

FLOYDADA FLOYD COUNTY, TEXAS, THURSDAY, NOVEMBER 3, 1966 NUMBER FORTY-THREE

Floyd Voters Will Vote In General Election Tuesday

Floyd County voters go to the polls Tuesday to vote in the General Election. Most of the interest centers around the vote for U. S. Senator. The Republican incumbent John Tower seeks re-election to the office. Texas Attorney General Waggoner Carr is also seeking the office on the Democratic party slate. Polls open at 8 a.m. and close at 7 p.m. Tuesday.

CANDIDATES
Four men are listed on the ballot for governor of Texas: Incumbent John Connally seeks reelection for the Democratic party; T. E. Kennerly, Republican; Tommy Gillespie, Constitution; and Bard A. Logan, Conservative.

U. S. Senator: Waggoner Carr, Democrat; John Tower, Republican; and James Barker Holland, Constitution.

LI. Governor: Preston Smith, Democrat; Kellis Dibrell, Republican; and William A. Johnson, Constitution.

Attorney General: Crawford Martin, Democrat; Robb Stewart, Republican; and John C. Williams, Constitution.

Commissioner of Agriculture: John C. White, Democrat; Jack Garrett, Republican; and Derek C. Bownds, Constitution.

Commissioner of General Land Office: Jerry Sadler, Democrat; Albert Fay, Republican; Joseph L. Tiller, Constitution.

Comptroller of Public Accounts: Robert S. Calvert, Democrat; Rudy T. Garza, Republican; and Wilma McDaniel, Constitution.

State Treasurer: Jesse James, Democrat; Lawrence Gilmer, Republican and Jesse Lee James, Constitution.

Railroad Commissioner: Byron Tunnell, Democrat; and David R. Clark, Constitution.

None of the other offices are contested.

AMENDMENTS
The official ballot is huge in size due to the fact that the voter must vote on whether or not to amend 16 of the state's Constitutional Amendments. In section two of this issue of The Hesperian is printed a complete explanation of these 16 amendments for the voters' study and consideration.

ABSENTEE VOTES
As of Tuesday, 34 absentee ballots had been marked in the county clerk's office. Deadline for absentee voting is Friday, November 4th.

The courthouse offices will be closed Tuesday in observance of election day. Election judges are urged to get the returns in as soon as possible to the county clerk's office in Floydada after polls close.

Judge Keller Holmes will receive the boxes at the clerk's office.

RESIDING JUDGES AND PLACES OF ELECTION

S. W. Floydada #1, R.M. Batley, First National Bank; Starkey #2, W.L. Davis, Starkey Club House; Allmon #3, Marvin Shurbet, Allmon Gin; Sandhill #4, T. C. Hollums, Sandhill Community Center; E. Lockney #5, J. D. Copeland, City Hall; Providence #7,

Wyatt McLaughlin, Providence School House; Lone Star #8, H. E. Frizzell, Lone Star Community Center; South Plains #9, Bryan Karr, South Plains School House;

Cedar Hill #11, Charlie Pernel, Cedar Hill Baptist Church; Baker #13, Malvin Jarboe, Baker Community Center; Lakeview #15, Holt Bishop, Lakeview School House; Harmony #16, Roy Hale, Harmony Community Center; Goodnight #17, Mrs. Jack

Pigg, Fairmount Baptist Church; West Lockney #18, Oliver Holmes, Lockney Methodist Church; Northwest Floydada #19, Sid Brown, City Hall; Dougherty #20, Mrs. Ruth Daniel, Dougherty School Gym; Sterley #21, Boyce Mosley, Sterley Community Center; McCoy #22, H.A. Tardy, McCoy Gin; Southeast Floydada #23, Claude Weathersbee, County Court Room; N.E. Floydada #24, Mrs. Carl Smith, North Hall Court House.

County Football Championship Game Friday Night In Lockney

The Floydada Whirlwinds will travel to Lockney tomorrow night for a 3AA conference game and hope to bring home the Floyd County football championship. Kickoff time is 7:30 p.m.

The Lockney Longhorns have won the county championship the past two years and the Floydada team is out to bring the victory back to the south end of the county.

Both Lockney and Floydada suffered defeats last week . . . with several players sick or hurt, Lockney made a good showing against Olton, losing 14 to 7. Floydada was nosed out of first place in the conference by losing to Memphis 13 to 12.

Lockney's record for the season is 0-5 in district play and they are in the cellar. Floydada stands 3-2 in district play and is tied for second place with Abernathy, Dimmitt, and Olton.

Although Lockney is down to its third quarterback, due to injuries, Floydada can expect them to be plenty tough. Lockney had the Olton game sewed up 7 to 6 last week until the last two minutes of the game when an Olton pass play clicked for a TD. Lockney was short eight regulars last week.

This week a sophomore, Tandy Johnston will take over the quarterback chores, as quarterback Randy Henderson received a broken ankle last week. Speed merchant Melvin Siss-

ney was injured two weeks ago and is out for the season.

Floydada goes into the game with no injuries from last week. Connie Bearden was injured in practice Monday and may not see action.

BONFIRE AND PEPRALLY
A big bonfire and pep rally have been scheduled for Thursday night at 7:30 at the Fire Department. A snake dance is scheduled before the bonfire, beginning at Lighthouse Electric. A Lockney Longhorn will be burned in effigy at the bonfire.

The Friday pep rally is scheduled at 3:30 in the high school gymnasium.

The public is urged to attend both rallies.

Colonial Bake Shop Open Here

Pete Kidwell of Plainview has opened the Colonial Bake Shop in Floydada at 213 South Second. This is the former location of Cornelius Grocery.

The new business will feature fresh hot pastries: doughnuts, cookies, cakes, pies, sweet rolls and will seek special orders for birthday and wedding cakes. The bakery will also cater pastries for parties and club meetings.

Kidwell has been associated with the Casey Bakery in Plainview and has been in this type business for over 20 years. He invites everyone to come in and get acquainted. The bakery will be open from 7 to 6, six days a week.

Youths Collect \$412 For Crop

Monday night youth from the community collected \$412 for CROP (Christian Rural Overseas Program). This amount included \$86 collected Sunday at the First Methodist Church, according to church officials.

There have been promises of cotton bales as donation at a later date which will be added to the above total.

Youth from St. Magdalen First Methodist and First participated in the effort.

DOLLAR DAY

The Hesperian features many big Dollar Day values in this issue. The reader is invited to shop the many big bargains in The Hesperian then visit the stores that offer the special buys.

Some firms feature the items on Monday only. . . . others have cut prices four days. . . . Thursday, Friday, Saturday and Monday.

Floydada merchants appreciate your business and want to be of service to the people in this trade area Dollar Days and every day of the year.



CORONADO RIFLE AND PISTOL CLUB member James Hale is taking a shot while being shot by a Hesperian photographer at the club's shooting range six miles south of Floydada. The public is invited to see the range and many firearms on display Sunday afternoon. (Staff Photo)

SUNDAY, 2-4 P.M. Gun Club Invites Public To See Range

The public is invited to attend the opening of the Coronado Rifle and Pistol Club's firing range Sunday from 2 to 4 p.m. The range is located six miles south of Floydada on Farm Road 1958. Members of the club will be on hand to show everyone what has been completed and what future plans include.

There will be many types of rifles, pistols, and shotguns on display. . . . some new, others are very old and the collector's values on some of the firearm relics run into thousands of dollars.

Of special interest will be the Winchester collection of Louis Newell. This is one of the most outstanding collections in this area and will be of interest to everyone.

The range will be closely supervised by range officers at all times as members will be firing some of the largest and

Rites Today For York Infant

Funeral rites are scheduled for this afternoon, Thursday, at 3 o'clock in the South Plains Baptist Church for Jimmy Matthew York, two month old son of Mr. and Mrs. Ernest York of the South Plains community.

Eakin Wins "High Cotton" Contest

Willie B. Eakin, McCoy farmer, is winner of the Production Credit Association's "high cotton" contest and will receive a \$25.00 Savings Bond. His stalk of Acala cotton measured 84".

Others who entered stalks of cotton in the contest included: Dale Lacey, Lambright 123, 76"; Elmo Schaffner, Paymaster 111, 73"; F. L. Montanden, Paymaster 202, 77"; Bob Ratjen, 66 Stripper, 80"; Doyle Moore, Paymaster 101A, 76";

Joe Hinkle, Acala, 74"; Linda Nelson, Paymaster 101, 68-1/2"; and Rose Hamilton, DeKalb 111, 63".

James Lackey, local Production Credit manager extended his congratulations to the winner and to the others who entered the contest.

Eakin said that he appreciated the gift from Production Credit and added that he had found them to be a very satisfactory financial firm with which to do business.



HUBERT FRIZZELL



JUNIOR SIMPSON

Farmers Union Officers Named

At a special called meeting Monday night officers were elected for the Floyd County Farmers Union organization.

Hubert Frizzell of Lockney is president, Junior Simpson of Floydada is vice president and Aldine Williams of Floydada is secretary-treasurer.

Some of the goals of the organization for the year will be announced later as committees are appointed.



ALDINE WILLIAMS

Dr. Goldberg Opens Clinic

A new doctor has opened a clinic in Floydada. He is Dr. Marvin Goldberg, Osteopathic physician and surgeon, now practicing at 208 S. Wall Street. His office faces east in the Duncan Abstract building.

Dr. Goldberg did his undergraduate work at Indiana University and Butler University. He received his Bachelor degree from Butler in Indianapolis, Indiana.

His major fields are chemistry, biology, bacteriology. He also received a second degree from Butler in bacteriology, writing a thesis on "Blood Factor G," an unknown blood factor.

He is a graduate of Chicago Osteopathic School of Medicine and Surgery. He interned for one year at Erie Osteopathic Hospital in Erie, Pennsylvania. He had received a National Educational Scholarship while in his last year in Chicago Osteopathic College.

He is a member of the Texas Association of Osteopathic Physicians and Surgeons and the national organization of the American Osteopathic Association.

His home town is South Bend, Indiana. Dr. Goldberg served



SHOTGUNNING COACHES - Floydada coaches practice for Turkey Shoot scheduled Saturday and Sunday afternoons from 1 to 6. This event is sponsored by the Floydada Quarterback Club at the Floydada gun range behind the bowling alley. There will be fights for all classes of shooters, only shotguns will be allowed in the contest. Winners may choose between turkeys or hams. The coaches pictured above left to right are: Delbert Wiley, Bill Curry, Jack Bell, Teddy Allen, Kenneth Hill and Robert Millikin. (Staff Photo)

Prock Chat
WENDELL TOOLEY

WE ARE responding to the fund of the Salvation Army and the we heard comes from Mar- teacher at Della Plains. She tion envelopes to her class were returned with money Army!

around Floydada each looking at the small and large I usually stop by and chat at the new hospital, and town and watch the airport

I visited the folks down at where they have built all across the south side This allows them enough the 65 foot trucks into the and the facilities and of the new offices makes for

EAST of Floydada about a B. Cartmack and Dick Guest large chicken houses. . . each a football field. Each house chicks. They plan to raise This could develop into

THE Mike's TV-Leonards area is about ready to open. This new business is the Colo- and will feature fresh baked cookies and doughnuts. We well, owner of the new business,

EXCITING to watch the new Grade school fast reach- along with the new cafeterias, wing at the high school.

of cotton samples have reach- cotton classing office to date on. This compares with 49,000

paid South Plains farmers, as the Consumer and Marketing USDA, ranged from the loan to over the loan for the white Spotted grades were bringing \$5.00 per bale over the loan. dominant grade, Middling, has the loan level to 50 cents per

paid for the most predom- in the 3.5 to 4.9 micron- Middling 31/32-20.60, Mid- 21.45, Strict Low Middling 19.50, Strict Low Middling 1-inch - 18.90, Light Spotted 31/32 - 18.90, Light Spotted 1-inch - 19.50, prices at gins were \$65 to \$70

last a heartbreaker to Memphis On the scoreboard we lost by and this of course is what this course showed Floydada with 13 and 10 for Memphis. We also led rushing and passing.

know that Memphis will re- . . . we came within one Dimmitt was busy elimi- nating from the running and we in the spot Memphis is now

say we were a sad bunch of of the stadium. . . . some of boys shed some tears. . . . and of us felt like it.

Sissney, their No. 1 quarter- back two weeks ago and is out their No. 2 quarterback Randy received a broken leg last week will be down to quarterback No. 3, for this week's game with

Floydada has most of the except the game will be -layed we'll pick the Winds to win

hunters are all anxiously watch- farmers, hoping they won't pump water on their wheat before the opens November 19th. Well, city of ducks in the area now and look very good. (I suppose until the 19th?)

WE have done our editorial an editorial urging everyone Tuesday. . . . we have in this ballot. . . . and we have also from the League of Wo- both Senator Tower's and Wag- qualifications and the 16 amend- constitution for your study

I can tell at this time, I plan all the amendments and as you from the editorial page I will Carr.

sons say, "I just don't want to in politics." We're not asking involved, we're only asking that to go vote your convictions.

if you're interested in the price grain sorghum, the agricultural war in Viet Nam, taxes, your and many other areas of that you should be interested

birthdays are pretty important Brad came in the other day and that what time of the day he was and he and Craig Hambricht birthday. His mother told him born in the afternoon. Brad re- too bad, I'm afraid he beat

CAPROCK

FROM PAGE 1
me!"

WHEN THE boys poured their trick or treat loot out on the dining room table Monday night, I was surprised to see a toothbrush in the pile. Now, I wonder who could have been

giving the trick or treaters toothbrushes? Three guesses and the first two don't count.

IF YOU'RE a firearm enthusiast, I suggest you'll enjoy the open house of the Coronado Rifle and Gun Club Sunday afternoon and the Quarterback Club's turkey shoot Saturday and Sunday.

**We Cover 23 Counties
West Texas TB Association**

Tuberculin testing and chest X-ray program will start in the Floydada Independent School system Tuesday, November 8.



PILOT Jimmy Stewart, navigator Richard Attenborough and passenger Hardy Kruger try to make an emergency landing during a sandstorm in the Sahara Desert in Robert Aldrich's production of "The Flight of the Phoenix," a 20th Century-Fox release in De Luxe color opening Sunday at the Capada Theatre. Also in the cast are Peter Finch, Ernest Borgnine and Christian Marquand.

DOCTOR

FROM PAGE 1

18 months in the armed services, traveling on ships in the South Pacific.

He is married to the former Devorah Elling of South Bend. The family includes Louis, 2 1/2 years and Mark, 1 year. He has practiced at Lorenzo for the past four years.

Office hours are 8:30 to 12:00 each day.

YORK

FROM PAGE 1

The father is employed by Don Probasco of that area.

The infant died Tuesday evening while being taken to Lockney for medical attention. Friends said the baby had been treated in Lockney Tuesday morning for what was believed to be a mild case of flu. However later in the afternoon his condition grew worse and the parents started back to Lockney with him about 6 p.m., from their South Plains home. The attending physician said it was possible the baby had a heart defect since birth, but this was not confirmed according to friends.

Survivors include the parents; four brothers, Joel Doyle, Glenn and Danny; one sister, Faye all of the home and grandparents, Mr. and Mrs. Grady York of Henhear, Ala., and Mrs. Adeline Johnson of Hollywood, Ala.

Interment will be in Floydada Cemetery under the direction of Moore and Rose Funeral Home.

Tornado Siren Test Monday

Bill Feuerbacher, city manager, said this week there would be a siren test Monday afternoon at 2 o'clock on the Tornado alert siren to make sure that all functions are working properly.

All residents are being notified in advance so as to not be alarmed when the siren whistle begins.

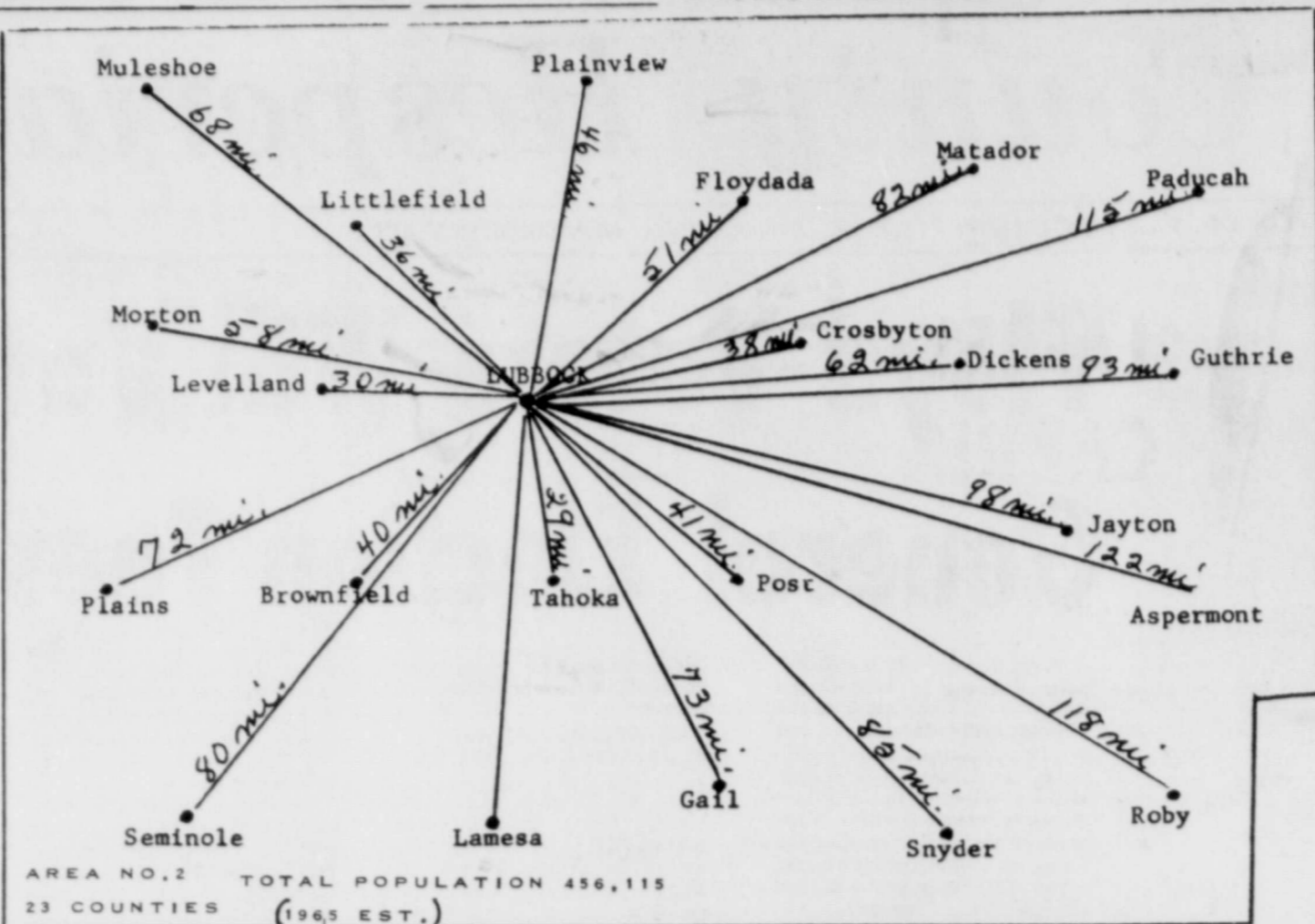
Feuerbacher said it was a good idea to check the siren periodically in case of a malfunction which could be easily caused from a small insect shorting out wiring.

Hays Buys Nocona Paper

Effective Nov. 2, Edgar R. Hays will become editor of the Nocona News, a weekly newspaper in Northwest Texas. Hays, editor of The Beacon for 24 years, and his wife moved Wednesday to Nocona.

He was reared near Nocona in the Bowie-Saint Jo area.

Purchase of the newspaper from Mr. and Mrs. E. L. Powell and Mr. and Mrs. R. L. Jeter of Saint Jo was completed last week.



GUNS

FROM PAGE 1

latest rifles and pistols on the market today.

On display and in firing demonstrations will be old, new and converted military rifles and pistols.

Members of the club will answer questions about the range and firearms.

Although the range is not completed, it is thought by the members that the public will get an idea of its scope and future use. Refreshments will be available to everyone.

LIST OF GUNS
Rifles: 30/06 win.; 7 m.m. mag.; 222 mag.; 300 win. mag.; 458 mag.; 30 m2 carbine.
Pistols: 9 m.m. P-38; 41 mag.; 41 mag.; 44 mag.; 357 mag.; 45 colt.
Shotguns: 12 gauge L. C. Smith double; 12 gauge win. Lever action; 10 gauge mag.

GUNS TO BE SHOT
Rifles: Rounds; 30/06 - 3; 458 mag. - 1; 30 m2 - 3; 300 win. mag. 3.
Pistols: Rounds; 9m.m. - 4; 41 mag. - 3.
Shotguns: Rounds; 10 gauge mag. - 2.

Tech Exes To Meet

The Floyd County Chapter of Texas Tech Ex-Students Association will hold an important meeting Friday night, Nov. 4, following the Lockney-Floydada football game, according to Eddie Foster, president.

Exes are asked to meet in the community room of the First National Bank in Lockney as soon after the game as possible, and all exes are urged to attend. Refreshments will be served.

CHANGES JOBS

President Johnson has announced the resignation of

Attorney-General Katzenbach

Katzenbach will succeed George Ball as under-secretary of

state. Ball resigned because he wished to leave government service.

Check & Compare These Prices



EVERYDAY
REGULAR PRICES

SWEET MILK

1/2
GAL.

39

409 CLEANER 69¢

HUNTS 46 OZ. CAN TOMATO JUICE 3 for \$1

TOSTUM POP UPS 47¢

KIM FLOUR 25 LB. SACK \$1.99

HOT SAUCE 9¢

HYGEA DRINKS GAL. 69¢

DEL MONTE 2 LB. BAG PRUNES 73¢

ANGEL FLAKE 3 1/2 OZ. CAN COCONUT 25¢

LIPTON TEA 1 LB. BOX \$1.65

CANNED SODA POP EA. CAN 10¢

FOLGERS, MAXWELL HOUSE, AND MARYLAND CLUB, LB. COFFEE 83¢

3 MINUTE OATS SMALL BOX 21¢

LIBBY'S FROZEN 10 OZ. GREEN BEANS 2 for 49¢

DECKERS BACON 2 lbs. \$1.57

WHOLE SUN FROZEN 6 OZ. ORANGE JUICE 21¢

JOHNSON'S FROZEN PIE CRUST 2 for 41¢

FROZEN HONEY BUNS BOX 29¢

10 ROLL PACK TOILET TISSUE 69¢

SAL HEPATICA LAXATIVE REG. 89¢ 69¢

ALKA SELTZER REG. 83¢

CATSUP

A REAL GOOD BUY

5 FOR \$1

GREAT SHAKE SHAKERS 4 SERVINGS

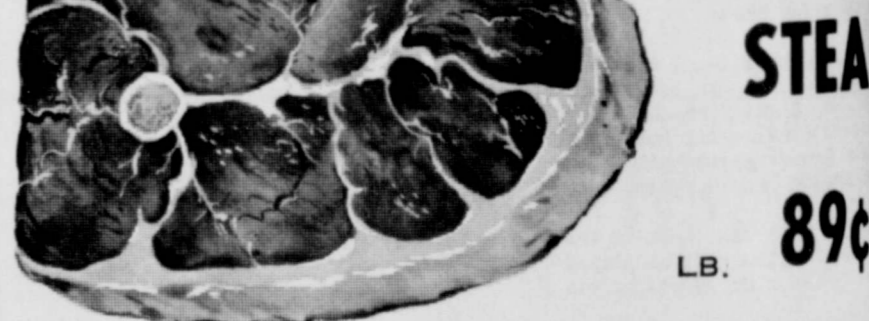
BAKERS CHOCOLATE SEMI-SWEET 8 OZ.

DRESDEN or CONTAC REG. \$1.49

TASTY AMERICAN CHEESE 2 lbs. 89¢

BROCCOLI SPEARS LIBBY'S FROZEN 10 OZ. 2 for 49¢

VAN CAMP TUNA BUY YOUR MR. CLEAN YOUR DIAL SOAP AT THE



ROUND STEAK

89¢

CHEESE RED RIND LB. 89¢

PRODUCE

RUSSETT POTATOES 20 LB. 89¢

TOKAY GRAPES LB. 12¢

BANANAS LB. 10¢

Thrifty Super Market

HOME OWNED & OPERATED
DOUBLE BUCCANEER STAMPS EVERY WEDNESDAY
SECOND AND MISSISSIPPI STREETS

THE FLOYD COUNTY HESPERIAN

Published at 212 South Main St., Floydada, Texas, 79235
WENDELL TOOLEY, Publisher

Established 1896 by Claude V. Hall. Entered as second class mail at the post office at Floydada, Texas April 10, 1907 under the act of Congress of March 3, 1879.



NOTICE—Any erroneous reflections upon the character, standing or reputation of any person, firm or corporation which may appear in the columns of The Floyd County Hesperian will be corrected gladly upon its being brought to the attention of the publishers.

BEST USED CARS

LOOK AT GROUP OF USED CARS

- 1964 IMPALA
- 4 DR. SEDA
- 32,000 ACTU
- 1964 SUPER
- OLDSMOBIL
- 43,000 ACTU
- 1963 LESAB
- BUICK
- 4 DR. SEDA
- LOW MILEA
- 1963 PONTI
- 4 DR. SEDA
- LOW MILEA
- 1962 NEWPR
- CHRYSLER
- 4 DR. SEDA
- LOW MILEA
- A FEW 196
- PLYMOUTH
- AT BARGAIN
- GOOD SEL
- OF OLDER
- CARS.
- ALL
- CHRYSL
- PLYM

**Charlton New Manager
Radio Station KFLD**

Charlton, former manager of radio station in Falls, was named manager of radio station KFLD, effective this week by the board.



Pete Charlton

Stevens Named

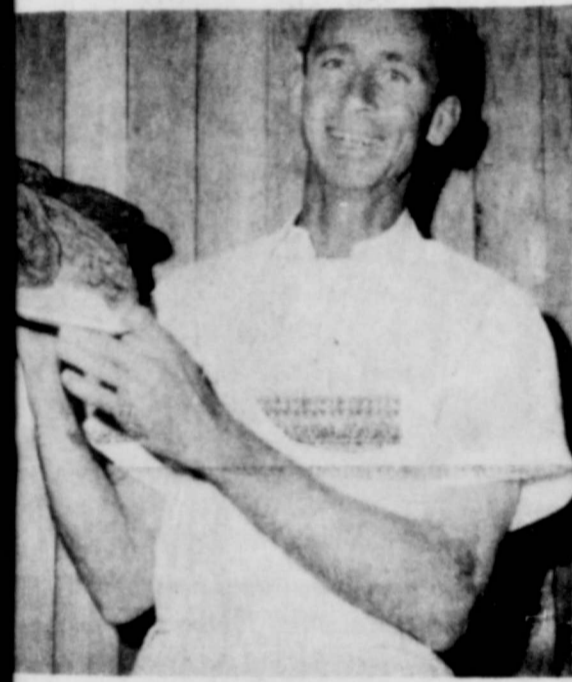
Advertising Manager

Stevens has been promoted to the position of Advertising Manager of the Department Store, effective to an announcement this week by R. G. Stevens.



E. G. STEVENS

Stevens is married to the former Marlene Owen, also of Paris, Texas. They have one daughter, Marla Jon, age 10.



BAKE SHOP....Pete Kidwell, top, and Mrs. Jim Anderson are pictured with some fresh baked pastries at the new Colonial Bake Shop. (Staff Photo)



LANEY, Lions Governor of district 2T2 was the featured speaker at the local Lion luncheon last week. He was introduced by Lion President Louis Anderson. (Staff Photo)

Beall's
DEPARTMENT STORES

THURSDAY, FRIDAY, SATURDAY & MONDAY

You All Come



**SPECIAL
LADIES
CAPRIS**

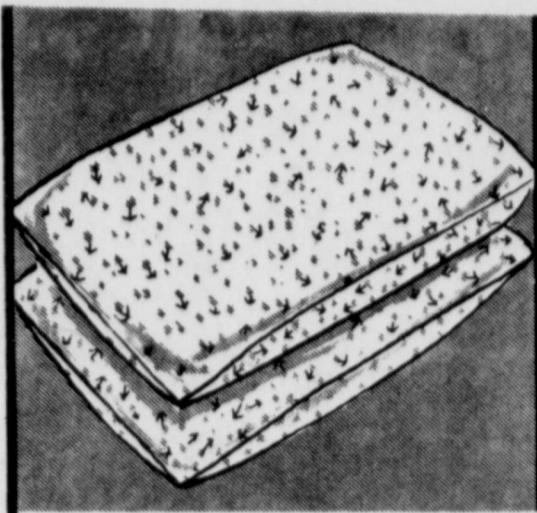
KORATRON
NEVER NEEDS
IRONING

- PERMANENT PLEATS
- PERMANENT CREASES
- WRINKLE RESISTANT
- MACHINE WASH AND DRY OR HAND WASH AND DRIP DRY
- COMPLETE SHAPE RETENTION
- COMPLETE SHRINKAGE CONTROL
- PERMANENTLY PRESSED GARMENT

SIZES 10 - 18

REG. \$5.98 VALUE
NOW

ONLY **\$3.88** PR.



REGULAR \$3.98

**21"x 27" RED LABEL
BED PILLOWS**

2 FOR \$5.99

DACRON POLYESTER OR FOAM WHICH IS NON-MATTING AND NON ALLERGIC, STAYS FLUFFY AND SOFT ALWAYS, COLORFUL FLORAL TICK.

REGULAR 25¢ YARD

**UNBLEACHED
SHEETING**

5 yds. \$1.00

39" SIDE WITH 140 THREADS PER SQUARE INCH, EXCELLENT FOR CURTAINS, MATTRESS PROTECTORS AND UTILITY CLOTH.

\$ DOLLAR DAY
SPECIAL

45" KETTLE CLOTH

50% POLYESTER
50% COTTON.

FIRST QUALITY
VALUES TO \$1.79 YD.

NOW ONLY **99¢** YD.

EXTRA
VALUE



**COTTON FLANNEL
SPORT SHIRTS**

\$1.50

MANY OUTDOOR MEN USE THESE FOR WORK SHIRTS. HANDSOME MULTI-CHECK PATTERNS IN SIZES S-M-L-XL.



**Cold
Weather
Ahead**

SPECIAL VALUE 27 INCH LENGTH
WESTERN STYLE CORDUROY JACKETS

\$10⁰⁰

WE CALL IT THE LBJ WESTERN LOOK, FEATURES ACRYLIC SHERPA COLLAR AND LINING FOR ADDED WARMTH, WIDE WALE CORDUROY IN TAUPE, WHISKEY OR OLIVE COLORS, SIZES S-M-L.

**D
O
L
L
A
R

D
A
Y**

\$ DOLLAR DAY
SPECIAL

**BEAUTIFUL
CANVAS PRINTS**

ASST. FANCY
COLORS

REG. 98¢ VALUE
NOW

\$ DOLLAR DAY
ONLY

77¢ A YD.

\$ DOLLAR DAY
SPECIALS

LADIES PANTIES

BRIEF STYLES

100% ACETATE
COLOR WHITE

SIZES 5 THRU 10
REG. 3 FOR \$1.00

\$ DOLLAR DAY

3 pr. 77¢

WEEK-END SPECIAL
\$ DOLLAR DAYS
ONLY

**54" to 60"
WOOLEN
PIECE GOODS**

REG. \$3.98 YD. NOW

\$2.99

REG. \$2.98 YD. NOW

\$1.99

REG. \$1.99 YD. NOW

2 yds. \$3.00

SPECIAL

FULL AND TWIN
SIZE

**CHENILLE
BEDSPREADS**

REG. \$5.00 VALUE

\$ DOLLAR DAYS
ONLY

\$3.99

\$ DOLLAR DAY
SPECIAL

**ONE TABLE
LADIES SHOES**

VALUES TO \$5.00 PR.

\$ DOLLAR DAY
ONLY

\$3.99

\$ DOLLAR DAY
SPECIAL

**THERMAL
COTTON
BLANKETS**

REG. \$5.98 VALUE
FULL SIZE

\$ DOLLAR DAY
ONLY

2 FOR \$10

**MEN'S 2-PIECE
INSULATED UNDERWEAR
\$3.00** SUIT

REGULAR \$1.98 PER GARMENT
LONG SLEEVE SHIRT AND
DRAWERS, SIZES ARE COMPLETE.

**SPECIAL! MEN'S
THERMAL SOX**

3 pr. \$1.00

SOFT SPUN COTTON WITH
CUSHION FOOT. THEY KEEP
FEET WARM AND DRY.



YOUNG FARMER BANQUET SPEAKER... Jim Morris of Austin, information director of Texas Electric Cooperatives is pictured as he spoke at the annual Floydada Young Farmers annual banquet at Rogers Restaurant last week. About 50 young farmers, their wives and guests attended the affair. (Staff Photo)



BOOKKEEPER... Mrs. Connie Reed is bookkeeper at The Hesperian Office. She succeeds Mrs. A.J. Jester, who has entered the restaurant business at the Travel Center with her husband. (Staff Photo)



YEP...THE WOMEN BELONG TO THE Coronado Rifle And Pistol club too! Mrs. James Hale demonstrates firing a big Magnum 41 pistol at the Sunday afternoon range this week. The public is invited to see the many pistols, rifles and shotguns on display. (Staff Photo)



TALL COTTON CONTEST WINNER... Willie B. Eakin, holds up winning stalk of cotton in the Production Credit contest that he won this week. Looking on is local Production Credit manager James Lackey. (Staff Photo)

CARR DISCUSSES INFLATION

AUSTIN — Some people are trying to make farmers, ranchers and dairymen "the scapegoats of inflation," Attorney General Waggoner Carr has declared in calling for more detailed information on the composite factors of food prices. As a United States Senator, Carr said, he would take steps to determine what share of food costs actually goes to the farmer-producer. The Department of Agriculture would be asked to provide periodic detailed breakdowns to reveal what share actually goes to the farmer-producer.

"I, and Mrs. Carr in particular, certainly share the concern of housewives over rising food costs," Carr said. "But I am convinced that the farmers and ranchers of Texas are not to blame for high supermarket prices." The Democratic candidate pointed out that in a time of prosperity, farmers are receiving less for many of their commodities than they did 18 years ago.

"In fact," Carr said, "they have almost become the forgotten people of our economy." Carr applauded Governor John Connally's action in launching a study of food costs in Texas. The Governor re-

quested the University of Texas, Texas A & M and Texas Tech to make the study and report to him by December 1.

Carr, who had previously called for more information on food costs, expressed hope the study will produce evidence to correct "a great deal of misinformation about who is to blame."

To forestall an accumulation of lint in plumbing and the resulting expensive repairs, an effective lint filter on the end of the washing machine hose can be fashioned very simply from aluminum screening. A few cents spent at a hardware store now for the rust-proof aluminum screening is the insurance against sizeable plumbing bills later.



DEATH CAR...The 1963 Chevrolet above is one of the two vehicles involved in a Sunday night wreck near Quitaque killing a man and his mother-in-law. Mr. and Mrs. Elton Goen and Mr. and Mrs. Bud Goen of Floydada, who were returning from a fishing trip in that area, came upon the wreck scene shortly after the accident before the injured and death victims were removed. (Photo courtesy of Gerald Howard, investigating officer.)



EASY-GOING — Faded blue cotton denim goes ship-shape in flared bell bottoms topped with a pullover shirt. The outfit's Sanforized to keep its comfortable fit.

COURTHOUSE NEWS

(Marriage Licenses)
Roy Elber Ewing and Idabell Lipham, Oct. 26.
Bemous Vernon Carver and Virginia Rafferty Lindsey, Oct. 27.
Ray Ivory Cook and Viola Gertrude Whitfield, Oct. 31.
(Warranty Deeds)
Edna V. Hill Meeker to Oscar Golden, 133 and one third acres out of survey 13 in block D-2 in Floyd County; \$22 stamps.
Pedro C. Soliz et al to I. C. Surginer, lots 2 and 3 in block 61 in Floydada.
Alice Tierce etviro to Garland Sams, all of the east 10 feet of the west one-half of lots 8, 9, and 10 in block 20 in Lockney; 55 cents stamps.
Thomas Weldon Fowler Jr., to Wilson M. Fowler etux, an undivided three-fifths interest in and to an undivided one-third interest of the east one-half of survey 6 in block 1, \$8.80 stamps.
Ralph Lemons etux to Harold Wayne Bennett, lot 1 and the east one-half of lots 3, 4 and 5 in block 4, Honerhea Addition in Floydada; \$1.65 stamps.
David F. Eaton Jr., etux to Roy Eugene Edwards etux, the west 67.5 feet of lot 1 in block 1, Steen Place in Floydada; \$1.65 stamps.
DISTRICT COURT
(Cases Filed)
Antonio Z. Salas vs Ranger Insurance Co., appeal from award of Industrial Accident Board.

Vote for YOU!
ONLY YOU CAN CAST YOUR VOTE!
Don't forget to VOTE!

YOUR Vote Counts
But it counts only if you cast

Shurfine CARNIVAL '66 The YEAR GREAT TEAM-UP SAVING

OCT. 24 thru NOV. 5, 1966

SHOPPING LIST

PORK CHOPS POUND 79

Shurfine Apple Butter 28 oz.3/\$1.00	Shurfine Luncheon Meat 12 oz.
Shurfine Apple Sauce 3036/\$1.00	Shurfresh Margarine 1 lb. Qtrs.
Shurfine Apricots Hlvs. Unpl. 303.....4/\$1.00	Shurfine Milk Evap. Tall Can.....
Shurfine Asparagus All Gr. Cut 300.....4/\$1.00	Shurfine Olives 7 oz. Stuff-Thr-Manz.....
Shurfine Beets Cut 3038/\$1.00	Shurfine Orange Juice Frozen 6 oz.
Shurfresh Biscuits Sw-But. Milk 8 oz... 13/\$1.00	Shurfine Peanut Butter 12 oz.
Shurfine Blackeyes Fr. Shelled 300.....7/\$1.00	Shurfine Pears Hlvs. Bart. 303
Shurfine Broccoli Sp. 10 oz. Frozen.....4/\$1.00	Shurfine Pickles Wh. Sweet 22 oz.
Shurfine Cake Mixes Asst'd. 19 oz.4/\$1.00	Shurfine Pork & Beans 300

BACON SHURFINE POUND 79

Shurfine Flour 10 lb. Paper Bag \$.98	Shurfine Potatoes Irish Whole 303
Shurfine Flour 25 lb. Print Bag\$2.19	Shurfine Pumpkin 300
Shurfine Frost. Mix Wht-Choc. 1 1/2 oz....4/\$1.00	Shurfine Salad Dressing Qt.
Shurfine Fruit Cocktail 3035/\$1.00	Shurfine Salmon Red Alaska Tall Can....
Shurfine Grape Jelly 18 oz.3/\$1.00	Shurfine Sauer Kraut 303
Shurfine Grape Juice 24 oz.3/\$1.00	Shurfine Shortening 3 lb.
Shurfine Gr. Beans 4 Sv.-Cut B.L. 303....5/\$1.00	Shurfine Spinach 303
SHURFINE PEACHES, YELLOW CLING 4 \$1.00	SHURFINE SWEET PEAS EARLY HARV. 303.....

FRANKS 3 POUNDS \$1.19

Shurfine Swt. Potatoes Wh. No. 3 Squat...3/\$1.00	Shurfresh Cheese Spread 2 lbs.
Shurfine Strawberry Preserves 18 oz. 2/\$1.00	Shurfine Corn C.S.-W.K. Golden 303.....
Softlin Toilet Tissue 2 Ply Asst'd. 10 rolls \$.79	Shurfine Corn Frozen Cut 10 oz.
Shurfine Tomatoes Wh. Peeled 303.....5/\$1.00	Shurfresh Crackers 1 lb.
Shurfine Tomato Sauce 8 oz.9/\$1.00	Shurfine Cranberry Sauce Str. 300
Shurfine Tuna Chunk Style Flat Can.....3/\$.89	Shurfine Cucumber Chips F.P. 16 oz.
Shurfine Waffle Syrup Qt.2/\$.79	Roxey Dog Food Canned No. 1 Can
SHURFINE CATSUP 14 oz..... 5 \$1.00	SHURFINE COFFEE, REG OR DRIP, LB.

CLUB STEAK U.S. GOOD POUND 85

Call Us **WESTER'S** 100 Main

We Deliver YU 3-

YOU ALL COME!!!

Producers Cooperative Elevators

FLOYDADA DOUGHERTY

Annual Stockholders Meeting

TUESDAY 7:30 P.M.

NOVEMBER 8th

Floydada High School Cafeteria

REFRESHMENTS TO BE SERVED AT CLOSE OF MEETING

BRING THE FAMILY

OF INTEREST TO WOMEN

PHONE YU 3-3737

CLUBS • PARTIES • WEDDINGS • PERSONAL MENTION

PHONE YU 3-3738

C Dignitaries Honored With Dinner, Reception

Officers of the Texas District of Women's Clubs, District officers and special guests were honored at a dinner Tuesday at the Lamplighter Inn at the annual inner club day program and held at the First church.

For the program at the church for which the state president was guest speaker, she chose as her topic her administration theme, "Education, Adult and Youth, The Challenge of Tomorrow."

Mrs. Seay urged everyone to contact their state representative and senator urging the passing of the safety legislation bill. She particularly stressed the driving safety program and urged all Federation club women to get behind the governor on his seven point safety plan.

Mrs. Decker presided over the program and introduced visiting guests, local club presidents and board members. Mrs. Cummings introduced the guest speaker.

Mrs. Cummings gave a brief talk on pointers of district interest.

Mrs. Kinder Farris was in charge of arrangements for the reception which followed the program held in honor of the state and district officers.

Mrs. P. D. Helms and Mrs. Ben Whitaker were at the serving table assisted by hostesses from each Floydada Federated club.



CLUB WOMEN LOOK OVER... Floydada advertisement featured on a page of October issue of Texas Club Women magazine. In the above group are TFWC dignitaries who were in Floydada Tuesday for a dinner and reception in their honor. Seen from left to right, seated, are Mrs. B.F. Seay, TFWC president; Mrs. R.L. Nichols, Floydada Inter-Club Council

...and standing left to right, Mrs. Joe Taylor, Caprock District 3rd vice president; Mrs. Lane Decker, Caprock District 1st vice president; Mrs. Bill Davis, TFWC secretary and Mrs. Louis Cummings, Caprock District president. (Staff Photo)

Kah Lodge Party

Members of the Floydada Revere held their annual party Tuesday night at the IOOF Hall decorated for the occasion.

Refreshments were served to Grace Grundy, Leona Oden, Artie Webb, Kathryn Turner, Ruby Davis, Ethel Sawyer, Laverne McIntosh, Lee Moss, Ruth Fitzgerald, Dorothy Reeves, Pauline Nash, Willie D. Hill, Gayle Daniel, Wanda O'Neal, Jewel Price and Lona Sparks.

Miss Nicholson Honored With Linen Shower

Mrs. W. P. Nicholson of Floydada attended a linen shower in honor of her daughter, Miss Merle Dean Nicholson, Thursday, October 27th in the home of Mrs. Anita Ramsey in Fort Worth. Miss Nicholson is the bride-elect of Harris Wells Bonnell. The couple plan to wed November 25th.

Dougherty Club Elects Officers

Dougherty Home Demonstration Club met in the home of Mrs. Johnnie Cates October 20 with various committee chairmen making their annual reports. New officers were also elected for the year 1967. They are Mrs. A. H. Kreis, presi-

Miss Upton, Glen Thompson Plan December 24th Vows

The engagement and approaching marriage of Miss Marvella Kay Upton to Jesse Glen Thompson is being announced by the bride-elect's parents, Mr. and Mrs. M.G. Upton of Sunray.

Parents of the prospective bridegroom are Mr. and Mrs. C. D. Thompson of Snyder. The wedding will be solemnized December 24 at 7 p.m. in the First Baptist Church in Sunray.

Miss Upton is a junior music education major at West Texas State University and a member of the honorary band sorority Tau Beta Sigma and Music Major Sorority Mu Phi Epsilon.

Miss Upton, Glen Thompson Plan December 24th Vows

Thompson attended Texas Tech in Lubbock and is a 1966 graduate of West Texas State University. He was a member of honorary band fraternity Kappa Kappa Psi and Phi Mu Alpha Sinfonia. He is presently assistant band director in Floydada High School.

To hold much around winter garden plantings that winter-kill, use rust-proof aluminum screening. Drive-1" x 2' stakes

Mr. and Mrs. Stanley Waits of Abernathy are parents of a new son born October 28 in Hill Plains Hospital in Hale Center. The baby has not been named as yet. He weighed eight pounds and seven ounces at birth.

Grandparents include Mr. and Mrs. J. C. Odum of Floydada and Mrs. Eula Waits of Abernathy and great grandmother, Mrs. M. J. McCoy of Lubbock.

Mr. and Mrs. Keith Holladay of Lockney are parents of a new daughter, Margaret Clorene, who was born in Plainview Medical Center Thursday night. She weighed six pounds and 15 ounces. The Holladays have another daughter, Becky, who is 16 months old.

Grandparents are Mr. and Mrs. Bill Holladay of Floydada and Mr. and Mrs. Cecil Carthel of Lockney.

The father farms.

Mrs. Linda Hodges visited her sister, Mrs. Bill Feuerbacher Sunday, who is a patient at the University Hospital in Lubbock.

Miss Carolyn Cunningham and Miss Rita Griffith of Plainview visited the latter's sister and family, Mr. and Mrs. Lonnie Loter, in Pampa during the weekend.

Troy Watson, Safety Instructor with Texas Engineering Extension Service, Texas A & M College, was at the Lighthouse Monday for the Linemen's regular Safety Meeting.

Mr. and Mrs. Bill Phillips and children were in Lubbock Saturday on business.



MARVELLA KAY UPTON



Mr. and Mrs. Stanley Waits of Abernathy are parents of a new son born October 28 in Hill Plains Hospital in Hale Center.

The baby has not been named as yet. He weighed eight pounds and seven ounces at birth.

Grandparents include Mr. and Mrs. J. C. Odum of Floydada and Mrs. Eula Waits of Abernathy and great grandmother, Mrs. M. J. McCoy of Lubbock.

Mr. and Mrs. Keith Holladay of Lockney are parents of a new daughter, Margaret Clorene, who was born in Plainview Medical Center Thursday night.

She weighed six pounds and 15 ounces. The Holladays have another daughter, Becky, who is 16 months old.

Grandparents are Mr. and Mrs. Bill Holladay of Floydada and Mr. and Mrs. Cecil Carthel of Lockney.

The father farms.

Mrs. Linda Hodges visited her sister, Mrs. Bill Feuerbacher Sunday, who is a patient at the University Hospital in Lubbock.

Miss Carolyn Cunningham and Miss Rita Griffith of Plainview visited the latter's sister and family, Mr. and Mrs. Lonnie Loter, in Pampa during the weekend.

Troy Watson, Safety Instructor with Texas Engineering Extension Service, Texas A & M College, was at the Lighthouse Monday for the Linemen's regular Safety Meeting.

Mr. and Mrs. Bill Phillips and children were in Lubbock Saturday on business.

PADA LIVE IN

WEDNESDAY-FRIDAY

THURSDAY

PLUS APPALOOSA RUN!

DISNEY PRODUCTION

WEDNESDAY-MONDAY

the LIGHT OF THE MOENIX

10 YEARS' GREATEST "TEAM-UP" FOR SAVINGS!

Shurfine CARNIVAL '66

OCT. 24 thru NOV. 5, 1966

SHOPPING LIST

Shurfine Apple Butter 28 oz.	3/\$1.00	Shurfine Luncheon Meat 12 oz.	2/\$1.00
Shurfine Apple Sauce 303	6/\$1.00	Shurfine Margarine 1 lb. Qtrs.	5/\$1.00
Shurfine Apricots Hlvs. Unpl. 303	4/\$1.00	Shurfine Milk Evap. Tall Can.	7/\$1.00
Shurfine Asparagus All Gr. Cut 300	4/\$1.00	Shurfine Olives 7oz. Stuff-Thr-Manz.	2/\$1.00
Shurfine Beans Cut 303	8/\$1.00	Shurfine Orange Juice Frozen 6oz.	5/\$1.00
Shurfine Biscuits Sw-But. Milk 8oz.	13/\$1.00	Shurfine Peaches YC Hlv-Sli. 2 1/2 Can.	4/\$1.00
Shurfine Blackeyes Fr. Shelled 300	7/\$1.00	Shurfine Peanut Butter 12 oz.	3/\$1.00
Shurfine Broccoli Sp. 10oz. Frozen.	4/\$1.00	Shurfine Pears Hlvs. Bart. 303	4/\$1.00
Shurfine Cake Mixes Ass't'd. 19 oz.	4/\$1.00	Shurfine Pickles Wh. Sweet 22 oz.	2/\$.89
Shurfine Catsup 14 oz.	5/\$1.00	Shurfine Pork & Beans 300	8/\$1.00
Shurfine Cheese Spread 2 lbs.	\$.89	Shurfine Potatoes Irish Whole 303	8/\$1.00
Shurfine Coffee Reg-Drip 1 lb.	\$.69	Shurfine Pumpkin 300	8/\$1.00
Shurfine Corn C.S.-W.K. Golden 303	5/\$1.00	Shurfine Salad Dressing Qt.	\$.39
Shurfine Corn Frozen Cut 10 oz.	5/\$1.00	Shurfine Salmon Red Alaska Tall Can.	\$.89
Shurfine Crackers 1 lb.	2/\$.45	Shurfine Sauer Kraut 303	6/\$1.00
Shurfine Cranberry Sauce Str. 300	4/\$1.00	Shurfine Shortening 3 lb.	\$.79
Shurfine Cucumber Chips F.P. 16 oz.	4/\$1.00	Shurfine Spinach 303	7/\$1.00
Shurfine Dog Food Canned No. 1 Can.	13/\$1.00	Shurfine Sweet Peas Early Harv. 303	5/\$1.00
Shurfine Flour 10 lb. Paper Bag	\$.98	Shurfine Swt. Potatoes Wh. No. 3 Squat.	3/\$1.00
Shurfine Flour 25 lb. Print Bag	\$2.19	Shurfine Strawberry Preserves 18 oz.	2/\$1.00
Shurfine Frost. Mix Whit-Choc. 1 1/2 oz.	4/\$1.00	Shurfine Toilet Tissue 2 Ply Ass't'd. 10 rolls	\$.79
Shurfine Fruit Cocktail 303	5/\$1.00	Shurfine Tomatoes Wh. Peeled 303	5/\$1.00
Shurfine Grape Jelly 18 oz.	3/\$1.00	Shurfine Tomato Sauce 8 oz.	9/\$1.00
Shurfine Grape Juice 24 oz.	3/\$1.00	Shurfine Tuna Chunk Style Flat Can.	3/\$.89
Shurfine Gr. Beans 4 Sv-Cut B.L. 303	5/\$1.00	Shurfine Waffle Syrup Qt.	2/\$.79

SHURFRESH BACON 1 LB. SLICED 79¢

DOUBLE ON WEDNESDAY

HULL & McBRIEN

We Deliver YU 3-3164

MRS BAIRD'S

Stays Fresh Longer

MRS BAIRD'S

Virginia Lindsey, Bemous Carver Exchange Vows

Virginia Lindsey and Bemous V. Carver were married Saturday afternoon at 6 o'clock in the home of the groom, 712 South Wall Street.

Rev. Floyd C. Bradley, pastor of the First Baptist Church, performed the single ring ceremony before an arrangement of pink gladiolus flanked by white bridal ropes.

The bride wore a street length sheath dress of green wool check with matching coat. She wore black accessories and pink orchid corsage. She wore her mother's wedding ring and a single strand of pearls belonging to her son's wife, Mrs. Darryl Lindsey.

A reception was held in the home following the wedding. The table was centered with an arrangement of pink carnations enhanced on either side by lighted pink tapers. A three tiered wedding cake and punch were served from crystal appointments.

Relatives attending the wedding and reception were Mr. and Mrs. Darryl Lindsey of Austin; Mr. and Mrs. H. L. Rafferty, parents of the bride, Murky Carver, Mr. and Mrs. Don Daniel and family, Mr. and Mrs. Mike Carver and son and Mr. and Mrs. James Murray and family, all of Floydada.

FLOYD DATA Mrs. W. H. Smith Sr., was returned home from West Texas Hospital last week after undergoing surgery on both of her feet. She is reported to be doing nicely but both feet are still in casts. She is able to be out in a walker and wheelchair.

FLOYD DATA Mrs. Kenneth Rimmer was able to return home Tuesday from a Plainview hospital where she underwent major surgery. She is reported doing nicely.

Autograph Party For Mrs. Baker Tomorrow At 2 P. M.

Mrs. Hattie Price Baker of Brownwood, author of a new book, will be honored with an autograph party at Alma's Gift Shop, 126 West California Street, Friday, November 4, at 2 p.m. The party is being arranged by Mrs. Alma N. Holmes.

Mrs. Baker's book is entitled MY JOURNEY OF LIFE: WRITTEN IN MY GOLDEN YEARS, and is an inspirational account of her long life of service in education and in the work of the Baptist Church. Mrs. Baker is well known in the entire West Texas area because of her long association with schools, colleges and churches. Also, she was married to the late R.H. Baker of Floydada.

In her book, published by The Naylor Company of San Antonio, she traces her work of sixty years in education. This was a joyful service for her, for she had wanted to be a teacher from childhood. From it she developed her philosophy of life: The way to be happy is to make others happy.

She struggled to prepare herself to be a teacher, for her parents died when she was in her teens. Death also robbed her of her husband after only a few years of marriage. She redoubled her efforts to gain an education and to educate others.

She was first graduated from the North Texas State University (then North Texas State Teachers' College). Through the years she was graduated from the Southwestern Baptist Theological Seminary, received her Master's Degree from Peabody College, Nashville, Tennessee, and a Master of Arts Degree from the University of Texas. She also did considerable work for a Ph. D. at the University.

HELLO WORLD Mr. and Mrs. Ray Lucas of Dumas announce the arrival of a baby daughter, Kathy Lee, weighing six pounds, 12 and a half ounces. Mr. and Mrs. Lucas have another daughter, Stacey, who is four.

The mother will be remembered here as the former Texie Ann Kenamer.

AIRMAN SHORTAGE Military officials report the Air Force and the Navy are facing a shortage of young pilots which may or may not be eased until the early 1970's. Top officials believe the shortage is due to commitments in Vietnam and the expanding airline industry.

For some years Mrs. Baker was head of the Elementary Education Department of Howard Payne College, Brownwood.

While working for her doctorate at the University of Texas, she carried on experimentation of the reading habits of 240 of her own college students. She also organized reading clinics in West Texas, and gave lectures and demonstrations from Texas to Chicago.

Another field that Mrs. Baker was deeply interested in was work with retarded children. She organized and administered the Baker School for Exceptional Children in Lubbock. This was one of the first educational institutions in the country for retarded children.

Mrs. Baker, now in her eighties, has had to curtail many of her activities, but she still retains her interest in arts and crafts and music. She also visits the aged and the handicapped as much as she can.

Mrs. Baker now lives in Brownwood. Hostess for the occasion will be Mr. and Mrs. Clement McDonald and Mr. and Mrs. Claude Price.

Fall Repair Tips On Screening

A spot survey of home-builders across the nation early this Fall revealed a burgeoning demand for the recently introduced green and charcoal aluminum screening, according to the Insect Wire Screening Bureau, New York. The availability of color in screening permits the homeowner to color coordinate the total exterior of the home.

MAY I BE YOUR GUEST?

I'LL SHOW YOU...AND LET YOU TRY... RELAXACIZOR, THE MODERN, EASY WAY TO REDUCE SIZE OF HIPS, ABDOMEN, THIGHS, WAIST...IN YOUR OWN HOME. CALL OR WRITE ME AND I'LL ARRANGE FOR YOUR FREE FIGURE BEAUTY APPOINTMENT.

Mrs. Mary Lou Gilbreath Box 903 Ralls Pho 7122

WATCH FOR Grand Opening OF Jo's Specialty Shop

FLOYDADA'S NEW LADIES AND TEENS READY TO WEAR SHOP

- DRESSES
- SUITS
- SPORTSWEAR

GRAND OPENING NOVEMBER 12, 1966

COLONIAL SHOPPING CENTER ON THE MATADOR HIGHWAY



REVERSIBLE—Tops in versatility is the tunic apron with a flip side. Stripes and polka dots in navy and gold cotton team up for one look, while the reverse side is all polka dots. Giant cotton rick-rack joins the contrasting fabrics in front.

The Apron Takes On New Style

Whether she's an honest-to-goodness cook or one whose specialty is opening cans, chances are she'll welcome a smart-looking apron for a Christmas gift. If you sew, you'll find this is an easy way to solve gift problems for almost every woman on your shopping list. This year, the newest look in kitchen cover-ups is the cotton tunic apron. Easy to make, the tunic apron is a straight-cut garment that slips over the head and

is joined together only at shoulder seams. Waist ties secure the apron at the sides. One size fits all. To personalize each style, vary trims and fabrics. You'll find that the same basic tunic pattern can look dressy or practical depending on the trim and fabrics used.

For a party apron, choose sparkling white cotton pique or cotton satin . . . and trim the scooped neckline with black pom-poms. Or pick a perky black and white polka dot print and outline the neck with black rickrack. Use the rickrack for waist ties, too. For an apron that's tops in versatility, make it reversible. Coordinated cottons—in smart stripe and polka dot combinations, checks and solids—take the guesswork out of matching up colors and designs. Use a basic shift pattern to make up your own design or write the National Cotton Council, Box 12285, Memphis, Tenn., for instructions.

Bealls Announces Three New Stores For 1966

R.G. Beall, President of the Beall's Department Store chain, with home offices in Jacksonville, Texas, announced this week plans for three new stores to be opened in 1967. Most significant in the announcement is the first store to be opened outside the State of Texas; that being in Ardmore, Oklahoma. An ultra modern shopping center store containing approximately 16,000 square feet of selling space is to be opened in that city next spring. Also, leases have been negotiated for stores in Temple, Texas and Harlingen, Texas.

These stores will also be scheduled for fall openings. All stores are to be one floor levels with spacious decor and furnishings. A wide assortment of merchandise for family and home will be stocked. The opening of these 3 new units will bring to a total of 54 family department stores of the company.

"Select your residential screening carefully," was the rueful advice volunteered by a Florida builder after a painful experience. In St. Petersburg's Southgate Towers, a 120-unit, six-story apartment

department stores of the company.

Vote for . . . YC

ONLY YOU CAST YOUR

Vote! TUES

STATE CAPITAL HIGHLIGHTS AND SIDELIGHTS

AUSTIN--Gov. John Connally has given three Texas' leading universities a hurry-up research assignment--a detailed analysis of food costs in the state and of the causes of recent price increases.

Connally set December 1 as target date for reports by the University of Texas, Texas A & M University and Texas Tech College. He gave the assignment to the heads of the three schools and left it up to them how to conduct the study.

"I share the concern of Texans with the dangers of inflation," Connally said in announcing the study. "And I am particularly disturbed about mounting food prices, and their effects on the homemakers of our state."

Connally said, "While rash judgments and emotionally based opinions as to blame are inevitable, they contribute little toward determining cause, or a sensible course of action for improvement of the situation."

Detailing his request, the governor asked for a determination of what part of the consumer's food dollar goes to the producer or grower, to the retailer, and how much goes for such things as transportation, advertising, sales incentives, added services and whatever other costs are involved.

He asked for that determination both on long and short-term bases, expressed both in absolute dollars and in percentages.

He also suggested that the food cost study be related to other consumer costs.

GAS TRANSMISSION--Texas' big gas pipeline operators disagree with their smaller colleagues over whether the state should assume regulation of the pipelines so the Federal Power Commission will not.

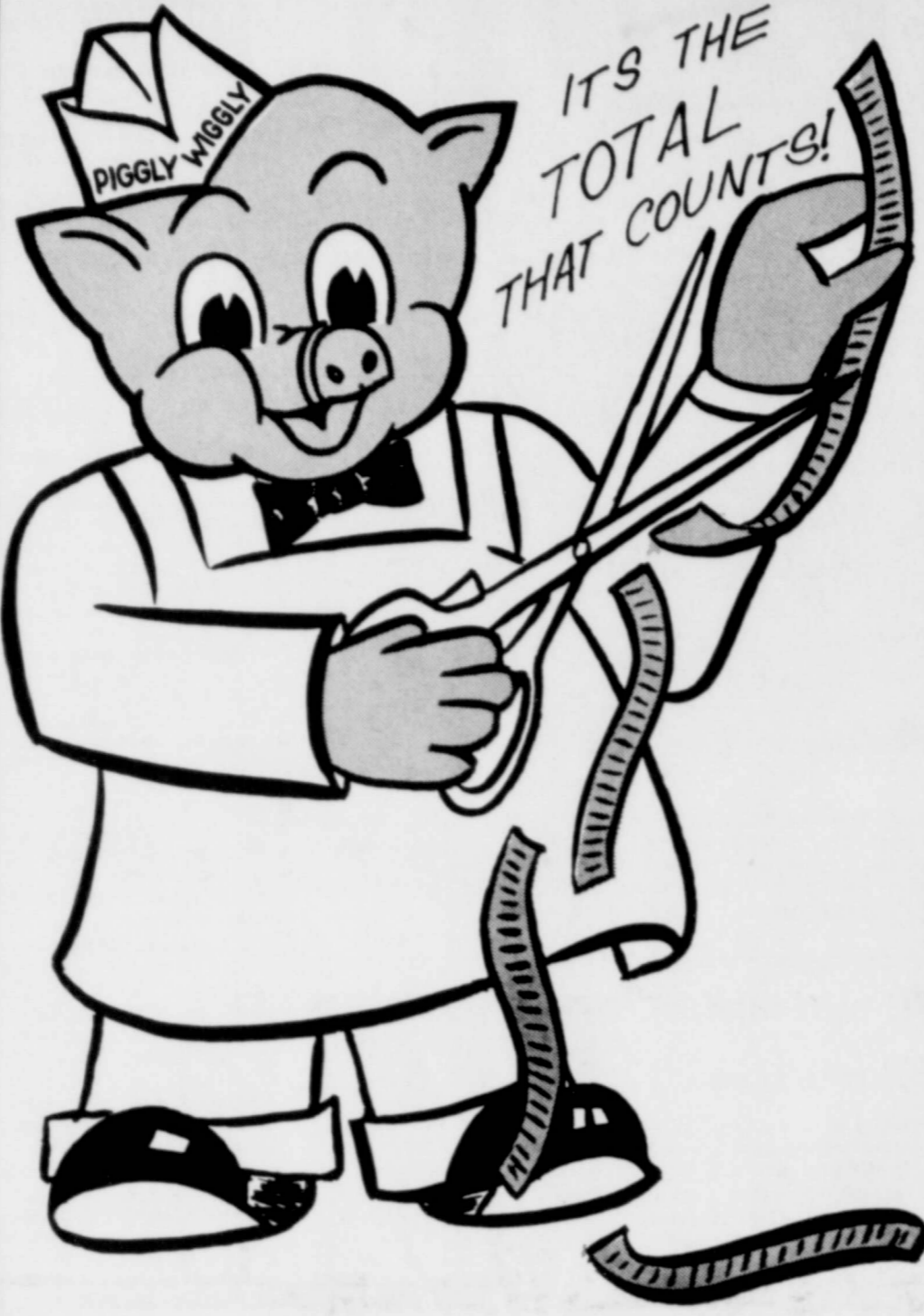
Major interstate gas transmission companies contend that they are doing well under the present regulations of the USA Standards Institute under sponsorship of the American Society of Mechanical Engineers. But the companies which transmit gas on a part-time basis want state regulation.

Both sides are to file written statements with the Texas Railroad Commission by November 25. Commission then will consider all arguments and reach a decision.

ROAD REVENUE HIGH--Texas Highway Department has been informed that Texas is expected to reap \$456,000,000 in state highway-user tax revenues this year.

This would make Texas third among the 50 states in road revenue. California is expected to take in \$941,000,000 in 1966. New York's income will hit \$497,000,000.

Road-user taxes include state fuel and vehicle registration taxes, but not toll fees or parking-meter money.



THESE PRICES GOOD IN FLOYDADA NOVEMBER 3 THROUGH NOVEMBER 5

GOING DOWN

HUNDREDS OF MORE PRICES AT YOUR NEAR-BY PIGGLY WIGGLY!

CHUCK ROAST U.S.D.A. AGED HEAVY BEEF VALUE-TRIMMED 39¢	AJAX HEAVY DUTY DETERGENT GIANT SIZE BOX 59¢	BACON SWIFT'S SWEET RASHER 59¢	CRACKERS PRIDE SALT ONE POUND 19¢
---	---	--	---

SHOP AND SAVE WITH THESE REDUCED PRICES!

GREENS , Allen's Mustard or Turnip, No. 303 Can 2/25c 10c	COFFEE CREAMERS , All Brands, Large Size 51c 49c	RAINBOW TROUT , Tradewind, 10 Oz. 69c 63c	FRESH FROZEN FOOD PRICE
HOMINY , Campfire, Golden or White No. 300 Can 10c 3/27c	PINTO BEANS , Chef Pride, 2 lb. Package 29c 27c	BREADED SHRIMP , Tradewind, 1 lb. Package \$1.49 \$1.39	CAKES , All Varieties, Sara Lee 89c
SPINACH , Del Monte or Libby, No. 303 Can 2/39c 2/35c	MINUTE RICE , 14 Oz. 51c 49c	MORE PRICES CUT!	FRUIT PIES , Banquet, Apple, or Peach 39c
TOMATOES , Hi Plains, No. 303 Can 2/33c 2/29c	RAISINS , Del Monte or Sunmaid 33c 29c	KELLOGG'S POP TARTS , All Flavors, 11 Oz. Box 49c 47c	CREAM PIES , All Flavors 39c
TOMATO SAUCE , Mountain Pass, 8 Oz. Can 11c 3/29c	BAKING POWDER , Clabber Girl, 10 Oz. Can 19c 17c	POST TOASTEMS , All Flavors, 11 Oz. Box 49c 47c	TURNOVERS , Pepperidge Farm, All Flavors 59c
PINEAPPLE JUICE , Del Monte or Libby, 46 Oz. Can 39c 3/\$1	SODA , Arm & Hammer, 1 lb. Box 17c 15c	FROSTING MIX , Jiffy, All Flavors, 9 Oz. Box 2/33c 2/29c	AWAKE , Orange Breakfast Drink, 9 Oz. 40c
PRUNE JUICE , Lady Betty, Large Quart Jar 49c 45c	HERSHEY'S COCOA , 1/2 lb. Box 39c 35c	MARSHMALLOW CREME , Kraft or Hip-o-lite, Pint Jar 27c 23c	FROZEN DINNERS , Banquet, All Varieties 49c
TUNA , Carnation, Chunk Style, No. 1/2 Can 39c 3/\$1	SALT , Western Plain or Iodized, Box 2/23c 2/19c	PIE APPLES , Old Fashion, No. 300 Can 2/31c 2/27c	HEALTH AND BEAUTY AID
TUNA , Star Kist, Chicken of the Sea, Family Size, 9 1/4 Oz. Can 63c 53c	BLACK PEPPER , Schilling Ground, 4 Oz. Box 49c 43c	APRICOTS , Stockton's Whole, No. 2 1/2 Can 29c 25c	COLGATE DENTAL CREAM , Family Size 95c
BEEF STEW , Dinty Moore or Austex, 24 Oz. Can 65c 59c	VANILLA EXTRACT , Tastit, 8 Oz. Bottle 35c 29c	CRANBERRY SAUCE , Ocean Spray, 16 Oz. Can 29c 27c	CREST DENTAL CREAM , .05c Off, Extra Large 74c
BABY FOOD , Heinz, Strained 4/45c 4/39c	CORN MEAL , All Brands, White or Yellow, 5 lb. Bag 53c 49c	FRUIT COCKTAIL , Libby or Del Monte, No. 303 Can 29c 25c	CREST DENTAL CREAM , Family Size 95c
CORN FLAKES , Post Toasties or Kellogg's, 18 Oz. 43c 39c	FLOUR , Gold Medal or Pillsbury, 5 lb. Bag 69c 63c	PEACHES , Cling, Calirose, No. 2 1/2 Can 29c 25c	GLEEM DENTAL CREAM , Family Size 95c
KELLOGG'S VARIETY , 12 pack Box 49c 47c	FLOUR , Sunlight Enriched, 10 lb. Bag 89c 85c	PEACHES , Del Monte, Libby's or Hunt's, Halves or Slices, No. 2 1/2 Can 33c 29c	GLEEM DENTAL CREAM , .06c Off, Family Size 89c
OATS , Quaker or 3 min, 20 Oz. Box 29c 27c	BISQUICK , Biscuit Mix, 4 Oz. Package 57c 53c	PINEAPPLE , Del Monte, Large No. 1 1/2 Can 29c 25c	MCLEAN DENTAL CREAM , Family Size 95c
OATS , Quaker or 3 min, 40 Oz. Box 53c 49c	CAKE MIX , Good N Rich, All Flavors, 19 Oz. Box 29c 25c	GREEN BEANS , Del Monte, No. 303 Can 29c 25c	MCLEAN DENTAL CREAM , .08c Off, Family Size 87c
COFFEE , Instant, All Brands, 6 Oz. \$1.09 99c	LOW, LOW, PRICES ON QUALITY MEATS	PEAS , Del Monte or Libby, Sweet, No. 303 Can 27c 25c	PEPSODENT CREAM , .07c Off, King Size 72c
TEA , Lipton's, 1/4 lb. Box 45c 43c	WHOLE FRYERS , Fresh USDA, Grade A Lb. 39c 35c	SWEET CORN , Del Monte, Libby, Green Giant, WK or Cream Style, No. 303 Can 2/49c 23c	PEPSODENT PASTE , .08c Off Label, Family Size 95c
TEA BAGS , Lipton's 65 Count Box 69c 65c	FRYERS , Cut up and pan ready lb. 43c 39c	CORN , Kounty Kist, Whole Kernel, 12 Oz. 2/39c 2/35c	PEPSODENT PASTE , Family Size 95c
CRACKERS , Pride or Tea Flake, 1 lb. Box 27c 23c	SLICED BACON , Hormel Dairy 98c 85c		
MILK , Borden's, Eagle Brand, Large Can 43c 39c	FISH STICKS , Sea Star, 8 Oz. 29c 25c		

ALL OUTSTANDING MAGIC LAMP CARDS WILL BE HONORED THRU NOVEMBER 15, 1966!

Lowest Prices . . . Greatest Variety . . . always at . . .



only YOU can VOTE!

Your vote is a personal thing—as personal as your fingerprint. Don't lose your identity as a citizen. Be sure to vote!

ABSENTEE VOTING Ends Nov. 4!

See your County Clerk for Details

More Floyd Families In Upper Bracket

before, the upward movement has been almost general. Families who had been in the \$4,000 to \$7,000 bracket may now be found in the \$7,000 to \$10,000 group. Their former spots have been occupied, in turn, by those who have moved up from the \$2,500 to \$4,000 category.

The facts and figures are brought out in a copyrighted study, made by Sales Management, to determine how the population is divided in terms of income brackets. Every section of the county is covered in the breakdown.

What was sought was a better financial picture of each community than is afforded by what is called its "average income."

It is made up of a small number of families with big incomes counterbalancing a larger number that have very low incomes, or are earnings more evenly divided?

The figures for Floyd County show that no less than 51.6 percent of the households had disposable cash incomes of \$4,000 or more after payment of their taxes.

This represented a considerable increase over the proportion in that income position three years ago. At that time, based on a similar study, there were 44.9 percent with such earnings.

The rate of gain, 14.9 percent, was better than that of the United States as a whole, 10.0 percent, and the 13.7 percent in the West South Central States.

The study also shows the number of local households at various other income levels.

It lists 410 of them with net incomes of \$7,000 to \$10,000, 950 in the \$4,000 to \$7,000 bracket and 729 with net earnings between \$2,500 and \$4,000. The rest are in the over \$10,000 or under \$2,500 categories.

Hand in hand with the general improvement in family financial picture in Amarillo where she was reported in a critical condition. She underwent surgery during the night. Miss Crowell and Hutchinson are also reported in a critical condition and Boggs and Persons in serious condition.

Howard said Boggs, 18, was driving south on FM 1055 and Barrett was headed north on the farm to market road. The vehicles collided head on in the northbound lane.

Barrett's body and that of Mrs. Persons were taken to Lockney Funeral Home where arrangements for the funeral were made.

nances, locally and in other parts of the country, has been a rise in the cost of living. The gains have been out-pacing the price rises, however, so that there has been a net improvement in purchasing power.

47 Men To Be Called In November

Texas Local Board No. 45, Plainview, Texas has been called upon to furnish forty-seven (47) men for the armed forces for the November, induction quota; and to send eighty (80) for the pre-induction examination.

In this group for induction will be students that did not qualify for further student deferment and were classified I-A, but who are now full-time students. These students will not be taken out of college if the local board has the Student Certificate (SSS Form 109) from their college showing they are full-time students (taking at least 12 hours). However, any student ordered for induction must write the local board a letter stating he is still pursuing a full-time course of instruction. DO NOT ASK YOUR SCHOOL TO DO SO. Upon receipt of this letter, the local board will re-open your case, cancel your order to report for induction and classify you in Class I-S(C) until the end of your academic year. If before the end of your academic year, you drop below a full-time student or cease to perform satisfactorily in your school, either of these conditions will terminate your classification in Class I-S(C).

Under the new banner of "Sustaining Membership Enrollment" hundreds of volunteer workers will solicit individuals and businesses in 20 counties to support the 1966-1967 Council budget of \$149,577.

NAME OMITTED FROM SCHOOL HONOR ROLL

The name of Andy Hale, room 8-A was unintentionally omitted by the school last week on the A honor roll. Andy had five A's.

FLOYD DATA

Mr. and Mrs. J. T. McLain visited Tuesday through Thursday in Dimmitt with his sister, Mrs. Myrtle Williams and others including Mrs. J. A. Bagwell, who is nearing her 97th birthday. Mrs. Bagwell has suffered several light strokes and has been recently hospitalized.

She asks about several Floyd County people whom she knew while she and her husband lived here.



SAVINGS BOND AWARD... J. M. Willson (left) receives a 25 year award for volunteer service to the Savings Bond program from Don Pemberton. Willson is chairman of district three, Pemberton is Floyd County savings bond chairman. (Staff Photo)

Jack McIntosh Attends Methodist Home Board Meeting In Waco

Jack McIntosh of Floydada represented his district at the annual meeting of the Methodist Home's Board of Commissioners in Waco.

McIntosh will have the key role in orienting Methodists of the Plainview area as to the importance of the annual Christmas offering which will be made in Methodist Churches throughout Texas and New Mexico in December.

Bishop W. Kenneth Pope addressed the 137 who attended the meeting in Waco Wednesday and Thursday (Oct. 26 and 27). He listed the Methodist Home's recent advances in the field of child-care and challenged Methodist laymen and ministers in Texas and New Mexico to do their parts to aid in the Home's continued program.

"There are more than 360 children on the campus at The Methodist Home today, and the average child there is the by-product of a home destroyed by alcohol, divorce, crime, mental illness or desertion," said McIntosh.

"We are dedicated to contributing our support to the staff's task of providing love, understanding and special counseling and to furnishing food, clothing and shelter for these children. The Methodist Home has a heart-warming 76-year record of working to provide a child with a healthy, normal life and with the ability to make his own way and meet the demands of society," added McIntosh.

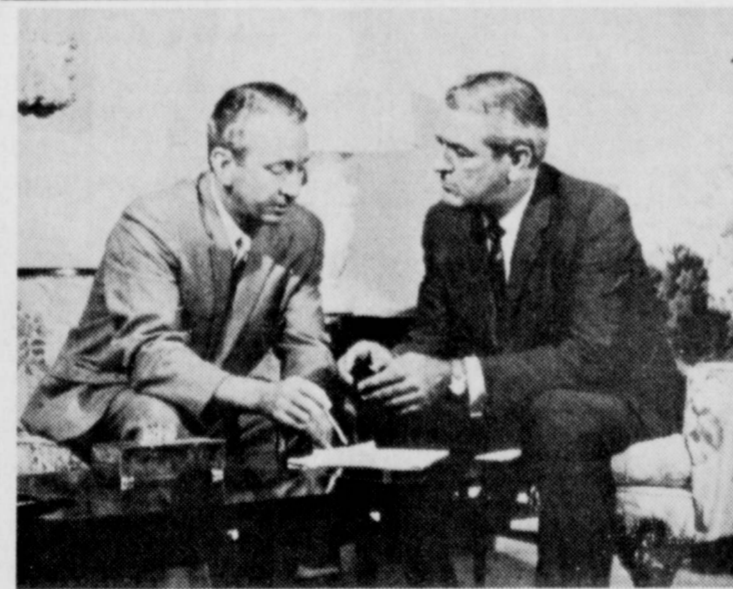
Jimmy Willson Heads 37 Town Boy Scout Finance Drive

South Plains Council's 37-town finance campaign kicked off November 1 under leadership of James M. Willson, Jr. general chairman, lumber dealer and civic leader of Floydada.

Under the new banner of "Sustaining Membership Enrollment" hundreds of volunteer workers will solicit individuals and businesses in 20 counties to support the 1966-1967 Council budget of \$149,577.

District and Community campaign chairmen who will organize the drive with Majors, Captains and Workers are as follows:

HAYNES DISTRICT: Chairman Bill Senning of Plainview; Kenneth Tate, Silverton; Carl King, Dimmitt; Stewart Newsum, Hart; Al Mauer, Nazareth; John Powell, Lockney; Jesse Hodges, Hale Center; Mrs. Jean Lyles, Turkey; J. W. Erwin, Tulla; Don Spain, Olton; and chairmen are yet to be named in Quitaque, South Plains



A team for a better Texas for you!

Governor John Connally and Attorney General Waggoner Carr have worked together for 4 years to give Texas and YOU a better state and better opportunities.

As a United States Senator in Washington, Waggoner Carr will co-operate with Governor Connally to work for better education, more jobs, benefits for our elderly, and better prices for our farmers, ranchers and dairymen. He will do what is right for Texas!

Vote Democratic, Tuesday, Nov. 8, 1966



Elect Democrat

WAGGONER CARR

United States Senator

Texas Citizens for Carr Committee, Thomas W. Butler, State Chairman

Accidents Kill Two, Injure Five

Floyd County Wrecks

Separate accidents happened in Floyd County the weekend of the weekend by patrolman Gerald Floydada, one in which were killed and five injured. The other resulted in no injuries and damages to vehicle.

A wreck occurred late in the afternoon about 5:10 p.m. on Highway 82, east of Floydada on the highway. Howard Ford driven north on Highway 82, in the right side of the road, was attempting to pass two trucks when his car collided with the east bound vehicle. He was given a citation for passing without sufficient clearance, according to Howard. Neither driver was injured.

The wreck which killed two and injured five happened just inside the northeast part of the Floyd County line Sunday night about 7:30, in a head-on collision, some four miles south of Quitaque on Farm Road 1065.

Howard said two Quitaque residents were dead at the scene. They were Clarence E. Barrett, 51, and his mother-in-law, Mrs. Eunice W. Persons, 70. Injured were Ray Persons, 71, Lela Persons Barrett, 44, Ricky Boggs and Ronnie Hutchinson, all of Quitaque and Glenda Crowell, 16 of Flo-

Persons, Boggs, Hutchinson and Miss Crowell were all taken to Lockney General Hospital then transferred to Lubbock Methodist, Mrs. Barrett was taken to Northwest Texas Hos-

John W. Kimble, O. D.

Ada, Texas YU 3-2496
AS FOR THE PAST 48 YEARS
OPEN ALL DAY SATURDAY
Contact Lenses—Visual Analysis

It's time to change to an electric range...



Here's why more and more families are changing to electric cooking every year...

CLEAN... Kitchen walls and curtains stay cleaner. So do pots and pans... and the range itself. It's as clean as electric light.

SPEEDY... Heat starts the instant you flick a switch. And it goes directly to the utensil. You get accurate heat, controlled exactly with definite settings... the same every time!

AUTOMATIC... a modern electric range almost cooks by itself... gives you more time for your family or yourself. Precise measured heat cooks better.

BETTER... Results improve because cooking speeds are controlled... You need less water... and save the vitamins in the food for better health.

See your dealer today!



Ben Franklin's Dollar Days

JACKETS REG. \$4.98 AND \$5.98 Dollar Day -- \$1.00 Off CASH AND CARRY	HOMECREST ALARM CLOCKS REG. \$2.59 For Dollar Day --- \$1.79
CHRISTMAS RIBBONS Half Price On Dollar Day	PURSES ONE GROUP REG. \$2.99 Dollar Day --- \$1.79
ASSORTMENT OF NECKLACES Your Choice ... 2 for \$1.00	CHILDREN'S LUNCH BUCKETS REGULAR \$1.29 Dollar Day Special .79c
ONE GROUP OF PICTURES MANY GOOD VALUES UP TO \$3.49 For Dollar Day --- 79c	CLOSEOUT PANTS CREASERS REGULAR \$1.29 Dollar Day --- 79c
THERMO PITCHERS HOT AND COLD REGULAR 79c Dollar Day --- 29c	ONE ASSORTMENT FALL SHOES CORK SOLES REGULAR \$3.29 Very Special --- \$1.99
ALL YARD GOODS One Fourth Off	BEN FRANKLIN STORE

Floydada Loses "Heartbreaker" To Memphis, 13-12



SPORTS

Bradford Wins Football Contest

The largest number of contestants ever entered the Hesperian football contest last week and most of them picked Floydada to win. However, Memphis turned the tables and most everyone missed the hometown game.

Marion F. Bradford, Rt. 2, Floydada came out in number one spot with five misses. He will receive the \$7.50 first prize. He missed the North Texas-Drake game, TCU-Baylor, Berger-Plainview, Caprock-Pampa and Matador-Lockett.

In second place is Bush Jordan of Floydada, who also missed five contests. He will receive the \$5.00 second prize. He missed the following games: North Texas, Texas A&M-Arkansas, West Texas-Memphis, Berger-Plainview and TCU-Baylor.

The tie-breaker Floydada-Memphis game was used on the above contestants and Bradford's guess was 19 to Jordan's guess of 38. Bradford's guess was nearer the 25 points. Both picked Floydada to win.

In third place and recipient of the \$2.50 prize is Roy Hartman of South Plains. He missed six contests: North Texas, TCU, West Texas, Oklahoma, Berger, and Hale Center-Friona.

In fourth place with six misses is Joe Wilson of Floydada.

Hartman guessed the tiebreaker at 30 points and Wilson guessed 33.

Only two more weeks of the big football contest. . . . so get your entries in. . . . you might be a winner!

Freshmen Lose To Lockney 12-0

The Floydada Freshman football team lost to Lockney's team last Thursday 12 to 0.

The Freshmen will play Slaton here at 5:30 p.m. today.

The Seventh and Eighth graders play Tullia at Tullia at 5 p.m. today.

FLOYD DATA
Mr. and Mrs. Ernie Crisp of Oklahoma City visited over the weekend with her aunt and uncle, Mr. and Mrs. V. D. Turner, Mr. and Mrs. S. D. Medley and other relatives. Mrs. Crisp is the former Oma Lea Medley, daughter of Mr. and Mrs. Ira Medley of Mustang, Okla., former Floydada residents.

Extra Points Difference

The conversion of one extra point was the difference in the Memphis win over Floydada last week when the Whirlwinds lost 13 to 12. Statistics showed Floydada the better team, but the ability to get some extra points was the difference.

It was Floydada all the way in the first half. Floydada took an early 12-0 lead after recovering two Memphis fumbles. . . . then just a minute before the half Memphis made six then kicked the extra point. Floydada's two touchdowns came via a pass from Larry Barbee to Steve Marler on a five yard aerial, and later in the same period Kerry Bearden tossed a 19 yard pass to Bob Murry for another.

Memphis' Junior Graves scored from six yards out and Jerry Hall booted the conversion.

Late in the third quarter an unorthodox play by Memphis came up with the winning touchdown. Tony Pounds handed off to William Welch who handed on the reverse to Dwayne Jones, Jones went 28 yards around the right end to score standing up.

One Whirlwind, Bobby Gilliland, figured out the reverse, but was unable to move his 200 pounds fast enough to catch Jones.

Both teams battled through the scoreless fourth quarter, and Whirlwind fans really came to their feet about two minutes before the game was over when Kerry Bearden hurled a tremendous pass to end Bobby Murry. Murry fought off two Cyclones and leaped high to catch the pass.

PLAY BY PLAY
Gilliland kicked off to the Cyclone 15 yard line. The Cyclones made two first downs then received a 15 yard penalty, then fumbled on the Cyclone 32 yard line. Steve Marler recovered the fumble.

Bearden and Christian carried the ball down to the 19 yard line. Barbee threw to Weathersbee for 18 and the 'Winds were within a yard of paydirt.

With downs running out Barbee hit Marler from five yards out to make the first TD. Kick for extra point was no good with 5:19 minutes remaining in the first quarter.

On the Whirlwind kickoff, the Cyclones fumbled again with Tim Rose recovering the fumble.

The 'Winds had the ball again on the 32 yard line. Monday ran for 18 yards, the ball was down on the 14 yard line. . . . the 'Winds were pressing for another TD. Bearden tossed a pass to Murry for another TD. Try for extra points was no good. Floydada led 12 to 0.

After kickoff the Cyclones brought the ball down the field in a hurry and the 'Winds great defense really showed its metal as it held for three plays on the one yard line. The ball went over and Bearden punted after the 'Winds couldn't go.

The Cyclone worked the ball back from the 40 yard line and just a minute before half time Junior Graves scored. Jerry Hall kicked the extra point for Memphis and Floydada led 12 to 7 at halftime.

SECOND HALF
After the Cyclones kicked off the 'Winds brought the ball downfield on strong rushing plays to the Cyclone 8 yard line. A backfield in motion penalty brought the ball back to the 13 yard line.

The ball went over to the Cyclones on downs. The Cyclones went to work and brought the ball down to the 28 yard line and then the miraculous reverse play worked and they were ahead 13 to 12.

The early part of the fourth quarter was nip and tuck until the last of the quarter when Christian, Barbee, Bearden and Monday brought the ball down the field with several running plays.

At this point Bearden heaved the lone one to Murry and the 'Winds fans rose from their seats as it was first and ten on the Cyclone 13 yard line.

Monday ran for two, Barbee ran for two, Monday made the line of scrimmage and then the 'Winds called time out.

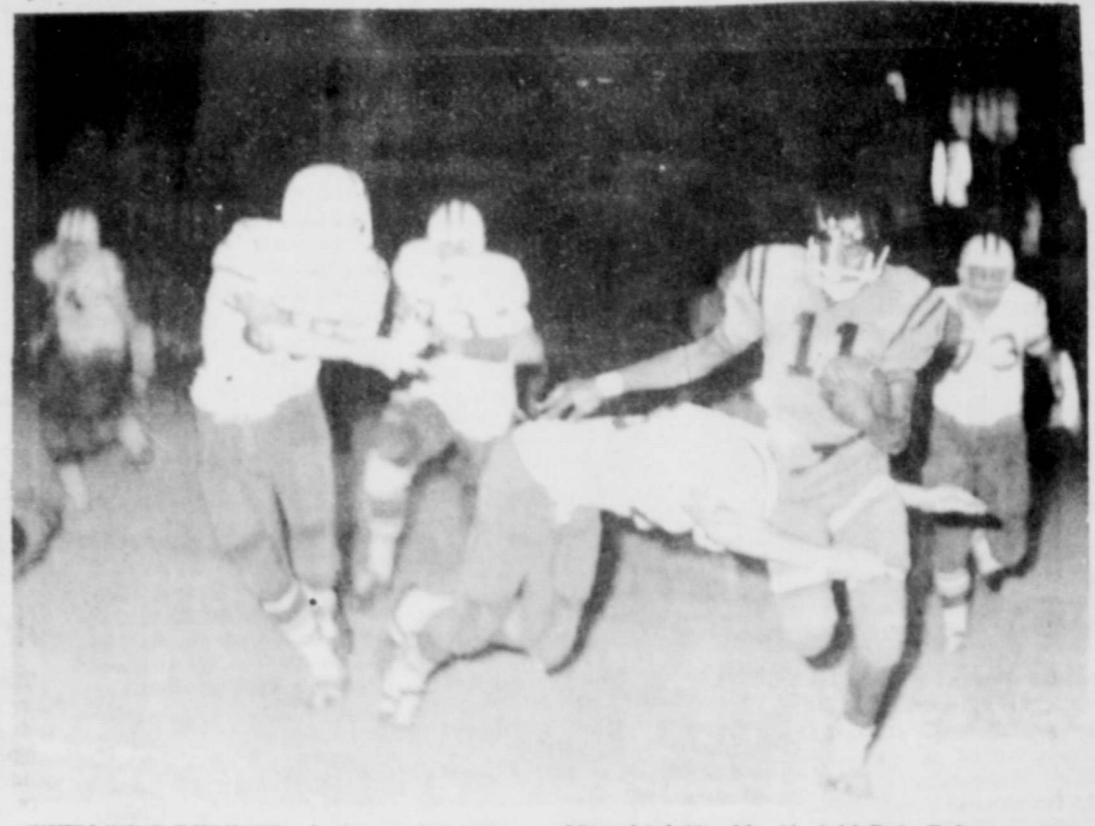
What to do on the fourth play? . . . Barbee tossed a pass to Murry, which was batted down by a Cyclone back. . . . and that was it for the 'Winds. The game was over after two plays by the Cyclones and the ball was resting on the nine yard line.

Floydada's No. 1 kicker Ross Miller was out with a broken foot and the Cyclone's speed merchant Gary Rea was sidelined early in the game for poor sportsmanship.

STATISTICS
First downs: Floydada 13, Memphis 10.
Yards Gained rushing: Floydada 157, Memphis 111.
Yards gained passing: Floydada 93, Memphis 37.
Penalties: Floydada 6 for 40 yards, Memphis 5 for 45 yards.



WEATHERSBEE PULLS ONE IN ON THE ONE YARD LINE - Tommy Weathersbee takes a pass from Larry Barbee and almost fell in the end zone. In the background is back Joe Christian. (Staff Photo)



WHIRLWIND DEFENSE - looks good in Memphis game here last week. Left to right Mac Baker, Larry Hunter, Roland Adams close in on Memphis' No. 11. At right Dale Baker comes in. (Staff Photo)

WITH WIN OVER SLATON

Post Can Clinch First Loop Title Since 1948 This Week

The Post Antelopes can win their first district championship since 1948 Friday night by beating their arch rivals, the Slaton Tigers, but if they lose, District 4-AA will be in a bigger mess than 3-AA.

Post is 3-0 in loop play and a victory will assure the Antelopes of a tie for the title, but it will give them the playoff rights. A loss would throw the race into a three-way tie should Denver City take care of Stanton.

Memphis moved to the head of the 3-AA class with its narrow 13-12 win over Floydada

Area Class AA Standings

DISTRICT 3-AA													
Team	Season	W	L	T	Pts	Opp	Team	District	W	L	T	Pts	Opp
Memphis	4	2	0	165	52	Memphis	4	1	14	58			
Abernathy	4	3	0	153	47	Abernathy	3	1	49	31			
Fremont	4	3	1	130	74	Fremont	3	2	66	21			
Friona	4	4	0	88	118	Floydada	3	2	78	46			
Olton	4	4	0	104	129	Olton	2	2	88	73			
Hale Center	4	4	0	114	90	Hale Center	2	3	42	68			
Floydada	4	5	0	96	114	Friona	2	3	56	91			
Lockney	4	2	6	95	126	Lockney	0	5	49	85			

DISTRICT 4-AA													
Team	Season	W	L	T	Pts	Opp	Team	District	W	L	T	Pts	Opp
Pool	4	1	0	182	48	Pool	4	0	87	30			
Slaton	4	3	1	101	77	Slaton	2	1	48	30			
Denover City	3	2	2	91	52	Denover City	2	1	56	22			
Frenship	4	4	0	80	185	Frenship	1	2	42	24			
Stanton	4	4	1	72	158	Stanton	1	2	28	80			
Morton	4	0	8	52	273	Morton	0	3	12	87			

Dimmitt 18, Abernathy 0; Memphis 13, Floydada 12; Hale Center 10, Friona 7; Olton 14, Lockney 7; Pool 48, Frenship 2; Denover City 22, Morton 0; Slaton 14, Stanton 0.

LAST WEEK'S RESULTS
Dimmitt 18, Abernathy 0; Memphis 13, Floydada 12; Hale Center 10, Friona 7; Olton 14, Lockney 7; Pool 48, Frenship 2; Denover City 22, Morton 0; Slaton 14, Stanton 0.

THIS WEEK'S SCHEDULE
Friona at Abernathy, Floydada at Lockney, Hale Center at Memphis, Olton at Dimmitt, Slaton at Denover City, Stanton at Pool, Frenship at Morton.

YOU DESERVE THE BEST — OF TREATMENT!

Only a physician is qualified to diagnose and prescribe for you and your family. See your doctor when you need medical care . . . see your pharmacist when you need medication.

ARWINE DRUG
PHONE YU 3 2856 FLOYDADA, TEXAS
YOUR LABEL IS YOUR PROTECTION

... business men, farmers, ranchers - LIGHT UP your property every night for only \$4.00 a month - total cost per unit!!!

Reddy installs the light, maintains it and even furnishes the electricity to operate it. Guard lights are automatic, too . . . on at night when you want light and off by day. Guard lights discourage prowlers, make night outdoor work safer and give a business-like prestige to commercial establishments—and, remember, \$4.00 a month includes everything.

ASK ANY PUBLIC SERVICE EMPLOYEE

Modern ELECTRIC Lighting

GUARD AREA LIGHT

START OUT with TOWER

FIRST THING WHEN YOU BEGIN VOTING

If you vote on a paper ballot, cross out BOTH other names in the Senate Race.

THEN YOU WILL KNOW FROM THE START YOU HAVE VOTED ACCURATELY AND THAT YOUR VOTE FOR TOWER WILL BE COUNTED.

"The Texas Supreme Court ruled long ago that you are a free voter, legally entitled to vote as you see fit for Senator Tower or anyone else on the ballot in any race, regardless of whether you voted in the Democratic Primary as I did, the Republican Primary, or did not vote in either primary. I urge you to join me in voting for our outstanding United States Senator, John Tower."

WILL WILSON, Immediate past Attorney General of Texas and former Justice of the Supreme Court of Texas.

KEEP TOWER
U.S. SENATOR
HE'S DOING A GOOD JOB FOR TEXAS

Paid Pol. Ad—Paid for by ATTORNEYS FOR TOWER, Will Wilson, State Chairman.

and the Cyclones are against loop members, other teams are still in ning. Abernathy, Dimmitt and Olton are 3-2.

Cyclones On Inside Memphis Memphis has won three of the four games it has played inside track to the playoffs. Memphis is especially if they can beat Center this week.

Dimmitt stung Abernathy 0, while Olton trimmed Friona 14-7, and Hale Center 10-8.

Olton and Dimmitt this week, Floydada goes to Friona to travel nearby in other leagues and the losers will be eliminated from the playoffs.

Dimmitt is probably a team in the district right but injuries have plagued Bobcats and it appears they may have jelled a week.

The Bobcats lost the two league games, 7-0 to Center and 7-0 to Memphis since then, they've managed to stomp, beating Lockney and Friona 35-6 before the care of Abernathy. The worst losses in league for those teams, too.

SLEEP WHILE YOU WANT AD WORKS

Sen. Spears Urges Senior Citizens Are Target of Amendment

State Senator Franklin Spears has called for a constitutional amendment to give voters the right to recall judges and other officials.

The amendment, if passed, would give voters the right to recall judges and other officials.

SENATOR FRANKLIN SPEARS SAID HE FAVORS PROPOSITION SEVEN BECAUSE IT DOES NOT REFLECT WHAT PASSAGE ACTUALLY MEANS.

"I. That all voters must do now have to register every year—this not the Legislature the change whether registration be annual, biennial or triennial."

"If Proposition 7 passes, Texas would be the only state in the nation to have annual registration. Annual registration is bad because it gives protection against voters who do not vote. Re-registration by voters is more preferable. Re-registration by voters is sometimes permanent registration."

Under such a system, "voter lists are compiled every year and are purged of those not registered. Also, he pointed out, persons would be listed as felons or other ineligible voters—because these persons are not automatically furnished voter registrar who do them."

Persons who move from one county to another must register and are automatically removed in the county of former residence.

"Finally," said Spears, "the cost of re-registration is only one-tenth as much as the cost of Proposition Seven—25 cents per voter as opposed to 2.50 cents."

"The strongest democracy in the history of man is where citizen participation is greatest," said Spears. "Proposition 7 would limit participation in their government."

"Texas is already low in the bottom of the 50 states in the age of eligible voters actually voted."

"Under Proposition 7, the legislature is given no power to provide for greater participation."

—from the Franklin Spears News Release (Pd. Adv.)

EDITORIALS

Is An Important Day

General election looms as one of the most important voting days ever to occur in this "hoff year" when the president will be elected on the ballot. The voters, viewing the light turn-out in the primaries, are justifiably pessimistic of a small vote. This is mirrored by statistics, which show an average turn-out in a non-primary election has been a dismal 33.4 percent of eligible voters. It will not be the case this year. The fate of 16 Congressional seats will be determined by you. In a spirited U. S. Senate race in which your vote must be counted, all of our State Senators will

be selected - due to re-districting. And next Tuesday, voters will determine their county's strength at the 1968 State political conventions. This fact too often is overlooked. As the election law now stands, our county will have one vote at the state political convention for every 100,000 votes cast in the governor's race. A heavy turn-out of voters Tuesday will give us a stronger voice two years from now. Your vote is yours alone; no one else can cast it for you. If you don't use it, it is lost. Your voice in the future conduct of our state and nation is muffled. Take time Tuesday to vote. And, if you are going to be out of the county Tuesday, remember that Friday, Nov. 4, is the last day you can cast your absentee vote.

able, Qualified

General of Texas, Waggoner had the opportunity to serve the state and nation in the United States Senate. He presented himself as a candidate with a background of long and effective service. As a five-term member of the Texas House of Representatives and as attorney general of Texas, he has in a long career in public life shown himself forthrightly on the record on important issues ranging from education and education to fiscal and industrial development. As a public official in the history of Texas, he has been as deeply concerned with the prevention of crime and juvenile delinquency. He gives every indication that he is the kind of man who will be an effective representative in the United States Senate. Through his home state, he has become one of the most familiar public figures in Texas. He knows the state, its people, and its problems. His determination were marked by the stages of his public life. His experience in the fields of law enforcement and investigation was grounded in

EDITORIAL FROM THE NATIONAL COTTON COUNCIL

Age Says The Attitude Of Congress Affected By The Cotton Farmers Vote

Special - The attitude of Congress is greatly affected, "for better or for ill" by the decision made in the dollar referendum on research and promotion, (D-Texas), ranking member of the Agriculture Committee, emphatically stated - under the emergency program in effect - the government just about the last mile in competitive price, in the domestic and foreign market," he pointed out by their votes that they are

ready to give up on cotton. "I think the Congress will be ready to give up too," he said. On the other hand, he continued, "if cotton farmers show they want and intend to compete - by approving the assessment of \$1 per bale for research and promotion - I think the Congress will be inclined to go along with further substantial assistance after the present four-year program expires." Representative Foage reminded cotton growers that in order to protect the farmer's income, meet price competition, and reduce the surplus, the government is making domestic allotment payments and diversion pay-

ments. For a typical farmer who has an allotment of 30 acres, who has average yields and who took the 35 percent diversion, he explained, the total payment on his production this year would come to about \$72.50 a bale. "Is it worth this much to the country to try and save cotton?" he asked. "In my judgment, Congress will feel that it is very much worthwhile - if we can see genuine promise that there will be programs capable of putting cotton on its feet and making it self-sufficient within some reasonable period of time. "If there is to be such an outlook, a greatly expanded program of research and promotion must be at the very heart of it." Rep. Foage said he was delighted when cotton producers came to Congress with a

self-help plan that would give farmers an opportunity to put up the dollar a bale for research and promotion programs they would operate themselves. He, accordingly, helped bring about passage of the Cotton Research and Promotion Act which would make possible such a program provided it is approved in the referendum in early December. "In this day and age," he reiterated, "the producers of any product have to put up big money to improve it and sell it through advertising and other techniques of promotion. Either they do this or go out of business. "In essence, this is the decision farmers must make in the referendum on cotton research and promotion."

MAYOR TAKES OVER downtown intersection. The mayor kept things going until help came from the sheriff's office and State Police.

Dr. O. R. McINTOSH
OPTOMETRIST
211 SOUTH MAIN ST.
Phone YU 8-3460—Floydada, Tex.

Twenty-Five Years Ago

(In Floyd County)
Oct. 30, 1941
Marjorie Kirk, Floydada girl is making an outstanding record in West Texas Teachers College in Canyon. This week it was announced she has been chosen to represent the school in "Who's Who in American Colleges." The Whirlwinds of Floydada and the Longhorns of Lockney have an important date Friday afternoon at Longhorn stadium. Neither team can afford to lose nor tie. Last year the Winds won with ease over the Horns 42-13 but in two previous years it was a different story. In 1938 the Longhorns won 32-14 and again in '39, 19-14. The Winds won last week over Paducah 24-0. County-wide food stamp plan begins Monday for the distribution of surplus commodities in Floyd County. Butter climbs to the highest price since 1930.

4-H News

SENIOR 4-H CLUB WEINER ROAST
The Floyd County Senior 4-H Club held a weiner roast Tuesday night at the J. P. Taylor ranch near South Plains. The group arrived about dark and gathered near the Caprock. Approximately 35 4-H Club members and guests enjoyed hot dogs, hot chocolate and marshmallows. Members attending were from the Lockney, Sandhill, Floydada, Harmony, Cedar Hill and South Plains 4-H Clubs. The senior 4-H Club is composed of 4-H members in the county who are over 13 years of age. Club members attending were Larry Scott, Donna Schulz, David Hale, Kent Hale, Stanley Pierce, Willie Patterson, Randy Patterson, Kenneth Bloys, Lindsay Lovell, Larry Fawver, Paula Gipson, Judy Probasco, Edwin Warren, Larry Noland, Craig Gilly, Katie Taylor, Julia and Margie Arrendondo, and Jeneva Hamm. It was a very enjoyable night.

families met together Saturday evening at son James David's home in Plainview. This meeting and supper honored Mrs. Welborn's and Donna's (Mrs. Clarmon Booth's) birthdays. Mr. and Mrs. Hal Thomas visited Mr. and Mrs. Sam Green Sunday p.m. Thursday they were in Plainview visiting Mr. and Mrs. Olin Miller, and in Lockney seeing Mrs. Maud Bristler in the hospital there. Mr. and Mrs. C. W. Denison were visiting last week in Lubbock with their son, Gilmer and family, and in Brownfield with their son, C. W., Jr. and family. In Brownfield they attended the bridal shower honoring their granddaughter, Janice, who is soon to be married. Mr. and Mrs. Bob Guffee of Hale Center visited Mr. and Mrs. R. C. Ross Sunday afternoon. The Doyle Sandifurs are busy cutting feed. They were in Quanah last Friday where she had a checkup at the hospital. Mr. and Mrs. Elmer Sellers visited Mr. and Mrs. Doyle Sandifur Saturday and Sunday afternoons. Ronald Crump (a nephew of Plainview) saw the Doyle Sandifurs awhile Thursday. Mrs. Sandifur and Veri Miller made several visits Tuesday week. They saw Mrs. Kincheloe, and Mr. and Mrs. R. H. Ashton at home and several friends in Westbrynn Haven.

PTA Carnival Big Success

The annual PTA Halloween Carnival held Monday night at Andrews Ward School was a big success, according to figures from the Carnival committee. Mrs. Jim Jackson, ticket chairman and PTA treasurer, reported a gross of \$1,142 from ticket sales. This amount also includes \$325 taken in at the school cafeteria where supper was served. Other ticket sales were for bingo, cake walk, booth games, country store and many others which brought entertainment for both parents and children alike. Costume contest winners were Kathy Graham, prettiest; Richard Briscoe, scariest and Sirena Brown, funniest.

CENTER NEWS

CENTER, Oct. 31 - Pastor Row of Calvary Baptist Church was back in his pulpit Sunday after a bout with a virus last week. Joe Lee Dunn and wife, Lynn of Lubbock, visited Sunday with his mother, Mrs. Frank Dunn. Mrs. R. C. Ross visited Mrs. Dunn Friday afternoon. Mr. and Mrs. O. C. Vinson visited the J. A. Hartsells Thursday afternoon. Mr. and Mrs. Jerrold Vinson of Harmony dined with his parents on Friday. Mr. and Mrs. Walter Sims were in Plainview this Monday p.m. at the Plainview Hospital seeing her brother, Willie Sandifur of Lockney, who had a heart attack a few days ago. All the Sandifurs' sons and daughters have arrived to be at their father's bedside. (One son came from San Francisco). The J. E. Greens visited Mr. and Mrs. R. H. Ashton late last Monday afternoon. Mrs. Green visited briefly this Monday morning with Mrs. Charley Battey and Mrs. Joe Evers. Both have been ill and we hope are improving. Mrs. Thomas Warren has been a frequent visitor during the week with her mother, Mrs. Charley Battey. All the J. D. Welborns and

PAT & PAM

BY SAM BAKER



BOTH OF THEM MUST BE INSURED BY
BAKER
Insurance Agency
127 W. California
Ph. YU 3-3270

ACCOUNTS INSURED TO \$15,000



AT TULIA SAVINGS AND LOAN ASSOCIATION

A RECENT BILL PASSED BY CONGRESS AND SIGNED BY THE PRESIDENT OF THE UNITED STATES RAISED THE INSURANCE OF ACCOUNTS FROM \$10,000. TO \$15,000.

MORE SECURITY AND A BIG DIVIDEND

5%

 CURRENT ANNUAL RATE

PAID OR COMPOUNDED QUARTERLY

TULIA SAVINGS AND LOAN ASSOCIATION

OLAN ALEXANDER, VICE PRESIDENT
200 N. MAXWELL 995-3521
TULIA, TEXAS

We are happy to announce the association of

PETE CHARLTON
MANAGER



MR. AND MRS. CHARLTON HAVE MOVED TO FLOYDADA FROM RALLS WHERE HE WAS MANAGER OF THE RADIO STATION. WE INVITE YOU TO COME IN AND GET ACQUAINTED WITH MR. CHARLTON. HE WELCOMES THE OPPORTUNITY TO BE OF SERVICE TO YOU.

RADIO STATION
KFLD
FLOYDADA

'67 CHEVROLET



Impala Super Sport Coupe—a clean new sweep in roof lines.

Now that you've seen all the daring new things our stylists did, get in and sample some of the safest, soundest ideas on the road!

What you feel is as new as what you see—thanks to all the fresh thinking that's gone into the way it rides, steers, stops and looks after your safety.

It's got a remarkable new road feel—beginning with a ride so hushed and gentle you'll feel like calling this the '67 Shhhevrolet. The steering is as much as 10% easier. And you'll find the stopping smoother, too.

We put safety features on top of safety features. For example, an energy-absorbing steering wheel atop the new GM-developed energy-absorbing steering column. A dual master cylinder brake system with warning light. And seat belts front and rear with pushbutton buckles. All standard, to be sure.

And there's a new SS 427 performance package—complete with 385-

hp Turbo-Jet V8 and flat-cornering suspension. You can order it for either the Impala Super Sport Coupe or Convertible.

Of course, there are all sorts of new custom features you can add, too, such as tape or FM stereo. But if you find so much that's new a bit too much to remember—drop down to your dealer's and take a drive. It'll all become unforgettable.



Everything new that could happen...happened! Now at your Chevrolet dealer's.



42-2914

ODEN CHEVROLET COMPANY

221 SOUTH MAIN STREET

FLOYDADA, TEXAS

HAVE FUN ... WIN PRIZES ...

\$15 IN CASH PRIZES
EACH WEEK

HESPERIAN

FOOTBALL CONTEST

AND QUARTERBACK FORECAST

DEADLINE FOR ENTRIES - 5 P.M. FRIDAY IN
HESPERIAN OFFICE OR POST MARKED

CONTEST RULES

ANYONE CAN ENTER EXCEPT THE EMPLOYEES OF THE HESPERIAN.
THREE CASH PRIZES ARE GIVEN EACH WEEK-TIES WILL SPLIT PRIZE
MONEY. MEMBERS OF THE EDITORIAL DEPARTMENT ARE SOLE
JUDGES OF THE CONTEST AND THEIR DECISION IS FINAL.
IT IS NOT NECESSARY TO INDICATE SCORES ON ALL THE GAMES,
BUT SCORE MUST BE INDICATED ON THE TIE BREAKER GAME AT
RIGHT.

SIMPLY CIRCLE THE TEAM YOU CHOOSE TO WIN IN EACH OF
THE FOOTBALLS. DEADLINE FOR SUBMITTING ENTRIES IS 5 P.M.
FRIDAY - WINNERS WILL BE ANNOUNCED THE FOLLOWING WEEK.
ENTER AS MANY TIMES AS YOU WISH, PRINT NAME AND ADDRESS
PLAINLY AT TOP OF THE PAGE YOU TURN IN AND MAIL TO THIS
NEWSPAPER.

1ST PRIZE \$7.50

2ND PRIZE \$5.00

3RD PRIZE \$2.50

**TIE BREAKER - Guess Total Points
FLOYDADA VS. LOCKNEY**

HOME OF TOP-FLIGHT FEEDS
CARMACK FEED & SEED
OLNEY VS. WELLINGTON

FARM BUREAU INSURANCE
SAM PUCKETT, AGENT
DUMAS VS. TULIA

MASSEY-FERGUSON EQUIPMENT
FLOYDADA IMPLEMENT CO.
DIMMITT VS. OLTON

BRING US YOUR GRAIN SORGHUM
MUNCY ELEVATOR
LITTLEFIELD VS. LAMESA

"GOOD LUMBER"
**HIGGINBOTHAM BARTLETT
LUMBER**
CANYON VS. PERRYTON

**FLOYD COUNTY
CO-OP GINS**
CROSBYTON VS. PETERSBURG

RUCKER'S OK TIRE STORE
COMPLETE TIRE SALES-SERVICE
BORGER VS. MONTEREY

ARMCHAIR QUOTE

SAM PUCKETT



FLOYDADA.....20
LOCKNEY.....7

JOHN DEERE FARM MACHINERY
COLLINS IMPLEMENT CO.
SILVERTON VS. CLARENDON

AC AND NEW HOLLAND
EQUIPMENT
McDONALD IMPLEMENTS
PLAINVIEW VS. PALO DURO

M. G. WELLS, AGENT
American National Ins. Co.
LUBBOCK VS. TASCOSA

**SANDERS
PUMP & DRILLING**
WESTERN PUMP REPRESENTATIVE
PAMPA VS. CORONADO

ODEN CHEVROLET
CHEVROLET-OLDSMOBILE
HALE CENTER VS. MEMPHIS

HAMMOND SHEET METAL
MATADOR VS. VALLEY VIEW

Producers Cooperative Elevator
SEEDS- FEEDS- GRAIN- FERTILIZER
FLOYDADA TEX. Phone YU3-3908
DOUGHERTY TEX. Phone YU3-3020
OKLAHOMA VS. KANSAS STATE

KELVINATOR APPLIANCES
DANIEL AUTOMOTIVE
SMU VS. TEXAS A AND M

COMPLETE BUILDING SUPPLY
BUILDERS MART
NORTH TEXAS VS. CINCINNATI U.

PONTIAC, BUICK
SALES-SERVICE
CITY AUTO, INC.
RALLS VS. IDALOU

FARMALL TRACTORS
AND EQUIPMENT
MARTIN AND CO.
ARKANSAS VS. RICE

HOUSEWIVES SHOP AND SAVE AT
PIGGY WIGGLY
ABERNATHY VS. FRIONA

"DEEP ROCK" BOTTOM PRICES
**DEEP
ROCK**
WYLIE PETROLEUM
WEST TEXAS VS. N. ARIZONA

Arthur Wylie's Stations Receive Beautification Award

CITY -- Arthur Wylie, Petroleum Commissioner of Houston, has won a General Electric Service Station contest, R. M. Knox, president of the Marketing, Pipeline Division, announcing.

Hundreds of station owners and managers spruced up their buildings, canopies and signs. Many refinished their refreshment centers and rest rooms, adding to the comfort of their customers.

Some of the most noticeable changes were produced in the landscaping. Major efforts were made to add beauty to the service stations with flowers, shrubs, exotic and unusual plants, evergreens, shade trees and crushed marble and lava rock.

"Many of our customers found it quite unusual, but pleasing, that the man who pumps the gasoline and changes the oil in their cars took the time to plant petunias and geraniums," Knox said. "We feel our campaign has done much to enhance the image of the modern service station."

TANNAHILL RITES HELD

Funeral rites were conducted Thursday afternoon in Friona for G. E. Tannahill, 59 year old former Lockney resident, who died of an apparent heart attack the previous Monday while on a fishing trip to Lake Brownwood.

Services were held in the First Methodist Church with graveside rites held in the Memorial Park Cemetery in Plainview.

Survivors include his wife; two sons, a daughter; one sister; two brothers and three grandchildren.

FLOYD DATA

Mrs. Vesta Savage has entered Plainview Hospital where she is under treatment for poor blood circulation in her leg. Mrs. Savage had only just recently come home from Lockney Hospital where she was receiving treatment there for the same ailment.

EDUCATION -- Since 1963, state investment in higher education has increased, and faculty salaries have increased 40%. State support of local public schools have increased 44% in four years, including a \$100 million teacher pay raise enacted in 1965. Technical and vocational training programs have been vastly increased; junior college enrollment doubled during the current bi-ennium. Special literacy programs for migrant workers and their children have been expanded. A college student loan fund of \$85 million has been established. And a special Governor's Committee on Public Education currently is studying all facets of elementary and secondary education.

RESOURCES DEVELOPMENT -- Long range planning and development have been given top priority. \$100 million in bonds have been issued for development of needed storage facilities; authorization has been granted to expand this program to \$200 million for the next two years.

AGING AND NEEDY -- Since 1963, assistance to our elderly has been increased 27%. The Governor's Committee on Aging is continuing working for the benefit of our senior citizens.

RECREATION -- More than \$2 million has been invested in improving some of our most attractive state parks during the past two years to provide additional recreational facilities.

INDUSTRIAL EXPANSION -- A record 855 new industrial plants have been established the past three years, moving Texas into second place in the nation in industrial expansion.

In last year, more than 23,000 new jobs were created in manufacturing alone -- the best year ever for the Texas labor force.

BASED TOURISM -- More than 12 million tourists visited Texas last year, adding more than \$900 million to the state's economy, and creating 140,000 new jobs. The state's tourist advertising program has been sharply expanded.

MENTAL HEALTH AND MENTAL RETARDATION -- New emphasis on prevention of mental illness and mental retardation has been achieved through establishment of new community centers, replacing the former practice of "warehousing" patients. Investment for research into causes of mental disorder has doubled the past four years.

HIGHWAY TRANSPORTATION -- Texas has more farm-to-market roads than any other state -- more than 35,134 miles. We lead the nation in construction of interstate highways, at a cost 40% below the nation's average.

AIR AND WATER POLLUTION -- New legislation for public health, "The Clean Air Act of Texas," provides state action to combat air pollution. Similar legislation was passed in 1965 to control pollution of Texas streams, bays and estuaries.

CULTURAL GROWTH -- The Fine Arts Commission was established in 1965 to nurture the cultural enrichment of Texans. The state's cultural heritage will be preserved and portrayed in the state's pavilion at HemisFair '68 in San Antonio.

GOVERNMENT ADMINISTRATION -- With unprecedented teamwork, our state government has operated responsibly and efficiently. The Legislature has finished its work on time in each session. Following a pay-as-you-go policy, we have maintained a healthy surplus in the general revenue fund without resorting to special taxes.

GROWING ECONOMY -- Business activity rose 11% last year, as Texas continues one of the brightest growth areas. Employment and income are at an all-time high, unemployment at an all-time low. Despite increased responsibilities, our state government costs only \$168.78 a year per citizen, with the lowest in the nation. No broad-based tax has been enacted the past four years. Texas still has no personal income or payroll tax, no corporate income tax, and is one of few remaining states with a limited sales tax of 2%.

KEEP THIS KIND OF PROGRESS AND PROSPERITY FOR TEXAS! HELP GIVE AN OVERWHELMING MANDATE TO THE VISIONARY LEADERSHIP OF DEMOCRATIC GOVERNOR JOHN CONNALLY AT THE POLLS NOVEMBER 8TH!

ELECT GOVERNOR JOHN CONNALLY



A GREATER TEXAS!

Political ad paid for by Connally for Governor Committee, Lewis Timberlake, Chairman)

MT. BLANCO

MT. BLANCO, Oct. 31 -- The HD Club met Thursday in the home of Mrs. Millard Watson. Each one attending brought a special dish which was enjoyed at the noon hour. After lunch a cosmetic demonstration was given by Mrs. Don Ballard of Crosbyton. The next meeting will be with Mary Phillips at the Lighthouse in Floydada November 10, for the annual Thanksgiving meeting. The November local meeting with Mrs. Harold Verrett will be November 17th, a week early so not to conflict with Thanksgiving day.

SCHOOL Menu

Menus for Week of Nov. 7, 1966

MONDAY:
Hungarian Meat Balls and Brown Gravy
Savory Green Beans
Tossed Potato Salad
Tomato Wedge
Rolled Wheat Rolls and Butter

TUESDAY:
Applesauce Cake
1/2 pint Milk

WEDNESDAY:
Virginia Baked Ham
Candied Sweet Potatoes
Frozen Green Limas
Hot Rolls
Pear Halves and Peanutbutter Cookies
1/2 pint milk.

THURSDAY:
Hamburgers with Cheese
Tomato, Lettuce, Dill Pickles
Potato Chips
Peach Cobbler
1/2 pt. milk.

FRIDAY:
Oven Crisp Fried Chicken
Buttered Corn
Early June Peas
Fresh Fruit Cups
Hot Rolls and Butter
1/2 pint milk.

In the home of their parents, Mr. and Mrs. Bob Kendrick, Mr. and Mrs. Anthony Latta attended their monthly dinner with a group of friends in the home of Mr. and Mrs. Victor Green in Plainview Saturday evening.

Sam and Carol spent Saturday evening with their grandmother, Mr. and Mrs. S. R. Wright in Plainview.

Sunday afternoon visitors in the home of Mr. and Mrs. Joe Appling were Mr. and Mrs. Billie Gene Cason and children of Lubbock.

Mr. and Mrs. Wayne Appling and Ann of Floydada and Miss Carol Latta attended a birthday party honoring Jamie Bridges in Crosbyton.

Mr. and Mrs. J. W. McClure were guests Thursday evening for dinner in the home of their daughter, Mr. and Mrs. Wayland Jones in Dougherty, honoring J. W. on his birthday. Amy and Greg Jones returned home with their grandparents for the night.

Mr. and Mrs. Frank Moore spent the day Sunday with her

Mr. and Mrs. W. T. Spurgin in Spur.

Mrs. E. H. Brown and Mr. and Mrs. Holt Bishop returned home Thursday from a two weeks vacation at Matagorda and Kingsland. Mrs. Brown spent a week with the Owen Crumps, former Crosbyton residents.

Mr. and Mrs. Billie Joe Ham-bright, Cathy and Todd, Mr. and Mrs. Edmond Brown, Rex and Scott, were Saturday night guests of their mother, Mrs. E. H. Brown for a fish supper.

Mr. and Mrs. Edmond Brown went to Lubbock for the afternoon after church Sunday.

Mr. and Mrs. C. F. Flemtns were guests for Sunday dinner with her mother, Mrs. C. H. Moore of Crosbyton and were supper guests of his mother, Mrs. C. E. Flemtns.

Mrs. Wayne Flemtns and daughter Jamie have been on the sick list this last week.

FLOYD DATA
Mr. and Mrs. W. D. Newell are due home the latter part of this week from California where they have been visiting their daughter and family, Mr. and Mrs. Gilbert H. Shirey at Ventura, a brother of Newell's, Mr. and Mrs. Earl Newell at Ventura and a granddaughter and her family, Mr. and Mrs. Gage Enoch and Darrin at Rendon Beach.

Permanent Anti Freeze
\$8.50 PER CASE

Trailer Tires
LARGE 14 INCH
\$5.00 EA.

Rucker's OK Tire Store
PHONE YU 3-3370

Big Savings Starting Thursday!

FALL SALE

Downtown And Gabriel-Wayland Plainview, Texas

Womens Fall COATS \$10.

WOMEN'S STRETCH DENIM PANTS
Capri Styles \$3.99 Values
\$2.22 PAIR
Sizes 8 to 18

Special - Purchase Sale!
3 DAYS ONLY

WOMENS FLATS! CASUALS! HOUSE SHOES! SLIPPERS!

Fall's Best Colors \$1.

COTTON DRESS PRINTS
36 - INCH
39c to 59c VALUE

25¢ YD.

Light Weight Windbreakers
FOR EARLY FALL
\$3.99 VALUE

SAVE 41c A YARD ON NEW Famous-Brand WOVEN GINGHAM CHECKS
Regularly Sold For 79c A Yd.

45 INCH WIDTHS! FULL BOLTS FLAT FOLD
38¢ Yd.

Woven Yarn-Dyed Combed Cotton

Fall's Favorite! 37 and 45 - Inch **WIDE-WALE CORDUROY**
EXTRA HEAVY FIRST QUALITY Short Lengths
64¢ Yd.

Famous CHATHAM BLANKETS
72 x 90 Double - Bed Size!
ONE LOW PRICE ONLY **\$2.99 EACH**

Small Mens Athletic Style SWEAT SHIRTS
SHORT SLEEVES Select from a group of bright colors in all sizes! Size extra - Large. Some crew - neck styles. Heavy knit. Color. Easy to launder.

\$1.88

PERMANENT PRESSED SPORT SHIRTS
SAVE \$1.10
\$2.88

3 FOR \$7

SEAMLESS NYLONS
Lovely New Fall Shades in FIRST QUALITY SEAMLESS NYLONS
3 PATS. IN A BOX FOR **\$3.74**

Sheer Contraco Nylons
Regularly \$4.99. Seasonal Impermeable fit at ankle, roll up knee. Wrinkle free. First quality. All sizes. **63c DFL.**

Now! 2 - Way Stretch NYLON * RAYON CAPRI PANTS
With Detachable STIRRUPS
DuPont Stretch Fabrics Regular \$5.99 Values

\$4.

Boys New Long - Sleeve Shirts in 2 Groups
\$1.

Mens \$14.75 Jackets \$9.99

Cardigan - Style Jackets
Regularly \$12.99 **\$7.99** Each

Light Weight Warm!
Laminated knits in assorted huckle-weave colors with sweater trims. Good looking, good feeling, long wearing. All sizes.

3 DAYS ONLY! HURRY!

New! Womens Gowns in Softly Brushed Tricot or Cotton Flannel
REGULARLY \$1.99 **\$1.57** Save Even More When You Buy **2 FOR \$3**

Regular and Extra-Large Sizes:
34 to 40-42 to 48

Stock up at Sale prices - mix or match styles and colors. Buy some in easy cotton flannel, some in lovely tricot acetate tricot, softly brushed. Made by a famous manufacturer - selected special by Anthony's during this 3-day sales event in Plainview.

• PINK
• BLUE
• WHITE
• MAIZE

SHOP BOTH STORES: PLAINVIEW

Anthony's

Down Town and Gabriel Wayland

Mens Long - Sleeve Shirts That Are Permanently Pressed!
EXTRA LOW PRICED!
\$2.98 Values Everywhere! \$2

GIANT 25 x 50 and 25 x 52 BATH TOWELS
Seconds of Actual **\$3.98 - \$4.98** EACH

Mens SUITS
ALL-WOOLS AND BLENDED WOOLENS **\$25**

Specialty-selected group of fine values at a new low price. Sizes are 36 to 46, and they're in lengths as well as regular!



STRONG CHURCHES

Make STRONG COMMUNITIES

St. Mary Magdalen Catholic Church
 Father Paul A. Link, Pastor
 Sunday: 11 A.M. Holy Mass and Communion
 Monday: 8 p.m. Holy Mass and Communion
 Friday: 8 p.m. Holy Mass and Communion
 9:00 p.m. Apostolic Hour
 Confessions: Before Mass

West Side Church of Christ
 Sunday Morning Worship 10:30
 Evening Services 7:00
 Wednesday Evening 7:00

Sandhill Baptist Church
 Dale Dozier, Minister
 Sunday Services
 Sunday School 10:00
 Morning Worship 11:00
 Training Union 7:00
 Evening Worship 8:00

First Methodist Church
 HERSCHEL THURSTON, PASTOR
 Sunday Services
 Sunday School 9:45
 Worship Service 11:00
 YOUTH FELLOWSHIP 8:00
 Evening Worship 7:00

Methodist Spanish Mission
 JUAN SALINAS, PASTOR
 Sunday School 9:45
 Morning Worship 11:00

First Christian Church
 Darrell Faïres, Pastor
 Sunday Services
 Sunday School 9:45
 Worship Service 11:00
 Youth Meeting 6:00

First Baptist Church
 F. C. Bradley, Pastor
 Sunday Services
 Sunday School 9:45
 Morning Worship 11:00
 Training Union 6:00
 Evening Worship 7:00

Calvary Baptist Church
 HERBERT ROW, PASTOR
 Sunday Services
 Sunday School 9:45
 Morning Worship 11:00
 Training Union 6:30
 Evening Worship 7:30

Bible Baptist Church
 JACK COLLINS, PASTOR
 Sunday Services
 Singing 9:50
 Sunday School 10:00
 Singing 10:45
 Preaching 11:15
 Training Union 6:00
 Singing 6:30
 Preaching 7:00
 Mid-Week Service 7:30

New Hope Primitive Baptist Church
 Beathel Jeffrey, Pastor
 Sunday Services
 2nd Sunday
 Morning Worship 11:00
 2nd Saturday Afternoon 2:00
 2nd Saturday
 Evening Worship 7:00

Cedar Hill Assembly of God Church
 Robert G. Slaton, Pastor
 Sunday Services
 Sunday School 10:00
 Morning Worship 11:00
 Evangelistic Service 7:30

Cedar Hill Baptist Church
 Sunday Services
 Sunday School 10:00
 Morning Worship 11:00
 Evening Worship 7:30



REV. DARRELL FAIRES
 PASTOR, FIRST CHRISTIAN CHURCH

Devotional of the Month

Telling God Where To Live

The number one task of every human being is to find out who he is. On the face of it, it would seem to be a simple task, but it is not. We get confused and side-tracked and tricked into believing we are something we are not.

In the satirical musical revue "For Heaven's Sake" Helen Kromer pictures presumptuous man who has not discovered his "manness."

"Little man, like a peacock, proud;
 Like a strutting rooster, crowing aloud;
 Like a neophyte actor, certain indeed
 He's a better star than the one playing lead,
 Is grabbing the stage and having his fling
 And playing the role of the Almighty King."

This temptation, to assume the role of God, has been with us since the beginning. This was the bait that Satan offered Eve, "You shall be like God."

It is easy to say, "God is God and I am only a man." It is not so easy for us to remember that in all the moments and events of our day to day life. What we say in theory we often do not practice. Too often we make decisions which refute our belief that God is God and we are men. Too often we seek to "make God in OUR image." When we are confronted with a decision of vital importance, rarely do we stop to ask, "What is God's will in this matter?" We usually make our decision on the basis of our own desires, our own tastes, our own background.

God has done His very best to help us understand who we are. He has revealed His own infinite wisdom and power in creation. He has demonstrated his limitless love by the incarnation of His presence in Jesus Christ - a love that did not stop short of suffering and death. In short, He has shown Himself to us as God in order that we might understand that we are men, children of God. He then leaves us free to acknowledge both his divinity and our own humanity. It is this freedom that becomes the battleground on which all of life's skirmishes take place. Here all of life's choices are made, including the choice to be a TRUE MAN as God intended, or to be a FALSE GOD, falling down to worship ourself as the center of the universe.

Can we, with our lips, call Him "Creator," but with our whole selves live as though we can "make" life out of a superabundance of gadgets and goods? Can we acclaim Him the "Great Architect," and yet try to build our life on our own private drawing board? The point is this--a man cannot know himself until he knows God. When he knows God, he then knows that he himself is a creature, a finite being whose meaning and destiny comes from God and God alone.

In another very telling section of "For Heaven's Sake" called "The Repair Job" the singer complains that He asked God to come and make a few small repairs in the house he calls his life. What he had in mind was just a little patch-up work. But God had other ideas. The man finds himself rebelling because God is "making him over." The purpose of this "remodeling job" was to provide living room for God in his life. The big problem is that there just isn't room for two Gods in one house (or one universe).

Want to know who you are? Let God be God. Be content to be a man--but a special man--a man who gives God living room in his life.

Rev. Darrell Faïres, Pastor
 First Christian Church

Nazarene Church
 LOWELL BELL, PASTOR
 Sunday Services
 Sunday School 9:45
 Morning Worship 10:30
 N.Y.P.F. 6:15
 Evening Worship 7:30
 Prayer Meeting, Wed. 7:30

Cumberland Presbyterian Church
 Sunday School 10:00
 BIBLE STUDY 8:00

Dougherty Baptist Church
 Jim DeWese, Pastor
 Sunday Services
 Sunday School 10:00
 Morning Worship 11:00
 Training Union 7:00
 Evening Worship 8:00

City Park Church of Christ
 George T. Elkins, Jr. Minister
 Sunday Services
 Bible Study 9:00
 Morning Worship 10:00
 Bible Study 5:00
 Evening Worship 6:00
 Bible Study Wednesday 8:00
 Ladies Bible Study, Wed. 9:30 a.m.

Wall St. Church of Christ
 O. W. Kirk, Elder
 Sunday Services
 Communion and Morning Worship 10:00
 Evening Worship 7:00
 Wednesday Evening 7:00

Mt. Blanco Baptist Church
 O. N. Reed, Pastor
 Sunday Services
 Sunday School 10:00
 Morning Worship 11:00
 Training Union 6:00
 Evening Worship 7:00
 Wednesday Prayer Service 7:00

South Plains Baptist Church
 Interim Pastor, Dr. Fred Howard
 Sunday Services
 Sunday School 10:00
 Morning Worship 11:00
 Training Union 6:00
 Evening Worship 7:00

Carrs Chapel
 Worship 2nd and 4th Sunday
 Rev. Doyn Meriman, Pastor
 Sunday School 10:00
 Morning Worship 11:00
 Evening Worship 6:00

Victory Baptist Church
 B. T. HOUCK, PASTOR
 Sunday Services
 Sunday School 10:00
 Morning Worship 11:00
 Evening Worship 7:00
 Wednesday Evening 8:00

New Salem Primitive Baptist Church
 Joe M. Jackson
 Sunday Services
 Congregational Singing 10:00
 Morning Worship 11:00
 Regular Conference Meeting 6:00
 Second Saturday night 8:00

Mexican Baptist Mission
 Raymond Asebedo, Pastor
 Sunday Services
 Sunday School 10:00
 Morning Worship 11:00
 Training Union 6:00
 Evening Worship 7:00

First Assembly of God Church
 R. A. Staggs, Pastor
 Sunday Services
 Sunday School 9:00
 Morning Worship 11:00
 Evangelistic Service 7:00

This Inspirational Message Is Sponsored By The Following Civic-Minded Firms:

Carthel Fertilizer & Oil

Federal Land Bank of Floydada

Hale & Hale Insurance

Simmons Machine & Irrigation Inc.

Russell Blacksmith & Welding

Floydada Real Estate & Insurance

McDonald Implements

Mac's "66" Station

Moore Funeral Home

Consumers Fuel Association

Parker Furniture

Wylie Butane

Floydada Implement Co.

Winn's Restaurant

Martin & Company

Reed Ford Sales

Farmers Co-op Gins

Collins Implement Co.

Carl Jarrett Service & Oil

Leonard's Cafe

M. J. Weems Oil Co.

Edmiston Plumbing & Heating

Solomon Jewelry

McLains Conoco



UP FOR THE MEMPHIS GAME.....
A HESPERIAN PHOTOGRAPHER SHOT THIS ONE
LAST WEEK AS THE HIGH SCHOOL STUDENT
BODY AND THE PUBLIC WENT ALL OUT TO
BEAT MEMPHIS.



IRON ON A DESIGN—A quick fashion touch that adds
interest to a plain jumpsuit is a paisley motif—applied
with an iron. The design is cut from black and white
iron-on cotton fabric by Irontex. For paisley pattern,
write the National Cotton Council, Box 12285, Memphis,
Tennessee.

Area Football Standings

Team, last week's ratings, season record:

Team	Rating	Season Record
CLASS AAAA		
1. San Angelo (1)	7-0	7-0
2. Texoma (2)	6-1	7-0
3. Cooper (3)	6-1	6-1
4. Abilene High (3)	4-2	4-2
5. Permian (3)	6-1	6-1
6. Monterey (6)	6-1	6-1
7. Amarillo (7)	4-4	4-4
8. Odessa (8)	4-2	4-2
9. Pampa (9)	4-3	4-3
10. Big Spring (10)	4-3	4-3
CLASS AAA		
1. Dumas (1)	6-1	6-1
2. Lamesa (2)	6-1	6-1
3. Littlefield (3)	6-1	6-1
4. Monahans (4)	6-1	6-1
5. Ector (5)	6-1	6-1
6. Harland (6)	6-1	6-1
7. Andrews (7)	3-4	3-4
8. Kermit (8)	4-1	4-1
9. Brownfield (9)	3-2	3-2
10. Tulia (10)	4-3	4-3
CLASS AA		
1. Post (1)	7-1	7-1
2. Denver City (2)	3-2	3-2
3. Memphis (3)	6-2	6-2
4. Abernathy (4)	6-2	6-2
5. Dimmitt (5)	4-3	4-3
6. Slaton (6)	4-3	4-3
7. Floydada (7)	3-3	3-3
8. Olton (8)	4-4	4-4
9. Hale Center (9)	4-4	4-4
10. Pecos (10)	4-4	4-4
CLASS A		
1. Sudan (1)	8-0	8-0
2. Spur (2)	7-1	7-1
3. Slaters (3)	7-1	7-1
4. Thobe (4)	7-1	7-1
5. Kress (5)	7-1	7-1
6. Plains (6)	5-3	5-3
7. Crosbyton (7)	4-4	4-4
8. Ball (8)	4-2	4-2
9. Sprinkle (9)	5-1	5-1
10. Petersburg (10)	3-4	3-4
CLASS B		
1. Sundown (1)	6-1	6-1
2. Amber (2)	6-1	6-1
3. Chillicothe (3)	6-1	6-1
4. Bronte (4)	6-1	6-1
5. Trend (5)	6-1	6-1
6. Vega (6)	5-1	5-1
7. Wilson (7)	6-2	6-2
8. Tuxline (8)	6-1	6-1
9. Popesville (9)	4-3	4-3
10. Lockett (10)	5-2	5-2
EIGHT MAN		
1. Klondike (1)	6-1	6-1
2. Amber (2)	6-1	6-1
3. Morse (3)	7-1	7-1
4. Rosaring Springs (4)	6-1	6-1
5. Sterling City (5)	4-2	4-2
6. Cotton Center (6)	4-2	4-2
7. Cotton Center (7)	4-2	4-2

Decorate the Home This Fall With New Color Screening

Screened areas of every home, apartment, mobile home or summer cottage include as much as 50% of the exterior, and they deserve sprucing up at the close of the Summer season. Recently introduced colors in aluminum screening offer a challenge in decorating this Fall.

Aluminum screening in green or charcoal can lend excitement to routine repair and replacement of screens, according to the Exterior Decorators Institute of the Aluminum Association.

With the installation of aluminum combination storm windows and screens, remodeling contractors can coordinate the green or charcoal screening to the total color scheme of the building.

Any Fall re-screening project becomes a re-decorating program with the use of color in aluminum screening. A growing number of hardware and building supply dealers offer a re-screening service. Or, the ambitious do-it-yourselfer can undertake the program himself.

Aluminum screening, the choice of seven out of eight consumers according to two recent independent national surveys, requires no painting and, more important, will not rust, rot, burn or fade. It has the strength to resist damage in storms and high winds and is highly resistant to the household abuse of children and animals.



A COVER CROP, such as the one pictured above can be very useful in helping prevent erosion and in helping conserve rainfall during the critical period when the land is either bare or has only small amounts of present. A cover crop of a leg help build up the fertility of the soil and prevent erosion.

SEE THESE EXCITING DOLLAR DAY BUYS

8-INCH SAUTE PAN **LAST WEEK!**

99¢
with \$5.00 Purchase

Food just can't stick to this heavy aluminum pan finished with super-slick DuPont TEFLO. Cleans with just a soapy cloth, no scraping or scouring ever. Chef-styled sloped sides, heatproof handle.

ELLIS NO. 2 1/2 CAN

TAMALES 3 FOR \$1

NESTLE'S CHOCOLATE DRINK MIX

QUICK 39¢

SPRAY STARCH

COTTON MAID 22 OZ. CAN 49¢

COCONUT

DURKEES 14 OZ. PKG. 49¢

KLEENEX

200 COUNT BOX 25¢

JELL-O

REG. SIZE 2 FOR 19¢

EGGS

CARMACK GRADE 'A' LARGE 57¢

PILLSBURY FLOUR 5 LB. BAG 59¢

FUNNY FACE DRINK 3 PKGS. 19¢

A-JAX CLEANER POWDER 14 OZ. CAN 10¢

COLD POWER DETERGENT 59¢

THE YEAR'S GREATEST "TEAM-UP" FOR SAVING

Shurfine CARNIVAL

OCT. 24 thru NOV. 5, 1966

SHOPPING LIST

Shurfine Apple Butter 28 oz. 3/\$1.00	Shurfine Luncheon Meat 12 oz.
Shurfine Apple Sauce 303 6/\$1.00	Shurfine Margarine 1 lb. Qtz.
Shurfine Apricots Hlvs. Unpl. 303 4/\$1.00	Shurfine Milk Evap. Tall Can.
Shurfine Asparagus All Gr. Cut 300 4/\$1.00	Shurfine Olives 7 oz. Stuff-Thr-Monz.
Shurfine Biscuits Sw-But. Milk 8 oz. 13/\$1.00	Shurfine Orange Juice Frozen 6oz.
Shurfine Blackeyes Fr. Shelled 300 7/\$1.00	Shurfine Peaches YC Hlv-Slt. 2 1/2 Can.
Shurfine Broccoli Sp. 10 oz. Frozen. 4/\$1.00	Shurfine Peanut Butter 12 oz.
Shurfine Cake Mixes Asst'd. 19 oz. 4/\$1.00	Shurfine Pears Hlvs. Bart. 303 3
Shurfine Catsup 14 oz. 5/\$1.00	Shurfine Pickles Wh. Sweet 22 oz.
Shurfine Cheese Spread 2 lbs. \$.89	Shurfine Pork & Beans 300 3
Shurfine Coffee Reg-Drip 1 lb. \$.69	Shurfine Potatoes Irish Whole 303 3
Shurfine Corn C.S.-W.K. Golden 303 5/\$1.00	Shurfine Salad Dressing Qt.
Shurfine Corn Frozen Cut 10 oz. 5/\$1.00	Shurfine Salmon Red Alaska Tall Can.
Shurfine Cranberry Sauce Str. 300 4/\$1.00	Shurfine Sauer Kraut 303 3
Shurfine Cucumber Chips F.P. 16 oz. 4/\$1.00	Shurfine Shortening 3 lb.
Roxey Dog Food Canned No. 1 Can. 13/\$1.00	Shurfine Spinach 303 3
Shurfine Flour 10 lb. Paper Bag \$.98	Shurfine Sweet Peas Early Harv. 303 3
Shurfine Flour 25 lb. Print Bag \$2.19	Shurfine Swt. Potatoes Wh. No. 3 Squar.
Shurfine Fruit Cocktail 303 5/\$1.00	Shurfine Strawberry Preserves 18 oz.
Shurfine Frost, Mix Wht-Choc. 1 1/2 oz. 4/\$1.00	Shurfine Toilet Tissue 2 Ply Asst'd. 10 R.
Shurfine Grape Jelly 18 oz. 3/\$1.00	Shurfine Tomatoes Wh. Peeled 303 3
Shurfine Grape Juice 24 oz. 3/\$1.00	Shurfine Tomato Sauce 8 oz.
Shurfine Gr. Beans 4 Sv-Cut B.L. 303. 5/\$1.00	Shurfine Tuna Chunk Style Flat Can.
	Shurfine Waffle Syrup Qt.

SHURFRESH BACON 79¢

LB. PKG.

JOHNNY'S FRYER BREAST SAUSAGE 59¢

LB.

JOHNNY'S SAUSAGE \$1.19

HOT OR MILD

2 LB. PKG.

These Prices Good Thursday, Nov. 3 thru Monday, Nov. 7

POWELL'S SUPER MARKET

YOUR HOME-OWNED, HOME-OPERATED STORE ON THE WYE

Alma's Gift Shop

BARGAINS FOR \$ DAYS AND HOLIDAYS!

ONE GROUP OF JEWELLED ACCURACY, SHOCK RESISTANT

BULOVA WATCHES \$11.66 and \$13.66

ONE GROUP OF BIRTHSTONE RINGS 1/2 PRICE

One Group Of Jewellery 1/2 PRICE

INCLUDES DIAMOND RINGS, WATCHES, MEN'S JEWELRY, AND BABY JEWELRY.

SEE OUR EXCITING MEXICAN IMPORTS BEFORE YOU PLAN YOUR HOME DECORATIONS FOR THE HOLIDAYS

WE GIFT WRAP...WE WRAP FOR MAILING