

# The Floyd County Hesperian

14 Pages

FLOYDADA FLOYD COUNTY TEXAS, THURSDAY, JANUARY 13, 1965

NUMBER TWO

## Poll Tax Payments Continue Slow For Election Year

...ions Far  
...nd Those  
...ast Years

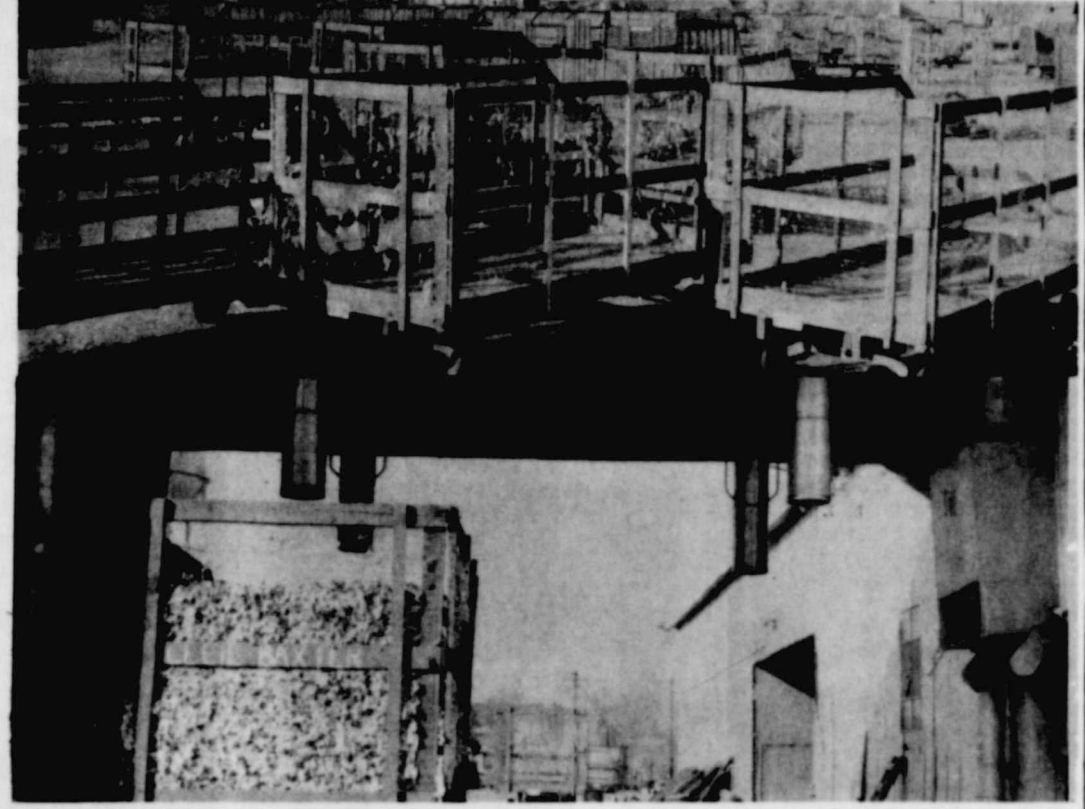
...yment of poll taxes by  
... Floyd County is  
... behind what it has  
... years, and even  
... of last year, which  
... "off" election year,  
... there were no state or  
... officials elected last  
... there will be elec-  
... officials this year.  
... years ago, the presiden-  
... tion year, a total of  
... her paid their poll taxes  
... ved exemption receipts.  
... the county showed a  
... 2,534 eligible voters.  
... over sixty, and those  
... e turned 21 since the  
... uary 31, get to vote  
... ying poll taxes.

... in Floyd County have  
... habits as those in other  
... and they tend to wait  
... last minute to pay their  
... s. Two years ago a  
... re the window closed  
... ent of poll taxes only  
... been paid.

... all taxes will be requir-  
... elections in Texas this  
... ept those concerning  
... officials, unless a court  
... is handed down in the  
... days.

... Jones at Lockney will  
... ll tax receipts today  
... Jan. 31, Monday.  
... Payne, County Tax As-  
... collector, will be in  
... Jan. 18th to collect  
... rent taxes at City Hall  
... council room, 9:00 a.m.  
... 10 p.m.

... who wishes to pay tax-  
... should bring his '65  
... pt.



ALMOST OVER - The scenes above show that the cotton harvest is almost over for the Floyd County area. Although trailers still fill the gin yards they are now empty. A trailer parked under the suction shed of a local gin indicates that the 24-hour activity is gone for this harvest season. (Staff Photos)

### Cotton Harvest Beyond Local Expectations, 120,000 Ginned

Last week in a gin-by-gin survey it was found by the Hesperian that a total of 113,540 bales had been ginned and around 5,700 more were expected. But, a report from the Texas Employment Commission in Plainview, the past week showed that a total of 120,099 had been ginned, surpassing the local's prediction of 119,240 bales.

The report shows that the four-county area has ginned a total of 394,241 bales. Hale County accounts for more than half this amount with 206,795 bales.

Last week the four counties ginned 35,796 bales, and need to gin another 35,119 to reach TEC predictions of the cotton crop.

The 120,099 total for this county tops the TEC prediction of 120,000 bales by 99. However, Plains Cotton Growers and the Lubbock Cotton Ex-

## Bank Deposits Continue To Climb, Top 1964 Reports

### SMITH TO LA SALLE COUNTY Assistant Agent Selected For County

John M. Fields, 28, a farmer in Lamb County and a graduate student at Texas Tech, has been named the new assistant county agricultural agent for Floyd County.

According to a joint announcement by Floyd County Judge J. K. Holmes and Extension District Agent Billy C. Gunter, of Lubbock, Fields will begin work in the position Feb. 1.

As assistant agent, Fields will assist County Agricultural Agent Joe Wilson in conducting adult education programs although his primary responsibility will be youth work programs.

He will fill a position held by Darrell E. Smith for the past four years. Smith is leaving to become a county agricultural agent in Extension District 12 which is located in South Texas. Smith will be stationed at Cotulla, in La Salle County.

The new assistant agent holds a B.S. degree in agriculture from West Texas State University, where he was named the Outstanding Student in Agriculture in 1961. While at West Texas State, he served as president of the Rodeo Club and was a member of Alpha Chi, a scholastic honorary society, and the Agricultural Club.

Since graduation, Fields has



JOHN M. FIELDS

### Lockney, Floydada Banks Show Increase

A bank call, dated December 31, 1964, shows that the county bank deposits continue to climb year after year, as the two financial firms reported over 1/3 of a million dollars increase over deposits of 1964. The 1964 report showed an increase of 1/2 million dollars at the two banks.

The banks also reported that loans were up near \$900,000, which indicates a lot of planned activity, or activity in the areas that is financed by the two banks.

### Small Turnout Approves Water Improvements

A very small turnout of voters approved the proposed city water supply improvements when they voted yes to a \$116,000 bond issue at City Hall here last week. The vote was 180 for the improvements and six against.

The city officials can now move ahead with plans to drill two new water wells on the present water field southwest of Floydada, construct a 500,000 gallon ground reservoir and in-

SEE APPROVES ON PAGE 3

### New Directors For Chamber Are Named

(Floydada Special) Clem McDonald, election judge, assisted by Homer Steen and Frank Harmon, after canvassing the ballots for the Board of Directors for the Chamber of Commerce, for the year 1965 to 1968, report the following six elected: Parnell Powell, grocer; A. E. Baker, superintendent of schools; Don Pemberton, utilities; John Fowler, commissioner and farming; John Stapleton, district attorney; and Andy Anderson, industry.

Hold over directors are Wendell Tooley, who has served the past year as President, Tommy Assiter, serving as Vice President, Ralph Mardis, serving as Treasurer. Others are Bill Cagle, Travis Jones, Walton Hale, and Clay Henry, by virtue of West Texas Chamber of Commerce director, repre-

senting Floydada. Retiring are Kenneth Bain Jr., Charles Tyler, Jim Simpson, Dr. Oatis McIntosh, and Wayne Brown and Weldon Harris, who have recently moved to another city.

Directors at large who were appointed by president for one year term are Wayne Collins, S. W. Ross, Keller Holmes.

The election of officers will be held at an early date. The new administration will take office March 1. The Chamber of Commerce Banquet has been planned for 7 p.m., Friday night, February 25, 1965, to be held in the Floydada High School Cafeteria. Dr. W. P. Deatheridge of the Second Christian Church, of Houston, will be the speaker. The Floydada High School Stage Band will furnish dinner music, and Chamber President Tooley will be the Emcee.

### Brock Chat

by  
NENDELL TOOLEY

MOST turn over every it that curve in the four-way south of Lockney toward Plainview. And, I get aggravated at the department and wonder if you didn't straighten out the lane highway.

Monday morning, I'm unhappy with the high-traffic. I noticed that slow down to the speed of 60 when you hit it, you're not nearly as

AND THEN the auto struders do something mentioning. Noticed this I have over 55,000 on my auto and I still had to buy a new muffler. Suppose this is the first I've ever owned that it new with exceptionally

THE woman said on the "It's a small woman to whom I had the little Hales Florida visiting a son, who is in the service. day as they stood in line at a cafeteria, a man in a line behind the Hales

### James Ray Announces Candidacy For Senate

James R. (Jim) Ray, 30, a known Hale County farmer and businessman announced his candidacy for State Senator from the 30th District. The district includes 21 counties from Wichita to the New Mexico border.

From the Legislating Bill, it comes from District 30 by Sen. Andy Rogers and District 21 by Sen. Jack Vernon.

Former Administration to Congressman session, serving in the 6 years. He is a

### Annual Soil Fertility Day Set February 17

The 18th annual Soil Fertility Day will be held in Lockney February 17. The event is sponsored jointly by the Lockney Chamber of Commerce, the First National Bank of Lockney and the Fort Worth and Denver Railroad.

A planning session is slated for Friday morning, tomorrow, at 7 a.m. to plan the event. The breakfast is sponsored by the Ft. Worth and Denver Railroad.

Maceyl Orman, Agricultural Representative of the railroad and Billy C. Gunter, District Extension Agent will appear on the morning program to help plan the day, which is one of the best educational programs conducted in the county each year.

### NEW RULING NOTED

## Annual County Stock Show Slated Here March 7, 8, 9

At a meeting of the County Stock Show directors here Tuesday night the group set the date for the show this year as March 7, 8, and 9. A new ruling accepted at the meeting stated that all animals are to be in their places by 10:30 a.m., Monday, March 7, instead of at noon as has been the case in the past.

The sifting will be held Monday, the judging Tuesday, and the sale will be held Wednesday. At last year's sale a total of \$31,794 was paid for the animals. This included 32 steers, 80 barrows, and 60 lambs.

Of the price paid \$20,963 was support prices contributed by county merchants and individuals. These participating in the show received a total of \$36,971.77 for prize money and sale of their animals.

Another new ruling the board discussed then acted on, was to limit the number of show animals to five per person.

A large number of those who will work with the show were selected at Tuesday night's meeting. Some of those named are as follows:

Raymond Aiken and Gene Harris will act as auctioneers for the sale slated Wednesday, March 9.

Joe Taylor was named superintendent of the show and Joe Wilson will act as show manager.

Carl Brock and James Hale

### Warren Appointed To Local School Board

Thomas Warren, of the Liberty Community, was appointed to serve out the remainder of the school trustee term held by Shirley Irwin at the regular school board meeting here Monday night. Irwin resigned from the position recently.

The board also named eight teachers to work with the Remedial Reading Course which will start Monday, January 24, at the Floydada Schools, Dougherty and Lakeview.

Those elected are Elayne Reid, Ethel Florence, Worth Merry, Ruth McIntosh, Diana Glover, Beta Boyd, Laverne Black and Mary Tom Tooley.

Mrs. M. C. McGill was named to replace Diana Glover at Junior High School. Mrs. McGill is presently teaching at San Antonio, but she and her husband will move to Floydada within the next few days. McGill will be associated with John Stapleton in the law firm.

In other business the board members went over the building plans. The contract bids will be let, Thursday, January 27, 4 p.m. at the high school auditorium. Also, superintendent A. E. Baker's contract was extended for another two years.

Warren is a farmer in the Liberty Community, and has lived in that area all his life. He graduated from Floydada High School in 1942, and served with the Army in Germany for 1 1/2 years beginning in 1944.

He and his wife, Marie, have four children, Elaine, age 16; Edwin, 14; Joyce, 11; and Don, 7.

Regarding the job Warren said, "I don't feel that I'm qualified but the other board members convinced me I can do the job. I'll do my best anyway."



TOM WARREN

### City Fathers Let Bids On Planned Wells

The members of the City Council, in their regular meeting this week, gave notice that they will receive sealed bids until 7:30 p.m., January 31, 1965, at the office of the City Manager, for the drilling of two new wells for the city. The bids will be opened and read publicly at that time.

The bidder will furnish all plant, labor, material and equipment, and perform all work required for the drilling and equipping of two water supply wells.

The plans, specifications and bidding documents may be secured from the office of the City Manager, at the City Hall, here, or at the office of McMorris and Associates, 6300 Canyon Drive, Route 1, Box 826, Amarillo, Texas.

The council members canvassed the election ballots and found that 160 voted for the \$116,000 bond issue last week, and six voted against it. The additional bonds will not cause taxes or water rates to increase.

Joe Smith, of the First South-

SEE WELLS ON PAGE 3

### REPLACES SHIRLEY IRWIN

## Warren Appointed To Local School Board

Thomas Warren, of the Liberty Community, was appointed to serve out the remainder of the school trustee term held by Shirley Irwin at the regular school board meeting here Monday night. Irwin resigned from the position recently.

The board also named eight teachers to work with the Remedial Reading Course which will start Monday, January 24, at the Floydada Schools, Dougherty and Lakeview.

Those elected are Elayne Reid, Ethel Florence, Worth Merry, Ruth McIntosh, Diana Glover, Beta Boyd, Laverne Black and Mary Tom Tooley.

Mrs. M. C. McGill was named to replace Diana Glover at Junior High School. Mrs. McGill is presently teaching at San Antonio, but she and her husband will move to Floydada within the next few days. McGill will be associated with John Stapleton in the law firm.

In other business the board members went over the building plans. The contract bids will be let, Thursday, January 27, 4 p.m. at the high school auditorium. Also, superintendent A. E. Baker's contract was extended for another two years.

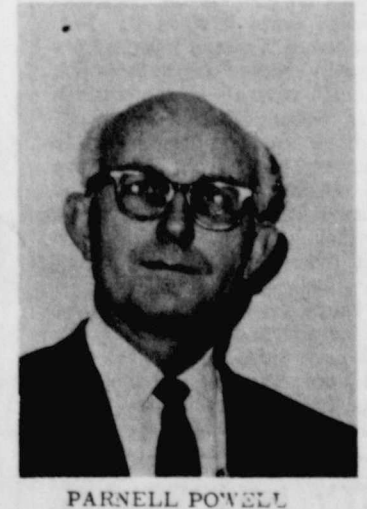
Warren is a farmer in the Liberty Community, and has lived in that area all his life. He graduated from Floydada High School in 1942, and served with the Army in Germany for 1 1/2 years beginning in 1944.

He and his wife, Marie, have four children, Elaine, age 16; Edwin, 14; Joyce, 11; and Don, 7.

Regarding the job Warren said, "I don't feel that I'm qualified but the other board members convinced me I can do the job. I'll do my best anyway."



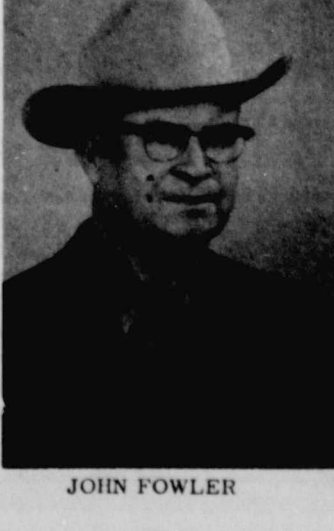
DON PEMBERTON



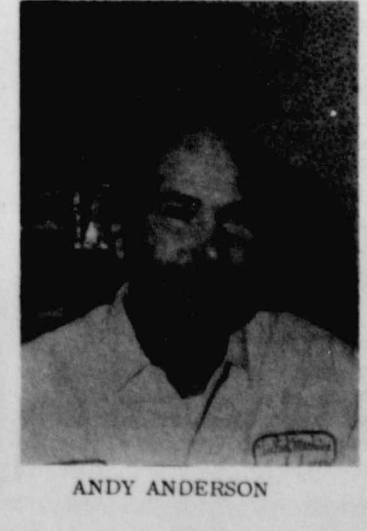
PARNELL POWELL



A. E. BAKER



JOHN FOWLER



ANDY ANDERSON



JOHN STAPLETON





**RIBBON CUTTING CEREMONY** - at the new Ward's Store and agency in Floyd Thursday morning. Mayor Leonard is seen cutting the ribbon and is the back left by Mr. and Mrs. Bill

Hendrix, Miss Margaret McCraney and Mrs. L. L. Hendrix of Lubbock, L. L. Hendrix and John Reue, Chamber of Commerce manager. (Staff Photo)

**TURNOUT**  
**Thomas, Hale Favored In Water Board Vote**

ery light turnout of only 59 at Floydada, as Thomas was favored over E. J. Foster, Kenneth Bean and Orlan Howard. In Floydada, Hale received 37 votes, Foster, 3, Bean, 12, and Howard 3.

The county named J. S. Hale as committeeman from this county over E. J. Foster, Kenneth Bean and Orlan Howard. In Floydada, Hale received 37 votes, Foster, 3, Bean, 12, and Howard 3.

der of the district in favoring the annexation of two parts of Cochran County to the water district. In Floydada 50 favored both annexations, and number one received two votes against, and number two received one vote against.

Committeemen are named to each five-man county committee in the district. The county committee approves well drilling permits and makes recommendations on various matters to the five-man district board.

Annexation of Cochran County Lands was made possible by a redefinition last April of boundaries of the Ogallala formation south of the Canadian River.

Following the shuffle by the Texas Water Commission, landowners in the area petitioned the board of directors to become a part of the district.

Unofficial returns showed a total of 509 votes cast in the district.

**RAY**

CONIT FROM PAGE ONE graduate of Abernathy public schools.

He was graduated from Texas Tech with a degree in Government and attended Georgetown University Law School while he was with Congressman Mahon in Washington, D. C. Ray has served as a part-time Government instructor at Texas Tech.

In announcing his candidacy in the Democratic Party Primary, Ray said "I intend personally to visit every town in the new 30th District and want to meet and visit with as many persons as possible."

"I am interested," he continued, "in learning the problems people are having with their State government, and I want to go to Austin to work in every way possible for the people in this District."

He said he "feels that my experience with legislation and dealings with the various Departments and agencies in Washington will be valuable."

Ray is a former member of the Texas National Guard and presently holds the rank of 1st Lt. in the Army Reserve.

Ray is married to the former Susan Murree of Lubbock, and the couple has two sons.

Counties in the 30th District are Archer, Bailey, Baylor, Briscoe, Castro, Childress, Cottle, Dickens, Floyd, Foard, Hale, Hall, Hardeman, King, Knox, Lamb, Motley, Parmer, Swisher, Wichita, and Wilbarger.

**COTTON**

CONIT FROM PAGE ONE Low Middling Light Spotted was next with 33 per cent. Middling Light Spotted made up 13 per cent of the total, Low Middling Light Spotted 3 per cent, and all Spotted and Tinged grades 6 per cent.

Average staple length was lower than the previous week. Ninety per cent was 15/16 of an inch and shorter compared to 83 per cent the previous week.

Micronaire readings continued to decline during the week. Nineteen per cent of the cotton was in the 2.6 and below, or Wasty, category. Thirty-two per cent miked 2.7 through 2.9, 27 per cent miked 3.0 through 3.2, 9 per cent 3.3 through 3.4 and 13 per cent was 3.5 and better.

The Consumer and Marketing Service of the U.S.D.A. reported increased trading on the Lubbock market but prices continued to decline slightly. Demand continued weak for most of the qualities of cotton being harvested, and most interest was in Low Middling Light Spotted and all Spotted grades.

Average prices paid for the most predominant qualities were: Strict Low Middling 15/16 - 26.20, Strict Low Middling 31/32 - 26.70, Low Middling 15/16 - 24.85, Low Middling 31/32 - 25.35, Middling Light Spotted 15/16 - 26.25, Middling Light Spotted 31/32 - 26.75, Strict Low Middling Light Spotted 15/16 - 25.80 and Strict Low Middling Light Spotted 31/32 - 26.00.

Prices paid farmers for cottonseed ranged from \$45 to \$52 per ton.

King Tire Company was low bidder on the tire service for the city. The firm bid \$3.00 for repair of a tractor tire, \$2.50 for truck tire, and 50¢ for pickup or auto tire repair. A service charge of \$1 was also bid.

In other business the council members discussed the electrical rates for gins and for the schools. The members decided to study the situations further and compare what this city does with the policies of some other area cities.

The council adopted Ordinance 410 which officially brings the property belonging to Jimmy Seay and bordering the city on the west into the city limits. All council members were present.

**FIELDS**

CONIT FROM PAGE ONE been operating his father's crop and livestock farm in Lamb County. He also has been doing graduate work in agricultural education at Texas Tech during the fall semester of each of the past three years.

He has been on the board of directors of the Littlefield Fat Stock Show and treasurer of the Littlefield Young Farmers. Fields was active in 4-H Club work for seven years.

His wife, the former Miss Erma Bronniman, is from Adrian. She now teaches at Littlefield Junior High School. The Fields have two sons, Brad, three, and Mark, one.

His parents are Mr. and Mrs. Virgil Fields of Littlefield.

**APPROVES**

CONIT FROM PAGE ONE stall 3,000 feet of new water distribution lines.

Although the city is one of four that will be supplied water from the Mackenzie Water Authority, when a dam is built on Tule Creek northwest of Silvertown, the delivery of water from that source is at least four years away, according to Mackenzie officials.

During the last couple of summers, when water demands have been at a peak, the wells have been going at full strength to keep up with the city demands. The wells would continue pumping through the nights to fill the reservoirs, and the wells would pump water throughout the day to keep up with the demands when the reservoirs were emptied. A fire could have become a major disaster under such circumstances. The new improvements should remedy some of these needs.

**STOCK SHOW**

CONIT FROM PAGE ONE meeting presided over by Eddie Joe Fortenberry. The meeting was held at the Lighthouse Electric Building.

Those in charge of bids in the ring are Jim Simpson, Curtis Snor, Virgil Brashear, Harmon Handley, Bill Price and Raymond Rucker.

Dr. Ron Loose and Fess Whitfill will act as Show Veterinarians.

**CAPROCK**

CONIT FROM PAGE ONE

noticed the Floydada Whirlwind jackets the boys were wearing and asked, "is this Floydada in Texas?" Mrs. Hale replied that it certainly was. The man said that he was born in Floydada. . . his name was Drisden. He left here at an early age, and now lives in Florida.

The Hales also saw Marivena Kemp at Fort Lauderdale, a former resident of Floydada. Marivena Street in Floydada was named for this woman. She is the sister of Mrs. Bob Smith. I believe Mrs. Smith's first name is Jeffie. . . and she also has a street namesake.

ADAM WAS the first electronics engineer. He furnished spare parts for the first loud speaker.

IN HIS ZEAL an expert fisherman took a novice with him on a fishing trip, furnishing all the tackle. The expert began fishing not far away. In a little while the novice called: "How much do those red and green things cost?"

"You mean the float?" the expert replied. "Oh, about a dime, I guess."

"Well," said the novice, "I owe you a dime; mine has sunk."

**Beall's** DEPARTMENT STORES **JANUARY**

**CLEARANCE**

**NO LOWER PRICES IN TOWN!**

**SAVINGS FOR LADIES**

<b>CLEARANCE</b> ONE RACK <b>LADIES DRESSES</b> JR. - REG. - HALF SIZES VALUES TO \$12.95 NOW <b>\$5</b>	<b>CLEARANCE</b> ONE DOUBLE RACK <b>LADIES DRESSES</b> JR. - REG. - HALF SIZES VALUES TO \$8.95 NOW <b>\$3<sup>99</sup></b>	<b>CLEARANCE</b> <b>LADIES COATS</b> DRESS AND CASUAL <b>20% OFF</b>
<b>CLEARANCE</b> SIZES 2 THRU 14 <b>GIRLS DRESS AND CAR COATS</b> NOW <b>20% OFF</b>	<b>CLEARANCE</b> <b>GIRLS CAPRI SETS &amp; CAPRI PANTS</b> \$1.98 VALUE NOW <b>\$1<sup>44</sup></b> \$2.98 VALUE NOW <b>\$1<sup>99</sup></b> \$3.99 VALUE NOW <b>\$2<sup>99</sup></b>	<b>CLEARANCE</b> <b>GIRLS SWEATERS</b> SIZES 3 TO 14 REG. \$1.98 <b>\$1<sup>44</sup></b> REG. \$2.99 <b>\$2<sup>00</sup></b> REG. \$3.99 <b>\$3<sup>00</sup></b> REG. \$5.99 <b>\$4<sup>00</sup></b>

**SAVINGS FOR GIRLS**

**Beall's**

**WHITE SALE STILL IN PROGRESS**

SAVE ON SHEETS AND HOME ITEMS SALE ENDS MONDAY, JANUARY 17

**DAN RIVER COTTON MUSLIN SHEETS**

81 X 99 OR 72 X 108 TWIN FITTED MUSLINS <b>\$1<sup>49</sup></b>	81 X 108 DOUBLE FITTED MUSLINS <b>\$1<sup>66</sup></b>	MATCHING CASES <b>2 for 78¢</b>
---	--	---------------------------------

**SHOES, BOOTS & HOUSESHOES**

<b>CLEARANCE</b> <b>LADIES SHOES</b> DRESS AND CASUAL FAMOUS WELL KNOWN BRANDS AA - AAA - B WIDTHS \$12.99 VALUES <b>\$5<sup>00</sup></b> \$8.99 AND \$9.99 VALUES <b>\$3<sup>00</sup></b>	<b>CLEARANCE</b> <b>LADIES FUR LINED BOOTS</b> \$5.99 VALUES <b>\$3<sup>00</sup></b> \$7.99 VALUES <b>\$4<sup>00</sup></b> \$10.99 AND \$12.99 VALUES NOW ONLY <b>\$4</b>	<b>CLEARANCE</b> <b>LADIES HOUSESHOES</b> ONE RACK FELT FUR LINED AND OTHER STYLES \$2.99 AND \$3.99 VALUES <b>\$2</b> A PAIR
---	--	--

**SAVINGS FOR MEN**

<b>CLEARANCE</b> <b>MENS WESTERN COATS</b> <b>30% OFF</b> <b>MENS DRESS GLOVES</b> REG. \$5.95 <b>\$3<sup>99</sup></b> REG. \$3.99 <b>\$2<sup>99</sup></b> REG. \$2.99 <b>\$1<sup>99</sup></b> REG. \$1.99 <b>\$1<sup>50</sup></b>	<b>CLEARANCE</b> <b>MENS TRENCH COATS</b> VALUES TO \$19.95 NOW <b>\$12</b>	<b>CLEARANCE</b> <b>MENS SWEATERS</b> REG. \$13.98 NOW <b>\$10</b> REG. \$9.95 NOW <b>\$7</b> REG. \$7.99 AND \$6.99 NOW <b>\$5</b> REG. \$5.95 NOW <b>\$4</b>
---	--	---

le  
ive Associa  
ectricificati  
The progr  
sentations  
rganizatio  
on perso  
the Preside  
entful day  
cruise dow  
h will inclu  
and refresh  
cluded on t  
ill be visit  
George Wa  
riron home  
Cemetery,  
Senate, the  
of Agricul  
an Institue  
orial and o  
t.  
anforth II  
thel Mabry  
the contest

S

STYLED Some  
w has been added  
classic turtleneck  
It's Thaknit. A  
nary new all-cotton  
nit, that can be  
washed and dried  
than one per cent  
Styled by Rob

Gal-  
/hile  
County  
Newsletter

ER'S CHANGE OF AD-  
dress shown on  
r correct? If not,  
ise us your correct  
Also if you are not  
arm as in 1965, please  
our records may be

IS T  
OOL AND MOHAIR:  
d make application for  
orn lambs or mohair  
by January 31, 1966  
les made during 1965.  
P: The 1966 Agricul-  
nservation Program  
approved and funds  
to assist you in  
out practices. Prac-  
being carried out are  
pipe irrigation, sys-  
tem land, building  
Be sure to get appro-  
beginning the work.  
d County limitation is  
as last year, \$600 per  
per farm.

SECURITY AND EM-  
R IDENTIFICATION  
S: Each ASCS Office  
directed to obtain So-  
rity Numbers of pro-  
ceeding any program  
Employer identifi-  
numbers are needed in  
of Partnerships, Cor-  
Trusts, Associa-  
It is very important  
ave the above inform-  
r to making any pay-  
der the 1966 programs.  
addressed envelope is  
for your convenience.  
greatly appreciated if  
show your zip code on  
en address.

ASE AND REAPPOR-  
TMENT OF COTTON  
E: The 1965 Agricul-  
l provides for the re-  
cotton acreage as in  
rs. We do not believe  
es will be released be-  
the sale and lease of  
provisions of the bill.  
sign a request for  
l acres any time before  
28, 1966. If you do not  
plant your allotment  
you may release it by  
28. This will preserve  
tory acreage and you  
p your allotment for

LAND ADJUSTMENT  
M: The Cropland Ad-  
Program will be in op-  
er 1966. In this pro-

PLACE  
ATRE  
MONDAY  
TUESDAY  
16 - 17 - 18  
GOLDFOOT  
AND HIS  
NI MACHINE"  
STARRING  
RIE AVALON  
AND  
YU 3-4

**PLACE**  
**ATRE**  
MONDAY  
TUESDAY  
16 - 17 - 18  
**GOLDFOOT**  
**AND HIS**  
**NI MACHINE"**  
STARRING  
RIE AVALON  
AND  
YU 3-4



### Announces Candidacy P. Of Precincts 1 and 4

Handley has been announced as the candidate for Precincts 1 and 4. Handley is presently serving in that capacity after he was appointed to complete the term of Ed Griffin who retired last March.

In his announcement statement to the voters of the County he said:

"I have enjoyed the privilege of serving the people of Floyd County since my appointment to this job last March. I am looking forward to serving you for a full term, should you see fit to re-elect me in the coming Democratic primary. I appreciate the help the people of these precincts have given me since I came into office."

Respectfully yours,  
S. J. Handley"

### Harmony News

HARMONY, Jan. 10 - Irene Daniel of Blanco spent Saturday night and Sunday with Jeanette Davis, and attended Carr's Chapel's two services. A number smaller than usual was in attendance. On the way home from church some saw the old house on the Glen Poole farm burning. It had originally belonged to Mack Carr, and was the second oldest landmark in the Harmony community. A Latin-American family had moved in only Friday.

Quite a lot of furniture was stored there, but it was a complete loss. Although a water tank was ruined, the windmill was saved, and was the home where the Pools live.

The parents were gone at the time the fire began, and the ten-year-old girl who is the oldest of the seven children led them to safety, and to the home of Mrs. Charles Mather Carr. She took them to Petersburg, where they found their parents.

Two fire trucks from Petersburg and one from Floydada made attempts to fight the fire, but it was too far gone for any help.

Mr. and Mrs. Lester Hargis came over to look at the house from their home in Floydada, after Mrs. Mather Carr called them, and they took her to the site, where her brother-in-law used to live. Mrs. Hargis lived in the house for many years.

Larry Scott was on the sick list this weekend. A number have had colds.

Most of the cotton crop has been harvested, but a number of green bolls are still drying out, and handling them is a bothersome task.

Rev. Doyn Merrimon and the Horace Carrs took the noon meal Sunday with Mrs. Mather Carr.

It was not made clear in last week's News that the R. E. Hoppers from Lorenzo were present at the New Year's dinner at the Community Center last week. The father and stepmother were both present. Other names to add to those mentioned were those of the Harley Wilson, Gary, Karen, and Dale,

Several have been in the past weeks and two in particular during the Emmitt Willis incident before the court. Some valuable was taken along in the deep freeze. The young school and Mrs. Carr from the house, recent break-in during the hours 3 o'clock at the home. Some dollars was taken near, change from a watch and ring bears. Jones were

Small change about \$4 was rendered the Jones

Verit officials in-neighborhood witness-ings and goings Officers are still

Mrs. A. E. Guthrie a scare at her slightly inebriated at her locked ranch in his hand, car trouble.

sized the situation, called the policeman was picked up.

NOTICES

CONTRACTORS addressed to the City Commission of Texas, will be re-office of the City 7:30 p.m., Jan. then publicly open for furnishing all material and performing all of two water supplies shall be accompanied by a cashier's or cert upon a national or amount of five of the total max- payable without the City of Floyd bond in the same a reliable surety a guarantee that enter into a contract performance bond says after notice of strict to him. The to be enclosed in with the bid. check or bid bond considered. successful bidder must performance and pay- upon the forms tached hereto in the 00% of the contract an approved surety ding a permit from Texas to act as sure- ties acceptable

is reserved to re- all bids, and to formality in bids

specifications and ments may be se- he office of the City ty Hall, Floydada, 9300 McMorris & 8300 Canyon Drive, 826, Amarillo, on deposit of 50 Dollars per set, deposited will be: (1) All doc- rned in good e Morries & Asso- han 48 hours time for receiving The Contractor sub- all documents in good condition e associates not e days after the e are received. FLOYDADA, TEXAS T. Matsler, Mayor 1-13, 20-c

LEGAL NOTICE

ADVERTISMENT FOR BIDS

Separate sealed proposals for General Construction, Mechanical Construction, Kitchen equipment and Science equipment for School Improvement for Floydada Independent School District, shall be addressed to Ralph C. Johnston, President, Board of Trustees, Floydada Independent School District, Floydada, Texas, will be received by the architects and the Board of Trustees in the Senior High School Auditorium, Floydada, Texas, until 4 o'clock p.m. Central Standard Time January 27, 1966, at which time they will be opened and publicly read aloud.

Each proposal shall be accompanied by a cashier's check or a certified check or an acceptable proposal bond in the amount of five per cent (5%) of the greatest amount of the proposal submitted, payable without recourse to the order of Ralph C. Johnston, President Board of Trustees.

Copies of plans and specifications may be procured from Stiles, Roberts and Messersmith's, architects and engineers, 3307 Avenue X, Lubbock, Texas, upon a deposit of Fifty (\$50.00) dollars as a guarantee of their safe return before the expiration of ten (10) days after receipt of bids. This deposit will be returned to each bidder upon return of such documents in good condition.

No bids may be withdrawn for at least fifteen (15) days after the scheduled closing time for receipt of bids.

The Board of Trustees, Floydada Independent School District, Floydada, Texas, reserves the right to accept or reject any or all bids and to waive all formalities.

Floydada Independent School District  
Floydada, Texas  
By: Ralph C. Johnston, President  
Board of Trustees

ORDER YOUR 1966  
MODEL BIKINI  
MACHINE NOW

IT'S TESTED, APPROVED  
AND READY TO GO GO GO

"DR. GOLDFOOT AND  
HIS BIKINI MACHINE"

PALACE THEATRE  
SUNDAY, MONDAY,  
TUESDAY  
JANUARY 16-17-18

1-20-66



1965-66 WHIRLETTES - Pictured above are the members of the Whirlettes Basketball team with three of the trophies they have won this year. The players from left to right are: front row - Shirley Rainer, Dee Ann Wilson, Patsy Pierce, Suzanne Guthrie, Nona Pernell; middle row - Jan Killian, Beverly Smith, Linda Williams, Becky Miller, Sally McIntosh; back row - Valdonna Bennett, Linda Rucker, Peggy Switzer, Janice McNeill, Donna Martin and Coach Kelly Chadwick. (Staff Photo)

### Whirlettes Break "Jinx", Defeat Springlake Girls Here

The Whirlettes defeated Springlake here last Friday night in basketball action, and it was the first time this year the locals have come out on the long end of a score with the Springlake fems. The final score, after one overtime period, was 58-56.

The Whirlettes jumped to a large early lead, then let the visitors close the gap in the second period and eventually

the score at the end of the regulation period. After the first quarter, the locals led 18-4, and at halftime the count was 26-22. Going into the final period the score was 37-35, Floydada and after the final eight minutes the count stood 52-52. During the overtime the Whirlettes hit 6 points and allowed Springlake only 4, to win the game 58-56.

Shirley Rainer was the leading scorer with 32 points, fol-

### Two Area Pastors In Seminar At Abilene

Rev. Floyd Bradley, pastor of the First Baptist Church here in Floydada, and Rev. Russell Pogue, pastor of the First Baptist Church in Petersburg, are among the 20 Baptist pastors from across the state who will take part in a Christian Seminar at Abilene, beginning Saturday, January 15.

The problems facing Christian higher education come under thorough discussion Jan. 15 as a group of 20 Baptists meet in Abilene. Academic Dean Robert G. Collier of Wayland Baptist College is chairman of the meeting.

As one of 24 regional seminars organized in the Southern Baptist Convention, the Abilene group will discuss the "Academic Scope of Christian Higher Education."

Dean Collier reports that his group, a part of the Baptist Education Study Task, will meet in February and March as well as the Jan. 15 meeting.

Background papers prepared by three Baptist college administrators have been distributed to the 20 seminar participants. These will provide a point of departure for discussion of the topic. Companion seminars are set for groups in Kentucky and Tennessee. The combined report of the three groups will be presented at a National Study Conference in Nashville, Tenn., this summer, Dean Collier explained.

Several other topics ranging from financing to college-den-

of Lubbock. This reporter regrets these omissions. Also, Keith is a brother, not nephew, of Margie Eubanks, both of Idalou.

Mrs. Everett Miller stayed with Mrs. Chloma Williams while their husbands, together with Hale County Deputy Sheriff Stephens of Petersburg, went bird-hunting at Guthrie Wednesday.

Chloma Williams took a business trip recently to Lubbock. The Sewing and Knitting Club met on Monday, Jan. 4, in the home of Mrs. Bob Hopper, beginning at 11:30. In addition to the hostess, those present included Mmes. J. R. Turner, Monroe Schulz, Marvin Smith, Walter Hanna, Zant Scott, Marion Tucker, and Mather Carr, all of Harmony Community, and Mrs. Kathryn Crabtree of Petersburg.

The Leon Williams took Mrs. Mather Carr for a spin in their new car, after which they visited the Chloma Williamses.

### Della Plains Cagers Down Paducah Here In Two Games

The Della Plains basketball teams pulled a "first" here last week as both the boys and girls downed the Paducah teams. The girls won by a 53-40 mark and the boys defeated Paducah to a 65-43 tune. The games were the first defeats for Paducah this year.

Shirley Minner was the big gun for the Hornets as she sank 36 points to lead the local's scoring. Nona Owens was next with 10. Betty Flemon hit 18 to lead Paducah in that department.

The Hornets took an early lead, after a slow start, and led 6-3 after eight minutes. At halftime the score read 20-13, Floydada. Going into the final period the Hornets had stretched that lead to read 37-24, then scored an additional 16 points, while allowing Paducah the same, in the final period.

The Hornets hit the court with determination and were not to be denied once the game got underway. After the first quarter the score read 20-7, Della Plains. At halftime the runaway score had reached a 35-11 count, and going into the final period the locals lead 45-23, scoring almost two points to their opponents' one. In the last eight minutes the subs scored another 20 points and allowed Paducah 20.

Willie Simon led the locals' scoring with 23, followed by Tommy Colling with 16. Paducah's Bobby Craig hit 12 to lead his team.

The girls' now stand 4-0 in conference play and the boys are 3-1. The girls are leading their district while the boys are in second place behind Colorado City.

### FOR WINDS, WHIRLETES Conference Schedule Begins Friday Night

The conference schedule for the Floydada Whirlwinds and Whirlettes gets underway tomorrow night, Friday, when the local teams invade Lockney to seek two victories in the conference openers.

Each of the teams in the district will play every other team twice during the double-round schedule. The Floydada teams will play each opponent on the local court and on the opponent's court during the conference slate.

Last year in the conference opener the local teams hosted Lockney in Graves Gym. During the boys game, which ended 99-43, Floydada, Keith Teague sank 50 points for Floydada to set a new school mark. The Whirlettes defeated their counterparts 69-46 in the first game.

The district schedule for this year follows:

January 14 - Floydada at Lockney;  
January 18 - Friona at Floydada;  
January 21 - Olton at Floydada;  
January 25 - Floydada at Dimmitt;  
January 28 - Floydada at Abernathy;  
February 1 - Lockney at Floydada;  
February 4 - Floydada at Friona;  
February 8 - Floydada at Olton;  
February 11 - Dimmitt at Floydada;  
February 15 - Abernathy at Floydada.

### Whirlettes First In Slaton Tournament

The Whirlettes took part in a tournament at Slaton held this past weekend and won first place with little trouble. The locals downed Tahoka 44-24 in the first round, the varsity-B team downed the Slaton B team 53-26 in the second game and the Whirlettes defeated Slaton 55-39 in the finals of the tournament Saturday night.

Only four teams, the Whirlettes, the Slaton varsity, the Slaton B and Tahoka were in the tournament.

In the first game of the tournament for the Whirlettes the locals downed Tahoka 44-24. Shirley Rainer hit 23 points for Floydada and Sue Woodall sank 14 for Tahoka to lead the scoring.

The Whirlettes took an early lead of 15-8 after the end of the first quarter and led 23-11 at halftime. Going into the final period the Whirlettes were leading 32-16 and went on to win 44-24.

Friday night in the second round, a mixture of the varsity and B teams downed the Slaton B team 53-26. The varsity girls were facing a game with Springlake here that night also.

Valdonna Bennett led the local cause with 26 points, followed by Janice McNeill who made 20 points.

In the final game the Whirlettes took a 14-6 first quarter lead and held a narrow 23-19 halftime lead. A 16-point surge in the third quarter, while allowing Slaton only 7 points, gave the locals a 39-26 lead going into the final stanza. The Whirlettes added another 16 in the final period and allowed Slaton only 13 to win the game 55-39.

Rainer was once again the leading scorer as she sank 22 points, but she was followed closely by Patsy Pierce, who got 19. Sally McIntosh added 13 to the locals' cause. Peggy Kirksey of Slaton had 23 points.

The Whirlettes outscored Slaton in both field goals and free throws. The locals hit 16 field goals and Slaton had 13. The Whirlettes made 23 of 33 free throws attempted and Slaton made 13 of 28 free throws attempted.

## It's Fertilizing Time!!!



★ DRY FERTILIZERS AVAILABLE FOR ALL CROPS

★ NO CHARGE FOR EQUIPMENT

★ NO CHARGE FOR SOIL SAMPLES (UNBIASED ANALYSIS FROM TEXAS AND EXTENSION, LUBBOCK)

★ LET PRODUCERS COOP ELEVATORS FIGURE A FERTILIZING PROGRAM WITH YOU TO FIT YOUR POCKET BOOK AND BUDGET

★ \$10 PER TON DISCOUNT ON ALL ANHYDROUS - PAYABLE IN 30 DAYS

★ ASK YOUR NEIGHBOR ABOUT CASH DIVIDEND RECEIVED FROM PRODUCERS COOP ELEVATOR IN 1965

YOU GET RESULTS WITH

# BEST FERTILIZERS

## PRODUCERS COOPERATIVE ELEVATORS

FLOYDADA  
FARMER OWNED - FARMER MANAGED

DOUGHERTY  
FARMERS BUSINESS

### Plainview Social Security Office Open Late Each Thursday In January

The social security office, 1401B West 3th Street, Plainview, will be open for business each Thursday until 8:45 p.m. during January, Mance King, officer in charge, has announced.

King said the late office hours are being provided for those who need assistance but are unable to go to the office during normal working hours. He said two groups of people are especially urged to take advantage of the after-working-hours opportunity. One group is composed of people who attained age 65 in 1965 or before, who have worked under social security, but have never applied for benefits. The other group is composed of people 65 and over in 1965, have not worked under social security, and have not applied for the health insurance through social security.

Both groups may qualify for the health insurance even if they are not retired but in order to do so, must apply for it. If they do not apply for the health insurance by March 31, 1966, they will not have another opportunity to apply for

the medical insurance (the supplemental part of the health insurance) until October 1, 1967.

King said the people who are over 65 and have applied for social security benefits as well as those who receive railroad or civil service retirement, and those who receive public welfare monthly checks already have been contacted concerning their desire for the medical insurance and do not need to come to the social security office unless they want more information or assistance.

The Plainview social security office serves Floyd and Hale Counties. Anyone who needs to contact the office and cannot do so during normal working hours may want to remember that the office will remain open Thursday evenings until 8:45 p.m. at least through January, King said.

The weekly social security service will continue each Tuesday morning at the Floyd County court house as in the past.

### Letter To The Editor

January 8, 1966

Editor  
The Floyd County Hesperian  
Floydada, Texas

Dear Sir:  
I had hoped a statement of this nature would not be necessary, however during the last four months my only known opponent and a few of his friends, have consistently and deliberately persisted in spreading the idea that I was not a candidate or might not be a candidate for re-election.

Redistricting has changed the area and proportion of all our legislative districts, but I think it is only fair, due to the propaganda referred to above, that the citizens of our new 30th Senatorial District know that I am a candidate for re-election.

Sincerely,  
/s/ Andy  
Senator Andy Rogers

#### FLOYD DATA

Mrs. Verlon Wright underwent surgery in Plainview Hospital last week and is reported to be doing well.

### President Of GSPA Speaks To YF Chapter

Elbert Hart of Abernathy, president of the Grain Sorghum Producer's Association, spoke to the local Young Farmer Chapter last week about the relation of the organization to the farm programs.

Hart pointed out that in 1952, 95 million bushels of sorghum were harvested in the U. S. In 1956-57 this figure grew to 630 million. In 1964, even with the cut-back programs, 650 million bushels were harvested.

In 1961 the government carried over 89 million tons of grain sorghum and in 1965 56 million were carried over. The Secretary of Agriculture is trying to get this figure to level off at 45 million tons.

The organization is trying to help cut down on the carry-over and still get the producer a reasonable price for his product.

L. A. Marshall also spoke to the group about the V. P. N. 8 tomato which is producing as much as 40 tons to the acre in California. Around 15-20 tons could be expected here from the product.

The Young Farmers are in Austin this weekend for the state convention.

### EVERETT COLLIER SERIOUSLY ILL

Everett Collier remains in a serious condition in intensive care ward at Lubbock Methodist Hospital. Collier underwent surgery last week at Plainview for the removal of a gall bladder and appendix and was recovering nicely when reactions to sedatives occurred, members of the family said. At this point he was rushed to Lubbock.

The rumor of a brain tumor suffered by Collier proved to be false after x-rays were taken in Lubbock. He is recovering from surgery nicely but the sedative reaction and dehydration is a grave concern at this time.

FLOYD DATA  
Woody Morris returned home from Lockney General Hospital Friday after receiving medical attention since the previous Monday.

FLOYD DATA  
Mrs. Ham Smith Jr. was admitted to Lockney General Hospital Saturday and continues to receive medical treatment.

### Court House NEWS

(Probate Docket)  
Estate of Fred J. Reeves, deceased. Application for temporary administrator, order granted and bond approved.

(Marriage Licenses)  
Andrew Camacho and Santos Rodriguez, Jan. 10.

Homer Secundus Phillip Jr. and Fern Irene Milligan, Jan. 11.

Dicky Willborn and Maria Castillo, Jan. 11.

(Warranty Deeds)  
A. P. Sanders et ux to Robert G. Morris et ux, 120 acres in Floyd County being the east three-eighths of the north one-half of survey 28, block C.

A. C. Thompson to Mrs. Donella Ann Thompson et al, lot 8 in block 10, Andrews Addition in Floydada.

J. W. Williford et ux to Billy E. Thompson, the south 160 feet of lots 23 and 24 and the south 160 feet of lot 22, Block 1 in Town and Country Addition in Lockney; \$25.30 stamps.

DISTRICT COURT  
(Cases Filed)  
Mackey Greer et al vs J. S. Dickey et al, suit in trespass to try title.

### Balls Names New Manager Of Shoe Department

Louis Anderson, manager of Balls Department Store in Floydada, has announced the association of Wesley Johnson with the firm. Johnson will manage the shoe department in the local store.

Johnson and his wife recently moved here from Austin, where he had previous experience with a Balls store. The family is living at 229 East Houston and list their religious preference as Methodist.

Anderson extends a cordial invitation to the public to come by and get acquainted with Johnson.

FLOYD DATA  
Mrs. Lewis Jones has been spending some time in Throckmorton caring for her mother, who has been seriously ill. At present she is reported improved.

FLOYD DATA  
James 'Bush' Jordan's father

### J. E. Billingsley, Former Lockney Resident Dies

J. E. Billingsley, 68 year old former resident of Lockney and father of Mrs. Jess Starkey of Happy, formerly of the Sandhill Community, was pronounced dead on arrival at Northwest Texas Hospital in Amarillo Wednesday afternoon of last week.

Billingsley had been a resident of Amarillo since moving there from Lockney in 1942. He worked at Amarillo Air Force base as a civil service employe until 1952 when he retired.

The deceased farmed near Lockney for 17 years. He was a veteran and a member of the Baptist Church.

Funeral rites were held Saturday morning in the Baptist Church in Amarillo, with interment in Amarillo.

Survivors include his wife, Lavenia of the home; sons, G. F. of Casa Grande, Ariz., and Roy B. of El Paso; daughters, Mrs. Laverne Hampton, Amarillo and Mrs. Jess Starkey of Happy and 14 grandchildren.

Mrs. Norman Ferguson of Floydada is a granddaughter of the deceased.

### MRS. HUTCHINS HAS SURGERY

Mrs. Tom Hutchins, who was injured recently in a car accident, underwent surgery Monday in St. Mary Hospital, Lubbock, to repair broken bones in her right arm.

Friends said in order to repair the two breaks a rod had to be placed in each of the two bones.

Mrs. Hutchins was reported to be doing as well as could be expected.

FLOYD DATA  
Mrs. Dena Myrick and Mr. and Mrs. Julian Lipham and children, Ricky, Brenda, Charlotte and Julia Ann, have returned home after spending the holidays in California visiting Mrs. Myrick's children, Mr. and Mrs. Dick Bunnell and Millie Dena at Inglewood, Mr. and Mrs. Ross McWilliams and family at Montclair, and Mr. and Mrs. Rasse Myrick and family at Santa Clara.

remains critically ill in Lubbock. Friends said his condition was not improving and he continues to lose strength.

### Dougherty To Sponsor Pancake Supper

The Dougherty Community Center is sponsoring a pancake supper and 42 party on Thursday night, January 20.

Serving will start at 6:30. Tickets are \$1 for adults and 50

cents for children. Everyone is invited to attend and enjoy good food and socializing.

### USED CAR HEADQUARTERS

1964 FORD 2 DOOR HARDTOP, AIR AND LOCAL ONE OWNER, V-8, MISSION

1962 PONTIAC BONNEVILLE 4 DOOR, TOP, AIR AND POWER

1963 MERCURY MONTCLAIRE 4 DOOR, AIR AND POWER

1963 PONTIAC 4 DOOR SEDAN, AIR AND POWER

1964 BUICK ELECTRA 4 DOOR HARDTOP, AND POWER, WINDOWS AND EXTRA CLEAN, ONE OWNER

1964 CHEVROLET 2 DOOR HARDTOP, STANDARD SHIFT

1962 THUNDERBIRD - LOADED

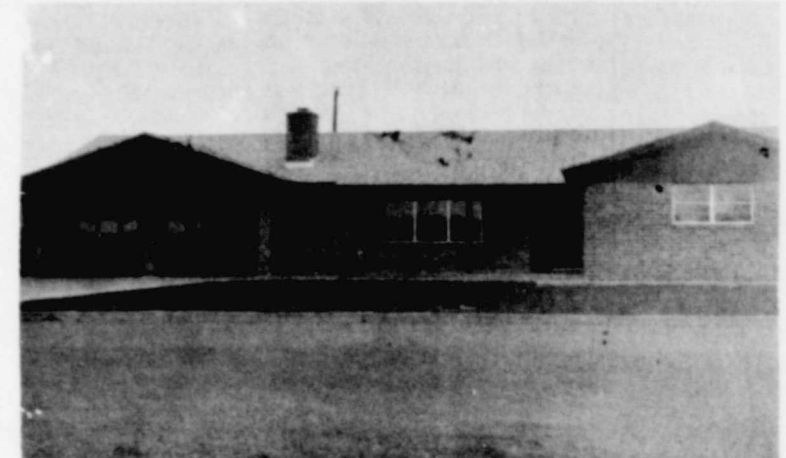
22 MORE USED CARS OR TRUCKS TO CHOOSE FROM

SEE US BEFORE YOU BUY OR WE BOTH LOSE

## CITY AUTO

121 EAST MISSOURI STREET

SEE THIS BEAUTIFUL HOME AT  
**OPEN HOUSE**  
SUNDAY, JANUARY 16, 2-5:30 P.M.



**SCHEFFEL & WEST**  
CONTRACTORS

GLADIOLA  
**POUND CAKE MIX**  
3 FOR 99¢

SHURFRESH  
**BISCUITS**  
4 FOR 29¢

SHURFRESH  
**OLEO**  
LB. 19¢

SUPREME  
**CRACKERS**  
LB. 29¢

ELLIS  
**CHILI**  
24 OZ. CAN 49¢

CLOVERLAKE  
**MELLORINE**  
1/2 GAL. 3 FOR \$1

**MARSHMALLOW CREME**  
KRAFT PT. 15¢

## CUT YOUR FOOD COSTS

WITH THESE EXCEPTIONAL VALUES!

BORDEN  
**BUTTERMILK** 1/2 GAL. 37¢

SHURFINE  
**COFFEE** LB. 69¢

SHURFINE FROZEN  
**ORANGE JUICE** 12 OZ. CAN 29¢

**COLD POWER or FAB DETERGENT** GT. BOX 67¢

WILSON CERTIFIED  
**BACON** 2 LB. PKG. \$1.79

WILSON CERTIFIED  
**FRANKS** 12 OZ. PKG. 49¢

FRESH GROUND  
**HAMBURGER** LB. 49¢

WE FEATURE  
WILSON CERTIFIED  
**COLD CUTS**

THESE PRICES GOOD JAN. 13 THRU JAN. 17

**COCONUTS**  
DURKEE'S 14 OZ. PKG. 49¢

SOFLIN  
**NAPKINS** 200 CT. PKG. 29¢

SHURFINE CUT  
**GREEN BEANS** 5 303 CANS \$1.99

CARMACK  
**EGGS** GRADE "A" DOZ. 49¢

STYLE  
**HAIR SPRAY** REG. \$1.19 NOW ONLY 59¢

WOODBURY  
**HAND AND BODY LOTION** LG. BOTTLE 39¢

YOUR HOME OWNED HOME  
OPERATED STORE ON  
THE WYE, FLOYDADA, TEXAS  
YU 3-2444

# Powell's

SUPER MARKET

**PECANS**  
TEXAS PRIDE SHELLED 12 OZ. PKG. 69¢

# HALE'S SEMI-ANNUAL

# CLEARANCE SALE

Starts Friday, Jan. 14 at 8:30 a.m. - Ends Sat., Jan. 22 - Store Closed Thurs. Jan. 13

## REMEMBER!

SHOE SALE WILL CONTINUE THROUGH  
SALE - MENS, WOMENS AND CHILD-  
S SHOES IN ALL SIZES, ALL AT LOW-  
PRICES. COME ON IN FOR YOUR BEST  
VALUES IN SHOES.

### LADIES MILLINERY

ENTIRE STOCK  
1/2 PRICE

### GIRLS ROBES

A SMALL GROUP - BUT  
SOME REAL BUYS

1/4 to 1/3 OFF

### SPECIAL GROUP

PIECE GOODS

1/2 PRICE & LESS

OTHER PIECE GOODS  
20% to 50% OFF

### ELECTRIC BLANKETS

BY FIELDCREST  
20% OFF

### WOMENS BLOUSES

IN ALL SPORTSWEAR LINES,  
SHIP 'N' SHORE AND SUINY  
SOUTH

LARGE GROUP  
1/3 OFF

### BEDSPREADS

A SPECIAL GROUP BY MORGAN -  
JONES, BATES AND OTHERS. FULL  
AND TWIN IN A VARIETY OF STYLES.

1/3 OFF

### HANDBAGS

1/4 and 1/3 OFF

### OUR CHARGE CUSTOMERS

YOU MAY CHARGE SALE  
MERCHANDISE

BEGINNING FRIDAY, JAN. 14 AT 8:30 A.M. HALE'S WILL  
START THEIR MID-WINTER CLEARANCE - BIG REDUC-  
TIONS ON BEAUTIFUL, FIRST QUALITY MERCHANDISE.  
THIS IS A WONDERFUL OPPORTUNITY TO REALLY SAVE,  
SO COME EARLY FOR THE BEST SELECTIONS, JUST IN  
TIME FOR OUR COLDEST MONTHS. REMEMBER, 'HALES  
HAS JUST TWO SALES A YEAR, BUT ALWAYS A REAL  
SALE.'

### LADIES DRESSES

IN MISSES, JUNIORS, AND HALF SIZES

\$29.95 DRESSES	-	NOW	\$19.97
\$24.95 DRESSES	-	NOW	\$16.63
\$19.95 DRESSES	-	NOW	\$13.30
\$17.95 DRESSES	-	NOW	\$11.97
\$14.98 DRESSES	-	NOW	\$9.99
\$12.98 DRESSES	-	NOW	\$8.65
\$10.98 DRESSES	-	NOW	\$7.32
\$9.98 DRESSES	-	NOW	\$6.65
\$7.98 DRESSES	-	NOW	\$5.32

### HOUSE CLEANING TIME

ENTIRE STOCK OF BOYS DRESS SLACKS  
1/3 OFF

BOYS DRESS COATS

SMALL GROUP - 1/3 OFF

**FIRST TIME EVER!**

LARGE GROUP TEX 'N' JEANS

REG. \$2.98 NOW \$2.25

REG. \$3.98 NOW \$2.99

**THIS IS A MUST!**

MENS DRESS HATS

BY RESISTOL - 1/4 TO 1/2 OFF

### WOMENS SPORTSWEAR

WHITE STAG, PADDLE AND SADDLE, AND PETTI SLACKS, SWEATERS, TOPS  
AND SHIRTS IN CO-ORDINATES. ALSO SWEATERS BY ROSANA AND  
JACQUARD SWEATERS BY CATALINA.

1/3 OFF

### WOMENS COATS

CAR COATS AND DRESS COATS IN A WIDE  
VARIETY OF STYLES AND MATERIALS -  
SOME FUR TRIMMED

1/3 OFF

### 23 ONLY

LADIES NYLON ROBES

A WONDERFUL BUY IN ROBES BY HOLLY-  
WOOD VASSARETTE AND SHADOWLINE.  
DON'T MISS THIS!

20% OFF

### SPECIAL GROUP

LADIES GOWNS AND PAJAMAS FROM OUR  
NEWEST STYLES. THESE VERY SELDOM  
GO ON SALE.

20% OFF

### WOMENS ROBES

ASSORTED GROUP OF QUILTED COTTON  
AND JERSEY ROBES.

1/4 - 1/3 OFF

### GIRLS COATS

1/4 - 1/3  
OFF

### GIRLS DRESSES

COTTONS, WOOLS AND VELVETEENS IN  
SCHOOL AND DRESSY STYLES.

1/4 OFF

### GIRLS SPORTSWEAR

A LARGE SELECTION OF GIRLS SWEATERS, SKIRT AND TOP SETS AND  
PANTS SETS - BY CATALINA AND OTHERS.

1/4 - 1/3 OFF

### MENS & BOYS CLOTHING

BOYS RED VESTS AND SHORT SLEEVE  
WHIRLWIND SWEATSHIRTS.

1/4 OFF

ENTIRE STOCK

### MENS & BOYS SWEATERS

1/4 to 1/3 OFF

MENS LONG SLEEVE

**SPORT SHIRTS**

LARGE GROUP IN ALL SLEEVE LENGTHS  
FROM 32 - 36. NECK SIZES 14 - 18 1/2.

1/4 to 1/3 OFF

MUNSWINGWEAR SHORT SLEEVE

**KNIT SHIRTS**

1/3 OFF

### MENS DRESS SHIRTS

BY ARROW

SOLIDS, STRIPES, AND CHECKS

1/4 to 1/2 OFF

### MENS SPORT COATS

SMALL GROUP - NOT ALL SIZES,  
BUT SOME GOOD VALUES

1/3 OFF

### MENS SLACKS

LARGE GROUP IN SHORT, REGULAR AND  
LONG RISE IN PLAIN AND PLEATED STYLES,  
BY HAGGAR AND CURLEE.

1/4 OFF

### MENS SUITS

ONE GROUP BY SEWELL AND CURLEE

**DRASTICALLY REDUCED**

### ALL WEATHER COATS

FOR MEN AND BOYS

REG. \$16.98 NOW \$12.99

REG. \$29.95 NOW \$22.99

### MENS JACKETS

GOOD SELECTION IN SIZES 36 - 46  
REGULAR AND LONGS

1/4 OFF

ENTIRE STOCK

### BOYS CAR COATS

COTTONS, NYLON AND CORDUROY - ALL  
COMPLETELY WASHABLE - SIZES 2 - 18.

20% OFF

BOYS GREEN AND WHITE

**FOOTBALL JACKETS**

REG. \$12.98 NOW \$10.99

REG. \$14.98 NOW \$12.99

**ENTIRE STOCK**

D. J. \$3.49 KHAKI PANTS AND \$3.49  
KHAKI SHIRTS.

\$2.99

### MENS WASHABLE CASUAL SLACKS

SPECIAL GROUP - IN WAIST SIZES  
32, 33, 34 AND 35 ONLY.

1/2 PRICE

### BOYS WASHABLE CASUAL SLACKS

SIZES 6 - 16

1/2 PRICE

ONE GROUP

### LEVI STA-PREST SLACKS

FOR BOYS AND MEN - A REAL SPECIAL

1/4 OFF!

BOYS LONG SLEEVE

**SPORT SHIRTS**

LARGE GROUP - SIZES 2 - 18.

MOST 20% OFF SOME 1/2 PRICE

# HALE'S DEPARTMENT STORE

# FOR STATE CONVENTIONS

## Young Farmers, Young Homemakers In Austin

Members of the Floydada Young Farmers and Floydada Young Homemakers Chapters will be in attendance at Austin today through Saturday for the annual Texas State Conventions. Over 1,200 of the members from across the state of Texas are expected for the event.

Those from Floydada who will attend are Mr. and Mrs. Carl Brock, Mr. and Mrs. James Hale, Mr. and Mrs. Truman Dunavant, Mr. and Mrs. Vaughn Ginn, Mr. and Mrs. Louis Bearson and Mr. and Mrs. Gerald Thompson.

The Young Farmers will meet at the Terrace Motor Hotel, 1801 South Congress. The Young Homemakers will meet at the Commodore Perry Hotel in downtown Austin.

Governor John Connally will be the speaker Friday noon, January 14 when the Young Farmers and Young Homemakers get together for the annual luncheon sponsored by the Texas Electric Co-operatives. The Young Homemakers will present awards to the winners in the various State award divisions during the luncheon program.

The YHT which has 160 chapters and approximately 2400 members is headed by Mrs. Ray Joiner of DeLeon. The Young Farmer association is made up of 220 local chapters and some 4500 members. Kenyon Harvey of Parker County is State President. The Young Homemakers are sponsored by the Home Economics Teachers in the public high schools, while the Young Farmers are sponsored by vo-ag teachers.

The Young Homemakers will get their convention underway at 8:30 Friday morning, Jan-

uary 14 with a coffee honoring past State officers. Dr. Robert E. Ledbetter, Marriage and Family Counselor of Austin will give the welcome address.

Other convention highlights for the Young Homemakers will be the presentation of awards at the Friday noon luncheon, an address Friday afternoon on "Communications in the Heart of the Home" by Mrs. Maurine Amis of The University of Texas, and the election of a new State president and installation of new officers Saturday morning.

A Fun Night Program will be held at 7:00 p.m. Friday for Young Homemakers who do not attend the Young Farmer Awards Banquet.

The highlight of the Young Farmer Convention will be the 12th Annual Awards Banquet which gets underway in the Grand Ballroom of the Terrace Motor Hotel at 6:30 p.m. Friday. Some \$6,000.00 in awards will go to individual Young Farmers and to chapters for outstanding achievements during 1965.

The climax of the awards banquet will be the announcement of the 1965 Star Young Farmer of Texas and the presentation of \$1100 in bonds to the winner by the Sears-Roebuck Foundation.

Featured speaker at the Young Farmer Convention will be Dr. C. William Swank of Columbus, Ohio, who will present revolutionary ideas on marketing of agricultural commodities. Swank, a 35 year old Ph. D. is General Manager of the Ohio Agricultural Marketing Association. Both the Young Farmers and Young Homemakers will wind up their conventions around noon Saturday, January

15. Truman Dunavant, the Outstanding Young Farmer of Area I is in the competition for the Star Farmer Award. There are ten areas in the state. Dunavant is also a state officer, and will begin his three-year term as soon as the convention adjourns. Two other state officers, including the president of the organization, are in the running for the Outstanding Farmer Award.

Mrs. Eddie Joe Fortenberry will be competing for the presidency of the Texas Assn. of Young Homemakers, during the fourth annual convention of Young Homemakers meeting in Austin Friday and Saturday. The convention will be highlighted by the annual Young Farmer luncheon and Young Homemaker awards banquet in Austin's Motor Terrace Hotel. Gov. John Connally is slated to

be guest speaker for the combination banquet and luncheon. Area persons assisting with conventions plans include Mrs. Fortenberry, state parliamentarian; Mrs. Edward Weil of Hale Center, past state president; and James Stair of Plainview, state vice president of Young Farmers. Young Homemaker Awards will be presented by Mrs. Ray Joiner of DeLeon, state YH

president, during the awards banquet. State awards are presented to chapters for outstanding work.

### Promising Reply About Tomatoes Received Here

I received a reply from W. T. Cushing, Field Manager of Libby, McNeill & Libby of California, regarding inquiry about the V.F.N. 8 variety of tomatoes, that I found produced such phenomenal results in California and which I have written about so much recently.

The letter says, in part, "The V.F.N. 8 appears to be just about the most promising variety ever developed. It does very well wherever planted—has both good size and color. Should make a good market variety. The first picking does have a few 'cat faces,' but I don't think enough to hurt you."

"This is a well-known variety and is handled by all large seed companies."

The seed of this variety can be purchased from a seed dealer here in Floydada.

L. A. Marshall

### COUNTY 4 - H CLUB NAMES OFFICERS

The Senior 4-H Club of Floyd County met recently to elect a new slate of officers.

Those named and their positions are Beverly Pierce, president; Edith Henderson, vice-president; Judy Probasco, secretary-treasurer; Ira Henderson, parliamentarian; Lindsay Lovell, reporter.

FLOYD DATA  
Visiting in the home of W. A. Lovell for the Christmas Holidays were Mr. and Mrs. G. R. (Margaret) Nixon, and children, of Sweetwater, Texas, and Mr. and Mrs. R. A. (Gladys) Fitch.

danger of damage by wind erosion.

Another practice that is gaining wide acceptance is the addition of a cotton burr mulch to unprotected cropland. The burrs will act to virtually eliminate wind erosion damage during the blow season.



IT'S THAT TIME - Shown above is a typical sight during the spring of each year on virtually any South Plains farm. This particular picture was taken near Muncy. Several preventative measures can be taken to counteract such activity, and thus save precious soil.

(SCS Photo)

### COUNTY SCS NEWS

## Critical Wind Erosion Season Approaching

The most critical season of wind erosion damage in the Floyd County Soil and Water Conservation Service, serious and permanent damage can be done to unprotected cropland as a result of wind erosion.

Conservation District is fast approaching. According to the local office of Soil Conservation Service, serious and permanent damage can be done to unprotected cropland as a result of wind erosion.

The damage may be visibly noticeable during a severe wind storm, or it may be a slow process that may go unnoticed until it is too late to take protective measures. During a windstorm, the finer particles of silt, clay, and organic matter are carried away, while the coarser particles remain. These finer particles contain a much greater percentage of plant nutrients and organic

matter than the sand dunes which are left behind.

So, looking at wind erosion control from an economic point of view, it does make sense.

There are several farming practices which have been proven to help control wind erosion in this section of the country. Cover crops such as small grains can do much good by providing a vegetative cover on areas subject to erosion during periods when major crops do not furnish adequate cover.

Properly managed plant residues from the previous crop will also help to control wind erosion. By adopting a stubble mulch type of farming operation, sorghum and small grain residues are kept near the soil

surface during the critical erosion period. Each farming operation - tilling, planting, cultivating, and harvesting should be performed with this objective in mind.

If it becomes evident that stubble or other residues are inadequate to control wind erosion, it is recommended that emergency tillage measures be carried out. Such measures include chiseling, listing, sand fighting, and rotary hoeing. No long-term benefits should be expected; rather, only temporary protection against soil losses by wind erosion will be obtained. Emergency tillage measures should be carried out only on cropland in immediate

**Dr. John W. Kimble, O. D.**

Floydada, Texas YU 3-2496

AS FOR THE PAST 48 YEARS  
OPEN ALL DAY SATURDAY

Contact Lenses—Visual Analysis

Olds 88 Swing Fever is mighty hard to resist!

A good thing always is.

Got that can't-wait-for-spring, can't-wait-for-that-new-car feeling? Welcome to the club! Olds 88 Swing Fever is catching up with just about everybody, and they're loving every minute of it. But the best part is the cure—as easy to take as a swinging new Jetstar, Dynamic or Delta 88! There's one priced right for you. See your Olds Dealer for a Rocket Rx today. Then watch your fever go down as your fun goes up. Happy convalescence! LOOK TO OLDS FOR THE NEW!

**OLDS 88 SWING FEVER**  
IS SWEEPING THE COUNTRY!

**OLDSMOBILE**

**ODEN CHEVROLET COMPANY**

221 SOUTH MAIN FLOYDADA, TEXAS

**HE'S HERE TO GIVE YOU PERSONAL SERVICE**

not limited to store hours

The ethics of his proud profession guide all his business endeavors. His idea of service extends far beyond mere dollar signs or store hours.

**ARWINE DRUG**

PHONE YU 3-2856 FLOYDADA, TEXAS  
"OUR LABEL IS YOUR PROTECTION"

**Thank You**

OUR THANKS TO THE MANY WHO ATTENDED OUR GRAND OPENING LAST WEEK. THANK YOU FOR YOUR BEST WISHES AND MANY COMPLIMENTS ON OUR NEW BUSINESS IN FLOYDADA.

IF YOU WERE UNABLE TO ATTEND THE GRAND OPENING, PLEASE COME IN AND VISIT AT YOUR EARLIEST CONVENIENCE.

**Radio Winners**

ALICE POLLAN  
MRS. PIKE HANNA  
FRED LAMBERT  
TRUMAN DUNAVANT  
W. U. WHITE  
C. O. SPENCE  
JEAN JARRETT  
MRS. A. C. JACKSON  
MRS. KEROLY BURNS

**TV Winner**

MYRA DUNAVANT  
515 SOUTH WALL

MR. AND MRS. BILLY HENDRIX

**Hi, Neighbors!**

We'll be looking forward to serving all of you, in our new Montgomery Ward Catalog Sales Agency.

Order by Phone  
Call YU3-5331  
And Place Your Order

**WESTER'S**

Weekend Specials

January 13, 14, & 15

Call Us We Deliver

100 Main Yu 3-2534

SHURFRESH TALL CANS	
CANNED MILK	3 for 43¢
MOUNTAIN PASS	
TOMATO SAUCE	3 for 25¢
JUST MADE 1/2 GAL BOTTLE	
ORANGE DRINK	39¢
BAMA 18 OZ. GLASS	
GRAPE JELLY	3 for 51¢
FOOD KING 3 LB. CAN	
SHORTENING	69¢
SHURFINE REG. OR DRIP GRIND	
COFFEE	LB. CAN 77¢
KRAFT 18 OUNCE	
BARBECUE SAUCE	33¢
ELLIS NO BEANS 1 1/2 LB. CAN	
CHILI	59¢
SHURFINE NO. 300 CANS	
APPLE SAUCE	2 for 29¢
DEER BRAND NO. 303 CANS	
TOMATOES	3 for 47¢
<b>Market Specials</b>	
AFFILIATED LEAN AND GOOD	
BACON	LB. 89¢
U. S. GOOD	
CHUCK ROAST	LB. 65¢
PORK CHOPS	LB. 75¢
PORK STEAK	LB. 59¢









**LETTERS to EDITOR**

Mr. Tooley:  
The 1962 Jr. Study Club of Floydada would like to express its sincere thanks to all of the friends and interested parties in and around Floydada for their help and participation in our recent annual Christmas Card Fund Drive.

Special thanks go to the following who contributed money to this cause: Mr. Clay Henry, Mrs. Emily Potts, Mr. Wendell Tooley, Mr. and Mrs. Gary Batte, Mr. and Mrs. Bill Hicks, Mr. and Mrs. Dean Morris,

Mr. and Mrs. Henry Watson, Mr. and Mrs. Kay Crabtree, Mr. and Mrs. S. J. (Jack) McIntosh, Floydada Seed and Delinting, Panhandle Compress & Warehouse, Mr. and Mrs. John Fowler, Mr. and Mrs. Delmas McCormick, Mr. and Mrs. Elmer Dean Williams, Mr. and Mrs. Harvey Allen, and Mr. and Mrs. Melvin Lloyd.

Also, a word of special thanks should go to the Floyd County Hesperian, the Lubbock Avalanche Journal, the Lockney Beacon and radio stations KSEL and KFLD for their help in the advertising of this project. Last year our club bought a hearing aid for a little boy,

**Hesperian Editorials**

**Advertising & Business**

Whether one realizes it or not, advertising is perhaps the most wonderful development of the modern commercial age. It is the maker or breaker of business, big or little. It is the one factor of successful sales that is most apt to be overlooked by the merchants and business men of small towns and cities.

Advertising is not the exclusive weapon of big business; it is the power that will make little concerns

grow into larger success. It is a science that requires study and, be it said, character. It cannot succeed if it is based upon truth; it must build upon faith and integrity.

Local newspapers are prepared to assist local businessmen with their advertising problems. It may be said, with due modesty, that its staff knows something about advertising and that their experience is available to all.

**Exercise & You**

Not long ago the R.C.A.F. (Royal Canadian Air Force) published a little book outlining various exercises for men and women of various ages—exercises which men could complete in eleven minutes and women in about the same time.

People all over the world have purchased it and are taking advantage of the benefits to health and physical condition it offers. There are other booklets no doubt as good, but the Canadian one is simple and officially-endorsed, and has been given wide publicity. It is, moreover, designed to show one how to keep in good physical condition in the least time possible, utilizing few exercises.

Americans are notorious for rich diets and poor physical condition. Soft chairs in front of television, many automobiles, bridge tables and office work contribute toward this condition.

Doctors recommend regular exercise, not merely to prolong life, but because it enables one to enjoy life more, to do more and feel better. And regular exercise does help prevent the onset of many serious or fatal health conditions and diseases. Eleven minutes a day, in regular exercise investment, is the best investment one can make toward happiness, money-making ability, long life and productivity.

**SAYS PHILOSOPHER**

**He's Discovered Prime Reason For Rush To Get To The Moon**

Editor's note: The Floyd Philosopher on his Johnson grass farm seems to be worried about cities this week, his letter indicates.

Dear editor:

I was out here on this Johnson grass farm yesterday changing the props on my barn from the north side to the south side, since winter's north winds have returned and the lean is now in the other direction, and at the same time wondering if it wouldn't improve the natural beauty of America if the government just planted shrubbery around my farm when I noticed a copy of a newspaper caught in a crack in the planks and I got around on the protected side and looked it over.

According to it, the National Science Advisory Committee is worried about air pollution in cities and is suggesting that businesses be taxed on the basis of how much air they pollute, with additional taxes for minor pollution, like automobile exhaust, done by individuals. The committee said the air in cities is being poisoned and something ought to be done about it.

I don't know whether this would be helpful or not, but you reckon Congress ought to require cities to erect signs at their city limits, train stations and airports, saying: "Warning, Breathing This Air May Be Hazardous To Your

Health?"

The same article went on to say that the sheer problem of hauling the trash out of a big city is becoming almost insurmountable, pointing out that Americans now use 48 billion cans and 26 billion bottles and jars a year. Getting that many cans and bottles out of the city in one year is hard enough, but have you ever stopped to think how many that'll be in 100 years, and how much land in the country it's going to take to bury them in?

This may be the prime thinking behind the rush to get to the moon. We've got to find some place to dump those cans and bottles, or give up farming on earth. I apologize for the doubts I've been throwing on the space program.

Living in a big city may be like Viet Nam. Whether it was a mistake or not to be there, how're you going to get out?

James Lovell and children, Mr. and Mrs. DeVon Lovell and children, of Plainview.

Yours faithfully,  
J. A.

**Guest Editorials**

We had a benefit the other night in Akron, Ohio, for the families of three policemen. One was shot dead in the line of duty; the other two are permanently paralyzed from the neck down.

I've visited privately with police in five states in recent weeks; they're scared!

The sworn obligation to "maintain law and order" has been countermanded by court decrees. "Rights" groups surveillance and politically motivated investigations to where a policeman with a family is between the bull and the barbed wire.

If the insurrection gets labeled a "demonstration", the rioter is within his "rights."

If the cop does not defend himself, he's maimed or dead. If he does defend himself, he's "suspended without pay pending investigation."

Brutality of criminals and criminal mobs last year cost 57 policemen their lives. Some 7,700 were injured.

Have you heard that? You heard 1,700 complaints of "police brutality" last year. (For the record, there were only FIVE convictions.)

But 18,000 policemen were assaulted! What about their "rights"?

Let's recap some of the scenes and see if we can't better distinguish the good guys from the bad guys in ret-

spect:

On July 18, 1964, William admitted Marxist, told a Harp "In the process of smashing we're going to have to kill cops...."

"There's going to be a certain amount of violence..." Jesse Gray, leader of the riot in Harlem;

"We need 100 skilled black tionaries, dedicated men ready for such utterances. There may be more than a nation for such utterances.

The demonstration business lucrative for the organizers. Epton has testified that his "ment" received \$8,000 to \$9,000 in contributions.

But it bears bitter fruit innocents involved.

In the face of fury, org unorganized, we dare not see armed army.

A scared cop is no more racist incited to riot, the jaw the switch blade, the corner the junkie with a broken bottle. And he--that policeman--alone between them and you.

BY PAUL HARVEY

**WINTER FOOD CARNIVAL**

TALL KORN 2 LB. \$1.49  
BACON

FRYERS LB. 29c

FRESH TOMATOES LB. 19c

FLAVOR - WRIGHT 3 LB. CAN LARD 59c

MORTON'S BEEF, TURKEY, CHICKEN POT PIES 5 FOR \$1

SUGAR 5 LB. 49c

CLOVERLAKE OR BELL MELLORINE 1/2 GAL. 3 FOR \$1

SHURFRESH 1 LB. BOX CRACKERS 19c

DEL MONTE SLICED 303 CAN PEACHES 19c

ENERGY BLEACH QT. 15c

GIANT SIZE SILVER DUST 63c

NORTHERN TISSUE 3 ROLLS 25c

SHURFINE COFFEE REG. OR DRIP. LB. 69c

SHURFRESH MARGARINE LB. 19c

COLGATE GIANT SIZE TOOTH PASTE 39c

HAIR SPRAY AQUA NET 59c

Specials Good THROUGH SATURDAY  
Double Buccaneer Stamps on Wednesday  
**L & J FOOD STORE**  
316 N. 2nd WE DELIVER YU 3-3105



GET IN ON THE RUN FOR THE BUICKS

Biuck Special  
**2332**

\*Manufacturer's suggested retail price for Special V-6 2-dr. coupe. Price includes Federal Excise Tax and suggested dealer delivery and handling charge (transportation charges, accessories, other optional equipment, state and local taxes additional).

Compare Special's looks and performance with anything else in this price range. There, You really can afford to own a Buick. In fact, you can't afford not to. See your Buick dealer now while he's in the mood to give you the very best deal in town. Hurry.

See your local authorized Buick dealer

**CLEAN FIELDS**  
from planting 'til harvest



**MEAN PROFITS for YOU**

There's only one weed killer you can really depend wet or dry

THAT'S **TREFLAN**

FOR CUSTOM APPLICATION CONTACT

DAVIS FARM SUPPLY  
YU 3-2233

or

CHARLES CHANDLER  
YU 3-3085





# Enjoy These Fringe Benefits



\*EXTRA FAST CHECKOUT  
\*CARRY-OUT SERVICE  
TO YOUR CAR  
\*FAMOUS S&H  
GREEN STAMPS

ALWAYS AT **PIGGLY WIGGLY**

## FRESH FROZEN FOODS!

BANQUET, BEEF, CHICKEN, TURKEY  
**DINNERS** 3 <sup>11 1/2 OZ.</sup> PKGS. \$1

BANQUET ALL VARIETIES  
**MEAT PIES** 5 <sup>8 OZ.</sup> PKGS. 89¢

SEABROOK, CUT OR CREAM STYLE  
**CORN** 5 <sup>10 OZ.</sup> PKGS. \$1

SEABROOK, MIXED  
**VEGETABLES** 10 OZ. PKGS. 23¢

HUNT'S FANCY  
**CATSUP** 20 OZ. BTL. 27¢

PET OR CARNATION, EVAPORATED  
**MILK** 2 <sup>LARGE CANS</sup> 29¢

**SALAD DRESSING**

MORTONS  
**QUART JAR** 43¢

**PEANUT BUTTER**

2 1/2 LB. JAR 89¢

THESE PRICES GOOD IN  
FLOYDADA, JAN. 13, 14, 15, 1966!

## HEALTH AND BEAUTY AIDS!

BOYER H.A. REG. 79¢  
**HAIR DRESSING**

LARGE SIZE  
BOTTLE  
**59¢**

NESTLE, REG. 59¢ 16 OZ. PLASTIC BOTTLE  
**SUPER SET** 49¢

**RED CARPET  
SERVICE**

**ONE-STOP  
SHOPPING  
HEADQUARTERS!**

COLD POWER, 10¢ OFF

**DETERGENT** GIANT BOX

MARYLAND CLUB OR FOLGERS  
**COFFEE** ALL GRINDS  
1 LB. CAN.....  
2 LB. CAN.....

"FRESH AND TENDER MEATS! LOWEST PRICES ALWAYS!  
SWIFT'S PREMIUM, AGED, HEAVY BEEF, VALU-TRIMMED, BLADE CUTS

**CHUCK ROAST** ..... LB. .... 49¢

100% ALL BEEF, DATED TO ASSURE FRESHNESS  
**GROUND BEEF** ..... LB. .... 39¢

SWIFT'S PREMIUM BOLOGNA, SALAMI,  
PICKLE, SPICED LUNCHEON OR LIVER LOAF. MIX OR  
MATCH 6 OZ. \$1.11  
**LUNCH MEAT** .... 3 PKGS. \$1.11

SWIFT'S PREMIUM, AGED, HEAVY BEEF, VALU-TRIMMED  
**SWISS STEAK** ARM BONE CUT ..... LB. .... 89¢

LEAN, CUT FROM BOSTON BUTTS  
**PORK STEAK** .... LB. .... 69¢

BUCK STYLE, 12-20 OZ. PKGS. LONGHORN  
**CHEESE** ..... LB. .... 69¢



**CATFISH STEAK**

ICELANDIC  
BREADED  
4 PORTIONS

12 OZ. PKG. ...

HORMELS, LITTLE SIZZLER,  
**SAUSAGE** 12 OZ. PKG. ...

ARMOUR'S VEGETOLE  
**SHORTENING**  
3 <sup>LB.</sup> CAN **59¢**

"FRESH FROM THE GARDEN SPOTS OF THE NATION"  
RUSSET, BULK, PREMIUM GRADE

**POTATOES** ..... LB. .... 7 1/2

RUBY RED, FLORIDA  
**GRAPEFRUIT** ... LBS. ... 25¢

RED ROM, FINE FOR BAKING BULK, FARM FRESH  
**APPLES** .LBS. 29¢ **TURNIPS** ... 10¢

TEXSUN UNSWEETENED  
**GRAPEFRUIT JUICE** 46 OZ. CAN 3

SCHILLING  
**BLACK PEPPER** 4 OZ. CAN 3

DR. PEPPER OR  
**COCA COLA** 6 BOTTLE CARTON PLUS DEPOSIT 3

OLD FASHION  
**APPLESAUCE** ... 8 <sup>NO. 300</sup> CANS \$1.11

SOFTPLY, ASST. COLORS  
**NAPKINS** 160 CT. PKG. ...

Lowest Prices . . . Greatest Variety . . . always at . . .  
**Piggly Wiggly**