

Daily Thanksgiving

SYBIL LEONARD ARMES

Too long have we taken for granted
The blessings that hallow our days;
The multitude of God's mercies
No longer inspire us to praise.

We who have never known hunger
Forget to thank him for bread
And the simple joys of love and faith
By which our souls are fed.

God's gifts are renewed every morning;
To grace He adds light for the way.
Oh, let us not wait for tomorrow,
Let us offer thanksgiving today!

"Serving The Floyd County Trade Area Since 1896"

The Floyd County Hesperian

12 Pages

VOLUME LXXXI

FLOYDADA (FLOYD COUNTY) TEXAS, THURSDAY, NOVEMBER 25, 1965

NUMBER FORTY-SEVEN

FAA Assures City Of \$52,289 For Airport

Nominées For C-C Directors Named

The nominating committee of Floydada Chamber of Commerce, Dr. Charles Craig, chairman, R. G. Dunlap, Ray C. Henry Barber, and C. L. ... members, met to nominate members, of which five will be elected as directors of Chamber.

Lubbock; Weldon Harris, moved to Amarillo. Others serving as directors at large, during the past year, appointed by President, Wendell Tooley, were Wayne Collins, S. W. Ross, and Keller Holmes.

Santa Will Visit Floydada Afternoon Of December 6

Cold weather or not... snow... or sun, Santa will make his first official visit to Floydada at 2 p.m. Monday December 6th.

He will be here visiting the youngsters and passing out candy from 2 until 4 p.m. He will also be back in Floydada December 10 and 17 from 2 to 4 p.m.

In a special called meeting of the retail merchants group of the Floydada Chamber of Commerce Friday morning the group decided to invite Santa here on the 6th, which will also be the December Dollar Day.

Shoplifters Caught Here Saturday

Shoplifters got out of three local stores with about \$48 worth of merchandise before they were caught here Saturday afternoon. Beall Brothers, Ben Franklins, and Perrys reported items missing before the people were caught on California Street near the stores.

Most of the items taken included clothing, billfolds, lipstick, etc., according to investigating officers. The people were taken to the county court and filed on for shoplifting. They posted bond and were released, then faced court Monday morning.



LEST WE FORGET - The Max Harrison family took time recently to pause and remember the reason we recognize Thanksgiving as a holiday. It is more than a break from work, for it is part of our heritage. Shown above are Mr. and Mrs. Max Harrison, Debbie, standing, and Tracie, in the arms of Mrs. Harrison, at the Bible Baptist Church. (Staff Photo)

Churches Set Special Service For Thanksgiving

A number of the local churches of all denominations plan to observe the Thanksgiving holidays with a special program or with regular services with emphasis of the holidays.

At the First Christian the past Sunday evening worship included "A Harvest from Holidays", a filmstrip which offered suggestions to families for the enrichment of holiday seasons. Following this, families enjoyed a salad supper prior to a Fellowship hour of fun and games.

The Bible Baptist Church will hold a special service tonight, according to Gilbert Rhine, pastor. The sermon tonight and again the following Sunday night will pertain to Thanksgiving. A breakfast meeting Sunday morning at Rogers Restaurant will be in honor of college and career young people of the First Baptist Church. The Breakfast and fellowship is at 8:30.

NEARING LATE FREEZE RECORD

Cotton Harvest Moves Into Stripping Stage; Yields Good

Although no freeze has been received on the High Plains of Texas this fall, the cotton has matured to a stripping stage and, when the dew has dried in the fields, area cotton patches are dotted with the harvesting machines.

Rites Today For Mrs. Edd Brown

Funeral rites will be conducted this afternoon at 2 o'clock in the First Christian Church for Mrs. W. Edd Brown of 801 South Main, who died Sunday night about 7:40 in Peoples Hospital.

Mrs. Brown suffered a stroke recently and had been in a critical condition since. She had been transferred from West Texas Hospital to Peoples Hospital in Floydada a week before her death.

Each day and night the farmers on the High Plains look for that first killing freeze, that will be one of the latest on record when it does come.

The latest known first freeze came November 22 in 1934. Last year's early freeze came on November 21, almost nearing the record. In 1930 and 1931, the first freeze came on November 20.

This writing is being done on November 21, and there is

County Tax Appraisers Will Finish Job By January, 1967

It was incorrectly stated in last week's Hesperian that the McMorries Company had begun its county property appraisal work and would be finished by January of 1966.

It should have read "January of 1967." The job must be completed prior to June of 1967 as a basis for the 1967 tax roll. Spokesman for the Mc-

not a freeze in the forecast. If none has come by the time this paper is published, Tuesday, November 23, it will be a new record.

As the stripping operations increase Floyd County has gained 25,443 bales of cotton, or an expected one-fifth of the 1965 crop. This compares with 27,749 at this time last year and 34,592 two years ago.

Trading increased in the new crop cotton on the Lubbock market but prices continued to decline. There was very little demand for the qualities of cotton being harvested and prices continued to drop closer to the loan on many qualities.

Cotton prices paid South Plains farmers, as reported to

SEE COTTON PAGE 3

Local Fund Above \$17,000 Mark Now

A telegram received by the Hesperian from Congressman George Mahon recently assured the city of Floydada that the Federal Aviation Agency has included \$53,289 for the city to be put toward the new proposed airport.

A report from the local Airport Committee of the Chamber of Commerce shows that the local funds have surpassed \$17,000 of a needed \$25,000 from local sources.

Policeman-Dog Combination Nets Burglar

A policeman-dog combination resulted in the capture of one burglar here last Thursday night. Weldon McCutchen, Jr., was the man on patrol at the time, with his newly purchased German Shepherd, Lady. The two cornered a burglar with \$1,500 worth of merchandise in his possession.

McCutchen was checking the doors of the businesses late Thursday night when Lady began to growl and pull toward Solomon Jewelry. Upon closer investigation, McCutchen noticed that an inside door was ajar, and as he was peering inside, the burglar raised up behind a counter.

McCutchen entered the building, handcuffed the burglar, went to his police car and radioed Freddie Edwards, the other night patrolman. The two took the man to the local jail.

The next day Baldomero Holguin, age 21, was charged with burglary and his bond was set at \$2,500, according to court records. He is a native of Chihuahua, Mexico.

Merchandise taken from the store included lapel watches, watches, wedding bands, gents rings, rings, birthstones, ladies identification bracelets, bracelets, necklaces, lighters and razors. All the merchandise has been recovered except two watches, according to the police report.

SEE COTTON PAGE 3

A telegram received shortly after notification of the approval of the city's request from Senator John Tower stated: "Have been advised by the Federal Aviation Agency that 1966 fiscal year Federal Aid Airport Program has been

SEE AIRPORT PAGE 3

Funeral Today For Mrs. Smith

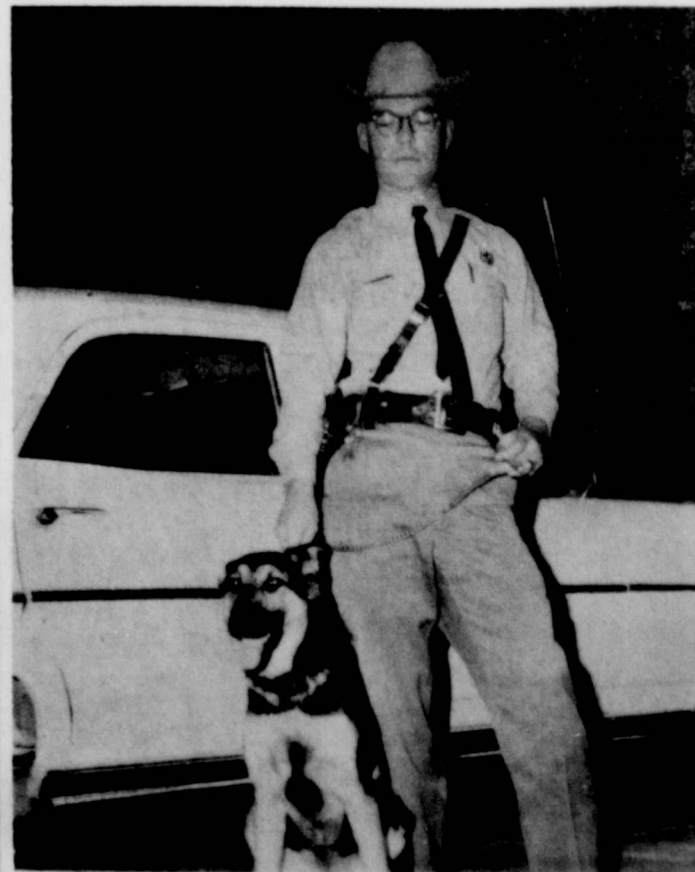
Mrs. F. A. Smith, 77-year-old longtime resident of Floydada, died in Peoples Hospital shortly after noon Sunday. She had been seriously ill for several weeks.

Funeral rites will be conducted this afternoon (Tuesday) at 3 o'clock in the Calvary Baptist Church. Rev. Perry Threadgill, pastor, will officiate.

Mrs. Smith was born Stella Leona Ford on May 21, 1888 in Oklahoma and was married to the late F. A. Smith on May 4, 1913 in Wise County. They moved to Floyd County from Denton in 1924. Smith preceded his wife in 1958.

Survivors include one son, Pruitt Smith of Floydada; four daughters, Mrs. Thelma Alexander, Floydada, Mrs. Juanita Jackson of Tucson, Ariz., Mrs. Loraine Dewey of Denver, Colo., and Mrs. Dorothy Bishop of Frisco; 15 grandchildren; six great grandchildren, and two brothers, Homer Ford of Lubbock and Dennis Ford of Gruver.

Interment will be in Floydada Cemetery under the direction of Moore Funeral Home.



WELDON McCUTCHEEN, JR. AND LADY

Caprock Chat

by WENDELL TOOLEY

ONE OF our subscribers might the following article written by Paul Harvey to my attention last week...and I read it for your information...entertainment.

CHICAGO - Look at the cold, pale faces of the go-go dancers, how dreadfully boring gyrations must be!

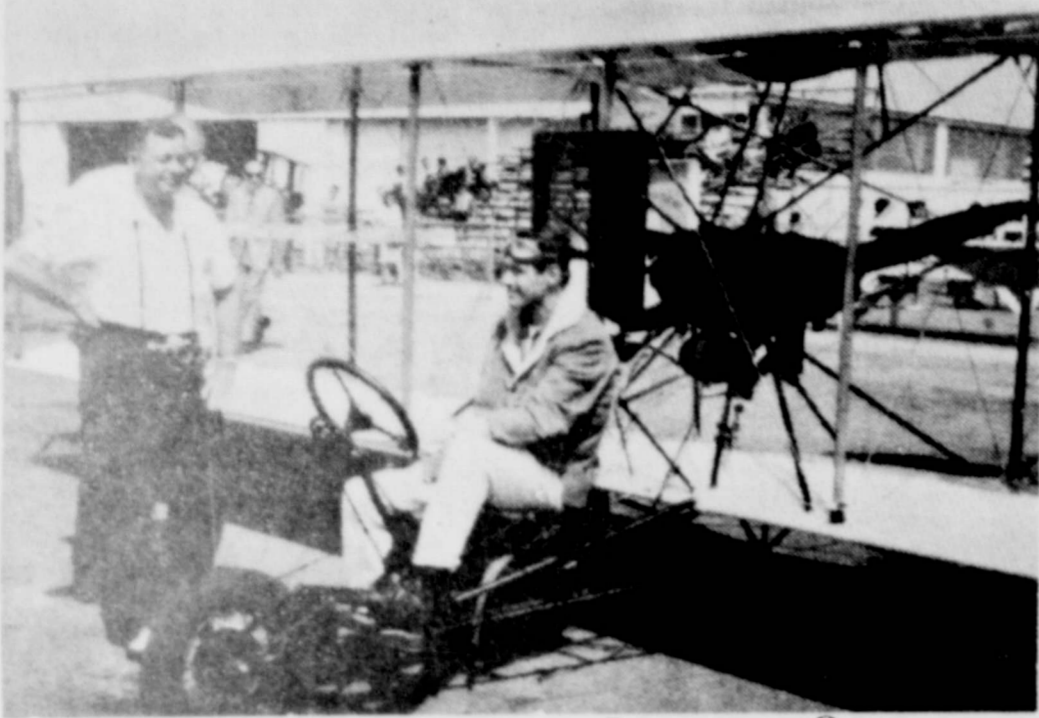
and in 1865 a great youth movement began. A spiritual bureaucracy of restless debauches and chimney sweeps, the intellectual and the uncouth... they rallied, then and since, victorious and happy music: Blessed Assurance, Jesus Is Me, "There Is Within My Heart a Melody," "Tis So Sweet To Trust In Jesus," Here Is Sunshine In My Heart.

and these young people called themselves The Salvation Army. William and Catherine Booth were young-marrieds with children. Bramwell became chief of staff of the Army at 24. Righter Catherine commanded the Army's work in London at 22. Wellington, in the United States, at 30. The Salvation Army, like Christianity itself, was not helped by fuddy-duddys -- but

SEE CAPROCK PAGE 4

SALUTING FLOYD COUNTY FLYERS

Dr. Craig's Flying Interest Began In His Childhood Days



DR. CRAIG VISITS WITH STUNT PILOT DALRYMPLE AT ORANGE COUNTY CALIFORNIA AIRPORT DURING FLYING DENTIST CONVENTION. PLANE IS REPLICA OF ORIGINAL WRIGHT BROS.

"When I was a small child in Missouri and would see airplanes fly over, I would compare their size with the garden plow I was pushing." Dr. Charles Craig said concerning his lengthy interest in flying. "My parents moved to within a mile or a mile and a half of the St. Louis Airport when I was a little older and this triggered a great deal more interest in airplanes," he continued. He took his first plane ride when he was 12 or 13.

A GOOD WORD FOR YOUR PHARMACIST...



PROMPT

When you bring a prescription here, you can be sure your pharmacist will make every effort to have it filled as promptly as possible.



ARWINE DRUG
PHONE YU 3-2856 FLOYDADA, TEXAS
"OUR LABEL IS YOUR PROTECTION"

FLOYDADA'S NEW PLYMOUTH AND CHRYSLER DEALER

MEET THEM AND SEE THEIR NEW SHOWROOM



TED ALLEN

SHELLY ALLEN

ENJOY THEIR HOSPITALITY

COME ON IN. IT'S OPEN HOUSE. WE'RE YOUR NEW NEIGHBORS AND WE'D LIKE TO GET ACQUAINTED. WE WON'T CHARGE YOU A CENT TO LOOK AROUND, OR TO RELAX WITH A CUP OF COFFEE OR TWO. JOIN US.

OUR ENTIRE SALES AND SERVICE STAFF WILL BE ON HAND TO ANSWER ANY QUESTIONS YOU MAY HAVE. WE'RE ANXIOUS TO MEET YOU SO THAT YOU'LL KNOW ALL ABOUT US THE NEXT TIME YOU'RE IN THE MARKET FOR A NEW OR USED CAR.

AUTHORIZED DEALER **CHRYSLER** MOTORS CORPORATION

ALLEN CHRYSLER PLYMOUTH

114 W. CALIF.

FLOYDADA, TEXAS

one place to another in an airplane. This, however, is more of a pass-time, for he doesn't make a practice of receiving compensation for the job.

Dr. Craig said he flies for several reasons. One is to get somewhere and back in a short length of time. Another is that air travel is less fatiguing, and a person in an airplane is more subject to his own errors and less subject to the errors of others than in automobile travel.

Too, flying is a good recreation. "I know of a high school that has flying in the curriculum," he stated.

In speaking of air travel, he said he has been to a RON-Tel in Tucson that is very similar to a motor hotel as far as auto travel is concerned. The establishment is built next to an airport, those landing may park their airplanes up very close to the building, carry their baggage in and leave from that spot the next day. The letters stand for Remain Over night Hotel.

There are several advantages to having a better airport in Floydada, Dr. Craig mentioned. "One is the places you can go in a small aircraft that the large airlines don't bother with. The nearest commercial line to us lands in Lubbock. Other places are Wichita Falls, Amarillo, etc. No such airline services Floydada, and there are thousands of such communities in the U. S. that have the same situation," he continued.

"By the time a person drives to Lubbock, and makes airline connections, he could fly to Oklahoma City, or Dallas or a dozen other points nearby before he could board the commercial airline," Dr. Craig stated.

Quite often he travels to Plainview when he needs, or wants, to fly. With better facilities here, he could lease a plane locally instead of going the thirty miles to another airport.

Also, he mentioned that several planes based here now have to fly to Plainview for gasoline, for the octane rating they require isn't available here.

"Quite often I will take someone to Plainview to lease a plane, or I will go myself, and that person flies back over Floydada on the way to their destination. If someone is going to Dallas they will pass almost directly over the city," he said. This happens quite often, for he makes several trips to Plainview for this purpose.

In comparison to commercial aircraft, it was mentioned during the recent interview, that he makes several trips to Plainview or to Lubbock to take a friend or business associate who then boards a private aircraft for his destination.

With a better airport, Floydada would be more accessible. Recently he drove to Plainview to meet a friend from Pennsylvania who didn't think he could land on the Floydada airstrip.

Last year a friend of Dr. Craig's and his family, were flying from San Diego to Oklahoma City at around 11,000 feet when the airplane developed engine trouble. He started grabbing maps and taking readings in an effort to find where he was, and realized that Floydada was almost directly below them.

The family spotted the Floydada airport and managed to land there. In going through the phone book he noticed Dr. Craig's name, phoned the house and realized then it was the Craig he had known some time ago.

The Craig family acted as host for the friends while a mechanic was brought from Plainview. After some repair, the plane was taken back to Plainview, where better facilities and services were available, repaired, and flown back to Floydada where the family boarded the plane and continued on their journey.

In the interview, Dr. Craig mentioned the hazard of the overlapping traffic patterns of the three airports within a mile of Floydada.

An airport would give Floydada an opportunity to keep pace with the time, in a means of transportation that is competitive with the automobile. It would also be a means of returning some Federal and State money to Floydada, that is paid by flyers, it was mentioned. (The State money for the new airport comes entirely from flyers.)

Lastly, according to Dr. Craig, a more modern airport would allow more people to make more efficient use of time. As the tempo of people's lives increase, the need for efficiency will become more important as has the need for efficient use of money.

HERNANDEZ COMPLETES MEDICAL TRAINING
MONTGOMERY, Ala.--Airman Third Class Jesse J. Hernandez, son of Mr. and Mrs. Robert Hernandez of Lockney, Tex., has been graduated at Gunter AFB, Ala., from the training course for U.S. Air Force medical specialists. Airman Hernandez, a graduate of Lockney High School, is remaining at Gunter for advanced training.

The Republican

BY MR. AND MRS. DAVID BATTEY

The "Little Senator from Texas", John Tower has been one busy fellow lately. He has been in virtually every corner of the state making speaking engagements and enlightening the public on the business of the recent 89th Congress. He feels the most important item of business has been and continues to be the recognition of the United States' commitment in Viet Nam. He supports President Johnson's program on Viet Nam, but feels we should take an even stronger stand. In a recent meeting in Borger, Texas, he expressed the belief that it would be worth the risk to bomb the North Viet Nam stronghold, Hanoi. Many servicemen returning from South Viet Nam feel we will not make much headway in the war until we do.

Senator Tower has not yet made an official announcement concerning his plans for the 1966 campaign. He said, "I have not announced yet, but I have never considered not announcing." He plans to have an announcement about his future plans about February 1.

Some interesting facts about Tower include the fact that he was the first Republican to be elected to the Senate from Texas since 1870. He is the only Republican Senator ever elected by popular vote from any of the former Confederate States.

He is the son of Retired Methodist minister, Dr. Joe Z. Tower, and is a veteran of World War II. He graduated from Southwestern University and SMU, and did graduate study and research at the University of London. In 1951, he joined the staff of Midwestern University at Wichita Falls where he taught Political Science until 1960. He is married to the former Lou Bullington of Wichita Falls, and is the father of three daughters.

John Tower was sworn in as United States Senator on June 15, 1961, filling the seat vacated by then-Senator Lyndon Johnson. He led a field of 71 candidates in a special election and run-off for the position. The fact that he won such a race signifies what a remarkable person he is.

He will be making other engagements in this area, and you are encouraged to hear him when you have the opportunity.

A LOT OF WATER - An inch of rain over a 160-acre farm delivers 4,356,000 gallons of water weighing over 18,000 tons. To transport this amount of water would require 544 tank cars of 4 trains, each over a mile in length.

SAYS FLOYD PHILOSOPHER

Taking Politics Out Of Farm Won't Help Solve Problems

Editor's note: The Floyd Philosopher on his Johnson grass farm is happy to find the farm problem back in the news, his letter this week indicates.

Dear editor:

According to a copy of The Avalanche Journal which my dog who is getting kind of old caught blowing across a field, I think he thought it was a rabbit but you'd figure he'd have noticed it tasted different, after he'd gone a few pages at least, anyway, according to it, after I convinced him it had no food value and had chance to get at it myself, some U. S. Senators got together and said the answer to the farm problem is

to take politics out of farming. "Take politics out of farming and let the law of supply and demand work and the problem will end," the group said. I have thought this over and while it's comforting to have the farm problem back in the news, alongside Viet Nam, Red China, metropolitan blackouts, etc., still I'm not sure I know what the Senators mean.

I know very few farmers who are politicians and practically no politicians who are farmers, and I believe you could take the one out of the other, or vice versa, and have about what you started with.

While it's true there have been farmers who gave up farming and went into politics, and

politicians who gave up politics and went into farming, both voluntarily, it's hard to tell who gained and who lost.

Of course, the Senators are right and if you take politics out of farming the problem will end, but as far as I'm concerned it won't end till you take it out of it.

The politics I can handle taking down. On the other hand, you take politics out of farming and cover it works, and some money will come along, suggest you take it out of government. We better leave well enough alone.

Yours faithfully,
J. A.

Letter To The Editor

Honolulu, Hawaii
Nov. 14, 1965

Dear Editor,

Our dad, J. Sam Hale, sends the Floyd County Hesperian to his son Ralph as a birthday present each year.

As Mrs. Ralph Hale, I want to tell you how much I enjoy your Floyd County Philosopher the tongue-in-cheek feller.

Since we live in Hawaii right now, the paper takes sometime in arriving. Our latest issue is that of Oct. 21 in which "Who Discovered America" is the topic your Johnson grass farmer discusses. What an ole boy!

When the paper arrives, I first read your philosopher and through the classified ads to see how many "two and three bedroom houses" Daddy has for sale.

I commend you, too, on your new printing presses which makes for easy reading, clear pictures and advertisements. Many big city newspapers are not up to these standards.

Aloha,
Mrs. Ralph Hale

One hand-operated mill was provided for each group of five to ten men in the Roman army and the soldiers ground their own corn.

BENNETT'S CONCRETE FACTS



"ABOUT CONCRETE SLUMP"

WAYNE BENNETT

YOU CAN INCREASE WEARABILITY BY REDUCING CONCRETE SLUMP. FOR EXAMPLE, A REDUCTION FROM 6 TO 2 IN. WILL INCREASE THE WEARABILITY OF 4.5 BAG CONCRETE FLOORS BY AS MUCH AS 15%

AS A GENERAL RULE, THE SURFACE HARDNESS OF 4 IN. SLUMP CONCRETE IS 100% BETTER THAN THAT OF 10 IN. SLUMP CONCRETE.

-ALPHA NEWS NOTES

Phone YU 3-2170 or Come In and Discuss YOUR BUILDING PROBLEMS WITH US.

Bennett's Building Material

Phone YU 3-2170

Floydada

Thanksgiving Day

Isla Paschal Richardson

To God we lift our grateful hearts
In gratitude today —
May we be worthy of His gifts,
For this we humbly pray.

Our eyes His blessings fail to see,
By selfish aims grown dim.
Our minds, beclouded by our fears
Forget to turn to Him.

Now from the strain of toil and care,
We lift our thoughts above,
Acknowledging His gracious gifts
Of life and truth and love.

And may we ever strive to see
In all mankind the good
That He creates, and nationwide
Find closer brotherhood.

Not only on Thanksgiving Day
But every day that ends,
May we remember to give thanks
For blessings that God sends.

TO OUR MANY FRIENDS
Thank You

Continuous Service since 1890





UP CEREMONY into Jr. Girl Scouts. These girls of Troop received their pins and wings Friday afternoon in a candle-lit ceremony held at the bank. In the group are Carol Cogdell, Mrs. Hodges, Sheri Collins, Phyllis Guffee, Marky Ferguson, Betty, Mary Overturf, Pam Price, Kayla Curry, Sheryl

Burns, Charlotte Nelson, Terry Stovall, Becky Berry, Nancy Puckett, Debbie Medley, Janet Vick, Kathy Graham and Vicki Hensley. Mothers were special guests. Refreshments were served by Scout leaders, Mrs. Russell Overturf and Mrs. Leroy Burns. (Staff Photo)

COTTON

Consumer and Marketing Service of the USDA, ranged from \$1.00 per bale for Low Middling to \$2.25 per bale for the Light Spotted. Middling ranged from \$1.00 per bale over the loan for Strict Middling Light Spotted to \$3.00 per bale over the loan for Low Middling Light Spotted. Middling Light Spotted was ranging from \$2.50 to \$4.25 per bale over the loan. These prices were for cotton with moisture of 3.5 and better. Prices paid farmers for cotton ranged from \$45 to \$50 per bale.

BROWN

Survivors include her husband; two sons, William E. Brown, Floydada and Martin Edwin Brown Jr., Stockton, Calif.; one daughter, Mrs. Woodrow Badgett, Floydada; 12 grandchildren and eight great grandchildren. Rev. Darrell Faies, pastor of the church, will officiate at the services, assisted by Rev. Paul Fullerton of Abilene. Burial will be in Floydada Cemetery. Pallbearers are Rex Brown and Gordon Thomas of El Paso; David Flanary, Houston; Eldon Jones, Lubbock; James Thomas, Wichita Falls; Madrel Williams, Clovis; Vyron and Edlie Williams, Dallas.



FISH CATCHES MAN - You've heard of the "Man bites dog" story. The case involving Earl Pierce, of Floydada, pictured above with a 22" Bass is similar. As he and Wilson Sikes, of Lamesa, were boating at Hornor Lake near White Flat Sunday afternoon they saw the fish underneath the water. They at first thought of trying to get the fish by hand, and decided to use the oar. As Pierce plunged the oar beneath the fish to try and flip him up, the fish came up the oar, flipped over Pierce's shoulder and landed in the boat. They enjoyed later meeting the same people who had earlier told them the fish were not biting. (Staff Photo)

DRAFT CARD - Charles ... a University of Iowa ... is proud of his draft card. He wears it around his neck in a plastic holder which

read: "I'm a draft card-carrying American and proud of it." Craig hopes other students will do this to show their support of their government.

AIRPORT

FROM PAGE 1 amended to include \$53,289 in Federal funds for City of Floydada.

"Newly authorized project involves following work on Floydada Municipal Airport: acquire land for airport development and clear zones; construct taxiways, apron, entrance road and fence; install beacon lighted wind cone and segmented circle and clear approaches."

The \$53,289 that will be appropriated by the FAA for the city is what has been expected by the group. The Airport Committee set in motion a drive to get local pledges for \$25,000 to make up the local portion of the funds.

Last summer the state approved \$12,000 for the local airport, less than the one-fourth hoped for, and the Airport Committee set in motion a drive to get local pledges for \$25,000 to make up the local portion of the funds.

Now with the Federal funds, plus the engineering fees that will be paid by the City of Floydada, maintenance work and other functions to be performed by the County, plus the state funds and what has been pledged locally, the first-class airport is virtually assured the city.

Arthur Wylie, one of those in charge of raising funds for the airport committee, said the local drive would continue until the \$25,000 is reached. "The local funds are one phase of the program and the Federal funds are another, so one does not cancel the other. They are both needed."

Work should begin immediately on the exact location of the airport and on the construction of the runway.

Rites Conducted For Elgin Duke

Funeral services for Thomas Elgin Duke, 70, Tulsa resident since 1925, were conducted Saturday at 3:30 p.m. in First Methodist Church here.

Officiating minister was Rev. H. B. Coggin, pastor. Burial was in Rose Hill Cemetery with Wallace Funeral Home in charge of arrangements.

Mr. Duke died at 7:30 p.m. Friday in Swisher Memorial Hospital from an apparent heart attack.

Born Dec. 25, 1894 at Lampasas, he was married June 3, 1922 to Cora Gertrude Jetton at Lockney. He is a former resident of Lockney and Floydada.

A retired farmer and rancher, he was a veteran of World War I and a member of First Methodist Church. He was Past Worshipful Master of Tulia Masonic Lodge.

Surviving are his wife; a son, Mayo Duke of Tulia; two daughters, Mrs. Gerald Matsler of Amarillo and Miss Ethelyn Duke of the home; three sisters, Mrs. Walter Garner of Lampasas, Mrs. L. W. Horne of Richland and Mrs. Alberta Holman of Morton, and four grandchildren.

Boots are not as popular as they once were except for their use in very cold climates. One of the newest boots is laced up from toe to top.

FESTIVE FOODS	
WE HAVE ALL THE FINISHES FOR YOUR FEAST	
GOLD MEDAL FLOUR	5 LB. 49c
SHURFINE GRAPE JUICE	24 OZ. BOTTLE 35c
SHURFINE FRUIT COCKTAIL	303 CAN 25c
SHURFINE TOMATO JUICE	46 OZ. CAN 25c
FRESH CUCUMBER CHIPS PICKLES	16 OZ. 25c
KLEENEX PAPER TOWELS	2 ROLL PACK 49c
GREEN GIANT PEAS	303 CAN 24c
SHURFINE CHERRIES	NO. 303 CAN 20c
DISCUITS SHURFRESH	3 CANS 25c
LOVERLAKE ICE CREAM	1/2 GAL. 69c

BUCCANEER'S SWEEPSTAKES
PRICES GOOD THROUGH SATURDAY

HULL & MCBRIEN
WE GIVE BUCCANEER STAMPS DOUBLE ON WEDNESDAY
Deliver YU 3-3164

THE FLOYD COUNTY HESPERIAN
Published at 212 South Main St., Floydada, Texas
WENDELL T. TOOLEY, Publisher
JEDD BLESSING, News Editor
Established 1896 by Claude V. Hall. Entered as second class mail at the post office at Floydada, Texas April 10, 1907 under the act of Congress of March 8, 1897.
TEXAS PRESS ASSOCIATION Member 1965

NOTICE—Any erroneous reflections upon the character, standing or reputation of any person, firm or corporation which may appear in the columns of the Floyd County Hesperian will be corrected gladly upon its being brought to the attention of the publishers.

HOSPITAL NOTES

Pat Jester, 11-22, continues treatment.
Juan Guajardo, 11-12, 11-21.
James Isbell, 11-13, 11-17, surgery.
Arnoldo Molina, 11-15, 11-17.
Mrs. Ray Cook, 11-16, expired 11-17.
Billy Shaw, 11-16, 11-21.
Laveta Kinard, 11-16, 11-17.
Guadalupe Garcia, 11-17, 11-21.
Calvin Coleman, 11-17, 11-18.
Dominga Barraza, 11-18, 11-20.
Hipolito Saucedo, 11-19, 11-20.
Guadalupe Gonzales, 11-20, 11-21.
Mrs. W. Edd Brown, 11-14, expired 11-21.
Mrs. Stella Smith, expired 11-21.
Mrs. Lydia Graves continues treatment.
Mrs. Goen continues treatment.
Mr. Messie continues treatment.
Mrs. W. M. Sanders continues treatment.

TAX MAN SAM SEZ:

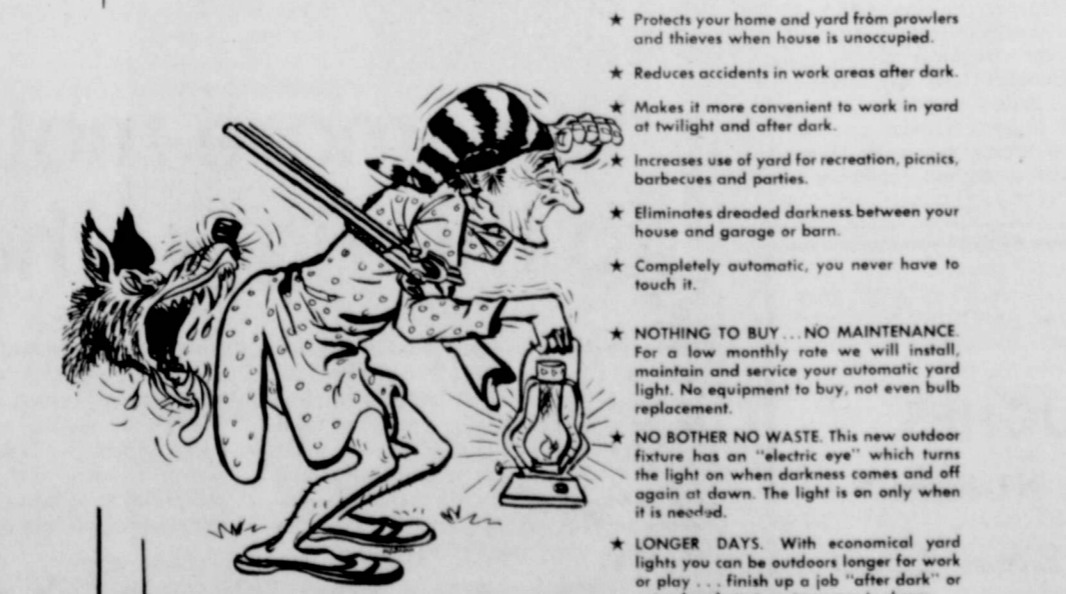
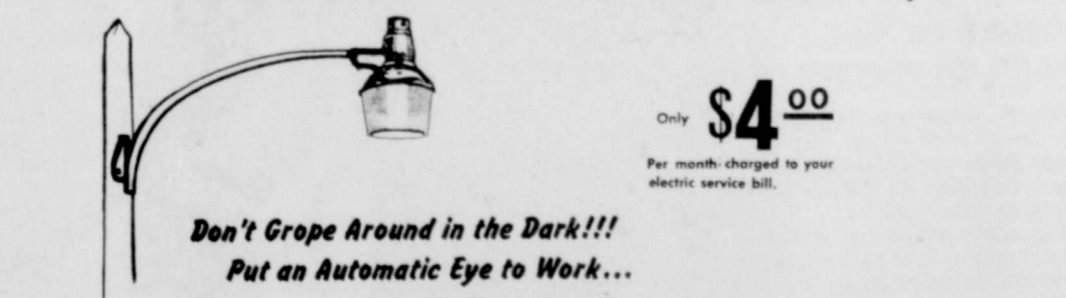
A lot of taxpayers don't like to keep records. They are willing to take the standard deduction and pay more tax to get out of the record keeping chore. You can cost yourself a lot more by failing to keep a record of your deductible contributions, taxes, medical and miscellaneous expenses. A careful record of deductible items is a pretty good idea, even if you don't itemize your deductions every year. Good records help you manage your personal affairs better.



The empire line continues to be good as shown by this season's styles. It is seen in the high waisted frocks as well as in lingerie and coats.

Many of the new coats have a fitted look. They come in cloth and fur.

AUTOMATIC OUTDOOR LIGHTING
TURNS ON AT DUSK...TURNS OFF AT DAWN...Automatically



Lighthouse Electric Cooperative, Inc.

Beall's DEPARTMENT STORES PRE THANKSGIVING

SPECIALS

REGULAR \$19.95

mens all weather coats

SAVE \$6.96

\$12.99

...FEATURES ZIP-OUT ACRYLIC PILE LINING, WATER REPELLENT POP-LIN, SHELL, SLASH POCKETS AND CLOSED FRONT OPENING. IN DARK PLAID PATTERNS, SIZES 36-42

save on **boys sweaters**

REG. \$3.99 AND \$4.99 VALUES

...WE BOUGHT THESE AT CLOSE-OUT PRICES AND ARE PASSING THE SAVINGS ON TO YOU, OF SHAPE HOLDING ORLON ACRYLIC IN LIVELY COLORS. 6-16

\$2.99

FOR SCHOOL OR PLAY, BOYS WANT

corduroy sport shirts

\$1.99

...STOCK UP DURING THIS SAVINGS EVENT. SOLID COLORS IN PIN-WALE STYLES WITH 2 POCKETS AND PEARLIZED BUTTONS. SIZES 6-18

...COLD NIGHTS AHEAD! SELECT NOW

2-year guarantee Beallwarm electrics

SINGLE CONTROL DOUBLE SIZE

\$9.88

...COMPARE! THERE IS NONE FINER, CONTROL OUTLETS FLAT OR CAN BE ATTACHED TO HEAD BOARD. SOLID COLORS INCLUDE BEIGE, PINK, BLUE, GOLD OR GREEN, LAYAWAY FOR CHRISTMAS.

TWO SPECIAL GROUPS

LADIES SHOES

DRESS AND STACKEE HEEL STYLES LEATHERS - SUEDES AAA - AA - B WIDTHS

...EARLY SEASON SAVINGS ON EXCELLENT STYLE AND QUALITY NAME BRANDS. NOT ALL SIZES AND WIDTHS IN EACH STYLE. SAVE UP TO 1/2 NOW.

VALUES TO \$14.99

\$4 AND \$7

special purchase nylon satin half slips

WHITE PINK BLUE BLACK

\$1.00

...AN EXCELLENT TAILORED FIRST QUALITY HALF SLIP THAT IS SOFT TO THE TOUCH. SIZES S-M-L.

boys' flannel sport shirts

\$1.98 VALUE

\$1.44

...ALL COTTON FLANNEL IN SIZES 6 TO 16, SELECT FROM ASSORTED PRINT AND PLAIN PATTERNS.

Two Soldiers AFAM Members Coast Guard At Della Plains To Attend Waco Academy Now Remembered Convention Seeking Cadets

Students in Homemaking II at Della Plains sent packages to Sp. 4 Johnny B. Bonner son of Mr. and Mrs. J. P. Bonner of 411 East Lee Street and Frank Samuels, son of Mr. and Mrs. Jeff Samuels, Grover Street, Floydada, Texas.

Bonner and Samuels were former students of Della Plains, Bonner being a 1963 graduate.

The homemakers prepared cookies for former students in Viet Nam as a club project. In doing this project, the students felt that they were participating actively for family, community and world improvement.

The packages were mailed November 18, 1965 with plans of reaching infantrymen by Christmas.

Several members of the local AF&M lodge plan to leave this weekend for Waco where they will attend the Annual Convention of the Grand Lodge of Texas and the Grand Chapter and Council, November 29th through December 2.

Planning to attend are Wayne Russell, District Deputy Grand Master; Clyde Hodges, Grand Master; M. J. McNeill, Senior Warden; Jimmy Willson, chairman of the workshop committee of Area E-3 of the Grand Lodge and Wallace Trapp of Lubbock, who is member of the Floydada chapter.

WASHINGTON, D. C. - The United States Coast Guard Academy, the only U. S. military academy which appoints its cadets solely on the basis of competitive examination, is seeking applicants for the class convening July 12, 1966.

Deadline for the applications is December 4, 1965.

The application deadline coincides with the December College Entrance Examination Board Tests which will be the basis for the competition.

There are no congressional appointments or geographical quotas.

Applicants must be unmarried high school seniors or graduates who have reached their 17th but not their 22nd birthday by July 1, 1966. They must have earned 15 units by June 30, 1966, including: three in English, two in algebra and one in plane geometry.

They must be in excellent physical condition, between 64 and 78 inches in height with proportionate weight, and must have at least 20/30 vision in each eye, correctable to 20/20.

The four-year course at the Academy leads to a bachelor of science degree and a commission as ensign in the regular Coast Guard.

Additional information and application forms may be obtained from high school guidance counselors or by writing to the Director of Admissions, U. S. Coast Guard Academy, New London, Conn., 06230.



ROBKITTEN—SuzAnne Collier, daughter of Mr. and Mrs. R. A. Collier, Beaumont, (formerly of Floydada) is a featured Golden Robkitten with the Southwest Texas State College Band of San Marcos. Her skill with the baton won her a scholarship at the college where she is a freshman. Miss Collier is the granddaughter of Mrs. Kate Collier, Floydada, and Mrs. Robert E. Jones, Lubbock.

I just found out that the Ralls polo club took the third place national championship trophy in Dallas last week.

INSPIRATION is far more likely to strike a busy man than an idle one.

THOSE WHO never retract their opinions love themselves more than they love truth.

AT THIS writing, Monday morning, I noticed Tom Burrow scraping ice off his windshield...I'm not sure we've had a killing frost...in fact a phone call to Pioneer Natural Gas reveals that it got down to 40 degrees. So, it appears that 1965 will go down in our record book as the latest freeze date.

DOUGHERTY NEWS by Mrs. W. J. Ross

Local Postmaster Attends Meeting

DOUGHERTY, Nov. 20 - Postmaster Jimmy Powell is attending a meeting of the State Postmasters Association in Lubbock today.

For most area residents Thanksgiving plans are to be on the job as usual. Several families plan informal turkey dinners or suppers along with their daily chores.

Mr. and Mrs. G. W. Smith visited in San Antonio last week. Their daughter, Mrs. Bob Everett and son, Robb, returned home with them for a visit.

Mr. and Mrs. Dale Smith, son Shannon, and her mother, Mrs. Donald Dufek of Amarillo are visiting in Sherman this week-end.

Richard Kenny (Rick) is scheduled to arrive today (Saturday) for a visit in the home of his sister, Mrs. Kenneth Poole. Rick is home on leave from Viet Nam. He has visited his mother in Dallas and plans to visit in the Poole home this Wednesday, when Mr. and Mrs. Kenneth Poole and Lance will accompany him to Dallas. He is due to return overseas Dec. 10.

Mr. and Mrs. Doris Blasingame and Mr. and Mrs. D. O. Blasingame of Lubbock are expected to be dinner guests in the home of Mr. and Mrs. Bob Ross Sunday.

Mr. and Mrs. R. D. Holly, Mr. and Mrs. Jesse Pernell and children and Mr. and Mrs. Kenneth Robertson and daughters, the J. E. Greens.

home of their parents, Mr. and Mrs. Claude Ring over the holidays.

It was erroneously reported last week that the mother of Mrs. Bradley was hospitalized; it was her brother, Blue Stephens of Spur who had surgery Monday. At this date his progress towards recovery is on schedule.

Richard Kenny (Rick) is scheduled to arrive today (Saturday) for a visit in the home of his sister, Mrs. Kenneth Poole. Rick is home on leave from Viet Nam. He has visited his mother in Dallas and plans to visit in the Poole home this Wednesday, when Mr. and Mrs. Kenneth Poole and Lance will accompany him to Dallas. He is due to return overseas Dec. 10.

Mr. and Mrs. Doris Blasingame and Mr. and Mrs. D. O. Blasingame of Lubbock are expected to be dinner guests in the home of Mr. and Mrs. Bob Ross Sunday.

Mr. and Mrs. R. D. Holly, Mr. and Mrs. Jesse Pernell and children and Mr. and Mrs. Kenneth Robertson and daughters, the J. E. Greens.

CENTER NEWS

CENTER, Nov. 20 - This Sunday we had two wonderful Thanksgiving sermons at Calvary Baptist by Bro. Threadgill.

Ronnie Ross of Texas Tech spent the weekend (Friday night and Saturday) with his grandparents, Mr. and Mrs. R. C. Ross.

Mrs. S. A. Guffie visited the Rosses awhile Sunday afternoon.

Mr. and Mrs. J. D. Welborn were in Lockney Hospital Sunday afternoon visiting Mrs. Hal Thomas. Then came by to see Mr. Plumlee who had come home from the hospital around noon.

Mrs. Frank Dunn visited Mrs. Welborn and the Rosses Saturday afternoon. On Friday Mrs. Dunn accompanied Mr. and Mrs. Vinson to Plainview.

Mrs. Ernest Huckaby who has been convalescing after surgery at the home of her parents, the O. C. Vinsons, left Thursday for her home at Stephenville.

Joe Lee Dunn and wife of Lubbock are spending this Sunday night with his mother, Mrs. Frank Dunn.

Mrs. Dunn called on Mrs. Ava Jackson one day last week.

Mrs. Jackson spent Sunday and Sunday night with Mr. and Mrs. Leo Frizzell.

Mr. and Mrs. Frizzell visited Thursday with their daughter and family, the Garvin Beedys of South Plains.

Mrs. Jackson is expecting all her children home for Thanksgiving. So is Mrs. Dunn and the Welborns.

James David Welborn and family of Plainview visited Saturday evening with his parents, the J. D. Welborns.

Victor Green of Plainview dined Thursday with his parents, the J. E. Greens.

Mr. and Mrs. Hubert Ring and sons, and Miss Sue Ring of Lubbock plan to be guests in the home of Mr. and Mrs. Jerry Finley.

Mrs. C. R. Woodson, Mrs. Ruth Daniel, Harold Woodson and Bill Daniel plan to be dinner guests Thanksgiving in the home of Mr. and Mrs. Jerry Finley.

Mr. and Mrs. Hubert Ring and sons, and Miss Sue Ring of Lubbock plan to be guests in the home of Mr. and Mrs. Jerry Finley.

Mrs. C. R. Woodson, Mrs. Ruth Daniel, Harold Woodson and Bill Daniel plan to be dinner guests Thanksgiving in the home of Mr. and Mrs. Jerry Finley.

CAPROCK

FROM PAGE 1

by militant young people!

The editor of the Army's War Cry, eager to keep himself in touch with today's young folks, the other day tuned in some of the teens' favorite disc jockey programs. First one and then another.

And then another.

And by then the editor was led to the inescapable conclusion that young people never had it so sad. The songs they hum and strum, the "Top Forty Hits" of the go-go set include: "Rescue Me" and "Where Have All the Flowers Gone?"

"And here's one," the deejay was heard to say, "that'll surely be a superclassic 'Who Can I Turn To If You Turn Away?'"

By George, life is a grim and gray business for those who think here's one, "that'll surely be a superclassic 'Who Can I Turn To If You Turn Away?'"

By George, life is a grim and gray business for those who think here's one, "that'll surely be a superclassic 'Who Can I Turn To If You Turn Away?'"

Ray Jones Dies In Crosbyton

Ray Jones of Crosbyton, 67 year old former resident of Floydada, died about 9:45 p.m. Thursday in a Crosbyton Hospital after becoming ill earlier in his hotel room in that city. Jones was part owner of the hotel where he resided.

Funeral rites were conducted Sunday afternoon in the First Methodist Church in Ralls with interment in Ralls Cemetery. Jones operated the old O.K. Cafe in Floydada for many years before moving to Crosbyton.

Survivors include two sons, Noel of Alaska and Jack of North Carolina; two daughters, Mrs. B. H. Davis of Sacramento, Calif., and Mrs. L. D. Waldron of Lubbock; his mother, Mrs. Orville Ferguson, Ralls; three sisters, Mrs. Annie Percer of Salem, Ore., Mrs. Margaret Paschall, California and Mrs. Laules Parkey of Floydada and one brother, Jack of Carlsbad, N. Mex.

Mrs. Adalee Jones of Floydada and Mrs. Midge Jones of Lockney are sisters-in-law of the deceased.

STOVALL RITES IN PLAINVIEW

J. C. Stovall Sr., 71, of Plainview, who resided in Floydada some 44 years ago, died Friday night in the Plainview Hospital. He was owner of Stovall Wrecking Co.

Funeral rites were conducted yesterday afternoon in the Calvary Baptist Church in Plainview.

Survivors include his wife, Fanny; two sons; one daughter; four sisters; four brothers; six grandchildren and two great-grandchildren.

MOTHER OF MRS. GRIGGS DIES

Mrs. Julia Claterbaugh, 85 year old Bridgeport resident and mother of Mrs. C. H. Griggs of Floydada, died last Thursday morning. Mrs. Claterbaugh had been a patient in a Bridgeport hospital for the past six weeks.

Mrs. Griggs had been with her mother for the past two months helping to care for her.

Survivors include the only daughter; two sisters and one brother; a stepmother; two half brothers; five half-sisters; two grandchildren and two great-grandchildren.

BROTHER OF MRS. STILES SUCCEUMS

Irvin H. Nations of De Ridder, La., brother of Mrs. George Stiles of Floydada, died Friday following an illness of several months.

Mrs. Stiles, who recently returned from a visit there, did not return for the funeral.

Survivors include his wife; four children and grandchildren; one brother, O. Nations of Wheeler and two sisters, Mrs. Stiles and Mrs. F. M. Smith of Port Arthur.

The deceased lived in Floydada for some two years before moving to Louisiana.

LEVELLING GRASSES

LA RUE HUGHES
LANDSCAPING & NURSERY

Box 484 Kress, Texas
PHONE 684-2535

Guaranteed - Free Estimates
Evergreens

Dickie Watson Joins Amarillo National Bank

Dickie Watson, bookkeeper at the First National Bank here, has resigned his position, effective Saturday, November 27. He will assume a similar position at the American National Bank in Amarillo.

Watson has lived in Floydada for the past 12 years. He graduated from high school here and attended West Texas State University in Canyon.

"That is one of the reasons I am going to the Amarillo Bank," Watson said recently. "I will be able to go to college at West Texas in the morning and work in the afternoons." He is majoring in finance.

Abernathy FFA Teams Win In District Contest

The Abernathy Future Farmers of America team took top honors at the District 6 FFA Leadership contest held in Plainview Saturday night. They won three first place awards.

Floydada's FFA team took fifth in farm radio and Lockney's team won first in Farm Quiz and second in farm radio.

Seventeen schools participated in the contest which is a prelude to the Area 1 contest to be held in Plainview on December 4th. First place winners in the district contests throughout the area will compete in the contest.

The state contest will be held December 11 in Huntsville.

Helping Him Out
He--There was something I wanted to say to you, but I forgot what it was now.
She--Was it "good night?"

WESTERS

Thanksgiving Specials
Wed., Fri., & Sat.
Call Us We Deliver
100 Main Yu 3-2534

DEL-MONTE CORN	NO. 303 CANS CR. STYLE GOLDEN 2 FOR 39¢
SHURFINE SAUERKRAUT	NO. 303 CANS 3 FOR 29¢
WILSONS CERTIFIED VIENNA SAUSAGE	NO. 303 CANS 2 FOR 45¢
SHURFINE FRUIT COCKTAIL	NO. 303 CANS 2 FOR 45¢
SHURFINE CRANBERRY SAUCE	NO. 300 CANS 2 FOR 45¢
FRITO CHILI	1 1/2 LB. CAN NO. BEANS 69¢
PEACH PRESERVES	18 OZ. GLASS 2 FOR 69¢
SHURFINE DATES	8 OZ. PKGS. 2 FOR 49¢
SHURFINE TUNA	GRATED 2 FOR 59¢
FRITO TAMALES	NO. 300 CANS 2 FOR 69¢
MARKET SPECIALS	
SWIFTS PROTEN CHUCK ROAST	TENDER LB. 67¢
SWIFTS CHUCK STEAK	LB. 65¢
ALL MEAT FRANKS	LB. 59¢
EHRESMANS SAUSAGE	2 LB. BAG \$1.20

—MENU—
ROAST TURKEY DINNER

MAKE YOUR PLANS NOW TO BRING THE FAMILY TO ROGERS RESTAURANT FOR A MOST ENJOYABLE THANKSGIVING MEAL.
MOM WILL ENJOY THE REST... AND YOU WILL ENJOY THE DELICIOUS HOLIDAY MEAL.

TURKEY	DRESSING	G-BLET GRAVY
CRANBERRY SAUCE	CREAMED POTATOES	
CRANBERRY SALAD	CREAMED CORN	
BUTTERED ASPARAGUS		
PUMPKIN PIE WITH WHIPPED CREAM	TEA OR COFFEE	
HOT ROLLS		

Rogers Restaurant
304 E. HOUSTON PHONE YU 3-3434



Why more motorists switch to the Tiger when it gets cold.

Many cars that ran just fine all summer get into trouble when ear-muff time rolls around - stalling at stoplights and coughing and chugging halfway into town.

That's when a lot of people switch to the Tiger. Winter-formula Enco Extra gasoline is blended to match the weather conditions in your area - including a special additive to help guard against icing. Result: easier starting, faster warm-up and a lot less worry about stalling.

You'll like the way new Enco Extra behaves on the open road, too. It's the High-energy gasoline with the: (1) cleaning power; (2) firing power; (3) octane power to help preserve the performance of new cars and restore lost power and mileage to many older cars.

Switch to the Tiger and get that nice warm feeling. *Happy Motoring!*

Put a Tiger in Your Tank! ENCO EXTRA Gasoline

GOVERNOR LEADS TWO STATE SALUTE TO METHODIST HOME ON 75th ANNIVERSARY



Governor John Connally of Texas is introduced to Ricky Darling, and Bobby Strickland, 13, by Methodist Home Superintendent Hubert Johnson, (at left). The Governor joined several hundred guests and three Bishops of the Methodist Church in celebrating the 75-year-old Home which has served over 8,000 children since its founding in 1890. The Home, located in Lubbock, serves children from Texas and New Mexico who have been separated from their families by social tragedies or other reasons. Known as the Heart of Methodism, the Home will have 650 children find hope and opportunity in 1965.

EDAR HILL NEWS

EDAR HILL, Nov. 20--In-missionaries from Arlington and Mrs. Jerry Smith, will be in the services of the Assembly of God Church. They will be staying with the Slatoons', pastors of the church.

Edie Joe Fortenberry, Mae Lyles, Mrs. Cecil Lyles and children, Mrs. Alfred VanHoose and son, Mr. and Mrs. W. O. Swain, Mrs. Durrell Fortenberry, Mrs. C. F. Lemons, and Mrs. Addie Smith.

Mrs. J. W. Kidd and Mrs. Dick Ellison of Aiken and Mrs. R. H. Kinsley and Mrs. Kenneth Broesh and Darlene of Sterley visited in the home of Mrs. Walter Merrill Thursday.

Marvin Lemons arrived home from California Tuesday afternoon. He will be home until the end of his furlough which is December 6th.

Mrs. Eugene Gilly, Mrs. H. M. Redd, and Mrs. Lillie Lutrell went to Amarillo Monday and visited with Dr. and Mrs. R. A. Hill and Mrs. Virgie Flowers.

Mr. and Mrs. Roy Baxter and Mr. and Mrs. A. S. Mize went fishing Tuesday.

Mrs. Weldon McCormick visited with Mrs. Joe Fortenberry and Mrs. T. F. Love of Floydada Tuesday afternoon.

Mrs. Ona Beth Carter and her son, Charles Glynn, visited in the home of her mother, Mrs. C. A. Purnell one day this week.

Mrs. John Kelley, Mrs. J. A. Welch, and Connie visited in the home of Mrs. M. H. Taylor Wednesday night.

Mrs. M. H. Taylor reports that her son, Mr. Dale Taylor of Hollis, Oklahoma, is recovering from surgery satisfactorily.

Thursday, Mrs. J. R. Kelley and her house guest, Mrs. E. R. Majors, went to Crosbyton and visited with Mrs. Majors' niece, Mrs. G. W. Craze.

Mr. and Mrs. Eddie Whitley and Karl and Mr. James Lemons visited in the home of their parents, Mr. and Mrs. C. F. Lemons, Tuesday night.

Mrs. Eldon Fortenberry visited in the home of her parents, Mr. and Mrs. Vitto of Plainview, Friday.

Mrs. C. A. Stone and her daughter of Snyder visited in the home of her brother, Mr. and Mrs. Frank Floyd, Friday.

Mrs. Billy Clyde Robertson of Post also visited with them.

Mr. and Mrs. Jim Conner, who left the first of November to visit their son, Dr. and Mrs. Stanley Conner of Houston, arrived home Thursday evening.

Mrs. W. E. Lackey and Mrs. Bill DuBois visited in the home of Mrs. C. V. Lemons, Thursday afternoon.

Mr. and Mrs. Lee Trice and Mrs. Robbie Bratton visited their cousin, Mr. and Mrs. Claude Tallant of Claude.

Mrs. Frank Floyd's father and sister, Mr. J. F. Prather and Mrs. C. A. Horsley, spent the week-end with Mr. and Mrs. Frank Floyd.

Mr. and Mrs. Bob Durham visited with Mr. and Mrs. Greer Lackey, who have recently moved to Hurst.

Mrs. Sylvia Yearly was hostess to the 84 Club Wednesday afternoon. Those attending

IRRIGATION WATER COSTS DEPLETION ALLOWED

IRS 'Will Follow' Water Ruling

Area Farmers Seeking 'Simplified Guidelines'

By KENNETH MAY
Avalanche-Journal Staff
The Internal Revenue Service announced Friday it "will follow" a U.S. 5th Circuit Court of Appeals decision allowing South Plains farmers a cost depletion allowance on the irrigation water they use.

Hailed here as a final victory in a decade-long fight by the High Plains Water District, the decision means that land owners will have a savings on their income taxes this year and in years to come.

"We hope to meet with IRS officials in Washington shortly after Thanksgiving to work out simplified guidelines land owners may follow in filing their income tax returns," said George McCleskey, attorney for Marvin Shurbet, Petersburg, in the landmark case.

Investment Varies
Today's announcement by the IRS was important because, despite the court victory in the Shurbet case, there had been no guarantee the revenue service would extend the cost depletion allowance to other farmers.

McCleskey said it is impossible to estimate how much the decision will mean to the area's economy because the investment individual farmers have in their water varies from farm to farm.

Such factors as original water thickness, the amount of water exhausted in a given year, the original cost of the land—and the amount of that cost assigned to the water—will determine each individual's tax saving.

"Guidelines for arriving at the cost depletion were laid down in the court decision," McCleskey pointed out, "but we hope to get them so simple the owner will have no trouble figuring his personal allowance and the IRS will have no trouble accepting his return."

Procedure Outlined
Although land owners may file for cost depletion refunds over three preceding years, many may not do so because of complications involved in filing amended returns.

McCleskey said many persons have expressed concern over how one might arrive at the portion of his original investment

which could be assigned to the water beneath the land.

"This will work the same way you work depreciation on buildings inside the city," he explained. "When you buy a building you pay so much for the lot and so much for the structure. You get no depreciation allowance on the lot, but you do on the building. The same thing will apply to farms: You now will get a depletion allowance for that portion of the purchase price assigned to the water."

Allowances To Vary
In the Shurbet case, one factor weighing heavily on establishing the original cost of the water was a comparison with the price Shurbet paid for his irrigated farm versus the price he would have had to pay for a dryland farm in the same general location with the same terrain and the same improvements.

Thus, persons who bought their irrigated farm land in recent years—after the value of water was recognized—will get a larger cost depletion allowance on their income taxes while those who bought land two decades ago will get comparatively small allowances.

One of the details still to be worked out with the IRS is whether water level measurements made annually by the High Plains Water District will be accepted as the basis for figuring how much water each

Lockney To Install 'Welcome' Signs
LOCKNEY (Special) — A chamber of commerce committee here has voted to sign a contract with West Texas Advertising Sign Co. to erect "Welcome to Lockney" signs at the west and the east city limits. The signs will be leased.

Eldon Roberts headed the committee. The City of Lockney, Lockney Lions Club and Lockney Rotary Club will assist in financing the signs.

were: Mrs. A. S. Mize, Mrs. Mary Lee Swain, and Mrs. Mamie Yearly.

Mr. and Mrs. Frank Floyd visited with his sister, Mrs. C. A. Stone of Snyder, Monday and Tuesday.

Mr. and Mrs. Jerry Billington and Mrs. Sylvia Yearly visited with Mr. and Mrs. Frank Peary, Thursday night.

Mrs. Evelyn Breckenridge and family went to the Lockney Assembly of God Church Thursday night and heard the Cadd Sisters sing.

Mr. and Mrs. W. E. Lackey and Mrs. Bill DuBois visited in the home of Mrs. C. V. Lemons, Thursday afternoon.

Mr. and Mrs. Lee Trice and Mrs. Robbie Bratton visited their cousin, Mr. and Mrs. Claude Tallant of Claude.

Mrs. Frank Floyd's father and sister, Mr. J. F. Prather and Mrs. C. A. Horsley, spent the week-end with Mr. and Mrs. Frank Floyd.

Mr. and Mrs. Bob Durham visited with Mr. and Mrs. Greer Lackey, who have recently moved to Hurst.

farmer exhausted each year. The announcement by the IRS emphasized the Circuit Court decision that water cost depletions allowed under the ruling apply only to underground water in storage in this region. In trial of the Shurbet case here, experts testified the water is trapped in a basin and is not replenished except for small amounts which trickle into the water-bearing sands as a result of surface rains.

"This situation does not exist in the case of areas irrigated from surface waters or from underground sources replenished by underground streams."

In fighting the Shurbet case through the courts, water district officials expressed hope the cost depletion allowance would focus dramatic attention on the fact water supplies in this region are dwindling and thereby would encourage farmers to conserve the precious supply.

"Peculiar Conditions"
In its announcement from Washington today, the IRS said it will follow the court decision "in the disposition of cases involving taxpayers in the Southern High Plains of Texas and New Mexico who extract ground water from the Ogallala formation beneath their land for irrigation purposes."

It added: "The court held that the taxpayers are entitled to a cost depletion deduction for the exhaustion of their capital investment in the ground water extracted and disposed of by them in their business of irrigation farming. The court specifically stated, however, that its decision was not meant to

furnish a precedent for the allowance of cost depletion except under the peculiar conditions of the Southern High Plains."

"Must Prove Depletion"
"Accordingly," the announcement continued, "cost depletion will be allowed to taxpayers in the Southern High Plains under facts similar to those in the Shurbet case. However, taxpayers claiming cost depletion or underground water will be required to prove both their depletion basis (especially where the water deposit was acquired with the purchase of the land for a single price) and the amount of exhaustion of the water deposit beneath their land during the taxable year."

Prior to conferences with IRS officials in Washington within the next two weeks, McCleskey said, he will discuss the cost depletion matter with a number of tax accountants here.

This, he said, will lay the groundwork for arriving at simplified formulas under which each land owner can figure his depletion allowance on a basis acceptable to the revenue service.

Lockney Girl Wins In Area Oratorical Meet

PLAINVIEW (Special) — A Lockney High School sophomore won over students from Lubbock, Slaton and Big Spring high schools here Saturday in district competition of the 29th annual National High School Oratorical Contest sponsored by the American Legion.

Margie Dean, 15, daughter of Mrs. Frankie Dean, Rt. 2, Lockney, was chosen by judges as winner of District 19. She will compete in the division meet at Lubbock High School, Dec. 3. State competition will be Dec. 10 at El Campo High School in El Campo.

Miss Dean's winning speech was titled "Your Responsibilities to Your Constitution." She receives the American Legion Oratorical Medal and a \$215 college scholarship.

Representing Lubbock in the Saturday contest was Nello Armstrong, Lubbock high senior and son of Mr. and Mrs. J. C. Armstrong, 4508 22nd St.

Other contestants were Linda Romines, Slaton High, and James Weaver Brown, Big Spring High School.

Judges for the event, hosted by Wayland Baptist College, included college faculty members Dorothy Watters Jamar, English; Jerry Watson, speech and drama; and Marvin Downing, history.

John Bickley, Lockney, chairman of the 19th District, American Legion in Texas, presided during competition.

Funeral rites for Mrs. Gilbert Huls, 95 year old Floyd County resident, were conducted in Lockney First Methodist Church Friday. Mrs. Huls died Thursday morning in Lockney General Hospital where she had been a patient for the past six weeks.

Born in Paola, Kan., Mrs. Huls moved to Lockney some 38 years ago from Hanna, Okla. She was a longtime member of the Methodist Church and a former Eastern Star.

Survivors include four sons, Loyd and Phil of Eufaula, Okla., Leslie, Perkins, Okla., and Glen of Abilene; two daughters, Mrs. Marie McLain, Oklahoma City and Mrs. Bernice Miller of Lockney; two brothers; 11 grandchildren; and 13 great great grandchildren.

Rev. James Carter, pastor of the church, officiated at rites. Interment was in Lockney cemetery.

SUPERIOR CLEANERS
For Quality Dry Cleaning The Approved Sani-tone Way.
CALL YU 3-3540

Dr. John W. Kimble, O. D.
Floydada, Texas YU 3-2496
AS FOR THE PAST 48 YEARS OPEN ALL DAY SATURDAY
Contact Lenses—Visual Analysis

BETTER Steel Barns

ed in your location. 8'x10 ft. high with 12" sliding door. 310. Call or write

Irwin Young
309 62nd Street phone SH 4-3174 Lubbock, Texas

Thanks be to God Who gives us life,
Homes warm with love, and friends who care;
A country beautiful and blest,
Now rich with harvest everywhere.
Keep us, dear Lord, and those we love
Safe under peaceful skies, we pray.
Guard all those rights we hold so dear—
In freedom's name to go or stay,
Voice our opinions without fear,
In our own ways to worship Thee!
Now as we lift our hearts in praise
God help us share abundantly!

MAUREN MURDOCH

Are you Covered? FIRE AUTO LIFE GROUP Insurance

- ★ LIABILITY
- ★ CROP INSURANCE
- ★ FIRE
- ★ HOSPITALIZATION
- ★ CASUALTY
- ★ WORKMEN'S COMPENSATION
- ★ AUTOMOBILE

"YOUR INDEPENDENT INSURANCE AGENT"

BAKER Insurance Agency
127 W. California Ph. YU 3-3270 SAM BAKER

The ELECTRIC Company
930.5

NOW! '66 CAPRICE BY CHEVROLET

A whole new series of elegant Chevrolets with a whole new choice of features even some of the most expensive makes don't offer

'66 Caprice Custom Coupe— with formal roof line that comes on no other car

Specially instrumented console, with the rich look of walnut, is available for the Custom Coupe

Strato-bucket seats featuring tapered backrests come with console shown at left

New Turbo-Jet V8's are available with up to 425 hp

Vinyl roof cover is available. Outside rearview mirror is one of many safety assists standard on all '66 Chevrolets

Strato-back front seat, available in Custom Coupe and Sedan, has center armrest that folds up for third person

Tilt-telescopic steering wheel moves up or down, in or out, can be added to any model

All told there are 200 ways you can pile luxury upon luxury in the '66 Caprice Custom Coupe, Sedan or Wagons. And that includes creature comforts like four-speaker FM stereo. But the beauty of it is that a Caprice, before you add the first extra, is luxurious above and beyond any other Chevrolet you've ever seen—and many a more expensive make, too. Ready to move up this year? Your Chevrolet dealer is now ready to move you up about as far as you could want to go.

See the new '66 Chevrolet, Chevelle, Chevy II, Corvair and Corvette at your Chevrolet dealer's

42-2914

Oden Chevrolet Co.
221 SOUTH MAIN FLOYDADA, TEXAS

and Butter
Fruit Jello with Whipped Topping
1/2 pint milk

THURSDAY
Salmon Croquettes and Tartar Sauce
Blackeyed Peas
Sassy Cole Slaw
Hot Rolls and Butter
Gingerbread with Applesauce
1/2 pint milk

FRIDAY:
Hot Dogs and Chili
Tomato and Lettuce Salad
French Fries
Boysenberry Cobbler
1/2 pint milk

DIDN'T KNOW HIS RADAR
Fresno, Cal.—When Jerald Hall, a State College student, was charged with speeding, he told the judge he doubted the accuracy of the radar equipment. Hall, accompanied by the judge, checked out his theory and it was wrong. The sentence was suspended but the judge ordered him to write a 1,000-word essay on radar.

CANDY
ALL 5¢ — 10 FOR
39¢

COLGATE
TOOTHPASTE LARGE
39¢

GROOM & CLEAN
HAIR GROOMING 79¢
39¢

ALCOHOL
GREEN — LANOLIN
39¢

VAPO RUB
VICKS
39¢

SUNGLASSES
LADIES
39¢

LIGHT BULB
4 YR. GUARANTEE
39¢

BAND AIDS
39¢

CIGARETTES
3 BARS 5¢ CAND
39¢

FREE
BOYS AND GIRLS CONTEST
\$500 IN PRIZES

Johnson Rexall PHARMACY

The Women's Page



MRS. LEN H. LAYNE nee Dorothy Rodgers

Dorothy Ray Rodgers Wed In Dallas Saturday

Wynne Memorial Chapel in Dallas was the scene of the double ring ceremony uniting Miss Dorothy Ray Rodgers of 2623 Hudnall, Dallas, and Mr. Len H. Layne, 5225 Belmont, Dallas, on Saturday, November 20, at 1 o'clock in the afternoon.

The bride is the daughter of Mr. and Mrs. Raymond J. Rodgers, 1614 Revere Lane, Harlingen, and the granddaughter of Mrs. Eula Thurmon, 415 West Missouri, Floydada. Mrs. Layne is a graduate of Harlingen High School where she was salutatorian of her class, a cheerleader, and class favorite. She received a Bachelor of Arts Degree with honors from the University of Texas where she was a member of Alpha Chi Omega, Panhellenic Council, Orange Jackets, the Spanish honorary fraternity, and a Bluebonnet Belle nominee. She received a Master of Arts in Teaching degree from Vanderbilt University.

The groom is the son of Mrs. Alfred D. Neeley, 7403 Centenary Avenue, Dallas. Mr. Layne is a graduate of Highland Park High School in Dallas and received a B. B. A. degree from Texas A&M College.

The wedding, attended by members of the immediate families, was solemnized by Rev. William M. Elliott, officiating minister. The altar was decorated by a large spray of white gladiolas and roses centered between two graduating candelabra. White satin bows adorned the pews of the mothers and grandmothers of the bride and groom.

For her wedding, the bride chose a gown of ivory silk and imported lace jeweled with tiny silk pearls. The moulded basque bodice was enhanced by an overblouse fashion-

ed with a bateau neckline and elbow length sleeves complemented by short ivory kid gloves. The A-line skirt was street length. Her veil of ivory silk illusion fell to below her shoulders from a Dior bow of the ivory silk complemented by a circle face veil. She carried a cascade of white roses interspersed with yellow roses.

Miss Rose Mary Rodgers of Houston attended her sister as maid of honor. Miss Rodgers wore a dress of the Saint Laurent design in an azure silk. Her circle face veil fell from a pillbox hat covered to match her dress. She carried a nosegay bouquet of blue carnations and Queen Anne's lace.

The bride's mother chose a gown of ice-blue lace and pseudo-sole complemented by the Dior blue silk dress worn by the mother of the groom. Both mothers wore corsages of yellow roses.

Mr. Layne was attended by his step-father, Mr. Alfred D. Neeley, who acted as best man.

A bridal luncheon followed the wedding ceremony and was attended by the families of the couple.

The couple will reside at the Belmont address when they return to Dallas after a wedding trip to New Orleans.

Dorcus Class Holds Annual Party-Social

The Dorcus Sunday School class of Calvary Baptist Church held their annual party social in the home of Mrs. Mabel Epperson Thursday night.

A salad supper was enjoyed by all as well as a question and answer game.

Mrs. Bonnie Threadgill was in charge of the program on Royal Service on Indonesia.

Those present were Girtie Warren, Belva Pricer, Vera Owens, Bernice Carey, Mary Corley, Georgia Foster, Opal Threadgill, Letha Lightfoot, Mabel Epperson, and visitors Opal Campbell and Bonnie Threadgill.

United States sugar costs are called excessive.

Youth In The Safe Society Is Club Program

Members of the 1929 Study Club met Thursday for a program on the role of youth in the safe society. Mrs. Clement McDonald was hostess for the event in her home.

Mrs. Clarence Goins was leader and introduced Lon Johnston, Floydada High School Senior, who attended Boys State this summer. He spoke on the accomplishments the local boys had attained from attending the conferences.

Lovely refreshments were served by Mrs. McDonald to Meses. Hollis R. Bond, C. W. Denison, Kinder Farris, R. E. Fry, Verne Gaunt, Clarence Goins, Clay Henry, J. D. McBrien, Conner Oden, R. W. Overstreet, George V. Smith, J. B. Smitherman, Carl W. Wilkins, Q. D. Williams, C. R. Yeokum, E. G. Clark and Mrs. S. W. Stephens.

During the business meeting the resignation of Mrs. Newell Burk was regrettably accepted.

Germany Is Topic Of 50 Study Club

The topic of "Germany" was the theme for the 1950 Study Club when it met on Tuesday night of last week in the PCA room. Mrs. Louis Anderson was assisted by Mrs. Jimmy Seay in hostess duties.

Mrs. Bob Copeland brought the part, "Heritage of Crises" and Mrs. W. R. Bradshaw brought "Quest for Unity".

During business the resignation of Mrs. Claud Estes and Mrs. Tom Theoford was regrettably accepted by the Club. Members also endorsed the name of Mrs. Lane Decker for First vice-president of the Caprock District.

Gifts for the State Hospital were brought to the meeting which have been mailed. This is an annual project of the club.

Those attending the meeting were Meses. Louis Anderson, Tommy Assiter, W. R. Bradshaw, Bill Cagle, Don Cheek, Bob Copeland, Jack Covington, Charles Craig, Lane Decker, Herman Graham, Sammy Hale, Adrain Helms, Bill Price, Dallas Ramsey, and Mrs. Jimmy Seay.



ELEGANT—An ideal gift for the homemaker: a set of handsome cotton terry towels trimmed with a Schiffli-embroidered border.

Beauty Tips



MRS. AUSTIN HOLMES

W. What do hormone creams or lotions do?

A. They excite skin cells to new vigor. As cells are revitalized, they draw deep moisture from the body. This in turn causes a plumping effect which makes the skin appear younger, firmer, and more vibrant.

Q. Do we need both moisture and hormone lotions?

A. Moisture lotion can't be recommended as a hormone replacement for a mature skin. So, mature skins need both hormone and moisture lotions to remain youthful appearing.

Study Club Has Annual Thanksgiving Dinner

Members of the 1922 Study Club held their annual Thanksgiving dinner Thursday at Rogers Restaurant with turkey and all the trimmings served to 15 members and two guests.

The program was on Americanism, Mrs. L. E. Crabtree was program director and brought the devotional. Members answered roll call with "Why I Like America."

Mrs. D. S. Battey Jr., guest of the club, introduced Mrs. Joe Taylor, Junior Director of the Caprock District of Lockney, who gave an interesting

Miladies Club Annual Thanksgiving Dinner

Miladies Club held their annual Thanksgiving dinner and social Friday night in the Community Room of the First National Bank. Following the meal, games of 42 and 84 were enjoyed as well as a white elephant sale.

Guests for the occasion were Mr. and Mrs. Grady Freeman, Mr. and Mrs. S. D. Medley and Danny, Mary Corley, Pearl Johnston, Ronnie Hill, Ebert Parvin Jr., and Annette Jordan.

Members attending were Mr. and Mrs. Carl Nelson, Shirley and Carla, Mrs. Reus Irwin, Mr. and Mrs. David Summers, Mr. and Mrs. Emmitt Dutton, Mr. and Mrs. Charlie Cross, Mr. and Mrs. Rusty Birchfield, Mr. and Mrs. Wayne Bennett,

talk on Americanism. Members brought their gifts and money for the State Hospital in Wichita Falls.

Those present were Meses. Kenneth Bain, D. S. Battey, P. W. Bell, D. W. Burke, L. E. Campbell, J. V. Daniel, Pearl Fagan, P. D. Helms, W. H. Henderson, Wilson Kimble, R. L. Nichols, Glad Snodgrass, W. O. Tye, Ben Waitaker, J. M. Willson Sr., and guests Mrs. Battey Jr., and Mrs. Taylor.

The next meeting is December 16 for the club's Christmas program with Mrs. Ben Whitaker as hostess.

Mr. and Mrs. W. A. Lovell, Mr. and Mrs. Sam Lide, Mr. and Mrs. Foster Auburn, Mr. and Mrs. Nathan Woody, Debbie and Sandra, Mrs. Jim Owens and Mrs. Vida Womack.



JEWEL REEVES RECEIVES PLAQUE...in honor of deceased husband, Fred Reeves. The plaque was presented to Mrs. Reeves by Judge Elbert Reeves of Matador at a recent open house of the Caprock Circle 100F held in Floydada. The plaque was given for the outstanding work and leadership the deceased 100F member had given his organization.

Bomber reaches 2,000 miles-per-hour mark

HOMEBUILDERS CLUB MEETS

Homebuilders Home Demonstration Club met on November 9th in the Council room with 11 members present. Mrs. O. G. Mayfield was in charge.

The group sang "Savior Like A Shepherd Lead Us." Members answered roll call with a favorite recipe used in autumn.

Mrs. Shirley Race and Mrs. Donnie Race gave a demonstration on making roses out of ribbon for decoration on Christmas packages.

Mrs. Leslie Fawver and Mrs. Albert Mankins were hostesses and served refreshments to Meses. Floyd Fuqua, O. G. Mayfield, Elmer Norrell, Ernie Widener, H. W. Roberts, Raymond Evans, Ernest Kendrick, F. F. Bertrand, Shirley Race and Mrs. Donnie Race.

The club held their annual Thanksgiving dinner on November 21 in the Council room. Fol-

lowing the meal of turkey dressing with all the trimmings games of 42 were played.

Those attending were Mrs. Mayfield, Mrs. Fuqua, Mr. and Mrs. Ver and family, Mrs. Race and Carolyn, Mr. and Mrs. Albert Mankins,

Elmer Norrell and Kathleen, Mrs. Widener and Mrs. Mr. and Mrs. Roberts, Mrs. Raymond Evans, Mrs. W. R. Daniel and Mrs. Mrs. Albert Mankins.

FLOYD DATA
Mrs. Gordon Gray of Diego, Calif., returned home Monday after a two-week visit with her parents, Mr. and Mrs. J. E. Roy and other relatives here. Mr. and Mrs. Roy and family of Dallas weekend visitors in the home and all were entertained a Sunday dinner in the home a daughter and sister, Harold Huggins and family.

See our connoisseur's collection of **Christmas Cards**

25 all alike \$2.00

Two extra envelopes in each box. Beautiful "Gems" by Gibson, the oldest name in Greeting Cards. Our selection is complete.

CHOOSE YOUR CARDS EARLY AND HAVE THEM PERSONALIZED WITH FAMILY OR BUSINESS NAMES!

PARK FLORIST
"VISITORS ARE WELCOME"

SPECIALS

For Your Thanksgiving

HENS GRADE A FAT, HEAVY LB. **45¢**

ROAST CHUCK POUND **49¢**

SWISS STEAK LB. **89¢**

BACON WILSON'S CERTIFIED 2 LB. **\$1.59**

CUT AND WRAPPED FOR YOUR LOCKER. CHOICE HEAVY BEEF. SATISFACTION GUARANTEED.

PINEAPPLE

DEL MONTE FLAT CAN **17¢**

POPCORN

2 LB. CELLO BAG **29¢**

SALAD OLIVES

1 LB. **97¢**

5 OZ. JAR

DUNCAN HINES CAKE MIXES

3 FOR \$1

PRODUCE

BANANAS LB. **9 1/2 ¢**

CELERY STALK **12 1/2 ¢**

POTATOES LB. **6 1/2 ¢**

VANILLA WAFERS

1 LB. CELLO BAG **29¢**

TEA

KIMBELLS 1/2 LB. SIZE **59¢**

SPRITE

6 BOTTLE CARTON **29¢**

BISCUITS

KIMBELLS 10 COUNT **5¢**

PEACHES

NO. 2 1/2 CAN **3 FOR 79¢**

MATERNITIES?

LATEST FASH

DRESSES
FORMALS
LINGERIE
SLACKS
TOPS

MATERNITY SHOP

1005 S. UNIVERSITY
LUBBOCK, TEXAS

CHRISTMAS GOODIES!

IT'S LATER THAN YOU THINK!

A Fairwind Of Do-It-Yourself Materials For Christmas Decorating

SUPPLIES APLENTY SHOP NOW

- Ribbons Galore • Velvets • Satin • Gift Tie • Ornamental Stems • Holly Picks • Poinsettia Picks • Florist Supplies • Votive Holders • Glitter Flowers and Foliage • Fruit Garlands • Kissing Balls • Satin Balls • Candles—All Sizes—All Colors • Miniature Blinking Lights • Balls • Door Rings • Wreaths All Kinds • Pine Cones • Baskets • Prizes Small, Med. & Large • Angels, Assorted • Holly Lantern • Scotch Pine Picks • Musical Santas • Dolls • Christmas trees—All Sizes, Kinds, Colors • Pam Pams • Scented Candles

• OLD FASHIONED WICK LAMP
• SCENTED LAMP OIL

PARK FLORIST
"VISITORS ARE WELCOME"
FLOYDADA

Johnson Rexall PHARMACY

THRIFTY SUPER MARKET

HOME OWNED & OPERATED

DOUBLE BUCCANEER STAMPS EVERY WEDNESDAY

SECOND AND MISSISSIPPI STREETS

LET US GIVE THANKS THIS
Thanksgiving Day

How much we have to be thankful for!
 We are privileged to live in a great and
 prosperous country, as free men, with
 dignity and right of self-government.

Our tables are laden with the bounty of
 this land and our children know no want.
 We worship as we choose, without fear,
 with pride in our beliefs.

For these and other blessings,
 we thank Thee now, O Lord!



**THIS MESSAGE SPONSORED BY
 THE FOLLOWING MERCHANTS:**

Boren Furniture and Appliance

Builders Mart

Caprock Motor Parts & Hardware Inc.

Carmack Feed & Seed Co.

Carthel Butane Co.

City Auto Inc.

Cline & Rainer Your GMC Dealer

Collins Implement Co.

Consumers Fuel Association

Daniel Automotive

Dougherty Grain Co. Inc.

Dyson Shoe Shop

Fieldan Motel

Floyd County Co-op Gin

Floydada Grain Co.

Floydada Implement Co.

Hale & Hale Insurance

Hammond Sheet Metal

Hasley Motor Service

Higginbotham Bartlett Co.

Jarrett Oil Co.

Ladies Three Inc.

Leonard's Cafe

M&N Auto Repair

Mac's 66 Service Station

McLains Conoco

Norrell Tractor Parts Co.

Oden Chevrolet Co.

Payne Implement

Producers Co-op Elevator

Parker Furniture Co.

Quality Body Shop

Reed Ford Sales

Floyd County Hesperian

Russell's Cleaners

Scott Gin

South Plains Co-op Gin

Spears Auto Supply

Superior Drive-In Cleaners

Tastee Freez

United Machine & Supply Inc.

Warren's 66 Service Station

White's Auto Store

Wylie Butane

Parker Studio

Willson & Son

Lighthouse Electric Cooperative

PLAINS NEWS by Mrs. Murray Julian

Cummings Improving

Nov. 20 - Mrs. Sterling Cummings kept the children of Mrs. Zach Cummings while she was in the hospital during the week, and we are glad to hear that Mrs. Zach Cummings may be able to come home on Monday.

The Rev. and Mrs. Sealy Smith and children will have their Thanksgiving day and dinner at Halfway with her sister, Mr. and Mrs. Lester Cox and family.

Mr. and Mrs. Sylvain Kinnibrugh, and Mrs. J. R. Spivey of Truscott, with Beth Kinnibrugh and 3rd Gregory of Floydada were all supper guests at a chop suey dinner in Lockney Friday night with Mr. and Mrs. Ray Dillard.

Mrs. Max Marble underwent major surgery in Plainview Wednesday morning, and according to her aunt, Mrs. Alvin Nichols, who was with her from here, she is getting along fine at this time.

J. Ronald Taylor had the misfortune to hurt his hand dreadfully Tuesday morning at the ranch. They were loading some machinery, and one of his fingers was cut badly when a part of the machinery fell on him. He lost the end of the finger, and the nail in the accident.

La Than Club members will meet in Plainview at the Bowling Alley for games Tuesday, beginning at 9:30, and the group will go to Waynes Restaurant where all will have a pre-Thanksgiving dinner with turkey and all the trimmings. Hostesses for the event will be Mrs. Hansel Sanders, Mrs. Bobby Britton, Mrs. L. N. Johnson, Mrs. Glen Wood and Mrs. Mike Wood.

Mr. and Mrs. Sylvain Kinnibrugh and Beth left this Saturday morning for Truscott to take Mrs. J. R. Spivey home after she had spent the week here with her daughter and family. The Kinnibrughs will be home Sunday night. They had all visited in Lubbock on Wednesday with the Teddy Horne family.

L. N. Johnson and Rev. Sealy Smith went to Paint Rock, which is down near Coleman on Thursday where L. N. Johnson bought some lambs which the children will use in their 4-H club work. They spent Thursday night in Coleman with Rev. and Mrs. Paul Smith, uncle of Rev. Sealy Smith.

Mr. and Mrs. John Key West, Mr. and Mrs. Kenneth Bean and girls, and Dale West from WT at Canyon plan to have their Thanksgiving turkey with Mr. and Mrs. Johnney West and girls.

Members of the Hobby Club met in the home of Mrs. Murray Julian in South Plains on Wednesday afternoon at 2 o'clock with Mrs. Arby Mulder assisting in hostess duties, and Mrs. Fred Fortenberry conducting business, as Mrs. E. J. Kinslow is ill. Plans for the Christmas party were made and members with their husbands will meet for games of forty two in the home of Mr. and Mrs. John Key West, with co-hostess Mrs. Early Pritchett. A light supper is to be served and Christmas gifts will be exchanged. Time will be announced at a later date.

Refreshments of homemade pumpkin pies, whipped cream, tiny sandwiches, candy, nuts and chips were served with coffee by the hostesses. Those present were Mmes. Fred Fortenberry, Horace Marble, L. T. Wood, Grigsby Milton, Sealy Smith, J. P. Taylor, John Key West, Alvin Nichols, Early Pritchett, and hostesses, M. M. Julian and Arby Mulder. Christmas gift suggestions and things to be made were exchanged and shown at the meeting, as members brought gifts they were making for the holidays.

Mr. and Mrs. Early Pritchett are expecting guests in their home for Thanksgiving day and the big dinner. His sister, Mr. and Mrs. L. D. Reid of Dallas, and their children, Mr. and Mrs. Price Pritchett, Jimmy Pritchett and guest Miss Patsy Robertson, all of Canyon where they attend WT College, plan to be with them.

Grigsby Milton and Marvin Wells flew to Dallas Sunday and returned on Wednesday after attending the Farm Bureau Convention which was held at the Adolphus Hotel in Dallas. Terry Julian was also in attendance at the meeting.

South Plains School will have their Thanksgiving room parties in the individual rooms on Wednesday afternoon, with school closing for the holidays, at 2:30 Wednesday afternoon, and opening again Monday morning.

All of the R. E. Young families are planning to have their Thanksgiving dinner at the home of their daughter, Mr. and Mrs. Don Shurbet, and from here those who will go are the Derrrell Youngs and the Travis Young families.

J. Frank Parks will be home Wednesday to spend Thanksgiving here with his parents Mr. and Mrs. I. H. Parks. He is from McMurray College in Abilene.

Mrs. Johnney West's brother, Billy Jack Darden is now stationed with the Armed Forces in Fort Polk, Louisiana. He has been there several weeks.

Thanksgiving Day guests with the Murray Julians will be Mrs. Ruth Burnett of San Antonio, Mr. and Mrs. Bruce Julian of WT at Canyon, who will spend the holidays here and in Floydada, Mr. and Mrs. Kendis Julian and girls, Mr. and Mrs. Terry Julian, Dee and Dickie of Roscoe, Mr. and Mrs. Edell Moore of Floydada, and Mr. and Mrs. R. E. Althof of Roscoe. Mrs. Burnett will spend several days here and in Amarillo, also Roscoe.

Mrs. Bruce Gibson and Steve of Turkey are here this Saturday to stay through next week with Mrs. Raymond Reeves and children while several of the men folk go deer hunting down at Ozona, Tex. Those who will leave Thursday morning for the hunt will be Raymond Reeves, Bruce Gibson, Noel Deavenport, and Jerry Patton.

Mr. and Mrs. Marvin Wells and girls plan to be hosts at the family Thanksgiving Day dinner for members of her family, the Marbles, including the families of Fred, Keith, Don and her parents, the H. L. Marbles.

DOUBLE

S. W. GREEN STAMPS TUESDAY AND WEDNESDAY WITH \$2.50 PURCHASE

PLAN A THANKSGIVING FEAST 'LOW PRICES' U.S.D.A. GRADE 'A' 20 LBS. AND UP

TOM TURKEYS 37¢

HEN TURKEYS 39¢



TURKEYS, HONEY SUCKLE WHITE BRAND 12-16 LB. SIZE 49¢ LB. U.S.D.A. GRADE 'A' 16-20 LB. AVG. TOM TURKEYS, LB. 37¢

U.S.D.A. GRADE 'A' 10-14 LB. AVG. HEN TURKEYS 39¢ LB. SWIFT'S BUTTERBALL BRAND 10-20 LB. AVG. TURKEYS 49¢

FRESH FROZEN FOODS MINCE AND PUMPKIN PIES

SWIFT'S PREMIUM, 5-7 LB. BAKING HENS, LB. 49¢

HORMELS OR SWIFT'S PREMIUM SLICED BACON 79¢ LB.

BANQUET, FAMILY SIZE EACH 29¢



IDEAL, GRADE 'A' MEDIUM EGGS... DOZEN 43¢ BELL'S 1/2 PINT WHIPPING CREAM... 29¢ FASTEST CARD IN THE WEST Join Piggly Wiggly's CASH CLUB Win UP TO \$1000.00 PLUS FREE S. W. GREEN STAMPS!

HOLSUM, PARKERHOUSE ROLLS... 4 24 COUNT PKGS... \$1.00 RICH'S WHIPPED TOPPING... 10 OZ. CAN... 39¢

10¢ OFF LABEL CRISCO OIL 48 OZ. 69¢ 87L. ROYAL, ASST. FLAVORS GELATIN... 3 3 OZ. PKGS. 23¢ NESTLES MORSELS, 5¢ OFF CHOCOLATE CHIPS 17 OZ. PKG... 39¢ ARMOURS VEGETOLE

FRESH PIGGLY WIGGLY PRODUCE!! GOLDEN RIPE BANANAS, LB... 10¢ 1 LB. PACKAGE CRANBERRIES, BOX 19¢ NUT-IN-SHELL ALL VARIETIES LB... 49¢



SHORTENING... 3 LB. CAN 59¢

MIRACLE WHIP 49¢

KRAFTS, SALAD DRESSING QUART JAR

GOLD MEDAL ENRICHED FLOUR... 5 LB. BAG... 49¢ BONNEBELLE, SWEET CREAM BUTTER 1 LB. PKG. 59¢ LIBBY, SOLID PACK PUMPKIN... 2 NO. 303 CANS 25¢ OCEAN SPRAY, STRAINED OZ. WHOLE, CRANBERRY SAUCE 16 OZ. CAN 23¢

WENDY DOLL AT LEAST A \$2.00 VALUE 88¢

FIFTH WEEK COUPONS GOOD NOVEMBER 22 THRU NOVEMBER 29 ANY 79¢ WENDY DOLL FASHION OUTFIT ONLY 59¢ WITH THIS COUPON LIMIT ONE COUPON PER CUSTOMER

FIFTH WEEK COUPONS GOOD NOVEMBER 22 THRU NOVEMBER 29 ANY \$1.29 WENDY DOLL FASHION OUTFIT ONLY 99¢ WITH THIS COUPON LIMIT ONE COUPON PER CUSTOMER

Lowest Prices... Greatest Variety... always at Piggly Wiggly

HERE IT IS ! The New 1966-1967 TEXAS ALMANAC AND INDUSTRIAL GUIDE

OVER 700 PAGES FACTS • FIGURES • PICTURES • GRAPHS • MAPS

New Features:

- 40 TEXAS CITIES - A full page of economic information on each Texas city with a population of 25,000 or more.
 - NEW TEXAS ECONOMIC DATA - Taken from the 1965 Census of Manufactures and Business. Compiled for the first time since 1952.
 - 20 INDIVIDUAL PAGES ON TEXAS HISTORIC SITES - Maps, photographs and detailed information compiled with the assistance from the Texas State Library and Archives staff.
- Other New Features Include:
- Photographs of historical scenes from leading museums, collectors and other sources.
 - Illustrations from the work of leading Texas artists, including Schwartz, Bearden, Mauney, Ellsberg, Ney and others.
 - A pronunciation guide to Texas names not printed since 1952.
 - Full color illustrations used for first time on inside pages.
 - Complete up-to-date election information, including the presidential vote in every election held in Texas and detailed information about elections and elective officials.
 - A new improved fold-out map of Texas.
 - Special historical introductions by authorities on business, industry, petroleum, soil conservation, game and fish and other subjects.

HESPERIAN OFFICE SUPPLY Phone YU 3-3737

SHIRTS \$1.75 \$2.25
RIMMED \$1.75 \$2.25
IVE - BR \$1.75 \$2.25
REG \$1.75 \$2.25
OATS \$1.75 \$2.25
LIM - H \$1.75 \$2.25
1/2 P \$1.75 \$2.25
THE \$1.75 \$2.25
OF TEXAS \$1.75 \$2.25
The source for all information \$1.75 \$2.25
medical, political, geographic \$1.75 \$2.25
with an interest in Texas, will \$1.75 \$2.25
this guide for interesting infor- \$1.75 \$2.25
tion. \$1.75 \$2.25
banking, employment, income, \$1.75 \$2.25
social receipts, etc. in \$1.75 \$2.25
Texas, or doing business in Texas, \$1.75 \$2.25
industries, resources, recre- \$1.75 \$2.25
ation, trade. The development \$1.75 \$2.25
and space-age industries can \$1.75 \$2.25
be found as much information \$1.75 \$2.25
Only the Almanac gives com- \$1.75 \$2.25
prehensive about all 254 Texas coun- \$1.75 \$2.25
ties, brought up to date. Texas \$1.75 \$2.25
Almanac. \$1.75 \$2.25
This \$1.75 \$2.25
more than \$1.75 \$2.25
of each edition... and this \$1.75 \$2.25
is the most attractive, \$1.75 \$2.25
best selling of them all. \$1.75 \$2.25

TV SCHEDULE

FUN FOR THE WHOLE FAMILY!

A NEW TV

- * ADMIRAL TV SETS
- * CURTIS MATHES TV SETS
- * RADIOS STEREOS
- * RECORDS
- * GUARANTEED SERVICE

Mike's TV Lab

NEW LOCATION
315 S. SECOND PHONE YU 3-4023

THURSDAY, NOVEMBER 25	
KCBQ-TV 11	KLBK-TV 13
6:30 Sunrise Semester 7:00 Channel 11 Farm Report 7:25 Weather with Bernie 7:30 TODAY SHOW 7:55 Mike Wallace News 8:00 Captain Kangaroo 8:30 News & Weather 8:50 MARY'S TRAVELING DAY PARADE 9:00 JEOGRAPHY 9:15 LET'S PLAY POST OFFICE 11:35 News 12:00 Noon Report 12:15 Community Close-Up 12:30 LET'S MAKE A DEAL 1:00 The Doctors 1:30 YOU DON'T SAY 1:55 News 2:30 THE NURSES 2:55 Father Knows Best 3:25 News 4:30 SUPERMAN 4:55 THE HUNTLEY BRINKLEY REPORT 6:00 News-Weather 6:30 HULLABALOO 7:00 JOHN FORESYTHE SHOW 7:25 DR. KILDARE I 8:00 ANDY WILLIAMS SHOW 8:30 TEN O'CLOCK NEWS 8:50 TEN O'CLOCK NEWS 10:30 TONIGHT SHOW	7:00 Seven o'Clock Headlines 7:05 Channel 11 Farm Report 7:25 Weather with Bernie 7:30 TODAY SHOW 7:55 Mike Wallace News 8:00 Captain Kangaroo 8:30 News & Weather 8:50 MARY'S TRAVELING DAY PARADE 9:00 JEOGRAPHY 9:15 LET'S PLAY POST OFFICE 11:35 News 12:00 Noon Report 12:15 Community Close-Up 12:30 LET'S MAKE A DEAL 1:00 The Doctors 1:30 YOU DON'T SAY 1:55 News 2:30 THE NURSES 2:55 Father Knows Best 3:25 News 4:30 SUPERMAN 4:55 THE HUNTLEY BRINKLEY REPORT 6:00 News-Weather 6:30 HULLABALOO 7:00 JOHN FORESYTHE SHOW 7:25 DR. KILDARE II 8:00 THE JACK BENNY HOUR 8:30 TEN O'CLOCK NEWS 8:50 TEN O'CLOCK NEWS 10:30 TONIGHT SHOW
KCBQ-TV 11	KLBK-TV 13
6:30 Sunrise Semester 7:00 Channel 11 Farm Report 7:25 Weather with Bernie 7:30 TODAY SHOW 7:55 Mike Wallace News 8:00 Captain Kangaroo 8:30 News & Weather 8:50 MARY'S TRAVELING DAY PARADE 9:00 JEOGRAPHY 9:15 LET'S PLAY POST OFFICE 11:35 News 12:00 Noon Report 12:15 Community Close-Up 12:30 LET'S MAKE A DEAL 1:00 The Doctors 1:30 YOU DON'T SAY 1:55 News 2:30 THE NURSES 2:55 Father Knows Best 3:25 News 4:30 SUPERMAN 4:55 THE HUNTLEY BRINKLEY REPORT 6:00 News-Weather 6:30 HULLABALOO 7:00 JOHN FORESYTHE SHOW 7:25 DR. KILDARE I 8:00 ANDY WILLIAMS SHOW 8:30 TEN O'CLOCK NEWS 8:50 TEN O'CLOCK NEWS 10:30 TONIGHT SHOW	6:00 Sunrise Semester 6:30 Cartoon Circus 7:00 Farm & Ranch News 7:30 Second Cup 7:55 Mike Wallace News 8:00 Captain Kangaroo 8:30 News & Weather 8:50 MARY'S TRAVELING DAY PARADE 9:00 JEOGRAPHY 9:15 LET'S PLAY POST OFFICE 11:35 News 12:00 Noon Report 12:15 Community Close-Up 12:30 LET'S MAKE A DEAL 1:00 The Doctors 1:30 YOU DON'T SAY 1:55 News 2:30 THE NURSES 2:55 Father Knows Best 3:25 News 4:30 SUPERMAN 4:55 THE HUNTLEY BRINKLEY REPORT 6:00 News-Weather 6:30 HULLABALOO 7:00 JOHN FORESYTHE SHOW 7:25 DR. KILDARE II 8:00 THE JACK BENNY HOUR 8:30 TEN O'CLOCK NEWS 8:50 TEN O'CLOCK NEWS 10:30 TONIGHT SHOW
KCBQ-TV 11	KLBK-TV 13
6:30 Sunrise Semester 7:00 Channel 11 Farm Report 7:25 Weather with Bernie 7:30 TODAY SHOW 7:55 Mike Wallace News 8:00 Captain Kangaroo 8:30 News & Weather 8:50 MARY'S TRAVELING DAY PARADE 9:00 JEOGRAPHY 9:15 LET'S PLAY POST OFFICE 11:35 News 12:00 Noon Report 12:15 Community Close-Up 12:30 LET'S MAKE A DEAL 1:00 The Doctors 1:30 YOU DON'T SAY 1:55 News 2:30 THE NURSES 2:55 Father Knows Best 3:25 News 4:30 SUPERMAN 4:55 THE HUNTLEY BRINKLEY REPORT 6:00 News-Weather 6:30 HULLABALOO 7:00 JOHN FORESYTHE SHOW 7:25 DR. KILDARE I 8:00 ANDY WILLIAMS SHOW 8:30 TEN O'CLOCK NEWS 8:50 TEN O'CLOCK NEWS 10:30 TONIGHT SHOW	6:00 Sunrise Semester 6:30 Cartoon Circus 7:00 Farm & Ranch News 7:30 Second Cup 7:55 Mike Wallace News 8:00 Captain Kangaroo 8:30 News & Weather 8:50 MARY'S TRAVELING DAY PARADE 9:00 JEOGRAPHY 9:15 LET'S PLAY POST OFFICE 11:35 News 12:00 Noon Report 12:15 Community Close-Up 12:30 LET'S MAKE A DEAL 1:00 The Doctors 1:30 YOU DON'T SAY 1:55 News 2:30 THE NURSES 2:55 Father Knows Best 3:25 News 4:30 SUPERMAN 4:55 THE HUNTLEY BRINKLEY REPORT 6:00 News-Weather 6:30 HULLABALOO 7:00 JOHN FORESYTHE SHOW 7:25 DR. KILDARE II 8:00 THE JACK BENNY HOUR 8:30 TEN O'CLOCK NEWS 8:50 TEN O'CLOCK NEWS 10:30 TONIGHT SHOW

District FFA Banquet Held Here

Roland Adams and Larry Hunter were Floydada's delegates to the annual District FFA banquet held in the Floydada cafeteria and auditorium last night.

About twenty schools were represented at the meet. Nearly 125 delegates and guests met in the cafeteria for the evening meal then moved to the auditorium.

The highlights of the meeting were the talent and sweetheart

MR. FARMER

COTTON DEFOLIATION TIME IS HERE

FOR YOUR DEFOLIATION & DESICCANT NEEDS CALL

KOOP AERIAL SPRAYERS

FLOYDADA YU 3-4085

AN AERIAL SPRAY OPERATOR THAT SERVES THE FLOYD COUNTY FARMERS THE YEAR 'ROUND.

SATURDAY, NOVEMBER 27	
KCBQ-TV 11	KLBK-TV 13
7:30 Roy Rogers Young Buffalo Bill 8:30 ATOM ANT 9:00 SECRET SQUIRREL 9:30 UNDERDOG 10:00 Top Cat 10:30 FURY 11:00 FIRST LOOK 11:30 EXPLORING 12:05 NCAA FOOTBALL ARMY-NAVY 1:15 Great Moments in Music 3:30 Music Village 4:00 Checkmate 5:00 Lone Ranger 5:25 SCHERER-MENEIL REPORT 6:00 FLIPPER 7:00 I Dream of Jeanie 7:30 GET SMART 8:00 SATURDAY NITE MOVIE "The Gazebo"-Debbie Reynolds, Glenn Ford 8:30 "The Untouchables" "Sheriff Rutledge" "Jeffrey Hunter, Constance Tamm" 10:30 TONIGHT SHOW	6:00 Sunrise Semester 6:30 Sgt. Preston 7:00 Bugs Bunny 7:30 Porky Pie 8:00 HECKLE & JECKLE 8:30 Milton The Monster 9:00 MIGHTY MOUSE 9:30 The Beatles 10:00 TOM & JERRY 10:30 Casper Cartoons 11:00 Sky King 11:30 Lassie 12:00 My Friend Flicka 12:30 American Bandstand 1:30 Film Festival To Be Announced 3:30 Big Time Wrestling 4:30 Bully Lord & The Grand 5:00 Wilburn Brothers Show 5:30 Pickin' Time 6:00 Porter Wagoner 6:30 Legend of Jesse James 7:00 M. L. Callender 7:30 Howdy Doody 8:00 Gunkamo 8:30 News & Weather 10:20 RAINBOW THEATRE To Be Announced 12:30 Late Late Show To Be Announced
KCBQ-TV 11	KLBK-TV 13
8:30 Sherman 9:00 Annie Oakley 9:30 Beanie and Cedi 10:00 Discovery 10:30 Unfolding Drama 11:45 Church Service 12:00 MEET THE PRESS 12:30 Frontiers of Faith 1:00 WILD KINGDOM 1:30 AFL Football 2:00 COLLEGE BOWL 3:00 Frank McGee Report 3:30 Red Raider Show 4:00 News-Weather 4:30 WALT DISNEY 5:00 BRANDED 5:30 BONANZA 6:00 WACKIE SHIP IN THE ARMY 6:30 News & Weather 10:30 Movie Eleven "So Big"-Jane Wyman, Sterling Hayden	7:00 Seven o'Clock Headlines 7:05 Channel 11 Farm Report 7:25 Weather with Bernie 7:30 TODAY SHOW 7:55 Mike Wallace News 8:00 Captain Kangaroo 8:30 News & Weather 8:50 MARY'S TRAVELING DAY PARADE 9:00 JEOGRAPHY 9:15 LET'S PLAY POST OFFICE 11:35 News 12:00 Noon Report 12:15 Community Close-Up 12:30 LET'S MAKE A DEAL 1:00 The Doctors 1:30 YOU DON'T SAY 1:55 News 2:30 THE NURSES 2:55 Father Knows Best 3:25 News 4:30 SUPERMAN 4:55 THE HUNTLEY BRINKLEY REPORT 6:00 News-Weather 6:30 HULLABALOO 7:00 JOHN FORESYTHE SHOW 7:25 DR. KILDARE II 8:00 THE JACK BENNY HOUR 8:30 TEN O'CLOCK NEWS 8:50 TEN O'CLOCK NEWS 10:30 TONIGHT SHOW
KCBQ-TV 11	KLBK-TV 13
6:30 Sunrise Semester 7:00 Channel 11 Farm Report 7:25 Weather with Bernie 7:30 TODAY SHOW 7:55 Mike Wallace News 8:00 Captain Kangaroo 8:30 News & Weather 8:50 MARY'S TRAVELING DAY PARADE 9:00 JEOGRAPHY 9:15 LET'S PLAY POST OFFICE 11:35 News 12:00 Noon Report 12:15 Community Close-Up 12:30 LET'S MAKE A DEAL 1:00 The Doctors 1:30 YOU DON'T SAY 1:55 News 2:30 THE NURSES 2:55 Father Knows Best 3:25 News 4:30 SUPERMAN 4:55 THE HUNTLEY BRINKLEY REPORT 6:00 News-Weather 6:30 HULLABALOO 7:00 JOHN FORESYTHE SHOW 7:25 DR. KILDARE I 8:00 ANDY WILLIAMS SHOW 8:30 TEN O'CLOCK NEWS 8:50 TEN O'CLOCK NEWS 10:30 TONIGHT SHOW	6:00 Sunrise Semester 6:30 Cartoon Circus 7:00 Farm & Ranch News 7:30 Second Cup 7:55 Mike Wallace News 8:00 Captain Kangaroo 8:30 News & Weather 8:50 MARY'S TRAVELING DAY PARADE 9:00 JEOGRAPHY 9:15 LET'S PLAY POST OFFICE 11:35 News 12:00 Noon Report 12:15 Community Close-Up 12:30 LET'S MAKE A DEAL 1:00 The Doctors 1:30 YOU DON'T SAY 1:55 News 2:30 THE NURSES 2:55 Father Knows Best 3:25 News 4:30 SUPERMAN 4:55 THE HUNTLEY BRINKLEY REPORT 6:00 News-Weather 6:30 HULLABALOO 7:00 JOHN FORESYTHE SHOW 7:25 DR. KILDARE II 8:00 THE JACK BENNY HOUR 8:30 TEN O'CLOCK NEWS 8:50 TEN O'CLOCK NEWS 10:30 TONIGHT SHOW

SUNDAY, NOVEMBER 28	
KCBQ-TV 11	KLBK-TV 13
8:30 Sherman 9:00 Annie Oakley 9:30 Beanie and Cedi 10:00 Discovery 10:30 Unfolding Drama 11:45 Church Service 12:00 MEET THE PRESS 12:30 Frontiers of Faith 1:00 WILD KINGDOM 1:30 AFL Football 2:00 COLLEGE BOWL 3:00 Frank McGee Report 3:30 Red Raider Show 4:00 News-Weather 4:30 WALT DISNEY 5:00 BRANDED 5:30 BONANZA 6:00 WACKIE SHIP IN THE ARMY 6:30 News & Weather 10:30 Movie Eleven "So Big"-Jane Wyman, Sterling Hayden	7:00 Seven o'Clock Headlines 7:05 Channel 11 Farm Report 7:25 Weather with Bernie 7:30 TODAY SHOW 7:55 Mike Wallace News 8:00 Captain Kangaroo 8:30 News & Weather 8:50 MARY'S TRAVELING DAY PARADE 9:00 JEOGRAPHY 9:15 LET'S PLAY POST OFFICE 11:35 News 12:00 Noon Report 12:15 Community Close-Up 12:30 LET'S MAKE A DEAL 1:00 The Doctors 1:30 YOU DON'T SAY 1:55 News 2:30 THE NURSES 2:55 Father Knows Best 3:25 News 4:30 SUPERMAN 4:55 THE HUNTLEY BRINKLEY REPORT 6:00 News-Weather 6:30 HULLABALOO 7:00 JOHN FORESYTHE SHOW 7:25 DR. KILDARE II 8:00 THE JACK BENNY HOUR 8:30 TEN O'CLOCK NEWS 8:50 TEN O'CLOCK NEWS 10:30 TONIGHT SHOW
KCBQ-TV 11	KLBK-TV 13
6:30 Sunrise Semester 7:00 Channel 11 Farm Report 7:25 Weather with Bernie 7:30 TODAY SHOW 7:55 Mike Wallace News 8:00 Captain Kangaroo 8:30 News & Weather 8:50 MARY'S TRAVELING DAY PARADE 9:00 JEOGRAPHY 9:15 LET'S PLAY POST OFFICE 11:35 News 12:00 Noon Report 12:15 Community Close-Up 12:30 LET'S MAKE A DEAL 1:00 The Doctors 1:30 YOU DON'T SAY 1:55 News 2:30 THE NURSES 2:55 Father Knows Best 3:25 News 4:30 SUPERMAN 4:55 THE HUNTLEY BRINKLEY REPORT 6:00 News-Weather 6:30 HULLABALOO 7:00 JOHN FORESYTHE SHOW 7:25 DR. KILDARE I 8:00 ANDY WILLIAMS SHOW 8:30 TEN O'CLOCK NEWS 8:50 TEN O'CLOCK NEWS 10:30 TONIGHT SHOW	6:00 Sunrise Semester 6:30 Cartoon Circus 7:00 Farm & Ranch News 7:30 Second Cup 7:55 Mike Wallace News 8:00 Captain Kangaroo 8:30 News & Weather 8:50 MARY'S TRAVELING DAY PARADE 9:00 JEOGRAPHY 9:15 LET'S PLAY POST OFFICE 11:35 News 12:00 Noon Report 12:15 Community Close-Up 12:30 LET'S MAKE A DEAL 1:00 The Doctors 1:30 YOU DON'T SAY 1:55 News 2:30 THE NURSES 2:55 Father Knows Best 3:25 News 4:30 SUPERMAN 4:55 THE HUNTLEY BRINKLEY REPORT 6:00 News-Weather 6:30 HULLABALOO 7:00 JOHN FORESYTHE SHOW 7:25 DR. KILDARE II 8:00 THE JACK BENNY HOUR 8:30 TEN O'CLOCK NEWS 8:50 TEN O'CLOCK NEWS 10:30 TONIGHT SHOW

Fairview News by Mrs. Clyde Bagwell

DuBoises Return From East Tex

FAIRVIEW, Nov. 20 - Mrs. Edell DuBois and son, Bill, returned home Thursday afternoon late from East Texas where they had gone on Sunday before, to be at the bedside of a sick relative, Mrs. Roy DuBois. She has improved some but will have to remain in the hospital for several more days. While down that way Mrs. DuBois and Bill visited relatives at Eddy, Jewett and Buffalo.

Mrs. Ruey Irwin was among those attending the Thanksgiving supper put on by members of the Miladies Club at the community room of First National Bank Friday night.

Mrs. E. W. Walls spent Wednesday in Plainview. While there she visited in the Dean Walls home and had dinner with them.

Mrs. C. W. Denison visited a short while with Mrs. Clyde Bagwell Thursday afternoon.

MONDAY, NOVEMBER 29	
KCBQ-TV 11	KLBK-TV 13
7:00 Seven o'Clock Headlines 7:05 Channel 11 Farm Report 7:25 Weather with Bernie 7:30 TODAY SHOW 7:55 FRACTURED PHRASES 8:30 Concentration 9:00 MORNING STAR 10:30 PARADISE BAY 11:30 JEOGRAPHY 11:55 LET'S PLAY POST OFFICE 12:00 News 12:15 Community Close-Up 12:30 LET'S MAKE A DEAL 1:00 DAYS OF OUR LIVES 1:30 The Doctors 2:00 Another World 2:30 YOU DON'T SAY 3:00 THE MATCH GAME 3:25 News 3:30 The Nurses 4:00 Father Knows Best 4:30 Superman 5:00 Woody Woodpecker 5:30 HUNTLEY BRINKLEY REPORT 6:00 News-Weather 6:30 HULLABALOO 7:00 JOHN FORESYTHE SHOW 7:25 DR. KILDARE I 8:00 ANDY WILLIAMS SHOW 8:30 TEN O'CLOCK NEWS 8:50 TEN O'CLOCK NEWS 10:30 TONIGHT SHOW	6:00 Sunrise Semester 6:30 Cartoon Circus 7:00 Farm & Ranch News 7:30 Second Cup 7:55 Mike Wallace News 8:00 Captain Kangaroo 8:30 News & Weather 8:50 MARY'S TRAVELING DAY PARADE 9:00 JEOGRAPHY 9:15 LET'S PLAY POST OFFICE 11:35 News 12:00 Noon Report 12:15 Community Close-Up 12:30 LET'S MAKE A DEAL 1:00 The Doctors 1:30 YOU DON'T SAY 1:55 News 2:30 THE NURSES 2:55 Father Knows Best 3:25 News 4:30 SUPERMAN 4:55 THE HUNTLEY BRINKLEY REPORT 6:00 News-Weather 6:30 HULLABALOO 7:00 JOHN FORESYTHE SHOW 7:25 DR. KILDARE II 8:00 THE JACK BENNY HOUR 8:30 TEN O'CLOCK NEWS 8:50 TEN O'CLOCK NEWS 10:30 TONIGHT SHOW
KCBQ-TV 11	KLBK-TV 13
7:00 Seven o'Clock Headlines 7:05 Channel 11 Farm Report 7:25 Weather with Bernie 7:30 TODAY SHOW 7:55 FRACTURED PHRASES 8:30 Concentration 9:00 MORNING STAR 10:30 PARADISE BAY 11:30 JEOGRAPHY 11:55 LET'S PLAY POST OFFICE 12:00 News 12:15 Community Close-Up 12:30 LET'S MAKE A DEAL 1:00 DAYS OF OUR LIVES 1:30 The Doctors 2:00 Another World 2:30 YOU DON'T SAY 3:00 THE MATCH GAME 3:25 News 3:30 The Nurses 4:00 Father Knows Best 4:30 Superman 5:00 Woody Woodpecker 5:30 HUNTLEY BRINKLEY REPORT 6:00 News-Weather 6:30 HULLABALOO 7:00 JOHN FORESYTHE SHOW 7:25 DR. KILDARE II 8:00 THE JACK BENNY HOUR 8:30 TEN O'CLOCK NEWS 8:50 TEN O'CLOCK NEWS 10:30 TONIGHT SHOW	6:00 Sunrise Semester 6:30 Cartoon Circus 7:00 Farm & Ranch News 7:30 Second Cup 7:55 Mike Wallace News 8:00 Captain Kangaroo 8:30 News & Weather 8:50 MARY'S TRAVELING DAY PARADE 9:00 JEOGRAPHY 9:15 LET'S PLAY POST OFFICE 11:35 News 12:00 Noon Report 12:15 Community Close-Up 12:30 LET'S MAKE A DEAL 1:00 The Doctors 1:30 YOU DON'T SAY 1:55 News 2:30 THE NURSES 2:55 Father Knows Best 3:25 News 4:30 SUPERMAN 4:55 THE HUNTLEY BRINKLEY REPORT 6:00 News-Weather 6:30 HULLABALOO 7:00 JOHN FORESYTHE SHOW 7:25 DR. KILDARE II 8:00 THE JACK BENNY HOUR 8:30 TEN O'CLOCK NEWS 8:50 TEN O'CLOCK NEWS 10:30 TONIGHT SHOW

TUESDAY, NOVEMBER 30	
KCBQ-TV 11	KLBK-TV 13
7:00 Seven o'Clock Headlines 7:05 Channel 11 Farm Report 7:25 Weather with Bernie 7:30 TODAY SHOW 7:55 FRACTURED PHRASES 8:30 Concentration 9:00 MORNING STAR 10:30 PARADISE BAY 11:30 JEOGRAPHY 11:55 LET'S PLAY POST OFFICE 12:00 News 12:15 Community Close-Up 12:30 LET'S MAKE A DEAL 1:00 DAYS OF OUR LIVES 1:30 The Doctors 2:00 Another World 2:30 YOU DON'T SAY 3:00 THE MATCH GAME 3:25 News 3:30 The Nurses 4:00 Father Knows Best 4:30 Superman 5:00 Woody Woodpecker 5:30 HUNTLEY BRINKLEY REPORT 6:00 News-Weather 6:30 HULLABALOO 7:00 JOHN FORESYTHE SHOW 7:25 DR. KILDARE II 8:00 THE JACK BENNY HOUR 8:30 TEN O'CLOCK NEWS 8:50 TEN O'CLOCK NEWS 10:30 TONIGHT SHOW	6:00 Sunrise Semester 6:30 Cartoon Circus 7:00 Farm & Ranch News 7:30 Second Cup 7:55 Mike Wallace News 8:00 Captain Kangaroo 8:30 News & Weather 8:50 MARY'S TRAVELING DAY PARADE 9:00 JEOGRAPHY 9:15 LET'S PLAY POST OFFICE 11:35 News 12:00 Noon Report 12:15 Community Close-Up 12:30 LET'S MAKE A DEAL 1:00 The Doctors 1:30 YOU DON'T SAY 1:55 News 2:30 THE NURSES 2:55 Father Knows Best 3:25 News 4:30 SUPERMAN 4:55 THE HUNTLEY BRINKLEY REPORT 6:00 News-Weather 6:30 HULLABALOO 7:00 JOHN FORESYTHE SHOW 7:25 DR. KILDARE II 8:00 THE JACK BENNY HOUR 8:30 TEN O'CLOCK NEWS 8:50 TEN O'CLOCK NEWS 10:30 TONIGHT SHOW
KCBQ-TV 11	KLBK-TV 13
7:00 Seven o'Clock Headlines 7:05 Channel 11 Farm Report 7:25 Weather with Bernie 7:30 TODAY SHOW 7:55 FRACTURED PHRASES 8:30 Concentration 9:00 MORNING STAR 10:30 PARADISE BAY 11:30 JEOGRAPHY 11:55 LET'S PLAY POST OFFICE 12:00 News 12:15 Community Close-Up 12:30 LET'S MAKE A DEAL 1:00 DAYS OF OUR LIVES 1:30 The Doctors 2:00 Another World 2:30 YOU DON'T SAY 3:00 THE MATCH GAME 3:25 News 3:30 The Nurses 4:00 Father Knows Best 4:30 Superman 5:00 Woody Woodpecker 5:30 HUNTLEY BRINKLEY REPORT 6:00 News-Weather 6:30 HULLABALOO 7:00 JOHN FORESYTHE SHOW 7:25 DR. KILDARE II 8:00 THE JACK BENNY HOUR 8:30 TEN O'CLOCK NEWS 8:50 TEN O'CLOCK NEWS 10:30 TONIGHT SHOW	6:00 Sunrise Semester 6:30 Cartoon Circus 7:00 Farm & Ranch News 7:30 Second Cup 7:55 Mike Wallace News 8:00 Captain Kangaroo 8:30 News & Weather 8:50 MARY'S TRAVELING DAY PARADE 9:00 JEOGRAPHY 9:15 LET'S PLAY POST OFFICE 11:35 News 12:00 Noon Report 12:15 Community Close-Up 12:30 LET'S MAKE A DEAL 1:00 The Doctors 1:30 YOU DON'T SAY 1:55 News 2:30 THE NURSES 2:55 Father Knows Best 3:25 News 4:30 SUPERMAN 4:55 THE HUNTLEY BRINKLEY REPORT 6:00 News-Weather 6:30 HULLABALOO 7:00 JOHN FORESYTHE SHOW 7:25 DR. KILDARE II 8:00 THE JACK BENNY HOUR 8:30 TEN O'CLOCK NEWS 8:50 TEN O'CLOCK NEWS 10:30 TONIGHT SHOW

Plan For Water Next Year

Order Your KMP Lake Pump Now

KMP OFFERS

- NO PRIMING
- EASY TO MOVE
- NO CLOGGING
- PRECISION BUILT

And Mr. Farmer The KMP Is The Most Efficient Tail Water Pump On The Market

See or Call
W. G. Waker

FLOYDADA PHONE YU 3-3910
or
FLOYDADA BUTANE
LOCKNEY HIGHWAY PHONE YU 3-2413

Cotton Quota Vote Set Today

The annual vote on cotton quotas in Floyd County for the 1966 crop will be held tomorrow at various places in the county. All farmers eligible in the production of Upland cotton in 1965 are eligible to vote.

If at least two-thirds of the growers voting in the referendum approve quotas for the 1966 upland cotton crop, growers who agree to reduce their cotton acreage below the effective farm allotment will have a broad program available, offering loans, and price-support and diversion payments. Marketing quota penalties would apply to any excess cotton produced on a farm. However, growers would also have the chance to produce cotton for export only, without marketing penalties or Government subsidy.

If more than one-third of the voters oppose quotas for the 1966 crop, the regular allotment program will remain in effect, and the price support will be available to growers who do not exceed their acreage allotments at 50 percent of parity, as provided by law.

POLLING PLACES

Polling places where Floyd County farmers are eligible to vote in the referendum are:

1. Who spoke these words...
2. To whom were they...
3. What was their...
4. Where are they...

Answers to Bible Questions:

1. Jesus.
2. A young man, who was named as "the Ruler."
3. He "went away..."
4. Matthew 19:12.

COTTON ON THE GROUND... Pick it up!

WITH A **ROOD** Cotton Harvester

SALES SERVICE PARTS NEW & USED MACHINERY

Farm Proven Quality

TEXAS COTTON HARVESTER SALES

5604 S. QUIRT SH 7-1261 LUBBOCK

IT'S COTTON PICKING TIME... AND COTTON SEED DELINTING TIME

Simply Call YU 3-3211

IF YOU LET US CATCH YOUR COTTON SEED AT THE GIN, WET ACID DELINT, CLEAN, GRADE, BAG AND STORE UNTIL JANUARY 1967, YOU WILL HAVE ONLY 7 TO 8 CENTS PER POUND INVESTED.

PLENTY OF HEAVY DUTY TRAILERS AND PICKUPS COME WITH MORE WAREHOUSE SPACE, MORE AND BETTER DELINTING EQUIPMENT... THESE ARE ONLY A FEW REASONS WHY YOU RECEIVE FAST, EFFICIENT SERVICE AT FLOYDADA DELINTING.

And We Certainly Appreciate Your Business

FLOYDADA SEED & DELINTING CO.

INCORPORATED

WANT BETTER JOBS ADS LOST and FOUND REAL ESTATE

Advertising rate: 5 cents per word first insertion 3 cents each subsequent insertion. Charge 50 cents. Display Rate: 75 cents per column.

of Thanks \$1. DEADLINE NOON TUESDAYS

WANTED

WANTED responsible party to take over payments on late model Singer sewing machine in Floydada area. Will zig-zag, fancy stitches, etc. 5 payments at \$4.96 or \$25.00 cash. Write Credit Department, 1114 19th Street, Lubbock, Texas. tfc

WANTED - Custom bailing and swathing Dick Mayfield, 4550 Bean, Texas, Silverton. tfc

PLAYTIME NURSERY. 8:00 to 5:30 Monday thru Friday. Mrs. George Spears, 709 West Virginia, YU3-2819. tfc

EMPLOYMENT

HELP WANTED

WANTED: Experienced combination painter and body man. Good working conditions. Group insurance. Weekly draw. We have the work. Cooper Pontiac-Cadillac, Plainview, Texas. CA4-7270. H. T. Sloan-CA4-7055. 12-2c

WANTED - Experienced fountain help and car hop. Call Dairy Mart, YU3-8108. tfc

SLEEP WHILE YOUR WANT AD WORKS

FOR RENT

FOR RENT: 2 bedroom mobile home. Call YU3-2241 or 321 W. Georgia. tfc

FOR RENT: Three bedroom house and three room furnished house. Call YU3-3123 or come by 1120 S. Main. tfc

Farm For Sale

If you are looking for one of the best 106 acre farms in Hale County see J. E. Black 1 mile northwest of Petersburg. This farm is improved, has two irrigation wells, 5 room, 2 bath house, 37 8/10 acre cotton allotment. 20 year terms, in good water belt. tfc

LOST AND FOUND

LOST: Hubcap for 1964 Ford south of Brown Gin on Ralls highway. Phone YU3-3982. 11-18p

THE NEW TEXAS ALMANACS ARE HERE

HESPERIAN OFFICE SUPPLY

MISCELLANEOUS

FOR SALE - Small acreage with barns and lots. YU3-4170. 12-2c

SHOP FLOYDADA AND SAVE

INVESTIGATE The Marshall plan of heating in your home. The under ceiling heat is pulled into the attic, into a box, recirculated down to the floor, through petition wall and out on either side. Makes an extra stove, the heat is free, operating cost a penny a day. Saves about half your fuel bill. See L. A. Marshall, 602 S. Wall. YU3-3169.

FOR SALE - Good used upright Singer vacuum cleaner. YU3-3088. tfc

COMPLETE LINE OF FRANKLIN VETERINARY SUPPLIES Available at Bishop's Pharmacy tfc

EVERYTHING in musical instruments and accessories and repair parts. Johnson's Pharmacy. tfc

WE BUY radios in need of repairs. Roy L. Linch, Floydada Trading Center, 406 E. Houston. tfc

FOR RENT - Adding machines and typewriters. Hesperian Office Supply, Phone YU3-3737. tfc

FOR SALE: Mink cape. Can be seen at 114 W. Tennessee St. tfc

FOR SALE - Custom Mag wheel covers, 15" solid chrome, excellent condition. 12-2p

FOR SALE - Low mileage, one owner sport sedan 1964 Chevrolet. All extras including air conditioning. See or call Ted Allen. tfc

DESIRABLE 81' lot in west Floydada on Virginia Street in new brick home neighborhood. Call YU3-2771 tfc

FOR SALE - an original share or associate share in Country Club. Call Sam Baker. YU3-3270. tfc

FOR SALE: 2 ranges, washer and dryer, have been used for demonstrations. Light-house Electric. tfc

CARPETS a fright? Make them a beautiful sight with Blue Lustre. Rent electric shampooer \$1. Boren Furniture 11-22-65

CLEAN used furniture bought and sold. Floydada Trading Center. Roy L. Linch, owner. 406 E. Houston. tfc

COUNTRY CLUB STOCK, original voting share. Call YU3-2771. tfc

FOR SALE - Electric food slicer, hand hair dryer, portable sewing machine, antique rocking chair. Mrs. Preston Watson, 813 W. Lee. tfc

FOR SALE - Repossessed 65 model sewing machines, Singers, Whites, Universals, Remingtons; guaranteed. Singer is in 4 drawer walnut cabinet; will zig-zag, blind hem, fancy stitches, etc. \$34.50 cash or 7 payments at \$5.96. Must have good credit. Write Lubbock Sewing Center, 1114 19th Street, Lubbock, Texas. tfc

Mrs. Virginia Dyson wins two free passes to see "The Family Jewels" at the Capada Drive-In Theater on Thursday or Friday night. 11-22-65

COW POKES

By Ace Reid



Wul, I jist can't enjoy any of this prosperity fer dreadin' the day when the bottom falls out again.

AUTO, FIRE & FARM INSURANCE

Floydada Real Estate & Insurance Agency JIM WORD PHONE YU 3-3360

WE FIX IT

WE FIX IT - Hearing Aid Repair on all kinds. Johnson Pharmacy. tfc

COMPLETE Vacuum Sweeper Service including hose installed on all makes. Home Appliance Service. 116 W. Missouri Street. YU 3-2846 3 tfc

WANTED: Electric Motor Repair service. Call Home Appliance, 116 W. Missouri St. YU 3-2846. 38tfc

ALL Parts for some washers, some parts for all washers. Complete line of belts for all washers and dryers. Home Appliance Service, 116 W. Missouri Street. YU 3-2846. tfc

FOR ANY TYPE BEDDING, TEXTONING, BEDDING AND TAPING, ROOFING, ALMOST ANY REPAIR WORK, CALL LUBBOCK BILL BUSCH - ROY DILLON SH 4-7932 SH 7-1057

TWO good used check writing machines. Your choice \$27.50. Hesperian Office Supply, Phone YU3-3737. tfc

TREAT rugs right - they'll be a delight if cleaned with Blue Lustre. Rent electric shampooer \$1. Boren Furniture. tfc

WE CLEAN AND TUNE **ELECTRIC SHAVERS** REPAIR ALL MAKES SELL AND TRADE ALL MAKES **GOEN DRUG AND PHARMACY** PHONE YU 3-3382

SHOP FLOYDADA AND SAVE

ARTHUR B. DUNCAN ABSTRACT COMPANY MAUD E. HOLLUMS Owner and Manager **ABSTRACTS - TITLE INSURANCE** Agents for Stewart Title Guaranty Company, member Texas Title Association and American Title Association. Telephone YU 3-3167 Office on South East Corner public square, Corner California and Wall, Floydada, Texas. "The Oldest Abstract plant in Floyd County."

FOR RENT

FOR RENT: One bedroom house in country on highway. Refrigerator and stove furnished. Call YU3-3894. tfc

FOR RENT - Unfurnished three room house. Call YU3-3140. tfc

FOR RENT: Furnished apartments and bedrooms. 102 E. Houston on Highway 70. tfc

FOR RENT - 2 bedroom unfurnished house. 608 So. Wall. See L. A. Marshall at 602 S. Wall. YU3-3169. tfc

FOR RENT: 3 room house with bath. Newly decorated inside and out. YU3-2202. tfc

FOR RENT - Small furnished apartment. Call YU3-3178. tfc

FOR RENT: 3 room furnished apartment. 610 W. Jackson. YU3-2169. tfc

FOR RENT - Brick building east side court house, Floydada, and residence 3 miles east on pavement. See E. L. Norman, First National Bank or call YU3-2158. tfc

FARMERS EXCHANGE

FARM MACHINERY

FOR SALE: Used Farm Machinery. Lawson Bros. E. Missouri St. tfc

NORRELL TRACTOR PARTS for Tractor and Irrigation Supplies and Accessories. tfc

IRRIGATION

WE'LL PAY top prices for junk irrigation engines, wrecks of all kinds. See us for rebuilt engines, guaranteed, of all kinds. Engine Supply. Phone YU 3-4071, Silverton Hwy. tfc

FEED, SEED & GRAIN

NEED Some Good Feed Oats? Northern white oats from the Dakotas. \$1.05 bushel bulk. Producers Co-op Elevator. tfc

FOR SALE - 22" x 34" aluminum sheets which would be fine for covering outside of barns, garages, etc. . . . make good roof with tar sealer. 10¢ each. Blanco Offset Printing. Phone YU3-3737. tfc

FARMS & RANCHES

FOR SALE - 160 acres grassland southeast of Floydada in water belt. \$135 per acre. \$7,500 down balance 5 1/2%, 1/2 min. John Garner, Silverton, Tex. Ph. 4196 Bean Tex. tfc

FOR SALE - 74 acres dryland, eight miles east Floydada. \$250 per acre, subject to irrigation. Goen & Goen, Phone YU3-3524. tfc

FOR LEASE - One quarter, irrigated farm, good house, quonset barn, 8-inch well, natural gas, underground tile, 3 miles South of Dougherty. Howard Gwens, Jr., Rt. 1, O'Donnell, Texas. 12-9c

FOR SALE: 120 acres, two 4-inch wells. \$325 per acre. B. B. Wilkes, Realtor, Phone OL4-3542, Lockney. 12-2c

ACCEPTING lease bids per acre on good level irrigated farm four miles from Floydada. Send bids to Box SW7, vd County Hesperian. 12-2p

FARM & RANCH LOANS

SHOP FOR a loan like you shop for a farm. Find out about the loan that financed a million farms and ranches - a long-term, low payment. Fed. Land Bank Loan. See Jake B. Watson at the Federal Land Bank Association of Floydada. 319 S. Main, Floydada Texas. tfc

FARM LOANS: See us for Farm Loans, higher appraisals, prompt closing and excellent prepayment options. GOEN & GOEN tfc

WANT TO EMPLOY EXPERIENCED SECRETARY

LOCAL FIRM HAS OPENING FOR EXPERIENCED SECRETARY. GOOD SALARY AND FRINGE BENEFITS FOR QUALIFIED PERSON.

WRITE QUALIFICATIONS, TRAINING, EXPERIENCE AND REFERENCES TO

BOX HIO
C-O FLOYD COUNTY
HESPERIAN
FLOYDADA, TEXAS 79235

Dr. O. R. McINTOSH
OPTOMETRIST
211 SOUTH MAIN ST.
MEMBER Phone YU 3-3460—Floydada, Tex.

JOHN B. STAPLETON
LAWYER
101 N. Main Street
TEL. YU 3-2197

HOUSES FOR SALE

MOBILE HOME FOR SALE - 2 bedroom, living room, kitchen, bath with washer. 720 N. 2nd. YU3-2334 or YU3-2359. tfc

FOR SALE - Two bedroom, excellent location, all electric kitchen with built-ins, fenced. 803 W. Jackson, YU3-2339. 12-9p

FOR SALE: 2 bedroom house. Johnson Pharmacy. tfc

FOR QUICK SALE - Nice 2 bedroom house, double garage. 5 acres of land. Hale & Hale, YU3-3261. tfc

FOR SALE: To settle the Earl Rainer Estate. 3 bedroom home at 622 West California and Rainer Shoe Shop. Call YU 3-2437. tfc

FOR SALE - Large 3 bedroom house, well located. Small down payment. Hale and Hale, YU3-3261. tfc

FOR SALE - Three bedroom home to be moved. YU3-2272. 12-9p

FOR SALE - Two bedroom house. 513 West Tenn. YU3-4170. 12-2c

FOR SALE - Two bedroom house, living room, den, garage. 803 W. Lee. YU3-2271. tfc

FOR SALE - 3 bedroom, 2 baths, brick. 717 West Tennessee. YU3-2496. tfc

FLOYDADA MERCHANTS APPRECIATE YOUR BUSINESS

EXTRA NICE three bedroom brick home in good locality in N. W. Plainview. Wall to wall carpet and fenced backyard. For sale or would trade for home in Floydada. See: call Ted Allen, YU3-2597. tfc

FOR SALE - 2 bedroom house, 509 S. Main. Goen & Goen, Phone YU3-3524. tfc

FOR SALE: house and acreage. Bob Muncy. tfc

FOR SALE - Suburban home sites. One half acre tract. One mile west of Floydada. Water, electricity, natural gas on premises. Call Sam Puckett or Ralph Rucker. tfc

MOBILE HOME PARTS - SALES PLAINSWAY TRAILER HAVEN

NICE PLACE FOR NICE PEOPLE

J. W. EATMON

CA 3-4346
3017 DIMMITT HIGHWAY
PLAINVIEW, TEXAS 79072

RADIATORS NEW AND USED CLEANED - REPAIRED RECORDED

BADGETT RADIATOR SHOP
Radiator Service
YU 3-3454

Home Made Eggs

Enjoy fresh home produced eggs from.....

CARMACK'S

English Walnuts-Pecans-Almonds
BUSINESS went to NUTS
ARTWAY
TREE SURGERY
Feeding-Fruiting-Treating
-Spraying-Landscaping
H. B. FOSTER P.O. Box 681
Lockney, Texas

Hollis R. Bond
Real Estate

(Successor to Massie & Bond)
BOOTHE BUILDING FLOYDADA

For Prompt Service on Home & Auto Radios See **RICE** RADIO SERVICE 1/2 blk. n. of bus station

FOOTE BUTANE

Call YU 3-3220
Gasoline - Oils - Grease For Delivery Butane - Propane Foote Butane & Oil Co. East Highway 70 FLOYDADA

SEED WHEAT WICHITA - TASCOSA KAW

Clemed and treated. in bulk

\$1.85 per bushel

Muncy Elevator
OL 4-3100

See or Call **DANIEL AUTOMOTIVE**

Your Authorized **KELVINATOR** Dealer For Kelvinator Refrigerators and Appliances

Good Used Refrigerators

Refrigeration Service by **L. D. BRITTON**
YU 3-2382 123 W. Calif.

SEE NEXT WEEK'S HESPERIAN FOR THE BIG DOLLAR DAY SPECIALS

TEXAS ARE
SUPPLY
MACHINES
SUPPLY
COUNTY
CT CO.
of Title
STEWART
Ph. YU 3-3728
Texas
WEIGHT
without a doc-
our product
You must lose
money back.
let and easily
nd of excess fat
Galaxon costs
on this guaran-
ted for any rea-
and get your full
No questions
is sold with
PHARMACY
DADA
ES FILLED
DS
666

Cheaper than rent!

105 J.B. AVENUE

\$200 DOWN TO ALL VETERANS
M&K CONSTRUCTION

Floydada Dealer Sees Preview Of 1966 MM Lines At Plainview

Tom Burrow of Payne Implement Co. attended the 1966 product preview of Minneapolis-Moline tractors and farm machinery at Plainview, Texas, November 5 according to M. M. Dillon, Minneapolis-Moline District Manager.

William F. Foss, President, and W. L. (Bill) Pringle, Vice President and Director of Marketing, introduced the new 1966 products with the assistance of Dallas District and Hopkins Home Office Marketing personnel.

"The new MM G-1000, 110 horsepower, row-crop tractor was the hit of the show," Dillon said.

Foss called the new tractor "the best tested tractor in MM HISTORY."

Pringle said, "Our new G-1000 had the greatest amount of market research in farm machinery history because our dealers and farmers actually operated more than one hundred pilot models from last spring until this fall under the most severe farm conditions."

"Dealers in Texas and New Mexico and in the rest of the country sent back to us at Hopkins the results of their experiences with these pilot models so that we came up with a tractor of unmatched superiority in the final design and

production." Pringle continued. "Now in production, the new tractors are being shipped to dealers in all parts of the country," Dillon said.

President Foss, at the Plainview Introduction told Burrow "Product of long-range planning by Minneapolis-Moline, heir of 75 years of farm power production, the new 110 hp row-crop tractor has undergone the most exacting tests on more than a hundred farms in all parts of the U.S.A. and Canada. As you know, farmers and MM dealers constantly fed back to Home Office Marketing their most candid suggestions for making the G-1000 the outstanding tractor in agriculture."

FLOYD DATA

Mrs. E. F. Stovall, who underwent recent eye surgery, had the stitches removed last week and is reported doing well at the home of her daughter, Mrs. Sullivan in Wichita Falls.

FLOYD DATA

Mrs. Pearl Johnston of Albuquerque, N. Mex., was a guest here several days last week with her sister, Mrs. Vida Womack.

Guatemala starting new drive toward democracy.



Court House NEWS

COURT RECORDS
(Marriage Licenses)
Manual P. Rodriguez and Rosa P. Mascorro, Nov. 17.
Antonio Queros Delgado and Maria Garcia, Nov. 18.
Tommy Sherman Chapman and Ima Jean Jones, Nov. 19. (Warranty Deeds)

Commissioner's Court to Earle Simpson, 15 and 11/100 acres out of the southwest part of survey 3, Block H in Floyd

Special Worship Services Slated

LOCKNEY (Special) - Special worship services for employees of cotton gins will be held at the Lockney Ministerial Association. Services will be held from 6:30 to 7:30 a.m. each Sunday, beginning this Sunday.

Services will continue through ginning season at the Lockney American Legion Hall. One service will be in Spanish, the other in English.

Ministers of the Lockney churches will alternate in conducting services.

Cooperating churches include First Methodist, First Methodist Church Mission, San Jose Catholic Church, Main Street Church of Christ, First Baptist Church and Lockney Salem Baptist Mission.

Buhrman In Agent School

Keith Buhrman, Floydada's Southland Life Insurance Company representative, was among 12 agents attending a Basic School at the company's home office in Dallas last week. The students represent states from California to Mississippi.

The schedule of study in the Basic School includes a study of life insurance as property; analysis of the company's insurance and terms; instruction in sales methods, motivation; prospecting and work habits; and talks by various home office staff members outlining procedures of interest to agents. Herman Ford, CLU, assistant vice president and director of training, Ordinary Agency Division, is in charge of the school.

County; 55 cents stamps.
Chas. R. Veigel et ux to High Plains Research Foundation. Six percent interest in and to the southeast one-fourth of survey 126 in block D-2 in Floyd County.

Cal Farley's Boys Ranch to Lloyd Glenn et ux, an undivided 67% interest in and to the southeast one-fourth of survey 126; \$66.55 stamps.

High Plains Research Foundation to Lloyd Glenn et ux, six percent interest in and to the southeast one-fourth of survey 126 in block D-2; \$6.05 stamps.

Grace Presbyterian Church of Plainview to Lloyd Glenn et ux, an undivided 20 percent interest in and to the southeast one-fourth of survey 126 in block D-2; \$19.80 stamps.

The Presbyterian Home for Children to Lloyd Glenn et ux, an undivided seven percent interest in and to the southeast one-fourth of survey 126, block D-2. \$7.15 stamps.

Lloyd Glenn et ux to Theodore Hershel Carthel et ux, all of the southeast one-fourth of section 126 in block D-2; \$66 stamps.

James W. Ellis et ux to Lynn Ray Smith et ux, lots 7 and 8 in block 32, South Side Addition in Lockney; \$4.40 stamps.

DISTRICT COURT
(Cases Filed)

State of Texas vs a 1965 Chevrolet Automobile, suit to forfeit the automobile belonging to Medford Bennett.

Lynn Carruth et ux vs Fort Worth and Denver Railroad Co., suit for damages.

Funeral Held For Mrs. Cook

Funeral rites for Mrs. Ruth Ann Cook, 52, of Floydada, were conducted Thursday afternoon in the First Baptist Church. Rev. Floyd C. Bradley, pastor, officiated.

Mrs. Cook died about 7:15 p.m. Wednesday in Peoples Hospital of an apparent heart attack. She was taken ill at the family home, 216 W. Houston, Tuesday night of last week.

Born at Snyder, Okla., Feb. 19, 1913, she deceased and Ray L. Cook were married August 16, 1929. They moved to Floydada in 1931 and had resided here since. Mrs. Cook was a member of the Baptist Church.

Survivors include her husband; one son, Ray Jr., of Lubbock and one sister, Mrs. Mary Hoover of Houston.

Interment was in Floyd County Memorial Park under the direction of Moore Funeral Home.

Palbearers were Maurice Campbell, A. C. Rainier, Don Rainer, Lewis Blum, Lee Rushing, Lindsey Graham, Charlie Lewis, and Woodrow Wilson.

FLOYD DATA

Mrs. E. Lee Ozburn of Oklahoma City, Okla., and her daughter, Mrs. Lewis H. Bond and two youngsters of Fort Worth, were visitors in Floydada and Lockney Thursday and were also in the county attending to business. Mrs. Ozburn has land interest here.

Her father, the late Dr. W. H. Freeman, was a horse and buggy doctor at Lockney in the early days coming to the county in 1900. Mrs. Ozburn will be remembered here as the former Katie Freeman.

OUR TRADITIONAL
Thanksgiving
DINNER

SERVING
11:45 TO 1:30
THANKSGIVING DAY
LAMPLIGHTER INN
FLOYDADA

NEED COTTON PICKED UP?

AFTER MACHINE GATHERING, WE WILL LOAD INTO THE FARMER'S TRAILER

ROOD MACHINE
NOW IN OPERATION

CALL JAMES HALE
YU 3-3840
OR TRUMAN DUNAVANT
YU 3-2053

YOU MAY ALSO REGISTER FREE FOR 2 BEAUTIFUL AUTUMN HAZE Mink Stole

RETAIL VALUE UP TO \$700 EACH

- NO PURCHASE NECESSARY
- YOU NEED NOT BE PRESENT TO WIN

PLEASE CLIP

REGISTRATION FORM

NAME _____

ADDRESS _____

CITY _____

STATE _____

PHONE NO. _____

RETURN REGISTRATION FORM TO STATION BELOW

FLOYDADA SHAMROCK

414 EAST HOUSTON
PHONE YU 3-8127

REMEMBER	
CIGARETTES ONLY	30¢
MILK PRESTON GALLON	79¢

Save now for your **THANKSGIVING SHOPPING**

SHOP
POWELL'S
FOR YOUR
NORBEST TURKEYS
AND
PONDEROSA HAMS

SHURFINE CRANBERRY SAUCE 2 FOR 49¢	CRISCO OIL 48 OZ. JAR 79¢
LIBBY'S 303 CAN PUMPKIN 2 FOR 29¢	TEXAS PRIDE SHELLED PECANS 6 OZ. PKG. 39¢
REYNOLD'S ALUMINUM FOIL 25 FT. X 18 IN. 59¢	WASHINGTON EXTRA APPLES LB. 19¢
DEL-MONTE PEACHES IN HEAVY SYRUP NO. 2 1/2 CAN 29¢	MORTON MINCEMEAT PIE 3 FOR \$1
SWIFT PREMIUM HEN LB. 45¢	NORTHERN NAPKIN 80 COUNT BOX 2 FOR 2
PONDEROSA FULLY COOKED SMOKED BONELESS HAM LB. \$1.09	CLOVERLAKE ICE CREAM 1/2 GAL. 69¢
SHURFINE CAKE MIXES 2 FOR 49¢	DURKEES COCONUT 14 OZ. PKG. 49¢
BETTY CROCKER PIE CRUST MIX 20 OZ. BOX 39¢	CARMACK GRADE "A" LARGE EGGS 4

Powell's
SUPER MARKET

YOUR HOME OWNED HO
OPERATED STORE ON
THE WYE, FLOYDADA. T
YU 3-2444