

# The Floyd County Hesperian

FLOYDADA (FLOYD COUNTY) TEXAS, THURSDAY, OCTOBER 7, 1965

NUMBER FORTY

## Rock Chat

by DELL TOOLEY

OUGH THERE are only six hundred acres of land in Floyd County, the volume of business created is tremendous.

IN THE middle of the show time... the Chryslers, Fords, Mercurys, Pontiacs and Dodges in the showrooms this week.

OF interesting people in the Hesperian last week a fellow by the name of R. A. Hancock came to the office.

amazed at the size of the crowd. Believe there were 300 people here in the parking lot.

TIONED some of the people who helped in the gas station in my cold weather wouldn't you know.

OUR Floydada motorists on the street and suggested that the police department back for directing school crossings each day.

COX is to be congratulated for bringing the show to Floydada. I saw the show and enjoyed it very much.

WEN gave me a review of the White River fishing. He said that he was there last Friday. He was plenty of fish.



DOG SHOW WINNERS... Mrs. Harold Cheatham, Springdale, Arkansas, is pictured with the winner of the Toy Fox Terrier show here on Saturday. Others left to right are: Freddie Dickerson, Lubbock, ringmaster; Dr. John Anderson, Lubbock, judge; and local terrier showman, Emory Cox.

## MONSOON SEASON CONTINUES

### Cold Front Brings Showers To Floyd County And Area

A new cold front that moved into the area during the week-end brought several days of rain and overcast skies that have kept the ground around Floyd County and the surrounding area very wet for the last couple of weeks.

## WATER PROJECT

### Mackenzie Authority Seeks Federal Loan

LOCKNEY — Officials of The Mackenzie Water Authority are preparing an application for a \$100,000 federal loan to finance engineering studies on a water reservoir near Silverton.

Freese, Nichols & Endress of Fort Worth were employed as engineering consultants for the project during a lengthy discussion meeting in Lockney Monday night.

Lon Davis of Floydada, president of the authority, said the board of directors "hope to start core drilling and other engineering work within 60 to 90 days."

The loan for the preliminary work will be solicited from the federal Housing and Home Finance Agency in Fort Worth, Davis said.

Mackenzie Water Authority is composed of four member towns — Tulla, Silverton, Lockney and Floydada. The reservoir to be built in Tule Canyon, northwest of Silverton, is expected to impound 35,000 acre feet of water for municipal use. Target date for completion has not been set.

Proposals from five banks from the member towns were accepted by the board Monday night. Selection of one of the banks as a depository for authority funds will be made at a later date.

The board also interviewed representatives from two firms seeking to be the authority's joint fiscal agent. They are First Southwest Co. of Lubbock and Columbian Securities of Amarillo. No decision on the matter was made.

"...they came, they saw, and they bought!"

Shoppers from all over the Floydada trade area were in town Monday for the big Dollar Day. They came, they found bargains, and they bought.

The shoppers were happy, and of course Floydada merchants were well pleased with the business.

The one day, first Monday, Dollar Day will continue through January according to plans made by the retail merchants committee of the Floydada Chamber of Commerce.

The next big Dollar Day will be Monday, November 1.

## Deadline For PP&K Signup Tomorrow At Reed Ford Sales

Tomorrow is the deadline for those interested in Ford's annual Punt, Pass and Kick contest, to sign up at Reed Ford Sales on the Ralls Highway in Floydada. The local contest will be held Saturday afternoon, beginning at 2, at Wester Field.

By mid-week 43 contestants had signed up at Reeds.

In the contest those taking part compete against other "future" athletes of their own age. There are six age brackets, from eight through thirteen.

Various prizes will be received by the winners of the contest on the local, district, area division and national contests.

The winners in the age brackets will receive awards as follows:

## TOY FOX TERRIERS

### First Floydada Dog Show Big Success

The first dog show to be held in Floydada was considered a big success after its closing here Sunday afternoon. The event was sanctioned by the West Texas Toy Fox Terrier Association and the Texas Toy Terrier Association and drew entries from several states.

Dogs were entered from Texas, Oklahoma, Michigan and other states. Entries were expected from Texas, Oklahoma, Kansas, Arkansas, Michigan, Missouri, Ohio and California.

The Sunday Show was by the Texas Toy Fox Terrier Association for the fall UKC Licensed Championship Point Show. Trophies, and ribbons were given at both the Saturday and Sunday shows.

G. F. Gideon, Big Spring, had the best male of the show; and Harold Cheatham, Springdale, Arkansas exhibited the best female dog of the fall show.

Glenn Holtman of Lubbock swept high honors in the Sunday show by winning best male and best female in the show along with winning the senior male and senior female classes.

## SATURDAY'S RESULTS

Saturday results included: these class winners: male puppies (under 3 months)—Mrs. Joe Cox, Amarillo; junior male puppies (3-6 months)—Mrs. Betty McMillan, Oklahoma City; senior male puppies (up to 12 months)—G. F. Gideon, Big Spring; junior male class (12-months-2 years)—Mrs. Ones Rago, of Kansas; senior male (2-yrs. and over)—E. M. Busby, Sherman, best male in how — Gideon.

Female classes winners included: females (under 3 months)—Harold Cheatham; junior female puppies (3-6 months)—Mrs. McMillan; senior female puppies (6-12 months)—Mrs. Glenn Holtman, Lubbock; junior female (12 months-1 years)—senior female class (2 years and over) — Howard Qurren, Port Huron, Mich; best female of show—Cheatham.

## SUNDAY'S RESULTS

Winners in the male classes of the fall UKC licensed championship point show held in Veterans of Foreign Wars hall here were W. E. Berry of Fort Worth for under three months; Dr. John Anderson of Lubbock in three to six months; Holtman in six to 12 months; Mrs. Phillip Thompson of Harper, Kan., in one to two years; and Henry Holtman of Pampa in the male two years and over.

Female classes were won by Mrs. Joe Cox of Amarillo in the under three months; Mrs. Betty Miller of Oklahoma City, Okla., Holtman in the six to 12 months; E. Dickerson of Lubbock in the one to two years; and Howard Curren of Port Huron, Mich. in the two years and over.

Mrs. G. F. Gideon of Big Spring was judge of the show. The spring show will be held in Sherman.

The show was held in the VFW building on the Lockney highway, with Mrs. G. F. Gideon of Big Spring judge. The spring show will be held in Sherman.

## Bean Winner Of Hesperian Grid Contest

Don Bean waded through a couple of ties and a number of upsets to win the fifth Hesperian Football Contest this past week. Bean missed seven of the games listed on the page and guessed the total score to be 48. There were 49 points scored in Tulla's 49-0 victory over the Whirlwinds.

Danny Medley and St. Medley grabbed second and third places respectively by also missing only seven of the games. Danny guessed the total points to be scored as 52, and St. Medley 42 would be scored.

On another entry St. Medley also missed only seven games but guessed the total score to be 38.

Eleven entrants missed only eight of the games, missing prize money by only one game. The entrants and the total score each guessed are: Edward Hartman, 50; Joy Allen, 48; Bill Hendrix, 48; Jim Reynolds, 52; Randy Reynolds, 46; Mary Martinez, 46; Bob Goen, 54; Larry Guffee, 43; Bill Hines, 58; I. H. Parks, 36; and Mike Breed, 35.

The sixth of the contests can be found in Section B of today's Hesperian. Why not enter? You may be a winner.

## United Employee Injured While Unloading Cars

Carl R. Yeokum, 56 year old Floydada resident and an employee of United Transport Co., here remains in serious condition in Hereford from undetermined injuries sustained in a mishap there about 9:30 a.m. Saturday.

Yeokum was said to be showing some improvement Tuesday and was resting more comfortably.

He is suffering from chest and abdominal bruises and contusions, fracture of lower two vertebrae, severe scalp laceration and possible internal injuries, sustained when pinned between two automobiles.

Grover Prince, manager of United, said Yeokum was injured while unloading a car from his transport truck at Orsborn Chevrolet and Oldsmobile. One of the cars was unattended and rolled back into the trailer pinning Yeokum between two cars.

Yeokum has been an employee of United for the past 26 years and is eligible for retirement in July of 1966.

## Mrs. McIntosh Will Speak To Methodists

Mrs. Jack McIntosh will speak at the First Methodist Church here Sunday. Methodists all over the nation observe Layman's Day, usually with a lay speaker.

Homer Garrison, Methodist layman from Plainview will speak at the Lockney First Methodist Church.

Jimmy Willson will speak at First Methodist Church in Olton.

David Willson, Methodist layman from Plainview will speak at the Matador Methodist Church.

Wendell Tooley will speak at the Methodist Church in Denver City.

## Winds Have Open Date; District Begins Next Week

The Floydada Whirlwinds have an open date this week and thus have a chance to recover from some injuries that have plagued the team since the beginning of the season.

After a rugged five weeks of non-conference games the Winds are expected to be in good physical condition when the team entertains the Abernathy Antelopes here next Friday night, October 15.

The team is expecting a hard fight through the district competition, for Floydada is rebuilding and some of the other 3-AA teams are at their peak strength in several years.

However, with the Floydada team in top physical condition, the green and white will put up a good battle in the district round.

With the locals idle this week a lot of Floydada fans will be on hand in Lockney tomorrow night when the Longhorns host Slaton.

# Individuals, Firms Respond To Airport

## Belts Win Three Ribbons At Fair

The Belt Angus Farms of Lockney made a good showing at the South Plains Fair held in Lubbock last week, as the firm brought home at least three ribbons from the exposition. The animals from the farm topped first, second, and third place ribbons.

## United Employee Injured While Unloading Cars

Carl R. Yeokum, 56 year old Floydada resident and an employee of United Transport Co., here remains in serious condition in Hereford from undetermined injuries sustained in a mishap there about 9:30 a.m. Saturday.

## Mrs. McIntosh Will Speak To Methodists

Mrs. Jack McIntosh will speak at the First Methodist Church here Sunday. Methodists all over the nation observe Layman's Day, usually with a lay speaker.

## Winds Have Open Date; District Begins Next Week

The Floydada Whirlwinds have an open date this week and thus have a chance to recover from some injuries that have plagued the team since the beginning of the season.

## Bean Winner Of Hesperian Grid Contest

Don Bean waded through a couple of ties and a number of upsets to win the fifth Hesperian Football Contest this past week. Bean missed seven of the games listed on the page and guessed the total score to be 48.

## Skinny Winn Demonstrates Lighting Effects

Skinny Winn demonstrated his light and sound extravaganza to county, state and federal representatives at St. George, Utah last night.

## Deadline For PP&K Signup Tomorrow At Reed Ford Sales

Tomorrow is the deadline for those interested in Ford's annual Punt, Pass and Kick contest, to sign up at Reed Ford Sales on the Ralls Highway in Floydada. The local contest will be held Saturday afternoon, beginning at 2, at Wester Field.

## Waters Have Open Date; District Begins Next Week

The Floydada Whirlwinds have an open date this week and thus have a chance to recover from some injuries that have plagued the team since the beginning of the season.

## Bean Winner Of Hesperian Grid Contest

Don Bean waded through a couple of ties and a number of upsets to win the fifth Hesperian Football Contest this past week. Bean missed seven of the games listed on the page and guessed the total score to be 48.

## Skinny Winn Demonstrates Lighting Effects

Skinny Winn demonstrated his light and sound extravaganza to county, state and federal representatives at St. George, Utah last night.

## Deadline For PP&K Signup Tomorrow At Reed Ford Sales

Tomorrow is the deadline for those interested in Ford's annual Punt, Pass and Kick contest, to sign up at Reed Ford Sales on the Ralls Highway in Floydada. The local contest will be held Saturday afternoon, beginning at 2, at Wester Field.

## Over \$8,000 Pledged At Noon Wednesday

With a \$12,000 state grant already committed and around \$60,000 sought after from the federal government, local airport backers met in the community room of the First National Bank last week and began a drive for \$25,000 to be raised locally.

The project is spearheaded by the Floydada Chamber of Commerce and the city council. In charge of the fund raising drive are Bill Brown, Arthur Wylie, Jr. and Junior Simpson.

Head of the airport committee Jack McIntosh presided at the meeting and around \$6,000 was pledged at the meeting.

Persons attending the meeting were asked to spread out and get enough cash or pledges to make up the rest of the needed money.

At press time a total of \$8,250 had been reported. Many solicitors had not reported back at this time.

Present at the meeting were: S. J. McIntosh, Chairman; Wendell Tooley, Bill Brown, W. H. Simpson, Jr., James Lackey, Ralph Rucker, Jim H. Jackson, Ray Gene Ferguson, Don Pemberton, Floyd C. Bradley;

Bill Feuerbacher, Keith Thomas, Wayne Collins, E. A. Williams, Q. D. Williams, Newell Burk, Leonard Matsler, Ralph Mardis, Arthur Wylie; Bill Brown, Tom Snead, Joe Jones, Robert (Babe) Jones, Doodle Milton, Bill Cagle, Dr. Charles Craig, J. W. Reue.

Those accepting financial responsibility of \$250.00 each by way of check or note of intent:

W. H. Simpson Jr., J. M. Willson Sr., J. M. Willson Jr., Floydada Growers & Marketing Assn., W. Edd Brown, William E. Brown Jr., Southwestern Public Service Co., Floyd County Hesperian, Newell Burk, Q. D. Williams, B. A. Robertson, Kenneth Bean;

Leonard Matsler, Earl Koop, L. D. Smith, Aaron Carbel, Wayne Collins, Claude Hutchins of Plainview, Wylie Butane, Wylie Grain Co., Caprock Motor Parts, S. J. McIntosh, Dr. Charles Craig, First Mortgage Land & Brokerage Co., Oden Chevrolet Co.

Clyde Hodges, Dr. Keith Patzer, Tom Snead, Reed Ford Sales, Johnny Miller, Billy Fulton, Lane Decker, McCoy Gin Inc. and McCoy Grain.

## 4-H Club Sheep Field Day Set Here Saturday

A 4-H Club Sheep Field Day will be held Saturday October 9, 9:30 a.m. at the Junior Livestock Show Barns in Floydada, according to Darrell Smith, Asst. Floyd County Agent.

The Field Day will include a program on feeding a lamb for show and the equipment and facilities necessary to raise show lambs.

A demonstration on shearing a lamb to put on feed as well as fitting a lamb for show will be given.

Control of diseases and parasites will also be discussed at the field day.

Approximately 100 lambs are expected to be fed out by Floyd County 4-H members for the 1966 shows.

## Over \$8,000 Pledged At Noon Wednesday

With a \$12,000 state grant already committed and around \$60,000 sought after from the federal government, local airport backers met in the community room of the First National Bank last week and began a drive for \$25,000 to be raised locally.

The project is spearheaded by the Floydada Chamber of Commerce and the city council. In charge of the fund raising drive are Bill Brown, Arthur Wylie, Jr. and Junior Simpson.

Head of the airport committee Jack McIntosh presided at the meeting and around \$6,000 was pledged at the meeting.

Persons attending the meeting were asked to spread out and get enough cash or pledges to make up the rest of the needed money.

At press time a total of \$8,250 had been reported. Many solicitors had not reported back at this time.

Present at the meeting were: S. J. McIntosh, Chairman; Wendell Tooley, Bill Brown, W. H. Simpson, Jr., James Lackey, Ralph Rucker, Jim H. Jackson, Ray Gene Ferguson, Don Pemberton, Floyd C. Bradley;

Bill Feuerbacher, Keith Thomas, Wayne Collins, E. A. Williams, Q. D. Williams, Newell Burk, Leonard Matsler, Ralph Mardis, Arthur Wylie; Bill Brown, Tom Snead, Joe Jones, Robert (Babe) Jones, Doodle Milton, Bill Cagle, Dr. Charles Craig, J. W. Reue.

Those accepting financial responsibility of \$250.00 each by way of check or note of intent:

W. H. Simpson Jr., J. M. Willson Sr., J. M. Willson Jr., Floydada Growers & Marketing Assn., W. Edd Brown, William E. Brown Jr., Southwestern Public Service Co., Floyd County Hesperian, Newell Burk, Q. D. Williams, B. A. Robertson, Kenneth Bean;

Leonard Matsler, Earl Koop, L. D. Smith, Aaron Carbel, Wayne Collins, Claude Hutchins of Plainview, Wylie Butane, Wylie Grain Co., Caprock Motor Parts, S. J. McIntosh, Dr. Charles Craig, First Mortgage Land & Brokerage Co., Oden Chevrolet Co.

Clyde Hodges, Dr. Keith Patzer, Tom Snead, Reed Ford Sales, Johnny Miller, Billy Fulton, Lane Decker, McCoy Gin Inc. and McCoy Grain.

## 4-H Club Sheep Field Day Set Here Saturday

A 4-H Club Sheep Field Day will be held Saturday October 9, 9:30 a.m. at the Junior Livestock Show Barns in Floydada, according to Darrell Smith, Asst. Floyd County Agent.

The Field Day will include a program on feeding a lamb for show and the equipment and facilities necessary to raise show lambs.

A demonstration on shearing a lamb to put on feed as well as fitting a lamb for show will be given.

Control of diseases and parasites will also be discussed at the field day.

Approximately 100 lambs are expected to be fed out by Floyd County 4-H members for the 1966 shows.

## TWINS TAKE WORLD SERIES OPENER

Area I at the Area Young Farmer Convention recently. Dunavant is the third Floyd County farmer in five years to receive the honor. Bill Sherman and Eddie Joe Fortenberry are the others. (Parker Studio Photo)



SWPS PRESENTS AWARD--Don Pemberton of Southwestern Public Service, is shown above presenting a new freezer to Mr. and Mrs. Truman Dunavant of the Harmony Community. The freezer was given to the Dunavants after Truman was named Outstanding Young Farmer

Area I at the Area Young Farmer Convention recently. Dunavant is the third Floyd County farmer in five years to receive the honor. Bill Sherman and Eddie Joe Fortenberry are the others. (Parker Studio Photo)

HALES DEPARTMENT STORE



# Oden Chevrolet Shows 1966 Chevrolet Line Today

DETROIT -- Variety, safety and new peaks of luxury highlight the 1966 Chevrolets -- plus the greatest assortment of models in the division's 55 year history.

E.M. Estes, general manager, said the new Chevrolets, totaling 50 models in six passenger car lines, will go on display in dealer showrooms on Thursday, Oct. 7.

"Model, option, color and interior combinations in the new Chevrolets number in the billions, giving the buyer an unparalleled opportunity to individually customize his car," Estes said.

Principal features include: New Models -- A Caprice top of the line series with four prestige models is added to the top selling regular Chevrolets. A four-door hardtop joins the Chevelle line, plus a distinctive Super Sport 396 series.

Styling -- The Chevy II receives its first complete redesign since introduction in 1962 models. The Chevelle is restyled, there are design refinements in the Corvaire and Corvette, and the regular Chevrolet has an even "bigger car" look.

Safety Features -- Numerous safety features are made standard on all models ranging from a padded instrument panel and padded sun visors to rear seat belts and backup lamps.

Mechanical Features -- New engines include a 250 cubic inch L6 and two 427 cubic inch V8's. A new three-speed fully synchronized transmission is standard on all Chevrolet models.

Options -- Offered for the first time, in addition to the more than 400 options and accessories already available to Chevrolet buyers, are a single-dial automatic heating and air conditioning system, a bench front seat with center armrest, adjustable front seat headrests and tilt-telescoping steering.

Interiors -- Restyled, high fashion interiors are featured in all models. Bucket seats in Chevrolet, Chevelle and Chevy II models are a new slim "Strato" design. Each of the 14 station wagons has an all-vinyl interior.

Here are details on the six Chevrolet lines for 1966:

Regular Chevrolet -- Headed by the luxury Caprice series, there are 19 models in five series. A color-keyed paint stripe distinguishes the Caprice Custom coupe -- which has a special roofline unique among all Chevrolet models -- and the Caprice Custom sedan. The two Caprice Custom station wagons have walnut grained exterior trim. All Caprice models have high prestige interiors.

The regular Chevrolets have a more powerful appearance, with a forward-thrust to front fenders and bold horizontal bars in the grille. Individual moldings and ornamentation designate each series. All have tail-lamps integrated into the rear quarters and deck giving a wider look.

Structural improvements have been made in both chassis and body. New springs, shock absorbers and softer bushings and body mounts increase smoothness and quietness of ride. The 110 inch wheelbase is retained.

Performance of the base six cylinder engine is improved by increasing displacement from 230 to 250 inches. Six V8's are available, including the two new 427-cubic inch engines. Horsepower range is from 155 to 425. Five basic transmissions are offered, including Turbo Hydra-Matic.

Chevelle -- The popular 4-door hardtop body style joins Chevelle models for the first time. A total of 12 models in

four series are offered. Distinctive will be two Super Sport 396 models. Simulated scoops on the hood emphasize that a new 396 cubic inch engine is standard on the "SS 396" convertible and a companion "SS 396" sport coupe. The hardtop also has a new roof line employing wide, flowing rear quarters and a recessed rear window.

Length and width of Chevilles are increased approximately one-half inch while the wheelbase remains at 115 inches. Redesigned body panels and front end with wrap-around grille give a longer and lower silhouette. Rooflines are new for 2 and 4-door sedans.

Seven engines -- two sixes and five V8's -- give the Chevelle buyer a wide range of power choices. Horsepower ranges from 120 to the two 396-cubic inch V8's rated at 325 and 380 horsepower. Four

## Thaxton Honored At SWPS Banquet

Fred H. Thaxton of Floydada is one of 54 Plains Division employees of the Southwestern Public Service Company honored Wednesday night at the division's 17th annual service awards dinner in Plainview.

Thaxton received a 15 year award from Roy Tolk, executive vice-president of the electric company, who made all of the awards presentations.

Roy B. Holland of Portales and Lee Westhoff of Plainview received 40-year awards at the dinner, the longest period of service honored.

292 employees with a combined service of 3775 years were honored this year at dinners throughout Southwestern Public Service Company's 45,000 square mile service area.

## 4-H Clubs Need Help Of Adult Leaders To Continue Efforts

by Sherry Mullin  
The 4-H Clubs of Floyd County could not exist without the efforts of our hard working volunteer adult leaders. As 4-H Club leaders, they are concerned with teaching boys and girls. They want them to develop new and improved practices, ideas, skills, habits, interests, attitudes, appreciations, values, and understanding. Under the leadership of local adult leaders 4-H members learn to work together, to give expression to their thoughts through action accomplishments and to observe the courtesies of life. Leaders serve the 4-H clubs without financial reward. They find their compensation in the growth and development of the youth they work with and from the satisfaction that comes from giving service without expectation of reward.

Only men and women of unusual quality enlist as local leaders since the job calls for much detailed work and personal sacrifice and but little public recognition. Yet it is this group that makes effective the whole 4-H Club program. As true teachers they subordinate themselves while pushing forward the club member for recognition and acclaim. It is not so much what they teach in a particular demonstration, though that is very important as it is the quality of men and women they are themselves that counts most in the building of youth and the making of a nation.

transmissions are offered. Chevy II -- The most complete change in exterior and interior appearance since its introduction in 1962 models gives new beauty to the seven models in three series of Chevy II.

Retaining its 110-inch wheelbase, the 1966 Chevy II is slightly lower and longer and more than 1.5 inches wider than previous models. There are new rooflines on all sedans and coupes.

A low, wide appearance is given the front end by a massive front bumper and new aluminum grille. Headlamps are recessed in front fenders. The side treatment emphasizes length with a sweeping peak line. A broad, tailored rear deck includes integral backup lamps in the rear fenders.

Chevy II retains the unitized construction with bolt-on front end. A new plastic panel immediately behind each headlamp increases corrosion resistance. Rear windows are bonded to the body of sedan and coupe

models for neater, more effective sealing. Seven engines -- a four cylinder, two sixes and four V8's allow a broad power choice. The horsepower range is from 90 to 350. There are three transmissions.

Corvaire -- The smooth continental styling of Corvaire is continued for 1966. Styling refinements include new rocker sill and wheel opening moldings, new front panel emblem, plus fresh design of the rear grille and taillights.

There are seven models in three series -- all either convertibles or 2 and 4-door hardtops. Wheelbase continues to be a highly maneuverable 108 inches.

Four rear-mounted, air cooled, six-cylinder engines are offered with horsepower ranging from 95 to 180, and choice of 3-speed, 4-speed or Powerglide transmissions.

Corvette -- America's only sports car continues its program of annual styling refinement with a new nameplate on

the hood, body side trim, grille and wheel covers. There is a special high-domed hood on models with a 427-cubic inch engine.

There are two Sting Ray models -- a convertible and a sport coupe -- on a 98 inch wheelbase.

Four V8 engines are available. Horsepower begins at 300. Inclusion of the new 427 V8's increases maximum horsepower to 425. Three transmissions are offered.

Sportvan -- Combining passenger car luxury with durable commercial chassis components, this vehicle rounds out Chevrolet's product versatility.

Three models are offered on a 90-inch wheelbase. Two six-cylinder engines of 120 and 140 horsepower are available with 3-speed and Powerglide transmissions.

For 1966, Chevrolet offers 15 colors -- 6 of them new -- with up to 8 two-tone combinations. Vinyl roof covers in black and beige are available for certain hardtop models.

## New roof line enhances 1966 Chevy II Super Sport Coupe



Reflecting smart new lines for 1966 is this Chevy II Nova Super Sport Coupe. New body panels combined with a new extruded aluminum grille and redesigned front and rear lamp treatments complement the sparkle of the new interiors and instrument panel. New sedan and coupe roof lines with restyled windows and 6 new colors point up the styling surge made by the '66 Chevy II. Chevrolet dealers throughout the nation will display the new cars on October 7.

## Rich styling, luxury prevail in 1966 Caprice and Chevelle Coupe



Two of Chevrolet's newest additions for 1966 are the luxurious Caprice Custom Coupe (below) and the stylish Chevelle Super Sport 396 Coupe. The Caprice Coupe is destined to be the style leader among regular size cars and the Chevelle Super Sport is distinguished by a new roof line with recessed rear window and a '396 SS' identification in grille and rear core area. Both models feature distinctive wrap-around lamps. Along with these two models, Chevrolet will offer 48 other models for 1966. Dealers will show the new cars for the first time on Oct. 7.

## Recessed rear window in '66 Chevelle Super Sport 396 Coupe



Newest member of the stylish 1966 Chevelle models is this Super Sport 396 Coupe with its distinctive roof treatment featuring a recessed rear window. A new radiator grille, simulated hood scoops and the "SS-396" identification on grille and rear core area distinguish the Super Sport 396 Convertible from other Chevelle models for 1966. Strato seats are standard equipment for the Super Sport. Dealers will display the new cars on Oct. 7.

## Letter To The Editor

2206-B Neville  
Ft. Worth, Texas  
October 1, 1965  
Mr. Wendell Tooley  
The Floyd County Hesperian  
Floydada, Texas  
Dear Mr. Tooley:  
After spending my first eighteen years in Floydada before leaving for college and later for employment, I have had and still have a great deal of pride in Floydada and confidence in its future. But even with that pride and confidence, I didn't expect to see its name on the front page of "The Wall Street Journal." Well, the unexpected appeared. I thought you would be interested in seeing it.

Sincerely,  
/s/ Glea Adams  
Glea Adams  
(Editor's note: -- the story to which she refers is a story about the big boll weevil spray fight in this area. A paragraph within that story states: "Dusters scoff at suggestions their work is dangerous. 'Spraying by air is safer than driving down a highway,' insists Joe Collier who operates four spray planes around Floydada, Texas. 'You know the ground or a telephone pole isn't going to move. . . you can't be sure of the car you meet on the highway when you're driving.'")  
Darlene is an airplane hostess for Eastern Airlines, stationed at College Park, Ga. She flew by plane from there to Dallas and was met by Scales, who resides in Lubbock. The couple motored by car to Floydada.

## Mysteries In Finals At SP Fair

The Mysteries, a Floydada High School group, placed in the finals at the Talent Show held Saturday at the Panhandle South Plains Fair in Lubbock. The group were one of 15 in the finals selected from 65 entries. In the band are Tommy Weathersbee, Rodney Bunch, Garland Martin and Danny Daniel.

## Stewart Title Guaranty Company Declares Dividend

The Board of Directors of Stewart Title Guaranty Company has declared a regular third quarter dividend of 12 1/2 ¢ per share on the company's class A common stock, payable October 29 to shareholders of record Sept. 20.

According to Maco Stewart, chairman of the board, the company also declared a three percent dividend on outstanding preferred stock to be paid December 20, to shareholders of record December 15.

Stewart Title, whose issuing office in Floydada is Arthur B. Duncan Abstract Company, has more than 250 issuing offices in ten states from Florida to California.

## Hospital News

PEOPLES HOSPITAL  
J. R. Vickers, 9-22; 9-28.  
Dorothy Wygal, 9-25; 9-30.  
Naomi Casillas, 9-26; 9-29.

Zollie Burgett, 9-27; 10-1.  
Grace Jarrett, 9-27; 9-29.  
Mrs. Al Galloway, 9-28; 9-30.  
Mrs. Maud Merrick, 9-29; 10-2.  
Robert Flores, 9-29; 10-3.  
Mrs. James Sewell, 9-1; 9-2.  
Joe Louis Cedillo, 10-2; 10-3.  
Joy Smitherman, 10-2, continues treatment.

T. J. Heard, 10-2, continues treatment.  
Mrs. Don Arnold and baby girl, 10-4, continues treatment.  
FLOYD DATA  
Mrs. Dena Myrick spent last week with her son, Gloy Ray-

burn Myrick and his wife Blue Ridge. She likes her brothers and sisters neighboring towns.

FLOYD DATA  
Joe Richard Noland returned home Monday from General Hospital where he received medical care since Friday.  
GRAND JURY TODAY  
Grand Jury will meet Tuesday morning in Court to hear evidence witnesses.

Announcing...

309 E. HOUSTON (MATADOR HIGHWAY EAST)

FEATURING -  
★ FINEST FOODS  
★ LOWEST PRICES

a personal invitation to see the most beautiful Chevrolet ever!

IN OUR SHOWROOMS TODAY

1966 CAPRICE CHEVROLET-CHEVELLE-CHEVY II-CORVAIR-CORVETTE

THE FOLKS AT ODEN CHEVROLET IN FLOYDADA INVITE YOU TO COME AND SEE THE MOST BEAUTIFUL CHEVROLET EVER...THE 1965 CHEVY LINE INCLUDES SOME SPARKLING NEW MODELS, AND A THOUSAND NEW IMPROVEMENTS AND FEATURES.

**ODEN CHEVROLET CO.**  
YOUR AUTHORIZED CHEVROLET AND OLDSMOBILE DEALER IN FLOYDADA

and---the  
1966 OLDSMOBILES NEXT THURSDAY



## SOCIETY NEWS



### PTA Meeting October 13th

"Children Need Models More Than They Need Critics". This will be the underlying theme of the program given at the Andrews Ward Parent Teachers Association meeting on Wednesday afternoon, October 13 at 2:30. The meeting will be held in the music room of Andrews Ward School.

Mrs. Wendell Tooley, program chairman, will introduce a panel to discuss the community resources for our children. All members and others interested are urged to attend. Music, by the third grade, will be presented under the direction of Miss Kathleen Wood.

During the business meeting the PTA Halloween Carnival to be held on October 28th will be discussed.

Chairmen of the Halloween committee include Mrs. Wilson Bond and Mrs. Bob Alldredge, tickets; Mrs. Gordon Hambricht, prizes; Mrs. Jerrold Vinson, Mrs. Jim Jackson and Mrs. C. C. Whittle, bingo; Mrs. Kinder Farris and Mrs. Ed Wester, publicity; Mrs. David Kirk and Mrs. Charles Tyer, booths; Mrs. Bill Price and Mrs. Bob Durham, clown; Mrs. Dale Goen, costume contest; Mrs. Norman Muncy, Mrs. Bob Hendrix, Mrs. Corky Guffee and Mrs. Charles Craig, cafeteria.

### Newly Weds To Be Honored

Mr. and Mrs. Ronnie Eubanks will be honored with a miscellaneous shower Thursday night (tonight), October 7 in the community room of the First National Bank. Calling hours will be from 7:30 until 9 o'clock.

Mrs. Eubanks is the former Linda Green.

### Rebekah Lodge Has Initiation

Floydada Rebekah Lodge held a candlelight ceremony on Tuesday night of last week when the Rebekah Degree was conferred upon Gladys Peck.

Twenty-eight members were present for the impressive initiation and also enjoyed a salad supper and social hour following the ceremony.

During business those reported ill were Jess Calahan, father of Kathryn Turner, Mrs. Clifford Webb, sister of Artie Webb, Mabel Sims, Minnie Fay Thomas and Correne Gallagher.

**HELLO WORLD**  
Mr. and Mrs. Kendis Julian of South Plains announce the arrival of a baby girl, born Monday of last week in Lockney General Hospital. The baby has been named Mitzi Lynne. She has an older sister, Kristi. Mrs. Julian is the former Janis Roberts. Her husband is associated with his father in farming.

Grandparents include Mr. and Mrs. P. I. Roberts of Floydada and Mr. and Mrs. M. M. Julian of South Plains.

**HELLO WORLD**  
Mr. and Mrs. Jim Hicks of Santa Rosa, Calif., are parents of a new daughter, Leanne Renee, six pounds and four ounces, who was born Thursday. The mother is the former Pat Clayton.

Mrs. Atta Hicks of Floydada is a great grandmother as is Mrs. J. H. Locke of Plainview.

### Business Women Circle Meets

The Business Women's Circle of the First Baptist Church met Tuesday night of last week in the home of Mrs. Laverne Black. The program was in Royal Service on "Scattered Abroad in the Orient." Those taking part on the program were Mrs. Black, Anne Swepston, Thelma Jones, Nelle Swinson, and Mabel Smith. Jewel Coltharp, Jo V Bingham, and Willie B. Gentry were reported ill.

Lovely refreshments were served to Mrs. Black, Ruth Williams, Jo Payne, Mabel Smith, Ruth Welch, Grace Hamilton, Ethel Florence, Helen Patterson, Anne Swepston, Francis Mitchell, Lois Guffee, Neva Baxter, Vera Meredith, Thelma Jones, Nelle Swinson, Ina Hammonds, and Tamara Payne, a visitor.

The next meeting will be October 12th in the home of Mrs. Guffee.

Homes on tour will include Mr. and Mrs. Sam Puckett, Sandhill Highway; Mr. and Mrs. Herman (Buck) Galloway, northeast of city; Mr. and Mrs. L. D. Smith Jr., 810 Mesquite; Mr. and Mrs. Dallas Ramsey, Cedar Street; and Mr. and Mrs. P. D. Helms, 806 Mesquite.

**HELLO WORLD**  
Mr. and Mrs. Jackie Troy Stout, Floydada, are parents of a girl born 9-25-'65 at 12:32 p.m. weighing 7 lbs., 4 ozs., and named Tammy Catherine.

**SPEAKERS FROM SEVERAL STATES, NATIONS**

### Revival Meeting Slated At Bible Baptist

The Bible Baptist Church will be host to a group of pastors, preachers, missionaries and many visitors during a two-day affair, which will begin on Wednesday night, October 13 and will continue all day Thursday, October 14.

Several states and foreign countries will be represented at the meeting and representatives from these states and countries will be doing the preaching. Each preacher and missionary will speak, if time permits. Time of the sermons will be limited so more of them may be heard.

There will be two speakers Wednesday night, with the services beginning at 7:15. Services will resume at 10 a.m. Thursday and continue until noon, then will resume once again at 2 p.m. with more singing and preaching until around 4 p.m.

A time of fellowship will follow the afternoon service and will continue until 7:15 p.m. at which time the services will begin again with the last two speakers to be heard for the meeting.

The noon and evening meal will be served by the Bible Baptist Church. A variety of meats, vegetables, salads and desserts will be served to those attending the meeting. Also, good old-time SOUR DOUGH BISCUITS will be served with the noon meal and probably at the evening meal.

There will be two big feasts, one upon the Word of God and other upon the fine food that will be prepared.

Everyone in this area, whether they are a member of any church or not, is especially invited to attend this very unusual type of meeting.

OCTOBER IS  
**BEALL'S RINGER**  
MONTH!

## "Botany 500"

AMERICA'S LARGEST SELLING BRAND OF MEN'S CLOTHING

CHOOSE NOW FROM BEALL'S FINE SELECTION OF LATEST STYLES AND PATTERNS

NOW IS A NICE TIME TO LAY AWAY FOR CHRISTMAS.

# \$75

JUST SAY, "CHARGE IT!"

### The Smart Approach To Comfort

STYLING ON THE OUTSIDE  
COMFORT ON THE INSIDE,  
IS WHAT YOU GET IN THIS  
NAME BRAND SHOE FROM  
BEALL'S. BLACK OR BROWN

**Weyenberg**  
MASSAGIC SHOE

**\$20.95**

LEATHER SOLE  
GRAIN LEATHER UPPER

from Dallas and New York...

the season's newest  
silhouettes and fabrics

ALL WOOL LUSTROSA  
TOUCH WOOL CASHMERES  
SUPER WOOL LUSTROSA  
ALL WOOL BOUCLE

# \$22<sup>95</sup> TO \$50<sup>00</sup>

MILIUM LINED ALSO INSULATED SATIN LININGS

...THIS IS TRULY OUR MOST SPECTACULAR SHOWING OF FUR TRIMMED FALL COATS WITH EACH A MAGNIFICENT GARMENT TO OWN. EACH OFFERS SUCH FASHION FEATURES AS OVERLOCKED LINING SEAMS, BOUND BUTTON HOLES, TAPERED ARM HOLES AND SHOULDERS PLUS DOZENS OF OTHER FASHION FIRSTS. FUR COLLARS ARE SHAPED GENTLY AND NEATLY IN AN ELEGANT MANNER YOU'LL LOVE TO FEEL AROUND YOU. PICK FROM SUCH COLORS AS NUDE, TAFFY, RED, AND OTHERS. WE'VE A SIZE TO FIT YOU.

### SAVE ON THESE FOOD BUYS

MORTONS FROZEN <b>APPLE PIES</b>	29¢
SHURFINE <b>COFFEE</b>	REG. OR DRIP 69¢
<b>FRYERS</b>	LB. 31¢
CLOVERLAKE <b>MELLORINE</b>	1/2 GAL. 3 FOR \$1
GRADE A MEDIUM <b>EGGS</b>	LAHAMS DOZEN 39¢
WHITE PREMIUM <b>POTATOES</b>	10 LB. 49¢
SHURFRESH <b>CRACKERS</b>	LB. BOX 25¢
GIANT <b>CHEER</b>	69¢
FOOD KING <b>PEARS</b>	NO. 2 1/2 CAN 39¢
LARGE <b>WESSON OIL</b>	69¢
LUSTRE CREAM <b>SPRAY NET</b>	59¢
NORTHERN <b>TISSUE</b>	2 ROLLS 59¢

**Specials Good  
THROUGH SATURDAY**  
Double Buccaneer Stamps on Wednesday  
**L & J FOOD STORE**  
316 N. 2nd YU 3-3105

EMILY POTTS

### Emily Potts Counsels Students

High School has a for the first time in She is Mrs. Emily Potts second grade Andrews Ward School nine years.

Potts is a graduate of High School and received B. S. degree at Texas 1936 in home economics in clothing and decision to become for about six years Potts said she felt would be more help high school students, largely on their own, thing in the second said "guidance is the everyone in the school. process of assisting to develop these which will enable him to own life, make his decisions and make maximum to difficult life as they arise". Potts will eventually carries Tyer in scheduling and various other evening duties. Potts attended Texas her certificate for

**ma Morris  
Beauty  
Salon Here**

Morris, who graduated Beauty School in and who worked at the and La Vernes in has opened Delma's at 322 West Crock-

12 and 13, as her get offer, she is fea- haircuts with a and set at regular

feature of the salon will take late appoint- be a little advance

is invited to visit and get acquainted with

**WORLD**  
Mrs. Don Arnold of are parents of a baby born in Peoples Hos- 1:05 a.m. Tuesday. venette weighed six and two ounces. She is child of Mr. and Mrs. the mother is the for- Edwards of Morton. erates the Shamrock Floydada.

parents are Mr. and Arnold of Texaco, and Mrs. Enid Ed- Morton.

**WORLD**  
Mrs. Leslie Dean Floydada, are parents of 9-26-'65 at 3:15 a.m. lbs., 7 ozs., and nam- Dramane.

**NOW OPEN**  
**DELMA'S BEAUTY SALON**

DELMA MORRIS,  
GRADUATE OF  
MCBRIDE BEAUTY  
SCHOOL, PLAINVIEW,  
WORKED AT LADY  
FAIR ONE YEAR  
AND AT LAVERNES  
IN FLOYDADA.

ALL TAKE LATE APPOINTMENTS  
FREE HAIRCUTS WITH  
SHOPO AND SET AT REG. PRICE OF \$2  
OCT. 12 AND 13

**DELMA'S BEAUTY SALON**  
CROCKETT YU 3-2354



CENTER NEWS by Mrs. J. E. Green

# Weather Cloudy, Rainy Here

CENTER, Oct. 4—This morning is cloudy and raining a bit. It is pleasant indoors with a low fire in the heater.

It was good to be in Calvary Baptist Church again after being out of town the Sunday before. It is such a nice place to go to Sunday School and church. Try coming to our church if you don't belong some other place in town. And anyway, visitors are always welcome.

There is some illness among our congregation - Mrs. Moore, and Mrs. Odum and Mr. Whitley at home; Mrs. Mable Sims in Methodist Hospital, Lubbock. We trust all will be better soon.

Visiting Saturday afternoon with the J. E. Greens were Mr. and Mrs. Zolan Melton and Mother Melton of Coleman. They were enroute to Muleshoe via Lubbock, where Mother Melton was left to visit another son and wife.

Mrs. Leo Frizzell is at home with a virus. Their grandson, Larry Beedy of South Plains, visited them briefly Saturday afternoon.

Mr. and Mrs. Houston Bradford and children visited the Thomas Warrens Saturday evening.

The Thomas Warrens visited Sunday afternoon with her mother, Mrs. Charley Battey.

Others visiting in the home sometime during the afternoon were Mr. and Mrs. Bob Alldredge and children, Mrs. Ola Warren, Mr. and Mrs. Fred Battey, Mr. and Mrs. Clark Battey of Lubbock, Mr. and Mrs. Shelby Cook, Amarillo; and Mr. and Mrs. Julian Edmondson of Phillips.

Sunday afternoon visitors in the Doyle Sandifur home were his sister, Mrs. Genele Fuston, and Mr. and Mrs. Olin Miller of Plainview.

Mr. and Mrs. Elmer Sellers also visited the Sandifurs recently.

Mrs. Frank Dunn is visiting in Lubbock with her children there.

Mr. and Mrs. R. C. Ross spent the weekend in Ft. Worth helping a couple of old friends celebrate their Golden Wedding anniversary.

Mr. and Mrs. O. C. Vinson were in DeLeon last Tuesday attending last rites for Vinson's brother-in-law, C. B. George. Later, the Vinsons visited other relatives in that locality including her sister, Mrs. Brown, and a daughter and family, the Ernest Huckabees of Stephenville. They returned home Friday.

Mr. and Mrs. Olin Miller of

Plainview visited Mr. and Mrs. Hal Thomas Sunday afternoon. Friday visitors for lunch at the Walter Sims' were her niece Mrs. Linnie Bell Randolph of Lubbock and a nephew, Clarence Sisson, Lockney.

Sunday dinner guests of Mrs. W. M. Jackson were her son and wife, Mr. and Mrs. J. I. Jackson of Quanah and Son Jackson, McCoy community.

## Dougherty News By Mrs. W. J. Ross

DOUGHERTY, Oct. 4—Among those attending the play, "Hope Springs Eternal", at the Plainview High School Friday evening were Mr. and Mrs. R. H. Crawford, Mr. and Mrs. Kenneth Poole, Mr. and Mrs. Wayland Jones, Mr. and Mrs. Harlan Cage, Mr. and Mrs. Roy Crawford, Mrs. Ruth Daniel, Mrs. J. T. Poole, Mrs. W. J. Ross, Jacques Crawford, Julie Jones, Jim Crawford, Lance Poole, Steve and Gregg Jones.

Mrs. Ruth Daniel and Harold Woodson attended the funeral of their paternal uncle, Ernest Woodson, age 79, at Ballinger Tuesday. The deceased was the brother of the late Charley Woodson. He is survived by the wife and two sons.

Mr. and Mrs. Jerry Finley and sons of Floydada were Sunday guests in the home of her mother, Mrs. Ruth Daniel.

Mr. and Mrs. B. F. Priddy of Ralls were Sunday dinner guests in the W. J. Ross home.

Mrs. Wayland Jones was hostess to the Dougherty H. D. Club Thursday. Alton Higginbotham, Home Service Consultant with Lighthouse Electric, gave an interesting discussion of electrical heating of homes.

Mrs. Johnny Cates reported on her recent trip to Austin to attend the annual convention of Texas Home Demonstration Association. She attended the district II luncheon, the THDA banquet and the conducted tour of the city, which included tours of the capitol building and the governor's mansion. She attended workshops on health and safety, family life and recreation.

Mrs. Johnny Cates reported on her recent trip to Austin to attend the annual convention of Texas Home Demonstration Association. She attended the district II luncheon, the THDA banquet and the conducted tour of the city, which included tours of the capitol building and the governor's mansion. She attended workshops on health and safety, family life and recreation.

Mrs. Johnny Cates reported on her recent trip to Austin to attend the annual convention of Texas Home Demonstration Association. She attended the district II luncheon, the THDA banquet and the conducted tour of the city, which included tours of the capitol building and the governor's mansion. She attended workshops on health and safety, family life and recreation.

Mrs. J. W. McClure and Mrs. Rachael Taylor, mother and aunt respectively of the hostess were guests. Members present were Mmes. G. W. Smith, Dale Smith, R. H. Crawford, Claude Ring, Robert Ward, Johnny Cates and W. J. Ross, children present were Amy Jones, Rhonda Ward, Shannon Smith and Gregg Jones.

Mr. and Mrs. J. T. Poole were business visitors to Clovis Tuesday.

## Harmony News

by Melvin Mathis

HARMONY, Oct. 4—The Sewing and Knitting Club met Monday with Mrs. Chloma Williams as hostess. Those attending included Mmes. Zant Scott, J. R. Turner, Marvin Smith, Everett Miller, Charles Mather Carr with David, Horace Carr, R. B. Gary, Marion Tucker, Mather Carr, Leon Williams, and M. D. Ramsey.

Both Mr. and Mrs. Gail Alexander are still in the Reese Air Base Hospital. Alexander suffered a heart attack and Mrs. Alexander underwent skin grafting. It is possible that they may be released late this week. Mrs. R. B. Gary visited them Tuesday.

Mmes. Chloma Williams, Wesley Carr, Charles Mather Carr, Vaughn Ginn, and Mrs. Mather Carr attended a dress party in Floydada at the home of Mrs. Leon Williams on Thursday evening. Mrs. Carrick Snodgrass served as saleslady. Between 25 and 30 was the total attendance.

The Wesley Carrs left Friday afternoon for a visit with Bill Carr, who attends a trade school in Oklahoma City.

Miss Reda Mae Gary, who was recently transferred by the Veteran's Administration from Lubbock to Waco, visited with her mother, Mrs. R. B. Gary, on Wednesday night. She was accompanied by a friend, Miss Ritchie. Mr. and Mrs. Leon Williams took the Sunday noon meal with Mrs. Gary.

Mr. and Mrs. Horace Carr had the Sunday noon meal with Mrs. Mather Carr.

Those attending the Tech-A-M-G game at Lubbock Saturday night included the Chloma Williams, Everett Millers, Charles Mather Carrs, and Vaughn Ginn. This time there was both a victory for Tech and dry weather. Meantime the Charles Mather Carr's "little David" was staying with maternal grandparents in Floydada, the Jim Woods.

The Chloma Williams hosted Sunday afternoon the Horace Carrs, Vaughn Ginn and children, Allen Grosses and children, and Mrs. Mather Carr. There were 18 at Sunday School at Carr's Chapel. This was not the Sunday for worship service. Rev. Doyn Merriman of Hale Center is to be back next Sunday.

**4-H Club News**  
CEDAR HILL 4-H NEWS (by Jennifer Yearly)  
Sue Whitehead called to order the past meeting of the Cedar Hill 4-H Club. The motto, pledge and prayer were led by Joe Breed and the pledge to the flag was led by Craig Gilly. Roll call was by Beverly Hollowell.

The election of new officers was held. Larry Noland was named president; Craig Gilly, vice president; Jennifer Yearly, secretary and treasurer; Sue Whitehead, reporter; Richard Breckenridge, parliamentarian; Joe Breed and Beverly Hollowell, council delegates; Pam Breed and Craig DuBois, calling committee.

A hobo or masquerade party for Halloween was discussed during the business session. It was also decided to change meeting dates to the third Monday of each month.

Refreshments were served by Beverly Hollowell and Donnie Fortenberry.

FLOYD DATA  
Kristi Lee Johns, daughter of Mr. and Mrs. Ronnie Wooten of Henderson, Nev., underwent a gall bladder operation this week and following complications had to have a kidney removed. The 14 year old youngster is the granddaughter of Mr. and Mrs. Claude Price of Floydada. She is in Rose De Lina Hospital in Henderson.

Johnson signs bill to spread technology.  
News from home favored by G.I.s.

## FUMBLES VERY COSTLY

# Tulia Hornets Blank Whirlwinds

The highly ranked Tulia Hornets did what was expected of them Friday night as they downed the Floydada Whirlwinds 49-0 at Tulia. Two fumbles, one by Tulia and one by Floydada proved costly for the Whirlwinds, for Tulia Hornets fell on both loose balls for touchdowns.

However, a fumble by Tulia on the Floydada 1 1/2 yard line stopped a Hornet drive, but a fumble by Floydada two plays later accounted for six points for Tulia.

During the first half the defense of Floydada appeared to be strong, after holding Tulia to only 14 points. There were only 33 seconds left in the first quarter before Tulia erased their goose-egg from the scoreboard to make the score 6-0. Midway in the second quarter

When one looks back at the game last Friday night, considers the injuries the Whirlwinds were suffering, and compares what was accomplished by the locals with what other district teams have suffered at the hands of Tulia, there are strong indications that the Whirlwinds will kick some district competition around.

The opening game of the conference play is one week from tomorrow night, at which time the Winds will host a speedy Abernathy team.

The first half of last Friday night's game was real impressive, despite the fact that two Tulia touchdowns were called back. With a little more experience under their belts, the Winds would have eliminated at least one of the counters by the Hornets.

Although the Whirlwinds gave all their hearts in the game, and this is all that can be expected of any team, the Tulia team was far above their heads. In spite of this the Winds held the Hornets very good the first quarter, and at halftime were sporting a score that most district teams would have envied at the times they met Tulia.

Dimmitt, for example, was behind 41-0 at halftime, whereas the Winds were trailing by only 14 points, and were still in the game.

Several good runs were made by the Hornet backs, but the play of the night, that pleased particularly the Whirlwind followers, was the fake kick and screen pass that Waldo West tossed to John Cantrell.

Under normal conditions a play such as that would go all the way to the goal line, but Tulia is a team that has good pursuit, and with such a long way to go, the locals did good to carry the ball as far as they did.

This thing of hesitation, when a football is loose on the field, was mentioned in this column a few weeks earlier, and although the Winds were trying all the way Friday night, at one point a moment of hesitation cost the locals a touchdown.

When Darrell Smith, Tulia's 35, drove through the line trying for the Hornet's first score, and fumbled, as the ball rolled into the end zone, a Floydada defender looked at the ball, hesitated, then got into the scramble for the ball. However, it was too late for Tulia had recovered the fumble and had six points on the scoreboard.

Was this hesitation caused from not knowing exactly what would happen if he fell on the ball behind the goal line? Perhaps the point in mind was "If I fall on the ball it's a safety". And by the time it was realized it would be a touchback and Floydada would have the ball on the 20, it was too late.

In baseball a player is taught to "know at all times what you will do if the ball is hit to you". And this philosophy is practiced religiously.

The same should hold true with football. Each player should think before the coming play about what he should do under any number of changing circumstances. Of course, what the offense does, is to determine, in an instant, how the defense reacts to meet the attack.

As was mentioned before, this will come with experience, and the better teams played prior to conference, the more experience the team members receive.

Once again we say, Whirlwinds, in spite of the score last Friday, you did put forth a good effort and would have given the AAA team a much better battle if you had been at full strength.

Know any good Aggie jokes? At Lions Club last week the ex-Techsans suffered a bit of ridicule from the Texas and A&M alumni, but no comment has been heard from the boys from College Station this week. I wonder why?

The Hornets tallied again to lead 14-0 at halftime. In the first quarter Tulia was the only team to put together a sustained drive. This came after the two teams played a see-saw game and punted back and forth for more than half the stanza.

Larry Berry received Clinton Fawver's kickoff on the Tulia 12 and was hauled down on the 30 where Tulia put the ball into play.

The Floydada defense held tight during the first three plays, allowing a net gain of only five yards. Darrell Smith then kicked for the Hornets and the ball took a Floydada hop setting the Whirlwinds up in business on their own 48.

Two plays gained five yards, but on third down quarterback John Cantrell was knocked down behind the line of scrimmage for a seven yard loss, so on fourth down Waldo West kicked to the Tulia 20.

Once again the Hornets couldn't muster a drive against the Whirlwind defense and three plays later the Tulia team had gained a minus five yards so on fourth down Fred Howell kicked to Joe Christian who was downed on the Tulia 48.

This gave the Whirlwinds very good field position, but in three plays only one yard had been gained so once again West kicked for the locals. The ball rolled out of bounds on the Tulia 29.

At that point, the Hornets began putting together the first drive of the night that carried them 71 yards in 11 plays for the first score.

Dennis Hardee picked up three, Fred Howell added five then on third down Darrell Smith broke through the middle for 16 yards and a first down. Smith was stopped with only a three yard gain on the next play, but on the second try of the series he added 12 yards to the Hornet cause.

Howell picked up three, Smith rambled for six and on third down Hardee picked up another three to the Whirlwinds 22 and the first down.

Smith was held to no gain, but Howell picked up another first on the following play to the Floydada 10.

On the following play, Smith piled into the center of the Floydada line, moved to the five, fumbled, and the ball rolled into the end zone where a Tulia player fell on it giving the Hornets their first score, with 33 seconds left in the first quarter.

Ricky Howard's kick was good and the Hornets led 7-0.

Christian received the kickoff on the 12 and got back to the 26.

The Whirlwinds were unable to move during the series, during which time the quarter ended, so on fourth down West kicked to Howard on the Tulia 45 and he carried the ball all the way back for a TD.

However, this was called back and Tulia was penalized 15 yards, back to the 28 for clipping. Smith picked up 16 and a first down and 11 yards and another first down to the Floydada 45, then on the following play Tommy Shepherd carried all the way to the goal line for another TD that was too awful, for once again the Hornets were clipping and were penalized back to the 47.

Howell moved the ball to the 34 for a 13 yard gain and a penalty against Floydada, for personal foul, moved the ball down to the 19 for a first down.

Danny Cook then carried to the 11 and Smith moved the ball to the six, then on first down Smith went through the middle of the Floydada line for the second TD of the night with 8:56 left in the half.

Cook's kick was good and Tulia led 14-0.

Howell's kickoff rolled into end zone so Floydada took possession on the 20. Roland Adams picked up four, but a fumble on second down resulted in a two yard loss. On third down, Christian picked up 8 to the 30 and a first down for the locals.

In the next series of downs the Winds gambled on fourth down, facing one, Cantrell sneaked for two yards and the first down.

However, this drive was soon to end for on second down a fumble on the 40 resulted in a Tulia recovery.

The Whirlwind defense held tight that time, aided by a clipping penalty against Tulia. On fourth down a pass from Hardee to Joe Childers was broken up by Marler so Floydada took over on the 40.

This stopped the Tulia drive, but three plays later after not moving against the Tulia defense West's kick rolled dead on the Tulia 35.

Cook lost three on first down, two passes from Hardee to Larry Berry went incomplete and Hardee picked up one to the 29 where the ball went over on downs.

A run by Adams moved the ball four yards upfield before the first half ended with the score 14-0.

Although it appeared as if a good ball game was in the making through the first half, for both teams were able to contain the other's attack on several occasions, the Hornets came out in the second half, went into the end zone and the Whirlwinds set up operations on the 20.

Christian was thrown for a one yard loss, Adams was caught behind the line for a four yard loss, but on third down Christian picked up 15 to the thirty and a first down.

The drive was soon to end for the next three plays netted minus five yards, so West kicked to the Hornets. The ball rolled dead on the Tulia 38.

Smith picked up five through the middle, and got a first down on the second play, also through the middle of the Floydada line.

With the ball at midfield Howell carried to the Floydada 39.

Marler took the kickoff on the 10 and moved back to the 20 before he was tackled. West kicked a minus five yard pass to the 25.

Jerry Jackson moved the ball across middle to the 48 and Howard exploded on a 48 yard run for another score with 1:57 remaining in the game.

The kick was good and the score was then 40-7.

Marler was dropped on the 44 after receiving the ball for a three yard loss and was downed on the 48 yard line.

This only stalled the Tulia team, however, for two plays later a fumble in the backfield resulted in a touchdown for the Hornets for Robert Cannon fell on the ball behind the Floydada goal line, with 5:40 left in the quarter.

Cook's kick was accurate and the score stood 21-0, Tulia.

John DeLeon took the kickoff and moved to the Floydada 28 before he met resistance from the Tulia team.

Christian gained one, and Cantrell picked up six to the 35, but a holding penalty against the Winds moved the ball back to the Floydada 14.

On the next play, the strong defense of Tulia threw DeLeon back to the four, then Christian moved the ball to the 8.

On fourth down West's kick went out of bounds on the Floydada 40.

It didn't take Tulia long to capitalize on this break after picking up a first down in two plays on the Floydada 28, Jerry Jackson moved the ball to the 20 then on second down Howell went the distance to the goal for the fourth Tulia counter of the night.

The kick was good and the score stood 28-0.

The kickoff went into the end zone once again so Floydada set up the offense on the 20.

Three plays later, after runs by Adams, DeLeon and Christian, West got off his shortest kick of the night as the ball went out on the Floydada 35.

On first down Howell picked up a first down on the Floydada 21, as the quarter ended.

Shepherd rounded right end for nine yards to the 12 and Howell picked up a first down on the next play down on the Winds three.

On the next play Howell went in for the score, with 10:56 left in the game. The kick was good and the score was 35-0.

Three persons were injured Tuesday afternoon in a three way collision on Second and Jackson St., about 4:30. Treated and released at Peoples Hospital were Clinton Fawver, contusion of nose; Dennis Gotcher, contusion of right hip; and J. L. Copperell, contusion of left shoulder and upper anterior chest.

Bill Taylor, chief of police, said the wreck occurred when Copperell, 91, driver of a 1952 Chevrolet, failed to yield right of way at the stop sign when entering the highway west on Jackson Street. A Ford, driven by Fawver with Gotcher as passenger, was traveling north on the highway. The Fawver car struck the driver's side of the Copperell car. Both vehicles went out of control. The Copperell car swerved into the west side of the highway, striking the truck, traveling south, the careened into the old Orman Store building. The Fawver car also swerved into the west side of the highway and came to a stop directly in front of the truck, Taylor said.

Driver of the truck was injured. Taylor said the accident was still under investigation.

The B team and Freshmen play tonight, so why not go out and give them a boost.

Speaking of Florida State... The Florida State-Baylor game is one this person missed in the predictions. The Bears went down 9-7, but how was anyone to know that Southall was going to break his leg in the game.

The B team and Freshmen play tonight, so why not go out and give them a boost.

The B team and Freshmen play tonight, so why not go out and give them a boost.

The B team and Freshmen play tonight, so why not go out and give them a boost.

The B team and Freshmen play tonight, so why not go out and give them a boost.

The B team and Freshmen play tonight, so why not go out and give them a boost.

The B team and Freshmen play tonight, so why not go out and give them a boost.

The B team and Freshmen play tonight, so why not go out and give them a boost.

The B team and Freshmen play tonight, so why not go out and give them a boost.

The B team and Freshmen play tonight, so why not go out and give them a boost.

The B team and Freshmen play tonight, so why not go out and give them a boost.

The B team and Freshmen play tonight, so why not go out and give them a boost.

The B team and Freshmen play tonight, so why not go out and give them a boost.

The B team and Freshmen play tonight, so why not go out and give them a boost.

Smith moved the ball to the 4 for another first, but was held for no gain on the next try. Howell moved to the one and on the next play the determined defense of Floydada held tight and caused Hardee to fumble. Zeke Robertson was the last man off the ball and Floydada team had the ball on its own 2 yard line.

This only stalled the Tulia team, however, for two plays later a fumble in the backfield resulted in a touchdown for the Hornets for Robert Cannon fell on the ball behind the Floydada goal line, with 5:40 left in the quarter.

Cook's kick was accurate and the score stood 21-0, Tulia.

John DeLeon took the kickoff and moved to the Floydada 28 before he met resistance from the Tulia team.

Christian gained one, and Cantrell picked up six to the 35, but a holding penalty against the Winds moved the ball back to the Floydada 14.

On the next play, the strong defense of Tulia threw DeLeon back to the four, then Christian moved the ball to the 8.

On fourth down West's kick went out of bounds on the Floydada 40.

It didn't take Tulia long to capitalize on this break after picking up a first down in two plays on the Floydada 28, Jerry Jackson moved the ball to the 20 then on second down Howell went the distance to the goal for the fourth Tulia counter of the night.

The kick was good and the score stood 28-0.

The kickoff went into the end zone once again so Floydada set up the offense on the 20.

Three plays later, after runs by Adams, DeLeon and Christian, West got off his shortest kick of the night as the ball went out on the Floydada 35.

On first down Howell picked up a first down on the Floydada 21, as the quarter ended.

Shepherd rounded right end for nine yards to the 12 and Howell picked up a first down on the next play down on the Winds three.

On the next play Howell went in for the score, with 10:56 left in the game. The kick was good and the score was 35-0.

Three persons were injured Tuesday afternoon in a three way collision on Second and Jackson St., about 4:30. Treated and released at Peoples Hospital were Clinton Fawver, contusion of nose; Dennis Gotcher, contusion of right hip; and J. L. Copperell, contusion of left shoulder and upper anterior chest.

Bill Taylor, chief of police, said the wreck occurred when Copperell, 91, driver of a 1952 Chevrolet, failed to yield right of way at the stop sign when entering the highway west on Jackson Street. A Ford, driven by Fawver with Gotcher as passenger, was traveling north on the highway. The Fawver car struck the driver's side of the Copperell car. Both vehicles went out of control. The Copperell car swerved into the west side of the highway, striking the truck, traveling south, the careened into the old Orman Store building. The Fawver car also swerved into the west side of the highway and came to a stop directly in front of the truck, Taylor said.

Driver of the truck was injured. Taylor said the accident was still under investigation.

The B team and Freshmen play tonight, so why not go out and give them a boost.

The B team and Freshmen play tonight, so why not go out and give them a boost.

The B team and Freshmen play tonight, so why not go out and give them a boost.

The B team and Freshmen play tonight, so why not go out and give them a boost.

The B team and Freshmen play tonight, so why not go out and give them a boost.

The B team and Freshmen play tonight, so why not go out and give them a boost.

The B team and Freshmen play tonight, so why not go out and give them a boost.

The B team and Freshmen play tonight, so why not go out and give them a boost.

The B team and Freshmen play tonight, so why not go out and give them a boost.

The B team and Freshmen play tonight, so why not go out and give them a boost.

The B team and Freshmen play tonight, so why not go out and give them a boost.

The B team and Freshmen play tonight, so why not go out and give them a boost.

The B team and Freshmen play tonight, so why not go out and give them a boost.

The B team and Freshmen play tonight, so why not go out and give them a boost.

The B team and Freshmen play tonight, so why not go out and give them a boost.

The B team and Freshmen play tonight, so why not go out and give them a boost.

The B team and Freshmen play tonight, so why not go out and give them a boost.

The B team and Freshmen play tonight, so why not go out and give them a boost.

The B team and Freshmen play tonight, so why not go out and give them a boost.

The B team and Freshmen play tonight, so why not go out and give them a boost.

The B team and Freshmen play tonight, so why not go out and give them a











# WANT BETTER JOBS ADS LOST and FOUND REAL ESTATE

Classified Advertising rate: 5 cents per word  
 insertion 3 cents each subsequent insertion.  
 Display charge 50 cents.  
 Classified Display Rate: 75 cents per column  
 100 words of Thanks \$1.  
 DEADLINE NOON TUESDAYS

**ANNOUNCEMENTS**

**WEDGES MEETINGS**  
 1000 Lodge No. 34  
 Monday nights, James L.  
 Noble Grand, Floyd  
 6 tfc

Chapter No. 227  
 Masons Lodge  
 their stated meet-  
 ings fourth Saturday  
 each month at 7:30.  
 James, H. P., Ray  
 Secy. tfc

Masonic Lodge No.  
 M. will hold their  
 meeting the second  
 night of each month  
 at the home of  
 W. M. Ferguson, Secy.

**WORD OF THANKS**

to say thank you to  
 friends who have  
 shown such thoughtfulness  
 weeks. We have ap-  
 preciated much those who  
 the hospital with us.  
 food, visits and  
 brightened each day.  
 We want to thank  
 the staff at Peo-  
 tal for the many  
 administered to  
 Each day we say a  
 prayer to God to bless  
 friends and for let-  
 in this wonderful

DeRene,  
 and Bobby Durham  
 10-7p

like this means of ex-  
 love and gratitude  
 friends who brought  
 during the illness  
 of our dear mother  
 kindness and sym-  
 pathy will always re-  
 us as a precious  
 beautiful service  
 offering, the food  
 especially ap-  
 10-7c

depths of our hearts  
 express our gratitude  
 shown us in our  
 loss. Words cannot  
 express our appre-  
 the prayers, food,  
 and gifts of mon-  
 us. Our heartfelt  
 to the doctors and  
 cared for our loved  
 time of their need.  
 vital service spoken  
 Falres and Rev. F.  
 left us with grateful  
 bereavement which  
 home has brought us  
 appreciation of our  
 friends. Such kindnesses  
 only thoughtfulness  
 forgotten.  
 Mrs. Charlie Warren  
 Johnny and Larry  
 Mrs. Carl Banks

our sincere thanks  
 and relatives for  
 food, flowers,  
 words of consolation  
 during the recent loss  
 of one. We thank Bro-  
 nly for the inspiring  
 delivered at the ser-  
 Mrs. David Bat-  
 Mrs. Bob Copeland  
 and Mrs. Thurman  
 having the meals in-  
 and those that help-  
 me. May God  
 bless you.

beautiful flowers, nice cards,  
 food and most of all your pray-  
 ers.  
 Mr. and Mrs. M. D. Rape  
 The Leslie Nixon Family  
 10-7c

**WANTED**

WANTED responsible party to  
 take over payments on late  
 model Singer sewing machine  
 in Floydada area. Will zig-  
 zag, fancy stitches, etc. 5  
 payments at \$4.96 or \$25.00  
 cash. Write Credit Depart-  
 ment, 1114 19th Street, Lub-  
 bock, Texas. tfc

to thank our many  
 neighbors for the  
 extended me in my  
 appreciate the many

ALL Parts for some washers,  
 some parts for all washers.  
 Complete line of belts for all  
 washers and dryers. Home  
 Appliance Service, 116 W.  
 Missouri Street, YU 3-2846.

**FARMERS EXCHANGE**

**FARM & RANCH LOANS**

SHOP FOR a loan like you shop  
 for a farm. Find out about  
 the loan that financed a mil-  
 lion farms and ranches -  
 a long-term, low payment  
 Fed. Land Bank Loan. See  
 Jake B. Watson at the Federal  
 Land Bank Association of  
 Floydada, 319 S. Main, Floy-  
 dada, Texas. tfc

FARM LOANS: S for Farm  
 Loans, higher appraisals,  
 prompt closing and excellent  
 repayment options.  
 GOEN & GOEN tfc

**FARM MACHINERY**

NORRELL TRACTOR PARTS  
 for Tractor and Irrigation  
 Supplies and Accessories. tfc

**PORTABLE DISC ROLLING**  
 (NO SCALLOPS)  
**COPELAND WELDING SHOP**  
 LOCKNEY, OL-3316

**IRRIGATION**

**FEED, SEED & GRAIN**

FOR SALE - 1,000 bushel metal  
 grain bins. W. B. Eakin, 667-  
 2514, Petersburg. 10-14c

NEED Some Good Feed Oats?  
 Northern white oats from the  
 Dakotas. \$1.05 bushel bulk.  
 Producers Co-op Elevator. tfc

FOR SALE - Dry land bundles,  
 short, leafy, small amount of  
 grain. Roy Hale. YU3-2760. tfc

MR. FARMER - All your wheat  
 seed needs available at Pro-  
 ducers Elevators, Floydada  
 and Dougherty. Wichita, Kaw,  
 Tascosa, Caddo, Triumph.  
 Also Barley. tfc

**SEED WHEAT**  
**WICHITA - TASCOSA KAW**  
 Cleaned and treated.  
 in bulk  
 \$1.85 per bushel  
**Muncy Elevator**  
 OL 4-3100

**WE FIX IT**

WE FIX IT - Hearing Aid Re-  
 pair on all kinds. Johnson  
 Pharmacy. tfc

**WANTED**  
 COMPLETE Vacuum Sweep-  
 er Service including hose instal-  
 led on all makes. Home Ap-  
 pliance Service, 116 W. Mis-  
 souri Street, YU 3-2846. 3 tfc

**WE CLEAN AND TUNE ELECTRIC SHAVERS**  
 REPAIR ALL MAKES  
 SELL AND TRADE  
 ALL MAKES  
**GOEN DRUG AND PHARMACY**  
 PHONE YU 3-3388

WANTED - Custom bailing and  
 swathing. Dick Mayfield,  
 4550 Bean, Texas, Silvertown.  
 tfc

**LIVESTOCK AND POULTRY**

FOR SALE - Horses, including  
 Barrel Racing Pony. Call  
 YU3-3064. 10-7p

LATEST FRANKLIN VETERI-  
 NARY SUPPLIES  
 Available at Bishop's Pharmacy  
 tfc

FOR SALE - 10 registered Ang-  
 us heifers, will calve in May.  
 Also five registered Angus  
 bulls. Ready for service. A.  
 E. Moore, Star Route, Cros-  
 byton, Texas. Phone McAdoo  
 Exchange, MY7-2402. tfc

**MERCHANDISE**

COMPLETE LINE OF FRANK-  
 LIN VETERINARY SUPPLIES  
 Available at Bishop's Pharmacy  
 tfc

EVERYTHING in musical in-  
 struments and accessories-  
 and repair parts. Johnson's  
 Pharmacy. tfc

WE BUY radios in need of re-  
 pairs. Roy L. Lynch, Floy-  
 dada Trading Center, 406 E.  
 Houston. tfc

FOR SALE - 22" x 34" heavy  
 aluminum sheets which would  
 be fine for covering outside  
 of barns, garages, etc. . . .  
 make good roof with tar sea-  
 ler. 25¢ each . . . or 20¢  
 each by the hundred. Blanco  
 Offset Printing . . . Phone  
 YU 3-3737. tfc

FOR SALE - General Electric  
 refrigerator. 30 day warren-  
 ty. \$65.00. 2 Citizens Band  
 Radios with crystals. \$50.00  
 each. YU3-2683. tfc

FOR SALE - Low mileage, one  
 owner sport sedan 1964 Chev-  
 rolet. All extras including air  
 conditioning. See or call Ted  
 Allen. tfc

FOR SALE - Good used upright  
 Singer vacuum cleaner. YU3-  
 3088. tfc

**FOR RENT**

FOR RENT - Furnished garage  
 apartment. 321 West Georgia,  
 YU3-2241. tfc

FOR RENT - Unfurnished house  
 - 3 rooms and bath. YU3-  
 2202. tfc

FOR RENT - 2 bedroom house,  
 partly furnished. Artie Mun-  
 cv. YU3-2272. 10-7c

FOR RENT - Furnished apart-  
 ment. See Mrs. Green at  
 129 West Georgia. 10-14c

FOR RENT: Furnished apart-  
 ments and bedrooms 102  
 E. Houston on Highway 70.  
 tfc

FOR RENT - 2 bedroom unfur-  
 nished house. 608 So. Wall.  
 See L. A. Marshall at 602 S.  
 Wall. YU3-3169. tfc

**MISCELLANEOUS**

BEAUTY SHOP FOR SALE -  
 Good town, new shop, good  
 business, Petersburg, Texas.  
 Ph. day or night. 667-5651.  
 10-28c

MADE-TO-MEASURE clothes.  
 Western suits, dress suits,  
 sport coats and slacks. Guar-  
 antee satisfaction. Recer's  
 Cleaners, Lockney, Texas.  
 O'dfield 4-2262 collect. tfc

FOR SALE - 10 horse electric  
 motor in excellent condition.  
 3 phase and variable speed.  
 Phone YU3-3737 or YU3-  
 3982. tfc

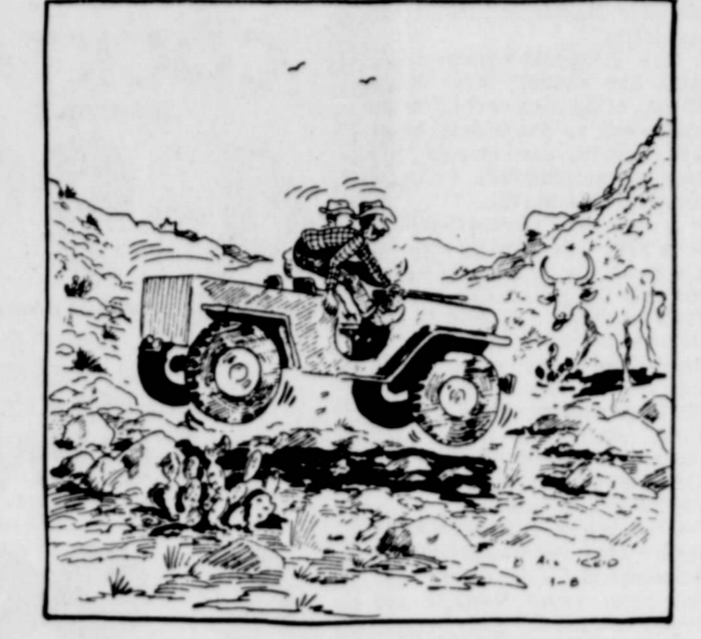
**WE FIX IT**

COMPLETE Vacuum Sweep-  
 er Service including hose instal-  
 led on all makes. Home Ap-  
 pliance Service, 116 W. Mis-  
 souri Street, YU 3-2846. 3 tfc

WANTED: Electric Motor Re-  
 pair service. Call Home Ap-  
 pliance, 116 W. Missouri St.  
 YU 3-2846. 3 tfc

**WE CLEAN AND TUNE ELECTRIC SHAVERS**  
 REPAIR ALL MAKES  
 SELL AND TRADE  
 ALL MAKES  
**GOEN DRUG AND PHARMACY**  
 PHONE YU 3-3388

**COW POKES** By Ace Reid



"Watch out, ol' steer! We done lost control of this modern bronc!"

**AUTO, FIRE & FARM INSURANCE**  
 Floydada Real Estate & Insurance Agency  
 JIM WORD - PHONE YU 3-3360

**FARMS & RANCHES**  
 CITY PROPERTY ranches and  
 farms. Give me your listings.  
 Thagard Real Estate. Phone  
 YU 3-3716. tfc

FOR SALE - 74 acres dryland,  
 eight miles east Floydada.  
 \$250 per acre, subject to  
 irrigation. Goen & Goen,  
 Phone YU3-3524. tfc

WANTED - Farm and Ranch  
 Real Estate Loans handled  
 promptly and efficiently.  
 Long terms, small interest  
 rates, good prepayment plan.  
 Call, write, or come by. Bob  
 Sudderth - J. B. McPherson  
 Mortgage Co., Inc., Office -  
 PO5-6649, Residence - SW5-  
 1212, 1801 Avenue Q, Lub-  
 bock, Texas. 10-7c

**HOUSES FOR SALE**

FOR SALE - 4-bedroom house  
 on West Grover. Can be fi-  
 nanced. Call Mrs. Bob Col-  
 lier. YU3-2474 until 1:00 and  
 YU3-2397 in afternoon. 10-7c

FOR SALE - Two bedroom house  
 on one and one-third acres.  
 One mile from town. \$5,150.  
 Call YU3-3767. tfc

FOR TRADE - My equity in 2  
 bedroom house for trailer  
 house. Call YU3-3884. tfc

FOR QUICK SALE - Nice 2 bed-  
 room house, double garage. 5  
 acres of land. Hale & Hale,  
 YU3-3261. tfc

FOR RENT - Adding machines  
 and typewriters. Hesperian  
 Office Supply, Phone YU3-  
 3737. ttp

FOR SALE - 2 bedroom, 2  
 baths, 816 West Jackson,  
 3 bedroom, 2 baths, brick.  
 717 West Tennessee. YU3-  
 2496. tfc

FOR SALE: To settle the Earl  
 Rainer Estate. 3 bedroom  
 home at 622 West California  
 and Rainer Shoe Shop. Call  
 YU 3-2437. tfc

FOR SALE - Large 3 bedroom  
 house, well located. Small  
 down payment. Hale and Hale,  
 YU3-3261. tfc

**OWN A NEW HOME**  
 LET US BUILD YOU A  
 HOME, 100 FINANCED ON  
 YOUR LOCATION OR WE  
 WILL BUY YOU ONE.  
**TOP CREDIT NOT REQUIRED**  
 FOR ANY COLOR, RACE,  
 OR CREED.  
 CALL 694-5769 OR WRITE  
 THE HIGHTOWER CO.,  
 BOX AA, LEVELLAND, TEX.

FOR SALE - Two bedroom home  
 located 12 miles northeast of  
 Floydada. YU3-3868. 10-21p

FOR SALE - 3 bedroom, living  
 room, kitchen, utility, gar-  
 age, central heating and re-  
 frigerator air. Carpets. 100  
 x 150 foot lot. YU3-2528.  
 10-7

EXTRA NICE three bedroom  
 brick home in good locality  
 in N. W. Plainview. Wall to  
 wall carpet and fenced back-  
 yard. For sale or would trade  
 for home in Floydada. See or  
 call Ted Allen, YU3-2597. tfc

FOR SALE - 2 bedroom house  
 509 S. Main. Goen & Goen,  
 Phone YU3-3524. tfc

**PORTABLE DISC ROLLING**

ROUND AND NOTCHED DISC  
 BASS FARM -  
 DISC ROLLING  
**CHUCK HUMPHREYS**  
 CA 4-9315  
 PLAINVIEW, TEXAS

**FLOYD COUNTY ABSTRACT CO.**  
 Abstracts of Title  
 Title Insurance  
 VERA L. STEWART  
 217 W. Calif. Ph. YU 3-3728  
 Floydada, Texas

**MISCELLANEOUS**

FOR SALE - 1962 Chevrolet  
 sport coupe, air condition-  
 ing. Good condition. Call  
 YU3-2490. 10-14c

A NEW TREND IN  
 MERCHANDISING  
 Lease - Purchase Plan  
 Rental - Purchase Plan  
 Outright Sale  
 Any Reasonable Offer  
 Top Quality,  
 Factory Authorized Service  
 G. E., Maytag, Tappan, Fedders  
 COLLIER'S HOME SUPPLY

TWO ONLY - demonstrator  
 Royal standard typewriters.  
 Sold for \$229.95 new. . . now  
 on sale at \$165.00 each. Hes-  
 perian Office Supply. Phone  
 YU3-3737. tfc

DESIRABLE 81' lot in west  
 Floydada on Virginia Street  
 in new brick home neigh-  
 hood. Call YU3-2771 tfc

FOR SALE - an original share  
 or associate share in Country  
 Club. Call Sam Baker. YU3-  
 3270. tfc

BRACE yourself for a thrill the  
 first time you use Blue Lus-  
 tre to clean rugs. Rent elec-  
 tric shampooer \$1. Boren  
 Furniture. 10-7c

TWO good used check writing  
 machines. Your choice  
 \$27.50. Hesperian Office  
 Supply, Phone YU3-3737. tfc

CLEAN used furniture bought  
 and sold. Floydada Trading  
 Center. Roy L. Lynch, owner.  
 406 E. Houston. tfc

COUNTRY CLUB STOCK, origi-  
 nal voting share. Call YU3-  
 2771. tfc

FOR SALE - 1960 model Chev-  
 rolet pickup, half ton. 12 ft.  
 Hoeme. W. C. International  
 tractor. Carl Smith, YU3-  
 3441. 10-21p

**HELP WANTED**

TWO MEN WITH SALES  
 EXPERIENCE BETWEEN  
 THE AGES OF 26-45, MUST  
 HAVE OWN AUTOMOBILE.  
 STARTING PAY DEPENDS  
 ON EXPERIENCE. APPLY  
 AT 2306 WEST 5TH STREET  
 SUITE 104, PLAINVIEW,  
 TEXAS GIVING COMPLETE  
 BACKGROUND. ALL AN-  
 SWERS CONFIDENTIAL.

LOCAL REPRESENTATIVE WANTED  
 MAN or WOMAN - FULL or PART TIME  
 No Investment Required

Protected Territory • Complete Com-  
 any Financing • Exceptional Earnings •  
 Incentive Plan • Full Training Provided  
 • National Advertising Program •  
 Representative will handle our com-  
 plete line: The Book of Knowledge -  
 "America's Favorite Since 1911". The  
 new Min-Max Teaching Machine -  
 "Program Learning at its Best" and  
 other educational products.

All replies kept confidential, write:  
 C. V. Foster, 4125 E. Hill  
 Denver, Colorado 80221

MR. AND MRS. Nolan Arney win  
 two free passes to see "The  
 Rounders" Thursday or Fri-  
 day night at the Capada Drive-  
 in Theatre.

**ARTHUR B. DUNCAN ABSTRACT COMPANY**  
 MAUD E. HOLLUMS  
 Owner and Manager  
**ABSTRACTS - TITLE INSURANCE**  
 Agents for Stewart Title  
 Guaranty Company, member  
 Texas Title Association  
 and American Title Association.  
 Telephone YU 3-3167  
 Office on South East Corner  
 public square, Corner Cali-  
 fornia and Wall, Floydada  
 Texas.  
 "The Oldest Abstract plant  
 in Floyd County"

**RADIATORS NEW AND USED**  
 CLEANED - REPAIRED  
 RECORDED  
**BADGETT RADIATOR SHOP**  
 Radiator Service  
 YU 3-3454

**Home Made Eggs**  
 Enjoy fresh home  
 produced eggs  
 from . . . . .  
**CARMACK'S**

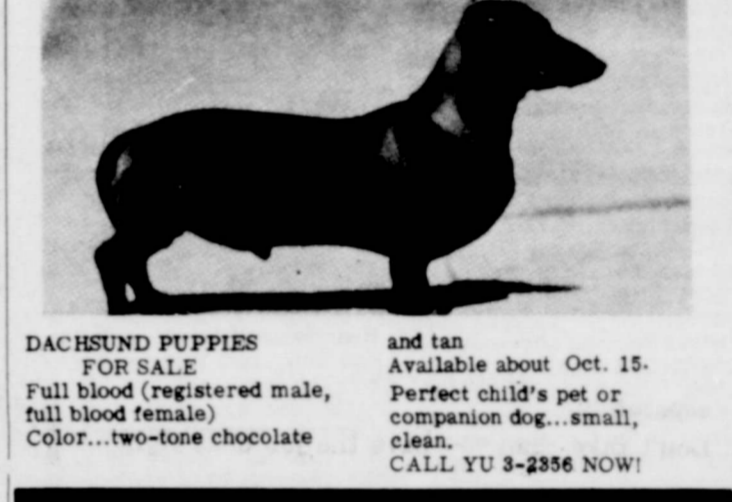
English Walnuts-Pecans-  
 Almonds  
 BUSINESS went to NUTS  
 ARTWAY  
 TREE SURGERY  
 Feeding-Pruning-Treating  
 -Spraying-Landscaping  
 H. B. FOSTER P.O. Box 681  
 Lockney, Texas

For Prompt Service  
 on  
 Home & Auto Radios  
 See  
**RICE**  
 RADIO SERVICE  
 1/2 blk. n. of bus station

**FOOTE BUTANE**  
 FLOYDADA

Call  
 YU 3-3220  
**Gasoline - Oils - Grease**  
**For Delivery**  
**Butane - Propane**  
**Foote Butane**  
**& Oil Co.**  
 East Highway 70  
 FLOYDADA

**Hollis R. Bond Real Estate**  
 (Successor to Massie & Bond)  
 BOOTHE BUILDING FLOYDADA



**DACHSUND PUPPIES**  
 FOR SALE  
 Full blood (registered male,  
 full blood female)  
 Color...two-tone chocolate  
 and tan  
 Available about Oct. 15.  
 Perfect child's pet or  
 companion dog...small,  
 clean.  
 CALL YU 3-2856 NOW!

**Dr. O. R. McINTOSH**  
**OPTOMETRIST**  
 211 SOUTH MAIN ST.  
 MEMBER Phone YU 3-3460-Floydada, Tex.

**JOHN B. STAPLETON**  
**LAWYER**  
 101 N. Main Street  
 TEL. YU 3-2197

**PARTNER OR PARTNERS WANTED**

Prefer working partner with minimum investment  
 of \$5,000 share in the business.

Will accept silent partner for 10% return on  
 investment in the Mar-Dell Manor Convalescent  
 Center in Floydada.

Contact Jerry Miller , phone CA4-4823 in  
 Plainview or SW5-7514 in Lubbock.



**CEDAR HILL NEWS**

**CEDAR HILL, Oct. 4** - Mr. and Mrs. Durrell Foetenberry and boys spent Friday night and Saturday in the home of her parents, Rev. and Mrs. V. C. Sparks, Timothy and Carolyn, in Memphis. Mrs. Sparks had undergone surgery and was still in the hospital.

Supper guests in the A. S. Mize home Thursday were Mr. and Mrs. Billy Tye, Mrs. W. B. Wilson, Woodrow Wilson, all of Floydada, and Mr. and Mrs. Walton Wilson. The occasion was celebrating Albert's 72nd birthday. We wish him many more birthdays.

The Cedar Hill sewing club met Wednesday in the home of Mrs. Rene Yearly. Members present were Mrs. Marylee Swain and Mrs. Mamie Yearly, Mrs. Rene Yearly.

Mr. and Mrs. Albert Mize, Mrs. W. B. Wilson and Cotton Wilson went fishing Friday at White River Lake near Crosbyton and caught several small fish, but no fish for supper or breakfast either.

Elton Strickland of Lubbock visited in the home of his uncle and aunt, Rev. and Mrs. C. A. Strickland, in Floydada Tuesday. Thursday Mrs. T. J. Perry visited in the Strickland home.

Mr. and Mrs. Dewey Lunsford and daughter, Mrs. LaFrance, and Gary Dee spent Saturday night in the home of their son, the Rev. and Mrs. Richard Lunsford and girls. They attended Sunday morning services at the Cedar Hill Baptist Church.

The Cedar Hill Baptist Church wishes to announce that the starting time for their night services has been changed from 7 p.m. to 6:30 p.m., both Wednesday nights and Sunday.

Mr. and Mrs. Joe Phillips of Lockney visited Sunday in the home of Mr. and Mrs. Rene Yearly.

Mr. and Mrs. Jerry Billington of Lockney visited Sunday with her parents, Mr. and Mrs. Jack Yearly.

Mrs. Tom Fortenberry visited her sister, Mrs. C. A. Stearnson, Wednesday near Silverton.

Mr. and Mrs. W. O. Swaim of Floydada attended the singing at the Assembly of God Church in Lockney Sunday afternoon.

Mrs. Belle Lemons visited Thursday afternoon with her granddaughter, Mrs. Eddie Whitley and Karl in Plainview, and helped to can beans.

Mrs. Eddie Whitley and Karl, and Mrs. C. F. Lemons were visitors Saturday afternoon with Mrs. Belle Lemons.

Rev. and Mrs. Robert Slaton and girls visited Tuesday night with the Garland Tuckers. Mrs. Slaton and girls spent Thursday afternoon in the Tucker home making catsup.

Mrs. Evelyn Breckenridge and children were guests in the home of Mr. and Mrs. Garland Tucker for a weiner roast Friday night.

Mr. and Mrs. J. R. Kelley visited Sunday afternoon with Mr. and Mrs. Garland Tucker.

Mr. and Mrs. Jim Conner went to Perryton Monday morning to attend the funeral of his brother-in-law, Robert Barlow, who passed away Saturday night. Barlow suffered a heart attack in January and has been in poor health since. Mrs. Barlow is the former Gertrude Conner who spent her childhood days in our community. Our heart-felt sympathy goes out to the family in this time of sorrow.

Mr. and Mrs. Robin Fortenberry visited Sunday afternoon with his mother, Mrs. John Fortenberry.

Mr. and Mrs. Weldon McCormick visited Sunday afternoon in the home of their son, Mr. and Mrs. Delmas McCormick and boys.

Mr. and Mrs. Junior Taylor, Bud and Mrs. M. H. Taylor were Sunday dinner guests of Mr. and Mrs. Olan Keeter and family in Plainview. Keeter had the misfortune of falling and breaking his arm about a week ago. Then little Olan suffered a broken right leg Wednesday afternoon in football practice. His leg is in a cast and he has had quite a bit of pain. We are hoping they both improve fast.

Mrs. J. R. Kelley and Mrs. J. A. Welch visited Wednesday morning with Mrs. M. H. Taylor.

Mark Gilly spent Saturday night with Bud Taylor; Sheila Taylor spent Saturday and Sunday night with Malinda Neff in Floydada.

Mrs. E. E. Wells, Miss Thelma Thompson and Mrs. J. C. Weaters visited Wednesday afternoon with Mrs. M. H. Taylor.

Mr. and Mrs. Eugene Gilly and boys visited Mr. and Mrs. David Reddout and son of Plano in the home of Mr. and Mrs. Leighton Teeple Sunday afternoon.

Rev. and Mrs. Robert Slaton and girls, Mr. and Mrs. John Harrison were visitors in the Eugene Gilly home Thursday night.

Mr. and Mrs. Esley Yearly were Sunday dinner guests of Mrs. Mamie Yearly and Andrew. Mr. and Mrs. Jim Teaver of Plainview spent Friday with Andrew Jetton and his sister, Mrs. Mamie Yearly.

Stephanie and Stevie Fortenberry spent Saturday night with their grandparents, Mr. and Mrs. C. W. Whitow in Plainview.

Mr. and Mrs. Eldon Fortenberry and David were Sunday dinner guests in the Vittow home. In the afternoon they visited in the home of Mrs. Fortenberry's sister, Mr. and Mrs. George (Junior) Brown and family, in Olton. The Browns have a new son, Michael Craig, born Sept. 24.

Mr. and Mrs. Bill Bales and girls of Dallas spent Sunday night and Monday in the home of her parents, Mr. and Mrs. Frank Floyd. Mrs. Floyd's father, J. F. Prather of Muleshoe, came Sunday to spend some time in the Floyd home.

Mr. and Mrs. Wilbur Floyd and family of Floydada were Sunday night supper guests of his parents. We were sorry to hear that Wilbur had suffered a broken foot and was walking on crutches. We wish him a speedy recovery.

Mr. and Mrs. Morris Degam and daughter of Medicine Mound spent Sunday night in the home of her sister, Mr. and Mrs. Greer Lackey, Rohn and W.E.

Mr. and Mrs. Edward Whitehead and family of Lubbock visited Sunday afternoon in the home of his parents, Mr. and Mrs. J. B. Whitehead.

Mr. and Mrs. W. W. Whitehead and son of Texon spent Sunday night in the home of his brother, Mr. and Mrs. Wayne Whitehead, returning home Monday.

Miss Thelma Thompson of Plainview and Mrs. J. C. Weathers of Lockney spent Wednesday in the home of Mr. and Mrs. E. E. Wells. The ladies are long time friends of Mrs. Wells.

C. C. Wells, a brother of E. E. Wells, of Tucson, Ariz., arrived by plane in Lubbock Saturday, and was met by his nephew, Marvin Wells. He and Mr. and Mrs. E. E. Wells were supper guests of Mr. and Mrs. Marvin Wells and girls Saturday night.

C. C. Wells, Mr. and Mrs. Marvin Wells, Kim and Malinda, were all dinner guests of Mr. and Mrs. E. E. Wells Sunday. C. C. Wells returned home Monday.

Mr. and Mrs. E. E. Wells are celebrating their 30th wedding anniversary this week - Oct. 6th. We wish them many more happy anniversaries.

Mr. and Mrs. Leroy Crutchfield and girls of Floydada were supper guests in the home of Mr. and Mrs. Frank Breed Sunday night.

Mr. and Mrs. Raymond Love and Tresa were Sunday dinner guests of her mother, Mrs. Purney Ray in Floydada.

Mr. and Mrs. Rene Yearly visited Saturday night with Mr. and Mrs. Jack Yearly and family.

Mr. and Mrs. Alvie Love of Lubbock visited his parents, Mr. and Mrs. Henry Love. In the afternoon they visited with Mr. and Mrs. Lindsey Lackey and Kim.

Mrs. Evelyn Breckenridge and children were Sunday dinner guests of her mother, Mrs. John Fortenberry. In the afternoon they attended the singing at the Assembly of God Church in Lockney.

Mr. and Mrs. Walter Merrell took their granddaughter, Jayme Jones to Post where she was met by her other grandparents, the Jones. She will spend the remainder of the week with them.

Mr. and Mrs. Walter Merrell visited Friday afternoon and also Sunday night with Mr. and Mrs. O. R. Beard.

Mrs. W. O. Whitehead visited Wednesday afternoon with Mrs. Walter Merrell.

A Pink and Blue shower, honoring Mrs. James Lemons, was held at the Cedar Hill Baptist Church Fellowship Hall at 10 a.m. Saturday. Hostesses were Mmes. Jim Conner, W. E. Lackey, W. T. Conner, Stanley Burleson, Rene Yearly, Lindsey Lackey, J. A. Welch, D. M. Cogdell, Bob Durham, Robert Lunsford, J. R. Kelley. Special guests were Mrs. Lemons' mother, Mrs. Raymond Warren, and sister-in-law, Dianne Warren, and cousin, Mrs. Lawson Rawell, James' mother, Mrs. C. F. Lemons, and daughter, Mrs. Eddie Whitley, and little Carla. The table was covered with a white linetable cloth and was centered with white, pink, and yellow lily arrangement. Party devoted, coffee and tea were served from white coffee service, by Mrs. W. T. Conner. Mrs. Robert Lunsford registered guests. The hostess gift was a playpen. There were some 45 guests registered.

We were sorry to hear of the passing of William Carrell Lee of Dimmitt. He was a former resident of our community and we offer our sympathy to the family.

Dozier Dillard of Lubbock visited Tuesday morning in the home of his sister, Mr. and Mrs. Joe Fortenberry.

Mrs. Robert Jones of Lubbock visited Thursday afternoon with Mr. and Mrs. Joe Fortenberry.

**SOUTH PLAINS NEWS**

**SOUTH PLAINS, Oct. 4** - The beautiful, blue weather of October has brought a hint of fall to us in the cooler night temperatures. The farmers here are glad for the good weather and sunshine as the maize cutting goes on continuously, and elevators are filled to capacity with the beautiful grain.

**County Agent's Corner**

Several farmers in Floyd County have been concerned because they can still find boll-weevils in fields that have been sprayed in the diapause program.

According to the extension area entomologist it would be too unusual to find weevils in a field after the third or fourth application of insecticide, if the population was extremely high to start with.

In one field I have been checking, the weevil population per acre at the time of the first application was about 75,000 per acre. After the third application the population had dropped to approximately 3,200 per acre. The largest decrease will come after the third application as the weevils life cycle is 27 days in which 14 days of this is spent within the square or bolls.

In using the low volume malathion the largest decrease comes on the fourth day after an application. By this time other weevils are emerging, so during the first four applications it is unlikely there will be a period that no weevils can be found. At present plans are to apply seven applications of insecticides.

This number of applications should be enough to break the life cycle of the weevil and kill every weevil before he goes into diapause.

Many Floyd County farmers are sowing wheat at this time. I would like to suggest that treated seed be used, as small grain disease problems can largely be solved by planting seed which have been treated.

The treatment process is simple and cheap and excellent insurance against crop losses from seed-borne disease. Many diseases attacking wheat are caused by organisms carried on the surface of the seed and can be easily controlled.

Foot-rot, a disease prevalent in wheat in the high plains, can be reduced by planting treated seed.

Because treatment chemicals are poisonous the seed and chemical should be handled with care. Treated seed should never be fed to livestock or poultry.

The Extension Cotton committee plans to meet Tuesday, October 12, 7:30 p.m. to plan this next year's work. Particular interest will be devoted to demonstrations for 1966.

On the committee are Zant Scott, Ray Lloyd, Albert Scheele, Chester Mitchell, Gerald Lackey, Tom Snead and Kenneth Bean.

Only 66 were present for Sunday morning Baptist Services with visitors Mr. and Mrs. J. E. Scott, Mrs. Teddy Home here from Lubbock, Boyd and D'Ann McClure of Plainview with their grandmother, Mrs. Frank McClure, and Beth Calahan was here from Texas Tech at Lubbock.

It is indeed good to see all the community home from the hospitals and all doing fine. Mrs. H. L. Marble came home from the Plainview Hospital Thursday and is doing fine. Arby Mulder is getting along very well at his home, and is able to work again. Mrs. Kendis Julian and little Mitzi Lynne were brought home from the Lockney Hospital on Thursday morning.

Mrs. Maud Brister was to have come home last week to the Bill Thomas' in Lockney, where they are now living. But the doctor is keeping her a few more days at the Lockney Hospital. She is getting along remarkably well.

Mr. and Mrs. Billy Stanforth, Sara and Billy III, went to Lubbock Saturday night to see the football game between Texas Tech and the Texas Aggies.

Mr. and Mrs. Frank McClure left Tuesday to be gone through Thursday at Ardmore, Okla., where they had a checkup at the Arthritis Clinic for Mrs. McClure.

Mr. and Mrs. Terry Julian of Roscoe were here Saturday afternoon visiting with his folks, the Murray Julians, and his brother, the Kendis Julians, Kristi and Mitzi. They were enroute to the Texas Tech-Aggie football game at Lubbock that night.

The Baptist Church meets at 7 p.m. Wednesday night for a business meeting, and Sunday morning will conclude the taking of the offering for the Mary Hill Davis for State Mission Program. Please remember the change in prayer meeting time.

Mr. and Mrs. Poyner Roberts and Ken Roberts who attends WT at Canyon, were Sunday visitors at the home of Mr. and Mrs. Kendis Julian, Kristi and Mitzi, the new granddaughter of the Roberts.

J. A. Kinnibrugh of Vera, father of Sylvan and John Kinnibrugh here, underwent surgery in Wichita Falls on Wednesday morning of last week, and according to the families he is getting along fine at this time.

Mrs. O. A. Johnson of Pampa, mother of L. N. Johnson here, is critically ill in Amarillo, and L. N. has spent a great deal of time up there with them the past week. Sunday the whole family went up to see her, and she was reported some better.

We extend a cordial welcome to Mr. and Mrs. Hal Hamm and daughters, Jeaneva, 14, who is in the 8th grade, and Arlaine, 11, who is in the 6th, who have moved to our vicinity. The girls are attending school at South Plains. The family has been living in Floydada, but their new home has been moved out this past week from Lubbock, and although the 3-bedroom house is not finished, the family will move in, and finish house while living in it. Mrs. Hamm is the sister of Leighton Teeple. They lived formerly in Amarillo.

Mrs. J. Ronald Taylor will be with her mother, Mrs. Willie Woods of Quitque several times this week as she undergoes an eye operation for cataract, this Monday morning in St. Anthony's Hospital in Amarillo.

A beautiful Coronation Service was held Sunday night at the South Plains Baptist Church for four GA girls taking steps in their GA work. Theme of the Coronation was "A Story To Tell", under the leadership of GA leader Mrs. Burks, and WMU president, Mrs. L. T. Wood. Girls who made their steps were Donna Blankenship, Kathryn Sessums, Sharon Smith and Beverly Kinnibrugh.

Mr. and Mrs. Leighton Teeple had all their children home over the weekend, including the Rev. and Mrs. David Reddout and Ricky, of Plano, and Dwight, who attends Texas Tech. Ricky is beginning to walk at this time.

Two children of the Segafredo Villareal family who were burned so badly in the fire two weeks ago are still in the Lockney Hospital. One child, Santenes who was 3, died from his burns, and his funeral was held at Lockney in the San Jose Catholic Church last Saturday. Johnny who is nine years old is still in a very critical stage at the hospital according to the Leighton Teeple family.

Mr. and Mrs. E. J. Kinslow went up to Canyon Saturday night to attend the West Texas State-Arizona State football game with their son, Mr. and Mrs. Barry Kinslow. Barry attends WT and the children live in Canyon.

Katie Taylor from here won the Junior Sweepstakes at the Floyd County Fair and also won several ribbons at the Panhandle South Plains Fair at Lubbock.

This past week most of the wheat land has been sowed to winter wheat. Arby Mulder has around 300 acres in wheat, and with all the wonderful seven inches of moisture we had here, a good foundation is laid for a good crop next year.

HOBBY CLUB MEETS AT MRS. BILLY STANFORTH Hobby Club members met in the spacious home of Mrs. Billy Stanforth, Jr. Wednesday afternoon at two o'clock with Mrs. E. J. Kinslow presiding over the business meeting, and Mrs. John Wilson assisted Mrs. Stanforth with hostess duties. Mrs. Jack McIntosh of Floydada gave a wonderful book review on "One Saint and Seven Sinners", which was greatly enjoyed by all.

Hostesses served refreshments of pecan pies, coffee, lemonade, and an assortment of appetizers. The club will have its October meeting in Floydada at the Lighthouse Electric Kitchen. Guests for the meeting were Mmes. E. J. Kinslow, Bryant Higginbotham, Sealy Smith, Alvin Nichols, Fred Fortenberry, Grigsby Milton, George West, Herman Thornton, Ernest Smitherman of Floydada, and guest speaker Mrs. McIntosh and Mrs. Josephine Davis of Floydada.

Mrs. Eddie McCown and son, Jack McCown both of Whitney, came Sunday to stay several days with Mrs. Walter Wood. They plan to take Mrs. Woods granddaughter, Mrs. Tommy McCown and twin sons, John Mark and Jack Mitchell back to Dallas where they will spend the night Wednesday and Thursday. They will take the plane for a through flight straight to San Jose, Calif. to Mrs. McCown's home, where the six year old twins, Michelle and Michael are now going to school. Mrs. Jack McCown is staying with them until their mother gets there.


Mr. and Mrs. Leonard Moore and girls of Lockney spent the weekend here with her parents, Mr. and Mrs. Ernest Newton.

Mr. and Mrs. Arby Mulder visited Tuesday night with Don Probasco and boys, Maury and Matt.

We are sorry to learn that Mr. and Mrs. Gary Wilson are moving to Amarillo where Gary will be employed in the Amarillo Post Office. They moved some of their household goods Sunday, and this Monday, and they will be staying here this week with his folks, Mr. and Mrs. John Wilson. Gary starts to work Oct. 11. Their new address is 4017 Travis in Amarillo. We wish them happiness in their new home.


Mr. and Mrs. Murray Julian went to Tulla Sunday after church to meet Mr. and Mrs. Bruce Julian of Canyon and have dinner and the afternoon with them at the Elm Tree Inn.

The foundation was laid last week at the home of Mr. and Mrs. Nathan Mulder in preparation for their new home which is ready to move into, and it is to be brought out this Monday, unless the rain prevents them coming.



# DEL MONTE

## ROUND-UP

<p>DEL-MONTE <b>FRUIT COCKTAIL</b> 303 CANS</p> <p><b>4 FOR 99¢</b></p>	<p>DEL-MONTE <b>CATSUP</b> 20 OZ. BOTTLES</p> <p><b>4 FOR 99¢</b></p>	<p>DEL-MONTE CUT <b>GREEN BEANS</b> 303 CANS</p> <p><b>4 FOR 99¢</b></p>
<p>DEL-MONTE WHO. KERNEL OR CRM. STYLE <b>CORN</b> 303 CANS</p> <p><b>6 FOR 99¢</b></p>	<p>DEL-MONTE <b>SPINACH</b> 303 CANS</p> <p><b>6 FOR 99¢</b></p>	<p>DEL-MONTE <b>SWEET ENGLISH PEAS</b> 303 CANS</p> <p><b>4 FOR 99¢</b></p>
<p>DEL-MONTE <b>PINEAPPLE-GRAPEFRUIT DRINK</b> 3 46 OZ. CANS</p> <p><b>3 FOR \$1</b></p>	<p>ELLIS <b>CHILI</b> 24 OZ. FAMILY CAN</p> <p><b>2 FOR \$1</b></p>	
<p>DEL-MONTE <b>TUNA</b></p> <p><b>4 FOR \$1</b></p>	<p>MORTON <b>CREAM PIES</b></p> <p><b>4 FOR \$1</b></p>	
<p>ELLIS <b>TAMALES</b> 303 CANS FOR</p> <p><b>4 FOR \$1</b></p>	<p><b>NOTEBOOK PAPER</b> 400 SHEET PKG.</p> <p><b>59¢</b></p>	
<p>GALA <b>PAPER TOWELS</b> DECORATED LARGE ROLL</p> <p><b>33¢</b></p>	<p>SHURFRESH <b>OLEO</b> LB.</p> <p><b>19¢</b></p>	
<p>POP'S-RITE <b>POP CORN</b> 2 LB. BAG</p> <p><b>29¢</b></p>	<p>SHURFRESH <b>BISCUITS</b> 3 FOR 25¢</p>	
<p>SWIFT GOOD AND FAT <b>HENS</b> LB. 45¢</p>	<p>CLOVERLAKE <b>ICE CREAM</b> 1/2 GAL.</p> <p><b>69¢</b></p>	
<p><b>CHUCK ROAST</b> LB. 59¢</p>	 <p>Make Sure Your Children drink the best... <b>SHURFRESH MILK</b></p>	
<p><b>POWELL'S</b> SUPER MARKET</p>		
<p>YOUR HOME OWNED HOME OPERATED STORE ON THE WYE, FLOYDADA, TEXAS YU 3-2444</p>		



## Lt. R.E. Dempsey Completes AF Survival Course

RENO, Nev.—Second Lieutenant Robert E. Dempsey, son of Mr. and Mrs. Dennis E. Dempsey of 220 South First, Floydada, Tex., has completed the rigorous U. S. Air Force survival and special training course conducted by the Air Training Command at Stead AFB, Nev.

Lieutenant Dempsey, a pilot, received combat-type escape and evasion training to enable him to survive under adverse climatic conditions and hostile environments.

The lieutenant is being assigned to Shaw AFB, S. C. He becomes a member of the Tactical Air Command which provides combat reconnaissance, aerial firepower and assault airlift for U. S. Army forces.

A graduate of Floydada High School, he received his B. S. degree and his commission in 1964 from the U. S. Air Force Academy.

Lieutenant Dempsey's wife, Lynn, is the daughter of Mr. and Mrs. George F. Salerno of 337A Greenleaf, Wilmette, Ill.

Those who are selected to fill these positions have the privilege of knowing that they stand as the symbol of order in our society, and are respected by all law-abiding citizens.

Full details on qualifications can be obtained from the nearest Department of Public Safety office or any DPS patrolman.



PRESENTS LEI TO DORM MOTHER—Earl Spence, right, places a lei of fresh flowers around the neck of his dorm mother, Mrs. Reba Porter at South Plains College, Levelland, Texas. Melvin Miranda, left, looks on. The young men made the trip from Honolulu by jet. They are residents of Forrest Hall. The boys' fathers are employees of the Kukaiau Ranch near Paauilo, Hawaii. Earl's father, who is married to a Portuguese he met while stationed in Hawaii, is a former Floydada resident. (SPC Photo)

lulu by jet. They are residents of Forrest Hall. The boys' fathers are employees of the Kukaiau Ranch near Paauilo, Hawaii. Earl's father, who is married to a Portuguese he met while stationed in Hawaii, is a former Floydada resident. (SPC Photo)

## School Menu

Menu for week of October 11

### MONDAY:

Pepper Beef Squares  
Creamed Potatoes  
Cabbage Relish Salad  
Cornbread and butter  
Pineapple Brown Sugar Cake  
1/2 pint milk

### TUESDAY:

Baked Ham  
Blue Lake Green Beans  
Jellied Orange Ambrosia Sa-

lad

Rolled Wheat Bread and Butter  
Fudge Cake with Fudge Icing  
1/2 pint milk  
WEDNESDAY:

### WEDNESDAY:

Seasoned Pinto Beans  
Corn Dogs  
Turnip Greens with Diced Turnips  
Pickle Sticks  
Crispy Cornbread and Butter  
Sweet Rolls  
1/2 pint milk

### THURSDAY:

Hamburger with cheese slices  
Oven fried potatoes  
Tomatoes and Lettuce  
Dill Pickles  
Cherry Cobbler  
1/2 pint milk

### FRIDAY:

Roast Beef with Brown Gravy  
Sweet Potato Croquettes  
Early June Peas  
Hot Rolls and Butter  
Harvest Prune Cake  
1/2 pint milk

Are you Covered?  
**FIRE · AUTO · LIFE · GROUP**  
*Insurance*

- ★ LIABILITY
- ★ CROP INSURANCE
- ★ FIRE
- ★ HOSPITALIZATION
- ★ CASUALTY
- ★ WORKMEN'S COMPENSATION
- ★ AUTOMOBILE

"YOUR INDEPENDENT INSURANCE AGENT"

**BAKER**  
Insurance Agency  
127 W. California  
Ph. YU 3-3270  
SAM BAKER



PARADE OF BANDS - Floydada High School Band, Floydada, participated in the "Parade of Bands" which officially launched the 25th annual Panhandle South Plains Fair in Lubbock Sept. 27. Dozen area high school bands participated for \$1,125 prize money and units from Muleshoe, Abernathy, Hale Center

and Whiteface walked off with top honors. Trophies also were presented to all bands in the gala formation, witnessed by thousands. Second place honors went to Littlefield, Denver City, Springlake and Sundown while Floydada, Petersburg and Jayton bands copped third place awards.

## VE KICKOFF OCTOBER 19

## Glazner Named Head SA Committee

A Salvation Army Service Unit committee meeting last week named Jeff Glazner as head of the Floydada Committee. He was selected to replace John Reue who has held the post for the past ten years. The committee will report on the welfare work of the unit during the year ending on October 19. The committee was formed last year as a result of a discussion concerning the unit's financial condition. The kickoff date has been set for October 19. Don Layton, treasurer, that the committee assisted 932 people with groceries, clothes, medical care, lodging, transportation, camps and other needs. Layton, of the local PCA,

was named to head the fund raising campaign. He will be assisted by Al Harrison who will be in charge of the rural areas surrounding Floydada. The fund drive will be kicked off with a noon luncheon at the Colonial House.

The two chairmen will be calling on people to help in this year's solicitation. Response has been very good in the past. In fact, 105 people helped with the drive last year that surpassed the \$2,500 goal.

Other officers of the service unit committee are: Don Pemberton, treasurer; Tommy Assiter, vice chairman; Jim Word, welfare secretary; and members, Weldon Harris, C. H. Bedford, Lorin Liebfried, John

Reue, Walter Collins, J. C. Harry Morckel. The goal for this year's drive will also be \$2,500. Wester, Homer Steen, J. M. Willson, Jimmy Willson and

## Seventy DPS Posts Are Now Available

AUSTIN-Col. Homer Garrison Jr., director of the Texas Department of Public Safety, announced today that the DPS has job opportunities in the uniformed services for over 70 young men interested in a career in law enforcement.

"The positions include opportunities for advanced education, excellent physical conditioning and a chance to participate in an outstanding public service," Garrison said.

Those who qualify will receive a salary while in training. They will undergo training at the DPS Law Enforcement Academy in Austin, studying such subjects as Texas Highway Law, accident investigation, first aid, professional driving, care and use of firearms, and many others.

Upon graduation from the 16-week training course at the Academy, the trainee is commissioned into one of the DPS Uniformed services. Assignment is based on talent and ability as well as the desire to serve in a particular branch. The services include: Highway

Patrol, License and Weight, Driver Licensing, and Motor Vehicle Inspection.

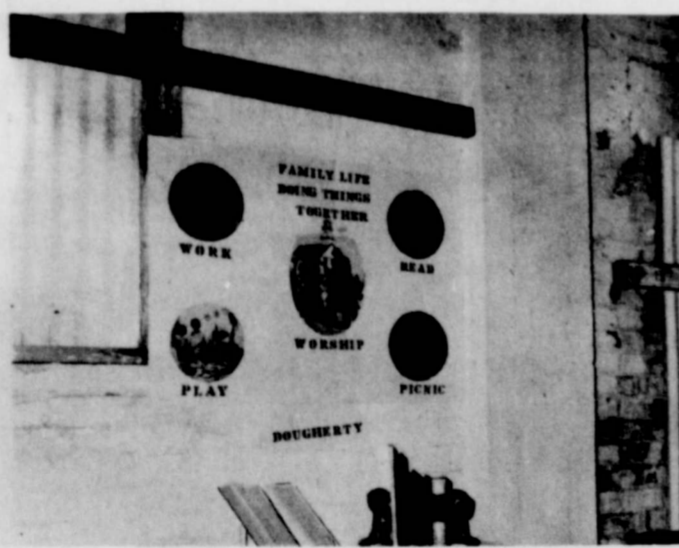
"The work of a patrolman is challenging," Garrison pointed out, "but the rewards are many. Each man answers the call to serve with the best of opportunities for participating in the constantly developing effort to curb the dual menace of increasing crime and traffic accidents.

Benefits afforded patrolmen include: two weeks annual vacation; 12 or more holidays each year; 12 days sick leave each year; \$10 per month longevity added to his salary at the end of each five years; modern liberal retirement privileges based on age and years of service; traveling expenses as prescribed by law. DPS patrolmen are furnished all uniforms and equipment necessary for performance of their duties.

"Application for these positions should be made as soon as possible," Garrison stated. "The deadline for applications for our next patrol training school is November 29, 1965.

**PLAY TIME NURSERY**  
PERSONALIZED CARE FOR YOUNG CHILDREN  
2 YEARS AND OLDER  
FENCED PLAY AREA  
HOT LUNCHES - REST PERIODS  
HOURLY - WEEKLY - DAILY RATES  
MONDAY - FRIDAY  
8:00 A.M. - 5:30 P.M.  
MRS. GEORGE SPEARS  
W. VIRGINIA YU 3-2819

LEVELLING GRASSES  
**LA RUE HUGHES**  
LANDSCAPING & NURSERY  
Box 484 Kress, Texas  
PHONE 684-2535  
Guaranteed - Free Estimates  
Evergreens



DOUGHERTY HOME DEMONSTRATION CLUB... won first place in the education booth at the fair on their Family Life scene above. (Staff Photo)

**MONEY**  
an work  
or you...  
with a  
**LAND BANK LOAN**

When you choose a tractor or a cowhorse, you do so with great care—to be sure it fits your particular need—that it will work for you effectively. When you need to borrow money, the loan should be selected with the same careful consideration. Here are some of the important things to look for in a long-term farm or ranch real estate loan:

1. The right to pay "on or before" without penalty.
2. A long-term loan with reasonable interest rate and payments geared to YOUR operation.
3. Convenient loan service with homefolk who understand your problems.

A Land Bank loan offers all of these advantages and more. See us for details on how you can make money work for you.

JAKE B. WATSON, MANAGER  
**FEDERAL LAND BANK ASSOCIATION**  
319 SOUTH MAIN STREET  
FLOYDADA, TEXAS

**YOUTH WINNER**—Thirteen-year old Mary Jo McCullough, Harvard, Ill., placed first in the youth division of the National Grange All-Cotton Sewing Contest. Her prize-winning entry was a cotton jumper.

**New**  
**1965 GMC PICKUP**  
**\$1795**  
**Cline & Rainer**  
Your authorized GMC Dealer  
Floydada



UNUSUAL SIGHT ON THE STREETS OF FLOYDADA - is the mule and buggy transportation of Walter Brannon. Enjoying the ride with Brannon are W. E. Lackey and Frank Breed.

## On SUNDAY why wait till 8 or 9 p.m. to call Long Distance?

Your lowest Long Distance rates are in effect all day. Telephone anywhere in the continental United States (except Alaska) for \$1\* or less.

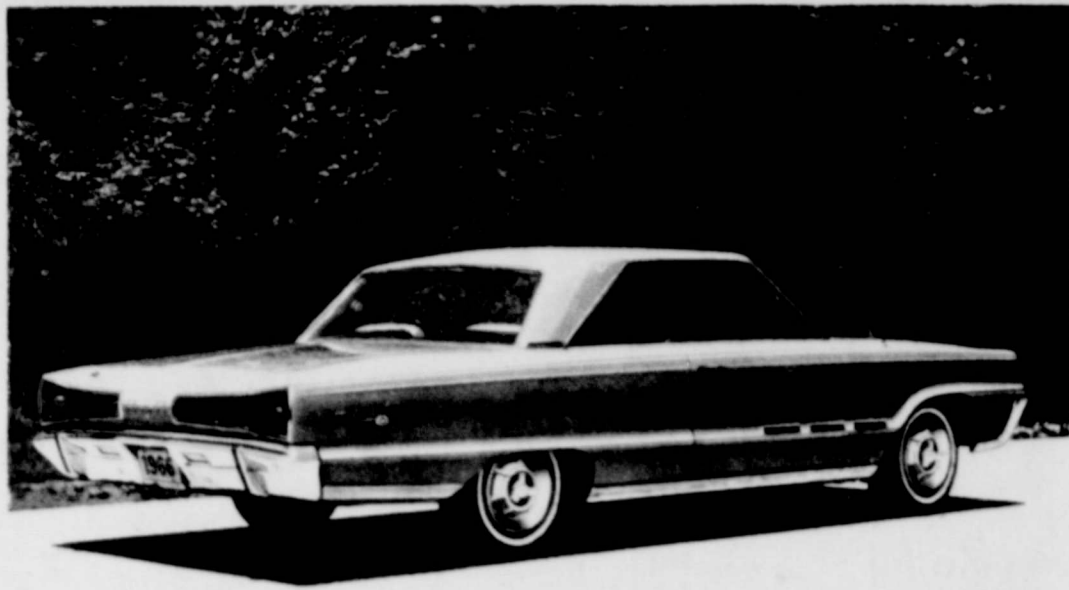
**Southwestern Bell**

\*Three minutes station-to-station





## Roe Motors Now Showing 1966 Dodge Line



TOPPING THE DODGE LINE - For 1966, is a series of six elegant new Monaco models, topped by the Monaco 500 2-door Hardtop shown above. Monaco offers comfort, convenience and style unmatched in a medium-price car.

### Cotton Farmers Can Still Aid Spraying Program

With the completion of the third of seven applications of insecticide to try to control the boll weevil on the High Plains, and four still to go, farmers themselves can be a great aid in the program.

How? By defoliating or desiccating their cotton as soon as it reaches the proper stage of maturity, then harvest as soon as possible. After harvest the stalks should be destroyed to prevent regrowth, says county agent Joe Wilson.

Defoliation and early destruction of the stalks will remove the food supply from the weevil and force the insect to starve before they can enter winter quarters.

The addition of .5 pounds of methyl Parathion or .25 pounds of Guthion per acre to arsenic acid or phosphate-type harvest aid chemicals will increase the effectiveness of the program.

Mixing insecticides with the chemicals kills weevils in the field and prevents them from moving to other fields or into hibernation after the field has been desiccated or defoliated. Cotton should not be desiccated or defoliated until at least 80 percent is open. Applying a chemical will not speed up harvest. Maturity of the cotton fiber stops when chemicals are applied. Too early of an application of chemicals can reduce yields and lower quality of cotton.

### Peace Corps To Test On October 9

An opportunity for Floyd County residents to offer their

### SUPERIOR CLEANERS

For Quality Dry Cleaning The Approved Sani-tone Way.

CALL YU 3-3540

## We Said It Would Rain - And It Did Order Your KMP Lake Pump Now

### KMP OFFERS

- NO PRIMING
- NO CLOGGING
- EASY TO MOVE
- PRECISION BUILT

And Mr. Farmer The KMP Is The Most Efficient Tail Water Pump On The Market

See or Call W. G. Walker

FLOYDADA PHONE YU 3-3910

or

FLOYDADA BUTANE

LOCKNEY HIGHWAY PHONE YU 3-2413



PVT. LARRY J. CROSS

### Cross Completes Basic Training

Pvt. Larry J. Cross, son of Mr. and Mrs. Oren Cross of Barwise, recently completed basic training at Ft. Leonard Wood, Missouri and is assigned to Ft. Sam Houston.

He is a 1962 graduate of Lockney High School, attended West Texas State in Canyon for 1 1/2 years and worked for Pioneer Natural Gas Company in Plainview for 1 1/2 years before entering the service at Ft. Leonard Wood, July 13.

Pvt. Cross will train as a dental assistant at Ft. Sam Houston.

abilities to the Peace Corps will come at 9 a.m., Saturday, October 9, at the Post Office Building, Lubbock, Texas.

The opportunity is the Peace Corps Placement Test, which is not passed or failed and you can't study for it. It measures general aptitude and the ability to learn a language. If, for example, test scores indicate limited language acquiring ability, the Peace Corps tries to place the applicant in an English-speaking area. The test is used by the Peace Corps only as a tool in the matching of Volunteers and jobs. The Peace Corps application is the most important indicator of suitability for Peace Corps service. It must be filled out and brought to the exam unless previously submitted.

Applicants should plan on about one and a half hours at the testing centers, unless they wish to take the Spanish or French language achievement test, which requires an additional hour.

### ★★★★★

DETROIT, Sept. 25 - Dodge today unveiled its most elegant '66 car, the Coronet.

The car is completely new and the styling carries a fresh, contemporary theme. The lines are simple and not cluttered with chrome. There are many significant new safety and mechanical features.

"The Coronet is a family-size car," said Byron Nichols, Dodge General Manager, "and it is in the price range most people can afford. Yet it offers a wide range of body styles and accessory options which allow the buyer to tailor it to his individual taste."

The complete Dodge line, including Monaco, Polara, Coronet and Dart will go on display in Dodge dealerships on September 30.

The Coronet was introduced to the Dodge line last year and officials predicted it would lead the way for Dodge. To date it has accounted for more than 40 percent of Dodge retail sales.

"The crisp, fresh styling of the Coronet should make it even more popular in 1966," said Nichols, "and we should produce about 300,000 Coronets in the coming year."

### 4 Series Offered

In the economical Coronet series, there are a 2-door and a 4-door sedan. In the Coronet Deluxe series, 2- and 4-door sedans and a 6-passenger station wagon are offered.

The Coronet 440 series has a 2-door hardtop, convertible, 4-door sedan, 6-passenger station wagon and 9-passenger wagon.

The top-of-the-line Coronet 500 series features a 2-door hardtop and a convertible. A 4-door sedan will be introduced about November 1.

Recognizing the broad range of performance preferences among car buyers, Dodge has given the Coronet buyer a wide choice of engines. The standard power plants are the economical 225-cubic-inch Slant Six and the 273-cubic-inch V-8. Optional engines, all V-8's are: 318-cubic-inch with single two-barrel carburetor; 361-cubic-inch, single two-barrel; 383-cubic-inch, single four-barrel; and 426-cubic-inch, dual four-barrel.

The biggest engine, called the Hemi-426, has hemispherical combustion chambers, and is a competition engine tuned for normal, everyday driving.

High-Style Interiors Coronet interiors are new and more luxurious. The Coronet 500 features elegant shell-design bucket seats, all-vinyl upholstery in hardtops and convertibles and a stylish console between the front seats.

The Coronet 500 4-door sedan will have cloth-and-vinyl upholstery patterned to give the "bench" seats a bucket-seat appearance.

Because the Coronet is a brand new car, Dodge engineers and stylists were able to incorporate many new safety and convenience features.

Safety Door Handles A new inside door handle, flush with the armrests, is easy to operate and minimizes the possibility of inadvertently opening the door when the car is in motion.

The Coronet's usable luggage space has been increased to more than 19 cubic feet. This was made possible by putting a recessed spare-tire well in the trunk. An extra low trunk sill eases loading chores.

A new parallel windshield wiper system provides 10 percent more wiped area. The wiper motor is located in the engine compartment, where its noise is isolated.

New air-conditioning and heating systems are quieter and more efficient.

Parallel side window guides permit the glass to be lowered straight down and practically eliminate around-the-pane drafts.

On station wagons, the second seat has a new design which folds flatter.

Easier Parking Redesigned power steering provides 30 percent additional assist at low-engine speeds. This means more help to the motorist when he is parking the

DETROIT - Dodge today introduced its popular Polara line for 1966 - seven models ranging from an economical 4-door sedan to a sporty bucket-seat hardtop and convertible.

The newly styled line features many innovations designed to provide added dependability, safety, comfort and convenience. A 440-cubic-inch V-8 is a new high-performance engine option for '66.

The Polara models, which Dodge officials described as "big but remarkably inexpensive," include 2- and 4-door hardtops, 6- and 9-passenger station wagons, two 4-door sedans and a convertible. All have a wheelbase of 121 inches.

The line will go on public display at the nation's Dodge dealerships on September 30.

"Dodge made its name in the auto industry by selling a larger car priced just a few dollars above the traditional low-priced models," said Dodge General Manager Byron J. Nichols. "The 1966 Polara is the up-to-date version of that car.

"It's designed for the price-conscious motorist who wants luxury, lots of room and a wonderfully comfortable ride."

A Polara "318" 4-door sedan model is equipped with a 318-cubic-inch V-8 for the buyer who wants a larger car with a fuel-saving power plant. A 383-cubic-inch V-8 which uses regular grades of gasoline is standard on other models.

The Polara 500, a special sports version of the Polara 2-door hardtop and convertible models, features luxuriously pleated bucket seats and a between-seats console.

The seats are of a shell-type design which improves both comfort and appearance. Hinges shaped like hockey sticks allow better seat folding and make it easier to get in and out of the back seat.

The console extends only to the rear of the front seat and therefore does not impair rear seat legroom. It is newly designed and incorporates one of two new gear selector levers.

The automatic transmission lever has a vertical sequence and features a pushbutton release on top of the knob. The lever moves freely between neutral and drive, but the pushbutton must be depressed to move into any other gear - a safety feature designed to prevent mis-shifts.

The 4-speed manual transmission shift lever has a lock-out device which makes it impossible to shift accidentally into reverse. The lockout is disengaged by pulling up a T-shaped handle just below the knob of the lever.

A Tilt- and Telescope steering wheel is optional on all Polara models. The wheel has

Two Torque Flite transmissions are available, one for six-cylinder models and the other for V-8's. Both have been modified to provide improved performance and durability.

There are two manual transmissions - the standard three-speed column-mounted unit and a companion floor-mounted four-speed with an all-new shift mechanism.

The shift pattern features a "lockout" in reverse which is released by a trigger-like handle just below the shift knob. The new mechanism provides rapid, easy shifting into all forward gears without fear of slipping accidentally into reverse.

Coronets equipped with automatic transmissions will have either a steering-column quadrant or a floor-mounted console selector. The console selector is "gated" vertically with the park position at the top. To go in and out of park, and when selecting reverse, second and first, a lockout button on top of the shift knob must be depressed.

### Quieter Ride

Each year, Dodge engineers find new ways of improving sound insulation. The 1966 Coronet has a new engine-mounting system and shock-absorber attachment that eliminates much of the road noise and vibrations previously transmitted to the body.

The new Coronet has unitized-body construction allowing a design that combines maximum weight. All components contribute to its structural strength.

"The Coronet is new from roof to ground, and bumper to bumper," Nichols said. "The many engineering advances give it better performance, greater safety, more economy, improved handling, and increased driver and passenger comfort, to go along with its new style and beauty."

### Youth To Attend FFA Convention

LOCKNEY - Francis Montandon, son of Mr. and Mrs. F. L. Montandon of Aiken and state FFA vice president, will attend the National Future Farmers of America Convention in Kansas City, Mo., Oct. 13-15.

Montandon, a May graduate of Lockney High School, will begin the expense paid trip on Oct. 11. He currently is attending Lubbock Christian College.

2.7 inches of adjustment forward and backward and six-tilting positions which allow the driver to custom-tailor the wheel for his comfort and convenience.

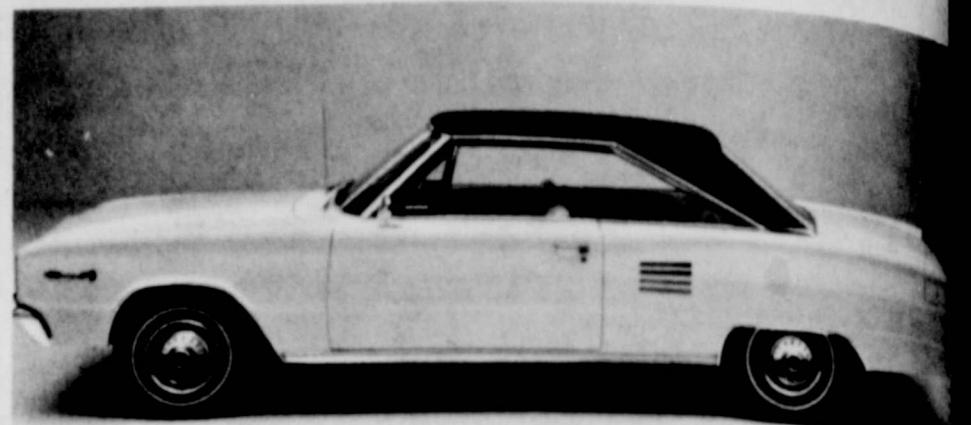
The 1966 Polara also features a new, 6-way adjustment for power seats which provides more efficient and quieter operation. This is an important accessory for drivers who do a lot of long-distance driving. It allows them to vary their sitting position while traveling and thus lessen fatigue.

The new cars have door and trunk lid locks that are better protected against weather and freeze-up and a new design for the front door glass which has more stable, rattle-free attachment and operation.

The design of the door handles is improved to make them substantially safer. The new handle is shaped like the buckle of a seat belt and operates in much the same manner.

It is integrated flush with the armrest and must be pulled outward to unlatch the door. Dodge engineers say the new design gives heightened protection against accidental opening.

Four safety accessories, for-



DODGE HARDTOP - The 1966 Coronet is a completely new car with fresh, clean styling and many new safety, comfort and convenience features. Coronet is offered in series: Coronet, Coronet Deluxe, 440 and the top-of-the-line Coronet 500.

merly optional, are now standard on the Polara models: front and rear seat belts, windshield washer, multi-speed windshield wipers, back-up lights and left outside rear-view mirror. The padded instrument panel is also standard.

Two engine options are offered for 1966 Polara models: a 383-cubic-inch V-8 with four-barrel carburetor and the new 440-cubic-inch V-8.

The 440 is an improved version of the 413-cubic inch engine that was offered as an option on 1965 models. Dodge engineers say the new power

plant provides better acceleration response at normal driving speeds. The engine is rated at 350 horsepower.

There are many mechanical improvements in the 1966 Polaras. A new type of engine mount dampens the vibrations encountered on rough roads at higher car speeds. Modifications in the automatic transmission increase its efficiency, quietness and durability. Similar improvements have been made in the 4-speed manual transmission.

A new design for the odometer and speedometer provides more accurate readings. The power brakes have been designed to offer additional response and improved "feel."

Front wheel disc brakes available, combined with heavy-duty drum-type rear brakes. These brakes give more dependable, stable stopping action even when used on wet roads.

Twenty exterior colors available on the 1966 Polara models. Vinyl roofs, a new feature, are offered on 4-door hardtops as well as door hardtops.

It's 1966. Rise up with Dodge. Get with the swinging cars of the year

# JOIN THE DODGE REBELLION

Why wait, when your year is here? The year to snap tired old ties, to break old buying habits. The year to really express yourself... with the '66 swingers from Dodge. Different, exciting cars for people with different, exciting tastes. Rally 'round Dodge for '66. Dart, Coronet, Polara, Monaco... cars made to help you kick the dull driving habit. There are lots of Dodges for you to hang your personal rebellion on.

Every one backed by a 5-year or 50,000-mile warranty. Every one with these features that used to cost extra but now come standard: Outside mirror. Padded dash. Variable-speed electric windshield wipers and washers. Backup lights. Turn signals. Seat belts, two front and two rear. And lots more with Dodge... the beautiful Rebellion wheels. Stir up your spirit and march to headquarters.

'66 Dodge Dart Still talking about squeezed-up compacts, when you'd rather do something about them? Put your money where Dart is! Unexpectedly big inside, long outside. Six or V8 power. Rise up with Dart! Be expansive without being expensive.

'66 Dodge Coronet Here comes Coronet... sharp, smart, sassy, the greatest thing from Dodge since Year One. Loaded with luxury the higher-priced cars haven't caught onto yet. With a choice of five engines, designed to make the walls of Dullsville come tumbling down. Get away from look-alike, first-cousin cars with Coronet.



Dullsville falls, Coronet rises in '66.

'66 Dodge Polara Snap, crackle, pop, go the ties that bind. You're up and out of the rut with Polara. More "big." More "hot." A lot of standard extras (like a 383 cubic inch V8) at no extra cost. See it now. And if you're carrying a big torch for a car that'll really move you, bring the torch along.



Demand more "big" in your big car; insist on Dodge-sized Polara.

HERE'S NOW DODGE'S 5-YEAR, 50,000-MILE ENGINE AND DRIVE TRAIN WARRANTY PROTECTS YOU: Chrysler Corporation confidently warrants all of the following parts of its 1966 cars for 5 years or 50,000 miles, whichever comes first, during which time any such parts that prove defective in material and workmanship will be replaced or repaired at a Chrysler Motors Corporation Authorized Dealer's place of business without charge for such parts or labor: engine block, head and internal parts, intake manifold, water pump, timing case and internal parts (excepting manual clutch), torque converter, drive shaft, universal joints, rear axle and differential, and rear wheel bearings.

REQUIRED MAINTENANCE: The following maintenance services are required under the warranty—change engine oil every 3 months or 4,000 miles, whichever comes first; replace filter every second oil change; clean carburetor air filter every 6 months and replace it every 2 years; and every 6 months furnish evidence of this required service to a Chrysler Corporation Authorized Dealer and request him to certify receipt of such evidence and your car's mileage. Simple enough for such important protection.

## ROE MOTORS

200 WEST MISSOURI

FLOYDADA, TEXAS

WATCH "THE BOB HOPE CHRYSLER THEATRE" WEDNESDAY NIGHTS ON NBC-TV. CHECK YOUR LOCAL LISTINGS.



# TV SCHEDULE

MIKE IS NOW IN HIS  
NEW LOCATION

CROSS THE STREET FROM  
THE FIELDAN MOTEL

FOR BEST TV SERVICE

Mike's TV Lab

PHONE YU 3 4023

315 SOUTH SECOND

(LOCKNEY HIGHWAY)

THURSDAY, OCT. 7

## TV SCHEDULE

KCBT-TV 11	KLBK-TV 13
7:00 Seven o'Clock Headlines	6:00 Sunrise Semester
7:05 Channel 11 Farm Report	6:30 Cartoon Circus
7:25 Weather with Bernie	7:00 Farm & Ranch News
7:30 TODAY SHOW	7:25 Second Cup
7:35 FRACTURED PHRASES	7:35 Mike Wallace News
7:40 MORNING STAR	8:00 Captain Kangaroo
7:45 PARADISE BAY	8:00 Donna Reed
7:50 JEOPARDY	8:30 The McCoy's
7:55 LET'S PLAY POST OFFICE	8:30 Andy of Mayberry
8:00 News	8:30 Dick Van Dyke
8:05 Noon Report	8:30 Search for Tomorrow
8:10 Community Close-Up	8:30 Guiding Light
8:15 LET'S MAKE A DEAL	8:30 National News
8:20 Moment of Truth	8:30 Local News
8:25 The Doctors	8:30 Farm & Ranch News
8:30 YOU DON'T SAY	8:30 Weather
8:35 THE MATCH GAME	8:30 As the World Turns
8:40 Father Knows Best	8:30 Password
8:45 Superman	8:30 Houseparty
8:50 Kiddie Kartoons	8:30 General Hospital
8:55 Huntley-Brinkley Report	8:30 Edge of Night
9:00 News & Weather	8:30 Secret Storm
9:05 THE VIRGINIAN	8:30 Ben Casey
9:10 BOB HOPE CHRYSLER THEATRE	8:30 COLOR CARNIVAL
9:15 SPY	8:30 The Rifleman
9:20 Ten o'Clock Report	8:30 CBS Evening News
9:25 TONIGHT SHOW	8:30 News & Weather
	8:30 MY MOTHER THE CAR
	8:30 PLEASE DON'T EAT THE DAISIES
	8:30 DR. KILDARE II
	8:30 TUESDAY NITE MOVIE "FUNNY FACE" Audrey Hepburn, Fred Astaire
	8:30 Ten o'Clock Report
	8:30 TONIGHT SHOW

## TV SCHEDULE

KCBT-TV 11	KLBK-TV 13
7:00 Seven o'Clock Headlines	6:00 Sunrise Semester
7:05 Channel 11 Farm Report	6:30 Cartoon Circus
7:25 Weather with Bernie	7:00 Farm & Ranch News
7:30 TODAY SHOW	7:25 Second Cup
7:35 FRACTURED PHRASES	7:35 Mike Wallace News
7:40 MORNING STAR	8:00 Captain Kangaroo
7:45 PARADISE BAY	8:00 Donna Reed
7:50 JEOPARDY	8:30 The McCoy's
7:55 LET'S PLAY POST OFFICE	8:30 Andy of Mayberry
8:00 News	8:30 Dick Van Dyke
8:05 Noon Report	8:30 Search for Tomorrow
8:10 Community Close-Up	8:30 Guiding Light
8:15 LET'S MAKE A DEAL	8:30 National News
8:20 Moment of Truth	8:30 Local News
8:25 The Doctors	8:30 Farm & Ranch News
8:30 YOU DON'T SAY	8:30 Weather
8:35 THE MATCH GAME	8:30 As the World Turns
8:40 Father Knows Best	8:30 Password
8:45 Superman	8:30 Houseparty
8:50 Kiddie Kartoons	8:30 General Hospital
8:55 Huntley-Brinkley Report	8:30 Edge of Night
9:00 News & Weather	8:30 Secret Storm
9:05 THE VIRGINIAN	8:30 Ben Casey
9:10 BOB HOPE CHRYSLER THEATRE	8:30 COLOR CARNIVAL
9:15 SPY	8:30 The Rifleman
9:20 Ten o'Clock Report	8:30 CBS Evening News
9:25 TONIGHT SHOW	8:30 News & Weather
	8:30 MY MOTHER THE CAR
	8:30 PLEASE DON'T EAT THE DAISIES
	8:30 DR. KILDARE II
	8:30 TUESDAY NITE MOVIE "FUNNY FACE" Audrey Hepburn, Fred Astaire
	8:30 Ten o'Clock Report
	8:30 TONIGHT SHOW

## TV SCHEDULE

KCBT-TV 11	KLBK-TV 13
7:00 Seven o'Clock Headlines	6:00 Sunrise Semester
7:05 Channel 11 Farm Report	6:30 Cartoon Circus
7:25 Weather with Bernie	7:00 Farm & Ranch News
7:30 TODAY SHOW	7:25 Second Cup
7:35 FRACTURED PHRASES	7:35 Mike Wallace News
7:40 MORNING STAR	8:00 Captain Kangaroo
7:45 PARADISE BAY	8:00 Donna Reed
7:50 JEOPARDY	8:30 The McCoy's
7:55 LET'S PLAY POST OFFICE	8:30 Andy of Mayberry
8:00 News	8:30 Dick Van Dyke
8:05 Noon Report	8:30 Search for Tomorrow
8:10 Community Close-Up	8:30 Guiding Light
8:15 LET'S MAKE A DEAL	8:30 National News
8:20 Moment of Truth	8:30 Local News
8:25 The Doctors	8:30 Farm & Ranch News
8:30 YOU DON'T SAY	8:30 Weather
8:35 THE MATCH GAME	8:30 As the World Turns
8:40 Father Knows Best	8:30 Password
8:45 Superman	8:30 Houseparty
8:50 Kiddie Kartoons	8:30 General Hospital
8:55 Huntley-Brinkley Report	8:30 Edge of Night
9:00 News & Weather	8:30 Secret Storm
9:05 THE VIRGINIAN	8:30 Ben Casey
9:10 BOB HOPE CHRYSLER THEATRE	8:30 COLOR CARNIVAL
9:15 SPY	8:30 The Rifleman
9:20 Ten o'Clock Report	8:30 CBS Evening News
9:25 TONIGHT SHOW	8:30 News & Weather
	8:30 MY MOTHER THE CAR
	8:30 PLEASE DON'T EAT THE DAISIES
	8:30 DR. KILDARE II
	8:30 TUESDAY NITE MOVIE "FUNNY FACE" Audrey Hepburn, Fred Astaire
	8:30 Ten o'Clock Report
	8:30 TONIGHT SHOW

## SATURDAY, OCT. 8

KCBT-TV 11	KLBK-TV 13
7:00 Seven o'Clock Headlines	6:00 Sunrise Semester
7:05 Channel 11 Farm Report	6:30 Cartoon Circus
7:25 Weather with Bernie	7:00 Farm & Ranch News
7:30 TODAY SHOW	7:25 Second Cup
7:35 FRACTURED PHRASES	7:35 Mike Wallace News
7:40 MORNING STAR	8:00 Captain Kangaroo
7:45 PARADISE BAY	8:00 Donna Reed
7:50 JEOPARDY	8:30 The McCoy's
7:55 LET'S PLAY POST OFFICE	8:30 Andy of Mayberry
8:00 News	8:30 Dick Van Dyke
8:05 Noon Report	8:30 Search for Tomorrow
8:10 Community Close-Up	8:30 Guiding Light
8:15 LET'S MAKE A DEAL	8:30 National News
8:20 Moment of Truth	8:30 Local News
8:25 The Doctors	8:30 Farm & Ranch News
8:30 YOU DON'T SAY	8:30 Weather
8:35 THE MATCH GAME	8:30 As the World Turns
8:40 Father Knows Best	8:30 Password
8:45 Superman	8:30 Houseparty
8:50 Kiddie Kartoons	8:30 General Hospital
8:55 Huntley-Brinkley Report	8:30 Edge of Night
9:00 News & Weather	8:30 Secret Storm
9:05 THE VIRGINIAN	8:30 Ben Casey
9:10 BOB HOPE CHRYSLER THEATRE	8:30 COLOR CARNIVAL
9:15 SPY	8:30 The Rifleman
9:20 Ten o'Clock Report	8:30 CBS Evening News
9:25 TONIGHT SHOW	8:30 News & Weather
	8:30 MY MOTHER THE CAR
	8:30 PLEASE DON'T EAT THE DAISIES
	8:30 DR. KILDARE II
	8:30 TUESDAY NITE MOVIE "FUNNY FACE" Audrey Hepburn, Fred Astaire
	8:30 Ten o'Clock Report
	8:30 TONIGHT SHOW

## SUNDAY, OCT. 9

KCBT-TV 11	KLBK-TV 13
8:30 Shenanigans	7:00 Bullwinkle
9:00 Annie Oakley	7:30 Quick Draw McGraw
9:30 Beanie and Cecil	8:00 Lina the Lionhearted
10:00 Discovery	8:30 Early Show
10:30 Unfolding Drama	To Be Announced
11:00 WORLD SERIES OR AFL FOOTBALL	Inquiry
San Diego-Buffalo	12:00 Face the Nation
(if world series is in west)	12:30 To Be Announced
2:30 WORLD SERIES OR AFL FOOTBALL	1:00 News & Weather
Kansas City at Denver	1:15 NFL Football
(if world series is in east)	1:30 Sportsboard
5:30 Red Raider Show	1:45 Amateur Hour
6:00 News-Weather	2:00 Twentieth Century
6:30 WALT DISNEY	2:30 Lassie
7:00 BRANDED	6:00 VOYAGE TO THE BOTTOM OF THE SEA
8:00 BONANZA	7:00 THE FBI
9:00 WACKIEST SHIP IN THE ARMY	8:00 Perry Mason
10:00 News & Weather	9:00 Candid Camera
10:30 Movie Eleven	9:30 Dick Van Dyke
"The Young Philadelphians", Paul Newman, Barbara Rush	10:00 National News
	10:10 Local News & Weather
	10:30 Sunday Night Movie "State Fair" Pat Boone, Tom Ewell & Ann-Margret

## MONDAY, OCT. 10

KCBT-TV 11	KLBK-TV 13
7:00 Seven o'Clock Headlines	6:00 Sunrise Semester
7:05 Channel 11 Farm Report	6:30 Cartoon Circus
7:25 Weather with Bernie	7:00 Farm & Ranch News
7:30 TODAY SHOW	7:25 Second Cup
7:35 FRACTURED PHRASES	7:35 Mike Wallace News
7:40 MORNING STAR	8:00 Captain Kangaroo
7:45 PARADISE BAY	8:00 Donna Reed
7:50 JEOPARDY	8:30 The McCoy's
7:55 LET'S PLAY POST OFFICE	8:30 Andy of Mayberry
8:00 News	8:30 Dick Van Dyke
8:05 Noon Report	8:30 Search for Tomorrow
8:10 Community Close-Up	8:30 Guiding Light
8:15 LET'S MAKE A DEAL	8:30 National News
8:20 Moment of Truth	8:30 Local News
8:25 The Doctors	8:30 Farm & Ranch News
8:30 YOU DON'T SAY	8:30 Weather
8:35 THE MATCH GAME	8:30 As the World Turns
8:40 Father Knows Best	8:30 Password
8:45 Superman	8:30 Houseparty
8:50 Kiddie Kartoons	8:30 General Hospital
8:55 Huntley-Brinkley Report	8:30 Edge of Night
9:00 News & Weather	8:30 Secret Storm
9:05 THE VIRGINIAN	8:30 Ben Casey
9:10 BOB HOPE CHRYSLER THEATRE	8:30 COLOR CARNIVAL
9:15 SPY	8:30 The Rifleman
9:20 Ten o'Clock Report	8:30 CBS Evening News
9:25 TONIGHT SHOW	8:30 News & Weather
	8:30 MY MOTHER THE CAR
	8:30 PLEASE DON'T EAT THE DAISIES
	8:30 DR. KILDARE II
	8:30 TUESDAY NITE MOVIE "FUNNY FACE" Audrey Hepburn, Fred Astaire
	8:30 Ten o'Clock Report
	8:30 TONIGHT SHOW

## TUESDAY, OCT. 12

KCBT-TV 11	KLBK-TV 13
7:00 Seven o'Clock Headlines	6:00 Sunrise Semester
7:05 Channel 11 Farm Report	6:30 Cartoon Circus
7:25 Weather with Bernie	7:00 Farm & Ranch News
7:30 TODAY SHOW	7:25 Second Cup
7:35 FRACTURED PHRASES	7:35 Mike Wallace News
7:40 MORNING STAR	8:00 Captain Kangaroo
7:45 PARADISE BAY	8:00 Donna Reed
7:50 JEOPARDY	8:30 The McCoy's
7:55 LET'S PLAY POST OFFICE	8:30 Andy of Mayberry
8:00 News	8:30 Dick Van Dyke
8:05 Noon Report	8:30 Search for Tomorrow
8:10 Community Close-Up	8:30 Guiding Light
8:15 LET'S MAKE A DEAL	8:30 National News
8:20 Moment of Truth	8:30 Local News
8:25 The Doctors	8:30 Farm & Ranch News
8:30 YOU DON'T SAY	8:30 Weather
8:35 THE MATCH GAME	8:30 As the World Turns
8:40 Father Knows Best	8:30 Password
8:45 Superman	8:30 Houseparty
8:50 Kiddie Kartoons	8:30 General Hospital
8:55 Huntley-Brinkley Report	8:30 Edge of Night
9:00 News & Weather	8:30 Secret Storm
9:05 THE VIRGINIAN	8:30 Ben Casey
9:10 BOB HOPE CHRYSLER THEATRE	8:30 COLOR CARNIVAL
9:15 SPY	8:30 The Rifleman
9:20 Ten o'Clock Report	8:30 CBS Evening News
9:25 TONIGHT SHOW	8:30 News & Weather
	8:30 MY MOTHER THE CAR
	8:30 PLEASE DON'T EAT THE DAISIES
	8:30 DR. KILDARE II
	8:30 TUESDAY NITE MOVIE "FUNNY FACE" Audrey Hepburn, Fred Astaire
	8:30 Ten o'Clock Report
	8:30 TONIGHT SHOW

## WEDNESDAY, OCT. 13

KCBT-TV 11	KLBK-TV 13
7:00 Seven o'Clock Headlines	6:00 Sunrise Semester
7:05 Channel 11 Farm Report	6:30 Cartoon Circus
7:25 Weather with Bernie	7:00 Farm & Ranch News
7:30 TODAY SHOW	7:25 Second Cup
7:35 FRACTURED PHRASES	7:35 Mike Wallace News
7:40 MORNING STAR	8:00 Captain Kangaroo
7:45 PARADISE BAY	8:00 Donna Reed
7:50 JEOPARDY	8:30 The McCoy's
7:55 LET'S PLAY POST OFFICE	8:30 Andy of Mayberry
8:00 News	8:30 Dick Van Dyke
8:05 Noon Report	8:30 Search for Tomorrow
8:10 Community Close-Up	8:30 Guiding Light
8:15 LET'S MAKE A DEAL	8:30 National News
8:20 Moment of Truth	8:30 Local News
8:25 The Doctors	8:30 Farm & Ranch News
8:30 YOU DON'T SAY	8:30 Weather
8:35 THE MATCH GAME	8:30 As the World Turns
8:40 Father Knows Best	8:30 Password
8:45 Superman	8:30 Houseparty
8:50 Kiddie Kartoons	8:30 General Hospital
8:55 Huntley-Brinkley Report	8:30 Edge of Night
9:00 News & Weather	8:30 Secret Storm
9:05 THE VIRGINIAN	8:30 Ben Casey
9:10 BOB HOPE CHRYSLER THEATRE	8:30 COLOR CARNIVAL
9:15 SPY	8:30 The Rifleman
9:20 Ten o'Clock Report	8:30 CBS Evening News
9:25 TONIGHT SHOW	8:30 News & Weather
	8:30 MY MOTHER THE CAR
	8:30 PLEASE DON'T EAT THE DAISIES
	8:30 DR. KILDARE II
	8:30 TUESDAY NITE MOVIE "FUNNY FACE" Audrey Hepburn, Fred Astaire
	8:30 Ten o'Clock Report
	8:30 TONIGHT SHOW

### HARMONY NEWS by Mathis

HARMONY, Sept. 27 - Mmes. Zant Scott and Bob Hopper attended the state meeting of home demonstration clubs in Austin Tuesday-Friday of last week. While they were gone the Scott home had company, consisting of Mr. and Mrs. Mack Johnston of Dallas. With her mother gone, Nita Karen Scott went right on ahead with the preparation of food for the family and visitors. She has proven herself quite capable in a number of fields in recent years, having

been a member of the 4-H club and taking part in the electric camp in Cloudercroft, N. Mex. sponsored by the Southwestern Public Service Co. She was one of the nine members of this year's junior class to make the National Honor Society at Floydada High School. Mrs. Scott serves as adult leader for the Harmony 4-H Club. The 4-H Club met at the W. R. Daniel home on Saturday evening for a truck ride, weiner roast, games, and picnic. Janet Holmes has enrolled at Texas Tech.

day afternoon, and both spent the night in Lockney. Mrs. Carr with Mrs. Ida Dodson, and Mrs. Gary with Mrs. Fred Byerly. Mrs. Mather Carr hosted the Horace Carrs and Everett Millers at the noon meal on Sunday then they all took off for Lubbock, where they viewed the parachute jump. Mrs. Mather Carr had already bought her ticket for a helicopter ride but would have had to wait too long for it. She has never flown.

Callers on Mrs. Mather Carr were Mrs. Bob Hopper on Monday and Mrs. Charles Mather Carr and Patrick David on Tuesday.

Mrs. Joe Johnston, wife of a cousin of Walter Hanna, died in Ft. Worth on Wednesday. The Hannas attended the funeral in Ft. Worth. A cousin of Carrick Snodgrass died Tuesday night at Stephenville, but as her mother, Mrs. Vinson Manning of Petersburg, was sick, they were unable to attend funeral services in Stephenville. There were 26 at Sunday School at Carr's Chapel, a number, when taken in proportion to the membership, would shock the larger churches. After the worship service, the pastor, Rev. Doyn Merriman of Hale Center, took the noon meal with Mrs. R. B. Gary, as did Mrs. M. D. Ramsey. As is his custom, Rev. Merriman visited extensively in the afternoon before evening service at six. Everett Miller went to Lubbock Tuesday to have X-rays made. Mrs. Carrick Snodgrass attended the district cancer society meeting at Lubbock on Wednesday of last week.



## The tiger scores again!

It's dramatically fresh and new, but still very, very Pontiac. That's written all over it, from the no-doubt-about-it new front end to the trimly tailored rear. (Did you think for one minute that we'd leave out the unique Pontiac styling character you like so well? Never!) Another nice thing about the '66 Pontiacs is that other Pontiac lovers we've got a bright new Grand Prix, new Catalinas, new Star Chief Executives—quick handling. But you'll discover those things when you slip behind the wheel and turn a new '66 tiger loose. **Wide-Track Pontiac '66**



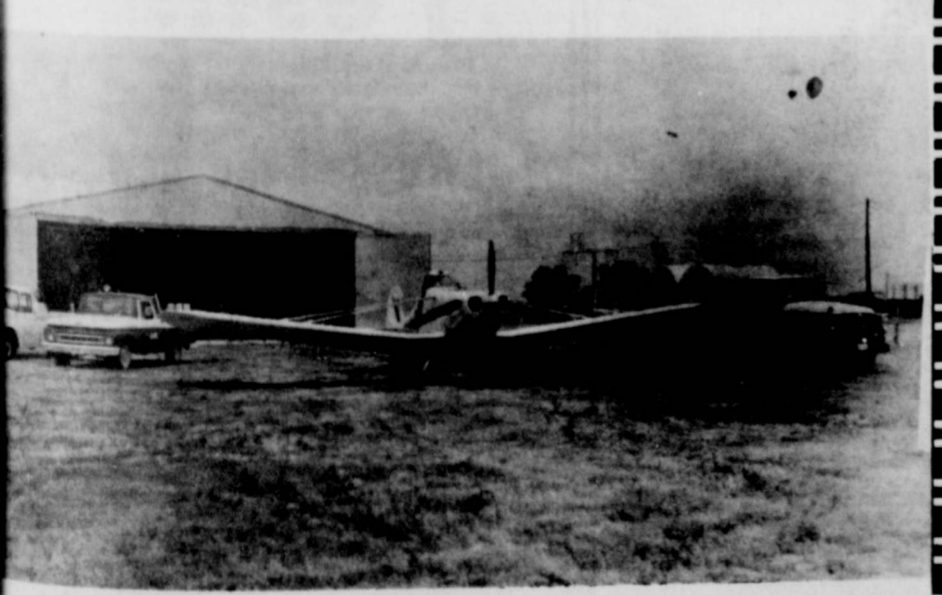
## and again!

You're looking at the newest thing in tigers. Sleek, lean-muscled new style. New power that starts with a revolutionary new kind of six and ranges through four V-8's. Crisp curves shape the new silhouette, and the sports coupe sports a smartly recessed rear window. Pontiac's revolutionary overhead cam six acts more like a V-8, looks like no six you ever saw, and still remembers that saving is what six buyers buy sixes for. Delivers 165 hp (or you can specify the sports package which includes the 207-hp version). And it's standard on all Tempests. Tempest Customs and Le Mans. V-8's? Up to 360 hp in the GTO. See all the '66 tigers in tiger country today. **Wide-Track Pontiac '66**

Come to tiger country. See all the Wide-Track tigers at your Pontiac dealers.

## COTTON DEFOLIATION

QUALITY WORK. . .COMPETITIVE PRICE



## NORMAN SPRAYING SERVICE

DOUGHERTY, TEXAS

WEIMS NORMAN — YU. 3-2794, FLOYDADA

ALL TYPES AERIAL APPLICATION — MODERN EQUIPMENT

**2 WAY RADIO EQUIPPED**

MEMBER OF TEXAS AERIAL APPLICATORS ASSOCIATION

121 EAST MISSOURI

## CITY AUTO INC.

FLOYDADA, TEXAS



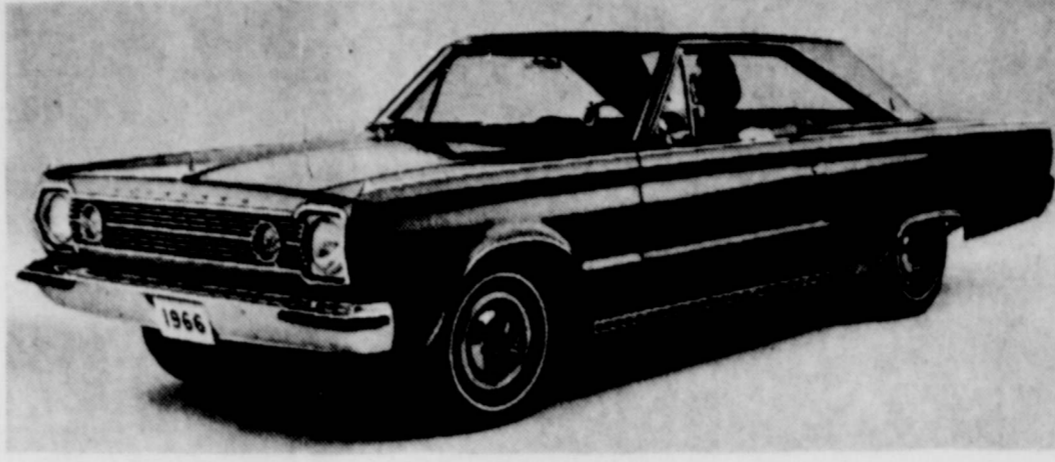
### New VIP Is Top Of 1966 Plymouth Line



A new luxury type four-door hardtop called the VIP is introduced by Plymouth in its line of cars for 1966. Designed for those who ask the finest in equipment and interior appointments in a standard size automobile with distinctive exterior trim and identification, the VIP has the same 119-inch wheelbase and length of 209.8 inches as other standard size Plymouth cars. Exterior appearance features, exclusive to the VIP, are body side moldings with wood-grain inserts, a new charcoal

metallic paint, and chromed VIP nameplates on the grille, lower deck panels and C-pillars. The new model is also available with standard Plymouth exterior colors. Interior features include recessed pull-down center arm rests for both front and rear seats, special door closing pull handles, and reading lamps in the rear. Interior trim colors of the VIP are black, red or blue. Fender skirts, wheel covers and hood-mounted turn indicators are standard. A vinyl covered roof is optional.

### Belvedere Is Completely New For 1966



The intermediate size Plymouth Belvedere for 1966 has a wholly new appearance, major chassis improvements and a wide range of optional equipment. A production version of the famous 426-cubic inch hemispherical head V-8 engine will be offered in 1966. There are six Belvedere body types and 18 models. Shown here is the Satellite two-door hardtop. Sedans, hardtops and convertibles will have a 116-inch wheelbase, and station wagons a 117-inch wheelbase. Fully unitized bodies with

curved glass windows and fresh body lines make the new Belvedere look longer and lower than its 1965 counterpart. The standard V-8 engine in the Belvedere series has 273 cubic inch displacement with a two-barrel carburetor. Other engine options besides the 426 "hemi" are the 318 and 361-cubic inch V-8s using regular fuel, and a high performance version of the 383-cubic inch V-8. Safety features include a new type of inside door handle, and new power brake boosters.

### New Series Of Plymouth Belvederes Featured At Allen Chrysler-Plymouth

Plymouth has a completely new series of Belvedere intermediate size cars in six body types and 18 models for 1966.

They have a wholly new appearance, major chassis improvements and a wide range of new optional equipment. A new engine will be offered in 1966. It is a production version of the famous 426-cubic inch hemispherical head V-8 engine which has powered Plymouth competition automobiles. The Belvedere group of cars, with a 116-inch wheelbase for sedans, hardtops and convertibles and a 117-inch wheelbase for station wagons, is one of four series of Plymouth cars for 1966, providing complete coverage of the low price field. The others are the standard size Fury series cars, the economy Valiant compacts and the sporty fastback Barracudas.

There is also the top-of-the-line Plymouth VIP, a luxury type four door hardtop.

The entire Plymouth line goes on sale Thursday, September 30.

"In 1965, we made Plymouth fully competitive, model for model, with other volume producers in the low price field," said P.N. Buckminster, general manager of the Chrysler-Plymouth Division. "In 1966, we are making major changes in the intermediate Belvedere series. Their new styling, new safety features and the new optional hemi engine are among the attractions that will widen Plymouth's appeal in the volume segment of the market."

**LONGER AND LOWER LOOK**--Belvedere cars have fully unitized bodies with curved glass windows and new body lines which make them look longer and lower than 1965 Belvedere cars.

One of the 1966 safety features is a new type of inside door handle shaped like the familiar buckle of a seat safety belt. It is integrated with the arm rest and lies flat on the door panel. The handle is exceptionally easy to operate and at the same time reduces the possibility of accidental door opening caused by the involuntary tendency of passengers to grasp for the nearest object when reacting under sudden stress.

Other safety features include new, more efficient parallel windshield wipers, new windshields with less curvature at the outer extremities, new power brake boosters providing an improved pedal "feel", and new, thicker secondary brake shoe linings.

**INTERIOR FEATURES**--Outstanding interior features include new instrument panels for all models and new shell-type design bucket seats for Plymouth Satellite two-door hardtops and convertibles, the luxury cars in the Belvedere series. The new seats have wider seat cushions and higher seat

backs than in 1965. Their new shape and hinging improves their appearance and provides increased rear seat entry room.

A new floor console for Satellite cars accommodates selector levers for either the automatic or four-speed manual transmission. There is a storage compartment with a side opening as an integral part of the console.

**NEW HEMI ENGINE AVAILABLE**--A new 426 cubic inch hemispherical combustion chamber V-8 engine will be

available in Plymouth Belvedere series cars with manual four-speed transmissions in mid-November, and in automatic transmission cars in January.

The new hemi engine is a modification of the competition 426 cubic inch hemi V-8 used with outstanding success in racing, starting with Plymouth's 1-2-3 victory in the 1964 Daytona 500-mile race.

Unlike the racing version, the 1966 production hemi performs well in traffic, operates quietly

and uses readily available premium gasoline.

Plymouths powered by the new production hemi will carry a distinctive HP2 medallion on the front fenders.

The production hemi engine has a 10.25:1 compression ratio, two tandem mounted four-barrel carburetors, provision for carburetor heat in the warm-up period, dual exhausts with mufflers and valve timing suitable for normal driving. Cars with hemi engines have heavy duty torsion and sway

bars in front and heavy duty rear springs.

The standard V-8 engine in Plymouth Belvedere series cars has 273-cubic inches displacement with a two-barrel carburetor. Other options are 318 and 361-cubic inch V-8s using regular fuel and a high performance version of the 383-cubic inch V-8 with a four-barrel carburetor and dual exhausts, using premium fuel.

**18 MODELS IN SIX BODY STYLES**--The six body types in the Belvedere series are a two-door sedan, two-door hardtop, convertible, four-door sedan, two-seat station wagon and three-seat station wagon. All body types are available with six-cylinder or V-8 engines. The Satellite two-

door hardtop and convertible, deluxe cars of the series, are available only with V-8 engines. Equipment changes in the Belvedere series include a new improved heating and ventilating system that takes advantage of the car's forward motion to force air into the car body, a new air conditioning system with a higher level of performance, and new power window lift systems with exceptionally quiet operation.

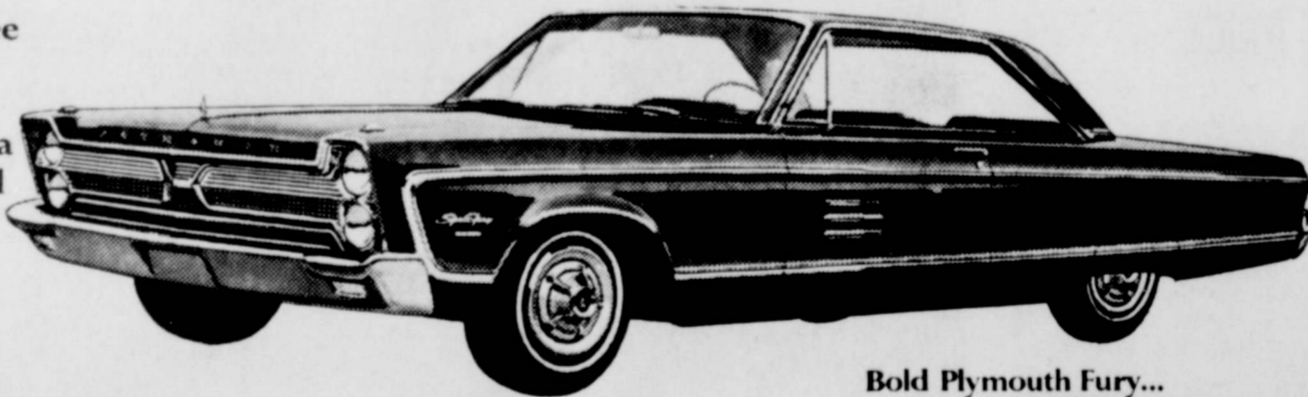
Chassis improvements include a more favorable weight distribution through relocation of the engine, a new engine mounting system to isolate vibrations from the body structure, and new rear axle with increased load-carrying capacity for six-cylinder models.



# Let yourself Go Plymouth '66

Totally new Plymouth VIP. A new high in luxury...well within your reach.

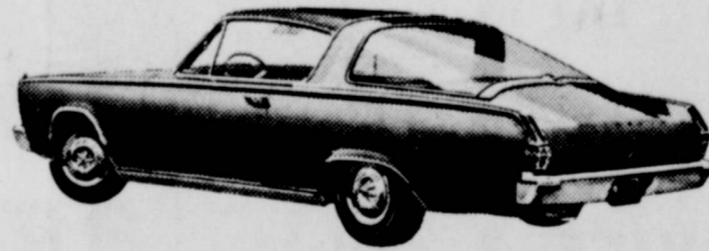
They're here now! Come see all the new '66 Plymouths including the totally new, elegant Plymouth VIP. And a brand-new line of beautiful Plymouth Belvederes featuring the sleek, high-performance Satellite. Something for everyone... at your Plymouth Dealer's!



Bold Plymouth Fury... a great big beauty in a great big hurry.



Hot new Plymouth Satellite... spirited leader of the all-new Belvedere line.



Fast new version of the car that got America thinking fastback... Plymouth Barracuda.



Plymouth Valiant. The car that really lets you live... within your budget.

See Plymouth in action on the World Series, NCAA Football, AFL Football and The Bob Hope Show, NBC-TV.

PLYMOUTH DIVISION CHRYSLER MOTORS CORPORATION

Let yourself go... *Plymouth*

**ALLEN CHRYSLER-PLYMOUTH**  
114 WEST CALIFORNIA FLOYDADA, TEXAS

WESTERS	NO. 2 1/2 CANS	3 FOR \$1
TAMALES	NO. 2 1/2 CANS	4 FOR \$1
SHURFINE PEACHES	NO. 2 1/2 CANS	4 FOR \$1
AUSTEX CHILI	24 OZ.	69¢
SHURFINE CHOPPED TURNIP GREENS	NO. 303 CANS	2 FOR 23¢
BEST MAID GRAPE JELLY	18 OZ. GLASS	29¢
OUR DARLING CORN	NO. 303 CANS	2 FOR 39¢
SHURFINE CUT GREEN BEANS	NO. 303 CANS	2 FOR 39¢
FOOD KING PORK & BEANS	NO. 300 CANS	4 FOR 43¢
SHURFINE MILK	TALL CANS	3 FOR 43¢
VAN CAMPS SARDINES	TALL CANS	2 FOR 49¢
<b>Market Specials</b>		
DECKERS BACON	2 LB. CELLO PACK	\$1.69
U.S. GOOD LOIN STEAK	LB.	75¢
TENDERIZED STEAK	LB.	89¢
BARBECUE	LB.	95¢

See or Call  
**DANIEL AUTOMOTIVE**  
Your Authorized  
KELVINATOR Dealer For  
Kelvinator Refrigerators and Appliances  
Good Used Refrigerators  
Refrigeration Service  
by L. D. BRITTON  
YU 3-2382 123 W. Calif.

**Yes!!!**  
We sell the new....  
**BIC PENS**  
**HESPERIAN**  
Office supply  
YU3-3737







# HAVE FUN ... WIN PRIZES ...

HESPERIAN

# FOOTBALL CONTEST

# \$15

IN CASH PRIZES  
EACH WEEK

AND QUARTERBACK  
FORECAST

### CONTEST RULES

ANYONE CAN ENTER EXCEPT THE EMPLOYEES OF THE HESPERIAN. THREE CASH PRIZES ARE GIVEN EACH WEEK-TIES WILL SPLIT PRIZE MONEY. MEMBERS OF THE EDITORIAL DEPARTMENT ARE SOLE JUDGES OF THE CONTEST AND THEIR DECISION IS FINAL. IT IS NOT NECESSARY TO INDICATE SCORES ON ALL THE GAMES, BUT SCORE MUST BE INDICATED ON THE TIE BREAKER GAME AT RIGHT.

DEADLINE FOR ENTRIES - 5 P.M. FRIDAY IN HESPERIAN OFFICE OR POST MARKED

SIMPLY CIRCLE THE TEAM YOU CHOOSE TO WIN IN EACH OF THE FOOTBALLS. DEADLINE FOR SUBMITTING ENTRIES IS 5 P.M. FRIDAY - WINNERS WILL BE ANNOUNCED THE FOLLOWING WEEK. ENTER AS MANY TIMES AS YOU WISH, PRINT NAME AND ADDRESS PLAINLY AT TOP OF THE PAGE YOU TURN IN AND MAIL TO THIS NEWSPAPER.

TIE BREAKER - Guess Total Points  
LOCKNEY SLATON GAME

1ST PRIZE \$7.50

2ND PRIZE \$5.00

3RD PRIZE \$2.50

**CAPROCK MOTOR PARTS**  
AND HARDWARE  
TULSA VS. MEMPHIS ST.

**FARM BUREAU INSURANCE**  
SAM PUCKETT-AGENT  
ABERNATHY VS. MORTON

**MOORE FUNERAL HOME**  
AND AMBULANCE SERVICE  
MICHIGAN STATE VS. MICHIGAN

HOME OF TOP-FLITE FEEDS  
**CARMACK FEED & SEED**  
ARKANSAS VS. BAYLOR

JOHN DEERE FARM MACHINERY  
**COLLINS IMPLEMENT CO.**  
TASCOSA VS. MONTERREY

PONTIAC, BUICK SALES SERVICE  
**CITY AUTO, INC.**  
LOCKNEY VS. SLATON

IRRIGATION PUMPS, REPAIR  
**UNITED MACHINE & SUPPLY**  
POST VS. SEAGRAVES

MASSEY-FERGUSON EQUIPMENT  
**FLOYDADA IMPLEMENT CO.**  
CROSBYTON VS. LORENZO

AC AND NEW HOLLAND EQUIPMENT  
**McDONALD IMPLEMENTS**  
PETERSBURG VS. SPUR

**ODEN CHEVROLET**  
CHEVROLET-OLDSMOBILE  
HEREFORD VS. LOVINGTON

KELVINATOR APPLIANCES  
**DANIEL AUTOMOTIVE**  
FRIONA VS. HALE CENTER

**SOUTH PLAINS COOP GINS & ELEVATOR**  
SOUTH PLAINS, TEXAS  
TCU VS. TECH

SINCE 1911  
**W. M. TYE DRILLING CO.**  
TEXAS VS. OKLAHOMA

YOU CAN BANK ON THE  
**FIRST NATIONAL BANK**  
AMARILLO VS. BORGER

COMPLETE BUILDING SUPPLY  
**BUILDERS MART**  
HOUSTON VS. A+M

COMPLETE ENGINE REPAIR  
**HASLEY MOTOR SERVICE**  
TULIA VS. TUCUMCARI

**SANDERS PUMP & DRILLING**  
WESTERN PUMP REPRESENTATIVE  
FRENSHIP VS. FARWELL

Producers Cooperative Elevator  
SEEDS-FEEDS-GRAIN-FERTILIZER  
FLOYDADA TEX. Phone YU3-3908 DOUSHERTY TEX. Phone YU3-3020  
**FLORIDA ST. VS. KENTUCKY**

FARMALL TRACTORS AND EQUIPMENT  
**MARTIN AND CO.**  
OLTON VS. CANYON

**FLOYD COUNTY CO-OP GINS**  
MULESHOE VS. DENVER CITY

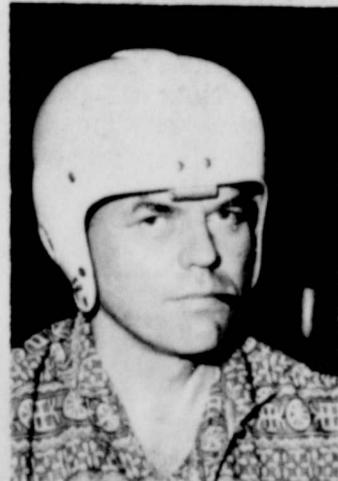
HOUSEWIVES SHOP AND SAVE AT  
**PIGGY WIGGLY**  
PALO DURO VS. LUBBOCK

**RUCKER'S OK TIRE STORE**  
COMPLETE TIRE SALES - SERVICE  
RALLS VS. ROOSEVELT

### QUARTERBACK QUOTES

JIMMY WILLSON

BILL TYE



LOCKNEY, . . . . .20  
SLATON, . . . . .14



LOCKNEY, . . . . .14  
SLATON, . . . . .14

"DEEP ROCK" BOTTOM PRICES  
AT  
**WYLIE PETROLEUM**  
CLAUDE VS. WHITE DEER



## 1966 Imperials Have Exclusive Seating



1966 Imperials have new interiors seating arrangements exclusive domestic production cars, exterior changes, front and rear, a new 440-cubic inch engine and engineering refinements contributing to unmatched riding and comfort. A new feature in the models is a front seat that looks like a conventional bench-type seat but is made up of two completely independent units, each with its own

center arm rest, seat track and seat adjusting mechanism. There are four Imperial models in two series, the Le Baron four-door hardtop, the Crown convertible, the Crown four-door hardtop shown above, and the Crown Coupe two-door hardtop. Top quality claro walnut inlays are used liberally across the upper half of the instrument panel, in the steering wheel center section and door trim panels of all 1966 Imperial models.

## 1966 Imperials On Display At Allen Chrysler-Plymouth

For 1966, tenth in the series of luxury Imperials, the new Imperial line-up includes the Le Baron, Crown, and Crown Coupe. Interiors with seating arrangements exclusive among production cars. The new Imperial also has exterior changes front and rear, a new 440-cubic inch displacement and engineering refinements contributing to unrivaled quietness and comfort. The luxury car makes showroom appearance Allen Chrysler-Plymouth Division. It is standard in our four-door models. Up to now, this type of arrangement has been available only in custom-built imported luxury cars.

NEW 440 CUBIC INCH ENGINE--The new Imperial V-8 engine has the largest displacement, 440 cubic inches, ever offered by Chrysler Corporation. With a four-barrel carburetor, 4.32 X 3.75 bore and stroke, and 10.1 to 1 compression, it provides even more usable power in the normal driving speed ranges than the 413-cubic inch engine it replaces. Cooling capacity is increased by a new wider radiator core, the fuel induction system is made more efficient and the exhaust system is modified to improve performance by a reduction in back pressure. In a typical highway passing situation, 50 to 70 mph, performance is improved 10 percent over 1965 models. Available as optional equipment on all Imperials is a multiposition steering wheel with a steering column that has both tilting and telescoping mechanisms. It permits a 3.1 inches fore-and-aft adjustment

## Chrysler 300 Series On Display At Allen Chrysler-Plymouth

Chrysler passenger cars, new from front to rear for 1966 make their debut in the Allen Chrysler-Plymouth showroom today.

They have more powerful engine options, new interior seating arrangements, new equipment options and a stronger separate styling identity for the four series which make up the 1966 line -- the luxury New Yorkers, the sporty 300s, the economical Newport and the new Town and Country series of wagons.

The most changed in appearance of 1966 Chrysler is the distinctive 300 series. The 300 two-door hardtop has a new roof with a restyled rear window, a new hood, new front bumper, wrap-around taillights and bumper-installed front park and turn lights visible from the side are exclusive features of the 300

series, Chrysler's entry in the sports-type car market.

New equipment options include power front wheel disc brakes, an adjustable tilting and telescoping steering wheel and a rear seat air and heat system.

Bucket seats of a completely new design with pull-down center arm rests are standard in some models and optional in others. They are wider, have higher seat backs and provide easier rear seat entry and exit room for two-door models than the bucket seats in 1965 cars. Integral head rests of a new more attractive design are optional.

ENGINE POWER INCREASED -- A 440-cubic inch V-8 engine with a four-barrel carburetor is standard in the New Yorker, replacing the 413-cubic inch engine of 1965. It has the same

compression, 10.1 to 1, and valve timing as the 413. With its larger displacement it provides improved stop-and-go performance resulting from greater torque at low engine speeds.

A high performance version of the 440 engine with twin exhausts and a silenced twin snorkel low restriction air cleaner is optional on all models.

The standard engine for Newport and Town and Country cars is a 383-cubic inch V-8 using regular grade fuel. A high performance version of the 383 engine is standard in the 300 and optional in Newport and Town and Country models.

13 MODELS AVAILABLE -- The model line-up for 1966 is the same as for 1965 except that two-seat and three-seat wagons, formerly available in both the New Yorker and Newport series, are now set apart in a separate Town and Country series.

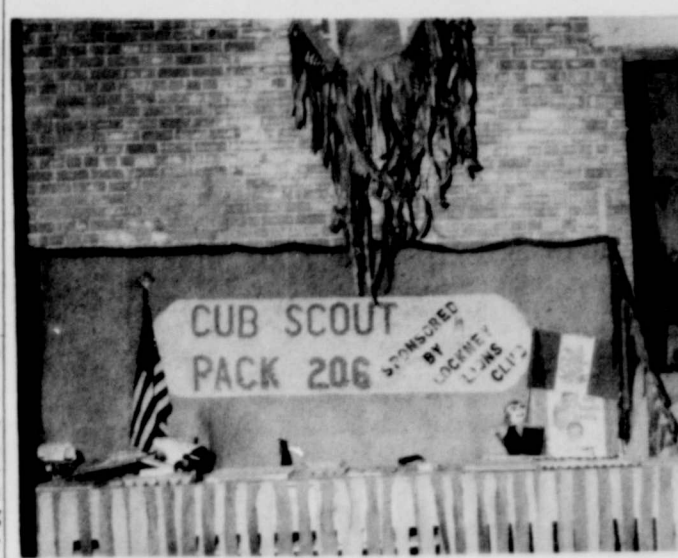
Each of the two-door hardtops, Newport, 300 and New Yorker, has a separate and distinctive roof style, and all series have their own distinctive grilles, taillight arrangements and side trims.

New Yorker and Newport models also have new, more attractive hoods and all hardtops, sedans and convertibles have new rear quarter panels which contribute to a lower, sleeker look as the cars are seen from the side.

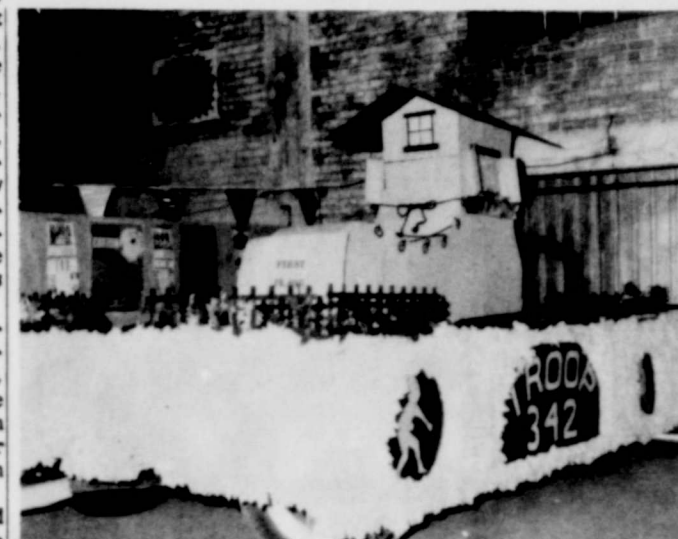
New bumpers are massive and deep and are designed to give superior protection to surrounding sheet metal and license plates.

The Town and Country wagons have their own type of body ornamentation and taillight treatment. Wood grain appliques with in body side moldings and on the instrument panel are standard styling features on both the three-seat and two-seat wagons.

NEW FEATURES OFFERED -- New features include six-way electric seat adjusters for bucket seats, safety-type inside door handles, modifications in shock absorbers to provide a smoother boulevard ride, a one-third increase in the thickness of secondary brake shoe linings to improve braking performance, improved luggage load-



CUB SCOUT PACK 206, sponsored by the Lockney Lion's Club, was first place winner in the education booth at the Floyd County Fair. (Staff Photo)



FIRST IN COMMUNITY FLOAT... in the parade at the Floyd County Fair... was Brownie Troop 342. (Staff Photo)

## Widener Family Reunion Held

The family of Mrs. D. H. Widener held their annual reunion in the Plainview Park Sunday where everyone enjoyed the day and the noon luncheon.

Those attending were: Mr. and Mrs. Odell Breed, Shirley and Mike, Mr. and Mrs. Roe Jones, Mr. and Mrs. Clifford Willis, Mrs. Dora Widener, Mr. and Mrs. E. L. Widener, Ann and Monte, Mr. and Mrs. Bobby Britton and Mitchell, all of Floydada;

Mr. and Mrs. Robert Billington, and Robert, Joyce and Billie, Mr. and Mrs. J. K. Sanders, Kenneth, Tommy and Jimmy and their guest, Tammy Seimantel, Mrs. Lela Billington, all of Amarillo;

Mr. and Mrs. E. R. Melton, Mr. and Mrs. Buddy Widener, James, Danny and Cristy, of Plainview;

Mr. and Mrs. Charles Ball of Lockney, Mr. and Mrs. James Huckabee, Mark, Bill and Tod of Stephenville, Texas.

Everyone is anticipating a good reunion next year.

## Former Resident Mrs. Alexander Interred Here

Funeral rites for Mrs. James Claud Alexander, 64, former Floyd County resident, were conducted Monday in the First Methodist Church in Floydada. Rev. Charles Lutrick, pastor, officiated.

Mrs. Alexander died Saturday in Cox Hospital in Abilene, She

was preceded in death by her husband who died in Floydada in 1941. Mrs. Alexander had resided in Abilene since 1961. She and her husband farmed in the Dougherty area for a number of years.

Survivors include four sons, J. C. of Albuquerque, N. Mex., Joel of Snyder, Gene of Lubbock and James of Austin; 17 grandchildren; four great grandchildren and three brothers, Reynolds Maxwell, Compton Calif., George and Clarence Maxwell, both of Oklahoma City.

# Champlin Oil Sale

NOW GOING ON!

Buy now and Save! Sale runs through Nov. 10th

## SPECIAL REDUCED PRICES!

24 One-Quart Cases

	List	Cash Price	Jan. 1 Price
transseason	\$9.06	\$ 8.36	\$ 8.56
eLuxe	6.96	6.36	6.66
i-V-I	6.06	5.26	5.49
P.G.	6.06	5.26	5.49
M.O.	5.22	4.98	4.98
Champlin Drip	.60	.55	.55
3 Oil	7.26	6.66	6.96
tube Grease	12.95	10.50	11.95
H. Trans.	6.95	6.20	6.75
John Deere Trans.	8.95	7.50	8.25

## Barrels — 55 Gallon Drums

	List	Cash Price	Jan. 1 Price
P.G.	\$50.05	\$44.05	\$45.05
transseason	76.45	67.27	68.81
eLuxe	57.20	50.34	51.48
i-V-I	48.95	43.08	44.06
M.O.	41.25	36.30	37.13
3	61.05	53.73	54.95

# Flash-O-Gas Co.

W. C. MERCER JR., Manager

Phone OL 4-3334

1/2 Mile East of Lockney on Farm Road No. 97

## To America with love... The 1966 Chrysler



Could be we're getting too emotional. But it isn't very often you get a chance to follow an all-time sales record year with a new Chrysler like this one.

Sure, our '65 was great. But the '66 is even better.

It looks better. Moves quicker. It's got a beautiful new front end and a very dramatic new rear.

It's got a bigger and more zesty group of V-8 engines. From a 383 cubic incher to a 440 TNT with twin exhausts and twin snorkels. (A "snorkel" is an air intake horn for the carburetor — does great things for performance.)

The interiors, all up and down the line, are more luxurious and comforting. Take our new shell bucket

seats, for example. It's almost as if they had been custom-fitted for you.

One thing we didn't even think about changing. It has to do with money. Five of our Newport models (real Chryslers — not junior editions) are priced just a few dollars a month more than the most popular smaller cars with the same equipment. This includes features like power steering, power brakes, a 383 cubic inch V-8, automatic transmission, radio and many standard items like safety door handles and seat belts.

Move up to Chrysler... it's getting easier by the minute.

## CHRYSLER



On display now.

CHRYSLER DIVISION CHRYSLER MOTORS CORPORATION

Illustrated above, the 300 2-Door Hardtop. Tune in Bob Hope and the Chrysler Theatre, NBC-TV, Wednesdays

## ALLEN CHRYSLER-PLYMOUTH

114 WEST CALIFORNIA

FLOYDADA, TEXAS



# FREE!

## CANNON NYLONS



**Cannon Seamless Stretch**  
the sophisticated stocking with the second-skin look and fit!

1 PAIR CANNON NYLONS FREE WITH \$1.50 PIGGLY WIGGLY GREEN CASH TAPES DATED AFTER SEPT. 14<sup>th</sup>

VEGETOLE

# SHORTENING

## 3 LB. CAN 59¢

HOLLY

# SUGAR

## 5 LB. BAG 49¢

THESE PRICES GOOD OCT. 7-9, 1965 IN FLOYDADA, TEX. WE RESERVE THE RIGHT TO LIMIT QUANTITIES!

# OLEO

ELGIN COLORED SOLID

## 2 1lb. PKGS. 29¢

HUNT'S HALVES OR SLICED

# PEACHES

## 5 #2 1/2 CANS \$1

HUNT'S

# CATSUP

## 4 20oz. BTL. \$1

# BLEACH

DURITE, LIQUID

## 1/2 GALLON 25¢

PRODUCE AT ITS BEST! ALWAYS AT PIGGLY WIGGLY!



### Piggly Wiggly

- SWEL CHOCOLATE Frosting Mix 12oz. CAN 37¢
- CHORE GIRL PURE COPPER Scour Pads 2 PADS 5¢
- DEL MONTE CREAM STYLE OR WHOLE KERNEL Golden Corn 5 #303 CANS \$1
- DEL MONTE WHOLE Green Beans #303 CANS 29¢

- USDA CHOICE, AGED, HEAVY BEEF, VALU-TRIMMED, ARM BONE CUT Swiss Steak POUND 69¢
- RATH'S BLACKHAWK, BONELESS, SMOKED Canned Ham 3 lb. CAN \$3.59

- USDA, CHOICE, AGED, HEAVY BEEF, VALU-TRIMMED CHUCK ROAST POUND 49¢
- LEAN 100% ALL BEEF, DATED TO ASSURE FRESHNESS Ground Beef 3 lbs. \$1
- BLUE MORROW, LITTLE PIGGY Link Sausage 12oz. PKG. 59¢

- BLOCK STYLE Longhorn Cheese 1lb. SHARP 8 1/2 oz. CHUNKS
- Cheddar Cheese 1lb. MONTEREY JACK, LOW CALORIE
- Jack Cheese 1lb. 3/8 EVE, 9-15 oz. CHUNKS
- Swiss Cheese 1lb. 9-15 oz. CHUNKS
- Mozzarello Cheese AMERICAN OR PIMENTO
- Sliced Cheese 3oz.



# APPLES

FANCY DELICIOUS

## 12 1/2¢ POUND

TABLE SIZE, CLIP TOP

# FRESH CARROTS

## 3 1/2¢ POUND

NON-FOOD ITEMS!

HYTONE, WIDE RULE, POLY WRAPPED, REG. 63¢

# FILLER PAPER

## 300 CT. PKG. 43¢

SOFT-N-EASY, REG. 99¢

- HAIR SPRAY 17oz. CAN 69¢
- DEODORANT FAMILY SIZE 99¢
- EXCEDRIN 60 ct. BOTTLE 79¢
- DANDRUFF SHAMPOO HEAD + SHOULDERS, REG. \$1.00 8¢ OFF MEDIUM SIZE 59¢

FROZEN FOODS!

## DINNERS

- BANQUET BEEF, CHICKEN, TURKEY 3 11 1/2 oz. PKGS. \$1
- SEABROOK, FRENCH OR CUT Green Beans 5 9oz. PKGS. \$1
- JOHNSTON, PUMPKIN AND Mince Pies 69¢
- LIBBY PEAS OR Cut Corn 2 24oz. PKGS. \$1



- CAMPFIRE PORK & BEANS 3 #300 CANS 29¢
- KOUNTY KIST, CUT GREEN BEANS 7 #300 CANS 29¢
- FESTIVAL STRAWBERRY PRESERVES 2 LB. JAR. 99¢
- IRELAND PLAIN CHILI #2 CANS 69¢
- BAKER ANGEL FLAKE COCONUT 3 1/2 oz. CAN 29¢

Lowest Prices . . . Greatest Variety . . . always at . . .

# Piggly Wiggly

