

65 Cotton Forecast Goes Up From 99,000 To 123,000 Bales For Floyd County

Harvest

to a report released by the estimated cotton in Floyd County has been increased from 99,000 to 123,000. The High Plains area output is estimated at 2,130,000 bales with the earlier prediction of 1,900,000. The favorable conditions have accounted for the increased estimate.

number of acres planted in cotton in this county is expected to be about 100,000. The South Plains has had a late season moisture has been scattered rains that have been received by late September have been little, if any, cotton has received little moisture. A couple of hailstorms also taken care of the cotton in Floyd County.

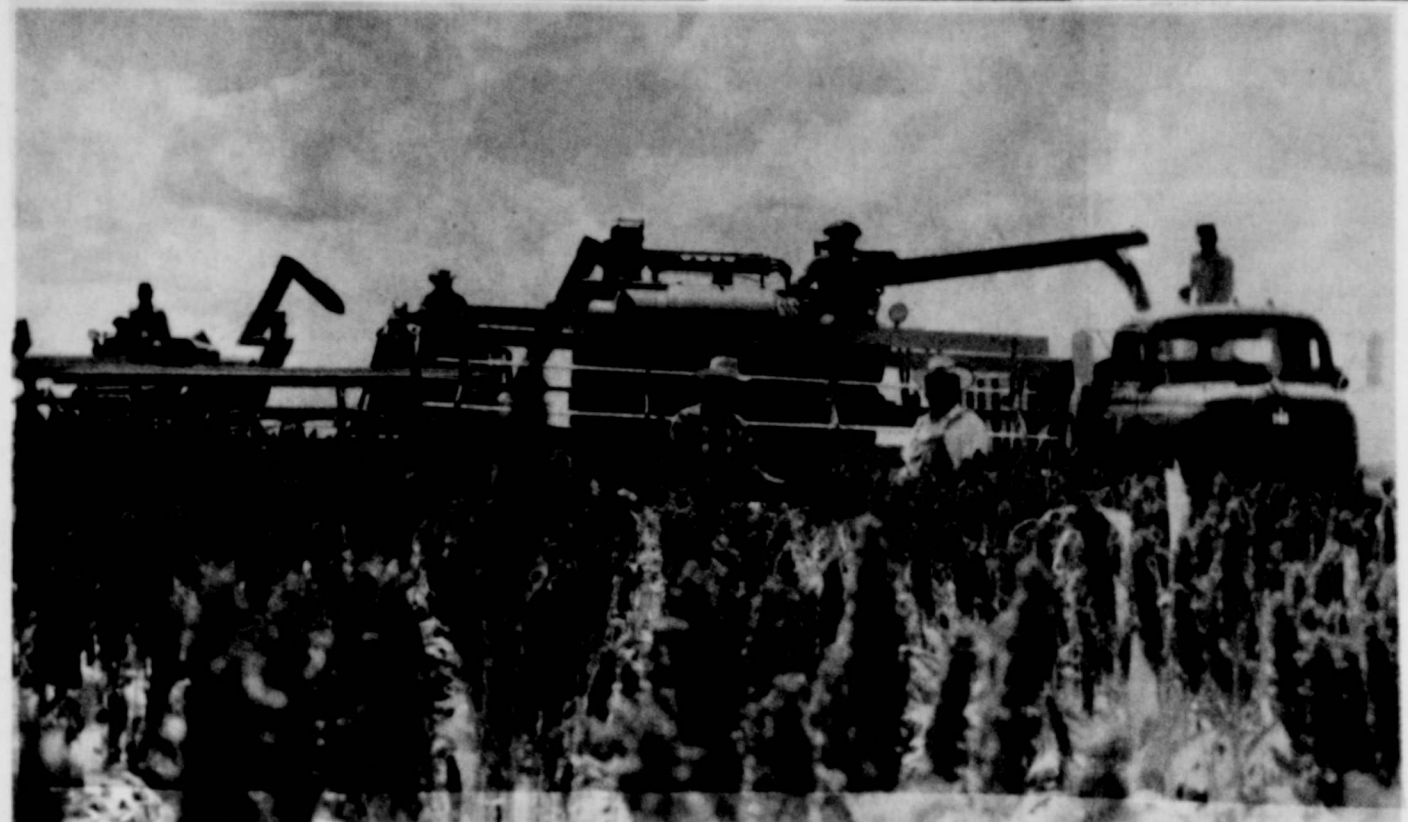
the 100,000 acres is expected to produce a yield of 1.23 bales per acre.

the counties on the High Plains have received their harvest, but harvest will not begin until another six weeks.

in the report the 5% of the South Plains will be harvested this year, for over 25,000 pickers and pickers of the bulk of the cotton.

increase costs in cotton the machines used wide-spread. The true more in the years since cotton harvest, making harvest more economical.

Caprock Hospital District Bonds Sold



10,000 POUNDS TO THE ACRE - this 15 acres of Stand King grain sorghum made 10,000 pounds to the acre. It was produced by Jerry and Donnie Race on their farm on the Ralls Highway about three miles out of Floydada. It was double rowed, watered three times, had \$15.00 per acre of fertilizer and was planted the first of May. Left to right on combines are: Jessie Boston

and Earl Evans of Floydada, Darrell Schofield of Cope, Colorado. Man in truck is George Gover of Throckmorton, Texas. In front of combine is Donnie Race (left) and Ellis Nance, combine man from Cope. Nance said he had been custom combining for 22 years and this is the best milo he has ever harvested. (Staff Photo)

Common Number Highway Plans Get Big Boost

Since last January a group of interested persons along a highway route stretching from Perryton to Big Spring had asked the Texas Highway Department to give the route a common number.

The idea was to get some of the north-south traffic off the Lubbock-Amarillo highway and send some of the traffic along a highway crossing Palo Duro and the future MacKenzie Reservoir.

Representatives from Spearman, Claude, Silverton, Floydada, Ralls, Post, Borger, and Big Spring had met at various times to lay plans for a meeting in Austin before the Highway Commission.

It was announced last week that the route from the Oklahoma line, north of Perryton, to Post would be designated Texas 207 in the near future. This decision is pending Armstrong and Briscoe counties furnishing the state a minimum of 120 feet of right-of-way.

As the decision now stands Texas 282 from the Oklahoma line to Spearman, Texas 15 from Spearman to Claude, part of Texas 86 from four miles west of Silverton to Texas 207, Texas 207 from Silverton to Floydada, U.S. 62 from Floydada to Ralls and farm-to-market 122 from Ralls to 122 will be designated Texas 207.

The route includes about 260 miles from the Oklahoma line to Post.

Hospital Board Goes To Work Hospital Consultant Hired

According to a report issued this week from the board of directors of the Caprock Hospital District bonds for construction of a new hospital in Floydada were sold to The First Southwest Company.

The bonds in the amount of \$395,000.00 have been matched by a Hill-Burton grant and the expenditure for the hospital and facilities is expected to cost around \$800,000.

Special Meeting Of Band Parents

It was decided in the kick-off meeting Tuesday night, of the Band Boosters a special call meeting would be necessary to help the finance committee set up plans for the coming year. This meeting will be held in the band hall at high school Monday, Sept. 13 at 8:00 p.m.

The Band Boosters is made up of the parents of the band students from the six grade through the 12. All are urged to be at this called meeting.

Glover New Route 1 Carrier

Postmaster Ed Wester announced this week that Kyle Glover, who has served as assistant postmaster the past seven years, will serve as rural carrier of Route 1 starting Monday, September 11.

(SEE GLOVER PAGE 3)

The interest rate on the bonds is 3.83%.

The board of directors has been in several meetings and are working rapidly ahead toward the construction of the new hospital.

A spokesman for the board said that several steps must be made and a lot of "paper work" will be necessary before architects can let bids for the construction of the hospital.

Five acres off the southwest corner of the Floydada High School have been purchased as building site. . . just east of the soon-to-be-finished Mar-Dell Manor Convalescent Center.

The board will begin consultation with the architectural firm of Wyatt C. Hedrick, Fort Worth, who has been selected for the job.

It is planned by the board to use the services of Charles C. Dunn, of Dallas, as consultant, during the construction and equipping of the hospital. Dunn is also consultant for the new hospital to be built in Plainview.

Members of the Caprock Hospital Board are Hollis Bond, chairman; Travis Jones, L. T. Wood, Walton Hale and M. S. Robertson.

Vengeance Seeking Eagles Invade Whirlwind Territory Tomorrow

The Floydada Whirlwinds will take on the Canyon Eagles here tomorrow night in the first home

football game of the season. It will be the season debut for the visiting Canyon team.

The Eagles are hungry for victory over the Winds, for two years ago the locals downed Canyon 12-7 in the closing game of the season and last year defeated the Eagles 10-8 on their home grounds with a field goal in the final eight seconds of the game.

Neither team is rated strong in their respective districts according to their district coaches, but new head mentor Jim Greenwood will be relying on his returning good backs to carry the load of the offensive attack.

Quarterback Tom Lair, and running backs Dennis Haley, Wayne Brewer and Joe Moore all have good speed and potential power. Moore is listed as a potential all-star if he develops as the season progresses.

However, lack of experience in the line coupled with lack of team speed make up the chief weaknesses of the Eagles. (SEE FOOTBALL PAGE 3)

Church Census Slated Sunday

A mass of regular church attenders are expected to invade the Floydada, Sandhill, and Dougherty towns and countryside for the annual church census.

Sunday afternoon at 1:30 p.m. several hundred workers are to meet at the First Baptist Church for final instructions before beginning the treks to get all the houses in the areas mentioned above.

Thursday afternoon (today), at 2 p.m. a committee is meeting at the First Baptist Church to final plans for the census.

According to reports, every house in this area will be visited by a worker. A card will be filled out at each house listing the names of all residents, relation to the head of the household, whether any members attend any Sunday school or church and which church, if none attend the church preference will be listed, the date of birth and the age of each occupant will be listed.

The workers will have from Sunday, September 12 until September 19 to complete the cards and the census.

All volunteers interested in working in the survey should be at the Baptist church at 1:30 Sunday afternoon. There will be plenty of work to do.

HIGH PLAINS FIELD DAY Several County Residents As Hosts

Several Floyd County residents will be on hand today at the High Plains Research Foundation for the ninth annual field day. The men will act as hosts during the afternoon activities.

Activities for the day will begin at 1 P.M. on Thursday, September 9th with field tours of the research plots and speeches by the research personnel. Tours will be made on semi-trailer trucks with benches.

Ewald Quebe of Lockney, vice president of the Foundation, will be Chairman of the host committee that will describe the lawngresses and direct visitors to the shrubbery

tours. Joe Foster of Lockney will be a host at the cotton products display and the 20-saw laboratory gin.

Eddie Joe Fortenberry of Lockney will be a host in the registration and agricultural service display tent.

Lane Decker of Floydada will be a host at the lawngress plots and direct visitors to the shrubbery tour.

B. A. Robertson of Floydada will be a host in the registration and agricultural service display tent.

Jimmy Wilson, Jr. of Floydada will be a host at the shrubbery tour. (SEE FIELD PAGE 3)

County Votes FOR Amendment 442-105, State Goes Against

Floyd County and South Plains voters did an "about face" from their fellow Texans Tuesday as they gave a 2 to 1 approval to the constitutional amendment for a 39-member Senate.

Almost all other areas of the state went against the Senate enlargement in what was easily a big city dominated election.

The Texas Election Bureau reported 126,163 votes against and 77,949 in tabulations from 236 of the state's 254 counties, 144 counties complete.

The major cities, with a few exceptions, voted against the

constitutional amendment proposal by overwhelming margins.

TWO SIGNIFICANT RESULTS The outcome had two significant results:

1. No special session of the legislature will be necessary to draw new district lines for the Senate. The districts as drawn for 31 members during the last legislative session will be in effect for the 1966 election.

2. At least seven present senators, should they seek the office again, will be defeated because 13 districts were combined into 6 in the redistricting for 31 members.

The loss of senators in redistricting hurt some smaller towns and rural areas.

VETERAN FACES CONTEST On the northern edge of the plains, Sen. Andy Rogers of Childress, himself a longtime member, will be thrown into the same district with freshman Sen. Jack Hightower of Wichita Falls.

200 Hear Delbert Downing

Approximately 200 Floydada Rotarians, their Rotary Anns and school guests attended a barbecue dinner and program in Wester Field Tuesday night. Special guest and speaker Delbert Downing of Midland wove a humorous strand of entertainment and food for thought in regard to schools and children.

Rotary vice-president, Dr. Andrew McCulley welcomed the guests; superintendent of schools A. E. Baker introduced school teachers and school officials. Rotarian John Reue introduced the speaker.

The barbecue dinner was catered by the Ponderosa.

STATE GRANT FOR AIRPORT

Floydada Receives \$12,000

Austin, Sept. 3, 1965.... Seven additional communities have been granted State funds under the rapidly moving Texas Airport Aid Program. Shelby Kristler, Texas Aeronautics Commission Chairman, announced that still more communities are destined to share in this new State airport aid program as passed by the 59th Legislature and approved by Governor Connally.

These State grants will aid in the construction or improvement of urgently needed community airports at Cameron (\$10,000); Hearne (\$2,000); Jacksboro (\$10,000); Kountze (\$7,500); Clarksville (\$12,000); Floydada (\$12,000); and Post (\$12,000).

This group of communities now being offered State grants is the second to be announced

following a series of public hearings. Additional hearings will be conducted as new applications are received from Texas communities.

A group of Floyd county flyers and other interested persons met before the state board last Thursday. Accompanying the group and aiding in the request were state representatives. (SEE AIRPORT PAGE 4)

FOR CONSERVATION

Overstreet Recieves Award

R. W. Overstreet was named the Outstanding Conservation Farmer in the Floydada area recently and was given a plaque in recognition of this feat at the noon meeting of the Lions Club last week.

Overstreet attributed the work that has been done on his ranching operation to the entire family. Mrs. Overstreet, Robert, and Charles were on

hand at the meeting and for the presentation.

Since 1947 or for the past 18 years the Floydada Lions Club has cooperated with the Floyd County Soil Conservation District each year in recognizing an individual who has done an outstanding job of conservation. This is done not only to recognize the work done by this individual but also to promote

and encourage others to apply needed conservation practices on their land.

It is with these motives in mind that the club presented the award to the outstanding conservationist for 1965, Mr. R. W. Overstreet.

Mr. Overstreet owns and operated a ranching unit approx. 20 miles east of Floydada. He (SEE OVERSTREET PAGE 4)



TOP CONSERVATION FARMER - The R. W. Overstreet family is shown receiving an award from Lions Club President Weldon Harris for Overstreet's being selected the conservationist in the area recently. Overstreet says conservation is a family affair and the family members pictured left to right are Charles, Robert, R. W. and Mrs. Overstreet. (Staff Photo)

Block Chat

by BELL TOOLEY

HOUSEWIVES HAVE to say that we are editorializing an important subject.

is the failure of the school in the intersection 70 in the school.

adres are reluctant to get into the traffic, the cars will stop so directs. The properly posted and enforcement of necessary at this

small concerned the township shown by the Post game when we support with a lot of "unpleasant screaming"....

our coach to give and give those sitting over, we're getting a good experience team, nor the present in the station say folks. . .

Don Bean Wins First Hesperian Grid Contest

Don Bean proved to be the one to outguess the football experts last week as he missed only three of the season opening games to be named the first place winner in the first of the Hesperian Grid Contests. Bean is a farmer and lives on Rt. 2, Lockney.

Mrs. Odell Breed and Zane Jones each missed only five games and Mrs. Breed's guess of 27 points in the Post-Floydada game was nearer to the 28 actually scored than was Zane Jones' guess of 25. Doyle Moore and Lee Webb each missed 5 also, but their guesses on the tie breaker were 19 and 15 respectively.

Bean missed only the Hobbs-Lovington, Silverton-Claude, and the Petersburg-Slaton games on the contest page. He picked Post over Floydada and Farwell over Friona, correctly the other two games most frequently missed by those entering the contest.

Since fans have had an opportunity to see how the teams fared in the opening games of the season the second contest page should be easier. Why not try your luck? You could be a winner. The contest is on page 6, Section B of today's Hesperian.

and Program chairman, Mrs. Charles Craig program planned for tonight at the first Parent Association meeting at Andrews Ward starting at 7:30. The Pulse of Life will be shown. Many important will be answered and demonstrated in the film. The is cordially invited. Seated with Mrs. Craig is Pratt, who is PTA president and standing left to Wilson Bond, secretary and Mrs. Bob All-



and Program chairman, Mrs. Charles Craig program planned for tonight at the first Parent Association meeting at Andrews Ward starting at 7:30. The Pulse of Life will be shown. Many important will be answered and demonstrated in the film. The is cordially invited. Seated with Mrs. Craig is Pratt, who is PTA president and standing left to Wilson Bond, secretary and Mrs. Bob All-

"White Elephant" Bingo Enjoyed By YF, YHA CHAPTERS

Does anyone want a "White Elephant"?

Well, several did at the social held at the Lighthouse Friday night. The Floydada Young Homemakers and Young Farmers Chapters enjoyed White Elephant Bingo and several gifts proved not to be "white elephants" to some people.

After the bingo party the homemakers served homemade ice cream, cookies, brownies and cake.

Those present at the Lighthouse were Mr. and Mrs. John Burns, Mrs. James Bachus, Mr. and Mrs. Gerald Thompson, Mr. and Mrs. Truman Dunavat

and family, Mr. and Mrs. W. H. Nelson and children, Mr. and Mrs. Nolan Turner, Mr. and Mrs. James Hale, and Mr. and Mrs. Carl Brock and girls.

The Lockney Homemakers met in Floydada Wednesday in answer to an invitation by the Floydada Chapter to complete the plans on the Ladies Day at the Fair, Sept. 24. The group met in the High School home-making lab.

Thursday night will be the night of the banquet planned for the installation and appreciation banquet for the Farmers and Homemakers. Members of both groups are urged to attend.

Lockney Murder Investigation Continues

According to a report from District Attorney John Stapleton, investigation continues on the slaying in Lockney of Mrs. Hazel Wofford, 44-year-old

beauty parlor operator. Stapleton said that sheriff's officers, Texas Rangers, and Lockney police continued to track down tips that lead to nothing.

Almost every day some sort of report is checked out, and that he continues to hope that one will lead to the person responsible for the crime.

SHOP FLOYDADA MERCHANTS

FOOTBALL

(FROM PAGE 1)

team is rated fifth in District 1-AAA just ahead of the Muleshoe team who is in the cellar.

For line experience, however, Greenwood will rely on end Larry Robinson, tackle Mike McBroom and center James Evans. These players will face such experience as Phil Green, Zeke Robertson, Ronnie Eubanks, Clinton Faw-

ver, Dennis Gotcher, Mac Baker, Waldo West, and possibly others in the forward wall of the Whirlwinds.

Coach Bill Curry still lists the main weakness of the Winds as the lack of experience, particularly in the backfield. Kerry Bearden and Steve Marler saw action last year as regulars, but Bearden was a split end and most of Marler's action was on defense. Other backs Roland Adams, John Cantrell and John DeLeon are new as regulars. Cantrell received a broken

neck in a scrimmage with Hale Center last year so saw no action and John DeLeon backed up Keith Teague at the quarterback position.

A third signal caller, Darrell Monday is out of the lineup at least until the conference games begin with a torn ligament. Dayne Golightly is still suffering from cracked ribs and Jeff Kimble has a shoulder separation that limits his activities.

Next week Canyon will test Levelland and Floydada will travel to Ralls.



NATHAN MULDER

Nathan Mulder Ordained

Mulder, son of Mr. and Mrs. Mulder of South...



JACK BATES

Bates of LCC Speak Here

Monday night, September 6, 8:00 p.m. the Floydada LCC Associates will...

MY Will Conduct Evening Service

Members of the Youth Department of the First Methodist Church will conduct the evening worship service on Sunday, Miss Vicki Gregory is President of the Youth Fellowship and will be in charge of planning the service with the members of the council assisting.

Included in the program will be reports of the youth activities during the summer months. At press time the following were designated to speak: Monty Westfall will tell about his two weeks in a Christian Outreach Study and Work Camp; Billy Stanforth will report on his participation in the Attorney General's Youth Conference at Austin. Mrs. David Battey Jr. will sing.

The youth will host the congregation to fellowship time including refreshments and showing of film of the youth planning trip in Fellowship Hall following the hour of worship.

Fortenberry Wins Award In Roping

LOCKNEY — Eddie Joe Fortenberry has captured the traveling belt buckle offered by Lockney Rodeo Association. Fortenberry won the honor of keeping the buckle permanently after he had won it three times. Travis Hulcy was runner-up.

The buckle, inscribed with "Champion Lockney Roper, 1965" traveled each week to the person with the best time on three calves. Sponsored weekly by the association, the event lasted seven weeks.

Other holders of the buckle for a week were Donnie Bybee and Donice Casey.

Contestants were W. L. Thomas Jr., Dub Dimprey, Wayne Deady, Bud Casey, Bobby Cartel, Billy Joe Turner, Hulcy, Bybee, Casey and Fortenberry.

Route 2 and Glover on Route 1

Glover started working with the local Post Office department October 16, 1941. He became assistant Post Master June 14, 1958.

Wester said the Department would now allow promotions in the local office and it is hoped that Doyle Turner, next senior man, would be made assistant to Wester.

Mrs. H. F. Hawkins of Chico spent Labor Day weekend visiting in Floydada with Mr. and Mrs. Ralph Johnston and family and Mrs. Lon Smith.



BEN PATE — Floydada man, was among one of the final winners of \$100 in the Shurline Royal Recipe contest which ended this past weekend. Pate won from Wester Grocery after receiving a recipe there bearing the word "Royal". J. C. Wester is seen making the presentation of a \$100 check. (Staff Photo)

Rites Held For Mrs. Palmer

Funeral rites were conducted Tuesday afternoon in the Mt. Zion Negro Baptist Church in Floydada for Mrs. Willie Palmer, 77, who died Saturday night after a lengthy illness.

Mrs. Palmer had made her home with a daughter, Mrs. Hardy B. Blaylock, 600 W. Lee in Floydada since 1954. She was a member of the Friendship Methodist Church.

She was born in Fairfield, Tex., Sept. 10, 1888.

Survivors include two daughters, Mrs. Blaylock and Mrs. T. J. Coleman both of Floydada; 13 grandchildren; 32 great grandchildren; and one great great grandchild.

Moore Funeral Home was in charge of burial in Floydada Negro Cemetery.

Dr. Willham has just recently returned to the United States from an extensive tour of the Near Eastern countries, where he had an opportunity to study and observe the agricultural situation and their associated problems. Willham became President of OSU in 1952 after having been the Executive Vice President and before that the Vice Dean of Agriculture of the University.

Dr. Willham is well known throughout the agricultural and educational world as a leader in the needs of agriculture. He is a member of the American Association for the Advancement of Science, the Genetics Society of America, and the Oklahoma Academy of Science.

A special guest at this year's Field Day will be Miss Grain Sorghum of the Nation, Lanella LaFon. Lanella is the 19-year old daughter of Mr. and Mrs. Rufus Gilbreath of Muleshoe. She is a sophomore at Texas Tech and was the 1965 Farm Bureau Queen of Bailey County, as well as first alternate as South Plains Maid of Cotton.

The day's activities will close with a drawing for prizes from registration cards. Prizes include: cotton topper, courtesy of Cole and Price, Inc., Plainview; and 5 bushels of "short-season" soybeans, High Plains Research Foundation, Halfway, hand weed burner, courtesy of Gene Bumpus, Inc., Plainview.

The High Plains Research Foundation is located on Highway 70 and is 10 miles west of Plainview.

Defense department orders ship mobilization.

EXCITING VALUES!

160 GO ON SALE AT 8:30 TOMORROW

CLEARANCE

GIRLS SCHOOL DRESSES

— BY —

CINDERELLA AND OTHER FAMOUS LABELS

DOZENS OF FRESH NEW PATTERNS TO SELECT FROM!

Reg. \$7.99
Values - Now

\$5⁹⁹

Reg. \$6.99
Values - Now

\$4⁹⁹

Reg. \$5.95
Values - Now

\$3⁹⁹

Reg. \$4.99
Values - Now

\$3⁹⁹

Reg. \$3.99
Values - Now

\$2⁹⁹

... HURRY TO BEALL'S --- EVERY SCHOOL DRESS GOES ON SALE TOMORROW. SELECT FROM DOZENS OF ALL COTTON STYLES, MANY OF WHICH WASH AND WEAR WITH LITTLE OR NO IRONING NEEDED. EVERY SCHOOL TYPE DRESS HAS BEEN REDUCED SO WHY NOT SELECT SEVERAL FOR ALL YEAR WEAR. DON'T MISS THIS SAVINGS EVENT!

Just say "charge it"

WEEK END SPECIAL

LADIES DAISY NYLON HOSE

FIRST QUALITY

2 COLORS TO SELECT FROM

SIZES 8 1/2 - 11

ONLY

44¢

A PAIR

WEEK END SPECIAL

LADIES DRESS FLATS

SUEDES AND LEATHERS

REG. \$4.99 VALUE

WEEK END ONLY

\$3⁸⁸

A PAIR

WEEK END SPECIAL

100% WOOL AND WOOL BLEND BONDED WITH ACETATE TRICOT

FABRICS

VALUES TO \$3.98 A YD.

ONLY

\$1⁶⁸

A YD.

Family Name _____ (* RACE
Caucasian _____ (Z) Zone _____ House Number _____
(White) _____
Street Address _____ (N) Telephone _____
Post Office _____ (L) Latin _____ (7) Date _____
(*) Not Home Refused Vacant Under Construction

G: Assembly of God CC: Church of Christ (A) ABBREVIATIONS OB: Other Baptist SM (B): Sp. Mis. Bap.
B: Calvary Baptist CG: Church of God FB: First Baptist L: Lutheran P: Presbyterian SM (M): Sp. Mis. Meth.
C: Catholic EP: Episcopalian FC: First Christian M: Methodist PB: Primitive Baptist N: Indicate Negro

(10)	(11) Given Name	(12) Relation	(13) Attend S. S. yes/no	(14) Member of What Church, - Where	(15) Christian? yes/no	(16) Local Church Preference	(17) Date of Birth Mo./Day/Yr.	(18) Ag

FLOYDADA — CITY & COMMUNITY RELIGIOUS CENSUS — FLOYDADA

SURVEY CARD—THIS IS A SAMPLE SURVEY CARD THAT WILL BE USED BY THE WORKERS SUNDAY AFTERNOON IN THE HOUSE TO HOUSE CHURCH CENSUS SUNDAY AFTERNOON. THE CARDS ARE TO BE FILLED OUT AND, IF THE FAMILY WON'T BE HOME SUNDAY AFTERNOON, PLACED ON THE FRONT DOOR.

COTTON

(FROM PAGE 1)
With a warm dry September the area can expect to harvest the bumper crop. However, if the month turns off damp, Verticillium wilt can be expected to be prevalent in several fields. This will cut the estimated production.
Following are the new county-by-county estimates and the predictions based on Aug. 1 crop conditions:
County Aug. 1 Sept. 1
Bailey 84,000 102,000
Borden 10,000 10,000
Briscoe 24,000 24,000
Castro 65,000 67,000
Cochran 75,000 78,000
Crosby 132,000 140,000
Dawson 134,000 140,000
Deaf Smith 10,000 10,000
Dickens 25,000 25,000
Floyd 122,000 123,000
Gaines 73,000 77,000
Garza 27,000 27,000
Hall 200,000 206,000
Haskell 177,000 180,000
Howard 35,000 35,000
Lamb 190,000 193,000
Lubbock 248,000 255,000
Lynn 130,000 145,000
Motley 10,000 9,000
Parmer 55,000 60,000
Swisher 66,000 68,000
Terry 130,000 135,000
Yoakum 29,000 30,000

OVERSTREET

(FROM PAGE 1)
purchased this place in 1953 and moved from his Lynn County farm to make his home on the ranch in 1957 along with his wife, Hannah, and their three children, Edwin, Robert, and Charles.
Mr. Overstreet was born at Rock Springs, Texas, and received some early day experience in the livestock business where his dad raised sheep, goats, and cattle. He later moved to Lynn County and received his education from Lubbock High. Following graduation from high school he attended Texas Tech.
Mr. Overstreet is a dedicated conservationist. He believes in working with Mother Nature and not against her. To him the grasses on his ranch are considered just as important as his livestock and he has carried out many practices to back up this theory. Some of these practices include: Controlling over 4000 acres of mesquite and cedar on his home place and 700 acres of mesquite and shinnery on his Lynn Co. place, the latter being overseeded with native grasses; 320 acres of cropland converted to grassland; construction of 13,219 feet of diversion terraces; deferment of grazing on 5466 acres of rangeland as a part of a planned rotational system in order to accomplish good grazing management on the same acreage. 812 acres of dry cropland has had a complete rotation of crops with full utilization of the crop residues for soil protection and improvement.
His program doesn't stop here. Future plans call for construction of over 3 miles of cross-fences, drilling of 4 livestock wells, and installation of 5 watering facilities for his stock within the next 4 years.
Besides the busy activity of farming and ranching the Overstreet family attend church at Matador and Mrs. Overstreet is a member of the 1929 Study Club here in Floydada. Robert, before entering Texas A&M, along with Charles, who is a senior in Floydada High, have been very active members of their FFA Chapters.
Mr. Overstreet is quick to point out that the work around the ranch is not a one person operation but that all the family chips in and helps out. "My family thinks conservation right along with me and we all believe in it," Mr. Overstreet has added.
Successful conservation farming or ranching cannot be measured in terms of acres, feet, or numbers. Such virtues as initiative, interest, ability to plan for the future, and to promote the benefits are combined to make an outstanding conservationist.
The members at the meeting also heard Dr. Arthur Gohlke of the High Plains Research Foundation speak on saving the soil.
"The soil is just like a new automobile. When you buy one, new you service it frequently and at regular intervals to make it last as long as possible. The same is true with the soil. Regular conservation practices are needed for the soil at regular intervals also," Dr. Gohlke told the group.
It was announced that the annual picnic will be held next Thursday at Napoleon Park. The family affair will begin around 7:30 p.m.
Susan Hotchkiss, the local club sweetheart consented since the meeting to represent the Floydada Lions Club in the Miss Floyd County contest which will be held the opening night of the fair in mid-September of this year.

AIRPORT

(FROM PAGE 1)
ives Ralph Wayne and Billy Wayne Clayton.
Approval of a federal grant for more money to be applied on the Floydada airport is pending from Washington. Attending the meeting at Austin last week were: Mayor Leonard Madsler, John Reue, Arthur Wylie, Gaylen Fleming, Wayne Collins, Billy Stanforth, Wendell Tooley, Doodle Milton, Kenneth Bean, Billy Brown, Clay Henry, Jack McIntosh, and E. A. Williams

SOUTH PLAINS NEWS

SOUTH PLAINS, Sept. 6 — Many of our farmers are in the fields combining maize this week, and both the elevators are getting quite a bit of grain. The new leg on the south side of the co-op elevator is finished and grain is being dumped there on the ground as the maize begins to pour in.
South Plains has opened the Co-op Elevator Restaurant last week, and Mr. and Mrs. Ray Schelle of Lockney are proprietors of the little eating place. Mr. and Mrs. J. C. Scott of South Plains spent last weekend over in Littlefield with their son, Mr. and Mrs. Don Scott and family.
Dwight Teepie, Jimmy Upton and Billy Jack Darden will go to Dallas and to Denton to spend the coming weekend with relatives and friends. Jimmy intends to see about college at North Texas State in Denton as he plans to enroll there in the fall.
Garvin Beedy has a new animal of interest on his farm. He recently became interested in raising mink, and over the past weekend a new baby mink was born. The animals were obtained from Kansas City, and those he can not use, he sells back to company.
Mrs. Roy Burks accompanied Mrs. Leighton Teepie to Amarillo on Tuesday and they spent the day there on business. Nathan and Cathy Mulder have purchased a lovely new three bedroom, two bath home in Lubbock, and the house will be moved out to their farm about the last of September. It is being built down at Lubbock, and they go each day to see about it, and pick out items for the home. They have been living for the past months here in their trailer house.
The robbery which occurred at South Plains Friday night and discovered Saturday morning was solved when two men were apprehended in Lubbock as they tried to cash some stolen checks taken from Raymond Upton's store. The pair had broken in the door at the grocery, and taken about fifty dollars in cash, and the checks, besides some articles from the store. The men are now in jail.
Jay Frank Parks and Dwight Teepie were models in the first Annual Cavalcade of Cotton, which was sponsored by the 1962 Study Club in Floydada, and held at the Floydada High School Friday night. Many from here attended the affair, and all of us are interested in the behalf of cotton.
Monday night Mr. and Mrs. George Beedy were hosts in their home at Plainview in honor of George's birthday, and also that of George West. Games of canasta were played throughout the evening and the birthday cake and shertbet was served to guests Mr. and Mrs. George West and Mr. and Mrs. Frank McClure.
Mrs. L. T. Wood left Tuesday by car with a group of ladies from Floydada for the WMU House Party which was held in Waco this week. They are to be gone through Friday. Those who attended besides Mrs. Wood were Mrs. Oleta Collier, Mrs. Lon Smith and Mrs. O. G. Mayfield.
L. N. Johnson has spent a good

deal of his time in Amarillo this week at the St. Anthony's Hospital where his mother, Mrs. O. A. Johnson is critically ill. Mrs. Johnson, with Carlton, Shari, Deneese and Denean are living in Lockney during the week where they are enrolled in school. Carlton has started to high school and intends to play football there. They are living in the former Harold Ellison home in Lockney.
Mr. and Mrs. E. J. Kinslow were in Amarillo all day Thursday as was Murray Julian, who was visiting with Mr. and Mrs. Bruce Julian at Canyon and attending to some business in Amarillo.
Curtis Sanders is remodeling and refurbishing the farm place formerly belonging to Mr. and Mrs. Bud McGowan, and in the near future Mr. and Mrs. H. C. Boteler of Plainview will be living there. Boteler is associated with Curtis in the well-drilling work.
Mr. and Mrs. Leighton Teepie, Rhonda and Dwight went to Amarillo, to Thompson Park last Sunday where they attended the R. I. Teepie family reunion with picnic lunches served at noon, and swimming and other entertainment during the afternoon.
Kenneth Bean, Grigsby Milton and Billy Stanforth flew their private planes to Austin Wednesday where they appeared with others from Floydada before the Texas Aeronautics Commission at 2 p.m. Thursday on behalf of a new airport which they hope to get at Floydada. Senator Andy Rogers also appeared with the group.
Mr. and Mrs. George West are refurbishing their house, cleaning all the furniture, rugs, and redoing the kitchen. A fire about three weeks ago destroyed a cabinet, walls, and stove in the kitchen, with the smoke and fire damaging nearly every room in the house. An electric fry pan was inadvertently left on, which caused the fire.
Terry Julian, and an associate worker from Roscoe, were visitors in the home of his folks, the Murray Julians and the Kendis Julians on Thursday afternoon as he was enroute to a speaking engagement at Cleburne that night. Terry has one of the new personalized license plates, with "COTTON" on his license plate, for this is the medium in which he works all the time.
Nathan Mulder, who is minister of the Northfield Baptist Church, which is near Turkey, and who drives back and forth to all his meetings is being ordained at his church on September 12, at 3 p.m. Sunday. Reverend Sealy Smith will assist in the ordination service.
Several families from South Plains are leaving this Saturday to go through Thursday of next week at Cowles, New Mexico, for a vacation up in the mountains. There the Pecos River flows right by the cabin. The cabin has six bedrooms, with other sleeping facilities, and those who will go are Mr. and Mrs. Roy Burks, Mr. and Mrs. Early Pritchett, Stevie and Jimmy, Mr. and Mrs. Murray Julian, Mr. and Mrs. John Key West and Dale, Mr. and Mrs. Bruce Julian and possibly Mr. and Mrs. Bryan Karr.

CAPROCK

(FROM PAGE 1)
how about "knockin' it off?"

A REALLY VERY interesting story has come to my attention. It concerns a lady by the name of Helen Dunlap. It seems that her auto has recently become involved in not only one accident... but TWO.
If I could get the details straight, I would certainly share them with you, but this seems to be impossible. Perhaps if you see Mrs. Dunlap, she'll explain the situation to you.

"YOU SOON will meet a handsome, rich man who will shower you with gifts and propose marriage," the fortune-teller said. "Before you continue this wonderful thing," the woman said, "what happens to my husband and six kids?"

IT IS GRATIFYING to see so many of our farmers who are actively working on Chamber of Commerce committees. It is interesting to see different individuals take the helm and work for the progress of this community and trade area.

We attend these meetings day after day, week after week and as we begin to see certain men begin to appear meeting after meeting, giving of their time and best efforts in behalf of this progress. . . . we see a pattern of community leadership that is outstanding.

This issue of The Hesperian is enough to make a newspaper man's blood pressure rise to 500. . . . because it is so chock full of good news; the hospital bonds are sold, money for the airport is coming in, the highway from the Oklahoma line through Floydada to Post has been designated as a state highway, the new convalescent home is about ready to open, the new Baptist Church is fast taking shape, a new cotton forecast of 123,000 bales, the Mackenzie Authority water dam progresses, new cafeterias and school will soon be built. . . . I'll tell you it's all enough to make you want to "race your motor!"

FLOYD DATA

Mr. and Mrs. Bob Everett and son, Rob, of San Antonio visited over the weekend with her parents, Mr. and Mrs. G. W. Smith. Visitors Saturday night with the group were Dale Smith, his wife and children, Shawn and Shannon and on Sunday afternoon, Carolyn Cates and Weldon Jones of Abernathy and the Wayne Adams called at the home.

FLOYD DATA

Mrs. Ethel Sawyer received word Tuesday of the death of her infant great grandchild who died suddenly in Dallas. Mrs. Sawyer was unable to attend rites.

TOO LATE TO CLASSIFY
WANTED — Drill press and stand. Call Steve Mize, YU3-2613.

COMPARE OUR LOW PRICES!

SAVE FOOD DOLLARS

PRICES GOOD SEPT. 9 THRU SEPT 13



JELL-O
ASST. FLAVORS

3 FOR 29¢

GLADIOLA
POUND CAKE MIX

2 BOXES FOR **69¢**

DEL-MONTE
TUNA

3 FOR **89¢**

BETTY CROCKER
ANGEL FOOD CAKE MIX

49¢

VIENNA SAUSAGE

5 FOR **98¢**

SHOP POWELL'S QUALITY MARKET

JOHNNY'S HOT OR MILD SAUSAGE 2 LB. BAG **\$1.18**

BEEF CUTLETS LB. **69¢**

FRYER BREAST LB. **69¢**

SECOND SUNDAY SINGING **49¢**

CHUCK ROAST LB. **49¢**

Powell's
SUPER MARKET

KRAFT
MIRACLE WHIP 49¢
QT.

BAKE-RITE
SHORTENING 3 LB. CAN **69¢**

FLAVOR-AID 12-5c PKG. FOR **35¢**

SOFLIN
TISSUE 10 ROLL PKG. **69¢**

ZEE FACIAL
TISSUE 400 CT. BOX **19¢**

DR. PEPPER 5 BOTTLE 1/2 QUART SIZE **39¢**
PLUS DEP

SHURFRESH BISCUITS 3 FOR **25¢**

SHURFRESH OLEO LB. **69¢**

NOTEBOOK PAPER 400 CT. PKG. **69¢**

BOWLLEN BOWL CLEANER **25¢**

YOUR HOME OWNED HOME OPERATED STORE ON THE WYE, FLOYDADA, TEXA. YU 3-2444

The Young Farmer-Young Homemaker Banquet



These, SPECIAL AWARDS - Shown above are the officers of the Young Farmer Chapter, the new officers of the Young Farmer Chapter and the recipients of the special awards presented at the banquet held last week. Photo at left are the Young Homemaker officers: Mrs. Truman Dunaway, secretary-treasurer; Mrs. Carl Brock, reporter; Mrs. James Hale,



president and Mrs. W. H. Nelson, vice president. In the center picture the new Young Farmer officers are: Jerry Race, vice president; James Hale, former president presenting the gavel to new president Carl Brock; Hale is now reporter; Nolan Turner, secretary. In the photo at right, James Hale pre-



sents the chapter outstanding farmer award to Truman Dunavant, who is one of the top three outstanding young farmers in the area, and presents an honorary chapter award to Lon Davis, Jr. It is the first such awards to be presented by the local chapter. (Staff Photos)

Floyd County Hesperian

MONDAY THURSDAY, SEPTEMBER 9, 1965 PAGE ONE

Annual Floyd County Fair For September 23, 24, 25

The Annual Floyd County Fair will be set for three days, September 23, 24, and 25, according to the board of directors. The D. S. Dudley Frizzell, president of the board, said they have a program of interest to the community. The D. S. Dudley Frizzell, president of the board, said they have a program of interest to the community. The D. S. Dudley Frizzell, president of the board, said they have a program of interest to the community.

Prizes for exhibits will be \$20 for first place, \$15 second and \$10 third. Each additional exhibit will be given \$5. Clubs having already entered this division are Lone Star Home Demonstration Club and Lockney Young Homemakers. Second section of these exhibits is for club recognition gained by individual club members. The clubs whose members win the greatest number of points on individual exhibits, the following prizes will be given: \$10 for first, \$7.50 for second and \$5.00 for third. Points will be counted as follows: blue ribbon three points, red ribbon two points, white ribbon one point and each entry one point. Points will be counted in agricultural and ladies division.

The Fourth Annual Quarter Horse Show is supervised by Mack Shurbet this year. The working and show area for horses has been enlarged and enclosed with a new steel cable and post arrangement. Added to the show this year is calf roping, reining and barrel racing events. In the Quarter Horse show competition will be three divisions, halter, performance and youth activities. Additional information and application forms may be secured by contacting Mrs. Bill Norris in Floydada.

Mrs. Joe Taylor is in charge of the Talent Show set for Saturday evening at 7:30. Trophies are to be awarded for first, second, and third places in each division of grade school, high school, and adults. Deadline for entry is September 18. The Fair Association is sponsoring an antique display this year under the direction of John Dorman. Persons are invited to bring their guns, glassware, ironware, furniture, and other precious items for display.

FLOYD PHILOSOPHER

Hails Telephone Improvement

Editor's note: The Floyd Philosopher on his Johnson grass farm reports on a new telephone invention this week. Editor's note: The Floyd Philosopher on his Johnson grass farm reports on a new telephone invention this week. Editor's note: The Floyd Philosopher on his Johnson grass farm reports on a new telephone invention this week.

somebody calls and leaves a message to call him, saying it's important, it's generally important to him, not to me. This is going to be changed soon, although I don't think the telephone company intends it that way. As I understand it, they've perfected a system where you can transfer your own calls, so in a sense your phone follows you around wherever you are. Say you're expecting a big business deal by telephone and you have to leave your office temporarily. All you do is dial a code number, then dial the number of the phone where you'll be while you're out, and if a call comes in it'll bypass your office and ring at the other number.

Symbol of Better Health

ARWINE DRUG FLOYDADA, TEXAS

PALACE

SUNDAY-MONDAY-TUESDAY
SEPT. 12-13-14

He shot down men in cold blood!

MURIETA!

CAPADA DRIVE IN

THURSDAY \$1.20 CARLOAD
JERRY LEWIS IN "WHO'S MINDING THE STORE"

FRIDAY-SATURDAY A MY
"BEACH BLANKET BINGO"

SUNDAY-MONDAY A MY
THE CARPETBAGGERS



10,000 POUNDS TO THE ACRE

Congratulations To Jerry And Donnie Race

POSSIBLY A NEW PRODUCTION RECORD HAS BEEN SET FOR THE FLOYDADA TRADE AREA WITH THIS 15 ACRES OF GRAIN SORGHUM THAT PRODUCED OVER 10,000 POUNDS PER ACRE.

OUR CONGRATULATIONS TO JERRY AND DONNIE FOR THIS OUTSTANDING PRODUCTION.

GRAIN SORGHUM IS OUR BUSINESS AND WE WOULD LIKE TO HAVE YOURS

LON DAVIS GRAIN CO.

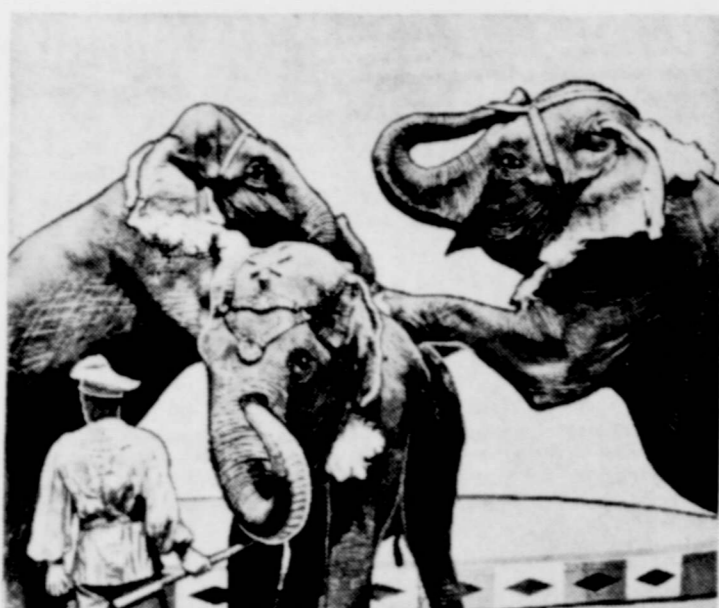
FLOYDADA

The Law And The Rebel



Jeffrey Hunter, as the revenge-ridden rebel-bandit, and Arthur Kennedy, as the relentless deputy marshal determined to capture the desperado, co-star in "Murieta," new Warner Bros. action drama in Eastmancolor directed by George Sherman, which captures on the screen all the color and excitement of the freebooting days of California's Gold Rush. "Murieta" will thunder across the screen of the PALACE THEATRE STARTING SUNDAY.

Huge Elephant Herd Dances At Circus



In addition to many new elephant specialty acts, the 1965 edition of Ringling Bros and Barnum & Bailey Circus will feature a spectacular production number, participated in by the entire huge Ringling herd. The number will present simultaneously three rings of "dancing" elephants.

The entire, enormous herd of Ringling Bros and Barnum & Bailey Circus elephants — presenting new 1965 routines, tricks and displays — will be BROUGHT TO THE LUBBOCK COLISEUM, LUBBOCK TEXAS, SEPTEMBER 10, 11, 12, 1965. When the Big Show opens its engagement. Largest in the world, the "ponderous pachyderms" are literally the favorite actors of all the vast tent that makes up the annual Greatest Show on Earth. In this 95th edition of the Ringling Circus, the elephants not only appear in specialty numbers — presented by their veteran trainer, Capt. Hugo Schmitt — but this year they appear in their own feature production number: "Elephants You'll Never Forget." Set to music and choreographed by Broadway's famed Richard Barstow, the number will present three rings of "dancing" elephants. And a surprise ending by Ringling's own "Dolly." The thrilling "long-mount," historically a Ringling Circus tradition, never fails to bring cheers from the "children of all ages" as tons and tons of elephants rise up to stand proudly, front legs resting lightly on the next in line. Quick to learn new tricks, the Ringling elephants seem to enjoy most of all this oldest of routines. Probably one of the reasons that these huge animals are so popular is the fact that an elephant is pure circus. No one individual or animal more completely personifies circus than the elephant. And strangely enough — not yet explained completely — even tiny children are generally unafraid of an elephant. They might cry at a nearby horse; hide from a caged lion — but hold tightly to their hand where the elephants are! An elephant eats approximately 100 pounds of hay per day, from 18 to 20 pounds of grain and plenty of pure dirt. Dessert is the popcorn and peanuts heaped from the kiddies. Elephants drink up to 25 gallons of water per day, depending on the weather and the size of the elephant. Automatically called "bulls" (a term designating the male of the species) circus elephants actually are not. With rare exception, the huge pachyderms are always females and usually not the African variety. Males or "bulls" and most African elephants grow hard to handle and are considered too dangerous to travel on tour.

FLOYD DATA
Mr. and Mrs. Algine Newman and son, Bob of Sun Valley, Calif., visited over the weekend of the 29th in the home of their cousins, Mr. and Mrs. E. J. Barker, Mr. and Mrs. C. M. Lyles, Mr. and Mrs. C. B. Lyles, Mr. and Mrs. E. B. Chesnut, Mr. and Mrs. A. L. Barker and son and daughter, Melinda and David, Mr. and Mrs. C. O. Lyles and daughter, Lora Jo. Mr. and Mrs. Cecil Baxter were also visitors at the family gathering on August 29th. The Newmans left for San Antonio to visit relatives there on the 30th.

On Wednesday and Thursday of last week Edward Newman and son of North Hollywood, Calif., were visitors in the Barker home. The two went on to Fort Worth and Texarcana for a visit before returning to California.



Elizabeth Ashley and George Peppard are first lovers, then enemies in Joseph E. Levine's presentation of "The Carpetbaggers." The Technicolor, Panavision epic opens Sunday at the Capada Theatre, through Paramount Pictures release.

CENTER NEWS by Mrs. J.E. Green

CENTER, Sept. 6 — The trace of moisture we had Sunday afternoon settled the dust and cooled the hot air.

Our Sunday School attendance at Calvary Baptist went up Sunday. Out of town visitors at church were Mr. and Mrs. L. C. Jones and daughters of Lufkin, who moved from Floydada a year ago, and were former members at Calvary.

Sunday evening visitors at Calvary were Mr. and Mrs. Fuller Price Jr. of McKinney who spent the weekend visiting her father and sister, Mr. Van Cleave and Arleta.

Mr. and Mrs. Thomas Warren and family went to Lubbock after church Sunday where they attended 50th wedding anniversary celebration of Mr. and Mrs. Charles Huckabee at their home. The Huckabees were formerly residents of this area. Later in the afternoon the Warrens visited Mr. and Mrs. Bob Karr and had supper with them.

Jan Perry, city, spent Friday night with Elaine Warren.

The J. E. Greens visited Mr. and Mrs. Plumlee awhile one p.m. last week.

Lamesa Site Of Witnesses October Circuit Assembly

Clarence W. Hall, local presiding minister for Jehovah's Witnesses, announced Lamesa, Texas will be the site of their semi-annual circuit assembly October 1-3.

The assembly is to be held in the Lamesa Junior High School Auditorium and is expected to be attended by about 500 delegates. Jehovah's Witnesses and interested persons will be attending from Hobbs, N. Mex. to Altus, Okla. and will include delegates from 16 congregations in West Texas, Eastern New Mexico and Altus, Oklahoma.

"The program will focus attention on the assembly theme of 'Increasing Our Praise to Jehovah,'" Hall said. Fundamental Bible truths will be thoroughly discussed and practical counsel from God's Word on the problems of everyday life will be considered. Those attending will grow in appreciation of how much the Bible can add to the happiness of their home.

"A fine feature of this assembly which local and visiting delegates will share in at a later date," said Hall, "is visiting the homes of Lamesans with an encouraging message from the Bible. Not only will entire families enjoy the fall meeting and fellowship but it will serve as a fine opportunity for Christians to worship together as the Bible commands."

The Watchtower Bible and Tract Society will sponsor the assembly. A. A. Catanzaro from Brooklyn Headquarters of the 'Society' will be the featured speaker of the meet. Local members will participate in the program of Bible discussions, demonstrations and talks. The public is welcome at all sessions. All sessions are free.

FLOYD DATA
Visitors in the S. L. Powell home over the weekend was their daughter and her family, Mr. and Mrs. Harold Williams and children, Kimberly and Craig of Grand Prairie.

CEDAR HILL NEWS

by Joe Fortenberry

CEDAR HILL, Sept. 6 — Mrs. June Brown of Hart, and her mother, Mrs. Grace Ware, and Mark Conner of Amarillo were Sunday morning visitors at the Cedar Hill Baptist Church. Rev. and Mrs. Wayne Jarnagan and Jana of El Paso, Mrs. David Redout and son of Dallas, Mrs. Jerry Miller of Canyon were Sunday morning visitors at the Assembly of God Church. Good services at both churches, and a good attendance was had.

Mr. and Mrs. Alva Love and grandson, Mick, and Mr. and Mrs. Winston Brown and family of Lubbock visited Sunday afternoon with Mr. and Mrs. Henry Love in Floydada.

Mr. and Mrs. Joe Fortenberry were supper guests of Mr. and Mrs. W. O. Swaim in Silvertown Monday night.

Mrs. W. T. Conner and children visited Wednesday evening in the home of Mr. and Mrs. Joe Fortenberry.

Mr. and Mrs. Carl F. Lemons, and Mrs. Clark Gayley were dinner guests of Mrs. Belle Lemons Tuesday.

Michael Fortenberry was Sunday dinner guest of Mr. and Mrs. Raymond Love and Tresa.

Mr. and Mrs. Robin Fortenberry enjoyed a fish supper in the home of Mr. and Mrs. Durrell Fortenberry Tuesday night.

Mrs. Jennie Williams of Ardmore, Okla., and Mrs. Myrtle Williams of Muleshoe visited in the home of their niece and husband, Mr. and Mrs. Rene Yeary Tuesday afternoon.

Mrs. Rene Yeary and Mrs. Esley Yeary returned home Wednesday after spending about 10 days in Arkansas.

Rev. and Mrs. Wayne Jarnagan were Sunday dinner guests of Rev. and Mrs. Robert Slaton and girls.

A revival meeting will begin at the Assembly of God Church, Sunday, Sept. 12 to the 19. Rev. E. O. Eldridge of Clovis, N. Mex. will do the preaching and service time will be 7:30 p.m. Everyone is invited to attend these services. Come and enjoy the revival.

Visiting in the home of Rev. and Mrs. C. A. Strickland this week was her nephew, Guy Hammonds of Flomot; also Rev. Anderson of Oklahoma, J. D. Vanhoose, Mrs. Henry Love, and Rev. Stags.

Mrs. Altha Davis, who has been visiting with her parents, Rev. and Mrs. C. A. Strickland in Floydada for the last two months, left Friday from Amarillo by train for her home in Van Nuys, Calif.

Mr. and Mrs. Guy Davis of Amarillo, Mr. and Mrs. Olin Keeter and family of Plainview and Mrs. M. H. Taylor were Sunday dinner guests of Mr. and Mrs. Junior Taylor and family.

Mr. and Mrs. John Kelley were Sunday dinner guests of Mr. and Mrs. J. A. Welch and Connie.

Mrs. Stanley Burleson and children, Mrs. Weldon McCormick, Mrs. Raymond Love,

Mrs. Eula Mae Lyles, and Mrs. M. H. Taylor visited in the Joe Fortenberry home Thursday.

Mrs. J. D. VanHoose of Floydada, Mrs. J. R. Kelley, Mrs. J. A. Welch and Connie visited Friday in the Fortenberry home.

Mr. and Mrs. Robin Fortenberry visited Saturday night in the home of Mr. and Mrs. Joe Fortenberry.

Mrs. Alpha McFall of Palo Alto, Calif. visited this week in the home of her brother and wife, Mr. and Mrs. Sid McFall and family.

Mr. and Mrs. Jim Conner visited Thursday and Friday in the home of their son, Robert, in Amarillo. Their grandson, Mark returned home with them to spend the weekend.

Mr. and Mrs. Greer Lackey, Rohn and W. E. spent Saturday night in the home of her parents, Mr. and Mrs. Walter Brannon in Floydada.

Mr. and Mrs. Garland Tucker were supper guests in the home of Mr. and Mrs. Eldon Fortenberry and family Thursday night. Mr. and Mrs. Robin Fortenberry were supper guests in the Eldon Fortenberry home Friday night.

Mr. and Mrs. Garland Tucker and Joe Edd Breckenridge visited Sunday afternoon in Lubbock with his parents, Mr. and Mrs. J. W. Tucker.

Mr. and Mrs. Eldon Fortenberry and family were Sunday dinner guests of her parents, Mr. and Mrs. C. W. Vittow in Plainview.

Mr. and Mrs. Eugene Gilly visited with Mr. and Mrs. David Redout and son of Dallas, in the home of her parents, Mr. and Mrs. Leighton Teeple, Dwight and Rhonda, Sunday afternoon.

Mr. and Mrs. Johnie Harrison of Lubbock visited in the Eugene Gilly home Sunday afternoon.

Mr. and Mrs. Albert Mize entertained Thursday night with a 42 party and a watermelon feast. Present were Mr. and Mrs. Rene Yeary, Mr. and Mrs. George Weast, Mr. and Mrs. W. O. Whitehead, Mr. and Mrs. Lee Pearson, Mrs. Mamie Yeary, Andrew Jetton, and Mr. and Mrs. W. O. Swaim of Silvertown.

Mrs. Evelyn Breckenridge, Rickie and Mary Ann, attended the singing at the Assembly of God Church in Lockney Sunday afternoon. Later they visited in the Cephus Fortenberry home, with Rev. and Mrs. Wayne Jarnagan and Jana.

Mrs. T. F. Love and Marvin visited Sunday afternoon with Mr. and Mrs. Henry Love in Floydada.

Mr. and Mrs. Jim Teaver of Plainview visited Wednesday afternoon with Mrs. Mamie Yeary and Andrew.

Mr. and Mrs. Rene Yeary and

Esley Yeary were Sunday dinner guests of Mrs. Mamie Yeary and Andrew.

Mrs. Esley Yeary, her daughter and granddaughter, went to Lovington Sunday to attend a family reunion. Mrs. Yeary will return home Wednesday.

Mr. and Mrs. Lee Pearson visited Sunday night with Andrew Jetton and Mamie.

Mr. and Mrs. Wayne Whitehead had the pleasure of having all their children and families home with them Sunday with the exception of one granddaughter who had sickness in her home and was unable to attend.

A good number of our community attended the grand opening of the new Nichols Manor Convalescent Home in Lockney Sunday afternoon. We are proud of the new home.

Mrs. Weldon McCormick and Mrs. J. R. Kelley visited Monday morning in the home of Mr. and Mrs. Joe Fortenberry.

Total color value 1965-1966 season will mate 3,000 hours of TV network and colorcasts of many sports events such as regularly scheduled NFL football games on the World Series of October.

Titles of the new series will premiere during are: "Hullabaloo", "Forsythe Show", "Your Life", "Mama's Don't Let the Girls Go", "Tuesday Night at the Movies", "Laredo", "Cluskey", "The Man From U.N.C.L.E.", "I Dream of Jeannie", "Wackiest Ship in the World".

September 12-19 NBC Week On Station KCBD TV

September 12 through 19 will be Fall Premiere Week on NBC-TV and KCBD-TV, Channel 11, introducing a dramatic new dimension in color programming.

The new schedule will include 14 evening series returning from the current lineup, all to be seen this year in the color spectrum as will 13 of the 15 new programs in the weekly in-

AT THE WORLD'S
GA
DOES BOX OF AIR CONDITIONING
Pioneer Natural Gas

After you see your doctor
PRESCRIPTIONS

bring your prescription to
COMPLETE DRUG STORE ON HIGH

Bishop's PHARMACY
NIGHT PHONES 3-2287

ANNUAL STOCKHOLDER MEETING

TUESDAY, SEPTEMBER 14, 1965
7:30 P. M.

LIGHTHOUSE ELECTRIC

- ★ DIRECTORS TO BE ELECTED
- ★ BUSINESS MEETING
- ★ REFRESHMENTS

"YOU ALL COME"

FLOYD COUNTY CO-OP GIN INC.

FLOYDADA

FOOD BARGAINS BY THE BAGFUL

SUGAR	5 LB. SACK	49¢
SHURFRESH CHEESE SPREAD	2 LB. BOX	69¢
SHURFINE SALTINES CRACKERS	1 LB. BOX	24¢
FOLGER'S COFFEE	1 LB. CAN	75¢
ENERGY DETERGENT	47 OZ. BOX	55¢
NEW RED POTATOES	10 LB.	49¢
SHURFRESH MARGARINE	2 LBS.	38¢
SHURFINE GRAPE JUICE	24 OZ. BOTTLE	39¢
SHURFINE PORK & BEANS	2 CANS	25¢
BREAST-O-CHICKEN TUNA		35¢

WE GIVE BUCCANEER STAMPS DOUBLE ON WEDNESDAY
HULL & McBRIEN
We Deliver YU 3-3164

NOW
IS THE TIME TO GET THAT TV TUNED UP FOR THE NEW FALL PROGRAMS. IF IT ISN'T WORTH TUNING UP, COME BUY A NEW **Admiral** AT **MIKE'S TV LAB**
113 W. CALIF. FLOYDADA

AUCTION Sept. 13, 10 a.m.
OPAL'S FABRIC MART AND COLONIAL FLORAL AND GIFT SHOP
LOCATED SOUTH OF ABERNATHY ON LUBBOCK HIGHWAY
LADIES AND GENTLEMEN WELCOME... ESPECIALLY DEALERS

- OFFICE EQUIPMENT
- 1 24 X 40 GREENHOUSE OF FIBERGLASS
- LAWN EQUIPMENT
- HOUSE DECORATIONS
- ABOUT 2100 YARDS OF ASSORTED MATERIALS
- SHOW COUNTERS
- WEDDING EQUIPMENT
- STATUETTES FOR LAWNS
- QUITTING BUSINESS SALES...

NELVIS, JACK, JIMMY KNOWLES, AUCTIONEERS
CAROL KNOWLES, CLERK

WANT BETTER JOBS ADS LOST and FOUND REAL ESTATE

Classified Advertising rate: 5 cents per word per insertion 3 cents each subsequent insertion. Minimum charge 50 cents.

Classified Display Rate: 75 cents per column per line.

Words of Thanks \$1.

DEADLINE NOON TUESDAYS

ANNOUNCEMENTS

RODGE MEETINGS

HOOP Lodge No. 34
Friday nights James L. Floyd
Grand. Floyd
6 t/c

WOLFE

Chapter No. 227
Masons Lodge
Their stated meet-
ing the fourth Saturday
each month at 7:30.
Times, H. P., Ray
Pison, Secy. t/c

WOLFE

Masonic Lodge No.
A.M. will hold their
meeting the second
night of each month
at 7:30.
W. M. Ferguson, Secy.

WOLFE

to thank our friends
for all the food,
cards, telegrams, and
other recent bene-
fits in the loss of our

WOLFE

Mrs. T. J. Coleman
Baylock 9-9p

WOLFE

express my thanks
in appreciation to those
neighbors who were
kind during my ill-
ness and family

WOLFE

9-9

WOLFE

9-9

WOLFE

9-9

WOLFE

9-9

WOLFE

9-9

WOLFE

9-9

WOLFE

9-9

WOLFE

9-9

WANTED - Custom baling and swathing. Dick Mayfield, 4550 Bean, Texas, Silvertown. t/c

LIVESTOCK AND POULTRY

WANTED - 100 good pigs and 100 feeder shoats. Willie B. Eakin, 667-2514, Petersburg. t/c

LATEST FRANKLIN VETERINARY SUPPLIES Available at Bishop's Pharmacy t/c

MERCHANDISE

WE BUY radios in need of repairs. Roy L. Lynch, Floydada Trading Center, 406 E. Houston. t/c

CLEAN used furniture bought and sold. Floydada Trading Center. Roy L. Lynch, owner, 406 E. Houston. t/c

COMPLETE LINE OF FRANKLIN VETERINARY SUPPLIES Available at Bishop's Pharmacy t/c

EVERYTHING in musical instruments and accessories and repair parts. Johnson's Pharmacy. t/c

FOR SALE - A round oak dining table and Nechi sewing machine. Maurine Parks. YU3-2617. 9-16p

FOR SALE - 22' x 34' heavy aluminum sheets which would be fine for covering outside of barns, garages, etc. . . . make good roof with tar sealer. 25¢ each . . . or 20¢ each by the hundred. Blanco Offset Printing . . . Phone YU 3-3737. t/c

FOR SALE - General Electric refrigerator. 30 day warranty. \$65.00. 2 Citizens Band Radios with crystals. \$50.00 each. YU3-2683. t/c

FOR SALE - Low mileage, one owner sport sedan 1964 Chevrolet. All extras including air conditioning. See or call Ted Allen. t/c

FOR SALE - Good used upright Singer vacuum cleaner. YU3-3088. t/c

FOR SALE - 1960 Kenmore automatic washer, 10-pound capacity. Excellent appearance, needs work. See 815 West Missouri, Floydada. Call YU3-2513. \$20 or Trading Stamps. 9-9

FOR RENT

FOR RENT...TWO BEDROOM mobile home. YU3-2241 t/c

FOR RENT: Furnished apartments and bedrooms. 102 E. Houston on Highway 70. t/c

FOR RENT - Unfurnished - 3 rooms and bath. YU3-2202. t/c

FOR RENT - 2 bedroom unfurnished house. 608 So. Wall. See L. A. Marshall at 602 S. Wall. YU3-3169. t/c

FOR RENT - Bedroom with kitchen privileges. Ladies only. YU3-2241. 9-17c

BUSINESS FOR SALE

FOR SALE - Grundy Iron & Metal Works. See Bill or J. B. Grundy for details. Phone YU 3-3530. t/c

MISCELLANEOUS

LOTS FOR SALE - See W. U. White. t/c

MADE-TO-MEASURE clothes. Western suits, dress suits, sport coats and slacks. Guarantee satisfaction. Recer's Cleaners, Lockney, Texas. Oldfield 4-2262 collect. t/c

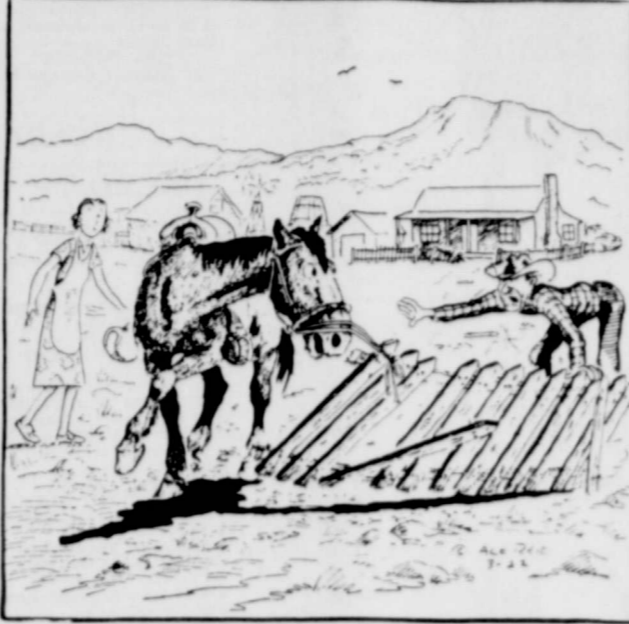
LARGE chain drive tricycle. \$5.00. Phone YU3-3982.

excess fat and live longer. Galaxon costs \$3.00 and is sold on this guarantee: if not satisfied for any reason, just return the package to your druggist and get your full money back. No questions asked. Galaxon is sold with this guarantee by: BISHOP'S PH. FLOYDADA, MAIL ORDERS FILLED.

CALL YU3-3737 FOR A WANT AD NOW

COW POKES

By Ace Reid



"Aw, quit naggin' at me, Maw! I wuz gonna build a new fence anyhow!"

AUTO, FIRE & FARM INSURANCE

Floydada Real Estate & Insurance Agency
JIM WORD - PHONE YU 3-3360

FARMS AND RANCHES

CITY PROPERTY ranches and farms. Give me your listings. Thagard Real Estate. Phone YU 3-3716. t/c

328 ACRES irrigated, North Crosby County. Improved. \$400 price. Lowered periodically until sold. Floydada, YU3-3616. t/c

890 ACRES heavy, dark land located in the better parts of Floyd County. Allotments are good. Will take small down payment, work out terms you can live with. Call or write Box 605, Lubbock, Texas. Office phone PO5-6649. Res. phones, Bob Sudduth, SW3-1212. J. B. McPherson, SW5-3625. 9-2c

HOUSES for sale or rent. See W. U. White. t/c

SLEEP WHILE YOUR WANT AD WORKS

WE CLEAN AND TUNE ELECTRIC SHAVERS REPAIR ALL MAKES SELL AND TRADE ALL MAKES GOEN DRUG AND PHARMACY PHONE YU 3-3389

EMPLOYMENT

HELP WANTED

FEMALE HELP WANTED - Interviewer wanted for part-time telephone survey work. Not a selling job. Give phone number and state if private or party line. Airmail letter including education, work experience and names of references to: Overnight Surveys Department, American Research Bureau, 11604 Baltimore Boulevard, Beltsville, Maryland. 9-16c

MONTGOMERY WARD "SERVING AMERICA FOR 92 YEARS" Offers an exciting opportunity to be your own boss and share in the growth of our business in this area. We will establish a qualified person, or a husband-wife team, in a full time franchised catalog store in Floydada. This is not door-to-door selling and requires no investment, but is a chance to earn a substantial year around income as our full time authorized representative. If you are willing to accept responsibility in return for a future in your own business, write giving your name and address, telephone number, personal qualifications, references and a recent photo. Agency Dept. 8D, 2600 West 7th Street, Fort Worth, Texas.

FOR SALE - 2 bedroom, 2 baths, 816 West Jackson. 3 bedroom, 2 baths, brick. 717 West Tennessee. YU3-2496. t/c

FOR SALE: To settle the Earl Rainer Estate. 3 bedroom home at 622 West California and Rainer Shoe Shop. Call YU 3-2437. t/c

FOR SALE - Large 3 bedroom house, well located. Small down payment. Hale and Hale, YU3-3261. t/c

FOR SALE - 3 bedroom, 1 3/4 bath house, storm cellar. Good Terms. See at 704 S. 3rd. Tommy Assiter, YU3-2511 or YU3-3611. t/c

FOR SALE - My equity in 3-bedroom home or will trade for late model pickup or house trailer. Orville Towler, YU3-2324. 9-9p

FOR SALE - Nice three bedroom, one bath room. Refrigerated air. Double garage and storm cellar. See at 607 W. Ollie. t/c

FOR SALE - 3 bedroom, living room, kitchen, utility, garage, central heating and refrigerator air. Carpets. 100 x 150 foot lot. YU3-2526. 10-7

EXTRA NICE three bedroom brick home in good locality in N. W. Plainview. Wall to wall carpet and fenced backyard. For sale or would trade for home in Floydada. See or call Ted Allen, YU3-2597. t/c

CALL YU3-3737 FOR A WANT AD NOW

PORTABLE DISC ROLLING

ROUND AND NOTCHED DISC BASS FARM - DISC ROLLING

CHUCK HUMPHREYS CA 4-1395 PLAINVIEW, TEXAS

FLOYD COUNTY ABSTRACT CO.

Abstracts of Title Title Insurance VERA L. STEWART 217 W. Calif. Ph. YU 3-3728 Floydada, Texas

MR. AND MRS. James Lovell win two free passes to see "Beach Blanket Bingo" Friday or Saturday night at the Capada Drive-In Theater. 9-9

A NEW TREND IN MERCHANDISING Lease - Purchase Plan Rental - Purchase Plan Outright Sale Any Reasonable Offer Top Quality, Factory Authorized Service G. E., Maytag, Tappan, Fedders COLLIER HOME SUPPLY

TWO ONLY - demonstrator Royal standard typewriters. Sold for \$229.95 new. . . now on sale at \$165.00 each. Hesperian Office Supply. Phone YU3-3737. t/c

DESIRABLE 81' lot in west Floydada on Virginia Street in new brick home neighborhood. Call YU3-2771 t/c

FOR SALE - an original share or associate share in Country Club. Call Sam Baker. YU3-3270. t/c

FOR SALE - Small refrigerated air conditioner. Ideal for small office or apartment. Used only 20 days. James Lemons. t/c

TWO good used check writing machines. Your choice \$27.50. Hesperian Office Supply, Phone YU3-3737. t/c

FOR SALE - Practically new Royal Deluxe Typewriter. YU3-3317. L. G. Withers. 9-9

COUNTRY CLUB STOCK, original voting share. Call YU3-2771. t/c

ONE Good used hand adding machine \$25.00. One good used adding machine \$35.00. Hesperian Office Supply. Phone YU3-3737. t/c

RADIATORS NEW AND USED CLEANED - REPAIRED RECORDED BADGETT RADIATOR SHOP Radiator Service YU 3-3454

Home Made Eggs Enjoy fresh home produced eggs from CARMACK'S

English Walnuts-Pecans-Almonds BUSINESS went to NUTS ARTWAY TREE SURGERY Feeding-Pruning-Treating -Spraying-Landscaping H. B. FOSTER P.O. Box 681 Lockney, Texas

Call YU 3-3220 Gasoline - Oils - Grease For Delivery Butane - Propane Foote Butane & Oil Co. East Highway 70 FLOYDADA

For Prompt Service on Home & Auto Radios See RICE RADIO SERVICE 1/2 blk. n. of bus station

FOOTE BUTANE

Hollis R. Bond Real Estate

(Successor to Massie & Bond) BOOTHE BUILDING FLOYDADA

PATTERSON PLASTIC PIPE COMPANY CHARLES PATTERSON, PH. YU3-2048 -PLASTIC GAS LINE INSTALLATION -ALUMINUM PIPES -PLASTIC IRRIGATION PIPE -ASBESTOS, CEMENT PIPE, 4" 6" 8" 10" 15" -DITCHING -BACK HOE CARLON PLASTIC (The pipe with the stripe)

Dr. O. R. McINTOSH OPTOMETRIST 211 SOUTH MAIN ST. MEMBER Phone YU 3-3460-Floydada, Tex.

JOHN B. STAPLETON LAWYER 101 N. Main Street TEL. YU 3-2197

PARTNER OR PARTNERS WANTED

Prefer working partner with minimum investment of \$5,000 share in the business.

Will accept silent partner for 10 % return on investment in the Mar-Dell Manor Convalescent Center in Floydada.

Contact Jerry Miller , phone CA4-4823 in Plainview or SW5-7514 in Lubbock.

WANTED responsible party to take over payments on late model Singer sewing machine in Floydada area. Will zig-zag, fancy stitches, etc. 5 payments at \$4.96 or \$25.00 cash. Write Credit Department, 1114 19th Street, Lubbock, Texas. t/c

CUSTOM deep breaking - Call YU3-3387 or see Ben Gallo-way. 9-30p

ARTHRITIS SUFFERERS-1000 Parke-Davis Aspirin, 3 grain tablets \$1.80. Bishop's Pharmacy on the Highway. 9-9

Guard Valuable with A National Deposit

New 1965 GMC PICKUP \$1795 Cline & Rainer Your authorized GMC Dealer Floydada

\$36,922,000 Farm Income in County

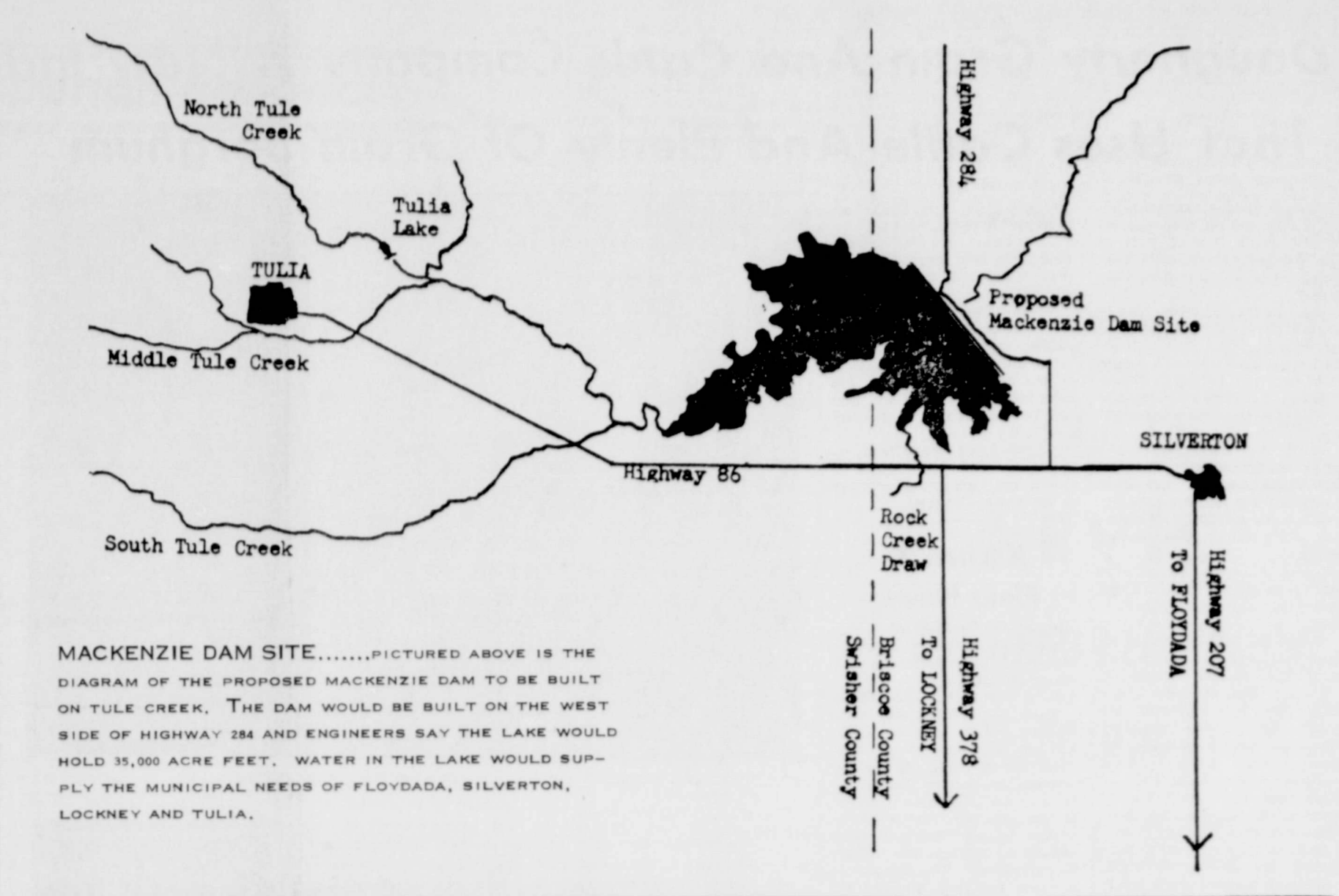
(Hesperian)
 AUG. 28 - Floyd
 yielded more in
 than did farms in
 of the United
 of the local farm
 the returns were
 average, according
 that covered farm
 operations in every
 county.
 It is attributable
 use of fertilizers
 efficient farm man-
 agement, they
 able to produce and
 more than in prior
 the reduced ac-

which was con-
 county-by-county
 Standard Rate and
 shows how the
 community fared as
 those elsewhere.
 County's gross
 the sale of farm
 \$36,922,000.
 the number of
 farms, this was
 equivalent to \$8,220
 than was reported
 farm areas in the
 the average being
 \$10. In the State

TWENTY-FIVE YEARS AGO IN FLOYD COUNTY

(Sept. 5, 1940)
 Purchase of the entire herd,
 numbering about 40 head of the
 E. W. Ewen estates milking
 shorthorn cattle in Hall County
 was completed last week by
 George McAllister and V. Wil-
 liams, local businessman who
 will be associated in the oper-
 ation of a milk producing farm
 and the breeding of a high
 grade of registered dual purpose
 cattle.
 J. Sam Hale returned home
 this week after a brief visit in
 Chillicothe where a brother,
 W. P. Hale, has been seriously
 ill. While there he was as-
 sociated for the first time in 29
 years with all four of his brothers,
 A. J., W. G., J. M.,
 and W. P.
 D. A. McGonagill, state high-
 way patrolman out of plainview,
 was killed instantly at 6:15
 p.m. Wednesday by a bolt of
 lightning near Muncy on highway
 70. The patrolman and his partner
 had been in Floydada visit-
 ing with the sheriff and were
 returning to Plainview when the
 accident occurred. McGonagill
 was riding behind his partner
 about 100 feet on another mo-
 torcycle when the bolt struck.
 Coaches Winter and Hale this
 morning had 32 boys in the foot-
 ball squad workout on the Whirl-
 wind team.
 Miss Ina Sims and Herschel
 Hammonds were married Sun-
 day in the Baptist parsonage
 church in Amarillo.

He notes that average prices
 for farm products are 10 per-
 cent above those of last year
 at this time and that prices
 for cattle and hogs have been
 moving strongly upward.
 On the other hand, farm costs
 have also shown an increase,
 with wages, taxes, family living
 and production expenses higher
 than before.
 On balance, however,
 farmers are expected to end up
 better off than in 1964. The
 forecast is for a net gain of
 about \$600 million.



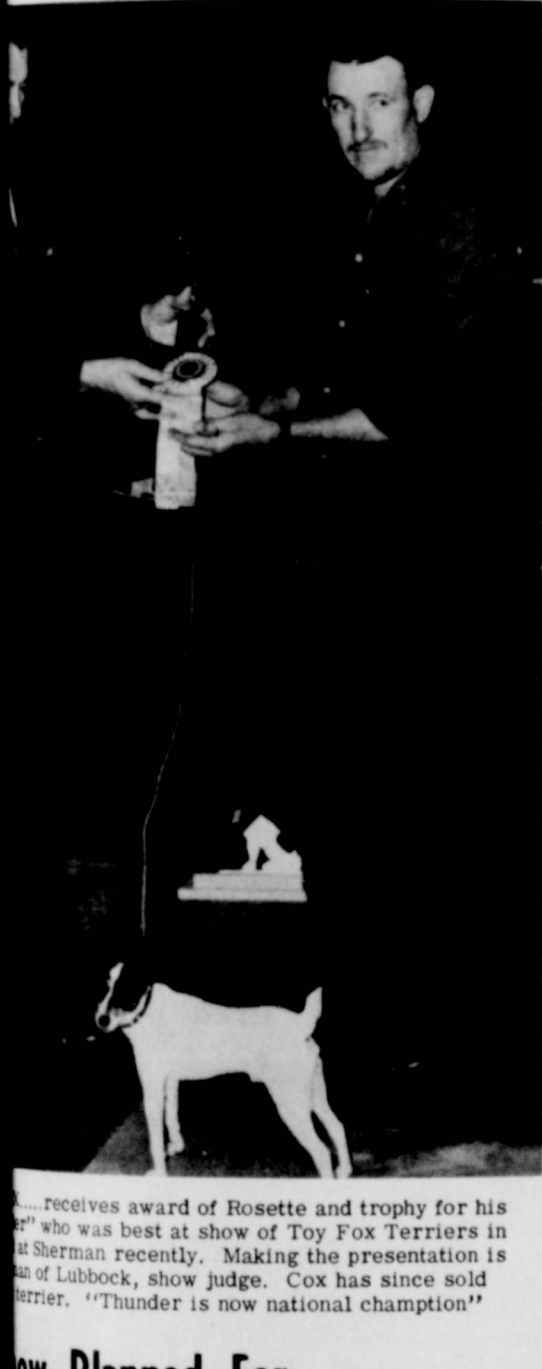
**MACKENZIE DAM SITE.....PICTURED ABOVE IS THE
 DIAGRAM OF THE PROPOSED MACKENZIE DAM TO BE BUILT
 ON TULE CREEK. THE DAM WOULD BE BUILT ON THE WEST
 SIDE OF HIGHWAY 284 AND ENGINEERS SAY THE LAKE WOULD
 HOLD 35,000 ACRE FEET. WATER IN THE LAKE WOULD SUP-
 PLY THE MUNICIPAL NEEDS OF FLOYDADA, SILVERTON,
 LOCKNEY AND TULA.**

CLASS CANCELLED
 NEWARK, England (UPI) —
 A class Monday for housewives
 studying toward high school
 diplomas was cancelled because
 it would upset washday routine.

Bill McNeill
 IS STILL IN
Precinct 4
 HE IS NOW LIVING AT RT. 2, FLOYDADA,
 IN JOHN KEY WEST ADDITION
 NEW PHONE NUMBER IS
Yu 3-2851

Floyd County Hesperian

THURSDAY, SEPTEMBER 9, 1965 PAGE ONE



...receives award of Rosette and trophy for his
 "who was best at show of Toy Fox Terriers in
 at Sherman recently. Making the presentation is
 of Lubbock, show judge. Cox has since sold
 terrier. "Thunder is now national champion"

**Construction On
 11.44 Miles In
 County Set**

A contract for 11.440 miles
 of construction on F. M. Road
 54 in Floyd County has been
 awarded to a Lubbock firm, it
 was announced in Austin this
 week by the State Highway Com-
 mission.
 Henry L. Stafford submitted
 the low bid of \$316,296.51 on
 the project. Rebuild grading,
 structures, base and surfacing
 from Hale County Line east to
 U. S. 62 is expected to take
 150 working days, according to
 O. L. Crain District Highway
 Engineer at Lubbock.
 Sam A. Fowler, Resident En-
 gineer at Floydada will be in
 active charge of the project
 while it is under construction.

FLOYD DATA
 Mrs. W. J. Wilks and daugh-
 ter, Mary, attended funeral
 rites in Plainview Thursday for
 George Blackburn, longtime
 friend of the Wilks family.
 Blackburn died on Wednesday
 of last week after a lengthy
 illness.

**LOCALLY GROWN
 TOMATOES**
 FOR SALE
 • FRESH MARKET
 • CANNERS
 SEE
CARL BROCK
 1 MI. N FLOYDADA ON
 SILVERTON HWY. YU 3-2672

**It Will Rain
 Some Time!**

Order Your KMP Lake Pump Now

KMP OFFERS

- NO PRIMING
- EASY TO MOVE
- NO CLOGGING
- PRECISION BUILT

**And Mr. Farmer The KMP
 Is The Most Efficient Tail Water
 Pump On The Market**

**See or Call
 W. G. Walker**

FLOYDADA PHONE YU 3-3910
 or
FLOYDADA BUTANE
 LOCKNEY HIGHWAY PHONE YU 3-2413

**Lockney's First
 Cotton Is Ginned**

LOCKNEY — Hershel Carthel,
 local farmer, brought in
 Lockney's first bale of cotton
 this season Thursday afternoon
 as he pulled 2,090 pounds over
 the scales at Lockney Co-op
 Gin. The first bale, ginned free,
 weighed 529 pounds.
 The cotton was grown in the
 South Plains community and
 was planted April 21. It was
 pre-watered and only watered
 once which was in July. Car-

**NEW FOR '65
 60 SERIES
 BASKET
 ATTACHMENT**

**with air system
 and boll separator**

FOR JOHN DEERE 77 AND 277 COTTON STRIPPERS

Now, John Deere offers a new harvesting convenience
 and a simple, low-cost means of reducing field labor for
 owners of 77 and 277 Cotton Strippers.

The new 60 Series Basket Attachment is available as
 optional equipment for these two strippers when
 mounted on "3020," "4020," "3010," or "4010" Tractors.
 It eliminates the burden and extra labor generally as-
 sociated with trailer-type harvesting, and it makes cot-
 ton stripping strictly a one-man operation.

Mounting is simple and easy. The 2,000-pound basket
 and frame are attached with eight bolts. The exclusive
 air-delivery system mounts on the stripper cross auger
 and is driven by a single V-belt from the tractor PTO.

The basket is basically the same as that of the John
 Deere 299 Picker, except for a lighter lid for greater
 dumping stability. A solid sheet-metal floor keeps trash
 and dirt from sifting down onto the operator and tractor.

The basket holds up to 2,000 pounds of seed cotton
 and dumps from a minimum height of 10½ feet. Double-
 acting hydraulic cylinders and lid-control linkage give
 positive dumping control. You can flip a full load into
 an empty wagon quickly and easily or ease it into one
 partially filled.

A unique air-delivery system feeds open cotton to the
 basket. Unlike competitive systems, it features inde-
 pendent velocity control for green-boll separation.

By adjusting the opening of a small intake door, vary-
 ing degrees of separation velocity can be set for lighter
 or heavier boll conditions with no sacrifice in capacity
 of the primary airstream which delivers open bolls to
 the basket.

For an effective, convenient means to lower harvest
 costs, see your John Deere dealer about the 60 Series
 Basket Attachment. Ask about easy Credit Plan terms.

Here's how the exclusive air system works...

In the delivery system, a jet air-
 stream is created by a powerful 16-
 inch fan, mounted above the cross
 auger opening. The fan forces air
 upward through a tapered jet noz-
 zle, causing a low-pressure area.
 Air rushes into this partial vacuum
 from the cross auger opening, the
 green-boll discharge opening, and
 through the air-adjustment door to
 form the necessary airflow for green-
 boll separation.

Nozzle velocity and primary air-
 stream remain relatively constant,
 according to fan speed. However,
 velocity in the separation chamber
 can be finely controlled by simply
 adjusting the opening of the small
 intake door (see diagram).

If green bolls are especially light,
 and too many are being discharged
 into the basket, the operator can
 bleed more air through the intake
 door and reduce airstream velocity
 in the separation chamber. If, on
 the other hand, too much open cot-
 ton is falling into the green-boll box,
 he can shut down on the opening
 for increased velocity and optimum
 separation.

Cotton touches no moving parts
 in the delivery system. There are
 no elevator or auger conveyors, and
 no material passes through the en-
 closed fan. Therefore, seed crackage,
 green-boll cracking, cotton staining,
 and embedding of pin trash are held
 to a minimum.

The green-boll box has a 10 cubic-
 foot capacity and dumps like a clam-
 shell. A lever, close to the tractor
 seat, allows the operator to dump
 bolls while the tractor is standing
 or moving.

**JOHNSON REXALL
 PHARMACY**
 presents

**Bonne Belle's
 CORRECTIVE
 COSMETICS**

These scientifically formulated cosmetics
 contain active therapeutic ingredi-
 ents—medically tested—to improve
 skin health and restore natural com-
 plexion beauty.

**Now Planned For
 In October**

...having a "dog
 arday and Sunday,
 3rd. The event
 at the VFW build-
 ing highway with
 as local sponsor.
 show will be by

the West Texas Toy Fox Ter-
 rier Association and is opened
 to all registered Toy Fox Ter-
 riers. Entry fee is \$2 per dog.
 Admission is free.
 Cox said he was expecting
 people to register dogs from

Dougherty Grain And Cattle Company A New Industry That Uses Cattle And Plenty Of Grain Sorghum

"I have always enjoyed raising cattle, and the management of the cattle feeding part of the Dougherty Grain and Cattle Company is an interesting venture."

This statement from Kinder Farris after five months of operating a new cattle feedlot business at Dougherty means that here is a Floyd County industry that offers several advantages to the county's economy.

First, the fattened cattle are being consumed right here in this trade area... and cattle ready for the market have already been marketed as far away as Florida and Sweetwater, Texas.

Second, here's an industry that uses almost 100% a Floyd county farm product, grain sorghum.

Third, the fertilizer from the feed lots will aid production on farms around Dougherty. Farris said the feeder operation fits in nicely with the grain elevator at Dougherty which has been in business for several years.

About five months ago, 12 steel pens were built on approximately three acres about a half a mile east of Dougherty. A total of 20 acres were purchased for the feeder sight. Automatic feeders were put in each pen. Each pen will accommodate 100 head of cattle. A modern automatic watering system was installed, an office and scale house, a feed mixing facility at the elevator, a specially equipped truck to deliver the feed to the feeders, and a lot of dirt moving equipment was used in building up a slop on each side of a middle lane adjoining pens on each side for proper drainage of the feeder site.

Farris said some of the cattle are owned by the business, and some are fed on a "custom" basis for local and area cattle men.

The feed recipe goes something like this to each ton: 1800 pounds of grain sorghum, 125 pounds of whole cottonseed and 75 pounds of Wilber-Ellis pre-mix.

As the cattle enter the feed lot, a special chute is used to hold them for vaccination shots of various kinds, castrating, dehorning, etc.

Steers are fattened to an av-

erage 1,000 to 1100 pounds and heifers 800 to 950 pounds.

The water system includes automatic heat thermostats, so that there will be no freeze up problems in the winter.

When asked if this was his first association with a cattle feeder operation, Farris replied that, "up until now, most of my feeder experience has been throwing bundles and cake out of the pickup to pasture cattle."

The feed lot reached its maximum of 1200 head about a month ago, and around 900 are in the lots at present.

Kitchen & Field News

Kitchen and Field News Lighthouse Electric Cooperative, Inc., Nancy Morckel, Home Economist

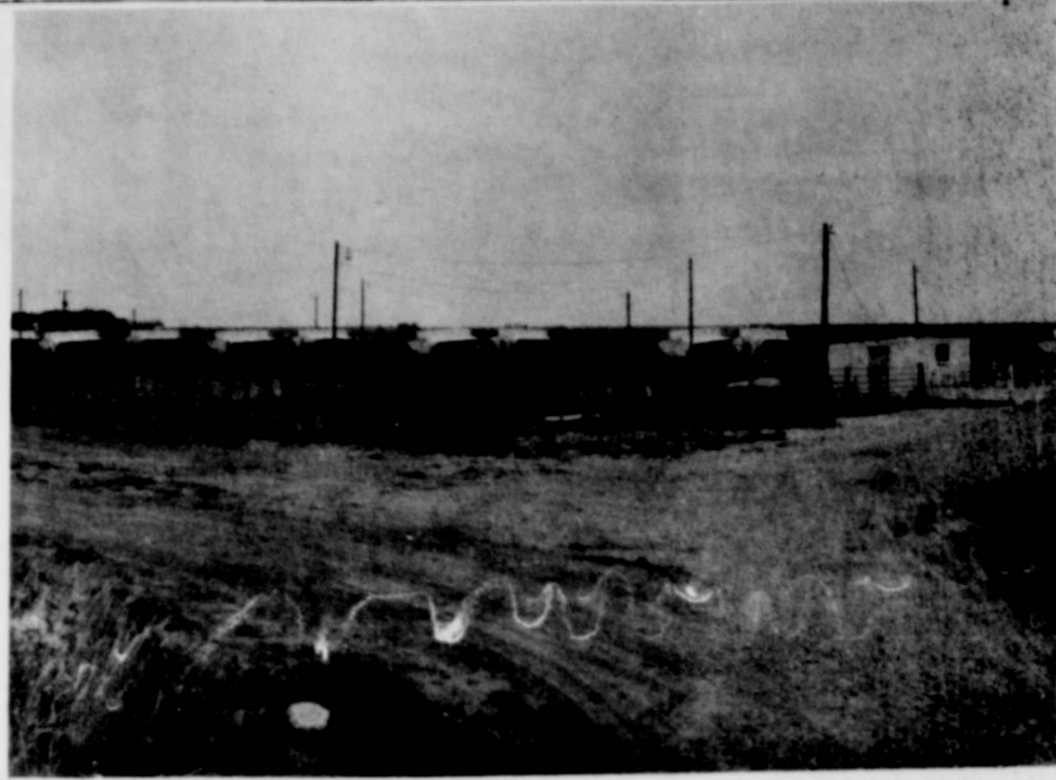
LET'S USE OUR FREEZERS-- Have you noticed that some women are so efficient in the kitchen, that they fix so many good things? Well, one of the secrets is they're good planners, especially when it comes to family meals. And at the top of the list for "magical" time savers is efficient use of their home freezer. The freezer is a place for food storage it's true, but it is a tool for everyday food preparation and not merely just a place for storing food.

By cooking in quantity you can have second meals with "planned overs" in a matter of minutes. Be sure to use recipes that are geared for your freezer--they're designed to minimize your kitchen time--give you more time for your family and friends.

FREEZE PASTRIES NOW--- SERVE FRESH BAKED PIES AND "GOODIES" later-----

Everyone enjoys fresh fruit pastries; but they take time to prepare. However, you will be well ahead of the game if you stock your freezer with a supply of these--either shells to be baked and filled with delicious berries or fruits, or the traditional favorite, a two-crust pie with fruit filling, ready for the oven.

Pastry frozen before baking has fine flavor and texture. It may be handled in several ways to save time and work



OVERALL VIEW OF FEEDLOT



CATTLE ARE ALL BREEDS



KINDER FARRIS LOOKS OVER CATTLE

BUFFET STYLE SUNDAY DINNER
\$1.25
AT LAMPLIGHTER INN
11:30 - 2 P.M.
SEPT. 12

R. A. MATHENY AT CONSOLE WURLITZER ORGAN

FISHERMEN BEHEADED
HONG KONG (UPI) — Eight fishermen were beheaded by pirates operating near storied Macao, 50 miles west of Hong Kong, it was reported Monday. A fisherman said he found the headless bodies floating in the sea west of Macao.

SUPERIOR CLEANERS
For Quality Dry Cleaning The Approved Sanitone Way.
CALL YU 3-3540



Higginbotham Bartlett Co.

Open A Budget Account With Us
NEW LONG TERMS — 5 YEARS TO PAY
Loans Up To \$3,500

JUST CALL YU 3-2140 — FLOYDADA
You no longer have to delay your plans for remodeling and improving your home. Our easy Pay-Out-of-Income Credit Plan enables you to make the improvements you want now — for just a few dollars a month and with no down payment required.

You'll be surprised at how easy you can get up to \$3,500 Confidential No Red Tape. Do-It-Yourself and save the cost of labor or hire the labor — whichever you prefer. Our plans cover the cost either way.

on the day you wish to serve a pastry dessert.

If time is short when making up a large batch, simply divide the pastry into balls, each the amount for a single crust. Wrap in cellophane or aluminum foil and freeze. These balls of pastry take only an hour at room temperature to soften sufficiently for rolling when needed.

For easier, quicker use, roll pastry into tart or pie-sized

circles and cut matching circles of foil. Stack on a cardboard circle, alternating foil and pastry circles to prevent sticking. Overwrap in foil to make a compact package, label and freeze. When needed, circles may be removed in the number required. They soften in 5 minutes. Tart shells can be formed by turning up foil and pastry 3/4 inch all around and pinching to make a firm edge. Bake them in the foil

on a cookie sheet. Large-size circles can be fitted into pie pans and used for shells or 2-crust pies.

Unbaked frozen fruit pies go directly from the freezer to the oven. They are baked at 400 degrees for approximately one hour. The bottom crust of frozen pies is sometimes difficult to brown. Although good pastry does not stick, spreading the bottom of the pan with margarine or butter before

Lockney Schools Now Integrated

LOCKNEY — Schools here were totally integrated last week when Washington School was closed because only four Negroes registered.

Earlier, the school board passed a resolution stating that Washington School would not operate unless 20 students chose to attend that school, which had operated for grades 1-5 in 1964.

Mr. and Mrs. Waverley Washington, teachers at Washington School, have been reassigned to Lockney Elementary School. According to Supt. H. H. Nicholas, 1,069 students enrolled in Lockney schools opening day, 18 less than last year.

placing the crust in it and then baking the pie on a lower shelf in the oven helps to brown the bottom crust.

Slits should be cut in a complete top crust for the escape of steam, either before or after freezing.

In preparing apples for fresh apple pie, peel and slice apples into a solution of 3 tablespoons salt, or 3 tablespoons lemon juice to one gallon of water.

PASTRY MADE WITH EGG AND VINEGAR — makes a nice pastry and one that freezes well.

- 3 cups flour
 - 1 teaspoon salt
 - 1 cup shortening
 - 1 egg
 - 1 tablespoon vinegar
 - 9 tablespoons water
1. Sift the flour before measuring.

2. Be extra careful in the

accurate measuring of the shortening.

3. Be sure to use the correct amount of water.

Thoroughly blend flour and shortening. Beat egg slightly, add water and vinegar. Add to flour and shortening mixture.

CREAM CHEESE PASTRY (delicious for turn-over pies, tarts, etc.)

- 1 three-ounce package cream cheese
- 1/2 cup butter or margarine
- 1 cup sifted flour - let cream cheese, and butter soften at room temperature; blend, stir in flour. Roll and use as desired.

There are 12 doctors, 11 lawyers and 40 gas station workers for every 10,000 people in the United States.

See or Call **DANIEL AUTOMOTIVE**
Your Authorized **KELVINATOR Dealer For Kelvinator Refrigerators and Appliances**
Good Used Refrigerators
Refrigeration Service by L. D. BRITTON
YU 3-2382 123 W.

JUST RECEIVED
FRESH SHIPMENT **PANGBURN'S**
JOHNSON REXALL PHARMACY

READY MIX CONCRETE

Mixed by exact weight to your specifications. Gravel is weighed separately. Sand is weighed separately.

Don't take chances—have the job done right.

Phone YU 3-2170 or Come In and Discuss YOUR BUILDING PROBLEMS WITH US

Bennett's Building Materials
Phone YU 3-2170

Why wait till 8 or 9 p.m. Sunday to call Long Distance?

Your lowest Long Distance rates are in effect all day Sunday. Telephone anywhere in the continental United States (except Alaska) for \$1* or less.

*Three minutes station-to-station

Southwestern Bell



"A PENNY'S WORTH OF ELECTRICITY, PLEASE. WE WANT TO RUN OUR YARD LIGHT TONIGHT!"

Modern Electric Lighting

913-7

Guest Editorials

HAROLD HUDSON in **The Ochiltree County Hesperian** (Ferryton): Last week a group of Ochiltree County farmers were in Dallas and blew a fuse when waiter in one of the better hotels there handed them a menu, to which was pinned a printed card explaining that because of the rise in the cost of food, all menu prices on steaks would have 50 cents added to them.

The natural question, and one which was asked by the local farmers, was why is it that no such sign is put on menus dropping the cost of steaks by 50 cents when the price of live cattle goes down to back breaking prices for the farmers and ranchers who produce them.

This is a question that never gets answered. The cattle market may drop to the bottom, but all most prices don't fluctuate that much. Always sensitive to a rise, food prices seem to enter stickiness when it comes to a drop.

Right now Congress is debating what they call "bread tax" in the proposed farm program, and city boys are shouting that the farmer has dirtied the political trough long enough and it is time to quit subsidizing him at the expense of the consumers who have to pay higher food prices because of this.

This is powerful political medicine, since there are more city voters who buy groceries than there are farm voters who produce them.

But the fact of the matter is that the farmer is the fall guy. He doesn't cash in on the gravy like he has been pictured. The government says that the cost of the wheat in a loaf of bread is merely 2 cents of the 28 or so that the consumer pays for it.

So if the farmer donated the wheat, there would be much of a change in bread price, probably not stay just the same.

The government says that for the past 17 years it has received by farmers for food they produce a drop of 15 per cent and in the same period, all prices of food have jumped 31 per cent.

The farmer now gets 37 cents of each \$1 spent for food. In a box of 29 cent cornflakes, the farmer's corn accounts for 2 cents.

Who gets all of the food money? It is hard to tell, but it is evident that the rising cost of food is not in the rise in cost of the raw product,

Hesperian Editorials

Color TV Arrives

Judging from sales charts, Americans are sold on color television.

In this year alone, more than two and a half million sets are expected to be bought, which would double the size of the industry.

But Americans took a long time making up their minds about color television.

Color sets became commercial in 1954 when the first came off the production line at the Radio Corporation of America's plant at Bloomington, Indiana. In the next ten years, about three and a half million color sets were sold, which is

only a fraction of the nearly fifty-five million sets in the country.

But color is now apparently getting wide acceptance with some five million sets expected to be in use by the end of 1965, and perhaps nearly twice that in the following year.

The prospect is no doubt received with a smile by General David Sarnoff, chairman of the Radio Corporation of America. As early as 1930, Sarnoff predicted color television for home use and directed his company's scientists to begin research in the field.

Protection From Freedom

Its been over four years now since The Wall, that infamous barrier in Berlin, was erected.

In those years many Germans have died seeking to escape its confines.

Much has been written both about those who failed and those who succeeded--the daring, the bravery, the tragedy, and the hatred of Communism and virtual enslavement they epitomize.

But the deaths are not the worst indictment of The Wall as it still

stands today. Its most monstrous sin is that it has deadened hope in the hearts of millions who still live under Communist rule in East Germany.

Captive in the depressing land, they have been victimized by skillful propaganda so long many even profess to believe that The Wall is a good thing because it protects them.

Protection from what?

From a contagious "disease" that goes by the name of freedom.

Dr. King, The Pope, Et Al

The proposals which come from Dr. Martin Luther King, and his followers admittedly sometimes leave one gasping.

Dr. King has moved rather heavily into the field of foreign affairs lately, despite the fact that he would seem to have his hands full with civil rights problems, riots, etc.

He announced he would send a personal letter to Vietnamese President Ho Chi Minh, and the leader of Russia, South Vietnam and the United States. One does not question Dr. King's motive and, in fact, his effort is similar to the President's.

However, when asked if this

action might violate the Logan Act, which forbids private citizens to negotiate with heads of governments without White House permission, King said he did not know but that if it did it was very unfortunate.

Another plan, proposed by a King supporter, is that he, the Pope, Mrs. Nikita Khrushchev and Mrs. John Kennedy make up a special peace delegation to help solve the crisis in Vietnam. That would certainly be a unique gathering, and it would be hard to estimate which of the four would feel most ridiculous, en route to Vietnam.

One hopes King will concentrate on the domestic scene.

of the tab will be picked up, leaving him with \$606 to pay out of his own pocket.

Most elderly people, it is expected, will subscribe for this supplementary coverage, which costs \$3 a month.

Residents of Floyd County will also gain under another provision of the medicare bill, which provides for an across-the-board bonus payment, retroactive to January 1st, for all those getting Social Security retirement or disability pensions.

For those in the local area who are receiving such pensions, it will amount to a \$38,400 windfall. They will get their bonus checks around September 15th.

HOSPITAL REPORT

PEOPLES HOSPITAL (Emergencies)

Billy Hinkle, 8-25, head laceration.

George Becerra, 8-29, evulsion of skin from thumb.

Don Davis, 8-27, foot injury.

Franklin Fields, 8-29, laceration of right elbow.

Mrs. Tom Hamilton, 8-20, laceration of thumb.

Jimmy Dale Elliott, 8-31, fracture of right clavicle.

(Patients)

Virginia Buster, 8-24; 8-25

Mrs. J. B. Tinnen, 8-24; 8-25

Ruben DeLeon, 8-25; 8-30

Margreita Cuevas, 8-25; 8-27, OB.

Mrs. A.W. Coltharp, 8-25, continues treatment.

Thomas Green, 8-27; 8-31, surgery.

Carolyn Molina, 8-27; 8-28, OB.

W. B. Lindley, 8-27; 8-30.

Leonard Smith, 8-28; 8-29.

Oscar Gonzales, 8-29; 8-31.

Alonzo Gonzales, 8-29; 8-30.

Latricia Powell, 8-31, continues treatment.

L. E. Fancher, 8-31, continues treatment.

Mrs. M. J. McNeill, 8-31, continues treatment.

Mr. Massie continues treatment.

Mrs. Lydia Graves continues treatment.

Mrs. W. M. Sanders continues treatment.

Mrs. A. C. Goen continues treatment.

Trial Of Simpson Set For Oct. 25

Trial date for J. C. Simpson of Plainview, charged with murder in the death of his wife, Irene, has been set for Oct. 25.

WESTERS
Weekend Specials
September 9, 10, & 11
Call Us We Deliver
100 Main Yu 3-2534

DEL MONTE CREAM ST. LE CORN NO. 303 CAN	2 FOR 37¢
DEER BRAND NO. 303 CAN TOMATOES	2 FOR 31¢
BEST MAID 18 OZ. GLASS PLUM JAM	31¢
FOOD KING NO. 303 CAN PORK & BEANS	5 FOR 59¢
MOUNTAIN PASS TOMATO SAUCE	3 FOR 25¢
SHURFINE TURNIP GREENS	3 FOR 35¢
SHURFINE CAKE MIX	4 FOR \$1
DELICIOUS 3 LB. BAG APPLES	49¢
BAMA 18 OZ. PEANUT BUTTER	49¢
SHURFINE QT. WAFFLE SYRUP	31¢

MARKET SPECIALS

CHUCK ROAST	LB. 53¢
FRANKS	3 LBS. \$1
LAB BACON	LB. 69¢
GRADE A RYERS	LB. 33¢

but in the labor costs of processing, packaging and marketing.

The farmer in this country is strapped in producing \$1.25 wheat and trying to buy \$7,000 tractors on his wheat crop.

The farmer is living in an age of inflation -- and unless something drastic gives it is going to get worse instead of better.

ONE OUT OF EVERY 12 ARE ELIGIBLE FOR MEDICARE IN FLOYD COUNTY

(Special to the Hesperian)

NEW YORK, Aug. 21.--How many people in Floyd County are currently eligible for the benefits that will be provided under the new medicare setup?

How much will the 7 percent cash bonus, to be paid to those who are on the retirement rolls, amount to locally?

According to the most recent tabulation, based on Department of Commerce Figures, approximately 1 out of every 12 persons in the local area are now automatically covered for most of their future medical costs.

They are the the 1,039 men and women who are 65 years of age or older.

They will be entitled to hospitalization, nursing home care, home nursing services and outpatient diagnostic services. These will go into effect, for the most part, next July 1st.

The 8.4 percent of the Floyd County population who are in the plus-65 bracket and are thus entitled to medicare, is relatively low. Elsewhere throughout the United States, the average is 9.2 percent.

Medicare's basic plan will take care of a large part of

has so-called supplementary coverage, which takes care of surgical costs and certain other bills, an additional \$52

LEVELLING GRASSES

LA RUE HUGHES
LANDSCAPING & NURSERY
Box 484 Kress, Texas
PHONE 684-2535

Guaranteed - Free Estimates
Evergreens

CEDAR HILL GRAIN CO.

OFFERS THE AREA FARMER TOP PRICE AND SERVICE ON GRAIN SORGHUM

MANAGER BOB DURHAM

APPRECIATES THE OPPORTUNITY TO SERVE YOU AGAIN THIS YEAR . . . AND EXPRESSES HIS THANKS TO THE MANY CUSTOMERS WHO HAVE PATRONIZED CEDAR HILL GRAIN COMPANY IN THE PAST.

BOB SAYS, "BRING YOUR GRAIN IN, WE'LL TREAT YOU RIGHT."

Are you Covered?
FIRE - AUTO - LIFE - GROUP
Insurance

- ★ LIABILITY
- ★ CROP INSURANCE
- ★ FIRE
- ★ HOSPITALIZATION
- ★ CASUALTY
- ★ WORKMEN'S COMPENSATION
- ★ AUTOMOBILE

"YOUR INDEPENDENT INSURANCE AGENT"

BAKER
Insurance Agency
127 W. California
Ph. YU 3-3270
SAM BAKER

EVERY "COTTON PICKIN' KIND" OF LEVIS ARE READY FOR YOUR SELECTION AT HALE'S DEPARTMENT STORE



The West's gone wild about **WHITE LEVI'S**

In the saddle and out, WHITE LEVI'S have the trim, rugged look Westerners insist on. And when the going gets rough, you'll find WHITE LEVI'S are just as tough as they look! Get 'em in off-white and colors, too!

Post Slaps Down 'Winds With 20-8 Victory

Antelopes In Control Of Game

The Whirlwind looked like a green wave moving down the gridiron on the opening play of the game against Post last Friday night as Kerry Bearden took a pitchout from Quarterback John DeLeon and scampered 62 yards around left end for the first score of the game.

Although spirits were high after the run the play was about all the Winds had to brag about after the final gun sounded with Post leading 20-8. It was the first time since 1956 that Post had defeated the Winds.

The locals managed only one official first down during the remaining 23 1/2 minutes in the first half and the Antelopes completely controlled the game in the final two stanzas.

In the closing minutes of the fourth quarter the Winds made a courageous attempt to score, but a first down on the ten-yard line plus a five-yard penalty on the second play left the team facing second and fifteen to go for the score. Two plays later the Winds were facing a fourth and four for the goal, but DeLeon was smothered back on the 11-yard line on a passing attempt to stymie the drive.

Two series of downs later the Winds had the ball once again

and moved to the 14 before the Antelope defense tightened and stalled the Green once again.

The first half was almost even statistically, however the Antelopes held the edge in ball control, therefore, the edge in statistics.

After Bearden's touchdown run, an attempted kick by Clinton Fawver was blocked by the Post line so the score stood 6-0, Floydada with 11:19 left in the first quarter.

Post stormed back, however, aided by 35 yards in penalties as Birch Lobban took Fawver's kickoff on the 36 and was downed immediately. A roughing penalty gave the Post team a first and ten on the Floydada 48.

Three plays later the Antelopes were facing a fourth and two, so they called on Sam Sims, one of the workhorses of the team who got the yardage needed but no more, for the Wind defense was reluctant to yield any territory.

Two plays later a 15-yard penalty gave Post a first and ten on the 23rd. An offside penalty, two plays later, against Floydada gave the host team a second and five on the 18.

It was at that point that the Winds decided that was as far



TOUCHDOWN BOUND - Kerry Bearden is shown on his way for a touchdown on the first play of the game against Post last Friday night. However, Post soon turned the tide

and turned the game into a 20-8 defeat for the local team. The Whirlwinds take on Canyon at Wester Field tomorrow night in the second outing of the season for the locals and the first for the visitors. (Staff Photo)

as the Antelopes should advance. A pass attempt missed its mark, Lobban picked up one yard but on the fourth down the front wall of Floydada smothered Lobban for a one-yard loss and took over on the 18.

Three plays later, the Winds, facing fourth and two called on Waldo West to punt out of trouble. His kick rolled to the Post 38-yard where it was pounced on by Sims.

On the next play Jimmy Bartlett swung wide around right end, got outside the corner man, and outran the secondary in the 62-yard race to the goal line to tie the score.

A kick by Paul Walker was good but a penalty rubbed out the point. On a second attempt from five yards farther away the kick was wide so the score remained 6-6.

Steve Marler received Mike Huff's kickoff on the 20-yard line and moved out to the 43 before he ran into a host of Antelope tacklers.

It looked as though the Winds were about to rebound as Adams picked up five, Bearden moved out for another three, and Adams got another four to the Post 45 to set up first and ten for the locals.

However, three plays netted a minus two yards for Floydada so West kicked to the 23. Before the ball hit the ground the punt, falling short, hit a Whirlwind, which cost the locals 15 yards. The play gave Post first and ten on the 38.

Four tedious plays later the officials called time out for a measurement to see if Post had made a first, and they had, but by only inches. After one play the first quarter ended with the score 6-6.

(SEE FOOTBALL PAGE 5)

FROM THE SPORTS DESK

BY JEDD BLESSING

No one knows better than the Whirlwinds themselves that there are a lot of improvements to be made this week.

Based on a 70 rating for a passing football grade only one of the Winds was graded with anything above that and he came up to about a 72 per cent. Most of the grades ranged from the upper 40's to the 60's. The blocking was poor, passing poor, running, fair at times, and reaction time on offensive and defense, very poor.

A lot of mistakes were made. The first could have been that

the team was very nervous, although there weren't the usual jitters, or many mixed up plays as is usually the case when a team is nervous.

One person has put it this way. The team leaked. On defense the team leaked runners and passes. On offense it leaked tacklers.

Everyone knew that a rough game with Post could be expected, the Antelopes don't have a bad team, but it isn't near the team the locals will meet tomorrow night on Wester Field.

In the Sunday School class that I help teach the group is studying about maturity. It was noted last Sunday that a mature person can make mistakes and make failures. But the difference between a mature person and one who isn't is that the first person will get up and go again in spite of the odds.

(SEE SPORTS PAGE 5)

STERMON WELLS, M. D.
ANNOUNCES THE OPENING OF
HIS OFFICES
IN
PEOPLE'S HOSPITAL
FLOYDADA, TEXAS

REXALL SUPER PLENAMINS SALUTES GREAT OLYMPIC PERFORMANCES

NOW SELECTED BY THE NATIONAL FOOTBALL LEAGUE FOR ALL 14 TEAMS.

SELECTED FOR USE BY THE U.S. OLYMPIC TEAM

SUPER PLENAMINS
AMERICAN'S LARGEST SELLING VITAMIN MINERAL PRODUCT

JOHNSON REXALL PHARMACY

Yes!!!

We sell the new.....

BIC PENS

HESPERIAN
Office supply
YU3-3737

BRING US YOUR

MILLO

WE PAY HIGHEST PRICES OR HANDLE YOUR CROP IN LOAN

IF YOU ARE LOOKING FOR THE RIGHT PLACE TO GET THE MOST FROM THAT GRAIN CROP... THEN TRY WYLIE GRAIN COMPANY IN FLOYDADA, WHERE YOU GET PROMPT, COURTEOUS SERVICE AND ATTENTION TO YOUR EVERY NEED.

CALL YU 3-2514 WHEN YOU MAKE YOUR HARVEST PLANS AND LET US HELP YOU.

REMEMBER YOUR BUSINESS IS ALWAYS APPRECIATED

WYLIE GRAIN CO.

ON LAKEVIEW ROAD IN SOUTHEAST FLOYDADA
PHONE YU-32514

BARGAIN ROUND UP TIME
COTTON STRIPPING SPECIALS

New 30 Brush Stripper
New No. 30 Metal Strippers
New No. 22 Strippers
New Triangle Basket

Used
Farmall M w/21 Stripper
Farmall 450 LPG
B 275 Diesel
I 350 LPG
No. 21 Strippers
No. 22 Strippers

ALL KINDS OF USED 4 ROW EQUIPMENT, TANDEM, SHREDDERS, 2 AND 3 BOTTOM REVERSIBLE PLOWS ARE IN STOCK. THEY WILL MAKE YOU MONEY AND WE NEED TO SELL THEM. COME TO SEE US.

MARTIN AND COMPANY
YOUR INTERNATIONAL HARVESTER HEADQUARTERS
FLOYDADA, TEXAS

for the
COLLEGE STUDENT

YOU MAY SUBSCRIBE TO THE HESPERIAN FOR NINE MONTHS FOR ONLY

\$3.00

CALL YU3-3737 NOW AND PLACE YOUR SUBSCRIPTION

FLOYD COUNTY HESPERIAN

BALL
PAGE 4)
plays later and after offense bogged down, Vargas kicked to Mar- Floydada 23 where he immediately.
an exchange of down punts Floydada took the ball on the Post plays netted no gain, again West kicked.
all called to Sims who trying to get control all and was soon tack- lling a trio of Whirlwinds. lling's decision on the coupled with a clipping gave the Antelopes the their one.
er, three plays later they got a safety when and other linemen lloban behind the goal stopped him in his
ay gave Floydada the again as the score
arry received the short Post 45 and moved the 38 before he was
er, the Winds couldn't drive and the ball went Post on the 28.
series of downs later oops had a first and the Post 49. A two- and an incomplete on lloban to Luis Ayal ard and eight for Post yada 49.
st play was another mpt with the Lob- combination but this icked off by Bearden where he was downed y.
eals had time for only before the half ended score Floydada, 8 and
the intermission the led to Post where they game on the Post plays later the team first and ten on the 38, but two plays later was recovered by the 34.
ays later West kicked 33 where the ball to a Whirlwind.
st team was not to a score while they sion of the ball for ang two first downs, ys later the Lobban- combination worked ntle end outran the secondary the re- yards to the goal second Post score of
ell incomplete for extra points and the 12-8, Post.
kickoff and the rest of the teams played back ball game with keeping possession for only four downs.
icked up one first Bearden spun out of a host of Antel- ers, gained another

five or six yards, and set up a first and ten. However, a John Cantrell pass was picked off by a Post defender ending the would-be-drive.
After the final stanza began Post took possession of the ball on the Floydada 43 with a first and ten. They moved the ball down to the 18, where an illegal motion penalty moved the ball back to the 23.
Facing first and 15 on the 23, Post went for the score, but a pichout pass fell incomplete. A drive by Sims picked up a yard to the 22 and on the next play, facing a third and 14, Dick Kennedy tossed to Ayala, who had beaten three Whirlwind defenders, for the TD.
A pass from Lobban to Ruben Solis was good for the extra points and the score stood at 20-8, Post.
The remainder of the ball game belonged to Floydada, except for seven plays by Post that gained only nominal yardage.
Marler received the final kickoff on the 25 and moved to the 38 before he was corralled by a host of Antelopes.
Two plays later, Bearden broke through for 12 yards to set up first and ten at the midfield stripe. Three plays later, after calling on Adams for three, Joe Christian for two, Adams for six, and a penalty against Post for unsportsmanlike conduct, the Winds had a first and ten on the 21.
Bearden moved the ball to the 14 and to the 10 on consecutive plays to set up another first down, after a pass from Cantrell to Marler went incomplete.
On the next play the two anxious teams jumped offside and received nullifying penalties. The next play, however, the Winds were too anxious and the entire forward wall moved before the ball was snapped to get the locals a five-yard penalty and set up first-and-goal on the 15.
Bearden moved the ball to the 9 and to the 4 on consecutive plays, but a Cantrell to Marler attempted pass was incomplete once again and on the next play DeLeon was smothered on the 11 to end the threat.
Post moved the ball from the 11 to their own 35 and were held there by Floydada and punted.
Marler called for a fair catch on the 44 to set the Winds in business once again with only a minute left to play.
A pass from Cantrell to West was incomplete but on the next play Cantrell found Marler with a little opening and hit him on the 14 where he was dropped.
Cantrell was smothered on the 16 and three passing attempts went incomplete to end the Wind drive and give the Antelopes the ball on the 16. A quarterback sneak by Lobban ended the game.
Next week Floydada hosts AAA Canyon and Post travels to Ballinger.

STATISTICS

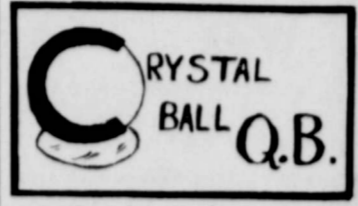
First Downs	Floydada	Post
Yards Gained	171	194
Yards Penalized	60	20
Passes Attempted	13	9
Passes Completed	1	5

SPORTS
(FROM PAGE 4)

The same is true of a good football team. Of the 25 games we had listed on our contest page this week 23 teams lost. However, those same teams may go undefeated for the rest of the season.
The Whirlwinds lacked experience going into last Friday's game, and, as was stated earlier, they got experience in a hurry. Now, if the team will look at the mistakes it made against Post and make sure they don't happen again, the team will go a long way this year.
However, if the team doesn't sharpen its week it can expect to get run off the field tomorrow night when the Eagles invade Floydada.
Looking at Friday night's results, it is noted that Olton, the district favorite, and Abernathy were the only two teams that won their games. However, of these two, Olton is the only one that accomplished much. The Mustangs were underdogs against Morton, but blasted the Indians 18-0. Abernathy pounded Frenship 40-0, Friona lost to class A Farwell, Dimmitt lost to class AAA Muleshoe, Lockney fell to Hale Center and Floydada lost to Post.
Hale Center is expected to play in the 3-AA circuit next year as a district team. This year the Owls play every team in this district except the Winds. For a wild prediction watch the Hale Center team beat every team in this district this year except perhaps Olton. The Owls outlasted the Mustangs last year on Olton's home field, however.

What happened on that punt? This question was kicked around a lot during halftime at the game Friday night, and to date no one here has come up with the answer.
The punt referred to was the one that carried a Post player into the end zone where he was tackled shortly before Floydada got a Safety.
The officials ruled it a touchback, for the momentum of the ball carried the Post player into the end zone, and he didn't have full control of the ball until he was back across the goal line.
This situation coupled with a clipping penalty against Post should have given the Antelopes the ball on the 10-yard line. (The ball went out to the 20 and the penalty against Post, half the distance to the goal, would move the ball to the 10.)
If anyone knows how Post got the ball on the one, a lot of people would like to share your knowledge.
It sure was disgusting to be down on the field and hear some of the remarks made by Floydada fans during the game. No one can deny that a lot of the calls made on the field were questionable, however, no one can say truthfully that Floydada got cheated out of the game. The Whirlwinds just got outplayed.
But remarks coming from the stands don't help a bit. Especially things like, "Go out there and hit him coach, we're behind you", show very poor

sportsmanship. Yes, that person is behind him, all the way to the stands behind him.
The purpose of having interscholastic athletics and other competition is to teach teamwork, sportsmanship and respect for other contestants. With sportsmanship like that in the stands what is a player on the field expected to learn?



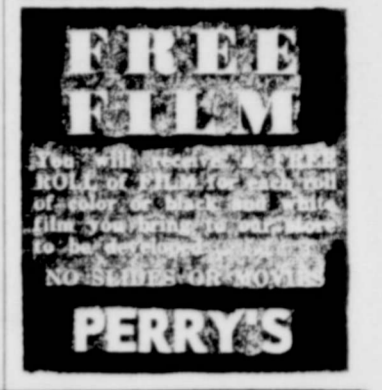
Let's take a look at what can be expected this week. Assuming that the Floydada team will sharpen its thinking and play football this week, the experience of the line should be greater than the experience of the Canyon backfield. The Eagles are picked to finish just above the Muleshoe team in district 1-AA.
For the other district teams Lockney should have little trouble with Kress, Dimmitt will have two losses after meeting Hale Center, Abernathy will down Petersburg, but it won't be easy, Friona will outlast Plains, and Tulia will do away with Olton.
In other area games, Phillips will blast Childress, Iowa Park will take Stamford, Matador will open with a win over Paducah, Springlake will take Seagraves, Farwell will run away with Bovina, Silverton will ease by Hart, Amarillo will open with a victory over Odessa, Dumas although AAA will dispose of AAAA Palo Duro and Plainview will drop a good Hereford crew.
Morton and Muleshoe will battle out a rivalry but give this one to AA Morton bouncing back after being kicked by the Mustangs, Dalhart will overpower Guymon, Pampa will defeat Perryton, Seminole, although not as strong as Denver

City will beat Levelland, (a team run over by Tulia in a scrimmage) Borger will blast Littlefield, Tucuman will continue its winning series over Boys Ranch, Panhandle and McLean will have a close one, but McLean will be the winner.
Lubbock High should take a victory when they meet Midland Lee, Tascosa should take Permian of Odessa, Claude should make it two in a row by taking Clarendon and White Deer will drop Gruver in a battle of the district favorites.
It will be interesting to see how this QB fares when compared those who win the contests each week.
Come out to the game Friday night and help support the Winds.

Billy Graham Motion Picture Set For Lubbock Showing September 19-21

LUBBOCK--"The Restless Ones," considered the most successful motion picture yet produced by Evangelist Billy Graham, will be shown in Municipal Auditorium here Sept. 19-20-21.
With the accent on youth, this feature-length film deals imaginatively and dramatically with the teen-age crisis. With a background setting provided by the 1963 Billy Graham Los Angeles Crusade, and artfully woven into the story pattern, "The Restless Ones," is a hard-hitting, bold approach to our social problems.
Here is a film which dares to be different, a story which will stir the heart and mind. Having seen "The Restless Ones," you will never be the same.
As one reviewer said, "Here is a picture that tells the world the truth and comes up with an answer--not an easy answer--but an answer from beyond us." This answer will satisfy, challenge and inspire young and old alike and will appeal to churchgoers and non-churchgoers. The Christian message comes through in the midst of a realistic teen-age situation, cleanly and without cloying. Swift-moving plot episodes highlight the opportunities facing the church.
Screen writer James Collier has skillfully brought into focus

the contemporary plight of both teen-agers and parents.
Performances will be at 2 p.m. on opening day and at 6:15 and 8:30 p.m. on Sept. 20-21. All tickets are priced at \$1 and may be obtained by writing Norton Baker, 1313 Avenue L, Lubbock.
The movie will be making its Texas premiere here. Local arrangements are being handled by a steering committee composed of civic and business leaders of inter-denominational faiths. Area churches also are cooperating in the effort to bring the film ministry of Graham to the South Plains.



40 Gather For Annual Reunion

A group composed of 40 old time residents of the Meteor-Aiken Community were reunited last Sunday in their annual meeting at the Shelter House in Plainview City Park.
A basket lunch was served at the noon hour and, after a short program which included the development of the Meteor-Aiken Community from its beginning in 1891 - 74 years ago - compiled and read by Mrs. Maggie Thompson Weathers of Lockney, the afternoon was spent in visiting and renewing old-time friendships.
The two oldest members present for the occasion were: Mrs. Alice Johnson, 94, of Plainview; and J. H. Weathers, 84, of Lockney.
Others attending included Mr. and Mrs. W. M. Turnbough of Meadow; Mr. and Mrs. Charley Starkey and Sercy of Fomot; Mr. and Mrs. Bob Mobley, and Jean, Lubbock; and Mr. and Mrs. T. J. Bonds of Happy; Mrs. and Mrs. Rainey of Lubbock; Mrs. Bowman Floydada; Mr. and Mrs. Ernest Wells, Mrs. Ida Dodson, Frank Whit-

fill, Mrs. Maggie Weathers and Mrs. Lena Weathers, all of Lockney; Mrs. Mammie Elam of Tulia; Mr. and Mrs. Emmett Thornton, Mr. and Mrs. J. J. Miller, Mr. and Mrs. Arthur Johnson, Mr. and Mrs. R. L. Powell, Mr. and Mrs. J. C. Thomas, Mr. and Mrs. Charley Elam, Bert Elam, Mr. and Mrs. Lee, Mrs. Edna Teague, Mrs. Nannie Toliver and Miss Thelma Thompson, all of Plainview.

99% OF THE COOKING AT THE WORLD'S FAIR IS PROVIDED BY **GAS** Pioneer Natural Gas Company

A. G. TYLER AT YOUR SERVICE
HERE IS A MAN WITH MANY MANY YEARS OF AUTO REPAIR EXPERIENCE. . . COME IN AND LET HIM HELP YOU.
WE SPECIALIZE IN REPLACING WINDSHIELDS AND DOOR GLASS
TED ALLEN AUTO SERVICE
205 E. MAIN PHONE YU 3-3290

BISCUIT MIX
PIONEER
2 POUND SIZE
49¢

CAKE MIX
GLADIOLA REG. SIZE
3 FOR \$1

NOTHING BUT BARGAINS THIS WEEK
Prices Good September 9 - 16
25 LB. BAG
GOLD MEDAL FLOUR \$2.29

MACARONI AND CHEESE
DINNER 2 FOR 43¢
3 OZ.
NESCAFE \$1.09
44 OZ. SIZE
PRESERVES 89¢

FREE SUGAR
5 LB. SACK WITH PURCHASE OF 8 LIGHT BULBS FROM 15 TO 100 WATT

TOILET TISSUE
4 ROLLS
29¢

OLEO
POUND
19¢

PRODUCE
TOKAY **GRAPES 17 1/2¢** LB.
NO. 1 RUSSETT **POTATOES 49¢** 10 LB.
GRAPEFRUIT 2 FOR 25¢

KIMBELLS TEA
POUND
98¢

PEACHES
HUNTS NO. 2 1 1/2 CAN
4 for 89¢

MEATS
BACON WILSONS CERTIFIED 2 LBS. \$1.59
CHEESE PHILADELPHIA 2 3 OZ. 25¢
PORK STEAK 59¢ LB.
ROUND STEAK 89¢ LB.
CHOICE HEAVY BEEF CUT AND WRAPPED FOR YOUR LOCKER

EGGS
3 DOZEN
\$1

THRIFTY SUPER MARKET
DOUBLE BUCCANEER STAMPS EVERY WEDNESDAY
Second & Mississippi Streets

GILLETTE RIGHT GUARD
\$1.50 VALUE
7 OZ. FAMILY SIZE SPRAY CAN.....
77¢ (LIMIT 1)
JOHNSON REXALL PHARMACY

We Will Meet...Or Beat All Competitors On OFFICE EQUIPMENT

Let H-O-N Plan Your Desks To Fit Your Office Needs

Keynoted to the trend for efficient L-work arrangements in the office is H-O-N's new desk line. Completely flexible, H-O-N desks offer literally hundreds of optional groupings. Artful use of vinyl-clad steel on drawer fronts and back panels adds distinctive tones and textures. Desk above with roomy 60 x 30 top and 38 x 19 typing return, includes two pedestals and center drawer.

HESPERIAN OFFICE SUPPLY

HAVE FUN .. WIN PRIZES ..

HESPERIAN

FOOTBALL CONTEST

\$15

IN CASH PRIZES
EACH WEEK

AND QUARTERBACK FORECAST

DEADLINE FOR ENTRIES - 5 P.M. FRIDAY IN
HESPERIAN OFFICE OR POST MARKED

TIE BREAKER - Guess Total Points
FLOYDADA-CANYON GAME

CONTEST RULES

ANYONE CAN ENTER EXCEPT THE EMPLOYEES OF THE HESPERIAN. THREE CASH PRIZES ARE GIVEN EACH WEEK-TIES WILL SPLIT PRIZE MONEY. MEMBERS OF THE EDITORIAL DEPARTMENT ARE SOLE JUDGES OF THE CONTEST AND THEIR DECISION IS FINAL. IT IS NOT NECESSARY TO INDICATE SCORES ON ALL THE GAMES, BUT SCORE MUST BE INDICATED ON THE TIE BREAKER GAME AT RIGHT. SIMPLY CIRCLE THE TEAM YOU CHOOSE TO WIN IN EACH OF THE FOOTBALLS. DEADLINE FOR SUBMITTING ENTRIES IS 5 P.M. FRIDAY - WINNERS WILL BE ANNOUNCED THE FOLLOWING WEEK. ENTER AS MANY TIMES AS YOU WISH, PRINT NAME AND ADDRESS PLAINLY AT TOP OF THE PAGE YOU TURN IN AND MAIL TO THIS NEWSPAPER.

1ST PRIZE \$7.50

2ND PRIZE \$5.00

3RD PRIZE \$2.50

Producers Cooperative Elevator
SEEDS - FEEDS - GRAIN - FERTILIZER
FLOYDADA TEX. Phone YU3-3908
DOUGHERTY TEX. Phone YU3-3020
DALHART VS. GUYMON

FARM BUREAU INSURANCE
SAM PUCKETT-AGENT
SPRINGLAKE VS. SEAGRAVES

MOORE FUNERAL HOME
AND AMBULANCE SERVICE
LOCKNEY VS. KRESS

HOME OF TOP-FLITE FEEDS
CARMACK FEED & SEED
IOWA PARK VS. STAMFORD

MASSEY-FERGUSON EQUIPMENT
FLOYDADA IMPLEMENT CO.
ABERNATHY VS. PETERSBURG

SOUTH PLAINS COOP GINS & ELEVATOR
SOUTH PLAINS, TEXAS
FRIONA VS. PLAINS

FLOYD COUNTY CO-OP GINS
PAMPA VS. PERRYTON

RUCKER'S OK TIRE STORE
COMPLETE TIRE SALES - SERVICE
SILVERTON VS. HART

WELDING, EQUIPMENT REPAIR
UNITED MACHINE & SUPPLY
WHITE DEER VS. GRUVER

JOHN DEERE FARM MACHINERY
COLLINS IMPLEMENT CO.
MATADOR VS. PADUCAH

AC AND NEW HOLLAND EQUIPMENT
MCDONALD IMPLEMENTS
FLOYDADA VS. CANYON

SINCE 1911
W. M. TYE DRILLING CO.
FARWELL VS. BOVINA

COMPLETE ENGINE REPAIR
HASLEY MOTOR SERVICE
MULESHOE VS. MORTON

SANDERS PUMP & DRILLING
WESTERN PUMP REPRESENTATIVE
DIMMITT VS. HALE CENTER

PONTIAC, BUICK SALES SERVICE
CITY AUTO, INC.
AMARILLO VS. ODESSA

ODEN CHEVROLET
CHEVROLET-OLDSMOBILE
HEREFORD VS. PLAINVIEW

YOU CAN BANK ON THE
FIRST NATIONAL BANK
DUMAS VS. PALO DURO

COMPLETE BUILDING SUPPLY
BUILDERS MART
OLTON VS. TULIA

PONDEROSA MEAT CO.
HOME OF JOHNNY'S COUNTRY-STYLE SAUSAGE
CLARENDON VS. CLAUDE

CAPROCK MOTOR PARTS
AND HARDWARE
BOYS RANCH VS. TUCUMCARI

NORRELL TRACTOR PARTS
HYDRAULICS, BEARINGS, BELTS, CHA
CHILDRESS VS. PHILLIPS

KELVINATOR APPLIANCES
DANIEL AUTOMOTIVE
PANHANDLE VS. MCLEAN

FARMALL TRACTORS AND EQUIPMENT
MARTIN AND CO.
TASCOSA VS. PERMIAN

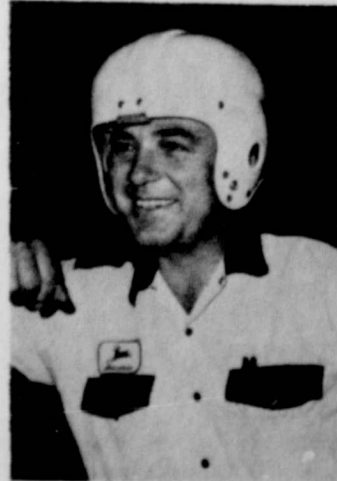
Parker Studio
121 W. CALIFORNIA PHONE YU3-4063
LUBBOCK VS. MIDLAND LEE

HOUSEWIVES SHOP AND SAVE AT
PIGGY WIGGLY
LITTLEFIELD VS. BORGER

"DEEP ROCK" BOTTOM PRICES AT
WYLIE PETROLEUM
LEVELLAND VS. SEMINOLE

QUARTERBACK QUOTES

JOHNNY COLLINS



FLOYDADA 12
CANYON 28

CLEM McDONALD



FLOYDADA 6
CANYON 13

STRONG CHURCHES

Make STRONG COMMUNITIES

- Mary Magdalen Catholic Church**
Paul A. Link, Pastor
11 A.M. Holy Mass and Union
7:00 p.m. Holy Mass and Union
- Methodist Church**
E. Lutrick, Pastor
Sunday Services
School 9:45
Service 11:00
Bible Groups 5:30
Worship 6:30
- Spanish Mission**
Chavez, Pastor
9:45
11:00
- Christian Church**
Ramirez, Pastor
Sunday Services
9:45
11:00
6:00
- Baptist Church**
Bradley, Pastor
Sunday Services
9:45
11:00
6:00
7:00
- Hope Primitive Baptist Church**
Jeffrey, Pastor
Sunday Services
11:00
Afternoon 2:00
Worship 7:00
- Cedar Hill Assembly of God Church**
G. Slaton, Pastor
Sunday Services
10:00
11:00
6:00
6:30
7:00
7:30
- Baptist Church**
H. Rhine, Pastor
Sunday Services
9:50
10:00
10:45
11:15
6:00
6:30
7:00
7:30



THE CHURCH FOR ALL • ALL FOR THE CHURCH

The Church is the greatest factor on earth for the building of character and good citizenship. It is a storehouse of spiritual values. Without a strong Church, neither democracy nor civilization can survive. There are four sound reasons why every person should attend services regularly and support the Church. They are: (1) For his own sake. (2) For his children's sake. (3) For the sake of his community and nation. (4) For the sake of the Church itself, which needs his moral and material support. Plan to go to church regularly and read your Bible daily.

A Change In View

There's nothing like a new perspective to change your attitude toward life.

When Junior is bored, he simply stands on his head for a new slant at things. The floor flips to the ceiling, with tables and chairs hanging from it, and people walk upside-down. At least that's the way it looks to him.

It is a good idea to gain a different perspective — to step back and get a new slant on things around you. But you don't have to stand on your head to do it.

Instead identify yourself with a church. Take your family and go regularly to worship. You will find a new perspective. Genuine values will keep their importance; unimportant things will diminish.

Today's life will be happier; tomorrow's full of hope. Nothing is upside-down, but everything claims its rightful place when you view life with the faith of a Christian.

Sunday Ecclesiastes 11:1-10	Monday John 3:1-17	Tuesday John 14:1-17	Wednesday Acts 10:34-43	Thursday Acts 17:22-34	Friday II Corinthians 5:1-10	Saturday James 3:13-18	Copyright 1965 Keister Advertising Service, Inc. Strasburg, Va.
-----------------------------------	--------------------------	----------------------------	-------------------------------	------------------------------	------------------------------------	------------------------------	---

- Nazarene Church**
Lowell Bell, Pastor
Sunday Services
Sunday School 9:45
Morning Worship 11:00
N.Y.P.F. 6:30
Evening Worship 7:30
- Cumberland Presbyterian Church**
Houston Dixon, Pastor
Sunday School 10:00
Morning Worship 11:00
Evening Worship Discont.
Radio Services 9:15 a.m.
- Cedar Hill Baptist Church**
Sunday Services
Sunday School 10:00
Morning Worship 11:00
Evening Worship 7:30
- Dougherty Baptist Church**
Jim DeWese, Pastor
Sunday Services
Sunday School 10:00
Morning Worship 11:00
Training Union 7:00
Evening Worship 8:00
- City Park Church of Christ**
George T. Elkins, Jr. Minister
Sunday Services
Bible Study 9:45
Morning Worship 10:40
Bible Study 5:15
Evening Worship 6:00
Ladies Bible Study, Wed. 9:30 a.m.
Bible Study Wednesday 7:30
- Wall St. Church of Christ**
O. W. Kirk, Elder
Newell Burk, Elder
Sunday Services
Communion and
Morning Worship 10:30
Evening Worship 6:30
Wednesday Evening 7:30
- Mt. Blanco Baptist Church**
O. N. Reed, Pastor
Sunday Services
Sunday School 10:00
Morning Worship 11:00
Training Union 6:30
Evening Worship 7:30
Wednesday Prayer Service 7:30
- South Plains Baptist Church**
Sealy Smith, Pastor
Sunday Services
Sunday School 10:00
Morning Worship 11:00
Training Union 6:00
Evening Worship 7:00
- Carrs Chapel**
Worship 2nd and 4th Sundays
Rev. Doyn Meriman, Pastor
Sunday School 10:00
Morning Worship 11:00
Evening Worship 6:00
- Victory Baptist Church**
A. J. Holster, Pastor
Sunday Services
Sunday School 10:00
Morning Worship 11:00
Evening Worship 7:45
Wednesday Evening 8:00
- New Salem Primitive Baptist Church**
Joe M. Jackson Pastor
Sunday Services
Congregational Singing 10:00
Morning Worship 11:00
Regular Conference Meeting each
Second Saturday night 8:00
- Mexican Baptist Mission**
Raymond Asebedo, Pastor
Sunday Services
Sunday School 9:45
Morning Worship 11:00
Training Union 6:00
Evening Worship 7:00
- First Assembly of God Church**
R. A. Staggs, Pastor
Sunday Services
Sunday School 9:45
Morning Worship 11:00
Evangelistic Service 7:00

This inspirational message is sponsored by the following civic minded firms

- | | | | |
|------------------------------|--|---|--|
| Ford Sales | Producers Co-operative Elevator
FLOYDADA & DOUGHERTY | Weems & Weems | Leonard's Cafe |
| Hand Implements | Mac's "66" Station | Consumers Fuel Association | Edmiston Plumbing & Heating |
| Hand Implement Co. | Parker Studio | Martin & Company | Solomon Jewelry |
| Land Bank Of Floydada | Carthel Fertilizer and Oil | Floydada Real Estate and Insurance | Parker Furniture Co. |
| Rubber Welders | Moore Funeral Home | Farmers Co-op Gins | Wylie Butane |
| Conoco | Winn's Restaurant | Collins Implement Co. | United Machine & Supply, Inc. |

Limit On Length Of Vehicles Increased

The Legislature has seen fit to allow the operation of longer vehicles on Texas highways. These vehicles can be a maximum of 65 feet. The present length for a combination of vehicles is 50 feet. The law has been changed as a result of the trucking industry seeking to improve the efficiency and quality of service to the public.

These combinations commonly known as "double-bottoms", although used extensively, are virtually unknown in many areas of the country. Texas has been one of those areas. However, beginning September 1, 1965, we will begin seeing the "big-rigs" on our roads.

Out purpose in this article is to acquaint the motoring public with the fact that the bigger and longer vehicles will be on our roads. And, though we occasionally see a long truck, mobile home, or some oil field equipment on the highway and we need to drive accordingly-----these are not too numerous. The "double-bottoms" will be there day and night, especially on our thru highways.

In the past a vehicle combination of this type would have required a permit and would not have been allowed on the roadway at night.

Since the picture is changing, Texas motorists will need to change some driving habits. Look for these longer and larger vehicles at night.

Naturally your question is, can they "fit" into present day traffic? Let's look at the turning movements of these 65 feet length "double-bottoms".

According to Traffic Safety, a National Safety Council publication, the Department of Commerce says that, after tests they ran, the 65 feet combinations have less off-tracking than the 50 feet, five-axle tractor semitrailers.

"For a 90 degree turn, such as a city street intersection, the 65 feet 'double' has a track width 2.7 feet narrower than the 50 feet tractor semitrailer."

Turning on the cloverleaf intersections of the Interstate System, the Department of Commerce tests show the "doubles" are 1.2 feet narrower than those of the smaller combinations.

Another question, and equally important, is it safe to pass a "double-bottom"? We again refer to the Department of Commerce report showing a 10 m.p.h. speed differential (car at 60 and truck at 50 m.p.h., for example) it takes 15.17 seconds for the car to pass a 55 feet long combination on a two-lane road. If the truck being passed is 65 feet long, the passing time is 15.75 seconds, only two-thirds of a second more.

Mainly, we will need to allow just a little more time and distance in passing these vehicles and look forward to seeing them on our roads day and night.

COXES ATTEND REUNION

Mr. and Mrs. Waldo Cox of Floydada attended the Winter reunion held in Snyder, Tex., last Sunday. Some 100 descendants of the late Joseph and Nancy Winter met in the Scurry County Memorial Park, both Saturday and Sunday for the family gathering.

The oldest member present was Mrs. M. E. Winter of Merkel, who is 82 and crippled with arthritis. She never misses a reunion. Her 15 week old great granddaughter was the youngest member present.

Driving the greatest distance was Mr. and Mrs. Lee Roy Brookshire of Dallas. Jack Green and wife of Snyder, who are both blind, were an inspiration to the entire group, Mrs. Cox said. Their cheerful greeting to all was warmly received.

Descendants attended from Abilene, Dallas, Merkel, Ovaio, Sylvester, San Angelo, Odessa, Colorado City, Hermleigh, Snyder, Lamesa, Lubbock, Floydada, Sweetwater and Anson.

Three Floyd Residents To Be Inducted

Three Floyd County residents are among the eight listed from the four-county area that are to report for Armed Forces induction next Monday, September 13, 1965. They are William D. Garrett, James Arnold Duvak and John Willis Hearson.

Denis Eugene Whitfill, Fred Zimmerman, III, Elbert David Gilliland, Toribio Pena Lopez and Willie R. Sturgeon also of Floyd County are among the 36 who will report the same day for physical exams.

**PLAN THE BEST SCHOOL-DAY
Breakfast**
FROM
PIGGLY WIGGLY

BONNEBELLE, SWEET CREAM, QUARTERS
BUTTER.....LB.. 69¢

FAB, NEW IMPROVED
DETERGENT....GIANT BOX 79¢

MORTON'S
SALAD DRESSING... 39¢

PIILLSBURY
**FLOUR... 25 LB \$2.39
BAG 2.39**

CHEF-BOY-AR-DEE
LASAGNA... 3 15oz CANS 1.19

HEALTH AND BEAUTY AIDS!
SHAMPOO
PRELL
REG 89¢
LARGE TUBE
59¢

GROOM & CLEAN, 11¢ OFF
HAIR DRESSING.... KING SIZE.. 69¢

MC LEAN'S, REG. 59¢
TOOTHPASTE... GIANT SIZE.. 47¢

RIGHT GUARD, PRESSURE CAN, REG. 1.00
DEODORANT..... KING SIZE.. 73¢

VERGEN'S, REG. 1.00
HAND LOTION.... LARGE SIZE.. 79¢

FRESH FROZEN FOODS!
FRUIT PIES
JOHNSTON
APPLE, CHERRY
PINE APPLE
9 INCH
BIG 79¢ SIZE.
59¢

BANQUET, ENCHILADA, OR
MEXICAN DINNERS... 39¢

SEALD SWEET, FRESH FROZEN
ORANGE JUICE 12oz CAN WITH 10¢ COUPON. 19¢
WITHOUT 10¢ COUPON 29¢

THESE VALUES
GOOD AT
YOUR PIGGLY
WIGGLY STORE
IN FLOYDADA,
TEXAS, SEPT. 9, 10,
11, 1965. WE RESERVE
THE RIGHT TO
LIMIT QUANTITIES!

RUSSET, ALL PURPOSE
POTATOES... 8 LB BAG 35¢

IDEAL GRADE A, MEDIUM
EGGS.... 3 DOZEN

HOLLY, IMPERIAL, C#H
SUGAR... 5 LB BAG 49¢

GOOD HOPE, EVAPORATED
MILK... TALL CAN... 12¢

ELGIN, COLORED
OLEO... 2 1LB PKGS 29¢

HI-C ASSORTED FLAVORS
FRUIT DRINKS 3 8oz CANS 89¢
CIRCUS ASSORTED FLAVORS 3 46oz CANS

DAMITA, ASSORTED COLORS
TOILET TISSUE 4 2 ROLL PKG. 29¢

GOLDEN KETTLE, PEACH PRESERVES, PLUM JAM OR
GRAPE JELLY..... 3 16oz TUMBLER 39¢
MIX OR MATCH

PIGGLY WIGGLY MEATS ARE THE BEST!!!
DECKER'S HICKORY SMOKED
PICNICS..... LB.. 39¢

RODEOS, ALL MEAT, SLICED
BOLOGNA 12oz PKG... 49¢

U.S.D.A. CHOICE, AGED, HEAVY BEEF, VALD-TRIMMED
ROUND STEAK..... LB... 89¢

LEAN, CHOKE, CUBES OF BEEF, BONELESS LEAN, CHOICE BEEF, DATED
STEW MEAT... LB. 69¢ LEAN NORTHERN PORK, CENTER CUT
GROUND CHUCK... 59¢ PORK CHOPS...

SPARKLING PIGGLY WIGGLY PRODUCE!!!
APPLES
NEW CROP, FANCY
DELICIOUS
LB....

Lowest Prices... Greatest Variety... always at
Piggly Wiggly