

Floyd County Bale Count Reaches 117,339 Total

Caprock Chat by WENDELL TOOLEY

Like the highway department might as well put their snow back in the moth...

of the old timers talk the big snow in 1918...

Bishop recalls another snow along about 1938 or so that held up traffic for three...

view's big snow came in...

GHERTY'S Chamber of Commerce has scored a big in...

was a growing season of little moisture. This was...

er pkgs. rainfall that we did get after the growing season...

Assessor Lockney at Tuesday

purpose of his being there the collection of state and taxes, and for issuing poll...

was anxious to remind county residents that January is the last day for...

alph Johnston, Jr., Named Outstanding Comanche Scout

was guest speaker at the event. He is a member of the National Council for the Boy Scouts...

FRIDA NEW SPY.



TEXAS' FASTEST SUPER STOCK — The '64 Chevy Chevelle, pictured above, won the state championship at Mineral Wells last weekend...

Post Office Receipts Up \$2,000 In '64

According to Ed Wester, postmaster of the Floydada Post Office, the postal receipts in 1964 were up over \$2,000 in the previous year...

Water Board Backtracks On Condemnation

The officers and directors of the Mackenzie Municipal Water Authority, in a called meeting at Lockney City Hall last week, voted to rescind their action...

Beloved Pioneer, Mrs. Lela Massie Dies At Age Of 95

One of Floyd County's first pioneer women, the beloved Mrs. Lela M. Massie, wife of the late W. M. Massie, succumbed Tuesday morning after a brief illness...

Merchants Discuss Local Burglaries and Holidays

The Retail Merchants Committee of the Floydada Chamber of Commerce discussed the outbreak of burglaries, set holidays for the year and made plans for the 1965 Christmas lighting for the city at a special called meeting...

Banquet Ticket Sales Climbing

The ticket sales for the Chamber of Commerce Banquet, slated February 5 have approached the 200 mark. About 500 persons are expected to attend the banquet...

Excels All Prior Season Predictions

In a survey that was run this week jointly by the Hesperian and the Lockney Beacon, it was found that the 1964 cotton crop in Floyd County went well above all early predictions...

Hospital Board Names Prexy

At a meeting of the Cooper Hospital Board recently, the group selected a new chairman to serve for the coming year. He is Hollis Bond, the former secretary of the board...

Livestock Is Subject Of Seminar Next Wednesday

Dr. Dixon D. Hubbard, Area Livestock Specialist for the Texas Agricultural Extension Service will be the featured speaker at the final seminar in the Livestock Electric Building next Wednesday afternoon at 2 p.m.



DIXON D. HUBBARD Livestock Specialist

Two Firms Planning Expansions

Two business firms, one in Floydada and one in Dougherty, are planning business expansions in the near future. They are the Dougherty Grain Company, and the Fishman Motel.

Richard Miller Resigns As County Agent

Floyd County must be hard on County Agriculture Agents. The second one to resign in a year's time turned in his notice to the Commissioners Court here recently.

SWPS Requests Renewal Of Franchise From City Aldermen

Southwestern Public Service Company requested the Floydada City Council to renew its franchise for a 30 year period Thursday night at a meeting of the city governing body.

Lubbock Fire Chief Is To Present YF Program Here

"How To Prevent And Control LP Gas Fires", will be the topic of discussion, and of the program, when the Young Farmers meet tonight at 7:30 in the Agriculture room of the high school.

SWPS Requests Renewal Of Franchise From City Aldermen

Southwestern Public Service Company requested the Floydada City Council to renew its franchise for a 30 year period Thursday night at a meeting of the city governing body.

Lubbock Fire Chief Is To Present YF Program Here

"How To Prevent And Control LP Gas Fires", will be the topic of discussion, and of the program, when the Young Farmers meet tonight at 7:30 in the Agriculture room of the high school.

Richard Miller Resigns As County Agent

Floyd County must be hard on County Agriculture Agents. The second one to resign in a year's time turned in his notice to the Commissioners Court here recently.

Merchants Discuss Local Burglaries and Holidays

The Retail Merchants Committee of the Floydada Chamber of Commerce discussed the outbreak of burglaries, set holidays for the year and made plans for the 1965 Christmas lighting for the city at a special called meeting...

Banquet Ticket Sales Climbing

The ticket sales for the Chamber of Commerce Banquet, slated February 5 have approached the 200 mark. About 500 persons are expected to attend the banquet...

Mothers March Of Dimes Scheduled Monday Night

Each day 700 babies are born in the United States with a birth defect that causes medical problems at the time of birth or later in life. This adds up to 250,000 each year. One infant in every 16 is born with a serious birth defect and a half a million unborn babies are lost each year because of a birth defect.

"How To Live Longer" Program For All Men Of All Ages Set

Bill Renfro, representative of the Texas Heart Association from Lubbock and local physician Dr. Ed Bayouth will present a program for every man who is interested in living longer at the First Methodist Church next Wednesday night in Fellowship Hall.



GIVE TO THE MOTHERS MARCH... of Dimes Monday night during the door to door canvassing. Sponsors of the drive in Floydada this year is the 1962 Jr., Study Club and the 1956 Jr. Study Clubs...



IT WENT THAT WAY — Dee Willson, Nona Pernel and Pat Pierce seem to be chasing a ball in Tuesday night's game against Dimmitt as a Dimmitt girl seems to point the direction the ball went. Dimmitt won the game 50-46. (Staff Photo)

**1964 Saw 264 New Irrigation Wells Drilled**

In 1964, 264 new irrigation wells were completed in Floyd County. This was the 3rd largest increase in irrigation well development since the beginning of available records.

1955 showed the largest increase with 358 wells and 1933 lead 1964 by only 4 wells or 268 new wells.

The drilling of wells for irrigation in Floyd County began in the early 1890's. Accurate records of the first irrigation wells and the beginning of irrigation are pretty scarce but for all practical purposes, the pumping of these first wells caused little effect on the water in storage until the late 1940's and early 1950's.

Reasonably accurate records of the increase in irrigation well development by years are as follows:

Year	Number of Wells	Increase by year
1948	700	
1949	925	225
1950	975	50
1951	1200	225
1952	1750	550
1953	1518	268
1954	1759	241
1955	2117	358
1956	2291	174
1957	2469	178
1958	2530	61
1959	2645	115
1960	2726	81
1961	2770	44
1962	2870	100
1963	2982	112
1964	3246	264

**J. H. BARNARD HAS SURGERY**

J. H. Barnard, who underwent major surgery Tuesday at Baylor Hospital in Dallas, is reported doing fine by his daughter.

Barbara arrived home from Dallas Tuesday night and said her father would remain in the hospital a week or ten days before returning home. Mrs. Barnard remained in Dallas.

**Higher Interest Rates In Store For Consumers**

COLLEGE STATION — Higher interest rates on credit are ahead for consumers, says Mrs. Wanda Meyer, Extension Service home management specialist at Texas A&M University.

Financial institutions across the nation are beginning to pass along the higher charges they must pay for use of Federal Reserve funds — they are doing this in spite of the Reserve Board's earlier assurances that its recent hike from 3.5 to 4.0 percent in the discount rate would not result in a general increase in consumer interest rates. The discount rate is the interest that the Reserve Board charges member banks on the money it loans them.

In the wake of the increase in the discount rate, a number of banks raised their prime interest rate from 4.5 to 4.75 percent. This is the rate charged to the biggest and safest borrowers, such as corporations. All other interest rates are scaled up from it.

One of the most influential financial institutions, the First National Bank of Boston, has rescinded the increase recently in response to President Johnson's public stand on the issue, thus al-

**Hospital Report**

Mrs. Menard Field continues treatment.

Mrs. Ollie Cox, 1-13, continues medical treatment.

J. D. Woody, 1-14, 1-15, medical.

Charlie McReynolds, 1-14, continues medical treatment.

Bob Copeland, 1-15, continues medical treatment.

Mrs. Elsel Quirk, 1-18, continues medical treatment.

Fred Cardinal, 1-18, continues medical treatment.

Mrs. Beryl Starkey, 1-19, continues treatment, O.E.

Donald Green, 1-19, continues medical treatment.

Mrs. Howe Hines, 1-16, 1-19, medical.

Verna Lee Cardinal, 1-8, 1-14, medical.

H. L. (Bud) Phillips, 1-15, continues medical treatment.

Marvin Massie continues treatment.

**EMERGENCIES**

Jack Osborn, 1-17, lacerations and bruises.

Romario, Arjona, 1-15, ankle injury.

Klpy Trowbridge, 1-16, finger fracture.

Kerney Edmiston, 1-12, laceration of thumb.

Ronnie Brown, 1-16, knee injury.

Ricky Leatherman, 1-16, knee injury.

H. L. (Bud) Phillips, 1-15, injury to toes admitted for treatment.

**CLAUDEAN MALSTRON FLOWN TO FLOYDADA**

Mrs. Claudean Malstrom of Davis, Calif., and daughter of Mrs. Polk Goen and the late Mr. Goen, was brought to Floydada, yesterday by ambulance plane from Phoenix, Ariz.

Mrs. Malstrom, who sustained a serious back injury in a car wreck just before the Christmas holidays, will recuperate at the home of her mother.

She was accompanied here by Mrs. Goen, who had been with her daughter for the past several weeks and by a brother, Dale, who was flown to Phoenix Tuesday.

**Composition Of Milk Changed By Cow's Diet**

COLLEGE STATION — Short-term studies have indicated that unrestricted feeding of grain with only a small amount of forage to dairy cows resulted in milk lower in fat content and moderately higher in protein content.

**SWPS**

(Continued from Page 1)

up-dated. This is an important consideration for our customers, inasmuch as the cost of money to provide service is part of the cost of our service to the customer," Pemberton said.

The company's statement pointed up its importance to Floydada and Floyd County as a taxing institution. The company is the sixth largest ad valorem taxpayer in the county and the 11th largest in the school district.

Floydada is a district office for Southwestern Public Service Company, with 6 employees. A three-man line crew stationed here serves customers in Lockney, Silverton and Petersburg in addition to local customers. Southwestern Public Service Company also provides all the wholesale power requirements of the Floydada based Lighthouse Electric Cooperative.

The franchise requested by the company is simply a permit to

**13 Aoudad Killed In Panhandle**

SAN ANGELO —Thirteen aoudad sheep were killed by trophy-conscious hunters during the December 11, 12 and 13 season in the rugged Palo Duro Canyon southeast of Amarillo, Texas, the Parks and Wildlife Department reports.

Wildlife workers reported two of the 13 barbary sheep harvested were in the 27 pound class.

The three day hunt was the second ever held in Texas.

In the late '50's, the Texas Parks and Wildlife Department purchased 44 barbary sheep from a rancher in New Mexico and released them in the Palo Duro Canyon. Until last year these sheep were permitted to reproduce and become firmly established in their new surroundings.

Forty-two hunting permits were distributed among Palo Duro Canyon landowners and nine sheep were harvested. This year 50 permits were distributed with six males and seven females bagged.

Current estimate of the total number of the rare sheep now present in the Palo Duro Canyon is between 400 and 600 head.

A. M. Meekma, Extension dairy specialist, Texas A&M University, reports the exploratory experiments were conducted by the U. S. Department of Agriculture's Agricultural Research Service and various State Experiment Stations.

The specialist says that dairy feeding authorities are now interested in determining the results of these short-term exploratory experiments are borne out in long-term feeding studies. How the amount and kind of feed in a dairy cow's diet affects her milk on a long-term basis—its protein and fat content—is to be studied as a cooperative research project between the USDA's Agricultural Research Service and the Maryland Agricultural Experiment Station.

This project, says Meekma, will cover three consecutive lactation periods involving high-producing dairy cows. The cows will be divided into three groups. One group will be fed corn silage alone in unlimited amounts; another, corn silage and hay in unlimited amounts; and still another, limited amounts of hay alone. All forage diets will be supplemented with various amounts of grain and other concentrates. Milk produced by these cows will be analyzed for total fat and total protein content, says Meekma.

Meekma suggests that for the latest research in dairy nutrition, keep in contact with your county agricultural agent.

**Dimes**

(Continued from Page 1)

the foundation. Fifty seven per cent create problems later in life. Birth defects add up to the biggest child health problem America today.

A film on birth defects is now available to see from the local chapter. Any organization wishing to show the film may contact Ed West or Mrs. Samoy Hale, who is coordinator for the Mother's March.

In charge of the house to house canvassing will be presidents of the 1962 Jr. Study Club and the 1956 Study Club respectively, and their workers.

Merchants are reminded there will be no business drive, therefore their checks will be accepted on the night of the Mother's March.

**Livestock**

(Continued from Page 1)

named to his present position on June 1, 1963.

Dr. Hubbard was reared on a wheat and livestock farm and has had extensive experience as a livestock farm operator. He is a member of the American Society of Animal Production. He is married and has two children, a son and daughter. His headquarters are at Lubbock.

He works closely with the county agricultural agents of the area he serves on problems and subject matter relative to livestock, and also with other interested organizations and groups.

Crain suggested that this would also be a good measure to no longer allow center parking on Highway 207 (Missouri Street) that is presently legal on that street in the Downtown area.

In other business the council members voted to buy a coin operated water dispensing unit that will cut down on water losses that occur when someone fills a tank with water and fails to pay the city for that amount. This is normally done through a fire plug on the north side of the city property.

The council awarded Western Industrial Supply Co. the bid on pipe needed for development of the Highland Addition. A request for a traffic lane across the double stripe in front of the Wellborn-Sparks Conoco Station on California street was denied. The filling of a plot of the Loma Vista Subdivision about a mile west of Floydada was tabled.

All councilmen were present for the meeting except Lon Davis Jr.

The council discussed a letter from O. L. Crain, District 5 Engineer, Texas Highway Department, stationed in Lubbock in which he complimented the city for no longer allowing parking on Highway 70 inside the city limits.

**JOHN B. STAPLETON**  
LAWYER  
101 N. Main Street  
TEL. YU 3-2197

**Attention All COTTON FARMERS!**

You Are Invited To The Colonial House  
MONDAY NIGHT  
JANUARY 25, 1965  
7:30 P. M.

To Hear George McDuff of Southwest Chemical  
Explain The Proper Use Of  
**TREFLAN PRE-EMERGENCE CHEMICALS**

If you want to eliminate weeds in your 1965 Cotton Crop this is the answer and the time for application is now.

**FREE COFFEE & DONUTS**

SPONSORED BY  
**Western Farm Supply**  
FLOYDADA



LOST BALL - TEMPORARILY — David Lutrick, of Floydada, looks back over his shoulder for the ball that was lost temporarily during

Tuesday night's game, as a Dimmitt boy appears to throw up his hands in disgust. Dimmitt won the game 83-52. (Staff Photo)

**Massie**

(Continued from Page 1)

ghter, Mrs. William Lynch Murray, Harrisburg, Penn.; two grandsons, William Massie Murray and Martin L. Murray both of Pennsylvania; one great grandson; one brother, Bernard Martin of Wichita Falls; two brothers-in-law, Marvin Massie of Floydada and Gerald Massie of Atlanta, Ga.; two sisters-in-law, Mrs. J. G. Martin, Lubbock and Mrs. Luther Martin of Weatherford. Also surviving are several nieces and nephews among whom are Mrs. Jake Watson and Mrs. J. V. Daniel of Floydada.

Funeral rites for Mrs. Massie were conducted yesterday afternoon in the Cumberland Presbyterian Church with Rev. Houston Dixon officiating. In interment was in Floydada Cemetery under the direction of Moore Funeral Home.

Palbearers were David B-tley Jr., Harold Norrell, Jim Price, Ed Porter, C. H. Bedford and Kenneth Bain Jr.

**Caprock**

(Continued from Page 1)

the year. It was a year without irriga-

tion from the many lakes, scattered over this area. The hard May and June rains just never did come in order to fill our farmer's lakes.

Lighthouse Electric manager Melvin Henry is sponsoring a complete rain chart in section B of this issue of The Hesperian, so if you really want to know about 1964's rainfall . . . and the rainfall for several year's back, I suggest you cut it out and save it.

THE MAXWELL PAPER Products Company sent me a little item of interest this week, think it merits the consideration of everyone. It's entitled, "A Short Course In Human Relations."

The six most important words: "I admit I made a mistake."  
The five most important words: "You did a good job."  
The four most important words: "What is your opinion?"

The three most important words: "If you please."  
The two most important words: "Thank you."  
The one most important word: "We."  
The least important word: "I"

IT'S BIRTHDAY celebration there'll be plenty of free time over at Mike's TV Lab this and spudnuts.

**ATTENTION - Lockney Residents**

**C. J. PAYNE**  
COUNTY TAX ASSESSOR-COLLECTOR  
Will Be At  
**BACCUS MOTOR COMPANY**  
Tuesday, January 26  
For issuing Poll Taxes and collecting County and State Taxes

**GOOD USED CARS AT WHOLESALE PRICES!**

1963 PONTIAC \$1895  
FOUR DOOR SEDAN, AIR CONDITIONED

1961 OLDSMOBILE Sta. Wag. \$1295  
AIR CONDITIONED, MANY EXTRAS

1961 OLDSMOBILE \$1295  
4 DOOR SEDAN, AIR CONDITIONED, POWER

1960 CHEVROLET \$750  
BELAIRE, 4 DR. SEDAN, AIR CONDITIONED

1959 FORD Station Wagon \$375  
AIR CONDITIONED, POWER

1960 PONTIAC \$675  
4 DOOR, HARDTOP, AUTOMATIC DRIVE

1958 FORD \$325  
4 DOOR SEDAN, GOOD TRANSPORTATION

1960 FORD \$495  
4 DR. SEDAN, AIR CONDITIONED, POWER

1963 PONTIAC Sta. Wag. \$1695  
TEMPEST, 4 DOOR, AIR CONDITIONED

1958 CHEVROLET \$395  
2 DOOR SEDAN, A GOOD ONE

**PICKUPS**

1960 FORD PICKUP \$395  
1/2 TON

1958 CHEVROLET PICK UP \$395  
1/2 TON

**City Auto Service**  
Your Pontiac And Buick Dealership In Floydada  
NORTHEAST CORNER SQUARE

**Dr. John W. Kimble, O. D.**  
Floydada, Texas YU 3-2496  
AS FOR THE PAST 48 YEARS  
OPEN ALL DAY SATURDAY  
Contact lenses — Visual analysis



NANCY LEE JOHN  
(bride elect)

**Nancy Lee John To Wed In April**

and Mrs. W. C. John of N. St. Louis, Joplin, Mo., 220 East Mississippi in Ada, announce the engagement and forthcoming marriage of their daughter, Nancy Lee, to Robert Robinson of Fort Worth, son of Mr. and Mrs. Bell Robinson of McAllen. The wedding will be exchanged by the Rev. on April 17 in the Royal Methodist Church in Ada, Mo.

**HB Club Meet In Fuqua Home**

Homebuilders Home Demonstration Club met January 12 in the home of Mrs. Floyd Fuqua with Mrs. Leslie Fawver in charge. Mrs. Fuqua gave the devotional and roll call was answered with how I will help my club in 1965.

Mrs. Shirley Race read the minutes and Mrs. Leo Sewer, club yearbook chairman, handed out 65 club books.

The financial report was read by Mrs. Elmer Norrell. A ten minutes demonstration on posture was given by Mrs. Ruby Evans.

Sherry Mullin spoke on windbreaks and shrubbery, telling that windbreaks should be as tall as possible and provide a dense barrier from the surface of the ground to the tops of the tallest tree. It should give protection from the north, west, and southwest, should be at least 100 feet from the building and no farther than 350 feet from the area to be protected. It should also extend at least 120 feet beyond the area to be protected.

Windbreak rows should be spaced wide enough apart to provide for convenient cultivation with farm implement.

Seedlings should be planted February through April and should be vigorous and well rooted seedlings. Species adapted to Floyd County are multiflora roses, wild plum, chinese elm, honey locust, hackberry, Russian olive, apricot, Russian mulberry, Arizona cypress, Austrian pine, red cedar, loblolly pine, Chinese arbutus and shortleaf pine and

**The World Of Children And Youth, Topic Of 1956 Club**

Topic of the 1956 Study Club was "The World of Children and Youth" when they met January 12 in the Community Room of The First National Bank. Mrs. Laron Fulton and Mrs. Don Shurbet were hostesses for the night meeting.

The meeting was called to order by the president, Mrs. Max Dyess. Members answered roll call with "problems with my children."

A very interesting program was presented by Dr. Mary Bubbis of Plainview, child psychiatrist, who spoke on the problems of children.

Members were asked to take all their old clothing to the center at the court house for distribution to the needy.

A committee composed of Mrs. Gordon Hambright, Mrs. Laron Fulton, and Mrs. Norman Muncy were appointed to call three persons and they in turn call three others and assist with the Mothers March of Dimes on January 25.

A committee of Mrs. Jackie Younger, Mrs. Gary Carthel and Mrs. Lewis Reddy were appointed to pick a committee of from six to eight persons consisting of business men, sheriff and teachers to observe a high school student for the "Teen-Age Safety Award" to be presented in May.

It was announced that a school will be held at Hemphill-Walls to teach the various departments of clubs how to report. It was also asked that members take all old magazines to the hospital and doctor's offices for reading purposes for the patients.

A report was heard on the TB Mobile Unit in Floydada in December. There were 800 children and adults taking the x-rays.

A leave of absence was granted Mrs. Glad Norman.

Club had designated Tuesday night as guest night. Guests attending were Mmes. Don Bean, Kendis Julian, Weldon Becker, Mack Hickerson, Weldon Pruitt, Adrian Helms, Connie Bearden, Arlis Powell, Bill Shurbet and Mrs. R. E. Young.

Refreshments were served to the above guests and to the following members, Mmes. Eugene Beedy, Gary Cartmel, Max Dyess, Ronald Evans, Gordon Hambright, Fred Marble, Norman Muncy, Bernie Parkey, A. C. Pratt, Don Probasco, Lewis Reddy, Marvin Wells, Jackie Younger, Don Shurbet, Laron Fulton and Mrs. Ray Ferguson.

The next meeting is Jan. 26 in the Community Room of the bank with Mrs. Dyess as hostess.

**FLOYD DATA**  
**Film On Heart Shown For PTA**

Mr. and Mrs. Charley Berry visited the Tubal Cain family at Mangum, Okla., Saturday night and Sunday.

Mrs. Oscar Phillips of Providence visited Monday with Mrs. S. F. Byars and Mrs. Wayne Adams.

The kind and amount of pruning to be done varies with varieties and types of roses. No fall pruning should be done since experiments during the past several years show that the less amount of fall pruning, the greater number of flowers produced the following season.

Miss Mullin said to apply a 5-10-5 commercial fertilizer when the new growth on the plants are five or six inches long and make another application about eight weeks later unless a soil test indicates otherwise. Three pounds of each 100 square feet of fed area should be used.

After the meeting lovely refreshments were served by the hostess, Mrs. Fuqua, to Mmes. Leslie Fawver, Leo Sawyer, P. F. Bertrand, H. W. Roberts, P. G. Mayfield, Elmer Norrell, Raymond Evans, W. R. Daniel, Raymond Williams, Ernie Widener, John Walker and Mrs. Shirley Race.

Songs by the second grade under the direction of Mrs. Hollis Payne, were enjoyed. The room count was a tie therefore the money gift went to the library. The fifth grade, class of Hollis Payne, won the PTA membership enrollment gift of \$5.

During business, presided over by Mrs. Cleo Whittle, members voted on the Andrews Ward budget of \$917.59. This amount will be used for teaching supplies, visual aid, library, music, arts and science.

Mrs. Dallas Ramsey was appointed as representative for PTA to the Community Clothing Center.

Mrs. Dan Hagood was in charge of the children in the gym and showed a film for entertainment.

Seeds should be planted February through April and should be vigorous and well rooted seedlings. Species adapted to Floyd County are multiflora roses, wild plum, chinese elm, honey locust, hackberry, Russian olive, apricot, Russian mulberry, Arizona cypress, Austrian pine, red cedar, loblolly pine, Chinese arbutus and shortleaf pine and

Windbreak rows should be spaced wide enough apart to provide for convenient cultivation with farm implement.

Seedlings should be planted February through April and should be vigorous and well rooted seedlings. Species adapted to Floyd County are multiflora roses, wild plum, chinese elm, honey locust, hackberry, Russian olive, apricot, Russian mulberry, Arizona cypress, Austrian pine, red cedar, loblolly pine, Chinese arbutus and shortleaf pine and

Windbreak rows should be spaced wide enough apart to provide for convenient cultivation with farm implement.

Seedlings should be planted February through April and should be vigorous and well rooted seedlings. Species adapted to Floyd County are multiflora roses, wild plum, chinese elm, honey locust, hackberry, Russian olive, apricot, Russian mulberry, Arizona cypress, Austrian pine, red cedar, loblolly pine, Chinese arbutus and shortleaf pine and

Windbreak rows should be spaced wide enough apart to provide for convenient cultivation with farm implement.

Seedlings should be planted February through April and should be vigorous and well rooted seedlings. Species adapted to Floyd County are multiflora roses, wild plum, chinese elm, honey locust, hackberry, Russian olive, apricot, Russian mulberry, Arizona cypress, Austrian pine, red cedar, loblolly pine, Chinese arbutus and shortleaf pine and

Windbreak rows should be spaced wide enough apart to provide for convenient cultivation with farm implement.

Seedlings should be planted February through April and should be vigorous and well rooted seedlings. Species adapted to Floyd County are multiflora roses, wild plum, chinese elm, honey locust, hackberry, Russian olive, apricot, Russian mulberry, Arizona cypress, Austrian pine, red cedar, loblolly pine, Chinese arbutus and shortleaf pine and

Windbreak rows should be spaced wide enough apart to provide for convenient cultivation with farm implement.

Beall's DEPARTMENT STORES  
**Pre-Inventory Clearance SALE**  
4 Big Days Thursday Friday Saturday Monday

**dress clearance of the year**



**20,000 DRESSES IN THE ENTIRE BEALL CHAIN TO CLEAR**

**shop dozens of styles**

**SALE STARTS TODAY AT 8:30 A.M.**

Beall's entire 48 store chain makes drastic clearance reductions on ladies fall transitionals and other styles. Our selections include all cottons, dacron polyester cotton blends and other dressy fabrics too numerous to mention. Be here when the doors open — buy for your own personal wear and save.

- JUNIOR
- JUNIOR PETITE
- MISSES
- HALF SIZES

**LADIES CAPRI PANTS**

One big Close-Out from Stockton Manufacturers Cottons, Acetates, all colors

REG. 3.98 - 5.98  
**2 Pair \$3.00**  
1 PAIR \$1.99

450 YARDS BEAUTIFUL SOLID COLOR  
**DAZZLE BROADCLOTH**  
45" WIDE — ASSORTED DARK TONES  
VALUES TO 79c YARD  
From 10 to 20 Yards to Piece

**38c**



LADIES FALL DRESS SHOES

**1c**

Buy one pair at regular price — select another pair of equal value for only one cent!

Last Week of our Big White Goods Clearance — Save Now

**BRAND NAME Food Values**

FRYERS	29c
FOLGERS — Drip or Reg.	Lb. 73c
COFFEE	73c
BELL Mellorine	1/2 Gal. 39c
ELLIS CHILI	1 1/2 Lb. Can 28c 89c
ELLIS TAMALES	No. 300 Cans 2 45c
GIANT TIDE	63c
HUNT'S TOMATO JUICE	300 Can 2 23c
HUNT'S — Solid Pack TOMATOES	300 Can 19c
WILSON'S CORN KING BACON	Lb. 49c
FOOD KING CHEESE	2 Lbs. 59c

**Specials Good THROUGH SATURDAY**  
Double Buccaneer Stamps on Wednesday  
**L & J FOOD STORE**  
316 N. 2nd YU 3-3105

**COMPLETE DRUG STORE ON HIGHWAY**  
**Bishop's PHARMACY** DRIVE IN WINDOW  
Trading Stamps on cash purchases and accounts paid in full by 10th of month.  
Open Week Days 8 to 6 — Saturday 8 to 8  
Two Registered Pharmacists  
Night Phones 3-2287 and 3-3503

**THE FLOYD COUNTY HESPERIAN**  
Published at 212 South Main St., Floydada, Texas  
WENDELL TOOLEY, Publisher  
JEDD BLESSING, News Editor  
JOHN BORDEAUX, Mechanical Superintendent  
Established 1896 by Claude V. Hall. Entered as second class mail at the post office at Floydada, Texas, April 10, 1907 under the act of Congress of March 8, 1897.  
**TEXAS PRESS ASSOCIATION** Member 1965  
NOTICE—Any erroneous corrections upon the character, standing or reputation of any person, firm or corporation which may appear in the columns of The Floyd County Hesperian will be corrected gladly upon its being brought to the attention of the publishers.



# Birthday Sale

HELP YOURSELF TO A BIG SLICE OF SAVINGS!

THREE BIG DAYS! — Thursday, Friday, Saturday

The SKIPPER PG9210 Series Precision-crafted horizontal chassis. Steelbond wide-angle 114" aluminumized picture tube. Black, brown or grey.



19" overall diagonal, 172 sq. in. viewable area

## ADMIRAL

PRECISION WIRED—PRECISION CRAFTED

## QUALITY TV

Register for many gifts to be given away Saturday Evening



The LOWELL Model LG3025 Early American Styling with 23,000 volt precision crafted horizontal chassis. All channel UHF/VHF reception. Front mounted channel selectors. Individual preference controls. 30 1/8" h., 34 1/2" w., 15 11/16" d. LG3025—Maple grained finish on hardboard



### ADMIRAL

The PACER Model P9414 Lightweight Portable 19" TV Model UP9414—With Built-in UHF and VHF tuners for 82 All-Channel Reception 19" overall diagonal, 172 sq. in. viewable area



ADMIRAL The BISCAYNE Model L1611 Masterpiece Color TV

Danish Modern lowboy console in genuine veneers and hardwood solids. 26,000 volts of picture power. New Admiral precision crafted horizontal chassis features: New 24 kt. gold precision wiring\* insures greater chassis reliability, new Electronic Color Balancer, new Color TV contrast control. New Picture Fidelity selector. Full fidelity speaker. 30 1/2" h., 39 1/8" w., 20 1/8" d. Model L1611—Genuine Walnut Veneers.

\*5 micro inches of pure 24 kt. gold applied by electro deposition.

## ADMIRAL COLOR TV

YOUR BEST COLOR TV BUY!

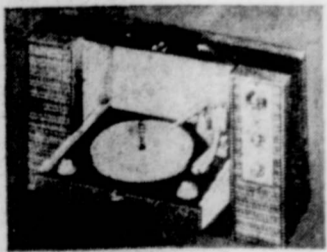


The WESCOTT Model LG2035 Early American lowboy in maple grained finish on hardboard. Color fidelity control; automatic degaussing; 24,000-volt chassis.



The CLAYTON — Twin-speaker radio-phonograph. 4-speed "tilt-out" unit. Long distance radio, 14 1/8" h., 25" w., 8 3/4" d. Model Y8087—Brown Beige.

Free Stand and Records



The CHARLTON — Trimly styled with wing-out lift-off sound chambers — two 5 1/4" speakers. Plays instantly! Automatic 4-changer. Bass/Treble, Loudness, Balance controls. All wood cabinet. 15 1/2" h., 24 1/4" w., only 7 7/8" d. Model Y8149 — Asure Blue/Dawn White.

Free Stand and Records

"Quality Doesn't Cost It Pays At — MIKE'S TV

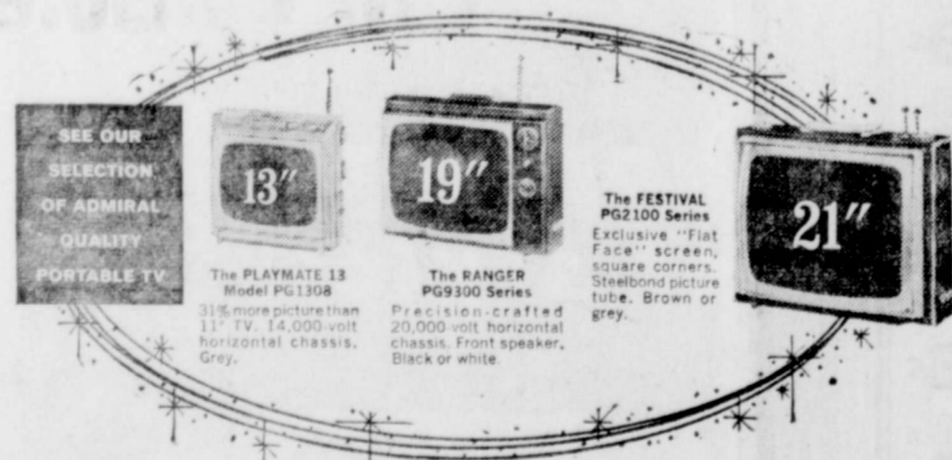
Only One Floor Sample

FREE!

A New \$119.95 Portable TV goes to the buyer of the above set

MORE QUALITY!  
COLOR FIDELITY CONTROL  
EXCLUSIVE! Dials amazing warmth into color TV pictures.

AUTOMATIC DEGAUSSING  
Purifies color TV instantly!  
24,000-VOLT CHASSIS  
Precision-crafted Custom SP-24 horizontal chassis!



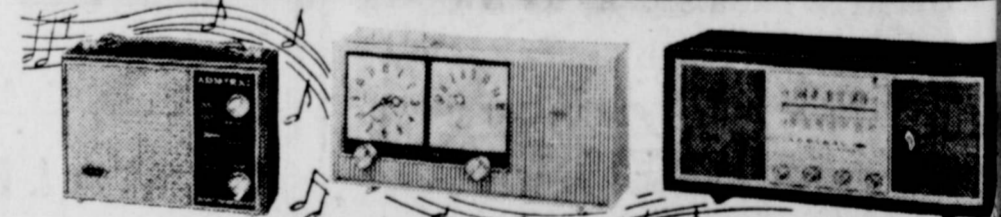
SEE OUR SELECTION OF ADMIRAL QUALITY PORTABLE TV

The PLAYMATE 13 Model PG1308 3 1/8" more picture than 11" TV. 14,000-volt horizontal chassis. Grey.

The RANGER PG9300 Series Precision-crafted 20,000-volt horizontal chassis. Front speaker. Black or white.

The FESTIVAL PG2100 Series Exclusive "Flat Face" screen, square corners. Steelbond picture tube. Brown or grey.

SEE OUR COMPLETE SELECTION OF ADMIRAL QUALITY RADIOS!



Big, beautiful portable sound The POWER EIGHT Y250 Series 3 1/2" inch speaker for tonal beauty; 3-band tuning. Tuned RI assure superior long-distance reception. Play on wall outlet current; recharge batteries with optional A.C. Charger plug. 8 Transistors. Luggage style in Black or Brown.

Push-button clock radio The SERENADE Y3810 Series Lighted clock face. Pushbuttons for on, off, sleep (nap alarm) and auto (turns radio on or off at pre-selected time). Varner tuning. Four tubes, one rectifier. Magna Grey, Brighton Beige or Beryl Blue.

Twin-speaker FM/AM radio The SHERIDAN Model Y3921 Two speakers for wide-angle sound. Wood cabinet with genuine walnut veneers. 6 tubes, 4 diodes. AFC lock in FM stations. Separate tone control. Phono jack with front switch.

PRICES START AT \$99.95

Prices from \$8.88

BUY AT MIKE'S AND SAVE --- IT'S THE SERVICE AFTER THE SALE THAT COUNTS

# MIKE'S TV LAB

113 West California

FLOYDADA

Phone YU 3-4023



# Birthday Sale

HELP YOURSELF TO A BIG SLICE OF SAVINGS!

## Doors Open 9:00 a.m. Friday Morning! Come One—Come All!

First Customer in our Store Friday and Saturday Mornings at 9:00 o'clock may buy an Admiral radio for only **\$5.55**

**FREE!**  
**COFFEE AND SPUDNUTS**  
Friday and Saturday

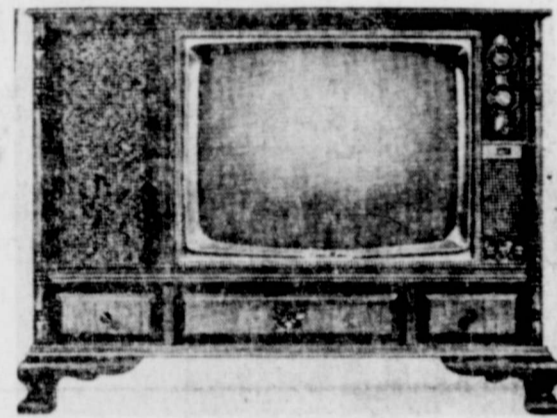
**FREE!**  
**DOOR PRIZES**  
SPECIAL GIFTS WITH PURCHASE OF RADIO, TV AND STEREO SETS

**SPECIAL!**  
BUY ONE RECORD ALBUM AND GET ONE 45 RPM RECORD FOR ONLY **1¢**

## Big Anniversary Buys From Curtis Mathes



23" EARLY AMERICAN MAPLE. **\$179<sup>95</sup>** WITH TRADE



23" EARLY AMERICAN MAPLE VENEER ON SELECT HARDWOOD SOLIDS. **YOU WILL SAVE!** ? ? ?

1965  
Curtis Mathes Console Walnut Stereo Set with AM/FM Radio and Diamond Needle  
Regular 239.95

Sale **\$160**

**23" ADMIRAL TV SET**  
Demonstrator Walnut Vinyl Finish with Matching Base  
Regular 239.95 - Sale **\$169**

One Lot 45 RPM **RECORDS**  
While They Last **5¢** Each

2 --- WALNUT 21" CURTIS MATHES

## COLOR TV SETS

BUY ONE AND RECEIVE FREE \$119.95 PORTABLE TV SET.

CAN'T ADVERTISE OUR LOW LOW PRICES ON THESE SETS --- COME SEE!

EARLY AMERICAN MAPLE 6 SPEAKER

## CM Console Stereo Set

WITH AM-FM RADIO

- ★ LARGE RECORD STORAGE COMPARTMENT
- ★ CHANGER IS EQUIPPED WITH DIAMOND STYLUS

THIS IS A REGULAR LIST PRICE OF \$299.95 ON THIS SET.

We Will Sell and Deliver for (Come and See) Then Buy It!

FREE DELIVERY TO YOUR HOME ANYWHERE IN FLOYD COUNTY

# MIKE'S TV LAB

113 West California

FLOYDADA

Phone YU 3-4023

# STRONG CHURCHES **Make STRONG COMMUNITIES**

**Sandhill Baptist Church**  
Dale Dozier, Minister  
Sunday Services  
Sunday School 10:00  
Morning Worship 11:00  
Training Union 7:00  
Evening Worship 8:00

**First Methodist Church**  
Charles E. Lutrick, Pastor  
Sunday Services  
Sunday School 9:45  
Worship Service 11:00  
MYF Youth Groups 5:30  
Evening Worship 6:30

**Methodist Spanish Mission**  
Ross Chavez, Pastor  
Sunday School 9:45  
Morning Worship 11:00

**First Christian Church**  
Sunday Services  
Sunday School 9:45  
Worship Service 11:00  
Youth Meeting 6:00  
Evening Worship 7:00

**First Baptist Church**  
F. C. Bradley, Pastor  
Sunday Services  
Sunday School 9:45  
Morning Worship 11:00  
Training Union 6:00  
Evening Worship 7:00

**Calvary Baptist Church**  
Perry Threadgill, Pastor  
Sunday Services  
Sunday School 9:45  
Morning Worship 11:00  
Training Union 6:30  
Evening Worship 7:30

**Bible Baptist Church**  
GILBERT H. RHINE, Pastor  
Singing 9:50  
Sunday School 10:00  
Singing 10:45  
Preaching 11:15

**SUNDAY NIGHT**  
Training Union 6:00  
Singing 6:30  
Preaching 7:00  
Mid-Week Service 7:30

**Nazarene Church**  
Roy G. Archer, Pastor  
Sunday Services  
Sunday School 9:45  
Morning Worship 11:00  
N.Y.P.F. 6:30  
Evening Worship 7:30

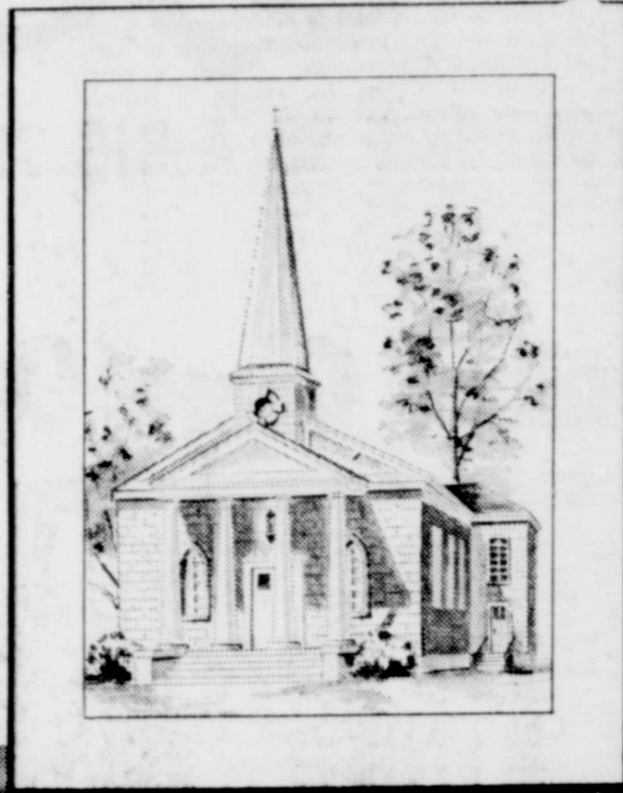
**Cumberland Presbyterian Church**  
Houston Dixon, Pastor  
Sunday School 10:00  
Morning Worship 11:00  
Evening Worship Discont.  
Radio Services 9:15 a.m.

**Cedar Hill Baptist Church**  
Leo Buscher, Pastor  
Sunday Services  
Sunday School 10:00  
Morning Worship 11:00  
Evening Worship 7:30

**New Hope Primitive Baptist Church**  
Beathel Jeffrey, Pastor  
Sunday Services  
2nd Sunday  
Morning Worship 11:00  
2nd Saturday Afternoon 2:00  
2nd Saturday  
Evening Worship 7:00

**Cedar Hill Assembly of God Church**  
Robert G. Slaton, Pastor  
Sunday Services  
Sunday School 10:00  
Morning Worship 11:00  
Evangelistic Service 7:30

**Sandhill Church of Christ**  
Sunday Services  
Morning Worship 10:30  
Evening Worship 7:30



Simply stone and iron! Our photographer called this "Strength."

Stone and iron are unyielding. But the greatest strength this world has known is a STRENGTH that yields:

God possesses a resolute Will . . . yet He gives man freedom of will.

God embodies all Power . . . but He hears and answers prayer.

God breathes Holiness . . . yet He forgives men's sin.

For God is Love . . . and love is a living Strength . . . that reaches, inspires, guides, protects, promises, fulfills.

He was a descendant of the Ages of Stone and of Iron — that earnest seeker who cried, *The Lord is the strength of my life.*

At church, next Sunday, you'll rub shoulders with countless others who look beyond walls and chains to find STRENGTH

Copyright 1965 Keister Advertising Service, Inc., Strasburg, Va.



**THE WRONG PICTURE**

Sunday Psalms 1:1-6	Monday Psalms 84:1-5	Tuesday Micah 6:8	Wednesday Jeremiah 31:33-34	Thursday Romans 8:1-5	Friday Ephesians 6:7-9	Saturday Romans 8:35-39
---------------------------	----------------------------	-------------------------	-----------------------------------	-----------------------------	------------------------------	-------------------------------

**Dougherty Baptist Church**  
Jim DeWese, Pastor  
Sunday Services  
Sunday School 10:00  
Morning Worship 11:00  
Training Union 7:00  
Evening Worship 8:00

**City Park Church of Christ**  
George T. Elkins, Jr. Minister  
Sunday Services  
Bible Study 9:45  
Morning Worship 10:40  
Bible Study 5:15  
Evening Worship 6:00  
Bible Study Wednesday 8:00  
Ladies Bible Study, Wed. 9:30 a.m.

**Wall St. Church of Christ**  
O. W. Kirk, Elder  
Newell Burk, Elder  
Sunday Services  
Communion and  
Morning Worship 10:30  
Evening Worship 6:30  
Wednesday Evening 7:30

**Mt. Banco Baptist Church**  
O. N. Reed, Pastor  
Sunday Services  
Sunday School 10:00  
Morning Worship 11:00  
Training Union 6:30  
Evening Worship 7:30  
Wednesday Prayer Service 7:30

**South Plains Baptist Church**  
Sealy Smith, Pastor  
Sunday Services  
Sunday School 10:00  
Morning Worship 11:00  
Training Union 6:00  
Evening Worship 7:00

**Carrs Chapel**  
Worship 2nd & 4th Sundays  
Rev. Doyn Meriman, Pastor  
Sunday School 10:00  
Morning Worship 11:00  
Evening Worship 6:00

**Victory Baptist Church**  
A. J. Holster, Pastor  
Sunday Services  
Sunday School 10:00  
Morning Worship 11:00  
Evening Worship 7:45  
Wednesday Evening 8:00

**New Salem Primitive Baptist Church**  
Joe M Jackson, Pastor  
Sunday Services  
Congregational Singing 10:00  
Morning Worship 11:00  
Regular Conference Meeting each  
Second Saturday Night 8:00

**Mexican Baptist Mission**  
Raymond Asebedo, Pastor  
Sunday Services  
Sunday School 9:45  
Morning Worship 11:00  
Training Union 6:00  
Evening Worship 7:00

**First Assembly of God Church**  
R. A. Staggs, Pastor  
Sunday Services  
Sunday School 9:45  
Morning Worship 11:00  
Evangelistic Service 7:00

**St. Mary Magdalen Catholic Church**  
Father Paul A. Link, Pastor  
Sunday: 11 A.M. Holy Mass and  
Communion  
Monday: 8 p.m. Holy Mass and  
Communion  
Friday: 8 p.m. Holy Mass and  
Communion  
9:00 p.m. Apostolic Hour  
Confessions: Before Mass

**West Side Church of Christ**  
Sunday Morning Worship 10:30  
Evening Services 7:00  
Wednesday Evening 7:00

This inspirational message is offered for your consideration by the generosity of Public Spirited Individuals and Firms

Reed Ford Sales

McDonald Implements

Floydada Implement Co.

Fieldan Motel

O K Rubber Welders

Fuqua Farm Supply

Producers Co-operative Elevator

FLOYDADA & DOUGHERTY

Mac's Gulf Service

Parker Studio

Carthel Fertilizer and Oil

Moore Funeral Home

Winn's Restaurant

Weems & Weems

Consumers Fuel Association

Martin & Company

Floydada Real Estate and Insurance

Farmers Co-op Gins

Collins Implement Co.

Leonard's Cafe

Edmiston Plumbing & Heating

Solomon Jewelry

Parker Furniture Co.

Wylie Butane

J. F. Patterson "66" Station

United Machine & Supply, Inc.

Court House NEWS

(Marriage Licenses) Washington J. C. Collier and Mrs. Frances Davis, Jan. 18. (Criminal Docket) State of Texas vs. Wanda Fay Olson alias Wanda Fay Olsson, unlawfully carrying pistol, Plea of guilty entered, subject fined \$100 plus court costs. Remanded to sheriff.

Party Spends Two Days At Convention

Mr. and Mrs. Gerald Thompson, Mr. and Mrs. James Hale and Mr. and Mrs. Carl Brock spent two enjoyable days in Dallas January 8-9 attending the annual Young Homemakers and Young Farmers Conventions.

STOCK BARN ADDITION - Workers are putting some of the final touches on the roof of the newest addition to the stock show barn.

Club Members Enjoy Meal Cooked Table Top Fashion

Members of the 1929 Study Club enjoyed a table top cookery presented in a demonstration by Mrs. Nancy Morckel at their last meeting, January 7.

Present for the meeting were Mrs. J. A. Arwine, Hollis R. Bond, J. A. Colston, C. W. Denison, R. E. Fry, Verne Gauntt, Clarence Goins, Clay Henry, Tate Jones, J. D. McBrien, Conner Olson, George V. Smith, J. B. Smitherman, Carl W. Wilkins, Q. D. Williams, C. R. Yeokum, and Mrs. Morckel.

VELMA SINOR IMPROVING

The family of Velma Sinor received word Sunday that she was improving and that possibly she would be able to return home in some three weeks.

"Doing Away With Weeds In '65," Subject

"If you want to eliminate weeds in your 1965 cotton crops, this is the answer and the time for application now," say representatives of the West-

Chapter & Council Meeting 7:30 each 4th Saturday Night

FOOD SALE

Table listing food items for sale: SHURFINE Lunch Meat 33c, SHURFRESH BISCUITS 3 for 25c, PINEAPPLE-ORANGE DRINK 3 for \$1, SHURFRESH Margarine 2 for 33c, SUPREME CRACKERS 29c, 10 LBS. SUGAR 98c, MRS. TUCKERS Shortening 59c, SHURFINE Salad Dressing 33c, GIANT BOX Blue Cheer 64c, RANCH STYLE BEANS 2 for 29c.

WE GIVE BUCCANER STAMPS DOUBLE ON WEDNESDAY HULL & McBRIEN Deliver YU 3-3164

How Can You Fight Birth Defects? March of Dimes Has Good Advice

What would you do if a defective child were born in your family or to friends or neighbors? Would you know where to turn?

To answer these questions, marching mothers, more than a million strong, will distribute a new leaflet with sound advice for every family in the nation as they call on their neighbors during January for support of the March of Dimes fight against birth defects.

More than a quarter of a million babies are born each year in the U.S. with serious birth defects.

The leaflet being distributed by Mothers' March volunteers is called "THINGS TO DO IF..."

IF You Are About To Be Married. Select a family physician; Each partner should have a complete medical examination, providing the doctor with complete medical histories;

IF You Are Expecting a Baby, See a physician as early as possible to confirm pregnancy;

IF You Have Friends With a Defective Child, Treat them as you would any other friends. They do not desire pity, but the sympathetic understanding of true friendship is always welcome;

IF a Birth Defect Occurs in Your Family, Seek the best medical advice and treatment. Modern skills can often prevent or correct serious disability;

Don't feel ashamed of yourself or the child born defective. No one is to blame so long as the stricken child is



JANE WYATT, National Mothers' March Chairman, reads to Tina Tidwell, 4, who was born with an open spine and is a patient at a March of Dimes Birth Defects Center in Los Angeles, Calif.

helped to make the most of his precious gift of life; Do not despair. Professional help from physicians, clergy and others experienced in dealing with these problems can lead to a wholesome adjustment; Remember that there are many persons and organizations such as The National Foundation-March of Dimes that stand ready to help. Seek them out.

Harmony HD Club Meets

Harmony Home Demonstration Club met on Thursday in the Community Center with Mrs. Walter Hanna as hostess.

It was announced the regular community meeting would be held Thursday, January 21. A good program is planned.

Mrs. Sherwood Ramsey announced that she had received a letter thanking the club members for the gift sent to Wichita Falls State Hospital Christmas.

Mrs. Everett Miller, yearbook chairman, read the program for the coming year and all yearbooks were filled out.

Mrs. Curtis read her committee for the year followed by Mrs. Hanna reading the members names and their attendance. Three members, Mrs. Curtis, Mrs. Glenn Pool and Mrs. Mather Carr had a perfect attendance record for the year.

For the program, Mrs. Marion Tucker spoke on posture and share an idea and Mrs. Cleo Alexander gave a recipe for barbecue sauce. She had browned a chicken, then added the sauce to make a very tasty dish.

Sherry Mullin, agent, gave an interesting talk and passed out pamphlets in operation wind-break.

Refreshments were served by Mrs. Hanna to Mmes. Glenn Curtis, Mather Carr, Marion Tucker, Truman Dunavant, Bob Hopper, Cleo Alexander, Everett Miller, Roy Hale, Bob Rajten, Sherwood Ramsey, Glenn Pool, Horace Carr, Monroe Schulz, R. C. Davis and children, Roy Davis, Linda, Sandra, and Roy Dunavant.

Women's Page

Floyd County HD Council Has First Meeting Of Year

The Floyd County Home Demonstration Council met January 15 in the council room for their first meeting of the year. Mrs. R. N. Hopper, council chairman, was in charge. Six clubs, three officers, nine members and the agent, Sherry Mullin and THDA chairman, Mrs. G. W. Smith were present.

Mrs. W. J. Ross read the minutes and gave the treasurer's report. Mrs. Hopper, Mrs. Earl Edwards Jr., Mrs. Bill Dubois and Miss Mullin extended their thanks to the council for their Christmas gifts. A thank you note was also read from Mrs. Bayne McCurry for her gift and for her invitation to attend the Council Christmas party and tell of her trip to Hawaii with the National Home Demonstration members. Mrs. McCurry also showed pictures. A word of thanks was read from Freda Painter to the District 2 members for her 4H Scholarship to Tech. Freda lives in Hockley County.

Mrs. Hopper appointed a committee to count Betty Crocker coupons that the council has been asked to get stainless steel for the council room. Mrs. Leslie Fawcett, Mrs. O. G. Mayfield and Mrs. Raymond Teeple are on the committee.

Club reports were given from each Home Demonstration club. It was reported that Dougherty Club had two meetings with 12 present and that a gift was presented to the special class at Andrews Ward. Harmony Club has 22 members with three new members and one resignation. There were 20 at their Christmas party. They have 18 members. The club sent a case of instant coffee to the State Hospital at Christmas.

The Lone Star Club had 11 members and two visitors at their Christmas party. They absent a box to the State Hospital. That club is to be met for a county wide luncheon at Lighthouse Electric in the near future.

Sandhill Club held their Christmas dinner at Raymond's Restaurant in Lockney with eight members and their husbands present. The club announced the Lynn Miller family had moved to Lubbock.

Starkey Club has 16 members on the roll and they had 13 present for their Christmas party and sent a box to Wichita Falls, Texas during 1964.

Mrs. Milton Evans of Floydada, new secretary. A new board member this year is Mrs. Shirley Irwin of Fairview community.

Mrs. A. T. Hull, librarian, said a total of 26,339 books were circulated from the main library at Floydada and from the Lockney branch during 1964.

Lynda Brannon Wed In Amarillo

Mr. and Mrs. Irvin Seymore are making their home in Amarillo following their marriage there on January 9th. Mrs. Seymore is the former Lynda Brannon, daughter of Mr. and Mrs. Walter Brannon of Floydada. She was formerly employed by LaVerne's Beauty Shop. A bridal shower given by a host of her friends was held at the beauty shop last Friday night as a token of appreciation. Thirty-three brought items the bride needed.

HELLO WORLD Mr. and Mrs. Dale Johnson of Floydada are parents of a son born on January 8 in Lockney General Hospital. The baby, named Allen Wayne, weighed seven pounds and three ounces at birth. The father farms and the mother was formerly employed at Russell's Cleaner.

hill; Mrs. Clinton Denning, Starkey. Council will meet again on February 19. All members are urged to attend.

Cycle Of Nations

The average duration of world empires is about 250 years and their rise and fall follows a continuing pattern of recurrence. From this process we have concluded, "History repeats itself." Every nation of people who find themselves oppressed and enslaved will, sooner or later, throw off their shackles. In their change from bondage



Geo. Elkins

they enter a period of (1) spiritual faith when freedom is conceived. Spiritual faith leads to (2) courage as leaders arise. Spirited by these patriots, courage becomes the means of (3) liberty. With new freedom and the classless society that promotes it, the infant nation advances into (4) abundance. Wherever, and whenever mankind has found plenty, he has also tended toward (5) selfishness. Those with abundance always want more. National disaster is the ultimate outcome of greed, for it leads to (6) complacency. Like the chain reaction in its turn leads to public and individual (7) apathy. Certainly when the citizens of any government become unconcerned in its growth and health, it will shortly lapse into a welfare community where all are (8) dependent on each other and the state relief programs. Thus, when a nation becomes dependent, it is easy prey to be brought into (9) bondage, and the cycle must be repeated.

But, where is America along this chain of progression? Is not the richest, most productive nation of the world tottering on the brink of disaster as morals are lowered, church attendance declines and public apathy finds more people on government relief? Our two hundred years has run out. We could, however, be the exception to the rule, for "righteousness exalts a nation" (Prov. 14:34) but the "wicked shall be turned into Hell and all nations that forget God" (Psalm 3:17). It is later than you think and we are winding the clock.

CHURCH OF CHRIST, 5th at W. Tenn.

Large advertisement for Dodge trucks with text: IT'S TOUGH TRUCK TRADING TIME! Go see THE DODGE BOYS ROE MOTORS 200 W. MISSOURI FLOYDADA, TEXAS



An Established Windbreak

### Arizona Cypress Remains Favorite Windbreak Plant

By Truman Gregory  
Soil Conservationist

It is the time of year for those planning to establish a farmstead windbreak to begin seedbed preparation. Farmstead windbreaks are used to a good advantage in the Floyd County Soil Conservation District to provide shelter for livestock, control snow deposition and prevent damage to the farmstead in general.

Several different species of plants and trees are adapted in the district with Arizona Cypress remaining the favorite over the years. Other adapted trees are Austrian Pine, Ponderosa Pine (Western Yellow), Loblolly Pine and several others.

Windbreaks on most of our soils should be located where they may receive extra water, or where they may be irrigated, or where they may be intensively cultivated and maintained. Protection from livestock and other animals especially when getting the trees started, is very important.

Windbreaks may be arranged in single or multiple row plantings. The seedlings should be planted during February through April. Plant only healthy, vigorous, well-rooted seedlings. Keep all competing vegetation away from the young seedlings.

For protection of seedlings from wind damage use materials such as shingles, burlap or milk cartons. Protection from rabbits should be provided where they are a problem.

Photo above shows typical farmstead windbreak of Arizona Cypress trees in the Floyd County.

Many successful windbreaks have been established in the district in the past. Some of these can be seen on the following farms: M. W. Hartman, Lonnie Hunsley, E. W. Walls, Roy Hale, Howard Gregory and W. S. Poole.

### Ralls Mill Receives Its First Order

RALLS — The Ralls-Tex Mill, manufacturer of cotton bagging, Tuesday announced it had received its first official order for the unique knitted material made here.

Jean D. Smith, president of the mill said the Sudan Compress Co. had ordered 14,500 compress patches of the new type cotton bagging material. Guy Nickels is manager of the Sudan firm.

Smith said he recently had made a trip to Mexico and conferred with government officials there on the new bagging material. "Prospects are good," Smith declared.

The \$12 million textile mill at Ralls recently started the manufacturing process of bagging, utilizing a knit of cotton and paper.

First deliveries of the material went to various representatives of the cotton industry who are stockholders in the mill.

### Jerry Miller To Be Lions Club Speaker At Noon Today

Jerry Miller, the man from Plainview who is planning to build a \$150,000 rest home in Floydada, will be the speaker at the Lions Club noon luncheon today. He will be introduced by Dr. John W. Kimble, local optometrist.

Miller recently purchased the land for the new home through realtor Jim Haynes of Lubbock, with help in finding the local site from Dale Goen of Goen & Goen. The land is located just west of the new hospital site in west

Floydada. It was formerly owned by B. A. Robertson and Jimmy Willson.

Thaton Bros. Construction Company of Wichita Falls will be builder of the home.

Owner-manager Miller is a state director of the Texas Nursing Home Association and also owns the Plainview Nursing Home. He has been in this type business for ten years. The new home will be built in a four-wing design and will be a 36 bed capacity. Construction of the home will take about 120 days and is expected to begin in the next few days.

### Only One Break-In This Week

According to local law officials, there was only one break-in reported this past week. This was quite a let up after having as many as three in one night recently.

The latest of the occurrences was at the Dixie Dog Drive-In on the Matador Highway. Only a few cartons of cigarettes were reported missing in the Friday night incident.

In other police activity, five colored people, four men and one woman, were picked up in Floydada for the Hale County law officials. The woman will be returned here to stand trial for carrying a prohibitive weapon. The quintet had a long-barrel pistol and a very long knife in their possession.

The only other activity was limited to several reports of prowlers.

### Death Claims Cecil Brown

Cecil Brown, Providence farmer, who owns land along the Floyd and Hale County line west of Lockney, died Sunday night in Plainview Medical Center. Brown had been critically ill and in the hospital for the past five weeks.

The deceased had been a resident of Providence for the past 58 years. He married the former Lola Lucille Cox in 1900.

Rites were conducted Tuesday in the First Baptist Church in Lockney. Survivors include the wife; one son, Robert Brown and one daughter, Mrs. Rayford Martin both of Lockney; two brothers; two sisters and four grandchildren.

Women Marines comprise approximately 1% of the total Marine Corps force.





### ANNUAL COUNTRY CLUB MEETING



Thursday, January 28  
7:30 p. m.

at  
LIGHTHOUSE ELECTRIC

# HUNT'S SALE

	<b>4</b>	\$1	No. 2 1/2 Cans For		<b>5</b>	\$1	300 Size Can For
---	----------	-----	--------------------	---	----------	-----	------------------

	<b>4</b>	\$1	20 Oz. Bottles			<b>6</b>	\$1	300 Size Cans		<b>10</b>	\$1	8 OZ. CANS
--	----------	-----	----------------	---	---	----------	-----	---------------	---	-----------	-----	------------

	<b>9</b>	\$1	300 SIZE CANS		<b>4</b>	49c	8 OZ. CAN	<b>PORK 'N HUNT'S BEANS</b>	<b>8</b>	\$1.00	300 Size Can
---	----------	-----	---------------	---	----------	-----	-----------	-----------------------------	----------	--------	--------------

<b>KRAFT GRAPE JELLY</b>	<b>3</b>	\$1	18 Oz. Jars		<b>2</b>	\$1.19	2 LB. Bag
--------------------------	----------	-----	-------------	---	----------	--------	-----------

	<b>3</b>	FOR	<b>389c</b>	<b>DOG FOOD</b>	Roxey Tall Cans	<b>3</b>	FOR	<b>23c</b>
---	----------	-----	-------------	-----------------	-----------------	----------	-----	------------

<b>Tamales</b>	No. 2 1/2 Size Cans	<b>3</b>	FOR	<b>\$1.00</b>	<b>CARMACK EGGS</b>	GRADE "A" LARGE	Doz.	<b>43c</b>	<b>BLACKBURN WAFFLE SYRUP</b>	Qt. Jar	<b>29c</b>
----------------	---------------------	----------	-----	---------------	---------------------	-----------------	------	------------	-------------------------------	---------	------------

<b>MIXED NUTS</b>	Tom Scott's, Lg. Can	<b>59c</b>	<b>ICE MILK</b>	Bell's, 1/2 Gal.	<b>59c</b>	<b>SHURFRESH OLEO</b>	Lb.	<b>19c</b>	<b>SHURFRESH BISCUITS</b>	Cans	<b>3</b>	FOR	<b>25c</b>
-------------------	----------------------	------------	-----------------	------------------	------------	-----------------------	-----	------------	---------------------------	------	----------	-----	------------

**POWELL'S FRESH PRODUCE**

Calif., Pick O' Morn	Fresh, Green
<b>Tomatoes</b>	<b>Cabbage</b>
<b>29c</b>	<b>5c</b>
Pkg.	Lb.

**WE RESERVE THE RIGHT TO LIMIT QUANTITIES ON THE WYE FLOYDADA YU 3-2444**

# Powell's

**SUPER MARKET**

YOUR HOME OWNED — HOME OPERATED STORE  
These Prices Good Thursday, January 21, Through Monday, January 25



## Mexico Must Approve Bracero Contracts For Work In U. S.

O CITY — Mexico warned American contractors that braceros must not be contracted for work in the United States without prior consent of this country's government.

A statement was issued by the Mexican foreign relations ministry in Mexico City on Jan. 19, 1965, in conclusion of the negotiations between the two countries under which hundreds of thousands of Mexican farm hands worked in the United States annually.

The statement was issued by Mexican foreign relations ministry in Mexico City on Jan. 19, 1965, in conclusion of the negotiations between the two countries under which hundreds of thousands of Mexican farm hands worked in the United States annually.

The Mexican government explained that the U. S. government had passed regulations requiring U. S. farmers to offer jobs to U. S. citizens before they can contract Mexicans. The U. S. citizens must be offered the same salaries being offered Mexican farm hands, that is, \$1.25 per hour in California, \$1.05 in Arizona and \$1.00 in Texas, until March 31 and after that date, \$1.40 in California, \$1.25 in Arizona and \$1.05 an hour in Texas.

is established to assure fulfillment of work contract conditions. Such contracts, it added, must provide equal conditions of contracts under the former system, and wages which are not lower than under the 1951 treaty that expired Dec. 31. The wages also must be at least equal to those offered to U. S. citizens for the same work, the foreign office added.

**Offer Same Salaries**  
The Mexican government explained that the U. S. government had passed regulations requiring U. S. farmers to offer jobs to U. S. citizens before they can contract Mexicans.

**Bachus Takes Tax Job At Petersburg**  
The Petersburg Board of Education has announced the appointment of James Bachus as Tax Assessor and Collector of the Petersburg Independent School District, and he will assume his duties on February 1, 1965.

**Lack of Hands**  
If farmers cannot find enough domestic workers, they must then obtain from the Labor Department a certificate of lack of hands so that foreign workers may be permitted to enter for a maximum of 120 days a year.

**Want Contracts Fulfilled**  
The foreign office said that Mexico will permit contracting of Mexican workers only if a system of satisfactory vigilance is established to assure fulfillment of work contract conditions.

**Want Contracts Fulfilled**  
The foreign office said that Mexico will permit contracting of Mexican workers only if a system of satisfactory vigilance is established to assure fulfillment of work contract conditions.

**Historians Needed In Civil Service**  
Professional historians are needed for work in Federal agencies in Washington, D. C., chief of the Department of Defense. The U. S. Civil Service Commission today announced a new examination for filling these positions. The salaries range from \$7,229 to \$16,460 a year.

**Bachus Takes Tax Job At Petersburg**  
The Petersburg Board of Education has announced the appointment of James Bachus as Tax Assessor and Collector of the Petersburg Independent School District, and he will assume his duties on February 1, 1965.

**Lack of Hands**  
If farmers cannot find enough domestic workers, they must then obtain from the Labor Department a certificate of lack of hands so that foreign workers may be permitted to enter for a maximum of 120 days a year.

**Want Contracts Fulfilled**  
The foreign office said that Mexico will permit contracting of Mexican workers only if a system of satisfactory vigilance is established to assure fulfillment of work contract conditions.

**Want Contracts Fulfilled**  
The foreign office said that Mexico will permit contracting of Mexican workers only if a system of satisfactory vigilance is established to assure fulfillment of work contract conditions.



A scene from "Behold A Pale Horse" showing at the Capada Drive-In Theatre Sunday and Monday.

**"Jesus Is The Key" Off The Press Recently**  
A book of several person's experiences, and lives entitled, "Jesus Is The Key", has recently come off the press.

**Army Offers Precision Maintenance**  
M/Sgt. Womack, Army Recruiter for Floydada offers an amazing variety of precision maintenance jobs, ranging from guided missiles assembly to metal working or munitions.

**Army Offers Precision Maintenance**  
M/Sgt. Womack, Army Recruiter for Floydada offers an amazing variety of precision maintenance jobs, ranging from guided missiles assembly to metal working or munitions.

## R. C. Patton Honored At Snyder Fete

R. C. Patton, son of Roy Patton of Floydada, was named the recipient of the annual Outstanding Citizen Award recently at the Snyder Chamber of Commerce Banquet. Patton, 27 years with a local lumber company, is active in the Salvation Army, Goodfellows, Boy Scouts, Boys' Club and in his church. He was nominated to Who's Who in Southwest Texas in 1964.

## Historians Needed In Civil Service

Professional historians are needed for work in Federal agencies in Washington, D. C., chief of the Department of Defense. The U. S. Civil Service Commission today announced a new examination for filling these positions. The salaries range from \$7,229 to \$16,460 a year.

**Army Offers Precision Maintenance**  
M/Sgt. Womack, Army Recruiter for Floydada offers an amazing variety of precision maintenance jobs, ranging from guided missiles assembly to metal working or munitions.

**Army Offers Precision Maintenance**  
M/Sgt. Womack, Army Recruiter for Floydada offers an amazing variety of precision maintenance jobs, ranging from guided missiles assembly to metal working or munitions.

## Lockney Gin Worker Killed

A 25-year-old Lockney cotton gin employee, Richard Lee Lambert, was killed about five miles south of Falls at 12:05 a.m. Sunday in a one-car turnover. A passenger in the car, George Thompson, 46, also of Lockney, remained in fair condition with a broken leg late Sunday night in Crosbyton Hospital.

## Some Natural Gas Is From Ogallala Strata

Field Representative of the High Plains Water District recently inspected an irrigation well that is producing natural gas — enough to burn. The well is located in one of the Slaughter farms in Haskell County.

**Army Offers Precision Maintenance**  
M/Sgt. Womack, Army Recruiter for Floydada offers an amazing variety of precision maintenance jobs, ranging from guided missiles assembly to metal working or munitions.

**Army Offers Precision Maintenance**  
M/Sgt. Womack, Army Recruiter for Floydada offers an amazing variety of precision maintenance jobs, ranging from guided missiles assembly to metal working or munitions.

## "Now" Is The Time To Get Safety Inspection Stickers

AUSTIN — Col. Homer Garrison, director of the Department of Public Safety today encouraged Texas motorists to "start the new year with a safe vehicle" by securing the 1965 vehicle inspection sticker without further delay.

The Public Safety Director said that approximately one-half of the inspection period has expired and only about one-fourth of the vehicles in the state have been inspected. He added that unless the inspection pace is stepped up, motorists may expect to find the usual waiting lines at the inspection stations when the April 15 deadline approaches.

**Tailwater Loss Greater Than Most Realize**  
Water losses from irrigation run-off are greater than the average irrigation farmer realizes. Several hundred tailwater return systems are now in operation with the High Plains Underground Water District.

**Some Natural Gas Is From Ogallala Strata**  
Field Representative of the High Plains Water District recently inspected an irrigation well that is producing natural gas — enough to burn.

**Army Offers Precision Maintenance**  
M/Sgt. Womack, Army Recruiter for Floydada offers an amazing variety of precision maintenance jobs, ranging from guided missiles assembly to metal working or munitions.

**Army Offers Precision Maintenance**  
M/Sgt. Womack, Army Recruiter for Floydada offers an amazing variety of precision maintenance jobs, ranging from guided missiles assembly to metal working or munitions.

**OUR GUARANTEE**  
Satisfaction Guaranteed or Your Money Cheerfully Refunded on All Rexall Products AND LOOK AT THESE SPECIALS

Timed Action Cold Capsules Reg. 1.49 SAVE 51c

Tussys Medicated MAKE-UP 1/2 PRICE

Tussys Wind & Weather Lotions & Cream 1/2 PRICE

King Size COLGATE 49c

CEPACOL 69c

98c Bubble Bath 4 FRAGRANCES 20 Packets 1/2 PRICE

Old Space Aerosol Deodorant 69c

300 Cotton Balls 69c

FREE! 1.00 VALUE OF VITAMINS

REXALL Permanents \$1.00

ALL CIGARETTES 26c Package \$2.59

OPEN TIL 7 P. M.

FAIR PRICES On All Prescriptions Call YU 3-4111 Day or Night HOME OWNED AND OPERATED

JOHNSON REXALL PHARMACY

CORNER MAIN AND CALIFORNIA FLOYDADA, TEXAS

Your General Tire Specialist Says

Buy Now, Save More on these First-0-Year Tire Values

**Warehouse Tire Sale**

We need the space! Every General tire in stock has got to go to make room for new merchandise.

Our sacrifice is your gain in this once-a-year opportunity to buy top quality, factory fresh tires at big, big savings.

Every tire is sale priced including the famous General Jet-Air and the full, 4-ply, long mileage General Nylon.

**BIG DISCOUNTS** up to 1/3 off our regular selling price

ODD SIZES DISCONTINUED TREADS SPORT CAR SIZES USED TIRES OFF NEW CARS (Some driven less than 50 miles)

**FREE MOUNTING \* FREE TIRE SAFETY CHECK**

**BUY ON 100% O.K. CREDIT**

**ALL TYPES ALL SIZES BLACK OR WHITEWALLS**

**Rucker's OK Tire Store**  
308 S. MAIN FLOYDADA, TEXAS

**Army Offers Precision Maintenance**

M/Sgt. Womack, Army Recruiter for Floydada offers an amazing variety of precision maintenance jobs, ranging from guided missiles assembly to metal working or munitions.

M/Sgt. Womack announces if your past training and experience qualify you for precision maintenance work, you can have your choice of the seven occupational groups within this field guaranteed before you enlist. Precision maintenance is only one of many technical subjects in which the army offers training as modern and extensive as you'll find anywhere. And when you enlist in the army, you get choice, not chance. That means you choose the training you want. You take tests to see if you qualify for that kind of work. If you do, you know you'll get that training, because the army guarantees it — in writing before you enlist. Contact M/Sgt. Womack at Plainview or call CA 4-9228.

**Are you Covered? FIRE-AUTO-LIFE-GROUP Insurance**

- LIABILITY
- CROP INSURANCE
- FIRE
- HOSPITALIZATION
- CASUALTY
- WORKMEN'S COMPENSATION
- AUTOMOBILE

"YOUR INDEPENDENT INSURANCE AGENT"

**BAKER Insurance Agency**  
127 W. California Ph. YU 3-3270 SAM BAKER

**1c DRESS SALE 1c**

**Thursday - Friday - Saturday**

Select any one of our many Dresses at Regular Price and get another one of equal Value or Less for only 1c.

**OUR ANNUAL JANUARY SALE ON ALL FALL AND WINTER MERCHANDISE CONTINUES.**

**SAVE! SAVE! SAVE!**

**SHORT SLEEVE SPORT SHIRTS**

480 To Choose from — Knits, Chambrays, Madras, Broadcloths in Slimtrim Ivy or Regular Cut.

**SALE PRICED**

4.00 Values	2.87
5.00 Values	3.87
5.95 Values	4.57

**STANDARD BRANDS PRICED RIGHT**

**Hagood's**  
FLOYDADA, TEXAS PHONE: YU 3-3554

**OUR GUARANTEE**  
Satisfaction Guaranteed or Your Money Cheerfully Refunded on All Rexall Products AND LOOK AT THESE SPECIALS

Timed Action Cold Capsules Reg. 1.49 SAVE 51c

Tussys Medicated MAKE-UP 1/2 PRICE

Tussys Wind & Weather Lotions & Cream 1/2 PRICE

King Size COLGATE 49c

CEPACOL 69c

98c Bubble Bath 4 FRAGRANCES 20 Packets 1/2 PRICE

Old Space Aerosol Deodorant 69c

300 Cotton Balls 69c

FREE! 1.00 VALUE OF VITAMINS

REXALL Permanents \$1.00

ALL CIGARETTES 26c Package \$2.59

OPEN TIL 7 P. M.

FAIR PRICES On All Prescriptions Call YU 3-4111 Day or Night HOME OWNED AND OPERATED

**JOHNSON REXALL PHARMACY**  
CORNER MAIN AND CALIFORNIA FLOYDADA, TEXAS

## Residents Attend Wilson Rites

FAIRVIEW, Jan. 11 — Mrs. W. B. Wilson, Mr. and Mrs. Walton Wilson, Mr. and Mrs. Woodrow Wilson, Mr. and Mrs. Randolph Wilson and Phillip Wilson were among the relatives attending the funeral of Mr. Charlie Wilson at the Date Street Baptist Church in Plainview Monday afternoon at 2 o'clock. Mr. Wilson was a brother-in-law of Mrs. W. B. Wilson and uncle of the other above mentioned.

Mrs. Walton Wilson returned home Thursday night from Vine Grove, Kentucky where she had been for two weeks in the home of her daughter, Mrs. Jim Mallard and family.

Mrs. Roy Meek spent the day Sunday in the home of Mr. and Mrs. Galen Holland.

Mr. and Mrs. Travis Burgott of Ft. Worth spent Sunday night and Monday morning in the home of his mother, Mrs. Rucy Irwin and Mr. Irwin.

Mrs. E. W. Walls went to Plainview Tuesday and visited while there with Mrs. E. R. Walls, and she returned home by Lockney and visited Sunday with her mother, Mrs. Donald Reccey, who is a niece of Mrs. Walls.

Mrs. C. W. Payne visited Sunday afternoon with Mrs. Clyde Bagwell and they both attended the open house for Mrs. C. O. Wise at the home of Mrs. Ralph Thayer. This was in honor of Mrs. Wise's 90th birthday.

Mr. and Mrs. Galen Holland went to Lorenzo Wednesday where they visited Mrs. Mittie Hughes.

Mr. and Mrs. Bill DuBois and sons, Craig and Quinn of Cedar Hill visited Sunday with his parents, Mr. and Mrs. Edell DuBois.

Mr. and Mrs. Earl Huckabee and Sandra of Hereford, visited Sunday night in the home of her sister, Mrs. Lee Burton and family.

Mrs. Kay Crabtree gave a birthday supper Friday night in honor of her husband's birthday. Mrs. L. E. Crabtree and J. C. Bullard were there to enjoy the meal with Kay and his family, and Mrs. L. E. Crabtree remained to spend the night in her sons home.

Mrs. James Truitt Payne and children visited Sunday night in the home of Mr. and Mrs. Cecil Payne.

Mr. and Mrs. Kay Crabtree and Becky were Sunday dinner guests in the home of his mother, Mrs. L. E. Crabtree.

Mr. and Mrs. Harvey Allen and sons, Mike and Norman of Floydada visited Sunday with her parents, Mr. and Mrs. Walton Wilson.

Mr. and Mrs. Shad Wilson and Mrs. John Wilson of Knox City visited with Mrs. W. B. Wilson Monday afternoon. They were on their way home after attending the funeral of Mr. Charlie Wilson at Plainview.

Mr. and Mrs. Kenneth Billington and children of Tullia spent Saturday night and Sunday in the home of Mr. and Mrs. Shirley Irwin and children.

Mr. and Mrs. Lee Burton and Mrs. E. W. Walls were among the ones attending the Bible Study Course held at First Baptist Church in Floydada last week.

Mr. and Mrs. M. O. Stapleton

## Floyd County ASCS Completes Busy Year With End Of 1964

The following is a general summary of the activities of the Floyd County ASCS, how it functions, and some of the accomplishments for the year 1964:

Floyd County ASCS has 10 full time employees, 27 community committeemen, and 3 county committeemen.

The community committeemen are elected by popular vote conducted by mail each year. They take office on October 1 and serve a one year period. The community committee meets on an average of 4 times a year. They also hold all Marketing Quota Referendums in the county.

The chairman of each community committee meets soon after election each year to elect a County committee to serve for one year. County committeemen for 1964-1965 are: J. B. Robertson of the Allmon Community, Chairman; Leslie Ferguson of Lockney, Vice Chairman; and Ned Bradley of Daugherty, Regular Member. They meet each Tuesday at 9:00 a.m. to attend to regular business. They also attend a number of called meetings during the year.

We mail a Monthly Newsletter to all owners and operators of Floyd County farms. Also during 1964 we mailed 11 other informational leaflets to farmers. If you would like your name added to our regular mailing list, let us know. We will be glad to add your name to the list to receive the newsletter.

Floyd County has 1389 farms with cotton allotments totaling 93,441.5 acres for 1965. In 1964 we received 8,932.4 acres of reappportioned cotton; that is cotton that was not planted in other parts of the State. The farmer plants this reappportioned acreage but does not receive history for planting it in order to be eligible to receive a portion of the reappportioned acreage, the farmer must sign a form requesting it. The final date to sign for 1965 reappportioned cotton will be March 3, 1965. The farmer will be notified of the increase by March 19, 1965.

The average 5 year yield for cotton produced in Floyd County is 575 lbs. This is the highest average yield of any county on the South Plains. In 1964 we had 144 farms to be paid under the Domestic Cotton Program. Total payments earned were \$18,094.00.

Floyd County has 1250 farms with wheat allotments totaling 115,718 acres with an average yield of 24.9 bushels. In 1964, 949 farms participated in the Wheat Stabilization Program. Farmers were paid a total of \$1,211,510.00 for diverting 13,704 acres under this program. Farms not participating were mostly farms with very small wheat allotments.

There are 1495 farms in Floyd County with Feed Grain bases (Grain sorghum, barley, and corn) totaling 185,110 acres. In 1964 farmers were paid a total of \$2,667,105 for diverting 58,888 acres under the Feed Grain Program.

One peanut farm in the county has an allotment of 48 acres. We had 13 farms planting 261 acres of sugar beets in 1964. They were paid \$12,122.36 incentive payment under the Sugar Beet Program.

In 1964 Floyd County had 125 farms with all or part of the cultivated acreage in the Soil Bank. A total of \$329,585.00 was made in annual payments.

Fifty-one producers had sheep or shorn lambs and received an incentive payment of \$4,263.29 last year.

1964 was one of the smallest loan years we have had in several years. We made 81 loans for a total of \$4,171,633.47.

Federal cost-shares under the Agricultural Conservation Program were paid on 581 farms totaling \$148,063.00. This is the conservation practices on which the government pays a portion of the cost of carrying out practices such as bindweed control, land leveling, reorganization of irrigation systems, etc. The producer spent approximately \$2.00 for each dollar spent by the government.

In 1964 we issued eight Drafts or Loan Drafts for a total of \$8,573,386.22. Approximately 7000 farm visits to measure wheat, cotton, feed grain, sugar beets and diverted acres were made.

Very truly yours,  
 Thomas J. Hutchins, Office Manager, Floyd County ASCS

### LEGAL NOTICES

**ORDINANCE NO 381 AN ORDINANCE AMENDING SECTION 7 OF THE BUILDING CODE OF THE CITY OF FLOYDADA HERETOFORE ADOPTED BY ORDINANCE NO. 344 OF THE CITY OF FLOYDADA: BE IT ORDAINED BY THE CITY COUNCIL OF THE CITY OF FLOYDADA, TEXAS:**

SECTION ONE: Section 7 of the Building Code of the City of Floydada, heretofore adopted by Ordinance No. 344 of the City of Floydada is hereby amended so that same shall hereafter read as follows:

## Four Extra Tombstones In Floyd County

There are four tombstones in Floyd County that were erected ahead of schedule in 1964. The stones mark the graves of persons who died in traffic accidents on rural highways in the county during the year.

But the suffering wasn't confined to those who were killed. The Department of Public Safety recorded 69 mishaps on rural highways in the county during 1964. Those accidents injured 51 persons and they spent countless days in the hospitals. Property damage from those accidents amounted to \$59,662.00.

During December there were seven accidents on rural highways in the county, according to Sergeant D. S. Lawson, Highway Patrol supervisor in this area.

These crashes resulted in three deaths, nine persons injured and an estimated loss in property damage of \$6,250.00.

Texas drivers have killed more people in 1964 than any other year in the state's history. Unofficial figures indicate the Texas death toll may have reached 3,670 during 1964, but the final tabulation will not be compiled until March 15.

Meanwhile, officials are hoping that motorists will heed warnings and drive with greater care during 1965 and give special consideration to the hazards of driving during the winter months ahead.

### LEGAL NOTICES

**THE STATE OF TEXAS TO: RICHARD ALEXANDER BRECKENRIDGE.**

GREETING:

You are commanded to appear by filing a written answer to the plaintiff's petition at or before 10:00 o'clock A.M. of the first Monday after the expiration of 42 days from the date of issuance of this Citation, the same being Monday the 22nd day of February, A.D., 1965, at or before 10 o'clock A.M., before the Honorable District Court of Floyd County, at the Court House in Floydada, Texas.

Said Plaintiff's petition was filed on the 5th day of January, 1965.

The file number of said suit being No. 9011.

The names of the parties in said suit are: Nancy Evelyn Breckenridge as Plaintiff and Richard Alexander Breckenridge as Defendant.

The nature of said suit being substantially as follows, to wit: Suit for divorce, plaintiff alleging that defendant has been guilty of cruelty and excessive to ward plaintiff of such nature as to render the further living together of the parties insupportable. Plaintiff praying for the custody of the minor children of the parties, to-wit: Richard Lynn Breckenridge; Ronald Glenn Breckenridge; Joe Edd Breckenridge; and Mary Ann Breckenridge; and for general relief. If this Citation is not served within 90 days after the date of its issuance, it shall be returned unserved.

Issued this 5th day of January, A.D., 1965.

Given under my hand and seal of said Court, at office in Floydada, Texas, this 5th day of January, A.D., 1965.

MARY L. McPHERSON, Clerk District Court, Floyd County, Texas (1-28-65)

PORTABLE DISC ROLLING GRAVES Welding Shop Call OL 4-3639 Lockney

## WESTER'S GROCERY & MARKET

Save Our Stamps — Exchange for Premiums or Groceries.

WEEKEND SPECIALS  
 Thurs. - Fri. - Sat. — Jan. 21 - 22 - 23

DINTY MOORE	1½ Lb. Can	BEEF STEW . . 49c
PARKAY	4 Quarters	Margarine . . .4 FOR \$1
ELLIS — JUMBO	No. 2½ Can	TAMALES . . 2 FOR 67c
CAMPFIRE — VIENNA		SAUSAGE . . 2 FOR 25c
VAL VITA, Sliced	No. 2½ Cans	PEACHES . . 2 FOR 49c
BLACKEYE — WITH SNAPS	303 Cans	PEAS . . . 2 FOR 29c
SHURFINE, White, Yel., Spice, Dev. Food Boxes		CAKE MIXES . . 4 FOR \$1
SHURFINE — Vac Pak, W. K.	12 Oz. Can	CORN . . . 2 FOR 33c
SWIFT'S — JEWEL	3 Lb. Can	SHORTENING . . . 63c
IMPERIAL	5 Lb. Bag	SUGAR . . . 59c

MARKET SPECIALS

AFFILIATED — None Better	Lb.	BACON . . . 53c
ARMOUR STAR — ALL MEAT	Lb.	BOLOGNA . . . 39c
LEAN AND GOOD	Lb.	BEEF RIBS . . . 29c
PORK	Lb.	ROAST . . . 47c

7.2 Any person, firm or corporation violating any of the provisions of said Code shall be deemed guilty of a misdemeanor, and each such person shall be deemed guilty of a separate offense for each and every day or portion thereof during which any violation of any of the provisions of said "National Building Code, Abbreviated Edition" is committed, continued or permitted, and upon conviction of any such violation, such person shall be punished by a fine of not more than \$200.00.

7.3 The imposition of the penalties herein described shall not preclude the attorney for the City of Floydada, Texas, from instituting appropriate action or proceedings to prevent an unlawful erection, construction, enlargement, alteration, repair, moving, improving, removing, converting or demolishing, equipping, using, occupying or maintaining or restrain, correct or abate a violation, or to prevent the occupancy of a building or structure or portion thereof, or of the premises, or to prevent an illegal act, conduct, business or use in or about any premises.

PASSED, APPROVED AND ADOPTED this 14th day of January, 1965.

S. W. ROSS Mayor

W. M. A. FEUERBACHER City Secretary

## E. A. NOLAND ELECTED TO AMERICAN ANGUS ASSOC.

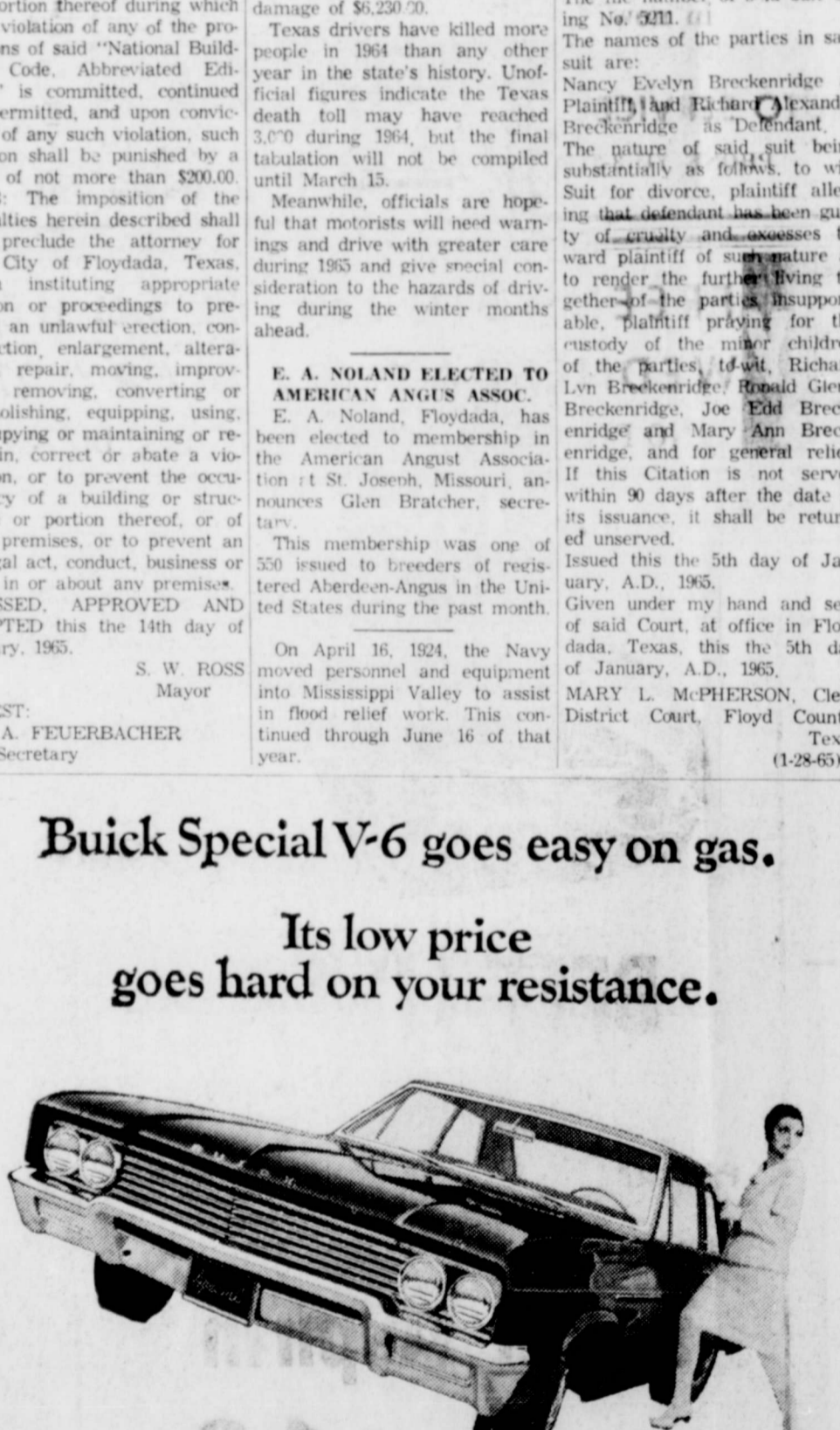
E. A. Noland, Floydada, has been elected to membership in the American Angus Association at St. Joseph, Missouri, announces Glen Bratcher, secretary.

This membership was one of 550 issued to breeders of registered Aberdeen-Angus in the United States during the past month.

On April 16, 1924, the Navy moved personnel and equipment into Mississippi Valley to assist in flood relief work. This continued through June 16 of that year.

## Buick Special V-6 goes easy on gas.

Its low price goes hard on your resistance.



We put 6 big reasons to buy a Buick Special under the hood. And another small one on the price tag. The six are a set of the liveliest, thriest cylinders that ever zipped you merrily on your way. They're all arranged in neat, smooth V-fashion. They add up to 225 cubic inches and 155 horsepower, and make other arrangements of 6 cylinders seem primitive. That's not all. Special sports Buick comfort, Buick style and traditional Buick quality. The price tag? We saved the best for last.

\$2343.00

Manufacturer's suggested retail price for Special V-6 2-dr. coupe. Price includes Federal Excise Tax and suggested dealer-delivery and handling charge (transportation charges, accessories, other optional equipment, state and local taxes additional).

Wouldn't you really rather go first class?

See your local authorized Buick dealer

TUNE IN "LWELL THOMAS AND THE NEWS"—CBS RADIO  
**CITY AUTO SERVICE**  
 121 EAST MISSOURI FLOYDADA, TEXAS

## Some Cotton Still Coming In

DOUGHERTY, Jan. 11 — Our gin manager, R. D. Holly, reports the cotton ginning season is practically over. A little "pickup cotton" is still coming in. A good season was reported.

Mrs. Carmel Eastham Sr. of Temple, is visiting in the home of her son, Carmel Jr. and caring for the children.

Carmel and Lucy are in Ardmore to be with the family and attend the funeral of Lucy's grandmother, Mrs. Lottie Bryant.

Mr. and Mrs. Wendell Graham and son, Randy, Mr. and Mrs. Len Emerit and Mrs. J. W. Graham visited relatives in Natchez, Mississippi recently. Mrs. Graham remained for an extended visit in the home of her son, Kelsey Kervin, who is reported to be convalescing nicely following extensive surgery.

Mrs. R. H. Crawford is in Plainview where her son, David, is hospitalized.

Several children in our community are ill with the mumps.

Mr. and Mrs. Floyd Starkey and son were Sunday guests in the Wendell Graham home.

Among those attending the Hillburn funeral in Lubbock were Mr. and Mrs. Orland Howard and Mrs. Bob Covington.

Mr. and Mrs. Earl Foster visited briefly with H. N. Powell at the Stanley Hospital, Matador Sunday.

Mrs. R. D. Holly, accompanied by her mother of Roaring Springs is visiting in the home of an aunt in Eastland.

Mr. and Mrs. Bob Ashton and son of Lubbock were Sunday guests in the home of his parents, Mr. and Mrs. Clarence Ashton.

Mrs. Bob Everett and son, Rob, have returned to San Antonio after visiting a few days in the home of her parents, Mr. and Mrs. G. W. Smith.

Mr. and Mrs. V. V. Scott and children and Mr. and Mrs. Bob Ross and son visited in Dickens Saturday evening.

Mr. and Mrs. Clyde Lewis and son, Cecil, of Barlesson, were guests in the J. T. Poole home during the New Year holidays.

Mr. and Mrs. Noble Hunsucker Sr., Mr. and Mrs. Noble Hunsucker Jr. and Mr. and Mrs. J. T. Poole attended the funeral of Andrew Burrow, at Barlesson Thursday. The deceased was an uncle of Noble Hunsucker and a life long friend of the Poles.

Before returning the Hunsuckers visited in the Roy Hunsucker home in Dallas.

Among those of our community attending the Neff funeral at McAdoo Sunday afternoon were Mrs. H. N. Powell, Jimmy Pow-

ell, Mr. and Mrs. T. M. Covington and Mr. and Mrs. Floyd Starkey.

Perry Graham was the house guest of his grandparents, Mr. and Mrs. Leo Brown in Lubbock last week.

Mrs. Meredith of Amarillo and Mrs. Elmer Warren were recent guests at Cage home.

Mr. and Mrs. G. W. Smith of Levelland, Dale Smiths at Ft. Worth.

## CHARGE IT SURE YOU CAN

Just ask your

# DEEP ROCK MAN

USE YOUR CREDIT CARD AT DEEP ROCK

Deep Rock accepts all approved credit cards... all our many fine products. If yours isn't Deep... we'll be glad to help you get one. It's easy. Drive in for Neighborly Service fill up with Natural Power... soon!

**DEEP ROCK**  
 ALL CREDIT CARDS

**Floydada Travel Center**  
 Matador Highway

Products by **KERR-McGILL OIL INDUSTRIES, INC.**

## ADVANTAGES OF A PCA LOAN

1. Planned for farmers and stockmen. Your P.C.A. representatives are interested in providing the finest in credit service.
  2. Interest only on time money actually used.
  3. Reasonable costs. Present interest rate 6%.
  4. Owned by farmers and stockmen. Production Credit Associations are credit co-operatives locally owned and operated by farmers exclusively for them.
  5. Credit Life Insurance available. Your loan can be protected for your security and peace of mind.
  6. Permanent and dependable source of credit. One loan can be set up to supply all of your credit requirements for your operations for a full year.
- SEE US WHENEVER YOU NEED CREDIT  
**Specializing in Farm and Ranch Loans — Lending in Excess of \$45,000,000**

**Plainview Production Credit Association**

Jim Lackey, Floydada Office Manager

Offices In: Plainview, Otton, Tullia, Muleshoe, Floydada, Dimmitt, Silverton, Friona, Littlefield

### J. D. Welborn Returns Home

CENTER, Jan. 18 — Mr. J. D. Welborn, who was in a Lockwood Hospital most of last week, was brought home Saturday. The children, James David and the family of Plainview, and his parents from Floydada—visited his parents some time Sunday evening.

Mr. and Mrs. Leo Frizzell were in town last Tuesday. Hal Thomas is still on the list.

Mr. Frank Dunn spent two days with Mrs. Welborn last week.

G. C. Bailey, City, visited Mrs. Welborn Wednesday. Mrs. Bailey called at Mrs. Welborn's home on Friday afternoon.

Mrs. Loye Sandifer visited in town recently with her brother, W. E. Crump, who was at home over the weekend with a cold.

Bruce Horton of W.T.S.U. is in town between semesters. Clarence Sisson of Lockney visited Mr. and Mrs. Walter on Sunday.

Visitors at the J. E. Greens last week were: Mrs. Walter Sims, Mrs. R. H. Ashton, Mrs. and Mrs. Kate Crabtree, and Mrs. Tom Jernigan Saturday afternoon.

Visitors called Wednesday at the W. C. Plumlee home at the C. A. Breeding home. Breeding is still on the sick list.

Sunday morning the Greens visited with Mrs. Charley.

Victor Rendon, son of Mrs. Allen Rendon, of Mississippi, Floydada has named recipient of a Latin American Scholarship, according to Charles P. McLaughlin, state secretary for the Baptist General Convention of Texas.

Recipient of a Wayland Baptist Scholarship, Plainview, Rendon's scholarship will begin with the next semester.

Latin American Scholarships are a joint project of the Baptist Convention and Baptist Woman's Auxiliary Union. Funds for the scholarships are made possible through the annual Mary Hill Day for state missions.

Other students received scholarships to begin this semester.

at home after surgery some ten days ago.

Mr. Frank Dunn and Mrs. O. C. Vinson visited Mrs. Plumlee recently.

The Thomas Warrens dined Sunday with his mother, Mrs. Ola Warren, city.

Mr. and Mrs. Vinson were hosts Friday evening to the 88 club.

### Field And Kitchen News

Lighthouse Electric Coop., Inc. Nancy Morckel, Home Economist Alton Higginbotham, Power Use Advisor

**RECIPE FOR LOSING WEIGHT**  
1 quart will power  
3 cups stickinability  
2 cups understanding  
1 cup humor

Keep at an agreeable temperature and bake in a cheerful oven. —Copied

Alton says much of the work has been completed on the stock show barn. All this work was done by local people interested in seeing this project done.

Wiley Rogers, line superintendent, attended the Earl Bishop's 60th wedding anniversary on Sunday afternoon.

Mr. and Mrs. Loran Nixon and girls, of Berger, spent the weekend visiting with her parents, Mr. and Mrs. Melvin Henry, his parents, Mr. and Mrs. L. L. Nixon, and other relatives and friends.

David Hutchins, of Fort Sill, Oklahoma, spent the weekend with his parents, Mr. and Mrs. Tom Hutchins, and Dale.

Mr. and Mrs. Jerry Bourland of Lubbock, spent Friday night with her parents, Mr. and Mrs. Pete Hickerson.

Mr. and Mrs. Pete Hickerson, and her father L. A. Sargent, were dinner guests Sunday in the home of Mr. and Mrs. E. C. Cope, Plainview.

Guests in the Claude Weatherbee home on Sunday were: her mother, Mrs. C. W. Terry, and her sister, Mrs. Reece Bivens, both of Post.

Mr. and Mrs. W. H. Rathel and their grandson Randy Rathel, of Crosby County were guests in our home Sunday afternoon.

**A PESTICIDE DO AND DON'T**  
DON'T spray or dust a pet unless the pesticide is labeled for such use. For instance, don't

use a flea powder on your cat just because the label recommends it for dogs. . . the product may be okay for dogs, but cats will lick it off as they clean themselves.

DO check the label to determine the animals upon which the pesticide can be used safely, how to apply it, and what precautions you need to take.

**FOR SAFETY AND ECONOMY . . . USE POWER PROPERLY**  
A. If you check your wire, you may save a fire —

Always insist on approved, labeled cord with appliances, lamps and cord attachments.

B. Be sure to have electric repairs and wiring made by a competent electrical contractor.

C. Cords should never substitute for permanent and properly installed wiring.

D. Double check! Have all wiring inspected by an electrical inspector.

**ALWAYS REMEMBER!** As Texas' rural families served by their electric cooperatives continue to make greater and more productive use of electric power, it is imperative that they maintain adequate wiring on their farms and in their homes.

To this end they are urged to constantly use every necessary precaution to keep their use of electricity at all time efficient, safe and economical.

Here are some rules to always observe:

1. Never touch an electric appliance or radio while you are in the bath.

2. Use convenience outlets, not lamp sockets, for electric appliances.

3. ALWAYS disconnect electric irons and heating appliances when not in use.

4. Don't stand in a puddle when connecting laundry appliances.

5. Never touch any grounded metal, such as a radiator, when handling connected electric appliances.

6. Inspect flexible cords on every appliance and in every room for any possible frayed or cracked places in the insulation.

7. Never run flexible cords across a radiator or over heating or water pipes.

8. Don't run cords through door jambs or under rugs.

9. Don't yank the cord when disconnecting electrical appliances.

10. ALWAYS disconnect cord from convenience outlet first; then from the appliance.

Electrical specialists at the U. S. Department of Agriculture say:

"Don't buy just any extension cord. Look first for the Underwriter's label. Then select a cord that's equipped for the use you intend to make of it. Small lamp cords are for just that — lamps. If you're going to use the cord for appliances, buy a larger one."

### Floyd Data

Mr. and Mrs. J. T. McLain have received word their daughter, Mrs. Don (Lorraine) Wallace of Woodland Hills, Calif., underwent major surgery last Friday. No later word had been received by the parents Monday.

2,000 milk bottles, put a ton of silage in a 30 foot silo. Hatch four chickens in an incubator brood one chick for an entire season, light a 100-bird poultry cuse for four days, test eggs for 40 hours, shell 30 bushels of corn, clean and grade 100 bushels of small grain, bale four bales of hay, shear 40 sheep, Electrify a fence for 70 hours.

Yes, one kilowatt-hour, we are told, will do this much for you and how much does it cost—is it can cost less than TWO CENTS.

With apples on the plentiful list at this time, a nice cake that is quick and easy to make is —

**APPLE-DATE CAKE**  
½ cup of shortening or 1 stick of margarine may be used  
¾ cup sugar  
1 egg  
1½ cups sifted flour  
1 teaspoon soda  
¼ teaspoon salt  
2 cups finely chopped apples, peeled  
1 cup dates cut fine

**TOPPING FOR APPLE-DATE CAKE**  
¾ cup brown sugar  
1 teaspoon cinnamon  
½ cup nuts  
Sprinkle over top of batter in flat pan and bake approximately 30 min. in 350 degree oven.

**SOMETHING TO THINK ABOUT**  
There are too many people praying for mountains of difficulty to be removed — and what they need is courage to climb them.

### 4-H Club News

(by Woodie Morris)

The Floydada 4-H club met on January 7 for the installation of new officers.

Those installed were Lindsey Lovell, president; Brenda Willis, vice president; Margaret Graham, secretary; and Kay Russell, treasurer.

Council delegates this year are Teresa Colston and George Finley. Woodie Morris and Pete Price are news reporters.

Shirley chairman, Lu Ann Lovell, co-chairman, Retha Jordan; attendance committee chairman, Penny Price, co-chairman, Randy Jordan and members, Wayne Fancher, Sherry Roberts, Tom Lovell, Jay Jones, Donna Hadamek and Cathy Graham. Program chairman, Brenda Willis, co-chairman, Karen Willis and Will Smith; recreation chairman, Doris Fawver and co-chairman, Billy Finley.

Club decided as a project to work with the Heart Fund drive. Randy Jordan and Vicky Hadamek were voted as chairman and co-chairman.

Bill Renfro, District Heart chairman, will speak at

### NOTICE OF MEETING

The 1962 Jr. Study Club will meet Tuesday night, February 2 with Mrs. Billy Black as hostess.

The meeting will start at 7:30 p.m. and "Our Family Circle", will be the topic for the evening.

our next meeting.

Kathy Graham led the 4-H pledge and Lee Sinor gave the prayer. Roll call was given by Margaret Graham and the treasurer's report by Kay Russell. Teresa Colston gave the council report.

Names were drawn for a one-minute speech. Donna Hadamek spoke on horses, Lou Ann Lovell, hogs and Teresa Colston on her first year record.

Recreation was led by Doris Fawver.

Brenda Willis introduced four guests and three new members, Tom Lovell, Pam Price and Denny Bradford. The guests were Shawn Shurbet, Willa Finley and Mitty Reddy.

Everyone was advised to be thinking of their demonstration.

We wish to thank Collins Implement for the calendars, Co-op Elevator for the Massie building to be added to the Fat Stock Show building and the leaders for our new yearbooks.

The next meeting is on February 4. You are invited to join or visit with the group.

### GATHER YOUR RECORDS

Financial records are important in preparing your Federal income tax return. Director of Internal Revenue Ellis Campbell, Jr., for the Dallas District said today.

The filing season began January 1 — now is the time to get these records together. Mr. Campbell said that cancelled checks, receipts, records of contributions, and other papers would all be helpful.

Taxpayers who keep good financial records during the year will find it easier to prepare their Federal income tax returns. Mr. Campbell explained. Complete records are especially important to taxpayers who itemize deductions.

Copies of prior year's returns are good guides in preparing the new return. Mr. Campbell reminded.

Men of the Marine Corps Ceremonial Guard Company were assigned to stand the famous portrait of Mona Lisa when the painting was displayed in the United States.

### Jimmy Collins With National Bank Examiners

Mrs. and Mrs. Jimmy Collins and daughter, Christie, have moved to Abilene and settled in their home at 1141 Burger St.

Collins, who has been associated with his father at Collins Implement for the past four years as bookkeeper and parts man, has joined the force of the National Bank Examiners of the 11th Federal Reserve District and will live and be headquartered at Abilene.

Collins is the son of Mr. and Mrs. Gene M. Collins of Floydada. His wife is the former Nancy Shaffer of Wichita Falls.

Men of the Marine Corps Ceremonial Guard Company were assigned to stand the famous portrait of Mona Lisa when the painting was displayed in the United States.

**SAFETY INSPECTION**

**Deadline APRIL 1st**

**Come in now.**

**SAFETY INSPECTION**


**Deadline APRIL 1st**

**Come in now.**


**TED ALLEN AUTO SERVICE**

206 S. MAIN PHONE YU 3-3290

**A is for ACCURACY**



Years of training and experience, plus careful checking and re-checking are your guarantee that your prescription will always be filled exactly as your doctor ordered. . . it's one of the ABC's of pharmacy!



**ARWINE DRUG**

100 E. California Street  
Floydada, Texas



**I Love you TRULY**

One picture worth a thousand words: your portrait. It says you care because you give of yourself. To your special Valentine, give the gift of love made with loving care by fine professional photographers. Telephone now for an appointment.



Time to remember with portraits

**"YOUR PERSONAL PHOTOGRAPHER"**

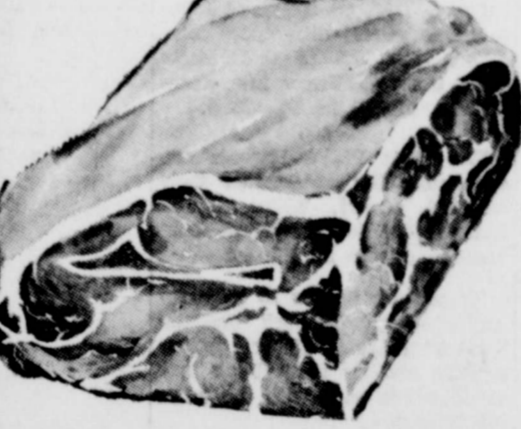
**Parker Studio**

121 W. CALIFORNIA YU3-4063

**Bring This Advertisement To Thrifty**  
— Worth 10¢ In Cash Or Trade

**FREE! 9 BIG PRIZES TO BE GIVEN AWAY NEXT WEDNESDAY, JANUARY 27th --- REGISTER NOW!**  
NO PURCHASE NECESSARY—YOU DO NOT NEED TO BE PRESENT TO WIN

<b>EGGS</b>	\$
PARMACK'S — MEDIUM 3 DOZEN	<b>19¢</b>

	<b>Pork Roast</b>
POUND	<b>35¢</b>

	<b>Oranges</b>
California Navel POUND	<b>12 1/2¢</b>
CELLO PAK TOMATOES	<b>19¢</b>
lb. 5c	

<b>BEEF LIVER</b>	<b>29¢</b>
POUND	
<b>PORK STEAK</b>	<b>39¢</b>
POUND	

<b>WELLY</b>	Assorted Flavors 18 Oz.	<b>3 FOR 79¢</b>
<b>CHILI</b>	Ellis, All Meat 1 1/2 Lb. Can	<b>49¢</b>

<b>Bayer Aspirin</b>	<b>19¢</b>
Reg. 29c	
<b>DOG FOOD</b>	<b>49¢</b>
Chefs, Reg. 59c	

<b>SOUP</b>	Heinz, Tomato Can	<b>9¢</b>
<b>POPCORN</b>	White or Yellow, 2 Lbs.	<b>19¢</b>

<b>CAT FOOD</b>	<b>39¢</b>
Chefs, Reg. 49c	

<b>BATTERIES</b>	Reg. 20c Ray O Vac Flash Light	<b>2 FOR 29¢</b>
------------------	--------------------------------	------------------

**THRIFTY SUPER MARKET**

DOUBLE BUCCANEER STAMPS EVERY WEDNESDAY

SECOND And MISSISSIPPI STREETS FLOYDADA

We Have Trewax & Polish For Your Floor

Floydada Teams Bounce Back; Down Olton In District Games

After losing two games to the Friona teams last week, the locals bounced back to take a double-header from Olton on the Olton court last week.

The boys had the battle well in hand at halftime, but let Olton close the gap and Floydada fought for survival during the closing minutes to salvage a 60-58 victory. The Whirlettes, after leading all the way, dropped behind in the fourth quarter with only about three minutes remaining, but put on a sudden burst of accuracy to take a 47-42 win.

In the Whirlettes game, Floydada took a 10-7 first quarter lead and were holding out very strongly with the score

showing 25-19 at halftime. After the intermission Olton closed the gap to a 36-33 score, pulled ahead of the locals in the final period by four points, but were unable to contain the determined Whirlettes. When the game ended, the locals had a five-point edge.

Shirley Rainer was the main spring in the local offense by blazing the basket with 27 points. Pat Pierce had 16 for the local team, with eight of these coming in the final minutes of the fourth quarter.

The boys and Olton fought to an 11-11 first quarter score after one team would lead for a few seconds then the other would take over. However, at halftime the Winds had moved into a 29-24 lead and were struggling for survival at 44-41 going into the closing period.

During the final eight minutes Floydada added 16 points and Olton added 17 to make the final score Floydada 60, and Olton 58.

Keith Teague led the locals in scoring with 18 points, far below his average for this year. Kerry Bearden had 17 and David Lutrick hit 12. Joe Priest had 16 for Olton, Jerry LaFrance had 15 and Church added 11.

Prior to Tuesday night the locals stood at 2-1 in conference play.

The teams host Aberrath here tomorrow night in two games that determine who will stay in the running for the district crown.

will still hold true in both the Whirlwinds games and the Whirlettes games, that the team losing the least games on the road will be the district champion. A team that loses a game on its home court has a 10-point disadvantage when they play that return game on the opponents home hardwood.

Both the local teams did a fine job, bouncing back from the Friona defeats, to overcome Olton at Olton last Friday night for both the Winds and the Whirlettes were victorious for their second conference victories against only one defeat. (This standing does not include Tuesday night's game against Dimmitt).

The Frionada teams were not the only ones taking victories from Olton, for last Tuesday night both the Della Plains teams traveled to Olton to literally blast two Olton teams in conference games.

The Della Plains Hornets won their game by a 109-35 count and the Hornets edged by Olton by a 39-19 score. Both encounters were the third conference games for each of the teams. These teams are now standing at 3-0 and play host to Snyder here this Friday night in the toughest of the district contests.

In the Whirlettes contest against Friona, it was mentioned by Coach Kelly Chadwick that the girls lost the ball to the Friona team a total of 14 times. This is, of course, very unusual.

"Even worse than that," Chadwick said, "when a team is playing against last year's state champion, there is a certain psychological factor involved."

When the game started the locals got the ball and went in to score. The Friona girls took the ball and did the same thing. However, before the Floydada girls had another shot at the basket, they had lost the ball seven times. Starting out like that can certainly tap the enthusiasm of

any team. It was also mentioned by Chadwick, that Floydada made four goals that were not counted because of some infraction just before the shot, or during the shooting process.

There weren't many free throws, but what was taken made another difference also. Friona hit 89% of their shots from the free throw line, compared with 40% for Floydada.

The Della Plains Hornets are welcoming the services of their rebound expert, Willie Simon, back to the team after a short absence due to an illness.

Simon was unable to play recently against Lubbock, and the local teams lost. He saw action against another team later that week and is back with the team full time now.

During the game against Olton, Simon did not score even one point. However, it should be mentioned that none of the starters played in the game for any length of time, and the top scorers were two players from the "B" team.

However, with the team at full strength, the Della Plains team was still unable to overcome Plainview in a game last week.

With reference to the Southwest Conference, which is always a mad-house until the end of the race, it will be interesting to see the outcome of the SMU-Tech game, who are the two league leaders.

Although, one is not to overlook either Baylor, or the defending champions, A&M.

HUNT PRESSURE STILL ON CLIMB AUSTIN — The increase in Texas hunting pressure continued during the 1964 fall harvest season, according to W. J. Cutbirth, Jr., of the Parks and Wildlife Department staff.

The assistant administrator said a partial report for the first two months of the state fiscal season beginning September 1 showed an increase from \$504,740.40 in hunting license receipts for 1963 to \$578,320.75 for 1964.

In May, 1964, the Coast Guard placed in operation the world's first atomic-powered lighthouse in Chesapeake, Md. It is anticipated that ultimately that automatic facilities will supplant many of the manned light stations now in use.



WHIRLWIND BASKETBALL TEAM — Pictured above are the members of the 1965 Whirlwind Basketball Team. Left to right they are: front row, Rodney Bunch, Kerry Bearden, Steve Marler and Keith Teague; back row, David Lutrick, Roland Adams, Coach Nick Greer, Mac Willson and Waldo West. (Staff Photo)

Della Plains Teams Blitz Olton For Year's Third District Win

The Della Plains Hornets and Hornettes traveled to Olton last week and brought home two conference victories, the third for each of the local teams this year.

The Hornets eased by their counterparts by a 39-19 margin, and the Hornets made a race-track of the basketball court as they blasted the Olton boys with a 109-35 count.

The girls were led by Shirley Minner in the scoring department who sank 21 points, two more than the entire Olton team was allowed. She was followed by Ruby Storey with 14.

Mary Mack of Olton sank 10 of the team's 19 points to lead her team in that department.

For Della Plains, the victory can largely be attributed to the fine defensive work of the guards, for allowing so few points. Those primarily responsible for this fine work are Clarence Owens, Louise Davis, and Evon Carr.

The Hornets and the Olton girls fought on even terms for the first period, and only seven points separated the two teams at halftime, but during the last half the girls got far out of reach of their host team. The

first quarter ended with the scoreboard showing 7-6, Della Plains. At halftime, the count stood at 19-12 and going into the final period the locals had a 30-17 margin. The locals allowed Olton only 2 points while making 9 in the last quarter.

In the boys lopsided victory, the "B" team saw so much action that two of those players were the high point individuals. Leon Collins sank 20 and Marcelos Richardson hit 18 for the locals. Hozie Jackson and Wilmer Bonner added 14 each. Tommy Collins hit 11, Jimmy Bean and Wilbert Richardson each added 9 and Harry Samuels and Jewell Storey each hit 8.

L. D. Nunn of Olton had 14 and Don Green had 15.

According to Coach Albert Johnson, substitutions started early in the game as the locals took a 28-9 first quarter margin, extended that to 49-13 by halftime, and led 76-23 going into the closing minutes.

The Della Plains teams played Plainview there last Thursday night and were able to split the games with the larger team. The Hornets lost 88-75 and the Hornettes were victorious 33-34.

The Hornets had a close 11-9 edge at the end of the first quarter and led 22-7 at halftime. After the intermission the locals came back to put the game out of reach by scoring 23 points during the quarter and to lead

45-25 going into the final stanza. The Hornets added only two points and allowed the host team 9 during the waning minutes.

Ruby Storey led Della Plains with 22 points and she was followed by Kathy Hearon with 15 and Shirley Minner with 14. Alice Pruitt added 14 for Plainview and Velma Haley hit 12.

The Hornets were not quite so fortunate, against a team they have lost to earlier in the year. Plainview jumped to an early lead and was never threatened during the game by the local team. The score at the end of the first quarter stood at 24-15.

Plainview, and at halftime was a 31-28 count. During the third quarter, Plainview pulled farthor away by adding 27 points and allowing Della Plains only 21. However, during the last quarter, the Hornets hit 26 and allowed Plainview only 9 to close the gap somewhat.

This Friday night the teams take on Snyder in their toughest of the district competition here at 7:30 p.m.

Prior to Tuesday night's game with Slaton, the two teams stood at 3-0 won-lost in district play.

Friona Takes Two Conference Wins At Expense Of Floydada

The Friona teams, both fresh from victories over tough Aberrath teams made it two wins against no losses last week as they blasted the Floydada Whirlwinds and the Whirlettes for two conference wins.

The local teams had been victorious over Lockney teams the prior week, so the contest made the Floydada teams stand 1-1 in district play.

In both the games the Friona teams jumped to early leads and coasted on in for relatively easy victories.

Whirlwinds As the first quarter progressed, the former state champions took an early lead over the Whirlettes. The score at the end of the opening period stood at 11-7.

Friona. At halftime the host team had extended that score to a 19-point lead and held a 26-16 edge. The Whirlettes almost held their own against the larger girls but were behind 23-25 going in to the final minutes.

During the last quarter the Whirlettes closed that gap and were behind only 8 points at the end of the game. The final score stood at 42-34 Friona.

Shirley Rainer sank 14 points to pace the locals, followed by Dee Wilson who made 13. Pat Pierce added 7. For Friona, Terry Jennings hit 17 points, and most of these came in the first quarter.

The Whirlettes are constantly reminded of the fact that they made four field goals that were not counted, due to "traveling with the ball" at the time of the shot. This would have been enough to tie the Friona team.

In the Whirlwinds game against the Chiefs, they, too, played a game of "catch-up" all through the game, for Friona took a 15-10 lead at the end of the first quarter, extended that lead to another seven points to lead 33-21 at halftime and were well in command going into the final period with a 46-31 lead. During the waning minutes of the game, the locals did close up the gap, but only slightly for

someWHAT.

This Friday night the teams take on Snyder in their toughest of the district competition here at 7:30 p.m.

Prior to Tuesday night's game with Slaton, the two teams stood at 3-0 won-lost in district play.

when the buzzer sounded ending the game, the score stood 63-52, Friona.

Keith Teague led all the players in the scoring department with an impressive 28 points. He was followed by Milder of Friona who sank 22, and Danny Murphree who had 15. Kerry

Bearden sank 8 and trick 6 against the speedy team.

The locals will have to average both the district and conference games to host the Friona boys from 7:00 p.m. to 9:00 p.m. on January 29 in the season of play.

LOCKNEY Plumbing Co

"Where Plumbing is an Art and Service is a Pleasure"

Owner: DAVID BARTON

Licensed and Insured — Formerly Workman Plumbing Co.

24 HOUR REPAIR SERVICE

Free Estimates on Contracting and Remodeling

ALL WORKMANSHIP AND MATERIALS GUARANTEED

Financing Available

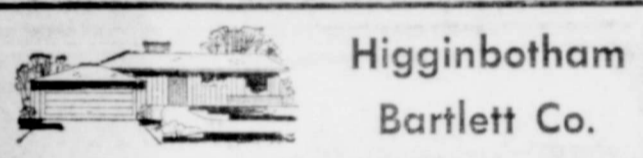
Nothing Down — 5 Years To Pay! • Remodeling • Heating • Air Conditioning • Water Heaters • Water Softening

Give Us A Call Today

For Service — Not Promises

DIAL OL 4-3422 DAY OR NIGHT

"Only the Rich Can Afford Poor Plumbing"

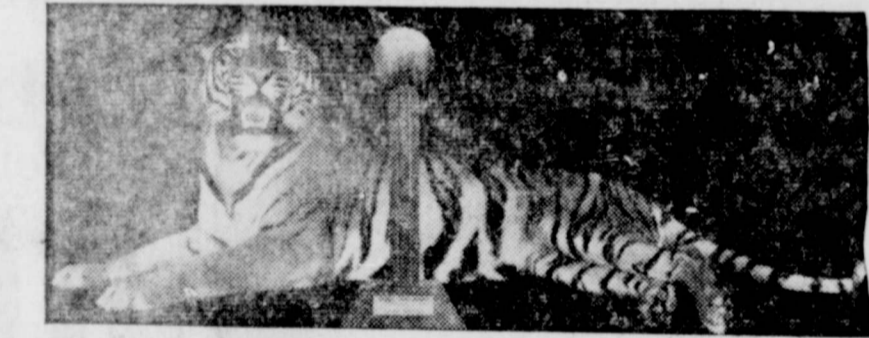


Higginbotham Bartlett Co.

Open A Budget Account With Us NEW LONG TERMS — 5 YEARS TO PAY Loans Up To \$3,500 JUST CALL YU 3-2140 — FLOYDADA

You no longer have to delay your plans for remodeling and improving your home. Our easy Pay-Out-of-Income Credit Plan enables you to make the improvements you want now — for just a few dollars a month and with no down payment required. You'll be surprised at how easy you can get up to \$3,500 Confidential No Red Tape. Do-It-Yourself and save the cost of labor or hire the labor — whichever you prefer. Our plans cover the cost either way.

We CHOP MEAT PRICES! 1/2 BEEF 38c lb. 1/2 HOG 30c lb. Call Willie B. Eakin — 667-2514 PETERSBURG



The Tiger of the year was just named Car of the Year by Motor Trend.



If that isn't enough of a hint, try Quick Wide-Track. (This is their year.) Or Turbo Hydra-Matic, the new transmission you can order that does away with roaring between shifts. Coupled with the quicker engines for the '65 Pontiac, it saves the roaring for whenever you need it. When you don't, the extra-potent engines let you just loaf along. And this loafing gives you the kind of economy you wouldn't expect from a looker like the '65 Pontiac. See your Pontiac dealer. He'll show you all 32 Pontiacs that are the "Car of the Year." They're the buy of the year, too. SEE THE NEW BONNEVILLE, STAR CHIEF, GRAND PRIX, CATALINA, 2+2, LEMANS, GTO AND TEMPEST AT YOUR AUTHORIZED PONTIAC DEALER.

Pontiac Quick Wide-Track

CITY AUTO SERVICE

121 EAST MISSOURI FLOYDADA, TEXAS

On sale now through April 30th! Big travel bargain for cities along Santa Fe



It's Chico Bargain Fare time again on the Santa Fe—through April 30, 1965.

For example, a regular round-trip ticket costing \$100 will be sold at the off-season bargain fare of \$80. Round trips costing \$75 now will be only \$60, and similar reductions will apply for round-trip tickets from all stations except for local trips within the State of California.

No matter where you travel on Santa Fe trains, round-trip bargain fares will save you approximately 20%. Tickets on sale every day with a return limit of 30 days. Yes, bargain fares apply for both round-trip coach and first-class tickets.

Now you can leave the car at home and save money traveling by Santa Fe.

See the Santa Fe Agent in your home town for complete information

# Study Course Set At Church

OUTH PLAINS, Jan. 18—Jan. 25th through 29th has been set for the time for a church study course. The book to be read is "The Christian Church" by Dr. Jerry Dawson of the South Plains Baptist Church. Dr. Dawson will be teaching the course from 7:00 to 8:30 p.m. each Sunday evening. Rev. Sealy Smith will be teaching the course to the young children of the church. Mrs. George West will be teaching the course to the young women of the church. Mrs. George West will be teaching the course to the young women of the church. Mrs. George West will be teaching the course to the young women of the church.

**APADA THEATRE**  
 FRIDAY - SATURDAY  
 JANUARY 22 - 23  
 WILLIAM SUSANNAH  
 GOLDEN YORK  
 CAPUCINE  
 THE 7th DAWN

SUNDAY - MONDAY  
 JANUARY 24 - 25  
 THE 7th DAWN

**Public Bookkeeping**  
 &  
**Tax Service**  
 L. W. Osborn  
 222 W. Lee Phone YU 3-2503

# Guest Speaker At Church Sunday

CEDAR HILL, Jan. 18 — Rev. Wayne Nelson of Plainview was the Sunday morning guest speaker for the Baptist congregation. He was accompanied by his wife and daughter Alice. The family had dinner with brother Buschur the pastor and family. Some of the regular church attendants are still out with illness. Among them are Mrs. Joe Fortenberry, Mrs. Garland Tucker and Mrs. T. F. Love. Mrs. Fortenberry is a patient in Lockney General Hospital. Mr. and Mrs. Jim Taveer of Plainview and Mr. and Mrs. Esley Yearie were Sunday dinner guests of Mr. Andrew Jetton and sister Mamie. Mr. & Mrs. Durrell Fortenberry visited with their friend, Mr. Welch, who is in the hospital in Chillicothe Sunday evening. On their return they stopped in Memphis and visited her parents and children. Hostess for the bridal shower for Mrs. Linda Seymore held at the Baptist Church from 10 until 11 a.m. Friday morning were Mrs. Lindsey Lackey, D. M. Cogdill, Frank Floyd, Eldon Fortenberry, Frank Breed, Elvie Lackey and Stanley Burleson. There were seventy-six names listed on the register sheet. Out of town attendants were Mrs. Mmes. George Saly, J. B. Bean and John School from Silvertown, Edna Lackey, C. L. Henderson and Mamie Henderson from Lockney, Larry McCormick of South Plains, Hubert Sidone and Slat Castleberry of Petersburg. Mr. and Mrs. C. F. Golightly visited with her parents, Mr. and

**LEGAL NOTICES**  
 Sealed bids addressed to the Honorable Mayor and City Council of the City of Floydada, Texas, will be received at the office of the City Manager, City Hall, Floydada, Texas, until 4 p.m., February 9 for the purchase of two buildings, description as follows:  
 1-18x16 stucco building with bath fixtures, alternate bid without fixtures;  
 1-21x16 open end stucco building.  
 The City Council reserves the right to accept or reject all or part of the bids, and to accept the bid the Council considers the most advantageous to the City.  
 Each bid must be sealed in separate envelope, and have Bid Number and closing date marked on outside of envelope. Bids on the purchase of the buildings individually, or on both in one bid will be accepted. (1-21, 28, 1965)

**Time is Money**  
 START SAVING TODAY!

**First National Bank** FLOYDADA, TEXAS  
 Think First of The First

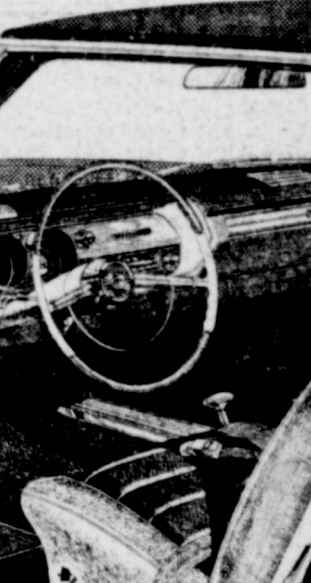
# Farm Bureau Facts & Faces

THE ANNOUNCEMENT CAN NOW BE MADE! Arrangements for the Texas Farm Bureau Market Builder Tour to Western Europe are now complete. The dates have been set for March 31 - April 14, 1965, and will provide a real opportunity for members to take an "on the spot" look at markets in one of the most prosperous areas of the world. This will be a "working tour." Samples of Texas agricultural products will be sent over in advance of departure. Trade fairs, on a miniature scale, will be set up in each hotel. The tour will have a complete staff, capable of advising prospective sellers and buyers on every aspect of exporting a particular agricultural product. Ample time will be set aside for sight-seeing and other items of interest. Texas — with its fine all-weather ports, its rich and diversified agricultural areas, its industrious farmers — and agribusiness people who want to expand their markets, is a "natural" for this type of tour. It is hoped that one or more local leaders will avail themselves of this "opportunity of a lifetime." Perhaps someone in business in Floyd County would like to go. This tour is by invitation only, so Farm Bureau member, ask your businessman friend if he is interested. Details may be obtained from the Floyd County Office, Mrs. A. C. Pratt, or Louis Pyle. WELDON SMITH and Virgil Brasher were the only absentees in the Monday, January 11, Board Meeting. Biggest item of business was the membership drive coming up in February. Tentative plans are for a breakfast at Rogers Restaurant at 7:00 a.m. February 9. Guest speaker will be Mack Guest of Waco. Heading the membership drive will be Weldon Smith, Eldon Fortenberry, and L. B. Brandes. Area Fieldman, Jerry Bedenberger attended the board meeting. The U. S. Marine Corps developed the concept of "Vertical Employment" which is the transporting of combat ready Marines over and behind enemy lines by helicopter.

# U.S. Sees Mail Explosion

The U.S. Post Office is in the middle of a mail explosion. Six billion more pieces of mail will be delivered this year than were delivered only 3 years ago. That's enough mail to reach around the Equator 25 times. Motorized equipment has helped keep postal employment relatively stable. As the mail explosion continues, the total number of postal employees is expected to rise very slowly in comparison with the soaring volume figures. Shakespeare's father made gloves.

# Bob Hope Goes to Bat for Heart Fund



MESSAGE displayed by film-and-TV veteran supports 1965 Heart Fund Campaign, which reaches high point on the week-end of Heart Sunday, February 21, when 1,750,000 volunteers will visit their neighbors to distribute information to protect hearts and to receive Heart Fund contributions.

# The Iron Curtain isn't soundproof.

And so the truth is broadcast, through the air, where it can't be stopped by walls and guards, up to 18 hours a day to millions of people in the closed countries behind the Iron Curtain. Will you help the truth get through? Send your contribution to: Radio Free Europe, Box 1965, Mt. Vernon, N. Y. Published as a public service in cooperation with The Advertising Council.

# Why Don't They Let Us Successful Businessmen Solve the Farm Problem?



Texas Farmers Union believes that farmers should run their own farm organization... not middlemen, not processors, not industry. Join the Texas Farmers Union... The Farmers' Farm Organization!

# '65 Chevelle by Chevrolet



(discover the difference)  
**Find out what 350 hp feels like**  
 in America's favorite intermediate size car  
 Next time you're feeling low, come on in and plunk yourself down in the bucket seat of a Chevelle Malibu Super Sport. Flick the ignition—bring that special-order 350-hp power plant to life. Then go find a road and try not to smile. We think it's the greatest pep pill since weekends—and that goes for the other Chevelle V8's too. The 195-hp. And the 250- and 300-hp jobs we can order for you. And of course if power doesn't sell you right off, maybe Chevelle's short turning radius and overall handling ease will. Or its Full Coil suspension ride, Or its all-vinyl, carpeted interior. Or maybe it's just plain old Chevelle value.  
 discover the difference  
**CHEVROLET**  
 Drive something really new—discover the difference at your Chevrolet dealer's  
**Chevrolet • Chevelle • Chevy II • Corvair • Corvette**

### Hesperian Editorials

#### Our 75th Anniversary!

The year 1965 marks the 75th Anniversary of Floyd County and it's time to make plans for a big celebration in observance of the event.

Looking back in The Hesperian files we note a big anniversary edition published in the year 1940 on the occasion of the county's 50th anniversary.

No doubt the Old Settlers' Day committees will want to soon begin work on plans for the celebration. The Hesperian will work with the committees in seeing that the event gets local, state and national publicity.

In fact, The Hesperian staff is already making plans to put out a huge anniversary edition. We'll soon begin interviewing our old timers and corresponding with old pioneers who live out-of-county and out-of-state for some tales of early days in Floyd County.

The Hesperian pledges its best efforts to make the event a successful one, and likewise asks for the cooperation of everyone in the collection of early days pictures and stories for the anniversary edition.

#### Dangers Of Butane

Most of our farmers have some responsibility each day in the use of butane fuel. Many use butane to heat their homes. Many tractors, irrigation motors, and pickups are powered with butane fuel.

No doubt many have experienced "close calls" in minor butane explosions and make a mental note to be more careful in the future handling of the fuel.

The Floydada Young Farmers group and the Floydada Fire Department members are co-sponsoring a program tonight in the agricultural building at the high school on the "Dangers Of Handling Butane."

Captain A. C. Black of the Lubbock fire department will be showing a film and making a talk on this very important subject.

The Hesperian suggests that everyone in this area who is even remotely concerned with the use of this fuel attend this very important and informative meeting.

Attend in the interest of your own well being... your family's... and your neighbor's.

### GUEST EDITORIAL

#### BRACERO LAW

What effect will the expiration of the bracero law have on farm wages in West Texas? We have an article from the Pecos Independent, an area where braceros were used considerably, which says that farm wages are expected to sky-rocket.

We will not be surprised at such a development. Of course that was the original purpose of those who sought to kill the bracero law. They wanted less competition in farm labor so that farmers would be forced to pay higher wages. J. B. Kirkland, chairman of the National Association of Agricultural Employers has said that a substantial raise in farm labor costs will put many a farmer out of business and he has made a 15 year study of farm labor costs.

In addition to this, the Johnson Administration now comes out with proposals to raise the minimum wage, do away with the "right-to-work" laws and up the Social Security Tax. In other words, just about anything that organized labor wants, the Administration is going to deliver to them. We have just this to say that those of the Lockney area who have been praising the Johnson administration so highly: when these objectives are passed it will not be to your advantage. Maybe you have so much money that you want to divide with others. If so, that's fine. But we'll personally guarantee you that the passage of these measures will result in you having considerably less money. If that's what you want, it appears that that's what you're going to get.

(Lockney Beacon)

#### Floyd County 25 Years Ago

in Floyd County (Jan. 18, 1940)

Mayor Glad Snodgrass and City Engineer J. L. Puckett were on hand to see the installation of the first motor for a private patron of the new Floydada Municipal Light and Power plant, by City Lineman L. D. Britton. The mayor's store was the first to receive electricity from the city plant.

West Texas Gas Company officials this week announced another voluntary reduction in gas rates effective with the January billing.

Funeral rites for Z. E. Shackelford, 80 year old pioneer resident of Lockney, were conducted Sunday afternoon.

Temperatures here Wednesday night dropped 54 degrees in less than 12 hours in the teeth of a raging blizzard which swept across the plains, and snow began falling shortly before 8 o'clock this morning.

83 Floydada High School students last week were exempt in every subject in final examinations. There were 13 freshmen, 24 sophomores, 19 juniors and 27 seniors.

#### State Parks

#### Have No Real "Off Season"

Rockport - Few people realize how busy state parks personnel are during the dead of winter, according to Tom Oliver, regional state park ranger.

During the "outdoor" season from Easter to Labor Day, the job of routine maintenance such as cleaning park grounds, cleaning rest rooms and mowing grass occupy parks personnel full time, and actual repairs must be put off.

When the icy blasts of winter turn the thoughts of the public away from state parks, the real work begins, said Oliver. Using the limited funds available, the repair crews swing into action. Rest rooms must be repaired and painted, shelters re-screened, broken windows replaced, leaky roofs fixed and signs must be repainted or replaced. Equipment such as mowing machines need repair while ancient pickup trucks are coaxed into condition to operate for another season.

#### School Menu

Menu for Week of January 25

MONDAY:

- Italian Spaghetti Cabbage Slaw Rolled Wheat Rolls and Butter Strawberry Jello Cake 1/2 Pint Milk

TUESDAY:

- Turkey and Dressing & Gravy Little Whole Potatoes with Sweet Peas Cranberry Sauce Sliced Peaches Hot Rolls and Butter 1/2 Pint Milk

WEDNESDAY:

- Seasoned Pinto Beans Fish Portions with Tartar Sauce Tossed Salad Hot Cornbread and Butter Bananas Pastry with Wafers 1/2 Pint Milk

THURSDAY:

- Baked Ham Fresh Blackeyed Peas Congealed Applesauce Salad Hot Rolls and Butter Date Cake 1/2 Pint Milk

FRIDAY:

- Hamburgers Lettuce, Tomatoes, Dill Pickles Shoestring Potatoes Cherry Cobbler 1/2 Pint Milk

#### Savings Bond Quiz

Q-I have a sizeable number of Series E Bonds of the \$100 denomination which I've accumulated over the years through the Payroll Savings Plan. If an emergency arises and I have to cash some of these bonds, when is the best time to do so to realize their highest dollar return?

A-Your highest return would be obtained if the bonds are cashed on the date on which redemption values increase. Your bond bank teller can tell you which date that is, so don't fail to ask. By way of example, though, let's say you need some extra money, the date is February 12, 1965, and the bond in question is dated September, 1956. If you cashed the bond on the 12th, your value would be \$95.26. If you could hold off cashing the bond until March 1, the date of higher redemption value, your return would be \$97.24.

Q-I am getting along in years, am in ill health, own over \$20,000 in Series E Bonds and am wondering whether I could name by alma mater as beneficiary. I have no known next-of-kin and feel I owe my school much for the success I've enjoyed.

A-Sorry, the answer is no. Savings Bonds issued in beneficiary or co-owner form can name natural persons only. A bond naming a school or any other type of organization can be registered in the name of that school or organization only. There is one way you could see the school gets the money, though, and, at the same time, insure it gets money on top of money. You could cash your bonds

#### States Right-To-Work Law ... Could Be In Jeopardy

A House Concurrent Resolution petitioning Congress to retain the Right-to-Work section of the Taft-Hartley Act will be introduced in the Texas Legislature under the sponsorship of Rep. Bill Clayton of Springlake, it was announced recently.

E. Clay Lafield of Austin, executive director of the Taxpayers Educational Association, Inc., said he expected the resolution would have strong support, and expressed the hope that Texas would lead the right to impress upon Congressmen the importance of continuing the authority with states of having Right-to-Work laws on their books.

Texas is one of 20 states with Right-to-Work laws. Lafield said his organization planned to encourage the introduction of similar resolutions in legislatures of all other states.

Repeal of Section 14(b) of the Taft-Hartley Act, the Right-to-Work section, has the endorsement and active support of the AFL-CIO, and is listed as its major legislative objective, Lafield said.

"This is contrary to the best interests of every Texan - and every American - who believes in the inherent right of every person to work and bargain freely with his employer, and who believes that no person should be denied employment because of membership or non-membership in a labor union," he said. Lafield said his organization

#### Veterans Ask

Q-I sent my change of address to the Treasury Disbursing Office, Chicago, Illinois. Why haven't my checks come to my new address?

A-Changes of address should be sent to the VA Regional Office having jurisdiction of your case. Disbursing Office officials would have no way to check addresses.

Q-How can I find out if I am entitled to hospital care from the VA?

A-Get in touch with your VA hospital or regional office. If you submit your claim by mail, be sure to identify yourself with a claim or serial number and give dates of your military service.

Q-My husband who is receiving VA money has left me. What procedure should I follow to apply for part of that money?

A-A letter to the VA regional office handling his claim, identifying the veteran by claim or service serial number and giving the circumstances of the separation, together with your income and expenses, will serve as your application for a portion of his payments. Of course, your husband will be contacted and asked to express himself in this regard.

and buy bonds in the name of the school with the proceeds. You would, however, have to pay Federal income tax on all interest earned on the bonds up to the time of cashing them.

was not a labor-baiter, or anti-union, "but we believe every person should be given a choice of belonging or not belonging to a labor union."

He predicted that if Congress repeals Section 14(b) of the Taft-Hartley Act, the next step will be for the labor unions to ask the courts to nullify state Right-to-Work laws on the grounds that they infringe upon Federal jurisdiction. This, he said, will place state Right-to-Work laws in jeopardy.

"The Right-to-Work law in Texas, and in other states, has served as the single greatest stimulant to economic growth since World War II, resulting in a prosperity unprecedented in history," he said.

The resolution is endorsed by Rep. Ralph Wayne of the 89th District.

#### Philosopher Says He Can't Estimate Costs Any Better Than Roads Bureau

Editor's note: The Floyd Philosopher on his Johnson grass farm reviews the highway situation this week.

Dear editor: According to an article I read in a newspaper last night while my television set was having cable trouble, the Bureau of Public Roads has discovered it has underestimated the cost of the vast interstate highway system which is supposed to span the United States by 1972 by about \$6,000,000,000 or 6 billion, to spell it out in case The Hesperian doesn't have that many zeroes in its plant.

Originally, they'd figured the 41,300 miles of super highways would cost 41 billion, or a billion dollars a thousand miles, but due

to rising costs, such as higher cost has risen to about 47 billion farm land is worth more in a highway than in cultivation, the cost has risen to about 447 billion dollars.

I know how these things are. You start out a year in January figuring it'll cost so much to get by on, but by the time September rolls around you find so many unexpected things have piled up your estimate was no better than the United States Bureau of Public Roads.

But what interested me in the highway article was the statement that the vast system was "designed to handle traffic 20 years beyond the design period." As I understand it, the project is supposed to be completed in 1972, however they've been work-

ing on it for several years already, with 19,000 miles open to traffic and 22,000 still to go.

What this means is that by the time they get the last of it built the first of it will be 20 years old and already out of date. It'll be like a woman wearing a 1965 hat and 1945 shoes. In other words, we're building new cars faster than we can build roads to run them on and the future looks dark unless we can step up the rate of accidents.

I don't like to stand in the way of progress, sit maybe, but not stand, but it is hard for me to figure out a place a thousand miles from here which is worth a billion dollars of highway to get to. Certainly I can't imagine anybody that far from here willing to spend that kind of money

to reach this place. This figure out to a mile, but I guess satisfaction in you've driven 60 miles an hour, you've got, although to get almost the sitting in a four-chair out here on grass farm.

**SUPER CLEAN**  
For Quality Dr... ing The Approp... tone Way.  
CALL YU 3-33

## OFFICIAL FLOYDADA RAIN CHART, 1925--1964

CLIP FROM THIS NEW SPAPER AND SAVE

	1925	1926	1927	1928	1929	1930	1931	1932	1933	1934	1935	1936	1937	1938	1939	1940
Jan.	.50	.70	.85	.40	1.10	1.25	.40	1.25	.60	.50	0	.90	.20	.75	2.65	.26
Feb.	.05	0	.10	1.80	.60	0	1.00	1.10	.30	.50	.45	.15	0	3.25	.65	1.75
Mar.	0	1.70	0	0	3.60	.85	1.15	0	.65	1.60	2.00	.20	1.40	.80	.60	0
Apr.	1.75	4.00	.20	.05	.40	1.90	3.25	2.00	.65	.65	.20	1.50	3.25	.70	.50	2.15
May	4.50	2.50	0	5.40	7.25	1.25	0	1.25	4.00	2.50	4.60	3.25	4.80	1.60	1.70	2.75
Jun.	1.00	1.50	2.75	.50	3.85	1.75	.50	2.00	.35	0	3.00	.80	3.00	2.60	3.65	.42
Jul.	4.00	.01	1.75	3.25	1.00	.05	2.00	4.50	2.50	0	.50	8.50	1.45	5.25	1.00	.64
Aug.	1.40	2.00	.80	5.60	2.00	.25	.75	4.75	2.50	1.50	1.75	0	4.65	2.00	1.75	3.48
Sep.	9.00	7.70	5.25	.50	4.50	1.50	0	3.00	.80	3.00	2.15	14.00	3.60	0	.40	1.50
Oct.	1.75	2.00	.10	1.50	1.20	4.75	4.30	1.10	0	0	1.90	1.30	4.75	1.65	2.50	1.00
Nov.	.15	0	0	1.10	.50	.55	2.00	.05	1.75	1.25	1.20	.15	.70	.20	0	2.85
Dec.	.05	1.70	.70	.50	.05	2.70	2.35	3.25	0	0	.65	.25	.60	.05	.65	.16
Year	24.15	23.81	12.50	20.60	26.05	16.80	17.70	24.25	14.10	11.50	18.40	31.00	28.40	18.85	16.05	16.96

	1942	1943	1944	1945	1946	1947	1948	1949	1950	1951	1952	1953	1954	1955	1956	1957
Jan.	.05	.04	1.31	.71	1.97	.90	.10	4.0	.40	.41	1.12	.06	.04	.67	.07	.21
Feb.	0	0	1.00	.37	.41	.12	1.60	.21	0	1.06	0	.14	0	.40	.45	1.13
Mar.	.50	.27	.58	.51	1.30	1.28	.63	.76	0	.99	.09	.63	.09	.11	0	.79
Apr.	5.78	1.55	.45	1.01	.15	1.62	.78	2.77	.73	.70	3.24	.88	1.87	0	.68	4.05
May	.87	4.43	2.11	0	1.95	8.13	1.21	5.64	2.33	4.38	1.30	1.72	6.20	3.98	2.18	6.32
Jun.	.77	1.70	1.35	.31	1.85	.71	4.50	4.24	3.45	2.33	.40	.57	.22	6.25	2.25	9.72
Jul.	1.80	3.12	2.04	3.19	.50	0	.81	1.58	7.46	2.29	3.68	3.11	0	3.64	1.77	.31
Aug.	2.05	0	3.62	4.13	1.40	1.84	.41	1.96	4.89	3.19	1.16	2.00	1.05	.95	0	1.42
Sep.	7.70	1.81	6.10	1.15	3.29	0	.75	3.90	6.35	1.54	.94	.28	0	2.33	.26	.23
Oct.	3.15	.80	.50	2.35	6.51	0	.97	2.21	0	.86	0	3.55	.65	3.71	.34	5.41
Nov.	.09	.66	.90	0	3.10	1.26	0	0	0	.37	.79	.25	.12	0	.04	1.74
Dec.	2.42	1.05	2.21	.35	1.20	.80	.22	.86	0	0	.63	.05	.32	0	.41	.03
Year	25.18	15.42	22.17	14.08	23.63	16.66	11.98	28.16	25.61	18.12	13.35	13.24	10.56	22.04	8.45	31.36

	1959	1960	1961	1962	1963	1964
Jan.	.04	1.82	.31	.23	0	.30
Feb.	.06	.82	2.20	0	.40	.51
Mar.	.03	.74	1.22	0	.54	.62
Apr.	1.58	.26	.42	1.42	.12	0
May	5.26	2.44	1.70	2.79	4.60	1.59
Jun.	5.89	3.21	2.88	6.98	3.19	2.62
Jul.	1.97	6.89	6.12	5.08	3.33	5.76
Aug.	.25	1.35	.84	1.20	2.03	2.92
Sep.	.56	1.67	2.39	3.20	.73	3.69
Oct.	1.87	7.92	.46	1.33	.63	.37
Nov.	.02	0	2.25	1.38	1.90	1.80
Dec.	2.79	2.12	.37	1.09	.10	1.01
Year	20.42	28.50	21.16	24.70	17.57	21.19

### If you want to mix business



### with pleasure



#### Your Ford Dealer has the truck that's right for you!

Whether you're on the job, or off on a family outing, Ford's Twin-Beam comfort makes it the best pickup for you. Two front axles smooth the rough roads. Each front wheel is suspended independently on forged I-beam axles and heavy-duty coil springs cushion the ride for comfort. If you never found in a tough truck before, find out for yourself what two front axles do for pickup ride-on or off the job!



Come in and test the ride that's tailored for TEXANS

## REED FORD SALES

114 W. California

Floydada, Texas

**Wet Years or Dry Years**  
YOU CAN DEPEND ON THE FOLKS AT  
**LIGHTHOUSE ELECTRIC COOPERATIVE, Inc.**

Philosophy Right-to-Work Law

# BUY SELL TRADE LEASE CLASSIFIED ADS

FLLOYD COUNTY HESPERIAN THURSDAY, JAN. 21, 1965 PAGE 7

Classified Advertising rate: 5 cents per word per insertion 3 cents each subsequent insertion. Minimum charge 50 cents.  
Classified Display Rate: 70 cents per column.  
Cards of Thanks \$1.  
Deadline 5 P.M. Tuesday.

ANNOUNCEMENTS	A
Lodges and Meetings	A-1
Card of Thanks	A-3
THANK YOU	
NEW OPPORTUNITIES	B
FOR SALE	B-1
WANTED	B-2
SERVICES	B-3
Upholstery	B-4
TRUCKS FOR SALE	B-5
TRUCKS FOR SALE	B-6
TRUCKS FOR SALE	B-7
TRUCKS FOR SALE	B-8
TRUCKS FOR SALE	B-9
TRUCKS FOR SALE	B-10
TRUCKS FOR SALE	B-11
TRUCKS FOR SALE	B-12
TRUCKS FOR SALE	B-13
TRUCKS FOR SALE	B-14
TRUCKS FOR SALE	B-15
TRUCKS FOR SALE	B-16
TRUCKS FOR SALE	B-17
TRUCKS FOR SALE	B-18
TRUCKS FOR SALE	B-19
TRUCKS FOR SALE	B-20
TRUCKS FOR SALE	B-21
TRUCKS FOR SALE	B-22
TRUCKS FOR SALE	B-23
TRUCKS FOR SALE	B-24
TRUCKS FOR SALE	B-25
TRUCKS FOR SALE	B-26
TRUCKS FOR SALE	B-27
TRUCKS FOR SALE	B-28
TRUCKS FOR SALE	B-29
TRUCKS FOR SALE	B-30
TRUCKS FOR SALE	B-31
TRUCKS FOR SALE	B-32
TRUCKS FOR SALE	B-33
TRUCKS FOR SALE	B-34
TRUCKS FOR SALE	B-35
TRUCKS FOR SALE	B-36
TRUCKS FOR SALE	B-37
TRUCKS FOR SALE	B-38
TRUCKS FOR SALE	B-39
TRUCKS FOR SALE	B-40
TRUCKS FOR SALE	B-41
TRUCKS FOR SALE	B-42
TRUCKS FOR SALE	B-43
TRUCKS FOR SALE	B-44
TRUCKS FOR SALE	B-45
TRUCKS FOR SALE	B-46
TRUCKS FOR SALE	B-47
TRUCKS FOR SALE	B-48
TRUCKS FOR SALE	B-49
TRUCKS FOR SALE	B-50
TRUCKS FOR SALE	B-51
TRUCKS FOR SALE	B-52
TRUCKS FOR SALE	B-53
TRUCKS FOR SALE	B-54
TRUCKS FOR SALE	B-55
TRUCKS FOR SALE	B-56
TRUCKS FOR SALE	B-57
TRUCKS FOR SALE	B-58
TRUCKS FOR SALE	B-59
TRUCKS FOR SALE	B-60
TRUCKS FOR SALE	B-61
TRUCKS FOR SALE	B-62
TRUCKS FOR SALE	B-63
TRUCKS FOR SALE	B-64
TRUCKS FOR SALE	B-65
TRUCKS FOR SALE	B-66
TRUCKS FOR SALE	B-67
TRUCKS FOR SALE	B-68
TRUCKS FOR SALE	B-69
TRUCKS FOR SALE	B-70
TRUCKS FOR SALE	B-71
TRUCKS FOR SALE	B-72
TRUCKS FOR SALE	B-73
TRUCKS FOR SALE	B-74
TRUCKS FOR SALE	B-75
TRUCKS FOR SALE	B-76
TRUCKS FOR SALE	B-77
TRUCKS FOR SALE	B-78
TRUCKS FOR SALE	B-79
TRUCKS FOR SALE	B-80
TRUCKS FOR SALE	B-81
TRUCKS FOR SALE	B-82
TRUCKS FOR SALE	B-83
TRUCKS FOR SALE	B-84
TRUCKS FOR SALE	B-85
TRUCKS FOR SALE	B-86
TRUCKS FOR SALE	B-87
TRUCKS FOR SALE	B-88
TRUCKS FOR SALE	B-89
TRUCKS FOR SALE	B-90
TRUCKS FOR SALE	B-91
TRUCKS FOR SALE	B-92
TRUCKS FOR SALE	B-93
TRUCKS FOR SALE	B-94
TRUCKS FOR SALE	B-95
TRUCKS FOR SALE	B-96
TRUCKS FOR SALE	B-97
TRUCKS FOR SALE	B-98
TRUCKS FOR SALE	B-99
TRUCKS FOR SALE	B-100

### BUS. SERVICES D

#### Building Services D-1

FOR SALE: Carpets by Superior Metal Works, CA 3-3247, Plainview; OL 4-2241, Lockney. tte

#### Furniture & Uphol. D-2

##### MATRESS RENOVATED

Direct Mattress Company, Lubbock will rebuild your mattress at a reasonable price or will sell you any type new mattress and give you a good price for your old mattress or exchange. Felt, rubber foam, orthopedic, inner spring. All work guaranteed. Free pickup and delivery once a week. Ask about terms. J. E. Weightman is your company representative. For an appointment call City Trim Shop, YU 3-2322. 8 tte

#### We Fix It D-9

COMPLETE Vacuum Sweeper Service including hose installed on all makes. Home Appliance Service, 116 W. Missouri Street, YU 3-2846. 3 tte

WANTED — Electric Motor Repair Service. Call Home Appliance, 116 W. Missouri St. YU 3-2846. 38-tt


ALL Parts for some washers, some parts for all washers. Complete line of belts for all washers and dryers. Home Appliance Service, 116 W. Missouri Street, YU 3-2846. 3-tte

IF it's an electrical household appliance, we repair it. Home Appliance Service, 116 W. Missouri Street, YU 3-2846. 3-tte

#### Sewing D-10

REPOSSESSED 1964 Singer sewing machine in optional 4 drawer walnut cabinet, equipped to blind hem, zig-zag, fancy stitches, etc. 5 payments at \$7.22 or will discount for cash. MUST HAVE GOOD CREDIT. Write Credit Department, 1114-15th Street, Lubbock, Texas. tte

### COW POKES By Ace Reid



"The thing about these droughts—it gives a feller time to forget just how muddy a dang cow lot gets."

### AUTO, FIRE & FARM INSURANCE

Floydada Real Estate & Insurance Agency  
**JIM WORD** — PHONE YU 3-3360

#### EMPLOYMENT F

##### Male Help Wanted F-4

MEN WANTED: 17 1/2 to 29 to Train for Railroad Communications Apprenticeship. No previous experience necessary. Immediate placement upon completion of training. For interviews, write Box 123 c/o The Hesperian. Give name, age, exact address and phone. 1-2tc

#### FINANCIAL G

##### Insurance G-1

**FARM LOANS** — See us for Farm Loans, higher appraisals, prompt closing and excellent prepayment options. GOEN & GOEN 15-tt

#### TAKING A TRIP? — We offer

Trinmaster insurance from \$5,000 to \$50,000 coverage by reliable Insurance Companies. Call Tommy Assiter, YU 3-2481, YU 3-2511. 6-ttc

#### Farm & Ranch Loans G-2

SHOP FOR A loan like you shop for a farm. Find out about the loan that financed a million farms and ranches — a long term, low payment Fed. Land Bank Loan. See Jake B. Watson at the Federal Land Bank Association of Floydada, 319 S. Main, Floydada, Texas. tte

### MERCHANDISE I

#### Miscellaneous I-5

MARSHALL can increase the heat output of your present heater 40 degrees by circulating the under ceiling heat to floor through your heater. See one of these set up at 602 South Wall. Will build whatever you need, very reasonable. Prices start at \$30.00. Filtering air is worth entire cost. tte

WANTED: 100 persons to test our vitamin and mineral product; 50 persons who have never taken vitamins; 50 persons who have taken other vitamins. JOHNSON REXALL PHARMACY, Floydada, Tex. tte

FOR SALE: Small trailer house Cabin at Horner Lake. Clara Jeffcoat, Lockney. OL 4-3358. tte

#### Nursery Stock I-7

FOR SALE: Baby bed, high chair, play pen, etc. Call YU 3-3225. 1-2tc

#### Office Supplies I-8

FOR SALE — We now have 1964 63 Texas Almanacs, The encyclopedia of Texas for \$1.75. Floyd County Hesperian Office Supply. 47 tte

FOR SALE: New Hon type-writer tables, chairs and desks ready for your selection. Hesperian Office Supply, Phone YU 3-3737. 5 tt

MR. BUSINESSMAN: . . . Don't buy office equipment or supplies from the big out-of-town boys until you get our price . . . we'll meet or beat their high prices: HESPERIAN OFFICE SUPPLY, YU 3-3737. tte

FOR SALE: Six quart size bottles of Skrip Ink, blue-black, red and emerald green. Were \$1.90 now \$1.00. Also two pint size bottles of red Skrip Ink for 75c at the Hesperian. All have convenient pouring spouts. tte

WE HAVE THERMO FAX paper for your machines \$29.99 phone. Hesperian Office Supply, Phone YU 3-3737. tte

FOR SALE: Almost new gray Hon steel desk, \$53.00. Hesperian Office Supply, Phone YU 3-3737. tte

FOR SALE: One good used Woodstock standard typewriter or \$20.00. Hesperian Office Supply, Phone YU 3-3737. tte

USED ADDING MACHINE SALE: Both Manual and Electric. All guaranteed. \$50 up. Hesperian Office Supply, Phone YU 3-3737. tte

### RENTALS J

#### Apartments J-1

FOR RENT: Large unfurnished two bedroom apartment with garage. YU 3-2302. tte

#### Houses J-4

FOR RENT: 5 rooms and bath with garage. Redecorated. 413 West Kentucky. Mrs. L. L. Clark. tte

FOR RENT: 2 bedroom home. 303 East Tennessee. YU 3-3588. 1-28p

FOR RENT: 3 room, unfurnished house. Prefer small family. Phone YU 3-2411; night, YU 3-3934. tte

FOR RENT: Modern trailer house, for couple. See H. A. Copeland at Enco Service Station or call YU 3-3558. tte

FOR RENT: Nice farm home, 14 miles south of Floydada on Crosbyton and Floydada farm to market road. Contact R. H. Farris, Jr., Box 486, Crosbyton or call 3301, Crosbyton. 1-21-p

FOR RENT: Unfurnished, 3 room and bath, well located, nice condition. YU 3-2272 tte

### REAL ESTATE K

#### Houses For Sale K-1

FOR SALE: If you are a GI, we can sell you a good home for a small down payment. Hale & Hale. YU 3-3261. tte

FOR SALE — Nice two bedroom home. Small down payment. Call Hale Insurance, YU 3-3261. 16 tte

FOR SALE: Will trade equity in 5 room house for late model car, truck, or house trailer. Take up payments of \$100.00 a month. YU 3-2675 tte

FOR SALE: Three bedroom house. Low down payment. GI loan West part of town. Call YU 3-3356. tte

FOR SALE: 3-bedroom, brick house, carpeted, central heating and air conditioning, double garage. 830 W. Calif. Tommy Assiter, YU 3-2511. tte

FOR SALE: Three bedroom home. 518 W. Tenn. Call YU 3-2437. tte

5 room house at 402 W. Jackson. See after 4 p.m. on school days or all day weekends. Phone YU 3-2881. 1-28p

FOR SALE: Nicely finished, 3-room frame house, plus bath and walk-in closet. To be moved. YU 3-2512 or YU 3-3315. tte

FOR SALE: 1 1/2 lots with 7 room modern house, with 1/2 bath. See or call Riley Teague. tte

### Legal Notice

THE STATE OF TEXAS  
TO: ASENCION MENDOZA

GREETING:  
You are commanded to appear by filing a written answer to the plaintiff's petition at or before 10 o'clock A.M. of the first Monday after the expiration of 42 days from the date of issuance of this Citation, the same being Monday the 15th day of February, A. D. 1965, at or before 10 o'clock A.M. before Honorable District Court a Floyd County, at the Court House in Floydada, Texas. Said plaintiff's petition was filed on the 30th day of December, 1964.

The file number of said suit being No. 5208.  
The names of the parties in said suit are: MARIA GARCIA MENDOZA as plaintiff, and Asencion Mendoza as Defendant.

The nature of said suit being substantially as follows, to wit: Suit for divorce. Plaintiff alleging that Defendant has been guilty of cruelty and excesses of such nature as to render the further living together of the parties insupportable. Plaintiff praying for the custody of the minor children of the parties to-wit: SIMON MENDOZA, GILBERTO MENDOZA and JESUS MENDOZA, and for general relief.

If this Citation is not served within 90 days after the date of its issuance, it shall be returned unserved.

Issued this 30th day of December, A.D. 1964.  
Given under my hand and seal of said Court, at office in Floydada, Texas, this 30th day of December, A.D. 1964.  
MARY L. McPHERSON, Clerk District Court, Floyd County, Texas. (3-38-65)

### Legal Notice

FOR SALE  
Two complete carry-all tractor operating units — One unit consists of:  
1. 8 cu. yd. Hancock gravity dump scraper, attached to —  
1. 830 John Deere industrial tractor, Diesel fuel — All purchased new December, 1959.  
2. Second unit consists of:  
1. 8 cu. yd. Hancock scraper, purchased new Oct. 1956, attached to —  
1. JHC 651 Tractor, Diesel fuel, purchased new Aug. 1952.  
Telephone after 7:00 p.m. at YU 3-2394, Floydada, Texas.  
Sealed bids will be accepted, per unit, until 12:00 Noon February 2, 1965 by the Floyd County Soil Conservation District Board, P. O. Box 553, Floydada, Texas.  
The Floyd County Soil Conservation District Board reserves the right to reject any or all bids.  
All equipment may be inspected at W. L. Miller farm, 6 miles west of Floydada on FM 781 then 1 1/2 miles north. 1-21-28-65

TRY A NEWS CLASSIFIED AD FOR QUICK RESULTS

### CLASSIFIED DISPLAY

ARTHUR B. DUNCAN  
ABSTRACT COMPANY  
MAUD E. HOLLINGS  
Owner and Manager  
ABSTRACTS — TITLE INSURANCE  
Agents for Stewart Title Guaranty Company, member Texas Title Association and American Title Association.  
Telephone YU 3-3767  
Office on South East Corner public square, Corner California and Wall, Floydada, Texas.  
"The Oldest Abstract plant in Floyd County."

### WANTED

New and Used Car Salesman — A top opportunity for the right man.  
Apply in person at Oden Chevrolet Co.

### WE CLEAN AND TUNE ELECTRIC SHAVERS

REPAIR ALL MAKES SELL AND TRADE ALL MAKES  
**GOEN DRUG AND PHARMACY**  
PHONE YU 3-3389

### Safe Guard Your Valuables With A First National Safety Deposit Box

### THIS SPACE FOR SALE

CLASSIFIED DISPLAY

BUTANE DELIVERY

Oil - Grease Delivery — Propane

Butane Oil Co. Highway 70 FLOYDADA

### DANIEL AUTOMOTIVE

Your Authorized KELVINATOR Dealer For Kelvinator Refrigerators and Appliances

Good Used Refrigerators

Refrigeration Service by L. D. BRITTON YU 3-2382 123 W. Cal

### New 1965 GMC PICKUP \$1795

Cline & Rainer Your authorized GMC Dealer Floydada

### GLEAN YOUR CARPETS

with our Electric Carpet Shampooer

### RENT FOR ONLY \$1 Per Day

with purchase of CARPET TONE

**H. G. PARKER**  
FURNITURE

Dr. O. R. McIntosh  
OPTOMETRIST  
211 SOUTH MAIN ST.  
MEMBER Phone YU 3-3460—Floydada, Tex.

### Hollis R. Bond Real Estate

(Successor to Massie & Bond)  
BOOTHIE BUILDING FLOYDADA

### LOANS

From \$100.00 to \$1,500.00  
CONSOLIDATE ALL YOUR BILLS  
into One Easy Monthly Payment Loan, On:  
FURNITURE — AUTOMOBILES — MOBILE HOMES

**Plains Finance Corp.**  
822 Austin Street CA 4-2786  
Plainview, Texas

### MR. STOCKMAN! GOEN DRUG & PHARMACY

now has O. M. Franklin Serum Co. dealership for vaccines, medicines, instruments and appliances for livestock.  
Call YU 3-3389

### Look for the Red Tag Specials

Unbelievable Values — Priced to the Bone  
Authorized GE Service and Parts at  
**COLLIER'S HOME SUPPLY**

### For Prompt Service on Home & Auto Radios See RICE RADIO SERVICE 1/2 blk. n. of bus station

### For Colds take 666

Symptoms of Distress Arising from  
**STOMACH ULCERS**  
DUE TO EXCESS ACID  
QUICK RELIEF OR NO COST

Ask About 15-Day Trial Offer!

Over five million packages of the VILLARD TREATMENT have been sold to relieve symptoms of distress arising from Stomach and Duodenal Ulcers due to Excess Acid—Poor Digestion, Sour or Upset Stomach, Gasiness, Heartburn, Sleeplessness, etc.—due to Excess Acid. Ask for "Villard's Message" which fully explains his home treatment—free—!t

Arwine Drug Co., Bishop's Pharmacy Johnson Pharmacy

### RADIATORS NEW AND USED CLEANED REPAIRED RECORDED

**BADGETT RADIATOR SHOP**  
Radiator Service YU 3-3464

## Scotts Visit In Dublin

DOUGHERTY, Jan. 18 — Mrs. V. V. Scott, Miki and Darien accompanied by her sister, Mrs. George Witt and daughters of Ralls and her parents, Mr. and Mrs. Henry Ellison of Floydada visited relatives in Dublin over the weekend and Sunday afternoon attended the 58th wedding anniversary celebration of Mr. and Mrs. D. Hancock, who are the parents of Mrs. Ellison.

Mr. and Mrs. Harlan Cage and Mrs. J. G. Cage visited relatives in Lubbock Saturday night and Sunday. Mrs. J. G. Cage remained for a several days visit in the home of her daughter.

Mr. and Mrs. Horace Johnson of Lubbock and Mr. and Mrs. Cal Ballock of Floydada were Sunday guests in the H. N. Powell home.

Mr. and Mrs. Bill McNeil visited their son and family in Dallas over the weekend and were present to help their little granddaughter, Fonda, celebrate her 2nd birthday anniversary.

Mrs. Leroy Chowning accompanied her father, W. B. Eakin to Martin for a weekend visit with his sister, Mrs. Peinger who is ill.

Mrs. Bob Ross and Tommy visited relatives in Lubbock Sunday afternoon.

H. N. Powell continues to be a patient at Stanley Hospital, Matador. His condition is reported to be about the same. He may have a limited amount of company.

Mrs. Howe Howe has been a patient at Peoples Hospital since Saturday.

Mrs. Leroy Chowning plans a stay of several days in the Quallah Hospital this week.

Little Martin Eastham is home after being hospitalized at Lockney.

Mr. and Mrs. Brooks Bradley of Dallas were recent house guests of Mr. and Mrs. Ned Bradley.

Mr. and Mrs. D. C. Thomson and granddaughter, Robin Thornton were Sunday afternoon guests in the Bradley home.

Mrs. A. T. Emert accompanied by Mr. and Mrs. Owen Emert and daughter, returned home today after visiting in the Dale and Tom Noble Emert homes in the Houston area. Mr. and Mrs. Elroy Emert and son came over from Alexandria, Louisiana, and visited with the family group.

## FAIRVIEW NEWS By Mrs. Clyde Bagwell

### DuBoises Return From Eddy

FAIRVIEW, Jan. 18 — Mr. and Mrs. Edall DuBois returned home Monday from a state where they were called on Friday due to the death of Ed's niece, Mrs. Bob O'Connell. The funeral was held on Saturday at Eddy. Mr. and Mrs. DuBois were accompanied to Eddy by Mr. and Mrs. R. A. McNeers of Amarillo and Bud DuBois of Lubbock.

Mr. and Mrs. Jake Hines of Odessa spent from Monday until Wednesday of last week here with her parents, Mr. and Mrs. R. R. Waller. Mr. and Mrs. Shirley Irwin were dinner guests on Wednesday in the Waller home with the guests from Odessa.

Mrs. Dot Hammonds spent the day Friday with Mrs. Walton Wilson.

Mr. and Mrs. Cecil Payne visited Sunday afternoon in the homes of Mr. and Mrs. James Truett Payne and Mr. and Mrs. Winfred Payne.

Mrs. Rucy Irwin visited Mrs. Shirley Irwin Saturday afternoon.

Mrs. Roy Meek and Mrs. Galen Holland spent Saturday in Plainview.

Mrs. C. W. Payne visited Fri-

day afternoon in Floydada with Mrs. W. W. Payne and with Mrs. Carl Phinney.

Thursday luncheon guests in the home of Mr. and Mrs. Bill Tye were Mr. and Mrs. A. S. Mine, Mr. and Mrs. Weldon Pruitt, Gray and Karen and Mrs. W. E. Wilson.

Mrs. Bill Tye spent Wednesday in Lubbock.

Sherry Johnson and Dixie Baird were Sunday dinner guests of Jan Perry in the home of her parents, Mr. and Mrs. T. L. Perry.

Sunday dinner guests in the home of Mr. and Mrs. A. S. Mine were Mr. and Mrs. Bill Tye and Mrs. W. R. Wilson.

Mrs. Rucy Irwin visited Sunday in the home of her daughter, Mrs. Carl Nelson and family and had dinner with them.

Mr. and Mrs. Earl Thompson of Matador were Sunday visitors in the home of Mr. and Mrs. Galen Holland.

### FFA NEWS

(By Larry Patton)

The FFA snapwork has helped Rickie Hodges to a great advantage in high school and he takes a great deal of interest in ag shop projects. Rickie says learning to weld, using a cutting torch and braze are some of the most useful things he has learned.

Being an all crop, non animal farmer, has given Rick a lot of experience in keeping machinery in operating condition. One of his main jobs on the farm is to keep the machinery working properly.

In his third year of FFA, Rick was a member of the radio broadcasting team which won fourth in the district in 1963. He raised lambs for his sophomore year and cotton his junior and senior year.

When he graduates Rick plans on entering South Plains Junior College at Levelland.

### Floyd Data

Irene Sherrill & Peggy James attended the Hair Fashion Release and Style Show Monday night at the Holiday Inn in Lubbock. The new release is the Swingline fashion.



## WATCH YOUR MAIL For Valuable Piggly Wiggly Coupon Book

Redeem coupons you receive in your mail soon for lovely ovenproof tableware and many other savers!

- FLOUR Sunlight, Fully Guaranteed 29¢  
5 Lb. Bag
- MISSION
- GREEN PEAS Garden Sweet 2¢25¢  
No. 303 Cans
- CHICKENS Allen's, Whole 69¢  
52 Oz. Can
- VIENNA SAUSAGE Campfire 10¢  
No. 1/2 can
- PEACHES Stokely, Sliced or Halves 25¢  
No. 2 1/2 Can
- ROLLS Holsum, Frozen 19¢  
24 Count Bag
- DINNERS Patio, Enchilada, Frozen 39¢  
12 Oz. Pkg.

### HEALTH AND BEAUTY AIDS!

- Contac Reg. \$1.49 Retail. 99¢  
10 Ct. Pkg.
- SHAMPOO Breck, Reg. or Dry, Reg. 79¢  
93c, 4 Oz. Tube
- TOOTHPASTE Gleem, Reg. 53c Large Tube 44¢
- JEANNETTE, Glass, Brown, Yellow
- COFFEE MUGS Green, Orange Regular 19c 6¢1
- JEANNETTE, Currier & Ives Pattern
- UTILITY DISH Regular \$1.29 2 1/2 Qt. Size 99¢

ALL FREEZER MEAT ITEMS CUT, WRAPPED, AND QUICK FROZEN TO YOUR SPECIFICATIONS, NO EXTRA CHARGE!



## BEEF FORE

Armour Star, Aged, Heavy Beef Consists of Chuck Roast, Arm. Swiss, Rib Roasts Rib Steaks, Lean Ground Beef, Short Ribs.

Armour Star, Aged, Heavy Beef Consists of all the cuts in a carcass of Beef, HALF BEEF, Lb. 49¢

Armour Star, Aged, Heavy Beef Consists of Sirloin, Porterhouse, T. Bone and New York Steaks. BEEF LOINS, Pound 79¢

Armour Star, Aged, Heavy Beef Consists of Round Steak, Rump & Pikes Pe. & Roast, Ground Round, & Boneless Steak. BEEF ROUNDS, Pound 65¢

PORK LOINS

RODEO'S, Lean Northern Pork, Half or 59¢ Whole, Lb.

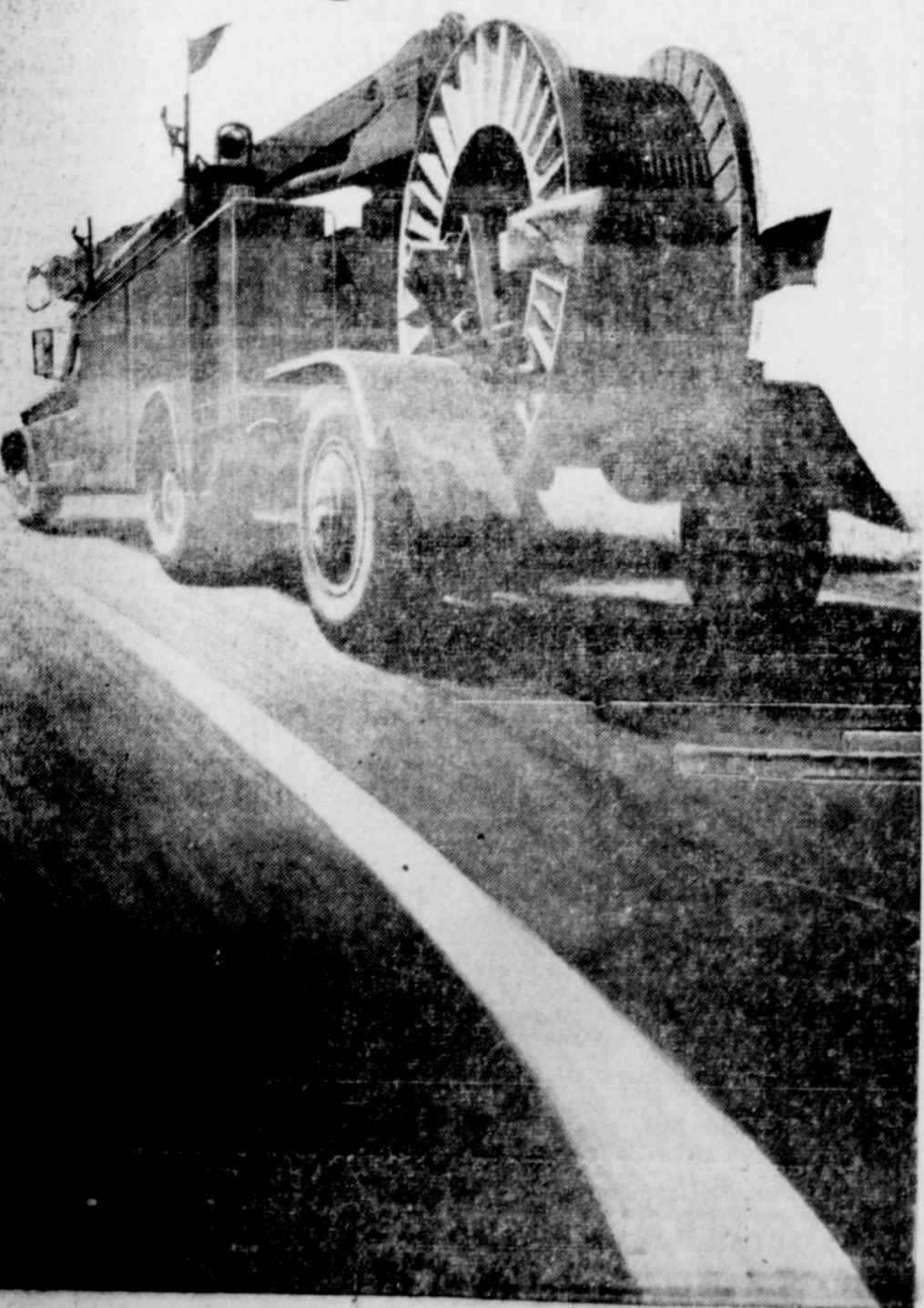


- ARMOUR STAR, Aged, Heavy Beef, Consists of Round Steak, Sirloin, Porterhouse, T. Bones, Sirloin Tip, Rump & Pikes Peak, Lb. 59¢
- BEEF HINDQUARTERS 59¢
- STEAK Armour Star, Aged, Heavy Beef, Round or Sirloin, Pound 89¢
- ARMOUR STAR, Aged, Heavy Beef, Yearling Liver, Uniform Slices, Skinned and Deveined, Baby 49¢
- T BONE STEAK 98¢ BEEF LIVER Pound
- FISH STICKS Sea Star 8-Oz. Pkg. 4¢\$1
- TURKEYS Clary's Hen, U.S.D.A., Grade A 10-14 Lb. Avg., L.B. 39¢

## Follow that truck

(but if you do, plan to step lively)

You're looking at one of the busiest trucks in the world, especially this year. During 1965 Southwestern Bell's motor fleet will travel 88 million miles in the biggest construction program ever undertaken. A one-year \$350 million effort (this means up to 17,500 new jobs among the firms which sell supplies, services and materials to the telephone company) to make the world's best telephone service even better. You will benefit directly. In cities, on farms, at home, at your office or in your car, you'll be able to call easier and faster in all kinds of weather. Next time you see a big telephone truck, take a second look. You'll be looking at rolling proof of a really massive effort to make your telephone serve you better, of more personal value to you.



- ORANGE JUICE 3¢ \$1.00
- CAKE MIX GOOD N RICH, ASST. FLAVORS, 19 OZ. BOX 19¢
- MEDIUM EGGS IDEAL, Grade A 3 Dozen \$1.00
- COCA COLA KING SIZE, 6 BTL. CTN., PLUS DEP. 29¢
- SUGAR HOLLY, C & H OR IMPERIAL 5 Lb. BAG 49¢

VITAMIN RICH PRODUCE ALWAYS AT PIGGLY WIGGLY!

## Potatoes

RUSSETS ALL PURPOSE 8 Lb. BAG 59¢

CALIFORNIA FRESH PEARS, Pound 15¢

GREEN PASCAL CELERY HEARS, Cello Bag 29¢

Avocados, Fresh Spinach, Parsley, Yellow Squash, Acorn Squash, Brussel Sprouts, Pineapple.

TEXAS, TABLE SIZE

Carrots 2 Lb. Cello Bags 19¢



### FROZEN FOODS

- Banquet, Apple, Peach, Cherry.
- Fruit Pies Family Size 29¢
- CORN Seabrook, Cut 10 Oz. Pkgs.
- TATER TOTS Ore Ida 2 Pound Pkg.
- Banquet, Beef, Chicken, or Turkey
- Meat Pies 7 8 Oz. Pkg.

These values are good in Floydada, January 21. We reserve the right to limit quantities. Watch for new specials Monday, Tuesday and Wednesday.



DOUBLE ON WEDNESDAY WITH \$2.50 PURCHASE OR MORE

- PINEAPPLE Santa Rosa, Crushed No. 300 Can
- BLEACH Du Rite, Liquid 1/2 Gallon
- TOMATO SAUCE Stokely 8 Oz. Cans

Lowest Prices... Greatest Variety... always at...

