

THE FLOYD COUNTY HESPERIAN

Most Widely Read News Medium In Floyd County

FLOYDADA, FLOYD COUNTY, TEXAS, THURSDAY, JANUARY 20, 1949

NUMBER 51

Salaries, No Fees, For Official Pay

Floyd-county officials are now on a straight salary and henceforth their official income will come directly from the treasury of the county. Warrants drawn by the county clerk on the treasury will be honored at the treasurer's office and a check issued monthly on the last day of the month.

No longer will fees enter into an official's salary, but this does not mean no fees are to be collected in the county or in the State of Texas. All fees for all services remain statutory as formerly and these are to be collected by officials in the same manner as they have been throughout the years.

This arrangement was set up last week by the Commissioners court to comply with the constitutional amendment adopted last year by the electorate. All fees collected will go into a new fund being set up as the "Officers Salary Fund." It appears the fees will take care of all salaries, this view based on past experience in the county.

Salaries Set by Court
Here are the salaries of the various officials as set by the Commissioners court, all indicated here on an annual basis:

- County judge, \$3,800;
- County attorney, \$3,500;
- Sheriff, \$4,000; first deputy \$3,000;
- second deputy \$2,750;
- District clerk, \$2,400;
- Assessor-collector of taxes, \$3,900;
- deputy \$1,800;
- County clerk, \$3,600; deputy \$1,800;
- County treasurer, \$2,600;
- Each of four commissioners \$2,200;
- Justice of the peace, precincts 2 and 3, \$900;
- Justice of the peace, Precincts 1 and 4, \$1,400.

Collection Is Required

Collection of all fees as heretofore assessed for the various services rendered in both civil and criminal cases will be required of the executing officers. These fees put in the pot should equal or exceed the total outlay for salaries, according to the estimates that have been made. Should they not equal the outlay for salaries then the general fund would be drawn upon. It is made an offense for an officer not to make collection of fees required, and presumably any carelessness in this respect could and would be a proper matter for consideration of the grand jury.

Even in criminal cases, where felony charge is made, the officials will turn in their bills for costs to the State of Texas in the usual manner and when the returns are made on these the money goes into the Officers Salary fund.

County Agents In Irrigation 'School' Here

County agents and soil conservation workers of the Vernon district of the Extension Service, Monday, when they made a study of irrigation problems and possibilities in the county court room, with Bob Thurmon, irrigation specialist of the Extension service conducting the school.

The delegation was headed by District Agent Scofield, of Vernon, who asked for the school here to give agents of his area a perspective for use in continually developing irrigation problems in counties which comprise that district.

Judge G. C. Tubbs formally welcomed the visitors and Robert Crowell, manager of Floydada Chamber of Commerce, was host at a dinner for them at the Hotel Coffee shop at high noon. County Agent A. L. Hartzog, assistant agent C. J. Murphy, and soil conservationist Ralph Cogdill helped in directing the meeting.

Counties represented at the "school" included Wichita, Wilbarger, Childress, Hardeman, Foard, Collinsworth, Donley, Hall, Motley and Briscoe. Seventeen persons were registered at the luncheon.

An afternoon visit planned to some of the irrigation farms of the area was abandoned when weather conditions became threatening to roads.

Q A & P President Over Night Visitor

C. H. Sommer, president of the Quannah, Acme & Pacific Railway company, was an overnight visitor in Floydada Monday. He was accompanied by Quin Baker, of Quannah, vice-president and general manager of the Quannah route.

The railway officials came out on the line for an inspection of the properties Monday afternoon, returning Tuesday morning. They were delighted with reports of good underground season in the areas, especially glad to be greeted with a blanket of snow during their stay here. In contrast with the weather further west St. Louis has had mild temperatures this winter, Mr. Sommer reported.

Can He Duplicate This Crop in 1949?



Can Robert Hinsley repeat in 1949 his record made in 1932 with his long staple cotton? He is going to try and, while that record was mighty good, (see below) the prospect now is for a good season and a good start when spring comes again for the cotton man.

Mr. Hinsley is mighty proud of his long staple cotton. He says it has not failed to do good for him since he found the first stalk in his garden in the spring of 1927. He nurtured it along, planting the increasing seed each year in the garden to and including the season of 1931.

In 1932 he had enough seed to plant 20 acres in the field, where he farms dry land. The 20 acres made him 34 bales of cotton. The picture above shows him standing in the field of bale and a half staple. The picture was made by J. E. Newton, Hinsley's ginmer, who was as proud of the field as Hinsley himself. Various and sundry people, including Hinsley's banker, J. V. Daniel at that time, came to see the outstanding example of good seed and good farming methods.

One thing Hinsley hopes will not repeat is the price, although he got a good premium over the 1932 market on account of the good staple he had. The going price of cotton was 5 cents per pound. Mr. Hinsley sold his first bale for six and a half cents. It was bought by J. R. Maddox, he recalls. The better price was account of the better cotton.

If Hinsley can repeat his production record of 1932 this year and get the good price that appears to be in prospect, it will make a lot better showing on his ledger than that crop did in 1932.

The Hinsleys came to Floyd county in 1926. They bought the place south of Dougherty, where they live now, in 1928.

Leaves to Attend Helicopter School

De Witt Burke, son of Mr. and Mrs. D. W. Burke, left Sunday for Providence, Rhode Island, where he will attend helicopter school for about two months.

On his way home he will stop in Stuttgart, Arkansas, for a short visit with Mr. and Mrs. Bill Coder, and to do some repair work on his planes in readiness for his work next summer.

Roof Collapse Ruins Lockney Church Bldg.

LOCKNEY.—The First Baptist Church of Lockney was virtually demolished last week when the snow and ice on the roof caused the walls to collapse dropping the roof down into the main auditorium.

Still standing Thursday was the front part of the building including the vestibule and two class rooms, and the rear of the building, including the church office, and two Sunday School departments. The roof fell into the main auditorium crushing the furniture and fixtures of the building. Church officials think that some pews may be salvaged and possibly other chairs, but most of the furniture was completely demolished. Damage will amount to at least \$40,000.00, it was estimated by church officials.

No one was in the building at the time of the collapse as far as is known and therefore no injury occurred.

Rev. E. J. Cobb said that he noticed some creaking and some popping during the day Wednesday, but he thought nothing of it at the time. The Cobb family were at home at the time, and the crash sounded like an auto collision. Mr. Cobb said. He rushed out to find the church veiled in dust. It was several minutes before dust settled to where he could determine just what happened. He called the Fire department fearing that fire would break out from broken gas pipes or electric lines. However, no fire resulted.

The building was built in 1918, and (See Lockney Church back page)

J. I. Hammonds Wreck Victim Near Guthrie

John I. Hammonds, 59, pioneer Floyd county wheat and stock farmer and business man, was the victim Sunday noon of a highway wreck in which he is believed to have died instantly, about one mile east of the headquarters of Pitchfork ranch west of Guthrie. His wrecked car was found near his lifeless body. The body was lying near the fence on the highway right of way. Patrolmen Leedy and McMurray, of Seymour, who went to the scene, carried the personal effects of the deceased to their office there.

Identification of Mr. Hammonds' body was made by papers on his person by the sheriff of King county, E. W. Hollar, who took charge after being notified of the accident. He got in touch at once with Leland A. Hart, Floyd county sheriff to make sure of identification. An ambulance out of Spur picked the body up and it was transferred to a Harmon ambulance at Dickens and brought to Floydada in the late afternoon.

Mrs. Hammonds was notified and arrived in Floydada the same evening. Mr. and Mrs. Hammonds had been in Mineral Wells for several weeks and he was enroute from that city when the accident took place. He was alone in the car, a 1947 Ford, which was badly wrecked. The machine was taken to Spur for safe keeping on order of officials. Injuries from which the wreck victim died were about the head and face.

Funeral Rites Are Pending

As late as yesterday day and hour of funeral rites were pending the arrival of a daughter, Mrs. Dan Daniel, from Germany, where she has been with her family since December. Her husband, Captain Dan Daniel, is a captain and pilot in the Army Air Force. Rites are tentatively set for Friday morning at 10 o'clock, at the First Methodist church depending on the arrival of Mrs. Daniel. Rev. Lloyd H. Jones will officiate.

The four sons reached home within 24 hours or so of their father's death, Hershel, of Pampa, and Ralph, of Dallas, and their wives reached Floydada Sunday night. Johnnie, a senior student at A. & M. (See J. I. Hammonds back page)

Club Sets Saturday For Sale of Food

The Dougherty Home Demonstration club is sponsoring a food sale at the AAA kitchen here Saturday afternoon beginning at 1 o'clock. Pies, cakes and cookies made by members of the club will be sold to the public.

Representatives of the club have stressed the point that this sale is not only for Home Demonstration club members, but for anyone who would like to buy home made pastry.

Cooper & Woodruff, Dallas Road Builders, Get Harmony-Sand Hill Lone Star Contract At \$186,784

Cooper & Woodruff, a road contracting firm, of Dallas, Texas, were low bidders on the Sand Hill-Harmony and Lone Star highways in Floyd County last week, when the State Highway commission opened the bids. Their figure for construction of the 26,026 miles of road was \$189,784. There were 15 bidders on the job. Resident Engineer Jas. F. Potts said the bid of Cooper & Woodruff was an estimated \$29,000 lower than similar work being taken by contractors last summer.

The contractors will have 150 working days in which to complete their job after details of bond and contract have been completed, usually about 30 days after a letting. All types of work may be carried on, including construction of culverts, except topping which will have to wait until after April 15. The road from Harmony by way

of Sand Hill to Floydada will be known as Farm to Market Highway No. 598, the Lone Star road as 784.

Will Build To Sterley

While construction under this contract does not include the mile east to Sterley from a junction with the road, the county has negotiations under way with the same contractors to build this roadway department will handle the engineering and the work will be of the same type in all particulars, it was said at the court house this week.

Seventy-five per cent of the 26,026 miles of construction will be paid out of Floyd county's road bond issue adopted by the voters last year and the engineering and 25 per cent of the cost will be borne by the State Highway department. Floyd county's funds for this and other roads due to be let this spring, is already in escrow with the highway department.

Weather Slows Polio Canvas

The weather man, with his fine rains and snows of the past 10 days, has stymied the March of Dimes workers for the Infantile Paralysis fund in Floyd county this week.

So pronounced has been the hindrance that not one district committee is known by the general campaign director to have been out at work. Jump off was to have been Friday, but the workers could not get around, either in town or country, said Guy Ginn, general fund campaign chairman. Repeated onslaughts have made repeat stories daily since that time, too.

\$2,500 is the goal toward which the campaign will be directed. First hope that it would be reached by the quickly has been dashed by the weather conditions, needless to say.

How Your March of Dimes Money Works

Floyd County chapter has been delegated the responsibility of fulfilling the pledge of the National Foundation for Infantile Paralysis to assist every infantile paralysis patient to obtain the best available medical care and treatment. Based upon your local chapter. Doctor's fees; hospital fees; physical therapy and nursing charges; transportation

and costs of other aspects of care that may be prescribed by a recognized physician.

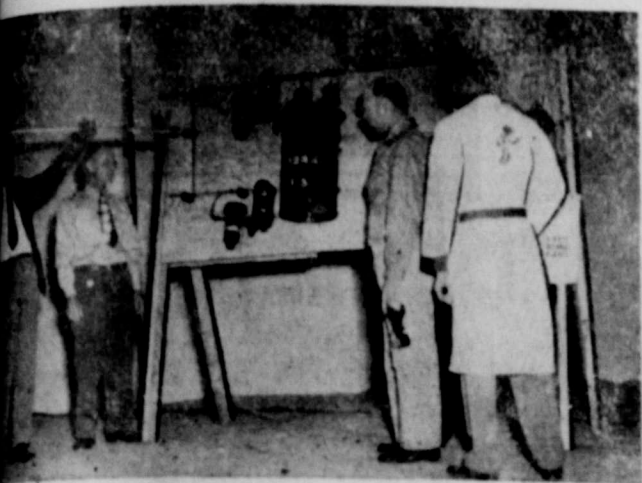
Inquiry about financial assistance for treatment of a poliomyelitis patient should be made by contacting A. H. Kreis, chapter chairman, or Clifford Tubbs, director, and at Lockney, Edgar Hays, director. Application for assistance may be made by a physician, the patient, any member of the family, or interested individual.

Last year infantile paralysis struck again with tremendous force throughout the nation less than two years after the terrific epidemic of 1946, which was second largest in the history of medical records. The 1948 epidemic began very early in the spring down in the Rio Grande valley, and by the end of the year, more than 2000 cases had been reported and treated, in Texas. During this epidemic in Texas the National Foundation for Infantile Paralysis sent over \$500,000 back to local chapters to meet emergency need arising.

Should an epidemic break out in our county and all local funds were expended the national organization would furnish funds and other sup-

of Floyd County's Best Institutions

TIME 55



rubber gloves and an insulated rod protect the man operating the thrilling features of the General Electric House of Magic to be presented here soon. Southwestern Public Service Company is the production to town, and shown are four Southwestern service employees, from left to right: George Canen, manager of the Floydada office; Earl Brack, manager of the Silverton office; Joe Brack, manager in Lockney; and H. E. Laird, lighting specialist from the office.

House of Magic Tuesday Night

He is assisted by H. E. Laird, a lighting specialist from the Plainview office.

New Ideas in Lighting

The exhibition includes demonstration of light bulbs in all sizes, with some of the newer developments in lighting such as the match stick sized 1000 watt bulb used to light air fields during the war. Also shown is fluorescent light, being used for many purposes, and the mercury vapor lamps being used for street lighting.

Other developments from the GE laboratory include stroboscopic lighting, photo electric cells which are used to control lighting, the use of electrical energy to turn gears through space, black light which cannot be seen, and the use of polaroid lenses to diffuse light rays.

Special showing for school students 9 a. m. January 25 in the High School auditorium.

Cornell Manager So'western

A Cornell, communications manager of the Southwestern Bell Telephone Company at Fort Worth, has been appointed manager for the So'western division, with headquarters at Dallas, according to A. O. Thorpe, district manager of the company.

Cornell will replace Coy A. Habel telephone manager for the two and one half years, he was named communications supervisor at Wichita Falls. Change is effective immediately.

Cornell's telephone career in Dallas in 1941 as a cable plant in the plant department. In 1942 he went to Waco, and shortly thereafter was promoted to communications representative in the communications department.

In following year, Cornell enlisted in the U. S. Navy and was assigned to submarine duty in the Pacific. During the war, he participated in many undersea patrols and was shot down at sea. The rescue on which he served was a chain of American U-boats rescuing from Salipan almost 100 lives, forming a "life-line" between the lives of many men forced down at sea during the war.

Thursday's Market

Wheat, 4 pounds and up...	28c
Wheat, 4 lbs.	26c
Wheat, 1 lb.	10c
Wheat, No. 1, lb.	60c
Eggs	60c
Hides	38c
Free from holes	
Hides, lb.	10c
Hides, lb.	6c
Hides, lb.	6c
Hogs	
wt.,	\$20.00
ows, cwt.	\$18 to \$19
Grain	\$15
Wheat, No. 1, lb.	\$2.01
Wheat, No. 2, lb.	\$2.10
Cotton (Government loan)	\$70.00

More Weather Brings A Bit More Moisture

More weather in the past week brought a bit more moisture to Floyd county range lands and fields and helped to drive the big sheet deposit's melting waters deeper into the subsoil.

It was a nice shower Friday night during the still warm three-day period last week that helped to melt the sleet so nicely and brought an additional 15-hundredths inch of moisture. This was followed by a two and a half inch snow Monday night, a bit of which was still graying the ground as late as yesterday afternoon.

Storm warnings issued for Tuesday and Wednesday had not materialized as late as 4 o'clock Wednesday. Further north into the Oklahoma panhandle and Kansas the storm was particularly severe because of high winds, the radio reports said.

Temperatures last week were particularly favorable to saving the moisture that fell in the big storm, with nearly a 60 hour period when the thermometer barely registered freezing a few times and principally above freezing.

High temperature of the week was 49 degrees Saturday according to West Texas Gas company record, and the low was 17 degrees Monday morning. Low yesterday was 19 degrees and the high 34.

1949 Studebakers On Display Soon

J. H. Hrabal and Gerald Cardinal of the Plains Equipment company, who attended a dealer showing of the new 1949 Studebaker automobiles in Dallas last week, said yesterday at least one, probably two new cars will be on display Friday and Saturday of next week at their showroom, 313 South Wall street.

CHARLES E. NEIL STILL IN HOSPITAL IN LUBBOCK

C. E. Neil, who has been in the hospital at Lubbock for the past two weeks is reported not improving. He is suffering from a heart ailment and high blood pressure.

The family plans to take him to Amarillo to the hospital the first pretty day.

MOVING TO TEXAS

Mr. and Mrs. E. J. Christopher and daughter, Amie Sue, will be guests of Mr. and Mrs. W. O. Jones and other members of the family this week end before making their home in Lubbock. Mrs. Christopher is a daughter of Mr. and Mrs. W. O. Jones. They have been making their home in Seattle, Washington. In Lubbock Christopher will attend Texas tech and be employed at Sears Roebuck and company.

EDITORIALS

Bad weather now means good weather later on --good weather when grass time comes and planting days for the row crops. Also possibly good days for the wheat that was in the ground, dormant as moisture hit the plains country last week. One of the great things about West Texas in general and the High Plains, we think in particular, that it "bounces back" from untoward conditions so fast. It doesn't pay to sell short on the plains country--no part of West Texas for that matter. Men who operate the farms and carry on the live stock industry can now make their plans with considerable confidence for the first early weeks of the spring. Last year in some sections was particularly bad in some areas, fair to good in others. It was about as rough a year, crop-wise, for the vicinity immediately surrounding Floydada as has come along in many a day. But the story is different now. There is season in the subsoil.

One thing the wet weather has revealed is that there is more feed in the country than we thought for, and that a few weeks of grazing is going to be available on many farms. Hay and bundles and green grazing mean hogs and cattle, and when you have these you have a good combination on the plains. We have suggested a good many times and it may bear repeating, that the future of the plains, despite the great value of specialty crops, is bound up in live stock and the development of the live stock industry. Men who have operated farms here for a good many years as a way of life will tell you that. They leave the specialties for the most part to the investor type of farmer.

Inaugurations at the state capital and at the national capital make interesting stories for newspaper readers and radio listeners. There will be much ado, especially at Washington, where the president, willy nilly, will be the central figure in the biggest series of inaugural celebrations in recent history of the country. People love a winner and they make much over him, especially an underdog who comes out winner such as Mr. Truman did. Then, in Washington, as everywhere they like many crowds, much business and activity. And while the president said let's cut the size of it down, even so the parade and the to-do in connection with the inauguration was a tremendously big event.

Theoretically the change over from a fee system to an all-salary system for the payment of county and precinct officials is a good thing. For many years the fee system that has been the constitutional arrangement in Texas since 1876 has been attacked

as vicious. And as we said above, theoretically it is. On the other hand, there were arguments in favor of the fee system, at least a partial fee system to pay public officials, that still have sound logic behind them. It will take 20 or 30 years to find out whether it really was a good change the people made in their constitution last year. And in that length of time it may have been forgotten that the way we have started to pay the officials is not or might not be the only one and best way to do it. One of the most used arguments in any matter of this kind is that everybody else is doing it, which is true in most of the subdivisions of the United States. To say that everybody is doing it settles many an argument about how a thing should be done.

Trees took quite a beating in Floydada and over the area of probably 100 counties in West and Northwest Texas last week. Overloads of ice and an occasional gust of wind broke many a pretty limb. This was especially true of Chinese elms, much in vogue now because they are of rank, quick growth, making good shade within a brief time. Several truck loads of tree limbs will have to be sawed off before many of the trees of local residents will have their symmetry back again. A plainsman sure dislikes to go cutting on his trees and some will do an insufficient job of trimming is the likelihood. If all the fallen limbs and broken limbs of trees in Floydada were stacked in one big stack and burned it would make quite a bonfire.

Austin was much in the news of the state last week, also this week of course. A meeting there at which more than 200 gathered was held for the purpose of suggesting whether or not the state legislature of Texas should call a constitutional convention. This convention, if set up, would make a new constitution to take the place of the one we have that was written in 1876. There was a great deal of interest in this meeting at Austin, presaging the probability that the legislature would be asked to go into the matter more fully. Several West Texans were invited to attend the Austin meeting. Texas seems to be doing mighty well under the old constitution and if a new constitution is adopted that would help matters the state certainly would "go to town."

Almost half of all Navy officers on active duty have risen from enlisted service, Bureau of Naval Personnel statistics show.

Try and convince the man with a short vacation that half a loaf is better than none.—Ex.

The Floyd County HESPERIAN

Established 1896 by Claude V. Hall Entered as second class mail at the postoffice at Floydada, Texas, April 10, 1907, under the act of Congress of March 3, 1897. Published by The Hesperian Publishing Co., Inc., Floydada, Texas. HOMER STEEN, Editor

Subscription Prices: In Floyd and adjoining counties — one year, \$2.00; six months \$1.00; four months, 70c; in advance.

Subscription Prices: Outside Floyd and adjoining counties — one year \$2.50, six months, \$1.25, four months 90c; in advance.



Floyd County 14 Years Ago

A new talking motion picture entitled "Partners" will provide a full hour of entertainment and education to all farmers who attend John Deere Tractor day, to be conducted by Stansell & Collins, local farm equipment dealers, aided by representatives of the John Deere organization.

Mr. and Mrs. Glad Snodgrass left Tuesday morning for Austin where they will stay two days before coming back to Mineral Wells for a two weeks stay. Eld Johnson will be in charge of the store while Mr. Snodgrass is gone.

Mrs. Lindsey Graham has been visiting Mr. Graham's sister, Mrs. G. C. Edwards and family.

The Floydada Chamber of Commerce Quartet scored a hit with its first appearance Tuesday of last week at Lakeview.

The Floyd County Chapter for Old Age pensioners was organized here Thursday. Named were Geo. L. Fawver as president and Tom

Bank Deposits On December 31 In Area Cities

How deposits in cities and towns of the area stack up and how they depict the basic soundness of the south plains area is given in the figures below. The basis from which the statements of deposits are made are the respective bank statements. Without exception the statements of bank deposits reflect a sound business outlook, some representing a big cotton crop and all showing the effect of oil and gas leasing in the territories which the banks serve:

Abernathy	\$ 2,221,684.66
Amherst	3,362,693.90
Anton	1,074,961.56
Brownfield	11,553,565.13
Crosbyton	2,087,322.15
Floydada	5,578,139.91
Hale Center	2,926,600.64
Lamesa	13,022,072.79
Levelland	9,705,368.43
Littlefield	14,663,429.39
Lockney	1,805,988.22
Lorenzo	2,606,094.95
Lubbock	91,475,456.28
Malador	3,003,318.35
Morton	2,699,873.48
Muleshoe	4,723,274.68
O'Donnell	1,597,415.32
Olton	2,287,948.31
Petersburg	2,047,362.67
Plainview	16,558,585.96
Post	3,528,636.37
Ralls	2,962,921.33
Seagraves	1,050,903.03
Seminole	2,440,090.33
Slaton	3,560,353.12
Spur	4,053,432.11
Sudan	1,721,790.81

W. Deen as secretary.

W. C. Hanna is candidate to succeed himself as mayor of the city of Floydada.

Miss Jessamae Hogge of Storm Lake, Iowa, and Paul R. Nelson of Floydada were united in marriage Tuesday night at 8 o'clock by Rev. I. A. Smith. The marriage ceremony was performed in the home of Mrs. Wilson Kimble.

Tahoka	5,164,980.71
Wilson	1,040,440.81
Total	\$230,520,701.40

NEW LAKEVIEW FAMILY
Mr. and Mrs. Frank Polasek and

children moved from Memphis week to make their home in Lakeview community. The family have five children. One of them will attend Floydada high school and two at Lakeview.

Dr. J. G. Pruitt
Naturopathic and Chiropractic Clinic
208 West Missouri St., Phone

DELICIOUS Pastries, Pies and Cakes

For Your Party Needs Made Fresh Every Day

— and —

Don't say Bread — say BUTTER KIST

FLOYDADA BAKERY



HOUSE of MAGIC Coming to Floydada

SOUTHWESTERN PUBLIC SERVICE COMPANY WITH GENERAL ELECTRIC COMPANY PRESENTS

"The House of Magic" AT THE HIGH SCHOOL AUDITORIUM 7:30 P. M. TUESDAY, JANUARY 25, 1949

The Public is cordially invited to see this presentation showing some of the wonders of electricity and how it helps us in our every day world. THIS IS NOT A PICTURE SHOW NO ADMISSION CHARGE

TO OUR FRIENDS AND CUSTOMERS

We are happy to announce that we now have BUTANE or PROPANE GAS for all customers tanks (larger than 180 gallons) AT— **10c per gallon**

AND

We are also happy that for the months of APRIL - MAY - JUNE - JULY - AUGUST - SEPTEMBER and OCTOBER. We will sell irrigation and tractor fuel for only. **8c per gallon**

This low price is the direct result of many months continued effort and expense on our part. We are glad that our efforts were rewarded with results that will save tens of thousands of dollars for the farmers of this section this year. We are thankful to our hundreds of loyal customers who have made it possible for our business to prosper and in turn enable us to serve them better.

WE PLEDGE

To continue our long established liberal value giving program and to serve each and every customer with BEST QUALITY — GOOD SERVICE — LOW PRICES And always to duly appreciate business —



Neighboring County Officials Sworn In

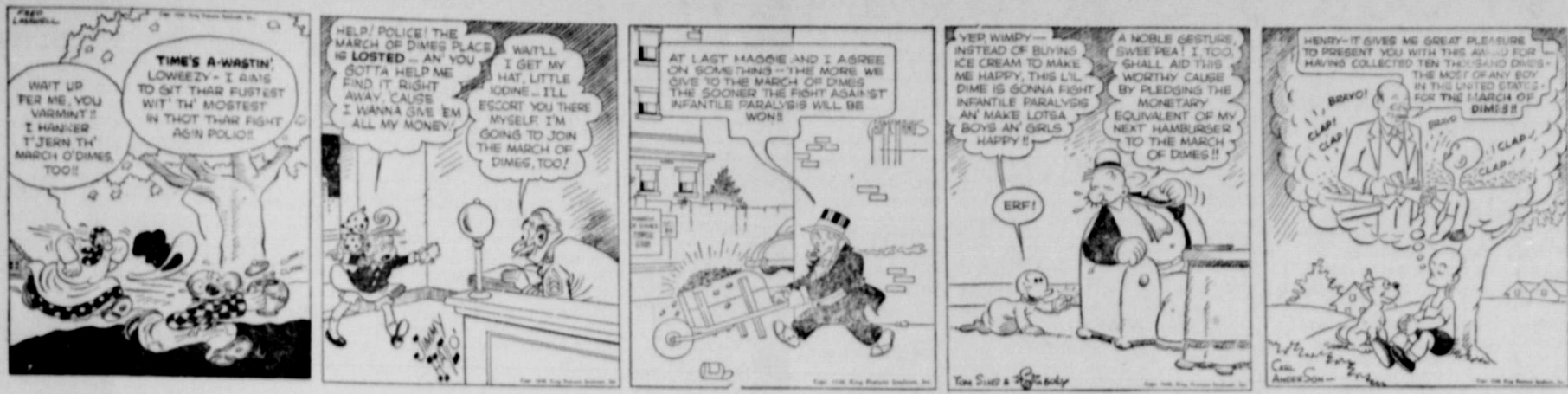
Officials in neighboring counties were sworn in last week in a ceremony similar to the swearing in of Floyd county officials.

To these officials the district will have Kilmer for state senator of the 10th district, I. B. Holt as representative of the 10th district, John Stotts as district attorney for the 110th judicial district.

Officers for the two years are as follows:

County judge, A. C. ...
 County superintendent, Rob-
 ...
 Sheriff and
 ...
 County clerk, John Stotts;
 ...
 County judge and ex-
 ...
 County clerk, John Stotts;
 ...
 County judge, Marsh S.
 ...
 County clerk, ...

THEIR DIMES JOIN



attorney, Howard Traweck; justice of peace, H. P. Pipkin; commissioners, Tom Berryman, prec. 1; James Monk, prec. 2; W. H. Leary, prec. 3; J. N. Fletcher, prec. 4.

CROSBY—County judge, Emzy Pierant; county superintendent, D. A. Edwards; county clerk, Lewis H. Benton; district clerk, Will F. Ezell; tax assessor-collector, Roy W. Karr; sheriff, Foy Addison; treasurer, E. H. Flournoy, jr.; county attorney, Lloyd A. Wicks, jr.; justice of peace, W. H. Nickson; commissioners, R. N. Keith, prec. 1; Cecil Berry, prec. 2; Joe M. Jackson, prec. 3; Leland Caddell, prec. 4.

HALE—county judge, Marsh S. Watson; county superintendent, Mrs. W. Halthcock; county clerk,

Fred Shelton; district clerk, Ed N. Nobie; tax assessor-collector, Marshall Surratt; sheriff, Ted Andrews; treasurer, Mrs. Jack Gamel; county attorney, Joe L. Cox; justice of peace, W. J. Lewis; constable, A. W. Patrick; commissioners, D. C. Aylesworth, Prec. 1; Buck Goldston, prec. 2; Carrol Bird, prec. 3; J. B. Smith, prec. 4.

KELLY AND LEWIS SIGN TO PLAY WITH PACKERS

LUBBOCK, Jan. 16—Bill Kelly of Idalou and Glenn Lewis of Quitique, student Texas Tech football players, have signed contracts to play professional football next year with the Green Bay Packers.

Discen Named Mgr. Levelland Papers

Bill Discen, a former editor of the Lockney Beacon, has recently been named general manager of the Hockley County Herald-Sun News publications in Levelland, it was announced by Forrest Weimhold, publisher.

Mr. Discen left Lockney when he purchased the Wheeler Times in 1942. He later sold that paper and went to Levelland as advertising manager of the Herald. In 1947 he accepted a position as advertising manager of the Odessa American

and later of the Brownwood Bulletin.

CARD OF THANKS

We wish to express our thanks to everyone who rendered food, floral offerings, and words and deeds of kindness and sympathy during the recent loss of our loved one, Bird McPeak. May each of you know such kindness in your time of sorrow.

Mrs. Bird McPeak,
 Mr. and Mrs. Elmer Carathers,
 The McPeak brothers,
 Mrs. Betty O'Neal.

Writing fluids, Hesperian

South Plains News

SOUTH PLAINS, January 16—The weather this week has been so very unusual. We have received about 2 1/2 or 3 inches of moisture which is very much appreciated. Looks like we might be in for a little more bad weather. Winter is really here.

There was school Monday and Tuesday, but none the latter part of the week, on account of the bad roads.

The bus did not run to Floydada only on Monday.
 Mr. and Mrs. H. L. Marble, June and Keith visited Mr. and Mrs. Otho Sanders and boys Wednesday night.

Ezzell Is Offered 3-Year Contract

MATADOR—The school board of the Matador Independent School district recently extended Superintendent Bert Ezzell a new three year contract, running from July 1, 1949 to June 30, 1952.

Ezzell was elected superintendent in 1945 immediately after his return from Germany where he served as an officer with General Patton's Third army.

Since his superintendency there the district has been enlarged and many improvements have been made in classroom instruction.

POSTAL RECEIPTS GROW

LOCKNEY—Postal receipts at the Lockney office showed a small increase in 1948, over 1947, according to a report made to the Beacon this week by Postmaster H. B. Machen.

The 1948 totals were \$9,881.56 compared to \$9,689.78 in 1947, Mr. Machen said.

Mr. and Mrs. Byron Carr visited in the Shelby Callahan home Thursday and Friday.

Mrs. E. P. Smitherman returned home from the Plainview hospital Sunday, and is reported doing very well.

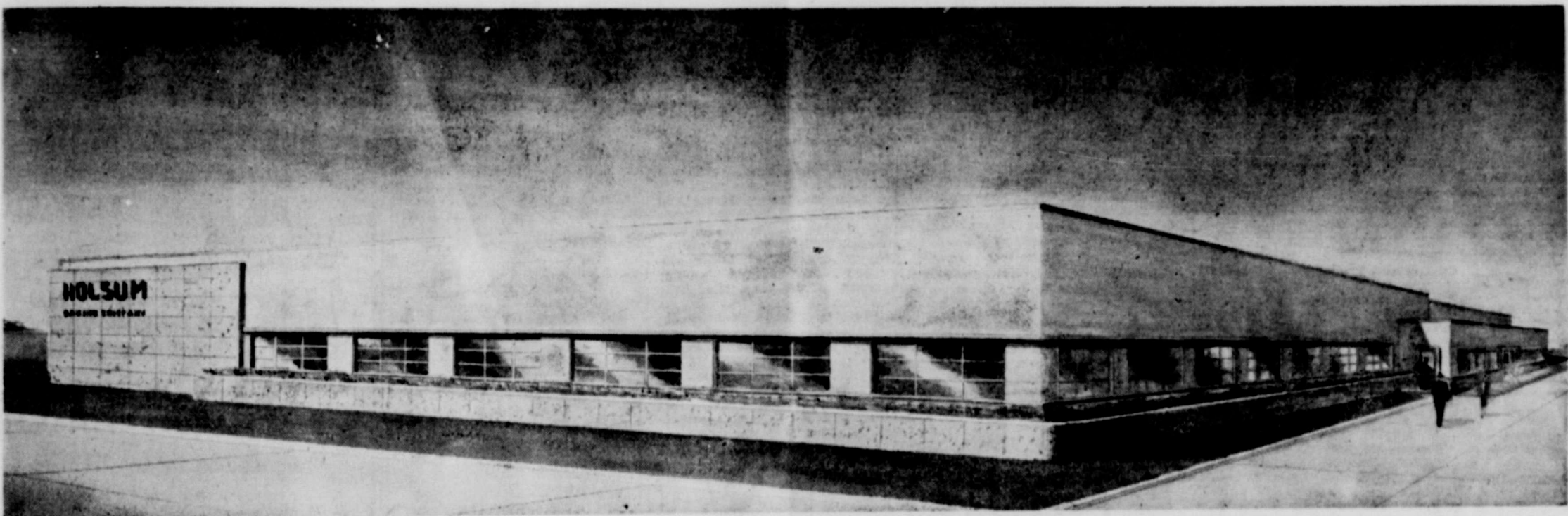
Mr. and Mrs. Edsell Hutsell visited her parents Rev. and Mrs. R. C. Guest.

Leon Marble is visiting in the C. V. Ford home.
 Mrs. C. V. Ford is on the sick list.

202 EAST BROADWAY

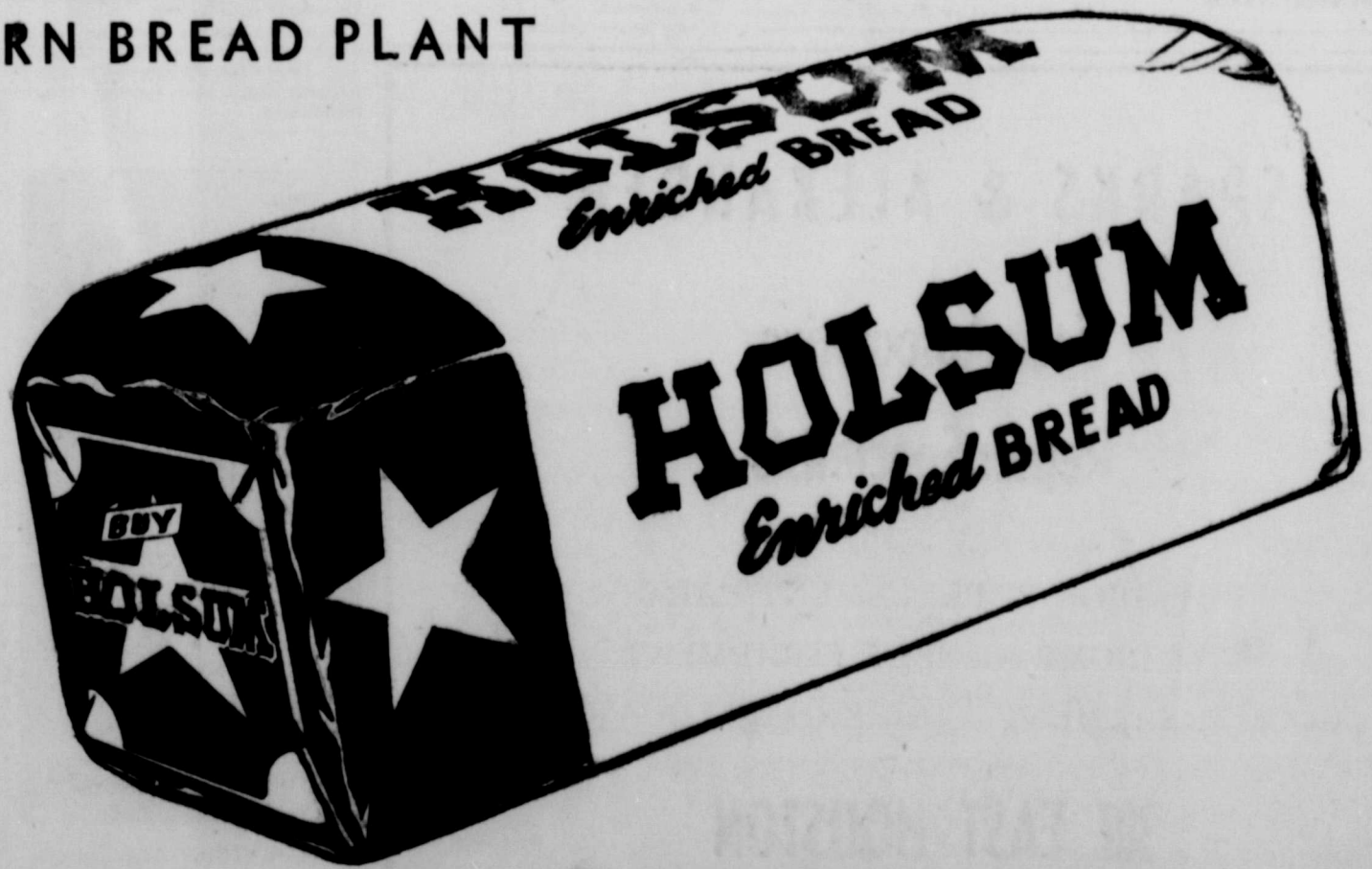
LUBBOCK

This Is It



Better Than Ever
HOLSUM ENRICHED BREAD
 NOW BAKED IN OUR NEW BAKERY
 Southwest's
 MOST MODERN BREAD PLANT

New Plant and a
 New Pound and a Half
 Family Size Loaf of Bread
 Has Been Added...



THERE IS A DIFFERENCE IN BREAD

In The Week's Social News

Miss Doris Vinson Becomes Bride of Earnest Huckabee

Miss Doris Vinson, daughter of Mr. and Mrs. O. C. Vinson became the bride of Earnest Huckabee, son of Mr. and Mrs. A. J. Huckabee, of Strawn, in a single ring ceremony performed Sunday afternoon at 4 o'clock in the home of Rev. L. A. Doyle, Baptist minister.

The couple's only attendants were Joy Jackson and Rex Smitherman. Miss Jackson wore a grey suit with black accessories and a corsage of pink carnations.

For her wedding, the bride wore a flamingo red dress with bronze accessories. She carried a white Bible topped with gardenias and white satin streamers. For something old, she wore a cameo pin belonging to her mother; the something borrowed was a handkerchief belonging to the groom's grandmother and the something blue was blue garters. For good luck, the bride wore a penny in her shoe. The penny was made in 1930, the year of the birth of the bride.

Mrs. Huckabee graduated from Floydada High school with the class of 1948. Following graduation she was employed for a time at Arwine Drug and the B. & M. cafe.

The groom graduated from Floydada High school with the class of 1942. He served two years in the Merchant Marines.

Following a wedding trip to south Texas, the couple will live near South Plains, where the groom is engaged in farming.

Mrs. Norman Hostess As Study Club Holds First 1949 Meeting

The Nineteen Twenty Nine Study club met January 6 with Mrs. E. L. Norman at 516 West Virginia street for the first 1949 club meeting.

The entertaining rooms were beautifully decorated with flowering bulbs.

Mrs. Hollis Bond, president, was in charge of the business meeting.

Mrs. A. T. Hull gave the program on Confucianism. "To see what is right and not do it, is want of courage,"—Confucius.

Members present were Mmes. R. C. Henry, A. T. Hull, W. E. Grimes, S. J. Latta, P. A. Dennison, S. W. Ross, Kinder Farris, Rex Brown, L. J. Welborn, J. D. McBrien, E. E. Joiner, Hollis Bond, John Hoffman, and the hostess, E. L. Norman.

The next meeting will be January 20 in the home of Mrs. W. E. Grimes, 618 W. Missouri.

Carmickle Shower at Lakeview Postponed

The shower that was to be given for Mr. and Mrs. Wayne Carmickle on Friday night, January 14, will be given on Friday night, January 21, at the Lakeview schoolhouse at 7:00 o'clock, it was announced this week.

Half Minute Interviews

Joe Smith, Silvertown: "We had quite a bit more snow in our part of Briscoe county than you had in Floydada or they had north of us. The fellows around me estimate 3.25 inches of moisture."

T. M. Noland: "My estimate is that the rain and sleet we had will make moisture in the ground go down 24 inches."

Mrs. R. B. Hatley returned home this week from Shamrock where she has been visiting her mother, who has been ill.

STARKEY CLUB MEETING

The Starkey Club will meet at Mrs. J. K. Holmes Friday, January 21, at 2:30 p. m.

Rev. A. C. Durrant, pastor of the Cumberland Presbyterian church in Garden City and former pastor of the church here, was in charge of the morning and evening services at the Presbyterian church here Sunday. Rev. Durrant left here in January, 1944, after a two year pastorate. He went to a Cincinnati pastorate but found that he and his family could not have their health in that climate.

Recent visitors in the McLain home have been all their daughters; Mrs. J. E. Brown, Lubbock; Mrs. Don Wallace, California; Mrs. Roy N. Tyler, and Mrs. James P. Huguley, Amarillo. Grandchildren visiting the McLains have been Vicki and La Dean Brown, La Dona Wallace, Betty Jean and Johnny Tyler, and Pat Huguley.

Jack Taylor of Lockney returned Monday from the Lubbock Memorial hospital where he has been receiving treatment for heart ailment. He was reported Wednesday as improving nicely.

The Mississippi river has a channel suitable for ocean-going vessels upstream to Baton Rouge, La., a distance of 233 miles.

BUSINESS . . .

goes where it is invited and stays where it is well treated.

J. H. & Dell Reagan Insurance
Floydada, Texas

Records
Music for your every mood as you like it . . .
H. G. Parker Furniture Co.

Simplified Controls Assure Driving Ease



In its 1949 models Chevrolet has relocated driving controls in a manner that promises appreciably to add to the safety and pleasure of driving. Dials are grouped around the face of a jumbo-sized speedometer. The starter button is on the panel together with light switches and ventilation controls. Also relocated is the handbrake, now conveniently placed at the right of the steering wheel under the dash. Notable in this view as well is the exceptional visibility offered by wider, deeper windshields.

Citrus Fruit Season At Peak; Recipes For Healthful Desserts

Now that citrus fruits are at their peak—and cheapest—you can make sure of getting all your vitamin C by drinking an extra glass of orange juice in the middle of the day. But there is an even tastier and prettier way of getting your daily quota, according to Marjorie Griffiths, who tells you to serve these fruits in wonderful desserts.

"No question about it, this is the prettiest and tastiest way to get your vitamin C, the wonderful vitamin that helps keep you frisky. Since you can't store up this vitamin against a seedy day, you should drink a nice big glassful every morning."

"Now that oranges are at their peak and, therefore, cheapest, go ahead and pamper yourself with an extra glass in the middle of the day. As for lemons and limes, they are the great flavor dramatizers—add so much to fish, vegetables, meats and other fruits."

Lemon Souffle

2 tablespoons butter or margarine
3 tablespoons flour
½ cup milk
Juice and grater rind of 1 lemon
4 egg yolks
4 tablespoons sugar
5 stiffly beaten egg whites
Grease a round 1½-quart casserole and sprinkle with a little sugar. Set your oven at 350F or moderate.

Melt butter or margarine in a saucepan and smooth in the flour. Add milk and cook very slowly until thick, stirring constantly. Stir in lemon juice and lemon rind. Beat egg yolks in a bowl, add sugar and beat again until thick and light. Now add egg yolk mixture to hot thickened milk and cook 3 minutes longer, stirring constantly.

Remove from stove. Mix in stiffly beaten egg white. Bake in casserole 15 minutes. Dust top with sugar. Serves four.

Orange-Lemon Pudding

2 tablespoons butter or margarine
½ cup sugar
2 eggs, separated
2 tablespoons flour
3 tablespoons lemon juice
Grated rind of ¼ lemon
Grated rind of 1 orange
7/8 cup milk
1 cup heavy cream

Campbell News

CAMPBELL, January 18—Mr. and Mrs. C. W. Jones and Mr. and Mrs. Cecil Baxter left for Temple Sunday. Mrs. Jones went for a check up at Scott and White.

Lawrence Stovall is having a time with the measles. Of course that nose of his had to hemorrhage, which has left him weak.

Rodney and Jerry Hinkle have been out of school, too, with the measles, and they have been real sick.

Frank Pratt visited his mother at the Ralls hospital Sunday. Mrs. A. T. Pratt has improved and was taken home Sunday afternoon.

Mr. and Mrs. Dave Hinkle and Bob returned home from Big Sandy Friday afternoon. Mr. Seago, Mrs. Hinkle's father, returned with them.

Mr. and Mrs. W. P. Hinkle and Mr. and Mrs. Billy Hinkle were dinner guests of Mr. and Mrs. Dave Hinkle Sunday.

Mr. and Mrs. W. H. Bethel spent the week-end with their son, Harold Reid, his wife and son, Donald, of Lamesa.

Mr. and Mrs. C. B. Lyles are staying with Mr. and Mrs. C. W. Jones' children, and are taking care of their stock while they are gone.

Mr. and Mrs. Lavane Kincheloe of Lubbock were Sunday dinner guests of Mr. and Mrs. Seaton Howard and Sharon.

Mr. and Mrs. W. W. Baxter, Kerwin and Waldo visited in the J. A. Baxter home Sunday night.

Kerwin and Waldo Baxter are spending this week with Mr. and Mrs. W. W. Baxter and Roy.

Mr. and Mrs. Frank Pratt visited with Mr. and Mrs. Everett Warren Monday night.

Mr. and Mrs. Buck Norvell of Plainview spent Sunday afternoon with Mr. and Mrs. J. H. Norvell and Geneva.



GRADUATED—After successfully completing eight weeks of basic training at Camp Lee, Virginia, recruit Susie Titus receives her certificate and congratulations from Lieut. Col. Elizabeth C. Smith, (left) commanding officer of the training center. Capt. Hattie Lou White (center).

Baptist Conference Attendance Good in Spite of Weather

Floyd County Baptist Association Workers conference was held with the First Baptist Church of Floydada Tuesday. The noon meal was served by the ladies of Floydada Baptist Church.

The program was scheduled as follows: 10:00 Song and Praise, in charge of Roy Clayton; 10:15 Devotional, by C. C. Holcomb; 10:30 District S. S. plans, J. Henry Cox; 11:00 Associational S. S. plans, R. C. Guest; 11:20 Special music, arranged by Roy Clayton; 12:00 Lunch; 1:15 p. m. W. M. U. and Board Meetings; 2:00 Report on Co-operation program, Ray Riley; 2:15 Closing Sermon, F. E. Swanner.

A good attendance was recorded in spite of the bad weather.

HOME FROM MEETING

Rev. Lloyd H. Jones returned yesterday from Oklahoma City where he attended a jurisdictional meeting. The meeting was a conference on preaching in large and small towns.

Rev. Jones will fill his pulpit here Sunday at the usual hours.

Jack cheese, sometimes known as Monterey cheese, originated in Monterey, county, California, in about 1892.

Mr. and Mrs. Carl Reeves, Carleta, and Bobbie Lon visited Mr. and Mrs. Pratt Huckabee Sunday. Mr. and Mrs. Reeves visited Keith Reeves, son of Mr. and Mrs. Harry Reeves, who has the measles. Keith is doing all right.

Doris, Randall and Ann Jones and Mr. and Mrs. Gerald Lackey spent Friday night with Mrs. Bratton.

Wasn't the rain, sleet, and snow just fine last week? Someone said "Just what the farmer and rancher ordered." At least it gave them renewed hope. "Hope" is almost as essential to a person as food, clothing, and shelter.

Mr. and Mrs. Carl Reeves and family visited "ma" Finley Monday night.

Mr. and Mrs. C. B. Lyles, Doris, Randall, and Ann Jones visited Mr. and Mrs. E. B. Chestnut Monday night.

Remember this is third Friday night-time to play "42" at Campbell again; if weather and no seriousness illness prevents it, we may play a few tables of "42" which do not progress this week. Everyone is invited to come. Please bring dominoes and tables.

We hope to have singing this Sunday night if everything is favorable. Everyone is invited to be with us on that night, too.

W. E. GRIMES
ATTORNEY AT LAW
Income Tax Service
Room 202 Bishop Bldg.
FLOYDADA

Funeral Rites For Lockney Resident Held On Monday

Mrs. H. B. Strickland, 69, a 10 year resident of Lockney, died Saturday in the Lockney hospital following a severe illness. Mrs. Strickland was born in Tennessee.

Funeral services were conducted Monday in the Methodist church at which Rev. E. J. Cobb officiated, assisted by Rev. N. S. Daniel. Interment was made in the Lockney cemetery under the auspices of Carter funeral home.

Survivors include the husband, Rev. H. B. Strickland of Lockney, a son, Hasler Strickland of Roswell, New Mexico, two daughters, B. F. Black of Hereford and Robert Morton of Houston, sisters, Mrs. H. H. Clifford of Cajon, California, and Mrs. McDonald of Waco.

GOOD GOVERNMENT AWARDS



TEXANS HONORED FOR PUBLIC SERVICE: Governor Ben Herring, right, and County Judge Earl Sharp of Longview, left, among the ten winners in the nation selected by the U. S. Chamber of Commerce to receive Good Government Awards for Governor Herring, whose award was presented by John Ben Sharp of Gladewater, past president of the U. S. Junior Chamber, was for his administrative ability and his leadership in the tideland. Judge Sharp, who received his award from Melvin Evans of Falls, president of the Texas Jaycees, was honored for his juvenile delinquency and for his public service to Gregg County.

BABY CHICKS

Place your order for New Chicks, most all breeds.

SOME TWO WEEKS OLD PARMETER REDS -- Really nice -- also a few White Rocks.

TEX-O DAIRY AND POULTRY FEEDS Will make your cows give more milk and your hens lay more eggs.

PATTON HATCHERY
Located at same old stand, on South Main Street, Floydada.

Insurance Fire

Phone 656-J 1

This week Mr. McLeroy insured his fine Farm Home and Buildings in McCoy Community for \$7,000 and knows by comparison that he will save \$173 on his premium alone in the next five years! Besides the saving, he knows there is no \$50 deductible clause in his New Policy.

Our Prompt, Fair Treatment in the Payment of all Legitimate Claims, Whether Large or Small, is Second to None.

The fact that your National Farmers Union Life Association will loan \$15,000 at 4 per cent interest to your PEOPLES HOSPITAL to better serve your health needs is just one more reason why YOU, TOO, as well as thousands of others, will know where to buy your:

LIFE INSURANCE and Triangle Group HOSPITALIZATION INSURANCE

Mr. Hustling Farmer . . . when you and your Family need Financial Protection, see or write Ed Holmes, or call me at the Farm, to come to your home. I will gladly write you LIFE INSURANCE that will stretch your credit in time of need.

Attend Our Texas Farmers Union Convention in Amarillo Hotel next Tuesday and Wednesday, Jan. 25 and 26. You may find that your Farmers Union companies are much larger and safer than out-of-state stock companies and their agents lead you to believe.

LISTEN to a Farmers Life as He Lives It, KVOP every Saturday, 12:30 to 12:45.

Phone 656-J 1 out of Floydada

ED HOLMES

SPARKS & ALEXANDER

Your Automotive Repair Specialists

SUPERIOR REPLACEMENT PARTS
THE RIGHT KIND OF EQUIPMENT
GOOD TREATMENT - CONVENIENT LOCATION

307 EAST HOUSTON

TELEPHONE 454

ALVA SPARKS

ROSS ALEXANDER

Bulldogs League Leader Basketball

...today in conference... the Spur Bulldogs stands... double round robin which... a championship for... Abernathy with one... the second slot definitely... Floydada with two losses out... is third.

...the schedules all snarled... the weather man last week... were trying to make up for... to regain schedules once... night, making up a game... Abernathy Antelopes the... of Floydada high lost... one 40-42. Tuesday night... jumped on Paducah... had already trampled... the previous Friday... I. T. Graves of... who is district chairman... have sufficient reports as... yesterday noon to give a... report on the standing of... nor could he say exactly... games were due to be... "One thing for sure we... that we have to finish by... 15," said Mr. Graves. He... anything like fair weather... the boys and their coaches... to make up for lost time... next few days.

Jackrabbits Best Matador
...The Ralls Jackrabbits... pair of District 3-A con... basketball games from Mat... Tuesday night.

Abernathy Is Winner
...Abernathy basketball... swept three games... Tuesday night, the... 53-33, the B squad... 42-12, and the girls taking... victory. The varsity game... district 3-A clash.

Friday Night Schedule
...basketball schedule for Fri... January 21, calls for... to be played as follows:
... versus Abernathy at Pa...
... versus Crosbyton at...
... versus Matador at Matador;
... versus Lockney at Lockney.

Chicken Pox And Measles Epidemic

...George Smith, County Health... reports an epidemic of... chicken pox and measles in Andrews... school and surrounding rural... are approximately 22 stu... absent from Andrews ward... Most of them are from... and second grades.

...George also said that there... much flu in the county at... taxes collected by taxing... of the different states... \$6,800,000,000 in the fiscal... of 1947.

...Alan Arthur was the 21st... of the U. S.

Baselton & Marts

...Building Contractors
...Building and Re-Modeling.
FREE ESTIMATES
...Commercial and Home
...Building
PHONE NO. 29

HUDSON AUTOMATIC Row Markers

And just received a large shipment of parts and are ready to take care of your combine repairs.

Let Bonnie Shultz get your combine or other machinery in first class condition, and stop time consuming break downs.

Come in to our new building and look around.

Floydada Implement Company
Highway 70 East



OOPS! President J. W. Bill Marshall of Wayland College was confident he could restore Business Manager J. L. Harden's necktie because he had seen a magician do it and remembered the magic word. When these failed, however, he wrote a letter of complaint to General Robert J. Smith, boss of Zafran the Great, acknowledging the failure of his magic complaining about the loss of the mutilated tie, which he enclosed, and asking that it be restored. A letter just received from General Smith had enclosed in it a tie of a different color.

County Agent Gives Range, Live Stock Report As Of January 1

...Texas winter range feed deteriorated over practically the entire state up to January 1, as droughty conditions continued, according to A. L. Hartzog, County Agent. Only in a limited area in east Texas were December rains sufficient to sustain growth of small grains, clovers and rescue grass. Dry range feed was short in all parts of the state except in some northern High Plains and some extreme southern counties where summer and fall rains were sufficient to produce a good growth of grass during the fall. Light rains, sleet and snow covered most of the Trans-Pecos country during the last week of December, but were generally too light to effectively break the drought in that area.

Condition of all range feed was reported at 68%.
This is the lowest January 1 condition reported since 1935 when 52% condition was reported and is 9 points below the ten year average of 77%. However last week's rain, sleet, and snow fall will, according to the Agent, no doubt give some early spring pasture growth.

Cattle Wintering Fairly Well
Cattle and calves are going through the winter in fair flesh, primarily because of the heavy supplemental feeding of roughage and cottonseed cake. Only a limited number of cattle are on wheat pasture in the important northern High Plains wheat country and these cattle generally are making only fair gains. Some farmers in that area are supplementing the wheat pasture with ground bundle feed because of the limited grazing. In spite of the summer and fall drought and short range feed, cattle marketings have been considerably lighter, than in most recent years.

Cattle marketed during the first eleven months of 1948 totaled 1,500,000 head which was the smallest number marketed during the same period since 1941 and substantially below the 1,965,000 head marketed during the same period in 1947. Calf marketings of 222,000 head during the first eleven months was the smallest number marketed during that period since 1936.

...Texas sheep and lambs are going through the winter in only fair flesh in spite of heavy supplemental feeding in much of the main sheep country. However, dry grass is fair to good in some southern Plateau counties and sheep and lambs in that favored area are carrying

Texas Drouth Was Part Of Climatic Cycle

...plied but little grazing in western Kansas, Oklahoma, and the Texas Panhandle. The reported condition of winter range feed for January 1 was the lowest for that date since 1940. Cattle showed more than usual decline in condition during December due to snow-covered ranges in the north and short range feed in Texas and the Southwest. The reported condition of cattle for that date since 1935. Heavy supplemental feeding was necessary in the snow-covered northern areas and dry sections of Texas and the Southwest. The early January blizzard and storm caused heavy shrinkage and some loss of cattle in the central Great Plains and along the east side of the Rockies.

Sheep Conditions Unfavorable
December conditions for sheep and lambs were generally unfavorable due to the snow covering in the north and short feed in Texas. Most northern sheep ranges were snow-covered in late December 1948 with heavy supplemental feeding. Texas sheep show the lowest condition for January 1 since 1935, with fair conditions in the southern part of the sheep section and thin sheep in other areas. Sheep in the West are wintering in below average condition, with the lowest January 1 condition since 1935. In California early lambs developed slowly. There are reports of wool contracting in New Mexico, Colorado, Utah, and western Colorado.

One of the major items in the cost of maintaining Railroad track is that of ties. In 1947, the Railroads bought in the neighborhood of 44 million crossties. By the time a new tie is put in the track in place of an old one its cost now comes to \$4 or \$5. That is more than double its prewar cost. The sharp increase in the cost of putting a new tie in the track was further strengthened by the export from our depleted sources of 6 million crossties in the 1947 relief program. The Railroads are carrying on intensive research to reduce mechanical wear on the tie. Longer tie life means better track and a saving in the cost of track maintenance.

...---1949 Santa Fe Almanac
A bad egg weighs less than a good egg.
The Federal Bureau of Investigation was created in 1908.

Mumps Control Calls For Aid In Isolation

...AUSTIN—Commenting on the necessity for individual cooperation in effecting the control of mumps, now widespread throughout the State, Dr. George W. Cox, State Health Officer emphasizes the fact that the contagion factor is present before any symptoms appear, and strict isolation of all patients is the surest means of controlling the spread of this disease.

Mumps is transmitted by direct contact with an infected person or articles freshly contaminated by the secretions of the mouth or nose of persons having the disease. It takes from 12 to 26 days for mumps to manifest itself after the infection occurs. The disease can be easily

transmitted, but one attack usually establishes permanent immunity and second attacks very rarely occur. The most easily recognizable characteristic symptom of mumps is a painful swelling of the salivary glands. Sometimes in the digestive, nervous, circulatory, and genitourinary systems. The disease is usually accompanied by a temperature rise which more often than not is mild. Patients suffering from this disease should be isolated from other members of the family immediately upon the suspicion that mumps exists, and the family physician should be called promptly. Dr. Cox said: "In the meantime, complete rest in bed is indicated. The doctor's orders should be followed strictly. Violating his instructions can lead to serious injury, which may permanently affect the patient's health."

From Charleston, S. C. to San Diego, California, a distance of 2,152 miles is the shortest distance across the United States.

Why send away for office supplies call no. 8.

T., N. M. & O. COACHES

Schedules Effective March 15, 1948

In effect now, make your travel in Air-conditioned buses easier, time-saving.

East Bound
Leave Floydada 8:40 a. m., 2:05 p. m., and 8:15 p. m., making direct connections at Vernon for Oklahoma City, Dallas and all points east;
Connections at Vernon for all points east

West Bound
Leaving Floydada 10:25 a. m., 4:20 p. m., and 9:45 p. m., making direct connections at Lubbock for all points North, West and South.

Northeast Bound 2:05 p. m.
To Silvertown, Quitaque, Memphis, Childress.

A. J. CLINE, Agent

Can Black-Draught help that dull, dopey feeling?

Yes, Black-Draught may help that dull, dopey feeling if this only reason you feel that way is because of constipation. Black-Draught, the friendly laxative, is usually prompt and thorough when taken as directed. It costs only a penny or less a dose. That's why it has been a best-seller with four generations. If you are troubled with such symptoms as loss of appetite, headache, upset stomach, flatulence, physical fatigue, sleeplessness, mental haziness, bad breath—and if these symptoms are due only to constipation—try Black-Draught. Get a packet today.

Where ice hit telephone lines

DAMAGE EXCEEDS \$2,300,000

Last week's ice and sleet storm struck telephone communications in the Southwest the hardest blow they'd received since 1937.

Damage to telephone lines exceeds \$2,300,000 in the area shown on the map above.

Telephone construction men, 3,000 of them, with their trucks and tools, moved into the storm region from all directions.

At the height of the storm 180 communities in four states had no outside telephone communications whatever.

The storm disrupted service for many thousands of telephone users for varying periods. We regret the interruption to service and we sincerely appreciate the patience people everywhere have demonstrated.

The size of the repair job that 3,000 telephone workmen are now tackling can be measured in the damage—108,000 wire breaks, 9,000 poles down, 2,600 long distance circuits out of service, 19,000 telephones temporarily silent.

By states, the money losses are \$600,000 in Missouri, \$380,000 in Kansas, \$570,000 in Oklahoma, and \$750,000 in Texas.

The poles, wire, crossarms, and all the other things needed to restore service are coming into the storm area by train and by truck. They're coming from Missouri, Texas, Alabama, Louisiana, Tennessee, Mississippi, Illinois, Pennsylvania, New Jersey, Maryland.

Telephone men began the repair job while the sleet still was falling. Long after emergency service is restored everywhere they'll still be at work until all damaged telephone equipment has been repaired and replaced, and everyone's service is back to normal.

SOUTHWESTERN BELL TELEPHONE COMPANY

CBS TOTEM POLE



Here's a totem-pole arrangement of the new CBS Sunday comedy lineup, beginning January 2nd. Anchor man on the totem pole is the colorful star of "The Spike Jones Show," who tees off the 90-minute laugh-cycle at 6:30 p.m. EST. Above Spike is Jack Benny, who takes over as soon as the last cowbell has died away, and above Jack are pictured "Amos" (Freeman Gosden) and "Andy" (Charles Correll), who follow Benny in the CBS all-star lineup.

A New First 'Polonaise' As A Violin Solo

When Chopin, moved to the depths of his soul by the treachery and tyranny confronting his native Poland, wrote the immortal "Polonaise" his brilliant technique was limited to the keyboard of his piano but music lovers of Floyd County will hear for the first time, the full score of the Polonaise not as a piano solo but as a violin interpretation by the famed Rubinfonoff and his violin.

The maestro appears March 2 at the Palace Theatre under sponsorship of the Floydada Junior Chamber of Commerce.

Rubinfonoff, who graduated from Warsaw conservatory at the age of fourteen, knows Poland—knows deeply the Poland which Chopin set to music. Now with the rendition of the Polonaise as a violin solo, Rubinfonoff fulfills a promise made many years ago to the dean of all American music—a pledge made as a child to the immortal Victor Herbert.

Discovered by Victor Herbert and discovered by the brilliant American composer in Warsaw, Rubinfonoff was brought to this country by Herbert. Earlier at the Warsaw conservatory the young prodigy, Rubinfonoff, sat with Victor Herbert as they listened to a great pianist of that day render the stirring Polonaise. "Some day," Rubinfonoff said to his older companion, "I shall write a violin arrangement of that composition."

Years intervened and the great Herbert passed away. Rubinfonoff became a household name and America learned that Rubinfonoff and his violin were as much a part of life as coffee and doughnuts. Radio appearances, moving pictures, nationwide concert tours—the acclaim of millions and literally thousands of renditions of the world's best loved music—but in between times, in every free moment, Rubinfonoff worked on his arrangement of the Polonaise.

Fulfillment of Promise

Rubinfonoff and his violin gives to America the fulfillment of that promise made many years ago-- the Polonaise with all the warmth and and his \$100,000 Stradivarius.

Music critics throughout the country, who have heard a rendition of the Rubinfonoff arrangement have been elaborate in their unanimous praise and admiration. One well known metropolitan reviewer wrote: "In a spirit of humbleness I relished the Chapin Polonaise. It is regrettable only that the great composer himself with his own intimates-- Franz Liszt, George Sandis and other contemporaries, could not have been present last night."

Reception of the Polonaise as a violin solo has been equalled only by the maestro's current feature number of his concert-- his own arrangement, also for the first time in history as a violin solo, of the Warsaw Concerto.

Tickets for Rubinfonoff's concert will soon be available from the Floydada Jaycees.



Rubinfonoff and his Violin

Lubbock Holsum Bakery Plant is up-to-date

The move into the new Holsum Bakery plant, one of the largest and most up-to-date in the Southwest, marks a milestone in the business of Walter E. Granberry established in Lubbock in 1933. At that time the bakery had only two routes. Since that time it has grown to serve an area stretching 100 miles from Lubbock in every direction, with 24 routes.

With 23,000 square feet of floor space, the building is constructed of brick and steel, with steel roof decking and fireproof construction throughout.

An inside loading room has space for 28 trucks and it is heated. As for the equipment, the latest improvements were embodied in all of the equipment.

Granberry has a staff of 62, and is assisted in management of the bakery by Robert Williams, plant superintendent. H. T. Owen, Jr., delivers bread to Floydada dealers.

Mr. and Mrs. Dalton Jones and daughter, Janice Kay, of Lubbock visited New Year's day in the home of Mr. and Mrs. W. O. Jones, Sr., Typewriter Ribbons, Hesperian.

Indicate Test Of Formation In Motley Hole

Humble Oil and Refining Co. has struck solid granite with its No. 1-H Matador, east Motley county wildcat, 16 miles east of the town of Matador and 960 feet from south and east lines of section 128, block M, Matador Cattle and Company survey, was the week-end report given out by Humble.

Total depth is 8,616 feet to the granite. A string of 5 1/2 inch casing has been cemented on 6,551 feet with 100 sacks and the venture was waiting on the cement job to cure.

From all indications, tests are to be made of the formation in which the pipe was set. That zone is unidentified.

Humble has drilled two holes a year for several years on the Matador lands and this is the first time a test of any formation found has been indicated. The drill has gone to varying depths in past years.

New Hole In Hale
General American Oil company was making a new hole with its No. 1 Mayo, flanker at the Arick field of southeast Hale county, 330 feet from north and west lines of the north half of section 18, block K, TTRR survey.

Last report had it below 4,340 feet in lime, continuing toward 6,000 feet, contract depth.

Also offsetting the Arick pool in Hale county, General American No. 1 Fannie Featherstone has rigged up rotary and was to spud and begin drilling as soon as the harsh weather lets up.

This new exploration is 330 feet from south and east lines of the southwest quarter of section 20, block K, TP survey.

Mrs. Walter Honea Died at Quitaque

QUITIQUE—Funeral services were held at 2:30 p. m. Friday afternoon, at the Quitaque Church of Christ for Mrs. Walter Honea, 79 years old, who died in her home in Quitique Wednesday afternoon. Earl Cantrell of Silverton was in charge of the service and interment was made in the Quitique cemetery under the direction of Stewart Funeral home.

Mrs. Honea died very suddenly. She had been ill about a week with a cold, but her condition was not considered serious. Her daughters, Mrs. Minnie Norris and Miss Leila Honea live in the family home, and Wednesday when their mothers condition seemed worse, they called a doctor, but she passed away before he arrived.

Survivors are the husband, Walter Honea, who has been in failing health for a long time; six children, Austin Honea, of Houston, Douglas of Shafter, California, Lois and Odie of Quitique, and the daughters, Mrs. Minnie Norris, and Miss Leila Honea, also several grand children.

Mr. and Mrs. G. C. Collins of San Bernardino, California, left last week after a short business trip to West Texas.

NUMEROUS RELATIVES AND FRIENDS AT MCEPEAK RITES

Out of town relatives and friends in Floydada for the Bird McPeak funeral last Thursday included Mrs. T. B. McPeak, Miss Nell Jones, and Mr. and Mrs. Brand of Sweetwater, Mr. and Mrs. Elmer Carathers and Children, Eugene and Frances, of Nashville, Tennessee, Mr. and Mrs. Dan Adair of Olton, Mrs. Marie McPeak and Lanora, and Mrs. Frankie Hopper of Lubbock; Mr. and Mrs. David Carathers, Mrs. Joe Browder, of Amarillo, Mrs. Joe McPeak and Linda, Jonah McPeak, Mr. and Mrs. Finas Hal Cum, Mr. and Mrs. Segal, Mr. and Mrs. Jake McClain, Mr. and Mrs. B. W. Hamby, and Mrs. Marie Seago of Plainview.

The U. S. Federal Trade Commission was organized in 1915.

QUANAH FEED
By the Sack, Ton or Truck
43% Protein Cotton Seed Cubes.
43% Protein Cotton Seed Meal,
20/80 Mixed Feed.
SCOTT GIN CO.

FARMS FOR SALE

In the best irrigation water belt in the United States. Improved and raw land. From \$60.00 to \$200.00 per acre. For further information write or call Spears Real Estate, Phone 61 Box 1206, Hobbs, New Mexico.

ON BRIEF HOME VISIT

J. M. Willson, Jr., and Misses Oragene Willson and Marjorie Oden made a brief visit home Sunday from Dallas, where they are students in SMU.

The young women are home students at the school and will be attending a between-semester trip home for building materials needed during the month of January and early February.

LANDS

Land for Sale and to Lease for Farming and Grazing purposes in Floyd and other Counties; also large list of Town Lots.

W. M. MASSIE & BRO.

General Land Agents
Floydada, Texas

W. M. Massie J. M. Massie Hollis R. Bor

FREE REMOVAL INSTANTLY

OF CATTLE, HOG, SHEEP AND HORSE CARCASSES

Call Floydada Cold Storage Locker
Phone 328

or Call Plainview 1444 Collect for
Prompt Service
PLAINVIEW RENDERING CO.

Arthritis Pain

For quick, delightfully comforting help for aches and pains of Rheumatism, Arthritis, Neuritis, Lumbago, Sciatica, or Neuralgia try **Romind**. Works through the blood. First dose usually starts alleviating pain so you can rest, enjoy life and sleep more comfortably. Get **Romind** at drugist today. Quick, comfortable relief.

Volcanic Ash or Concrete Building Blocks

Concrete Pipe

DRIVE-WAY GRAVEL

Wayne Bennett



Service

Banks sell no tangible article, no bright painted "gimmick" to take home and admire. We deal proudly in the greatest intangible of all—service—and it is available to everyone.

Whether you come in to arrange a loan to buy a home or to open baby's first savings account, visit your friendly bank today and learn why bank and service mean the same.



First National Bank Floydada, Texas

WE SELL SAVINGS BONDS

Welcome the New CHEVROLET



The most Beautiful BUY of all

We cordially invite you to see the new Chevrolet for '49—the first completely new car the leader has built in more than seven years—and the most beautiful buy of all!

You'll find it's the most beautiful buy for styling, for driving and riding ease, for performance and safety, and for sturdy endurance born of quality construction throughout... because it alone brings you all these advantages of highest-priced cars at the lowest prices and with the low cost of operation and upkeep for which Chevrolet products have always been famous.

Yes, here's the newest of all new cars—pre-tested and preproved on the great General Motors Proving Ground—and predestined to win even wider preference for Chevrolet as the most beautiful buy of all, from every point of view and on every point of value. Come in and see it!

First for Quality at Lowest Cost

AMERICA'S CHOICE **CHEVROLET** FOR 18 YEARS

ODEN CHEVROLET CO.

221 South Main Street

Floydada, Texas

Farmers Union Convention On January 25-26

The State Convention of Texas Farmers Union will hold their annual convention in Amarillo, in the Hotel next Tuesday and Wednesday, January 25 and 26. The highlight will be an address from Jim Patton, National Farmers Union president. Tuesday Farmers Union Juniors from Texas will give a two-hour program.

Sand Hill Local No. 33 will send a delegation of school students that will go in Sand Hill school bus. Mr. McLeroy will be in charge of school children on the trip to Amarillo. Mr. McLeroy is the principal of the Sand Hill school.

Mr. Roy Hollums, Mrs. Lloyd Allen and Mrs. Ed Holmes will have a program of Floyd County's part of the program.

Tuesday will include the political business meeting of Texas Farmers Union County Mutual Insurance company.

Several of Floyd County's several policyholders have indicated they will go to the two-day convention.

The State's Largest Local

Sand Hill Local No. 33 has the largest Farmers Union local in the state of Texas, having more than 100 members.

At their regular meeting at Sand Hill on January 6, Ed Holmes was elected president; Lloyd Allen, vice-president, and Mrs. Lloyd Allen, secretary-treasurer.

Ed Holmes points with pride to the fact that the National Farmers Union Life Association is offering a \$100 life insurance policy free, the first year's premium paid, for any boy and girl in Texas who complete a group study course through the Farmers Union work at Sand Hill. Plans are being completed to take advantage of the offer.

Floyd county members of Farm-Union rightly feel proud of their annual Farmers Union for offering \$15,000 on the Peoples Hospital in Floydada to better equip the hospital to make first class medical care available to farm families in this area," said Mr. Holmes. "I expect all who will go to the State convention in Amarillo on January 25 and 26 to get first hand information on what your State and National organization has to offer to help farmers in your commu-

nication.

Vic Vet says

PROTECT YOUR NATIONAL SERVICE LIFE INSURANCE - MAIL PREMIUMS PROMPTLY

Conservation District News

Rainfall in Floyd County Soil Conservation district varied from 11.09 inches to 18.25 inches in 1948. The average of 12 gauges scattered over the District was 14.46 inches for the year. In general, the north and west part of the County had the most moisture. November was the driest month with an average of .86 reported from the various stations. The highest amount of moisture fell in June with reports averaging 3.76. The total precipitation includes all measurable amounts of moisture in the form of rain, snow, sleet and hail.

The average rainfall in 1948 was about 6 inches under the long time average of around 20 inches. Some of the gauge stations reporting the most moisture had damaging rain and hail. In these areas there was a great deal of runoff and washing and the lakes were filled to capacity. The growing crops were severely damaged.

Lakeview News

LAKEVIEW, January 18—School was resumed Monday after being dismissed since last Tuesday on account of the bad roads. Several new pupils have been enrolled the past week.

Mr. and Mrs. James Nichols of near Plainview visited the Dick Nichols family several days during the week.

In spite of the very disagreeable weather quite a few attended church and B. T. U. services Sunday morning and night. The district Missionary, Rev. Swanner, of Plainview, filled the pulpit Sunday morning and brought a message that everyone enjoyed. Prayer meeting is held each Wednesday night led by our pastor, Rev. G. A. Rowell.

Mrs. Leo Dunford was taken to the Floydada Hospital Sunday night. Her condition has improved somewhat.

Miss Anna Mae Jones returned home Wednesday, after spending several days visiting in the home of her brother, James Jones and wife, of Panhandle.

Mr. and Mrs. Cecil Johnson returned this week from several weeks stay in Springdale, Arkansas.

Mr. and Mrs. Fowler Estep visited in Plainview Monday.

The people of this community were indeed saddened last week when news came to us that the home of Wesley Gentry family of Slaton, had burned. The Gentrys formerly lived in this community.

Mrs. W. O. McNeely and Ethel McNeely returned Monday from a twelve day visit in Corpus Christi, San Antonio, and Taft.

Miss Arline Wilson of Amarillo spent last week-end with Mr. and Mrs. Virgie Shaw.

Remember Last Year?...

'S-NO FUN

WHEN WINTER WEATHER CATCHES YOU WITHOUT A FULL PANTRY!

BE PREPARED FOR AN EMERGENCY • PIGGLY WIGGLY

THESE PRICES GOOD FRIDAY SATURDAY & MONDAY

ARMOURS PURE LARD 3 LB. 55c	FOLGERS COFFEE, DORMANS NEW POTATOES, RINSO, SCOTTS TISSUE,	LB. CAN 55c NO. 2 13c BOX 33c ROLL 12c	CHUM SALMON NO. 1 TALL 49c
---	--	---	--

LARGE BOX OXYDOL 33c	DELMAR OLEO LB. 27c	ARMOURS TREET CAN 47c
---------------------------------------	---	---

CANNED VEGETABLES	WOLF CHILI NO. 2 59c	CANNED FRUITS
--------------------------	--	----------------------

LIBBYS DEEP BROWN BEANS, 14 OZ. 15c	HUNTS PEACHES, NO. 2 1/2 27c
--	---

TOMATOES, NO. 1 9c	LUX, 3 BARS 23c	DROMIDARY ORANGE JUICE, 46 OZ. 25c
OLD KENT CORN, NO. 2 15c	LIBBYS PUMPKIN, NO. 2 1/2 19c	DOLE PINEAPPLE JUICE, NO. 2 17c
SHASTA PEAS, NO. 2 12 1/2 c	COTTAGE SARDINES, 2 CANS 25c	DOLE SLICED PINEAPPLE, NO. 2 33c

Pork Cuts	No. 1 Russets Potatoes, LB. 6c
PORK SHOULDER ROAST, 47c NICE AND LEAN POUND	Bunch Radishes, Bunch 7c
SLICED BACON, 53c WILSON CORN KING POUND	Green CELERY, Stalk 19c
SLICED BACON, 45c EDGEMERE POUND	CALIFORNIA ORANGES, POUND 15c
ROUND CHEESE LB. 43c	WINESAP APPLES 15c lb.
SMOKE BACON 29c lb. SLAB BY THE PIECE	FIRM HEAD CABBAGE 5c lb.
Dry Salt Bacon 6c lb. NICE AND LEAN	YELLOW ONIONS LB. 5c

PAYMENT MADE BY SCHOOL FUND TO SCHOLASTICS

check in the amount of \$246.45 received from the State Board of Education Monday, January 17, County Superintendent Clarence E. This is \$7 of the \$55 per child that is to be received this year, which \$15 each had already been paid.

The money received by Mr. Guffee will be used in the rural districts. The balance on the same basis was paid by Floydada Independent School district.

IN THE NEWS



...biggest newspaper advertising campaign will use 5,972 dailies and ...to announce new models January 22. Dwarling Toni Banish, here's ...5,972 newspapers look like, each representing an individual publication.

"THE STORE YOU'RE MOST AT HOME IN!"

PIGGLY WIGGLY

Classified Ads

Houses for Sale

RESIDENCE PROPERTY FOR SALE
Two lovely 5 room modern homes, well located on pavement, priced right. Several other homes at from \$1,500 to \$6,500. Also have a few improved small acreage tracts.

J. G. Wood, Bank Bldg. Phone 236. Res. 444-W 491fc.

FOR SALE—Four room furnished house, bath, three porches, chicken house, paved walk. Located at 200 W. Jackson. \$3500. W. H. Ely. 512tp.

FOR SALE—Or would consider late model car for trade in. New G. I. home in Amarillo. 4 rooms and bath, on pavement. \$1,000 will handle. See H. A. Copeland. 493tp.

GOOD homes for sale in Missouri, cheap. Contact Marshall Brooks, Cabool, Missouri or Roy Golden, Norwood, Missouri. Five miles north on highway E after 1st of January. Can fix you up with a real home cheap. 466tp.

FOR SALE—Three room house 1 1/2 blocks north of Ward school on 1 1/2 lots. Monthly payments. Phone 473-J. 512tp.

WE HAVE several good buys in houses with immediate possession. Goen & Goen. 1011fc.

TO CLOSE THE W. T. BROWN ESTATE, we offer for sale one modern residence on West Mississippi and one small house on East Kentucky. See or phone W. Edd Brown or R. Fred Brown, Floydada. 35 1fc.

FOR SALE—Five room modern house, \$5,500.00. 911 So. Main. Pay Maxey. Call 372-J. 411fc.

FOR SALE OR EXCHANGE—Modern four room frame house near Andrews Ward. Henhouse and garage. Mrs. Lindsay Warren. 614 W. Lee. 493tp.

PROTECTIVE Weather Strip Co.

See your home dealer for free estimates.

RAY WILLIAMS

320 South Second St. Telephone 367-J

Land For Sale

LAND FOR SALE: 200 acres with good irrigation well has large loan 20 years at 4 1/2%. 1/2 minerals reserved and the very best of terms. This place is really worth the money not \$180 just \$80 per acre.

WELL improved 160 acres with well. WE have several 320 acre tracts well improved worth the money. HOUSES most any kind you want priced reasonable.

F. A. Faulkenberry 212 Bishop Bldg. Phone 722W1

FLOYD COUNTY FARMS FOR SALE DRY LAND OR IRRIGATED IMPROVED OR UNIMPROVED. FOR PRICE AND DESCRIPTION SEE J. G. WOOD, ROOM 5 BANK BLDG. OFFICE PHONE 236. RES. 444W 491fc.

LOW INTEREST RATE LOANS
See us for your farm loan. More money per acre, no commission charge, quick inspection, low interest rate, splendid pre-payment options. Goen & Goen. 491fc.

FARMS, RANCHES, BUSINESS & RESIDENCE PROPERTY
IF YOU WOULD BUY, SEE WOOD J. G. WOOD, Room 5, Bank Bldg. Phone 236, residence No. 562-W

FOR SALE—One of the nicest irrigation quarter sections in the country. The price on this land has been reduced—\$200 per acre this week. Better see this. Smith and Stanley at Stanley's Barber Shop. 511fc.

FAIRM FOR SALE—320 acres all in cultivation, four shallow irrigation wells, 3 on electricity, 1 on gas. Other improvements. 240 acres in alfalfa. Attractive terms. \$200 per acre. Glen Hartsell, Texline, Texas. 484tp.

FOR SALE—Several choice irrigated tracts, some improved, some not, also dry land farms in most any size tract wanted. Some good buys in city property. See or call Leonard Smith at McCoy store or Harry Stanley at Stanley's Barber shop. 461fc.

Farm and Ranch Loans for Long Terms at 4% interest. Pay off in advance at any time. Available to repair, rebuild improvements, finance old loans and for the purchase of farms and ranches. Floydada National Farm Loan Association. 12 1fc.

NOTICE
Still soliciting your listings. Have several choice farms for sale. Also several houses here in town. See me at Palace Barber Shop, or phone 326-J. Jack Burleson. 4 1fc.

Miscellaneous

ATTEND your National Farmers Union convention in Amarillo hotel Tuesday, January 25 and 26. 511tc.

FOR covered buttons, buckles, eyelets, buttonholes, custom made belts and sewing. See Mrs. R. L. Cook, 337 W. Ollie, Phone 178W. All work guaranteed. 516tc.

Order of the Eastern Star will meet Thursday night January 27 at 7:30 o'clock. 512tc.

BOOK YOUR ORDERS now at Rice Hatchery for future delivery of Baby Chicks. Hatch comes off Jan. 24 and every Monday thereafter for several weeks. Flocks represented are Poliorum tested. 503tc.

CUSTOM GRINDING TESTDAYS AND FRIDAYS McCARTY'S FEED MILL. 511fc.

GET—Your anti-freeze at Collier Auto and Electric. 491fc.

SPECIAL price on farm wagons. Two wheel trailers, rebuilt motors. Floydada Wrecking Co. L. L. Clark. 38 1fc.

CATTLE and sheep cubes \$75 ton delivered. Rice Hatchery. 511tc.

SEWING MACHINES
Bought, repaired and sold. Parts for all kinds of machines. Motors on hand at all times. S. H. Wright, 226 East Tennessee, Phone 113-J, Floydada, Texas. 488tp.

DODGE & CHRYSLER 6's and 8's IRRIGATION MOTORS We pick up and deliver MAYO MOTOR CO., Phone 237

FOR FLOOR sanding see Earl Baker at Callison & Son Lumber Co., or call residence phone No. 182-W. 40 12tp.

M. A. BARTON—Long and short distance hauling. Covered van, 211 East Crockett St. 481fc.

Arthur G. Duncan Abstract Company
Best and most complete Abstracts in Floyd County. Prepared and prompt efficient service on everything in the line of land titles. S. E. Corner Public Square. Mrs. Maud E. Hollums, Manager.

AUTHORIZED MAYTAG SERVICE
Genuine Maytag parts, Oils & Grease. See your Maytag dealer. H. M. McDonald, Hdq. 491tc.

EXPERT repairing on home and auto radios. Rice Radio Service at Rice Hatchery. 271fc.

ATTEND your National Farmers Union convention in Amarillo hotel Tuesday, January 25 and 26. 511tc.

Farm Machinery

FOR SALE—Used New Holland automatic baler, \$1,500. Glen Hartsell, Texline, Texas. 484tp.

NEW and used tractors, all makes. Braselton Implement Company. 411fc.

FOR SALE—Model A John Deere tractor and equipment. S. G. Appling, Mt. Blanco. 513tp.

MARTIN Ditchers. Braselton Implement Company. 411fc.

FOR SALE—1937 Model John Deere tractor and two row equipment. \$950. See James Anderson at Higginbotham-Bartlett. 512tp.

FOR SALE—Good used 14" moldboard plows, \$135.00. Power lift type ditcher for M Farmall or G John Deere, \$200.00. New two and three row power lift stalk cutters, \$110.00 to 137.00. Braselton Implement Company. 451fc.

Legal Notices

NOTICE TO BIDDERS

Sealed bids will be received by the Commissioners Court of Floyd County, Texas until 10:00 o'clock A. M. February 5, 1949 at the Courthouse in Floydada, Texas, for the replacement of the roof of the courthouse; the removal of the dome, and the replacement of the down spouts. Further specifications of the repairs may be obtained in the County Judge's office. The contractor shall be required to give good and sufficient bond in the full amount of the contract price for faithful performance of such contract. The right is reserved to reject any and all bids.

G. C. Tubbs
County Judge, Floyd County, Texas. 512tc.

For Sale

FOR SALE—Alfalfa hay, 450 bales, No. 1 hay, International mower for H or M. J. A. Noland, 7 miles north Floydada. 514tp.

FOR SALE—Bundles, cane and begari, 5 miles East of Floydada. Glen Jarnagin. 451fc.

FOR SALE—At sacrifice, one Van Horn All Purpose sprayer. McCarty's Feed Mill. Phone 490-J at night. 451fc.

FOOD SALE

At The
A A A KITCHEN
SATURDAY
January 22

Wanted

WANTED—Farm hand to work on farm. Living quarters. R. I. McLeroy, Sand Hill School. 511fc.

WANTED—Junk batteries. We will pay you \$2.00 cash for each of your old junk car, truck, or tractor batteries, or will trade you a gallon of Zerex for two of them. Collier Auto and Electric. North side of square. 491fc.

WANTED—Ladies sewing. Mrs. J. T. Myrick, Jr. Call 762-W-2 512tc.

WANTED—Good clean cotton rags Spa's & Alexander Garage on Highway 70 east. 35 1fc.

WANTED—Clean cotton rags. Oden Chevrolet Company. 181fc.

WANTED TO RENT—2 or 3 room apartment or small house. Call 119-W or see Mrs. Sam McCleskey. 511fc.

Live Stock

FOR SALE—Two year old black Angus bull pure bred but not registered. See Duncan Hollums. 504tc.

FOR SALE—18 Brahma calves, weight 300 lbs. See Carl Smith at Home Oil Company before Tuesday, January 25. 511tp.

FOR SALE—Entire stock of Duroc hogs (200 head) Breeding stock and all. Several gilts and sows with pigs by side, 2 to 6 weeks old. Several gilts and sows bred for early spring farrowing. Several 80 to 90 lbs. Sow pigs and boar pigs. All of above subject to register and vaccination. Herd boar is a son of Tops. C. O. Roberts, Lockney, Texas. 504tp.

GOOD typewriter ribbons for your model typewriter. Hesperian office.

Hesperian Ads Pay

For Rent

ROOMS FOR RENT. See Mrs. Green at 129 W. Ga. 502tp.

FOR RENT—Two room furnished apartment. Call Jewell Elza at the bank. 511fc.

FOR RENT—Storage space over our store for household furniture, etc. Collier Auto and Electric. 491fc.

FOR RENT—Modern garage apartment, furnished. 418 West California street. Phone 173-J. 512tp.

BEDROOM for rent. Phone 145-W. Mrs. W. N. Paschall. 451fd.

FURNISHED apartments 102 East Houston St. 421fc.

Lost and Found

LOST—Leather purse inscribed "Mary". Finder leave at Bishop's Pharmacy. 511tc.

REWARD—\$5.00 for recovery of male Boston screw tail Bull dog, answers to name Buster. Was wearing collar and harness, notify Mrs. J. M. Redd or call Camp Copes. 511tp.

Male Help Wanted

RELIABLE MAN with car wanted to call on farmers in Floyd county. Wonderful opportunity. \$15 to \$20 in a day. No experience or capital required. Permanent. Write today. Mc Ness Company, Dept. A, Freeport, Ill. 502tp.

ASTHMA

Don't let coughing, wheezing, recurring attacks of Bronchial Asthma ruin sleep and energy without trying MENDACO, which works thru the blood to reach bronchial tubes and lungs. Usually helps nature quickly remove thick, sticky mucus. Thus alleviates coughing and aids freer breathing and better sleep. Get MENDACO from druggist. Satisfaction of money back guaranteed.

For Lease

FOR LEASE—Filling station in Matador. Will sell cash register, one grease gun, electric coke box, air compressor and stock. Station been in operation four months. Located in East Matador on highway 70. Phone Ray Locke 114-M, Matador. 512tp.

Poultry and Eggs

LOOK AT THIS VALUE! Cook from pedigreed matings size Dixie's Lowest price chicks, as Leghorns, Rocks, Reds, 4 weeks old Leghorn started cheaper than you can raise. Write for Bargain catalog. Dixie Poultry Farm, Brenham, Texas.

INSURANCE

Fire, Windstorm, Extended Coverage, Automobile Surety Bonds 1923 to 1949

E. P. NELSON AGENCY

LET'S GO TO COPE'S FOR A GOOD STEAK

First class steaks... a specialty at Cope's expertly served in all their mouth-watering, sizzling goodness.

Family parties welcome.

COPE'S DRIVE IN

Highway 70 North

YOU'LL LIKE THE RICHER FLAVOR OF





Borden's
HOMOGENIZED
VITAMIN D MILK

BIG SAVINGS

ARMOURS, DEXTER	POUND	
SLICED BACON,		55c
THE BEST	POUND	
LOIN STEAKS,		79c
WILSON'S CERTIFIED	1 LB. ROLL	
PORK SAUSAGE,		39c

Snow White
PURE LARD
4 Pound
85c

	
LEADWAY APRICOTS,	No. 2 1/2 Can 29c
DEL HAVEN PEACHES,	CAN 27c
KIMBLE, Whole GREEN BEANS,	No. 2 Can 25c
HEARTS DELIGHT FRUIT COCKTAIL,	No. 2 1/2 Can 45c
BANNER SWEET PICKLES,	32 Oz. 45c
DELICIOUS APPLES,	POUN 15c
NICE BIG BUNCHES CARROTS,	BUN 9c
NICE FIRM HEADS CABBAGE,	POUN 5c
LARGE HEADS LETTUCE,	EAC 15c
YELLOW ONIONS,	POUN 7c

RUSSETT
POTATOES,

TEXAS'
ORANGES,

White Swan
COFFEE
1 Pound Can
51c

PATTERSON'S GROCERY & MARKET
Free DELIVERY — Free PARKING LOT REAR OF STORE —
PHONE 24 — S. MAIN — FLOYDADA

SPECIAL GET ACQUAINTED OFFER!

SAVE 25¢ ON EACH SACK

OF FUL-O-PEP CHICK STARTER

USE OFFER BLANK BELOW

Vitamin-Rich Ful-O-Pep Chick Starter
Raises Healthy, Robust Chicks!

Big, husky chicks that live and grow... those are the kind Ful-O-Pep Chick Starter raises. You see, Ful-O-Pep is built around wholesome oatmeal, and fortified with Concentrated Spring Range*—Nature's Richest Vitamin Combination. No wonder it grows big pullets that lay. So feed Ful-O-Pep Chick Starter. Take advantage of this money-saving offer today!

HURRY! BRING IN THIS OFFER BLANK TODAY! YOU CAN SAVE UP TO \$5.00 A TON!

*Reg. U. S. Pat. Off.

SPECIAL OFFER TO READERS OF THIS NEWSPAPER
Bring in this offer blank. We'll give you 25¢ off on each 100 lbs. of Ful-O-Pep Chick Starter you buy up to one ton. Sign your name and indicate amount bought. Maximum discount, \$5.00 per customer. Discount allowed on one purchase only.
I certify I bought _____ lbs. of Ful-O-Pep Chick Starter on my initial purchase under this offer.

Name _____
Address _____
Come in today... offer expires March 31, 1949

D. W. FYFFE
Feed — Seed
Phone 91

Chevrolet Showing Saturday

of three years of engineering research and design development. Begun immediately after V-J Day, experimental work has included 1,068,000 miles of test driving over the roads of the General Motors Proving Ground and arid highways of the southwest, reports the Detroit office of Chevrolet.

The local showing will be held simultaneously with displays in other cities and is expected to draw one of the biggest crowds in history of events of its kind.

"From inquiries at our offices and dealer showrooms, we know that many people are waiting to see the car," said Conner Oden of Oden Chevrolet Company.

Chevrolet's solid reputation for

value and reports of impressive new features have kindled interest.

"We do not believe the public will be disappointed. While the car carries numerous comfort and convenience advantages, it maintains our tradition of rugged, reliable transportation at the lowest possible cost."

Whitworth Elected Cashier Of First State At Matador

MATADOR. — J. R. "Rat" Whitworth was promoted to the office of cashier of the First State bank here Tuesday, following a stockholders meeting. Secretary-treasurer of the Matador Lions club for 14 years and a leader in the community's civic and religious activities, Mr. Whitworth has held the position of assistant cashier over a long period of years.

Other changes announced following the meeting, included creating a new office of executive vice-president, to be filled by former cashier Elmer Stearns. C. D. Bird was re-elected as president. W. N. Pipkin and Mrs. Lucy Ford were named as assistant cashiers.

WEEDS IN COTTON

If experiments in chemical control of weeds in young cotton succeed, the results are likely to be far-reaching. This is so because weeds in the row are a principal condition that checks the advance of mechanization in cotton production, explains O. A. Leonard of the U. S. Department of Agriculture.

Mechanization of this crop is a problem on which the plant scientists, agricultural engineers, and other specialists are devoting increasing attention. Dr. Leonard who is working on weed control in cotton through use of chemicals at the Mississippi Agricultural Experiment Station points out that cotton growers now need to have on hand labor enough for hand-hoeing of the young cotton. This need may make it unprofitable for them to adopt mechanical equipment that would save labor at other seasons.

Promising results have followed use of "dinitro" chemicals applied as a "pre-emergence" spray. On some soils and under favorable conditions the sprays have not injured the cotton stands and have been effective in keeping down most of the weeds and several of the troublesome grassy plants for the six- to eight-week period while the cotton plants are growing big enough to endure "flame cultivation." Flaming the cotton rows is a quick and economical way of meeting the weed problem, once the cotton plants are large enough. It is in the earlier period that the extra labor is required.

The chemical weed killer was applied in these experiments immediately after the cotton was planted, says Leonard. In several experiments the chemical controlled most of the annual weeds, including crabgrass. It does not control the perennial weeds, but other chemicals have been tested with considerable success against Bermuda grass and Johnson grass. In some experiments the "dinitro" spraying injured the stand of cotton. The weather affects results. Warm weather increases the damage to the cotton. The "dinitro" on the row is not likely to be as effective if the soil is cloddy, the clay soils call for a heavier application than the lighter soils.

Results are encouraging, but Leonard is conservative in his report. He concludes that "it is possible

Training Program For Electric Line Men to Begin Soon

COLLEGE STATION, Jan.—Rural electric line construction and maintenance crews in fifteen Texas communities will start their 1949 training programs during the remaining week of January under the direction of M. D. Kaderli, line crew instructor in the Industrial Extension Service of Texas A. & M. College.

This was announced today by E. L. Williams, IES director, whose department conducts REA training program in Texas in cooperation with the State Board for Vocational Education.

Covering a regular circuit, Kaderli will instruct crews in the following communities during 1949: Childress, Memphis, Wellington, Prereton, Tulsa, Hereford, Muleshoe, Littlefield, Floydada, Stamford, Merkel, Roby, Stanton, Tahoka, and Lubbock, the announcement said.

HORMONES HOLD FRESHNESS

The keeping quality of cauliflower grown on Long Island was improved by spraying the crop with hormones, or growth-regulating substances, two weeks before harvest, reports the U. S. Department of Agriculture's Bureau of Plant Industry, Soils, and Agricultural Engineering. Good results were obtained by using 2, 4-D, or a mixture of equal parts of this material and methyl ester of naphthaleneacetic acid. In six weeks storage of cauliflower at 33° F., this preharvest treatment reduced leaf dropping from 80 percent to 10 percent.

This is one of a wide variety of uses of plant growth regulators reported by the Department. Uses range from staggering the harvest period of pineapples and the hastening and stimulating of root growth of many kinds of plant cuttings, to prolonging the blossoming time of some kinds of Japanese cherry trees.

that a certain type of seedbed preparation, coupled with accurate placement of the herbicide, may make the procedure reasonably dependable for the control of annual weeds for four to six weeks."

Mt. Blanco News

By Mrs. Weldon McClure (too late last week)

MT. BLANCO, January 11—Well, this country is really a "Winter Wonderland" at this time, and all of the farmers are smiling, even if it is awfully cold to get out and do the work. We are all hoping that we will get enough moisture to make the wheat grow a little higher.

Mr. and Mrs. C. B. Hartsell and children spent Monday night in Floydada with Mr. and Mrs. J. M. Harrison.

Mr. and Mrs. J. W. McClure, Mr. and Mrs. John Fletcher, Mr. and Mrs. Frank Moore, and Mr. and Mrs. Earl Crawford went shopping last Wednesday in Lubbock.

Mr. and Mrs. Luther Norvell, and son, State, spent Saturday night with Mr. and Mrs. Bill Norris.

Mr. and Mrs. Robert Moss, and sons, Mack and Jerry, spent last Saturday night and Sunday with Mr. and Mrs. C. A. McClure.

Mr. and Mrs. Weldon McClure spent Monday with Mr. and Mrs. Walter Crawford of Crosbyton.

Mr. and Mrs. Rudolph McCurdy and Larry spent part of last week in Memphis.

Little Charles Raymond Payne, of Lubbock, spent Friday night with his grandparents, Mr. and Mrs. R. E. Spurlin.

Everyone will know when we put on our play, for someone will see everyone in the community and sell them tickets. That way you will know.

Dinner Party Held

Mr. and Mrs. Dennis Taylor were hosts Saturday night to their respective families at a dinner party honoring the newest weds of the family, Mr. and Mrs. James McClure of Lubbock, and Mrs. C. A. McClure on her 65th birthday.

Present for the enjoyable occasion were Mr. and Mrs. J. B. McClure Lubbock; Mr. and Mrs. R. S. Moss and sons, Jerry and Mack, of Memphis; Mr. and Mrs. L. W. Norvell and son State, of Hereford, Mr. and Mrs. C. A. McClure, Mr. and Mrs. W. B. Allen and daughters, Judy and Nancy, Mr. and Mrs. J. W.

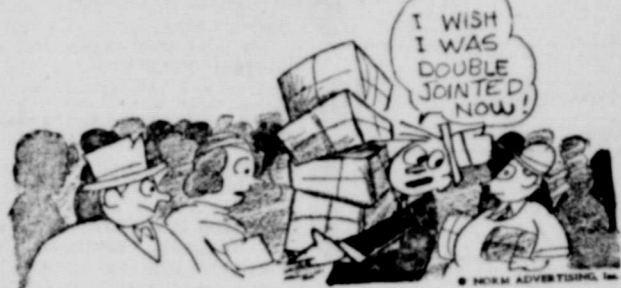
McClure and Jerry, and Margaret, Mr. and Mrs. J. H. McClure, and Miss Sammy Lowe of Crosbyton; Mr. and Mrs. Bill Norris, Mr. and Mrs. Tilford Taylor, of Floydada, and the host and hostess, Mr. and Mrs. D. Taylor and sons, John, Joe, and Tom.

Just Received
Large Shipment Beautiful
Rock of Ages Monuments

Your Visit Will Be Appreciated
South Plains Monument Co.
401 W 6th St. Plainview, Texas

Carthel's Service Station
says It's a Fact!

THERE ARE NO
DOUBLE JOINTED
PEOPLE



And We Can Prove It!

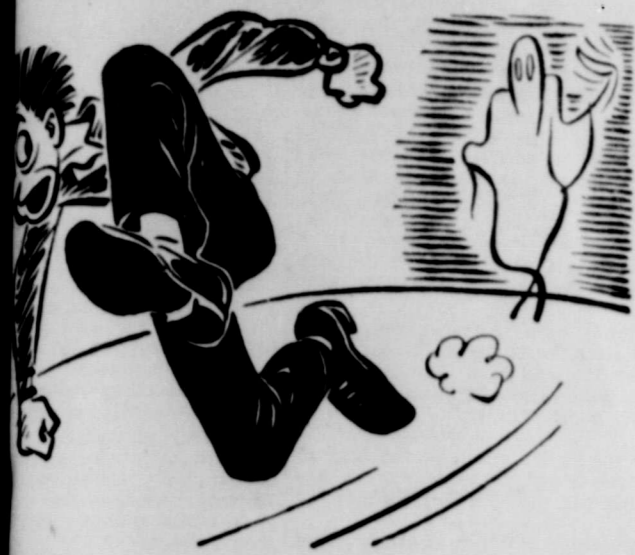
If you've always wished for a place where the standards are high, the will to please strong and merchandise and values just right, patronize Carthel's on the convenient northeast corner.

(Proof Next Week)

Lightning curves, twists, meanders and branches, but it does not turn in acute angles or zigzag. In 1856 James Nasmyth, a Scottish engineer, called this fact to the attention of the British Association for the Advancement of Science, after observations over a period of years. —"Uncommon Knowledge."

CARTHEL'S SERVICE STATION
PHONE 552 FLOYDADO, TEXAS

TALK ABOUT FAST STARTS

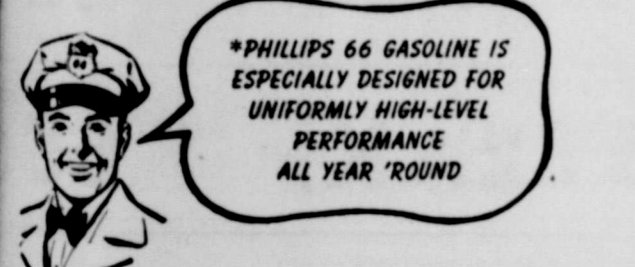


THIS GASOLINE'S GOT IT!

Phillips 66 is "CONTROLLED" To Give You Fast Action In Cold Weather or Hot!

If your car is a "sluggish starter"—look to the gasoline—it may be sluggish, too. Why not start with Phillips 66—now!

You see, Phillips 66 is controlled so you can get high quality performance from this fine fuel even at very low temperatures. Try a tankful and see for yourself!



PHILLIPS 66 GASOLINE

PHONE 66 FOR PHILLIPS "66" WHOLESALE — AARON CARTHEL

These Phillips Retail Service Stations are the kind you'll enjoy patronizing.

Walt Patterson
300 West California

Thornton's
Phillips Service
300 East Houston

Thomas Grocery & Market
312 South Second on Highway 70

CARTHEL'S Service Station N. E. Corner Square
Blue Goose Station & Grocery Highway 70 East

THE NEW FUTURAMICS



FUTURAMIC—the most glamorous word in motor cars now applies to two great lines of Oldsmobiles. Not only the newly styled Futuramic "98"—but also a brand new Futuramic "76" with a new '49 Fisher Body that's lower, wider and offers greater visibility. And this year, Oldsmobile has struck a new balance of power with two great engines for these Futuramic cars. The new "Big Six" Engine in the "76" is more powerful than ever. And the new "98" is powered by the revolutionary "Rocket" Engine. It's a high-compression, valve-in-head eight—an engineering marvel that steps up horsepower to 135, yet actually cuts down on gas costs. Words can't describe it. You've got to drive it yourself for Oldsmobile's "NEW THRILL!"

OLDSMOBILE

The New Thrill! TRY IT... AT YOUR OLDSMOBILE DEALER'S

C. E. FYFFE CO., Floydada, Texas

State Senator Corbin Takes Over Duties

AUSTIN—Senator Kilmer B. Corbin of the 30th Senatorial district along with ten other new members of the Senate took the oath of office at noon on January 11. The senate completed the organization on that date and is proceeding with legislation. Of the 31 members of the senate, Senator Corbin is the youngest member.

Senator Corbin was selected to

serve as the chairman of the committee on town and city corporations; vice-chairman of the committee on aeronautics; and as a member of the following committees: agriculture; civil jurisprudence; congressional districts; finance; insurance; oil, gas, and conservation; public printing; state institutions and departments; and water rights.

Corbin and his wife and three children—Barry, 8; Blaine, 5; and Jane, 4—are living in Austin during the session.

In a recent letter to the Hesperian, Senator Corbin expressed his intention to keep the people of this area informed on legislative matters through the columns of this paper.

MARRIAGE RECORD

Marriage license was issued this week to E. J. Huckabee and Doris Vinson, January 14.

New Manager

(Continued from first page)

Mr. and Mrs. Cornell and their two children, a daughter, 8, and a year-old son, will move to Plainview to make their home as soon as arrangements can be made.

Myers Long-Time Resident

Mr. Myers, who has been manager since July, 1946 here, has been a long-time resident of this vicinity. He came to Plainview in 1904 with his parents and resided there 18 years. During his telephone career, which began in 1932, he saw service in Fort Worth and Wichita Falls, and during the war was Camp Telephone Manager at Sheppard Field. In 1946, he was appointed manager for Floydada and the surrounding exchanges, his position until the present time.

Mr. and Mrs. Myers will move to Wichita Falls soon.

J. I. Hammonds

(Continued from first page)

college, arrived Monday, and Jimmie, who is a TWA pilot, stationed at Ypsilanti, Michigan, reached Floydada Monday night.

Mrs. Daniel is believed to have left Germany sometime Tuesday and is expected to reach Floydada sometime today. The hour of her departure for the states by plane was indicated for the afternoon of Tuesday.

Surviving other than the immediate family is a sister, Mrs. Viola Heckathorne, of Portales, New Mexico.

John I. Hammonds was a native of Greer county, Oklahoma. The family moved to Floyd county in 1902 and settled four miles west of Floydada, where he grew to manhood. He attended school here. He was married to Hope Duncan, the widow who survives, in 1911.

AUNT DIED AT ENNIS

Mrs. Ed. O'Leary, 78, of Ennis, Texas, passed away Saturday at her home and was buried Sunday.

She is the aunt of Mrs. S. W. Ross and Mrs. E. P. Nelson of Floydada. She is also the oldest sister of the late W. L. Boerner, former mayor of Floydada.

Mrs. O'Leary had been a resident of Ennis for many years.



JAYCEE WEEK IN TEXAS will be observed from Jan. 14-21 by official proclamation of Governor Beauford Jester (center). In issuing the proclamation Governor Jester praised the Texas Junior Chamber of Commerce for its fine work in training young men and cited the organization's current "Pay Your Poll Tax" campaign as one of its most important contributions toward good government in Texas. Looking on are Melvin Evans of Wichita Falls, left, president of the Texas Jaycees, and John Ben Shepperd, Gladewater, past president of the U. S. Junior Chamber of Commerce.

Electric Coop Office Moved

Floyd County Rural Electric cooperative is in process of moving from their former location on the north side of the square to their new offices and warehouse at the corner of California and Fifth streets, purchased last year from Bernard Martin at a cost of \$25,000.

The office force and much of the equipment and materials have already been moved and the headquarters are at the new location, Monday. However, the former location is still under lease and in use and will be indefinitely, he said.

The change over of the Martin building from a store arrangement to an office and warehouse was under way for some months. Chapman said the arrangement is practically ideal for their needs. The building occupies a space of 75 by 100 feet.

Got Lucky During Storm

With tongue in cheek Mr. Chapman gave a pleasing report on the good luck the Electric coop had during the storm of the past 10 days. In contrast to ill fortune that dogged electric coops further downstate there were only four or five breaks in the several hundred miles of lines of the local coop and these were reached quickly so that little inconvenience was experienced by members.

Lockney Church

(Continued from first page)

a basement was later dug out under the floor for Sunday School rooms.

Church Will Be Re-Built

Rev. E. J. Cobb said Tuesday that the church congregation has been holding meetings and formulating plans for re-building and at this time it appears the church will be re-built on the old site. "We are feeling our way along," said the Lockney minister. "Present indications are that the auditorium will

First Meeting Council Held For Year 1949

The Floyd County Home Demonstration council had its first meeting of the year Saturday. Mrs. Raymond Teeple served as chairman, due to the absence of the chairman and vice-chairman.

The standing rules for 1949 were read and approved. Mrs. Raymond Teeple reported on the T. H. D. A. and the district meeting was discussed. Mrs. Bertrand told how to keep account of books read by club members.

Mr. Reue discussed the clubs serving lunch for the Rotary.

Mrs. J. B. Smitherman showed a cook book from Dallas county. Committees for 1949 are as follows:

Finance—Mrs. Lee Rushing, Mrs. Ruth Daniels, Mrs. R. C. Matthews; Exhibit—Mrs. W. A. Lovell, Mrs. C. B. Carmack, Mrs. O. G. Mayfield;

Education and Expansion—Mrs. Herman King, Mrs. George West, Mrs. Lee Pope, Mrs. Don Finkner, Mrs. P. I. Roberts;

Marketing—Mrs. W. C. Sims, Mrs. W. L. Morgan, Mrs. Paul Sparkman; Recreation—Mrs. Everett Miller, Mrs. Wayne Russell, Mrs. Clyde Farrish;

Year Book—Mrs. Lynn Miller, Mrs. Joe Reeves, Mrs. A. H. Harris; Cannery—Mrs. J. I. Helms, and Mrs. R. S. Harless;

Parliamentarian—Mrs. C. A. Caffee;

Reporter—Mrs. J. D. Eaves, Assistant reporter—Mrs. A. M. Dorsey.

Twelve clubs were represented at the Council meeting as follows:

Baker, Mrs. P. I. Roberts; Center, Mrs. Clyde Henderson; Dougherty, Mrs. Sam Lide, Mrs. C. A. Caffee; Friendship, Mrs. Lee Rushing; Harmony, Mrs. Don Finkner; Home-

be built on the ground floor with a two-story educational building."

Between \$20,000 and \$25,000 had been raised Tuesday for the construction of the new church.

The church is now meeting in the city auditorium and Sunday school is to be held at different places as they are available, said Rev. Cobb. Possibly some of the classes will meet in homes of the community.

Brotherhood Meet

The Floyd county Associational Brotherhood will meet at the First Baptist church here Monday night, January 24. Supper will be served at 7:30 p. m.

Professor Arch M. McMillan of Wayland college will be principal speaker reports W. B. Allen, associational president of Brotherhood.

builders, Mrs. O. G. Mayfield, Mrs. D. T. Mayo;

Lakeview, Mrs. Orvis Shearer; Lockney, Mrs. M. L. Anderson, Mrs. W. L. Morgan; Lone Star, Mrs. Raymond Teeple; Pleasant Valley, Mrs. A. M. Dorsey; South Plains, Mrs. J. B. Smitherman; Sunnyside, Mrs. W. C. Sims; and Miss Petty, the Home demonstration agent.

The visitors present were Mrs. P. F. Bertrand, Mrs. John Lloyd, Mrs. G. N. Shirey, Mrs. D. D. Shipley, and Mrs. Raymond Williams.

Bi-Regional Meet West Texas JC's

An estimated 200 Jaycees attended the bi-regional meeting of the Junior Chamber of Commerce for regions 1 and 2 composed of 18 Jaycee organizations in the Panhandle-south plains area of Texas at Lubbock Saturday afternoon and Sunday.

Each organization made a report of the activities in their communities. Jim Brown, the executive vice-president gave a report on the financial standing of the state organization. Melvin Evans, state president, gave a report of the activities of the state organization.

Saturday evening's activities included a banquet followed by an informal dance. The high light of the evening program was the presentation of the "Lubbock Man of the Year." Dr. E. N. Jones, vice-president of Texas Tech made the presentation to Gene Quest, 31, a member of the Lubbock Jaycees. Quest's outstanding activities were in youth work.

Those who attended the meeting from the local Jaycee organization were Mr. and Mrs. Guy Ginn, Mr. and Mrs. Jewell Elza, and Mr. and Mrs. A. H. Rainer.

On the Pacific coast the coastline of the U. S. is 1,386 miles; on the Atlantic the distance is 1,888 miles.

Washington, D. C. is often called The City of Magnificent Distances.

Money makers—Hesperian Classified advertisements.

Rev. W. M. Lane Is Fatally Injured At San Antonio

Funeral services for Rev. W. M. Lane, 53, pastor of the Methodist church here from 1920, were held at 4 p. m. Wednesday in Travis Park Methodist church in San Antonio.

The Associated Press said Lane was injured at about 11 p. m. Monday when he apparently slipped into the side of a man impaling himself on the door. Relatives did not know the cause of his injuries, but were told that Rev. Lane was rushed to hospital and did not regain consciousness before he died.

The retired minister had been living in San Antonio for fifteen years. Before coming to San Antonio he was pastor of the Methodist church in Lubbock for his retirement he was a Mason.

Survivors include the wife, daughter, Mrs. H. T. Atkins, one daughter, Mrs. Sallie Lane and two great grandchildren of Lubbock.

Interment was in the Burial park in San Antonio.

Rotary's Farmers Day February 9

Henry Teubel, of Tulsa, guest speaker when the Rotary club has their annual farmers' day program on February 9. It was announced this week by Arlin L. Hartzog, who will be man of the program that day.

Teubel is an authority on diversified farming and an interesting life background. Hartzog, each member of the club is to invite a farmer guest to port February 9, the county fair.

In telling the time of day initials p. m. mean post meridiem.

- EVERLITE Flour, 25 Lb., **\$1.69**
- SURFINE Pork & Beans 15c No. 2 Can,
- HUNT'S Early Garden PEAS, 15c No. 1 Can,
- ADAMS Orange Juice 23c 46 Oz. Can,
- Snowdrift, \$1.09 3 Lb. Can,
- MAGIC SUDS SWERL, 19c Large Pkg.,
- SUN MAID RAISINS, 39c 2 Lbs.,
- IDEAL Dog Food, 29c 2 Cans,
- JELLO, 25c 3 Pkgs.,
- TAFTS Grape Juice, 25c Pt.
- FOLGERS Coffee, 55c 1 Lb.,

Hull & McBrien
Phone 292
WE DELIVER

Looper-Fenner

Your Friendly Food Store

- PURE LARD, 4 Lb. Carton **89c**
- FLOUR, Everlite, 10 Lb., **79c**
- MEAL, Everlite, 10 Lb., **69c**
- SPUDS, Idaho Russet, Lb., **4 1/2c**
- TISSUE, Great Northern, 3 large rolls, **27c**
- FRUIT COCKTAIL, Hunt's Tall Can, **25c**
- BEANS, Chuck Wagon, 2 Cans, **25c**
- HYPRO BLEACH, 1/2 Gallon Jug, **33c**
- JELLO, 3 Packages **25c**
- TOMATOES, No. 2 Can, **13c**
- QUALITY MEATS**
- SLICED BACON, Hawkeye, Lb., **49c**
- STEAK, T Bone, Grain Fed, Lb., **59c**
- Bacon Squares, Sugar Cured, Pound, **39c**
- CHEESE, Longhorn, Pound, **45c**

STAR CASH VALUES

Floydada's Oldest Food Store
Phone 46 — We Deliver

- SUGAR, 10 Lb. Bag, **90c**
- SPRY, 3 Lb. Tin, **\$1.09**
- LIBERAL PEARS, No. 2 1/2 Can, **39c**
- Sliced, Crushed, Chunks PINEAPPLE, No. 2 Can, **33c**
- MIRACLE WHIP Salad Dressing 1 Pint Jar, **39c**
- HERSHEY'S Chocolate Syrup 15c 16 Oz. Jar,
- HI HO Crackers, 1 Lb. Box, **30c**
- BILTMORE TUNA, Flat Can, **45c**
- Ivory Flakes, Large Box, **33c**
- DREFT, Large Box, **30c**
- AJAX, Can, **10c**
- TREND, 2 Boxes For, **35c**

WEEK-END SPECIALS

QUALITY OF OUR PRODUCTS IS DEPENDABLE

- PURE CANE 10 LB. BAG **89c**
- SUGAR,
- GOLD MEDAL 10 LB. BAG **85c**
- FLOUR,
- PURE 4 LB. Carton **82c**
- LARD,

- MEATS** Special
- PORK CHOPS, Per Pound **49c**
- STEAK, Per Pound **65c**

- ADMIRATION OLEO POUND **33c**

- FRESH VEGETABLES**
- Grapefruit RUBY RED **9c lb.**
- PECANS Paper Shell **29c lb.**
- AVACODAS
- Green onions
- Bananas ?

- MIRACLE WHIP SALAD DRESSING PINT **37c**

- SURFINE NO. 2 CAN **17c**
- Red Kidney Beans,
- SUGAR LOAF NO. 2 CAN **29c**
- PORK & BEANS, 2 FOR
- MACARONI OR 16 Oz. Pkg. **19c**
- SPAGHETTI,
- ADAMS 46 OZ. CAN **27c**
- ORANGE JUICE,

- SURFINE **39c**
- Grape Jam 2 lb. jar
- CAMAY SOAP reg. bar **10c**
- WOODBURY SOAP bar **10c**

- PUREX QUART **15c**
- Super Suds box **33c**
- TREND 2 BOXES **39c**

Felton-Collins
Phone 27 • Grocery & Market • 122 W. Calif

WE DELIVER

The Hesperette

Edited by Pupils of Floydada High School

HESPERETTE STAFF

Ivy Pearl Simmons
 Don McGuire
 Gladys Roberts, Claudine
 Hope McIntosh, Brad Beedy,
 and Roberta Garrett
 Wilma Hamilton and
 Anne Swepston

basco, Elayne Snodgrass, Ann West,
 Mary Ann Wilson, Stanley Conner,
 Doris Foster, Dorothy Foster, Juanita
 Huckabee; Junior—Peggy Collier,
 Betty Johnson, Buddy Sanders,
 Sammie Shultz, Doris Bollman, Velma
 Briggs, Jimmie Hammonds, Barbara
 Marshall, Gloria Ratjen, Billy Shipley,
 Dorothy Bishop; Senior—Barbara Landers,
 Mary Maxey, Hope McIntosh, Ivy Pearl Simmons,
 Fern Stovall, Lonnie Cates, Bob White,
 Gladys Roberts, Roberta Garrett.

General Students

Main Exemption

The following students are the ones who attained an exemption in every subject the past year. An average of 85 in the grade and of 90 in department required. Freshmen—Virginia Laelle Rahn, Hubert Rnig, Cook Conray Johnson, Guy Sphomore—Aubrey Guthrie, Powell, Walter Anderson, Duller, Ruth Maxey, Billie Perry, Peggy Parkey, Don Pro-

COURAGE

Bite off more than you can chew, Then chew it.
 Plan for more than you can do, Then do it.
 Point your arrow at a star, Take good aim, and there you are. Arrange more time than you can spare, Then spare it.
 Take on more than you can bear, Then bear it.
 Plan your castle in the air, Then build a ship to take you there.
 —Cleveland Compass

EDITORIAL

It is time now for your mid-year check-up. What have you done thus far? There may be some things you have begun that you will want to finish. There are some that you will need to change.

Stack up your achievements in one corner and your failures in another. Which pile is the higher? Then look at your unlimited opportunities. Perhaps you cannot see them very clearly yet, but they are mountain high. Determine now to take each opportunity as it comes and make it into a success. You still have half of the year left, so go to work now and build your opportunities into the greatest achievement.

Candid Camera

Wilma Hamilton, a very charming and cute little senior girl, is the theme of our Candid Camera this week. A glimpse of Wilma as you would see her coming down the hall of F. H. S. would be a tiny little person with the figure 5' 1/2" tall and weighing around 94 lbs. She has short curly brown hair and big brown eyes.

Wilma, sometimes known as "Wilma Mae", was born in Floydada sixteen years ago. She is among the fifteen members of the present senior class who started to school with that same group of eleven years ago.

She would like to spend her vacation months in Colorado, skiing, relaxing and dating her ideal boy (Jake?).

Wilma has a long list of accomplishments. She is a member of the Gamma Sigma Kappa, Civics Club, A. Y., and is one of the very efficient typists who plays a great part in getting the "Hesperette" ready for publication. She is also typist for the annual.

A list of Wilma's favorite wearing apparel includes slacks, turtle neck T-shirts, boots, and loud socks.

A list of her likes would begin with the color's red and green (but not together). Other likes are the card game "Little Casino", fried chicken, fish, pecan pie, boogie-woogie music, fried okra, playing the piano when she is in the right mood, practically any kind of salad, typing, cokes, eating doughnuts that are still hot, shorthand, bookkeeping, football, boxing, and basketball.

Wilma's favorite pastime is riding around and reading.

Her favorite expression are "Oh, my Heavens" and "Oh, my cow!"

A list of her dislikes would begin with snooty people, others that think that they are better than other people, mince pie, spinach, cabbage, any kind of greens, avocados, icy weather, and swinging bridges.

Wilma's most exciting moment happened on a trip to Colorado. They were coming down Pike's Peak and the brakes on their car went out. They came down that huge mountain about three-fourths of the way without any brakes.

Her most pleasant vacation was spent on that same trip to Colorado. She saw Pike's Peak, the Royal Gorge, Orville, the Mountaineer, and many other interesting places.

Claudean Goen is her ideal person. Her ideal boy has curly red hair, and blue-green eyes. He is 6' tall exactly and weighs around 160 lbs. He also has a wonderful personality and is just oodles of fun to be with. I believe this fits Jake's description to a "T". When asked if she had found him, Wilma said "I guess unless something happens".

Her greatest achievement in high

school was to pass senior Literature. Wilma's life's ambition is to grow taller and to be able to play anything she wants to on the piano. Wilma, your great personality and just being yourself has added and brightened our class for the past eleven years and the student body wants to wish you much luck.

Guess Who?

Answers for last week:
 Dennis Wilks
 Hattie Boyd

—unior
 —ptomist
 —outhful

—londe
 —mm, good!
 —onchalant
 —hattering
 —asty

—enerous
 —legant
 —rdely
 —easonable
 —ay
 —arnest

—enior
 —leasant
 —nterprising
 —micable
 —eserved
 —olemn

DE QUACKER

Hi Suckers! You kids seemed to have enjoyed the holidays from the gossip I got this week. Don't think just because its cold that I don't keep my eyes and ears open. "To hear all and tell all" is my motto. Dub Hodge and Don McGuire seem to enjoy the eight grades. What about this Floyd?

Clara Mae Jones and Stanley Conner weren't doing bad Saturday nite. Peggy what do you have to say about this??

John Moss and Jane Johnson were together Tuesday nite. John, you must like blonds awfully well!!

Verna brought her boy friend to church Sunday morning. Cute couple!

June Britton, who is the boy that I've seen you with lately? Is it serious???

One-Day SERVICE

Cleaning That Excels

STEWART'S CLEANERS

EASY AS ROLLING
 YOUR HAIR WILL CURLERS
 BUT NOT STAYS IN
 MONTHS!

WITH PLASTIC CURLERS \$2 plus tax

Toni HOME PERMANENT

Bishop's PHARMACY

MONEY TO LOAN
ON FARMS & RANCHES **4%**
 INTEREST
 WHY PAY MORE? SEE
R. E. FRY, Floydada, Texas
 Bank Building

WOODY, The Builder's Friend BY "SAWDUST"

NOW, PA! IF YOU WANT TO KEEP OUR ROMANCE ALIVE YOU BETTER GIT YERSELF RIGHT ON OVER TO NICHOLS LBR. CO.-WILLSON & SON AND GIT SOME OF THAT QUALITY BUILDING MATERIAL!

I WANT THAT NEW COTTAGE!

RELIABILITY AND SERVICE THROUGH THE FRIENDS OF CUSTOMERS!

NICHOLS LBR. Co. • WILLSON & SON
 PHONE 7 PHONE 3
BUILDING MATERIALS
 DON'T WANT ALL THE BUSINESS—JUST YOURS!

JUST For The RECORD

We DO NOT "STANDARDIZE" or "CUT BACK" our milk.

It is just as rich in Cream as it was when we took it away from the cow!

Taste it, Compare it, or have it Tested and you will know you are getting much more for your money when you buy Lyndale.

Don't just ask for it! Demand it!

LYNDALE FARM DAIRY STORE

P. S. Have you Tried Floydada Baked Bread lately? It is Just as Good, and we Think Better.

Swansdown PRESENTS Cygnets

Especially Created For The Smaller Woman

This is one of the new Cygnet suits — designed by Swansdown especially for you who are 5'5" or under. Miss Dorothy Stickney, star of the Broadway hit "Life With Mother", considers this Cygnet suit the perfect solution to her small figure problems. She is photographed wearing in in the January issue of Vogue. Softly feminine, with curved detail of collar, rounded pouch-like pockets. In a fine pure worsted by Miron. Cygnet sizes 10 to 20.

\$65.00

IT'S OURS EXCLUSIVELY

Miladies Specialty Shoppe

DEARBORN
Utility Blade
 has many uses around the farm

Called the Utility Blade because it does so many jobs, saves so much pick and shovel work. Makes earth moving and manure cleaning go so fast. A great tool, low priced.

Can be attached in a minute to Ford Tractor; lifts, lowers by Hydraulic Touch Control; uniform depth easily held. Blade adjusts for angle, pitch, tilt; reverses for back-filling. Learn more at our headquarters for Ford Tractors, Dearborn Implements... parts and service.

...Such as
 Grading lanes, roads
 Cleaning barns, feedlots
 Leveling fields
 Filling gullies
 Making ponds, ditches
 trench silos
 Excavating for concrete
 Terracing
 Many other uses

Dearborn Windy Sub-Soiler

Come in and see a demonstration of this sub-soiler. It chisels from 12 to 16 inches deep, allowing water penetration up to 40 inches wide.

This sub-soiler meets the approval of the District Soil Conservation Committee. Priced at —

\$55.00
 Genuine Dearborn 2-Way Plows
 Ready for immediate delivery
\$285.00

Braselton Implement Co. Inc.
 Your Authorized Ford Tractor Dealer
 Floydada, Texas

HESPERETTE

(Continued)

Whirlwinds Lose Two at Abernathy

Shallowater Game The Floydada Whirlwinds lost a very hard fought game to Shallowater 43-34 and it was a lot closer than the score shows...

New Deal Game

The Whirlwinds also lost their second game but by a smaller margin 38-36. This game was a consolation game...

back to come within 2 points of beating them. Christie and Hobbgood led the New Deal cagers with 7 points each...

F. F. A. Stars

Delton Waggoner, a young, up and coming farmer, was born October 31, 1931, at Amarillo, Texas...

Delton is seventeen years of age and is one of the outstanding leaders of the Floydada Chapter of Future Farmers...

Delton's projects this year include ten acres of wheat, five acres of milo, and a cow for calf production...

Among Delton's few dislikes are snobbish people and getting up

early. Among Delton's likes are pretty girls (of course), fried chicken, and pineapple cream pie...

Delton can usually be seen wearing levis, western style shirt, boots, and cowboy hat.

Delton, it's boys like you, who grow up to be great farmers and help make our country what it is.

DE QUACKER, Continued—

My, My, we have a new cute couple in school. It's none other than Peggy Lanham and Shorty Cardinal...

It seems that Lee is receiving letters from Donald Ray now. What happened to Odell and Curley, huh?

June Powell wanted Dan McGuire to sit by her in Plainview at their Young People meeting.

Barbara Dutton and Bobby Robertson were really painting the town red Saturday night!

It seems that Mary Plumbee turned down a date with Edward Landers to go with someone else!

Roberta was with Dale Roberts Saturday nite and Mayfield Sunday afternoon.

That Hershel Nelson is really a Romeo. One night with Sammie and the next night with J. What's going to become of this, Hershel?

Who was Dan Hagood looking for Saturday nite? He sure was desperate in finding them!

David W. and Billie Newberry were really having a swell time Sat. night. New Romance??

Shorty Cardinal and Ruth Maxey seem to like to go together!

Well, well, well an old romance has come into bloom again. Audrey and Happy were really having a swell time the other nite!

Who were Gene Dale and Barry looking for Saturday nite? They sure were anxious to find them!

Peggy Collier likes Dale Sims a lot from what I hear. What about this, Peggy?

Archie was well aware of the fact that Pete Huntman was at church Sunday morning.

Blondie, why don't you make up your mind? Is it Pete, Rene, Corky, Jimmy, Norman, or "Dream-bora" can't you give the other girls half a chance?

"Of all life's sad surprises There's nothing to compare With treading, in the darkness, On a step that isn't there."

FLOYDADA GIRL SINGS IN MUSIC PROGRAM AT TSCW

DENTON, Tex.—Miss Beth Hinson sang with the Texas State College for Women college chorus in a joint concert of Sacred and popular music presented last night with the Singing Stars at the TSCW main auditorium.

Consisting of about 80 members, the college chorus is under the direction of Richard C. von Ende, professor of music.

Featured on the concert will be several original compositions by advanced harmony students.

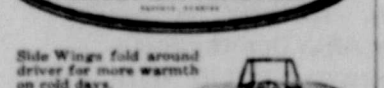
Miss Hinson is the daughter of Mr. and Mrs. E. E. Hinson.

Mr. and Mrs. E. J. Christopher and son of Seattle, Washington are returning this month to Texas to make their home in Lubbock.

Mrs. Christopher is the former Mary Frances Jones, daughter of Mr. and Mrs. W. O. Jones.

Get the want ad habit.

Keep WARM ON Your Tractor



Side Wings fold around driver for more warmth on cold days.

Side Wings open out for warm days.

Yes sir, new Comfort Covers ready now for most popular tractors now have side wings that adjust close around you.

Get Your Comfort Cover Today

We have in stock comfort covers for all popular makes of tractors and can get you covers for any other tractor.

Stansell Collins Co. Lockney Implement Co.

Center News

CENTER, January 18—Sunday was church day. Rev. and Mrs. Clay Muncy were there on time as usual...

How we do appreciate that two inches of moisture we have received during the past week. And there was plenty of space in the ground to soak it up...

Dinner guests in the home of C. M. Meredith Sunday were Frances and Bobby Ashton and Rev. and Mrs. Clay Muncy.

Mrs. Charles Horton and children were Sunday dinner guests of her parents, Mr. and Mrs. Walter Sims.

Mrs. J. D. Welborn returned home Thursday after a ten day's visit in Pampa with her mother...

A card from Mrs. W. A. Latta of Mt. Blanco, states that she and Mr. Latta arrived in Rochester, Minn., last Wednesday...

Mr. and Mrs. Green called at the C. M. Meredith home last Monday afternoon.

A nice snow fell late Monday afternoon and night.

Some of the members of the Baptist church here plan to attend the Tuesday workers conference in Floydada.

BACKACHE

For quick comforting help for Backache, Rheumatic Pains, Getting Up Rigids, strong cloudy urine, irritating passages, Leg Pains, circles under eyes, and swollen ankles...

For quick comforting help for Backache, Rheumatic Pains, Getting Up Rigids, strong cloudy urine, irritating passages, Leg Pains, circles under eyes, and swollen ankles...

Deeds Recorded

Hulda Page, etal, to J. B. Grundy, lot 15, block 48, Floydada.

J. B. and Grace Grundy to R. S. and Ella B. Harless, lot 15, block 48, Floydada.

C. M. and Maude Thacker to T. P. Collins, lots 9 and 10, block 6, West Side Heights addition, Floydada.

Joe and Maude Anderson to Vernon Daniels, southeast 1/4 of section 4, Floyd county.

L. F. and Karra Lee Widner to J. H. Widener, section 71, Floyd county.

M. L. McCulloch, etal, to Chester Carthel, southwest 1/4 of section 106, Floyd county.

H. M. Thompson and wife to A. D. Vines a parcel of land from section 49, Floyd county.

S. H. Millwee to T. Z. Reed, lot 11, 12, 13, block 11, original Lockney.

R. M. and Myrtle McCauley to J. E. Travis, southwest 1/4 of southwest 1/4 of Survey 67, Block 1, Floyd county.

C. R. and Zora L. Woodson to John A. Couch, 448.6 acres of land from survey 351, Floyd county.

Robert A. and Dorothy Jean Collier, to Margaret Collier, lot, 13, block 103, Floydada.

W. C. and Mary F. Watson to

DRS. CLOUGH & CLOUGH Optometrists & Orthoptists Clough Bldg. 111 West 7th Plainview, Texas

I am now agent for the AMARILLO DAILY NEWS

Having succeeded Bob McGurie. Will appreciate your new subscriptions very much.

Delivered to your house every morning before 8 o'clock. Can pick up extra papers at the Bakery.

Claud Parrish

WINDS LOSE IN ABERNATHY BASKETBALL TOURNAMENT The Floydada Whirlwind basketball team was defeated by Shallowater 43-34...

RUTLEDGE Oil Company WHOLESALE PANHANDLE PRODUCTS Phone 68

INVITING WARMTH... To step in out of cold into a house automatically heated to the temperature you desire...

Worsham & Son Plumbing Co Plumbing Contractors and Supply 127 West California Phone 57

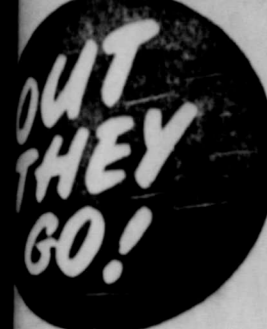
P. O. STERLING REAL ESTATE DEALER Room 12, Bank Bldg. Will appreciate your listings of Real Estate or other property.

666 GIVES FAST RELIEF when COLD MISERIES STRIKE LIQUID OR TABLETS

Shop PENNEY'S For Your Spring Wardrobe 100% WOOL BOTONY GABARDINE by HOBBS TALLEURS All wool gabardine is tops for spring. \$39.75

Keep WARM ON Your Tractor COMFORT COVER TRACTOR HEATER Side Wings fold around driver for more warmth on cold days.

BIG CAR? YES! Big Car Comfort! Seats as wide as sofas... up to 60.9 inches wide. Big Car Visibility! 'Picture Windows' all around. Big Car Safety! 'Lifeguard' Body of heavy-gauge steel...



JANUARY CLEARANCE SALE!



BEGINS FRIDAY JANUARY 21 THROUGH SATURDAY JANUARY 29

Open 9 A. M.

STORE WILL BE CLOSED ALL DAY THURSDAY JANUARY 20 TO MARK DOWN MERCHANDISE

Open 9 A. M.

MENS WEAR

46 SUITS
 \$49.95 MARX MADE, Now, \$39.50
 \$55.00 Two Pants, Now, \$49.50
 \$55.00 SEWELL MFG., \$29.50
 \$52.50 SEWELL MFG., \$22.50
 All Suits 100% Wool

33 PANTS
 PLAIN FRONTS
 Nationally Advertised
 MARX MADE
 \$12.95, 100% Wool, \$10.00
 \$4.95, All Cotton, \$3.00

5 WESTERN SUITS
 \$45.00 100% Wool, Cavalry Twill, \$29.50
 \$15.95 100% Wool, Stockman Pants, \$7.95
 \$12.50 40% Wool, Stockman Pants, \$5.95
 \$6.95 Cotton gabardine, Stockman pants, \$4.95

141 SHIRTS
 DRESS COTTON
 Values to \$3.00
 Nationally Advertised
 Sanforized
\$1.98
 Sizes 14 - 16 1/2 Sleeve Length 32, 33, 34

55 JACKETS
 Leather Wool
 \$29.75 to \$35.00—Leather \$22.50
 \$14.95 Wool Coat Jackets \$9.90

44 SWEATERS
 Warm Long Sleeve
 \$7.95 100% Wool Ski Sweater, \$2.98
 \$8.95 100% Wool Staples, Button, \$3.98
 \$5.95 Cotton Dress, Fancy, Button, \$2.98

40 HATS
 WOOL FELT
\$1.00
 Values to \$4.95

64 UNION SUITS
 HANES
 National Advertised
 \$2.49 Values Sanforized Long Sleeve
 Long Legs \$1.98.

BLANKETS

11 - 100% WOOL ESMOND PARADISE (72 x 84)
\$19.50 Now Only \$12.50
 Warmly Welcomed! Rich Luxurious Blankets in many Delightful Colors, Blue, Green, Cedar and Rose.

9 - CANNON - LEAKSVILLE & WELWYN by Nasha
\$13.95 Now Only \$9.90
 100% Wool, Beautifully bound with matching Rayon Satin. Full Generous size.

OTHER BLANKETS AT
 25% Wool Double (72 - 84) **\$5.50**
 5% Wool Double (72 - 84) **\$3.98**
 5% Wool Double (70 - 80) **3.49**
 All Cotton Blanket (72 - 84) **\$6.75**
 All Cotton Double (70 - 80) **\$2.98**
 All cotton sheet blanket (70-95) **1.79**

SENSATIONAL VALUES
 WE ARE OFFERING THESE REDUCED SAVINGS TO YOU SO WE MAY CLEAR OUR STOCK FOR THE NEW SPRING GOODS THAT ARE ARRIVING.

AT HAGOOD'S
 4 Only Linen Bridge Sets, \$5.50, Now \$3.98
 12 Pure Linen Napkins (17 x 17) \$1.00 Now 50c
 1 Only Linen Bridge Set, \$9.90, Now \$7.95
 27 Cotton Napkins, (17 x 18) Now, 10c

BOLT PIECE GOODS
 100% Wool - 54" Suiting, \$4.98 Value, \$1.00
 Wool and Rayon 54" Suiting \$2.98 Value, \$1.00
 ALPACA, BOUTON & MEMPHIS BELL
 CREPES, 36" in Dress Material, \$1.98, \$1.00
 Wash Silk, 36", \$1.39
 Quadriga Print, 59c, 49c yd.
 Cotton GINGHAMS, 59c, 39c yd.
 Cotton Suiting, 69c, 49c yd.
 Butcher Linen, \$1.39 value \$1.00
 Cotton Suiting, 36", 69c value 49c
 Seersucker, \$1.39 value \$1.00
 Cotton Gabardine, 36", 98c value 49c
 Imported All Pure Linen, \$2.98 value \$1.98
 Heavy Cotton Twill, 79c value 49c
 Oxford Cloth, 36" 98c value 49c
 Cotton Shantung, \$1.39 value 49c

LADIES READY TO WEAR by
 GAY GIBSON JR., BROGAN — JENNINGS, PEERLESS
 Crepe & Faille Dresses
 Dresses in 100% Wool - Cotton Gabardine
 13 — \$24.95 - \$19.90, \$12.95
 17 — \$19.90 to \$22.95, \$10.00
 13 — \$16.90 - \$15.90 - \$14.90, \$8.00
 2 — Only, \$10.90, \$6.00
 22 — \$16.90 - \$15.90 - \$14.90, \$9.90
 15 — \$12.90, \$5.00
 10 — \$9.90, \$4.00

BOOTS! BOOTS! BOOTS!
 1 Lot Boys Boots 5 1/2 - 8 Graham - Brown Brown or White \$3.98 values \$ 2.98
 1 Lot Boys Boots 4 - 8 Juskids Tan \$4.95 values 3.30
 1 Lot Boys Boots 5 - 8 Endicott - Johnson Tan \$5.65 values 3.77
 1 Lot Boys Boots 8 1/2 - 3 Acme Brown, Tan, Black, \$7.95 values 5.30
 1 Lot Boys Boots 8 1/2 - 3 Acme Tan \$9.95 values 6.30
 1 Lot Boys Boots 3 1/2 - 6 Acme Tan \$14.95 values 9.97
 1 Lot Boys Boots 3 1/2 - 6 Acme Tan \$15.95 values 10.63
 1 Lot Boys Boots 3 1/2 - 6 Acme Black \$17.50 values 13.95
 1 Lot Justin 3 1/2 - 6 Justin Tan \$28.50 values 22.50
 1 Lot Mens Boots Acme Brown \$14.50 values 5.00
 1 Lot Mens Boots Justin & Nocona Brown and Black Kid \$24.50 values 18.38

91 Pair Ladies Dress, Medium and High Heel Shoes, **\$1.00**
 All Black Suede Shoes, 1/2 Price
 1 Lot Children Oxfords, 8 1/2 - 3, At **\$1.98**
 1 Lot Men Work Shoes, Value to \$4.98, **\$2.98**

BOYS WEAR

63 DICKIES
KHAKI PANTS
 \$2.49 - \$2.98 Values, Sanforized \$1.98
 33—Boys Khaki Shirts \$1.98

76 SHIRTS
 Cotton Flannel
 \$1.98 Values, Sizes 4 - 10 \$1.25
 \$2.49 Values, Sizes 12 - 16 \$1.69
 BIG SMITH — Sanforized

30 BOYS CORDUROY PANTS
 \$4.98, Now, \$3.00
 \$5.98, Now, \$3.50
 \$6.95, Now, \$4.00
 Sizes 7 to 16

16 DRESS PANTS
 Cotton and Rayon or Part Wool
 Sizes 5 - 10
\$2.00

MENS WEAR
22 SPORT SHIRTS
 Nationally Advertised Brands
 \$3.98 Values, Solid and Plaid, \$2.00

43 WOOL SHIRTS
\$4.95
 To be worn in or out of Pants
 Plaids or Solids - Sizes 13 - 17 1/2
 Regular or Slims

52 GABARDINE SHIRTS
\$4.95
 Rayon or Part Wool
 \$5.95 to \$7.95 Values

MENS ROBES
 5—\$8.95 Values, \$3.00
 6—\$7.95 Values, \$2.00

Hagood's Department Store

Standard Brands

Priced Right

PENNEY'S

5 RING CIRCUS OF SENSATIONAL VALUES!

WHITE GOODS

81 x 99
Opportunity Sheets
1.98
each

45 x 36
Nationwide Pillow Cases
.51

80
Square Prints
.35
yard

22 x 44
Thirsty Bath Towels
.50 each

Cream
Lace Panels
1.59
each

90 x 105
Chenille Spreads
9.90

Warn Ranchmen Green Ration Is One 'Must'

COLLEGE STATION—There is a saying that history repeats itself. And that's just what it will do this year, unless Texas stockmen do something.

About a year ago, a number of West Texas cattle feeders had trouble. Their cattle lost their appetites and didn't gain as well as they could have. The blame went to the late summer drought of the year before, says Dr. W. C. Banks, extension veterinarian of Texas A. & M. College.

Texas had a good share of dry summer ranges this past year, so history may repeat itself again this year unless Texas stockmen keep a good eye on their cattle. Cattle are facing a tough winter. They have spent a lot of time on drothy ranges, and now there is little green feed in the winter pastures. It takes high quality green feed—and lots of it—to keep the cattle in shape. Good quality alfalfa hay is one of the best sources of vitamin A there is, says Dr. Banks. Two to four pounds per day supply enough vitamin A to keep the cattle in good shape.

Cattle that don't get plenty of green hay will soon become night blind. After that, if they still don't get their vitamin A, they will have convulsions and later become totally blind.

Here's a recent report from Paul T. Marion, assistant animal husbandman of the Spur Experiment Station. On the night of December 22, one Hereford steer in a pen of five was found to be completely night blind. Two others had affected night vision. These steers had not had any vitamin A in their ration in 44 days. They came from grass pastures that had dried out back in August and September. They just didn't have any green feed to furnish them vitamin A.

Other steers just like these—on the same pastures—have been fed the same ration plus alfalfa hay and silage. All this group had normal night vision.

If nothing is done to correct the vitamin A deficient ration, all the steers in this group will become night blind. They will soon lose their appetites, some may fall to the ground and have convulsions. Later they may become totally day blind.

Last year, reports Marion, steers from these same pastures showed more severe symptoms of vitamin A deficiency after 84 days on the ration that didn't have green feed. Before the end of the experiment it was necessary to feed vitamin A to them so they would recover their appetites and be able to finish the experiment.

Now is the time to see that your cattle get plenty of high quality alfalfa hay or silage, says Dr. Banks. This will keep them off the sick list later on.

LOCAL SPEECH TEACHER INVITED TO SEE W T S PRESENTATION OF PLAY

CANYON, Jan.—Presentation of the play, "Outward Bound" by the Speech Department of West Texas State College has been scheduled for February 8 and 9. It was originally scheduled this week. It will be given in the Branding Iron Theater at 8 p. m.

A third performance will be given on February 11 at 3:30 p. m. for the benefit of high school speech students and teachers. Those who have been invited include Mrs. I. T. Graves, Floydada; Betty Brown, Plainview; Wendell Cain, White Deer; Mable Hare, Panhandle; Mrs. Jolly Johnson, Dumas; Patricia Smith, Portales, N. M. and Mildred Hulsey of Tulsa.

Lacy Martin, Grady Walker, and Polk Goen left last Thursday for a fishing trip at Suca Lake, which is on the other side of Del Rio, Texas. They were scheduled to be back Wednesday of this week.

Mr. and Mrs. Robert Crowell and daughters spent Saturday night and Sunday at Levelland, where they were guests of the Jim Wimana, former Floydada residents.

DO YOU KNOW—



that the hour of 5 to 6 is the most dangerous hour for traffic accidents? 7 to 9 P.M. for traffic deaths?

The reason is obvious for the accidents—it's "going home" time. Pedestrians dart into the streets; motorists step on it to beat the rush and get home quickly.

From 7 to 9, fatigue plus early darkness is the answer with slower reactions and poorer vision.

Take it easy at all times—a few extra minutes may save a life—yours!

This message presented in the interest of our policyholders and all other motorists of this community.

Floydada Real Estate & Insurance Agency
Phone 440

Representing
CANTON ASSURANCE and SECURITY COMPANY
Bartlett, Connecticut

As A Farm Woman Thinks

(By Nellie Witt Spikes)

Well, I saw something before this bad spell that I had never seen before. I saw water running down the furrows of our field that was not caused by moisture from the clouds. From far below the water came, a big pipeful, clear and cold, water on top where only parched crops have been for so many years. The magic of water in the desert transforms the land into green growing

beauty and usefulness. I think of the Water of Life that our heavenly Father has stored for us. All we need to transform our lives into helpfulness and beauty is to partake of this gift from God and like a rose of fragrance in the desert our lives will blossom.

Margaret Nell has certainly enjoyed the bad spell. The electricity was off and we had to hunt up and fill the kerosene lamps. We found some candles and she carried one from room to room. Yesterday she and I took pieces of old candle, from Christmases gone by, melted them up and made candles. We cut a long paper tube into pieces, stretched a candle-wick string in

the center, held with toothpicks on each end, buried the ends of the tubes in the sleet outdoors and poured in the melted tallow, making some very nice candles when the paper was torn off. Wilda and I washed on the washboard and she ironed with old black irons. My longing for going back to the good old days is over for this spell anyway and last night about 11 when the lights flashed on again, I was happy to be living in this modern world.

Thanks to Mr. J. T. McLain of Floydada for a very nice note of appreciation of this column. Such gives me inspiration to carry on.

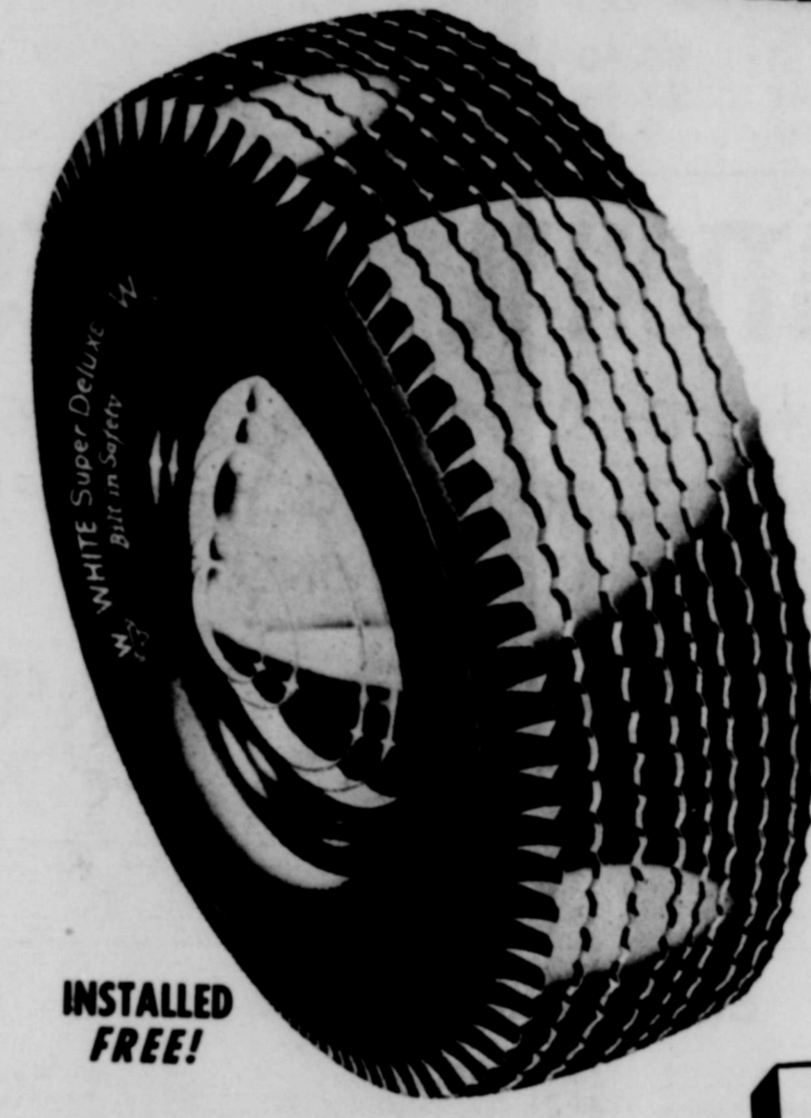
Time goes on and another old-time friend has passed on to wait "Over There" for the coming of loved ones and friends. Mrs. Payne of McCoy I know that for you that life was sweet, but "Death is beautiful as feet of friend, coming with welcome at your journey's end." Mrs. Payne was such a good Christian that not only her children rise up to call her blessed but all that knew her say the same.

I have been teaching Margaret Nell a little song that my father taught me that he learned from his mother. I want it to go on down the line.

Perhaps some of you learned it

too. Oh, mother what will give. He's gone away to home. And left the silver spectacles. How can he read his page or find his hickory staff? He'll put his coat on wrong and make the people laugh. There won't be any little likes so well as me. To run about and bump and place them on his nose. So mama if you'll dress just like an angel bright I'll put a ladder against and take them up tonight.

Want ads save money.



Now in ALL WHITE Super Deluxe PASSENGER TIRES!

GREATEST MILEAGE EVER

The evidence is overwhelming—COLD RUBBER treads OUTWEAR the finest natural rubber. Large test fleets and thousands of motorists have already proved the sensational mileage performance of COLD RUBBER. You will get mileage you never thought possible.

DON'T TRUST YOUR LUCK!

Buy White Super Deluxe Tires and get the Lowest Cost-per-mile tire you have ever been able to buy. The name "White Super Deluxe" is your ASSURANCE that EVERY passenger tire has COLD RUBBER expertly compounded in the wearing parts of the tread. White's offers you what others are promising tomorrow. Remember—not just a few, but EVERY White Super Deluxe passenger tire now contains COLD RUBBER.

*** GUARANTEED 25,000 MILES!**
But NO INCREASE IN PRICE! **6:00 x 16 \$14.35 PLUS TAX**
STILL

There's no "Surprise" to it—in White Super Deluxe Tires 100 out of every 100 participate in this sensational mileage discovery. Naturally, White's cannot supply all the tires that America needs. However, every White Super Deluxe passenger tire built contains Low Temperature (Cold) Rubber expertly compounded in the tread. So don't trust to luck—look to White's and be sure you are getting the "World's Best Tires."

HERE'S WHAT READER'S DIGEST HAS TO SAY!

The new product assures the future of the synthetic rubber industry
The World's Best Tires Are Here
Condensed from Popular Science Monthly
Charles Stevenson and Alben P. Armagnac

IF LUCK is with you, next time you buy a tire for your car you'll get more than you expected for your money. This year something like three out of 100 purchasers will receive a "surprise" package" tire.

The prize will be of a standard make and will bear no distinguishing label. It looks exactly like any other tire. Neither you nor the dealer can tell it from the rest—not even an expert could. So you won't even know you have the jackpot tire until some day, perhaps in 1950 or 1951, you realize it has worn longer than any other tire you ever owned.

Treads of these wonder tires are made of a brand-new kind of synthetic rubber, called "cold rubber" made in a special process.

The special synthetic rubber that goes into these tires is not expensive. It sells at the same price as standard synthetic rubber—18½ cents a pound. Natural rubber costs about 22½ cents.

In synthetic-rubber plants that they operate for the Government, the Copolymer Corporation, jointly owned by eight tire manufacturers, began making the new rubber last February at Baton Rouge, La., and the U. S. Dept. of Commerce.

NOW

YOU HAVE AN OPPORTUNITY OF A LIFETIME
You're SURE to get this Amazing New Mileage Discovery
COLD RUBBER
Expertly compounded in the tread of ALL
WHITE Super Deluxe PASSENGER TIRES!



117 West California Phone 323