

"By Helping Business You Help Yourself"

The Floyd County Plainsman

NUMBER 16

FLOYDADA, FLOYD COUNTY, TEXAS, THURSDAY, NOVEMBER 1, 1945

NUMBER

Hambright 4-H Club Here

Floyd County 4-H Club recent Day Hog Show held at Lakeview was divided into two

Hog-Hen Gilt Division by the Floydada Co-op, Floydada Consumers' Grain Corporation and Consumers' had winners

Registered Jersey Johnny B. Griffin, Lone Lakeview community.

100 baby chicks, Wilson, Fairview community.

75 baby chicks, Durand Fortenberry, Cedar Hill community.

50 baby chicks, Milwau, Lakeview community.

50 baby chicks, Harbry, McCoy community.

50 baby chicks, Acie Kirk, Baker community.

50 baby chicks, Laver, Lakeview community.

50 baby chicks, Leach, Cedar Hill community.

Classes with cash prizes by the Floydada Co-op and Merce grad champion hog by Bob Hambright of who also showed the pen of 3 and the champion of 5 or more.

pen award of \$9 each by Jo Smith and Bobby Smith of McCoy.

in the Duocos were: and breed champion, and of Lakeview community.

Bob Hambright, Eddie Joe Fortenberry, Hill community.

Earl Eubanks, McCoy community.

Earl Edwards, Jr., community.

Earl Edwards, Jr., community.

Earl Eubanks of McCoy community.

Eddie Joe Fortenberry, Hill community.

China winners were: and breed champion, Hambright, Lakeview, Lavon Shearer, Lakeview community.

Harvey D. Tardy, McCoy community.

Jerrold Vinson, community.

Clyde Colson, Lakeview community.

A. C. Pratt, Floyd community.

Billy Joe Hambright, community.

Billie Jo Smith, McCoy community.

Bobby George Smith, community.

Charles Patterson, community.

winners were: lights, Billie Joe Hambright, community.

2nd place heavies, Bob Patterson, Floydada.

3rd place heavies, Bob Patterson, Floydada.

Breed Champion, Charles Patterson, Floydada.

Pens of 3 placings were:

1st place, Bob Hambright, Lakeview community.

2nd place, Gordon Hambright, Lakeview community.

3rd place, Billy Joe Hambright, Lakeview.

4th place, Roy Eubanks, McCoy.

5th place, Billy J. Hambright, Lakeview.

6th place, Earl Edwards, Jr., Lakeview.

7th place, Eddie J. Fortenberry, Cedar Hill.

Litters of 5 or more:

1st place, Bob Hambright, Lakeview.

2nd place, Earl Eubanks, McCoy.

3rd place, Earl Edwards, Jr., Lakeview.

The show and sale was operated with the help of Mr. Emory Angus of the Chamber of Commerce and members of the Floydada Rotary Club Boys' Relatiton Committee. Those helping were Jackie Gene Brock, Ground Supt., Bill Spears assistant superintendent in charge of tagging and sale procedure; Henry Barber, assistant superintendent in charge of public address system who with the help of Guy Ginn did a fine job of broadcasting the sale and show procedures; Grady Walker, assistant in charge of pen allocations; O. P. Rutledge, sale clerk, and Col. Seale auctioneer.

As a whole the show and sale represented one of the outstanding events in 4-H Club history in the county and was attended by a large number of interested lovers of good livestock and friends of the boys' club work. OPA ceilings were lifted on the selling price of the swine and 50 fat hogs sold at ceiling prices or above.

AUCTION SALE

At auction sale 44 animals weighing approximately 12,135 pounds brought the club boys a general average of 16.35 cents per pound, with a high of 17.25 on individual sales. The lowest bid on any of the stock was 14.25 cents per pound.

Floydada Scores 38 to 0 In Game With Paducah

In a district 4-A game here Friday night the Floydada Whirlwind team defeated the Paducah Dragons by a score of 38 to 0.

The Whirlwind scored once in the first period, four times in the third, and once again in the closing period. Carrying the ball over the line for the victors were Carmack (2), Jones, Hagood, and Robertson (2).

Blount of the Dragons was a repeated threat, breaking loose for many good runs despite a strong Floydada defense.

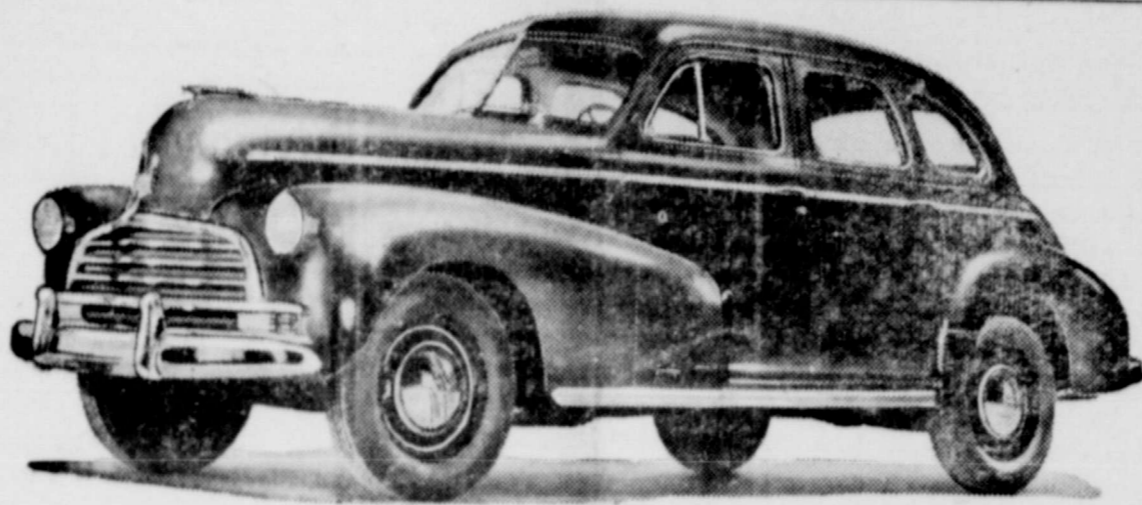
The game was well attended and weather was perfect for football.

CORPORAL RUSSELL L. SWAFFER WITH FIFTH AIR FORCE IN TOKYO

Fifth Air Force, Tokyo Corporal Russell L. Swaffer, son of Mrs. Pernie Swaffer, Route 3, Floydada, is now serving with a unit of the Fifth Air Force Service Command in the occupational Fifth Air Force.

Overseas 19 months, Cpl. Swaffer is a supply clerk in the command, which supplies and maintains fighters and bombers of the occupational air force.

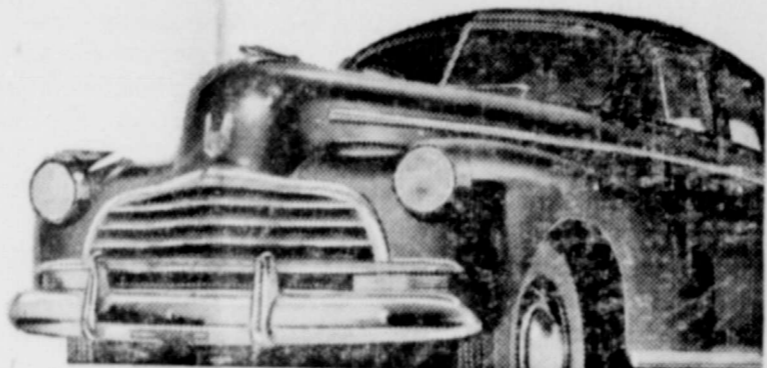
NEW 1946 MODEL CHEVROLET



The Stylemaster Sport Sedan

The new 1946 model Chevrolet, shown above, is outstanding not only for style-leading design, but for quality in materials and construction, advanced engineering, proved performance, economy and dependability.

Every line and contour emphasizes the massiveness and lowness of the vehicle from front to rear. The new, distinctive radiator grille, shown at the right, presents an expanse of gleaming chrome-plated horizontal bars, framed within a low-arched molding. A model of classic simplicity, it tends to emphasize width as well as lowness.



Front-End Styling Accentuates Massive Low Lines

Texas' Resources to be Discussed at Waco Meeting

Waco, November 1.—The Geography and Geology section of the Texas Academy of Science will meet at Baylor University at 2:30 p. m. Friday, November 9, and the subject matter of speakers will be resources of Texas.

Harold Vance, vice president, head of the Petroleum Engineering department of Texas A. and

M. College, College Station, will preside.

Speakers will include Dr. Luther G. Jones, head of the A. and M. Agronomy department; Trigg Twichell, hydraulic engineer, Austin; W. L. Broadhurst, U. S. Geological Survey, Austin; Olin Culbertson, Railroad Commissioner, Austin; Z. W. Bartlett, Port Sulphur, La.; and A. A. L. Matthews, A. and M. College Geology department.

Conner Oden was a business visitor in Dallas this week.

DUCK SEASON TO OPEN ON NOVEMBER 2

Duck and goose season opens officially at 7:07 a. m. Friday, November 2, continuing from one-half hour before sunrise until sunset each day through January 20, Floyd A. Thompson, U. S. game management agent stationed in Lubbock, announced Saturday.

Thompson also called the attention of hunters to the fact that dove season closes in the north zone at sunset, 5:57 p. m., Oct. 30.

Let Cavanaugh Do Your Printing.

THE OTHER THINGS AREN'T COOKED YET — BUT THE BEST DISH OF ALL IS NOW READY

MENU

- NEW AUTOMOBILES
- BUILDING MATERIALS
- NEW MODELS
- POST-WAR ICE BOXES
- NEW MODEL WASHING MACHINES
- ELECTRIC TOVES
- PLASTICS
- U.S. VICTORY BONDS
- READY TO SERVE
- FOOD
- HOUSE PLANTS
- TELEVISION
- CLOTHING
- UMBRRELLA

Buy Bonds Now in America's Great Victory Loan

For a more abundant future—yours, your community's, the future of our millions of fighting men—buy Victory Bonds in this last loan, the great Victory Loan! Your crop dollars can help pay the cost of victory—and in ten years, Victory "E" Bonds pay you \$4 for every \$3 you put in.

90th Division Ass'n To Meet in Tulsa, Oklahomt

The 90th Division Association reunion will meet in Tulsa, Oklahoma, at the Mayo Hotel on November 9, 10, and 11, this year. This reunion is a joint meeting of the old and the new 90th Divisions.

The old 90th Division was officially brought into being at Camp Travis, Texas, on August 25, 1917, when Major General Henry T. Allen assumed command. The Division was trained at Camp Travis, San Antonio, Texas. It was originally composed solely of enlisted men from Oklahoma and Texas. Later, after the Division had been depleted by transfers, five thousand men were received from Camp Dodge, Iowa. These men were from Iowa, Illinois, Minnesota, and the Dakotas.

The old 90th went overseas in May, 1918, as a member of the American Expeditionary Forces in World War I. It saw action in the Lorraine offensive, the battle of St. Mihiel, and the Argonne drive. The Division received special citations for gallantry in action. It was one of the Divisions selected for the Army of Occupation in Germany.

The new 90th Division was reactivated at Camp Berkeley, Abilene, Texas, on March 25, 1942. The new 90th was trained at Camp Berkeley, Texas, went from there to Louisiana, and California-Arizona maneuvers areas before sailing for England on March 23, 1944.

The emblem of the 90th Division is "T-O", meaning Texas-Oklahoma. The record of both the old and new 90th has been so brilliant that during the latter part of World War II, when the Division was fighting so gallantly in Germany, it received the name of "Tough-Ombres."

The new 90th first saw action in the attack on the coast of Normandy. It was in a position for attack on D-Day plus one. The Division fought through the attack at Normandy, through Brittany, through North France, through Germany, and into Czechoslovakia. It was one of the most active divisions of the Third Army General Patton's army—in World War II.

HUEY LEE COOK DIES AT MATADOR TUESDAY EVENING

Huey Lee Cook, age 63, was found dead in a pasture near Matador Tuesday evening. It was thought he suffered a heart attack. Harmon Funeral Home was called to take charge of the body, until funeral services which will be held at the Church of Christ in atador, by Elder Leonard Dennis. The date and hour yet to be announced.

Mr. Cook is survived by his wife, four children, a son, Wilson, of Matador, and Elmer, who is in the armed service; two daughters, Nevada, of Matador, and Mrs. Tutt Garnett, of Matador. Also his mother, Mrs. John M. Cook, of Noodle, Texas; five brothers and two sisters, and one grand child survive.

Deceased came to Texas when he was two years old and settled with his people at Anson. He moved to Motley county in 1911, where the family has resided since.

Lt. Col. George J. Schaumburg of Beaumont, Texas, received the Croix de Guerre with palm from General da Gaulle for his aid in liberating France.

Funeral Held Saturday for L. G. Williams

Last rites were held Saturday afternoon at 2:30 at Carr's Church for L. G. (Percy) Williams, of Los Angeles, California. Services were conducted by Cecil Mathews, of Lubbock. Interment was made in Carr's Cemetery with Harmon Funeral Home in charge of arrangements.

Survivors are his parents, and Mrs. L. A. Williams, brothers, Aaron, of Oak Tennessee; Raymond, Floyd Chloma, of the Harmony county; and Sgt. Aldine in the services and stationed on the waiian Islands. One sister, LaRue Williams, also survived. All were present except Sgt. Aldine Williams who was unable to attend.

Flower girls were: Mesd Bill Smith, Sherwood Ray Walter Hanna, Zant Scott, Ker Roberson, Roy Hale, J. R. deLova, C. Snodgrass, Loyce Tu Wesley Carr, Ray Eason, E. Williams; Misses Reba Mae and Mattie Pearl Heard.

Pallbearers were: Messrs. Smith, Roy Hale, Everett M. J. T. Hall, Horace Carr, and deCordova.

Motley County Will Vote on Bond Issue

Matador, November 1.—Election authorizing the issue of \$175,000 for the construction of a new courthouse for Motley County has been called for November 17 by the commissioners' court. Judge W. R. Cammack announced that he believes present low rate of interest bonds of 2 3/4 per cent will probably be the greatest factor in aiding the election.

"Building of a courthouse is court's outstanding postwar project because the county needs a modern fireproof building," the judge said.

The Motley county courthouse was destroyed by fire several months ago.

The county voted \$80,000 in 1938 to augment a WPA grant for the purpose of building a courthouse but the funds were never used. The bonds will be cancelled by order of the court due time, the judge said.

FLOYD L. WILLIAMS DIES CALIFORNIA

Floyd L. Williams, for Floyd County resident, died California October 28, 1945. The body is being returned to Floydada for burial in the Floydada Cemetery beside that of his wife, who preceded him in death August 12, 1930.

Deceased lived in Floyd County from 1927 to 1930. He had been visiting in California for the four months. Funeral arrangements are pending the arrival of the body from California. Survivors include five sons and four daughters.

MAIL SERVICE TO LUBBOCK STARTS NOVEMBER 5

Mrs. Barbara Smith, post office, announced this week that daily mail service by bus to Lubbock will start November 5, leaving Floydada at 4:10 in the afternoon and arriving in Lubbock same afternoon at 5:35 p. m. Mail pouch will be closed at local postoffice at 3:43 o'clock.

OSSUM FLATS . . . GLADIOLA GUS MAKES FOOTBALL HISTORY

BY GRAHAM HUNTER



ODEN CHEVROLET COMPANY ANNOUNCE SHOWING OF 1946 CARS SATURDAY, NOVEMBER THREE

Announcement was released this week by Oden Chevrolet Company, 221 South Main Street, Floydada, that the first showing of 1946 Models will be placed on the floor of their show room Saturday, November 3, and they cordially invite everyone to call and see the Car. In discussing the 1946 models Mr. Oden keyed the following information on new features of this year's cars:

The thrifty, performance-proven, valve-in-head engine, and unit-knee-action which provides standing riding comfort are of the mechanical features that go to the new 1946 Chevrolet top in the parade of lowest priced cars.

Other star features are a vacuum-over gear shift with synchromesh transmission; shockproofing and positive-action hydraulic brakes. The six-cylinder valve-in-head engine, which has been improved refined through years of experience, is standard on all Chevrolet. The engine is famous for its combination of economy performance, and is justly called the Thrift-Master.

The engine is equipped with light weight, cast alloy iron pistons which have had more than 30

years' experience. Chevrolet engineers claim that the cast alloy iron pistons wear best, and permit engine design which insures maximum economy of fuel and oil.

"Unitized knee-action is an outstanding feature. It provides comfort and smoothness for all riders. The front spring suspension, shock absorbers, brakes and steering connections form a single assembly, which is adjusted accurately and aligned before it is attached, as a unit, to the chassis. This promotes safety for the driver and passengers because the front wheels run true on curves or rough roads.

"Shockproof steering is a major advantage of the 1946 Chevrolet. Knee action maintains the front wheel alignment, and eliminates wobble, thus doing away with the chief causes of steering wheel jerk and vibration.

"The Chevrolet hydraulic brakes are different, too. They are superior because of an articulated brake-shoe linkage which assures positive braking and prolongs the life of brake linings.

"The gear shift has fingertip control. The lever moves easily and but a short distance because a vacuum power cylinder does 80 per cent of the work. The driver does not even have to remove his hand from the steering wheel.

"The Chevrolet engine is noted for its specialized four-way lubrication system, using four methods of supplying oil to moving parts such as the valves, crankshaft and camshaft bearings, connecting rods, pistons and cylinder walls. The engine is lubricated effectively for all purposes, including the most critical of cold starts.

"A cooling system, scientifically designed to provide more engine mileage, is another Chevrolet feature. The radiator core permits full coverage by the fan. More uniform cooling is provided by full-length water jackets that enclose each cylinder.

"The fuel system embodies a balanced, single-adjustment carburetor with air cleaner, silencer and flame-arrester. Fuel mixture is heated, with thermostatic control, in the manifold heat chamber. The Chevrolet octane selector en-

ables owners to obtain the best possible results from the various types of fuel obtainable.

"The chassis frame is the exclusive, proved box girder type. Side rails and cross members are of flanged box section construction on all models, insuring exceptional rigidity as used in conjunction with the all-steel, all-welded body. The cabriolet, with its open-type body, uses I-beams in V-K construction in place of the central box section cross members, to insure comparable rigidity.

"A semi-floating type rear axle, with a gear ratio of 4.11 to 1 has hypoid drive gears and six ball and roller bearings."

First Christian Church, Otto F. Marshall, Minister

Morning Worship 11:00.
Bible School 10:00.
Christian Youth Fellowship 7:00.
Evening Worship 7:00.
Come to Church.
The Friendly Church With a Spiritual Message.

Development of rice drying plants in Southeast Texas has radically changed the rice industry.

Raymond F. Lawson at Northern Luzon Base

Base M, San Fernando, La Union, Luzon, P. I. Technician Third Grade Raymond E. Lawson, son of Mr. and Mrs. Floyd Ballard, Floydada, Texas, is a wheel-end vehicle and tank mechanic with the 369th Ordnance Heavy Auto Maintenance Company in this large Northern Luzon Base.

A son of Texas he was inducted in March, 1943, had his basic with the Field Artillery, Ft. Sill, Oklahoma, and went overseas in January 1945. He served with the 3rd and 9th armies in the ETO until he was shipped to the Asiatic-Pacific Theatre in June of this year and arrived in August.

Tech 3 Lawson wears the Good Conduct Ribbon, European African Theater Ribbon with two Bronze battle participation stars, and the Asiatic-Pacific Theatre Ribbon.

Cpl. George A. Gearhart is Near Manila

Manila—Corporal George A. Gearhart is now serving near Manila in the Philippines as a bulldozer operator with the 1307th Engineer Construction Battalion. Overseas since March, 1944, Cpl. Gearhart saw service in New Guinea before coming to Luzon. In addition to the Good Conduct Medal, the corporal wears two battle stars on his Asiatic-Pacific Ribbon, the Philippines Liberation Ribbon, and the Meritorious Service Award Wreath, which was awarded to his unit for its record-breaking work in the assembly of amphibious landing craft. His wife, Mrs. George A. Gearhart, and daughter, Phyllis, are residents of Floydada; and his parents, Mr. and Mrs. F. B. Gearhart, live in Amarillo. Prior to his entry into the Armed Forces, Cpl. Gearhart was employed by the American Smelting and Refining Company, in Amarillo.

Over 213 states the size of Rhode Island, could be placed in Texas.

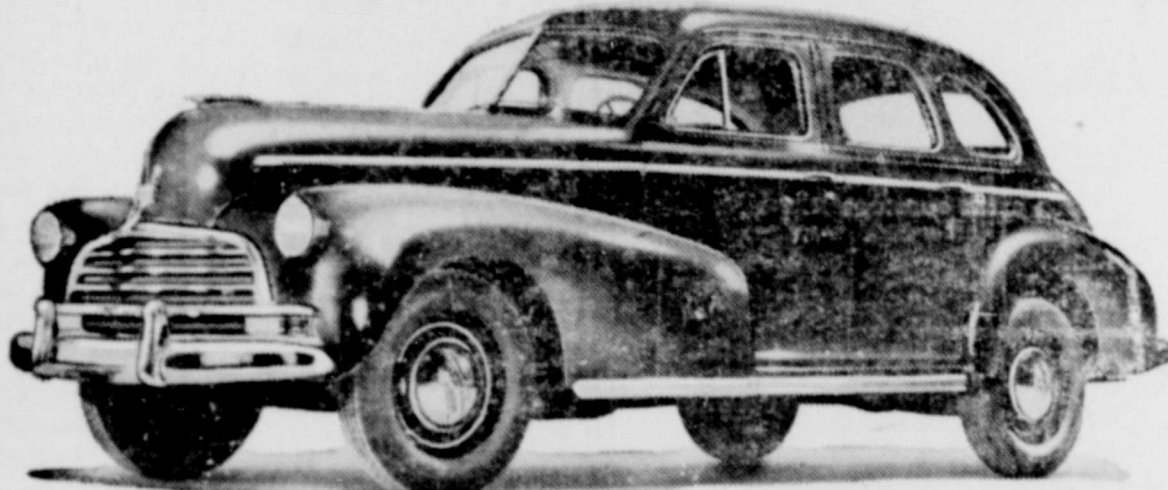
Texas produced more turkeys in 1944 than any other state in the Union.

RUPTURE SHIELD EXPERT HERE

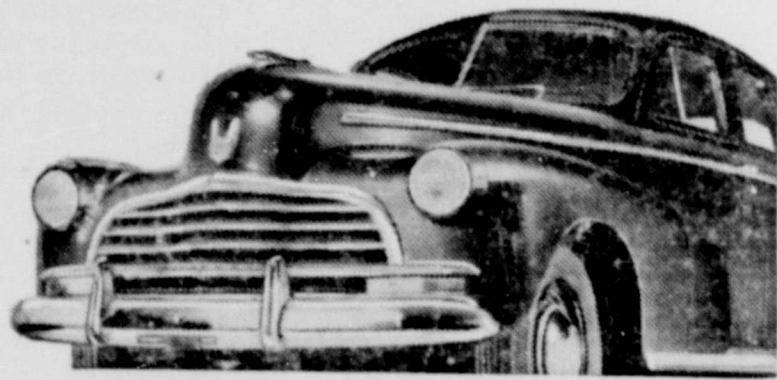
H. M. SHEVNAN, widely known expert of Chicago, will personally be at the Hilton Hotel, Lubbock, Wednesday only, Nov. 7, 9 a. m. to 4 p. m.

Mr. Shevnan says The Zoetic Shield is a tremendous improvement over all former methods, effecting immediate results. It will not only hold the rupture perfectly no matter the size or location but it will increase the circulation, strengthen the weakened parts, and thereby close the opening in ten days on the average case, regardless of heavy lifting, straining or any position the body may assume. A nationally known scientific method. No under straps or cumbersome arrangements and absolutely no medicines or medical treatments.

Mr. Shevnan will be glad to demonstrate without charge. 6509 N. Artesian Ave., Chicago 45 Large incisional hernia or rupture following surgical operation especially solicited.



The Stylemaster Sport Sedan



Front-End Styling Accentuates Massive Low Lines

New 1946 Chevrolet Now on Display

ODEN CHEVROLET COMPANY WILL HAVE ON DISPLAY **SATURDAY, NOVEMBER 3, 1945** AT THEIR SHOW ROOM THE NEW 1946 CHEVROLET.

THIS IS YOUR PERSONAL INVITATION—

Why don't you take a few minutes and drop down to see this new car—The first new automobile on display at our showrooms for many months.

Modern styling that accentuates massiveness in smart, low sleek lines characterizes the new 1946 models of Chevrolet—the nation's No. 1 sales volume motor car in 10 of the last 11 years of peacetime automotive production. We make this as a personal invitation to visit our showrooms.

ODEN CHEVROLET COMPANY

27 SOUTH MAIN STREET

PHONE 4, FLOYDADA, TEXAS



KIRSHMOORE
Coats & Suits

PRE-SEASON VALUE... YOUR PROFIT

Yes—it's Kirsh-Alpa fabric, deeply piled and silky... almost as warm as fur. We went to market early so as to bring you these all-wool, alpaca mixed classics. Beautifully lined with rayon satin... warmly interlined with lambs wool. So durable and chic. Black, Blue, Brown, Moss Green, Grey, Camel, Gold, Winter White. 10 to 20.

STYLE SHOPPE

"Always Showing Newest Things First"
Mrs. Mollie A. Morton, Owner Telephone No.



A Charming All-Wool Companion Suit designed with versatility. Wear the Suit with or without Top Coat.

STYLE SHOPPE

"Always Showing Newest Things First"
Mrs. Mollie A. Morton, Owner Telephone No.

The Floyd County Plainsman

PUBLISHED THURSDAY EACH WEEK
M. B. CAVANAUGH, PUBLISHER

FLOYD COUNTY \$1.00; OUTSIDE FLOYD COUNTY \$2.00
Second Class Matter June 23, 1930, at the Post Office at
Floydada, Texas, under the Act of March 3, 1879.

erroneous reflections upon the character, standing or repu-
tation of any person, firm or corporations which may appear in the
of The Floyd County Plainsman will be gladly corrected
being brought to the attention of the publisher.

**Drymen's
Will Meet
ber 9-10**

Texas Chapter of the
Foundrymen's Associa-
hold its November meet-
Texas A. and M. College
9-10 and mechanical
students of the college
with the group. Speakers
outstanding figures in
among them being Ed
Lufkin; L. H. August,
Jack Klein, Lufkin; H.
Corsicana; Ronald
Chicago; R. E. Bockrath,
Mich.; P. B. Croom,
and members of the A.
College staff.

**ns to Post ai
nd M. College
wing Service**

Station Nov. 1. Lt. Col.
ngell, after nearly two
years in England and
with military government
returned to the Agri-
and Mechanical College
His duties in France
were liaison between
Dwight Eisenhower's staff
French government. He
the Croix de Guerre for
service in the invasion

Mr. Angell is assistant to the
president at Texas A. and M.
College.

**Homecoming Day
At Canyon Set
November 3**

Canyon, October 1. -- Home-
coming day at West Texas State
Teachers college November 3--
will bring a partial renewal of the
festivities which have made this
day outstanding in the Panhandle.

In addition to coffees, teas, and
other receptions, and a dance in
the evening at Cousins hall, the
top events will be a high school
band marching contest, beginning
at 1 p. m., and a football game.

Fourteen or more bands, bring-
ing more than a thousand gaily
attired young musicians, will
match marching ability on Buffa-
lo field before the game. At 3 p.
n. will come the kickoff in a game
between the Buffaloes and Dal-
hart Army Air base.

Ex-students will be welcomed
between 10 and 12 o'clock at a
coffee in the office suite of Miss
Pauline Brigham. Miss Edna
Graham will preside as hostess.

Prominent among the visitors
will be many former students re-
cently discharged from the mili-
tary service.

Renewal of the Homecoming
carnival and night club, however,
has been postponed until a later
date, when most combat men have
returned to this section.

Sheriff's Sale

THE STATE OF TEXAS,
COUNTY OF FLOYD

NOTICE IS HEREBY GIVEN

That by virtue of a certain Order
of Sale issued out of the Honora-
ble District Court of Floyd Coun-
ty, on the 20th day of October,
1945, by Mrs. P. G. Stegall, Clerk
of said District Court of Floyd
County, Texas, for the sum of
SEVEN HUNDRED NINETY-
THREE & 79/100 (\$793.79) Dol-
lars and costs of suit, under a
Judgment, in favor of Plaintiff,
First National Bank of Floydada,
Texas, a corporation in a certain
cause in said Court, No. 3490 and
styled FIRST NATIONAL BANK
of Floydada Texas, vs. F. P.
Merry, placed in my hands
for service, I, Lee Howard,
as Sheriff of Floyd County,
Texas, did, on the 22nd day of
October, 1945, levy on certain
Real Estate, situated in Floyd
County, Texas, described as fol-
lows, to-wit:

An undivided One-Sixteenth
(1-16) Interest in and to all of
the oil, gas, and other minerals in
and under, and that may be pro-
duced from the following describ-
ed lands situated in Floyd County,
Texas:

All of Survey Number Twenty-
Nine (29), Block "K", Abstract
No. 484, Certificate No. 714, T. T.
Ry. Co. Survey, Assignee Isaac P.
Cox, patent record in Vol. 1, Page
385, Patent Records of Floyd
County, Texas, containing 640
acres of land more or less.

And the East Five-Eighths
(E-5-8) of the Northwest One-
Fourth (N. W. 1-4) of Survey
Number Thirty (30), in Block
"K", Abstract No. 1467, Certifi-
cate No. 714, T. T. Ry. Co. Sur-
vey, containing 100 acres of land,
more or less.

A total of 740 acres more or
less.

Together with the right of in-

gress and egress at all times for
the purpose of mining, drilling,
and exploring said land for oil,
gas and other minerals, and re-
moving the same therefrom.

Said Assignment being subject
to the rights of Standard Oil
Company of Texas, and levied up-
on as the property of F. P. Merry
and that on the first Tuesday in
December, 1945, the same being
the 4th day of said month, at the

Court House door, of Floyd Coun-
ty, in the Town of Floydada, Tex-
as, between the hours of 10 a. m.
and 4 p. m., by virtue of said levy
and said Order of Sale I will of-
fer for sale and sell at public ven-
ue, for cash, to the highest bid-
der, all the right, title and interest
of the said F. P. Merry in and to
said property.

And in compliance with law, I
give this notice by publication, in

the English language, once a week
for three consecutive weeks imme-
diately preceding said day of sale,
in the Floyd County Plainsman, a
newspaper published in Floyd
County.

Witness my hand, this 22nd day
of October, A. D. 1945.

LEE HOWARD,
Sheriff Floyd County, Texas.

By H. E. Whitaker, D.
46-3t

Your quota is bigger boi
USE **6 6 6**
COLD PREPARATIC
LIQUID, TABLETS, SALVE, NOSE
USE ONLY AS DIRECTED

**FIRST NATIONAL BANK
Floydada, Texas**

1903—Time Tested Service—1945

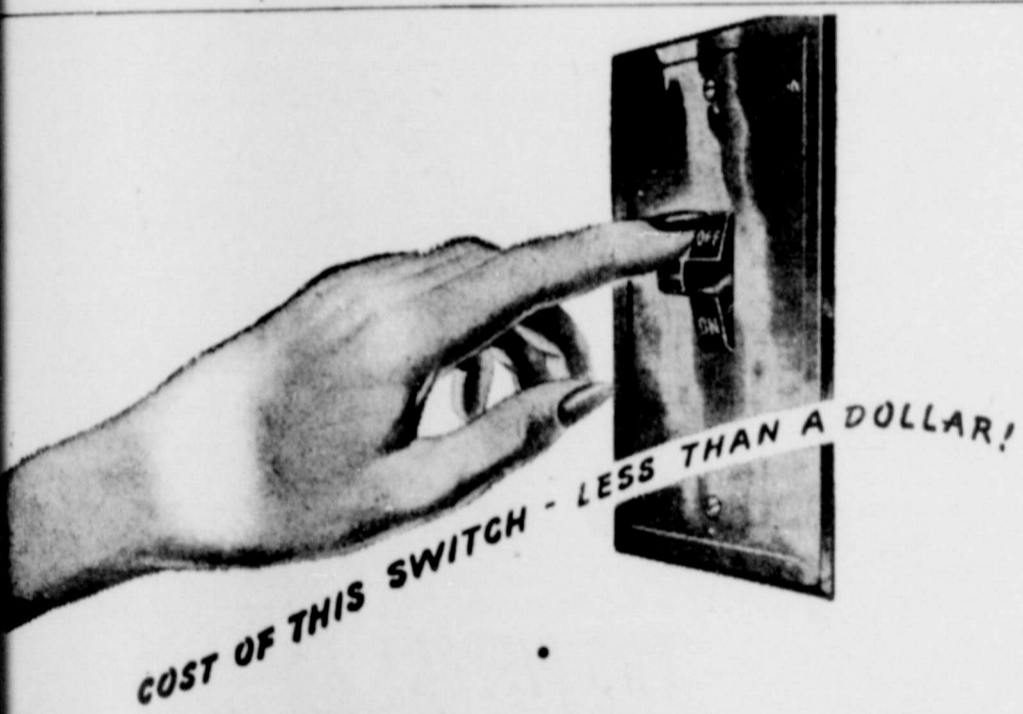
OUR SERVICE IS YOUR GUARANTEE FOR LONGER
USE OF YOUR AUTOMOBILE.

CLINE AND RAINER GARAGE

Let us put your car back on its wheels! Your automob
is priceless today; and a car in fair condition can be overhau
so expertly as to rival a new one in service! Get the habit
checking your car at regular intervals—our trained expe
are well qualified to give you advice—and the best service.

Telephone 37

CLINE AND RAINER
WESTERN AUTO ASSOCIATE STORE

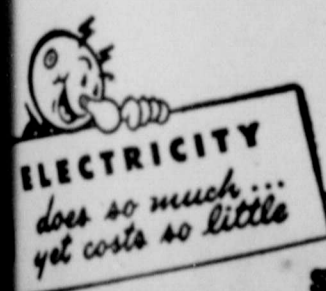


But IT TAKES HUNDREDS OF EMPLOYEES TO MAKE IT WORK

Seems like a little thing—your electric wall switch.
It's one of the least expensive permanent fixtures
in your home. And it works so easily, you don't
give it a thought.

But what is behind that wall switch? First, there
is the hard, sincere work of nearly a thousand em-
ployees in your Public Service Company who are
on the job day and night to furnish you with
cheap, dependable electric service. Also, stop to
think of the millions of dollars invested in equip-
ment—power plants, transmission lines, sub-sta-
tions, poles, insulators.

Yes, your electric wall switch is a small thing but
it takes a lot to make it work for you.



**SOUTHWESTERN
PUBLIC SERVICE
COMPANY**
50 YEARS OF GOOD CITIZENSHIP AND PUBLIC SERVICE



- Thinking men, the country over, are planning now for tomorrow's great markets . . . and modern printing plays an important role in these plans.
- These men realize that today's business needs cannot be filled with yesterday's obsolete letter-heads, envelopes and other printed forms.
- OUTSTANDING LETTER-HEADS COST NO MORE HERE!

**THE
FLOYD COUNTY
PLAINSMAN**

MIDDELIGHTS FROM WASHINGTON

BY GEORGE MAHON

Texans who are interested in moving equipment and machinery for the use of local Soil Conservation Districts will approve recently taken by Congress. Months many of us here have legislation which would re-transfer of certain surplus dirt-moving machinery to Soil Conservation Districts. Days ago the Senate passed a bill, and the Committee on Agriculture approved and plans to present to the House for passage a similar bill.

Mail indicates widespread interest among farmers in the use of machinery by Soil Conservation Districts. It would be difficult to exaggerate the importance of land and water conservation, and of this surplus machinery not be put to better public use.

There are one hundred fifteen Soil Conservation Districts embracing 336,000 farms. In the United States there are four hundred Soil Conservation Districts embracing a vast territory of seven hundred million acres.

Those of us who are advocating the proposed legislation feel it would be in the public interest to make much of this surplus dirt-moving equipment available to these Districts, rather than let it lie idle or sell it for a few dollars.

The proposed airport construction program, which has been approved by the House and sent to the Senate for consideration, provides for Federal participation in the cost of local airports up to 25 percent. But the Federal Government would not participate in the cost of the land, and the act would have to be approved by the Civil Aeronautics Administration. The CAA office for Texas is in Fort Worth. L. C. Elliott is director.

Manufacturers of airplanes suitable for private ownership and are trying to gauge the public mind for such planes. One airplane manufacturer estimates that the airplane industry will make and sell to the private market fifty thousand planes in 1946. Most of the surplus Army Navy planes now being disposed of are way-worn combat planes, or are otherwise so worn that they are not economical or safe for individual use.

West Texas High Schools desire war-worn airplanes for educational purposes can get them, though such schools do not have courses in mechanics and aviation and do not have shelter for planes, they can secure a plane by making application and paying the packing, handling and transportation costs, ranging from \$50 to \$100. The Educational Disposition, Surplus Property Division of the RFC in Washington, circularized the schools as to the procedure. The disposal regulations have recently been modified. I would be glad to provide information to the schools upon request.

The surplus aircraft disposal program is a big one. Planes of original total value of ten billion dollars are in process of being declared surplus and offered to the public. Up to October 15, forty-four thousand planes had been declared surplus. Seventeen thousand of them had been disposed of. There are 634 surplus aircraft at the airfield at Lamesa, Texas. At the South Plains Army Airfield at Amarillo, there are 1500 Flying Boats, many of which have been shipped to other countries. The Government will declare 1200

ON THE FARM AND HOME FRONT

EDITH L. WILSON
HOME DEMONSTRATION AGENT

Hominy making time is here again and a few hints on selection of corn for hominy will help the homemaker in getting a better product, says Gwendolyn Jones, specialist in food preservation of the Texas A. and M. College Extension Service. Since hominy is an economical source of carbohydrate, or energy food, and has some protein and a small amount of iron and calcium, it is a popular and valuable addition to the diet.

Corn with large flat kernels is best for hominy because the broad type requires less time for lyeing. White corn makes a whiter and more attractive hominy, but yellow corn may be used. Surecraoper, Chisholm, and White Hybrid are suitable Texas varieties, and Stowell's Evergreen is a good sweet corn for making hominy. Tuxpan is especially suitable to the Gulf Coast area, while Hickory King is used by most commercial canneries making hominy, Miss Jones states.

Kernels should be uniform in size. That means that butts and tips of ears which are usually off-shape should be left out. New corn which has dried in the field under normal weather conditions is best. If it is too dry it takes too long to remove hulls and the starchy portion of the kernel is burned by the long lye treatment.

The American 36th Division, composed largely of Texans, captured the German 36th Division. These planes surplus within a few weeks.

Get the Most Out of Electrical Appliances

Electrical appliances for making home work easier soon will be on the market, and farm women will be buying new cleaners, mixers, irons and other appliances which they have had to do without during the war. Electrical appliances, if used in the correct manner, can save a great deal of energy and time, says Mrs. Bernice Claytor, home improvement specialist for the A. and M. College Extension Service. All too often, however, the housewife starts out using her appliances without checking to see if her methods are best for time and labor saving.

When the homemaker buys a new appliance, it will save her time and work in the long run if she studies out first the best way of doing the job. Just as an example, here are a few pointers in cleaning a room with a vacuum cleaner. First the housewife should see that there is enough light and ventilation in the room for a good and comfortable job. After she decides on the best method of doing the job, she must eliminate any part of the task she can or combine steps in the cleaning.

"If you can use one attachment for several jobs," says Mrs. Claytor, "you may be able to do all those steps before the attachment is changed. Keep everything within easy reach so that when you need to change attachments you can do it quickly. Attachments have a specific job. Be sure you are using the right one for the job you are doing."

Proper method of using any electrical appliance will save money, too, Mrs. Claytor continues, because the appliance will

Santa Fe's Operating Income for September, 1945

Amarillo, November 1.—The Santa Fe's gross railway operating income for September, 1945, was \$36,852,481 according to a statement released by President F. G. Gurley today. This is a decrease of \$8,335,161 compared with September, 1944.

Adjustments in operating expenses and tax accruals to give effect to Presidential proclamation of September 29, 1945, ending the emergency period for amortization of defense facilities, resulted in a red figure of \$11,122,991 for September, 1945.

Spur Defeats Lockney 34 to 26 Friday Night

Playing on the Lockney home field The Spur Bulldogs won a hardfought game over the Lockney Longhorns Friday night 34 to 26.

Spur scored twice in the first quarter to place it two touchdowns in the lead. Lockney scored once during the second quarter, and Spur scored once in the same period.

In the third period, Spur scored once and Lockney twice and in the final period both teams scored. Lockney successfully converted twice and Spur converted for the extra point four times.

David McAtter and Glen Williams were outstanding on the Spur eleven. Harold Jeffcoat, quarterback, passed most of the plays for the Longhorn scores.

The carbon black and gasoline industry of Texas dominates that of the entire United States.

"Standardized" Dressed or Canned Hens Find Market

College Station November 1.—Farm women who are culling old hens from their flocks will find a ready market for these birds if they are placed for sale as dressed or canned hens. Supply of dressed or canned hens has never equaled consumer demand in most sections of Texas, and poultry products "standardized" under the Extension Service requirements always find a ready market, says Myrtle Murray, home industries specialist of the Texas A. and M. College Extension Service. Many consumers buy canned chicken to send overseas, Miss Murray states, and old hens are good for canning because they do not overcook.

A standardized product bears the 4-H Label, which is identified in marketing circles with high quality products. In order to get hens "standardized," the seller must have her county home demonstration agent score method of killing, bleeding, dressing and wrapping. In the case of canned chicken the agent must check recipe and method used in canning. (Other considerations, such as cleanliness of the seller and her kitchen and work area, also enter into the score as well as the product itself.)

The agent will then score the product and methods used and if it scores 90 or above, the product then may be submitted to an Extension Service headquarters specialist for her scoring. A sample of dressed chicken will be scored by the food preparation specialist, who will check it in the seller's home if the product is perishable. The food preservation specialist will score canned chicken, if two cans of each kind are

sent to her. Only after the food specialist has approved the product as standardized and Miss Murray has sent a statement to that effect to the demonstrator or seller, the county home demonstration agent, and the distributing agency, can the

product bear the 4-H Label. When a consumer sees the 4-H Label on a dressed hen or chicken; or any other poultry product she knows it meets the Extension Service standardization requirements and that she is getting a quality product.



FROM THE PAGES OF VOGUE...
TWO-TONES are twice as Fashionable
Soft flattery touches the tailored frock... embroidery goes to your heart... and you look slimmer, trimmer. In Paca Rayon Crepe... Black with Cupid Pink or Ocean Aqua, Brown with Riviera Sand or Blue with Hero Blue. Sizes 38 to 44. \$11
STYLE SHOPPE
"Always Showing Newest Things First"
Mrs. Mollie A. Morton, Owner Telephone Number



A SUIT-ER
Stitched in Time!
FROM THE PAGES OF CHARM
Saddle-stitching criss-crosses the jacket front of this charming two-piecer... in Black Atlantic Rayon Crepe. Sizes 14½ to 20½. \$10



Accent the EMBROIDERY!
Jewel Tone jacket in wool and rayon mixture tops a dickey and skirt in Old Glory Rayon Crepe... and you're costumed for fall! In Black with Fuchsia, Green or Violet. Sizes 14½ to 20½. \$13



AS ADVERTISED IN GLAMOUR!
SLIM TRIM
TWO-PIECER!
Fashionable, fall '45... and ultra feminine! Rich embroidery on the jacket matches the bow-tied dickey. Old Glory Rayon Crepe in Black with Chinese Pink or Blue Heaven... Bitter Chocolate with Aquafrost or China Gold... Sizes 14½ to 20½. \$13

Style Shoppe

"Always Showing Newest Things First"
Mrs. Mollie A. Morton, Owner. Telephone Number