

"By Helping Business You Help Yourself"

The Floyd County Plainsman

FLOYDADA, FLOYD COUNTY, TEXAS, THURSDAY, MARCH 15, 1945

NUMBER

Ronald R. Cornelius Awarded Medal

With Air Force Bomber Squadron, Second Lt. Cornelius, 20, of Floydada, navigator of a B-17 bomber, has been awarded the Medal for Meritorious Service while participating in Air Force bombing attacks on Nazi industrial plants and on Nazi airfields, in conjunction with Allied ground forces on the front. The presentation was made by Colonel Jack E. Casper, Wyoming, and group commander.

Cornelius is a member of the group which led the bombing attack on Berlin, and which was President for its outstanding assault on rail-shedding yards at Munster, in October, 1943. He is the distinguished Air Division, the group in a Presidential citation for the entire division for the England-Africa shuttle of an important Messerschmitt plane plant at Regensburg, in August of 1944.

AF flyer, son of Mr. Cornelius of 120 East Street, Floydada, Texas Tech prior to entrance.

Bemous V. Carver Decorated in Italy

With the Fifth Army, Italy.—Private First Class Bemous V. Carver, 28, Floydada, Texas, recently was awarded the Bronze Star for heroic achievement in action on the Fifth Army front in Italy.

He is a rifleman in Company A of the 362nd Infantry Regiment, 91st "Powder River" Division.

Carver and two others maintained wire communication between their company command post and the battalion observation post under heavy German shelling. As shells repeatedly ruptured wires running around each side of a hill, Carver remained at work repairing the breaks. When it became obvious he could not splice these wires as fast as they were being severed, he laid a third wire across the top of the hill while enemy artillery shells pounded the area, some of these exploding only 50 yards from him.

"His devotion, diligence and heroism resulted in excellent contact and largely aided his unit in their subsequent action," the citation stated. "His courage exemplifies the great American ideal."

Carver attended high school in Rising Star, Texas. He entered the army January 22, 1944.

His wife, Anna Gertrude, lives at 101 North Second Street, Floydada.

Enrollment of Latin-American students at the University of Texas continues on the upswing.

Supplemental Gasoline Ration Coupons

New supplemental gasoline ration coupons, B7 and C7, are being issued now to eligible motorists by War Price and Rationing Boards and may be accepted by dealers, the District Office of Price Administration said today.

Coupons E3 and R3, which are for gasoline for non-highway use, are also currently being issued and are acceptable now.

Coupons B5, B6, C5, C6, E1, E2, R1 and R2 continue valid until further notice, OPA said.

Sales of Wheat Begun Says McEntire

Local AAA officials who have been in a quandary relative to the number of wheat loans which have been liquidated, have at last received information relative to such deliveries.

McEntire, local AAA Administration, said, "We have been advised that the Commodity Credit Corporation has been authorized to begin immediately to take title to warehouse receipts covering loan wheat which is stored in country, sub-terminal, or terminal warehouses instead of waiting until May 1, 1945. The acceleration of the purchase program enables CCC to take title to enough wheat to meet heavy military and lend-lease demands for the war effort. The rate of movement of grain stocks hinges almost entirely on the availability of box cars."

Release by producers are not required for wheat stored in terminal and sub-terminal warehouses; releases must be secured from borrowers for wheat stored in country warehouses.

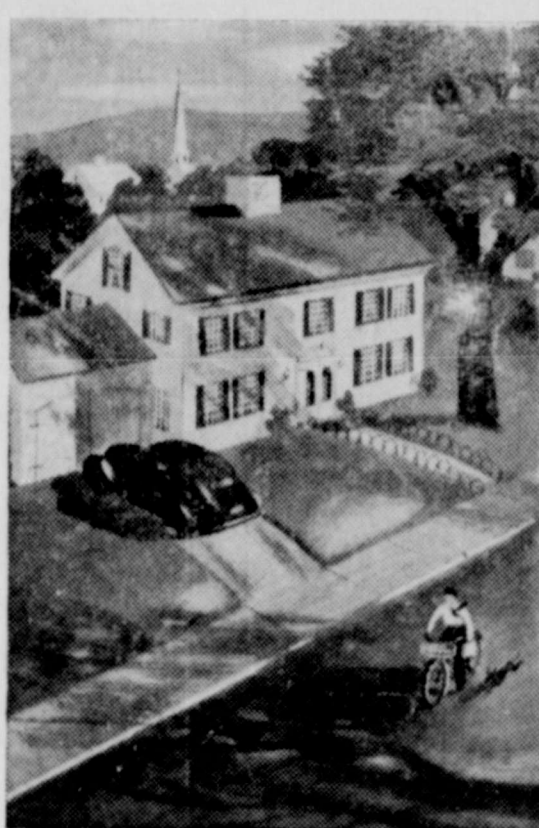
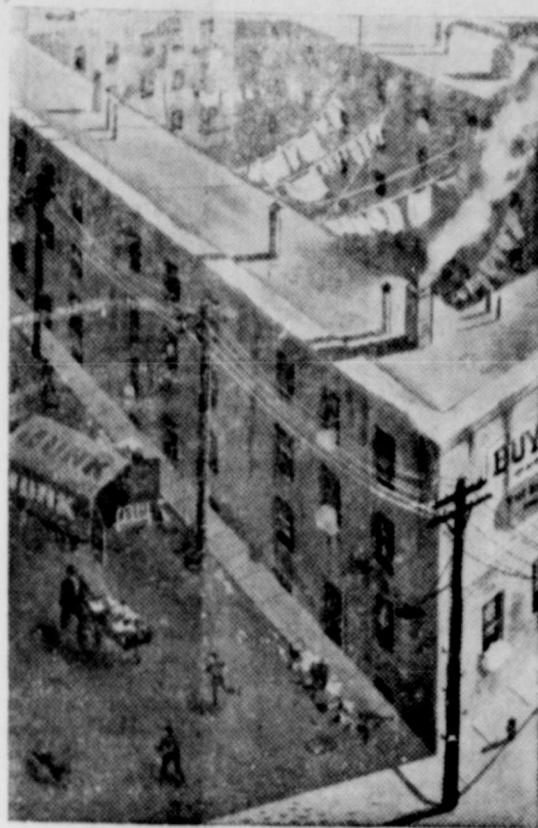
The Wheat Parity Purchase Program provides that 15c per bushel, less the warehouse charges and interest, will be paid to producers. The fact that CCC has seen fit to start the purchase program now instead of waiting until May 1 does not alter the terms of the contract. The whole idea of this immediate purchase is to minimize the load on the already over-taxed transportation system and enable the elevators to be cleared in time for this year's harvest.

For further information relative to this program make inquiry at your local AAA office.

Oasi Tax Rate Still 2 Per Cent

Lubbock, March 15.—In reply to inquiries received from some employers concerning the old-age and survivors insurance tax rate, Sam Leifeste, manager of the Lubbock office of the Board stated that for 1945 this rate remains unchanged at 2 per cent, 1 per cent being deducted from wages paid the worker and 1 per cent from the employer's pay roll as his contribution. He stated that Congress did not allow the automatic increase in the tax rate to go into effect January 1, 1945, as some employers seem to think. Employers will continue to make the same deductions from wages and include this information in their report to the Bureau of Internal Revenue Leifeste said, as in the past.

The Governor's mansion at Austin, Texas, was built in 1855, at a total cost of \$17,000.



What street are you going to live on after the war?

We hope it will be Easy Street. It's a lot more fun living there than on Poverty Row. And it's up to you. If you put every penny you don't honestly need to live on into War Bonds—if you hold on to those Bonds till they can bring you back \$4 for every \$3—if you'll stick to the habit of regular saving that the Payroll Saving Plan got you started in—well . . . You, and your family, and G. I. Joe, and this whole country can look forward to the best years any of us ever knew. It's up to you!

WAR BONDS - to have and to hold!

This is an official U.S. Treasury advertisement—prepared under auspices of Treasury Department and War Advertising Council

Helicopter Rescue At Sea

HELICOPTER air-sea rescue entered an unexpected obituary in its final development, when A. Erickson, USCGC, today solved the problem of hoisting a man from a life raft or perhaps 30 feet below the helicopter and getting the flying machine safely.



In the issue of the COPE, magazine of the Corporation, Commander Erickson, Commanding Officer of the weeks of experimentation and applied necessary to making the function as a life-saving device.

One of the first test pickups from a rubber life raft that proved the success of the Vickers hydraulic hoist. Commander Erickson is piloting the helicopter.

Under Erickson, Commander of the Coast Guard Air Station at Bennett Field, Brookhaven, had a large hand in the problem but he flew the first which made the first successful rescue of Manasquan inlet.

The Coast Guard decided to investigate both types of motors. Meanwhile Commander Erickson and his co-workers set about developing a simple harness that would require little skill and strength for a man to fasten himself securely.

It had seemed a simple matter of installing a small electric pump and motor each side of a man's hand—found capable of lifting a 400-pound load at one-half feet a second. It was by Vickers, Inc., of Dearborn, Michigan, that the solution was found.

The breeches buoy was considered, but it was too cumbersome, he continues. "We decided to build a ring buoy which could be opened to form a 'U', making it easily accessible. In this 'U' was hung a seat strap. When the hook was snapped to form the ring buoy, it made a comfortable seat." According to Commander Erickson, the ring buoy worked and the hydraulic hoist worked and both are now being used successfully in all later adaptations of the rescue harness. The Vickers helicopter hoist also gave the Coast Guard the idea of adapting it to their aircraft rescue boats. Whereas formerly it required four men of the rescue crew nearly five minutes to lift a man aboard by hand, the hoist plucks him from the sea and lowers him gently aboard within thirty seconds.

Francis B. Wester Spends Three Day Vacation in Paris

T-5 Francis B. Wester, former Floydada resident, and four of his Buddies recently spent three days in Paris with passes from duty in Belgium. They are winners of the tire conservation program contest given by ADV. Section, Com. Z, according to a U. S. Army Signal Corps news release.

Oatis R. McIntosh Promoted to Corporal

OPA 500, San Francisco, Calif.—Private Oatis R. McIntosh, who recently took part in the Leyte Island campaign as a medical aid man attached to a rifle company, has been promoted to the rank of Corporal. In addition to his promotion Cpl. McIntosh has been awarded the Bronze Star Medal. The Citation which accompanied the award made by Major General A. D. Bruce, Commanding General of the Army's famous 77th Inf. Div., credited Cpl. McIntosh with meritorious service in connection with military operations against the enemy in the Philippine Islands.

Cpl. McIntosh is the son of Mr. and Mrs. B. F. McIntosh of 222W. Mississippi Street. Before entering the army he was employed by Dr. Wilson Kimble of Floydada.

Victory Garden Week Set for March 11-17

College Station, March 15th.—March 11-17 has been designated as Victory Garden Week in Texas. These are the same dates as for Texas A. and M.'s radio short course on Victory gardening.

Even if weather conditions do not allow actual planting, every Victory gardener can profit by doing a few simple things as part of the observance, says J. F. Rosborough, horticulturist for the A. and M. College Extension Service.

These include (1) getting sufficient amounts of seed well adapted to his own local conditions, (2) starting some plant beds, if he hasn't already and (3) laying aside fertilizers, insecticides, disinfectants for vegetable seeds and inoculants for the legumes, peas and beans. Many gardens have already been planted and are now growing, and with good weather, additional spading or plowing and fertilizing of garden plots can be done before Victory Garden Week is over.

Texas' goal for Victory gardens is again one million, Rosborough says, and reports from seed and equipment dealers indicate that interest is more evident than this time a year ago. The next 30 or 40 days, however, will "tell the tale" on the success of the spring garden campaign.

This year's aim is for quality as well as quantity. Rosborough points out that there is plenty of room for improvement in this re-

Carloadings for Week Ending March 10

The Santa Fe System carloadings for week ending March 10, 1945, were 23,511 compared with 21,430 for same week in 1944. Cars received from connections totaled 14,497 compared with 11,752 for same week in 1944. Total cars moved were 38,008 compared with 33,182 for same week in 1944. Santa Fe handled a total of 38,028 cars in the preceding week.

WHAT THEY'RE SAYING ABOUT THE RAILROADS

"When the history of the present hectic times is written it is certain that the part played by the railroads of the country will come into its own. Until then they are content to do their work as best they can, looking for no special handout or praise."—Springfield Massachusetts Union, February 3, 1945.

spect. Only one-twelfth of all of last year's Texas Victory gardeners disinfected their vegetable seed before planting, and only one out of twenty-five inoculated pea and bean seed. But gardeners who followed these recommended practices were enthusiastic about their results. A large number, five of every seven, attempted to control vegetable diseases and insects.

Information on adapted varieties, methods of preparing plant beds, and other gardening jobs and problems can be obtained from county agricultural and home demonstration agents.

Migrant Labor Being Studied for 1945 Distribution

College Station, March 15th.—The Texas A. and M. College Extension Service, which has the responsibility for recruitment and placement of farm labor in Texas, has adopted two courses in an effort to bring about more effective distribution and better utilization of migratory farm labor in 1945.

According to Caesar Hohn, Extension farm labor supervisor, parallel action is directed toward (1) trying to create a better understanding of the farm labor problem by migrant Latin-American farmers and (2) attempting to persuade farmers who use this labor to recognize and remove hazards which have hampered maximum utilization of it.

The first step in this program Hohn said, was to divide the Lower Rio Grande Valley, the area in which the majority of the migrants live, into eight districts based upon the residence of cross-overs who operate trucks.

At the same time contact meetings including Latin-Americans, were assigned to explain to migrants individually and in groups, the Extension farm labor office endeavoring to obtain suitable housing and reception centers wherever they may be employed. Along with this they are telling the laborers what they can do to make more effective use of their time and to become better American citizens.

In West Texas, Hohn said, county agricultural agents in cooperation with the district farm labor office at Plainview and Extension district agents, have held meetings with commissioners, courts, farmers and towns people to explain the problems. Farmers, business men and others concerned have promised cooperation in correcting the conditions which have interfered with the best use of migrant labor in the past.

During a recent survey in south Texas, Hohn said that contact men reported a growing confidence among Latin-American migrants in the Extension farm labor program and appreciation of the service it is endeavoring to render them. He added that county agricultural agents are finding that migrants prefer not to have Texas farmers ask them to go their farms sooner than is necessary.

Blue Panic grass, a native of Australia, was first planted in the United States in 1935, at the permanent station at Chillicothe.

POLITICAL Announcement

After almost 10 years of service as alderman of Floydada I am offering my name to be shot at mayor.

This is not for any selfish motive but being aware of the needs of our city and anxious to do what I can for the betterment of it I am willing to sacrifice a sufficient amount of my time to that effort to make it a success.

We must be awake to the future happenings and on our toes keep our town as good as it is; with the proper interest and we can make it a town to be proud of and might even grow some.

If you think that I am the one for the place I will appreciate your vote and influence. Respectfully, F. C. HARMON

14-1c

Carole King
DRESSES FOR JUNIORS

Pickin' Poppies



Border bright with brilliant red poppies! To add bloom to your wardrobe this spring! Sweetheart neckline, and tiny caplet sleeves for a teen age touch of gaiety! Shadowbox Rayon Crepe in Ice Pink, Eggshell, or Romance Blue, all with bright red poppies. Sizes 9 to 15.

\$12.95

Carole King
DRESSES FOR JUNIORS

FEATURED IN "CHARMI"

Dipsy-Daisy



Sp corsages embroidered in the pique. Sleeves tied with a self. Make this slim. Long princess frock a e-bait must in ry junior's ward- el Carole-Paca on Crepe in arican ry or Jet k with te. Sizes 15.

98

STYLE SHOPPE
"Always Showing Newest Things First"
Mrs. Mollie A. Morton, Owner. Telephone 17

FIRST NATIONAL BANK
Floydada, Texas

3—Time Tested Service—1945

Lamp Engineer Goes Firefly One Better

The firefly has long been held up as a model to the lamp engineer, because of the erroneous belief that its light is produced with almost no energy consumption. The lamp engineer has done much better. A new type of glow lamp, the size of an average marble, emits continuously more light than hundreds of fireflies with an energy input that in a year's continuous burning does not add up to one kilowatt hour. In a year, at average domestic power rates, it consumes less than three cents' worth of electrical energy.

The glow lamp actually is a miniature fluorescent lamp. A discharge takes place in a rare gas and the resulting radiation (invisible) is converted by phosphors on the inner wall of the bulb into a soft green glow. A tiny resistance in the miniature screw base serves as ballast.

The green light from this lamp fortunately falls in the region of maximum night sensitivity of the eye. Held beside a neon glow lamp of the same wattage in the daytime, the two lamps would be judged of equal brightness. However, to dark-acustomed eyes the green glow lamp appears four times brighter. Thus, the green glow lamp is ideally suited as a night light in bathrooms, stairways, and halls.

Best Treatment for Shock Is Prevention

Best treatment for shock is prevention, according to Dr. Robertson Ward of the University of California. Anticipation of shock and its avoidance is better than treatment; in this the layman at the scene of the accident can assist by a few simple precautionary measures.

Bleeding from a wound should be stopped by a pressure dressing or by pressing on the pressure points, rarely by tourniquet. The injured person should be kept warm and in a prone position. Usually the person in shock should have his feet a little higher than his head. When medical treatment is likely to be delayed, sulfa powder should be sprinkled into the wound.

An accident victim should not be picked up and crowded into the back seat of a car, but should be moved by an experienced ambulance crew. Rarely is a traction splint indicated; much harm can be done by one. Better first aid technique is to make a splint by wrapping a pillow around the broken limb and tying it above and below the wound. Newspapers or boards can be used for stiffening.

Fire Hazards

It is the duty of every parent to keep constant vigil in the home to reduce fire hazards which may exist because of the physical make-up of the house, personal habits of the family, or unsafe housekeeping methods. A good place to start as a self-appointed fire inspector, is with the heating system. If you use a fireplace, be sure to have and use an adequate screen as a shield against sparks. Defective flues or bad chimneys are responsible for more home fires than any other thing; check to see that there are no cracks, see that stovepipes are in good condition and correctly installed a safe distance from any wood. A chimney in good repair may even be dangerous if it is allowed to become clogged, so keep the flues open. Ashes are not always as dead as they seem, and for that reason should be deposited in metal containers that are fire-proof.

Road Magnet

A road magnet of the Minnesota highway department collected the amazing amount of 2,580 pounds of metal tire threats. When it is considered that this haul averaged 100 pieces to the pound, it will be seen that over a quarter of a million pieces which might have injured tires have thus been taken out of circulation and added to the nation's scrap drive. This important highway service was given at a cost of approximately \$1.00 per mile which covers all expenses involved in the operation including depreciation of equipment used. The electro-magnet bar is 8 feet long, which required four passages over a 32-foot highway. On paved roads, the magnet treatment was applied only to the shoulders, since pavements and bituminous surfaces are relatively free of scrap metal. Cost of one passage per mile is estimated at 30 cents. The unit travels 10 miles per hour.

Shade Trees

Early spring is an excellent time to feed shade trees, as well as fruit trees. Keep your trees thrifty, for the more vigorous the growth of a tree, the less subject the tree will be to disease and insect attack. Make application of plant food about the time buds are swelling. A series of holes should be made in a zigzag fashion under the drip of the branches; the most satisfactory instrument to use is an earth auger, obtainable in hardware and gardening departments. Make holes about 2 inches in diameter and 8 inches deep. The amount of plant food needed is determined by allowing 3 pounds to each inch of diameter of the trunk, measuring the trunk 4 feet above the ground. Fill the holes with a mixture of half plant food and half soil. Then water thoroughly.

Staff Changes are Announced by A. and M. College

College Station, March 15th.—After more than 20 years with the Texas A. and M. College Extension Service, Miss Zetha D. McInnis, district agent, has resigned to join the Louisiana Extension Service. This vacancy on the home demonstration staff will be filled by Miss Leta Bennett, now McLennan county home demonstration agent.

Miss Bennett's appointment will become effective on March 16, according to Miss Maurine Hearn, vice director for women and state home demonstration agent. The new district agent will supervise home demonstration work in District 10, which includes the San Antonio area. Miss McInnis will be succeeded in District 9 by Miss Mae Belle Smith, formerly assigned to District 10.

On March 15, Miss McInnis, a native Louisianan, will become associate home demonstration agent for the city of Lake Charles, La. with the Extension Service in Texas. Miss McInnis has been county home demonstration agent in Kerr, and Hardeman counties, and she joined the staff at College Station as home industries specialist in September, 1930. Five years later she became a district agent, and until last June was assigned to District 8, which includes a number of Central Texas counties.

She holds a degree in home economics from Southwest Texas State Teachers' College at San Marcos.

Miss Bennett is a graduate from the Texas State College for Women, Denton, and has been a county home demonstration agent since 1926. She has served in McCulloch, Caldwell, Wichita, and McLennan Counties, the latter for the past six years.

District 9 is the third district to be supervised by Miss Smith. Her county experience was in McCulloch, Johnson, and Tarrant, and she has been a member of the headquarters staff since 1935.

Feed and Milk Production Program Is Discussed

College Station, March 15th.—Texas dairymen have been asked to produce two per cent more milk this year than in 1944. Since proper feeding and care make up the only road to realizing this goal, G. G. Gibson, dairy husbandman for the A. and M. College Extension Service, urges dairymen to plan early and thoroughly not only their 1945 operations but their feeding program as well.

In planning, Gibson suggests that they consider these points: (1) Keep good producing cows and sell low producers while beef prices are favorable; (2) Have only as many cows as can be fed and milked properly; (3) Balance the herd with the feed supply; where feed must be bought try and obtain a supply at harvest time; (4) Own the best bred bull of your breed which can be found.

In the feed picture Gibson sees prospects for a shortage of roughage. This means producing more good roughage at home. Pastures, which must be used to the fullest this year, will furnish more feed if the grass is allowed a good start before being grazed. Mowing weeds will give the grass a chance to grow and also keep it from going to seed, thereby lengthening the grazing period.

Pastures should be cross fenced to establish rotate grazing and milk cows given first chance at each pasture. Sudan planted in rows should be included in the crops plans at the rate of one acre per cow. Cattle grazing along the rows trample less than when it is in drills. Should sudan make more growth than can be grazed it should be cut for hay before heading out.

Gibson says that good hay, allowing a minimum of one ton per cow, will ease lots of feeding pains, but silage still is necessary. Three tons per cow is the least amount to plant, but six tons would give a reserve in case of pasture failure. An average of one ton of concentrates, 500 pounds of which should be a protein concentrate, will be needed for the year's feed supply. Cows should be fed concentrates according to production, meaning good milkers will get more than poor ones.

The deadly Mustang fighter plane was created as a challenge to the German fighter plane, ME-109.

Texas' place in the national picture of milk production has changed little in the past five years.

The powerful 37-ft. 4-ton, P-51 Mustang fighter plane was designed and built by North American, Inc., Dallas, Texas.

The 1945 goal in milk production for Texas, is nearly four and one half billion pounds of milk.

Political Announcements

Those whose names appear below have authorized The Floyd County Plainman to announce their candidacy for nomination for the office under which their name appears, subject to the action of the City Election to be held on April 3, 1945:

- FOR CITY MARSHALL
Bob Smith
- FOR CITY SECRETARY
B. K. Barker
- FOR MAYOR:
J. C. Wester
F. C. Harmon

"Sure, I'll hold it to 5 minutes"

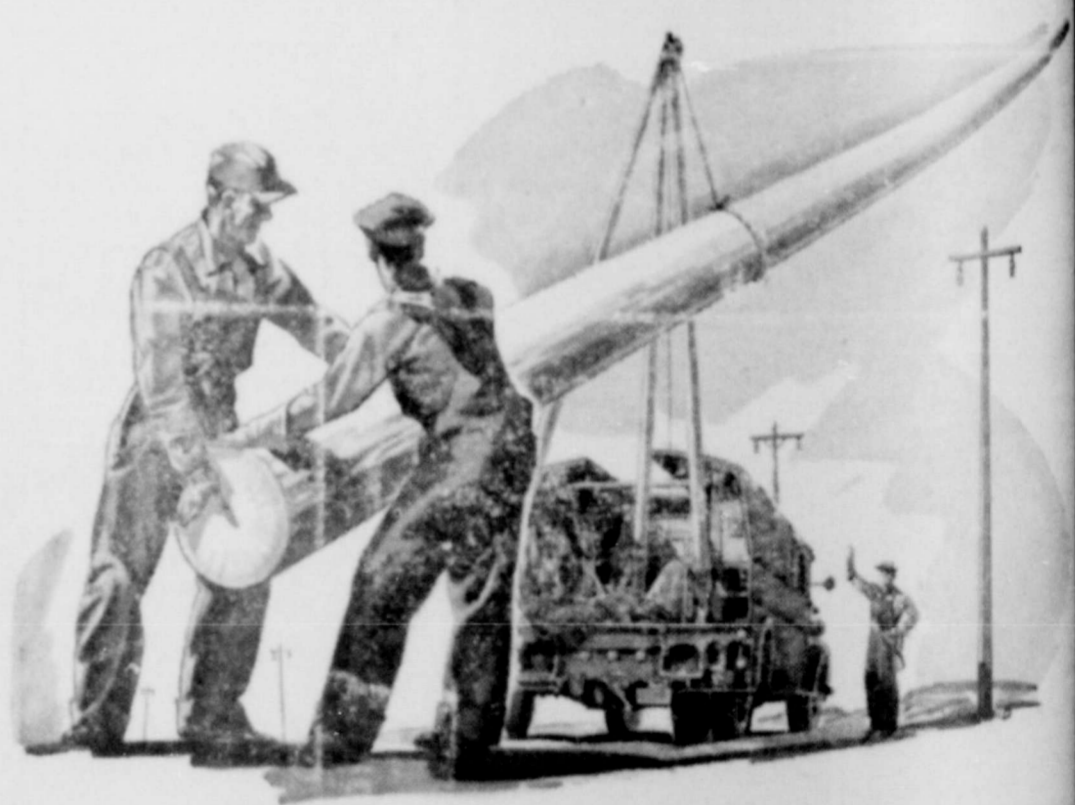


Busy as Long Distance lines are, most calls go through all right. But there's still a rush on some circuits.

When you're on a crowded line, Long Distance will ask you to help by saying, "Please limit your call to 5 minutes."

SOUTHWESTERN BELL TELEPHONE CO.

THERE IS NO SUBSTITUTE FOR SKILL AND EXPERIENCE



It takes the skill that comes from hard-earned, first-hand experience to back up our fighting men to Victory!

Southwestern Public Service Company employees know their jobs—and know them well. Many of our employees have been with us since our company was formed 20 years ago, but all of our employees—old and young—study their business constantly. That's why they have the all-important "know how" to deliver to you efficient, dependable electric service at rates that are lower than ever before.



SOUTHWESTERN PUBLIC SERVICE COMPANY

Floyd County Plainsman
 PUBLISHED THURSDAY EACH WEEK
 M. B. CAVANAUGH, PUBLISHER
 COUNTY \$1.00; OUTSIDE FLOYD COUNTY \$2.00
 Second Class Matter June 23, 1930, at the Post Office at
 Floydada, Texas, under the Act of March 3, 1879.

NOTICE!

Anonymous reflections upon the character, standing or reputation of any person, firm or corporations which may appear in the Floyd County Plainsman will be gladly corrected and brought to the attention of the publisher.

Texas State Trackers Down

March 15th.—With a schedule and several tentative list, North Texas tracksters buckled down to their workouts this week.

is without track experience, but Coach Bill Cooper, who is directing the team, says that several of the boys show promise.

Beginning to take shape after two weeks of preliminary workouts, Eagle cindersmen are at present practicing in several events besides track; other events being the shot put, high jump, javelin throw, and possibly pole vaulting.

March 15th.—Leading roles for the College Players production of "Mr. Pim Passes By" at North Texas State College were announced this week. Due primarily to technical problems in staging, including inability to obtain materials, the play "Suspect," which was first chosen to be the College Players' spring production, has been dropped.

Denton, March 15th.—Leading roles for the College Players production of "Mr. Pim Passes By" at North Texas State College were announced this week. Due primarily to technical problems in staging, including inability to obtain materials, the play "Suspect," which was first chosen to be the College Players' spring production, has been dropped.

"MR. PIM PASSES BY" TO BE SUBJECT OF COLLEGE PLAYERS

Early maps of Texas often referred to the state as "The New Philippines."

The collection of rare books at the University of Texas is one of the finest in the world.

Abilene District Retail Grocers Ass'n Resolve

Abilene, March 15.—At a recent meeting of the officers and directors of the Abilene District Retail Grocers Association, the following resolution was unanimously adopted and it gives us real pleasure to pass it on to you.

"Whereas, the duties and responsibilities of every person, service people or civilians, are increased greatly by the many restrictions and regulations necessary to waging total war and maintaining production and distribution on the home front.

"And, Whereas, we, being actively engaged in the retail grocery business, do believe that our part in the over all effort is comparable to any and all others and that this fact is oftentimes seemingly overlooked by the masses and even by those who are directly charged with directing affairs on the home front.

"And, Whereas, we do greatly appreciate every word of recognition and encouragement which greatly helps us to carry on our work, we, the officers and directors of Abilene District Retail Grocers Association, do hereby recognize and agree that,

"Whereas, the Fant Milling Company, in its regular daily news cast featuring Gladiola Flour, does recognize our efforts and does greatly assist each of us in our work by constantly reminding the radio audience of the problems and the greatly increased responsibilities and the many complex regulations under which we operate.

"Therefore, be it resolved that we gratefully acknowledge this very fine recognition and assistance by the Fant Milling Company, and pledge our continued cooperation in the merchandising of their products."

First Christian Church, Otto F. Marshall, Minister

Bible School 10:00.
 Morning Worship 11:00.
 Christian Youth Fellowship 7:00
 Evening Worship 8:00.
 Come to Church.
 The Friendly Church With a Spiritual Message.

A new night course being offered at the University of Texas should be a cure-all for Uncle Sam's income tax. Titled "The Federal Income Tax," the course is open to students and non-students.

Self-Help Series

"Gold Ahead" ----- \$2.50
 "If It's Wealth You Desire, 1.00
 "Troubled Feet Corrected" 1.00
 "How to Read Character"--- 1.00
 All prices are postpaid.
 Satisfaction Guaranteed.
 SPECIAL: Save \$1.50 by ordering all four books for \$4.00.
 HOME EDUCATION SERVICE
 P.O. Box 383, Big Spring, Texas.

BABY CHICKS

HATCHING EGGS
 BREEDING COCKERELS
Blood Tested
 TRAPNESTED
 PEDIGREED FROM WORLDS
 FAMOUS STRAIN.

KIRK'S BARRED ROCK FARM

PHONE 178-J
 ON RALLS HIGHWAY
 SOUTHWEST CORNER
 FLOYDADA.

WANTED:

Wanted. New and used household articles, furniture, automobile accessories, farm implements, to sell at the Floyd County Farmers Exchange, 204 South Main St., Floydada. 10-4p

For Sale

- 1 Farmall, Regular 11
- 1 44 A. C. Model "C" Tractor—Power Lift, Starter and Lights. 14
- Philco Radio, Dry Cell 12
- 2 Kerosene Brooders 12
- Knife Attachment for Ford Tractor Cultivators 12
- Two Wheel Trailer 12
- Four Wheel Trailer 12
- 3 Listers 12
- 3 Cream Separators 13
- Work Horse 13
- Work Shoes 13
- Tire Boots 13
- 1 Vacuum Cleaner 14
- 24 Acre, Well Improved Modern 5 Room House. 1 Mile From City Limits. 12
- 2 Room House in Town on Highway. 12
- 6 Room well improved home, 1 mile from Court House, 15 acres land, sell or trade. 11

Wanted

Model A John Deere F-20 Farmall 13
 4 or 5 Room House in Floydada to Rent
 Kerosene or Butane Refrigerators
 FLOYD COUNTY FARMERS EXCHANGE
 B. C. Patton, 204 So. Main Street.

Do you want to get ahead? You do? OK! Then write for full particulars on "Gold Ahead," the finest book of it's kind ever published. Praised by Liberty magazine. Free gift offer included with description. Financial Enterprises, Box 383, Big Spring, Texas. 11-4p

For Sale:

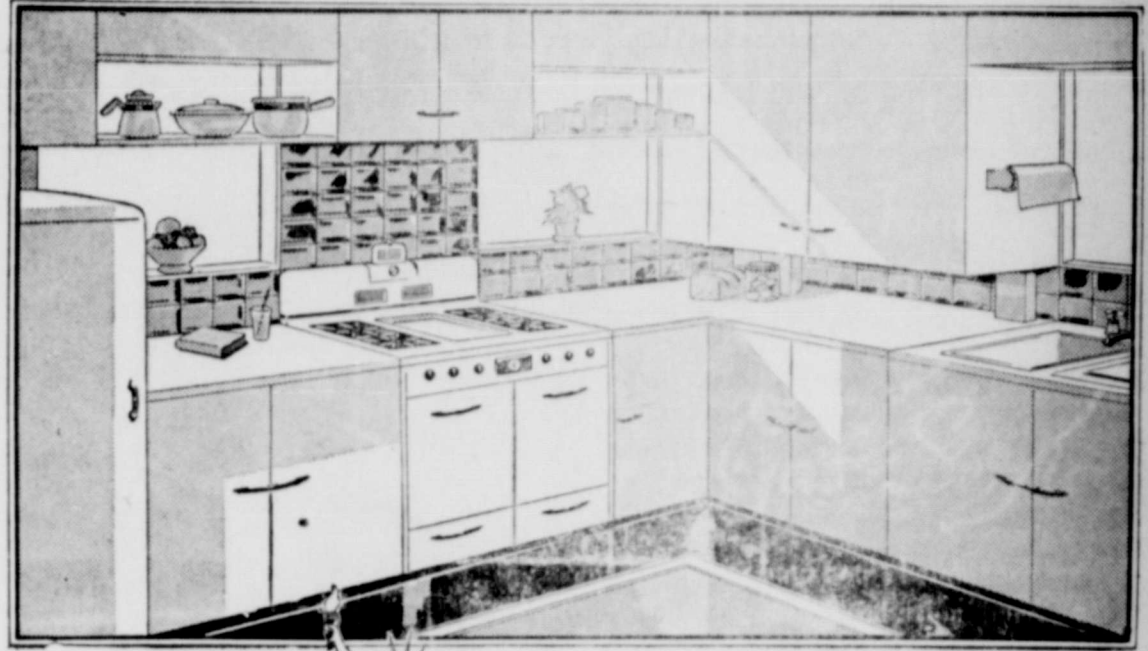
Well located business house for sale. Money invested in this property should bring around 10 per cent per annum. See Cavanaugh at the Plainsman office.

In stressing the need for increased training of dentists in Texas, Dr. F. C. Elliott, dean of the University of Texas School of Dentistry, Houston, cites that a recent survey shows that 1,150,000 children in Texas now have two or more decayed teeth which need a dentist's care.

DR. KIBBY J. CLEMENTS
 OSTEOPATHIC PHYSICIAN AND SURGEON

Diathermy, Light Therapy, Colonic Irrigations, New Improved Methods of Curing Piles, Fistula, Pruritis (Itching Piles) by Office Treatment Without Interrupting Daily Routine.
 SKAGGS BUILDING, PLAINVIEW, PHONE 683

Some day.. YOU CAN HAVE A
NEW GAS KITCHEN LIKE THIS!



THE NEW FREEDOM GAS KITCHEN WILL BE AVAILABLE WHEN PEACE RETURNS

There is no fuel so fast, so economical as gas. For cooking, refrigeration, home heating, water heating and air conditioning, gas is best.

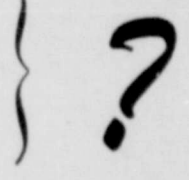
If you are planning a new home or the remodeling of your present one—start with the kitchen. Here the average homemaker spends most of her working hours. Here she prepares and cooks the family meals, washes the dishes, and in many instances does the weekly washing. The kitchen is truly the most important room in the home. It should be planned to save needless steps, and arranged to provide an atmosphere of cheerful, modern living. The New Freedom Gas Kitchen with its efficient gas range, gas refrigerator and other easy-to-use appliances transforms kitchen drudgery into pleasure.

West Texas Gas Company

Natural Gas Is Vital War Fuel. Use What You Need, But Save All You Can

It's Good Business
★ TO USE GOOD BUSINESS STATIONERY!

- ★ LETTER-HEADS
- ★ ENVELOPES
- ★ STATEMENTS



Are your Letter-Heads, Envelopes, Statement Blanks and other Printed Business Forms an asset or a liability to your business?

Do you know that Good Business Stationery can create a lasting GOOD impression with the firms and individuals you send them to?

Why not let us show you samples of some of the nation's leading styles of fine, colorful and distinctive printed business stationery?

We are equipped to design and print YOUR outstanding business stationery requirements. See us today.

QUALITY PRINTING

THE FLOYD COUNTY PLAINSMAN

BULK GARDEN SEED

EVERYTHING NEW AND COMPLETE
 SEED POTATOES, ONION SETS AND PLANTS

STAR CASH GROCERY

BETTER SELDS FOR BETTER CROPS

**G. A. WEATHERFORD
 OLDIE'S RADIO SHOP**

204 WEST MISSOURI ST., FLOYDADA
 Repair all makes of Radios and fix Electric Appliances and more. We buy and sell used Radios, and have those Hard-to-find. Come to see us. We will be glad of an opportunity to Shop located Northwest Corner Courthouse Square.

DRY AND DRY CLEANING. Pick-up Thursday. Delivered Monday. Pick-up Monday. Delivered back Thursday.

SERVICE IS YOUR GUARANTEE FOR LONGER USE OF YOUR AUTOMOBILE.

ME AND RAINER GARAGE

Put your car back on its wheels! Your automobile today; and a car in fair condition can be overhauled as to rival a new one in service! Get the habit of your car at regular intervals—our trained experts qualified to give you advice—and the best service.

Telephone 37

ME AND RAINER
 WESTERN AUTO ASSOCIATE STORE

Floyd County Farmers Exchange

Owned — Home Operated
 Sell it for You—Anything
 at Your Home or Farm.

B. C. PATTON
 South Main St., Floydada, Tex.

Furlough Fashions

FOR EASTER

No wonder you want your Easter outfit to be "extra special"—he's coming home on furlough! No need to get in a dither about things! Just march yourself right in here and your wardrobe problems are solved! See these beautiful suits—see them man tailored to a "T"—see them soft and dressy—see them in two-piece—see them with matching toppers. We'll bet our bottom dollar when you see them you'll love them—that your Easter choice is among them. Come see today!



Easter Flattery

Destined to be leaders in the Easter Parade—these loveable hats—young and flower bedecked—chic and ribbon trimmed—veiling for that "coming hither" look—colors that will lift you to the skies. Here is your Easter bonnet!



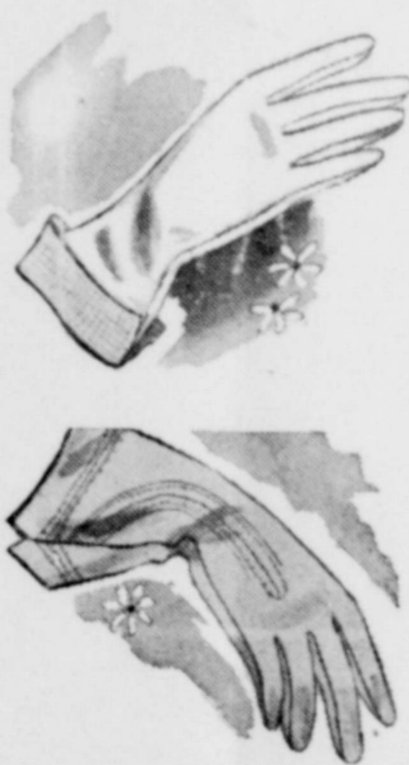
Blouses Are Tops for Spring!

Versatile, dashing and new as this minute. Styles so lovely they'll stay out till the stars fade—so feminine they'll take his breath away—so tailored they'll make you feel like an executive. Blouses and dickies that will sing the praises of your new spring suit.



HAND-SOME FOR EASTER

Slip your hand into one of these beauties. Long, short or medium lengths—some with cuffs, some with smart stitched trim. All our gloves are lovely to look at—perfectly fitted and oh so handsome.



Bags for Easter

Do you like your purse flat to slip under your arm—with a convenient handle—or in the shape of a carry-all drawstring? We have all styles in colors sure to please.

Style Shoppe

"Always Showing Newest Things First"
Mollie A. Morton, Owner. Telephone Number 17