

"By Helping Business You Help Yourself"

The Floyd County Plainsman

FLOYDADA, FLOYD COUNTY, TEXAS, THURSDAY, JANUARY 25, 1945

NUMBER

D. Porterfield's Wife Died at Vernon, Texas

Funeral services were held Sunday afternoon for S. T. Porterfield, 82, of Wilbarger County farm near Vernon, who died Friday in a hospital.

Services were held at 3 o'clock at the First Methodist Church with Rev. A. Reed officiating. Interment was made in the East View Memorial Park Cemetery. Pallbearers were Ellison Haynes, D. W. J. K. Campbell, F. R. Hill, J. N. Fulcher, R. D. W. Brock and F. E. Now-

Survivors include the widow; sons, J. D. Porterfield of Dallas, Herman Porterfield of Tulsa, and S. E. Porterfield of Tulsa; four daughters, Miss Porterfield of Tulsa, Okla., Mrs. W. H. Cochran of Waco, Mrs. J. R. Ingram of Waco, J. C. McCarroll of Vernon; grandchildren; and three granddaughters.

Porterfield was a native of City, Texas, and was reared in Austin. He and his wife moved to Wilbarger County in 1905 and settled on a farm near Vernon where they lived until 1935 when they moved to Vernon. He was active in the operation of his farm until recently.

Porterfield, son of the deceased, made his home in Dallas for several years, where he was engaged in the paint-paper-hanging business.

NORA POPE IN MARKET

Nora Pope left Sunday for Fort Worth, where she will attend the wholesale market, to purchase ready-to-wear for Miladies Specialty Shop. She was accompanied by M. Finkner, proprietor of the Specialty Shoppe, who is her daughter during the week.

DALLAS MARKET THIS

Mollie A. Morton left Sunday for Dallas and Fort Worth, where she will attend the wholesale market, to purchase ready-to-wear for the Style Shoppe. Mrs. Morton was accompanied by her husband, Ben G. Morton, on the trip. They will return home the first of the week.

Mrs. B. Hatley, of San Antonio, spent the early part of the week here visiting relatives and attending to business matters.

Santa Appoints Additional Safety Supervisors

The appointment of three additional Safety Supervisors to augment the Santa Fe Railway System program to combat personal injuries among employees, was announced today by E. L. Duggan, Superintendent of Safety.

Appointments include that of Charles H. Robinson, with headquarters at La Junta, Colorado, with jurisdiction over Western Colorado and New Mexico divisions of the Western Lines, with S. C. Flagler, transferred from Albuquerque to California.

William J. Tillman was appointed supervisor over the Albuquerque division with headquarters at Winslow.

Walter J. Piper was named supervisor at Argentine, Kansas, with jurisdiction over Kansas City Terminal, and other Eastern divisions.

With the appointment of the new supervisors there is a general reduction in the size of territories so as to enable closer contacts between the safety men and employees, Duggan asserted.

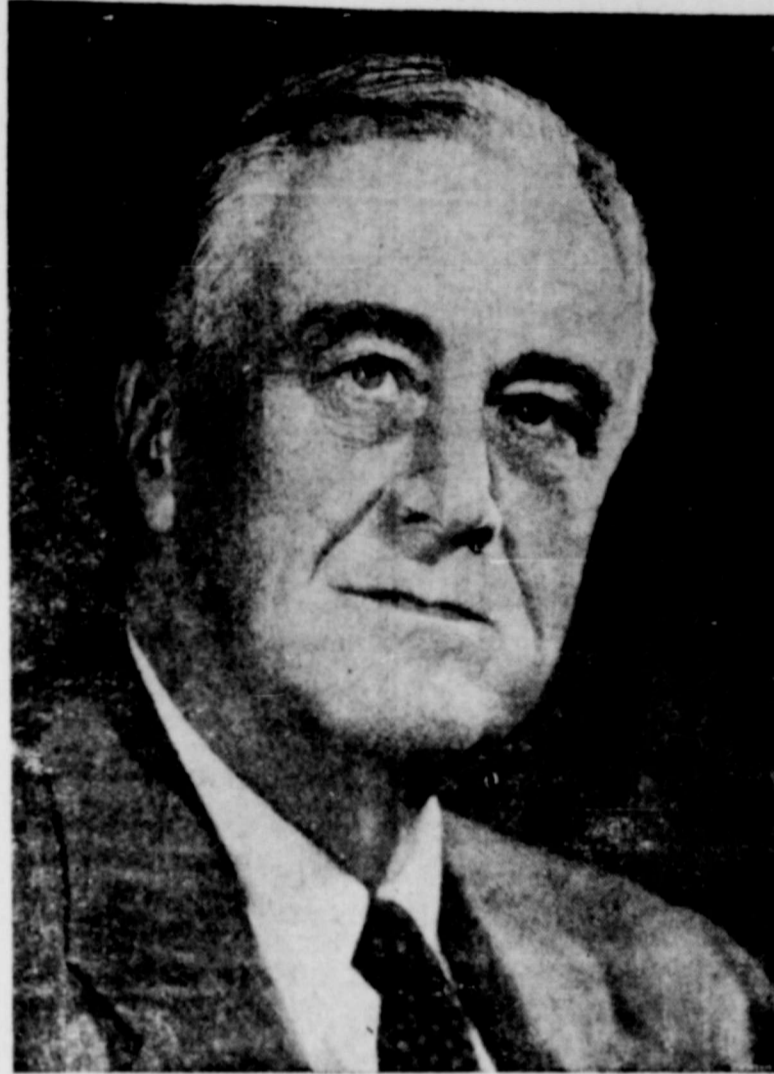
Horace F. Bishop In Continuous Combat 71 Days

With the First Cavalry Division on Leyte—It wasn't the Japs so much that were tough but the terrain we had to fight them in", says Private First Class Horace F. Bishop of Floydada, Texas.

Fighting in the battle for the liberation of the Philippines since the latter part of October with the First Cavalry Division Bishop's regiment was in continuous combat for seventy-one days. Action in the Leyte mountains proved a test to the American fighting machine both in the opposition encountered and in the supplying the front line troops. Ammunition and rations were carried to the cavalrymen most of the time by pack trains of Filipinos enlisted to help drive the Japs out of Leyte.

Bishop, son of Mr. and Mrs. W. J. Bishop of Floydada, entered the army in March, 1941, and took his basic training at Fort Bliss, Texas. A veteran of the Admiralty Islands campaign, he has been overseas with the division since July, 1943. Two brothers, Staff Sergeant Howard W. Bishop, and Private First Class Fred M. Bishop, are serving in the Air Corps.

Roosevelt and Truman Were Inaugurated Saturday in Short Ceremony



FRANKLIN D. ROOSEVELT



HARRY S. TRUMAN

Don C. Thomas Given Promotion at Camp Claiborne

Camp Claiborne, La.—Don C. Thomas, son of Mr. Alfred Thomas of Floydada, Texas, has been promoted from Private First Class to T-5, according to Col. L. H. Hill, commanding officer of the 10th Engineer Group, T-5 Thomas is in the Corps of Engineers in Army Service Forces of the United States Army. He entered service on August 23, 1940.

A. B. Clark Honored From Houston Loan Meeting

A. B. Clark, secretary-treasurer of the Floydada National Farm Loan Association, has just returned from Houston where he spent two days at a meeting held by the 27-year old Federal Land Bank of Houston to honor the secretary-treasurers of the 20 national farm loan associations of Texas making the largest number of loans in state during 1944.

The secretary-treasurers were guests of the officers and directors of the Land Bank and the Federal Credit Administration at their annual meeting.

The Floydada association made 52 loans during the year. The association has outstanding long-term farm and ranch loans aggregating \$1,099,701.51. The association is owned entirely by the farmers and stockmen using services in this area.

Officers and directors of the Floydada National Farm Loan Association are: President, W. G. Gates; vice-president, J. A. Lloy; M. L. Probasco; G. C. Collins; Norman Hamilton, all of Floydada.

Texas Legislation On Education Favors Teachers

Austin, Texas, January 25th.—The Texas House threw the rule book out the window last week to pass and send to the Senate an emergency appropriation to aid some 15,000 rural school teachers and 400,000 Texas pupils.

The \$1,575,082 appropriation would give teachers \$75 more per month for the last four months of the current school year. It would allow rural school districts \$60 more per teacher a year for purposes other than salaries, and would increase transportation allowances for pupils \$1 per capita a month.

Rep. Bob Proffer of Denton, sponsor of the House legislation, declared "hundreds of rural teachers" have been leaving their jobs because of low salaries. Sen. G. C. Morris of Greenville will press for early action in the Senate, since the bill as it is now written must be passed by Feb. 1 for teachers to receive the maximum benefits of \$300 this year.

Gov. Coke Stevenson submitted as emergency matter the proposal to amend the state equalization law so to increase rural teachers' salaries.

A movement to increase state employees' pay would also benefit University of Texas and other college-level teachers in State-supported institutions. Sen. James A. Stanford and Rep. H. D. Pruett, both of Austin, are sponsoring legislation to increase state workers' pay to meet increased living costs.

Mrs. John A. Hollums left Saturday night for McAllen, Texas, where she will spend two months with her husband, who is there for his health. Mrs. Walter Collins has charge of the Duncan Abstract Company while Mrs. Hollums is away.

Out of a class of 40 registered nurses at the University of Texas, nearly all have applied for military service with the Army or Navy. Miss Emma Pope, assistant professor of nursing education, reports.

New Electron Microscope is Installed By U of Texas

Austin, January 25.—Installation of the University of Texas' new electron microscope—the only one of its kind in the South—will soon be underway, C. Read Granberry, professor of electrical engineering, has announced.

The microscope is one of only 12 manufactured last year under strict war priority, and it is useful in determining the basic physical properties of matter. It will be of value to engineers, geologists working in metallurgy, physical chemists, and other scientists, Mr. Granberry says.

While the ordinary microscope magnifies up to about 2,000 times the normal size of any object, the electron microscope—which magnifies beams of electrons, instead of light waves—magnifies up to 100,000 times.

A special laboratory in the University's main engineering building has been prepared for the microscope. It contains a spectrophotometer, which was built two years ago by University electrical engineers to identify color accuracy; a darkroom, air-conditioner to stabilize atmosphere changes, and other electrical equipment. L. L. Antes, special instructor in electronics and microscopy specialist, will be in charge of the microscope.

An appropriation for the microscope was made by the 48th Legislature, and purchase price plus installation charges will be approximately \$15,000.

VALIDATION OF FOOD RATION STAMPS ANNOUNCED

District Food Rationing Officer Opal L. Wood has announced the validation of food ration stamps for both processed foods and meats and fats for the coming month.

Six red stamps to become valid on January 28 are Y5, Z5, and A2, B2, C2, and D2. Five blue stamps to become valid on February 1 are H2, J2, K2, L2 and M2.

They say you are an old timer if you can remember when a bureau was a piece of furniture.

Technical Study of Petroleum Industry

One of the far-reaching services performed by the University of Texas Bureau of Industrial and Business Extension Training is that of serving foreign countries, as well as the Army, Navy and United States in technical study of the petroleum industry.

James R. D. Eddy, recently made director of the Bureau, re-

ports that 27 foreign nations have purchased the most recent text on training in the oil industry.

Demands for the most recent text, tenth in a series published by the University, have exceeded the original 600, and 1,000 more texts are being prepared for sale at cost.

One sacrifices but little in exhibiting good manners, and gains much.

The speed of the whirling winds of a tornado is estimated as equaling or exceeding that of a tornado.



The Quickest way to lose \$25

There's nothing to it... All you have to do is take one of those \$100 War Bonds for which you recently paid \$75... go to your bank and say... "I want to turn this in." The bank takes your \$100 War Bond—gives you \$75. And you lose \$25—just like that!

Isn't that an easy way to drop \$25? And isn't it a foolish way? Most people think so! That's one reason why they're holding on to their War Bonds. They don't know any easier way to make \$25. Do you?

**KEEP FAITH WITH OUR FIGHTERS
BUY WAR BONDS FOR KEEPS**



OFFICIAL U. S. MARINE CORPS PHOTO
Red Cross recreation hut serving a Marine Corps transient in the Pacific, Private First Class Clyde E. Connelley, of Floydada, Texas, is seen with Mrs. Dorothy Petitmaire, of Dallas, Texas, who is organizing. At the right is Mrs. Emma Pope, of Dallas, Texas, Private First Class Hugh D. Whitaker, of Donie, Texas.

GRAHAM
By HUNTER

POSSUM FLATS... THE LOCAL GROUCH IS A CHANGED MAN



Industry

Expands With War

the war, the aircraft industry progressive but relatively slow in manufacturing transportation equipment. Total employment in the entire aeronautical industry in the beginning of 1940 probably exceeded 100,000 workers. In airplane plants, the largest of the industry, received, on average, \$27.85 weekly in demands of war have made aircraft industry, in four years, the nation's major industry in terms of employment and production. Some observers flatly state that aircraft manufacturing is now five times larger than the industry was at its peak, diverting to war production. Employment is concerned nearly correct.

Employment in the aeronautical industry was reached in the latter part of 1943, when about 2,100,000 workers—20 times the number of workers earlier. By August of 1944, aircraft employment had increased 14 per cent from the peak of 1,800,000. Wage earners in automobile, body and parts factories numbered 448,000; in 1944 before conversion, 513,000. Weekly pay envelope of the automotive worker in 1940 was less than the corresponding of the airframe worker, amounting to \$34.08. In August, 1944, the same worker was getting the average.

of Remarriage

Is High in Country

Remarriage is an important part of the country's vital statistics, since of every eight marriages, one has been remarried before. The rates of marriage among widowed or divorced are high as for the single. For both single and separated, the average age of marriage is from 20 to 25 for men and from 25 to 29 for women. New England marriages, representative of the whole country, shows a very rapid drop in divorce rates.

Remarry far oftener in the United States than do women, and marry much younger. The male head of a broken home needs and gets a wife, a wife with dependent children, and is often handicapped in rearing them because frequently funds for widows, and often in wills as well, require allowance be stopped if the remarries.

Remarriage rate among the divorcees is remarkably high, which suggests that divorces among young people are stimulated by thought of an immediate re-

Washday Hazard

It may be a hazardous one to take similar precautions against electrical shock are taken in the home. To guard against an insurmountable breakdown in the machine, a possible dangerous shock, an electrician connect a spreading wire between the motor of the washer and a water pipe. With such a wire in place, a breakdown will be immediately by blowing of all shocks around the home attributed to live electrical current. When the atmosphere is charged with electricity may be injured by a person's body as he walks across a rug or a mat. If while holding such a metal object the person touches a metal object he receives a mild but harmful shock.

Plasticize Porkers

Domestic hog—scalding to remove hair in butchering may be "out," replaced by a new method. In the new process, porkers are plasticized and the hog is submerged in a liquid plastic, then pulled out with the sticky stuff. Properly cooled, the plastic is peeled off, taking all the hair with it. The process is quick, clean, and economical.

Plastic used is a resin chem-

ical being used on one hog after another and used again and again. Bristles, whiskers, stubble and hairs are removed from the hog. It is reused. They are suitable for commercial uses if they had been removed by the scraping method.

Hay Frame Moving

A handy device for removing a hay frame from a wagon may be made from two spikes, two-by-four feet long; one eight foot long for the handle jack and three eight inch bolts and one iron hook. To assemble, bolt the two two-by-four between the five foot lengths, letting one end extend beyond them 18 inches. Bolt an iron hook in the end of the extension. Bolt a block of two-by-two between posts 10 inches from the center of the frame and to hold them securely together. Bolt the two posts together at the bottom. The length of the handle could be governed by the length of the wagon to be used. To remove the frame, insert the hook in the center of the frame and pull on the handle tilting the desired directions to remove the frame or put it on the wagon.

THE STATE OF TEXAS
COUNTY OF FLOYD

Sheriff's Sale

Whereas, on the 3rd day of November A. D. 1944, in a certain cause numbered 3394 T5 on the docket of the district court of said county, wherein The State of Texas and the County of Floyd are Plaintiff, and Dorsey Baker and Burton Thornton are Defendants, the said plaintiff, intervener, and or impleaded part, defendant, recovered and were awarded judgment in the amount of \$1,355.29 Dollars for taxes, and legal amount of penalties, costs and interests computed thereon, together with the foreclosure of its their delinquent tax liens upon the property hereinafter described as the property of the defendants, because of non-payment of the taxes due thereon;

And whereas, on the 5th day of December, A. D. 1944, by virtue of the said judgment and the mandates thereof, the Clerk of the District Court of said County did cause to be issued an Order of Sale, commanding me as Sheriff of said County to seize, levy upon and sell in the manner and form as required by law the hereinafter described property as the property of the above defendants, to satisfy the said judgment.

Wherefore, by virtue of the said Judgment and said Order of Sale, and the mandates thereof, I did on the 5th day of December, A. D. 1944, seize and levy upon, as the property of the above defendant, the following described real property, situated in the county of Floyd and State of Texas, to-wit:

1st Tract: All block 5, Original town of South Plains, Floyd County, Texas.

And I will, on the first Tuesday in the month of February, A. D. 1945, the same being the 6th day of said month, proceed to sell all the right, title and interest of the defendants, in and to said property, at the Court House door of said County, in the town* of Floydada between the legal hours provided for by law, to the highest bidder for cash as completely as I can convey; subject, however, to the rights of the defendant, to redeem same in the time and manner provided for by law, and subject to the further rights of the defendant to have said property divided and sold in less divisions than the whole. And in event there are no bidders, said property will, at said sale, be bid off to the State of Texas and the County, of Floyd.

Dated at Floydada, Texas this 2nd day of January, A. D. 1945.

LEE HOWARD,
Sheriff Floyd County, Texas.
*Strike word not needed. 4-4tc

When some men discharge an obligation you can hear the report for hours.



Buy Genuine
FORD PARTS

WHY?

1. Best grade material, selected for the work it is to do.
2. Genuine Ford parts, designed by Ford engineers are bound to fit better.
3. The result is increased performance, longer life for your auto.
4. Price is usually lower. Ford gives you the advantage of immense production.

Bishop Motor
Company

P. S. Ford Batteries for Most Makes of Cars.

The Most Beautiful GARMENT

YOU HAVE EVER OWNED MAY WELL BE IN THIS

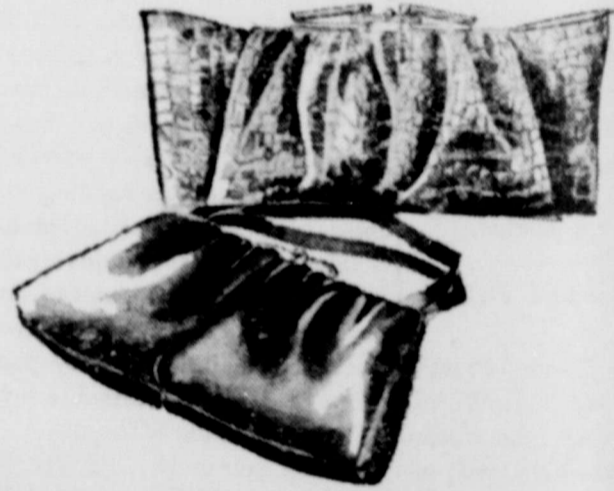
Mid-Winter Showing

OF ALL WOOL COATS AND SUITS

A Betty Rose Coat or Suit is your assurance of choice quality and durability in fashion. See them.



NEW MID-SEASON FELTS—
In Blacks—Pastel Shades



PURSES—A Large Assortment Here

FABRICS, PATTERNS, ALIGATOR, KID—COLORS ARE BLACK, BROWN, AND LUGGAGE. OUR SELECTION IS COMPLETE.



LONG SLEEVE
White Blouses
OTHER BLOUSE IN
Jersey and
Sheer
MATERIALS.

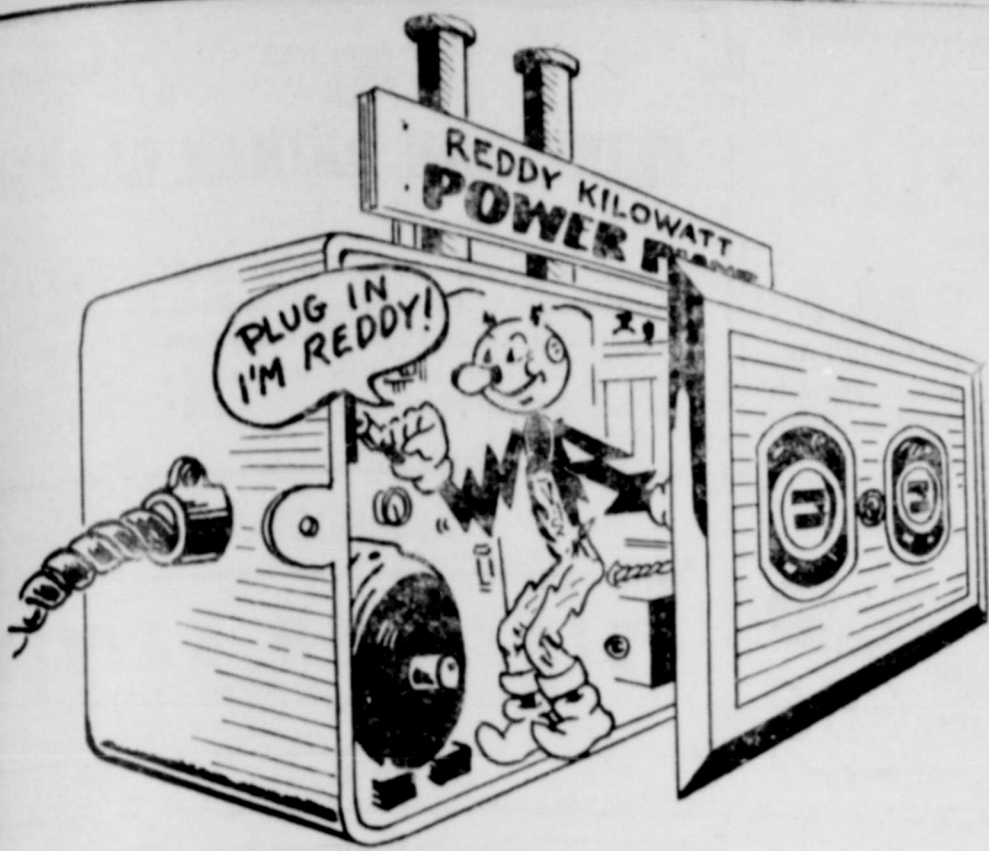


Gloves

Well assorted
Colors in Fabric
Gloves.

STYLE SHOPPE

"Always Showing Newest Things First"
Mrs. Mollie A. Morton, Owner. Telephone 17



Place orders here for IMMEDIATE delivery!

Wartime shopping has certainly cooked up a lot of headaches, what with shortages, delays and substitutes. When you come to electric service, however, the story is different. You get it when you want it. Your nearest outlet supplies you at once. It's really your own private power plant. When you want to order electricity, just plug in. You needn't write a letter, make a trip down town, or even phone. You don't have to tell us in

advance how much you want. When is your order filled? In a fraction of a second!

All this service comes to you at less than pre-war prices. Electricity is the biggest bargain in your household budget today. So let Reddy Kilowatt be your household servant. He's always prepared to work, stronger than a horse, can handle many jobs at once, and is right at your fingertips. Just plug in—he's Reddy!

**Southwestern
PUBLIC SERVICE
Company**

Edgar R. Jones is Promoted to Staff Sergeant

An Eighth Air Force Bomber Station, England. — Edgar R. Jones, the son of Edgar F. Jones, of Floydada, Texas, has recently been promoted from the rank of Sergeant to Staff Sergeant.

Since his arrival in the European Theatre of Operations on July 9, 1944, Sgt. Jones has been serving with the veteran 305th Bombardment Group as a ball turret gunner on a B-17 Flying Fortress heavy bomber.

Prior to his entrance in the AAF on January 16, 1943, Sgt. Jones was employed by the Jones Market and Grocery, as a meat cutter.

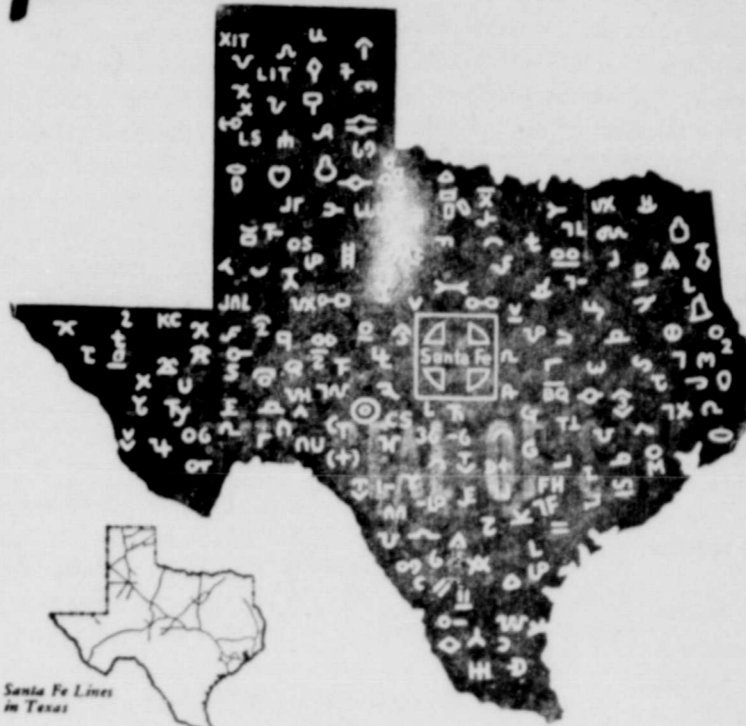
Bulletin Issued On Construction of Outdoor Furnaces

College Station, January 25.—A new bulletin on the construction of out-door barbecue ovens and utility furnaces has been released by the A. and M. College Extension Service, and copies are available from county home demonstration agents.

Miss Sadie Hatfield, Extension specialist in landscape gardening is author of the new publication which is entitled "Barbecue and Utility Furnaces." Several kinds, including those suitable for both urban and rural homes are pictured in the bulletin. Some can be used as trash incinerators and others for heating water on wash days.

Various materials, such as native sandstone, river rocks and bricks are discussed, and pointers given on locating the furnaces and on suitable landscaping for their protection. Blueprints on constructing home-and commercial-size barbecue pits are also available from the Extension Service.

famous TEXAS brands



Santa Fe Lines in Texas

Those brands above (with one exception) stand for cattle—Texas cattle. But look a little closer and you'll see a "brand" that doesn't represent cattle-raising. It stands for a long-time Texas partner in getting those cattle to market. It's the Santa Fe trademark.

minerals. Texas sheep. Texas steers. Texas turkeys. Texas gas. Texas wool. Texas mohair. Texas pecans.

Santa Fe "settled" in Texas in the early 1880's. Since then we have seen the products of Texas lands and factories begin, grow and flourish.

Texans will be interested to note how Santa Fe is keeping in step with the Lone Star State—by increasing yard facilities, lengthening sidings to handle bigger freight loads faster.

After the war your Santa Fe railroad partner will be ready, able and proud to take even more Treasures of Texas where you want them to go—North, East or West.

Cattle isn't all that Texas offers to the nation—not by a long shot.

Texas is the big "all 'round" producer from field, orchard and mine as well as range.

Look at Texas grapefruit. Texas helium. Texas cotton. Texas melons. Texas grains. Texas oil. Texas vegetables. Texas sulphur and other

SANTA FE SYSTEM LINES
Serving 12 Western and Southwestern States

This ad is also running in Eastern newspapers



"Fight Infantile Paralysis—January 14 to 31"

DAIRY OPENS IN MAIN STREET

Patton Dairy completed their new location, 209 Main Street, this week and ready to serve their cus-

tomers. The building where they are was recently vacated by Cleaners, and has been to accommodate the dairy

business.

Mr. Patton will appreciate his customers seeing him at his new location.

THE SOUTHWESTERN HISTORICAL QUARTERLY CARRIES STORY

Austin, Jan. 25.—The "Farmers Alliance" of Texas, which came into being in Lampasas in 1875, and died a natural death in 1900, is told about by Dr. Ralph Smith

in the current issue of The Southwestern Historical Quarterly, published at the University of Texas by the Texas State Historical Association.

Other outstanding articles in the issue are "Ben Thompson, Pistol-Extraordinary" by Paul Adams, and "Perote Fort, Where Texans Were Imprisoned," by J. J. McGrath and Wallace Hawkins.

Let Cavanaugh do your Printing.

NOTICE!

TAX PAYERS—PAY YOUR 1944 TAXES

Your 1944 TAXES are now due and must be paid by the last day of January, 1945, to avoid penalty.

Both men and women are required to pay their poll tax. Unpaid poll taxes are a lien upon any real or personal property you may own, or come into possession of.

Those who were 60 years of age or more on January 1, 1944, are not required to have an exemption to vote; Those who have become 21 years of age since January 1, 1944, or will become 21 before election are required to secure an exemption certificate during January, 1945, before they can vote in any election during the year—no charge is made for these exemptions.

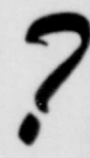
In 1945 automobile license fees cannot be paid before February 1, 1945, but must be paid between February 1, and April 1, 1945.

ETHEL GRAHAM

Assessor - Collector, Floyd County, Texas.

It's Good Business
★ TO USE
GOOD BUSINESS STATIONERY!

- ★ LETTER-HEADS
- ★ ENVELOPES
- ★ STATEMENTS



Are your Letter-Heads, Envelopes, Statement Blanks and other Printed Business Forms an asset or a liability to your business?

Do you know that Good Business Stationery can create a lasting GOOD impression with the firms and individuals you send them to? Why not let us show you samples of some of the nation's leading styles of fine, colorful and distinctive printed business stationery?

We are equipped to design and print YOUR outstanding business stationery requirements. See us today.

**THE
FLOYD COUNTY
PLANSMAN**

QUALITY PRINTING

The Floyd County Plainsman

PUBLISHED THURSDAY EACH WEEK

M. B. CAVANAUGH, PUBLISHER

FLOYD COUNTY \$1.00; OUTSIDE FLOYD COUNTY \$2.00 as Second Class Matter June 23, 1930, at the Post Office at Floydada, Texas, under the Act of March 3, 1879.

NOTICE!

erroneous reflections upon the character, standing or reputation of any person, firm or corporations which may appear in the pages of The Floyd County Plainsman will be gladly corrected if brought to the attention of the publisher.

Age, Livestock Conditions Show Improvement

Station, January 25.—Conditions of Texas livestock age feed rated uniformly at the end of 1955 than at corresponding time 12 months

January 1 report of the Bureau of Agricultural Economics, received by the A. and M. Extension Service shows the continued in good flesh condition of 81 per cent of five points higher than previously, but the same 10 year average. Cold, wet had caused some shrinkage especially in cattle grazing pastures. But grain and supplies, were considerable in most areas if the severity of the winter is not too severe.

report gives sheep and an even higher rating. They good condition and reported 1 per cent at the year end. Compared with 79 per cent ending year, and 83 per cent the 20-year average. Moisture conditions were reported favorable in most of the sheep country although cold weather in winter retarded growth of weeds and grass, early range prospects were promising. More ewes than usual have been to lamb in February. report, prepared by V. C. and F. E. Finley, agricultural statisticians, defines range conditions as continuing average at the close of the year a "more than seasonal" decline during December. Most areas have good range and adequate supplies of feed and roughage, it explains, weeds and grass were making slow growth as a result

PLAINS THEATRE Lockney

SEE IT! GREATEST EVER!
IRRYL F. ZANUCK'S WILSON
 IN TECHNICOLOR
 DIRECTED BY HENRY KING
 Written for the Screen by LAMAR TROTTI

SEE EACH DAY AT 1:00 P. M. 3:45. NIGHT SHOWS AT 7:45 9:45

MISSION: Matinee

DOORS OPEN AT 12:45
 MEN 75c
 LADIES 40c

Night

DOORS OPEN AT 8:45
 MEN \$1.10
 LADIES 55c
 CHILDREN 75c

UNIFORM PRICES INCLUDE TAX Person Must Have a Ticket. TURE EVERY PERSON SHOULD SEE!

Monday and Friday Feb. 1 and 2

Navy Needs Men To Train as Radio Technicians

The Navy needs radio men. Opportunity to train in one of the war's newest and most thrilling fields—"Radar". Radio Technicians have many important duties in the Navy, such as installing, repairing and maintaining radio communication equipment, radio direction finders, submarine detection apparatus and other extraordinary electronic devices. Upon release from the Navy after the war, the Radio Technician will have countless new opportunities open to him. He will have a thorough ground work in ultra high frequency electronics, that will still be unknown to commercial engineers. A Radio Technician will be qualified for many key positions in such fields as television, industrial electronics, broadcast radio, aircraft radio and many other scientific occupations.

Upon successfully passing the Eddy test you may be enlisted as a Seaman First Class, with pay to start with \$66.00 per month. Men who have successfully passed their pre-induction physical examination between the ages of 18 and 38 and men of 17 years of age may take the Eddy test at the Navy Recruiting Station, Post Office Building, Lubbock, Texas any day of the week. The Recruiting Station is open from 8:00 a. m. to 5:30 p. m. and Chief H. A. Lambert of the Navy Recruiting Station urgently requests that you come by and find out first hand complete information that the Navy is offering at this time to Inductees and volunteers. There is absolutely no obligation.

Let Cavanaugh Do Your Printing

FIRST CHRISTIAN CHURCH

OTTO F. MARSHALL, MINISTER
 Bible School 9:45.
 Morning Worship 11:00.
 Evening Worship 7:30.
 Come to Church.
 The Friendly Church With a Spiritual Message.

FOR SALE!!

LET YOUR MONEY WORK—Well located business house for sale. Money invested in this property should bring about 10 per cent per annum. See Cavanaugh at the Plainsman office.

AT FIRST SIGN OF A
COLD
 USE 666
 Cold Preparations as directed

PATTON DAIRY

NOW IN NEW LOCATION
 219 SOUTH MAIN STREET

We are open for business in our new location where we are better prepared to serve you. You can now get pasteurized milk at our conveniently located downtown plant. In Building Formerly Occupied by Stewarts Cleaners.

PATTON DAIRY
 219 SOUTH MAIN STREET

DR. KIBBY J. CLEMENTS

OSTEOPATHIC PHYSICIAN AND SURGEON
 Diathermy, Light Therapy, Colonic Irrigations, New Improved Methods of Curing Piles, Flatula, Pruritis (Itching Piles) by Office Treatment Without Interrupting Daily Routine.

ROOMS 313-315, SKAGGS BUILDING, Plainview, Phone 683

FIRST NATIONAL BANK

Floydada, Texas

19 3--Time Tested Service--1945

IT'S ESSENTIAL—THAT YOU KEEP YOUR CAR FIT—FOR ESSENTIAL DRIVING!

Now it's Fall. And a change of season always calls for overhauling your car. But this year more than any past, it's important that your car's innards get a thorough checking: so that if any part is not in good mechanical condition it can be immediately repaired and not allowed to further deteriorate. Carburetor and timer probably need resetting so you'll burn less gasoline. Spark plugs need cleaning. Friction points need lubrication. It's Fall Checkup time for your car—so drive in!

STEEL FLEX RINGS, TIRES, ACCESSORIES
 An assortment of Steel Flex Rings, Third Grade Tires, and Allied Batteries, and many other needed accessories for your automobile. Come to our store for your needs.

BILL DYER'S AUTO STORE
 WEST SIDE SQUARE

Martha Manning
 "ILLUSION" HALF SIZES

Slim Sophisticate...

#2034—Tailored to give a tall, slender silhouette. Paca-Paca Rayon Crepe button-front dress with trapunto detailed pockets, bracelet length sleeves, well-cut notched collar. Blue Clipper, Park Green, Wine Sparkle, Plum Purple in sizes 18½ to 24½

\$10.95

OUR SERVICE IS YOUR GUARANTEE FOR LONGER USE OF YOUR AUTOMOBILE.

CLINE AND RAINER GARAGE

Let us put your car back on its wheels! Your automobile is priceless today; and a car in fair condition can be overhauled so expertly as to rival a new one in service! Get the habit of checking your car at regular intervals—our trained experts are well qualified to give you advice—and the best service.

Telephone 37

CLINE AND RAINER
 WESTERN AUTO ASSOCIATE STORE

STYLE SHOPPE

"Always Showing Newest Things First"
 Mrs. Mollie A. Morton, Owner. Telephone 17

Martha Manning
 "ILLUSION" HALF SIZES

About Towner...
 (As featured in Good Housekeeping)

#2036—Smart and simple... Black Paca-Paca Rayon Crepe coat dress with a frothy White Organza jabot at the neckline for that fresh, feminine look. Sizes 16½ to 22½

\$10.95

Martha Manning
 "ILLUSION" HALF SIZES

Your Coat-Classic
 (As featured in Vogue)

#2184—Casual and correct day or night... a tailored softened with delicate self-color embroidery on the bodice. Colonial Rayon Crepe in Allied Blue, Eagle Grey, Mandarin Purple, and Chinese Green. Sizes 18½ to 24½

\$12.95