

"By Helping Business You Help Yourself"

The Floyd County Plainsman

FLOYDADA, FLOYD COUNTY, TEXAS, THURSDAY, JULY 6, 1944

NUMBER 30

NUMBER 15



JOHN H. KEEFE
John H. Keefe, president of the Texas High Plains Land Improvement Commission, other non-carrier affiliates of the Santa Fe Railway, was elected a vice president of the railway at the regular meeting of the Company's board of directors in Chicago last Thursday.

Progress of Irrigation in the Texas High Plains

Irrigation from wells in the Texas High Plains has reached a new high and the rate of growth during the past ten years is believed to have been unprecedented anywhere in the United States, according to a report released today by the Texas State Board of Water Engineers in cooperation with the United States Geological Survey.

In 1943 approximately 2,950 wells were operated in 14 counties and about 400,000 acres were irrigated from them. This year the number of wells, and the resulting contribution to the war food program, is still greater.

The first successful irrigation from wells on a large scale in the High Plains was started near Plainview in 1911. Moderate success was experienced for a few years and by 1914 about 140 wells had been drilled and equipped with pumping plants. Development was rather slow during the next 20 years and by 1934 only about 300 wells had been drilled and equipped, and only about 35,000 acres were irrigated from them.

The report shows that on the whole the underground reservoirs have withstood the pumping draft very well, and only in relatively small parts of the more heavily pumped territory has there been a serious decline in the water table. In some areas, in fact, where the pumping is light to moderate the water table was higher this spring than it was six years ago in the spring of 1938, due to the heavy ground-water recharge during the exceptionally wet year 1941.

FUNERAL SERVICES HELD SATURDAY FOR GEORGE B. LEWIS

Last rites were held Saturday afternoon at 5 o'clock at the First Baptist Church for George B. Lewis, age 62, who died in the Plainview hospital June 30, 1944, following an illness of several days. Rev. L. A. Doyle, pastor of the local church, officiated. Interment was made in Floydada Cemetery with Harmon Funeral Home in charge of arrangement.

Mr. Lewis was born January 1, 1882, in Hill County, Texas, and moved to Summervell County in 1903 and to Johnson County in 1920 and from Johnson County he moved to Hall County in 1921. In 1923 he moved to Floyd County where he had made his home. For more than a year Mr. Lewis had been employed by the City of Floydada.

He was married to Miss Fannie Bell Eddy December 23, 1901, in Summervell County. Deceased is survived by his wife, one son, Carl B. Lewis, of Presque Isle, Maine Air Corps; three daughters, Mrs. J. F. Patterson, Floydada; Miss Johnnie Mae Lewis, Plainview; Mrs. H. A. Allen, Floydada; seven grand children; four brothers also survive, they are: Bob, Fletcher and Bill, of Hill County; Jim of Munday; one sister, Mrs. Queenie Robinson, Grand Prairie.

Flower bearers were: Miss Mozelle Sells, Mrs. Ollie Combs, Miss Mae Rea Parrott, Mrs. Belma Scott, Mrs. Phillips McPeak.

Pallbearers were: L. A. Horton, Woodrow Wilson, H. K. Reeves, A. O. McCAda, Hugh Nelson, Claud Patton, Curtis Gilbreath, Bun Hopper, Pierce King, W. U. White, J. D. McBrien, and Walton Wilson.

It's hardly reasonable to suppose that thousands of war workers on strike in this country are suffering from invasion jitters.

Success of 5th War Loan Will Meet Acclaim of Men in Field and Prove Nation Is Backing Our Armed Forces

by Gen. Ike Eisenhower

"In moments of crisis involving the safety of our native land, the American people have invariably rallied against the danger with courage, faith and resolution.

"For the past two years we have been in one of these crises, perhaps the greatest in our history. On the battlefield and on the home front men and women are daily making great sacrifices so the freedom in our way of life may be preserved.

"There is now in progress the 5th War Loan Drive to raise money so as to insure that this conflict will be brought to the speediest possible conclusion and with the least loss in lives.



The complete success in the drive will meet the acclaim of the forces in the field and will be renewed proof that all Americans are one solid phalanx of determination in this great war.

"All of us profoundly trust that soon the world may be restored to a just peace. Until we can, with God's help, bring about that happy realization of our dreams, each of us must seek incessantly for ways and means by which the value of our services to our country may be enhanced. Right now we can do so by buying Bonds. Let's make this particular victory a quick and decisive one."

His patriotism is written in

BLOOD.



Yours is written on every Bond you buy in the 5TH WAR LOAN!

THE stepping stones to victory are red with blood of American heroes. Tarawa... Salerno... Cassino. Their patriotism is written in blood.

Your patriotism is written on every Bond you buy in this vital 5th War Loan. Your name on a War Bond means you're behind our invasion troops.

Help hasten the day of Victory by investing in extra War

Bonds now. Invest in more than you've ever purchased before. Invest \$100, \$200, \$300, \$400. Those who can, must invest thousands of dollars.

For this is the biggest job we've ever had to do. We can't fail our fighting men as they plunge into the biggest and bloodiest struggle of all.

WELCOME THE VICTORY VOLUNTEERS when they call to tell you about War Bonds



How to Hold up Summer Milk Production

Milk production usually declines in summer. The principal causes, says E. R. Eudaly, dairyman for the A. and M. College Extension Service, are dry or insufficient grass and other roughages; insufficient or undesirable drinking water; lack of minerals; lack of protection from heat and horn flies. Correction of these defects is the first step toward maintaining full production.

Tender, green spring grass is high in protein and minerals, and both are essential to milk production. As grass matures or dries it loses these elements. If they are not replaced the cow's production has to go down. This may be done by increasing the protein and mineral content of the grain mixture, or concentrates—namely, adding more cottonseed, soybean, or peanut meal. In effect, the protein in the grain mixture must be kept in balance with that in the roughage (grass, silage and hay). Eudaly recommends Extension bulletin B-69 for information upon the protein content of roughage. It may be obtained from the county agricultural agent.

Dairy cows must have all of the roughage they can eat for maximum milk yield. They should have opportunity to fill on grass or other roughage at least twice daily. If grass is short and sparse they should be given hay or silage, or both under good shade. The better the hay and silage the more likely cows are to eat the required amount of roughage. The more roughage eaten the less grain mixture will be required.

An average size Jersey on tender, green grass obtains about 85 pounds of water daily while grazing. But when the grass matures or dries its water content decreases. Accordingly, a cow must drink more water to maintain her production. To persuade her to drink enough, the water should be clean, cool, and accessible so she can get all she needs as often as she wants it. Eudaly says that a cow should and will drink at least three times daily if the water is palatable and near by. It may be necessary to build a shade over the trough to keep the water cool.

A dairy cow needs shade. A tree is fine, but a brush arbor will serve well. To be cool the shade should be at least eight feet high.

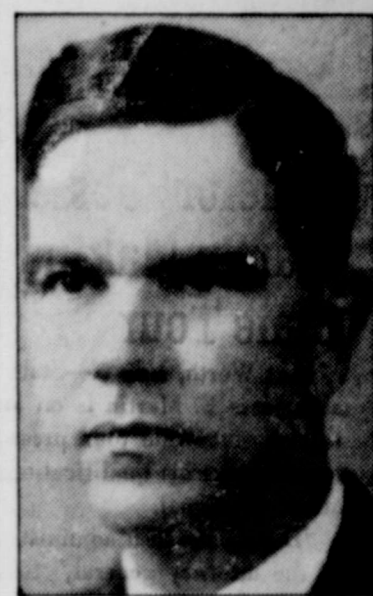
SANTA FE RAILWAY GIVES FIGURES ON OPERATING INCOMES

The Santa Fe's net railway operating income for May was \$4,063,981, according to a statement released by President E. J. Engel, today. This is a decrease of \$1,421,525 compared with May, 1943. Gross for the system was \$42,493,579, an increase over May, 1943 of \$2,638,211. Operating expenses were \$25,982,809, an increase of \$6,289,276 over the same month of 1943. Railway tax accruals were \$11,928,626, a decrease of \$2,140,719 under the same month last year.

Railway tax accruals for five months ending May 31, 1944, include \$49,913,170 federal income and excess profits taxes compared with \$53,254,000 in 1943.

SECOND SUNDAY SINGING WILL MEET AT 2:00

The regular Second Sunday Singing will meet promptly at 2 o'clock Sunday afternoon at the Methodist Church. Everyone is cordially invited to attend. Bring your books and be on time.



Congressman George Mahon

CONGRESSMAN GEORGE MAHON BACK IN DISTRICT

Congressman George Mahon is taking advantage of the recent recess of congress to visit among the people of the 19th District. Mahon is a candidate for re-election and this week he issued the following statement to the people of Floyd County:

"Congress is in recess and I have returned home to visit among the people of our Congressional District. In our District there are 25 counties, dozens of towns and more than a quarter million people. Naturally, I will not be able to see a large proportion of the people between now and the Primary, July 22.

"This is meant as a personal word to the people of Floyd County. You have been generous to me beyond measure in the confidence you have shown in me and the support you have always given me. I have aggressively championed the rights of our people, seeking in every possible way to serve our people and our nation well in matters great and small.

"Our problems and difficulties have been many. I know that you are interested in many matters but that the war and the welfare of your sons in the service are your greatest concern.

"Our country's progress in the war has been amazing. I join you in the hope and prayer that victory will come sooner than we can now foresee. I have great faith in the stability and future of our country. Victory, peace for the longest possible span of years, and a better America for all our people are uppermost in my thinking in my service in Congress.

"I warmly thank you for the opportunities for service which you have given me and I pledge my best in the difficult and traditionally important days ahead."

(Political Advertising)

INNER TUBES REMOVED FROM RATIONING OPA ANNOUNCES

Moving to conserve tires by making new inner tubes more readily obtainable, the Office of Price Administration has announced the removal of all inner tubes from rationing. In explanation, officials stated that a good tube properly inflated will extend the life of a tire.

The inner tube stockpile has grown enough to meet the anticipated future demand for 1,500,000 tubes a month. At the same time, officials estimated that conditions would prevent "A" gasoline card drivers from receiving tires until early next year.

Miss Doniece Cline, daughter of Mr. and Mrs. H. O. Cline, recently accepted a position at the Naval Air Base at Corpus Christi, Texas.

It's a wise teacher who knows how to use something besides a ruler to make a pupil smart.

Sgt. Andrew J. Brown is Killed in Action

Tech. Sgt. Andrew J. Brown, 36, top turret gunner and engineer of a Flying Fortress based in England, was killed in action June 4.

He was the son of Mr. and Mrs. Guy M. Brown of Jayton and a former druggist in Floydada. He had been overseas since February 3 and had been awarded the Air Medal with four clusters and the Distinguished Unit Badge.

Sgt. Brown had worked in Anson, Spur, Plainview, Tahoka and Lamesa before entering the armed services. He was a football, basketball, baseball and track star at Jayton High School.

The speed of the whirling winds of a tornado is estimated as equaling or exceeding that of a tornado.

More Blue Stamps Good for Buying Processed Food

Five more blue stamps totaling 50-points, W3, X3, Y3, Z3 and A5, were good for buying rationed processed foods on July 1, the Office of Price Administration announced this week.

During July, officials said, many housewives will use all of the first strip of blue ration stamps in War Ration Book IV and will begin using the second strip. The first stamp in this strip is A5.

The first strip of stamps had the figure "3" on them. The figure "5" is printed on stamps in the second row. These figures serve for identification of the stamps only, and have no connection whatever with their value. All food ration stamps are worth 19 points.

GUEST IN G. C. TUBBS HOME OVER WEE KEND

Judge and Mrs. G. C. Tubbs had as their guest over the week end, L. and Mrs. Richard Tubbs of Oklahoma City; Frank S. Henderson and son, Jimmie, of Carson, Kansas; Mrs. Ray Rankin and daughter, Leota, of Elk City, Oklahoma; Mrs. Mary Louise Clark, of Lubbock. Also visiting with Judge and Mrs. Tubbs, are Mr. and Mrs. Wilmer Jones, and son, Clifford, of Long Beach, California.

RETURNS TO FLOYDADA TO MAKE HOME

Mrs. Addie Thagard arrived Friday from Elsinore, California, where she has made her home for several years. Mrs. Thagard plans to make her home in Floydada. At present she is visiting her daughter, Mrs. Oliver Allen and Mr. Allen.

Let Cavanaugh Do Your Printing.

The Floyd County Plainsman

PUBLISHED THURSDAY EACH WEEK
M. B. Cavanaugh, Publisher

IN FLOYD COUNTY \$1.00; OUTSIDE FLOYD COUNTY \$2.00
Entered as Second Class Matter June 23, 1930, at the Post Office at
Floydada, Texas, under the Act of March 3, 1879.

NOTICE!

Any erroneous reflections upon the character, standing or reputation of any person, firm or corporation which may appear in the columns of The Floyd County Plainsman will be gladly corrected upon its being brought to the attention of the publisher.

Senator Jesse E. Martin Making State Tour

Fort Worth, July 6.—State Senator Jesse E. Martin is on an extensive state-wide tour presenting to the voters his qualifications for attorney general.

"During the next administration of the attorney general," Senator Martin, the next administration of the attorney general," Senator Martin, the only ex-serviceman in this race, is telling the people, "many problems will arise in the attorney general's office that will deal directly with the returning soldier, his widow, his orphans or his dependent parents. I believe an ex-serviceman, otherwise qualified, will be better able to solve these vital problems than a man who has never been in the service."

Senator Martin, who fought with the Marines in France in World War I, advocated soldiers voting without paying a poll tax. He is serving his second term in the Texas Senate and three times was elected district attorney of Tarrant County after serving as assistant. As an assistant federal district attorney he prosecuted in the United States District Court in 99 Texas counties.

While in the State Senate he worked for and helped pass appropriations for old age assistance, teachers retirement, the needy blind and dependent children.

While still a Marine, Senator Martin won a scholarship in Cambridge University in England where he took a post graduate law course. He previously had obtained his law degree from Texas Christian University. He was born on a Texas farm and worked his way through school.

Mr. and Mrs. A. J. Cline left Tuesday for Waco, where they will visit Mrs. Cline's parents, Mr. and Mrs. J. A. Coker for several days.

Let Cavanaugh Do Your Printing.

SUPERINTENDENT GRAVES AND FAMILY MOVE TO FLOYDADA

Superintendent I. T. Graves, wife and daughter, arrived in Floydada Monday to make their home at 300 South Second Street. Mr. Graves is superintendent of the Floydada public schools. He has been superintendent at Crowell for a number of years.

FORMER RESIDENT DIES IN NEW MEXICO

L. E. Williams, former resident of the Harmony community of Floyd County, but who had made his home at Farmington, New Mexico, died at his home there on Tuesday of last week. He was 69 years of age.

Funeral services were held last Thursday afternoon at Farmington, Mrs. Albert Club of Petersburg and a son Elmer Williams of Floydada attended the funeral of their father.

Mrs. Joe Smith was carried to the Lubbock hospital last Thursday. Her condition is critical.

TO CHECK
MALARIA
IN 7 DAYS
take 666
Liquid for Malarial Symptoms.

MARCHING WITH MARTIN THE EX-MARINE



(QUALIFIED!
EXPERIENCED!

JESSE E. MARTIN
FOR
ATTORNEY GENERAL
The Only Ex-Serviceman in the Race!

Something to remember these war-busy days—and nights



When your Long Distance call is going where lines are crowded with war, you may hear the operator say —"Please limit your call to 5 minutes." That helps more hurry calls get through quicker.

SOUTHWESTERN BELL TELEPHONE CO.



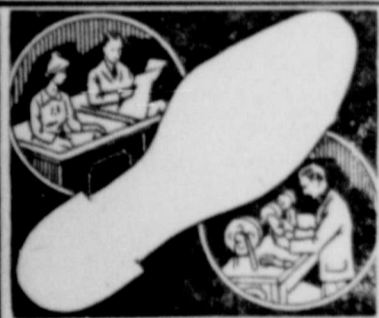
IT'S TIME TO CHANGE TO AN ACTIVE

CONGRESSMAN

Vote for C. L. HARRIS

WHO ADVOCATES FREE AMERICAN BUSINESS ENTERPRISE, FREEDOM FROM BUREAUCRATIC MEDDLERS.

FREQUENT CHANGES OF OFFICIALS MAKES FOR A STRONG DEMOCRACY.



WE CAN MAKE OLD SHOES LOOK ALMOST AS GOOD AS NEW—

We take pride in our expert workmanship. Shoes can be reshaped and made to look almost like new. Bring your shoes in for rebuilding today.

Rainer Shoe Shop
SOUTH SIDE SQUARE

SHORTHAND in 6 Weeks at Home

Fast preparation for a job. Surprisingly low cost. 12,000 taught by mail. Send to leading office and Civil Service. Write for free booklet.

Speedwriting

DENSON SCHOOL OF COMMERCE
CLOVIS, NEW MEXICO



"Can all you can this summer!"

Rows of fresh food crammed with vigor—loads of fun—plus the teamwork with nature that inspired our forefathers to fight for the freedom of their own good earth—food leads the parade toward Victory—through America's gardens and "fruited plains"—on the road laid out by her patriotic home canners! SAVE FOOD POINTS—CAN YOUR OWN!

Southwestern PUBLIC SERVICE Company

PRINTING!

TELL US OF THE JOB AND WE'LL DO THE WORK CORRECTLY AND PROMPTLY.....

We have modern type and equipment to handle the work in an efficient manner, which results in most moderate cost to the buyer. When you order printing from our plant you may depend upon it that the work will be done to your complete satisfaction.

- LETTERHEADS
- ENVELOPES
- BOOKLETS
- BUSINESS STATIONERY
- WEDDING ANNOUNCEMENTS
- FOLDERS
- CIRCULARS
- SHOW CARDS

NO MATTER WHAT THE PRINTING JOB MAY BE, WE WILL DO IT RIGHT.

Cavanaugh Printing Company

S. Marsh Made Assistant to Santa Fe President

July 6.—The appointment of E. S. Marsh, formerly of Santa Fe, as one of the assistants to the president of the Santa Fe Railway, recalls the long period during which the appointee worked in the Santa Fe Railway.

Mr. Marsh, who has had a rapid rise in the railway business, was first employed as a file clerk in the president's office at Clovis, N. M. He was born in Lynchburg, Virginia, and his parents moved to Clovis when he was a child.

After receiving his preliminary education in the grade and high school at Clovis, he started as a file clerk in the president's office at Clovis. He became in turn assistant auditor and then division auditor. In 1923 he was appointed chief clerk of Division Accounting. In 1928 he became auditor of disbursements at Amarillo. At that time he became widely known throughout the P & S F system.

He was transferred to Santa Fe, Kansas, as general clerk and auditor of disbursement's office. He was made chief clerk in January, 1940. He was auditor of disbursements of the same year. He was chief clerk in the President's office in September, 1942. In that position he held until the present time.

Political Announcements

Those whose names appear below were authorized by the Floyd County Plainsman to announce their candidacy for nomination for office under which their name is subject to the action of the Democratic Primary Election on July 22, 1944:

CONGRESS

George Mahon—Re-election

DISTRICT CLERK:

W. P. G. Stegall

COUNTY TREASURER:

O. M. Conway

COUNTY CLERK:

Marjaret Collier

ASSESSOR-COLLECTOR:

W. B. Marshall

Edith Graham

COMMISSIONER PRE-DISTRICT NO. 1:

W. H. (Bill) Brock

COMMISSIONER PRE-DISTRICT NO. TWO:

W. R. Harris

COMMISSIONER PRE-DISTRICT FOUR:

W. R. Calhoun

COUNTY SCHOOL SUPERINTENDENT:

Lawrence Guffee

CANDIDATE FOR DISTRICT JUDICIAL SEAT NO. 110th JUDICIAL DISTRICT:

Richard F. Stovall

COUNTY JUDGE:

W. C. Tubbs

W. E. Grimes

SHERIFF:

W. Howard

FOR SALE!!

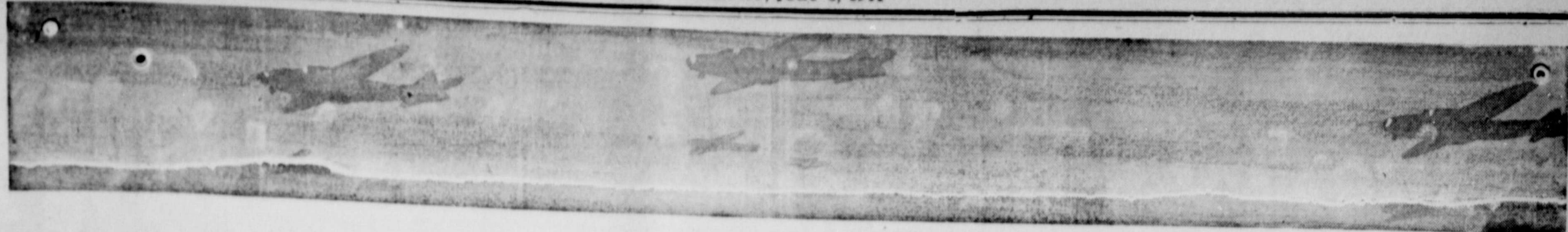
Acres of land one mile east of town. Improvements consist of good four room stucco house with electricity, well and pump, good chicken house and all fenced hog proof. If interested in this well located property, see H. O. Cline, Phone 37.

YOUR MONEY WORKS!

Invested in this property should bring about 10 per cent per annum. See Cavanaugh at Plainsman office.

WANTED — Man's Gold Watch

on side walk South side of town. Owner describe, pay for receipt property.



YOUR INVASION!



FROM General Bradley, leading the Invasion ground forces, right through every rank, American men now face a brutal, desperate, able enemy. For this invasion has only begun—before our fighters lies a hard and bloody task, one that demands all *their* courage, backed by *all your faith* in their ultimate victory.

That faith will be tested many times in this invasion—in grim struggles, setbacks, possibly even temporary defeats. It will be up to you to remember that early victories usually only mean more

savage opposition from a foe made more bitter, more ruthless as the shadow of his doom grows larger—up to you to keep that faith in days and nights of gloom as well as in hours of triumph.

There is little that you can do to show that you realize what *they* must face, perhaps for many months. But one thing you *can* do—back the attack with every dollar you can spare! Let the Bonds you buy in this greatest of Drives be the measure of your belief in their ultimate victory!



BUY YOUR INVASION BONDS TODAY!

This is an official U. S. Treasury advertisement—prepared under auspices of Treasury Department and War Advertising Council

- Farmers Grain Company
- The First National Bank
- H. G. Parker Furniture Company
- Westers' Bakery
- Higginbotham-Bartlett Company
- Dale Strickland Butane Company
- Stansell-Collins Company

- Producers Cooperative Elevator
- Style Shoppe, Mrs. Mollie A. Morton
- G. C. Tubbs Insurance Agency
- Plains Cooperative, Inc.
- Rice Hatchery
- Floyd County Plainsman
- White Drug Company

- Henry Edwards Elevators
- Nichols Lumber Company
- Arthur B. Duncan Abstract Company
- Radio Electric Company
- A. V. Stewart's Cleaners
- Bishop Motor Company
- Patterson's Fruit Stand

Erisman Fights for State Rights In his Campaign

Longview, Texas, June 6.—Declaring his stand to be one unalterably opposed to the encroachment of various agencies and bureaus on the powers delegated to state by constitution, Fred Erisman, District Attorney of the 12th Judicial District at Longview said that "Texas News an Attorney General," now, more than ever before.

"With some agencies creating rules which they look on as laws," Erisman said, "and acting as police officers, judge and jury, it is time for Texas to fight to protect its state rights. We must never lose the power of electing public officials to bureaus and agencies. It is high time for Texans to declare themselves at the polls and elect officials who will fight to protect the liberties, freedoms and rights of Texas boys now fighting all over the world and to keep Texas free for them when they return."

Erisman campaigned during the past week in West Texas and the Plains Country. This week he presided at the annual meeting of the District and County Attorney's Association of Texas of which he has served as president during the past year. Next week he will campaign in South Texas and the Valley.

MILTON G. JETTON IS AWARDED THE BRONZE STAR MEDAL

Somewhere in the Pacific.—Milton G. Jetton, seaman first class, U. S. N. R., of Floydada, was awarded the Bronze Star Medal and citation for heroism and meritorious achievement as a member of the beach party of this assault transport in the assault on and capture of Tarawa last November.

The presentation was made at appropriate ceremonies aboard this ship by the Commanding Officer, Captain P. F. Dugan, U. S. N., for Admiral Chester W. Nimitz, U. S. N., Commander-in-Chief of the U. S. Pacific Fleet.

Seaman Jetton, who entered the U. S. Navy March 29, 1943, was born March 5, 1909 in Hillsboro, Texas, son of Robert M. Jetton and the late Mrs. Flora Jetton of Rt. 3, Arlington, Texas. Jetton married the former Clara Mae Craft, who resides at 214 West Tennessee Street, Floydada. Seaman Jetton has participated in operations at Kiska in the Aleutians, Tarawa in the Gilberts, Kwajalein and Eniwetok in the Marshall Islands.

The citation read by a Captain Dugan for Admiral Nimitz follows:

"In the name of the President of the United States, the Commander-in-Chief, United States Pacific Fleet, takes pleasure in presenting the Bronze Star Medal to Milton G. Jetton, Seaman First Class, U. S. N. R. for services set forth in the following:

"For heroism and meritorious achievement as a member of the Beach Party of an assault transport during the assault on and capture of Tarawa, Gilbert Islands, 20 to 24 November, 1943. This Beach Party was the first one to be established on the deck in the assault. After making five attempts to reach the dock and being driven off by enemy gunfire he aided in finally establishing this Beach Party on the end of the dock, still under fire. There he worked continuously for three days under great difficulties and harassing sniper fire to unload badly needed ammunition and supplies. Throughout this operation his conduct was in keeping with the highest traditions of the naval service."

The average American man at war is 25.1 years old. We don't know the average of the married ones fighting at home.

Farm Labor Placement in Texas

College Station, July 6.—The tight spot in the current farm labor situation is in the Panhandle and South Plains where the wheat harvest is underway, according to C. Hohn, state farm labor supervisor for the A. and M. College Extension Service. More than 1,200 tractor drivers, 800 combine operators and several hundred additional farm laborers are needed at once to bring in the crop.

Meanwhile the 4,000 war prisoners available for farm labor in Texas have been placed. Hohn explained that temporarily war prisoners can be used for all emergency farm work, but when the rice harvest begins about August 15 that work will have priority upon their services, and as many as may be needed will be moved to the rice growing counties. At

present, the majority of the war prisoners are employed in chopping cotton. Among the counties using them are Taylor, El Paso, Brown, Cooke, Kaufman, Lamar, Limestone, Navarro, Rockwall, Exar, Montgomery, Trinity, Walker, Brazos, Burleson, Robertson, Brazoria, Colorado, Fort Bend, Galveston, Harris, Liberty, Matagorda and Wharton.

Reports received by the supervisor from 130 counties show total placements of 6,277 non-farm youths in farm work through June 16. Navarro reported 658, Brown 483, and Falls 400.

A survey shows that choppers are needed in the major cotton counties of the coastal prairie counties and also in the Trans-Pecos region, where ranch hands also are needed. Chopping in the low rolling plains area is well advanced in several sections. Except in isolated instances conditions elsewhere are fairly satisfactory, Hohn says.

In most counties of the central

and northern blacklands available labor will be sufficient if the weather remains fair. Small grain harvest in this area is making satisfactory progress, with a few counties reporting the work almost completed.

Continued rain and shortage of farm hands have aggravated work-

ing the crops in Caldwell County, but elsewhere in the southern blacklands area satisfactory progress with crops is reported. Progress in east Texas varies from satisfactory to poor. Many farmers are taking up non-farm work as soon as crops are in condition to be cared for by their families.

DR. KIBBY J. CLEMENTS

OSTEOPATHIC PHYSICIAN AND SURGEON

Diatomy, Light Therapy, Colonic Irrigations, New Improved Methods of Curing Piles, Fistula, Pruritis (Itching Piles) by Office Treatment Without Interrupting Daily Routine.

ROOMS 313-315, SKAGGS BUILDING, Plainview, Phone 683

FIRST NATIONAL BANK Floydada, Texas

1903—Time Tested Service—1944

LET us DO YOUR LATHE WORK

We have two Lathe machines and are prepared to do many jobs which will save you time and money on repairing your farm equipment and other machines where lathe work is required to make the adjustment.

Steel Flex Rings, Tires, Batteries

We carry in stock a large assortment of Steel Flex Rings, Third Grade Tires, and Allied Batteries. Come to our store for your needs.

BILL DYER'S AUTO STORE WEST SIDE SQUARE

OUR SERVICE IS YOUR GUARANTEE FOR LONGER USE OF YOUR AUTOMOBILE.

CLINE AND RAINER GARAGE

Let us put your car back on its wheels! Your automobile is priceless today; and a car in fair condition can be overhauled so expertly as to rival a new one in service! Get the habit of checking your car at regular intervals—our trained experts are well qualified to give you advice—and the best service.

Telephone 37

CLINE AND RAINER WESTERN AUTO ASSOCIATE STORE



"Daisies Don't Tell"
AN EXCLUSIVE

Dress of Burma rayon Crepe with bouquet of daisies and white piping as seams. In Horizon Blue, Peppermint Pink, Lemon Yellow, Sizes 9 to 15.

\$8.98

STYLE SHOPPE

Mrs. Mollie A. Morton, Owner

Telephone 17

"Just Ducky"

AN EXCLUSIVE



Burma rayon Crepe duck print. Duck buttons full length. Softly tailored blouse, knife-pleated skirt. In Grey Mist, Rio Blue, Mecca Tan. Sizes 11 to 17.

\$8.98



"ILLUSION HALF SIZES"

1668—This sweet-slimming dress of washable pearly printed sheer Spun Rayon is a "must" in a smart woman's wardrobe! Bands of white lace trim the bodice... and you'll like the soft, action-pleated skirt. Pink, Aqua, Purple, in sizes 16½ to 22½... \$7.95



"Martha Manning JUNIOR STYLES"

"Sheer Ma...
Shadowy lace trims this...
k Enka Rayon Sheer "dress"
You'll love it as a cool ch...
your casual cottons. In...
Navy, sizes 14 to 20



"Sheer Shopper"
A dress to carry you beautifully from a day in town to an evening on the country club terrace. Crystal pleating outlines the yoke and styles an apron front. Enka Rayon Sheer Georgette in Red, Brown, Navy, or Green, sizes 14 to 20.

\$10.98

"Martha Manning JUNIOR STYLES"



"ILLUSION HALF SIZES"

I Dream of a Dress...
This cool printed Ripple Rayon Sheer... So soft and feminine... yet tailored, too, with rows of drawwork on the bodice, unpressed pleats, and self-fabric flower trim. In Pansy Purple, June Rose, or Lotus Yellow, sizes 14½ to 20½... \$10.98

STYLE SHOPPE
Mrs. Mollie A. Morton, Owner