

# "By Helping Business You Help Yourself" The Floyd County Plainsman

FLOYDADA, FLOYD COUNTY, TEXAS, THURSDAY, JUNE 29, 1944

## Home Processed Food Stipulations

Regulations regarding the home processed foods on the list are similar to the stipulations, but many Texas consumers still are confused with their responsibilities for various reasons.

The processor may sell home processed foods, but he must observe limitations, explains Murray, home industries extension agent for the Texas A. and M. Extension Service. The consumer must collect ration points in accordance with OPA's regulations of point values, except the point value of home-processed foods never exceeds one point per quart or four points per pound. Any farm woman who fails to collect points for home-processed foods sold in private or rental stores are governed by the regulations, Miss Murray says. She urges home processors to keep accurate records of dates and quantities sold. Points collected must be turned in to the ration board by the tenth of the month.

If permissible, the OPA has a consumer to buy fresh produce from a farm woman and pay the producer by the canning the food. But this action must be carried out in strict accordance with the regulations.

Miss Murray adds that farm women can give away or sell fresh produce, but there is a limit of 50 quarts to the amount of home-processed foods that can be given to any person in any one year without a receipt intended for the house.

## CARMACK INFANT SON DIES SATURDAY

John Milton Carmack, day old infant son of Mr. and Mrs. A. M. Carmack of Dougherty, died Saturday, June 24, in a Lubbock hospital. Funeral services were held Monday, June 26, at the home of J. M. Brownlow, of Dougherty, and burial was made in McAdoo Cemetery.

Harmon Funeral Home had charge of arrangement.

## Assignment Announced by Prewit

College Station, June 29.—Assignment of one new member of the demonstration staff of the Texas A. and M. College Extension Service and reassignment of others have been announced by J. D. Prewit, acting director. Maurine Hearn, vice director and state home demonstration agent, for 12 years in the County home demonstration, becomes district agent for the demonstration work in the central west Texas counties of the Extension District 7.

Former Extension food presentation specialist, Miss Hazel Prewit, becomes assistant state demonstration agent and the district assignments have been made: Miss Lida Cooper, district 4; Miss Bess Edwards, district 8; Miss Zetha D. McInnis, district 9; Miss Beulah Blackwell, district 5. All have been members of the home demonstration for periods varying from one to 23 years.

Miss Casey, the new district agent, was reared in Mills County and received her bachelor's degree in home economics from the West State Teachers' College at San Marcos. She was Caldwell County home demonstration agent with headquarters in Lockhart before she went to Travis County.

## SIMPLE RITES SAID FOR MRS. WILL ROGERS AT GLENDALE, CALIFORNIA

Glendale, California—Members of the Rogers family gathered in Forest Lawn Memorial Park Monday for private Christian Science funeral services for Mrs. Will Rogers.

The widow of the late cowboy humorist died at her Santa Monica, Calif., home last Wednesday after a long illness.

Mrs. Rogers' body will be placed in a vault to remain a month or more before being removed for permanent entombment near the body of her late husband in the Will Rogers Memorial at Claremore, Oklahoma.

## Gates Thrown Open July 4th at Glider School

South Plains Army Air Field.—With gates thrown wide to the public of the South Plains area, this advanced glider school will display the same type of combat training July 4 through which thousands of U. S. glider pilots passed before landing their big "whisper ships" behind enemy lines in France on D-Day.

Visitors to South Plains Army Air Field's open house on the Fourth of July will have the opportunity to see the everyday routine of training at SPAAF—landings and takeoffs seconds apart, "blitz" landings, obstacle landings, all the varied facets of winged commando training.

In addition to the flights of huge gliders and towplanes, visitors will see complicated drills by squads of marching Waacs, a demonstration by ordnance personnel, mass calisthenics to music. There will be other attractions also.

SPAAF has had other successful open houses, but due to heightened interest in gliders because of the part the motorless craft played in the invasion, more people are expected to visit the field July the Fourth than ever before.

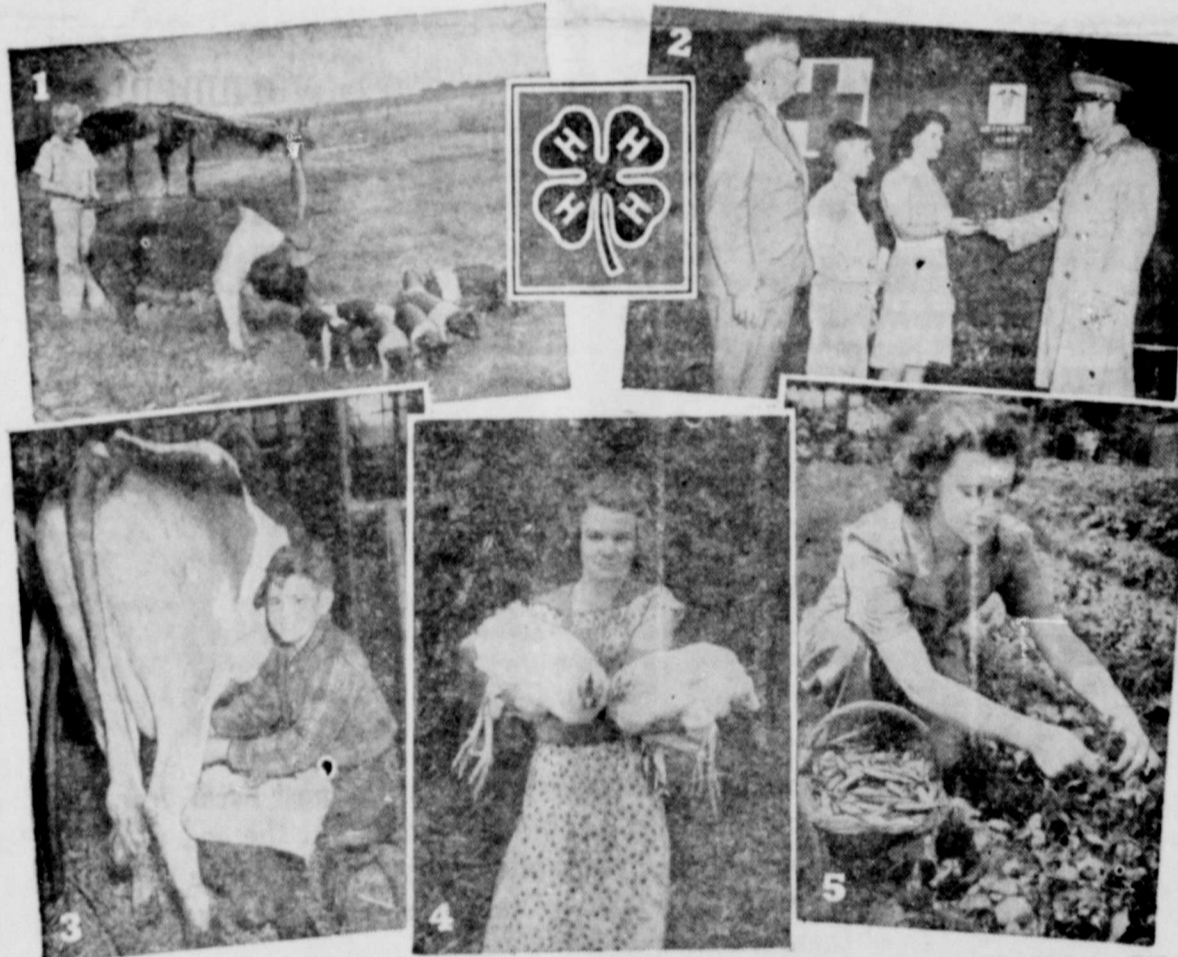
SPAAF is six miles north of Lubbock on the Plainview highway and is the only advanced glider school in the nation. Further details on the SPAAF open house will be announced later.

## Future Farmers Put Food Profits in Bonds



Throughout the nation the FFA boys are making a substantial contribution to the war effort through the production of the all-important food supply and purchase of War Bonds and their profits. Shown here are some instances. No. 1 shows Robert Hill of the Welcome Chapter FFA, North Carolina, with three of his eight registered dairy calves. North Carolina FFA boys owned 9,299 dairy cows and invested profits in War Bonds totalling \$308,650. No. 2 shows two Wilson County, Tennessee, boys of the Green Gale Chapter at Lebanon repairing farm equipment. At an auction of this farm equipment, a total of \$85,000 went into War Bonds. No. 3—Edward Jones of Pittsboro Chapter FFA, North Carolina, and some of his 455 high-producing victory hens. Edward made a net profit of \$548.12 from his flock last year and is putting his profits in War Bonds. No. 4 shows Colin English, State Superintendent of Public Instruction, Herbert Shuman, president Palmetto Chapter FFA, and Harrison E. Barringer, State Senator, all of Florida, at the high light of an annual Father-and-Son banquet. The Florida Future Farmers bought a \$1,000 War Bond with the funds from their farm produce grown on their own class project. Back the Attack—Buy More Than Before.

## 4-H Club Goes All Out in War Bond Effort



The Four-H Clubs of America, 1,700,000 strong, are making a vital contribution to the war program helping in the gigantic problem of keeping the food supply line strong and in buying War Bonds. Here are some scenes of 4-H boys and girls at their war work. No. 1 shows Glenn Whittenberg, of Hidalgo County, Texas, with his fine litter which will help the food supply. Glenn is putting his profits in War Bonds. No. 2 shows an ambulance purchased by the 37,000 members of the 4-H Club members of Virginia. Representing the Virginia Clubs in the picture is Carolyn Steele, Fairview, and Richard Fleming, of Branesville. Major Bernard Sobol, USA, is accepting the ambulance, with Director M. L. Wilson of the Extension Service Department of Agriculture, looking on. No. 3 shows Billy Fleming of Fairfax County, Virginia, helping Dad with the chores. Billy is putting his earnings into War Bonds. 4-H Club members own 90,000 head of dairy cattle. No. 4—4-H Clubs make a mighty contribution to the poultry and egg supply, raising 9 million chickens in 1943. Here is Helen Wheeling, Brown County, South Dakota, with a couple of her birds. She also buys War Bonds with her profits. No. 4—4-H Clubbers are also Victory Gardeners. Here is Jane Buddard of Frederick County, Maryland, in her garden. These farm youngsters raised 5 million bushels of garden produce last year. Back the Attack—Buy More Than Before.

## FOLLOWING REGISTRANTS SIGN APPLICATIONS FOR IMMEDIATE INDUCTION INTO ARMS SERVICE

The following registrants of the Local Board have signed applications for immediate induction, and have been forwarded to their stations in the navy:

Leon Hulsey, Kenneth Gordon Stubbs, Randolph Rutledge, and James Hollis McLain, all of Floydada.

These men together with Roy Reed and Scott Wesley Maner, will complete the call for July for six men for the armed forces, all having volunteered for immediate induction. The Local Board will forward a group of men for pre-induction physical examination the latter part of July, but will have no further induction call for that month.

After July 1st all men forwarded for examination, who are certified as physically qualified for service, will be put in a common pool, and will be assigned to service in the branch of service where they are most needed, instead of being accepted for Navy or Army service. For the present, induction calls will be extended to men

under twenty-six years of age, and no limited service men will be forwarded.

## CEILING PRICES ARE SET ON SEVERAL VARIETIES OF FRESH FRUITS

Ceiling prices at retail have been set for the first time on apricots, sweet cherries, plums, Italian prunes, and coconuts, the District Office of Price Administration announced today.

Prices for the fresh fruits were effective June 22. Additional information may be secured from the price clerk of the local War Price and Rationing Board, the announcement said.

Throw your scrap into the fight.

## Plane With Passenger Elevator In Use

Washington.—Presidential Secretary Stephen Early said this week a special plane equipped with a passenger elevator is in use in this country for the transportation of various government missions.

In response to a reporter's question, Early said the plane was not constructed particularly for the use of President Roosevelt or any one government official and added:

"There are no plans at all for its use by the president to my knowledge and belief."

## Mowing Pastures Proves Profitable Tests Reveal

The profit from mowing pastures is readily demonstrable, says R. R. Lancaster, pasture specialist for the A. and M. College Extension Service.

Production of pasture grasses generally can be increased 50 to 60 per cent by mowing weeds because grass thereby is allowed more moisture, sunlight, plant food and air, he asserts. Also, livestock grazing clean, open pasture can get about 80 per cent of the palatable forage instead of 50 per cent where weeds are in the way.

Furthermore, animal products could be doubled by cleaning and mowing several million acres of land along streams, on overflow crop land and other soil now overgrown with a variety of weeds and worthless shrubs. While the most extensive benefit from mowing is to speed up the transition from a weedy pasture to a good turf, mowing also improves and freshens even the most palatable pasture grasses.

At the Angleton sub-station of the Texas Agricultural Experiment Station experimental yields of mowed bermuda grass were double, and total protein and phosphorus were four times greater than from unmowed grass, the pasture specialist said.

Lancaster counsels that mowing to control weeds must start when the first of the worst begin to bloom, or soon enough to mow all before seed can form. Bitterweed, a common pest in bermuda pasture, may retain enough vitality to mature seed from blooms on the mowed tops. Hence, this week would require early and repeated mowing. Cut high enough on the first mowing so the sprouting stubble can be mowed often since it blooms repeatedly.

Reminding that some stockmen depend upon hay for pastures mowed during lush spring growth, the specialist says that the feed value of hay cut before maturity and baled or stacked, more than offsets the cost as compared with leaving an overgrowth on the pasture where its feed value is lost and its presence more injurious than beneficial. Dairy cows need forage to supplement permanent pastures almost the year round. Permanent pastures often are to succulent in the spring and too dry in summer and winter. Reserve of hay or silage always are needed to adjust fluctuations in pastures.

## W. E. Grimes Announces for County Judge

To The Voters of Floyd County, Texas:

This is to announce that I have entered the race for County Judge of Floyd County, subject to the Democratic Primary to be held on July 22. For the past nine or ten years I have been in the active practice of law at Floydada and should be qualified in every way to fill the office. Due to conditions, and business of my office, it will be impossible to see everybody or make a canvass and I hope that each and everyone of you will consider this a personal solicitation of your vote and influence. All efforts made in my behalf will be greatly appreciated. If elected I promise to give the County the best and the most economical administration that I am capable of.

W. E. GRIMES.  
(Political Advertising)

## The Farm Labor Picture Through Texas is Given

College Station, June 29.—The farm labor picture in Texas is spotty with the demand for choppers in the major cotton growing counties the most urgent. The Coastal prairie area showed the greatest shortage of labor in the sections near war industries, according to reports to C. Hohn, state farm labor supervisor for the A. and M. College Extension Service.

Cessation of excessive rainfall in Brown County brought a sharp upturn in the demand for harvest hands, hoers, and general laborers. Reports show, however, that a total of 1,173 workers, including 1,051 town and city youths, had been placed on Brown County farms. Over the state 11,714 workers had been placed.

Latest reports from county agricultural agents indicate that movement of town and city youths to farms over the state is growing. Currently, a total of 4,742 have been placed on farms. Counties recording 100 or more such placements include Coleman, Mitchell, Atascosa, Coryell, Denton, Dallas, Navarro, Caldwell, Colorado, and Robertson.

In the Panhandle wheat areas the demand for harvest labor is to become acute before the end of June, Hohn says. Meanwhile, grain sorghums and cotton are being planted for the second and third times in the same areas. Small grain harvest is proceeding well in the low rolling plains region, with several counties at or past the peak. Fisher County farmers are cross cultivating cotton to simplify the work of chopping. Shifting of combines, trucks and men is solving the major difficulties in the grain harvest. Meanwhile, row crops in several counties need attention.

Reports from parts of east Texas indicate better weather and progress with crops. Exchange of labor is widely used in this part of the state. Tomato harvesting is under way in southern counties and will begin the latter part of June in areas where the crop matures later.

Generally, the demand for cotton choppers from the blacklands areas is heavy notwithstanding that several counties report the situation well in hand. In parts of the area fields are reported wet and the cotton heavily infested with grass, Hohn says.

## Plane With Passenger Elevator In Use

Washington.—Presidential Secretary Stephen Early said this week a special plane equipped with a passenger elevator is in use in this country for the transportation of various government missions.

In response to a reporter's question, Early said the plane was not constructed particularly for the use of President Roosevelt or any one government official and added:

"There are no plans at all for its use by the president to my knowledge and belief."

## Mowing Pastures Proves Profitable Tests Reveal

The profit from mowing pastures is readily demonstrable, says R. R. Lancaster, pasture specialist for the A. and M. College Extension Service.

Production of pasture grasses generally can be increased 50 to 60 per cent by mowing weeds because grass thereby is allowed more moisture, sunlight, plant food and air, he asserts. Also, livestock grazing clean, open pasture can get about 80 per cent of the palatable forage instead of 50 per cent where weeds are in the way.

Furthermore, animal products could be doubled by cleaning and mowing several million acres of land along streams, on overflow crop land and other soil now overgrown with a variety of weeds and worthless shrubs. While the most extensive benefit from mowing is to speed up the transition from a weedy pasture to a good turf, mowing also improves and freshens even the most palatable pasture grasses.

At the Angleton sub-station of the Texas Agricultural Experiment Station experimental yields of mowed bermuda grass were double, and total protein and phosphorus were four times greater than from unmowed grass, the pasture specialist said.

Lancaster counsels that mowing to control weeds must start when the first of the worst begin to bloom, or soon enough to mow all before seed can form. Bitterweed, a common pest in bermuda pasture, may retain enough vitality to mature seed from blooms on the mowed tops. Hence, this week would require early and repeated mowing. Cut high enough on the first mowing so the sprouting stubble can be mowed often since it blooms repeatedly.

Reminding that some stockmen depend upon hay for pastures mowed during lush spring growth, the specialist says that the feed value of hay cut before maturity and baled or stacked, more than offsets the cost as compared with leaving an overgrowth on the pasture where its feed value is lost and its presence more injurious than beneficial. Dairy cows need forage to supplement permanent pastures almost the year round. Permanent pastures often are to succulent in the spring and too dry in summer and winter. Reserve of hay or silage always are needed to adjust fluctuations in pastures.

## W. E. Grimes Announces for County Judge

To The Voters of Floyd County, Texas:

This is to announce that I have entered the race for County Judge of Floyd County, subject to the Democratic Primary to be held on July 22. For the past nine or ten years I have been in the active practice of law at Floydada and should be qualified in every way to fill the office. Due to conditions, and business of my office, it will be impossible to see everybody or make a canvass and I hope that each and everyone of you will consider this a personal solicitation of your vote and influence. All efforts made in my behalf will be greatly appreciated. If elected I promise to give the County the best and the most economical administration that I am capable of.

W. E. GRIMES.  
(Political Advertising)



# The Floyd County Plainsman

PUBLISHED THURSDAY EACH WEEK  
M. B. Cavanaugh, Publisher

IN FLOYD COUNTY \$1.00; OUTSIDE FLOYD COUNTY \$2.00  
Entered as Second Class Matter June 23, 1930, at the Post Office at  
Floydada, Texas, under the Act of March 3, 1879.

**NOTICE!**

Any erroneous reflections upon the character, standing or reputation of any person, firm or corporation which may appear in the columns of The Floyd County Plainsman will be gladly corrected upon its being brought to the attention of the publisher.

## 4-H'ers Help Reduce Farm Accident Deaths

A nationwide survey just made discloses that an estimated total of 17,200 persons lost their lives through accidents on American farms during 1943, which is a decrease of 1,000 from the preceding year.

As 1943 was the first year of the National 4-H Farm Safety Activity, much credit for the above decrease is due the 400,000 club boys and girls throughout the nation who checked farms and homes in their localities for accident and fire hazards and helped correct them.

The activity is continued this year with increased rewards for meritorious farm safety work,

which are provided by William G. Mennen, of Newark, N. J. The awards include a maximum of 10 silver medals to each county having 15 or more 4-H Club members who turn in creditable safety reports in the activity, and \$25 War Bonds to four representatives of each state's blue award group. Ten sectional safety champions selected from the state winners will receive trips to the National 4-H Club Congress, Chicago, next December. Six of the latter will be chosen as national winners to receive \$200 college scholarships. In addition a hardwood plaque, appropriately engraved, will be awarded to the county reporting the most outstanding 4-H Safety program.

Last year's state-national winner was James Neal Hutchins, Estel- line, Texas.

Let Cavanaugh Do Your Printing.

## Extension Agents Hold Conference At College Station

Men and women county Extension agents, assistant agents, and state and county emergency war food assistants from 245 Texas counties joined members of the headquarters staff of the A. and M. College Extension Service for a three day wartime conference on the college campus June 26. About 500 workers took part in the proceedings. The visitors were housed in the college dormitories.

According to Acting Director James D. Prewitt, the conference was designed as a refresher for the field force through individual and group discussions of wartime problems growing out of the extraordinary production of agricultural crops, food conservation, labor and farm machinery shortages and kindred matters. Demonstrations in various phases of Extension work will be conducted by specialists at four of the six half day sessions. Normally, the field

and headquarters personnel meet in conference yearly, but it was omitted in 1943 on account of the war emergency.

### COMMISSIONED OFFICERS AN DSELECTED OFFICER CANDIDATES TO TRAIN

According to information received by the Plainsman this week from Austin commissioned officers and selected officer candidates from Floydada units of the Texas State Guard have been assigned, by order of Adjutant General Arthur B. Knickerbocker, for special training during one week in July at the Officers School at Camp Bullis, near San Antonio.

The school for Texas State Guard personnel will be conducted by Army specialists from the Eighth Service Command. Its commandant will be Col. Hobart Brown, army cavalryman and training officer at Fort Sam Houston.

Separate courses will be provided for battalion commanders, company officers and officer candidates. The instructions will include two days of rigorous field

training, in addition to prescribed courses in martial law, emergency and disaster relief plans, use of weapons, sanitation, scouting and patrolling.

Divided into four weekly sections, the school will begin Sunday, July 2, and continue through July 29.

Among Texas State Guardsmen assigned to the school are the following: 1st Lt. George B. Smith, Capt. Travis P. Collins, 1st Lt. Harry Morckel, 2nd Lt. Floyd Freeman Fuqua, Sgts. William G. Walker, and Howell B. Johnson.

Mrs. C. L. McMurray, of Suncari, New Mexico, returned to Floydada this week and will remain with her parents, Mr. and Mrs. Roy Patton, while her husband is in the army. C. L. went to Fort Sill, Oklahoma, Monday where he was inducted into the service.

W. E. Grimes left Tuesday night for Fort Worth where he attended a meeting of the State Bar Association.

LET'S ALL BACK THE ATTACK



"Hi, Mom, it's me"

The next best thing to having a soldier open the door at home with "Hi, Mom, it's me!" is to hear him say it over the telephone.

THIS EVENING thousands of boys and girls in

uniform will be asking the Long Distance lines to connect them with the homes all over America.

Please try to save the wires "from 7 to 10 for the servicemen."

SOUTHWESTERN BELL TELEPHONE CO.

Let Cavanaugh do your Job Printing

## The Minute Man



Today  
This Man  
Is You...

Guardian  
of  
Freedom

For Your  
Family,  
For Your  
Nation!

Every Member of  
Our Civilian Population Must Be  
A Minute Man

Today the Army at home has its duties to perform. To keep the home fires burning, to maintain this home intact as far as possible, for the return of our Army at the front.

West Texas Gas Company

IT'S TIME TO CHANGE TO AN ACTIVE

**CONGRESSMAN**

Vote for C. L. HARRIS

WHO ADVOCATES FREE AMERICAN BUSINESS ENTER-  
PRISE, FREEDOM FROM BUREAUCRATIC MEDDLERS.

FREQUENT CHANGES OF OFFICIALS  
MAKES FOR A STRONG DEMOCRACY.

# CITY OF FLOYDADA INVEST \$25,000.00 IN WAR BOND

We are glad to announce that the City of Floydada was able to purchase \$25,000.00 in Government bonds last week.

**YOUR PUBLICLY OWNED LIGHT AND POWER PLANT IS MAKING GOOD. FOR YOUR INFORMATION WE ARE MAKING THIS ANNOUNCEMENT:**

Our profits for the past fiscal year ending April 30, 1944, was \$13,139.17. We accomplished this with only about 85 per cent of the electrical outlets of the City using Municipal light and power.

**YOUR LIGHT AND POWER PLANT COULD BE FREE OF DEBT IN FOUR YEARS...**

Based on accomplishments of the past fiscal year, Floydada could retire its indebtedness in four years on the Light and Power Plant. At the end of which time the profits of the plant could be used for the betterment of our city. For instance this money could be used to promote a program of lower water rates, lower tax rates, civic improvements, lower light rates or a combination of all of these items.

**COMMERCIAL LIGHT RATES LOWERED 25 PER CENT...**

Actually the Commercial light rates of the City have been lowered 25 per cent since our installation. Residential rates have been lowered and the meter deposits abolished.

Our neighboring City of Lubbock has one of the lowest tax rates in the state, due to the public ownership of its Light and Power System.



Back the Attack—Buy More Than Before

# CITY OF FLOYDADA, TEXAS

W. U. WHITE, MAYOR

J. W. Lanier, F. C. Harmon, Walton Hale, Conner Oden,  
and J. D. McBrien, Aldermen.



# This is the one that counts!



"... Ask the Joes in the front lines!" " ... Ask that kid on the stretcher!" " ... Ask those who bury our dead."

**THEY KNOW.** Every G. I. Joe knows. "This is the big show. This is the pay-off. This is the one that counts. "Sure, we're going to take 'em. But it's going to cost us plenty . . . thousands and thousands of lives . . . billions and

billions of dollars. "That's the price we must pay for a decent world—a world in which we and our children can live in peace. We G.I.'s will furnish the bodies. Will you furnish the dough?"

# ..and it's going to cost us plenty!

**N**OBODY needs to tell you that the *fighting* in this war is reaching a crisis. But we've got to realize also that we face a similar crisis in *financing* the war.

Make no mistake! The 5th War Loan is beyond question the biggest, most vitally important financial effort of this whole war!

We can't afford to fail. Now is the time for every American, sol-

dier and civilian, to go all-out. Buy *double* the extra Bonds you bought last time!

- And here are 5 More reasons for buying Extra Bonds in the 5th!
1. War Bonds are the best, the safest investment in the world!
  2. War Bonds return you \$4 for every \$3 in 10 years.
  3. War Bonds help keep prices down.
  4. War Bonds will help win the Peace by increasing purchasing power after the war.
  5. War Bonds mean education for your children, security for you, funds for retirement.



# Back the Attack! - BUY MORE THAN BEFORE

This is an official U.S. Treasury advertisement—prepared under auspices of Treasury Department and War Advertising Council

- Farmers Grain Company
- The First National Bank
- H. G. Parker Furniture Company
- Westers' Bakery
- Higginbotham-Bartlett Company
- Dale Strickland Butane Company
- Stansell-Collins Company

- Producers Cooperative Elevator
- Style Shoppe, Mrs. Mollie A. Morton
- G. C. Tubbs Insurance Agency
- Plains Cooperative, Inc.
- Rice Hatchery
- Floyd County Plainsman
- White Drug Company

- Henry Edwards Elevators
- Nichols Lumber Company
- Arthur B. Duncan Abstract Company
- Radio Electric Company
- A. V. Stewart's Cleaners
- Bishop Motor Company
- Patterson's Fruit Stand

ON WAR BOND SALE  
 WITH LOAN AS COM-  
 PLATE WEDNESDAY  
 as compiled late Wed-  
 nesday by County Chair-  
 man M. Willson of Floyd  
 County as follows:  
 \$82,997.75, the E bond  
 \$195,000; other bonds  
 that time amounted to  
 \$100. Floyd County was  
 a quota of \$335,000.00.  
 V—  
 Mrs. Gordon and dau-  
 ghter, of Detroit, Michigan,  
 Mrs. Lona Mince and daugh-  
 ter, Long Beach, California, are  
 Mrs. Annie Steen is seriously ill  
 on West California  
 Dr. Carl T. Steen,  
 Oklahoma, visited his  
 week several days.  
 V—  
 average temperature of the  
 about 39 degrees Faren-  
 from 80 degrees in  
 around 28 degrees in  
 regions.  
 V—  
 is rarely heard at a  
 of 15 or 20 miles, but the  
 of a cannon as far as  
 V—  
**Political**  
**Announcements**  
 whose names appear be-  
 authorized the Floyd  
 Plainsman to announce  
 candidacy for nomination for  
 under which their name  
 subject to the action of  
 Democratic Primary Election  
 22, 1944:  
 CONGRESS  
 George Mahon—Re-election  
 DISTRICT CLERK:  
 P. G. Stegall  
 COUNTY TREASURER:  
 O. M. Conway  
 COUNTY CLERK:  
 Margaret Collier  
 ASSESSOR-COLLECTOR  
 B. Marshall  
 E. L. Graham  
 COMMISSIONER PRE-  
 DISTRICT NO. 1  
 W. H. (Bill) Brock  
 COMMISSIONER  
 DISTRICT NO. TWO  
 E. R. Harris  
 COMMISSIONER  
 DISTRICT FOUR:  
 E. B. Calhoun  
 COUNTY SCHOOL  
 SUPERINTENDENT  
 Clarence Guffee  
 CANDIDATE FOR DISTRICT  
 DISTRICT NO. 110th JUDICIAL  
 DISTRICT  
 Richard F. Stovall  
 COUNTY JUDGE  
 G. C. Tubbs  
 W. E. Grimes  
 SHERIFF  
 Lee Howard  
**FOR SALE!!**  
 acres of land one mile east  
 of town. Improvements con-  
 sisting of good four room stucco  
 house with electricity, well and  
 small, good chicken house and  
 All fenced hog proof. If  
 interested in this well located  
 property, see H. O. Cline, Phone 37.  
**YOUR MONEY WORK—**  
 Located business house for  
 Money invested in this prop-  
 erty should bring about 10 per  
 cent per annum. See Cavanaugh  
 at Plainsman office.  
**FOUND**—Man's Gold Watch  
 on side walk South side of  
 street. Owner describe, pay for  
 and receive property.  
**WORTHAND in**  
**6 Weeks at Home**  
 Famous dictating system, no sign-  
 at Central State to learn and use  
 system for a job. Satisfactory pay  
 can be made by mail. Send to  
 Central State, 1111 1/2 Ave. S.E., Wash-  
 ington, D.C. Write for free booklet.  
**Speedwriting**  
 SCHOOL OF COMMERCE  
 CLOVIS, NEW MEXICO



STORE WILL BE CLOSED JULY 4th

"Daisies Don't Tell"

AN EXCLUSIVE

Carole King ORIGINALS FOR JUNIORS

Dress of Burma rayon Crepe with bouquet of daisies and white piping at seams. In Horizon Blue, Peppermint Pink, Lemon Yellow, Sizes 9 to 15.

\$8.98

STORE WILL BE CLOSED JULY 4th

"Just Ducky"

AN EXCLUSIVE

Carole King ORIGINALS FOR JUNIORS

Burma rayon Crepe duck print. Duck buttons full length. Softly tailored blouse, knife-pleated skirt. In Grey Mist, Rio Blue, Mecca Tan. Sizes 11 to 17.

\$8.98

STYLE SHOPPE

Mrs. Mollie A. Morton, Owner

Telephone 17

SILAS E. DUNCAN SR. FAMILY MAKE WAR RECORD FOR FLOYD COUNTY

The Silas E. Duncan, Sr., family residents and former residents of Floyd County hold record for service with armed forces. Of the seven children they serve in the following capacities:

Alvah B. Duncan, will be 40 years of age August 14th, has serv-

ed his country for more than twelve years. Has been called but at this time not drafted. No dependents.

Jimmie R. Duncan, of San Antonio, Texas, has seen four years service in the Air Corps, has a Commercial Pilot's license and has been called but at this time not drafted, will be 38 years of age on August 21st, 1944. Wife and 3 children.

Sgt. Silas E. Duncan, Jr., with the signal Corps, now in Beaumont General Hospital, of El Paso, Texas, his wife being with him at this time, he is expected home for a short period of time within the coming two weeks, he has seen service in Australia, New Guinea, New Britton and is now improving in health. Wife and 2 children. Two children deceased.

Pfc. W. Pope Duncan, after several months training in the USA, was transferred to North Ireland and from there to some place in England, his family now lives in Bird City, Kansas. He is very probably with the Invasion forces somewhere. Wife and 3 children.

Private Robert (Bob) Burns Duncan was inducted on the 15th day of this month, has been with the Douglass Air Plane Factory for over a year as an expert welder as well as an instructor in same, his wife formerly Imogene Woody, of Dougherty, Texas, is in war production employment and lives in Venice, California. Wife no dependents.

Pfc. Burton Eddie Duncan, with the Raiders Division of the US Marines, who landed somewhere across the Pond recently, according to a card from the War Department posted from Washington, D. C. as of June 22nd. This lad was eighteen years of age March 9, 1944. He is one of a Replacement Division which Uncle Sam is furnishing the invasion, he is an expert marksman with three guns. Single.

All of the above named sons of Texas, were born and reared in Floydada, Floyd County, Texas, USA, and are also sons of Silas E. Duncan Sr., who is the elder living Old Settler in this County (Floyd) at this time.

One daughter, Mrs. Rebecca (Reba) Martin, wife of Aubrey Martin, now living in San Antonio, Texas, her husband, (Abe), has been and is in the employ of the Duncan Air Field, an expert and instructor in mechanics in said field, they have two sons which will make soldiers 20 years from this date.

The normal pressure of the air at sea level is 14.7 pounds per square inch or more than 2,100 pounds per square foot.

WARREN HAMILTON SMITH, JR., GRADUATES FROM MARINE OFFICER CLASS

Quantico, Va., June 29.—Warren Hamilton Smith, Jr., son of Mr. and Mrs. Warren H. Smith of Floydada, Texas, has been graduated from Marine Officer Candidates' Class here and appointed second lieutenant in the Marine Corps Reserve.

Lieutenant Smith attended North Texas State College, Denton, before enlisting in the Marine Corps April 14, 1942.

CARLOADINGS FOR WEEK ENDING JUNE 24

The Santa Fe system carloadings for week ending June 24, 1944, were 29,657 compared with 25,718 for same week in 1943. Cars received from connections totaled 12,347 compared with 11,780 for same week in 1943. Total cars moved were 42,004 compared with 37,498 for same week in 1943. Santa Fe handled total of 39,174 cars in the preceding week of this year.

DR. KIBBY J. CLEMENTS

OSTEOPATHIC PHYSICIAN AND SURGEON

Dialthermy, Light Therapy, Colonic Irrigations, New Improved Methods of Curing Piles, Fistula, Pruritis (Itching Piles) by Office Treatment Without Interrupting Daily Routine.

ROOMS 313-315, SKAGGS BUILDING, Plainview, Phone 683

FIRST NATIONAL BANK

Floydada, Texas

1903—Time Tested Service—1944

LET us DO YOUR LATHE WORK

We have two Lathe machines and are prepared to do many jobs which will save you time and money on repairing your farm equipment and other machines where lathe work is required to make the adjustment.

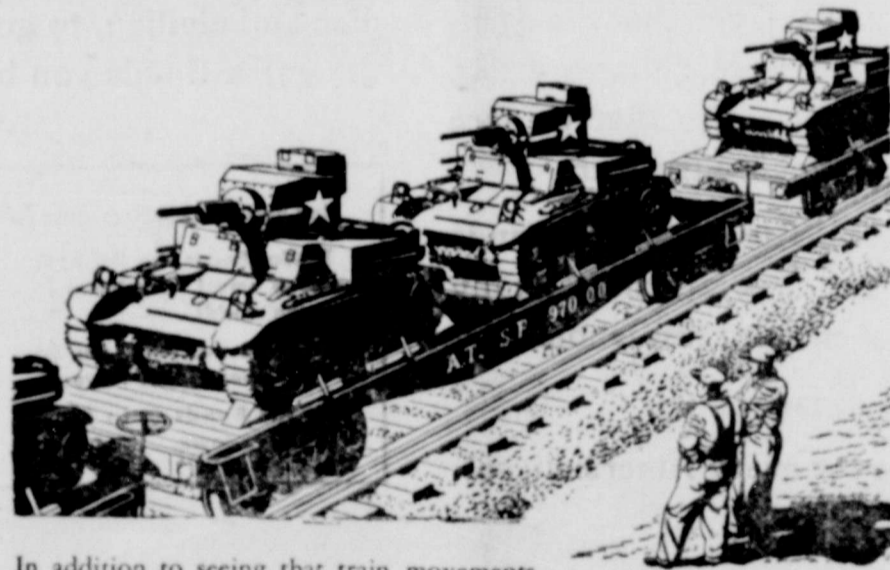
Steel Flex Rings, Tires, Batteries

We carry in stock a large assortment of Steel Flex Rings, Third Grade Tires, and Allied Batteries. Come to our store for your needs.

BILL DYER'S AUTO STORE

WEST SIDE SQUARE

Why we're buying WAR BONDS



In addition to seeing that train movements essential to Victory come first—

Santa Fe employs in pay roll deductions alone are buying well over \$1,000,000 of War Bonds every month!

We know there is no better way for us to back up those who have the toughest job of all in this dirty war—those millions of men and women in our fighting forces. 10,000 of them are former Santa Fe employees.

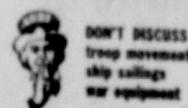
By buying War Bonds and keeping "Loaded for War" trains rolling, we know we are helping to bring our victorious forces home quicker—and providing ourselves with savings for the days of peace to come.

No matter where you work let's all dig a little deeper and buy more War Bonds now.



SANTA FE SYSTEM LINES

"ALONG THE ROUTE TO TOKYO"



1394-A

OUR SERVICE IS YOUR GUARANTEE FOR LONGER USE OF YOUR AUTOMOBILE.

CLINE AND RAINER GARAGE

Let us put your car back on its wheels! Your automobile is priceless today; and a car in fair condition can be overhauled so expertly as to rival a new one in service! Get the habit of checking your car at regular intervals—our trained experts are well qualified to give you advice—and the best service.

Telephone 37

CLINE AND RAINER

WESTERN AUTO ASSOCIATE STORE

Martha Mann JUNIOR-STYLE DRESSES IN MIST

"Sheer Mag"

Shadowy lace trims this dress. Enka Rayon Sheer "dress up" You'll love it as a cool change your casual cottons. In Navy, sizes 14 to 20.

"Sheer Shopper"

A dress to carry you beautifully from a day in town to an evening on the country club terrace. Crystal pleating outlines the yoke and styles an apron front. Enka Rayon Sheer Georgette in Red, Brown, Navy, or Green, sizes 14 to 20. \$10.98

Martha Manning JUNIOR-STYLE DRESSES IN MIST

I Dream of a Dress...

This cool printed Ripple Rayon Sheer... So soft and feminine... yet tailored, too, with its rows of drawwork on the bodice, unpressed pleats, and self-fabric flower trim. In Pansy Purple, June Rose, or Lotus Yellow, sizes 14½ to 20½. \$10.98

Martha Manning ILLUSION HALF SIZES

STYLE SHOPPE

Mrs. Mollie A. Morton, Owner Telephone