

"By Helping Business You Help Yourself"

The Floyd County Plainsman

FLOYDADA, FLOYD COUNTY, TEXAS, THURSDAY, JUNE 8, 1944

NUMBER 15

Advisory Committee to Assist War Veterans

Station, June 8.—Local committees to assist war veterans with the purchase of farms soon will be set up throughout Texas under plans advanced by the Texas M. College Extension Service.

There is no need to wait until the war era to help discharged veterans with this or other problems, D. Prewitt, acting Extension Service, has notified county extension workers. He cited that 100,000 men are being discharged each month from the armed forces.

The agricultural Victory League, reorganized for war years, will form the nucleus of these committees, and representatives in the counties will be selected to assist, Mr. Prewitt said. Advisory groups can render valuable assistance in seeing that veterans are adequately informed of their values, rental agreements, and other factors involved in the purchase or leasing of land or ranch.

Surveys made among veterans in the armed forces show that many fighting men buy farms with their military pay. And they will not be able to pay. The price of land is above cost of production, he believes. He expects that war and ranch people will have the opportunity to give up volunteer service since every family has contributed some member to the armed forces. Gaining some experience in helping the small numbers returning now will enable local committees to be set up for large scale demobilization later.

Points out that this type of assistance does not differ in character from that which the Extension Service customarily provides.

Selectees are Forwarded to Production Centers

The following Selectees were forwarded to Fort Sill June 2nd: E. Call for June; E. McNutt, Leon Chamberlain, Woodson B. King, and Roy David Reed, Navy Call for June was several days ago, by the following Selectees, who volunteered immediate induction, and were against Navy quota: T. Farrow, Henry Newton and W. E. Smith, Floydada. Directives from State quarters, urging postponement of all registrants over age of 30, who are engaged in essential work, and especially those 30 or over, unless they are unemployed, or working in recognized essential occupations, very important except those in the bracket will be called for production examination, or for induction, until the restrictions are lifted.

Earl Crow and Mrs. Earl Crow left Saturday for San Diego, California, they will make their home in San Diego and Mrs. Crow will be employed.

CAVANAUGH DO YOUR PRINTING

Tom Croft Dies at Cabot, Arkansas; Was Visiting Son

Tom Croft, age 64, died suddenly Thursday, June 1, at the home of his son at Cabot, Arkansas, where he and Mrs. Croft were visiting. The body was returned by rail to Plainview where Harmon Funeral Home brought it to Floydada for burial.

Funeral services were held at the Wall Street Church of Christ Sunday afternoon at 4 o'clock, O. W. Kirk, officiating. Funeral arrangements were in charge of Harmon Funeral Home.

Mr. Croft had been in ill health for a number of years. He was born April 15, 1880 in Arkansas and was reared there. He was married to Miss Cora Myrtle Turner December 1, 1900. They moved from Arkansas to Tampa, Florida, where they lived three years, and came to Floydada in August 1929, where they have made their home since. Mr. Croft had been a member of the Church of Christ since eighteen years of age.

Survivors include the wife, and two sons, John Earl Croft, Jacksonville, Arkansas, and A. J. Croft, Grand Junction, Colorado; three daughters, Mrs. John Trusty and Mrs. Wanda Fawver, Floydada; Mrs. Dale Self, Levelland; one brother, Jim Croft, Jonesboro, Arkansas; one sister, Mrs. Gertie Perkins, Jonesboro, Arkansas. Also surviving are eighteen grand children, one great grandchild.

Pallbearers were: Grady Dunavant, Hubert Davis, Oran Self, John Alley Fawver, R. H. Reinhardt, and Grady Freeman.

Flower bearers were: Ruby Davis, Mrs. Floyd Ballard, Mrs. Joe Fawver, Mrs. R. H. Reinhardt, Mrs. Oran Self, Miss Mary Pearl Cowand, Mrs. Cager Carmack, and Mrs. E. T. Williams.

Interment was made in Floydada Cemetery.

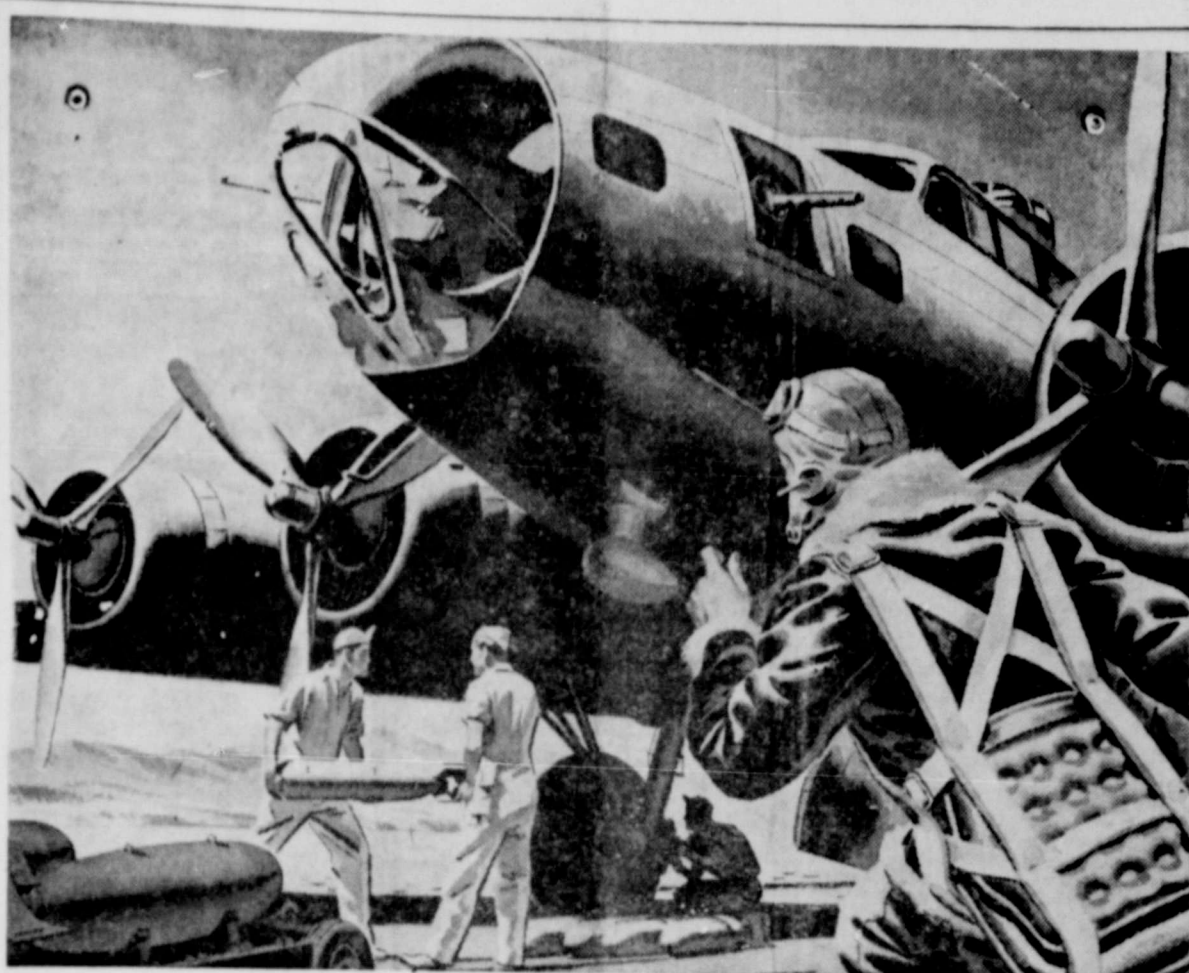
New Rulings on Passenger Tires and Tubes

Lubbock, June 8.—During the six-week period from June 1 to July 15 dealers may receive new passenger tires and tubes from manufacturers without giving tire rationing certificates, the District Office of Price Administration announced today.

Officials pointed out that this move in no way changes the present method through which a motorist obtains a tire or tube certificate from his local board. The action was designed to facilitate the shipment of new passenger tires and tubes from manufacturers to dealers and will bring about better distribution.

Announcement was also made that any person desiring to enter tire business and intending to acquire allotment from a manufacturer under this ruling must apply to the District OPA for recognition as a dealer. This will make it possible for tire dealers who closed their establishments several years ago because of the limited tire distribution to re-enter business and obtain new passenger tires and tubes on a basis similar to the allotment provided for existing dealers.

All tire certificate replenishment portions, Parts B, dated before April 1, 1944, are to be invalid after July 15, 1944, unless they have been received by the manufacturer on or before July 15, officials stated.



HE'S OFF ON HIS FIFTY-FIFTH MISSION

There he goes again — out to pour more destruction on the Axis — once more to face the death of enemy fighters and flak!

He won't hesitate to go out on his fifty-sixth or his hundred and fifty-sixth mission. He knows he might not come back, but he keeps on going — giving more and more until the Hitler

and Tojo crews are ready to "call it quits."

This is only your fifth mission—and a mission which is mighty easy in comparison with the ones he makes every week.

Stay in the fight by welcoming the Victory Volunteers—at least double your Bond purchases and then keep on. Your buying means "bombs away" for the Axis!



Back the Attack! - BUY MORE THAN BEFORE

SEVEN ILLICIT PRESSES ARE SEIZED

Lubbock, June 8.—Nation-wide activities to stop the racket in gasoline coupons have brought about the seizure of seven illicit presses since the middle of March, the Office of Price Administration has announced.

The government's attack on the

Black Market in gasoline counterfeiting has brought about the arrest of over 1300 peddlers and distributors of counterfeit and stolen stamps since the first of the year. Two major distributing rings have been broken up on the East Coast and the West Coast.

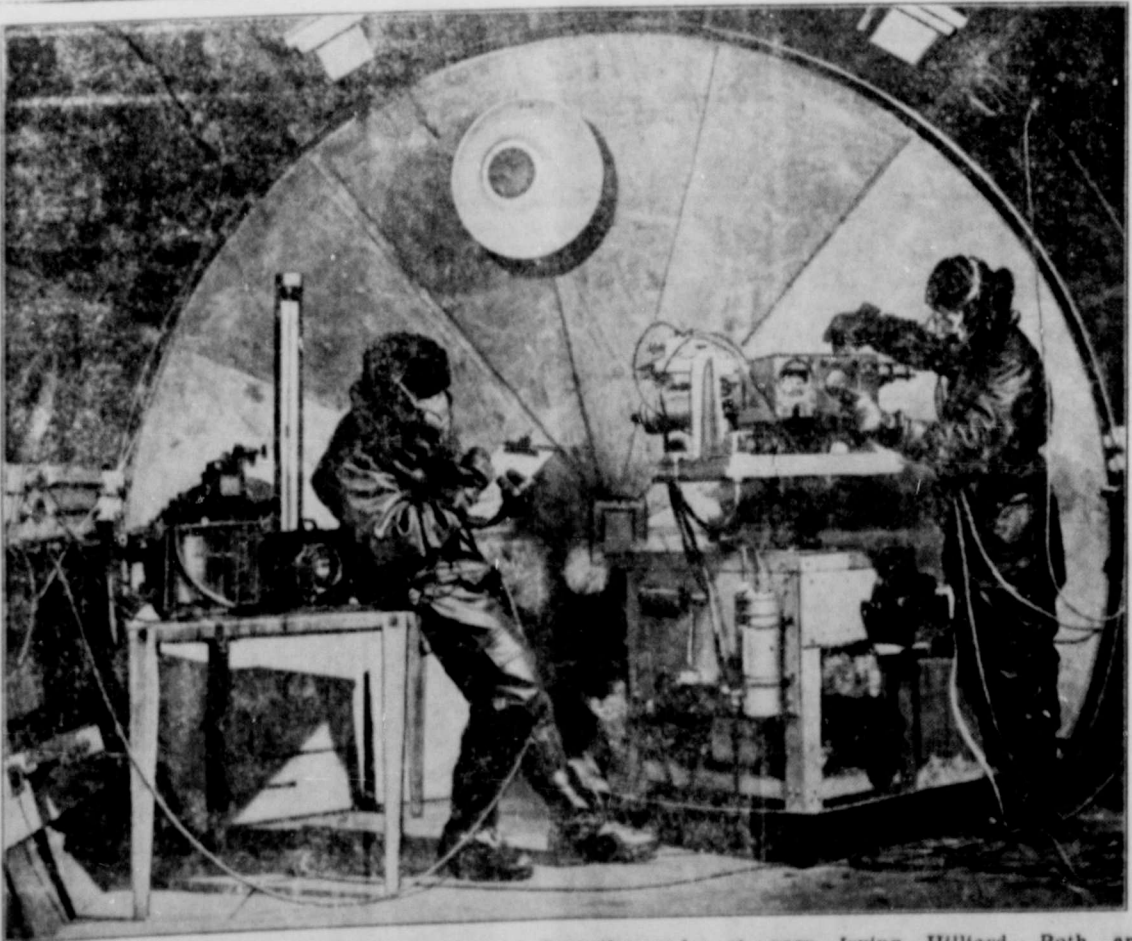
Every handler of counterfeit coupons whose case has come to trial in U. S. courts has been convicted. Over 200 of them have gone to jail.

In giving the details of the seiz-

ure of the seven presses, the OPA announced that in one instance an alert high school boy was credited with the lead, in another a patriotic service station operator put officials on the trail of the gang of peddlers.

"It is too soon to tell whether the drain into illegal channels is increasing or decreasing. All we know now is that we, and not the professional criminals, are beginning to gain control of the situation," OPA officials stated.

They're 'Up' 40,000 Feet At 40 Below



ALTHOUGH in an insulated steel cell near sea-level on Long Island, these workers in the new Sperry Gyrocompass Company's plant at Great Neck, are preparing to test a Sperry Gyrocompass under atmospheric and temperature conditions such as a bomber crew would find at stratospheric height. At the left is Dr. Elizabeth Newkom, medical supervisor; at the right, engineer Irving Hilliard. Both are dressed in electrically heated suits, shoes, gloves and helmets, plus long and heavy woolens. Each wears a mask equipped with oxygen tubes and phone connections.

Make Acidity Tests Before Liming Soils

Liming is advisable for Texas soils tested and found to be acid to a pH of less than six, but not in excessive amounts, says Robert R. Lancaster, pasture specialist for the A. and M. College Extension Service. Over-liming causes injury and may decrease crop yields.

(pH) symbolizes the degree of acidity or alkalinity of soils. Using seven as neutral, six would be "slightly" acid and eight "slightly" alkaline, the content increasing as the pH recedes from neutral.)

On such soils ground limestone or oyster shell applied at the rate of 1,000 to 2,000 pounds an acre at intervals of three to five years will prove beneficial excepting on deep sandy soils. On the other hand lime in any form should not be applied to soils which are very low in organic matter without using manure or cover crops. Such a condition also indicates need for phosphate fertilizer, and on some poor soils both phosphate and potash.

Soils testing below pH six in sod pastures with clovers are helped by liming, provided that plenty of fertilizers are used. East Texas and the sandy Gulf Coastal pastures generally need superphosphates and depleted soils usually need potash. Clovers grow best on land having a pH of six to seven. Most crops and pasture plants common in east Texas are more or less acid tolerant and will grow without liming, Lancaster explains. Those which may grow fairly well with a pH of 5.5 include cotton, sweet sorghum, corn, potatoes, watermelons, cowpeas, beans, peanuts, soybeans, vetch, pastures, grasses, white dutch clover, and lespedeza. Most Texas soils, however, have enough lime and are not acid, especially in the west, south and central regions.

Lancaster cautions that liming material and superphosphate should not be mixed nor applied at the same time. Lime makes phosphate insoluble. Superphosphate must be worked into the soil when applied, but this is not so important with liming material. For crops it usually is spread when the land is prepared for planting. Surface applications are made on established pastures, preferably during fall and winter. Farmers should get instructions for sampling and testing from county agricultural agents, Lancaster suggests.

Second Sunday Singing at Methodist Church

The regular Second Sunday Singing will be held Sunday at the First Methodist Church beginning promptly at 2 o'clock. New song books will be used and several out of county singers are expected to be in attendance.

Everyone is cordially invited to attend.

Mrs. Grace Johnston visited last week in Levelland with her son and family, Mr. and Mrs. Terrell Lorain.

When the sun has gone down, the surface of the ground loses its heat at a much more rapid rate than does the surrounding air.

Things in general seem to be going wrong with the German general.

E. P. Thompson Dies In California; Former Judge

E. P. Thompson, former resident and county judge of Floyd County, died at his home in Long Beach, California, Friday friends and relatives here have been advised. Judge Thompson served as County Judge from November 9, 1914 until January 18, 1918, at which time he resigned his office and returned to Lockney, where he had made his home before moving to Floydada.

Judge and Mrs. Thompson have made their home in California for a number of years, and have visited here several times since moving away.

Producing Fish at Home Points Way to Better Food

There are more than 100,000 fishin' holes in Texas in the form of farm ponds, which many farmers and ranchmen are drawing upon to supply their tables with fish. With this resource, R. E. Callender of the A. and M. College Extension Service, believes it is as reasonable to think of raising fish by the acre of water as of other crops by the acre of land.

Good management in stocking with right varieties, numbers and combinations of fish, and increasing the food supply during the past few years has raised the production of fish in the average farm pond from a few to several hundred pounds per surface acre of water annually.

Intelligent management helps to produce more fish and in line with this Callender, who is the game management specialist, recommends that if possible ponds should be located on a sodded watershed to prevent silting. Sunshine, which is needed to grow fish food, cannot penetrate muddy water. A pond should be stocked with a combination of the right varieties, and blue gill bream, bass, and catfish (channel cat) are the most common and acceptable varieties for Texas. He suggests as a good combination to use in fertilized ponds for each surface acre of water: 100 minnows early in the spring; 25 bass fingerlings; 50 crappie fingerlings; and 500 blue gill bream fingerlings. If channel cat alone is preferred they may be stocked at the rate of 200 fingerlings to the acre in fertilized ponds.

The fish population should be in keeping with the available supply of food. Over population means a flock of small fish. A pond is capable of producing only so many pounds of fish—lots of little ones or a fewer number of larger ones.

The degree of fertilization governs the growth of small plants and bug life which the fish live on, and determines the pour-dage of fish per acre. He recommends the following formula for each surface acre of water yearly: either 400 pounds of cottonseed meal, or 1,500 pounds of barnyard manure, and 200 pounds of 20 per cent superphosphate.

Mr. and Mrs. W. M. Speer and family, of Amarillo, have returned to Floydada and Mr. Speer is employed at Bishop Motor Company as mechanic. The Speer family are former residents of Floydada, having lived here for a number of years before moving to Amarillo where Mr. Speer was employed in defense work.

The Floyd County Plainsman

PUBLISHED THURSDAY EACH WEEK
M. B. Cavanaugh, Publisher

IN FLOYD COUNTY \$1.00; OUTSIDE FLOYD COUNTY \$2.00
Entered as Second Class Matter June 23, 1930, at the Post Office at
Floydada, Texas, under the Act of March 3, 1879.

NOTICE!

Any erroneous reflections upon the character, standing or reputation of any person, firm or corporation which may appear in the columns of The Floyd County Plainsman will be gladly corrected upon its being brought to the attention of the publisher.

Political Announcements

Those whose names appear below have authorized the Floyd County Plainsman to announce their candidacy for nomination for the office under which their name appears, subject to the action of the Democratic Primary Election of July 22, 1944:

FOR CONGRESS

George Mahon—Re-election

FOR DISTRICT CLERK:

Mrs. P. G. Stegall

FOR COUNTY TREASURER:

Mrs. O. M. Conway

FOR COUNTY CLERK

Margaret Collier

FOR ASSESSOR-COLLECTOR

Geo. B. Marshall
Ethel Graham

FOR COMMISSIONER PRECINCT NO. 1

W. H. (Bill) Brock

FOR COMMISSIONER PRECINCT NO. TWO

E. R. Harris

FOR COMMISSIONER PRECINCT FOUR:

R. B. Calhoun

FOR COUNTY SCHOOL SUPERINTENDENT

Clarence Guffee

CANDIDATE FOR DISTRICT ATTORNEY 110th JUDICIAL DISTRICT

Richard F. Stovall

FOR COUNTY JUDGE

G. C. Tubbs

FOR SHERIFF

Lee Howard

FOR SALE!!

18 acres of land one mile east of courthouse. Improvements consists of good four room stucco house with electricity, well and windmill, good chicken house and barn. All fenced hog proof. If interested in this well located acreage, see H. O. Cline, Phone 37.

SHORTHAND in 6 Weeks at Home
Denson School of Commerce
CLOVIS, NEW MEXICO

DR. KIBBY J. CLEMENTS
OSTEOPATHIC PHYSICIAN AND SURGEON
Diathermy, Light Therapy, Colonic Irrigations, New Improved Methods of Curing Piles, Fistula, Pruritis (Itching Piles) by Office Treatment Without Interrupting Daily Routine.
ROOMS 313-315, SKAGGS BUILDING, Plainview, Phone 683

LET us DO YOUR LATHE WORK
We have two Lathe machines and are prepared to do many jobs which will save you time and money on repairing your farm equipment and other machines where lathe work is required to make the adjustment.
Steel Flex Rings, Tires, Batteries
We carry in stock a large assortment of Steel Flex Rings, Third Grade Tires, and Allied Batteries. Come to our store for your needs.
BILL DYER'S AUTO STORE
WEST SIDE SQUARE

Replanting Keeps Garden Working Full Time

A good gardner is one who continues planting throughout the full spring period, according to J. F. Rosborough, horticulturist for the A. and M. College Extension Service. He recognizes, for instance, that beans being picked now won't last all summer and makes a second planting. In that way he assures himself a continuation of green string beans until dry, hot weather stops production.

This is also true of tomatoes. In most parts of the state the early crop will be picked in late June and July. Therefore summer tomatoes, which are of a different type, must be looked to for the

Well located business house for sale. For information see M. B. Cavanaugh, at the Plainsman office.

STAR CASH VALUES

SUGAR, 10 pounds62c
CORN, 2 cans25c
GREEN BEANS, 2 cans25c
STOCK SPRAY, gallon?
HI-HO Butter Wafers, box	23c
RAISINS, 15 oz. pkg.	..15c

BUY A BOND
Shorten the Invasion

COCOA, Hersheys, box	..10c
BABO For quicker cleaning	11c
MACKERAL, can17c
LARD, Pure, 4lb. carton	69c
FRESH FRUITS AND VEGETABLES	
Another shipment for the week end.	
AFTER THE RAINS is a good time to plant. Good selection of Bulk Garden Seeds.	

home table supply, Rosborough says. Varieties like Porter, Danmark and Cherry, though small in size are dependable for production because the plants are resistant to heat and drought. Small plants or the seed planted directly in the row, is the method of starting and second crop, but it is not advisable to prune or stake the plants. During the hot, dry weather a canopy of foliage is needed to prevent the fruit from blistering or becoming sunburned.

Green pepper, okra, squash, butter beans, eggplant, blackeye, cream, or purple hull peas, and shallot onions are hot weather, or heat-resistant, vegetables. Rosborough suggests that every garden should have space for them so that midsummer will not find idle places in the Victory garden. Accordingly, if they are not already

growing they should be planted in the near future.

Blackeye, cream, or purple hull peas can be planted now for late June and July production. A second should be made in mid-June for late July and early August production. Allow three feet between rows and six to 10 inches between plants for easier cultivation.

Don't run a Victory garden on half time, Rosborough counsels. Every foot which can be utilized and every plant which can be made to produce is going to be needed to keep the nation in food this year.

THE WORLD'S *Safest* INVESTMENT
WAR BONDS

GARDENING for VICTORY



Plant the "BIG SIX"

TOMATOES * SNAP BEANS * CARROTS * CABBAGE
LETTUCE * GREENS

Agricultural experts wisely suggest that at least we grow these "Big Six" vegetables in our back yards this year and get the most for our money and effort. They're the "Big Six" because they have been selected for their high nutritive values, ease of culture and volume of yield. Since food is vital to winning the war, let's plan our Victory Gardens now and help to hoe the Axis under.



Southwestern PUBLIC SERVICE Company

OUR SERVICE IS YOUR GUARANTEE FOR LONGER USE OF YOUR AUTOMOBILE.

CLINE AND RAINER GARAGE

Let us put your car back on its wheels! Your automobile is priceless today; and a car in fair condition can be overhauled so expertly as to rival a new one in service! Get the habit of checking your car at regular intervals—our trained experts are well qualified to give you advice—and the best service.

Telephone 37

CLINE AND RAINER
WESTERN AUTO ASSOCIATE STORE

FIRST NATIONAL BANK
Floydada, Texas

1903—Time Tested Service—1944

PRINTING !!

TELL US OF THE JOB AND WE'LL DO THE WORK CORRECTLY AND PROMPTLY

We have modern type and equipment to handle the work in an efficient manner, which results in most moderate cost to the buyer. When you order printing from our plant you may depend upon it that the work will be done to your complete satisfaction.

- LETTERHEADS
- ENVELOPES
- BOOKLETS
- BUSINESS STATIONERY
- WEDDING ANNOUNCEMENTS
- FOLDERS
- CIRCULARS
- SHOW CARDS

NO MATTER WHAT THE PRINTING JOB MAY BE, WE WILL DO IT RIGHT.

Cavanaugh Printing Company

Conditions as
by Santa Fe
Public Relations

outlook for wheat in Texas is good, and with weather between now and June 15, a crop in line with the official estimate of 52,949,000 bushels will be realized. Every bushel considered, 50,000,000 bushels would seem to be a reasonable estimate for the state at this time.

Wheat in the Panhandle is the best in years, and North Plains farmers have yields of from 20 to 30 bushels an acre. The situation in the south is less favorable. Heavy moisture during the winter and heavy abandonment in this area are thin and lower yields are expected.

Wheat heading out, harvest in the South Plains should start about June 20, and move northward into the Panhandle around June 25. Additional moisture is needed to maintain the present crop, and light rain was falling at the time this report was prepared. No insect damage was reported.

Planting of grain sorghums and cotton is well along. As compared with last year, there will be slight increase in cotton but an increase in sorghums of approximately 20 per cent. Other plantings in the area include 6,000 acres of sorghum for harvest in late July, and about 400 acres of sugar

IT'S TEAMWORK THAT DOES IT



The 5th War Loan STARTS NEXT WEEK!

WHEREVER your invasion forces are fighting—at sea, in the air, on the ground—they're working together for victory. They know that they must depend on each other, for only by coordinated teamwork will they win through to final victory in the earliest possible time.

The Fifth War Loan starts next week. It's going to take teamwork—a lot of it—to put this drive over the top. For we've got a job to do. As the tempo of invasion rises every one of us must mobilize for support of our fighting men.

In every city, town and hamlet men and women like

yourself have banded together as War Bond Volunteer Workers, giving their time to taking your subscriptions for Bonds. Support them. Give them the kind of teamwork our boys are giving to each other on the fighting fronts!

When your Volunteer Worker calls, double your War Bond subscription. It's their job to help raise \$16 billions of money for victory during this Fifth drive, \$6 billions from individuals like yourself.

Make up your mind to welcome your Victory Volunteer with a friendly smile and an open checkbook—remembering that it's teamwork that does it!



Back the Attack! - BUY MORE THAN BEFORE

- Farmers Grain Company
- The First National Bank
- H. G. Parker Furniture Company
- Westers' Bakery
- Higginbotham-Bartlett Company
- Dale Strickland Butane Company
- Stansell-Collins Company

- Producers Cooperative Elevator
- Style Shoppe, Mrs. Mollie A. Morton
- G. C. Tubbs Insurance Agency
- Plains Cooperative, Inc.
- Rice Hatchery
- Floyd County Plainsman
- White Drug Company

- Henry Edwards Elevators
- Nichols Lumber Company
- Arthur B. Duncan Abstract Company
- Radio Electric Company
- A. V. Stewart's Cleaners
- Bishop Motor Company
- Patterson's Fruit Stand

HERE'S WHAT UNCLE SAM OFFERS YOU IN THE FIFTH WAR LOAN

The "basket" of securities to be sold under the direction of the State War Finance Committees during the Fifth War Loan consists of eight individual issues.

These issues are designed to fit the investment needs of every person with money to invest.

THE OFFERING INCLUDES:

- ★ Series E, F and G Savings Bonds
- ★ Series C Savings Notes
- ★ 2½% Bonds of 1965-70
- ★ 2% Bonds of 1952-54
- ★ 1½% Notes, Series B of 1947
- ★ ¾% Certificates of Indebtedness



This is an official U. S. Treasury advertisement—prepared under auspices of Treasury Department and War Adv.

More War Bonds now
Future security, too!

Expert Repair
Counts These
War-time Days

Rainer Shoe
Shop

4-H Club Boys are Being Entertained at Air Field

More than 375 4-H Club boys from 21 surrounding South Plains counties will visit at South Plains Army Air Field Thursday and Friday, June 8 and 9, as the field pays tribute to the young men for outstanding farm production.

The visit to the big advanced glider pilot training center is the second annual trip to the field for these outstanding farm boys of the area, each of whom has raised enough food to feed a soldier for a year.

Ten counties will be represented Thursday and eleven Friday, with trucks meeting the young men at the SPAAF gate and taking them on a full inspection of the big school for invasion where men are training in giant gliders.

The visitors will be given an opportunity to visit the flight line where actual training is taking place, the link trainer and instrument buildings, athletic fields and the obstacle course where any of the young men wanting to test their physical adeptness may do so, the range where SPAAF men are given small arms training with various types of weapons, the mess halls where they will eat dinner, and other points of interest on the field.

This year, as last, the various county agents will accompany the young men. In charge of arrangements to get the young men to the field are Jason O. Gordon, Lubbock county agent, and K. J. Edwards, district agent.

Price Panels are Performing Nation Wide Service

Lubbock, June 8.—County-wide Price Panels of the War Price and Rationing Boards throughout the nation are stepping up their activities in an all-out effort to keep the cost of living at the level that has been maintained for the past year. Boards in the Lubbock District are cooperating in every way with this move, the Office of Price Administration has announced.

Stressing the need for more price panel assistants, Howard R. Gholson, District Director of the OPA, has announced that any man or woman who can volunteer a few hours each week to this community program should contact the Price Panel of his local board. "Whether it is at all possible, we want to keep the price control program on a neighbor-to-neighbor basis. The Local Boards need many more volunteers if the program is to be carried out as it should be," Gholson stated.

A skating rink in New York City is reported to have a seating capacity of 5,000.

ERISMAN TO RUN FOR STATE OFFICE



Fred Erisman of Longview, who is serving his third term as District Attorney of Gregg County, has announced his candidacy for Attorney General of Texas. Long prominently identified in Texas Junior Chamber of Commerce activities, Erisman is now serving as president of the District and County Attorney's Association of Texas.

Martha Manning
JUNIOR STYLES IN MISSES SIZES

"Scroll Delight"

Luscious colors softly printed in a superb scroll design of two-tone effect, in Shiffo Sheer rayon. China Jade, Rose Petal, Hero Blue, Amber Light, sizes 10 to 16.

\$10.95

#2160... A cool, trim two-piece of Embroidered and Plain Frosted Rayon Chambray. Notice the interesting, flattering yoke treatment... the softly rolled lapels. In Gold, Romance Green, Happy Blue, June Rose. Sizes 14½ to 20½.

\$12.95

It's washable

Martha Manning
ILLUSION HALF SIZES

Martha Manning
JUNIOR STYLES IN MISSES SIZES

"Ship Ahoy!"

Two-piece of Sport Lin Spun rayon with fresh white embroidery trim and buttons. Cinnamon Tan, Navy Blue, Fire Red, Glory Green, sizes 10-16.

\$7.98

Martha Manning
JUNIOR STYLES IN MISSES SIZES

"Turn-A-Bout"

Two-piece trim-and-tailored white Harmony Rayon Crepe blouse with an all-round gathered skirt of stripe Accatate Rayon Jersey. Air Corps Blue, Marine Rust, Navy Blue, in sizes 12 to 18.

\$8.98



Summer Handbags You are Sure to Admire

They're perfect gifts—these bags—in pouch, strap or styles—thoughtfully colorful to go from Spring into Summer

FABRICS, LEATHERS, PLASTICS, STRAWS
BEAUTIFULLY LINED AND FITTED.



We Are Showing A Varied Selection Of Smart Summer Hats

Every Hat is Charming in our varied stock of sailors, pill bamburgs, big brims, and tiny floral creations. Veil included almost every one.

STYLE SHOPPE

"Always Showing Newest Things First" Mrs. Mollie A. M.

