

"By Helping Business You Help Yourself"

The Floyd County Plainsman

Industrial Users Must Register Again

Between December 15, 1943 and January 5, 1944, all industrial users of rationed foods will be required to re-register with their local Price and Rationing Boards, Boyle Settle, district rationing officer, announced today. This registration will be made on the form R-1200, which is a continuation of the former sugar form R-310, the processed foods form R-1308, and the meats form R-1309.

The purpose of this re-registration is to combine the allocations of rationed foods on one form rather than on the three forms previously used. This will permit uniform application of the Regulations to all industrial users of rationed foods. It will permit the issuance of all allocations of rationed foods at one time instead of three times as heretofore has been the case, Settle said.

Under this initial re-registration between December 15 and January 5, allocations will be granted for three months at a time on all rationed foods, the rationing executive pointed out. This will eliminate the need for the board at different intervals and will enable the industrial user to plan his purchases on a basis of rationed foods on a farm basis.

Industrial users include, for example, such people as bakers, dairymen, bottlers, candy manufacturers, pharmaceutical manufacturers, and a host of others who use rationed foods in the preparation of products both rationed and unrationed, Settle declared. A baker, for example, he explained, would use sugar, processed foods, fats and oils, which fall under the rationing program. He would use one allotment of all these commodities each three months. Applications he might file for re-issuance of one rationed commodity would be made applicable for all corresponding needs of other rationed commodities.

This change of policy is in line with the OPA's announced intention to simplify and consolidate its regulations whenever possible, Settle said.

Interscholastic League Basketball Entries are 784

Austin, December 9.—Entries in the University of Texas Interscholastic League basketball tournament now number 74, including Conference B teams, according to R. J. Kidd, athletic director. This year's roster counts 115 players that were inactive last year. District basketball championships must be decided by February 26, Kidd pointed out, and regional titles by February 26. The tournament will be held in Austin March 2, 3 and 4.

All County Pioneer Dies

Mrs. Belle Dalton, 81, wife of Jerry Dalton, of Memphis, died at her home November 25. Mrs. Dalton had resided in Hall County for 37 years, and for a number of years owned and operated the Memphis Democrat, a newspaper published in Memphis.

In 1942, the volume of wood in the war effort exceeded that of steel. Lumber production in that year was in excess of a billion board feet.

Son-in-Law of R. E. Fry Buried at Lubbock

Lubbock, December 5.—Funeral services for Lt. (j. g.) J. Holt Waldrep, 26, former Lubbock insurance man, who died Friday night of injuries received Monday in a crash of a Navy training plane near Hensley field, Dallas, was conducted Sunday afternoon at 3 o'clock at the Broadway Church of Christ. G. C. Brewer, minister officiated. Burial followed in a local cemetery.

Lt. Waldrep's body arrived in Slaton at 8:30 o'clock Sunday morning from Dallas and was held at the home of his parents, Mr. and Mrs. J. S. Waldrep, in southeast Slaton until the afternoon.

Besides his parents, Lt. Waldrep is survived by his wife, the former Marilyn Fry, daughter of Mr. and Mrs. R. E. Fry of Floydada, two sisters, Mrs. C. A. Hodge and Mrs. Roswell S. Mayer of Slaton, and two brothers, E. S. (Sandy) Waldrep, 1526 Hill street, stationed at Lubbock Army Air field, and Billy Ray Waldrep, who is in the Marine and stationed at San Diego, California. The husbands of Mrs. Hodge and Mrs. Mayer are both in foreign service.

Lt. Waldrep, who had lived in Slaton all of his life until he came to Lubbock to attend Texas Technological college in 1936, was a graduate of Slaton High school and Tech, receiving his degree from Tech in 1940. He was a star football player for both Slaton High and Tech and was prominent in student affairs at the college.

He was associated with a local insurance agency prior to going into the Navy early in 1942 as an ensign. He was secretary of the Lubbock Junior Chamber of Commerce and active in affairs of the Tech Alumni association.

He was first stationed at the Navy's preflight school at the University of Georgia, Athens, as a physical director and had been transferred to aviation training about three months ago. He visited his parents and relatives and friends here in mid-November his transfer to the Dallas field for basic flight training.

Death Claims Founder of Goodnight Ranch

Funeral rites were held Sunday for David Ray McCormick, one of Texas' pioneer cattlemen.

McCormick, 88, died Saturday night at the home of a daughter, Mrs. R. H. Fonville, in Houston.

He was a native of Maine and mick established the first units of the Goodnight ranch in the Palo Duro canyon, now a state park, and in later years held extensive cattle interests in Mexico. He was an original member of the old Trail Drivers' association, and was active for many years in the Texas Cattlemen's association.

The body was sent to San Antonio for burial.

SECOND SUNDAY SINGERS AND SOUTH SIDE CONVENTION WILL GATHER

The regular Second Sunday Singing and the Floyd County South Side Convention will meet at the First Methodist Church Sunday at 2 o'clock. T. J. Heard is president of the South Side Convention and will be in charge of the gathering Sunday afternoon. The public is invited to attend.

"Silent Night"

The battle is over.

The bomb-shattered village is deserted, lifeless.

And the silence that greets our invading men is deathly. It's the kind of grim stillness many of them will know on Christmas Eve this year.

Not like the warm, beautiful "Silent Night" we know. Not like the peace in our homes the night before Christmas.

But the only way we can have some peace in our hearts is to know that we're helping bring our men back. Actually helping by buying all the War Bonds we possibly can. And by giving all the War Bonds we possibly can.

For no other gift could mean so much this year . . . no other gift could do so much good.

In War Bonds, lies the spirit of Christmas.



FOR PEACE ON EARTH BUY WAR BONDS

Weekly Rationing Calendar, Dec. 10 Through Dec 17

Sugar: Stamp No. 29, Book IV, good for 5 pounds through January 15, 1944. Nos. 15 and 16, Book I, already expired but if unused, may be taken to local War Price and Rationing Board for application for sugar certificate.

Meats and Fats: Book III, brown stamps L, M and N valid and P to become valid December 12, all good through January 1, 1944.

Processed Foods: Book IV, green stamps, A, B and C valid through Dec. 20. Green stamps D, E and F, which became valid on December 1, will be good through January 20, 1944.

Shoes: Book 1, stamp No. 18 and Book 3, stamp one on airplane sheet, are each valid for one pair of shoes indefinitely. Thirty days notice will be given in advance of expiration date.

Gasoline: (Endorse coupons on front.) "A" coupons, 3 gallons each with the No. 9 coupons expiring January 21, 1944. In B-2 and C-2 books issued effective December 1, 1943, the coupons nationally have a value of 5 gallons each. Other B and C coupons, including B-1 and C-1, still outstanding will retain their two-gallon value. "R" and "TT", five gallons each; "D", one and one-half gallons each; and "E", one gallon each.

Next Tire Inspection Dates: "A" book holders, March 31, 1944; "B", Feb. 29, 1944; "C", Feb. 29, 1944; and "T", every six months or every 5,000 miles, whichever comes first.

Tire, Inner Tube Certificates: Certificates from local boards required for all new tires, used car and truck tires, all new inner

Shamrock football Team Defeats Spur In Game Friday

Spur, December 3.—The visiting Shamrock Irishmen downed the Spur Bulldogs Friday afternoon, 6 to 0, to take the title of district 3-A and 4-A.

Shamrock's touchdown came in the second quarter, when Halfback Nolan shot a pass to Lummas, end, from the 2-yard line to tally the game's only touchdown. Aerial attempts were numerous, Shamrock throwing 11 passes and Spur trying 10. Shamrock completed three and Spur likewise completed a trio of the hurls.

First downs were few, Shamrock totaling six and Spur making two. The game was tight and hard-fought all the way.

The Friday win give Shamrock the right to play Phillips, also bi-district winner Friday.

There is more fresh water available for domestic and industrial purposes and irrigation in underground reservoirs and conduits than in all the surface reservoirs of Texas, geologists of the Texas Academy of Science were told during their fall meeting at the University of Texas.

No Certificates are required for passenger car tire recaps, used tractor and implement tires, and used inner tubes. December 1 truck recaps were taken off certificate required list.

Other Certificates: Certificates from local board required for n-w cars, domestic cooking and heating stoves, bicycles, typewriters and some types of rubber footwear.

U. S. Navy Said to Be Strongest in the World

Today the United States Navy is the strongest the world has ever seen—and it has not yet reached its peak of power.

But keeping the Navy at the highest possible level is not alone the responsibility of the superb officers and men who man its ships. The Navy also must rely upon the efforts of thousands of civilian workers whose jobs are to repair ships damaged in action.

All men not now in essential war work—whether experienced or inexperienced—may help to keep the ships fighting by engaging in civilian employment at one of three great Navy yards—the Puget Sound Navy Yard, Bremerton, Washington, the Mare Island Navy Yard, Vallejo, California, or the U. S. Naval Drydocks, Hunters' Point, San Francisco, California.

The work is vital to winning the war, the pay is standard, and there is good chance for advancement. In addition, modern, inexpensive government housing units are provided for all workers and their families. And free transportation to the Navy yard will be furnished from the point the person is recruited.

Men with experience in skilled crafts who are not engaged in essential work at the present time are especially needed; even men who have never had a day's experience with anything mechanical have a job waiting for them.

Persons not engaged in war work or equal skill should apply to civil service representatives or Navy recruiting stations in Dallas, Tyler, Waco, Lubbock, Wichita Falls, Amarillo, San Angelo or Fort Worth. Applications also

Range Feed and Pasture Outlook is Improved

College Station, December 9.—A slight improvement in the state average range feed and pasture conditions was shown on November 1 as compared with those of October 1, but with considerable variations between districts. According to information to the A. and M. College Extension Service from V. C. Childs of Austin, agricultural statistician-in-charge, Bureau of Agricultural Economics, USDA, range feed continued to go down in the northwest districts, and wheat pasturage is spotted and will be very limited.

During October, however, range feeds over the Edwards Plateau generally were improved, and were fair in the Pecos-El Paso area. Meanwhile they declined in the southeast districts, but the extreme south end of the state had generally good grazing and range feed. In the north central and northeast districts pastures were materially improved during October.

Range feed condition for the state as a whole was 14 points lower on November 1 than at the corresponding date last year, and four points below the 20-year average for the date. Concern over lack of adequate supplies of feed, especially proteins, is reported by stockmen in the present and former drought areas of west and northwest Texas.

According to the survey, the situation is reflected in a measurable decline in the condition of cattle in northwest districts, with shrinkage especially noted in some of the dry low Rolling Plains counties. On the other hand, stock were in fair to good shape in other sections. The state average condition was approximately the same as a month earlier.

The condition of sheep was reported low in the northwest portion on November 1 than a month earlier. But some improvement was noted in the Edwards Plateau and Pecos sections, with the state average condition about the same as on October 1. The improvement in the Edwards Plateau area resulted from improved moisture and range feed conditions from late September and early October rains. By November 1, however, surface moisture was somewhat depleted, but subsoil moisture was most adequate for the present.

SANTA FE WEEK END CAR LOADINGS FOR DEC 4

The Santa Fe System carloadings for week ending December 4, 1943, were 24,416 compared with 22,577 for the same week in 1942. Cars received from connections totaled 12,133 compared with 11,753 for same week in 1942. Total cars moved were 36,549 compared with 34,330 for same week in 1942. Santa Fe handled total of 34,203 cars in preceding week this year.

A Nebraska draft board found subtle humor in one of its cards. Under the listing, "serious physical defects," was this classic: "None, except one arm missing."

LET CAVANAUGH DO YOUR JOB PRINTING.

will be taken at Navy recruiting stations in Sherman, Paris, and Longview, or at the nearest U. S. Employment Office.

Appointments will be made in accordance with War Manpower Commission Regulations, and may be quickly completed after the physical check-up and short interview with the recruiting representative.

Old Age assistance Grants Will be up 20c in December

Austin, December 9.—John H. Winters, Executive Director of the State Department of Public Welfare, announced today that payment of Old Age Assistance grants will be raised a flat 20c over November payments when December checks are written. The welfare director said that the \$2.64 cut in each grant, which has been in effect for several months because of insufficient money, will be reduced to \$2.44 this month when \$3,781,489.16 is distributed to 180,511 aged persons in an average payment of \$20.95. The rolls made a net decline of 1,332 cases between November and December payments, due principally to better employment conditions and to a general increase in resources of recipients, the director said.

Four thousand six hundred eighty one blind persons will be paid \$114,942 in December in an average grant of \$24.56. This is practically no change in the rolls, being a net increase of only nine recipients and \$27 over November rolls.

The Aid to Dependent Children program sustained a net loss of 239 families with 600 children during November. The December rolls call for \$221,052 in average payments of \$21.28 to 10,389 families, representing 23,000 children.

37th Annual Sale of Christmas Seals is on in Texas

Austin, December 9.—The first ten days of the 37th annual Christmas seal sale to finance the fight against tuberculosis, "once again proves that Texans are the most generous people in the world when it comes to support of causes they believe in," according to Pansy Nichols, executive secretary of the Texas Tuberculosis Association.

As evidence of the interest people in this state are taking in the campaign against tuberculosis, Miss Nichols picked out a few letters from the thousands enclosing contributions to further tuberculosis work in Texas.

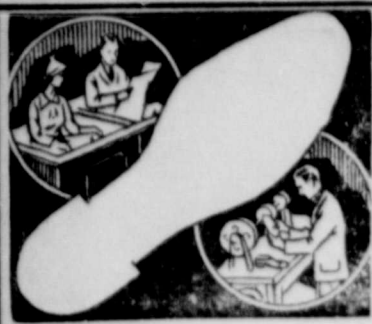
One letter from a well-known attorney read: "Herewith I gladly enclose you two dollars to cover Christmas seals mailed me. It gives me pleasure to contribute this small bit to such a grand cause. I hope that in the use of these seals at Christmas time I may arouse in some person's heart a child's hope, faith and love—in this war torn world."

Another was from a mother who purchased seals in the absence of her son to whom they were addressed: "My son and his wife are in the army, he in the air corps and she in the W. A. C. I am sending a dollar to pay for one sheet of seals. Wish I could do more, but just don't have the money."

ANNOUNCE NEW ARRIVAL

Technical Sergeant and Mrs. Harold W. Huggins are the parents of a son, born Monday, December 6, at Pitts Hospital. He has been named James Harold. The grandparents are Mr. and Mrs. J. R. Roy, City, and Mr. and Mrs. J. D. Huggins, Lockney. Technical Sergeant Huggins has been in foreign service for several months.

Back the Attack With War Bonds



CONSERVATION IS THE FOUNDATION OF VICTORY!

In having us repair your shoes so that you may help conserve our country's valuable war supplies, you are helping to win this war.

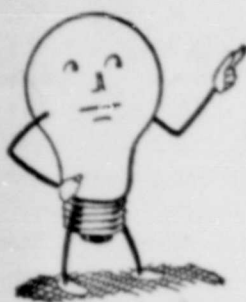
Rainer Shoe Shop
South Side Square

The finest CHRISTMAS present you can give is one of Uncle Sam's WAR BONDS. Keep on BACKING THE ATTACK.

DR. KIBBY J. CLEMENTS
OSTEOPATHIC PHYSICIAN AND SURGEON

Diathermy, Light Therapy, Colonic Irrigations, New Improved Methods of Curing Piles, Fistula, Pruritis (Itching Piles) by Office Treatment Without Interrupting Daily Routine.

ROOMS 313-315, SKAGGS BUILDING, Plainview, Phone 683



How You Can Help Save Vital Electricity

WE are glad to cooperate with the War Production Board in urging all our customers to conserve electricity wherever possible.

There is no shortage of electricity in this community, but you should remember that the production of electricity involves fuel, transportation, equipment and manpower—all needed in the war effort. Therefore, we suggest:

IN YOUR HOME

Eliminate all waste in the use of various electric appliances.
Turn off all lights and appliances when not actually needed.

AT YOUR BUSINESS

Eliminate decorative and ornamental lighting.
Eliminate daytime use of lighting—as in signs and show windows—wherever possible.
Day or night—turn off lamps not actually needed.

Electricity and eyesight are both important in fighting a war. Let's conserve them both.

Don't Waste Electricity just Because it isn't Rationed.

Southwestern
PUBLIC SERVICE
Company

FIRST NATIONAL BANK
Floydada, Texas

1903—Time Tested Service—1943

TRACTOR TUBES

REPAIRED IN ANY CONDITION

PASSENGE RTUBES

REPAIRED IN ANY CONDITION

WE HAVE COMPLETE STOCK OF TIRES

BILL DYER'S AUTO STORE
WEST SIDE SQUARE.

TROOP MOVEMENTS TWENTY PER CENT OF PASSENGER MOVEMENT

Troop movements constitute about 20 per cent of the total passenger miles of the railroads, according to a statement made recently by Major General Charles P. Gross, chief of the Army Transportation Corps. So far in this war, General Gross stated, the railroads have carried three and a half times as many troops in special cars as were handled in like movements in the entire nineteen months the United States was in World War I. On the freight side, he said, the railroads have hauled more than five times as much army freight and express as they did in the other war, and they are now moving more than nine-tenths of all army freight tonnage.

Why Texas Is Not Getting Its Fair Share of Apples

Dallas, Texas, December 9th.—Johnnie Brown, manager of the Ben E. Keith Company, Dallas, has just returned from a trip to

the Pacific Northwest where he went to secure apples for the company's seven houses located throughout North, East, Central and West Texas; and, instead, he unearthed the reason why Texas is not getting its fair share of apples this season.

Under the new apple order written by the Office of Price Administration, the ceiling price to the grower automatically increases. On November 1st it increased 17c a box; December 1st, 16c; February 1st, 16c; and April 1st, 17c.

Very few if any growers have facilities for washing, grading and packing apples. Consequently, it has been the established custom for the growers to take their apples to the packers, where they are washed, graded, sized, boxed and storage facilities provided. The OPA has authorized the box mill to increase their charge on boxes to 25c per box, and the War Labor Board has authorized increase in wages for warehouse labor to 77 1-2c per hour. These two items, of boxes and labor, account for approximately 60 per cent of the total cost of producing and preparing a box of apples for market; yet, no provision has been made for these items. Under the OPA order an apple is an apple, regardless of its variety, grade, size, or pack. Third grade bulk apples will bring just as high a price as the finest variety, packed and sized, of established brands. There is very little choice in the matter for the buyers, as the consumer is beginning to learn.

In order to get back to expense incurred in packing, it has become necessary for the packers to hold the fruit until the advances in ceiling prices pyramid sufficiently to take care of these costs. It is likely that most of these apples will be held in storage until the April ceiling goes into effect. Some few cars, however, are being released at the beginning of each advance in ceiling price; but from the middle of the month on, no apples are available for shipment until the next advance period becomes effective. These are things which operate against all markets alike.

But the thing which is operating against the markets in the Southwest, which have formerly handled more apples from the Northwest than any other markets in the United States, and which prevent Texas from getting its fair share of the apple crop, is the subsidy being paid by the government on apples going into other zones. Strange as it may seem, apples produced in Washington and Oregon may be shipped into such other apple producing States as

New York, Virginia, Illinois, Michigan and Arkansas, and in addition to the maximum ceiling price the grower will also obtain a subsidy from the government of from 19 1-2c a box to 49c a box covering what is known as freight rate subsidies; making the growers' returns on apples shipped in to other producing areas greater than when sold for shipment to Texas where practically no apples are produced commercially.

It is true that the 1943 apple crop in the Northwest is approximately 20 per cent short of last season's crop. But the fact remains that there are approximately 11,000 cars of apples in the Wenatchee district of Washington State and approximately 6,500 cars in the Yakima district. The government has a set aside order for 15 per cent of the total. Many of these apples are of varieties which should be moved before the first of the year, if extensive loss is to be prevented. Mr. Brown states that if the bulk of this fruit is held until the April 1st advance, markets will be glutted with apples, many of which should have been sold months earlier. And, too, the railroads will be faced with an acute shortage of cars in which to move such a tonnage and transportation will be disrupted.

The shipper has very little to say in the matter, for unless he does as other shippers are doing and holds back the fruit so as to realize for his growers the same price that other shippers realize for their growers, he stands to lose the tonnage next season.

Mr. Brown states further that he was able to obtain a few cars of apples for the Christmas trade, but apples will be very scarce. Ben E. Keith Company has been vigorously protesting the workings of this order, both to the Hon. Marvin Jones, War Food Administrator, and to the Office of Price Administration; but, as yet, has had no satisfactory answer from either of these agencies. Texas obviously is being discriminated against.

Mr. Brown also visited Colorado, Idaho and Utah, looking over the onion and potato situation. While the potato crop in Idaho suffered a severe set-back on account of the early freeze; yet, the crop as a whole will be plentiful and the quality of the Idaho potatoes not affected by the freeze will be fine. Onions, however, are going to be extremely scarce and they may be expected to disappear from the market before new crop Texas onions are ready to move about the middle of March.

—V—
Let Cavanaugh do your Printing

PRINTING !!

TELL US OF THE JOB AND WE'LL DO THE WORK CORRECTLY AND PROMPTLY

We have modern type and equipment to handle the work in an efficient manner, which results in most moderate cost to the buyer. When you order printing from our plant you may depend upon it that the work will be done to your complete satisfaction.

- LETTERHEADS
- ENVELOPES
- BOOKLETS
- BUSINESS STATIONERY
- WEDDING ANNOUNCEMENTS
- FOLDERS
- CIRCULARS
- SHOW CARDS

NO MATTER WHAT THE PRINTING JOB MAY BE, WE WILL DO IT RIGHT.

Cavanaugh Printing Company



As seen in VOGUE

Whip-Saw

TISH-U-FUR-FELT by LEIGHTON

Brimming over with good looks and charm... and with the subtle distinction that marks the well-turned-out woman... "Whip-Saw" for your more tailored moments this Spring. The flattery of the soft lines, the novel horse-shoe crown and the "whip-saw" edge of felt, promise to be your "Open, Sesame" to compliments. In new Tish-U-Fur-Felt colors.

*Reg. U. S. Pat. Off.

STYLE SHOPPE
Mrs. Mollie A. Morton, Owner

The Floyd County Plainsman

PUBLISHED THURSDAY EACH WEEK
M. B. Cavanaugh, Publisher

FLOYD COUNTY \$1.00; OUTSIDE FLOYD COUNTY \$2.00
as Second Class Matter June 23, 1930, at the Post Office at
Floydada, Texas, under the Act of March 3, 1879.

NOTICE!

erroneous reflections upon the character, standing or repu-
of any person, firm or corporation which may appear in the
of The Floyd County Plainsman will be gladly corrected
being brought to the attention of the publisher.

Billy Joe Welch Married Sunday

Mary Frances Bronson,
of Mrs. Lavenia E. Bron-
Pasadena, California, and
daughter of Mr. and Mrs. H.
son of Wichita Falls, be-
the bride of Sgt. Billy Joe
of South Plains Army Air
Saturday at a ceremony read
block in the evening at the
of the bridegroom's uncle
Mr. and Mrs. A. L.
2207 Sixteenth street.
is the son of Mrs. A. J.
of Floydada.

Rev. Walter P. Jennings read
the service as the couple stood
before an arrangement of white
Chrysanthemums and fern light-
ed by tall tapers in candelabra.

Miss Merle Scoggin played "Ah
Sweet Mystery of Life" and the
traditional wedding march. Pre-
ceding the ceremony she and Mrs.
Mack Scoggin sang "O Promise
Me", accompanied by Miss Char-
lotte Scoggin.

Mrs. W. M. Cauley, Sgt. Welch's
sister, as matron of honor, wore a
formal dress of metallic blue and
carried a bouquet of yellow roses.

Pfc. Marshal Quintin Cauley
served as best man.

The bride was given in mar-
riage by her grandfather, H. E.



SOUTH TAKES UP THE SLACK

IN LIGHT, BRIGHT, AND DARK COLORS

Complementary jackets—these well-mannered slacks will be your
for Winter, resort play, and comfort. Give Her Slacks.

STYLE SHOPPE

MRS. MOLLIE A. MORTON, OWNER

OUR SERVICE IS YOUR GUARANTEE FOR LONGER
USE OF YOUR AUTOMOBILE.

LINE AND RAINER GARAGE

Let us put your car back on its wheels! Your automobile
priceless today; and a car in fair condition can be overhauled
expertly as to rival a new one in service! Get the habit of
checking your car at regular intervals—our trained experts
well qualified to give you advice—and the best service.

We buy junk Batteries. Phone 37

LINE AND RAINER
WESTERN AUTO ASSOCIATE STORE

Wilson. She wore a bridal gown
of embroidered marquisette de
soie fashioned with a sweetheart
neckline and full skirt sweeping
into a train. The long sleeves tapered
to pointed cuffs and her
finger-tip veil of bridal illusion
was held in place by white flow-
ers. She carried a white prayer
book topped with a white orchid
from which fell streamers of bou-
vardia on satin ribbons.

Following the ceremony, a re-
ception was held and a three-tiered
wedding cake topped with silver
bells was served. Assisting in the
dining room were Mesdames J. H.
Scoggin, A. P. Horn and J. Ray
Dickey.

For traveling the bride wore a
green wool dress with matching
hat and pinned a corsage of white
orchids to her beaver trimmed
coat. She is a graduate of Pasa-
dena High School and a former
student at the University of Cali-
fornia at Berkeley where she was
a member of Delta Gamma national
sorority.

The bridegroom is a graduate
of Floydada High School and re-
ceived his bachelor of science de-
gree from Texas Technological
College where he was a member
of the College club. He later re-
ceived an O. D. degree from South-
ern College of Optometry, Mem-
phis, Tennessee.—Lubbock Awa-
lanche-Journal.

Classified Advertising

FOR SALE—Electromaster white
enamel electric cook stove. See
Sparks at Bishop Motor. 51-1tp

LANDS FOR SALE

A few farm tracts to lease at
reasonable prices for cash.

W. M. MASSIE & BRO.
Floydada, Texas. 11-tfc

PERMANENT WAVE, 59c! Do
your own Permanent with Charm-
Kurl Kit. Complete equipment,
including 40 curlers and shampoo.
Easy to do, absolutely harmless.
Praised by thousands including
Fay McKenzie, glamorous movie
star. Money refunded if not sat-
isfied. ARWINE'S DRUG STORE.
37-10 tp.

FOR SALE—Six room modern
house with block of land (sixteen
lots) on highway, big concrete
porch, well and windmill, lots of
shrubby, trees, grape vines etc.
Arthur B. Duncan Abstract Com-
pany. 49-4tc

Throw your scrap into the fight.

Floydada Insur- ance Agency . . .

Insurance of all kinds. Your in-
quiries and business respectfully
solicited.

W. H.
HENDERSON
OWNER

Advice is to Save Tree Leaves to Build the Soil

College Station.—Nature's al-
chemy translates dead tree leaves
into humic acid which releases
plant food in the soil for use by
plants and trees the next season.
Don't burn them. Instead, says J.
F. Rosborough, horticulturist for
the A. and M. College Extension
Service, make them into leaf mold
or a compost bed. Not leaves
alone, but all plant refuse, such
as grass clippings, weeds and
other vegetation, may be used. A
simple frame enclosure of scrap
lumber should be provided to pre-
vent the compost material from
becoming scattered.

If a bed already is available,
spread a thin layer of dirt over its
contents, if any, before adding the
leaves. In areas of very limited
rainfall, it is best to wet the en-
tire compost bed once or twice a
month to insure uniform decom-
position.

If a well-balanced plant food
mixture is desired, add a 100-
pound sack of 4-12-4 commercial
fertilizer to about one wagon load
of compost mixture. Sprinkle the
fertilizer over the vegetative mass
before covering with a layer of
soil. The fertilizer tends to hasten
decomposition.

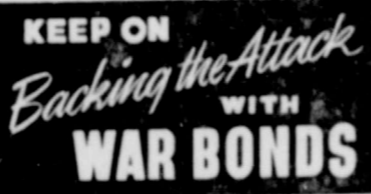
Where soil is acid, as in the
eastern part of the state, also add
100 pounds of lime to the heap.
Compost of this type is especially
beneficial to soils which tend to
pack or become hard and crusty
during dry periods.

It usually requires about three
months for leaves, weeds and other
vegetation to decompose into a
first class plant growing mixture.
The application to a vegetable gar-
den is one half to one pound per
foot of row space. Mix it thor-
oughly into the soil before seed-
ing. For pot plants the mixture
should be about one half compost
and one half good loam soil.

Since flowering plants in out-
door beds are more exacting in
their plant food requirements,
Rosborough suggests spreading a
layer of compost about three
inches thick over the bed. Then
spade it in, mixing thoroughly
with the soil.

SECOND SUNDAY SINGERS AND SOUTH SIDE CONVEN- TION WILL GATHER

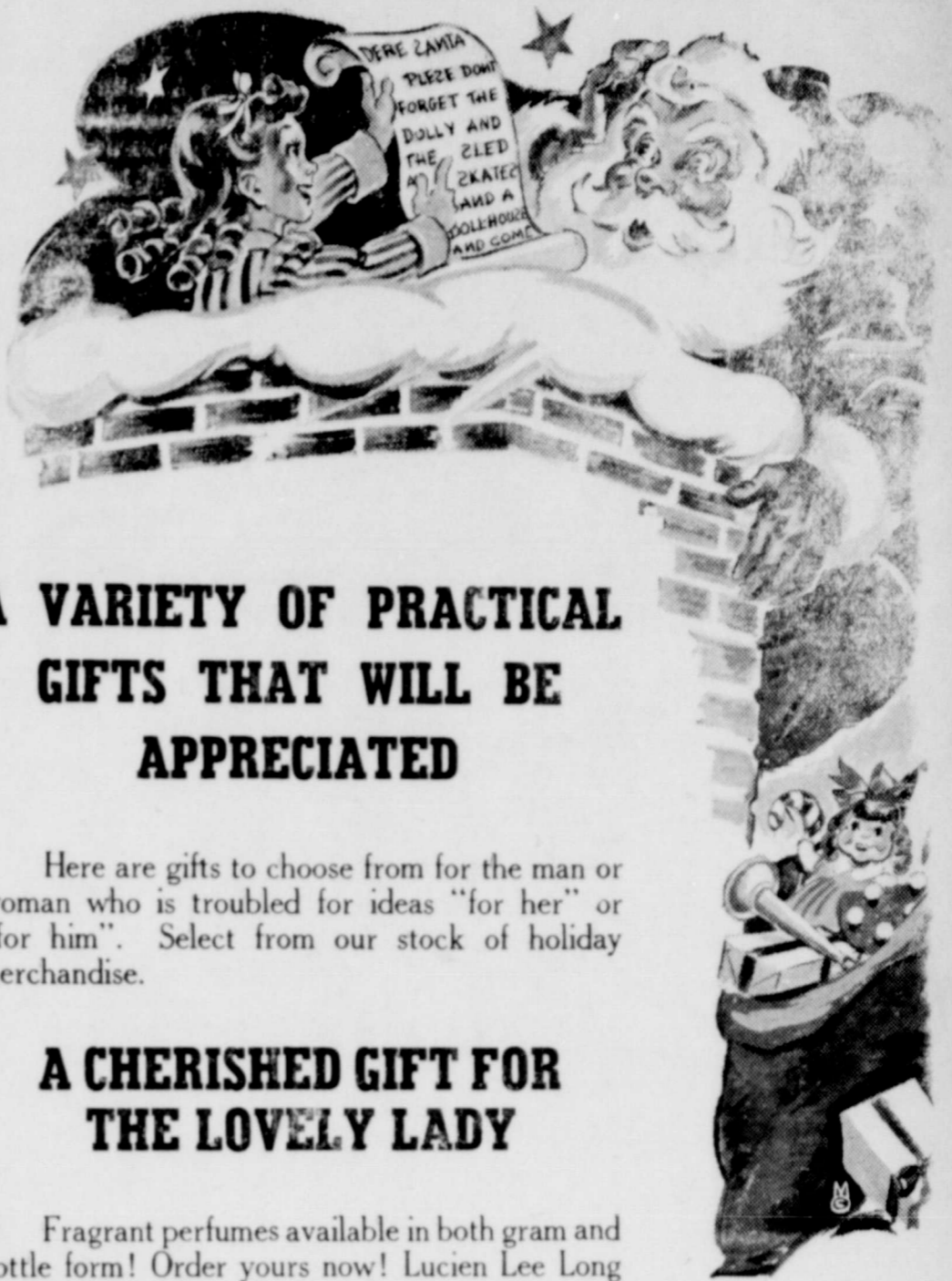
The regular Second Sunday
Singing and the Floyd County
South Side Convention will meet
at the First Methodist Church Sun-
day at 2 o'clock. T. J. Heard is
president of the South Side Con-
vention and will be in charge of
the gathering Sunday afternoon.
The public is invited to attend.



Help essential calls get
through this Christmas

During the holidays please use Long
Distance only if the call is urgent.

SOUTHWESTERN BELL TELEPHONE CO.
BUY WAR BONDS



A VARIETY OF PRACTICAL GIFTS THAT WILL BE APPRECIATED

Here are gifts to choose from for the man or
woman who is troubled for ideas "for her" or
"for him". Select from our stock of holiday
merchandise.

A CHERISHED GIFT FOR THE LOVELY LADY

Fragrant perfumes available in both gram and
bottle form! Order yours now! Lucien Lee Long
and Lenthic Lines. Our Perfume Bar is most com-
plete in all the new and desirable scents. If you
know her likes you'll find them.

GIFT SUGGESTIONS—Manicure Sets, Dres-
ser Sets, Big Vanity Sets, Soap Sets, Week-end
Bags, Zipper Bags. Many other items.

WHITE DRUG COMPANY
"Palace Theatre Building"



Thousands of them will be traveling during CHRISTMAS-NEW YEAR HOLIDAYS

★ Many of our men and women in the service will be
traveling on a furlough trip during the holiday season.
They deserve their well-earned trips, and for many it may
be their last furlough for an indefinite period of time.

POSTPONE YOUR TRIP during the holiday period

You can adjust your going and coming with more latitude
than our men and women in service. Why not defer your
trip away from the holidays? Show them your cooperation.



★ We have only limited equipment
available for nonessential wartime
travel. We are giving preference
to Uncle Sam and you can help
our boys and girls by at least en-
abling us to take care of them.

WE ARE OFFERING MANY CHRISTMAS SUGGESTIONS—AND URGE THAT YOU DO YOUR "CHRISTMAS SHOPPING EARLY"—AVOID THE RUSH—WHILE WE HAVE A COMPLETE Stock to select from. We invite you to come in and let us help you with your gift list.

STYLE SHOPPE, MRS. MOLLIE A. MORTON, OWNER



MISSES SKIRTS—Wonderful Fits—That's what smart shoppers say about our skirts—Give them as Gifts.



NECK WEAR—All new styles—Many dickies, collars and cuff sets—Another answer to your Christmas gift problem.



BETTY ROSE COATS AND SUITS. The most practical and appreciated gift for any season of the year.

INFANTS DEPARTMENT

We have added a nice line of infants wear—you can find most anything here for the "grandbaby."

LADIES AND MISSES ROBES

Most appropriate gift for Mother, Sister, Wife or Daughter. Lovely Assortment.



BAGS MAKE HANDSOME GIFTS. Roomier interiors. An all new materials and colors. See them.



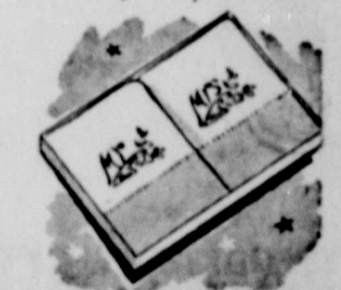
THE SOUTH TAKES UP THE SLACK. In light, bright and dark colors, with complementary jackets. These well mannered slacks will be your "uniform" for winter, resort play, and comfort. Give her Slacks.



MISSES GIMP DRESSES
In all new materials—a gift she will appreciate.



COSTUME JEWELRY
For gifts that will last—give her jewelry.



OTHER SUGGESTIONS
Luncheon Sets, Pillow Cases, in many beautiful colors and materials. Buy several this Christmas.

HANDKERCHIEFS FOR GIFTS. We have a beautiful selection of lovely handkerchiefs that will make appropriate gifts.



WOOL SWEATER
Ideal Gifts for School—in all new colors



THE USUAL GIFT GLOVES
The one gift that is appreciated—in all new colors.



ANKLETS
In many colors and styles—Inexpensive but practical.

Nelly Don

timeless classic with a 1944 look

A willing volunteer for double duty in your wardrobe. Nelly Don's polka dot classic in a washable rayon crepe . . . beautifully cut, and well made to the last seam. The perfect dress for so many occasions! In navy, luggage or light blue. 14-44, 164-244.