

Link Solons, Lobbyists To Land Company

HOUSTON (AP) — The Houston Post says three state representatives and a former member who now is a Harris County judge are partners with six registered legislative lobbyists in an Austin-area land firm.

The Post said in its Sunday editions said the legislators who are limited partners in the venture are Reps. Dean Cobb of Dumas and Don Cavness of Austin and Hilary B. Doran Jr. of Del Rio.

The judge is F. Lee Duggan of Houston who served in the legislature before he was appointed a Harris County criminal court at law judge in July, 1967, the newspaper said. Duggan now is a district judge.

The Post said the firm is a limited partnership known as Three Hundred Bee Caves, Ltd. It bought 300 acres on the western edge of Austin.

The Post said the lobbyists who are among 17 other limited partners in the venture are Benner Dowe, Ed Stumpf, Del Diamond and James Nance, all of Houston, and David Irons of Dallas.

The general partner in the venture is lobbyist Cletus A. Davis of Houston. Davis, a lawyer, is a former legislator.

Reps. Cavness and Doran said they saw nothing wrong with their investment in the venture.

"If the lobbyists or somebody had given me a share in it, it would be different, but they certainly didn't," Cavness said. "As far as I'm concerned, it is just a business investment."

Doran said the lobbyists had nothing to do with his getting into the partnership.

"I financed my own part and I assume everybody else paid for his, too," Doran said.

Davis said "there is nothing illegal, immoral and unethical about it."

Soviet Ships Fish Charges May Be Filed

ADAK ISLAND, Alaska (AP) — A federal fisheries official says that if two Russian herring boats seized in U.S. waters are not found guilty of violating the U.S. 12-mile fisheries zone, the result could weaken the American position in negotiations with the Soviet Union on fishing rights.

The Soviet ships are accused of illegal "fisheries support activities"—transferring fish or supplies—some nine miles off St. Matthew Island, in the Bering sea about 200 miles off the coast of western Alaska.

James Branson, an enforcement officer for the National Marine Fisheries Service said the 362-foot processing ship Lamut and the trawler Kolyvan were seized Monday within the 12-mile contiguous fisheries zone only 10 to 15 miles from an area where they could have entered the zone legally under a U.S.-Soviet agreement.

If they are not made to stick to precise terms of the agreement, the United States might lose some bargaining power next winter at the U.S.-Soviet fisheries talks, Branson said.

Meanwhile, U.S. Atty. G. Kent Edwards said in Anchorage he probably would decide today whether to file charges against the Soviet vessels.

The Coast Guard had planned to fly two Soviet officers from Adak to Anchorage Sunday, but high winds, heavy snowfall and a low cloud cover grounded planes at Adak.

Police Checking On Break-Ins

Police investigated attempted break-ins during the weekend of a residence and a parked car. No entry was gained in either case, and nothing was reported stolen.

At 1:04 a.m. Saturday, a resident in the 600 block of North San Antonio notified police that someone was trying to break into his home. Police investigated and found that entry had been attempted through a window, but the would-be intruder was gone when police arrived.

Thieves or vandals attempted to gain entry at 4:48 p.m. Friday to a car parked near a residence on September Lane. The car's owner notified police, who investigated and found that no entry had been gained into the vehicle.

Electronics Gear To Precede Nixon

EL SEGUNDO, Calif. (AP) — A \$1.5 million self-contained electronics station is to be flown to Peking Jan. 27 to en-

able President Nixon's visit to mainland China to be covered by American radio and television stations.

A 10-man Hughes Aircraft crew along with two Western Union International technicians will go to Peking Jan. 29 to operate the equipment, which was

put on display Friday at the Hughes plant here.

Louis A. Greenbaum of Jamesburg, Greenbaum added, Hughes Aircraft said the equipment would be used to transmit broadcasts from Peking to the Jamesburg Comsat Station, south of San Francisco, via In-

telstat, which is in stationary orbit over the Pacific. From

Jamesburg, Greenbaum added, landlines would be used to transmit to the East Coast from where the programs will be transmitted for worldwide satellite broadcast.

Vehicle Collision Involves Police

Policeman Danny Hubbard, No. 19, November, was examined at Cowper Clinic & Hospital Saturday and released

following a two-car collision involving a patrol car and a private motorist.

The accident occurred at 1:14 p.m. Saturday at the intersection of Fifth and Owens, and resulted in an overturned fire

hydrant which was struck by the vehicles.

Victor Jalomo Guzman, Ira Rt., Box 76-A, Snyder, reportedly uninjured, was the other driver involved.

For the smokers of America who prefer low tar and nicotine cigarettes.

Marlboro Lights



Lighter in taste, low in tar.

Some people prefer the taste of a low tar and nicotine cigarette. For them, we've made new Marlboro Lights. The same great quality you get with full-flavored Marlboro—only Lights were developed especially for those who prefer the lighter taste of a low tar smoke.



Marlboro Lights—the new low tar cigarette from America's fastest-growing brand.

Marlboro Lights: 14 mg. "tar," 1.1 mg. nicotine av. per cigarette by FTC method

24

JAN

24



Mourning Danes, Four Kings, Five Queens Pay Respects

COPENHAGEN (AP) — Representatives of all of Europe's reigning houses assembled in wintry Copenhagen today to follow the body of King Frederik IX to the Roskilde Cathedral, Denmark's 800-year-old royal sepulcher west of the capital.

Four kings, five queens and more than a dozen princes and princesses joined hundred

thousands of mourning Danes in paying their respects to the popular king who died Jan. 14 after nearly 25 years on the throne.

For the king who became a symbol of informal monarchy, the government arranged a history-book funeral, with 48 marines to pull the old gun carriage with the sailor king's bier

through the streets of Copenhagen and Roskilde. Honor guards from the armed forces of the United States, Britain, France and Sweden joined Danish marines, airmen, life guards and hussars in the military escort of the funeral procession.

The state railway, fulfilling a

wish of Frederik's, took two old steam engines out of storage to power the funeral train on the slow 20-mile journey from Copenhagen to Roskilde.

Queen Margrethe II, the king's 31-year-old daughter, was to lead the mourners, walking behind her father's bier. Though tradition did not dictate it, Queen Ingrid, the king's 62-year-old widow, also insisted on following the bier on foot. So did Queen Margrethe's two younger sisters, Princess Benedikte, 27, and Queen Anne-Marie of Greece, 25, and the three sons-in-law, Prince Henrik, the new queen's husband; Prince Richard, Benedikte's husband; and King Constantine

Horoscope Forecast

TOMORROW
—CARROL RIGHTER

GENERAL TENDENCIES: The morning is the best time for whatever you want to do. Good for intelligently thinking out ways and means of accomplishing aims. But there is also a certain restlessness in the air that can cause people to deliberately, or otherwise, misunderstand their companions. Promises may be broken. Avoid this.

ARIES (March 21 to April 19) Talk over with allies just what should be done for greater success where regular operations are concerned. Later get out and make the right contacts. Add more color and cheeriness to your surroundings.

TAURUS (April 20 to May 20) Financial affairs are important to you now, but you need advice from experts before you can handle them wisely. Get some. Go along with the best ideas offered.

GEMINI (May 21 to June 21) You can gain personal goals now if you handle them in a more objective fashion. A friend can oppose you without knowing all the facts, but don't let this bother you. Take it in your stride.

MOON CHILDREN (June 22 to July 21) Spend spare time taking care of any personal problems you may have.

Seek advice from good advisers so you have greater comfort and happiness. It is best to take it easy tonight.

LEO (July 22 to Aug. 21) Try to be of assistance to friends who are having rough sledding. Instead of expecting them to do for you, labor alone now for best results. Avoid social activities as much as you can.

VIRGO (Aug. 22 to Sept. 22) You had better just carry through with duties at hand instead of taking some risk that would not bring you the advancement you want at this time. Play bills and improve your credit rating. Make new plans in the a.m.

LIBRA (Sept. 23 to Oct. 22) Don't jump into some plan that others have without first studying it carefully, and then drop it if you do not like it. Get the facts. Writing letters is fine but don't be too precise and formal.

SCORPIO (Oct. 23 to Nov. 21) Know what is expected of you by higher-ups and do your utmost to please them. Loved one may be a little demanding, but if you are diplomatic you find all will be fine. Stop being such a dreamer. Sit down with allies and see how to make joint outlets more profitable and pleasurable. Give full cooperation. Steer clear of one who opposes you and could prove to be very troublesome. Have happiness with mate in p.m.

CAPRICORN (Dec. 22 to Jan. 20) First get advice from others who are most experienced and then proceed with that work ahead of you. Not a good day to buy some new items of clothing. Fine for professional treatments, though.

AQUARIUS (Jan. 21 to Feb. 19) You have an opportunity to enjoy a good time today, but make sure you're not extravagant and do not get into anything of a dangerous nature. Be cheerful about helping others not as fortunate as you. Smile.

PISCES (Feb. 20 to March 20) You can make corrections now where routine matters are concerned and can develop greater efficiency for the future. Strive for more goodwill from regular associates. This could be in both personal and business life.

Headliners Picked

AUSTIN, Tex. (AP) — Secretary of Treasury John Connally and television actress Eva Gabor will be named "Headliners of the Year" at this year's annual awards party of the Headliners Club on Feb. 5.

SAFeway COMPARE LOW EVERYDAY PRICES Plus SPECIALS!

Large 'A' Eggs 38¢ — Dozen Breakfast Gems, Grade 'A' Safeway Special!

Sliced Bacon 73¢ — 1-Lb. Pkg. Safeway, #1 Quality. Safeway Big Buy!

Orange Juice 18¢ — Texsun, Frozen. Rich in Vitamin 'C'. Big Buy! 6-oz. Can

Waffles 10¢ — Bel-air, Frozen. Breakfast Treat! Big Buy! 5-oz. Pkg.

Coffee 69¢ — Safeway, Pre-ground. Fresh Flavor! Big Buy! 1-Lb. Bag

Canned Biscuits 8¢ — Mrs. Wright's *Sweet Milk or *Buttermilk. Safeway Big Buy! 10-Ct. Can

Good morning to you.

Start The Day With a Nourishing Breakfast!

Corn Flakes 25¢ — 12-oz. Box. Softener, Wholesome and Delicious!

Inst. Breakfast 58¢ — Looney, Assorted Flavors. — 4-Evt. Pkg.

Creamery Butter 88¢ — 1-Lb. Ctn. Steady Lane

Waffle Syrup 25¢ — 12-oz. Glass. Hebert's Made

Strained Honey 37¢ — 12-oz. Glass. Emeress.

Preserves 39¢ — Emeress, Strawberry. 15-oz. Jar

Hearty Breakfast Foods from Safeway at Low, Low Prices plus Fine Foods for all meals. Shop Safeway for all your meal-time needs. Remember Safeway has Low, Low Everyday Prices plus Specials Every Day!

Safeway Values to Please Every Taste!

Fresh Milk 49¢ — 1/2-Gal. Ctn. Looney Low Fat, Nutritional

White Bread 29¢ — 1 1/2-Lb. Loaf. Mrs. Wright's *Regular or *Softwich, Sliced

Margarine 17¢ — 1-Lb. Pkg. Coldbreak Solids

Texas Toastin' 33¢ — 1 1/2-Lb. Loaf. Mrs. Wright's

Cinnamon Rolls 27¢ — 8 1/2-oz. Can. Mrs. Wright's

English Muffins 35¢ — 12-oz. Pkg. Mrs. Wright's

Finest Quality Fruits & Vegetables!

Oranges 99¢ — 15 Lb. Bag. Texas Juice Oranges. Full of Vitamin 'C'! Economy Pack

Green Cabbage 9¢ — 1-Lb. New Texas Harvest, Crisp Green Heads!

Golden Bananas 25¢ — Top Quality! Large 2 Lbs. Box

Pineapples 39¢ — Cayenne Variety, Large Size — Each

Large Papayas 45¢ — Hawaiiian, — Each

D'Anjou Pears 29¢ — Washington, Large Size — Lb.

Large Apples 29¢ — Washington Golden Delicious — Lb.

Red Apples 59¢ — Red Delicious, Lamchab Size 3-Lb. Box

Broccoli 29¢ — New Texas Harvest — Lb.

Rutabagas 29¢ — Selected Sizes 2 Lbs. Box

Orange Juice 89¢ — Safeway, Pure, From Florida 1/2-Gal. Decan.

Dried Prunes 95¢ — Town House, Extra Large 2-Lb. Cello

Best for Baking!

Potatoes 5 49¢ — Russet, US #1A Select. Good Every Meal! Nutritious! 5 Lb. Bag

Compare Low Prices! Check These Values!

Chunk Tuna 35¢ — 6 1/2-oz. Can. Sea Trader Light Meat.

Salad Dressing 37¢ — Piedmont, Quart Creamy. Jar

Saltines 23¢ — Melrose Soda Crackers 1-Lb. Box

Enriched Flour 39¢ — Harvest Blossom, For Baking — 5-Lb. Bag

Detergent 49¢ — Parade, Family Wash-Box 49-oz.

Dog & Cat Food 7¢ — Favorite Brand 15 1/2-oz. Can

Safeway Meats Are Guaranteed to Please!

Pork Chops 68¢ — Fresh, Family Pack (Pork Steak) — Lb. (Extra Lean from Boston Butt Cut — 69¢)

Rib Steaks \$1.09 — USDA Choice Grade Heavy Beef — Lb.

Chicken Hens 39¢ — Fresh-Frozen, 4 1/2-Lb. Avg. USDA Insp. Grade 'A' — Lb.

Variety and Quality Meats ... Always at Safeway!

Pork Spareribs 49¢ — Fresh-Frozen, 3 to 5-Lb. Avg. — Lb.

Pork Backbone 68¢ — Fresh, Country Style — Lb.

Short Ribs 49¢ — USDA Choice Grade Heavy Beef — Lb.

Lean Ground Beef 87¢ — Compare Lean & Fat Content! — Lb.

Hamburger Steaks 83¢ — Freshly Ground Pre-Formed — Lb.

Ground Beef \$1.45 — Regular, Safeway Chub Pack 2-Lb. Chub

Perch Fillets 69¢ — Pre-Cooked, Quick & Easy! — Lb.

Cod Fillets 69¢ — Row, Fresh-Frozen — Lb.

Catfish Fillets 85¢ — Ocean Catfish, Row, Fresh-Frozen — Lb.

All Meat Wieners 48¢ — Safeway, Serve Hot or Cold! — 12-oz. Pkg.

Neuhoff Franks 52¢ — Tender! All Meat 12-oz. Pkg.

All Beef Wieners 79¢ — Safeway, Ready to Eat! 1-Lb. Pkg.

Safeway Bacon 73¢ — Sliced, No. 1 Quality! 1-Lb. Pkg.

Armour Bacon 79¢ — Armour Star, Microwave-Sliced 1-Lb. Pkg.

Corn Dogs \$1 — Easy to Prepare! 10-Ct. Pkg.

Lunch Meat \$1 — Safeway Sliced, *Pickle-Planets *All Beef *Polonaise *Spiced *Olive *Macaroni & Cheese 3-Lb. Pkg.

Sliced Bologna 69¢ — Safeway, All Meat 12-oz. Pkg.

Boneless Ham \$1.49 — Halves, Swift's Hostess — Lb.

Compare Low Prices!

Tomato Soup 10¢ — Town House, Rich Flavor! — 10 3/4-oz. Can

Golden Corn 19¢ — Highway, Whole Kernel 16-oz. Can

Pork & Beans 16¢ — Von Camp's, Tasty! 16-oz. Can

Tomato Catsup 19¢ — Highway, Flavorful! 14-oz. Bottle

Canned Pop 8¢ — Snowy Peak, Assorted 12-oz. Can

Paper Towels 28¢ — Tree Saver, White Roll 175-Ct. Roll

Paper Napkins 10¢ — Tree Saver, White 60-Ct. Pkg.

Save With These Values!

Del Monte Catsup 20-oz. Bottle 37¢

Gadiola Flour Enriched — 4-Lb. Bag 62¢

9-Lives Cat Food All Tuna — 12-oz. Can 31¢

Star-Kist Tuna Chunk Light Meat — 4 1/2-oz. Can 40¢

Grape Juice Welch — 40-oz. Decanter 69¢

Maryland Club Coffee, Assorted Grinds — 2-Lb. Can \$1.77

Fresh 'n Ready Omelets *Ham & Bacon — 12-oz. Pkg. 98¢

Soft Chiffon Unsalted Margarine — 1-Lb. Ctn. 45¢

Money Saving Values!

Macleans 69¢ — Toothpaste, Whiter Teeth! — 4.75-oz. Tube

Mouthwash 47¢ — Antiseptic, Safeway Brand 16-oz. Bottle

USDA Inspected Grade 'A'!

FRYERS 29¢ — Fresh, Ready to Cook! Special! (Cut-Up Fresh — Lb. 38¢) Whole — Lb.

Fryer Thighs 73¢ — or *Drumsticks, Cut from USDA Insp. Grade 'A' Fryers — Lb.

Split Breasts 77¢ — With Ribs, Cut from USDA Insp. Grade 'A' Fryers — Lb.

Prices Effective January 24-26 in Big Spring, Tex. No Sales to Dealers.

SAFeway SELLS ONLY USDA GRADE 'A' WHOLE FRYERS

| | | | |
|--|--|---|---|
| Toothpaste Colgate Dental Cream Helps Fight Cavities! 3 1/2-oz. Tube 59¢ | Colgate Instant Shave ★Regular ★Lime ★Menthol 11-oz. Can 63¢ | Comet Rice Long Grain 28-oz. Pkg. 47¢ | Hour After Hour Anti-Perspirant 5-oz. Can 98¢ |
| | | Comet Rice Extra Fluffy Long Grain 14-oz. Pkg. 27¢ | Romilar C. F. 8 Hour Cough Syrup 3-oz. Bottle \$1.37 |

© COPYRIGHT 1970, SAFEWAY STORES, INCORPORATED

Free Stamps!

Take home 170 extra Gold Bond Stamps this week at Furr's. You receive 70 free stamps with your mailed coupon plus 100 stamps with \$5.00 purchase or more and your mailed coupon.



YOU GET A LOWER TOTAL.

WITH FURR'S MIRACLE PRICES!

| | | |
|--------------------|-------------------------------|------------|
| Fryers | USDA Insp. Fresh Dressed, Lb. | 29¢ |
| FRYER PARTS | | |
| BREAST | All White Meat Lb. | 69¢ |
| THIGHS | Juicy Dark Meat Lb. | 59¢ |
| LEGS | Children's Choice Lb. | 59¢ |
| BACKS | For Dumplings Lb. | 12¢ |

| | | |
|-------------------|---|--------|
| STEAK | Club, Furr's Proten Lb. | \$1.29 |
| STEAK | Boneless Family Style Furr's Proten, Lb. | 98¢ |
| STEAK | Cutlets, Boneless Lb. | \$1.36 |
| ROAST | Boneless Pot, Rolled and Tied, Furr's Proten, Lb. | 98¢ |
| ROAST | Rump, Furr's Proten Lb. | 98¢ |
| ROAST | Texas Pot, Furr's Proten Lb. | 89¢ |
| SHORT RIBS | Deluxe, Bar-B-Q, Furr's Proten, Lb. | 59¢ |
| STEW MEAT | Boneless, Extra Lean Lb. | 98¢ |
| FRANKS | Farm Pac 12-oz. | 58¢ |
| BOLOGNA | Farm Pac 12-oz. Pkg. | 59¢ |
| PORK CHOPS | Family Pac Lb. | 78¢ |

BANANAS GOLDEN RIPE LB. 10¢

POTATOES ALL PURPOSE, RUSSET 10-LB. BAG 59¢

GRAPEFRUIT RUBY RED TEXAS FINEST, LB. 12¢

| | | | | | |
|-----------------------|--------------------------|-------|------------------|--|--------|
| YELLOW ONIONS | Idaho Sweet Spanish, Lb. | 12¢ | RUTABAGAS | Fancy Waxed Lb. | 16¢ |
| LIMES | Full of Juice Fresh, Lb. | 42¢ | ORANGES | Texas Sweet 5-lb. Bag | 69¢ |
| EGGPLANT | Glossy Black, Lb. | 29¢ | PEANUTS | Roasted 2-lb. Bag | \$1.09 |
| SWEET CORN | Florida Fancy 3 FOR | 35¢ | GREENS | Mustard, Collard or Turnips, Arizona Fancy | 19¢ |
| SWEET POTATOES | E. Texas Lb. | 2/35¢ | APPLES | Red Delicious 4-lb. Bag | 69¢ |



T-Bone Steak Lb. \$1.29

RIB CHOPS STEAK, FURR'S PROTEN, LB. \$1.04

SIRLOIN STEAK, FURR'S PROTEN, LB. \$1.04

ROUND STEAK, FURR'S PROTEN, LB. \$1.04

| | | |
|----------------------|-----------------------------|--------|
| PORK STEAK | Boston Butt Lb. | 79¢ |
| CHEESE | Longhorn, Block Style Lb. | 89¢ |
| STEAKS | Shurinda, Heat-Eat 5 Steaks | \$1.00 |
| STEAK FINGERS | Breaded, Heat-Eat, 16 Sucks | \$1.00 |
| FISH CAKES | Heat-Eat 16 Cakes | \$1.00 |
| CORN DOGS | 8 FOR | \$1.00 |
| BEEF PATTIES | 15 Patties 3-lbs. | \$1.89 |

| | | |
|---------------------------|--------------------------------|-----------|
| SAUSAGE | Large Hot Links Lb. | 69¢ |
| HAMS | Food Club, Boneless Can 3-lbs. | \$2.99 |
| Leo's Sliced Meats | Reg. 39¢ Size | 3/\$1 |
| | Regular 49¢ Size | 3 FOR 89¢ |
| Leo's Sliced Ham | 4x7 & 4x4 1/2 Regular 69¢ Size | 59¢ |
| SAUSAGE | Owens 2-lbs. | \$1.49 |
| | 1-lb. | 79¢ |

SPINACH FOOD CLUB NO. 303 CAN 19¢

CORN KOUNTY KIST WHOLE KERNEL, 12-OZ. CAN 5 FOR \$1.00

EGGS FARM PAC, USDA GRADE 'A' LARGE, DOZEN 39¢

FLOUR GAYLORD 5-LB. BAG 39¢

BLEACH TOPCO GALLON 38¢

ICE CREAM BORDEN'S, ASS'TD. FLAVORS, 1/2-GAL. 69¢

MARGARINE FOOD CLUB DELUXE, QUARTERS, LB. 25¢

PRESERVES GAYLORD, APRICOT, PEACH, GRAPE OR PLUM JELLY, 18-OZ. 39¢

GREEN BEANS KOUNTY KIST WHOLE 303 CAN 5 FOR \$1.00

| | | | | | |
|-----------------------|---|-----|------------------------|-----------------------------------|-----|
| Cat Food | Nine Lives, Ass'td. Flavors 6 1/2-oz. Can | 19¢ | Black Pepper | Schillings 4-oz. Can | 49¢ |
| Catsup | Food Club 32-oz. | 53¢ | Cookies | Food Club, Chocolate Chip, 10-oz. | 29¢ |
| Foil | Topco 25-ft. Roll | 25¢ | Turkey Bag | Reynold's Each | 25¢ |
| Frosted Flakes | Food Club 11-oz. Pkg. | 37¢ | Log Cabin Syrup | 36-oz. Bottle | 99¢ |

PICKLES FOOD CLUB Sour, Dill, Dill Chips, or Kosher Quart 49¢

SWEET PEAS Our Darling No. 303 Can 5/\$1.00

COOKIES GAYLORD Assorted Flavors, 12-oz. 3/\$1

Instant Breakfast Carnation 6-Count Pkg. 69¢

Olives Food Club, Stuffed Manzanilla, 5-oz. 39¢

French Dressing Food Club 8-oz. 29¢

Beef Stew Food Club 24-oz. 69¢

Vanilla Extract Food Club Extract, 2-oz. 39¢

Green Beans Kounty Kist Diagonal, No. 303 Can 17¢

Macaroni or Spaghetti, Food Club 2-lbs. 49¢

Apple Butter Food Club 3-lb. Jar. 79¢

Spaghetti Franco American No. 300 Can 19¢

Sliced Carrots Food Club No. 303 Can 5 FOR \$1.00

| | |
|--|-----|
| Fresh Frozen Foods | |
| Top Frost, Beef, Turkey, Salisbury Steak, Chicken, or Meat, Loaf, Each | 39¢ |
| Tater Treats Top Frost, Fresh Frozen, 2-lbs. | 49¢ |
| Waffles Top Frost, Fresh Frozen, 10-oz. Pkg. | 25¢ |
| PIES Johnston's, Apple or Peach Fresh Frozen, 9-Inch | 79¢ |

| | |
|----------------------------------|--------|
| PAMPER DIAPERS | |
| NEW SUPER ABSORBENT DAYTIME 30's | \$1.69 |
| DAYTIME 15's | 89¢ |
| NEWBORN 30's | \$1.49 |
| OVERNIGHT 12's | 89¢ |
| NEW TODDLERS | \$1.19 |

DOUBLE GOLD BOND STAMPS WEDNESDAY!

DINNERS Sweet Peas GAYLORD FRESH FROZEN 10-OZ. PKG. 17¢

PETROLEUM JELLY

VASELINE 3 3/4-OZ. 33¢

Winter Weight Blanket ALADDIN Beacon Rose Beauty 72x90 Beautiful Rose Print Needlewoven 1/2-Lb. 50% Polyester, 50% Rayon, Each \$4.99

DUST PANS ORANGE & YELLOW WITH HOOD 39¢

Pepto Bismol 12-oz. Liquid \$1.29

Aspirin Bayer 100-Count 77¢

LIBBEY'S FOOTED GOBLET Crystal Clear Reg. 29¢ **19¢**

AREA RUG 28"x17" Ass'td. Colors Reg. 1.39 **\$1.00**

Desitin Ointment 2 1/4-OZ. **89¢**

Colgate MFP Toothpaste COLGATE FAMILY **71¢**

'Helga R. Hughes' Linked With Autobiography Controversy

ZURICH, Switzerland (AP) — Police throughout Europe are looking for a dark-haired woman who cashed \$650,000 worth of checks which the McGraw-Hill Book Co. paid for a purported autobiography of industrialist Howard Hughes.

Swiss authorities confirmed that an international warrant was issued for the woman, about 31 years of age, who collected the money from the Swiss Credit Bank in Zurich.

The Swiss officials did not identify the woman. But Time magazine said she gave her name to the bank as Helga R. Hughes. The McGraw-Hill checks were made out to H.R. Hughes.

ALLEGING FRAUD

The warrant was issued after McGraw-Hill filed a criminal complaint alleging fraud last Thursday with the Zurich district attorney.

The woman was described as dark-haired, with a lean face, about 5 feet 3 inches tall, wearing a mid-dress and speaking broken German. Earlier reports of the mystery woman said she was a blonde.

She reportedly pocketed 2.6 million Swiss francs after endorsing the checks "H.R. Hughes," in a handwriting that closely resembled that of the industrialist, according to photostats.

The district attorney's office meanwhile called off a news conference this morning on the case. But it did confirm that the Zurich police had alerted Interpol, the international police organization.

TANGLED

"As far as our bank is concerned, everything was handled correctly," the Swiss Credit Bank official said. "It was a most refined case of fraud, so refined, in fact, that clerks could not detect it."

The search for the mystery woman was the latest development in the tangled Howard Hughes autobiography controversy, which involves McGraw-Hill, Life magazine and author Clifford Irving. Irving claims to have compiled the autobiography from interviews with Hughes.

His book has been challenged in court as a hoax and its publication suspended by McGraw-Hill and Life pending clarification of the controversy over the Swiss bank account.

'60 MINUTES'

Newsman Mike Wallace said Sunday on the CBS television program "60 Minutes" that Swiss police were looking for a blonde, German-speaking woman "who, according to the bank's records, opened an ac-

Bates Trial Will Feature Cross-Exams

CORPUS CHRISTI, Tex. (AP) — Cross-examination of a Rosenberg jeweler gets underway today in the trial of state Sen. Jim Bates of Edinburg.

John Herfort, owner of Herfort Diamond Ring Factory, testified in 105th District Court Friday that Bates came to his factory May 6, 1969, to get some diamonds, including a large unusual stone, appraised.

Bates is being tried on a charge of receiving a diamond stolen in the burglary of the home of Corpus Christi lawyer Edmond J. Ford.

Adrian Lambert, a convicted slayer and self-proclaimed professional burglar, testified earlier he burglarized the Ford home and took 36 diamonds to Austin where he sold them to Bates for \$4,400.

Nueces County Dist. Atty. William Mobley then put Mrs. Dianne Peterson Martin, a former secretary to Bates, and Herfort on the stand to back up Lambert's testimony.

Mrs. Martin, an attractive Houston housewife, testified she was in Bates' office when Lambert, her former boyfriend, brought the diamonds. She said one of them was the same one Bates is accused of receiving from Lambert.

Herfort testified he had been told that Bates associated with diamond and jewel thieves. He said Bates hurriedly left the factory after Herfort told him the large diamond, described by Herfort as "beautiful" and "unusual," was worth about \$2,000.

Ford had earlier testified he paid \$5,900 for the diamond.

The jeweler said a woman identified only as Mrs. Olson took down the description and license number of the car driven by Bates.

Cross-examination of Herfort will be by Austin defense lawyer Frank Maloney.

Wage Hunt For Plane

SPRINGFIELD, Mo. (AP) — Inclement weather again has restricted the search for a missing private plane that left Texas Tuesday on a flight to Springfield.

Civil Air Patrol pilots were grounded most of the morning Sunday in searching for a plane flown by W. A. Murray, with his wife and two children aboard. The Murrays are from Los Fresnos, Tex.

Fifteen ground crews have combed an area southwest of Springfield in an effort to find the plane or locate someone who might have heard it.

Four Small Children Burn To Death During Weekend

By The Associated Press

Four small children burned to death Saturday night as traffic accidents, usually the biggest killer, took a back seat to other forms of violent deaths in Texas over the weekend.

The Associated Press began its regular weekend tabulation of violent forms of death in Texas at 6 p.m. Friday and continued the grim count until midnight Sunday.

The death toll by midnight Sunday stood at 28 killed, 10 in traffic accidents while a plane crash killed two, shootings claimed five, fire killed four

and the rest died in miscellaneous incidents.

Here is the way some died in Texas over the weekend:

Thomas Clyde Kay III and John W. Barnes, both pilots from Lafayette, La., died Sunday when their single-engine plane nose-dived into the beach at Freeport. The crash was blamed on a power stall by investigators. Kay was identified as the son of a retired Air Force colonel who lives in San Antonio.

Stanley Edward Law, 55, of Sinton was killed Sunday when his automobile overturned on a

farm road. The accident occurred about four miles north of Sinton.

Four tiny children burned to death and a fifth member of the same family was critically burned in a home fire that occurred Saturday night in Lufkin.

The dead were Phyllis E. Starr, 8; Jonna Starr, 8; Michael Starr, 6, and William Earl Starr, 7, all brothers and sisters. The critically burned youngest sister, Shirley Ann Starr, 4, was taken to a Lufkin hospital.



Double Green Stamps every Wednesday

With \$2.50 Purchase or More!

EARLY WEEK SPECIALS!

SAVE 30¢ on Purchase of Maxwell House COFFEE
All Grinds **59¢**
Lb. Can

On first can with this coupon and purchase of \$5.00 or more
Excluding Cigarettes Thereafter 89¢
Coupon good only at Piggly Wiggly
through Jan. 26, 1972

Fruit Drinks
Wagner Flavors **4** 32-Oz. Can

Boned Chicken
College Inn **3** 5 Oz. Can

Chunk Tuna
Carnation **3** 6 1/2 Oz. Can

| | | |
|---|---|---|
| Pork Steak Pound 68¢ | Sliced Bacon Farmer Jones, Pound Package 69¢ |  Pork Roast Fresh Picnic Cuts 48¢ Pound |
| Sliced Bacon Farmer Jones First Grade Quality 2 Pound Package \$1.35 | Shrimp Fisher Boy, Breaded 8 Ounce Package 69¢ | |
| Fish 'N Chips Fisher Boy 1 Pound Package 69¢ | Fish Sticks Fisher Boy 2 Pound Package 98¢ | |
| Swiss Cheese Signature, Natural Chunks 8 Ounces 68¢ | Cheese Slices Farmer Jones, Individually Wrapped American Singles 6 Ounce Pkg. 41¢ | |
| Longhorn Cheese Farmer Jones Halfmoon 8 Oz. Package 56¢ | Cream Cheese Kraft's Philadelphia Plain 8 Ounce 39¢ | |

| | | | |
|---|---|---|---|
| Golden Corn Carol Ann 16 1/2 Oz. Can 6 \$1 | Bathroom Tissue Bonne' Assorted Colors 2 ply, Twin Pak 25¢ | Detergent Carol Ann 49 Oz. Box 49¢ | Green Beans Carol Ann 16 Oz. Can 6 \$1 |
|---|---|---|---|

COOKIES
Ass'td. Flavors 10-oz. **4 FOR \$1.00**

Fresh Frozen Foods!

Fruit Pies
Morton's, Frozen, Apple, Peach, Cherry, 20 Ounce Pie **29¢**

Frozen Vegetables
Kounty Kist **3**
20 Oz. Bags, Golden Corn
18 Oz. Bags, Cut Green Beans
20 Oz. Bags, Green Peas **\$1**

Frozen Waffles 5 Ounce Package **10¢**

Dairy Specials!

YOGURT
Carnation 8 Oz. Carton **25¢**

Sour Cream
Or Dips Carnation 8 Oz. Carton **3** \$1

Grapefruit

Sweet, Juicy Each **5** Lb. Bag **59¢**

Crisp, Garden Fresh Each **19¢** Cello Pound Bag

Good Eating **D'Anjou Pears** Lb. **25¢**



OUTSIDE years ago new town been m since. It start started talked counselor. The tea and they tiolate. I know know th stuck up why the new ght Mistreat State. (A.) Teen people. Th people who You seen students do

State Plan

DALLAS legislature congression that a fed day was u But the plan the ce says all it four days teenage so 50-cent U.S. "Almost reasonable start with should det not politics the oil con who was trictrig pla here Satur and order

Weiser plaintiff in plan labore ruled uncor Weiser's doesn't di three-tenths the ideally 466,530 peo "The first over and m me back i "Mathemat be poor at where the Weiser, 1 sisted in t Martin, 13,

ACR
1 Cover
6 "Catch
10 Radio announ
14 Mervyn of movi
15 Silkwo
16 Vetch
17 Tributa
Missour
18 Chicker
20 Surrou
21 Numb
22 Rowboa
23 Sprinkl
26 Misdee
27 Tapioca ingredi
29 Takas f
32 Involve
35 Facial f
37 Animal
38 Active
39 Expung
41 Greek i
42 Roadsid
43 Stock fr
44 Halters
46 Drift
48 Gazed
50 Early ex
52 Cherub
56 Mad
58 Man's r
59 Basebal statistic

| | |
|----|---|
| 2 | 3 |
| 4 | |
| 5 | |
| 6 | |
| 7 | |
| 8 | |
| 9 | |
| 10 | |
| 11 | |
| 12 | |
| 13 | |
| 14 | |
| 15 | |
| 16 | |
| 17 | |
| 18 | |
| 19 | |
| 20 | |
| 21 | |
| 22 | |
| 23 | |
| 24 | |
| 25 | |
| 26 | |
| 27 | |
| 28 | |
| 29 | |
| 30 | |
| 31 | |
| 32 | |
| 33 | |
| 34 | |
| 35 | |
| 36 | |
| 37 | |
| 38 | |
| 39 | |
| 40 | |
| 41 | |
| 42 | |
| 43 | |
| 44 | |
| 45 | |
| 46 | |
| 47 | |
| 48 | |
| 49 | |
| 50 | |
| 51 | |
| 52 | |
| 53 | |
| 54 | |
| 55 | |
| 56 | |
| 57 | |
| 58 | |
| 59 | |

OVER 65 ONLY: ENROLLMENT PERIOD ENDS MIDNIGHT THURSDAY, JANUARY 27, 1972

Here's when most folks over 65 find out... too late... what Medicare does not pay...

Now, for just \$1 for your first month's protection, you can examine 'on approval' this sensible, affordable Plan! New Elder-Care® pays you up to \$50,000 Tax-Free Cash! It covers every hospital expense that Hospital Medicare leaves out, except the initial deductible!

- only \$3 a month after the first month!
- no age limit ■ no health questions
- all pre-existing conditions are covered!

Your first month is only \$1. And you get your dollar back if you're not completely satisfied.

| HOSPITAL BILL * | |
|-----------------|------------------|
| MEDICARE PAYS | PATIENT OWES |
| 6990.00 | 3230.00 |
| 490.00 | 127.30 |
| 0.00 | 600.00 |
| 775.15 | 251.55 |
| 120.00 | 90.00 |
| 0.00 | 75.00 |
| TOTAL | \$4373.85 |

PATIENT MUST ARRANGE PAYMENT BEFORE DISCHARGE
\$4373.85 BALANCE PATIENT OWES

*Sample bill based on hypothetical case.

IMPORTANT ANNOUNCEMENT

MEDICARE COSTS JUMP AGAIN!
 Now You Must Pay **13 1/3% MORE!**

Effective January 1st 1972 Hospital Medicare payments increased again, by law! Just as in past years, amounts that patients must pay rose very sharply - up 13 1/3%! Fortunately ELDER-CARE owners need not worry! Once again this Plan automatically adjusts to cover increased hospital charges... yet it still costs just \$3 a month. Today your Initial Deductible is \$68 (up from \$60!); after the 60th day you must pay \$17 per day (up from \$15!); and your "lifetime reserve" contribution is now \$34 per day (up from \$30!). These continuing annual increases make it more important than ever to protect yourself at today's rates! Send your Application NOW - before the postmark deadline.

MEDICARE IS GREAT—BUT!... Wake up friends. Blessing that it is, please realize that Medicare isn't everything many folks suppose. It has Gaps—deductibles, percentages and charges that you must pay out of your own pocket. And recent changes have increased those Gaps. The Government pays less and you pay more! What a shock to find this out too late. Today, even with Hospital Medicare, a long seige of illness in the hospital could leave you with crippling financial debts.

DON'T LEARN THE FACTS THE HARD WAY! After you're laid up, it's a little late. Under Medicare today you pay the initial deductible for each "benefit period". That's the first \$68 of hospital expenses. Then from the 61st day of the period you must pay \$17-a-day. After 90 days this increases to \$34-a-day - \$238-a-week, \$1020.00-a-month—that you must pay. Plus you start dipping into your Hospital Medicare 60-day "Lifetime Reserve". And after your Lifetime Reserve is used up, Hospital Medicare won't pay you a cent for the rest of that period. Think what a long spell of illness could mean—the slow kind that older folks get more than anyone else! You could be stuck with unpaid bills that could wipe out retirement savings... force you into borrowing (at today's rates)... selling your home... even turning to your children for charity!

ARE YOUR PARENTS OVER 65? READ THIS! Right now you have an opportunity to help protect your parents against today's skyrocketing hospital bills. A long illness can easily exhaust their savings. That's why we urge you to bring this plan to their attention immediately—and help them get \$50,000 worth of lifetime maximum benefits. Or better still, just complete the form below for them using your address and we will send the Policy and payment notices to you.

THIS PLAN IS A MUST FOR ANYONE OVER 65 If you feel Medicare Gaps are confusing, you're right—they are! Worse—they're expensive! Part 'A' of Medicare is Hospital Insurance, designed primarily for in-hospital costs. Part 'B' is Medical Insurance, for doctors and medical service bills. This Plan supplements 'Part A' to protect you for every eligible Medicare hospital expense that Hospital Medicare doesn't pay. After your initial deductible, you're covered for all the Hospital Medicare Gaps—100%—with no time limit—no matter how much or how often you collect—up to \$50,000.00 tax-free cash! And no matter how Hospital Medicare Gaps widen in the future, you needn't worry. This Plan fills in automatically. There's no finer Plan in America today!

MEDICARE GAPS KEEP GETTING WIDER The law requires that Hospital Medicare costs must be reviewed each year—and if hospital charges change significantly, the money that patients contribute must be adjusted the following year. Well, it's no secret; it's already happened three times—in '70, in '71 and again in '72. In fact, hospital costs have TRIPLED in the past few years. And are still increasing! There's little doubt about it. You'll wind up paying even more. That's why our Elder-Care Hospital Plan makes so much sense!

THE COMPANY BEHIND YOUR ELDER-CARE Elder-Care is issued to citizens over 65 no matter what their present state of health by Union Fidelity Life Insurance Company of Philadelphia, a progressive old-line legal reserve company. Union Fidelity is recommended by both *Best's* and *Dunn's*, the insurance industry's leading independent rating authorities.

EVERY GAP IS ANOTHER PROBLEM FOR YOU: The Social Security Administration estimates that Medicare will pay less than half of your total health cost! That's why this Elder-Care Plan is so vital. It assures you virtually complete hospital coverage no matter how much Hospital Medicare pays (or doesn't pay) in the future. It assures you will never be saddled (or saddle anyone else) with bankrupting hospital bills. It's like having up to \$50,000 set aside against a rainy day!

ANY CONDITION YOU HAVE NOW IS COVERED NOW! There are no tricky "catches" or "waiting periods". All pre-existing conditions (physical illness you've had or have right now) are covered in any recognized hospital, from the moment your policy is in force. Here are the only exceptions: Federal or State Government facilities, mental institutions, sanitariums for alcoholics or drug addicts, and geriatric extended-care facilities like nursing or rest homes. Loss paid by Workmen's Compensation or Occupational Disease Laws is not covered. Your plan cannot be cancelled as long as you pay your premiums; and the \$3 rate cannot be raised, unless a general rate adjustment—up or down—applies to everyone in your state.

SEND \$1 FOR YOUR FIRST MONTH'S PROTECTION... while you examine your Elder-Care Plan. It's yours with a money-back guarantee. Examine it carefully in the privacy of your own home. There's no "fine print". Show it to any trusted advisor. Indeed, show it to your doctor. He knows about the limitations of Hospital Medicare. He'll tell you how valuable this Plan really is. Even then, if you're not completely satisfied, return the policy within 30 days and we'll promptly refund your money—no ifs, ands or buts! It makes sense to protect yourself now for such a low amount—while you make up your mind! If you decide to continue, your regular monthly premium is only \$3 per person. A small premium for so much peace of mind!

ENROLL AT ONCE—NOW IS THE TIME! Everyone over 65 automatically qualifies during this mass enrollment period—with no medical questions asked! The closing date, however, is definite! We cannot accept applications after the postmark deadline. So please don't hesitate. You are protected by an iron-clad 30-day money-back guarantee. Mail your Application Form, with only \$1, regardless of the number of people to be covered, before the midnight deadline. Act now, while the thought is uppermost in your mind!

9 IMPORTANT QUESTIONS AND ANSWERS

- Q. If I have Medicare, why do I need this Plan?**
A. Medicare, with its maximum limitations, was never designed to cover all hospital expenses. But the amount you pay gets bigger! \$17-a-day is up from \$15! \$34-a-day is up from \$30! Where will it all end? These widening Gaps could cost you thousands of dollars. But Elder-Care relieves your hospital money worries—up to \$50,000 security in tax-free cash!
- Q. How do I collect my benefits once I'm in the hospital?**
A. There's a simple form to be completed by you and your doctor—and that's all there is to it. As soon as your request reaches us, it gets immediate attention. Folks all over the country have praised the speed and efficiency of Union Fidelity's claim service.
- Q. Can I enroll if I'm not in good health?**
A. Yes you can. There are no medical questions to answer. No matter how poor your health, any health condition you have right now is covered. There is no waiting period. And of course, any accident or future health condition is covered too.
- Q. Can you cancel me, or raise my rates if I go in and out of the hospital, or if I collect thousands of dollars?**
A. Absolutely not! Your Plan cannot be canceled as long as you keep up your low premiums—no matter how often, or how much, you collect—up to the \$50,000 maximum. And you'll never pay more than \$3 per month, unless a general rate adjustment is made on all policies of this class (Form I-919) in your state.
- Q. Does this plan cover doctor bills?**
A. No. Private doctor bills are not covered by Elder-Care because they do NOT come under the hospital part of Medicare. For protection against doctor bills make sure you're signed up for the Medical part of Medicare through the Government.
- Q. How can it cost only \$3 a month?**
A. Because the initial deductible is not insured—that's still your responsibility. Without this one provision Elder-Care would be too costly to afford. With it, however, this Plan is exceedingly reasonable. Hospital Medicare covers most expenses in the first 60-day hospital benefit period. Then Elder-Care fills in the rest of the hospital benefit Gaps—100%—provides up to \$50,000 long-range protection. In addition, mass-enrollment by mail-only—plus no medical questions to process—keeps policy-issue costs at a minimum. And since no salesman will call, there are no sales commission costs. All these savings are passed on to you!
- Q. If I have other hospital insurance, doesn't it cover these Medicare Gaps?**
A. Unfortunately not! Many other plans specify exclusions, riders, and limitations on Medicare. They don't bridge all the Gaps, particularly as benefits are adjusted. But with Elder-Care you know that hospital Gaps are covered automatically with up to \$50,000 protection. There's no waiting period—you're covered immediately for pre-existing conditions. And note: this Plan pays in addition to any other coverage you may have. It's your money to spend as you wish.
- Q. What other advantages are there to joining this Plan right now?**
A. During this period there is no red tape of any kind. Just fill in the simple Application Form here. And you enjoy a 30-day approval guarantee! You're protected for only \$1 while you examine your Elder-Care Policy. If you're not completely satisfied return the Policy within 30 days and we'll promptly refund your money. In the meantime, you're still protected!
- Q. How do I enroll?**
A. Complete the Application Form at left and mail with only \$1 for the first month's protection. Your spouse, if over 65, may also be enrolled on this form. But do not send more money! \$1 covers you both during your 30-day approval. Be sure to sign your name and mail before the postmark deadline.

MAIL BEFORE MIDNIGHT, THURSDAY, JANUARY 27, 1972

UNION FIDELITY LIFE INSURANCE COMPANY
 1515 LOCUST STREET, PHILADELPHIA, PA. 19102

The Union Fidelity Insurance Group is licensed in all 50 States, Washington, D.C., Puerto Rico and Canada

Do not delay. Fill out—and mail Application Form today with only \$1.00 (regardless of the number of people to be protected) to: Union Fidelity Life Insurance Company, Dept. MM, 1515 Locust St., Philadelphia, Pa. 19102.

919 1-919

OFFICIAL APPLICATION FORM TO:
 UNION FIDELITY LIFE INSURANCE COMPANY 21860
 PHILADELPHIA, PENNSYLVANIA

MR. MRS. NAME (Please Print) MISS _____
First Middle Initial Last (Ladies, if Married, Use Your First Name)

ADDRESS _____
Street or R.D. No.

CITY _____ STATE _____ ZIP _____

DATE OF BIRTH _____ AGE _____ SEX Male Female

I also apply for my spouse _____ BIRTH DATE _____
Spouse's first name and middle initial Month Day Year

I have enclosed my first monthly premium and hereby apply to Union Fidelity Life Insurance Company, Philadelphia, Pa. 19102 for Medicare Supplement Plan, Form 919. I understand that my policy will become effective when issued.

SIGNATURE X _____ DATE _____

UFA 7117-1 62

NO SALESMAN WILL CALL

Union Fidelity Life is licensed by the State of TEXAS

BIG SEC. B

AIMS FOR TE in the Texas L Jorden of Hou among the mos Miss Bailey w man. Two men

Girl Hor

Two Big Spr volunteers were their service to and five were West Texas Girl board of director meeting in Snyder

The Girl Scout to Elmo Wasson to Scouting thro Wasson has p space in Big council for many A certificate o

Wome Sewing

A film, "T Costumes," will a.m. Tuesday a County Library sponsorship of the Home Demonstr showing is open at no charge.

Described as picture study of s fashion imaginat will be shown l Macklin. It has

Youn Meet

AUSTIN members of the makers of Texa local units of f duplicated in se gathered in San and Saturday fo nual state conve

The delegate 4,000 out-of-scho ried and single in 230 local chap

The Rev. Mop assistant pastor Methodist Chur keynoteed the 9 eral session in Room of the St.

Dr. J. W. Edg missioner of John Guemple, missioner education a n brought greeti Texas Educator Jennifer Dujka o state president Homemakers of brought greeting dent group.

The Rev. Biggs, wl torate of nearl bers, is a gradu College of Lou Perkius School Southern Metho Known statewid ist, he has also televising relig Houston

The 8:30 a.m. Saturday, also- thony Hotel, feat on creative ac home by Miss J and Miss Julia San Antonio. Miss Wagner professor of dr

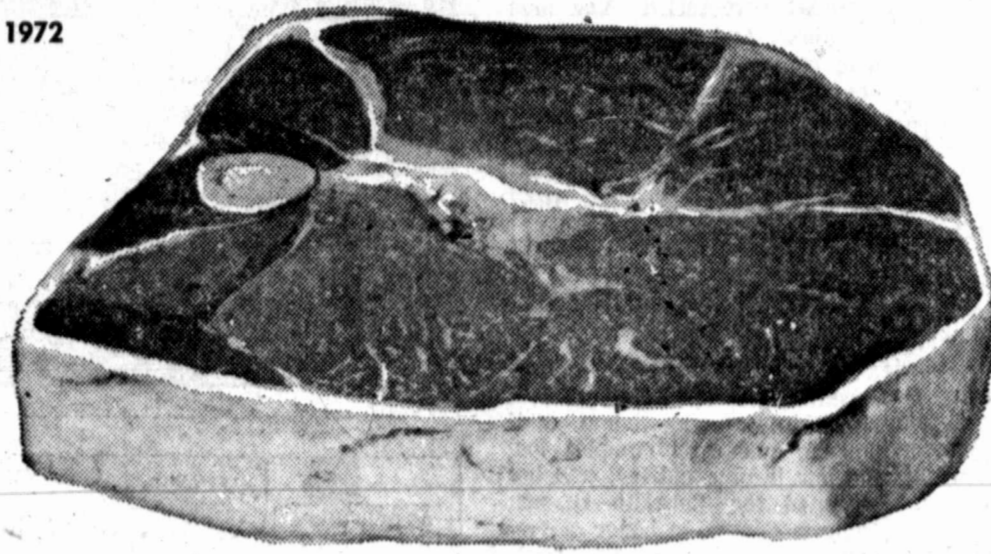
FOODWAY

2500 S. GREGG ST. at RD. 700
CORONADO PLAZA SHOPPING CENTER

PRICES EFFECTIVE JANUARY 24th THROUGH JANUARY 26th, 1972
WE RESERVE THE RIGHT TO LIMIT QUANTITIES

Every Day Low Prices Plus Advertised Items. Volume Buying And Low Operating Costs Enable Us To Help You Cut The Cost Of Your Total Food Bill.

- STEAK** ROUND LB. **99¢**
- CHUCK** LB. **79¢**
- GROUND BEEF** LB. **67¢**
- STEAK** SIRLOIN LB. **\$1.19**
- STEAK** T-BONE LB. **\$1.29**



- ROAST** RUMP LB. **89¢**
- HOT LINKS** LB. **59¢**
- LITTLE SIZZLERS** HORMEL 12-OZ. **59¢**

- FRENCH FRIES** MR. G. 2-LB. BAG **29¢**
- STRAWBERRIES** NATURIPE 10-OZ. PKG. **4 FOR \$1**
- Cool Whip** 49¢ **Roman Pizza** 49¢
- BEEF TACOS** PATIO 1 1/2-OZ. **49¢**
- FISH STICKS** SEA STAR 8-OZ. **4 FOR \$1**
- POT PIES** SPARETIME 6-OZ. **8 FOR \$1**
- DINNERS** MORTON YOUR CHOICE **39¢**
- FROZAN** GANDY'S HALF GALLON **3 FOR \$1**
- ICE CREAM** GANDY'S 5-QT. BUCKET **\$1.59**
- WAFFLES** HARVEST 6-COUNT **10¢**

Bacon Ends & Pieces Sliced 4-lb. Box **99¢**

BACON RATH'S BLACK HAWK LB. **69¢**

LUNCHEON MEATS GLOVER'S 6-OZ. PKG. **3 FOR \$1**

FRYERS WHOLE LB. **29¢** CUT-UP LB. **35¢**

TOP QUALITY PRODUCE BUYS

- NAPKINS** KIM 60-COUNT **10¢**
- TOWELS** LADY KIM JUMBO ROLL **29¢**
- FACIAL TISSUES** KIM 200-COUNT **19¢**
- CATSUP** HUNT'S 32-OZ. **55¢**
- PICKLES** PICKLE BARREL DILL OR SOUR, QUART **39¢**
- BREAKFAST DRINK** KOUNTRY FRESH QUART **28¢**
- TOMATO SAUCE** CONTADINA 8-OZ. CAN **7¢**
- BABY FOOD** GERBER'S STRAINED 4 3/4-OZ. JAR **10¢**
- AIR FRESHENER** JOHNSON'S 7-OZ. CAN **3 FOR \$1**
- PEACHES** KIMBELL NO. 2 1/2 CAN **4 FOR \$1**
- TOMATOES** HUNT'S 300 CAN **5 FOR \$1**
- VIENNA SAUSAGE** LIBBY'S 4-OZ. CAN **5 FOR \$1**
- TISSUE** LADY KIM 2-ROLL PACK **5 FOR \$1**
- CHICKEN NOODLE SOUP** CAMPBELL'S 10 3/4-OZ. CAN **6 FOR \$1**
- SPINACH** HUNT'S 300 CAN **6 FOR \$1**
- SWEET PEAS** KIMBELL 303 CAN **6 FOR \$1**
- CUT GREEN BEANS** KIMBELL 303 CAN **6 FOR \$1**
- CORN** KIMBELL 303 CAN **6 FOR \$1**
- CAT FOOD** FRISKIES 6 1/2-OZ. CAN **8 FOR \$1**



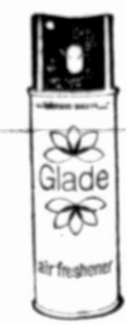
ZEST

2 FOR 39¢

BATH SIZE

POTATOES 20-LB. BAG **99¢**

- Yams** Lb. **23¢**
- Tangerines** Lb. **29¢**
- Cabbage** Lb. **10¢**
- Tomatoes** Cherry Pint Carton **33¢**
- Potatoes** Red New Lb. **10¢**
- BANANAS** DELICIOUS LB. **10¢**
- Oranges** Lb. **25¢**
- Carrots** 1-lb. Bag **19¢**
- Tangelos** Lb. **19¢**



- NEW POTATOES** HUNT'S 300 CAN **7 FOR \$1**
- FLOUR** GOLD MEDAL 25-LB. BAG **\$1.99**
- SNOWDRIFT** WHIPPED 42-OZ. **69¢**
- LYSOL CLEANER** 28-OZ. **59¢**
- SALAD DRESSING** KIMBELL QUART **37¢**
- CHILI** WOLF BRAND NO. 2 CAN **59¢**
- GRAPE JELLY** KIMBELL 18-OZ. **3 FOR \$1**
- PRUNE JUICE** KIMBELL QUART **39¢**
- SLICED PINEAPPLE** DOLE 20-OZ. CAN **3 FOR \$1**
- PORK & BEANS** VAN CAMP 300 CAN **15¢**
- SAUERKRAUT** LIBBY'S QUART JAR **39¢**
- SLICED CARROTS** KIMBELL 303 CAN **15¢**
- SALT** KIMBELL 26-OZ. BOX **8¢**
- LAYER CAKE MIXES** DUNCAN HINES **3 FOR \$1**
- MACARONI & CHEESE DINNER** KRAFT'S 7 1/4-OZ. **6 FOR \$1**
- TOMATO SOUP** CAMPBELL'S 10 3/4-OZ. CAN **10¢**
- OIL** KIMBELL QUART **59¢**
- Pineapple Upside Down Cake Mix** BETTY CROCKER **49¢**

Comet CLEANSER 14-Oz. **17¢**

- EGGS** KOUNTRY FRESH MEDIUM **3 FOR \$1**
- Oleo** Meadolake 1-lb. Quarters **4 for \$1**
- Oleo Solids** Diamond 1-lb. **6 FOR \$1**
- Buttermilk** Borden's Half-Gallon **45¢**

- Cottage Cheese** BORDEN'S, 24-OZ. **49¢**
- Cheese Spread** DIAMOND, 2-LB. BOX **59¢**

Mr. Clean 28-Oz. **49¢**

\$5 BONUS SPECIAL!!
With \$5 or more purchase (excluding cigs. & beer) You Can Buy...

FLOUR GLADIOLA 5-LB. BAG **35¢**
(With \$10 or more purchase (excluding cigs. & Beer Quality for Both \$5 Bonus Items))

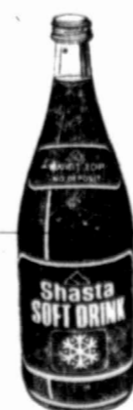
- LIQUID DETERGENT** VEL 32-OZ. **59¢**
- DOG FOOD** VITA PEP 10-LB. BAG **99¢**
- DOG FOOD** KAL KAN 14-OZ. CAN **4 FOR \$1**

- Instant Tea** 3-oz. Jar **89¢**
- Bleach** Kalex Gallon **38¢** Kimbell 1-lb. Can **69¢**

- COFFEE** Blackburn Quart **39¢**
- Chocolate Chips** Hershey's 12-oz. Bag **39¢**
- Marshmallow** Creme Hip-O-Life 9-oz. **29¢**

DETERGENT DRIVE OR AJAX KING SIZE **99¢**

- SHASTA** 28-oz. No Return Bottle **5 FOR \$1**
- DORITOS** Taco Flavor or Reg., Reg. 4 1/2 **3 FOR \$1**
- BEAN DIP** Frito 10-oz. **28¢**
- 7-UP** 12-OZ. **10¢**



BEER

99¢

\$5 BONUS SPECIAL!!
With \$5 or more purchase (excluding cigs. & beer) You Can Buy...

SUGAR SUGAR BARREL OR IMPERIAL 5-LB. BAG **35¢**
(With \$10 or more purchase (excluding cigs. & Beer Quality for Both \$5 Bonus Items))

24

JAN

24



Two Sides

Dear Abby
Abigail Van Buren

DEAR ABBY: Your recent article on the subject of spoiling grandchildren hit home with me.

Several years ago I had a discussion with my father in law on the subject. His point of view was brief and to the point. He said, "There are three points which you should understand: First, it's my money; second, it's my grandchild; and third, it's none of your business in the first place."

Having said his piece, the subject was closed. Looking back, I find myself in complete agreement. Care to comment? R. B. G., FORT MEYERS, FLA.

DEAR R.B.G.: Yes, I would have responded with "three points" of my own: "First, it's

my child; second, my child is more important to me than your money; third, the welfare of my child is my FIRST concern, and as long as I'm alive and mentally competent, that's the way it will be."

Then I would add, "C'mon, Dad, let's compromise, and give the kid more love than anything else — at least until he can handle it, OK?"

DEAR ABBY: I feel a problem coming soon. Our daughter (brainy, taught math at college last year) and her husband (ditto, teaches computer science) are coming to spend two weeks with us.

My husband is not anticipating their visit with the same joy as I. The three of

them get into these hot political debates in which everyone loses his cool and nobody wins. After their last visit everyone was worn out.

My husband is hawkish and they are dovish. I keep out of it, because if I took sides, I'd have to oppose my husband which wouldn't help our marital relations.

I know my daughter would like to avoid these arguments, but my husband honestly believes he can enlighten those "poor misguided boobies." And they feel the same about him.

What to do? Our how to keep the peace? PEACE LOVER

DEAR PEACE LOVER: When people with conflicting political views get together, if they speak their minds (and why shouldn't they?) a "hot" debate inevitably ensues. The loss of "cool" seems to be the problem here. Perhaps last year's experience can be avoided by cautioning your husband to control his temper, and giving your daughter and her husband the same advice.

DEAR ABBY: Wait until you hear this one. I am 41, have

a nice husband and two teen-aged children. I also have a problem, which hasn't caused me any trouble so maybe it's not a problem after all.

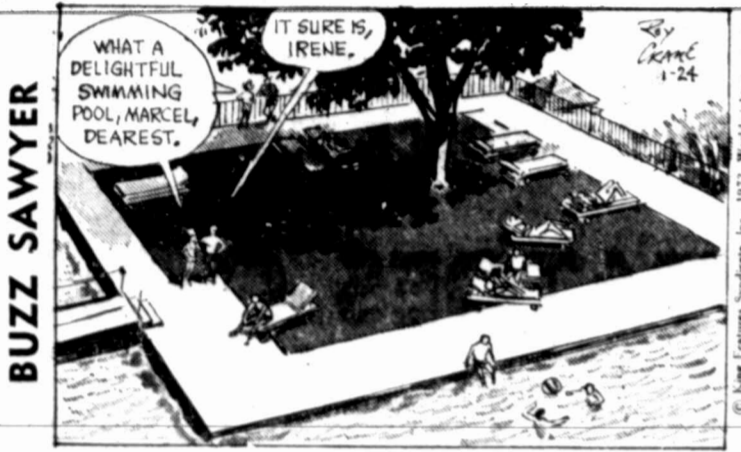
I am having an affair — strictly mental, with a man who is extremely attractive. I am sure he hasn't given me a second thought, but that doesn't interfere with my imaginary romance with him! Do you think I am going off my rocker? DREAMER

DEAR DREAMER: You are not alone. And it's harmless as long as you don't try to make your dreams come true.

For Abby's new booklet, "What Teen-Agers Want to Know," send \$1 to Abby, Box 89700, Los Angeles, Calif. 90069.

Matriarch Honored

AUSTIN, Tex. (AP) — The Austin Geriatric Center Inc., a high rise nursing home and housing apartment complex for the low income elderly, will be renamed the Rebekah Baines Johnson Center, in honor of the mother of former President Lyndon B. Johnson.



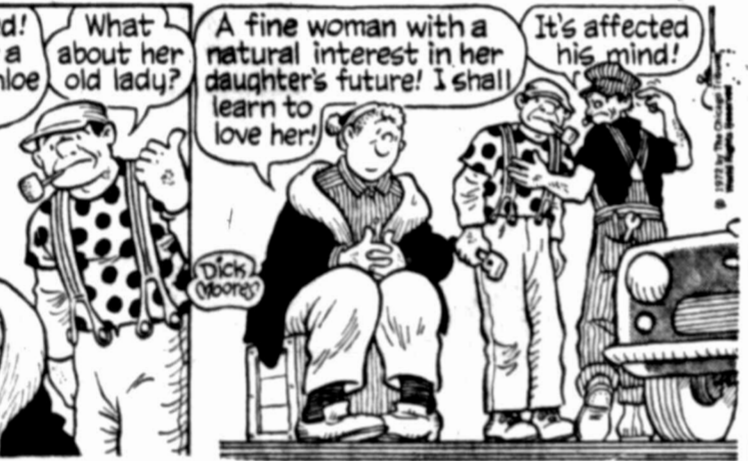
BUZZ SAWYER



MARY WORTH



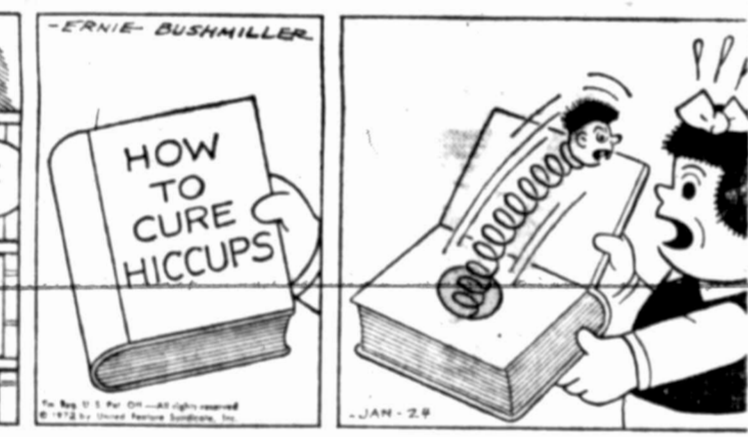
GASOLINE ALLEY



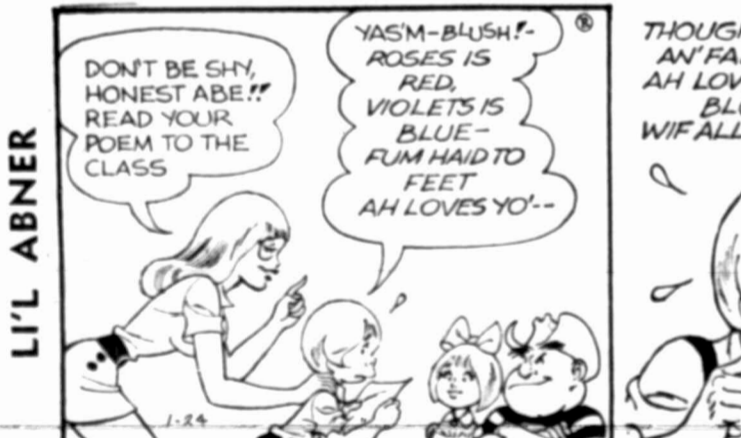
REX MORGAN



NANCY



TERRY



LI'L ABNER



KERRY DRAKE



BLONDIE



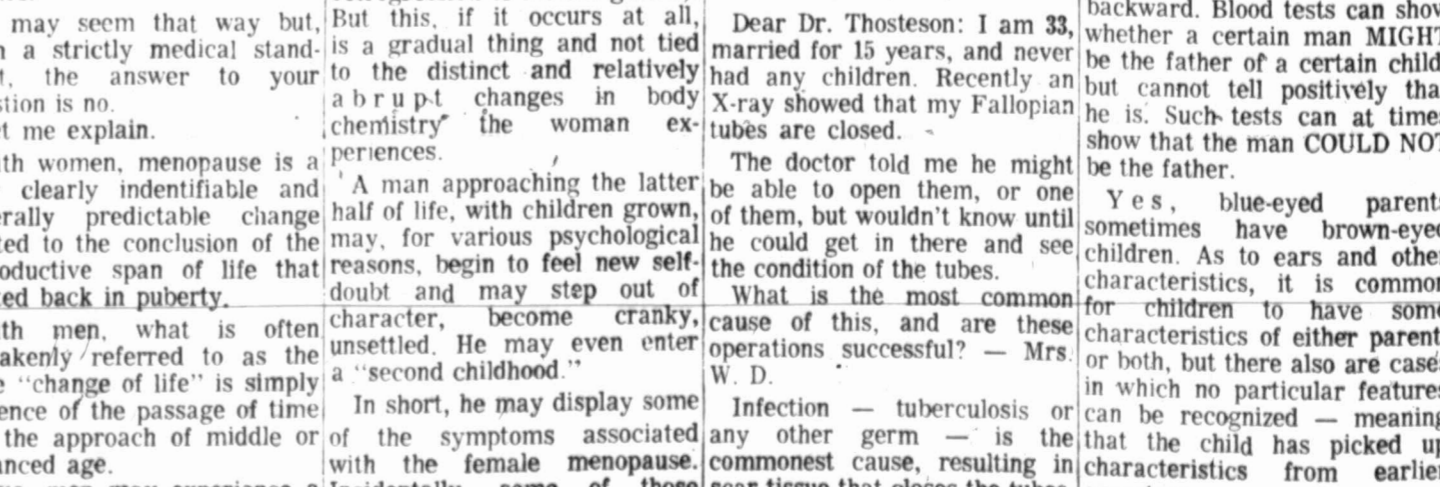
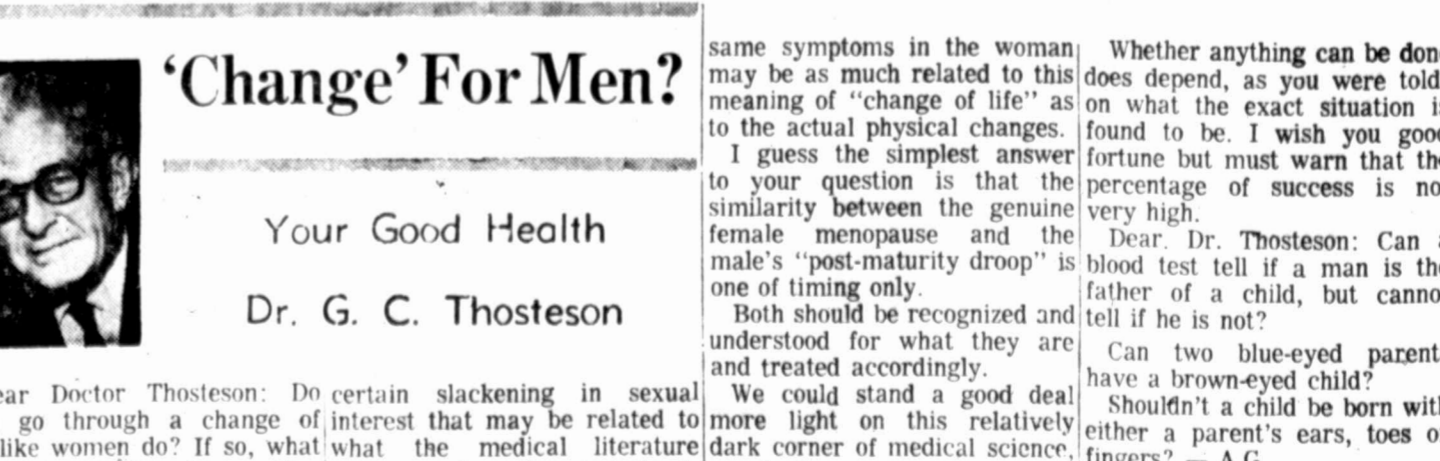
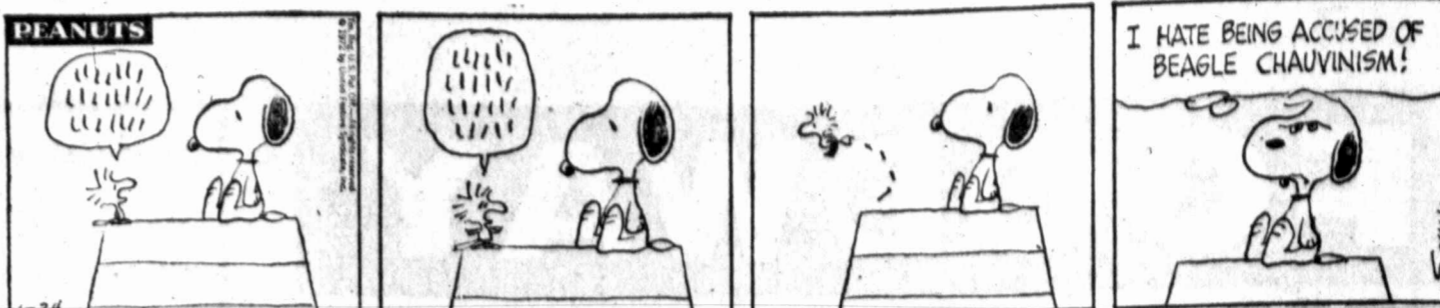
BEETLE BAILEY



RICK O'SHAY



SNUFFY SMITH



GRIM BOBBI was later called Sunday, and Hendricks

LOS ANGELES Stenerud, his first goal attempts fail whether he belongs Bowl with the national football league. The nightmare football's longest

IN Forsy

GRADY — Forsy Stanton's boys' champions in the High School Basketball meet here Saturday. Forsan decision in the champions 19, after limiting two points in period. Stanton raced past in the boys' final repeat as titlist. Garden City slugs the girls' third place had 24 points for and Sawyer 16 in that one. In the boys' third Coahoma won out 39-26. Gary Robert Coahoma and Jun for Grady. In consolation Coahoma's girls Stanton, 45-19, as hit 27 points for Hopkins seven for Forsan seven for City, 39-31, in

IOC Chicago Rails At

TOKYO (AP) head of the International Olympic Committee proposed the Winter Olympics abolished rather than "professionalism," gins a crucial week today that the Olympic of the Olymp. The start of the Games in Sapporo will be little more away when the meeting takes place, that of the Olympic Committee meets the scene shifts to miles to the north for the start of the Games. There are three to be resolved: 1. Avery Brundage, 84-year-old president IOC, has stated some 30-50 Alpin skiers should be the Games for mercantilism — i.e., brand names of on their equipment. 2. Marc Holder the International Federation of FIS, has the differences with main unbridgeable championships in Sapporo.

'Change' For Men?

Your Good Health
Dr. G. C. Thosteson



Dear Doctor Thosteson: Do men go through a change of life like women do? If so, what are the symptoms? — Mrs. E.K.M.

It may seem that way but, from a strictly medical standpoint, the answer to your question is no.

Let me explain.

With women, menopause is a very clearly identifiable and generally predictable change related to the conclusion of the reproductive span of life that started back in puberty.

With men, what is often mistakenly referred to as the male "change of life" is simply evidence of the passage of time and the approach of middle or advanced age.

True, men may experience a certain slackening in sexual interest that may be related to what the medical literature calls "male climacteric" (a retrogression of the sex glands). But this, if it occurs at all, is a gradual thing and not tied to the distinct and relatively abrupt changes in body chemistry the woman experiences.

A man approaching the latter half of life, with children grown, may, for various psychological reasons, begin to feel new self-doubt and may step out of character, become cranky, unsettled. He may even enter a "second childhood."

In short, he may display some of the symptoms associated with the female menopause. Incidentally, some of those

same symptoms in the woman may be as much related to this meaning of "change of life" as to the actual physical changes.

I guess the simplest answer to your question is that the similarity between the genuine female menopause and the male's "post-maturity droop" is one of timing only.

Both should be recognized and understood for what they are and treated accordingly.

We could stand a good deal more light on this relatively dark corner of medical science, too, by the way.

Dear Dr. Thosteson: I am 33, married for 15 years, and never had any children. Recently an X-ray showed that my Fallopian tubes are closed.

The doctor told me he might be able to open them, or one of them, but wouldn't know until he could get in there and see the condition of the tubes.

What is the most common cause of this, and are these operations successful? — Mrs. W. D.

Infection — tuberculosis or any other germ — is the commonest cause, resulting in scar tissue that closes the tubes.

Whether anything can be done does depend, as you were told, on what the exact situation is found to be. I wish you good fortune but must warn that the percentage of success is not very high.

Dear Dr. Thosteson: Can a blood test tell if a man is the father of a child, but cannot tell if he is not?

Can two blue-eyed parents have a brown-eyed child?

Shouldn't a child be born with either a parent's ears, toes or fingers? — A.G.

First question: You have it backward. Blood tests can show whether a certain man MIGHT be the father of a certain child, but cannot tell positively that he is. Such tests can at times show that the man COULD NOT be the father.

Yes, blue-eyed parents sometimes have brown-eyed children. As to ears and other characteristics, it is common for children to have some characteristics of either parent, or both, but there also are cases in which no particular features can be recognized — meaning that the child has picked up characteristics from earlier ancestors.

HUGE DEFICITS IN BUDGET MESSAGE

Sure-Fire Ammunition For Demos

WASHINGTON (AP) — The huge deficits announced in today's budget message—more than \$64 billion in two years—are a bad political break for President Nixon's re-election campaign.

They are sure-fire ammunition for Democrats, on whose past deficits Nixon has blamed his own problems with inflation, recession and the soaring federal debt.

The rich red ink, \$38.8 billion worth in fiscal 1972 and \$25.5 billion in the coming government year, could prompt demands for higher taxes and traditional Republican "fiscal responsibility" from the conservative wing of the President's own party.

Conservatives have shown rising irritation with the Nixonian economics. DID HIS BEST Nixon did his best to minimize a political backfire. The deficits are just the right tonic for the tired economy, he contended, and he implied that it is the Democratic-controlled Congress which needs to show fiscal discipline, not the Republican administration.

The message gives his administration credit for \$22 billion in income tax relief gained by Americans since 1969, omitt-

ing the fact many of the cuts into fiscal 1973. The latter budget is the one that will be in the voters' minds next November.

The budget shows evidence of tinkering with the timing of outlays. This has crowded more deficit spending into this fiscal year, before June 30, and less

economic stimulus when it is needed to get the recovery rolling, a high White House official explained, instead of later on when, presumably, the recovery will have gained enough momentum to revive inflationary hazards.

The shift also will enable Nixon to tell voters—as he told Congress in the budget message—that even though the deficits are large they are being reduced, and federal budgets are being brought under control.

A White House source said about \$1 billion in federal welfare normally would come after the turn of the fiscal year are being handed over to the states before the new book-keeping year begins.

There is little doubt that both deficits are swollen by some items that Congress is unlikely to approve, including revenue sharing. If Congress balks, the \$2.2 billion budgeted for that program this fiscal year would be a handy cushion to offset possible cost increases in other programs—or to point to as evidence that the deficits are being reduced.

The message alternately attacks Congress for over-spending Nixon requests on programs it favors and scolds the lawmakers for not voting the funds for programs he favors.

COSTLY MISTAKES Congress has made "costly mistakes" in past reductions of defense budgets, Nixon said in advocating more money for the Pentagon. Older people "have waited long enough," he said, for Congress to provide Social Security reforms. He complained that his plan to aid needy students is stalled: "There it sits, in Congress, while thousands of young people miss their chance."

On the other hand, the message bespeaks the President's pride that "the rate of increase in government spending has been cut nearly in half" compared to what it describes as comparable years of the Johnson administration. The Johnson years were those of the Vietnam buildup.

NO PROOF The current deficits are pictured as being of exactly the right size to speed the recovery without reviving the price-wage spiral.

His critics in Congress already have taken a line that ignores such fine-tuning of fiscal policy.

Their strategy has been simply to remind voters that Nixon, who took office promising a policy of budget surpluses and denouncing Democratic deficits as breeders of inflation: "Will have amassed combined deficits of more than \$90 billion in his four-year administration, far more than any administration since World War II, and... Has yet to prove that inflation is licked even after resorting to mandatory wage-price controls.



THE PARTY'S OVER — Art dealer Reese Palley, center, is greeted on arrival at New York's Kennedy Airport Sunday night, by his son, Gilbert, 24, and daughter-in-law, Robin, 23. The elder Palley and 685 guests had just returned from a four-day birthday party jaunt to Paris aboard two jumbo 747 jetliners that Palley had chartered.

Pilots Hit Antiaircraft Batteries In Red Vietnam

SAIGON (AP) — U.S. planes attacked five North Vietnamese antiaircraft batteries in the demilitarized zone and North Vietnam Saturday and Sunday, knocked out two of them and damaged another, the U.S. Command announced. SHOT DOWN American warplanes also dodged five antiaircraft missiles fired at them over Laos Sunday, the command said... but no planes were damaged in the weekend air flurry.

Bridge Test

BY CHARLES H. GOREN (© 1972, by The Chicago Tribune) BRIDGE QUIZ ANSWERS Q. 1—With neither vulnerable, as South you hold: AK2 ♠7 2 ♠K73 ♠A98654 The bidding has proceeded: South West North East Pass Pass 1 ♠ 4 ♦ ? What do you bid now? A.—Double. East has made life difficult for you by this bid and the wisest strategy by far is to take your medicine and settle for what looks like a "sure profit." Exploration for the best fit is not safe at this level. Q. 2 — Neither vulnerable, as south you hold: AKJ92 ♠AKJ2 ♠J7 AK6 The bidding has proceeded: South West North East 1 ♠ Pass 2 ♠ Pass ? What do you bid now? A.—Three hearts. There is a distinct aroma of slam in the air [partner's two-over-one response promises a minimum of 10 points], and it is appropriate for you to show your interest below the game level. Three hearts is preferable to a jump in no trump because of the slightly unbalanced nature of your hand and the possibility that partner might have four fairly good hearts himself. If he should return to three spades, you may try no trump on the next round. Q. 3—Both vulnerable and as South you hold: AK103 ♠A95 ♠KJ3 ♠KQ87 The bidding has proceeded: West North East South 1 ♠ Pass 1 NT Pass ? What do you bid now? A.—Pass. A strategic move dictated by vulnerability and conditions of the bidding. Your best chance for a profit in the long run is to keep silent and hope the opponents get overly aggressive. Prospects for a game your way are just about nil, but there is the possibility of a substantial penalty if you can restrain yourself for a round or two. Q. 4—Both vulnerable, opponents have a 60 part score and as South you hold: AK1086 ♠A95 ♠3 ♠QJ654 The bidding has proceeded: East South West North 1 ♠ Pass 1 NT Pass Pass ? What do you bid now? A.—Pass. The time to contest a low level contract is before the opponents get a part score not once they already have it. Furthermore, the on this type of sequence partner can usually be

counted on to have some values, there can be no such assurance with the present part score situation, as West may be deliberately underbidding in order to lure on an unsuspecting opponent. Q. 5—As South vulnerable, you hold: J10843 ♠762 ♠104 ♠9866 The bidding has proceeded: West North East South 1 NT Dble. Rdbl. ? What do you bid? A.—Pass. East's redouble has relieved you of the obligation to bid and you should grasp the opportunity to stay out of partner's way. He may wish to rescue himself in clubs or hearts. Q. 6 — Neither vulnerable, as South you hold: AJ864 ♠7 ♠J3 ♠AQ1075 The bidding has proceeded: South West North East 1 ♠ Pass 2 ♠ Pass 3 ♠ Pass 3 NT Pass ? What do you bid now? A.—Four clubs. The bidding might have proceeded more smoothly had you originally opened with one club on this minimum holding, but be that as it may, your values are too distributional to permit partner to try the shorter route to game. Q. 7 — Both vulnerable, as South you hold: AJ87432 ♠KJ1085 ♠4 Your partner opens with one no trump. What is your response? A.—Six spades. There are many hands that do not lend themselves to a scientific approach. This is one of them. However, the odds in favor of a small slam are sufficiently good to make us willing to gamble it out, and a direct stab could easily serve to inhibit the best defense. Q. 8—Both vulnerable and as South you hold: AKQ93 ♠4 ♠J1093 ♠K86 The bidding has proceeded: South West North East 1 ♠ Dble. 4 ♠ 5 ♠ Pass Pass 5 ♠ Pass Pass 6 ♠ Pass Pass ? What do you bid now? A.—Six spades, not with any intention of fulfilling the contract, but merely to prevent the opposition from scoring a vulnerable slam which is highly probable, if, as seems likely, West has the ace of clubs. Your partner has little defense since he twice failed to double the opponents. His diamond holding and marked shortness in clubs indicates that your "save" will prove that your economic

THEFTS

Theft of stereo tapes and carrying case valued at \$122 from a car parked at the Webb AFB Bowling Alley was reported by Jim Brent, 243-A Langley to police at 3:14 p.m. Saturday. Brent reported that the theft occurred between 9 and 11:30 a.m. Saturday. An air wrench valued at \$147 was reported at 11:53 a.m. Saturday to police as stolen. The theft reportedly occurred Friday afternoon. Joseph Deliberto, 1211 Harding, reported to police at 8:08 a.m. Saturday that a boy's 26-inch black-and-blue bicycle had been stolen during the night from the backyard of his home. A burglary of a residence from which \$395 worth of stereo and tape deck equipment was taken was reported to police at 10:09 p.m. Friday. The residence was at 114 NE 11th.

Chamber Priorities Will Be Reviewed At Lamesa

LAMESA (SC) — A Commitment '72 meeting set for 7 p.m. Monday in the Lamesa High School Student Center has been termed "the most important meeting of the year for the Chamber of Commerce." According to Chamber of Commerce president, Dallas Woods, it is the goal of the chamber to involve all chamber members in this special, goal-setting meeting. After orientation in the Student Center, the members will separate into committees, in an effort to allow each member the opportunity to make his own feelings known.

serving piece Sale 20% OFF open stock prices



Wallace is serving up special savings. Now you can buy the additional serving pieces you've always wanted. Or take the opportunity to select a gift in the bride's Wallace pattern. Patterns included: Dawn Mist, Evening Mist, Royal Satin, Spanish Lace, Grand Colonial, Stradivari, Michele, Shenandoah, Feliciano, Royal Rose, Rose Point, Grande Baroque, Sir Christopher, Romance of the Sea, My Love, Silver Swirl, Waltz of Spring, Aegean Weave, Golden Aegean Weave, Meadow Rose.

Sole Ends January 31st. Hemphill-Wells Silver, Second Level.

Bob Wilton Named IF's President

LAMESA (SC) — R. S. (Bob) Wilton has been elected president, Perry Roberts, vice-president and John Hegl, secretary. Treasurer of the Lamesa Industrial Foundation, Inc.

Heehaw's Lulu Is Handed Sentence

DALLAS, Tex. (AP) — Lulu, the hefty character of the "Hee Haw" television series, has been sentenced to four years in the Texas penitentiary. Lulu, whose real name is Bertha Louise Roman, was convicted by a jury Friday on a charge of possessing 3½ pounds of marijuana.

Not To Be Missed! Final Clean Sweep Last Call!

You can make some fantastically great buys. Many advance fashions with the great looks, the great fashion names at unbelievable prices. You must come and see for yourself!!

Table with columns for Values, NOW, and And Others. Values include \$30 to \$45, \$46 to \$60, and \$65 to \$90. NOW prices are \$13.90, \$20.90, and \$30.90 respectively. Includes the Swartz brand name and 'Doors Open 9:30 A.M.' and 'both shops'.

Wright's for Drugs Prescriptions Cold Remedies. Ritz today & Tuesday Open Daily 12:45. Lady and the Tramp. Double Feature: The Return of Count Yorga. Jet.

CINEMA NOW SHOWING. Matinees Wed., Sat. and Sun., 1:30 and 3:05. Evenings 7:15 and 9:00. 'I got one hell of a bang out of CRY UNCLE!'. Ryan's Daughter.

Price 1... WASHING... growing in... Nixon is p... date for t... U.S. troops... lease of Ar... war, the... nounced he... make a nat... radio broad... statement t... President... Ronald Zie... deliver the... oval office... Ziegler rel...