





Good Luck Charm At Work

Patricia Canafax, 15, is shown at home in Dallas after she sent a good luck charm to Judy Lynn Funch, 5, who was in the University of Michigan Hospital in Ann Arbor. The charm, Brownie, a small, floppy-eared stuffed dog, was Patricia's charm when she underwent heart surgery when she was 3. Judy Lynn had similar surgery last week. Patricia said, "I almost cried when I put it in the box. But maybe it'll bring her the kind of luck I had. They said I didn't have a chance." Doctors were hopeful for Judy's recovery. (AP WIREPHOTO)

## Trains Over State Halted

FORT WORTH (AP)—Widening effects were reported in Texas today from a strike against the Texas & Pacific and the Missouri Pacific Railroads. Spokesmen for the railroads said the walkout by the Brotherhood of Locomotive Firemen and Enginemen was bringing trains to a halt as each arrived at its terminal point.

Pickets appeared at a number of places soon after the strike began at 12:01 a.m.

D. P. Barksdale, assistant general manager of the Missouri Pacific's Texas district said Texarkana, Fort Worth and Baird were among the first points at which trains were stopped.

Freight trains were affected more quickly than passenger service.

R. L. Wisdom, assistant chief dispatcher for the T&P here, said picket lines were up at all terminal points.

## MoPac Reports Defense Shipments Left Stranded

ST. LOUIS (AP)—Missouri Pacific Railroad operations shut down today because of the nationwide rail strike and a MoPac spokesman said the strike "would have a serious effect on national defense."

Locomotive firemen and enginemen struck eight major U.S. railroads, including the Missouri Pacific, early today.

MoPac said 300 freight and passenger trains in operation at the time of the strike have been stranded at various points through the railroad's 12,000-mile system in Texas and 11 other Southern and Midwestern states.

## L.A. Hassle

### 'Obscene' Art Show Draws Peak Crowd

LOS ANGELES (AP)—The Los Angeles County Museum of Art now knows a hard fact of show business — nothing sells tickets like sex.

An exhibit of junkyard assemblages by artist Edward Kienholz opened Wednesday featuring love in the back seat of a Dodge and a house of ill repute. Both had been labeled pornographic and obscene by some county officials.

Result — the biggest one-day crowd in the one-year history of the museum. Tickets are \$1 each.

The crowd, counted at 1,532 by the time the doors closed at 5 p.m., had formed a serpentine line outside the museum all day.

Most of the Kienholz viewers said they were attracted by the publicity. Few called his work pornographic.

### The Big Spring Herald

Published Sunday morning and weekday afternoons except Saturday by Maria-Helen Newsom, Inc., 718 S. Broadway, Big Spring, Texas 77717. Second class postage paid at Big Spring, Texas. Subscription rates: By carrier in Big Spring \$1.75 monthly and \$21.00 per year. By mail within 100 miles of Big Spring, \$1.50 monthly and \$18.00 per year. Beyond 100 miles of Big Spring, \$1.75 per month and \$21.00 per year. All subscriptions payable in advance. The Associated Press is exclusively entitled to the use of all news photographs credited to it or its wire service. All other news published herein. All rights for reproduction of these articles are reserved.

## Fired Agent's Claim Called 'Ridiculous'

WASHINGTON (AP)—Internal Revenue Service officials have termed "ridiculous" and "preposterous" a c c s a t i o n s made to Senate investigators by a former IRS agent who said he was fired because "I refused to remain silent on a fix."

The former agent, Archie Sherer, 36, of San Francisco, told a Senate Judiciary subcommittee Wednesday he was dismissed last Friday on grounds he would not cooperate in examination of his own tax returns. He said this was not true.

**FALSE REPORTS**  
He swore he signed false reports in 1962 on tax returns on instructions from his group supervisor after a San Francisco accountant, Nathan Friedman, complained about his work to the IRS district director.

**PROMPTS QUERY**  
After Sherer testified it was known Friedman and Caplin were friends, Long asked him: "Did the district director know of the friendship between this accountant and the commissioner?"

"If he didn't," Sherer replied, "he was the only one in the audit office who didn't."

He said that as a result of what he termed a fix the government failed to collect a substantial amount in income taxes he felt was due—an amount he estimated at "anywhere from \$10,000 to \$50,000."

## West Texans Will Greet First Lady

ALPINE (SP)—Big Bend National Park, 110 miles to the south of Alpine, is part desert and part mountain country, one of the few remaining true "wilderness" areas left in the United States, lies along the border of the United States and Mexico and takes its name from the course of the Rio Grande which describes a tremendous bend between Van Horn on the west and Langtry on the east. Consisting of some 789,000 acres, it was established in 1943 as a national park and is the nation's fifth largest. The scenery is spectacular, from the towering Chisos Mountains up to 7,800 feet in height to the awe-inspiring gorges of the Rio Grande River, the most famous of which are the Santa Elena, Mariscal and Boquillas Canyons. The park abounds in wildlife common to the Rocky Mountains to the north and the Sierra Madre of Mexico to the south. The park is termed by the National Park Service as "one of the outstanding geological laboratories and classrooms of the world."

**FIRST LADY**  
It is to see and visit this great unspoiled beauty that Mrs. Lyndon B. Johnson is arriving at the Presidio County Airport, midway between Marfa and Alpine on Saturday at 10 a.m. Accompanying the First Lady will be Secretary of the Interior Stewart Udall and Mrs. Udall, George Hartzog Jr., director of the National Park Service, as well as approximately 50 news writers and photographers representing the most prominent newspapers, magazines and television and wire service companies.

A large crowd of West Texans is expected to be on hand to give a typical warm, enthusiastic welcome to Mrs. Johnson. Included in the welcoming ceremonies will be the Sul Ross College Marching Band, cheer leaders, 10 lovely co-eds dressed in western cow-girl attire and some 50 members of the Sul Ross Rodeo Club on horseback. Also on hand to welcome the First Lady will be Congressman Richard White, Mayors McFarlane and Winter of Marfa and Alpine, Mrs. Ruth Caveness, president of Marathon's Women's Chamber of Commerce, Paul Forchheimer of Alpine, acting as spokesman and representing the Big Bend Park Development Committee, and many other local and area dignitaries.

Following welcoming ceremonies at the Presidio County Airport, Mrs. Johnson and party will board charter buses for the weekend tour of Big Bend National Park, Odessa's Chuck Wagon Gang will serve Saturday night dinner, Sunday morning breakfast and Sunday night dinner to the group. Entertainment will be furnished Saturday night by "The Believers," popular Sul Ross musical combo, followed by a talk by Dr. N. L. McNeil, president of Sul Ross State College, on authentic folk songs of the West. He will also sing and play the guitar for the group.

## Sourpuss with false teeth now laughs loudest

"Because of terrible yellow denture stains and bad breath, I always held back from smiling. Everyone called me 'sourpuss.' DENTUR-KLEEN foaming tablets changed all that! One tablet in a glass of water made the difference. All the stain and offending food particles were foamed away. My false teeth have never looked so clean and white, felt so fresh. I can smile and even laugh again, thanks to foaming DENTUR-KLEEN available at Gibson's Discount Center, 2222 Gregg.

of the fort. Taking part in the ceremonies will be high school bands from Alpine, Marfa, Marathon and Pecos, as well as the combined 62nd and 424th army bands from Fort Bliss, Texas, as well as an artillery honor guard from Fort Sill, Okla. Official welcome will be made by Franklin Smith, superintendent of Fort Davis, and appearing on the program with Mrs. Johnson will be the Rev. Hugh Stiles, Fort Davis Baptist Church, who will give the invocation.

**NEWCOMER GREETING SERVICE**  
Mrs. Joy Fortenberry  
Your Hostess:  
An established Newcomer Greeting Service in a field where experience counts for results and satisfaction.  
1207 Lloyd AM 3-2005

### LEWIS' DISCOUNT PRICES

<b>DUST PAN</b> PLASTIC REG. 29¢..... <b>11c</b>	<b>WHITE Work Gloves</b> REG. 39¢..... <b>19c PR.</b>
<b>ALUMINUM 4 INCH Lawn Edging</b> REG. 1.00..... <b>49c</b>	<b>MOUNTAIN PINE, SPICE, FLORAL &amp; LAVENDER Room Air Freshner</b> REG. 67¢..... <b>47c</b>
<b>PLASTIC, BY GOTHAN 2 Gal. Bucket</b> REG. 77¢..... <b>31c</b>	<b>BEAUTIFUL ASSORTMENT Flower Arrangement</b> <b>99c EACH</b>
<b>BODY SET Hair Spray</b> 2.00 VALUE OUR PRICE 1.29..... <b>99c</b>	<b>Easter Basket</b> <b>29c UP</b>
<b>RIGHT GUARD DEODORANT KING SIZE..... 47c</b>	

**WE GIVE AND REDEEM SCOTTIE STAMPS  
GIFTS OVER \$1.00 WRAPPED FREE!**  
COLLEGE PARK STORE OPEN 'TIL 8 EACH EVENING

**CROWDS ARE JAMMING THEIR WAY IN FOR THIS GREAT SALE NOW GOING ON!**

# THANKS FOLKS!

**We Deeply Appreciate Your Terrific Response To This GREAT SALE.**

THE NEXT FEW DAYS CAN BE THE MOST IMPORTANT "SHOPPING DAYS" OF YOUR LIFE!  
For during the next few days... you have a "once-in-a-lifetime" buying opportunity! If you are looking for real bargains here is your answer. YOU CAN BUY WITH CONFIDENCE THAT YOU WILL POSITIVELY BE THRILLED WITH YOUR PURCHASES! YOU can't lose... while taking advantage of this sensational sale. A SELLOUT ON MANY ITEMS IS EXPECTED, SO BETTER GET HERE EARLY!

## PRICE CUTTER'S AX FALLS AGAIN

### QUITTING BUSINESS SALE!

<b>Look At These Bargains</b>	<b>35 NECK TIES</b> VALUES TO \$2.50 <b>49¢</b>	<b>18 BELTS</b> VALUES TO \$3.50 <b>59¢</b>	<b>41 PURE SILK SHIRTS</b> VALUES TO \$18.95 <b>\$9<sup>98</sup></b>
<b>29 PAIRS DRESS SLACKS</b> SIZES 33-33 VALUES TO \$21.50 <b>\$10<sup>95</sup></b>	<b>28 PAIRS EDWIN CLAPP Sharkskin Shoes</b> VALUES TO \$47.95 <b>\$29<sup>95</sup></b>	<b>ALLIGATOR TOP COATS</b> VALUES TO \$87.95 <b>1/2 PRICE</b>	<b>AFTER SIX TUXEDOES</b> VALUES TO \$89.50 <b>\$45<sup>00</sup></b>
<b>JIFFIES BEDROOM SLIPPERS</b> MEN'S & BOYS, VAL. TO \$4.00 <b>\$1<sup>99</sup> - \$2<sup>79</sup></b>	<b>77 PAIRS EDWIN CLAPP Summer Shoes</b> VALUES TO \$31.50 <b>\$19<sup>95</sup></b>	<b>100, ASSORTED COLORS SPORT CAPS</b> VALUES TO \$1.75 <b>49¢</b>	<b>WESTERN DRESS PANTS</b> VALUES TO \$28.95 <b>1/2 PRICE</b>

## LEE HANSON MENS STORE

**EVERYTHING IN THE STORE ON SALE!**  
126 EAST 3RD DIAL AM 4-5731

**Yo Le**  
CHU PHO Nam (AP) — spoken New wears glasses wants to study ness School. he took comm company of t ry, Airmobile, them in a star sand North V 2nd Lt. Dan New Britain, on the battlefi pany comm wounded and t cer killed.

**VETERA**  
Though they several first l company defe because he h three list Caval Nam. The compar Battalion, 12th out late in the cate the crew ters shot dow fighting betwe cavalrymen an action took pl the Chu Phong a mile from the der in the cent The compar first chopper a rescued the cre moving to the about 300 yards

**SNIFE**  
Two pilot downed aircraft fanned out past

**LBJ Tre**  
WASHINGTON ate Republican cautiously in w describe as th field of opposi Johnson's dome Although 123 cans voted to e subsidy progr supported it, t surance that cans will deliv lopsided count comes to a vote No COH

Senate Rep Everett M. Dir has been no att any party conse ter. He said he has decided he is going to vote tel.

What has c some Senate R their announce to cut Joh spending progr increases in ar riod could back Even if they in halting such \$12 million for ment and \$10

**Anc Crea**  
SAN ANGE tures that roan National Park years ago are lengthy study University of geology.

Some outar have been ma much about the section of Texa activity in the other facets abe of years ago.

Tornillo Flat country is the only contain the bor tertiary perio Texas.

**MESOZ**  
Some 63 mill the close of th riod and the meek little ma in the shadow o ozoic dinosau earth.

For some entirely unders reptiles vanish million years, sway.

When the gre ished, the only ing were tur crocodiles.

Dr. John A. tologist and pr at the Univers dored the these finds in He said, " southernmost e United States link between M American fau Wyoming.

**SHOW**  
"They show Wyoming and do forms, but not as nicely said. The most co earliest of T among the Pal

# Young Hero Leads Battle

CHU PHONG, South Vietnam (AP) — He is a slim, soft-spoken New Englander who wears glasses. Next year he wants to study at Harvard Business School. Wednesday night he took command of a battered company of the U.S. 1st Cavalry, Airmobile Division and led them in a stand against a thousand North Vietnamese troops.

2nd Lt. Daniel Kapica, 22, of New Britain, Conn., took over the battlefield after his company commander had been wounded and the executive officer killed.

**VETERAN FIGHTER**  
Though they outranked him, several first lieutenants in the company deferred to Kapica because he had been through three 1st Cavalry actions in Viet Nam.

The company from the 1st Battalion, 12th Cavalry, had set out late in the afternoon to locate the crews of two helicopters shot down during heavy fighting between a platoon of cavalrymen and the enemy. The action took place just south of the Chu Phong Mountains about a mile from the Cambodian border in the central highlands.

The company reached the first chopper about 5 p.m. and rescued the crew. Then it began moving to the second helicopter about 300 yards to the north.

**SNIPER FIRE**  
Two platoons reached the downed aircraft. But as the men fanned out past it toward a tree-

line, "all hell broke loose," Kapica said.

Small-arms and automatic-weapon fire flashed from spider holes and trees. "We were taking casualties but we continued the assault," Kapica said. "Then the company commander got hit and the fire became so heavy that we pulled back."

"But we moved up soon afterwards and then the executive officer got killed. I took over the company then, but I worked closely with the other lieutenants. We worked as a team, we put our heads together."

The company started pulling back to await air support, leaving an element behind to bring in the wounded. By nightfall, Kapica had his men in a 30-yard-wide perimeter. A North Vietnamese prisoner they had taken told them they were surrounded by a thousand troops.

**EXHAUST AMMO**  
The enemy kept probing the beleaguered Americans throughout the night, exhausting the ammunition supply of the little group. At 1 a.m. a U.S. Army Caribou transport plane came in over the treetops to drop ammunition and C-rations. As darkness still lay over the hills, helicopters brought in two more companies from the battalion, and this may have broken the will of the enemy. Kapica's company began moving out at dawn. It came across some dead North Vietnamese troops

and picked up enemy weapons. On one body, Kapica's men found a batch of English-language leaflets. They showed a sketch of a coffin draped with the Stars and Stripes on one side and these words on the other: "Escalation up or down? Johnson's escalation can only take you down, way down into a coffin of rough pine if they can find your remains."

The leaflets apparently were for distribution in U.S. troop areas.

At noon, Kapica's company was still in the field moving through the slight rolling hills and tall trees.

Kapica's superior officers praised him for a superb job as acting commander.

# Verwoerd's Party In Heavy Lead In S. Africa Election

JOHANNESBURG, South Africa (AP) — Premier Hendrik Verwoerd's Nationalist party held a lead of more than 2 to 1 today in returns from South Africa's general election. It promised another overwhelming endorsement by the country's white voters for the party's apartheid policy of rigid racial segregation.

Returns for 121 of the 168 seats to be filled in the House of Assembly gave 84 seats to the Nationalists, 36 to the United party and one to the Progressive party.

In the previous Parliament Mrs. Suzman, 49, made more than 100 major speeches charging that Verwoerd's policy of separate development for the black majority will lead to disaster for South Africa.

Only white persons voted Wednesday in the elections for another all-white Assembly to serve for five years. Persons of mixed blood (called coloreds) had already voted separately.

Verwoerd, who has been premier for 7 years, easily won reelection from his Heidelberg constituency in Transvaal Province with a majority of 5,516 against a United party opponent. He was unopposed in the previous election.

Under the parliamentary system, the party with the most seats forms the government and

the party leader becomes premier. In the old Parliament, which had only 160 seats, the Nationalists held 106 seats, the United party 49, the Progressives one and four represented the coloreds.

The Nationalists have been in power for 17 years. The Nationalists plan to create independent black states within South Africa. In these "bantustans" the Africans will have limited self-rule and will be allowed to commute to work in the heavily industrialized white-controlled areas.

# LBJ's Rivals Tread Warily

WASHINGTON (AP) — Senate Republicans are treading cautiously in what some of them describe as the political mine field of opposition to President Johnson's domestic programs.

Although 125 House Republicans voted to kill Johnson's rent subsidy program and only six supported it, there was no assurance that Senate Republicans will deliver any similarly lopsided count when the issue comes to a vote.

**NO CONSENSUS**  
Senate Republican Leader Everett M. Dirksen said there has been no attempt to arrive at any party consensus on the matter. He said in an interview he has decided how he personally is going to vote. But he wouldn't tell.

What has come through to some Senate Republicans is that their announced policy of trying to cut Johnson's domestic spending programs to avoid tax increases in an inflationary period could backfire politically.

Even if they were successful in halting such expenditures as \$12 million for the rent supplement and \$10 million for a Viet Nam war.

Teachers Corps to operate in poverty-stricken districts, they would have a long way to go toward their objective of achieving from \$2 billion to \$4 billion in budget cuts.

**BAD RESULTS?**  
Any cuts they might engineer with help of conservative Democrats would be at the cost of alienating voters affected by the programs in the areas where the party has been weakest in recent elections.

Although GOP leaders have plugged for substantial budget reductions instead of tax increases, Dirksen has been careful to avoid painting his party members into a corner where they would be found voting against tax hikes the President might say are necessary to curb inflation.

Any such action would tend to destroy their contention that Johnson is responsible for letting prices get out of hand, an election issue they think will help their cause almost as much as public frustration over the Viet Nam war.

# Ancient Big Bend Creatures Studied

SAN ANGELO (AP) — Creatures that roamed the Big Bend National Park area 60 million years ago are the object of a lengthy study being made by a University of Texas professor of geology.

Some outstanding discoveries have been made which reveal much about the activities of the section of Texas, about volcanic activity in the area and many other facets about Texas millions of years ago.

Tornillo Flat in the Big Bend country is the only area known to contain the bones of the earliest tertiary period mammals in Texas.

**MESOZOIC ERA**

Some 63 million years ago, at the close of the Cretaceous period and the Mesozoic era, the meek little mammals which lived in the shadow of the great Mesozoic dinosaurs inherited the earth.

For some reason still not entirely understood, all the great reptiles vanished. For some 140 million years, they had held sway.

When the great dinosaurs vanished, the only reptiles remaining were turtles, lizards and crocodiles.

Dr. John A. Wilson, paleontologist and professor of geology at the University of Texas, underscored the importance of these finds in Texas.

He said, "These are the southernmost exposures in the United States and serve as a link between Mexican and South American faunas and those of Wyoming."

**SHOW VARIATION**

"They show a variation from Wyoming and western Colorado forms, but the specimens are not as nicely preserved," he said.

The most common form of the earliest of Tertiary mammals among the Paleocene fauna were

little mouse-like Ptilodus. It was not a rodent, but is known by the jaw breaking term, multituberculate.

Wilson explained the meaning of multituberculate as referring to the teeth of the mammal.

"The back teeth of Ptilodus consisted of two large, bumpy plates in the lower jaw and one in the upper," he explained.

The multituberculate family is well known back into the Cretaceous, but it became extinct early in the next epoch, the Eocene, without giving rise to any modern form.

Another kind of animal which dominated the Paleocene landscape of the Big Bend was Titanoides, a member of the pantodont family.

"The pantodonts may have given rise to the ungulates (all of the many kinds of hoofed mammals) but they became extinct in the early Eocene," Wilson said.

Titanoides was much larger than the mouse-like Ptilodus. "He was about six feet long, about the size of a yearling calf," Wilson said. But there the resemblance ended.

**PLANT EATER**  
He was a plant eating animal but what he ate in Big Bend country during the Paleocene period is not known.

Numerous pieces of fossil wood life have been found in the Paleocene formations on Tornillo Flat, but no one has studied them.

A warmer and damper climate is indicated with open forests clothing low hills and lowland swamps along large, sluggish rivers. Titanoides, a large, clumsy, stupid animal, probably spent his days browsing on leaves or grubbing for roots.

Titanoides had five-toed feet with large blunt claws and stout legs capable of carrying considerable weight.

## Penneys ALWAYS FIRST QUALITY

BEFORE YOU SPEND MORE...

# Compare Penney's Easter Fashions



Boys' Easter SUIT PARADE

- SLIMS
- REGULARS

10<sup>98</sup>

Slim Continental styling . . . fashion first 2-button coat with side vents. Trim fit matching slacks. Cadet sizes 6 to 12.

BOYS' SIZES 14 to 20—17.98



**SPECIAL BUY**

girls' total-look suits for Easter!

\$7

Her favorite suit-looks in cotton knit bonded to acetate tricot! All at Penney's spectacular savings price! Neat pleated skirts topped with classic box jackets . . . with the added fashion fillip of turtle-neck dickies, sleeveless shells, or matching knee-hits! Aqua, pink, blue, yellow, or navy-and-red combinations. 6 to 14.

Penneys ALWAYS FIRST QUALITY

2 DAYS ONLY . . . FRIDAY & SATURDAY

**BUILD BABY'S PHOTO ALBUM WITH PIXY PIN-UPS**

**Beautiful 5x7" photograph, for only 59c**

Non-glass lights get natural smiles.

Do your baby-bragging with a beautiful photo . . . "worth more than a thousand words." Get a completely finished photograph for only 59c. You will not be urged to buy but if you wish the remaining poses they're yours for 1.35 for the first, 1.25 for the 2nd and \$1 for any additional.

**AGE LIMIT 5 years.** One or two children per family will be photographed singly for 59c each for the first picture. Each additional child under five, 1.50.

PIXY PIN-UPS EXCLUSIVELY AT PENNEY'S PHOTOGRAPHER'S HOURS: 9:30 A.M. to 12, 1 to 6 P.M.



## EASTER SHOES

compare Childcraft

Penney's own shoes for boys and girls! Styles for school or dress-up . . . many with our own durable Pentred® soles that are guaranteed to outwear the uppers! Scientifically lasted for perfect fit!

**A. GIRLS' PERT BOWD SLIP-ON** Just the shoe for parties and dress-up! Black patent or white smooth leather upper . . . composition sole, 12 1/2-3A, 8 1/2-3B, C, D . . . \$5.99

**B. LITTLE GIRLS' CLASSIC PUMP** Her favorite dress shoe in black or white glossy vinyl. Perky T-strap styling on long-wearing composition sole. 12 1/2-3A and 8 1/2-3B, C and D widths . . . \$5.99

**C. YOUNG MAN'S SMART SLIP-ON** Smooth scuff-resistant leather upper on Pentred sole, heel. Grown-up styling with elasticized quarter for smooth fit. 8 1/2-3B, C, and D widths . . . \$5.99

**D. LITTLE BOYS' DRESS OXFORD** Just like Dad's! Smooth, scuff-resistant leather upper in black or burgundy . . . rugged Pentred heel, sole. 8 1/2-3B, C, D, E widths . . . \$5.99

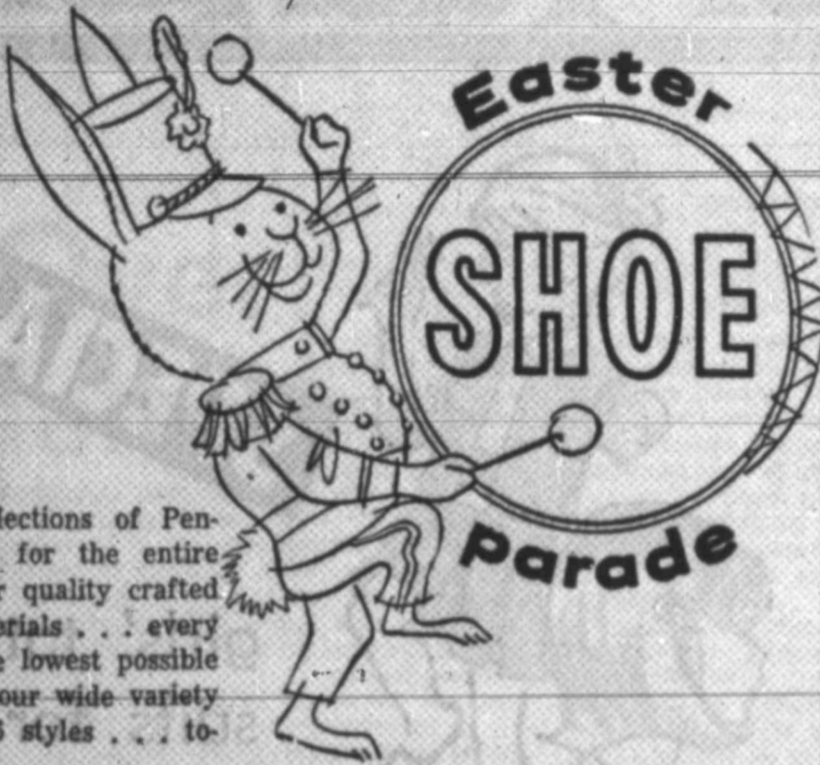
2-Hour Free Parking On Downtown Parking Lot • Lot At 2nd & Main • 2-Hour Free Parking On Downtown Parking Lot • Lot At 2nd & Main • 2-Hour Free Parking On Downtown Parking Lot • Lot At 2nd & Main • 2-Hour Free Parking On Downtown Parking Lot • Lot At 2nd & Main

# There's More Of Everything In Downtown BIG SPRING

# SPRING BARGAIN

SWING INTO SPRING WITH YOUR FRIENDS DURING THESE THREE BIG DAYS THURSDAY, FRIDAY & SATURDAY

**Penneys**  
ALWAYS FIRST QUALITY



**Easter SHOE Parade**

Our fabulous collections of Penney brand shoes for the entire family! Every pair quality crafted of the finest materials... every pair tagged at the lowest possible price! Come see our wide variety of outstanding '66 styles... today!

**COMPARE...**

New For Spring  
Short Sleeve SPORT SHIRTS

Reg., Tab. Henley and Button Down Collars in Press-Free Easy-Care, Light, Cool And Comfortable Shirts. Select Now!



FROM \$4.00

**Prager's**

Buy on Budget Terms  
We Redeem Scottie Stamps  
102 E. 3rd

**McCroory's**  
Spring Bargain Spree THURSDAY, FRIDAY & SATURDAY

CHILDREN'S, MISSES & LADIES

## CANVAS SNEAKERS

\$1.27

5 COLORS TO CHOOSE FROM  
RED—BLACK—BLUE—TAN—WHITE

CHOOSE YOUR EASTER NOVELTIES & BASKETS  
WHILE SELECTIONS ARE COMPLETE 49c to \$1.98

50-FT. WATER HOSE \$1.66  
FULL FLOW LIGHT WEIGHT FLEXIBLE NON-KINKING

ONE GALLON PLASTIC DECANTER 58¢

**GA**

"ESTATE" Full 5/8" 50 Feet Reg. \$9.99

AIR CO ASPE BECKET A PUM STA

203 Runnel

IT'S A SWINGING SAVINGS FLING!  
**115th BIRTHDAY AT SINGER**  
BUY THE TOUCH & SEW ZIG-ZAG SEWING MACHINE BY SINGER AND SELECT A FREE GIFT, TOO

<b>FREE</b> Dress Form by SINGER	<b>FREE</b> Canister vacuum cleaner by SINGER
<b>FREE</b> SCHOLASTIC® Portable typewriter by SINGER	<b>FREE</b> SINGER® Rug cleaner-floor polisher

**THIS WEEK'S SPECIAL NEW SINGER ZIG-ZAG SEWING MACHINE \$88**

- MONOGRAMS
- SEWS ON BUTTONS
- BUTTON HOLES

Open Thurs. 'Til 9 P.M.

112 East 3rd  
Dial AM 4-5777

What's new for tomorrow is at SINGER today!\*

# SINGER

**SPECIAL PURCHASE OF Ladies' Spring Handbags**

4.98 Value **2.99** and 2.98 Value **1.99**

Assorted Styles And Colors



OUR BIG LADIES' **Sample HAT SALE**

IS STILL IN PROGRESS CHOOSE YOUR SPRING HAT NOW. WITH SAVINGS UP TO... **50%**

**Anthony's**  
C.R. ANTHONY & CO.

The perennial favorite for those who love comfort  
**The BANDWAGON**

It's a treat to put your feet into Black from rubber sole topped off with super-soft smooth leather. Pillow-foam filled waists for extra comfort! Four straps assure perfect fit. Select in White, Bone, Black.

**2.98**

White • Bone • Black

SIZE 5-10

**True HAR**

**Dynalite DIRT SHOES**  
Lightweight, but strong at wear. Sheds loads quick.

NEW! A R

**BIG**

FOR MOTHER'S DAY, GRADUATION AND VACATION!

## 3-PIECE TROJAN LUGGAGE SET



Lightweight and durable Trojan luggage set includes pullman, overnite and vanity case with scuff-resistant vinyl covering.

**only \$19.88**

**ZALE'S**  
JEWELERS

NO MONEY DOWN

OPEN AN ACCOUNT TODAY

Thursday—Friday—Saturday

Mobile Maid® Dishwasher by General Electric

Gets dirty dishes sparkling clean!

Thoro-Wash® Means no hand rinsing or scraping. Just tilt off large or hard food scraps!

**2<sup>30</sup> Weekly**

\*Thoro-Wash is General Electric's name for more than one level washing action coupled with Phosphoric acid.

General Electric Automatic Range with P7 Oven

Replace Your Old Range Now!

- Hi-Speed, self-cleaning Calrod® surface units.
- Set oven timer to turn on and off automatically.
- 3 roomy storage drawers put cooking utensils where you use them.

**3<sup>00</sup> Weekly**

Open 'Til 8 P.M. Thursday  
115 E. 2nd

**WHEAT**  
Furniture & Appliances  
AM 4-5723

Open 'Til 8 P.M. Thursday

Satisfaction Guaranteed

**Sears** Shop at Sears and Save!

## PATCH RUGS

18"X28" **66¢** Each

## OVAL BRAIDED RUGS

27"x48" REVERSIBLE **\$5.44**

**Sears**

483 Runnel Dial AM 4-5523  
Store Hours: 9 A.M. To 5:30 P.M.

WITH OVER NEW MERC 2-10 YD. P FABRICS— SPORT FAI BROADCLO SAVE! SAV TODAY! VA

**3**

2-Hour Free Parking On Downtown Parking Lot • Lot At 2nd & Main • 2-Hour Free Parking On Downtown Parking Lot • Lot At 2nd & Main • 2-Hour Free Parking On Downtown Parking Lot • Lot At 2nd & Main • 2-Hour Free Parking On Downtown Parking Lot • Lot At 2nd & Main

At 2nd & Main • 2-Hour Free Parking On Downtown Parking Lot • Lot At 2nd & Main • 2-Hour Free Parking On Downtown Parking Lot • Lot At 2nd & Main • 2-Hour Free Parking On Downtown Parking Lot • Lot At 2nd & Main

# BARGAIN SPREE

YOUR FRIENDLY DOWNTOWN MERCHANTS  
6 DAYS THURSDAY-FRIDAY-SATURDAY

## TWO HOUR FREE PARKING DOWNTOWN

### GARDEN HOSE

"ESTATE" RED RUBBER  
Full 5/8" Flow  
50 Feet  
Reg. \$9.95

**\$5.75**

AIR CONDITIONER  
ASPEN PADS . . . . . **20% OFF**  
BECKET AIR CONDITIONER  
PUMPS . . . \$6.95 TO \$12.95

**STANLEY HARDWARE**  
YOUR FRIENDLY HARDWARE STORE  
203 Runnels Dial AM 4-6221

*Magic of the West*



You can search the western skies and not find a more rugged wearing, handsome looking western hat than our BRADFORDS. They are just what you've been looking for.

**BRADFORD Westerns**

BUY YOURS AT  
**WARD'S**  
BOOT, SADDLE AND WESTERN WEAR  
212 RUNNELS AM 4-5512

ONE GROUP OF ASSORTED ODD

**RUGS** Assorted Sizes, Decorators Shapes  
SAVINGS UP TO **50%**



ONE TABLE ASSORTED  
MEN'S LONG SLEEVE  
SPORT SHIRTS **2.22**



Values To 4.98  
Open Tonight 'til 8

**Anthony's**

**True Value** HARDWARE STORES **SPRING EVENT**  
**TRUE TEMPER.**

 <b>Dynamite DIRT SHOVEL</b> Lightweight, but extra strong at wear points. Sheds loads quickly. <b>4.79</b>	 <b>ROTARY LAWN EDGER</b> Trims along driveways, walks, and curbs. Blade shifts automatically to best cutting position. <b>4.89</b>	 <b>"ROCKET" PRUNER</b> Most comfortable, best-cutting pruner with nonslip cushion grips and natural angle head. A 3.50 Value <b>2.69</b>
 <b>NEW! ADJUSTABLE... Rotary Sprinkler</b> Dial-a-distance control adjusts to cover 10-to-50-ft. circle evenly. Smart, modern design. <b>6.66</b>	 <b>DELUXE ACTION GRASS SHEARS</b> Slicing action cuts all types of grass easily. Gravity squeeze lock keeps blades closed. <b>2.69</b>	 <b>"ROCKET" HAMMER</b> Comfortable cushion grip and super-strong tubular steel handle make hammering less tiring. Polished head. A REAL VALUE AT <b>5.59</b>

**BIG SPRING HARDWARE CO.** 117 MAIN AM 4-5265



**WHITE'S Spring Bargain Spree**  
**Outside House Paint**

DeSOTO LATEX, ONE COAT  
FINEST PAINT ANYWHERE

**\$4.88 GAL.**

SO DURABLE. YOU PAINT LESS OFTEN! ACRYLIC LATEX DRIES IN ONLY 30 MINUTES! NO NEED TO WAIT FOR RESULTS! MILDEW RESISTANT! IT LASTS LONGER! USE ON ALL EXTERIOR SURFACES!

**SOLD ON A MONEY BACK GUARANTEE!!!**  
We have everything to complete the job!



JUST SAY CHARGE IT AT WHITE'S

202-204 SCURRY

**THUR. FRI. SAT.**

**CONTINUING OUR BIG! BIG! PIECE GOODS RIOT**

WITH OVER 1,000 YDS. OF BRAND NEW MERCHANDISE ADDED—  
2-10 YD. PIECES OF QUALITY COTTON FABRICS—INCLUDING SATEENS—SPORT FABRICS—BUTCHER WEAVE—BROADCLOTH—YOU CAN SAVE!  
SAVE! SAVE! SEE FOR YOURSELF TODAY! VALUES TO 69¢



**3 yards 1.00**

**Anthony's**  
C. R. ANTHONY CO.

**FREE!**

**\$50 WORTH OF RECORDS. YOUR CHOICE, WHEN YOU BUY ANY MOTOROLA STEREO CONSOLE!**

**3 DAYS ONLY!**

**The Record Shop**  
211 MAIN DIAL AM 4-7501

PAY ANY AMOUNT DOWN YOU WISH! **SAVE**

Make Your Mowing Easy With this 2 1/2-H.P. 4-Cycle 18" Model!



Monthly Payments As Low As \$5!

WE TRADE POWER MOWERS

- 14-Gauge Steel Deck
- One Year Warranty!
- Rugged Steel Wheels!
- Safety Approved!

Powerful 2 1/2-h.p. 4-cycle Briggs and Stratton engine zips through big mowing chores and leaves velvet smooth lawns behind! Close side trim design. Cutting height adjusts from 3/4" to 3". A bargain at this low, low price!

**Complete with Catcher**

**49.95**

**NO TRADE AT THIS PRICE, PLEASE**

**WHITE'S**  
THE HOME OF GREATER VALUES  
202-204 SCURRY

At 2nd & Main • 2-Hour Free Parking On Downtown Parking Lot • Lot At 2nd & Main • 2-Hour Free Parking On Downtown Parking Lot • Lot At 2nd & Main • 2-Hour Free Parking On Downtown Parking Lot • Lot At 2nd & Main



# OLD FASHIONED BARGAINS



**WITH EVERY PURCHASE DOUBLE ON WEDNESDAY WITH \$2.50 PURCHASE OR MORE**

KIMBELL, ENRICHED ALL PURPOSE FLOUR 25 LB. COTTON SACK **1.69**

12 BTL. CTN., PLUS DEPOSIT  
**Dr. PEPPER 59¢**  
RED DART, BLUE LAKE, CUT 303 CAN  
**GREEN BEANS 10¢**

GANDY'S ALL FLAVORS, 1/2 GAL. CTN.  
**FRO-ZAN 3 FOR \$1**  
DEL MONTE, 20 OZ. FAMILY SIZE  
**CATSUP 25¢**



**QUALITY MEATS**  
FEATURING GOOCH'S BLUE RIBBON BEEF  
**GOOCH'S BLUE RIBBON BEEF SALE**

<b>ROUND STEAK</b>	GOOCH'S BLUE RIBBON, TENDER, LB.	<b>89¢</b>
<b>T-BONE STEAK</b>	GOOCH'S BLUE RIBBON, LB.	<b>89¢</b>
<b>SIRLOIN STEAK</b>	GOOCH'S BLUE RIBBON, LB.	<b>85¢</b>
<b>CLUB STEAK</b>	GOOCH'S BLUE RIBBON, TENDER, LB.	<b>79¢</b>
<b>PINBONE LOIN STEAK</b>	GOOCH'S BLUE RIBBON, LB.	<b>69¢</b>
<b>CHUCK FAMILY STEAK</b>	GOOCH'S BLUE Ribbon, Tender, Lb.	<b>59¢</b>
<b>REAL VEAL CUTLETS</b>	GOOCH'S BLUE RIBBON, LB.	<b>\$1.09</b>
<b>ARM ROUND ROAST</b>	GOOCH'S BLUE RIBBON, LB.	<b>49¢</b>
<b>CHUCK ROAST 7-CUT</b>	GOOCH'S BLUE RIBBON, LB.	<b>49¢</b>
<b>RUMP ROAST</b>	GOOCH'S BLUE RIBBON, LB.	<b>65¢</b>
<b>PIKE'S PEAK ROAST</b>	BONELESS, GOOCH'S BLUE RIBBON, LB.	<b>69¢</b>
<b>BEEF SHORT RIBS</b>	LEAN, GOOCH'S BLUE RIBBON, LB.	<b>29¢</b>
<b>SIRLOIN TIP ROAST</b>	BONELESS, GOOCH'S BLUE RIBBON, LB.	<b>89¢</b>
<b>STEW MEAT, BONELESS</b>	GOOCH'S BLUE RIBBON, LB.	<b>59¢</b>
<b>Ground Chili Meat</b>	GOOCH'S BLUE RIBBON, LB. ....	<b>2 1/2 LB. \$1</b>
<b>SIRLOIN TIP STEAK</b>	GOOCH'S BLUE RIBBON, BONELESS, LB.	<b>98¢</b>
<b>HAMBURGER PATTIES</b>	10 GENEROUS SERVINGS	<b>1.00</b>
<b>BRISKET ROAST</b>	GOOCH'S BLUE RIBBON, LB.	<b>25¢</b>
<b>GROUND BEEF</b>	GOOCH'S BLUE RIBBON, LB. ..	<b>2 1/2 LB. \$1.00</b>
<b>GROUND ROUND</b>	GOOCH'S BLUE RIBBON, LB.	<b>69¢</b>



**GROUND CHUCK**  
GOOCH'S BLUE RIBBON, LB. **59c**  
**Brisket Stew Meat**  
LB. **25c**

KIMBELL, ORANGE PEKOE, 1/4 LB. BOX  
**TEA . . . . .25¢**  
KIMBELL, ALL GRINDS, 1 LB. CAN  
**COFFEE . . . . .59¢**  
KIMBELL, SLICED OR HALVES, IN HEAVY SYRUP, NO. 2 1/2 SIZE CAN  
**PEACHES . . . . .29¢**




**FROZEN FOODS**  
MORTON'S 5 FOR **CHERRY PIES .. \$1**  
KEITH'S KRINKLE CUT FRENCH FRIES  
**POTATOES 2-LB. BAG 29¢**

PRICES EFFECTIVE MARCH 31, THROUGH APRIL 2, 1966. WE RESERVE THE RIGHT TO LIMIT QUANTITIES. NO SALES TO DEALERS.


DEL MONTE, EARLY GARDEN, 303 CAN  
**PEAS 5 FOR \$1.00**



**TICKETS**  
Regular \$2.00  
WITH A \$15.00 OR MORE PURCHASE, START NOW AND GET TICKETS FOR THE ENTIRE FAMILY.  
**49¢**  
PERFORMANCES: MAY 18, 19, 20 & 21



**FRESH PRODUCE**  
**POTATOES 39¢**  
RUSSET 10 LB. BAG  
CRISP CARROTS 1 LB. CELLO BAG 2 FOR 15c  
FRESH Green Onions 2 BUNCHES 15c  
FIRM GREEN CABBAGE 1 LB. 5c



2 CONVENIENT LOCATIONS









# C-City Meter Vote Split Three Ways

**COLORADO CITY (SC)**—Only 177 of 586 persons casting ballots in the straw vote on parking meters, favored a continuation of free parking.

The Colorado City Chamber of

Commerce, in checking the ballots, said 181 voted to put parking meters back in place, and 228 voted for some sort of control, such as two-hour parking with city employees checking on a time limit.

Parking meter heads were removed from the stands about six months ago, and parking has been free and uncontrolled.

Mrs. Don Guitart, chamber manager, said the merchant's committee will undoubtedly offer some sort of recommendation to the city council, based on the straw vote.

Mayor John Chinn, at the March 14th meeting of the council, told representatives of the committee that the city hoped the straw vote would be limited to the question of being for or against parking meters and said at that time, that the city would prefer not being involved in the enforcement of controlled parking without meters.

The next meeting of the council is April 11th.

## Road Death Cut 'Possible'

**DALLAS (AP)**—Texas traffic fatalities could be cut in half, Col. Homer Garrison Jr., director of the Texas Department of Public Safety, said Wednesday.

Speaking at the 27th annual Texas Safety Conference, he said better laws, more officers and better courts are needed for "effective law enforcement in rural areas, where two-thirds of the state's traffic deaths occur."

Strong enforcement, he said, is the key element.



## Receives Apology From GM Head

Ralph Nader, above, author of a book on auto safety which was critical of General Motors' Corvair models produced 1960-63, complained to the Senate Government Operations Subcommittee that he was subjected to harassment by a GM investigation of his private life. GM President James M. Roche apologized both to Nader and the subpanel for any part GM had in the investigation conducted by a private detective agency the firm hired. (AP WIREPHOTO)

## Johnson Quite Informal At Formal Dinner

**WASHINGTON (AP)**— Protocol-conscious Washington is biting its oyster forks in consternation over President Johnson's latest spurge of spontaneous informality.

The President now is known as the "man who stayed for dinner." In — of all things — a business suit. He wasn't exactly invited in the first place.

It's a diplomatic version of "set another place at the table mom — Lyndon's here." For Vice President Hubert H. Humphrey, man in the black tie, it's another version of being upstaged by the boss without one.

The occasion was the formal dinner at the Indian Embassy Tuesday night for Indira Gandhi, prime minister of India. Humphrey and Chief Justice Earl Warren were to be ranking guests at the 8:30 meal for 40.

The President planned to pay a brief courtesy call beforehand. He arrived at 7:30 and an hour later, as dinner guests were arriving in formal gowns and stiff white collars, the President was still there and his limousine was blocking the driveway.

At 9 p.m., Mrs. Raj Kumar Nehru, wife of the ambassador, announced that the President had accepted an invitation to stay for dinner. This meant frantically reshuffling place-cards and bumping the lowest-ranking guest, a member of the prime minister's party.

"I imagine his kinfolk never thought it any trouble at all just to pull up another chair," Mrs. Gladstone Williams said, speaking in defense of the President.

"I think we should remember that the President was brought up in a small-town atmosphere. Texas is more informal."

Mrs. Williams, known as the "high priestess of protocol" because she teaches social know-

how to many government and diplomatic officers, has taught Johnson's elder daughter, Lynda.

She said she's aware matrons all over town are howling over the President's breach of protocol, but added: "The President sets the pace. By virtue of his office he is a super Ph. D. Regardless of the accepted social usage, he's privileged to do what he pleases."

lendear him to people all over the country, except Washington hostesses. On the other hand, could any refuse?"

Prescription By  
PHONE AM 4-5232  
900 MAIN  
BIG SPRING, TEXAS  
DELIVERY AT NO EXTRA CHARGE

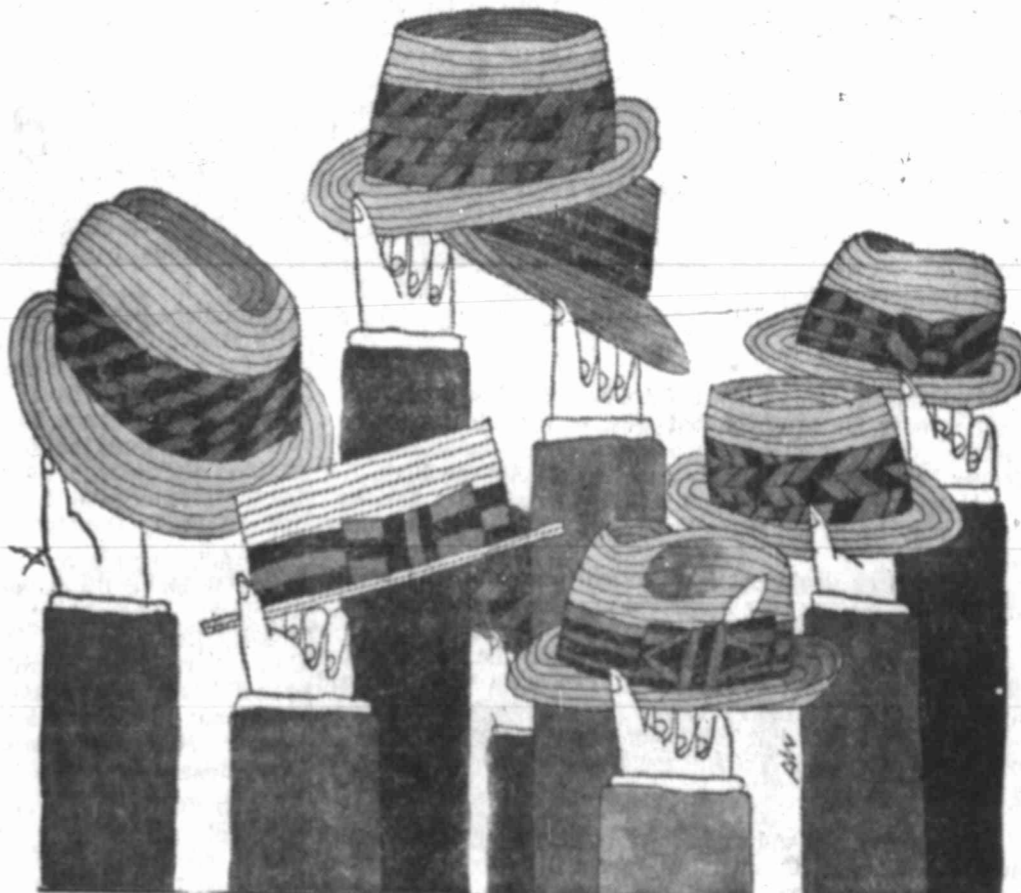
# GOUND'S

Hemphill-Wells

It's time to count the votes!  
(straw votes, that is)

# New Straw Hats by DOBBS

That time of year is here again . . . FRIDAY IS STRAW HAT DAY . . . and time for you to come in and cast your vote for your personal choice of our stylish array of new Dobbs Straw Hats . . . Panama, Milan and Messina Straws in the style you want . . . Come in, cast your straw vote and take home your Dobbs choice today!!!  
All in favor, says Dobbs . . . 5.95 to 12.00



## Beautiful Setting For Easter Service

A setting of beauty, in keeping with the spirit of the occasion, will be an attraction at Big Spring's Easter sunrise worship, to be held at the City Park amphitheatre, beginning at 6:07 a.m. April 10.

Various committee leaders and workers surveyed the vast outdoor auditorium this week, and made plans for a stage background, an improved sound system, and other arrangements to enhance the appeal of the Easter worship.

Mrs. Odell Womack and Mrs. Garner McAdams are directing plans for decorating the large stage, which will be graced with Easter flowers, highlighting a Cross in the background.

Parks superintendent Johnny Johansen and city electrician Roy Rogan drafted their plans for a cleanup of the amphitheatre and arrangement of the sound system. City policemen will handle traffic at the park on the morning of the 10th, and members of the Ambassadors Club are to serve as ushers.

A highlight will be a dramatic presentation of the Scriptures, with readers being from the Big Spring Little Theatre.

The morning's message will be brought by Dr. John S. Rasco, pastor of the First Baptist Church in Odessa, and regarded as one of the outstanding preachers in the state.

## Paroled Attorney Who Claimed Sickness Dies

**OKLAHOMA CITY (AP)**—"I am a sick man and cannot possibly live out 24 months."

Fitzhugh Lee Welch, a lawyer from Antlers in southeast Oklahoma, was speaking to a federal judge who had just sentenced him to two years for not reporting \$32,000 income on his tax returns.

Welch, 68, brother of former Oklahoma Supreme Court Justice Earl Welch who figured in last year's Supreme Court bribery scandals, died Wednesday night, 10 months after he had been sentenced. Welch was paroled from the Federal Medical Center at Springfield, Mo., last December after serving part of the sentence. The Internal Revenue Service had filed tax liens amounting to \$308,820 against him under 62 aliases.

## New Debaters Have A Legacy

**HURON, S.D. (AP)**—Doland High School won the Class B state high school debating championship this week. The school boasts a long line of talented talkers — five previous titlists and Vice President Hubert H. Humphrey, an alumnus.

JAMS! - SURF A' GO-GO TRUNKS

JAMS, the bold patterned swimtrunk designed just the opposite of most swim wear. The fit is loose. The pattern is wild floral—wild, wild colors. S-M-L 5.95  
Shirt of ventilated cotton mesh white-blue trim 3.95

Elmo Wasson THE MEN'S STORE

Hemphill-Wells

ARROW® DECTON PERMA-IRON

. . . the shirt that's born ironed . . . and stays ironed . . . this luxurious blend of Dacron polyester and cotton is completely washable and tumbles dry to a wrinkle-free finish . . .

Bi-Way or Glen collar styles in classic white . . . "Sanforized Plus" labeled to insure perfect fit . . . Short Sleeves . . . 5.00

## EASTER ELEGANCE! THE HART SCHAFFNER & MARX VIRACLE SUIT

Step out smartly in the Easter Parade . . . and on into spring and summer, crisp and cool in the lustrous look of an HS&M Viracle Suit . . . a cooling blend of Dacron polyester and wool Viracle stays neat through hot summer days . . . wrinkle-free to give that well-pressed look . . . choose a HS&M Viracle suit now in Verde-Blu, Black Colonnade Stripe, Frosted Grey, Deep Green or Blue . . . 90.00

Hemphill-Wells

# Grazing Land Brush Fought

TEMPLE, Tex. (AP)—Millions of other acres are threatened by encroaching mesquite, cactus, junipers, live oak and post and blackjack oak.

"Millions of acres of grazing land are so heavily infested with woody plants that production of nutritious forage is greatly reduced, making the range unprofitable for livestock production," says H. N. Smith of Temple, state conservationist.

**SQUEEZE ON**  
Smith said the rancher is "caught in an ever-tightening cost-price squeeze between rising costs of production and the price he receives for his product."

"He must control the brush or reduce the amount of livestock he can graze off the land," he said.

The rich bluestem prairies of Central Texas and the Gulf Coast once carried as many as

60 to 100 head of cattle per section of 640 acres. Much of this area can support only 30 to 40 head per section now, Smith said.

**GRAZING CUT**  
In the 20 to 24 inch rainfall areas of the central Edwards Plateau, the number of cattle grazed has been cut from 30 to 50 head to less than 20 head per section in some areas, Smith said.

In far West Texas where the rainfall is even less, some ranges have been cut from 15 to 5 head per section, he said.

The hardy brush, which manages to germinate and spread during drouths, is a water-robbing, depriving grass of needed moisture.

Also, grass will not grow in the shade of the brush. Smith estimates that brush, cacti and weeds in Texas use about 146 million acre-feet of water a year, or 40 per cent of the state's total use.

**TAKE WATER**  
"Brushy ranges are always in a drouth condition because the more vigorous brush is using most of the water," Smith said. The state conservationist said a four-point program is needed to restore rangeland: Control undesirable brush, re-establish desirable plants by natural or artificial means, control sprouts and reinfestation and manage the grass to maintain the grasslands in high productivity.

"Effective treatment of brush is a complex and difficult problem and it's costly. Complete treatment ranges from a low of \$3 an acre to as high as \$35 an acre," he said. A number of methods of fighting brush have been developed.



Candidate In City

Temple Dickson of Sweetwater, seeking election to the state legislature from the 72nd district, which includes Howard, was a visitor in Big Spring Wednesday, making contact in behalf of his candidacy. He was accompanied by Mrs. Dickson, and they are shown here with Mayor George Zachariah. Dickson, currently in the legislature, is now pitted against Roger Brown of Big Spring as a result of state redistricting. The district includes Howard, Mitchell and Nolan counties.

# Blanket Invitation Declared A Joke

LOUISVILLE, Ky. (AP)—If a computer is right, there are 12,000 persons in the United States who may have an invitation to spend the week of the Kentucky Derby with Dr. and Mrs. Hoyt D. Gardner. But the Gardners aren't expecting them.

The only guests the Gardners expect are Dr. Blair Henningsgaard, of Astoria, Ore., and his family. And Dr. Henningsgaard is threatening to back out.

The "invitations" were extended in the Oklahoma Medical Journal. Dr. Gardner's picture appeared on the cover and inside were 1 1/2 pages of copy explaining that Dr. Gardner invited all Oklahoma doctors to his "estate" for derby week.

**"FOX HUNT"**  
The festivities would include a fox hunt, an all-night mint julep festival in the doctor's "spacious gardens" on derby eve May 6, and free tickets for all who accepted, the article said.

The article went on to say that anybody who couldn't be accommodated at the Gardners' home would be placed in "various local hostels."

"Our dilemma is this: How

many of the people who have answered think it's serious, and how many realize it's a joke?" Gardner said Wednesday.

Gardner says the joke is the product of Dr. Rex Kenyon, president of the Oklahoma Medical Association. Kenyon's family was house guest of the Gardners during derby week in 1965.

Kenyon said in Oklahoma City the article was written "in cheek and appeared only in about a dozen copies of the Oklahoma Medical Journal mailed to a few key people around the country."

**146 RESPOND**  
He said special issue inserts were copied and mailed along with letters of explanation to other doctors in the state and nation.

"We might have played it up a bit," he said.

So far 146 persons have replied to the blanket invitation.

Gardner said he has received replies from 12 states. And a computer has figured out that 12,000 persons may have been "invited."

# Unscheduled Show On After Elephant Escapes

SAN MARCOS, Tex. (AP)—be more fun than tugging, and Barbara, a 7,200-pound elephant who decided she would rather run than perform, escaped from a circus and two companions joined her on an unscheduled show Wednesday in this Central Texas town.

The unplanned performance started when Barbara fled the Kelly and Miller Circus, ran wild through a residential area and wound up bogged down in the Blanco River.

In an attempt to free Barbara from the river, circus employees brought Hattie and Katie, two female elephants, to raise her from the muddy river. Katie decided running would

be more fun than tugging, and off she went with some of Barbara's rescuers in pursuit. About four miles later, Katie was captured in a cow pasture.

Back at the river bottom, a winch truck was put into operation and Barbara was lifted from the river. She had been too frightened to walk a short distance downstream to a sandbar, and she was too heavy to climb the 15-foot muddy riverbank, a trainer said.

All three animals were returned to the circus ground in time for Wednesday night's performance and circus employees reported they were back on good behavior again.

# LBJ Eyes Price Hikes

WASHINGTON (AP)—President Johnson said today the economy "is not shooting off into outer space" but if inflation gets rolling, he won't hesitate to ask for a tax hike or other restraints — "election year notwithstanding."

In an address at a meeting of the National League of Cities, Johnson said it is too soon to determine whether anti-inflation actions already taken will curb rising prices.

While holding out the possibility of more drastic measures later, the President described the current situation as one demanding caution rather than more strenuous measures.

**TOUCHING BRAKES**  
"We are touching the brakes, not clamping them on, not risking a skid into recession or depression," he said.

The chief executive said his administration doesn't know yet whether past actions will block overheating of the economy. "But if it isn't," he said, "we won't hesitate — election year notwithstanding — to ask for further fiscal restraint."

**ENTERTAIN 150**  
Johnson, entertaining nearly 150 industrialists and financiers at a White House dinner, asked that they review, and curtail where possible, plans for new capital investments. Many in his audience rose to pledge support.

Plant and equipment spending this year has been expected to total about \$60 billion, a jump of 16 per cent over last year. This prospective surge has been viewed by government economists as threatening to overheat the economy and perhaps prompt new anti-inflation measures.

# C-City Schools Taking Survey

COLORADO CITY (SC)—The Colorado Independent School District began a Community Occupational Survey Wednesday, sending a form home with each student, requesting information on the employees in each home and those used in farm and ranch work.

School officials say they plan to contact each person and firm in the district in order to give school officials an appraisal of the employment opportunities available to students in the Colorado City school system. School board president Bill Carter said that the survey may qualify Colorado City schools for state aid in a proposed vocational program.

**THE CHRISTIAN CALLING**  
REV. JOE L. TURNER  
Of The Austin Presbyterian Seminary  
Speaks  
Thursday, 7:30 P.M.  
"The Passover"  
Friday, 7:30 P.M.  
"The Living and the Dead"  
**First Presbyterian Church**

# LAND LOVERS?

Balance And Condition Your Soil Now For Immediate And Long Lasting Results

- By:
- Adding a complete balance of plant nutrients, including Major and Secondary nutrients, and Trace Elements.
  - Adding fully decomposed organic humus, the storehouse in the soil for plant nutrients.
  - Adding air and moisture holding materials.
  - Adding food to the soil to increase bacterial action, since bacteria converts all plant nutrients into useable forms.
  - Bactelife FORTIFIED Peat may be used along with your present fertilizer to help get the maximum benefits.

Premium Quality Bactelife Products will fill this need. The nutrients will stay in the soil indefinitely, until used by plants. A pound of HUMUS used in Bactelife products is equal to approximately ten pounds of barnyard manure — plus being fortified with high protein and all the essential minerals.

- Bactelife FORTIFIED PEAT for lawns, gardens, flower beds, shrubs, trees, potting soil.
- Bactelife FORTIFIED HUMUS for agricultural, used independently as a soil conditioner or as a base in any custom blended formula to correct the deficiencies of the individual farm and to feed the particular crop that is to be grown.
- Complete SOIL ANALYSIS — \$3.00 per sample.

Turner Janitor & Lawn Supplies Service

502 Gregg AM 3-1841

Rich Anderson  
Area Distributor For  
INTERNATIONAL SOIL CONDITIONER CORP.  
CALDWELL, TEXAS

# WOOLWORTH'S



Lightweight power net slimmers

# LONG LEG PANTIES

Rayon-cotton-rubber power net. Embroidered reinforced front panel, satin elastic back panel. Snap crotch. White. S-M-L-XL. **2.99**

# CIRCLE STITCH PADDED BRA

Cotton broadcloth. **1.59**

Multiple stitched cotton broadcloth bra pre-shaped in soft foam. White, black. Sizes 32-36A, 32-36B.

# YOUTHFUL LINES! YOUNG 'SHAPE INSURED' BRA

Embroidered cotton broadcloth seamed for perfect uplift. A 32-38, B 32-40, C 34-44, D 34-46.

**WOOLWORTH'S**  
YOUR MONEY'S WORTH MORE AT  
**WOOLWORTH'S**

# FREE BABY CHICK WITH THE PURCHASE OF ANY PAIR OF SHOES



Complete selection... Latest SPRING STYLES for little feet!

**2.90** PAIR OR **2 PAIRS \$5**

ON THE EAST END OF THE MALL IN HIGHLAND SHOPPING CENTER  
OPEN: MON. & THURS. 9-5-TUES., WED., FRI. & SAT. 9-6-SUNDAYS 1-6  
**BUY-RITE** SELF SERVICE SHOE STORE

# RUSH

THAT'S WHAT PEOPLE DO WHEN YOU USE HERALD CLASSIFIED ADS

... They rush right to your door with cash in hand for the worthwhile items you're so smart to sell with far-reaching, result-getting Herald classified Ads.

Don't keep the household goods, appliances, sleds, skates, heaters or good clothing you don't use any more. Place a Classified Ad and have extra cash instead. It's easy and inexpensive. Just make a list and dial AM 3-7331 for a friendly, courteous Ad Writer. A 15 word/line ad costs only 60¢ on the special 6 day rate. Don't wait — do it today and you can rush right out and start your spring shopping with the extra cash you have.

# HERALD CLASSIFIED ADS



# 'Human Element' Still First In Traffic Hazard Factors

By The Associated Press

When there is an automobile death or injury — and there is one every 18 seconds — it usually is blamed on one — or a combination — of three things:

The car, the road, the driver. Mainly, the driver.

If this is the culprit, what makes him that way?

For years, he was usually described as the decent chap who turned into a holy terror the minute he got behind the wheel. Or he was pictured as the guy who had one too many at a party. Or he was either too young to be driving or too old.

But now research indicates: — He may be drugged and not know that it impairs his driving ability.

— He may be affected by a poisonous gas and not recognize it.

— He may be ill with alcoholism, not merely a social drinker.

— He may be unable to handle his emotions.

— He may be determined to kill himself.

The millions of drivers and pedestrians, the millions of automobiles and trucks, the millions of miles of road have together produced an ironic catastrophe: the blessing of fast, cheap, universal transportation has brought with it fast death and maiming.

In 1965, 49,000 persons were killed, 3.5 million maimed and injured. The loss in dollars: \$8.5 billion.

The finger usually has been pointed at the driver. But what about the automobile, tires, roads, weather? None of these factors is dismissed, and experts agree that in cases of automobile death and injury more than one factor may be involved. Practices within the automotive industry are now being challenged in federal and state hearings with the one theme consistently stated: Detroit thinks more about style than safety.

What would happen if there was an overnight miracle and suddenly all autos and all roads met the highest standards of

safety?

"The impact on reducing fatalities wouldn't be greater than 20 per cent," answers James P. Economos, director of the American Bar Association's traffic court program. "That leaves the human element to deal with. This is probably greater than 80 per cent."

Howard Pyle, president of the National Safety Council, says "statistics do show that driver fault was present in about 85 per cent of all automobile accidents, but this does not mean that other factors may not also have been present."

The driver has been flooded with special training courses, long litany of "do's and don'ts," car care tips and about everything else in the book. Since the deaths and injuries continued to grow, researchers began to wonder whether the advice was

Big Spring (Texas) Herald, Thurs., March 31, 1966 3-B

simply being ignored, or whether there might not be forces at work that are impervious to the good intentions of driver or advisers.

The widespread use of drugs came under scrutiny.

Briefly, the medical-pharmaceutical breakthrough which produced stimulants, antihistamines, hypnotics, tranquilizers, and pain-killers or sleep-inducing synthetics of all sorts, also made it possible for millions of people to get easy aid for the things that bothered them. The stay-awake, go-to-sleep, calm-jangled-nerves, lose-weight, stop-sneezes pills are produced by the ton and sold supermarket fashion.

Since there are 96 million licensed drivers in the United States, it follows that these pills, capsules, tablets, elixirs and what-not are being consumed by people who at one time or another operate a motor vehicle.

While the medical profession knows about the side effects of many drugs, the exact role they play in accidents involving automobiles or machinery has not been fully measured statistically.

Dr. L. E. Hollister, conducting a 90-day observation of 60 patients receiving a tranquilizer reported in the U.S. Navy Medical News Letter that his subjects had 10 times more traffic accidents than would have been predicted for a normal population.

The AMA is engaged in an educational campaign to change this situation.

There is sufficient reason to believe however, that no matter how strenuously doctors warn patients about drugs and driving, the advice probably wears off faster than the drug. And, of course, the doctor really has no control over how people consume over-the-counter pills, the nonprescription ones that can be bought by the carton. While labels warn people about possible side-effects, they can be ignored or forgotten.

Alcohol has been the most universally condemned factor in terms of driver impairment. In short, alcohol and driving make a terrible mixture. But researchers are now saying that the so-called social drinker has been taking more blame than is properly due him.

"WHERE YOU ALWAYS BUY THE BEST FOR LESS"

## GIBSON'S DISCOUNT CENTER

### WEST TEXAS "ORIGINAL" DISCOUNT CENTER

Open 9-9 Mon.-Sat.  
1-6 SUNDAY  
FREE PARKING  
2303 Gregg AM 4-2586  
USE OUR LAYAWAY

LADIES' LEATHER ITALIAN SANDALS  
24 STYLES & COLORS  
REG. 3.27 GIBSON SPECIAL  
**1.97**

FRESHEN UP YOUR KITCHEN WITH NEW "WORKABLE COLORS"

BY MARVALON

Discover how easy and inexpensive it is to add new sparkle to the most lived in room in your home.

- SHELF LINING
- ADHESIVE LINING
- DRAWER LINING

Your Choice **1.19**

ALL MEN'S DRESS TROUSERS

- DACRONS
- WORSTED
- PERMA-PRESS
- KORATRONS

VALUES TO 10.88

**4.97**

NO. 4102  
ALL RAYON DUST MOP  
BY MODGLIN  
RETAIL 98¢ GIBSON SPECIAL  
**69¢**

KUNER'S TOMATO JUICE  
● 46 OZ. CAN GIBSON'S PRICE **3 FOR 97¢**

COCK O' WALK NECTAR  
● PEACH, PEAR, OR APRICOT  
● 12 OZ. CAN GIBSON'S PRICE **2 FOR 25¢**

SUDDEN BEAUTY HAIR SPRAY  
1.09 Value Gibson Special **56¢**

MILE HIGH FRUIT MIX  
● 303 CAN  
Gibson's Price **2/29¢**

COCK O' WALK PEAR HALVES  
● 303 CAN  
Gibson's Price **2/47¢**

7-11 GUE OFF FLUORACTON  
89¢ VALUE FAMILY SIZE GIBSON SPECIAL **49¢**

MEN'S KNIT KODEL AND COTTON SPORT SHIRTS  
Retail 5.99 Gibson's Low Discount Price **3.97**

MEN'S WALK SHORTS  
PRICED FROM **2.77 TO 3.47**

—APPLIANCE DEPT.—  
DOMINION STEAM AND DRY IRON  
NO. 1095 GIBSON'S SPECIAL  
**6.88**

KUNER'S TOMATOES AND GREEN CHILIES  
NO. 1 PIC CAN  
Gibson's Price **2/27¢**

COCK O' WALK TOMATO PASTE  
6 OZ. CAN  
Gibson's Price **10/97¢**

MEN'S SPRAY DEODORANT  
1.39 Value **83¢**

COLGATE "100" MOUTHWASH  
98¢ Value **49¢**

KUNER'S CUT GREEN BEANS  
● NO. 303 CAN  
Gibson's Price **6/97¢**

COCK O' WALK CREAM STYLE CORN  
● NO. 303 CAN  
Gibson's Price **2/37¢**

TONI HOME PERMANENTS  
2.00 Value Gibson Special **99¢**

JOHNSON & JOHNSON FIRST AID CREAMS  
59¢ Value Gibson Special **33¢**

DOMINION HAIR DRYER  
● WITH NAIL-DRYER AND LARGE HEAD  
RETAIL 21.95  
GIBSON'S LOW PRICE **10.88**

REGINA ELECTRIC BROOM  
● FOR FAST CLEAN-UP WORK  
REG. 26.88 GIBSON SPECIAL **19.88**

KUNER'S TENDER SWEET PEAS  
● NO. 303 CAN  
Gibson's Price **2/39¢**

KUNER'S Colorado Peeled TOMATOES  
● NO. 303 CAN  
Gibson's Price **2/35¢**

EASY-ON NOW A PUSH-BUTTON SPRAY STARCH  
Gibson's Discount Price **43¢**

ZEE PAPER TOWELS  
Gibson's Discount Price **23¢**

COCK O' WALK YELLOW CLING SLICED PEACHES  
● NO. 303 CAN  
Gibson's Price **2/35¢**

CRYSTAL PRESERVES  
● APRICOT—PEACH ORANGE MARMALADE  
Gibson's Price **3/1.00**

VACUUM CLEANER BAGS  
**2 FOR 70¢**

MANCHESTER COCONUT OR OATMEAL COOKIES  
1 LB. PKG. **3 FOR 87¢**

Holiday Special  
Instant MAXWELL HOUSE COFFEE 10 OZ. JAR \$1.25  
WIN FREE 5.00 GIFT CERTIFICATE  
NO PURCHASE NECESSARY. See Details in our Store!

# Old-Rival Cities Bury Tomahawks

ARLINGTON, Tex. (AP) — The fast crumbling Dallas-Fort Worth battle line — one of Texas' most rugged frontiers — is being replaced by an ambitious plan that would bury the civic and economic tomahawks and have the two cities working as a team for regional development.

Back of the plan is the new North Central Texas Council of Governments, a confederation of city and county governments and school districts in a 10-county area with a population of more than 2 million.

Headquarters for the new organization that has brought the longtime foes together at the conference table is Arlington, 10 miles east of Fort Worth and 20 miles west of Dallas. Thus it is in neutral territory.

The council emphasized its regional image and avoided showing any preference between Dallas and Fort Worth by electing as its president Arlington Mayor, Tom Vandergriff, a long-time advocate of inter-city cooperation.

growth and development. The commission is also expected to draft recommendations for legislation that would give the appropriate governmental agencies authority to implement the long-range plans.

**SINCE 1880'S**  
Ever since the mid-1880's when Fort Worth was a frontier military post and Dallas was founded by a small colony of artists, musicians and artisans who prided themselves on culture, the two cities have been fierce rivals.

Unable to agree on a joint airport, each developed multi-million dollar airports just 11 miles apart. Airliners to both cities spent more time taxing, taking off and landing than they did in the air on Fort Worth-Dallas flights.

Finally the Civil Aeronautics Board delivered an ultimatum. It would give recognition to only one regional airport for North Texas. So then the two cities got together and agreed last year on a site for a common airport.

**NOW COMMUTE**  
For a large segment of the population the day is past when they lived and worked in the same town; they are now commuters, living in the suburbs and working in the metropolitan areas. Their interests and their welfare are no longer confined to just one city, Vandergriff says.

So far, the North Texas Council of Governments has no imposing edifice to use as a symbol of unity, but Vandergriff points to a recently completed structure—a sparkling baseball park just outside Arlington as a major step toward unified action.

For years Fort Worth and Dallas were bitter rivals in the Texas Baseball League. Now on Arlington's new stadium hangs a sign: "Home of the Dallas-Fort Worth Spurs."

Vandergriff says that is a harbinger of even greater unity in the future.

**BALANCED SLATE**  
The slate of officers was nicely balanced by electing Fort Worth Mayor Willard Barr as vice president and Dallas City Councilman W. H. Roberts as secretary-treasurer.

The board is composed of a director for each governmental unit joining the council. There are now 60 directors. The council hopes for double that number.

"We believe the formation of the council marks the beginning of an exciting new era," says Vandergriff. "By recognizing that we are no longer isolated communities, that we are interdependent, and that cooperation will be of mutual benefit, we gain a new perspective."

"There are many problems that can no longer be solved by the individual communities—they must be solved on a regional basis," he says.

"Water supplies, waste disposal, river and air pollution, transportation, education, recreation, health and welfare and land use are among the top-priority problems he lists.

Vandergriff points out that the council has no governmental power. Its first project is to create a commission to study the region; blueprint the solution of problems, and project the area's

**Object Off Sunken Sub?**  
WASHINGTON (AP) — The Navy has sent two officers to Western Ireland to get a three-foot-long cylindrical metal object found there which had markings indicating it may have come from the sunken submarine Thresher.

The object washed up at Killee and is marked "Thresher. . . radioactive." But the Navy said it "cannot confirm that a piece of equipment from the USS Thresher was found off the coast of Ireland."

The object is to be taken to the U.S. Polaris submarine base at Holyloch, Scotland, for further study, the Navy said, adding "a statement will be made when the item is positively identified."

The submarine Thresher was lost off New England in 1963 with 129 Navy men and civilians aboard.

## Court Refuses To Hear Case

AUSTIN (AP)—The Texas Supreme Court refused again Wednesday to hear arguments on a judgment against the S. W. Richardson estate for failure to pay state, county and school ad valorem taxes on St. Joseph Island, near Aransas, in 1960 and 1961.

Executors of the Fort Worth estate, including Gov. John B. Connally, contended the valuations upon which the assessment was made were "grossly excessive" and "unequal."

The high court refused Dec. 31, 1965, to hear the case, and today turned down an amended petition for rehearing.

**GOREN ON BRIDGE**  
West covered with the jack as a come-on, and North played the king. A diamond was led and declarer finessed the jack. When West showed out, South's hopes went glimmering. East was revealed to have two diamond stoppers, and declarer was unable to establish the suit before the defenders had developed the setting tricks.

South took two spades, three hearts, two diamonds, and one club, falling one trick short of his goal.

At the second table, declarer felt that the location of the king of hearts was of only secondary concern, inasmuch as he always had two stoppers in that suit. He therefore put up the ace of hearts from dummy at trick one in order to seize control of the lead and start the development of the diamond suit.

The fall of East's king of hearts, although fortuitous, was a mere by-product of declarer's main plan. A diamond was led from dummy at trick two and the jack was finessed. Although the lead had to be surrendered twice to East while the diamonds were being set up, South was assured of nine tricks.

East chose to switch to a spade when he was in, and this gave the declarer an opportunity to score an overtrick; in all, he took four diamonds, three hearts, two spades, and one club. The total swing to his team on the deal was 730 points (630 for the vulnerable game plus the 100 points for the set scored at the other table).

**BY CHARLES H. GOREN**  
(© 1966, BY THE GOREN TRUST)  
North-South vulnerable.  
North deals.

NORTH		EAST	
♠ K 7 2	♠ 10 9 8 4 3	♥ K	♥ K 10 9 8
♦ A 6	♦ Q 3 2	♣ K 10 9 8	♣ Q 5 4
♠ A 10 9 6 3			
WEST		EAST	
♠ Q J 5	♥ 10 9 8 7 5 4	♥ K	♥ K 10 9 8
♦ 10 9 8 7 5 4	♦ Void	♣ K 10 9 8	♣ Q 5 4
♠ K J 8 7	♠ K 5 4		
SOUTH		WEST	
♠ A 6	♥ Q J 3 2	♠ 1 0	♠ 1 0
♦ Q J 3 2	♦ A J 7 6 5 4	♠ 2 NT	♠ 2 NT
♠ 2		♠ 3 NT	♠ 3 NT

The bidding:  
North East South West  
1 ♠ Pass 1 ♦ 1 ♠  
Pass Pass 2 NT Pass  
3 NT Pass Pass Pass  
Opening lead: Ten of ♠

Declarer's play to the opening trick proved crucial in today's hand taken from a recent team-of-four contest.

The final contract at both tables was three no trump with South as the declarer, in each case.

West opened the 10 of hearts; however, the play varied radically from that point. One declarer was almost certain to have the king of hearts, and he therefore played a small heart from dummy.

When East produced the king, South was slightly taken aback; however, he was not yet unduly concerned. East shifted to the ten of spades,

This week  
GET YOUR **Sheffield**  
BONE WHITE  
**Coffee Cup**  
9¢ only  
with every \$5 purchase

# It's Good Old-Fashioned

FROZEN FOODS!  
**CREAM PIES**

BANQUET, CHOCOLATE, STRAWBERRY, BUTTERSCOTCH FAMILY SIZE ..... 29¢

SEABROOK, ITALIAN **GREEN BEANS** ..... 9-OZ. PKG. 2/49¢

LIBBY **Stewing Vegetables** 24-oz. Pkg. 47¢

**TUNA PIES**  
3 8-OZ. PKGS. 39¢

**Piggly Wiggly DELICATESSEN**  
Ready To Serve Foods From Your Carry Home Chef!

FREE PINT OF POTATO SALAD, With The Purchase of Whole Bar-B-Que'd Chicken, Plump and Tender ..... Each \$1.19

DANISH SWISS CHEESE, Baby Samsoe ..... Half Pound 69¢  
HAM SALAD, Made with Real Ham, Fresh ..... Pound 89¢  
CORNED BEEF & CABBAGE, Take Home Hot ..... Pint 59¢

**BAKERY AND PASTRY SHOPPE**  
DONUTS, Glazed or Plain, Freshly Baked, Buy By The Dozen ..... Only 59¢  
APPLE or CHERRY PIES, Ripe Fruit Under Tender Flaky Crusts. These Are Good. We Bake Them In Our Own Store Ovens ..... Each 98¢

Lowest Prices... Greatest Variety... always at **Piggly Wiggly**

**SALMON** LIBBY, FANCY RED NO. 1 CAN ..... 79¢

**Coca-Cola** 3 6-BOTTLE CARTONS \$1

**FRUIT COCKTAIL**  
4 \$1

Libby Fancy In Heavy Syrup.....

NO. 303 CANS

GET THIS Old-Time Value  
**PINEAPPLE**  
LIBBY, CRUSHED, CHUNKS, SLICED  
4 NO. 1 1/2 CANS \$1

GET IT TOO!

INDIVIDUALLY FOIL WRAPPED, REG. 98¢

**GREEN BEANS**  
5 \$1

Libby Fancy Cut.....

NO. 303 CANS

HEALTH & BEAUTY AIDS!  
**Hand Lotion**  
JERGEN'S, WITH FREE BAR MEDICATED BEAUTY BAR, REG. 1.48  
10-Oz. BTL. .... 79¢

TONI, REGULAR, SUPER, OR GENTLE, REG. 2.00  
**Home Permanents 1.49**

**Alka Seltzer** 36-CT. 79¢

NEW DAWN, ASSORTED COLORS, REG. 2.00  
**Hair Coloring** WHILE THEY LAST 99¢

McLEAN, REG. 65¢  
**TOOTH PASTE** GIANT TUBE 47¢

LIBBY'S, TOMATO  
**CATSUP** 20-OZ. BOTTLE 27¢

LIBBY'S WITH SNAPS  
**Blackeyed Peas** 2 No. 300 Cans 37¢

SOFTPLY, ASSORTED COLORS, 2-PLY, FACIAL QUALITY  
**TOILET TISSUE** 4-Roll Pkg. 39¢

SWAN, 13¢ OFF LABEL  
**Liquid Detergent** 22-OZ. BOTTLE 51¢

IDEAL, GOVERNMENT INSPECTED, 2¢ OFF LABEL  
**Dog Food** 2 No. 1 CANS 29¢

SUNSHINE HI, HO  
**Crackers** 1-LB. BOX 39¢

LIBBY'S CUT  
**BEETS** 2 NO. 303 CANS 29¢

LIQUID BLEACH, 5¢ OFF LABEL  
**PUREX**  
Gallon ..... 59¢  
Jug.....

LAUNDRY, CONDENSED ALL, 10¢ OFF LABEL  
**DETERGENT**  
3-Lb. .... 75¢  
Box.....

DISH, DISHWASHER ALL, 7¢ OFF LABEL  
**DETERGENT**  
Box..... 41¢

IVORY, PERSONAL SIZE  
**FACIAL SOAP**  
4-Bars..... 33¢

Lowest Prices... Greatest Variety... always at... **Piggly Wiggly**

# Fashioned Thrift Days Again at



**AM**  
**5**  
**29c**  
**2/49c**  
**47c**  
**39c**

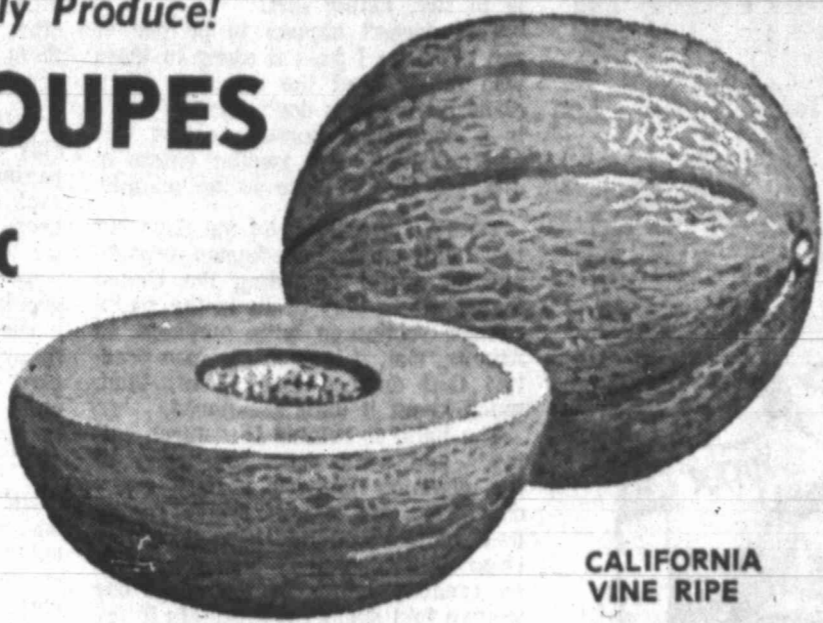
Fresh Piggly Wiggly Produce!

**CANTALOUPE**

DELICIOUS FLAVOR, SELECTED AND GRADED LB.

**15c**

Other Produce Specials  
 CAULIFLOWER, RED CABBAGE, ACORN SQUASH, PINEAPPLE, BUTTERNUT SQUASH, CHERRY TOMATOES



CALIFORNIA VINE RIPE



**TOMATOES** POUND..... **19c**

**ROMAINE LETTUCE** CALIFORNIA, FRESH..... **LARGE BUNCH 19c**

**APPLES** Winesap, Washington, Extra Fancy . Lb. **19c**

**MIRACLE WHIP**

KRAFT SALAD DRESSING QUART.....

**49c**

Old Fashioned Thrift Day Special!

**BEEF STEW**

LIBBY 2 24 Oz. Cans \$1

Plus

FINE FLAVOR, TOO!

**ALL VEGETABLE SHORTENING CRISCO**

**69c**

Piggly Wiggly Meats! Finest Quality in Town!

**PORK ROAST**

**39c**

LEAN NORTHERN PORK, PICNIC CUTS, LB.



U.S.D.A. CHOICE, AGED, HEAVY BEEF, NEW YORK STEAK, Valu-Trimmed..... Lb. **\$1.69**

U.S.D.A. CHOICE, AGED, HEAVY BEEF, K C STEAK, Valu-Trimmed..... Lb. **\$1.39**

U.S.D.A. CHOICE, AGED, HEAVY BEEF, FAMILY STEAK, Valu-Trimmed..... Lb. **69c**

FAMILY PACK, QUARTER LOIN, ENDS AND CENTER CUT RIB CHOPS, PORK CHOPS, 2 1/2 to 3 1/2-Lb. Pkg..... Lb. **69c**

LEAN NORTHERN PORK, LOIN CHOPS, BONELESS **Pork Chops** Lb. **\$1.49**

U.S.D.A. CHOICE, AGED, HEAVY BEEF, VALU-TRIMMED

**Chuck Roast** **49c**

**CREAM CHEESE**

**29c**

**GREEN PEAS**

**51c**

Libby Garden Sweet... NO. 303 CANS

**EGGS**

IDEAL GRADE A, MEDIUM, DOZ..... **47c**

KRAFT'S PHILADELPHIA 8 OZ. PKG.....

LEAN NORTHERN PORK, COUNTRY STYLE **PORK RIBS**.....Lb. **79c**

LEE'S ALL PORK **SUSAGE**.....2 LB. PKG. **1.79**

ICELANDIC PERCH OR COD **FISH STEAKS**.....12 OZ. PKG. **55c**

U.S.D.A. CHOICE, AGED, HEAVY BEEF, VALU-TRIMMED **SIRLOIN STEAK**.....Lb. **98c**

Lowest Prices... Greatest Variety... always at...



## JOY, WORRY

### Boom Frets Businessmen

NEW YORK (AP) — The better times get the more businessmen and stock traders worry. And this week they've been worrying about how all this obvious prosperity is going to pay off — and for whom.

Currently it's paying off fine for a majority of businessmen, for most workmen, for a large percentage of all Americans. But some binds are developing, too, and more seem to be in the making.

**TIGHTER MONEY**  
 Tighter money is beginning to pinch here and there. Monetary experts warn that there's likely to be less funds available for borrowing than industry will want if it goes through with all its plans for expanding its plant and buying new equipment.

And the intentions of industrial firms to expand go right on expanding, too. They want to spend much more this year than last. But accountants warn that annual reports show that many corporations have less available cash assets to draw upon than a year ago, despite their record profits.

**INVENTORY PINCH**  
 The corporate cash bind will hurt also in the current buildup in inventories. Many corporations must borrow to order these stocks and to carry them.

Factory inventories stood at \$68.4 billion at the end of January, up \$400 million in the month. New factory orders rose

to \$44.3 billion, with unfilled orders increasing by \$1.3 billion in the month to \$67.3 billion.

Both the inventory rise and the steadily increasing backlog of unfilled orders are cited by those who worry about the economy overheating as it starts its sixth year of upturn.

Profits are at a record high. Most companies are predicting still higher net income after taxes this year. But an increasing number of observers are saying the gain won't be as much as last year. And a few are warning that production costs may be rising faster than prices, so that profit margins will be clipped and the big profit boom brought to an end.

All these worries can be based on interpretations of available figures and projected trends. But businessmen, and especially stock traders, have other uncertainties, nebulous now because they're mixed in with politics.

One disturbing fear is that before 1966 is over taxes will go up again, reversing the 1964 and 1965 course. Higher corporate income taxes would bite into profits, into enthusiasm for business expansion, and into stock prices.

Along with this is the fear that if inflation becomes an acknowledged fact, the government may turn voluntary wage and price restraints into something much closer to actual government controls.

### Tejas Muy Bueno: Envoy, Marquessa

WASHINGTON (AP) — The Spanish ambassador and Marquessa de Merry del Val are back from a trip to Texas that left them enraptured with the Lone Star State.

In the words of Betty Beale, Washington Evening Star columnist, who interviewed them, it was a "visit that left them gasping."

The Marquessa was quoted as saying: "The people were charming. And they are the most traveled people I have ever met. They know everybody everywhere. They all have dresses from Dior, Balenciaga and so forth."

Red carpet treatment for the diplomatic couple began with their arrival at Corpus Christi, where Mrs. Richard Kleberg Jr. (sister of the late actor Zachary Scott) and a company of 50 met them to whisk them off in an air conditioned bus to the King Ranch.

RANCH "WONDERFUL"  
 "The King Ranch was wonderful!" she exclaimed. "We had an enormous Mexican luncheon in the old house with a patio. We saw their horse Assault which won \$600,000 but has no children. It is sterile. We saw the bulls (Santa Gertrudis) that are going to be auctioned. They were something incredible. And everybody was talking Spanish."  
 Their itinerary in Texas included a stop in Austin for a luncheon with Gov. and Mrs. John Connally, and visits to San Antonio and Dallas.

"In Dallas they supped and danced till 3 in the fabulous one-story, modern palace of the Clinton Murchisons Jr.," the Washington columnist wrote.

"And the Marquessa lunched at the breathtaking residence of airplane industrialist James Ling, which, she said, was like France's famed Petit Trianon. It is approached past fountains and statues, has a three-hole golf course, bathrooms with sunken Pompeian tubs, and a huge dining room table set entirely with vermeil and baccarat crystal."

**AROUND CAPITAL**  
 The famed United States Navy Band is on another tour of the nation arranged by Gib Sanderfer, one-time manager of the Hardin-Simmons University Cowboy bands which traveled the globe.

On his inauguration day, March 4, 1925, President Coolidge signed an act of Congress designating the Washington Navy Yard band as the official United States Navy Band. Sanderfer, whose father long was president of the Ableton school, has been tour director of the band for years. The tours include concerts in city auditoriums, at high schools and colleges. The receipts pay the band's expenses.

**Actress Changes, Plays Scene Sans Wardrobe**

HOLLYWOOD (AP) — "No. Absolutely not. I wouldn't consider it."

This was Eleanor Parker's initial reaction when she was asked to play a scene in the nude for "An American Dream."

But she played the scene — sans wardrobe.

"Well, almost," she admitted afterward. "I wore a G-string, that's all. The set was cleared except for the director and the camera operator. Studio police were placed on both sides of the set."

**WHY CHANGE?**  
 Why did the actress change her decision after first refusing to play the nude scene?  
 "At first the thought was repugnant to me," she explained. "It went against everything I believed. I'm a bit conservative, you know — the Midwest upbringing did that. I thought if I had to play nude scenes, I'd rather give up the business."

"But Robert Gist, who is the most sensitive and exciting director I have ever worked with, explained to me how the scene would be done in the best possible taste. If it were nudity for nudity's sake, I never would have done it."

**"MAKES SENSE"**  
 "Actually it makes sense. The character I play is completely amoral, a woman who gets her kicks from every possible source — booze, dope, men. The scene showed her in bed with another man while watching her husband on a television panel show. All she had on was dark

glasses."

"An American Dream," which also stars Stuart Whitman and Janet Leigh, is Warner Brothers' version of the Norman Mailer novel which was extravagantly praised and damned by the critics. No one was indifferent but book-buyers; the novel failed to sell.

The film marks the return of Miss Parker to her old home lot after a 16-year absence. She remains beautiful enough that it seems incredible she started at Warner Brothers 25 years ago.



Switch

Actress Eleanor Parker, who once said she would never consider playing a scene in the nude, now has done just that. The scene is in a movie called "An American Dream."











**THE RED BARN**  
13 30 AT BIRDWELL LANE  
SPECIALIZING IN STEAKS,  
AMERICAN & ITALIAN FOODS  
CATERING FOR YOUR PARTIES  
Call AM 7-9192  
Plus Home Delivery Of Hot Food!

**EASTER CANDIES**  
FRESH SELECTION  
OF  
PANGBURN'S  
FINE EASTER CANDY  
WATCH FOR DANTE!  
**Toby's Ltd., Inc.**  
TOBACCONIST  
1714 Gregg AM 3-3400  
FOR BEST RESULTS...  
USE HERALD WANT ADS

**VICTIM BLINDED**  
**Youth On Probation  
In Denton Maiming**

DENTON, Tex. (AP)—Byron McClellan Jr. was convicted of maiming Wednesday in the Oct. 5 injury of another North Texas State University student, Michael Portman, and assessed a 7-year, probated prison sentence.  
McClellan, 23, testified that he and fraternity brothers had gone to Portman's apartment after a beer-drinking party in Oklahoma.  
McClellan said after the sentencing he hoped to return soon to his job on an oil drilling rig off Louisiana. His attorneys said they will appeal the verdict.  
**OTHERS INJURED**  
Portman, 19, was blinded in one eye from the early-morning attack by four persons using shattered soft bottle drinks and beer mugs. Two other persons, like Portman unknown to the alleged attackers, were injured the same dawn.  
Thursday afternoon, a contempt of court hearing was scheduled for McClellan and one of his companions, Trenton Torregrossa of Galveston, for alleged failure to appear at an earlier hearing in a civil suit. Portman's father and Joe Bourn of Dallas, one of the others injured, have filed civil suits totaling \$35,000 against McClellan and Torregrossa.  
**FATHER D.A.**  
The defense asked the jury of nine men and three women for a probated sentence because McClellan had no previous felony conviction. McClellan's father is district attorney in Gatesville, Tex.  
Dist. Atty. John Lawton told the jury their decision "is going to set the pace for law enforcement in Denton County." Lawton had recommended not handing down a probated sentence, which in effect means McClellan will serve no time in prison if his behavior is flawless during the next seven years.  
**"DIDN'T ENTER"**  
McClellan testified he never entered Portman's off-campus apartment room but had stayed by the door as his companions went inside.  
Ernie Bovio of Galveston, who testified he was "kinda drunk," and Robert Harold Glenn of McKinney testified they broke a soft drink bottle and a beer mug against Portman's wall.  
Glenn and Bovio pleaded earlier no contest to the maiming charges and served jail terms. They are on probation for two years. Torregrossa was charged but never indicted.



**Resigns**  
Dr. Duane Graveline, 31, has resigned as one of the nation's six new scientist-astronauts, Manned Space Center at Houston announced. However, he is remaining at the center as a flight surgeon. (AP WIRE-  
PHOTO)

**Will Contest  
Case Poses  
Legal Stir**

AUSTIN (AP) — Lawyers brought before the Texas Supreme Court Wednesday a question of procedure touched off by a 1962 suit to set aside the multi-million dollar will of Mrs. Sarita Kennedy East.  
Mrs. East, believed to be the last surviving descendant of Capt. Mifflin Kennedy, who founded a family fortune in ranch and mineral properties in South Texas, left an estate valued as high as \$300 million.  
She died in February, 1961, and the will contest still has not been resolved.  
The question before the high court Wednesday was how and where a temporary injunction granted by a probate judge should be appealed.  
**OPINION WAITED**  
It probably will be several weeks before the Supreme Court writes its opinion.  
In this issue — one of many surrounding the will contest — a Kenedy County probate judge granted a temporary injunction to Patrick A. Turcotte and others preventing the Alice National Bank and others from filing court actions about the will in other courts and counties.  
The injunction was appealed to a Kenedy County district court which dissolved the order. The Waco Court of Civil Appeals upheld the ruling.  
**PROBATE CODE**  
Frank W. Nesbitt, of Corpus Christi, representing Turcotte, said the Probate Code of 1876 says appeal of a probate matter should go to the district court, but statutes say appeal of a temporary injunction should go directly to courts of civil appeals.  
"A temporary injunction is not a probate matter," said Nesbitt. "It involves matters growing out of probate matters but it is not a probate matter."  
"So, the district court had no jurisdiction, and that left the civil appeals court only with the jurisdiction to dismiss the case."  
Kenneth Oden of Alice, representing the bank, said the "main action of this case is a will contest... and the nature of the main suit determines the nature of jurisdiction to it."  
Thus, he said, the district court had jurisdiction, an argument the Waco court upheld.

**It's Easter  
Fashion Time...**



FOR  
YOUNG  
ELEGANCE  
Elegant and understated... the Lanz shift with hemstitching detail in crease-resistant Swiss rayon. Sizes 5-15. Green, beige, blue. 39.95  
*Schwartz jr shop*

**TONIGHT & FRIDAY**  
**JET**  
SAN ANGELO BEWAY  
OPEN 6:30  
WILLIAM HOLDEN  
THE WORLD OF SUZIE WONG  
NANCY KWAN

**TRY OUR  
Barbecue Sandwiches  
THEY ARE DELICIOUS!  
WAGON WHEEL**  
DRIVE IN NO. 2  
2311 And Grove AM 4-2851  
Trevi Meudin, Mgr.

**Readiness Gamble  
By U.S. Paying Off**

WASHINGTON (AP) — The Johnson administration took a calculated risk in deciding, at a perilous point in the Viet Nam war last summer, that it had time to build the regular armed forces gradually instead of mustering thousands of Reservists.  
Top officials scanned the intelligence evaluations and reckoned then that:  
1. The situation in Viet Nam could be stabilized without a massive and swift mobilization of national resources.  
**PAYS OFF**  
2. The country would not be confronted by a second major crisis elsewhere — a threat that would tax U.S. military resources burdened by the vaulting demands of Viet Nam.  
Part of the gamble involved reducing temporarily the combat effectiveness of Army divisions based in the United States so they could undertake the training of thousands of rookies who could not be squeezed into the crowded basic training centers.  
So far, at least, the gamble has paid off.  
U.S. forces in Viet Nam, swollen from 75,000 last summer to about three times that number, have turned what appeared to be impending defeat into at least a standoff.  
And the Communist world has made no attempt to create any serious military diversion elsewhere.  
The danger period is not yet past. Restoration of the Army divisions in the United States to full combat readiness is still months away.  
**OPPOSES COURSE**  
But even as strong a critic as Sen. John C. Stennis, D-Miss., chairman of the Senate Preparedness subcommittee, conceded Wednesday that the administration plan has worked — although Stennis clearly still opposes the course followed and obviously favored at least a selective callup of Reservists.  
"To a large extent, time has rescued us in this matter," Stennis said.  
"We have had the time to gear up our production facilities, to let contracts and obtain deliveries of vitally needed equipment, repair parts and supplies, to recruit and train additional manpower."  
"Thus, we have been able to overcome a substantial part of our problem. We are fortunate, indeed, that this time has been available. It will eventually cure the deficiencies in the readiness of these divisions."  
**BELOW READINESS**  
Stennis spoke out after the contents of a secret subcommittee report on readiness leaked and the Defense Department admitted that the only four complete Army divisions in the United States are below full combat readiness because they are handling training.  
The Mississippi senator said that last Aug. 4 Secretary of Defense Robert S. McNamara assured a Senate Appropriations subcommittee that "all divisions are ready to go to combat."  
At that time, Stennis said, his subcommittee's investigation showed that one of the four U.S. Army divisions was at barely 55 per cent of its authorized strength of nearly 16,000 men and another division barely more than 70 per cent of strength.  
"I am certain that the secretary had not been advised of the actual condition of these divisions when he made the statements," Stennis said.  
**NOT PINPOINTED**  
The two below-strength divisions were not named by Stennis. The four divisions involved in the over-all readiness dispute are the 1st and 2nd Armored of Ft. Hood, Tex., the 4th Infantry of Ft. Lewis, Wash., and the 5th Mechanized Infantry of Ft. Carson, Colo.  
An earlier report of the subcommittee showed that the divisions in the United States had significant shortages of major items of equipment, Stennis said.  
"Our recent investigation of the four divisions — showed that there had been significant improvement in the equipment situation as far as these four divisions are concerned, and we are gratified at this," he said.  
McNamara told newsmen on Capitol Hill Wednesday the use of Army divisions for training had not endangered national security. "On the contrary," he said, "the national security is enhanced and strengthened by the retention of the Reserve forces as Reserve forces instead of calling them to active duty and thereby destroying their usefulness as a contingency reserve."

**STARTING TODAY**  
**Ritz**  
OPEN 12:45  
Adults 90¢  
Students 75¢  
All Child. 25¢  
BIG ALL COLOR DOUBLE ADVENTURE  
**Tiko and the SHARK**  
A YOUNG ISLANDER WHO TAMED  
A MAN-KILLER SHARK!  
PLUS BLAZING WESTERN ACTION IN COLOR  
"SON OF A GUNFIGHTER"

**ONE DAY ONLY**  
**AFTERNOON and NIGHT**  
**MON. APR. 4**  
BIG SPRING  
RODEO GROUNDS 4 AND 8 P.M.  
OPTIMIST CLUB  
**ALG KELLY AND MILLER**  
2nd Largest  
**CIRCUS**  
Brings For 1966 Edition  
A Gigantic Array Of Top  
**Euro Asian Talent**  
THE FLYING PABLOS  
ST. JOHNS  
WHIRLWINDS  
Extra Added Attraction  
PRINCESS HUKLAUS  
UNDER ONE HUGE TENT  
Popular Prices — Bring The Family  
Midway Opens 1 Hour Earlier

**SPECIAL**  
THURSDAY—FRIDAY—SATURDAY  
**CHICKEN BASKET**  
1/2 Chicken... complete  
with toasted bread,  
Salad, French Fries  
**79¢**  
ONLY  
**Circle J Drive In**  
CLOSED ON SUNDAY  
1200 E. 4th Call AM 4-2770 For Orders To Go

**T.G. & Y.**  
5¢ TO 50¢ STORES  
IN HIGHLAND CENTER  
Open Monday and Thursday 9 A.M. 'til 8 P.M., Tuesday, Wednesday, Friday and Saturday 9 A.M. 'til 6 P.M.  
Effective Monday, We Will Be Open Until 8 P.M.  
Every Night Until Easter For Your Convenience

LADIES' SOLID AND STRIPES, COTTON  
**HENLEY BLOUSES**  
**67¢**  
SIZES 32-38  
REG. 1.77

JUST ARRIVED, FOR SPRING WEARING  
**LADIES' FLATS**  
**\$1.88**  
SIZES 5 1/2-9  
REG. 3.98

**ALCOHOL**  
1-PINT PLASTIC BOTTLE  
**11¢**

**HAIR SPRAY**  
HAZEL BISHOP  
97¢ VAL., 14-OZ. CAN  
**27¢**

**BRACH JELLY BIRD EGGS**  
16-OZ. BAG  
**16¢**

**Boys' MUSCLE SHIRT**  
**27¢**  
SIZES 4 TO 14  
REG. 88¢

**KUDDLE-UP BABY BLANKET**  
**88¢**  
2 IN GIFT BOX  
REG. 1.98

**PLYWOOD HEADQUARTERS**  
CUT-TO-SIZE  
**Low, Low Prices!**  
● 4'x8' 3/4" Mahogany Per Sheet ..... **\$11.52**  
● 4'x8' 3/4" Birch Per Sheet ..... **\$13.95**  
● 4'x8' 3/4" Ash Per Sheet ..... **\$14.95**  
**Roofing Specials**  
● 235 LBS 3 TAB SHINGLES, PER SQ. .... **\$6.85**  
● 15 LBS. FELT, 4 SQ. ROLL ..... **\$2.35**  
● 90 LBS. ROLL ROOFING ..... **\$3.19**  
● 29 GA. AMERICAN MADE CORRUGATED IRON, PER SQ. ... **\$9.45**  
**22-Gallon, Acid Resistant GARBAGE CAN**  
Compare! ONLY **\$2.19**  
**HARRIS LUMBER & HDW.**  
East 4th At Birdwell Lane  
Open Monday-Saturday 7:30 A.M.—5:30 P.M.  
1609 E. 4th AM 7-8206

**Campaign To Seek Baptist College \$\$\$**  
DALLAS (A) — The Executive Board of the Baptist general convention of Texas has approved a campaign to raise \$2.5 million for Dallas Baptist College.

B  
SEC  
V  
Lit  
By J  
Not even  
enchanted  
foods. Some  
to eat the  
mins and (.  
In the  
Denton, 2  
phobia was  
Learning  
a battle of  
it's only  
been sign  
the winner  
Mrs. De  
why she  
against ei  
cept that i  
of some  
seemed an  
extra burd  
served no i  
Things c  
married to  
manager f  
vester. Con  
out he wa  
any food,  
pounded d  
parents' l  
where Mrs  
vegetables  
every meal  
of eating t  
the merits  
Cap  
Low  
Capture  
menus thr  
tamin C-ra  
the Ori  
long expo  
anges rank  
ly good so  
much as  
pound of f  
Calorie  
in the fact  
ry a mode  
half a me  
calories. 1  
Salad, pre  
light to the  
cial joy fo  
the develo  
particular  
en to elimi  
"empty" c  
little, if an  
place of s  
sweetener,  
natural-tas  
the calor  
delectably  
vored trea



MRS. W. K. DENTON

## Vegetables Present Lifetime Mystery

**By JO ANN PHINIZY**

Not everyone is born with an enchantment with all variety of foods. Some people have to learn to eat their non-favorite vitamins and calories.

In the case of Mrs. W. K. Denton, 2507 Ann, her special phobia was fruit and vegetables. Learning to eat them has been a battle of Olympic portions, and it's only recently that there've been signs that she might be the winner.

Mrs. Denton can't remember why she had a mental block against citrus and greens. Except that if you've eaten plenty of something you enjoy, it seemed unnecessary to add the extra burden of something that served no immediate purpose.

**URUGUAY**

Things changed after she was married to W. K. Denton, zone manager for International Harvester Company. Come to find out he wasn't at all opposed to any food. The proof was compounded during a visit to his parents home in Uruguay where Mrs. Denton was served vegetables (of some sort) with every meal. She got in the habit of eating them and began to see the merits of taste.

Then, when their son, Michael, arrived, Mrs. Denton started the policy of always having plenty of vegetables around.

She hasn't really become the fruit and vegetable fan her husband is—his favorite is avocado and catchup—but things are beginning to look encouraging.

Carrots or spinach or Brussels sprouts really do have a place in menu schemes. As for green beans, they can be "goshed up" with mushroom soup and topped with thin sliced onion rings.

When it comes to desserts, Mrs. Denton reigns supreme. She enjoys cooking all sorts of cakes except angel food. She says that, for some reason, that type of cake seems to escape her.

"Mine make better footballs," she said.

Mrs. Denton believes in the sort of hobby that has a useful harvest. Re-finish antique furniture, for one thing.

**FURNITURE COLLECTION**

She delights in finding an item that others have rejected, doing a little scrubbing, polishing or repainting and ending up with an unusual and tasteful piece of furniture.

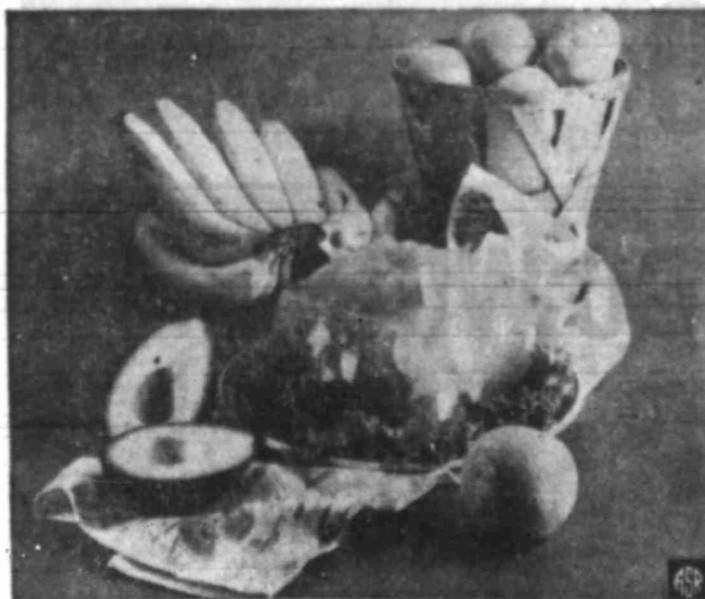
"I don't know whether it's

economical or not," she said. "But I have furniture that's warm and has a personal interest to me; and it's the kind I intend to keep forever."

Her other activities include being a member of the Junior Woman's Forum, the Panchelonic Forum, and a Brownie Troop leader for Kentwood Elementary School.

She says that she is a neighborhood bridge player and is beginning to show possibilities as a golf caddy.

Mrs. Denton selected recipes that she describes as "unfancy" but perfect for family meals.



DIETER'S DELIGHT  
Citrus fruits add color

## Capture Sunshine For Low-Calorie Specials

Capture some sunshine in menus through liberal use of vitamin C-rich citrus fruits, such as the orange. Partially due to long exposure to sunlight, oranges rank as an extra-ordinarily good source of vitamin C, as much as 224 milligrams per pound of fresh orange juice.

Calorie counters can rejoice in the fact that citrus fruits carry a modest calorie tab... a half a medium grapefruit, 75 calories. The Sherry Sunshine Salad, presented here, is a delight to the palate, and an especial joy for weight watchers. In the development of this recipe, particular consideration was given to eliminating all unnecessary "empty" calories which provide little, if any, nutritive value. In place of sugar, a calorie-free sweetener, was used to provide natural-tasting sweetness minus the calories. Note that in this delectably sweet, orange-flavored treat, total calories have been slashed nearly in half.

**SHERRY SUNSHINE SALAD (Low-Calorie)**

3 envelopes unflavored gelatin  
1/2 cup cold water  
1 1/2 cups apple juice  
2 cups liquid sugar sweetened gingerale  
1 1/2 cups orange juice  
1/2 cup sherry  
2 tbsps. liquid sugar solution  
1/2 cup orange sections  
1 cup banana slices  
1-3 cup avocado, cubed

In large mixer bowl, soften gelatin in cold water. Bring apple juice to a boil; add to gelatin, stirring to dissolve. Add gingerale, orange juice, sherry and liquid sugar; chill until mixture begins to thicken. Add orange sections, banana slices and cubed avocado. Spoon into an 8-cup mold; chill until set. Makes 10 servings, each 91 calories; 3 grams protein; 1.5 grams fat; 15 grams carbohydrate. (With sugar 177 calories.)

## CELEBRITY RECIPES

### LBJ Approves Texas Style Home Cooking

Lyndon B. Johnson and the First Lady brought The Great Society to America, but in the world of gourmets, the President of the United States is, perhaps, better known for introducing society to the tantalizing aromas of Texas cooking.

Though it is doubtful that Lady Bird Johnson has much time for cooking and baking these days, this does not mean she is a stranger to the kitchen. A Texas girl who grew up in the old American do-it-yourself tradition, the First Lady is an excellent cook whose culinary reputation spreads far beyond the Pederalines.



President Lyndon B. Johnson

Recipes from the White House include such varied fare as cheese pie, brownies, chili, casseroles and spinach souffle—plus a most interesting white bread.

For two delicious loaves fit for a president—or a king or a constituent—dissolve two yeast cakes in a quarter-cup of warm water and let cool. Cream a half-cup of sugar and three tablespoons of solid shortening, then pour a cup of scalded milk over it.

Combine both mixtures and while agitating with an egg beater add a teaspoon of salt and one beaten egg, beaten until light.

Add four-and-a-half or five cups of flour, one cup at a time, using just enough so the dough can be worked by hand.

Put the dough in a large greased bowl, greasing the top part of the dough, too. Cover with a hot damp cloth (which should be changed several times in the two hours it takes to rise) and let stand in a warm place until doubled in bulk.

Toss the dough on a floured board and knead it for five minutes, working with the ball of the hand and from the outside toward the center. Keep at it until the dough no longer sticks to the board, is "bubbly" and puffs right back up.

Place the kneaded dough in two greased glass baking dishes

and let rise again until the bulk is doubled. Bake at 450 degrees for ten minutes, then lower the heat to 350, bake half an hour more. 40 minutes in all. Bake until the crust is brown and shrinks from the sides of the dish. Remove and turn out on a wire tray. Resist the temptation to slice until cool.

Mrs. Johnson says this bread can be baked a day or two ahead of time, wrapped in wax paper, and that is great sliced, buttered and reheated.

### For Cake Icing Use Daily Motif

For a dramatic looking cake, bake your favorite flavor cake mix in 8 or 9-inch round layer pans as directed on package.

Fill and frost cooled cake with 1 can white ready-to-spread frosting. Allow frosted cake to stand 15 minutes; place dolly or stencil on cake.

Sprinkle a little cocoa or sweet cocoa mix through sieve over dolly. Gently remove dolly or stencil.

Variation: Fill and frost cake with 1 can chocolate flavor ready-to-spread frosting; sprinkle top with confectioners' sugar.



BRIGHT DESSERT  
Perfect ending for a meal

### Oranges, Pears Form Elegant Fruit Dish

Bright in flavor, bright in color, Golden Orange-Pear Compote includes orange sections, pear halves and a subtly spiced sauce made with 7-Up, apricot jam and lemon juice. This easy sauce cooks in moments. Try it with other fruit combinations, too.

Top the dessert compote with whipped cream or vanilla ice cream, a sprinkle of cinnamon, and it's ready to serve.

### April Buys Announced

April will bring a "shower" of raisins, honey, grape juice, peanuts and peanut products.

These four items make up the plentiful foods list for the "rainy month," according to the Consumer and Marketing Service, the agency of the U.S. Department of Agriculture that joins the food industry to invite you to share in the abundance.

Many other foods also will be available in normal amounts to assure a springtime of good eating. But supplies of the four plentiful are expected to exceed routine needs. So count on "specials" as grocers cooperate with producers and wholesale firms in making the abundance available to everyone.

All of the April plentiful receive equal billing. There is no "star" of the list.

Raisin production in California was the most since 1952. Markets are well supplied. Wholesale prices are lower, so look for good buys on raisins.

Honey production, in 1965, was smaller than in either of the two previous years. But commercial stocks have been running ahead of those in 1963 and 1962, so expect honey plenty in April.

The abundance of grape juice follows the record - large 1965 grape crop—19 per cent above average. Wholesale grape juice prices have been running the lowest since 1961.

### Fresh Fruit Joins List Of Savers

Did you know that you can buy more oranges for a dollar now than you could last year at this time?

Here's why. Prices reflect a crop 10 per cent larger than last year and 15 per cent larger than average, according to the U.S. Department of Agriculture.

More than half of the crop—about 65 million boxes—is still to be harvested.

So you can count on plenty of fresh oranges this spring, says the Consumer and Marketing Service.

Valencia oranges dominate spring supplies as they ripen late in the season after other varieties are moving off the market.

The Valencia is a round or slightly oval fruit, medium to large in size with a deep golden orange color. The skin is smooth or slightly pebbled. It is juicy, solid and heavy with two to six seeds.

When you buy a large sack of oranges, how do you store them? They will keep for weeks at room temperature if not above 70 degrees F. Be sure to place them in a basket or other container that allows plenty of air to circulate.

The mesh bag used to package oranges makes a good container if the fruit is loosely packed. However, do not set or hang the bag upright, for the weight of the fruit will cause the bottom layer to deteriorate.

Here's a tasty orange relish to serve with Easter ham or turkey. Peel and cut three oranges into medium thick slices. Add a tablespoon each of sugar, wine vinegar and instant minced onion or a half cup of minced fresh shallots. Chill for several hours and serve as a relish with baked ham or roast fowl.

### Use Cheese Omelets For Meatless Days

Here's how to give egg dishes, mainstay of meatless meals, a glamorous new look, a delightful new taste, and a protein boost most welcome during the Lenten season! Just combine eggs with cheese—and make sure that the cheese is Danish.

It took clever Danish cooks to discover that versatile blue cheese gives omelets and other egg dishes inimitable distinction. This creamy white cheese, delicately traced with the blue-green veins that give it memorable flavor, is the pride of fertile little Denmark, a country famous for the quality of its farm and dairy products. You can discover the reason for yourself. Make a Danish cheese omelet this Lenten season and you'll make it a menu regular all year round.

Our first choice for Lent is a creamy, puffy omelet—an omelet mouseline—that has made the fame and fortune of European restaurateurs. It may do the same for you!

Another famous egg dish, a luncheon favorite at fine restaurants, makes a delicious and dramatic Lenten appearance in a version in which poached eggs are Benedict with tangy Danish blue cheese and tiny shrimp, all on a crisp-toasted English muffin.

### Use Fan To Aid Defrosting Time

Defrosting time can be shortened with the use of a fan or, better yet, electric hair dryer.

Turn the refrigerator off, remove food and wait a half hour. Then turn on the fan or dryer and direct it toward the refrigerator.

White Swan COFFEE  
Lb. 69c  
SUPER SAVE  
DRIVE-IN GROCERY  
17th & Gregg AM 7-9195

**WELCOME VESTOR**  
There's a lot to do in  
**BIG SPRING**  
If you're newly moved, looking for the newest show, the best place to eat, a week-end resort, your church or synagogue, please in stop at perhaps a home of apartment... read the  
**HERALD**  
Welcome to Big Spring  
Phone AM 3-6540

**Frosted ROOT BEER**  
**14¢**  
**LEWIS'**  
COLLEGE PARK SNACK BAR

### Kitchen Cues For Vegetable Menus

For a combination salad and dessert, pare fresh pears, halve and remove the seed and stem structure. Fill the pear cavities with small seedless grapes and top with commercial sour cream. Garnish with tiny inner leaves of romaine, watercress sprigs or the inner yellow leaves of escarole or chicory.

Stuffed tomatoes make a fine luncheon salad. Cut out the pulp from the tomatoes and rid it of juice and seeds; dice and mix with cooked green peas and mayonnaise. Return this mixture to the hollowed-out tomatoes and serve on salad greens with sliced hard-cooked eggs.

When you are preparing tomato aspic using canned tomato juice you may wish to include a suspicion of sugar.

Planning a new home?  
**MAKE IT TOTAL ELECTRIC**

...including electric cooling and heating, and enjoy the economy of our

**LOW RATE FOR ALL-ELECTRIC HOMES**

Our low rate for All-Electric Homes substantially reduces the cost of electricity for summer cooling and winter heating, as well as for other household purposes, when you live in a total electric home.

With electricity as the "do-everything" source of energy in your home, you'll enjoy real economy along with wonderful new cleanliness and convenience... you'll save much time and energy... and you can relax in the comfort of an ideal climate this year around.

Before you start construction of your new home, come by our office or telephone and let us give you full information about our low electric rate for All-Electric Homes, and show you the savings in the cost of summer cooling and winter heating this rate makes possible.

**TEXAS ELECTRIC SERVICE COMPANY**  
L. BEALE, Manager AM 4-6383



# Gimmick Attracts Horse Racing Bets

PARIS (AP) — A golden chariot has guided horse racing to a comeback in France. The chariot is a betting gimmick called the "terce" meaning a combination of three. Bettors must pick the first three finishers in specially selected

France's biggest private industry. More than \$1 billion was bet last year at the off-course betting shops and at tracks. About 60 per cent went for the terce.

In this Gallic version of the daily double, the basic bet is 3 francs — 60 cents. Bets are accepted for the first three horses in order, or just the first three without specifying the order of finish. Big odds are the attraction, and most bettors go for the jackpot by trying to predict the correct order.

**CHARITY TIPS**  
Combinations of figures in birthdays, or shoe, shirt and hat

ing, the terce owes its fame to a race in 1957, when no one picked the horses in order. The pot of \$65,000 stayed with the PMU — Pari-Mutuel Urbain — betting organization. This ended at such a fortune.

The biggest odds ever paid on the terce was 24,328.20 francs for one on Jan. 24, 1965.

The terce cannot be bet at the track, only in off-course shops. Not more than 65 acres a year are selected of the terce. This keeps it from becoming routine. Betting is heaviest in the winter, when families are at home with time on their hands.

# Renaissance Of Comic Book Superheroes Hits Full Stride

NEW YORK (AP) — Once upon a time a man couldn't properly do battle with the enemies of mankind without a brightly colored union suit and a twirly cape.

He whizzed through the air, leaped buildings, saved the nation from imminent destruction; then in a shizophrenic fit he re-

verted to his true self, weak-eyed, weak-willed, and weak-kneed.

He was Superhero and for years he knocked them dead in the comic books — while his own image took a beating.

**SOARING CRIME**  
Even the defenders of comic books conceded they were junk.

Then the adults discovered him.

Superhero is hot stuff now, he's camp and he's everywhere — hanging in museum galleries, in smart book shops, in the best homes, on television, in the movies and ready for the Broadway stage.

**MANY FRONTS**  
The revival of the Superheroes from the golden age of the comic books burst like the crack of "Shazam!" in the final months of 1965. It came on many fronts, and each seemed independent of the others.

A spreading band of aficionados has collected the vintage comic books from the late 1930s and early 1940s for some time. The demand has driven the price for a run-of-the-mill book to \$15 and a first edition Superman commands \$100 — when and if you can find it.

The current Boswell of the Superheroes is cartoonist Jules Feiffer, who cut his professional teeth on comic books before turning to satire.

His book, "The Great Comic Book Heroes," reproduces in full color some of the best and tells what it was like to grow up in a world populated by paperdoll men of steel.

**"NO QUALITY"**  
"There was never any quality in the comic books in the first place," says Feiffer. "It was junk and they were designed for people who needed junk as an outlet."

In an interview he added: "The Depression was on, we were about to enter World War II, and the people needed something to hook onto. The adults got FDR and the kids got Superman."

The idea for Feiffer's book came from E. L. Doctorow, editor in chief of Dial Press. "It was a hunch, an instinct," says Doctorow. "I felt an entire generation of people who had grown up in this era wanted to see once again what they had grown up with."

What do the psychiatrists see behind this renaissance?

Dr. Frederic Wertham, the man who nearly kayaked the comics in the early 1950s with his book, "Seduction of the Innocent," says: "The present revival is entirely artificial. There is no great nostalgia for the early comic book heroes and there is no folklore thing. It was manipulated the same as the Davy Crockett fad."

"A lot of people will make a lot of money out of this, and then it will be dropped dead."

One of the most durable of the heroes is Batman, who is turning up everywhere these days. He's still going strong in the comic books after 27 years.

The new Batman television series — Holy Nielsen! — jumped into the top 10 with the first show. It spawned a Batdance, a boatload of Batproducts and Robin the boy wonder's "holly you-name-it" expressions are spreading like Tom Swifites.

## Station Seeks Wider Range

DALLAS (AP) — A step that would increase the area served by Dallas' educational television station to include all of Fort Worth and Mineral Wells and parts of Waco was taken by the Area Educational Television Foundation.

The foundation, which owns KERA-TV, Channel 11, authorized its board of directors to apply to the federal government for "all available federal funds through the Department of Health, Education and Welfare, or other government agencies" which might be used by the station.

KERA-TV Executive Director Ray Huffer said the government would match funds contributed from other sources. Contributions last year amounted to \$100,826.00.

The increased coverage would add 100,000 new television sets to the 567,000 sets already in the KERA coverage area. The number of school children that could be reached would be increased by nearly 157,000, according to a survey made by the station.

## Starr Bond Vote Upheld By Court

AUSTIN (AP) — The Texas Supreme Court has upheld a 1964 bond election in the Starr County of Roma.

The election was contested on grounds there were several irregularities, including a larger slot in the stub box than the Election Code specifies.

<p><b>All Grinds</b></p> <p><b>Edwards Coffee</b></p> <p>Fresh, Rich coffee taste. (10¢ off label).</p>  <p><b>2 Lb. Can 1<sup>18</sup></b></p>	<p><i>Mix or Match</i></p> <p>★ Cream Style Corn <small>Garden of Eatin'—No. 303 Can</small></p> <p>★ Canned Tomatoes <small>Garden of Eatin'—No. 303 Can</small></p> <p>★ Ranch Style Beans <small>Hearty Flavor—No. 300 Can</small></p>  <p><b>6 for \$1</b></p>
<p><b>Del Monte</b></p> <p><b>Tomato Juice</b></p> <p>or Pineapple Juice. Serve alone or as Cocktails—46-oz. Can</p>  <p><b>25¢</b></p>	<p><b>Delicious Fruit!</b></p> <p><b>Libby Pineapple</b></p> <p>★ Sliced ★ Crushed ★ Chunks Use in pies, salads, or cakes.</p>  <p><b>No. 1 1/2 Can 4 for \$1</b></p>
<p><b>Nu Made</b></p> <p><b>Salad Dressing</b></p> <p>Rich and Creamy.</p>  <p><b>Quart Jar 39¢</b></p>	<p><b>Laundry Aid!</b></p> <p><b>Tide Detergent</b></p> <p>For the Whitest wash in town. (20¢ off label).</p>  <p><b>King Size Box \$1<sup>03</sup></b></p>



**SPRING SALE at SAFEWAY**

*Safeway Quality Produce!*




**Cantaloupes**

Fill with Ice Cream for a real treat. High in Vitamin A.

**Lb. 19¢**

*Variety and Freshness... Always at Safeway!*

*Frozen Favorites!*



**MELLORINE** 3 for \$1

Joyett. Smooth and creamy but low in calories. Treat the family. Assorted Flavors—1/2-Gallon Carton

**Fruit Pies** 3 for \$1

Bal-air, ★ Apple ★ Cherry ★ Pumpkin—1 1/2-Lb. Pkg.

**Orange Juice** 2 for 89¢

Minute Maid, Tastes like fresh—12-oz. Can

**Lemonade** 10¢

Bal-air, Pink or Regular—6-oz. Can

**Turnip Greens** 6 for 89¢

★ Chopped Spinach ★ Leaf Spinach ★ Chopped Collards, Bal-air—Regular Package

**Asparagus** Lb. 29¢

Tender and Spring fresh. Use in salads or as a vegetable.

*For Your Spring Gardening!*

**Sphagnum Peat** 99¢

Makes your garden grow—2 Cu. Ft. Bag

**Michigan Peat** \$1<sup>79</sup>

For rich soil and beautiful flowers—100-Lb. Sack

*Always Popular!*

**Potatoes** 20 Lb. Bag 69¢

Red. Firm and can be used so many ways.

Prices Effective Thrus., Fri. and Sat., March 31, April 1 and 2, in Big Spring. We Reserve the Right to Limit Quantities. No Sales to Dealers.

*Non-Food Values!*

**Gleem Toothpaste** 45¢

Perfect for the entire family—Large Tube

**Prell Liquid** Shampoo—Fem. Bottle 69¢

**Micrin** Cold Antibiotic—12-oz. Bottle 79¢

**Lysol Spray** 83¢

Disinfectant. Kills germs—7-Oz. Can

**Garbage Can** \$1<sup>79</sup>

With lid, Sealrite—20-Gallon Can

**Rise Lather Hair Spray** 63¢

Regular or Menthol. With free Groom & Clean—4 1/2-oz. Can

**Tame Rinse** Extra Conditioner & Cream Rinse. 8-oz. Bottle 99¢

**Ice Cream Scoop** Leave Action. Each 98¢

**Vitalis** Keeps hair well groomed—4-oz. Bottle 69¢

**Plastic Mug** Columbus Brand, Clear—Each 29¢

*Salad Fixins'*

**Green Onions** 5¢

Tender and perfect for salads or cold plates—Bunch

**Crisp Radishes** 5¢

Adds flavor and color to salads or meats—6-oz. Pkg.

**YOUR CHOICE**



**SAFEWAY**

© Copyright 1965, Safeway Stores Incorporated.

<p><b>Facial Tissue</b></p> <p><b>Kleenex</b></p> <p>White or Assorted Colors—300-Ct. Box</p> <p><b>2 for 69¢</b></p>	<p><b>Kleenex</b></p> <p><b>Napkins</b></p> <p>Dinner Size—80-Ct. Pkg.</p> <p><b>27¢</b></p>	<p><b>Delsey Toilet Tissue</b></p> <p>White or Assorted Colors—3-Roll Pkg.</p> <p><b>2 for 49¢</b></p>
---	--	--

**SAVE at SAFEWAY**

It takes less books to Get More Gifts with

**GOLD BOND STAMPS**

129

89¢

9¢

79¢

99¢

89¢

S:

10¢

# Met To Get New Home

NEW YORK (AP) — The Metropolitan Opera is a company of singers surrounded by an orchestra, dancers and a variety of production and administrative people. It is one of the best opera companies in the world and should have the best, most modern fully equipped house in which to perform.

That is the sensible view. The Metropolitan Opera is a building just south of Times Square, where second and third act scenery is stacked outside on the sidewalk leaning against the back wall while the first act is going on where the acoustics are wonderful, where it's nearly always too hot for audience comfort and where Caruso sang. It's a building soon to be torn down and a lot of people love it and hate to see it go.

**NOSTALGIC VIEW**  
That is the nostalgic view. The sensible view is prevailing. On Sept. 16, the Met will open its 1966-67 season in a new \$42.7-million building at Lincoln Center for the Performing Arts. It will be cooled, it will have 3,800 seats, 175 more than the Met has now, it will have storage space and rehearsal space and two orchestra pit elevators.

Rudolf Bing, Met general manager since 1950, says: "It won't look like the old house at all. You cannot expect in 1966 to build a 19th century building, but it will be traditional within contemporary limits. It will have tiers of boxes, beautiful redwood, gold leafing in the ceiling, red chairs and a crystal chandelier. It will be very elegant. It will have nothing of the mixture of antique hospital and airplane terminal style you see in Europe today."

**SOUNDS WELL**  
"You can't tell about acoustics now — not all the chairs are in yet. But Justino Diaz and Leontyne Price — who will open the next season in Samuel Barber's new Antony and Cleopatra — just sang the National Anthem from the stage without accompaniment and it sounded very well."

The present house, soon to be torn down to make room for a skyscraper, opened Oct. 22, 1883, with Charles Gounod's "Faust." It cost \$2 million, including the land.

The Met is selling everything it can — light fixtures, seats, even tassels from the gold curtain for \$5 each.

Nostalgia will prevail on the last night of this season, April 16, at 39th St. and Broadway. The last night — sold out long ago — won't be an opera. Too many stars want to sing and each person in the audience

wants to hear his favorites. More than 50 stars will be able to say "Oh, yes, I sang at the last night in the old house."

This is the old wooden stage where great music, and some that wasn't, has been created for 82 years.

**SWAN QUESTION**  
It is where Leo Slezak gazed at a departing mechanical swan pulling a raft on which he, as Lohengrin, should have been standing, and loudly inquired, "What time does the next swan leave?"

Where Russian bass Feodor Chaliapin, under cover of a language his audience didn't understand, once sang to his valet in the wings, "Go home and get me a suit of underwear." Where the great duo, Flagstad and Melchior, sang naughty stories to each other in German, performance after Wagnerian performance, and the music critics never caught on.

## U.T. Shows Latin Art

AUSTIN (AP) — "Art of Latin America Since Independence, 1800-1965," an exhibit of about 300 Latin American works of art, is one of The University of Texas displays this season.

The exhibit is a collaborative venture of Yale University and the University of Texas.

Countries represented in the exhibit are Argentina, Bolivia, Brazil, Chile, Colombia, Cuba, Ecuador, Guatemala, Haiti, Mexico, Nicaragua, Panama, Paraguay, Peru, Uruguay and Venezuela.

The exhibit has been at Yale and will go to California for showing at the San Francisco Museum of Art and the La Jolla Museum of Art.

## Cashed Check Is 47 Years Old

DENISON, Tex. (AP) — J. E. Conner of Denison recently cashed a 47-year-old check worth 5 cents.

The check was for back pay as a Katy Railroad brakeman. Conner found it recently in some old papers and cashed it through Miss Betty Willis, a cashier at the Citizens National Bank. The railroad accepted the check.

# Shopping at Furr's SUPER MARKETS is More Exciting than a Wild West Rodeo!



EXCLUSIVE EXTRA CARE SERVICE

WIN UP TO \$1,000 CASH OR A COLOR TV SET

WIN MERCHANDISE OR STAMPS

Everywhere you look at Furr's, something's going on! If you're "buckin" high prices, take advantage of a corral full of dollar sale savings. Complete your Furr's Dividend Sweepstakes Card and win up to \$1,000 cash, a Color TV, Free Merchandise or Frontier Stamps. "Come to where the service is" in the form of Furr's EXCLUSIVE EXTRA CARE SERVICE . . . every time you shop.

## WINNERS LIST

### \$100 MERCHANDISE WINNER

IN FURR'S NEW DIVIDEND SWEEPSTAKES

MRS. I. H. DAVIDSON  
BIG SPRING



- |   |  |
|---|--|
| \$100.00 Merchandise, D. M. Mathews, Odessa, Texas          | \$100 in Merchandise, Mrs. Ruby Stev, Snyder, Texas        |
| \$1.00 Cash, Mrs. E. E. Stockton, Amarillo, Texas           | \$100 in Merchandise, Alice Stein, Albuquerque, New Mexico |
| \$1.00 Cash, Dorothy Pearl Hunter, Amarillo, Texas          | \$100 in Merchandise, Mrs. Bobby Johnson, Amarillo, Texas  |
| \$1.00 Cash, Alton Bawles, Midland, Texas                   | \$25 in Merchandise, Joanne Gilmore, Amarillo, Texas       |
| \$200 Cash, Mrs. E. C. Lewis, Rowell, New Mexico            | \$25 in Merchandise, Mrs. Violet Ash, Lamesa, Texas        |
| \$200 Cash, Mrs. O. A. Stronahan, Amarillo, Texas           | \$25 in Merchandise, Mrs. Robert Price, Odessa, Texas      |
| \$200 Cash, Travis Brents, Big Spring, Texas                | \$25 in Merchandise, Doris Goffard, Snyder, Texas          |
| Color Television, Sarah M. Ward, Albuquerque, New Mexico    | \$25 in Merchandise, Mrs. R. K. Edmiston, Odessa, Texas    |
| Color Television, Mrs. W. E. Welch, Grand Falls, Texas      | Sore Wash, Hobbs, N.M.                                     |
| Color Television, Mrs. Harold Robertson, Littlefield, Texas | Mrs. A. J. Brandon, Carlsbad, N.M.                         |
| Color Television, Mrs. R. T. Landess, Brendfield, Texas     | Mrs. Marie James, Littlefield, Tex.                        |
|   | Mrs. Howard Masters, Levelland                             |
|   | Karlson Parsons, Pampa, Tex.                               |
|   | Mrs. John S. MacDonald Jr., Albuq.                         |
|   | Mrs. Francis Stone, Amarillo, Tex.                         |
|   | Harold J. Lair, Roswell, N.M.                              |

# RED HOT



WILSON'S MEAT PRODUCTS

CHILI, with Beans, No. 300 Can	35c
CHILI, No. Beans, No. 300 Can	39c
CHILI, No Beans, 24-oz. Can	75c

**COFFEE**  
Chase & Sanborn, Drip or Regular, Includes ??? Off Label

1 LB. CAN ..... **65c**

**Smuckers**  
Preserves, 12-oz. Jar or Jelly, 10-oz. Jar

YOUR CHOICE 3 FOR \$1.00

# MEXICAN Dog Food

<b>DIAMOND PAPER PRODUCTS</b>	
PLATES, Comp. 15-ct.	53c
PLATES, Comp. 32-ct.	89c
PLATES, 16-ct.	29c
PLATES White, 40-ct.	69c
SALAD BOWL, 16-ct.	29c

- 12 BOTTLE CAN COOKIES
- DEL MONTE GREEN
- GLADE ROOM D
- Turnip G
- DEL MONTE JUICE
- BART RANCH PEARS
- ELNA PINTO B
- Cascad
- Comet
- ZEST B
- DASH
- HEAVY ECONO STAND

## CROSSWORD PUZZLE

<b>ACROSS</b>	60 American colonizer	24 Extent
1 Kind of apple	61 Correct	25 Telescope part
5 Summoned	62 X. —	26 Flutter
10 Talk loudly		27 Flattens
14 Unctuous	<b>DOWN</b>	28 Girl's name
15 Fragrance	1 Irish seaport	29 Shockles
16 Hawaiian island	2 Anger	30 European people
17 Kentucky area:	3 Astrigent	31 Syrian tribesman
2 words	4 Tournament	32 Shows sorrow
20 Skirt edge	term	35 Milwaukee specialty
21 French cleric	5 Port	37 Hypocrisy
22 Flat-bottomed boat	6 "The Sheikh of —"	38 Gull-like bird
23 Surflet	7 Be bested	40 Southern city
24 Cut	8 Western German river	41 Fleet animals
26 Dickens' character	9 Patriotic organization: abbr.	43 Polly — ; actress
29 Where Mt. Hekla is	10 South American capital	44 Guileless
32 Relating to birds	11 Animal abode	46 Mortise and —
33 Aged one	12 Nautical greeting	47 Aperture
34 Sphere	13 Container	48 In a little while
36 Peddle	14 2d century Greek physician	49 Harmful thing
37 Cuts close	15 Roman official	50 Caribbean country
38 Genuine	16 Puzzle of Wednesday, March 30, Solved	51 "— a Rose"
39 Windup		52 Literary works
40 Coastal state		53 Splash against
41 German state		54 Pronoun
42 Ancient Italians		55 On the —; fleeing
44 Profession		56 Scull
45 Takes riffin		
46 Mountain pool		
47 Injure		
49 Note —		
50 Bird call		
53 Eastern waters: 3 words		
57 Century plant		
58 City much in news		
59 Clever		

# ROUND STEAK

U.S.D.A. CHOICE OR FARM PAC BLUE RIBBON MATURE BEEF LB.

**BACON**  
HORMEL, BLACK LABEL OR FARM PAC

**69c**  
LB.

- U.S.D.A. Choice or Farm Pac
- Chuck Roast BLUE RIBBON 49c**  
LB.
- U.S.D.A. Choice or Farm Pac Blue Ribbon SIRLOIN STEAK, Full Top Cut, Lb. .... 89c
- U.S.D.A. Choice or Farm Pac Blue Ribbon CLUB STEAK, Lb. .... 89c
- U.S.D.A. Choice or Farm Pac Blue Ribbon RUMP ROAST, Lb. .... 79c
- U.S.D.A. Choice or Farm Pac Blue Ribbon BONELESS CHUCK ROAST, Lb. .... 89c
- Farm Pac, with Icing CINNAMON ROLLS, 9-oz. Can ..... 5/\$1.00
- LEO'S LUNCH MEAT Beef, Ham, Corn Beef ..... 3/\$1.00
- TURKEY, CHICKEN ..... 2/89c



- |   |
|---|
| Maxwell House INSTANT COFFEE, 26c off, 10-oz. .... \$1.39 |
| Hi Vi DOG FOOD, 26-oz. Can ..... 2/35c                    |
| Bowman GRAHAMS, 1-lb. .... 39c                            |

**Furr's SUPER MARKETS**

EXTRA CARE SERVICE

**POTATOES** COLO. RUSSETS 10 LB. BAG **49c**

**CABBAGE** FIRM GREEN HEADS, LB. **5c**

CARROTS CELLO BAG 1-LB. .... 2 FOR 29c





# SAVE IN FURR'S HOT DOLLAR SALE

**COFFEE**  
Chase & Sanborn, Drip or  
Regular, Includes  
??? Off Label

**CORN  
PEAS  
MILK**

DEL MONTE CREAM  
STYLE GOLDEN  
NO. 303  
CAN.....

**5 FOR 1.00**

DEL MONTE SWEET  
NO. 303  
CAN.....

**5 FOR 1.00**

FOOD CLUB  
TALL CAN.....

**8 FOR 1.00**



HUNT'S  
**Tomatoes** No. 300  
CAN..... **5/\$1.00**  
DEL MONTE  
**Catsup** 20-OZ. BOTTLE **4/\$1.00**

**Smuckers**  
Preserves, 12-oz. Jar  
or Jelly, 10-oz. Jar

**3 \$1.00**  
YOUR CHOICE FOR

**AMERICAN DINNERS**

PATIO FRESH  
FROZEN, 15-OZ.  
PKG.....

**3 FOR 1.00**

**Food**

SCRAPPY  
TALL CAN.....

**14 FOR 1.00 | Flour**

GOLD  
MEDAL..... 25 LBS.

**12 BOTTLE CARTON  
COKE OR DR. PEPPER PLUS DEPOSIT..... 59c**  
DEL MONTE  
**GREEN BEANS** CUT, NO. 303 CAN ..... **4/\$1.00**  
GLADE  
**ROOM DEDORANT** 7-OZ. CAN ..... **49c**  
**Turnip Greens** and Turnips, Tender,  
Sweet, No. 303 Can ..... **8/\$1.00**  
DEL MONTE  
**JUICE** PINEAPPLE-GRAPEFRUIT, 46-OZ. CAN .. **3/\$1.00**  
BART RANCH  
**PEARS** SYRUP PACKED, NO. 2 1/2 CAN ..... **3/\$1.00**  
ELNA  
**PINTO BEANS** NO. 300 CAN ..... **10/\$1.00**

**EGGS  
Dash**

FARM PAC, U.S.D.A.  
GRADED A, LARGE  
DOZEN.....

**49c**

HOME LAUNDRY  
20-LB.  
60c OFF LABEL.....

**3 69**

**Milk Output  
Dropoff Poses  
U.S. Dilemma**

WASHINGTON (AP) — Declining national milk production has put the Johnson administration in an economic and political bind in its efforts to stabilize food prices and encourage ample food production. The administration must make decisions soon on milk prices that could either bring higher retail prices of milk and dairy products or result in a possibly severe milk shortage later in the year.

**WEIGHS ISSUE**  
Both the White House and Secretary of Agriculture Orville Freeman have been weighing the pros and cons of price decisions and possible repercussions on the administration's efforts to stave off inflation and on the outcome of next fall's elections.

A decline in milk production began early last year and has continued ever since. As a result, the nation no longer is confronted by a dairy surplus. Freeman must announce by Friday a level at which the government will support producer prices of milk used for making manufactured dairy products, such as butter, cheese and non-fat dry milk. At present the support rate, at \$3.24 per 100 pounds, is the minimum allowed by law.

**INCREASE DEMANDED**  
Demands have come from dairy organizations and lawmakers of that major dairy states that this support be increased to as much as \$4. Dairy leaders attribute the downturn in milk production to desertion of dairymen by farmers tired of low returns, a shortage of dairy cows, inability of farmers to get efficient labor and shifting of some dairymen to more profitable hog and beef cattle production. Freeman also says any substantial increase in milk supports could be expected to bring somewhat higher retail dairy prices at a time the administration is striving mightily to keep food costs from rising further. Higher food prices, they say, could trigger new wage demands by organized labor.

If the supports are not increased enough to encourage a pickup in milk production, however, the administration would run the gamble of having to take responsibility for a milk shortage should one develop. Either higher food prices or a milk shortage would provide Republicans fodder for the coming congressional campaigns.

**Houses In South  
Dallas Held Unfit**

DALLAS (AP) — A city official says nearly 600 housing units in the southern part of Dallas are unfit for human habitation and must either be demolished or brought up to city standards. William McClintock, who made the report, also said city building code violations have been found in 7,000 instances since a cleanup drive began in December.

## STATE COURTS

AUSTIN (AP) — Texas Supreme Court proceedings:  
Orders:  
Trial court and civil appeals reversed, remanded to trial court:  
Texas Employers' Insurance Association vs. Charles Robert Dossay, Andrews, Civil appeals reversed, remanded to trial court:  
Hendricks vs. Alton B. Curry, Denton  
Civil appeals reversed, cause remanded and docket of that court for appeal on merits:  
North East Independent School District vs. Guy Aldridge, Bezer.  
Applications:  
Will of error granted:  
Travis County Water Control & Improvement District No. 12 vs. John Lee McMillan, Travis.  
Hank Avery vs. Mitchell County, Mississippi. Will of error refused, no reversal error.  
Richter's Bakery, Inc. vs. O. L. Verdine, St. Comanche.  
T. Schneider vs. DeWald Center, Inc., Tarrant.  
M. A. Ford vs. Aetna Insurance Co., Houston.  
F. W. Curry vs. Elia May Ingram, Throckmorton.  
Lower Neacot River Water Supply District vs. Live Oak County, Live Oak, Libbick.  
Libbick National Bank vs. Ben Harris, Libbick.  
Archie Baker vs. R. E. Morabito, Pecos.  
Livestock Feeder Co. vs. A. W. Fenech, El Paso.  
A. J. Hamilton vs. Leta Kate Butler, Pecos.  
F. C. Gonzalez vs. Roma, Sherrill.  
Carl D. State vs. G. H. Ruffin, Pecos.  
Jones Development Corp. vs. Team, Dallas.  
American Radiator & Supply Corp., Industrial Division vs. Lewis C. Krasick, individually and also Vanguard Construction Co., Tarrant.  
York Line, Inc. vs. Harvey Bentley, Wichita.  
Barnard vs. Lawrence Vaccaro, Fort Bend.  
J. W. Marshall and Marshall Pipe & Supply Co. vs. M. O. Rife, Jr., City, Roy George Gibson vs. R. O. Bill Williams Insurance Agency, Jefferson, Insurance Co. of North America vs. Daniel O. Pittner and W. H. Pitter, Caddo.  
Gerard L. Getz vs. Herbert A. Sawyer, Harris.  
Missouri Pacific Railroad Co. vs. Railroad Commission, Travis.  
Red Overlook Country Club vs. R. J. Hollaway, Newton.  
L. E. Bourgeois vs. Janet Towne, Jefferson.  
Jerome Clinton Fraser vs. Joe Wayne Perry, Lubbock.  
Gladis C. Flora vs. Charles B. Scott, Dallas.  
Lampson vs. Don D. Roberts, Lampson.  
Will of error dismissed for want of jurisdiction:  
Archie C. Gonzalez vs. William G. Burns, Bezer.  
William Thomas Stegner vs. Elizabeth Key, Grayson.  
Cecil Ruby Co. vs. Hella Jones, Eastland.  
Sandra Carter vs. Ace Health Health Service, Inc., Harris.  
Will of error dismissed upon joint motion of the parties:  
Alameda Electric Corp. vs. Worth Tool & Die Co., Dallas.  
Motions:  
Rehearing of causes overruled:  
Houston Lighting & Power Co. vs. Tom-Yee Alley & Chandler Corp., Harris.  
Fort Worth Concrete Co. vs. Texas, Tarrant (2).  
Subverting of application for writ of error overruled:  
Perry R. Bess vs. Aransas County Independent School District, Aransas.  
Signature Indorsement Co. vs. W. J. Wilson, Harris.  
United Finance & Thrift Corp. vs. James Bell, Dallas.  
W. L. Cane vs. Lubbock, Lubbock.  
Francis Marie Ella Pfeiffer vs. Harold P. Pfeiffer, Harris.  
Ovid H. Youngblood vs. A. O. Bullock, McLennan.  
John H. Kelsey vs. Perry H. Corbett, Pecos.  
Employers Casualty Co. vs. American Employers Insurance Co., Peller.  
W. B. Greenhouse Co. vs. Pauline C. Zoller, Bezer.  
Margaret Rich vs. Phillip Rich, Harris.  
W. W. Johnson vs. W. W. Johnson, Tarrant.  
Texas Electric Service Co. vs. George Segos III, Tarrant.  
Clayton vs. Cynthia Young, Harris.  
Donald R. Long vs. Jack M. Bess Jr., Harris.  
R. L. Ramey vs. C. G. Richardson, Deaf Smith.  
Chen-Che Engineers, Inc. vs. Texas Asphalt & Refining Co., Harris.  
Houston Chronicle Publishing Co. and the Houston Post Co. vs. Houston Typographical Union No. 67, Harris.  
Mrs. Ben Hula vs. Jesse Solor, Ector.  
Clay Kitchens, Independent executor vs. Francis G. Culberson, Mansfield.  
Francis Cooper vs. Texas Department of Public Safety, Harris.  
Miscellaneous orders:  
City Eugene Rich vs. Owen Giles, district judge motion for leave to file petition for writ of mandamus overruled.  
R. M. Curry vs. Elia May Ingram, Throckmorton, respondents' motion to dismiss application for writ of error overruled.

AUSTIN (AP) — Court of Criminal Appeals:  
Orders:  
Rehearing denied:  
Marvin Foster, Bezer.  
C. D. Sanders, Harris.  
C. L. McCaleb, Lubbock.  
Mike Gonzalez, alias Macedonio Gonzalez, Baytown.  
Six paria Charles Malten Lefors, Dallas.  
Thomas Sullivan Martin, Uvalde.  
Harold Sturford Kelley, Dallas.  
James Lloyd Cain and Melvin Edward Kohnert, Harris.  
Felix Helling Bryant, Estelita Flores, Evelyn Roy Johnson, Lee Post Johnson, Willie Chastain, Jeffice Lee Harris, Claude Ivory James, Olen W. Keatin, Willie Edward Brown, F. J. Hughes and Eusebio Alarcado, Lubbock.  
Troyly Marcella Jones, Lillian A. Strickler, James Monroe Smith and Johnny Bill Moulden, Smith.  
Appellate division:  
Richard Morris, Bezer.  
Charles Malton Lefors, Dallas.  
Harold Dale Henderson, Harris.  
Appellants' motions for rehearing overruled:  
Jimie Ray Gullitory, Montgomery.  
Ben Carolee Crane, Tarrant.  
Charles Benjamin Alzo, Harris.  
Ex parte Charlie A. Fant and Kenneth Dean Jones, Dallas.  
Kenneth Hooley, Evelyn Washburn, Binnie Mae Smith, alias Jimmy Kelly and Arthur Ivy, Lubbock.  
Harold Hermon, Charles Grant Mitchell and Roscoe Ray Smith, Harris.  
Roy Charles Kite, Tarrant.  
Appellant's second motion for rehearing overruled:  
Jackie Washington, Dallas.  
Calvin Sellers, Harris.

GENERAL MERCHANDISE SAVINGS

**CHARCOAL** 49c

Portable BBQ GRILL

NEW!

179

6 99

LUAU 10-LB. BAG

Utility Pail Superior Plastic, 11-Qt., Each ..... 37c

DECANTER 1-Gallon, Plastic ... 49c

Garden Tools Cultivator, Trowel, Transplanter, Ea. 19c

CHAISE LOUNGE

1" Square Mirror  
Finish Aluminum  
Tubing, 6x14 Green  
Webbing, 5 Reclining  
Positions, Each.....

\* BRASS FINISH EGGS  
\* 3 POSITION GRILL  
\* 13" DIAMETER GRILL  
\* EXTRA STURDY

NOW ONLY

**FARM PAC**  
BLUE RIBBON BEEF

**REYNOLD'S ALUMINUM FOIL**

HEAVY DUTY, 25-FT..... 69c  
ECONOMY, 75-FT..... 89c  
STANDARD, 25-FT..... 35c

**49c** FRESH FROZEN FOODS FOR LESS  
**Mexican Food**  
PATIO, FRESH FROZEN  
**5c Beef Tacos** 6 Co't. Pkg. **49c**  
**Cheese Enchiladas** 10-OZ. PKG. **3/\$1.00**

TOP FROST, FRESH FROZEN  
**Baby Limas** 10-oz. Pkg. **5/1.00**  
SIMPLOT, FRESH FROZEN  
**Tater Gems** 2-lb. Pkg. .... **39c**  
TOP FROST, FRESH FROZEN  
**Broccoli** Spears, 10-oz. Pkg. .... **5/1.00**  
CHEF ROY-AR-DEE  
Cheese or Sausage, **PIZZA** YOUR CHOICE .. **59c**

**Furr's**  
EXTRA CARE SERVICE  
SUPER MARKETS



**BUZ SAWYER**

HERE'S FIVE DOLLARS. I WANT TO TALK TO CHRISTY SAWYER.  
THANKS, DOC! HEY CHRIS! SOME TONNIE WANTS TO TALK TO YOU.  
Y-YOU'RE CHRISTY SAWYER?  
THAT'S RIGHT, KIDDO. WADDA YA WANTA TALK ABOUT?  
WELL, YOU SEE, MY WIFE'S NAME IS CHRISTY SAWYER. SHE'S MISSING, AND I TROT HAYSE.  
GET THIS THRU YOUR BONNET, BOBO. HA, HA! I AINT YOUR WIFE!

**GASOLINE ALLEY**

Young & George

**NANCY**

IRMA—CAN I BORROW YOUR DOORMAT?  
SURE  
CAN I BORROW YOUR DOORMAT?  
O.K.  
CAN I BORROW YOUR DOORMAT?  
SURE  
MY RICH UNCLE IS COMING TO VISIT US TODAY  
WELCOME  
WELCOME  
WELCOME  
WELCOME  
WELCOME

**LI'L ABNER**

LOOK AT THESE RATINGS, FLABMAN // 100 PERCENT OF THE TV. AUDIENCE!!  
"FLABMAN AND DOLPHIN" IS AN UNBEATABLE TEAM!!  
SHALL WE SIGN HIM UP FOR LIFE?  
NO—FIRE HIM!!

**BLONDIE**

DARLING, WILL YOU DASH UPSTAIRS AND GET MY SHIRTS FOR ME?  
MY FOOT'S ASLEEP!  
YOU DIDN'T EXPECT ME TO TAKE OFF LIKE A BOLT OF LIGHTNING, DID YOU, DEAR?

**RICK O'SHAY**

IT BEING AN INDIAN TRIBE IS OFFERING A CERTAIN MINERAL TO THE PEOPLE OF CONNIPPION.  
A MINERAL WHICH SUPPOSEDLY REDUCES TOOTH DECAY WHEN APPLIED TO A COMMUNITY'S DRINKING WATER.  
HOWEVER, I SUSPECT A SINISTER MOTIVE BEHIND THIS APPARENT GESTURE OF BROTHERHOOD TO HIM.  
THOSE SCHEMING INDIANS PLAN TO TAKE OVER THE COUNTRY!  
GREAT SCOTT, SURE. THAT'S POSITIVELY UNAMERICAN!

**SNUFFY SMITH**

I'M BITTIN' COLD AS A FROG. JUGHAD—MEND UP TH' FIRE  
THAT AINT NO WOOD IN TH' WOOD BOX  
GO FETCH SOME WOOD AN' FILL UP TH' DADBURN WOOD BOX  
I AINT GOT TIME FER NO CHORES, UNK SNUFFY—I'M LATE FER SCHOOL

**KERRY DRAKE**

CAN HE... BREATHE THROUGH THE GAZE, SICOM?  
PERHAPS... FOR A TIME, ERMINE?... BUT SOON THE COLD DOES ITS WORK! ENH?  
EXCELLENT... NOW WE PUT HIM ACROSS THE HOOD—LIKE A SLAIN DEER—AND DRIVE TO A SECLUDED VALLEY I KNOW OF!  
SO... A GOOD SWING AND WE LET GO TOGETHER! THEN, AGAINST THE WINDS, HE WILL LIE UNSEEN—UNTIL THE SPRING THAW!

**BEETLE BAILEY**

LAST NIGHT I DREAMED WE HAD A FIGHT, SARGE  
BOY, DID I GIVE IT TO YOU!  
YOU BEGGED FOR MERCY, BUT I JUST POURED IT ON! BAM! BAM!  
HO! HO! YOU SURE WERE A MESS!  
THAT LITTLE JERK! TWO CAN PLAY AT THAT GAME!!

**PEANUTS**

THIS IS THE ONE MOMENT OF THE YEAR I CHEER!  
THIS IS THE FIRST TIME I CLIMB UP ON THAT OF PITCHER'S MOUND.  
THIS IS THE MOMENT OF MOMENTS. THE BEGINNING OF A NEW SEASON... THIS IS A MOMENT TO SAVOR THOUGHTFULLY, A MOMENT TO...  
GET UP THERE AND PITCH, YOU BLOCKHEAD!  
IT'S OVER!

**DICK TRACY**

ON THIS SPRING MORNING A LUMBERING BEHEMOTH OF ENGINEERING EMERGES FROM A SPECIAL HANGAR AT DIET SMITH INDUSTRIES.  
A BLOOD-CHILLING SIGHT, IT MOVES WITH SURPRISING AGILITY TO THE STREET.  
ENGINEER O'CONNELL LAID OUT THE ROUTE TO THE DEMONSTRATION AREA, MR. SMITH, SO THERE WILL BE NO DIFFICULTY WITH OVERHEAD WIRES.  
GOOD! I'LL GET DICK TRACY ON THE 2-WAY WRIST TV. I WANT HIM TO SEE THIS SHOW.

**MARY WORTH**

I BEGIN TO WONDER IF I'M NOT JUST A LITTLE PAST THE 40-HOUR-DAY AGE!—I'LL MAKE THIS ONE MORE CALL, THEN HEAD FOR ANNE'S—AND, I HOPE, A VERY HEAVY DINNER!  
I'M MRS. MARY WORTH, THE "HOUSEWOMAN'S HOSTESS"—MAY I SIT DOWN WITH YOU FOR JUST A MOMENT—AND WELCOME YOU TO PLAINSVILLE!  
YOU—MAY COME IN, MRS. WORTH—BUT—AS FOR SITTING DOWN—!

**REX MORGAN**

WHAT'S BUGGING YOU, PROFESSOR? WHY DO YOU WANT TO LEAVE TOWN WHEN WE HAVE MRS. BENNINGTON ALL SET FOR THE BIG TOUCH?  
I DON'T KNOW, GEORGE. I JUST HAVE A FEELING... A PSYCHIC HUNCH THAT WE'RE HEADED FOR TROUBLE!  
WELL, SLEEP ON IT—AND WE'LL TALK IT OVER IN THE MORNING!  
WHAT DO YOU THINK, GEORGE?  
I DON'T KNOW! I'VE NEVER SEEN HIM RUN SCARED BEFORE! SOMETHING HAPPENED THAT HE'S NOT TELLING US... AND I INTEND TO FIND OUT WHAT IT IS!

**TERRY**

I'M AFRAID I'M NOT ALL THAT FOND OF YOUR NIKI, SHOCK.  
PLEASE, TERRY! FOR MY SAKE! LOOK, I'VE EVEN MADE IT EASY FOR YOU.  
YOU'RE INVOLVED WITH PEOPLE AT THE AIRBASE, AREN'T YOU? WELL, NIKI AND I ARE COMING OUT FOR A SIGHTSEEING FLIGHT AROUND THE ISLAND, WE'LL BE ON YOUR DOORSTEP.  
I KNOW YOU CAN'T BE HEARDY ENOUGH NOT TO DROP AROUND FOR A FEW MINUTES TO SAY "HELLO" THERE! YOU ARE A DARLING, TERRY!

**SMITTY**

COURAGE, HERBY! WE'LL SAVE YOU!  
I'VE GOT THE TIGER LOCKED UP IN THE BATH ROOM!  
HE WAS THIRSTY AND HE WENT TO GET A DRINK—  
BUT—BUT HOW DID YOU GET THE DOOR ON HIM?  
OH, YOU KNOW, PA—WHEN THE FRONT DOOR HE OPENED, THE DOOR SLAMMED THE BATH ROOM DOOR SHUT!

**MOON MULLINS**

UNCLE WILLIE'S BUILDIN' A MODEL CLIPPER SHIP IN A BOTTLE!  
ALL THAT REQUIRES GREAT PATIENCE, GREAT DEXTERITY... A MOST DIFFICULT TASK...  
NAW—HE SAYS IT'S ALL A MATTER OF GOING STEP BY STEP.  
I THOUGHT YOU WERE BUILDING A SHIP IN THAT BOTTLE.  
THAT'S STEP TWO...

**JUMBLE** — that scrambled word game

Unscramble these four Jumbles, one letter to each square, to form four ordinary words.

BLAYK  
YUCLJ  
GLOBE  
TINKTE

Now arrange the circled letters to form the surprise answer, as suggested by the above cartoon.

A GOOD (Answers tomorrow)

Yesterday's Jumbles: OCTET HAZEL OBTAIN HANGAR  
Answers: What three martini's before lunch can make—"HIGH" NOON

**GRANDMA**

WELL, I SEE YOU BOUGHT ONE, TOO, GRANDMA!  
E-R-R... WHAT IS IT?  
GOSH, I DON'T KNOW, ROY... BUT, GOLLY, MARKED DOWN HALF PRICE...  
...WHO COULD PASS UP SUCH A BARGAIN?  
YEAH!



## Get in the Swing of Spring

*Spring is here and Easter is just around the corner. The time is right and the fashions are better than ever before, so, let's get together and make this the best Spring season.*

*What better way to sell your Spring merchandise than with the Big Spring Daily Herald. Newspapers reach almost everyone... as an advertiser this is very important, because everyone is a potential buyer... And it's true that your newspaper comes closer to reaching all customers than any other media under the Spring sun.*

*A recent survey showed that 88% of all U.S. families had a newspaper in their home almost daily.*



# BIG SPRING DAILY HERALD



# AGNES' CAKES

BAKED FRESH HOURLY  
 ● MILKY WAY REG. \$1.39  
 ● PECAN SQUARE  
 ● CARROT SINGLE LAYER  
 ● BANANA  
 ● APPLESAUCE EACH  
 ● FUDGE

# 98c

# GROUND BEEF

FRESHLY GROUND

# 3 LBS \$1

**TUNA**  
 STAR KIST CHUNK FLAT CAN ..... **3 CANS \$1**

**AURORA TISSUE**  
 2-ROLL PACK ..... **8 ROLLS \$1**

**BISCUITS**  
 KIMBELL'S, CAN OF 10 ..... **15 FOR \$1**

**PEAS** DEL MONTE SEASON NO. 303 CAN ..... **4 FOR \$1**

**SPANISH RICE** LIBBY 303 CAN ..... **5 FOR \$1**

**CORN** MISSION 303 CAN ..... **5 FOR \$1**

**GREEN BEANS** DEL MONTE 303 ..... **3 FOR \$1**

**Chuck Wagon Beans** Giant 26-oz. Can ..... **4 FOR \$1**

**TOMATOES** 303 CAN ..... **6 for \$1**

**GREEN BEANS** RED DART 303 CAN ..... **7 for \$1**

**Pineapple Grapefruit Drink** .. 4/1  
 DEL MONTE, 29-OUNCE CAN

**APPLE JELLY**  
 KRAFT  
 BIG 18 OZ. JAR .. **3 FOR \$1**

**TOMATO SAUCE**  
 MOUNTAIN PASS 8-OZ. CAN  
**10 for \$1**

**BLACKEYED PEAS** 8 for \$1  
 DIAMOND, WITH BACON, 300 CAN

**CATSUP** HUNT'S PIZZA OR HICKORY BIG 14 OZ. BTL. .... **5 FOR \$1**

**TOMATO SAUCE**  
 DEL MONTE  
 BIG 300 Can ... **5 For \$1**

**FISH STICKS**  
 NORSEA  
**4 PKGS. \$1**

**MEXICAN DINNER** 2 FOR \$1  
 PATIO

**LIBBY FROZEN FOOD**  
 GREEN BEANS, BROCCOLI SPEARS, GREEN LIMAS, CAULIFLOWER, PEACHES, WAX BEANS, OKRA, BLACKEYES ..... **4 10-OZ. PKGS. \$1**  
**MIX 'EM OR MATCH 'EM!**  
 CORN, PEAS, MIXED VEGETABLES, SPINACH, TURNIP GREENS, FRENCH FRIES, SUCCOTASH, CHOPPED BROCCOLI, MUSTARD GREENS, BUTTERS BEANS, CREAM PEAS, SQUASH ..... **5 10-OZ. PKGS. \$1**

**Agnes' Fresh Homemade Cookies** BAKED FRESH HOURLY AT THE KOUNTRY KITCHEN ..... **3 DOZ \$1**

**PEARS** KIMBELL 303 CAN ..... **3 FOR \$1**  
**CORN** KOUNTY KIST, 303 CAN ..... **5 FOR \$1**  
**PEACHES** CAL TOP 2 1/2 CAN ..... **3 FOR \$1**  
**PINEAPPLE** DIAMOND 303, CRUSHED .. **4 FOR \$1**  
**PEAS** MISSION 303 CAN ..... **6 FOR \$1**  
**BEETS** LIBBY'S, 16-OZ. PICKLED ..... **3 FOR \$1**  
**VEG ALL** 303 CAN ..... **5 FOR \$1**  
**CORN** KOUNTY KIST 303 CAN ..... **5 FOR \$1**  
**KRAUT** LIBBY'S 303 CAN ..... **6 FOR \$1**  
**MACARONI** FRANCO 300 CAN ..... **5 FOR \$1**  
**HOMINY** KIMBELL GIANT 2 1/2 CAN ..... **5 FOR \$1**  
**CORN** KIMBELL 303 CAN ..... **5 FOR \$1**

**ROAST** NEWSOM'S PEN FED BEEF CHUCK, BLADE LB. .... **39c**

**ICE CREAM** GANDY'S COUNTRY FRESH BRAND — REAL ICE CREAM COUNTRY FRESH 1/2 GAL. CTN. .... **59c**

**BACON** COTTON BOLL 1 LB. PKG. .... **59c**

**FLOUR** PILLSBURY 5 LB. BAG ..... **39c**

**HUNT'S Tomato JUICE** 300 CAN ..... **8 FOR \$1**

SMALL FAMILY? SMALL FREEZER?  
 NEWSOM'S PEN FED — PROPERLY AGED  
**SPLIT SIDE BEEF** LB. **55c**  
 COST? APPROXIMATELY \$60

CONTAINS APPROXIMATELY  
 ● 7 Round Steaks ● 1 Rump Roast  
 ● 4 Sirloins ● 1 Pk's Peak Roast  
 ● 7 T-Bones ● 1 English Roast  
 ● 4 Sirloin Tips ● 18 Pounds  
 ● 7 Club Steaks ● Short Ribs  
 ● 6 Chuck Roasts ● Ground Meat  
 ● 2 Arm Roasts ● Stew, Chili Meat

**FREE!**  
**10 Lbs. Fryers**  
 WITH EACH SPLIT SIDE AND—THIS WEEK— UP TO 6 MONTHS TO PAY

**CORN** KOUNTY KIST 12-OUNCE CAN ..... **5 for \$1**

**Peaches** PENTHOUSE GIANT 2 1/2 CAN ..... **4 FOR \$1**

**WELCHADE** QUART CAN ..... **3 FOR \$1**

**PLUMS** TEMPTING PURPLE GIANT 2 1/2 CAN ..... **3 FOR \$1**

**PINTOS** NEW CROP BULK LB. .... **10c**

**FOIL** KAISER 25 FT. ROLL ..... **3 FOR \$1**

**SUGAR** IMPERIAL 5-LB. BAG ..... **49c**

**PORK AND BEANS** KIMBELL—GIANT 2 1/2 CAN ..... **4 CANS \$1**

**POTATOES** KIMBELL—2 1/2 CAN, SHOESTRING ..... **10 FOR \$1**

**SPAGHETTI** DIAMOND 300 CAN .. **8/1**

**FRUITS**  
**Cherries** Kim 303 ..... **4 FOR \$1**  
**Peaches** Hunt's 300 Can ... **5 FOR \$1**  
**Peaches** Early Garden 2 1/2 Can ... **3 FOR \$1**  
**Apricots** Hunt's 300 Can ... **3 FOR \$1**  
**Apples** Kim No. 2 Can ..... **4 FOR \$1**  
**Pears** Hunt's 300 ..... **3 FOR \$1**  
**Peaches** Del Monte, 303 . **4 FOR \$1**

**SPAGHETTI** FRANCO AMERICAN GIANT 1 1/4-OUNCE CAN ..... **5 for \$1**

**PORK & BEANS** VAN CAMP BIG NO. 2 CAN ... **5 FOR \$1**

**PICKLES** PECAN VALLEY FULL QUART. .... **3 FOR \$1**

**DEL MONTE TOMATO JUICE** GIANT 46 Oz. Can ..... **3 FOR \$1**

**FLINGS** NEW BY NABISCO, BOX. .... **39c**

**PEAT MOSS** MICHIGAN 50 LB. BAG ..... **89c**

**Blackeyes** Kimbell 300 Can .. **6 FOR \$1**

**Okra** Kimbell 303, Cut ..... **5 FOR \$1**

**Potatoes** Hunt's 300 Can ... **6 FOR \$1**

**Spinach** Hunt's 300 Can ... **6 FOR \$1**

**Hominy** Kimbell 300 Can ... **10 FOR \$1**

**Tomatoes** Diamond No. 1 Can ..... **8 For \$1**

**Yams** Diamond 300 Can ..... **5 FOR \$1**

**DOG FOOD**  
**Red Heart** 1-Lb. Can . **6 FOR \$1**  
**Friskies** Giant 26-Oz. .... **4 FOR \$1**  
**Friskies** 1-Lb. Can ..... **7 FOR \$1**  
**Pard** 1-Lb. Can ..... **6 FOR \$1**  
**Hi Vi** Giant 26-Oz. Can ..... **6 FOR \$1**  
**Red Heart** Giant 26-oz. Can ..... **4 FOR \$1**  
**Kim** 1-Lb. CAN ..... **12 FOR \$1**

**RED SOCKEYE SALMON** LIBBY'S 1-Lb. Can .. **\$1**

**PEAS** DEL MONTE 303 CAN ..... **4 FOR \$1**

**Green Beans** 4 For \$1  
 Del Monte Italian—303 Can

**Green Beans** 4 For \$1  
 Del Monte—303 Cut

**HI-C** ..... 3 for \$1  
 GIANT 46-OZ. CAN

# POTATOES

U.S. NO. 1 RUSSET 10-LB. PLIO BAG ..... **39c**

# NEWSOMS

**GRAPEFRUIT JUICE** TEXSUN GIANT 46 OZ. CAN ..... **3 FOR \$1**