

EIGHT
 doctor's pre-
 ced Odrinax,
 your money
 of and easily
 for and five
 and is sold on
 filed for any
 hope to your
 money back,
 is sold with
 ACY
 123 Main
 R
 SERVICE
 VICE
 y
 M 3-2005
 ewcomer
 a field
 ounts for
 tion.
 DEFENS
 ROVED
 T SHELTER
 \$5.00 up
 Under 18
 Shop
 in
 tioned
 RINK
 land
 in Street
 2-6431
 4644
 's
 ARGE
 ated
 le
 is
 al
 of
 to
 ur
 he
 of
 ge
 ry
 al
 m.
 be
 S
 ns
 25



Two Former Wives Of Eddie Fisher Sail

Elizabeth Taylor, left photo, and Debbie Reynolds, right picture, are pictured in New York as they sailed on the liner Queen Elizabeth for Cherbourg, France. The two former wives of singer Eddie Fisher are accompanied by their current husbands, Richard Burton, left, and Harry Karl, right. They had been staying at the same New York hotel where they also faced the possibility of a chance meeting. (AP WIREPHOTO)

Enrollments At Record In Colleges

By The Associated Press
 The World War II baby crop is pouring onto the campus and Texas colleges and universities are jammed this fall with an estimated quarter of a million students.
 Never before have so many sought degrees in the state.
 The University of Texas, the largest school in the South, again leads in enrollments with 23,500.
 In second place is the University of Houston with 18,000, followed by Texas Tech with almost 14,000. Other institutions with more than 10,000 students are North Texas State University, 11,813, and Arlington State College, 11,500.

OTHER COLLEGES
 Besides Texas and Texas Tech, other Southwest Conference figures are:
 Arkansas, 9,000; Texas A&M, 8,300; Southern Methodist (counting downtown), 7,700; Texas Christian, 6,855; Baylor, 6,000; and Rice, 2,289. Rice has a sharply limited enrollment.

The Texas Commission on Higher Education says the percentage of college-age people going to school will continue to grow. The TCHE estimates that by 1972, the Texas collegiate population will soar to 365,000, an increase of more than 100,000 on the campus over this year.

Junior colleges also are being swamped. Examples are Kilgore Junior College, with 1,505 this fall compared with 1,232 a year ago; Temple JC, 987 and 750; and Amarillo College, 2,280 and 2,106.

Other TCHE estimates for state-supported schools are:
 Lamar Tech, 7,802; Texas Western, 6,735; Sam Houston, 5,650; East Texas, 5,340; West Texas, 4,500; Texas Southern, 4,500; Southwest Texas, 4,460; Stephen F. Austin, 4,200; Texas A&I, 4,200; Texas Woman's College, 3,407; Prairie View, 3,256; Midwestern, 2,807; Tarleton, 1,528; and Sul Ross, 1,418.

WILL ADD 2
 Two schools are to be brought into the state-supported senior college system next year. They are Pan American, 2,374, and Angelo State, 1,845.

Other private college estimates include South Texas College, 3,000; San Jacinto, 2,200; Texas Wesleyan, 1,529; and Texas Southmost, 768.

Texas Governor Hits At 2 Issues

PHOENIX, Ariz. (AP)—Texas Gov. John Connally hit at two presidential campaign issues Wednesday.
 The Texas Democrat, a one-time secretary of the Navy and longtime friend of Lyndon Johnson, spoke at a \$50-a-plate testimonial dinner for Sen. Carl Hayden, D-Ariz., attended by about 600.
 Connally hammered at delegation of authority for use of nuclear weapons and lawlessness in the streets.

"NOT SMALL"
 "When we hear statements concerning small, conventional nuclear weapons, let us remember that they are neither small nor conventional," he said.

"The smallest of these weapons is 10 times more powerful than the largest conventional bomb used in World War II. The smallest strategic atomic bomb is larger than those which devastated Hiroshima and Nagasaki."

Shortly after being nominated, Republican presidential candidate Goldwater said something

must be done to reinstate the nation's respect for law. He suggested that one way a president might do this is in careful selection of federal judges.

Connally agreed that lawlessness is a problem.
 "We know, as you know, the horror of crime on our streets," he said. "But we know also that the enforcement of criminal law is the function of our state and local governments."

WATER BATTLE
 "It is not now, nor has it ever been, the function of the federal government."

Connally said this problem can be met best by building and supporting stronger state and local law enforcement and by assuring a program of better education throughout the nation.

Hayden, who turned 87 last week, predicted Arizona's long

battle with California over Colorado River water would soon end.
 "A way has been found where Arizona and California are now ready to join forces to bring about enactment of a Lower Colorado River Basin plan which includes a Central Arizona project," he said.

OVERWEIGHT?
 Lose Pounds - Gain Pep
 TRIMDEX WITH VITALON
 Easy To Take Tablets
 MORTY DENTON PHARMACY, 608 Gregg Street - WALKER'S PHARMACY, 123 Main

AUTHORIZED

SALES
SERVICE
PARTS
 Nixon & Madewell
 Motor Co.
 911 W. 4th AM 3-4936

Johnson Signs Foreign Aid Bill

WASHINGTON (AP)—President Johnson signed the \$3.25-billion foreign aid appropriations bill Wednesday before leaving on his Midwestern campaign trip. Congress had authorized \$3.5 billion, but trimmed the program in the appropriations bill.
 Johnson also signed a bill appropriating \$1.1 billion for a variety of programs, including his "war on poverty," civil rights legislation, food stamp programs and mass transportation.

Young Mom In East Texas Charged With Baby's Death

LONGVIEW (AP)—Diminutive Martha Crowder, 25, was under police guard today in a Longview hospital, charged with murder in the death of a 22-month-old son.
 "Oh, my God, my God, my baby!" the 5-foot-2, 100-pound blonde screamed Wednesday when she saw the body of Ricky Dale Crowder, whom she had reported missing Sunday night.

Rex Crowder Jr. who will be 5 years old in less than two weeks, led his mother, Police Lt. Earl Claxton, and an uncle, where the body of his brother lay.
 Dr. E. L. Jones, Gregg County medical officer, said the baby died 12 to 15 hours earlier. Exposure was believed the cause of death.

The father of the boys, Airman L.C. Rex Crowder, was expected here shortly. He obtained emergency leave from Clark Field in the Philippines when his wife reported their youngest child missing.

Tears dimmed Mrs. Crowder's blue eyes as she told police Sunday night that Ricky Dale disappeared from her parked car while she shopped for thread and stationery.

GETS HYSTERICAL
 Claxton said Mrs. Crowder went into shock and became hysterical after the body was found. He carried her to his patrol car when she fainted and radioed for help. A doctor administered a sedative and moved her to a hospital.

Police said she had not been able to make a statement.
 During a search for the missing boy, in which Texas Rangers, the Federal Bureau of Investigation and state and county officers took part, Mrs. Crowder said she would not press charges if persons who took her son would return him unharmed.

Claxton went to the home of Mrs. Crowder's mother Wednesday after police were told Rex Jr. would not eat breakfast or go to kindergarten.

Mrs. Crowder told Claxton the

distraught child kept saying, "I can hear Bubba crying... I can hear Bubba hollering... I think I know where he is."
 The officer took the mother, her brother and the 5-year-old on a search.

TELLS OF "VISION"
 At each area they visited, Rex Jr. would say: "This is not the one... The place where Ricky is crying is on a hill, on a long, curving road, and there are some red stop signs on it."

Claxton said he had difficulty understanding the boy, adding that Mrs. Crowder often prompted the child and explained what he was saying. The detective said she spoke of Rex Jr. having a "vision."

Several times, Claxton said, the boy directed him to vacant lots, but Mrs. Crowder reminded her son about the curving road and red stop signs.

When they finally reached the right spot, Claxton said Mrs. Crowder walked almost directly to the body.

Claxton filed a murder complaint less than an hour after the grim discovery, charging Mrs. Crowder threw Ricky from an embankment.

"It's all a jigsaw puzzle and you can't fit it together," Claxton said.
 The body was found a few miles north of this East Texas city. It was about 30 or 40 feet off Loop 218, a recently constructed highway.

Volcano Perils Costa Rica City

SAN JOSE, Costa Rica (AP)—Jorge Manuel Dengo, Costa Rica's "volcano minister," told the Legislative Assembly Wednesday night avalanches from Irazu volcano may force evacuation of the entire population of Cartago, a town of 20,000.

Irazu has been in almost constant eruption for months. Dengo was appointed to the cabinet to direct relief measures.

Red China 'Won't Scare U.S. Navy'

CANBERRA, Australia (AP)—The commander of U.S. forces in the Pacific said today any explosion of a nuclear device by Communist China is not likely to result in a change in deployment of his forces.

"Explosion of a nuclear device by Red China probably would be more of a political development than military," Adm. Ullyses S. Grant sharp told a news conference.

CASH ON THE BARRELHEAD

from SEABOARD!

Tell us how much you need and when you need it! You may arrange for cash on the barrelhead to pay past-due bills, to buy new clothes or appliances, to pay off installment purchases.
 No matter why or how much you borrow, we fit the payments to your budget. Call or visit your nearby Seaboard office for cash on the barrelhead now!

SEABOARD FINANCE COMPANY
 A lifesaver when you need cash

208 Gregg Street, Big Spring
 Phone AM 4-5247

CROSSWORD PUZZLE

ACROSS	71 Psychological term; plural	30 Thick-skinned beast
1 Rocky peak	72 Support	31 Philippine island
5 Tibetan monks	73 Heredity factors	32 Get away from
10 Cut	74 Record	33 Countryman
14 Vagrant		34 Thrill; slang
15 Western Indian	DOWN	37 Street surfer
16 Protagonist	1 Fellow	40 Prefix; half
17 Legate	2 European capital	42 Jacob's son
19 Russian ruler	3 Church title	45 Son of Adam
20 American painter	4 Hockey player	47 Used tire
21 Girl's name	5 — Angeles	50 Porpoise; 2 words
23 Conjunction	6 "Not —"	52 Uttered reproaches
24 Tourist mecca	7 Fabricated	54 Fashion
27 Long	8 Suffering	56 Box
29 Believes	9 World —	57 Relax
32 Striker	10 Greek letter	59 Eminent Englishman
35 Exclamation of disgust	11 Mediterranean peoples	61 "The Gift of the —"
36 Fight	12 Asian country	62 Biblical oldest
38 French soldier	13 Body of water	63 Furniture item
39 Honeybee genus	18 Dispatches	65 Talent
41 — Ataturk	22 Molot	67 Girl's name
43 Blunt	25 — of time	68 Wicket sides, in cricket
44 Roman calendar time	26 Scatter	
46 Hesitate	28 Spanish idiom	
48 Nigerian town	29 Barnyard fowl	
49 Dwarfs		
51 Setback		
53 Quotes		
55 Costa —		
56 Bishopric		
58 Abhor		
60 Directed		
64 Brazilian state		
65 Flying machine		
69 Ancient Hebrew instrument		
70 City near Buffalo		

Reds Admit Laos Setback

TOKYO (AP)—The pro-Communist Pathet Lao sent a protest to the International Control Commission today confirming reports that right-wing forces have won back important positions in Laos.
 Phoumi Vongvichit, former Pathet Lao minister in the coalition government, complained that the rightists have seized areas in the southern and eastern parts of Xieng Khouang Province and mounted repeated attacks on Mt. Phou Kouat, southwest of the Plaine des Jarres.
 Vongvichit said the positions had been under the control of the Pathet Lao and the neutralists who came over to their side after the Reds took over all of the Plaine des Jarres last May.

Coin Clubbers Meet Thursday

Big Spring Coin Club members will meet today at 7:30 p.m. in the Elks Club rooms at the old Crawford Hotel building. This, according to Dan Kester, president, is a most important meeting — the club's third annual coin show will be held Saturday and Sunday and plans and work assignments will have to be put in final form Thursday night.
 Another feature is the unusual array of door prizes which have been assembled for this meeting.
 First prize will be a set of presidential medals complete from Washington to Johnson. A second prize will be a set of silver nickels. Third door prize to be awarded will be a mint set of Canadian coins.

Savings Deposited by the

10th

Earn Dividends from the

1st

at

BIG SPRING SAVINGS

419 Main

Current dividend on savings continues at 4 1/2 per cent per annum, compounded each six months. And all accounts to \$10,000 insured by a federal agency. Join the thrift parade today — at Big Spring Savings Association!

Sprightly, beautiful Buick '65. Just for you. And just right for 8 out of 10 new-car budgets.

Wouldn't you really rather go first class

SEE YOUR LOCAL AUTHORIZED BUICK DEALER. AUTHORIZED BUICK DEALER IN THIS AREA:

McEWEN MOTOR CO., 403 S. Scurry Street



DISCOUNT CENTER

"WHERE YOU BUY THE BEST FOR LESS"

AM 4-2586 2303 GREGG
OPEN 9 TO 9 FREE PARKING

USE OUR LAYAWAY

TOY Layaway How

HORSEMAN'S — NO. 3149

Peggy Ann

COMPLETE WARDROBE

Reg. 5.59

Layaway Special **4.49**

BARBIE FASHION QUEEN

FASHION QUEEN™ BARBIE
By Mattel

She's 11 3/4" tall, of sturdy plastic with movable arms, legs and head. Comes with a new sculptured head and 3 high-fashion wigs in gorgeous colors and different styles — All of the Barbie clothes fit her, too.

Reg. 4.79 LAYAWAY SPECIAL **3.97**

LAYAWAY TODAY FOR CHRISTMAS

MR. FREEZY ICE CONE MACHINE

INCLUDES:
● 12 DELICIOUS FLAVORIZERS
● SUPPLY OF CUPS AND SCOOP

Reg. 2.99 GIBSON'S SPECIAL **2.49**

66 SHOPPING DAYS TILL CHRISTMAS

TV'S MR. ED

● Talking Hand Puppet
● Says Many Different Things

Reg. 4.99

GIBSON'S SPECIAL **4.49**

WOLVERINE No. 521 SINK

With Accessories
● All Metal
● Plastic Acc.
● Real Play Value

Reg. 2.79

GIBSON'S SUPER SPECIAL **1.99**

Wolverine No. 511 Refrigerator

WITH ACCESSORIES
● All Metal
● Plastic Acc.
● Real Play Value

Reg. 2.79

GIBSON'S LAYAWAY SPECIAL **1.99**

ELDON'S REPEATING PUMP GUN

● SHOTS AS FAST AS YOU CAN PUMP
● HARMLESS FOR THE YOUNG SOLDIER
● AIR POWERED

Reg. 3.19 LAYAWAY SPECIAL **2.67**

MILTON BRADLEY BINGO

● FUN FOR ALL
● EMBOSSED CALLING NUMBERS
● PLENTY OF MATERIAL FOR LARGE GROUP

Reg. 1.00 GIBSON'S PRICE **79¢**

GARTON NO. 5000 PEDAL CAR

● IN THE CARTON

Reg. 11.88 LAYAWAY SPECIAL **10.47**

NO. 914 STRUCTO FARM SET

● STAKE TRUCK AND TRAILER
● JEEP AND HORSE TRAILER
● PLASTIC ANIMALS

Reg. 7.99 GIBSON'S LAYAWAY SPECIAL **6.88**

66 SHOPPING DAYS TILL CHRISTMAS

ETCH-A-SKETCH

● UNLIMITED DESIGN POSSIBILITIES
● SKETCH, ERASE & SKETCH AGAIN
● FUN FOR EVERYONE

Reg. 2.88 GIBSON'S LAYAWAY SPECIAL **2.47**

LAYAWAY FOR CHRISTMAS

LAY AWAY FOR CHRISTMAS

GUERRILLA GUN BY MATTEL

Reg. 2.97 GIBSON'S SUPER SPECIAL **2.19**

66 SHOPPING DAYS 'TIL CHRISTMAS

BARBIE'S KEYS TO FAME GAME

Reg. 1.98 For Children 8 To 14
2 To 6 Players
GIBSON'S LAYAWAY SPECIAL **1.47**

No. EF405 ELECTRONIC SUPER FLASH AIRPLANE

● Bat. Operated
● Push Button Control

Reg. 2.39

Gibson's Layaway Special **1.99**

EASY CHRISTMAS SHOPPING LAYAWAY

Wolverine No. 501 STOVE

WITH ACCESSORIES
● All Metal
● Plastic Acc.

Reg. 2.79

Gibson's Layaway Special **1.99**

SALE

MATTEL'S V-RROOM

REAL MOTOR ROAR

DUMP TRUCK

Reg. 12.95 Value **9.77**

V-RROOM SHIPLOADER

Reg. 12.95 Value **9.77**

SHOP EARLY FOR ALL-NEW TOYS

No. 972 — MISS PRINCESS

TEA SET

Service For 4
Reg. 2.47 SPECIAL **1.00**

SELCHOW & RICHTER SCRABBLE

● REAL FUN FOR ALL

GIBSON'S SUPER SPECIAL **2.77**

<p>Globe No. 36</p> <p>ROLLER SKATES</p> <p>● Adjustable ● Ages 5 - 12 ● Ball Bearings ● Rubber Cushion</p> <p>GIBSON'S LAYAWAY SPECIAL 2.99</p>	<p>Globe No. 42</p> <p>ROLLER SKATES</p> <p>● Adjustable ● Ball Bearing ● Hvy Duty Chassis ● Top Quality Straps</p> <p>GIBSON'S LAYAWAY SPECIAL 3.99</p>
--	--

LAYAWAY FOR CHRISTMAS TODAY

A. C. GILBERT — 60 POWER TELESCOPE

● STEEL TRIPOD
● PRODUCES DIRECT IMAGE
● 360° SWIVELS

Retail 12.00 GIBSON'S PRICE **8.99**

SHOP GIBSON'S FOR ALL MODELS AT DISCOUNT PRICES

MISS BARBIE

CARRYING CASE

● TEENAGE FASHION MODEL
● FOR BARBIE FASHION QUEEN

Suggested Price 5.00 GIBSON'S PRICE **3.59**

<p>HUTCH</p> <p>KICK BALL</p> <p>TOUGH LEATHER COVER</p> <p>GIBSON'S SPECIAL 5.98</p>	<p>SPAULDING HELMETS</p> <p>● Formed Plastic ● Face Guard ● Chin Strap ● S-M-L</p> <p>GIBSON'S PRICE 3.57</p>
---	---

SPORTING GOODS

NEW CAMERA DEPT.

KODAK INSTAMATIC

● INSTANT LOAD
● BUILT IN FLASH
● 1 YR. GUARANTEE
● 3 1/2 x 3 1/2 PICTURES

Not Exactly As Shown

19.95 Retail GIBSON'S PRICE **15.44**

KODAK

STARMITE II CAMERA

● USES 127 FILM

13.50 Retail GIBSON'S PRICE **11.47**

KODAK

"BROWNIE" MOVIE CAMERA

FUNSAVER 8mm

17.91 Retail GIBSON'S PRICE **15.22**

66 SHOPPING DAYS TILL CHRISTMAS

EXTRA SPECIAL MODEL 7A CHINON 8mm

MOVIE CAMERA

● 8MM ● ZOOM LENS
● BATTERY OPERATED
● SHUTTER AND DIAL LOCK

OUR REGULAR DISCOUNT PRICE 89.89

JUST A FEW TO SELL AT **77.77**

USE OUR LAYAWAY

WESTINGHOUSE

SUPER 88 MOVIE LIGHT

● NO LIGHT BARS NEEDED
● FITS ANY MOVIE CAMERA

10.98 Retail GIBSON'S SPECIAL **6.97**

NOW AT GIBSON'S

24-HOUR FILM SERVICE

<p>PICKUP</p> <p>GUN RACK</p> <p>● HOLDS TWO GUNS ● ALL METAL</p> <p>GIBSON'S PRICE 2.37</p>	<p>GYM BAGS</p> <p>● Water Resistant ● Heavy Duty</p> <p>Reg. 1.37</p> <p>GIBSON'S SPECIAL 97¢</p>
--	--

SPALDING sets the pace in sports

RONNIE BULL

AUTOGRAPHED FOOTBALL

● OFFICIAL SIZE
● OFFICIAL WEIGHT

Reg. 5.97

GIBSON SPECIAL **\$3.97**

Best of Values

SOFT GOODS

ONE GROUP
MENS

Dress Trousers



PLEATED OR
PLAIN FRONT
ASST. FABRICS
Values to 6.88
Sizes 29-44 Waist

Gibson's Special **2.99**
Pr.

STARCREST ELECT.
BLANKET



DOUBLE BED
DUAL CONTROL

GIBSON'S SPECIAL **9.97**

MENS
LONG SLEEVE

Sport Shirt



80% DACRON
20% COTTON
Calif. Styled By

"Encino" **3.44**
Reg. 3.87

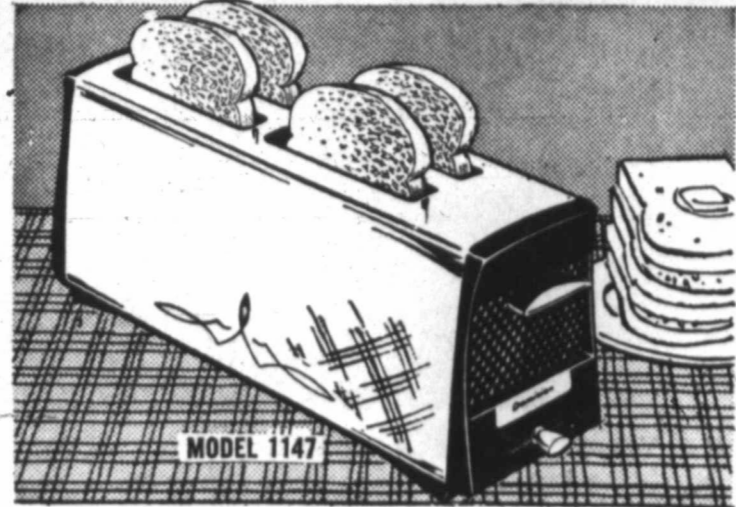
MENS

Dress Shirts

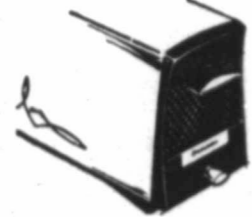
LONG SLEEVE
Size 14-16 1/2
DACRON COTTON
BLEND
Reg. 3.67

2 FOR \$4

APPLIANCES



Dominion Imperial
automatic **4-Slice Toaster**



Styled in chrome with sculptured end panels in rich black and gold

Plenty of hot, fresh toast for the entire family. Beautifully styled to enhance any breakfast table!

- LIFT-O-MATIC action lifts one slice or four precisely to correct height for easy removal
- Fingertip color control selector
- Large crumb trays in base
- Oven-type interior keeps toast warm longer

GIBSON'S DISCOUNT PRICE

14.88

Great gift Idea!



Walk, talk, cook while you dry your hair!

Dominion Imperial
PORTABLE HAIR DRYER

- Beautiful way to dry hair at home!
- Washable vinyl case with beak handle and trim
- Roomy hood fits over largest collars
- Three-position dial switch
- Adjustable over-the-shoulder strap leaves hands free while hair dries!

NO REPAIRS! Get a new one free if defective within 1 yr. As demonstrated on NBC-TV's TODAY and TONIGHT Shows

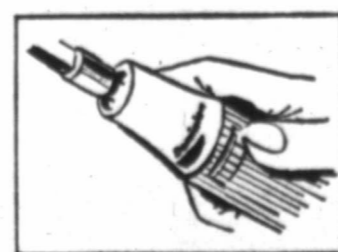
GIBSON'S DISCOUNT PRICE

10.97

New! *Dominion*
PORTABLE ELECTRIC
Toothbrush



Dominion Portable Electric Toothbrush hangs on wall or sits on vanity. Complete with 4 brushes in convenient built-in holder.



Slim, lightweight power handle is comfortable to hold. Brushes snap on and off easily. Cordless, perfectly safe for everyone.

GIBSON'S DISCOUNT PRICE From

10.88

PRESTO ELECTRIC
TOOTH BRUSH

- 4 HEADS FOR THE FAMILY

LAYAWAY SPECIAL

9.97

HOUSEWARES

81-85T

COOKIE PAN SET

HEAVY GAUGE
TIN PLATE
EASY TO CLEAN
FAMILY SIZE
1 - 17 1/4 x 11 1/4"
1 - 15" x 10"

SET OF 2
Reg. 1.49

GIBSON'S SPECIAL **88¢**

ALUMINUM
ROAST PAN

EASY GRIP OUTER
EDGE
HEAVY DUTY
ALUMINUM

HOLDS UP TO 20"
TURKEY
Use For Roasting
or Baking

88¢

LUCITE OUTSIDE
HOUSE PAINT

Reg. 6.97

5.97 Gal.

4 Inch
PAINT
BRUSH

2.69

NO. 1083
TIDY ALL

UTILITY BASKET

with Swing Top Asst. Colors Reg. 1.29



Not Exactly as Shown

GIBSON'S SUPER SPECIAL **55¢**

FOIL RE-USABLE

9" PIE PANS

- Bake - Freeze Reheat & Serve In Same Pan
- Perfect Size For Regular Recipes & Ready Mixed
- 39¢ Retail Gibson Price 29

SPECIAL PRICE **18¢** PKG.

PLASTIC PAIL

- WIRE BAIL
- 12 QT.
- POLYETHYLENE

Reg. 39¢

19¢

30 GALLON
GARBAGE CAN

ATTN. APT. PROJECTS CAFES INSTITUTIONS



Reg. 4.29
Gibson's Untouchable Value **2.69**

10 GALLON
GARBAGE CAN

Reg. 1.99

1.77



The paint that changed America's painting habits—
NEW DUPONT Lucite WALL PAINT

DUPONT DUCO SATINS SHEEN MATCHING ENAMEL

Reg. 7.95

6.95 Gal.

- No mixing or stirring
- Doesn't drip or spatter like ordinary paints
- Dries in minutes
- Clean up with soap and water

Reg. 5.87
Gibson's Untouchable Value **3.99** Gal.

88¢
PAINT ROLLER TRAY **77¢**

OLD SOUTH
ALKYD LATEX PAINT



Reg. 2.99 Gal.

2/5.00

SEMI GLOSS ENAMEL
In Matching Colors



Reg. 4.77 Gal.

GIBSON'S SPECIAL **3.99**

TV ANTENNA KITS

- Easy To Install
- Improves Picture

Reg. 4.47
GIBSON SPECIAL

3.57

- Easy To Install
- Improves Picture

Reg. 5.98
GIBSON SPECIAL

4.87

GROCERIES

HERSHEY'S INSTANT COCOA MIX

2-Lb. Can

65¢

LIPTON INSTANT TEA

4 1/2 OZ. JAR

1.09

SWIFTS CORNED BEEF 12 OZ. CAN
GIBSON'S SUPER SPECIAL

49¢



19-Oz. Can

59¢

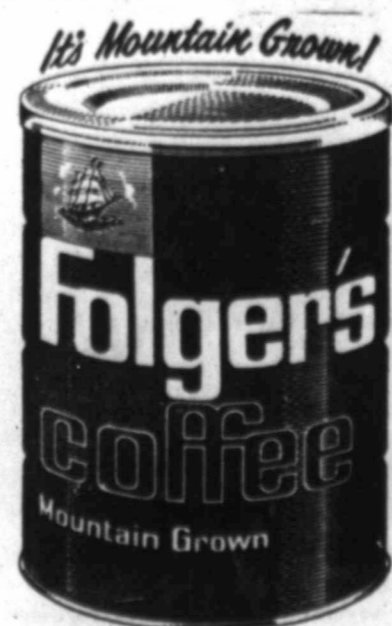
FOLGER'S COFFEE

ALL GRINDS

2-LBS.

1.53

GIBSON SPECIAL



8 1/2 Size Family Size PEPSODENT TOOTHPASTE **47¢**

95¢ Retail LAVORIS Mouthwash **57¢**

89¢ Retail BUFFERIN 60 Tablets **57¢**

1.59 Retail Johnson BABY SHAMPOO **99¢**

1.00 Retail PACQUIN'S MEDICQUE HAND LOTION OR CREAM New From Pacquins GIBSON'S UNTOUCHABLE VALUE **23¢**



THE ASSOCIATED PRESS NEWS IN PICTURES



A LITTLE WONDERLAND — Apparently Elaine Rowe is intrigued by the miniature houses but puzzled by the lack of little people. Scene was taken during visit to the Tudor-style village, complete to the last detail, set up at Ramsgate, Kent, England.



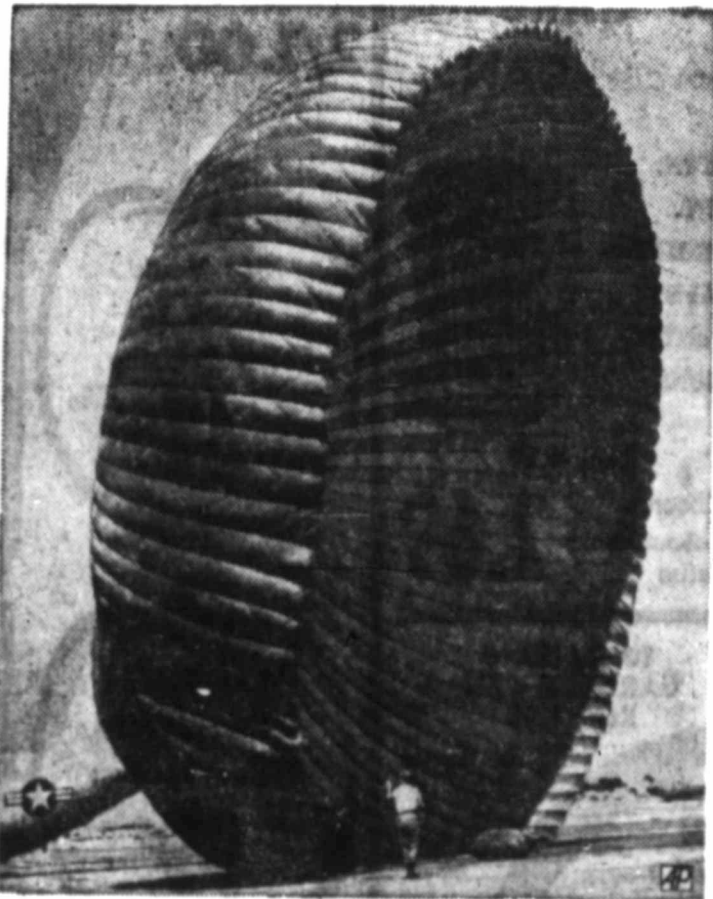
TOKYO PUSH — Veteran Parry O'Brien puts the shot during Olympic trials in Los Angeles. He placed third, earning a berth for the fourth time on a U.S. Olympic team.



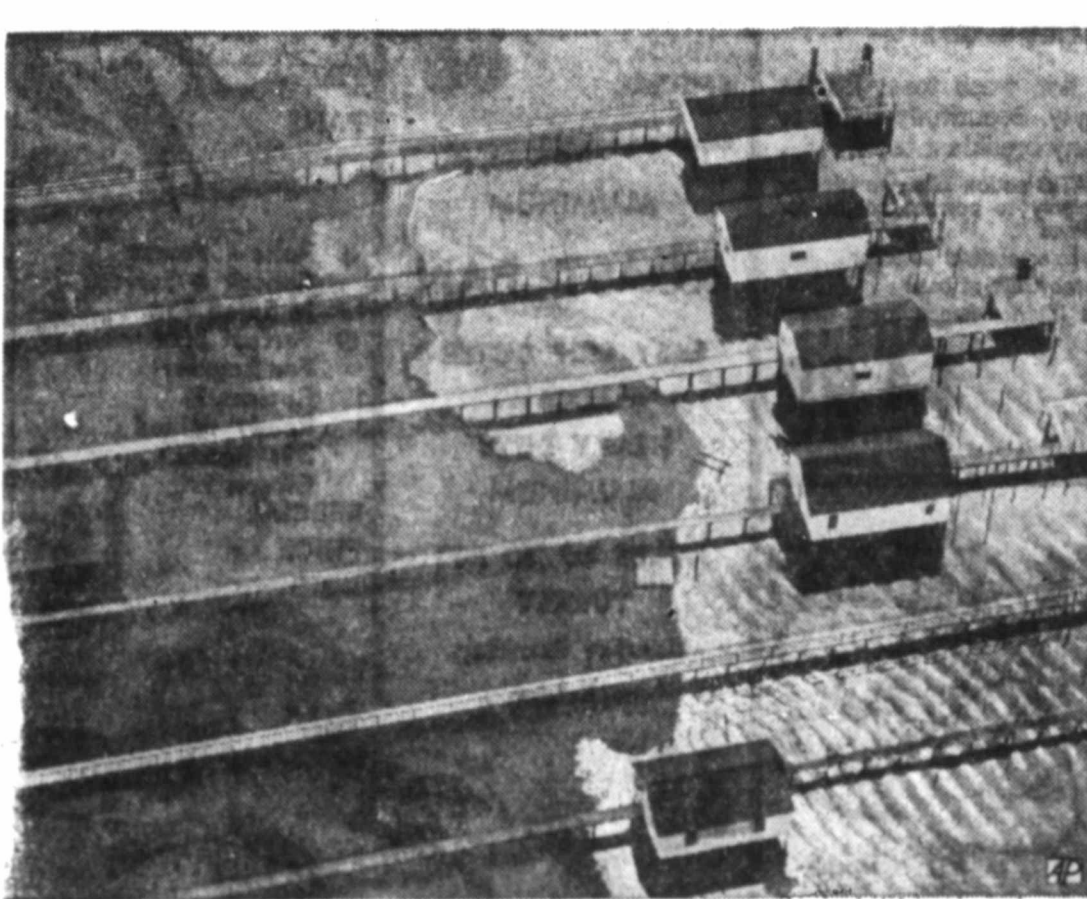
UP TO SEE THE SHOW — Two enterprising fans are perched atop mast of a swordfishing boat, part of the spectator fleet at the America's Cup competition off Newport, R.I. The Constellation defended the trophy against the British challenger Sovereign.



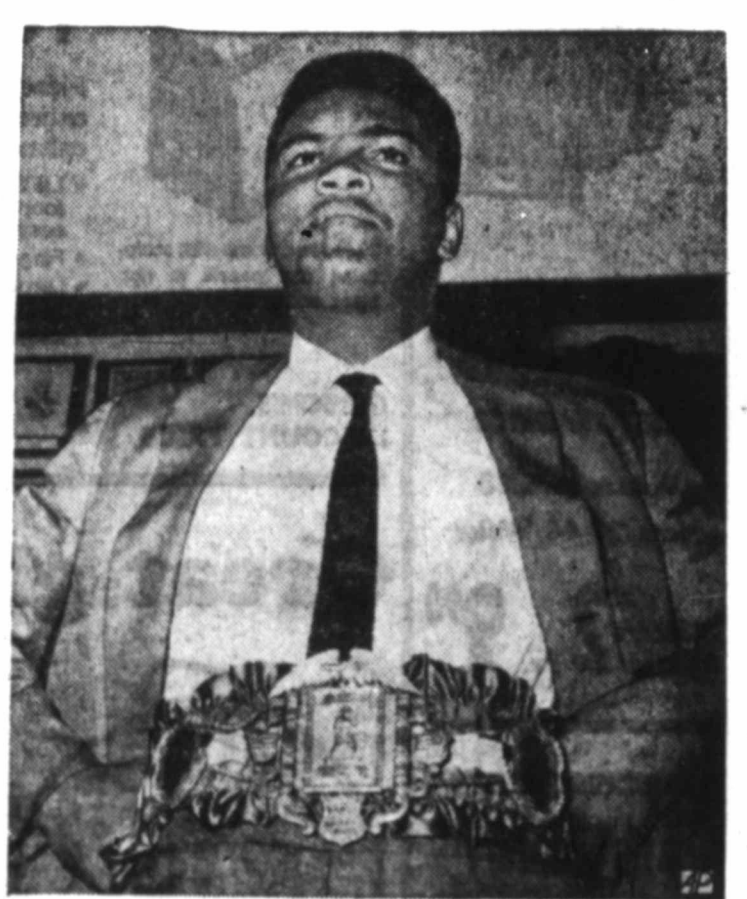
STAR ON SET — Kim Novak smiles during break on location in Kent, England. She plays role of Moll Flanders, the 18th century adventuress created by novelist Daniel Defoe.



JOB'S DONE — A 100-foot parachute is dried before repacking at Eglin AFB, Fla., after U.S. Air Force exercise in which it carried heavy equipment to ground units.



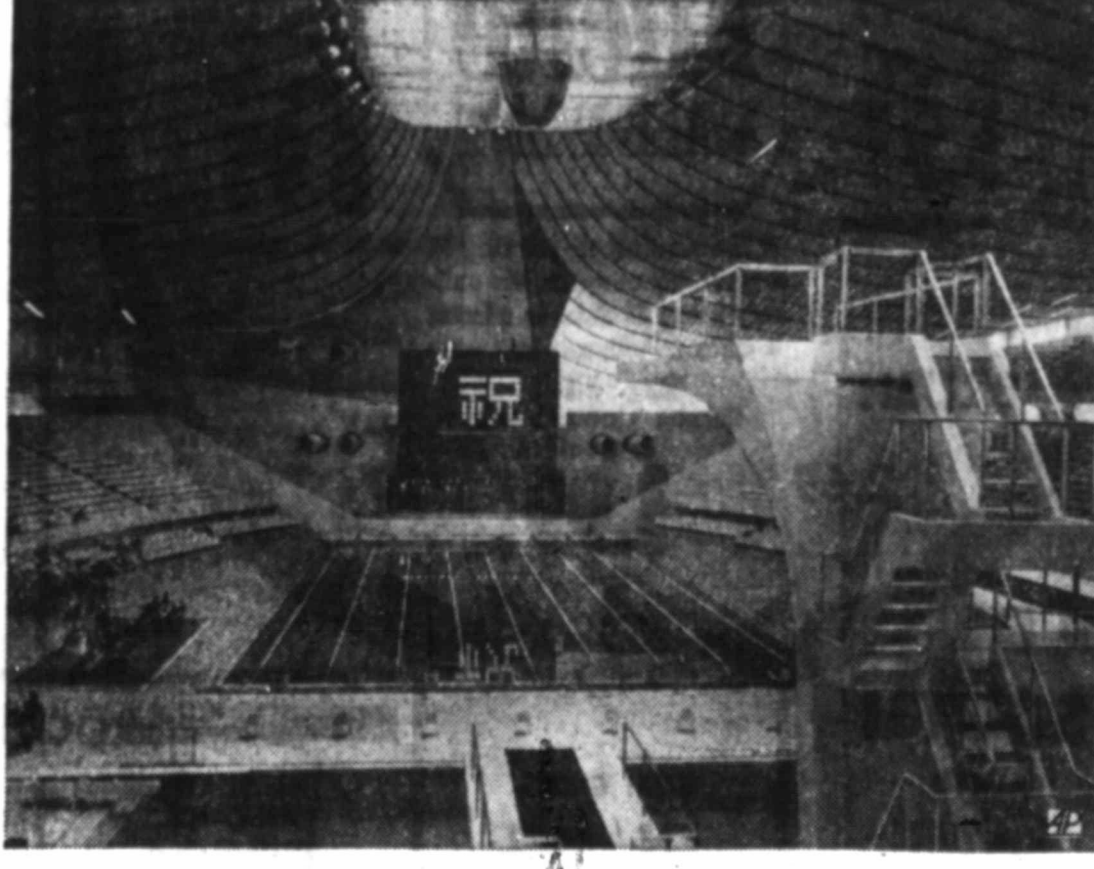
AS LEVEL LESSENS — Here's a graphic illustration of how the water level of the Great Lakes has fallen drastically in recent months. Normally these exposed docks along the St. Clair river west of Algonac, Mich., have lots of water surrounding them.



THE CHAMPION — Cassius Clay displays the 24-carat gold-plated belt presented to him in New York. It symbolizes possession of the world heavyweight boxing title.



PREMIER'S POINT — Sir Alec Douglas-Home gestures during address to outdoor meeting at Chatham, England. The British national election is set for October 15.



FOR WATER SPORTS — This is the interior of the National Gymnasium building in Tokyo with the pools which will be used for the swimming and diving events in forthcoming Olympic Games. The structure is world's largest building with a suspension roof.



CHEW CHECK — Youngster looks up to see how the competition is faring during pie-eating contest at Walters, Minn., celebration. Pause was costly when he was outeaten.



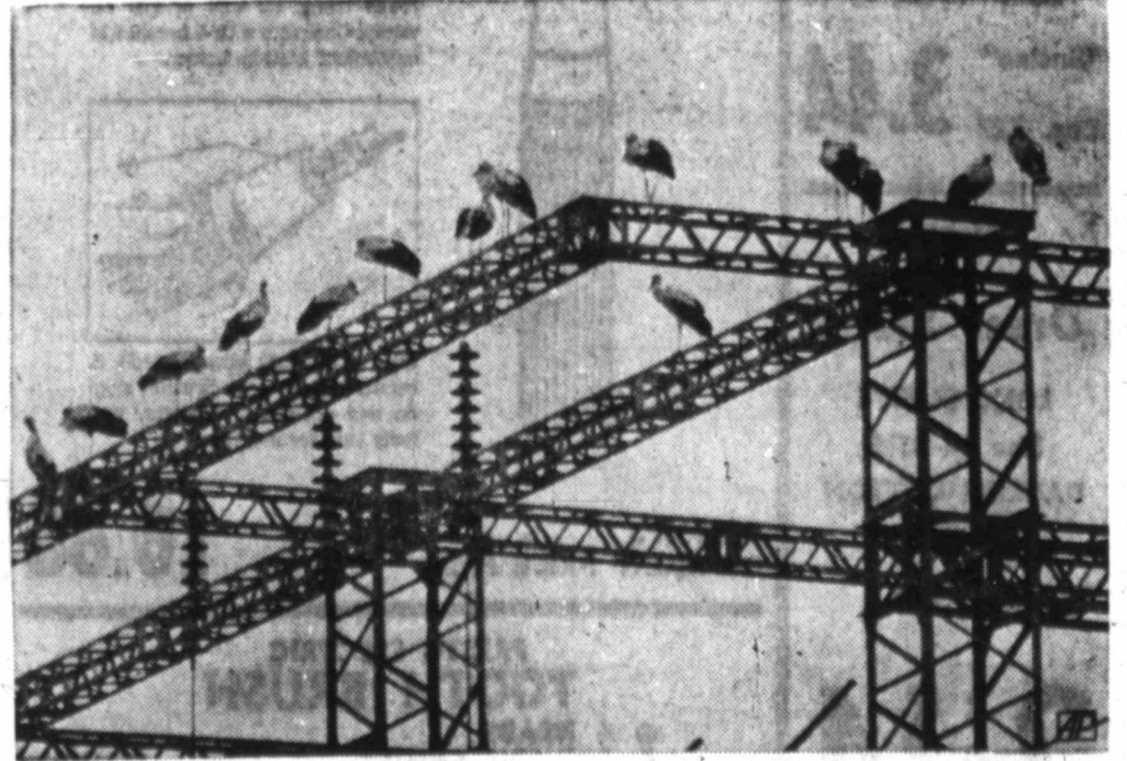
DIRECTOR — Mrs. Porter Brown of Salina, Kan., is the new head of the Methodist Board of Missions. She will oversee the church's work by 8,000 missionaries in 49 countries.



THE THIRD SESSION — Pope Paul VI blesses the assemblage as he is carried on portable throne in St. Peter's Basilica for opening ceremony of the third session of the Ecumenical Council. Visible are several of the prelates participating in the council.



DIVIDED USE — Cover of crocodile leather bag, shown at Frankfurt fair, has three compartments: right part for necessities; center for pad and other for a picture.



BUILDING UP POWER — A flock of storks, pausing on their flight south, perches on framework of a transformer station of power plant at Nice on the French Riviera. Their early exodus has caused amateur weather experts to predict an early winter.

Wives
2 Brit
Polit

LONDON
clergymen's
Douglas-Hor
Wilson—stre
hopes of th
quiet devoti
advice and
ing their me
They both
help without
spotlight fro
Elizabeth
Home, 54,
Wilson, 48,
political car
sonal exper
ably similar
They trav
smile until t
meet floods
Minister Sir
the Conserv
and Harold
Labor party
asking for
Oct. 15 nati
Each wom
husband, sit
with him, ke
mor function
couragement
rough.

"I like my
I am nearby
said Lady I
Wilson felt t
In a serie
views the tw
a clear pict
like for the
litical leader
Campaign
the morning
series of me
crossroads u
The wives
the same sp
They have le
cue, to app
the proper p
all never to
bored no ma
hall or hot t
Lady Doug
tinguished l
sured, want
sense her bo
in him. She
"I have al
capable of h
office in the
both mental
He can rea
well.
"I'm not
thing like th
ing people.
life."

"DO
Lady Doug
let rowdy in
She resents v
emotional, u
her husband
bred to all
show.
Mrs. Wils
to mask her
fair hair, co
and a peach
plexion.
Widely re
writer of pos
plished singe
now has kept
spicuous, wh
London's H
suburb separ
bling politica
band.
The two W
Robin, 20, a
dent at Oxfo
Giles, 16. Al
sing and pl
ments togeth
The Dougl
is made up o
daughters a
tives.

WE

NORTH CENT
day and Frid
south today, co
and south Frid
high Friday 7
NORTHWEST
Friday. Cooler
east and south
north Friday, U
SOUTH CENT
TEXAS—Clear
and Friday, U
Friday 74 to 8
Friday 74 to 8
SOUTHWEST
cloudy today, 4
48 to 62. High

CITY TEM
BIG SPRING
Abling
Amarillo
Chicago
Dallas
El Paso
Fort Worth
Houston
New York
San Antonio
St. Louis
Sun sets today
Friday at 6:45
this date 96 in
in 1921. Maxim
in 1921.



RI
WI
June
Mon
THE CASE

RENTALS
FURNISHED APARTS. B-3
2 DUPLEXES, 2 bedrooms, 1 bathroom, 1/2 bath, 900 sq. ft. Call AM 4-2628 after 5:00.

RENTALS
UNFURNISHED HOUSES B-4
3 ROOM HOUSE, plenty of storage, wash, kitchen, fenced yard, 1/2 acre. Call AM 4-2922.

BUSINESS SERVICES
ECONOMY Fence Company, color and railroad fence. Quality guaranteed. Call Cecil Drake, 391-264.

EMPLOYMENT
HELP WANTED, Female F-2
NEEDED EXTRA MONEY FOR SCHOOL EXPENSES? Start earning immediately by selling Ann du Viv Cosmetology, Write 107 West 29th, AM 3-6219 between 4:00 & 6:00 p.m.

EMPLOYMENT
HELP WANTED, Misc. F-3
BIG SPRING EMPLOYMENT AGENCY
BOOKKEEPER-40, heavy bookkeeping or accounting experience. \$375 weekly. Have experience. Call AM 4-7154.

FOR SALE OR RENT
2 and 3 Bedroom Homes
No Down - Payment
Furnished or Unfurnished
C. V. RYDAN AND CO.
2100 11th Pl. AM 3-4601

BUSINESS BUILDINGS B-9
FOR LEASE
November 1st
Ideally located building containing about 5000 sq. ft. in suburban 11th Place Shopping Center.

EMPLOYMENT
HELP WANTED, Male F-1
DEPENDABLE MARRIED man, steady and permanent, must have commercial operators' license in person. Big Spring Rendering Company.

EMPLOYMENT
CORINTH NURSING CENTER
New - Modern - Fireproof
Centrally heated & cooled for aging colored people. 24 hour nursing care by licensed nurses.

EMPLOYMENT
FREE
Ceramic Instruction
Classes Each Wednesday
1:00-4:00 p.m.
Tuesday 7:00-10:00 p.m.

EMPLOYMENT
FARMER'S COLUMN K
FARM EQUIPMENT K-1
FARM SPECIAL
600x16 4-ply, 2 ribs front tractor tires. (\$12.95 Plus Tax)

EMPLOYMENT
HELP WANTED, Female F-2
LADIES. Add \$25-50 per week to family budget serving an established territory near your home. Experience unnecessary. Phone Mr. Spears, AM 4-2222 for appointment.

EMPLOYMENT
EXCELLENT BUSINESS OPPORTUNITY
VERY PROFITABLE... Part or full time business for financially responsible person. \$1900 investment... ALL-INVENTORY FULLY SECURED OFFERS INVESTMENT INCOME. No warehouse or office space necessary.

GRIN AND BEAR IT
A cartoon illustration of a man with a large, toothy grin, looking at a bottle of toothpaste. Below the illustration is a speech bubble that says: "No, no, Otis! ...It's school papers that are illegal! ... This is a toothpaste test!"

CUSTOM
UPHOLSTERY
\$29.95
Upholstered Sofa W/OA
Choice of Materials
Free Estimates - Pick-Up and Delivery - Financing
ONE-DAY SERVICE
"Good Work Doesn't Cost - It Pays"
AM 3-4544 3910 W. Hwy. 90

MERCHANDISE
HOUSEHOLD GOODS L-4
FOR SALE new 40 watt transistorized Stereo Amplifier. AM 4-4986.

MERCHANDISE
HOUSEHOLD GOODS L-4
SPECIALS
PHILCO Electric Range. Real good condition. \$59.50

VEAZEY
Cash Lumber
SNYDER, TEXAS
Lamesa Hwy. HI 3-6612
SPECIALS
Close-Out Sale on All DUPONT PAINTS

FINANCIAL
PERSONAL LOANS H-3
MILITARY PERSONNEL - Loans \$10.00 up. Quick Loan Service, 308 Runnels, AM 3-3139.

DOG OBEEDIENCE
DOG OBEEDIENCE classes to begin 2:00 p.m. Sunday, October 11th, 3017 Dixon, AM 4-7262.

THE PET CORNER
AT WRIGHT'S
419 Main Downtown, AM 4-8276
HOUSEHOLD GOODS L-4
TESTED, APPROVED AND GUARANTEED

COOK APPLIANCE CO.
400 E. 3rd AM 4-7476
FRENCH PROVINCIAL
GOING AT 50% OFF
Armstrong Linoleum, 7' x 12' With. Chest-of-Drawers. \$9.95 up

HOME
Furniture
Whatsize We Want Be Underd!
504 W. 3rd AM 4-6731
BIG SPRING FURNITURE
110 Main AM 4-2631

VISIT OUR BARGAIN BASEMENT
Today's FM PROGRAMS
KFNE - Big Spring Monday - Friday
7:59 Sign On
8:00 Morning Show
9:05 Fashion Tips
10:05 Morning Show

WATER HEATERS
30-Gal., 18-Yr., Glass Lined
\$47.97
P. Y. TATE - 1000 West Third

HOUSEHOLD GOODS L-4
SPECIALS
PHILCO Electric Range. Real good condition. \$59.50

STANLEY
HARDWARE CO.
"Your Friendly Hardware"
203 Runnels AM 4-6221
SUPER SPECIAL
58 Pieces MELMAC DISHES
Guaranteed for 2 Years
\$14.88

SEAR'S
AM 4-5524 403 Runnels
NORGE Electric dryer. \$45.00
TAPPAN gas range. \$89.95
GE 11 cu. ft. Refrigerator, Real nice. \$129.95

REBUILD MAYTAG Automatic Washer, 6-months warranty. \$89.95
MAGIC CHEF Gas Range \$49.95
Large group of TVs, \$10.00 up
Terms As Low As \$5.00 Down And \$5.00 Per Month.

BIG SPRING HARDWARE
115 Main AM 4-5265
Desk & Chair. \$35.00
Early American Recliner \$39.95

SPONSORED BY
SHASTA FORD SALES INC.
500 W. 4th AM 4-7424
WRECKER SERVICE
DAY OR NIGHT AND HOLIDAYS
AM 4-7424 AM 4-8321

SHASTA FORD SALES INC.
500 W. 4th AM 4-7424
USE HERALD WANT ADS FOR BEST RESULTS..

ANTENNA TRADE-IN... For Greater TV Variety... Trade Your TV Antenna For a Cable Hookup
Call AM 3-6302 For a Hookup

TELEVISION SCHEDULE
KVID KWAB KOSA KCBK KVKM
THURSDAY EVENING

Table with 5 columns (KVID, KWAB, KOSA, KCBK, KVKM) and 2 rows (THURSDAY EVENING, FRIDAY MORNING) listing various TV programs and their air times.

Table with 5 columns (KVID, KWAB, KOSA, KCBK, KVKM) and 2 rows (THURSDAY EVENING, FRIDAY MORNING) listing various TV programs and their air times.

Table with 5 columns (KVID, KWAB, KOSA, KCBK, KVKM) and 2 rows (THURSDAY EVENING, FRIDAY MORNING) listing various TV programs and their air times.

Table with 5 columns (KVID, KWAB, KOSA, KCBK, KVKM) and 2 rows (THURSDAY EVENING, FRIDAY MORNING) listing various TV programs and their air times.

Table with 5 columns (KVID, KWAB, KOSA, KCBK, KVKM) and 2 rows (THURSDAY EVENING, FRIDAY MORNING) listing various TV programs and their air times.

Table with 5 columns (KVID, KWAB, KOSA, KCBK, KVKM) and 2 rows (THURSDAY EVENING, FRIDAY MORNING) listing various TV programs and their air times.

Vertical column of advertisements on the right side of the page, including 'MERCURY JOHNSON', 'D&G MARINE', 'NOTICE ALL PUNT, PASS and KICK PARTICIPANTS THE BIG SPRING LOCAL COMPETITION WILL BE HELD SATURDAY OCT. 10th AT THE OLD FOOTBALL STADIUM 9:30 a.m.', and various 'FOR SALE' and 'WANTED' notices.



2nd LT. DAVID L. VAN BRYANE
Mishawaka, Indiana
C. R. Anthony Co.



2nd LT. RODERICK K. ELLSWORTH, JR.
Mt. Pleasant, S.C.
Big Spring Theaters



2nd LT. DONALD B. EICHER
Westchester, Ill.
Security State Bank



2nd LT. HARRY DAVID GREENBERG
Cincinnati, Ohio
Lee Hanson



2nd LT. STANLEY C. SURLOFF
Miami, Fla.
First National Bank



2nd LT. WARREN S. STOVALL
Memphis, Tenn.
State National Bank



2nd LT. ART Z. SIMON
Omaha, Nebraska
Big Spring Furniture



2nd LT. DAVID S. BETHUNE
Columbia, S.C.
Carter Furniture



2nd LT. TIMOTHY J. ROELS
Chesterfield, Mo.
Zale's Jewelers



2nd LT. FRANCIS P. CLEMENTS, JR.
Ft. Lauderdale, Fla.
Cook Appliance



2nd LT. HUGH L. CRABTREE
Abingdon, Virginia
Cunningham & Philips



2nd LT. LARRY A. WEGNER
Graham, S. Dakota
Fisher's



2nd LT. DAVID H. MATTEI
San Mateo, California
Elrod Furniture



2nd LT. FREDERICK C. FIELD, JR.
St. Petersburg, Fla.
Firestone Stores



2nd LT. WAYNE K. BARCOCK
Great Falls, Montana
Gibbs & Weeks



2nd LT. EDWIN A. OLSON
Jewett, Iowa
C. R. Anthony Co.



2nd LT. JOSEPH D. SPEIGHT
Greenville, N.C.
Good Housekeeping Shop



2nd LT. JERRY A. ANDERSON
Hartington, Nebr.
Goodyear



2nd LT. CLINTON L. STONEHAM
Easton, N.J.
Security State Bank



2nd LT. JOHN H. RADER
Clarksdale, Mississippi
Hemphill-Wells Co.



2nd LT. ALFRED V. MAI
Baton Rouge, La.
Gibbs & Weeks



2nd LT. TRUMAN M. MCCARTER
Piedmont, S.C.
Hemphill-Wells Co.



2nd LT. RICHARD W. JOHNSON
Wheaton, Ill.
Zack's



2nd LT. JOHN E. HAMNER
Box 2, Esment, Va.
Wheat Furniture



2nd LT. RAY G. PILAND
Dallas, Texas
Barnes-Pelletier's



2nd LT. STEVEN N. OLESK
Chicago, Ill.
Firestone Stores



2nd LT. ARTHUR KEY
Apison, Tenn.
Montgomery Ward



2nd LT. GARY O. DAVIDSON
Barrington, Ill.
Foy Dunlap Fina Ser. Sta.



1st LT. ROBERT H. BAXTER
University City, Missouri
Montgomery Ward



2nd LT. ALAN M. HILLIER
Rochester, Indiana
Gillihan Motor



2nd LT. THOMAS R. HEARD
Hermleigh, Texas
Lee Hanson



2nd LT. BILLIE W. COFFEY
Memphis, Tenn.
Prager's



2nd LT. GEORGE BRUCE WICKLES
Knoxville, Tenn.
First National Bank



2nd LT. PAUL W. RABLER
Louisville, Kentucky
Pollard Chevrolet



2nd LT. RALPH WALKER
Alliance, Ohio
State National Bank



2nd LT. WILLIAM R. MCMAHAN
Dallas, Texas
Windy's Camera Center



2nd LT. CURTIS L. ROBERTS
Lynchburg, S.C.
Ranch Inn Pizza House

Welcome TO

WEBB PILOT TRAINING CLASS 66-C

Big Spring and all its people extend the friendly hand of a West Texas welcome to the student pilots of Webb's Class 66-C. These young men, here for a complete course of primary and basic jet-flying instruction, become citizens of our city for more than a year, and it is our earnest hope that they will find here a helpful, cheerful and hospitable atmosphere; and that when they must leave, they will do so with a kind feeling in their hearts for Big Spring, its business establishments, and all its population.

May we urge our new student pilots, as time permits them, to become acquainted with our town, to know about the churches and the schools, the facilities for leisure and enjoyment, the shops and the service establishments.

Particularly do we ask them to drop in and see us, just to let us get acquainted and say in person what we are saying here. There's no obligation to buy at any time... we want to be of service, and of assistance if we can.

Yes, it's all wrapped up in one wholesome, hearty word "WELCOME!"

A "HOSPITALITY GIFT" For New STUDENT PILOTS

If the Webb student pilot or his wife will call within the next 10 days at the store or service establishment whose name appears with his under his picture (bringing this page with him for identification), he will be given a "welcome gift" by that firm. There is no obligation, and we simply ask that the visit be for getting acquainted. Be our guest!

The Entire City's Cordial Greeting Is Expressed By These Business Firms

- Firestone Stores: 507 E. 3rd Street
- Lee Hanson: Men's Store—126 E. 3rd
- Ranch Inn Pizza House: West Highway 80, Dial AM 4-9311 or 4-9059
- Fisher's Ladies' Shops: 1107 11th Place, 1907 Gregg Street
- Hemphill-Wells Co.: 214 Main Street
- Big Spring Theatres: 401 Main Street
- Gibbs & Weeks Men's & Boys' Store: 109 E. 3rd Street
- Zale's Jewelry: 3rd at Main
- Sears, Roebuck & Co.: 403 Rannels
- J&J Auto Supply: 1510 Gregg
- First National Bank: 400 Main Street
- Good Housekeeping Shop: 907 Johnson
- J & K Shoe Store: 214 Rannels Street
- Barnes Pelletier's Shoes: 113 E. 3rd Street
- Goodyear Service Store: 408 Rannels Street
- Windy's Camera Center: 409 Main
- Pollard Chevrolet: Service Dept. — 1501 E. 4th
- Goodyear Service Store: 408 Rannels Street
- Windy's Camera Center: 409 Main
- Prager's Men's & Boys' Wear: 102 E. 3rd Street
- Wacker's: 210 Main — 1103 11th Place
- Gillihan Motor Co.: 600 East Third
- Montgomery-Ward Co.: 3rd and Gregg Streets
- Wheat's Furniture Co.: 115 E. 2nd — 504 W. 3rd Street
- Elrod's Furniture Store: 806 E. 3rd Street
- Security State Bank: 1411 Gregg Street
- Zack's: 204 Main Street
- Foy Dunlap Fina Ser. Sta.: 500 E. 3rd Street
- C. R. Anthony Co.: 305 Main Street
- Big Spring Furniture Co.: 110 Main
- Barr Photo Center: 708 11th Place — Base Exchange
- Carter Furniture Co.: 110 Rannels
- Cook Appliance Co.: 400 E. 3rd Street
- Cunningham & Philips Drug: 906 Johnson
- The State National Bank: 124 Main Street
- Farris Pontiac, Inc.: 504 E. 3rd Street—AM 4-5535
- Wacker's: 210 Main — 1103 11th Place
- Wheat's Furniture Co.: 115 E. 2nd — 504 W. 3rd Street



2nd LT. JERRY V. PATTON
Lorain, Ohio
Wacker's

SEC.

Makin
social
Maxw
man;
Howa

P.

Sa

The 10
shop for
ent-Teach
held Sa
School at

Tea
In M

Master
Team-of-
Spring C
Wednesd
Snyder p
team con
First pi
Joe Stey
lough, M
Mrs. J. H
high team
J. J. H

Edu
Nee

Mrs. R
moderator
"Working
Quality
the Runn
ent-Teach
ing Tues
were Mrs
R. B. G. C
Dickens.
Mrs. J.
\$350 had
azine sale
report on
tee, and f
to furnish
clothing a
curb the d
school. Co
Mrs. Hom
and Rosco
Mrs. D
dent, and
delegates
tion in Da
lication r
Mrs. Alder
se Hernar
membersh
Johnson g
27 membe
Member
the fall v
Saturday.
vided for
and sack
nished.

Jan
Tal

James
Spring
speaker
when mem
Garden Cl
S. Riley, 5
Coffee wa

The spe
"Making
aged each
compost p
things as g
vegetable
scraps and
said that
post is bett
table gard
products, a
ditives will
posting pro
Sessions
Mrs. Cloy
charge of

TV Moves Out Of Beaten Track

By CYNTHIA LOWRY
AP TV - Radio Writer

NEW YORK (AP) — Television, which often seems to be running in a rut, certainly moved out of the beaten track Wednesday.

By adroit dial-twisting, the viewer had on tap the opening of the baseball World Series, the Beatles, a new feature-length motion picture and a real life

story about a pauper who changed the law.

NBC had its color cameras on the ball game from the opening pitch to the dash for the dugouts at the end. Baseball, even a World Series, is a pretty slow game for the non-sports fan to watch.

Nab Defiant White Moms

NEW YORK (AP) — Police Wednesday arrested dozens of defiant white mothers backing a school sit-in protest against an integration program which transferred their children away from the neighborhood school.

The arrests sparked a near-riot among scores of demonstrators and on-lookers outside Public School 149 in the Jackson Heights section of Queens.

A SPECTACLE

As for ABC's "Shindig" Wednesday night, which had the Beatles and a curious assortment of long-haired and strangely dressed young men and women, it was a fascinating puzzling spectacle.

The show was taped in England and the squeals of little British girls in the audience sounded just like the squeals in Ed Sullivan's audience under similar circumstances.

Police headquarters reported the arrests of 65 adults on charges of loitering in or near a school, a form of disorderly conduct. One man was charged with felonious assault on a policeman.

"CBS Reports" undertook Wednesday night to translate into pictures and sound a report of the fight by a man described by Martin Agronsky as "a born loser," an ex-convict and drifter who succeeded in getting a ruling from the United States Supreme Court giving every accused man, including penniless persons, the right to legal counsel.

The adults, along with 80 children, were taken in buses and patrol wagons to court.

Material was originally gathered by Anthony Lewis for his book, "Gideon's Trumpet," and told the story in the words of the principal, Clarence Earl Gideon, and many others connected with the case.

About 100 demonstrators marched outside the school when the mothers, some pushing baby carriages, arrived for the third day of their sit-in at the school. In addition to the 65 first and second graders directly involved in the protest, the mothers were accompanied by several younger children.

Gideon, a small, defeated-looking man, was accused of stealing wine, beer and money from a bar. He was denied counsel and had no funds to hire a lawyer. He was convicted after attempting to defend himself.

They had been warned they would be arrested if the protest was resumed today, but they came anyway.

GOOD STORY

In prison he made repeated appeals, and one finally reached the highest court which agreed to hear the case and assigned an eminent Washington attorney to represent him. Result was the reversal of his conviction and a new legal precedent.

The Police Department had assigned 50 patrolmen and 15 police women to the school.

"See How They Run," NBC's two-hour movie made for TV, probably would have been better paced if it had not run quite so long. But it was a better than average international suspense story just the same.

The school was predominantly white until it was paired this year with a nearby almost all-Negro elementary school in an experimental program to balance racial enrollments.

Clerks, Carriers Being Sought

E. C. Boatler, postmaster, said that Uncle Sam is in need of postal clerks and mail carriers. Applicants for such jobs are invited to apply for the right to take a written test given by the Civil Service Commission. Those who pass the test will be placed on the eligible list and will be considered for future job openings.

The program involves eight schools altogether and includes busing children between the schools of each paired set. This was at the heart of a two-day white boycott of public schools here last month.

Clerks and carriers are now paid at the rate of \$2.33 per hour with annual increases for six years to \$2.80 an hour and additional increases every three years to \$3.20 an hour. Boatler said that J. Weldon Bryant is local secretary of the civil service and has complete information on the recruitment program.

GOP Fund Dinner Delayed By Games

ST. LOUIS, Mo. (AP) — The World Series has forced postponement of a \$100-a-plate Richard M. Nixon Republican fundraising dinner Oct. 13.

Walter C. Ploeser, Missouri Republican national committee man, said Wednesday the affair has been rescheduled for Oct. 24.

Ploeser said the interest of St. Louisans and visitors in the World Series forced postponement of the dinner.

GOREN ON BRIDGE

BY CHARLES H. GOREN
(to play by The Casino Times)

Neither vulnerable. North deals.

NORTH
▲ A 3
♦ Q 10 9
♥ J 6 3
♠ A K Q 8 2

WEST **EAST**
▲ K J 8 7 4 2 ▲ 10 9
♦ 2 ♥ 8 7 6 5
♦ 10 9 5 ♦ A K Q 2
♠ 9 4 3 ♠ J 10 7

SOUTH
♦ Q 5 5
♥ A K J 4 3
♦ 8 7 4
♠ 6 5

queen, West's king, and the dummy's ace.

South had a ready parking place for one of his spade losers on the queen of clubs. However, unless the outstanding clubs were divided three-three, which was distinctly against the odds, it would be necessary to ruff a club in order to establish dummy's long card in the suit for the second spade discard.

Declarer proceeded to cash the ace and king of clubs, followed by a third club which he trumped with the ace of hearts. It was his intention to play three rounds of trumps next ending up in dummy. Had the adversely held hearts fallen in the expected three-two pattern, South would have been able to discard his remaining spades on North's clubs.

When West showed out on the second round of hearts, South's campaign collapsed and he wound up a trick short of his goal. Altho declarer's mathematics were correct, his timing was a bit faulty.

He could have tested the trump suit first without inconveniencing his plans in the slightest. If both opponents follow to two rounds of hearts, declarer may now shift his attention to the club suit—ruffing the third round to assure establishment of dummy's long club—and eventually regain access to the North hand with the third round of trumps.

When West shows out on the second heart, however, South must bow gracefully to reality by drawing four rounds of trump and then banking his hopes on an even club break.

The bidding:
North East South West
1NT Pass 3♥ Pass
4♥ Pass Pass Pass
Opening lead: Ten of ♦
South's plan of campaign to fulfill his four heart contract was soundly conceived. The execution of his scheme revealed a distinct gap in his technique, however, and the result was an unnecessary loss on the deal.

Altho nine top tricks were available at no trump, it was somewhat natural for North and South to glide into four hearts. South had the 10 points required to insist on a game contract after partner has opened with one no trump. Holding a good five card major suit, he made a forcing response of three hearts intending to pass if North rebid three no trump.

West opened the ten of diamonds which East overtook with the queen in order to cash two more tricks in the suit. The shift was to the ten of spades covered in turn by South's

SPEND LESS, GET MORE

QUALITY MEAT

STEAK Round Gooch's Blue Ribbon, Lb.	79¢
RUMP ROAST Gooch's Blue Ribbon, Lb.	59¢
PIKE'S PEAK ROAST Gooch's Blue Ribbon, Lb.	65¢
RANCH STYLE BACON Gooch's Blue Ribbon, 2 Lbs.	98¢

DOLLARS SAVED... the Scottie Way!

DOUBLE ON WEDNESDAY

WITH \$2.50 PURCHASE OR MORE
Redeemable At Lewis' 5c & 10c Stores and Proger's

"You'll Be Saving While You're Spending"

TAMALES	GEHARDT'S NO. 2 1/2 CAN	29¢
COFFEE	KIMBELL'S 1 LB. CAN DRIP OR REGULAR	69¢
EGGS	FLYIN-W GRADE A MEDIUM DOZEN	39¢
TISSUE	KIMS FACIAL 400 COUNT BOX	15¢
FRO-ZAN	GANDY ALL FLAVORS 1/2 GAL. CTN.	3 FOR \$1
CHERRIES	KIMBELL R.S.P. 303 CAN	15¢
JUICE	HUNT'S TOMATO 46 OZ. CAN	25¢
COCA-COLA	12 BTL. CARTON PLUS DEPOSIT	59¢

SALT Kimbell Round Box	11¢
LARD Rex, Pure 3-Lb. Carton	49¢
FLOUR Big K 25-Lb. Bag	\$1.79
COFFEE Kimbell Instant, 6-Oz. Jar	89¢
ORANGE DRINK Handy 1/2-Gal	39¢

PATIO Combination DINNER EACH 39¢

SPARK UP YOUR MENU WITH FRESH PRODUCE

BANANAS Golden Ripe Lb.	10¢
SQUASH Yellow Banana, Lb.	10¢
GRAPES Fresh Tokay, Lb.	12 1/2¢
APPLES Washington Delicious Extra Fancy, Lb.	15¢

MORTON FRUIT PIES

FAMILY SIZE
APPLE, PEACH, CHERRY & COCONUT CUSTARD

EACH 25¢

CHEER Giant Box	79¢
SOAP Safeguard Reg. Bar	2-35¢ Bath Bar 2-45¢
JOY Liquid Detergent, Giant	65¢
COMET Cleanser 14-Oz. Can	17¢
SUNSHINE HYDROX COOKIES 1-Lb. Box	49¢

YOU CAN WIN UP TO \$1,000 EACH WEEK

NATIONAL FOOTBALL SWEEPSTAKES CARD

BIG CASH PRIZES — NEW CONTEST EACH WEEK — FREE — NO OBLIGATION — NOTHING TO BUY

HULL & PHILLIPS

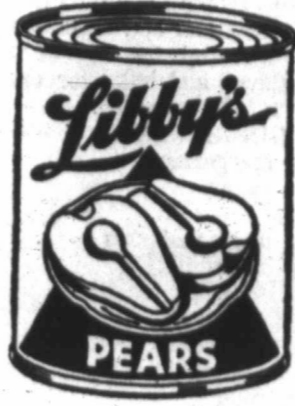
809 SCURRY 611 LAME SA HWY. 501 WEST 3RD

FOOD STORES

3 CONVENIENT LOCATIONS

Furr's Joins Libby's

BACK
THE
STEERS



FURR'S
PREMIUM CARDS
**VOID
AFTER
OCT. 17**

HURRY!
TIME IS RUNNING OUT!

DON'T MISS YOUR CHANCE TO WIN!
**PUNCH YOUR WAY
TO CASH at FURR'S**

Time is growing short. Your Premium Card may be a big cash winner. Bring it to Furr's each time you shop and win cash. You are guaranteed a win of \$1 and you could win up to \$1,000!

AUSTEX PLAIN
Chili No. 300
Can **45¢**

CORN LIBBY'S CREAM
STYLE, GOLDEN
NO. 303
CAN **2 FOR 29¢**

COFFEE MARYLAND CLUB
ALL GRINDS **5¢ Off Label 74¢**
1-Lb. 74¢
10¢ Off Label \$1.47
2-Lb. \$1.47

FRUIT COCKTAIL LIBBY'S,
IN HEAVY
SYRUP, NO. 303
CAN **19¢**

VIENNA SAUSAGE LIBBY'S
NO. 1/4
CAN **19¢**

SALAD DRESSING ZESTEE
QT. JAR **29¢**

FRUIT PIES MORTON,
FRESH FROZEN,
APPLE, PEACH, CHERRY OR
COCONUT, EACH **25¢**

BABY FOOD GERBER
OR HEINZ,
STRAINED,
ASSORTED
FLAVORS, JAR **3 FOR 29¢**

LIBBY'S
CATSUP 20 Oz.
Bottle **25¢**

JEWEL
SHORTENING 5-Lb.
Can **49¢**

MARYLAND CLUB
INSTANT COFFEE 6 Oz.
Jar **99¢**

LIBBY'S CUT
GREEN BEANS No. 303
Can **19¢**

FOOD CLUB
COOKING OIL 48 Oz.
Jar **59¢**

JIF
PEANUT BUTTER 12 Oz.
Jar **47¢**

KRAFT STRAWBERRY
PRESERVES Pure Fruit,
18 Oz. Jar **49¢**

LIBBY'S
TOMATO JUICE 48 Oz.
Can **29¢**

AUSTEX
TAMALES No. 300
Can **25¢**

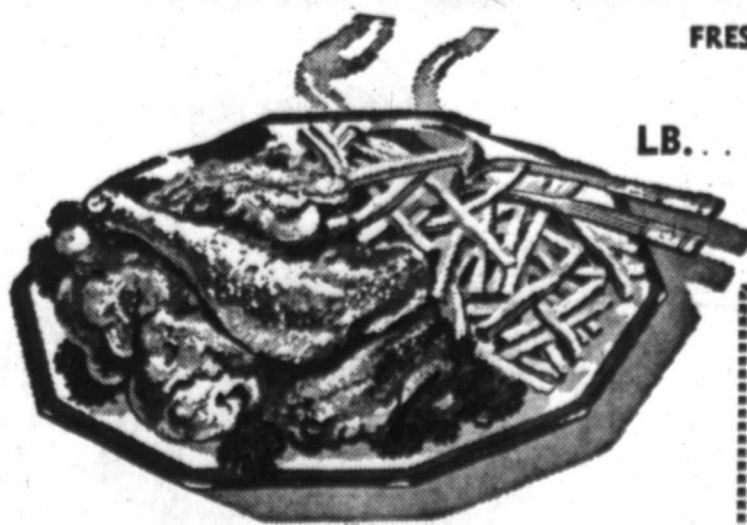


SAVE AND REDEEM
FRONTIER STAMPS

SHAMPOO HEAD &
SHOULDERS
LARGE TUBE **63¢**

ALCOHOL BEACON
PINT **11¢**

FRYERS



WE RESERVE THE RIGHT
TO LIMIT QUANTITIES

FRESH DRESSED GRADE A
LB. **25¢**

FARM PAC SAUSAGES
Hickory Smoked Links, lb. 59¢
Fresh Links, 12-oz. pkg. 39¢
Smoked Links, 12-oz. 69¢
German Style, lb. 79¢
Bar-B-Q Ring, lb. 79¢

FRYER PARTS Cut From Fresh Dressed
Grade A Fryers

Thighs Lb. 39¢ Legs Lb. 39¢

Breasts Lb. 59¢ Wings Lb. 19¢

ARMOUR'S STAR
CANNED HAM Lean, No Waste,
5-Lb. Can **379**

LEAN, NO WASTE
TENDERIZED STEAK Lb. **98¢**

U.S.D.A. INSPECTED FARM PAC BLUE RIBBON CHOICE
SIRLOIN STEAK Top Cut,
Lb. **89¢**

U.S.D.A. INSPECTED FARM PAC BLUE RIBBON
OR CHOICE
T-BONE STEAK Lb. **98¢**

BABY BEEF FRESH
SLICED LIVER Lb. **39¢**

FARM PAC OR SWIFT PREMIUM
BACON (Frontier Brand 40¢)
Lb. **55¢**

FRESH FROZEN FOOD SELECTIONS

DINNERS
Morton, Fresh Frozen,
Chicken, Beef, Turkey,
Salisbury, Meat Loaf,
Ham, Spaghetti & Meat Balls,
Scallops, Fish or Macaroni
& Cheese, Pkg. **39¢**

PATIO, FRESH FROZEN
Enchilada Dinners 12-Oz.
Pkg. **39¢**

TOP FROST, FRESH FROZEN
CUT OKRA 10-Oz.
Pkg. **2 for 35¢**

Chili Con Queso
Ashley's, Fresh Frozen
18 Oz. **59¢**

Guacamole Saled
Ashley's, Fresh Frozen
18 Oz. **59¢**

MORTON'S VEGETABLES
Blackeye Peas & Ham or Peas
and Mushrooms, **39¢**
18 Oz. Pkg.
Peas with Butter Sauce, 9 oz.;
Corn with Butter Sauce, 9 oz.;
Peas & Celery, 19 oz.; Okra
& Tomatoes, 19 oz.;
Your Choice **29¢**

BREAD DOUGH Morton, Fresh
Frozen, 2 Lbs. **49¢**



APPLES
NEW MEXICO, RED
DELICIOUS, GOLDEN
DELICIOUS OR JONATHAN,
MIX OR MATCH, LB. **12 1/2¢**

CALIF., FRESH CRISP
CELERY Stalk **2 for 25¢**

MEDIUM SIZE
RUTABAGAS Lb. **10¢**

FRESH CRISP
CARROTS 1-Lb. Cello
Bag **2 for 19**

COMET CLEANSER 2 1/2-Oz.
Box **2 - 49¢**

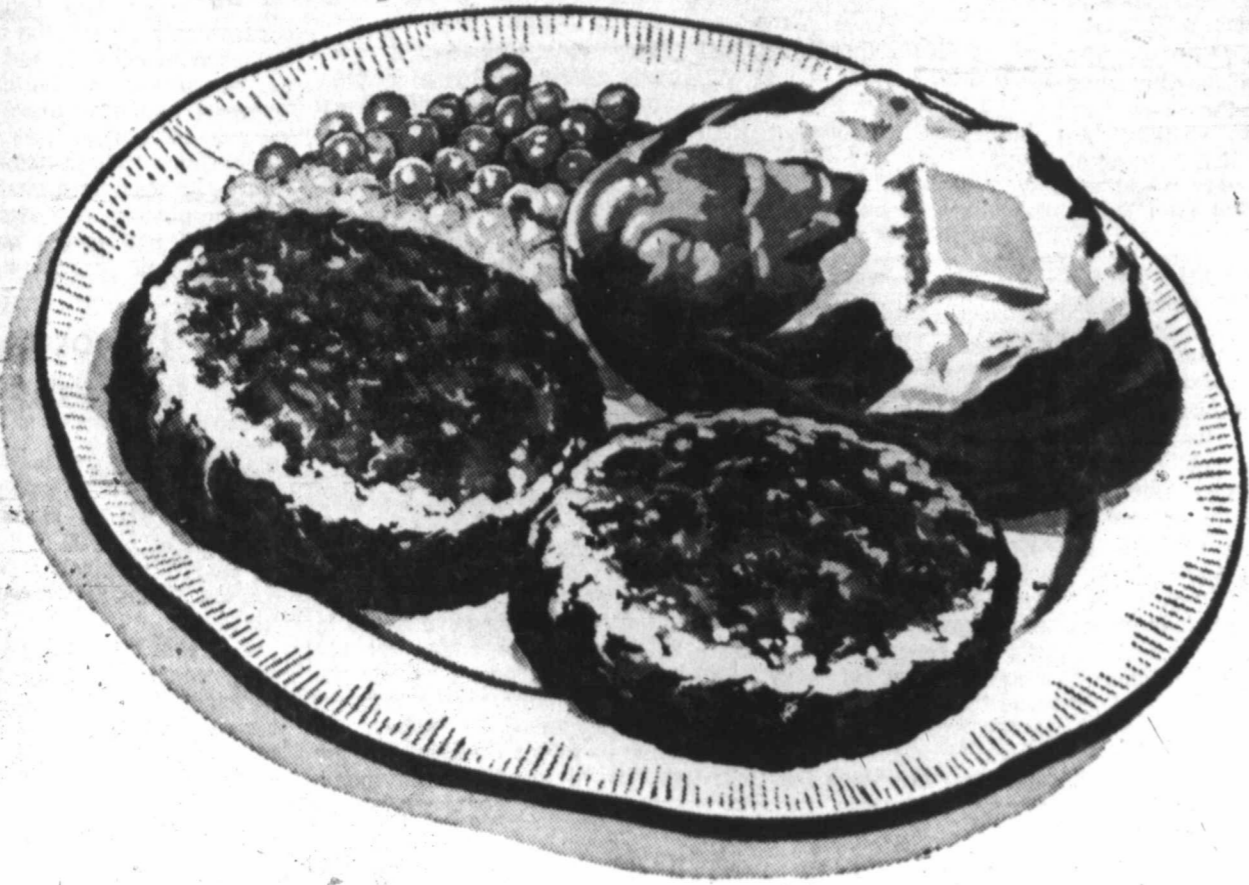
IVORY SNOW Large
Box **35¢**

IVORY FLAKES Large
Box **37¢**

LUX LIQUID 22-Oz.
Plastic **65¢**



PIGGLY WIGGLY GROUND BEEF ... BEST for A JUICY MEAT LOAF!"



GROUND BEEF

3 \$ **1**
LBS.

Lean, 100% Pure Domestic Beef, Dated for Freshness

MEAT LOAF MIX

Lean Ground Beef Mixed with Just Enough Lean Pork to Accent the Flavor

2 \$ **98**
LBS.

- EXTRA LEAN, DATED TO ASSURE FRESHNESS - POUND
- GROUND CHUCK 55¢
- RODEO'S THICK OR THIN - 2 POUNDS
- SLICED BACON 99¢
- ARMOUR STAR - 8 OZ. PKG.
- BRAUNSCHWEIGER 19¢
- LEAN NORTHERN PORK, COUNTRY STYLE, EXTRA MEATY - POUND
- PORK RIBS 59¢

Chuck Roast

ARMOUR'S STAR AGED HEAVY BEEF, LB. 39¢

LINK SAUSAGE PORK CHOPS

HORMEL'S LITTLE SIZZLERS 12 OZ. PKG.

LEAN NORTHERN PORK, CENTER CUT, RIB CHOPS POUND

39¢
39¢
59¢

MIRACLE WHIP

KRAFT'S SALAD DRESSING QUART JAR

49¢

PINTOS

CHEF PRIDE

4

POUND BAG

39¢

CHERRIES

STOKELY'S RED, SOUR PITTED NO. 303 CAN

15¢

CORN

OUR DARLING GOLDEN CREAM STYLE OR WHOLE KERNEL

2

NO. 303 CANS

29¢

Peaches

LIBBY'S SLI OR HALVES YELLOW CLING, NO. 2 1/2 CAN

29¢

Sun Ripened Fruits and Vegetables from Piggly Wiggly!

Lettuce

Fresh Crisp Green

2 Large Heads 29¢



California Corn, Fresh Cauliflower, Artichokes, Fresh Turnips, Red Bell Pepper, Egg Plants, Fresh Endive, Leaf Lettuce.

CALIFORNIA EXTRA FANCY - POUND BELL PEPPER . . . 19¢

FRESH - LARGE BUNCH RADISHES . . . 2 for 15¢

Apples

NEW MEXICO DELICIOUS

4 LB. BAG 35¢

AUSTEX - 24 OZ. CAN BEEF STEW 49¢

BREER RABBIT, BROWN LABEL - 24 OZ. BOTTLE SYRUP 51¢

GOOD N RICH ANGEL CAKE - 15 OZ. PKG. CAKE MIX 35¢

PHLSBURY OR BALLARD, SWEETMILK OR BUTTERMILK - 8 OZ. CAN BISCUITS 3 for 29¢

SOFTPLY ASSORTED COLORS - JUMBO ROLL PAPER TOWELS . . . 25¢

LIFEBUOY - REGULAR SIZE TOILET SOAP . 3 for 37¢

LIGHT CRUST - 5 POUND BAG FLOUR 49¢

LIFEBUOY - BATH SIZE TOILET SOAP . 2 for 37¢

GRAPE JILL - 24 OZ. BOTTLE GRAPE JUICE 33¢

ALL FLUFFY - 3 POUND BOX Laundry Detergent . 79¢

PUSS N BOOTS, SAUCY PAMPER - 24 OZ. PKG. CAT FOOD 47¢

ALL LIQUID - QUART BOTTLE Laundry Detergent . 79¢



These values are good in Big Spring October 8-9-10, 1964. We reserve the right to limit Quantities.

Piggly Wiggly Freshest Frozen Foods!

Fruit Pies 29¢

Banquet Apple, Peach, & Cherry FAMILY SIZE

BANQUET - 16 OZ. PKG. MEX. DINNER 39¢

SOMERDALE, CUT - 10 OZ. PKG. CORN . . . 3 for 49¢

RANCH OVEN - 2-1 LB. LOAVES Bread Dough . 3-1

SOMERDALE, CHOPPED - 10 OZ. PACKAGES BROCCOLI . 3-49¢

SENECA

Grape Juice 3 \$1
12 OZ. CANS

Lowest Prices . . . Greatest Variety . . . always at . . .



Many Long For New Name In U.S. Presidential Race

SAN FRANCISCO (AP) — From the sparse settlements of the badlands, from the valley towns of the Rockies, from the teeming cities of the Pacific slope, a strange medley is rising in the West.

It is a political cacophony made up of three themes:

1. Earnest support of Lyndon B. Johnson. The comment of Mrs. Albert Becco, part-time hospital employe at Pueblo, Colo., is typical: "I like Johnson because he says he loves everyone. I mean I think he's interested in all the people."
2. Dedicated backing for Barry Goldwater. Example: Mrs. Gene A. Williams, housewife, of Olympia, Wash., who said she was a Democrat for some years: "I'm going to vote for Goldwater because I think he would be more responsible with my money."
3. The plague-on-both houses theme. E. D. Hovde, a state highway engineer from San Francisco said: "We've got two lousy candidates."

THIRD SCHOOL

An unusual aspect of this presidential contest is the apparent strength of this third school of thought, composed of people who either won't vote or, if they do, will vote against somebody rather than for somebody.

There seems to be considerable yearning for another choice — for some unidentified man who isn't there. This yearning was put into words by Sharon Atzeni, a parking lot attendant in Tucson, Ariz.:

"I don't think Johnson is a very good President. I think Goldwater would be worse. I'd sure like to have more of a choice."

These quotes, and many others, were gathered by Associated Press reporters as they interviewed people at random in 13 states — New Mexico, Arizona, California, Washington, Oregon, Nevada, Montana, Wyoming, Utah, Colorado, Idaho, Alaska, Hawaii.

These states represent 95 electoral votes out of a total of 538. It is largely from the West, plus the Midwest and South that Goldwater has been hoping to put together the required victory total of 270.

TWO STATES

The New York Times, after a nationwide survey, says that as of now Goldwater is generally considered certain to carry only two states, Mississippi and Alabama, with eight others appearing to favor him.

In California, with its weighty total of 40 electoral votes, Goldwater is considered "dead," the Times says.

A voice long powerful in California Republican circles was raised for Goldwater last Sunday, however, when the Los Angeles Times came out for

House Target In Tax Trial

MUSKOGEE, Okla. (AP) — A \$15,000 house became today a major point in federal income tax evasion trial of state Supreme Court Justice Earl Welch, 72.

The house and the judge's acquaintance with his present wife before they were married occupied most of the testimony Wednesday.

Mrs. W. S. Taylor, Welch's sister-in-law, testified about two hours, mostly about purchase of the house, her acquaintance with Welch, her sister's acquaintance with Welch and her financial affairs.

Witnesses disclosed: The house was bought Aug. 4, 1953, by Mrs. Taylor, her husband and her sister, Mrs. Ruby Myers. The Taylors gave a \$5,893 check and Mrs. Myers, now Mrs. Welch, gave a \$1,805 check as part payment and they jointly signed a \$6,500 mortgage.

The house was put solely in Mrs. Myers' name on Aug. 18, 1955. It was sold after she and Welch were married June 27, 1959.

Mrs. Taylor testified she and her husband received no payment for deeding the house to Mrs. Myers. She said she received nothing from its sale.

Mrs. Taylor's lack of recollection on when she first met Welch brought a warning from the judge. Government lawyers later read her answers to questions before the grand jury which indicted Welch.

Bonn Investigates Shooting Of Guard

BERLIN (AP) — The West Berlin government has ordered an investigation into the shooting of an East German border guard during the tunnel escape last weekend of 57 persons from East Berlin.

The government said the public prosecutor would try to determine who was responsible and what charges, if any, might be made. It confirmed the shooting near the East Berlin end of the tunnel after a preliminary investigation.

Arms Figures Are Missing

EL PASO (AP) — U.S. authorities believe two El Paso men accused after the seizure of a \$200,000 arms cache Tuesday near the border may have fled to Mexico.

The men, Merced Munoz and his son Pedro, failed to appear for arraignment Wednesday on charges of failing to keep records of receipts and sales of firearms.

Their lawyers had assured authorities the two would show up for the arraignment. The attorneys said late Wednesday they were trying to persuade their clients to return.

Weapons found in the men's San Antonio store included submachine guns, rifles and revolvers, a mortar and machine pistols.

Asst. U. S. Atty. Fred Morton said authorities in this country could do nothing if the men renounced U. S. citizenship. Pedro Munoz is believed to hold dual citizenship and his father is a naturalized U. S. citizen from Mexico.

Healthy Economy Creates Problem In Business Field

NEW YORK (AP) — The economy is so healthy and balanced that the monetary authorities are starting to wonder out loud if tightening of credit later this year might not prove more helpful than harmful.

By helpful they refer to the possibility that the dollar may need further bolstering if U. S. international payments develop more of a deficit toward the end of the year. They also have an eye on early, but still inconclusive, signs that inflationary forces might be gathering strength at home.

By harmful they refer to the much-discussed danger that any reversal of the easy money policy of the past four years might halt the business upswing abruptly. Right now there's plenty of money and credit for business expansion, home building, consumer spending. Those who want credit would object,

however, if the money well suddenly went dry.

QUESTION POSED Still, Federal Reserve Bank officials here and in Washington are bringing up the question of change — and emphasizing that inflation is still a question and not a present threat.

The federal reserve system has been one of the suppliers of the money and credit that has been readily available during the long business upturn. And, Alfred Hayes, president of the Federal Reserve Bank of New York, says this has made a valuable contribution to the economic expansion.

But he adds: "The question could be raised whether continued increases on the scale of recent years might not be a little too generous even from a domestic point of view." Let alone the still unsolved problem of the international payments deficit.

"Efforts to reduce the United States payments deficit have made notable progress in some directions, but we still have a considerable way to go before we reach equilibrium," Hayes says today in the bank's October Review.

HEALTHY PACE "With domestic business going ahead at a very healthy pace — in part doubtless because of the tax cut — the federal reserve system is, as it must be, ready to do its full part to preserve the dollar as a source of economic strength at home and as the financial keystone for the liberal international economy which we all seek."

The chance of "adverse international developments" is also noted by Guy E. Noyes, adviser to the Federal Reserve Board in Washington. He adds that the board must keep an eye on potentially inflationary forces now beginning to appear at home — forces that could cause the board to tighten its monetary policy within the next few months.

Forces that must be watched, Noyes says, include "recent isolated price and wage developments" and the "recent expansion in money and credit after a period of fair stability."

If the price and wage increases don't spread, the money expansion moderates, and progress in cutting the balance of payments deficit resumes after the setback earlier this year, Noyes says, "There would be no basis or sense in a change in the basic posture of a monetary policy that has served so well for almost four years now."

Bank Deposits Rise In Texas

WASHINGTON (AP) — Deposits in Texas national banks rose from \$10,814,000,000 in June of 1963 to \$11,347,000,000 in June of this year, Comptroller of the Currency James Saxon reported Wednesday.

There are now 534 national banks, compared with 498 a year earlier. Assets rose from \$11,950,000,000 to \$12,709,000,000 in the same period.

It's



Libby's
FAMOUS FOODS

STOCK-UP

Don't be a "Bulb-Snatcher" ...

Light Bulbs 25¢

General Electric Frosted. Sizes 25, 40, 50 or 60-Watt. Each

REDEEM YOUR 3rd Week's STONWARE COUPON at Your FRIENDLY SAFEWAY!

Cane Sugar Imperial, (Great Western) Beet, 5-Lb., 50¢.

Soda Crackers Melrose, Tasty Fresh and Crisp. 1-Lb. Box 21¢

Fresh Eggs Breakfast Gems. "A" Quality, Large size. (Cream O' the Crop Large "AA" ... Doz. 55¢.) **49¢** Doz.

Liquid Bleach White Magic, Safe for nylon, rayon, dacron. **25¢** 1/2-Gal. Plastic

5-Lb. Bag 49¢

1-Lb. Box 21¢

SAVE 4¢

SAVE 12¢



SAFEWAY PRODUCE VALUES...

Potatoes Red. Serve potatoes for good health, good menus and sound budget. **20-Lb. Bag 89¢**

Tomatoes U.S. No. 1. Vine Ripe. Fresh and juicy. Serve with Safeway Steaks. **13-Oz. Ctn. 15¢**

Tokay Grapes U.S. No. 1. Serve grapes and cheese for dessert — it's delicious! **2 Lbs. 29¢**

Mrs. Wright's **Cinnamon Rolls** (Reg. 25¢). Wonderful for Sunday breakfast, serve them hot for a real tasty treat! **19¢** 11 1/2-Oz. Pkg. **SAVE 6¢**



- Peanut Butter** Polar Pan Smooth or Crunchy. Serve often. 12-Oz. Jar 43¢
- Fig Bars** Sunshine. Smooth, moist fig jam wrapped in cake. 1-Lb. Pkg. 43¢
- Canned Biscuits** Ballard Sweetmilk or Pillsbury Buttermilk. 3 1/2-Oz. Pkg. 29¢
- Chunk Tuna** Best-O-Chicken Light Meat. A tasty delight. 3 1/2-Oz. Case \$1.00
- Coffee Mate** Caramel. Brings out the true flavor of coffee. 11-Oz. Jar 79¢

- Cucumbers** U.S. No. 1. Crisp. For slicing or pickles. 2 For 17¢
- Bell Peppers** U.S. No. 1. Stuff with ground beef and bake. 2 For 17¢
- Eggplant** U.S. No. 1. The tasty vegetable steak. Lb. 25¢
- Radishes** U.S. No. 1. Garden fresh and zippy. 2 1/2-Oz. Pkg. 19¢
- Waldorf Dates** Unpitted. Sweet and tasty. 12-Oz. Pkg. 39¢
- Waldorf Dates** Pitted. Rich in flavor. 10-Oz. Pkg. 39¢

Ironing Pad And Cover Set. Gam. Each **88¢**

Sherbet PARTY PRIDE ALL FLAVORS 1/2-GAL. CTN. **59¢**

Chocolate Milk LUCERNE 1/2-GAL. CTN. **39¢**

Prices Effective Thurs., Fri. and Sat., October 8, 9 and 10, in Big Spring. We Reserve the Right to Limit Quantities. No Sales to Dealers.

SAFEWAY
© Copyright 1960-'62, Safeway Stores Incorporated.

A GREAT OLD SOUTHERN CUSTOM "Hospitality" ... a warm and wonderful word that we've made a part of our way of doing business. You're our guest when you enter. Your doors and all our SHOPPER'S FUN efforts are aimed at making your visit a most pleasant one. You'll come! AT SAFEWAY!

Your Safeway Gives Valuable GOLD BOND STAMPS
Your Nearest Redemption Center is 1206 Gregg Street

ATTEND THE FOOTBALL GAME FRIDAY NIGHT STEERS vs. BRONCS

A Devotional For The Day

He that was dead came forth, bound hand and foot with grave-clothes... Jesus saith unto them, Loose him, and let him go. (John 11:44)

Insect Control By Radiation

A whole new field of insect control has been opened by the astonishing success in the control of the screw-worm, first in Florida and most recently in Texas.

Even Imperfect Free Coverage Best

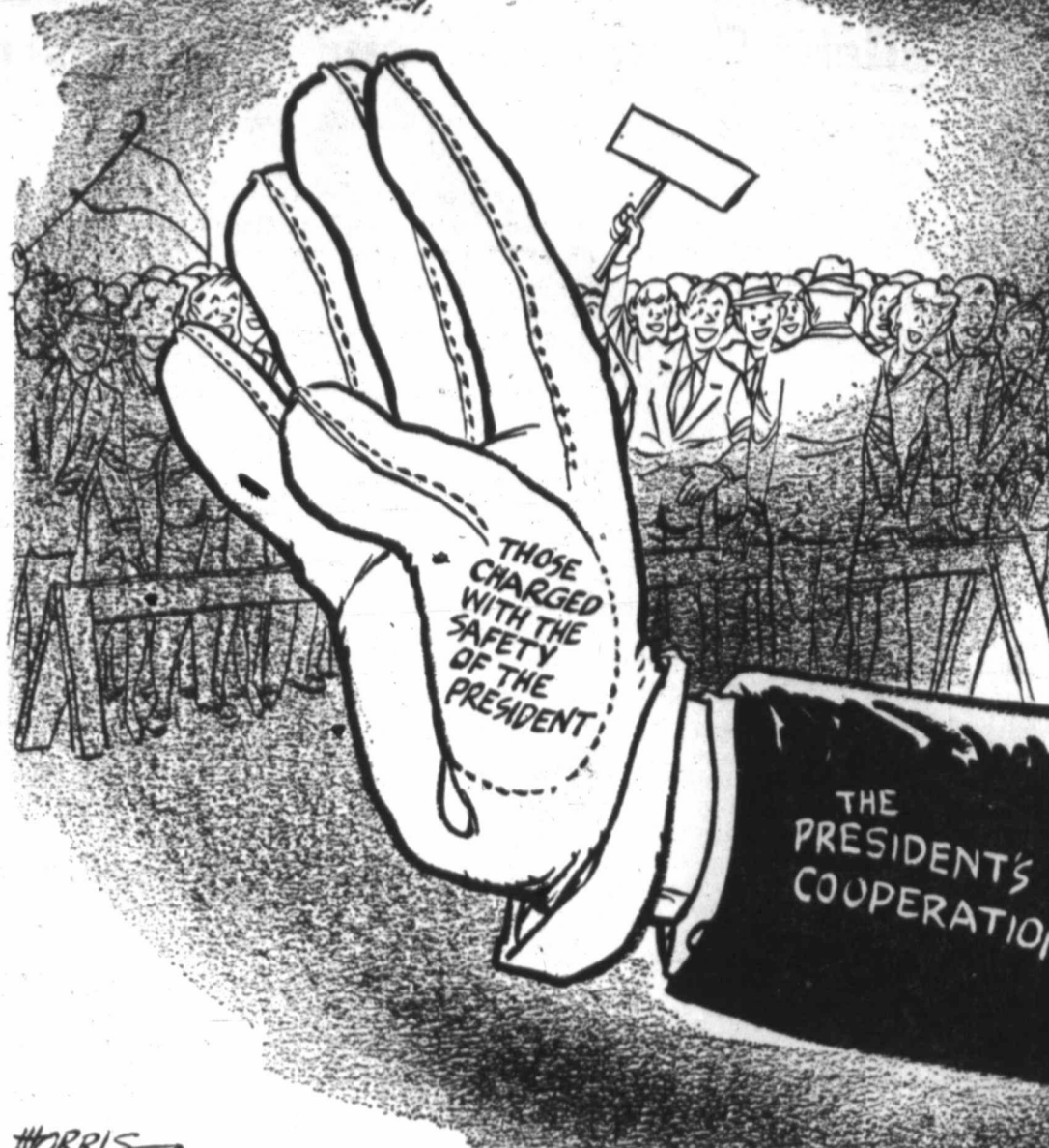
In one section of the voluminous Warren Commission report on the assassination of President Kennedy, news media and the Dallas police are joined as subjects for criticism.

David Lawrence Nuclear Weapons Controversy

WASHINGTON—Former President Eisenhower is exactly right when he says that the controversy on how nuclear weapons should be used by the United States ought not to be an issue in the presidential campaign.

The Big Spring Herald

Published Sunday morning and weekday afternoon... Harte-Hanks Newspapers, Inc. 710 Scurry Street, Big Spring, Texas 79721



A HAND-IN-GLOVE PROPOSITION

James Marlow LBJ Using Needle Technique

WASHINGTON (AP) — After watching Sen. Barry Goldwater let himself be needled into using up a lot of his presidential campaign time defending himself, President Johnson has begun to use the needle technique on the Arizona.

Hal Boyle The Birthday Ordeal

NEW YORK (AP) — One of life's little ordeals is the birthday problem. When you are very young and terribly honest, a birthday is a frank adventure in invitational tchewery.

To Your Good Health Cough May Be Serious, Or Trivial

By JOSEPH G. MOLNER, M.D. Dear Dr. Molner: I have been bothered with colds and a hacking cough every winter. I have had TB X-rays and they are negative, and I do not smoke or drink.

Around The Rim Down In One Piece

I don't remember many of the details of learning to drive a car, except for learning to coordinate the clutch and gear shift, then learning to park. These appeared to be unsurmountable obstacles at the time, but finally were conquered, in a fashion.

Holmes Alexander Mason's Law And The Campaign

WASHINGTON — "As nations cannot be rewarded or punished in the next world," wrote George Mason of Virginia (1725-1792), "they must be in this (world)..." Providence punishes national sins by national calamities.

Marquis Childs Canada's Bitter Difference

MONTREAL — The visit of Queen Elizabeth II has brought with it a rude shock to the two-thirds of English-speaking Canada. The one-third of Canada that is French-speaking (and, more to the point, French-thinking) is restive, unhappy and perhaps ready to seek a national identity of its own—even at the cost of splitting Canada.

Billy Graham

My husband and I recently inherited quite a lot of money and property. We, like others, had always longed for financial security. But, to be honest with you, our lives have been one mess since we became rich. My husband has taken to drinking, we argue about the least little thing, and our children have become snobs.

DOLLAR DAYS *Are Here Again!*

FILL YOUR FREEZER AT NEWSOM'S — NOTHING DOWN —

Mexican Dinner From the Kountry Kitchen \$1 **UP TO 6 MO. TO PAY!** **TACOS** From the Kountry Kitchen 4 for \$1

FRIED CHICKEN
AT THE KOUNTRY KITCHEN WHOLE
\$1.59 EA.

GREEN GIANT—EARLY GARDEN PEAS 5 ³⁰³ CANS \$1

BISCUITS
KIMBELL CAN OF 10..... **15 FOR \$1**

PEAS DEL MONTE SEASONED NO. 303 CAN..... **5 FOR \$1**

CRACKERS CRACKER BARREL LB. BOX **4- \$1**

CORN OUR DARLING 303 CAN **5 For \$1**

CORN KOUNTY KIST 12-OUNCE **6 For \$1**

PORK-BEANS VAN CAMP Big No. 2 Can **5-\$1**

DIAMOND TOMATOES 303 Can **6 For \$1**

DIAMOND GREEN BEANS 303 CAN **7 For \$1**

LIBBY, 29-OUNCE CAN **Pineapple Grapefruit Drink 4-\$1**

IRELAND CHILI BIG NO. 2 CAN **2 FOR \$1**

Corn DIAMOND 303 CAN **10 FOR \$1**

Green Beans LIBBY'S, CUT, 303 CAN **5 FOR \$1**

PINEAPPLE DEL MONTE CRUSHED NO. 2 CAN **4 FOR \$1**

SHOESTRING POTATOES KIMBELL, CAN **10-\$1**

SPAGHETTI Diamond 300 CAN **8-\$1**

DIAMOND, WITH BACON, 300 CAN BLACKEYED PEAS 8 - \$1

Vienna Sausage Van Camp's, All Meat, Can **5 FOR \$1**
PINEAPP. JUICE DIAMOND 12-Oz. Can **10 FOR \$1**

CANNED POP 12 ^{1/2} \$1

HUNTS, 300 CAN Peaches 5-\$1

Pot Pies MORTON..... **5 ^{1/2} \$1**

MARYLAND CLUB COFFEE 2-LB. CAN **\$1.57** 1-LB. CAN **79¢**

LIBBY FROZEN FOODS MIX 'EM OR MATCH 'EM!
GREEN BEANS, BROCCOLI SPEARS, BRUSSEL SPROUTS, GREEN LIMAS, STRAWBERRIES, CAULIFLOWER, PEACHES, WAX BEANS, BLACKKEYES **4 10-OZ. PKGS. \$1**

MIX 'EM OR MATCH 'EM!
CORN, PEAS, MIXED VEGETABLES, SPINACH, TURNIP GREENS, OKRA, FRENCH FRIES, SUCCOTASH, CHOPPED BROCCOLI, MUSTARD GREENS, BUTTER BEANS, CREAM PEAS, SQUASH. **5 10-OZ. PKGS. \$1**

NOW! MEXICAN FOODS AT THE KOUNTRY KITCHEN EVERY DAY AFTER 4 P.M.

NEWSOM'S PEN FED—PROPERLY AGED BEEF HALF Pound **49¢**
COST? APPROXIMATELY \$100 TO \$110
CONTAINS APPROXIMATELY
● 14 Round Steaks ● 2 Rump Roasts
● 8 Sirloins ● 1 Pike's Peak Roast
● 14 T-Bones ● 2 English Roasts
● 8 Sirloin Tips ● 35 Pounds
● 13 Club Steaks ● Ground Beef
● 12 Chuck Roasts ● Stew Meat
● Arm Roasts ● Chili Meat
● Short Ribs
CUT AND WRAPPED TO YOUR PERSONAL ORDER — DELIVERED IF YOU WISH! AND
FREE
20 POUNDS YOUNGBLOOD FRYERS
WITH EACH HALF BEEF ORDERED THIS WEEK
AND — UP TO SIX MONTHS TO PAY!
CALL DON NOW — AM 4-2471

SAUSAGE PACE PURE PORK 1-LB. PACKAGE **4 Lbs. \$1**

BACON HAMS HAMS ROAST
MOHAWK, PREMIUM, 2-LB. PKG. **99¢**
SUGAR CURED SHANK HALF, LB. **29¢**
SUGAR CURED BUTT HALF, LB. **39¢**
NEWSOM'S FINEST FLAVOR AGED BEEF LB. **33¢**

LIBBY'S POTTED MEAT **10-\$1**

LILY PINK SALMON 1-LB. CAN **2 for \$1**

SMALL FAMILY? SMALL FREEZER? NEWSOM'S PEN FED — PROPERLY AGED SPLIT SIDE BEEF POUND **49¢**
COST? APPROXIMATELY \$50 TO \$55
CONTAINS APPROXIMATELY
● 7 Round Steaks ● 1 Rump Roast
● 4 Sirloins ● 1 Pike's Peak Roast
● 7 T-Bones ● 1 English Roast
● 4 Sirloin Tips ● 18 Pounds
● 7 Club Steaks ● Short Ribs
● 6 Chuck Roasts ● Ground Beef
● 2 Arm Roasts ● Stew Meat
● Chili Meat
FREE! 10 Lbs. FRYERS
WITH EACH SPLIT SIDE AND—THIS WEEK—
UP TO 6 MONTHS TO PAY

SHORTENING MRS. TUCKER'S 3-LB. CAN **39¢**
CATSUP HUNT'S 14-OZ. BOTTLE **6 FOR \$1**

KIM DOG FOOD 1-LB. CAN **13-\$1**

OLEO 6 DIAMOND, 1-LB. CTNS. **\$1**

Sugar IMPERIAL 5-LB. BAG **49¢**

TOMATOES HUNT'S SOLID PAC. **5 303 CANS \$1**

PEACHES HUNTS GIANT 2 1/2 CAN **4 FOR \$1**

DEL MONTE — 303 CAN FRUIT COCKTAIL 4 CANS \$1

TUNA VAN CAMP, FLAT CAN **4 FOR \$1**
TAMALES GEBHARDT BIG 2 1/2 CAN **39¢**

ROYAL PACIFIC TUNA FLAT CAN **6 FOR \$1**

TOMATO JUICE HUNT'S 300 CAN **10 Cans \$1**

PARD DOG FOOD 1-LB. CAN **7 For \$1**
FRISKIES DOG FOOD 1-LB. CAN **7 For \$1**

KRAFT—BIG 18-OZ. JAR GRAPE JELLY 3 FOR \$1

HUNTS, 300 CAN Spinach 8-\$1

PEAS MISSION 303 CAN **6 ^{1/2} \$1**

POTATOES RUSSETS 10-LB. PLIO BAG **39¢** **BIG 400-CT. KLEENEX BOX 4-\$1**

LIBBY'S FRUIT DRINKS 8 CANS **\$1**

JOLLY TIME, 10-OZ. CAN POP CORN 5 FOR \$1

CABBAGE FRESH CRISP LB. **1 ^{1/2}**

NEWSOMS

TOMATOES VINE RIPE LB. **19¢**

EGGS GRADE A, SMALL **3 Doz. \$1**

1910 GREGG

BUZ SAWYER

BY THE WAY, SAWYER, CAN YOU SHOOT?
I'M AVERAGE, DON DIEGO. WHY?
BECAUSE THIS JUNGLE IS CRAWLING WITH GUERRILLAS! TAKE THIS GUN, AND SHOULD THERE BE AN ATTACK, OR AN ATTEMPT TO STEAL THE GOLD, YOU'LL BE EXPECTED TO FIGHT.
HEY, PANCHO! THE BOSS GAVE THAT GRINGO PILOT A GUN.
HMM! THEN MAYBE HE IS A COMPANY SPY. I'LL KEEP AN EYE ON HIM.

GASOLINE ALLEY

Careful, Joe! Mebbe it's a bomb like you said!
I ain't touchin' er Rufus! Just gettin' a explosion cap under the lock!
Now we gets back here a safe ways an' sets her off!
I declare!

NANCY

WE'RE EARLY FOR THE MOVIE
YEAH—THE THEATRE IS STILL EMPTY
WE CAN HAVE ANY SEATS WE WANT TODAY
LET'S PICK OUT GOOD ONES
I WANT THIS ONE—IT MUST BE A VERY POPULAR SEAT
LOOK AT ALL THAT GUM UNDERNEATH

LIL' ABNER

LOOPS!
A FUNNY-LOOKING BEETLE!
NO BEETLES ARE FUNNY-LOOKING! THEY'RE ALL DIVINE—EVEN RINGO!
SPESHLY RINGO!
AND THERE IT IS—MY NEXT STORY! IT BEGINS TOMORROW.

BLONDIE

TO LIKE TO BUY A GOPHER TRAP
THIS ONE'S GUARANTEED—LOOK AT THOSE TETH
OH, NO
I WOULDN'T WANT TO HURT THE LITTLE GOPHER
HAVEN'T YOU A TRAP THAT WILL JUST SEND HIM TO SOMEONE ELSE'S YARD?

ORPHAN ANNIE

HAI! HAI BOTHER WITH A GLASS? I'M A BOTTLE BABY, SEE?
YOU'RE A SLOB, ROCK!
WIAH-HOO! I THINK MY BARS LIT UP JUST THEN! WHAT'S DIS STUFF MADE OF?
GRAPES, ROCK! A VERY LONG TIME AGO, IN THE TIME OF NAPOLEON! DISTILLED GRAPES JUICE!
YEAH? GRAPES? CHEE! DIS STUFF SURE BRINGS TH' MESSAGE! WELL, "LEARN SOMETHIN' EVERY DAY! WOM! DIS GRAPE JUICE I LIKE!
WE CAN'T ALL BE GENTLEMEN, "SHRT!

SNUFFY SMITH

I BETTER LAY IN A GOOD SUPPLY OF KINDLIN' WOOD—IT'S GITTIN' COLDER'N A FROG
LOWEEZY!! I GOT SOME GOSSIP FER YE
JEST A SECONT, ELMINEY

KERRY DRAKE

IT'S TOO LATE TO SEARCH THE YACHT, JOHNNY! THE GUESTS ARE GOING ASHORE WITH THEIR GIFT PACKAGES!
LOOK, BARNABE! WOULD YOU MIND EXPLAINING...
I'M SURE THE PACKAGES CONTAIN SMUGGLED GOODS! BLACK DOTS!
THERE MUST BE ONE PLACE WHERE THE GUESTS LEAVE THOSE PACKAGES. JOEY! WHY DON'T YOU PLAY IT SMART AND GIVE US THE ADDRESS!

BEETLE BAILEY

COFFEE?
I TOLD YOU, COOKIES! I DON'T WANT ANY!
THERE SHOULD BE A RULE THAT YOU GOTTA HAVE ONE CUP OF COFFEE AT A COFFEE BREAK!

PEANUTS

I ACCEPT THE NOMINATION FOR THE OFFICE OF SCHOOL PRESIDENT.
IF I AM ELECTED I WILL DO AWAY WITH CAP AND GOWN KINDERGARTEN GRADUATIONS AND SIXTH GRADE DANCE PARTIES
IN MY ADMINISTRATION CHILDREN AND ADULTS WILL BE ADULTS!
I MAY EVEN DO AWAY WITH STUPID ELECTIONS LIKE THIS...THANK YOU.

DICK TRACY

AND WE'LL SEE YOU NEXT WEEK ON OUR FIRST SCHEDULED TRIP BACK.
THE ROUND TRIP WILL TAKE ME ABOUT FIVE HOURS. PHONE MRS. SMITH THAT I'LL BE HOME AT SEVEN.
MAGNETIC FORCE, AMPLIFIED BY ATOMIC POWER, IS DESTINED TO RULE THE UNIVERSE.
YES, GOVERNOR, ANYTHING ELSE IS JUST FANCY FIREWORKS FOR THE SCHOOLKIDS.

MARY WORTH

TAP! TAP!
RUTH?... ARE YOU HERE?
I'VE BROUGHT SOMEONE TO SEE YOU!

REX MORGAN

DON'T TRY TO HOLD THE GLASS, RICK! I'LL DO IT FOR YOU!
HAS MY BROTHER, DON, BEEN HERE, MISS GALE?
YES, HE WAS HERE TWICE DURING THE NIGHT! HE'LL BE BACK THIS MORNING!
IS THERE ANY WAY FOR ME TO GET A SHAVE? I MUST LOOK AWFUL!
IF YOU'LL TRUST YOURSELF IN MY HANDS, I'LL GIVE IT A TRY!

Special-NEW EUREKA UPRIGHTS

BEST CLEANER MADE AT YEAR 1950 PRICES!
BIG TRADE-INS!
HEAR Sounding Hour Daily, 10 A.M., KHEM

VACUUM CLEANER SALES, SERVICE & EXCHANGE
Bargains in ALL MAKES Used Cleaners. Guaranteed, On Time.
Guaranteed Service For All Makes - Rent Cleaners, 50¢ Up. CAN MAKE YOUR CLEANER RUN LIKE NEW - OR BETTER!

G. BLAIN LUSE
1501 Lancaster
1 Blk. West of Greer
Phone AM 4-2211

POGO

SO YOU DON'T WANT TO BE NAMED AFTER NO GIRLS, HAY?
NOPE, MY MASCULININITY IS 100 PROOF!
JUST FOR THAT, I'M GONNA PICKET MICE AND HOORIGANS!
DOWN WITH THEM THAT DOES AND THEM THAT DON'T!
I'M FOR WOMEN'S RIGHTS!
CALL THAT A RIGHT? GOIN' IN BOTH DIRECTIONS AT ONCE?
A WOMAN'S FIRST RIGHT IS TO BE WRONG.

GRANDMA

SEEMS SILLY TO ME, GRANDMA
BUT ROY HAS BEEN PLAYING GOLF FOR YEARS...
...AND HE SAID FOR THIS KIND OF SHOT, YOU USE AN IRON

TERRY

AT THE NEVAN INDUSTRIALISTS PARTY, TERRY MINGLES UN-CONSTRUCTIVELY WITH THE OTHER GUESTS.
THERE'S IKOFF... IGNORING ME... GOOR! ANATOLE MUST HAVE PRESSED THE WORD IN HIS BABY BITTER.
THE PRO? MUST THINK THAT PUNCH BOWL IS A HONING BEACON! IF THE GAL WITH THE KNIFE IS HERE HE'S MAKING IT EASY FOR HER.

SMITTY

EVERYTIME YOU WHISTLE MY DOG DOES A TRICK!
YES—ONE WHISTLE MEANS A BACK-FIP, TWO MEANS FLY DEAD...
THREE MEANS SIT UP—NUMBER FOUR MEANS ROLL OVER...
FIVE MEANS WALK ON FRONT LEGS—SIX MEANS HOP ON HIND LEGS—SEVEN MEANS JUMP OVER...
WHY? IF HE DOESN'T STOP BLOWIN' THAT WHISTLE, I'LL COLLAPSE!

MOON MULLINS

AND NOW, "TH' SPAGHETTI AND MENTBALL!"
GREAT, UNCLE WILLIE! THAT'S REAL OLYMPIC STUFF! YOU'LL WIN IN TOKYO FOR SURE!
—AND NEXT—WALKING TH' DOG?—OOFS!
TAKE YOUR PLAYTHINGS OUTSIDE, WILLIE!
TELL ME HOW WONDERFUL I AM SOME MORE, KAYO—I'M GETTING DISCOURAGED AGAIN.
IT'LL COST YA ANOTHER QUARTER.

1.
2.
3.

BELOW IS A QUIZ FOR SMART PEOPLE

ANSWER "YES" OR "NO" TO THESE QUESTIONS:

- | | |
|---|------------------------------------|
| 1. Are you in your home or office now? | 4. Are you enjoying today's paper? |
| 2. Did you buy this paper at a newsstand? | 5. Do you like convenience? |
| 3. Do you read this newspaper often? | 6. Do you like to save money? |



IF YOU ANSWERED "YES" TO ALL THESE QUESTIONS, THEN YOU SHOULD CALL OUR CIRCULATION DEPARTMENT TODAY...

They'll see to it that you receive every issue of The Herald at your home or office. And because Subscription rates are less than if you pay cash for the paper each day, you'll save money!

YOU CAN SEE WHAT'S IN TODAY'S PAPER, BUT WHAT WILL YOU FIND TOMORROW AND NEXT WEEK AND THE MONTH AFTER?

- You'll find the same top-notch quality in the Special Columns and Features
- You'll find bargains day in and day out through your local merchants' advertisements and the wonder-working ads in the Classified Section
- You'll find information and entertainment for every member of the family in every issue of The Herald!

PLACE YOUR SUBSCRIPTION WITH OUR CIRCULATION DEPARTMENT TODAY. Dial AM 4-4331

BIG SPRING DAILY HERALD



