



### Kelly Bell Opens Law Office In Midland

Kelly Bell, formerly of Nacogdoches, has announced the opening of an office for the practice of law in the Crawford Hotel here.

BANK BUILDING BURNS  
DALLAS (AP)—Fire Wednesday night destroyed the Grand Avenue State Bank Building. Money and records were locked in a fireproof vault and were not damaged.

**MADELINE DE PARIS FRENCH COOKIES**  
3 1/2 lb. Sealed Tins  
Martha Ann Glace Fruits  
MISS KING'S  
TEXAS PECAN CAKE  
Schreff's Chocolates  
Almond Rees  
**Elite Confectionery**  
323 N. Colorado

**RITZ** Admission Adults 35c Children 25c (tax incl.)  
★ Ends Today ★  
**GO NUTS WITH THE BUMSTEADS!**

**BLONDIE HITS THE JACKPOT**  
A GILBERT SUZUKI PRODUCTION  
★ Friday & Saturday ★  
**GENE AUTRY**  
**"The Blazing Sun"**

**GIVE ENTERTAINMENT THIS YEAR**  
**THEATRE GIFT BOOKS**  
On Sale At Our Box Offices  
**YUCCA** ENDS TODAY  
**2-BIG FEATURES!**  
White Tie... And A Black Automatic!

**THE GREAT JEWEL ROBBER**  
DAVID BRIAN  
AND  
America's Big Story!  
50 Years in the Making!

**50 YEARS BEFORE YOUR EYES**  
ARTHUR GODFREY  
★ Friday & Saturday ★  
**JOHN GARFIELD**  
**"The Breaking Point"**

**POWER** ENDS TODAY  
ALWAYS A GOOD SHOW  
First Showing in Midland!  
**ADAM AND EVA**  
Added: "Basketball Headliners"

### ★ IN HOLLYWOOD ★

### Shakespeare Will Be Done In '51 As Hepburn Likes It

By **ERSKINE JOHNSON**  
HOLLYWOOD—Katharine Hepburn's big secret is a movie version of "As You Like It" to be filmed during 1951 with Vanessa Brown, William Prince and most of the original cast of the stage play.

The wags are telling about the starlet who's writing her life story. It's titled, "Mink Is a Girl's Best Friend."

A movie titled "Pick Up," filmed in 11 days for \$85,000 by Czech character actor Hugo Haas, has become Exhibit A in Hollywood's new ring-the-budget chant.

Sylvia Oable will pick up a small fortune when she releases Douglas Fairbanks, Sr.'s old movies to TV, she controls the rights as his widow and has been talking about them to NBC.

**TEXAN DRIVE-IN THEATRE**  
ON WEST HIGHWAY 80  
INDEPENDENTLY OWNED AND OPERATED  
Individual RCA Speakers  
Phone 2787-J-1  
★ Last Times Tonight ★  
**DOUBLE FEATURE**  
First Showings in Midland!

**Holiday Rhythm**  
MARY BETH HUGHES  
DAVID STREET  
WALLY VERNON  
4 Big Bands!  
★ Coming Fri. & Sat. ★  
**DOUBLE FEATURE**  
**"The House On 92nd Street"**  
— AND —  
**"Blue Grass Of Kentucky"**

**Operation HAYLIFT**  
Plus: Cartoon  
★ Coming Fri. & Sat. ★  
**DOUBLE FEATURE**  
**"The House On 92nd Street"**  
— AND —  
**"Blue Grass Of Kentucky"**  
Plus: Cartoon  
Visit our snack bar for your favorite refreshments.  
**HOT COFFEE EVERY NIGHT. TRY OUR CHILI DOGS.**  
Box Office Opens 6:00 p.m. — First Show at 7:00 p.m.

**★ DANCING ★**  
MUSIC BY  
**Max's Palmetto Orchestra**  
**The PALMS**  
Located West Hiway 80

### Plastic Gullet Saves Man From Starving, Hospital Announces

BALTIMORE (AP)—A man who five weeks ago was slowly starving because of a diseased gullet now is eating normally—thanks to a piece of plastic.

Surgeons at Sinai Hospital cut out the tube-like organ connecting the mouth and the stomach and replaced it with a flexible plastic.

The operation was performed by Dr. Edgar F. German on a patient suffering from cancer of the gullet (esophagus). It was the result of three years of research by Dr. German and his associates at the hospital's Hofferger Laboratory.

The surgery takes about 90 minutes to complete. This compares, the announcement said, to the as much as four hours required for the conventional operation in which the esophagus is cut out and the stomach is brought into the chest so that food passes into it directly from the mouth.

Dr. Berman believes the prime use of the plastic gullet at present would be in patients suffering from cancer.

The announcement made it clear doctors offer no hope of a cancer cure through the new plastic tube, "only a possible palliative or relieving effect."

In many of these cases, scar tissue continues to form, making a construction that must be stretched periodically over a period of years.

Alcoholics Anonymous  
Closed Meeting Tues. Night  
Open Meeting Sat. Night  
Phone 3523  
115 S. Baird St. P.O. Box 536

**Now Showing!**  
— at —  
**Jenkins Angelo**  
Luggage & Jewelry

**"With Love" Lingers by Skyway**  
Individual Pieces or Complete Sets  
— plus —  
**Fine Diamonds**  
SEBEL—ARTCARVED  
**Watches**  
Hamilton - Waltham - Elgin - Bulova - Longines - Rado  
**Complete Line of Leather Goods**  
**JENKINS**  
ANGELO  
Luggage & Jewelry

### Laughton Brings His Famed 'One Man Show' To Midland

Midland and area residents doing as many as five benefits a week.

Last year, Charles Laughton was swamped with requests from more than 300 universities asking for him to appear in person. He complied by making 60 one-night stands in so many cities throughout the East and Midwest.

Thursday night Laughton is in Midland, Texas.  
Read The Classifieds.  
For Christmas Jewelry—  
See our selection of  
• Diamonds  
• Watches  
• Jewelry  
Watch Repair - Clocks - Jewelry  
**J. B. (Pete) Peterson**  
Watchmaker & Jeweler  
708 W. Illinois Phone 972

**A WHOLE FRIED CHICKEN**  
"Fried Golden Crisp"  
With Hot Roll, French Fried Potatoes... \$2.75  
As Close As Your Phone — CALL 9571  
Delivered to your Home, Office, Hotel or Tourist Court.  
11:00 a.m. to 9:30 p.m.  
or served at  
"Formerly Cox's"  
**COOPER'S FRIED CHICKEN**  
2603 W. Well

### Shopping 'Round Town —with Barbara

**Repairs By Experts—**  
Don't let dented fenders detract from the appearance of your car. WELLS BODY SHOP, 208 South Weatherford, will straighten them out and paint them to look like new.

**Christmas Dinner Cloths—**  
Make your Christmas Dinner gayer and more festive looking with table cloths stamped with Christmas designs. You'll find them at MIDLAND HARDWARE AND FURNITURE COMPANY GIFT DEPARTMENT in bright Yuletide designs.

**A Gift For The Family Car—**  
Knowing the family's interest in the car and how to add to its comfort and beauty—auto seat covers are a natural Christmas gift suggestion.

**Polio Insurance—**  
Do you live in constant terror of polio? Here is an inexpensive protection—an insurance policy that assures protection for your whole family.

**Commercial Fixtures Built To Order—**  
Your merchandise has more buyer appeal when it is displayed in custom made store fixtures.

**Gift Shopping Made Easy—**  
BASIN SUPPLY COMPANY has made your Christmas shopping easy by filling one counter with so many beautiful gifts of beauty that you will be able to find a gift for every one on your list.

**Dream Gifts—**  
The purpose of your Universal Electric Blanket is the same as any other blanket: to keep you warm by insulation.

**It Took A Million Years To Build This World—**  
Well, it won't take LLOYD PONDER, BUILDING CONTRACTOR, that long to build on your property, but it will take as long as is necessary to do a perfect job.

**Point Protects And Beautifies—**  
It is a wise home owner who keeps his home in the best condition with high quality paints.

**Reopened Under New Management—**  
Any dish you order at THE MANHATTAN DRIVE-IN AND RESTAURANT, West Highway 80, is truly one of goodness, prepared by chefs experienced in the art of fine cuisine.

**SANDWICH FILLING**  
Mustard pickles are good mixed with tuna fish for a sandwich filling. Spread on whole wheat bread and add a layer of finely shredded salad greens.

**BARNEY'S MARKET**  
North Vault of Southern Ice Co. Phone 1292  
All Steaks and Roasts cut from Peyton's Heavy Beef  
**STANDING RIB ROAST \$65c**  
**CHUCK ROAST \$63c**  
SPARE RIBS, lb. 45c  
CALF LIVER, lb. 45c  
VEAL SHORT RIBS, lb. 45c  
BROOKFIELD SAUSAGE, SWIN'S, 1-lb. pkg. 45c  
VEAL CUTLETS, lb. 45c  
BACON, SWIN'S, lb. 45c  
ROLLED ROAST, Veal, lb. 45c  
BACON, Armour's Star, lb. 45c  
BUMP ROAST, lb. 45c  
ROUND STEAK, lb. 45c  
ROAST, Fine's Peak, lb. 70c  
PETER, Swin's, lb. 45c  
VEAL CHOPS, lb. 45c  
CURED SLICED HAM, center cut, lb. 90c  
FOREQUARTER ROUND ROAST, lb. 67c  
WISCONSIN AGED CHEESE, lb. 75c  
Center Cuts  
**Pork Chops \$55c**  
End Cuts for Roasts, lb. 55c  
CANNED HAM, Swin's Freshman, pear shaped, 7-9 lb. avg., lb. 85c  
COOKED PICNICS, Armour's, lb. 45c  
HAM BUTTS, Cured, lb. 60c  
CURED PICNICS, Armour's, lb. 45c  
CURED HAMS, Peyton's, 8-10 lb. avg., lb. 60c

### A Gift To Please The Student—

The Royal Portable Typewriter, available at WEST TEXAS OFFICE SUPPLY, 204 West Texas, is sure to please the high school or college student. Leads of exclusive features include finger-lead keys, "Magic" margin, speed spacer, "touch control," rapid ribbon changer, plus many others.

**Bamboo Drapes—**  
Now you can easily give your rooms a new lease on loveliness. MIDLAND HARDWARE AND FURNITURE COMPANY DRAPEY DEPARTMENT is the dealer for Calhoun Bamboo Drapes.

**The Last Comes First—**  
It's a fact that much foot discomfort is due to the type of shoes worn. Orthopedic shoes are constructed on a variety of types of lasts—for years they have been providing women the kind of comfort and support their feet demand.

**The Center Of Attraction In Every Home—**  
A gift to thrill Mother... a big beautiful new refrigerator will be the pride of her kitchen!

**A Gift That Speaks The Language Of Love—**  
This Christmas, thrill your beloved with a fine diamond ring from the selection of quality gems at CRUSE JEWELRY COMPANY, 120 West Wall.

**Take A Bright Outlook—**  
Have your housecleaning done the professional way. THE ADVANCED WINDOW CLEANING COMPANY, 1421 East Highway, specializes in all types of cleaning, including windows, walls and floors.

**Give Your Home A Grand Entrance—**  
Let ABELL-McHARGUE MILL WORK DIVISION show you how a deluxe door frame can enhance the appearance of your home.

**Take The Children To The Movies—**  
It's almost like seeing a movie from your favorite easy chair—when you attend the TEXAN DRIVE-IN THEATRE, West Highway 80.

**Exterminate Household Pests—**  
Kill roaches in your home with Johnston's No-Roach available in two sizes at MIDLAND HARDWARE AND FURNITURE COMPANY.

**For Your Building Needs—**  
Now is the time to go into your building operations whether you want to build anew or remodel.







### Took A Chance—It Backfired

A 20-year-old ex-convict, who "took a chance" so he could get a job in Midland, was being held as a parole violator from the state of New York.

Col. Milan M. Flavic, director of the department of public safety, said the man, Floyd E. Vinson, is wanted for violating a parole from a burglary conviction sentence.

He was identified by a federal bureau of identification through a routine check of his fingerprints.

Colonel Flavic said Vinson, who married a Midland girl last October, had waived extradition and that New York officers will come here to return him.

The fingerprints were obtained on November 24 when Vinson came to the police station to obtain a permit to drive a taxicab.

"I didn't know they would fingerprint me until I got down here," he told Flavic.

"When they did fingerprint me, I figured it would be for their local files. I didn't know whether they would send them off."

"I took a chance because I wanted to get a job."

Colonel Flavic said that, as a routine measure, copies of all fingerprints are sent to the state department of public safety and to the Federal Bureau of Investigation.

He said records show Vinson first was convicted in 1943 on a theft charge and sentenced to the New York state reformatory in Elmira. After being released on probation, he obtained three parole violations.

In 1948 he was sentenced from Broome County for burglary and was paroled in December 1949. A year later he violated his parole by leaving the state.

He came to Midland last July and obtained a job at a dairy. He was discharged a short time later and hasn't worked since.

### Livestock

**FORT WORTH — (AP) — Cattle** 1,400; calves 900; slow, steady to weak; some medium and lower grades 25-50 cents lower; good fed steers and yearlings 22.00-24.00; beef calves 20.00-22.50; canners and cutters 18.00-20.00; bulls 19.00-24.00; good and choice slaughter calves 27.50-31.00; common and medium calves 21.00-27.00; culls 18.00-21.00; stocker calves 24.00-31.00; stocker yearlings 23.00-29.00; stocker cows 19.00-24.00.

Hogs 600; butchers and sows weak to mostly 25 cents lower; pigs poorly tested; good and choice 190-280 pound butchers 18.25-20.00; good and choice 150-185 pound hogs 17.00-18.00; sows 16.50-17.00, a few at 17.25-20.00; light weight and medium grade feeder pigs 12.00-14.00.

Sheep 300; around steady; medium and good wooled slaughter lambs 27.00-29.00; common to good slaughter ewes 18.00-19.00; feeder lambs 25.00-28.00; kid goats 25.00; shorn goats 12.00.

### Your Christmas Cards May Be In Dead Letter Bin

Hundreds of letters and cards mailed in Midland each week wind up in the dead letter office in Dallas.

And it is largely the fault of the mailer—not the Post Office—according to Postmaster N. G. Oates. Oates Thursday suggested two things a person should do to insure delivery or return of a letter or card.

"Three-cent stamps should be used to qualify for first-class handling," Oates stated, "and the sender should remember to jot down a return address even on Christmas cards."

If a card carries a two-cent stamp, several things can prevent its delivery. If the address is incorrect, postal employes have but one alternative—send it to the dead letter office. Often a person fails to include the state in the address, and unless the city is well known no attempt at delivery is made. A three-cent stamp and return address would solve such problems.

**Hurriedly Addressed**

Often a person hurriedly scratches the address on the envelope, and if an experienced postal clerk can not make out the scribbling, off to the dead letter office it goes. So, even a three-cent stamp and return address won't help if the handwriting is illegible.

"About 200 pieces of mail—mostly cards—were sent to the dead letter office Wednesday," Oates exclaimed, "and that is just about an average day during a rush season."

So, if Mary doesn't get that Christmas card you mailed to her, don't be so hasty in criticizing the Post Office. Just remember that one little, supposedly insignificant error on your part probably prevented delivery.

### Egg Prices Drop, Other Foods Gain

Egg prices took a humpy-dumpy spill in many cities this week, but changes in other foods were mostly upward.

Best items, some cuts of pork, canned coffee and several fresh vegetables were higher.

The drop in retail egg prices were irregular across the country. In some cities, like New York, Philadelphia and Pittsburgh, the reduction ranged as much as 18 cents a dozen. But in others the declines were made smaller, and in some were made up by mid-week, were still being quoted a few cents above last Friday's levels.

### Rules Adopted, Officers Elected At 1-AAA Meeting

Adoption of rules and election of officers was the principal order of business at an organizational meeting of District 1-AAA in Lamesa Wednesday. Representatives from the five member schools attended the session.

C. W. Tarter, superintendent of schools in Sweetwater, was elected district chairman. A. P. Nichols, Sweetwater High School principal, was chosen secretary-treasurer. The new district will begin operation in September, 1961.

Rules and regulations governing athletic and scholastic competition in the district were adopted. They virtually will be the same as arranged under present Class AA setup, with no notable changes.

The conference football schedule for 1961 was arranged at the meeting. Midland's schedule will be announced after Athletic Director and Head Football Coach Thurmon (Tugboat) Jones completes the non-district scheduling.

Attending the meeting from Midland were Supt. Frank Monroe, Principal Charles Mathews and Jones.

Midland, Sweetwater, Big Spring, Lamesa and Plainview make up the new conference.

### Dear Santa—

Dear Santa Claus:  
"I am a little boy eight years old and I am in the third grade. Would you please bring me a wrist watch and a Lone Ranger suit, and the guns to match the suit? All my love."  
—Ronald Lynn Smyrre

Dear Santa:  
"For Christmas, would you bring me a pair of cowboy boots and a pair of deer skin gloves, cowboy shirt, cowboy hat. Also I would like a football suit and a BB gun and baseball glove. Please bring me a pair of cap guns."  
"Bring my little sister a platform rocker, set of dishes, little piano, football suit, a trike, pair of boots, cowboy shirt and hat."  
"I am 11 years old and my sister is seven years old. Signed, sealed and delivered."  
—Bill and Ann Collins

Dear Santa:  
"I think I have been kind of good this year. Would you please bring me a big magic-skin doll with some clothes. And Santa, would you please bring my sister a volleyball and a camera. Don't forget to bring my cat some cat food."  
"Santa, don't forget to come on Christmas because I am waiting for you. Merry Christmas and a Happy New Year, Santa. You will have to come in our front door because the chimney is not clean. Goodbye now."  
—Roberta Haslip

### A CHRISTMAS CAROL



BY CHARLES DICKENS

### Seriously Injured In Accident At Rig

Donald O. Crockham, who was seriously injured in an oilfield accident near Snyder, has been transferred from a Snyder hospital to Midland Memorial Hospital here.

Crockham, of Midland, suffered severe burns and multiple injuries when a lower rig structure caught fire at a well. He was burned and also injured again when he jumped from the flames.

He resides at 1810 West College Street.

### McCarthy Jumps On Pearson In Washington Club

WASHINGTON — (AP) — Senator Joe McCarthy of Wisconsin hauled off at Columist Drew Pearson in the plush Bulgrove Club Wednesday night and slapped, punched or kicked him, depending on whose version you accept.

McCarthy, noting Pearson's writings, has been circulating the word that any day now he will arise in the Senate and take the hide off Pearson.

Wednesday night they met at a party in the club, which is frequented by many Washington celebrities.

The Senator and the columnist-commentator do not fancy each other. Pearson has been critical of McCarthy, who has been conducting a campaign for months against Reds in high government posts.

The Senator, noting Pearson's writings, has been circulating the word that any day now he will arise in the Senate and take the hide off Pearson.

Wednesday night they met at a party in the club, which is frequented by many Washington celebrities.

McCarthy's version—"I slapped him hard."  
Pearson's version—"He kicked me below the belt."

**TALLY HOSTESS PARTY**  
The Tally Hostess Bridge Luncheon Club will have its annual cocktail party at 7:30 p.m. Friday in the home of Mrs. A. L. Attaway, 1600 West Tennessee Street. Those assisting with the party will be Mrs. Clyde Davidson, Mrs. H. L. Huffman, Mrs. J. C. Williamson and Mrs. M. A. Murphree.

# Christmas Shop For All The Family ... At Low Special Prices!

*This year give Revere ...*  
for a Christmas they'll never forget!

In many homes, movies are a Christmas tradition. When dinner's over, everybody adjourns to the living room for the "big show." Taking movies, too, is part of the Christmas picture. You'll want glorious full-color movies of all the joyous events the whole family will enjoy re-living again and again. So make this a Christmas they'll never forget—give a Revere! We have a wide selection of Revere cameras and projectors. Come in and see them today!

Revere "47" 8mm Magazine Type Camera 7.5 Coated Lens, Taxied, \$104.50

Revere "77" 8mm Magazine Camera 7.5 Coated Lens, Inc. \$127.50

Revere "88" 16mm Silent Projector 7.5 Coated Lens, With Case, \$127.50

Revere "88" 16mm Silent Projector 7.5 Coated Lens, Inc. \$127.50

Revere "88" 16mm Silent Projector 7.5 Coated Lens, Inc. \$127.50

**YORK NUT SHELLER**

Just clip the shells — leaving the nut meats whole. Beautiful, polished aluminum handles and shield; cutting teeth of finest steel.

**SHEAFFER'S TM \* PEN**

No Light! Easy to Use!

Does not Crush the Meats ... does not Scatter shells.

\$3.95

Add 10¢ Postage on Mail Orders

**ELECTRIC BLANKETS**

UNIVERSAL

With Sunbeam Sentinel Temperature Control

Rose • Blue • Green

Twin Bed Single Control ..... 37.95  
Double Bed Single Control ..... 39.95  
Double Bed Dual Control ..... 44.95

**Ronson Lighters** 6.50 up

Gift Wrapping Paper, Christmas Seals and Tags, Hallmark Greeting Cards ... all your Christmas needs!

**CAMERON Rexall DRUG**

FILLING PRESCRIPTIONS IS THE MOST IMPORTANT PART OF OUR BUSINESS

PHONE 1883 DOWNTOWN MIDLAND

**Argus Cameras**

FA ..... 29.95  
Model 21 ..... 59.50  
C3 ..... 66.50

C3 is Priced with Flash and Case

Christmas Special On Electric Razors

Schick ..... 22.95  
Sunbeam ..... 22.95  
Remington ..... 23.95

*Make somebody EXTRA HAPPY!*

**ARVIN LECTRIC COOK**

Grills! Fries! Bakes! Toasts!

New Low Price 27.95

Here's the gift of gifts for everybody who likes good food! Cooking area equals 3 ten-inch skillets. Big enough for 16 hamburgers, 8 pancakes, or 4 big toasted sandwiches! Automatic heat control, signal light, insulated base and handle. Underwriters' listed.

WAFFLE GRIDS FOR DOUBLE UTILITY

Give twice as much usefulness! These quick clamp-on Arvin Grids convert Lectric Cook to a fully automatic waffle baker.

**Chrome Neff Smoker Set**

4-Piece Set in gift box. Special at 3.98

**CAM-WORTH Rexall DRUG**

HOME DRUG & HOUSEHOLD NEEDS

PHONE 2286 1405 NO. BIG SPRING

**Gifts for Him**

Kaywoodie Pipes ..... 3.50  
Fountain Pens ..... 3.50 up  
Shaving Sets ..... 2.00 up  
Billfolds ..... 3.50 up  
Manicure Sets ..... 3.50 up

New Model **Universal Automatic Percolator**

8-Cup 26.95

**Motorola Radios**

23.95 up

**General Electric Toaster**

21.50

**ALL-NEW EVERSHARP-SCHICK RAZOR KIT**

ONLY 98¢

**Sunbeam Coffee Maker**

31.95

New Model **Waffle Master**

26.50

New Model **Mixmaster**

42.50

**Waffle Iron**

8.95

**Iron Master**

Regular 13.95

11.95

Gift Wrapping











YOU ALWAYS FIND TOP REAL ESTATE LISTINGS IN THE REPORTER-TELEGRAM CLASSIFIED ADS—CHECK THEM TODAY

AUTOS FOR SALE 21 AUTOS FOR SALE 21 HOUSES FOR SALE 21 HOUSES FOR SALE 21 HOUSES FOR SALE 21 HOUSES FOR SALE 21 HOUSES FOR SALE 21

PRE-INVENTORY SALE
Bring This Ad
It Is Worth \$25.00 Credit On Any Used Unit
— CARS —
1948 Ford V-8 Custom 4-dr., new tires, radio & heater, o'drive \$1495
1948 Chevrolet Club Coupe \$1295
1948 Plymouth 4-Door, radio & heater \$1395
1948 Dodge 4-Door \$1295
1948 Plymouth 4-Door \$1095
1948 Plymouth Club Coupe \$995
1947 Chevrolet Aero, radio & heater \$1045
1942 Plymouth Club Coupe, new paint \$395
1942 Mercury, 2-Door \$295
1941 Ford 2-Door \$295
— TRUCKS —
1948 Ford 1/2-ton pickup \$895
1948 GMC pickup \$895
1948 Chevrolet pickup \$895
1947 Dodge pickup \$895
1947 Dodge pickup \$395
EASY TERMS
OPEN EVENINGS

Murray-Young
USED CAR AND TRUCK MARKET
301 E. Wall Phone 3510
DECEMBER SPECIALS
1948 Nash Ambassador Custom 4-door, Low Mileage
1948 Nash Ambassador Super 4-door
1948 Plymouth 2-door, Very clean
LOOK AT OUR OLDER MODELS
AT THE RIGHT PRICE
Our Location — Big Spring at Ohio
Phone 3282
Nash Cars ACE MOTORS GMC Trucks

GUARANTEED USED CARS
1948 Studebaker Champion 5-passenger coupe.
1948 Studebaker Land Cruiser 4-door sedan.
1948 Studebaker 1/2-ton pickup.
1948 Dodge 1/2-ton pickup.
1947 Studebaker 1-ton pickup.
BROADWAY MOTORS
USED CAR LOT CORNER MISSOURI & COLORADO

Curtis Pontiac
BEST DEAL IN TOWN!
1948 Packard, 4 door, Radio, new tires, overdrive. Low mileage. \$1,795.
1948 Pontiac 8 Streamliner, 4 door, Hydramatic, Radio, heater, seat covers, white wall tires. \$1,695.
1948 Pontiac 8 Sedanette, Hydramatic, Radio, heater. Excellent condition. \$1,345.
1948 Pontiac 2 sedanette, A-1, New white wall tires, radio, heater. A really nice car. \$1,095.
1948 Ford 8 Four door sedan (custom), Radio, heater, A-1 condition. \$1,395.
1947 Chevrolet, 2 door, A-1, Radio, heater. Good tires. \$995.
1947 Chevrolet club coupe, A-1, Radio and heater. Good tires \$995.
2-1947 Fraser sedans. Excellent condition. \$745.
We also have many other makes and models, all priced to sell. Come in and look them over.
CURTIS PONTIAC CO.
ROY WILLIAMS, Salesman
"Tommy" Thompson Mgr.
2800 W. Wall Ph. 1988

TRUCKS, TRACTORS 67
GARDEN tractor, good as new, with all accessories. Less than half price. 1304 South Colorado. Phone 1312-M.
MODEL-A Ford pickup. \$85. Good shape. Ralph E. Flinn, Skyhaven Trailer Co.
217-C Custom built trailer house. Can be seen R&M Trailer Park, Lot 28, Andrews Highway.
TRAILERS, FOR SALE 68
New & Used Trailers
Buy—Sell—Trade—Terms
Muzny Trailer Sales
2610 W. Wall

REAL ESTATE 79
HOUSES FOR SALE
Two new four room houses on lot. \$2190 corner lot. A good investment.
New three bedroom frame, garage attached. Paved street on Oak Drive.
Seven room home with rentals at rear, 1/2 block land on paved street. Would sell separately.
Two bedroom frame, one year old. Plenty of closet space. Has good lot. \$69 per month.
Two residential lots, East California Street.
McKEE AGENCY REALTORS
PHONE 695 MIDLAND TEXAS
CLASSIFIED DISPLAY
HOME SPECIALS
Large two bedroom brick veneer, attached garage, wall heaters and venetian blinds, etc. Paved street. Only \$2,500 cash. Balance \$30 per month.
2-1/2 bed 1 1/2 bath, one bath, attached garage, corner lot, paved street. Worth the money.
New 3 bedroom, near new school. \$1,900 cash. Balance monthly.
New 2 bedroom, near new school. Will go OK.
Three bedroom, brick veneer, one bath plus 3 rental units on same lot. Paved street near school. This is really worth the money.
One city block with utilities, for lease, for warehouses, supply yards or many uses.
New 2 bedroom home, 748 sq. ft., finished on your lot for only \$2,500. Or the same home, one block on your lot for only \$2,500. This is the miracle home.
If you're a real estate loan we can make it. If you're a real estate for sale, we can sell it.
TED THOMPSON & CO
305 WEST WALL
PHONE 622 - 2782-W - 1284-J

REAL ESTATE 78
STEVE LAMINACK AGENCY
Lovely brick veneer, in exclusive section of Midland. Three bedrooms, den, two beautiful tile baths, unusual finish work, double car garage, large water softener, central heat and indirect lighting. For modern comfortable living see this attractive well arranged home.
Another better, 5-room, wall to wall carpet, large spacious rooms, better workmanship. Close in. Priced to sell.
\$1,900 will buy equity in 2-bedroom home with 4% GI loan. Nice lawn, fenced back yard, paved street. Near school and shopping center.
Choice lot in Keview, on paying.
We still have two homes left with 100% GI loan.
DIXIE WEAVER
2628 - PHONES - 637-J
JIMMY THOMAS
CLASSIFIED DISPLAY
WANTED
Electric Welders and Millwrights
Contact Hudson Engineering Corp., at Pure Oil Company Gasoline Plant, Dolanville Field, Andrews County, Texas, Phone 3393, Jal, New Mexico, or rural phone — Andrews, Texas. P. O. Box 1627, Kermitt, Texas, or Box 248, Jal, New Mexico.

BLUEPRINTS
OZALID PRINTS
PHOTOSTAT
COPIES
R. M. Metcalfe, Inc.
321 N. Colorado Ph. 1358

LARRY BURNSIDE
Realtor
Grafaland, large lot, brick veneer, 3 bed-room home, 2 baths, ready for occupancy, paved street. Master bed-room with own bath, closet off from rest of house, lovely closet space, double garage... \$24,000.00 down, balance like rent... \$24,000.00
West Texas, 2 bed-room brick, fireplace, immediate possession, paved corner lot, separate garage and apartment... \$5,500.00 down... shown by appointment only.
Lovely one bed-room home, 900 sq ft of floor space, ranch style house, 4 picture windows, separate garage and hobby room, 2 wells, 5 acres in City limit, floors carpeted, paneled wood walls... shown by appointment only... \$18,250.00
West Louisiana St. 3 bed-room stucco house with attached garage, now vacant... \$10,500.00
W. Pennsylvania — 4 room frame home, fenced yard, close in—appointment only... \$4,750.00
Phone 1337
212 Leggett Bldg.
LOANS INSURANCE

2-Bedroom brick veneer unfurnished house for rent. 8 blocks from town
One unfurnished duplex for rent.
2-bedroom suburban. Five acre ground.
3-bedroom rock veneer. 2 acres.
Very nice three bedroom home, suburban. Located on two acres of ground. Two tile baths. Bedrooms carpeted. Double garage. Natural gas. See this property today
Select a lot in Skyline Heights Addition and let us build according to your plans and specifications.
SEE US FOR YOUR POLIO INSURANCE AND ALL OTHER LINES OF INSURANCE.
T. E. NEELY
INSURANCE — LOANS
Phone 1850 Crawford Hotel

PARKLEA ADDITION
Have you been out to this new addition recently to see the high type development in small homes? If not, drive out today! 50 brick homes are being laid out now for immediate construction, and will sell at prices ranging from \$11,800 to \$14,500, with only a small down payment of \$3,000 to \$4,000.
No doubt you have been waiting for a nice brick home, priced within your means! The home of your choice can be built and ready for occupancy within 60 days.
Drive out any day to the field office on the ground, where a courteous salesman will explain and show you the plans and locations of these homes. You should not overlook this opportunity to buy that new brick home you have been waiting for. Contact the salesman, Mr. Belcher, phone 3235 or 3712; or Mr. Friberg, phone 3910, or 4594.
Exclusive Representative
BARNEY GRAFA
REALTOR
—Serving West Texas for 25 Years—
Phone 106 202 Leggett Bldg.

BARNEY GRAFA
REALTOR
—Serving West Texas for 25 Years—
Phone 106 202 Leggett Bldg.

BARNEY GRAFA
REALTOR
—Serving West Texas for 25 Years—
Phone 106 202 Leggett Bldg.

BARNEY GRAFA
REALTOR
—Serving West Texas for 25 Years—
Phone 106 202 Leggett Bldg.

BARNEY GRAFA
REALTOR
—Serving West Texas for 25 Years—
Phone 106 202 Leggett Bldg.

BARNEY GRAFA
REALTOR
—Serving West Texas for 25 Years—
Phone 106 202 Leggett Bldg.

Have You Waited Too Long?
NOT IF YOU WANT A
BRICK HOME!
In many cases, Regulation "X" is not as bad as you might have thought. As an example, a down payment of about \$2,500 is all you need in the purchase of one of the very nice brick homes now being built by The Boyce Company in Parklea Place. Several floor plans from which to choose YOUR NEW HOME!
FOR COMPLETE INFORMATION, CALL
JOHN FRIBERG or JIM KELLY
The BOYCE Company
JAMES K. BOYCE, Building Contractor
W. Highway 80 Phones 3910, 4594

G. I. or F. H. A. Financing
AVAILABLE ON
SOUTH PARK HOMES
Closest Subdivision to Downtown Midland
Paved Streets — Close to School
No Better Value in Midland Area
Sales By
Harston-Howell Agency
415 W. Texas 2704—Phones—3038-J

Better Homes For Sale
307 E. Maidenlane—very nice 2 bed room frame — detached garage—fenced back yard—well landscaped — \$9,500.00 — \$2,000.00 down payment.
601 E. Banner — 2 bedroom frame — asbestos siding — nice lawn — priced to sell.
501 E. Banner — 1 bedroom frame — asbestos siding — nice lawn — priced to sell.
1012 W. Ohio — very nice 2 bedroom frame — \$10,500.00
205 West Nobles Ave — 2 bedroom masonry constructed home — attached carport
Choice residential lots in rapidly developing addition in North East section of city — average width 70' — inside lots \$350.00 — corner lots \$450.00
Let us show you our nice building sites West of the football stadium. We have some nice homes under construction and others to be built. For the price these sites cannot be equaled in Midland.
W. F. Chestnut's Agency
Realtors
Loans — Insurance — Real Estate
Residential Building
W. F. Chestnut — Tom Casey
Mora Chestnut

W. F. Chestnut's Agency
Realtors
Loans — Insurance — Real Estate
Residential Building
W. F. Chestnut — Tom Casey
Mora Chestnut

W. F. Chestnut's Agency
Realtors
Loans — Insurance — Real Estate
Residential Building
W. F. Chestnut — Tom Casey
Mora Chestnut

W. F. Chestnut's Agency
Realtors
Loans — Insurance — Real Estate
Residential Building
W. F. Chestnut — Tom Casey
Mora Chestnut

W. F. Chestnut's Agency
Realtors
Loans — Insurance — Real Estate
Residential Building
W. F. Chestnut — Tom Casey
Mora Chestnut

W. F. Chestnut's Agency
Realtors
Loans — Insurance — Real Estate
Residential Building
W. F. Chestnut — Tom Casey
Mora Chestnut

Today and Every Day
YOU WILL FIND
Top Real Estate Values
At The
MIDLAND REALETERIA
Drive out to 1404 North Big Spring and find out how easy it is to "home shop" at Midland's new "Cafeteria of Real Estate"!
Two-bedroom home, an exceptionally good value, 24-foot living room opens on 24-foot porch. Venetian blinds throughout. Utilities accommodate electric range and automatic washer. Plenty of closet space. Located in nice West area, on corner lot. No closing costs—already financed!
A city farmer can live comfortably in this large, 2-bedroom home located close in on the Andrews Highway. 2 acres of land, with 210-foot frontage. The house is practically new and very comfortable, with all city conveniences. The large chicken house and chicken yard will add to your income. Phone us for details.
If you're one of those who want to be in their own homes before Christmas, here's a real opportunity. It's a new 2-bedroom home—been lived in only a few months—in a good North location. Furniture included in the deal, and at a price you won't quibble with! Already financed at low interest. This home is way above average on all counts. Phone us and let us show it to you.
Here is an extra big (1,000 feet of floor space) 2-bedroom home that is a dandy! Unusually large cabinet space, with Venetian blinds throughout. Air conditioned. Tub and shower. Detached garage. Financing already arranged. Located on North Colorado.

MIDLAND REALETERIA
1404 N. Big Spring Phone 2388
Rhea Paschall, Manager
AN AFFILIATE OF
Allied Commercial Services
REALTORS

One Block West
Of Country Club
Lovely new home, about to be completed. Three bedrooms, two tile baths, knotty pine kitchen, with plenty of cabinet space. This house is really a home to live in and enjoy. Must be seen to be appreciated. Large living room. Shown by us exclusively.
BARNEY GRAFA
REALTOR
—Serving West Texas for 25 Years—
Phone 106 202 Leggett Bldg.

Walter Hemingway
REPRESENTATIVE
NIGHT PHONE 1036 SUNDAY
The Allen Company
R. W. (Smoker) ALLEN, Owner
General Insurance — Mortgage Loans
Avery-Wemple Bldg
Day or Night—Phone 3537

Walter Hemingway
REPRESENTATIVE
NIGHT PHONE 1036 SUNDAY
The Allen Company
R. W. (Smoker) ALLEN, Owner
General Insurance — Mortgage Loans
Avery-Wemple Bldg
Day or Night—Phone 3537

Walter Hemingway
REPRESENTATIVE
NIGHT PHONE 1036 SUNDAY
The Allen Company
R. W. (Smoker) ALLEN, Owner
General Insurance — Mortgage Loans
Avery-Wemple Bldg
Day or Night—Phone 3537

Walter Hemingway
REPRESENTATIVE
NIGHT PHONE 1036 SUNDAY
The Allen Company
R. W. (Smoker) ALLEN, Owner
General Insurance — Mortgage Loans
Avery-Wemple Bldg
Day or Night—Phone 3537

Walter Hemingway
REPRESENTATIVE
NIGHT PHONE 1036 SUNDAY
The Allen Company
R. W. (Smoker) ALLEN, Owner
General Insurance — Mortgage Loans
Avery-Wemple Bldg
Day or Night—Phone 3537

Complete Service!
Regardless of the make or model of the car you bring to us, we can provide COMPLETE service and repair! We don't have to "farm it out" for brake work, body work, ignition repair or wheel alignment, with a resulting loss of time and increase in cost. And our low prices will please you!
Boyce K & F
Motor Sales
Your Kaiser-Frazer Dealer
W. Hwy 80 Phone 3910

Christmas Shop **TONIGHT**



Open till seven-thirty!  
she'll discover  
a treasure in  
your gift of a  
Christmas Tree Ornament

the treasure—a dram of fabulous Dioratoire perfume! She'll "scent out" this heavenly fragrance from among all her Christmas gifts. And what a Christmassy way to present it... snuggled in its own glittering bauble... gay, colorful, personal. Your gift from Charles of the Ritz will be the brightest on her tree. \$3.50 (plus tax)

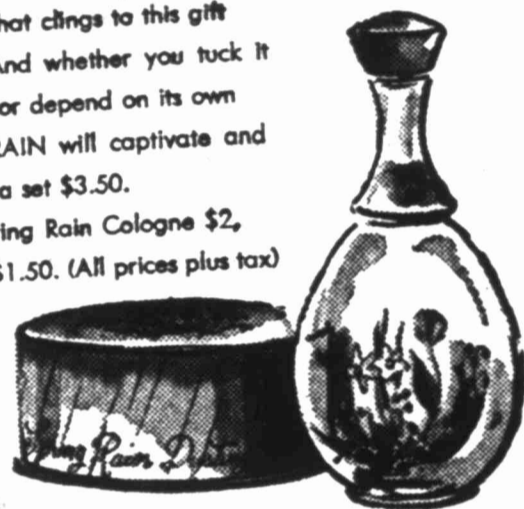


Celebrate Christmas this year with...

*Spring Rain*  
by  
**Charles of the Ritz**



She'll love the touch of May that clings to this gift you give her in December. And whether you tuck it into the pocket of a mink... or depend on its own gay wrappings... **SPRING RAIN** will captivate and delight her. Gift-wrapped as a set \$3.50. Gift-wrapped separately: Spring Rain Cologne \$2, Spring Rain Dusting Powder \$1.50. (All prices plus tax)



ALWAYS...IN ALL WAYS...

*Intoxication*  
**D'ORSAY**  
*it goes to your heart!*

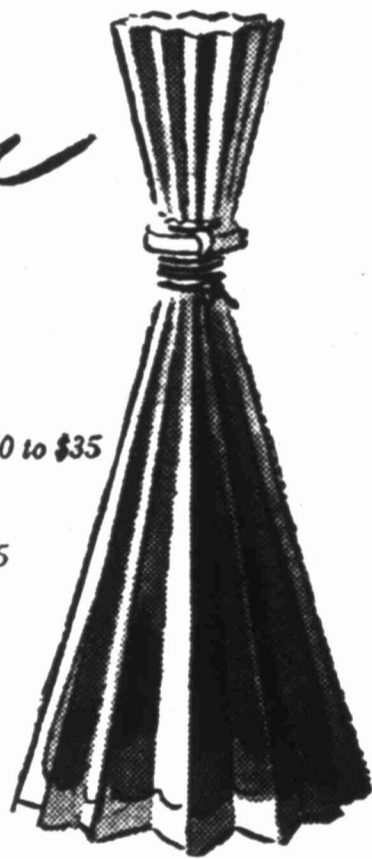
everytime you make up... *Eau de Toilette* \$3 and \$5 *Parfum* \$5.50 to \$35

whenever you travel... *Solidette*... solid form eau de toilette \$1.75

when rushing round town... *parfum Pursette* \$3

when you scent your clothes... *Sachet Concentrate* \$2.25

as bath-and-beauty time... *Bath Essence* \$3.50 *Dusting Powder* \$1.50 and \$3.50



ALL PRICES PLUS TAX



*Schiaparelli*  
PROUDLY GIVEN  
PROUDLY RECEIVED

**Shocking**  
Most renowned of perfumes with such verve and elegance it's become a hall-of-fame personality. new size **\$8.75\***  
Other sizes: 15.00\* 32.50\*  
Colognes: 2.75\* 5.00\* 9.00\*

**Sleeping**  
Dramatically subtle perfume rare and unforgettable. She'll cherish it in its lovely crystal candlestick. new size **\$8.00\***  
Other sizes: 15.00\* 30.00\*  
Colognes: 3.00\* 5.50\*

**ZUT**  
New Paris sensation. A sophisticated, provocative, luxurious fragrance for one who loves fine perfume. **\$5.00\***  
Other sizes: 25.00\* 40.00\*  
Colognes: 5.00\* 9.00\*

Gala Christmas Gift Wrappings!

**GRAMMER-MURPHEY**

MIDLAND'S Gift Store FOR MEN AND WOMEN!

**Permian Basin OIL & GAS LOG**  
James C. Watson  
Oil Editor

**More Shows Found In Crane Wildcat**

Humble Oil & Refining Company No. 1 Halle C. Day, Central-East Crane County wildcat continues to encounter more shows of possible petroleum production in the Devonian lime and chert.

The latest show came in a one hour drillstem test at 8,220-61 feet. Recovery was 480 feet of slightly gas cut drilling mud with a trace of oil in the bottom 120 feet of the mud. There were no signs of formation water.

The prospector is drilling ahead below 8,220 feet in lime and chert. It is expected that operator will drill and test about 100 feet deeper and then stop and run casing and make production tests and try to complete the exploration as a commercial oil well and the opener of a new field.

This project has shown signs of oil and gas in drillstem tests in the Devonian from 7,650 feet down to the present level of operations. There has been some barren sections in that horizon—but so far no formation water has been developed and informed sources think that enough pay has been encountered to assure some sort of a well.

Location is 1,980 feet from north and west lines of section 15, block X, CCSD&RONG survey. That makes the project five miles southwest of the town of Crane.

**NW Crockett Tester Plugged, Abandoned**

Ted Welner and associates No. 1 P. L. Mitchell, Northwest Crockett County wildcat, eight miles north of Iraan, and 690 feet from north and east lines of section 43, block H, GC&SF survey, has been plugged and abandoned on a total depth of 8,088 feet in Ellenburger lime.

This project ran a drillstem test at 8,015-89 feet. The tool was open two hours. Recovery was 750 feet of sulphur water. No shows of oil or gas were reported.

This prospector topped the Ellenburger at 7,858 feet. Elevation is 2,440 feet.

Unofficial sources had reported that the wildcat had shown some slight signs of oil and gas in drillstem test in the top of the Ellenburger.

Those slight shows are said to have been extremely small and not sufficient for any sort of commercial production.

**W-C Reagan Venture Is PB To Test Bend**

Atlantic Refining Company No. 1 S. A. Hartgrove, wildcat in West-Central Reagan County, is at plugged back total depth of 10,627 feet in Bend lime.

All sections below that depth have been eliminated as possible producing horizons.

Operator is now preparing to perforate casing between 10,450 and 10,550 feet. The prospect will be swabbed natural and then probably will be acidized if no commercial production develops on the original swabbing.

The No. 1 Hartgrove was drilled to a bottom of 12,137 feet in the Ellenburger, where tests for production failed.

Operator believes the best chance of production is from the formation now plugged back to the Bend lime.

Location is 690 feet from south and west lines of section 12, block H, L&SV survey.

**C-E Yoakum Wildcat Plugged, Abandoned**

Cabot Carbon Company has plugged and abandoned its No. 1 Heidenheimer estate, wildcat in Central-East Yoakum County.

Operator took a drillstem test from 6,278 to 6,948 feet in the middle Permian lime. The tool was open two and one-half hours. Recovery was 3,220 feet of muddy gas cut salt water with no shows of oil.

The failure is located 1,990 feet from north and east lines of section 11, block D, J. K. Gibson survey and five miles northwest of Tokio.

**New Mexico Sells Leases On More Than 12,000 Acres**

SANTA FE, N. M. —(AP)—The State Land Office has sold oil and gas leases on more than 12,000 acres of state land for \$163,750.21.

Leases on 30 tracts in Chaves, Eddy and Lea County were sold on a sealed bid basis. Another 73-acre tract in San Juan County was sold on oral bidding.

The Atlantic Refining Company paid the highest price per acre, bidding \$11,983.75 for a 130-acre tract in Lea County, or about \$91 per acre.

A land office spokesman said the results of the sale were "very good."

Leases on two unusually large tracts in Chaves County were sold to Humble Oil & Refining Company. The company bid approximately \$26,000 on a 3,300-acre tract and \$23,000 on a 2,073-acre tract. The land lies in territory not heretofore popular with oil operators.

Snow is never seen in Adelaide, the capital of South Australia.

**YOUR SHOPPING HEADQUARTERS**

These Sensational Prices Good After 5:30 P.M. Thursday, and All Day Friday and Saturday!

Two Superb Gift Items for "Her"

LUSTROUS SATIN LOUNGING PAJAMAS

Breathtaking, is the word for these red satin lounging pajamas with rich, black trimming with gold braid, ¾ length sleeves and belted jacket. Contrasting black trousers.

Regularly Priced \$12.95 **\$9.95**

TOM GIRL PAJAMAS and TOMMIE COAT

Three piece sets in either solid or contrasting colors. Sizes 12 to 18.

Regular price \$14.95, now **\$10.95**



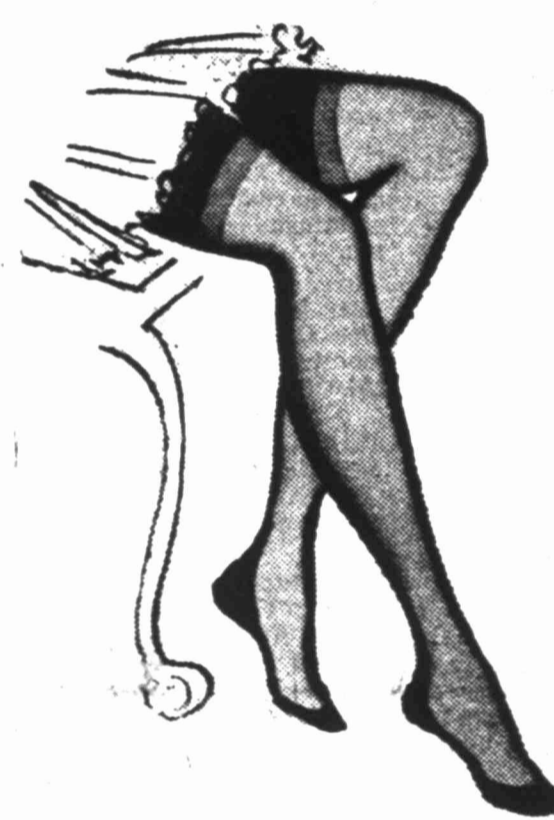
Nylon BRIEF PANTIES  
In white only. Sizes 4, 5, 6 and 7. **\$1.50**

Revolving Cruet Sets  
7 piece in chrome & crystal. **\$1.95**

Crème Bon-Bon Dishes  
Assortment of styles & sizes. **\$1.95**

A Special Purchase of . . .

1500 PAIR NYLON HOSE



Newest holiday shades. Choose from 66 gauge 15 denier, 60 gauge 15 denier, 54 gauge 15 denier, and 51 gauge 15 denier.

**\$1.00** Pair

Cotton Madiera Cloths

A marvelous gift for any home maker.

Size 66x84 **\$13.95**  
Size 66x100 **\$17.95**



Madiera Napkins  
All linen Madiera Napkins in boxes of 4. A nice gift. **\$3.95**

TOWEL SETS

We have them in all colors, priced **\$1.75**

Wool Filled Satin Comforts

Choose from comforts of blue, green, gold, grey or chartreuse. **\$18.95**



Chenille Bedspreads

With or without fringe in solid colors and white. **\$12.95**

2-Pc. Salad Service

Holiday pattern in King Edward silverplate. **\$4.95**

Men's Holiday Suits

One group of 50 suits. New Fall and Winter suits but broken sizes. Terrific values for the lucky men.

\$47.50 to \$49.50 Values for only	<b>\$33.00</b>
\$54.50 to \$59.50 Values for only	<b>\$38.00</b>
\$69.50 to \$75.00 Values for only	<b>\$50.00</b>
\$85.00 to \$90.00 Values for only	<b>\$65.00</b>
\$100.00 Regular Values for only	<b>\$75.00</b>
\$125.00 Regular Values for only	<b>\$85.00</b>

Men's Corduroy Coats

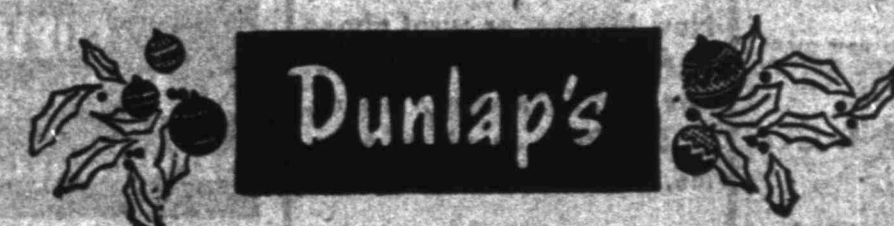
In colors of tan, rust or maroon. Reduced for quick sale. **\$14.95**

\$18.50 Values **\$17.95**  
\$21.50 to \$23.00 Values **\$17.95**

Boys' Sport Coats

Sizes 6 to 8—Reg. \$7.95 **\$6.50**

Sizes 6 to 8—Reg. \$11.00 **\$7.50**  
Sizes 8 to 18—Reg. \$13.50 **\$9.00**  
Sizes 8 to 18—Reg. 18.50 **\$12.00**



# Gifts

**FOR EVERYONE  
AT WALGREEN'S**



## YORK NUT SHELLER

Just clip the shells — leaving the nut meats whole. Beautiful, polished aluminum handles and shield; cutting teeth of finest steel.

*It's Light!*  
*Easy to Use!*

Does not Crush the Meats . . . does not Scatter shells.

\$3.95

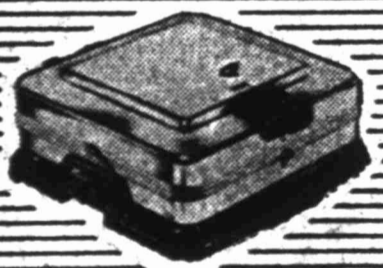
Add 7c Postage on Mail Orders



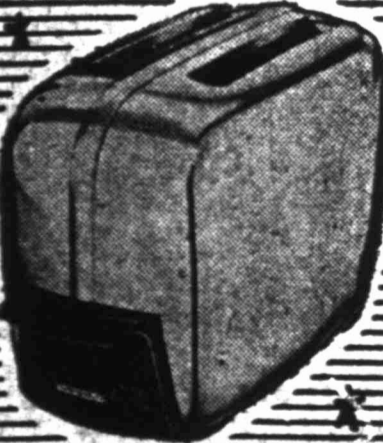
**GE Waffle Iron  
with Sandwich Grill**  
**19.95**



**Sunbeam  
Coffee Maker**  
**31.95**



**Sunbeam  
Waffle Baker**  
**24.95**



**GE Toaster**  
**21.50**



**Sunbeam Irons**  
**13.49**

## GENERAL ELECTRIC ELECTRIC BLANKETS



**UNIVERSAL**

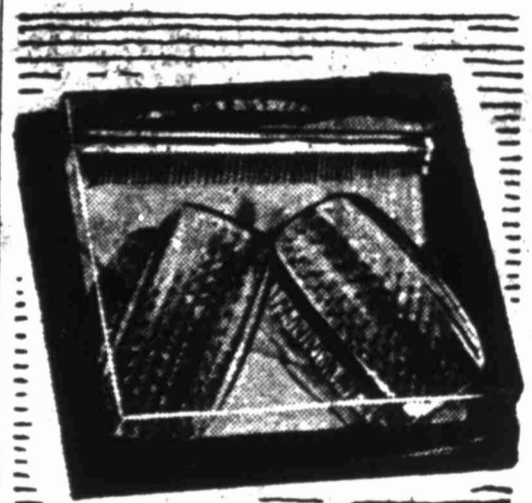
With Sunbeam Sentinel  
Temperature Control

Rose • Blue • Green

**DOUBLE BED SINGLE CONTROL** 46.95  
**DOUBLE BED DUAL CONTROL** 54.95



**COLONIAL DOLL HOUSE** . . . 8.95



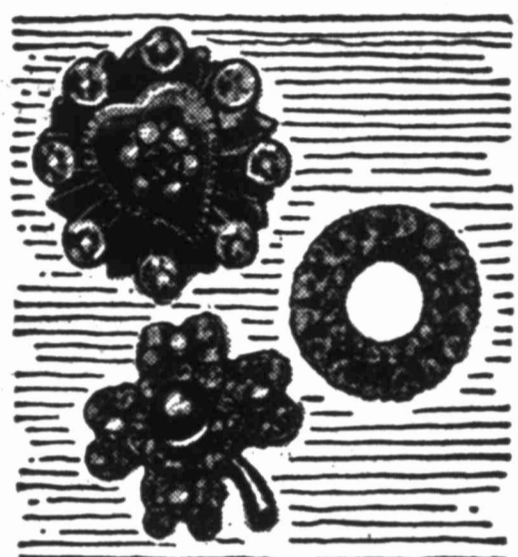
**Jewelite  
COMB and BRUSH SET**  
Two bristled lucite men's brushes and matching comb in giftable box.

**6.85**



**LENTHERIC MEN'S SET**  
For men of action, nippy shave lotion, cologne, talc, "Three Musketeers" set.

**2.25**



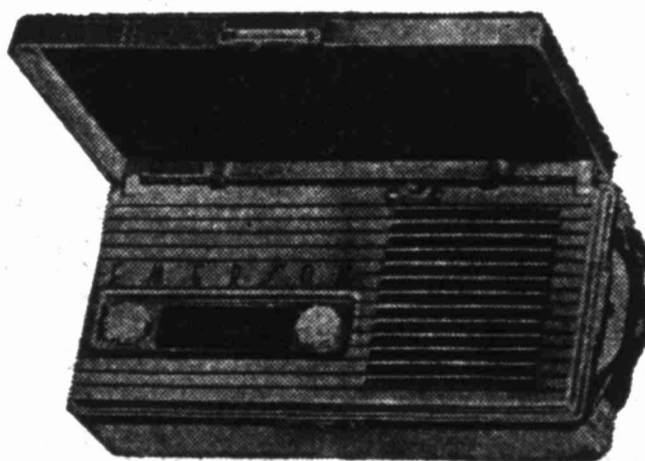
## HOLIDAY EARRINGS

Scores of styles—they look like they cost \$2 to \$4. . . **\$1** plus tax. Choose today. Per pr.



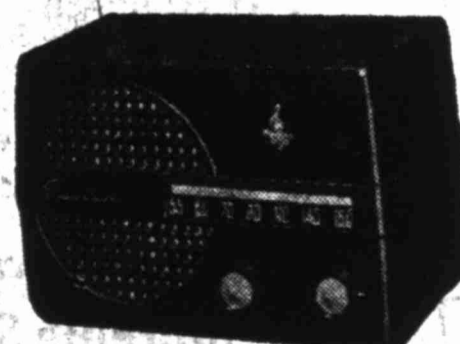
**SEAFORTH DUO**  
Men like this! Heather and Fern Shaving Lotion and a mate Shave Mug

**2.10**



**EMERSON PORTABLE RADIO**

only **27.95** complete with batteries



**EMERSON TABLE RADIO**  
**19.95**



**EMERSON CLOCK RADIO**  
Combination  
**36.95**

# BLESSED EVENT

The amazing new doll whose expression you can change

The only doll with lips that kiss!



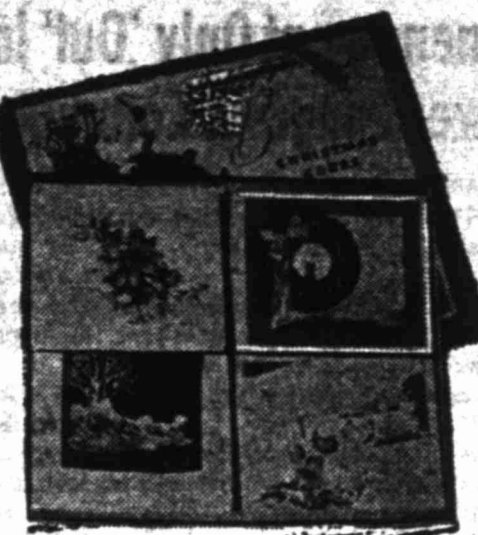
The only doll that sucks your finger!



The only doll that opens her mouth to cry!

Ideal's Blessed Event doll is so real she almost breathes . . . for when you caress her she puckers and moves her lips as she kisses you. She pouts and frowns and changes her expression when you press her back. She looks like a baby . . . feels like a baby . . . cries like a baby! Dressed in white flannel diaper, shirt and bathrobe, with her own blanket. See her in our toy department.

**I**  
18" SIZE  
\$11 - \$14.95



**CHRISTMAS CARDS**  
Sparkling holiday four-folds. Envelopes too!

Box of 15 for 97c

Deluxe Box of 18 . . . 79c



## DOPP-KIT

the travel-kit that gives you superlative convenience. It opens wide—stays open for easy use—and closes snug and flat to occupy little space in your travel-bag. Large capacity, easily holds all necessary toilet articles and accessories. Smart style and fine leathers. A favorite with men—women like it, too.

6.95 up

# MIDLAND

**Walgreen Agency  
DRUG CO.**

SPECIALS THURSDAY P.M. — FRIDAY — SATURDAY

Right reserved to limit quantities.

We are never knowingly undersold . . . We meet or beat any price in Midland . . .

★ **FREE DELIVERY ON PRESCRIPTIONS** ★

60¢  
**WILDROOT  
Cream Oil**  
**49¢**

49¢  
**EXTENSION  
CORDS . . . 39¢**  
6-foot lengths

49¢  
**COLGATE  
Shave Cream**  
**39¢**

## Christmas Tree LIGHTS

89¢ Sets  
Series Type . . . . . **69¢**

## DISH CLOTHS

**MORGAN-JONES** 3 FOR 19¢  
REG. 9¢. (Limit 6)

## WOODBURY Soap

13¢ BATH SIZE BARS  
Limit 6 Bars . . . . . **3 for 27¢**

## HALO Shampoo

1.00 Value  
Limit 1 . . . . . **59¢**

**75¢ Bayer  
Aspirin  
Bottle of 100  
Tablets**  
**59¢**

**Ronson Butane  
Lighters**  
**1250 and  
1350**

**All Metal  
Christmas  
Tree Stands**  
**98¢**

# PHOTOGRAPHY Specials



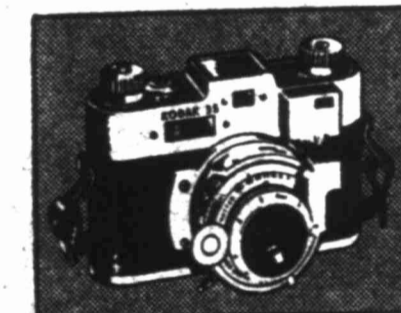
**Kodak "35"**  
F/3.5 Lens

Cine Kodak 8 mm Camera . . . . . 147.50

Only 22.00 down, balance monthly

Cine Kodak Royal 16 mm . . . . . 192.50

Only 29.00 down, balance monthly



**Kodak 'Pony' 829**  
29.95



**Kodak 'Pony' 125**  
34.75



**KODAK TOURIST  
CAMERA**

Modern folding camera with exciting new features. Negatives, 2 1/4 x 3 1/4. Five models, from \$24.50 to \$95. Other Cameras from \$27.75.



**CINE-KODAK RELIANT  
CAMERA**

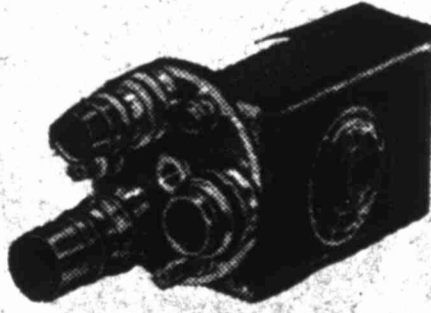
Full-color home movies are easy to make . . . economical, too, with this movie maker. With 1/2.7 lens, \$79. Prices include Federal Tax.

SYNCHRONIZED FOR FLASH. DOUBLE EXPOSURE PREVENTION, COUPLED.

Range Finder . . . . . 86.75

Flash Holder . . . . . 11.50

**Only 13.00 down**  
Balance monthly



**Bell & Howell  
AUTO MASTER**

Now Only **269.50**

with Filmmoted 1/1.9 lens only

**Only 40.00 down**

Designed for the most discriminating movie maker, the Bell & Howell Auto Master is the only 16mm turret-head camera with positive viewfinders that automatically match the lens in use! What you see, you get! Built-in exposure guide covers every outdoor light condition. Five speeds including true slow motion, plus Singlopic release for animation tricks and titles. *Guaranteed for life.*

\*During life of product, any defects in workmanship or material will be remedied. See complete instructions.



**argus**

More people want it . . . more people buy Argus. It's so good for taking color slides, or natural, exposures . . . it's so good for taking snapshots . . . it's so good for taking snapshots . . . it's so good for taking snapshots . . .

Now Only **269.50**  
with Filmmoted 1/1.9 lens only

**COMPLETE OUTFIT NOW  
Only \$60.50**

**Only 9.95 down**  
Balance monthly



**NEW MAGAZINE-LOADING  
8mm MOVIE CAMERA**  
by Bell & Howell

Only 8mm Auto-8 gives you all these features:  
\* Magazine-loading with Tip-Touch Ejector.  
\* Shifts Two-Lens turret on which matched finders turn with lenses. What you see, you get!  
\* Selfo Lock—lets operator step into the picture.  
\* Superfocusing—for filming glass-fronted titles and other tricks.  
\* Two-Speed Motion and four other speeds.

Price **200.65**  
**Only 42.00 down**  
Balance monthly

### T&P Superintendent Moves To Fort Worth

W. T. Alexander of Big Spring, western division superintendent for the Texas & Pacific Railway Company, will move to Fort Worth, January 1, to become superintendent of the railway's eastern division, according to information received here.

He will be succeeded at Big Spring by W. C. Foster, who has been promoted to the position of SPLAWN TO BOSS RAILROADS.

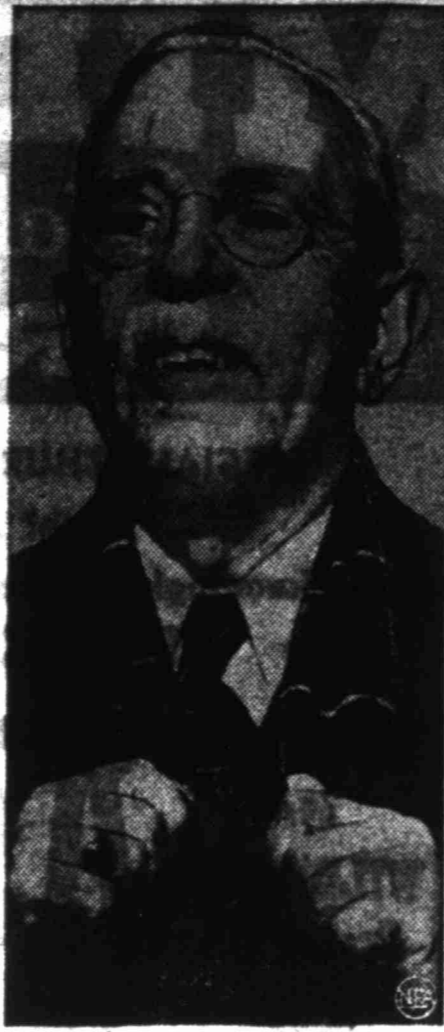
WASHINGTON—(AP)—Walter W. M. Splawn, former president of the University of Texas, will be top boss next year of the nation's railroads. He was elected chairman of the Interstate Commerce Commission for 1961.

Alexander, who formerly was assistant superintendent at Fort Worth, will be replaced by T. E. Griswold, who is retiring from service, has been stationed at Big Spring three years.

L. B. Griffin, transportation inspector at Big Spring, is being transferred to Marshall as trainmaster.

**ADMITTED FOR TREATMENT**

Wesley A. Edwards, 408 East Elm Street, was admitted to Western Clinic-Hospital Tuesday for medical treatment.



**DOCTOR OF YEAR**—Dr. Dean Sherwood Lucas, 74, of Canton, Mass., above, was named family doctor of the year by members of the American Medical Association, meeting in Cleveland, O. Dr. Lucas, son of an old-time Yankee sea captain, has been practicing medicine since 1905. He was described by a patient as "the epitome of the old-time physician, soft-spoken, kind, wise and vigorous."

**MUNICIPAL WATER DISTRICT MANAGER IS ANNOUNCED**

AUSTIN—(AP)—E. V. Spence will resign as Texas Interstate Compact Commissioner or the Canadian Red and Sabine Rivers to become general manager of the Colorado River Municipal Water District January 1, Gov. Allan Shivers' office has announced.

Spence said he will move to Big Spring, his former home, as soon as possible to administer the water district which will serve Big Spring and Odessa. The water district was authorized by the last Legislature and has been approved by the two cities, which will contract for water from the district.

**Cushman**  
1958 Model  
New CUSHMAN Eagle  
1951 Mustang Mitey.  
Christmas Accessories,  
Parts, Good used  
Scooters  
Phone 5423, Odessa  
TAYLOR MACHINE WORKS

### Fifth Amendment Only 'Out' In Refusing To Answer Congress Committee Question

By JAMES MARLOW  
WASHINGTON—(AP)—In 1957 Congress passed a law still standing, which says:

"No testimony given by a witness before a congressional committee shall be used as evidence in any criminal proceedings against him in court."

But this is no perfect protection. For example: suppose you admitted to a congressional committee you had violated a federal law.

True, what you said to the committee could never be used against you in court. And you couldn't be charged with a crime on the basis of what you told the committee.

But the FBI could use what you said as a lead to dig up evidence on its own. Then you could be charged and the FBI evidence, not your congressional testimony, would be used at your trial.

What "out" then does a man have if he's called before a congressional committee since he can be jailed for contempt if he refuses to answer a committee question?

There is only one "out." That's the Fifth Amendment to the Constitution. It says no man can be forced to testify or give any evidence against himself.

So if you hide behind that Fifth Amendment you can refuse to answer on the grounds that: "What I say may tend to incriminate me (that is, lead to my arrest, trial and imprisonment)."

**Must Have Reason**

But you can't even use that "out" unless you really have some reason for fearing your answer might incriminate you. You just can't use it as a trick for refusing to answer. And if you use it, and Congress doesn't think you have a good reason for it, you can be cited for contempt and tried. Then it's up to a jury to decide whether you really might have been incriminated by answering.

It used to be that when a committee asked a witness if he was a Communist he could not refuse to answer, using the Fifth Amendment, on the grounds he might incriminate himself. There was no law affecting the Communist Party or making it a crime to belong.

But in 1940 Congress passed a law called the Smith Act. It said nothing about the party or that there was any crime in belonging to it. The law said:

**Crime To Advocate**

It's a crime to teach or advocate forceful overthrow of the government, to help organize any group which teaches it, or to be a member of such a group, knowing its purpose.

Finally the government tried and convicted 11 top Communists on a charge of violating the Smith Act by teaching overthrow of the government. Whether they were justly convicted will now be decided by the Supreme Court.

But, because of the Smith Act and the conviction of the 11 leaders, membership in the party may result in any member's being charged with violating the law.

Meanwhile, a Colorado grand jury tried to question Mrs. Patricia Blau about the party's operations in Colorado. She refused to answer, using the Fifth Amendment, on the grounds she might incriminate herself.

**Woman Found Guilty**

She was found guilty of contempt and sentenced to a year in jail. She appealed to the Supreme Court. And the court ruled:

She shouldn't have been held in contempt and had a right to refuse to answer on the grounds she might incriminate herself. Why? Because, the court said, she had reason to fear prosecution under the Smith Act if she admitted membership in, or knowledge of, the Communist Party.

But right now 30 persons stand indicted in Washington on a charge of contempt for having refused to answer congressional committee questions about communism. Does the Supreme Court decision mean the government will have to drop its charges against all these people? Not at all.

Earl Browder, former head Communist, is one. To some questions he merely said—without using the Fifth Amendment—he wouldn't answer because he thought the committee was fishing for information.

The other 19 gave various reasons for refusing to answer. Even in their case using the Fifth Amendment is not necessarily a good excuse for refusing to answer. For this reason:

Did they have reasonable grounds—as the Supreme Court said Mrs. Blau did—for fearing their answers might land them in jail? So, using the Fifth Amendment is not a complete shield in itself. There has to be a good reason for fearing prosecution before using it.

**Hearing Set For Field Designation**

AUSTIN—(AP)—The Railroad Commission has set public hearing for January 18 on the application of the Magnolia Petroleum Company for discovery allowable rights and a new field designation for the producing reservoir of its No. 1 Timmerman in Midland County.

Read The Classifieds.

**Food buns**

- AVOCADOS, nice size — each ..... 10¢
- LETTUCE large heads — each ..... 15¢
- TEXAS ORANGES, lb. .... 10¢
- IDAHO POTATOES, lb. .... 5¢
- YELLOW ONIONS, lb. .... 5¢
- PHILADELPHIA CREAM CHEESE, 2 pkgs. .... 25¢
- ALLSWEET OLEO, lb. .... 29¢
- CHOCOLATE COVERED CHERRIES, lb. box ..... 49¢
- MONARCH COFFEE, lb. .... 79¢
- MONARCH PUMPKIN, #2 can ..... 19¢
- TREND, large size ..... 19¢
- HUNTS TOMATO JUICE, #303 can ..... 10¢
- DEL MONTE PINEAPPLE JUICE, #2 can ..... 15¢
- BACON, Peyton's Hotel Style — lb. .... 57¢
- HAMBURGER MEAT, Fresh ground — lb. .... 42¢
- SAUSAGE, fresh country — lb. .... 29¢
- PORK CHOPS, end cut — lb. .... 45¢
- FRESH BACKBONE, lots of meat — lb. .... 59¢
- CHUCK ROAST, U. S. Choice beef, Omaha fed — lb. .... 69¢
- HAMS, half or whole, Christmas wrapped, Peyton's Del Norte — lb. .... 63¢
- TORTILLAS, 2 dozen limit — doz. .... 10¢

We have Jones hickory smoked bacon, Jones Sausage and U. S. Choice Beef. Guaranteed in every way to be good!

**H&H FOOD STORE**  
605 W. TEXAS PHONE 238

### Meat Loaf Slices Easily



**EASY SERVING**—Here's a new meat loaf that holds its shape, retains its nutritious juices and slices perfectly.

By GAYNOR MADDOX  
NEA Staff Writer

Our hunt for the best meat loaf recipe goes on. Here's the newest discovery. It uses granulated rice cereal for binding and the result is a loaf that holds its shape well and slices beautifully.

**Baked Meat Loaf**  
(Yield: 6-8 Servings)

Three-quarters of a pound of chopped beef, 3/4 pound chopped pork, 1/2 cup granulated rice cereal, 1 egg, 1/4 cup finely diced onion, 1/4 cup finely diced green pepper, 1 1/2 teaspoons salt, 1/4 teaspoon pepper, 1/2 teaspoon chili powder, 1 teaspoon sugar, 3/4 cup tomato sauce.

Place all ingredients in large mixing bowl. Mix thoroughly with hands or large kitchen fork. Pack in greased loaf pan, about 8x4x3 inches, making sure there are no air spaces. Bake in moderate oven (350 degree F.) until meat is done, about 1 1/2 hours. Serve hot, or chill and turn out on platter to slice cold, then serve with a hearty macaroni mushroom salad.

For a super occasion here's a super-duper pie. It has no gumminess, yet the pieces do not run around the plate either.

**Super Cherry Pie**  
(One 9-inch pie)

Two pounds frozen pitted red sour cherries, 1/2 cup sugar, 1/8 teaspoon salt, 2 tablespoons granulated rice cereal, pastry for 9-inch pie, 1 tablespoon butter.

Detroit cherries. Place cherries in a mixing bowl and add sugar.

**MRS. HEARN HAS GUEST**

Billy Beau Duncan of Fort Davis, returned to her home Wednesday after spending several days as a guest of Mrs. Nonie Hearn, 2211 West Washington Street.

### Irish Setter Helps Save Child From Burning Structure

MARLIN—(AP)—Buster, an Irish setter, has a special place in the hearts of the Ernie Lawrence family. For Buster helped save Ernie Wayne Lawrence, five, from a burning barn.

Buster raised such a fuss that Ernie Wayne's uncle, H. C. Lawrence, saw the burning structure, rushed to it, and rescued Ernie Wayne.

It happened while the boy's father—Ernie Lawrence, Marlin High School football coach—and his mother, who works in the tax collector's office, were away from home.

H. C. Lawrence was painting a side of the house that obscured his view of the barn.

Buster barked and bugged at Lawrence so much he couldn't work. He stepped back to get a stick to chase Buster off. When he did he saw the barn on fire. As he ran to it he heard a child screaming. Inside he found Ernie Wayne huddled in a trough. He barn collapsed in flames just after he ran out with the boy.

Lawrence's hands were burned. Ernie Wayne was treated for second and third degree burns.

Careless smokers top the list of causes of forest fires in Canada.

### CHRISTMAS FOOD SHOP HERE!

You'll find a large variety of bakery products that will brighten up ANY meal! Come in and see our displays... you'll see why more and more people are shopping Snowwhite for bakery goods!

**Double Dip Caramel Cake**  
Tender, tasty layers covered with a creamy white icing and then topped with a smooth caramel top! You'll get a taste treat when you bite into a piece of this wonderful cake! **65¢**

**Cherry Chiffon Cake**  
The rich flavor of cherries blended into this wonderful cherry chiffon... a generous helping of maraschino cherries whipped and baked into this tasty treat! Try some today! **65¢**

**PUMPKIN PIE**  
Smooth, creamy pumpkin baked in a wonderfully flaky pie crust. Serve hot or cold... with whipped cream. A delicious treat! **60¢**

**MINCE PIE**  
Old fashioned mince pie... a wonderful treat at this time of the year. You'll delight in the tangy taste of this wonderful creation! **60¢**

**RAISIN BREAD**  
Chewy, wholesome, nutritious raisins baked into a tender loaf of bread. A wonderful breakfast treat... a delicious bread at any meal in **20¢** loaf the day.

**OLD FASHIONED FRUIT CAKE**  
Made with candied pineapple, glazed cherries, walnuts, pecans, raisins, candied fruit rind, and other delicious, nutritious ingredients... all to make a wonderful, special season's treat. **REAL fruit \$1.25** lb. cake!

For Your Christmas Parties... let Snowwhite make your bakery treats. Specially decorated cakes, special season cookies, or any other special baked creation you may desire. Place your order now.

**Snowwhite BAKERY**  
105 N. Pecos St. Phone 2910

## Never before... for home use!

# Kraft Salad Oil

### ...it's lighter-bodied to blend perfectly with other flavors!

It's here! Your grocer has it!

The same smooth-blending salad oil perfected for use in Miracle Whip Salad Dressing and other Kraft products is now available in handy bottles... so you can use it at home to improve your own favorite salad dressing recipes, and all your cooking and baking!

Every golden drop of Kraft Salad Oil is superfined by a special Kraft process. Every golden drop is lighter-bodied so it blends quickly and perfectly with other flavors.

That's why Kraft Salad Oil is fast becoming the favorite salad and cooking oil all over town. Put it on your shopping list today!

**Superfined by a special Kraft process!**

Blends a fresh taste into homemade salad dressings... gives tender lightness to fried foods... puts a grand fill into your chicken cakes!

Needham, Louis and Brody, Inc.  
Ad No. 5—P.O. 6111—4 col. x 150 li.—B/W  
Newspaper, 1959  
©—G. 599—5-25-59-4

## Good Food at a SAVING

- APPLES Washington Red Delicious 2 lbs. **25c**
- BANANAS Nice—Pound **15c**
- CELERY Pound **10c**
- Fritos Large Pkg. **29c**
- AXAX—Can **Cleanser 2 for 29c**
- Pi-Do Box **18c**
- FOLGEE'S Coffee Pound **85c**
- BORDEN'S Biscuits 2 cans **29c**
- KRAFT'S Salad Oil Bottle **36c**
- Breakfast Bargain! **HANDY 1 CUP ALUMINUM DRIP COFFEE MAKER** ONE 800 3 TRADE MARK PLUS 25¢ IN COIN Per Pkg. **18c**
- JOLLY TIME Jolly Time POP CORN Yellow **22c**
- DURKEE'S Margarine lb. **37c**
- Coca-Cola **20c**
- Supreme Salad Waters Box **29c**
- Bacon Decker's Tall Korn—Pound **49c**
- Hams Peyton's Del Norte, Half or Whole, lb. **59c**
- Pork Chops End Cut—Pound **49c**
- Ham Butts For Baking—Pound **41c**
- Hens Swift's Premium—Pound **59c**

Place Your Order for Christmas Turkeys NOW!

We Give S & H Green Stamps

**WHITSON STORE FOOD**  
Corner of N. W. Front and "M" St. Phone 1311

### Frozen Foods

<b>Strawberries</b> Honor 12 oz. pkg. ....	53c
<b>Raspberries</b> Honor 12 oz. pkg. ....	43c
<b>Peaches</b> Honor 16 oz. pkg. ....	38c
<b>Orange Juice</b> Minute Maid 6 oz. tin ....	27c
<b>Corn on Cob</b> Honor 2 ear pkg. ....	31c
<b>Brussel Sprouts</b> Honor 10 oz. pkg. ....	39c
<b>Succotash</b> Honor 13 oz. pkg. ....	39c
<b>Squash</b> Honor 10 oz. pkg. ....	29c
<b>Green Peas</b> Honor 12 oz. pkg. ....	28c
<b>Peas &amp; Carrots</b> Honor 12 oz. pkg. ....	31c
<b>Breaded Shrimp</b> Pan Ready, Fan Tail Variety 12 oz. pkg. ....	79c
<b>Oysters</b> Fresh Frosted, Pan Ready—12 oz. pkg. ....	79c



### Fine Candies

<b>Mint Wafers</b> Rockwood 8 1/2 oz. pkg. ....	37c
<b>Satin Mix</b> Roxbury 1 lb. pkg. ....	29c
<b>Chocolate Drops</b> Roxbury 1 lb. pkg. ....	31c
<b>Peanut Clusters</b> Roxbury 1 lb. pkg. ....	53c
<b>Jelly Beans</b> Roxbury 1 lb. pkg. ....	29c
<b>Orange Slices</b> Roxbury 1 lb. pkg. ....	25c
<b>Gum Drops</b> Roxbury 1 lb. pkg. ....	25c
<b>Hershey Kisses</b> 7 oz. pkg. ....	25c
<b>Peanut Brittle</b> Blu Hill 12 oz. pkg. ....	32c
<b>Filled Mix</b> Hromada's 14 oz. glass ....	41c
<b>Peppermint</b> STICKS Sea Breeze 8 oz. pkg. ....	28c
<b>Honeycomb</b> Roxbury Chocolate Covered CHIPS 10 oz. pkg. ....	43c

### Gift Ideas

<b>Chocolate</b> Villa CHERRIES 1 lb. box ....	53c
<b>Terry Thin Mints</b> Chocolate Covered Libby's Manzanilla 1 lb. box ....	45c
<b>Stuffed Olives</b> 10 oz. glass ....	75c
<b>Tobacco</b> Prince Albert Carton of 12 - 15c tins 1.38	
<b>American Cheese</b> Dutch Mill 2 lb. leaf ....	96c
<b>Wrigley's Gum</b> Assorted Flavors Carton of 20 5c pkgs. ....	85c
<b>Cookie</b> Nabisco Anniversary Pack 1 lb. box ASSORTMENT ....	57c
<b>Lucky Strike</b> Cigarettes Carton Christmas Wrap ....	1.88
<b>Camel</b> Cigarettes Carton Christmas Wrap ....	1.88
<b>Chesterfield</b> Cigarettes Carton Christmas Wrap ....	1.88

### Baking Needs

<b>Kitchen Craft</b> All Purpose Flour 5 lb. bag ....	51c
<b>Gold Medal</b> All Purpose Flour 5 lb. bag ....	51c
<b>Fleet Mix</b> For Biscuits and Waffles—40 oz. box ....	42c
<b>Party Cake Mix</b> Betty Crocker 20 oz. box ....	37c
<b>Swansdown</b> Cake Flour 40 oz. box ....	42c
<b>Crustquick</b> Betty Crocker Pie Crust Mix 8 oz. box ....	18c
<b>Cocoa</b> Hershey 1 lb. box ....	48c
<b>Margarine</b> Sunnybank 1 lb. pkg. ....	35c
<b>Mince Meat</b> Borden's None-Such, 28 oz. glass ....	43c
<b>Sugar</b> Powdered or Brown 1 lb. box ....	13c
<b>Shortening</b> Royal Satin Pure Vegetable, 1 lb. tin ....	37c
<b>Coconut</b> Baker's Shredded 8 oz. pkg. ....	27c
<b>Fresh Eggs</b> Large Grade "A" Breakfast Gem Dozen ....	88c

### Beverages

<b>Airway</b> Coffee, Fresh Ground As You Buy—1 lb. pkg. ....	76c
<b>Nob Hill</b> Coffee 1 lb. pkg. ....	78c
<b>Edwards</b> Vacuum Packed, Drip or Regular Grind Coffee 1 lb. tin ....	83c
<b>Folgers</b> Coffee, Drip or Regular Grind—1 lb. tin ....	85c
<b>Hills</b> Coffee, Drip or Regular Grind—1 lb. tin ....	85c
<b>Gingerale</b> In No-Deposit, Non-Returnable Bottles 24 oz. bottle ....	15c
<b>Sno-Cola</b> In Handy 6 Bottle Cartons 24 oz. bottle ....	15c
<b>Orange</b> Nesbit (plus deposit) Carton ....	25c
<b>Dr. Pepper</b> In Handy 6 Bottle Cartons (plus deposit) Carton ....	25c
<b>Orangeade</b> Green Spot 46 oz. tin ....	21c
<b>Tea Bags</b> Canterbury Orange Pekoe—16 bag box ....	17c
<b>Instant Postum</b> 8 oz. box ....	58c

Get a head start on your **CHRISTMAS FOOD SHOPPING**—stock up on staples now!

Be sure...shop **SAFEWAY**

### Canned Fruits

<b>Apricots</b> Del Monte Halves No. 303 tin ....	23c
<b>Peaches</b> Libby's Sliced or Halves No. 2 1/2 tin ....	32c
<b>Peaches</b> Highway Sliced or Halves—No. 2 1/2 tin ....	29c
<b>Blackberries</b> LeFlore No. 2 tin ....	23c
<b>Applesauce</b> Lake Mead Fancy, No. 303 tin ....	17c
<b>Grapefruit</b> Glenaire Segments—No. 2 tin ....	25c
<b>Cherries</b> Honeybird R.S.P. No. 2 tin ....	25c
<b>Pineapple</b> Libby's or Dole Crushed—No. 2 tin ....	29c
<b>Cranberry Sauce</b> Ocean Spray, Whole or Strained Tall Tin ....	12c
<b>Fruit Cocktail</b> Libby's Finest, No. 303 tin ....	24c
<b>Pears</b> Libby's Halves No. 303 tin ....	29c
<b>Cherries</b> Liberty Maraschino 8 oz. glass ....	29c
<b>Sliced Apples</b> Musselman's No. 3 tin ....	20c

Lots of your holiday food needs can be bought right now—saving you important time later on. Check this ad for suggestions.

### Salad Needs

<b>Vegetable Salad</b> Butterkernel No. 300 tin ....	24c
<b>Pimento's</b> Dromedary 4 oz. tin ....	14c
<b>Jell Well</b> Lemon or Lime 7c	
<b>Gelatin</b> Knox Sparkling Pkg. ....	23c
<b>French Dressing</b> Kraft or Best Foods 8 oz. glass ....	23c
<b>Mayonnaise</b> Best Foods Pint ....	48c
<b>Salad Dressing</b> Duchess Pint ....	37c
<b>Cottage Cheese</b> Borden's 8 oz. ctin. ....	19c
<b>Ripe Olives</b> Libby's Large Pitted—Tall tin ....	39c
<b>Stuffed Olives</b> Libby's Manzanilla 3 oz. glass ....	31c
<b>Olive Oil</b> Pompeian 8 oz. tin ....	45c
<b>Shrimp</b> Shady River Small Wet 5 oz. tin ....	43c

### Canned Vegetables

<b>Pumpkin</b> Libby's Custard No. 303 tin ....	10c
<b>Mushroom</b> Keystone Stems and Pieces 4 oz. tin ....	31c
<b>Green Beans</b> Briargate Fancy Vertical Pack—No. 2 tin ....	29c
<b>Wax Beans</b> Libby's Cut No. 303 tin ....	22c
<b>Lima Beans</b> Libby's Small Green No. 303 tin ....	30c
<b>Whole Beets</b> Libby's Fancy 10 Count No. 2 tin ....	18c
<b>Golden Corn</b> Highway Whole Kernel 12 oz. tin ....	16c
<b>Sweet Potatoes</b> Crystal No. 2 1/2 ....	25c
<b>Fancy Peas</b> Sugarbell No. 303 tin ....	18c
<b>Spinach</b> Emerald Bay Fancy No. 2 tin ....	17c
<b>Tomatoes</b> Gardenside No. 2 tin ....	14c

### Nuts

<b>Pecans</b> Funsten Large Soft Shell 1 lb. bag ....	52c
<b>Walnuts</b> Diamond Medium 1 lb. bag ....	43c
<b>Walnuts</b> Emerald Baby 1 lb. bag ....	36c
<b>Almonds</b> I.X.L. 1 lb. bag ....	47c
<b>Brazils</b> Sunset 1 lb. bag ....	43c
<b>Mixed Nuts</b> Sunset (No Peanuts), 1 lb. bag ....	45c
<b>Pecan Halves</b> L-Paso 8 oz. pkg. ....	72c
<b>Cashews</b> Azar Salted 4 oz. pkg. ....	28c
<b>Shelled Walnuts</b> Azar 4 oz. pkg. ....	29c
<b>Cocktail Peanuts</b> Planters 8 oz. tin ....	36c
<b>Spanish Peanuts</b> Planters 8 oz. tin ....	28c
<b>Mixed Nuts</b> Planters Shelled 4 oz. tin ....	38c

### Cakes, Cookies

<b>Fruit Cake</b> Hostess 3 lb., 3 oz. ....	1.39
<b>Fruit Cake</b> Hostess 14 oz. ....	45c
<b>Angel Cake</b> Mrs. Baird's 8 oz. ....	29c
<b>Fig Bars</b> Merchants 12 oz. pkg. ....	27c
<b>Griddle Wafers</b> Merchants Assorted 8 1/4 oz. ....	27c
<b>Vanilla Wafers</b> Dixie 1 lb. box ....	29c
<b>Royal Fingers</b> Chocolate Covered N.B.C. 5 1/2 oz. ....	29c
<b>Sugar Cookies</b> Jumbo 1 lb. pkg. ....	26c
<b>Assorted Cookies</b> Merchants Supreme 1 lb. box ....	52c
<b>Clipped Cookies</b> Merchants 11 oz. box ....	29c
<b>Chocolate Puffs</b> Sunshine 7 1/2 oz. pkg. ....	24c

### Miscellaneous

<b>Crisco</b> Vegetable Shortening 1 pound ....	39c
<b>Sliced Apples</b> Pilo Choice 1 lb. pkg. ....	45c
<b>Raisins</b> Kismet Seedless 15 oz. box ....	23c
<b>Dates</b> Bordo Pitted 7 1/2 oz. pkg. ....	23c
<b>Prunes</b> Rosetta Large 1 lb. box ....	27c
<b>Milk</b> Carnation, Pet or Borden's Tall tin ....	13c
<b>Hot Roll Mix</b> Pillsbury 14 oz. box ....	27c
<b>Fresh Yeast</b> Fleischman's Cake 3 for 13c	
<b>Wax Paper</b> Kitchen Charm 125 ft. box ....	23c
<b>Dinner Napkins</b> Zee Pkg of 40 ....	13c
<b>Syrup</b> Sleepy Hollow Cane and Maple—24 oz. glass ....	49c

### Miscellaneous

<b>Dreft</b> Makes Dishes Shine Large box ....	32c
<b>Vel</b> Makes Dishwashing Easy Large box ....	32c
<b>Tide</b> Tide's In—Dirt's Out Large box ....	32c
<b>Camay</b> Soap of Beautiful Women Bath bar ....	13c
<b>Camay</b> Soap of Beautiful Women Regular bar ....	9c
<b>Vinegar</b> Old Mill Cider Pint ....	14c
<b>Chicken Soup</b> Campbell's No. 1 tin ....	18c
<b>Vegetable Soup</b> Campbell's No. 1 tin ....	14c
<b>Tomato Soup</b> Campbell's No. 1 tin ....	12c
<b>Salt</b> Snowwhite Plain or Iodized 25 oz. box ....	10c
<b>Marshmallows</b> Fluffiest 1 lb. box ....	27c

### Safeway Guaranteed Meats

<b>Tom Turkeys</b> Govt. Inspected Grade "A"—Cello Wrapped—15-18 lb. wts.—Pound ....	57c
<b>Hen Turkeys</b> Govt. Inspected Grade "A"—Cello Wrapped—11-14 lb. wts.—Pound ....	65c
<b>Hen Turkeys</b> Govt. Inspected Grade "A"—Cello Wrapped, Premium, 8-10 lb. wts.—Lb. ....	67c
<b>Oysters</b> Fresh Selects Pint ....	95c
<b>Fresh Hens</b> Grade "A" Dressed and Drawn—Pound ....	59c
<b>Fresh Fryers</b> Grade "A" Dressed & Drawn—Lb. ....	59c
<b>Chuck Roast</b> Govt. Grade Good Mature Grainfed Beef Pound ....	73c
<b>Pork Roast</b> Fresh Pork Shoulders—Pound ....	47c
<b>Sirloin Steak</b> U.S. Good Grade Mature Grainfed Beef Pound ....	96c
<b>Smoked Hams</b> Half or Whole Small Size Pound ....	55c
<b>Smoked Picnics</b> Short Shank Small Size Pound ....	39c
<b>Sausage</b> Pure Pork, in Pound Rolls—Pound ....	41c
<b>Pork Chops</b> Lean End Cuts Pound ....	59c

### Coca-Cola

<b>Coca-Cola</b> (Plus Deposit)—Carton ....	19c
<b>Butter</b> Dairy Glen, In Quarters—1 Pound ....	72c
<b>Sugar</b> Fine, Granulated Beet—10 lb. bag ....	95c
<b>Flour</b> Gold Medal or Kitchen Craft—10 lb. bag ....	93c
<b>Cherub Milk</b> Tall Tin ....	12c

Be sure...shop **SAFEWAY**

### PM Again Warns About Christmas Card Mailing

Postmaster N. G. Oates reported Wednesday that Christmas mailings handed at the Midland Post Office this year appear headed for an all-time high and postal employees are working at top speed to keep up with the record flood.

Greetings for out-of-state delivery should be posted by Friday night, December 15, to reach their destinations in time. After that date, the postmaster warns, use Air Mail or Special Delivery stamps—or else send Happy New Year cards.

Christmas cards for Midland delivery should be mailed "at least a week before Christmas, and sooner if possible," he stated. The postmaster declared that despite the heavy volume of mail this year, he is confident it will be possible to deliver every last card and parcel before Christmas if the public continues to cooperate.

"Success will depend in a large measure upon prompt mailing by patrons," he stated.

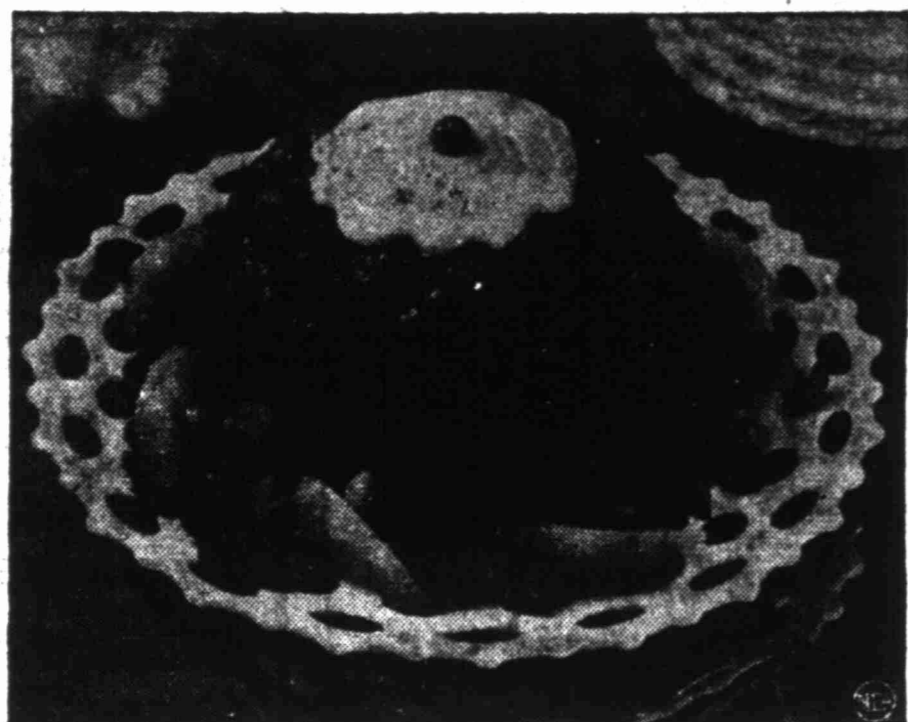
### Andrews Class To Present Play

ANDREWS — The Junior Class of Andrews High School will present the play, "The River Between," Friday afternoon and Saturday night in the high school auditorium.

Director is Miss Alice Cade. Members of the cast include: Jean Price, Joan Price, Janette Pendleton, Shirley Ham, Walter Randolph, Jerry Brown, Dick Blendon, Stella Day and Kenneth White.

Read The Classifieds.

### Cranberry Relish Adds Color



#### Jellied Cranberry Relish

By GAYNOR MADDOX  
NEA Staff Writer

For brilliant color in the Christmas menu serve this jellied cranberry molded salad:

**Jellied Cranberry Relish Salad**  
Two cups fresh cranberries, 1 lemon, quartered and seeded; 1 apple, peeled, cored and quartered; 1 orange, quartered and seeded; 1 cup sugar, 1 package fruit-flavored gelatin.

Put cranberries and fruit through food chopper. Combine with sugar and let stand a few hours to blend. Prepare fruit-flavored gelatin as directed on package, reducing water by 1/4 cup; chill until syrupy. Stir into drained cranberry relish mixture. Fill mold and chill until firm. Unmold on lettuce or watercress and serve garnished with orange sections.

Or if you want your cranberries

for the Christmas Turkey. In the salad course, just combine pineapple and pears, bananas and walnuts, lettuce and watercress. Top off with a generous handful of crunchy fresh cranberries for color and texture.

Finally—and what an old-fashioned and zestful end to the Big Meal of the Year—there's cranberry pie.

**Grandmother's Cranberry Pie**  
One recipe favorite pastry, 2 1/4 cups sugar, 1/2 cup water, 1/4 cup raisins, 2 cups apple sliced, 4 cups fresh cranberries, 2 tablespoons cornstarch, 2 tablespoons water.

Roll out half of pastry and fit into 9-inch pan. Combine sugar, water, raisins, apple slices and cranberries in saucepan. Cook until cranberries pop—about 10 minutes. Make a paste of cornstarch and remaining water, stir into fruit and continue cooking until thick and clear—about 5 minutes. Cool and pour into pie shell. Roll out remaining pastry and cut in strips. Arrange criss-cross fashion over top. Bake in hot oven (425 degrees F.) 25 minutes.

Morristown, N. J., had 45 forces turning out arms for the Continental Army during the Revolution.

#### Now Many Wear FALSE TEETH With More Comfort

FASTEST, a pleasant, alkaline (non-acid) powder, holds false teeth more firmly. No eat and talk in more comfort—just sprinkle a little FASTEST on your plates. No gummy, gooey, pasty taste or feeling. Checks "plate odor" (denture breath). Get FASTEST at any drug store.

### Sybesmas Speak On European Trip

ANDREWS—Mr. and Mrs. O. C. Sybesma, recently returned from a tour of Holland and other European countries, related highlights of their trip at the recent meeting of the Progressive Study Club. The group met in the Community Building with Mrs. James Belew and Mrs. H. E. Clark serving as hostesses.

Mrs. M. J. Smothers presided at the business meeting.

Refreshments were served to Mrs. Allen Jackson, Mrs. R. W. Fitzgerald, Mrs. Jimmie Burleson, Mrs. J. P. Roach, Mrs. C. O. Haskins, Mrs. M. J. Smothers, Mr. and Mrs. Othell Ogden, Mr. and Mrs. Roy Bennett, Mrs. Mart Vivian, Mrs. Dave Siebold and Mrs. Trilby Gerber.

Read The Classifieds.

### Last Of Marines To Come From Red Trap Make Dramatic Sight

By TOM LAMBERT

WITH THE U. S. MARINES, KOREA —(AP)—The weary, dangerous road to safety lay steep on the sharp-ribbed, snow-capped mountains. Then it unfolded leisurely along a brown, snow-dappled valley crusty with frost.

The Marines came down the road slowly. Their eyes were red with fatigue. Their faces and hands were grimy. They still were under the tension of the past terrible 12 days which shall be written boldly in Marine Corps history.

These were the last Marine troops to come out of the Chinese trap which the Leathernecks themselves had jammed apart. They were tired, dirty and bearded, but unafraid and proud with a pride which brought a lump in your throat.

They were not all there. Not all who drove far inland from the sea; through snow and ice and freezing

cold to Changjin Reservoir, where the Chinese tried to spring a trap. For many Marines died alongside that great reservoir and on the bloody road back to safety. Their bodies will lie forever in this barren and inhospitable wilderness.

Some climbed wearily from their vehicles, many of which were gaudy, like gypsies' wagons, with the vivid red and yellow and white silk from parachutes which had floated food and bullets to them while they were out from all help except by air.

There were the tired but joyful cries of profane greetings—like "Hey, Red, you b-----, I heard they got you"—which failed completely to hide their regard for each other. And there were low-spoken reports like "Bill got it at Hagaru."

Then the Marines climbed stiffly back into their vehicles. A few drivers, grinning weakly, sooted their horns in response to the pe-

but whistle shrilling from tiny locomotives which had hauled some Marines south to safety from the valley railroad.

Then the convoy rolled south into the dusk, the vehicles faintly lighted by a thin sliver of moon and the evening star.

### Crane HD Club Sets Christmas Party

McCAMEY—The McCamey Home Demonstration Club will hold its annual Christmas party and covered dish program Friday evening in the Humble Recreation Hall. Members and their families are invited to attend.

### When you buy coffee...



White Swan  
Quality is your  
Best Economy

MORE PLEASURE PER CUP  
MORE CUPS PER POUND...



## TABLE-READY FOODS for QUICKIE MEALS

### Frozen Foods

- Honor Brand Citrusip Can ..... 15c
- Honor Brand Orange Juice Can ..... 19c
- Honor Brand Baby Limas 12 Oz. Can ..... 33c
- Honor Brand Strawberries 16 Oz. Pkg. .... 49c
- Honor Brand Fantail Shrimp Pkg. .... 79c

Does Christmas shopping leave you with little time and less inclination to prepare supper these busy days? Then here's the simple answer to your problem—serve table-ready foods that are quickly and easily whipped up into delicious meals. They're this week's very special values at COLLINGS and our current variety of "quickie" foods suggest meal-a-minute menus for many a thrilling and filling supper. Stop in today and pick up a good supply of these grand tasting foods that save you so much time... and money, too!



**When it rains it pours**

More people use Morton's

Plain or iodized

**RHYMES OF REASON** Words and Music By CLOVERDALE GROCERY

I'VE BEEN IN TOWN JUST FOR A DAY  
AND FOUND OUT SOMETHING RIGHT AWAY  
IT'S JUST AS ALL THE PEOPLE SAY  
IT PAYS TO BUY AT CLOVERDALE GROCERY.

WE GIVE PACIFIC TRADING STAMPS  
— Specials for Thursday-Friday-Saturday —

<b>SUGAR</b> Imperial	5 Lbs.	49c
<b>MILK</b> Pet or Carnation—Tall Can	2 for	25c
<b>CORN</b> Jack Spratt White Cream Style—Can	2 for	29c
<b>Meal</b> Aunt Jemima—5 Lbs.	45c	
<b>Apple Jelly</b> 14 oz. mug	29c	
<b>Salad Dressing</b>	49c	
<b>CHERRIES</b> Red Pie—No. 2 Can	25c	
<b>KRAUT</b> Wapco—No. 2 Can	10c	
<b>COCA-COLA</b> Carton of 6 Bottles	19c	

<b>MEATS</b>	<b>PRODUCE</b>
<b>Chuck Roast</b> Lb. 59c	<b>Spuds</b> 10 Lb. Mesh Bag 39c
<b>Hams</b> Half or Whole, Lb. 55c	<b>Apples</b> Pound 13c
<b>Round Steak</b> Lb. 89c	<b>Yams</b> East Texas Choice, Lb. 9c
<b>Sliced Bacon</b> Lb. 49c	<b>Oranges</b> Juicy—Lb. 10c
<b>Wieners</b> Pound 43c	<b>Walnuts</b> English—Lb. 49c

**CIGARETTES** Popular Brands Carton ..... \$1.75

**CHERRIES** Chocolate Covered 1 Pound Box ..... 49c

**Grocery Dept.**

<b>Cranberry Sauce</b> No. 300 Can	2 for 25c	<b>Pumpkin</b> Del Monte—No. 300 Can	15c
<b>Strawberry Preserves</b> 2 Lb. Jar	59c	<b>Coconut</b> Baker's, Moist—1/4 Lb. Can	18c
<b>Corn Meal</b> White or Yellow—5 Lb. Sack	39c	<b>Peaches</b> Hunt's, Sliced or Halves—No. 2 1/2 Can	29c
<b>Peas</b> Empson's Garden Gathered—No. 303 Can	17c	<b>Cream Cheese</b> Philadelphia, 3 Oz. Pkg. 2 for	29c
<b>Asparagus</b> Mary Washington All Green—No. 2 Can	49c	<b>Apple Cider</b> Martinelli—32 Oz. Bottle	35c
<b>Pie Apples</b> Comstock, Sliced—No. 2 Can	23c	<b>Pineapple</b> Sliced or Crushed—Flat Can	15c
<b>Pie Cherries</b> No. 2 Can	23c	<b>Pickles</b> Diamond, Sour or Dill—Quart Bottle	29c
		<b>Whole Chicken</b> Derby—3 Lb. Can	\$1.98

**Farm-Fresh Produce**

<b>Celery</b> Stalk	10c	<b>HAMS</b> Peyton's, Half or Whole—Pound	59c
<b>Oranges</b> Florida, Large Size—Pound	7 1/2c	<b>SAUSAGE</b> Morrell's Pure Pork—Pound	39c
<b>Bananas</b> Central American—Pound	15c	<b>CHUCK ROAST</b> Pound	69c
<b>Onions</b> Red Sweet Spanish—Pound	5c	<b>PICNIC HAMS</b> Pound	49c
<b>Walnuts</b> Diamond—Pound	49c	<b>FRYERS</b> Doran's Fresh Dressed—Each	89c
<b>Almonds</b> Blue Diamond—Pound	57c	<b>Backbone or Spare Ribs</b> Country Style—Lb.	55c
		<b>CANNED HAMS</b> Pear Shape—Pound	89c

We reserve the right to limit quantities.

**CLOVERDALE GROCERY**

Biggest Little Store in Town

506 E. FLORIDA

Nellie Hughes  
Loy Blanscott

Open 7 a.m. To 9:30 p.m.

TEL. 9568

**COLLINGS FOOD SERVICE**

Your Complete Food Market

NO PARKING HEADACHES HERE

1403 No. BIG SPRING ST. MIDLAND, TEX.

EVERY DAY LOW PRICES

Open 7:30 A.M. To 9:00 P.M. Week-Days



# FURR'S FOR A-



**SURPRISE THE FAMILY**  
 Make a Ginger Bread House Just like the One on the Cover of McCall's.  
 CLIP THE RECIPE AND VISIT OUR GINGER BREAD HOUSE DISPLAY FOR ALL YOUR NEEDS.

**McCALL'S GINGER BREAD HOUSE**

*A McCall's Magazine Fail-Proof Recipe*

Two packages Ginger Bread Mix or equivalent amount of very stiff dough.

- |                                       |                        |
|---------------------------------------|------------------------|
| 1 lb. nougat                          | 40 peppermint rounds   |
| 2 lbs. (2 boxes) lime or lemon slices | 2 green candy sticks   |
| 3 red and white candy canes           | 1/4 lb. cinnamon drops |
| 1/4 lb. small green gum drops         | 4 red jelly hearts     |
| 1/4 lb. large green gum drops         |                        |
| 1/4 lb. assorted large sprinkles      |                        |

To make, just obtain McCall's Pattern 1590 or put your imagination to work—all you do is make a house of cardboard, blackening the windows with ink. Before assembling, use the walls as patterns for cutting gingerbread dough (rolled to 1/8" thickness after chilling overnight in refrigerator) which you later mount with thick icing to the cardboard. The roof, too, is cardboard and to it with icing you mount the lime slices. The trees like the house are of gingerbread, which by varying the baking time can be made in a variety of shades. Nougats are used to form the chimney and the other candies to complete the scene.

FAIRYLAND OF-

# Christmas Goodness



**Folger's Coffee**  
 Pound  
**75¢**

**PEACHES**

Sierra Mission In Heavy Syrup No. 2 1/2 Can

**25¢**

**HOMINY**

Perfection Tall Can

**5¢**

**Tomato Juice**

Dorman Fancy Large 46 oz. Can

**19¢**

ASSORTED FLAVORS

**Jello**  
 Package  
**5¢**

**Grapefruit Juice**

Magic Garden 46-oz. can

**23¢**

**FURR'S TENDERIZED**

<b>PICNICS</b>	Half or Whole, Lb	<b>39¢</b>
<b>BACON</b>	Corn King Sliced, Lb	<b>49¢</b>
<b>STEAK</b>	Table-Trimmed, Choice Beef T-Bone, Lb	<b>85¢</b>
<b>Pork Chops</b>	Small Lean First Cuts, Lb	<b>49¢</b>
<b>Cheese</b>	Longhorn Full Cream Pound	<b>43¢</b>
<b>Liver</b>	Fresh Pork Sliced Pound	<b>39¢</b>

Order Your Christmas Turkeys NOW!

**SAUSAGE**  
 Furr's Roll Pound **39¢**

**FRANKS**  
 Furr's Skinless Pound **45¢**

<b>Elna Salad Dressing</b> pt. <b>23¢</b>	<b>Chuck Time Vienna Sausage</b> can <b>10¢</b>	<b>Dorman, Tall Can Pork &amp; Beans</b> 3 for <b>25¢</b>
<b>Hunt's Tomato Sauce</b> 8 Oz. Can 2 for <b>15¢</b>	<b>Food Club, Pure Fruit Grape Jam</b> 2 Lb. Jar <b>49¢</b>	<b>Ma Brown, Sweet Pickles</b> Pint Jar <b>35¢</b>
<b>Dorman, Whole Small New Potatoes</b> No. 2 Can <b>15¢</b>	<b>Ma Brown, Old-Fashioned Pickles</b> Pint Jar <b>25¢</b>	<b>Del Monte, Fancy Cream Style Corn</b> No. 303 Can <b>17¢</b>
<b>Zestee, Pure Fruit Strawberry Preserves</b> Lb. Jar <b>29¢</b>	<b>Melosweet, Chocolate-Covered Cherries</b> Pound Box <b>49¢</b>	<b>France-American Spaghetti</b> Tall Can <b>15¢</b>
<b>Peanut Butter</b> 12 Oz. Jar <b>39¢</b>		

**Libby's PUMPKIN** Can **10¢**

**Cranberry Sauce** Can **12 1/2¢**

**Ice Cream** Home Style Pint **19¢** Quart **37¢**

**Crushed Pineapple** Can **18¢**

★ FRESH PRODUCE ★

**AVACADOS** Each **10¢**

INTRODUCING...  
**GIFT Half-Box Delicious Apples** **\$2.75**

**TOKAY GRAPES** Pound **15¢**

**RADISHES** Bunch **5¢**

# Furr's

# DADDY RINGTAIL

## Daddy Ringtail And Pirate Treasure

Daddy Ringtail, your monkey friend, was camping out on Treasure Island. Mugwump Monkey was with him, and so was the Huffer Puffen, the friendly wolf. The night had come, and now the folks were ready to sleep in their blankets there around the campfire.

Tomorrow they were going to dig for pirate treasure, and so Daddy Ringtail was explaining all about it. He said that pirates long ago had come from the sea and sailed their ships up the river there. Their ships were great wooden ships with cannons. They had great red and black sails with a look as dangerous as the pirates themselves. "Ooooh!" said the Huffer in fright.

"Steady, Huffer," said Mugwump. And Daddy Ringtail went on to explain that the pirates had great

treasures—gold and silver and money and jewels that they had captured from other ships, all after much fighting with swords and pistols and cannon booming. Yes, and



when the pirates had so much treasure that they didn't know what to do with it for awhile, then they would put it in a box and bury the box in the sand to hide it.

"Humph!" said Mugwump. "Imagine!" But while Mugwump was trying to imagine about it, a

## Regulations Curb Credit Expansion

By WESLEY DAVIS

NEW YORK—After two months of credit controls, government officials are satisfied with the way they are working and intend to let Regulations W and X ride, according to Business Week magazine.

The magazine reports that the regulations have not put a stop to the expansion of consumer and mortgage credit nor kept prices from rising. However, they have slowed down the rate of expansion in credit, thereby making demand smaller than it would have been. Their influence has been a check-rein, not an air brake.

Fewer Installment Loans

"Each month, consumers are getting fewer installment loans," says the publication. "The total consumer credit outstanding is still rising, but more slowly than it was before Regulation W was tightened in mid-October. The stampede for major durable goods that started with Korea has slowed to an orderly—though still brisk—walk. The thinning of the market has removed some of the pressures on prices."

The article adds that in coming months, business will feel the check-rein more plainly. But even then, W and X won't cut demand so drastically that goods won't move. Instead they will help tailor demand down to curtailed supply. That's what the mobilizers are shooting for.

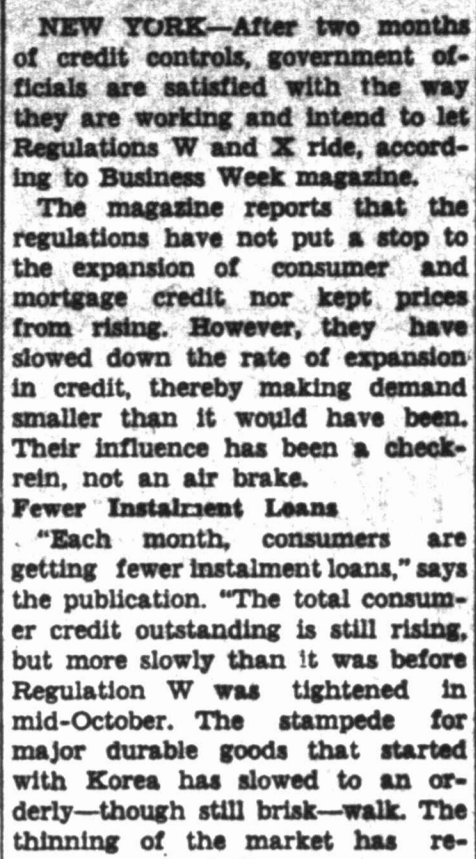
"So don't expect early relaxation," the publication continues. "Right now, credit control is the government's main anti-inflation weapon. Direct, compulsory price and wage controls are still months away."

BLOOD VESSEL BANK

SAN FRANCISCO—(AP)—Blood vessels will be put in the bank at the University of California School of Medicine here. Surgeons in this area can draw on the bank and it is expected to save many lives. It is explained that the blood vessels are used as grafts in operations.

## OUT OUR WAY

By J. R. WILLIAMS



## OUR BOARDING HOUSE

With MAJOR HOOPLE



## Freshie



For Complete Home Decorations Interiors by Wayne Phone 3474 315 So. Main

RADIO REPAIRS Modern Equipment Expert Technicians Guaranteed Service

PLENTY OF PARKING SPACE at AVERY'S Radio and Speedometer Service 700 S. Main Phone 3453

## VIC FLINT



## BUY BALDRIDGE'S Sally Ann Bread

CHARLES AIKEN and ELVIS HUGHES, DISTRIBUTORS—PHONE 3655-R.

## FRECKLES



## CARNIVAL



## WASH TUBS



## RED RYDER



## PRISCILLA'S POP



## HOMER HOOPEE



## ALLEY OOP



## BOOTS AND HER BUDDIES



## DICKIE DARE



## BUGS BUNNY



If you miss your Reporter-Telegram, call before 6:30 p.m. week-days and before 10:30 a.m. on Sunday and a copy will be sent to you by special carrier.

# WE PLAY SANTA TO YOUR SLIM FOOD BUDGET



These Prices in Effect Thursday P.M., Friday and Saturday!

<b>Chocolate Covered Cherries</b>	Chase's 1 Lb. Box . . . . .	<b>49<sup>c</sup></b>
<b>FLOUR</b>	Gold Medal or Light Crust 10 Pound Bag . . . . .	<b>83<sup>c</sup></b>
<b>PEACHES</b>	Hunt's Sliced or Halves No. 2 1/2 Can . . . . .	<b>29<sup>c</sup></b>
<b>PINEAPPLE</b>	Monarch Thick Slices No. 2 1/2 Can . . . . .	<b>39<sup>c</sup></b>
<b>PIE CHERRIES</b>	Monarch, In Heavy Syrup—No. 303 Can . . . . .	<b>29<sup>c</sup></b>
<b>APRICOTS</b>	Hunt's—No. 2 1/2 Can . . . . .	<b>29<sup>c</sup></b>
<b>PEACHES</b>	Gold Coast, Spiced—No. 2 1/2 Can . . . . .	<b>33<sup>c</sup></b>
<b>ASPARAGUS</b>	Winslow—No. 1 Can . . . . .	<b>23<sup>c</sup></b>
<b>PEAS</b>	Hunt's—No. 1 Can . . . . .	<b>15<sup>c</sup></b>
<b>BEANS</b>	Monarch, French Style—No. 2 Can . . . . .	<b>25<sup>c</sup></b>
<b>BEETS</b>	Winter Valley, Whole—No. 2 Can . . . . .	<b>17<sup>c</sup></b>
<b>CORN</b>	Monarch, White or Yellow, Cream Style—No. 303 Can . . . . .	<b>21<sup>c</sup></b>
<b>LIMA BEANS</b>	Monarch, Green—No. 1 Can . . . . .	<b>2 for 35<sup>c</sup></b>
<b>PINEAPPLE JUICE</b>	Dole—46 Oz. Can . . . . .	<b>43<sup>c</sup></b>
<b>ORANGE JUICE</b>	Treesweet—No. 2 Can . . . . .	<b>17<sup>c</sup></b>
<b>CORN MEAL</b>	Quaker—24 Oz. Box . . . . .	<b>17<sup>c</sup></b>
<b>CORN MEAL</b>	Aunt Jemima—5 Pounds . . . . .	<b>43<sup>c</sup></b>
<b>PARTY CAKE MIX</b>	Betty Crocker—Package . . . . .	<b>35<sup>c</sup></b>
<b>RAISINS</b>	Sun-Maid—15 Oz. Box . . . . .	<b>31<sup>c</sup></b>

<b>Armour's Star SLICED BACON</b>	Pound . . . . .	<b>55<sup>c</sup></b>
<b>Nice, Lean PORK CHOPS</b>	Pound . . . . .	<b>49<sup>c</sup></b>
<b>Kraft's VELVEETA</b>	2 Lb. Loaf . . . . .	<b>79<sup>c</sup></b>
<b>Tender CHUCK ROAST</b>	Pound . . . . .	<b>69<sup>c</sup></b>

<b>Brown Sugar</b>	1 Pound Box . . . . .	<b>2 for 25<sup>c</sup></b>
<b>Powdered Sugar</b>	1 Pound Box . . . . .	<b>2 for 25<sup>c</sup></b>
<b>Mince Meat</b>	Borden's None-Such—16 Oz. . . . .	<b>20<sup>c</sup></b>
<b>Mince Meat</b>	Monarch, Rum Flavored—16 Oz. . . . .	<b>39<sup>c</sup></b>
<b>Ground Nutmeg</b>	French's—1 1/2 Oz. . . . .	<b>19<sup>c</sup></b>
<b>Ground Cinnamon</b>	French's—1 1/2 Oz. . . . .	<b>10<sup>c</sup></b>
<b>Pumpkin Pie Spice</b>	French's—1 1/2 Oz. . . . .	<b>15<sup>c</sup></b>
<b>All Spice</b>	French's—1 1/2 Oz. . . . .	<b>10<sup>c</sup></b>
<b>Ground Sage</b>	French's—1 1/2 Oz. . . . .	<b>17<sup>c</sup></b>
<b>Ginger</b>	French's—1 1/2 Oz. . . . .	<b>15<sup>c</sup></b>
<b>Celery Salt</b>	French's—1 1/2 Oz. . . . .	<b>13<sup>c</sup></b>
<b>Garlic Salt</b>	French's—1 1/2 Oz. . . . .	<b>13<sup>c</sup></b>
<b>Poultry Seasoning</b>	French's—1 1/2 Oz. . . . .	<b>19<sup>c</sup></b>
<b>Vanilla Extract</b>	Adams—3 Oz. . . . .	<b>25<sup>c</sup></b>

<b>DASH</b>	Armour's—Can . . . . .	<b>15<sup>c</sup></b>
<b>PALMOLIVE</b>	Soap	<b>2 Bars 23<sup>c</sup></b>
<b>CASHMERE BOUQUET</b>	Soap, Both Size Bar . . . . .	<b>13<sup>c</sup></b>
<b>COFFEE</b>	Bright & Early—Lb. . . . .	<b>81<sup>c</sup></b>
<b>CHEEZ-ITS</b>	Sunshine — 6 Oz. . . . .	<b>19<sup>c</sup></b>
<b>KARO</b>	Red Label—16 Oz. . . . .	<b>22<sup>c</sup></b>
<b>TREND</b>	Soap . . . . .	<b>2 for 37<sup>c</sup></b>
<b>PEANUT BUTTER</b>	Peter Pan—12 Oz. . . . .	<b>35<sup>c</sup></b>
<b>PAPER TOWELS</b>	Diamond . . . . .	<b>19<sup>c</sup></b>

A Complete Assortment Of  
**SMUCKER'S JELLIES and PRESERVES**  
for your  
**Gift Boxes**  
CREAMED  
**Honey**  
1 Pound . . . . . **39<sup>c</sup>**  
Assorted Christmas  
**Candies**  
4 Pound Bag . . . . . **99<sup>c</sup>**  
DIAMOND BRAND  
**Walnuts**  
Pound . . . . . **41<sup>c</sup>**  
**Pecans**  
Pound . . . . . **50<sup>c</sup>**  
**Mixed Nuts**  
Pound . . . . . **53<sup>c</sup>**  
Complete Assortment of  
**Fruit Cake Ingredients**

COOKING  
**Sherry**  
Quart . . . . . **\$1.09**

MONARCH  
**Sweet Cider**  
Quart . . . . . **29<sup>c</sup>**

<b>QUALITY PRODUCTS</b> WORK FOR YOU THIS SUMMER	<b>IVORY FLAKES</b> 31 <sup>c</sup>
<b>IVORY SOAP</b> LARGE 27 <sup>c</sup>	<b>IVORY SNOW</b> 31 <sup>c</sup>
<b>IVORY SOAP</b> MEDIUM 9 <sup>c</sup>	<b>CAMAY</b> 2 Reg. Bars 17 <sup>c</sup>
<b>PERSONAL IVORY</b> 6 <sup>c</sup>	<b>CAMAY BATH SIZE</b> 2 Bars 23 <sup>c</sup>
<b>3 Lb. Can Crisco</b> 99 <sup>c</sup>	<b>LAVA SOAP</b> 10 <sup>c</sup>
<b>DREFT</b> Large Box 31 <sup>c</sup>	<b>DUZ</b> Large Box 31 <sup>c</sup>
<b>SPIC and SPAN</b> 27 <sup>c</sup>	<b>OXYDOL</b> Large Box 31 <sup>c</sup>
	<b>TIDE</b> Large Box 31 <sup>c</sup>

**EVERY TIME YOU SPEND A DIME, Ask for 2 GREEN STAMPS**

<b>WINESAP APPLES</b>	2 Pounds . . . . .	<b>29<sup>c</sup></b>
<b>PUERTO RICAN YAMS</b>	2 Pounds . . . . .	<b>21<sup>c</sup></b>
<b>CAPE COD CRANBERRIES</b>	Pound . . . . .	<b>19<sup>c</sup></b>
<b>CALIFORNIA PASCHAL CELERY</b>	Pound . . . . .	<b>12 1/2<sup>c</sup></b>
<b>DE ANJUE PEARS</b>	Pound . . . . .	<b>17<sup>c</sup></b>
<b>TEXAS ORANGES</b>	2 Pounds . . . . .	<b>21<sup>c</sup></b>

**PIGGY WIGGLY**  
FIRST IN QUALITY AND ECONOMY  
STORE NO. 1 — 200 East Texas — Phone 1582  
STORE NO. 2 — Corner Ohio and Marienfield — Phone 1303







**FLOOD BRINGS APPLE JAM**—Bobbing for apples would have been a cinch in Tuscarora Creek near Martinsburg, W. Va., after a flood jammed the stream with 20,000 bushels of fruit. The apples were swept from a fruit packing company's outdoor stockpile and bobbed merrily downstream.

**Letters To Santa Claus—**

Dear Santa Claus:  
"I am a little boy seven years old. I want you to bring me a pair of cowboy boots, a cowboy suit and a cowboy hat; a traffic light and some cars."  
—Hal Douglas Leake, Jr.

Dear Santa Claus:  
"I am a little girl five years old. I want a tricycle very very much. Don't forget my little brother. He is just learning to walk. Bring him a teddy bear and some blocks."  
"I hope all the other little children have a good Christmas. Thank you, Santa."  
—Mary Helen Leake

Dear Santa Claus:  
"Bring my dog, Brownie, a collar and me a bride doll. Thank you."  
—Linda Kay Seyer

Dear Santa Claus:  
"I am nine years old and I have a little sister. She is seven years old. We both want a big doll and a dollhouse. We want two maid dolls and we want you to fill our stockings with nuts, candy, apples and oranges. Love."  
—Ann and Gaye Sloan

Dear Santa Claus:  
"Please bring me a pretty baby doll. Her name is Tiny Tears."  
—From Jo Anne Rust

Dear Santa Claus:  
"I am a little boy five years old. I have a little sister three years old. We have not been good all this year but will try to be good next year."  
"Daddy has been good all this year so be good to him."  
"Bring me a steam engine and bring a Sparkle Plenty doll."  
"Our love."  
—Joe Roy and Sissy

Dear Santa:  
"I am a little boy five years old and I've tried to be a good boy this year. Could you please bring me

a ping-pong gun, a model toy and a filling station?"  
"My little sister is writing to you, too."  
"Don't forget my little friends, Gary and Andy Landrum. They're good little boys, too. Thank you, Santa. I love you."  
—Richard Thomas

Dear Santa Claus:  
"I'm Veda Jo, Richard's little sister. Could you bring me a bed for my dollies? I've taken good care of them. I'd like another baby doll, too—one that will say "Mama." Also a little doll house and some dishes."  
"Please remember Charlotte and Linda Grace. They're my little friends. Thank you, Santa. I love you."  
—Veda Jo Thomas

Dear Santa:  
"I am five years old and love you very much. I will try to be a good girl and wish you would please bring me a television set, two twin dolls and some dresses for my doll, Mary Jane. She already has some socks but she needs a new pair of pink ones."  
"My mother is writing this letter for me and I would like some shirts and socks and dresses for my Mom and Pop and Tarche and Grandma. Thank you, Santa, and I hope I get to see you down our chimney. Love and kisses."  
—Kerri Fenoglio

Dear Santa:  
"We have been good little girls all year, and we are looking forward to you coming. I am 8 years old and my sister is 2. Please bring me a bicycle and lots of candy and fruit. My little sister wants a doll and doll buggy. Also Santa I want you to ask the Lord to watch over all the soldier boys in Korea, and pray this war will soon be over. We live in San Antonio, but we'll be looking for you there."  
—Pat and Sue Mixon

Dear Santa:  
"I love you very much. I have been a good little girl. I am 8 years old and I am in the third grade. I have one little sister three years old and another little sister one year old."  
"My little sister three years old would like a doll, doll suitcase, and a doll bottle."  
"My little sister one year old would like some blocks, a doll and some mittens."  
"I would like a doll, doll suitcase and some skates."  
—Patay, Jeanne and Hazel Turner

Dear Santa Claus:  
"Please bring me a two-gun holster, cowboy shirt and hat. I would also like a pair of Lone Ranger gloves. Love."  
—Blake

**Try A Christmas Ice Cream Ring**



**HOLIDAY EXCITEMENT: A Christmas Ice Cream Ring.**  
By GAYNOR MADDOX  
NEA Staff Writer

Here's really exciting Christmas dinner news—the most colorful and gayest dessert we've ever seen. It's a ring of rich cake with green pistachio frosting, with glossy brown chocolate dripped over the rim, filled with balls of ice cream and all decorated with red maraschino cherries.

**Christmas Ice Cream Ring (Serves 8-10)**  
Two quarts vanilla ice cream (bulk), 3 cups all-purpose flour, sifted, 1 1/2 teaspoons baking powder, 1 teaspoon salt, 1 teaspoon cinnamon, 1/2 teaspoon nutmeg, 1 cup butter, softened, 2 cups brown sugar, 4 eggs, 1/2 cup evaporated milk, 1/2 cup coffee, 1 1/2 teaspoons vanilla, 1 cup raisins, 1 cup chopped citron, 1 cup nuts, 1 recipe pistachio frosting, 1 cup dipping chocolate, melted, maraschino cherries.  
Place ice cream in freezing compartment of refrigerator with controls set at freezing until ready to use.  
To Make Cake: Sift dry ingredients together and set aside. Cream butter; beat sugar in gradually. Add eggs and continue beating until mixture is well blended. Combine evaporated milk, coffee and vanilla. Add liquid and dry ingredients alternately (1/3 at a time) to the butter-egg mixture, beating well after each addition. Add raisins, citron and nuts.

**Crane News**

**CRANE**—Representatives of the Iran Youth Center met here with Crane officials recently to discuss plans for a Crane youth program. A committee appointed to prepare a program for the Summer of 1951 included the Rev. Robert O. Tomlinson, chairman; F. F. Adams, Oran Faircloth and Joel Williams. James Ward and Bill Kelton, students at Sul Ross College at Alpine, were recent visitors here.

Mr. and Mrs. R. V. Wilson and family have returned from a trip to Fort Worth.

The Crane County Commissioner's Court held its final regular meeting of the year recently, with Judge Joseph A. Beyer, Oscar Reynolds, F. L. Williams, Jr., and George Clark, present.

Supt. L. L. Martin was the principal speaker at the Gamma Gamma Christmas party held here recently. Crane members were hostesses. Members attending from McCamey included Mrs. Julia Doris, Mrs. Frances Wallace, Mrs. Bess Moorman, Ethie Bagleton and Nell Eddleman. Mrs. Bennie Williamson, Mrs. Helen Watkins, Mrs. Jackie Doris, Mrs. Lois Skipping, Mrs. Vaughn Hale, Mrs. Inez Dossert, Mrs. Mamie Bullard, Mrs. Robbie Canthron, Mrs. Ruby Bascom, Mrs. Helen Reynolds and Mildred Stokes attended from Iran. Mrs. Elsie Runyan and Myrna Holman represented Rankin. From Big Lake came Mrs. Marie Williams and Mrs. Prule Garrett.

In California's gold rush days, four bushels of Oregon apples sold for \$500.

**LST BECOMES DRILLING BARGE**

A wartime LST has been converted by a Gulf coast drilling company into the world's largest diesel-electric drilling barge. The barge, 212 feet long, and 50 feet wide, mounts a 136-foot portable derrick that can be lowered to a horizontal position in the event of a hurricane. The barge is used in bayou and swamp country and is moved to location by tug boats.

The National Geographic Society says about \$600,000,000 in treasure is definitely known to be aboard sunken ships.

**Merry Christmas With—**



**3 TOOLS IN ONE**  
DREMEL Electric SANDER-POLISHER AND MASSAGER

Say "Good-Bye" to hand sanding and polishing (hand massaging tool). The Dremel Sander is ideal for all finish jobs... walls, woodwork, furniture, etc. Its straight-line (non-rotary) action will not scratch or burn surfaces. So easy to handle a child can use it. Delivers 14,400 strokes per minute... weighs only 2 1/2 lbs... never needs oiling. Operates on 110-120V. A.C. Complete with 6 sheets. **\$14.95**  
General Paper—no polishing pads!



**MOTO TOOL KIT**  
23.50  
Dremel's "pocket-size" machine shop includes the famous Moto-Tool and 23 accessories. Does kind of everything and comes with job finder and folder.  
**Wilcox Hardware**  
506 W. Wall  
Next to Safeway

**Randall E. Cooper, M. D.**  
Announces the opening of offices for the treatment of Nervous and Mental Illness and Emotional Disorders at the PROFESSIONAL BUILDING 302 North "N" St. Phone 2493. Hospital facilities available at Midland Memorial Hospital.  
**Robert L. Carlin, M. A.**  
Clinical Psychologist Associated

**Two of America's Finest Aluminum Windows**  
Demand the Best— They Cost No More Than Ordinary Windows!  
Compare Quality - Compare Prices  
We Carry A Complete Stock For Immediate Delivery.  
"APCO" Double-Hung and FUMICE and HAYDITE BLOCKS  
**JOHN B. DAVIS**  
511 West Wall  
Midland — Phone 2986  
**American Window Company**  
1942 Texas Ave. Lubbock, Texas., Phone 4741

**PRE-CHRISTMAS Food Specials**

**COCA-COLA**  
6-Bottle Carton (Plus Deposit) **21c**  
**PI-DO** Package **15c**  
Jolly Time **POP CORN** Package **17c**  
Thin Saltine Crackers  
**Supreme Salad Wafers**  
Now in the new 4-pack—Pound **27c**

**Potatoes** Idaho Russetts—lb. **4c**  
**Hunt's Peaches** No. 2 1/2 Can **31c**  
**FLOUR** Kimbell's Best 25-lb. bag **\$1.75**  
**Blackeyed Peas** Kimbell's, No. 303 Can **2 for 25c**  
**CORN** Our Darling Cream Style No. 303 can **16c**  
**Borden's Biscuits** 2 cans **25c**

**Durkee's Own Grade AA YELLOW Margarine**  
IN 1/2 lb. PRINTS **35c**  
**Breakfast Bargain!** HANDY 1 CUP ALUMINUM DRIP COFFEE MAKER  
ONE RED 3 TRADE MARK PLUS 25¢ IN COIN  
3-Lb. Box **33c**

**Buy Your Hams For The Holidays!**  
**SALE**  
tasty, tempting **HAMS**  
Half or Whole **59c**  
Decker's Iowa and Peyton's—Pound

**SAUSAGE** Morrell's Pride 1-lb. roll **39c**  
**BACON** Decker's Tall Corn or Peyton's Ace—Pound **49c**  
**FRANKS** Skinless Pound **39c**  
**Pork Chops** Lean, Pound **59c**  
**Chuck Roast** Payton's, Lb. **65c**

**Gifts Galore... in Brooks Variety STORE**  
Still good assortments of Tricycles, Wagons, and Smaller Toys  
**Plastic Shower Sets** In the new PLASTRON Solids and Patterns **2.79**  
Burgundy, Lace Pattern **Dish Sets**  
Service for 6, 32 pieces— **6.98**  
Special at **12.49**  
Service for 8, 53 pieces—  
Special at  
**Pressure Cooker**  
4-Qt. Wear-Ever Aluminum, Snap-Tite Cover. **9.95**  
Reg. 12.95—Special at

**Andrews Highway Store OPEN SUNDAYS**  
9 a.m. to 9 p.m.  
For Your Shopping Convenience  
**AJAX** **13c**  
3 Pound Carton **85c**  
**Mrs. Tucker's SHORTENING**

**PHONE 867 FOR FREE DELIVERY SERVICE**

**BROOKS STORES**  
PAUL BROOKS  
120 South Main Street  
Andrews Highway & Michigan Avenue

**Ask For Brooks Bonus Stamps**  
One Stamp with Each 10c You Spend at ANY Brooks Store. Stamps issued with cash purchases or on accounts paid on time. When making purchases or paying accounts, ask for them: they cost you nothing and are the same as money. A book of \$120 in stamps will be redeemed for \$2.00 in merchandise (any items) in Brooks Variety Store.

**BARNEY GRAFA**  
REALTOR  
LOANS • HOMESITES  
REAL ESTATE  
Developer and Builder of  
**GRAFALAND**  
Midland's Finest  
Residential District  
203 Leggett Bldg. Phone 106

**General Contractors**  
★  
**Building Materials**  
Commercial and Residential  
Work  
Repairing and Rebuilding  
★  
**Mid-West Lumber Co.**  
JOE B. WRIGHT, Mgr.  
1302 W. N. Front Ph. 1106

**DUPONT AUTHORIZED DEALER**  
**PAINTS**  
We have a complete line of the Finest Building Materials and can supply your needs—regardless of how large or small.  
**J. C. Velvin Lumber Co.**  
BUILDERS • DESIGNERS • LUMBER DEALERS  
204 N. Fort Worth Phone 1534

**Ford**  
GENUINE TRACTOR PARTS  
**MIDLAND TRACTOR Company**  
Ford Tractors...  
Dearborn Farm Equipment...  
Berkeley Water Systems...  
Layne-Bowler Irrigation Pumps  
301 South Baird Phone 1688

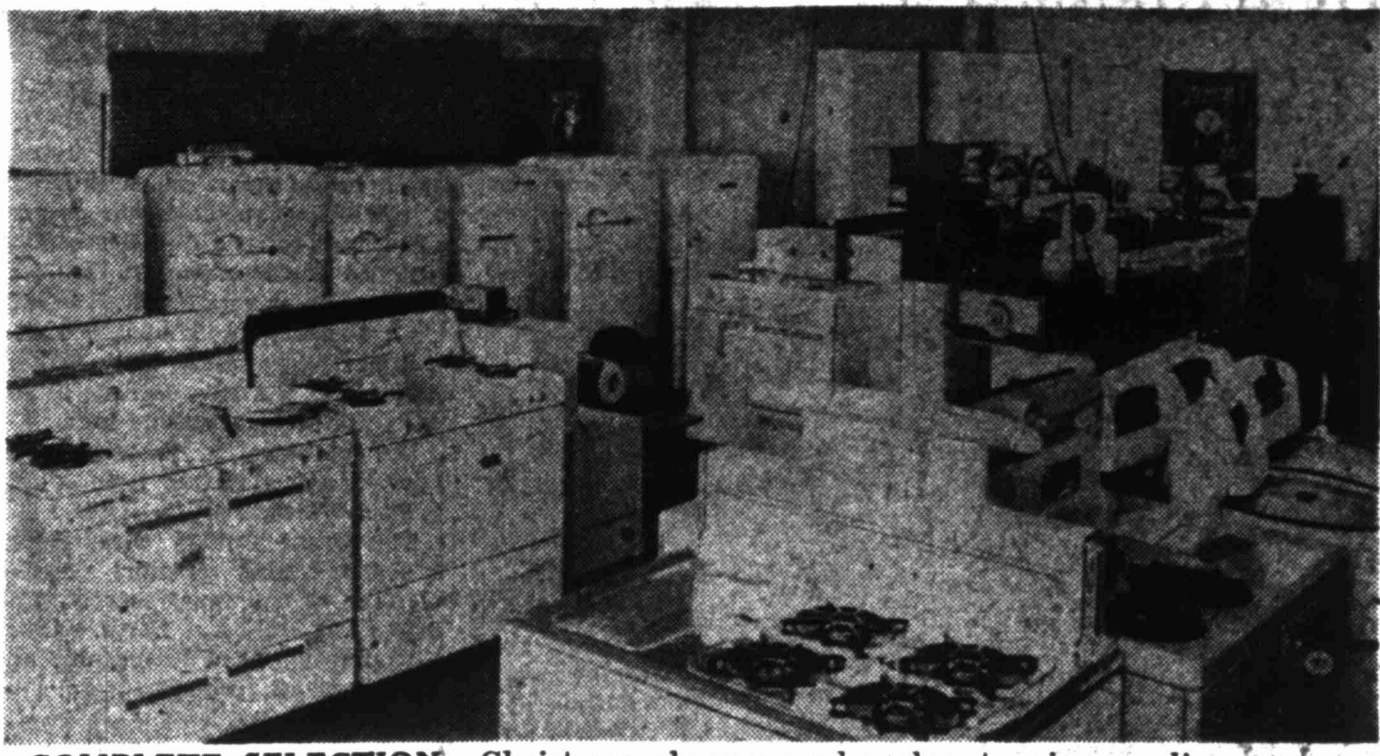
**PRINGLE BODY SHOP**  
Body and Fender Work • Automobile Painting  
"Good As Any—Better Than Most"  
807 East Florida Phone 2419

ADD INTERIOR CHARM  
THIS CHRISTMAS  
Many a home owes its charm to Millwork creations which had their origin in our work shop. Book shelves of modernistic design, as an example, help greatly to improve a room. Built to order, from your plans or our own, at a modest cost.  
Building **Gates** Designing  
Custom Built Furniture  
Complete Cabinet Work  
Ph. 1981 411 W. Kentucky

**Water Conditioning Co.**  
Distributor For  
Permutit—Automatic—  
Electric and Manual  
**WATER SOFTENER**  
A Midland Institution Since 1938  
Box 263 707 So. Baird Phone 3447

**B & B Butane Service**  
Butane Gas, Tanks, Stoves and Bottles.  
Day or Night Phone 2102 — 321 S. Fort Worth

**COSDEN GASOLINE**  
**BAKER OIL Company**  
OUR NEW "CAT CRACKED" PREMIUM GRADE GASOLINE  
will improve your MILEAGE, regardless of the KIND of car you drive!  
Cosden Higher Octane Gasoline  
Para-Fine Motor Oils  
Veedol Motor Oils  
United Tires and Tubes  
See your local Cosden dealer for Quality Petroleum Products.  
1409 E. Wall—Phone 42—2110 W. Wall



**COMPLETE SELECTION**—Christmas shoppers who plan to give appliances can find lots of selections at Cox Appliance Company, 615 West Wall Street. The firm features Kelvinator refrigerators, Maytag washers, Kelvinator deep freezers, Zenith radios, Florence ranges and a multitude of small appliances, such as mixers, waffle irons and coffee makers. You are invited to come in and look over the large stock for gift suggestions.

**Shepard Urges Home Builders To Obtain Best In Roofing**  
If there is any need for the very best construction and materials for any part of the house, it is the roof. A faulty roof easily can cause costly repairs to the interior. That is why the Shepard Roofing and Metal Company advises the home builder to use only the best in roofing.  
Not only is there an actual saving in the long run but there is the added cost of repairs from a faulty roof which must be taken into consideration when the home owner takes a chance on faulty economy in this vital phase of construction.  
By installing a permanent type roof, maintenance costs can be kept down over the years. Clay tile roofing, currently being featured by the Shepard Roofing and Metal Company, will stand the test of time as well as the test of the laboratory. Telephone Number 887  
The firm is located at 1811 West South Front Street and the telephone number is 887.  
All types of sheet metal work are done by the Shepard Roofing and Metal Company.  
You will marvel at the surprisingly low cost of the fine roofing materials found at Shepard's. All quality roofing material is handled

**SHELL K&K TIRE CO.**  
W. G. Keeler, Owner  
Midland's Most Modern and Complete Tire and Service Headquarters.  
We Give **S&H GREEN STAMPS**  
Phone 2700 —  
619 West Wall

**Quincy belles-flowers**  
305 West Illinois  
Phone 154

**The Kirby Vacuum Cleaner**  
is eight complete units in one—has a lifetime service guarantee and fire insurance protection!  
PHONE US FOR A DEMONSTRATION  
Phone 3493 203 So. Main

**Midland Planing Mill**  
GENERAL MILL WORK  
415 South Baird Phone 2930

**City TRANSFER STORAGE**  
313 S. Baird Ph. 3391  
Packing - Crating  
Shipping - Storage  
General Hauling

**FOR CHRISTMAS**  
Choose  
**Royal Portable Typewriters**  
for a welcome, practical gift!  
Give a Royal Portable and you give the best! Always a welcome gift... always a wonderful gift for your children or yourselves!  
For the business person  
**Sheaffer, Parker, Esterbrook Desk Sets, Pen and Pencil Sets.**  
Choose from a wide variety of styles, sizes, colors and shapes.  
**West Texas Office Supply**  
204 West Texas Phone 95

**615 West Wall MAJESTIC CLEANERS** Phone 2847  
U-SAN O Meth Proof Cleaning At No Extra Cost!  
GOOD CLEANING DOESN'T COST — IT PAYS!

**'Every Bite Tastes Just Right' At Hi-D-Ho**  
When eating out is mentioned these days, everyone from Grandma to little Susie casts a vote for the Hi-D-Ho Drive-In. Young and old alike take particular delight in stopping at the Hi-D-Ho, where courteous and efficient service is offered and the best of foods at a minimum price is served.  
Everything from fried chicken (both white and regular orders), to the plain American variety of hamburgers is served at the Hi-D-Ho, owned and operated by W. E. King.  
And of course there are those dishes peculiar to the Hi-D-Ho. Such as tender steak fingers, fried to crispy goodness and served with french fries, hot rolls and a spicy dinner salad. It is here too that the sensation of West Texas—the Hi-D-Ho "Long Dog" is served. Eleven and one-quarter inches from tip to tip, it is the delight of the teen-age group. It is, in fact, a super hot dog. Truly it's "every bite made just right."  
Fast Service  
The Hi-D-Ho is famous too for its extremely fast service. You might think that at a place so popular, service would be hard to obtain—but far from it. Trained employees, the best in their fields with years of experience, know what to do and when to do it. There's no lengthy waiting at this modern drive-in.  
To go with that delicious food is the best in fountain drinks. Malts, milk shakes, carbonated drinks—all are expertly made. Ice cream, sundaes, and lime freezes also are on the menu. Or, if the weather makes these drinks less desirable, try the coffee or hot chocolate—both piping hot.  
King is a restaurant man widely known in Midland and throughout West Texas. He has been associated with restaurant work since the age of seven—and all those years of experience show up in the Hi-D-Ho service.  
An insecticide, scabrin, has been extracted from the roots of the oxeye weed.

**Midland Glass And Mirror Whispers In Santa's Ear**  
Mr. and Mrs. Q. M. "Shine" Shelton, owners of the Midland Glass and Mirror Company, 1811 West Wall Street, have some suggestions for Christmas presents which everyone in the family will enjoy. A mirror for the mantel, door or most any place in the house, is sure to make a big hit with the entire family. Or how about a beautiful wood base floor lamp, a table lamp or desk lamp? Also on the "most desired" gift list is a beautiful mahogany coffee table that features an antique mirror top and trim. The coffee tables come in two styles—Queen Anne or plain leg models. Both are beautiful and practical.  
Dramatic Touches  
Simple, dramatic touches may be added to the home with mirrors. Mirrors serve as a constant reminder to the kiddies to stay well groomed, and to keep a good posture. Mirrors add sparkling beauty to the home. On sale now at Midland Glass and Mirror Company.  
and Mirror Company are many beautiful types of mirrors. Some are gold and silver framed, others unframed, and they are in oval, rectangular and square shapes. Mirrors in any shape and any type are available at the Midland Glass and Mirror Company.  
There are all types of small fixtures for glassware and household articles at the Midland Glass and Mirror Company.  
In addition, glass tops or mirror tops are available for furniture and desks. And of course attractive glass shelves are in stock.  
Friendly courteous service is a byword at Midland Glass and Mirror Company. Whatever your needs in glassware, this is the place to obtain it. The telephone number is 28. Call, or come by in person. Whatever you choose, you may be sure the person receiving the gift will be delighted—and if it is for your own personal use, you couldn't be better pleased.

**Beauchamp Refrigeration Service**  
Gibson Refrigerators — R.C.A. Radios — Apex Washers and Sweepers — Air Conditioning — Sales — Service.  
216 NORTH MAIN PHONE 604

**Specializing in FHA, GI, AND CONVENTIONAL LOANS ON BOTH RESIDENTIAL AND COMMERCIAL PROPERTIES.**  
**CHARLES R. ERVIN**  
Successors to Sparks, Barron & Ervin  
ABSTRACTS — GENERAL INSURANCE — REAL ESTATE  
First National Bank Bldg. Phone 4765

**The FIRST NATIONAL BANK**  
MIDLAND, TEXAS Since 1890  
OVER 60 YEARS DEPENDABLE BANKING SERVICE  
Total Capital Structure Investment Over \$1,500,000.00  
"Member Federal Deposit Insurance Corporation"

**Midland Glass & Mirror Co.**  
Glass — Mirrors — Resilvering — Lamps — Lamp Parts — Shades and Shade Frames.  
1611 West Wall Phone 282

**SHEPARD ROOFING & METAL CO.**  
"REAL ROOFS"  
Residential & Commercial Work  
All Types of Sheet Metal Construction.  
Phone 887 1811 West South Front St.

**PLAMOR LANES Coffee Shop**  
Best Alloys — Best Equipment  
Open 6 a.m. to 12 p.m.  
111 North Weatherford

**Midland Iron Works**  
ORNAMENTAL and STRUCTURAL STEEL  
PORTABLE WELDING • WINCH TRUCK SERVICE  
Oscar Watlington, Owner  
900 N. W. Front St. Midland Phone 2303

**The Steak House**  
"FINE FOOD — OPEN 24 HOURS"  
611 West Wall Phone 9546

Buy **MEAD'S FINE BREAD**  
It's Fresher-ized

**CHRYSLER AIRTEMP**  
Year 'Round Air Conditioning  
Affords the maximum in heating and cooling comfort.  
Installation—Sales—Service  
**The Fitzgerald Company**  
PHONE 3145  
2906 W. WALL

**WILLIAMS FEED & SUPPLY**  
1403 East Highway 80 Ph. 2011  
FOR A COMPLETE RATION...  
Everything in one bag—nothing else to feed. For top egg production... for top quality eggs. Feed PURINA LAYENA

**Thrifty to Own—Thrifty to Use**  
**BENDIX**  
AUTOMATIC ECONOMAT  
With the Rins-Saver uses less water than any other automatic agitator washer on the market. The entire washing, rinsing and damp-drying operations are completed in one continuous and fully automatic cycle. No fastening to floor.  
**Western Appliance Co.**  
210 N. Colorado Phone 3035

**DON'T SAY HELLO — SAY HI-D-HO**  
IT'S A DRIVE-IN — Corner Pecos and Missouri

**MIDLAND CONCRETE Company**  
Ready-Mix Concrete  
Washed Sand and Gravel  
Mortar Sand and Roof Gravel  
Phone 1521

**MAYES ELECTRIC COMPANY**  
Phone 186

**Helbert & Helbert CONTRACTORS**  
Concrete, Paving Breaking and Sand Blasting Work  
All work guaranteed satisfactory.  
14 years in business in Midland.  
1900 S. Colorado Ph 2520

**Tommie's Electric Shop**  
"IF IT'S ELECTRICAL, WE DO IT"  
We specialize in Motor Service for heavy oil field equipment and commercial motors, regardless of how large or small the units may be. Let us rebuild your equipment back to factory standards.  
207 South Pecos Phone 1222

Get the Beauty—  
Get the Buy—  
**GET KELVINATOR!**  
9 Models From Which to Choose.  
**Cox Appliance**  
613 West Wall Phone 454

# 71 Requests To Drill In WT Filed With Midland Office

A total of 71 applications requesting permission to drill operations in West Texas were filed with the Railroad Commission of Texas district 8 office in Midland last week.

The operations include six wildcat wells, 67 will be drilled in one of the following counties: Glascock, Ector, Pecos, Scurry, Sterling and Terry.

Scurry again led all other counties in field explorations with 12. Hookley followed with nine.

**Andrews County**  
Amended: Shafter Lake-Wolfcamp-Sinclair No. 2-3-154 University, 600 feet from west and north lines of section 26, block 14, University survey, rotary, 8,000 feet depth. To plug off Devonian and re-complete in Shafter Lake Wolfcamp pay.  
Amended: Shafter Lake - Wolfcamp - Sinclair No. 2-3-154 University, 330 feet from west and 600 feet from north lines of section 26, block 14, University survey, rotary, 8,000 feet depth. To plug off Devonian and re-complete in Wolfcamp.  
Amended: Deep Rock Glorieta-Tripplern No. 2-B A. R. King, 330 feet from north and east lines of north half of northwest quarter of section 11, block A-48, pal survey, rotary, 8,000 feet depth. To re-drill. **Borden County**  
Von Roeder - Amerasia No. 11 Cora E. Weathers, 653 feet from west and 497 feet from south lines of lease in section 34, block 25, H&T survey, rotary, 1,500 feet depth.  
Reinecke - Rutherford - Heep No. 6-A T. L. Griffin, 600 feet from north and 467 feet from west lines of lease in section 59, block 25, H&T survey, rotary, 1,500 feet depth.  
Reinecke - Rutherford - Heep No. 5-A T. L. Griffin, 1,213 feet from east and 467 feet from south lines of lease in section 54, block 25, H&T survey, rotary, 1,500 feet depth.  
**Cochran County**  
Levelland-United Development No. 1 Brewer-Wright, 440 feet from west and 725.15 feet from south lines of southwest quarter of south half of lease in labor 5, league 59, Martin CSL survey, rotary, 4,650 feet depth.  
Slaughter-Magnolia No. 2-DD F. L. Woodley, 580 feet from south and 1,973.4 feet from east lines of northeast quarter of labor 10, league 57, Oldham CSL survey, rotary, 5,100 feet depth.  
Levelland-DeKalb No. 16 D. S. Wright estate, 440 feet from north and 887.8 feet from west lines of labor 2, league 97, Brewer CSL survey, combination, 5,000 feet depth.  
Levelland-DeKalb No. 15 D. S. Wright estate, 440 feet from north and east lines of labor 2, league 97, Brewer CSL survey, combination, 5,000 feet depth.  
**Crane County**  
Sand Hills-Tubbs-Humble No. 70 J. B. Tubbs, 660 feet from northwest and 1,290 feet from southwest lines of section 29, block 32, pal survey, rotary, 4,600 feet depth.  
Tucker-Tubbs-George P. Livermore No. 2 Evans B. Jones, et al, 690 feet from northwest and 1,980 feet from south lines of section 12, block 3, H&T survey, combination, 4,300 feet depth.  
**Dawson County**  
Spraberry-Deep-Seaboard No. 12 D. A. J. Spraberry, 560 feet from west



"I know exactly how you feel—I'll be glad when Christmas is over too!"

and survey, combination, 8,000 feet depth.  
Levelland - United Development Company No. 1 and No. 2 Tidewater-Reeves; No. 1 is 440 feet from north and west lines of labor 12, league 30, Abstract 2, Baylor CSL survey, No. 2 is 440 feet from north and east lines of labor 12, same league, abstract and survey, combination, 5,000 feet depth.  
Ropes-Honohulu and Signal No. 2 B. L. Burleson, 694 feet from east and south lines of labor 9, league 5, Wilbarger CSL survey, rotary, 9,500 feet depth.  
Ropes-Honohulu and Signal No. 3 M. D. Underwood, 694 feet from west and south lines of labor 13, league 5, Wilbarger CSL survey, rotary, 9,500 feet depth.  
**Howard County**  
East Vealmoor-P. R. Rutherford and Pan American No. 2 Loyd E. Brannon, et al, 1,866 feet from north and 466 feet from west lines of southwest quarter of section 19, block 27, H&T survey, rotary, 7,800 feet depth.  
Howard-Glasscock-Magnolia No. 15 G. O. Chalk, 330 feet from north and 921 feet from west lines of lease in section 114, block 29, W&NW survey, rotary, 1,650 feet depth.  
Howard-Glasscock - Duncan No. 1-A Chalk, 330 feet from south and 2,310 feet from east lines of section 124, block 29, W&NW survey, combination, 3,200 feet depth.  
Vealmoor-Seaboard No. 3-B S. L. Lockhart, 660 feet from north and east lines of lease in section 34, block 22, T-3-N, T&P survey, rotary, 8,000 feet depth.  
East Vealmoor-Skally No. 6 Frances Gunn, 467 feet from east and 1,031.8 feet from south lines of section 20, block 27, H&T survey, rotary, 7,600 feet depth.  
Howard-Glasscock - Continental No. 10 Kioh, 2,310 feet from north and 330 feet from west lines of section 13, block 23, T-2-S, T&P survey, combination, 2,900 feet depth.  
Howard - Glascock - Magnolia No. 5 Owen-Chalk, 330 feet from east and 1,650 feet from north lines of northeast quarter of section 113, block 29, W&NW survey, rotary, 1,650 feet depth.  
Howard-Glasscock-Magnolia No. 11 Sloan-Chalk, 367 feet from south and 330 feet from west lines of east half of northwest quarter of section 114, W&NW survey, rotary, 1,650 feet depth.  
Howard-Glasscock-Magnolia No. 9 Owen-Chalk, 330 feet from north and east lines of east half of northwest quarter of section 113, block 29, W&NW survey, rotary, 1,650 feet depth.  
Howard-Glasscock-Magnolia No. 13 Sloan-Chalk, 330 feet from north and west lines of east half of northwest quarter of section 114, W&NW survey, rotary, 1,650 feet depth.  
Howard-Glasscock-Magnolia No. 12 Sloan-Chalk, 330 feet from west and 1,040 feet from south lines of east half of northwest quarter of section 114, W&NW survey, rotary, 1,650 feet depth.  
Vealmoor-Seaboard, et al No. 4 E. L. Clanton, 660 feet from east and 786.3 feet from south lines of section 33, block 32, T-3-N, T&P survey, rotary, 8,000 feet depth.

## LOOKING FOR A GIFT IDEA?

For the Family... for Relatives or Friends?

Here is one that brings happiness to everyone in the family group... it's always as new as tomorrow's newspaper... and it's delivered every day in the year (except Saturdays)...

AND IT COSTS ONLY \$12.00 FOR THE ENTIRE YEAR

SPECIAL SERVICEMAN'S RATE \$6.00 YEAR

## Call Our Circulation Dept. Now TELEPHONE 3000

# The Midland Reporter-Telegram

FIRST WITH THE NEWS

## Santa and the COWBOY

By LUCRECE HUDGINS

### CHAPTER EIGHT BUCKY GETS READY FOR THE RACE

CHIEF HURRICANE said, "My son, Lonesome Boy, swiftest rider in world. Can this Buckeroo Kid ride better?"

"We will see," said Santa. "But first we must make an agreement. If Bucky outrides your boy you will leave our land and never bother us again. And you will return Dasher, our best reindeer."

"Ha!" cried the chief.

"Well," insisted Santa. "Is it agreed?"

"Agreed," grumbled the chief. Then his eyes gleamed. "Race tomorrow," he said. "Who ride first through Northern Light? he win. Without another word Chief Hurricane and Lonesome Boy departed.

"Now you're in for it!" said Tweedleknese to Bucky. "For a little boy you talk awful big."

Bucky felt sadly enough. It's true he talked too much, too fast, without thinking at all. Why he didn't even have a horse to ride! He thought longingly of old Fellow, his stick horse. But he knew perfectly well that Fellow would have been of no use to him now.

He wondered why Santa believed in him at all. Now Santa sat in the living room, his chin on his hand, his eyes closed. What could he be thinking?

"Well, come on," said Tweedleknese. "At least we can rig you up into some decent cowboy clothes since that is what you are supposed to be."

Santa looked up. "Good," he said. "And then meet me in the tool house. I'll have a horse ready. Too bad Dasher is gone. On Dasher you could outride the wind."

When Tweedleknese had taken Bucky away, Mrs. Claus went to Santa's side. "What will happen," she asked, "when the boy goes among the Northern Lights? Santa shook his head. "I'm afraid," he admitted. "But he is our only chance. Our little work is in danger. The great Indians. We could never fight them. We must depend on the boy and the horse I give him to ride."

MEANWHILE Tweedleknese marched Bucky to the Santa Land Cowboy shop, the busiest place in all Santa Land. It seems that all the little boys in the world asked for cowboy suits for Christmas. Not only boys—but



"I'm finished, son," said Santa. His voice was sad and weary.

girls, too, so that over a hundred fairy suits were kept busy the year long stitching at jodgers and chaps and fringed skirts and all the fancy shirts that little cowboys and cowgirls love so much.

Mimi, the little fairy who used to be in charge of dolls but now was in charge of cowboy outfits, showed Bucky around the shop. "Pick any shirt you want," she told him.

Bucky chose a plain red shirt and dungarees. Then Benny the pistol maker took him into the weapon room.

What a place for a boy to be! Six-shooters, four-shooters, single shooters hung from the walls in holsters stamped with shining metal. With a cry of pleasure Bucky selected two six-shooters exactly like those he'd lost in the fight with the hawk. Then with new boots and hat he stood finally before a mirror.

"Yippi ki-yi!" he shouted.

For an instant the faeries were dumbfounded. Never had they heard so strange a word. Then they tried it, rolling the word slowly around their tongues and then shouting together: "Yippi ki-yi!" It made quite a shout.

"Now for my horse," said Bucky. As he and Tweedleknese left for the tool house. As they entered, they saw Santa bent over a work bench working with sand paper on a twisted limb of cherry tree.

"I'm finished, son," said Santa. His voice was sad and weary.

"But—the horse!" stammered Bucky. "You said—didn't you say there'd be a horse?"

"Here he is," said Santa holding out the cherry stick. "His name is Fellow like your old one."

"Oh," said Bucky.

He tried to smile but truly his heart was heavy when he thought of the fact he must run with a cherry stick.

"Yippi ki-yi!" he shouted. (Next: The Great Cherry Stick)

### + Crane News +

CRANE-The Crane Post Office will remain open all day Saturday, December 16, according to Postmaster A. T. Carroll. The office will close at noon, as usual, December 23.

W. E. Hogsett, Jr., recently underwent surgery at the Ector County Hospital in Odessa and still is hospitalized.

Mr. and Mrs. Paul Davidson have announced the arrival of a baby daughter, Paula Kay. The maternal grandparents are Mr. and Mrs. W. T. Cantrell, also of Crane.

The Rev. Orville Coleman of Odessa was the principal speaker at a meeting of the Naomi Class recently in the Tabernacle Baptist Church.

Visitors From Midland  
Mr. and Mrs. W. E. Hobbs of Midland recently visited with the Lloyd Wimberly here. Mrs. Wimberly is their daughter.

Mrs. P. O. Vines was hostess to the Friendship Club in her home recently.

Mrs. Ronnie Jekot, who has recently returned to Fort Stockton from Japan, visited with Mrs. Quay Clark recently.

Mr. and Mrs. J. O. Coffey are vacationing in El Campo with Mr. and Mrs. Frank Allison.

A meeting of the Crane National Guard unit has been called December 17 in the courthouse by Capt. Ethel H. Batson, company commander.

Dr. and Mrs. T. E. Williams of Odessa were recent guests in the home of Mr. and Mrs. W. E. Horn.

MID-LAND FINANCE COMPANY  
Loans on New & Late Model Cars  
J. H. Brock A. C. Corwell  
We appreciate your business  
201 E. Wall Tel. 55

Gift Candies  
FRUIT CAKES  
In vacuum sealed tins for mailing.  
Elite Confectionery  
322 N. Colorado

### Small Fry Can Make Yule Candy



CANDY FOR CHRISTMAS—The small fry can make it.

By GAYNOR MADDOX  
NEA Staff Writer

Christmas is everybody's job. So why not let 'teen agers or even younger members of the family take a hand in making Christmas candies. A box of Johnny's fudge bars for grandma! Wonderful thought. A jar of candy on the Christmas table made by young Susie! Why, of course, let the small fry put their oar in the holiday good will.

Here are two very easy recipes. Our own youngster, five year old Pat, helped make the first himself and there was no confusion—just smiles of pride when we all said it was wonderful candy.

**Fudge Bars**  
(Makes 22 bars)  
Two ounces unsweetened chocolate, 1 can (15 ounce) sweetened condensed milk, 1 cup quick rolled oats, uncooked, 1/2 cup coconut, 1/2 cup pecan meats, chopped.  
Melt chocolate in top of a double boiler over boiling water. Add condensed milk, rolled oats, coconut and chopped pecan meats. Stir until well mixed. Pack into a greased baking pan (7x11 inches). Bake in a moderate oven (350 degrees F.) 12 to 15 minutes. Cool and cut into bars.

**Peanut Butter Marshmallow Bars**  
(Makes 2 dozen bars)  
Five cups puffed rice or puffed wheat, 1/4 cup butter or fortified margarine, 1/3 cup peanut butter, 1/2 pound marshmallows (about 32).  
Measure puffed rice into a shallow pan. Heat in a moderate oven (350 degrees F.) for 10 minutes. Pour puffed rice into a large greased bowl. Melt butter, peanut butter and marshmallows in top of a double boiler over boiling water, stirring occasionally. Pour peanut butter-marshmallow mixture over the puffed rice. Stir until the puffed rice is evenly coated. Pack into a greased baking pan (7x11 inches). Cool and cut into bars.

### Commanders Decide Buddy System In Korean War Failure

By HALE BOYLE  
WITH U. S. EIGHTH ARMY, KOREA—(AP)—The "buddy system" has been a failure in the opinion of most frontline commanders in Korea. This attempt to integrate South Korean soldiers with American front line outfits was begun in August. It was an emergency military measure. In those desperate days of defense along the Naktong River line American soldiers were not arriving in enough numbers to replace the men lost or wounded in battle. So it was decided to fill the gaps in the line with selected South Koreans. This emergency program became known as the buddy system. To get the needed volunteers some enterprising commanders sent officers into Korean cities and invited picked young native policemen to come out and spend a day with their outfit. The program started off in an atmosphere of one big happy military family. Each recruit was assigned to an American buddy, whose job was to act as his friend and teacher in learning how to be a soldier. Everything was patsy walsy—as

long as the outfits were refitting in rest areas. More Important When the mixed Korean and American outfit went into combat the buddy system began to fall apart. Under the stress of battle the differences of language and loyalty between the two nationalities become more vitally important than their desire to understand and work with one another. The Koreans haven't had time to learn our Army technique. An American Doughboy hated to have his life dependent on whether his Oriental buddy knew enough to give him covering at the right moment. There were numerous cases of outstanding stubborn and heroic fighting by these Korean volunteers. But there were other cases where they broke and ran—and these created bitterness. "It is all right to say we should educate them up to our level. That's fine. But you can't do it in war time," one commander said. That is a fair summary of how most troop leaders feel about the integration program. And as fast as they could get fresh American replacements they got rid of their Korean volunteers. The result today is that the buddy system has been quietly shelved. Soil microbes, not soil chemicals, do the damage to rubber-insulated electric cables laid in the soil. They do more damage to natural rubber than to synthetics.

### 50-Mission Plane's Biggest Moment Of Peril Was On Ground

By WILLIAM C. BARNARD

TOKYO—(AP)—A battered B-29 named "The Outlaw" flew 50 flak-filled missions over Korea but had its greatest moment of danger on the ground. "The Outlaw" and its nimble-tongued crew fly in the 19th Bomb Group on the Far East Air Force Bomber Command. Okinawa is their base, but after 50 missions over Korea they were given a brief holiday in Tokyo. The crew members told about "The Outlaw's" closest call while they were resting here. "We couldn't get rid of a thousand-pound bomb," Lt. Edward L. Waldon, pilot and aircraft commander, chuckled. Waldon is from Indianapolis. At 28 he has made 85 bombing missions into enemy territory. Thirty-five were over Germany in the second World War.

Lt. Raymond P. Gambill, Jr., 26, of Pensacola, Fla., the navigator, said: "The other bombs dropped okay, but this one stuck in the bomb bay and just dangled there. We flew all over the sky trying to shake her loose, and went through all sorts of crazy maneuvers. But she wouldn't shake." Waldon grinned. "Finally we gave up," he said. "We got back to our base and decided to bring her in for a tail-high landing."

Everybody Is Tense "Didn't want to scratch that bomb up by dragging it along the runway," Gambill explained. "A sharp impact would have blown us to pieces and a colonel who couldn't be spared was with us that day. Everybody was mighty tense when we came down. The tail-high landing was fine. Our wheels touched the ground, the tail lowered and the bomb fell out on the runway. I remember that Waldon turned to the colonel and gulped real hard and said 'It didn't explode!' The colonel didn't bat an eye—just said very calmly, 'That's good.'"

The 19th Bomb Group was the first American group to drop bombs in the second World War. It dropped them in the Philippines. It was the first to hit Korea. Twenty-four hours after the 19th was alerted at its Guam base, its planes were striking at the Communists in Korea. And they struck hard. The high-flying Superforts have carried out some entirely new operations over the war-ridden peninsula. Fifty missions bring trouble of all kinds—engine trouble, many trips home with one of the four engines out, dirty fog, driving rain, wing ice and enemy flak. Flak Gets Heavy "I'll tell you about that flak," said Waldon. "It gets just as heavy in Korea as it did in Germany." Charles J. McNeer, 18, the tall gunner from Norfolk, Va., spoke up eagerly: "Boy, I'll never forget the first time I saw flak. It came up in black puffs so close you could practically feel it. It looks mighty mean the first time you see it and it still looks mean to me." It was amazing. Sergeant McNeer, at 18 years of age, was a veteran of 50 combat missions—an old friend of danger. And there was the radio operator, Sgt. George C. Mize, right gunner, of Indianapolis, 21. So is Robert Wollits, staff sergeant and left gunner from Youngstown, Ohio. William H. Ralph, master sergeant and flight engineer of Ashtabula, Ohio, is 22. Staff Sergeant James E. Self of Asheville, North Carolina, is a year older. He is central fire control gunner. "One thing we didn't have to put up with over Germany are these fast Russian-built jets," Waldon said.



GERMAN POLICE MARCH—An armed battalion of West German industrial police passes in review during training in a woods outside West Berlin. About 800 of these carbine-equipped troops are being trained for emergency duties in Red-encircled Berlin. (NEA-Acme photo by Staff Photographer Allyn Baum.)

There are more Chinese in Malaya than Malaysians, 2,615,000 compared to 2,294,000. There are more than 50 known species of fuchsia, mostly natives of tropical America. King Gustav V of Sweden succeeded to the throne Dec. 8, 1907, on the death of his father, Oscar II.

**SUPER WOMAN** By Mack

When did you learn to make those Mrs. Tucker's SUPER Biscuits?

"Miz-zis Tuck-er Wanted in Kit-chen!"

BETTER BISCUITS

Mrs. Tucker's SPEED-MIX The CREAMIEST QUICK MIX SHORTENING on the market!



<b>FLOUR</b> Gold Medal 10 Pounds	83¢
<b>SUGAR</b> Imperial 10 Pounds	83¢
<b>COFFEE</b> Admiration Pound	79¢
<b>TUNA</b> Half Hills Can	29¢
<b>SALMON</b> Red Sockeye, Topmost Pound Can	79¢
<b>CHERRIES</b> Chocolate Covered Pound	47¢
<b>MILK</b> Eagle Brand—Can	28c
<b>PEACH PRESERVES</b> Hunt's—Pound Jar	27c
<b>ORANGE JUICE</b> Adams—46 Oz. Can	38c
<b>Fudge &amp; Frosting Mix</b> Dromedary—Pkg.	29c
<b>CRACKERS</b> Sunshine—Pound Box	25c
<b>ORANGE SLICES</b> Sunshine—10 Oz. Pkg.	19c
<b>CHERRIES</b> Hunt's Dark Sweet—No. 300 Can	29c
<b>COLORED OLEO</b> Parkay—Pound	29c

## FOODS FOR HEARTY WINTER MENUS at HEALTHY SAVINGS!

**Pre-Christmas HAM SALE**

Peyton Del Norte **HAM** 57¢  
Whole Only — 11 to 13 lb. average — lb.....

Decker's Iowa Pear Shaped **Canned Hams** \$4.69  
5 lb. Average — Cooked ready to eat — Each

Decker's Iowa Pear Shaped **Canned Hams** 79¢  
9 - 12 lb. average — cooked ready to eat — lb.

**FOOT SPECIALIST**  
**DR. VIRGINIA Y. JOHNSON**  
306 N. Main CHIROPODIST Phone 856

HOW ABOUT GOING TO THE GROCERY AND GETTING SOME FRESH FISH FOR SUPPER, DEAR?

CITY AQUARIUM

BOB GRUBB

**Triangle Food Market** "SCRUTIE" SKAGGS  
BOB GRUBB  
SOUTH "A" AT MISSOURI AT MISSOURI  
7 A.M. TO 9 P.M. Open Nights -- Sundays EVERY DAY  
PHONE: 280

**BURTON LINGO CO.**  
★ Building Supplies ★  
★ Paints - Wallpapers ★  
119 E. Texas Ph. 58

**GARDEN FRESH VEGETABLES**

<b>Oranges</b> Florida, Full of Juice Pound	10¢
<b>Grapefruit</b> Texas Pound	8¢
<b>Lemons</b> Sunkist, 360 Count Pound	10¢
<b>Lettuce</b> Jumbo Heads 2 for	25¢
<b>POTATOES</b> New Reds 2 lbs.	15c
<b>CAULIFLOWER</b> Snowball—Pound	18c
<b>CHIVES</b> Each	45c
<b>BELL PEPPER</b> Pound	27c
<b>POTATOES</b> Idaho Russet—Pound	5c
<b>CABBAGE</b> Green Heads—Pound	5c

Decker's Tall-Korn **Bacon** 45¢  
Sliced — Extra lean & nice — lb. ....

Center Cut **Pork Chops** 49¢  
Nice and lean — lb. ....

**Our Christmas Turkeys**

Our Christmas Turkeys are the "baby beef" type, home grown, and will be dressed Dec. 22 to assure you of freshness. Place your order now!

Roy • Sam • Dud

Order your poinsettias now from the most beautiful selection we've ever had. Our poinsettias are especially grown for us.

**SAY IT WITH FLOWERS**  
**Midland Floral Co.**  
1705 W. WALL Phone 1286  
MIDLAND'S Leading FLORISTS

**Wes-Tex Food Mart**  
— QUAY HAMBLET — We Reserve the Right to Limit Quantities. — C. W. CHANCELLOR —  
200 W. Texas Ave. • Specials For Thursday, Friday and Saturday • Phone 1800, 4777