





**HOME DEMONSTRATORS MEET IN GALVESTON**

GALVESTON—The Texas Home Demonstration Association opens a three-day annual convention here Wednesday with more than 600 delegates expected to attend.

About 27 tons of oxygen are required for every ton of coal burned.

**Baby's Colds**  
Relieve misery direct—without dosing.  
**RUB VICKS ON VAPOR**

**Congratulations To:**

Mr. and Mrs. P. D. Lewis on the birth, Monday, of twin sons, Carl Glenn, weighing six pounds, four ounces, and James Lynn, weighing five pounds, 12 ounces.

Mr. and Mrs. J. W. Covert on the birth, Tuesday, of a son, John Charles, weighing seven pounds.

Mr. and Mrs. J. A. Murphy on the birth, Wednesday, of a son, weighing eight pounds, 15 ounces.

**SOCIETY**

THE REPORTER-TELEGRAM, MIDLAND, TEXAS, SEPT. 24, 1947-3

**Mrs. Guy McMillian Honors Room Mothers Of MHS With Coffee**

Mrs. Guy McMillian, membership chairman of the Midland High School P-TA, entertained 31 room mothers with a morning coffee Tuesday at her home, 1201 West Illinois Street.

The hostess announced there are 16 room mothers to each class. Chairmen are: Mrs. Peyton Anderson, seniors; Mrs. L. C. Link, juniors; Mrs. C. W. Chancellor, sophomores; and Mrs. Bill Franklin, freshmen.

Mrs. W. H. Rhodes, president, added Mrs. McMillian in the serving of refreshments.

Mrs. Allen Cowden, chairman of the Ways and Means Committee, announced a coffee to be held at 10 a. m., October 14, for all room mothers at her home.

**MARRIAGE LICENSES**

Nimrod Norton Lacy and Frances Burns Sibley, Walker Cadd and Ruthie Lee Polk, Edwin H. Harvey, Jr., and Ella H. Edwards have been issued marriage licenses by the Midland county clerk's office.

**BANNED**

The secretary of the treasury of the United States never bought a single war bond. He's prohibited by law from buying government securities.

**Get Welcome Relief From Stomach Gas, Sour Food Taste**

Do you feel bloated and miserable after every meal? If so, here is how you may rid yourself of this nervous distress. Thousands have found it the way to be well, cheerful and happy again. Everytime food enters the stomach a vital gastric juice must flow normally to break-up certain food particles; else the food may ferment. Sour food, acid indigestion and gas frequently cause a morbid, touchy, fretful, peevish, nervous condition, loss of appetite, underweight, restless sleep, weakness.

**YWA Initiates 3 New Members At Regular Meet**

Three new members were initiated into the First Baptist YWA and newly elected officers were installed Tuesday night at a business meeting at the church. New members are Rebecca Smoot, Margaret Smoot, and Dorothy Routh.

The program, which opened with a prayer by Ruth Melton and the singing of "Our Best," was in observance of the Mary Hill Davis Week of Prayer for State Missions. Highlighting the program were a devotional, "Christ—Answer To The Problems of Evangelism," by Gwendolyn Simpson; Clara Belle Kelton in "Christ—Answer To Rural Church Problem," followed by Dorothy Routh's singing of "Little Brown Church in the Vale," Wilda Drake's discussion of "Christ—Answer to Failure," a prayer for rural churches by Anna Joyce Streeter, Eloise Williamson's discussion of the Stonebury Baptist Church, and Dorothy Raines' brief talk on tithing. Helen House closed the program with a prayer.

New YWA officers are: Clara Belle Kelton, president; Ruby Gilbert, vice president; Wilda Drake, secretary; and Nellivee Clark, treasurer. The president appointed the following committee chairmen: Ruby Gilbert, enrollment; Nellivee Clark, stewardship; Dorothy Raines, program; Gwendolyn Simpson, mission study; Ruth Melton, community missions; Helen House, literature; Nancy Woodruff, library; Dorothy Routh, social; Anna Joyce Streeter, music; and Ruby Hale, publicity.

The group decided to change meeting dates to the first and third Thursdays of each month. It was announced that those present were Gwendolyn Simpson, Anna Joyce Streeter, Ruth Melton, Wilda Drake, Clara Belle Kelton, Eloise Williamson, Rebecca and Margaret Smoot, Dorothy Routh, Helen House, Mrs. J. S. Griffith, Nellivee Clark, and Dorothy Raines.

**TULLS LEAVE FOR DENVER**

Mr. and Mrs. C. C. Tull left Tuesday for a trip to Denver, Colorado.

Michal Namesty, of Prague, Czechoslovakia, is serving a term.

**Best in BOOKKEEPING and TAX WORK**  
For Independent Businesses  
"MAIL-ME-MONDAY"  
INVESTIGATE—No Obligation  
Ph. 2182 Odessa, Texas Box 1241

**High School P-TA Honors Teachers**

More than 200 parents and teachers, including 50 fathers, honored Midland High School teachers Tuesday night when the High School P-TA gave its annual reception in the North Elementary cafeteria, with a program featuring an address by School Superintendent Frank Monroe.

Charles F. Mathews, high school principal, introduced the following faculty members to those present: J. P. McKinney, Inez Cheatham, Mrs. G. E. Massey, Betty Crouch, J. R. Cuffman, Ruth Donnell, Audrey Gill, John E. Glassie, Gwendolyn Gordon, Verma Harris, Roy Howard, Minnie Jackson, H. N. Lawhon, Mrs. Elsie McGee, John Mashburn, Barnes Milani, Clyde Parmely, Ann Cummings, Lucy Moore, Donald Moore, Mrs. Josephine Parr, Mary Phillipus, Elma Rowland, Josephine Weaver, Louise Boyd, Mrs. C. M. Dunagan, Helene Miley, and Theresa Klapproth.

Following a P-TA business session in which the group voted to give financial support to the building of a Junior Canteen for Midland, Mrs. Y. D. McMurry and Mrs. O. J. Hubbard were hostesses to the parents and teachers during a social hour.

Refreshments of coffee, cookies, dainty sandwiches, and nut-mints, made by Mrs. Hubbard, were served from a table covered with a yellow organdy cloth with a taffeta under-cloth. The centerpiece, arranged by Mrs. Hubbard, was of white and yellow mums and daisies, with table-corner daisy corsages on doilies.

The Silver String Quintet presented several numbers on the program, with Homer Meeks, Jr., furnishing music throughout the social hour.

**First Christian's Henderson Circles Has Regular Meeting**

The Henderson Circle of the First Christian Church met Monday afternoon in the home of Mrs. Ella Ragsdale, 407 North Marientfield Street.

Featuring the study from the "World Call," talks were given by Mrs. Al Boring and Mrs. Wade Heath, with Mrs. Bush leading the devotionals.

Others present were Mrs. Lizzie Bradshaw, Mrs. J. H. Elder, Mrs. W. C. Barber, Mrs. J. Roy Jones, Mrs. D. B. Snider, Mrs. J. O. Shannon, Mrs. Frank Ingham, Mrs. R. J. Auld, and one guest, Juanda Bradshaw.

**BELFOLD MISSING**

A billfold containing \$33 was reported taken Tuesday from an apartment on East Indiana Street, police were informed.

**HALLS IN TULSA**

The Rev. and Mrs. Raymond Hall of the First Baptist Church are in Tulsa, Okla., where they were called by the serious illness of Mrs. Hall's father, Robert Eisle.

**L. T. MILLER, JR.**  
CERTIFIED PUBLIC ACCOUNTANT  
Announces The Opening of His Office For The Practice Of Public Accounting—AUDITS—SYSTEMS—TAX SERVICE.  
114 1/2 South Main Street Midland, Texas Telephone 495  
Member of The American Institute of Accountants

**New Fall PERMANENTS . . .**  
Your Crowning Beauty Is Your Hair. Take Care Of It . . . Wear It In The Most Becoming Fashion.  
OUR PERMANENTS Assure You That Natural Look. Our Experienced Personnel Includes: Pet Bost, Damie Young, Juanita Wells and Mita Yates.  
New Equipment . . . New Supplies  
*American Beauty Shop*  
407 W. Wall Phone 531

**MIRRORS**  
Make your home distinctive with outstanding styles in mirrors! Have your present mirror resilvered or purchase a new one.  
★ New Mirrors ★ Plate Glass  
★ Resilvering Mirrors ★ Glass Doors  
★ Furniture Tops  
**Midland Glass & Mirror Co.**  
1611 W. Wall Q. M. (Shine) Shelton Phone 282

**Thelma Van Bibber**  
Will Be In Midland  
Wednesday and Thursday  
Sept. 24 and 25  
IN ROOM 244 SCHARBAUER HOTEL  
To Take Your Order For  
**VAN BIBBER**  
CUSTOM MADE  
Blouses and Skirts  
(Delivery In Two Weeks)  
BEAUTIFULLY DETAILED IN THE NEWEST FALL FABRICS

**Specify CONCRETE BUILD FOR STRENGTH**



Free . . . Write today for your pictorial review of model homes and business buildings.

CHASE AND MCGINNIS, INC.  
ABILENE WACO AMARILLO  
PH 4588 PH 9273 PH 2501  
BOX 355 BOX 924 BOX 2102

**Announcing THE OPENING OF**

**MASTERCRAFT FURNITURE SHOP**  
REFINISHING and REPAIRING  
by  
**HENRY E. GOULET**, formerly in charge of refinishing and repair department for DAVIS UPHOLSTERING SHOP  
J. A. Connolly — Owners — Henry E. Goulet  
210 W. WASHINGTON  
1565-W Phones 832-J

**Making New Friends Every Day!**

**Baldrige's SALLY ANN BREAD**  
Ask for it at your favorite grocer in the double seal dust proof wrapper which preserves its freshness.  
— Distributed By —  
**BLACKWELL BROS. — BAKERY —**

**Whopping Big Fall Assortment!**  
**SHIRTS**  
Now! Sanforized! TOWNCRAFTS® at a Stop, Look, LOAD UP Price!  
**3.49**  
White Broadcloths, 2.98  
**Choose from These!**  
• Genuine Woven-In Patterns—No Prints!  
• Luxury-Look Piques!  
• Crisp Oxford Cloths!  
• Soft Toned End-to-End Broadcloths!  
Famous Towncrafts in ALL the shirt cloths . . . ALL this Fall's favored colors and patterns . . . ALL Sanforized! And priced at a sensible 3.49! Every last one is perfect-tailored and full-cut—plenty of shoulder room, 33" tail.  
Regular Nu-craft collars (look crisp, feel soft!) and other collar styles like widepreads, tabs, button-downs, long points, too! Come in and stock up on the best buy in town—TOWNCRAFTS!  
**... and TIES 1.49**  
• New Fall Patterns!  
• Sharp, True Colors!  
• Smooth-Draping Rayon!  
• Wool Lined, Large Size!  
Modern, tasteful patterns—richly colored! Smooth, heavy rayon that springs back after every wearing!  
**AT PENNEY'S**  
Values Are Always Dependable

Plenty of **PLYWOOD**  
1/4-INCH FIR 4'x10' PANELS  
5/8-INCH FIR 4'x10' PANELS  
3/4-INCH GUM 24"x48" PANELS—30"x48" PANELS  
**"RUBEROID"**  
210-LB. ASPHALT SHINGLES  
Beauty, quality and durability in one package choice of 3 fade-proof colors  
EVERGREEN—SLATE GREEN BLUE-BLACK  
Only \$6.95 Per Square  
167-LB. HEXAGON SHINGLES  
Red or Green  
Now Only \$5.95 Per Sq.  
90-LB. ROLL ROOFING \$3.50 Per Roll  
55-LB. ROLL ROOFING \$2.50 Per Roll  
**BARBED WIRE**  
80-ROD ROLLS  
2 Pt. Heavy \$6.75 Per Roll  
**RED CEDAR SHINGLES**  
UTILITY GRADE \$4.95 Per Sq.  
**MOULDED TRIM**  
\$7.50 Per 100 Lineal Ft.  
**WINDOW UNITS**  
**ASSORTED DOORS**  
**MEDICINE CABINETS**  
\$4.95 And Up  
**"Pay Cash and Save"**  
**Chambers LUMBER COMPANY**  
MEMBER LUMBERMEN'S ASSOCIATION OF TEXAS  
COLORADO and FRONT PHONE 367



Midland-Odessa Telephone Service To Be Increased

Facilitating greater and better phone service between Midland and Odessa, the Southwestern Bell Telephone Company announced it will almost double the circuits between the two cities.

Scout Commissioners Discuss Objectives

At a conference of commissioners of the Buffalo Trail Council of the Boy Scouts of America at the Schaubauer Hotel Tuesday evening, plans for participation in the second annual Nationwide Round-Up and celebration of scouting's silver jubilee, and general objectives for the council were discussed.

Dallas Woman Gives Book Review Here

More than 200 Midland women heard Mrs. Herbert Emery, noted Dallas book reviewer, present a review of Samuel E. Lilienberger's best seller novel, "Prince of Foxes," at the Yucca Theater Tuesday morning.

McCamey News

Mrs. B. W. Gettys of Bloomfield, N. J., has returned to her home after a week's visit in the home of her sister, Mrs. A. O. Beavers, and Mr. Beavers. Their brother, S. C. Evans, who is with the Federal Land Bank of Houston, visited them over the weekend.

Miss Doris Jean Jones was a visitor to Alpine and attended the football game last weekend. Mr. and Mrs. T. A. Pauley and Janet, went to Alpine Saturday to see their son and brother, Bob Pauley, play in the football game for the San Angelo Rams against Sul Ross.

Elementary Schools Start Sports Events

The annual elementary school sports program will kick off Thursday at 2:40 p. m. when North and South Elementary Schools teams play at the South location.

COTTON

NEW YORK — Noon Wednesday cotton prices were 10 to 65 cents a bale higher than the previous close, October 31.33, December 31.18 and March 31.19.

FRECKLES AND HIS FRIENDS



Officers Continue Study Of State's New Traffic Code

Capt. C. O. Layne, commanding officer of highway patrolmen in this district, concluded the second day's discussion of the recently enacted Uniform Traffic Code here Tuesday as officers of Midland, Martin and Reeves Counties met in a law enforcement school.

Wednesday, the officers were scheduled to study a crime problem under supervision of Fred McIntyre, assistant special agent in charge of the Federal Bureau of Investigation office at El Paso. McIntyre is instructing officers of the three counties in investigative techniques.

Oil & Gas Log-

Central Runnels Wildcat Made Oil and Water in DST. Pan American Production Company No. 1 Campbell, Central Runnels County wildcat, three miles south of Hatchell, and in northeast corner of the Jesse B. survey, No. 536 6 8, was drilled ahead here.

Deep, Dry Schleicher Exploration To PA. Al P. Groehl No. 1 Baugh, Schleicher County wildcat in section 8, block M, GH&SA survey, and four and one-half miles north and slightly west of the base field, has been plugged and abandoned at total depth of 6,591 feet.

Argentine Women Get Right To Vote. BUENOS AIRES — A new law, signed by President Juan D. Peron, Wednesday said Argentine women the right to vote in federal elections.

Livestock. FORT WORTH — Cattle 3,800; calves 4,135; trade slow; few early sales of most classes around steady, late trade very dull, weak to unevenly lower; package of good fed steers topped at 24.00; other steers, yearlings and heifers mostly common to medium, 12.50-20.00; good fat cows, 15.00-17.00; common to medium cows, 12.25-14.00; bulls 11.00-16.50; good and choice fat calves 17.00-19.00; few to 20.00; most stocker calves, yearlings and steers 15.00-19.00; few to 20.00; stocker cows 13.00 down.

East Texas Has More Forest Fires. CONRCE, TEXAS — The second serious outbreak of forest fires in the Conrce area this year was reported Wednesday by J. O. Burnside, chief of fire control for the A&M College Texas Forest Service, who said that 12 fires were being fought.

JayCee Describes Trip To Europe

Taylor Cole, president of the International Junior Chamber of Commerce, who has just returned to Midland from a European tour, described the highlights of his trip at a meeting of the Midland Lions Club Wednesday noon in the Scharbauer Hotel.

Cole with his wife and Mr. and Mrs. John Ben Sheppard of Gladeville visited England, France and Belgium. Sheppard is president of Texas Jaycees.

Mavor R. H. (Rusty) Gifford was program chairman and introduced the speaker, J. P. Carson, Jr., announced the Lions Club sponsors circus, coming to Midland, Bill Alley, a representative of the circus, also made announcements concerning the show.

Students Claim Board Put Cattle First

AUSTIN — Petitions asking improvements at the Texas School for the Deaf, signed by 86 students, were on Gov. Beauford H. Jester's desk Wednesday.

Among other complaints, the students inferred that the State Board of Control was more concerned with "the comfort of the cattle at our asylum" than that of the inmates.

IRA C. EAKER JOINS HUGHES TOOL COMPANY

Houston — Lt. Gen. Ira C. Eaker, who recently retired as deputy commanding general of the U. S. Air Force, was house-hunting here Wednesday. The Army veteran became a vice president of Hughes Tool Company.

BUCKY HARRIS TO REMAIN WITH YANKEES

NEW YORK — Bucky Harris, who piloted the New York Yankees to the American League pennant in his first year as manager, will remain at the helm next year, Larry MacPhail, president of the Yankees, announced.

TEXAS ENROLLMENT NEARS 18,000 MARK

AUSTIN — University of Texas enrollment Wednesday was still short of the 18,000 expected for the fall semester.

TRIESTE HAS STRIKE

TRIESTE, FREE TERRITORY — 12,000 workers left their jobs Wednesday in response to a "general strike" order issued by the Communist-dominated Sindacato Unico Union in protest against Allied Military Government suspension of six of its members.

TECHNICIANS STRIKE MILAN, ITALY

MILAN, ITALY — A strike of technicians and their assistants threatened Wednesday to paralyze the entire Italian textile industry, one of the country's busiest, throwing 550,000 persons out of work.

GANDHI IS HONORED CALCUTTA

CALCUTTA — The provincial government of West Bengal announced Wednesday that Mohandas K. Gandhi's birthday would be observed as a public holiday. Gandhi, spiritual leader of India's Hindus, will be 76 October 2.

McKenney on Bridge

By WILLIAM E. MCKENNEY America's Card Authority

With the east and west coasts just an over-night hop apart, the big tournaments in the east have more entrants now from the Pacific coast. Many of the easterners are planning to go out of Coronado, Calif., to participate in the All-Western Championships in November.

Advertisement for a card game dealer listing various cards and a phone number.

Advertisement for Household Goods Burn Too! WE INSURE THEM MIMS and STEPHENS Phone 24 205 W. Wall

Advertisement for SCHOOL DAYS! Brighten Your Room Midget and Portable Radios Table Phonographs Temple

OUR BOARDING HOUSE



with MAJOR HOOPLE OUT OUR WAY



—By J. R. WILLIAMS

BOOTS AND HER BUDDIES



WASH TUBBS



ALIFY OOP



RED RYDER

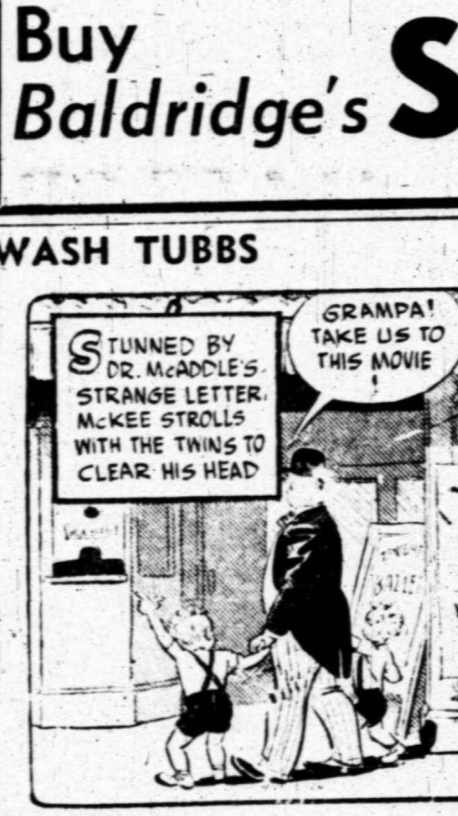


Advertisement for Buy Baldridge's SALLY ANN BREAD DISTRIBUTED IN MIDLAND BY BLACKWELL'S BAKERY —By LESLIE TURNER

PHILCO Radio Philco Refrigerator Easy Washer Chambers Range PIONEER GENERAL STORE 511 W. Wall Phone 1020



"I think beautiful things like that harvest moon educate us as much as Latin and algebra—but our parents never would believe that!" —By MERRILL BLOSSER



VIC FLINT



RED RYDER



ALIFY OOP



RED RYDER



VIC FLINT



RED RYDER



ALIFY OOP



RED RYDER



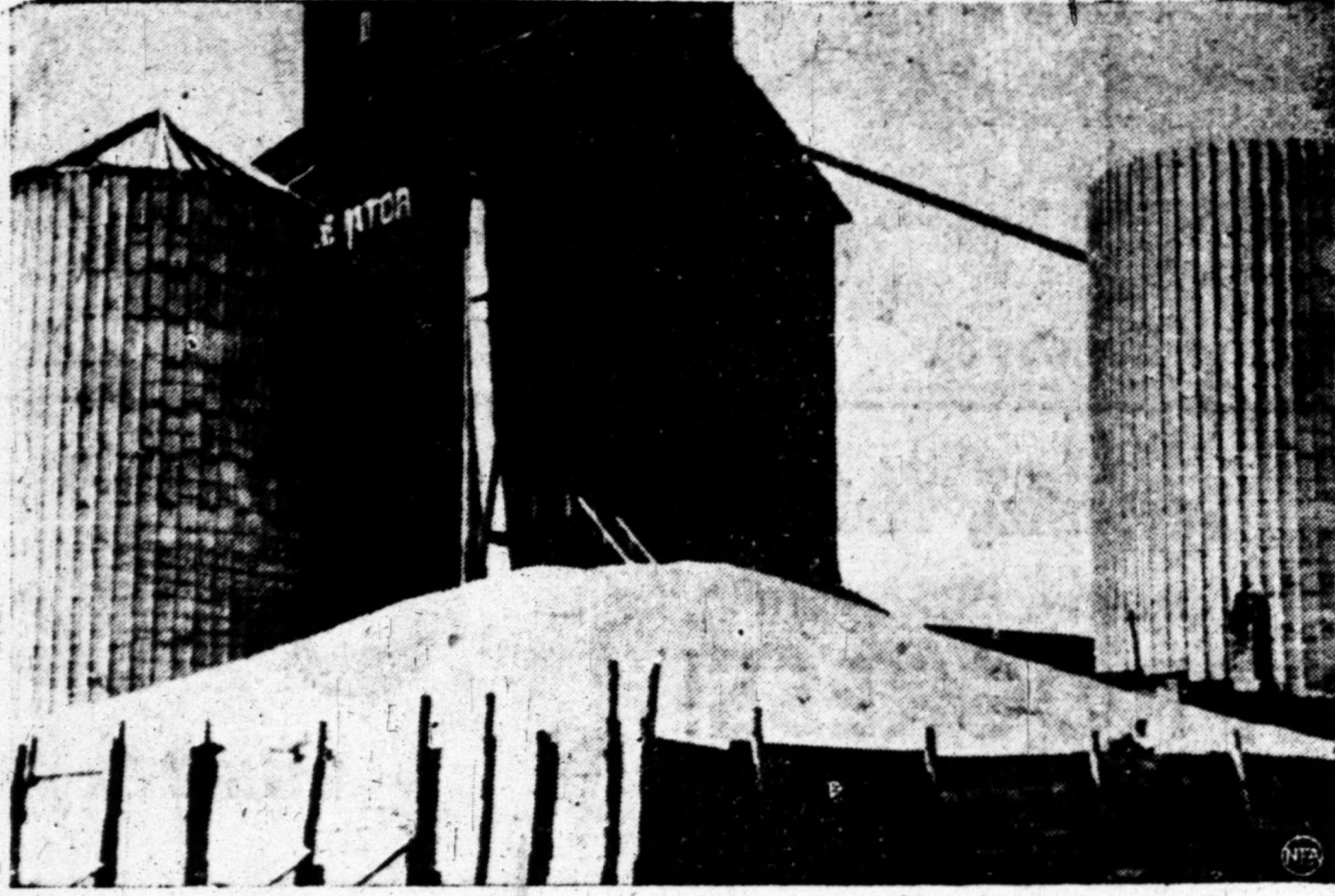








### Mountains of Wheat, With No Place to Go



That vast pile of wheat contains 30,000 bushels of the precious grain. At many grain elevators, like the one pictured above, at Egeland, N. D., the wheat has come in, but hasn't gone out. The bumper crop, the record prices, and a shortage of railroad cars are responsible for outdoor storage.

### McKenney on Bridge

By WILLIAM E. MCKENNEY  
America's Card Authority  
Frank Weisbach of Cincinnati, Ohio, who won the world championship Masters Pairs this year with Allen Harvey of Louisville, standing players now in the south, midwest and west who will make a good showing any time they enter major competition. It was no surprise when Weisbach came through for the championship. Weisbach had an interesting percentage problem in today's hand. He had eight top card tricks, two spades, two hearts, two diamonds and two clubs. If either the spades or clubs were divided

10742	AK3	J986
842	AQ7	K9
A7	K65	Q82
9873	AK10	J643

W E Dealer  
S  
W  
N  
E  
J  
K  
Q  
A  
K  
A  
K  
10

Tournament—Neither vul.  
South West North East  
2 N.T. Pass 3 N.T. Pass  
Opening—♥5 ♠5

### Army Picks 'Dud' For Initial Test Of Super Bomb

WASHINGTON—(AP)—The Army will limit the first test of its new over-size bomb to the drop of a "dud" missile, with actual blast experiments to be made later from fixed ground positions. This was learned here from Army Air Force and Army ordnance experts who said the initial problem to be solved is how to release the huge 42,000-pound bomb from an airplane and determine the pattern of its fall to a target. They note that never before has a load of this weight been dropped from an aircraft—and they won't even guess what may happen when the specially fitted B-29 suddenly becomes 21 tons lighter.

Ordnance officers said they assume that one of the factors of particular interest in the first experiments is the depth of penetration attained by the heavy bomb. They suggested that to carry through the tests, a loaded bomb might be planted later at the depth indicated by the drop-test and then exploded. This would provide an opportunity for a more careful check on the force of the explosion and the accompanying earth shocks. The combat use of the huge bomb presumably will be decided by the results of the series of tests, the first of which are scheduled this fall.

### FUNNY BUSINESS



"Good morning, dear!"

### British Grain Yield Misses 1947 Target

LONDON—(AP)—British farmers, having completed what is called "the easiest" harvest in memory, slow find it to have been the lightest in yield at a time when the United Kingdom needs every grain. The Agriculture Ministry estimated the wheat yield at 15.9 hundredweight an acre compared with a 10-year average of 18.8, and 19 hundredweight in 1946. The wheat acreage target in 1947 was 2,500,000 against 2,000,000 actual acreage in 1946. Even if the 1947 target were met, the reduced yield means that British home wheat production was only about 40,000,000 hundredweight compared with 38,000,000 from last year's lower acreage.

The orang-utan is the only animal that knows the principle of the lever.

PERSONALIZED GIFT STATIONERY  
Phone 7 or 8  
The REPORTER-TELEGRAM  
Pamphlet Book Printers

Philco Radio  
Philco Refrigerator  
Easy Washer  
Chambers Range

PIONEER GENERAL STORE  
511 W. Wall Phone 1020

### CARNIVAL

By DICK TURNER



"No, no, sir! The left-overs are eighty-five cents! It's the left-over left-overs that are fifty cents!"

### SIDE G'ANCES



"There's smartly laughing his head off at the boss's stories—you don't see me doing that just for a raise!"

### FRECKLES AND HIS FRIENDS

—By MERRILL BLOSSER



Household Goods  
Burn Too!  
WE INSURE THEM  
MIMS and STEPHENS  
Phone 24 205 W. Wall

Miss Floria Says—  
WANT TO BE NICE TO HER FAMILY?  
Midland Floral Co.  
Mary & Joe Kaugler  
1705 W. WALL • PHONE 1286  
Midland's LEADING FLORISTS

### OUR BOARDING HOUSE with MAJOR HOOPLE OUT OUR WAY —By J. R. WILLIAMS



### BOOTS AND HER BUDDIES

—By EDGAR MARTIN



Buy Baldridge's SALLY ANN BREAD  
DISTRIBUTED IN MIDLAND BY BLACKWELL'S BAKERY

### WASH TUBBS

—By LESLIE TURNER



### ALLEY OOP

—By V. T. HAMLIN



### RED RYDER

—By FRED HARMAN



### VIC FLINT

—By MICHAEL O'MALLEY and RALPH LANE





Forward  
Midland—

**Williams**  
Photographers

105 N. Big Spring

Phone 363

### Fight 'Em, Bulldogs

We're All For You!

Play The 5th Quarter  
At The City Drug

Your Favorite Drinks  
And Sandwiches Made  
Your Favorite Way!



**City Drug Store**

### Bulldogs— Fight 'Em!

Then eat with your  
friends at the finest  
Drive-In in Texas—



**KING'S**

### FIGHT 'EM, TEAM!



Before the game visit us.  
We serve choice steaks  
and Mexican Dinner.

**HOT BISCUITS 3  
TIMES DAILY**

**Crawford Hotel Coffee Shop**

### EXTRA POINTS

may win the game—

just as extra knowl-  
edge can keep your  
equipment out of  
trouble—we've ex-  
perienced men to  
do the job.



**Wes-Tex Equipment Co.**

105 N. Fort Worth

Phone 2468



We're For You  
**BULLDOGS!**

And For That Extra  
Power In "66" Gas

**Wilson's "66"  
Service**

500 W. Wall

Phone 577

### Bulldogs! Get 'Em!

We're pulling for you  
to win... because you're  
from winning stock.



The  
**Midland National Bank**



Sometimes A  
Pass Is Good!

But

you'll be unable to pass up  
the values we have here for you in quality fashionable  
clothing—

**UNITED**

121 N. Main

INC.

Phone 2218

### FIGHT 'EM BULLDOGS!



Clean 'em  
up---

Just like we do  
your soiled clothing!

**HABIT CLEANERS**

109 N. Pecos "Make Our Habit Your Habit" Phone 1777

### Block That Kick, Bulldogs!

and leave it to us to run  
interference for you...  
we'll see that you get the  
highest quality at lowest  
prices on everything you  
buy at—



**WESTERN AUTO**

T. E. Allen, Owner

### WE'RE ALL FOR YOU, BULLDOGS

Do Your Best



**BLACKWELL BROS. BAKERY**

Distributors in Midland For  
BALDRIDGE'S SALLY ANN BREAD

### 100% for the BULLDOGS!

Let us give your car  
that easy-riding,  
smooth-running  
Feeling.



Melvin Haney's

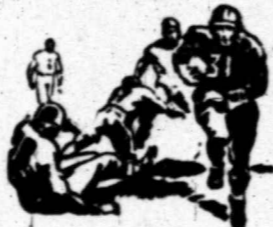
**HUMBLE**

Service Station

702 W. Wall

### Power To You, Bulldogs!

You have our enthusiastic  
friendship and backing...



TEEN-AGERS WILL FIND OUR  
SNACK BAR A PLACE TO MEET!!

**Palace Drug Store**

J. B. McCoy, Owner

108 South Main

We Are Backing The

**BULLDOGS!**

Give 'em that old power  
drive... show them the  
same class they'll find in  
the new Fords!



**MURRAY-YOUNG MOTORS, Ltd.**

AUTHORIZED

DEALER

223 E. Wall

Phone 64

### AFTER THE GAME...

is tied up... wrangle your bunch out to the  
Ranch House for a delicious dinner with all the  
trimmings! You'll like the  
way our food is prepared  
for you!



West Highway 80

**J. Ranch**



Supporting Midland!

MOVING AHEAD WITH

**PROGRESS!**

Colorado and Front

**Cha**

LUMBER



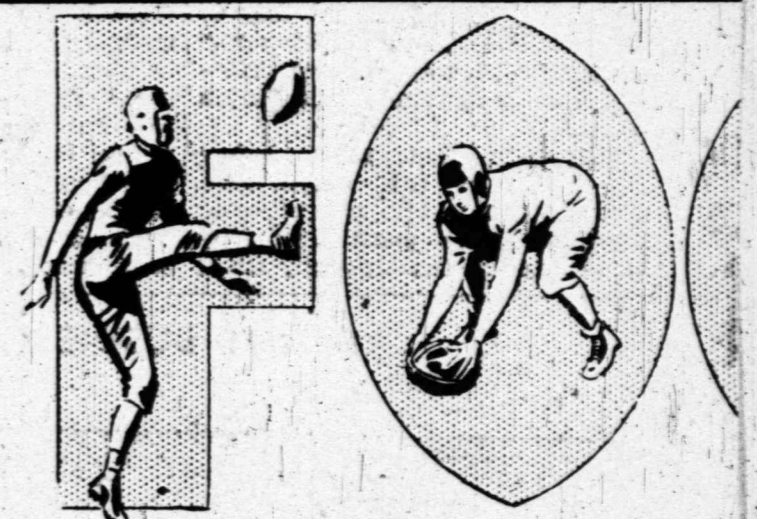
Beat 'Em BULLDOGS!

but you can't beat the low  
prices always featured at

**YOUR  
BETTER VALUE STORE**

207 West Wall

**WH**  
*Auto*  
THE HOME OF



**FRIDAY**  
**Lackey Field**

**BU**  
—SQU

No.	Name	Pos.	Wt.
00	Stephens	Back	13
11	Spaw	Back	12
15	German	Back	14
16	Good, D.	Back	16
19	Deel	Tackle	16
22	Roberts	Back	13
25	Buckingham	Back	15
26	Filler	Center-End	14
29	Little	Back	16
33	Hamblet	Back	12
35	Leftwich	Guard	14
36	Devore	Back	15
39	Cooper	Center	15
45	Hightower	Guard	15
46	Bevins	Back	16
48	Hyatt	Back	16
56	Whitson	Guard	16
59	Moncrief	Center	15

### 1947 FOOTBALL SCHEDULE

SEPT. 12—Ysleta 13—Midland 7.  
SEPT. 19—Brownfield 7—Midland 13.  
SEPT. 26—Austin High at Midland.  
OCT. 3—Plainview at Plainview.  
\*OCT. 10—Sweetwater at Midland.  
\*OCT. 24—Abilene at Midland.  
\*OCT. 31—San Angelo at San Angelo.  
\*NOV. 14—Big Spring at Big Spring.  
\*NOV. 21—Lamesa at Midland.  
\*NOV. 27—Odessa at Odessa.  
\* Denotes Conference Games

### Go Get 'Em BULLDOGS!

WE'RE BEHIND YOU!

**Simmons**  
PAINT &  
PAPER CO.

206 S. Main



Phone 1633

### Fight To

**Pylant**

NEON SIGNS

Phone 944



### Bulldogs!

The Crawford Hotel is your firm  
friend and enthusiastic backer.

- FRIENDLY
- COURTEOUS
- ACCOMMODATING

**Crawford Hotel**

Cal Baykin, Owner



### BULLDOGS!

Hold That Line  
and  
Hit 'Em Hard--

The whole town's for you  
all the way—and that cer-  
tainly includes us.

**—NEELY AGENCY—**

Crawford Hotel Building



# h House

**Corral 'Em, BULLDOGS!**

An' after they're bunched up and it's time for chow, here's where you'll find everything your heart desires!

Fine Foods —  
Favorite Beverages  
Phone 2163



and Save!"  
**Members**  
COMPANY

**Supporting The Bulldogs!**

WE'RE BACKING YOU  
**TO WIN!**

Phone 367



**YOU'LL ENJOY THE GAME!**

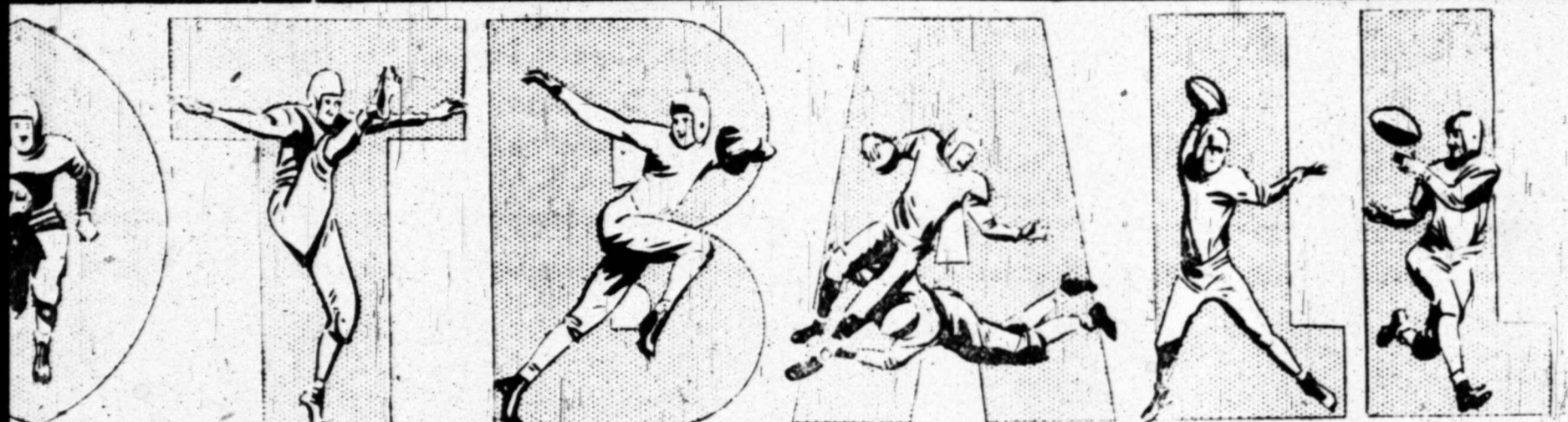
AND

you'll enjoy the large selection of quality merchandise at low prices that we have for you!

Phone 1644



**TE'S**  
tores  
EATER VALUES



**SEPTEMBER 26th**  
**Midland — Kickoff 8 P.M.**

**LAND DOGS**

**VS.**

**AUSTIN HIGH of EL PASO PANTHERS**

— SQUAD LIST —

No.	Name	Post.	Wt.
65	Prichard	Guard	152
96	Messersmith	Back	147
69	Henderson	Tackle	177
75	Bennett	Tackle	177
76	Richardson	Tackle	175
77	Clark	Guard-End	148
79	Sorokin	Tackle	207
85	Dunn	End	165
86	Goode, K.	End	145
88	Ward	End	137
95	Morrison	Guard	148
96	Morrow	End	166
99	Branham		168

No.	Name	Post.	Wt.	No.	Name	Post.	Wt.
10	Rabland	Back	135	64	May	Guard	142
11	Oppenheim	Back	159	65	Daw	Guard	156
12	Brown	Back	151	66	Webb	Guard	139
20	Desmeyer	Back	147	68	Cowan	Guard	165
21	Salem	Back	150	70	Gorman	Tackle	185
22	Slaughter	Back	172	71	Webber	Tackle	169
23	Lehman	Back	140	72	Pickens	Tackle	150
30	Langford	Back	161	73	Scott	Tackle	182
31	Mann	Back	178	74	Landers	Tackle	204
32	Boyce	Back	156	75	de Bryn	Tackle	190
33	Gutierrez	Back	135	80	Morrissey	End	151
40	Walsh	Back	131	81	Shaeffer	End	172
41	Oppenheim	Back	143	82	Surratt	End	167
42	Baker	Back	137	83	Tanner	End	169
50	Edens	Center	183	84	Furr	End	144
51	Suder	Center	160	85	Pufal	End	142
53	Garcia	Center	136	86	Pierce, B	End	143
60	Anderson	Guard	161	87	Pierce, D	End	154
61	Angeles	Guard	182				
62	Hildebrandt	Guard	175				
63	Michael	Guard	149				

**OFFICIALS**  
Referee—Arthur  
Field Judge—Taylor  
Umpire—West  
Head Linesman—Hart

**COACHES**  
"Foots" Milam—Head Coach  
Audrey Gill—Line Coach  
Jack Mashburn—End Coach  
Earl Glasie—Backfield Coach

**in, Bulldogs!**

*Sign Advertising*

**COLD CATHODE LIGHTING**

W. PYLANT  
Owner • 508 W. Indiana



**PLAY HARD—BULLDOGS!**

After the Game  
Let Us Service  
Your Car

24-HOUR SERVICE

**West-End Magnolia Service Station**

703 W. Wall



Phone 9519

**FIRST AND LAST AND ALL THE TIME**

We're rooting for you and  
always at your service,  
**BULLDOGS!**

**Kruger Jewelry Co.**

104 North Main Street

Midland, Texas



**WIN—Bulldogs!**

Just the way our butane  
service wins more satisfied  
customers each day  
in the year!

**Jones Butane Service**

Rankin Highway

Phone 1495-J-2



**Cool 'Em Off Midland!**



**Southern Ice Company**

310 So. Main L. W. Meador, Mgr. Phone 5

**WE'RE FOR YOU, BULLDOGS**



**Basin Supply Co.**

Authorized G-E Dealer

**We're Backing The BULLDOGS!**

**YUCCA RITZ REX**

Movies are your greatest entertainment value for your entire family.

**MIDLAND THEATERS**



**Stop 'em Bulldogs!**

We're For You —

**McMULLAN'S**

"Family Outfitters Since 1934"



**Hit 'Em HARD BULLDOGS!**

May the best team win—and we believe YOU are the best!



**FIRST NATIONAL BANK**  
Since 1890

**Backing the Bulldogs!**



High Quality At Low Prices

**J. C. Penney Co.**

**WIN—BULLDOGS!**



just the way we win more satisfied customers—

**BE BETTER!**

**MIDLAND CLEANERS**

117 E. Wall

W. N. (Bill) COLE

Phone 150

**FIGHT! FIGHT! FIGHT!**

**BULLDOGS**

we're for you

**BARROW**

FURNITURE



**WE'RE WITH YOU, BULLDOGS!**

**Permian Electric Co.**  
Electrical Appliances  
and Contracting

**Permian Electric Co.**

508-A South Main

Phone 1178



**Play Hard, Bulldogs... Then**

**EAT BUTTERNUT BREAD...**  
It will give you the lift that will help you win the next game. Call for it by name at your favorite grocer.

**Midland Bakery**  
112 S. Main Phone 1230



**Keep going FORWARD, BULLDOGS**



the same way we advance each day in our services and equipment to take care of your automobile!

**WILLIS SALES CO.**

Corner Beard and Missouri

Phone 2435 - 2436

We're Behind You, Bulldogs 100%



**FURR Food**

**SUPER MARKETS**

**THAT GOOD OLD BULLDOG SPIRIT--**



**MIDLAND Hardware & Furniture Co.**

106 N. Main

Phone 1500

**We're For The Bulldogs**

and we're also doing our best to bring the best in building materials to Midland.



**ROCKWELL BROS. & CO.**  
BUILDING MATERIALS

112 W. Texas

Phone 48

**Canada Wheat Crop Drops Below 1946**

OTTAWA—(AP)—Canada's 1947 wheat crop is placed by the Dominion Bureau of Statistics at 352,200,000 bushels from an estimated seeded acreage of 23,900,000 acres, yielding an estimated 14.7 bushels per acre.

This was a drop of approximately 6,600,000 bushels from the first estimate of 358,786,000 bushels made August 13.

The new 352,200,000-bushel total includes 333,979,000 bushels of Spring wheat and 18,235,000 bushels of Fall wheat.

The new estimate compares with a 1946 wheat production of 420,725,000 bushels.

**Man Finds Lost Nickel After Half Century**

WINFIELD, KAN.—(AP)—Ed Brant has recovered the first nickel he ever earned.

It was on September 19, 1898, that Brant, then a pupil at the Akron, Kan., school, was paid a nickel by the teacher for sweeping out the room. In his excitement he dropped the coin and it rolled through a crack in the floor. There it stayed for nearly half a century.

The old school was torn down last summer. Brant made a search, but was unable to find it. However, Mrs. May Kennedy, who lives near the old school, later raked the tarnished coin from the debris.

**A-a-a-h... Phooey!**



Demolishing the historic Vanderbilt mansion in New York, to make way for a 19-story office building, the crew stumbled across the wine cellar. This member settled down among the champagne bottles, prepared for a cozy afternoon. But one guzzle changed his plans—the stuff had turned to vinegar.

**New Yorkers' Food Costs Millions More**

NEW YORK—(AP)—A New York City emergency committee estimates it is costing New Yorkers \$870,000,000 a year more for food at current prices than it did a year ago.

The committee's report to Mayor William O'Dwyer noted that "it is impossible to cure excess prices on a local level of government" and urged federal action.

But one of its recommendations, that public eating places help reduce the demand for high-priced meat by observing two meatless days a week, is being studied by the Society of Restaurateurs and the Hotel Association of New York.

**Michigan Children Have Long Vacation**

BOYNE FALLS, MICH.—(AP)—Summer vacation was still going on today for 200 school children of this agricultural district who cannot get back to classes until their partly constructed school building is completed.

A total of \$97,000-\$122,000 in insurance on the school that burned down last year and \$75,000 raised in a special bond issue—has been spent on the building, but the school board indicated about \$30,000 more would be needed before it could be finished.

State officials said they would withhold school aid because, they maintained, payment is illegal unless classes are in session. The five school board members then resigned.

The township board of directors has set September 25 for a special election to name a new school board. Meanwhile, however, the vacation continued.

**OLDEST LAND RIGHT**

One of the white man's oldest land rights in the United States is marked by an inscription on a rock at South Mountain, near Phoenix, Ariz. The inscription, placed there by Father Marcos de Niza, in 1539, claimed the land for Spain 80 years before the Mayflower came.

**LENGTHY RACES**

The Blackfoot Indians of a few generations ago ran foot races several hundred miles in length, without stopping. A favorite run was from what is now Gleichen, Alberta, to Medicine Hat and back, a distance of about 240 miles.



**Steering Gear Faulty! HOW'S YOURS? Midland Brake Service**

108 W. Missouri Phone 478

**Telephone Operators Wanted**

Telephone operators play an important part in everyday life. Positions are open for qualified women in this permanent work. Frequent pay increases, vacations with pay. Apply to chief operator.



SOUTHWESTERN BELL TELEPHONE CO.

**Trumpeter Toots Away As Hurricane Howls Outside**

By HAL BOYLE  
NEW ORLEANS—(AP)—The only man I know who enjoyed a practical advantage from "ole, double

**Russians Cultivate Paul Bunyan Garden**

MOSCOW—(AP)—Did you ever hear of... Watermelons that mature forty days after the seeds have been planted and are so big only a strong man can lift them?

Strawberries the color and size of tomatoes? Bunches of grapes that weigh several pounds? Potato tubers so big it takes a strong man to bring them in off the farm?

Apples so big they bend the branches of the trees to the ground? The Moscow "News" has heard of them. A dispatch from Frunze, capital of the Kirghiz Republic of the U. S. S. R., reports the development of all of these things in the republic's experimental station. Some of the station's other accomplishments are 200 varieties of apples, 28 varieties of pears, 22 varieties of cherries, 115 different kinds of grapes and 10 kinds of raspberries.

debbil eye," the Caribbean hurricane, was an amateur trumpet player. It enabled him to satisfy a lifelong ambition.

John Quarrier, who had worked the night before eating news at The Associated Press office here, arose from sleep at home as the hurricane reached its height.

He took up his trumpet and—with accompanying sound effects provided by nature—blasted through "The Storm," from Rossini's William Tell Overture. Quarrier matched "Ole Double Debbil Eye" note for note.

"Always did want to try out that trumpet part during an actual storm," he said.

Alligator wrestling has one advantage over chasing hurricanes. You can at least catch hold of the alligator.

Catching up with a hurricane is more difficult, and if you do—well, what have you got? It is a mighty poor place to light a cigar.

I caught up with the northern edge of the big wind at Fort Pierce as it was throwing its first punch at Florida, and followed it by plane, train, motor car and afoot until it blew itself out in Louisiana.

The first sight of a hurricane leaves you with a feeling of complete unreality. It looks and acts so much like a "corny" Hollywood version of a storm that you have the uneasy sensation of being an unwilling spectator in a "B" grade film. I guess it is the slanting rain that does it. The gusts look as if they were blown by a hidden wind machine.

That feeling disappears the moment you step outside. The winds claw at your breath, drench you through as if you had stepped into the face of a powerful fire hose.

Walking against the hurricane is as tiring as climbing the Washington Monument. Your legs go weak and tremble, your heart begins to hammer at your ribs and you can taste salt water clear through to your backbone.

If you get off balance, the wind dumps you to the ground as neatly as a blocking halfback. One Associated Press reporter, Eem Price of Atlanta, had to crawl two blocks through sailing street signs and palm fronds to reach a telephone in West Palm Beach. A waving palm frond is romantic in calm moonlight. But whirled at you on the wings of a hurricane it is a green-edged knife.

**Brings Battle Memories**  
The hurricane brought back war memories to many veterans. The storm area had many of the characteristics of the battlefield—terror, noise, confusion, danger, destruction and uncertainty.

Lines of refugees crowding into shelters renewed the illusion that the coastal area was under military attack by an invisible enemy. But as one ex-soldier remarked:

"Leastways I know nobody is deliberately pointing that hurricane at me."

**European Roads To Rib Africa**

JOHANNESBURG—(AP)—A first move in making Africa a strategic defense center will be a great international network of roads for the whole continent.

Britain is expected to call a conference at Algiers shortly to discuss the building of a master main road from Cape Town to Algiers, as the backbone of the road system. Its ribs will be hard, all-weather highways radiating to the coastal towns.

South Africa has been invited to attend the conference together with several European countries with colonial interests in Africa, including France, Belgium and Portugal. Tentative proposals suggest that Britain and France will be responsible for a quarter of the cost.

Britain has already made a start with the planning and construction of a \$7,000,000 road scheme linking Rhodesia with Uganda, through Tanganyika and Kenya. It will later form part of the main road.

Neon is an element present in air only to the extent of 15 millionths of a per cent.

**Get Your Car Ready For Winter NOW**

Get GOOD SERVICE and CHRYSLER CORPORATION MOPAR PARTS for Chrysler and Plymouth CARS

Let Our Experienced Personnel Service Your Car. We have the finest equipment Available.

WHEEL BALANCING and WHEEL ALIGNING A SPECIALTY

Come In Today For A Check-UP

**Scruggs Motor Co.**  
624 W. Wall Phone 644

**TRIANGLE FOOD MARKET**

QUALITY SERVICE VALUE

Bill Davidson "Scruttie" Skaggs

Bob Grubb

South "A" At Missouri OPEN NIGHTS - - SUNDAYS Phone 289

**LET-US**

WIRE YOUR NEW HOME or rewire your present home for modern convenience... Nothing down and 3 years to pay.

AT **Permian Electric Co.**

For **ELECTRICAL APPLIANCES & SUPPLIES**

INDUSTRIAL ENGINEER LICENSED & BONDED ELECTRICAL CONTRACTORS Complete Repairs For All Electrical Appliances

G. D. Johnson - - J. H. Childress

TEMPORARY PHONE 1178 508-A S. MAIN - MIDLAND

**LIGHT THE WAY TO Better Grades**

Too often one of the most trying of all school tasks is doing homework. Home study is always a chore and if enough of the right kind of light for easy seeing isn't provided, it becomes double tough. Right now, take time out to check the lighting in your home, especially where your children will be studying. Make sure that every empty socket is filled with the right-size bulb and that portable lamps are in good working order and placed properly for comfortable reading and writing. Remember—better light plus better sight equals better grades.

Lamps and Lamp Bulbs Are Available Now— See Your Electrical Dealer

**EYESIGHT IS PRICELESS LIGHT IS CHEAP!**

**TEXAS ELECTRIC SERVICE COMPANY**

R. L. MILLER, Manager

**It's COMFORT You Want**

REAR WINDOW VISION INCREASED 60%

DOOR OPENINGS FOUR INCHES WIDER

3-POINT CAB MOUNTING AND RUBBER STABILIZERS

SEATING WIDTH INCREASED 8 INCHES

73 INDIVIDUALLY WRAPPED SPRINGS

TUBULAR FRAMED ADJUSTABLE SEATS

WINDSHIELD VISION INCREASED 20%

FAMOUS BALL BEARING STEERING

EASIER CLUTCH PEDAL ACTION

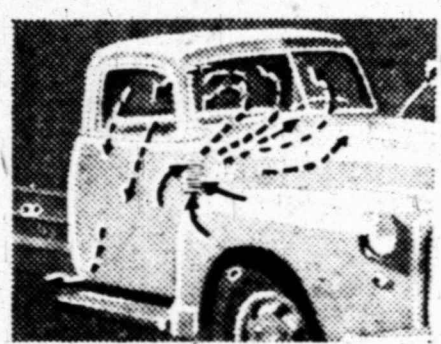
CIRCULATING FRESH AIR VENTILATION

RADIO AVAILABLE IF YOU WANT IT

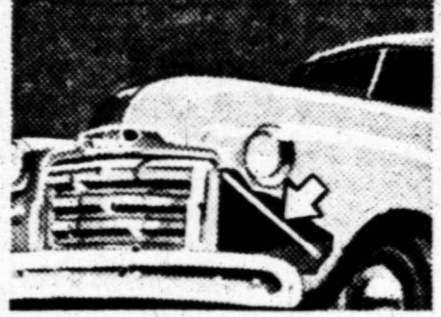
COMPLETE INSULATION AND SOUNDPROOFING

**See the Brand New GMC Postwar Cab**

There's no truck cab on the road that can surpass a new light-medium duty GMC in advanced features. See what's been done to add to the comfort of truck riding. Look what's been done to take the work out of truck driving. There's more roominess than drivers have ever known before. The fresh air ventilation system is the equal of that in the finest passenger cars. These new light and medium duty GMCs give you much more for your money in comfort and convenience. And they give you more in good looks... in safety... in dependable performance... in rugged construction and extra value all the way through!



GMC's new cabs circulate fresh air by a revolutionary ventilating system. Forced air heating is also available.



New GMC grilles incorporate a protecting bar of heavy bumper stock at top and sides. Frame mounting adds strength.

THE TRUCK OF VALUE **GMC TRUCKS** GASOLINE • DIESEL

YMAC Time Payment Plan Assures You of the Lowest Available Rates

**WILLIS SALES COMPANY**

Corner Baird and Missouri • Midland, Texas • Phones: 2435-2436

### Christmas Parcels For Overseas Should Be Sent Next Month

Christmas packages to members of the Armed Forces overseas should be mailed between October 15 and November 15. Postmaster N. G. Cates reminded Thursday. The earlier they are mailed, the better, he added.

Packages should be marked "Christmas parcel," and those intended for recipients in Japan and Korea should be mailed not later than November 1. Postal regulations require packages not to exceed 70 pounds in weight nor 100 inches in length. They should be packed in boxes of metal, wood, solid fiberboard, or strong double-face corrugated fiberboard testing at least 200 pounds.

Regulations prohibit shipment of intoxicants, inflammable materials (including matches and lighter fluids), and any poisonous materials.

No cigarettes or other tobaccos may be sent to A. P. C. numbers in Germany, France or Austria, nor to Navy number 913 and 963 in Germany. No penicillin may be sent overseas.

### Midland School Teacher Reports On Newfoundland People, Weather

Miss Sybil Rutherford, North Elementary School teacher, took as much of Texas as possible into Newfoundland last Spring when she accepted a position as principal of a school on the Argentinia naval base.

Miss Rutherford says she tried to run the school, which is established for the children of army, navy, and coast guard personnel, like Texas schools, although it used a New York curriculum. She reported her school was located in the same building with the only other elementary school, the Newfoundland-operated school. When children reach high school age, says Miss Rutherford, they must go 90 miles to attend the high school at St. John's, the capital and largest city in Newfoundland, or else to private schools in the United States.

The only good highway is the U. S.-built road between the naval base, which occupies a small portion of the Avalon Peninsula leased by the U. S. from England for a 99-year-period, and St. John's. In the back of the country, hacks

and horses are the most popular form of conveyance.

**Three Months Summer**  
The natives, who are primarily English and Irish, make their living from fishing and lumbering. The only vegetables that can be raised during the short, three-months growing season are turnips, cabbages, and potatoes. The base, however, which has approximately 1,500 persons, is supplied with every type of food from the United States.

Ideal weather exists in Newfoundland, Miss Rutherford reports. The thermometer rarely drops below zero and seldom goes above 70 degrees during the summer months. She says that coming from Newfoundland to the United States this summer, she experienced a rise in temperature from 70 degrees to 105 degrees.

Among the historic spots in Newfoundland visited by Miss Rutherford was the site of the signing of the "Atlantic Charter."

Miss Rutherford, who returned recently to resume the teaching of the fifth grade at North Elementary is entering her fourth year in the Midland public school system. She has traveled in 36 of the 48 states, Canada, Mexico, and on both the Atlantic and Pacific Oceans.

### Chorus Group Rehearses For 'Runnin' Hi'



Members of the chorus group of the Kiwanis Club-Community Theater minstrel-revue, "Runnin' Hi," go through their paces in a rehearsal in the City-County Auditorium. The production will be presented next Monday, Tuesday, Wednesday and Thursday nights. Left to right—Beverly Littlejohn, Mariana Mosley, Mary Frances Shure, Ruth Storey, Patsy Brewer, Virginia Towns, Mont. Cole, Barbara Davidson and Ruth Shepherd.

### 4-H Club Girls Win Trip To Dallas Fair

Ten Midland 4-H Club girls have been awarded trips to the Dallas Fair for scoring highest places in the recent Midland County Fair. They will make the trip in a chartered bus, leaving Midland October 12 and returning October 15.

Winners are Ruth Bennett, Donna Howard, Eunice Hudgins, Eddie Mae Hamlin, Laveria Hucabay, Leita Norwood, Mary Lynn Manning, Betty O'Neal, Wanda Fain, and Pauline Norwood.

### Smasher's 'Some Fun' Becomes Some Fun

SAN ANTONIO—(AP)—Two men smashed a 9x12 foot plate glass window in the five-and-ten and when police later caught one, he said it was just done in "the spirit of fun." Some fun-d, police said. The glass cost \$100.



### Ring Reaches Owner After Exciting Trip

CCPENHAGEN—(AP)—A Chinese sailor from an American ship got drunk at a Copenhagen waterfront joint and proudly showed a valuable ring to his companion.

She persuaded him to take it off so she could admire it better. As soon as she had the ring she fled.

Police traced the girl and recovered the ring just before the American ship sailed. They boarded the vessel to give the sailor his ring.

The Chinese was so excited that in grasping for his treasure he knocked it into the water.

Having accepted responsibility for recovery of the ring, and feeling they had not taken proper care in handing it over to its owner, the police hired a diver. Descending 40 feet below the surface, the diver found the ring in 10 minutes.

### Prairie Lee 4-H Club Has Business Meeting

At a meeting of the Prairie Lee 4-H Club Tuesday in the Prairie Lee schoolhouse, Essie Raggett, president, was in charge of the general business session, and Peggy Lucas directed the recreation period. Mrs. Nettie B. Messick, home demonstration agent, showed the group how to make felt lamp pins.

Present were Ada Jane Meisner, Carolyn North, Lena Marie Price, Bessie Frank, Wilda Mahan, Peggy Lucas, Frances Dunn, Jeanette Mae Nichols, Betty Carol Franks, Georgia Ann Gately, and Essie Raggett.

Next meeting will be October 14 with Mrs. Livingston, 4-H Club sponsor, in charge. Lamp pins made by club members will be exhibited, and each girl will read a theme on "What I Can Do to Prevent Fires in My Home."

### MEXICANS NOT AVAILABLE FOR COTTON PICKING

WASHINGTON—(AP)—The Mexican government has advised the U. S. Immigration Commission it "is not in a position to accede to the proposal" that thousands of Mexicans be recruited privately for cotton picking, a government official said.

T. B. Shoemaker, acting commissioner of immigration, said Texas members of Congress were notified that there is no apparent way to bring in additional farm labor from Mexico, with federal funds for this purpose exhausted.

Farmers at Lamesa and other points had asked Mexican labor to pick cotton. Such help can be imported only through a contract arrangement between the Mexican and United States governments, Shoemaker said.

**L. T. MILLER, JR.**  
CERTIFIED PUBLIC ACCOUNTANT  
Announces The Opening Of His Office For The Practice Of Public Accounting—AUDITS—SYSTEMS—TAX SERVICE.  
114 1/2 South Main Street, Midland, Texas Telephone 495  
Member of The American Institute of Accountants

75c  
**OJ's BEAUTY LOTION**  
59c

60c  
**MARVELLO CREAM**  
49c

50c  
**ANACIN Tablets**  
33c

60c Jar  
**ICE-MINT for FEET**  
39c (Limit 1)

125 Ft.  
**WAXED PAPER**  
17c (Limit 1)

25c Value  
**MERCUROCHROME**  
15c

Pkg. of 12  
**MARLIN Double-Edge BLADES**  
25c

25c Size  
**MENNEN BORATED POWDER**  
21c

**MIDLAND Walgreen Agency DRUG CO.**  
Producing areas are represented in the cheddars, creamy Swiss and other favorites offered for your selection. Whatever your cheese need, you'll find the answer at **SAFWAY**

**33c MAGNESIA TOOTH PASTE**  
Cleans teeth, combats acidity.  
**2 FOR 36c**  
LARGE Tubes!

**FORMULA 20 CREAM SHAMPOO**  
It's LANOLIZED! Generous 8-oz. jar **149c**  
Cleanses and beautifies... leaves hair soft, silken, lovely.

**BEST Beauty BUYS**

Two for the Price of One  
**50c L'ADONNA Rouge Compact & Lipstick**  
BOTH FOR **79c**  
8 smart shades... floral design, gold finish case.

**\$1 Indelible DARK EYES FOR LASHES**  
One application lasts 4 to 5 weeks! **89c**

**It's Antiseptic VETO CREAM DEODORANT**  
Medium size... **39c**

**For Autumn TRIOMPHE COLOGNE**  
Bouquet bottle... **1.50**

**At-Home HAIR CARE**

**Safe... Simple THE TONI HOME PERMANENT... Complete kit for... 25c**

**Fast-Foaming LUSTRE-CREME Cream SHAMPOO**  
4-oz. size... **\$1**

**Fast and Easy PORTRAIT HOME WAVE KIT**  
Plastic curlers... **1.49**

**\$1 LEON LARINE DUSTING POWDER**  
Now offered to you for only... **69c**  
Lovely, lasting fragrance.

**NOW ON DISPLAY**  
at our drug counter. Get mail-in coupon today!

Beautiful Modern Plastic **Serving Set**  
Fork and spoon—overly makes long—sparkle like expensive crystal!  
**25c**  
and see top from Pepsodent Antiseptic

Pepsodent Antiseptic safeguards breath, relieves cold misery.  
50c Size **43c**

**IPANA 50c TOOTH PASTE (Limit 1)** **28c**

**CAROID (Limit 1) and BILE SALTS Tablets, 50s** **49c**

**DOAN'S PILLS REGULAR 75c TUBE OF 40 (Limit 1)** **42c**

**DREFT SUDS LARGE SIZE (Limit 1)** **29c**

WE CARRY THE COMPLETE LINE OF FAMOUS WALGREEN PRODUCTS. Drugs with a Reputation.

17c Size **EPSOM SALT** **11c** (Limit 1)

50c Size **PEPSODENT TOOTH PASTE** **43c**

1 lb. **SMA Milk Powder** **76c** (Limit 1)

\$1.25 Pint **Petrolax Laxative** **79c**

**Home-Makers SAVE HERE!**

**Splash-Shield BATH SPRAY**  
Price cut to... **59c**  
Fits any faucet.

**For Pure Flavor COFFEE MAKER**  
Glass, 8-cup... **1.59**  
Bakelite handle.

**THRIFTIEST DECK OF ALL CARDS** **39c**  
Crisp, springy.

**Prophylactic Tooth Brush**  
Prolong bristles... **49c**  
It's guaranteed.

**Smart CHECK STATIONERY**  
Penway postals... **50c**  
2-tone pattern.

**60c MURINE FOR EYES**  
Safe & gentle... **49c**  
Quick relief!

Pkg. of 6.  
**BLUE-JAY CORN PLASTERS**  
**23c**

Box of 10  
**TAMPAX SANITARY TAMPONS**  
**31c**

**MILLER'S Kibbles Dehydrated Dog Food**  
3 Lbs. **59c**

## Walgreen Agency Drug Store

**THE EXTRA POINTS ARE YOURS**  
**WHEN YOU FLY PIONEER**

**EXTRA SPEED**  
Fly Pioneer to your favorite football game this weekend. Pioneer will take you to the game and bring you home quickly and comfortably. Convenient daily flights to the Texas homes of the Southwest conference schools.

**EXTRA COMFORT**

**EXTRA TIME FOR FUN**

For Immediate Space Confirmation  
Phone 2544

**PIONEER Air Lines**  
GOVERNMENT DESIGNATED TO FLY PASSENGERS—MAIL—FREIGHT—EXPRESS

## Chalk Up New Gains In Popularity for Baldridge's SALLY ANN BREAD

The steady day to day increase in the demand for this marvelous Slo-Baked Sally Ann Bread is ample proof of its tasty Goodness.

**Unbeatable for toast or sandwiches. You be the Judge.**

Wrapped in a Distinctive Red, White and Blue Dust-Proof Double-Sealed Wrapper to Assure Absolute Freshness!

**Try A Loaf Today!**

**On Sale At Your Favorite Grocery Store**

Distributed in Midland by  
**Blackwell Bros. Bakery**









## Growth Pattern Grid Charts May Make Healthier American Children In Future

### How Children Grow

CLEVELAND, OHIO—(NEA)—An inexpensive grid chart may make the present generation of American children, and their children after them, bigger, healthier and brighter.

The U. S. learned the sorry state of its national health when millions of American men and boys had to be rejected by draft boards during the war. There has been little or no improvement since.

Today, 13,000,000 of the nation's 40,000,000 children are failing to grow properly, according to J. D. Fitchitt, writing in the current *Science* illustrated just off the press. Growth, he says, is the most sensitive indicator of body health. Those 13,000,000 are not necessarily slum children; they come from all strata of society and every section of the country.

**Years Of Research**  
Dr. Norman C. Wetzel, Cleveland child specialist, developed the grid chart after years of research on growth patterns.

After graduation from medical school and postgraduate work in



The girl being measured above is traveling right down her "B1 pattern." Only one of the four patterns of child growth represented by graphs in the right background is correct. First line on the left is too rapid, second is normal, third is slow and fourth is dwarfed.

London, Berlin and Vienna, Dr. Wetzel returned home to teach pediatrics at Western Reserve Medical College. He found, however, that he and all other doctors knew little about the growth of children.

He knew all about the "average" child. But he also knew that a chunky child of stocky parents could be healthy and still not approximate the average child's measurements. And, by the same token, a child that fell right in with his national average might be underweight and his growth stunted.

**Wetzel Measured Thousands**  
Dr. Wetzel studied growth patterns in cells, animals and children.

He measured thousands and plotted the results but he found that because he was a physician and not a mathematician he couldn't adequately interpret the results. So he sat up night after night teaching himself calculus, harmonic analysis and other super arithmetic.

Then he came back to measure children.

He discovered that children fall into five general body types, from very fat to very thin, and that each of these nine has its own schedule. Each child stays in its own channel until illness or some other factor intervenes.

Dr. Wetzel labeled the channels on his chart with A for the ones on the fat side, M for the average

and E for the thin.

Among adults A2's are star athletes like Bob Feller and Joe Louis. A4's are weight-lifters, the shot-put men; A3's the heavy linemen on football teams; A1's the backfield stars, tennis players and highjumpers usually fall in the thinner B1's, the thin man at the circus well over into B4's. Miss Americas are M-B1's; professional models, because clothes hang better on a thin frame, B1-B2.

He found that the growth patterns which produce these adult results are determined when the embryo life is no longer than a pea. As long as an individual remains healthy he stays in the channel in which he was born.

Thus, with Dr. Wetzel's grid charts it is possible to forecast with astonishing accuracy the size and build today's five-year-old will have 15 years from now.

But the grid charts perform a far more important function. Using any child's height, weight and age, the charts can tell in a month or two of checking when normal growth is interrupted.

**Detects Hidden Ills**  
When a child wanders from its normal growth pattern it may mean glandular trouble, malnutrition, tooth trouble or dozens of other things that affect growth pattern. Knowing that the pattern has been broken, a physician can more quickly detect hidden ill.

Each grid chart is a continuous record of a single child which constantly compares the child against himself and does not try to force a comparison with a national average. The charts are so simple a child can keep his own record.

In schools where they now are being used, school physicians can tell whether each individual child is growing normally. Those that are, need not concern the doctor; he can concentrate on the ones the charts show are in trouble, even if they don't realize it.

**Schools Adopt Grid Chart**  
In one case, the charts revealed that a 12-year-old had been falling steadily behind his pattern since he was six. The doctor discovered diabetes which had not before been suspected. Treatment for diabetes started the boy back in his normal growth pattern and he nearly doubled his weight and grew seven inches in the next 13

months.

The growth channel of another youngster was determined while he was recovering from a serious illness and he was fed 3500 calories a day while still bedridden. This maintained his growth as he recovered.

Today, a number of medical institutions like the Ford Hospital in Detroit and several school systems have adopted the grid charts. The cost, over the growing-up period of a child's life, comes to about one cent a year.

### Control Board Seizes Five Illicit Stills

AUSTIN—(AP)—Five illicit stills were seized by State Liquor Control Board inspectors last month and four arrests made, Liquor Administrator Bert Ford reported.

Three of the stills were in Titus County and two in Henderson County, the report said.

Ford said liquor revenues for August brought the state \$913,692. Liquor stamp sales contributed \$413,336 to the total. Beer stamps ran second with \$386,222.

Frags and snails are considered an appetizing dish by Frenchmen.

### Puckett & French ARCHITECTS & ENGINEERS

Phone 747  
607 Petroleum Bldg.  
BIG SPRING, TEXAS

**DUNN'S VAN LINE**  
LOCAL, STATE & INTERSTATE MOVING  
PACKING - CRATING - STORAGE  
**Bonded DUNN'S MOVING VAN** Insured  
2412 W. Wall MIDLAND Day or Night Phone 4793  
HOBBY—Phone 336 ODESSA—Phone 571

### Cowboy Blues Singer Sings Real Blues Now

SAN ANTONIO—(AP)—"Red River Dave" McEnery, San Antonio cowboy blues singer, had some real blues to sing about. He filed suit against a New York man, charging he had been swindled out of \$1,000 by a worthless check.

### Stranger Leaves Man Holding The—Leash

ROSLYN, N.Y.—(AP)—A stranger in a bar handed Otto Steinh, Jr., the end of a leash and said, "Hold this a minute, pal. I'll be right back."

But the stranger didn't return. That's why the Steinh family is wondering what to do with a raccoon.



Distributed by  
**MARTIN DISTRIBUTING CO.**

**An "All Beer" Flavor!**  
**FAMOUS Berghoff BEER**  
BERGHOFF BREWING CORPORATION, FORT WAYNE, INDIANA

A favorite any place where better beers are sold, and ON DRAFT at **TEXAN CLUB and SERVICE CLUB**

Are you sure you're using the **BEST FLOUR?**  
LOOK AT THIS GUARANTEE!

**GUARANTEE**  
We do so agree to line as only...  
The Quaker Oats Company



No other ingredient is as important to you as the flour you use. Make sure you're using the best.

See and taste the difference in all your baking in everything from bread to sponge cake! This wonderful flour backed by this amazing double guarantee, is made by one of the world's largest milling companies, makers of Quaker and Mother's Oats, Aunt Jemima Ready Mix Pancakes and other famous foods. Get a sack from your grocer today—the guarantee protects you.

Are you sure you're using the **BEST flour?**  
**AUNT JEMIMA Family FLOUR**  
H. O. Wooten Grocery Co.  
Big Spring, Texas  
DISTRIBUTOR

### Tutor Of Jap Heir Arrives For Visit

SAN FRANCISCO—(AP)—Mrs. Elizabeth Gray Vining, Philadelphia, tutor of Japan's heir apparent, 14-year-old Crown Prince Akihito, has arrived by military plane from Japan for a two month's leave.

Also aboard the plane was Lt. Gen. Robert L. Eichelberger, commander of the Eighth Army doing occupation duty in Japan and Korea. He was enroute to Washington for a short tour of duty.

### 'Life With Mother' Begins In March

NEW YORK—(AP)—At last there is something definite to be announced concerning "Life With Mother," the long-proje ted sequel to the long run record-breaker "Life With Father."

Keyed Cronin and Howard Lindsay will have it ready, they say, for producer Oscar Solari to premier Monday, March 24, in Detroit. Solari said.

Lindsay and his wife, Dorothy Finkbeiner, who originated the parental roles in "Life With Father," will have the same parts in the maternal sequel.

"Life," the producers say, will be based on original material by the late Clarence Day. The Detroit try-out will be for four weeks only. Solari said after what he considers will be closed down until Autumn.

**On Your Wedding Day**  
Your bouquet, those of your attendants, the church decorations must be truly magnificent, unusual, distinctive. We specialize in planning the floral decorations for weddings and receptions.  
**Vestal Flowers**  
1501 W. Wall Phone 468

## The Favorite Of West Texas Housewives Since 1918



Fresh From Oven to Grocer to You, Within a Few Hours—

# Mead's Fine Bread

In The Golden Yellow Wrapper

**DO YOU KNOW?**  
That—  
**TRANSIT-MIX CONCRETE**

Is fully laboratory tested for finest materials and will be delivered to you in any amount from a bucketful to enough for the largest building?

- USE OUR EASY PAYMENT PLAN
- NO MONEY DOWN
- 36 MONTHS TO PAY.

Just See Or Call  
**Midland Concrete Co.**  
CHUCK HORTON, Manager  
403 South East Front St. Phone 1521

**LEGAL NOTICES**

**NOTICE OF ELECTION**  
 THE STATE OF TEXAS,  
 COUNTY OF MIDLAND,  
 CITY OF MIDLAND.  
 TO THE RESIDENT QUALIFIED ELECTORS OF THE CITY OF MIDLAND, TEXAS, WHO OWN TAXABLE PROPERTY IN SAID CITY AND WHO HAVE FULLY RENDERED THE SAME FOR TAXATION.

TAKE NOTICE that an election will be held in the City of Midland, Texas, on the 14th day of October, 1947, on the propositions and at the place more particularly set forth in the election order adopted by the City Council on the 16 day of September, 1947, which is as follows:

**RESOLUTION ON THE QUESTION OF THE ISSUANCE OF \$750,000.00 WATER WORKS IMPROVEMENT BONDS.**  
**RESOLUTION ON THE QUESTION OF THE ISSUANCE OF \$200,000.00 SEWER IMPROVEMENT BONDS.**  
**RESOLUTION ON THE QUESTION OF THE ISSUANCE OF \$300,000.00 STORM SEWER BONDS.**  
**RESOLUTION ON THE QUESTION OF THE ISSUANCE OF \$125,000.00 PARK IMPROVEMENT BONDS.**  
**RESOLUTION ON THE QUESTION OF THE ISSUANCE OF \$200,000.00 STREET IMPROVEMENT BONDS.**  
**AND ON THE QUESTION OF THE ISSUANCE OF \$500,000.00 PUBLIC BUILDING BONDS AND DECLARING AN EMERGENCY.**

WHEREAS, the City Council of the City of Midland, Texas, deems it advisable to issue the bonds of the said City for the purposes hereinafter mentioned:

BE IT RESOLVED BY THE CITY COUNCIL OF THE CITY OF MIDLAND, TEXAS:

1. That an election be held in said City of Midland, Texas, on the 14th day of October, 1947, at which election the following propositions shall be submitted:

**PROPOSITION NO. 1**  
 Shall the City Council of the City of Midland, Texas, be authorized to issue the bonds of said City in the amount of Seven Hundred Fifty Thousand (\$750,000.00) Dollars, maturing serially in such installments as may be fixed by the City Council, the maximum maturity date being not more than Thirty (30) years from their date, and bearing interest at a rate not to exceed Three (3) per cent per annum, payable annually or semi-annually, and to levy a tax sufficient to pay interest as it accrues and principal as it matures on said issue of bonds, for the purpose of constructing improvements and extensions to the City's Waterworks System as authorized by the Constitution and laws of the State of Texas.

**PROPOSITION NO. 2**  
 Shall the City Council of the City of Midland, Texas, be authorized to issue the bonds of said City in the amount of Two Hundred Thousand (\$200,000.00) Dollars, maturing serially in such installments as may be fixed by the City Council, the maximum maturity date being not more than Thirty (30) years from their date, and bearing interest at a rate not to exceed Three (3) per cent per annum, payable annually or semi-annually, and to levy a tax sufficient to pay interest as it accrues and principal as it matures on said issue of bonds, for the purpose of constructing improvements and extensions to the City's Sewer System, as authorized by the Constitution and laws of the State of Texas.

**PROPOSITION NO. 3**  
 Shall the City Council of the City of Midland, Texas, be authorized to issue the bonds of said City in the amount of Three Hundred (\$300,000.00) Dollars, maturing serially in such installments as may be fixed by the City Council, the maximum maturity date being not more than Thirty (30) years from their date, and bearing interest at a rate not to exceed Three (3) per cent per annum, payable annually or semi-annually, and to levy a tax sufficient to pay interest as it accrues and principal as it matures on said issue of bonds, for the purpose of purchasing and improving land for park purposes, as authorized by the Constitution and laws of the State of Texas.

**PROPOSITION NO. 4**  
 Shall the City Council of the City of Midland, Texas, be authorized to issue the bonds of said City in the amount of One Hundred Twenty Five Thousand (\$125,000.00) Dollars, maturing serially in such installments as may be fixed by the City Council, the maximum maturity date being not more than Thirty (30) years from their date, and bearing interest at a rate not to exceed Three (3) per cent per annum, payable annually or semi-annually, and to levy a tax sufficient to pay interest as it accrues and principal as it matures on said issue of bonds, for the purpose of improving the streets within said City, as authorized by the Constitution and laws of the State of Texas.

**PROPOSITION NO. 5**  
 Shall the City Council of the City of Midland, Texas, be authorized to issue the bonds of said City in the amount of Two Hundred Thousand (\$200,000.00) Dollars, maturing serially in such installments as may be fixed by the City Council, the maximum maturity date being not more than Thirty (30) years from their date, and bearing interest at a rate not to exceed Three (3) per cent per annum, payable annually or semi-annually, and to levy a tax sufficient to pay interest as it accrues and principal as it matures on said issue of bonds, for the purpose of improving the streets within said City, as authorized by the Constitution and laws of the State of Texas.

**PROPOSITION NO. 6**  
 Shall the City Council of the City of Midland, Texas, be authorized to issue the bonds of said City in the amount of Eighty Thousand (\$80,000.00) Dollars, maturing serially in such installments as may be fixed by the City Council, the maximum maturity date being not more than Thirty (30) years from their date, and bearing interest at a rate not to exceed Three (3) per cent per annum, payable annually or semi-annually, and to levy a tax sufficient to pay interest as it accrues and principal as it matures on said issue of bonds, for the purpose of constructing a public building, as authorized by the Constitution and laws of the State of Texas.

2. The said election shall be held under the provisions of Chapter 2, Article 22 of the Revised Civil Statutes of 1925 as amended, including the provisions of Article 24 as amended by Chapter 382 passed at the First Called Session of the Forty Fourth Legislature and locally qualified electors who own taxable property in the City and who have duly rendered the same for taxation shall be qualified to vote at said election.

3. The ballots for said election shall have written or printed thereon the following:

**PROPOSITION NO. 1**  
 FOR THE ISSUANCE OF WATERWORKS IMPROVEMENT BONDS AGAINST THE ISSUANCE OF WATERWORKS IMPROVEMENT BONDS.

**PROPOSITION NO. 2**  
 FOR THE ISSUANCE OF SEWER IMPROVEMENT BONDS AGAINST THE ISSUANCE OF SEWER IMPROVEMENT BONDS.

**PROPOSITION NO. 3**  
 FOR THE ISSUANCE OF STORM SEWER BONDS AGAINST THE ISSUANCE OF STORM SEWER BONDS.

**PROPOSITION NO. 4**  
 FOR THE ISSUANCE OF PARK IMPROVEMENT BONDS AGAINST THE ISSUANCE OF PARK IMPROVEMENT BONDS.

**PROPOSITION NO. 5**  
 FOR THE ISSUANCE OF STREET IMPROVEMENT BONDS AGAINST THE ISSUANCE OF STREET IMPROVEMENT BONDS.

**PROPOSITION NO. 6**  
 FOR THE ISSUANCE OF PUBLIC BUILDING BONDS AGAINST THE ISSUANCE OF PUBLIC BUILDING BONDS.

Each voter shall mark out with black ink or black pencil one of the expressions on each proposition, thus leaving the other as indicating his vote on such proposition.

3. A substantial copy of this resolution signed by the Mayor of said City

**Bidault Believes Soviet Campaign Is In Full Swing**

By DEWITT MacKENZIE

We shall be wise not to overlook French Minister Bidault's declaration before the UN Assembly that his delegation "deems it futile and dangerous to conceal the magnitude and seriousness of the crisis" growing out of the Russo-American clash, which is threatening the very life of the peace organization, and that it's only honest to say one doesn't see how the opposing views can be reconciled.

And why can't they be reconciled? Having given us something to ponder, M. Bidault side-stepped that issue—a delicate matter for discussion by the foreign minister of a country which is precariously situated in the no-man's land between the two dominant powers.

**Real Key To Situation**  
 However, we can fill in the gaps which he skipped. The real key to the situation is a fact upon which this columnist has been insisting because of its supreme importance, and it is this:

Russia's generation-old program of world revolution for the establishment of totalitarian Communism finally is in full swing. Not for one moment should we forget that, for the insidious ramifications of the great offensive have penetrated every country on the globe.

Its greatest success has been in Eastern Europe where a big new Red empire has been built out of weak countries by strong arm methods in a short time. Already it has a grip on other war-torn nations like Italy.

**Can Plan Work Fast Enough**  
 The big question is whether the rehabilitation plan can work fast enough to save all but desperate situation. Most of Europe is struggling in the economic morass.

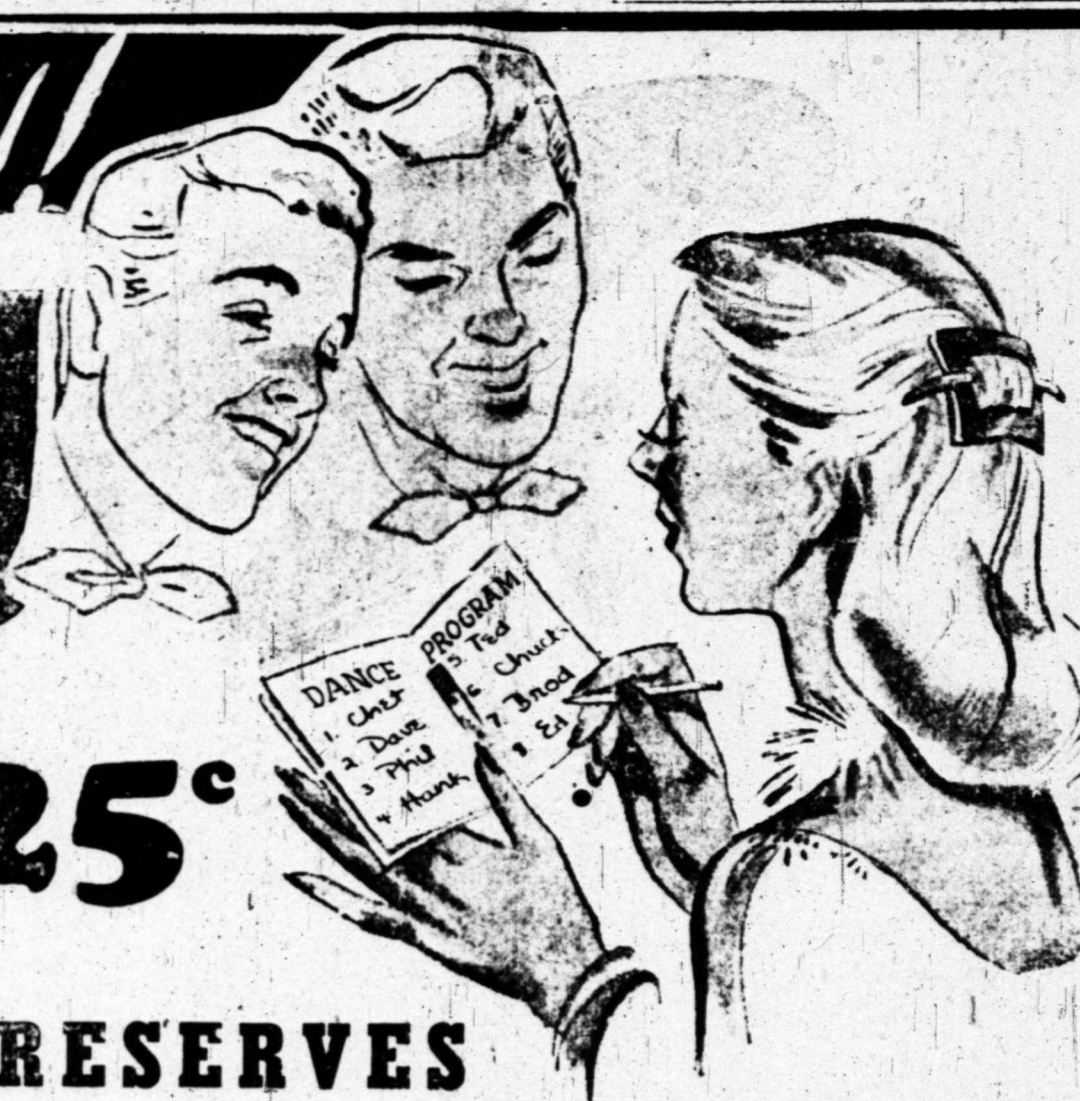
Key countries like Britain and France are so hard hit that they are unable to bolster their smaller neighbors. That's why so much dependence is being placed on America.

Such a condition of weakness provides the best possible field for the operations of Communism. A prime example is Italy which is so hard hit that she is fighting for her life.

Into that situation Communism is throwing every ounce of strength in the way of fomenting strikes and disorders to make the position of the right-center government untenable. The Reds, led by Russian-trained Italian Communist Palmiro Togliatti, are even talking revolution openly.

If rehabilitation can be achieved in time to form an effective barrier against aggressive Communism, then the Red-ism will overrun the rest of Europe. That would create a new and terrible menace to the Orient and the Western Hemisphere.

**Shop at FURR'S**



**Peaches** Hunt's, Sliced or Halves, In Syrup, No. 2 1/2 Can **25c**

**BLACKBERRIES** WOLCO No. 2 Can **19c**  
**ORANGE JUICE** Heart Of Florida 46 Oz. Can **29c**  
**APRICOT NECTAR** Eveready 12 Oz. Can **13c**  
**CLAM JUICE** S & W 8 Oz. Bottle **15c**

**PRESERVES**  
**TAK-A-TASTE PEACH**—2 Lb. Jar **51c**  
**DELIGHTFUL PINEAPPLE**—1 Lb. Jar **25c**  
**TASTIT CHERRY**—1 Lb. Jar **39c**

**Miracle Whip** 16 Oz. Jar **29c**

**CORN SYRUP** Stokely's Cream Style, White, No. 2 Can **25c**  
**BRAN FLAKES** Post's 40% 14 Oz. Pkg. **20c**

**BABY FOOD** LIBBY'S 2 Cans **15c**  
**SPAGHETTI** Franco-American, Can **16c**  
**TEN-B-LOW** 10 Oz. Can **29c**

**Fruit Cocktail** HUNT'S Tall Can **25c**

**PEAS CORN SPINACH** KOUNTY KIST No. 303 Can **15c**  
**WHOLE KERNEL NIBLET** 12 Oz. Can **19c**  
**DEL MONTE** No. 2 Can **15c**

**GREEN BEANS** ROSE, CUT No. 2 Can **11c**  
**TOMATO SAUCE** DEL MONTE Buffet Tins **9c**  
**GREEN BEANS** DEL MONTE WHOLE Stringless, No. 2 Can **29c**

**CHERRIES** WEST BAY RED SOUR PITTED No. 2 Can **25c**

**OLEO** NUCOA PARKAY Pound **33c**

**CABBAGE** FRESH CRISP—Lb. **5c**  
**Potatoes** RED No. 1's—Lb. **4c**

**TOMATOES** FRESH PINKS, Lb. **15c**  
**BELL PEPPER** FRESH Pound **12 1/2c**  
**PLUMS** Lb. **17c**  
**GRAPES** TOKAYS Pound **11c**  
**ONIONS** GREEN Bunch **7 1/2c**

**Quality MEATS**

**GROUND BEEF** Pound **35c**  
**GROUND VEAL** Pound **39c**

**STEAK ROAST** LOIN, T-BONE, or CLUB—Pound **69c**

**BABY BEEF CHUCK** Pound **45c**  
**SHOULDER CROWN** Pound **49c**  
**WIENERS** Pound **45c**  
**CHEESE** Full Cream Longhorn Pound **49c**

**HAM** SHANK END Lb. **59c**  
**BUTT END** Lb. **63c**

**Low prices every day**

**FURR'S SUPER MARKETS**

**IMPERIAL SUGAR**  
 10 Pounds **93c**

**3-MINUTE OATS**  
 Regular Package **17c**

**SALT**  
 MORTON'S Package **7 1/2c**

**Admiration COFFEE**  
 1 Lb. Can **47c**

**FLOUR**  
 Gold Medal 10 Lb. Bag **85c**

**Grapefruit JUICE**  
 TEXSUN 46 Oz. Can **17c**

**BLUING**  
 MRS. STEWART'S Bottle **23c**

**SUGAR**  
 IMPERIAL 5 Lbs. **47c**

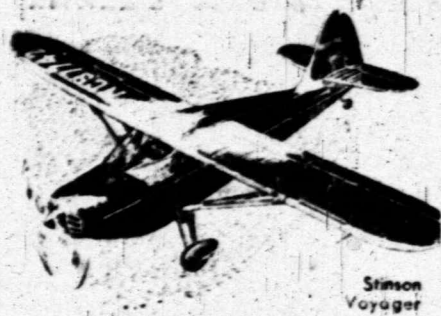
**TOMATO JUICE**  
 LIBBY'S No. 2 Can **13c**

**A FOOD ITSELF BROCKLES**  
 SPECIAL DRESSING

**Pint . . . 88c**

**MARVENE SUDS**  
 Regular Package **25c**

**SEND US YOUR FATS**



### Hotel Guests Must Serve Themselves

PHILADELPHIA—(AP)—Some 900 guests in the 18-story Bellevue-Stratford Hotel have been making their own beds and doing their own dining with no settlement of the bill of 700 hotel employees in sight.

Bennett E. Toussley, vice president and general manager of the hotel, charges that leaders of the Hotel Restaurant, Building Service and Maintenance Workers Union (CIO) called the walk-out without notice.

Anthony d'Elia, chief bell boy and president of the local union, declared his union had gone on strike because management was attempting to "break" the organization and arbitrarily discharge employees who had worked at the hotel for many years.

The strike was the second at the hotel in the last 10 months and affected bell boys, waiters, chambermaids, bartenders, cooks, elevator operators and engineers.

**New Low Rates for SKY CAB**

Personal Plane Service (One to Three Passengers)

**West Texas Flying Service**

One Mile East of Midland on Highway 80 • Phone 844

**FLOWERS—make the Perfect Gift**

Expert Attention Given All Orders For Every Occasion.

**City Floral**

"Your Downtown Florist"

Phone 2077 or 1420-M

**BARNEY GRAFA REALTOR**

LOANS • HOMESITES REAL ESTATE

Developer and Builder of **GRAFALAND**

Midland's Finest Residential District

203 Leggett Bldg. Ph. 106

**Simmons Pictures, PRINT & PERPER CO. Mirrors,**

Picture Frames and Artists' Supplies

206 So. Main Phone 1633

**J. C. VELVIN LUMBER CO.**

From The Drawing Board—To—The Finished Home!

BUILDERS • DESIGNERS • LUMBER DEALERS

204 N. Fort Worth Phone 1534

"Bowl for Health -- Bowl for Pleasure. It's great sport either way!"

Al Boring, Sole Owner

**Plamor Palace**

211 W. Wall Phone 9525

**Neill's SHEET METAL CO. MASTERS IN METAL**

"Warm Air Heating and Air Conditioning"

693 W. Missouri Phone 1718

**BUTANE & PROPANE TANKS**

Butane Heaters, Water Heaters, Ranges RADIOS and ELECTRIC HEATERS (Phillips Petroleum Products)

**FELIX COX, Jobber**

WHOLESALE and RETAIL Phillips Petroleum Products

West On Highway 80 Phone 2162-J

LOCAL, STATE & INTERSTATE MOVING PACKING - CRATING - STORAGE

Bonded **DUNN'S MOVING VAN** Insured

2112 W. Wall MIDLAND Day or Night Phone 1793  
HOBBS—Phone 336 ODESSA—Phone 571

**EMPLOYERS CASUALTY CO.**

HOME OFFICE—DALLAS

Alton Brown Dist. Mgr. Midland  
W. V. Stafford Claims Mgr. Midland

C. W. Crandley Salesman

504 Thomas Bldg. Phone 1320

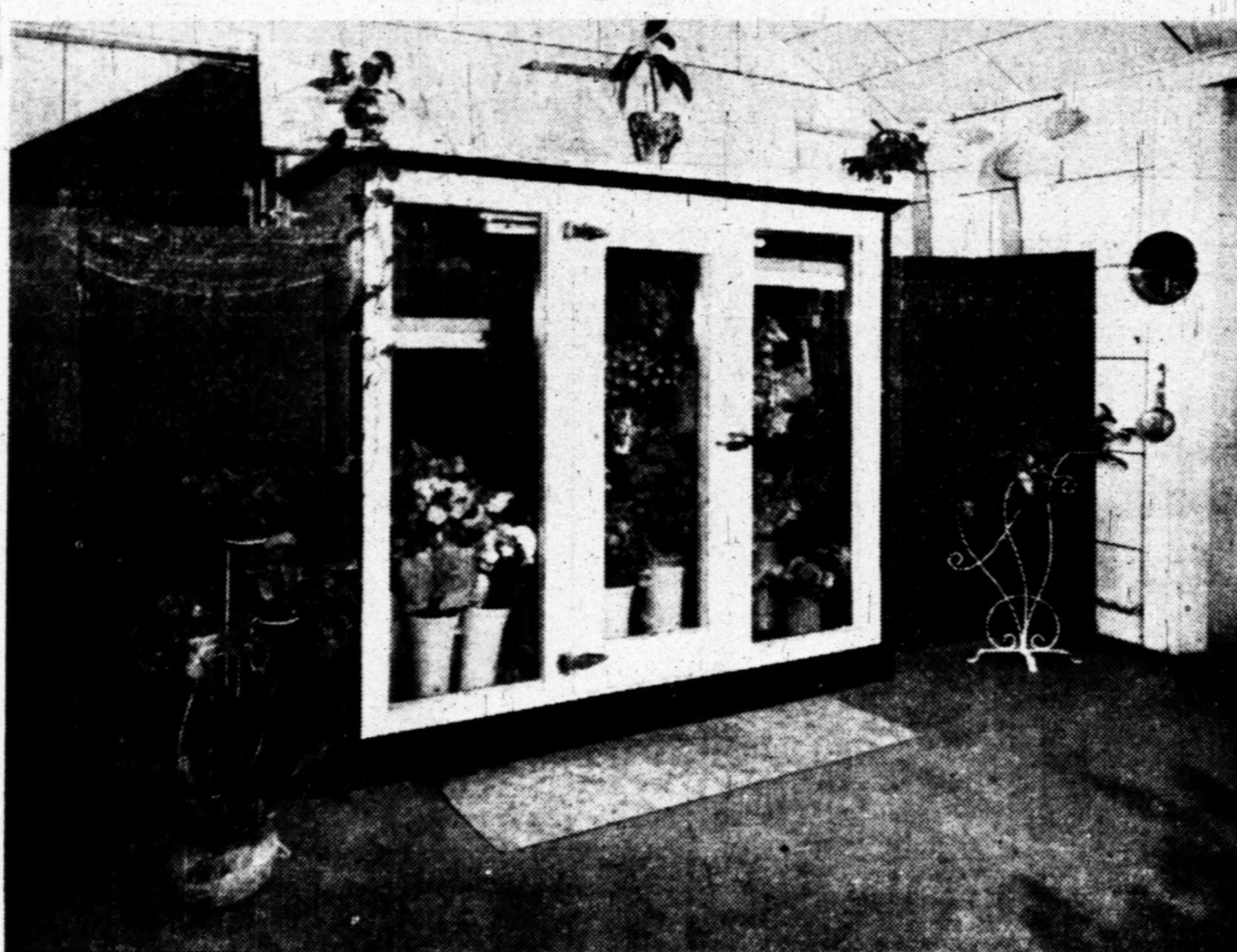
**CURTIS PONTIAC CO.**

WE SPECIALIZE IN Pick Up And Delivery

of all Makes of Cars for Repairs, Overhauling and General Servicing. Factory Trained Men—Factory Approved Parts—Personalized Service.

West Highway 80 Phone 1988

### Flowers For Every Occasion At Vestal's



Call Vestal's and you'll find a complete line of flowers and plants. Delivery service is available at Vestal's Flowers, 1501 West Wall Street in Midland. Mrs. M. W. Vestal, owner, is glad to advise with patrons concerning floral needs at any time. A refrigerated case in the corner's well-arranged shop is pictured. Vestal's will deliver flowers in the city or will telegraph them to any point in the nation.

### Mirrors Add Brilliance To Any Interior

Would you like your surroundings to reflect light and beauty? Well, what more reasonable or logical way to achieve this than with high quality mirrors—mirrors which reflect accurately, without distortion or loss of detail?

Midland Glass Company, 1611 West Wall Street, specializes in mirrors made of Libby-Cwens-Ford plate glass. The company makes any size or shape mirrors a customer may want, and is in a position to suggest special types peculiarly adaptable to individual needs.

Q. M. (Shine) Shelton, owner, recommends a new plate glass mirror for the attractive frame, the home or office decorator may have on hand. Frames of certain types are difficult to obtain these days, but a brand new mirror of highest quality can be installed in any frame.

Midland Glass Company also handles plate glass for windows and doors, and glass blocks for the utmost in modern construction. The company welcomes inquiries regarding costs and will provide estimates without obligation. Telephone No. 232 for complete details and information regarding any type of glass problem.

**McNeal Painting Co.**

GENERAL PAINTING CONTRACTORS

Structural Steel and Oil Field Equipment Tanks Gasoline Plants Pumping Stations

We Paint ANYTHING ANYWHERE ANY TIME

Phone for Estimate

503 North "D" St. Phone 860

**PRINGLE BODY SHOP**

Body and Fender Work • Automobile Painting

"Good As Any — Better Than Many"

807 E. FLORIDA PHONE 2419

**HIGGINBOTHAM-BARTLETT CO.**

Chas. N. Reeder, Mgr.

Our many years experience with EVERY type of building, repairing or remodeling problem can be of valuable assistance to you—we invite you to call on us any time.

211 W. Missouri Phone 445

**GAINES RADIATOR SHOP**

A Complete Service For All Radiators

PLENTY OF ANTI-FREEZE

307 N. Weatherford Phone 2327

BEAUTIFY THE OCCASION WITH—

**VESTAL'S FLOWERS**

CORSAGES — WEDDING DECORATIONS — PARTY FLOWERS

1501 W. Wall MRS. M. W. VESTAL Phone 408

**BARROW FURNITURE**

IF IT'S **Borden's** IT'S GOT TO BE GOOD

**Borden's**

PASTEURIZED MILK . . . ICE CREAM

**MELVIN HANEY'S Humble Station**

We call for and deliver cars for washing, greasing and, repair of flats

Atlas Tires, Tubes, and Batteries 24 Hour Service.

702 WEST WALL PHONE 243

### Nursery Will Help You Plan Landscaping

The Walker Nursery, one of West Texas' best known nursery firms, would like to make landscaping plans NOW for its customers and clients before the season actually starts, so that proper time can be given to selection of nursery stock required. The firm is located on the Andrews Highway, and the telephone number is 2010.

Jim Walker said members of his staff are available to discuss landscaping plans with citizens at any time.

**Big Stock On Hand**

The company handles all types of nursery stock suitable to the West Texas climate and to local growing conditions, but Walker said in order to get the best results, stock for landscaping should be selected ahead of time. A better selection may be had by planning and selecting stock in advance.

Expert inspection also is given by the firm, upon request, of slow growing shrubbery which is not doing as it should. In many instances suggestions can be made by the nurseryman which will improve the growth and appearance of backward shrubs and plants.

Walker's well-trained nurserymen who are familiar with plant growth in this section, are glad to advise with friends and customers, concerning shrubs and plants at any time. The firm is doing its part in making Midland a more beautiful and attractive city.

### Unknown Thief Wants To Make Clean Sweep

SAN ANTONIO—(AP)—The thief who entered a Main Avenue store in San Antonio apparently wanted to make a clean sweep, police said. He passed up all other articles, took a vacuum cleaner valued at \$88.50.

**Westland Grocery & Market**

Fine Foods • Meats • Fresh Vegetables

JOHNNY CARTER WE DELIVER LIGE MIDKIFF

Andrews Highway at Wall Phone 2129

Let Us Adjust, Repair And Make Ready

**YOUR FURNACE**

FOR THE COLD DAYS AHEAD— Don't Wait Until A Cold Snap Hits!

Floor Furnaces, Water Heaters, and Water Softeners can be purchased on Time Payments.

**Heath & Templeton Plumbing Co.**

119 N. Weatherford Phone 2533

DRINK **Banner MILK**

IT TASTES BETTER

**Shepard Roofing & Metal Co.**

"REAL ROOFS"

RESIDENTIAL and COMMERCIAL WORK

Sheet Metal Of All Kinds Rock Wool Insulation

Phone 887 204 So. Main

**MAYES' ELECTRIC COMPANY**

"THAT'S THE PLACE"

1013 N. Lorraine Phone 186

Phone 1003 317 North Colorado

"Your Complete Photographic Center"

**The Steak House**

"FINE FOOD"

611 W. Wall Phone 9546

**The FIRST NATIONAL BANK**

MIDLAND, TEXAS Since 1890

OVER 57 YEARS OF DEPENDABLE BANKING SERVICE

MIDLAND . . . TEXAS

"Member Federal Deposit Insurance Corporation"

### Plamor Palace League Play Is Beginning

A large number of Midlanders recently have signed up for a Winter regular recreation—they have become members of bowling teams playing in league competition justifying under way at Plamor Palace.

Plamor Palace, by the way, recently has gone under the ownership of Al Boring, who bought it at the interest of his former partner, A. R. Beals.

Three leagues already have been organized, and two more are under process of organization. Two of the leagues existing leagues are for men, one for women. The two additional leagues will be sponsored by a single major oil company, while the third league will be sponsored by a single major oil company, while the fourth league will be sponsored by a single major oil company.

Through league bowling is especially interesting and exciting to experienced players who find their rival division and exercise in battling the pins. Plamor Palace, of course, continues to be a favorite amusement spot for those who are just learning to bowl and to many and feel quite up to a regular team competition. Beginners' experts are equally welcome at Plamor Palace.

The V-2 missiles shot into the upper air at White Sands, N. M., are powered by enough fuel to drive an auto from New York to San Francisco and back seven times.

Landscaping . . . All types Nursery Stock . . . Bulbs, Bedding Plant, in Season . . . Let us inspect your shrubbery that is not growing properly . . . our recommendations will help you.

**Walker Nursery**

ANDREWS HIGHWAY PHONE 2010

**Midland Glass AND Mirror Co.**

Q. M. (Shine) SHELTON

New Mirrors • Plate Glass • Re-Reflecting Mirrors • Glass Beaters • Furniture Tops

1611 W. Wall Phone 1282

**Robinson's WASHATERIA**

HELP-YOUR-SELF

Plenty of Hot and Cold Soft Water and Steam.

OPEN 7 A.M. to 5 P.M. Saturdays 7 A.M. to Noon—Thursdays 7 A.M. to 8 P.M.

505 S. Baird Phone 86

**AUSTIN Sheet Metal Works**

"ANYTHING IN SHEET METAL"

See us for Air Conditioners, Evaporative and Refrigeration Types, Forced Air Heating Systems, and Unit Heaters. We do estimating and engineering for air conditioning, heating and ventilating.

2201 West Wall Phone 2705

**NEED AN EXTRA ROOM?**

36 Months To Pay, If Desired

Why not convert your present porch into a year-round habitable, livable and versatile room? At a small cost, we can enclose your porch with CLEARVIEW life time, five-in-one combination blind and awning. PHONE US FOR DETAILS!

**J. Ed Black Co.**

621 West Texas Phone 1654

**SOUTHERN ICE COMPANY**

**HELBERT & HELBERT**

Concrete, Air Compressor, Paving Breaker Work, Sand Blasting

NO MONEY DOWN 36 Months To Pay

Phs. 2520—2056-J 1800 S. Colorado

**Mitchell's Premium BEER BORDER Beverage Co.**

"Make Mine Mitchell's"

1007 W. Michigan Phone 2498

We can supply Cosden high quality petroleum products in any quantity, wholesale and retail. Truckers and fleet operators are assured of prompt, efficient service. Ask us today!

**HIGHER COSDEN OCTANE**

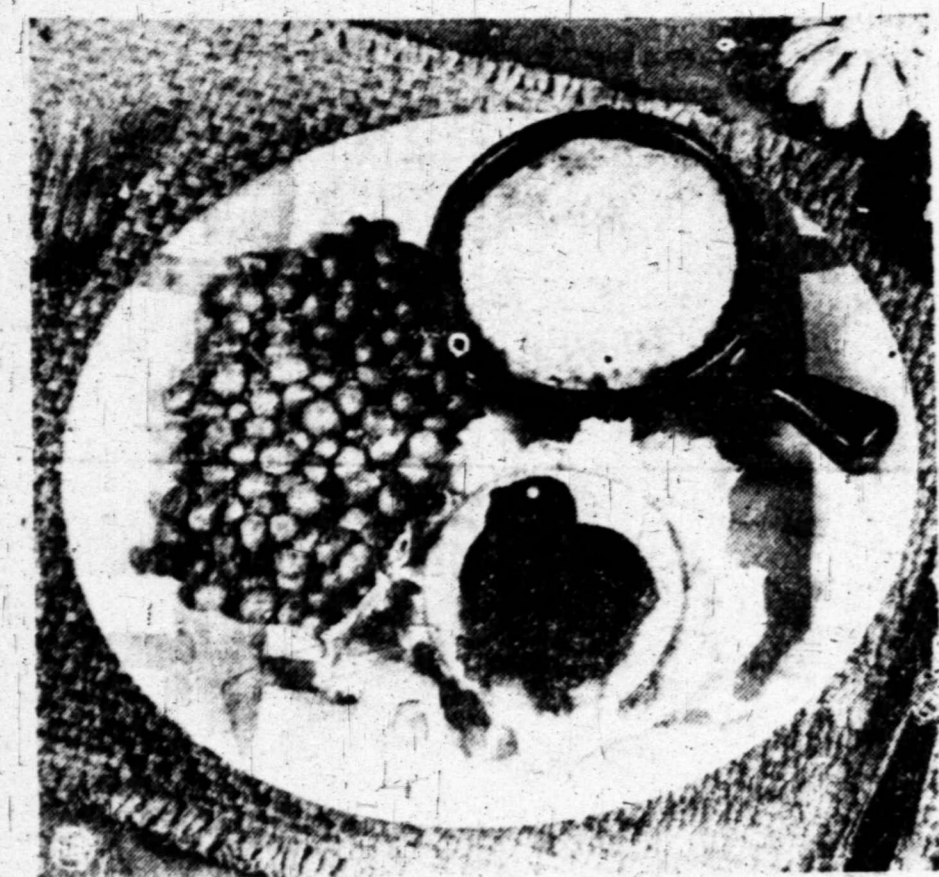
We also handle distillate, stove oil, lubricating oils, kerosene, fuel oils, and Veedal motor oils and greases made by The Tidewater Oil Company.

Cosden Distributors for Midland County

**BAKER OIL CO.**

1409 E. Wall Phone 42 2110 W. Wall

# Individual Chicken Pies Sub For Beef



Individual chicken pies with jellied cranberry sauce—a budget aid.  
By GAYNOR MADDOX  
NEA Staff Writer

Chicken is expensive. But not as expensive as beef, another top source of essential protein. You can make chicken go further in a pie with potatoes and other vegetables, cheese (a top source of protein) and white sauce. All these additions have food value and help build up the nutritional importance of the relatively small amount of chicken used.

### Individual Chicken Pies

One and one-half cups cooked chopped chicken, 1 1/2 cups diced cooked potato, 1 2 cup cooked diced

celery, 2 tablespoons finely minced onion, 1 1/2 cups hot milk, 1/4 cup white sauce, pepper, 1/2 cup grated cheese, pastry.  
Combine chicken, potatoes, carrots and onion. Add cheese and cream sauce. Season to taste. Place in individual baking dishes. Roll out pastry, cut pastry slightly larger than baking dishes. Place on top of chicken mixture to bake. Cut slits in pastry.

Bake in moderately hot oven (400 degrees F.) until pastry is nicely browned and filling begins to bubble. Serve with cranberry sauce chicks on pineapple or apple rings.

To make the cranberry sauce chicks: Cut a 1-pound can of jellied cranberry sauce into 1 2-inch slices. From each slice cut a cranberry chick with a chick-shaped cookie cutter. Mount each chick on top of a ring of pineapple or a slice of red-skinned apple. Serve on lettuce with dressing or as an accompanying relish.

## Europe To Get Food From Africa

PARIS—(AP)—Intensive agriculture development of colonial holdings is planned by Western European nations who are assaying their food needs under the light of the Marshall Plan.

Great Britain plans to clear 3,000,000 acres of scrub land in East Africa and introduce mechanized agricultural methods for raising groundnuts.

France envisages a similar program for 500,000 acres in Senegal, and another half-million acres in equatorial Africa.

These schemes were outlined in a report of the Committee of Economic Cooperation's Food and Agriculture Committee which estimated food and farm needs at \$21,900,000,000 for the next four years.

The sub-committee's four-year program was designed to give the 16 participating nations an agricultural production slightly higher than the 1934-38 average.

Although probably all the dollar credits would have to come from America, the report indicated that only approximately \$7,500,000,000 worth of actual supplies would come from the United States, while \$8,000,000,000 worth was to be supplied by other unspecified American countries and \$10,100,000,000 elsewhere.

## Texas High Football Injures 1,242 Last Year

AUSTIN—(AP)—The eighth annual survey of football injuries in 414 Texas high schools show that 1,242 of 12,900 boys were injured. Interscholastic League Athletic Director R. J. Kidd has reported.

One death was reported, that occurring during the spring training period, Kidd said.

Failure to provide adequate warm-up for substitutes, overlooking safety features in enthusiasm of the game, poor equipment and failure of game officials to be alert for unnecessary roughness were listed among causes of injuries.

For Beautiful Tailor-Made SLIP COVERS SEE Davis Upholstery Shop 107 N. Weatherford Ph. 2185

## Drug Team To Stop Blood Clots Forecast

NEW YORK—(AP)—A new use for penicillin as a partner drug to help prevent deaths when blood clots block the arteries has been forecast by Dr. David I. Macht, pharmacologist of Mount Sinai Hospital, Baltimore.

Penicillin by itself is useless against blood clots, one of the great killers of humans, and even would make them worse since it tends to make the blood clot faster, he told the American Chemical Society.

Its new value, as shown in animal tests, is in partnership with dicoumarol, a powerful drug that dissolves the clots, Macht said. But dicoumarol is so effective that it may go further and produce inter-

nal hemorrhages, he added. The animal tests showed that suitable amounts of penicillin can counteract this tendency to hemorrhage from dicoumarol, he reported. Macht said "there is every reason to believe that these results obtained in the laboratory on lower animals will be confirmed and found to hold good in clinical patients."

### JANITOR'S IDEA FAILS TO COOL HIM OFF

SAN ANTONIO—(AP)—Hubert M'veng, a janitor, climbed to the roof and stretched out on a mattress to cool off one hot night. The mattress caught fire.

## Russia Is Not Ready For War With U. S.

WASHINGTON—(AP)—Russia won't have the industrial capacity to war against the United States for at least 25 years, Ernest G. Ropes, chief of the Commerce Department's Russian section, said. "They haven't got the stuff for a war now, won't have it for at least 25 years and possibly not even after 50 years," Ropes told a reporter. "We don't need to worry about Russia as a potential enemy."

## Unknown Man Gives 'Blue Baby' \$500

CHICAGO—(AP)—A receptionist at the Chicago Daily Times reported that a man who said "I don't want my name mentioned" dropped five \$100 bills on her desk and walked out after telling her he "wanted to do something" for the family of a sick child. Chicago newspapers had reported that Mr. and Mrs. Louis Kwiatek needed \$500 to purchase a trailer to take their four-year-old "blue baby" Johnny, to a warm, dry climate as doctors advised. The receptionist, Lynn Berment, said the unknown philanthropist told her he had suffered from an ailment similar to the Kwiatek boy's when he was a child.

## Reporter-Telegram Want Ads Get Fast Results!



<b>Peaches</b>	ROSEDALE HALVED No. 2 1/2 Can	25c
<b>Cherries</b>	STURGEON, RSP PIE No. 2 Can	25c
<b>Blackberries</b>	FAMOUS STAR No. 2 Can	17c
<b>Pears</b>	HEART'S DELIGHT DICED No. 2 1/2 Can	39c

<b>Deer Brand Tomatoes</b>	3 No. 1 Cans	29c
<b>Friendship Peas</b>	2 No. 2 Cans	23c
<b>Delco Pinto Beans</b>	3 No. 2 Cans	29c
<b>Nation Pride Corn</b>	2 12 Oz. Cans	29c

<b>Champion, In Tomato Sauce Beans</b>	3 No. 1 Cans	29c
<b>Pine Grove Cut Green Beans</b>	2 No. 2 Cans	23c
<b>Timpson Valley Hominy</b>	3 No. 2 Cans	29c
<b>Peerless Kraut</b>	3 No. 2 1/2 Cans	29c

Swift Jewel Shortening  
3 Lb. Ctn. 85c

Brockle's Dressing Pint Jar 85c  
Blue Bonnet Salad Dressing Pint Jar 25c

Pride Ozark Sweet Potatoes No. 2 1/2 Can 18c

<b>Blackeye Peas</b>	Plains Land 2 No. 1 Cans	25c
<b>Juice</b>	Mary Lou Grape Quart Jar	39c
<b>Juice</b>	Lady Betty Prune Quart Jar	25c
<b>Juice</b>	Texsun Grapefruit 46 Oz. Can	19c
<b>Juice</b>	Dr. Phillips Orange, 46 Oz.	29c
<b>Juice</b>	Libby's Pear 12 Oz. Jar	15c
<b>Juice</b>	CHB Tomato No. 2 Can	11c

Maxwell House Coffee Lb. Can 45c

**PET MILK**  
3 Tall Cans 35c  
GOLD MEDAL FLOUR  
5 Lb. Bag 45c

Rinso Large Box 33c

Soap Crystal White Laundry, Large Bar 9c

Cleanser Swift's Lb. Can 12c

Bleach Hilex Quart Jar 15c

Scal Camay 3 Bars 25c

Glocoat Johnson Quart Bottle 89c

Saniflush Small Can 9c

Prince Albert Can 10c

Canadian Style BACON  
Swift's Premium Pound 98c

Velveeta KRAFT'S 2 Lb. Box 95c

Chuck Roast Choice Baby Beef—Lb. 49c

Sirloin Steak To Fry Or Broil Pound 79c

Cream Cheese Philadelphia Each 15c

"Rink - Roy & Joe"

**BEER TO GO**  
By The Case—\$2.50  
Try Our Fried Chicken and Thick Steaks  
**Choo-Choo Diner**  
East Highway

1941 CHEVROLET BLOCK ASSEMBLIES  
**NEW NOT REBUILT \$155.00**  
\$10 for your old block if returned.  
Use the G.M.A.C. Budget Plan for payment for major repairs.  
**Elder Chevrolet Co.**  
Phone 1700 701 W. Texas

<b>Chili</b>	Texas No. 2 Can	33c
<b>Tamales</b>	Armour 16 Oz. Can	23c
<b>Treet</b>	Armour 12 Oz. Can	35c
<b>Snacktime Vienna Sausage</b>	2 No. 1/2 Can	25c
<b>Red Crown Potted Meat</b>	No. 1/4 Can	6c
<b>Phillips Franks with Beans</b>	2 12 Oz. Cans	29c

Red Crown Corned Beef Hash No. 300 Can 25c

**VEGETABLES FOR VITAMINS**  
CELERY Fresh Crisp Pound 12c  
LETTUCE Iceberg Pound 13c  
Tomatoes California Pound 15c  
CABBAGE Pound 6c  
PEARS Bartlett Pound 17c  
GRAPES Tokay or Seedless, Lb. 12c  
APPLES Delicious Pound 12c

**PIPKINS' QUALITY HAS MADE US FAMOUS**  
200 East Texas St. Phone 1582

Egar Allen Poe excelled as a sprinter, jumper, fencer, boxer, and swimmer in his youth. In the symbolism of heraldry, red-green is the color of youth and hope.

**The VIGOR VITAMIN Comes From**

**TEXSUN**  
America's No. 1 GRAPEFRUIT JUICE

Pure, undiluted, unadulterated, naturally sweeter grapefruit juice—this Texsun. It comes to you with all the health-giving qualities that Nature puts in the fresh fruit. We add nothing—we take nothing away. Texsun is enjoyed more by more people because it's a natural product—naturally sweeter.

TEXSUN DISTRIBUTION EXCHANGE, WESLACO, TEXAS

**Royal Bengal Tiger With Lions Circus**



Mallanoff is one of Capt. Roman Prosky's Royal Bengal Tigers which will be seen here Saturday and Sunday with the Benck Brothers Lions Club Circus. Afternoon and night performances will be presented both days, with proceeds going to the Lions Club's charity and welfare fund. Thirty-five thrilling acts will be presented.

**Greeks Ask Aid To Double Army**

ATHENS—(AP)—An informed source said the Greek government would ask the United States for permission to double the size of the Greek army—to about 270,000 men. This informant said a plan, approved by the Supreme Defense Council called for adding 70,000 men to the present strength of 130,000 men and for formation of a 7,000-man National Guard, which would be under strict military control and which would absorb the present armed peasant organization.

Any expansion of the Greek armed forces would be financed from the \$300,000,000 American Aid Program and hence is subject to United States approval. Chiefs of both the United States and British Military Missions attended the Defense Council meeting.

Increase Long Advocated

Greek government sources have been advocating an increase in the size of the army since last April, when it became clear that Greek forces would be unable to cope with the guerrillas in the north. The forces were scattered on the retreat and it was conceded to be almost futile to try and maneuver the retreating guerrilla bands into position for an all-out frontal fight. Large numbers of troops are being used in small defense units for

**Film Star Is Thankful It Was Dental Scene**

HOLLYWOOD—(AP)—Perhaps it was the power of suggestion: Kathryn Grayson and Frank Sinatra were doing a scene in "The Kissing Bandit" in which the dialogue deals with an impending visit to the dentist. Within four hours after leaving the set, Kathryn was in a dentist chair having a wisdom tooth jerked.

"Thank goodness," said Kathryn, "the scene wasn't about an appendectomy."

**No Charge For Glass When It's A Homer**

CHICAGO—(AP)—A woman who lives across the street from Wrigley Field made a tardy demand for payment for a shattered window. "That happened several days ago," she was informed. "Why didn't you report it sooner?" "I thought Bill Nicholson (Chicago Cubs long ball hitter) might have hit a home run," the complainant replied. "Then I wouldn't have cared. But I just learned the window was broken in batting practice."

**NOTE THESE BETTER BUYS OF QUALITY FOODS**

**STOCK UP!**

Tokay Grapes	lb.	11c
WASHINGTON Delicious Apples	lb.	15c
Sweet Potatoes	lb.	10c
WHITE SWAN WHOLE Green Beans	NO. 2 CAN	35c
Scot-Tissue	Roll	10c
Apple Jelly	2 LB. JAR	45c
Catsup	JACK SPRAT LGE. BOTTLE	19c
Peaches	Monarch Short Cake No. 2 1/2 Can	55c
Coffee	MONARCH 1 LB. CAN	47c
FRESH PORK Spare Ribs	lb.	49c
PEYTON'S or ARMOUR'S LOIN or T-BONE STEAK	lb.	69c
HAM	Sliced Cured or By The Piece, 1/2 or Whole, Lb.	65c
BACON	SMOKED POUND	59c
Velveeta Cheese	2 LB. BOX	89c
Chuck Roast	lb.	45c

Store Hours 7:30 A. M. - 7:00 P. M. Weekdays  
Saturday 7:30 A. M. - 9:00 P. M.

**Cooperatives May Increase With Rise In Food Prices**

By MAX HALL

WASHINGTON—(AP)—High prices are causing more interest in cooperatives. Labor unions, especially, have begun a drive to organize more of them.

To understand this, let's start with the question: What is a cooperative?

It is a business organization, run by the members for the benefit of the members, without profits.

Two Types Of Co-Ops

Some cooperatives are groups of "producers." For example, a group of farmers may band together to sell their products. Or they may band together to buy things they need, like fertilizer and gasoline.

Other cooperatives are "consumer cooperatives." For example, a group of citizens may band together and open a grocery store.

That's the kind of co-ops labor unions are interested in.

Last week, the CIO United Auto Workers announced that 40 of its local unions in Michigan have joined to buy carloads of food and other goods and sell them to their members at cost—that is, without profit.

Long-Range Enterprise

A "true cooperative" is a long-range enterprise. The goods aren't sold at cost. They are sold at about the same prices as in other stores. The customers benefit, not from lower prices across the counter, but from refunds at the end of the year.

"True cooperatives" are often called "Rochdale cooperatives."

Both the AFL and CIO have come out flatly in favor of Rochdale co-ops.

**WHO is "MY FAVORITE GROCER"?**

*Lovely Dishes For Your Table!*

IN MOTHER'S OATS PREMIUM PACKAGES

STUNNING TABLEWARE FOR YOU AND MOTHER'S OATS BENEFITS FOR YOUR FAMILY!

Each premium package of delicious Mother's Oats brings you all this: The cereal Americans named best-tasting in a nationwide poll! The cereal famous for its growth-promoting and vitality-protecting elements! Plus a piece of beautiful tableware. Start building your set today. Ask for Mother's Oats, with premium.

Mother's Oats with Aluminum Ware Now Available, Too!

**Mother's Oats**  
(PREMIUM PACKAGE)

**STOP-LOOK-BUY**

ORANGE AND GRAPEFRUIT JUICE	S & S 46 OZ. CAN	15¢
COCK OF THE WALK PEARS	NO. 2 1/2 CAN	39¢
ELBERTA PEACHES	HEART'S DELIGHT NO. 2 1/2 CAN	39¢
PICTSWEET CORN	WHOLE OR CREAM	19¢
PICTSWEET PEAS	NO. 2 CAN	19¢
GRAPEFRUIT JUICE	TEXSUN 46 OZ. CAN	19¢
HART APPLE SAUCE	NO. 2 CAN	15¢
SPICED PEACHES	GOLDCOAST NO. 2 1/2 CAN	39¢
FLAPJACK SYRUP	MAPLE HARVEST, 1 PT.	25¢
3-MINUTE OATS	LARGE PACKAGE	37¢
MAGNOLIA COFFEE	POUND	33¢

*Quality Meats*

**FRYERS** EACH \$1.29  
DRESSED & DRAWN

**PURE PORK SAUSAGE** POUND 49¢

**CHUCK OR SEVEN ROAST** Peyton's Fed Beef POUND 49¢

**Swift's Picnics** READY TO EAT POUND 69¢

**CRYSTAL PEACH JAM** 2 LB. JAR 49¢

**SUGAR** IMPERIAL CANE 5 lbs. . . . 49¢

**PRODUCE**

**TOMATOES** Vine-Ripe Home Grown lb. 15¢

**BEANS** KENTUCKY WONDERS lb. 17¢

**TOKAY GRAPES** lb. 13¢

**Brockle's Dressing**, pt. 89¢

**AUNT JEMIMA FLOUR** 5 LB. BAG 49¢

**FOLGER'S COFFEE** 49¢ LB.

SPICK & SPAN REG.	25¢	Mrs. Stewart's Bluing 4 OZ.	15¢
HILL'S DOG FOOD 2 CANS	25¢	IVORY SOAP MED. BAR 3 FOR	25¢
JELLY STAR BRAND ALL FLAVORS 1 LB. JAR	23¢	MORTON'S SALT REG.	10¢

Store Hours: 7:30 A. M. To 6:30 P. M.—Saturday 7:30 A. M. to 9:00 P. M.

**MORRIS SYSTEM**  
*Complete Food Market*

**H & H**  
FOOD STORE  
605 W. Texas Phone 238  
FREE DELIVERY