

Police Discover Palestine-Bound TNT

Midland Schools To Remain Closed As Safety Measure

Midland schools, scheduled to reopen Monday after the Christmas holidays, will remain closed until "further notice."

No children under 12 years of age will be admitted to churches, Sunday Schools or movies.

These announcements came Saturday night as health officers, school officials, pastors and movie operators cooperated to combat a strange illness which has stalked with deadly swiftness among young Midland children.

Seven have died since mid-December, most of them within the last week. An eighth was critically ill Saturday night.

Dr. F. E. Sadler, director of the Midland-Ector-Howard County Health Unit, and Dr. Tom C. Bobo, city-county health officer, advised schools to close. Clergymen and movie managers quickly agreed to assist in keeping children away from public gatherings as much as possible.

Disease Unidentified

The disease had not been definitely diagnosed Saturday night, health officers said. Doctors were not sure whether it was a new type of diphtheria, or a disease caused by a combination of several strains of staphylococcus; but laboratory experts were trying desperately to isolate and identify the virus responsible for the illness.

Symptoms are much like those of diphtheria — rapidly mounting temperature, obvious congestion of the lungs, and extreme difficulty in breathing. In its final stages, the disease literally chokes its victims to death.

Doctors, Parents on Alert

Doctor Sadler said Saturday night he was keeping in touch with the State Health Department in Austin and that the department was standing ready to take any steps deemed necessary to prevent spread of the disease. No reports of such a disease have come from Odessa or Big Spring, which are also under his supervision, he said.

"We hope the disease has reached its peak," he said, "but we don't know whether it has or not. Therefore, we must do everything possible to prevent unnecessary exposure of infants and young children."

The health officers emphasized that parents should call a physician as soon as they notice a child ill. Early attention may mean the difference between life and death, they said.

CONDEMNED SLAYER CONFESSES 10 OTHER KILLINGS IN SIX STATES

TACOMA, WASH. — (AP) — Jake Bird, a 45-year-old negro transient who awaits death in the Washington State Penitentiary for killing two women here on October 30, has admitted to other slayings. Pierce County Under-Sheriff Joseph Karpech revealed Saturday.

The killings, during a 20-year period, included one killing in Iowa for which another man has served 10 years, the slaying of a family of three in Indiana, three persons in Nebraska, and one each in Illinois, Utah and Colorado.

Gov. Mon C. Wallgren said Bird might be granted a stay of execution, in order to clear up any other slayings possible. Bird is sentenced to hang January 18.

Larry Bruce Holderman Hailed As Midland's First Baby Of New Year

Congratulations to Master Larry Bruce Holderman—Midland County's first white baby of 1948—and to his parents, Mr. and Mrs. J. C. Holderman, P. O. Box 117, Midland, Texas.

The birth on New Year's Day of Larry Bruce Holderman was announced by attendants at the Western Clinic-Hospital and hailed by 34 Midland merchants who presented the child and its parents with a group of attractive and useful gifts ranging from baby blankets to prescription and drug certificates.

The lucky baby was born at 2:58 a. m., Jan. 1, 1948, according to a written statement, verifying the exact time of arrival, and furnished The Reporter-Telegram in accordance with rules of the event. Dr. R. M. Golladay was the attending physician.

Father Is Ex-Service Man

The parents of the New Year's babe have resided in Midland since September, 1946, when Holderman received his honorable discharge from the U. S. Navy in which he served three years and five months. Twenty months were spent in the Aleutian Islands and the remain-

Congress To Face Knottiest Problems

WASHINGTON — (AP) — Congress goes to work Tuesday on what many lawmakers think is the knottiest problem they ever faced in an election-year—an attempt to help Western Europe escape economic chaos and Communism without rocketing already high living costs at home.

President Truman will present his recommendations on this many-sided issue in a series of three messages, beginning Wednesday with his report on the state of the Union. He will follow this Friday with an economic message and January 12 with an expected record peace-time budget.

The Republican-controlled Congress will begin compiling its answers Wednesday when the Senate Foreign Relations Committee starts hearing a list of upwards of 40 witnesses on Truman's proposal for a four-year, \$17,000,000,000 economic recovery program for 16 non-Communist Western European nations. Plenty To Think About

There are indications Truman will give the Republican lawmakers plenty to think about in his annual messages. GOP members frankly expect what they call "a campaign document" of domestic legislative proposals to accompany his plea for speedy action on European recovery.

Chief of these is likely to be a reiteration by the President of his request for stand-by price-wage and rationing authority to back up the "adequate" inflation controls (Continued On Page 8)



Sam Cobb

during its first year, and Harvey Herd succeeds J. T. Baker as vice president. Ralph L. Crays is secretary-treasurer.

New directors are E. W. Anguish, J. T. Baker, Reese Cleveland, Albert Kelley, C. C. Keith, Gabe E. Massey and Dr. F. E. Sadler.

The meeting will be a ladies' night event with special music and entertainment.

Doctor Ireland will relate the accomplishments of the last year, and Koegler will speak on "Citizenship Responsibility."

All members and their ladies are invited, and urged to attend.

The regular weekly luncheon of the club will be held Monday noon.

LAST VICTIM IDENTIFIED

CTTERVILLE, MO. — (AP) — The last of 14 victims of a New Year's Day passenger train wreck was identified Saturday as Cpl. Hugh J. Hannaway of Long Island, N. Y.

Dr. W. R. White Elected Head Of Baylor University

DALLAS — (AP) — The Baylor University Board Saturday elected Dr. W. R. White, pastor of the First Baptist Church, Austin, as president of Baylor University to succeed Pat M. Neff.

Andrew Allen, public relations man for the Texas Baptist organization, said the board elected White without opposition.

White, himself a member of the board, is a former president of Hardin-Simmons University, Abilene, and has been pastor of the Baptist Church at Austin since 1944.

Neff's resignation as president of Baylor was accepted by the Baylor Board last month. Neff, 75, former governor of Texas, had been president of Baylor for 15 years. He concluded his services December 31.

White was born in East Texas and received his Bachelor of Arts degree from Howard Payne University at Brownwood. He earned his Master of Theology degree from Southwestern Baptist Theological Seminary at Fort Worth and later taught there. He holds an honorary Doctor of Divinity degree from Baylor University.

White is chairman of the Texas Baptist Executive Board and came to the Austin church from Tennessee, where he was editorial secretary of the Southern Baptist Sunday School Board.

AUSTIN — (AP) — Dr. W. R. White said Saturday he will have to give very serious consideration to the offer of the presidency of Baylor University, "when I receive official announcement from the Baylor Board."

He said the University Board had not notified him of his election when The Associated Press called him for comment.

Joe Mims Announces For Reelection

County Attorney Joe Mims Saturday announced his candidacy for reelection, subject to the Democratic Primary, July 24, and asked the continued support and cooperation of citizens.

Mims, a native West Texan, has practiced law in Midland about 12 years, and is serving his third term as county attorney. He is well known in Midland and the Permian Basin area where he has taken an active part in professional and civic affairs.

"I am grateful for the fine cooperation given me in the past years and will appreciate the continued support of my friends," Mims said. He pledged continuation of loyal, efficient and courteous service.

Cotton Valley Surveys Wreckage



Damage to the business section of Cotton Valley, La., is graphically pictured in this photo, which was made after the tornado passed. In the foreground is what was once the railroad depot and at left background is the scattered wreckage of the C. W. Campbell store.

Jews, Arabs Join Battle In Holy City

JERUSALEM — (AP) — Violent fighting erupted in Jerusalem's old walled city Saturday night, and informants said Jews and Arabs in that sacred area were locked in an "all out" fight for control of the ancient streets.

Jews began the battle, Arab sources said, by tossing grenades in an attempt to regain control of the Walling Wall, Judaism's holiest shrine in Jerusalem. Arab riflemen have occupied the wall for the past two weeks.

Jews and Arabs lashed at each other on two fronts, as fighting also broke out on Jerusalem's outskirts.

Explosives inside the old walled city said the battle had assumed "major proportions." Casualties were described as heavy on both sides. Arabs, using "Molotov cocktails" (gasoline filled bottles), set some Jewish shops afire.

Fighting Heaviest Yet

Police said they had no details of the fighting in the old city but added: "The entire walled area is isolated. No one can enter or leave the city because the Arabs control all the gates."

Disorders throughout Palestine, 11 Arabs and four Jews were known to have been killed Saturday. The unofficial count of deaths since the United Nations voted for Partition November 29 stood at 523.

Ronald E. Ramsey, Infant, Dies Here

Ronald Edward Ramsey, seven-months old son of Mr. and Mrs. Wayne Ramsey of Midland, died late Saturday in a Midland hospital. He had been ill since Thursday.

The baby was a grandson of Mr. and Mrs. Charles E. Lynch who live on the Rankin Highway.

Funeral services will be held at 3:30 p. m. Sunday in the Ellis Funeral Home Chapel, with the Rev. Howard Hollowell, pastor of the First Methodist Church, officiating. Interment will be in Fairview Cemetery.

Cowboy Star Marries Leading Lady



Roy Rogers, well-known Western movie star, was married to his leading lady, Dale Evans, at the Flying L Ranch, Davis, Okla. The wedding was in the ranch home of Bill and Alice Likins. Here, Roy kisses the bride, something he's never done in the pictures they've made together.

Meat Rationing Bill Ready For Congress

WASHINGTON — (AP) — Legislation to set up meat rationing machinery which Congress could slip into gear quickly will be introduced in a few days by Senator Flanders (R-Vt), he said Saturday.

The senator outlined his plans after Secretary of Agriculture Anderson expressed belief Congress will restore meat rationing during the session opening Tuesday.

Flanders told a reporter he already has started drafting a bill which he expects to have ready in about 10 days.

The measure would authorize the Agriculture Department to make all necessary plans for rationing, including preparation for, but probably not actual, rationing of beef.

These plans would go on a hold-in-reserve basis.

Flanders said he still is against coupling meat rationing with price ceilings. He expressed the opinion that rationing, if handled right, could have the effect of placing a check on prices.

Other End of Scale

He glanced at the United States at the other end of the political scale from the Soviet Union and said:

"The United States of America stands for individual liberty in the political sphere and for the maintenance of human rights."

"But its economy is based on capitalism, with all the problems which it presents, and with the characteristic extreme inequality of wealth in its citizens."

He said the British Labor Party is following a middle course.

Reds Called Threat To All Europe

LONDON — (AP) — Prime Minister Attlee denounced Russian Communism Saturday night as "a new form of imperialism" threatening the rest of Europe.

"Today in Eastern Europe the Communist Party, while overthrowing an economic tyranny of landlordism and capitalism, has renounced the doctrine of individual freedom and political democracy and rejected the whole spiritual heritage of Western Europe," Attlee said in a speech broadcast at Britain's peak listening hour.

His attack came in a party political broadcast in which he raked international Communism as hard or harder than he did his main domestic opponents, the Conservatives.

Purchase Of A&M Packing Company Is Announced

Clark J. Matthews, president of the C. J. M. Packing Company, a Texas corporation, Saturday announced the purchase of the A&M Packing Company of Midland from the Reconstruction Finance Corporation.

The purchase included the 10 acres of land, buildings, and inventory of supplies and equipment. The price was not disclosed.

Matthews has been engaged in the meat packing business since 1929 in Kansas, Oklahoma and Texas. He has been in West Texas in the last six years and is well-known in packing circles of this trade area.

To Move To Midland

The new owner said he is impressed with the possibilities of his industry in this section, and intends to devote his full time and energy toward making it a worthwhile one which will command a favorable position in West Texas.

Mr. and Mrs. Matthews bought the W. A. McClurg home at 1800 West College, and Mrs. Matthews and their two children, Iyla Kay and Jackie, will move to Midland soon. Iyla Kay is a junior in high school and Jackie is in the fifth grade.

BOWMAN CHILD DIES IN HOSPITAL HERE

Gerome Ralph Bowman, 17-months old son of Mr. and Mrs. Paul H. Bowman, 810 North Main Street, died Saturday afternoon in a Midland hospital. The baby was born in Reading, Pa.

The father was stationed at Midland Army Air Field during the war years, and the family returned to Midland several months ago to make their home.

Funeral arrangements are pending the arrival of relatives.

MARSHALL WILL DIRECT RECOVERY PLAN CAMPAIGN

WASHINGTON — (AP) — Secretary of State Marshall will return to his post Monday to open an administration drive for adoption of the \$17,000,000,000 European recovery program bearing his name.

Marshall is due to take active field command of the campaign with his first testimony Wednesday before the Senate Foreign Relations Committee. He has been taking a brief vacation.

Other Contraband Taken From Vessel

JERSEY CITY, N. J. — (AP) — What police described as enough tri-nitro-toluene (TNT) to "blow Jersey City and five Jersey Cities to bits" was discovered on a pier here Saturday in packing cases consigned to Palestine, and a quantity of military materiel was uncovered by police who raided a warehouse in New York City.

Jersey City Police Captain Patrick W. Flannagan said 77 freight cases which were being loaded into the 14,000-ton SS Executor at the American Export Line's Pier F for shipment to Habor, Ltd., Tel Aviv, Palestine, and to the Palestine Glass Works and Phoenix, Ltd., both at Haifa, Palestine, were loaded on a barge and towed to Gravesend Bay when two of the cases were found to contain TNT.

A cooper, called to fit a case which had dropped on the pier and had broken, found the TNT, Flannagan said. Both cases were part of a 28-case shipment to Tel Aviv, Flannagan said, and added police believe the rest of this shipment, also contains TNT. If this should be found true, the cases would contain 65,000 pounds of the explosive.

Shippers Are Named

In a 51-case shipment consigned to Haifa, one case opened by police was found to contain machinery, Flannagan said, and on the basis it could be used for manufacture of war material, the 51 cases were loaded with the 26 others on a barge, which was towed to Gravesend Bay and anchored there pending investigation.

In New York, Frank Laughlin, assistant port collector of the U. S. Customs Service, said 30 cases of the seized shipments, marked "used industrial machinery and parts," were sent by the Oved Trading Company, New York City, and another 58 cases, marked "used industrial machinery," were sent by the Mar-Tech Export Corporation, New York.

He said his office had not yet determined the full facts of the police seizure, but that a customs investigation will be made.

Former King Mihai Departs From Romania

SINAIA, ROMANIA — (AP) — Former King Mihai and his mother, Queen Helen, left the royal estate here by special train Saturday night for Hungary, enroute to Switzerland where the abdicated monarch may marry Princess Anne of Bourbon-Parma and live in exile.

Mihai did not wait until he had obtained a visa for admission to Switzerland, a delay which would have kept him in Romania until Monday or Tuesday.

He departed a few hours after he had received his visa for Hungary, with the probable intention of waiting for his Swiss entry permit at Salzburg in the American zone of Austria.

SENATE GROUP WILL PROBE RECORDS OF PAULEY AND GRAHAM

WASHINGTON — (AP) — The Senate Appropriations Committee arranged Saturday to start out next week with a close going over of records covering the commodity trading of two Administration figures—Edwin W. Pauley and Brig. Gen. Wallace H. Graham.

Pauley, special assistant to Secretary of the Army Kenneth Royall, advised a subcommittee, checking in on commodity speculation, that his books would be available to it over the weekend.

The subcommittee headed by Senator Knowland (R-Calif) expected by Monday to get from Bache and Company, New York brokers, records covering the trading activities of General Graham, physician to President Truman. It was prepared to force delivery of the records by subpoena if necessary.

Regans Will Return To Washington Sunday

Rep. and Mrs. Ken Regan will leave Sunday for Washington after spending the holidays in the 16th Congressional District. The representative will be at his desk when Congress convenes Tuesday.

After spending several days in Midland, the Regans attended the Sun Carnival in El Paso and visited in Pecos, Odessa and other area cities on the return trip.

Regan expects the new session of Congress to be one of the busiest and most important in history.

WEATHER

Fair Sunday and Monday. No important temperature changes.

LATE NEWS FLASHES

WASHINGTON — (AP) — Secretary of Agriculture Anderson told a reporter Saturday night he had assigned Assistant Secretary Charles E. Brannan to the task of planning a meat rationing program, to be ready when and if the Agriculture Department is asked to recommend one.

RANGOON, BURMA — (AP) — BURMA, AN EXOTIC LAND OF PAGODAS, JEWELS AND RICE TERRACES, BECAME AN INDEPENDENT COUNTRY SUNDAY AFTER MORE THAN A CENTURY OF BRITISH RULE.

LONDON — (AP) — The Moscow radio said early Sunday Russia had sent notes to the United States, Great Britain and China, renewing her proposal that the Big Four write a Japanese peace treaty at a special foreign ministers' conference this month.

FORT WORTH — (AP) — A \$50,000 FIRE RIPPED THROUGH THE SUNDAY BAPTIST CHURCH HERE SATURDAY AFTERNOON. THE MAIN AUDITORIUM BUILDING WAS UNDAUNTED.

Assistance Of Deputy Collectors In Filing Income Tax Limited

DALLAS—The office of the Collector of Internal Revenue for the second Texas district has announced it will be unable to furnish as much help to taxpayers in the preparation of their income tax returns for 1947 as it has furnished in prior years.

Acting Collector John B. Dunlap said the staff of field deputy collectors was reduced 25 per cent last July 1, making it impossible to assign as many men to the work of assisting taxpayers as has been possible heretofore.

Instructions have been issued to all deputy collectors to limit their assistance to the public to answering questions. Each taxpayer's time with any deputy must necessarily be limited to a few minutes, the acting collector said.

Alexander Rites Are Held In Austin

AUSTIN. — (AP) — High state officials, lawyers, and members of the judiciary paid final tribute Saturday to Chief Justice James Patterson Alexander in funeral services at the First Baptist Church.

The Supreme Court's presiding judge was buried in the State Cemetery here, with 12 of his former law students acting as pallbearers. The honorary pallbearers were members of the court over which Alexander had presided since January 1, 1941, members of the Court of Civil Appeals, and Court of Criminal Appeals. He died New Year's Day after an illness which started with a heart attack last Summer.

Dr. W. R. White, pastor of the church of which Justice Alexander had been a member since he moved here from his old home, Waco, conducted the services.

Differentials In Pay To Teachers Upheld By Attorney General

AUSTIN. — (AP) — Teachers salary schedules which will meet with the minimum pay requirements of the law enacted by the 50th Legislature are not subject to approval or disapproval of the state superintendent or Board of Education, the attorney general ruled Saturday.

The effect of the legal opinion was to nullify previous action by Dr. L. A. Woods, state superintendent of public instruction, who had disapproved salary schedules of Goose Creek and Abilene independent school districts.

Woods based his action on the fact that Abilene and Goose Creek, while paying at least minimum salaries to all teachers, paid certain teachers well above the minimum. Woods said the two districts were paying negro teachers on one schedule, white teachers on another.

Two-Day-Old Baby Dies In Hospital

David Kenneth Fuller, two-day old son of Mr. and Mrs. Kenneth D. Fuller, 424 West Kentucky Street, died Friday in a Midland hospital.

Services were held at 4:30 p. m. Saturday, with the Rev. Vernon Yearby, pastor of the First Baptist Church, officiating. Interment was in Fairview Cemetery.

TWO DROWN WHEN CAR CRASHES OFF BRIDGE

KAUFMAN, TEXAS. — (AP) — A Dallas woman and a 14-year-old girl drowned Saturday when their automobile crashed off a wooden bridge on Highway 175, 12 miles west of Kaufman, and plunged into the East Fork of the Trinity River.

The dead were Mrs. Ben F. Lightfoot, 33 and Bertha Louise Parnell, 14, both of Dallas.

The name "amorgasbord" is a compound of the words for butter, cheese, and bread.

Greek Forces Smash Communists



(NEA Telephoto)

Greek government forces attacked guerrillas to smash Communist attempts to establish a separate state in Northern Greece. Heaviest fighting is reported around Konia (1), possible capital of the new state, where government troops from Mt. Grammos (2) attacked important guerrilla lines from Konia to Kalpaki (3) and from Kalpaki to Bourazani (4). Fighting is also reported between Metsovo (5) and Kalabaka (6).

Midland Has 53 Schedules For In-Out Travel

So you want to come to Midland or leave the city.

There are 53 schedules per day in and out of Midland.

There are 18-airline flights daily by Continental, Pioneer and American airlines. There are 31 bus schedules by Greyhound, All-American and Baymont companies. There are four train schedules by Texas & Pacific Railroad.

Transportation comes and goes from every direction — north, south, east and west.

And Midland is on Highway 80, the Bankhead Highway, busy transcontinental artery.

Midland has inter-city bus transportation to Odessa.

YOUR newspaper, serving free by serving YOU.

Bob Wills' Playboys To Play VFW Dance

Still bringing name bands to Midland, the VFW will present Bob Wills' Texas Playboys in a dance the evening of January 12 in the recreation hangar at Midland Air Terminal.

Although Bob Wills brings western-styled music, he also brings other kinds of dance music, VFW sponsors pointed out.

Cost of the dance is \$1.80 per person for dancing or for listening. Tickets are on sale in the city.

Vermont has 39 women legislators, largest number of any state in the Union.

Alcoholics Anonymous

If you have an alcoholic problem, we can help you!

Box 536, Midland, Texas

TIRES AT WHOLESALE

Goodyear, Pennsylvania, Mobil and Dunlop Tires. 4 and 6 Ply. At Wholesale Prices While They Last!

★ ★ ★

GLYCERINE and ALCOHOL ANTI-FREEZE



Please Call For Free Baby Pictures

T. E. ALLEN, Owner

Building Permits Off To Slow Start

Setting a record last year, when \$4,291,700 in building permits were issued, Midland got off to a slow start in 1948 with only a \$150 garage permit issued since January 1.

Permits for the week ending Saturday, which included the windup of 1947, amounted to \$26,350.

G. C. Ponder took two permits, totaling \$11,000, for two residences at 946-948 North Fort Worth Street. Each will be a frame dwelling, size 22 by 49 feet, with asbestos siding. Cost of each will be \$5,500.

Brick Veneer Residence

J. D. Henderson was issued a permit for \$12,000 to build a residence at 1201 West Kansas Street, size 72 by 37 feet. It will be a brick veneer.

Other permits of the week included: Dave Henderson, \$2,200 to alter a structure at 1306 West Indiana Street, size 10 by 17 feet, brick veneer; E. E. Stalcup, \$1,000 to move a portable floor to a location on North Weatherford Street for a skating rink, size 50 by 140 feet; Frank Orson, \$150, rock-veneer private garage at 410 West Illinois Street, size 10 by 20 feet.

Times Do Change; Recruiters Anxious For Enlistee Letters

There was a time when an Army recruiting sergeant, for reasons best known to himself, did not care to see or hear from that part of young America that he persuaded to join the service. As the song goes, however, "time changes everything," and this is no exception. Recruiters today encourage correspondence with those they have signed on the dotted line and they return every reasonable assistance.

The following, received from Frank Cain, Jr., son of Frank Cain of 807 South Fort Worth Street, is typical of letters received:

"I am stationed at Kirtland Field, Albuquerque, N. M., with the Air Materiel Command. It is a swell place and everyone is friendly. I will probably get my first vacation in July or August." (It might be added that these vacations are with full pay plus an allowance of about 75 cents per day for food.)

RECOVERS FROM ILLNESS

Frank Monroe, superintendent of Midland schools, was able to be at his office Saturday after being confined to his home the last week because of illness.

1940 Chevrolet 2-door. 1940 Plymouth Coupe. Both in excellent condition. For Sale or Trade.

DANFORD MOTOR CO.
Corner E. Wall and S. Baird
Phone 256

Going South?



As long as you're taking a vacation this winter, why not go all out in style and quality?

Check this list for your Winter Vacation Needs:

Summer Tropical Slacks from \$12.95

Colorful Contrasting "T" Shirts by Jansen from \$2.50

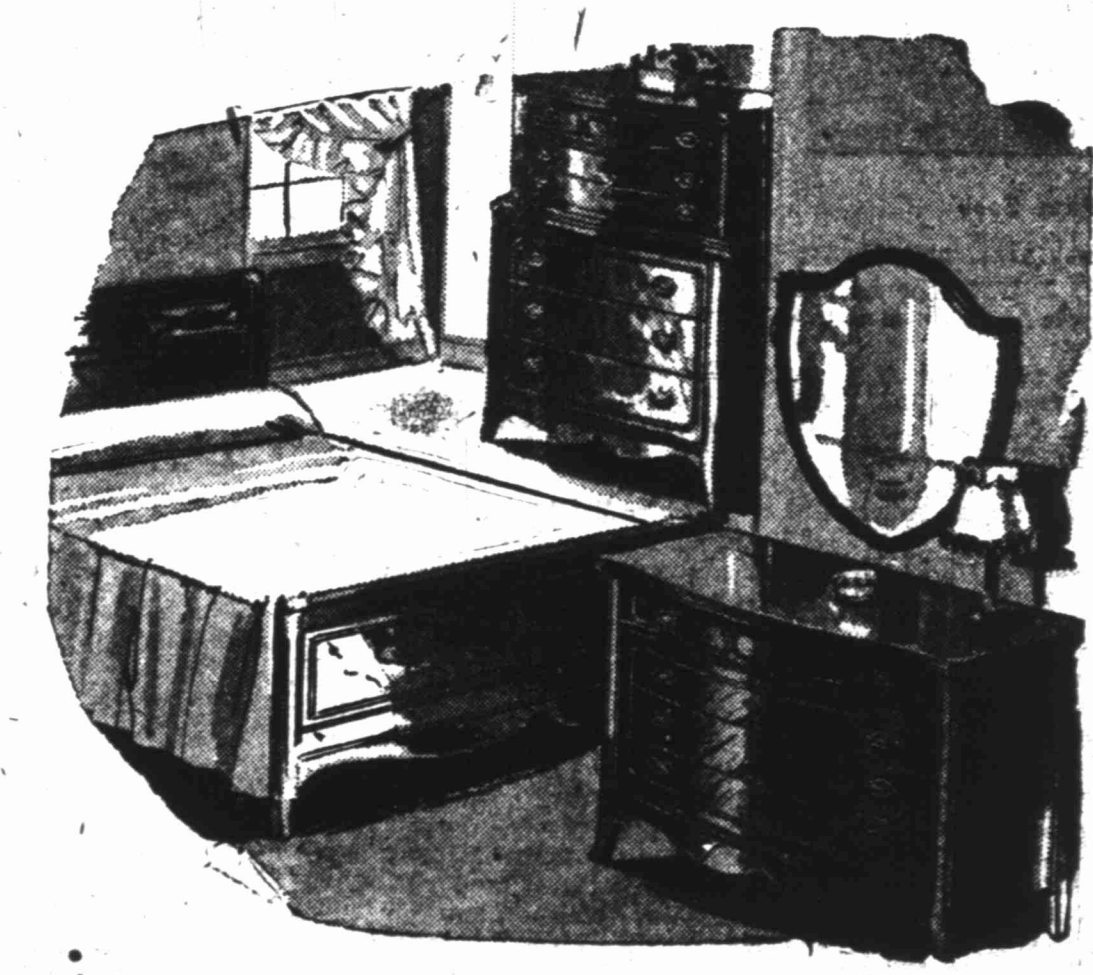
White Mesh Dress Shirts by Arrow \$3.25

A necessity for your Florida wardrobe... Summer Worsted Tropical Tuxedo Coats \$30.00

For hours of leisurely enjoyment... Beautiful Sport Shirts from \$4.95



BLAKE DUNCAN CO. MIDLAND, TEXAS



Your 1948 Home

The dream of everyone this year is to have a better, smarter, more comfortable home. And that dream can be realized at BARROW'S!

We are proud of our present selection of fine furniture, and more things are arriving daily. We are keeping abreast of the latest fashion trends; see our displays; let our experienced salespeople help you. Whether you want to freshen up a single room or your entire home, this is the place to come, for when it comes to homes, BARROW'S KNOW HOW!

Largest coordinated display of fine furniture—outstanding designs in Modern and Traditional Groups and Pieces—plus helpful service in home planning—visit our store today!

BUDGET TERMS AVAILABLE

BARROW

COLORADO AT TEXAS

THE LARGEST AND BEST ASSORTED STOCK OF FURNITURE IN WEST TEXAS

Big Lease Deal Made In SW Andrews Between McMillen And Southland

Instruments filed and recorded in the office of the county clerk of Andrews County, at the town of Andrews, reveal that J. W. McMillen of Midland, has taken a ten-year commercial oil and gas lease from Southland Royalty Company of Fort Worth, on that concern's one-half interest in the minerals under the 12,065-acre Rube M. Evans ranch in the Southwest Andrews County, between the Dollar Hide field, and the Nelson field.

In the transaction, according to the records, McMillen acquires the oil and gas lease on half, on 6,532.5 acres in the Evans ranch. It is understood that Rube M. Evans, et al, own the other half of the minerals. The records show that Sinclair Prairie Oil Company have an oil and gas lease on most of the Evans, et al, minerals.

No official information is available regarding the bonus paid to Southland Royalty for the lease. However, revenue stamps on the recorded instruments indicate that the figure was in excess of \$300,000—or approximately \$50.00 per acre.

The leases call for a payment of \$20,000.00 to Southland, out of all—oil, and when production is developed on the spread.

The nearest completed producers in the Dollar Hide field are about three miles south of the south side of the Evans ranch.

Included in the leases secured by McMillen is section 5, and the north half, and the north half of the northwest quarter of section 6, block A-53, ps. survey. The north half, and the north half of the southwest quarter of section 12, all of sections 13, 16, 17, 18, 19, 24 and 25, block A-51, ps. survey.

Sections 1, 2, 3, 4, 5, 6, 7, 8, 9, and 10 in block A-52, ps. survey.

None of the instruments filed on this transaction call for the drilling of a wildcat exploration on any of the lands covered by the deal. However, it is expected that such a project will be undertaken in the not too distant future. None of the parties in the trade were available for comment at the time this report was prepared.

Permian Basin OIL & GAS LOG
James C. Watson
Oil Editor

At 8,307-09 feet recovered two feet of shale and lime of the Mississippian. The venture is a long southwest stepout to the same company's No. 1 Frost, which has discovered a small production from the Ellenburger, entered at about 8,354 feet. It is now on a plugged back bottom of 8,365 feet and making about 25 barrels of oil and 28 barrels of water per day, pumping.

HIGH WELL IN MARTIN FIELD FLOWS OIL FROM MCKEE ZONE

Humble No. 11 J. E. Parker, stepout from Ellenburger production in the Martin multi-pay field in Central-Southwest Andrews County, and 1,980 feet from north and 660 feet from east lines of section 23, block A-41; ps. survey, was drilling ahead below 8,309 feet in the lower Simpson, and going on to the Ellenburger.

It ran a 45 minute drillstem test in the McKee section of the Simpson, at 8,039-8,300 feet. Gas showed at the surface in 33 minutes. Recovery was 150 feet of oil and gas cut drilling mud and 3,300 feet of pipe line oil. No fluid flowed out at the top.

Open flowing bottom hole pressure was constant at 2,400 pounds. The fact that the pressure was constant indicated that the tool was probably partly clogged. Informed observers think the drill pipe would have flowed oil otherwise. Shutin bottom hole pressure, after 15 minutes, was 2,700 pounds.

No. 11 Parker is the highest well, on the Simpson, to be drilled up to now in the Martin field.

NOLAN PROSPECTOR TRYING TO TEST IN ELLENBURGER

Sohio Oil Company, Hunt Oil Company, et al, No. 1 Faver, North-Central Nolan County wildcat, about five miles east and south of Sweetwater, and 660 feet from north and west lines of section 50, block 21, TP survey, and old well being drilled down from 5,863 feet, is bottomed at 6,193 feet in the Ellenburger, and is making the fifth effort to get a drillstem test to that point.

A drillstem test was run for one hour at 6,125-47 feet. Recovery was 180 feet of heavily oil cut drilling mud and 10 feet of free oil, estimated to be 45 gravity. No water was developed.

The hole was deepened to 6,193 feet, and the attempts to get a test to that level have been underway for several days.

Top of the Ellenburger was called at 6,144 feet, elevation is 2,130 feet. That puts it about 25 feet low on that marker to the Skelly No. 1 company No. 1 Adrain, a small Ellenburger discovery a short distance to the south.

BORDEN PROJECT DRILLING AHEAD IN LIME AND SHALE

Tide Water Associated Oil Company No. 1 Clayton & Johnson, slated 9,300-foot wildcat in South-Central Borden County, about nine and one-half miles south of Gall, and 660 feet from north and west lines of section 47, block 31, TP survey, T-4-N, had reached 7,354 feet, in lime and shale, and was making more hole. So far this venture has not developed any possibilities of petroleum production.

CSOC WILDCAT IN STERLING CONTINUES TO MAKE HOLE

Cities Service Oil Company No. 1 Collins, North Sterling County wildcat, 8,400 feet to try to locate and test the Ellenburger, four miles north and two miles west of Iolanthe, had reached 4,925 feet in shale and lime and was making more hole.

It is 660 feet from south and east lines of section 71, block 17, SPRR survey.

SUTTON EXPLORATION IS SCHEDULED TO BE P & A

Olsen Drilling Company and E. N. Wahlenmaier, No. 1 Miers, Sutton County venture, 1,980 feet from north and 660 feet from west lines of section 63, block 14, TW&NG survey drilled to a total depth of 6,215 feet, without reporting the logging of any signs of oil or gas. It is scheduled to be plugged and abandoned.

MOORE SETS CASING IN S-C REAGAN PROSPECTOR

Moore Exploration Company No. 1-A University, South-Central Reagan County wildcat, seven miles south of Big Lake, and 330 feet from south and 2,478 feet from east lines of the north half of section 13, block 12, University survey, had drilled to 2,330 feet in lime, and was to run and set 5 1/2-inch casing, in order to make tests of any shows of oil that may be developed.

TGPC STAKES STEPOUT TO BARNHART-ELLENBURGER

Texas Gulf Producing Company No. 1-6 University, 1,980 feet from south and 660 feet from east lines of section 7, block 48, University survey, is slated to drill to about 9,200 feet, with rotary tools, starting at once, to test the Ellenburger, on the edge of the Barnhart field in Southeast Reagan County.

TEXACO SPOTS STEPOUT TO JORDAN-ELLENBURGER

The Texas Company No. 33 W. R. Connell, 660 feet from north and east lines of section 1, block B-22, ps. survey, 22 miles South-

The Daily Pusher

IPAA REPORT SHOWS NEED

A report just completed by the Independent Petroleum Association of America which has analyzed the needs of the petroleum industry for steel, was released in Midland Saturday by J. E. (Ed) Warren of this city's committee on material shortages.

The survey reveals that there is a need for 1,450,000 tons of steel—particularly casing and tubular goods—for 1948, for drilling and producing wells, if the industry is to get back to a drilling rate sufficient to rebuild the productive capacity of the United States. This is 45 per cent above the steel used by the industry in 1946.

The report reviews 20 years of petroleum development in the United States in order to obtain factual information as to present and future requirements for steel needs by the industry. It shows that during the year just being completed, as well as through 1946, a serious shortage of steel materials retarded drilling and the development of oil and gas areas, and also necessitated the use of secondhand materials. In order to obtain this latter steel it was frequently necessary to prematurely abandon wells of small production. This, the report points out, has resulted in the loss of many thousands of barrels of producible reserves.

On a national standpoint the report shows that drilling during 1947 was 20 per cent under what it should have been; a condition directly reflective of the inadequacy of the supply of steel materials. In 1946 only 1,000,000 tons of casing, tubing and drill pipe for use in the United States were available, and this compares with a need for 1,450,000 tons for 1948. If normal drilling to rebuild our productive capacity, at a very minimum, merely to meet the increasing demands for crude oil and products, operators will require 1,245,000 tons during 1948. The report differentiates between minimum and normal needs by showing that through the war period the industry reduced its productive capacity to supply the needs that were urgent at that time, and that today's drilling program, to be considered normal, should regain the deficiencies in productive capacity created during the war years.

Demand for crude oil and products has never been higher, the Independent Petroleum Association report concludes, and it is essential that steel be available in quantities sufficient to support the industry's drilling program. Eleven tons of steel are needed for every 1,000 feet of hole drilled, the association determined by establishing a relationship between total footage and steel requirements. This relationship cannot be adjusted downward without reducing total wells drilled. The only answer to the necessity of steel is more steel, the report finds. There is no reason to anticipate a decrease in the demand for oil products, and there is need to develop a surplus producing capacity against any unusual future demands.

"The data of the report is essential to sound administration of government programs such as export controls, and constitutes a measure of the needs of the domestic oil industry," Merle Becker, president of the association stated. "It provides a factual basis for determining the volume of steel materials of this classification which can be used for foreign aid, recovery, and foreign development. The association, the steel industry and Federal government have needed this analysis as a basis for planning industry activity in the future."

WTGS TO ELECT OFFICERS AT MEETING MONDAY NIGHT

Officers for the West Texas Geological Society are to be elected at a meeting of the organization at 8 p. m., Monday night. The session will be in the district courtroom of the Midland courthouse.

Before the election is held the membership will vote on a proposal to split the present secretary-treasurer office into two jobs—separate secretary and treasurer.

The nominating committee composed of F. H. McGuigan, chairman, Robert I. Dickey, Ronald K. DeFord, B. A. (Al) Rex, and E. Russell Lewis, will submit a slate of suggested names for the various offices, and other nominations will be accepted from the floor.

The committee nominations are:—For president—Max David, W. A. Waldschmidt, and Addison Young. —For vice president—Sam C. Giesey, Richard V. Hollingsworth, and William T. Schneider. —For secretary-treasurer, or treasurer—(if the place is divided)—Louise Fillman, Jane Johnson, and John Norman, Jr. —For secretary—(if the secretary-treasurer job is divided)—Mary Louise Rhodes, Warren Sobey, and Clyde Turner. —W. A. Waldschmidt, elected vice president a year ago, and who has been serving as president since the resignation of William J. Hilsweck, when he moved to Dallas, a few weeks ago, will preside at the Monday night meeting.

API WILL HOLD BUSINESS MEETING HERE ON JAN. 5

A business meeting of the officers, and members of the Permian Basin Chapter of the American Petroleum Institute will be held at 7:30 p. m., January 5, in the Crystal Ballroom of Hotel Scharbauer in Midland. The session will start with a dinner, according to R. E. Saxe, of Odessa, chairman of the chapter. Reservations should be made in advance.

NATIONAL PRESIDENT TO SPEAK TO AIME JAN. 7

Clyde E. Williams, of Columbus, Ohio, president of the American Institute of Mining and Metallurgical Engineers will be the guest speaker for a meeting of the Permian Basin Chapter of the AIME at 7 p. m., January 7.

SUNRAY PLANS ENLARGED EXPLORATION PROGRAM

Dor O. Chapell, division geologist for Sunray Oil Corporation at San Antonio, has been named a vice president of the concern, and will direct a new department of exploration, according to an announcement by C. H. Wright, Sunray president from his headquarters in Tulsa.

The appointment of Chapell to the new position, effective January 1, is the first step in a new program of activity which the company plans for the Mid-Continent states and in California, Wright said.

Chapell will move to Tulsa and set up his new office there. H. S. McCintock, another vice president, will continue to direct Sunray's land department.

MARKLEY IS NEW AMERADA SCOUT FOR NEW MEXICO

Richard Markley is the new scout for Amerada Petroleum Corporation for New Mexico. He works out of the concern's district office in Midland.

Prior to being assigned the scouting job Markley was stationed at Monument, N. M., for about four months. He, his wife, and two-year-old son, Stephen are now living in Midland.

PLYMOUTH EXECUTIVES VISITED PERMIAN BASIN

Sam T. Mallison, of Pittsburgh, Penn., public relations director in the headquarters offices of The Plymouth Oil Company was a visitor in Midland and other Permian Basin centers last week.

He was accompanied here by W. M. (Mike) Griffith, vice president, and general manager for the company's operations in Texas, and who maintains his headquarters at Sinton.

While in this area, Mallison and Griffith were the guests of W. D. (Bill) Lane, Plymouth superintendent in West Texas.

CONOCO AND TPC&OC HAVE MOVED OFFICE LOCATIONS

Continental Oil Company has moved its Midland offices from 601 West Missouri Ave. to the fourth floor of the Crawford Hotel. The concern will occupy those quarters until space contracted for in the new Midland Tower is available.

Texas Pacific Oil & Gas Company has moved into the West-

Construction Starts On Huge Natural Gas Plant In Oklahoma

BARTLESVILLE, OKLA.—(AP)—The Cities Service Oil Company here announced Saturday the start of construction of a natural gas-oline plant capable of ultimately processing 8,000,000 cubic feet of gas daily, near Mayville, Okla.

The plant, which ultimately will produce 300,000 gallons of natural gasoline, butane and propane daily, is scheduled for completion within 12 months, the announcement said.

The plant will be owned jointly by Cities Service, Carter Oil Company, Sinclair Prairie Oil Company, and Winclair Petroleum Company. Construction is being handled by Dresser Engineering Company, Tulsa, under the supervision of the Warren Petroleum Corporation, which will operate the plant when it is completed.

Initial construction will be completed in three units capable of handling approximately 45,000,000 cubic feet of low pressure gas daily.

Livestock

PORT WORTH.—(AP)—(USDA)—Cattle—compared week ago: all classes strong to unevenly higher at highest levels on record. Week's tops: beef steers and heifers 32.00; cows 28.00; bulls 18.50; stocker yearlings 23.50 with choice lacking. Week's bulks: medium and good slaughter steers and yearling 22.00-30.00; good cows 18.50-19.50; common and medium 16.00-18.00; campers and culls 12.00-15.00; sausage bulks 14.00-18.00; medium and good stocker steers and yearlings 20.00-23.50; medium and good stocker cows 14.00-17.00.

Calves—compared week ago: strong to 1.00 higher at new high levels. Good and choice slaughter calves 23.00-27.00, some heavies to 28.00 and 28.50; common and medium butcher calves 16.00-22.00; culls 13.50-15.00; medium and good stocker calves 20.00-23.50; no choice stockers offered.

Hogs—for week: butcher hogs 50c lower, sows 1.00 lower, stocker pigs 2.00 higher. Week's tops: butcher hogs 27.00; culling hogs 26.00; stocker pigs 20.00; closing bulk: good and choice 24.00; fat yearlings 21.00; fat cves 10.00; feeder lambs 19.00. Bulk prices: medium and good woolled fat lambs 22.00-24.00; medium and good shorn lambs No. 1 pelts 19.00-22.50; medium and good slaughter 17.00-21.00; medium and good slaughter ewes 9.00-10.00; cull and common ewes 7.50-8.50; medium and good feeder lambs 17.00-19.00.

ARMSTRONG IS INSPECTOR FOR RAILROAD COMMISSION

H. P. Armstrong, formerly of Georgetown, is a new inspector on the staff of the Midland office of the oil and gas division of the Railroad Commission of Texas.

BORIS ARE VISITED BY FORT WORTH RELATIVES

James H. Cook, Jr., and young son, James Theron, of Fort Worth, were guests in the home of Mr. and Mrs. Edmund Boris, 502 West Storey, several days last week. The elder Cox is a brother of Mrs. Boris. He was in Midland to assist in the installation of the special front door in the new Honolulu Oil Corporation Building.

AERIAL SURVEY CONCERN HAS CHANGED ITS NAME

Name of the concern formerly known as Karol Aerial Surveys, Inc., has been changed to Midland Aerial Surveys, Inc. According to an announcement by Gordon K. Elderkin, manager.

SPLC IS PREPARING TO MOVE MORE BASIN OIL

Stanford Pipe Line Company has practically completed a new 90-mile, eight-inch pipe line from the Garza field, in Central Garza County, to a connection near Menroe, in North Lubbock County, with its 16-inch trunk carrier from West Texas to Drumright, Okla. The Garza line is to be in operation shortly.

The company is now starting on a looping program on the West Texas-Drumright line, which will increase its capacity from 83,000 barrels per day to 100,000 barrels each 24 hours. The first of the loops to be built will be 46.22 miles of 16-inch line between Monroe Junction and Floydada. Contracts on four other loops which will total 29 1/2 miles will be let during January.

It is reported that the company plans to lay 164.37 miles of additional loops on the big line during the Summer of 1948, in order to raise the carrying capacity of the trunk to 132,000 barrels daily. Those loops are due to be completed by October 1.

Stanford is also reported to have sought the South Plains Pipe Line company system in Reeves and Johnson Counties, which is connected to wells in the Levelland and Slaughter fields, with approximate daily production of 9,000 barrels.

Lea Wildcat To Treat And Test Zone With Oil Shows

HOBBS, N. M.—(Delfern Oil Company No. 1 Lea-Stein, wildcat in West-Central Lea County is due to test shows of oil and gas which have been encountered in the middle Permian lime, above the current total depth of 4,723 feet.

These indications of possible production had not been extra heavy, but it was understood that operator plans to treat the section showing the porosity and oil stain with acid, in an effort to stimulate the section.

North Of Vacuum Field

The prospector is three miles northwest of the Vacuum field, and 1,860 feet from north and west lines of section 8-175-34e.

Texas Gulf Producing Company No. 1-B State, one location stepout from the recently discovered new producing area on the west side of the Vacuum field, and 660 feet from north and west lines of section 32-175-34e, has reported a daily industrial production of 120 barrels of oil per day, averaging and flowing from part section in the San Andres-Permian at 4,633-4,755 feet.

That zone had been treated with 5,000 gallons and with 6,000 gallons of acid.

Texas Gulf No. 1-C State, 1,980 feet from south and 660 feet from east lines of section 32-175-34e, had reached 2,000 feet in anhydrite, and was drilling ahead toward 4,750 feet, or thereabouts, to test the San Andres producing possibilities.

In Northeast Lea Area

Mid-Continent Petroleum Corporation No. 1-A Sawyer, slated 11,000-foot wildcat in extreme Northeast Lea County, and 680 feet from south and 1,840 feet from east lines of section 27-89-36e, had reached 9,165 feet, in an unidentified lime, with streaks of dolomite, and was drilling ahead.

Magnolia Petroleum Company No. 1-A Sant-Fe, in the Crossroads section of Northeast Lea, and 680 feet from south and east lines of section 30-89-36e, was bottomed at 4,780 feet in lime, and was milling on junk. As soon as the obstruction is removed more hole will be made.

Shell Oil Company, Inc., No. 1 Taylor-Glenn, deep venture in East-Central Lea County adjacent to the shallow Hardy field, and 3,300 feet from north and 1,980 feet from west lines of section 3-215-37e, was on a total depth of 8,972 feet in granite. It had run a Schumberger survey, and is waiting for orders.

Oil Shows

This prospector drilled through the Ellenburger without finding any shows of oil or gas. A drillstem test was run in that zone at 8,538-4/2 feet. The tool was open one hour. Recovery was 46 feet of drilling fluid, with no shows of oil.

No other formation penetrated had shown any strong possibilities of production.

Amerada Petroleum Corporation No. 2 H. S. Record, deep exploration in the Monument shallow field of Central-East Lea County, and 1,980 feet from north and 660 feet from west lines of section 25-185-35e, was making hole below 10,819 feet in an unidentified lime.

It ran a four-hour drillstem test at 10,752-562 feet. A 1,600-foot water blanket was used. There was a light blow of air throughout the period.

Water Recovered

Recovery was the water blanket, 3,180 feet of black salt, sulphur water, and 40 feet of mud cut sulphur water, with a gas odor.

Amerada No. 8 Andrews, another deep development in the Monument area, and 589 feet from north and 711 feet from west lines of section 12-205-36e, had reached 7,740 feet, in dry lime, and was continuing to make hole.

Barnsdall Oil Company No. 9 Alaska Cooper, 554 feet from north and 765 feet from east lines of section 12-205-36e, and a deep wildcat in the Monument area, had reached 8,239 feet in the Pennsylvania lime, and was continuing, at last report.

Tentative, unofficial top of the Pennsylvanian was picked by some geologists at 7,870 feet, on an elevation of 3,565 feet.

A drillstem test was run at 7,765-7,868 feet. The tool was open four hours. There was no gas. Recovery was 3,800 feet of salty, sulphur water, with a slight oil cut. Operator has not revealed how much deeper the project will be carried.

Chaves Prelet Continues

Richfield Oil Corporation No. 1-A 1788, Southeast Chaves County prospector, 660 feet from south and 1,980 feet from west lines of section 35-142-27e, had penetrated past 9,312 feet in an unidentified dolomite, and was continuing. It has not reported having logged any shows of oil or gas. It is due to go to the granite—unless it gets oil or water before that section is reached.

Deafened Now Hear Whispers 5 Feet Away

Tests by the American Medical Association's Council on Physical Medicine show that science has now enabled deafened people to hear faint sounds, to easily understand whispers from 5 feet away, aided by a tiny hearing device so light you hardly know you are wearing it. With thoughtful use, enjoy music, sermons and friendly companionship. Finger tip controls let you adjust it instantly to changing sound conditions. No separate battery pack, wires or harness buckle to weigh you down. The makers of Beltona, Dept. 25, 1450 W. 19th St., Chicago 8, Ill., are so proud of their achievement that they will gladly send you a free descriptive booklet and explain how you may test this remarkable device in your own home without risking a penny. Write Beltona today. (Adv.)

ZONING COMMISSION WILL MEET MONDAY

Members of Midland's Zoning Commission will meet at 7 p. m., Monday in the city hall, John J. Redfern, Jr., chairman, announced Saturday. The commission was created by an ordinance adopted by the City Council recently.

HEY, KIDS!

Have you seen the wonderful jeans I designed for you?

GENUINE

Jane Cooty JEANS

When you get your jeans, look for the coupon on the label, then send it in for an autographed color photo of me and Champion. There's a koon leather label on the jeans, too, with my signature and my "Flying A" ranch brand on it. Just be sure you buy genuine GENE AUTRY JEANS, made exclusively by WOOD OF TEXAS.

Sizes 1 to 10 \$195

Sizes 12 to 16 \$225

T. Paul Barron LEATHER GOODS
201 So. Main — Phone 691

FOR NOTHING DOWN

And Up To

3 YEARS TO PAY

YOU CAN HAVE A STEADY INCOME.

You Can:

1. Convert that garage into an apartment. (Rentals in nearly all cases exceed the monthly payments)
2. Add one or more rooms to present house.
3. Add porch to your house.
4. Build a garage.
5. Build a fence.
6. Reroof, repoint, and rebuild.
7. All repairs and additions.

Rockwell Bros. & Co.

BUILDING MATERIALS

112 W. Texas Phone 48

Down SPORTS Lane

with TANNER LAINE

This happy New Year is apt to be the greatest in history for Midland in the way of sports. Not that any particularly great events are scheduled but because of the carrying on of regular activities with improvements perhaps.

Looking into 1948, there will be high school basketball through January and February with some good 3-AA games booked here. Then comes high school track-feld followed by baseball or the Bulldogs. There will be no Spring training in football. Next Fall is a new slate and Midland will join the pack which after Odessa's hide now the Broncs have been tumbled.

Bowling will enjoy a great year in 1948 in Midland. We have the best of alleys in Plamor Palacs. Bowling is the sport for all. Midland has fine leagues and open play is good.

League baseball returns for its second year in Midland with the Midlanders in the Longhorn League fight again. The second-place Drib, and only outfit to get on top of the circuit beside the season-leader Big Spring last year, drew more than 35,000 paid admissions and should beat that figure by plenty in 1948.

There will be softball and those interested in this fine sport will gain enjoy good games in an excellent plant. Outstanding players probably will be returned to Midland.

Golf will boast a banner year. The attractive Midland Invitation returned in 1947 and the '48 event will be a greater one. The country club is enlarged in its facilities around the clubhouse, a \$30,000 job of 1947. Women will play a lot of golf at the MCC again in '48 and they will have their city tournament. The youngsters got in the win in 1947 with a boy's tourney and a repeat has been ordered. May be even that Old Men's Tournament, which has been kicked around the office cups in planning, will be staged this year.

Most certainly the Midland Gun Club and its affiliate the Permian Basin Rifle Club will continue current actions with improvements and innovations scheduled. There is no doubt the big all West Texas skeet tournament held here in 1947 will become an annual event.

The Midland Tennis Club governs the post-war hump in 1947 and staged city tournaments in several classes. These are again in the offing.

There always are a few rule changes in the two major sports—football and basketball. For the benefit of you cage fans there are new changes this year in your sport. These will not be so apparent to spectators.

Here are those changes: Last year the officials informed the coaches when there were only four minutes left to play. Wholesale substitutions could be made at that time. From then on, however, just one at a time could be made. This season time will stop automatically on all dead balls in the last three minutes but the coaches must be informed on how much time is left. Unlimited substitutions may be made.

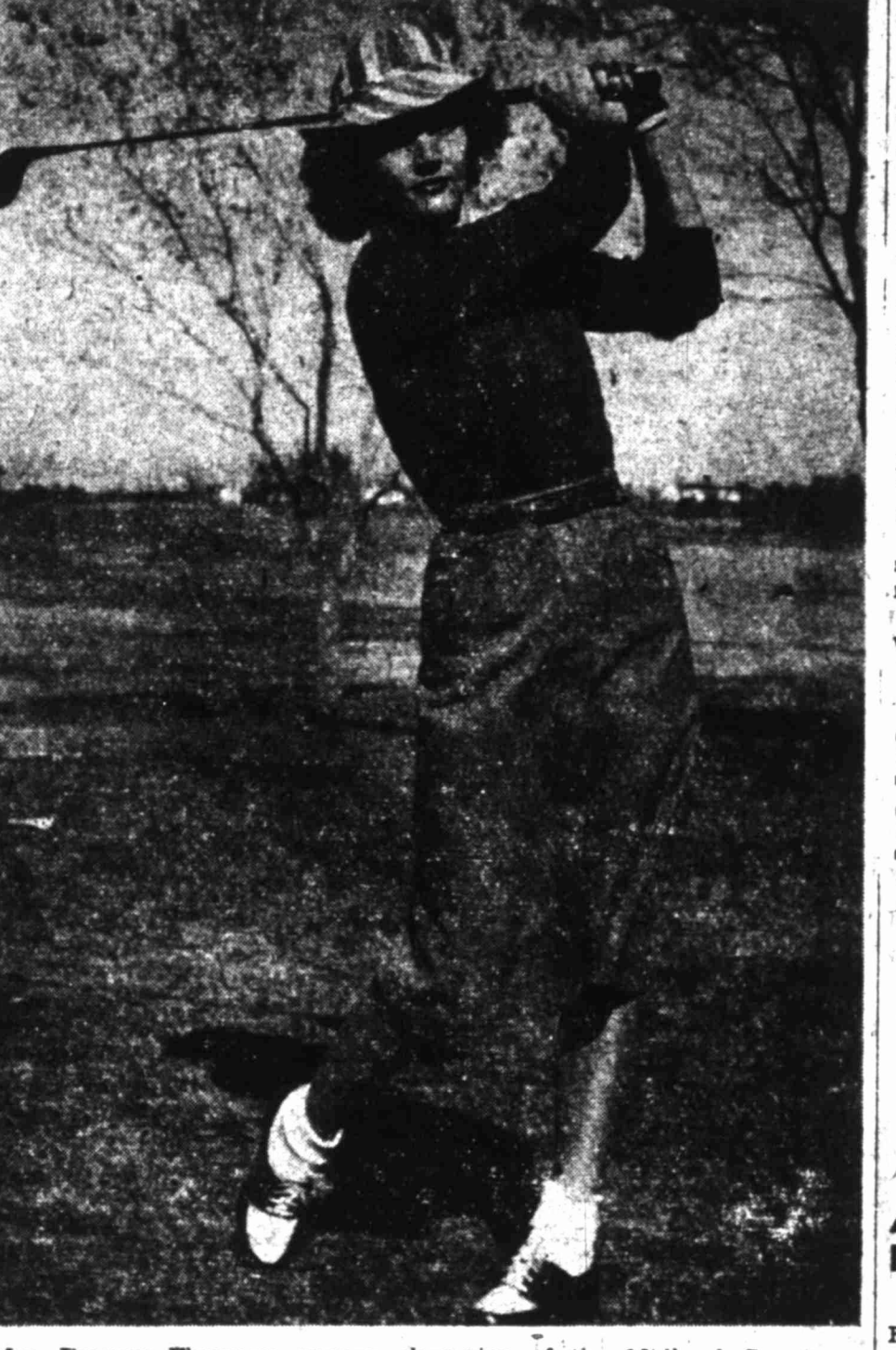
In other words, there was nothing but confusion resulting from the four-minute rule. There's no stopping the game to virtually ask the coach to make substitutions. He ought to know whether he wants new men in the game or not—and he should be able to keep up with the time.

Fouls which occur when play is suspended will be technical instead of personal and the ball will go out of bounds to the offended team. The purpose of this rule is to Auto Loans. Appliance Loans. Re-finance your present loan. MID-LAND FINANCE COMPANY. H. Brock - A. C. Coawcp. We appreciate your business. Tel. 548. 31 E. Wall St.

Sports

THE REPORTER-TELEGRAM, MIDLAND, TEXAS, JAN. 4, 1948

Women's City Champ



Mrs. Frances Flournoy, woman champion of the Midland Country Club tees off with a smooth swing. Mrs. Flournoy, who has been playing golf but a year, won the tournament when she bested Mrs. Paxton Howard, 5 and 4.

3-AA OPENER—

Purple Dumps Lamesa, 27-22

LAMESA—Coach Jack Mashburn's hustling Midland Bulldogs won their opening 3-AA basketball game here Friday night, quieting the Lamesa Tornadoes, 27 to 22.

In the curtain-raiser, Coach Aubrey Gill's Midland "B" basketekers dropped their first game this season, falling to the Tornado "D", 25-23. It was oh, so close, and a thriller.

Four Texans Chosen On WWA All-America High School Squad

OKLAHOMA CITY—(AP)—The Wigwam Wisemen of America Saturday announced its 44-man all-American high school football squad, which it said would play an East-West all-star game next August.

McNeill of Lamesa garnered 11 points and scoring honors in the "B" tilt. Miller and Bizzell pumped in six points each for Midland. The box scores:

MIDLAND				
Player	FG	FT	PF	TP
Messersmith	3	1	4	7
Harris	2	2	4	6
Hankia	1	0	5	2
Dunn	2	0	1	4
Jackson	0	0	2	8
German	0	0	3	0
Shepard	0	0	0	0
Total	12	3	19	27

LAMESA				
Player	FG	FT	PF	TP
Hoover	3	3	1	9
Cox	0	0	0	0
Watson	2	0	1	4
Kattimore	1	1	1	3
Morris	0	2	3	2
Pa'air	1	2	1	4
Bizzell	0	0	0	0
Womack	0	0	0	0
Moody	0	0	0	0
Phillips	0	0	0	0
Totals	7	8	7	22

MIDLAND "B"				
Player	FG	FT	PF	TP
Henderson	1	1	0	3
Miller	2	2	3	6
Smith	2	1	1	5
Harris	0	0	0	0
Bizzell	3	0	1	6
Weaver	0	0	3	0
Conline	1	0	0	2
Price	0	0	0	0
Gilmore	0	1	2	1
Robertson	0	0	1	0
Totals	9	5	11	23

LAMESA "B"				
Player	FG	FT	PF	TP
Hart	2	0	1	4
Roe	0	0	0	0
Bates	0	0	2	0
Hughes	2	0	0	4
Phillips	0	0	2	0
Luenberger	1	0	2	2
McNeill	5	1	2	11
Conner	0	0	0	0
Messingale	0	0	2	2
Hawkins	0	0	2	2
Totals	11	3	9	25

Ducats Sell For Golden Gloves Meet

Tickets are on sale at the Midland Chamber of Commerce office and other points in the city for the district Golden Gloves tournament to be held January 16-17 at Midland Air Terminal.

Midlanders who like boxing will want to purchase these tickets and see the two-day mitt meet. Odessa's team already is an entry and other Permian Basin cities are expected to send teams here. Midland, of course, will enter a team. It is working out nightly at the legion hall.

Sponsor of Golden Gloves in Midland is the Veterans of Foreign Wars organization and it will furnish the site for the tournament. Ringside tickets cost \$1.80, reserved seats \$1.20, and general admission 60 cents. Attractive awards will be given various winners in the tournament. Joe Shell is matchmaker.

Bulldogs Meet Broncs Tuesday

The Odessa Bronchos are coming! This time it's basketball. The Bronchos invade Midland Tuesday night for the first home 3-AA cage game for the Bulldogs.

Two games will be played, with "B" fives of the two schools unrelenting a curtain-raiser. The varsity tilt will begin at 8 p. m.

Armed, Assault Will Duel In February

MIAMI, Fla. —(AP)— Calumet Farm's Armed and King Ranch's Assault will duel under top weight of 130 pounds in the \$50,000 added Widener Handicap at Hialeah Park February 21.

Calumet's golden gelding will carry a pound more than last year as he seeks his third consecutive Widener victory. Assault, 1946 "horse of the year," will try for a Widener victory for the first time. The King Ranch standard bearer lost to Armed in the special at Belmont last Summer, but termen claim he wasn't at his best. Assault won five consecutive 1947 stakes before bowing to Stymlie and Talon in the first running of the International Gold Cup.

Jimmy Demaret Wins Golf's Vardon Trophy

LOS ANGELES. —(AP)— Jimmy Demaret of Houston, Texas, and Ojai, Calif., won the Vardon Trophy for 1947, the Professional Golfers' Association of America announced Saturday.

The Texan, noted for his lavish sports attire and good golf, edged out fellow Texan Ben Hogan for the honor by four-hundredths of a point — 69.80 to 69.84.

Baylor-Tulane Grid Game Slated In '48

WACO—(AP)—Baylor and Tulane will meet on the gridiron for the first time next November 13 when the Bears go to New Orleans for a contest with the Green Wave. Athletic Director Ralph Wolf announced Saturday.

City Manager Meets With Department Heads

H. A. Thomason, who Thursday assumed his duties as city manager, Friday afternoon took time out from his office arrangement chores to meet with the heads of all city departments. Conferences with the personnel of various departments were held Saturday. The City Council Tuesday night.

Hogan Takes Lead In Los Angeles Open

LOS ANGELES—(AP)—Defending Champion Ben Hogan fired his second sub-par round in the Los Angeles Open Saturday, and as the pace setter of the first round, Jack Harden of El Paso, fell by the wayside, took at least temporary command at the midway point of the tournament.

J. B. "PETE" PETERSON WATCHMAKER & JEWELER

Prompt, Reliable Service • Call For and Deliver 708 W. Illinois Phone 972



It was runny weather in the Cotton Bowl at Dallas January 1, even though the temperature was near freezing. This may have had something to do with missed passes such as this one, in the second quarter of the game between Southern Methodist and Penn State. Here, No. 86, Bob Hicks, Penn State, does a gyration in an attempt to snag a pass tossed at him. Breaking up the play is No. 81, Bobby Polson (falling) and No. 41, Frank Payne, both EMU. Final score was a 13-13 tie.

Odessa Lands Two Players On Scribes' All-State Grid Team

By WILBUR MARTIN Associated Press Staff

Stars in Texas' 1947 high school football race were widely scattered, and six of those bright enough to make the Texas Sports Writers Association All-State Team were from teams that failed to win district titles.

Selected by more than 100 coaches and by sports writers over Texas, the All-State Team announced Saturday includes only one boy from last year's mythical eleven. This is Byron Townsend, great Odessa back, who was a unanimous choice.

The extremely well-balanced team, composed entirely of seniors, has only one player from state champion Brackenridge (San Antonio). And finalist Highland Park (Dallas) did not place a single man on the first team.

Odessa is the only school represented by more than one player, its other all-state performer being Gordon Headlee, a near-unanimous choice at guard.

William Wilson, Ennis, and James Spencer, Brackenridge, easily won end positions, while Charles O'Neal, Corpus Christi, was an overwhelming choice for one tackle position. The other was filled by Bill Wilson, Sam Houston (Houston).

Jerald Olive, Brackenridge (San Antonio), captured the other guard position, while Don Menasco, another center honor.

One Playoff Back The backfield has only one man who played past district competition, Townsend. The others are Reed Quinn, Austin, a sensational punter; Henry Stollenwerk, Waxahachie, hailed as the best broadfield runner in the high school game, and Bill Burkhalter, Texarkana's great individual star.

Wichita Falls, which went undefeated until quarterfinal play, failed to place a single man on the first team, though two Coyotes made the second team and another the third.

This probably is the only team picked by the association in which so few players from playoff teams were included. Two boys tied for backfield positions on the third team. They are Pat Knight, Thomas Jefferson (San Antonio), and Marshall Alford, Brownsville.

Honorable Mention Ends—Mike Michon, Kerrville; Bill Howton, Plainview; Don Stratt, Austin (El Paso); Jim Bollof, Sherman.

Hogan finished Saturday's round with a 70, one under par for the 35-36-71 Riviera Country Club course, and with his 63 Friday, made a 36-hole score of 138. Harden, whose 67 led the field Friday, slipped to a 77 Saturday for 144.

Arizona is the only pest-free citrus area in the United States.

THE FIRST TEAM

Pos.	Player	School	Age	Wt.
End	William Wilson	Ennis	17	198
End	James Spencer	Brackenridge	18	172
Tackle	Charles O'Neal	Corpus Christi	17	203
Tackle	Bill Wilson	Sam Houston (Houston)	17	190
Guard	Jerald Olive	Brackenridge (S. A.)	18	162
Guard	Gordon Headlee	Odessa	18	200
Center	Don Menasco	Longview	17	230
Back	Henry Stollenwerk	Waxahachie	17	175
Back	Reed Quinn	Austin	17	185
Back	Byron Townsend	Odessa	18	160
Back	Bill Burkhalter	Texarkana	17	171

SECOND TEAM

End	Freddie Simmons	Wich. Falls	17	172
Guard	Charles Driver	Lufkin	17	170
Guard	Danny Perkins	Brackenridge	17	170
Guard	Jim Long	Mineral Wells	17	170
End	Buddy Terry	Longview	17	170
Back	James Timmons	Sweetwater	17	175
Back	William Wood	Wichita Falls	17	175
Back	Homer Dear	North Side	17	175
Back	Thomas Jefferson	Thomas Jefferson	17	175
Back	Marshall Alford	Brownsville	17	171

Lamar; Joe Rowe, Highland Park; Billy Bob Cannon, Kingsville.

Tackles—Marvin Hill, Kilcoer; Robert Davidson, Port Arthur; John Carroll, Goose Creek; Jerrell Price, Brownfield; Douglas Conaway, Hillsboro; Charles Shaw Brackenridge.

Guards—Alton Taylor, Austin; Carlton Skipper, Waxahachie; Freddie Clotiaux, South Park (Beaumont); Manuel Oxfanos, McAllen; Shepherd, Gladewater; Frank Anderson, North Dallas; Pace, Odessa.

Centers—Bill Banta, San Antonio; Ed Mosak, Goose Creek; Tommy Moorman, Odessa.

Backs—Duane Grissett, Mineral Wells; Buddy Lambert, Gaena Park; Williams, Cisco; Jack Schluening, Brackenridge; Elmer Field, Marshall; Lawson, Wichita Falls; June Davis, Denton; Bobby Dillon, Temple; Alton Martin, Brownfield; Bob Bozie, Plainview; Leroy Collier, Forest; John Duke, Sherman.

PLUMBING REPAIRS FRANK GOODE

109 W. Florida Phone 1612-J or 2599 C. E. Smith, Owner

ONE NIGHT ONLY Bob Wills And His Texas Playboys

Monday, Jan. 12 9 TIL 1 VFW HALL \$1.80 Admission No Reservations

NOW IN PROGRESS! TWIN-ENGINE FLIGHT INSTRUCTION!

We are now fully equipped to give you twin-engine instruction. If you have a private license and as many as 150 flying hours OR if you have a single engine commercial license you are eligible for this training.

Ex-G.I.'s, your instruction will be paid for by the government!

10 DAYS is all it takes to give you a twin-engine rating!

THE SCHOOL IS NOW IN PROGRESS! YOU CAN ENROLL NOW!

"Government Approved Twin-Engine School"

West Texas Flying Service

Located SKY HAVEN AIRPORT East Highway 80 Phone 844

"Next time take it to ACE MOTORS. They'll fix your lights right."

SMITH-CORONA

OFFICE TYPEWRITERS

BRAND NEW! LATEST MODELS! STANDARD or SILENT! They have everything—Automatic margin set, interchangeable letters, tabulator, Touch selector. Everything!

HERE'S YOUR CHANCE TO REPLACE OLD WAR-WORN MACHINES WITH THE SWIFTEST OF MODERN TYPEWRITERS!

Call Us today Baker Office Eqpt. Co.

Office Furniture Typewriters-Adding Machines Friden Calculators Sales - Service Phone 2634 - 415 W. Texas Midland

J. B. "PETE" PETERSON WATCHMAKER & JEWELER

Prompt, Reliable Service • Call For and Deliver 708 W. Illinois Phone 972

TAXI - - Call 80 or 600

Prompt, Courteous Service - - 24 Hours Daily

CITY CAB CO.

221 N. Colorado H. G. Newton, C. A. Brown—Owners

Christmas Seal Sale Is \$503 Short Of Goal

A total of 1,031 persons have contributed \$4,897 to the Midland County Tuberculosis Association through the purchase of Christmas seals. John J. Redfern, Jr., campaign chairman, said Saturday. The figure is \$503 short of the \$5,200 goal which is needed to finance activities of the TB association this year. Officials of the association appealed to citizens who have not made returns to do so at once so the drive may be ended promptly and successfully. "We must hear from all outstanding mail if we are to meet our 1948 budget," Redfern said. "The Midland County Tuberculosis Association receives its sole support from the sale of Christmas seals." The campaign opened Thanksgiving Day when sheets of the seals were mailed to hundreds of citizens.

All eyes require more and more illumination as they grow older because they admit an ever-decreasing percentage of available light.

Funeral Services For Marvin English Are Held In Midland

Funeral services for James Marvin English, 41, an assistant manager of the A&L Housing and Lumber Company here, who died Thursday in Dallas, were held at 2 p. m. Saturday in the First Baptist Church. The Rev. Vernon Yearby, pastor, assisted by J. Woodie Houston, minister of the North Side Church of Christ, officiated. Interment was in Fairview Cemetery. English, a resident of Midland the last nine years, was born March 8, 1906, in Haskell County, Kansas. He came here from Floydada as manager of the Higginbotham-Bartlett Lumber Company. The family residence is at 507 North San Angelo Street. Survivors include the widow, a son, Bobby; two daughters, Lou and Frances Ann, all in Midland; the parents, Mr. and Mrs. R. L. English of Alma, Ariz.; two brothers, Lester of Spur, N. M., and Delbert of Dexter, N. M.; and two sisters, Mrs. Edith Turner of Ingleswood, Calif., and Ruth English of Alma.

Sheep first were introduced into America in 1609, being brought to Virginia from England.

An Even Swap for a Book



Money alone buys practically nothing in scarcity-ridden Germany these days. To purchase a book, you must have the equivalent in old paper plus the price of the book. Above, two Stuttgart boys hope their three-foot long discarded voting list, held by the salesgirl, will be enough to exchange for a school book.

It is estimated that modern Americans read at least five times as much as their grandfathers did.

About nine pounds of plastic parts are used in a modern passenger automobile.

Texans Listed As 'Big Traders'

WASHINGTON (AP)—The Agriculture Department made public Saturday night an alphabetical list of 755 "big traders" in grains, butter, eggs, potatoes, lard, millfeeds, cottonseed meal and soybean meal, covering the period from January 1, 1946, to November 30, 1947.

The list does not show which of these commodities nor how much were traded in by the various persons or firms. However, it contains those holding or controlling contracts equal to or more than these amounts:

Grains 200,000 bushels; butter, eggs, potatoes, 25 carlots; lard 250,000 pounds; millfeeds, 1,000 tons; cottonseed meal, soybean meal, 1,000 tons.

The list includes these Texans: Burrus, J. B., Dallas; Byer, Edward R., Garland; Cate, Henry M., Dallas; Cleveland, J. Fred, Fort Worth; Cox, Edwin B., Dallas; Cox, Edwin E., Dallas; Curtis, Jr., Jesse B., Greenville; Dawson, Herman, Fort Worth; Embretsen, Robert V., San Antonio; Fant Milling Co., Sherman; Hamon, Jake L., Dallas; Harris, Mrs. Annie, Sinton; Harvest Mill and Elevator Company, Plainview;

Texas Crops Bring Record Returns In '47

AUSTIN (AP)—An all-time high value of \$1,466,219,000 was attained by Texas crops last year, the United States Department of Agriculture reported.

USDA attributed the record total to the larger cotton and wheat crops and a general increase in the level of prices of most farm commodities.

The bumper total was 55 per cent greater than the \$322,248,000 value placed on 1946 crops and 94 per cent more than the valuation of \$745,290,000 in 1945.

Cotton and cottonseed were valued at \$631,000,000 and were responsible for \$311,000,000 of the \$1,466,219,000 rise in value from 1946.

Wheat worth \$775,908,000 accounted for \$126,000,000 of the increase. The crop of golden grain exceeded 1946's valuation of \$113,378,000 by 246 per cent.

Hays, Russell E., San Angelo; Kimbrell Milling Company, Fort Worth; Lone Star Elevator, Fort Worth; Neal, Wesley L., Jasper; Peterson, Ed., Wichita Falls; Producers Grain Corporation, Amarillo; Reiser, Dale, El Paso; Roelke Provision Company, San Antonio; Smith, Jack, Dallas; Tex-O-Kan Flour Mills Company, Dallas; Universal Mills, Fort Worth; Whitsitt, H. H., San Angelo; Wilson, R. R., Fort Worth.

Dam Building Program To Unearth Relics

ALBUQUERQUE, N. M. (AP)—The long-buried story of peoples who inhabited the great Missouri River Basin 1,000 to 10,000 years ago will be unearthed with speed and thoroughness because of unprecedented dam building program now getting under way.

This story has remained largely untold because archeologists heretofore have had apparently richer and more easily workable places from which to recover evidence of prehistoric life in America.

It will be brought out, Dr. Jesse D. Jennings of the national park service, told the American Anthropological Association, because governmental and scientific agencies are co-operating to glean the evidence in advance of coming man-made floods which will flood many areas in the region.

DAUGHTER BORN TO MR. AND MRS. T. R. TATE

Mr. and Mrs. T. R. Tate of McAllen, formerly of Midland, are the parents of a daughter born December 31, according to information received here. The baby has been named Virginia Ann. Mrs. Tate is the former Betty Jean McDonald of Midland.

Forecasts Of Thaw Cheer Residents Of Winter Storm Areas

By The Associated Press

Forecasters of a general thaw cheered millions of residents in the nation's "ice belt" Saturday. The most destructive storm of the winter laid a 2,000-mile-long ice and snow blanket from the Texas Panhandle to New England, but forecasters said temperatures would rise gradually and by Monday a "reassurable portion" of the cover would be melted away.

The storm caused damage running well into the millions. South-eastern Iowa reported damage of more than \$1,000,000, and Illinois suffered damage at \$1,200,000 to telephone lines alone. Damage also was heavy in other Midwest and Eastern states. The storm brought death to at least 16 persons in the New England states and the New York metropolitan area. Other storm fatalities occurred in the Midwest.

Some stretches of the 79-mile-long Albert Canal in Belgium run between 40-foot embankments above the surrounding country.

GET CASH PRIZES!

\$203,725.00

"TREASURE TOP" SWEEPSTAKES AND CONTESTS

WIN ONE OR MORE OF THESE CASH PRIZES

51 CASH PRIZES EACH MONTH IN YOUR STATE

IN ADDITION...WIN FAMILY SWEEPSTAKES 1st PRIZE \$25,000.00 CASH

IN ADDITION...WIN MONTHLY NATIONAL PRIZES

Every entry gets at least a 100 point Certificate for the Family Sweepstakes

Hidden design under EVERY BOTTLE TOP



Win your prize from this list

- #### Family Sweepstakes Prizes:
- 1st PRIZE: \$25,000.00
 - 2nd PRIZE: \$5,000.00
 - 3rd PRIZE: \$2,000.00
 - 4th PRIZE: \$1,000.00
 - 5th PRIZE: \$500.00
 - 35 PRIZES: \$100.00 each
- #### Monthly National Prizes:
- 1st PRIZE: \$1,000.00
 - 2nd PRIZE: \$500.00
 - 3rd PRIZE: \$250.00
- #### Monthly Prizes in Every State:
- 1st PRIZE: \$100.00
 - 2nd PRIZE: \$50.00
 - 3rd PRIZE: \$25.00
 - 4th to 10th PRIZES: each \$10.00
 - NEXT 41 PRIZES: each \$5.00
- ★ Every entry gets at least a 100 point Treasure Certificate toward the Family Sweepstakes Prizes

Everybody Can Get a TREASURE Pouch

This big, 7-inch Treasure Pouch is made of heavy cloth with a zipper at the top, has back loops so that it may be worn on a belt. It's handsome, it's handy, it's practical, it's a safe place to keep your "Treasure Tops". To get your Treasure Pouch, just send 25¢ in coin to Pepsi-Cola Treasure Pouch, P. O. Box 19, New York, N. Y.

Find the hidden designs

"TREASURE TOPS"—what they are

"Treasure Tops" are Pepsi-Cola bottle tops with hidden designs under the cork lining. To find the design, simply remove the cork from inside the bottle top. At present, there are 48 different designs—symbols of branches of the U. S. Armed Forces—like those shown above. At intervals during the contest, new designs will be added. That makes these big Pepsi-Cola "Treasure Top" Sweepstakes and Contests even more fun. Look for them! Collect them!

Soak and flip out

Soak Pepsi-Cola bottle tops in moderately hot water until cork lining softens. Then cork can be removed from top with pen knife or kitchen knife.

- #### HERE ARE THE OFFICIAL CONTEST RULES
- On your entry blank or a sheet of paper, complete this statement in 25 words or less—"Pepsi-Cola hits the spot because...". Then write down your own name and address, the name of the head of your family, the name and address of the Pepsi-Cola dealer who helped you, and the total number of different designs on Pepsi-Cola "Treasure Tops" you have collected. Then mail your entry, together with one Pepsi-Cola "Treasure Top" with cork removed to show hidden design, to:
 - Pepsi-Cola "Treasure Top" Contests, P. O. Box 17, New York 8, N. Y.
 - Entries with insufficient postage not accepted.
 - The number of different designs you have collected will not be a factor in the awarding of prizes. However, when you win a monthly prize, you must be able to show your total collection of different designs reported in the winning entry. Also, it's fun to collect and swap "Treasure Tops". Do not send your collection of "Treasure Tops" with your entry. Send in only one top with each entry.
 - You may enter these contests as many times each month as you wish, but no entry postmarked after June 30, 1948 will be accepted. Each time you enter, whether you win a cash prize or not, we will mail you a Treasure Certificate good for 100 points toward the \$37,000.00 Family Sweepstakes Prizes. If you win any one of the monthly prizes, you will receive 100 additional Treasure Certificate points.
 - All entries received during each calendar month will be judged in that month's contest. Entries from each state (and from the District of Columbia) will be judged separately, and will compete for the monthly state prizes only with other entries from that state.
 - Monthly cash prizes as listed on this page will be awarded on the basis of aptness, originality and interest of the statements submitted (see Rule 1). Each month's national prizes will be awarded to the three best entries of the 49 state first-prize winners in each monthly contest. All entries will be judged by the impartial judging staff of The Reuben H. Donnelly Corporation, an independent, nationally-known contest judging organization. Decisions of the judges will be final.
 - All entries must be prepared by the contestant. Elaborate or fancy entries will not count extra. All entries and statements become the property of the Pepsi-Cola Company and none will be returned. In case of ties, the prize pool will be awarded to each tied contestant, except for the sweepstakes prizes, procedure for which is listed under Rule 8.
 - Only contestants living within the 48 states or the District of Columbia will be eligible. Anyone may enter these contests except the employees of the Pepsi-Cola Company, Pepsi-Cola bottling companies or their advertising agencies. Members of the families of these employees are also excluded.
8. HUGE NATIONAL SWEEPSTAKES PRIZES WILL BE AWARDED AS FOLLOWS:
- Each Treasure Certificate received by you or members of your family (see Rule 3) counts 100 Sweepstakes Points for your family. Save them! For the purpose of this contest, a "family" shall be considered as only persons related by blood, marriage or adoption living in the same household under one family head.
 - The 100 families, plus families tying with any of them, who have received the greatest number of Sweepstakes Points in the competition, qualify for the Sweepstakes Finals. Each family thus qualifying must be prepared to show the total number of Treasure Certificates received by the family and also to show the total number of "Treasure Top" designs reported in the family's entries (see Rule 1). Both the number of Treasure Certificates and the number of "Treasure Top" designs must agree with official contest records of the judging staff and these records will be considered final where any discrepancy occurs.
 - The qualifying families will then be promptly notified and each family will be required to submit one statement of fifty words or less on the subject "How the Sales of Pepsi-Cola Can Be Increased". They must get the help of their Pepsi-Cola dealer in preparing this statement and must submit that dealer's name and address. The Sweepstakes Prizes will then be awarded by the impartial judging staff, mentioned in Rule 5, on the basis of aptness, originality and sincerity of the statements thus submitted.
- These contests are subject to all state and local laws and regulations.

Facts about Pepsi-Cola to help you win!

Here are just a few of the reasons why so many people prefer Pepsi-Cola to any other soft drink. Perhaps they'll help you when you're preparing your contest entries.

QUALITY—The finest of ingredients, the utmost care and skill in blending and bottling, make Pepsi-Cola tops for quality.

SIZE—That big Pepsi-Cola bottle speaks for itself. Every bottle holds 12 full ounces of pleasant drinking.

That means Pepsi goes farther—makes entertaining more economical—gives you plenty to enjoy.

TASTE—Your own taste tells you that flavor comes first with good good Pepsi. It's the swell-tasting drink that packs lots of smoother drinking in every bottle.

VALUE—Bigger, better Pepsi-Cola sets the pace for value. Compare Pepsi by any standard... for quality, size of taste. You'll find it's your best drink, your best buy.

ENTER HERE AND NOW!!!

PEPSI-COLA "TREASURE TOP" CONTEST

P. O. BOX 17, NEW YORK 8, N. Y.

NAME _____

ADDRESS _____ (Please Print)

NAME OF HEAD OF FAMILY _____

PEPSI-COLA HITS THE SPOT BECAUSE _____ (25 ADDITIONAL WORDS OR LESS)

I have, so far, collected and am holding "Treasure Tops" with a total of _____ different designs, not including the one enclosed herewith. I have received assistance and advice in preparation of my entry from the following dealer:

DEALER'S NAME _____ (Your dealer may win a special prize if he has assisted you) and

ADDRESS _____ (Be sure to enclose one "Treasure Top" with this entry.)

(Not necessary to use this blank. Use any sheet of paper but be sure your entry is legible in every detail.)

CLASSIFIED DISPLAY

KCRS 1230 Kc. 1230 Kc. (Soon-To Be 5,000 Watts)

SUNDAY

7:00 MUSICAL FAVORITES
7:30 EASY RHYTHMS
8:00 HOLIDAY CARDS OF THE AIR
8:30 TRINITY BAPTIST CHURCH
8:35 MORNING MELODIES
8:50 CHURCH OF CHRIST-STANTON
9:00 FIRST BAPTIST
9:30 DELIGHTFUL REFRAIN
10:00 HOLIDAY CARDS OF THE AIR
10:15 MUSICAL REFLECTIONS
10:45 AP NEWS
10:45 HAWAIIAN AIRS TSN
11:00 FIRST PRESBYTERIAN CHURCH
12:00 MUSICAL TID-BITS
12:10 MOVIE TIME
12:15 AP NEWS
12:30 MELODIES TO REMEMBER
12:30-BOUQUET OF MEMORIES
12:45 AP NEWS
1:00 LITERARY HOUR
1:30 HOLIDAY CARDS OF THE AIR
1:45 CHURCH OF CHRIST (Colored)
2:00 MUSICAL HIGHWAY
2:30 TABERNACLE BAPTIST CHURCH
3:00 HOLIDAY CARDS OF THE AIR
3:15 TREASURE CHEST OF MELODY
3:30 A HOUSE IN THE COUNTRY
4:00 TIME & TEMPO
4:10 MELODIC MOMENTS
5:10 HOLIDAY CARDS OF THE AIR
5:15 SONG PATROL
5:30 CONCERT MASTER
5:50 SHE SINGS
6:15 MASTERS OF MUSIC
6:15 HYMN TIME
6:45 MEMORABLE MUSIC
7:00 TUNE TIME
7:15 SENTIMENT IN SONG
7:20 WALTZ TIME
7:45 HIT TUNES
8:00 TOPS IN POPS
8:30 MUSICAL MINIATURE
9:00 ALLEN BOTT ORCHESTRA
9:30 BOY'S CHORAL GROUP TSN
10:00 OLD FASHIONED REVIVAL
11:00 SIGN OFF

WEATHERSTRIP and **SASH BALANCES** EXPERT INSTALLATION **F. S. WEST** Box 1572 Phone 1539-J

MARKET PRICE Paid For Good Used Cars **MURRAY-YOUNG MOTORS, Ltd.** 223 E. W. Phone 64

DAIRY RATION is doing a fine job of producing milk for a lot of successful dairymen in the Southwest. It always carries the correct balance of protein, carbohydrates, minerals and vitamins. **MIDLAND FEED STORE** E. Wall & Terrell Phone 53 Free Delivery

West Texas Brick & Tile Co. **TILE CONTRACTORS** Ceramic Tile—Glazed and Unglazed Asphalt Tile—Rubber Tile Brick and Hollow Building Tile 304-N. WEATHERFORD MIDLAND, TEXAS Phone 1526 Box 1376

PHONE 2840 **Permian Electric Company** Electrical Appliances and Supplies Industrial Engineers Licensed and Bonded Electrical Contractors 508-A South Main Midland, Texas

FOR TOP PRICES Consign Your Cattle to our sale
If the weather permits, we will have a good run of stocker calves Thursday, Jan. 8, as we already have several consignments.

Midland Livestock Auction Co. DON ESTES, Owner
Mac McConal Homer Ball

LOTS FOR SALE

FOR SALE: choice corner lots on West Wall Street, Midland, G. E. Mix. 705 N. Baird.
TEN acres on Andrews Highway, near new hospital, bounded by three roads. Reasonable. Call 137-M.
FARMS FOR SALE 78
HAVE good 220-230 cultivation. \$37.50 per acre. 10 miles Station—Possession. 220-230 cultivation \$50.00 per acre. Well improved—possession—on pavement. Have other farms. R. A. Bennett, Stanton.
BUSINESS PROPERTY FOR SALE 80
FOUR 22150 ft. lots on West Wall Street next to Park Inn. Box 362, Reporter-Telegram.
20x300 ft. lot with office and warehouse on West Wall Street next to Park Inn. Box 362, Reporter-Telegram.
200x300 ft. lot with office and warehouse on West Wall Street next to Park Inn. Box 362, Reporter-Telegram.
BUSINESS PROPERTY FOR LEASE 80-A
FOR LEASE
Ground space for lease on E. Highway 50 and well-constructed barrack for sale.
LAURA JESSE Insurance 104-A Wilkinson Bldg. Phone 114
BUSINESS PROPERTY FOR LEASE 80-A
FOR LEASE
NEW all sheetiron warehouse. Ideal for business or storage.
60 Ft. x 130 Ft.
Call: **W. H. WALTON** at 367
ACREAGE FOR SALE 81
WHEAT LAND
In Dear Smith County-dry land or irrigated farms. Priced from \$35 to \$175 per acre. Call on or write for descriptive list of these places.
G. B. NEILL REALTOR San Angelo, Texas
375 ACRES, REA, school, mail, 2 miles west Bradshaw. Would consider small farm in the deal. G. A. Buchanan, RFD 4, Winters, Texas.
SMALL acreage, water, electricity. 710 W. 111. Phone 1532-W.
5 acres, 1 mile north El Campo, fenced, good well, natural gas, electricity, sowed in oats. Call J. B. Livingston, phone 978.
REAL ESTATE WANTED 84
HOMES WANTED
Need at once homes for sale. For immediate sale call
BARNEY GRAFA REALTOR
203 Leggett Bldg. Phone 106
CLASSIFIED DISPLAY
LOANS
To buy or build. Homes or Business. From 3 to 25 years to pay at 4% and up.
TED THOMPSON AGENCY REALTORS 113 Wilkinson Bldg. Phone 823

CLASSIFIED DISPLAY

TED Says:



Dear Friends:
Some people do not wish to make friends of those who will be of no service to them, but our agency wants to make friends with everybody — everywhere, and I want to take this method of personally thanking our friends for their generous support which has enabled us to establish one of the Southwest's finest small Insurance, Real Estate, and Loan Agencies, equipped with the world's largest Fire Insurance & Loan companies.
Without the support of friends, no business can succeed. Everything which we are, or ever shall be, will most certainly owe to those like yourself who have given us a boost over the rough beginning. During the coming year we will try to continue to merit your support and friendship.
For yourself, we make the sincere wish that 1948 will be one of your very best years, filled with happiness and success.
We will appreciate your inquiries on any type of home building, buying, or re-financing loan. We have the very best loan connections available today, and we write any type of insurance written in Texas. Just call 823.

Ted Thompson Agency
PLUMBING Contracting & Repairs Time Payment On New Plumbing if Desired
HEATH & TEMPLETON PLUMBING CO. 119 N. Weatherford Ph. 2533
TILE For bathroom, walls and floors, drainboards, store fronts. Drainboards a specialty. 24 year's experience.
D. J. CALLAWAY 309 S. BIG SPRING Res. 2558-J
BUSINESS CARDS CALLING CARDS Call Reporter - Telegram Phone 7 or 8

Political Announcements

Charges for publication in this column:
District & State Offices... \$25.00
County Offices... \$15.00
Precinct Offices... \$1.50
(No returns to candidates who withdraw)
Subject to the action of the Democratic Primary Election Saturday, Feb. 24, 1948
FOR DISTRICT CLERK
MRS. C. C. ROMER (Re-election)
MRS. FREDRICK LOU PAPE (Re-election)
CLIFFORD C. KEITH (Re-election)
FOR COUNTY CLERK
ED DARNELL (Re-election)
FOR TAX ASSESSOR AND COLLECTOR
J. H. FINE (Re-election)
FOR COUNTY ATTORNEY
JOE MIMS (Re-election)
FOR COUNTY CLERK
LUCILLE (JACK) JOHNSON (Re-election)
FOR COUNTY TREASURER
MRS. MARIEN H. DOZIER (Re-election)
FOR COUNTY COMMISSIONER
SHEWOOD ONEAL (Re-election)
ADDISON WADLEY (Re-election)
FOR COUNTY COMMISSIONER
Precinct No. 2 JOHN M. KING, JR. (Re-election)
FOR COUNTY COMMISSIONER
Precinct No. 3 WARREN SKAGGS (Re-election)
FOR COUNTY COMMISSIONER
Precinct No. 4 A. G. BOHANNAN (Re-election)
FOR JUSTICE OF THE PEACE
Precinct No. 1 B. C. GIRDLEY (Re-election)
For Prompt Efficient Service on Envelopes Phone 7 or 8
The REPORTER-TELEGRAM
CLASSIFIED DISPLAY
5-Room home, S. Weatherford.
4-Room house and 2-room house at brick on 100x140 corner lot. S. Weatherford.
Brick duplex W. College.
4-Room frame. 804 S. Marientfield.
Modern 6-room home, 3 room apartment at rear.
39 lots in Montgomery Addition. Reasonable price.
4-room home and 2-room home.

McKEE INSURANCE AGENCY REALTORS 114-A S. Main Phone 465

More Are Slain In Holy Land



Smoke rises from wreckage at the Damascus Gate in Palestine after 12 Arabs were killed by a group of Jews who attacked an Arab bus with bombs and machine guns from a passing taxi. As a result of this action, an outbreak of fighting took place in Haifa, where 47 persons were killed and 81 injured.

Most animals, even if they had the right kind of a brain, could not read a book because their eyes cannot make the necessary adjustments.
CLASSIFIED DISPLAY
"HOMES"
2-bedroom. Brick, \$13,000
2-bedroom. Frame, \$8,250
2-bedroom. Frame, \$8,500
2-bedroom. Frame, \$8,000
Ted Thompson Agency Phone 823
Insurance Real Estate Loans

RFC Reports Loss Of \$8,632,714.519
WASHINGTON. — (AP) — The Reconstruction Finance Corporation reported to the President and Congress that it will show a loss of \$8,632,714.519 on its \$9,313,736.531 outlay for defense and war programs.
Not all of the \$8,632,714.519 will be a total loss to the government, RFC said, explaining that some will be recouped through War Assets Administration sales of property declared surplus by RFC. However, the sales returns will not be credited to RFC.
The agency said the remaining \$881,022,012 that it spent would be recovered, but the \$8,632,714.519 ought to be written off to clear its books.

Drainage pumps in New Orleans are capable of pumping water equal to that in a lake 10 square miles in area and eight and one-half feet deep each 24 hours.
HARDY'S HAT SHOP 119 East Wall MIDLAND, TEXAS
Custom Made Hats Renovations All Work Guaranteed
Phone 2808 4 Day Service

Testimony On Steel Black Market Sought

WASHINGTON. — (AP) — Officials of eight major steel companies were asked by a congressional investigating committee Saturday to testify Monday on alleged "black market" operations in steel involving an estimated \$1,000,000,000 a year.
The steel inquiry will mark only the beginning of what is planned to be a sweeping investigation into so-called "black" or "gray market" conditions generally, as voted by Congress at last month's special session.
The idea is to learn details of transactions, outside normal trade channels, at prices far above the open market.
Rouge which women use to color their cheeks is also used as an abrasive in the delicate work of lens grinding.

The ORIENTAL CLEANERS & DYERS
We are satisfied with our cleaning when you are.
D. E. GABBERT, Owner Ph. 12 104 N. Marientfield

For All Kinds Of Investigations contact our office at Abilene, Texas
Abilene Detective Agency 173 1/2 Pine St. Abilene, Texas Phone: 2238 - 2237

Resolve...
that during 1948 you will get the most for your money by buying at McMullan's! You can always buy standard brands of nationally advertised merchandise for LESS MONEY!
It is **Quilting Time!** We have your favorite TAYLOR MADE beautiful white **COTTON BATTS** Priced—**110 139 159**
McMullan's is—HEADQUARTERS FOR WORK CLOTHES
Sturdy, comfortable, hard working clothes—made to fit you and your budget!
LONG WEARING WORK SHOES
a wide selection. Sizes We have YOUR style—6 to 12.
398 498 645 685
LEE Coveralls
Made to fit—short or long stripe—**5.95**
Heavy Herringbone Khaki—**6.45**
Men's Goodyear **4-Buckle Overshoes** Sizes 6 to 12 **4.98**
Best 4-Buckle Overshoes Sizes 6 to 11 **5.95**
Shop For The Family At **McMullan's** Family Outfitters Since 1924

START THE NEW YEAR RIGHT WITH THESE VALUES

RED CEDAR SHINGLES
No. 1—16-Inch \$14.95 Per Sq.
No. 2—18-Inch \$13.95 per sq.
UTILITY GRADE \$4.95 per sq.

167-LB. HEXAGON SHINGLES
RED and GREEN Only \$5.95 Per Sq.

210-LB. THICK-TAB SQUARE-BUTT SHINGLES
RED or GREEN Only \$6.95 Per Sq.

90-LB. ROLL SLATE ROOFING
RED or GREEN Only \$3.50 Per Roll

ROLL BRICK SIDING
RED or SILVERSTONE Only \$3.65 Per Roll

BUILDERS HARDWARE

Certain-Teed Fibreglas Insulation
... will wrap your house in warmth during Winter and protect it from searing heat in Summer.
16 INCHES WIDE—2 INCHES THICK Roll Blanket Style—Easily applied between joists.
NOW ONLY 4 1/2¢ Per Sq. Ft.

Certain-Teed Insulation Batts
4-Inch Fibreglas MEETS FHA SPECIFICATIONS NOW ONLY 5 1/2¢ Per Sq. Ft.

LUMBER—PRICED RIGHT!
FIR 2x4 and 2x6 As Low \$6.95 Per 100 Bd. Ft.
No. 105 SIDING 1x6 and 1x8 As Low \$12.00 Per 100 Bd. Ft.

No Money Down UNDER FHA PLAN FOR IMPROVING, REPAIRING, INSULATING, PAINTING, or MODERNIZING YOUR HOME
36 MONTHS TO PAY Consult Us for Details

PLYWOOD
3/4" White Pine and Fir 3/8" and 5/8" White Pine

CHI-NAMEL PAINTS
OUTSIDE WHITE \$4.75 per gal. in 5-gal. cans \$5.00 per single gal.
OUTSIDE GRAY \$2.00 per gal. in 5-gal. cans

MASTIPAVE FLOOR COVERING \$1.00 Per Sq. Yd.

WINDOW SHADES \$1.65 And Up

SASH WEIGHTS

BRICK

REINFORCING STEEL 3/8" — 1/2" — 5/8" — 3/4"

WHITE PINE DRAINBOARDS

TILE-MARKED PRESTILE

PORTLAND CEMENT This is scarce—better hurry!
MASONRY CEMENT 85¢ Per Sack

Pay Cash and Save
Chambers, Inc. BUILDING SUPPLIES & SERVICE
Colorado and Front Phone 367

English Cowboys To Texas



The three Payne boys, Leonard, Dennis and Fred, play with cowboy equipment in their London, England, home while waiting to sail for the U. S. to make their homes with their parents at the Mrs. Oglia Weber ranch near LaMarque, Texas. The boys early last year wrote a letter to "a Texas cowboy," asking to hear all about cowboys. The letter was delivered to a Midland Reporter-Telegram which published it. Several letters from Midland went to the English "cow hands." Contents of the letter later were distributed by The Associated Press. Mrs. Weber sent the cowboy boys to the children and invited the Payne family to make their home at her ranch.

Britain Takes Over Nation's Railways

LONDON. — (AP) — Britain's labor government completed another major phase of its socialization of basic industry, by recently taking over the nation's four main railway lines and 54 other railways employing 600,000 persons. The British Transport Commission, which will operate the system for the government, also took over 70 railway-owned hotels and 174 miles of inland waterways. The government is paying 1,000,000,000 pounds (\$4,000,000,000) for the railroads. The properties include 52,000 miles of track, 40,000 passenger coaches and 1,200,000 boxcars. Other Nationalizations Nationalization of long distance road transport, also scheduled under the transport act, was delayed pending appointment of a road transport executive to the commission. Other nationalization projects completed since the labor government came into power in mid-1945 include the coal mines, the Bank of England, cable and wireless and civil aviation.

Still due to be nationalized under the government's program are the iron and steel industry and gas utilities. Legislation for the nationalization of electric utilities was passed last July, but the transfer of properties has not been completed.

France Borrows American Methods To Stem Tide Of Youth Delinquency



France's hopes for the future lie in today's youngsters, like these children of war, waiting for help from a Red Cross truck.

By ROSSETTE HARGROVE PARIS. — (NEA) — The war-aggravated tide of juvenile delinquency has forced France to modernize her antiquated legal machinery. By decree, she now has introduced features that the United States has taken for granted for some years. Until the Liberation, children were tried in adult Criminal Courts and were punished for crimes. Now minors — under 18 years old — are judged in the Children's and Adolescents' Tribunal, which is supposed to reform rather than punish them. One goal of the system is to avoid burdening a youngster with a lifelong criminal record because of a single offense. The Tribunal's judges are authorized, if they see fit, to remove all record of a sentence passed on a minor, after five years if the child is not an habitual offender. Setup Is Modern The new setup gives each children's magistrate access to the most modern information on child psychology — to make him an enlightened social worker and humanitarian rather than just a judge. Probation, inspired by U. S. experience, is now in France. The judges here favor it, heartily. Wherever possible they send delinquents back into the family circle, under watch of a probation officer. But as with so many other things, there aren't enough probation officers. In the Paris region 12 of them, assisted by 750 volunteer social workers, are trying to handle 5000 juveniles, now on probation. Revolutionary In France I was given the jealously restricted privilege of attending a session of the Children's Tribunal in the grim Palais de Justice, in Paris. It was held in a large, well-lighted room in the modern section of the building. The judge was assisted by two assessors from a panel of psychologists, doctors, teachers, social workers. The probation officers interested in cases to be heard, and some social workers were present. Delinquents waited in a room outside, and parents and others responsible for the children waited on benches in a corridor. The only marks of a courtroom were the judge's black robe and the gendarmes at the doors. The atmosphere was one of friendliness. The judge used the familiar "tu" in questioning the children. This approach to juvenile delinquency, though routine in the United States is almost revolutionary in its modernity in France. It might not have been begun even now but for France's sudden realization, after the Liberation, that the new generation was in a bad way. Hope For Improvement The breakup of home life was one important factor in the breakdown of youthful morality. It is the major factor hampering efforts to put adolescents back on the right track. France hopes for much from the reform of its judicial system. But educators and judges agree that what the nation's children need most is the re-establishment of sane, normal home life. Even under the handicaps the face, authorities tackling the youth problem are making some headway. They cite a census taken last year in the Paris region, covering 61 children on probation. Of these 88 had "relapsed" into further delinquency, but 42 had improved so much they were discharged from probation, 218 were considered to be progressing well, 87 had remained stationary, 29 had enlisted in the army, and 153 were "consolidated."

In television, each individual picture is drawn by light in about one-thirtieth of a second.

Best smelling paint that was ever smelled . . . by an accomplished smeller . . . 'cause that means progress . . . and if there is anything we need more of . . . that's it.

Some people don't wish to wait for the suit lengths that are coming in . . . and are buying suits from the small swatches . . . that's alright with us . . . we really appreciate it . . . but we sure will be able to offer the finest method of buying clothing in a short time . . . you know, your size . . . and model . . . in over 200 patterns . . . Had a couple of people ask me what "poop" is . . . will be defined at a later date. Back tomorrow with more poop . . .

Albert S. Kelley

IF Your automobile is worth the price you paid for it. AND You want to make it last as long as possible. THEN Have it repaired by competent mechanics and latest equipment.

Use the G.M.A.C. Budget Plan for Payment of Major Repairs.

Elder Chevrolet Co. Phone 1700 701 W. Texas

Contraband—

(Continued From Page 1) the trucking concern, said his firm had been renting a truck for the past year to the Machinery Processing Company, New York City, and that it had been used to haul what he believed to be machinery. Police ordered the pier closed, and three other ships tied up there were ordered to remain until they have been examined.

Gotham Warehouse Raided Several hours after the seizure, New York City police raided a three-story warehouse near Park Avenue and 180th Street and found a quantity of military material, including devices for loading .30 calibre rifle cartridges, several radio and field telephone outfits and miscellaneous Army equipment spare parts. Police said they also found several wooden crates, one of which was marked "Fines, Tel Aviv Palestine," and another "Degania, Palestine, via Haifa."

YOUR newspaper, serving freedom by serving YOU.

MAYTAG

- WASHERS
- IRONERS
- HOME FREEZERS
- RANGES

Cox Appliance

615 W. Wall Phone 454

In cooperation with Midland health authorities, no children under 12 years of age will be admitted to any Midland theater until further notice.

YUCCA

Now thru Tues.

Features 1:45 3:52 5:53 8:00 10:00 Action At It's Best!

Alan Ladd, Dorothy Lamour "WILD HARVEST" with Robert Preston EXTRA! EXTRA! — ON OUR SCREEN — Play by Play SMU vs PENN STATE FOOTBALL GAME Played in the Cotton Bowl

RITZ

Today and Mon.

Features 2:05 4:04 6:03 8:02 10:00 The Love Drama Of The Year! Rosalind Russell Melvyn Douglas "THE GUILT OF JANET AMES" Added: Color Cartoon and News

POWER

Now thru Tues.

It's Really Something To Crow About! Claudette Colbert Fred MacMurray "THE EGG AND I" Added: Color Cartoon and News No Matinee Except Saturday, Sunday and Holidays.

REX

Today and Mon.

OPEN 1:45 P.M. Gene Tierney, Bruce Cabot "SUNDOWN" Plus: Color Cartoon

Just in Case



National and North American figure skating champion and member of U.S. Olympic team takes plenty of skates with him as he sailed for St. Moritz despite doubt about U.S. participation in the Winter Games.

'DRILLING BY FAILING' DESCRIBES OPERATIONS OF FAILING COMPANY

"Drilling By Failing" is the title of an article about the George E. Failing Supply Company, which has a retail store in Midland, appearing in the January issue of Fortune magazine. Headquarters of the concern are in Enid, Okla. The organization, operation and success of the Failing company is described in the story. It also mentions the company's war work in producing water-well drills for the army and navy. Factories are located in Enid and Houston and retail stores in Midland and Casper, Wyo. Failing representatives also are stationed in several foreign countries.

ASKS TO BE RELIEVED

LOS ANGELES. — (AP) — Edwin W. Pauley has asked to be relieved of his duties as California Democratic National Committeeman, the party's national chairman, Sen. J. Howard McGrath of Rhode Island, said Saturday.

More than 400,000 people visit Carlsbad Caverns in New Mexico annually.

100 WORLD'S FINEST GLADIOLUS

FOR ONLY \$1.29 POST-PAID

THIS IS ONE OF THE FINEST MIXTURES OF BULBS YOU CAN BUY! All bulbs are size 4 & 5 and have a wide range of colors. You can have flowers continuously from this collection. This SPECIAL is for cash orders only! ORDER NOW!

MONARCH BULB FARMS DEPT. P-32 KALAMAZOO 99, MICH.

ROCKY FORD WAREHOUSE MOVING STORAGE

LOCAL and LONG DISTANCE MOVING STORAGE and CRATING—Direct Service to and from California 20 YEARS IN MIDLAND

ROCKY FORD MOVING VANS

Phone 406 Day or Night—Odessa Phone 2444—1111 West Wall

Congress—

(Continued From Page 1) he said the special session of Congress gave him in a Republican sponsored bill.

The cost of living problem rapidly has been rising to the top as an issue in the presidential campaign. Each party blames the other for high prices.

Income Tax Reduction

Tied in with this and the European aid program are a number of other issues on which the President is expected to speak his mind. One that has assumed major proportions in Republican thinking is a proposed income tax reduction. Speaker Martin (Mass) has predicted the House will pass a tax-cutting bill this month. The prospective cost of aid abroad is expected to boost the President's budget toward the \$40,000,000,000 mark, a level likely to prompt immediate Republican objections. Unless the President changes his previous tactics, he will ask Congress for national health legislation, a housing program, extension of social security coverage tightening of the laws governing civil rights, admission of displaced European persons, an increase in the minimum wage level and enactment of a long range farm program to supplant the price support legislation which dies this year.

FRENCH PREMIER WINS TEST VOTE; DEMANDS BALLOT OF CONFIDENCE

PARIS. — (AP) — Prime Minister Robert Schuman won his first test vote in his drive for an unpopular 138,000,000 franc income tax measure in the national Chamber of Deputies Saturday and appeared assured of a substantial majority Monday, when he will stake the life of his government on a question of confidence. The test vote came on two relatively unimportant amendments proposed to the second of eight articles of the measure. The amendments, bundled under one vote as a time-saving procedure, were turned down, 322 to 292. The premier then announced the government was posing a question of confidence on five other amendments to the second article, and demanded that it be adopted unchanged.

AL MILCH NAMED TO FI-SU COACHING STAFF

ABIENE. — (AP) — Al Milch, head coach at Roscoe High School during the 1947 season, has been named as freshman football and basketball coach at Hardin-Simmons University, Athletic Director Warren Woodson said Saturday.

Milch was an all-Border Conference guard with Hardin-Simmons in 1946. At the same time, Woodson announced that Wesley W. Bradshaw, assistant football coach and head basketball coach since the Fall of 1946, had resigned, effective January 20, to become head coach at Cuchita Baptist College, Arkadelphia, Ark. He coached there from 1940 through 1943.

MARRIAGE CLIMAXES INTERSTATE ROMANCE

INDIANAPOLIS, IND. — (AP) — Governor Thomas J. Herbert of Ohio and Mildred Helen Stevenson climaxed in marriage an interstate romance that began in a doctor's office in the Spring of 1946.

Governor Herbert, now 53, had gone there for treatment of a leg wound suffered in World War I. The new Mrs. Herbert, now 40, was the secretary of the Governor's personal physician, Dr. Edward Harlan Wilson.

ELECTED AT MCCAMEY

ALPINE. — (AP) — Charles E. Brandon, a mid-term graduate at Sul Ross State College and starting quarterback, has been elected assistant coach at McCamey, and will begin work there soon.

IN STOCK!

Beautiful New Office • DESKS • CHAIRS Steel Storage Cabinets Steel Office Shelving Typewriters, Check Writers, Safes, General Office Equipment WEST TEXAS FINEST PRINTING PROMPT SERVICE Howard Sales Co. SoundSubscriber Distributor 111 E. Wall Phone 2518

Former Tech Librarian Succumbs In Florida

PENSACOLA, FLA. — (AP) — Miss Elizabeth Howard West, 74, former college librarian in Texas and assistant in the Library of Congress for a number of years, died in her sleep at the home of a sister, Mrs. R. P. Reese, Saturday.

A native of Pontotoc County, Miss. she became the first woman to head a department in the Texas State government when she was named head librarian of Texas Tech College at Lubbock. She retired in 1942 and since that time had been engaged in historical research.

Churchill, Ill With Cold, Reported Better

MARRAKECH, FRENCH MOROCCO. — (AP) — Winston Churchill went to Marrakech Civil Hospital Saturday to have an X-ray photograph taken.

His physician, Lord Moran, afterward issued this bulletin: "Mr. Churchill has had a cold which degenerated into bronchitis. He is not seriously ill and is better today."

The wartime British Prime Minister, 73, came here to write his memoirs. He took cold on a trip into the mountains to paint. Mr. Churchill and his physician arrived Friday night from England.

SURVIVORS OF BROKEN CANNERY TENDER SEEN

KODIAK, ALASKA. — (AP) — Navy Headquarters Saturday reported that the cannery tender Spencer was broken on the rocky coast near Kanatak, opposite Kodiak Island, but the six survivors were seen morning about on the beach. The number aboard the 65 foot tender was not known, but previous reports indicated the crew was not believed to include more than six. The plane's report said only that the vessel was broken, the Navy Headquarters said, without further detail.

A Navy tug is believed to be in the vicinity.

RUMOR LINKS STALIN WITH 'MYSTERY' CALL

STOCKHOLM, SWEDEN. — (AP) — Dr. Elis Berven, famed Swedish cancer specialist, left for Moscow Saturday after a call which his son described as "fantastically mysterious." The Swedish press speculated that his patient might be Prime Minister Stalin, but cited no foundation for its guesses.

Soviet officials reacted with alacrity in speeding Doctor Berven's journey. The Russian Consulate promptly issued a visa, and Doctor Berven left on a Finnish plane for Helsinki, where he was to transfer to a Russian plane.

Boots \$38.00 UP

- Best Materials and Workmanship
- Guaranteed To Fit
- Fancy Boots, Any Design

REPAIRING NEATLY DONE.

Lupe Ramirez

407 North Mineola St.

Be A Successful Hostess . . .

in one easy serving!

Here is the technique! Bring your party problems to us . . . choose from the pastry favors we make . . . build dinner around the "going-away" taste . . . and then serve to a group of happy, charming friends. The result . . . compliments, and more compliments to you!

WALKER Bakery

119 SO. MAIN • PHONE 1101

BEVERLY LITTLEJOHN, Editor

FIRST WITH THE NEWS

MIDLAND, TEXAS, SUNDAY, JANUARY 4, 1948

SECTION TWO

Shirley Gallagher, George Barcus Wed In Midland Church Setting

Rites solemnizing the marriage of Miss Shirley Gallagher, daughter of Mr. and Mrs. Leo Gallagher, 1210 West Indiana Street, to George Douglas Barcus, Jr., were read at 9

a. m. Wednesday in St. George's Catholic Church, with the Rev. Frank B. Triggs, O.M.I., officiating. The bridegroom is the son of Mrs. Irene Barcus of Miami, Fla., and G. D. Barcus, Sr., Jacksonville, Fla.

Stage Crews To Move 'Years Ago' Into Full Swing

Stage crews will work Monday, Wednesday and Friday in the City-County Auditorium as preparations for the Community Theater's production of "Years Ago" move into full swing.

Rehearsals for this comedy of domestic Americana, to be presented January 15-17 as the final production of the '47 season, are in final stages and emphasis is being placed on construction and painting of the stage set which has been held up by holiday activities. Anyone interested in backstage work is urged to attend the three nights this week, beginning at 7:30 p. m. Help also is needed on costumes and properties for the production.

Newcomers To Stage
The cast for this autobiographical comedy of a small-town girl, who confused her parents by deciding to go on the stage, includes several newcomers to the Community Theater stage and several who are returning to the stage after previous roles. Glenn Graham is cast in the role of Ruth Gordon Jones, the young would-be actress and author of the forthcoming production, and June King, who plays her mother, was seen in a 1947 production of "Watch on the Rhine." Leon Valdes, the mean papa in last year's "Papa Is All," again plays the father role, but this time a kindlier one. Sara Lew Link, Peggy Whitson and Jim Fitzgerald, who have appeared in many high school productions, make up the teen-age portion of the cast. Cooper Hyde, Jeff Williams and Christine Swanzy appear in their first roles in theater plays, and "the first-time-only-stage" applies to Guapa, the real name of the kitty who plays the fern-chewing cat, Punk.

Because of the postponement of "Years Ago," 1947 membership tickets include the production, and 1948 memberships, now on sale, also will be honored for this play, it was announced.

BELMONT BIBLE CLASS MEETING SCHEDULED

The next meeting of the Belmont Bible Class is scheduled at 3 p. m. Friday in the home of Mrs. W. L. Sutton, 511 North Pecos Street.

The group was entertained with a recent Christmas party in the home of Mrs. R. Chanslor, 605 West Ohio Street. Mrs. W. G. Ataway read the Christmas story, followed by the exchange of gifts and the serving of refreshments.

NYLON SHOP

Specializing in the sheerest of Nylons. All gauges and deniers. In all shades.

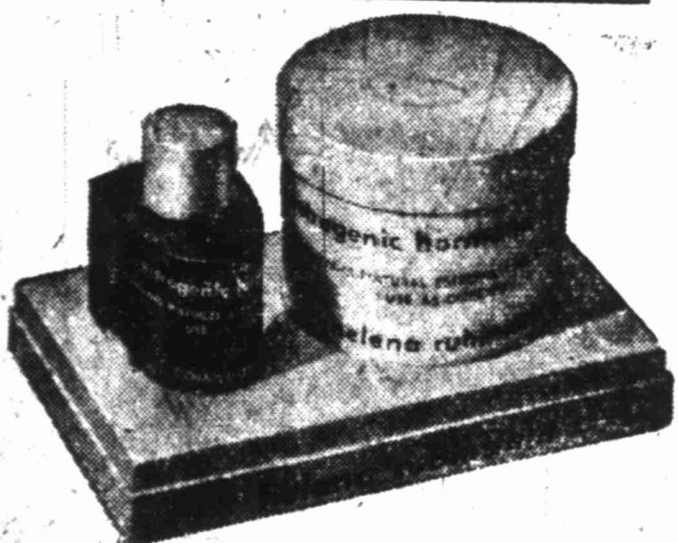
608 South Colorado

for a limited time only!

Helena Rubinstein

ESTROGENIC HORMONE TWINS

both for the price of one



ESTROGENIC HORMONE CREAM, 3.50
ESTROGENIC HORMONE OIL, special size, 2.50

600 value for 350 plus tax

AGING SKIN? Helena Rubinstein offers you the best of night-and-day beauty treatments. ESTROGENIC HORMONE CREAM and ESTROGENIC HORMONE OIL work wonders while you sleep, smoothing away fine lines, bringing a softer, younger-looking texture. By day a thin veil of swiftly-absorbed ESTROGENIC HORMONE OIL acts as an invisible beauty treatment under your make-up. Get both now for the price of one.

Midland Walgreen Agency Drug Co.

Midland Bride



Miss Shirley Gallagher, above, daughter of Mr. and Mrs. Leo Gallagher, 1210 West Indiana Street, became the bride of George Douglas Barcus, Jr., in a Wednesday morning ceremony read in St. George's Catholic Church by the Rev. Frank B. Triggs, O.M.I. The bridegroom is the son of Mrs. Irene Barcus of Miami, Fla., and G. D. Barcus, Sr., Jacksonville, Fla. The rites were followed by a wedding breakfast in the Ranch House and the couple's departure for a trip to Miami and Jacksonville. They plan to reside in Gainesville, where Barcus attends the University of Florida.

Gallagher-Barcus Wedding Party Given Rehearsal Dinner

The Shirley Gallagher-George Douglas Barcus, Jr., wedding rites were preceded Tuesday evening by a rehearsal dinner in the home of the bride-cloth's parents, Mr. and Mrs. Leo Gallagher, 1210 West Indiana Street.

White candles flanked a buffet centerpiece of gold and white flowers and illumined gumdrop-apple arrangements centering other tables throughout the entertaining rooms. Guests attending included Mrs. A. D. Rich, Jr., and Mrs. A. H. Dimney, Jr., sisters of Miss Gallagher, the Rev. Frank Triggs, O.M.I., and officiating minister, Mr. and Mrs. K. E. McFarland, Mr. and Mrs. A. C. Mahman, Mrs. A. M. Carrel, Mr. and Mrs. H. E. Gallagher, Mr. and Mrs. H. E. Gallagher, Mr. and Mrs. L. D. Rich, Jr., and Mrs. A. H. Dimney, Jr., Mrs. Irene Barcus, Mr. and Mrs. Leo Gallagher, Mrs. J. D. Peacock, Jr., and the wedding couple.

CHRISTINE SWANZY READS FOR CHILDREN

Christine Swanzy read Fritz Wille's "Clover" and Fellette Lefevre's "The Cock, the Mouse and the Little Red Hen" to Midland County children at the Saturday morning "story hour" in the Children's Library of the courthouse.

Those attending included Nancy Newkirk, Marjorie Jo Crisman, Tom Brown, Gwen McAden, Gary Patterson, Billy Pruitt, Robert Pruitt, Delbert O'Neill, Don Devore, Kenneth Pruitt, David Pruitt, Jeanette Messick, Arla Fuller, Ernie Fuller, Larry Earl Patterson, Joseph Kent and Mark Kent.

VISIT PARENTS HERE

Betty Jo and Jimmy Greene have been the holiday guests of their mother, Mrs. J. L. Green, 706 West Louisiana Street. Betty Jo returned Friday to resume classes at the University of Colorado, Boulder, and Jimmy returned Saturday to Schreiner Institute, Kerrville.

TREASURED ALWAYS—

Portraits

by

MIAMI

Portrait & Commercial Photographers

111 N. Big Spring Ph. 363

Country Club Women Hostesses To Meeting Of Five-City League

The Ladies' Golf Association of the Midland Country Club will be hostess to an all-day meeting of the Five-City League Friday, to which all women members of the club are urged to attend, it was announced.

Reservations may be made by phoning 2552 by noon Thursday. Golf, bingo and bridge will be played. The following committees have been appointed to officiate at the Friday meeting: Mrs. Bob Franklin, registrar; Mrs. Bill Harkrider, golf prizes; Mrs. Clifford Cool and Mrs. Charlie Sherwood, social; Mrs. Fred Girdley and Mrs. Doyle Patton, hostesses; Mrs. Payton Anderson and Mrs. J. D. Dillard, bridge; and Mrs. Morris Norton, Mrs. Warren Cantrell and Mrs. Bob Payne, handicap.

GS Council Election Postponed For A Week

The postponement of the important meeting of all Girl Scout adult members for the election of officers and the adoption of the constitution and by-laws was announced Saturday by Mrs. C. E. Bissell, commissioner. The meeting, previously scheduled for Monday, will be held at 8 p. m. Monday, January 12, in the First Presbyterian Church.

Further announcements will be made regarding the meeting to which all adult members, leaders and council members of the Midland Girl Scouts are urged to attend.

Attend Church Today

9:00 A. M. Sunday Morning, Meditation—KCRS

9:45 A. M. Sunday School

10:55 A. M. Morning Worship

Sermon by Pastor: "UNCHARTED SEAS"

6:45 P. M. Training Union

8:00 P. M.

Sermon by Pastor: "THE SIN OFFERING"

First Baptist Church

Vernon Yearby, Pastor

Main of Illinois

Melba Lee Story Weds Jesse Hart New Year's Eve

A candlelight ceremony New Year's Eve in the Calvary Baptist Church was the setting of a wedding uniting Melba Lee Story, daughter of Mr. and Mrs. F. A. Story, and Jesse H. Hart, son of Mr. and Mrs. H. L. Hart, both of Midland.

The bride, given in marriage by her uncle, Robert Lee, wore a white wool, street-length dress with gold and tan accessories and a corsage fashioned of pink carnations.

Attending her were Marguerite Lee, maid of honor, and bridesmaids, Nancy Jo Booth and sister of the bride, Marvel Story. Douglas Dyess was best man. Other attendants included Sammie Cohen and John Stanley.

Special Music
Special pre-nuptial music, which included "I Love You Truly" and "Always," was presented by Mrs. McElroy, vocalist, accompanied by Eileen Welch.

Following a short wedding trip, the couple will reside in Wink, where Hart is employed by Humble Oil and Refining Company.

The bride, who attended Midland High School and graduated from the Crystal City High School, has been employed by Shell Oil Company here. Hart, a graduate of Midland High School, served four years in the Air Corps.

TO ARIZONA
Mr. and Mrs. B. H. Blakeney will leave Monday for a visit in Phoenix, Ariz.

Weds Here



Melba Lee Story, daughter of Mr. and Mrs. F. A. Story, became the bride of Jesse H. Hart, son of Mr. and Mrs. H. L. Hart, at a New Year's Eve candlelight ceremony performed in Midland's Calvary Baptist Church. Following a short wedding trip, the couple will reside in Wink. Hart is a graduate of Midland High School, and the bride, a graduate of the Crystal City High School, also attended Midland High School.

RACK TOO SEWANEE

Jimmie Allison left Saturday morning for Sewanee, Tenn., to resume his studies at Sewanee Military Academy after spending the holidays with his parents, Mr. and Mrs. James N. Allison, here.

History Professor, Japan Authority Speaks To 50 AAUW Members, Guests

Dr. Charles D. Eaves, professor of history at Texas Technological College in Lubbock, spoke to more than 50 members and guests of the American Association of University Women, highlighting the Saturday general meeting and luncheon of the group in the Ranch House.

"Japan—The Japanese Occupation," subject of Doctor Eaves' discussion, was based on information he gathered as professor of geopolitics in Osaka and as supervisor of 86 Japanese colleges in the Tokyo area. Eaves, who has been associated with Texas Tech since its opening in 1925, took a leave of absence from September, 1946, to September, 1947, during which time he was with the Army I&E in Osaka, a city the size of Chicago, teaching officers and GIs, and later with the Army CIE supervising colleges in the Tokyo area.

Travels In Japan
During his stay in Japan, Doctor Eaves traveled approximately 10,000 miles in the three southern main islands, Honshu, Shikoku and Kyushu, visiting the atom-bombed cities, Nagasaki and Hiroshima.

The guest speaker described the "Flower Kingdom" country as "very colorful" with its garden-like farms, "and the Japanese" Doctor Eaves says, "are very cooperative." Before his return to the United States, he had a 30-minute interview with Gen. Douglas MacArthur.

Guests, Members Attending
The Japanese, with whom MacArthur is popular, states Eaves, have purchased 15,000 copies of the best seller book on his life. AAUW members and guests attending the meeting and luncheon included Mrs. Edwin Borge, Mrs. C. B. Borchard, Mrs. Leslie Brown, Mrs. Robert Clarke, Mrs. John Colvin, Mrs. John Ed Cooper, Mrs. Doris Thea Davis, Mrs. H. E. Davis, Mrs. J. A. Dolman, E. J. Elliott, Jane Floyd-Jones, Mrs. W. C. Fraz, Mrs. Sam Geffen, Mrs. C. F. Henderson, Mrs. R. V. Hollingsworth, Mrs. Tom Ingram, Mrs. H. A. Ireland, Mrs. Earl Johnson, Theresa Klapproth, Mrs. F. F. Kotzka, Mrs. Alan Leeper, Mrs. W. T. Magee, Mrs. Lloyd Mills, Mrs. R. D. Monkress, Mrs. Jo Ray Morris, Mrs. Lee B. Park, Mrs. Davis Pennell.

ending the meeting and luncheon included Mrs. Edwin Borge, Mrs. C. B. Borchard, Mrs. Leslie Brown, Mrs. Robert Clarke, Mrs. John Colvin, Mrs. John Ed Cooper, Mrs. Doris Thea Davis, Mrs. H. E. Davis, Mrs. J. A. Dolman, E. J. Elliott, Jane Floyd-Jones, Mrs. W. C. Fraz, Mrs. Sam Geffen, Mrs. C. F. Henderson, Mrs. R. V. Hollingsworth, Mrs. Tom Ingram, Mrs. H. A. Ireland, Mrs. Earl Johnson, Theresa Klapproth, Mrs. F. F. Kotzka, Mrs. Alan Leeper, Mrs. W. T. Magee, Mrs. Lloyd Mills, Mrs. R. D. Monkress, Mrs. Jo Ray Morris, Mrs. Lee B. Park, Mrs. Davis Pennell.

Mrs. George Putnam, Mrs. B. A. Ray, Mrs. John Redfern, Julia Rippsig, Mrs. Rex Russell, Mrs. Donald St. Clair, Mrs. Ellis Scooby, Mrs. Ray Seifert, Mrs. Keith Stuart, Mrs. Leonard Thomas, Mrs. W. M. Thompson, Mrs. Gilbert Thompson, Mrs. A. W. W. Mrs. Edna Borys, Mac Jones, Frances A. Davis, Mrs. J. E. Bucher, Mrs. Leonard Swords, Mrs. B. R. Forman, Mrs. Luke Thompson, Mrs. Don Young, Mrs. Naomi Lancaster and Lou Van Landingham.

The speaker was introduced by Mrs. Charles Henderson, program chairman. Mrs. Earl Johnson, president, conducted a brief business session, and Mrs. J. A. Dolman, social chairman, had charge of arrangements.

ELKINS ATTEND FUNERAL

Mr. and Mrs. Frank Elkin returned Friday from McKinney, Texas, where they attended funeral services for Mrs. Elkin's brother-in-law, Dr. H. F. Wolford.

What's New And Where To Find It

BY BARBARA

Appetite Attractors At Midland Cafeteria

"Rolly-Polly" just can't control his appetite when he visits the MIDLAND CAFETERIA for dinner. All the tempters look so delicious displayed in neat rows, he has to "sample" each one. As for the steak—the little fellow really loses control when he whiffs the aroma of a fine cut being prepared especially for him. And "Rolly-Polly" enjoys the personal attention and the speediest service in town. Bet you'd like the Midland Cafeteria, too.

Men Most Likely To Succeed

Wanna help your husband succeed? Then here are some pointers to remember. First, you know how important the first impression can be. That's why Hubby should look his best all the time. Second, an immaculately cleaned and pressed suit will contribute greatly toward that well-groomed look—boost your husband's morale too. Third, the HABIT CLEANERS, at 107 North Pecos, offer you fine service and expert cleaning and pressing. Add all three and you find that man of yours top on the list of men most likely to succeed.

They Know No Season

Beauty, comfort and "wearability"—skirts designed in finest black crepe for the lady-in-waiting. That's the bright New Year announcement from Mrs. Edna Rothwell at MOTHERS-TO-BE, 1800 West Texas. A generous adjustable skirt is fashioned with side gathers on a figure-minimizing yoke. The supply is limited, so the lady who wants an expertly tailored skirt that "knows no season" will be wise to visit Mrs. Rothwell soon.

'Hook' A Rug At The Little Yarn House

Remember how you admired that exquisite hooked rug resting so comfortably before Mrs. Jones' fireplace? Well, you'll probably be surprised to discover how easily and quickly you could have just such an enviable item. At the LITTLE YARN HOUSE in the Ryan Apartments, you'll receive free instructions in this art that is exceedingly valuable to you as a home-maker. Patterns, frames, and yarn are all on hand in the shop. P. S.—Men love to work on hooked rugs. Hubby would probably lend a hand.

New Term To Begin At Tiny Tot

Registration has begun for the fifth term of the PROGRESSIVE TINY TOT SCHOOL at 1008 West Indiana, phone 798-W. The 20-week term will begin January 5 and close in May. Children between the ages of three and six years may enroll. Mrs. W. M. (Tommy) Thompson offers child development through creative arts—dancing, drawing, painting, clay modeling, dramatics and group singing. Due to enlarged amount of space and equipment Mrs. Thompson is able to reduce kindergarten rates.

The Fabulous Orchid Of Bavaria China

The lustrous orchid reigns queen of "blossom-land"—just imagine its velvet luster captured on the pearl texture of Bavaria China. That's what you'll find at MIDLAND HARDWARE. Bavaria's child Spay pattern. Available in services for eight, this exquisite design will enhance the beauty of your table as an effervescent diamond complements the hand of a charming woman. Why not make a resolution for more luxurious dining and see this china at Midland Hardware tomorrow. Pride and satisfaction will be your reward.

\$2.50 Value At Cameron's For \$1.50

Results prove that the Bonne Bell Twin Mit, Ten-O-Six and Plus 30 lotions keep skin looking younger. The first, Ten-O-Six, cleans and removes make-up—helps clear up minor surface irritations. Skin looks lovelier in ten days. Plus 30 lotion is the thrilling daytime way to keep estrogenic harmonies in youth awakening contact with face, throat, and arms. When used under make-up, it is invisible. This week at CAMERON'S the Bonne Bell Twin Mit, a \$2.00 value, is selling for only \$1.50.

Is Your Home Sad-Eyed?

Do your windows have a sad-eyed expression? Well, the surest way to remedy that situation is to visit SIMMONS PAINT & PAPER COMPANY and place your order for Art-Craft venetian blinds. They are the choice of discriminating people. The glossy enamel finish, the high quality materials and workmanship mean you'll have longer lasting, more attractive blinds. You can select tape colors to harmonize with your home interior decoration. And on the practical side, Art-Craft gives you quiet operation, no breakage of hardware, and a self-adjusting cord.

Midland Day Nursery Under New Management

Four years of experience in one of Fort Worth's outstanding nurseries qualifies Mrs. Annie McKimble for her new position. Mrs. McKimble, who recently leased the MIDLAND DAY NURSERY from Mrs. Freddy Lou Pate, announces that she will continue to provide care, training, and well-balanced meals for children of all ages. The nursery will be open every day except Sunday from 8 a. m. until 6 p. m.

'Shortie' Is The Coat To Watch

Shortie coats are certainly catching the feminine fancy—and masculine admirers this season. Maybe it is because they harmonize so well with the new long lengths and the flurry of skirts. At WILSON'S these little shorties are all in for you—plaid, plaid, striped, crystal white in woollens and velvety covert. You'll love the luxurious swing back and the abundant folds of fabric. Also at Wilson's, the teen-ager's favorite Carole King creations. Crepes, velveteens, cottons—all designed with youthful, flattering lines.

Introducing Imperial's Cape Cod Crystal

Introducing Imperial's new Cape Cod crystal pattern found at KRUGER'S. This stemware captures the flavor of quaint New England. It is artfully wrought with radiant facets and tear-drop designs. Priced at only 65 cents a stem, this unusually beautiful crystal offers a real bargain. At Kruger's, a complete stock is available—water glasses, ice tea, sherbets, fruit juice glasses, wine, salad plates, and a wide assortment of extra pieces.

For Everyone -- Bill-Paying Envelopes

Every household needs them—Every billpayer needs them—Every businessman needs them—Every professional man needs them—Yes! Everybody needs Rylex bill-paying envelopes from THE BOOK STALL. Why? First, because envelopes printed with your name and address help guard against loss. Second, pre-addressed stationary commands respect. Third, recipients appreciate the clear, easy-to-read address. Fourth, and one of the most important reasons, you will be proud to send these envelopes of superior quality, so tastefully designed.

Whooo, Whooo -- Why Walker's, Of Course

The wise old owl wants to tell you about THE WALKER NURSERY on the Andrews Highway. He has been around and visited lots of places, so he feels that he is qualified to offer some sage advice. Here it is—"This is the best time of the year to plant trees and shrubs. So, 'twould be a bright idea to call Jimmy Walker at 2010 and ask him to make a free landscaping estimate for you. Then, you can select from the variety of flowering shrubs, trees, vines, and evergreens available."

So Prettily Shaded

Variations on the Spring theme—as prettily shaded as the petals of May's first blossom are the classic pinks and Chesterfield coats at FRANKLIN'S. And they're so reasonably priced to harmonize with your new budget as well as your wardrobe. Three-buttoned gabardine coats in gray, blue, beige, navy and green—designed to turn masculine eyes and the crisp guests of Spring. Lightweight woollen suits—gold, gray, brown—a special group of lining pastels priced at \$18.95. A wide variety of styles—tailored and trim, coquettish and comfy.

On Approaching The 'Champs'

A mighty pleasant way to spend an afternoon—that's bowling at PLAMOR PALACE. There you can relax, get valuable exercise and develop a skill to amaze your friends. "Jonnie" will be glad to help you and give free instruction on the correct approach to becoming a champion. Why not make a date with some friends today for an afternoon of fun at Plamor? They'll applaud your suggestion. How about it?

Long Skirts For Cars?

No, MILLER BROTHERS TRIM SHOP won't put a long skirt and a Gibson Girl tie on your car, but they will give it that "new" look. In the shop at 114 East Wall (rear), there are dozens of sturdy, attractive fabrics ready to assume the position in your car—solid colored satin—bright plaids designed in cotton and plastic, fibrous-plastic leatherette in a variety of colors. There's a style and a price especially for you—so, visit Miller Brothers and give your car a new personality.

Sweep 1948 With A Vacuum From Singer's

Make a clean sweep for the new year by visiting the SINGER SEWING CENTER and inspecting the remarkable Singer vacuum cleaners. The motor-driven brush cleaner embodies a special light that concentrates rays on the needed spot, an automatic cord control, and a convenient handle release for position adjustment. It is designed to reduce noise and vibration. See these handy, sturdy vacuums this week for years of ease and satisfaction.

The Three For You

A winning threesome—your Gourelli Metal Bow lipstick, and Gourelli Metal Bow rouge. Here's why. The daintily feminine, unusually attractive gold cases at DUNLAP'S will add charm to your make-up kit. Second, the lipstick contains lipids to supply all precious moisture, so it prevents chapping, cracking, and keeps your lips creamy soft. Third, among the Gourelli shades, you'll find just the right tint to enhance natural skin tones—Pink Berli, Rose Topaz, Carnelian, Star Ruby, Garnet and Red Jasper.

How's Your Home Life?

How's living in your home? Why not take a look around at the furnishing and see if they are really as you would have them? You may discover that a chair or table would profit greatly by making a trip to the MASTERCRAFT FURNITURE SHOP at 606 South Colorado. H. E. Goulet and J. A. Connolly are experts on repairing and refinishing all types of furniture. Call 1565-W or 823-J for prompt pick-up service.

An Investment In Years Of Happiness

"Not for just a day, not for just a year, but always"—sterling silver from KRUGER'S. Few possessions bestow upon the owner such a grand sensation of achievement and pride. Let the folks at Kruger's help you select a silver pattern that you and your children will cherish for decades. And do take advantage of their "easy credit plan"—payments are timed to suit your convenience. Forty beautiful sterling patterns by Gorham, International, Wallace, Whiting, Alvin, Watson, Blackington, and Smith await your choice at Kruger's, your credit jeweler.



MILLIONS
of miles
of comfort

Thousands of men—each walking thousands of miles—have proved the comfort of the Walk-Over Broadway. Try it yourself!

\$13.95



WALK-OVER BROADWAY

Smartly conservative styling by Walk-Over. Expertly fitted to your feet by trained specialists.

Haynes

What The Devil Is 'The Maxixe'?

What the devil is "Maxixe?" For one thing "The Maxixe" is the subject of a search by Midland Community Theater.

Maxixe, according to Webster, is pronounced "mak-seeks" and is a sort of dance two-step with certain variations.

Webster does not supply a description of it, but Arthur Murray, Community Theater needs someone to teach the dance to two young members of the cast of "Years Ago," the theater's new play.

If Midland has a Harvard man of 1913 he will remember the dance as the "Big Apple" of his day.

According to the play "Years Ago," the "Maxixe" was danced to the tune "Too Much Mustard," a hit parade favorite of 1913.

Any person in Midland able to dance and teach the "Maxixe" or who has the sheet music to "Too Much Mustard," please contact Community Theater.

Birthday Dinner-Party Favors: Bill Bissell

Bill Bissell was honored by his parents, Mr. and Mrs. C. E. Bissell, on his eighteenth birthday with a dinner-party in the Ranch House Wednesday night, followed by the group's attendance at a movie and several "watch" parties being held in Midland.

Guests included Pat Flanigan, Alvin Bauman, Monta Jo Glass, Bob Bissell, Bill Bissell, and the host and hostess.

England uses more than 20,000,000 stamps annually.

Miller Brothers' SEAT COVERS

NEW FALL and WINTER COLORS

Best Assortment in West Texas.

Finest Selection We've Had in Two Years of Business.

Plastic Art Leather in All Colors.

114 E. Wall (rear)



MILLER BROS

McKelvy-Rose Vows Exchanged in Rankin

MCCAMEY — LaRosa McKelvy, daughter of Mr. and Mrs. D. O. McKelvy of Rankin, became the bride of Kenneth Rose, son of Mr. and Mrs. A. A. Rose of Fort Stockton, at 8 p. m. Thursday at the home of the bride's parents, in Rankin.

In a double-ring ceremony, the Rev. R. L. Herring, of the First Baptist Church read the marriage vows before an arrangement of tall lighted pink candles in white stands flanked on either side with gardenias, carnations and plumosa with green and matching pink satin streamers.

The bride, who was given in marriage by her father, wore a grey gabardine suit, dressmaker type, with brown accessories and a shoulder corsage of gardenias. Her bridesmaid was Ruth Elliott, who wore aqua crepe with corsage of pink carnations. Groomsmen were Joveta Youkum and Mackie Horton, who wore grey and brown suits with yellow and pink corsages. The bride's mother wore a yellow and black print with corsage of fuchsia roses. The groom's mother wore black with a white corsage.

The groom was attended by his brother, Hollis E. Rose, as best man. Mrs. Workman played Longhorns' Wedding March, "Because" and "I Love You Truly" during the ceremony.

Reception Held

Immediately following the wedding a reception was held at the McKelvy home. Jodie Stephenson presiding at the guest register wore a dusty pink creation with pink Iris corsage. Mrs. Elizabeth Rains, who poured coffee, wore a chocolate brown dress with a corsage of yellow rose buds. Winnie Ellis served the four-tiered wedding cake topped with a wedding bell from a lace laid table themed with pink and white carnation arrangement. Miss Ellis wore a grey suit with white and a pink carnation corsage.

Following the reception the couple left on a wedding trip to Del Rio and Mexico.

They will be at home in Fort Stockton.

MIDLAND CAREER WOMEN— Betty Wilkes: A 1948 'Find' For Midland In Geology And Rodeos

The outlook during the coming year is good. New Year's prospects for Midland, leads us to the scene of women here and the roles they will play.

In surveying the large group of career women, one sees many brilliant lights that have shown splendidly during 1947, and one also sees much new brilliance to help develop the city during 1948.

Among Midland's newest "finds" is a 19-year-old geologist for Humble Oil and Refining Company, Miss Betty Wilkes, who arrived December 2 to become another of Midland's career women. One of four women geologists working for Humble here, Betty is from Houston where she worked for Humble following her January graduation from Texas Christian University in Fort Worth.

Betty's work for Humble in Midland is in the sub-surface division and includes the "ripping" of samples. Betty, however, specialized in field and surface geology while attending school, the first year of which was spent in the University of Houston and the remainder of the time at TCU. She particularly enjoys field work and is looking forward to the time when she will be sent out—"but," says Betty, "that is entirely up to the company." And then, comes the question that men and women geologists have argued since women became prominent in these fields—can women cope with all the disadvantages connected with field work? Well, quite a few of them have done it and survived, and since Betty is the "outdoor" type there is no reason why she couldn't.

Active in Rodeos

She is quite active in sports, and nothing delights her more than swimming and horseback riding, unless it is dancing, of course. Betty's experience in horseback riding may result in a new "find" for Midland's annual rodeo, too. She has participated in rodeos in both Houston and Fort Worth, riding in quadrilles and flag races.

The young geologist's talents, however, extend far beyond riding—she is a pianist (once aspiring to be a concert artist), she has studied dramatics and dancing, and minored in business administration in school.

While attending TCU Betty taught biology and geology, presenting lab lectures and instructions to husky veterans, and still had the time to be active in the Science Club and the Business and Professional Women's Club. She liked school—and Fort Worth, too—and she lacks very little work for her master's degree. She is thinking seriously of finishing her work for the degree, her thesis for which would probably be on fossils in the upper Permian, a subject which she has chosen because of the small amount of research done on it.

"Experience is what the companies want," says Betty, "but a degree helps."

Betty Wilkes, who is residing in the home of Mr. and Mrs. Louis C. Avres, 1610 West College Street, likes Midland very much, thinks it is an unusual and interesting city, and is certainly enjoying living here.

Young girls like Betty are Midland's prospects for 1948.

Congratulations To



Mr. and Mrs. A. E. Pettit on the birth, Friday, of a daughter, Suzanne, weighing six pounds.

MRS. S. W. MILLER ILL, VISITED BY DAUGHTER

Mrs. Sally Watson Miller has been ill at her home on North Main Street.

Her daughter, Mrs. Agnes McCormick was here from Austin to visit her. Mrs. McCormick returned to Austin Saturday.

Advertise or be forgotten.

Sprinkler Irrigation Equipment Co. OF STANTON

J. C. MOTT, Representative
Box 162, Stanton, Texas

Martin County Tel. 915, Stanton Midland County

Philippus Rejoins Duniap's Sales Staff

George H. Philippus, a Midland resident for 17 years, has rejoined the men's department staff at the Duniap Company department store here, it was announced Saturday. Philippus was connected with the firm before becoming a civilian employee at Midland Army Air Field where he served five years.

He is active in civic affairs, and is a former director of the Midland Chamber of Commerce and a past secretary of the Lions Club.

FIRST MARRIAGE LICENSE

William Daniel Wilkerson and Mildred Jackson Friday received the first 1948 marriage license to be issued by the Midland County clerk's office.

Just arrived—Ca. load No. 1 Specimen Shrubs, and now is the time to start your Fall planting. Free landscaping estimates gladly given. No job too large or too small. We also do pruning of all kinds, and spraying. We welcome your visit at any time.

EVERGREEN SHRUBS

Richardson Nursery

2 Blocks East Rankin Highway at City Limits. PHONE 529 1506 S. COLORADO

Reporter-Telegram Want Ads Get Fast Results!

FAMOUS NAMES IN STERLING SILVER

REED AND BARTON
GORHAM
INTERNATIONAL
LUNT
DAMASK ROSE HEIRLOOM STERLING
TOWLE
WALLACE and WATSON

THE FINEST IN SILVERPLATE

HOLMES AND EDWARDS
COMMUNITY
1847 ROGERS

Also Beautiful Golden Hue Dirilyte

Vosatko's
1st National Bank Building

THE FINEST IN DIAMONDS, WATCHES and JEWELRY

WHY SHOP AROUND? COME TO PENNEY'S FIRST!

YOU WILL FIND PENNEY'S PRICES LOW --- AND QUALITY HIGH --- ON ALL YOUR CLOTHING NEEDS!

JANUARY WHITE GOODS SPECIAL!

9/4 Unbleached Sheeting

Make your own sheets and cases. 81" unbleached sheeting. Good weight. Special price Yard **59¢**

600 Yards—Monday!

Unbleached Muslin

19¢

36" wide. Sturdy quality. Look at this price!

MONDAY Rug Special

WOOL FELT HALL RUNNERS

98¢

27"x72" stitched end. Practical colors.

69¢

27"x48" Runners. You will find many uses for these rugs.

Make Diapers Yourself!

Cotton Flannel

23¢ yard

27" wide white outing at a very low price!

Warm Part Wool Jacquard Blankets

3.98

70"x80" Singles. Assorted colors.

Crystal Clear Patterns in Toplight* Shirts

2.49

Back at last—precise patterns for you—the individual! Try to match their sharpness — at this price! All Sanforized broadcloth! Non-wilt Nu-craft* collars.

Pin Dot Priscillas

Full window size.

1.98 pair

This is really a good buy in curtains!

Large size 2.98

Bed Pillows

Standard size. Good ticking.

1.98 each

Chicken and duck feathers.

Other Pillows

2.98



OUR LITTLE SUIT-DRESS IS GOING PLACES!

JUNIOR Laurie Spence
DALLAS

Our Laurie Spence Junior uses Berlinger's linen-weave rayon for the trim little buttoned up jacket that flares below the waist, puts a full skirt with it, and then sparks it with a gay polka-dotted bow. Black with aqua, rose, chartreuse or blue.

9's to 15's.

\$1250

WILSON'S

ADVANCE GUARD FASHIONS



It's warm inside!

Faultless Nobelt Dormitogs

For smartness, you can't beat these ski-type Faultless Dormitogs. Smoothly knit of soft combed cotton. Solid colors only. For PLUS comfort, the special Faultless Nobelt waistband that holds without pressure. Easy to launder, no ironing required. You'll want several!

\$395

made by **Wilson Brothers**

for **CHAS. A. Haynes COMPANY**

Home Owned - Home Operated

+ Coming Events +

MONDAY

The Midland Ministerial Association is sponsoring the appearance of "Wings Over Jordan," famous negro choir, in a concert at 7:30 p. m. in the high school auditorium. Tickets may be obtained in church offices.

The units of the Women's Auxiliary of the Trinity Episcopal Church will meet at 3:30 p. m.: St. Cecilia's unit in the home of Mrs. Eric Bucher, 2101 West Brunson Street, and St. Margaret's unit in the home of Mrs. John Shipley, 1501 West Illinois Street.

The First Baptist Church's WMS will hold its regular monthly missionary meeting at 3 p. m. in the church.

The following First Methodist Church circles will meet at 3:15 p. m.: Belle Bennett in the home of Mrs. R. D. Myers, 904 North Baird Street; Laura Haygood in the home of Mrs. J. L. Barber, 311 North Baird Street; Winnie Prothro in the home of Mrs. Sam Preston, 405 North Loraine Street; and Mary Scharbauer in the home of Mrs. N. G. Oates, 610 North Main Street.

The Woman's Council of the First Christian Church will meet at 3 p. m. in the church.

The P-TA Council meeting, regularly scheduled for January 5, has been postponed until 1:30 p. m. Monday, January 12, in Supt. Frank Monroe's office.

The meeting of the Girl Scout Council and all adult members of the organization has been postponed until January 12.

The Past Matrons and Patron's Club of the Order of the Eastern Star will meet at 7:30 p. m. in the home of Mrs. Frank Orson, 410 West Illinois Street. All members are invited to attend.

TUESDAY

The First Methodist Church's Workers' Council meeting will be held in the Scharbauer Education Building at 7:30 p. m., following a 7 p. m. meeting of all departments.

The Wesley Bible Class of the First Methodist Church will have its

monthly meeting at 2:30 p. m. in the home of Mrs. M. D. Johnson, 1111 West Illinois Street.

Las Comaradas Bridge Club will meet at 1 p. m. in the Ranch House, Missouri Street.

WEDNESDAY

The Modern Study Club will meet at 3 p. m. in the home of Mrs. C. S. Britt, 716 West Kansas Street, for a study of "Security in the Home." Speakers will include Mrs. J. M. Devereux on "Real Delinquency—The Parents" and Mrs. John Casselman on "Child Delinquency (Cause and Cure)."

The Woman's Wednesday Club will meet at 3 p. m. in the home of Mrs. George Glass, 911 West Texas Avenue.

The Star Study Club, business meeting and study will be conducted at 1 p. m. in the Masonic Hall.

The Lion Tamers Club will have a covered-dish luncheon at 1 p. m. in the home of Mrs. Noel Oates, 619 North Main Street, with Mrs. L. V. Bassham and Mrs. John Biggs as co-hostesses. All wives of Lions Club members are urged to attend.

The Play Readers Club will meet at 3 p. m. in the home of Mrs. J. E. Beakley, 910 West Storey Street.

Holy Communion will be celebrated at 10 a. m., celebrating the Epiphany, in the Trinity Episcopal Church.

THURSDAY

The B&PW business-luncheon will be held at noon Thursday in the Private Dining Room of the Scharbauer Hotel.

The West Side Home Demonstration Club will meet at 2:30 p. m. in the home of Mrs. Edna Lodge, 1206 West Tennessee Street.

The Midland Garden Club will meet at 10 a. m. in the home of Mrs. L. W. Leggett, 901 West Storey Street.

The Yucca Garden Club will meet in the home of Mrs. Carl Westlund, 81 North Marienfield Street.

The Tejas Garden Club will meet in the home of Mrs. J. D. Dillard, 703 North Marienfield Street.

La Merienda Club will meet at 1 p. m. in the Ranch House, with Mrs. T. S. Edrington and Mrs. Murray Pasken as hostesses.

FRIDAY

The Belmont Bible Class will meet in the home of Mrs. W. L. Sutton, 511 North Pecos Street at 8 p. m.

The Ladies' Golf Association of the Midland Country Club will be hostess to an all-day meeting of the Five-City League. Reservations may be made by phoning 2552 by noon Thursday. It was announced. All women members of the club are urged to attend.

SATURDAY

The League of Women Voters' luncheon will be held at 1 p. m. in the Crystal Ballrooms of the Scharbauer Hotel. An invitation is extended to all of Midland's women voters.

Goggles for industrial use can be made of glass so tough it can be dropped more than 10 feet to a concrete floor without breaking.

Barbara Conkling Gives New Year's Party

Miss Barbara Conkling entertained a group of friends Friday afternoon with a New Year's party in the home of her parents, Mr. and Mrs. W. H. Conkling, 1908 West Missouri Street.

Refreshments were served from a table centered with a Cupid doll dressed as the New Year's babe. A color scheme of pink and white was used throughout the entertaining rooms. Guests attending included Helen Crabb, Sue Caruthers, Joan Stein-

GO TO NEW BRAUNFELS

Le and Mrs. Howard Arnold left Saturday for New Braunfels where they will reside while he is stationed at Randolph Field. The couple were in Midland this week visiting Mr. and Mrs. John P. Butler, parents of Mrs. Arnold, the former Jane Butler.

berger, Billie Walker, Dorothy Watson, Mrs. D. C. Roberts, M. S. Olin Frutcher, Mrs. Chuck Melton of Huntington Beach, Calif., Mrs. Bill Beckers, Mrs. J. W. Thomas, Jr., Mrs. Lamar Eschberger, Mrs. Roscoe Crabb, Mrs. Ewel Stone, Mrs. Hans Winkler, the hostess and her mother.

Stanton Rebekahs Have Regular Meet

STANTON — Stanton Rebekah Lodge No. 287 held its regular meeting at the Odd Fellow Hall Monday night. Installation of officers will be held January 12, Melba Brewer, noble grand, announced.

Members present were Elnora Shipp, Vera McCoy, Melba Brewer, Francis Butcher, Mr. and Mrs. Charles Christopher, Gussie Pierce, Naomi Yell, and Pauline Graves.

More than 60 million quarts of fresh milk and cream are used daily in the United States.

ATTENDS SUGAR BOWL GAME

Billie Jean German attended the New Orleans Sugar Bowl game with friends from Fort Worth. Before returning to Austin, where she is a senior student at the University of Texas, Miss German will spend the weekend in Fort Worth, visiting a former schoolmate. She is the daughter of Mr. and Mrs. R. T. German, 714 West Storey.

RETURN FROM LOUISIANA

Mr. and Mrs. W. C. Tatom and son, Clayton, Jr., returned Friday from a visit with relatives in Northern Louisiana.

50 POUNDS LOST WITH BARCENTRAT

Many people have reported amazing results with this home recipe. It's easy to make and costs little. Just go to your grocery and ask for four ounces of liquid Barcentrat. Pour this into a pint bottle and add enough grapefruit juice to fill bottle. Then take just two tablespoonsful twice a day. That's all there is to it. Here is what Mrs. C. M. Egan, 1111 1/2 St. McAllen, Texas, says about her success. "I want to tell you that I just lost 50 pounds since taking Barcentrat. I still want to lose 50 more pounds as I weigh 167, a reduction from 217 pounds. To lose weight the grapefruit juice and Barcentrat from your favorite drug get busy."



The "New Look" In Spring SUITS

Though the holidays may still be in our collective minds we're all for the rare tonic of new Spring styles, colors and fabrics! If it's something that can be worn right through Spring, so much the better! Think how much better you'll feel about buying a suit, now that you know you can wear it into Summer! And that's just what you can do with every one of these new Spring suit arrivals! So pretty, so practical, so right! See them!



Swansdown

SMART... WONDERFULLY SMART

SUITS

Advertised in Mademoiselle

Our New...



Suits Have Spring Airs! (above)

It's exclusively ours and we're proud of it. Free and motion-loving, fitted and flared to make you look as happy as you feel. Choose it now and wear it way into Spring! In a Miron pure worsted. Sizes 7 to 15. \$69.95

Jaunty Junior is ours, exclusively!



LEFT— It's the bolero suit but unlike any you've seen before. It's the longer bolero over a slim, slim, trouser-pleated skirt. It's new as the first crocus, yet has a timeless quality that assures seasons of wear. Swansdown carefully tailors it of Julliard's pure worsted sheen. Sizes 10 to 18. \$75.00

Swansdown—Ours Exclusively!

ABOVE— The Swansdown suit with the prettiest lines of all! Minkie waistline, flung-out skirt. Of tiny-checked Vivero, a new Bur-Mil fabric. \$69.95

We've a bright new collection of exquisite "headliners" that transplant the fresh, delicate flowers and bright new colors of Spring into your "end of winter" wardrobe. In straws and pastel felts... feather (right for Spring) and flower trims.



Spring Hat

is the "crowning" accessory with your new Spring suit!

Custom Built Furniture!

We invite you to come in, look through our catalogue, and select the frame that you want. Frames built from kiln-dried lumber. We will upholster it in the covering of your choice to suit your taste.

DAVIS Upholstery Shop
107 N. Weatherford Phone 2185

2 LOTIONS OF LOVELINESS Bonne Bell TWIN HIT

TEN-O-SIX LOTION... cleanses skin and removes all makeup with effortless ease. Helps clear up minor surface irritations. Skin looks lovelier in 10 days. Reg. \$1.00

PLUS 30 LOTION... thrilling daytime way to keep estrogenic hormones in youth-awakening contact with face, throat and arms. Invisible under makeup... result: prove skin looks younger... Reg. \$1.50



CAMERON'S PHARMACY
CRAWFORD HOTEL BLDG PHONE 1882
HOTEL DRUG
SCHARBAUER HOTEL BLDG PHONE 305

USE YOUR CONVENIENT EVERYBODY'S CHARGE ACCOUNT

EVERYBODY'S

NATIONALLY FAMOUS FASHIONS FOR HER

Be assured of a ticket to see and hear the "Wings Over Jordan" all-negro choir Monday night only. Phone your church office or pastor for tickets.

3 DAYS ONLY!

Monday, Tuesday, Wednesday
— January 5, 6 and 7 —

DUNLAP'S

JANUARY SALE

Doors Open 9 A.M.

Monday



ONE GROUP

Silk Dresses

A wonderful array of silk dresses at a sensationally reduced price. Included in this group are a host of nationally advertised brands.

These are dresses that formerly sold from \$22.50 to \$65.00 — NOW

1/2 Price

ONE GROUP OF WOMEN'S SUITS

Among this group are man's wool, gabardine and wool crepe suits. This offering is timely and reductions really drastic.

Regular \$29.95 NOW \$18.95	Regular \$55.00 NOW \$29.50	Regular \$69.95 NOW \$37.50	Regular \$75.00 NOW \$39.50
Regular \$79.95 NOW \$44.50	Regular \$98.00 NOW \$59.50	Regular \$129.00 NOW \$69.50	

ONE GROUP

Wool Dresses

You will marvel at the values in this group. Included you will find plaids, stripes and solids, in a wide variety of the newest style treatments.

These dresses formerly sold at prices ranging from \$6.95 to \$55.00 — NOW

1/2 Price



NELLY DON DRESSES

Crepes in long sleeves. Beautiful, autumn shades. Regularly sold for \$16.95 — NOW

\$10.95

ROBES, BRUNCH COATS, PAJAMAS

Make your choice from quilted satins and wools.

Regular \$16.95 NOW \$10.95	Regular \$19.95 NOW \$14.95	Regular \$25.00 NOW \$18.95	Regular \$27.50 NOW \$19.95	Regular \$42.50 NOW \$32.50
--------------------------------	--------------------------------	--------------------------------	--------------------------------	--------------------------------

NYLON HOSE

"The Single Unit" In Peter Pan—Mink—Ebony

Regular \$2.50
NOW \$1.85

SATIN GOWNS

Soft and smooth, tailored and lace trim. Sizes 32 to 40—11 to 15.

Values to \$7.95
NOW \$4.95

MISSES' ANKLETS

Choose from red, navy and pastels. Sizes 9 to 10 1/2.

Regular values to 65¢
NOW ONLY 25¢ pair

Shrewsbury Pajamas

Cut to size. Sanforized fabric in pink, blue, white or-rose.

Regular values to \$7.95
NOW ONLY \$4.95

WOMEN'S SLIPS

by Henson, Munsingwear, Artemis, Kickemick and Laros. Both lace trim and tailored. Sizes from 32 to 52

PRICED TO CLEAR AT

\$3.95

Women's Cotton Snuggies

Small, medium, and large sizes.

59¢ pair

4 Groups Of Ladies' Oxfords

From our regular stock in blacks and browns
\$9.95 Values Reduced To \$7.85
\$10.95 Values Reduced To \$8.85



ONE GROUP Joyce Play Shoes

Brown and red. Oxfords only. Former price \$7.95

\$5.85

ONE GROUP Men's Work Shoes

Leather and rubber soles. These are regular \$6.95 shoes.

\$4.95

Sheets, Pillow Cases SHEETS

81x108 \$2.95
90x108 \$3.15

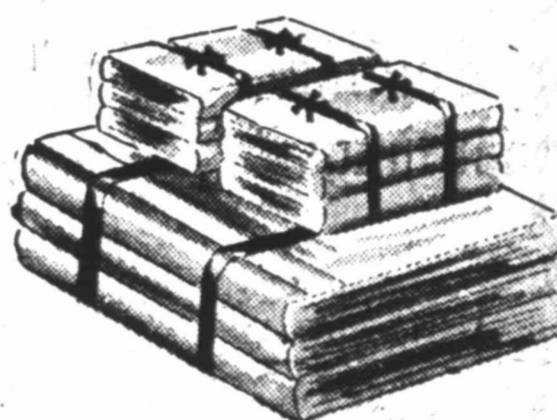
Pillow Cases to Match Each... 55¢

MONUMENT BEDSPREADS

Regular \$6.90 Now \$5.45
Regular \$8.90 Now \$6.95
Regular \$9.90 Now \$7.45

CHENILLE BEDSPREADS

Regular \$7.50
Now \$5.95



MADEIRA PILLOW CASES

Regular \$8.95 Pair—NOW \$5.95 pair
Regular \$10.95 Pair—NOW \$8.95 pair

MADEIRA NAPKINS

Box of 6. Regular \$5.95 box. Now \$3.75

NATIONALLY FAMOUS BRANDS IN SIZE 72x90

BLANKETS

100% wool. Single, in solid colors.

Regular \$15.00 Now \$9.95

Reg. \$16.95 Now \$10.95 Reg. \$18.95 Now \$13.95



50-Inch SATEEN 75¢ yard

CORDED CHAMBRAY 95¢ yard

RAW SILK Regular \$4.95 yard \$2.95 yard

54-Inch WOOLENS Solids and plaids

1/2 Price

54-Inch Rayon and Wool GABARDINE

Regular \$2.95 yard \$1.75 yard

FAST COLOR GLAZED PRINTS

Topmost and A.B.C. 55¢ yard

18-Inch TOWELING 35¢ yard

ENGLISH BROADCLOTH 69¢ yard

PIQUE In solid colors. 75¢ yard

39-Inch LINEN Extra weight for durability. \$1.95 yard

39-Inch Width NYLON and RAYONS

Regular \$2.60 yard \$1.95 yard

36-Inch INDIAN HEAD

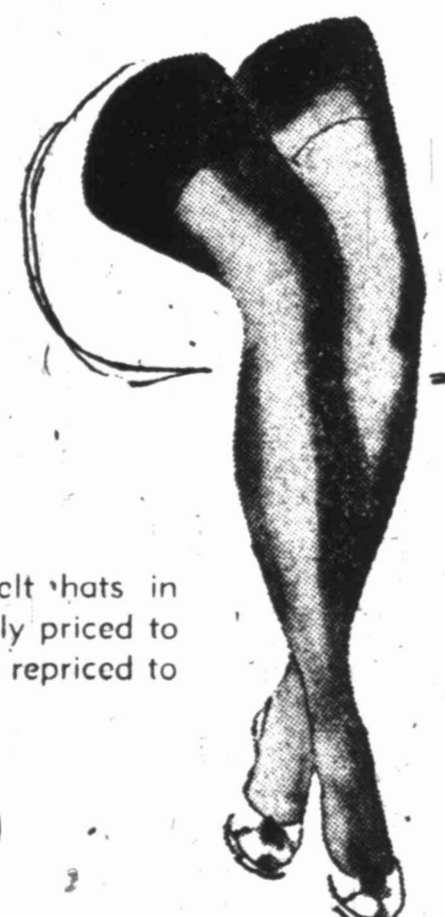
White or Colored 65¢ yard

GROUP EVENING DRESSES

A host of sparkling beauties to choose from — sequin trim, marquisettes, nets, failles and dinner dresses. Do not fail to see them!

\$19.95 Values \$14.95
\$27.50 Values \$19.50
\$29.50 Values \$22.50
\$32.50 Values \$24.50

\$39.95 Values \$29.50
\$42.50 Values \$34.50
\$69.95 Values \$49.50



ONE GROUP Ladies' HATS

At one sensationally low price! These are new Fall felt hats in gorgeous colors. Formerly priced to \$16.95, they have been repriced to clear at only

\$5.00

WOMEN'S PURSES

Arranged in 3 groups for quick clearance

Values to \$10.00 NOW \$5.00
Values to \$15.00 NOW \$10.00
Values to \$24.50 NOW \$18.50

Plus Federal Tax

Mittens

White angora. Values to \$3.50

NOW 95¢

Mittens

Wool in green, black, white, red, yellow. Small, medium, large.

NOW 49¢

Scarfs

Wool. Values to \$2.50

NOW 95¢

Gloves

Kayser and Fownes fabrics. Red, gold, green, copper, and blue. Values to \$2.00

NOW 95¢

Royal Line Stationery

36 sheets and 24 envelopes

59¢ per box



ANNUAL STORE-WIDE CLEARANCE

Half Leather Shoes

Medium, high, and low heels.
 \$11.95 Values Reduced To **\$985**
 \$14.95 to \$17.95 Values Reduced To **\$1085**



Nationally Advertised Men's Shoes

Browns in wing tip and moccasin toes.
 Values to \$14.95.
\$985

104 PAIRS
Andrew Geller Shoes
 Beautiful fall suedes in AAAA widths. Were \$17.95 and \$21.95.
FINAL CLEARANCE \$795

ONE GROUP
Men's Dress Oxfords
 Moccasin or cap toe. Incomplete sizes.
 Regular \$9.95
\$695

Rayons, Poplins, and Shantung

40-inch widths
 Regular \$1.25 Now **95c** yard
 Regular \$1.50 Now **\$1.15** yard
 Regular \$1.95 Now **\$1.65** yard

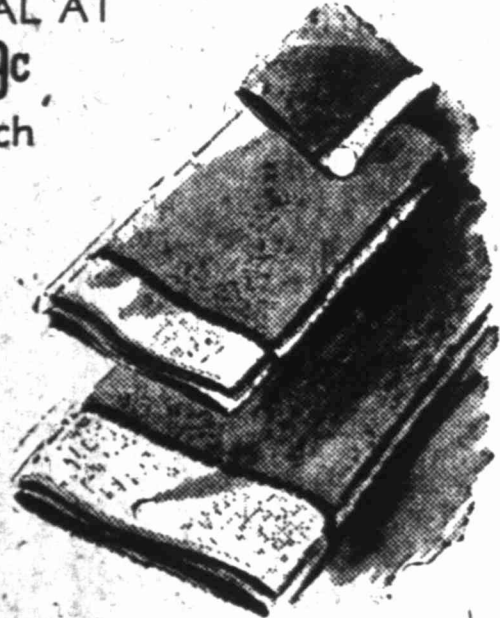
32-Inch LINGERIE
RAYON CREPE
 Tearose and blue floral.
 Regular \$3.95 yard
\$295 yard

BROCADED SATIN
 Rose, orchid, white and yellow.
 Regular \$3.50 yard
\$265 yard

CHECKED TAFFETAS
 39-inch. Formerly \$1.95 yard.
\$135 yard

BATH RUGS
 Wool string and chenille.
 Regular to \$10.00 Regular \$6.85
\$595 **\$495**

FERRY CLOTH TOWELS
SPECIAL AT 39c
 Each



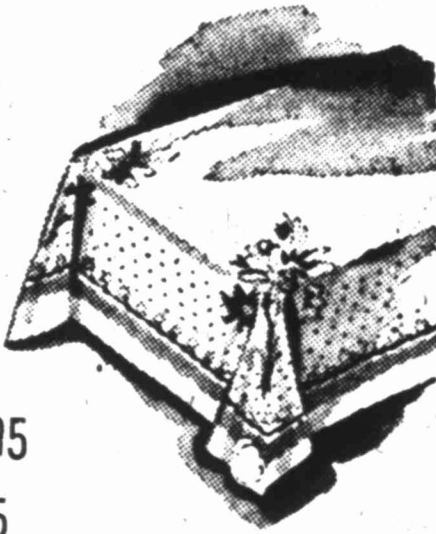
36-Inch GINGHAM
 Plaid and checked.
 Regular \$1.25 yard.
85c yard

NOVELTY SUITINGS
 Regular to \$1.45 yard
95c yard

Curtain Panels
 Rayon and Nylon Mesh, Crossbar Marquette, Cotton Mesh, Coin Dot.
 Regular \$2.95 Now **\$1.95**
 Regular \$3.95 Now **\$2.95**
 Regular \$5.95 Now **\$3.95**

Floral Ticking
 Special at **75c** yard
RUBBERIZED CLOTH
 Special **79c**

LUNCH CLOTHS
 Specially priced in 3 groups.
95c - \$195
 and **\$295**



TEA TOWELS
 3 special groups at the amazingly low prices of
35c - 59c - 69c

EMBROIDERED BATISTE
 36-inch width. Was \$4.95 yard.
\$195 yard

54-Inch JERSEYS
 In solid colors. Formerly \$1.75 yard
\$145 yard

JERSELLA PRINTS
 39-inch. Formerly \$1.95 yard
\$165 yard

EMBROIDERED GINGHAM
 36-inch. Regular \$4.95 yard.
\$350 yard

DRAPERY DAMASK
 56-inch wide.
\$195 yard

Once a year Dunlap's gives you this sensational store-wide event! Do not fail to take advantage of the tremendous savings offered!

Men's Sweaters

\$7.95 Values	\$6.95 Values	\$5.95 Values
\$595	\$495	\$395

Men's Topcoats

Just the event you have been waiting for. 100% wool topcoats in solids and small checks. Coverts, camel hair, and worsteds.
 Former selling price \$34.50 to \$39.50

\$2750



You'll instantly recognize these values!

Men's Suits

Sweeping reductions throughout our entire stock, with a wealth of styles, materials, and patterns to choose from.

Regular \$55.00 Values	Regular \$45.00 Values
Reduced To \$4250	Reduced To \$3695

Regular \$35.00 Values
 Now Reduced To

\$2675

Better see these early while the size ranges are complete!

Doors Open 9 A.M.
 Monday



Men's Windbreakers, Jackets, Leather and Suede Coats

Windbreakers
 Natural color in coat styles. Warm and comfortable.
 Formerly \$11.95
 NOW **\$895**

Wool Jackets
 Waist length in small checks with ribbed bottom.
 Formerly \$13.25
 NOW **1/2 Price**

Gabardine Coats
 These coats are leather lined and tan in color.
 Formerly \$39.50
 NOW **\$2950**

Men's Jackets
 Plenty good for rough weather. Fiberglas lined.
 Formerly \$22.50
 NOW **\$1495**

Windbreakers
 Blue, lined, in 2 styles. Waist Lengths Coat Styles
 Were \$7.50 to \$12.95
 NOW **1/2 Price**

Cravenette Jackets
 Waist length. Water repellent, sheds showers. Fully lined with ribbed bottom. Formerly \$19.50
 NOW **\$1395**

LEATHER and SUEDE COATS and JACKETS

In suede, horsehide, goatskin, horsehide front quarters. Longs and regulars in sizes from 34 to 46.

Former \$42.50	Former \$39.50
\$3495	\$2950
Former \$34.50	Former \$32.50
\$2450	\$1950

MEN'S RAYON UNDERSHIRTS
79c

ONE GROUP
MEN'S TIES
\$100

MEN'S PAJAMAS
 Stripes, solids and patterns.

\$5.95 Values	\$4.95 Values	\$3.95 Values
\$495	\$395	\$295

MEN'S WESTERN SHIRTS
 Wool and rayon mix. Brown only.
\$595

MEN'S PALOMINO FRONTIER PANTS
 100% wool. Were \$16.95.
\$995

MEN'S LOAFER TYPE SPORT COATS
 In small checks and patterns.
 Formerly sold for \$19.95 and \$24.95
1/2 Price

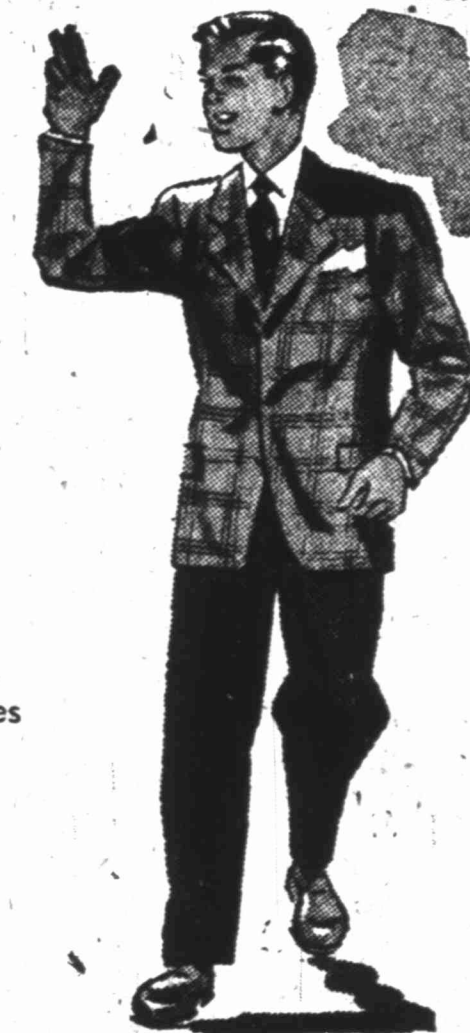
BOYS' CORDUROY PANTS
 with matching cotton plaid flannel shirts. In either blue or brown.
 Were \$6.95
\$495

CHILDREN'S CORDUROY BIB OVERALLS
 In blue, red, maroon or brown.
 \$3.95 values \$3.50 values
\$295 **\$245**

BOYS' GREY COTTON SWEAT SHIRTS
 Formerly sold for \$1.00
79c

BULLDOG and BULLPUP SWEATERS
 Turtle neck. Long sleeve.
 Were \$3.95 — NOW **\$100**

BULLDOG and BULLPUP "T" - SHIRTS
 Short sleeve. Were \$1.50 — NOW **\$100**



Men's Felt GAMP HATS
 Blue-Tan Palomino Nutria
 Values to \$10.00
\$795
 Values to \$7.50
\$595

MEN'S 100% WOOL ROBES
 Solid colors and solid trimmed in contrasting colors. Were \$17.95 and \$15.95
\$1295

BOYS' SPORT COATS
 Solid front and checked sleeves and back. Regularly sold for \$16.50.
 NOW **1/2 Price**

BOYS' SPORT SUITS
 Solid back and sleeves with checked front. Checked slacks to match. Formerly \$24.50.
 NOW **1/2 Price**

Boys' Slack Pants
 100% wool and rayon and wool mix. Solids, checks, and patterns. Sizes range from 4 to 16.
 \$9.50 Values \$8.95 & \$7.95 Values \$5.00 Values
 NOW \$695 NOW \$595 NOW \$395

Cotton Gabardine Slacks
 In either tan or brown. Formerly sold for \$2.95
\$245



Frank Sinatra Beats Recording Drought
HOLLYWOOD—(AP)—The Pele-entorced recording drought does not seem to have bothered Frank Sinatra. He recorded 100 sides before the drought and figures the supply will last for six years.

The crooner, who has been all with a sinus condition, will record most of the winter at his home in Palm Springs. He has even broadcast his radio show in the desert.

HARMACOLOGIST PERFECTS AN AMAZING FORMULA FOR SICK PEOPLE

Acts Quickly To Overcome Conditions Which May Have Been Causing Untold Misery Over A Long Period Of Time

Since countless ages, man has been seeking a panacea for his ills. Heres of people have sought alleviation at the spas of Europe and here at home. But, mineral salts and literally thousands of remedies have been used by countless people. Now, a pharmacologist, who has spent many years in prescription work, with ample opportunity for research, has perfected an amazing formula that has helped thousands of people back to health.

From letters on file, many, many people have reported relief, after using this formula, from rheumatic pain, kidney ailments, tingling in limbs, relief from sour stomach, gas, bloating and many other ailments. This formula, called MERTOX, is compounded from 15 of nature's own herbs and her splendid ingredients. It contains: Sank Chosh, Barbary, Burdock, Dandelion, Gentian, Licorice, Poke, Mandrake, arparilla Roots, Casaca Bark, Buhu waves, Juniper Berries, Senna Leaves, Ios, Magnesium Sulphate, Wild Cherry

WTCC Manager Predicts Territory Faces Best Economic Year In 1948

ABILENE—That West Texas faces its best economic year in 1948 is the belief of D. A. Bandeen, general manager of the West Texas Chamber of Commerce. Bandeen bases his opinion on the economic indices of the nation, together with the possibility of heavy crops, continued oil drilling activity, and construction projects already on the 1948 calendar.

Despite early indications of an unfavorable winter grain crop, rains in recent weeks and a favorable season in the ground, the industrial farmer who will work his available acreage should bank more money per acre in 1948 than in any other year in the history of West Texas.

Bandeen likewise pointed out that livestock prices are at least 25 percent higher at the start of this year and that prices probably will be maintained at a level not too far below current prices. He also pointed out the feeding element is much better in hand now than in previous years, with ample proteins available.

"While the oil price increase has been helpful, oil has not yet attained its full parity in price," Bandeen said. "New pools, wide exploration, and tremendous drilling campaigns will put oil in the top-most picture in West Texas economy this year."

Conservation will be the major project of the West Texas Chamber of Commerce for 1948, Bandeen pointed out. This program will cover two of the most important problems of West Texas, water development and soil conservation. In the 1948 work program of WTCC, special commissions were appointed to carry out the work on these two projects.

Crane News

CRANE—Mr. and Mrs. N. E. Poque and daughter, Barbara Ann, of Odessa were New Year's visitors here. The family formerly lived at Crane.

Carla Boyd of McCamey spent New Year's Day with June Crowner of the Gulf Camp.

The Rev. and Mrs. Christian of Crane, and Mr. and Mrs. Neal Lauderbeck of Kermit were dinner guests of Mr. and Mrs. J. C. Caldwell recently.

Mr. and Mrs. Frank Perkins of Norman, Okla., are guests of Mrs. Perkins' parents, Mr. and Mrs. J. P. Hickey of the Gulf Sand Hills Camp.

Mr. and Mrs. Q. M. Sharp and daughters were holiday guests of Mrs. J. O. King of Houston. They returned by Brady for a visit with Stiner's grandfather, A. H. Conner.

The First Baptist Church here held a watch service following prayer service Wednesday night. A baptismal service was held for two. After fellowship and refreshments, the Rev. Bill Lee of McCamey gave a devotional.

The WSCS of the Crane Methodist Church will meet at 1 p. m. Tuesday at the church for a covered dish luncheon. Members are urged to bring guests.

J. R. Boyd left last week in response to a message informing him of the death of his sister who lived in Rising Star.

Mr. and Mrs. Ray Maxwell and children visited Maxwell's brother of Montgomery during the holidays.

Holiday Guests
 Mrs. Grover J. Bright had the following relatives as guests during the holidays: Dr. and Mrs. Paul Z. Brown and Mary Anne of Dallas; Mr. and Mrs. C. C. Lutton of Hot Springs, Ark.; Mr. and Mrs. Paul and son, Eddie, of Evansville, Ind.; and Mrs. C. L. Lutton and son, C. L. Jr., of Evansville, Ind.

Mr. and Mrs. Martin Ingram announced the birth of a boy December 29, in a McCamey hospital.

V. M. Stacy visited his brother, Ben Stacy, this week. The latter is in the hospital for surgery.

Mrs. D. O. Bradley of the Gulf Sand Hills Camp entered a Lubbock hospital this week for treatment.

Dr. S. F. Robinson and son, Bobby, flew to Paduca recently for a visit with the doctor's parents.

Mrs. D. C. Whaley and baby daughter of Crane, and Mrs. L. R. Meier and daughter of McCamey were dismissed from the hospital here this week.

Crane High School's varsity basketball team was defeated by the Ozona High team last week by a 34-30 score. In the B team game, Crane defeated Ozona by a score of 37-16.

The following members of the Crane tennis team attended the Sun Carnival in El Paso, accompanied by Coach and Mrs. Douglas Chrane and daughter, Lynda; Jimmie Neal Stacy, Merwin McCullough, Bill Teague, Doris Collins, and John Hickey.

BE A SECRETARY
 Specialized courses prepare quickly for superior income. Urgent demand, interesting work, future security. Enroll now.

DRAUGHON'S BUSINESS COLLEGE
 Abilene, Lubbock, Amarillo, Texas

HD Agent Announces Schedule For Week
 Home Demonstration Agent Nettie B. Messick has announced the following meetings in which committees will discuss plans for 1948 and other groups will study leather craft.

Monday, 10 a. m., the Home Demonstration Club Finance Committee will meet in the assembly room of the courthouse; Monday, 1 p. m., the Air Terminal 4-H Club will meet in the school building there; Monday, 2:45 p. m., HD Club presidents, vice presidents and committee chairmen will meet in the assembly room for special training; Monday, 4 p. m., the marketing committee will meet in the assembly room.

Tuesday, 10 a. m., the exhibit committee will meet in the assembly room; at 2 p. m., the Busy Wives Home Demonstration Club will meet for a demonstration in leather craft.

Wednesday, 10 a. m., the education committee will meet in the assembly room; at 2 p. m., the Air Terminal Home Demonstration Club will meet in the home of Mrs. Murphy.

Thursday, 10 a. m., the yearbook committee will meet in the assembly room; and the West Side Home Demonstration Club will meet at 2 p. m.

Friday, 10 a. m., the expansion committee will meet in the assembly room. At 2:30 p. m., the home demonstration council will meet in the assembly room.

Saturday, at 10 a. m., the Girl's 4-H Council will meet in the assembly room.

Recruiting Station Announces New Plan For Former Army Men

The U. S. Army Recruiting Station here has received authority to enlist former service men for a guaranteed three year assignment to any one of several units in the United States having vacancies. Sgt. Ted Dykes announced Saturday.

To be eligible for one of these choice assignments enlistees must have had at least one days service outside the continental limits of the United States since September 2, 1945.

Among the organizations having vacancies at this time are 2d Infantry Division, Fort Lewis, Wash.; 2d Armored Division, Camp Hood, Texas; 82nd Airborne Division, Fort Bragg, N. C.; 2d Engineer Special Brigade, Fort Worden, Wash.; 3d Armored Division, Fort Knox, Ky.; 4th Infantry Division, Fort Ord, Calif.; 5th Infantry Division, Fort Jackson, S. C.; and the 9th Infantry Division, Fort Dix, N. J.

Full details on this new plan may be obtained at the recruiting station on the third floor of the courthouse.

Social Situations

Situation: You are introducing a friend of yours to an acquaintance. Wrong Way: Say, "I want you to know my girl friend, Sarah Smith." Right Way: Leave out "my girl friend."

RETURNS TO AUSTIN
 Mrs. Clark Steinberger accompanied her daughter, Joan, when she returned to Austin Sunday. Joan is a junior student at The University of Texas.



Expecting a Baby?

Mother's Friend massaging preparation helps bring ease and comfort to expectant mothers.

MOTHER'S FRIEND, an exquisitely prepared emollient, is useful in all conditions where a bland, mild anodyne massage medium in skin lubrication is desired. One condition in which women for more than 70 years have used it is an application for massaging the body during pregnancy... it helps keep the skin soft and pliable... thus avoiding unnecessary discomfort due to dryness and tightness. It refreshes and tones the skin. An ideal massage application for the numb, tingling or burning sensations of the skin... for the tired back muscles or cramp-like pains in the legs. Quickly absorbed. Delightful to use. Highly praised by users, many doctors and nurses. Millions of bottles sold. Just ask any druggist for Mother's Friend—the skin emollient and lubricant. Do try it.

Mother's Friend

Disabled Persons Not Entitled To Free Voting Privileges

Disability does not entitle voters to free voting privileges, Midland County Tax Assessor-Collector J. H. Fine said Saturday.

A ruling by the attorney general holds that 40 per cent or more disability entitles citizens to vote by paying only \$1 poll tax, but that even total disability does not mean exemption from this payment.

The only persons who need not pay any poll tax at all are those who have reached the age of 21 since the last election or who will become 21 before the coming elections this year; and those who have passed the age of 60.

Disabled persons who may already have received free poll tax receipts must, therefore, pay the \$1 tax before January 31 in order to vote, Fine said.

MIRRORS Re-Silvered!

Stagnant Front Glass, and Setting
 Car Glass Installed
 Furniture Glass
 New Mirrors Made To Order
PAINT CONTRACTING
 • Wallpaper
 • Sowell's Paints

Phone 1100
MID-WEST
 Paint & Glass Co.
 307 South Marienfield

Name It And Take It Organization Is Formed

Membership fees in WAFPAOCT-TECOTMLOPHB, a new Midland organization, were being received Saturday by Lions Club members. Ernest Sidwell and Dr. Henry Schlichting are co-chairmen.

"Western Association for the Advancement of Culture Through the Enthusiastic Support of the Midland Lions Club Philharmonic Hillbilly Band" is the full name of the new organization.

Proceeds from the membership campaign will be used to send the band to the Lions International convention in New York City in July.

Advertise or be forgotten.

Guatemala has about the area of New York state.

SPENCER
 INDIVIDUALLY ADJUSTED
SUPPORTS

A Spencer designed especially for you... you please, comfort and perfect shape...
 Doctors' prescription...
MRS. OLA BOLES
 1318 W. Wall
 Phone 2944-J

OPENING SOON!

Majestic Cleaners

615 W. Wall
 Phone 2847

Watch for our
Opening Date

"MIDLAND'S MOST MODERN CLEANERS"

Plain Spoken Pete
 BY BASIN SUPPLY COMPANY

SONNY, WHEN YOU GROW UP YOU MAY HAVE TO PAY MONEY TO HEAR THAT BOY SING.



But the radio and television have enabled you to hear and see anybody singing without having to pay. For radios of beautiful design, lovely tune, all shapes and sizes, visit our store today. Test them and you will be sure to take one.

And... don't forget us when it comes to hardware and gardening tools... we are ready to take care of all your needs.



Every good carpenter needs a chest of cutting tools. For the finest precision tools—see our selection of tool chests. All sizes... all prices... all first quality values.



GARDEN TOOLS

- RAKES . . SHOVELS . .
- SPADES . . HOES . .
- PITCHFORKS . .
- SPADING FORKS . .
- GRUBBING HOES . .

Save money! Make little house repairs yourself... it's easy when you have the right tools. Let us help you select the tools you need. All at low cost.



It won't be long before you will need some or all of these tools. Check with us now!

POULTRY NETTING

We have just received a fair supply of poultry netting. Ask us about it.

WE ARE HEADQUARTERS FOR FARM, HOME, AND RANCH SUPPLIES

BASIN SUPPLY COMPANY
 OF MIDLAND
 103 SOUTH MAIN STREET PHONE 1159
 MIDLAND, TEXAS

CACTUS LUMBER CO.
 2121 N. Chadbourne SAN ANGELO, TEX. Phone 5220

PLYWOOD
 1/4" 22¢ ft., 3/8" 28¢ ft., 1/2" 43¢ ft., 3/4" 55¢ ft.

FIR FRAMING LUMBER
 8 to 26 ft. long. 12 1/2¢ bd. ft.

January Specials

BOYS' and GIRL'S KNIT PAJAMAS
 Either 2 or 3 Piece.
 Sizes 1 to 6. Values to \$2.98
 Now \$150 and \$198

BOYS' LEATHER JACKETS
 Lined. 2 Slash Pockets.
 Sizes 4 and 6. Were \$15.95 and \$16.95
 Now \$998

ONE LOT FLANNEL ROBES
 Sizes to 10. Regular to \$9.98
 Now \$500 and \$650

KIDDIES' OUTING & FLANNEL ROBES
 Sizes 1 to 3. Regular \$2.25
 Now \$198

ALL BOYS' and GIRL'S WINTER COATS and ALL GIRL'S WINTER SUITS and SKIRTS
 At Cost

SPECIAL GROUP
CORDUROY OVERALLS
 Greatly Reduced For Quick Clearance!

"THE SHOP FOR YOUR CHILD!"

Kiddies' Toggery
 109 North Marienfield Midland, Texas

Take a Tip from KRUGER'S
 If you received a Christmas Bonus

invest it in diamonds

or turn it into a family treasure

or treat yourself to a really fine watch

GRUEN the Precision watch

Now you can own the watch you've always wanted—a world-famous Gruen. You're investing your money wisely when you choose this stunning watch renowned for lasting beauty and dependability. We'll be waiting to show you our wide selection of Gruen Vari-Thin and Curvex models. Priced from \$33.75 including federal tax.

Curvex Envoy
 Gruen-Precision movement \$67.50

Vari-Thin MODE BRUCE \$33.75
 Vari-Thin BRUCE \$49.75
 Vari-Thin ROSINA \$59.50

Kruger JEWELRY CO.
 104 North Main Street Midland, Texas

Just Nosing Around



Sniffing their way toward friendship—or at least mutual tolerance—are "Duchess," a German shepherd dog, and "Leaping Lena," a pet rabbit, recently acquired by the family of Earl Haegle, Chicago.

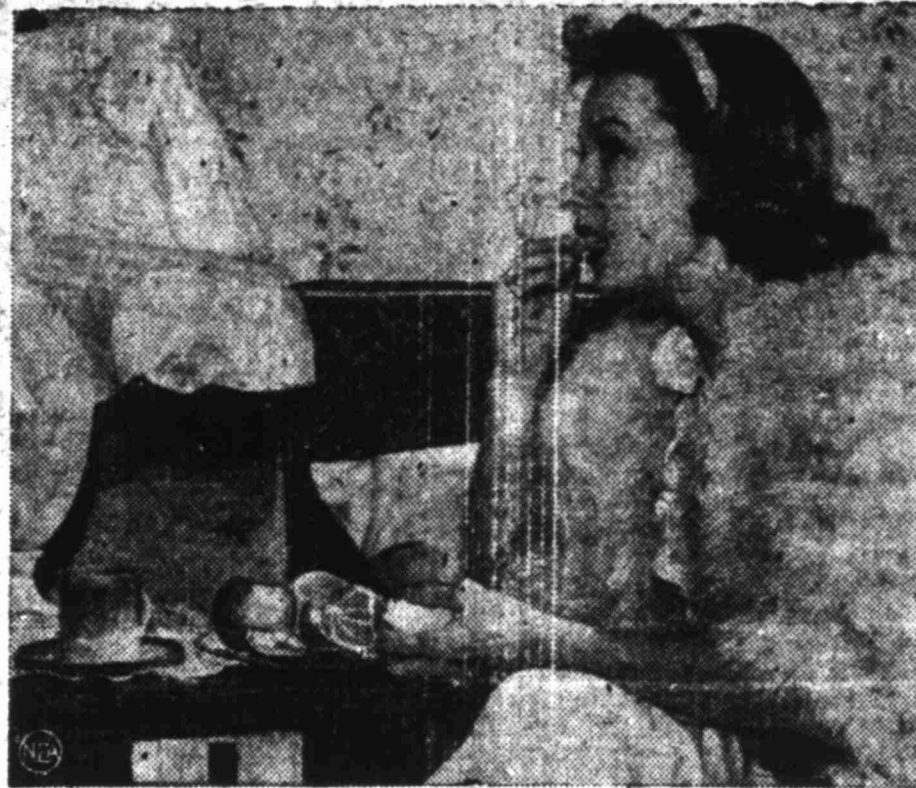
Former Glasscock County Official Dies In Fort Worth

PORT WORTH—Funeral services were held here Saturday for Norman Girdwood, 69, Fort Worth resident for 29 years and a former West Texas rancher and county official, who died here Thursday.

He retired three years ago as owner and operator of a roofing company. He came to Fort Worth in 1918 after resigning as district and county clerk of Glasscock County, an office he had held 12 years. He had been a rancher at Garden City prior to that time. His father, the late William Girdwood, formerly was county judge of Glasscock County.

Survivors include the widow; a son, Elmer E. Girdwood; a daughter, Mrs. Lucille Richart, all of Fort Worth; a sister, Mrs. Miriam Elliott of Alpine; and three grandchildren.

Between-Meal Hunger May Be Prevented By Dieter's Nibbling On Solid Fruits



White dieting, Jane Kean eats an orange to curb bedtime hunger.

By ALICIA HART
NEA Staff Writer

Cater occasionally to your spells of hunger instead of trying to fight them. That way, you'll find it easier to follow a restricted diet. When it seems difficult to keep your ap-

petite appeased, eat lightly four or five times a day. You can do this by eating less than the amount of food allowed, you for luncheon and dinner and taking up the rest of your quota as a mid-afternoon snack.

American Airlines Sets New Records

With new all-time traffic records for domestic air carriers set in 1947, American Airlines moves into the New Year optimistic of completing its transition from prewar to postwar flying equipment. Woody Campbell, station manager for American here, said Saturday.

During the last year American flew approximately 1,500,000 passenger miles and carried more than 2,750,000 passengers. This compares with 1,308,000 passenger miles and 2,485,289 passengers in 1946. These are the highest totals ever recorded by a domestic airline, Campbell said. The 1947 figure brought American's total in its 20-year history to 13,000,000 passengers.

Air Freight Gains

Air freight also continued to make spectacular gains in 1947. American flew 16,350,000-ton miles of freight during the year as compared with 10,500,000 in 1946.

A combination of factors including voluntary withdrawal of the DC-6s in November, sharp increases in wages and salaries and other costs prevented the company from showing a profit during 1947, Campbell explained. Although profits were shown in the second and third quarters of the year, the nine months loss was \$1,014,799.

New cities including San Francisco, Milwaukee, Wilmington, and Midland were added to the Flagship Route during the year.

Former Midlander Is Stationed In Panama

RIO HATO, REPUBLIC OF PANAMA—Major Jack E. Moore, formerly of Midland, Texas, recently arrived in Panama. Major Moore is stationed at Rio Hato Air Field, where he has been assigned as base executive officer and to the 5th Base Camp Squadron. Rio Hato Air Field is an installation of the Caribbean Air Command.

Major Moore was ordered to extended duty as a second lieutenant with the Air Corps on July 15, 1941, at Randolph Field, Texas. He received a commission in the Regular Army in July, 1946.

Prior to entering the service Major Moore graduated from high school in 1936 at Enid, Okla., and went to the University of Oklahoma at Norman, from which he graduated in 1941.

Major and Mrs. Moore, the former Miss Daisy White of Uvalde, Texas, are the parents of four children.

Before coming to Panama Major Moore was stationed at Randolph Field, and Midland Army Air Field, Midland, Texas.

A fourth of the American Indians on U. S. reservations live in New Mexico and Arizona.

Closet Inventory, Clue To Money Sense

By ALICIA HART
NEA Staff Writer

Are you a wild speculator or a shrewd investor in clothes? A coed doesn't have to major in high finance to find out whether she's investing wisely or speculating madly with her wardrobe allowance. An inventory of her clothes closet will give her an unbiased answer.

If she's a shrewd investor who gets her money's worth, her wardrobe is as carefully balanced as a bookkeeper's ledger. Her closet lists only "active" clothes—those that are ready to slip on at a moment's notice, that complement each other, that take to necessary changes to double their value. She spends the most money on clothes she wears the most; allocates less money to dresses she wears infrequently. Her wardrobe may be small but it's rated AAA because she always looks her best. The reason she does is that she is thoroughly aware of her needs before she invests her cash.

Now take the case of the speculator. With the same cash outlay, the speculator splurges on spur-of-the-moment purchases without regard to wardrobe needs. As a result, she usually winds up with a closet full of clothes—many of them mistakes—and few that she actually likes to wear. Her closet will harbor a mixed-up jumble of outfits which taken separately might be handsome but collectively will refuse to harmonize with each other. Clothes "skeletons" in her closet are duds which are never worn because they don't fit, because the color is wrong or the style is unsuitable. A high percentage of these space-grabbers in a closet is graphic evidence of ill-advised extravagance.

Tired, "All-In"—Listless Feeling Brought To Halt

As Vibrant Energy is Released To Every Muscle, Fibre, Cell

Do you get up in the mornings still tired, feel down-and-out all day? Have you checked up on your blood strength lately? Overwork, undue worry, cold, flu or other illness often wears down the red-blood-cells.

Every day—every hour—millions of tiny red-blood-cells must pour forth from the marrow of your bones to replace those that are worn-out. A low blood count may affect you in several ways: no appetite, underweight, no energy, a run-down condition, lack of resistance to infection and disease.

To get real relief you must keep up your blood strength. Medical authorities, by analyzing blood, have by positive proof shown that 585 Tonic is amazingly effective in building up low blood strength in non-organic nutritional anemia. This is due to the 585 Tonic formula, which contains special and potent activating ingredients.

Also, 585 Tonic helps you enjoy the food you eat by increasing the gastric digestive juice when it is non-organically too little or scanty—thus the stomach will have little cause to get balky with gas, bloating and give of that sour food taste.

Don't wait! Recharge your body with rich, red-blood. Start on 585 Tonic now. As vigorous blood surges throughout your whole body, greater freshness and strength should make you eat better, sleep better, feel better, work better. Play better, have a healthier color glow in your skin—firm flesh all out hollow places. Millions of bottles sold. Get a bottle from your drug store. 585 Tonic helps Build Sturdy Health.

Our truck will be in Midland each Wednesday. Leave calls at MIDLAND HOME & FUR. CO. or BARROW FUR. CO.

Superior Rug Cleaners

DUNN'S VAN LINE

LOCAL, STATE & INTERSTATE MOVING
PACKING - CRATING - STORAGE

DUNN'S MOVING VAN

Bonded
2112 W. WALL - MIDLAND - Day or Night Phone 535
HOBBE - Phone 535

Midland Furniture Dealers To Attend Market In Chicago

Among the hundreds of Texans planning to attend the January furniture market in Chicago during the two-week period beginning Monday are Midlanders John B. Mills, manager of Midland Hardware and Furniture Company; S. M. Vaughn, manager of Barrow Furniture Company; and Joel Adcock, furniture department manager of Whites Stores, Inc., here.

Vaughn and Mills plan to leave early this week to do their buying during the first part of the market; Adcock's plans are to leave late in the week in order to be on hand for the last week.

Meanwhile, the Retail Furniture Association of Texas has reported the entire state will be well represented by buyers selecting new furniture stocks for 1948. Special trains will carry hundreds of furniture men to Chicago over the weekend.

The association's officials said 1948 styles would be much the same as those that found good markets last year. Texas' retail stores in 1948 will do a record \$5,000,000,000 business, it was predicted.

Advertise or be forgotten.

Help-Your-Self Robinson's Washateria
Plenty of Hot and Cold Soft Water and Steam
OPEN 7 A.M. TO 5 P.M.
Saturday 7 A.M. Till Noon
585 So. Baird Phone 58

Pioneer To Open Plainview Airport

PLAINVIEW—The Hale County Airport, one of the first ever built in the United States under the new Civil Aeronautics Federal aid program, will be put in operation by Pioneer Air Lines Monday, President Robert J. Smith announced.

This will also mark the first time an airport built under the federal aid program has been put into operation by a scheduled airline, Smith added.

Special ceremonies are scheduled at the new field Sunday with many prominent persons from all over the state participating.

M. E. Randall Services Scheduled In McCamey

MCCAMEY—Funeral services will be held at 2 p. m. Sunday in the Spalding Funeral Home for Myron E. Randall, Casper, Wyo., ranchman, who died there last week. The body arrived here Saturday.

Survivors include two brothers, Victor V. Randall of McCamey, and W. O. Randall of Jacksonville, Ill.

Opening January 5
GRIFFIN SCHOOL OF TAP DANCING
Classes twice weekly.
Lessons \$1 each. Enrollment now.
Phones 1383-J-612-J

7 REASONS FOR EATING AT THE Midland Cafeteria

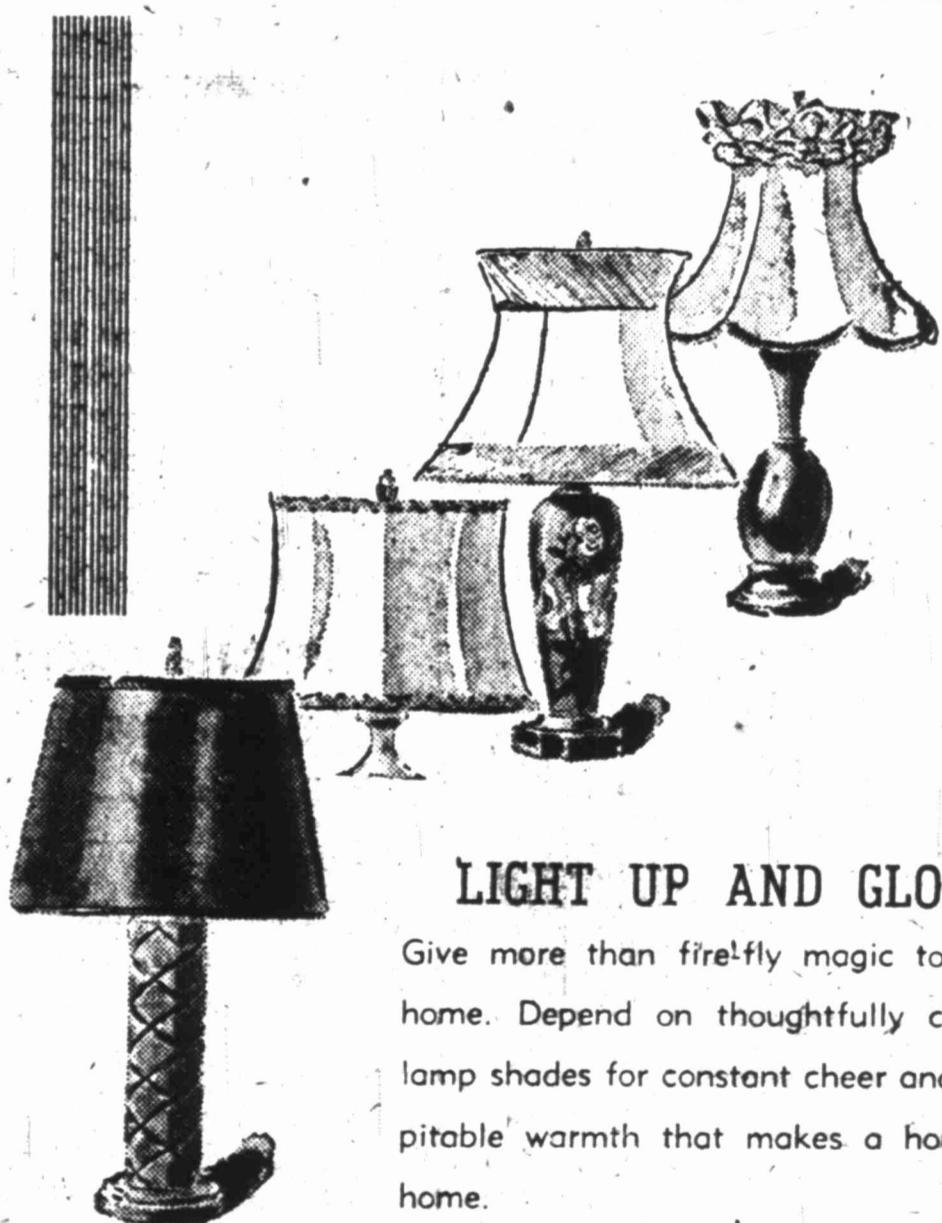
1. We have reduced prices
2. New Ownership
3. More generous servings
4. No additional cost of tips
5. See what you eat
6. Pay only for what you want
7. Fine variety of dishes

You will find a great variety of dishes, prepared with the finest foods obtainable, cooked and seasoned to your taste. We have choice steaks that are the best and most reasonable in town. Get in tune with the times and eat cafeteria style; the fastest and most efficient method of eating what you want.

COME IN AND GIVE US THE OPPORTUNITY TO PROVE OUR 7 REASONS

DON MATTHIAS, BOYD RIDGWAY

JUST ARRIVED



LIGHT UP AND GLOW

Give more than firefly magic to your home. Depend on thoughtfully chosen lamp shades for constant cheer and hospitable warmth that makes a house a home.

FLOOR LAMP SHADES

Several Patterns in DUSTY ROSE and IVORY

Phillips Electric Co.
ELECTRICAL CONTRACTORS

218 N. Main Phone 878

Plan For Future Security

Of course you want security. We believe that the "Beauty Business" is one of the best paying and permanently good occupations you can choose. You can graduate in six months with a position awaiting you. Don't be satisfied with less than the best of training. We are approved by the Veterans' Administration for men and women eligible for government paid training.

Enroll Now for Class starting Jan. 15
EASY TERMS OR DISCOUNT FOR CASH
Positions assured for all our students. High School education not required. Can work for room and board.

Mrs. Beatrice Martin, Senior Instructor; Mrs. Pauline Morgan, Junior Instructor; Mrs. J. W. Jolley, Manager.

WRITE OR COME TO SEE US
JOLLEY BEAUTY COLLEGE
14 N. Chadbourne, San Angelo, Texas

Firestone '48 Sale
Celebrating

THE NEW YEAR WITH MANY SMASHING VALUES GREATLY REDUCED IN PRICE!!

New Tire Safety at Less Than 1/2 the Cost of New Tires

Get New Firestone De Luxe Champion TREADS for Extra Safety for Longer Mileage \$7.00 (Top Cap 4.00-16)

Even though your present tire tread is worn, the tire body may still be as strong and dependable as when new. Let us put on new Firestone De Luxe Champion tread and you'll get many additional miles of safe driving... come in today!

Keeps Motor Oil Clean
OIL FILTER 6.45
Removes foreign matter from oil. Saves oil and costly repair bills.

SAVE! SAVE!
BIKE BASKET 2.45
Heavy-gauge steel wire, welded for maximum strength. A real buy!

BUY NOW AT THIS LOW PRICE
5-Piece ALUMINUM SET
Reg. 11.00 Value 6.45
Heavy weight for years of wear. Includes 1 1/2-qt., 3-qt. and 4-qt. saucepans; 9-inch skillet; 11-inch skillet; and one cover that fits both saucepan and skillet.

5 STAR SPECIAL
Regularly 7.00 SCOOTER 3.98

Fun and good exercise, too. Flashy red finish. Easy-rolling disc wheels with rubber tires. Even has a parking stand. Watch every week for our Five-Star Special.

Children's GOLF SETS
INCLUDES 3 Clubs—7 Balls—Bag
Reg. SALE! 2.49 1.98

Sensational Bargains in EVERY DEPARTMENT

AUTO SUPPLIES REDUCED!

Rear-View Mirrors	2.39	2.19
Rear-View Door Mirrors	1.79	1.48
Perfection Fender Guide	1.89	1.49
Defrosting Fans	7.95	5.98
Powertrone Horns	8.95	6.88

HARDWARE PRICES SLASHED!

Padlocks and Keys	55c	38c
Carpenter's Tool Box (all metal)	7.45	5.45
Flashlights (incl. battery)	75c	58c
Coping Saws	40c	25c
10" Jaw Wrenches	1.95	1.48
Electric Soldering Irons	2.09	1.68

HOME APPLIANCE BARGAINS!

Ironing Board	1.39	1.18
Pad and Cover Sets	1.28	1.18
Self-Polishing Wax and Wax Applicator, 1 qt.	3.79	2.88
Velon Shower Curtains	4.27	3.28
Bathroom Slag Rug and Lid Cover Sets	5.85	4.88
Kitchen Exhaust Fans	27.95	23.88
Firestone Vacuum Cleaners	69.50	54.50

SPORTING GOODS SPECIALS:

Zipper Bags	2.49	1.98
Olympian Striking Bag	6.50	5.95
Official Basketball	8.95	7.88
Reversible Poplin Jacket	9.95	8.88

WESTEX SERVICE STORE
"YOUR FIRESTONE DEALER"
SHELL OIL COMPANY PRODUCTS
FIRESTONE TIRES, HOME and AUTO SUPPLIES
West Wall at Carrizo Phone 2700

HELBERT & HELBERT

Concrete, Air Compressor, Paving Breaker Work, Sand Blasting
NO MONEY DOWN
 36 Months To Pay
 2528-2066-J 1800 S. Colorado

Wings Over Jordan Choir To Appear In School Auditorium Here Monday

The nationally famous negro choir, "Wings Over Jordan," which is said to be the most listened to religious choir in the nation, will be presented in three concerts here Monday under the sponsorship of the Midland Ministerial Association. The performances will be staged in

the Midland High School Auditorium.

A matinee for students will be given at 4 p. m., to be followed by a performance for adult whites at 7:30 p. m. A third concert for negroes is scheduled at 9 p. m.

Tickets may be purchased from ministers of the city or at church offices. They also will be available at the door Monday.

10 Years On Air

The Wings Over Jordan Choir made its first radio broadcast more than 10 years ago, and in January, 1938, made its initial coast-to-coast broadcast. Since that time the choir has been heard by 10,000,000 listeners every Sunday, going off the air only when the group spent 10 months touring Europe for USO Camp Shows. The choir recently celebrated its 500th broadcast.

In answer to requests for personal appearance, Wings Over Jordan began touring the country, and so far has appeared in 45 states. The choir members have raised more than a million dollars for relief and charitable purposes and have worked constantly with both white and negro groups.

Listeners over the nation have praised the singing of the group and declared Wings Over Jordan had helped persons develop a greater understanding of the negroes through their songs of faith and inspiration.

Representatives of the Midland Ministerial Association said they were fortunate in being able to book the choir here. They urged as many persons as possible to see and hear Wings Over Jordan.

There has been a steady increase in the number of American Indians since 1900.

Stanton News

STANTON, — Mr. and Mrs. Turner Vance, Jr. of Redondo were here recently on a business trip.

Mrs. Nadine Stephens and son, Joey, left Saturday to join Lieutenant Stephens who is stationed on Guam.

Mr. and Mrs. Floyd Smith and children, Barbara and Smitty, of Abilene are here visiting Mrs. B. F. Smith and other relatives of Stanton and Lenora.

Mrs. Flora Morris is in the hospital here. Mrs. Mildred O'Conner of Odessa is in charge of the Eat Shop during Mrs. Morris' illness.

The Junior class of Stanton High School sponsored the Stamp Quartet in a recent appearance here.

Mr. and Mrs. Dale Kelly and children returned recently from a holiday trip through Arizona, California, and Old Mexico.

Jean Hardy, a student at Southern Methodist University, Dallas, spent the holidays here with her parents.

Billy Jean Keisling, a student nurse at Shannon Hospital, San Angelo, spent New Year's here with her parents.

Mr. and Mrs. Charles Peterson of Nyssa, Ore., who have been visiting here during the holidays have returned home.

Dicky and Harja Jean Madison of Big Spring visited during the holidays here with their grandparents, Mr. and Mrs. Dick Madison, New Year's Visitors.

Dick Hittson of Mineral Wells was here New Year's Day.

Mayor Alsop is still in the hospital here recuperating from a heart attack suffered the day after Christmas.

Mr. and Mrs. W. B. Spinks of Stanton and Mr. and Mrs. Guy Spinks of Midland visited Mr. and Mrs. Tom Spinks of Kermit during the holidays.

Granville Graves entered a Big Spring hospital recently for surgery.

Mr. and Mrs. Speedy Moffett and children, Mike and Mary Ann, of San Angelo are here visiting Mr. and Mrs. T. E. Bentley and Dr. and Mrs. J. E. Moffett.

Mr. and Mrs. C. Turner and children, Diane and Robert Wayne, spent Thursday in Crane, Odessa, and Kermit on business.

Mr. and Mrs. Marvin Graham, Mrs. A. J. Graham, and Joyce Graham spent the holidays in Oregon visiting Mrs. A. J. Graham's son and family.

Guests in the G. A. Bridges home during the holidays were Mr. and Mrs. Bascomb Bridges and sons, Henry Holmes of Big Spring, Mr. and Mrs. Henry Bridges and daughters of Lamesa, Charlie Vest of Brownfield, and Mr. and Mrs. Albert Bauring Jr., and daughter, Patsy, of Stamford.

Mrs. B. P. Edison honored Mrs. Fred Cook with a farewell party recently. Refreshments were served to the following guests: Mr. and Mrs. Hoyt Gilbreath, Mr. and Mrs. E. W. Ross, Mr. and Mrs. Fred Cook, Mrs. Mace Howard, Mr. and Mrs. Ray Wright, and Mrs. Edison.

On Your Wedding Day

Your bouquet, those of your attendants, the church decorations must be truly magnificent, unusual, distinctive. We specialize in planning the floral decorations for weddings and receptions.

Buddy's Flowers
 1505 W. Wall Phone 408

AMAZES FRIENDS



Everybody kidded him about his old shabby jalopy. Then he turned up in a bright, slick, new-looking car. Amazing what a Chrysler-Plymouth Shine-up can do! Let us give your car a beauty treatment. We'll wash her thoroughly, apply polish and elbow grease, brush and vacuum all upholstery and interior. Drive in tonight. We'll keep your old car in tip-top shape while you're waiting for your new Chrysler or Plymouth!

Get Your Car Heater Now
SCRUGGS MOTOR CO.

CHRYSLER SERVICE PLYMOUTH
 624 W. Wall Phone 644

GRAMMER-MURPHEY Women's Wear

ALL SALES FINAL!
 No Returns, Exchanges, Lay-aways
 Refunds or Approvals—Please!

Clearance SALE

Better Hurry! Only A Few More Days Left To Enjoy Clearance Sale Savings!

To Close Out!

Women's Hats

A special group including values to 22.98

3.00

Special Group

Women's Slips

2.98 Slips Now 1.97
 3.98 Slips Now 2.67
 4.98 Slips Now 3.37
 5.98 Slips Now 3.97
 7.98 Slips Now 5.37

Special Group

Women's Pajamas

4.98 Pajamas Now 2.97
 5.98 Pajamas Now 3.97
 7.98 Pajamas Now 4.97

Special Group

Down Comforts

22.98 Down Comforts 16.87
 24.98 Down Comforts 18.87
 29.98 Down Comforts 22.87
 34.98 Down Comforts 33.87

Special Group

Wool Blankets

6.30 Wool Blankets 4.37
 8.95 Wool Blankets 6.87
 11.95 Wool Blankets 8.87
 16.95 Wool Blankets 12.87

Special Group

Women's Coats

34.98 Coats 26.77
 39.98 Coats 29.77
 45.00 Coats 33.77
 49.98 Coats 37.77
 59.98 Coats 44.77
 64.98 Coats 48.77
 69.98 Coats 52.77
 74.98 Coats 56.77
 79.98 Coats 59.77
 84.98 Coats 63.77
 99.98 Coats 74.77

Special Group

Woolens

3.49 yard Woolens 2.37
 3.98 yard Woolens 2.57
 5.98 yard Woolens 3.77

Special Group

House Shoes

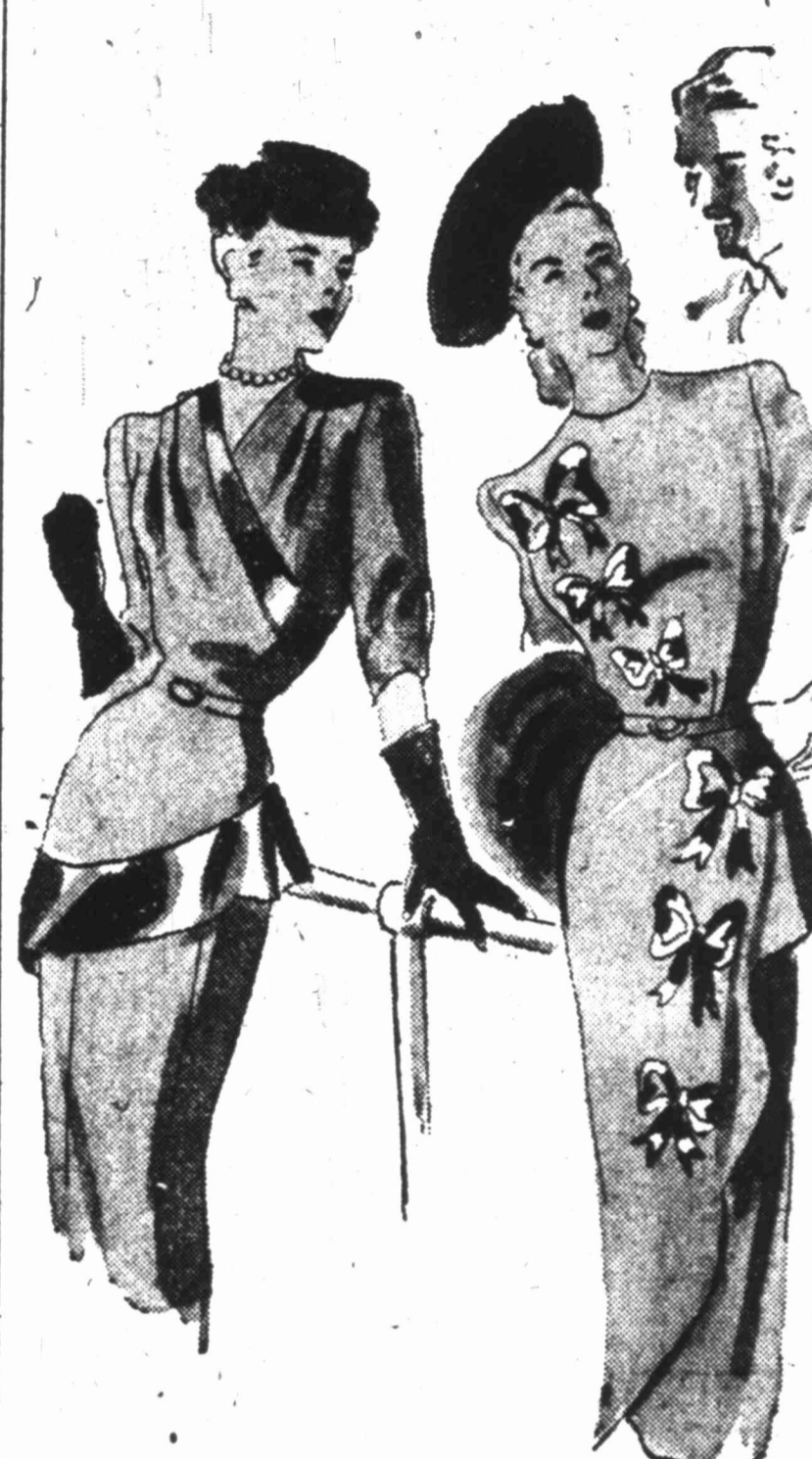
2.98 House Shoes 1.47
 3.50 House Shoes 1.77
 3.98 House Shoes 1.97
 4.50 House Shoes 2.27
 4.75 House Shoes 2.37
 4.98 House Shoes 2.47

To Close Out!

Rain Coats

Values to 24.98
 All colors and sizes your choice

9.00



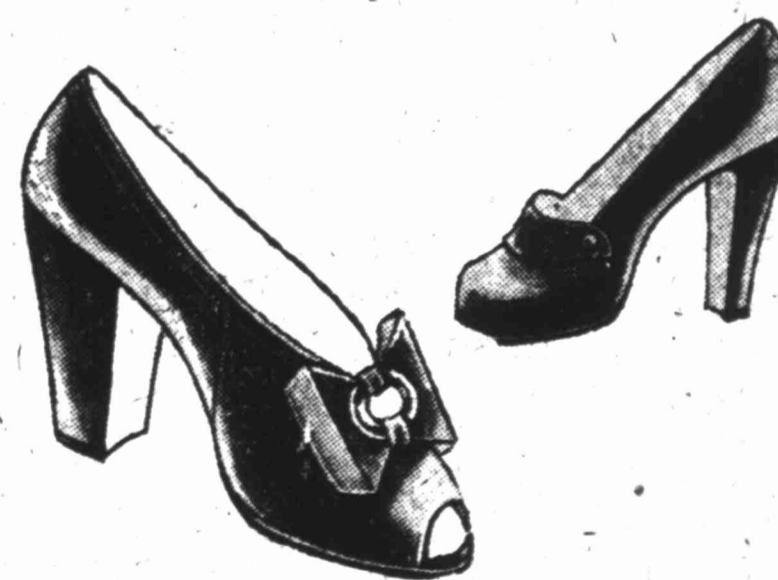
Monday Feature!

Women's Dresses

A special group in a wide and varied selection for sports or dress wear. Your Choice

17.98 to 49.98 **1/2 Price**
 Values Now

All sizes! All colors! Beautiful crepes and novelties from makers famous for their smart styling and good dress making!



Monday Feature!

Women's Novelty Shoes

Most all sizes - - - values to 14.98

Black!
 Browns! \$4.00
 Colors!

Many a rare bargain in this great sale group - - from finest makers - - excellent quality and well fitting lasts - - see them early!

To Close Out!

Fur Trim Coats

Only a few, so shop early
 74.98 to 139.98 values

1/2 Price

Special Group

Women's Skirts

5.98 Skirts 3.97
 6.98 Skirts 4.67
 7.98 Skirts 5.37
 8.98 Skirts 5.97
 9.98 Skirts 6.67
 10.98 Skirts 7.37
 19.98 Skirts 13.37
 22.98 Skirts 15.37
 24.98 Skirts 16.67

Special Group

Women's Blouses

3.98 Blouses 2.67
 4.98 Blouses 3.37
 5.98 Blouses 3.97
 6.98 Blouses 4.67
 7.98 Blouses 5.37
 8.98 Blouses 5.97
 9.98 Blouses 6.67
 10.98 Blouses 7.37
 12.98 Blouses 8.67
 14.98 Blouses 9.97
 16.98 Blouses 11.37
 19.98 Blouses 13.37

Special Group

Junior Dresses

7.98 Juniors Now 5.37
 8.98 Juniors Now 5.97
 9.98 Juniors Now 6.67
 10.98 Juniors Now 7.37
 12.98 Juniors Now 8.67
 14.98 Juniors Now 9.97
 16.98 Juniors Now 11.37
 17.98 Juniors Now 11.97
 19.98 Juniors Now 13.37
 22.98 Juniors Now 15.37
 24.98 Juniors Now 16.67
 27.98 Juniors Now 18.67
 29.98 Juniors Now 19.97

Special Group

Casual Dresses

7.98 Casuals 5.37
 8.98 Casuals 5.97
 9.98 Casuals 6.67
 10.98 Casuals 7.37
 12.98 Casuals 8.67
 14.98 Casuals 9.97
 16.98 Casuals 11.37
 17.98 Casuals 11.97
 19.98 Casuals 13.37
 22.98 Casuals 15.37
 24.98 Casuals 16.67
 27.98 Casuals 18.67
 29.98 Casuals 19.97

Special Group

School Oxfords

6.98 Oxfords 4.67
 7.50 Oxfords 4.97
 7.98 Oxfords 5.37
 8.50 Oxfords 5.67
 8.98 Oxfords 5.97
 9.98 Oxfords 6.67

To Close Out!

Evening Dresses

23.98 to 59.98 values—A valuable selection

1/2 Price

DO YOUR 1948 EXPANSION PLANS CALL FOR NEW STORE FIXTURES?

Let us figure with you and submit plans and recommendations to fit your business.

Greenwald Cabinet Shop

405 West Kentucky Phone 1537
 FIXTURES ARE OUR BUSINESS - - - NOT A SIDELINE

TRIANGLE FOOD MARKET

Bill Davidson

QUALITY SERVICE VALUE

"Scruttie" Skaggs

South "A" At Missouri Bob Grubb Phone 280
 OPEN NIGHTS - - SUNDAYS

UNDER NEW OWNERSHIP

THE JUNIOR MISS SHOP

HAS BEEN PURCHASED BY

Miss Buena Page

and from her store in Mount Pleasant, Texas, she has brought an abundance of merchandise and has added it to the "Junior Miss" stock. Beginning Monday, January 5th, Miss Page is offering to Midland a

STORE-WIDE

CLEARANCE SALE

At These Unheard Of SAVINGS!

ALL SALES FINAL • No Approvals, Returns, Exchanges or Refunds!



Special Group!

WOOL SUITS

Regular \$45.00 Values
\$7.98 and \$5.98

Special Group!

COATS

Regular \$49.50 Values
\$12.98

SKIRTS

Regular \$9.85 Values
\$1.98

SLACK SUITS Reg. \$19.85 Values **\$3.98**

BLOUSES

\$7.95 Values **\$2.98**
 \$4.95 Values **\$2.49**

CHILDREN'S

Wool Sweaters

\$3.95 Values **\$1.00**

TEEN-AGE

DRESSES

\$10.98 Values **\$5.98**

DRESSES

\$29.75 Values
\$10.98

\$10.98 Values
\$2.98

\$19.75 Values
\$7.98

MATERNITY DRESSES

\$12.85 Values **\$3.98**

RAINCOATS

\$16.85 Values **\$6.98**

BEACH COATS

\$16.85 Values **\$6.98**

ROBES **20% Discount**

SALE STARTS MONDAY