

**TODAY'S WEATHER**  
**BIG SPRING AND VICINITY:** Partly cloudy with little change in temperature through Friday. Widely scattered afternoon or evening showers or thundershowers in the area. High today 92; low tonight 65; high tomorrow 93.

# BIG SPRING DAILY HERALD

INSIDE THE HERALD

Comics ..... 2-D  
 Dear Abby ..... 1-D  
 Editorials ..... 2-B  
 Food News ..... 1-C, 3-D  
 Oll News ..... 6-A  
 Sports ..... 4, 5-B  
 TV Log ..... 6-B  
 Women's News ..... 5-A

34 Year . . . No. 76

Member Audit Bureau of Circulations  
 Member Associated Press

Big Spring, Texas, Thursday, August 31, 1961

24 Pages  
 4 Sections

5¢ Daily . . . 15¢ Sunday



Is It Taxable???

Demonstrating how grocery checking will be done at many local supermarkets is Mae Darrow, a cashier at the Piggly Wiggly store. Groceries will be sorted first and taxable items rung up on the register and subtended so tax can be computed and added. Other groceries will then be registered. The products on the right are a few which will be taxable. The candy which Mrs. Darrow holds in her left hand is taxable but the cookies are exempt. Merchants ask customers to help with the sorting to save time.

## Groceries Tackle Sale Tax Confusion

**By JOE BEYER**  
 The sales tax which goes into effect Friday does not apply to groceries, but ironically, in the grocery store it will be one of the biggest sources of irritation to both customer and merchant. To the housewife, the tax will mean more than just another budget item. It will also mean a longer wait at the check-out stands while taxable items are sorted. Grocery merchants in Big Spring have united to make the task of administering the tax on a local level easier on both the stores and customers. They offer at least a partial solution for the already long lines during peak hours.

**SEPARATE**  
 By segregating groceries at the checkout counter, the taxable items can be registered first and the tax computed and added. The other goods can then be added to the bill and the customer pays for all goods in a single transaction. "This way the customer becomes acquainted with items which are taxable and also has the satisfaction of knowing exactly how much of the grocery bill went for tax," according to John R. Taylor, manager of the Safeway store. "It also keeps the customer from paying excess tax," Bob Spears, manager of the Piggly Wiggly, said. As an instance of such overpayment, he explained that if three items priced 39 cents each, were purchased singly, the person would pay three cents tax. If all were totaled as a single purchase, the person would pay only two cents tax. At least one store in Big Spring has already begun sorting out goods at the check out stands to acquaint customers with the tax and taxable items. Also signs will be displayed prominently listing categories of goods which will be taxable.

**PRE-SORT**  
 "Customers could speed up checkout time if they helped pre-sort the goods while they are waiting in line," several managers said. This system has worked in Dallas and other places and should expedite totaling purchases. "We will mark the bigger items which are taxable," two local managers said, "but many items in medicine, cosmetics and candy would be too much of a job to mark." Although many items still need to be ruled on by Robert S. Cal-

### BIBLE FUND AT ONE-FIFTH

Response to pleas for support of the Bible Fund today pushed the total investments to one-fifth of the volunteer goal. The latest list of donors added \$195 to the fund, bringing to \$723.19 the amount so far raised. At least \$3,500 is needed from people, organizations and firms who believe in the worthwhileness of the high school Bible course. Make checks payable to Bible Class Fund and mail or bring to the Herald where they will be gratefully acknowledged. New donors include:  
 Tom Eason . . . \$10.00  
 Mr. and Mrs. H. L. Derrick . . . 100.00  
 Angeline Shaw . . . 25.00  
 Sara B. Peterson . . . 15.00  
 Boykin Bros . . . 25.00  
 J. C. Bryans . . . 10.00  
 Nell Brown . . . 10.00  
 Prev. acknowledged . . . \$528.19  
**TOTAL \$723.19**

**Your Newsboy Has Gone Back To School**  
 Little merchants who deliver your Herald are returning to school. This means that they must be a little later in starting their delivery each afternoon. Your paper thus will reach you later than it has during the summer months.

## Calvert Issues Sales Tax Ruling On Utilities Bills

**AUSTIN (AP)**—State Comptroller Robert S. Calvert held today that Texans will pay the sales tax on the first gas or electric light bill that covers any part of September. Calvert said the 2 per cent levy will apply only to that fraction of services furnished after the new tax becomes effective Friday. Utility firms that make daily meter readings, mostly for commercial customers, will tax customers for service in billing periods that end on or after Sept. 16, Calvert said. "There is no practical way to determine the daily sales of such utility services," the comptroller said. For those who make meter readings on a given day or series of days of the month the tax will be calculated on a pro rata basis. Specifically exempt from the utilities tax are receipts from telephone, telegraph and water services; butane, propane and other such special fuels; gas or electricity used for manufacturing, mining, farming, dairy or

poultry operations, and power to pump water for irrigation. **NOT POWER**  
 The exemption for mining does not include power used for quarrying of rock, marble or slate, although it does include coal and salt, Calvert said. Neither does the mining exemption include power used in drilling for oil or natural gas. The agricultural exemption does not include forestry or fisheries. Calvert said that where a utility bill covers power furnished for both exempt and non-exempt services, then the "predominate use" theory will apply. "That is to say, the total reading shall either be exempt or non-exempt depending upon the predominate use of the utility service so furnished," Calvert said. Calvert issued another ruling for photographers, commercial artists, portrait painters, photo finishers, book binders, printers and related occupations (Ruling No. 28). The comptroller said the appli-

cation of the tax under this ruling would follow two general classifications. **OWN SUPPLIES**  
 First, for those who furnish their own supplies such as photographers, commercial artists, and portrait painters the tax will be levied in the same manner as it applies to contractors and repairmen (Ruling 29). This allows a customer either to be billed for a single lump sum for both labor and materials with the contractor paying the tax on materials or the contractor may pass the tax on to the customer by making separate billings for material and labor. The second method is for those in the graphic arts, such as photo finishers, book binders and printers. "Where the material for such processing is furnished by the customer for processing, the total charge made by the artist

# Military Action Begins Against Brazil Leftists

WITH A THREAT TO THE WEST

## Russia Scraps Ban On Nuclear Testing

**MOSCOW (AP)**—The Soviet Union today scrapped the three year moratorium on nuclear testing with a threatening warning to the West and a plea for understanding from the nonaligned nations the Kremlin is wooing. Premier Khrushchev gave the go-ahead to his scientists to test new weapons ranging up to monster bombs with an explosive force of 100 million tons of TNT—5,000 times more powerful than the bomb dropped on Hiroshima in World War II.

The Soviets blamed the United States and its Allies for their decision to resume nuclear testing. "It is an open secret," said a 6,000-word government statement, "that the United States is standing at the threshold of carrying out underground nuclear explosions and only waits for the first suitable pretext to start them."

Because of that, and because France has exploded some bombs the statement said, the Soviet Union has decided to test new bombs and to add to the world-crushing nuclear arsenal it claims it already has. The statement linked the government's decision to the Berlin crisis as well. "The Soviet government has been compelled to take this step, whose significance it fully appreciates, under the pressure of the international situation created by the imperialist countries," it said.

"The policy of the leading NATO powers—the United States, Britain, France and the Federal (West) German republic—and of this aggressive bloc as a whole, leaves the Soviet Union no other choice." The statement appeared to be

the death knell for the Geneva test ban talks after 338 sessions begun in October, 1958. President Kennedy charged the Soviets with endangering everyone on earth by resuming atomic testing. He called emergency conferences to consider whether the United States would follow suit.

Arthur H. Dean, chief U.S. delegate at Geneva, said Soviet negotiator Semyon K. Tsarapkin, has never given any indication at all that this was coming. British delegate David Ormsby-Gore said "the verdict of the world on this will no doubt be clear."

The Soviets themselves showed concern about the possible effect of their about-face on world opinion. The Soviet statement went to great length to plead a "peace-loving policy." It directed an appeal to those foreigners "who would perhaps judge too severely the Soviet Union's carrying out tests of new types of nuclear weapons."

clear tests "leaves the United States under the necessity of deciding what its own national interests require." Vice President Lyndon Johnson entered the White House at 10 a.m. The limousines of Secretary of State Dean Rusk and Atty. Gen. Robert F. Kennedy were seen near a side entrance even earlier. Sen. Henry S. Jackson, D-Wash., a member of the Senate Armed Services Committee and the Senate-House Atomic Energy Committee, said he had no information about the conference but: "It's obvious what it's about." Among others invited to the White House meeting were the top Republican leaders in Congress—Sen. Everett Dirksen of Illinois and Rep. Charles A. Halleck of Indiana.

The big question as Kennedy conferred with leaders of Congress and the administration was whether the United States would resume its own tests quickly. Congressional leaders from both parties were among those who gathered at the White House for the emergency session. Kennedy said Wednesday night that the Soviet move to end a three-year-old moratorium on nuclear

devices but the will and determination of the free world to resist such tactics and to defend freedom. "The President is entirely confident that the size of the U.S. nuclear weapons stockpile and the capabilities of individual weapons and delivery systems are wholly adequate for the defense needs of the United States and the free world."

The statement said nothing of any plans this country may have to resume testing of its own. It declared: "What the Soviet Union is obviously testing is not only nuclear

### Call To Arms Issued By Southern Area

**RIO DE JANEIRO, Brazil (AP)**—Brazil's interim government ordered army, navy and air forces today to subdue Joao Goulart's supporters in his stronghold state of Rio Grande do Sul.

The nation appeared at the edge of civil war.

Military sources in Rio de Janeiro said its army was driving on the southern state, where the governor and commander have declared their support of Goulart in defiance of Brazil's three military ministers.

But best available information from Sao Paulo, eight hours after the government's order was that the army had not moved. Sao Paulo, headquarters of that army, is 600 miles northwest of Rio de Janeiro.

Gen. Osvaldo de Araujo Motta, commander, issued a manifesto appealing for confidence of his men and said War Minister Marshal Odylho Derys would "re-echo and obey the supreme decision of Congress."

Congress after much wavering finally voted to accept Goulart, the leftist vice president, as president. It had not yet taken a stand on how much power he would have as the successor of President Janio Quadros, who resigned.

**EN ROUTE**  
 Goulart, who claims he is the rightful president, was en route south by air, with the supposed intention of returning to Brazil. He reached Lima, Peru, in Rio. Air Ministry sources asserted that aircraft loyal to the government were ordered to patrol Brazil's border and intercept him. A communique from the military-dominated National Telecommunications Commission Council said units of the army, air force and navy were taking part in an "action in force" against Rio Grande do Sul. In defiance, the "Voice of Legality," a chain of Rio Grande do Sul radio stations, announced that all civilians in the state had been called to arms. Porto Alegre, the state capital, was reported surrounded by trenches and barricades. Rio Grande do Sul's governor, Leonel Brizola, is Goulart's brother-in-law. Gov. Brizola and Gen. Jose Machado Lopes, head of the army in the state, have proclaimed their support of the vice president.

**DEFIED ORDER**  
 Machado Lopes Wednesday defied an order from acting President Ranieri Mazzilli relieving him of command of the 60,000-man southern army, considered one of the best-trained and equipped of Brazil's four armies. Only the army in Rio de Janeiro is larger. In addition, Rio Grande do Sul is the home of fight-loving gauchos—cowboys—who roam the flat wheat-growing and cattle-raising state. Apparently the only air force unit—or most of it—deserted Brizola and Machado Lopes, however. The southern state has no navy. But Brizola sank three barges in the entrance to Porto Alegre's inland harbor, temporarily blocking it, when Brazilian warships were reported en route there four days ago. Headquarters of the army ordered into action against the Goulart-supporting state is at Sao Paulo, nearly 600 miles northeast of Porto Alegre.

**Volunteers To Be Recognized**  
 A recognition and appreciation ceremony will be held tonight at the VA Hospital for all Junior volunteers who have done work the past summer. The program, which begins at 7:30 p.m. in the recreation hall, will terminate the summer volunteer program. Presiding will be Mrs. Ann Cunningham, director of volunteers, and Chaplain C. O. Holt will give the invocation. Dr. H. C. Ernsting, chief of staff, will give the welcome address. Special feature of the program will be a movie entitled "Juniors At Work," which shows each of the junior volunteers at work in the hospital. Dr. H. J. Zinn will present certificates of appreciation, while Dr. Ernsting will hand out certificates of merit. Miss Bessie Love will present letters of recognition and Dr. Ernsting, letters of commendation.

### CRMWD Sets Date For Bids

Directors of the Colorado River Municipal Water District today set Oct. 3 as the date bids will be received on a headquarters building to be erected here. The project, together with furnishings and fees, will approximate \$85,000. It was designed by Puckett and French, Big Spring architects. Proposals will be opened at 10 a.m. in the Settles Hotel, and if the low bid is within the money, contract may be awarded at that time. The building will be located on a quarter of a block the district previously had bought at Lancaster and West Third Streets, and it will front on the Third Street side. It will be brick and haydite block construction with wainscoting of glazed tile. In all, the building will contain about 5,400 square feet, of which 4,300 will be in the first floor. The basement area, containing a fire-proof vault and storage space, will have 1,100 square feet. At the rear of the building, off-street parking will be provided for district personnel and others having business with the office.

### Rights Panel Is Extended

**WASHINGTON (AP)**—A Senate battle over civil rights legislation has ended with approval of a bill to extend the Civil Rights Commission for two years.

### Children Free At QBC Barbecue

Children under 12 years of age will be admitted free to tonight's Quarterback Club's barbecue honoring the 1961 Big Spring High School football team, if accompanied by their parents. The barbecue, which will be held in the amphitheatre at the City Park, starts at 7 p.m. Tickets for the meal sell for \$1 each and can be purchased at the door. Jack Cox of Breckenridge will serve as principal speaker.



That's the last admonishment Donna Carol gets as her mother, Mrs. Carroll Kinman, kisses her daughter and leaves her with her new first grade teacher at Cedar Crest this morning. Donna, like many other Big Spring youngsters this morning, began her public school career. Throughout the

### Listen To Your Teacher

school system, other students returned to their classrooms. Officials are expecting a new record enrollment figure, somewhere over the 7,000 mark. The peak enrollment last year was 6,996 but average enrollment leveled off below 6,900.



**Farewell To Gamblers' Priest**

Father Richard Crowley, who for six years conducted a special 4:30 a.m. mass for Las Vegas entertainers, is shown as he was honored at a farewell party staged by 3,000 of his parishioners. With him are the Dagenham Pipers. From left to right are Christine Amor, Father Crowley, Selina Lee and Barbara Sawkins.

**SOUTH PACIFIC JOURNEY**

**Time Stands Still In Tahiti; Only The Tourists Are Busy**

By HOUSTON HARTE  
**PAPEETE, Tahiti**—As the SS Monterey edges up to its wharf in this coral-locked harbor in the early morning you get the feeling you are in the languid land of leisure where time is only an incident in life. You are positive of it when you learn the Monterey lay at anchor at the harbor's mouth because the Tahitian pilot does not go to work before 6 in the morning.

A row of shops set up on the dock below provide a carnival air. Even before the ship's lines are securely tied the sound of ebony sticks against hollow logs almost drowns out the music of the little guitars and the soft melody of the Polynesian singers. The dancing girls wiggle from knee to shoulder moving neither head nor feet. The sun is just breaking from behind the cocoa palms along the bay's shore lighting the tops of the lofty lava peaks which rise quickly from the beach. It is still cool but as you look at the busy crowd on the dock you know the day is going to be hot.

**BARE FEET**  
 Everyone on the wharf—men, women and children are dressed in shorts or bathing trunks. Some wear straw hats. Fully half the men and children are bare from the waist. No one appears to have heard of socks. There are no shoes—just a variety of sandals from the string-across-the-toe type to the more modern open-faced models. Many walk unflinchingly on loughened, spreading feet that seem to have been confined to any sort of shoe.

Barefoot Tahitian girls come aboard, arms loaded with fragrant leis of frangipani, various colored oleanders and an occasional purple or blood red bougainvillea. The passengers and the crew line the decks opposite the dock. If a passenger does not want to leave this busy scene, a breakfast of fruit juices, pineapple slices, papaya, scrambled eggs, bacon, sweetrolls and coffee are served in the open terrace lounge above the swimming pool. You wished you owned stock in Eastman Kodak as you watch the typical tourist with from one to three cameras around his neck.

**STRAW HATS**  
 It is 8 to 8:30 now and the straw hats on sale in the booths on the docks begin to disappear. They are cheap and well made of local straw by agile weavers who work as they sell. The cost is a hundred colonial Pacific francs—approximately a dollar. With a band of coral, little sea shells and hard dried seeds, the cost is 35 to 75 cents more. Maison day is a great day for the Papeete-ians.

There is a joke on shipboard that the Tahiti stop of two days is not for the passengers but for the crew. Many crew members have the Papeete stop from 10 to 30 times. Everyone appears to find something here which creates a desire to return.

It may be nothing more than the wild, boisterous design of colors of the sport shirts typical of the island or it may be Quinn's Tahitian Hut, a night club which cherishes its reputation as the

**Lubbock Twins Killed In Fire**

LUBBOCK (AP)—Twins died today when fire at daybreak broke out at their home.

They were Mrs. Blanche Wadley and Miss Beulah Mitchell, 51. Their bodies were found on their bedroom floor. The cause of the fire wasn't known.

They were daughters of South Plains pioneers.

**Youths Drown**

HEREFORD, Tex. (AP)—Two youths drowned in a pond on the Tierra Blanca Creek southwest of here Wednesday. Rescue crews recovered the bodies of Inez Campos, 14, and Adolph Chavez, 16, shortly after the accident.

diest in the world. Quinn's values this reputation as an accolade. Others find the unspoiled and un-sophisticated sister island of Moorea or the Southern Cross in a starlit southern sky as sights they must see again.

**LITTLE HISTORY**  
 There is little history about Tahiti. The tomb of Pomare V, the last island king on a peninsula covered with cocoa palms and mango trees. The only unusual feature is the large replica of a Benedictine bottle which tops this last resting place of this unknown island chief.

On the other side of Papeete is the remains of a "Marae," or open air temple of the Polynesian religion. Here again the theme which plays such a part in most religions is portrayed. As Abraham was about to offer Isaac and as Jephthah sacrificed his daughter, the ancient Polynesians slaughtered their sons and daughters on these stones as an attempted atonement to their gods. It is not an inspiring spot.

The only history the Tahitians of today are interested in is that which began with the arrival in Papeete Harbor of HMS Bounty on Oct. 17, 1769 with Capt. Bligh in command. The Captain had been sent to Tahiti for a shipload of breadfruit trees to take to the British colonies in the West Indies. The mutiny of his crew, after the Bounty had left Tahiti, has been portrayed in a best selling novel and by a stirring motion picture starring Charles Laughton. This was the piece of advertising for the easy life of Tahiti which has made this island the toast of the romantics and beachcombers.

**NEW FILM**  
 Today a new three-masted schooner named the Bounty rides at anchor in Papeete harbor. Most of the new picture has been shot. Some minor retakes were made while we were on the island. Metro-Goldwin-Mayer, the producers, left a large hunk of the reputed \$20 million new picture is to cost, on this island. Some say Tahiti will never be the same. The star, Marlon Brando, gave a party here for 400 local VIPs. Tahiti never saw anything like it and does not expect to see it again. James Norman Hall and Charles Nordhoff, the authors of "Mutiny on the Bounty" and a half dozen other stories of the South Pacific, spent their adult lives here. Hall

**U. S. 'Ahead' In Missiles**

SAN ANTONIO (AP)—"Development-wise, the United States has overtaken Russia in the long-range missile field," Gen. Bernard A. Schriever, head of the Air Force Systems Command, said Wednesday night.

Schriever, here to address a Salvation Army banquet, told newsmen the buildup of conventional warfare forces "has not been at the expense of the strategic deterrent forces."

"There has been no reduction in funding," he said. "Very definitely, the President's directive is a proper one, that will provide us with a more flexible military posture."

Schriever, the successor to the Air Research and Development Command, also said the announcement that the Russians plan to resume testing atomic weapons came as no surprise to him.

"They could have been testing underground or in space all along," he added.

Felix McKnight, vice president and executive editor of the Dallas Times Herald, told a press conference prior to the banquet that he and other representatives of news media expect to confer with President Kennedy "in the near future" on possible censorship regulations.

McKnight, also president of the American Society of Newspaper Editors, introduced Schriever.

**Berlin Opinion Reflects Coldly Realistic View**

WASHINGTON (AP)—President Kennedy's statement that West Berlin would be "untenable" if it were subjected to a direct attack by the Soviet Union" obviously reflects the coldly realistic assessment of his top military advisers.

The chief executive, in his news conference Wednesday, went on to say that it is hoped Soviet awareness of U.S. determination to defend West Berlin will prevent Soviet attack.

He termed the few thousand U.S. troops in the city as "hostage to that intent."

Kennedy's comments were different from views expressed in his message to the nation on July 25.

In that speech the President said: "I hear it said that West Berlin is militarily untenable—and so was Bastogne and so, in fact, was Stalingrad. Any dangerous spot is tenable if men—brave men—will make it so."

The U.S. Army believes that it has about 6,500 brave men in West Berlin, part of the total of slightly over 13,000 American, British and French forces garrisoned the free part of the old German capital.

Such a force, in an isolated arena 110 miles from the main Allied forces in West Germany, could not be expected to hold out against the massive weight of manpower the Soviet Union could bring to bear. There are estimates that 35 to 40 Soviet divisions are located in adjacent European Russian territory.

Kennedy's mention of direct attack by "the Soviet Union" was interesting in that he made no reference to East German Communist military forces. Some Bonn government officials say the East German army consists of six divisions (which they consider unreliable from the Soviet

viewpoint), plus police-type units and an air force.

The defenders of West Berlin would have some basic advantages, even if temporary, including the military precept that defense is easier than attack.

Defense of West Berlin would be city-type fighting—unless of course the Communists wanted to destroy West Berlin by all-out air and ground bombardment.

In city-type fighting, some of the firepower effectiveness of modern Soviet arms could be negated, the situation coming nearer to being equalized until overwhelming masses of Soviet manpower poured in.

Could the Berlin garrison be reinforced and re-supplied after it came under attack?

Unless the Western forces wanted to shoot their way through, the closing of the highway and rail line would be simple.

Shutting off the air corridor would be more difficult, involving a decision by the Communists to start shooting down planes. This would mean fighter cover for transport planes. And fighter cover would mean more shooting.

Which would take the whole matter to the threshold of general war.

**Civilians Collect Cash Awards**

Incentive awards amounting to \$75 were paid to four Webb AFB civilians for management-improvement suggestions adopted by the Wing Incentive Board.

Howard C. Voss was top recipient as he collected \$30 for a portable kit which enables technicians to do on-the-spot nickel plating jobs on jet aircraft electrical parts. Voss is assigned to 3560th M&S Group's electric shop as an aircraft systems leader.

Ernest J. Hode received \$15 for an idea which improves the B-5 parachute. By using the pilot chute pin to direct the spring guide into the locking loop, damage to the locking loop is prevented. Hode works in M&S Group's parachute shop.

John J. Herbert of reclamation section in M&S Group, got \$15 for suggesting a trailer hitch for M-246 wreckers. By installing this hitch, there is no more need for modifying T-37 towbars as to clear nose wheel doors. Herbert is a crash truck operator foreman.

Mrs. Edith L. Scales, a voucher examiner in Air Base Group, collected \$15 for simplifying the acquisition of reserve funds in Communications-Electronics division.

**Midlander Dies**

MIDLAND (AP)—A motorcycle accident here early today killed Royce Selman, 21. His vehicle hit loose gravel and flipped.

**No Rest From Rain**

By The Associated Press  
 Dampened areas of Central Texas are due to get no rest from the scattered thundershowers that have fallen off and on most of the week.

Thundershowers fell at dawn in the Houston area Thursday and fog shrouded Lufkin in East Texas.

Otherwise skies were clear to partly cloudy, but the weatherman predicted more scattered showers and thundershowers in all parts of the state through Friday.

Lightning injured a farmer near Sherman in North Texas Wednesday as showers fell in the area and southward to Abilene.

J. J. Flannery, 79, was watering cows in a pasture when the bolt of lightning hit near him. His condition was reported as good later in the day.

Abilene had 22 of an inch of rain Wednesday. Waco, 18, Mineral Wells, 15, Lufkin, 8 and College Station, a trace. Early morning temperatures Thursday ranged from 79 at Galveston to 65 at Dalhart.

**GIBSON'S DISCOUNT CENTER**

3rd & Johnson Free Parking  
 Store Hours: 9:00 To 9:00 Daily

**PALMOLIVE SOAP**  
 Reg. Size Beauty Bar ..... 12 Bars 77¢

**Gillette Thin Blades**  
 Pkg. Of 10 ..... 22¢  
 Ret. 35¢

**250 COUNT PACKAGE NAPKINS** ..... 35¢

**PAPER PLATES**  
 Package Of 100 ..... 88¢

**PAPER CUPS**  
 100 Count ..... 88¢

**NOW! You Can Use Your Credit at Gibson's! Ask For Full Details Today.**

**Shot To Death**  
 FORT WORTH (AP)—James Bragg Jr., 39, was found shot to death in his car Wednesday near the Benbrook Dam. Justice of Peace T. M. Sheffield ruled suicide.

**Thomas TYPEWRITER and OFFICE SUPPLY**  
 Has Royal Typewriters To Fit Any Color Scheme Budget Priced.

**AT ZALE'S**

JUST ARRIVED!

OUR NEWEST SOLID SILVER PATTERN by **TOWLE STERLING**

**SCULPTURED ROSE**  
 6-PIECE PLACE SETTING \$39.75  
 Fed. Tax Incl.

Service for four and a FREE anti-tarnish chest for only \$1.50 per chest on our Sterling Silver Club Plan

Come, see today's most beautiful new pattern. Inspired by the most graceful of all flowers... the timeless Rose, long-stemmed, gleaming—utterly, utterly lovely. A truly faithful reproduction in miniature... in the tradition of quality so inherently TOWLE.

**ZALE'S JEWELERS**  
 3rd At Main AM 4-6371

**Zale's BACK-TO-SCHOOL VALUES!**

**NO MONEY DOWN... CONVENIENT TERMS!**

**17-JEWEL ELGINS**  
 your choice \$19.95 plus tax \$1.60 weekly

Man's 17-jewel water-resistant\*. Chrome top. Glamorous lady's dress watch in yellow or white. \*Rubin case and crystal are intact

**SAVE 40% FAMOUS BULOVA WATCHES**  
 Choose from a great variety of styles for men and women. All watches from our regular stock and reduced 40% lower than list.

**Perfect Class-mates For Back-To-School**  
 FAMOUS CROSS Pen And Pencil Set \$8.00

**CULTURED PEARL WISHBONE PENDANTS**  
 Lustrous cultured pearl... gold-filled wishbone and matching chain. \$1.99 plus tax CHARGE IT!

**A SNAP TO USE! KODAK BROWNIE STARMITE OUTFIT**  
 just \$11.89 plus tax Charge It!  
 Includes built-in flash, bulbs, batteries, your first roll of film

**REMINGTON "HOLIDAY" TYPEWRITER**  
 CARRYING CASE INCLUDED FOR BETTER GRADES Big machine performance! 42-character keyboard, margin release, shift lock, back space key. \$52.25 with federal tax. just \$49.95 plus tax NO MONEY DOWN! \$1.00 weekly

**EXCITING NEW LP RECORDS**  
 12" Stereo or Monaural While they last! Broadway show hits, jazz tunes, Western hits, religious songs, and favorites from foreign countries. Traffic values at only 69¢ each! 69¢ plus tax Charge It!

**ZALE'S JEWELERS**  
 3rd At Main Dial AM 4-6371

**Local Get H**

Bill Tid...  
 Jane Will...  
 Spring are...  
 ing their m...  
 Tech on S...  
 his master...  
 and Mrs. I...  
 in education...  
 James M...  
 mesa, also...  
 education...  
 deron, And...

**Sings**

Dorothy...  
 dent at Ho...  
 lege, enter...  
 Club mem...  
 vocal sele...  
 A soprano...  
 three love...  
 popular to...  
 accompani...  
 Gambill...  
 Teams for...  
 sale, which...  
 18-19-20...  
 under Fr...  
 Charles H...  
 Milton B...  
 Pete Cook...  
 my Ray S...  
 Don Pend...  
 Hines, J...  
 Farris, R...  
 Proceeds...  
 light bulb...  
 sight con...  
 fund, and...  
 charity pr...

**Gets**

Kay A...  
 more, Big...  
 ter of sci...  
 annual co...  
 of the Tu...  
 school. Th...  
 Dr. H...  
 Tulane pr...

# Liquid Or Solid Fuel? Depends On Missile's Mission

By JACK STILLMAN  
HUNTSVILLE, Ala. (AP)—Which method of propelling a rocket is better, with liquid or solid fuel?

Ask this question of an expert and he will tell you: It depends on what your rocket is supposed to do.

Dr. Wernher von Braun, director of the Marshall Space Flight Center, says the Russians use liquid propulsion in their biggest space missions—including the recent man-in-space flights. The Saturn space booster, the 1 1/4-million-pound thrust vehicle that is the free world's largest space vehicle, also uses a liquid system.

But in space vehicles of the future, says Von Braun, liquid and solid systems likely will be combined, and some vehicles might use nuclear and electronic propulsion systems as well.

**EXPERIMENTS**  
"In my opinion, there will be in the foreseeable future important places in the science of rocketry for both liquid and solid boosters," Von Braun said.

"Undoubtedly the future will see more and more a mixture of propellants in multi-stage rockets—liquid solid, nuclear and electric. We are conducting research in all of these areas and intend to use each to the maximum practicable extent."

The solid propellant rockets are descendants of ancient Chinese rockets. When Francis Scott Key wrote about the rockets' red glare, he was writing about solid-fuel rockets.

Rocket men refer to propellants as fuel in a general sense, since all chemical propellants are composed of two constituents—a fuel and an oxidizer.

Getting a giant booster off the ground without it blowing up is not like shooting a firecracker. One scientist said that should a rocket the size of the Saturn booster blow up, it would wreak untold havoc for many miles.

Solid propellants, which look something like hard rubber, have built-in oxidizers and are ready to go at the touch of a spark. Those working on the Saturn system frankly admit they would not relish working with such a booster filled with solid fuel.

"If it went off accidentally, you wouldn't have a chance," said one. "But that goes for a liquid motor, too, although the chances of a liquid engine exploding are considerably less."

The solid rocket comes already

loaded, since the solid fuel first is liquified and then must be cooked to its hardened state. This must be done at the factory.

**THRUST IS A FACTOR**  
The advantage of solid rockets for military use is obvious. They are ready to go at a moment's notice.

But solid propellants are unable to produce the thrust that liquid propellants produce. The power of a propellant is determined by its "specific impulse." A pound of solid propellant would produce only about 75 or 80 per cent of the thrust obtained from the same amount of liquid propellant.

The second major drawback is that the entire casing of a solid fuel rocket is subjected to the full pressure of the combustion chamber. This is because the flame burns inside the entire length of the casing.

There are several arguments in favor of liquid propellants. They give a higher thrust; they are safer; they are easier to control during flight, and they are easier to make.

In a liquid propellant rocket, the fuel is stored in tanks at modest pressure. Pumps force the fuel into the high pressure combustion chamber of the rocket shortly before firing.

But liquid propellants have drawbacks, too. There are hundreds of nozzles, valves, pumps, regulators and other parts necessary to control the flow of the liquid. If they all work properly, that's one thing. But when one goes wrong, chances of a failure are high.

**LOOK TO FUTURE**

A nuclear rocket would be similar to conventional chemical rockets except that the fuel would be heated in a reactor rather than burned in the nozzle. This would mean a lighter rocket, since the fuel tanks or solid-fuel casings would not be needed.

The nuclear rocket also would have a higher specific impulse.

A liquid propelled rocket like the Titan has a specific impulse of somewhat over 300. But the first nuclear rocket expected to fly would have a specific impulse of about 900.

Development of the nuclear system has its difficulties, however. Revving up a nuclear engine in a rocket would be like trying to carry a lighted acetylene torch in a tin pail. The problem of carrying the engine still has to be solved.

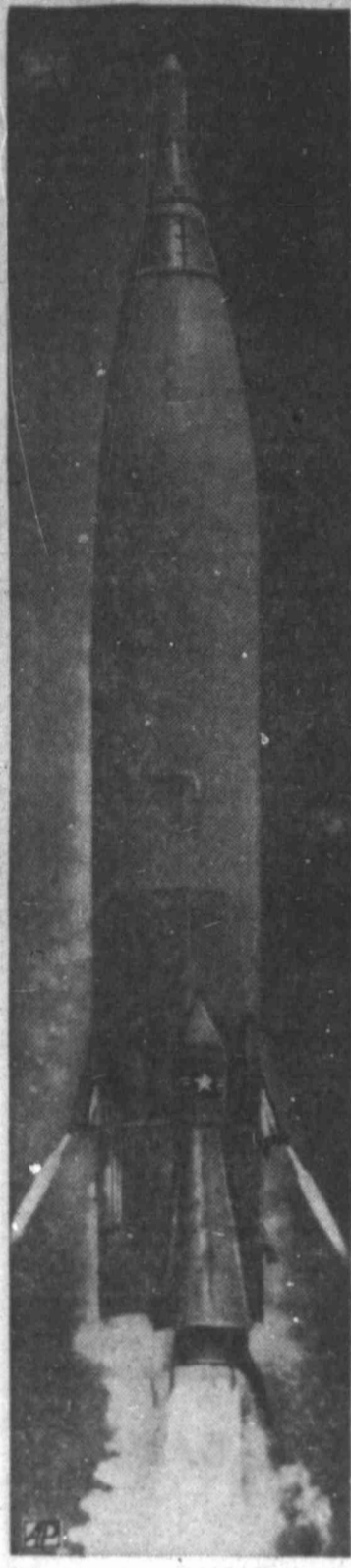
The electron-ion propulsion system is in the distant future.

In this system, a reactor would heat cesium vapor from which electrical power would be provided. Although the specific impulse would be extremely low, once an ion rocket is in space it would build up power as it traveled since there would be no drag.

Such a system, say scientists, will be necessary if we are ever to get to Mars.



MINUTEMAN Solid Fuel Rocket



ATLAS Uses Liquid Fuel

## Local Students To Get High Degrees

Bill Tid Bradley and Wilma Jane Williams Dotson of Big Spring are among those receiving their master degrees at Texas Tech on Saturday. Bradley took his master of education in music and Mrs. Dotson took her masters in education.

James Marvin Williams Jr., La-mesa, also took his masters in education, as did Luisa Rede Calderon, Andrews.

## Sings For Lions

Dorothy Wheeler, freshman student at Howard County Junior College, entertained Downtown Lions Club members Wednesday with vocal selections.

A soprano, Miss Wheeler sang three love songs, ranging from the popular to light opera. She was accompanied by Mrs. Forrest Gambill.

Teams for the annual light bulb sale, which will be staged Sept. 18-19-20, were chosen. Captains under Frosty Robison will be Charles Havens, Dean Tomlinson, Milton Barnett, Morris Rhodes, Pete Cook, Don Young; the Jimmy Ray Smith team captains are Don Pendergrast, Bill Sneed, Phil Hines, James Tidwell, Jessie Farris, Rad Ware.

Proceeds from the sale of the light bulbs go to the Lions Club sight conservation and blind fund, and to other welfare and charity projects.

## Gets Degree

Kay A. D. Koonce, 1500 B Sycamore, Big Spring, received a master of science degree Saturday at annual commencement exercises of the Tulane University summer school. The degree was conferred by Dr. Herbert E. Longenecker, Tulane president.

## Ike Returns To Home Course

WASHINGTON (AP)—Former President Dwight D. Eisenhower returned to his old home course at Burning Tree in suburban Maryland Wednesday for a round of golf with former Vice President Richard M. Nixon.

The two met at Eisenhower's farm home on the edge of Gettysburg, Pa., two days ago and arranged the golf date then.

The foursome included William P. Rogers, attorney general under Eisenhower and close friend of Nixon, and Col. John Eisenhower, son of the former President.

## Rejected Suitor?

HUTCHINSON, Kan. (AP)—The sheriff's office received a call for help Tuesday evening.

The caller, a man, screamed almost incoherently that a man was being stabbed during a poker game.

Officers rushed to the address, barged inside—and found themselves in the midst of a wedding ceremony.

They theorized the anonymous caller must have been a disappointed suitor trying to even the score.

## Sgt. W. R. Ingram Moves to Germany

Leaving Webb AFB this week for Sembach Air Base, Germany, is T. Sgt. Willie R. Ingram of the base procurement office. His wife, Marie, and their two sons are expected to join him in the next five or six weeks.

Sgt. Ingram came to Webb in August, 1958 and has been NCOIC of his section. He has been in the Air Force for more than 15 years and had assignments in Germany and Alaska.

Last January, Sgt. Ingram completed a course for contracting officers, conducted by the University of Ohio at Wright Patterson AFB, Dayton, Ohio. He has also completed a course in government contracts through the Air University, Ala.

Sgt. Ingram is president of the Protestant Men's Group; vice president of the NCO Talon Toastmasters Club; and an active worker in the Marcy School P-TA.

## HAMILTON OPTOMETRIC CLINIC

- ALLEN R HAMILTON, O.D.
- MARSHALL Q. CAULEY, O.D.
- HAROLD G. SMITH, O.D.
- CHARLES W. NEEFE, Optician
- TOM C. MILLS, Lab Technician
- JIMMY J. BRYANT, Lab Technician
- GALE KILGORE, Lab Technician
- WINNIE HARDGREE, Office Manager
- LETHA MASSIE, Assistant
- BEULAH CRABTREE, Assistant

106-108 West Third Dial AM 3-2501

## Stacked Deck?

DECATUR, Ill. (AP)—Local officials are conducting a drive to collect delinquent property taxes and have filed 4,000 suits.

To help serve warrants, Constable John R. Garner deputized William J. Gordy.

Wednesday the county clerk's office listed Gordy as one of the delinquents.

**NEWCOMER GREETING SERVICE**  
Your Hostess:  
**Mrs. Joy Fortenberry**  
1207 Lloyd AM 3-2005  
An established Newcomer Greeting Service in a field where experience counts for results and satisfaction.

**DO YOU KNOW?**  
AIR CONDITIONER PAINTS, RUST & CORROSION PREVENTION MADE FOR THE WEST.  
**CACTUS** EAST HIGHWAY 86  
"A LOCAL INDUSTRY"

# BIG REFRESHMENT VALUE FOR THE HOLIDAY



## KING SIZE COKE HAS MORE FOR YOU GET VALUE, LIFE, REFRESHMENT TOO!

Bottled under authority of The Coca-Cola Company by Texas Coca-Cola Bottling Co., Big Spring, Texas

# PRE-TAX SALE

## ENDS AUGUST 31...

### SALES TAX GOES INTO EFFECT SEPTEMBER 1st

#### SAVE NOW WHILE YOU CAN!

Quality - Price - Service - Delivery

**D** FURNITURE - APPLIANCES - TELEVISIONS - ORGANS - PIANOS

205 Runnels  
Dial AM 4-6354

**W**





OIL REPORT

Venture Finds Wolfcamp Shows

Jack B. Chase No. 1 Strain, a Martin County wildcat which was abandoned in 1951, continues to produce new oil on tests of the Wolfcamp. It pumped 4 1/2 barrels of new oil along with a lot of water. The operator is still testing.

Howard County had two or three completions logged in the area.

Bond Oil Corp. No. 12 L. C. Denman pumped 66.21 barrels of oil on initial potential in the Itan-East Howard field in Howard County.

The other well was a shallow Howard - Glasscock oiler, Schkade Brothers Drilling Co. No. 8-X E. W. Douthit. The well pumped 26.22 barrels of new potential.

In Mitchell County, Col-Tex Refining Co. No. 33-E Morrison produced 70 barrels of oil in the Westbrook field.

Robinson Brothers Drilling Co. No. 1 Caffey has perforated the lower Spraberry and was fraced heavily. The operator is waiting for pressure buildup on this Martin County explorer.

Borden

Blair No. 1 Kootsman is drilling through sandy shale below 7,533 feet. Location is C SE SW, section 2-6-2, T&P survey.

Midwest No. 1 Drum is digging below 8,203 feet in lime, shale and chert. The venture is C NW NE, section 467-97, H&TC survey.

Dawson

BTA No. 1-A TM was at 6,265 feet in lime. This Pennsylvania explorer is C SW SW SW, section 33-34-3n, T&P survey.

Conoco No. 1 Tootle is making hole below 8,533 feet in lime. The site is C SW NW, section 39-34-4n, T&P survey.

Garza

Gulf No. 1 Turberville was reported digging in shale below 7,330 feet. It spots 1,340 feet.

GROCERIES

(continued from page 1)

mixes which are not pure juices (pure juice is not taxed, candy and gum, poppicles, bleaches, cleansers, soaps, brooms, mops and other household needs, charcoal, lighter fluid, matches, toothpicks, hardware and gardening items, fertilizers except for use to raise edible foods, light bulbs, insecticides;

Paper products, tissues, polishes, laces, drug items which can be purchased without prescription, razor blades, baby powders, school supplies and stationery, magazines, bottle water, snuff. No ruling has yet been given on whether dog and cat food is taxable. However, other pet foods and items are taxable.

Some peculiarities exist. Chocolate sold as candy is taxable. If used to make cookies or other food products, it is exempt. Fertilizer sold for the lawn is taxable. When purchased for gardening or growing edibles, it is exempt. Small is taxable, but cigarettes, cigars, etc. are exempt. Food sold by vending machines is subject to tax only if seating or eating facilities are furnished adjacent to the machines. Vitamins sold on prescription are not taxable. If bought from open stock without a prescription, it is taxable.

The tax has been labeled a sales tax, but undoubtedly, merchants and shoppers will for a time think it would be more appropriate to call it a chaos tax.

WEATHER

NORTH CENTRAL AND NORTHEAST TEXAS - Clear to partly cloudy today and Friday. Widely scattered light thunder showers. Little change in temperature. Low tonight 68 to 74. High Friday 88 to 95.

Table with columns for CITY, SPRING, MAX, MIN. Lists temperatures for Abilene, Amarillo, Chicago, Denver, El Paso, Fort Worth, Galveston, New York, San Antonio, St. Louis.

Advertisement for NALLEY PICKLE Funeral Home, 906 Gregg, Dial AM 4-6331.

Calvert Seeks Auditors For New Sales Tax

The Big Spring office of the Texas Employment Commission has been notified that it will be the local recruiting office for the limited number of qualified tax auditors who will be needed in connection with the new limited sales, excise and use tax.

Qualified tax auditors who are interested in working for the state comptroller, Robert S. Calvert, in one of four regional offices should file an application with the local office of the Texas Employment Commission as soon as possible.

Applications will be taken on three classes of jobs—Auditor I, which will require entry level auditing duties; Auditor II, which requires the ability to perform complex auditing assignments; Auditor III, which not only requires a high degree of professional ability as an auditor but will also require the ability to supervise.

All applications taken by the local office, Kinney said, "will be forwarded to Austin for screening. Those who are qualified will then be given a written test in Big Spring, and if they pass this test, the applicant will then be called in to Austin for a final interview with Calvert."

Applicants were urged not to go to Austin or write to Calvert until these initial steps have been completed.

Mrs. Craddock Dies Thursday

Funeral services for Mrs. Minnie B. Craddock, 84, aunt of Mrs. Lewis Murdock, 606 E. 17th, will be held from the Wylie Funeral Home Chapel in Cisco at 3 p.m. Friday. She died at 2:30 a.m. Thursday at 1110 Main.

Mrs. Craddock had been in Big Spring about 10 days before her death. She was a resident of Cisco for many years, and was a member of the Cisco Methodist Church. She will be buried in the Cisco Cemetery beside her husband.

Pritchett Funeral Was Slated Today

LAMESA (SC) — Funeral services for Orb R. Pritchett, 78, were to be held at 3 p.m. today at the Assembly of God Church. Officiating ministers were to be W. M. Bozeman of Imperial, J. W. Farmer and Nicholas Kovacs of Lamesa.

Two Reports Of Dog Bites

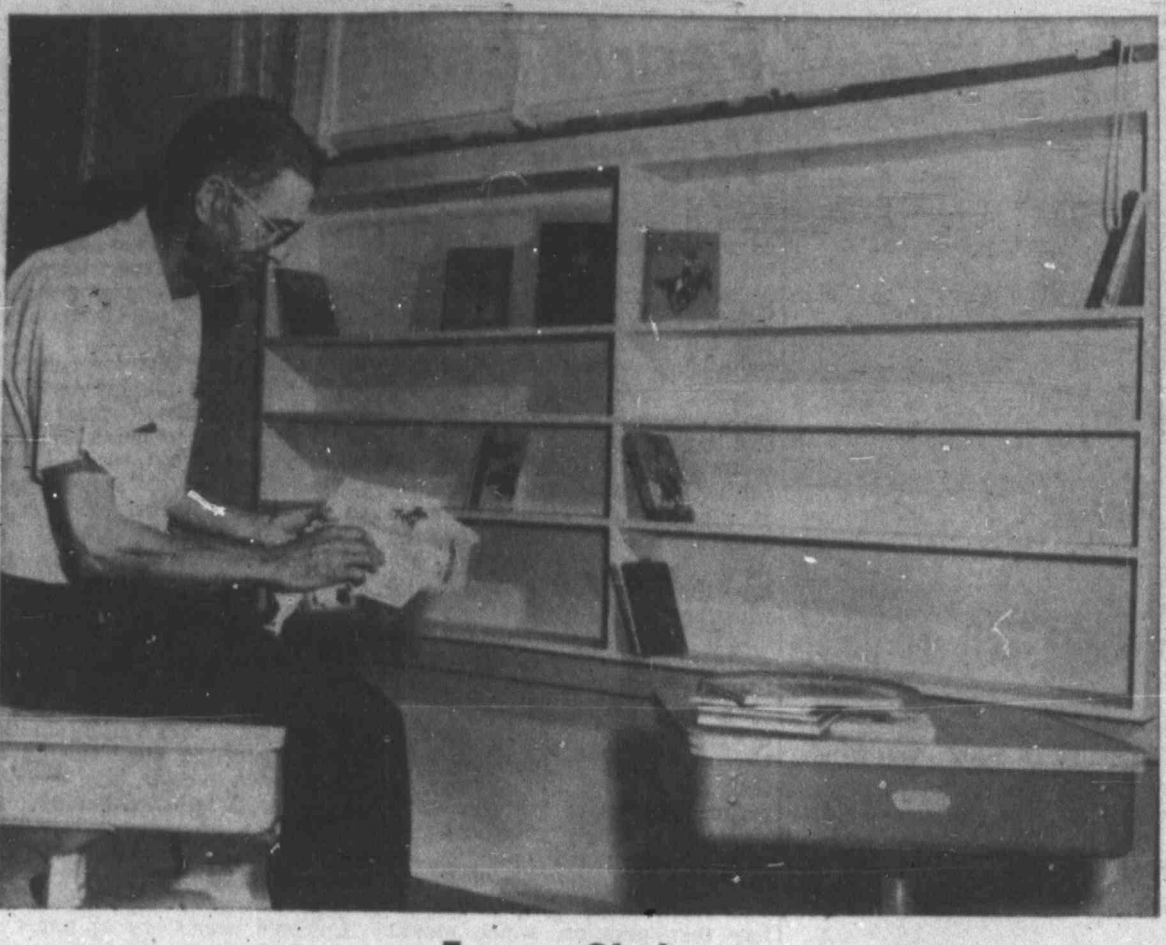
Police investigated two reports of dogs biting children Wednesday, in addition to around 20 pickups of stray, sick or dead animals. Mrs. Laymon, 1710 Purdue, said a physician took several stitches in the upper left arm of her nine-year-old daughter, Brenda, Wednesday. The animal was penned for observation.

Legion Auxiliary Postpones Meeting

The regular meeting of the American Legion Auxiliary, scheduled for Sept. 4, has been postponed. Mrs. T. P. Musgrove, president, announced. It will be held Sept. 11.

Pleads Guilty

W. L. Hubbard charged with writing a worthless check, pleaded guilty Thursday morning. His plea was accepted by Judge Ed Carpenter, Howard County Court, and of recommendation of Gil Jones, district attorney, Hubbard was fined \$100 and costs.



C. B. Underwood, teacher of the school students in the State Hospital class, surveys the near empty shelves of the class library. The local AAUW chapter hopes to fill them through a local solicitation asking for donated books. They have a list, prepared by Underwood, designating the kind and type of books most desirable.

AAUW Asks Books For State Hospital

A call for books to stock the patient's school library at the Big Spring State Hospital has been made by the local chapter of the American Association of University Women.

3 Witnesses Lead Off Sweetwater Rape Trial

COLORADO CITY (SC)—Three witnesses testified Thursday morning in the trial of four men charged with assault in connection with the rape of a Sweetwater woman June 25th near Blackwell. Mrs. Brooks, the plaintiff in the case, spent three hours on the witness stand Wednesday.

No Injuries In Road Accident

Archie D. May at a Mrs. Johnson's house on Orange Street, and taking both in his car to look for the other men. They found Ronnie Houston and Richard May crossing a street and picked them up. Bratcher also identified the four boys in the court room.

Private, Parochial Schools Here Expect Over 250 Pupils

More than 250 pupils have been registered at private schools in Big Spring, according to their principals. Classes will begin Sept. 5 at the new Immaculate Heart of Mary Parochial School south of the city. Sister Rose Claire, principal, said. About 110 have been registered already and more may enroll before school begins.

Melon Feast For The Shutins

Patients in the Veterans Administration Hospital and in the Big Spring State Hospital got a watermelon feast today, thanks to Houston Cowden, Melon Brown and David Reed. The melons, raised on the Cowden farm southwest of town, were gathered and transported by Brown and Reed, shown above, to the hospitals. One load went to the VA hospital, and two loads to the state hospital.

Citizens Hear Tax Explained

About 75 business men and women crowded the conference room of the Chamber of Commerce this morning to hear State Representative David Read offer explanations of articles of the new sales tax during a meeting of the retail committee.

Second Mrs. White Hurt In Wreck

A second Mrs. White in two days was taken to Malone and Hogan Hospital Wednesday afternoon, following a two-car accident at East Fourth and Union.

SALES TAX

(continued from page 1) for such work shall be taxable to the customer," Calvert said. Calvert added that "When printing, imprinting or processing is performed in compliance with an order from a customer, it is subject to tax based upon the total price charged to such customers."

MARKETS

Table of market prices including DOW JONES AVERAGES, STOCK PRICES, and various commodity prices like cotton, sugar, and oil.

Advertisement for H. HENTZ & CO. Members, New York Stock Exchange, Dial AM 3-3600. Includes an image of the building.

Vertical column of small advertisements and notices on the far right edge of the page.



CHARLES COBURN  
Dead at age 84

## Death Takes Veteran Actor Charles Coburn

NEW YORK (AP)—Veteran actor Charles Coburn, whose distinguished face, gruff voice and ready wit were familiar to audiences for more than half a century, is dead at 84.

Coburn died of heart failure at Lenox Hill Hospital Wednesday, shortly after undergoing minor throat surgery. He had entered the hospital Monday for a check-up.

An energetic man more active than many half his age, Coburn came here after completing a 6-day run only Sunday night in an Indianapolis production of "You Can't Take It With You." The play drew the largest audiences in the Avondale Playhouse's 8-year history.

## Congressmen Angry Over Red Decision

WASHINGTON (AP)—The Soviet Union's announcement that it will resume experimental explosions of nuclear weapons was met in the Senate by somber and icy anger.

"This," said one senator, "is a long step toward war." Another suggested that President Kennedy address the U.N. General Assembly.

Several said the Soviet move underscored a need for the United States to drop its self-imposed moratorium and begin testing again.

Sen. George D. Aiken, R-Vt., saw in the Soviet announcement a long stride toward war. But Aiken, a member of the Senate Foreign Relations Committee, called for one more effort to get from the Soviets some sincere negotiations toward a ban on nuclear weapons tests.

"It is my guess," Aiken said, "that if testing is resumed, war won't be very far away."

The suggestion that Kennedy address the United Nations came from Sen. Hubert H. Humphrey, D-Minn. This move, Humphrey said, would dramatically call the world attention to U.S. efforts to get an agreement on a test ban.

Senate Democratic Leader Mike Mansfield of Montana said "there is merit" in Humphrey's suggestion and that the President may have something like it in mind. Mansfield emphasized, however, that he had not discussed the matter with Kennedy and did not know the President's plans.

Senate Republican Leader Everett M. Dirksen of Illinois said he did not think it was a congressional prerogative to give the President such advice.

To Humphrey's suggestion that the Soviet decision, although regrettable, amounted to a U.S. propaganda victory, Dirksen retorted: "I wish we would win something besides a propaganda victory."

Dirksen said he had been advocating—and still does—a resumption of U.S. tests so that if "the chips are down" the United States would have the best possible weapons ready.

## Cuban, Dog Happy in U. S.

MIAMI, Fla. (AP)—Juan Antonio Ponce, 16-year-old Cuban, and his white spitz, Osito, are together again and happy in the United States.

Twice Juan attempted to outfit Fidel Castro's guards and flee Cuba but each time was turned back in his 17-foot boat.

One day, Juan loaded his mother, three other Cubans and Osito into the boat and set out. The guards apparently thought they were fishing.

They had food and water for two days but storms delayed them and on the fourth day they became lost at sea. Another boat found them and led them to Miami.

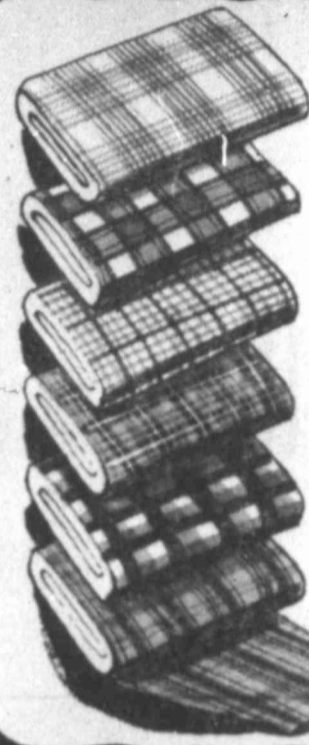
Osito was forced to spend five days in quarantine, with a fee of \$1 a day for board, \$3 for a rabies shot and \$2 for a license.

Juan had no money, but the humane society provided that, and took the dog to the pound when the five days were up.

Juan and Osito were united Wednesday.

OPEN THURSDAY 'TIL 8 P.M. — FRIDAY, SATURDAY AND TUESDAY

# ANTHONY'S SEPTEMBER DOLLAR DAYS



Wrinkle-Shed Dri-Don  
**DAN RIVER GINGHAMS**  
All New Fall Patterns and Colors  
First Quality, at Big Savings

**2 YARDS \$1**

Woven Yarn Dyed Cottons  
Plaids - Stripes - Novelties. Easy to Sew, Easy to care for. Save!



Richly Lace Trimmed  
**NYLON SATINETTE**

• FULL SLIPS Sizes 32 to 40  
• HALF SLIPS Sizes Sml. Med. Lge.

**\$2** each

2.98 QUALITY

Colors White or Biege  
Luxurious Tricot Knit  
Expertly Styled and made to fit perfectly. Big Savings

## SEAMLESS NYLONS

Sheer Streak Free Nylons, reinforced toe and heel. New shades; First Quality

**2 PAIR \$1**

Sizes 8 1/2 up to 11  
Big Savings for You!



## MEN'S PAJAMAS

Quality Made Wash and Wear Cotton broadcloths. Coat Style, Full cut for Comfort Fit.



**2 PAIR \$5**

Regular 2.98 Quality

Men's Sizes A-B-C-D

Boys Pajamas . . . 6 to 16 . . . \$2

## MEN'S SPORT SHIRTS

Better Quality Short Sleeve Styles

Trims, Solids, Plaids and Checks. Sizes S-M-L.

**\$1.**

All First Quality  
Big savings Buy Now!



## BOYS' GYM TRUNKS

Full Elastic Waist  
Boxer Style



**77¢**

Made of Peppercorn Cotton Jean fabric  
White or Colors

## TAPERED TOE OXFORDS

White Canvas  
Cushion Sole

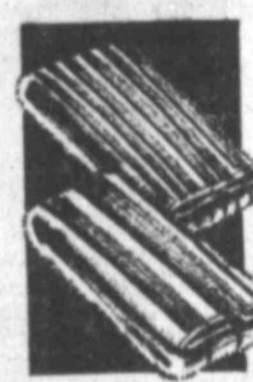


**\$2**

Misses 12 1/2 to 3  
Ladies 4 to 10

## TERRY TEA TOWELS

Pretty Multi-Stripes  
Big Size 16x29



**4 FOR \$1**

16 beautiful colors  
If perfect 39¢ each

## MEN'S SPORT SHIRTS

A good looking assortment of solid Iridescent, Plaids, Novelties.



**\$2** 2.98 QUALITY

Sizes Sml.-Med.-Lge.-Ex.Lge.  
Every Shirt First Quality  
New Wanted Colors and Styles



## FLANNEL SLACKS

Tailored Exclusively for Anthony's by America's largest and best maker.

**\$9**

NEW PERMANENT CREASE

Select Fabrics and best colors and patterns. Sizes 29 to 42. Free Alterations.

## BIG 18x25 PILLOWS

Plump Kapok Filled. Be here early for these values.



**\$1.**

Taped edge, candy striped and rosebud printed ticking.

## SHEET BLANKETS

Soft 100% Cotton in Plaids or Solid White



**\$1.**

All First Quality  
Stock Up Now and Save

## MEN'S SHORTS

Popular Boxer-Gripper style. Cotton broadcloth.



**3 PAIR 1.50**

Solids or Fancies  
Regular 69¢ each  
Full cut, First Quality

## BOYS' KNIT BRIEFS

Fine combed cotton Reinforced Construction.



**3 PAIR \$1**

Sizes 1 up to 6  
All First Quality

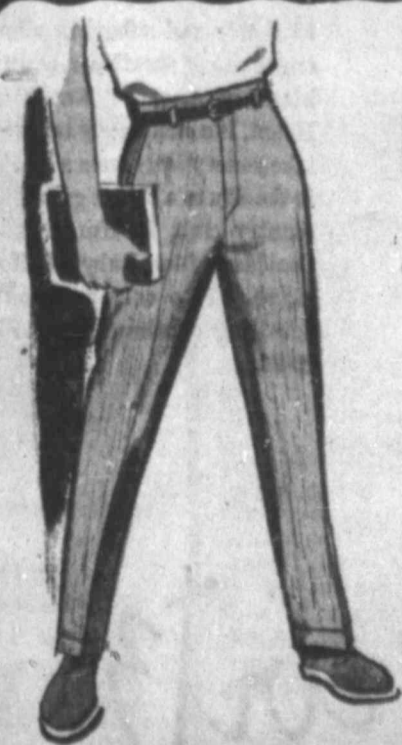
## 2-PC KNIT SLEEPERS

With plastic feet  
Sizes 0-1-2-3-4



**\$1.**

Pink, Blue, Mint, Moise, Soft Warm Cotton.



## BOYS' IVY PANT

Wash and Wear finish  
• Black • Loden Green • Dark Blue

**\$2** 2.98 QUALITY

Exceptional values. Dress pant make, drop belt loops, self lined waistband, and tinted pocketing. Sizes 6 to 16.



## CORDUROY CAPRIS

Stripes, Fancies, in a big color assortment. Sizes 10 to 18.

**1.66**

Slim trim fitting Capri Pants that are truly exceptional values. Save at your Anthony Store.



## Girls' Corduroy SLIM JIM SETS

Choose from 4 Smart Styles Cotton knit top, Corduroy pant.

**2.50**

Sizes 3 up to 6X  
Red, Blue, Rust, Lilac

Anthony's  
C. R. ANTHONY CO.

ABOVE PRICES EFFECTIVE THURSDAY NIGHT — SHOP UNTIL 8 P.M. THURSDAY



**Military Leaders in Brazil**

Brazil's three military chiefs who attempted to block Vice President Joao Goulart from succeeding to the presidency are shown in Brasilia, the nation's capital. From left are Gen. Odilio Denys, war minister; Brigadier Grun Moss, air chief and Adm. Silvio Heck, of the navy.

**3 Negroes, 1 White Charged In Kidnaping**

MONROE, N.C. (AP)—Two Negroes and a white youth were charged Wednesday night with kidnaping in the seizure of an elderly white couple during the height of racial tension here last Sunday.

A Union County grand jury Monday had indicted Robert F. Williams, 36, a Monroe Negro, on the capital crime of kidnaping in the same case.

Authorities said Wednesday night three members of the Monroe Non-Violent Action Committee also have been charged with kidnaping. They were identified as Richard Crowder, 19, Negro, of Monroe, president of the non-violent group; Harold Reep, 18, also a Monroe Negro, and John Cecil Lowry, 20, a white of the Bronx, N.Y.

All three were being held without bond.

State, county and city officers raided Crowder's home Wednesday and reported they found a small arsenal of weapons, including at least one automatic rifle.

Police said one rifle was of Soviet origin with a hammer and sickle emblem on its side.

Williams, who with his wife and two children hasn't been seen since he was indicted, had boasted that he was accumulating weapons in his home to meet violence with violence.

Mr. and Mrs. G. Bruce Stegall of Massville were taken from their car by 200 armed Negroes, held hostage for 2½ hours and released unharmed. The kidnap charges grew out of this episode.



**Arrow Tabber Snap**

There's new fashion appeal in the neat styling of this smart Arrow Shirt. Arrow Tabber Snap features modern lines, convenient collar tabs that snap closed under your tie knot . . . in handsome pinchecks, blue, tan, grey . . . \$5.00  
Stripe Dacton (Dacron polyester, and cotton) in tan, blue, grey, 7.95

*Hemphill-Wells*

**MCCRORY'S**

**FOR SAVINGS ON Back to School Supplies**

**Fully Equipped LOOSE LEAF BINDERS**  
Regular Value \$1.59  
Our price only **99¢**

**2-Hole, 135-Count FILLER PAPER**  
Regular Value 50¢ Per Pkg.  
**4 Pkgs. 88¢**

Blue canvas binder, 2 of 3 rings (1½" capacity) sturdy construction, double opening and closing metal booster, heavy weight board, clip for notes and pencil, equipped with filler paper, 29¢ subject index, plastic tabs and 25¢ zipper plastic carry-all

136 sheets 10½" by 8" wide of marginal ruled paper, 2 hole punch.

**School Bags & Brief Cases**  
\$1.00 to \$2.98

SCHOOL BAGS—Latest popular styles and color combinations. Some shoulder strap models, some with handles or combination of both.  
BRIEF CASES—Made of vinylized leather and texon, riveted bottoms, metal corners, metal locks.

**McCrory's Special 2-RING BINDER WITH FILLER PAPER AND RULER**  
**\$1.44 Plus Tax**

**Sanford's White Paste**  
19¢ and 29¢

For home, school and office use. Dependable adhesive quality. Snow white, non-toxic. Bright included.

**Swingline Cub Stapler**  
**\$1.29**

Easy to load and use. It loads, fastens and repairs. Unconditionally guaranteed by manufacturer.  
1,000 Swingline Cub Staples 29¢

**Crayola Crayons**

Pkg. of 8 crayons . . . 12¢  
Pkg. of 24 crayons . . . 29¢  
Pkg. of 48 crayons . . . 69¢

Non-toxic brilliant crayons in a rainbow of beautiful colors.

**1000" Cellophane Tape in Dispenser**  
**29¢**

Jumbo size cellophane tape ½" wide, comes packaged in its own clear plastic dispenser.

**Weaver Ink Cartridge Pen plus 6 Cartridge Refills**  
**\$1.49 Value 77¢**

Weaver ink cartridge pens are pre-tested. No messy ink bottles, can't leak or skip.

**331st Names Contest Team**

The 331st Fighter Interceptor Squadron has named its team which will compete in this year's USAF Interceptor Weapons meet at Tyndall AFB, Fla.

The meet set for Oct. 23-Nov. 2, is hosted by Air Defense Command. The 331st FIS will be one of 10 ADC participating units and one of seven interceptor squadrons flying F-102 Delta Daggers.

Squadron Commander Lt. Col. Jack C. Price will captain the 331st team. Other pilots are Maj. Curtis L. Uiterback of Brackettville, Tex.; Capt. Lurie J. Morgis, Dothan, Ala.; Capt. Albert Shortt, Marlboro, N. Y.; and Capt. Thomas A. Nelson, Baldwin, N. Y.

GCI directors chosen are Capt. Jimmie L. Smith, Dallas, and Capt. Lowell D. Covington, Lovington, N. M. Interceptor Control technicians are Airman I.C. Philip A. Harrison, Danvers, Mass., and Airman I.C. William H. Tennille, Milledgeville, Ga. Airman 2.C. John H. Brown of Pittsburgh, Pa., will be height range indicator operator.

**Texas Roll Call Votes**

WASHINGTON (AP)—Following is the roll call vote of Texans when the House refused to consider the administration's aid for education bill:

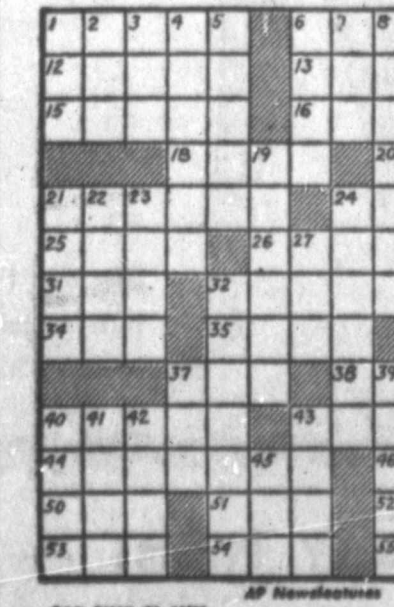
Democrats for: Kilday, Thomas, Thornberry, Young.

Democrats against: Beckworth, Brooks, Burleson, Casey, Dowdy, Fisher, Ikard, Mahon, Patman, Poage, Rogers, Rutherford, Teague, Thompson.

Republicans against: Alger.  
Recorded against but not actually voting: Kilgore.

**Crossword Puzzle**

- ACROSS**
- Large landed estate
  - Needlefish
  - Article
  - Perceptive
  - Exist
  - Inexperienced
  - Lukewarm
  - Ameliorate
  - Sodium chloride
  - Depress
  - Chant
  - Designer
  - Part of speech
  - So be it
  - That woman
  - Study
  - Accommodate
  - Play on words
  - One: Scot
  - Nothing more than
  - Comminuted silica
  - Prohibit
  - Precludes infancy
  - Declaim pompously
  - Dismounted
  - Small water flask
  - Color
  - Segment of a circle
  - Vase
  - Shade of green
  - Born
  - Feminine
  - Rent



**Court Overrules Louisiana Local Option School Law**

NEW ORLEANS, La. (AP)—The St. Helena decision won't stop Louisiana from carrying out its private school plan, but the state's grant-in-aid program may have to be revamped.

This was the opinion of two key state segregation leaders today after a three-judge federal court struck down Louisiana's local option school closing law, ruling Wednesday that the state cannot close some schools and keep others open.

It issued a temporary restraining order forbidding St. Helena Parish (County) from abandoning its public schools.

Rural St. Helena—some 60 miles north of New Orleans—voted overwhelmingly this summer to authorize school closing rather than accept integration. Some 1,400 white voters were registered and just over 100 Negroes.

"This sort of election," said the court, "is like having only the cats vote on a program for kittens and young mice."

Chairman Frank Voelker Jr. of the State Sovereignty Commission

said the court's decision was, in part, "inaccurate, misleading and highly irritating."

But, he said, grants-in-aid are apparently entirely legal so long as public schools are not closed.

"They are not closed in Louisiana and the state is making no effort to close them," Voelker said. "I do feel, however, our present grants-in-aid program needs considerable revision."

Louisiana has set up machinery to permit students to accept tuition grants to go to private segregated schools rather than to integrated schools.

Integration has been ordered in St. Helena and East Baton Rouge parishes, but no dates have been set.

State Sen. E. W. Gavolet Jr.,

the vice chairman of the Sovereignty Commission, called for an immediate statewide program of grants-in-aid. Though an enabling law has been passed, the state has not implemented it.

The federal judges—all from New Orleans—ruled the state local option law violated the 14th Amendment's equal protection clause.

"This is not the moment in history for a state to experiment with ignorance," the court said. "When it does, it must expect close scrutiny of the experiment."

The ruling was handed down by Judge John Minor Wisdom of the U.S. 5th Circuit Court of Appeals and U.S. District Judges J. Skelly Wright and Herbert W. Christenberry.

**To TCU Post**

FORT WORTH (AP)—Dorothy A. Shuler, 31, editorial assistant for the Ladies Home Journal in New York since 1959, will become assistant dean of women at Texas Christian University on Sept. 1.

**Alumnus Award**

AUSTIN (AP)—The University of Texas Ex-Students' Association will give Navy Secretary John B. Connally its sixth distinguished alumnus award Nov. 10.



**City and Suburban**  
City chic and suburban slim... our textured sheath is a beautiful blend of Acetate, Rayon and Nylon. It's exquisitely tailored to take you stylishly from a luncheon in the city to a bridge game at the country club. In Hunter green, Coal black, Blue, Ruby red, Honey glaze. (Two self buttons... detailing on the collar.) Sizes 10-20.  
22.95

*Swartz*

















**RITZ** COMING SATURDAY!

THE GREATEST HIGH ADVENTURE EVER FILMED!

GREGORY PECK DAVID NIVEN ANTHONY QUINN

**THE GUNS OF NAVARONE**

STANLEY BAKER ANTHONY QUAYLE IRENE PAPAS GIA SCALA  
JAMES DARREN GALE FOREMAN

TO SUSTAIN THE TREMOR... IT FROM THE BEGINNING.

TODAY & FRIDAY **RITZ** OPEN 12:45  
Adults 75¢ Children 25¢

THE ARMY'S WILDEST DAME-CHASERS  
lose out to Dondi in the wackiest fun film on land or sea!

**DONDI**

BASED ON THE COMIC STRIP THAT THRILLS MILLIONS!

DAVID JANSEN  
PATTI PAGE WALTER WINCHELL  
MICKEY SHAUGHNESSY  
ROBERT STRAUSS ARNOLD STANG  
and DAVID KORY as "DONDI"

Now Showing **State** OPEN 12:45  
DOUBLE FEATURE!

THE CURSE OF THE WEREWOLF  
CLIFFORD BRUNS YOUNG ROMAN

THE SHADOW OF THE CAT  
ANGIE MORIEL BARBARA SHELLEY

STARTING TONIGHT! **SAHARA** Open 7:00 P.M.  
News & 2 Cartoons Adults 60¢ Children Free

First TIME TOGETHER! COLOR WIDE SCREEN

ELVIS PRESLEY  
G-I-BLUES HAL WALLIS  
JERRY LEWIS  
CINDERELLA

TONIGHT AND FRIDAY! **JET** Open 7:00 Adults 60¢ Children Free  
BIG DOUBLE FEATURE BOTH IN COLOR

PECK SIMMONS CARROLL O'BRIEN BAKER HESTON IVES  
**THE BIG COUNTRY**

RIVER BOAT DRAMA! **THE RAWHIDE YEARS**  
TONY CURTIS COLLEEN MILLER

**Blind Mother To Get Hearing**

DALLAS (AP)—A blind mother whose newsstand business was taken from her after her husband died last week has been granted an open hearing before the State Commission for the Blind, the Times Herald was told today.

The board chairman, Asher Thompson, told the newspaper from his Lubbock home that the hearing for Mrs. Mable Richardson, 46, mother of three, will take place at Austin Saturday Sept. 16.

FRIDAY NIGHT'S THE NIGHT BIG END-OF-SUMMER LATE SHOW

**RITZ**

FRIDAY NIGHT ONLY 11:30 P.M.

A SHOCK ENDING THAT YOU DARE NOT REVEAL!

THE NERVE SHATTERING STORY OF A MAN WHO COMMITTED EVERY OUTRAGE IN THE BOOK LIVING A HOLOCAUST OF HORROR!

ROBERT LOUIS STEVENSON'S STUDY IN TERRIFYING EVIL

**HOUSE OF FRIGHT**

COLOR AND MEGASCOPE



**On The Threshold**

Former President Dwight D. Eisenhower, right, and his former vice president Richard M. Nixon wave at the door to the Eisenhower farm home in Gettysburg, Pa. The two conferred on Nixon's political future and Eisenhower pledged his full support to Nixon in the event the former vice president sought the governorship of California.

**Friday, We Start Paying Sales Tax**

By GARTH JONES

AUSTIN (AP) — Texans start reaching in their pockets Friday for something new — a state sales tax.

The 2 per cent levy on most items costing more than 24 cents becomes effective at midnight.

Two years from now it is hoped the "limited sales, excise and use tax" will have added \$319.3 million to the state treasury and eased Texas' financial woes at least temporarily.

Future hopes of financial relief and security didn't ease any of the birth pains of the new tax. The weeping and wailing stretched from the harassed state comptroller, administrator of the complex plan, to the bewildered hot dog salesman at the ball park.

"We've got too much to do in too short a time," said Comptroller Robert S. Calvert. "It's absolutely impossible to do it, but we've got to."

**ANSWER SAME**

Whether you like the tax or not; whether you understand what it is all about, or whether you have the correct forms and regulations, the answer is the same. Friday you start paying and collecting the tax.

"On Sept. 1, it (the sales tax) will be the law of our state and as long as the law is in effect, it behooves all of us, whether we like it or not, to cooperate in its enforcement," said Gov. Price Daniel, a long-time battler of the general sales tax.

Let's do a quick flashback into the history of Texas' first sales tax:

For years a percentage levy on sales and services made to ultimate consumers has been proposed, and defeated. Daniel and 55 other so-called anti-sales tax "immortals" blocked a similar plan in the 1939 Legislature. The sales tax bounced up, and out, of the 55th and 56th Legislatures. It was defeated by the one vote of Speaker James A. Turman in the regular session of the 57th Legislature.

**FINAL APPROVAL**

Shortly before the midnight deadline of the first special session on Aug. 8, the sales tax bill (HB 20) got final approval of legislators. On Aug. 16, Daniel agreed to let it become law, but without his signature.

As a result of this action, the average Texas family will chip in somewhere around \$24 a year in new state taxes. That's figuring a man who makes \$5,000 annually will spend about \$1,200 for taxable goods.

Texas will notice the extra tax bite principally when they buy furniture, household and kitchen appliances, clothing costing more than \$10, household supplies, toys,

**Congressman Suggests Ferry Crossing For Padre Island**

WASHINGTON (AP)—The possibility of a ferry crossing of the Port Mansfield cut on the proposed Padre Island national seashore in Texas was suggested by Rep. Joe Kilgore, D-Tex., Wednesday.

Such a ferry crossing would use the inland waterway in the Laguna Madre, he said in a report to constituents.

Kilgore said that some confusion apparently has arisen about provision in companion Padre Island seashore bills that a roadway to be built through the area to connect causeways to each end of the island.

Kilgore introduced one of the bills and Rep. John Young, D-Tex., the other.

"This suggestion has been translated by some as meaning that a 'throughway' should be built," Kilgore said. "Such an expressway would not be suitable for the proposed national seashore."

"The National Park Service does not want the bill authorizing a national seashore on Padre Island to provide specifically for a roadway the entire length of the seashore area," he said.

He said Secretary of the Interior Stewart L. Udall has recommended that the legislation not be made contingent upon there being a commitment at this time for road construction the entire length of the island.

But both say, he said, that there is no question about desirability of adequate access to considerable portions of the seashore area.

His own feeling, he asserted, is that visitors should be able to go by automobile from one end of the park to the other on a wandering road.

One other suggestion has occurred to him, he said—some sort of a bridge or automobile ferry crossing of the Port Mansfield cut is necessary and a ferry seems more suitable.

Such a ferry crossing, he said, could easily be established using the inland waterway in the Laguna Madre and the length of the ferry run could be extended a few miles north of the cut by locating the north ferry slip there.

A bill to establish the seashore was approved Wednesday by the Senate Public Lands Subcommittee. Kilgore said it is impossible to predict whether final action will be taken before adjournment of the present session of Congress.

Announcing the Opening of the Office of Dr. Charles N. Rainwater D.D.S.

General Practice of Dentistry suite 202—Perman Bldg. Office Hours by Appointment AM 4-8711

**KFNE-FM**

WISHES TO EXPRESS APPRECIATION TO THE CIVIC CONCERT SERIES FOR SCHEDULING FOUR OUTSTANDING PRESENTATIONS FOR THE COMING SEASON

FRED WARING MUSIC MAN • GRANT JOHANESSEN RICHARD ELLSASSER

MEMBERS ARE URGED TO PURCHASE THEIR TICKETS NOW

KFNE-FM — WITH REGULARLY SCHEDULED PROGRAMMING SOON ON 95.3 MCS

**3 Children Die In Sand Cave-In**

SPOKANE, Wash. (AP)—Three small children were suffocated as a sand bank caved in on them as they were playing in a vacant lot Wednesday.

Discovery of the playmates' bodies under about four cubic yards of sand ended a five-hour search for the youngsters.

The coroner said Debbie Orth, 6; Larry Burns, 6, and Joyce Ritzo, 4, had been buried for several hours.

**FALL FASHIONS**

FOR BACK-TO-SCHOOL...

**GEMS** YOUNG SHOE FASHIONS

(1) AA & B Widths "Hi-Flyer" Black Crushed Kid \$695

(2) AA & B Widths "Snooky" Black Or Brown \$498

(3) AAA-AA & B Widths "Beauty" Black-Briar Coffee-Orter \$595

(4) AA & B Widths "Sparky" Black Calf \$695

(5) AA-B & C Widths "Itaska" Black Or Olive Handsewnl \$695

(6) AA & B Widths "Lo-Boot" Black Kid Soft! \$695

THE SHOES PICTURED ABOVE ARE IN STOCK RIGHT NOW, and these are only a very small sampling of the many wonderful styles from which you can choose.

PRICES START AT \$2.98

OPEN TILL 8:00 TONIGHT **Anthony's** OPEN TILL 8:00 TONIGHT

Struck By Car

DALLAS (AP)—Suzanne Bradford, 2, died Wednesday, struck by a car in a parking lot.



# These Simple Tricks Enliven Your Meals

By CECILY BROWNSTONE  
*AP News Editor, Food Editor*

It's the little extras that count. Friends around our dining table sometimes are as interested in a garnish, a simple sleight of hand, as in a main dish we've slaved over.

What's in our stock of tricks? An assortment of easy embellishments. Ideas picked up here, there and everywhere. From restaurants. At parties. Talking to people about cooking. Reading cook books—and other books, too.

Most fun of all is to invent your own garnishes with what's in the kitchen and as you need them. Here's a grab-bag sampling of some of our own bagatelles. Help yourself to any that are new to you.

Serve yourself - accompaniments never fail to beguile. Offer them with soup.

Use miniature containers for these go-alongs. (Demi-tasse cups and spoons are fine.) Place them on a small tray for easy pass and fill each with a topping that will complement the flavor of the soup.

With jellied red madrilene or a bisque (a creamy seafood or tomato concoction) we like cucumber, avocado, pimiento-stuffed green olives—all diced; minced chives or scallions.

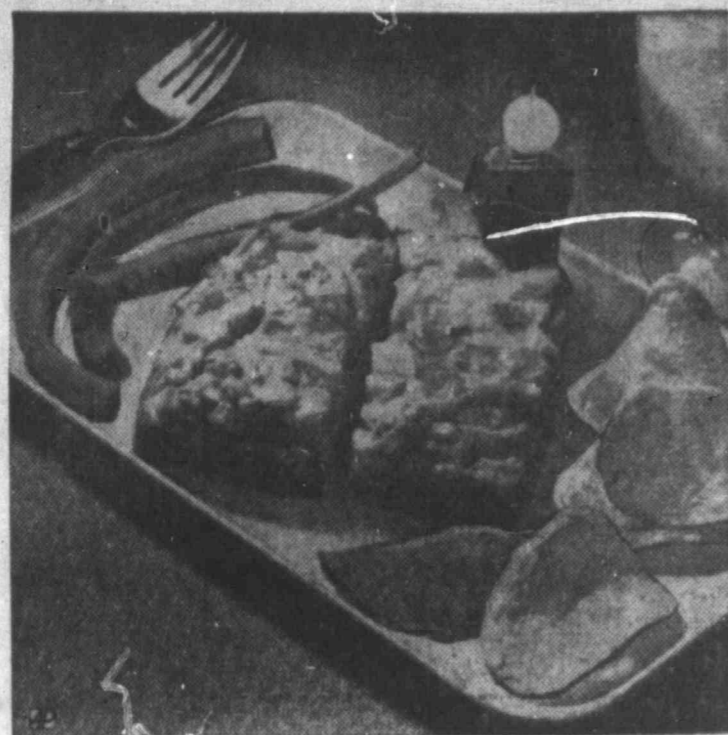
Sandwich partners next. Brown shelled walnut halves in hot butter and salt lightly. Delicious to munch with tuna salad between slices of good bread.

Or feature one of these sandwich partners starring pickles. For a bridge-luncheon make heart, diamond, club and spade shapes from pimientos using 1-inch cutters. (Sets of these small cutters include playing-card and other shapes.)

Stack flat bread - and - butter pickles in twos or threes and top each stack with one of these pimentos.

For roast duck we've invented this fresh-tasting garnish. Pare oranges so they are membrane-free; slice into about 1/4-inch thick rounds. Choose small onions and peel; slice into rounds just thick enough to stay together—they must not be separated into rings. Roll the outside edges of the onion slices in mayonnaise and then in parsley minced finer than fine. Place each green-ringed onion slice on a round of orange.

Fresh pineapple for dessert? Re-



Something Old . . .

. . . something new make good company for open-face egg salad sandwiches. Carrot sticks and potato chips are tried and true. Kebabs of pickle and chunks on toothpick skewers, topped with onions, are fun to do.

move the plume and cut into crosswise slices; with a small sharp knife remove the outer covering. Cut out the core on each slice with a small heart-shaped cookie cutter. Amusing to serve with bouquets of sweet red cherries or raspberries and sprigs of mint.

Over the top of a frosted cake we like to fashion a large bunch of grapes. Fill in the shape of a cluster with sweet seedless grapes. Be sure to add a stem! No decorating tube needed, and

### Flavored Muffins

Ever use orange extract for flavoring plain muffins? You can add a teaspoon of the extract for a standard recipe.

### Worth The Trouble

Ever wrap frankfurters in strips of bacon before broiling? Double trouble but doubly good!

# Peaches For Cool Summer

Peaches, at their prime in August, are perhaps one of nature's ways of making late summer's sweltering days more tolerable. This golden fruit enhances any meal of the day—slice a peach over your morning corn flakes; combine peach halves or chunks with cottage cheese or other fruits for a luncheon salad, or take advantage of some of the elegant desserts possible with peaches.

A quick unbaked shell made with packaged corn flake crumbs complements a Fresh Peach Chiffon Pie filling. Make the shell in minutes by combining the crumbs, soft butter and sugar and pressing the mixture into a pie pan.

A single-crust variation of old-fashioned peach pie makes for another spectacular peach dessert. Peach Basket Pie is baked in pastry, but its shape is new. Roll the pastry to a square, then fold and flute edges and top with corn flake crumbs.

### FRESH PEACH CHIFFON PIE

4 cups corn flakes or  
 1 cup pkgd. corn flake crumbs  
 1 tbsp. unflavored gelatin  
 1/2 cup cold water  
 3 eggs, separated  
 1/2 cup sugar  
 1-3 cup soft butter or margarine  
 2 tbsps. sugar  
 1-1/2 cups slightly mashed fresh peaches  
 1/4 tsp. salt  
 1 tsp. lemon juice  
 1/4 tsp. almond flavoring

If using corn flakes, crush into fine crumbs. Combine corn flake crumbs, butter and sugar; mix well. Press evenly and firmly around sides and bottom of 9-inch pie pan. Chill.

Soften gelatin in water. Beat egg yolks slightly; stir in 1/4 cup sugar, peaches, salt and lemon juice. Cook over boiling water until mixture coats a metal spoon.

Remove from heat; stir in softened gelatin. Cool until mixture begins to set. Fold in flavoring. Beat egg whites with remaining 1/2 cup sugar until stiff but not dry. Fold into peach mixture. Pour into chilled crust. Chill until firm. Yield: 1 9-inch pie.

### PEACH BASKET PIE

1 cup sifted flour  
 1/2 tsp. salt  
 1-3 cup soft shortening  
 1/2 cup sugar  
 1/2 tsp. cinnamon  
 4-5 large fresh peaches, pared and pitted  
 3 tbsps. cold water  
 2 cups corn flakes or  
 1/2 cup pkgd. corn flake crumbs  
 1 1/2 tbsps. butter or margarine  
 1 10-oz. jar red raspberry jelly

Sift together flour and salt; cut in shortening until mixture resembles coarse corn meal. Sprinkle with water. Mix to soft dough with fork. Shape into ball. Roll pastry on ungreased baking

# Bake Gnocchi For A Gourmet Brunch

Looking for an easy breakfast dish that will tease gourmet tasters? Here is one they will eat with gusto; then ask for your recipe.

Low in cost and high in taste appeal, Gnocchi originated in Italy. Farina, plain or malt flavored cooked, cooled, and cut in circles or squares is smothered with grated Parmesan cheese and butter, then baked. Serve with broiled or fried tomato slices, a fresh fruit compote and crunchy toast fingers to make an adequate morning meal.

Sophisticated Americans, cautioned against losing their vitality, will enjoy Gnocchi as the focal point in a brunch that brims with

energy-producing food values.

### FARINA GNOCCHI

3 cups milk  
 1/2 cup butter or margarine  
 1 tsp. salt  
 1/2 cup farina, plain or malt flavored, uncooked

2 eggs, beaten slightly  
 2 cups shredded Parmesan cheese

Combine first three ingredients in saucepan. Scald—do not boil! Add farina in a fine stream, stirring constantly during addition. Cook, stirring, until thickened. Beat in eggs, and 1/2 of cheese.

Press into greased square pan, 8x8x2 inches. Chill until firm. Cut when firm into slices 1/2 inch thick. Overlap slices in greased

shallow baking dish, 11 1/4 x 7 1/4 x 1 1/2 inches. Dot with remaining butter or margarine and sprinkle with remaining cheese. Bake in hot oven (425 degrees F.) until hot and brown, about 25 minutes. Yield: 6 servings.

NOTE: May be prepared ahead and heated just before serving.

IT'S LOVE AT FIRST BITE



SUN-FLAVORED TO A GOLDEN GOODNESS

A new milk for a new You!

especially FOR ADULTS

Borden's HIGHER-PROTEIN BRAND Skim Milk

A delicious new lower-calorie milk especially for adults. Now you need not sacrifice taste and vital protein nourishment to get a lower-calorie milk. Borden's Higher-Protein Brand Skim Milk is lower in calories... but it tastes good. Doesn't have that thin taste of ordinary diet milk. This new milk contains about one-third more protein than regular milk. And everyone needs protein every day to maintain youthful health and vigor.

SEND FOR FREE BOOKLET "A New You"

The Borden Company  
 P. O. Box 751  
 Midland, Texas

Enclosed are the letters "Higher" from a carton of Borden's Higher-Protein Brand Skim Milk for my free copy of "A New You."

NAME \_\_\_\_\_  
 ADDRESS \_\_\_\_\_  
 CITY \_\_\_\_\_ ZONE \_\_\_\_\_ STATE \_\_\_\_\_

When sandwiches disappear fast...

you'll know

Frost's bread is daybreak fresh!



Give your picnic lunch greater flavor-appeal with Frost's...the Premium Quality bread

## Focus On Health

By The Associated Press

Vaccines in the Soviet Union, heart attacks in middle-aged smokers, and calcium in the diet of persons with thinning bones are subjects for focus on health:

### Soviets Push Vaccines

The Soviet Union is pushing development of various vaccines against influenza, mumps and respiratory infections, say U.S. doctors after a recent trip to the U.S.S.R.

The Soviet Union is preparing a billion doses of live-virus, oral polio vaccine from seed viruses obtained from Dr. Albert Sabin. Some of these doses are to be offered to other countries, scientists report.

Most other Soviet vaccines reported also involve live viruses as opposed to killed virus vaccines used widely in the United States. Soviet researchers say they have a live-virus mumps vaccine which has been given to 50,000 children by injection with good response.

They have also used live-virus influenza vaccine which has some drawbacks, they told U.S. visitors.

### The Heavy Smoker

Why are death rates from heart attacks among middle-aged men up to 1 1/2 times as high for heavy cigarette smokers as for non-smokers?

The American Heart Association's newsletter says a possible explanation may exist in a study by a Philadelphia research team. The team found that two cigarettes smoked within 10 minutes raised the level of some fats in the blood—and the effect lingered for at least 40 minutes.

Perhaps nicotine from smoking stimulates the nervous system and the adrenal glands to release a form of adrenalin that frees fats from storage areas in the body, researchers suggest.

It could explain why smokers have higher levels of cholesterol in their blood. Cholesterol is a blood fat which is suspected of contributing to heart disease by clogging and narrowing arteries.

### Building Bone

A new study indicates that abundant calcium in the diet during adult years may protect the skeleton, especially in persons suffering from a loss of calcium, and a thinning of bone.

Doctors have obtained good results by boosting the calcium in the diets of arthritis patients who are taking cortisone or related hormones. Cortisone apparently worsens calcium loss.

Almost a third of the women past menopause suffer from a thinning of bone, involving a loss of calcium, particularly from the spine. This bone thinning disease is even more common in older women with rheumatoid arthritis.

### This Week, Mumps

A valid way to protect adults against diseases such as mumps, chicken pox and German measles may be to expose them to these diseases in childhood, says a Scottish doctor.

When these diseases strike older persons they can be severe and spread through the entire system. Vaccination of children may only delay infection, leaving the adult vulnerable, says Dr. Thomas Anderson of the University of Glasgow.

### Good Fish Or Bad?

During these hot summer days when the ardent fisherman in the family brings home his catch, you might ask for health's sake if he can tell a good fish from a spoiled one.

The Connecticut State Department of Health offers guides. Among them: Good fish have bright red gills, usually closed. Eyes are bright and full. Scales are adherent. Body is stiff and tail rigid. Flesh is firm. The fish sinks in water. Bad fish float, have dull, opaque eyes; pale gray or yellowish brown gills, a soft and limp feel.

### Church Drops Beer Plans

EDINBURG (AP)—A McCook, Tex., church has decided not to pursue efforts to attain a license to sell beer at its parish hall.

The 11 m.c.t.a. Conception Catholic Church withdrew its application for a beer retailer's on premises license after an 1835 county ruling was brought forth.

Hidalgo County Judge Milton Richardson said the 1835 records show the county commissioners ruled that beer could not be sold within 300 feet of the front door of a church or school in the county.

### Bids To Be Taken On Highway Work

AUSTIN (AP)—Bids on 268 miles of construction work on Texas highways and farm roads will be taken Sept. 12 and 13 by the State Highway Department.

Low bids on the projects are estimated to total \$19.2 million. The construction includes 197 miles on U.S. and state highways and 71 miles of farm to market roads.

The projects, by counties, include these in West Texas:

Tom Green — U.S. 87, structures, widen surfacing, 1.7 miles, across Twin Butte Reservoir project at Middle Concho River.

Sept. 13—

Winkler — Texas 306, structures and bridge approaches, at intersection Highway 303 and Bellair road in Kermit.



BOTH STORES CLOSED SEPTEMBER 4



# FOOD SALE

**FRYERS** FRESH DRESSED LB. .... 23¢

**SIRLOIN** STEAK LB. .... 59¢

**7-BLADE CHUCK ROAST** Tender, Lb. .... 39¢

**FLAVORITE THICK SLICED BACON** 2-LB. PKG. .... 98¢

**LOCKER MEAT** Cut And Wrapped To Your Own Order  
 HALF LB. .... 45¢  
 FOREQUARTER LB. .... 39¢  
 HINDQUARTER LB. .... 51¢



With Every Purchase DOUBLE ON WEDNESDAY With \$2.50 Purchase Or More Redeemable At Big Spring Hardware And Progers

**STRAINED FRUITS AND VEGETABLES**

**Heinz Baby Food** 6 CANS ..... 73¢

**KARO SYRUP** 1 1/2-LB. BOTTLE ..... 25¢

**VAN CAMP'S BEANEE WEENEES** 12-OZ. CAN ..... 29¢

**SUGAR** IMPERIAL 5-Lb. Bag ..... 49¢

**KIMBELL'S COOKING OIL** Qt. Bottle ..... 49¢

**OLEO** DECKER'S IOWANA LB. PKG. .... 2 LBS ..... 29¢

**MARYLAND CLUB COFFEE** Lb. Can ..... 65¢

**MARYLAND CLUB INSTANT COFFEE** 6-Oz. Jar ..... 69¢

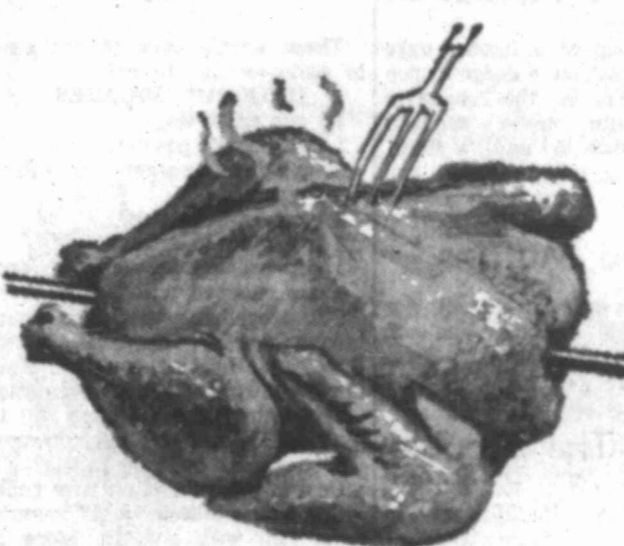
**FRO-ZAN** GANDY'S 1/2-GALLON ..... 39¢

**OREO COOKIES** Nabisco Creme Sandwich 1-Lb. Package ..... 49¢

**TEA** Kimbell's 1/4-Lb. Pkg. .... 29¢



**HUNT'S PEACHES** IN HEAVY SYRUP NO. 2 1/2 CAN ..... 25¢



**FRANKS** OSCAR MAYER LB. CELLO PKG. .... 49¢

**STEAK** CLUB LB. .... 59¢

**ROAST** CROWN LB. .... 39¢

**ROAST** ARM LB. .... 45¢

**GROUND BEEF** GROUND FRESH DAILY 3 LBS ..... \$1

**MEXICAN DINNERS** PATIO FROZEN pkg. .... 39¢

**Crisp LETTUCE** LB. .... 12 1/2¢

**RADISHES** 2 CELLO BAGS ..... 19¢

**PEARS** YELLOW, FIRM FOR DELICIOUS EATING, LB. .... 19¢

**BIG "K" NOTEBOOK PAPER** Reg. 98¢ Pkg. .... 49¢

We Reserve The Right to Limit Quantities—No Sales To Dealers  
 Your Home Town Boys Offer You Two-Way Savings . . . Every Day  
 Low Prices Plus Scottie Savings Stamps!

2 Convenient Locations

**HULL & PHILLIP'S FOOD STORES**

9th & Scurry 611 Lamesa Hiway

# LABOR DAY SALE!

**Giant Fab** SAVE 2¢ Detergent. (10c off label.) (White Magic... 53¢) **63¢**  
Giant Box

**Salad Dressing** SAVE 4¢ Piedmont. Made fresh; sold fresh. **35¢**  
Quart Bottle

**Enriched Flour** DISCOUNT PRICE Harvest Blossom. For baking. **5 37¢**  
5-Lb. Bag

**Cane Sugar** SAVE 5¢ Imperial or Domino. A Good Buy at Safeway. **5 49¢**  
5-Lb. Bag

**Kraft Barbecue Sauce** Add flavor to meats. 18-Oz. Bottle **39¢**  
**Charmin Tissue** Assorted color toilet tissue. 4 Rolls **37¢**  
**Vel Detergent** Pink Liquid. 12-Oz. Bottle **35¢**  
**Ad Detergent** For automatics. (11¢ off label.) Giant Box **64¢**  
**Ajax Cleanser** Removes stains. (2¢ off label.) 2 14-Oz. Cans **29¢**

**School Supplies!**  
**Notebook Paper** 3 Pkg. **\$1.00**  
**Riveria Pens** Each **39¢**  
**Crayolas** 16-Ct. Box **25¢**  
**Scissors** Sharp or blunt. Each **25¢**

**Vanilla Wafers** Nabisco. For snacks. 12-Oz. Pkg. **35¢**  
**Chopped Beef** Libby's. Perfect for sandwiches. 12-Oz. Can **51¢**  
**Maryland Club Coffee** Regular or drip. 2-Lb. Can **\$1.41**  
**Folger's Coffee** Instant. (20¢ off label.) 4-Oz. Jar **75¢**  
**Barbecue Sauce** Kraft Hickory Smoked. 18-Oz. Bottle **39¢**

All Stores will be **CLOSED** **SAFEWAY**  
Labor Day  
Monday, Sept 4  
Shop early and save!

More Values!

**Pork & Beans** SAVE 11¢ No. 300 Cans **6 49¢**  
Highway. Nutritious and flavorful.

**Tempest Tuna** SAVE 16¢ 6-Oz. Cans **3 49¢**  
Light Meat Grated. For sandwiches.

**Lemonade** SAVE 4¢ 6-Oz. Can **10¢**  
Bel-air Frozen Regular. Rich in vitamins.

**Mellorine** SAVE 10¢ 1/2-Gal. Ctn. **39¢**  
Joyett Vanilla, Chocolate, Strawberry or Neapolitan.

5¢ OFF on any package of Safeway Half Moon Longhorn Cheese. Sliced or unsliced.

"Bakery Feature of the Week"

**French Bread** **19¢**  
Skylark. Foil wrapped. 1-Lb. Loaf  
Perfect for garlic toast. Reg. 25¢.

**Fruit Snails** Mrs. Wright's. Regular 25¢. "2¢ off." 7-Oz. Pkg. **23¢**

**Texas Toastin' Bread** Mrs. Wright's. 1 1/2-Lb. Loaf **25¢**

**Hot Dog Buns** Or Hamburger Buns. Mrs. Wright's. 8-Ct. Pkg. **19¢**

**Western Farm Bread** Skylark. 1 1/2-Lb. Loaf **27¢**

Frozen Food Buys!

**Cut Green Beans** Bel-air French Style Cut. 4 9-Oz. Pkg. **89¢**

**Bel-air Lima Beans** Fordhook. 4 10-Oz. Pkg. **89¢**

**Bel-air Succotash** Nutritious. 4 10-Oz. Pkg. **89¢**

**Bel-air Peaches** So fresh tasting. 4 12-Oz. Pkg. **89¢**

**Smoked Hams** **29¢**  
Delicately pink and fine textured. Selected for superb eating quality. Delicious with Ocean Spray Cranberry Sauce. 24 to 30-lb. avg.

**Butt Half Lb. 39¢** **Center Slices Lb. 75¢** **Ham Roast Lb. 69¢** **Shank Portion Lb. 29¢**

**Luncheon Loaves** Olive, Cooked Salsami, Square Bologna, or Macaroni and Cheese. 3 1 1/2-Lb. Pkg. **\$1.00**

**Plumrose Hams** 1-Lb. Can **\$1.25** 2-Lb. Can **\$2.25** 3-Lb. Can **\$3.39**

**Skinless Franks** Perfect for outdoor cooking. 3-Lb. Pkg. **89¢**

**Pork Spareribs** 3 to 5-Lb. average. Lb. **39¢**

**Mazola Corn Oil** For cooking or salads. Quart Bottle **65¢**

**Charmin Napkins** White. 2 80-Ct. Pkg. **27¢**

**Kraft Mustard** Horseradish or Salad. 6-Oz. Jar **10¢**

**Melrose Cookies** Coconut, Lemon, Oatmeal-Pecan or Sugar. Pkg. **29¢**

**SAFEWAY Gives those Valuable GOLD BOND STAMPS**  
your nearest Redemption Center is 1206 Gregg

**Safeway Guarantee**  
Every item at Safeway is sold on a Moneyback guarantee. This means the full purchase price will be cheerfully refunded on any item that does not give you complete satisfaction.  
Shop With Confidence at Safeway

**Lettuce** **10¢**  
Large Head  
Crisp and crackling fresh. Ideal for salads, sandwiches or just plain munching.

**Bell Peppers** Lb. **19¢**

**Lemons** 6 For **19¢**  
Sunlist. For lemonade.

**Tomatoes** Red, ripe and firm. 10-Oz. Ctn. **10¢**

**Fresh Corn** Plump and tender ears. Each **5¢**

Prices Effective Thurs., Fri. and Sat., Aug. 31, Sept. 1 and 2 in Big Spring  
We Reserve the Right to Limit Quantities. No Sales to Dealers.

**SAFEWAY**

More Values!

**Beverages** **10¢**  
Cragmont. Ass'd flavors. (Plus dep.) Quart Bottle

**Beverages** **6 49¢**  
Cragmont. In Mira-Cans. 12-Oz. Cans

**Shampoo** SAVE 18¢ 3 1/2-Oz. Bottle **37¢**  
Prell Liquid.

**Aspirin** SAVE 12¢ 100-Ct. Bottle **53¢**  
Bayer Tablets.

**Bosco** Chocolate Milk Amplifier. Children love its rich flavor. 12-Oz. Jar **39¢**

**White Karo Syrup** Red Label. 16-Oz. Bottle **25¢**

**Niagara Starch** A laundry "must." 12-Oz. Box **21¢**

**Paper Napkins** Zee White or Assorted Colors. 80-Ct. Pkg. **10¢**

**Charcoal** Arrow Brand Briquets. 10-Lb. Bag **49¢**

**Orange Juice** Bel-air Frozen. 2 6-Oz. Can **35¢**

**Salads** Lucerne Potato, Vegetable Gelatin, Waldorf Gelatin, Fruit Gelatin, Mandarin Orange, Pineapple-Cottage Cheese or Cole Slaw. 14-Oz. Ctn. **35¢**

**SAFEWAY**  
sells the freshest fruits and vegetables in town.  
**SHOP SAFEWAY and SAVE!**

**Vel Beauty Bar** So gentle. 2 Bag **39¢**

**Palmolive Soap** Green. 2 Bath Bars **29¢**

**Palmolive Soap** Pink. 2 Reg. Bars **21¢**

**Vel Detergent** For washday. Large Box **32¢**

**Colgate Deodorant** Floral Pine. 5 1/2-Oz. Can **75¢**

# Newsom's ... Labor Day

# DOLLAR DAYS

**SAUSAGE** GOLD CROWN PURE PORK 1-LB. ROLLS **3 LBS \$1**

**FRANKS** BIG TEX 2 1/2-POUND FAMILY PAC **98¢**

**FRESH PORK ROAST** LB. ... **39¢**

**GREEN BEANS** PECAN VALLEY 303 CAN **10 FOR \$1**

**BACON** PIONEER BY MOHAWK THICK SLICED **2 -LB. BOX 89¢**

**Pork & Beans** KIMBELL 1-LB. CAN **12 FOR \$1**

**JUMBO BOLOGNA** SLICED **3 Lbs. \$1**

**GROUND BEEF** FRESHLY GROUND **3 Lbs. \$1**

**SPINACH** DEL MONTE 303 CAN **10 FOR \$1**

**FRYERS** YOUNGBLOOD GRADE A FRESH LB. **23¢**

**Tomatoes** DIAMOND 303 CAN **7 CANS \$1**

**DINNER STEAK** FLAVOR AGED BEEF, LB. **59¢**

**KIM** DOG FOOD 1-LB. CAN **14 FOR \$1**

**FROZAN** 1/2-GAL. **39¢**

**SPAGHETTI** DIAMOND 300 CAN **8 FOR \$1**

**HOMINY** KIMBELL 300 CAN **10 FOR \$1**

**CATSUP** SNYDER'S BIG 20-OZ. **3 FOR \$1**

**CORN** OUR DARLING 303 CAN **5 FOR \$1**

**OLEO** DIAMOND 1-LB. CTN. **7 LBS \$1**

**PORK & BEANS** KIMBELL GIANT 2 1/2 CAN **4-51**

**WELCHADE** 3 For \$1

**TOMATO JUICE** 10 For \$1

**BUG BOMBS** GULF REG. \$1.29 **\$1**

**CRACKERS** CRACKER BARREL, 1-LB. PKG. **5-51**

**BLACKEYES** KIMBELL Fresh, 300 Can **6-51**

**TEA** LIPTON, INSTANT 1 1/2-OZ. JAR **2 For \$1**

**FLOUR** BIG K, 25-LB. BAG **\$1.69**

**COFFEE** FOLGER'S 1-LB. CAN **65¢**

**CHERRIES** KIMBELL, R.S.P., 303 CAN **4 For \$1**

**APPLES** COMSTOCK, SLICED BIG NO. 2 CAN **5 For \$1**

**WE GIVE GREEN STAMPS**

**DOUBLE STAMPS ON WED.**

WITH \$2.50 PURCHASE OR MORE

**EGGS** GRADE "A" DOZEN **39¢**

**Vienna Sausage** ARMOUR'S ALL MEAT **5 CANS \$1**

**PEACHES** HUNT'S NO. 2 1/2 CAN **4 FOR \$1**

**3 LB. CAN FLUFFO** **69¢**

**HI-C** BIG 46-OZ. CAN **4 For \$1**

**PINEAPPLE** DIAMOND CRUSHED 303 CAN **4 FOR \$1**

**Prem** LUNCHEON MEAT 12-OZ. CAN **49¢**

**GRAPE JUICE** SNOW CROP 6-OZ. CAN **5 For \$1**

**ORANGE JUICE** SNOW CROP 6-OZ. CAN **5 For \$1**

**SHRIMP** GULF STREAM BREADED 10-OZ. PKG. **2 FOR \$1**

**MEX. DINNERS** PATIO **2 For \$1**

**T-V DINNERS** SWIFT FOUR VARIETIES **2 FOR \$1**

**SNO CROP - MIX OR MATCH SALE**

TURNIP GREENS-PEAS  
SPINACH-PEAS & CARROTS-  
POTATO PATTIES-POTATOES  
BROCCOLI-MIXED VEG.-CORN **5 PKGS \$1**

# NEWSOMS

• 1910 GREGG • OPEN NIGHTLY UNTIL 8 O'CLOCK • 501 W. 3rd

**SQUASH** YELLOW BANANAS LB. **5¢**

**CARROTS** CELLO 1-LB. PKG. **2 FOR 15¢**

**Cabbage** FRESH CRISP GREEN, LB. **2 1/2¢**

**Potatoes** U.S. NO. 1 RUSSETS 10-LB. PLIO BAG **49¢**

**Green Onions** FRESH CRISP **2 BUN. FOR 5¢**

**Peaches** FRESH ELBERTAS POUND **10¢**

**CAKE MIXES** DUNCAN HINES ASSTD. **3 PKGS \$1**

**Tissue** BEST VALUE COLORED 4-ROLL PAC **12 ROLLS \$1**

**SCHOOL SUPPLIES**

**Notebook Paper** ALADDIN REG. 25¢ **12 1/2¢**

**BIG CHIEF TABLETS** REG. 10¢ **5¢**

**CRAYOLAS** 8-COUNT, REG. 15¢ **7 1/2¢**

**PENCILS** REG. 2 FOR 5¢ **1¢**

**NOTEBOOK PAPER**

**BIG K \$2.00 SIZE 500 SHEETS** **\$1.00**

**PEAS** DIAMOND 303 CAN **6 For \$1**

**Corn** DIAMOND 303 CAN **6 FOR \$1**

**DOVE SEASON OPENS SEPT. 1**

**SAVE ON SHELLS**

REMINGTON - PREMIUM QUALITY

**SURE SHOT - EXPRESS**

20 Ga. - Box \$2.19    20 Ga. - Box \$2.59

16 Ga. - Box \$2.29    16 Ga. - Box \$2.69

12 Ga. - Box \$2.49    12 Ga. - Box \$2.98

I-D

DE

DEAR mouth with a who is, at the he had his che he got in the combat Recen told me fight w was 17, sent to this sto go out Should brother!

DEAR and ask are you you fin know.

DEAR people ness? I in 15 3 out, an Almost "Why off?" O lot of t To be trouble. I'm the of it. I quit st remark don't ne to wear

DEAR "stared day an hair, p yoursu at a st you ar that w folks s How mu sport a brushed wait?

DEAR letter i Private who w didn't eral. I hav half a nessed ilies' served most w parted time, w took th is the e one wh go into is call he didr cruel a

A

CONJ JAM": you ca you.

"Are help 3 a pers stampe and se Hills, C

For

Fai Ch

GAR field in iled in sesame Olive agent, arrang who ha and for Prim is to d actly harvest dling th in the The at the headqu 10:30 i The the ge set for lips fat four n This l the Bl land a Wers sesame area t harvest pounds the hi

Rai

WAS state ( recom sides Haven roads sential

Dro

WAS ermet brought of Fl al Co memb award Miami

31, 1961

\$1

98¢

39¢

3¢

59¢

39¢

\$1

\$1

12 1/2¢

5¢

7 1/2¢

1¢

PER

00

or \$1

\$1

5¢

15¢

2 1/2¢

9¢

5¢

0¢

1

\$2.59

\$2.69

\$2.98

# BIG SPRING DAILY HERALD

1-D BIG SPRING HERALD, THURSDAY, AUGUST 31, 1961 1-D

## DEAR ABBY

### The Truth Will Out



DEAR ABBY: For the last four months I have been going out with a boy (I will call him "A") who is 22. When I first met "A" at the swimming pool, I noticed he had a deep scar running down his chest, and I asked him how he got it. He told me that while in the Army he was cut during combat practice.

Recently, his younger brother told me that "A" was in a knife fight with another boy when he was 17, and that both boys were sent to an Industrial School. If this story is true, I know I can't go out with "A" any more. Should I believe "A" or his brother?

"A's" GIRL: Start with "A" and ask some questions. Chances are you won't get to "Z" before you find out what you want to know.

DEAR ABBY: How can I get people to mind their own business? I haven't had my hair cut in 15 years. I wear it brushed out, and hanging to my waist. Almost everyday someone says, "Why don't you cut that stuff off?" Or, "Gee, isn't that mop a lot of trouble?" To be truthful, it is a lot of trouble. But I like it this way, and I'm the one who has to take care of it. How can I get people to quit staring at me and making remarks? I am 37 years old and don't need anyone to tell me how to wear my hair.

LONG HAIR: DEAR LONG: If you are "stared at," and almost every day someone remarks on your hair, perhaps you ought to treat yourself to a professional opinion at a smart beauty salon. But if you are determined to wear it that way, don't be offended if folks stare and make remarks. How many other women your age sport a 15 years' growth of hair brushed out and hanging to the waist?

DEAR ABBY: I just read a letter in your column signed "A Private Affair" from a woman who was criticized because she didn't cry at her mother's funeral. I have been a nurse for nearly half a century, and have witnessed many deaths and the families' reaction to them. I have observed that those who did the most work, caring for the departed during his (or her) lifetime, were usually the ones who took the death most quietly. It is the ones who neglected the lost one who carry on in public and go into hysterics. To say that one is callous and unfeeling because he didn't shed tears in public is cruel and unjust.

A NURSE WHO HAS SEEN CONFIDENTIAL TO "IN A JAM": There is NO law whereby you can FORCE a man to marry you.

"Are things rough?" Let Abby help you solve your problems. For a personal reply, enclose a stamped, self-addressed envelope and send to Box 3365, Beverly Hills, Calif.

For Abby's booklet, "How To

## Farmers To Check Sesame

GARDEN CITY—Two sesame field inspections have been scheduled for Garden City area sesame growers on Friday. Oliver Werts, Glasscock County agent, said the meeting had been arranged specifically for growers who have sesame crops this year, and for their neighbors.

Prime purpose of the inspection is to demonstrate in the field exactly when sesame is ready to harvest. Arrangements for handling the commercial sesame crop in the area also will be discussed. The first meeting will be held at the Sam Montgomery farm headquarters in St. Lawrence at 10:30 a.m. Friday.

The second inspection, to which the general public is invited, is set for 2 p.m. at the V. E. Phillips farm about 15 miles north and four miles east of Garden City. This is for potential growers in the Big Spring, San Angelo, Midland and Big Lake areas. Werts said that 500 acres of sesame have been planted in the area this year. He anticipates a harvest of some 400,000 to 500,000 pounds for the first year yield of the high protein and oil crop.

## Rail Subsidies

WASHINGTON (AP)—The Interstate Commerce Commission has recommended direct federal subsidies for the New York, New Haven & Hartford and other railroads to help them maintain essential passenger services.

## Drop Charges

WASHINGTON (AP)—The government has dropped charges brought against Richard A. Mack of Florida, a former Federal Communications Commission member, in connection with award of television Channel 10 in Miami.

## Odessa Increases Teacher Salaries

ODESSA (AP)—Odessa has granted its school teachers an annual basic salary increase of \$425. Supt. Dwight Kirk said the action would raise the minimum pay for teachers with a bachelor's degree from \$4,225 to \$4,650. Those with 15 years experience will get \$6,150.

Odessa's teachers' salaries have been above the state minimum, he said.

## Cube-Shaped Eggs, Yet

RALEIGH, N.C. (AP)—So you never heard of eggs shaped like ice cubes?

Neither had poultry scientists at North Carolina State College until they set out to assist in promoting North Carolina as "the good egg state."

At a breakfast here Friday, Gov. Terry Sanford will be presented with a supply of the eggs—shaped like a child's building blocks. At the breakfast, the governor will designate North Carolina officially as "the good egg state."

Dr. Henry W. Garen of the col-

lege's poultry science department told how the cube-shaped eggs are produced. First, a cube-shaped template—or form—of calcium was prepared and the egg, minus its regular shell, was placed inside.

The template was then inserted in the oviduct of a hen who, obligingly, deposited egg shell around it.

"She'll put a shell around anything," explained Dr. Garen.

Then the scientists have to remove the cube-shaped egg "because the hen can't lay it properly."

Dr. Garen doesn't believe square eggs will replace the standard variety any time soon. Although more convenient for packing and storing, they aren't nearly as strong as the regular eggs—and they're rather uncomfortable for the hens.

## Texans Travel A Bit Slower

AUSTIN (AP)—Texas motorists are traveling slightly slower than they have in past years, the Highway Department reports.

Passenger buses average better than 60 miles per hour, the annual speed survey of the department shows.

The survey is a research study used by highway designers and the U.S. Bureau of Public Roads in designing new roads to meet traffic requirements.

The Highway Department said this year's survey showed that all

vehicles, including passenger cars, buses, and trucks, averaged 54.2 miles per hour at 25 locations throughout the state.

The maximum daytime speed limit on open highways usually is 60 miles an hour.

Average speed for trucks was 59.1 miles an hour, down slightly from the 51.2 last year.

The average speed of passenger buses was 60.5 miles an hour compared to the 60.7 for both 1959 and 1960.

## Gets Divorce

SAN JOSE, Calif. (AP)—Mrs. Stanley Hardman, 35, was granted a divorce after complaining that her police sergeant husband bawled her out if she didn't bring him coffee right away when he rang a bell.

## More Rockets

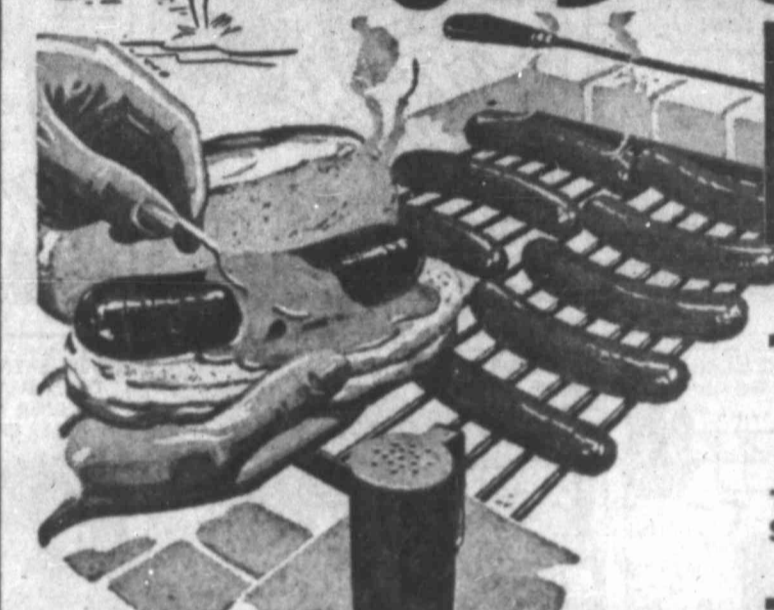
PASADENA, Calif. (AP)—A U. S. space agency official says four more Ranger spacecraft have been ordered for close-up television exploration of the moon.

## IT'S LOVE AT FIRST BITE



FULL-FLAVORED, UM-M-M-M TASTY

# TWO IN ONE! OUTDOOR & DOLLAR SALE



Furr's Will Be Closed Monday, Sept. 4 LABOR DAY

ROUND STEAK U.S.D.A. GRADED STANDARD, LB. 63¢

CHUCK ROAST U.S.D.A. GRADED STANDARD, LB. 33¢

SAVE • SAVE • SAVE • SAVE • SAVE • SAVE • SAVE • SAVE • SAVE • SAVE

FRESH FROZEN DOLLAR SALE VALUES  
Mexican Dinners 3 FOR \$1.00  
PATIO, FRESH FROZEN, 16-OZ. PKG. 3 FOR \$1.00

MIX OR MATCH THESE TOP FROST ITEMS  
WHOLE OKRA 10-OZ. PACKAGE  
BLACK EYE PEAS 10-OZ. PACKAGE  
CAULIFLOWER 10-OZ. PACKAGE  
MIXED VEGETABLES 10-OZ. PACKAGE  
GREEN BEANS 10-OZ. PACKAGE

5 FOR \$1.00  
FRONTIER STAMPS—YOUR BONUS AT FURR'S!

SAVE AT FURR'S BECAUSE PRICES ARE LOWER!

CANTALOUPE HOME GROWN, VINE RIPE, LB. 5¢

APPLES New Crop Golden Delicious, Lb. 19¢  
EGG PLANT Home Grown Fresh, Tender Pound 9¢  
OKRA Fresh Tender Green, Lb. 10¢  
POTATOES Colo. Russets, 10-Lb. Bag 49¢

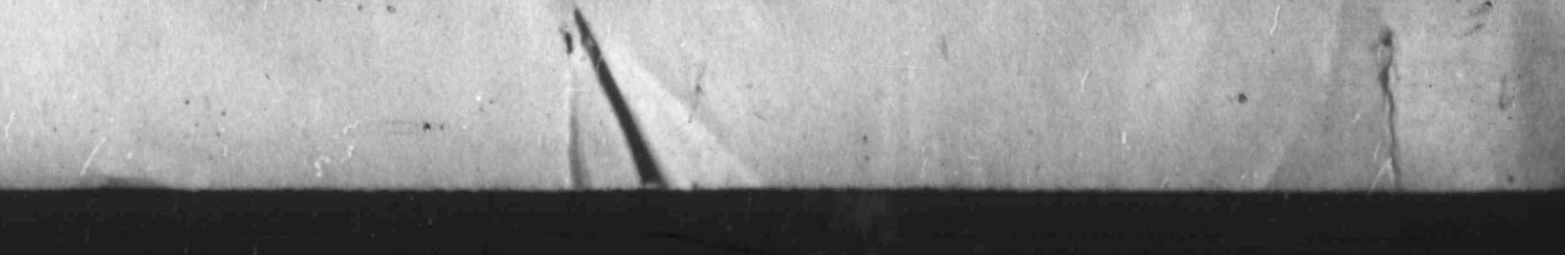
COCA COLA HANDY 12-BOTTLE CARTON 49¢  
CORN DEL MONTE, CREAM STYLE GOLDEN No. 303 Can 5 For \$1.00  
COFFEE FOLGER'S OR CHASE & SANBORN 1-LB. CAN 65¢  
SPAM HORMEL 12-OZ. CAN 39¢

HUNT'S SOLID PACK TOMATOES 300 Can 6 For \$1.00  
GATEWAY, PKG. INSTANT POTATOES 6-\$1  
YELLOW OR RED, 46-Oz. Can. HAWAIIAN PUNCH 3-\$1  
VAN CAMP, CHUNK STYLE TUNA FISH Can 5 for \$1.00  
FOOD CLUB—ASSORTED FLAVORS CAKE MIX Pkg. 3 For \$1.00  
FOOD CLUB SPINACH 303 Can 7 For \$1.00

SAVE • SAVE • SAVE • SAVE • SAVE • SAVE • SAVE • SAVE • SAVE • SAVE

CHARCOAL ARROW 10-LB. BAG 49¢  
BALL Canning SUPPLIES LIDS 17¢ CAPS 35¢  
Ice Tea Glasses 22-OZ. SIZE REGULAR 29¢  
6 FOR \$1.00

Gillette, Right Guard, 89¢ Scent Deodorant . 69¢  
Helene Curtis, Tender Touch BATH OIL \$1.19  
JERGENS Hand Lotion 63¢



BUZ SAWYER



GASOLINE ALLEY



NANCY



LI'L ABNER



BLONDIE



ORPHAN ANNIE



SNUFFY SMITH



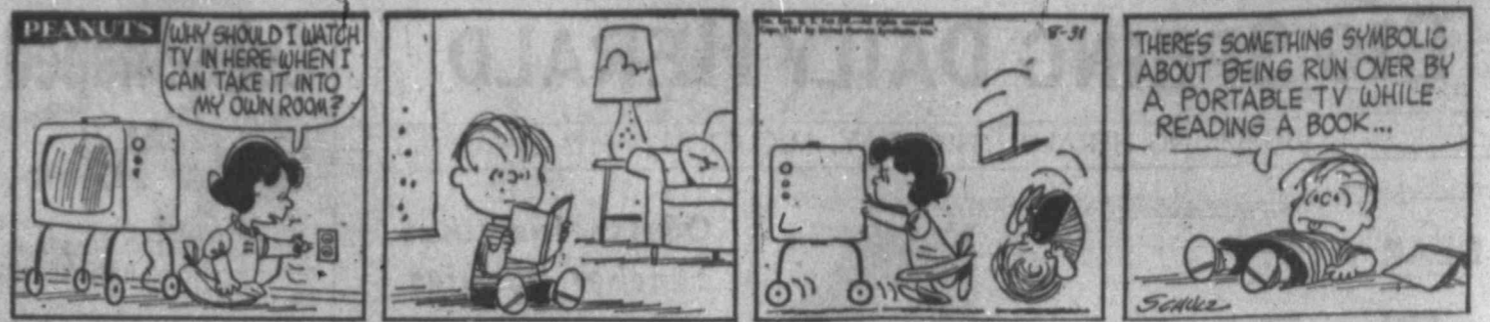
KERRY DRAKE



DONALD DUCK



PEANUTS



DICK TRACY



MARY WORTH



REX MORGAN



POGO



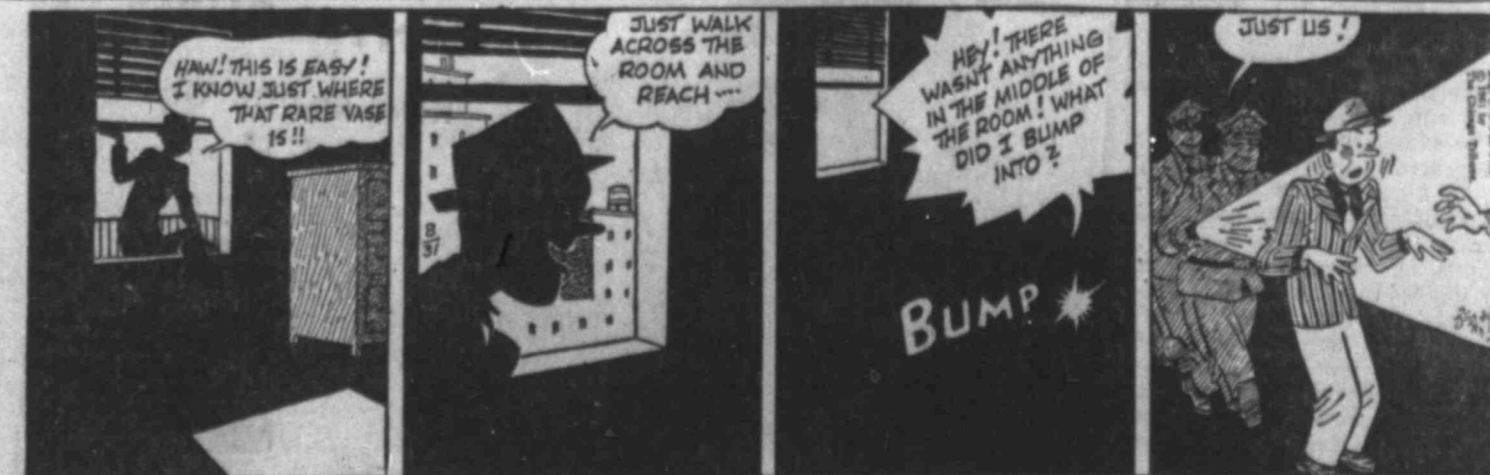
GRANDMA



TERRY



SMITTY



MOON MULLINS



Bargain Specials \$39.95 And Up VACUUM CLEANER SALES, SERVICE AND EXCHANGE G. BLAIN LUSE

High Retailer expected than last increase ports to Agricult



MRS. LEWIS WOLFSON AND SYDNE

# Baby, Decorating Are Homemaker's Interest

Interior decorating and taking care of 11-month old Sydney are Mrs. Lewis Wolfson's major interests. With Sydney being such an active little sprite, the mother spends a great deal of time keeping her occupied. When she is not busy with Sydney, however, her interests turn to her new home at 2613 Lynn which she and her husband decorated.

Wolfson has been the manager of Pelletier's Shoe Store here since January, having come here from Odessa where he was also in the

retail shoe business. A native of Michigan, he met the West Texas girl in Dallas, and they were married five years ago. "Since we've been married," Mrs. Wolfson says, "I have found out that Yankees don't eat the way Texans do. Lew has taught me a lot about northern food, and I have had to teach him about our West Texas dishes." Mrs. Wolfson lists these favorite recipes for both Yankees and Southerners:

### STUFFED CABBAGE

Mix together:

- 1 lb. ground beef
  - 1 cup cooked rice
  - 1 small chopped onion
  - 1 tsp. caraway seed
  - 1 tsp. salt
  - 1/2 tsp. pepper
  - 1 egg
- Roll in cabbage leaves and brown in oil. Add two 8-ounce cans of tomato sauce and one-fourth cup water. Cook slowly for 40 minutes.

### MARTHA WASHINGTON CANDY

- 2 lbs. confectioner's sugar
  - 1 can condensed milk
  - 1 stick butter
  - 1 tsp. vanilla
  - 1 qt. chopped pecans
  - 1/2 lb. paraffin
  - 1 lb. sweet chocolate
- Cream butter and sugar, add milk and pecans. Beat until stiff and roll mixture into balls. Melt paraffin and chocolate together and dip balls in mixture.

### HOLIDAY CAKE

#### EGG NOG ANGEL FILLING

Split angel food cake into four equal layers. Sift 1 lb. confectioner's sugar and cream with 1/2 lb. butter. Whip until creamy, add 5 egg yolks and fold in 1/2 cup bourbon.

Cover layers of cake with above and frost with 1 pint whipped cream to which has been added 2 teaspoons sugar and 2 teaspoons bourbon. Sprinkle top and sides of cake with one-fourth pound crushed macaroons and one-half cup toasted slivered almonds. Refrigerate.

# Plan Ahead And You'll Make Two Loaves

On lazy summer days double-duty cooking makes a lot of sense. If you're planning to make a meat loaf one of these days, why not make a second one at the same time, freeze it, and you'll have it ready for picnic sandwiches, late night snacks, or the children's supper when you're dining out.

This is a great idea in planning ahead for the long Labor Day weekend coming up. No longer an orphan of the oven, meat loaf has taken its rightful place at the family table. There are probably as many tasty ways to put a meat loaf together as there are states in the Union, and if you haven't tried making one with beer here's a new recipe to add to your collection. Beer or ale is used as the liquid ingredient; they are interchangeable in cooking, and the tang of this delicious beverage will heighten the meat flavors.

### TANGY MEAT LOAF

- 1 egg
- 1/2 cup beer or ale
- 1/2 teaspoon Tabasco
- 2 cups soft bread crumbs
- 1 medium onion, minced
- 2 teaspoons salt
- 1 teaspoon dry mustard
- 1/4 teaspoon ground thyme or marjoram
- 1 1/2 pounds ground chuck
- 1/2 pound ground pork shoulder

### Right Measurements

A pound of granulated sugar measures about 2 cups; a pound of brown sugar (light or dark) measures about 2 1/2 cups.

**IT'S LOVE AT FIRST BITE**

**FULL OF TASTEWORTHY FOOD VALUE**

Compare the freshness of Youngblood's Fryers with the ordinary fryer packed in ice and sealed in by the miracle of quick freeze... a freshness that gives you a better chicken dinner.

Available at better food stores in:

- WHOLE CUT UP FRYERS
- FRYER PARTS
- BREADED CHICKEN
- ROCK CORNISH GAME HENS

**Youngblood's FROSTED FRESH Fryers**

# Bait Refrigerator With Spiced Meats

The time, midnight. The place, the refrigerator. Your job; unravel the mystery of the midnight raider. With a stock of table ready meats waiting, you're likely to have the right bait. You'll find your man piling slice on slice of hearty, invitingly spiced meats into a concoction that only late hours and a man-sized appetite could inspire.

Many homemakers have found that a supply of cold cuts is convenient to have on hand, from midnight right on around the clock. First thing in the morning these sliced meats go into the lunch box sandwiches. For the come-home-to-lunchers, cold cut sandwiches are perfect with hot bowls of soup.

They're even versatile enough to suit a fancy late afternoon coffee hour, as the menu and recipe which follow prove. Then, at supertime, table ready meats are wonderful makings for hot casseroles.

**CHOPPED HAM ROLL-UPS**  
6 ozs. pkg. sliced chopped ham  
8 oz. pkg. sliced cheese  
1/2 stick (1/4 cup) butter or margarine  
1 tsp. grated lemon rind  
1/2 tsp. ground ginger  
8 pineapple spears, fresh or canned

French bread  
Blend together butter, lemon rind, and ginger. Fold one slice of cheese and one slice of chopped ham around each pineapple spear. If canned pineapple spears are used, drain well. Slice French bread with some of butter mixture. Place a ham roll-up on each slice of bread. Heat in a moderate oven (375 degrees F.) for about

### 5 minutes or until cheese begins to melt. Serve hot.

### BOLOGNA-AVOCADO STACKS

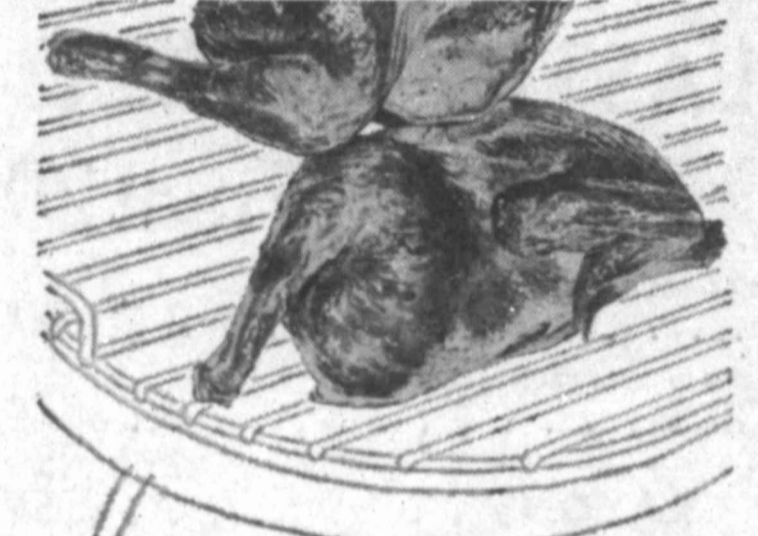
- 6 oz. pkg. sliced bologna
  - 1 ripe medium-sized avocado, mashed
  - 1 tsp. mashed blue cheese
  - 1/4 cup sour cream
  - 1/2 cup finely chopped nuts
  - 1 tsp. lemon juice
- Blend together avocado, blue cheese, sour cream, nuts and lemon juice. Divide bologna into 2 stacks of 4 slices each. Spread 3 slices of bologna in each stack with avocado mixture. Top each stack with the remaining bologna slices. Chill. Cut each stack into 12 wedge shaped pieces. Insert a wooden pick into each wedge.

### Higher Average

Retail prices of cereal foods are expected to average a little higher than last year, due mainly to the increase in marketing charges, reports the U. S. Department of Agriculture.

### Add Mushrooms

Some epicures like to add raw mushrooms to a green salad. If the mushrooms are very small, add them whole. Medium-size mushrooms can be sliced thin and used.



# CUE

for your Holiday Cookout!

Let's have a barbecue! And for that real outdoor flavor, use CUE, the barbecue sauce made by folks—for folks—who know good barbecue. Try CUE's rich, exciting flavor on chicken, ribs, hamburgers. It's tantalizing!



Pick up your CUE at your grocers TODAY!

Another fine product from Mrs. Tucker's Kitchen — © AC & Co., Inc.

# Tomatoes, Grapes Are Priced Low

Tomatoes and grapes are features of Texas fresh produce markets. Tomatoes at wholesale are even lower than last week. The volume of both items is huge, the Agricultural Marketing Service reports.

Abundant supplies of avocados, bananas, lemons, nectarines, peaches, and plums and prunes are on hand. Peaches come now mostly from the North. Watermelon and cantaloupe prices remain low, but the melon season won't last much longer.

Colorado potatoes are arriving in many markets in volume. Prices are at best-buy levels. Other vegetables at prices that favor consumers include cabbage, carrots, celery, greens and green onions, lettuce, onions, sweet corn and peppers. Sweet potato volume is on increase, and prices are lower.

Snap beans, lettuce, onions and peppers also carry lower price tags than a week ago. Yellow squash is much lower. Okra, with limited supplies, is higher.

There'll be a lot of apples this fall—15 per cent more than last year—but so far only summer varieties are available. Supplies of Bartlett pears are greater but price is fairly static. Some markets are beginning to carry pumpkins.

Turkey and broiler-fryer marketings continue heavy and retail prices of both are very low. Beef joined the official September plentiful foods list, as fall slaughter steps up. High-quality beef is especially abundant.

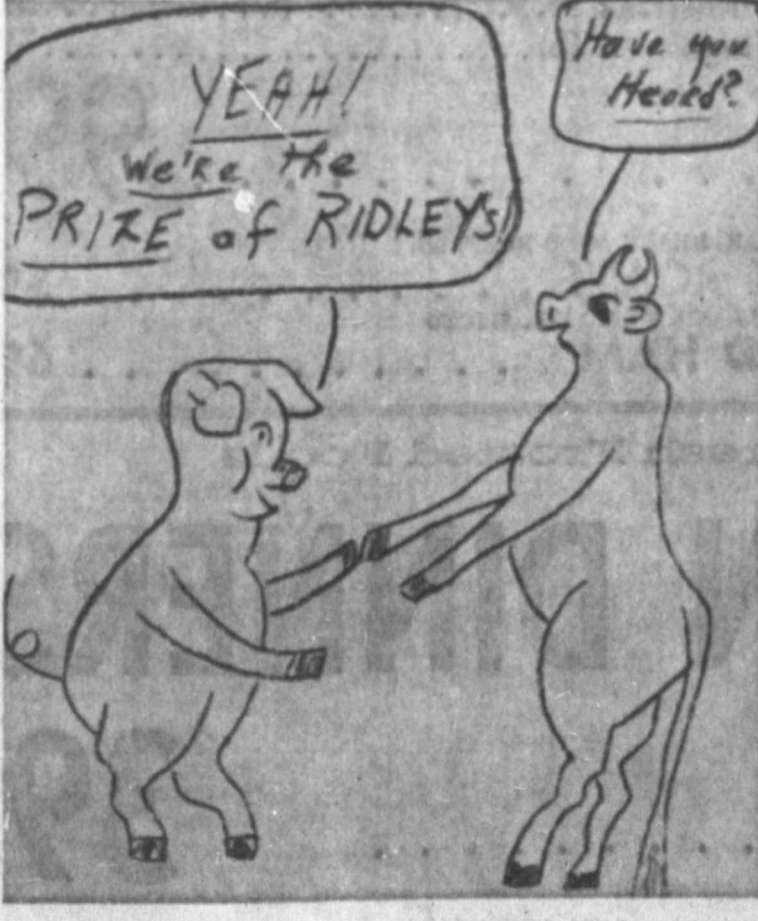
### Lorenzo Dressing Perks Up Tomatoes

Here's a new way to use a famous salad dressing.

**TOMATO SALAD LORENZO**  
Small or medium-sized tomatoes  
Mayonnaise  
Chili Sauce  
Watercress  
Romaine or other lettuce  
Wash and dry tomatoes; cut a thin slice from bottoms so they'll stand straight.  
Cut out tops in plug shape; make cut out large enough to hold dressing.  
Mix equal parts of mayonnaise, chili sauce and finely chopped watercress leaves; fill tomato cavities with this Lorenzo dressing.

Arrange tomatoes on romaine; garnish with watercress sprigs; pass extra Lorenzo dressing.

**Near Peak**  
Peach marketings are nearing the peak of the summer as daily shipments increase from southern states, says the Agricultural Marketing Service.



Ask For RIDLEY'S PRIZE MEATS

Now Available

at your favorite grocery store or meat market.

**R P M**  
**RIDLEY'S PRIZE MEATS**

# FRESHEST TASTE IN BUNS



# PIGGLY WIGGLY'S LABOR DAY



# Tunarama



These values good in Big Spring August 31, September 1 & 2, 1961.

PIGGLY WIGGLY WILL BE CLOSED ALL DAY - LABOR DAY.

## SCHOOL SUPPLIES

SHOP RITE FOR THE LOWEST PRICES IN SCHOOL SUPPLIES

### NOTEBOOK PAPER

Super Pak, 260 sheets with purchase of 2 Pkgs. A map of your choice free. Total value \$2.75. **59¢**

Super Pak, 450 sheets - FREE Rand McNally Map of your choice, total value over \$4.00. **99¢**

CRAYONS 24 COUNT REG. 35¢ ..... **19¢**

PASTE SNOW FLAKE 5 1/2 OZ. JAR 25¢ VALUE ... **2 For 29¢**

TABLET BIG CHIEF 39¢ VALUE ... **2 For 39¢**

SCISSORS BLUNT, SHARP 4 1/2" - 5" ... **2 For 27¢**

RULERS WOODEN (METAL EDGE) OR PLASTIC ..... **5¢**

## FREE MAP!

A free Rand & McNally Map of the U.S., The World or Outer Space worth from \$1 to \$2 given with the purchase of each \$2 size of Super Pak Notebook Paper or two packages of the \$1 size.

## PLASTIC POCKET

58¢ VALUE. CARRY ALL ZIPPER POCKET. (FITS INSIDE NOTEBOOK.) **Free! 29¢**

8-Pk. Silvertone Pencils

SCRIPT, 2 OZ. BOTTLE, REG. 19¢ **2 For 27¢**

12 PEDIGREE PENCILS PLUS PENCIL SHARPNER **49¢**

SUNSET, 24-COUNT BOX MAP CRAYONS ..... **59¢**

PENCIL OR ART GUM, YOUR CHOICE, LARGE SIZES ERASERS ..... **10¢**

MAGNA-LOK, 7 OR 3 RING - SIDE RINGS DELUXE NOTEBOOK ..... **98¢**



## DOUBLE EVERY WED.

WITH \$2.50 PURCHASE OR MORE

WE RESERVE THE RIGHT TO LIMIT QUANTITIES

Shop Rite for the Finest Meats

FRUIT COCKTAIL PACIFIC GOLD NO. 2 1/2 CAN ..... **29¢**

MIRACLE WHIP QUART JAR ..... **49¢**

FLOUR GOLD MEDAL 5-LB. BAG **49¢**

CHARCOAL ARROW 10 LB. BAG ..... **49¢**

SHORTENING BAKE RITE 3 LB. CAN ..... **59¢**

CHICKEN ALLEN'S CANNED CHICKEN 52 OZ. CAN ..... **89¢**

PECANS AZAR 10 OZ. PKG. .... **89¢**

TISSUE ZEE ROLL ..... **4 For 33¢**

NAPKINS ZEE 80 COUNT PKG. .... **10¢**

NESTLE'S CHOCOLATE KING SIZE REG. 49¢ ..... **3 For \$1.00**

MELLORINE FOREMOST 1/2 GAL. CTN. .... **39¢**

CAMPFIRE, NO. 300 CAN PORK & BEANS **12 For \$1.00**

ORANGE DRINK G.C. GRAPE 1/2 GAL. ... **33¢**

COFFEE FOGER'S ALL GRINDS 4c OFF 1-LB. CAN ..... **65¢**



ARMOUR'S STAR

HAM FULLY COOKED BUTT PORTION, LB. ... **39¢** SHANK PORTION, LB. ... **35¢**

FRESH FRYER PARTS Breast lb. .... **49¢** Thighs lb. .... **39¢** Drumsticks lb. .... **39¢** Wings lb. .... **19¢**

BACON Roth Ends and Pieces 4-lb. .... **99¢**

3 LB. BAG SKINLESS FRANKS ..... **69¢** ARMOUR'S STAR, HEAVY AGED BEEF, LB. RIB STEAK ..... **59¢**

ARMOUR'S STAR, HEAVY AGED BEEF, LB. CHUCK ROAST ..... **39¢** HUFFMAN HOLLAND, 5 OZ. PKG., SLICED COOKED HAM ..... **69¢**

Shop Rite for Fresher Produce

PEACHES ELBERTA LB. .... **10¢**

GRAPES THOMPSON SEEDLESS LB. .... **19¢**

BUNCH GREEN ONIONS . **7 1/2¢** CALIF., GOLDEN SWEET Roasting Ears . **3 - 19¢**

## HOME PERMANENT

FASHION QUICK, \$2.50 SIZE ..... **99¢**

TONI CREAM, \$2.50 VALUE, REG. 99¢ PLUS TAX HAIR SPRAY ..... **55¢**

FONDS, WITH SKIN FRESHNER, \$1.05 VALUE PLUS TAX COLD CREAM ..... **59¢**

WEBSTER FOR SCHOOL & OFFICE DICTIONARY ..... **99¢**

1ST QUALITY, ACTION TOPS, REG. 99¢ PER PKG. 2 PAIR PER KG. BOBBY SOX ..... **69¢**

Shop Rite for Fresh Frosted Foods

## MEXICAN DINNERS

PATIO, 16 OZ. PKG. .... **39¢**

ASHLEY'S, FROZEN, 12-COUNT PKG. TORTILLAS ..... **10¢** SARA LEE, FROZEN, BIG 17-OZ. SIZE BANANA CAKE ..... **69¢**

LIBBY'S, FROZEN, 6-OZ. CAN LEMONADE ..... **10¢** SUZAN, FROZEN, 24-COUNT PKG. PARKERHOUSE ROLLS . **19¢**

Lowest Prices . . . Greatest Variety . . . always at . . .

