

Mirror

A distorted view of the western edge of downtown Fort Worth is reflected on a 14 1/2-inch stainless steel ball topped a 90-foot flagpole erected at the First National Bank's new building. Mirrored in the globe are, left to right, Neil P. Anderson Building, Texas Electric Service Co., and the bank structure. Man in center is Star-Telegram photographer Joe McAuley, taking his own picture with the buildings.

Parking Tickets In Holiday Ban

RUSSELL, Ky. (AP) — Mayor Raymond Stevens says no parking tickets will be issued here today, Friday or Saturday for cars parked at overdue parking meters.

This, he said, would be done to give shoppers more freedom to wind up their preparations for the Yule season.

The Church And Money

Many have been turned away from religion because church leaders are sometimes mercenary. The Bible is not responsible for this; it does not condone high pressure methods and "snappy" schemes from the members upon the first day of the church of Christ, week, I Cor. 18:1, 2.

This also means the church is not to get her funds by competing with business houses. The New Testament church did not hold pie sales, rummage sales, etc. Why should the wife spend a day cooking and an evening selling her pie; while the husband buys the materials that go into them, attends the pie sale, and buys back that which his wife has baked? How much simpler and better to do things the Scriptural way. Think it over!

Take time tonight to attend a worship and Bible study service, 7:30. Sermon, "Man Tries to Come to God's Rescue."



Tom Farbet, member of the church of Christ.

AT&T Stock Prices Up

NEW YORK (AP)—Stockholders of American Telephone & Telegraph Co. have received a surprise package in the form of higher dividends and valuable rights to buy more stock at a bargain rate.

As a result, the price of their stock skyrocketed Wednesday to an all-time high of \$103.50 a share before dipping slightly in active trading on the New York Stock Exchange.

The nation's largest family of stockowners, 1.9 million strong, will begin collecting \$3.60 a share annually in July. The rate has been \$3.50 a year since July 1959.

Next March they will receive rights to buy at an undetermined price, lower than market value, 1 share of AT&T stock for each 20 held on Feb. 23, 1961. This financing promises to be the largest in U. S. corporate history, with a total value of over \$750 million.

Directors of the world's largest utility came up with the surprise package at their regular monthly meeting yesterday. They said the company needs money for a \$2.5 billion expansion program planned in 1961.

Suicide Ruled

WESLACO (AP) — Justice of Peace Jack Verser ruled suicide in the death of Mrs. Olive Graham Scott, 56, who was found shot to death at her home here Wednesday. Verser said the former school teacher had been depressed since the death of her husband four years ago.

Police Training Program Slated For January

Intensive in-service training for Big Spring policemen is due to begin in January, the start of a continuing department program.

Chief Jay Banks said that the training will include traffic and criminal investigation phases of police work at first, although other subjects may be made a part of the training later.

The traffic training will include selective enforcement at trouble spots, accident investigation and reports and police driving.

Chief Banks said that to aid in traffic enforcement a method of marking on a map those areas where accidents occur would probably be worked out.

Criminal investigation training will take in procedures of taking statements from witnesses, victims and suspects, properly making out reports, and use of scientific investigative aids.

Lubbock Man Killed In Crash

SNYDER (AP)—One man died and another suffered serious injury early today in a head-on car-pickup truck collision six miles southeast of here on U.S. Highway 84.

Harley W. Bell, about 40, of Lubbock was dead on arrival at a Snyder hospital. Henry Treat, 31, Snyder, received a broken leg and multiple fractures of the jaw. Treat, driver of the truck, was transferred to Methodist Hospital in Lubbock.

Meet To Be Held Here On Retirement Center's Plans

Detailed explanation of a special project for retired people will be given here on Monday, Dec. 26, at 3 p.m., by representatives of the Rio Concho Manor of San Angelo.

The presentation, to include a talk with colored slides, will be

Wrongly Jailed Man Not Bitter

McALESTER, Okla. (AP) — Louis Bennett is a free man today. He says he holds no bitterness about serving more than three years for a crime another man apparently committed.

"All I want to do is forget this place," the plumber, 41, said Wednesday as he strolled out of the prison.

A Texas convict, Leonard McClain, started incidents leading to Bennett's freedom when he told Texas officials last week he fatally beat Fred Ernest, 70, of Bartlesville.

Bennett had pleaded guilty to first degree manslaughter in the 1957 slaying and was sentenced to 35 years. McClain is serving life in Texas for the murder of his landlady in Dallas in 1957.

Oklahoma officers, after checking McClain's story and giving Bennett a lie detector test, exonerated Bennett.

in the Settles Hotel ballroom, and everybody is invited.

Rio Concho Manor is a deluxe residential center being projected at San Angelo, for people over 50. The retirement center will have 300 apartments, built especially to accommodate 500 persons who would like to live graciously and independently, have a dignified method of living without obligations to any one.

Rio Concho Manor is located on 40 acres, on the Concho River just three blocks from the central business district of San Angelo.

It is planned for luxury living at less cost than maintaining a home. A trained staff would meet all residents' needs, with doctor, registered nurses, maids, janitors and laundry available. Unlimited hospital care would be available in the Manor hospital, and there would be a diet kitchen with separate dining room. Such items as a beauty parlor and recreational facilities also are in the Concho Manor plan.

To Hear Appeal

AUSTIN (AP) — The State Insurance Board will hear an appeal Jan. 6 of its order freezing auto insurance rates at their present level until sometime next summer.

Appearing before the board will be representatives of the Texas Automobile Insurance Office and the Association of Texas Fire and Casualty Companies.

DO YOU KNOW?

CEMENT BLOCK PAINTS AND SEALERS ARE MADE IN BIG SPRING. SEE THEM CACTUS EAST HIGHWAY 80 "A LOCAL INDUSTRY"

YOUR CHRISTMAS GIFT DOLLAR BUYS MORE AT

BETTER VALUE! BIGGER SELECTION! BIGGER DISCOUNTS!

Zale's

14-DIAMOND ELGIN
Your Choice \$69.95 plus Fed. tax
No money down • \$1.50 weekly
14 fiery diamonds in 14k gold mounting. 17-jewel movement.

Twin rows of exquisite Zale diamonds accent this 14k gold wedding band. **\$200**
\$16.00 monthly

Distinctive dome ring holding a cluster of brilliant diamonds. **\$300**
monthly terms

2-DIAMOND BAYLOR
\$19.95 plus tax
\$1.00 weekly
• 2 fiery diamonds in glamorous case
• matching expansion band
• 17-jewel movement with unbreakable mainspring

Large full-cut diamond drop 14K mounting and chain. **\$100**
Monthly Terms

Gem-on-gem setting dramatizes the center diamond in this 14K gold bridal pair. 1/4 carat (total weight) **\$69.50**
Wedding band **\$49.95**
\$8.00 monthly

Glorious swirls of diamonds interlock in this contemporary design in 14K gold. **\$125**
\$10.00 monthly

Magnificent emerald cut center diamond with baguette side diamonds accents this bridal pair. **\$495**
monthly terms

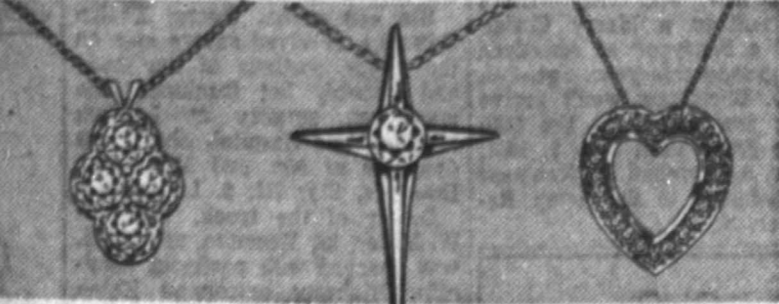
AT ZALE'S...FOR CHRISTMAS!

dazzling diamond pendants

PRICED TO FIT YOUR BUDGET!



14K gold pear shape design with diamond center. \$24.95
Diamonds ablaze on 14K gold heart, 14K gold chain. \$125.
14K gold rose pendant with radiant diamond center. \$24.75



Large full-cut diamond drop, 14K gold mounting and chain. \$100.
Four radiant diamonds, 1/4 carat total weight, in 14K gold. \$124.
Fabulous diamond "Galaxie" cross, 14K white gold. \$79.50
Magnificent 24-diamond heart, 14K gold mounting and chain. \$250.
Monthly terms

Prices include federal tax. Illustrations enlarged to show detail.

no money down easy terms

ZALE'S JEWELERS

CERAMIC LAZY SUSAN
Covered center bowl, 4 gold trimmed side dishes revolve on mahogany base. **\$9.95**
Charge it!

FABULOUS PHONOLO® STEREO HI-FI
12" C 8" main and two 4" side speakers, 4-speaker automatic changer, 45 rpm spindle. **\$139.95**

Charge It!
SELF-WINDING GRUEN 17-JEWEL \$25.00 plus tax.
\$1.00 Weekly
Waterproof.* Self-winding. 17-jewel movement. Chrome top, stainless steel back, matching expansion band.
*as long as case and crystal are intact
NO MONEY DOWN

72-PC. SILVERPLATE by International
Complete 72-Pc Service for Eight
Only **\$29.95** \$1.00 weekly
Everything You'll Need!
• 8 serving spoons
• sugar shell
• butter knife
• berry spoon
• 8 oyster forks
• 8 salad forks
• 16 teaspoons
• pastry server
CHEST EXTRA
NO MONEY DOWN
Easy Weekly or Monthly Terms

57-PIECE Imported China
Complete 57-Pc. Service For 8 **\$28.88**
Fully vitrified china with the luxury look that only fine china can possess. Beautiful patterns you'll give with pride... or purchase for yourself. Pay nothing until '61!

BAYLOR 6-TRANSISTOR RADIO
COMPLETE ONLY \$19.95
\$1.00 weekly
Leather carrying case, battery, private listening attachment.

OPEN 'TIL 9:00 EVERY NIGHT 'TIL CHRISTMAS

Radio Tapes Show Airliner Off Course, But Not Why

NEW YORK (AP)—Radio tapes show that a United Airlines jet streaked off course just before colliding with a Trans World airliner over Staten Island, but the recordings offer no clue as to why.

The tapes released Wednesday by the Federal Aviation Agency disclose that the La Guardia field controller tried, but failed, to reach the TWA Super Constellation after warning it of the approaching jet.

An instant later came the voice of the radar-scanning La Guardia controller saying: "I think we have trouble here with a TWA Connie. There's something wrong! He's not moving or anything. He might have got hit by another airplane."

Last Friday's crash was the worst in aviation history. The TWA craft went down in flames on Staten Island. The United jet crashed 11 miles away into a crowded Brooklyn area.

WORKING NORMALLY
In Washington Wednesday night, FAA Administrator E. R. Quesada said the Preston holding stack—where planes circle while waiting to land—and the Idlewild radar were working normally at the time of the crash. The jet was headed for Idlewild, while the TWA plane was being brought into La Guardia.

Quesada said Idlewild's approach control was "prepared and ready" to guide the jet into the airport but could not locate the DC-8 or near the pattern to which it had been assigned.

Federal authorities previously had said the jet—Flight 826—was about 11 miles off course when it collided with TWA's Flight 266.

The recordings also disclosed that, with the TWA plane gone from the radarscope, La Guardia called Idlewild: "This is La Guardia. I think we've got an emergency. Nobody declared anything but who is that jet or fast-moving aircraft that went from Preston toward Flatbush (in Brooklyn)?"

BREWING
"From Preston toward Flatbush?" Idlewild asked.

"Yes, he's at Flatbush right now," said La Guardia. "A fast-moving aircraft going where?" asked Idlewild. "Do you know his destination?"

"I don't know," replied La Guardia. "I think he may have—now listen to this! He may have hit one of our aircraft. We're not sure."

A pause, and then La Guardia said: "All right, now we got troubles, but we're not sure of it. We lost contact with a TWA, 266

and was starting its descent toward La Guardia.

The La Guardia controller told the TWA plane: "That appears to be jet traffic off your right, now 3 o'clock at one mile, northeast bound."

NO ANSWER
No confirmation came back from the Super Constellation. The controller messaged several times again. Still no answer.

The Preston holding stack is in New Jersey about 10 miles west of Red Bank and south of Staten Island. There is no town of Preston—it is a point delineated by the intersection of two radio beams from Colts Neck to the southeast and Robbinsville to the southwest.

In a news conference in Chicago Tuesday, William A. Patterson, president of United Air Lines, said Quesada had created an impression that United's ill-fated flight was "carelessly operated."

In his reply to Patterson, Quesada said the latter phrase was Patterson's, "not mine."

Concerning Patterson's statement that it was improper for Quesada to comment publicly until all facts are known, the FAA head replied that no one involved could or should suppress "elemental facts as to which there can be little or no dispute, particularly where there is such a legitimate basis for public interest and press inquiry."

Dies Of Injuries
ABILENE (AP)—Diane McCraw, 3 months old, died Thursday of a head injury suffered in a car collision.

Collision Near Abilene Is Fatal
ABILENE (AP)—Injuries suffered in the collision of a car and a chemical transport truck killed Luther Curtis, 46, of Kerrville Wednesday night.

The crash several hours earlier occurred 16 miles south of here in West Central Texas at the junction of U.S. 85 and 94. His widow was reported en route to Abilene from Hugoton, Kan., where she had been visiting a sister.



Body Of Ethiopian Rebel

A crowd looks at the body of Ethiopian rebel chief Col. Workneh Gebeyehu, which was put on display in the city square in the capital of Addis Ababa. Troops searched the mountains for other rebel leaders after an abortive attempt to dethrone Emperor Haile Selassie.

Astronomers Still Haven't Pinned Down Bethlehem Star

By FRANK CAREY
WASHINGTON (AP)—Astronomers still have not pinned down any scientific explanation for the star of Bethlehem which guided the Magi to the crib of the Christ child, a naval astronomer said Wednesday.

Neither have they come up with any new theories beyond the three major alternative speculations which have cropped up since professional stargazers first began to theorize on the subject more than 300 years ago, says Simone Daro Gossner of the U. S. Naval Observatory.

These three possibilities are: 1. A supernova—a star that suddenly flares up much more brilliantly than previously. 2. A comet. 3. The configuration, or apparent close proximity, of several planets in the sky.

Mrs. Gossner says the difficulty besetting any real attempt to link the Magi's guiding star with a specific astronomical event is that "neither the year of Christ's birth nor the season of the year when it occurred are known with certainty."

She said in an interview that historians estimate that the earliest possible year was 11 B.C. and the latest, 4 B.C.

"And," she said, "while the time of year when the birth occurred has not been fully established, most probably it occurred in the springtime, rather than in December."

"The Bible story speaks of shepherds watching their flocks by night—and they'd only do such night watching when the sheep were having lambs. That is, in the springtime."

She said that in the early days of the Christian era the Christians celebrated the Nativity in the springtime but later changed this several times, finally settling on Dec. 25.

Rails Blocked

DEL RIO (AP)—The Southern Pacific main line was blocked Wednesday when 10 of the 94 cars in its eastbound train jumped the track near Malverde siding, 90 miles northwest of here. The cause of the pileup was not determined.

One view, she said, is that the ultimate change was made because Dec. 25 was "the date of the Roman Saturnalia, when all the Romans were whooping it up, and the Christians felt that their own celebration of a religious event could pass undetected at such a time."

Of the three astronomical theories offered to explain the star, Mrs. Gossner said the configuration-of-planets concept conceivably might tie in best.

"The Magi," she said, "were astronomers, but they also were astrologers as well. And the possible appearance of three bright planets—for example, Venus, Jupiter and Saturn—in apparent very close position to each other in the heavens might well have been considered a mystic symbol by the Magi."

Mrs. Gossner said that astronomers have computed that Jupiter, Saturn and Venus formed a close triangle in early March of the year 6 B.C.

"This configuration," she said, "appeared in the constellation of Pisces—the Fishes—which had always been held sacred to the Jews."

STAGG DISTILLING COMPANY, FRANKFORT, KENTUCKY • 56 PROOF



*7 years old and handsomely dressed for the holidays.

Give Geo. T. Stagg this season—the mellow 7 year old Kentucky bourbon. The handsome traditional etched green glass bottle and beautiful gift wrap make it an especially appropriate holiday gift.

WARDS
MONTGOMERY WARD

DISCOUNT PRICES

<p>Reg. 1.69 Children's SLIPPER SOCKS</p> <p>Assorted Colors Made Of Wool An Ideal Gift 1.33</p> <p>Reg. 2.98 Girls' SLIP AND PANTY SET</p> <p>Made Of Nylon Knit Color White Sizes 4 To 14 2.27</p> <p>WOMEN'S COAT SALE</p> <p>Reg. 24.98 Coats 16.00 Reg. 19.98 Coats 14.00</p> <p>Reg. 1.59 To 1.99 Children's HOUSE SLIPPERS</p> <p>Corduroy Uppers Leatherette Soles Sizes 8 To 3 1.00</p> <p>TOYS</p> <p>One Large Group Of Assorted Toys 1/2 Price</p> <p>Reg. 36.95 BICYCLES</p> <p>Twin Bar In Boys' Or Girls' Models 34.88</p> <p>Reg. 2.99 SUPREME FRUIT CAKES</p> <p>3- And 5-Lb. Sizes 2.33</p> <p>Reg. 10.95 AUTOMATIC TOASTER</p> <p>Wards Fully Automatic Deluxe 8.22</p> <p>Reg. 14.95 PERCOLATOR</p> <p>Ward Deluxe Fully Automatic 4- To 10-Cup 10.88</p> <p>Reg. 12.98 BULLDOZER</p> <p>Unbreakable Polyethylene Battery-Operated 8.88</p> <p>Reg. 8.49 TABLE AND CHAIRS</p> <p>Metal Blue And White Toy Department 4.44</p> <p>Reg. 139.95 SOFA</p> <p>Modern Styling End Table On Each End 109.88</p> <p>Reg. 229.95 LIVING ROOM SUITE</p> <p>Save 100.00! 2-Pc. Foam Rubber Cushions, Nylon Frieze Cover, Beige .. 129.88</p>	<p>221 W. 3rd AM 4-8261 Free Customer Parking Open Until 8:00 Through Dec. 24</p> <p>Reg. 99.95 BUNK BEDS</p> <p>Complete With Springs And Mattresses Maple Finish 89.88</p> <p>Reg. 24.95 CHAIRS</p> <p>Danish Modern Plastic Covering Colors: Black, White, Tan 16.88</p> <p>Reg. 119.95 DINETTE SETS</p> <p>7-Pc., Chrome Heat-Resistant Tops 59.88</p> <p>Reg. 109.95 FOAM MATTRESS SET</p> <p>Full Size Mattress And Box Springs 10-Yr. Guarantee 89.88</p> <p>Reg. 39.95 BABY CARRIAGE</p> <p>Deluxe Storkline Carriage Very Sturdy 24.88</p> <p>Reg. 169.95 17-IN. PORTABLE TV</p> <p>Has Built-In Telescoping Antenna Push-Button Off And On Range Control Only 5 — Demonstrators ... 134.88</p> <p>Reg. 19.95 PORTABLE PHONOS</p> <p>4-Speed Single Play Ideal For Young People 16.88</p> <p>Reg. 189.95 SEWING MACHINE</p> <p>8-Cam Automatic In Desk Model Cabinet Choice Of Mahogany, Oak Or Walnut 149.88</p> <div style="border: 1px solid black; padding: 5px; text-align: center;"> <p>Ward gift certificate</p> <p>gift problems solved!</p> <p>GET THEM NOW—PAY LATER!</p> <ul style="list-style-type: none"> • Not sure what folks want? Let Wards Certificates solve your gift-shopping problems the easy way • Lets "them" select from more than 100,000 items • Certificates come in \$1, \$5, \$10 denominations • Redeemable in any of Wards hundreds of Retail and Catalog Stores throughout the entire Country </div>
--	---

Wings Station

DAY

2

CHRISTMAS HOLIDAYS

MOND FOR 95

weekly

monds in glam-

expansion

ovement with

e mainspring

d cut center

te side dis-

bridal pair.

\$495

monthly terms

NDING

EN

WEL

5.00

plus tax.

Self-wind-

movement,

stainless

atching ex-

OR

R RADIO

COMPLETE

ONLY

\$19.95

\$1.00 weekly

'S

RS

Night Classes, No Half-Days Gain Cadets Early Graduation



Prepare The Speech

S.Sgt. Laurel O. Ruff indicates a point of interest to S.Sgt. Joseph D. Aunkst as they perform a little research and note-taking in getting their 20-minute speeches ready at the NCO Prep School. During the three-week course the classes make a five-minute speech on their choice of subjects, and a 20-minute talk on a subject assigned. Sgt. Aunkst spoke on Brazil and Sgt. Ruff talked about Berlin.

No half-day off on Saturdays and a few late evening classes explains the early graduation for Class 61-6 at Webb's NCO Preparatory School. The class, due to graduate Saturday, finished up and put away their books for the Christmas vacation Tuesday.
Five of the graduates were Staff Sergeants Charles A. Lipe, transportation squad; Buddy B. Reno, civil engineering group; Laurel Ruff and Joseph Aunkst, Air Base Group; Jesse E. Williams, 3165st Flight Line Maintenance Squadron; and Robert Newman, USAF Hospital.
The other ten graduates were all Airmen First Class. They include Franklin J. Frouth, Air Police; William G. Assip, Civil Engineering Group; William C. Kurashige and William J. Jackson, 3560th Flight Line Maintenance Squadron; Elwood J. Jones and Isaac Forest, M&S Group; Jerry E. Ayres and James W. Henderson, 3560th Flight Line Maintenance Squadron; and Sherman J. Thomas of the 3561st Flight Line Maintenance Squadron.
M. Sgt. Harold M. Kain, school director, is assisted in conducting the three-week course by instructors Airman 2.C. Keith A. Bayas and Airman 3.C. Richard D. Gordon. Management, covering 30 of the 120 hours, is conducted by Airman Bayas. Airman Gordon gives the Air Force history, customs and courtesies, and uniform lectures.

44 Operators On Duty For LD Yule Calls

Many of Big Spring residents will go visiting by long distance telephone calls this Christmas.
Big Spring phone users are expected to top last year's Christmas Day record of 4,100 long distance calls, according to Mrs. Bertha Morton, chief operator for Southwestern Bell Telephone Co.
She said a full force of 44 long distance operators will be at the switchboards Christmas Day to handle the heavy volume of calls.
"People planning Christmas calls can help speed them through by calling early in the day," Mrs. Morton added.
She said callers can help speed service on Christmas calls by giving the long distance operator the out-of-town numbers and by placing these calls station-to-station.
"Station-to-station calling will save customers money, too, since these calls cost about one-third less than those placed person-to-person," she said.
Mrs. Morton suggested that customers obtain their out-of-town numbers before Christmas so they will have them handy when placing calls that day. Long distance operators will obtain these numbers at no charge.
Out Of Business
PITTSBURGH, Pa. (AP)—The Pittsburgh Progress Committee Wednesday called off its plans for a week-long dedication in June of the city's new \$22 million arena. The committee, miffed by a work stoppage by 300 union craftsmen, that has delayed completion of the arena, is going out of business.

Summer Below

BUENOS AIRES, Argentina (AP)—The Argentine summer began Wednesday with a high reading of 94 Fahrenheit.

BUNDLE UP FOR PAGEANT

Spectators at the Christmas Pageant, to be presented at 7 p.m. and 8 p.m. today on the south side of the YMCA building, are advised to bundle warmly.
The pageant moves steadily, but it requires some 20-25 minutes. Those who come dressed for the evening's chill will be comfortable enough.

Leach Escapes From Jail Again

David W. Leach, 35, who has escaped the clutches of Texas law four times, was showing no favorites this week when he escaped from the State Police office at Alamogordo, N.M.
Leach, of Colorado City, jumped out a window when he was left alone for a few minutes after being picked up for questioning in connection with a burglary at Artesia, N.M.
Officers said Leach once served time for shooting a policeman in Colorado City and State Police here described him as dangerous. They said he was armed with a knife.
Leach escaped from Taylor County jail in Abilene, Sept. 23, 1960, after being convicted of simple assault.
In February 1960, he escaped from authorities in Colorado City. In 1952 he escaped from the Mitchell County jail, and in 1954 he escaped from the Big Spring jail.

Needy Get Toys, Food At 9 A.M.

Christmas toy distribution for needy families will begin Friday at 9 a.m., at the 6th and Main headquarters, according to Capt. James Jay, local Salvation Army commander.
Cards have been mailed to each family who will receive the toys and food baskets.
Jay said each of the applications for assistance are thoroughly checked to insure against duplication and the possibility of overlooking someone. Families receiving aid from any other source are generally ineligible for Salvation Army Christmas assistance and many organizations have adopted families this year.
Food baskets will be dispensed from the Salvation Army office.

Optimists Sell 762 Yule Trees

The Optimist Club wound up its Christmas Tree sale with only 38 left, representing a sale of 762. Jim Calmes, president, said the remaining trees will be given to needy families listed with the Howard County Welfare office.
The annual sale added \$1,100 to the club's treasury.
Visitors from Midland and Lamesa were on hand for the club meeting Wednesday. President Dick Claybourne, and other members of the Noon Optimist Club of Midland, and Lt. Gov. Cliff Torgerson, Midland, were here. President Charles Darwin headed a five member delegation from Lamesa.
The program included Christmas carols by the Big Spring High School choir.
Members discussed plans to purchase sports equipment for the playground at 100 Northeast 8th. Plans are being made to repair the playgrounds and sponsor a Pony League baseball team.
Calmes urged all interested boys to contact their school principals.

LEGAL NOTICE

NO 482
IN THE MATTER OF THE ESTATE OF J. D. PURSER, DECEASED,
IN THE COUNTY COURT, HOWARD COUNTY, TEXAS IN PROBATE
NOTICE is hereby given that original Letters Testamentary upon the Estate of J. D. Purser, Deceased, were issued to me, the undersigned, on the 19th day of December, 1960, in the proceeding indicated below my signature hereto which is still pending, and that I now hold such letters. All persons having claims against said Estate, which is being administered in the County below named, are hereby required to present the same to me, respectfully, at the address below given, before said time, and within the time prescribed by law. My residence and Post Office Address is 1304 Rummels, Big Spring, Howard County, Texas. Dated this 19th day of December, A. D. 1960.
Estate of J. D. Purser,
Executrix of the Estate of J. D. Purser, Deceased, No. 482 in the County Court of Howard County, Texas.

ROCCO, Inc.
in Sand Springs
AM 3-2636 G.I.'s LY 4-7001
We can build your Dream House on 1/4 acre, or on your land Out of City Limits. No Down Payment, up to 20 year loan.
YOU DESIGN IT WE BUILD IT
Call Us Quick - Loans Are Now Coming Through Fast. No Obligation To Get All The Facts.
SOUTHEAST PART OF TOWN
We took this in trade and will make you a good deal. 3 bedroom Bungalow, fenced yard, trees and shrubs. Also large 1 1/2 room house on rear. Only \$500 will handle this one. Established GI loan at 4% interest.
UNDER CONSTRUCTION
On 1/4 acre—2 bedroom brick, utility room and garage. Ceramic tile bath. All tile and only \$10,100. Low down payment. Buy now and choose your colors.
M. H. BARNES GENERAL MANAGER

Business Directory
AUTO SERVICE—
MOTOR & BEARING SERVICE
404 Johnson AM 3-2661
ROOFERS—
COPFMAN ROOFING AM 4-5683
2403 Rummels AM 4-5683
WEST TEXAS ROOFING CO.
808 East 2nd AM 4-4101
DEALERS—
WATKINS PRODUCTS-B. F. SIMS
1204 Green AM 4-5683
OFFICE SUPPLY—
THOMAS TYPEWRITER-OFFICE SUPPLY
101 Main AM 4-6081

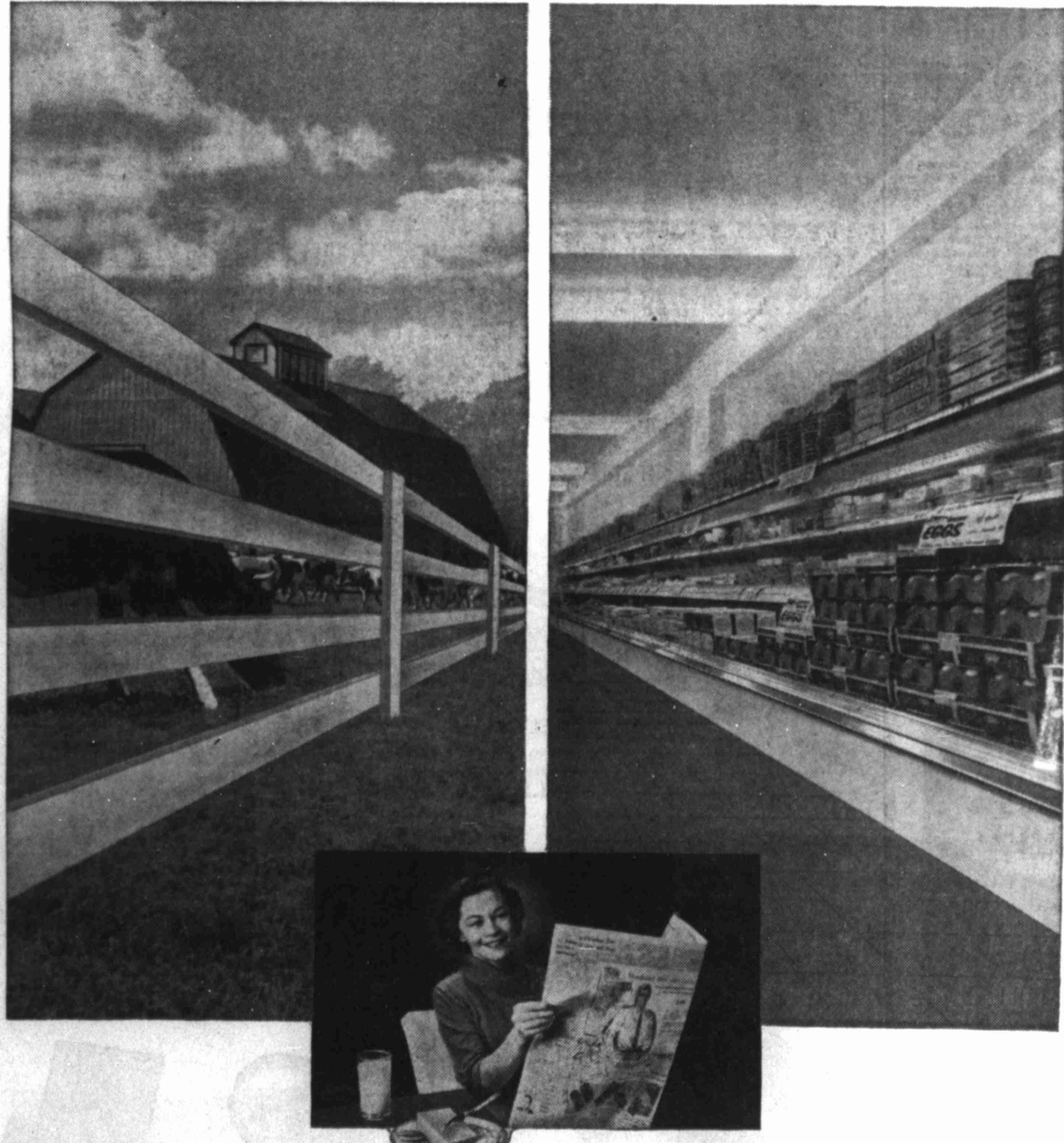
REAL ESTATE A
HOUSES FOR SALE A-3
BY J. ANDRE SANDS
NOW GET AHEAD IN A BEAUTIFUL HOME
TO YOU FROM THE

HANG YOUR STOCKINGS—on the fireplace in large den, 3 carpeted bedrooms, 2 ceramic baths, kitchen with built-in. Located in College Park Estates.
READY FOR CHRISTMAS—vacant 3 bedroom brick on 607 Eigh, \$2000 for equity.
1 LARGE CARPETED Bedrooms on Victoria. Only \$5200 with \$2000 down.
ON UTAH ROAD—Dandy 3 bedroom, excellent condition. Yours for \$4800
2 FRAME HOUSES on corner lot, perfect location to Goliad HI, \$15,500.
3 HOUSES ON corner lot on Abrams. A gift for \$2250.
ALMOST NEW cottage and duplex on one lot. Near Goliad HI. \$10,000.
GROCERY STORE, fixtures and stock, all for \$7000. Requires 1/2 cash.
Juanita Conway — Sales
AM 4-2244
GEO. ELLIOTT CO.
Multiple Listing Realtor
409 Main
Real Estate-Loans-Insurance
Off. AM 3-2504 Res. AM 3-5618
3 ROOM ROCK veneer house to be moved.
3000 Also Veneer rock for sale. \$25 square. AM 4-8008.
EQUITY FOR SALE
430 Hillside Drive in Edwards Heights. This is an excellent buy. Extra nice 3 bedroom brick. Electric kitchen, carpet throughout, ceramic tile bath, air conditioned and central heating, fenced yard. Immediate occupancy
AM 4-7376

BUYING OR SELLING
IF IT'S FOR SALE WE HAVE IT. LIST WITH US IF YOU WANT TO SELL OR BUY
Fire, Auto Liability
Notary Public
See Us For Investments
Slaughter
AM 4-7366 806 W. 18th AM 4-2662 1305 Gregg

A Gift A Day
FOR ONE FULL YEAR
AT A COST OF ONLY PENNIES PER DAY!

Your Daily Herald
Sent to your friends and loved ones will prove a daily reminder of the gift.
And it's a gift that they are sure to enjoy throughout the entire year.
The Herald has a very attractive gift card to send, telling them you are sending The Herald for a year.
Contact The Herald
Circulation Department
At The Office or Dial AM 4-4331



DAILY NEWSPAPERS SELL DAIRY PRODUCTS FROM PASTURE TO PUBLIC

THE DAIRY INDUSTRY, with sales of \$12 billion a year from hundreds of types of products, is a giant of the great food business.

The daily newspaper, another giant, is a dominant influence in helping dairy manufacturers and dairy associations to increase the public's demand for their products. These advertisers use the daily newspaper as a national force to keep the public aware of the innovations and nutritional value of dairy products.

The thousands of local processors and retailers of dairy products use the daily newspaper regularly to keep their

products moving from store to home.

The daily newspaper is a vital force in this mass movement of dairy products from the moment they are processed to the moment they are placed on the table. With practically everyone consuming them, it is necessary to move them through the medium that reaches practically everyone. The daily newspaper reaches nationally—and reaches locally—with 58,299,723 news-filled copies every day.

THE TOTAL SELLING MEDIUM IS THE DAILY NEWSPAPER

Suburban Heights IS THE

\$80.00 Approximate Total Monthly Payments Includes Everything

Total Price \$10,250 And Up

No Down Payment To Veterans Immediate Delivery
 \$50.00 Deposit Moves You In For Christmas ATTENTION - AIR FORCE PERSONNEL
 Special In Service Loans Now Available-Contact One Of Our Representatives
 JOHNNY JOHNSON, Representative

First Payment Not Due Until March 1st, 1961
 You'll enjoy these features . . .

- Ceramic Tile Baths
- Central Heat
- Attached Garage
- Colored Bathroom Fixtures

E. C. SMITH CONSTRUCTION CO.
 611 Main - Midwest Building, Room 201-3 AM 4-5086 Or AM 3-4439

FIRST STOP FOR Home Hunters!



WESTINGHOUSE
 Built-in Appliances
 Electrical Wiring
 Residential & Commercial
 Tully Electric Co.
 AM 4-5123 607 E. 2nd

REAL ESTATE A
 MISC. PROPERTY A-10

COLORADO MOTEL

9 Units with nice living quarters. Four years old. In excellent condition. On Highway 530. Price \$45,000. For information write: REDWOOD LODGE, Durango, Colorado.

RENTALS B

BEDROOMS B1

COMFORTABLE AND Reasonably priced rooms. 611 Rummel.
 ROOMS FOR rent \$10.50 week. State Hotel, 209 Gregg Street, Amarillo. AM 4-7425.
 NICE COMFORTABLE bedrooms. Mrs. Shelby Hall, 1804 Scurry. AM 4-6075.

CRAWFORD HOTEL

Weekly-Monthly Rates \$10.50 Week and Up
 Daily Maid Service
 One Day Laundry Service

LOCATED DOWNTOWN

WYOMING HOTEL, clean rooms 87 west and up. TV. Plenty free parking space. Mrs. Alice L. Childers, 304 Johnson.

FURNISHED APTS. B3

ONE, TWO and three room furnished apartments. All private utilities paid. Air conditioned. King Apartments, 304 Johnson.
 LARGE 3 ROOM furnished apartment. Automatic washer, carpet. Bills paid. 1818 Scurry. apply 1808 Scurry. AM 4-9708.

MODERN FURNISHED 3 room duplex. Panel ray heating. 9006 Nolan. AM 4-3216 or 4-3283.
 NICE CLEAN 3 room furnished apartment. tub bath. 600 East 12th. AM 4-5230.

FURNISHED 3 ROOM apartment, newly decorated. Panel ray heat. Adults only. locate 502 West 4th.

EFFICIENCY APARTMENT. Close to shopping and VA Hospital. Nice. bills paid. Jo Con Restant. AM 4-8531; nights, AM 4-7283.

TWO LARGE rooms, wall to wall carpet. Gas furnace, carpet, near shopping center. AM 4-6352.

RANCH INN APARTMENTS B5

Clean 3 or 4 room apartments. Vented Heat. Laundry Facilities. Near Airbase. 2 ROOM FURNISHED apartments, private baths, frig. Bath. Call in. 502 Main. AM 4-5282.
 TWO ROOM furnished apartment. bills paid. 600 North 7th. AM 4-7964.
 NICE 3 ROOM furnished apartment. Bills paid. 408 1/2 Scurry. AM 4-9068.

THREE ROOM furnished apartment. Bills paid. 408 1/2 Scurry. AM 4-9068.

NICE LARGE 3 room, furnished home. Storage garage. AM 4-3283 before 9 a.m. or after 5 p.m.

NICE THREE room apartment. 3 B.H.s. Near Base. AM 4-6061 before 10 a.m. or after 4.

THREE ROOM furnished apartment. Private bath. AM 4-6097. 200 Gelled.

THREE ROOM steadily furnished duplex apartment. Located 1501 Scurry. Inquire 1501 Scurry. AM 4-6008.

4 ROOM FURNISHED duplex. 1100 East 1st. Call AM 4-6282.

LARGE FURNISHED 3 rooms and bath. AM 4-6282 or AM 4-6277.

LARGE 3 ROOMS. Close to shopping and VA Hospital. Jo Con Restant. AM 4-9351; nights, AM 4-7283.

NICE FURNISHED 3 room upstairs apartment. Private. No bills paid. 811 West 12th. AM 4-7964.

NICE THREE room apartment. 3 B.H.s. Near Base. AM 4-6061 before 10 a.m. or after 4.

THREE ROOM furnished apartment. Private bath. AM 4-6097. 200 Gelled.

THREE ROOM steadily furnished duplex apartment. Located 1501 Scurry. Inquire 1501 Scurry. AM 4-6008.

4 ROOM FURNISHED duplex. 1100 East 1st. Call AM 4-6282.

LARGE FURNISHED 3 rooms and bath. AM 4-6282 or AM 4-6277.

LARGE 3 ROOMS. Close to shopping and VA Hospital. Jo Con Restant. AM 4-9351; nights, AM 4-7283.

NICE FURNISHED 3 room upstairs apartment. Private. No bills paid. 811 West 12th. AM 4-7964.

NICE THREE room apartment. 3 B.H.s. Near Base. AM 4-6061 before 10 a.m. or after 4.

THREE ROOM furnished apartment. Private bath. AM 4-6097. 200 Gelled.

THREE ROOM steadily furnished duplex apartment. Located 1501 Scurry. Inquire 1501 Scurry. AM 4-6008.

4 ROOM FURNISHED duplex. 1100 East 1st. Call AM 4-6282.

LARGE FURNISHED 3 rooms and bath. AM 4-6282 or AM 4-6277.

LARGE 3 ROOMS. Close to shopping and VA Hospital. Jo Con Restant. AM 4-9351; nights, AM 4-7283.

NICE FURNISHED 3 room upstairs apartment. Private. No bills paid. 811 West 12th. AM 4-7964.

NICE THREE room apartment. 3 B.H.s. Near Base. AM 4-6061 before 10 a.m. or after 4.

THREE ROOM furnished apartment. Private bath. AM 4-6097. 200 Gelled.

THREE ROOM steadily furnished duplex apartment. Located 1501 Scurry. Inquire 1501 Scurry. AM 4-6008.

4 ROOM FURNISHED duplex. 1100 East 1st. Call AM 4-6282.

LARGE FURNISHED 3 rooms and bath. AM 4-6282 or AM 4-6277.

LARGE 3 ROOMS. Close to shopping and VA Hospital. Jo Con Restant. AM 4-9351; nights, AM 4-7283.

NICE FURNISHED 3 room upstairs apartment. Private. No bills paid. 811 West 12th. AM 4-7964.

NICE THREE room apartment. 3 B.H.s. Near Base. AM 4-6061 before 10 a.m. or after 4.

THREE ROOM furnished apartment. Private bath. AM 4-6097. 200 Gelled.

THREE ROOM steadily furnished duplex apartment. Located 1501 Scurry. Inquire 1501 Scurry. AM 4-6008.

4 ROOM FURNISHED duplex. 1100 East 1st. Call AM 4-6282.

LARGE FURNISHED 3 rooms and bath. AM 4-6282 or AM 4-6277.

LARGE 3 ROOMS. Close to shopping and VA Hospital. Jo Con Restant. AM 4-9351; nights, AM 4-7283.

NICE FURNISHED 3 room upstairs apartment. Private. No bills paid. 811 West 12th. AM 4-7964.

NICE THREE room apartment. 3 B.H.s. Near Base. AM 4-6061 before 10 a.m. or after 4.

Under New Management
Big Spring Iron and Metal Co.
 103 Anna St. AM 4-6781
 (Back of Coca Cola Plant-Off W. Hwy 90)
 See Us and Save-
 *Water Well Casing
 4"-5"-6"-7"-8"-9" Pipe
 *Clothesline Poles
 *Garbage Can Bins
 *New and Used Structural Steel
 *Rebar and Wire Mesh
 *Big Field Marker Bods
 *Used Structural Pipe
 Top Prices Paid For All Types of Scrap Iron & Tin, Coppers, and Brasses, Aluminum, Junk Batteries See Us First

Glass Lined
MISSION
 Hot Water Heaters
 \$44.50
P. Y. TATE
 1000 West Third

RENTALS B

UNFURNISHED HOUSES B6

FOR RENT
 Or Will Sell
 With No Down Payment. Small Closing Cost. 3 and 3 Bedroom home in conveniently located Monticello Addition.
 Blackmon & Assoc., Inc.
 AM 4-2594

TWO BEDROOM unfurnished house. Plumbed for washer, carpet, good condition. Call 1808 Scurry. AM 4-7964.

MISC. FOR RENT B7

OFFICE SPACE. Midwest Building, 7th and Main. Central heat, air conditioned. Junior service. AM 4-7161.

ANNOUNCEMENTS C

LODGES C1

Called Meeting Big Spring Commandery No. 31 Christmas Observance. Sunday, Dec. 25, 9:00 a.m. See Lemmons, E.C.

STATED MEETING Blaked Plains Lodge No. 188 A.P. and A.M. every 3rd Thursday, 7:30 p.m. Charles Teague Sr., W.M. Ervin Daniels, Sec.

STATED CONVOCATION Big Spring Chapter No. 178 B.O.E.U. every 2nd Thursday, 7:30 p.m. School of Instruction every 1st and 3rd Thursday. Ervin Daniels, H.P. Ervin Daniels, Sec.

STATED MEETING Big Spring Commandery No. 31 and A.M. every 1st and 3rd Thursday, 7:30 Visitors Welcome. H. L. Morris, W.M. H. O. Hughes, Sec.

SPECIAL NOTICES C2

ANNOUNCING
 SMITH'S NURSING HOME
 Smith's old folk's home has recently been converted to a nursing home. Our home is state approved, with nurses on duty day and night. The 17 bedrooms are all on the ground floor, built especially for elderly people. Prices are \$150 for bed patients, and \$125 for ambulatory patients.
 604 South Ave. K
 Lamesa, Tex.
 Phone 2458
 Mrs. D. W. Smith, Owner
 M. R. Smith, Mgr.

PLASTIC FLOWERS, supplies, plaster molds for plaques. Free instruction. 1104 Nolan. Phone AM 4-6320.

I Will Not Be Responsible for any Checks Given by Anyone Other Than by Me Personally.
G. W. DANIELS
 106 Mobile

PERSONAL C3

PERSONAL LOANS, conventional loans. Working girls, housewives. Call Miss Tate, AM 3-2662.

BUSINESS OP. D

FOR SALE - Tending machine, new, good. Free estimate. Immediate delivery. Buyer may pay balance from profit of machines. Write P. O. Box 1124, Big Spring.

FOR SALE or would lease - Barber Shop next to Montgomery Ward. Will sell 2nd floor.

FOR SALE of trade for farm - 2 apartments, 4 rooms, close to store, 3044 Highway 70, Big Spring, Texas.

FOR LEASE - 2-car garage home with shower. 600 South 12th. Lamesa, Texas.

BUSINESS SERVICES E

RED CATLAW sand, barnyard fertilizer, brick, tile, etc. Also building. Reservoir. AM 4-6181.

FIX-IT SHOP, build or repair almost anything around your home. 2000 Rummel. AM 3-2564.

CONTRACTORS FOR installation of concrete block, brick, tile, commercial building. Free estimates. Worthy Construction Company, 524 Main. AM 4-2727.

ODD JOBS - Herman Williams, will contract any carpenter work or repair floor and bathroom. Use cabinet tops. Concrete work. No job too small. Experienced labor. AM 4-3131; AM 4-7471.

SPECIALIZED in grading and grading work. Free estimates. Call 4-3272.

ELECTROLUX - Sales and Service. See our amazing new rotating brush carpet sweeper. Call Ralph Wray, AM 4-9874, AM 4-5078.

TOP SOIL and IR sand. Call A. L. (Sherry) Henry, AM 4-5282; AM 4-5414.

VIGAR'S TV AND RADIO SERVICE AM 4-5580

1812 Avion

FOR PROFESSIONAL ROOFING
 Building, Composition, New or Repair. Painting, Interior-exterior, 19 years experience, work guaranteed. Free estimate. 514 Scurry. AM 4-5142.

TRUCE, TRACTOR, Loader and Backhoe. Driveway gravel, concrete, sand and gravel delivered. Wagon Kinatrix, Day 824-4187.

DAY'S PUMPING SERVICE, cesspool, sump, water, sump, 1200 East 1st. AM 4-2823.

HOUSE SINKING, painting, windows, gutters, small repairs. See or call E. C. Newcomer, AM 4-6818.

NOTICE

5 Yd. Cushion Sand \$4.00
 5 Yd. Red Catclaw Sand \$4.00
 5 Yd. Black Dirt \$3.50
 5 Yd. Mixed Dirt \$3.50
 Asphalt Paving, Loss Levelling, Driveway Gravel, Yard Work.
 I. G. Hudson AM 4-5142

WATER WELLS drilled, cased, pumps, can be financed. J. T. Cook, P.O. 3-2128.

PAINTING-PAPERING E11

REPAIR-LEVELING, painting, paperhanging. Free estimates. E. C. Adams, AM 4-7676, AM 4-6886.

PAINTING-CLEAN workmanship. Free estimates. Call Clyde, AM 4-5422.

FOR PAINTING and paper hanging call D. M. Miller, 1418 Durin, AM 4-5422.

CARPET CLEANING E-16

CARPET AND Upholstery cleaning and re-upholstering. Free estimates. Modern equipment. W. S. Brooks, AM 3-2128.



"DON'T LET HER WORRY YA JOEY. SANTA CLAUS IS SAFFED TO BE FAT! HE'S NOT GONNA HAVE NO HEART ATTACK!"

For Best Results Use Herald Classifieds

TELEVISION DIRECTORY

THURSDAY TV LOG

KMID-TV CHANNEL 2 - MIDLAND

3:00-Make Room for Daddy	6:50-7:00-Devotional	9:30-10:00-For Dads
3:30-Here's H'wood	7:00-7:30-Play Your Hunch	10:00-11:00-Edwards
4:00-Dimensiona	7:30-8:00-Three Stooges	11:00-11:30-Edwards
4:30-Kenneth Karval	8:00-8:30-Play Your Hunch	11:30-12:00-Edwards
5:00-Three Stooges	8:30-9:00-Play Your Hunch	12:00-12:30-Edwards
5:30-Play Your Hunch	9:00-9:30-Play Your Hunch	12:30-1:00-Edwards
6:00-Christmas Tree	9:30-10:00-Play Your Hunch	1:00-1:30-Edwards
6:30-News, Weather	10:00-10:30-Play Your Hunch	1:30-2:00-Edwards
7:00-Real McCoy	10:30-11:00-Play Your Hunch	2:00-2:30-Edwards
7:30-Bachelor Father	11:00-11:30-Play Your Hunch	2:30-3:00-Edwards
8:00-Ernie Ford	11:30-12:00-Play Your Hunch	3:00-3:30-Edwards
8:30-Grocery	12:00-12:30-Play Your Hunch	3:30-4:00-Edwards
9:00-Lois Loring	12:30-1:00-Play Your Hunch	4:00-4:30-Edwards
9:30-Navy, Weather	1:00-1:30-Play Your Hunch	4:30-5:00-Edwards
10:00-Bowling	1:30-2:00-Play Your Hunch	5:00-5:30-Edwards
11:00-Jack Paar	2:00-2:30-Play Your Hunch	5:30-6:00-Edwards

FREE ALL TRANSISTOR RADIO LOANS \$25.00 TO \$200.00 (60 Day Minimum)

TO NEW ACCOUNTS
PEOPLE'S FINANCE CO.
 218 Scurry AM 4-6681
 (Crawford Hotel Bldg.)

KEDY-TV CHANNEL 4 - BIG SPRING

8:00-Brighter Day
 8:30-Edwards
 9:00-Edwards
 9:30-Edwards
 10:00-Edwards
 10:30-Edwards
 11:00-Edwards
 11:30-Edwards
 12:00-Edwards
 12:30-Edwards
 1:00-Edwards
 1:30-Edwards
 2:00-Edwards
 2:30-Edwards
 3:00-Edwards
 3:30-Edwards
 4:00-Edwards
 4:30-Edwards
 5:00-Edwards
 5:30-Edwards
 6:00-Edwards
 6:30-Edwards
 7:00-Edwards
 7:30-Edwards
 8:00-Edwards
 8:30-Edwards
 9:00-Edwards
 9:30-Edwards
 10:00-Edwards
 10:30-Edwards
 11:00-Edwards
 11:30-Edwards
 12:00-Edwards
 12:30-Edwards

SPECIALISTS IN AUTOMATIC TRANSMISSIONS
 And
GENERAL AUTOMOBILE REPAIR
 Charlie Atwell - Mechanic

FORT'S WRECKING COMPANY
 7 Mi. South on San Angelo Hwy. AM 4-2141

KOSA-TV CHANNEL 7 - ODESSA

8:00-Brighter Day
 8:30-Edwards
 9:00-Edwards
 9:30-Edwards
 10:00-Edwards
 10:30-Edwards
 11:00-Edwards
 11:30-Edwards
 12:00-Edwards
 12:30-Edwards
 1:00-Edwards
 1:30-Edwards
 2:00-Edwards
 2:30-Edwards
 3:00-Edwards
 3:30-Edwards
 4:00-Edwards
 4:30-Edwards
 5:00-Edwards
 5:30-Edwards
 6:00-Edwards
 6:30-Edwards
 7:00-Edwards
 7:30-Edwards
 8:00-Edwards
 8:30-Edwards
 9:00-Edwards
 9:30-Edwards
 10:00-Edwards
 10:30-Edwards
 11:00-Edwards
 11:30-Edwards
 12:00-Edwards
 12:30-Edwards

KCBD-TV CHANNEL 11 - LUBBOCK

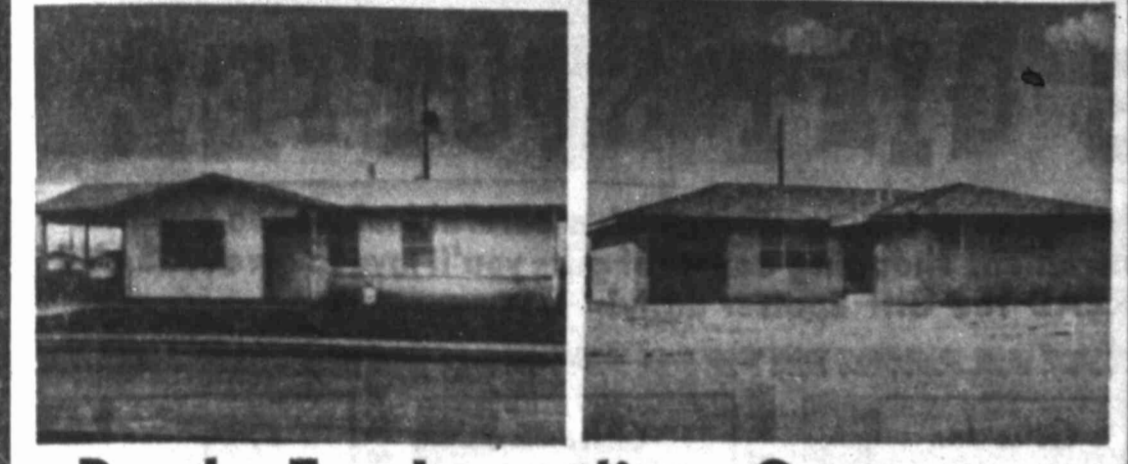
8:00-Showcase
 8:30-Hospitality Time
 9:00-Edwards
 9:30-Edwards
 10:00-Edwards
 10:30-Edwards
 11:00-Edwards
 11:30-Edwards
 12:00-Edwards
 12:30-Edwards
 1:00-Edwards
 1:30-Edwards
 2:00-Edwards
 2:30-Edwards
 3:00-Edwards
 3:30-Edwards
 4:00-Edwards
 4:30-Edwards
 5:00-Edwards
 5:30-Edwards
 6:00-Edwards
 6:30-Edwards
 7:00-Edwards
 7:30-Edwards
 8:00-Edwards
 8:30-Edwards
 9:00-Edwards
 9:30-Edwards
 10:00-Edwards
 10:30-Edwards
 11:00-Edwards
 11:30-Edwards
 12:00-Edwards
 12:30-Edwards

KPAR-TV CHANNEL 12 - SWEETWATER

8:00-Brighter Day
 8:30-Edwards
 9:00-Edwards
 9:30-Edwards
 10:00-Edwards
 10:30-Edwards
 11:00-Edwards
 11:30-Edwards
 12:00-Edwards
 12:30-Edwards
 1:00-Edwards
 1:30-Edwards
 2:00-Edwards
 2:30-Edwards
 3:00-Edwards
 3:30-Edwards
 4:00-Edwards
 4:30-Edwards
 5:00-Edwards
 5:30-Edwards
 6:00-Edwards
 6:30-Edwards
 7:00-Edwards
 7:30-Edwards
 8:00-Edwards
 8:30-Edwards
 9:00-Edwards
 9:30-Edwards
 10:00-Edwards
 10:30-Edwards
 11:00-Edwards
 11:30-Edwards
 12:00-Edwards
 12:30-Edwards

KDUB-TV CHANNEL 13 - LUBBOCK

8:00-Brighter Day
 8:30-Edwards
 9:00-Edwards
 9:30-Edwards
 10:00-Edwards
 10:30-Edwards
 11:00-Edwards
 11:30-Edwards
 12:00-Edwards
 12:30-Edwards
 1:00-Edwards
 1:30-Edwards
 2:00-Edwards
 2:30-Edwards
 3:00-Edwards
 3:30-Edwards
 4:00-Edwards
 4:30-Edwards
 5:00-Edwards
 5:30-Edwards
 6:00-Edwards
 6:30-Edwards
 7:00-Edwards
 7:30-Edwards
 8:00-Edwards
 8:30-Edwards
 9:00-Edwards
 9:30-Edwards
 10:00-Edwards
 10:30-Edwards
 11:00-Edwards
 11:30-Edwards
 12:00-Edwards
 12:30-Edwards



Ready For Immediate Occupancy

2 CHOICE LOCATIONS
COLLEGE PARK ESTATES
 and
SETON PLACE
 3 BEDROOM G.I. BRICK & BRICK TRIM HOMES
NO DOWN PAYMENT
 PAY SMALL CLOSING COST ONLY
 3 BEDROOM F.H.A. BRICK & BRICK TRIM HOMES
SMALL DOWN PAYMENT

- Payments From \$76.00 (Seton Place)
- Payments From \$94.00 (College Park)

MANY OUTSTANDING FEATURES

SALES OFFICE
 NOTICE FIELD OFFICE 800 BAYLOR
 3 BLOCKS NORTH OF OLD LOCATION
 OPEN 9:00 A.M. - 6 P.M. MON.-SAT.
 1:00 P.M. - 5 P.M. SUN.
DICK COLLIER-BUILDER
 MATERIALS BY CALCO LUMBER COMPANY

Attention Veterans

No Down Payment
 Moves You In
 GI 3 Bedroom Brick Home
Immediate Occupancy
 IN SCENIC EAST PARK ADDITION
 Buy Where Each Home Is Distinctively Different

SEE WHAT WE HAVE TO OFFER BEFORE YOU BUY

Jack Shaffer, AM 4-7376
 Sales Representative AM 4-8242
 Open Daily 9:00 A.M. To 7:00 P.M.
 Sundays 1:00 P.M. To 6:00 P.M.

QUALITY CARPET

100% **WOOL CARPET**

Installed With 40-Oz. Pad

\$6.95 Sq. Yd.

Installed

We Invite You To Visit Our Carpet Dept.

Lloyd F. Curley Lumber Co.

1600 E. 4th AM 4-8242

now own a **MAGNUS organ**

as easily as you play it

It takes only minutes to play music on a Magnus Organ because you don't read notes. You simply match numbers to keys, and letters to chords.

To Play **3 Months**

Over 500 specially arranged songs available. Choose from four models, from \$89.95 to \$299.95. Pay nothing extra to enjoy a Magnus Organ



EMPLOYMENT F

HELP WANTED, Male F1

LOAN MANAGER

National Sales Finance Company, now expanding into the personal loan field, has an opening for a capable man.

Applicants should have at least 3 years experience with a consumer finance company. One year of successful management desirable. This is a "ground floor" opportunity offering a liberal starting salary plus employee benefit programs.

Mail resume outlining qualifications. All replies confidential. Our employees know of this ad.

Write: **BOX B-1078** Care of Herald

CONTRACT TRUCKMEN make \$9. Tractor furnished. If over 25 write Mayflower Box 107, Indianapolis 6, Indiana.

AGES 21 to 44 - Married, high school education. Starting salary, \$328 per month, first year earnings, \$5200. Contact C. W. Thompson or A. C. Sanders, 601 Permian Building.

CAB DRIVERS wanted—must have City Permit. Apply Greyhound Bus Depot.

HELP WANTED, Female F2

WANTED—BEAUTY operator for beauty shop in Garden City, contact B. L. Murray, Garden City.

MERRY CHRISTMAS!

Yes, your Christmas can be merry by the earnings realized from selling Avon Cosmetics. Complete training provided.

MERCANTILE L

Box 4141 Midland, Texas

E 1x1/2 2

WANTED - EXPERIENCED alteration lady. Apply to Deluxe Laundry and Cleaners, 283 Scurry, AM 4-8232.

HELP WANTED, Misc. F3

WANTED man and woman to live in and care for elderly couple starting in January. Salary plus room and board. Res. AM 4-8208. Call AM 4-8216.

INSTRUCTION G

HIGH SCHOOL AT HOME

Start where you left off. Text furnished, diploma awarded, low monthly payments. For free booklet write: American School, Dept. B, Box 1382, Odessa, Texas, RM 4-2122.

Men and Women Needed TO TRAIN FOR CIVIL SERVICE EXAMS

We Prepare Men and Women

Age 18 to 55. No experience necessary, grammar school education usually sufficient. Permanent jobs, no layoffs, short hours. High pay advancement. Send name, home address, phone number and time home. Write Box B-1039, Big Spring Herald. If rural—give directions.

FINANCIAL H

PERSONAL LOANS H2

CASH

For **CHRISTMAS**

Fast—Friendly—Confidential Service

QUICK LOAN SERVICE

308 Runnels AM 4-8548

Air Force Personnel Welcome

PEOPLES FINANCE Co. has Christmas money. Free radio on opening first account. Loans \$10-500. 219 Scurry.

WOMAN'S COLUMN J

CONVALESCENT HOME. Room for one or two. Experienced care. 1116 Main, Mrs. J. L. Unger.

ANTIQUES & ART GOODS J1

NEW LOAD ANTIQUES. Everything from single bed to mustache cups. Lou's Antiques. Open daily, 7-8 a.p.m.

COSMETICS J4

LUIGER'S FINE Cosmetics. AM 4-7714, 100 East 17th, Odessa, Morris.

CHILD CARE J5

CHILD CARE—My home, days, evenings. Mrs. Scott, AM 4-2963.

SUBURBY FOR children over 1. Good twins. 805 East 12th, AM 4-8212.

MRS. MORGAN'S baby nursery, day-night, 7 days week, \$1.50 day, AM 3-6781, 800 Avlon.

WILL KEEP children in my home days, AM 3-5922.

MRS. HUBBELL'S Nursery open Monday through Saturday, 1817 Shebourn. Call AM 4-7798.

PLAY SCHOOL Nursery, 1906 Morrison, AM 4-9119. Open day and night, Mrs. L. D. Coppedge.

CARE FOR child My home, starting January 1. AM 3-6212.

WILL KEEP children, My home, 1401 East 15th, AM 3-4867.

WILL KEEP children in my home, 124 Wood, AM 4-8207.

BABY SITTING wanted, Mrs. Cook, 2005 Canale, AM 4-8207.

EMPLOYMENT F

HELP WANTED, Male F1

LOAN MANAGER

National Sales Finance Company, now expanding into the personal loan field, has an opening for a capable man.

Applicants should have at least 3 years experience with a consumer finance company. One year of successful management desirable. This is a "ground floor" opportunity offering a liberal starting salary plus employee benefit programs.

Mail resume outlining qualifications. All replies confidential. Our employees know of this ad.

Write: **BOX B-1078** Care of Herald

CONTRACT TRUCKMEN make \$9. Tractor furnished. If over 25 write Mayflower Box 107, Indianapolis 6, Indiana.

AGES 21 to 44 - Married, high school education. Starting salary, \$328 per month, first year earnings, \$5200. Contact C. W. Thompson or A. C. Sanders, 601 Permian Building.

CAB DRIVERS wanted—must have City Permit. Apply Greyhound Bus Depot.

HELP WANTED, Female F2

WANTED—BEAUTY operator for beauty shop in Garden City, contact B. L. Murray, Garden City.

MERRY CHRISTMAS!

Yes, your Christmas can be merry by the earnings realized from selling Avon Cosmetics. Complete training provided.

MERCANTILE L

Box 4141 Midland, Texas

E 1x1/2 2

WANTED - EXPERIENCED alteration lady. Apply to Deluxe Laundry and Cleaners, 283 Scurry, AM 4-8232.

HELP WANTED, Misc. F3

WANTED man and woman to live in and care for elderly couple starting in January. Salary plus room and board. Res. AM 4-8208. Call AM 4-8216.

INSTRUCTION G

HIGH SCHOOL AT HOME

Start where you left off. Text furnished, diploma awarded, low monthly payments. For free booklet write: American School, Dept. B, Box 1382, Odessa, Texas, RM 4-2122.

Men and Women Needed TO TRAIN FOR CIVIL SERVICE EXAMS

We Prepare Men and Women

Age 18 to 55. No experience necessary, grammar school education usually sufficient. Permanent jobs, no layoffs, short hours. High pay advancement. Send name, home address, phone number and time home. Write Box B-1039, Big Spring Herald. If rural—give directions.

FINANCIAL H

PERSONAL LOANS H2

CASH

For **CHRISTMAS**

Fast—Friendly—Confidential Service

QUICK LOAN SERVICE

308 Runnels AM 4-8548

Air Force Personnel Welcome

PEOPLES FINANCE Co. has Christmas money. Free radio on opening first account. Loans \$10-500. 219 Scurry.

WOMAN'S COLUMN J

CONVALESCENT HOME. Room for one or two. Experienced care. 1116 Main, Mrs. J. L. Unger.

ANTIQUES & ART GOODS J1

NEW LOAD ANTIQUES. Everything from single bed to mustache cups. Lou's Antiques. Open daily, 7-8 a.p.m.

COSMETICS J4

LUIGER'S FINE Cosmetics. AM 4-7714, 100 East 17th, Odessa, Morris.

CHILD CARE J5

CHILD CARE—My home, days, evenings. Mrs. Scott, AM 4-2963.

SUBURBY FOR children over 1. Good twins. 805 East 12th, AM 4-8212.

MRS. MORGAN'S baby nursery, day-night, 7 days week, \$1.50 day, AM 3-6781, 800 Avlon.

WILL KEEP children in my home days, AM 3-5922.

MRS. HUBBELL'S Nursery open Monday through Saturday, 1817 Shebourn. Call AM 4-7798.

PLAY SCHOOL Nursery, 1906 Morrison, AM 4-9119. Open day and night, Mrs. L. D. Coppedge.

Building Material

PRICES REDUCED!

2x4 & 2x6's

West Coast Fir **5.95**

Dry Pine 4.95

Composition Shingles

215 Thick Butt No. 1 **6.39**

SHEETROCK

4x8-1/2 in. **1.49** Now

Corrugated Iron

Strongbarn **9.95**

SHEETROCK

4x8-1/2 in. **1.20** Now

ECONOMY SHINGLES

215 Lb. **5.25** Now

J. M. Asbestos Siding

Now **14.45**

All Prices Good On Material In Stock Only!

Veazey Cash Lumber CO.

Snyder, Texas Phone HI 3-6612

MERCANTILE L

HOUSEHOLD GOODS L4

Values Never Before Equalled!!

USED SPECIALS

PHILCO 21-Inch console TV. Excellent condition \$89.50

RCA Hi Fidelity Phonograph. Brand new. Regularly sells for \$144.95. Now \$97.50

TELEKING Console 21" TV. Very nice. Only \$65

CROSLEY 21-inch Console TV set. Mahogany \$75.00

STEWART WARNER 21" Console TV. Mahogany finish. Makes a real good picture \$49.50

Stanley Hardware Co. "Your Friendly Hardware"

203 Runnels Dial AM 4-6221

USED FOUR ROOM GROUP consisting of:

Refrigerator, Range 3-Piece Dinette, 3-Piece Living Room Suite, 3 Step Tables, 1 Coffee Table, 3 Table Lamps, 3-Piece Bedroom Suite, Mattress and Box Springs

all this for only **\$199.95**

\$10.00 Month D & W FURNITURE

2nd and Nolan AM 4-6354

202-204 Scurry AM 4-5271

Metal Dinettes \$15 to \$28

Used Refrigerators \$20 to \$85

Ranges \$25 to \$30

Bedroom Suits \$20 to \$40

TV's \$30 to \$45

Hi-Fi's \$25 to \$35

Used Stoves \$2 and up

MERCANTILE L

HOUSEHOLD GOODS L4

Values Never Before Equalled!!

USED SPECIALS

PHILCO 21-Inch console TV. Excellent condition \$89.50

RCA Hi Fidelity Phonograph. Brand new. Regularly sells for \$144.95. Now \$97.50

TELEKING Console 21" TV. Very nice. Only \$65

CROSLEY 21-inch Console TV set. Mahogany \$75.00

STEWART WARNER 21" Console TV. Mahogany finish. Makes a real good picture \$49.50

Stanley Hardware Co. "Your Friendly Hardware"

203 Runnels Dial AM 4-6221

USED FOUR ROOM GROUP consisting of:

Refrigerator, Range 3-Piece Dinette, 3-Piece Living Room Suite, 3 Step Tables, 1 Coffee Table, 3 Table Lamps, 3-Piece Bedroom Suite, Mattress and Box Springs

all this for only **\$199.95**

\$10.00 Month D & W FURNITURE

2nd and Nolan AM 4-6354

202-204 Scurry AM 4-5271

Metal Dinettes \$15 to \$28

Used Refrigerators \$20 to \$85

Ranges \$25 to \$30

Bedroom Suits \$20 to \$40

TV's \$30 to \$45

Hi-Fi's \$25 to \$35

Used Stoves \$2 and up

WHITE'S

202-204 Scurry AM 4-5271

Metal Dinettes \$15 to \$28

Used Refrigerators \$20 to \$85

Ranges \$25 to \$30

Bedroom Suits \$20 to \$40

TV's \$30 to \$45

Hi-Fi's \$25 to \$35

Used Stoves \$2 and up

WHITE'S

202-204 Scurry AM 4-5271

Metal Dinettes \$15 to \$28

Used Refrigerators \$20 to \$85

Ranges \$25 to \$30

Bedroom Suits \$20 to \$40

TV's \$30 to \$45

Hi-Fi's \$25 to \$35

Used Stoves \$2 and up

A&B FURNITURE

1200 W. 3rd AM 3-3681

USED VACUUM cleaners \$12.50 and up. Service and parts for all makes. Kirby Vacuum Company, 803 Gregg, AM 3-3124.

YOU'RE THROUGH with roaches and ants after applying long lasting invisible Roach Film, Big Spring Hardware.

REMINGTON TYPEWRITER Like New

STEREOPHONIC Record Player GIBSON Guitar

ARMY SURPLUS Complete Line of Pottery. We Need Good Used Furniture and Appliances

Furniture Barn And Pawn Shop

3000 W. 2nd Dial AM 4-9088

A&B FURNITURE

1200 W. 3rd AM 3-3681

USED VACUUM cleaners \$12.50 and up. Service and parts for all makes. Kirby Vacuum Company, 803 Gregg, AM 3-3124.

YOU'RE THROUGH with roaches and ants after applying long lasting invisible Roach Film, Big Spring Hardware.

REMINGTON TYPEWRITER Like New

STEREOPHONIC Record Player GIBSON Guitar

ARMY SURPLUS Complete Line of Pottery. We Need Good Used Furniture and Appliances

Furniture Barn And Pawn Shop

3000 W. 2nd Dial AM 4-9088

S&H GREEN STAMPS

Good Housekeeping Furniture Shop AND APPLIANCES

907 Johnson AM 4-2822

HIGHEST PRICES PAID FOR GOOD USED FURNITURE

WHEAT'S 504 W. 3rd AM 4-2505

We Have Added An... **APPLIANCE DEPARTMENT** To Our **HARDWARE**

Full Size **MODERN MAID Gas Range**

\$124.50 Terms

Lloyd F. Curley Lumber Co. 1600 East 4th AM 4-8242

S&H GREEN STAMPS

Good Housekeeping Furniture Shop AND APPLIANCES

907 Johnson AM 4-2822

HIGHEST PRICES PAID FOR GOOD USED FURNITURE

WHEAT'S 504 W. 3rd AM 4-2505

We Have Added An... **APPLIANCE DEPARTMENT** To Our **HARDWARE**

Full Size **MODERN MAID Gas Range**

\$124.50 Terms

Lloyd F. Curley Lumber Co. 1600 East 4th AM 4-8242

WHEAT'S

3 Used Ranges. Very nice. Your choice **\$29.95**

4 New 3-Piece Living Room Suits. Slightly damaged. Reg. \$129.95. Now **\$99.95** each

1 Set of Solid Oak Bunk Beds. Complete **\$59.95**

Your Choice of Three 2-Piece Living Room Suits **\$29.95**

Good Selection of Step Tables, Coffee Tables, Corner Tables. From **\$2.95** Up

D&W FURNITURE

2nd and Nolan AM 4-6354

205 Runnels

Nice used Lounger **\$39.95**

9-Piece Chrome Dinette. Brand new. Reg. **\$149.95**. Special price **\$89.95**

Sofa Bed Suites **\$110.00** up

Carpet remnants. Room size. At the lowest prices ever offered.

Washing Machines. Like new **\$59.95**

22 cu. ft. AMANA Freezer. Very clean **\$229.95**

3-Piece Ranch Style Living Room Suite. Nice **\$99.95**

We Finance Our Own Paper

Wheat's

504 W. 3rd AM 4-2505

WHEAT'S

3 Used Ranges. Very nice. Your choice **\$29.95**

4 New 3-Piece Living Room Suits. Slightly damaged. Reg. \$129.95. Now **\$99.95** each

1 Set of Solid Oak Bunk Beds. Complete **\$59.95**

Your Choice of Three 2-Piece Living Room Suits **\$29.95**

Good Selection of Step Tables, Coffee Tables, Corner Tables. From **\$2.95** Up

D&W FURNITURE

2nd and Nolan AM 4-6354

205 Runnels

Nice used Lounger **\$39.95**

9-Piece Chrome Dinette. Brand new. Reg. **\$149.95**. Special price **\$89.95**

Sofa Bed Suites **\$110.00** up

Carpet remnants. Room size. At the lowest prices ever offered.

Washing Machines. Like new **\$59.95**

22 cu. ft. AMANA Freezer. Very clean **\$229.95**

3-Piece Ranch Style Living Room Suite. Nice **\$99.95**

We Finance Our Own Paper

Wheat's

504 W. 3rd AM 4-2505

WHITE'S

202-204 Scurry AM 4-5271

Metal Dinettes \$15 to \$28

Used Refrigerators \$20 to \$85

Ranges \$25 to \$30

Bedroom Suits \$20 to \$40

TV's \$30 to \$45

Hi-Fi's \$25 to \$35

Used Stoves \$2 and up

WHITE'S

202-204 Scurry AM 4-5271

Metal Dinettes \$15 to \$28

Used Refrigerators \$20 to \$85

Ranges \$25 to \$30

Bedroom Suits \$20 to \$40

TV's \$30 to \$45

Hi-Fi's \$25 to \$35

Used Stoves \$2 and up

MERCANTILE L

HOUSEHOLD GOODS L4

PIANOS L6

MISCELLANEOUS L11

FOR SALE—Water cut-off, clotheslines, poles, and garages can racks. 1000 West 3rd. AM 3-2134.

PIANOS L6

Wurlitzer Pianos

New And Used Ask About Rental Plan **ADAIR MUSIC CO.**

1708 Gregg AM 4-8301

Pianos — Organs For The FINEST In Pianos And Organs

Call **RITA PATTERSON** AM 4-7002

Agent for Jenkins Music Co.

Hammond Organs, Steinway Chickering, Everett and Cable Nelson Pianos. Rent a New Piano for as little as \$10.00 month. Full credit on purchase.

Jenkins Music Co. 309 East 8th Odessa, FE 2-6861 Texas

MISCELLANEOUS L11

PEOPLES FINANCE Co. is offering a free house. See at 406 Galveston or call AM 4-6233.

MCCLELLY EXERCISING equipment. Figure skates, roller massager, bicycle. Zora Patterson, 808 Eleventh Place, AM 4-6067.

MERCANTILE L

HOUSEHOLD GOODS L4

USED SPECIALS

PHILCO 21-Inch console TV. Excellent condition \$89.50

RCA Hi Fidelity Phonograph. Brand new. Regularly sells for \$144.95. Now \$97.50

TELEKING Console 21" TV. Very nice. Only \$65

CROSLEY 21-inch Console TV set. Mahogany \$75.00

STEWART WARNER 21" Console TV. Mahogany finish. Makes a real good picture \$49.50

Stanley Hardware Co. "Your Friendly Hardware"

203 Runnels Dial AM 4-6221

USED FOUR ROOM GROUP consisting of:

Refrigerator, Range 3-Piece Dinette, 3-Piece Living Room Suite, 3 Step Tables, 1 Coffee Table, 3 Table Lamps, 3-Piece Bedroom Suite, Mattress and Box Springs

all this for only **\$199.95**

\$10.00 Month D & W FURNITURE

2nd and Nolan AM 4-6354

NOTICE

ORDERS PLACED Thursday, Dec. 22 Will Be Delivered Christmas Eve Open Thursday Until 8 p.m.

SEARS

AM 4-5524 Nights AM 3-4784

See at 213 Main

APPLIANCE SPECIALS

Rebuilt MAYTAG Automatic Washer with matching Dryer. \$99.50 down. \$12.03 per month. BENDIX Duo-a-matic Washer-Dryer combination. Good working order. \$9.95 down and \$9.61 per month.

PHILCO Washer with matching Dryer \$225 off Regular price. SPEED QUEEN Automatic Washer with portable hook-up. \$5.00 down and \$7.38 per month. 21-Inch Mahogany MOTOROLA Consolelette TV set. Very nice **\$89.95**

Terms As Low As \$5.00 Down And \$5.00 Per Month. Use Your Scottie Stamps As Down Payment.

Open 'til 8:00 p.m. 'til Christmas

BIG SPRING HARDWARE

115 Main AM 4-5265

CARPET and Upholstery cleaning. Used carpeting and padding for sale. 1000 Main. AM 3-2929.

Western Auto

206 Main AM 4-6241

And **Western Auto Toyland**

506 Johnson

CLOSE OUT

Tie Bar and Cuff Links Set

While They Last...

\$1.50 up

GRANTHAM Watch Repair

120 Main AM 4-9008

WESTERN WEAR

Ties Shirts

Pants Jackets

Caps Hats

Suits Dresses

Slacks Jackets

Belts Purses

Billfolds Boots

CHRISTENSEN'S BOOT SHOP

603 W. 3rd AM 4-8401

MR. BREGER

MISCELLANEOUS L11

AUTOMOBILES M

SCOOTERS & BIKES M2

MOTORCYCLES M3

AUTO SERVICE M6

DERINGTON AUTO PARTS

And **MACHINE SHOP**

300 NE 2nd Dial AM 4-2461

TRAILERS M8

Only 33 Dealers Left Big Spring Since We Opened 10 Years Ago! You Can Buy A Quality Mobile Home For A Lot Less Than You Think See Us Today.

Burnett Trailer Sales

1603 East 3rd AM 4-8209

FOR SALE—1954 Viking boat, trailer moving anywhere. Bonafide ICC carrier. Insured. Call AM 3-3972.

FOR SALE—1954 Viking boat, trailer moving anywhere. Bonafide ICC carrier. Insured. Call AM 3-3972.

MORGAN DRIVEWAY Inc. mobile trailer moving anywhere. Bonafide ICC carrier. Insured. Call AM 3-3972.

© 1960, King Features Syndicate, Inc., World rights reserved 12-22

"Dear, I'm afraid you've hurt that hitobhiker's feelings by not picking him up..."

THE GIFT SPOTTER

Exciting fun for Christmas planning starts with a careful look at the fascinating ideas in this convenient shopping center of gifts you'll love to give... **SAVE shopping hours - READ the Gift Spotter daily!**

Gifts for Christmas

When You Write to SANTA, Say: "Make Mine A MORRIS MINOR"

1961 Deluxe 2-door

ONE FULL YEAR WARRANTY

Delivered in Big Spring for only **\$1595.00**

HARMONSON Foreign Motors

911 W. 4th AM 4-8143

Gifts for Her

Pedal-Drive Compact Car 10.99

Down—A Week

Entire body made from one piece of heavy-gauge steel for years of rugged use.

Sportsman-Toyland Center

1608 Gregg AM 3-3642

Open From 8:30 A.M. to 9:00 P.M.

Gifts for Him

8" Junior Tricycle 4

Little likes favorite. Rugged all-steel frame. Double-disc wheels. Large metal saddle.

Combination peg table & blackboard with seat \$4.44

32 cup Electric Percolator **\$19.95**

Wizard Portable Mixers **\$10.75**

Toasters (makes buttered toast) **\$5.95**

Western Flyer Bicycles, 26-inch Electric Football Game **\$37.95**

Layaway Now At **Western Auto**

206 Main AM 4-6241

And **Western Auto Toyland**

506 Johnson

Gifts for Mom

Give a Gift That's PRACTICAL

in so many, many ways!

● DAZEY electric can opener. Reg. \$19.95. Now **\$14.88**

● 11" Automatic Frypan. Completely immersible. Reg. \$19.95. Now **\$14.99**

● Special **ELECTRIC TOASTMASTER**. Pop up type. Free cover. Reg. \$19.95. Now **\$14.88**

● OVEN TOASTER. Reg. \$10.95. Now **\$8.88**

● MELMAC Dinner Ware, 45-piece set. Service for 8 Reg. \$29.95. Now **\$19.95**

●

BETTER BUYS

- '59 PONTIAC 4-door, Air and power. Nice ... \$2695
- '59 CHEVROLET Bel Air 4-door, Air and power ... \$1995
- '58 CHEVROLET Bel Air 4-door, Air and power ... \$1495
- '58 CHEVROLET Wagon ... \$1395
- '57 OLDSMOBILE 4-door ... \$1295
- '57 PONTIAC 4-door, Air ... \$1295

McBRIDE PONTIAC
Authorized Dealer
504 E. 3rd AM 4-5335

AUTOMOBILES M
TRAILERS MB

\$50.00
MOVES YOU IN
On Rental Purchase

For The Young At Heart
NEW 57x10
3 Bedrooms, 2 Baths
Raised Roof, Carpet
Natural Gas Appliances
Washer, 3-ton Ref. Air Cond.
Anglematic Kitchen
Radio, Intercom
Triple Axle

WE TRADE
Cars—Furniture
Trucks—Tractors
Lots—Farms
Houses for Trailers
Trailers for Houses
Oil Royalties

Trailer-Heater Parts
Insurance-Service
Towing-Repair
Hardware

D&C SALES
Big Spring's Most Aggressive
AM 3-4337 West Highway 80

SALES AND SERVICE

- '59 FORD Wagon, Air ... \$1895
 - '59 STUDEBAKER 1/2 ton ... \$895
 - '57 RAMBLER 4-door, Air ... \$990
 - '57 RENAULT 4-door ... \$385
 - '56 FORD 4-door ... \$785
 - '56 STUDEBAKER "8", Air ... \$975
 - '55 CHAMPION 4-door ... \$550
 - '55 STUDEBAKER 1/2-ton ... \$685
 - '54 FORD Pickup ... \$345
 - '55 STUDEBAKER Coupe ... \$595
 - '54 CHEVROLET 4-door ... \$375
 - '52 CHAMPION 4-door ... \$265
- Allstate Motorcycle ... \$ 85

McDONALD MOTOR CO.
206 Johnson Dial AM 9-2412

HOOVER'S GARAGE
Bennett Hoover, Owner
Chrysler Products
Our Specialty
We Service All Makes
ALL WORK GUARANTEED

- General Auto Repair
- Brake Repair
- Automatic Transmissions
- Tune-Ups
- Wheel Balancing
- Washing And Greasing
- All Brands Of Oil

EXPERT MECHANICS TO SERVICE YOUR AUTOMOBILE
600 East 3rd AM 4-7408

1958 FORD 1/2-Ton V-8 Pickup
\$995

REEDER
MOTOR & TRUCK SERVICE

1861 MORRIS MINOR is here. \$1895 4-door. Guaranteed one year—parts, labor. Harmonson Foreign Motors.

From all of us to each of you... Best Wishes for a Holiday Season filled with Christmas Joy and Cheer!

EAKER MOTOR CO.
AND EMPLOYEES
1509 Gregg AM 4-6922

GRIN AND BEAR IT

"Never saw a more restrained office party! ... There's a rumor about that the boss got hidden microphones all over the place!"

McDONALD MOTOR CO.
206 Johnson Dial AM 9-2412

FOR SALE—1958 MG, radio, heater, wire wheels. Tomcat silver. Extra clean. \$1425. AM 3-3783 after 5.

Tidwell Chevrolet
1501 E. 4th Dial AM 4-7421

ARE YOU LOOKING FOR A BARGAIN IN A NEW CAR?
We Have A Few Brand New 1960 Chevrolets AT A GREAT SAVING

- '59 CHEVROLET Impala 4-door sedan. Power-Glide, radio, heater, power steering, power brakes, large engine, air conditioned. This is a good buy for only ... **\$1895**
- '57 CHRYSLER Imperial 4-door sedan. Automatic transmission, radio, heater, all power, factory air conditioned. This is a locally-owned car ... **\$1850**
- '56 CHEVROLET Bel-Air 4-door sedan. V-8 engine, radio, heater, Power-Glide. Beautiful white and blue finish. This is an ideal family car ... **\$895**
- '56 OLDSMOBILE Holiday sport coupe. Radio, heater, Hydramatic. This is the cream of the crop ... **\$985**

WE HAVE A GREAT SAVING FOR YOU ON A 1960 CHEVROLET DEMONSTRATOR. COME IN TODAY.

COMMERCIALS

- '59 CHEVROLET 1/2-ton Pickup with heater. This one is new as a used pickup can be ... **\$1295**
- '60 CHEVROLET 1/2-ton Pickup. Radio and heater. Real low mileage ... **\$1650**
- '60 FORD 1/2-ton Pickup with radio and heater. This is a one owner pickup ... **\$1495**
- '57 G.M.C. Panel Heater, good tires. Lots of service left in this one ... **\$595**
- '59 CHEVROLET 2-ton Truck. Fully equipped and ready to go to work ... **\$1785**

"A Good Place To Do Business"

Christmas Greetings

The spirit of Christmas warms every heart, brightens every eye, lightens every care... It moves us to express our deep appreciation of the friendship and loyalty of our customers, and to wish for all a rich abundance of the Season's happiness

TARBOX-GOSSETT AND EMPLOYEES
300 W. 4th AM 4-7424

AUTOS FOR SALE M10

1961 VOLKSWAGEN

Come in today. See the world's most economical car.
BIG SPRING'S ONLY Authorized Volkswagen Dealer Western Car Co.

Exclusive Sales — Service — Parts
SEDANS—TRUCKS—SPORTS
1107 E. 3rd AM 3-4162

- '55 FORD 4-door ... \$295
- '54 FORD 2-door ... \$165
- '53 DODGE 2-door ... \$225
- '53 MERCURY Hardtop ... \$ 95

BILL TUNE USED CARS
Where Pa. Bayou Meets Money
911 East 4th AM 4-6783

FOR A Clean Used Car or good work call P. M. (Boobie) Thorp. AM 4-7146.

Be Sure To See The

NEW 1961 MODEL MGA 1600

Guaranteed One Full Year!

NOW \$499.00 down, \$80.70 per month

The world's most famous sports car, the new MG will run at 100 mph with ease, corner with amazing elasticity, and delight the most captious with its precision engineering, true leather bucket seats, full instrumentation, and racing disc brakes.

Harmonson Foreign Motors
A product of THE BRITISH MOTOR CORPORATION LTD., makers 911 W. 4th of Austin-Healey, Austin, MG, Midget, Morris and Riley cars. AM 4-8143

EVERY CAR A QUALITY CAR
"Ask Your Neighbor"

HUGE DISCOUNTS
Executive Cars
'60 Continental
'60 Mercury
NEW CAR WARRANTY

- '57 BUICK Special sedan. Factory air. An original like new car ... **\$1085**
- '57 MERCURY Phaeton. Factory air and power. Spotless ... **\$1185**
- '56 MERCURY 4-door sedan. Take a look. It's nice ... **\$885**
- '52 FORD sedan. Standard shift. V-8 ... **\$185**
- '51 FORD sedan. V-8. Standard shift ... **\$185**
- '51 PLYMOUTH sedan. It's really solid ... **\$185**

'58 CHEVROLET sedan. V-8 engine, standard shift. It's a honey ... **\$1285**

'58 CONTINENTAL. Convertible, air, heater, electric seats, windows, top. America's greatest Car. It's new ... **\$3485**

'57 PONTIAC Chief. Sedan. Factory air conditioned. Reflects perfect care ... **\$1085**

Truman Jones Motor Co.
Your Lincoln and Mercury Dealer
403 Runnels Open 7:30 P.M. AM 4-5254

HELP PREVENT HOLIDAY ACCIDENTS

Protect
● Your Family ... Yourself,
● Your Community

BY HAVING YOUR CAR SERVICED BEFORE YOUR CHRISTMAS HOLIDAY TRIP

Our Mechanics Are Experienced And Have The Know How

WE WILL BE CLOSED MONDAY, DEC. 26th
"The Place Of Almost Perfect Service"

SHROYER MOTOR CO.
OLDS — GMC AM 4-4623
424 East 3rd

DEPENDABLE USED CARS

- '55 PONTIAC 2-door hardtop. Radio, heater, Hydramatic, white tires, nice car inside and out ... **\$665**
- '57 PLYMOUTH 4-door sedan. V-8 engine, standard transmission, radio and heater ... **\$795**
- '57 CHEVROLET 4-door sedan. V-8 engine, standard transmission, radio and heater. Only ... **\$995**
- '56 PLYMOUTH 4-door sedan. V-8 engine, automatic transmission, radio and heater ... **\$695**
- '56 DODGE 4-door sedan. Radio and heater. Good condition ... **\$695**
- '56 OLDSMOBILE "8" 4-door sedan. Radio, heater, Hydramatic, white tires, low mileage. Very nice ... **\$895**
- '55 PONTIAC Station wagon. Radio, heater, Hydramatic, white wall tires, good condition throughout ... **\$695**
- '57 FORD 1/2 ton Pickup. 6 cylinder. Solid transportation. Only ... **\$795**
- '54 DODGE 4-door sedan. Radio, heater, automatic transmission, white tires, excellent upholstery, good paint. Nice car ... **\$450**
- '53 DODGE 4-door sedan. Radio, heater, automatic transmission, air conditioned ... **\$375**
- '53 CHEVROLET Bel-Air 2-door hardtop. Standard shift. Real nice ... **\$365**

JONES MOTOR CO., INC.
DODGE ● DODGE DART ● SIMCA
101 Gregg Dial AM 4-6351

The Best Used Cars Are Found Where The Best New Cars Are Sold HERE AT

McEwen Motor Co., Used Car Lot

- '58 CADILLAC '61 4-door sedan. A pretty white and grey. Has power and air ... **\$2895**
- '58 CHRYSLER Crown Imperial 4-door hardtop. Solid black and fully equipped ... **\$2595**
- '58 BUICK Special 4-door sedan. Solid white. Radio, heater, Dynaflo, white sidewalls ... **\$1495**
- '57 CHRYSLER New Yorker 4-door sedan. Solid white, radio, heater, automatic transmission, power steering, power brakes, air conditioned ... **\$1495**
- '56 BUICK Special 2-door hardtop. Green and white, radio, heater, Dynaflo ... **\$895**
- '57 BUICK Special 2-door hardtop. Garnet red and ivory. Radio, heater, Dynaflo. white wall tires ... **\$1095**
- '55 FORD Fairlane 4-door sedan. Green and white, radio, heater, Fordomatic, air conditioned, new white sidewall tires ... **\$795**
- '55 BUICK Special 2-door hardtop. Black and white finish. Radio, heater, Dynaflo ... **\$595**

McEWEN MOTOR CO.
BUICK — CADILLAC — OPEL DEALER
5th At Gregg AM 4-4883 488 Scurry

For Best Results Use Herald Classifieds

12-22

nitohhiker's feet

... fascinat- ... SAVE

its boys

WATER THAN

U THINK

Your Bicycle Selection Is complete

Shuerer

BIKES

E BEST!

H BOY'S BIKE

ed

Horn!

swim quality, deluxe Chrome truss rods, d d i e, fenderlight, blar rims, coaster of radiant colors. ng, fun to ride! See

ices Start

\$9.95

l Thixton

orcycle & ycle Shop

AM 3-2322

Gifts

BABINETS

s — Store Fixtures Guncases

es Remodeling

McADAMS

AM 4-2948

derful gift your fly will enjoy for a lifetime

A

TZER PIANO

NAL PLAN

Music Co.

AM 4-6301

omplete Line of

STUDIO

GIRL

OSMETICS

es For The Stars"

STBROOK

e Company

AM 4-5386

Give

E HERALD

friends and relatives.

'll enjoy it

year 'round

cial gift card

be mailed at

r direction.

al AM 4-4331



Final Performances

Tonight at 7 p.m. and again at 8 p.m., the music will begin and the lights will fade on the final performances of the YMCA Christmas Pageant, staged at the south end of the Y building. This is the colorful scene of Herod's Court, featuring Herod (Olen Packett) sitting and Buddy Redden as one of two priests. Karen Hodnett, standing, feeds grapes to Herod during the performance. The other girls are Gwen Davis (left) and Kath-

erine Boren. Wayne Burns is the other priest and Joanna Patterson is the fourth girl at the court. Both were unavailable for the picture. The pageant features outstanding lighting, planned by City Electrician Roy Rogan, who also engineered a moving star for the Three Wise Men to follow. Howard Brown and Roy Rosene have joined with him to help with sound and lighting equipment.

Police Keeping Traffic In Hand

Big Spring is moving into the home stretch as far as Christmas is concerned and while the downtown traffic is getting worse as shopping time grows short the situation is by no means out of hand.

At least, not according to Police Chief Jay Banks. The chief said that officers posted in the heavily congested downtown area have kept good control over shopping traffic.

Officers have been doing a good job in keeping the traffic moving," the chief said, but he added that other factors have helped keep the problem minimized.

"The new loading zones are helping to a great extent, although we are still having trouble with certain individuals," Banks said.

Chief Banks also extended his appreciation to the motorists for their cooperation downtown. "Their patience and careful driving has contributed substantially to easing the situation."

The chief asked that residents continue their careful driving habits over the holiday, keeping in mind that more than 500 traffic deaths are predicted for the weekend.

"Let's do our best to see that none of these fatalities occur in Big Spring," the chief said.

Probers Must Rule On Public Hearing

BEAUMONT (AP)—Lawmakers digging into reports of wide open vice in this Southeast Texas coast area today faced a need to decide quickly whether to hold a public hearing on the situation.

Time is running short because the Texas House General Investigating Committee, an interim group, must wind up its affairs before the Legislature opens a new session Jan. 10.

The committee, headed by Rep. Menton J. Murray of Harlingen, completed a two-day secret session with public officials of Beaumont and neighboring Port Arthur Wednesday night. None would comment on what was said.

Rep. Tom James of Dallas, vice chairman of the committee, told newsmen the legislators' next move will be to hear out-of-town witnesses. He declined to name them or say where they will be questioned.

James and David Witts of Dallas, general counsel of the group, have asserted—and Dist. Atty. Ramie H. Griffin of Beaumont has denied—there is evidence of open gambling, prostitution and illegal dealings in liquor and narcotics in this vicinity.

Murray said his committee would decide whether to conduct a public hearing after its staff finishes evaluating evidence collected here. He said if a hearing is ordered, it will be held in Beaumont and will last two to three days.

The life of the five-man commit-

tee, as presently set up, expires with the start of a new legislative session. There has been speculation its members may be re-appointed.

Jefferson County Sheriff C. H. Meyer and Willie Bauer, senior assistant police chief in Beaumont, were the last of several local officials conferring behind closed doors with the lawmakers Wednesday.

Beaumont Police Chief Jim Mulligan, who appeared before the committee a day earlier, said Wednesday the word has gone out that even bingo games of church and other organizations henceforth are strictly taboo.

Petitions Ask Rep. Mahon's Help In Killing Gas Tax

Congressman George Mahon today sent the names of 10,338 persons from his district who advocate scheduled expiration next June 30 of the "temporary" 1-cent per gallon federal tax on gasoline.

Included with petitions mailed to Rep. Mahon was a joint statement signed by George Tarbox of Lubbock, representing the Oil Information Committee of Texas Mid-Continent Oil & Gas Association, and OIC area chairman Harlan A. Hodges, Lubbock.

The statement asked Rep. Mahon's support in resisting proposals to extend the federal levy. A one-week petition drive that afforded Texas motorists a chance to express their desire on expiration of the 1-cent federal levy and cut their gasoline bill nearly \$38 million a year was sponsored last October by the Texas petroleum industry through OIC. Statewide, some 268,725 Texans signed petitions and were joined by 5.5 million motorists nationwide.

Texas motorists now pay four cents a gallon in federal taxes, plus a five cent state tax, the statement said.

Pointing out that the petroleum industry advocates better highways, Tarbox and Hodges said that the federal highway program "can be financed without this extra penny if all federal highway user taxes are devoted to roads. Some \$1.7 billion in auto-user taxes are now diverted to other purposes."

The statement said that expiration of the penny tax next June

30 will not hurt the federal highway program because the present law provides that about \$602 million a year in auto excise taxes—now going into the Treasury general fund—will be channeled into the program next year, resulting in a \$225 million gain over current income.

Clerk's Death Ups Munich Crash Toll

MUNICH, Germany (AP)—The crash of a U.S. Air Force Convair jet into a streetcar packed with Christmas shoppers last Saturday claimed its 51st victim today with the death of Ingeborg Kraus, 19, a Munich clerk.

Thirteen other Germans are still in the hospital with severe burns from the crash. All 20 Americans aboard the plane were killed.

You Who Did Not Finish HIGH SCHOOL

Are invited to write for FREE booklet—Tells how you can earn Diploma in your spare time. Newest texts furnished, 63 years of service. Why accept less than the best. Better Jobs go to the High School graduate.

AMERICAN SCHOOL

Box 1582 EM 6-8182 Odessa, Texas

Name _____ Phone _____
Address _____ City _____ State _____

City Officials Take Vacations

Vacations of two top city officials will leave local government in the hands of assistants for about two weeks following Christmas.

City Manager A. K. Steinheimer, to be out of the office between Dec. 26-Jan. 9, will turn his administrative post over to Roy Anderson, assistant city manager.

Bruce Dunn, director of public works, who will be away between Dec. 23-Jan. 3, will leave R. V. "Skeet" Foreyth, his assistant, and Ernest E. Lillard, city engineer, in charge.

Be an angel . . .
Get Her Gift At
Fisher's 1907 Gregg
1107 11th Pl.

JOHN A. COFFEE
ATTORNEY-AT-LAW
308 Scurry
Dial AM 4-2591

At Zale's DISCOUNT PRICES! CONVENIENT TERMS!

Our Own **MONEY-SAVING POLAROID KIT**
Pictures in Seconds

Complete... **\$99⁸⁹** \$2.00 WEEKLY

Take pictures in seconds indoors-outdoors *without flash!* You can with Polaroid's compact 80B camera, the amazing Wink-light that takes pictures without a flash and the 3000 speed film that is so sensitive it almost sees in the dark! Now assembled for you in a money-saving outfit you'll enjoy using for years! Nothing down! As long as a year to pay!

NO MONEY DOWN ZALE'S JEWELERS

OPEN 'TIL 9:00 EVERY NIGHT 'TIL CHRISTMAS

Crossword Puzzle

- ACROSS**
- Dry
 - Box
 - Small mollusk
 - Textile screw pine
 - Place of great activity
 - Rodent
 - Shares
 - Seaport in Latvia
 - Spike
 - Inquiry for lost goods
 - Impudence
 - Trust of grain
 - Group of cattle
 - Incombustible coal masses
 - Land measure
 - Not tight
 - Totem post
 - Taciturn
 - Have being
 - Highway
 - Attack from all sides
 - Scattered
 - Deposit
 - Idle
 - Disperses
 - One of Aleutian islands
 - Roof edge
 - Tang in cheese
 - Para
 - Vehicle runner
 - Daily

**SEEP CASK CHA
HALL ABLE RED
ASTA BEEBREAD
MESQUITE OARS**

**URN PROM
CUBES HEADERS
ASE APARTY REA
RECANED TOYED
ALAE LAW
ORLO RAINLESS
TEMPLATE ERIA
TEE AGOG TINTY
ODD DEME SNEE**

Solution of Yesterday's Puzzle

- DOWN**
- Weaken
 - Age
 - Early
 - English statesman
 - Part of the leg
 - Fresh-water fish
 - Broad street; abbr.
 - Curb
 - Decreased
 - Secular
 - Exhort honestly
 - Apparel
 - Made fast
 - Official grade
 - Burn
 - In this place
 - Pleasantly smooth
 - Washes
 - Present
 - Talk wildly
 - Proof-reader's mark
 - Flat-bottomed boat
 - Incensed
 - For fear that
 - Held in
 - Rebuff
 - Haul
 - Appraise
 - Natural cavity
 - Wolftramite
 - Brazilian seaport
 - Secret agent

fashion inspired gifts

... for late shoppers



Rogers Lingerie

Now... the baby doll floats with a new young spirit Rogers own nylon tricot in a trillion pleats spilling out from magnificent cut lace Y's front and back. (It laces out fuller than a complete arc!) Matching sleep panties beneath. It's a joy to select a gift like this.

Pink Flamingo, Bachelor Blue, Aqua Frost, White, Sparkling Champagne, Black, Very Cherry. #1970, sizes S-M at \$2.98



Sapphire Saucy Santa

Marvelous little case of scarlet felt with a rhinestone-eyed smiling Santa outside. Inside, a box of marvelous Sapphire stockings! Hang it on her tree—she'll keep it forever!

Box of 3 pairs from 4.50



Toward you... direct from France
parfums Worth paris

You'll want to wear VERS TOI (Toward You) everywhere... because you'll love the young way it makes you feel. VERS TOI, the youthful perfume, in Latique presentation. Made, sealed, packaged in France.

Perfume: From \$20 to \$3.50* Toilet, Soap and Bath Oil also available.



BIG SPRING DAILY HERALD

SEC. B BIG SPRING, TEXAS, THURSDAY, DECEMBER 22, 1960 SEC. B



With Sheep, Too

The shepherd scene was considered one of the outstanding parts of the YMCA Christmas Pageant when it opened Tuesday. Final performances are slated at 7 p.m. and 8 p.m. tonight. Pictured on the back row are, from left, Harold Macomber, Gary Pickle, Sherman Smith and Coy Mittleman. The youngsters in front are Bobby Measler and Paul David Pickle. During the pageant, the scene also includes sheep. The pageant is staged at the south end of the Y building, 8th and Owens. There is no charge and residents can see the pageant from the warmth of their cars. The sheep and a cow are furnished by Jimmy Taylor to make the scenes more realistic. The colorful costuming was planned by Mrs. John Redesel and the make-up by Mrs. Herbert Johnson. The set and properties are work of Mrs. Terry Patterson and L. D. Chrane.

Ozark Girl Enlists N.Y. Cops To Find Her Missing Santa

By LAMAR FALKNER
NEW YORK (AP)—If there is a real Santa Claus, a little farm girl from the Arkansas Ozarks is out to find him. She has enlisted the aid of the New York City cops.

Coleta Burns, 11, has decided Santa either doesn't know where she lives, or he's dead. He hasn't called on her in a long time.

"Is there a real Santa in New York?" Coleta wrote in a letter to the Police Department. "You see, if there is a real Santa, he doesn't know where we live. I thought I would write a letter to him, and if he doesn't come this time, I know he must be dead."

"You know," she went on chat-

tily, "he hasn't been to our house for a long time. He must have been dead for a lot of years. If he is alive, I hope you will read this letter to him."

Then Coleta systematically listed the things her family needs from Santa.

"I hope you have some encyclopedias for my big brothers . . . I have two sisters. They are 13 years old. They are twins. They want a old piano so they can learn to play at church."

"I want a pair of cowboy boots and some blue jeans and a cowboy hat."

"I have a little brother and sister. . . They want a little car that they can ride in."

"I sure hope you are still alive, for I hope we can have Christmas at our house this year."

Coleta added that she lives "five miles southwest of Viola, Ark."

"If Santa is dead," she concluded, "will you write and tell me?"

Viola is a town of 156 persons, nestled in the foothills of the Ozarks. Wednesday night most of the town was in church singing Christmas carols. School Supt. Max Harber was there, and he said, sure, he knows Coleta.

"She's in the sixth grade," he said, "and she makes mostly A's and B's. Her family's not very well off, but they're good people, well thought of."

Postmaster Jim Feltz was at church, too, and he knows Coleta. "Her father is a farmer and a carpenter, and he works when he can," he said, "and I doubt if Santa has been there lately. Things haven't been so good here lately."

Fulton County, Ark., is a cattle-growing area with a little corn and hay on the side. Most of the

people depend on the rocky land for their living.

Coleta's letter was turned over to the Police Athletic League, which plays Santa to many New York kids, and deputy Police Commissioner Walter Arm answered the child's letter promptly.

"I am sure there is a real Santa," wrote Arm, "not only in New York but everywhere."

"However, he has been very busy and, somehow, he must have overlooked you and your brothers and sisters. . . ."

"I hope he gets to Viola by Christmas Day. If not, please be patient—he has a lot of territory to cover."

Hoover Reports U.S. Reds Plan Youth Group

WASHINGTON (AP)—FBI director J. Edgar Hoover said today that "at this very moment, the Communists are completing final arrangements for a conference to be held in Chicago beginning Dec. 31 . . . to formulate plans for a new national youth organization."

The Communist party, U.S.A., remains the largest subversive organization in the United States, Hoover said in a year-end report on FBI activities to Atty. Gen. William P. Rogers.

Hoover did not elaborate on his announcement about the Chicago meeting. But an FBI spokesman said there were indications the session would draw a substantial attendance of representatives from various areas of the Communist party. He declined to give other information on the meeting.

STRONGER TIES

Hoover said that under the leadership of Moscow-trained Gus Hall the U. S. Communist party has strengthened ties with the Soviet Union and with Communists in Cuba and elsewhere.

The new national youth organization, Hoover said, "will be clandestinely directed by party members."

"In addition," Hoover said, "the Communists hope to repeat the success which they achieved on the West Coast last May in spearheading mob demonstrations by college students and other young people against a committee of Congress."

CHARGE DENIED

This referred to a demonstration in San Francisco at a hearing of the House Committee on Un-American Activities. Hoover's claim that demonstrators were goaded by Communists, echoed by committee Chairman Francis E. Walter, D-Pa., was denied by a group of students involved.

Be an angel . . .
Get Her Gift At
Fisher's 1907 Gregg
1107 11th Pl.

Thomas TYPEWRITER and OFFICE SUPPLY
Has Royal Typewriters To Fit Any Color Scheme
Budget Priced

SHOP LATE!

...IT'S TOO LATE TO SHOP EARLY!

OPEN NIGHTS 'TIL 9:00

OPEN 364 DAYS A YEAR
We observe only one holiday each year—Christmas. We will be closed all day Sunday. Open Monday at 9 a.m. as usual.

6 Transistor Radio COMPLETE WITH CARRYING CASE AND EARPHONES
Low Price
14⁸⁸

CIGARETTES

Reg. Size Carton	King Size Carton
2⁵³	2⁶³

BASKETBALL GOAL & NET
Retail 5.98 **3.88**

Slate And Pegboard DESK
Complete with chalk, pegs, eraser and mallet
2³⁹ Retail Value 4.95

TABLE AND 2-CHAIR SET
Formica Table Top, Sturdy Tubular Aluminum
Retail 19.95
Our Price **9.88**

8-Pc. Wearever Anniversary Set
Retail 39.80 **19.95**

Peter Pan All Rubber SPRING HORSE
BY REMPEL
Retail 18.95 **11.88**

BLANKETS
Full 72"x84" Size
3⁸⁸

PHILCO RADIO
Retail 19.95 **14⁸⁸**

ALL KINDS AND SIZES SHOES
At Discount Prices

BA-BE DOLL SET
Retail 10.95 **7.25**

Fruit Cake
2-lb., 12-oz.
88^c

Electric Skillet
LID AND CONTROLS. IMMERSIBLE
8⁸⁸

BA-BE DOLL
Retail 3.95 **2⁷⁹**

EXPERT SERVICE WORK from coast-to-coast

Firestone WINTER SAFETY SERVICE

1. Pull all 4 wheels, inspect brake linings and drums.
2. Check grease seals, wheel cylinders for leakage.
3. Clean, inspect, repack front bearings.
4. Add brake fluid if necessary.
5. Adjust brakes on all four wheels for "full pedal" braking.

\$119 ALL FOR ONLY Any American Made Car

Firestone SPEEDWAY PROVED TIRES

1 DOWN 1 A WEEK

CAR SAFETY HEADQUARTERS

Wm. C. Martin Manager
507 E. 3rd
AM 4-5564

PEARL SALES Hit Million

SAN ANTONIO — The Pearl Beer Company has become the first brewery in the history of Texas to produce and sell 1,000,000 barrels of beer in a single year. The 1,000,000th barrel of Pearl Beer for 1960 was turned out December 20.

Otto A. Koehler, president and chairman of the board of the company, said the record is one toward which the company has been moving for several years.

Final tabulation of sales this year actually will exceed 1,000,000 barrels by a substantial margin. The 1,000,000th barrel was taken off the production line and delivered to company officials by master brewer, Harry Haegelin.

In the last decade, sales of Pearl Beer have more than doubled. Total sales for 1949 were 390,059 barrels. In 1959, sales for the year were 967,581 barrels. In the last three years, distribution of Pearl Beer has been extended into New Mexico, Louisiana and Arkansas.

GOOD USE FOR EXTRA CARDS

Get an extra Christmas Card?

An item on the military teletype might suggest a use for it. Doris Ridgeway, a little girl who lives on Route No. 1, Hardy, Va., is stricken hopelessly with bone cancer. Her wish this Christmas is for cards from over the country. The OIC for the weather station at Tinker AFB, Okla. was so impressed, that he paid for the expense of the relay on the wire in hopes people over the country would have a chance to respond to the wish.

FINAL MARKDOWNS JUST IN TIME FOR XMAS!

LYNN'S JEWELERS 50% to 75% On Famous Brand

DIAMONDS JEWELRY WATCHES SILVERWARE CHINA AND CRYSTAL

QUIT BUSINESS SALE! Save 25%-35%
LYNN'S JEWELERS UNBELIEVABLE DIAMOND Value

Reg. \$300.00 Ladies' KEEPSAKE 6-DIAMOND SET	\$149 ⁰⁰
Reg. \$106.00 Ladies' KEEPSAKE DIAMOND SET	\$69 ⁸⁸
Reg. \$150.00 32" MASONIC DIAMOND RING	\$33 ⁰⁰
Reg. \$275.00 Ladies' 15-Diamond Elgin WRIST WATCH	\$99 ⁰⁰

WATCHES Special

Reg. \$22.50 Ladies' Guaranteed Dress Wrist Watch	\$12 ⁸⁸	Reg. \$13.95 Value Cultured Pearl Flower Rings, Solid Gold	\$4 ⁰⁰
Reg. \$55.00 Ladies' BENRUS 17-J. Wrist Watches	\$27 ⁸⁸	Reg. \$29.95, Cultured Pearl Graduated Necklace 14K Gold Clasp	\$14 ⁸⁸
Reg. \$75.00 Men's HAMILTON 17-J. Wrist Watches	\$37 ⁵⁰	Reg. \$9.00 Value Sterling Silver Flower Petal TIE SETS	\$4 ⁸⁸
Reg. \$85.00 Ladies' Diamond, Gruca Wrist Watches	\$39 ⁸⁸	Reg. \$14.95, Genuine Diamond SOLID GOLD RINGS	\$5 ⁴⁹
Reg. \$29.95 7x35 Binocs., Center Focus, Coated Lens	\$12 ⁸⁸	Val. To \$12.00 Genuine Leather ENGLISH MOROCCO WALLETS	\$3 ⁸⁸
		Reg. \$18.00 Val., Sterling Silver TIE SET AND Silver Dollar MONEY CLIP	\$9 ⁸⁸

OPEN EVERY NIGHT TILL CHRISTMAS
Note — All Lay-Aways Must Be Picked Up By Sat.

LYNN'S JEWELERS
221 MAIN ST.

GIBSON'S DISCOUNT CENTER

DEAD END! MERCHANTS GUARANTEE SATISFACTION

3rd & JOHNSON FREE PARKING

WHERE EVERYBODY BUYS AT DISCOUNT PRICES

Open Sunday 1:00 to 6:00
Daily Store Hours
9:00 a.m. to 9:00 p.m.



MRS. WAYNE BASDEN
... plays Christmas music

Foreign Recipes Given Today By Mrs. Basden

Mrs. Wayne Basden, 615 Colgate, is the busy mother of four lively children; Wayne who is a six-year-old first grade student at Washington School; Mark Russell is five; Mary Margaret two and a half and Seth Paul is 11 months. The Basden family moved here three years ago from Austin after his graduation from Texas University. While in Austin Mrs. Basden worked at Seton Hospital in the pharmacy and admission office.

The family pet, a two year old Boxer, is named Bevo after the Texas U mascot.

Mrs. Basden's hometown is El Paso; her husband was born near Gull but moved to Pecos at an early age.

She is a member of the 1948 Hyperion Club and St. Thomas Altar Society. At the present time she is attending Howard County

Junior College where she plans to receive a business degree. These recipes were all taken from a cookbook belonging to her grandmother.

A French bread, which is made in France traditionally at Christmas, is offered today by Mrs. Basden. She suggests that unless you are preparing for a large number the recipe should be cut in half.

BRIOCHE
1 cake yeast
¼ cup warm water
4 cups flour
1 tsp. salt
1 tsp. sugar
6 slightly beaten eggs
1 cup butter
½ cup milk

Mix yeast with warm water and one cup flour. Cover and set aside to rise. Mix remaining dry ingredients. Work in butter with your fingers. Add eggs. Add milk very slowly. (The dough should be softer than bread dough). Mix in yeast combination, and let rise one to two hours. Punch down, and keep in cold place until ready to use. Then shape in loaves.

Place in two 6 by 10 loaf tins. Put in warm place until dough rises about one-third more in size.

Brush with beaten eggs. Bake in hot oven (450 degrees) until brown. This recipe will make two loaves.

ENGLISH EGGNOG
12 eggs
2½ cups sugar
1 qt. brandy
1 pt. rum
3 pts. cream
3 qts. milk
1 cup powdered sugar

Beat egg yolks with sugar. Add brandy and rum slowly so eggs will not coagulate. Beat in milk and two sprints of cream. Fold in six stiffly beaten egg whites.

Beat remaining egg whites very stiff; add powdered sugar and one pint cream.

Foat this egg white mixture on the eggnog. Chill over night before serving.

One of the favorites around the Basden house is a spice cookie which came from the Netherlands;

the Dutch klookje, is called Speculatius. The recipe is from an aged cookbook which was her grandmother's.

SPECULATIUS
1 cup butter
1 cup hard
2 cups brown sugar
¼ cup sour cream
¼ tsp. soda
4 tsp. cinnamon
¼ tsp. nutmeg
¼ tsp. cloves
4¼ cups sifted flour
¼ cup chopped nuts

Cream the butter, lard and sugar. Add sour cream alternately with the sifted dry ingredients. Stir in the nuts.

Knead the dough into rolls. Wrap the rolls in wax paper and chill them in the refrigerator overnight.

Roll the dough very thin and cut it into shapes.

Bake in moderate oven (375 degrees) for 10 to 15 minutes.

Rolls To Be Made Ahead Of Time

If you make these rolls ahead, reheat them in a hot oven.

LIGHT ROLLS
¼ cup boiling water
¼ cup butter
¼ cup sugar
1 pkge. active dry yeast
¼ cup warm water
1 egg (slightly beaten)
¾ cups sifted flour
1 tsp. salt

Pour boiling water over butter and sugar in bowl; cool to lukewarm.

Dissolve yeast in warm water and add with egg to lukewarm mixture. Stir in 3 cups of the flour and the salt; dough will be soft and moist.

Place in buttered bowl; cover tightly; refrigerate overnight.

Flour pastry cloth or board with remaining ¼ cup flour; turn out dough and knead lightly.

Cut dough into quarters; shape 6 balls out of each quarter; in greased pan (13 by 9 by 2 inches). Let rise until double in bulk (about 1 hour).

Bake in hot (425 degrees) oven 12 to 15 minutes or until browned. Serve hot.

Fill 'Em Up With A Chinese Supper

Cook the main dish just before serving.

CHICKEN CHOW MEIN
4 tbsps. peanut oil
2 cups thin strips onion
2½ cups celery crescents
1½ cups fat-free chicken stock
2 cups diced cooked chicken
1 can (1 lb.) bean sprouts (well-drained)
1 can (5¼ oz.) diced bamboo shoots (drained)
3 tbsps. cornstarch
3 tbsps. soy sauce
1 or 2 cans (3 ounces each) chow mein noodles

Toss onion and celery in hot oil in 12-inch skillet. Add 1½ cups of the stock; cover and cook gently about 10 minutes.

Add chicken, bean sprouts and bamboo shoots.

Add cornstarch and soy sauce mixed with remaining ¼ cup chicken stock until smooth; stir constantly until thickened. (If thicker than you like add 2 to 4 tbsps. bean sprout liquid.)

Top with noodles. Makes 4 servings.

A Roly-Poly By Any Name Is Very Good

By CECILY BROWNSTONE
Associated Press Food Editor

My, how the Roly-Poly has been given the run-around.

This famous pudding, the heritage of all good little English girls and boys, is made traditionally from paste spread with fruit or jam. It's boiled, steamed or baked.

A recipe for the dessert was given by Miss Leslie, the famous American cook-book writer of the 1850's. But how sedate Miss Leslie was! She changed Roly-Poly's delicious name to "Rolled Pudding." It's hard to forgive her. Fanny Farmer did no better. When her cook book first appeared in the 1890's she called Roly-Poly "Steamed Apple Pudding." But then this is no surprise—Miss Farmer was very serious and slightly austere.

It wasn't until the 1930's and '40's that we find Roly-Poly's recipe given under its delightful, rightful name. But alas, these days Roly-Poly's recipe and name have gone out of fashion. Standard modern cook books neglect it woefully.

Let's reinstate the Roly-Poly. Children will love its sweet and hearty qualities as well as its name. Here's a variation on the basic

recipe. We found it fine to serve our family on a night when we were feeding them chowder and salad.

APPLYMINCE ROLY-POLY
2 cups biscuit mix
¼ cup sugar
1 egg (slightly beaten)
1-3 cup (about) milk
1 can (about 1 lb) or 2 cups apple sauce
1 1-3 cups drained mince meat
Spicy Syrup

Stir together biscuit mix and sugar; add egg and enough milk to make a stiff dough.

Roll out to 12 by 14 inches. Heat apple sauce and thick mince meat; spread over dough. Beginning at narrow side, roll up; cut into 12 crosswise slices; place on greased baking pan (13 by 9 by 2 inches).

Bake in hot (400 degrees) oven 10 minutes. Pour hot Spicy Syrup over rolls and continue baking 20 minutes. Serve hot.

Spicy Syrup: Mix together 1-3 cup sugar, 1 tablespoon cornstarch, a dash of salt, ¼ teaspoon cinnamon and ¼ teaspoon nutmeg; gradually add 2 cups apple juice, stirring until smooth after each addition; cook and stir constantly until thickened.

Stir in 2 tablespoons margarine until melted.

Teen-Age Party Treat Is Peanut Popcorn Brittle

They can make and eat it!
PEANUT POPCORN BRITTLE
1½ cups sugar
¼ cup dark corn syrup
¼ cup water
¼ tsp. salt
4 cups prepared popcorn
1 cup shelled peanuts
2 tbsps. butter
1 tsp. vanilla

Stir sugar, syrup, water and salt together in a heavy saucepan over low heat until sugar is dissolved. Cook over moderate heat to hard-crack stage (300 degrees) or until a teaspoon of syrup forms hard brittle threads when dropped into a cup of ice-cold water.

Meanwhile spread popcorn and peanuts in a well-greased shallow pan and heat in a moderate (350 degrees) oven 10 minutes.

Remove syrup from heat. Quickly stir in butter and vanilla until brittle melts.

Pour over popcorn and peanuts; toss. Spread thin; cool.

Break into pieces. Makes 1¼ pounds.

Baked Yams Add To Roast, Turkey, Ham

By CECILY BROWNSTONE
Associated Press Food Editor

How do you like yams prepared when they are served with roast turkey or ham?

Baked in their skins? Then here's a reminder from the second edition of an unusual and delightful cook book, "North Carolina and Old Salem Cookery" by Elizabeth Hedgecock Sparks. Mrs. Sparks has a vast knowledge of North Carolina cookery and her book is full of fascinating regional food history and good recipes brought up to date. Of the yam she writes:

"Countless numbers of sweet 'aters' have been baked in the ashes of the fireplace. Many a child grew up to regard a sweet potato hot from the ashes as a treat before bedtime.

"Even after the wood range was added to the kitchen, many a woman continued to bake her potatoes in the ashes.

"When the potatoes were baked in the oven, the old folks baked them at a low temperature, about 250 degrees, for a long time. The process 'brings out the candy' in the potatoes. Before putting them in the oven, the potatoes were usually greased with pork drippings to make a softer skin.

"The hot potato should be gooped open and filled with a lump of butter. The butter melts and runs out the bottom of the potato and mixes with the other food in the plate but what did a little butter ever hurt?"

That "slow oven" advice is worth listening to.

When it comes to candied pared cooked yams, we find this old-time dish has a modern rival. A good many cooks like to substitute an orange topping for the tradi-

tional very sweet glaze.

ORANGE-FLAVORED YAMS
6 medium-sized yams (cooked, peeled and sliced)
1-3 cup firmly-packed light brown sugar
¼ cup butter (melted)
1 tbsps. grated orange rind
¼ cup orange juice
¼ cup chopped walnuts

Arrange yams in buttered 8-inch square baking dish. Mix the sugar, melted butter, grated orange rind, orange juice and walnuts; top yams with mixture. Bake in moderate (350 degrees) oven about 20 minutes or until potatoes are hot through. Makes 6 servings.

Sponge Cake Is A Delightful Dessert

THREE-FLAVOR SPONGE CAKE
1 pkg. (4 oz.) chocolate flavored pudding-pie filling mix
3 8-inch sponge-cake layers
Dark rum
¼ cup filberts
¼ cups confectioners sugar (sifted after measuring)
1 egg
1 tsp. vanilla

Make up mix according to package directions for pie filling. Sprinkle cake layers with rum and put together with filling.

Toast filberts in shallow pan in oven (375 degrees) 20 minutes; rub off as much of the brown skins as possible; rotary-grate fine. Mix nuts with sugar.

Beat egg until thick and ivory-colored; gradually stir into sugar mixture with vanilla. Allow to stand about 5 minutes to stiffen to spreading consistency.

Spread over top and sides of cake. Refrigerate until serving time.

Americans Cherish Continental Customs But Have Some Of Own

From Italy's Panettone to Norway's Julekake, every country in Europe seems to have its own special Christmas breads. But the interesting thing is that they're usually national variations on a single theme—in this case, both Panettone and Julekake are round, fruit-laden loaves—only the bread is a little different. In Germany, Stollen is the favorite form of this traditional Christmas food.

Americans cherish all of these customs, but in addition, we've invented some fruit breads of our own. Candied Fruit Bubble Ring, for instance, as glamorous a companion as coffee ever had—is actually a bread dough, and the bread is made in typically American, convenience, fashion—with hot roll mix.

Raisins and apricots are added to the dough for extra flavor and richness, and brilliant fruits make the topping—cherries, pineapple and other candied fruits, plus crunchy pecans.

A traditional bread in a very different vein is Denmark's famous Kringle. Richer and finer textured than the usual European specialty bread, it comes in almost as many variations as there are families in Denmark; some fill it with cream, others with jam or sugar. In one lovely version you might enjoy making yourself, the Kringle is filled with cottage cheese and raisins, touched with the distinctive flavor of mace. Hot roll mix makes it easy to do, and even a Danish cook would be pleased with the delectable result!

KRINGLE
Hot Roll Mix
¼ cup warm (not hot) water
¼ cup butter
2 tbsps. sugar
1 unbeat egg

1 tsp. vanilla
1 egg white, slightly beaten
2 tbsps. sugar

Soften yeast from hot roll mix in warm water. Empty dry mix into large bowl and cut in butter until particles are size of small peas. Add 2 tablespoon sugar, egg, vanilla and softened yeast. Mix well. Let rise in warm place (85 degrees to 90 degrees F.) until light and doubled in size, 30 to 60 minutes.

Divide dough in half. Roll half on floured surface to a 15 x 10-inch rectangle. Place on well-greased baking sheet. Spread with cottage cheese filling. Roll out remaining dough; place on top of filling. Pinch edges to seal. Brush with slightly beaten egg white.

Let rise in warm place until light and doubled in size, 30 to 45 minutes. Sprinkle with 2 table-spoons sugar.

Bake at 375 degrees for 20 to 25 minutes until golden brown. Cut into squares or diamonds.

COTTAGE CHEESE FILLING
1½ cup cottage cheese
1-3 cup sugar
2 tbsps. soft butter
¼ tsp. mace
1 egg yolk
¼ cup golden raisins

Combine cottage cheese, sugar, soft butter, mace, egg yolk and raisins; set aside.

CANDIED FRUIT BUBBLE RING
Hot Roll Mix
¼ cup warm (not hot) water
1 unbeat egg
1 cup white raisins
1-3 cup finely chopped dried apricots

¼ cup light corn syrup
¼ cup firmly packed brown syrup
1 tbs. butter

1 candied pineapple ring, cut up
4 whole red candied cherries
4 whole green candied cherries
¼ cup whole pecan halves
¼ cup mixed candied fruit
¼ cup melted butter
¼ cup sugar
1 tsp. cinnamon

Prepare richer dough as directed on hot roll mix recipe folder, adding raisins and apricots with the dry mix. Blend thoroughly; let rise.

Combine corn syrup, brown sugar and 1 tbs. butter in saucepan. Bring to a boil. Pour into a well-greased 6¼-cup (9-inch) ring mold.

Arrange on syrup pineapple ring, red cherries, green cherries, pecan halves, and mixed candied fruit.

Pinch off walnut sized pieces of dough (about 25). Dip in ¼ cup melted butter, then in mixture of sugar and cinnamon. Arrange in layers on top of syrup and candied fruits.

Let rise in warm place until light and doubled in size, 30 to 60 minutes. Bake at 350 degrees for 30 to 35 minutes, until golden brown.

Allow to cool in pan for 5 minutes, before inverting onto rack or serving dish. Makes one 9-inch ring.

For Tidy Cake

Want to keep your layer-cake spick and span while you're frosting the cake? Put four strips of paper over edges of plate so they cover it. After the cake is frosted, pull away the paper!

The pause that refreshes

Bottled under authority of The Coca-Cola Company by TEXAS COCA-COLA BOTTLING CO., BIG SPRING, TEXAS

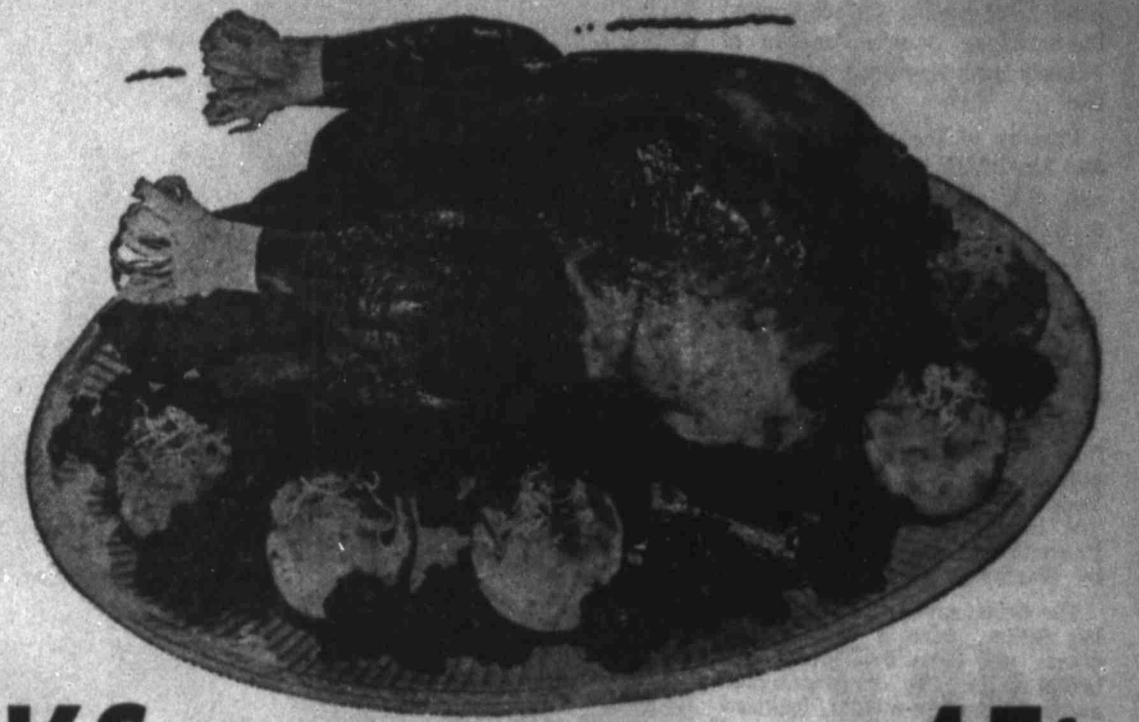


FURR'S Will Close
Sun., Dec. 25 and
Mon., Dec. 26
Also Sat., Dec. 24
at 6:00 P.M.

IN EVERY LANGUAGE - Merry Christmas



We Can't Say It Enough So We've Said It In Many Languages "Merry Christmas" And May The Best Be Yours At This Happy Season



TURKEYS

TOP FROST GRADE A

TOMS 18 LBS. UP AVG. LB. **37¢**

HENS 12-14 LB. AVG. LB. **41¢**

HENS TOP FROST Young And Fat 3 1/2-4 1/2-Lb. Avg. **39¢**

HAMS

FARM PAC Half Or Whole, 14-16-Lb. Avg., Lb. **59¢**

DUCKS TOP FROST, LONG ISLAND, LB. **45¢**

OYSTERS FRESH 12-OZ. CAN. **69¢**

See Furr's Display of Geese, Ducks, Smoked Turkeys, Fruited Hams, Picnics and other items.

SEE OUR WONDERLAND OF TOYS!

Tractors
Reg. \$19.95

\$17.95

We Reserve The Right To Limit Quantities

DOLLS

Teen-Ager Suggested Retail \$12.95 **\$8.95**

BICYCLES

20-Inch Convertible Regular \$39.95 **\$33.95**

BICYCLES

26-Inch Convertible Regular \$49.95 **\$39.95**

HOBBY HORSE

Regular \$9.95 **\$6.95**

ELECTRIC TRAIN

Transformer Included Regular \$18.95 **\$13.98**

TRICYCLES

Deluxe, 10-Inch **\$9.95**
Deluxe, 12-Inch Box Price **\$10.95**

ICE CREAM Top Frost, Assorted Flavors, 1/2-Gallon **69¢**

Candied Cherries Liberty 8-Oz. Pkg. **49¢**

Cranberry SAUCE, Food Club No. 300 Can **2 For 33¢**

CHOC. CHIPS Baker's 12-Oz. Pkg. **39¢**

M'MALLOW CREME Kidd's 32-Oz. Jar **29¢**

Maraschino CHERRIES, Towie 10 1/2-Oz. Jar **29¢**

STUFFED OLIVES Towie 7 3/4-Oz. Jar **39¢**

ALUMINUM FOIL Alcoa 25-Ft. Roll **33¢**

GREEN BEANS Food Club, Whole No. 303 Can **25¢**

SWEET PICKLES Eina 22-Oz. Jar **39¢**

STRAWBERRY PRESERVES, Food Club, 12-Oz. **29¢**

Pork Roast BOSTON BUTT, Lb. **49¢**

SHRIMP JUMBO Medium Lb. **89¢**

OYSTERS MYCO 8-Oz. Can ... **39¢**

APRICOTS GAYLORD, IN HEAVY SYRUP No. 2 1/2 Can ... **25¢**

ASPARAGUS FOOD CLUB, ALL GREEN, CUT, SPEARS 300 Can ... **25¢**

It's Fresh Frozen Foods For Convenience!

ROLLS

TOP FROST, FRESH FROZEN, 24-COUNT PKG. **19¢**

PIES BANQUET, FRESH FROZEN Pumpkin Or Mince Family Size **3 For \$1.00**

BROCCOLI TOP FROST, FRESH FROZEN 10-Oz. Pkg. **19¢**

BRUSSEL SPROUTS TOP FROST, FRESH FROZEN, 10-Oz. Pkg. **25¢**

LIMA BEANS TOP FROST, FRESH FROZEN, BABY 10-Oz. Pkg. . **19¢**

FOR CHRISTMAS- SAMSONITE CHAIRS AND TABLES

Your Choice Only **4.98** Each

SUGAR POWDERED OR BROWN 1-Lb. Pkg. **2 For 25¢**

WHIPPING CREAM ALL BRANDS 1/2-Pt. **32¢**

DRESSING SOUR CREAM, FOREMOST 8-Oz. Pkg. **25¢**

DIP & CHIP FOREMOST 8-Oz. Pkg. **25¢**

APPLES Washington Winesap, Lb. **19¢**

LEAF LETTUCE Fresh Bunch **10¢**

TANGERINES Florida Thin Skin, Lb. **19¢**



COCONUT PUMPKIN EGGS

BAKER'S ANGEL FLAKE 7-OZ. PKG. **25¢**

KUNER'S NO. 300 CAN. **10¢**

FURR'S GRADE A LARGE, DOZ. **59¢**

ELLIS, FRESH SHELLED 12-OZ. PKG. **89¢**

PARK ROW PITTED, 8-OZ. PACKAGE. **19¢**

PECANS

DATES

Celery CALIF. PASCAL FRESH, CRISP, STALK **7 1/2¢**

Oranges TEXAS SWEET LB. **9¢**

Walnuts ENGLISH BABY 1-LB. CELLO BAG **39¢**



Miss Bearden Is Bride In Twin Ring Ceremony

A double ring ceremony performed Wednesday evening at the Adventist Methodist Church added to the wedding luncheon banquet of Mrs. Bearden and Raymond Walton of Gal.

Parents of the couple are Mr. and Mrs. J. C. Bearden of Ardmore and Mr. and Mrs. Paul Walton of Gal.

The Rev. W. R. Watson, pastor of the church, read the vows at the couple stood before an altar decorated with two cascading Santa roses married the family pair.

Traditional wedding music was furnished by Marvin Buckmaster, pianist who also sang "I Love You Truly" and "A Wild Rose." The bride was accompanied by Shirley Williams.

The bride gives in marriage to her father with a white length dress of Chantilly lace over heretofore. The groom dressed and made by her mother designed a fitted bodice with long tapered sleeves and a scooped neckline. The waist length and of imported English linen was attached to a beaded train. The traditional bride's bouquet was carried and with tiny bouquets on the bride's dress. An exceptionally nice something new was her wedding veil which was borrowed and she wore a gather of blue.

Mrs. Robert Taughts of Fortson was matron of honor and Wilma Keister of Midland, cousin of the bride, was maid of honor. "Four dresses were of the blue tulle organza over blue tulle. They were coronas of white carnations.

Dennis Decker, brother of the bridegroom, was best man and Jerry Anderson of Gal. was groomsmen. Ushers were David Bearden, brother of the bride, and Harold Decker, brother of the bridegroom.

For a wedding trip to San Antonio the bride chose a blue wool tailored suit and accessories of black. The couple will make their home in Gal.

The bride is a graduate of South High School and attended Howard County Junior College.

The bridegroom is a graduate of Borlen High School and now owns and operates the Gulf Station in Gal.

RECEPTION
Fellowship Hall of the church was the setting of the reception immediately following the ceremony.

Guests were greeted by the

AAUW Has Buffet Supper

The American Association of University Women met in the parlor of the Student Union Building of Howard County Junior College Tuesday evening.

Mrs. Bruce Dunn was hostess for the festive yuletide buffet supper. Each member brought a favorite dish and shared her recipe with the group.

The theme for the year is "Expanding Community Horizons." A special invitation is extended to all eligible women of Big Spring who would like to take part in this worthwhile project under the direction of Dr. Paul Young. The group has adopted Ward 2 of the state hospital.

Two transfer members were welcomed into the group. Mrs. Paul Bessert and Ann Ruffill, along with three new members Mrs. Homer House, Mrs. Arnold Oates and Gladys Bursham.

Anyone wishing to secure information about the AAUW is asked to contact Mrs. C. R. Humphrey.



Tells Favorite Diet

Teal Ames, star of CBS' "The Edge of Night" TV series, tells Lydia Lane about the diet that she intends to stay an indelible.



Mrs. Raymond Walton

bride couple and their parents. The bride's table was covered with ice blue under a white lace cloth. The centerpiece was the bride's bouquet. A three tiered wedding cake holding a miniature bride and groom also decorated the table.

Members of the house party

Brighten Home
You'll want your home, of course, to reflect the glorious spirit of Christmas this year. And in addition to a tree hung with sparkling lights and other colorful decorations, why not take advantage of the many home furnishings designed to help you say "Merry Christmas" to your family and guests? Look for bright tablecloths, cheery couch covers, Terry cloth towels and cotton throw rugs.

in holly red and green or decorated with holiday motifs. If you like to sew, buy these items and add your own gay accents.

Cheese Rounds
Better make plenty of these tasty appetizers for they make a savory accompaniment for your favorite holiday drinks. Toast 2 inch rounds of white bread on one side in the oven. Spread American blue cheese with equal parts of butter and spread on untoasted bread rounds. Top each with a slice of stuffed olive. Toast in hot oven just until cheese begins to sizzle.

Five Generations

At a recent gathering of the Fortune and Madewell families in Denton, five generations were present in the home of Mrs. Ed Madewell. Seated is W. D. Fortune, her father, holding one-year-old Raymond Madewell Jr. Standing are Mrs. Madewell, her son, W. R. Madewell, 900 Bell, and his son, Spec. K. Raymond Madewell, who is stationed in Fort Carson, Colo.



HOLLYWOOD BEAUTY

Health Food Given Credit By Actress

By LYDIA LANE
NEW YORK — When I visited with Teal Ames in her dressing room at CBS-TV, she was well-prepared for an interview. "Would you like to know how I lost 26 pounds?" she asked.

"Of course I would. Your figure is so slender and you look so healthy that your diet must have agreed with you," I replied.

"I feel so much better than I did, and I have more energy. When you do a live TV show five times a week, you really need energy. For five years I've played Sara Lane Kerr in 'The Edge of Night,' and during that time I gained five pounds a year. I'm five-three and 125 pounds was too much for me to weigh, so I decided to find a diet that I would enjoy while losing."

"I talked to a lot of people because I hate to start something that I'm not going to finish. I couldn't hit upon a reducing plan that appealed to me. Then one night I went to a lecture about the rebuilding of body tissue with natural foods. As I listened I realized I had found something I could follow with enthusiasm.

"On this diet there is no need to be hungry, because you can eat all you want of special foods—such as whole-grain flour, whole-grain rice and natural sugar. It is

Angel Pins Given Guests At Coffee

Angel pins were given to guests at the Christmas coffee given Wednesday morning at the Downtown Lanes Auxiliary.

Business, Mrs. Louis Garbner, Mrs. Ivory Frazier and Mrs. Carl Coleman entertained at the Christmas coffee.

Green leaves made a background for a dinner given last evening at the dining room of the Downtown Lanes Auxiliary.

Mrs. Cecil Bridges of Houston, wife of the district governor of Lanes Club, and Mrs. Patsy Cook presided at the coffee table. A special guest was Mrs. Albert Frazier of St. Louis, Mo., a former resident of Big Spring.

Tomato Sauce Peps Up Fish

Fish fillets are really peped up when covered with tomato sauce.
DIFFERENT FISH FILLETS:
4 small fish fillets 1 1/2 to 2 lb.

- 2 large butter
- 1 medium-sized onion, finely chopped
- 1/2 green pepper, finely chopped
- 1 tsp. fine dry bread crumbs
- 1/2 tsp. salt
- 1/2 tsp. pepper
- 1/2 cup paprika
- Tomato sauce

Cook onion and pepper lightly in butter. Stir in tomato sauce, pepper and paprika. Spread on fillets. Bake over and secure with four pins.

Place in shallow pan (about 20 by 4 by 1 1/2 inches). Pour tomato sauce over fish. Bake in moderate oven 20 to 30 minutes. Makes 4 servings.

For the tomato sauce heat a can about 1 pound of tomatoes (the sort that has tomato paste added), 1/2 teaspoon salt, pepper to taste and 1 teaspoon sugar. Force through strainer.

GS Troop Packs, Gives Cheer Boxes

Instead of a gift exchange at their Wednesday afternoon meeting, G. S. Troop 255 brought fruits and candy to pack into cheer boxes.

The group met at the home of Mrs. Ernest Miller where they assembled three such boxes Wednesday evening they were carried to homes of about-its where they were entertained and left the food.

The six were accompanied by Mrs. Miller

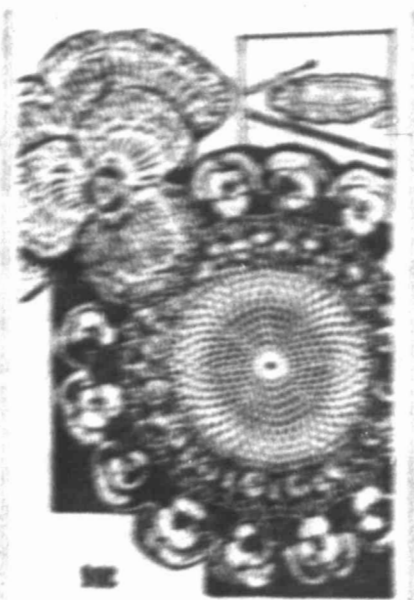
Exotic

An exotic combination of fabrics lends an especially festive air to the holiday party dress of black nylon lace lined with the opaque warmth of gold tulle. It has shimmering straps and black velvet trim with a gold flower at the waist.



Have Yule Dinner

Employees and families of the Big Spring Locker Company were honored Tuesday evening at the annual Christmas dinner of the company. Gifts were exchanged from a gaily decorated Christmas tree.



Pansy Doily

This pansy doily pictured today is simple to make. A wreath of green leaves surrounds a simple white center pattern. For 20 cents the instructions for the making.

Send 25 cents in coin for this pattern to MARTHA MADSON, Big Spring, Herald, Box 1000, New York, N. Y. Add 30 cents for each pattern for first-class mailing.

COURSE SLATED AT WEBB AFB FOR GRAY LADIES

Slated for Jan. 21 and 22 is a class for Red Cross Gray Ladies to be given at Webb AFB Hospital with the same to be announced. The course is open to wives for all military personnel.

Free nursery service will be provided for children of enrollees in the class. It was stated, instructors will be members of the American Red Cross and the professional staff at the base hospital.

Following completion of the course and 30 hours of work at the hospital, volunteers will be capped at a ceremony.

Those wishing to enroll or desiring further information may call Mrs. James Smith, AM 3-3310 or Mrs. Glenn Perry, AM 3-3486.

Spicy Make-Up Is Wise For Holidays

"Sugar and spice" are the beauty seasonings that make everything sparkle with the new fashions. Sparkling lipstick shades give a costume-perfect touch.

A new hot pink with sparks of marve is delicious with violets, blues and pinky reds. A racy young red, with a dash of spice, is a complement to browns, greens and to gold.

In eye makeup, two shadows are suggested, the one a basic tone for depth, and the other an accent. This is the complete eye makeup that is beautiful with the pink shades. Use gray shadow with accent of violet or blue, blue or black mascara; blue or violet eye-liner pencil; and liquid eye liner in clear blue or violet, or frosted blue or violet.

Eye makeup for wear with the red tone includes brown shadow with accent of green or turquoise, green or brown mascara; green or brown eye-liner pencil; liquid eye liner in green, turquoise, brown or frosted green, frosted turquoise.

Jackie's Designer Says Fashion Will Be Swept By 'Kennedy Look'

By JIM WELLES
NEW YORK (AP)—Clay Casini says he has achieved a new status with the appointment as the next first lady's chief designer. But it is his way of being so different — especially among American women.

"The Jackie Kennedy look will sweep the country," he predicts. "It will develop in France and Italy. She will be in the most seen, the most talked about, the most photographed woman in the world."

"For the first time in history all the elements are present to make a tremendous impact on the world's eye. Jackie's look is the best first lady's look since the 1950s. What we've had in the past, they've been very fine ladies but missing were the fashion world."

Casini, 47, designer, artist and manufacturer, is leaving modest about his new eminence. He says the chance to "glorify the American look that has never

been determined to survive except in the most sophisticated intelligence about the world."

There is no doubt that Mrs. Kennedy has a great customer of the Paris couture and especially in the great-couture designer Givency. Through the fashion world, she has a long list of other designers who will select from Givency's creations.

Casini's appointment as the next first lady's chief designer is expected to be announced in the next few days.

Baptist WMS, Brotherhood Have Joint Meeting

A joint meeting of the Baptist Women's Missionary Society and the Brotherhood was held Tuesday evening.

Worship at the meeting was by Pastor W. H. W. Eason, who described the life in heaven and has experience in a spiritual concentration camp.

Chapman Jim Leath offered the opening prayer. Joe Dunn discussed the group with prayer.

Mrs. A. V. Payne read the mission prayer list, placing crosses in front of the locations of workers.

Raspberry Prunes For Family Dinner

Adapted from a French recipe: RASPBERRY PRUNES
1 lb. prunes
1 cup red water
1 cup 1/2 cup frozen raspberry-juice beverage
Sugar
Place prunes in hot water. Place prunes in bowl with hot water. Cover and refrigerate 12 hours.
Add thawed undiluted raspberry-juice beverage mix well.
Refrigerate 12 hours. Nice topped with whipped cream.

Be an angel . . .

Get Her Gift At
Fisher's
1307 11th St. Ft.

Watch Repair
25 Years' Experience
J. T. GRANHAM
First Door North
State National Bank
PROMPT SERVICE

Prescriptions by

900 MAIN
Big Spring, Texas
DELIVERY AM 4:30 PM

GOUND'S
DELIVERY AT NO EXTRA CHARGE

HUNTING SEASON CLOSES DEC. 24 GIFT SHOP NOW!

Timex Watches Plus Tax 6.95
Boxed Christmas Cards 1/2 Price

6 TRANSISTOR Radio Earphones Plus Tax 19.95
TYPE 42 Carrying Case

Polaroid Film 1.79
MERRY CHRISTMAS TO YOU FROM FOSTER DRUG CLOSED CHRISTMAS DAY

All Popular Brands Reg. Ctn. King Size Ctn.
Cigarettes 2.55 2.65
Complete Stock Imported Colognes And Perfumes.
Gifts For Every Member Of The Family.

1-Day Photo Finishing . . . All Prints Made Jumbo Size . . . 5-Day Service On Color Prints

OPEN UNTIL 9:00
FOSTER DRUG

WE GIVE \$48 GREEN STAMPS
Corner Second And Runnels AM 4-7969

Reins 12.95

Reins 10.95

Reins 10.95

Reins 10.95

New Spring Patents

These are the shoes she'd choose for herself . . .

fashion-right, beautifully detailed, perfect for every occasion in the busy holiday season.

She loves them for their smartness, their gentle fit . . . she'll love you for choosing such a thoughtful gift.

Velvet step
Spectrum 12.95 White, Grey and Black Trim

J & K SHOE STORE
214 Runnels

BUTTERBALL TURKEYS

NEWSOMS
Wish Each Of You A MERRY CHRISTMAS
Both Newsom's Stores Will Be Closed On Christmas Day
Open Monday

HAM

for Christmas!

ARMOUR'S STAR, FULLY COOKED, READY TO EAT SHORT SHANK 1/2 OR WHOLE, LB. **59c**

ARMOUR'S STAR SMOKED 14 TO 16 LB. AVG. 1/2 OR WHOLE, LB. **49c**

ARMOUR'S STAR, BAKED FRUIT DECORATED AND GLAZED, 1/2 OR WHOLE 8 TO 16 LB. AVG., LB. **79c**

FRESH 2 1/2 TO 3-LB. POUND **29c**

FRESH, BAKERS 5 TO 7-LB. AVG. POUND **49c**

Toms 18-LB. TO 22-LB. AVERAGE, SWIFT'S PREMIUM BUTTERBALL LB. **45c**

Hens 12-LB. TO 14-LB. AVERAGE, SWIFT'S BUTTERBALL LB. **49c**

ROAST FRESH PORK LB. **39c**



Cranberry Sauce KIMBELL 300 CAN **12 1/2c**

SWEET PICKLES HEINZ 24-OZ. JAR **49c** Mince Meat Kimbell 9-Oz. Pkg. **19c**

AGNES' HOMEMADE CHRISTMAS PIES ARE BAKED EACH DAY—HOWEVER—TO ASSURE YOUR CHRISTMAS PIE, PLACE YOUR ORDER EARLY—CALL DON—NOW!

AGNES' HOME MADE **PIES** FRUIT OR CREME **98c** EA. ORDER NOW!

BAKED HAMS HALF OR WHOLE, LB. **69c**
BAKED HAM SLICED, BONE-LESS, LB. **\$1.69**

GLADIOLA FLOUR 10-LB. BAG **79c**

Brach's Gift Boxes Of Chocolates — 27 Varieties
Snowdrift 3-LB. CAN **59c**

LET NEWSOM'S BAKE YOUR TURKEY AND SUPPLY ALL THE TRIMMINGS—CALL DON!

LONG ISLAND DUCK—GEESE—CANNED HAMS—QUAIL—OYSTERS

Christmas Candy
Select Your Sweets From Our Enormous Displays Of Christmas Goodies

4,000 Pounds To Choose From Everything From Horehound Candy To Swiss Chocolates

PEARS DEL MONTE 303 CAN **29c**
Peaches GOLD COAST SPICED 2 1/2 CAN **25c**
Pumpkin DEL MONTE 303 CAN **10c**
FRUIT COCKTAIL DEL MONTE 2 1/2 CAN **33c**



PINEAPPLE DIAMOND 303 CRUSHED **2:39c**
PEACHES HUNT'S 2 1/2 CAN **25c**
Green Beans DEL MONTE 303, CUT **19c**
MILK GANDY 1/2-GAL. CARTON **50c**

Newsom's Will Deliver Any Cooked Gift Ham On Christmas Eve or Before. Call Don Now and Place Your Order.

CORN DEL MONTE 303 CAN GOLDEN **19c**
MARSHMALLOWS KRAFT COLORED 10 1/2-OZ. PKG. **12 1/2c**

EGG NOG MIX GANDY QT. **59c**

NAPKINS KLEENEX PKG. **25c**
Tomato Juice HUNT'S 300 CAN **10c**

POWDERED SUGAR IMPERIAL 1-LB. BOX **12 1/2c**
ST'BERRY PRESERVES KRAFT 20-OZ. JAR **49c**
PEAS TRELIS 303 CAN **2:33c**
SWEET POTATOES KIMBELL NO. 3 CAN **25c**



COFFEE MARYLAND CLUB 1-LB. CAN **65c**
OLEO 2 DIAMOND 1-LB. CTNS. **29c**
FOIL REYNOLDS 25-FT. ROLL **31c**
Dates DROMEDARY 8-OZ. PKG. **25c**



Biscuits KIMBELL CAN **7:49c**

CATAWABA SPARKLING GRAPE JUICE STILL • SPARKLING • SPARKLING PINK

FROZEN FOOD BUYS
LIBBY'S Broccoli Spears, Blackeyes, Cauliflower, Okra, Lima, Brussel Sprouts, Strawberries, Morton's Pot Pies **4:10c**
LIBBY'S Pineapple, Potato Patties, English Peas, Broccoli, Corn, Mixed Vegetables, Green Beans, Peas And Carrots, Spinach, Turnip Greens, Potatoes, Kale, Wax Beans, Squash, Succotash, Grape Juice, Peach- **5:10c**

FROZEN ROLLS SUZANN'S 24-CT. PKG. **23c**
ENCHILADA DINNER ROSA RITA, 12-OZ. **39c**
FISH STICKS 8-OZ. PKG. **25c**

EXTRA GIBLETS YOUNGBLOOD FOR YOUR GRAVY 8-OZ. PKG. **19c**

LIBBY **RIPE Olives** 300 CADET **25c**

Grapes TOKAY 7 1/2 LB. **7c**
NAVEL ORANGES CALIFORNIA BLUE GOOSE LB. **19c**

SMUCKER'S CHRISTMAS ASSORTMENT \$4¹⁵ 12 OR MORE \$3.99

M'mallow CREME KRAFT, Pt. Jar **19c**
DAINTIES HERSEY Big 12-Oz. Pkg. **49c**

Oranges TEXAS 5-LB. BAG **33c**
WALNUTS DIAMOND, BABY EMERALD 1-LB. PKG. **39c**
Avocados LARGE EACH **10c**
POTATOES 10-LB. PLIO BAG **49c**

Cranberries FRESH 1-LB. PKG. **19c**

CAKE MIX BETTY CROCKER WHITE, YELLOW, CHOC. PKG. **25c**

MILK EAGLE BRAND LARGE CAN **33c**

Asparagus OUR DARLING 303 CAN **25c**

NEWSOMS

• 1910 GREGG OPEN NIGHTLY UNTIL 8 O'CLOCK • 501 W. 3rd

Blue Cheese Meat Loaf Is Delicious

Meat loaf is a perennial family favorite in most homes, and with good reason. It is a hearty main dish when served hot, and a delightful cold meat for sandwiches.

Always popular with young homemakers because it is so easy to make, and with more experienced cooks because it offers many opportunities for experimenting with different mixtures, meat loaf also is one of the most nourishing dishes on the family menu.

Here is a simple meat loaf recipe that has been given real zest through the addition of a cup of American blue cheese, whose pungent flavor will make this meat loaf a favorite for family meals and informal entertaining.

BLUE CHEESE MEAT LOAF
1 cup crumbled American blue cheese (about 5 ounces)
2 pounds ground beef
1 egg, slightly beaten
1 can (16) tomatoes, partly drained
1/2 tsp. pepper
1 tsp. Worcestershire sauce
1/2 cup crumbled American blue cheese and let stand about 10 minutes to bring it to room temperature. Mix well with remaining ingredients. Pack in loaf pan, approximately 9x12x3 inches. Bake in moderate oven, 350 degrees, about 1 hour. Serve either hot or cold.

Sportsmen Will Relish Blueburgers

Any winter sports group—whether it is comprised of teen-agers or members of the "Over 40 Club"—will welcome a hearty sandwich and hot beverage after vigorous outdoor exercises.

Juicy, hot hamburgers have long been a favorite with the sports crowd, but recently a new "wrinkle" has been added to this popular sandwich. Called a Blueburger because American blue cheese is put over the top of the patty, this variation of the plain hamburger probably will become a year-round favorite.

To make Blueburgers, simply form your usual good beef patties. Cook the patties on one side, then turn and brown them slightly on the other side. Then top each one with a generous spoonful of crumbled American blue cheese blended with an equal amount of butter.

Continue cooking just until cheese melts slightly. Serve promptly plain or on toasted, buttered buns.

French fries and a piping hot beverage will top off this special after-sports snack.

Blueburgers also can be made by crumbling the American blue cheese directly on the patties. Individual taste will determine whether you prefer the cheese and butter spread or the crumbled cheese over the burger.

Only a little of the sharply pungent blue cheese is needed to transform ordinary hamburgers into distinctive Blueburgers. The creamy blue-marbled cheese is relatively low in calories.

Spicy, Crisp Apple Dessert

Deliciously spicy fruit dessert.
MINCE-APPLE CRISP
4 cups sliced pared apples
1 cup moist mince
1/2 tsp. cinnamon
1/4 tsp. nutmeg
1-8 cup flour
1 cup quick or regular rolled oats
1/2 cup firmly-packed dark brown sugar
1-3 cup butter (melted)
Mix apples, mince and spices; turn into baking dish (8 by 8 by 2 inches). With a fork mix flour, oats, sugar and butter until crumbly; sprinkle over apple mixture.
Bake in moderate (375 degrees) oven 30 to 40 minutes or until topping is browned.
Serve hot as is or topped with vanilla ice cream. Makes 6 servings.

Recipes To Serve 50 Soon Available

Beginning with its February issue, the Methodist family magazine, Together, will introduce a new monthly feature entitled "Feeding Fifty."

This new feature will share recipes (including some with foreign or regional flavors), menus, original ways of carrying out themes, even innovations in kitchen or dining room planning, which have helped make church-group meals especially memorable.

All recipes will have been tested. For its first recipe, Together will present Chess Pie, an old English-type pie popular in the south. This particular recipe was developed by the director of food services at Emory University, Mrs. Helen Jenkins, and tested at a dinner served to the Methodist Men's Club of First Methodist Church, Decatur, Ga.

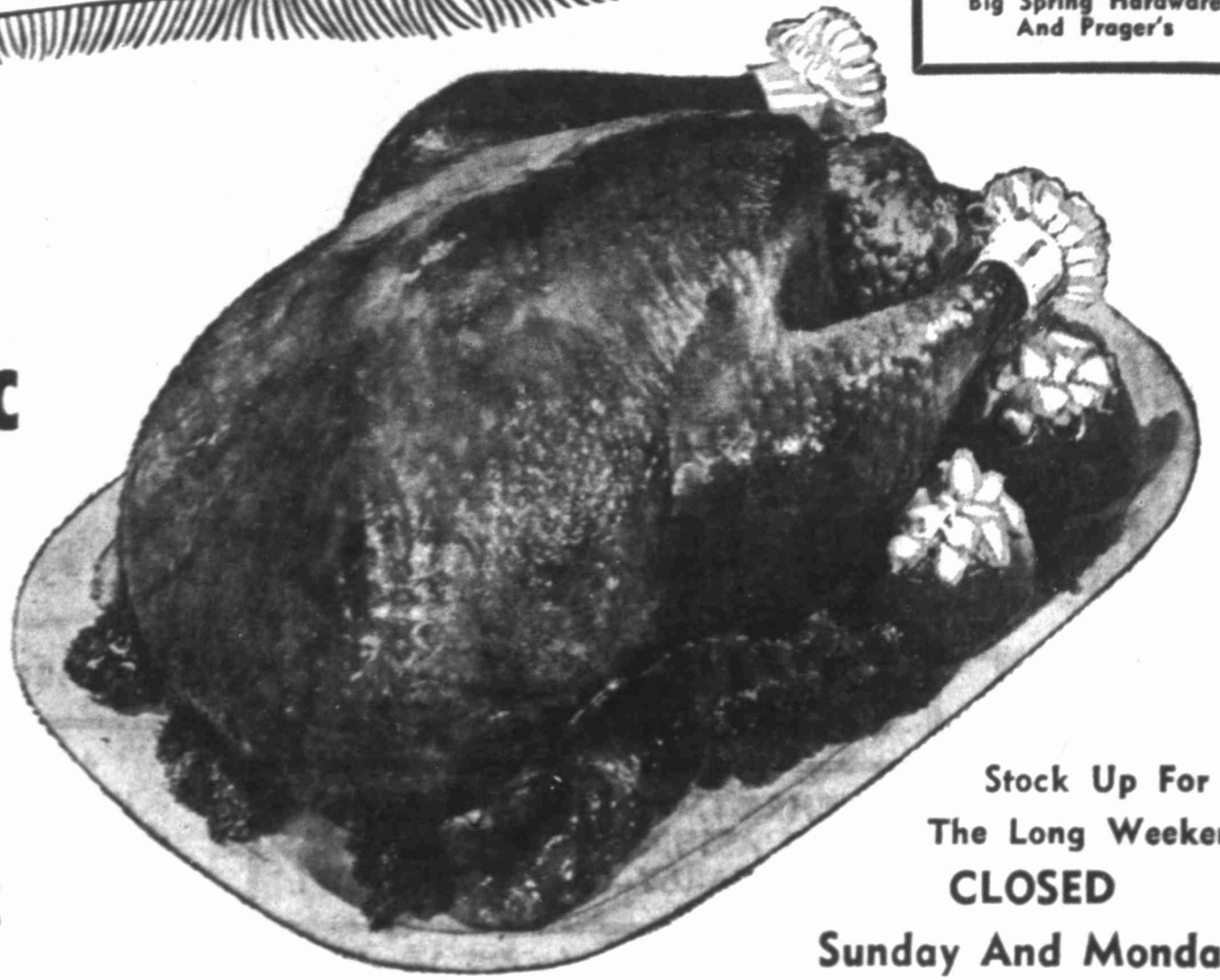
Velvet Sheath

The rich depth of black velvet shapes a classic sleeveless sheath for holiday partying. The velvet belt has rhinestone cocktail tips. Scoop neck is shallow.



CHRISTMAS TURKEYS

Toms 16-20-lb. Avg.	39^c	Hens 10-lbs. and up	45^c
Hams Armour Star Butt End, Lb.	53^c	Shank End, Lb.	49^c
Chicken Hens 2 1/2 to 3-lb. Avg., Lb.			29^c
Best Val Bacon 1-LB. PKG.			49^c



Stock Up For
The Long Weekend.
CLOSED
Sunday And Monday

FROZEN FOODS

Rolls Keith's 24-Count Pkg. **19^c**

Pies MORTON'S PUMPKIN FAMILY SIZE **3¹/₂ \$1**

Pies MORTON'S MINCE FAMILY SIZE **2¹/₂ \$1**

Cherries Northmoor Chocolate Covered 12-oz. Box	49^c
Peaches GOLD COAST SPICED NO. 2 1/2 CAN (Or Sun Spun)	25^c
Coffee MAXWELL HOUSE 10c OFF LABEL 1-LB. CAN (OR KIMBELL'S)	59^c
CRANBERRY SAUCE KIMBELL'S NO. 300 CAN	2 FOR 35^c

GANDY PRODUCTS
FOR ALL YOUR HOLIDAY DESSERTS

WHIPPING CREAM 1/2-Pint **32^c**

FRO-ZAN Assorted Flavors
1/2-Gal. Carton **39^c**

EGG NOG Get Plenty For The
Holidays, Quart **59^c**

Apple Sauce KIMBELL'S NO. 300 CAN	15^c
JELL-O ASSORTED FLAVORS BOX	3 FOR 25^c
Light Crust Meal 5-LB. BAG	29^c
Del Monte Tuna Regular Can	25^c
PUMPKIN LIBBY'S NO. 303 CAN	2 FOR 25^c

We Reserve The Right To Limit Quantities — No Sales To Dealers

Apples Washington Delicious Pound	19^c
Celery Fresh, Crisp, Flavorful STALK	9^c
Cranberries 1-Lb. Box	19^c

FRESH. MAKE YOUR OWN CRANBERRY SAUCE

Your Home Town Boys Offer You Two-Way Savings . . . Every Day
Low Prices Plus Scottie Savings Stamps!

2 Convenient Locations

HULL & PHILLIPS

FOOD STORES

9th & Scurry 611 Lamesa Hiway



With Every Purchase
**DOUBLE ON
WEDNESDAY**
With \$2.50 Purchase Or
More
Redeemable At
Big Spring Hardware
And Prager's

Hurry! Last 3 Days!

- Low, Low Prices! • Guaranteed Savings! • Courteous Salesmen!
- Easy One-Stop Shopping!

White's Big Money-Saving



CHRISTMAS DISCOUNT PRICES

Low Prices! High Quality! Christmas Toys!
Buy at White's NOW and SAVE!

Wanted-Dead or Alive!
444
Josh Randall's Lever Action Survival Holster

34 inches High
1344
"Duke Harry" Horse
32-inch horse stands 34 inches tall. "Pinto" body.

20" Doll in Sleeper-Feeder
498
She Drinks and Weets!

White's All-Metal Doll Walker
Discount Special **187**
12 1/2 x 22 1/2 x 8-inch size.

Texas Ranger Deluxe Wagon
699
35 x 16 1/2 x 4-inch steel bed. Lifetime bearings.

Brownie Starmite
Film, 2 batteries, 6 flash bulbs.
997

Built-in Flash!
with Bulbs and Batteries!

Lightweight Remington Portable Typewriter



Now Only! 7995
Plus Tax
With Carrying Case

Has standard modern keyboard. Margin sets, etc.

26-inch Racing Bicycle
2988
with Bell, Pump, Tool Bag!
Full Ball-bearing Construction.

\$1.25 Weekly!

For the Big Holiday Dinner! Ceramic Platter



Discount Price **598**

988 Electric Skillet



12-inch Square!
Probe control. 100% Immersible. With Metal Lid.

Guaranteed 3 Full Years!
Man's 17-Jewel **Benrus Watch**
2500*
17-jewel Movement.

498
Junior Chemistry Set
Safety-tested chemicals and apparatus with experiment instruction manual.

Special! "Texas Ranger" 10-inch Tricycle
744
12-inch Tricycle 8.44



Non-slip step plate. Bucket seat.

6-Piece Stainless Steel Steak Knife Set
439
Hollow-ground Blades.



2-pc. Carving Set **298**
Matching Knife and Fork.

988
Giant 30-cup Size Automatic Electric Percolator
1699
With No-drip Faucet.



Sunbeam Automatic Toaster
with Dial Selector
Reg. \$21.00
1697
Lifetime Sparkling Chrome Finish.



SPECIAL NOTICE:
PICK YOUR LAY-AWAYS UP EARLY,
We Will Close At 4:00 P.M. Saturday!

THE LOWEST PRICES EVER!
White Premium Deluxe Nylon Tires
Guaranteed 25,000 Miles against ALL road hazards!

TUBE-TYPE	BLACKWALL		WHITEWALL	
	Blackwall	Whitewall	Blackwall	Whitewall
6.70-15	14.77	17.77	16.77	19.77
7.10-15	16.77	19.77	18.77	21.77
7.60-15	18.77	21.77	20.77	23.77
8.00-15	20.77	23.77	22.77	25.77
7.50-14			16.77	19.77
8.00-14			18.77	21.77
8.50-14			20.77	23.77
9.00-14			22.77	25.77

6.70-15 Tube-Type Nylon Blackwall 1477*

Triple-Written Guarantee!

1. FREE 30-DAY REPLACEMENT GUARANTEE if tire fails due to road hazards or faulty workmanship and materials.
2. MILEAGE SERVICE GUARANTEE against all types of road hazards, based on miles of service rendered, at rate determined of time of purchase.
3. LIFETIME GUARANTEE against defects in workmanship and materials, prorated on tread wear.

*Plus tax with your old recyclable tire

Deluxe 9-Piece CLUB ALUMINUM SET



Including Lid!

3995
FREE SKILLET Makes Total Of 10 PIECES

1395
50-Piece Tableware Set
Full Service for 8 in Lifetime Stainless Steel.



Sunbeam Steam or Dry Iron
Completely Automatic. It Never Overheats.
Reg. \$17.95
1399



8-MM Brownie Kodak Movie Outfit
8488
Complete Outfit Easy to Operate!
Camera, projector, light bar, screen, reels and can.

18-qt. Capacity Westinghouse Electric Roaster



Oven-type Control!
Regular \$32.95
2399
With Self-Sealing Lid. Fully Insulated Sides.

Special! Electric Knife Sharpener-Can Opener
1599
Opens any size or shape of can.



Sunbeam Portable Mixer
Reduced.... Was \$21.95
1597
Choice of Colors!
Large Full-power, Full-size Beaters.



Tropic-Airo SEAT COVERS



1888
Cash or order
INSTALLED FREE!

- Vinyl Trim
- Nylon & Rayon
- Burn & Shock Resistant

White 6-volt "Super" Battery
Guaranteed 36 Months
1188 Exch.
Fits '40-'54 Chev., '40-'53 Ford and Mercury, '36-'55 Plymouth, and others.

12-volt "Super" Battery
Guaranteed 36 Months
'55-'60 Chev., '56-'60 Plymouth **1288** Exch.

White's Heavy Duty Muffler
Fits Most Models
689

WHITE'S
THE HOME OF GREATER VALUES
202-204 SCURRY — DIAL AM 4-5271
PLENTY FREE PARKING



BEST SURPRISE PACKAGE OF ALL... YOUR CHRISTMAS DINNER



All Piggly Wiggly customers enjoy
the finest quality at the lowest prices!

- DURKEE 14-OZ. PACKAGE COCONUT 49¢
- KRAFT'S MINIATURES 6 1/4-OZ. PACKAGE MARSHMALLOWS 15¢
- BAKER'S 12-OZ. PACKAGE CHOCOLATE CHIPS 39¢
- SCANDIA 12-OZ. PACKAGE POULTRY STUFFING 59¢



WE WILL BE
CLOSED
DEC. 25 AND DEC. 26
We Will Close At 6 p.m.
Saturday - Christmas Eve

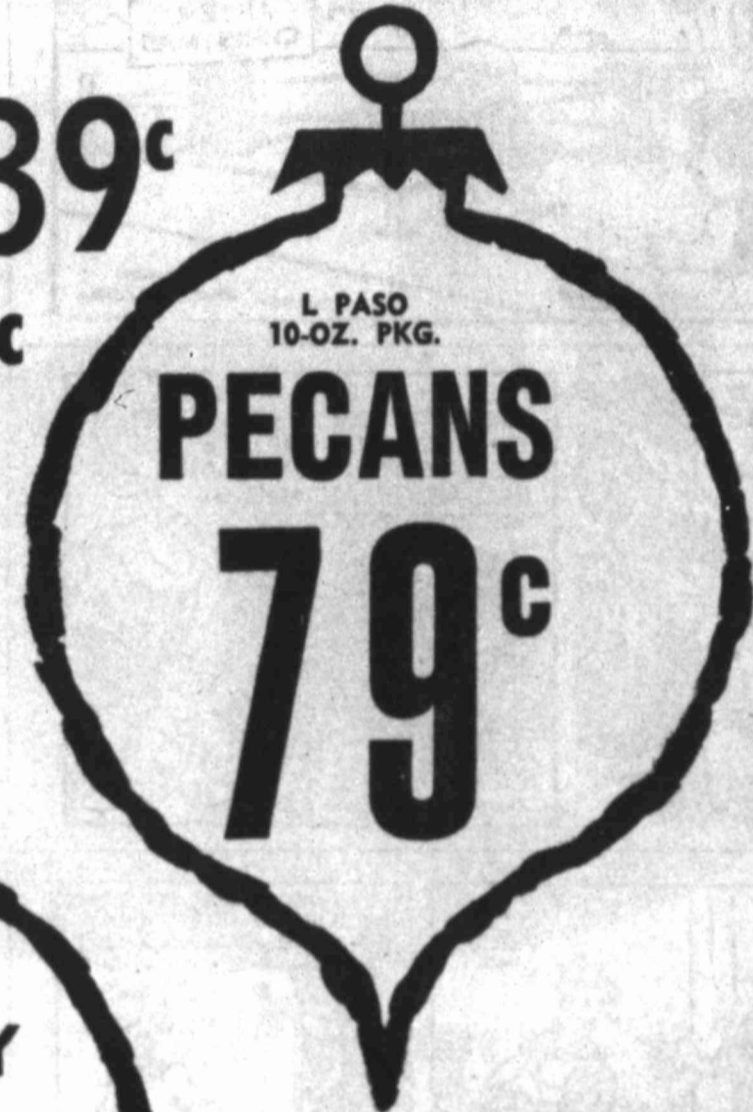
TURKEYS OYSTERS

HENS, PRATER'S OR CLARY'S FRESH FROSTED 12-14 LB. SIZE, LB. **45¢**
TOMS, PRATER'S OR CLARY'S FRESH FROSTED 18-LB. UP, LB. **39¢**

BOOTH'S FRESH MEDIUM 12-OZ. CAN **69¢**

- MRS. CHESHER'S, 8-OZ. PACKAGE CHICKEN LIVERS 49¢
- MRS. CHESHER'S, 8-OZ. PACKAGE CHICKEN GIZZARDS 19¢
- SWIFT'S PREMIUM, BONELESS, READY TO EAT HAM 5 LB. CAN \$3.98
3 LB. CAN \$2.79

- DECKER'S OR HORMEL'S DAIRY, 12 TO 16-LB. AVERAGE, 1/4 OR WHOLE, LB. HAMS 59¢
- FRESH PICNICS, LB. PORK ROAST 29¢
- KRAFT'S PHILADELPHIA, 8-OZ. PACKAGE CREAM CHEESE 37¢



- PINOCCHIO NO. 2 1/2 CAN PEACHES 4 For \$1.00
- SPEAS QT BOTTLE APPLE JUICE 25¢
- SILVER SAVER QT. JAR SWEET PICKLES 35¢
- FACS 49c SIZE CORN CHIPS 39¢
- FACS 49c SIZE POTATO CHIPS 39¢
- ALUMINUM FOIL HEAVY DUTY 25 FT. ROLL REYNOLDS 59¢
- LIBERTY 8-OZ. PACKAGE RED CHERRIES 49¢
- HUNT'S, 300 CAN FRUIT COCKTAIL 19¢

PUMPKIN AND MINCE, BANQUET, FAMILY SIZE

PIES FROZEN 3 FOR \$1.

- DEARBROOK 16-OZ. FROZEN BROCCOLI SPEARS 23¢
- PURE WHIPPED CREAM REDDY WIP 49¢
- DEARBROOK, 10 OZ., FROZEN GREEN PEAS 2 For 35¢
- SUZANNE, 24 CT. FROZEN ROLLS 19¢
- HILLS-O-HOME, 14 OZ., FROZEN CANDIED YAMS 2 For 49¢



- PUMPKIN MINCEMEAT** COCK-O-THE-WALK NO. 303 CAN 10¢
- EGGS** GRADE A MEDIUM, IDEAL, DOZ. 59¢
- MILK** EAGLE BRAND LARGE CAN 29¢
- CAPS** BOYS' & MEN'S VALUES TO 1.49 79¢
- FRUIT PEELS** LIBERTY 8 OZ. PACKAGE 35¢
- TOMATOES** HI-PLAINS 303 CAN 2 FOR 25¢

Get Christmas camera supplies at Piggly Wiggly

FILM BLACK & WHITE, KODAK 620, 127, 120 3 FOR \$1.

FLASH BULBS SYLVANIA PRESS 25 CARTON OF 12 **99¢**

KODAK, 620, 127, 120 KODACHROME 8 MM TYPE A & DAYLITE
COLOR FILM 89¢ MOVIE FILM \$1.89

KLEENEX Red or Green 200's Box 15¢

Piggly Wiggly Holiday Fruits and Nuts

CELERY GREEN PASCHALL THE DELIGHT OF CHRISTMAS DINNER MED. STALKS, EACH 7 1/2¢

AVOCADOS THE ARISTOCRATS OF SALADS LARGE SIZE EACH 7 1/2¢

CALIFORNIA, LARGE NAVELS, LB. ORANGES 19¢
YELLOW, LB. ONIONS 7 1/2¢

Shop Rite . . . Always Shop



VALUES IN THIS AD GOOD IN
BIG SPRING THURS., FRI.,
& SAT.



CIGARETTE LIGHTER
with package of Camel, Winston or Salem Cigarettes
79¢

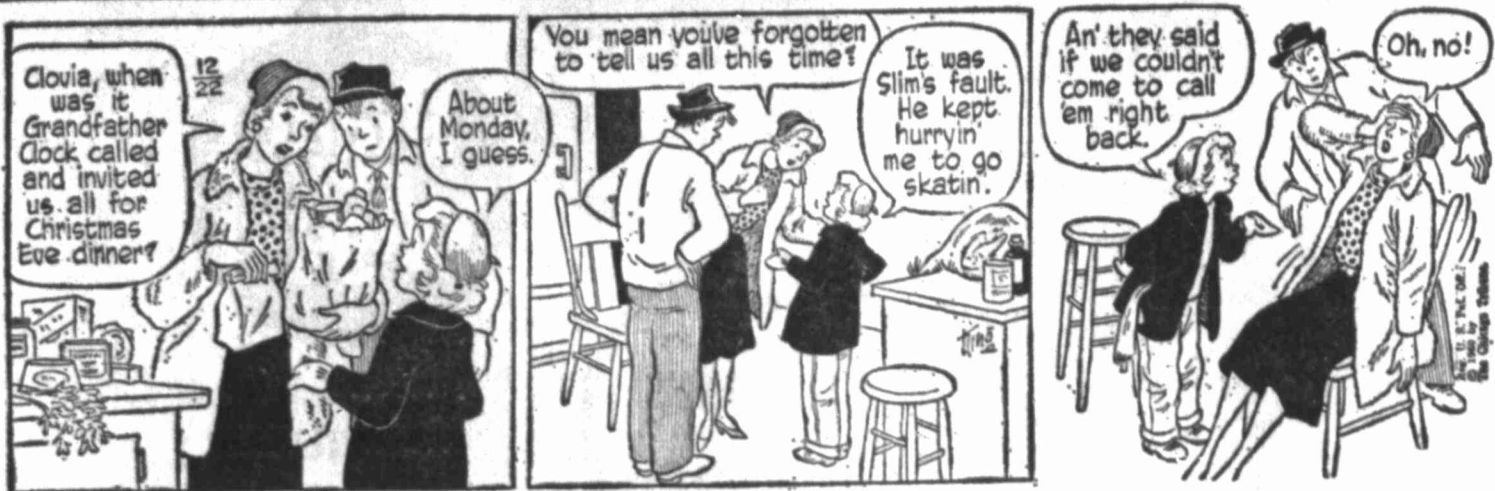


DOUBLE EVERY WEDNESDAY
WITH \$2.50 PURCHASE OR MORE

BUZ SAWYER



GASOLINE ALLEY



NANCY



L'IL ABNER



BLONDIE



ORPHAN ANNIE



SNUFFY SMITH



KERRY DRAKE



DONALD DUCK



PEANUTS



DICK TRACY



MARY WORTH



REX MORGAN



Christmas Special NEW EUREKA \$39.95 and UP While They Last. Also 100 Bargains in Late Model Pre-Owned Cleaners Taken In On Eureka Commercial Uprights. Eureka Is The Fastest Rug Cleaner Known. Buy On Time. G. BLAIN LUSE 1891 Lancaster 1 Blk. W. of Gregg Phone AM 4-2311

POGO



GRANDMA



TERRY



SMITTY



MOON MULLINS





Season's Best to you...from all of us at **SAFEWAY**

All Stores will close
Christmas Eve at 8 P.M.
and remain **CLOSED**
Sunday and Monday
Dec. 25th and 26th
Shop for the long weekend.

Dill Pickles Zippy Whol. 2 22-Oz. Jars 49¢
Sweet Pickles Zippy Midgets 12-Oz. Jar 39¢

Cherub Milk Evaporated — For holiday cooking. 3 14½-Oz. Cans 40¢
Jell Well Assorted flavor gelatin desserts. Serve a congealed salad. 3 3-Oz. Pkgs. 19¢
Edwards Coffee All Grinds. (2-Lb. Can ... \$1.18) 1-Lb. Can 59¢
Cane Sugar Powdered or Brown 1-Lb. Box 25¢

Forgotten Anyone?
The Perfect Gift...
Safeway Gift Certificate
Available in four denominations:
★ Ham ★ \$ 5.00
★ Turkey ★ \$10.00
Valid in the United States and Canada.

Egg Nog Mix Lucerne. Quart Carton 59¢
Ice Cream Snow Star. Ass'd Flavors. ½-Gal. Ctn. 59¢

Safeway Holiday Meats!

TURKEYS

U.S.D.A. Inspected for wholesomeness and Grade "A." Fancy, Broad Breast, Young and Tender. Ready-to-cook. Delicious with Ocean Spray Cranberry Sauce.

Toms 18 to 24 Lb. Avg. Lb. **39¢** | **Hens** 10-Lbs. and Up Lb. **45¢**

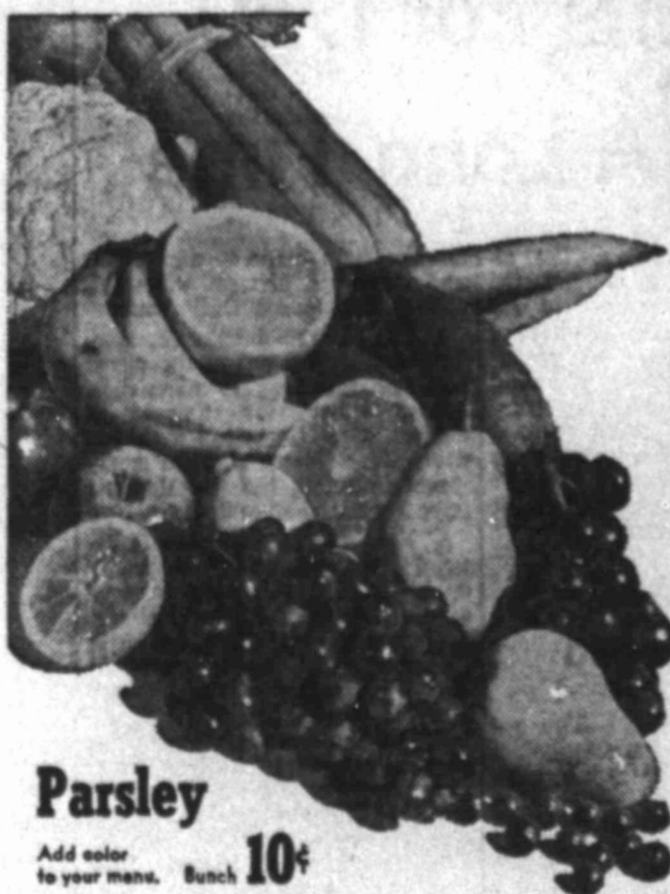


Chicken Hens U.S.D.A. Inspected for wholesomeness. Ready-to-cook. 3½ to 6-Lb. avg. Lb. **39¢** | **Canned Hams** Armour's Star. 6-Lb. Can **47¢** | **Oysters** Texas Gulf Coast. 12-Oz. Jar **79¢**
Young Ducklings Long Island. U.S.D.A. Inspected and Grade "A." Lb. **49¢** | **Hams** Smoked Shankles. Half or whole. 14-18-Lb. Avg. Lb. **53¢**

Bakery Feature of the Week!

French Bread 1-Lb. Loaf **25¢**
French Rolls 10½-Oz. Pkg. **22¢**
Stuffing Bread Mrs. Wright's. 1½-Lb. Loaf **25¢**
Christmas Cake Blain's. 20-Oz. Cake **59¢**
Christmas Cake Blain's. 2-Lb. Cake **\$1.49**

GRADE "A" EGGS Breakfast Gems, Grade "A" Quality, Medium Mixed. Doz. **55¢**
Large "A" Eggs Breakfast Gems, Grade "A" Quality, Large Stn. Doz. **59¢**
LARGE "AA" EGGS Cream O' The Crop, Grade "AA" Quality, Large Stn. Doz. **63¢**



Parsley Add color to your menu. Bunch **10¢**

Safeway Produce

CELERY 7 1/2¢
Pascal — Crisp, crunchy, and full of flavor. Perfect for salads, roasts or seasoning meats. Stalk

Winesap Apples Washington State Extra Fancy. Lb. **15¢**
Sunkist Oranges California's Finest Navel. Lb. **15¢**
Texas Yams Kib dried. Delicious. 2 Lb. **25¢**
Yellow Onions For turkey stuffing. Lb. **5¢**
Fresh Dates Waldorf unspiced. 1-Lb. Pkg. **39¢**
Cranberries Ocean Spray. 1-Lb. Pkg. **17¢**
Cocoanuts Fresh and flavorful. 2 For **25¢**
Mixed Nuts (New crop) Bulk. Lb. **53¢**

Holiday Specials!

Grape Juice Empress. Perfect for making punch. 24-Oz. Bottle **29¢**
Pumpkin Pie Bal-air Frozen. Large 8-inch. Easy to serve. 1½-Lb. Pie **45¢**
Fruit Cocktail Town House — Five delicious fruits ready mixed. 3 No. 303 Cans **69¢**
Del Monte Corn Cream Style Golden — Tasty and nutritious. 3 No. 303 Cans **37¢**
Del Monte Peas Early Garden — Full of fresh garden flavor. 2 No. 303 Cans **39¢**
Spiced Peaches Old Ivory — Make a delicious peach cobbler. 2 No. 2½ Cans **39¢**

Why Lug A Jug!

Pick a Pair of ½-Gal. Cartons from Safeway They cost no more.
★ No deposit ★ No bottle washing
★ Safe — no breakage ★ Easier to handle

Swansdown Cake Flour 2-Lb. Pkg. **39¢**
Safeway Mince Pie Bal-air frozen — Large 8" pie. 1½-Lb. Pie **49¢**
Baby Walnuts Diamond — Rich, nutty flavor. (New crop). 1-Lb. Pkg. **45¢**
Nabisco Crackers Chipper Potato. Perfect for snacks. 8½-Oz. Box **35¢**
Cheez-It Crackers Sunshina. Perfect for parties. 8½-Oz. Box **19¢**
Deviled Ham Underwood — Perfect for making hors d'oeuvres. 8½-Oz. Can **37¢**
Morton's Barbecue Chips Delicious with sandwiches. 3½-Oz. Pkg. **25¢**

Traditional Holiday Foods!

Cranberry Sauce Cape Cod Jellied. Delicious with turkey. 2 No. 300 Cans **35¢**
Pie Pumpkin American Beauty or Scott County. No. 303 Can **10¢**
Maraschino Cherries Empress Red. Jar 8-Oz. **29¢** | **Fresh Butter** Shady Lane — Fine quality. 1-Lb. Ctn. **69¢**
Mince Meat Little Cook — For making pies or cakes. 9-Oz. Pkg. **23¢** | **Libby Green Beans** Cut. 2 No. 303 Cans **39¢**
Chocolate Cherries Hutches Bunch. Box **49¢** | **Corn Meal** Kitchen Craft Enriched. White or Yellow. 5-Lb. Bag **35¢**
Pecan Halves Woody's. Make a delicious pecan pie. 4-Oz. Pkg. **39¢** | **Black Pepper** Trader Horn — Pure ground. 4-Oz. Can **39¢**
Pecan Halves or Pieces. Woody's. 1-Lb. Pkg. **\$1.39** | **Vanilla Extract** Westing Imitation. 8-Oz. Bottle **15¢**
Sno-White Salt Plain or Iodized. 2 26-Oz. Boxes **19¢** | **Mixers** Cragmont — Collins, Lemon-Lime, Sparkling Water and Ginger Ale. (Plus deposit.) 2 Quart Bottles **25¢**

Prices Effective Thurs., Fri. and Sat., Dec. 22, 23 and 24 in Big Spring. We Reserve the Right to Limit Quantities. No Sales to Dealers.

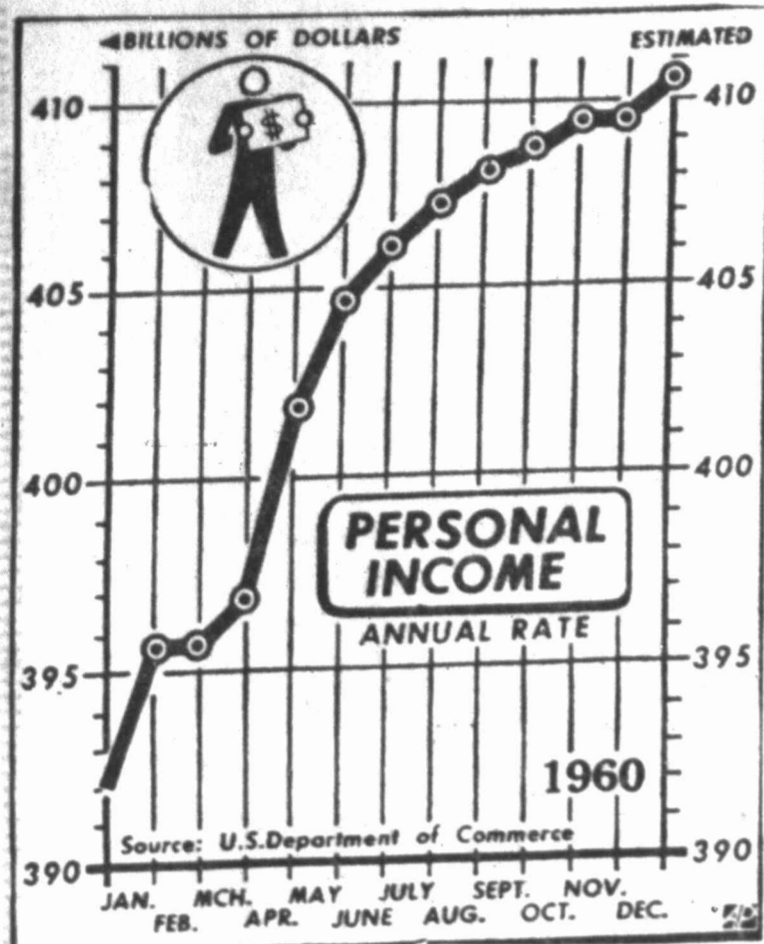
SAFEWAY GIVES VALUABLE GOLD BOND STAMPS
With every purchase of 10¢ or more.
Your nearest Gold Bond Redemption Center
4th and Gregg

More Holiday Values!

Aluminum Foil Reynolds heavy duty. 25-Ft. x 18-In. Roll **63¢**
Marshmallows Fluffiest. 1-Lb. Bag **33¢**
Strawberries Bal-air Frozen Sliced. 10-Oz. Pkg. **25¢**
Cottage Cheese Lucerne All styles. 1-Lb. Ctn. **29¢**

Breast O' Chicken Tuna Chunk Style. Light (Green Label). 4½-Oz. Can **33¢**
Smucker Topping Chocolate Fudge, Butterscotch, or Pineapple. 2 4-Oz. Jars **39¢**
Hawaiian Punch Perfect for serving at parties. Pint Bottle **51¢**
Snowdrift Shortening (10¢ off label.) 3-Lb. Can **69¢**
Instant Sanka Coffee (10¢ off label.) 5-Oz. Jar **99¢**
Trend Detergent For washing clothes. Giant Box **49¢**
Light Crust Flour For baking. 5-Lb. Bag **55¢**
Pillsbury Best Flour For everything you bake. 5-Lb. Bag **55¢**
Banquet Dinners Frozen Beef, Chicken or Turkey. 11-Oz. Pkg. **55¢**
Paper Plates Diamond Delux. 8-Ct. Pkg. **29¢**
Zee Paper Napkins White or assorted color standard size. 2 20-Ct. Pkg. **25¢**
Kitchen Charm Wax Paper For wrapping sandwiches. 100-Ft. Roll **21¢**





Personal Income Up

Personal income rose throughout 1960 but the pace slowed in the last few months. Although personal income went to a new high, consumers did not spend as much as usual. Many economists expect those who have been saving will resume spending in the spring.

Barry Sullivan Takes Time Out For Return To X Role

By CYNTHIA LOWRY
AP-TV Radio Writer
NEW YORK (AP)—Television hero Rod Cameron, who has appeared in a long list of syndicated adventure series over the past few years, recently was asked by an interviewer how he moved so easily from one part to another. "I just change my hat," replied Cameron.

Barry Sullivan doesn't change hats quite as often or easily as Cameron, but he has survived two series—"The Man Called X" and "Harbor Master," neither of which caused any great stir in the business. Now he is playing the leading role of a marshal in a Western called "The Tall Man," an NBC entry which slipped quietly this fall into the TV stream.

On Dec. 28, however, Sullivan will be putting on his "Man Called X" hat again for an evening, the lead in a spy thriller on CBS' Steel Hour drama, "Operation Northstar."

"I wanted a change of pace and a change of scenery," explained Sullivan.

Sullivan is a versatile performer—he's toured with Bette Davis recently in a reading of Carl Sandburg's writings—and has no difficulty getting good parts. So, after his experiences in two short-lived series, he swore he would never get mixed up with another.

"But I have three children," he said, "and the money is a factor. For another, I've discovered that in television, a performer can be in one poor show after another and still survive without injury to his reputation. It's different in the theater or even motion pictures—there is so much television and it is so immediate that people know that you've been appearing and they know if they like you, but they tend to forget how good or bad your show was."

Be an angel . . .
Get Her Gift At
Fisher's 1907 GREEK
11107 11th Pl.

JET Starting Tonight Open 6:30
Never anything like it!
THUNDER IN CAROLINA
RORY CALHOUN
MAN HALL - CONNIE HINES - JOHN GENTRY

SAHARA Starting Tonight Open 6:30
"Ma & Pa Kettle on Old McDonald's Farm"
—Plus—
EXTRA! ANOTHER BIG **COUNTRY MUSIC SHOW** IN EASTMANCOLOR
3 BIG COUNTRY MUSIC SPECIALS
"HONKY TONK HEART"
"CASTLE IN THE SKY"
"MAYBELLENE"

NOW SHOWING **Ritz** OPEN 12:45 Adults 75c Children 25c
The mightiest adventure of them all!
American International presents
GOLATH AND THE DRAGON in COLORSCOPE
MARK FOREST - BRODERICK CRAWFORD - ELEONORA RUFFO and a cast of thousands

Dallas Theatre Holiday Slated

The Dallas Theatre Center plans a holiday season with the return of some of this season's and last year's shows.

Thornton Wilder's comedy, "The Matchmaker," will return through Dec. 23; "The Importance of Being Earnest," by Oscar Wilde, will return Dec. 28-29; Jason Miller's "A Waltz in the Afternoon" will be held Dec. 30-31, with a Saturday matinee play at 2:30 p.m. Dec. 31.

Jan. 5, Paul Baker and company will open the season's third play, "The Visit" by Friedrich Duerrenmatt. The Swiss drama starred Alfred Lunt and Lynn Fontanne in New York a few years ago.

Tickets are available by mail at 3536 Turtle Creek or in person at the box office (LA 6-8857).

OPEN DAILY
Big Spring Riding Stable
21. Wray St. opposite Sahara Drive to Gaylord - Trailside - Riding Feat.
Riding \$1.00 Per Hour
We Buy, Sell and Trade Horses
We Board and Break Horses
Call AM 5-5215

STARTING TODAY **State** OPEN 12:45 Adults 50c Children 25c
BIG 3 UNIT HOLIDAY SPECIAL
A RIOT OF FUN AND SONG!
WALT DISNEY'S wonderful... lovable... **DUMBO** a full-length all cartoon feature
TECHNICOLOR PLUS 2nd FEATURE
NEW AND NOVEL WALT DISNEY ENTERTAINMENT!
WALT DISNEY'S **NOAH'S ARK** Technicolor & Panavision
EXTRA! EXCLUSIVE ATTRACTION
BING and WALT tell the fabulous tale of the Headless Horseman!
WALT DISNEY presents **the LEGEND of SLEEPY HOLLOW** and more by BING CROSBY

Hollywood Events For 1960 Most Varied In A Long Time

By BOB THOMAS
HOLLYWOOD (AP)—Oh, it was quite a year!
Any year is bound to bring a lion's share of news and surprises from the town called Hollywood. In 1960 it was more so. Rarely have a year's events seemed so varied.

Some news was momentous, some monumentally trivial, some sad, some amusing. As the first year of the new decade ended, it appeared that despite its business woes, Hollywood would continue to add its contribution to American culture and legend, for better or worse.

Here are the 10 stories that seemed the most newsy and/or significant to this reporter during 1960:
1. The death of Clark Gable. No movie death in recent years received such worldwide prominence. The reason was simple: Gable had been a part of everyone's life for more than 30 years.

2. The movie strikes. The already invalidated film industry seemed in grave danger of extinction when hit by strikes of writers and actors. The gentlemanly strikes, without picketing or name-calling ended in compromise when the guilds realized the producers wouldn't give them a royalty on old films sold to TV.
3. The Desilu scrum. TV's most

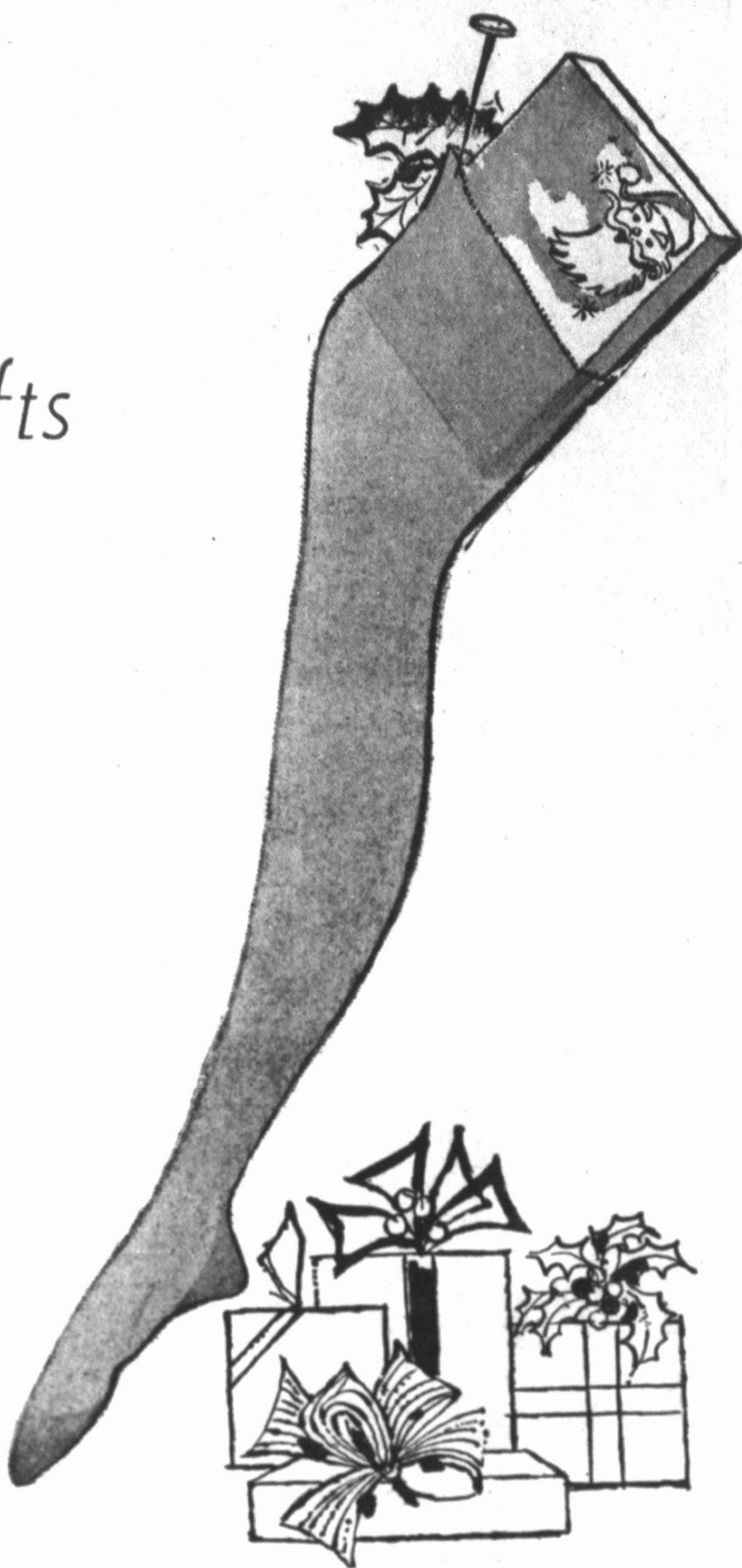
Charges Against Clerk Dropped

FORT WORTH (AP)—Two remaining criminal charges against District Clerk Gene Smith have been dismissed.

Judge Dave McGee of Criminal District Court No. 2 approved the dismissals today.
He did so at the request of Dist. Atty. Doug Crouch who said there was insufficient evidence.
Smith was indicted on three counts of compelling his employees to make contributions to his 1958 political campaign expenses. He was acquitted on one of the charges last month.

Boys Suffocate

ODESSA (AP)—Rodney Holleman, 8, and his brother Michael, 7, were found suffocated inside an ice box at their aunt's home here Wednesday. The two Negro boys had been missing about six hours.



Hemphill-Wells

She will be glad you thought of hosiery for Christmas! Whether you give a pair or a boxful . . . shop Hemphill's for the finest selection of colors and styles . . . by Bryans, Belle Sharmeer, Hanes and Berkshire . . . Luxury sheers, dress sheers, service sheers. Gold and silver evening sheers, stretch hose, garter above the knee, white nurses' stockings . . . full-fashioned and seamless. 1.00 to 1.95 a pair.



Pretty Knits

A delightful gift that all the girls on your gift list will love . . . ear warmers, snap-and-wrap hoods and others . . . all wools, and blends . . . Many, many colors from which to choose . . . 1.00 and 2.00.

Hemphill-Wells

BEST GIFT EVER— A NEW HOME
You Can Get A Loan at—
FIRST FEDERAL SAVINGS & LOAN ASSOCIATION
500 MAIN

Gandy's Kiddie Show
Saturday, 9:00 A.M.
Admission
1 CAN OF FOOD
To Be Given To The
Salvation Army
In place of the usual admission with a Gandy Carton.

HAMILTON OPTOMETRIC CLINIC
ALLEN R. HAMILTON, O.D.
MARSHALL Q. CAULEY, O.D.
HAROLD G. SMITH, O.D.
CHARLES W. NEEFE, Optician
TOM C. MILLS, Lab. Technician
JIMMY J. BRYANT, Lab. Technician
GALE KILGORE, Lab. Technician
WINNIE HARDEGREE, Office Manager
LETHA MASSIE, Assistant
BEULAH CRABTREE, Assistant
106-108 West Third Dial AM 3-2501