

Published by The Muleshoe Publishing Co. Publishers of Bailey County Journal and The Muleshoe Journal

# Bailey County Journal

"The Community of Opportunity - Where Water Makes the Difference."

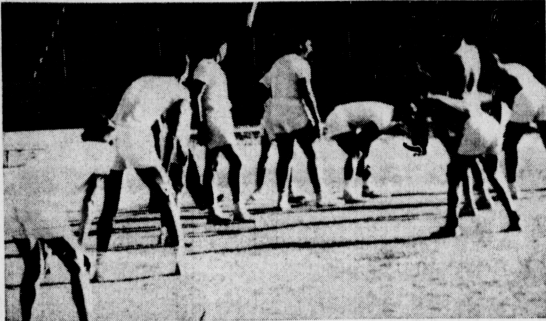
MULESHOE TEMPERATURES		
Jan. 6	71	29
Jan. 7	73	38
Jan. 8	72	48
Jan. 9	65	14
	Sunrise	Sunset
Jan. 10	7:35	5:45
Jan. 11	7:35	5:46
Jan. 12	7:35	5:47

VOLUME 3, NUMBER 1

8 PAGES

Published Every Sunday At Muleshoe, Bailey County, Texas - 79347

Sunday, Jan. 9, 1965



JUNE IN JANUARY - This is a boy's gym class. There is nothing unusual about that except for one thing: The picture was made, not in June, but one day last week when Muleshoe's temperature soared above the 70-degree mark for five days in a row. Thus the scantily-clad lads were comfortable outdoors in shorts. A year ago it would have been a different story: The HIGH for the same day a year ago was 32. Saturday it differed story -- down to 14.

## Plans Launched For Unveiling Of Mule Statue, Free Barbecue, Parade, Talent Show Scheduled

Muleshoe will stage a whirlwind of a celebration, come July 4. In fact it will be a five-barreled production, starting that morning and ending with an elaborate fireworks display late that night. The plans were announced Saturday following a series of planning meetings by Chamber of Commerce groups and the Mule Memorial committee.

And smack in the middle of the events will be Pete, the Bailey county mule who is to be immortalized in plastic for the world to see from now on. This is the schedule: 1. Unveiling of the mule statue. 2. A parade in downtown Muleshoe with mules occupying the central spot. 3. A free noon barbecue. 4. A talent show. 5. A fireworks display. Pete, the plastic life-sized mule, is being molded in a California plant now. He'll be ready long before the July 4 production but there's the matter of building the tall base on which he will stand, and getting ready for his debut.

The Santa Fe railroad has offered a plot at its U. S. 70 crossing on North First, and will "dedicate" the area to the City of Muleshoe. Plans for the base have not been announced, but it is understood it will stand several feet high, pushing life-sized Pete well up into the air. Then the entire area will be fenced and markers will give information about the memorial.



BANQUET SPEAKER - Speaker for next Thursday night's Muleshoe Chamber of Commerce banquet here will be W. H. (Bill) Collins, editor of the Midland Reporter-Telegram.

### FHA To Offer Loans To Lower Income Groups

A new credit service to help areas raise their incomes is now available in Texas, according to State Director, L. J. Capleman, Farmers Home Administration.

The information was received here Friday by Clinton Kenney, FHA manager for Bailey County.

Capleman said the new service opens up Farmers Home Administration credit aid for the first time to many low-income rural families who previously were unable to obtain either public or private loans to improve their earnings.

All county offices in Texas, Capleman said, are accepting applications for loans up to \$2,500 to finance farming enterprises, small family businesses, trades and services. Rural cooperatives serving low-income families and providing services and facilities not otherwise available may also be eligible for credit under the program.

Borrowers will be provided continuing management aid to help them make a success of their farming enterprises or new businesses.

Farmers Home Administration, a U. S. Department of Agriculture agency, will administer. (See F. H. A. Page 5)

### 'Music Man' Has Several 'Firsts' For Muleshoe

Muleshoe high school's production of the elaborate Meredith Willson's "Music Man" will have several "firsts" for Muleshoe, it was pointed out Saturday.

The show, one of the most prestigious ever attempted here will be given in the high school auditorium Jan. 25, 28 and 29 and ticket sales are brisk.

All seats are reserved at \$1.50 each, regardless of age.

First time to have professional designed choreography.

First time to produce a "Broadway" musical.

First time to have 5 directors working on a single production.

First time to have Broadway designed sets.

First time to use a "huge" cast 108 members strong.

First fine arts production. First time the fine arts production has worked together as an unit.

### Gins Turn Out 83,000 Bales Of Cotton; End In Sight

Bailey county gins have turned out 83,493 bales of cotton, as of Jan. 7, and the end is in sight. Farm experts said the total gainings for the year will not run above \$4,100 -- or \$3,000 at the most.

Gins served by Bailey County Electric cooperatives had gained 58,978 bales as of Thursday, Joe Harbin of the cooperative reported. Gins on Southwestern power had turned out 24,515 gins which makes the total 83,493 bales.

Last year's total was 113,000 bales ginned in the county. However, the county got "credit" officially for only 89,000 bales produced in this county, state offices figuring the difference was for cotton from other counties which was run through Bailey county gins.

### Schools Taking Nose Count; Due In January 28

Annual head count of all school age students and preschool youngsters began on Jan. 1, and will continue until midnight, Feb. 1. School Superintendent Neal Dillman announced Saturday.

All students between the ages of 6 and 17, inclusive, as of Sept. 1, 1965, are required to be counted by the state.

All pre-school children are being counted for use in future planning by the Muleshoe Schools, he explained.

It is very important that all school age children are registered because part of the schools income from the State is based on the per capita basis of the census, the superintendent said.

### Contract is Let For New Church

The new church will be built by the Progress Baptist congregation, will replace the present structure which lies in the path of the new U. S. 84 highway widening program.

The new structure, says the pastor, the Rev. B. C. Stonelicher, will cost \$45,000 and will be built by the Killingsworth Contracting Co., Dimmitt, It. It will have Sunday school rooms, a kitchen and a fellowship hall. The auditorium, which will be equipped with new pews, will seat 160 persons. Aisles will be carpeted.

The new church will be built on the north side of the Santa Fe tracks just north of the elevator.

The church is a Southern Baptist Church.

### Wallace Seeking Bids To Remodel Movie House

Muleshoe may have a downtown movie in 1965 if plans of Wallace Theaters, Inc., Lubbock, work out.

S. J. Neyland Jr., manager of the chain, met with local representatives, contractors and Muleshoe Chamber of Commerce officials here this past week to study plans.

The contractors were asked to submit bids by Jan. 16 and the firm then will decide whether to proceed with its remodeling program. His firm has an (See WALLACE Page 5)

### Farm Yields: \$17 Million

Bailey county farms and ranches yielded \$17 million during 1964. This does not include feed lots or related interests.

The figures were supplied by J. K. Adams, county agent, after he had put together estimates from various other governmental sources. "And I want to make it perfectly plain that the \$17 million figure is purely an estimate," he hedged. "It's based on crop reports as of now, figuring that most of the crops during 1964 already have been counted. There could be more production than it now appears, but as of now, the \$17 million figure is as good a nestimate we can come up with."

He made the estimate especially for a meeting of Farm Bureau directors Thursday night when M. D. Gunstream gave Adams' figures to the FB officials. Gunstream is president of the First National.

### Western Labor Sticks By Guns: 70-Cent Scale

Approximately 25 members of the Western Texas Farm Labor Association of Muleshoe, attended the larger meeting of farmers from across the South Plains in Lubbock, Thursday when Henry LeBlanc, Chief of Farm Placement, of the Texas Employment Commission was the main speaker. LeBlanc went into lengthy explanation of the new farm labor law. The most significant point that was brought out, was the fact that the \$1.15 per hour rate, which is to come into effect April 1, applies only to persons wishing to secure foreign workers. The \$1.15 is part of the criteria prescribed by the Secretary of Labor; this is not a minimum wage in agriculture. A farmer or his association, may secure any domestic labor at any rate that is agreeable between the two parties.

Upon return to Muleshoe, the Board of Directors of the Western Texas Farm Labor Assn., which includes, Virgil Nowell, Harold Allison, Charles Hough, J. P. Smithson, and Cameron (See WESTERN Page 5)

### It's Water-Measuring Time For Wells in Bailey County

It's water-measuring time again in West Texas, including Muleshoe and the entire Panhandle, and crews this month have started the task of taking water level measurements of more than 800 observation wells in the High Plains Water District which includes Bailey county.

The wells in the High Plains district are a portion of more than 1700 observation wells to be measured in a 39-county region by personnel of the Texas Water Commission.

High Plains Underground Water Conservation district and the North Plains Water district cooperate in the program.

Bailey county has 76 observation wells on which records are being kept by the High Plains Water District and the Texas Water Commission. The observation wells are measured annually during the month of January. January was chosen as the measurement month because the wells are allowed to rest after the heavy summer irrigation and because the personnel are more readily available to measure the wells at this time.

The wells that are used in the observation well program are measured, the level is recorded and then the data is assembled in the Lubbock Office of the High Plains Water District for distribution. Any person who is interested in the well measurements of his county, or all the counties within the High Plains Water District can obtain a record of these measurements for the past several years through his local county water district office or from the High Plains Water District office.

### Ticket Sales For C C Banquet Brisk; Capacity Crowd Seen

With advance ticket sales brisk, indications are that a capacity crowd will be on hand next Thursday night for the annual Chamber of Commerce banquet when a prominent west Texas editor will be the principal speaker. Chamber Manager Roy Davis said Saturday.

The dinner, to be held in the High School cafeteria, will seat 310 persons, and every seat is expected to be occupied. Starting time is 7:30.

Davis has received word that many area chambers will send representatives to the dinner. Clovis, for example, has reservations for seven, and all other towns in this area have indicated they will be represented at the banquet.

One of the features, as in the past, will be the presentation of the "Outstanding Conservation Farmer" award to a Bailey county farmer by the Blackwater Valley Soil Conservation District.

Another feature will be the presentation of new officers and board members who will officially take over their duties this month.

Irvin St. Clair will be master of ceremonies, and Susan Bird will provide dinner music at the piano. Dr. W. F. Birdson is general chairman of the banquet.

Outgoing president is Roger Albertson, and out-going vice-president is Bobby Ahrhart. Dr. Charles Lewis will be the new president and Boone Allison the new vice-president. Earl Birdson will serve as treasurer.

New directors who will start three - year terms are Jacques Baker, Vic Benedict, D. B. Lan-

### Norther Topples Mercury To 14

A cold wave that whistled in from the northwest on the wings of 35 MPH winds late Friday, left a one-inch deposit of snow, and skidded temperatures to 14 degrees officially Saturday morning. Moisture was measured at .15 inch.

The "norther" followed a series of warm days which had seen the thermometer climb into the 70's several days in a row.

A bright sun Saturday morning was chasing away the snow.

### Water - Measuring Crew

Here are water specialists measuring one of the many observation wells in the High Plains Water district, this well being one of 76 in Bailey county included in the program. Left to right are Sam Gammon, Texas water commission, Austin; David Cunningham, High Plains Water District; Don Reddell, High Plains Water District, and Bernie Baker, Texas Water Commission.



WATER - MEASURING CREW - Here are water specialists measuring one of the many observation wells in the High Plains Water district, this well being one of 76 in Bailey county included in the program. Left to right are Sam Gammon, Texas water commission, Austin; David Cunningham, High Plains Water District; Don Reddell, High Plains Water District, and Bernie Baker, Texas Water Commission.

# Afternoon Service Unites Couple

In a ceremony read Sunday at 3 p.m., Miss Gloria Pearson became the bride of Larry Drake. The afternoon nuptials were performed in the Assembly of God Church, Canyon with Rev. A. J. Pettit, pastor of the church officiating for the double ring service.

The bride is the daughter of Mr. and Mrs. B. L. Pearson, Canyon, and the bridegroom's parents are Mr. and Mrs. Earl Drake, Friona.

Escorted and presented in marriage by her father, the bride was attired in a formal gown of Peau De Soie, designed with a rounded neckline with embroidered seed pearls. The full-length skirt was also embroidered with sprays of seed pearls. The tapered sleeves were buttoned to the elbow. A chapel train extended from the flowing skirt.

Her veil of illusion, bordered with lace, was attached to a pearl tiara and she carried a

white Bible given her by her maternal grandmother, Mrs. Mat Dudley, Muleshoe.

Janice Townsend, cousin of the bride, was maid of honor and wore a floor-length gown of yellow brocade.

Bridesmaids were Kathy Townsend, cousin of the bride, and Peggy Drake, cousin of the bridegroom. They wore identical, floor-length gowns of gold brocade. All the bridal attendants carried long-stemmed yellow roses.

Flower girls were Tamra Townsend and Jana Jones, cousins of the bride. They wore dresses styled after that of the bridesmaids.

Lighting candles were Bobby Drake, brother of the bridegroom, and Susan Hensley, Muleshoe, cousin of the bride. Her gown was also fashioned after that of the bride's attendants.

Owen Drake served as his brother's best man. Dennis

Pearson, brother of the bride, and Ted Reece, cousin of the bridegroom were groomsmen. Ushers were Tommy Sanders, Carol Bennett, Edwin Taylor and Larry Hartman.

Mrs. Royce Grant, organist, presented traditional wedding selections and also accompanied her husband as he sang "I Love You Truly" and "O Promise Me."

A reception following the ceremony was held in the A. J. Pettit home.

Guests were registered by Miss Rachel Wall and presiding at the serving table were Miss Sylvia Wall and Miss Kathy Strohmeyer.

For a wedding trip to New Orleans, La., the bride chose a black piece red knit suit with black accessories.

The couple are making their home at 1903 9th Avenue, Canyon, where the bride is a senior at Canyon High School and is continuing her education.



Mrs. Larry Drake

# Men's Fashions Studied By Club

"What Every Woman Should Know About Men's Fashions" was the topic of the program given by Home Demonstration Agent Jean Martin at the January 5 meeting of the Progress Home Demonstration Club.

"It has often been said that a woman's most important accessory is a well dressed man" whether he be husband, brother, son, father, or friend, a woman likes to see "her" man well dressed," she said.

"The man who dresses with an eye to fashion and good grooming is frequently the man who succeeds."

Mrs. Martin pointed out that women purchase about 75 percent of all men's furnishings such as shirts, ties and handkerchiefs. Their opinions are important in the purchase of a high percentage of other items in a man's wardrobe — suits, coats, shoes, hats and a variety of sportswear. And, most of men's wear is cared for by women. A display of suits and sportswear was shown for a study conduct.

Types of clothing suited for the type of man was discussed at length by the group including Traditional, Conventional, Contemporary and West Coast styling.

Phebe Gray was hostess for the meeting. Lauretta Baker conducted the business and roll call was answered with a New Year's resolution.

Myrtle Wells read "It Shows In Your Face."

The Yearbook Committee is to meet January 14 at 2 p.m. in the home of Mary Ramm.

Attending were Lela Mardis, Betty Williams, Gertie Meyers, Veta Self, Celia Hicks, Lauretta Baker, Myrtle Wells, Phebe Gray.

Visitors were Jean Martin and Mrs. Ethel Munford and Mrs. Montford was welcomed as a new member.

The next meeting will be January 19 in the home of Celia Hick and the women are to make cancer dressings for Bailey County patients.

# Kimberly Wilson Is New Arrival

Mr. and Mrs. Gordon Wilson, 1425 West Avenue C are parents of a daughter born December 29 in West Plains Hospital. The new arrival weighed 8 pounds, 2 ounces and has been named Kimberly Von.

The Wilson's have a four-year old son, Denny.

Grandparents are Mr. and Mrs. Bay Wilson, Muleshoe and Mr. and Mrs. George Mitchell, Las Vegas, N. M.

**MEN'S BREAKFAST**  
The regular meeting of the Methodist Men was held Thursday at 6:30 a.m. with a breakfast at Paul's Cafe.

# Club To Raise Library Funds:

Epsilon Chi Chapter of Epsilon Sigma Alpha met the evening of January 3 in the home of Jo Santos.

Marlene Martin, president, presided during a business meeting in which a fund raising project was discussed. It was decided that a Bake Sale would be held in the near future to pay expenses on the Muleshoe Area Public Library for one month.

The Welfare committee reported that groceries were provided for a needy family for Christmas.

The program was presented on "Wardrobe Perfection" and was presented in an interesting series by Laetecia Eoff. Vickie Young assisted in preparing the program.

Attending the meeting were Evelyn Johnson, Marlene Martin, Elnor Yerby, Joaddine Mayhugh, Joy Tibbitts, Mary Moore, Chubby Douglass, Betty Matthews, Skeet Bliss, Laetecia Eoff, Carol Johnson, Laura Seales and the hostesses, Jo Santos and Vickie Young.

# John Blackwell In Fraternity: On Dean's List

John Blackwell, attending Dallas Institute - Gupton Jones College of Mortuary Science, was accepted into the Pi Sigma Eta Epsilon Fraternity.

Blackwell, a former employee of Singleton Funeral Home here, has also been named to the Dean's Honor list for the first quarter of school.

To be invited into the Fraternity as a member, one must have an average of 90 or above. To be named to the Dean's list, an average of 91 to 95 must be maintained.

Blackwell will graduate September 1 and plans to return to Muleshoe.

# Relatives Are Kistler Guests

Dinner guests Saturday in the home of Mrs. W. H. Kistler were her daughters, Mrs. J. A. Arwine, Floydada; Mrs. Beulah Hobbs and family, Farwell; a grandson and family, Mr. and Mrs. Warlick Thomas and a granddaughter and her family, the Keith Levys, Amarillo.

Mercury, nearest planet to the sun, is the smallest of the nine.

# Miss Karen Jones Elected Pershing Rifles Sweetheart In El Paso

Miss Karen Jones, graduate of Muleshoe High School, was elected Pershing Rifles Sweetheart. Pershing Rifles is a military fraternity composed of approximately sixty members. As Sweetheart, she will receive a page in the Flow-sheet, Texas Western annual, a chance to compete for sweetheart on a regional basis, ride in the Homecoming and Sun Carnival parades, and receive the rank of honorary captain.

Miss Jones is a member of Delta Delta Delta sorority. She is a senator in the Student Senate. Karen is Future Teacher chairman of Student Education Association and a member of the Concert Reading Group. She travels with the debate squad as an oral interpreter. Miss Jones is editor - historian of

Spurs which is a national sophomore women's honorary. She has recently received recognition by being named a Flow-sheet Beauty. She competed for this in two contests and the Flow-sheet will feature the winners in the annual.

Last year, Miss Jones was freshman president of Hawthorne House and a member of the Dormitory Council. She participated in the Chamber Reading Group and was a finalist in the Speech 3101 contest. Karen is a scholarship student and is on the Dean's list.

She was selected as one of the twenty members of the R. O. T. C. Women's Sponsor Corps. Miss Jones has the office of Executive Officer with the rank of major and will represent the college in a drill meet at Tempe, Arizona in the spring.



MISS KAREN JONES FRANCIS IMPLEMENT CO. FORD TRACTOR Muleshoe, Texas

# Busy Bee 4-H Completes Unit Of Food Book

The Busy Bee 4-H Club met January 6 at the home of Mrs. Loyde Throckmorton and completed the 11th meeting and the final one in the Unit Food Book.

The puddings were made and a chocolate pudding was decorated with pecan and the lemon pudding decorated with coconut.

The puddings were served with milk as a snack.

The girls expressed their enjoyment of learning to cook. "We have enjoyed learning to cook and feel that we have learned so much and it's been fun."

Next Tuesday, Mrs. Jean Martin will meet with the group and discuss the food shows and how record books should be prepared.

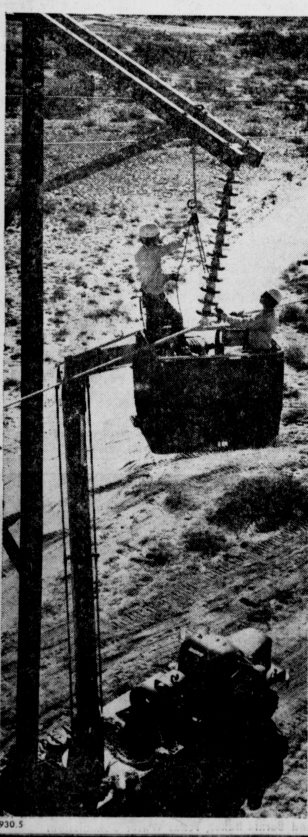
Those attending were Cynthia Puckett, Renee and La Donna Caldwell, Jeanette and Kay Campbell, and Vovery and Dantina Throckmorton.

# Hobby Club Meeting Held

Muleshoe Hobby Club met Tuesday in the Community Clubroom. Altha Hanks and Lucille Harper were hostesses.

Displays were shown by some of the members. Dora Phipps showed a soap swan and crocheted dog; Mae Pattie, can covers used for cleanser cans, etc. also a four compartment covered cans for nails, screws, and other items used in a workshop of household. Ola B. Jones, a TV stool for children, and Mable Caldwell showed plastic grapes, plastic lamp and shade.

Attending were Lucile Harper, Ruth Bass, Elsie Iley, Marie Oswald, Zora Mae Beller, Mae Pattie, Hallie Briscoe, Mirk Vera Dement, Chambliss, Ola Pesch, Ola B. Jones, Hallie Barbour, Zula Carlyle, Mary Evans, Zona Boydston, Mable Caldwell and Edith St Clair.



**New Construction This Year Over \$24,000,000!**

That's right! Reddy Kilowatt will invest \$24,607,000.00 this year, in the service area of Southwestern Public Service Company, as evidence of the faith we all share in a growing land that 100 years ago promised less but has delivered more than perhaps any other area in our nation. We'll be completing another large steam electric generating unit, adding new transmission and distribution lines with one view in mind — to give you better service at the lowest possible cost. You'll have, at the touch of your finger, all the power you'll need for a powerful area.



Picture shows an example of modern construction methods. The aerial, truck-mounted bucket lift is being used by two linemen in a safe and efficient manner to construct a new 230,000 volt transmission line.

**ANNUAL ELECTION**  
TUESDAY, JANUARY 12  
ENOCHS GIN OFFICE, ENOCHS COMMUNITY HOUSE MULESHOE  
**HIGH PLAINS UNDERGROUND WATER CONSERVATION DISTRICT NO. 1**

**WATCH FOR COBBS JANUARY SALE**

*annual sale*  
**Fanes**  
seamless stockings

- reinforced sheer — (reg. \$1.50) \$1.25, 3 prs. \$3.75
- sheer heel demi-toe — (reg. \$1.65) \$1.35, 3 prs. \$4.05
- run guard® cantreco® — (reg. \$1.65) \$1.35, 3 prs. \$4.05
- sheerloc® — (reg. \$1.75) \$1.45, 3 prs. \$4.35
- sandalfot — (reg. \$1.95) \$1.65, 3 prs. \$4.95

short, medium and long  
colors: south pacific, bali rose and shell  
one week only january 9-16  
**Cobb's**

### Deputy Grand Matron Makes Visit To Local Eastern Star Chapter

Mrs. LaVerne Long, Deputy Grand Matron, District 2, Section 3, Grand Chapter of the Eastern Star, made her Official Visit to Muleshoe Chapter, Tuesday evening, January 5.

She was introduced from the East and presented a money corsage. She brought greetings from the Worthy Grand Matron and Worthy Grand Patron and gave instructions on the work of the Order. She was accompanied from Silverton by Mrs. Lilly Wofford.

Other visitors were: Mrs. Mildred Armstrong of Earth Chapter, Member of Interchapter Goodwill Committee, Elsie Hawkins, Anna Hedige, Both Kelly, Dorothy Parish and the Worthy Matron, Joy Runyon.

A letter of appreciation was received from Mrs. Katherine Harbour, Grand Examiner, enclosing the names of the members from Muleshoe receiving Certificates of Proficiency at the O. E. S. School. Those receiving "A's" Frank and Lavonne Hinkson, Mary Farley, Hazel Nowel and Jewell Strong. "B's": Pat Johnson, Lois Norwood, Barbara Lust, Ruth Williams and Ruby Green.

### Student Visited Parent's Home

Linda Wells, a student at Eastern New Mexico University spent the holidays here with her parents, Mr. and Mrs. Clayton Wells.

Other guests in the Wells' home were Mr. and Mrs. Robert Wells, Richard and Donita, Amanda, Mr. and Mrs. Wayne Wifford, Floydada; Mr. and Mrs. Wayne Doty, Karen, David, Jo Gayle and Donald; Mr. and Mrs. Glenn Chester, Curtis, Mitch and John, Sudan and Mr. and Mrs. Kenneth Wells, Muleshoe.

Mr. and Mrs. Clayton Wells and Linda and Mr. and Mrs. Robert Wells and children visited in Lubbock Saturday with Mr. and Mrs. Claude Patton and children.

### Contest Started By TOPS Club

A contest has been launched by members of the Muleshoe Jenny TOPS Club with the group divided into two sections. Each group is to have all the overweight women in meetings as possible and at the end of the contest, January 30, the group with the most overweight attending will be feted with a salad supper in February.

This contest got underway at held at Bailey County Electric Community Room.

Newly elected president Cecile Cunningham was in charge of the program. The TOPS Prayer was repeated and the club song sang by the group lead by song leader Evelene Harris.

Queen of the week was Lauranette Mason and Princesses were Evelene Harris and Ruby Ward.

Evelene Harris was Queen of the Month and Princesses were Essie Hall and Ethel Allison.

The group voted to present the White Elephant gifts to the Queen of the Week each time.

Six members occupied the "Pig Pen" and sang the "Pig Song". They were Myrtle Wells, Rose Sain, Clarne Clayton, Eth and Zoa Mae Beller.

Installation of officers will be held at the next meeting, Thursday, January 14, and all members are urged to attend.

Members of the Jenny TOPS Club invite all overweight to attend the meetings and see what is being done with this problem.

Twelve attended and welcomed one visitor, Mrs. Simmons, San Jose, Calif., sister of Mae Province.

### Student Visited Parent's Home

Linda Wells, a student at Eastern New Mexico University spent the holidays here with her parents, Mr. and Mrs. Clayton Wells.

Other guests in the Wells' home were Mr. and Mrs. Robert Wells, Richard and Donita, Amanda, Mr. and Mrs. Wayne Wifford, Floydada; Mr. and Mrs. Wayne Doty, Karen, David, Jo Gayle and Donald; Mr. and Mrs. Glenn Chester, Curtis, Mitch and John, Sudan and Mr. and Mrs. Kenneth Wells, Muleshoe.

Mr. and Mrs. Clayton Wells and Linda and Mr. and Mrs. Robert Wells and children visited in Lubbock Saturday with Mr. and Mrs. Claude Patton and children.

### Mrs. Mardis, 92 Dies in Roswell; Rites Held at YL

Funeral services were conducted at 2:30 Saturday afternoon in the YL Methodist church for Gussie Amanda Mardis, 92, a long-time area resident who had been making her home in Roswell for the last four years. She died Wednesday in St. Mary's Hospital, Roswell.

The rites were conducted by the Rev. L. G. Craft, pastor of YL Methodist church, and by the Rev. J. Frank Peery, pastor of First Methodist Church, Muleshoe. Burial was in Muleshoe Cemetery with Singleton Funeral Home in charge of arrangements.

Mrs. Mardis and her late husband, C. C. Mardis, settled 11 miles west of here in 1908, moving to the area from Pawnee County, Nebr. She was born in Green County, Ill. and was a member of the Methodist Church.

Survivors include four sons, Harold of Muleshoe, Chester and Ivan, both of Tucson, Ariz. and Homer, Albuquerque, N. M.; a daughter, Mrs. Beal Barkhead, Roswell; one sister Mrs. Lucy Temple, Lyons, Kan. and 18 grandchildren.

Like onion with your hamburgers: If you don't feel like peeling and chopping fresh onion, add a little of the dehydrated chopped onion to the meat.



**PAINTS FOR PLEASURE** - Mrs. Lewis Shafer started painting sometime during 1960 and has had instructions from Elizabeth Black and Dana Arnold. She is presently taking lessons from Mrs. Arnold. Mrs. Shafer said she found painting very relaxing and paints strictly for her own enjoyment. This is one of her paintings hanging in Paul's Cafe on exhibit now.



**EXHIBITS PAINTINGS** - Dana Arnold is shown here with one of her paintings hanging in Paul's Cafe. Mrs. Arnold, a member of Muleshoe Art Association, and one of her students is supplying art for this month's show.

### McKinstry Home School Opens

Mrs. Sam McKinstry has returned home after spending the holidays with relatives.

She went to Hagerman, N. M. just before Christmas for a short visit with her sister, Mrs. B. J. West, and a niece and family, the Ted Smiths.

From there, she went to Lovington to be with her daughter and family, the Dr. Keane Oshorns for Christmas.

Also visiting in the Osborn home was Dr. Osborn's father and mother, Mr. and Mrs. Sam Osborn, Dexter.

Also two sisters and their families, Mr. and Mrs. Virgil Henry, Hobbs, and Mr. and Mrs. Don Bish, Odessa.

Mrs. McKinstry's piano classes will begin Monday, January 4.

U. S. Highway 40 traverses 14 states.

**BAPTISMS RECORDED** - Two baptisms have been added to the roster of the Immaculate Conception of Mary Catholic Church.

Baptized Sunday, January 3, were Rosita Selguero and Ruben Ramirez.

Rosita is the daughter of Mr. and Mrs. Genery Selguero and her sponsors were Inez and Olga Lasno. Ruben is the son of Mr. and Mrs. Manuel Ramirez with Mariano and Pola Rodriguez as sponsors.

**WSCS MEETING** - The Executive Committee of WSCS of the First Methodist Church will meet Tuesday at 1:30 p.m.

A general meeting will be held at 2:30 p.m. at the church. All members are urged to attend.

Asia is the largest continent.

**FRANCIS IMPLEMENT CO.**  
FORD TRACTOR  
Muleshoe, Texas

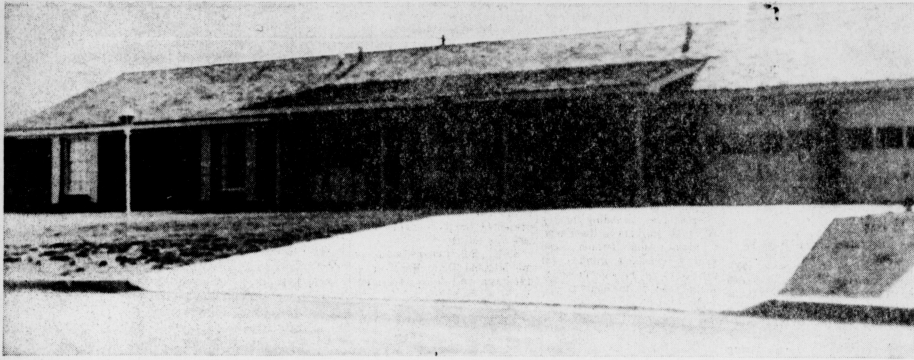
**CHOCOLATE COVERED GRASSHOPPERS?**

In 1939, 140 people out of every 100,000 died of pneumonia or influenza. In 1958, only 28 per 100,000 died 1/5 as many deaths. Sulfa and anti-biotics made the difference. What is the value of a prescription when it saves a life?

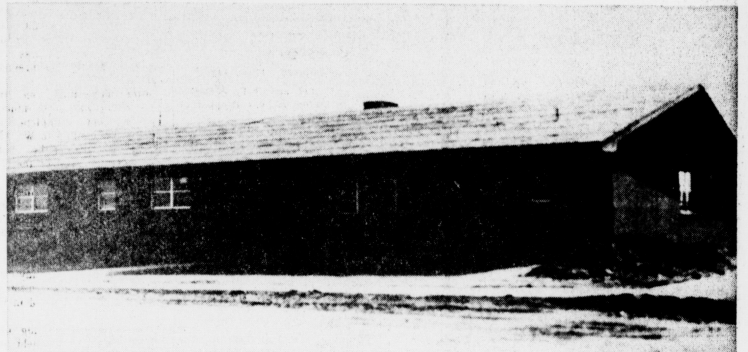
**Western DRUG**  
Your Walgreen Agency  
PHONE 3-1060 MULESHOE, TEXAS

**JANUARY Clearance Sale PRICES SLASHED**  
**ON ALL FURNITURE — APPLIANCES — CARPET . . .**  
**JOHNSON FURNITURE**  
 CLOVIS HIGHWAY  
 MULESHOE  
 JOHNSON FURNITURE  
 MULESHOE  
 JOHNSON FURNITURE  
 PHONE 5150

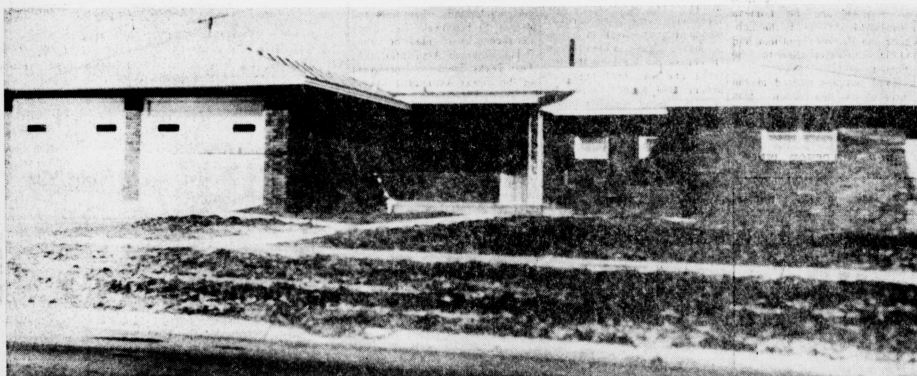
# Homes Beautiful, Muleshoe Built Many During '64



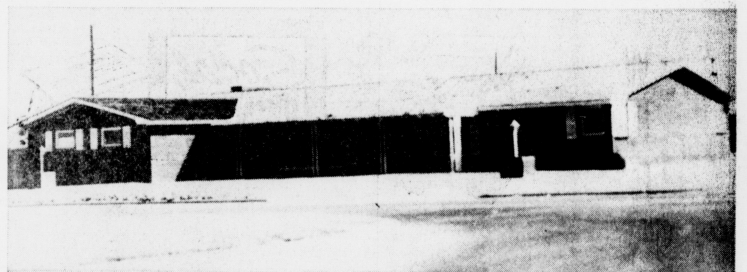
**RANCH STYLE COLONIAL** - Mr. and Mrs. James Freeman, 1805 Ave. H, picked a combination ranch style and colonial theme for their new home, one of the newer Richland Hills residences. The home offers a tremendous display of spaciousness. Alex Adams was the contractor.



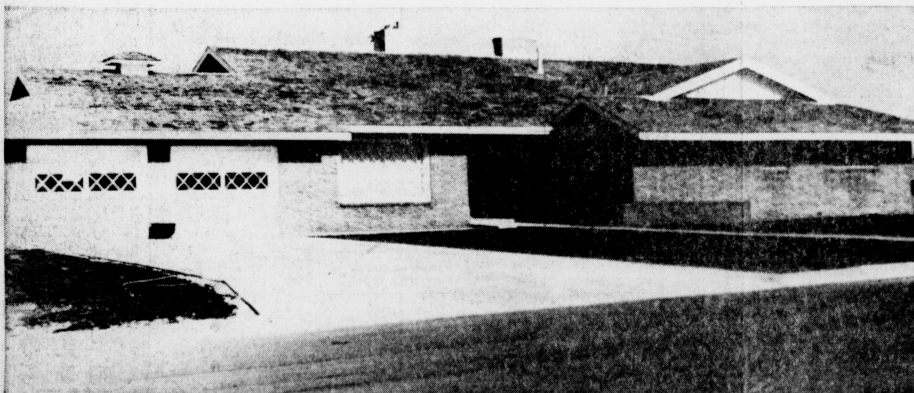
**MORRISON BEAUTY** - This is one of the newest homes in the Morrison addition and will be occupied by the builder and developer of the Morrison area, D.L. Morrison. In fact, it was completed only a few days before 1964 ended. The home is located at 902 Ivy.



**NEW POOL RANCHER** - Here's another house that is mas. It's the Henry Lander's home, built by Melvin Lee brand new, the owners moving in barely before Christmas. at 334 West Ave. J in the Pool addition.



**ANOTHER POOL BEAUTY** - A true rancher is this new home of Mr. and Mrs. Vance Wagon at the corner of W. 6 and Ave J in the Pool addition. A feature of this home is the completely fenced - off parking area and garages. The house was a Melvin Lee structure.



**RANCHER WITH ENGLISH TOUCH** - Here's another of the many beautiful new homes erected in Muleshoe last year which combines the rancher features with a touch of old English, characterized by the criss-cross windows. A Melvin Lee structure, the home is owned by Mr. and Mrs. Cecil Davis. It's located at 1906 Ave. H in Richland Hills.

Published each Sunday by the Muleshoe Publishing Co. 304 West Second Street, Muleshoe, Texas

# Bailey County Journal

Member of The Associated Press Entered as second class matter at the Muleshoe Post Office under act of Congress, March 3, 1879.

**SUBSCRIPTION RATES**  
 Immediate Territory ..... \$4.00  
 Outside Territory ..... \$4.50  
 In combination with the Muleshoe Journal (Published each Thursday) the following rates apply

Both papers in territory ..... \$5.50  
 Both papers outside territory ..... \$6.25

L. B. HALL ..... Publisher  
 RAMON MARTIN ..... Editor  
 DORIS KINSER ..... Society Editor

(Advertising Rates on Application)



## Plans ...

(Continued From Page 1)

gram and providing the promotion for the day-long event. The board of directors of the Chamber accepted the responsibility at a meeting held last week.

On the Mule Memorial board are Gil Lamb, Robert Harmon, Elliott Albert Alford, John Fried, John Crow and Roy Davis.

Plans for the barbecue at noon July 4 are yet to be made, but it is planned to feed thousands who will be on hand for the mule unveiling. Place for the barbecue also must be worked out, sponsors said.

In fact, the entire time schedule is yet to be fixed. The parade will feature mules, although other types of transportation also will be seen in the parade.

In summing it up, Roy Davis manager of the chamber, said, "we expect this to be the biggest event staged in Muleshoe, and should draw thousands of people from throughout west Texas and eastern New Mexico to Muleshoe."

Who will do the unveiling honors has not been announced, but there is talk of enlisting the services of a well-known Texas figure for this honor.

Francis Implement Co. FORD TRACTOR Muleshoe, Texas

## Wallace ...

(Continued From Page 1)

option on both the downtown movie houses, and a decision is expected to be reached by Jan. 25.

The show, if it is opened, will be completely remodeled, and first-run movies only will be shown. Neylan told the group. Present at the hearing, held in Chamber headquarters, in addition to Weyland were Tru-firm's Littlefield dealer; Neal Waltrip, circuit engineer for Wallace; chamber representatives, representatives of the Moeller estate which owns the buildings, and these contractors: Marvin Lee, Cy Stockard, Ray Givens, George May, Sylvan Robinson, Charles Lenna, all of Muleshoe, and Elmo Jones, Littlefield.

Wallace Theaters, Inc. was founded in 1923, and owns theaters in Levelland, Littlefield, Morton, Taboka and Andrews, and has theaters leased in Croyston, Petersburg and Ralls.

## Western ...

(Continued From Page 1)

Gaut, met and this decision and statement was adopted by the Board of Directors of the Western Texas Farm Labor Association, after due debate and consideration and in compliance with most farmers across the nation, feel that in order to prove a need for supplementary labor in our area, that we must place all our needs with the local Employment Office. Considering the economic factor involved, we cannot comply with the criteria set out by the Secretary of Labor, demanding the \$1.15 per hour, plus all benefits.

This Association will be placing order for the usual number of workers as were needed in the past. We will request single male, list the job requirements, at a rate of pay that we can live with, at this time 70 cents per hour.

"We urge all users of farm labor to do same."

Domestic cats spread all over the world when sailors carried them on board to keep rats and mice in check.

SHOP MULESHOE FIRST

### LATE WANT ADS

**FOR SALE BY OWNER:** 160A, good irrigated farm. Cotton mize and wheat allotments. Strong 8" well, underground tile, natural gas. Located between Hub and Bovina, 1 1/2 mile from pavement. Call or see D. H. Nelson, Friona, Texas. Pho. 247-3168. 8-25-61p

## Gins ...

(Continued From Page 1)

per acre, along with a 4000-pound yield per acre on 50,000 acres of irrigated grain sorghum planted and harvested, this would bring the county's total output to 255 million pounds in 1964. Price ranged from \$1.85 to \$1.90 per hundred weight.

By the best estimates available at this time, it would appear that the county produced 100 million pounds less in 1964 than during the previous year.

Cotton harvesting on the South Plains was over ninety-five per cent complete on Thursday, according to W. E. Palmer, in charge of the Lubbock classing office of the USDA.

Sample receipts declined to only 5,900 daily at the South Plains USDA classing offices as the harvest reached the scrapping stage. The seasonal classing office at Lamesa close Monday and the remainder of the cotton in that area will be classed in the Lubbock Office.

During the week ending Jan. 6, the Lubbock, Brownfield and Lamesa offices classed 118,600 samples. The Lubbock office classed 94,300, the Brownfield office 17,400 and the Lamesa office 4900. On Jan. 6, the Lubbock and Brownfield offices had 14,000 samples on hand to be classed.

Total samples classed at the three offices this season was 1,783,800, compared with 1,827,700 by the same date last year.

SHOP MULESHOE FIRST

## FHA ...

(Continued From Page 1)

ter the new loan service under recently delegated authority from the Office of Economic Opportunity.

Liberalized terms and conditions for participating low-income families allow for an interest rate of 4-8 percent. To be eligible for the new rural credit program, an applicant must live in a rural area, have an income that does not cover basic family necessities, be unable to obtain credit from other sources, including the regular loan program of the Farmers Home Administration, and show a reasonable promise of succeeding in the enterprise to be financed by the loan.

A cooperative to be eligible must be primarily composed of and serve low-income rural families and be unable to obtain credit from other sources.

About 3.5 million families in rural areas across the country, cooperative to be eligible are unable to obtain credit to develop income-increasing enterprises. The new credit program is budgeted at \$35,000,000 for the current fiscal year.

In addition to the new credit service, the Farmers Home Administration serves all rural counties in Texas with loans to finance farm operations, buy and enlarge farms, construct rural housing and develop community water systems; reconvert areas and grazing land. It also provides a program of emergency loans, watershed loans and rural renewal loans.

## Farm ...

(Continued From Page 1)

irrigated and 126,318 was dry, and grain planted. Actually he says the county produced grain sorghum on only 80,000 acres of dryland out of a possible 126,000 acres. He figures the yield at 700 pounds per acre.

Then there were some 50,000 acres of irrigated grain sorghum out of a possible 74,344 allotted acres. Of course the yield on the watered land was much higher—around 4000 pounds to the acre. This would result in a 256 million pound estimated yield. Figuring at \$1.90 per hundred, grain sorghum brought the county an estimated gross income of \$1,864,000.

Now Adams figures that minor crops had an important role in the 1964 farm and ranch income picture. He says the county had some 5000 acres of alfalfa a 6000 acres of Midland bermuda. He estimates sudan and related crops were planted on maybe 20,000 acres, although that figure may be a bit high. Silage added another 3000 acres, sesame was planted on 1000 acres and vegetables on 1500 acres.

It's difficult to figure just how much of these "minor" crops yielded, but they brought in a pretty neat sum. So, although he did not attempt to give a breakdown on each particular crop, he came up with the \$17 million figure. Now this is no record; Bailey county has had a higher gross in other years. Yet by the same

## NOTICE

A film on Modern Math subtraction will be shown at the Muleshoe High School Tuesday at 4:15 and 7:30 p.m. All parents, teachers and interested persons are invited, according to Elizabeth Watson, curriculum director.

## Ticket ...

(Continued From Page 1)

will be provided by the high school's music department, which will include numbers from "The Music Man" to be presented by the department later this month.

W. H. (Bill) Collyns, editor of the Midland Daily Reporter-Telegram, will deliver the address. He and Mrs. Coyins will arrive Thursday afternoon and will remain overnight, the chamber has been informed.

Collyns is a native west Texan; he was born and reared in San Angelo where he first gained newspaper experience as a newsboy. He lived in McCamey from 1927 until 1933, working with an oil company and serving as sports editor of the McCamey newspaper. He moved to Midland in 1935 and served as manager of the Midland Chamber of Commerce from 1936 until November, 1946, with the exception of two years out of military service during World War II.

Collyns has been district vice-president of the West Texas Chamber of Commerce for the last 10 years and also serves as chairman of the organization's public information committee.

He is an elder in the First Presbyterian Church and is director of Midland's junior achievement program and vice-president of the Midland Industrial Plan, Inc.

Collyns is past president of the Midland Chamber of Commerce, the Midland Downtown Lions club and Presbyterian Men of the Southwest. He also has served as president of the Texas Editorial Association, the West Texas Press Association and the Texas Associated Press

When \$17 million is not to be sneezed at.

And the crop and ranch program, as the items listed above indicate, cover a wide range. It's a far cry from the old cotton-corn routine of the old days.

## Water District Election Set For Next Tuesday

High Plains Underground Water Conservation District No. 1 will stage an election Tuesday at two points in Bailey county, it was announced Saturday.

Voting boxes will be at the Enochs' gin at Enochs with W. R. Adams in charge and in the Community Building, Ave. D and 2nd, with B. H. Black in charge.

Polls will open at 8 a.m. and close at 7 p.m. On the ballot for director from Bailey county will be Ross Goodwin, John Gammon

Managing Editors' association. Mr. and Mrs. Collyns have a married daughter, Mrs. Bill Harris, who lives in Snyder.

## YOUNGESTER VISITS GRANDPARENTS HERE

Young Ben Browder, Bowie, Texas arrived here December 28 for a visit with his grandparents, Mr. and Mrs. L. C. Browder.

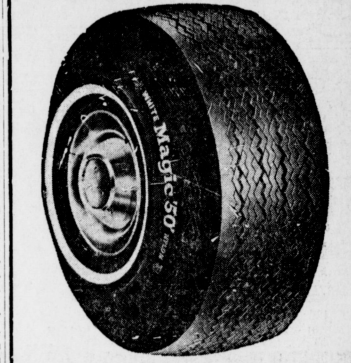
His grandparents returned him to his home Thursday.

Natives of the Solomon Islands captured the English Ship Dancing Wave in 1878 and ate all except one of the crew, who escaped and reported the incident.

Two county committeemen also are to be elected from this county. From Precinct 1, the nominees are Marvin Nieman, Muleshoe and Loyd Throckmorton, also of Muleshoe.

From Precinct 3, the nominees are Melvin L. Hale and Homer W. Richardson, both of Maple.

## SHOP MULESHOE FIRST



**WHITE "MAGIC 50" TIRE**  
 The Only Tire in the World Guaranteed NOT TO WEAR OUT for 40,000 Miles! Plus 40,000 Mile Road Hazard Guarantee.

**WHITE'S** the Home of Greater Values

## JOB PRINTING

## COMMERCIAL PRINTING

## Social PRINTING

## CUT Pump Repair Bills!

## WESTERN deep well TURBINES

last up to 3 TIMES longer than other pumps

## DOMESTIC PUMP SERVICE

SALES & SERVICE PUMPS PULLED AND SET. ALL TYPES. SEE

## WESLEY HAWKINS LOWE DRILLING CO

Clovis Hwy. Ph. 5970

# WELCOME TO MULESHOE



Darrell Turner

We welcome Darrell Turner, newcomer to Muleshoe. Turner was formerly of Armarillo and was employed at R & R Electronics. He is now a salesman for Harvey Bass Appliance. The Turners live at 523 W. 6th. They have 3 children: Keith age 12, Jacque Sue 9 and Cindy 10 months. The Turners attend the Baptist Church. The following merchants extend a cordial welcome to the Turners.

## CASHWAY GROCERY

402 Main Phone 2440

## DAMRON DRUG CO.

REXALL 308 Main Phone 2100

## James B. Glaze

Insurance - Real Estate - Loans

## MULESHOE STATE BANK

304 Main Phone 2540

## MULESHOE MOTOR CO.

"At The Crossroads"

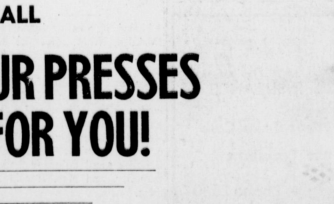
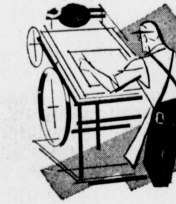
## Cobb's

218 Main Phone 4090

## LET US PUT OUR PRESSES TO WORK FOR YOU!

**MULESHOE PUBLISHING CO.**  
 304 W. 2ND PHONE 2350

EVERY JOB WELCOME



# SHOP MULESHOE FIRST

## BUSINESS SERVICES DIRECTORY

**CONOCO**

FILL UP AT  
FIRST STREET  
CONOCO STATION

1st & American Blvd.

FAST SERVICE  
PICK-UP & DELIVERY  
TIRES & BATTERIES

J. A. MILLS, Dealer  
Phone 7920

Phone 3-0780

— the number to call to save money on your new office, store, warehouse

Headquarters for attractive Inland steel buildings. Pre-engineered in any length, any width. Enclosed with colorful metal wall panels, glass, or other materials. Fast erection saves money.

**STEEL BUILDINGS**

**B & C BUILDERS, INC.**

217 E. Ave. B Muleshoe, Texas

Save Money On Auto Parts!

**BOVELL MOTOR SUPPLY**

107 East Ave. B — Dial 2880

W. T. BOVELL, Owner

**BERKELEY**

IRRIGATION PUMPS AND WATER SYSTEMS

COLEMAN HEATING & AIR CONDITIONING

**E. R. HART CO.**

210 E. 3rd -- Ph. 3-3300

ART IN STYLING.... IF YOUR HAIR ISN'T BECOMING TO YOU, YOU SHOULD BE COMING TO US

**WELLBORN'S BEAUTY SHOP**

1101 Ave. J. Ph. 3-4040

**Kelton Barber Shop**

— BARBERS —

Omer Kelton  
Sunny Shoemaker

**FLOWERS**

Add that Sweet Note

Cut Flowers  
Potted Plants  
Flower Arrangements  
Artificial Flowers

**Decorators 216**

216 D St. Ph. 5400

Filter Queen Sales - Service

Call 3-1630 after 6:00 p. m.

J. R. Ottwell  
Muleshoe, Texas

Sell Us Your USED FURNITURE AND APPLIANCES

**SWAP SHOP**

Phone 3-0710

**HEATHINGTON LUMBER COMPANY**

Lumber, Paint,  
Builders Hardware

Clovis Rd. - Ph. 7970

**COTTONSEED DELINTED**

Phone 3-2510 — Muleshoe

**WILLIAMS SEED CLEANING CO.**

**JAKE DIEL DIRT & PAVING**

Land Leveling  
Terracing

Ph. 8410 or 3-5940  
Unit 323 Box 381  
Plainview, Hwy.

**SHAHER'S BELL SERVICE**

Save Money — Trade with US  
All Brands of Oil — Good Gas  
Tire Service — Accessories

J. W. 'Bub' Shafer -- 623 American Blvd.

**SINGLETON FUNERAL HOME**

24 HOUR AMBULANCE SERVICE

Phone 2860 Muleshoe

Good Clean Used Cars

**GOSS AUTO SALES**

1030 W. American Blvd. — Phone 3-9949

C. W. Goss, Owner

**MERLE NORMAN**

TAKE THE GUESSWORK OUT OF YOUR COSMETIC PURCHASES FREE FACIAL

**THE SCULPTRESS BBA.**

NEW... SENSATIONAL  
Ask Lauranette For Fitting

118 E Ave B Ph. 3-5410

**KEN DUNCAN TRUCKING GARAGE**

24 Hour Service  
TANDUM STOCK TRAILERS

Corner 1st and Fir  
Muleshoe, Texas

Ph. 3-1140  
965-2661

"FIRST IN FASHIONS"

Permanents — Styling  
Tinting — Shaping  
Revlon Cosmetics

**MAIN STREET BEAUTY SALON**

Ermance Holdeman  
115 Main — Muleshoe  
Dial 3-4400

**BEAVER'S FLOWERLAND**

Real and Artificial Flowers — Corsages  
Pot Plants — Banquets  
Funeral Designs

520 S. First St.  
Ph. 3-1160 -- Muleshoe

FOR FHA., GI and FARM LOANS AND THE

**BEST INSURANCE**

SEE—  
**POOL INSURANCE COMPANY**

Phone 2950 Muleshoe

W. M. POOL, JR. — LEE R POOL

**Muleshoe Jewelry**

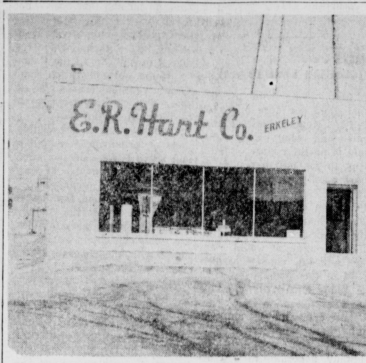
Headquarters For Fine Gifts

Famous Name Brands

- Keepsake Diamonds
- Fostoria Crystal
- Wyler Watches
- Wallace Silver
- Lennox China
- Franconia - Syracuse

Call  
**SENA or JEWELL**

226 Main Ph. 5820



BERKLEY PUMPS - E. R. Hart Co., Inc., installs pumps and water systems and Coleman Heating and Air Conditioning units and does a turn-key job.

### Berkley Pumps Sold By E.R. Hart Co., Inc.

One of the oldest and best known business firms in Muleshoe is the E. R. Hart Co., Inc. dealer in Berkeley pumps and water systems and Coleman Heating and Air Conditioning units. This establishment installs pumps and irrigation systems and does a turn key job. They also can have wells drilled through their connections with well drilling contractors. Berkeley pumps come in several sizes up to 3 horse power. These pumps are famous all over the United States and have been on the market many years. They are famous for giving many years of excellent service. Six inch pipe is used on most irrigation systems and small units are used for household service, for either shallow or deep wells.

This company has mechanics that overhaul any type of pump and install them. They do all the plumbing work connected with water service. Otis Blaylock is the head mechanic and installed the first Berkeley pump in this area in 1938. Seven employees operate this organization.

Berkley pumps can be bought on easy terms and his firm handles the financing for pumps and heating and air conditioning units. They are familiar with the water problems of farmers in this area and know how to solve them. They have all the equipment necessary to bring the water to the surface and distribute it over the land.

The E. R. Hart Co., has a complete line of plumbing supplies and pump parts. Practically any item a farmer needs for his irrigation system can be bought here.

Houston Hart is president of

**Carpenter's Service**

Hwy. 84 Ph. 3-9080

**HOUSES MOVED ANYWHERE**

By  
**LANGER BROS. HOUSE MOVERS**

Call  
Muleshoe — 5091  
Clovis — PO 3-3497  
Bovina — 238-3641

**Try Our BERTI-BURGERS!**

They're Great Sandwiches Fountain Drinks, also Malts, Shakes

**DARI-DELITE**

210 N. 1st. St. - Ph. 4829

Bertie Purcell, Owner

**W. O. CASEY GENERAL INSURANCE**

Let Our Complete Coverage Take Care of All Your Insurance Problems

Muleshoe State Bank Bldg. — Phone 2540

**JOHN'S CUSTOM FEED MILL**

523 E. American Blvd. Phone 5730

Custom Grinding & Mixing, Bulk Feed Delivery  
Feeds for Cows, Horses, Chickens, & Birds

### New Curriculum Ideas Presented To Lions Club

The school curriculum, which is getting the x-ray treatment these days, was the subject of a talk before Muleshoe Lions club this past week by Elizabeth Watson, the schools' curriculum expert.

Curriculum, she told the Lions, is no longer "the three R's," but is very broad indeed covering every schooltime activity of the pupil - classroom, laboratories, athletics, fine arts.

The current curriculum studies being made by our school and by many other schools these days, "is designed to help the teachers do better work, to coordinate all school activities, and to provide in-school training for the teachers themselves."

She said the conception of curricula has changed greatly from the old days, "adding, "we must start with a better understanding of the child himself; children differ greatly, and the measure of the effectiveness of the curriculum is determined not by how nearly he meets the standards of the top students, but how much progress he makes from the start of his school year."

She cited 10 purposes for curriculum studies, starting with understanding of the child himself. Helping the teacher to succeed, making study more interesting by the use of better material, and the improvement of methods is part of the 10-point program.

She pointed out that teachers need to use the help of specialized personnel, an appraisal of the pupils' progress is a part of the broad program of curriculum. She said other points include such matters as stimulating the teacher to do better work, aiding to both the pupil's and the teacher's poise, and stimulating a spirit of cooperation among pupils and teachers. The final part is a

public relations program which keeps the public informed on the matter of curriculum.

She pointed to two such programs now under way — the "by - grade curriculum series being carried in The Journal, and the public showing of six films dealing with curriculum. The next in the film series will be presented Jan. 12.

**WESLEYAN GUILD**

The Wesleyan Service Guild of the First Methodist Church will be Monday, January 11 at 7:30 p.m. in the home of Mrs. Arnold Gross, 222 West 13th Street.

and all parents were invited to attend the showing.

**REPORT OF CONDITION OF MULESHOE STATE BANK**

of Muleshoe, Bailey County, Texas, at the close of business Dec. 31, 1964

Federal Reserve District No. 11  
State Bank No. 1631

**ASSETS**

Cash, balances with other banks, cash items in process of collection 1,986,819.87

United States Government obligations, direct 1,570,828.75

Obligations of States and political subdivisions 361,042.79

Loans and discounts, (including 34,749.10overdrafts) 5,251,379.53

Bank premises owned 127,175.62, furniture and fixtures 182,706.75

Customers' liability to this bank on accept-ances outstanding 1,856.92

**TOTAL ASSETS** 9,554,734.63

**LIABILITIES**

Demand deposits of individuals, partnerships, and corporations 5,706,200.44

Time and savings deposits of individuals, partnerships and corporations 1,847,863.30

Deposits of United States Government (including postal savings) 42,306.65

Deposits of States and political subdivisions 1,418,311.53

Certified and officers' checks, etc. 71,250.46

9,083,472.38

(a) Total demand deposits 6,124,012.80

(b) Total time and savings deposits 2,961,858.58

**TOTAL LIABILITIES** 9,085,872.38

**CAPITAL ACCOUNTS**

Capital: (a) Common stock, total par value 200,000.00 200,000.00

Surplus 200,000.00 200,000.00

Undivided profits 68,862.25 68,862.25

**TOTAL CAPITAL ACCOUNTS** 468,862.25

**TOTAL LIABILITIES AND CAPITAL ACCOUNTS** 9,554,734.63

**MEMORANDA**

Assets pledged or assigned to secure liabilities and for other purposes 1,570,428.75

Loans as shown above are after deduction of valuation reserves of 225,450.05

**CORRECT-ATTEST**

W. Q. Casey

W. D. Moore

J. P. Shelton

**DIRECTORS:**

I, Bobby Airhart, Vice-President of the above named bank do hereby declare that this report of condition is true and correct, to the best of my knowledge and belief.

Signed: Bobby Airhart  
STATE OF TEXAS  
COUNTY OF BAILEY

Sworn to and subscribed before me this 8th day of Jan., 1965 & I hereby certify that I am not an officer or director of this bank.

Notary Public  
Bailey County, Texas  
Lou Ann Blaylock

### Pleasant Valley News

By KATHY WEST

Mrs. Jack Calhoun's sister, Emice Godwin was buried Monday in Midland. The Calhoun family has been there for the funeral.

Mr. and Mrs. Duane Stevens and Mr. and Mrs. John West were in Clovis last Thursday for supper.

Carolyn and Veta Allison were hostesses for a coke party Saturday. The girls had their school friends as guests.

Mr. and Mrs. Roy Bryant visited her sister and family, the Burt McDonald family, Slaton Sunday and then went to Lubbock to spend the night with their son and family, the R. E. Bryants.

Sunday afternoon visitors in the Bonnie Haberer home included: Ted Haberer, Grand Isle, Neb.; Mr. and Mrs. W. E. Angeley, Morton; Mr. and Mrs. E. K. Angeley, Mr. and Mrs. Jack Angeley and family; Mr. and Mrs. Ken Angeley and family; Mr. and Mrs. Russell Haberer and family; and Mr. and Mrs. Roger Haberer and family.

Sheryl Stevens returned to Portales, N. M. after the holidays.

Mr. and Mrs. Harold Allison were in Lovington, N. M. recently. Mrs. Allison and Mr. and Mrs. Kenneth Osburn then went to Hagerman, N. M. for a school reunion. The Kenneth Osburns spent Saturday night with Mr. and Mrs. Harold Allison.

James West returned to Levelland Sunday for the start of classes. Other college students returning to college were: Veta Allison, Texas Western at El Paso; Inez Platt, Texas Tech; and Larry Allison, Hardin-Simmons.

**BOSS ALUMINUM PIPE SALE**

Price Per Foot

4"x30' LATERAL PIPE..... 51c

4"x40' LATERAL PIPE..... 47c

5"x30' MAIN PIPE..... 60c

5"x40' MAIN PIPE..... 57c

6"x30' MAIN PIPE..... 71c

6"x40' MAIN PIPE..... 68c

6"x30' FLOWLINE PIPE..... 65c

**BOSS IRRIGATION**

AC 806 - PO 5-5559 Clovis Hwy at Quaker St.  
LUBBOCK, TEXAS

**SNEED REPAIR SHOP**

New Engines, Priced Right

- Continental Red Seals
- Chrysler (6 Models)
- Oldsmobile 394
- Pontiac 389
- Chevrolet 292 Truck

**Reconditioned Engines**

- 1-5820 Continental
- 1-R602 Continental
- 1-T427 Continental
- 1-M330 Continental
- 1-V856A Chrysler

Complete Repair service on any make of irrigation engine!  
Ratio changes and repair service on gear drives!

Phone 3-4260 for Fast Service  
D. H. SNEED, Owner





**PRIVATE LICENSE** ... Mrs. Wylie Baker is pictured in front of her Cessna 172 as she prepares to take Mrs. Carl White and Mrs. Kenneth Dye for a ride after being issued her private license. "Being a housewife with four children, it probably took me longer to get my license, but I sure am proud of them," she said. Mrs. Baker took her first lesson 11 months ago. Recommendation flight was given by Jack Redpath, Lubbock, and the check ride and license were issued here by Morgan Locker, FAA examiner. She is the third woman in Bailey County to hold this rating.

**Off The Runways**

**MCALLEN FLIGHT**  
Dr. Ray Santos was flown to McAllen by Morgan Locker in the Aztec recently due to the illness of his sister. Weather closed in at San Antonio and they made an instrument landing there, and continue the flight to McAllen the following day.

Stanley Williams flew to Lubbock where he picked up his father, Bud Williams, Clovis.

**BUSINESS FLIGHTS**  
Sam Dameron made a business flight to Amarillo and Herb Griffin and Ben Yeager made a business trip in the Cherokee.

Kenneth Lowe, Earth, made his solo flight and is working for private license.

Flying to El Paso for a football game were Mr. and Mrs. Jack Little and Mr. and Mrs. Russell Haberer.

Bill Wimberley flew Mr. Parker to El Paso on business.

Don Sander, a former Muleshoe resident now living in Seminole, came here this week and began flight training under Morgan Locker.

Sander plans to come to Muleshoe each week and get his license here.

**Youth News From MHS**

By WISTER R. HARRISON

The Distributive Education Club recently elected their club sweetheart who this year is Elizabeth Barris. Libby will go to the sweetheart contest in San Angelo February 16 with the other members of the D. E. C. A. Club.

The D. E. C. A. Club is selling heat tags for the boys and girls basketball games to support and others wishing to support their local basketball team.

The Student Council had a meeting Friday during Activity Period to discuss many matters. One of them was to have reserved parking for all teachers. They also decided to have a sponsored drive to raise money for their many projects. They decided to use their money to buy a new scoreboard for the football field. They also revealed their date for the annual Kangaroo Court to punish offenders of Twerp Week.

Many students went to Lubbock Saturday to take college entrance exams.

Mr. and Mrs. J. C. Snitker upon the birth of John Lynn born 1-2-65 at 6:49 a.m. Weight 8 lbs. 5 oz.

Mr. and Mrs. Leon Collins upon the birth of Tina Danielle born 1-4-65 at 8:18 a.m. Weight 7 lbs.

Mr. and Mrs. Miguel Oropeza upon the birth of baby girl born 1-5-65 at 5:39 a.m.

Mr. and Mrs. Leaman Stancel upon the birth of Jennifer Glorie born 1-4-65 at 5:27 p.m. Weight 7 lbs. 13 oz.

**HOSPITAL NOTES**

**GREEN HOSPITAL**

**Admitted**  
Mrs. Eula B. Smallwood, Mrs. Ronnie Gustin, Linda Pat Usery, Mrs. Jamie Lou Moraw, Gene W. Edwards, Mrs. Valla Osborne, Mrs. Howard Elliott, Mrs. Allie Horsley, L. D. Knight, Mrs. Bill Gable, Mrs. Martha Ruckman, Shorty Lambert, Mrs. Rosie Washington, George W. Chapman, Jeannette Grasz, Darrell Lynn Moore, Mrs. Jane Beavers.

**Dismissed**  
Mrs. Eula B. Smallwood, Mrs. Ronnie Gustin, Linda Pat Usery, Mrs. Jamie Lou Moraw, Gene W. Edwards, Mrs. Valla Osborne, Mrs. Allie Horsley, L. D. Knight, Mrs. Bill Gable, Mrs. Martha Ruckman, Darrell Lynn Moore.

**WEST PLAINS HOSPITAL**

**Admitted**  
Mary Pearl Campary, Raymond Davenport, Mrs. A. B. Miller, Mrs. Martha Hightower, Charles Goodhue, Wm. H. Langford, Mrs. Jessie Bustamonte, J. W. Hancey, Jimmie Lee, Ernest Lightfoot, Lynette Shafer, Glenn R. Dunn, Mrs. Edith Collins, Mrs. L. O. Stancel, Abraham Farr, Mildred Glenn, Mrs. Robert Buter.

**Discharged**  
Archie Curry, Rosella Oropeza, Herman Smith, Cheri Lynn Grow, Chas E. Moore, Cecil Mills, Mrs. Willie Perez, Mrs. Narciso Garza, W. A. Elmore, John A. Benson, Mrs. R. M. White, Mrs. Wm. B. McDorman, Mr. Wm. B. McElhannon, Carl Case, J. M. Shuttlesworth, G. B. Frazier, Mrs. Lupe Gonzales, David R. Blaylock, Homer Johnson.



**Congratulations To**

Mr. and Mrs. Ronnie Gustin upon the birth of Deloy Gail born 1-2-65 at 4:40 a.m. Weight 7 lbs. 4 oz.

Mr. and Mrs. William Leonard Ruckman upon the birth of William Leonard, Jr. born 1-5-65 at 6:16 p.m. Weight 7 lbs. 4 oz.



**MR. FARMER!**

**BEFORE YOU INVEST IN ANY MECHANICAL IRRIGATION PIPE MOVER INVESTIGATE THE WAGNER SYSTEM**

The Latest The Simplest The Most Improved The Most Economical

**PIPE MOVER ON THE MARKET IRRIGATION EQUIPMENT CO.**

385-3159 Phone Day J. D. Hagler Littlefield, Texas Phone Night 385-5150

**"THE BEST! WINTER FRUITS and VEGETABLES - ALWAYS AT PIGGLY WIGGLY!"**

- TEXAS FULL O JUICE**
- ORANGES** POUND **7 1/2¢**
  - Fresh Green Large Bunch **19c**
  - ROMAINE** **19c**
  - Fresh Green Onions 2 lg. bu. **15c**
  - Fresh Radishes 2 large Bun. **15c**
  - Red Emperor **GRAPES, Pound 19c**
  - Washington Extra Fancy Delicious **APPLES, Pound 19c**
  - Fresh Mustard Greens 2 Lg. Bun. **25c**
  - Texas Ruby Red **GRAPEFRUIT, Pound 10c**
  - Fresh Clip Top **TURNIPS Pound 12 1/2c**
  - Florida Fresh **TANGERINES, Pound 19c**
  - California Fresh Cello Bag **SPINACH, Each 29c**
  - Fresh, Crisp & Meaty **BELL PEPPERS Pound 25c**
  - Texas Table Size **Carrots 2 1 lb. Cello Bags 25c**



We Reserve the Right To Limit Quantities

**CELERY** FRESH GREEN PASCAL EACH **10¢**

**MELLORINE** Plains Homestead, or Foremost Assorted Flavors 1/2 GALLON **39¢**

**PORK & BEANS** VAN CAMP NO. 300 CAN **12 1/2¢**

**GOLDEN CORN** Kounty Kist 12 OZ. CAN **12 1/2¢**

**SALMON** WHITNEY CHUM NO. 1 CAN **39¢**

**SALAD DRESSING** SUZAN QT. JAR **29¢**

**HEALTH AND BEAUTY AIDS!**

**TOOTHPASTE**

Maclean, Regular **59¢**  
89c Retail, Family Size

Jargen's, Regular \$1. Retail, Tax 7c  
HAND LOTION, Large Size BH ...69c  
Regular 39c, St. Joseph 50 Count BH  
CHILDREN'S ASPIRIN ... 27c  
Hytone Cello Wrapped, Regular 59c  
FILLER PAPER, 300 Count ... 47c  
Hytone, Big Chief Pencil Tablet, Regular 39c  
TABLETS ... 23c

- Ideal, Grade A Medium EGGS** 3 Dozen **\$1**
- Holsum Buttermilk, Sweetmilk BISCUITS** Can **5c**
- Woritz, Salted CRACKERS** 1 Pound Box **19c**
- Good N Rich Assorted Flavors CAKE MIX** 2 8 Oz. Box **19c**
- Rusty DOG FOOD** 6 No. 1 Can **39c**
- Goodhope Evaporated MILK** Tall Can **12 1/2c**
- Orchard Pride APPLESAUCE** No. 300 Can **12 1/2c**
- Gladiola FLOUR** 5 Pound Bag **59c**



**FRYERS** Clary's Grade A Whole POUND **27¢**

**Sirloin Steak** Armour Star, Aged Heavy Beef, Valu-Trimmed POUND **79¢**

- FROZEN FOODS!**
- Barquet, Apple, Peach, Cherry, Family Size **FRUIT PIES 29c**
  - Seabrook French or Italian **GREEN BEANS 2 - 9 Oz Pkgs. 49c**
  - Minute Maid 3 & 9 Oz. Cans **ORANGE DELIGHT 59c**

**COFFEE** GOLDEN WEST REG. - DRIP OR FINE POUND **69c**

**CRISCO** ALL VEGETABLE SHORTENING 3 LB. CAN **69c**

- Lean, Lots of Meat, Country Style **PORK RIBS** Pound **49c**
- Lean, Northern Pork **PORK STEAK** Pound **39c**
- Armour Star **SLICED BACON** Pound **55c**
- SLICED PORK LIVER** Pound **19c**
- Made Fresh in our own Delicatessen, Tomato, and Cheese **Pizzas** Large Family Size, Each **59c**

**TOILET TISSUE** Damita, Assorted Colors **4 ROLL PACK 25¢**

Lowest Prices... Greatest Variety... always at...

**Piggly Wiggly**