



Promoted

J. D. (Dave) Bigham has been promoted to vice president in charge of production, general manager of the coffee roaster, and a member of the board of directors, by the White Swan Coffee Company, Bigham, who has 31 years of experience in the coffee industry, came to the White Swan Company in 1944 as plant superintendent.

Texas Steer For Two Bears A 'Fair Swap'

MEMPHIS (AP)—Tennessee and Texas Jaycees said yesterday the swap of two scrappy Smoky Mountain black bears for one Texas Longhorn steer is a fair rate of exchange.

In poundage the Tennesseans got more. The bears, 2½ year old, 200 pound twins, are on their way to the Greenville, Tex., Sam Houston, a frisky 1,300 pound steer, is going to the Knoxville zoo.

The Greenville Jaycees initiated the trade. They are building their "goodwill zoo" by swapping animals with other Jaycee units. Bill Narramore, Greenville "swap chairman," said his club is also engineering another trade with the Knoxville zoo involving some prairie dogs for a lion cub.

The animals were brought here by truck and swapped at the Mississippi bridge. The Jaycees were welcomed here by Mayor Edmund Orgill.

Their brief life hasn't been a "bed of roses" for the Knoxville bears. Zoo keeper Mack France nursed them through infancy with an eye dropper after their mother refused to feed them.

Hugh Haston, Knoxville Jaycee president, said the bears are tame, but have a "gigantic sweet tooth." They dined on cakes and guzzled soft drinks most of the way to Memphis.

"Sam Houston" is a trifle wild now, Greenville Jaycee President Earl Marrs said, predicting it should be domesticated in a few years.

The Texans rode to Memphis with Lone Star flags on their cars. They brandished a proclamation from Texas Atty. Gen. Shepperd which endowed them with the responsibility of reporting "evidence of any Tennessee who is not jealous, covetous, or envious of Texas and to report anyone who is not anxious to make 'The Eyes of Texas' the national anthem, or any attempt to prevent mass migration of Tennesseans to Texas."

Nasser Sees Self, Egypt As Hub Of Arabic-African World

By WILLIAM L. RYAN
Associated Press Foreign News Analyst

Gamal Abdel Nasser sees himself — and Egypt — at the center of two vast geographical circles, the Arab world and Africa. Unity of purpose by the nations within those circles, he feels, could play a major role in shaping the future of mankind.

As Egypt's President an idealist, seeking to throw off all remnants of colonialism — or is he scheming for dictatorial control of a vast area upon which depend the fortunes of Western Europe?

When Nasser released his latest bombshell — nationalization of the Suez Canal — diplomats could seek the answer in Nasser's own words. He wrote down his dreams in a series of brochures published last year as a book: "Egypt's Liberation, the Philosophy of the Revolution." The thoughts it expresses were disturbing enough to cause Premier Guy Mollet of France to call it a new "Mein Kampf" in which an Oriental Hitler laid bare his boldest dreams.

Nasser at 38 is new to politics. A military man since his academy days 20 years ago, he sprang almost overnight from army obscurity to a commanding position in the sprawling Arab world. He has given the Western world one headache after another.

When he seized the canal, he announced: "We shall all of us defend our nationalism and our Arabism and we shall all work so that the Arab homeland may extend from the Atlantic Ocean to the Persian Gulf."

The book began as a series of jottings when he was an officer in Palestine, hemmed in by Israelis in the sun-baked Faluja Pocket. Concerned with Egypt's history of misery under corrupt regimes, he met and plotted with other young officers who were to overthrow King Farouk in 1952.

The last section of the book, apparently put together long after the revolution, is the one which caused the French Premier's concern. In it Nasser expounded the idea that Egypt was the center not only of the Arab world from Asia to the Atlantic, but also of Africa. He wrote:

"Can we fail to see that there is an Arab circle surrounding us, that this circle is part of us and we are part of it? . . . Can we possibly ignore the fact that there is an African continent which fate decreed us to be part of, and that it is also decreed that a terrible struggle exists for its future . . . ? Can we further ignore the exist-

Skin Diver Dies At Andrea Doria

NANTUCKET, Mass. (AP)—Lack of oxygen in the blood was blamed today for the death of a skin diver while practicing dives before taking underwater pictures of the sunken liner Andrea Doria.

William Edgerton, 23, of Belmont, died shortly after he was pulled from the waters of Nantucket harbor.

He was one of a group of about 20 in a privately financed expedition to film the liner which plunged into 225 feet of water 45 miles south of Nantucket after a collision with the Swedish liner Stockholm last week.

Dr. Christian J. Lambertson, a physician member of the expedition, said one of the valves on Edgerton's breathing apparatus somehow became partially closed.

Hot Rod Club Deteriorates Into Car Parts Theft Ring

TOWSON, Md. (AP)—Investigators claimed today to have cracked an enormous ring of young thieves operating under the direction of a 23-year-old man.

Supt. Gilbert Doyle, chief of the Baltimore County Detective Bureau, said the gang called itself the "Four Aces" and specialized in stealing automobile accessories.

Arthur Lee Hash, 23, was identified by police as the leader and organizer of the gang and was charged with contributing to the delinquency of minors. Papers filed in Juvenile Court accused him of giving intoxicants to teen-

age girls and bringing boys into the court's jurisdiction for disorderly conduct.

Besides Hash, police also arrested four older members of the gang and charged them with the theft of auto accessories. Seven young girls and eight boys were named in Juvenile Court petitions.

Police said the organization, originally set up to promote hot-rod racing facilities, had numbered about 2,000 spread over many neighborhoods but had deteriorated into a gang whose principal activities were stealing auto parts, buying whisky and beer and warring with other gangs.

Easy Way to Kill Ants and Roaches



JOHNSTON'S NO-ROACH: Simply brush Johnstons' No-Roach on baseboards and cabinets to control cockroaches. Brush the colorless, odorless coating on window and door sills to stop ants. Stays effective for months. No need to move dishes, or breathe harmful sprays. Johnstons' No-Roach is proved by good housekeepers. 8 oz. 89¢; pint 1.69; quart 2.98.

HULL & PHILLIPS FOOD STORES

No. 1—4th & Gregg No. 3—411 Lamesa Highway

Walt Disney Sued For \$415,000 By Kirk Douglas

LOS ANGELES (AP)—Kirk Douglas has sued Walt Disney for \$415,000 over films showing the actor riding on Disney's miniature train.

Douglas' complaint said Disney violated the actor's right of privacy by taking the films surreptitiously during a social visit he and his family paid to the Disney home last April 4.

Named with Disney as defendants were the ABC network, which showed the films; three sponsors and three advertising agencies.

Douglas contends his earnings power as a movie actor is based on the kind and number of appearances he chooses to make, and the amount of money he receives for such appearances.

Pilot Dies Flying Flaming Jet From Heart Of El Paso

EL PASO (AP)—A Navy pilot who was killed when his plane crashed and burned yesterday chose death rather than plunge his craft into the heart of El Paso, the Navy said last night.

Lt. Cmdr. Robert Anderson could have jumped from the two-engine FTU jet, an Air Force witness said. Instead, he remained at the controls to guide the burning plane from the center of the city, the Pacific Fleet Air Command said.

His last radioed words were "I can't make it," spoken only seconds before the plane crashed in a vacant lot southwest of El Paso's Burgess High School.

Ferrying the plane from Webb Air Force Base at Big Spring to Litchfield Naval Air Facility in Arizona, Anderson had taken off from El Paso after refueling. An engine misfired and started blazing.

Anderson told the control tower by radio he would attempt to maintain altitude and fly away from the city. The Navy said he next reported he was having difficulty and then came his final words.

His widow and children live here.

Relieve Bladder Irritations—Get Comfortable Again

Such a common thing as urinate eating or drinking may be a source of mild, but annoying bladder irritations—making you feel restless, tense, and uncomfortable. And if restless nights, with nagging backache, headache or muscular aches and pains due to over-exertion, strain or emotional upset, are adding to your misery—don't wait—try Doan's Pills.

ALL FIRST QUALITY!

SATISFACTION GUARANTEED or your money back!

* WHITE SALE *

New Pastel and Bright Colors in a Rainbow of Values!

Save! low, low prices on Wards Own Fine Brands

FITTED! PLAIN! ALL POPULAR SIZES!

| | |
|---|--|
| <p>132-Count White Muslin Longwear, Rugged Tape Selvages</p> <p>Wards best-seller—basic for your linen closet. Budget-price sheets woven for long wear; excellent washing. 81x108" full 1.83 72x108" 1.63. 42x36" case 37c</p> | <p>1.63</p> <p>81x99"</p> |
| <p>Sweet-Dream Pastel Sheets . . . Wards Longwear Quality</p> <p>Beautiful pastel muslin that gives your bedding a fashion flavor! Sturdy 132-count—choose from pretty blue, green, lilac, pink, and yellow. 72x108" Twin . . 1.97 42x36" Case . . 46c</p> | <p>2.17</p> <p>81x108"</p> |
| <p>Treasure Chest—Luxurious, Silken-Touch White Percale</p> <p>Wards 186-count sheets are created for beauty and practicality. Delightfully smooth, sturdy and easy-to-handle. Come; check big savings! Twin 72x108" . . 1.97 Case 42x38½" . . 54c</p> | <p>2.17</p> <p>81x108"</p> |
| <p>Easy-On Fitted Sheets Won't Pull Out! Muslin or Percale</p> <p>You'll whiz through bed-making with reversible fitted sheets. Automatically stretch smooth—stay tucked-in 'til removed. Contour corners give this snug fit—and are double-stitched for extra wear.</p> | <p>Longwear 132-Count Muslin</p> <p>Twin Size, bottom fitted 1.61 Full Size, bottom fitted 1.78</p> |

BUY TWO! SAVE TWICE!

Dacron®-Nylon Edged 79c Cannon Towel

2 for 99c

Fluffy terry with extra-strong edges. Bath size 22x44", carefree colors. 49c 15x25" Towel 3 for 99c 25c Washcloth 6 for 99c

SAVE 99c REG. 3.98

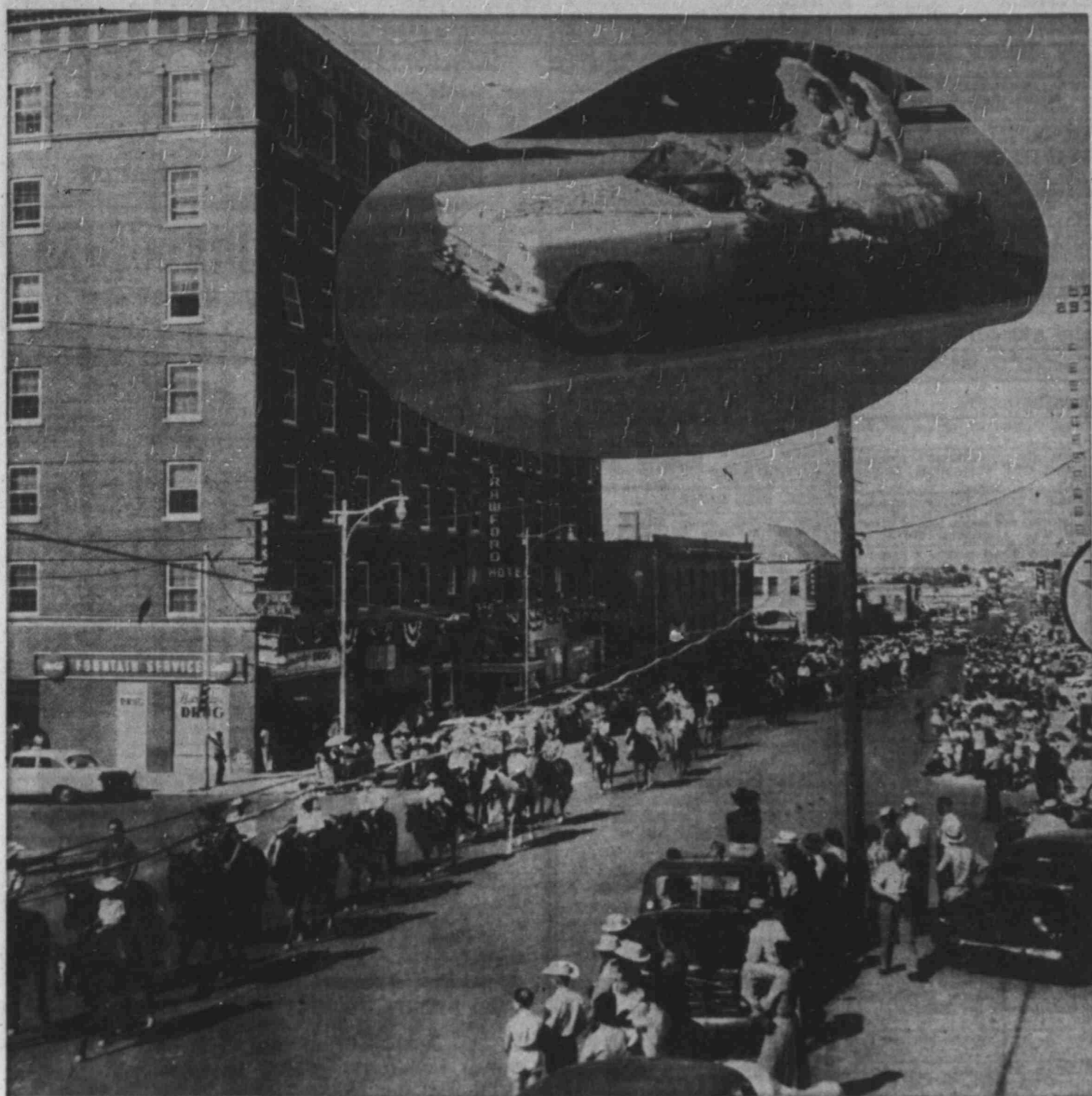
Bullion Fringed Chenille Spread

2.99

Here's a handsome, NO-IRON bed-spread. It's an eye-ful of solid color—styled in waves of pin-point tufts.

SHOP AT WARDS DURING AUGUST . . . NOW . . . EVERYDAY LOW PRICES ARE EVEN LOWER!

| | | |
|---|--|---|
| <p>PLAID BLANKET—REG. 1.69 Cozy-soft, deep nap cotton. 70x80". 1.48</p> | <p>3.59 ZIPPERED MATTRESS COVER Sanforized sheeting. Full or twin. 2.99</p> | <p>3.59 BLEACHED MATTRESS PAD Securely box-quilt-stitched. Full. Twin Size. Reg. 2.59 1.99 2.99</p> |
| <p>SHEET-BLANKET—REG. 1.98 Fluffy cotton. Snowy white. 70x90". 1.78</p> | <p>35c BLEACHED 80x80 MUSLIN Heavy quality. For cases, sheets. 36" 27c yd.</p> | <p>FOAM LATEX PILLOW, REG. 5.95 Plump! Zip percale cover. 18x26". 4.88</p> |
| <p>2.98 PASTEL SHEET-BLANKET Cozy cotton year-round. 80x108". 2.68</p> | <p>5.98 CONTOUR MATTRESS PAD Sanforized! Bleached filler. Full. Twin Size. Reg. 4.98 3.88 4.88</p> | <p>5.95 COMFY DACRON® PILLOW Light! Nylon covering. 20x26". 4.88</p> |
| <p>UNBLEACHED MUSLIN For drapes, covers, dust cloths. 36" 17c yd.</p> | <p>89c ZIPPERED PILLOW TICKS Featherproof, washfast. 21 x 28". 66c</p> | <p>27c BLEACHED COTTON CLOTH For all-duty kitchen use. 30x30". 5 for \$1</p> |



STANDING ON THE CORNER, WATCHING ALL THE HORSES... Inset shows winning float, Thunderbird decked with camellias.

Friday Is Deadline For 'Bank' Plow-Up

All land put into the soil bank program must be plowed out by Aug. 3, according to an announcement by Gabe Hammack, county ASC manager. He would also like to call attention to some things that may occur if a proper number of acres are not plowed.

Potential Tests Being Made On Wildcat Northwest Of City

Operators are currently taking potential test at the Williamson-Alstrin No. 1 Buchanan wildcat northeast of Big Spring, but no production report has been made. The wildcat is five miles northwest of Big Spring and also a mile and a half south of the Big Spring field. The No. 1 Buchanan is trying for production in the Fusselman, with that formation being perforated between 9,705-98 feet.

McKEON

(Continued from Page 1) from the crowded courtroom when he declared: "The trouble is there is not enough night training prescribed. I know I got most of the glory and I got all of the blame, and I would willingly have taken the blame, and I would train my troops as I thought and as I knew they should be trained, regardless of any directive."

PRIZES GIVEN Thousands See Rodeo Parade

Thousands of people, many gaily dressed in cowboy regalia, lined the streets of downtown Big Spring yesterday for the parade which opened Big Spring's 23rd Annual Rodeo.

Sees No Cause To Toss Webb Ballots Out

LAREDO (AP)—A key witness testified today that even if signatures on applications for and on absentee ballot affidavits did not correspond he would see no reason for throwing the ballot out.

Missiles To Take Place Of Bombers

NEW ORLEANS (AP)—The Air Force disclosed today that it expects its surface-to-air guided missiles of the future to replace guided aircraft in about half the missions of the Strategic Air Command and a third of those of the Tactical Air Command.

Colleges Urged To Try 'Rain-Making'

CORPUS CHRISTI (AP)—O. G. McLain, a member of the State Water Resources Committee, called on the University of Texas and Texas A&M yesterday to pool their resources and launch a rain-making effort and study as a "probable solution for the Texas water problem."

Recount In Duval Shows No Change

ALICE (AP)—Dist. Atty. Sam Burris said yesterday Duval County vote totals were substantially the same after a recount of absentee ballots.

Scouting Machinery Oiled To Push For Record Autumn

Scouting machinery is being oiled for a full scale resumption of activities next month. Indeed, the summer picture looks much better than average, the district committee reported Thursday at its regular monthly meeting at the Howard House.

Mrs. Burns Of Stanton Dies

STANTON (SC)—Funeral services will be conducted here Friday for Mrs. Ruby I. Burns, 47, who died here suddenly Wednesday.

HOSPITAL NOTES

BIG SPRING HOSPITAL Admissions—Opal Kelly, Box 633, Coahoma; Ruby King, 1600 E. 16th; Beulah Richardson, 402 Birdwell Lane; Munson Stewart, 1209 Maple; Pearl Rogers, Venus; Robert Irwin, Royce, Okla. Mich.; F. K. Martin, Fort Worth.

Dawson Sending 7 On Draft Call

LAMESA—Included in the 687 Texans who are to report for induction into the armed forces on August 13 are seven registrants from Local Board No. 32 of Lamesa.

Police Radar Is Due Soon

The city should be hearing from its radar set order within the next two or three weeks, Police Chief C. L. Rogers said today.

Livestock Auction Is 'Generally Fair'

An estimated 400 cattle and 75 hogs went through the ring at the Big Spring Livestock Auction's sale Wednesday, which owner A. L. Cooper described as "generally fair."

Scouting Machinery Oiled To Push For Record Autumn

Scouting machinery is being oiled for a full scale resumption of activities next month. Indeed, the summer picture looks much better than average, the district committee reported Thursday at its regular monthly meeting at the Howard House.

Minor Collision On Today's Report

The only indication of an accident in Big Spring Wednesday was a report at 4:07 A.M. When police men arrived however the motorists were gone.

RODEO

(Continued from Page 1) Midland; Boger Niam, Abilene; and Marie Nix, Big Spring. BARBERACK BRONCO RIDING—Bogor Niam, Abilene; Marie Nix, Big Spring; second: Bill Barton, Abilene; third: Donny Faye Banks, Abilene. SADDLE BRONCO RIDING—Billy West, Abilene; second: Brown, Abilene; third: Brown, Abilene. HORSE SHOOTING—Bogor Niam, Abilene; second: Bill Barton, Abilene; third: Donny Faye Banks, Abilene. GIRL'S BARREL RACE—Pat Wiley, Abilene; second: Marie Nix, Big Spring; third: Marie Nix, Big Spring. STEER WRESTLING—C. C. Evans, Abilene; second: Jack Foy, Abilene; third: C. P. Watson, Loco, Okla. 12:17: Wayne Ewing, 21:1: Freddie Brown, Loco, Okla. 21:7: Angelo McAnally, Monahan, 23:1: Carl D. Estes, Jr., Monahan, 23:1.

WEATHER

NORTH CENTRAL TEXAS—Partly cloudy but this afternoon and Friday with widely scattered showers and evening thunderstorms. WEST TEXAS—Partly cloudy this afternoon and Friday with scattered showers and a few local thunderstorms. EAST TEXAS—Partly cloudy with widely scattered showers and evening thunderstorms. Breeze from the west with gusts to 15 mph. Rain or drizzle with a few showers on Friday. Little change in temperatures. Moderate to locally fresh south winds on coast.

WEATHER

| CITY | MAX. | MIN. |
|-------------|------|------|
| Abilene | 80 | 60 |
| Amarillo | 80 | 60 |
| BIG SPRING | 80 | 60 |
| Chico | 80 | 60 |
| Denver | 80 | 60 |
| El Paso | 80 | 60 |
| Fort Worth | 80 | 60 |
| Galveston | 80 | 60 |
| Los Angeles | 80 | 60 |
| New York | 80 | 60 |
| San Antonio | 80 | 60 |
| San Diego | 80 | 60 |
| San Jose | 80 | 60 |
| Seattle | 80 | 60 |
| Stockholm | 80 | 60 |
| Washington | 80 | 60 |
| Yokohama | 80 | 60 |

BUSINESS DIRECTORY

Where to buy—with the best in Service

Business Directory listing various services and businesses in Big Spring, Texas. Categories include: AIR-CONDITIONING, AUTO SERVICE, BEAUTY SHOPS, BUILDING SUPPLY, CATERING, CLEANERS, DRIVE-INS, OFFICE SUPPLY, PRINTING, ROOFERS, and ANNOUNCEMENTS. Each listing includes the business name, address, and phone number.

BUSINESS SERVICES C
Experienced and Guaranteed CARPET LAYING
Protect Your Investment! Tackless, Smoothedge Installation

W. W. LANSING
AM 4-8976 after 6:00 p.m.
I. G. HUDSON
PHONE AM 4-5106
For Asphalt Paving - Driveways

FOR SERVICE
FOUNDATIONS-CELLARS- WATER & SEWER DITCHES. ANYWHERE!
C&C DITCHING SERVICE
Dial AM 4-4719

KNAPP ARCH-SUPPORT shoes. Sold by R. W. Windham. Dial AM 4-5757, 418 Dallas, Big Spring.
HOUSES LEVELED and blocked. Most all other home repairs. All work guaranteed. Phone AM 4-4890.

WOMAN'S COLUMN G
SALESMEN, AGENTS D4
FULL OR PART TIME SALESPERSON MEN OR WOMEN

TO sell hospitalization insurance. Experienced or inexperienced. Training program for those selected. PREFERRED plans have home nurse care, doctor calls at home, out-patient care and many other outstanding benefits.

PLENTY OF LEADS CASH BONUS
Liberal Commission No Age Limit Write
F. CARL TAYLOR
201 O'Michael Bldg., Odessa, Tex.

FINANCIAL F
PERSONAL LOANS F2
DRASTIC CUT INSURANCE RATES
You can now borrow Cheaper than ever!

LOANS UP TO \$300. FIRST FINANCE CO.
105 East 2nd St. Dial AM 4-7353

WOMAN'S COLUMN G
ELECTRIC APPLIANCES repaired. Irons, toasters, percolators, mixers, etc. Big Spring Repair. AM 4-2383. Free pickup, delivery.

BEAUTY SHOPS G8
LUTHERS FINN cosmetician. Dial AM 4-7216. 106 East 17th, Odessa, Texas.

WOMAN'S COLUMN G
CHILD CARE G3
CHILD CARE. Special weekly rates. Mrs. Scott. Dial AM 4-2363.

WOMAN'S COLUMN G
MICKIE'S
Fabrics, Draperies, Bedspreads (Custom & Ready-made), Slipcovers, Upholstery, Foam Rubber, Refinishing and Repair of Wood and Steel Furniture, Venetian Blinds, Shades and Kirco Rods.

CONCESSION HELP
Middle Aged Lady APPLY IN PERSON MR. TOMMY BASWELL SAHARA DRIVE-IN THEATRE After 6:00 P.M.

GRIN AND BEAR IT



"I'm optimistic, gentlemen... With the government's huge highway building program under way, surely the public will accept the challenge to overcome them!"

MERCHANDISE J
HOUSEHOLD GOODS J4
TODAY'S SPECIALS
1-Push type lawn mower. Good condition. \$12.50

Wheat's
115 East 2nd 504 West 3rd
Dial AM 4-5722
IT'S ALWAYS ELROD'S FURNITURE
We're out of the high rent district which means—BIG SAVINGS FOR YOU

APPLIANCE SPECIALS
1-21" Blonde Zenith Console TV Set, complete with 30 foot antenna. \$179.95

ADAIR MUSIC
BALDWIN and WURLITZER PIANOS
Used Pianos
1708 Gregg Dial AM 4-5301

PRICES REDUCED ON WRIGHT AIR CONDITIONERS
2,200 to 4,500 CFM
1955 Model Emerson TV with table. \$100

WASSTON & TRANTHAM
Furniture & Appliances
FOR COMPLETE LINE OF Built-In Cabinets (Steel or Wood)—Electric Ovens & Stoves—Refrigerators—Freezers—Dishwashers & Dryers—Disposal Units.

RENTALS K

BEDROOMS K1
FRONT BEDROOM: adjoining bath, 609 Gollad.
CLEAN, COMFORTABLE rooms. Adequate parking space. On bus line. 1801 Scurry. Dial AM 4-4894.

RENTALS K
FURNISHED HOUSES K5
4-BEDROOM FURNISHED house at 311 North-wood 11th, Sec 2, S. Brooks at Midway Truck Stop, five miles east on 80.

RENTALS K
FURNISHED HOUSES K5
4-BEDROOM FURNISHED house at 311 North-wood 11th, Sec 2, S. Brooks at Midway Truck Stop, five miles east on 80.

RENTALS K
FURNISHED HOUSES K5
4-BEDROOM FURNISHED house at 311 North-wood 11th, Sec 2, S. Brooks at Midway Truck Stop, five miles east on 80.

RENTALS K
FURNISHED HOUSES K5
4-BEDROOM FURNISHED house at 311 North-wood 11th, Sec 2, S. Brooks at Midway Truck Stop, five miles east on 80.

RENTALS K
FURNISHED HOUSES K5
4-BEDROOM FURNISHED house at 311 North-wood 11th, Sec 2, S. Brooks at Midway Truck Stop, five miles east on 80.

RENTALS K
FURNISHED HOUSES K5
4-BEDROOM FURNISHED house at 311 North-wood 11th, Sec 2, S. Brooks at Midway Truck Stop, five miles east on 80.

REAL ESTATE L

REAL ESTATE L
HOUSES FOR SALE L2
HOUSES FOR SALE L2
SLAUGHTER'S
Marie Rowland
107 West 21st
Dial AM 3-2501 or AM 3-2072

TELEVISION DIRECTORY
WHERE TO BUY YOUR NEW TV SET
ZENTH
Everything You Want In A TV Complete TV Service

TELEVISION LOG
Channel 2—KMD-TV, Midland; Channel 4—KBS-TV, Big Spring; Channel 7—KOSA-TV, Odessa; Channel 11—KCB-TV, Lubbock; Channel 13—KQUB-TV, Lubbock.

TELEVISION LOG
Channel 2—KMD-TV, Midland; Channel 4—KBS-TV, Big Spring; Channel 7—KOSA-TV, Odessa; Channel 11—KCB-TV, Lubbock; Channel 13—KQUB-TV, Lubbock.

TELEVISION LOG
Channel 2—KMD-TV, Midland; Channel 4—KBS-TV, Big Spring; Channel 7—KOSA-TV, Odessa; Channel 11—KCB-TV, Lubbock; Channel 13—KQUB-TV, Lubbock.

TELEVISION LOG
Channel 2—KMD-TV, Midland; Channel 4—KBS-TV, Big Spring; Channel 7—KOSA-TV, Odessa; Channel 11—KCB-TV, Lubbock; Channel 13—KQUB-TV, Lubbock.

TELEVISION LOG
Channel 2—KMD-TV, Midland; Channel 4—KBS-TV, Big Spring; Channel 7—KOSA-TV, Odessa; Channel 11—KCB-TV, Lubbock; Channel 13—KQUB-TV, Lubbock.

DENNIS

DENNIS
Big Spring
McDONALD McCLESKEY
AM 4-5901

DENNIS
Big Spring
McDONALD McCLESKEY
AM 4-5901

DENNIS
Big Spring
McDONALD McCLESKEY
AM 4-5901

DENNIS
Big Spring
McDONALD McCLESKEY
AM 4-5901

DENNIS
Big Spring
McDONALD McCLESKEY
AM 4-5901

DENNIS
Big Spring
McDONALD McCLESKEY
AM 4-5901

DENNIS
Big Spring
McDONALD McCLESKEY
AM 4-5901

Who Backs Whom? Question In Texas' Governor Campaign

By WHITEY SAWYER
The Associated Press
Who is supporting whom and will it do any good was the big question Thursday in the runoff race for governor.

YARBOROUGH LED Both Candidates Got Negro Votes

Both Ralph Yarborough and Sen. Price Daniel, who face each other in a runoff for governor Aug. 25, captured some predominantly Negro voting boxes in Saturday's first primary, a survey by several newspapers showed Wednesday.

Yarborough appeared to have received heavy Negro backing in some big cities, but a spot check indicated he did not score a sweep.

Daniel won several boxes in Negro neighborhoods and was close in others. W. Lee O'Daniel, who ran third with a strong pro-segregation platform, also captured at least one box.

Daniel and Yarborough took almost identical stands on segregation. Both said they opposed the use of force to carry out the Supreme Court's ruling against segregation in schools.

Daniel sought to link Yarborough with Walter Reuther of the CIO and other "labor bosses." He also pointed to Reuther's support of the National Assn. for the Advancement of Colored People.

Yarborough said Reuther had not contributed to his campaign fund and minimized organized labor's support of his candidacy.

At Tyler and in Smith County attempts were made to direct Negro votes into a strong force.

Yarborough led in Box 13, which had a ratio of 1,200 eligible Negro voters to 600 whites. Yarborough got 699 votes, Daniel 263 and O'Daniel 134.

In the seven Dallas boxes in which Negroes vote heavily, the total vote was Yarborough 2,896, O'Daniel 246 and Daniel 234. One Dallas box, No. 309, gave Yarborough 436 votes and Daniel 3.

Negroes apparently voted in blocs for Yarborough at Fort Worth. Box 39 gave the Austin attorney 545 votes and all other candidates combined only eight.

One San Antonio precinct with a heavy Negro vote gave Yarborough a 5-1 majority. Yarborough ran 2-1 or 3-1 in six other precincts with Negro population.

Two boxes in Beaumont and two in Fort Arthur with large Negro votes gave Yarborough a 5-1 majority to Daniel's 226, O'Daniel's 48 and 118 for the other candidates.

In Harris County (Houston), Yarborough received 87 per cent of the vote in 23 predominantly Negro precincts. He got 8,195 votes, Daniel received 460 and O'Daniel 177.

Galveston County's large Negro population gave Yarborough a 5-1 margin in Negro voting areas.

El Paso's only predominantly Negro voting box gave Yarborough a heavy majority.

The predominantly Negro voting box in Lubbock gave Daniel an edge of 2-1.

Four major boxes in which the Negro vote is a factor in McLennan County (Waco) showed: Box 1 close for the three leading candidates in this order: Yarborough, Daniel and O'Daniel. Box 4, Daniel led, Yarborough was about 30 votes behind and O'Daniel trailed by about 100 votes.

Box 10, with the heaviest concentration of the Negro vote, gave Yarborough a good edge with O'Daniel second and Daniel third. In Box 11, Daniel led, Yarborough was second and O'Daniel third.

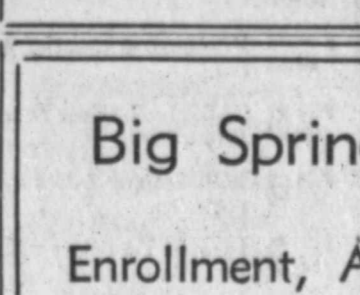
In the latest survey, delegates with 9 votes reported they were undecided and others with 8½ votes chose to remain silent on their preferences.

The balance of the delegation, representing 18½ votes, could not be reached.

Poses As Doctor
MEXICO CITY (U)—Hector Orco Rodriguez has been charged with posing as a doctor for six years after flunking out of the National University's medical school. He was employed by the government Health Ministry and Social Security Institute.

RP Coolpads And Extelior Pads Made To Order INSTALLATION . . . SERVICE
Year 'Round Air Conditioners 36 Months To Pay WESTERN SERVICE CO.
207 Austin Dial AM 4-8321

Thank You!
I wish to express my sincere thanks for the support of my many friends in my race for Constable of Precinct One.
C. H. FORGUS
(Paid Pol. Adv.)



Big Spring Christian Day School announces opening of Enrollment, August 1st. . . For Fall Term

- Kindergarten Through 4th Grades, Qualified Teachers—Excellent Facilities
- Transportation And All-Day Nursery Care Is Available

Registration 3 p.m. to 6 p.m. Monday thru Friday
AT THE SCHOOL LOCATED ON OLD SAN ANGELO HIGHWAY, WEST OF CITY PARK ENTRANCE
For Information, Call Mrs. Gene Combs—DIAL AM 4-5886

Shivers said "Those who dealt in personalities and wild, unsubstantiated charges were defeated, or, as in the races for governor and attorney general, trailed the leader by a wide margin."

Dist. Atty. Tom Moore of Waco faces former state Supreme Court Justice Will Wilson in the attorney general race.

Politicians wondered whether Shivers' blast would help Daniel by pulling more conservatives firmly into his camp. Or would it give Yarborough new grounds for his charges he is running against what he calls the "Shivers-Daniel" team?

Yarborough asserted his first primary campaign was clean and that "the Shivers-Daniel team has smeared me with their evil and false charges for years."

Daniel made no comment. The Dallas News said its correspondents covering the first primary campaign noted that many a conservative who backed Johnson in his May convention victory showed up at Daniel meetings.

They were still angry about the way some of the "liberal-labor groups tried to dump Johnson's moderation program" at the convention, the News said. The account said some felt that if Yarborough wins, the left-wing group will have a loud voice at the convention.

Yarborough claims he was the only candidate who supported Johnson and Speaker Sam Rayburn in the moderation movement.

Daniel did no active campaigning Wednesday, but sent a telegram to Agriculture Secretary Benson urging him to take prompt action to relieve farmers and ranchers in 27 more Texas counties. The department approved assistance for 61 counties Tuesday.

Daniel said dire need exists in these counties, and urged prompt action: Brooks, Colorado, Fayette, Jim Wells, Brazos, Burleson, Camp, Ellis, Falls, Franklin, Grayson, Grimes, Harrison, Henderson, Hopkins, Hunt, Johnson, Lee, Morris, Rains, Smith, Somervell, Titus, Van Zandt, Victoria, Wharton and Waco.

When the steel talks bogged down, Mitchell and Secretary of the Treasury Humphrey teamed up to get the steel industry and union back into bargaining sessions. This quiet intervention, it is felt, may have improved the Eisenhower administration's standing with organized labor, or at least with some of its leaders.

Informants said Mitchell would like to see this followed up with some Republican platform planks written to attract workers and unions. The idea is that if unions won't formally support the GOP, they might be dissuaded from endorsing the Democratic cause, as most did in 1952.

Mitchell, like other Cabinet members, has advanced platform suggestions in private, but none have been made public.

It was learned that, whereas the labor section of the 1952 Republican platform dealt solely with an expression of support for the Taft-Hartley labor relations law, Mitchell would like to see the 1956 platform say something about a dozen matters in which labor is interested.

Washington Report, weekly newspaper of the U. S. Chamber of Commerce, published in its current issue an article headlined "Mitchell's GOP Platform Ideas Causing Concern." It says "the most alarming feature" deals with a suggestion on union security, or



The "Pill Box" . . . There is beauty in its simplicity. The soleil wool felt highlights the full richness of its fashionable tones. Blue, brown, navy, red, white, dior blue, grey, coffee, and beige, 4.00
Hemphill-Wells Co.

Slight Stir In GOP On Labor 'Planks'

WASHINGTON (U)—Secretary of Labor Mitchell has put forward a series of Republican party platform proposals aimed at attracting more votes from workers. The proposals have aroused some business opposition.

This comes at a time when Mitchell is receiving plaudits from union and business quarters for a successful behind-scenes role in helping engineer an amicable settlement of the steel strike.

When the steel talks bogged down, Mitchell and Secretary of the Treasury Humphrey teamed up to get the steel industry and union back into bargaining sessions. This quiet intervention, it is felt, may have improved the Eisenhower administration's standing with organized labor, or at least with some of its leaders.

Informants said Mitchell would like to see this followed up with some Republican platform planks written to attract workers and unions. The idea is that if unions won't formally support the GOP, they might be dissuaded from endorsing the Democratic cause, as most did in 1952.

Mitchell, like other Cabinet members, has advanced platform suggestions in private, but none have been made public.

It was learned that, whereas the labor section of the 1952 Republican platform dealt solely with an expression of support for the Taft-Hartley labor relations law, Mitchell would like to see the 1956 platform say something about a dozen matters in which labor is interested.

Washington Report, weekly newspaper of the U. S. Chamber of Commerce, published in its current issue an article headlined "Mitchell's GOP Platform Ideas Causing Concern." It says "the most alarming feature" deals with a suggestion on union security, or

dicale first-ballot preferences 430½ to 160.

The survey is based in part on the effect of the withdrawal from contention of Sen. Estes Kefauver of Tennessee. In the convention starting at Chicago a week from Monday, it will take 68½ votes to win.

The claim of swelling Harriman support came from Frank McKinney, former Democratic national chairman and a booster of the New York governor.

On the Republican side, the ruckus over Harold E. Stassen's campaign to erase Vice President Nixon's name as a second-term nominee was still going on.

Hemphill-Wells
it's all clean fun . . .

Martex Towels

"SOVEREIGN" . . . the touch of luxury in RICH texture and FULL sizes. Superlative absorbency and long lasting quality with the newest of fashion colors of Persian poppy, aqua mist, blue mist, butterscotch, antique gold, shadow green, cameo rose, ebony black, charcoal gray, blush pink, lemon ice, crystal pink, peach champagne, and white.

- 25x50 in. bath towel . . . 1.98
- 17x30 in. face towel . . . 1.00
- 17x17 in. bath cloth39

Lady Norah Fails To Win Job For Hubby

LONDON (U)—Britain's No. 1 headline hunter, Lady Norah Docker, turned sweetly penitent for the stockholders, but it wasn't good enough. Hubby didn't get his \$129,000 job back.

Norah's husband Sir Bernard Docker was ousted two months ago from the managing directorship of the 70-million-dollar British Small Arms Corp., makers of the Daimler luxury automobiles among other things.

The other directors contended the Dockers had tried to stick the company for nearly \$70,000 worth of "frivolities," including five Daimlers (several gold plated and one upholstered in zebra skin; Norah said mink was too hot to sit on), all sorts of fancy feminine apparel and a trip to Grace Kelly's wedding.

Seeking reinstatement at a stockholders' meeting yesterday, Sir Bernard explained: "The publicity which my wife and I have had, which has been very considerable, I felt would inspire people to buy the car."

Lady Docker, who once slapped an attendant at the Monte Carlo casino, told the group her "whole idea has been to help the company."

"If I have tripped up in any way and let anybody down, I am sorry," she went on. "I did not mean it. I have always wanted to help all of you, especially my husband."

Mother's Concern Is Fatal To Child
PATNA, India (U)—An estimated 2,000 persons are reported to have died of cholera during July in the East Indian state of Bihar. The casualty estimate was based on unofficial reports from various parts of Bihar reaching Patna, the state capital.

Harriman Camp Says Averell Threatening To Catch Adlai

By The Associated Press
Supporters of Gov. Averell Harriman maintained today their entry in the Democratic presidential nomination race is gathering speed and threatening to catch front-running Adlai Stevenson.

The Stevenson camp disputes that, and a preliminary survey by The Associated Press showed Stevenson still leads Harriman in convention delegates willing to in-



THE SHADOW PLAID . . . in blue, gray and gold.
25x50 in. bath towel 2.49
17x30 in. face towel 1.49
17x17 in. bath cloth49

Junior Accent

Fall Forecast . . .
Look forward to a harvest of compliments this fall when you're wearing this superb silk-cotton herringbone tweed with a fabulous nubby texture. Buttoned just for fun from Empire bodice to hem, belted in patent in the most intriguing of ways.

Silver grey, 34.95



Hemphill-Wells

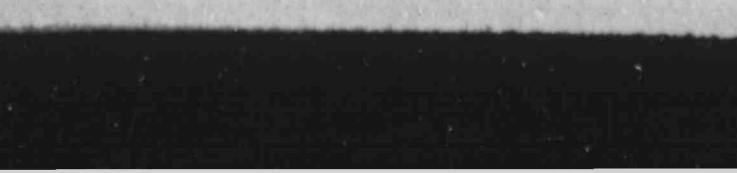
MUSICAL ROUNDUP

Monday Thru Saturday 7:45 A. M.
On K B S T RADIO
1490 ON YOUR DIAL

Presented By C. R. Anthony Dept. Store

THANKS

I appreciate every vote I received and will appreciate your further consideration in the run-off
SIMON (CY) TERRAZAS
FOR COMMISSIONER PRECINCT 1
(Paid Pol. Adv.)



No In S
By Recent out been report Houston, but mals have by. It has be a dog went n according to bach, local. He did se rabid fox a animal ha Lee's Stor thought th it came tow tried to cli knew somet cause foxes ride with ra Schafer s brought it t was sent of proved rabi were report Schwarzen every month lists the nu mals exami dogs, becau horses and list. They h

SHOE
Da
Is

By BET LAMESA—Public Libri answers fro material. B book handy of "How to the library a lot of infi many years line.

It's almo story of the institution o and a "sho had its be when the W on the organ a project. (basement v club keepin a start; th was employ an, and wi for books, i brary unde ment for in ness was u scale.

Now four ing at Net Avenue hou than four t reference n of a little nually, the grow.

Mrs. Len calls that brarian's j small room 2,300 volum filling cabin There was that adequ sistant we but her es her work l burden of lowed. As helped her Olney, tak

1 t
E

15th

No Rabies Here In Several Years

By JESS BLAIR
Recent outbreaks of rabies have been reported around Dallas and Houston, but thus far no rabid animals have been found in this vicinity. It has been several years since a dog went mad around Big Spring, according to Dr. H. F. Schwabenbach, local veterinarian.

He did send off the head of a rabid fox a few years ago. The animal had been spotted south of Lee's Store by Ben Schafer. He thought the fox acted strangely as it came toward him. And when it tried to climb into the car, he knew something was wrong, because foxes don't usually care to ride with ranchers.

Schafer shot the animal and brought it to town, and the head was sent off for examination. It proved rabid, but no other cases were reported that year.

Schwabenbach gets a report every month from Austin which lists the number of heads of animals examined. They are not all dogs, because cats, rabbits, cows, horses and pigs were also on the list. They had even examined the

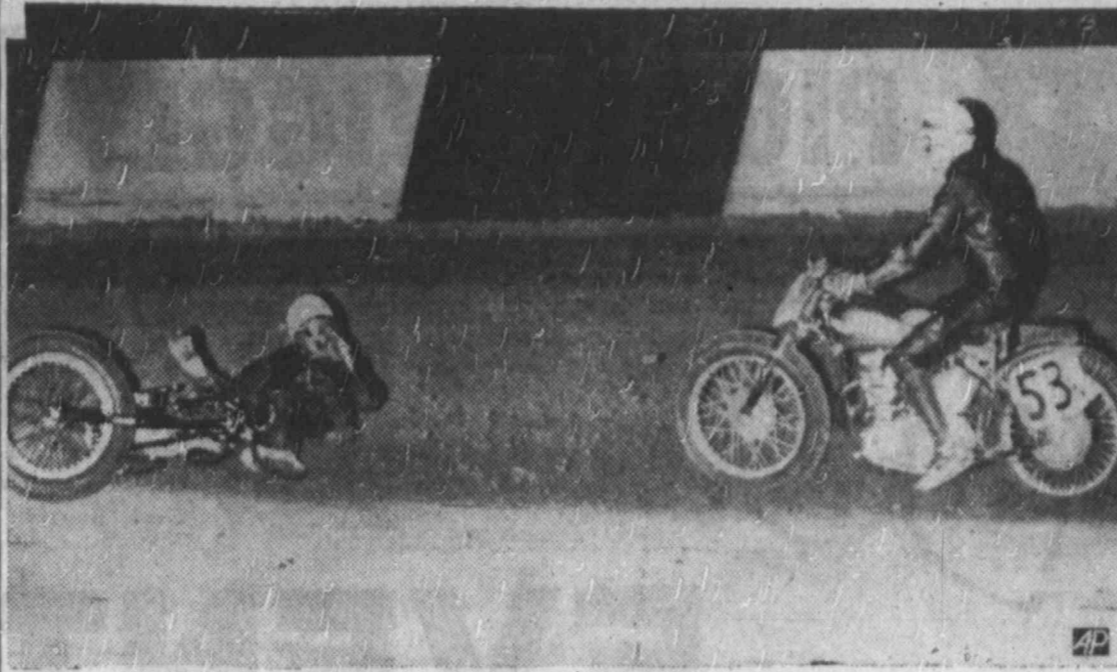
heads of three mice.

The report didn't say if the mice were rabid. They might have been killed mistakenly, because nearly any mouse appears mad while looking up at a woman on top of the kitchen table.

Schwabenbach sent off the head of a dog just a few days ago. The animal came into a Big Spring yard where a small boy was playing and bit him. The boy's father killed the dog then brought it to the animal hospital to be sent off for examination.

"I doubt if the dog was rabid," said the veterinarian, "but we can't take chances. If the animal did have rabies, there will be plenty of time for the boy to take treatment."

Ordinarily, if a suspicious animal bites anyone, it can be penned up and observed. If it is rabid, the symptoms will begin to show in a few days, then the victim can start treatment. If the person is bit on the head, though, treatment should begin sooner, because the closer the wound is to the brain, the quicker the disease sets in.



Just A Second From Death

A catapulted motorcyclist lies helpless on the Lakeside Stadium track in Kansas City, Kan., a second before he was struck and fatally injured by the motorcycle at right. The fallen driver was Robert Dunn, 22, Rockford, Ill. Driving the approaching motorcycle is Frank Wanczyk, 41, Denver, Colo., who could not avoid hitting Dunn. Wanczyk crashed into a wall and suffered head and chest injuries. The cyclist raced at speeds of about 75 miles per hour. This photo was taken by Ron Christison, a freelance photographer. (AP Wirephoto).

SHOE STRING VENTURE Dawson Library Is Still Growing

By BETTYE CAMPBELL
LAMESA—The Dawson County Public Library can furnish many answers from a wealth of reference material. But whether there's a book handy or not on the subject of "How to Make a Budget Work," the library staff can hand out a lot of information. They've had many years experience along this line.

It's almost incredible—the true story of the growth of this service institution on little more than faith and a "shoe string." The library had its beginning back in 1925 when the Woman's Study Club took on the organization of a library as a project. One room in City Hall basement with members of the club keeping the library open was a start; then Mrs. Nellie Carter was employed as the first librarian, and with a penny campaign for books, and books given the library under the Carnegie Endowment for International Peace, business was under way on a larger scale.

Now four rooms in a city building at North Third and Houston Avenue house 9,431 books and more than four thousand magazines for reference material. With a budget of a little more than \$6,000 annually, the library continues to grow.

Mrs. Lex Brock, librarian, recalls that when she took the librarian's job in October, 1949, one small room at City Hall housed 2,300 volumes—she had a desk, no filing cabinets and 15 patrons. There was such a limited budget that adequate supplies and an assistant were out of the question, but her enthusiasm and love for her work helped her shoulder the burden of the years that have followed. As a young girl she had helped her mother, Mrs. Antoinette Olney, take over and build a li-

brary at Siloam Springs, Ark., so the tremendous task didn't look too great.

Then, as now, the board of directors and interested citizens who want a library to adequately serve the needs of the community lent encouragement and support to the project. At the present time, the directors include six women and three men with A. J. McDaniel serving as board chairman.

With the funds set aside by city and county for the library, the budget allows only \$122 monthly for the purchase of new books. But if an added expense arises, the only place money can come from to take care of the matter is from the "book money." For example, one of the books on the list of 500 the library needs, might be several more months getting to the shelves if the work on the lawn and shrubs runs pretty high this summer. With the cost of books to libraries at a \$3 average, and 20 categories for which the library must buy books, there's a possibility that the library will get one book for each category monthly if operations run smoothly.

There's special emphasis placed on reading material for all age levels, including a story hour weekly for 4 and 5 year-olds. There's a children's room and one shelf of books suitable for first and second graders.

The summer reading program for children through junior high age this summer has 210 participants who have already read 3,393 books. With a "speed and action" theme, the contest will be completed next month, with prizes donated by the men's civic clubs of the town.

When television came to Lamesa, the librarian had qualms in large proportion. For several months, the library seemed to be destined to revert to a back seat.

South Atlantic Defense Pact Is Proposed

BUENOS AIRES (AP)—Argentina has proposed formation of a South Atlantic defense pact aimed at "preserving the security of the American Continent."

Invitations to a conference to draft such an alliance have been sent to Uruguay and Brazil, Argentina's seaboard neighbors. A Foreign Ministry source said other countries could be signed up later, specifically mentioning Paraguay and Chile as possible participants.

An outline of the alliance proposal was sent to all Hemisphere nations, the spokesman said. He added that Argentina would have no objection to any American country sending observers to the projected three-nation conference.

In Montevideo, Acting Foreign Minister Alberto Abdala said Uruguay would consider the invitation sympathetically. He recalled that Uruguay in the past had been cool toward restricted regional arrangements on defense or political matters, preferring to participate in the large framework of such organizations as the United Nations or the Organization of American States.

He added that any new pact negotiated by Uruguay should be "wheels within the wheels" of international agreements his country has signed in the past.

Argentina suggested Buenos Aires as the site for the conference to draft the alliance, but proposed Montevideo as a permanent seat for the pact organization because of its midway location.

and then a remarkable thing happened. Activity began to pick up at the library, Mrs. Brock said.

At the present time there is no tax allocation for the library; funds come from the improvement and building funds of the city and county.

Money Allotted To States To Speed Highway Network

WASHINGTON (AP)—Secretary of Commerce Weeks today allotted \$2,550,000,000 to the states to speed construction of first sections of the new 41,000 mile road network.

The money, for the fiscal year beginning next July 1, is the largest amount ever provided for roads at one time in history.

Texas was allotted \$149,004,800; New Mexico \$31,575,663 and Oklahoma \$46,647,514.

This second division of funds for the new road building plan brings to \$3,675,000,000 already set aside for the states.

Immediately after President Eisenhower signed the federal highway legislation June 23, Weeks moved to provide \$1,125,000,000 to the states for the current fiscal year which began July 1.

He said at the time that he expected the first construction to get underway within three months and that the program should be rolling by Jan. 1.

The federal aid road program calls for a spending of about \$3 billion dollars in the next 13 to 15 years. The bulk of the funds provided by Congress will go for construction of the 41,000 mile interstate system.

The federal government provides 90 per cent state and local governments 10 per cent for construction of the interstate roads. On building primary and secondary state roads and urban highways the federal government and states put up the money on a 50-50 basis.

BIG SPRING DAILY HERALD

SEC. II BIG SPRING, TEXAS, THURSDAY, AUGUST 2, 1956 FOOD

B'Springers Can't Count, House Numbers Indicate

By DON HENRY
Newcomers and visitors to Big Spring may think that the city and its residents can't count, judging from the way many of the streets are numbered.

Utility companies daily receive calls from persons wishing to locate a certain numbered block which does not fall in sequence.

The city's house numbering system has become jumbled with the addition of out-lying areas which were previously numbered.

In quick succession, Mildred Bell of the city water department, named nine streets in the city which are irregularly numbered and cause trouble for newcomers and long-time residents alike.

One of them causing trouble constantly is Birdwell Lane. The street was originally known as County Road and has been numbered and renumbered three times.

When it was first platted, the numbers started with 100 and proceeded south progressively from Eleventh Place. Later when the area developed, the street was renumbered starting south from the highway—Third Street — again with 100.

The third and final time, it was numbered from First beginning with 100.

Many residents now have one number of their house and another listed with utility companies. In accord with cross streets, only two blocks are correctly numbered.

On Circle Drive, one utility company has two different blocks listed as 600.

Many of the streets in Washington Place addition are irregularly numbered. Reason is segments were brought into the city at different times after being previously numbered.

On Virginia, the count jumps from 707 to 1500 in the space of two blocks.

Another street causing headaches in Pennsylvania. The street dissolves into Aylford in the 1100 block.

South from where it leaves Aylford, Pennsylvania is numbered correctly through 1800. Then a one-block area at the extreme end is 400—when it should be 2100 or 2200.

Some streets in the air base area are numbered in reverse of the city's method. From W. 80 northward, streets are numbered progressively; under the city's pattern, streets south of the railroad decrease in number traveling north.

One of the streets in the reversed-order section also has two 200s in the same block — one on the same side of the street and next to 201.

Confusion reaches a climax in

the same area where there is an Unnamed Street — at least that is the title given it by the city water department.

Most of the trouble stems from the city not having an ordinance forcing anyone to regulate his house number to conform to a pattern. City Manager H. W. Whitney said that several years ago a small area was annexed, and houses there were in reverse to the city's system. All residents were asked to re-number.

All agreed but one, who — as far as Whitney knows — still has a completely different block number from his neighbors.

Whitney said there are two theories on how to number a city, and this difference has caused a majority of the trouble. One theory is that streets that extend out from that point should be numbered according to related numbered cross streets.

The other idea is that no matter where a street begins, the first block should be numbered 100 even if — for instance — it began at Fifteenth Street.

In an effort to improve the numbering here, a survey has been started by the city, but recent construction and added work for the city engineer has slowed it.

Possibly the survey would recommend that some street names be changed. This would be to eliminate duplication of names here and outside the city limits. Two are Lincoln and Mesquite. The streets were named before Big Spring had any control over outside-city plats.

No matter what the survey shows and the engineer recommends, it will be of no avail unless the commission passes an ordinance requiring house owners to adhere.

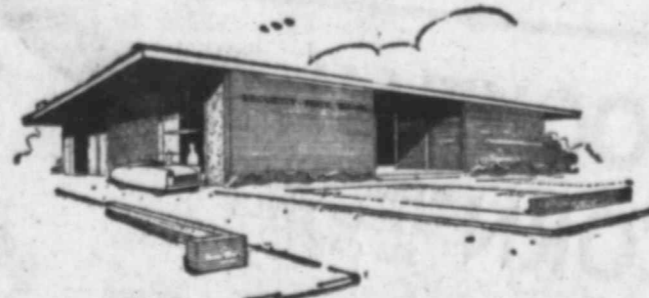
Oil Sale Affects West Texas Wells

DALLAS (AP)—The General American Oil Co. of Dallas said yesterday a contract had been signed with G. E. Hall of Dallas and Midland covering his 13.5 net well interest in 31 wells in five West Texas fields.

It was understood payment will be part cash and part oil for a total of \$1,125,000.

Ten producers are in the Emma field and four in the Fuhrman Gloria field, both in Andrews County. Seven are in the Eaves field, Winkler County and three in the Seminole field, Gaines County. The remainder are in the Old Glory field, Stonewall County.

It's EASY



To Do Business With SECURITY STATE BANK

The new Security State Bank was designed with you in mind . . . to make your banking more convenient. One of the many convenient features at our bank is the night deposit service . . . No need for you to risk keeping large amounts of money on hand . . . Make your after-hours deposit in the night depository in the front of the bank . . . facing Gregg Street . . . Safety deposit boxes are now available at Security State . . . avoid the risk of losing valuable papers, securities and other valuables . . . Come in and see us today . . . let us be of service to you . . .

ATTEND BIG SPRING'S 23RD ANNUAL RODEO

SECURITY STATE BANK

15th and Gregg Streets

Welcome Rodeo Visitors

August FUR SALE

All day Friday

You will be pleased with the big savings. By buying now, you take advantage of early season prices that cannot be duplicated later . . . And you have lay-away privileges . . .

We believe this will be our biggest fur event in history! It's all planned as a special service to you, with strong emphasis on quality and price . . . From our exciting collection, here are a few items . . .

- *Prices include federal excise tax.
- Dyed Mouton-Processed Lamb Jackets 59.95 plus tax
 - Dyed Russian Squirrel Backs capelets and stoles 135.00 to 275.00*
 - Dyed Japanese Mink pocket stoles and stoles 195.00 to 275.00*
 - Natural Ranch Mink Let-Out Stoles 595.00*
 - Natural Royal Pastel Mink Let-Out pocket stoles 745.00*
 - One-of-a-kind Natural Mink cape-stoles, jackets, and stoles including Silverblu, EMBA Autumn Haze, EMBA Diadem, EMBA Desert Gold, UMPA Ranch Mink, EMBA Cerulean (Sapphire), Royal Pastel. 595.00 to 3,500.00*

Furs are labeled to show country of origin.



FRIDAY, AUGUST 3rd

Mr. Cliff, personal representative of Joncliff, will be in our store to assist you with your fur selection . . . Avail yourself of his expert advice.



BIG NEWS!

PIGGY WIGGLY and Libby's

DOLLAR-DAY EVENT



- LIBBY'S, 15-OZ. CAN SPANISH RICE . . . 6 for \$1
- FAR, 29-OZ. TUMBLER GRAPE JELLY . . . 3 for \$1
- LIBBY'S, NO. 2 CAN, WITH MEAT SPAGHETTI . . . 4 for \$1
- ROSEDALE, CUT, NO. 303 CAN GREEN BEANS . . . 8 for \$1
- MARSHALL, NO. 300 CAN PORK & BEANS . . . 12 for \$1

It's a great event for thrifty housewives when Piggy Wiggly and Libby team up to stretch the food purchase value of your dollar. You'll want to stock up at these dollar-saving prices. They are all top quality foods and you still get your bonus of S&H Green Stamps . . . Double every Wednesday with \$2.50 purchase or more.

- LIBBY'S, NO. 2 CAN, WITH MEAT BALLS SPAGHETTI . . . 4 for \$1
- LIBBY'S, 14-OZ. CAN, DEEP BROWN BEANS . . . 7 for \$1
- LIBBY'S, NO. 300 CAN TOMATO JUICE . . . 9 for \$1
- LIBBY'S, SLICED, NO. 1 1/4 CAN PINEAPPLE . . . 5 for \$1



LEMONADE
LIBBY'S, 6-OZ. CAN
12 1/2c

ORANGE JUICE
LIBBY'S, 6-OZ. CAN
19c

LIMEADE
LIBBY'S, 6-OZ. CAN
10c

GRAPEFRUIT AND ORANGE JUICE
LIBBY'S, 6-OZ. CAN
12 1/2c

STRAWBERRIES
FRESH PACT, 10-OZ. PKG.
19c

BROCCOLI
SPEARS, LIBBY'S, 10-OZ. PKG.
25c

FROZEN POT PIES
BEEF, CHICKEN, TURKEY, LIBBY'S, 8-OZ.
25c

GUARANTEED RED OR YELLOW, LB.
WATERMELONS . . . 2 1/2c

PINEAPPLE LIBBY'S CRUSHED NO. 2 CAN . . . 4 FOR \$1.00

PEACHES LIBBY'S HALVES OR SLICED, NO. 2 CAN . . . 5 FOR \$1.00

SNOWDRIFT 3-LB. CAN . . . 79c

- Lucky Strike, Chunk Style, No. 1/2 Can TUNA . . . 4 for \$1
- HUNT'S PURPLE, NO. 2 1/4 CAN PLUMS . . . 4 for \$1
- HUNT'S, NO. 2 1/4 CAN APRICOTS . . . 4 for \$1
- COMSTOCK, PEACH, NO. 2 CAN PIE MIX . . . 39c
- LIBBY'S, SOUR OR DILL, 22-OZ. JAR PICKLES . . . 33c
- LIBBY'S, NO. 303 CAN KRAUT . . . 6 for \$1

- BISCUITS** ALL BRANDS . . . 10c
- FISH STICKS** FRY-DAY 8-OZ. PKG. . . 4 PKGS. \$1.00
- U.S. CHOICE, HEAVY BEEF, LB. LOIN STEAK . . . 69c
- U.S. CHOICE, HEAVY BEEF, LB. CHUCK ROAST . . . 43c
- E&R THICK-SLICED, 3-LB. PKG. SLICED BACON . . . 98c
- LEAN, TENDER, BEEF RIBS . . . 5 Lbs. \$1
- 3-LB. BAG FRANKS . . . \$1.00
- PICNICS** CUDAHY'S PURITAN READY TO EAT, LB. . . 39c
- LB. FRESH PORK SHOULDERS . . . 45c
- FRESH GROUND HAMBURGER . . . 4 Lbs. \$1

KLEENEX 4 400 COUNT BOXES \$1.00

TOOTHPASTE GLEEM, 50c SIZE **39c**

COCKTAIL FRUIT LIBBY'S 303 CAN . . . 4 FOR \$1.

CORN LIBBY'S GOLDEN CREAM STYLE 303 CAN . . . 6 FOR \$1.

PEAS LIBBY'S, GARDEN SWEET NO. 303 CAN . . . 19c

SUGAR PURE CANE 10-LB. BAG . . . 93c

MELLORINE PLAINS ASST. FLAVORS HALF GAL . . . 49c

- SWANSDOWN, WHITE, YELLOW, DEVIL'S FOOD CAKE MIX . . . 25c
- SWANSDOWN, 5-OZ. CAN CHICKEN SPREAD . . . 5 for \$1

TOMATOES NO. 1 CALIFORNIA, LB. . . . 19c

PEACHES ARKANSAS ELBERTA, LB. . . . 10c

- BAYER'S, 15c TIN ASPIRIN . . . 10c
- GILLETTE, 10's BLUE RAZOR BLADES . . . 49c

- FIRM HEADS, LB. HEAD LETTUCE . . . 10c
- FRESH BUNCH GREEN ONIONS . . . 7 1/2c
- CALIFORNIA, LB. BELL PEPPERS . . . 19c

- LEMONS** CALIFORNIA SUNKIST, LB. . . . 15c
- SQUASH** FRESH YELLOW, LB. . . . 7 1/2c



YES
6
With
Dou
OLE
PEA
KIM
TEA
CRIS
TID
JEL
FOIL
PI
CA
T
G
SI
P
B
SI
H
ALWA
FRES
LE
ST
Brocco
flower,
Limas,
ries, M
Peach
Vegeta
Carroh
Potato
Waffle
Rolls,
tato P

SHOP EVERY DAY . . . TAKE ADVANTAGE OF OUR SPECIALS WEEKLY!



MORE
GOOD
EATING!

SAVE MORE ON
NEWSOM'S FINE FOOD BUYS

On Our Regular Shelf Prices Or
Our Specials, You Won't Find Better Values!

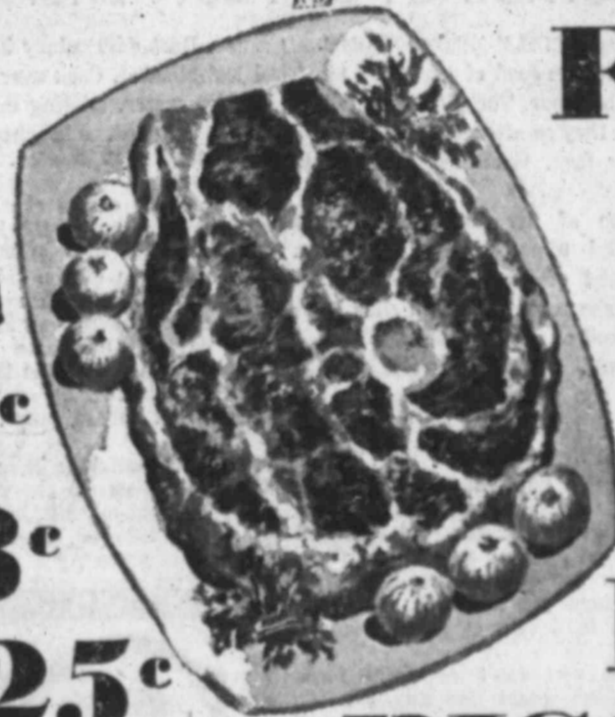
PEARS Del Monte 2 1/2 Can **3 For \$1.**
VELVEETA 2 Lb. Box **79¢**
COFFEE Maxwell House Instant, 6 Oz. **\$1.39**

Charcoal Broiled
BURGERS **5 For \$1**
Full 1/4 Lb. Of Beef

YES, DON'T FORGET
GREEN STAMPS
With Every Purchase You Make!
Double On Wednesday

OLEO Sun Valley . . . 19c
PEAS Mission 303 Can . . . 15c
KIM Lb. Can 7 1/2c
TEA Lipton 1/4 Lb. 35c
CRISCO 3 Lb. Can . . . 91c
TIDE Large Box 31c
JELLO Pkg. 7 1/2c
FOIL 25 Ft. Roll 29c

U.S. CHOICE
CHUCK
ROAST
LB. **29¢**
BEST MEATS
YET!



FRYERS Fresh Lb. **37¢**
BACON Pennant Lb. **33¢**
CHICKEN Barbecued Lb. **98¢**
BACON Armour's Thick Slice 2 Lb. Pkg. **83¢**
CHEESE Wisc. Aged Longhorn, Lb. **49¢**
FRANKS Rath Lb. Pkg. **39¢**

EGGS FRESH DOZEN LARGE **39¢**
Catsup Valtex 12 Oz. Bot **2 for 35¢**
Ice Cream Dairy Gold 1/2 Gal. . . **59¢**
BISCUITS Gladiola Can **10¢**

PEACHES Del Monte 2 1/2 Can . . . **29¢**
CAKE MIX Swansdown Pkg. **23¢**
TISSUE Scott Colored, Roll . . **2 for 25¢**
Green Beans Kimbell 303 Cut . . . **12 1/2¢**
SPAGHETTI Kimbell 300 Can . . . **12 1/2¢**
PRESERVES Strawberry Kimbell, 20 Oz. **49¢**
BEANS Gebhardt's Mex. Style, 303 Can . . . **10¢**
SPINACH Del Monte 303 Can **12 1/2¢**
HOMINY Kimbell 300 Can **7 1/2¢**

YES..GET
DOUBLE S&H GREEN STAMPS WED.

SODA POP 12 OZ. CANS **12 FOR \$1.00** (Asst. Flavors)
PEACHES Calif., Large Elbertas, Lb. **12 1/2¢**
PLUMS Santa Rosa, Lb. **12 1/2¢**
CANTALOUPE Vine Ripe, Lb. **3 1/2¢**
TOMATOES Large Carton **12 1/2¢**
FRESH CORN Calif. Ear **3 ears 10¢**
WHITE SEEDLESS GRAPES Lb. **15¢**
TOMATOES Hunt's Solid Pack Fancy, 300 Can **5 cans \$1**

ALWAYS FRESH!
FROZEN FOOD
Libby's EXTRA GOOD

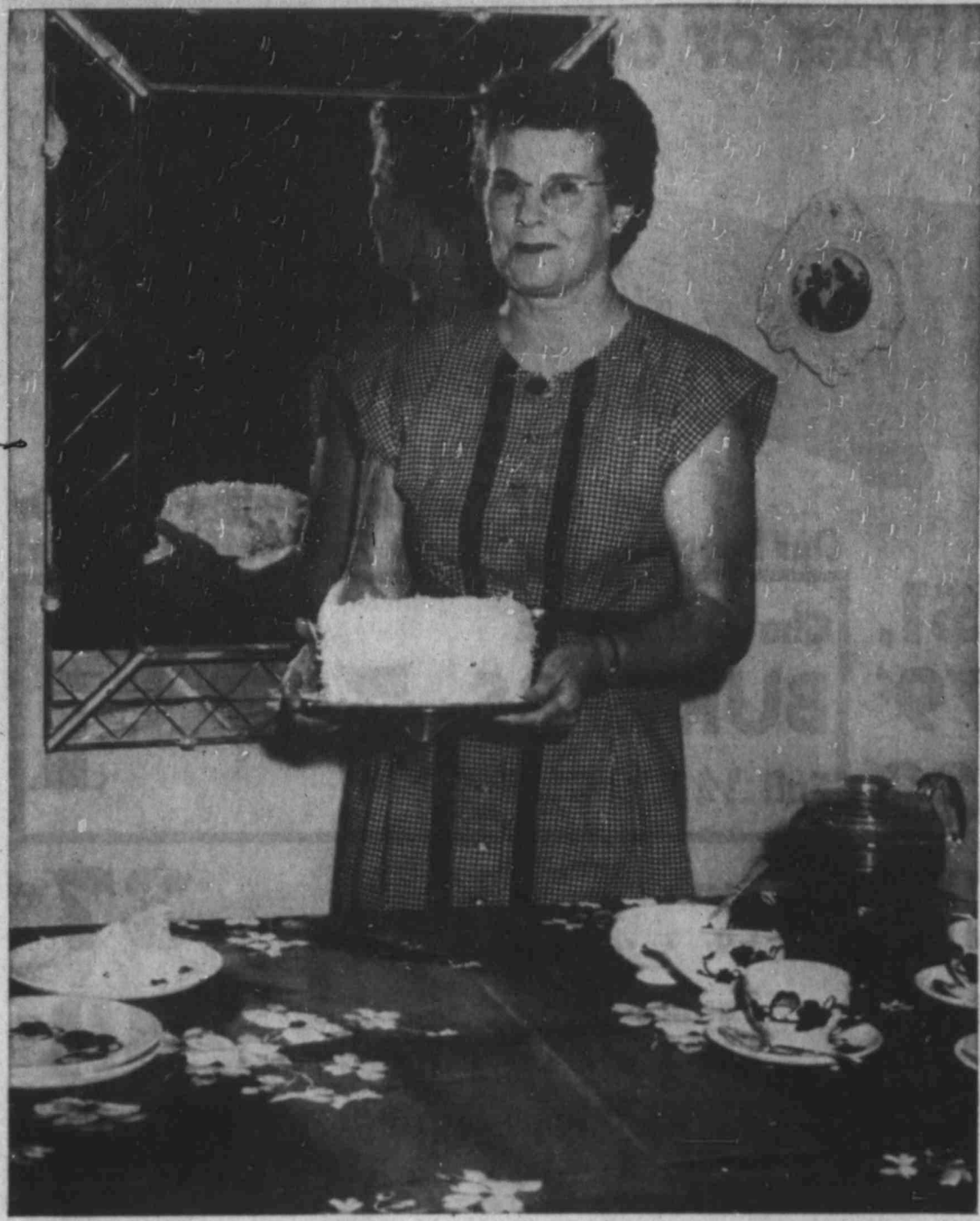
LEMONADE OR LIMEADE Libby, 6 Oz. Cans **8 Cans \$1**
STRAWBERRIES Essex 10 Oz. Pkg. **5 For \$1**

LIBBY'S
Broccoli Spears, Blackeyes, Cauliflower, Okra, Morton Fruit Pies, Limas, Brussel Sprouts, Strawberries, Morton's Pot Pies. **4 for \$1.00**
Peaches, Broccoli, Corn, Mixed Vegetables, Green Beans, Peas & Carrots, Spinach, Turnip Greens, Potatoes, Kale, Wax Beans, Squash, Waffles, Succotash, Parker House Rolls, Grape Juice, Pineapple, Potato Patties, English Peas. **5 for \$1.00**

At 1900 GREGG
505 W. 3rd

S&H GREEN STAMPS 7 DAYS A WEEK!

Newsom's
FOOD CENTERS



Ready For Guests

This old-fashioned coconut cake is delicious enough for the most special guests you might have. Mrs. Roy Rogan finds it is a favorite of all ages. Cake wouldn't be cake if it weren't served with steaming hot coffee and Mrs. Rogan decorates her table with an apple blossom designed cloth and her try patterned pottery. This coconut cake might take a little longer than the stir and mix kind, but the results are well worth the extra effort!

Cake Baker Possesses A Variety Of Talents

A woman of many talents is Mrs. Roy Rogan, 317 Lincoln! And if you don't believe it, just visit her lovely back yard, inspect the guest house at one corner of the yard and eat a slice of her delicious coconut cake.

Besides being a gardener, builder and decorator, and cook, she has at one time raised chinchillas. In the shady back yard, with a carpet of grass meeting a delightful patio, the work is all done by Mrs. Rogan. "Yard work is my hobby, I suppose, if I have one," she remarked. And the neat beds, free of grass, with a row of rose-bushes along a fence, tell you that her hobby is worked at!

A most remarkable accomplishment is the guest house, which she and her husband constructed. The work, begun Jan. 25, was completed June 5 of last year. She did more, too, than "just hand him the hammer and nails."

Part of her work was mudding the sheetrock on the walls, and the reaction to that was, "I was never so tired in my life!"

Serving as their decorator was fun after that, as Mrs. Rogan purchased an attractive print in blue, pink, white and black for the draperies, which she made "right in the middle of the floor."

Vinyl tile in a deep rose forms a lovely background for the blue and the pink chairs used with accessories of blue and pink; a bedspread in a deep pink covers the bed.

A large walk-in closet and a bath in pink and blue have, between them, a formica-covered dressing table. Bathroom fixtures are in a soft shade of blue.

The recipe for coconut cake, given by Mrs. Rogan, is one that she has used for about 23 years—"for as long as we have been married—and I don't know where I got it."

The nicest thing about the cake, Mrs. Rogan pointed out, is that it can be baked as a loaf cake, or

the batter can be cooked as muffins. As a layer cake, it can't be beat!

Here's her recipe for the cake and for the frosting which she uses on it:

COCONUT CAKE
Ingredients:
 1 cup sugar
 3/4 cup butter (she uses a creamy shortening)
 3/4 cup sweet milk
 2 cups flour
 2 teaspoons baking powder
 2 eggs
 1 teaspoon vanilla

Method:
 Cream sugar and shortening until light and fluffy. Add eggs one at a time, beating after each addition until the batter is light in color. Add sifted flour and baking powder alternately with milk. Add vanilla and beat thoroughly.

Pour into two lightly greased eight-inch layer pans. Bake at 350 degrees for 30 to 35 minutes. Test by touching with finger. If the cake springs back into place, it is done. Frost with the following icing:

SEVEN MINUTE ICING
Ingredients:
 2 unbeaten egg whites
 1 1/2 cups sugar
 5 tablespoons cold water
 3/4 teaspoon cream of tartar
 Vanilla as desired

Place all ingredients in top of double boiler over boiling water. Beat with electric mixer or rotary beater for seven minutes, or until frosting stands in peaks.

Remove from bottom of boiler and beat for two or three minutes longer. Add coconut as desired and stir until well-mixed. Spread generously between layers, and cover the top and sides of the cake. Sprinkle coconut over the frosting.

It is better if served warm. (Editor's note: The last sentence is the opinion of Mrs. Rogan. I helped serve a cold cake, and it disappeared—swish!—in five minutes!)

Aloha Sherbet Has Garnish Of Fruit

For gala occasions, split a fresh pineapple in half, retaining the leaves with each half.

Carefully remove the center of one-half of the pineapple, cutting into slender sticks. Fill the cavity of pineapple half with Aloha Sherbet.

Ingredients:
 1 cup drained and canned crushed pineapple
 1-3 cup orange concentrate
 1 cup light corn syrup
 1-3 cup water
 1 tablespoon lemon juice
 1-3 cup instant nonfat dry milk powder

Method:
 Set refrigerator control at coldest point. Combine pineapple and orange concentrate. Stir in corn syrup. Pour mixture into refrigerator tray. Freeze until firm.

Combine water and lemon juice in deep 1 quart bowl. Sprinkle instant nonfat dry milk powder over surface. Beat with rotary beater or electric mixer 8 to 10 minutes or until stiff enough to hold peaks.

Beat pineapple mixture until smooth. Fold in whipped nonfat milk. Return to freezing tray. Freeze until firm, about 4 to 5 hours.

Popcorn Gives Energy

To see all the fluffy white morsels of popcorn heaped in the popper, you might never suspect they're as good for you as they are appetizing. One cup of popcorn is equal in food value to one slice of bread. And popcorn offers more food energy than 98 per cent of all edible foods — fine fuel for active days outdoors. Yet popcorn won't harm appetite or teeth.

Outdoor Cookery Adds A Delightful Surprise

Summer entertaining will benefit from skewer cookery.

You can get delectable tidbits ready in advance, then cook and their helpers can thread them on skewers and charcoal-broil them outside or, if necessary, in the kitchen range.

Beef and lamb are usually used for skewer cookery along with appropriate vegetables. But how about something different? Here's a recipe for skewering ham with a sweet-and-sour marinade. To make life easy, use a fully-cooked ham from your market or a canned ham.

With the ham a salad of red-and-white cabbage tastes good. Young and old will probably want plenty of bottled soft drinks around. Choose various flavors of carbonated beverages and put them in a tub of crushed ice to keep them cold.

HAM SPARKLERS

Ingredients:
 Two whole cloves, 1/2 teaspoon cinnamon, 1/2 teaspoon dry mustard, 1/2 teaspoon ginger, 1 tablespoon dark brown sugar, 1-3 cup wine vinegar, 2-3 cup pineapple juice, 1/4 pounds fully-cooked boneless ham, 2 green peppers, 8 medium-sized mushrooms, 4 small parboiled onions.

Method:
 Mix together the cloves, cinnamon, mustard, ginger, brown sugar, vinegar and pineapple juice. Cut ham into 2-inch cubes. Pour seasoned mixture over ham. Refrigerate for several hours. Meanwhile remove tops from green pepper

and cut each in half. Remove membrane and seeds. Cut each half into three sections. Wash and dry mushrooms and if stems are long cut them about even with the caps. When ready to cook, drain ham; save marinating liquid. Alternate green-pepper pieces, ham and mushrooms on skewers. Insert an onion on end of each skewer. Broil over charcoal or in broiler of range until hot through, turning a few times. Brush with marinating liquid during broiling. Makes 4 servings. Recipe may be doubled.

CABBAGE SALAD

Ingredients:
 Three tablespoons cider vinegar, 1/2 teaspoon salt, 1/2 teaspoon pepper, 1/4 teaspoon dried crushed oregano, 1/4 teaspoon dry mustard, 1/4 teaspoon paprika, 1/4 teaspoon Worcestershire sauce, 1/2 cup salad oil, 2 tablespoons minced parsley, 2 tablespoons minced onion, 2 1/2 cups shredded red cabbage, 2 1/2 cups shredded white cabbage, 2 tomatoes.

Method:
 Mix together the vinegar, salt, pepper, oregano, mustard, paprika and Worcestershire sauce. Mix well with oil, parsley and onion. Toss red and white cabbage together. Add salad dressing to cabbage and toss gently until all cabbage is coated with dressing. Turn into salad bowl. Peel and stem tomatoes. Cut in halves; cut each half into 4 wedges. Arrange tomato wedges in pin-wheel design in center of salad. Makes 6 servings.

Tomatoes, Tuna, Cheese Combine For Tasty Dish

By CECILY BROWNSTONE

Favorite food of summer: Stuffed tomatoes. They look so inviting that they're often offered for company fare. Good for just family, too.

One of my sisters fixes cold stuffed tomatoes the easy way. Instead of scooping out the center, she removes a thin slice from the end of each tomato and cuts it in half. On top of each tomato half she piles her stuffing — the sort it is depends on what is in the refrigerator, on the pantry shelf and her whim. Hard-cooked eggs, for instance, are often mashed with mayonnaise and seasoned with salt, pepper and minced fresh chives or dill. These egg-topped tomatoes are likely to go to the table in a nest of green cabbage slaw.

But you can't eat cold foods at every meal in summer. So here's a pleasant way to stuff tomatoes and serve them hot. Tuna fish and cheese sauce go into the tomato hollows and extra cheese sauce accompanies them.

You might serve these hot stuffed tomatoes with baked potatoes, crunchy bread sticks and a salad of sliced cucumber and crisp greens. Or you might serve them on toast with buttered green peas or zucchini squash.

STUFFED TOMATOES WITH CHEESE SAUCE

Ingredients:
 Six medium-sized tomatoes (about 2 pounds), 1/2 teaspoon salt, 2 tablespoons butter or margarine, 1 small onion (finely chopped), 1 can (7 ounces) tuna (drained and flaked), 1 1/4 cups water, 1/2 cup instant nonfat dry milk powder, 1/4 cup flour, 1 teaspoon dry mustard, 1 teaspoon Worcestershire sauce, 4 ounces processed or natural cheddar cheese (grated).

Method:
 Wash tomatoes; remove a thin slice from bottom if necessary to have tomatoes stand straight. With a small sharp knife, cut a plug out of stem end; scoop out pulp; place pulp in strainer to drain off seeds and juice. Sprinkle the inside of each hollowed-out tomato with salt; let stand upside down until ready to stuff.

Melt butter in 8-inch skillet. Add onion, tuna and drained tomato pulp; do not add seeds. Cook over moderate heat until onions are wilted, stirring occasionally. Pour water into top of double boiler; sprinkle instant nonfat dry milk powder, flour and dry mustard over surface; add Worcestershire

sauce. Beat with rotary beater until just blended. Cook over hot (not boiling) water, stirring constantly, until thickened. Add cheese; stir until cheese is melted. Remove from heat.

Mix 1/4 cup of the cheese sauce with tuna mixture; fill hollowed-out tomatoes with mixture. (If there's a little of the filling left over, add it to the cheese sauce.) Place stuffed tomatoes in baking dish. Bake in moderate (350 degrees) oven until heated through—about 20 minutes. Serve with remaining hot cheese sauce.

Note:
 After the tomatoes have been stuffed, 1/2 teaspoon curry powder and 1 tablespoon chili sauce may be stirred into the cheese sauce for piquant flavor.

ALEXANDER'S Grocery & Market

300 N.W. 3rd E. W. Alexander Sr., Owner and Operator Dial 4-8631
 STORE HOURS 7:30 A.M. TILL 9:00 P.M. 7 DAYS A WEEK
 Free Delivery On All Bills Of \$5.00 Or More
 Prices Effective Thursday, Friday and Saturday

| | |
|---------------------------------|----------------|
| Try Our Meats—We Carry The Best | |
| ROUND STEAK CHOICE, LB. | 69c |
| LOIN STEAK THE BEST, LB. | 59c |
| HAMBURGER MEAT Lb. | 29c 4 Lbs. \$1 |
| ARMSTRONG FRYERS LB. | 39c |
| TALL KORN BACON LB. | 37c |
| BEEF RIBS LB. | 19c |

| | |
|--------------------------------|--------|
| LARGE COUNTRY EGGS DOZEN | 39c |
| DAIRY-FREEZE GANDY'S, 1/2 GAL. | 49c |
| FLOUR LIGHT CRUST, 25 LB. SACK | \$1.89 |
| PEACHES DEL MONTE, 2 1/2 CAN | 29c |
| LIPTON'S TEA 1/4 LB. | 35c |

| | |
|-----------------------|-----|
| CANTALOUPE FRESH, LB. | 5c |
| PEACHES FRESH, LB. | 15c |
| WHITE GRAPES LB. | 19c |
| TOMATOES CARTON | 15c |
| LETTUCE LB. | 10c |

| | |
|---|-----|
| PICKLES DILL OR SOUR, BEST MAID, QT. | 23c |
| OLEO DECKER'S, LB. | 18c |
| TISSUE OLD DUTCH TOILET 3 Rolls | 25c |
| KLEENEX 400 COUNT | 29c |
| SHORTENING MRS. TUCKER'S, (17c Coupon In Can) | 89c |

Popcorn Poppins' Fun

Popcorn is as entertaining to prepare as it is to eat. Gather small baskets or bowls for individual serving — and individual seasoning. Bring out an old-fashioned open wire popper, pour in kernels one layer deep, and shake gently about four inches away from a medium-sized bed of white live charcoal.



Ray's GROCERY & MARKET

602 N. E. 2nd OWNED AND OPERATED BY RAY THOMAS Dial AM 4-2361

| | | | |
|---------------------------|-----|-----------------------------|-----|
| FRANKS | | ROAST STEAK | |
| RATH'S ALL MEAT, LB. | 39c | CHOICE CHUCK, LB. | 35c |
| BACON | | CHOICE ROUND, LB. | 73c |
| CEDAR FARM 2-LB. PKG. | 89c | PORK CHOPS Center Cuts, Lb. | 59c |
| PICNICS | | STEAK | 43c |
| DECKER'S — WHOLE — SMOKED | | CHOICE CHUCK, LB. | 69c |
| | | CHOICE SIRLOIN, LB. | 69c |

| | |
|-----------------------------|---------|
| POTATOES U. S. No. 1 Pound | 7 1/2c |
| ORANGES Sunkist Navals, Lb. | 12 1/2c |
| LIMES Extra Fancy Pound | 25c |
| APPLES Winesap Pound | 19c |
| CABBAGE Firm Heads Pound | 4c |

| | |
|----------------------|-----|
| SALAD WAFERS | |
| SUNSHINE 1-LB. BOX | 21c |
| MARYLAND CLUB COFFEE | |
| LB. CAN | 99c |

| | |
|----------------|--------|
| PEACHES BUSHEL | \$2.99 |
|----------------|--------|

EAST TEXAS, ELBERTAS

"It really opened my eyes on ways to lower my food bill"

"It all started a couple of months ago when I wanted that new hat so badly. Couldn't figure any way to get it out of my budget.

"Then I began to wonder if I was paying more for food than I needed to. Decided to check. And I really checked! Went about it very scientifically, I'll have you know.

"I listed all the foods I bought in a week's time. Then I put five columns to the right of the list so I could jot down the price of each item at each of the five stores that are fairly convenient for me to shop in.

"Believe me, I went to each one of those stores. I put down every price and totaled all prices for each store. It took me almost half a day to do it, but it was worth it."

Comparison Proves That You Save Money

| | | |
|---------------------------------------|------------------|-----|
| Cragmont Cola Plus Deposit | 2 32-Oz. Bottles | 25¢ |
| Westfair Grape Juice | 24-Oz. Bottle | 29¢ |
| Chunk Tuna Sea Trader Light Meat | No. 1/2 Can | 25¢ |
| Salad Dressing Dutchess | 32-Oz. Jar | 47¢ |
| Mayonnaise No Made | 16-Oz. Jar | 39¢ |
| Zippy Pickles Whole Sour or Dill | 22-Oz. Jar | 27¢ |
| Del Monte Catsup Tasty | 14-Oz. Bottle | 20¢ |
| Heinz Ketchup Delicious | 14-Oz. Bottle | 24¢ |
| Lemonade Bel-air-Frozen Plain or Pink | 2 8-Oz. Cans | 29¢ |
| Skylark Bread Multi-Grain | 16-Oz. Loaf | 21¢ |
| Skylark Bread Cracked Wheat | 16-Oz. Loaf | 18¢ |
| Skylark Raisin Bread | 16-Oz. Loaf | 25¢ |



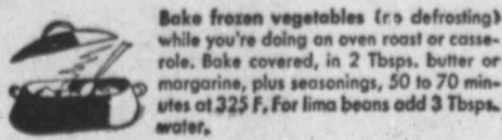
Know what I found? And this will amaze you, as it did me! My total at Safeway was much less than at any of the other stores. Enough savings in a year, I figured, to pay for a new coat!



The secret lies in just a few pennies difference here and there, usually on items you don't see advertised. But those pennies really add up. And you should hear Steve rave about the meats I've been getting from Safeway. And was he ever impressed with my businesslike approach to my shopping.

You'll Be Way Ahead Shopping Safeway!

| | | |
|--|---------------|-----|
| Lucerne Milk Homogenized | 1/2-Gal. Ctn. | 49¢ |
| Lucerne Drink Chocolate | 6-Oz. Ctn. | 25¢ |
| Post Toasties Crispy Fresh | 12-Oz. Box | 22¢ |
| Post Raisin Bran Nutritious | 14-Oz. Box | 27¢ |
| Pure Preserves Shasta Apricot or Peach | 32-Oz. Jar | 49¢ |
| Strawberries Bel-air Frozen | 10-Oz. Pkg. | 29¢ |
| Tea Timer Crackers So Good | 1-Lb. Box | 31¢ |
| Jane Arden Cookies Coconut Chocolate | 14-Oz. Pkg. | 49¢ |



Bake frozen vegetables (no defrosting) while you're doing an oven roast or casserole. Bake covered, in 2 Tbsp. butter or margarine, plus seasonings, 50 to 70 minutes at 325 F. For lima beans add 3 Tbsp. water.

All Prices Low Everyday at Safeway!

| | | |
|---|----------------|--------|
| Pinto Beans Sunny Hill | 2 1-Lb. Pkg. | 19¢ |
| Wesson Oil Salads or Frying | Quart Bottle | 65¢ |
| Flour Harvest Blossom | 5 1-Lb. Bag | 43¢ |
| Corn Meal Covered Wagon White | 5 1-Lb. Bag | 41¢ |
| Cake Mix Swansdown White, Yellow | 20-Oz. Box | 33¢ |
| Cake Mix Dromedary Devil Food, Yellow, or White | 19-Oz. Box | 33¢ |
| Fryers Manor House | 2-Lb. Avg. Lb. | 59¢ |
| Chicken Breast Manor House | Lb. | \$1.25 |
| Chicken Thighs Manor House | Lb. | 88¢ |
| Chicken Wings Manor House | Lb. | 38¢ |
| Sherbet Party Pride Orange, Pineapple, Lime | Pt. Ctn. | 19¢ |
| Jello Dessert Gelaflin Assorted Flavors | 3 3-Oz. Pkg. | 25¢ |



Tell you what. I'm going down to Safeway now. Get your coat and come along. I'll show you how to save enough, in no time at all, for that blouse you've had your heart set on.



It's the Total You Save That Counts...

| | | |
|----------------------------------|---------------|------------|
| Highway Apricots Unpeeled Halves | No. 2 1/2 Can | 29¢ |
| Fruit Cocktail Del Monte | 3 Cans | \$1.00 |
| Lakemead Applesauce | No. 303 Can | 2 Cans 29¢ |

| | | |
|---------------------------------|--------------|-----|
| Red Potatoes Economy | 10 1-Lb. Bag | 89¢ |
| White Onions Top Quality | Lb. | 15¢ |
| Sunkist Lemons Full of Juice | Lb. | 19¢ |
| Corn on the Cob Fresh from Farm | 3 Ears | 29¢ |
| Nectarines La Grande Tanga | Lb. | 39¢ |
| Avocados Cuban Top Grade | Each | 17¢ |



VIGO Dog Food
Beef or Horse Meat 1-Lb. Can 10¢

Low Shelf Prices Every Day of the Week...

| | | |
|---|-------------|-----|
| Round Steak Bone-In Heavy U.S. Choice Beef | Lb. | 89¢ |
| Ground Beef Economy Heavy U.S. Gov't Grade Beef | Lb. | 29¢ |
| Chuck Roast U.S. Gov't Grade Call | Lb. | 29¢ |
| Short Ribs Or Brisket U.S. Gov't Grade Call | Lb. | 19¢ |
| Pork Spareribs Fresh-Small-Lean | Lb. | 49¢ |
| Bacon Squares Smoked | Lb. | 23¢ |
| Jumbo Bologna Sliced | 14-Oz. Pkg. | 43¢ |
| Somerset Franks All Meat | 1-Lb. Cello | 45¢ |

| | | |
|--------------------------------|----------------|-----|
| Pork & Beans Taste Tells | 2 No. 300 Cans | 17¢ |
| Tomatoes Standard | No. 303 Can | 10¢ |
| Shortening Royal Satin | 3 1-Lb. Cans | 79¢ |
| Pure Lard Good for All Cooking | 3 1-Lb. Ctn. | 43¢ |

| | | |
|-----------------------------------|-------------------|-----|
| Shortening Crisco or Spry | 3 1-Lb. Cans | 89¢ |
| Cane Sugar Fine Grain | 10 1-Lb. Bag | 89¢ |
| Canned Milk Carnation or Pet | 2 14 1/2-Oz. Cans | 25¢ |
| Miracle Whip Kraft Salad Dressing | 32-Oz. Jar | 49¢ |
| Taste Tells Catsup | 14-Oz. Jar | 15¢ |

| | | |
|---------------------------|------------------|-----|
| Busy Baker Crackers | 1-Lb. Box | 23¢ |
| Gerber Baby Food Strained | 4 4 1/2-Oz. Cans | 33¢ |

BISCUITS

Choice of... Ballard, Pillsbury Buttermilk, Gladiola, Puffin, Puffin Buttermilk

8-Oz. Can 10¢

| | | |
|---|-----------------------|-----|
| Kraft Cream Cheese Philadelphia Regular, Pimiento, or Chive | 3 3-Oz. Pkg. | 10¢ |
| Cherub Milk Canned | 14 1/2-Oz. Can 2 Cans | 23¢ |
| Canterbury Tea Orange Pekoe | 1/2 1-Lb. Box | 59¢ |
| Liptons Tea Orange Pekoe | 1/2 1-Lb. Box | 65¢ |



Prices Effective August 2, 3, 4 in Big Spring, Texas

BUZ SAWYER



DIXIE DUGAN



NANCY



L'L ABNER



BLONDIE



ANNIE ROONEY



SNUFFY SMITH



GRANDMA



DONALD DUCK



JOE PALOOKA



SCORCHY SMITH



OAKY DOAKS



G. BLAIN LUSE

VACUUM CLEANER SALES, SERVICE & EXCHANGE 1501 Lancaster 1 Bk. West Gregg

POGO



DICKIE DARE



LITTLE SPORT



How To Torture Your Wife



Crossword Puzzle

Crossword puzzle grid with clues and solutions.

The Herald's Entertainment Page Of Top Comics

BE FF B G C C P ... HELENS (SHA NESTLES SPR) GLEEM TOO LILT HOA PERI JOHNSON BAB ... P G B C P



ROUND-UP

OF BETTER **Food Buys**
 SAVE while you celebrate

VISIT THE RODEO FOR FUN
 VISIT US AND SAVE

BLACK PEPPER FRENCH'S 4-OUNCE ... **29c**

GREEN BEANS Mission Cut ... 2 No. 303 Cans **29c**

Luncheon Meat OSCAR MAYER 12-OZ. CAN ... **29c**

CHEESE SPREAD CHIEF PRIDE 2-LB. BOX ... **59c**

KIMBELL'S FLOUR 25-Lb. Print Bag ... **1.69**

Maxwell House Instant Coffee 6-Oz. ... **1.45** | **PIMIENTOS** Kimbell's 4-Oz. ... **15c**
SHORTENING Bake-Rite 3-Lb. Can ... **79c** | **Chewing Gum** All Brands 3 For **10c**

DEL MONTE CATSUP 2 14-Oz. Bots. **39c**

APPLE BUTTER KIMBELL'S 24-OZ. ... **19c**

Cake Mix Gladiola, Marble, White, Yellow, Chocolate. Box ... **29c** | **Kraft Dinner** 7 1/2-Oz. ... **17c**
OLEO Armour's Pantry Maide, Pound ... **20c** | **Spaghetti** Kimbell's In Tomato Sauce 2 15-Oz. Cans **29c**

MARSHMALLOWS Curtis 10-Oz. ... **19c** | **SALAD OLIVES** Rio Grande 8-Oz. ... **39c**
KOOL-AID All Flavors ... 6 For **25c** | **PURE LARD** Armour's 3-Lb. Carton ... **49c**

MISSION PEACHES SLICED OR HALVES. NO. 2 1/2 CAN ... **25c**

BIG DIP 1/2-GALLON ... **49c**

LIPTON TEA 1/4-LB. PACKAGE ... **35c**

Oreo Sandwich Nabisco 7 1/4-Oz. ... **25c** | **French Dressing** Kraft 24-Oz. ... **24c**
POT PIES Morton House 7 1/2-Oz. ... 2 For **59c** | **Kim Dog Food** ... 2 For **15c**

BETTER MEATS AT SAVINGS!

FRYERS Grade A. Fry 'Em And Serve On Your Next Picnic. Lb. ... **39c**

BACON MATCHLESS EXTRA LEAN ... 3 1-Lb. Pkgs. **\$1**

Ground Beef GROUND FRESH DAILY. LB. ... **29c**

Club Steaks Choice. Nice And Tender. Lb. ... **55c**

Chuck Roast Choice. Mighty Good Eating. Lb. ... **35c**

Pork Steak FRESH, LEAN, ECONOMICAL. LB. ... **39c**

DRUG SPECIALS

HELENS CURTIS 2.00 SIZE **SHAMPOO** ... **1.39**
 NESTLES 1.25 SIZE. PLUS TAX **SPRAY NET** ... **89c**
 GLEEM 49c SIZE **TOOTH PASTE** ... **39c**
 LILT HOME REG. 2.00 PLUS TAX **PERMANENTS** ... **1.49**
 JOHNSON'S 6-PIECE **BABY SETS** ... **1.47**

FROZEN FOODS

STILLWELL 10-OZ. **STRAWBERRIES** ... **19c**
 DONALD DUCK 6-OZ. **ORANGE JUICE** ... **15c**
 DONALD DUCK GRAPEFRUIT 6-OZ. **JUICE** ... 2 for **25c**
 KEITH BRAND OKRA, CUT GREEN BEANS, FORD HOOK LIMAS, BROCCOLI, CAULIFLOWER, GREEN PEAS, CUT CORN, LEAF SPINACH, TURNIP GREENS **5 Pkgs. \$1.00**

FRUITS & VEGETABLES

Potatoes POPULAR SIZE RUSSETS. 10-LB. BAG ... **69c**
Grapes Red CARDINALS ... 2 Lbs. **25c**
Blackeye Peas Fresh And Nice. Lb. ... **12 1/2c**
Celery NICE CRISP STALKS. EACH ... **15c**
Peaches Sweet, Juicy Texas Elbertas. Lb. ... **12 1/2c**

FREE! \$25 CASH!

Or more given every Wednesday. There is nothing to buy. You don't have to be present to win... Just register at either store Wednesday... Be sure and register... This may be your week to win!

Matelda Sotelo Won \$25 Last Week

She Lives At 509 North Johnson, Big Spring

4th & Gregg
 Phone AM 4-6101

611 Lamesa Hiway
 Phone AM 4-2470

HULL & PHILLIPS

FOOD STORES

TED HULL

"FRIENDLIEST SERVICE IN TOWN"

ELMO PHILLIPS

ALWAYS ALL-STAR ENTERTAINMENT AT YOUR R & R THEATRES



Ritz TODAY THRU SATURDAY MAT. 50c EVE. 60c CHILDREN 20c



PLUS: LATE NEWS—COLOR CARTOON

Stats TODAY-THURSDAY OPEN 12:45 ADULTS 40c CHILDREN 10c

LEWIS HAYWARD DENNIS O'KEEFE IN WALK A CROOKED MILE PLUS: SELECTED SHORTS

TOMORROW AND SATURDAY



PLUS: CARTOON—SERIAL AT YOUR R&R DRIVE-INS



TERRACE DRIVE-IN THEATRE TONIGHT AND FRIDAY OPEN 7:00 ADULTS 40c—CHILDREN FREE

James Dean REBEL WITHOUT A CAUSE CINEMASCOPE NATALIE WOOD SAL MINO

1956 Building Past \$3 Million

A boost during the last few days of July put the city's building permit total valuation for the year over the \$3 million mark.

2 MORE DAYS WORLD CHAMPIONSHIP RODEO

Produced By EVERETT E. COLBORN Friday & Saturday Big Thrill-Packed Nights 8:00 P.M.

Admits Executions Under Soviet Rule

BUDAPEST, Hungary, Aug. 2 (AP)—Hungary's chief prosecutor publicly conceded today that thousands of people had been imprisoned or executed unjustly in this country under Communist rule.

New Swimming Pools Due Completion This Month

Contractors are pointing toward completion of the Negro swimming pool "about the middle of August."

Yule Tree Sale Slated

DeMolays of Big Spring will start the sale of Christmas trees in August this year.

Favors Turning State Parks To Local Control

AUSTIN (AP)—State Auditor C. H. Cavness yesterday again suggested that several state parks could better serve communities if under local management and operation.

Southwest Retail Sales Over 1955

DALLAS (AP)—The Federal Reserve Bank of Dallas said today retail sales in its five-state district were higher for the first six months of 1956 compared to the same period in 1955.

Contractors are pointing toward completion of the Negro swimming pool "about the middle of August."

At the other pool, being built in the same block with a new fire station, crews have finished all construction on the pool proper and have laid all big piping to the filter area.

Anthony's new autumn styles for women and girls LAY AWAY COAT EVENT

Wool Fleece - Tuxedo Front COAT 32.50

Pretty-'N-Practical in Wool and Cashmere 29.75

Part Pre-Teens Adore This 100% Wool Tweed COAT 19.75

100% Wool - For The "Small Fry" 10.90

BOB'S NEW HEART AND FUN SHOW OUT-JOYS "THE SEVEN LITTLE FOYS" THAT CERTAIN FEELING

JET FIRST BIG SPRING SHOWING ADULTS 50c - CHILDREN FREE

A CITY SCREAMS IN TERROR as his fury stalks its streets! THE CREATURE WALKS AMONG US

SAHARA TWIN-SCREEN DRIVE-IN THEATRE 2 EARTH SHAKERS! WARNING! TAKE COVER!

Vertical text on the far right edge of the page, including "Tuffy", "Mu", "Ro", "Ex-S", "Ask", "To V", "AUSTIN", "Sen. Ge", "Price", "didate", "a runoff", "thing", "tion of", "light of", "ness an", "Democr", "when w", "course", "harmony", "clean pe", "There", "from Ya", "ed in D", "gion con", "Another", "the sign", "was that", "pus Chr", "Sen. Ly", "ber of t", "the nati", "tion.", "Other", "John", "rice Bro", "son, Cor", "Worth:", "Ray Shi", "ney, Co", "hachie", "Dr. Sil", "Johnson", "McAllen", "Frank", "Beck, B", "Amarill", "ville; E", "Connell", "Mince", "Waco, a", "your fo", "ous can", "thereby", "from th", "Sen. Pr", "began.", "We", "Price", "ly dem", "Texas t", "sive go", "serve th", "ple. Th", "giving h", "in the", "they h", "eritiv