

"By Helping Business You Help Yourself"

The Floyd County Plainsman

VOLUME No. 13

Floydada, Floyd County, Texas, December 11, 1941

Number 1

ACREAGE ALLOTMENTS HELP TO STRENGTHEN COTTON PRICES IS BELIEF OF G. B. JOHNSTON

Special to the Plainsman: Acreage allotments, strengthened by marketing quotas, which...

vote in a national cotton marketing quota referendum Saturday, December 13. Voting places are as follows: Farmers residing in Dougherty, Baker, Antelope, Pleasant Hill, Lake view, Starkey, McCoy, Allmon, Harmony, Sanahill, Floydada, Blanco, and Campbel School Districts will vote in the County Court Room in Floydada.

Mahon Voted for to Prevent Strikes

Report from Washington Representative George Mahon states that he voted for the bill designed to prevent defense strikes which passed last week.

Floyd County Men Leave December 6 For Training

The Local Board set for induction on December 8th, three selectees, James Madison Cypert, G. T. McGinley and Denzie Price Wylie, all of Lockney, and a transferred Selectee from Corpus Christi, Raymond Richard Redd, also of Lockney.

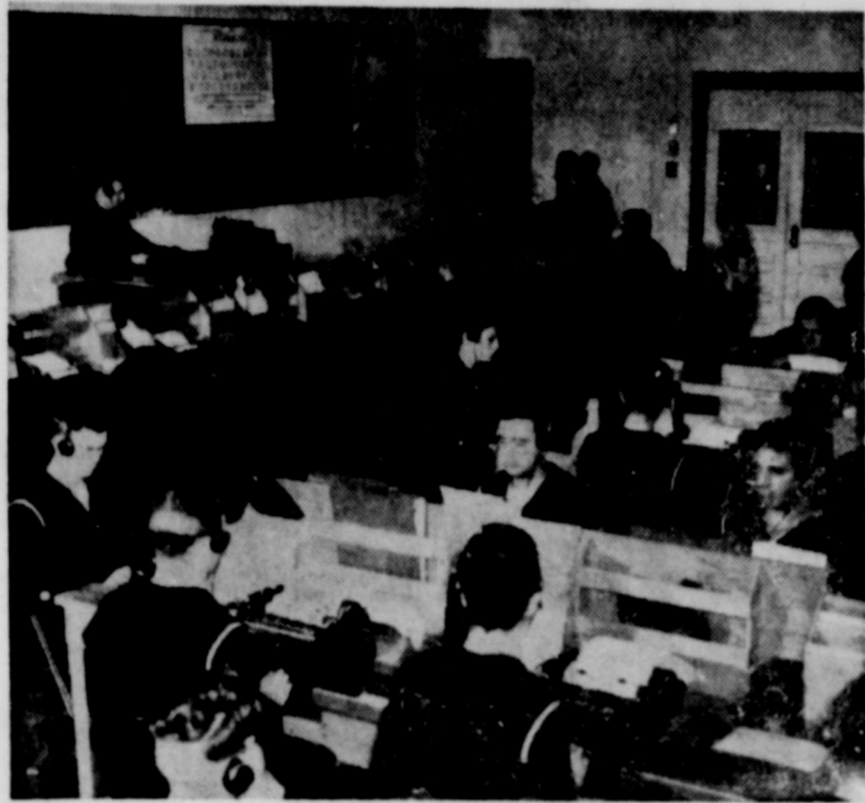
Mrs. John A. Hollums and Mrs. K. Duncan visited with Mrs. Will Sims in Lubbock Sunday afternoon.

Mrs. Will Sims, of South Plains, who has been ill the past ten days in Pitt's Hospital with pneumonia, is reported much improved and will be moved to her home the latter part of the week.



Claude R. Wickard, U. S. Secretary of Agriculture, is shown pointing out his "farm defense plan for 1942," joining thousands of American farmers in increasing production of dairy, poultry, pork products.

UNCLE SAM TEACHES RADIO



To meet the demand for qualified men created by the huge shipbuilding program of the Maritime Commission, the United States Maritime Service is training youths to become radio operators in the American Merchant Marine.



MORKEL AND BATTEY ENTERED WINNING BIRDS AT PLAINVIEW DRESSED TURKEY SHOW

Special to the Plainsman: The Plainview Bulldog football squad will dine Christmas on turkey that cost \$2.06 a pound. The grand champion bird of the Eighth Annual Southwestern Dressed Turkey Show sold here for that price and was presented to the grid team.

Churchill who operates the largest turkey farm in this part of the country added to his impressive array of trophies with the grand champion award in the live show, a young tom exhibited by the Muleshoe grower winning the honor. In addition Churchill's birds took top honors in a number of other divisions.

Services Held For Mrs. Clementine Henry

Funeral rites were held Tuesday morning at 10 o'clock at the First Methodist Church for Mrs. Clementine Brown Boyd Henry, who passed away at her home Sunday night, after an illness of three years.

Causes of Better Prices Are Given By A. A. Hoots

Special to the Plainsman: Collective causes of improved price of cotton are acreage allotments, marketing quotas and the loan program, A. A. Hoots, Secretary of the Floyd County AAA Committee, announced this week.

Mark Your Ballot "Yes" or "No" December 13

Special to the Plainsman: By marking a "Yes" or "No" on the face of the ballot, Floyd County farmers will help write the answer to the question: "Do you favor marketing quotas on the 1942 crop?"

ANNOUNCE NEW ARRIVAL

Mr. and Mrs. Greer Christian are the parents of a son, born Monday night, December 8, in the Lubbock Hospital. The child has been named Robert Greer, and weighed eight and one-half pounds.

Mr. and Mrs. Somer Hollingsworth, of Amarillo, are visiting Mr. Hollingsworth's parents, Mr. and Mrs. A. S. Hollingsworth this week.

Mrs. J. A. Grigsby returned home Monday from Abilene where she spent the past three weeks visiting her daughter, Mrs. Carrie Bishop and family.

Miss Anna Sims, of Plainview, spent the week end with Mrs. Maud Merrick.

supply were in the United States. The purpose of marketing quotas is to divide a limited market equally among cotton producers.

With more than two million farmers in the United States planting within cotton acreage allotments they are cooperating in an effort to keep supply in line with demand, Johnston said.

U.S. Marines - by Krieb

Advertisement for U.S. Marines featuring portraits of Major General Clayton B. Vogel and Capt. Louis C. Kirk, along with text describing their service and awards.

McLean Tigers Toss Floydada, 43 to 25

Special to the Plainsman: McLean, December 5.—McLean and Floydada put on the wildest football offensive show this area has ever seen this afternoon, with the Tigers coming from behind four times to win the bi-district championship, 43 to 25.

Early in the second quarter Floydada went ahead when Rushing plunged over from the 1-yard line. McLean scored on three plays after the kickoff with Cooke dashing over from the 20. Floydada took the lead again with Rushing grinding out the score from the 10-yard line.

Navy Seeks 100 Mechanics for Aviation

A special quota of one hundred mechanics for Naval aviation has been assigned this Recruiting District by Eighth Naval District Headquarters at New Orleans, Louisiana, J. E. Calloway, Chief Quartermaster and recruiting officer at Lubbock, announced today.

The openings are for men between the ages of 17 and 36 and enlistments are for the duration of the emergency. Each accepted applicant will, upon the completion of six weeks of military training, be sent to a Navy trade school for aviation for a period of from four to six months and then attached to an aviation unit of the Navy.

Selective Service men who have not received their army physical examination, or who have not been called by their draft boards for induction, are eligible, Calloway added. Navy Recruiting Stations in this district are: Post Office Lubbock, daily except Sunday; Post Office Tahoka every Monday; Post Office Brownfield every Tuesday; Post Office Littlefield every Wednesday; Post Office Plainview every Thursday; Post Office Matador every Friday; Post Office Levelland every Saturday.

FLOYD COUNTY SINGING CONVENTION WILL MEET SUNDAY AFTERNOON

The Floyd County Singing Convention will meet Sunday afternoon, December 14, at Starkey schoolhouse. All singers and those who are interested in good singing are urged to attend.

LET CAVANAUGH DO YOUR JOB PRINTING.



Open throat yoke dress with full skirt.



Tiny button trim for dress-up occasions.

**SALE PRETTY WOOL DRESSES**

Colors taken from the chalk-box to make you pretty as a picture! Cozy, featherweight wools to keep you warm and bulk-free all the winter through. You'll look like a breath of spring on these dreary winter days . . . so see yourself in one soon . . . Women's and misses sizes.

**SALE PRICES . . .**

7.98 Reduced \$6.89  
10.98 Reduced 8.89  
12.75 Reduced 9.89



Double collar on a tailored coat-dress



Two-tone coat-dress for double chic

**STYLE SHOPPE**

"ALWAYS SHOWING NEWEST THINGS FIRST"  
Mrs. Mollie A. Morton, Owner Phone No. 17

**A LIST OF LOW PRICED**

**Christmas GIFTS**

We are offering many Christmas suggestions at a Reduced Price. Do your Christmas shopping early and take advantage of the many bargains we list

**NEW FALL HATS Reduced**



**1/2 PRICE**

**HANDSOME FALL HANDBAGS!**

**\$1.00 to \$1.98**



ROOMIER INTERIORS, more beautiful surfaces, colors perfectly keyed to fall fashions. Find everything you want in our smart styles.

SADDLE LEATHER  
ANTIQUÉ CALF  
PATENT LEATHER  
SUEDE, FAÏLLE

**SALE FUR TRIM COATS . . .**



LYNX TRIMMING is the most elegant trimming for the casual coat that borders on being dressy! In pastel plaid, this coat favors a self-fabric, tied belt.

**\$29.75 Sale \$22.50**

**CORDUROY SUITS**



**\$12.75 Sale \$9.89**

**The South Takes up the Slack**



In light, bright and dark colors—with complementary jackets—these well mannered slacks will be your "uniform" for winter resort play and comfort. Sizes 12 to 20.

**\$6.50 Suits \$5.73**  
**\$7.98 Suits \$6.98**  
**\$10.98 Suits \$9.9**

**WOOL sweaters**

**New Fall Colors . . .**  
Price Range from **\$1.00 to \$7.98 Each**



**FLOYD COUNTY PLAINSMAN**

Published Thursday Each Week  
M. B. CAVANAUGH, PUBLISHER

County \$1.00; Outside Floyd County \$2.00  
second class matter June 23, 1930, at the post office at  
Floydada, Texas, under the Act of March 3, 1879.

ADVERTISING RATES GIVEN ON APPLICATION

**NOTICE!**

Anonymous reflections upon the character, standing or reputation  
of a person, firm or corporation which may appear in the columns of  
the County Plainsman will be gladly corrected upon its being  
brought to the attention of the publisher.

**New Counties  
Special  
Program**

Station.—From one Texas  
12 counties in four years  
of growth of the special  
program of the southern great  
plains, Charlie L. Thomas, state  
committeeman from Pampa,  
said.

Under the special program, total  
AAA payments are earned by carry-  
ing out approved soil-building prac-  
tices and land uses on the entire  
farm. Farms are typed according to  
major crops customarily planted and  
payments are made by applying pro-  
ductivity indices. Weather condi-  
tions, soil types, production practices  
and general fertility determine in-  
dices the AAA official said.

Recognizing a need for a more  
stable type of farming, Sherman  
county farm leaders developed the  
special program in 1939 to solve  
drought and erosion problems. Farm-  
ers in six more counties voted to use  
the special program the following  
year.

Within a radius of approximately  
100 miles involving about 50 counties  
in five states, the southern great  
plains farm program covers specific  
conditions applicable to this area,  
the state committeeman said.

**HAPPENS SOMEWHERE EVERY DAY...**



and then they switched to  
**U. S. ROYAL MASTERS**  
and forgot about tire troubles

Royal Master's extra protection against  
blowouts and skids PLUS the extra  
mileage means low-cost safety. No  
wonder they say, "We'll never ride on  
any other kind of tire."

**Dale Strickland, Distributor**  
Floydada, Texas

**FIRST NATIONAL BANK**  
Floydada, Texas

3—Time Tested Service—1941

**CLINE AND RAINER GARAGE**

Here you can get everything for your car at one-stop.  
Gas, Mobiloil

RADIATORS REPAIRED, and boiled out for cars, tractors  
and combines. Parts of all kinds, welding, tires, batteries. In fact  
we have everything for your car. See us for lawn mowers and hose.

buy junk Batteries. Phone 37

**CLINE AND RAINER**  
WESTERN AUTO ASSOCIATE STORE

**CHEVROLET TRUCKS**



**"THRIFT-CARRIERS FOR THE NATION"**  
For Farms . . . For Business . . . For Total Defense Effort

**ODEN CHEVROLET CO.** Sales and Service  
Phone 4, Floydada, Texas

**Outlook for Beef  
Production is  
Bright**

Colege Station, Dec. 11.—Texas  
should be able to furnish without  
straining its resources 18 percent  
more cattle and calves for marketing  
and home slaughter in 1942 than it  
did in 1940, according to A. L.  
Smith animal husbandman of the A.  
and M. College Extension Service.

This is the minimum quota allotted  
to the state by the Texas USDA  
Defense Board in the Food for Free-  
dom program. Texas is expected to  
furnish an increase of 269,093,000  
pounds and a total output of 1,764,-  
053,000 pounds in 1942.

Returning recently from a survey  
of the cattle-raising areas of south  
and west Texas, Smith forecast a  
high average spring calf crop be-  
cause cows generally have had un-  
usually good pasture and are going  
into the winter in excellent con-  
dition. But he did not look for any  
material increase in existing herds  
next year. There is considerable  
of sterile and over-age cows, espe-  
cially when in good flesh, but he did  
not observe that any of these are  
being put into feed lots. On ac-  
count of prevailing prices large  
numbers of cattle are being grazed  
on wheat and other small grains,  
with a supplement of cottonseed  
cake.

Texas calves contracted for fall  
delivery by out-of-state feeders have  
been moved and very few are going  
out of the state at this time, Smith  
said.

USDA economists have pointed out  
the desirability of increasing mar-  
keting and slaughter of cattle and  
calves during the coming year. They  
suggest that unless marketings are  
increased, there will be a continued  
expansion in numbers of cattle and  
calves on farms and ranches, with  
heavy marketings in subsequent  
years when consumer demand con-  
ditions may not be as favorable as  
they are expected to be next year.

**New Procedures  
Filing Land  
Vacancy Claim**

New procedures for filing land  
vacancy applications are contribut-  
ing to the elimination of many  
abuses in the handling of Texas' pub-  
lic domain, Jack Sparks, attorney  
for the general land office, told 150  
Texas surveyors meeting in Austin  
for their second annual short course.

The new procedures, included in  
the 1939 application for vacancies  
act provide for public hearings, im-  
partial surveyors and higher filing  
fees, thereby doing away with nu-  
merous spurious claims to public do-  
main, Sparks told the group.

**Floyd County food  
Expenditures are  
Increased**

Dallas, December 11.—Expen-  
ditures for food in Floydada and Floyd  
County were increased \$1,170.50 dur-  
ing the month of November through  
the Government's food stamp pro-  
gram, it was revealed today by L. J.  
Cappleman, Regional Director of the  
Surplus Marketing Administration  
for the thirteen Southern States.

This sum represented the amount  
of blue stamps issued by the Floyd-  
ada and Floyd County stamp pro-  
gram office during the month. In  
addition, \$1,549 of orange stamps  
were purchased from the Government  
during the period, bringing the total  
amount available for food purchases  
due to the stamp program to \$2,719.-  
50 for November.

Participating in the Floydada and  
Floyd County stamp program during  
the month were 172 cases, represent-  
ing with their families, 576 persons.  
Those participating represented 72  
percent of the 798 persons in the  
area eligible to receive stamps dur-  
ing November.

Amount of blue stamps issued per  
person during November averaged  
\$2.03.

The oil industry buys each year  
directly from agriculture lard oil,  
stearine made from cattle and horses,  
castor oil from the castor plant,  
neatfoot oil from horns and hooves,  
milk, fiberboard, hairfelt, leather,  
cotton fabrics, wood products and  
many other supplies.

**CLASSIFIED  
ADVERTISING**

Our FLOWERS are FRESH and  
are BEAUTIFULLY ARRANGED.  
HOLLUMS, FLOYDADA FLORISTS

**LANDS FOR LEASE**  
A few farm tracts to lease at rea-  
sonable prices for cash.

**W. M. MASSIE & BRO.**  
Floydada, Texas. 11-tfc

We invite you to visit the green  
house. **PARK FLORISTS**—Mrs. W.  
S. Goen. Phone 78. 46-tfc

**Floydada Insur-  
ance Agency . . .**

Insurance of all kinds. Your in-  
quiries and business respectfully  
solicited.

**W. H.  
HENDERSON**  
OWNER

**Eastern New  
Mexico College is  
Presented Flag**

Portales, New Mexico, Dec 11.—  
A United States flag that flew over  
the Senate side of Congress when the  
Lend-Lease Bill was passed, was for-  
mally presented to Eastern New  
Mexico College, recently.

Floyd D. Golden, Dean of the Col-  
lege, made the presentation in the  
name of Senator Dennis Chavez, who  
gave the flag to Mrs. U. D. Sawyer,  
of Crossroads.

Senator Chavez told Mrs. Sawyer  
she might present the flag to any  
state institution she wished, or keep  
it herself. She chose to give it to  
ENMC.

The dimensions of the flag are 9  
feet by 13 feet.

"The flag has been placed in the  
Roosevelt County museum, located  
on the college campus, and may be  
used on the College flagpole on  
special occasions," said Dean Golden.

Farmers' marketing, purchasing,  
and farm business service cooper-  
atives borrowed nearly twice as much  
money from banks for cooperatives  
in the first nine months of 1941 than



**A NEW PHILCO RADIO**

IS WHAT THE FAMILY WANTS MOST

Please them all, with the instrument which will bring them many  
hours of happy entertainment, education and information.

**H. G. PARKER, APPLIANCES**

SEE THE NEW PHILCO RADIO AT OUR STORE

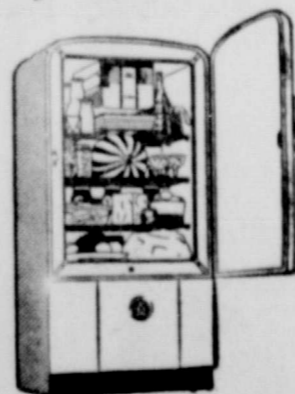
Let Cavanaugh do your job printing.

**LOOK LADY! HERE'S HOW TO KEEP YOUR FOOD AND COOK IT, TOO!**

Protect Foods in Your Home  
the **SAFE WAY**  
with a  
**Westinghouse  
Refrigerator**



Protect Vitamins,  
Minerals, Natural Flavor with  
**Electric COOKING**  
... it's simple and easy with a  
**Westinghouse  
Electric Range**



No combination of kitchen ap-  
pliances could give you more  
enjoyment than an ELECTRIC  
Range and Refrigerator. The Re-  
frigerator keeps your food at  
proper temperature at all times  
and the Range gives you the sim-  
plest, easiest, most convenient  
cooking known. Why not come  
in TODAY and make your selec-  
tion? . . . For the convenience of  
our customers, monthly terms  
may be arranged.



Texas-New Mexico Utilities Company



Open throat yoke dress with full skirt.

**SALE PRETTY WOOL DRESSES**

Colors taken from the chalk-box to make you pretty as a picture! Cozy, featherweight wools to keep you warm and bulk-free all the winter through. You'll look like a breath of spring on these dreary winter days . . . so see yourself in one soon . . . Women's and misses sizes.



Tiny button trim for dress-up occasions.

**SALE PRICES . . .**

7.98 Reduced \$6.89  
10.98 Reduced 8.89  
12.75 Reduced 9.89



Double collar on a tailored coat-dress



Two-tone coat-dress for double chic

**STYLE SHOPPE**

"ALWAYS SHOWING NEWEST THINGS FIRST"  
Mrs. Mollie A. Morton, Owner Phone No. 17

**A LIST OF LOW PRICED**

**Christmas GIFTS**



We are offering many Christmas suggestions at a Reduced Price. Do your Christmas shopping early and take advantage of the many bargains we list

**NEW FALL HATS Reduced**



**1/2 PRICE**

**SALE FUR TRIM COATS . . .**



LYNX TRIMMING is the most elegant trimming for the casual coat that borders on being dressy! In pastel plaid, this coat favors a self-fabric, tied belt.

**\$29.75 Sale \$22.50**

**CORDUROY SUITS**



**\$12.75 Sale \$9.89**

**HANDSOME FALL HANDBAGS!**

**\$1.00 to \$1.98**



ROOMIER INTERIORS, more beautiful surfaces, colors perfectly keyed to fall fashions. Find everything you want in our smart styles.

SADDLE LEATHER  
ANTIQUE CALF  
PATENT LEATHER  
SUEDE, FAILLE

**The South Takes up the Slack**



In light, bright and dark colors — with complementary jackets — these well-mannered slacks will be your "uniform" for winter resort play and comfort. Sizes 12 to 20.

**\$6.50 Suits \$5.73**  
**\$7.98 Suits \$6.98**  
**\$10.98 Suits \$9.99**



**WOOL sweaters**

**New Fall Colors . . .**

**Price Range from \$1.00 to \$7.98 Each**

**FLOYD COUNTY PLAINSMAN**

Published Thursday Each Week  
M. B. CAVANAUGH, PUBLISHER

Floyd County \$1.00; Outside Floyd County \$2.00  
as second class matter June 23, 1930, at the post office at  
Floydada, Texas, under the Act of March 3, 1879.

**ADVERTISING RATES GIVEN ON APPLICATION**

**NOTICE!**

erroneous reflections upon the character, standing or reputation  
person, firm or corporation which may appear in the columns of  
Floyd County Plainsman will be gladly corrected upon its being  
brought to the attention of the publisher.

**Planning More Defense Foods**



farmers in this State and elsewhere in America are beginning to  
plan for producing more "defense foods" in 1942. Among the  
nutritious foods needed in greater quantity are milk, cheese,  
meats, and vegetables. Good market prices for the year are  
expected. Every farmer in the nation will be visited this fall by an  
extension agent who will assist in planning the  
program.



R. Wickard, U. S. Secretary of Agriculture, is shown  
presenting his "farm defense plan for 1942," joining thousands of  
American farmers in increasing production of dairy, poultry,  
and pork products. In the background is the appropriate U. S. D. A.  
poster, "Your Farm Can Help." On his 380-acre home farm in Carroll  
County, Indiana, Secretary Wickard is reducing his beef herd, in-  
creasing his dairy herd, maintaining high poultry production, and  
planning for record hog production. To get sufficient feed for his  
herd he expects to plant nearly his full AAA corn acreage again.  
He will reduce his wheat acreage, in line with AAA policy of  
1942 wheat production due to large supplies already in storage.

**Texas' 1942 Egg  
Goal in Sight with  
Present Flocks**

College Station, December 18.—  
There seems to be little need for in-  
creasing the number of layers now  
producing to enable Texas farmers to  
reach the minimum goal set for  
1942 by the Texas USDA Defense  
Board for a 14 percent increase in  
production over 1940. According to  
H. H. Weatherby, assistant poultry  
husbandman of the A. and M. Col-  
lege Extension Service, proper hous-  
ing and feeding of existing flocks  
of hens and pullets should make this  
possible. Texas' goal for eggs pro-  
duced on farms in 1942 is 203,775,000  
dozen.

A better balanced ration is helping  
to bring about increased production,  
Weatherby explains. Ordinarily the  
farm rations in sections where corn  
is the chief feed crop contains too  
large a proportion of low protein  
grains. But with favorable prices  
for eggs prevailing, farmers are giv-  
ing closer attention to housing and  
management of laying flocks, and  
are feeding more suitable rations.  
These rations consist either of com-  
mercially mixed mash or of com-  
posed of farm grown grains and com-  
mercially mixed protein concen-  
trates.

Egg production in the United  
States for the first nine months of  
1941 was the largest since 1930, and  
production in August and September  
was the largest since 1929, with a  
record high per layer of 12.25 eggs.  
Egg prices in August were the high-  
est since 1929; prices for chickens  
about three cents above a year ago,  
and turkeys higher than in the past  
eight years.

To continue the high rate of pro-  
duction throughout the winter, Wea-  
therby says, poultrymen are making  
provisions for green feed for layers  
by sowing small grains or winter  
legumes. They are vaccinating pul-  
lets for fowl pox and starting them  
in the laying house free of internal  
and external parasites. Many poul-  
trymen will use lights and wet mash-  
es to stimulate heavy winter laying.

Weatherby emphasized that an ex-  
pansion program which would include  
construction of new buildings is not  
recommended. "Converting existing  
structures into properly ventilated  
laying houses is a sound program."

**THE UNITED STATES MARINES  
NEED PHYSICALLY FIT MEN**

The United States Marines need  
physically fit men between the ages  
of 17 and 34. Applicants must be  
between 64 and 74 inches in height,  
single and without dependents and  
of good moral character. All recruits  
will be sent to San Diego, California,  
and enlistments are for the duration  
of the war. Apply now at any of  
the following recruiting stations:

The Post office building: Oklaho-  
ma City, Room 330; Enid, Oklahoma,  
room 245; Ardmore, Oklahoma, room  
229; Tulsa, Oklahoma, room 212;  
Amarillo, Texas, room 14;  
Come on the run! Your country  
needs you!!

Mr. and Mrs. Joe E. Pitts, of  
Amarillo, visited with Mr. and Mrs.  
John Hollums and Mrs. Sarah K.  
Duncan over the week end.

**Plant Trees Now  
For Best Results in  
Forests, Orchards**

December and other months  
through the dormant season offer  
the best opportunity for planting  
forest trees, according to C. W. Sim-  
mons, farm forester for the A. and  
M. College Extension Service. He  
says sub-marginal lands, cut-over, or  
burned acres cannot be put to a bet-  
ter use than round farm forestry.

The 1942 AAA program re-or-  
ganized the value of tree planting and  
payments are made at the rate of  
\$4.50 per acre for pines and \$6 per  
acre for other trees. About 1,000  
pines per acre with a 6x8 spacing of  
700 trees of other varieties with 8x3  
spacing are required for compliance.  
A 65 percent survival is necessary  
also. A special forestry allowance  
of \$15 is available for tree planting  
in addition to the regular soil build-  
ing allowance.

Farmers interested in tree plant-  
ing can consult their county agri-  
cultural agents on how to obtain  
trees from the Indian Mound For-  
estry Nursery operated near Alto by  
the Texas Forest Service. Approx-  
imately three and one-half million  
seedlings are available for distribu-  
tion from the nursery.

Among the varieties obtainable  
are slash pine, longleaf pine, lobl-  
olly pine, shortleaf pine, black wal-  
nut, black locust, red mulberry,  
Chinese elm, and Russian olive. The  
last two are suited especially to wind  
break and shelterbelt planting in  
West Texas, since they are drought  
resistant.

The trees are for forestry purposes  
only, so no trees can be used or re-  
sold for ornamental plantings, Sim-  
mons says.

LET CAVANAUGH DO YOUR  
JOB PRINTING.

**CLASSIFIED  
ADVERTISING**

Our FLOWERS are FRESH and  
are BEAUTIFULLY ARRANGED.  
HOLLUMS, FLOYDADA FLORISTS

**LANDS FOR LEASE**

A few farm tracts to lease at rea-  
sonable prices for cash.

W. M. MASSIE & BRO.  
Floydada, Texas. 11-tfc

We invite you to visit the green  
house. PARK FLORISTS—Mrs. W.  
S. Goen. Phone 78. 46-tfc

**Floydada Insur-  
ance Agency...**

Insurance of all kinds. Your in-  
quiries and business respectfully  
solicited.

W. H.  
HENDERSON  
OWNER

**1934 STUDY CLUB MET  
TUESDAY NIGHT**

The 1934 Study Club met Tuesday  
evening at the home of Mrs. C. K.  
Arnold, with Miss Edith Wilson,  
Mrs. Laurie Carlisle and Mrs. Lula  
B. Owens, as hostesses. A short busi-  
ness gathering was held and Mrs.  
Charles Brown was voted in as a  
new member.

The living room and dining room  
was decorated in keeping with the  
holiday season. White lighted tapers  
were used in the living room and red  
tapers on the dining table. Christ-  
mas gifts were wrapped and placed  
on the dining table. After the Christ-  
mas supper the group sang Christ-  
mas chorals led by Betty Newell,  
with Miss Velma Elliott at the pia-  
no.

**FERTILIZER TESTS TO BE  
CONTINUED IN 1942**

Nine Floyd County farmers have  
filed applications with the Texas A.  
and M. College Extension Service  
and the Tennessee Valley Authority  
for 50,800 pounds of Calcium Meta  
Phosphate to be used as demonstra-  
tions to determine the direct and in-  
direct values of applying this ferti-  
lizer, according to H. W. Schacht,  
chairman of the Floyd County T. V.  
A. Committee.

Applicants mailed from the coun-  
ty agent's office December 13 in-  
cluded F. L. Brown, R. E. Deahl,  
Fred Hage, Elmer Laughlin, H. W.  
Schacht, C. J. Taylor, Dr. H. M.  
Thompson, Glen Watson, and E. B.  
Wilkes. These men are operating ir-  
rigated farms in the Lockney com-  
munity.

Three new applications were ap-  
proved by the T. V. A. Committee  
for 1942. These were R. E. Deahl,  
Glen Watson, and B. B. Wilkes. The  
application of Mr. Deahl for 12,300  
pounds of phosphate represents the  
largest request filed in the county.  
"This program was started in 1941  
when 46,800 pounds of phosphate was  
received in the county, but due to  
excessive rainfall results could not  
be determined," Mr. Schacht said.  
"Each demonstrator agrees to a 5-  
year crop rotation program by using  
the fertilizer and legumes in a soil  
building program," he said.

The program is supervised by  
Jason O. Gordon, county agricultural  
agent.

Let Cavanaugh do your Printing.

**U.S. Marines— by Kzeb**



MAJOR GENERAL  
**CLAYTON B. VOGEL**

RENDERED OUTSTANDING SERVICE AS  
COMMANDANT OF THE GARDE D'HAITI,  
AND WAS AWARDED THE ORDER OF HONOR  
AND MERIT. ALSO IS A DESCENDANT OF  
COMMODORE JOSHUA BARNEY, FAMOUS  
SEA-FIGHTER OF THE REVOLUTION AND  
THE WAR OF 1812...

CAPT.  
**LOUIS CUKLA**, THE MOST  
DECORATED MARINE CORPS  
OFFICER, WEARS THIS COUNTRY'S  
HIGHEST AWARD—THE ARMY AND THE NAVY  
CONGRESSIONAL MEDALS OF HONOR.

AMPHIBIAN TRACTORS CALLED  
"ALLIGATOR TANKS" WERE  
TESTED BY THE U.S. MARINES,  
AS FAR BACK AS 1924...

Let Cavanaugh do your job printing.

**CLINE AND RAINER GARAGE**

Where you can get everything for your car at one-stop.  
Mobigas, Mobiloil

RADIATORS REPAIRED, and boiled out for cars, tractors  
and combines. Parts of all kinds, welding, tires, batteries. In fact  
we have everything for your car. See us for lawn mowers and hose.

We buy junk Batteries. Phone 37

**CLINE AND RAINER**  
WESTERN AUTO ASSOCIATE STORE

**PRINTING!!**

TELL US OF THE JOB AND WE'LL DO THE WORK  
CORRECTLY AND PROMPTLY.

ON GOOD PRINTING—large job or small—Our policy is to do the  
work correctly and promptly.

We have the newest and most modern type of equipment to  
handle the work in an efficient manner, which results in most moder-  
ate cost to the buyer. When you order printing from our plant you  
may depend upon it that the work will be done to your complete  
satisfaction.

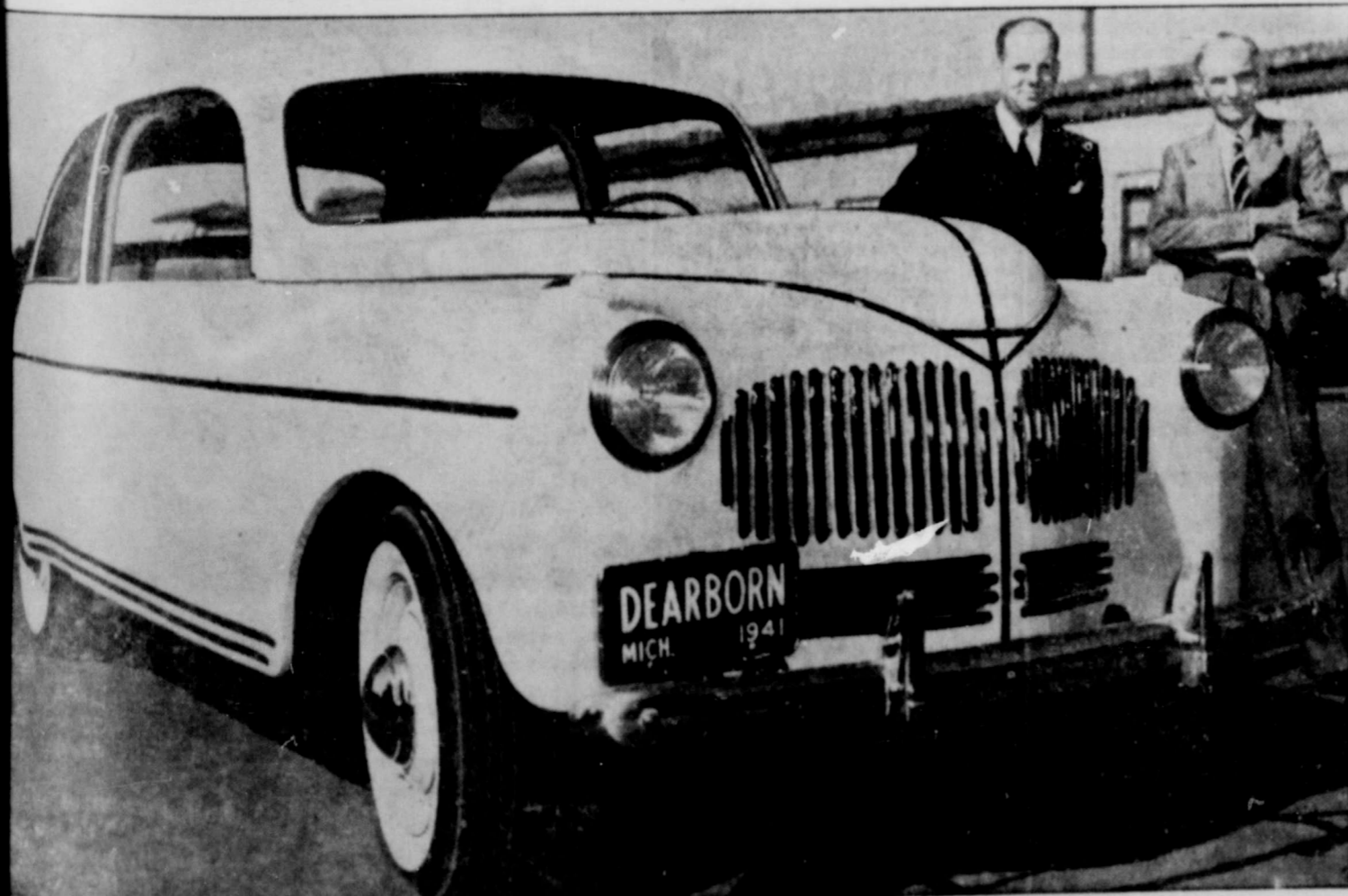
LETTERHEADS  
ENVELOPES  
BOOKLETS  
BUSINESS STATIONERY

WEDDING ANNOUNCEMENTS  
FOLDERS  
CIRCULARS  
SHOW CARDS

NO MATTER WHAT THE PRINTING JOB MAY BE,  
WE WILL DO IT RIGHT.

**Cavanaugh Printing  
Company**

**Henry Ford Builds Plastic Car Body from Farm Crops**

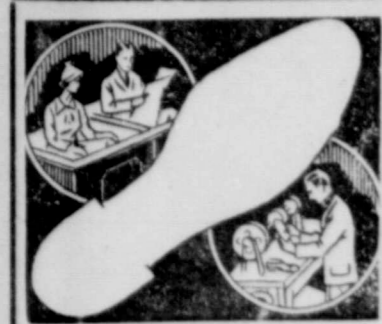


This is a picture of the world's first complete plastic  
mobile body. Made largely from ordinary farm crops,  
it was introduced recently at Dearborn, Mich., by Henry  
Ford, shown (right) with R. A. Boyer, Ford Motor Com-  
pany research chemist. The plastic body marks a big  
stride in Mr. Ford's intensive effort to bring agr culture  
and industry into partnership. Ford officials point out,  
however, that the plastic body still is in an experimental  
stage and that substituting it for the conventional steel  
body on a production scale may take several years.

### Cotton Brings Highest Price Since 1929

Texas cotton farmers are receiving highest price for cotton since 1929, according to Frank Seale, state AAA committeeman and cotton farmer of Robertson county.

The national farm program, plus marketing quotas, 85 percent of parity loans, and increased domestic consumption have caused cotton prices to double this year, he said.



### THE ROAD TO SHOE ECONOMY

Those long wearing, good looking. Wear-U-Well shoes for men and women provide real foot wear at low cost.

### REPAIR WORK

Avail yourself of further economies by coming to our shop for shoe repair work.

### Rainer Shoe Shop

SOUTH SIDE SQUARE

To Relieve Misery of **COLDS** Take **666** LIQUID TABLETS, SALVE, NOSE DROPS



We're sorry Many CHRISTMAS Long Distance calls will be delayed

We simply cannot build enough long distance lines to carry the flood of calls that develops after 7 p.m. on Christmas Eve. It is as if thousands of citizens in hundreds of cities rushed to the station to catch the seven o'clock train. Or, as if all the Christmas cards were presented at each post office at the last minute.

We're sorry, but delays are inevitable—on Christmas Eve and again on Christmas Day.

We have done all we can to make ready for a big rush, but we know it will get bigger than that. Please be patient with us. We will be working every minute to catch up.

SOUTHWESTERN BELL TELEPHONE CO.



THIS YEAR give a share in America

### DEFENSE Bonds and Stamps

SANTA CLAUS CAN HELP AMERICAN DEFENSE! This poster, drawn by J. W. and W. J. Wilkinson, a father and son artist team of Baltimore, reminds Americans that they can help the Defense Program this Christmas by giving Defense Bonds and Stamps in addition to the usual present. Nation-wide distribution of this poster has been made, especially in the windows of 500,000 retail stores where Defense Stamps for as low as 10 cents—are now on sale.

### Model Houses in Historical Collection at NTSTC

Denton, Texas, December 18.—Model houses from the Philippines and Yokohama and Toky in Japan were attracting the attention of the visitors this week to the state historical collection of the North Texas State Teachers College because they show graphically why bombings can be so disastrous in these countries.

A model house from Manila and another from Japan showed the same light, highly inflammable construction that would make them equally vul-

nerable to devastating bomb damage. From Penang, in the Federated Malay States, the area in which the British are now fighting, comes a third house in the museum's collection. Millions of people in Malaya, museum attendants explained, live in the kind of house on exhibit—a house sitting on seven-foot square, cornered stilts; the people believe that no snake will coil around square corners. The museum house is unfurnished, but that is correct, for the Malayan masses use no furniture.

The Japs, living in the same type of houses in densely populated areas, have good cause for looking with terror and apprehension toward possible air raids from Vladivostok, only 300 miles from the island.

### Housing Facilities for 156th Hospital Accepted

Camp Wolters, Mineral Wells, Texas, December 18.—Four of the five buildings which constitute the housing facilities for the 156th station hospital were accepted Thursday from the contractor, Ramey Brothers, Inc., of Amarillo, according to Captain Thomas G. Gammie, Constructing Quartermaster.

The hospital unit is part of the current \$2,000,000 expansion program nearing completion at this huge cantonment. Although it has not been turned over to the camp commander this is expected in the next few days, according to officials.

Rapid progress is being made on the sidewalk project which, when completed, will extend around the entire 7,500 acres bordering the camp proper. The major portion of the walk project is four feet wide and affords plenty of space for two people, while the distance in front of the Service Club area has been made seven feet wide to accommodate three abreast.

The declaration of war on the United States by Japan, Italy, and Germany was received here with calmness, and but for a step-up in construction work on the United States Organization recreational buildings in Mineral Wells and Wichita Falls, work progressed as usual. Rumors concerning the war were lacking from within the camp and the few that drifted inside the reservation were soon squashed by workers and government employees. This does not mean that workers and employees were not affected by the war news. They were grim and indignant at the dastardly acts committed by the Orient. But, on the other hand, they realized that futility of excitement and hap-hazard, hurry-scurry working conditions and immediately settled down to normal.

Flood lights were turned on at the site of the type "C" USO building in Mineral Wells and crws were kept on the job until 10:30 p. m. for several nights. This was due mainly to lagging of construction caused by inclement weather and delay in securing certain materials. However, after foundation work has been completed the workers will probably be placed on a day and night basis. The type "C" project is 10 per cent completed.

### Amateur Investigative Efforts are Discouraged

San Antonio, Texas, December 18.—Local defense councils and coordinators in the Eighth region, including Texas, Oklahoma, New Mexico, Arizona and Colorado, were urged today by Regional Civilian Defense Director R. E. Smith to discourage all amateur investigative efforts in connection with suspected cases of espionage, sabotage, and "fifth column activities."

The President of the United States and National Defense Director LaGuardia have directed that all such investigative work be conducted by the Federal Bureau of Investigation with the cooperation of local peace officers, so that it can be correlated on a national basis, Mr. Smith said.

Some local defense councils in various sections of the nation are reported, Smith said, to have organized "intelligence divisions" and enrolled "secret observers" to do investigative work. This, he declared, is in violation of the national plans for Civilian Defense.

"Director LaGuardia has specifically requested that local defense councils and individuals refrain from such activity," said Mr. Smith. "Individuals who observe suspected cases of espionage or sabotage are asked to turn over whatever information they may have to local police authorities, or to communicate with the nearest local office of the Federal Bureau of Investigation."

### THE UNITED STATES MARINES NEED PHYSICALLY FIT MEN

The United States Marines need physically fit men between the ages of 17 and 34. Applicants must be between 64 and 74 inches in height, single and without dependents and of good molar character. All recruits will be sent to San Diego, California, and enlistments are for the duration of the war. Apply now at any of the following recruiting stations: The Post office building: Oklahoma City, Room 330; Enid, Oklahoma, room 245; Ardmore, Oklahoma, room 229; Tulsa, Oklahoma, room 212; Amarillo, Texas, room 14;

Come on the run! Your country needs you!!

Mr. and Mrs. Joe E. Pitts, of Amarillo, visited with Mr. and Mrs. John Hollums and Mrs. Sarah K. Duncan over the week end.

### "Business Leadership" Is Name of New Periodical

Issue No. 1 of "Business Leadership," a new West Texas chamber of commerce periodical, has gone to its mailing list of 1,113 members of Public Affairs committees of the territory, bearing reports on the regional chamber's current activities and aims. Since September affairs committees have been created by 145 affiliated chambers of commerce in a move to tighten the tie between regional and local groups and to bring concerted action on territorial problems and programs. While the WTCC directors serve as chairmen, the committees are controlled by the local boards.

The WACC said "Business Leadership" will be a monthly mimeographed bulletin "dedicated to coordinating business interests and leadership through the chamber of commerce." It is designed to keep the more than one thousand public affairsmen directly posted on the regional body's work. The bulletin will be mailed out on or about the first of every month and be re-printed in the following issue of "West Texas Today," WTCC magazine, for the whole membership now standing at 6,000.

The initial issue reports on the WTCC's Defense and Preservation contest in which 103 towns have made formal entry, and on steps already taken by contesting towns on activities so far designated for competition. Also discussed are plans for creating a West Texas postwar economy and projects commission, and the reorganization of the Resource and Museum institute housed in the headquarters building. Three control boards instead of one as at present will be set up for the \$50,000 display.

### Navy Turning Out 300 Cadets a Month at Corpus Christi

Corpus Christi, December 18th.—Putting aside all obstruction to its primary function of turning out 300 cadets a month with all possible speed, skill and safety, the Navy "University of the Air" went on a war time footing this week.

Main change on the station was the installation of air raid sirens to be used for blackouts. Procedure for air raid warning will be set in motion by sixty-second blasts from sirens and air whistles. Immediately the Officer of the Day and Duty Officers of each unit will donse all lights. All hands will break up gatherings, man their stations and stand by for action until the "all clear" signal, three 15 second blasts, is given.

Other noticeable changes were the posting of armed sentries on embankments formed by dredging operations, and the searching of all cars and trucks as they enter and leave the station.

There has also been a reduction in the number of people admitted to the base. No more sight-seeing tours will be permitted and approximately 600 commercial passes were revoked by the Naval Air Station officials. Passes were issued only to those whose business was considered essential. All passes issued to dependents other than Navy Personnel Dependents were cancelled.

Cadets and V. 5 men must wear uniforms when ashore from now on, but officers and sailors may change into civilian dress when at their homes or taking part in recreational activities. This change in shore attire for cadets has caused some of them to cancel their orders for new clothes for the holiday season.

Most of the 25 officers away on leave when the surprise attack was launched have returned. Officials said that henceforth no leaves would be granted except those on orders from Washington in line with official duties.

Because of the present war emergency plans to send a Naval Air Station team to the servicemen's boxing tournament in Houston opening Thursday and continuing through Saturday, have been postponed. The Navy team was to compete with teams from six Army camps.

Since the war news was received several officers and sailors have tried to check into means for transferring to a type of active duty which would move them into the area of operations in the Pacific.

In the Navy colony news from friends and relatives in Hawaii or Philippines and the general "tightening down" policy caused parties, trips and other holiday plans to be cancelled as the whole station settled into a war time routine.

LET CAVANAUGH DO YOUR JOB PRINTING.

### ANNOUNCES NEW ARRIVAL

Mr. and Mrs. W. H. McClung, of Perryton, are the parents of a daughter, born December 15. Mrs. McClung is th former Miss Nell Patton, daughter of Mr. and Mrs. Roy Patton. Mrs. McClung and daughter is reported to be doing nicely.

### MAJOR L. G. MATHEWS RETURNED TO CAMP BOWIE

Major L. G. Mathews and wife left Monday for Camp Bowie where Major Mathews has been recalled by the war department. Major Mathews had been home about a month when he received word to report back to Camp Bowie.



### A NEW PHILCO RADIO IS WHAT THE FAMILY WANTS MOST

Please them all, with the instrument which will bring them many hours of happy entertainment, education and information.

### H. G. PARKER, APPLIANCES

SEE THE NEW PHILCO RADIO AT OUR STORE

### FIRST NATIONAL BANK Floydada, Texas

1903—Time Tested Service—1941

### Winter Condition Your Car ...

For the best in Winter Driving let us tune-up your car and Winter Condition it. Phone 5

### SPEARS AND DANIELS

AGENCY FOR INTERNATIONAL TRUCKS Shop Located East Side of Courthouse.

This Christmas...

BE PRACTICAL!

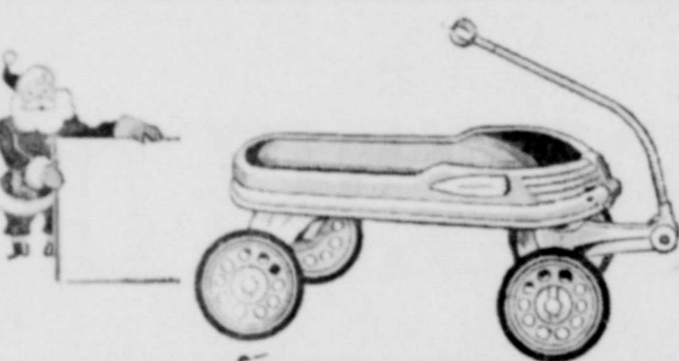


THIS is the Christmas when we all must study over the presents we intend to give. We must give something practical. Something that the receiver can and will use.

THERE is a keen satisfaction of giving something electrical. You have the definite assurance that an electrical gift is useful and attractive as well as being moderately priced. And you know that it will be used day after day.

MAY we suggest that you visit our office at your earliest convenience to select the gifts of your choice. For the convenience of our customers, small monthly terms may be arranged.

Texas-New Mexico Utilities Company



### CHRISTMAS GIFT SUGGESTIONS

Wagons, Tricycles, Scooters, Boxing Gloves, Daisy Air Rifles, Electric Toasters, Electric Waffle Irons, Electric Clocks, Foot Balls, Base Balls Baseball Gloves, Shot gun shells, and many other items.

### WESTERN AUTO STORE Cline and Rainer

### WEEK-END SPECIALS!!

CHERRIES, No. 2 can	15c
JELLO, per package	6c
CATSUP, 14 ounce bottle	12c
Pork and Beans, 1 pound can	5c
Primrose C No. 2 can	12c
SUGAR, 10 pounds	57c
Lifebouv Soap, 2 bars	13c
P. and G. SOAP, 10 bars	39c

### HULL & McBrien