

"By Helping Business You Help Yourself" The Floyd County Plainsman

Floydada, Floyd County, Texas, September 11, 1941

Number 40

TIME No. 12

Miss Emma Louise Smith is Appointed County Clerk

Miss Emma Louise Smith, who has served as deputy clerk since June 1, 1939, was named as successor to A. B. Clark, county clerk, following his resignation Monday, by the commissioners court. Miss Smith will fill the unexpired term ending January 1, 1943.

Mr. Clark's resignation becomes effective August 15. He is resigning to take the place as secretary-treasurer of the Floydada National Farm Loan Association, to which place he was named by the directors of the organization Saturday afternoon in their annual meeting.

Miss Smith said Wednesday that she had not selected a deputy, and that she would assume her duties as clerk Monday morning, and hoped to have selected a deputy by that time to assist with the work of the clerk's office.

BAKER SCHOOL HAS NEW PRINCIPAL

W. B. Harris, formerly principal of the Baker School has accepted a position in Lorenzo Public Schools. Mr. and Mrs. Harris moved to Lorenzo Monday. Mr. Harris taught one year in the Baker school and two years in the Muncy school.

Mose Damron, of Edgin, has accepted the position in the Baker school. Mr. Damron will assume his duties as principal Monday.

Large Fall Screw-worm Fly Population Forecast

College Station, Texas.—Weather conditions are favorable for continued high populations of the screw-worm fly over the western half of the state, and no marked summer decrease is indicated.

According to Cameron Siddall, extension service entomologist, prevalence of this condition will lead to very high populations in the sheep and goat areas of the Balcones Escarpment and Edwards plateau. Siddall quotes D. C. Farman, associate entomologist of the Bureau of Entomology and Plant Quarantine at Uvalde, that during the last half of June the adult population of the fly on the western escarpment indicated to have been the highest on record for the last six years.

In view of the threat, Siddall cautions that all wounded animals should be kept where they can be watched and treated, and that all wounds should be healed before October 1.

The pupal, or ground, stage of the fly begins to lengthen in October and any worms maturing in wounds in that month may produce active flies in December. Any worms from September wounds will mature to adults usually by October 15, and these flies will die before December. In practice it has been indicated, and laboratory tests substantiate, that if no breeding was allowed in October and November, the fly would be eradicated. But on the escarpment area, Siddall explains, "elimination of breeding is not possible."

Decreasing the population of the fly as far as feasible by preventing breeding in October and November and then getting the small carryover to the midwinter activity, allows two strategic moves on the annual cycle. It is indicated that winter treatment alone on ranches proved advantageous last season.

By Edgerton, of Artesia, New Mexico, and family were visiting with friends in Floydada Wednesday morning. Edgerton is a former resident of Floydada, and had been away some 23 years.

Mrs. G. L. Cardinal and children moved to Grand Prairie Friday. Mr. Cardinal is employed with the North American Aeroplane Factory where he has worked for the past two months.

Mr. and Mrs. A. A. Hoots, had as their guests Friday and Saturday, Miss Nell Alexander and Mrs. Minnie Maud Alexander, of Dalinger, and Miss Elizabeth Alexander, of Belton. The Alexanders are friends of Mr. and Mrs. Hoots.

Mourning Dove and White-Winged Dove Open Seasons For 1941—As Provided By State Law and Federal Regulations

MOURNING DOVES

OPEN SEASON—NORTH ZONE SEPT 1 TO OCT 12 SHOOTING HOURS, 7 A. M. TO SUNSET SOUTH ZONE SEPT 16 TO OCT 27 SHOOTING HOURS, 7 A. M. TO SUNSET

IN WEBB, ZAPATA, STARR, HIDALGO, CAMERON AND WILLACY COUNTIES SEASON WILL BE OPEN ONLY ON EACH TUESDAY, THURSDAY AND SUNDAY FROM 12 NOON UNTIL SUNSET DURING THE PERIOD SEPT 16 TO OCT 15.

BAG LIMIT—NOT MORE THAN 12 PER DAY AND NOT MORE THAN 12 IN AGGREGATE OF BOTH SPECIES IN ONE DAY OR IN POSSESSION AT ANY TIME.

WHITE-WINGED DOVES

OPEN SEASON—SEPT 16 TO SEPT 25, EXCEPT IN WEBB, ZAPATA, STARR, HIDALGO, CAMERON AND WILLACY COUNTIES THEY MAY BE SHOT FROM 12 NOON UNTIL SUNSET ON SEPT. 16TH, 18TH, 21ST, 23RD AND 25TH ONLY.

SHOOTING HOURS IN OTHER PORTIONS OF STATE, 7 A. M. TO SUNSET.

BAG LIMIT—NOT MORE THAN 12 PER DAY AND NOT MORE THAN 12 IN THE AGGREGATE OF BOTH MOURNING AND WHITE-WINGED DOVES IN ANY ONE DAY OR IN POSSESSION AT ANY TIME.

SHOTGUNS MAY NOT BE LARGER THAN 10 GAUGE

SHOTGUNS MUST BE PERMANENTLY PLUGGED TO THREE SHELL CAPACITY

UNLAWFUL TO TAKE WHITE WINGS OR CHACHALACA SOUTH OF U. S. HIGHWAY 81 IN SOUTH (ERN TIP OF TEXAS MARKED ON MAP AS "GAME SANCTUARY")

—From Texas Game, Fish and Oyster Commission



GEORGE MAHON
ROTARY CLUB

George Mahon was in Floydada Wednesday attending to business and meeting friends. While speaking to the members and the local Rotary Club.

Wheat

Wheat farmers are taking advantage of the higher prices made possible by recent market conditions. Texas wheat farmers received \$6,635,821 in loans, P. M. commodity loan specialist AAA has announced.

10,773 regular warehouse Federal Crop Insurance 1941-24 bushels of wheat as collateral, Colgin said. "excess" loans have been 1,095 bushels.

Small number of farm storage loans are being made in the area of the state, is at the fact that grain must be on the farm 30 days prior to being loan collateral, Colgin pointing out that only 10 had to date. The number is to increase rapidly during the next few weeks, he continued.

Loans will be taken until April 31, 1941 and will mature on April 30, 1942. The interest is 3 percent.

Loans are made to cooperate in plant within farm wheat loans. "FCI" loans are made on the basis of indemnity issued by Federal Crop Insurance Corporation on "excess" wheat are 60 percent of the loan rate cooperators, the AAA offi.

Loans and farm storage loans are being made and are respectively as "regular," and "FCI" loans. Regular loans made either with the Commodity Credit Corporation directly or through agencies approved by the AAA, while "excess" loans must be made with the AAA, he explained.

Loans are being made and are respectively as "regular," and "FCI" loans. Regular loans made either with the Commodity Credit Corporation directly or through agencies approved by the AAA, while "excess" loans must be made with the AAA, he explained.

Loans are being made and are respectively as "regular," and "FCI" loans. Regular loans made either with the Commodity Credit Corporation directly or through agencies approved by the AAA, while "excess" loans must be made with the AAA, he explained.

Loans are being made and are respectively as "regular," and "FCI" loans. Regular loans made either with the Commodity Credit Corporation directly or through agencies approved by the AAA, while "excess" loans must be made with the AAA, he explained.

Loans are being made and are respectively as "regular," and "FCI" loans. Regular loans made either with the Commodity Credit Corporation directly or through agencies approved by the AAA, while "excess" loans must be made with the AAA, he explained.

Loans are being made and are respectively as "regular," and "FCI" loans. Regular loans made either with the Commodity Credit Corporation directly or through agencies approved by the AAA, while "excess" loans must be made with the AAA, he explained.

Loans are being made and are respectively as "regular," and "FCI" loans. Regular loans made either with the Commodity Credit Corporation directly or through agencies approved by the AAA, while "excess" loans must be made with the AAA, he explained.

Loans are being made and are respectively as "regular," and "FCI" loans. Regular loans made either with the Commodity Credit Corporation directly or through agencies approved by the AAA, while "excess" loans must be made with the AAA, he explained.

Loans are being made and are respectively as "regular," and "FCI" loans. Regular loans made either with the Commodity Credit Corporation directly or through agencies approved by the AAA, while "excess" loans must be made with the AAA, he explained.

Loans are being made and are respectively as "regular," and "FCI" loans. Regular loans made either with the Commodity Credit Corporation directly or through agencies approved by the AAA, while "excess" loans must be made with the AAA, he explained.

W. A. Amburn, Jr. Accepts Job on More County News

W. A. Amburn, Jr., and family left Saturday for Dumas, Texas where he will be employed on the Moore County News. Mr. Amburn has been employed with the Hesperian Publishing Company for several years as printer.

R. L. McAllister Funeral Is Held at Glen Rose

Funeral services were held at Glen Rose, Texas Tuesday of last week for R. L. McAllister, 68, first mayor of Glen Rose, who died at Valley Sunday. Burial was at Andrews Chapel, near Eulogy.

Mr. McAllister, who moved to Glen Rose in 1908, was also a former county tax assessor and collector of that county.

Geo. B. McAllister of Floydada, son of R. L. McAllister was notified of his father's illness and was in Glen Rose during the week.

PHILADELPHIA

Mr. and Mrs. Edgar B. Howard and son, Robert, of Philadelphia, Pa., arrived Sunday afternoon and visited with Marvin Massie until Monday afternoon when Mrs. Howard was called home on account of the illness of one of their sons. Mr. Howard remained for several days visit and attending to business.

A. H. Porter, 72, Dies at Plainview; Services Monday

Plainview, September 7.—A. H. Porter, 72 years old, prominent Hale County farmer, died here this afternoon.

Mr. Porter was born in Mississippi, but moved to Texas when he was 11 years old. His family first settled at Forney. He moved here in 1917. He was a member of Woodmen of the World.

Survivors include the wife, six daughters, Mrs. Claude M. Martin of Floydada, Mrs. Mary Sanders of Lubbock, Mrs. B. C. Pollard of Lubbock, Mrs. Paul Bryan of Plainview, and Mrs. Gordon Gillespie of St. Louis; two sons, Robert Porter of St. Louis and Grady Porter of Plainview; and two brothers, V. C. Porter of Stephenville and A. J. Porter of Maxwell, New Mexico.

Funeral services were held Monday afternoon at 3 o'clock at the Plainview Methodist Church. Rev. E. A. Reed and Rev. L. R. Reavis will officiate.

Burial was in the local cemetery under the direction of the Roy Wood Funeral Home.

The Silver Thimble Club went on a shopping tour in Amarillo last Wednesday. Those attending were Mrs. Holland Patton, Mrs. Joe Martin, Mrs. Ralph Taylor, and Mrs. J. W. Kinnard.

Mrs. Arvol Hays was brought home Sunday from a Canyon hospital where she had undergone a major operation. Mrs. Hays is improving.

United States Civil Service Examination

The United States Civil Service Commission announces open competitive examination for the position of Molder (Non-ferrous metals), for employment in the War Department, Air Corps, San Antonio, Abilene, Ellington Field (Genoa), Harlingen, Lubbock, Midland, Mission, San Angelo, Sherman, Victoria and Wichita Falls, Texas; Barksdale Field (Shreveport), Baton Rouge, Lake Charles and New Orleans, Louisiana; and at such other localities as vacancies may occur in various branches of the government service in Louisiana and Texas.

Applications may be filed with the Secretary, Board of U. S. Civil Service Examiners, San Antonio Air Depot, Duncan Field, San Antonio, Texas, until further notice. Competitors will not be required to report for examination at any place but ratings will be based on information shown in their applications subject to corroboration.

Further information and application forms may be obtained from the Secretary, Board of U. S. Civil Service Examiners, San Antonio Air Depot, Duncan Field, San Antonio, Texas; from the Secretary, Board of U. S. Civil Service Examiners, at any first or second class post office in the states of Louisiana and Texas; or from the Manager, Tenth U. S. Civil Service District, Customhouse, New Orleans, Louisiana.

SECOND SUNDAY SINGING TO BE HELD SUNDAY

The regular second Sunday Singing will meet Sunday afternoon at 2 o'clock at the South Side Baptist Church. There will be several out of town singers present and good singing is expected. All singers are urged to attend.

REX BROWN CAPTURES ELMCREST GOLF TITLE

Rex Brown, Floydada, took out Jodie Bihl of Lubbock, 5-4, Sunday afternoon to cop the Elmcrest Invitation Golf Meet title. The Floydada ace was five under par when he took out the tourney medalist, course record holder and favorite to capture the Elmcrest crown.

Mr. and Mrs. J. P. Williamson, of Amarillo visited with the latter's mother, Mrs. P. G. Stegall Sunday.

BORN—To Mr. and Mrs. H. O. Ginn, of Lockney, a daughter, Shirley Faye, Wednesday, September 10.

School Milk Program Is Available This Term

College Station, Texas.—Rural and urban club women, land use planning committees, professional workers interested in nutrition, Parent-Teacher units and civic organizations should become familiar with the conditions under which children in their community can benefit from the school milk program, says Mildred Horton, vice director of the A. and M. College Extension Service and chairman of the Texas State Nutrition Committee.

Recently an authorization was signed by Secretary of Agriculture Claude R. Wickard which will permit expansion of the program which was previously confined to several large cities of the country. The project provides that milk can be sold to children in schools and various institutions at one cent per pint.

For each half pint of milk sold under the program, handlers receive a federal indemnity payment. This plus the selling price of one cent enables them to pay for the milk and the necessary cost of distributing it. Producers who supply the milk to handlers receive a price lower than that established for fluid milk sales and higher than the price established for so-called "surplus" milk.

E. R. Eudaly, Extension Service dairyman, says there are numbers of communities in Texas which can qualify for the program. "It would give under-privileged children some milk and at the same time use up some of the surplus, which would help the dairymen," he says.

A sufficient surplus in excess of fluid milk and cream needs must exist in the area to meet the probable requirements before the school milk program may be set up. A list of conditions which must be met before the program can be made operative in any area can be obtained from the Surplus Marketing Administration.

TYE FAMILY GATHER HERE FOR REUNION

Mr. and Mrs. W. O. Tye has as their guest this week Mr. Tye's parents, Mr. and Mrs. G. G. Tye and son, Charley, of Albuquerque, New Mexico, and Mr. and Mrs. Jim Tye, of Kermit, Texas.

Mr. and Mrs. Jim Tye and Charley are enroute to the post masters national convention held in New York September 16, 17, 18.

Miss Sybil Taylor of Amarillo, visited with her parents, Mr. and Mrs. Ray Taylor, Sunday.

Buffalo Grass Makes Good Lawn

College Station.—Buffalo grass, sometimes erroneously called curly mesquite grass, makes excellent sod for lawns where a moderate supply of water is available.

On that account, says Sadie Hatfield, specialist in landscape gardening of the A. and M. College Extension Service, it would be well to consider this grass for the home lawn. But she cautions not to give it "an abundance of water and fertilizer for that is likely to make it grow so rank that it will require a great deal of mowing."

In areas of scant rainfall this grass will make a thin sod, but the sod can be improved by diverting water from adjacent areas to the lawn and allowing it to soak in.

Among the advantages of using this kind of grass, Miss Hatfield lists its ability to withstand prolonged dry spells better than Bermuda, St. Augustine and other lawn grasses; the ease with which it is controlled by cultivation when it spreads to gardens and fields; it grows closer to the ground than other grasses and thus requires less mowing; it has a fine texture, and a pleasing, soft green color.

Buffalo grass can be started from seed, but that is expensive and slow. Miss Hatfield suggests that a better method is to plant pieces of the sod about three inches square with a depth of about five inches. It is necessary to cover the roots but avoid smothering it by covering the leaves and stems with soil. Placed two or three feet apart, these plantings will make a complete sod in one good growing season.

St. Augustine sometimes is combined with buffalo for a lawn covering, the buffalo growing well in sunny portions and St. Augustine thriving in densely shaded sections where buffalo does not thrive.

MRS. W. P. DAILY HOME FROM VISIT TO DALLAS AND ARKANSAS

Mrs. W. P. Daily, city, and Mr. and Mrs. Bill Daily and daughter, Jo Ann, of Dallas, returned to Mrs. Daily's home Monday after several days visit with relatives in Arkansas.

Mr. and Mrs. Bill Daily and Jo Ann will leave Thursday for their home in Dallas.

Mrs. W. J. Womack visited with her brother, J. C. Wood and Mrs. Wood in Fort Worth several days last week.

ALL MADE IN ONE DAY

It was Canada that supplied most of the mechanized transport used by General Wavell in his famous North Africa drives against the Italians in Libya and Ethiopia. It is Canada that is making much of the mechanized transport being massed in the British Isles to ward off invasion, and under the Hyde Park Agreement, such vehicles may be part of the supplies which Canada will send to the United States as exchange for war commodities Canada needs and in order to also the great motor industries of the United States to concentrate their energies on other things. Already the motor industry of the Dominion has produced more than 120,000 mechanical transport vehicles of various types and the picture shows just part of the output of a single day at one of these Canadian factories.

U.S. Marines -

SONNY BOY WARRIOR

POPULAR HEAVYWEIGHT CHAMPION OF U.S. SERVICES CALLED A SECOND GENTLEMAN IS A MEMBER OF THE EIGHTH REGIMENT, U.S. MARINES...

SEMPER PARATUS

RECRUITER

THE ONLY ONE EXCEPT THE NATIONAL GUARD WHICH IS OFFICIALLY RECOGNIZED BY THE UNITED STATES GOVERNMENT

"By Helping Business You Help Yourself"
The Floyd County Plainsman

Floydada, Floyd County, Texas, September 11, 1941

Number 40

Volume No. 12

Miss Emma Louise Smith is Appointed County Clerk

Miss Emma Louise Smith, who has served as deputy clerk since June 1, 1939, was named as successor to A. B. Clark, county clerk, following his resignation Monday, by the commissioners court.

Mr. Clark's resignation becomes effective August 15. He is resigning to take the place as secretary-treasurer of the Floydada National Farm Loan Association, to which place he was named by the directors of the organization Saturday afternoon in their annual meeting.

Miss Smith said Wednesday that she had not selected a deputy, and that she would assume her duties as clerk Monday morning, and hoped to have selected a deputy by that time to assist with the work of the clerk's office.

BAKER SCHOOL HAS NEW PRINCIPAL

W. B. Harris, formerly principal of the Baker School has accepted a position in Lorenzo Public Schools. Mr. and Mrs. Harris moved to Lorenzo Monday. Mr. Harris taught one year in the Baker school and two years in the Muncy school.

Mose Damron, of Edgin, has accepted the position in the Baker school. Mr. Damron will assume his duties as principal Monday.

Large Fall Screw-worm Fly Population Forecast

College Station, Texas—Weather conditions are favorable for continued high populations of the screw-worm fly over the western half of the state, and no marked summer decrease is indicated.

According to Cameron Siddall, extension service entomologist, prevalence of this condition will lead to very high populations in the sheep and goat areas of the Balcones Escarpment and Edwards plateau. Siddall quotes D. C. Farman, associate entomologist of the Bureau of Entomology and Plant Quarantine at Uvaide, that during the last half of June the adult population of the fly on the western escarpment indicated to have been the highest on record for the last six years.

In view of the threat, Siddall cautions that all wounded animals should be kept where they can be watched and treated, and that all wounds should be healed before October 1.

The pupal, or ground, stage of the fly begins to lengthen in October and any worms maturing in wounds in that month may produce active flies in December. Any worms from September wounds will mature to adults usually by October 15, and these flies will die before December. In practice it has been indicated, and laboratory tests substantiate, that if no breeding was allowed in October and November, the fly would be eradicated. But on the escarpment area, Siddall explains, "elimination of breeding is not possible."

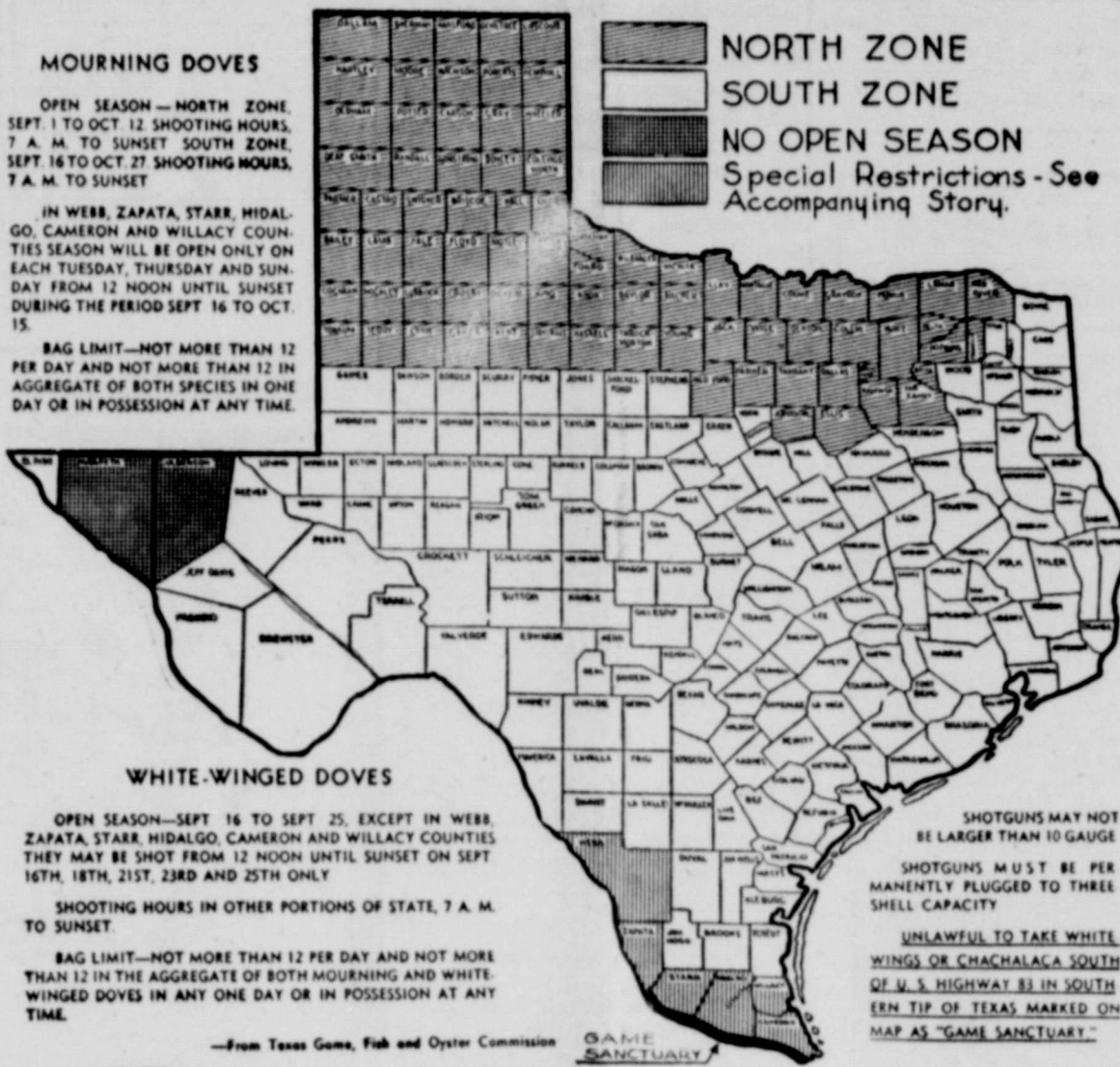
Decreasing the population of the fly as far as feasible by preventing breeding in October and November and then getting the small carryover to the midwinter activity, allows two strategic moves on the annual cycle. It is indicated that winter treatment alone on ranches proved advantageous last season.

Sy Edgerton, of Artesia, New Mexico, and family were visiting with friends in Floydada Wednesday morning. Edgerton is a former resident of Floydada, and had been away some 23 years.

Mrs. G. L. Cardinal and children moved to Grand Prairie Friday. Mr. Cardinal is employed with the North American Aeroplane Factory where he has worked for the past two months.

Mr. and Mrs. A. A. Hoots, had as their guests Friday and Saturday, Miss Nell Alexander and Mrs. Minnie Maud Alexander, of Dalinger, and Miss Elizabeth Alexander, of Belton. The Alexander's are friends of Mr. and Mrs. Hoots.

Mourning Dove and White-Winged Dove Open Seasons For 1941—As Provided By State Law and Federal Regulations



MOURNING DOVES
OPEN SEASON—NORTH ZONE, SEPT. 1 TO OCT. 12 SHOOTING HOURS, 7 A. M. TO SUNSET SOUTH ZONE, SEPT. 16 TO OCT. 27 SHOOTING HOURS, 7 A. M. TO SUNSET

WHITE-WINGED DOVES
OPEN SEASON—SEPT. 16 TO SEPT. 25, EXCEPT IN WEBB, ZAPATA, STARR, HIDALGO, CAMERON AND WILLACY COUNTIES SEASON WILL BE OPEN ONLY ON EACH TUESDAY, THURSDAY AND SUNDAY FROM 12 NOON UNTIL SUNSET DURING THE PERIOD SEPT. 16 TO OCT. 15

NORTH ZONE
SOUTH ZONE
NO OPEN SEASON
Special Restrictions—See Accompanying Story.
SHOTGUNS MAY NOT BE LARGER THAN 10 GAUGE
SHOTGUNS MUST BE PERMANENTLY PLUGGED TO THREE SHELL CAPACITY
UNLAWFUL TO TAKE WHITE WINGS OR CHACHALACA SOUTH OF U. S. HIGHWAY 81 IN SOUTH (SEE TIP OF TEXAS MARKED ON MAP AS "GAME SANCTUARY")

—From Texas Game, Fish and Oyster Commission

United States Civil Service Examination

The United States Civil Service Commission announces open competitive examination for the position of Molder (Non-ferrous metals), for employment in the War Department, Air Corps, San Antonio, Abilene, Ellington Field (Genoa), Harlingen, Lubbock, Midland, Mission, San Angelo, Sherman, Victoria and Wichita Falls, Texas; Barksdale Field (Shreveport), Baton Rouge, Lake Charles and New Orleans, Louisiana; and at such other localities as vacancies may occur in various branches of the government service in Louisiana and Texas.

Applications may be filed with the Secretary, Board of U. S. Civil Service Examiners, San Antonio Air Depot, Duncan Field, San Antonio, Texas, until further notice. Competitors will not be required to report for examination at any place but ratings will be based on information shown in their applications subject to corroboration.

SECOND SUNDAY SINGING TO BE HELD SUNDAY

The regular second Sunday Singing will meet Sunday afternoon at 2 o'clock at the South Side Baptist Church. There will be several out of town singers present and good singing is expected. All singers are urged to attend.

REX BROWN CAPTURES ELMCREST GOLF TITLE

Rex Brown, Floydada, took out Jodie Bihl of Lubbock, 5-4, Sunday afternoon to cop the Elmcrest Invitation Golf Meet title. The Floydada ace was five under par when he took out the tourney medalist, course record holder and favorite to capture the Elmcrest crown.

Mr. and Mrs. J. P. Williamson, of Amarillo visited with the latter's mother, Mrs. P. G. Stegall Sunday.

BORN—To Mr. and Mrs. H. O. Ginn, of Lockney, a daughter, Shirley Faye, Wednesday, September 10.

School Milk Program Is Available This Term

College Station, Texas—Rural and urban club women, land use planning committees, professional workers interested in nutrition, Parent-Teacher units and civic organizations should become familiar with the conditions under which children in their community can benefit from the school milk program, says Mildred Horton, vice director of the A. and M. College Extension Service and chairman of the Texas State Nutrition Committee.

Recently an authorization was signed by Secretary of Agriculture Claude R. Wickard which will permit expansion of the program which was previously confined to several large cities of the country. The project provides that milk can be sold to children in schools and various institutions at one cent per pint. For each half pint of milk sold under the program, handlers receive a federal indemnity payment. This plus the selling price of one cent enables them to pay for the milk and the necessary cost of distributing it. Producers who supply the milk to handlers receive a price lower than that established for fluid milk sales and higher than the price established for so-called "surplus" milk.

E. R. Eudaly, Extension Service dairyman, says there are numbers of communities in Texas which can qualify for the program. "It would give under-privileged children some milk and at the same time use up some of the surplus, which would help the dairymen," he says.

A sufficient surplus in excess of fluid milk and cream needs must exist in the area to meet the probable requirements before the school milk program may be set up. A list of conditions which must be met before the program can be made operative in any area can be obtained from the Surplus Marketing Administration.

TYE FAMILY GATHER HERE FOR REUNION

Mr. and Mrs. W. O. Tye has as their guest this week Mr. Tye's parents, Mr. and Mrs. G. G. Tye and son, Charley, of Albuquerque, New Mexico, and Mr. and Mrs. Jim Tye, of Kermit, Texas. Mr. and Mrs. Jim Tye and Charley are enroute to the post masters national convention held in New York September 16, 17, 18.

Miss Sybil Taylor of Amarillo, visited with her parents, Mr. and Mrs. Ray Taylor, Sunday.

Buffalo Grass Makes Good Lawn

College, Station—Buffalo grass, sometimes erroneously called curly mesquite grass, makes excellent sod for lawns where a moderate supply of water is available.

On that account, says Sadie Hatfield, specialist in landscape gardening of the A. and M. College Extension Service, it would be well to consider this grass for the home lawn. But she cautions not to give it "an abundance of water and fertilizer for that is likely to make it grow so rank that it will require a great deal of mowing."

In areas of scant rainfall this grass will make a thin sod, but the sod can be improved by diverting water from adjacent areas to the lawn and allowing it to soak in.

Among the advantages of using this kind of grass, Miss Hatfield lists its ability to withstand prolonged dry spells better than Bermuda, St. Augustine and other lawn grasses; the ease with which it is controlled by cultivation when it spreads to gardens and fields; it grows closer to the ground than other grasses and thus requires less mowing; it has a fine texture, and a pleasing, soft green color.

Buffalo grass can be started from seed, but that is expensive and slow. Miss Hatfield suggests that a better method is to plant pieces of the sod about three inches square with a depth of about five inches. It is necessary to cover the roots but avoid smothering it by covering the leaves and stems with soil. Placed two or three feet apart, these plantings will make a complete sod in one good growing season.

St. Augustine sometimes is combined with buffalo for a lawn covering, the buffalo growing well in sunny portions and St. Augustine thriving in densely shaded sections where buffalo does not thrive.

MRS. W. P. DAILY HOME FROM VISIT TO DALLAS AND ARKANSAS

Mrs. W. P. Daily, city, and Mr. and Mrs. Bill Daily and daughter, Jo Ann, of Dallas, returned to Mrs. Daily's home Monday after several days visit with relatives in Arkansas.

Mr. and Mrs. Bill Daily and Jo Ann will leave Thursday for their home in Dallas.

Mrs. W. J. Womack visited with her brother, J. C. Wood and Mrs. Wood in Fort Worth several days last week.

W. A. Amburn, Jr. Accepts Job on More County News

W. A. Amburn, Jr., and family left Saturday for Dumas, Texas where he will be employed on the Moore County News. Mr. Amburn has been employed with the Hesperian Publishing Company for several years as printer.

R. L. McAllister Funeral Is Held at Glen Rose

Funeral services were held at Glen Rose, Texas Tuesday of last week for R. L. McAllister, 68, first mayor of Glen Rose, who died at Valley Sunday. Burial was at Andrews Chapel, near Euology.

Mr. McAllister, who moved to Glen Rose in 1908, was also a former county tax assessor and collector of that county.

Geo. B. McAllister of Floydada, son of R. L. McAllister was notified of his father's illness and was in Glen Rose during the week.

VISITING HERE FROM PHILADELPHIA

Mr. and Mrs. Edgar B. Howard and son, Robert, of Philadelphia, Pa., arrived Sunday afternoon and visited with Marvin Massie until Monday afternoon when Mrs. Howard was called home on account of the illness of one of their sons. Mr. Howard remained for several days visit and attending to business.

A. H. Porter, 72, Dies at Plainview; Services Monday

Plainview, September 7.—A. H. Porter, 72 years old, prominent Hale County farmer, died here this afternoon.

Mr. Porter was born in Mississippi, but moved to Texas when he was 11 years old. His family first settled at Forney. He moved here in 1917. He was a member of Woodmen of the World.

Survivors include the wife, six daughters, Mrs. Claude M. Martin of Floydada, Mrs. Mary Sanders of Lubbock, Mrs. B. C. Pollard of Lubbock, Mrs. Paul Bryan of Plainview, and Mrs. Gordon Gillespie of St. Louis; two sons, Robert Porter of St. Louis and Grady Porter of Plainview; and two brothers, V. C. Porter of Stephenville and A. J. Porter of Maxwell, New Mexico.

Funeral services were held Monday afternoon at 3 o'clock at the Plainview Methodist Church. Rev. E. A. Reed and Rev. L. R. Reavis will officiate.

Burial was in the local cemetery under the the direction of the Roy Wood Funeral Home.

The Silver Thimble Club went on a shopping tour in Amarillo last Wednesday. Those attending were Mrs. Holland Patton, Mrs. Joe Martin, Mrs. Ralph Taylor, and Mrs. J. W. Kinnard.

Mrs. Arrol Hays was brought home Sunday from a Canyon hospital where she had undergone a major operation. Mrs. Hays is improving.



It was Canada that supplied most of the mechanized transport used by General Wavell in his famous North Africa drives against the Italians in Libya and Ethiopia. It is Canada that is making much of the mechanized transport being massed in the British Isles to ward off invasion, and under the Hyde Park Agreement, such vehicles may be part of the supplies which Canada will send to the United States as exchange for war commodities Canada needs and in order to allow the great motor industries of the United States to concentrate their energies on other things. Already the motor industry of the Dominion has produced more than 120,000 mechanical transport vehicles of various types and the picture shows just part of the output of a single day at one of these Canadian factories.

Advertisement for 'U.S. Marines' featuring 'SONNY BOY' and 'WARRIOR' comic strips, and a portrait of Norman March.

Fields-Delahanty Marriage Is Announced

Mr. and Mrs. W. H. Fields of Lockney wish to announce the marriage of their daughter, Dorris Fields, to Jack Delahanty, son of Mr. and Mrs. A. J. Delahanty of 2008 Ave., U, Lubbock, Texas. They were married on April 19, 1941 at Austin, Texas.

The bride was graduated from Lockney High School in 1936 and Lubbock Sanitarium School of Nursing in 1940. For the past year she has been in the Army Nursing Corps in Camp Bowie, Texas. The groom is a graduate of Lubbock High School and was a student of Texas Technological College for two years before his service in the United States Army, Camp Bowie. Mr. Delahanty is with Parkinson's Music

Store in Lubbock, and the two will make their home there in October, when the bride receives her discharge from the army.—The Lockney Beacon.

Mrs. Claud Henderson Honored With Buffet Supper

Mrs. Claud Henderson was honored with a buffet supper Friday evening at 7 o'clock at the home of Mrs. R. C. Patton. Mrs. Duncan Hollums, Mrs. George Sherill and Mrs. Earl Crow were co-hostesses with Mrs. Patton.

Mrs. Henderson is a former resident of Floydada and has been making her home in Dallas for the past two years.

Those attending were: Mesdames George Henry, R. L. Ormon, Hershel Hammonds, Wilmer Jones, Jr.,

Pete Nelson; Miss Bernice Patton, Mrs. Henderson and little daughter, Claudia, and niece, Mrs. Fred Stone and little daughter, Patty, and the hostesses.

FENCELESS

The fence around the outside of the Governor's office was down last week—and it won't be put back, not while Coke Stevenson is governor.

Capitol carpenters, following Stevenson's orders, removed the railing which former Governor W. Lee O'Daniel had built, corral-like around the entrance of the Governor's private office on the second floor of the capitol.

O'Daniel visitors were herded into the inclosure to wait—usually without chairs—to see the Governor.

Those who come to see Governor Coke Stevenson wait on comfortable chairs in the spacious Governor's reception room, the same room O'Daniel had used for a private office.—State Observer.

A Prediction About Hose is Made

Beautiful cotton hose, the kind women will be proud to wear, will be one result of the present hosiery situation. That's a prediction of Dora R. Barnes, clothing specialist for the A. and M. College Extension Service. Just how long it will take to develop that kind of cotton hose, she won't say.

"Somehow I can't get excited over the present shortage of silk hose for something good will come out of the situation," Mrs. Barnes explains. Other fibers, such as nylon probably will be used more and more. Already manufacturers are combining nylon and cotton in hose, making cotton tops and toes and the remainder of the stocking nylon.

In addition, rayon will be used more in hose, since the United States ranks third in the production of that material. It can be made into hose that will wear well and are attractive.

Most women use little silk these days, the specialist points out, since so many other beautiful synthetic fibers are available and the cost of pure silk is so high. In many small stores it is impossible to buy pure silk.

READER

If you've heard Governor Coke R. Stevenson make a speech, you may have wondered about the source of the literary and historical allusions he is fond of using.

The answer is that Stevenson is a prodigious reader. His usual fare is a book a day, and oftentimes he may read two in a day.

With only about 22 months of formal schooling, the governor formed his reading habits from self-education in the classics and the law.

An early riser (he is up from 4:30

INTESTINAL GAS PAINS
"Adlerlike quickly relieved me of gas pains in the intestines." (C. E. Ohio) Gas pains due to delayed bowel action relieved thru QUICK results from ADLERIK. Get it TODAY. WHITE DRUG COMPANY and BISHOP'S PHARMACY

CLASSIFIED ADVERTISING

Turnip Seed at STAR CASH GROCERY. 40-tfc

OUR FLOWERS are FRESH and are BEAUTIFULLY ARRANGED. FLOLLUMS, FLOYDADA FLORISTS

Best Garden Seed. STAR CASH GROCERY. 40-tfc

LANDS FOR LEASE

A few farm tracts to lease at reasonable prices for cash.

W. M. MASSIE & BRO. Floydada, Texas. 11-tfc

Turnip Seed at STAR CASH GROCERY. 40-tfc

We invite you to visit the greenhouse. PARK FLORISTS—Mrs. W. R. Goen. Phone 78. 46-tfc

Best Garden Seed. STAR CASH GROCERY. 40-tfc

Floydada Insurance Agency...

Insurance of all kinds. Your inquiries and business respectfully solicited.

W. H. HENDERSON
OWNER



PARENTS, DON'T THROW AWAY WORN SHOES!

We can rebuild them at a low cost to you. You'll find you can save money by having old shoes repaired here.

Don't forget the WEAR-UP WELL SHOES for school wear.

Rainer Shoe Shop
SOUTH SIDE SQUARE

to 5) he still finds a lot of time for book-reading before his newspapers are delivered and telephone calls start coming in.

During his recent confinement to the mansion because of a throat ailment, Stevenson read seven books on widely differing subjects. Among them was "Man versus State" by the classical political scientist, Herbert Spencer.

Others were "Lone Star Preacher" and "Gone to Texas" by John W. Thomason, Jr.; "Berlin Dairy" by William L. Shirer; "Not All Ashes," a novel by Executive Secretary William J. Tucker of the Game, Fish and Oyster Commission; "Louisiana Hayride" by H. T. Kane; and "Cattle Kings of Texas" by C. L. Douglas.—State Observer.

Let Cavanaugh do your printing.

TO CHECK **MALARIA** IN 7 DAYS take **666**

THE FLOYD COUNTY PLAINSMAN

Published Thursday Each Week
M. B. CAVANAUGH, PUBLISHER

In Floyd County \$1.00; Outside Floyd County \$2.00
Entered as second class matter June 23, 1930, at the post office at Floydada, Texas, under the Act of March 3, 1879.

ADVERTISING RATES GIVEN ON APPLICATION

NOTICE!
Any erroneous reflections upon the character, standing or reputation of any person, firm or corporation which may appear in the columns of The Floyd County Plainsman will be gladly corrected upon its being brought to the attention of the publisher.

START WITH QUALITY

STAY WITH QUALITY...GET YOUR MASTERPIECE SCHOOL SUPPLIES AT—
STAR CASH GROCERY
Better sow some seeds for that FALL GARDEN CROP. Plenty of Turnip, Mustard, Spinach, Radish, Lettuce or what have you. MIGHTY GOOD TIME TO PLANT.

Fluorescent Lighting Helps Make Her Kitchen Tasks a Pleasure

Streamlined Tubular Lamps in Special Ceiling Fixture and Close to Working Areas Virtually Bring Daylight Indoors

By Carlene Waldo
FOR KITCHENS, the grand new thing—without any ifs or buts about it—is fluorescent lighting.

However black the night may be outside, a push of the electric light switch brings into the fluorescent kitchens the closest approach to natural daylight ever concocted for practical home use.

You will recall that fluorescent lamps are the new streamlined tubes which in some cases give two or three times as much light as do filament incandescent lamps, for the same amount of power. Cool, relatively, is their light.

Now beginning to make their entrance properly on the market are new streamlined fixtures designed to hold these slender tubular bulbs.

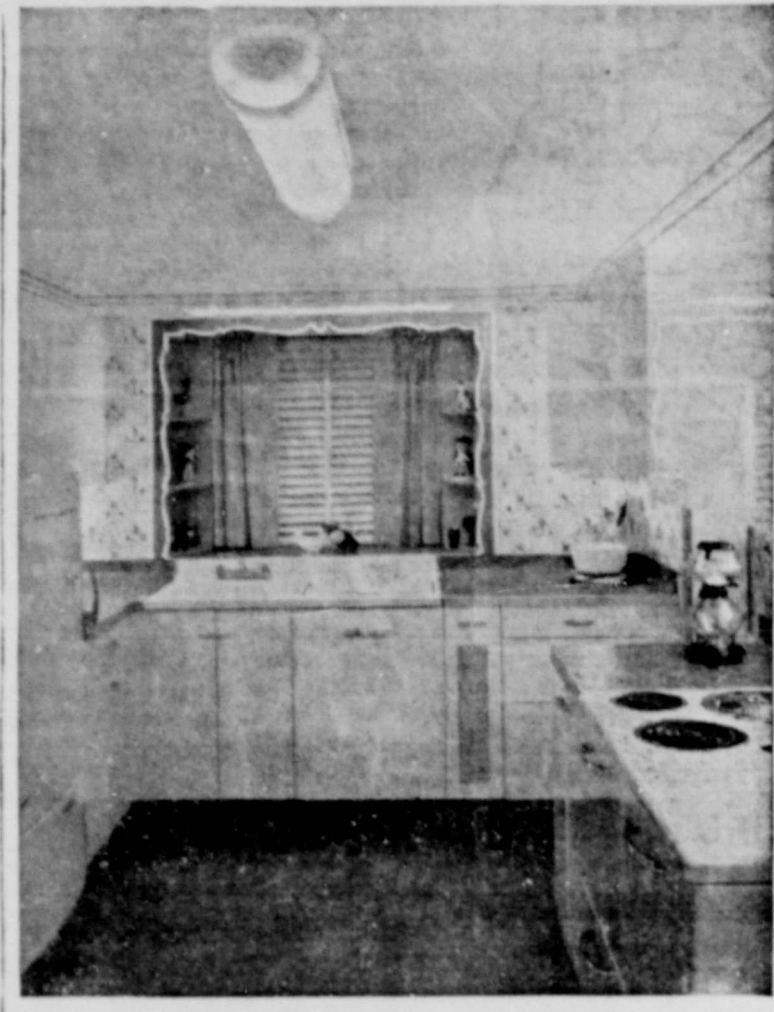
Like Daylight

Among new units available for the kitchen is the one illustrated, a sheet of white translucent plastic material which fits into etched glass end-pieces, and which holds two 48-inch fluorescent lamps of the daylight type.

A wealth of light on the range top saves work and time. The amazing amount of range lighting is achieved here through use of one 48-inch 40-watt daylight fluorescent lamp. The metal wiring channel for this tube is recessed to the level of the wall. A plastic shield over the lamp keeps it from being visible from across the room. Daylight fluorescents are adroitly used elsewhere in this woman's workshop.

To properly light all working areas.

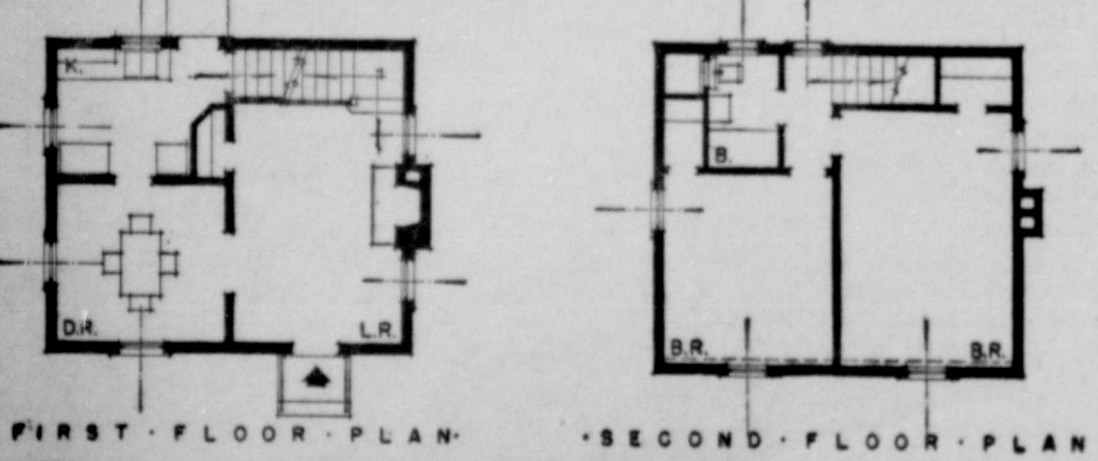
The "daylight" kitchen really feels like daylight. And when outdoor light filters through the venetian



Kitchen Tasks Can Be Real Joy Here.

blinds, you hardly can distinguish between indoor and outdoor light. But fluorescent lamps alone are not the whole secret of this "dream" kitchen. The warm gray and white tones of the linoleum floor and counter tops, the accents of bright red in the wall paper figures, the decorative treatment of window and curtains... all combine with the fluorescent lighting to make this kitchen a "seat for women's eyes". Absent, here, is the feeling of

bluishness so characteristic of artificial daylighted kitchens of the past. I'd advise anyone planning to install fluorescents in the kitchen to obtain the advice of those experienced in their application, since the lamps are different from any ever used in the home before and require skillful installation. Once correctly installed, however, the new lamps will give you the unusual pleasure of a true daylight kitchen... both by day and by night!



FIRST FLOOR PLAN **SECOND FLOOR PLAN**

This inexpensive two-story house is well suited to the needs of the average small family. It has a neat and unpretentious appearance. The exterior design is a simple expression of the interior plan. Downstairs are the living room, dining room, and kitchen, while upstairs are two bedrooms and a bath. In the North Central section of the country, this property is valued at \$5,800 and was financed with a mortgage of \$5,200 insured by the Federal Housing Administration. Average monthly payments on a 25-year mortgage of this amount, exclusive of local taxes and hazard insurance, total approximately \$30. The cost of a similar property in another locality will vary.

THE RECORD... Facts That Concern You



A BAD ONE DOES TURN UP ONCE IN A WHILE!

Good weather and a bumper crop! Even then one finds a poor stalk once in a while.

The retailing of beer is something like that. Most beer retailers operate respectable law-abiding establishments. Occasionally one finds an exception—a man who tries to beat the law or who permits anti-social conditions.

The beer industry wants this type of undesirable retailer stamped out. Your cooperation will help us in our clean-up efforts.

The beer industry brings important

benefits to the community. Here in Texas, beer provides employment for 31,165 persons, supports an annual payroll of \$22,076,182 and contributed \$2,273,968.64 last year in state taxes.

Texas, too, has an important stake in the beer industry's purchases—for materials, equipment, and services—from over 100 other industries.

You can help us protect these benefits in two ways. First—patronize only the reputable places where beer is sold. Second—report to the proper authorities any law violation you may observe.

BEER... a beverage of moderation



Helpy-Selfy Laundry

DO YOUR OWN WASHING the quickest, easiest, cheapest way to do your laundry.
25c Per Hour.
PLENTY OF HOT, SOFT WATER.

Steam Laundry Charges—Rough Dry 4c
WET WASH washed and extracted ready to iron
2 Cents a Pound
Shirts 9c, in Thrift T and Rough Dry Bundles.

White Way Laundry
Formerly Floydada Steam Laundry
PHONE 141 FOR PICK-UP AND DELIVERY SERVICE! FLOYDADA, TEXAS

SPEARS & DANIEL

COMPLETE AUTOMOTIVE SERVICE—SPECIALIZED LUBRICATION. LATEST MODERN VALVE SEATING AND RING EQUIPMENT.

Phone 51

LOCATED ON EAST SIDE SQUARE
AGENCY FOR INTERNATIONAL TRUCKS

McRoberts-Penhall Vows Read Saturday

Miss Mary Frances McRoberts, of Amarillo, daughter of Mrs. S. G. McRoberts of Floydada, became the bride of Norman Penhall, son of Mr. and Mrs. Penhall, of Granite, Oklahoma at 10 o'clock Saturday evening at the Methodist parsonage in Amarillo with Dr. Earl Hamlett officiating.

Mrs. R. C. Patton, sister of the bride, and Mr. Patton of Floydada and Ralph Penlow of Amarillo, cousin of Mr. Penhall were present for the ceremony.

Mrs. Penhall wore a black suit with white accessories and a sweetheart rose corsage.

Mrs. Penhall graduated from the Floydada High School in 1940. While attending high school she was president of the Social Club, vice president of the Glee Club, editor of the Hesperette, and a prominent band member. In 1941 she finished the Fleming Business College, in Amarillo and is employed with the Hub Clothier, Amarillo as cashier.

Mr. Penhall is a graduate of the Granite High School and Oklahoma University, Norman, Oklahoma. He is now employed with the Culberson and Culberson Architecture Firm.

The couple will make their home in Amarillo.

Mr. and Mrs. Everett Price took their daughter, Barbara, to Dallas, for treatment Tuesday.

Misses Joy Cardinal and Helen Young visited with Earl Young in Lubbock over the week end.

Miss Clea Drake of Woodward, Oklahoma, has been employed at Martin's Dry Goods Company as saleslady.

Let Cavanaugh do your printing.

LITTELL'S LIQUID

A Calcium Sulphurate Solution for relieving the discomforts of itching that frequently accompanies Minor Skin Irritations, Prickly Heat, and the Bites of Non-Poisonous Insects. Locally it helps to allay the itching of Eczema. Price 50c per bottle.

ARWING DRUG COMPANY

Miss Reba Savage And Earl McClung Marry in Clovis

Miss Reba Savage and Earl McClung, both of Amarillo, were married at the Methodist parsonage in Clovis, August 16. Rev. George W. Shearer read the double ring ceremony.

The bride was attended by Mrs. Marvin Babbs, who wore a navy blue suit trimmed with white, with white accessories and a gardenia corsage. Marvin Babbs served as best man.

The bride wore a dark green woolen-tailored suit with a tan blouse and black accessories, and a corsage of gardenias.

The couple made a short wedding trip to Carlsbad Caverns and other points in southern New Mexico. The bride traveled in a blue sport suit, with black accessories.

Mrs. McClung is a daughter of Mr. and Mrs. Oliver Savage of Lockney. She was graduated from Lockney High School and attended West Texas State College. She is employed by Morrow Thomas Hardware Company of Amarillo.

Mr. McClung is a son of Rev. and Mrs. R. H. McClung of Perryton. He is a graduate of Perryton High School. He holds a B. S. and a B. A. degree from McMurry College in Abilene, where he was a member of the I. H. R. Club. He is president of the Beta Chapter of Delta Kappa Chi fraternity. Since his graduation from McMurry in 1938. Mr. McClung has been associated with the National Youth Administration in Amarillo.

After September 1, Mr. and Mrs. McClung will be at home at 1119 Polk Street in Amarillo.—The Lockney Beacon.

Mr. McClung is a former resident of Floydada, living here with his parents, Rev. and Mrs. R. H. McClung, while his father filled the pulpit at the local baptist church.

SANDHILL NEWS

Rev. and Mrs. Hardin Stevens and children visited with Mr. and Mrs. G. C. Collins and A. J. Womack Monday.

Shirley, little daughter of Mr. and Mrs. Albert Pricer, received treatment at a Lubbock hospital Tuesday.

Tom Thomas received treatment at a Lubbock hospital Tuesday.

Kenneth Cassy, Rever. Rolit and Buford Teal, all of Randolph Field, San Antonio, visited Mr. and Mrs. Albert Pricer from Thursday until Saturday. Mr. Teal is a brother of Mrs. Pricer.

Mr. and Mrs. Arthur Womack and family, and A. J. Womack attended church in Plainview Sunday and visited with Mr. and Mrs. Bob May and Mrs. Claude May.

LET CAVANAUGH DO YOUR JOB PRINTING.

Is Your Home Complete?



For Complete Service, Use **Natural Gas**

Cooking Water Heating
House Heating Refrigeration

West Texas Gas Company

This World-Famous Resort Gives You
HAPPY HOURS of AIR CONDITIONED Comfort

BAKER HOTEL
The ultimate in facilities for recreation and rejuvenation. Other outstanding features include the finest in therapeutic treatments with complete massage. Luxurious accommodations. Beautiful grounds with an eighth-mile sun veranda. Outdoor activities at their best. Dancing each Saturday night on the Roof.

AIR CONDITIONED
FOR YOUR HEALTH
and
COMFORT
BAKERWELL HEALTH PLAN
ROOM, MEALS, BATHS, MASSAGES FROM \$5 A WEEK
Suburban Plan
1942

For Booklet Write to the Manager
LOUIS GAMBRELL
MINERAL WELLS, Texas

NEW FALL COATS—

USE OUR LAY-AWAY PLAN.



Betty Rose

Charmette

"For Mademoiselle"
"From Mademoiselle"

Pretty feminine in containing all the leading fashion points: Smooth shoulders, slim pleated skirt, and bulky fullness above the corset waist. This slim coat of Aerolaine Worsted comes in Mahogany, Brown, Claret Wine, Mallard Teal, and Jetty Black. Sizes 10 to 20.



Betty Rose

Hi-Sierra

The wraparound coat that goes from country to city and loves it! Made of glamorous Bero fleece, in Camel, Brown, Nude and Black. You'll favor the flattering wide lapels, the patch pockets with inverted pleats, and the draped back. A coat impeccably tailored and "Forever Yours".
Sizes 10-20.

"Inside Story" of

Betty Rose

Coats and Suits

- 1 - Extra Wide Lap-Over
- 2 - Embroidered Shields at armhole.
- 3 - Double Blind-Stitching prevents front "rolling".
- 4 - Fabric Scientifically Tested and Pre-shrunk.
- 5 - All Points of Strain Taped for longer wear.
- 6 - Embroidered Neck Shield protects lining.
- 7 - Linings Guaranteed for life of coat.
- 8 - Lining Seams Stitched and Serged to hold.
- 9 - Collars and Lapels stayed with many rows of stitching - moulds and shapes the coat.
- 10 - Open Bottoms finished on both sides insure perfect all-over drape.

The "Inside Story" Makes The Outside Smart!

Style Shoppe

Mrs. Mollie A. Morton, Owner
Phone 17

FIRST NATIONAL BANK Floydada, Texas

1903—TIME TESTED SERVICE—1940

CLINE AND RAINER GARAGE

Where you can get everything for your car at one-stop. Gas, Mobiloil

RADIATORS REPAIRED, and boiled out for cars, tractors combines. Parts of all kinds, welding, tires, batteries. In fact have everything for your car. See us for lawn mowers and hose.

Buy junk Batteries. Phone 37

SHORTY BARKER and CLAY ANDERSON, are in charge of shop, and will appreciate your next job.

CLINE AND RAINER

WESTERN AUTO ASSOCIATE STORE.

PRINTING!!

TELL US OF THE JOB AND WE'LL DO THE WORK CORRECTLY AND PROMPTLY.

ON GOOD PRINTING—large job or small—Our policy is to do the work correctly and promptly.

We have the newest and most modern type of equipment to handle the work in an efficient manner, which results in most moderate cost to the buyer. When you order printing from our plant you may depend upon it that the work will be done to your complete satisfaction.

LETTERHEADS
ENVELOPES
BOOKLETS
BUSINESS STATIONERY

WEDDING ANNOUNCEMENTS
FOLDERS
CIRCULARS
SHOW CARDS

NO MATTER WHAT THE PRINTING JOB MAY BE,
WE WILL DO IT RIGHT.

Cavanaugh Printing Company

It takes VITAMINS for VITALITY!

For growing health and plenty of pep and energy, everyone needs a steady supply of essential vitamins and minerals.

... THEY'RE EASY TO GET!

They're in all the vegetables, meats and other foods you buy. But, remember, improper cooking methods can cause wasteful destruction of these precious vitamins. With PROPER COOKING, however, needless loss of these vitamins and minerals can be prevented.

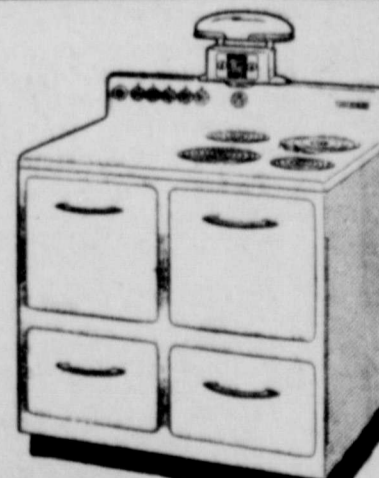


Electric COOKING PROTECTS VITAMINS, MINERALS AND NATURAL FOOD FLAVORS

... It's easy with a

Westinghouse Electric Range

ELECTRIC COOKING is based upon simple, sensible cooking principles. ELECTRIC COOKING is easy because the Electric Range provides the fast, even, accurately-controlled heat needed for scientific, modern cooking methods. With many advanced features that make the Electric Range almost completely automatic, you save time and lighten your work.



COST OF OPERATION
is just a
FEW CENTS A DAY

INVESTIGATE TODAY!

"A HEALTHY AMERICA IS A STRONG AMERICA"

Texas-New Mexico Utilities Company

Miss Mary Katherine Daniels Becomes Bride of J. S. Hale, Jr.

The marriage of Miss Mary Katherine Daniel, daughter of Mr. and Mrs. J. V. Daniel, and J. S. Hale, Jr., son of J. S. Hale of Floydada, took place Sunday morning at 9:30 at the home of the bride's parents with Rev. Doyle of the First Baptist Church officiating.

Baskets of garden flowers and tapers in pedestal candelabra formed an altar before which the couple exchanged vows.

Mrs. E. C. Thomas of Roswell, New Mexico, played the wedding marches, accompanied W. T. Butler of Amarillo, uncle of the bride, as he sang "O Promise Me" and "Because." During the ceremony Mrs. Thomas played Schubert's "Serenade."

The bride's brother, Wendell Daniel, lighted the tapers as Mrs. Thomas played a prelude of wedding numbers.

The bride wore a white corded taffeta frock made with torso bodice and sweetheart neckline, her veil falling from a hale of lace. She carried an arm bouquet of white tube roses and for "something borrowed" she wore her mother's pearls. For "something old" she carried a lace-edged handkerchief that belonged to her maternal grandmother.

Miss Helen Butler of Amarillo, cousin of the bride, was maid of honor. She wore a rose gold taffeta made identical to the bride's and carried gold chrysanthemums.

Wayland Hale, brother of the bridegroom, served as best man.

An informal reception followed the ceremony with Mrs. Hart Shoemaker of Ahilene and Mrs. J. G. Martin, aunt of the bride, serving from a table covered with a lace cloth and centered with garden flowers.

When the couple left for a wedding trip the bride wore a teal blue suit with black accessories.

Mrs. Hale was reared in Floydada and finished high school here. She is a former student at Texas Technological College where she was a member of Las Chapartas social club, the Tech Honor Society and the junior council.

Mr. Hale will graduate from Tech in February, is a member of Los Camaradas social club and of the

F. F. A.
Mr. and Mrs. Hale will make their home in Lubbock where the groom will continue his school work.

BIRTHDAY DINNER HONORS GENE GILLY OF CEDARHILL COMMUNITY

Mrs. Gene Gilly entertained her husband with a birthday dinner at their home in the Cedarhill community Sunday.

Guests present for the buffet style dinner were: Mr. and Mrs. R. F. Luttrell, Paul and Juanetta Luttrell, Mrs. J. A. Patterson, Mrs. Clara Redd, Mr. and Mrs. Clay Anderson and family, Mr. and Mrs. G. V. Gilly, Mr. and Mrs. Claude Hammitt and family.

Let Cavanaugh do your printing.

DR. AND MRS. G. E. GUTHRIE HOSTS TO CLUB

Dr. and Mrs. G. E. Guthrie were hosts to the Friendship Bridge Club Friday evening at 7:45.

Cut flowers decorated the house, small vases of flowers centered the bridge tables.

After dinner bridge was played by the members: Mr. and Mrs. J. A. Arwine, Mr. and Mrs. B. K. Barker, Mr. and Mrs. L. T. Bishop, Mr. and Mrs. Walton Hale, Mr. and Mrs. A. B. Keim, Mr. and Mrs. J. C. Gillingham and the host and hostess, Dr. and Mrs. Guthrie.

Mrs. Hale and Mr. Keim held high score.

Mr. and Mrs. Keim will be hosts at the next meeting.

Week-EndSPECIALS

DEL MONTE Crushed Pineapple, 3 No. 1 Cans	25c
PORK & BEANS, 1 lb. can	5c
COCOA, 1-2 lb.	8c
Primrose Corn, 2 No. 2 cans	25c
Treet, can	27c
SAOP, 6 bars Chrystal White	23c
NAPKINS, 2 packages	15c
BROOMS, each	25c

HULL & McBRIEN

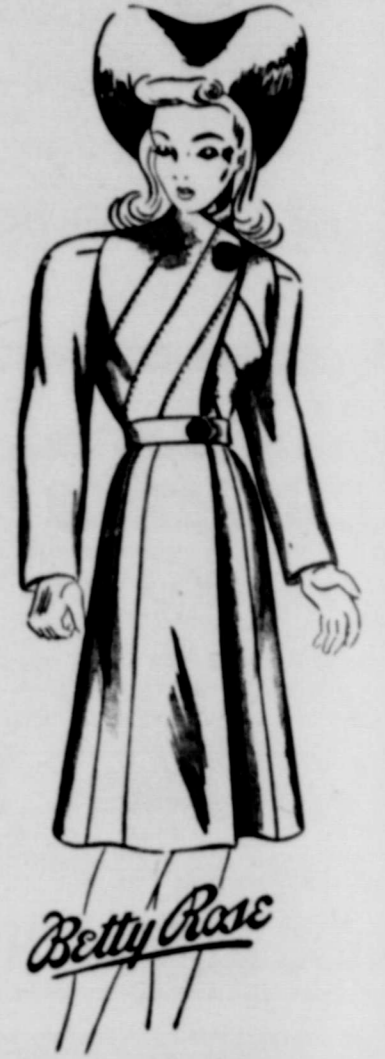
UNLIMITED SMARTNESS AT A LIMITED PRICE!

..... These New Autumn Dresses

\$7.98 to \$12.75

A feature collection of Fall's New Dresses for college girls, high school girls, and teachers—smartly designed fashions at reasonable prices.

Materials: Corduroys, Velveteen, Rabbit-hair Woolens, and various other materials. Colors: Timber green, Vineyard Red, Golden Sherry, and Santon Brown.



NEW FALL FELT HATS in all the new shades
\$2.45 and \$2.93

LADIES AND MISSES SWEATERS
\$1.00, \$1.98 to \$3.98

LADIES AND MISSES SKIRTS
\$1.98 up to \$3.98

LADIES PURSES \$1.00, \$1.98

GLOVES Fabric Gloves \$1.00
Kid Gloves \$1.93 to \$2.25

Gemmy
Diagonal tucks add the 'unusual' to this coat of Spiriline Worsted. Lovely to look at here's a coat you'll wear everywhere with assurance. The final touch of perfection... rich jeweled buttons at throat and waist. Capri Blue, Sherry Wine, and Black. Sizes 12 to 20.



Style Shoppe

Spindletop

STARTED IT!

Forty years ago an oil gusher roared in on a low hill south of Beaumont to open a new industrial era for Texas.

That discovery at Spindletop started our modern Texas petroleum industry and made Texas the nation's leading oil state.

In the forty years since Spindletop blew in, nearly 200,000 wells have been drilled throughout Texas. Over 500 separate fields are now producing in all parts of the State. Today Texas supplies over one-third of the Nation's oil and has over half of its petroleum reserves.

Our industry, by refining almost all of this oil in Texas, has created our largest manufacturing enterprise. By furnishing cheap fuel it has laid the foundation for many other Texas industries.

From a handful of Texans forty years ago, this industry has grown until now, directly or indirectly, it supports almost one million of our people. Its expenditures reach into every section of the State and benefit every Texan.

The discovery of America's first gusher oil field at Spindletop has turned out to be one of the most important events in the history of our state.

Today all of Texas salutes Spindletop!

* * *

On October 9, 10 and 11, during its annual convention at Beaumont, the Texas-Mid-Continent Oil & Gas Association will dedicate a monument to Spindletop.

Inscribed in ageless Texas granite will be the story of oil.

This is more than a monument to petroleum. It is a tribute to Texas enterprise and initiative which in forty years have built a great industry in our State—an industry in which you and every other Texan share.

This advertisement paid for by various units of the industry and sponsored by
TEXAS MID-CONTINENT OIL & GAS ASSOCIATION