



# THE FLOYD COUNTY PLAINSMAN

Published Thursday Each Week  
M. B. CAVANAUGH, PUBLISHER

In Floyd County \$1.00; Outside Floyd County \$2.00  
Entered as second class matter June 23, 1930, at the post office at Floydada, Texas, under the Act of March 3, 1879.

ADVERTISING RATES GIVEN ON APPLICATION

### NOTICE!

Any erroneous reflections upon the character, standing or reputation of any person, firm or corporation which may appear in the columns of The Floyd County Plainsman will be gladly corrected upon its being brought to the attention of the publisher.

## RECENT IMPRESSIONS OF THE PHILLIPINES, BY HESTER WEST

The following letter was received recently by Miss West's parents, Mr. and Mrs. John L. West:

On the Monday after Easter our big steamship drew up to the spacious wharf at Manila. The time was eight o'clock in the morning and we hurried down to eat our breakfast so that we should be on the deck and watch the people greet their friends. Our table boy was new to his work and we were rather impatient with his slowness but finally did get our food eaten. We hastened up on deck and looked to see if we could see any of our friends. Before we could see the faces of the people who were waiting on land, we could see the bright colors of their clothes. The men wore their shirt tails outside their trousers and their shirts were of brightly figured material or had gay colored embroidery in a pattern across the front. The dresses of the women were equally as gay. As the boat drew in nearer we saw that several of the people held flowers leis and some had corsages. Reminded us of Honolulu's way of welcoming friends.

Presently our friends were to be seen. It was good to see their welcoming smiles, and still better to feel their warm handclaps when we reached them. As all of us had lived in either Japan, Korea, or China, we felt very much embarrassed at the Filipina display of affection on greeting our ship mates. A Kiss on both cheeks seemed the order of the day. There were a number of beautiful Filipina girls returning from study in America and by the time the friends got through welcoming them they were well kissed. It certainly did not remind me of Shanghai just at that point! Miss Rowland had corsages of orchids and spice flowers for us and I felt my eyes go moist as she pinned mine on.

Customs was not too tedious but it did take a lot of time. We did not have any duty to pay so when we were through, called a taxi and started to the hospital. Traffic in Manila is always interesting because of the variety of vehicles. Traffic is all directed to the left so that did not seem strange but to see horse carriages, carts pulled by water buffalo, stream lined cars of all makes whiz by was new. Trucks are also numerous but—no rickshaws and very few bicycles! There were street cars and busses too and on the Pasig River there were all types of water craft.

The sun was blazing down and we were perspiring freely so the Nurses' home seemed good to us when we arrived. March, April and May are the hottest months on the island of Luzon. The seasons vary on some of the other islands. These months are also the dry season. As the street in front of the Nurses' home, or rather between the nurses' home and hospital, is not paved, the clouds of dust constantly swirling about reminded me of the days in Soochow when the University was still occupied by the invaders and the army trucks kept the dust constantly stirred up. As we looked out the windows, we saw the street sprinkler go down the street with its jets of water laying the dust. Later we found that it makes about four trips a day down our street. The main streets are all paved and it might have been that this one was too but the traffic has worn it down to the ground.

We found that the traffic goes by in a ceaseless stream day and night. The Nurses' home is only a few feet from the street and as my room is on the front, when the big trucks go by I not only notice the noise but also feel the vibration. After the peace and calm of Soochow I found it difficult to get adjusted to the change. However that was one place which seemed similar. Our dining room is across the street on the second floor of the hospital and looks right out on the bay. If I were a mind to, I could throw a stone from the window and it might fall into the sea. My place at the table is facing the sea and it is a joy to watch the sail boats. A new pier is being built just back of the hospital so the boats cannot come close in any more but even at a distance they remind me of window scenes in Soochow.

I may have told you that there are many different dialects in the over 700 islands. Different people give different statistics but on several occasions I have heard 87 mentioned. They are quite separate dialects with only a few similarities. I am told, and do not have the Chinese advantage of having a common written language. Consequently, since the communications are improving and the people are coming together more, a common language is needed. Just recently Tagalog, of the dialect of Manila and environs, has been made the national language but it will take years for it to grow into widespread usage. At present Spanish is the legal language and English is the common medium of exchange. Their English has a decided Filipino accent but become more understandable as time goes on.

The hospital is a frame building, painted a tan color, with vines, flowers, and coconut palms to add to its attractiveness. It is carefully cared for and the patients are well cared for. Only women and children are accepted as patients. Mostly the patients are maternity cases and quite a number of them are from Manila's large Chinese population. The doctors are women and of course that appeals to Chinese mothers. Outside doctors bring in patients too but many of the doctors outside are women too. I made rounds one day and out of about six Chinese patients found one who spoke my dialect, the Wu dialect, and we had fun talking together. Most of the Chinese are from Amoy or Canton.

The forty student nurses and the 12 graduates all speak English of course and the classes are all taught in English with the exception of the newly established class in Tagalog. The girls are attractive with their dark coloring and their white caps and aprons. They all have long hair and to my unaccustomed eyes looked all alike at first. Their names proved, and have proven jaw breakers for me. Hope I improve as time goes on. Most of them have Spanish surnames. While I was there a party was given for the graduates and it was interesting to watch the 15 of them. After having been accustomed to the reticence of the Chinese girls their freedom socially and conversationally was noticeable. I am looking forward to classes.

Classes here close the last of February and then begin again in June. The probationers are to come the second week in May for the beginning of their classes. As soon as we had made plans for the next term's work, I came to this mountain summer resort, Baguio, for a week or so of vacation before classes start. It is a cool beautiful spot and our cottage is on a hillside in the midst of tall straight pines. Many people are here on vacation. There are social activities, athletics and leisure for all. It is hard to realize that only a five or six hour's drive away thermometer is from 95 to 100 daily and that there is constant noise and smothering clouds of dust. I have enjoyed this opportunity of rest and of getting acquainted with the place and the people. It is true that less than two years ago I was here on vacation but just being a casual visitor and being a member of the mission is different. I have enjoyed the church services. They are in English and are well attended. The shops with their stock of American goods and the markets with the native products are a never ceasing source of interest to me.

During our stay here the dress-makers have been kept busy. It seems that one wears summer dresses the year round. It is true that in December and January one wears silk rather than voile and dimity but the other months the thin materials are the order of the day. That has meant that we had to make some extra. That has been fun and has given us definite plans for our days. We have gotten enough to last us for awhile. Here we sleep under blankets, wear sweaters and sit by the lighted fireplace night and morning—but not in the low lands!

This is a Catholic country and is a land of ancient churches. We see crosses worn on neck chains, watch chains, or wrist watches and just

pinned on to clothing. Lotteries are officially recognized and while I have not seen any beggars on the street in the islands, the sellers of the lottery tickets prove pests of the first order. Cock fighting is a favorite way of gambling too. On the train we saw any number of men with their precious cocks tied to their wrist by a string. The cocks all looked weather beaten and bedraggled to me but from the way the men fondled them, they must have appeared beautiful to them.

From a Public Health standpoint, while a great improvement over conditions in China, there yet remains much to be done. Flies, mosquitoes, bed bugs, lice are just a few of the problems. I have seen ever so many of the mountain people here with withered limbs, from infantile paralysis, I suppose, as it has been rather widespread in this country. Sanitary arrangements are very primitive, or else are lacking altogether in many sections. Food is something to satisfy one's hunger rather than to nourish one's body in the minds of many and much is yet to be done in food planning and in the utilization of the products at hand. Fruits are in abundance but milk, except out of

## SECOND REGISTRATION DAY SET FOR JULY 1, 1941, FOR SELECTIVE MILITARY SERVICE TRAINING

The Local Board announced this week that the second registration day for young men eligible for military training under the Selective Service, will be held July 1, 1941 at the office of the Local Board in Floyd-

ada, at American Legion Hall. All young men who have reached the age of twenty one since October 16, 1940, will be required to register between the hours of 7:00 a. m. and 9:00 p. m., July 1, 1941.

The Local Board will ask for volunteers to assist the clerk in holding this registration, and will get these volunteers from the very efficient personnel who helped with the first registration. State Headquarters for Selective Service estimate that this registration should run about 8 per cent of the first, and on that basis, Floyd County should register around 100 young men. Men who are away from home will register with the board in the city in which they happen to be on July 1, and should be careful that their home address is given correctly, if they would like for their registration cards to be with their home board.

My few observations are those of a new comer and I may have to change my opinions along several lines after a longer stay. Any how, I am giving to you my first impressions for what they might be worth. There is certainly work here to keep me busy and I am glad that it is so. I would not like to feel that I was simply marking time until I could get back to my work in China. But if there come times when I am despondent, have pity upon me and pray that I may revive to render real service to the people here.

## Wigington Will Direct Cotton Research

John T. Wigington, who has been in charge of the cotton fibre and spinning research laboratories of the Agricultural Marketing Service at College Station, has been appointed first director of the Cotton Textile Institute's new division of cotton research. The research center will be located at Clemson College, South Carolina.

Families of 2,404 home demonstration club women in Extension Service District 3 have used 50 pounds of cotton in their homes during the past year.

Production of tomatoes in Georgia, Louisiana, South Carolina, and Texas has been estimated at slightly over three and a half million bushels. This is 11 per cent less than last year.

Remember—be alive on the Fifth!

### CALL NUMBER NINETEEN IS ISSUED

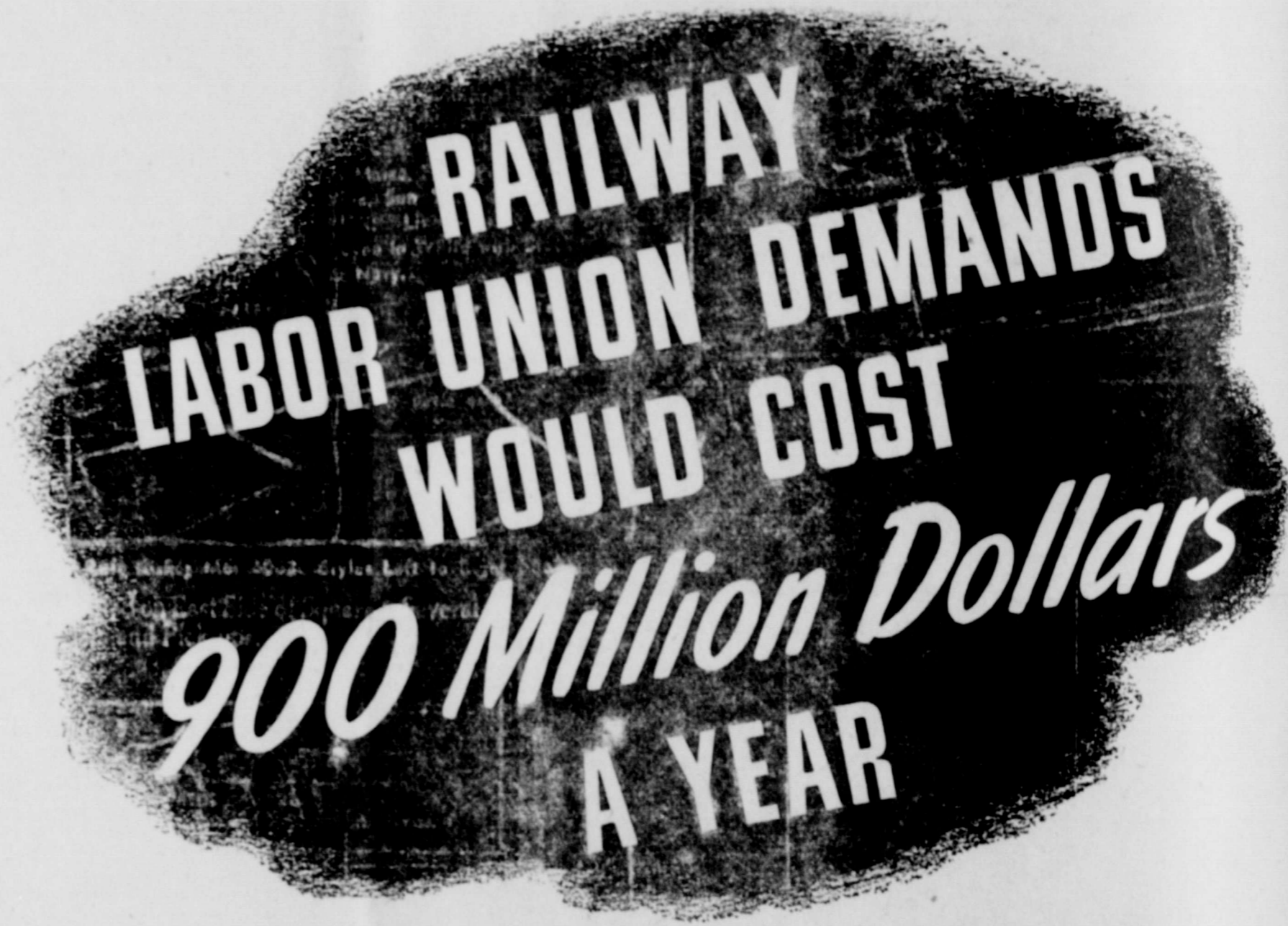
Call number nineteen for the lectures to be inducted July 1, 1941, has been received by the Local Board. The Local Board has finished mailing of questionnaires for the first registration, the last having been mailed July 17th. Classification of all registrants, of the probable I-A men, who will be held for physical examination, will be completed by July 1st or thereafter.

United States savings bonds provide a quick way to serve your country and conserve your earnings.

### "IF MORE OL PEOPLE

would use ADLERIKIA they feel better. I'm 70 and have on hand for 14 years." (L. Dak.) For QUICK bowel action relief from bloating gas, try ADLERIKIA today.

WHITE DRUG COMPANY  
BISHOP'S PHARMACY



**T**HE labor unions have made their demands upon the railways of the United States—and through the railways upon the PUBLIC. These demands are vastly larger in proportion than any they have ever made. The economical and efficient operation of the railways is vital to the nation's defense effort. Therefore, the Western Railways present to the public the following facts:

The labor unions representing engineers, firemen, conductors, brakemen and switchmen are demanding a 30 per cent increase in wages, amounting to 190 million dollars a year—although their present rates of pay are the highest in history.

Other unions representing a greater number of railway employees are demanding wage increases ranging as high as 95 per cent—averaging 47 per cent—and amounting to 580 million dollars a year—although their present rates of pay also are the highest in history.

Thus the wage increases being demanded by the labor unions amount to 770 million dollars a year, an average increase in excess of 41 per cent.

In addition, certain of these labor unions have demanded advances in their pay not included in the above figures, and more rules for the creation of unnecessary jobs.

The situation, then, is this: The total cost of complying with all the demands made would be approximately 900 million dollars a year!

The average weekly earnings of railway employees are now 15 per cent higher than in the peak year 1929, while the cost of living is 12 per cent less.

The demands of the railway labor unions are being made when the entire nation has just been asked to make a supreme effort for National Defense.

The railways cannot meet these demands without a great increase in the cost of transportation. They exceed by more than 700 million dollars the income that the railways had left after paying their annual expenses, taxes and charges in 1940.

The railways have a vitally important job before them. They need all their resources to continue adequately to serve you and contribute effectively toward the National Defense Program.

## THE WESTERN RAILWAYS

Union Station, Chicago, Ill.

## FIRST NATIONAL BANK Floydada, Texas

903—TIME TESTED SERVICE—1940

### Leading the Field LYNDON JOHNSON

For  
S. Senator



Lyndon Johnson now leads in the Senate race as a well known and quoted state politician. He admits his own vicious and unbridled attack on his stand for "Unity and Unity." But Johnson is still the man who is all trying to beat.

It has caused this tremendous swing to Lyndon Johnson? His position is now clear: He wants a Senator trained for the job, a Senator who has the confidence and confidence of our great President, Administrators and Members of Congress. Texans now know that Lyndon Johnson is that man and that he can get the job done for Texas.

He wants unity of action and Unity of purpose in this hour. They know that Lyndon Johnson stands for Roosevelt and action now. They know that his record of achievement and for his District proves that his stand is sincere and fulfilled.

With Lyndon Johnson in a State wide pledge of Unity and to President Roosevelt. Let the world know that Texans stand with all Americans in our fight to preserve our Democracy.

(Paid for by West Texas friends of Lyndon Johnson.)

### Timing Hay Harvesting Is Important

College Station, June 26.—When hay, especially legumes such as alfalfa, clover and soybeans, is allowed to get too ripe it becomes coarse and loses a great deal of its feed value.

According to E. A. Miller, extension agronomist for Texas A. and M. College, Sudan and Johnson grass should be cut as soon as the first seed pods begin to form in order to obtain good quality hay. Soybeans should be harvested for hay as soon as the first pods begin to form. Cowpeas are ready to cut when the first pods begin to ripen, and peanuts when the leaves start turning yellow.

Alfalfa hay should be cut when the field is about one-tenth to one-fourth in bloom, or when the young shoots begin to appear at the base of the plants. If allowed to get too mature, the valuable protein content will be reduced and the grass become coarser and lose more leaves during harvesting. It is important, however, and especially in a new field to let one cutting go to seed, or at least to full bloom stage, in order to develop stronger plants and longer-lived fields.

Sweet clover should be cut before it blooms. Otherwise the stems may become coarse and woody. It is important, too, that sweet clover be cut five or six inches above the ground, except the last mowing, because new shoots form on the main stem instead of stooling out at the base of the plant.

Grass hay may be left in the swath until fairly well cured, but alfalfa, clovers and cowpeas must be raked in windrows and placed in shocks before the leaves begin to shatter. Leaves contain most of the feed value.

A good stack must be built symmetrical and have the same width or diameter for more than half the distance to the top. The remainder should be gradually sloping. In building a stack the middle should be kept well tramped and always higher at the edges. If this is not done rain will enter and spoil the hay.

Texas claims more than two-thirds of the cooperative cotton gins in the country.

Texas farmers' cooperatives have more than \$7,500,000 invested in land, buildings and equipment.

### Carloadings For Week Ending June 21 Are Up

The Santa Fe Railway System carloadings for the week ending June 21, 1941, were 25,463 compared with 20,164 for the same week in 1940. Received from connections were 7,589 compared with 5,200 for the same week in 1940. Total cars moved were 33,052 compared with 25,384 for the same week in 1940. The Santa Fe handled a total of 29,367 cars during the preceding week this year.

Mr. and Mrs. Wilmer Jones, Jr., visited in Lubbock Sunday with Mr. and Mrs. Roy Neal.

### CLASSIFIED ADVERTISING

**USED TRUCKS AND PICK UPS**  
1937 Ford 1/2 ton pick up \$325  
1938 Ford 1/2 ton pick up \$300  
1937 Chevrolet 1/2 ton pick up \$300  
1936 Dodge Pick up 1/2 ton \$150  
1934 Chevrolet 1/2 ton pick up \$150

**TRUCKS**  
1939 Dodge 2 ton 8.25 tire \$650  
1937 Ford 1 1/2 ton flat body \$325  
1933 Dodge 1 1/2 ton excellent grain body \$150  
1936 Ford chassis and cab \$200  
And also about 25 used cars all prices and year models.

**BISHOP MOTOR COMPANY**

**MOVIE OPERATORS AND MANAGERS**, Floydada District, Movie Circuit Work, 1416 Gulf States Bldg., Dallas, Texas. 28-2tp

**HAND MADE BOOTS** in all styles and colors. Forgerson's Shoe Shop. 21-tfc.

Our **FLOWERS** are FRESH and are BEAUTIFULLY ARRANGED. **COLLUMS, FLOYDADA FLORISTS**

**LANDS FOR LEASE**  
A few farm tracts to lease at reasonable prices for cash.

**W. M. MASSIE & BRO.**  
Floydada, Texas. 11-tfc

For best and cheapest monuments, either in marble or granite. See **S. B. McCLESKEY**. 24-tfc

Laces, Polishes, Belts, Dye, Insoles, Arche Supports, Dance Taps, Etc., at Forgerson's Shoe Shop. 21-tfc

We invite you to visit the greenhouse. **PARK FLORISTS—Mrs. W. S. Geen**. Phone 78. 46-tfc

### Notice of Intention To Issue Refunding Bonds

TO THE RESIDENT QUALIFIED PROPERTY TAXPAYING VOTERS OF THE COUNTY OF FLOYD, TEXAS:

TAKE NOTICE that on the 14th day of July, 1941, the Commissioners' Court of Floyd County, Texas, will pass an order authorizing the issuance of refunding bonds of said County, in the principal sum of \$15,000.00, for the purpose of refunding, cancelling and in lieu of an equal amount of indebtedness now outstanding against said County, represented by:

\$15,000.00 6% "Floyd County, Texas, Road Machinery Warrants, Series D, 1941," dated June 9, 1941.

FURTHER TAKE NOTICE that the proposed refunding bonds to be issued for the purpose of refunding, cancelling and in lieu of the aforesaid warrants, shall be numbered consecutively from 1 to 15, both inclusive, shall be in denomination of \$1,000.00 each, shall become due and payable serially, \$1,000.00 on April 15th in each of the years 1945 to 1955, both inclusive, and \$2,000.00 on April 15th in each of the years 1956 and 1957, and shall bear interest from date until paid at the rate of 4% per annum, payable semi-annually on April 15th and October 15th, in each year, the first interest payment date to be on October 15th, 1941.

AND FURTHER TAKE NOTICE that the warrants proposed to be refunded or cancelled by the issuance of said refunding bonds are described in that certain order of the Commissioners' Court of said County, passed on the 9th day of June, 1941, which order is recorded in the Minutes of said Court, and to which reference is hereby made for a more detailed description of said warrants, and such order is hereby adopted by reference in respect of the description of said warrants, and shall be considered as much a part of this notice as if incorporated herein.

WITNESS MY OFFICIAL SIGNATURE, this 9th day of June, 1941, pursuant to order of the Commissioners' Court of Floyd County, Texas.

G. C. TUBBS,  
County Judge, Floyd County, Texas.

Economists estimate that more than two-thirds of all Texas farmers use short-term credit.

## Star Cash VALUES!

MEAL, Large sack	47c
SPUDS, Texas Reds, 10 pounds	15c
VINEGAR, quart	10c
Packed in regular Mason Jars. Better get a dozen.	
GRAPEFRUIT JUICE, No. 2 cans, each	6c
DREFT, Giant Box	59c
1 Ten Cent Box FREE!	
GLO-COAT, Johnson's, Quart can	98c
1 applicer FREE!	
FIBBER SAYS: "IT MAKES LINOLEUMS LAST LONGER AND LOOK BETTER."	
CRACKERS, 2 pound box	13c
RIPPLE WHEAT, 2 boxes	15c
CORN FLAKES, 3 large boxes	25c
RAISINS, 2 pound Cello	17c
ORANGES, Fresh from California, dozen	15c
GRAPEFRUIT, Sunkist, Seedless, each	5c

## Amazing Safety Discovery— New Brake-Action Tread

FEEL Why It Stops Quicker



Double Action Tread  
Has 2500 Extra Grippers

As you apply the brakes—2500 extra gripping edges... built into famous U.S. Cogwheel Tread... go into instantaneous action. They open up... grip, hold... stop your car quicker, safer, straighter.

Before You Buy Any Tire... THINK  
Can you afford to be without the protection of this tire's quicker-stopping, non-skid "Brake-Action" Tread?



**US ROYAL**  
De Luxe

DOES THINGS You Never Dreamed A Tire Could Do

- \* Stops Quicker
- \* Steers Straighter
- \* Wears Longer
- \* Rides Smoother

### Floydada Insurance Agency...

Insurance of all kinds. Your inquiries and business respectfully solicited.

**W. H. HENDERSON**  
OWNER

**PANHANDLE REFINING CO. PRODUCTS**  
DALE STRICKLAND, Distributor

## Helpy-Selfy Laundry

DO YOUR OWN WASHING the quickest, easiest, cheapest way to do your laundry.

**25c Per Hour.**

PLENTY OF HOT, SOFT WATER.

**Steam Laundry Charges—Rough Dry 4c**

WET WASH washed and extracted ready to iron

**2 Cents a Pound**

Shirts 9c, in Thrift T and Rough Dry Bundles.

## White Way Laundry

Formerly Floydada Steam Laundry

PHONE 141 FOR PICK-UP AND DELIVERY SERVICE! FLOYDADA, TEXAS

### NE AND RAINER GARAGE

where you can get everything for your car at one-stop. Mobil Oil

DIATORS REPAIRED, and boiled out for cars, tractors and bikes. Parts of all kinds, welding, tires, batteries. In fact everything for your car. See us for lawn mowers and hose.

Buy junk Batteries. Phone 37

BERTY BARKER and CLAY ANDERSON, are in charge of and will appreciate your next job.

**CLINE AND RAINER**  
WESTERN AUTO ASSOCIATE STORE.

### VACCINATE YOUR HORSES AGAINST

## SLEEPING SICKNESS

WE HAVE THE VACCINE.

## White Drug Company

Palace Theatre Building  
Phone 202

**VACATIONS ARE BEST IN A VACATIONLAND**



Most any kind of vacation is worthwhile... but if you want to get

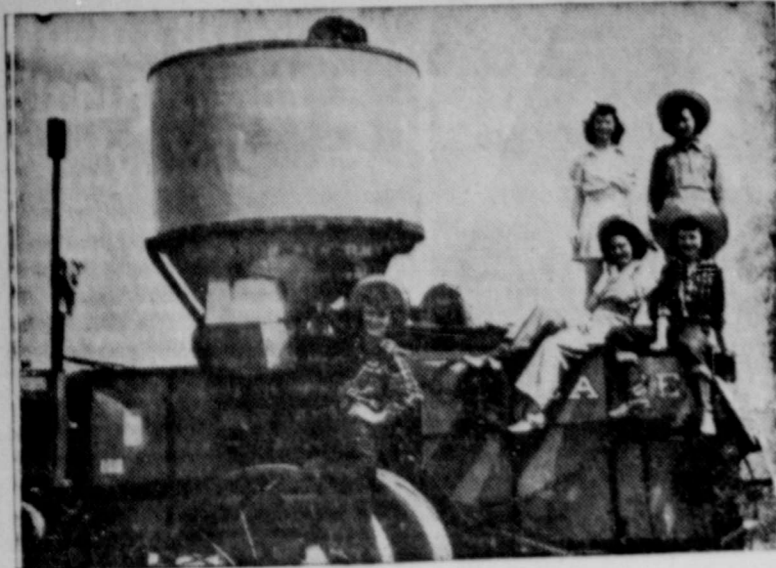
100% of pleasure and let-down and change out of your precious vacation days and dollars, plan a holiday trip to a real Vacationland.

**CALIFORNIA** the ideal vacationland

offers a hundred answers for your holiday dreams... mountains... seashore... entertainment... interesting cities... an enjoyable summer climate. CALL YOUR SANTA FE AGENT TODAY FOR CALIFORNIA FOLDERS AND DETAILS OF ECONOMIC SERVICE VIA THE SCENIC SANTA FE ROUTE WEST.

take a vacation from SHIPPING WORRIES—

SHIP via Santa Fe



Farmerettes in rehearsal for part of the Wheat Festival to be staged in Perryton, Texas, Saturday, June 28, when this city will donate a minimum of 4,213 bushels of wheat to the USO, to become the largest donor per capita of any community in the nation. The entire day filled with gala entertainment will be climaxed with an address by Hon. E. B. Germany, regional director of the U. S. O. for Texas, Oklahoma, Arkansas and Louisiana.

### Pressure Cookers May be Considered Valuable Now

If you have a pressure cooker, your biggest contribution to defense may be keeping it safe and in working order and using it for a more abundant food supply.

Because the country's supply of virgin aluminum is being used for defense needs faster than it can be produced, there may not be "any aluminum pressure cookers available in 1942," one manufacturer and dealer has written to Mildred Horton vice director of the Extension Service and chairman of the Texas State Nutrition Committee. Since most Texas orders were placed early this year, Texas distributors have been able to meet the seasonal demand for 1941.

Companies manufacturing their cookers from virgin sheet aluminum have been particularly hard hit this spring, since the only metal available has been scrap or "secondary aluminum." Now, even scrap supplies are not obtainable.

A recent statement from the consumer representative on minerals and metals for the national defense commission explains that "although it appeared some time ago the manufacturers of cooking utensils, it now develops that supplies may be restricted to a much greater extent than hitherto foreseen. Since the defense needs are increasing much more rapidly than production, it appears secondary scrap metal will be taken over for defense needs. While it may be that a pool of material may be set up for emergency use, this does not mean any of this will be made available to the manufacturers of consumer goods."

TO CHECK  
**MALARIA**  
IN 7 DAYS  
take **666**

### Wigington Will Direct Cotton Research

John T. Wigington, who has been in charge of the cotton fibre and spinning research laboratories of the Agricultural Marketing Service at College Station, has been appointed first director of the Cotton Textile Institute's new division of cotton research. The research center will be located at Clemson College, South Carolina.

CALL NUMBER NINETEEN IS ISSUED

Call number nineteen for three Selectees to be inducted July 10, has been received by the Local Board. The Local Board has finished the mailing of questionnaires for the first registration, the last hundred having been mailed July 17th. Classification of all registrants, except the probable I.A. men, who will be held for physical examination, should be completed by July 1st or shortly thereafter.

Mr. and Mrs. Wilmer Jones, Jr., visited in Lubbock Sunday with Mr. and Mrs. Roy Neal.

### Believe It or Not

You can now buy for \$1.00 enough genuine 100% Mineral Wells, Palo Pinto County, Texas, BAKERWELL dehydrated mineral water crystals to make 20 gallons No. 4 strong mineral water. Why suffer from aches, pains and nervousness caused by acidity and constipation. BEWARE OF SUBSTITUTES. Call your local Drug, Department or Grocery Store or Bakerwell Mineral Water Co. Mineral Wells, Texas

### ANOTHER NEW SHIPMENT OF BRUNSWICK TIRES

JUST RECEIVED THIS WEEK.

Many commercial sizes which will be needed during the rush of harvest. See us at once about your tire needs.

### STEEL-FLEX RINGS

You will find our store headquarters for STEEL-FLEX RINGS in sizes for all automobiles, trucks and tractors. There is none better than STEEL-FLEX.

### BILL DYER'S AUTO PARTS

West of Courthouse. FLAT SERVICE. Phone 387

### See Us At New Location!

Now located on East Side of Square. Several good used cars and Pick-ups.

INTERNATIONAL TRUCKS AND PARTS AGENCY

### SPEARS & DANIELS

EAST SIDE SQUARE. Complete Automotive Repair and Replacement Service.

Heartfully Yours  
**Kitty Fisher**

**Spec-Daters Delight**

**\$3.98**

JUNIOR SIZES 11 to 17

Game time is "your name time" when you show up in these Kitty Fisher crispy-cool eye-fillers. **DOUBLE-HEADER:** Rayon Ripple-O in Maize, Petal Pink, Sailor Blue, Sun Tan. **SCORING RUN:** Linen-Lyke Spun Rayon in White with Black, or Navy.

Other National Advertisers Kitty Fisher Juniors. Sizes 9 to 17—\$0.00 to \$0.00

Kitty Fisher Mat 6063. Styles Left to Right 6063-6065

**DOTTED SWISS RE-CUTE**

Heartfully Yours  
**Kitty Fisher**

**\$2.98**

JUNIOR SIZES 9 to 15

Reporting for duty, and what a beauty! Reverse color Swisses! Kitty Fisher new-new versions you'll love for expensive-looking niceties. Patriotic alliances of Red, Navy, Black and White.

Kitty Fisher Mat and Style 6030

THE YOUNG CROWD MEETS IN OUR CAROLE KING SHOP

**Carole King**  
ORIGINALS FOR JUNIORS

**\$7.98**

"Honey Bunch" Shirring and more shirring in this youthful gay little dress of sheer rayon in a charming floral design that's exclusively Carole King's. Crystal buttons accent that dainty look. Sizes 11 to 17. Colors, Blue, Yellow, Red.

"As seen in **LIFE** today"



• These famous stockings are giving constant satisfaction to millions of smart women everywhere. We're sure you'll like them too. We have a type and weight for your every need. New Screenlite Shades.

**MOJUD**  
the dependable  
HOSIERY.

**79c, \$1.00**

## Style Shoppe

MRS. MOLLIE A. MORTON, OWNER  
"Always Showing Newest Things First"  
Telephone Number 17