

"By Helping Business You Help Yourself"

# The Floyd County Plainsman

Floydada, Floyd County, Texas, Thursday, May 1, 1941.

Number 21

ME No. 12

## Marketing Quota Wheat Double Production

The Plainsman: Farmers will vote May 31, of protection—protection of for the consumer and pro- of the market for wheat grow selves, says Paul Snodgrass, County wheat farmer and of the County AAA Com-

Marketing quota insures wheat for every probable by consumers in this country and, Snodgrass said. A quota may be proclaimed only if total supply exceeds a nor- domestic consumption and by more than 35 percent. practically shut off by blockade, Snodgrass reports will be almost 2 bushels of land for every 1 which is be consumed this year in States.

of this supply, marketing necessary to protect the of all wheat farmers, Snod- stated. In the last 2 years, last program, principally the hold the United States price 30 to 40 cents above of price. However, on the the large supply in prospect coming year, the loan needs of protection of the market, he said. Because loans on and surplus would invol- risk, they are prohibited when a wheat marketing quo- down.

quota is approved, farmers able to sell without penalty at they raise on their acreage. The farmer who has within his acreage allotment his wheat just as he always Snodgrass. He is also eli- a government loan on all. The farmer who over- allotment may store the produced in excess of the if he sells or uses it a pen- be collected. If he stores get a loan on the excess, a lower rate than that avail- the cooperator.

## NSOM, PLAINVIEW GIRL, RIDE IN HORSE SHOW

May 1—Lou Sansom of will ride in the eleventh horse show sponsored by Bit University of Texas riding by a. Sansom won fourth place in class at the Floydada 1937, has ridden in the West Show in Plainview and Lubbock Horse Show.

## Gin Group Form Four County Association

Gin Group representatives from 4 counties met in the county court room Thursday, April 24th and voted to set up an area one-variety cotton organization. R. E. (Bob) Wilson of Hale Center was elected president, Mal Jarboe, Floydada, vice president and F. L. Brown, Lockney, secretary treasurer. The executive committee selected was as follows: R. E. Wilson, Mal Jarboe, F. L. Brown, Floydada; R. E. Douglass, Silvertown; J. W. Miller, Tulia; F. A. Halcomb, Plainview, and J. C. Beedy, Floydada.

The following requests were mailed the National and State Agricultural Departments:

To the United States Department of Agriculture and the Texas State Agricultural Extension Service.

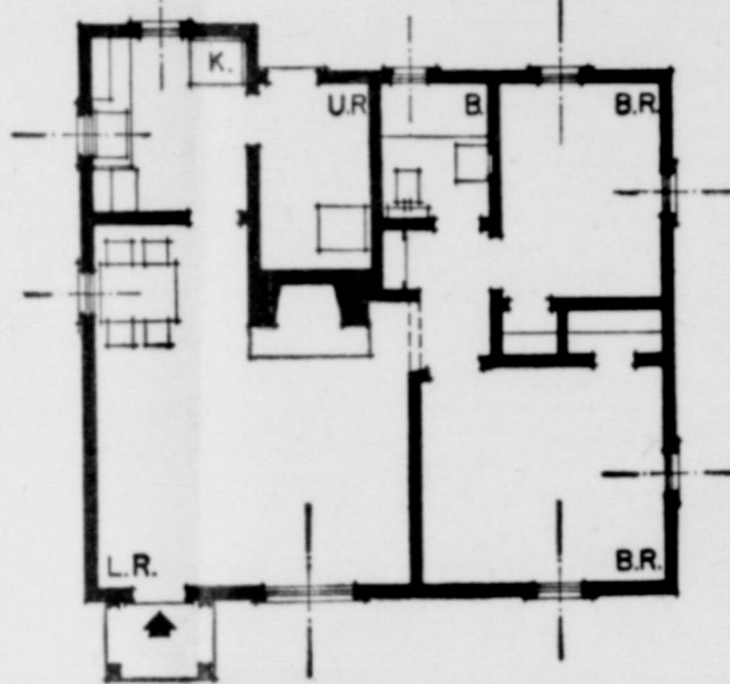
Request for approval of the South Plains One Variety Cotton Improvement Area as one of the special one variety cotton improvement and market demonstrations on Paymaster and Jennings Cotton for the crop year 1941 and 1942.

Be it hereby resolved that the undersigned members of the executive committee representing the various one variety Paymaster and Jennings cotton committees of the Floyd-Hale One Variety Cotton Improvement Association according to the requests of the cotton farmers of this area do hereby petition and request the United States Department of Agriculture and the Texas State Agricultural Extension Service to continue the one variety improvement and marketing program in the South Plains area through the crop year 1941-1942, and we submit the following resolutions pertaining to this program:

1. Since the one variety cotton program has spread to the adjoining counties of Briscoe and Swisher, it is only natural to expect that these counties will wish to cooperate in the one variety program, and we hereby request the privilege of changing the name from Floyd-Hale One Variety Cotton Improvement Association to South Plains One Variety Cotton Improvement Association. As we received some 6,600 bales in this program in 1940, it would be very conservative to estimate that with the increased interest that has developed in this area that from 20,000 to 25,000 bales could be expected for the 1941 marketing season.
2. We recommend that the approved variety for the South Plains One Variety Cotton Improvement Association by Paymaster and Jennings Cotton.
3. Seed Improvement:



Simplicity is the keynote of this small two-bedroom house. In avoiding needless architectural detail, the builders of this house have achieved what many in the past have sought—a low-cost cottage of beauty and dignity. This property is located in the Midwest, where it was given a valuation of \$3,800 and was financed with a mortgage of \$3,200 insured by the Federal Housing Administration. Monthly payments on a 25-year mortgage of this amount total less than \$19 exclusive of local taxes and hazard insurance. The price will vary in other localities.



FLOOR PLAN

4. That seed be purchased from breeder and bill of sale furnished by the producer to the Board of Directors of the group organization.
5. That farmer having purchased pure seed in 1939 or 1940 and can verify purchase of same will be accepted in the program for his own crop, provided he produced sufficient seed from said purchase to plant his 1941 crop.
6. That every grower going into this program must purchase sufficient seed from recognized or approved cotton seed breeder in 1941 and each succeeding year thereafter to plant a seed block sufficient to insure him a supply for his entire crop for the next year.
7. That any producer will be permitted to purchase from another grower second year planting seed for planting his 1941 crop, provided he has complied with the preceding paragraphs, and it will be the responsibility of this grower to establish his eligibility with his local organization.
8. That no producer will be permitted to participate in the program for 1941 unless his entire cotton acreage is planted to Paymaster or Jennings cotton.
9. That each community board of directors accepts the responsibility of certifying to the eligibility of the cooperating farmers in their communities.
10. We respectfully suggest that the U. S. Department of Agriculture Chemistry and Engineering establish, if possible, a ginning laboratory in West Texas, similar to the Laboratory at Stoneville, Mississippi, to assist this territory in solving ginning problems. This request is made for the reason that our conditions in this high and dry climate are entirely different from the conditions in the humid areas. Static is our main problem.
11. We further request the cooperation of the Texas Agriculture Extension Service in sending competent men to our area to work with our ginners in improving ginning service and operating methods.
12. We recommend the continuation of the press box samples as this method was favorably accepted by both producer and ginner for the past season.
13. We recommend the use of cotton bagging, if and when possible.
14. We favor the continuation of

the net weight trading and recommend that this be retained in the program for 1941.

9. a. Cotton classification by the Government classifier has been highly satisfactory and we recommend that the local classing service be continued.
- b. We suggest that split grades be recognized by the classing service due to the fact that the cotton trade recognizes the split grade and buys the cotton accordingly.
10. We favor the continuation of the Agriculture Marketing Service price quotation and market information as provided in the program this year.
11. We approve the methods used for tagging the one variety cotton, and the price information which was calculated by shipper or authorized agent on Form MD-4 copies of such bale tags.
12. In order to promote competition in the purchase of this cotton, we suggest that two or more buying firms be given opportunity to purchase this cotton, provided we produce a sufficient volume.
13. We recommend that the bale weight remain the same as 1940 (400 to 565 pounds net weight.)
14. We recommend that the same regulations be required on compressing the one variety cotton that were in effect in 1940.
15. We recommend that the shipper be required to concentrate cotton in even running lots before being offered to mills or export market.
16. Community and Area Organization.

That each community association will elect its president, vice president, and secretary-treasurer, and that each community organization will furnish one representative for the area organization.

FLOYDADA RECEIVED 1.77 INCHES OF RAIN  
In Floydada rain started Saturday with light showers and continued falling over the week end bringing the total precipitation to .68. Monday night rain amounted to .91 inches, giving a total of 1.77 inches, according to the measurements at the local REA office weather gauge.

Lockney reported 2.10 inches over the week end and Monday night. Reports from most parts of the county give as much moisture and in some sections more than was received in Floydada.

Crosbyton received 1.55, Lubbock .97 inches.

Farmers are anxious for clear weather since receiving needed moisture so they may be able to go ahead with their row crop preparations.

Spears and Daniels Place  
ORVILLE W. HARRIS  
AS WELDER

Spears and Daniels has placed Orville W. Harris in their firm as head of the welding department. They are equipped to do welding work of all kinds, using a portable welding machine for road and field hurry-up jobs.

Mr. Harris has just recently returned from Abilene, where he had been employed in army camp construction work.

ELLIOTT APPLIANCE ADDS NEW MAN TO SALES FORCE THIS WEEK

Jerry Cox, of Lubbock, this week began his duties as salesman for the C. H. Elliott Appliance Company, according to a statement by Mr. R. L. Smith, manager of the local store.

## Floyd County to Get CCC Camp is Announced

Washington, April 28.—James J. McEntee, director of the Civilian Conservation Corps, said today the final quarter of the current year had begun with 53 camps assigned for operation in Texas, a decrease of two from the number operating during the winter.

"Approximately 10,600 CCC enrollees will work on conservation projects in Texas under the present program," McEntee said.

The spring operating program calls for the opening of four new camps and the closing of six. The new camps are: SCS 43, Coleman County; SCS 44, Floyd County, Floydada; SCS 45, Cochran County, Morton; and SP 65, Possum Kingdom State Park, Palo Pinto County, Mineral Wells. The following camps are ordered closed: SCS 15, Lamb County, Littlefield; SCS 16, Dawson County, Lamesa; SCS 21, Brown County, Brownwood; SP 42, Garner State Park, Uvalde County, Uvalde; SP 43, Goliad State Park, Goliad County, Goliad; and SP 54, Tyler State Park, Smith County, Tyler.

## 105 Students Will Be In Graduation Class Here

105 students will be eligible for high school diplomas on May 23, according to announcement by Walter Travis, superintendent of the Floydada schools.

54 boys and 51 girls will make up the list, an increase of three over last year's number.

The boys are:  
Anderson, James; Arnold, Robert; Arwine, Joe; Asher, Billy; Bishop, Kenneth; Boyd, James; Brown, Winston; Burke, James;  
Chowning, LeRoy; Cornelius, Donald; Cozby, L. B.; Crawford, Benny; Daily, Jack; Denison, Gilmer; DuBois, Weldon; Foster, Bruce; Goen, Norman; Griffin, Tommie; Grigsby, J. W.;  
Handley, Leon; Head, Noel; Hill, Calvin; Hodges, Kenneth; Irwin, Shirley; Jester, J. P.; Johnston, Warren; Jones, Noel; Kennamer, Presley; Kirk, David; Love, H. C.;  
McCleskey, Greer; McIntosh, Tommie; McNeely, Vernon; Michael, Jess; Nichols, J. L.; Norman, Buddy; Owens, Charlie Bill; Parrish, Carl; Patterson, Dillon; Patterson, Gordon; Patterson, Russell;  
Smith, Jack; Smith, L. H.; Smythe, Jimmie; Steen, Maurice; Steen, Phil; Tubbs, George; Turner, James; Turner, Royce; Tyler, E. L.; Walls, Doyle; Wester, James; Williams, Aldine; Womack, Arthur Jr.

The girls are:  
Barbee, Eula; Batten, Vera Faye; Baxter, Hilda; Billingsley, Lavelle; Blackmon, Mona Ruth; Bratton, Janette; Brock, Ellen; Clubb, Lee Dale; Connelley, Geneva; Crabtree, Ella E.; Cypert, Edith Kate;  
Duncan, Marjorie; Edwards, Mabelle; Fagan, Nelda; Felts, Lois; Fields, Francis; Finley, Wilda Ruth; Fortenberry, Evelyn; Fyffe, Arlene; Graham, Nadine;  
Hamm, Madine; Handley, Layverne; Harris, Norma Mae; Head, Mary Lois; Head, Rachel; Hinton, Maudell; Hopper, Laddie; Jackson, Bennie Ruth; Jernigan, Bertha Lee; Jones, Ima Nell; Lide, Delilah; Martin, Eugenia; McCleskey, Bettie Jo; Millican, Juanita; Moore, Corene; Morrison, Phyllis; Morrison, Virginia;

## Wool Growers to Open Storage House Here

Local wool growers of Briscoe, Hale, Swisher, Crosby and Floyd Counties have set up a wool storage house at Floydada for the marketing season. Floyd County committee-men L. E. Coshy, T. Taylor, A. G. Cardinal and H. D. Meredith have made arrangements with the Mid West Wool Growers Marketing Cooperative and have placed Mr. Gray Faulkner of Fort Worth in charge of the Floydada, storage plant to assist wool growers in the marketing of their clip. Mr. Faulkner reports that the building which was formerly used for the boiling alley located on the west side of the square offers adequate storage and that wool bags and twine are available to growers.

This association will concentrate, purchase or make advance on all wool. It is hoped that local wool growers make themselves available of the association so that a wool market center can be established in this area. Wool growers must remember that June 15th may be the turning point when the division of purchases U. S. Government will state publicly amounts of wool need in the defense program for the balance of the year and will also discuss the differential in foreign and domestic wool in an effort to find a fair and reasonable price to the domestic grower, Mr. Faulkner stated.

Mrs. W. A. Cates is receiving in a Lubbock hospital for an eye infection. Mrs. Cates was carried to Lubbock about a week ago by her husband and is reported slightly improved.

## New Collars are Crocheted



BERKY Pierrette collar, with cuffs to match, which you can crochet yourself in the twinkling of an eye. Frilly, feminine neckwear is important fashion news this season, and this starched, lacy ruff crocheted cotton will make a simple, dark dress look very smart. You can crochet it for less than fifty cents, and it will launder and always retain its crisp, sparkling air. Directions for making the collar may be obtained by sending a stamped, self-addressed envelope to the Sewing Department of this newspaper, specifying Design #2432.

## Improved Soil Aids Child Health



Observance of Child Health Day every May 1 indicates the nation's interest in the welfare of its future citizens such as this radiant child. This interest is shared by the 6 million farmers cooperating in the AAA farm program. As a contribution to proper nutrition for growing children, these farmers are creating soil conditions which assure an abundance of healthful foods both now and in the future. Application to the land of liming materials and superphosphate, shown in the top picture, is one means of doing this. Such practices mean better pastures, more and better milk from dairy cows, and healthier American children.

# THE FLOYD COUNTY PLAINSMAN

Published Thursday Each Week

M. B. CAVANAUGH, PUBLISHER

In Floyd County \$1.00; Outside Floyd County \$2.00  
Entered as second class matter June 23, 1930, at the post office at  
Floydada, Texas, under the Act of March 3, 1879.

ADVERTISING RATES GIVEN ON APPLICATION

### NOTICE!

Any erroneous reflections upon the character, standing or reputation of any person, firm or corporation which may appear in the columns of The Floyd County Plainsman will be gladly corrected upon its being brought to the attention of the publisher.



This brick home is located in the Southwest where it is valued at \$4,000, including land.



In Texas this clapboard house is valued with lot at \$4,500. Its price, like that of other houses, will vary in other localities.



This property is almost out of the small house class yet its valuation is only \$5,750. It is located in a South Atlantic State.

These houses show that much has been done toward solving the problem of design for the inexpensive home. Constructed and located to conform to FHA requirements and financed under the FHA-insured mortgage system, these houses show that the attractive low-cost home has become a reality.

## EVERYONE KNOWS THAT



## DELICIOUS CHOCOLATES

Why hesitate over what to give your Mother on Mother's Day, when you know how pleased she'll be with a box of creamy, luscious chocolates? We mail anywhere. Better order yours today—special prices for Mother's Day!

Other appropriate gifts that she will appreciate: Air-Maid Hosiery, Lucien Lelong and Lenthéric Lines will be found among our suggestions for "MOTHER'S DAY."

**WHITE DRUG COMPANY**  
Palace Theatre Building

## Farmers can Estimate Amount Of Earnings

With the recent determination of 1941 parity payment rates, Floyd County farmers can now estimate the amount they can earn through full participation in the 1941 AAA farm program, according to Aicye A. Hoots, secretary of the county AAA committee.

Parity payments, based on the normal yields on allotted acreages, will be made at the rate of 1.38 cents per pound on cotton, 10 cents per bushel on wheat, and 32.4 cents per barrel on rice, the AAA official said. Farmers who participate in the 1941 AAA program and plant within their far acreage allotments of these crops are eligible to receive payments at these rates, he declared.

In addition to parity payments, cooperating farmers will receive conservation payments on the normal yield of the farm acreage allotments. As previously announced, conservation rates for 1941 are 1.37 cents per pound on cotton, 8 cents per bushel on wheat, 8.91 cents per barrel on rice, 11.25 cents per 100 pounds on peanuts, \$1.30 per acre on commercial vegetables, and an average of 91c per acre on general soil depleting crops for Floyd County. All payments are subject to deductions if acreage allotments are overplanted.

Farmers, also, may earn payments under the Agricultural Conservation Program for carrying out approved soil building practices up to the maximum allowance available to the farm. In most cases, this information has been made available to the farmer on his 1941 farm plan sheet.

Parity payments in Texas are made to producers of wheat, cotton and rice to give them more nearly a fair share of the national income and to bring farm income and purchasing power nearer the 1910-14 level, the secretary explained. At that time, before the first World War, prices of agricultural and industrial products were in comparative balance. Both conservation and parity payments help farmers to adjust production to meet all market needs and to farm in such a way as to maintain and build up the fertility of the soil, Hoots explained.

## 4-H Boys Invited To "Ag Day" at A. and M.

Texas 4-H Club boys and their sponsors and county agricultural agents have been invited to attend "Ag Day" May 3 on the campus of Texas A. and M. College by the Ex-4-H Club Boys Association. Approximately 300 boys are expected to visit the college and attend special activities planned for the day.

Visiting 4-H Club boys will wear county arm bands to identify themselves, and they will be shown around the campus by members of the Ex-4-H Club Boys Association. Graham Purcell, president; J. D. Jordan, vice president; and "Bugs" Tate, secretary, have issued the invitations through county agricultural agents.

Approval has been given to the undertaking by Dean E. J. Kyle of the School of Agriculture and the State Boys' Club Agent of the Extension Service, L. L. Johnson.

Texas petroleum workers are paid \$272,000,000 a year in wages and salaries. This is approximately 40 per cent of the total business and industrial payroll in Texas.

Texas farmers and ranchers receive \$128,000,000 a year from the Texas petroleum industry in lease and royalty payments.

Homer D. Jones of Dallas, spent the week end with his brother and family; Mr. and Mrs. W. O. Jones.

Dalton Jones of Lubbock Tech. spent the week end with his parents, Mr. and Mrs. W. O. Jones.

Texas produced 14,362,000 pounds of cheddar cheese in 1939.

The South Plains region of Texas is the center of Sudan grass seed production in the United States.

It is estimated that if terracing needed on farms in the United States were done it would call for moving as much earth as in the digging of 40 Panama Canals.

Raw salads are necessary because they provide the important Vitamin C, which is a factor in preventing pyorrhea.

Trade agreements between the United States and Canada have been modified to permit free entry of oranges into Canada during the months of January to June, inclusive.

## New Publications Made Possible by Department

Thirty-eight new publications were issued by the U. S. Department of Agriculture during March and are obtainable from the Department's Office of Information, according to information received by the Extension Service of Texas A. and M. College.

Among the free ones which may be of interest to rural people in Texas are: "Control of Turnip Aphids in the Southern States," FB 1863; "Slip Covers for Furniture," FB 1873; "Projects Under the Cooperative Farm Forestry Act," L 208; "Work of the Soil Conservation Service," "Soils and Security," and "Guarding a Heritage," (the soil); "Grain Prices and the Futures Market: A 15-Year Survey, 1923-1938," TB 747; "Dairying by Major Type of Farming Regions," TB 751; "Vegetable Seed Treatment to Prevent Distase," FB 1862; "Brucellosis (Bang's disease, infectious abortion) of Cattle," FB 1871.

In addition, "Expenses, Income, and Dividends of Oklahoma and Texas Cooperative Cotton Gins" is available from the Farm Credit Administration.

### CALL NUMBER 12 IS FOR FOUR FLOYD COUNTY MEN

The local board will fill Call No. 12, for four men to go to induction station May 6th, 1941, with the following registrants:

- John Thomas Lewis, Floydada;
  - Otis Johnson, Floydada;
  - Mace McPherson, Lockney;
  - Sam Eldridge Bolton, Lockney.
- These men will go by bus to El Paso, Texas.

Texas petroleum production makes up 93 per cent of the value of all mineral production in Texas.

## CLASSIFIED ADVERTISING

HAND MADE BOOTS in all styles and colors. Fergerson's Shoe Shop. 21-tfc.

You should see the new 1941 Servel Electrolux Gas Refrigerator on display at ELLIOTT APPLIANCE East side square, Phone 89. 21-tfc

FOR SALE—Cotton Seed, Field Seeds, Maize, Standard and Dwarf; Sudan, Hegari, and Cane Seed, Cereals treated. See us about your requirements. FLOYDADA SEED COMPANY. 20-tfc

Our FLOWERS are FRESH and are BEAUTIFULLY ARRANGED. ILLUMS, FLOYDADA FLORISTS

Our used department is jammed to capacity with such items as, Coolers, Iceboxes, oil ranges and heaters, oil water heaters and one six foot kerosene refrigerator. Everything at prices you can afford to pay. Pay us a visit. C. H. Elliott Appliance, East side square, Phone 89. 21-tfc.

LANDS FOR LEASE  
A few farm tracts to lease at reasonable prices for cash.  
W. M. MASSIE & BRO.  
Floydada, Texas. 11-tfc

WANTED: An opportunity to demonstrate in your home the new 1941 Servel Electrolux Refrigerator. C. H. ELLIOTT APPLIANCE, East side square, Phone 89. 21-tfc

For best and cheapest monuments, either in marble or granite. See S. B. McCLESKEY. 24-tfc

Want to stop those ANTS. Get an ANT TRAP at Star Cash Grocery. 21-tfc

Laces, Polishes, Belts, Dye, Insols, Arche Supports, Dance Taps, Etc., at Fergerson's Shoe Shop. 21-tfc

Don't let those ants spread. Those ANT TRAPS at Star Cash Grocery should stop them. 21-tfc

We invite you to visit the green house. PARK FLORISTS—Mrs. W. S. Goen. Phone 78. 46-tfc

PLANTS and SEEDS—at STAR CASH GROCERY. Seed Corn too. 21-tfc

## Floydada Insurance Agency...

Insurance of all kinds. Your inquiries and business respectfully solicited.

W. H. HENDERSON  
OWNER

### STYLE SHOPPE

Mrs. Mollie A. Morton

No. 782

No. 1275

No. 316

No. 1275

for Youth of all Ages

## Martha Manning

ORIGINALS FOR MISSES AND YOUTHFUL HALF SIZES

ORIGINALS DESIGNED BY YOUNG AMERICANS FOR YOUNG AMERICANS

**\$3.98      \$6.50      \$7.98**

No. 1275. Crisp embroidered organdy with lace trim, forms the yoke of this dainty model of coin print sheer rayon. Tiny pearl buttons run from the neck to the hem. Sizes 12-20. Colors, American Navy, Nassau Rose, Island Aqua. \$7.98

No. 782. A delightful flower garden Marvellsheer rayon print to cheer your heart! The skirt bursts into gales of pleats to make you walk more gracefully! Sizes 16½-20½. Colors, Navy, Brown, Black. Pattern confined to Martha Manning. \$6.50

No. 794. Eye-appeal in every cycle! Smart and simple is this lovely Rayon. It has a convertible neckline and easy-to-change front coat closing. Sizes 14-20. Colors, Rose Clay, Day Blue, Natural. \$6.50

### Director for Defense Savings Issues

Responsible Gale F. Johnston, director for the Defense Savings Program of the Treasury Department, will make a visit to Austin on April 25, issued the following statement:

"The government desires the support of every man, woman, and child in this national emergency. The defense savings program of the Treasury Department offers an opportunity to have a share in the production of a piece of defense material; however, there are many who can't make an investment in this security plan. There is a security

dividual. The lowest denomination of the defense savings stamp is 10 cents, whereas the largest amount that a person may purchase in one year of the combined securities, exclusive of the stamps, is \$53,750.

"Continuous and systematic investment in defense saving securities will promote thrift at a time when national safety calls for savings and not spending. When an individual takes advantage of the increase in income occasioned by this national defense program and buys as many commodities which could well be termed surplus or luxuries, he puts an additional strain on the national production. The national production should have as its primary purpose defense materials and equipment.

"In addition to building our national defense through this program, there is the very business-like aspect for the individual of making a prime investment in these securities. Not only is one backing the United States Government in a moral sort of way, but he is purchasing a security behind which is the faith and the security of the entire United States. The securities involved in this program are considered to be among the finest from every standpoint that have been put on the market in many years.

"These securities, and particularly the 'E' bond, which will prove most popular to the normal individual investor, will never bring less than their original cost. If held to maturity they will produce a very satisfactory interest return, considering their conservative and safe investment feature. If this Series E bond is held to maturity, it will yield the equivalent of slightly less than 3% interest. For instance, the \$25 maturity value bond will cost \$18.75, and at the end of ten years one will receive the full maturity value of \$25.00. This bond may be registered in the name of one individual or the name of two individuals as co-owners, or in the name of one individual as owner and of one individual as the beneficiary. The owner of these bonds may redeem any bond at any time after 60 days from the issuance of the bond. The table of redemption values appears on the face of the bond; however, everyone should know that they will always receive as much as this bond has cost. It cannot go down in value. These bonds may be purchased through your bank or Post Office, or direct by mail from the Treasury of the United States, or from any Federal Reserve Bank.

"One of the greatest things about the entire program is that it will enable an individual by continuous and systematic purchasing to buy securities that will serve as a reserve against the future. We cannot tell what the future will bring. We do know that the present spending for national defense will ease down some day. If individuals during prosperous times have set away a reserve for the uncertainty of the future our national economy will not suffer a severe shock when we change over from a defense economy to a peace-time economy.

"Thrift is never easy. It is much harder to save than it is to spend.

### Floyd County to Get CCC Camp is Announced

Washington, April 28.—James J. McEntee, director of the Civilian Conservation Corps, said today the final quarter of the current year had begun with 53 camps assigned for operation in Texas, a decrease of two from the number operating during the winter.

"Approximately 10,600 CCC enrollees will work on conservation projects in Texas under the present program," McEntee said.

The spring operating program calls for the opening of four new camps and the closing of six. The new camps are: SCS 43, Coleman County; SCS 44, Floyd County, Floydada; SCS 45, Cochran County, Morton; and SP 65, Possum Kingdom State Park, Palo Pinto County, Mineral Wells. The following camps are ordered closed: SCS 15, Lamb County, Littlefield; SCS 16, Dawson County, Lamesa; SCS 21, Brown County, Brownwood; SP 42, Garner State Park, Uvalde County, Uvalde; SP 43, Goliad State Park, Goliad County, Goliad; and SP 54, Tyler State Park, Smith County, Tyler.

### Wool Growers to Open Storage House Here

Local wool growers of Briscoe, Hale, Swisher, Crosby and Floyd Counties have set up a wool storage house at Floydada for the marketing season. Floyd County committeemen L. B. Cosby, T. Taylor, A. G. Cardinal and H. D. Meredith have made arrangements with the Mid West Wool Growers Marketing Cooperative and have placed Mr. Gray Faulkner of Fort Worth in charge of the Floydada, storage plant to assist wool growers in the marketing of their clip. Mr. Faulkner reports that the building which was formerly used for the boiling alley located on the west side of the square offers adequate storage and that wool bags and twine are available to growers.

This association will concentrate, purchase or make advance on all wool. It is hoped that local wool growers make themselves available of the association so that a wool market center can be established in this area. Wool growers must remember that June the 15th may be the turning point when the division of purchases U. S. Government will state publicly amounts of wool need in the defense program for the balance of the year and will also discuss the differential in foreign and domestic wool in an effort to find a fair and reasonable price to the domestic grower, Mr. Faulkner stated.

### NOTICE TO CREDITORS OF ESTATE OF W. M. HOUGHTON, DECEASED:

Notice is hereby given that Letters Testamentary upon the Estate of W. M. Houghton, Deceased, were granted to the undersigned on the 21st Day of April, 1941, by the County Court of Floyd County, Texas. All persons having claims against said Estate are hereby required to present the same to me as the law directs.

My address is 208 East Crockett Street, Floydada, Floyd County, Texas.

This 21st Day of April, 1941.  
HOWARD HOUGHTON,  
Executrix of Estate of W. M. Houghton, Deceased.

Four-fifths of the value of all the crude oil produced in Texas each year is paid to Texas oil workers and farmers and ranchers in wages and lease and royalty payments.

There are many temptations for the spending of our money; however, the smart American always builds a reserve for the future and this program offers such a plan in the most convenient, easy way that has ever been devised.

"It is hoped by your Government that you will embark on a program of continuous saving, such as buying a bond every month or at some other designated period, or of buying stamps each week or each month. There is no goal or quota to be reached in the effort. The whole answer will be the number of Americans who enter the program on an investment basis, which is systematic and continuous month by month saving."

### SINCE 1883

Ballard's Snow Liniment has been an inexpensive aid in relieving the discomforts of Muscular Congestion that accompanies Sprains, Strains, Bruises, and Muscular Soreness from over-exertion or undue exposure. In 30c and 50c bottles.

WHITE DRUG COMPANY

### Wheat Quotas Still In The Offing for Farmers

College Station, May 1.—Wheat quotas neared the stage of actual proclamation this week with the indicated wheat supply for 1941 still well above the level calling for a marketing quota. B. F. Vance, administrative officer in charge of the Agricultural Adjustment Administration in Texas, points out.

According to government estimates, based on intentions to plant reports, the spring wheat crop will run about 17,000,000 acres. At average yields this acreage would make a spring wheat crop of about 180,000,000 bushels. With an indicated winter wheat production of 633,000,000 bushels and a carry over of 380,000,000 bushels, the total supply for the 1941-42 marketing season would be about 1,200,000,000 bushels.

Vance pointed out that this is more wheat than we normally grind into flour in two years. Total annual consumption, including food, livestock feed, and seed, has been running about 675,000,000 bushels. On this basis the quantity available for exports and carry-over will be more than 525,000,000 bushels. Exports this year may total, at the most, 35,000,000 bushels.

In three years time, war blockades and economic barriers have reduced United States exports from more than 100,000,000 bushels to the level expected this year. This loss of markets, plus favorable wheat crops during recent years, has brought about the surplus.

"If present crop prospects materialize, the situation will call for a quota proclamation and a vote by wheat farmers," Vance declared. "To keep the quota in effect, two-thirds of the farmers voting in the referendum must approve. Marketing quotas are a guarantee that all wheat growers will share equally in the available market and in handling the surplus."

### REA Lines Are Spreading Over Texas

College Station, May 1.—Allotment of \$500,000 for construction of two transmission lines in Texas has been granted recently by the Rural Electrification Administration. The Brazos River Transmission Electric Cooperative of Itasca and the Farmers Electric Generating Cooperative of Gilmer each received \$250,000. This brings allotments made by the REA since it was established in 1935 to \$362,656,621.22, of which \$93,274,500 represents operations of the current fiscal year.

Forty-one states, including Texas have enacted laws permitting farmers to establish conservation districts.

Eggs from hens getting a diet that is low in pigments but high in fish liver oil will have light-colored yolks rich in Vitamin A.

All but three of Texas' 254 counties now have oil or gas production or exploration.

More than 500 separate oil and gas fields are now producing in Texas.

Cotton loans made by the Commodity Credit Corporation on the 1940-1941 crop in Texas amounted to \$77,640,143.88. Of this amount \$28,476,125.98 had been repaid on April 14, and loans outstanding on that date aggregated \$49,164,017.90.

ANNOUNCING ORVILLE W. HARRIS in charge of the Welding Department of shop. Portable welding for hurry-up jobs. call us.

### SPEARS & DANIELS

INTERNATIONAL TRUCKS AND PARTS AGENCY

SEVERAL GOOD USED TRUCKS.

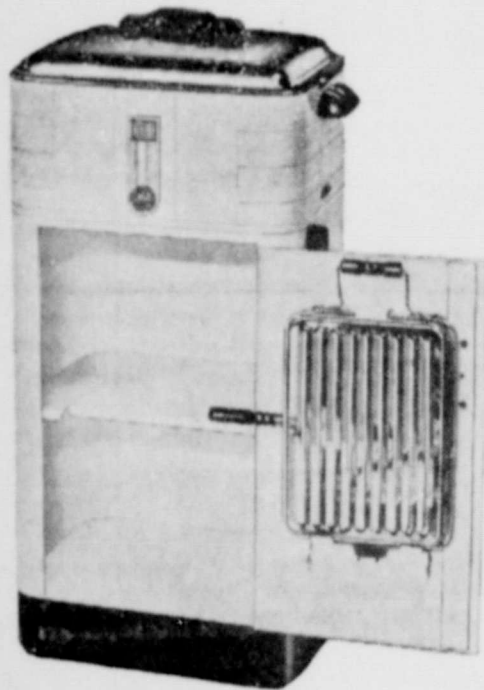
Complete Automotive Repair and Replacement Service Located Across Street from Post Office.

### EVERHOT

White Roaster \$19.95  
Enclosed Cabinet 6.95  
Complete Broiler Unit 3.95

THIS \$30.85 VALUE for ONLY \$19.95 For May ONLY

Special Terms \$1.95 Down, \$2 Per Mo.



### See This Complete EVERHOT Electric ROASTER that

ROASTS • BROILS • BAKES • STEWS • GRILLS • FRIES  
... at Your Local Electric Dealer ... or  
Texas-New Mexico Utilities Company

### Prepare for Pleasant, Low Cost SPRING MOTORING



★ Pave the Way with Sovereign Spring Service! The unwelcome presence of winter-worn lubricants, or fouled spark plugs can ruin your spring driving pleasure. A complete Sovereign Spring Check-Up by our service experts will banish motor ills and insure safe, enjoyable economical motoring for you. Steer in soon to prepare your car with Spring Safety Service and a complete bumper-to-bumper Sovereign Service Check-Up.

### SOVEREIGN Spring CONDITIONERS

- Switch to Spring Motor Oil • Change Gear Lubricants • Drain and Flush Radiator • Check Battery • Get a complete Bumper-to-Bumper Check-Up.

STRICKLAND, Distributor. Phone 289



INDEPENDENTLY OWNED and OPERATED

### AIR CONDITIONED REST AND RELAXATION AT MINERAL WELLS, TEXAS

Outdoor activities at their best. The ultimate in facilities for recreation and rejuvenation, including the finest therapeutic baths with complete massage. Luxurious accommodations, beautiful grounds, and an eight-mile long sun veranda; outstanding features at this famous resort Dancing each Saturday night on the Roof. Write for information.



### THE BAKER HOTEL

### FIRST NATIONAL BANK Floydada, Texas

1903—TIME TESTED SERVICE—1940

### CLINE AND RAINER GARAGE

Where you can get everything for your car at one-stop. Mobilgas, Mobiloil

RADIATORS REPAIRED, and boiled out for cars, tractors and combines. Parts of all kinds, welding, tires, batteries. In fact we have everything for your car. See us for lawn mowers and hose.

We buy junk Batteries. Phone 37

SHORTY BARKER and CLAY ANDERSON, are in charge of our shop, and will appreciate your next job.

### CLINE AND RAINER WESTERN AUTO ASSOCIATE STORE.

### Helpy-Selfy Laundry

DO YOUR OWN WASHING the quickest, easiest, cheapest way to do your laundry.

25c Per Hour. PLENTY OF HOT, SOFT WATER.

### Steam Laundry Charges—Rough Dry 4c

WET WASH washed and extracted ready to iron

2 Cents a Pound

Shirts 9c, in Thrift T and Rough Dry Bundles.

### White Way Laundry

Formerly Floydada Steam Laundry

PHONE 141 FOR PICK-UP AND DELIVERY SERVICE! FLOYDADA, TEXAS

### Funeral Services Held for William Samuel Moss

Last rites were held Sunday afternoon at 2:30 o'clock at the First Baptist Church for William Samuel Moss, age 67 years, 11 months and 16 days. Mr. Moss passed away Saturday morning at 10:30 at the Floydada Hospital and Clinic where he had been ill for two weeks. Rev. Vernon Shaw conducted the services, assisted by Rev. Renfer, pastor of the Presbyterian church.

Mr. Moss was born May 10, 1873, at Grand Saline, Texas, and moved to Floyd County about 11 years ago from Mansfield, Texas. Deceased is survived by his wife, Mrs. Julia Adams Moss.

Pallbearers were: George Sherrill, Lewis Norman, Lorraine Britton, J. B. Claiborne, Byron Clark, and Virgil Shaw.

Honorary pallbearers were Odd Fellow Lodge members.

Interment was made in Floydada Cemetery with Harmon Funeral Home in charge of arrangements.

### Insured Wheat Growers May Defer Claim Settlements

College Station—Texas wheat growers with Federal crop insurance may, upon unavoidable crop loss, have their indemnity paid immediately in the cash equivalent or request that settlement be deferred until later, Wilmer T. Swink, state AAA committeeman and wheat farmer from Olney, pointed out this week.

If a grower asks for deferred settlement, he will receive from the Federal Crop Insurance Corporation a certificate of indemnity. The grower may use this certificate to establish the cash equivalent of his indemnity by properly executing it and mailing it direct to the Corporation's Kansas City branch office, or he may use it to obtain a wheat loan from the Commodity Credit Corporation, the committeeman said.

Final settlement can be deferred until the closing date for getting wheat loans from the Commodity Credit Corporation, or 90 days from the time the certificate of indemnity is issued, whichever is later.

Swink reports that approximately 75 claims have been submitted by insured Texas growers so far. Most of the losses reported have been caused by wind erosion in several counties bordering on New Mexico.



### DIVE BOMBING TACTICS INVENTED BY AMERICANS

The employment of stukas, or dive bombers, which have proved to be so destructive to fighting men and their morale, is not, as many persons suppose, entirely the result of military experiments in Europe.

During the first World War planes frequently swooped low over the trenches to fire scattering bursts of machine-gun fire on enemy troops, but such sporadic forays were by no means a regular form of attack.

It was post-war experiments in our own country which proved that airplanes could be used as a devastating blitzkrieg weapon. Dive bombing is said to have first been tried at Kelly Field, Texas, but was abandoned because it was thought that planes were too exposed to fire from ground troops.

Some years later, while Marine Corps pilots were engaged in experimental dive bombing at their west coast base at San Diego, Calif., they were ordered to duty in Central America. Here dive bombing tactics were employed with marked success against bandit groups.

When the Marines took part in air shows at Montreal, Canada, and at Cleveland, Ohio, in 1932, their dive bombing was a sensational feature of both shows. Nine "hell divers" of the Marine Corps engaged in spectacular ground strafings or used miniature bombs to blast targets.

It is a significant fact that one of the spectators at Cleveland was a reserve officer of the German air force and a member of an international acrobatic team performing at the races.

Mr. and Mrs. Dorris W. Jones, and daughter, Linda Gay, and Mrs. Marvin English and daughter, of Midland, spent the week end visiting with Mr. and Mrs. W. O. Jones and Mr. and Mrs. Russell King.

### Farm and Ranch People Can Profit By Co-operating

College Station, May 1.—Texas farm and ranch families can profit materially and also contribute to national defense by cooperating in several movements announced recently by the Department of Agriculture, says Director H. H. Williamson of the Texas A. and M. College Extension Service, who advises farmers to keep posted on fast-moving plans for converting ever-normal granary supplies into ever-normal food supplies.

Among the defense programs announced recently by the Secretary of Agriculture are: A plan for making purchases in the open market to support long-term prices of hogs, dairy products, chickens, and eggs, a program to expand the production of tomatoes for canning, and a nationwide drive to increase egg production this spring and summer from present laying flocks.

Director Williamson points out that the ever-normal food supply program is intended to stimulate sufficient increases in production to insure food supplies adequate to all needs here and abroad. Should unwarranted speculation drive prices up to unduly high levels at any time, the supplies in the hands of the government will be released to stabilize prices and maintain them at reasonable levels. This means consumers will be protected and farmers will benefit by selling more products at fairer prices than those which have prevailed in the past few years.

A 50 percent increase in production of tomatoes for canning is also sought this spring to meet demands for canned tomatoes under the Lease Lend Act and for distribution for the American Red Cross. Additional supplies will be used for school lunch programs, relief distribution, and other public assistance purposes, the Director explains. To make it possible for canners to take immediate steps to insure an increase in tomato acreage, the Federal Surplus Commodities Corporation will ask canners to submit offers at once to deliver canned tomatoes after the new pack has been completed. In considering bids the FSCC will make allowance for increases of from \$2.75 to \$3.00 per ton over 1940 contract prices to growers.

The new drive for increase in poultry products is expected to increase the nation's egg production by about six percent in the next 15 months, Director Williamson says. This means eggs produced will be increased by about 10 million cases of 30 dozen eggs each.

Extension Service poultrymen George P. McCarthy and H. H. Weatherby say the goal can be achieved by ample feeding beginning immediately, by filling up the nation's poultry houses to capacity with laying birds this fall, and by an increase of around 15 percent in the number of chicks raised. The specialists emphasize that expansion of permanent new poultry housing at this time is probably not justified.

### MRS. ANDREWS' RECITAL POSTPONED ON ACCOUNT OF WET WEATHER

Mrs. V. Andrew's recital which had been announced for Monday night, has been postponed until Monday night, May 6th, on account of the weather. The program will be held at the high school auditorium beginning at 8:15.

Four Texas borrowers from the Rural Electrification Administration made advanced payments aggregating \$17,000 on their loans during January, 1941. Since the REA charges its borrowers simple interest on the unpaid balance of their loans, this encourages them to make payments in advance.

### NOTICE TO CREDITORS OF ESTATE OF W. M. HOUGHTON, DECEASED.

Notice is hereby given that Letters Testamentary upon the Estate of W. M. Houghton, Deceased, were granted to the undersigned on the 21st Day of April, 1941, by the County Court of Floyd County, Texas. All persons having claims against said Estate are hereby required to present the same to me as the law directs.

My address is 208 East Crockett Street, Floydada, Floyd County, Texas.

This 21st Day of April, 1941.  
HOWARD HOUGHTON,  
Executrix of Estate of W. M. Houghton, Deceased.

### TO RELIEVE MISERY OF COLDS

LIQUID, TABLETS,  
666 SALVE, NOSE DROPS  
COUGH DROPS  
Try "Rub My Tism" - a Wonderful Lintment

# Mother's Day

MOTHER.... The Sweetest Name On Earth  
Sunday, May 11 Is Her Day  
.....Of Course You Won't Forget!

MOTHER'S DAY... a day recognized by the whole nation in which to do special honor to greatest person on earth... YOUR MOTHER. You should express your love with appropriate gifts. Everything you do for her or give her on Mother's Day is a source of joy, and to a reward for everything she has done for you.



New Straws and Felt Hats  
\$1.00, \$1.98, \$2.45



### MATCH YOUR BAG AND GLOVES

High fashion—Low price. Colors black, beige and white.  
Purses \$1.00, \$1.98  
Fabric Gloves \$1.00  
Kid Gloves \$1.98

### NECK SCARFS

In all new styles 79c and \$1.00

### WEAR FILLED NECKWEAR

Crispy Neckwear—fresh accent to your dresses, suits! Organdies, piques, eyelet types. Bibs, jabots, collars, cuffs 50c and \$1.00

### GIVE COSTUME JEWELRY

Gay, amusing, fun to wear fruit jewelry. Many other types in necklaces, bracelets, and pins. \$1.00, \$1.98, \$2.98

### PERFECT GIFTS—LINEN HANKIES

Hand rolled, pure linen, large size. Acceptable gifts 15c, 25c, 45c

### GIVE HOSIERY

For a practical gift—give hosiery. All new spring shades 79c, \$1.00

### BELTS

We have a nice assortment of belts in kid and pattenas. Black, white and pastels 35c, 50c, \$1.00

## STYLE SHOPPE

"Always Showing Newest Things First"  
Mrs. Mollie A. Morton  
Phone No. 17