

# "By Helping Business You Help Yourself"

# The Floyd County Plainsman

Floydada, Floyd County, Texas, Thursday, February 20, 1941

Number 11

Volume No. 12

## Land Use Committee Met Here February 13

Floyd County Land Use Planning Committee met in the District Court Room, Thursday, February 13, to discuss the report of the farm men and women members, agency representatives and visitors attended the meeting. Chairman L. A. Williams presided over the meeting at 9:30 a. m. After the regular routine business, Chairman Williams introduced Mr. Scott, assistant in agricultural extension service, College Station, Texas. Mr. Scott made a few short remarks on what land use planning was doing over the State. He congratulated the county group on the excellent work that was being done in the county and stated that the State Planning Committee regarded Floyd County as very outstanding in this type of work.

Mr. Scott then introduced W. R. Smith, assistant hydraulic engineer with the Bureau of Agricultural Economics of Amarillo. Mr. Smith in opening his report on the water survey, stated that he was a governmental agency representative and that he was presenting facts as found by the engineers and that these facts were being presented to the farmers so that they might get the information with their own eyes and experience in order they might be in position to give their opinions to the law making body of the state as they thought

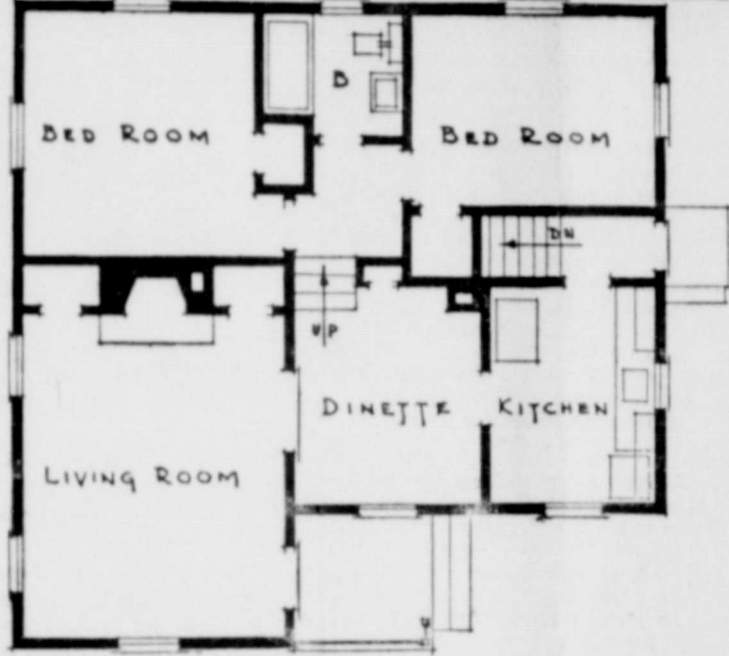
Stanley then presented a report of the studies of ground water that have been made possible through allocations of the State Legislative funds. Mr. Stanley briefly stated included following:

- Source of ground water.
- Recharge of ground water.
- Discharge from depression ponds.
- Natural discharge of ground water.
- Discharge of ground water in shallow water table on the high plains.
- A brief history of the development of ground water for irrigation.
- The use of ground water for irrigation.
- Stanley pointed out that according to estimates, the total number of wells pumped for irrigation in the high plains of Texas and the amount of land irrigated from the amount of the last three years was as follows: 1937, 1,150 wells pumped, 200,000 acres irrigated; 1938, 1,500 wells pumped, 200,000 acres irrigated; 1939, 1,700 wells pumped, 230,000 acres irrigated. The total amount of water, in acre-feet, withdrawn from the underground reservoir during the period, is roughly estimated as follows: 1937, 130,000; 1938, 145,000; 1939, 165,000.

In concluding his report Mr. Stanley stated that a very large quantity of water that has accumulated over a long period of time, is stored in the natural underground reservoir formed by the beds of sand and gravel that lie below the high plains in Texas. A small part of this water is discharged each year by the flow of springs or by evaporation and the growth of plants in the localities where the water table is near the surface. This natural discharge is approximately balanced through a long term of years by water derived from that part of the rainfall upon the area which penetrates to the water table. The average annual replacement is only a small part of the average annual rainfall.

He continued by stating that in the last 30 years water has been pumped from wells in this region in large quantities, chiefly for irrigation. The annual pumpage has been increased greatly in the last six years. In 1937 it amounted to about 130,000 acre-feet; in 1938 to about 145,000 acre-feet; and in 1939 to about 165,000 acre-feet. There has been a general and persistent decline of the water table in the pumping districts during the last few years. A large part of the water that has been pumped from wells in this region has been derived by reduction in underground storage. A question in the mind of many of the owners of irrigation wells in the high plains is this: What are the limits of safe pumping in my neighborhood? How much water should be pumped and how closely should the wells be spaced? The investigation shows that this is largely a question of economics. With increased pumping the rate of decline of water table and the pumping lift will increase. However, as the uppermost sands and gravels are unwatered, the wells that draw from them probably will decline in yield. The farmers of the high plains, with their water supply, are in a position similar to that of a man who has a large capital but who uses a part of his capital each year. Obviously, the problem of the conservation of the stored ground water for future as well as present beneficial use deserves serious consideration.

At the conclusion of the above report, the Land Use Planning Committee went into regular session. Motion was passed that additional names be added to the standing irrigation subcommittee, composed of Ben Quebe, Buck Sams, Henry Schacht, R. B. Gary, and Mrs. Chas. Smith. The following names were added: Geo. T. Meriwether, C. J. Taylor, Ed Whitfill, Wyatt McLaughlin, F. L. Brown. This committee will meet at Lockney on February 18 for the purpose of making definite plans for the irrigation school to be held at Lockney on March 5 and 6.



FLOOR PLAN

For the family that desires spaciousness with economy and flexibility, a home such as this will give great satisfaction.

In the dignity of its design and the unaffected construction, this house is reminiscent of the charming and livable homes built along the byways of old New England.

The large living room connects with the dinette and through to the efficiently planned kitchen. Up a few steps are two good-sized bedrooms with ample closet space and cross ventilation. The bathroom is easily accessible to both.

This property was financed with a mortgage of \$5,000 insured by the Federal Housing Administration. Monthly payments on a mortgage of this amount, over a period of 25 years, average about \$2.00, exclusive of taxes and hazard insurance.

## Survey Shows Oil Paying Large Volume of Tax

Dallas, February 19th.—More than half of all the oil produced in Texas already pays a tax of over 10 cents a barrel, a survey just completed by Texas Mid-Continent Oil and Gas Association statisticians shows. Twenty-two separate taxes are now levied against Texas oil producers.

The survey, based on tabulation of tax records of all 254 counties and of independent taxing subdivisions, shows that more than half of the State's oil bears taxes of 10.26 cents a barrel. All of the oil produced in Texas pays an average tax of 9.23 cents a barrel, while in some counties the taxes amount to 15 and 20 cents per barrel.

"Texas oil producers now pay 22 separate taxes, or 21 in addition to the State gross production tax," a statement today from the association points out. "In fact, analysis of the various tax levies borne by oil produced in 33 leading Texas oil counties (which produce over half of the State's total crude output) shows that the State gross production tax of 2.34 per cent makes up less than 20 cents of each dollar collected in State and local taxes on oil production and producing properties. The fact that so much of this oil already pays over 10 cents a barrel is noteworthy in view of statements sometimes heard that Texas oil should pay 10 cents a barrel tax."

These 22 taxes do not include any paid on refining, pipe lines or any branch of the industry except production. Nor do they include the gasoline taxes paid by the individual motorist.

"The oil tax situation is different from that of any other State," the association statement explains. "There are more than 9,000 separate local taxing subdivisions in our State, each of which is empowered under the Texas constitution to levy and collect taxes. Many of these are independent taxing agencies such as cities, independent school districts, water districts, road districts, etc. Every oil field within the jurisdiction of any of these taxing agencies is subject to property assessments and tax levies deemed necessary by the respective taxing officials. And all of these taxes must be paid by the Texas oil producer from the money he receives for

## Russell Rucker Is Opening Bakery In Floydada

Mr. and Mrs. Russell Rucker, of Olton, have moved to Floydada where he is overseeing the remodeling of the building and the installation of bakery equipment, preparatory to their opening a bakery business here Saturday, February 22.

Mr. Rucker is a former resident of Floydada, and was employed by the Wilkerson Bakery. Since leaving here Mr. Rucker has owned and operated bakeries at Turkey, Rails and Olton. For the past two years he has been living in Olton, where he still owns and operates a bakery.

Mr. Rucker's mother lives in east Floydada where she has made her home for a number of years.

Mr. Rucker announces that he will feature Golden Krust Bread, Rucker's Vitamin B-1 Bread, 100% Whole Wheat Bread, Wheat Flour, Whole wheat and white flour, and French Bread. He will also have on hand at all times pies, cakes, cookies and pastry.

In an ad elsewhere in the Plainsman Mr. Rucker invites the public to attend his formal opening.

## REA Lines Spread Over Much Scope Of Texas

Four contracts for building 810.7 miles of lines to serve 1,523 consumers have been awarded by four electric cooperatives in Texas. The Rural Electrification Administration has listed the four co-ops as the Lamar County Electric Cooperative Association of Paris, 172.2 miles, to serve 392 members; the Karnes Electric Cooperative of Karnes City, 300 miles, to serve 439 members; the DeWitt County Electric Cooperative of Cuero, 120.5 miles, to serve 261 members; and the Jackson Electric Cooperative 218 miles, to serve 431 members.

Leaves burned in back yards and alleys each fall could be converted into leaf mold within a year if properly handled, says the Colorado State College Experiment Station.

his petroleum, his sole source of income."

## Farm Planning Time In Texas Again

College Station, February 19th.—Farm planning time being at hand, a complete plan should comprehensively consider all resources as in any other business, says Tyrus R. Timm, Extension Service economist in farm management for Texas A. and M. College. This because planning time is equal in importance to planting time on most Texas farms. The specialist says that farm resources include land, labor, equipment, buildings, feed, livestock, and money or credit for current operation. Other factors, such as available markets and road conditions, are elements of almost equal importance.

A farm business plan, he explains, falls naturally into three divisions or phases. First, there is the plan for crop production, which involves the field layout of the farm, the cropping system, labor, and equipment necessary for growing and harvesting crops, and facilities for storage and marketing. The second is the livestock production plan, which involves the kind and numbers of livestock to be raised, the feed, labor, equipment, shelter, sanitation program and marketing plan; and the third is the budget for expense and income. Timm reminds farmers that soundness of any plan of production and marketing depends upon its ability to yield the maximum return over costs, and that expense of operation on any farm must be guessed at if no accounts are kept. By using the Texas Farm Record Book, which has been prepared by specialists at Texas A. and M. College, he adds, farmers can budget their expenses as accurately as the corresponding estimates of other businesses.

"In addition to the record book, the Extension Service has available for free distribution through county agricultural agents two pamphlets which may be of assistance in planning farm operations," the specialist says. "One is entitled 'How to tell whether you went forward or backward financially on your farm during the year,' and the other 'Farm and home production plan.'"

Let Cavanaugh Do Your Printing

## Former Atheist Speaks at Assembly of God in Floydada

Evangelist Michael Laleff, a native-born Bulgarian, who was reared in the Greek Orthodox Church, but who, when he came to America as a youth drifted into Atheism and crusaded against Christianity for a number of years, (until his conversion to Christianity) is speaking tonight this week, at the Assembly of God Church, two blocks west of the water tower.

Rev. Laleff is a pleasant and efficient speaker with a timely message. Speaking on Prophetic subjects with the aid of a large chart, will prove to be an inspiration to those who attend. He is non-sectarian and has preached in various denominations throughout the country.

The subject for Sunday morning's message will be "The True Worship" Sunday night Bro. Laleff will give his thrilling life story "From Atheism to Christ." Don't fail to hear this message.

H. C. LONIS, Pastor.

## Carloadings for Week-End

The Santa Fe System carloadings for the week ending February 15, 1941, were 17,945 compared with 16,620 for the same week in 1940. Received from connections were 7,175 compared with 5,154 for the same week in 1940. The total cars moved were 25,120 compared with 21,774 for the same week in 1940. The Santa Fe handled a total of 24,835 cars during the preceding week of this year.

Miss Louise Hyatt underwent a tonsil operation Tuesday at the Floydada Hospital and Clinic. Miss Hyatt is reported to be recovering nicely. Mrs. Dan Shaw of Crosbyton, sister of Miss Hyatt, is here with her during her illness.

Angelina County home demonstration women bought 100 dozen pineapples cooperatively in 1940.

## Mineral Wells Okays Square Dancing

Mineral Wells, February 19th.—It looks like the Baker Hotel of this famous resort city has started something. It appears as if the square dance fad, launched without any particular intention on the part of the Baker management, has caught on and got the approval of everybody, including the jitterbug continent!

The fad may have been born at Big Spring last spring, when Mineral Wells' Chamber of Commerce took some square-dancers to the convention of the West Texas Chamber of Commerce there. The dancers were one of the biggest attractions of the meet. Back home, the square-dancers appeared on the Baker roof a few times. They got the applause of everybody and the careful attention of the jitterbuggers. It wasn't long until guests and visitors were asking for instruction and the hotel provided it. And it wasn't long before the youngsters and everybody were trying out at answering the calls of the man who presided over the fiddle band that provided the music.

Now, visitors here will tell you, swing and jazz and all the other terms that apply to cacophony, have had to move over a bit to make room for the lift of the oldtime tunes to which the square-dancers cut their capers. And, according to what the Baker management hears, other large hotels are trying out square dancing with the local experience duplicated. Maybe grandma and grandpa had something, at that, that measured up to the hotcha of today. Square-dances are now one of the many features of entertainment at the Baker and the hotel thinks they have something.

## WORKS BOTH WAYS

Reckless fellows who drive with one hand are usually headed for a church aisle. Some will walk down it, some will be carried.—Santa Fe Magazine.

Growing of Alfalfa has paid New York farmers the most for the time spent on it for the past 25 years. The return averaged 68 cents an hour for labor.

## "Lunch for Mama" is New Crusade



A TASTY sandwich and a cup of two of freshly-made coffee is the noon-time need of mothers. If the kitchen dishes are still undone, fix up your lunch in a tray and carry it into the living room—be relaxed for a few minutes. Be careful with your coffee—it should be just right for complete satisfaction—here are general rules and a few sandwich ideas besides.

**For Good Coffee**  
Always wash the coffee maker after each use with plenty of hot, soapy water.

Be sure to use fresh coffee and never put newly-bought coffee on top of the old. Use the grind recommended for your coffee maker.

Accurate measurement is essential. For regular strength use 1 heaping tablespoon of coffee for each measuring cup of water. For double strength coffee (demi-tasse) use 2 heaping measuring tablespoons of coffee for each measuring cup of water.

Use a maker of the right size for the amount of coffee to be made.

Never allow the coffee to boil. Remove grounds from coffee as soon as it is made.

Serve coffee immediately after making. Cool coffee cannot be reheated without loss of flavor. If coffee must be kept hot keep it on an asbestos mat over low heat.

**Lunchtime Sandwiches**  
**Ham and Tangerine Sandwich:** Spread two slices of bread with butter or mayonnaise and place on plate. On one slice, place lettuce and slice of ham and pickle relish. Mix equal parts of shredded cabbage and diced tangerine sections, mix lightly and pile on other piece of bread.

**Bacon and Cheese Sandwich:** Toast two pieces of bread on one side; spread untoasted side with butter and prepared mustard. Place layer of cheese on bread and place under low broiler heat, 3 inches from flame and broil until cheese is melted. Broil the bacon at the same time. Top the sandwich with the crisp bacon and serve with wedges of tomato.

## COUNTY OFFICIALS STRESS FARM-TO-MARKET ROADS FOR DEFENSE



Importance of farm-to-market roads to national defense was highlighted by deliberations of County Highway Officials at 38th annual "New York City" Convention of American Road Builders' Association, New York City, January 27-31. Left to right, above, are L. V. Papp, president, ARBA County Highway Officials' Division and vice-manager, Oakland County Road Commission, Pontiac, Mich.; B. Rynning, Jackson County, Medford Ore., engineer; N. P. Manton, vice-chairman, Board of County Commissioners, Miami, Fla.; Stanton Hannah, McLennan County, Waco, Tex., engineer, division president. Belknap said, "No army, no navy can move without road supplies. Roads are as necessary to national defense as guns and ammunition. We need roads to the farms where the food is raised. We need roads so our defense forces can be transported wherever and whenever needed."

# THE FLOYD COUNTY PLAINSMAN

Published Thursday Each Week  
M. B. CAVANAUGH, PUBLISHER

In Floyd County \$1.00; Outside Floyd County \$2.00  
Entered as second class matter June 23, 1930, at the post office at Floydada, Texas, under the Act of March 3, 1879.

ADVERTISING RATES GIVEN ON APPLICATION

### NOTICE !

Any erroneous reflections upon the character, standing or reputation of any person, firm or corporation which may appear in the columns of The Floyd County Plainsman will be gladly corrected upon its being brought to the attention of the publisher.



HIS JOB IS TO BREAK GLASS

DEARBORN, MICH.—This man's job is to break glass. He's been at it for years. Yet he keeps on breaking it, trying to find a kind of glass that will bend instead of break.

After the first success with a glass that would break in a way that would not leave jagged edges, continued experiments have produced a glass which will crack and bend but not smash into dangerous cutting edges. In the 1920s, when the jagged glass in broken windshields was a major menace in even minor accidents, the Ford Motor Company pioneered safety glass in automobiles.

This picture, taken at that

company's glass plant, shows a 2-pound ball falling five feet upon a piece of safety glass. The glass merely cracks slightly. There is a newer glass now which will withstand the ball dropping 16 feet. This glass has a rubber-like quality and bends slightly when hit.

Ordinary plate glass of quarter-inch thickness shatters into jagged pieces when the balls drop only 18 inches.

Safety glass is made on the sandwich principle. This principle is to place between two layers of glass a sheet of plastic known as vinyl. Glass and plastic are formed into one unit under heat and pressure.

the air, landing right side up 250 feet from where it left the road.

Mrs. Sweat and her son were knocked unconscious. During the next 10 hours, until a passerby found them the next morning, they remained in the automobile in near freezing weather. They were thankful every time a train passed that the car had cleared the railroad tracks. Unable to get out of the automobile, the two sounded the horn to attract attention of a passerby, who took them to the home of relatives.

A pioneer plains woman, Mrs. Sweat took her first airplane ride at the age of 70, "so I can say that I have ridden every contraption on land, water and in the air," she said.

### HERWYN E. STRICKLAND, SECRETARY MANAGER OF C OF C RESIGNS

Herwyn E. Strickland, secretary-manager of the Floydada Chamber of Commerce for the past eight months, has resigned his position to re-enter the newspaper business in Abilene. The executive committee of the Chamber of Commerce accepted Strickland's resignation to become effective March 1, in a meeting this week.

Prior to entering Chamber of Commerce work in Floydada, Mr. Strickland had been associated with newspapers in Floydada, Jacksonville and Bryan.

Mrs. Strickland and the daughters will continue to make their home in Floydada until moving arrangements to Abilene have been made.

Mr. and Mrs. Wilmer Jones, Jr., spent the week end in Matador visiting Mr. and Mrs. Dorris W. Jones.

Reckless fellows who drive with one hand are usually headed for a church aisle. Some will walk down it, some will be carried.—Santa Fe Magazine.

Growing of Alfalfa has paid New York farmers the most for the time spent on it for the past 25 years. The return averaged 68 cents an hour for labor.

### LITTELL'S LIQUID

A Calcium Sulphurate Solution for relieving the discomforts of itching that frequently accompanies Minor Skin Irritations, Prickly Heat, and the Bites of Non-Poisonous Insects. Locally it helps to allay the itching of Eczema. Price 50c per bottle.

### WHITE DRUG COMPANY

As Seen in Picture Play Magazine

### Loma Leads REDINGOTES



The latest trick out of Hollywood DOUBLE FEATURE DRESS. You wear it 'round the clock... without the matching redingote you'll find this bright star in the Loma Leads collection at this store.

Blue, rose, gold, aqua. Sizes 12 to 20.

**\$7.98**  
**\$12.75, \$16.95**

With Waldes Kover-Zip Slide Fastener.  
In a CREST Fabric.

### STYLE SHOPPE

"Always Showing Newest Things First"  
Mrs. Mollie A. Morton, Owner  
Phone No. 17

### FLOYDADA FLYING CLUB IS ORGANIZED BY SEVERAL LOCAL MEN

Organization of the Floydada Flying Club was completed by a group of local men last mid-week. The Club has purchased, and its members are now taking instruction in, a Piper Cub ship.

Members of the club are Marvin Shurbet, Wallace King, Dale Strickland, T. E. Leach, Mark H. Martin, Milton (Buck) Sims, and Dr. Ira Bowman. A constitution and by-laws were adopted in a meeting at the Chamber of Commerce office last Wednesday evening.

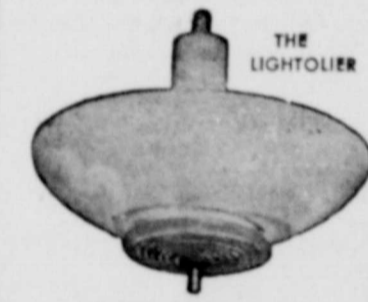
The club at present is using the landing field just west of town and the hanger at Stringer Farms Headquarters at Barwise but plans are being made for construction of a hanger near Floydada. Instruction is being given by Buck Phillips of Lubbock.

**Hurry!  
Hurry!  
Hurry!**  
**IT IS LATER THAN YOU THINK!**

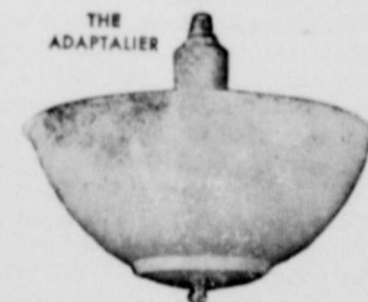
This Money-Saving Opportunity Soon Will Knock No More

Are you one whose "good intentions" list for the past two months has included a thorough lighting modernization while prices are low, but who's been putting off making the change 'cause there's plenty of time? If you are, you had better hurry if you want good light and extra savings both on your "all done" list. Beginning March 1st these fixtures below return to their regular prices—probably for years to come!

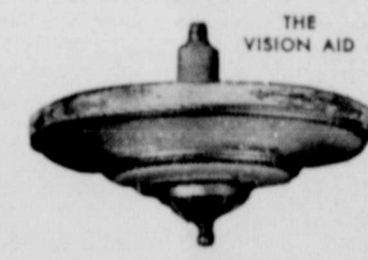
So rush down to Texas-New Mexico Utilities Company showrooms today to pick out your better-lighting bargains—or better still, just call for a free demonstration of these wonder lights right in your own home. But whichever you do—do it today, because time's a-wastin'!



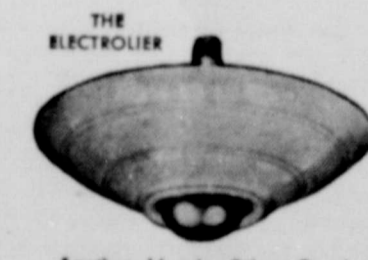
After March 1st this smart fixture will be priced at \$2.45. You can get it NOW for only \$1.75



Until March 1st you can save an even dollar on every one of these fixtures you buy. Will be \$4.45. NOW only \$3.45



This metal indirect Mazda Silver-Bowl fixture probably will never be this low again. After March 1st will be \$3.50. NOW only \$2.95



Another Mazda Silver-Bowl adapter using plastic, which will take a big price jump on March 1st to \$2.95. NOW it's yours for only \$1.95

Only 45c down to modernize your lights! \$1.00 per month—or up to 8 months to pay!

Texas-New Mexico Utilities Company

### TRAVEL LIGHT Travel Smart



Black or Navy Trianon Twill. Moth Resistant. Sizes 14-44

**\$17.50 to \$19.50**

"INSIDE STORY" OF Betty Rose COATS AND SUITS

- 1—Extra Wide Lap Over.
- 2—Embroidered Shields at armhole.
- 3—Double Blind Stitching prevents front "rolling."
- 4—Fabric Scientifically Tested and Pre-shrunk.
- 5—All Points of Strain Taped for longer wear.
- 6—Embroidered Neck Shield protects lining.
- 7—Linings Guaranteed for life of coat.
- 8—Lining Seams Stitched and Serged to hold.
- 9—Collars and Lapels stayed with many rows of stitching—moulds and shapes the coat.
- 10—Open Bottoms finished on both sides insure perfect all-over drape.



A coat to fit you out of your humdrum, everyday life. Tiny stitched collar, high peaked lapels, half moon stitched pockets, T-square shoulder and a litting swing in the body of this perfect casual coat of Airpax Fleece. Choice of Horizon Blue, Hocienda, Gold, Misty Rose, or Tropic Nude. Sizes 18-20.

**\$17.50 to \$19.50**

### Political Column!

Those whose names appear below have authorized the Floyd County Plainsman to announce their candidacy for nomination for the office under which their name appears, subject to the action of the City Election April 1, 1941.

FOR CITY MARSHALL:  
Morgan Wright  
FOR CITY SECRETARY:  
Clyde W. Henderson  
Silas E. Duncan

### INJURED WOMAN AND SON TRAPPED 10 HOURS IN AUTOMOBILE

Plainview, February 14.—A 72 year old mother and her son, both of Plainview, Friday agreed "it might have been worse" after spending a harrowing 10 hours in their wrecked automobile, she with a crushed ankle and he with a broken back.

Mrs. Bamma Sweat and O. R. Sweat were returning from the home of O. A. Sweat, 17 miles southwest of Plainview, Wednesday night when the car the son was driving left the country road, struck a railroad embankment and was catapulted into

### FIRST NATIONAL BANK Floydada, Texas

1903—TIME TESTED SERVICE—1940

### SEVERAL GOOD USED CARS!

We have a few GOOD USED CARS which will go at a bargain price. Come see us

SPECIAL CLOSE OUT PRICES ON TIRES.

### FINKNER'S AUTO STORE

EVERYTHING AUTOMOTIVE

Study of Deer and  
Little is Made by  
Franklin Halloran

College Station, February 19th—  
Franklin Halloran, graduate  
of the A. and M. College

Floydada Insur-  
ance Agency . . .

Insurance of all kinds. Your in-  
terests and business respectfully

W. H.  
HENDERSON  
OWNER

Department of Fish and Game, has  
completed a study of deer and cat-  
tle relationships on the Aransas  
National Wildlife Refuge which in-  
dicates a similar method of taking  
the annual inventory of deer on the  
refuge and the proper management  
of both deer and cattle on the area.

Halloran discovered that it is  
possible to secure a fairly accurate  
estimate of the number of deer on  
the refuge by counting the deer from  
an automobile road for 20 minutes  
per day on 25 days in December or  
January when climatic conditions  
are favorable. Deer do not move  
about much during the colder weath-  
er but are more active when the  
temperature is somewhat moderate or  
even high.

A range management plan was  
drawn up by Halloran covering the  
47,325 acre area of the refuge, and  
it was suggested that white the  
number of deer or cattle is not at  
present excessive, careful checks  
should be made at periodic intervals

to prevent such a development.  
**186,817 Mattresses  
Completed on  
February 1**

College Station, February 19th—  
Mattresses completed on February 1  
under the 1940 and 1941 cotton mat-  
tress demonstration program in Tex-  
as totaled 186,817, according to re-  
ports compiled in the office of Mil-  
dred Horton, vice director and state  
home demonstration agent of the  
Texas Extension Service. Applica-  
tions for 1940 totaled 191,990; 1941  
applications are still being filed and  
no report on the aggregate number  
is available from county home dem-  
onstration agents.

The Tennessee program completed  
72,818 cotton mattresses in 1940.

MISS BOBBIE LOU WATTERS OF  
SPUR PLANS TO SPEND TEN  
DAYS AT STOCK SHOW

Ranch girls from all over the  
Southwestern cattle country will  
ride into Fort Worth March 7 for  
their appearance at the world cham-  
pionship rodeo at the Fat Stock  
Show.

In the list of seven ranch girls  
who will be honor guests is Miss  
Bobbie Lou Watters, daughter of  
Mr. and Mrs. Clarence Watters of  
Spur.

Miss Watters will drop her junior  
class studies at the Spur High School  
for the ten day show but it will be  
a new kind of education for both  
Miss Watters and her horse, "Mug-  
gins."

Miss Watters is a blond, weighs  
106 pounds, and is five feet and  
three inches in height. She was born  
in Brown County and came to Dick-  
ens County two years ago.

In a letter of indorsement, O. C.  
Arthur, secretary of the Spur Round-  
up Association, describes Miss Wat-  
ters as "one of the finest little girls  
in this country who knows her horse  
and horsemanship." She has ridden  
in rodeos since 1939, appearing in  
12 different shows in Spur, Big  
Spring, Stamford, Matador, Colora-  
do City, Midland, Floydada, and  
Memphis.

LOCKNEY FIVE TAKE TWO  
FROM FLOYDADA

The Lockney Longhorns boys bas-  
ketballers came back after losing  
the first of a two-out-of-three series  
last week to Floydada to win the  
last two games by scores of 43 to  
25, and 39 to 26.

The last game was played Tues-  
day night in the Floydada gym.

This gives the Longhorns the much  
coveted title of "County Champions,"  
and make them eligible to compete  
in the district meet to be held at  
Lubbock.

Mr. and Mrs. Tom Croft, who  
have been spending the winter with  
their daughter in Dove Creek, Utah,  
returned home Sunday. Mr. Croft  
recently suffered a stroke and his  
condition was considered serious for  
some time, but since his return home  
relatives report him much improved.  
Dale Self and V. D. Turner went to  
Utah after Mr. and Mrs. Croft.

Mr. and Mrs. Duncan Hollums and  
Mrs. John A. Hollums made a busi-  
ness trip to Lubbock Tuesday.

A produce publication has an-  
nounced three important additions  
to the family of vegetables. These  
include the rhubarb chard, a Swiss  
chard which looks like rhubarb; the  
pure alabaster white tomato; and a  
new, tender pod bean, stringless and  
fiberless.

Farm and ranch people of San  
Saba County, through their county  
land use planning committee, are  
studying their county tax system  
with the help of the Texas Agricul-  
tural Experiment Station.

More than half of the 3,200 frozen  
food locker plants in the United  
States are owned by individuals.  
Commercial corporations own 22 per  
cent, partnerships own 16 per cent,  
and cooperatives 14 per cent.

TO RELIEVE  
MISERY OF COLDS

LIQUID, TABLETS,  
**666** SALVE, NOSE DROPS  
COUGH DROPS

Try "Rub-My Tism" - a Wonderful  
Lindiment

**CLASSIFIED  
ADVERTISING**

Ready to Garden? See STAR  
CASH GROCERY. 9-tfc.

FOR SALE—Vacant lots in Lake-  
side Addition. Best place to keep  
cows and chickens in town. S. B.  
McCleskey. 9-1tp

Better get your Garden ready.  
Time to plant. STAR CASH GRO-  
CERY for Better Seeds. 9-tfc

Our FLOWERS are FRESH and  
are BEAUTIFULLY ARRANGED  
BOLLUMS, FLOYDADA FLORISTS

Bulk Garden Seeds. STAR CASH  
GROCERY. 9-tfc

LANDS FOR LEASE

A few farm tracts to lease at rea-  
sonable prices for cash.

W. M. MASSIE & BRO.  
Floydada, Texas. 11-tfc

New stock of Garden Seeds. STAR  
CASH GROCERY. 9-tfc

For best and cheapest monuments,  
either in marble or granite. See S. B.  
McCLESKEY. 24-tfc

We invite you to visit the green  
house. PARK FLORISTS—Mrs. W.  
S. Goetz. Phone 78. 46-tfc

*Announcing*

**Formal Opening of**

**RUCKER'S BAKERY**

**SATURDAY, FEBRUARY 22,**

Located at 110 Main Street Next to Ritz Theatre

We will specialize in the following breads:

- GOLDEN KRUST BREAD  
Red Ended Wrapper.
- RUCKER'S VITAMIN B-1 BREAD
- 100% WHOLE WHEAT BREAD  
Tru wheat Flour
- WHEAT BREAD  
Whole Wheat and White Flour
- FRENCH BREAD

We will also have a complete line of PIES, CAKES, COOKIES,  
and Pastry.

WE EXTEND AN INVITATION TO EVERYONE TO ATTEND  
OUR FORMAL OPENING.

**RUCKER'S BAKERY**

MR. AND MRS. RUSSELL RUCKER, OWNERS.



**TELEPHONE  
FOREMEN  
are never Hired!**

**...they come up  
from the ranks**

In the telephone business, the people  
at the top all started at the bottom.  
The managers, chief operators...  
even the presidents... began as  
clerks, groundmen or operators.

"Promotion from the ranks,"  
means that your service is super-

vised by men and women whose  
"know how" is backed by long ex-  
perience.

And that is one reason America's  
telephone system marches steadily  
forward... furnishing fast, depend-  
able, low-cost service to the nation.

**SOUTHWESTERN BELL TELEPHONE COMPANY**

*Among All*

*Biggest-Selling Low-Priced Cars*

**CHEVROLET FOR '41 IS**

**FIRST IN ACCELERATION**    **FIRST IN HILL-CLIMBING**    **FIRST IN ALL-ROUND ECONOMY**



**DRIVE IT ONCE AND YOU'LL DRIVE IT ALWAYS!**

AGAIN CHEVROLET'S THE LEADER

... because Chevrolet for '41 is the only low-priced car with a 90-h.p. Valve-in-Head "Victory" Engine—the same type of engine that holds all world's records for performance on land, sea and in the air!

**QUALITY QUIZ**

90 H.P. ENGINE	YES	NO	NO
CONCEALED SAFETY STEPS	YES	NO	NO
VACUUM POWER SHIFTS AT NO EXTRA COST	YES	NO	NO
BODY BY FISHER WITH UNITIZED CURVED TOP	YES	NO	NO
UNITIZED KNEE-ACTION	YES	NO	NO
BOX GIRDER FRAME	YES	NO	NO
ORIGINAL FISHER NO DRAFT VENTILATION	YES	NO	NO
TIPTOE MATIC CLUTCH	YES	NO	NO

ONLY CHEVROLET HAS ALL THESE QUALITY FEATURES

**First BECAUSE IT'S FINEST!**

**ODEN CHEVROLET CO.**

SALES AND SERVICE    PHONE 4    FLOYDADA, TEXAS

**ODEN CHEVROLET CO.**

SALES AND SERVICE    PHONE 4    FLOYDADA, TEXAS

SIXTH ANNUAL HOUSTON  
AZALEA TRAIL WILL OPEN  
MARCH ONE THIS YEAR

On March 1st and 2nd the Sixth  
Annual Azalea Trail of the River  
Oaks Garden Club of Houston will  
be held. Twelve distinctive Azalea  
gardens, ranging from one to twelve  
acres in size, will be open. The  
hours will be 2:00 until 6:00 p. m.  
on Saturday and 10:00 a. m. until  
6:00 p. m. on Sunday.

Each spring, many Texans travel  
to other states to see the Azaleas,  
not realizing the exceptional oppor-  
tunities that Houston's Azalea Trail  
offers. Thousands of Azaleas, in  
addition to Camellias, Dogwood, Red-  
bud, and countless spring flowers  
and shrubs, abound in the beautiful  
gardens of these River Oaks estates.

For further information, write  
Mrs. Birdsell Briscoe, 2317 Clare-  
mont Lane, Houston, Texas.

**CLINE AND RAINER GARAGE**

Where you can get everything for your car at one-stop.  
Mobilgas, Mobiloil, Prestone, Mobile Frezone.

RADIATORS REPAIRED, Radiator Hose and Clamps. Heater  
and Heater Hose. Parts of all kinds, Welding, Tires, Batteries. In  
fact we have everything for your car.

**We buy junk Batteries. Phone 37**

SHORTY BARKER and CLAY ANDERSON, are in charge of  
our shop, and will appreciate your next job.

**CLINE AND RAINER**  
WESTERN AUTO ASSOCIATE STORE

**Helpy-Selfy Laundry**

DO YOUR OWN WASHING the quickest, easiest, cheapest way to do your laundry.

**25c Per Hour.**  
PLENTY OF HOT, SOFT WATER.

**Steam Laundry Charges—Rough Dry 4c**  
WET WASH washed and extracted ready to Iron

**2 Cents a Pound**

Shirts 9c, in Thrift T and Rough Dry Bundles.

**White Way Laundry**

Formerly Floydada Steam Laundry

PHONE 141 FOR PICK-UP AND DELIVERY SERVICE!    FLOYDADA, TEXAS

### Texas Farmers Contribute to Defense

College Station, February 19th.—Maintenance and improvement of the nation's most important natural resource—the soil—is the farmer's and ranchman's job in the national defense program.

Texas farmers and ranchmen are doing their share of this task. B. F. Vance, administrative officer in charge of the Agricultural Adjustment Administration in Texas, told the Southern Regional conference of the AAA in New Orleans last week.

With enormous surpluses of the basic commodities already stored in the nation's warehouses and on the farms, the problem today is not one of producing abundantly but of maintaining and improving the soil's fertility, the Texas administrator said. The fact that more Texas farmers and ranchmen in the state cooperated with the AAA's conservation program in 1940 than ever before is ample proof that Texas agriculture is cooperating, he declared.

The speaker cited a few of the accomplishments of an estimated 637,000 farmers cooperating with the program in the field of conservation in 1940: the construction of nearly 23,000 miles of water saving terraces; contour farming of intertilled crops on 4,200,000 acres of cropland; planting soil-building crops on 10,250,000 acres; and contour listing, subsoiling or furrowing of 2,105,000 acres of non-crop open pasture land. These were only a few of the 31 soil-building practices used by Texas farmers in 1940, he said. He estimated that 88 percent of the farmers in the state cooperated with the program last year.

Equally important were the practices carried out by ranchmen under the range conservation program, the administrator said. He cited a few examples of the work done by the ranchmen, including natural reseeding by deferred grazing of 5,500,000 acres of rangeland; construction 18,000 stock water tanks; and construction of nearly 7,000,000 linear feet of spreader dams.

The Texas administrator explained that all figures on soil-building and range-improvement work were, of necessity, estimates, since reports could not be compiled until sometime in the spring after all applications for payment have been received.

"Of course, we're not satisfied yet," Vance declared, "and we know we still have a long way to go before we have real conservation of all our farm and range lands. But we're on the way and hope to show a big increase in 1941 over the 1940 record."

Vance stressed the importance of placing an ever-greater emphasis on conservation work in the program and explained that in Texas all county and community committees were trying to work out with the individual farmers a plan of farming operation so that they might take the fullest advantage of the conservation features in the program.

"Conservation of our soil is one of the farmer's big jobs in the national defense efforts," Vance said, "and we know that Texas farmers are pitching in with farmers over the rest of the nation to save and improve the nation's soil so that agriculture can produce ample supplies to fill both military and civilian needs in America."

In 1915, 82,000,000 acres were required to feed workstock, but now it takes less than 40,000,000.



### Special Price on Brassieres

One group of Ladies and Misses Brassiers reduced to the following prices for only a few days:

SIZES 32 TO 38

Regular 35c Brassiere, reduced to 25c

Regular 50c Brassier, reduced to 40c

### Hosiery Special

We offer this special hosiery values in two and three thread silk hose, in broken sizes and colors.

TWO PAIR FOR 89c

### STYLE SHOPPE

"Always Showing Newest Things First"

Mrs. Mollie A. Morton, Owner  
Phone No. 17

### Admiral Nimitz Commissions Navy Service School Built by Henry Ford



Auto Manufacturer Makes One of His Rare Appearances Before Microphone

DEARBORN, MICH.—When its huge building program got under way, the Navy faced another huge problem, the training of men in the highly technical duties which crews are called upon to perform.

The existing naval training stations were already full. Turning to industry, Navy officials found that the Henry Ford Trade School, situated in the heart of the Rouge plant, was perfectly suited to such training.

Henry Ford not only offered the facilities of both school and plant to the Navy for this purpose, but also said he would build barracks for 1200 students, mess hall for 2000, administration building, provision storage, recreation room, athletic field, a steam generating plant.

The offer was accepted, and on December 6, 1940, the first shovel of earth was turned on the bank of the Rouge River. Forty days later the first contingent took up quarters in the newly erected buildings. The inauguration ceremonies were described by Commander C. P. Cecil as "unique in the history of the United States Navy—for we are dedicating the first Navy Service School ever to be operated in connection with civilian industry."

With naval officers on the outdoor platform beside him, and 200 enlisted men drawn up in front of the school's administration building, Henry Ford said that: "During the present crisis our organization wants to do everything possible to help America and the President. The Navy being our first line of defense, I feel that the training of these young men will vitally benefit our nation. And when this

crisis is over, we can then claim these mechanically trained young men in our industries."

In turning the facilities of school and plant over to the Navy for training personnel, Edsel Ford explained that his father had established the Henry Ford Trade School 24 years ago "because he believed in using the facilities of the Ford Motor Company for something more than the building of motor vehicles. He believed that these facilities could also be used for the building of youth."

Rear Admiral C. W. Nimitz, who came from Washington to represent Secretary Knox, accepted the facilities of school and plant. "I can think of no better place for this extension of the Navy training program," he declared. "I wish, Mr. Ford, to express to you the appreciation of the Navy Department for this fine demonstration of patriotism on your part."

The new Navy Service School will be under the administration of Rear Admiral John Downes, Commandant of the Ninth Naval District, which includes 13 states and has headquarters at Great Lakes, Illinois.

After explaining that the men to be trained here come from both the Pacific and the Atlantic, as well as the Great Lakes, he added: "We know that Mr. Ford has here established the finest school in the world for training men in the mechanical trades. This will be the most important training center that the Navy has for schooling its newly enlisted men in the mechanical duties which they will be called upon to perform immediately upon joining the fleet."

### Nine Barley Loans Were Made on 1940 Texas Crops

Only nine barley loans were made in Texas in 1940 by the Commodity

Credit Corporation. This was the first year loans on barley have been made in Texas.

The nine loans aggregated \$3,524.59 on 10,928 bushels. Of this amount, 9,534 bushels are in farm storage and 1,394 are stored in warehouses, the CCC has announced.

### Spears & Daniels Automotive Repair

COMPLETE LUBRICATION SERVICE.  
AT NEW LOCATION IN DAY AND NIGHT GARAGE BUILDING  
ACROSS THE STREET FROM POSTOFFICE.

### International Trucks and Service

ENGINE TUNE-UP A SPECIALTY. TELEPHONE NUMBER 61

now *Baths* are the order of the day

It is becoming, in America, more and more a part of good breeding, good business, and good health for everyone to have a thorough cleansing bath each day. We have all recognized the bath for what it truly is, "a delightful and a highly important aid in the fine art of modern living."

An Automatic Storage Gas Water Heater will furnish plenty of Hot Water—the BATH will be more pleasant—then, too, there will be enough for other household uses.

West Texas Gas Company

## GET IN .. STRETCH OUT .. and enjoy a great new ride!

NEW COMFORT was the keynote as we made plans for this year's Ford.

Get in, through the new wide doors! Stretch out, in room to spare! Seating width has been increased as much as 7 inches. Knee-room and inside length are greatest in the low-price field.

Then take the road and try its ride!

A soft, steady, gliding new Ford ride that takes good road or bad in a satisfying new kind of stride. And notice the quietness of this big Ford!

There's news at your Ford Dealer's that's too good to miss! News in comfort. News in value. And news in a "deal" that you'll find easy to take!



GET THE FACTS AND YOU'LL GET A FORD!



## Bishop Motor Co.

NEW CARS USED CARS

Telephone No. 228

# Cheer Up, Mister!

# This Is ANOTHER Year!

We are equipped to give you first class workmanship on any style of printing you may need. We have special type faces, special illustrations and can assist you in selection of paper stock that will give your printed matter character and add to the prestige of your business. Low prices and prompt service prevail.

# Floyd County Plainsman