

"By Helping Business You Help Yourself"

The Floyd County Plainsman

Floydada, Floyd County, Texas, Thursday, September 14, 1939

Number 42

Page No. 10

ies On Some ortant Pasture ses

L. HENSEL, Agronomist

For desirable pasture which will remain green for months of grazing and which produces heavy yields and is readily established has been developed by the Texas Agricultural Experiment Station for the past few years. It would seem that hundreds of grasses which are available to the state that this comparatively easy task of producing grasses which possess all of the qualities and which can be grown over large areas under variable climatic, soil, and other conditions are hard to find. The present time Angelton grass, red grass, buffalo grass, and others are receiving the most

attention. Produced into it from its home in India, it is now being grown in England from its name. It is a grass of the same family to which the big bluestem grasses belong. It differs from these in that it is a long runner which roots and forms a rather dense mat. The grass, although it is succulent and palatable, also makes good hay. Under a variety of soil and other conditions and withstands a range of about zero degrees Fahrenheit. It has been propagated by rooted cuttings because the plants at Angelton do not set seed or those that do produce seed of very low vigor. Recent observations at other than Angelton, however, show that under different conditions, viable seed are produced. That established stands rapidly to adjoining areas, which are readily carried by wind. Work is under way to produce seed which can be produced cheaply and harvested. If this is accomplished, it will be a start on this valuable grass in other parts of the state now without a desirable summer grass.

Small grass is also a member of the little and big bluestem family. It does not produce runners and is a native of Central Europe and of North America. It was introduced into this country about 15 years ago. It is a bunch grass but the bunches close together that it forms a tall turf-forming grass. It is palatable and is readily harvested by livestock. It appears to be as far south as Oklahoma and as far north as Oklahoma. It spreads rapidly from seed and to compete successfully with other grasses. Seed planted in the Station on April 1 germinated and grew well in spite of the fact that both April and May were dry. By July 15 the grass formed clumps a foot or more high and had already produced seed and were green and growing all summer. This grass is of considerable value for grazing, and being a winter grass does not have to be reseeded each year. It is relatively hard. The seeds shatter and this fact in harvesting of seed difficult. They are being taken to plant on a large scale and time seed will be available for distribution. Since this grass grows in regions of heavy rainfall as well as in those having less rainfall, it appears to have a wide range.

Indies and South America. It belongs to the same family as Dallis grass and resembles carpet grass but is coarser-leaved and taller, sometimes growing to a height of two feet. It is aggressive, sod-forming, and spreads from runners. Livestock graze it readily and it seems to persist under heavy grazing. The grass produces an abundance of seed, which, however, are generally low in viability. Planting failures are apt to occur for this reason. It does well in the Gulf Coast Prairie and generally remains green throughout the year in the office of the county agricultural station when other grasses are dormant. It grows tall enough to cut for hay. At the present time the work with this grass is concerned primarily with rates and time of seeding and seed bed preparation. It is spreading naturally in some parts of the Gulf Coast Prairie. At the present time the Station does not have seed of any of the above grasses for distribution.

No Action On Road Petitions Before Commissioners

In regular meeting of the Commissioners Court Monday two road petitions brought before the court was postponed until the October term of court, so that details may be worked out with the highway engineer.

One petition is road directly east from Petersburg to connect up with highway 207. The other petition is asking for a road through the Harmony community connecting with Highway 207 this side of the canyon.

TAKE IT EASY, IS ADVICE TO TEXAS FARMERS, FROM AGRICULTURAL LEADERS

College Station, September 13.—There is no reason for Texas farmers to get the jitters on account of war, agricultural leaders here believe.

Commenting on a statement from Secretary of Agriculture Henry Wallace, George Slaughter, chairman of the State Agricultural Conservation Committee of the AAA, says farmers have every reason to operate as though the peace of Europe had not been shaken.

"Agriculture is in better shape to withstand the impact of war," Slaughter asserted, "than it was in 1914, and the same machinery which farmers have used to adjust their acreage to slackening demand can be used just as effectively to increase production should the need arise."

He quoted as follows from Wallace's letter: "There is little likelihood that any substantial increase in production of the major crops is desirable, certainly not in the near future. In any case, the need for increase in supplies can be anticipated in ample time to make any necessary increases in acreage."

"This year's wheat carryover is estimated at 254 million bushels, in comparison to 115 million bushels for the five years from 1924 to 1928. The present large supply of corn probably will make the total supply for 1939-40 even larger than the 1938-39 supply."

"Supplies of meat animals are expected to be larger next year than for this year, and continued heavy production of milk this fall is expected. Combined supplies of cotton seed oil, lard and soy-bean oil available for home consumption will be larger during the rest of this year and 1940 than for 1938."

"Loans which are a part of the ever-normal granary are available to prevent price collapses. They can prevent such a disaster to farmers as befell cotton growers in 1914-15."

DORRIS W. JONES TRANSFERRED TO MATADOR

Dorris W. Jones, who has been employed with Higginbotham Bartlett Lumber Company the past three years as bookkeeper, was transferred to Matador and assumed the same position in the company yard there.

Mrs. Jones and little daughter, Linda Gay, is visiting this week in Lubbock with Mrs. Jones' parents, Mr. and Mrs. John R. Freeman, and when she returns to Floydada the family plans to move to Matador to make their home.

Dr. and Mrs. C. M. Thacker went to Big Spring Saturday night where they visited with Mrs. Thacker's brothers, John and Pat Sullivan. Mrs. A. C. Sullivan who had been visiting several days with her sons returned home with Dr. and Mrs. Thacker.

Harold Merrick Opens Brunswick Tire Shop In Plainview

Harold Merrick, who has been employed with Bill Dyer's Auto Parts for several months, has moved to Plainview and opened up a Brunswick Tire Shop in that city. His formal opening date was Saturday, September 9.

Dale Strickland and Fred Blasen, game left Saturday for Jacksonville, Texas, where they will visit with Herein Strickland, and from Jacksonville they will go to Houston and Galveston, returning home Friday.

Clay (Shorty) Anderson Moves to Lackey's Shop

Clay (Shorty) Anderson, who has been employed at Handley's Repair Shop for sometime, announces that he is moving to Lackey's Blacksmith Shop located two blocks east of the Consumers Fuel Association, where he will do all classes of auto repair and mechanical work.

J. J. Day returned home Monday from a months visit with his daughter, Mrs. Weaver Howard and family, of Pueblo, Colorado.

Trenton T. Davis spent last week in Saint Jo, visiting his parents.

Europe Lines Up for Second World War



Map shows lineup of nations under present European alliances. Poland, France and the British Empire are aligned against Germany in the conflict, with Italy and Russia listed as "doubtful." Spain, hitherto considered pro-Nazi, is expected to remain neutral as a result of the Nazi-Soviet non-aggression pact.

History Repeats Itself—Australians Win



Bobby Riggs, left, of the U. S., and Adrian Quist, of Australia, shake hands after their singles tennis match at Haverford, Pa., which helped decide the Davis cup championship. History repeated itself, for just two years ago Australia won the cup, and the winners marched off to war. This year's victorious Australians, Quist and John Bromwich, received their sailing orders one hour after their triumph.

Gunners in Action on Polish Battlefront



A German anti-aircraft gun in action somewhere on the Polish border. With rear lines protected, German aircraft opened aerial combat by bombing Polish cities. This photo was flown to Berlin from the front and radioed to the United States.

PROGRAM FOR FLOYD COUNTY BAPTIST ASSOCIATION TO BE HELD AT LOCAL CHURCH



PANHANDLE SOUTH PLAINS FAIR WILL BE IN FULL SWING SOON

Lubbock, September 13.—In another ten days or so the 26th annual Panhandle South Plains Fair will be in full swing. Announcement was made this week by Fair officials of the signing of the contract with Ace Lillard and his Death Defiers to present one of the most sensational and thrilling exhibitions ever staged in the southwest. This auto thrill show will be held Friday and Saturday afternoon in front of the grandstand.

Firthing with the Grim Reaper every minute of the two hour show, these dare devils will put their cars through routines foreign to this section of the State. Crashing a brick wall, leaping the leap of death, tall spins, ski jumps, mid air crash at an 80 mile an hour impact, and many other breath-taking stunts, will furnish spectators a thrill a second.

Final touches are being put on exhibit buildings as painters finish their work. Trees have been trimmed and the grass cut, all making ready for what promises to be the best Fair in the history of the Association. The new drinking fountains, as pictured, are now ready for the Fair patrons, young and old, to use. Wednesday and Thursday will be children's days, so officials announced. Each county and city school superintendent has been notified of their particular day.

Exhibitors are showing a marked interest in the exposition this year. Already more than 20 counties have made reservations for county exhibits and a larger number for community exhibits. Individuals have already made reservations for livestock and agricultural exhibits.

Revival Meeting to Start at Assembly Of God Church

An up to date revival beginning September 17th, at the Assembly of God Church corner Third and West Virginia street. Evangelists, Miss Alma Johnson and Miss Margaret Coppinger, of Greenville, Texas, will conduct the revival.

Evangelist Johnson is a very able speaker. Miss Coppinger will be rendering special numbers each evening and other good singing will be had. The public is invited to attend each night. Bring your friends and neighbors. Services begin each evening at 8:15.

Miss Jewel Clark, Pastor.

NOTICE! SPECIAL SERVICE IN SONG

Sunday afternoon, September 17, beginning at 2:30 there is to be a good and enjoyable singing at the City Park Church of Christ. Singers from various sections of the county are expected to be here with several special numbers. The general public is cordially invited to be present and enjoy it with us. May we see you there?

C. L. BRYANT, Pastor.

Singing at Muncy Sunday Afternoon

Announcement was made this week that there will be singing at Muncy Sunday afternoon at 2:30. Everyone is invited to attend the singing and take part.

The Floyd County Baptist Association will hold a two day meeting at the First Baptist Church in Floydada, September 19-20. The meeting will open at 10 o'clock Tuesday morning with the following program: Song Service, Rev. Harvy Graham. Devotional, Rev. G. W. Tubbs. Report on order of business, Rev. R. C. Tennon.

Religious Literature and Baptist Standard, Rev. R. C. Tennon. Report on Buckner Orphans Home, Rev. R. C. Malone. Visitors Recognized. Song. Sermon, Rev. Sidney Johnston. Lunch.

TUESDAY AFTERNOON

Board Meeting. Women's Work, Mrs. Geo. A. Linder. State and Home Missions, Rev. W. M. Joslin. Foreign Missions, Rev. J. L. Ponder.

TUESDAY EVENING

Song Service, Clifford Tubbs. B. T. U. Report, L. A. Claborn. Sunday School Report, Emzy Pieratt.

Report on the 100 M. Club, Rev. W. R. Derr. Sermon, Rev. Vernon Shaw.

WEDNESDAY MORNING

Song Service, Geo. Owens. Devotional, Rev. Jarrett Martin. Report on Laymen's Work, Rev. B. P. Harrison.

Report on Obituaries, Rev. G. C. Applewhite. Report on Vacation Bible School, Mrs. Cap Ellison.

WEDNESDAY AFTERNOON

Song and Devotional, Clifford Potts. Budget Report, Rev. Vernon Shaw. Treasurers Report, A. B. Muncy. Digest of Letters, Rev. J. C. Terry. Report of Committee on Nominations and Resolutions, Rev. W. R. Derr.

Civil Righteousness, Rev. Victor Crabtree. Adjournment.

Judge Hill Stewart Will Preach

Judge Hill Stewart, of Lubbock, will preach Sunday at 11 o'clock and Sunday night at 8 o'clock at the South Side Baptist Church. Everyone is cordially invited to attend all services.

Miss Emma Ruth Modawell Wed C. L. Boren

Miss Emma Ruth Modawell, of Becton and C. L. Boren, of Petersburg, were united in marriage by Rev. G. W. Tubbs Saturday evening, at the latter's home in east Floydada. The couple will make their home in Petersburg.

Fairmont Church Announcement

The following services will be held at the Fairmont Baptist Church Sunday, September 17th: Sunday School at 10 a.m. Preaching at 11 a.m. Everyone is cordially invited to attend all services.

REV. G. W. TUBBS, Pastor.

Oran Martin Filled Pulpit at Church of Christ

Elder Oran Martin, of Petersburg, preached at the 11 o'clock hour at the Wall Street Church of Christ Sunday. A large crowd attended the services.

Let Cavanaugh Do Your Printing.

Non-Allotment Farms May Get Some Cash

College Station, September 13.—The 1940 AAA wheat program is flexible.

According to a change in the program announced here this week, any wheat farmer may place his farm in a non-allotment classification for 1940 and still be eligible for at least some cash benefits.

The non-wheat allotment classification enables a farmer who grows wheat as hay, pasture or green-manure or cover crops to continue his regular farming operations and still cooperate in the program, Vivtor Cade of Slaton, member of the State Agricultural Conservation Committee, explained.

The farmer who so elects may seed all the wheat he likes, just so he doesn't harvest more than his acreage allotment, or 10 acres, whichever is larger. If he does harvest more than his allotment, deductions will be made at the regular rate for payments otherwise due him.

If he decides to plant more than his allotment, he may avoid penalty by using the excess acreage for pasture, green manure or a winter cover crop. He cannot use it for hay unless it is used as a nurse crop for legumes and grasses and cut green, or is grown in a mixture containing at least 25 percent by weight of winter legumes.

Farmers who apply the non-wheat allotment option will not be eligible for wheat loans or price adjustment or conservation payments on wheat in 1940. However, payments will be made on the allotted wheat acreage at the specified rate for general crops.

Texas wheat farmers have until October 1, or the beginning of seeding of wheat if that is earlier, to exercise the choice.

Agricultural Dis- play For Fairs From Floyd Co.

Arrangements have been made with the Tri-State Fair at Amarillo and the South Plains Fair at Lubbock by D. F. Bredthauer, county agricultural agent, to represent Floyd County with an agricultural booth at each of these fairs. Plans have also been made to send an exhibit to the Dallas Fair. As each of these fairs will require a large amount of agricultural products and it also happens that articles used in the county exhibit can also be used in individual exhibits, any one having agricultural products which he would like to place in the county exhibit or in an individual exhibit can deliver their products to the office of the county agricultural agent and their products will be put on exhibition, however, it will be impossible to return products.

The following agricultural products will be needed for the agricultural exhibits: 20 bolls cotton, 1 stalk open bolls, 1 lb. lint cotton, 10 heads of maize, kaffir, hegar, feterita, 1 gallon wheat, oats, barley, millet, sweet sorghums, maize, kafir, sudan, soy beans, cow peas, black eyed peas, dry limas, dry pintos, or dry beans any variety, 1 bundle (not less than 3 inches nor more than 6 inches in diameter at center band) of wheat, oats, barley, millet, broom corn, sudan, sweet sorghums, alfalfa, sweet clover, soy beans, 1 bale (8x10x16 inches) of alfalfa, sweet sorghums, cow peas, peanuts, sudan, 10 ears of corn (any variety) and pop corn; 1 watermelon, 1 pumpkin, 1 cashaw, 3 each of cantaloupes, egg plants, cucumbers, winter squash and cabbage; 6 each of tomatoes, beets, onions, turnips, bell pepper, apples, pears, peaches, 1 bunch of grapes.

A number of 4-H club boys have selected bundles of grains for exhibition use and each of these boys will exhibit their products at Amarillo and Lubbock. The agricultural products to go to Amarillo must be in agent by Saturday, September 16th, at 10:00 a. m.

ENROLLED IN WAYLAND COLLEGE

The following local girls left Monday for Plainview where they enrolled for the term in Wayland Baptist College: Misses Floris Conway, Mary Wilson and Evelyn Hicks, Nelly Shirey, and Vera Nell Marshall.

Watson Jones left Friday for Stephenville, where he enrolled in John Tarleton Agricultural College.

THE FLOYD COUNTY PLAINSMAN

Published Thursday Each Week

MRS. LOLA CAVANAUGH, BUSINESS MANAGER
M. B. CAVANAUGH, PUBLISHER

SUBSCRIPTION PRICES

In Floyd County \$1.00; Outside Floyd County \$2.00

Entered as second class matter June 23, 1930, at the post office at Floydada, Texas, under the Act of March 3, 1879.

ADVERTISING RATES GIVEN ON APPLICATION

NOTICE!

Any erroneous reflections upon the character, standing or reputation of any person, firm or corporation which may appear in the columns of the Floyd County Plainsman will be gladly corrected upon its being brought to the attention of the publisher.

INDIGESTION

Sensational Relief from Indigestion and One Dose Proves It
If the first dose of this pleasant-tasting little black tablet doesn't bring you the fastest and most complete relief you have experienced and bottle back to us and we'll send you DOUBLE MONEY BACK. This tablet helps the stomach digest food, makes the stomach stomach fluids harmonize and lets you eat the nourishing foods you need. For heartburn, sick headache and spots or often caused by some stomach fluids making you feel sour and sick all over—TWO ONE DROPS of this tablet gives speedy relief. See everywhere.

LET CAVANAUGH DO YOUR JOB PRINTING.

Dr. E. H. Balch

Announces the opening of office formerly occupied by Dr. Carl Arnold.
Office Phone 83 Residence 60

Hershel Mathews returned home Friday from New York where he attended a six weeks school studying materials and dying. Hershel will attend Tech College at Lubbock this term.

Mr. and Mrs. M. Easterling, of San Bernardino, California, are visiting with relatives and friends here this week. They are former residents of Floydada.

A STITCH IN TIME SAVES NINE



Get well and stay well the NATURAL AND ECONOMICAL way by drinking genuine Bakerwell Mineral Water. This health giving mineral water made from BAKERWELL dehydrated mineral water crystals or BAKERWELL LAX, a 50-1 concentrated mineral water. For sale by your local Drug Department or Grocery Store.

Bakerwell Mineral Water Company, Mineral Wells, Texas.

Wealth in Ships Lies on Erie Bed

Items in Sunken Cargoes Range From Cash to Locomotives.

LORAIN, OHIO.—Rich treasures—not gold doubloons but everything from cash to whisky and locomotives—lie on the bottom of Lake Erie, a survey of records here shows.

The wrecks of ships lie scattered over the bottom of the shallowest of the Great Lakes—whose average depth is less than 100 feet—but are neglected by treasure hunters who go instead to tropical islands to search for legendary pirates' gold.

Valuable cargoes have gone down on the ships that travel the inland seas.

One of the better-known lake tragedies was that of the ship Erie, commanded by Capt. T. J. Titus.

Sailing from Buffalo for Chicago on the afternoon of August 9, 1841, an explosion rocked her decks as she was about 33 miles out.

Panic Followed Fire.

Flames spread throughout the rigging on the old sailing ship. There was a panic and most aboard were drowned or burned to death. Scores of immigrants aboard died, and their life savings—amounting to approximately \$18,000—sank with the charred ship in 70 feet of water.

No one thought of the fortune until 1855, when an enterprising group from Buffalo found the hull of the ship, towed it to shallow water and recovered the wealth, which was mostly in foreign coins. Not all of the treasures have been recovered.

The bulk of the Dean Richmond still lies between Dunkirk, N. Y., and Erie, Pa. All hands were lost when the Richmond sank, and \$50,000 worth of pig zinc lies in her water-logged hold.

The Young Sion sank during the last century with a valuable cargo of railroad iron, near Walnut creek.

Off Point Pelee, Ont., lies the Kent with a money cargo, and somewhere between Cleveland and Detroit the Clarion is sunk with a cargo of locomotives.

Finders of the steamer Atlantic, which went down off Long Point in Lake Erie with a loss of 300 lives, were made richer by \$30,000.

Much Whisky Lost.

Not a little of the valuable cargo on the rocky bottom of treacherous Lake Erie is whisky, some lost in wrecks but much thrown overboard from rumrunning smugglers' boats.

During the days of prohibition the bootleggers—many of them boys in their 'teens out for adventure and profit—plied the lake with their bottled cargoes.

One of the most popular routes was by way of the Lake Erie islands—past Put-In-Bay, where Admiral Perry harbored his fleet before his famous encounter with the British.

In the shallows near the islands the rumrunners hastily dumped their liquor whenever the vigilant coast guard appeared. Many cases of whisky still rest on the sandy bottoms.

Edward A. Nagel, a young Toledo yachtsman, last summer anchored his catboat off one of the islands, descended in an open-bottom diving helmet, and recovered many cases of liquor.

Boy in Swimming Hole Killed by Falling Plane

GREENSBURG, PA.—One boy was killed and another injured in a swimming hole seven miles southwest of Greensburg when an airplane occupied by two men crashed into the hole when the controls failed.

Peter Kodylak, 13 years old, of Greensburg, was crushed to death by the plane. Joseph Woyets, 15, of Armbrust, suffered a concussion.

Pilot David Patterson, of Greensburg, climbed uninjured from the wreckage. Nicholas Plevia, of Montongahela River Lock No. 4, a student pilot, received only a bruised knee.

Caveman Lives Decade

In Underground Burrow
MODESTO, CALIF.—Hans Hansen, 77, has been ejected by police from the underground burrow he has called home for the last 10 years.

Officers said Hansen had dug out from under the floor of a warehouse a space big enough to hold his body and store a few groceries. There he had lived since 1929, eating, sleeping, reading and even cooking.

His inadvertent rap on the floor of the warehouse led to discovery by employees of Hansen's mole-like existence.

Rail Mileage Equals Four Trips to Moon

BELLEVUE, OHIO.—James Furlong, dean of Nickel Plate railroad engineers, retired after nearly 51 years of service during which friends figured he had traveled a distance equal to four round trips to the moon.

Furlong estimates his total mileage at 2,000,000 miles. The mean distance to the moon is 238,857 miles. On this basis he has traveled on rails a distance equal to more than four trips to the moon and back.

It's a Safety Sensation New Brake-Action Tread

Come In...FEEL Why It Makes Quicker, Straight-Line Stops

The instant you apply the brakes... 2,500 extra gripping edges go into action... open up... grip, hold, stop your car quicker, straighter, safer on even the slipperiest of wet pavements.

Before You Buy Any Tire...THINK

Can you afford to be without the protection of this tire's quicker-stopping, non-skid "Brake-Action" Tread?

You Can Actually Feel Its Extra Stopping Power



Rob your hand over this amazing "Brake-Action" Tread. Feel the extra safety in the sharp, biting edges of those 2,500 "grippers" set at the angle of greatest resistance to forward and side skid!



The Quicker Stopping Tire MILLIONS CAN AFFORD

U.S. ROYAL De Luxe

DOES THINGS You Never Dreamed A Tire Could Do

- ★ Stops Quicker
- ★ Steers Straighter
- ★ Wears Longer
- ★ Rides Smoother

PANHANDLE REFINING COMPANY

SMART COATS



L'Avorne



Betty Jean

1096—Junior Miss Dress Coat of Shor-Onde, a new pin-point fabric. Double row of buttons down front, high, close-fitting collar and slash pockets on bodice. Full swing skirt. Colors: Black, Wine, Green, and Boy Blue.

\$17.50 \$19.50

1221—Luxurious Kid Mohair Coat in swing skirt model with contrast stripe design. Pointed collar, big buttons and leather belt. Colors: Oxford, Green, Teal, Wine.

\$17.50 \$19.50

These styles are authentic and positively in vogue for the season.

Style Shoppe

"Always Showing Newest Things First"
Mrs. Mollie A. Morton, Owner Phone 17

FITTED TOP COATS... In Scottish Plaid and Roman Stripes... Price... \$3.98, \$5.98



Misses Sweaters

Fuzzy Angora Types, rib and novelty knits. Cardigans, pullovers, new collar styles. Royal Blue, Dusty Rose, Beige, Green and wine.

\$1.00, \$1.98

Misses Skirts

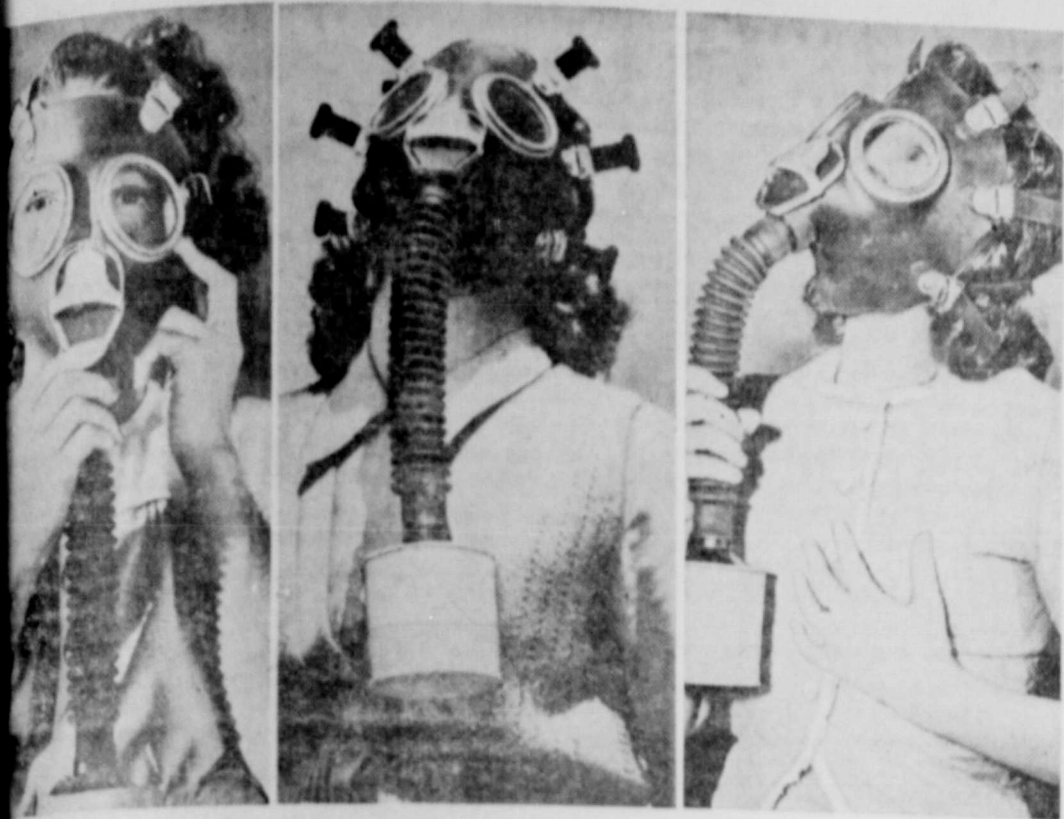
Skater, pleated, gored and slim styles. tweeds and flannels. Gay plaids, etc.

\$2.98 to \$3.98

STYLE SHOPPE

"Always Showing Newest Things First"
Mrs. Mollie A. Morton, Owner Phone 17

Masks Stage Comeback in European Fashions



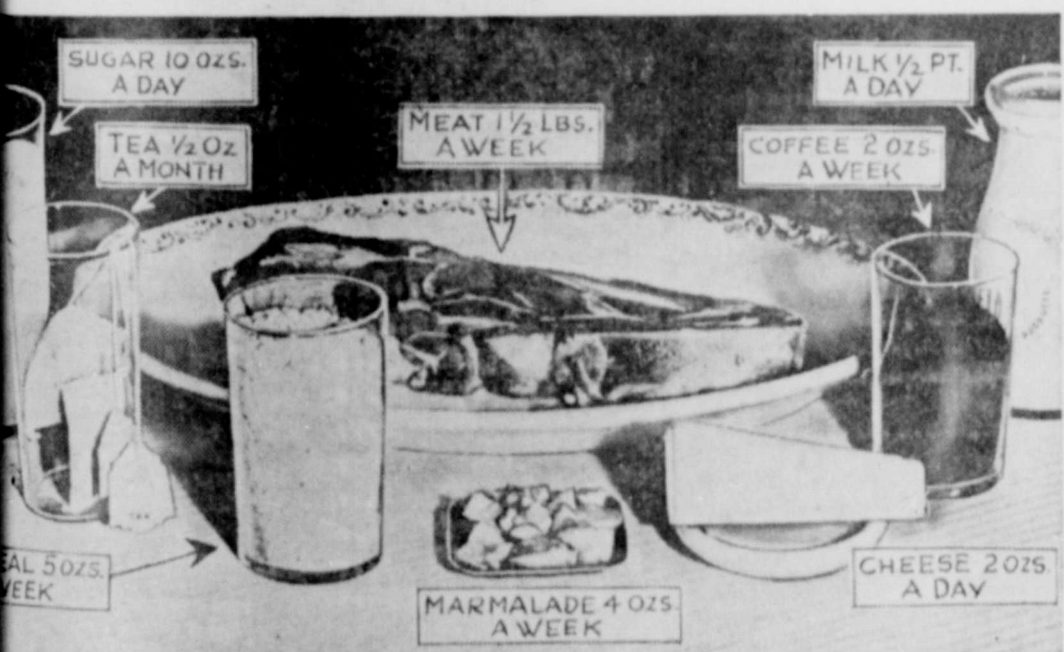
How you would look if you were forced to don a gas mask for safety's sake every time you heard the roar of an airplane engine. Gas masks are standard equipment in war-torn Europe, with special masks for babies, children and even household pets. War-time kits, complete with mask and emergency supplies, are carried by civilians in danger zones.

Prisoners of War 'Somewhere in Poland'



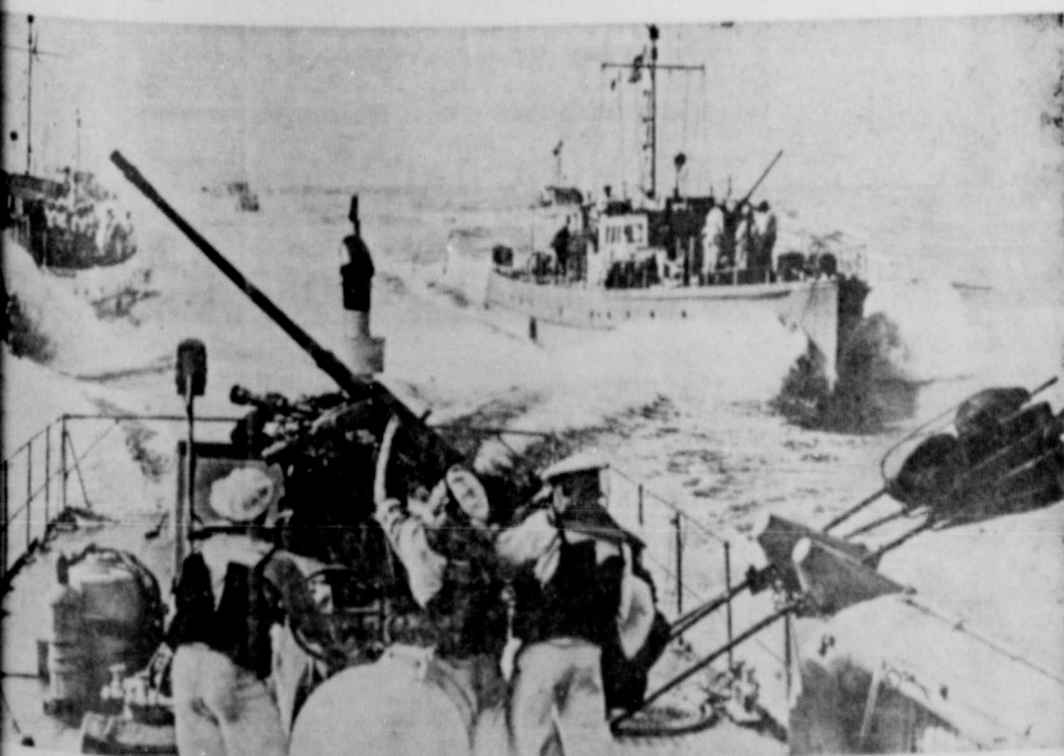
This photo, radioed from Berlin and passed by the Nazi censor, shows Polish prisoners being led, hands behind their backs, "somewhere in Poland" after opening hostilities on the Polish border. German soldiers trot after the prisoners of war, their rifles ready for instant use in case of attempted escape.

Shopping Made Easy Under Reich Ration Plan



Restrictions imposed on Germany's inhabitants are illustrated here in actual quantity. A pound of meat—that's a week's supply. Also allowed is a half pint of milk per day and two ounces of eggs. Groceries are obtainable only under the Reich ration-card system. Each citizen must present her card at the grocery store when making purchases, and merchants must adhere to limitations. In addition to food restrictions, the amount of clothing each citizen is allowed is regulated by Nazi edict.

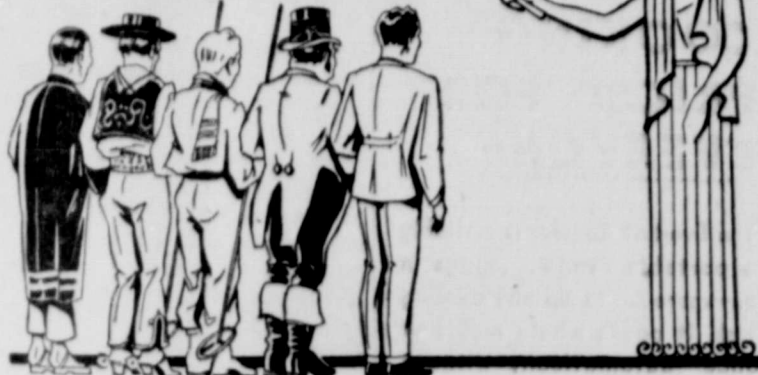
Speedy Torpedo Boats Protect Nazi Minesweeper



A minesweeper, protected by two speedy torpedo boats, plows through the waves of the North Sea. The instrument at lower right is a paravane, a device for detecting mines. Minesweepers are an important cog in Germany's 500,000-ton navy.

MODERATION, THE NOBLEST GIFT OF HEAVEN . . .

EURIPIDES 484-406 B.C.



World Beer Consumption Gains As Moderation Movement Grows

WORLD-WIDE consumption of beer and ale, which has been steadily increasing in the wake of temperance education advocating moderation and sobriety, reached a new post-war peak with the production of 196,000,000 barrels in the fiscal year 1938, according to preliminary figures collected by the League of Nations, at Geneva, Switzerland. The world increase of 2,000,000 hectolitres (1,700,000 barrels) over 1937 was due primarily to the estimated increase of 3,000,000 hectolitres in Europe, where temperance promotion and governmental advocacy of beverages of moderation have gained wide headway in recent years.

The United Kingdom, Germany, Austria and Japan were among the major countries producing more beer during the fiscal year 1938 than during the previous year. Other nations reporting increases were Bulgaria, Estonia, Greece, Hungary,

Italy, Latvia, Lithuania, Netherlands, Poland, Sweden, Yugoslavia, Egypt, Morocco, Tunis, Union of South Africa, Guatemala, Mexico and Peru.

The United States showed a slight decrease in the amount of beer produced. More recently the figures have turned upward again, indicating that beer production in this country follows the general business index.

Starting with the post-war period, during which wide-spread movements of temperance education were developed in many sections of the world, consumption of beer as a beverage of moderation has been on the increase. Even discounting the amount attributable to the return of legal beer in the United States, a world-wide gain of approximately 14 per cent is reflected in a comparison of the 123,000,000 barrels produced in 1920 with the 196,000,000 barrels produced last year.

Mrs. Trenton T. Davis and children who have been visiting in Lubbock with her parents, Mr. and Mrs. T. P. Hamilton, returned home Sunday.

Mrs. Lester Statter and children, of Nara Visa, New Mexico, is visiting this week with her sister and family, Mr. and Mrs. W. E. Grimes.

Meryl Fagan left last week for Abilene where she enrolled in Simmons University.

Emory Gray, of Crowell, visited Sunday with his sister, Mrs. W. E. Grimes and Mr. Grimes.

LITTELL'S LIQUID
A Calcium Sulphurate Solution for relieving the discomforts of itching that frequently accompanies Minor Skin Irritations, Prickly Heat, and the Bites of Non-Poisonous Insects. Locally it helps to allay the itching of Eczema. Price 50c per bottle.

WHITE DRUG COMPANY

NOTICE TO OUR CUSTOMERS!!

I am moving from HANDLEY'S REPAIR SHOP to
LACKEY'S BLACKSMITH SHOP
TWO BLOCKS EAST OF CONSUMERS OIL COMPANY,
Where I will do all classes of AUTO REPAIR and Mechanical work.
Will be glad to have all friends and customers see me at the new location.

CLAY (SHORTY) ANDERSON

NAGGING BACKACHE

May Warn of Disordered Kidney Action. Don't Neglect It!

Modern life with its hurry and worry, irregular habits, improper eating and drinking, exposure, contagion, whatnot, keeps doctors busy, hospitals crowded. The after-effects are disturbing to the kidneys and sometimes people suffer without knowing that disordered kidney action may cause the trouble.

After colds, fever and similar ills there is an increase of body impurities the kidneys must filter from the blood. If the kidneys are overtaxed and fail to remove excess acid and other harmful waste, there is poisoning of the whole system.

Symptoms of disturbed kidney function may be nagging backache, persistent headache, dizziness, getting up at night, swelling, puffiness under the eyes—a feeling of nervous anxiety and loss of strength and energy. Other signs of kidney or bladder disturbance may be burning, scanty or too frequent urination.

In such cases Doan's Pills are helpful. All over the country grateful people ask your neighbor: "That is why we got Doan's Pills. They have been winning new friends for more than forty years. Be sure to get Doan's. Sold at all drug stores."

DOAN'S PILLS

CLASSIFIED ADVERTISING

FOR SALE—1933 Chevrolet Truck in good condition. See Cline and Rainer at Western Auto Store. 41-2tc

Our FLOWERS are FRESH and are BEAUTIFULLY ARRANGED. ILLUMS, FLOYDADA FLORISTS

LANDS FOR LEASE
A few farm tracts to lease at reasonable prices for cash.

W. M. MASSIE & BRO.
Floydada, Texas. 11-1tc

We invite you to visit the greenhouse. PARK FLORISTS—Mrs. W. S. Goen. Phone 78. 46-1tc

For best and cheapest monuments, either in marble or granite. See S. B. McCLESKEY. 24-1tc

LET CAVANAUGH DO YOUR JOB PRINTING.

Make Cooking EASIER-FASTER CLEANER



with Modern

GAS RANGE

NOW comes a range so miraculous, old-time kitchen drudgery is a thing of the past. The new Gas Ranges think for themselves with heat control, temperature signals, minute minders.

Result? You can create, with assured success, cooking and baking triumphs such as you never dared attempt before.

Visit your dealer and see the many handsome new models. You'll be amazed at what they can do—you'll love their beauty.

WEST TEXAS GAS COMPANY

Floydada Insurance Agency . . .

Insurance of all kinds. Your inquiries and business respectfully solicited.

W. H. HENDERSON
OWNER

M. L. SOLOMON JEWELER

Floydada, Texas

666 Checks MALARIA in 7 days and relieves COLDS symptoms first day
Liquid, Tablets Salve, Nose Drops
Try "Rub-My-Tism" a Wonderful Liniment

THE RECORD . . . Facts That Concern You

HERE, MR. TAXPAYER IS A MILLION DOLLARS A DAY To Lighten Your Tax Burden



BEER CONTRIBUTES ANNUALLY IN LOCAL, FEDERAL AND STATE TAXES AROUND 400 MILLION DOLLARS

BEER PAYS A MILLION DOLLARS A DAY IN TAXES NATION-WIDE



HERE, MR. WORKMAN, ARE A MILLION JOBS CREATED BY BEER

HERE, MR. FARMER, IS A HUGE MARKET FOR FARM PRODUCTS.

SEE how many public benefits brewing has helped create in only five years! How can the brewing industry preserve these benefits for the people and itself?

The answer, brewers realize, lies in with the distribution of their mild, wholesome beverage through responsible retail outlets. Obviously, the brewers can enforce no laws. But they can

—and will—cooperate with all law enforcement authorities to the end that retail beer outlets give no offense to anyone.

May we send you a booklet giving interesting facts about beer, and discussing the brewers' self-regulatory program? Address: United Brewers Industrial Foundation, 19 East 40th Street, New York, N. Y.

BEER... a beverage of moderation



Mr. and Mrs. Deniz Probasco and son, Mike, spent the week end with Mr. Probasco's parents, Mr. and Mrs. Frank Probasco.

Let Cavanaugh do your Printing.

Week End SPECIALS

- CHEESE, 2 Pound Box .. 44c
- PINEAPPLE, No. 2 Cans, 2 for .. 25c
- PRIMROSE CORN, No. 2 Can, 2 for .. 25c
- PINK SALMON, Per Can .. 15c
- SHORTENING, 4 lb Carton .. 33c
- CATSUP, 14 oz. Bottle, Each .. 10c
- P. & G. SOAP, 10 Bars .. 35c
- APPLE BUTTER, Per Quart .. 19c

HULL AND McBRIEN

Leman Norman left last Friday for Lawton, Oklahoma, where he enrolled in the Cameron Junior State Agricultural College.

Reid Strickland went to Lubbock last week where he enrolled in Texas Tech for the term. He will return Friday to take up his work.

Richard Tubbs, of Lubbock, spent the week end with his parents, Judge and Mrs. G. R. Tubbs.

I. A. Smith, Jr., left Friday for Abilene, where he enrolled in McMurry College for the term.

GET A CHECK-UP FIRST

To prevent trouble. To protect you car. To make better time. We carry parts for all standard model cars.

- ACME AND DELCO BATTERIES
- FARM AND A. C. OIL FILTERS
- HASTINGS RINGS
- McQUAY NORRIS AND THOMPSON PARTS
- THOMPSON PARTS

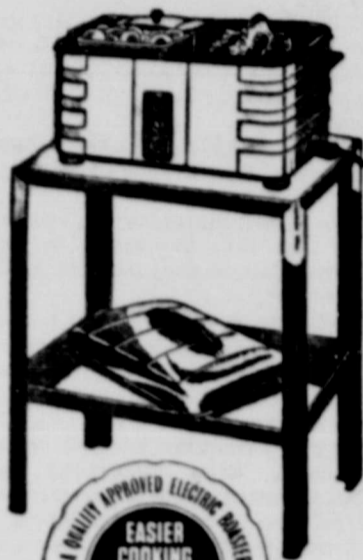
We assure you of QUALITY at reasonable prices on all repair parts.

FINKNER'S TRIANGLE GARAGE

OLDSMOBILE INTERNATIONAL

EASY ELECTRIC COOKING PRICED FOR EVERYONE

The Everhot Roaster is veritably a portable range... plugs in anywhere... to do any cooking task. It cooks whole meals at once—automatically without watching. A swish cleans it in a jiffy. Truly, easier cooking and easier living begins with an Everhot Roaster.



LOOK FOR THIS SEAL

This Everhot Roaster, complete with Broiler, Glass-Bake dishes, and table, is a \$29.40 value, but this special price is offered during September for only

\$19.95

\$1.95 Down \$2.00 a Month

Any employee will be glad to show you this outstanding value.

Texas-New Mexico Utilities Company

GILLIAM'S APPLIANCES AND SPORTING GOODS STORE
BROWN'S HOUSEHOLD SUPPLY
RADIO ELECTRIC COMPANY

FRAME GARDENS FOR FALL WILL PROVIDE MORE FOOD IN SHORTER TIME

Provident Texas gardeners can secure vegetables from frame gardens from two to three weeks earlier than from unprotected fall garden plots. So says Jennie Camp, specialist in home production planning for the A. and M. College Extension Service.

The specialist advises people with frame gardens to replant them immediately to save time, and to persons without these conveniences she suggests construction of a frame garden subrigged with either tile or tin cans soldered together. Two rows of tile two or three rows apart laid at a depth of 10 inches are recommended.

A chart prepared by Extension Service officials indicates that lettuce, mustard, spinach, parsley, swiss chard, onion sets and radishes can be grown successfully in frame gardens between the planting season September 1 to November 1, even under the most extreme weather conditions. In most Texas areas, several plantings of vegetables can be made.

Authorities suggest that low growing, quick maturing varieties be planted and that seed be kept on hand for replanting each row as rapidly as it is harvested.

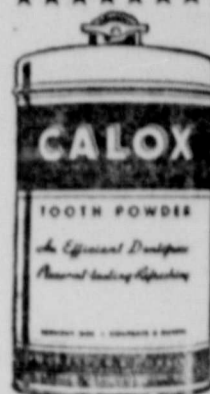
There are now more than 200 Texas counties with from 10 to 300

frame gardens in each, according to figures gathered by Extension officials. Miss Camp recommends immediate replanting of these to supplement the food budget of Texas farm and ranch families.

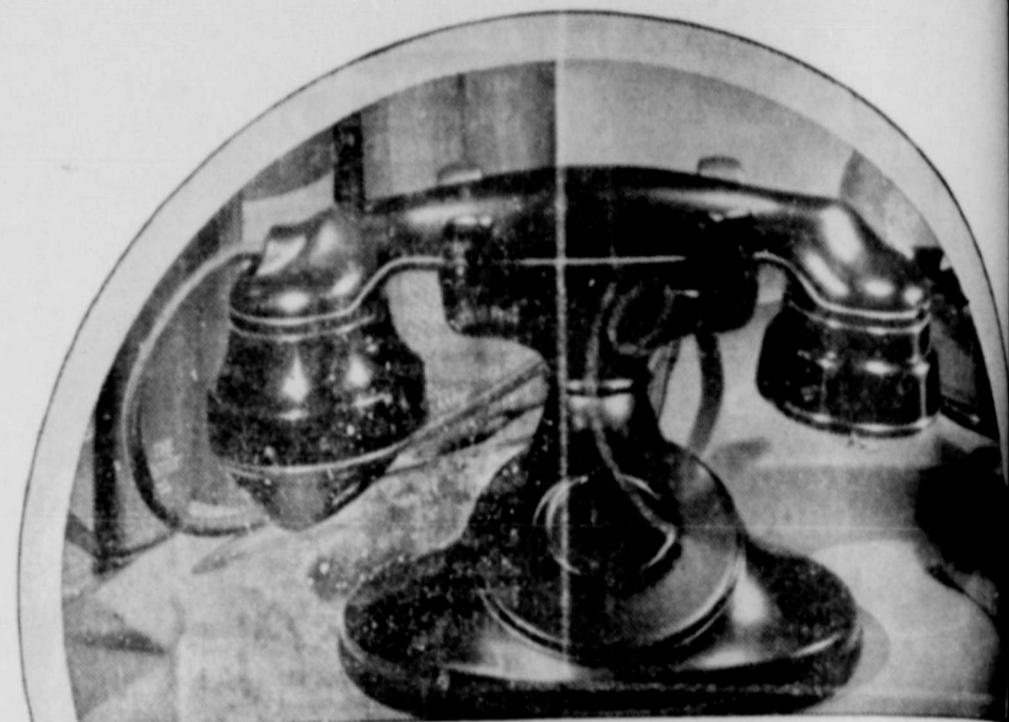
Mary Louise Tubbs left yesterday for Belton where she enrolled in Mary Hardin-Baylor College for the term. She was accompanied by her parents, Judge and Mrs. G. C. Tubbs. Mr. and Mrs. Tubbs returned to Mineral Wells Thursday where Judge Tubbs attended a two days meeting of the County Judge's of Texas.

Miss Evelyn Jenkins, daughter of Mr. and Mrs. W. H. Jenkins has entered Draughon's Business College of Lubbock for a combined business course.

Help your teeth shine like stars... use Calox Tooth Powder



Many of Hollywood's brightest stars help bring out the natural lustre of their teeth and you can rely on Calox too. Pure, pleasant-tasting, approved by Good Housekeeping Bureau. Five tested ingredients, blending to the formula of a foremost dental expert make Calox an economical tooth powder that can't harm tooth enamel. Get Calox at your drug store. Five sizes, from 10¢ to \$1.25.



Photograph of a TEXAS TAXPAYER... your Telephone

YOUR TELEPHONE carries quite a load as a taxpayer. Last year this company's tax bill in Texas was almost five million dollars—an average of \$9.81 per telephone.

women who build and operate Texas' telephone system. Last year this company's taxes were nearly 60 per cent higher than three years ago.

Taxes amounted to 20 cents of every dollar this company spent last year to furnish telephone service in Texas. Taxes totaled almost half as much as the wages paid to the 8,700 men and

As a citizen of Texas, bearing its share of the cost of government, the Southwestern Bell Telephone Company is here to furnish fast, accurate, and dependable telephone service at low cost to you.

SOUTHWESTERN BELL TELEPHONE COMPANY

Long Distance is cheaper than ever... despite increasing costs of furnishing telephone service. Ask "Long Distance" for rates.

FLOYDADA STEAM LAUNDRY Phone No. 141

WE CAN MAKE YOUR WASHDAY A "HAPPY DAY" PHONE US NOW!

AVOID HOME LAUNDERING And all its attendant worries!

Why spend another washday in a damp basement? We'll do your laundry just as cheaply and save your health and happiness.

FLOYDADA STEAM LAUNDRY Pick-Up and Delivery! Phone 141

Welcome TO THE FAIR

The 26th Annual PANHANDLE-SOUTH PLAINS FAIR LUBBOCK, TEXAS

6 BIG DAYS September 25th Thru Sept. 30th 6 BIG Nights

2 DAYS SCHOOL CHILDREN FREE 2 DAYS Wed. & Thurs. Sept. 27 & 28

Hereford, Short Horn, Dairy Cattle and Swine Exhibits... Newest in Farm Implements and Equipment... County, Community and Individual Agricultural Exhibits.

Home and Fine Arts Exhibits.

Merchandise Display

RODEO THRILL SHOW

Friday and Saturday Nights 4 BIG Nights Monday Thru Thursday 4 Saturday Afternoon

Stars on Parade

A Musical Revue of Screen and Stage Stars Featuring Clyde Lucas and His Band

Fun For Everyone—On the MIGHTY SHEESLEY MIDWAY "A Show That's Different"

Fashion Event!

NEW FALL FROCKS

\$3.98

Spirited young dresses for campus, business or casual wear! You'll love their jolly color combinations... flattering necklines... slim or draped skirts. Rayon wool challis. 12-20. Shop today.

Plaids! Solids! Two-Tones!



FELT HATS

Young... Hard-to-find... Large Head-sizes for young-minded women of all ages. Cleverly manipulated brims, berets and toques with flattering feather trims.

\$1.98, \$2.45, \$2.98

STYLE SHOPPE

"Always Showing Newest Things First" Mrs. Mollie A. Morton, Owner Phone 17



WAR!... Terrible... WAR!

It Has Come and Everyone Will Want the

Latest News at the Lowest Cost

ANNUAL SUBSCRIPTION OFFER

WICHITA DAILY TIMES (Daily and Sunday)

OR THE

WICHITA FALLS RECORD NEWS (Daily with Sunday Times)

AT THE MONEY-SAVING RATE \$5.50 REGULAR PRICE \$8.00 SAVES YOU \$2.50

By Mail in Texas and Oklahoma Only

For a Limited Time—Due to Possible War Prices of Paper, etc.

The Times and Record News—your neighboring daily newspapers—will give you the latest news, being equipped with the best news services—Associated Press, United Press and International News Service—together with the best selection of features and comics obtainable.

SUBSCRIBE TODAY!