

# The Floyd County Plainsman

VOLUME NO. 5

Floydada, Floyd County, Texas, March 8, 1934

NUMBER 13

### Infant Son of Mr. and Mrs. T. E. Lester of Liberty Died Sunday Morning

Thomas Wayne Lester, age 1 year, 4 months and 16 days, died Sunday morning at 12:30 o'clock at the home of his parents, Mr. and Mrs. T. E. Lester in the Liberty community.

The child died of diphtheria and meningitis, with which he and the other children in the family had been ill for several days. Thomas Wayne was born October 18, 1932. Four other children, two boys and two girls, survive as do the parents.

Funeral services were held Sunday afternoon at 4:30 o'clock at the Floydada cemetery chapel. W. N. Brewster conducted, assisted by Rev. I. A. Smith.

Assisting with the flowers were: Mrs. L. G. Withers, Mrs. Bruce Whitlock, Mrs. B. L. Mattison and Mrs. C. V. Ford. Pallbearers were: L. G. Withers and Bruce Whitlock.

Surviving brothers and sisters are: Travis, aged 13, Morris and Maurice, twins, aged 11 years, and Betty Jean, age 4 years.

Out of town relatives present for the funeral services were Mrs. V. O. Morris, Virgil and Emory Morris, of Clarendon, Mr. and Mrs. Chas. Talley, of Miami, Texas, and Miss Frances Lester, of Dumas.

Interment was in the Floydada cemetery with F. C. Harmon in charge of arrangements.

### Regular Business Meeting Adult Missionary Society Held At Church

A regular business meeting of the Adult Missionary Society of the First Methodist Church was held Monday with Mrs. J. M. Willson presiding.

Following the business meeting a regular mission study was read from the book, "Missions in America."

A regular meeting will be held Monday afternoon at the church at 3 o'clock.

### Mrs. Katie Callihan Died Friday Evening, Funeral Saturday

Following a brief illness, Mrs. Katie Callihan, aged 68 years, died Friday evening at 6:35 o'clock at her home in northwest Floydada. She suffered a paralytic stroke Monday morning of last week and another later which left her completely paralyzed.

Deceased was born Miss Katie Demare, February 21, 1866, in New Orleans, Louisiana. She was married June 30, 1890 to S. D. Goslee at Greenville, Mississippi. To this union were born three children, two sons and one daughter, who are: Tom Goslee, of Floydada; S. M. Goslee, of Los Angeles, California, and Mrs. A. A. Tubbs, of Center community, this county.

Mr. Goslee died January 3, 1897 and is buried in Louisiana. Mrs. Goslee re-married on April 30, 1905 to J. A. Callihan and with him she and the family moved to Floydada, in May 1905. One child, a daughter named Catherine Adelaide, was born to the second union in 1907 but died on November 29, 1915.

Surviving other than the three children are two sisters, Mrs. Lizzie Apple and Mrs. Edell Bondick, both of New Orleans, Louisiana.

Mrs. Callihan, during the World War, had three members of her family serving the United States-Texas and Sam Goslee, her sons were in the Army and her son-in-law, A. A. Tubbs was in the United States Marines.

Funeral services were held Saturday afternoon at 2:30 o'clock from the American Legion Home in Floydada. Rev. I. A. Smith and Rev. G. W. Tubbs conducted the services. F. C. Harmon's funeral directors were in charge of arrangements.

Pallbearers were: Homer Steen, John Maxwell, Pink Maxwell, W. U. White, Calvin Steen, Jack Henry, Harry Stanley and John Reagan.

Flower bearers were: Mrs. Champ Walters, Mrs. G. T. Young, Mrs. W. H. Finley, Mrs. W. W. Pierce, Mrs. S. E. Thurmon and Mrs. S. R. Stanley.

Interment was in Floydada cemetery.

### V. M. Stewart and Dick Naylor Now Employed At Panhandle Lumber Co.

Vernon M. Stewart, of Amarillo, and Dick Naylor, of Perryton, have assumed duties as employees of the Panhandle Lumber Company in Floydada. Both were transferred here.

Mr. Stewart arrived Friday and Mr. Naylor arrived Thursday of last week. T. W. Whigham, who for the past several months has been employed as bookkeeper and yard man, has returned to devote his time to the Radio Electric Company.

### Porterfield Missionary Society To Hold All-Day Meeting Friday

The Porterfield Missionary Society of the First Methodist Church will hold an all day meeting Friday at the home of Mrs. Dean Hill. Each guest will bring a covered dish for the luncheon.

Mrs. Paul Jacobsen will lead the lesson from the World Outlook during the afternoon. A regular meeting was held Monday afternoon at 3:30 o'clock at the church when Mrs. Jacobsen led the lesson on "The Never Fading Light."

Misses Louise Connor and Lola Mae Grundy, students in Texas Technological College, spent the night Tuesday visiting in Floydada with their parents.

### His "FEE"

By Albert T. Reid



### A. D. Cummings Re-Elected To Head Floydada Schools For 1934 and 1935

In a meeting of the Floydada Independent School District board of trustees Monday evening A. D. Cummings, present superintendent, was re-elected to head the Floydada schools for the school year 1934-35. He was re-elected by a unanimous vote of the board.

An election to select three trustees for the Floydada schools board will be held April 7, that being the first Saturday in April. E. C. Nelson, Mrs. T. M. Cox and Mrs. Lillie Britton were selected as manager of the election.

The four insurance agencies were asked to cancel the old policies and re-write them in order to get the new state insurance rate, in further business of the meeting.

Several current bills were itemized and ordered paid.

### To Address Association In Dallas Meeting On March 30 and 31

Dr. J. O. Ellsworth, head of the agricultural economics department at Texas Technological College, will address the agricultural economics section of the Southwestern Social Science Association which meets in Dallas March 30-31 on the subject "Effects of the agricultural act on the wheat industry."

### SUNDAY SCHOOL INSTITUTE UNDERWAY IN FIRST METH. DIST CHURCH THIS WEEK

A Sunday school institute of the First Methodist Church will close Friday evening of this week. The school has been underway since last Sunday afternoon.

Rev. Willis, of Happy, is conducting one course and Mrs. J. E. Eldridge, of Lamesa is conducting another. Attendance has been good.

### RESIGNS AS CEDAR TEACHER

Mrs. Eddie Strickland, teacher in the Cedar Hill school, has resigned her position and Miss Odessa Clendon has been employed to succeed her.

### BUILD NEW WINDMILL

A new windmill, to furnish water for the Baker school system, has been erected at that school. A recent high wind wrecked the old wooden mill, which had been in use for several years.

Miss Ina Rae Cummings, student West Texas State Teachers College in Canyon, visited in the Sandhill community over the week end with her parents, Mr. and Mrs. A. S. Cummings.

### Kendall Onstott To Fort Worth to Play With Anton Gypsy Band

Kendall Onstott left Monday for Anton where he spent until Wednesday practicing with the Anton Gypsy Band. The band left Wednesday for Fort Worth where they are playing for the Fort Worth Fat Stock Show which opens Saturday. Mr. Onstott will return from Fort Worth Sunday.

### Floydada Baptists Attended Workers Meeting Held At Crosbyton

Several members of the Floydada First Baptist Church attended a workers meeting of the Floyd County Baptist Association held Tuesday in Crosbyton at the Baptist Church. They reported a good program and good attendance.

Those attending from Floydada were: C. W. McCarty, Rev. and Mrs. S. R. McClung, Mr. and Mrs. D. I. Bolding, Mrs. J. H. Myers, Rev. G. W. Tubbs, Mr. McMurray and Mrs. Geo. A. Linder.

### BOOHE MILL & ELEVATOR ENTERTAINERS GAVE 2 PROGRAMS IN HALL COUNTY

Joe Boothe and his Boothe Mill & Elevator Musical entertainers gave two musical programs in Hall County Saturday.

Saturday afternoon a program was given at Lakeview when approximately 400 people were in attendance. At Palaska Saturday night at 8 o'clock about 350 people were in attendance.

### MT. BLANCO BAPTIST CHURCH ANNOUNCEMENT FOR SUNDAY, MARCH 11

Following is the announcement for services of the Mt. Blanco Baptist Church for Saturday, March 10 and Sunday, March 11.

Preaching at 11 o'clock Saturday, conference following.

Sunday school 10 o'clock Sunday morning.

Preaching 11 o'clock Sunday morning.

B. Y. P. U. 7:15 o'clock Sunday evening.

Preaching at 8:15 p. m.

Members urged to attend, visitors cordially invited.

REV. G. W. TURBS, Pastor.

### MORE WHEAT CHECKS HERE

Eleven wheat checks, totalling \$2,543.40, were received by County Agent Glen A. Lindsey for distribution to Floyd County wheat farmers this week. Only a small portion of the entire contracted amount is yet to arrive.

### Sock Supper and Candidate Speaking Held Cedar Hill Tuesday Night

A 'sock supper' and candidate speaking was held Tuesday evening at the Cedar Hill community school house. Purpose of the entertainment was to raise money to pay for gas lanterns in the school house.

Musical entertainment was furnished by the Boothe entertainers. Several county candidates and district candidates were in attendance.

### Meeting of New Foot Ball District Representatives Held at Matador

Plans for procedure and play were made in a meeting of the new Class B Football District held in Matador last Saturday. B. F. Tunnell, superintendent of Matador schools, acting chairman was elected as chairman of the executives of the district for 1934-35.

It was voted that the district be divided into a north and south division, with the east-west line running north of Motley county line. Jarvis, of Wellington, made the motion and Terrell, of Floydada, seconded. Every team will play all other teams in its half, percentage basis to determine winners. In case two teams or more tie in one half, play off games will be held and the winners will be determined in each half by November 24.

A plan will be worked out whereby there will be trophies awarded for 1st, 2nd, and 3rd places in the district. The executive committee will work out plan for meeting of expenses for this item.

A fee of \$2.00 will be assessed each school to pay expenses of chairman and secretary. Final date for payment will be September 15. The executive committee is composed of one member elected from each participating school. In case an active member can not be present for executive meetings he will select an alternate to be present in his place.

Members of the executive committee are: Cummings, Floydada; Jones, Lockney; Gore, Memphis; Hall, Spar; Jackson, Paducah; Lewis, Roaring Springs; Jarves, Wellington; Sharp, Dickens; Jay, Turkey; Scheidt, Quitaque; Kelsey, Silvertown; Tunnell, Matador.

### Rains and Snow During Past Week to Greatly Benefit Farming

Rain last Wednesday night, rain and snow Thursday morning and rain Saturday brought about an inch of moisture to Floyd County. According to reports the rain and snow covered the entire county and much more of the plains country.

The moisture will greatly benefit the wheat now growing and will leave a good season for plowing and planting later on. Some planting of barley and oats was expected to start soon.

This week, thus far, the temperature has been much warmer and with only slightly cloudy weather prevailing. Roads in the county, which had been very rough and muddy since the rain and snow, are in much better condition.

### 1-Act Play Tournament To Be Held At Texas Tech Campus April 13 and 14

The district three Interscholastic League one-act-play tournament will be held on the campus of Texas Technological College April 13-14, according to Miss Anna Jo Pendleton, of the Tech speech department and manager of the tournament.

"There are no deposit fees this year," Miss Pendleton stated, "but only winners in the county tournaments are eligible. We expect a good showing from this district in this year's contest."

District three includes Hale, Crosby, Dawson, Floyd, Garza, Hale, Hockley, Lynn, Lubbock, and Yoakum counties.

Miss Billie Plain, of Lubbock, and Allan Dykes, of Lubbock, visited in Floydada Saturday and Sunday with Miss Plain's sister, Mrs. H. E. Wright and Mr. Wright.

Mr. and Mrs. R. E. Fry and daughters, Misses Marilyn and Maxine, spent the past week end visiting in Plainview with friends and relatives.

### Zone Meeting of Methodist Missionary Society to Meet Tuesday, March 13, Here

The zone number three in the Plainview district of the Methodist Missionary Society will meet in Floydada Methodist Church Tuesday, March 13, beginning at 10 o'clock.

Mrs. Bryan Wells, Lockney, is the zone leader and will have charge of the meeting. A secretary will be elected. A large representation of the auxiliaries is expected. The program will be on officer's training day and is, as follows:

Devotional, Mrs. B. J. Osborn, Lockney.

Words of Welcome, Mrs. Mina Leo Solomou, Floydada.

Response to welcome—Whiteflat. Classes (45 minutes).

1. Local work and supplies led by adult Matador.

2. Children's Work led by Mrs. J. B. Timmin, Fairview.

3. President and vice president, led by Mrs. J. J. Harris, Lockney.

4. Christian social relations, led by Mrs. Loran Leibfried, Floydada. News of World Outlook, Mrs. L. A. Cooper, Lockney.

Young Women's Circles, Floydada.

Spiritual Feast in charge of Mrs. Potter, Floydada and Mrs. H. C. Pearson, Lorenzo.

Covered Dish Luncheon. Afternoon Devotional, Mrs. J. J. Spikes, Cone.

Study by Mrs. Ray Lee, Amberst.

Words from Mrs. S. S. Sloneker, Plainview district secretary.

Budget by Irene Eldridge Auxiliary, Matador.

Special Song: "O Love That Wilt Not Let Me Go." By Hester West Circle, Floydada.

Announcements, Benediction.

### C. W. A. Quota For Floyd County is 171 For Week of March 9th

In a telegram from the state C. W. A. the quota of workers on Civil Works Administration projects in Floyd County was set at 171, starting Friday, March 9th.

Burl Bedford, county administrator, was authorized to make the reductions in accordance to specifications as set out in previous telegrams. Last week's quota was 194 people.

\$709.20 was authorized to be expended as additional funds on the court house project. \$696.00 was authorized in the precinct two project for truck hire. E. R. Harris is commissioner here. An improvement of the Day crossing was included in the original project in precinct 1, of which Cummings is commissioner.

C. W. A. street and alley projects are rapidly nearing the completion point and the entire work is expected to be completed soon.

### For Attorney General



WILLIAM McCRAW

William McCraw, prominent Dallas attorney, has launched his campaign for the office of Attorney General of Texas.

McCraw served three consecutive terms as District Attorney in his own county, holding the distinction of being the only prosecutor who has ever been so honored. His record as a public official and in private law practice has won him state-wide recognition. McCraw studied law while working in his father's printing office; saw active service in France and made a notable record for law enforcement as district attorney. He has been active in the State's Democratic party affairs, being regarded as a liberal in politics.

### DO YOU WANT TO RENT YOUR HOUSE OR APARTMENT?

Have you a house or apartment to rent? Have you something about the home that you would like to sell or trade? List it in the Floyd County Plainsman Classified Ads.

Many have found that better results may be had by using the want ads. The cost of classified ads is small but they get the job done. For 25c or less you can buy, sell or trade through the Floyd County Plainsman.

At the present time there is a demand for houses, apartments, furnished apartments and rooms. We have inquiries every day and could easily rent the house or rooms if you would list them with us.

# Classified Ads.

Star Cash Grocery has the best assortment Bulk Garden Seeds 12-tfc

HAVE YOUR ABSTRACTS made by DONA COVINGTON, Abstracter, Floydada, Texas. 21-tfc

100% Pennsylvania Hyvis Lubrication oil in sealed cans. Triangle Garage. 12-1tc

BIGGER AND BETTER line of Garden Seeds at Star Cash Grocery 12-tfc

Get your car up early. Use Panhandle Noxless Gasoline. 10-2tc

QUAKER STATE OIL in sealed cans. Triangle Garage. 12-1tc

Your needs in Bulk Garden Seeds can be had at Star Cash Grocery. 12tc

To Farm Lease, Splendid Lands in Floyd and other Counties, convenient to Railroad Towns. W. M. Maasie & Bro. 13-tfc

Klean the Kitchen up with a new gas range and new wall paper. F. C. Harmon. 12-tfc

NOTICE TO THE PUBLIC  
I will do public typing and draw legal papers and notary work at County Surveyor's office. DONA COVINGTON, abstracter. 23-1tc

SHERWIN - WILLIAMS and DEVOE paints for sale at P.A.N. PANHANDLE LUMBER CO. 10-3tc

Jones Shoe Shop. We do all kinds of shoe and harness repairing 109 W. California Street. 34-5tc

Rid your chicken houses of mites, blue bugs and other vermine by using un-refined crude oil. Also kills mange on dogs and stock of all kinds. Crude oil in large or small amounts at PANHANDLE REFINING COMPANY WHOLESALE, Floydada. 13-tfc

FOR SALE—All Electric Majestic Radio, cheap. Finkner Motor Company. 13-1tc

### Better Than Whisky For Colds and Coughs

Your money back while you wait at the drug store if you don't feel relief coming in two minutes by your watch.  
Try this quick and most pleasant relief. You will be delighted or it will cost you nothing.

## ASPIRONAL

For Sale by ARWINE DRUG COMPANY

### HORSES AND MULES



#### NOTICE TO STOCKMEN

Will stand Registered Mammoth Jack also good combination Paint Horse 1934 Season. Prices \$5.00 season or \$10.00 insured. Stock located at J. M. Bungardner place 2 miles south of Sandhill, 9 miles S. West of Floydada. E. W. Turner, Owner. 10-8tp

Cherry trees, Peach trees, Plum, Cherry-Plum, Apples, etc. Grape Vines, Shade Trees, Rose bushes, shrubs etc. Hollums, Floydada Florists. 10-tfc

The New Perfection. The all-purpose stove for the farm home. F. C. Harmon. 12-tfc

TO TRADE—Town Lots for acreage or live stock. W. M. Maasie & Bro. 44-tfc

Have you seen the new Philco Radios? A Radio and price for every home. F. C. Harmon. 12-tfc

FOR SALE—Easy terms, rich plains land, also cotton land below Caprock. W. M. Maasie & Bro. 44-tfc

New Shipment of Wall Paper in latest shades. F. C. Harmon 12-tfc

HOOD TIRES at the Sign of the Red-Man. Panhandle Service Station. Phone 259. 10-2tc

LOST—On Floydada streets. Dome cap to tank truck. Finder return to Panhandle Service Station or Plainsman office. Reward. 10-tfc

Black Beauty Dew-berry plants, fifty cents per dozen. Hollums, Floydada Florists. 10-tfc

FOR SALE—One pair fine, Young Horses. See H. G. McChesney at Panhandle Lumber Co. 13tc

ANNOUNCEMENT — Load of Fresh produce from the Valley every week. Leave orders at Elliott's Repair Shop. J. A. Patterson. 13-1tp

For best monuments and prices, see S. B. McCleskey. 13-1tp

FOR SALE—\$260.00 Chevrolet deposit. L. G. Withers. 13-1tc

### Experiment Station Warns Against Feeding Copper Salts

Dr. I. B. Boughton, veterinarian at the Ranch Experiment Station, located near Sonora, Texas, announces that nine cases of chronic copper poisoning in sheep have been produced experimentally by feeding salt to which copper sulphate has been added. Chemical analysis for the copper content of the livers from these animals showed unusually high amounts of copper, further verifying the cause of the trouble.

Animals affected with chronic copper poisoning in advanced stages show a marked depression and a dirty, yellowish color of the mucous membranes of the eyes and of the skin. At this stage the urine is reddish to dark red color. There is no marked change in the body temperature but the respiration and pulse rate become very much accelerated in the late stages of the disease. Examination of affected animals show the blood to be of a dark chocolate, slow to coagulate, and the blood serum a very dark chocolate color instead of straw colored. Tissues of the body exhibit a jaundiced condition; the liver is yellowish in color and usually very friable; the spleen is swollen and the contents softened and dark in color; and the kidneys are swollen and very dark, almost black, in color.

Following an outbreak of the trouble on the Ranch Experiment Station at Sonora and on a nearby ranch some three years ago, Dr. H. Schmidt, acting chief of the division of veterinary science, began a systematic observation of affected animals pointing out the close resemblance of the trouble to the heterohemoglobinuria disease known in Europe and caused by protozoan blood parasites. He pointed out certain differences, however, that entirely removed the blood parasite from consideration as a cause, having failed through repeated experiments to transmit the trouble either by inoculation or by contact. Doctor Schmidt and his associates, Doctor Boughton and Dr. W. T. Hardy, continued their studies bearing in mind that the trouble or a similar one was reported from New York state and from Colorado. Reports by German scientists in the meantime described an acute copper poisoning that somewhat resembled the cases found in Texas. Investigations showed that a practice has been prevalent on some Texas ranches of feeding copper sulphate in some commercial mixture over long periods for control of stomach worms and it was found that the trouble was occurring on the very ranges where these mixtures were being fed. Suitable tests were immediately begun which showed the trouble is really copper poisoning but of a chronic nature which accounts for the distinction between this trouble and the acute copper poisoning reported from Germany.

In view of the fact that it has been established that a small amount of copper sulphate fed continuously in salt to sheep will produce this trouble, ranchmen should not mix copper sulphate with salt and place it before sheep, nor should they continuously use medicated salt that contains copper sulphate.

Copper sulphate, commonly known as bluestone, is a useful medical substance for the treatment of stomach worms in sheep, when administered in therapeutic doses as recommended by this station in bulletin No. 448, but the continuous feeding of it to sheep will result in chronic copper poisoning and death of the animal.

It is not wise to feed medicine to well animals. If they are well they do not need medicine, while if they are sick they should receive the medicine or treatment for the particular ailment from which they are suffering.

### Campbell Plate Supper And Music Entertainment Gets Good Crowd

A community wide plate supper banquet and entertainment held Friday night at the Campbell school attracted a large crowd and was a success in every respect.

A one hour entertainment of music and songs was given by Booth's music makers. Following this program a candidate speaking was held at which time several candidates for county offices spoke.

Let Cavanaugh do your printing.

### Pure Milk Is Nature's Most Nearly Perfect Food

Pure milk is Nature's most nearly perfect food, according to the Texas State Department of Health, and persons should be sure that the cows which produce the milk they use are in a healthy condition.

It is estimated that 2 per cent of all milk cattle have bovine type tuberculosis. Tuberculin testing of cattle will definitely prove whether the cow has tuberculosis. If a person owns their own cow, she should be tested, and if milk is being purchased, the purchaser should make sure that the cattle in the dairy he patronizes are free of this disease. These tests should be made each year, and if milk stock is to be purchased, they should be tested before completion of the sale.

About twenty-five per cent of all tuberculosis in children is of the bovine type—fatal bovine tuberculosis after the fifth year is rare. It generally attacks the lymph glands and bones. When not fatal, this disease, when it attacks the joints or bones, usually leaves the child crippled for life.

The C. W. A. has created a fund to pay for the destruction of each tuberculin cow. Of course, the disease must be certified by an accredited veterinarian. The State Live Stock Sanitary Commission and State Department of Health are very anxious to control this disease. The former to improve the dairy herds and the health department to protect the public health. Every one can help by demanding that the cows where they purchase milk be tuberculin tested.

### Texas Tech Expedition On Way Into The Yaqui River Country of Mexico

Texas Technological College's first major expedition is now on its way into the heart of the Yaqui River country of Sonora, Mexico, where original research as to the history, customs, and habits of the Yaqui Indians is hoped to be found by Dr. W. C. Holden, leader of the group.

Three recognized scientists, a surgeon, a newspaperman, a clothing merchant, and a first string Matador football player make up the party. The scientists are, Dr. W. C. Holden, historian and anthropologist, and Dr. R. A. Studhalter, ethnobotanologist, of Texas Technological College, and Dr. Carl Seltzer, physical anthropologist, of Harvard University.

Dr. Charles J. Wagner, Lubbock surgeon; Charles A. Guy, publisher of the Lubbock Avalanche-Journal; Ross Edwards, Lubbock clothing merchant; and Bennie McWilliams of San Benito, first string tackle on the Matador football team and student in anthropology who is to act as cook, interpreter, and truck driver, complete the party.

Two cars and a heavily loaded truck are being used for transportation. A week's time is expected for the trip to the camping base which is about 80 miles inland from Guaymas, Mexico, on the Gulf of California coast. Stops have been planned in Van Horn and El Paso, Texas; Tucson and Nogales, Arizona; and Hermosillo and Guaymas, Mexico.

They will be joined by representatives of the Yaqui Indians in Tucson and escorted through the bad lands to Guaymas, the nearest city to the base.

A headed rabbit's foot, belonging to Mrs. R. L. Slaughter of Lubbock, which she claims, brought her luck at one time when she was captured by Yaqui Indians and held prisoner for 24 hours before being released, will be carried by Dr. Holden as a talisman for good luck.

Although there was a slow drizzling rainfall at the time the group pulled out of Lubbock, everyone was in good spirits and happy to be on the way. Six weeks will be taken for the journey, the time for return being set for April 15.

Mr. and Mrs. Arthur B. Duncan, Jr., and son Arthur B., of Canyon, visited in Floydada over the week end with his mother, Mrs. A. B. Duncan and her mother, Mrs. J. E. Courtney.

Z. R. Felton left Sunday for Austin where he is planning to work and probably attend Texas University.

Clyde Williamson, bookkeeper at the First National Bank spent the past week end visiting in Abilene with relatives.

### Mrs. Cullen Riley Hostess To Meeting Thursday Contract Club

Mrs. Cullen Riley was hostess Thursday evening to a meeting of the Thursday Contract Bridge Club, at the home of her mother, Mrs. Sam Thurmon.

High score in the games for the evening was held by Miss Mildred Strickland for the members and Miss Dannie Mack Stewart for the guests.

Members playing were: Meadames N. B. Stansell, Lorraine Britton, Winifred Cooper, Arthur Stewart; Misses Mildred Strickland, Ruth Jenkins, Golden Louise Steen, Audrey Farris, Adelaide Scott. Guests were: Jesse Mae Wood, Eulalia Burgess, and Dannie Mac Stewart.

The hostess served chicken a la king, individual pies and tea. Miss Golden Louise Steen will be hostess at the next meeting to be held Thursday evening, March 15.

### Friendship Bridge Club With Mr. and Mrs. Tony B. Maxey

Mr. and Mrs. Tony B. Maxey entertained at the meeting of the Friendship Bridge Club Friday evening at their home, 516 West California street.

High score in the games for the evening was held by J. A. Arwine and Mrs. B. K. Barker.

Those playing were: Mr. and Mrs. A. B. Keim, Mr. and Mrs. B. K. Barker, Mr. and Mrs. J. A. Arwine, Mr. and Mrs. Walton Hale, Mr. and Mrs. Bob McGuire, Mrs. Bob Rosson and Mrs. Maxey.

Mr. and Mrs. A. B. Keim will entertain at the next meeting of the club to be held Friday evening, March 16, at 8 o'clock.

### \$5,284.45 Taxes Collected For County Monthly Report Shows

A total of \$5,284.43 was collected by County Tax Collector Frank L. Moore during the month of February according to a monthly report made to the state treasurer.

Current collections were \$874.37, insolvents \$1.55; redemptions \$4,358.24; occupation tax \$50.00.

### School Census Now Under Way In Floyd County —Cooperation Is Asked

An annual census of the scholastics of Floyd County is now under way with census takers busy both in the rural sections and in Floydada and Lockney.

"We are insisting that everyone cooperate in every way possible in an effort to get this information, in regard to age of children, as near correct as possible," County Superintendent Price Scott said.

"Everyone, both the enumerators and the parents, should be careful to enumerate all children 6 to 17 years of age inclusive. Every child that is six years of age or over before September 1, is counted as a scholastic," Mr. Scott said.

Every scholastic child that is overlooked means a loss of \$16.00, state apportionment money, to the district. Every year several scholastics are overlooked in the county it was pointed out.

### HAULING FROM THE VALLEY

Jess Patterson and V. L. Elliott have started operating a truck between Floydada and the Rio Grande Valley, where they buy fresh fruits, vegetables and produce.

The truck also brings in truck from Colorado and other points. Elliott's repair shop is headquarters for the business.

Mr. and Mrs. J. C. Covington, of this city, were business visitors in Plainview Monday morning.

### WHY GET UP NIGHTS?

Lax the Bladder With Juniper Oil, Buchu, Etc.

Drive out the impurities and excess acids that cause irritation, burning and frequent desire. Juniper oil is pleasant to take in the form of BUKETS, the bladder laxative, also containing Buchu leaves, etc. Works on the bladder similar to castor oil on the bowels. Get a 25c box from any drug store. After four days if not relieved of "getting up nights" go back and get your money. If you are bothered with backache or leg pains caused from bladder disorders you are bound to feel better after this cleansing and you get your regular sleep.

"BUKETS guaranteed by Arwine Drug Company."

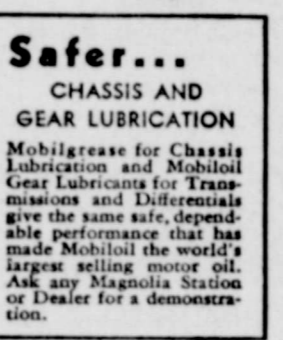


# Mobilgas and Mobiloil.

Mobilgas and Mobiloil will give you more complete, smoother performance and fewer repair bills.

Thousands of particular car owners throughout the Southwest prefer Mobilgas because it gives quicker starting in the winter . . . longer, smoother mileage in the summer and anti-knock performance all year around.

Mobiloil, the world's largest-selling motor oil, keeps wear to a minimum, seals power and lasts longer with greater economy.



Ask for these famous products at

# MAGNOLIA STATIONS AND DEALERS

"Stay with Magnolia and you stay ahead!"

(B M M-10) Magnolia Petroleum Co.—A Socony-Vacuum Company

## C. W. GINN, AGENT

FLOYDADA, TEXAS, PHONE 79 OR 298 W  
MAGNOLIA SERVICE STATION NO. 1, H. O. CLINE, MANAGER  
FLOYDADA, TEXAS, PHONE 36 OR 37  
MAGNOLIA SERVICE STATION NO. 2, A. J. CLINE, MANAGER  
FLOYDADA, TEXAS, PHONE 36 OR 37  
R. L. KNOX SERVICE STATION, LOCKNEY, TEXAS  
J. W. GINN SERVICE STATION, LOCKNEY, TEXAS  
J. A. DILLARD SERVICE STATION, LOCKNEY, TEXAS  
H. C. MCCORMICK SERVICE STATION, LOCKNEY, TEXAS

## JUST RECEIVED!

1934 SELECTIONS IN IMPERIAL WALLPAPERS (AMERICA'S FINEST)

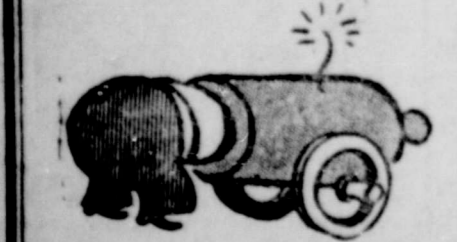
## Washable

This paper can be kept clean with soap and water without damaging it.

### NATIONALLY ADVERTISED

Let us figure the paper for your home. Our prices are in line.

# KIRK & SONS



### WOULD YOU STICK YOUR HEAD IN A CANNON?

NO . . . Neither would you want anyone but an expert working on your car. For expert repairing bring your car to—

## Elliott's Repair Shop AT FINKNER MOTOR COMPANY'S



## Westers' Quality Bakery

**The Floyd Co. Plainsman**  
Published Thursday of Each Week.

M. B. CAVANAUGH  
Owner and Publisher  
Telephone No. 187

**ADVERTISING RATES**  
Given on Application

**SUBSCRIPTION PRICES**  
In Floyd County \$1.00  
Outside Floyd County \$2.00

Entered as second class matter  
June 23, 1930, at the post office at  
Floydada, Texas, under the Act of  
March 3, 1879.

**NOTICE!**  
Any erroneous reflection upon the  
character, standing or reputation of  
any person, firm or corporation  
which may appear in the columns  
of The Floyd County Plainsman  
will be gladly corrected upon its  
being brought to the attention of  
the publisher.

**POLITICAL  
ANNOUNCEMENTS**

Those whose names appear below  
have authorized The Floyd County  
Plainsman to announce their candi-  
dacy for nomination for the offices  
under which their names appear,  
subject to the action of the Demo-  
cratic Primary Election of July 28,  
1934:

For Congress 19th Congressional  
District:  
ARTHUR P. DUGGAN  
(Littlefield, Texas)  
CLARK M. MULLICAN  
(Lubbock, Texas)  
GEORGE H. MAHON  
(Colorado, Texas)

For Judge 110th Judicial District:  
KENNETH BAIN  
A. J. FOLLEY

For District Attorney 110th Judicial  
District:  
ALTON B. CHAPMAN  
TONY B. MAXEY

For County Judge:  
J. W. HOWARD, (Re-Election)  
A. H. KREIS

For County Treasurer:  
MRS. MAUD MERRICK  
(Re-election)

For County Attorney:  
WINFRED F. NEWSOME  
W. E. GRIMES

For District Clerk:  
ROY O'BRIEN, (Re-Election)  
GEORGE B. (B) MARSHALL  
J. J. (Jeff) Davis

For County Clerk:  
A. B. CLARK

For County School Superintendent:  
E. C. NELSON  
C. A. CASS  
PRICE SCOTT (Re-Election)  
FLOYD BLANKENSHIP

For Collector and Assessor:  
FRANK L. MOORE  
(Re-Election)

For Sheriff of Floyd County:  
E. S. RANDEBSON

For Commissioner Precinct One:  
A. S. CUMMINGS  
(Re-Election)

**Regulations For Making  
Emergency Crop Loans  
From 40 Million Fund**

Regulations for making emergency  
crop loans from the \$40,000,000 fund  
recently made available by Congress  
indicate that a farmer may obtain  
such a loan if he cannot qualify for  
credit elsewhere, if he has a justi-  
fied need for credit and if he is  
cooperating with the production con-  
trol program of the Agricultural Ad-  
justment Administration, according to  
a statement made today by S. M.  
Garwood, Production Credit Com-  
missioner of the Farm Credit Admin-  
istration.

The maximum amount which will  
be made available to any one farm-  
er this year is \$250 and the mini-  
mum is \$25 according to the regu-  
lations. The interest rate will be  
5 1/2 per cent per annum. Provi-  
sions for taking crop liens have been  
worked out under Mr. Garwood's di-  
rection and detailed regulations will  
be placed in the hands of local emer-  
gency crop loan committees within  
the near future. The time and place  
where these committees will receive  
applications will be made known lo-  
cally within a short time.

Before any farmer may secure a  
loan, however, he must first obtain  
a statement from the County Pro-  
duction Council where one exists, that  
he does not intend to increase his  
acreage or production in opposition  
to the Agricultural Adjustment Ad-  
ministration program. Where a  
county production council has not

been set up, the applicant will have  
to give satisfactory evidence that he  
is cooperating with the production  
control program of the Agricultural  
Adjustment Administration, before  
his application for a loan will be  
considered.

Applications for loans from \$25  
to \$150 may be made directly to the  
emergency crop loan offices provid-  
ed the applicants do not have suf-  
ficient security to obtain loans else-  
where.

A farmer applying for a loan of  
\$150 or more must first make applica-  
tion for a loan to the Production  
Credit Association serving his coun-  
ty. Rejection of his application by  
the Production Credit Association  
will be considered sufficient evi-  
dence that other credit is not avail-  
able and the farmer may then make  
application to the emergency crop  
loan office.

The emergency crop loans are en-  
tirely separate from, and are not to  
be confused with production credit  
associations loans. The Emergency  
Crop Loan Fund is an emergency  
relief measure for this year only, to  
make available funds to those who  
cannot qualify for credit through the  
regular channels of a production  
credit association.

In announcing the regulations Mr.  
Garwood said he could not empha-  
size too strongly that the emergency  
crop loans are to provide a means  
of temporary relief for this year  
only, and that this year's loans  
probably will be the last of their  
kind.

Farmers who have a source of in-  
come other than farming are not  
eligible for emergency crop loans.

The fund will be used to make  
loans not exceeding the cash cost of  
growing crops during the year 1934,  
for summer fallowing, and for win-  
ter wheat to be planted in 1934 and  
harvested in 1935. An amount from  
the fund, not to exceed \$1,000,000,  
may be used to make loans to pur-  
chase feed for livestock in cases  
designated by the Governor of the  
Farm Credit Administration as  
drought and storm-stricken. The  
fund may not be used to make loans  
to replace work-stock.

Loans from the fund may not be  
used for the payment of existing  
debts, rent, taxes or past-due ac-  
counts. The Emergency Crop Loan  
Fund Act is an emergency relief  
measure and not a refinancing mea-  
sure. Loans are to be made only to  
farmers who need relief to help car-  
ry on the basic farming operations  
necessary in making a living. The  
money was appropriated for the spe-  
cific purpose of producing, planting,  
fallowing and cultivating crops, and  
for feed for farm livestock in  
drought and storm-stricken areas.  
The act imposes a very severe pen-  
alty for rusing loans from the fund  
for any other purposes.

Although the maximum amount  
of an emergency crop loan to any  
one farmer is \$250, as authorized by  
the regulations, no farmer will be  
loaned any more than the cash cost  
of producing the crops. The regu-  
lations restrict the amount that may  
be loaned to the tenants of any one  
landlord in any one county to \$500  
and also restrict the amount that  
may be loaned per acre, depending on  
the kind of crop being grown.

All funds will be advanced to the  
borrower at the time the loan is  
made and not on a budget basis. The

borrower must make the amount ad-  
vanced run him through the entire  
season, for if the money is used up  
before the crop is finished, or if the  
money is spent for any other pur-  
pose, additional advances will not be  
made.

Loans may be made to a borrower  
before his crops are planted provided  
a first lien may be taken on the  
crops growing or to be grown as se-  
curity for the loan. In some states,  
according to the law, a first lien may  
be taken on crops to be grown dur-  
ing the season even though the crops  
have not been planted. In other  
states this is not permitted. There  
it will be necessary for the borrow-  
er to agree to give a first lien on  
the crops to be grown.

All loans from the fund are to  
be secured by a first lien on all  
crops growing or to be planted or  
grown or harvested during the year  
1934; in the case of summer fallow-  
ing or the production of winter  
wheat a farmer must give a first  
lien, or an agreement to give a first  
lien, on such crops to be harvested  
in 1925.

In the case of loans to renters or  
share-croppers, the landlord will  
have to waive his claim to the rent  
or share of the crop. The law re-  
quires this. On the other hand, all  
tenants or share-croppers benefit-  
ing from any loan to a landlord  
must waive their claims to the crops  
if the landlord is to receive a loan  
from the emergency crop loan fund.

The recording fee or other legal  
fees in connection with emergency  
crop loans may be paid by the Farm  
Credit Administration up to \$100.  
The borrower must pay the balance,  
if any.

Emergency crop loans will mature  
when the crops are harvested and  
available for sale.

No loan will be made to any in-  
dividual who has shown lack of good  
faith in repaying feed and seed loans  
made to him in previous years. It is  
evidence of failure to observe good  
faith if a borrower has outstanding  
unpaid balances for two or more  
years which cannot be attributed to  
crop failures for which the borrower  
could not reasonably be held respon-  
sible.

In each case the farmer is the ap-  
plicant. If he is not eligible loans  
may not be made to his wife, un-  
married children, members of his  
family or employees.

**Conducted Dairy  
Products Judging Contest**

M. G. Pederson, of the Texas  
Technological College dairy depart-  
ment, conducted a dairy products  
judging contest for the Hale County  
Home Demonstration Club in Plain-  
view recently. He was assisted by  
Walter Labay of Granger, a student  
of the department.

**FLOYDADA INSUR-  
ANCE AGENCY**

Insurance of all kinds. Your  
inquiries and business respect-  
fully solicited.

**W. H. HENDERSON**  
OWNER

**Texas Tech To Get  
Two New Dormitories;  
Will House 321 Each**

A contract with the Public Works  
Administration has recently been  
signed by the directors of Texas  
Technological College to finance the  
building of two dormitories on the  
Tech campus which are to cost  
\$650,000 and house 321 students  
each. The meeting of the board of  
directors was held in the Fort Worth  
offices of Clifford B. Jones, chair-  
man.

"Only one more signature is needed  
for the completion of the contract,"  
Clifford B. Jones explained. "Secre-  
tary Icks, who is head of the Public  
Works Administration as well as  
Secretary of the Interior, will prob-  
ably sign as soon as he receives the  
document, as it was originally pre-  
pared in Washington."

W. S. Bellows Construction Com-  
pany of Oklahoma City has the con-  
tract for the building of the struc-  
tures. Actual construction work is  
expected to begin in the near future.

Let Cavanaugh do your Printing.

**WINTER SERVICE . . .**

All kind of auto repair work  
at prices you can afford to  
pay.

"All parts for some cars,  
Some parts for all cars."

**HARRIS  
BROTHERS  
AUTO WRECKING**  
PHONE 31

**Judges Hogs In Houston  
Fat Stock Show and Cattle  
At Ector County Show**

Prof. W. L. Stigel, head of the  
Texas Technological College depart-  
ment of animal husbandry, acted as  
judge of hogs at the Houston Fat  
Stock Show recently.

Before leaving for Houston, he  
judged cattle at the Ector County  
Annual Livestock and Poultry Show  
held in Odessa.

Mr. and Mrs. Gene Collins and Mr.  
and Mrs. Lindsey Graham visited in  
Turkey Sunday afternoon.

Leo Jackson, student in West Tex-  
as State Teachers College, spent the  
past week end visiting in the Camp-  
bell community with his parents, Mr.  
and Mrs. Andy Jackson.

For better vision see

**PAUL A. TAYLOR  
OPTOMETRIST**

at  
**TAYLOR DRUG**  
20 Years Experience

**Dr. Clark B. Meador**  
PHYSICIAN AND SURGEON  
Announces opening of offices  
in Boothe Building, Room 201.  
Office Phone #6 Residence  
Phone 299-W.

**HOUSTON STARTS CENSUS**

J. B. Houston, secretary of the  
Floydada Independent School dis-  
trict, last week started the census  
for the Floydada scholastics.  
Mr. Houston stated that it was

very important that every scholastic  
within the Floydada Independent  
School District be rendered. The  
census must be completed within the  
month of March. He said that he  
expected to complete the census  
within three weeks.

**Light Up  
For Profit**

You, too, Mr. Merchant, needn't envy the  
fellow who seems to get all the trade. You can  
do the same good business as he with a small in-  
vestment in that powerful sales force **GOOD  
LIGHTING**. The cost of good lighting is negligent  
when you find that in no small measure it helps  
you to sell your merchandise. Why not resolve  
today to employ this sure-fire attention and busi-  
ness getter . . . for **PROFIT?**

**Texas Utilities Company**  
"YOUR ELECTRIC SERVANT"

**Let the Plainsman Print Your Job**

**CENTERVIEW FARM**

**S. C. WHITE  
LEGHORNS**

**PEDIGREED-TRAPNESTED**

MR. AND MRS. OLIN S. MILLER  
FLOYDADA, TEXAS

Our flock of Single Comb White Leghorns has  
been built from individually pedigreed hens and males  
from high producers, blood-tested by the Live Stock  
Sanitary Commission, Fort Worth, Texas, for bacillary  
white diarrhea. We have trapnested every hen every  
day since 1928. We don't have to GUESS which hen  
lays the most eggs or which hens lay a profitable  
number of eggs, we KNOW. The trapnest tells which  
hens are the best layers, the hatching record tells  
which is the best breeder as to fertility and hatch-  
ability of eggs. Then when the daughters of these  
trapnested hens are trapped we find which of the  
original hens are the best producers of good-laying  
pullets.

Needless to say, such careful breeding requires  
endless work and patience. But we have been re-  
warded, for CENTERVIEW LEGHORNS are the  
RECOGNIZED BEST LAYING STRAIN in this  
section of the State and have won high honors in  
competition with the best Leghorns from breeders in  
thirteen States. One of our pens in the Texas National  
Contest laid 2,569 eggs in 51 weeks—an average of  
over 255 eggs per hen. Our pen of ten hens led 36 of  
the 49 pens of Leghorns from thirteen States. The  
average production from all hens, all breeds, in the  
contest was 205 eggs—Records for each of the ten  
hens in CENTERVIEW'S pen are as follows: 314, 284,  
275, 271, 270, 244, 233, 233, 232 and 214 eggs. The  
314 egg hen was the second high hen in the contest.

Even hens with as high as 200 egg records don't  
"just happen." They are produced by careful selection  
and mating. We pedigree all of the chicks we  
hatch for our own breeding pens. Pedigreed males  
from our very best hens are used. We have never  
used a male that was not pedigreed and from a 200  
egg hen or better. We have had several males of very  
high production records on their mothers side as high  
as 302, 305 and 314 eggs. Our Leghorns are large  
type, good to look at and real layers for two, three,  
four years and even longer. Hen No. 31 laid 226 eggs  
her first year, 173 2nd, 226 3rd, 174 4th, 161 5th, and  
still laying and producing good chicks. Hen No. 90  
laid 210 eggs her first year, 159 2nd, 279 3rd, 155 the  
4th and still laying. No. 192 laid 201 first year, 218  
2nd, 191 3rd and still laying. We could list a good  
number of others who were profitable layers for four  
and five years. Selling off the greater part of your  
flock each year is expensive and unnecessary if you  
buy our strain of layers.

It will pay you, and pay you big to buy your  
chicks this year from a real breeder who trapnests  
everyday. You will know what you are getting and  
what to expect of them. The cost of growing the  
best is no more than growing ordinary chicks, which

will disappoint you when the time comes to reap  
returns on your work and money invested. The first  
cost is only a few cents more per chick than you would  
pay for ordinary chicks. We believe you will be  
glad you ordered CENTERVIEW FARM LEGHORNS  
next fall when you are getting large white eggs and  
lots of them from your pullets.

**MATINGS**

We sell only two grades of chicks from our special  
pens (Grade AA) and from our selected flock mating,  
grade A.

**AA MATINGS**

In this mating we have the best 10% of our  
breeding flocks—records 200 to 279 eggs. The males  
from 314, 308 and 284 egg hens. Only one male is  
mated to each pen in this group to enable us to know  
the parentage of all chicks. These are the matings  
from which our best breeders and contest hens come.  
Price of chicks from these pens, not wing banded,  
\$         per 100. Wing banded, pedigreed chicks  
\$         per 100.

**A MATING**

This is our selected flock mating made up of  
large, healthy hens records 200 to 240 eggs in twelve  
months, and a few of the very best pullets being  
trapnested their first year. Many of them will be  
in our special pens next year. We could pedigree the  
chicks from every one of our hens, as every egg is  
marked with the hen's number when we take the egg  
from the trapnest. However, most of our customers  
prefer not to pay for the extra work required to  
hatch and wing band these chicks as they know they  
are getting chicks from good layers. We don't hatch  
from our entire flock—only the best selected for size,  
vigor and egg record. We are making a good price  
on these chicks of \$         per 100 delivered. We  
ask that you compare our prices with that of other  
breeders who trapnest and pedigree their Leghorns.

Pedigreed cockerels from our AA Matings may be  
purchased from November to April, at reasonable  
prices.

**EGGS**

We believe it is more satisfactory to all concerned  
to buy chicks instead of eggs. You know how many  
chicks you will get and get them when you want them.  
Shipping is injurious to hatching eggs. We have  
incubators at home to take care of all the eggs we  
ordinarily produce. We do not buy eggs to hatch to  
fill orders. You get only chicks from our flock.

**DISCOUNT FOR EARLY ORDERS**

SEND IN YOUR ORDER EARLY.

An order sent in a month before you  
want the chicks gives you better service and helps  
us to plan our hatching. You may deduct 1/2 cent per  
chick if you send in your order 30 days before you want  
the chicks delivered. Deduct the 1/2 cent per chick  
from the quoted price. Send 25% cash with order,  
balance five days before you wish chicks to be shipped  
or if you prefer we will ship—balance C. O. D.

We guarantee live delivery. Count the live chicks.  
In case of loss have your carrier or postmaster make  
statement to that effect. We will refund or replace,  
whichever you prefer.

You, as our customer must be pleased. A satisfied  
customer is the best advertisement we could possibly  
have. Write us when we can be of service to you. We  
shall be glad to have you visit us, anytime.

Yours for a square deal,  
**MR. AND MRS. OLIN S. MILLER.**

**Hemorrhoids -- Piles**

Piles, ulcers, fissures, fistulae and allied rectal diseases  
healed by my gentle and soothing method. No danger. No hospital  
No loss of time from work or business.

LABORATORY—Prepared to do microscopic and chemical  
analysis as an aid to diagnosis.

**DR. K. J. CLEMENTS**

306-310 Skaggs Building, Plainview, Texas Phone 189

**Wake Up Your Liver Bile  
—Without Calomel**

**And You'll Jump Out of Bed  
in the Morning Rinin' to Go**

If you feel sour and sunk and the  
world looks punk, don't swallow  
a lot of salts, mineral water,  
oil, laxative candy or chewing  
gum and expect them to make you  
suddenly sweet and buoyant and  
full of sunshine.

For they can't do it. They only  
move the bowels and a mere move-  
ment doesn't get at the cause. The  
reason for your down-and-out  
feeling is your liver. It should  
pour out two pounds of liquid  
bile into your bowels daily.

If this bile is not flowing freely, your  
food doesn't digest. It just decays in the  
bowels. Gas bloats up your stomach. You  
have a thick, bad taste and your breath  
is foul, skin often breaks out in blis-  
ters. Your head aches and you feel down-  
cast and out. Your whole system is poisoned.  
It takes those good, old CARTER'S  
LITTLE LIVER PILLS to get these two  
pounds of bile flowing freely and make  
you feel "up and up." They contain won-  
derful, harmless, gentle vegetable ex-  
tracts, amazing when it comes to making  
the bile flow freely.

But don't ask for liver pills. Ask for  
Carter's Little Liver Pills. Look for the  
name Carter's Little Liver Pills on  
the red label. Resist a  
substitute. 25¢ at drug stores.  
©1931 C. M. Co.

TRY PLAINSMAN WANT ADS—THEY'LL SELL IT!

HEALTHFUL

**Vigor**

KEEP THAT WAY!

OUR selves, in both our prescription department and in our proprietary medicine department, are fully stocked to meet your every need. When your doctor orders a specific remedy or when you have need of any standard product, you may be sure that you will find it at this store.



PHONE 202

WHITE DRUG CO. "THE REXALL STORE" FLOYDADA, TEXAS

**For Double-Quick Relief**

Demand And Get

GENUINE BAYER ASPIRIN



Because of a unique process in manufacture, Genuine Bayer Aspirin Tablets are made to disintegrate—or dissolve—INSTANTLY you take them. Thus they start to work instantly. Start "taking hold" of even a severe headache; neuralgia, neuritis or rheumatic pain a few minutes after taking.

And they provide SAFE relief—for Genuine BAYER ASPIRIN

does not harm the heart. So if you want QUICK and SAFE relief see that you get the real Bayer article. Always look for the Bayer cross on every tablet as illustrated, above, and for the words GENUINE BAYER ASPIRIN on every bottle or package.



GENUINE BAYER ASPIRIN DOES NOT HARM THE HEART

Miss Annie Jewel Fawver, student in West Texas State Teachers College at Canyon, visited during the week end in the Baker community with her parents, Mr. and Mrs. G. L. Fawver. A friend, Miss Fields, of Hereford, spent the week end with her.

Truett McClung, who has been a student in Wayland Baptist College for the past several months, has completed his course and is home.

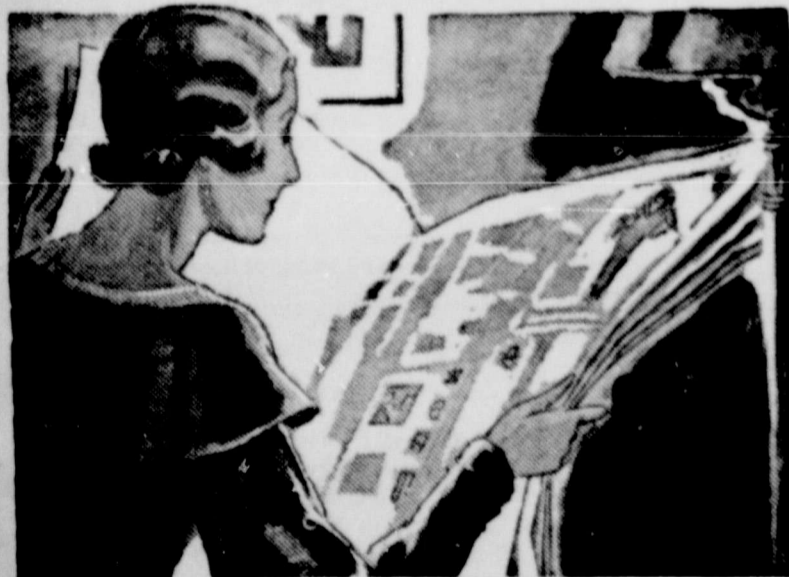
Otto Parrish, of New Mexico, is visiting in Floydada with his brother Efford Parrish.

**MRS. JOHNSON**

(The Insurance Salesman's Wife)

SAYS . . .

"I CAN BUY NOW BECAUSE I COOK WITH GAS"



CARL JOHNSON is a life insurance salesman, and planning savings is his daily work. He and his wife use the same plan in their family budget that he recommends for others. Carl thinks that some savings should go for insurance, some for other stable investments and some for taking advantage of special prices on goods for future consumption.

The Johnsons have found that judicious buying is one way to save that many overlook. They count gas for cooking as one of their greatest bargains because it is worth \$1.75 more per 1000 cubic feet than is asked for it, as compared to substitute fuels, based on the findings of a large university.

They multiply \$1.75 by the number of thousands of cubic feet of gas used for cooking per year and find that their total annual savings amount to \$26.25 on this one item, used for one purpose.

This money goes to Mrs. Johnson to take advantage of other bargains, because they apportion the money for insurance and other investments directly from Carl's earnings. Recently she has noticed some exceptional bargains advertised in this newspaper by local merchants. Economic forecasts, present prices and the advertisements, themselves, all say "Buy Now." Mrs. Johnson intends to do that very thing with the \$26.25 she has saved by cooking with gas. It is surprising the number of items that this amount of money will buy.

West Texas Gas Co.

Good Gas With Dependable Service

**POLITICAL ANNOUNCEMENTS**

Those whose names appear below have authorized The Floyd County Plainsman to announce their candidacy for nomination for the offices under which their names appear, subject to the action of the Democratic Primary Election of July 28, 1934:

For Congress 19th Congressional District:

- ARTHUR P. DUGGAN (Littlefield, Texas)
- CLARK M. MULLICAN (Lubbock, Texas)
- GEORGE H. MAHON (Colorado, Texas)

For Judge 110th Judicial District: KENNETH BAIN A. J. FOLLEY

For District Attorney 110th Judicial District:

- ALTON B. CHAPMAN
- TONY B. MAXEY

For County Judge: J. W. HOWARD, (Re-Election) A. H. KREIS

For County Treasurer: MRS. MAUD MERRICK (Re-election)

For County Attorney: WINFRED F. NEWSOME W. E. GRIMES

For District Clerk: ROY O'BRIEN, (Re-Election) GEORGE B. (B) MARSHALL J. J. (Jeff) Davis

For County Clerk: A. B. CLARK

For County School Superintendent: E. C. NELSON C. A. CASS PRICE SCOTT (Re-Election) FLOYD BLANKENSHIP

For Collector and Assessor: FRANK L. MOORE (Re-Election)

For Sheriff of Floyd County: E. S. RANDERSON

For Commissioner Precinct One: A. S. CUMMINGS (Re-Election)

**CARD OF THANKS**

We wish to express our appreciation to our friends for the many kind deeds and words during the sickness and death of our darling baby and nephew. Especially do we want to thank Bros. Brewster and Smith for their words of consolation also Dr. Anders and Miss Smith for their untiring efforts and for the many beautiful floral offerings.

May God bless you is our prayer. Mr. and Mrs. T. E. Lester, and Children.

**CITY SECRETARY IS ILL**

Silas E. Duncan, city secretary and tax collector, is ill at his home, 513 West Kentucky street, with "flu" this week. He has been confined to his bed since Monday.

Silas Duncan, Jr., is in charge of his father's office, while he is ill.

Mr. and Mrs. B. O. Cloud, of this city, visited in Plainview Tuesday of this week with S. J. Whitacre, Mrs. Cloud's father.

John L. West and daughter, Iona, visited in Bovina last week end with Mr. and Mrs. The Quickle.

Misses Eula Smith and Eula Mae Gullion are visiting in Plainview and Aiken this week.

Judge Jeff D. Ayres went to Houston and Austin, Texas last week on legal business. He left on Thursday and returned to Floydada Sunday.

Mr. and Mrs. W. N. Brewster visited Tuesday and Wednesday of this week near Levelland.

Leo Jackson, student in West Texas State Teachers College, spent the past week end visiting in the Campbell community with his parents, Mr. and Mrs. Andy Jackson.

for **BILIOUSNESS** Sour stomach gas and headache due to **CONSTIPATION**



104

354

**PRESENTED CASE IN AMARILLO**  
Ben F. Ayres, of the Ayres & Ayres law firm in Floydada, went to Amarillo Monday to present a case before the court of civil appeals.

**REV. ANSIL LYNN RECOVERED**  
Rev. Ansil Lynn, of Bovina, Texas, has recovered from an operation for hernia and is able to be back in his pulpit at the Methodist Church there. Rev. Lynn has many friends in Floyd County.

Roy Ferguson, of Los Angeles, California, arrived the latter part of last week for a visit in Floydada with his parents, Mr. and Mrs. S. D. Ferguson.

Mr. and Mrs. T. C. Russell and niece, Misses Marcella and Nella Frances Paulk, and Miss Rhe Cloud visited in Lubbock Tuesday of this week.

**F. F. A. TEAM DEFEATED**  
A basketball team from the F. F. A. of Floydada High School was eliminated in a basketball tournament held in Anton last week end.

Grady Jenkins, of Enid, Oklahoma, arrived Friday for a visit in Floydada with his parents, Mr. and Mrs. W. H. Jenkins. He is employed with the Phillips Petroleum Company in Enid.

Miss Kathleen Snodgrass, who is taking a beauty course at Mrs. Hatcher's beauty school in Amarillo, visited in Floydada during the past week end with her mother.

**SENIOR BANQUET NEXT WEEK**  
The Senior Class of Floydada High School will hold the annual banquet Friday evening, March 16, according to plans now being made. A St. Patrick motif is to be carried out in the arrangements.

**HAD TONSIL OPERATION**  
Charles Mathews, who is employed at White Drug Company, underwent an operation for tonsils Tuesday of this week and is recovering. Dr. Clark B. Meador performed the operation.

**IN SMITH & SMITH HOSPITAL**  
Mrs. Geo. Eudy, city, was admitted this week to the Smith and Smith sanitarium for medical treatment. She is thought improving.

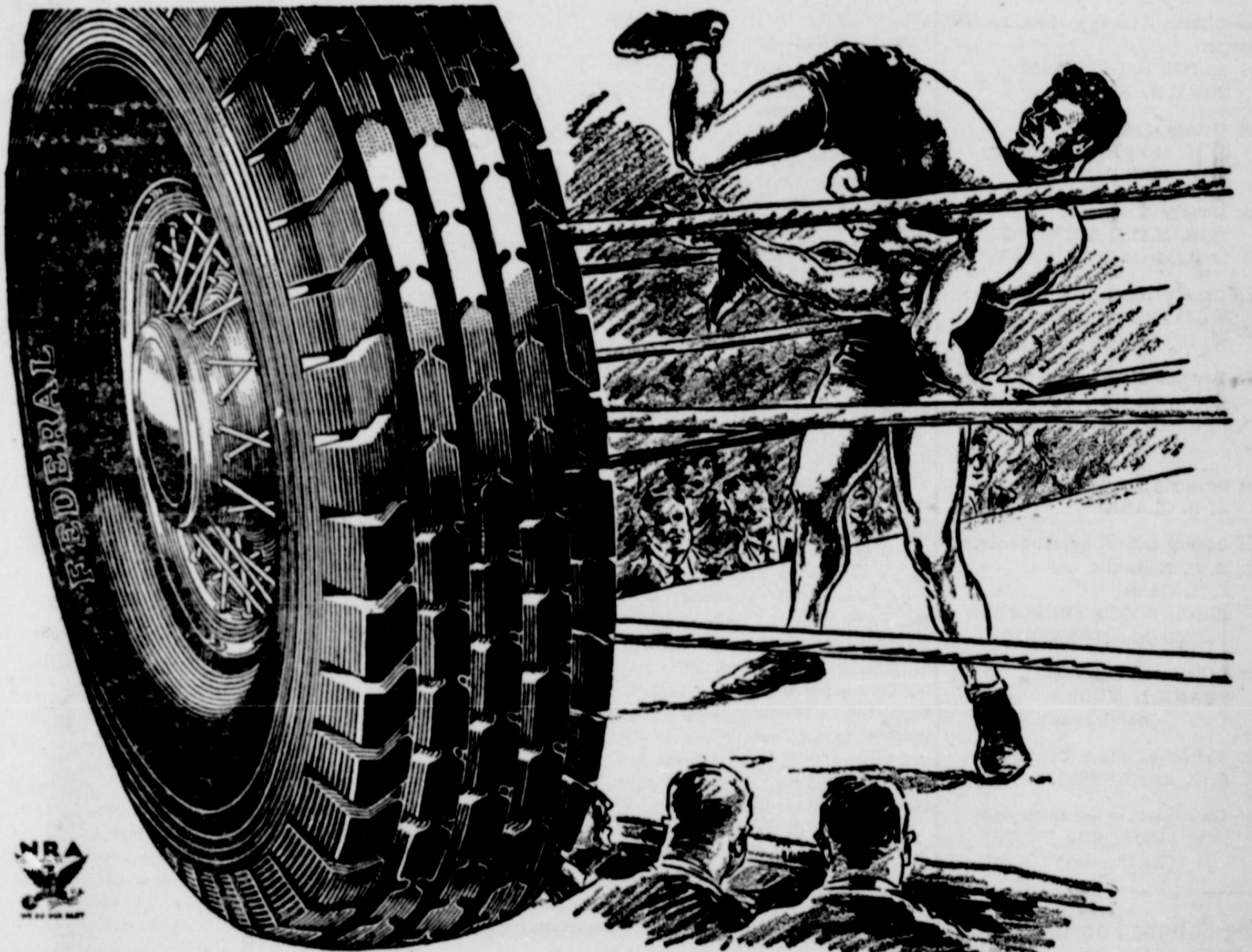
**IN LUBBOCK SANITARIUM**  
Mrs. G. C. Tubbs, who has been ill for several weeks, went to Lubbock Wednesday to go through the Lubbock Sanitarium and Clinic. Mrs. C. M. Thacker took Mrs. Tubbs to Lubbock and the latter remained for further treatment.

Miss Verna Lyles, student in W. T. S. T. College, visited during the past week end with her parents, Mr. and Mrs. C. M. Lyles in the Fairview community. Miss La Juana Cosby spent the week end in that community also.

**Lost 20 Lbs. of Fat In Just 4 Weeks**

Mrs. Mae West of St. Louis, Mo., writes: "I'm only 28 years old and weighed 170 lbs. until taking one box of your Kruschen Salts just 4 weeks ago. I now weigh 150 lbs. I also have more energy and furthermore I've never had a hungry moment."

Pat folks should take one half teaspoonful of Kruschen Salts in a glass of hot water every morning before breakfast—an 85-cent bottle lasts 4 weeks—you can get Kruschen at any drug store in America. If not joyfully satisfied after the first bottle—money back.



*'they certainly CAN take it'*

**Federal Blue Pennants De Luxe**

- 4.50x21 ..... \$8.15
- 4.75x19 ..... \$8.65
- 5.00x19 ..... \$9.25
- 5.25x18 ..... \$10.30
- 5.50x17 ..... \$11.30
- 5.50x19 ..... \$11.85

**Special For Your Trailer**

- 4.40x21 ..... \$2.95
- 30x3 1/2 Giant Oversize ..... \$3.85

**ROUGH**, tough, tumbling, glorying in gruelling punishment, how the Behemoths of the Mat can "take it." Trained to a T, the acme of physical perfection, of strength, stamina and grit, with bodies of steel and cartilage, skins of leather and muscles sinewy as rubber, they're ready for any sort of a rough and tumble bout.

FEDERAL tires can "take it" too. Magnificent specimens of the art of making tires, strong, sturdy, ready for a rough and tumble with any road in the world, Behemoths themselves; road wrestlers, built to "take it" plenty, and they certainly can add do.

**JACKSON TIRE CO.**

WHOLESALE AND RETAIL FLOYDADA, TEXAS



**FEDERAL** Extra Service **TIRES**