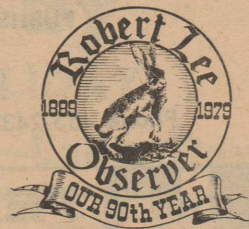


Robert Lee Observer



Vol. 90, No. 9

Robert Lee, Coke County, Texas (76945), Friday, Aug. 31, 1979

Single Copy 15c

Forty Teams Expected for Annual Labor Day Tourney at Mt. Creek

A big crowd of golfers is expected in Robert Lee this weekend for the annual Labor Day Golf Tournament. Qualifying rounds will start Saturday to get the tournament underway.

Approximately 40 teams are expected to compete in the contest.

Teams will play qualifying rounds Saturday and up to no later than 2 p.m. on Sunday.

Monday will be the day for the real action.

Town to Close For Labor Day

The last holiday of summer will be observed Monday when most firms in Robert Lee close for Labor Day. Classes will be dismissed at Robert Lee School.

Some service stations, convenience stores and cafes will remain open to take care of the holiday trade.

A large crowd is expected to visit Lake Spence during the long holiday weekend for fishing, camping, swimming, skiing and other sports.

The U.S. Post Office and Robert Lee State Bank will be closed, since Labor Day is a mandatory holiday for them. Offices in the courthouse and the city hall will be closed, also.

BRONTE REUNION

A Labor Day Reunion will be held at Bronte, with a large variety of activities planned. Some 17 organizations will have booths set up to furnish food and entertainment for the expected crowd. Young Homemakers and Young Farmers organizations are sponsors for the celebration and they issued an invitation to everyone in Robert Lee to attend.

The next holiday for school students and other residents is Thanksgiving Day.

MARTIN AT CORPUS

Navy Aviation Machinist's Mate 2nd Class Elmer J. Martin, son of Alice B. Lara of Robert Lee, has reported for duty at the Naval Air Station at Corpus Christi. He joined the Navy in May 1964.

with shotgun starts scheduled for 8:30 a.m. and 1 p.m.

Prizes to be awarded in each flight will consist of MacGregor irons for first place winners; woods for second; bags for third; and balls for fourth.



LISA DEVOLL

Lisa Devoll Is Lion Sweetheart

Lisa Devoll was elected Sweetheart of the Robert Lee-Silver Lions Club at its July meeting. She is the daughter of Mr. and Mrs. Lendy Devoll. As sweetheart of the club she will have a place of honor at many of the club's functions during the coming year.

A senior, Lisa has had an outstanding career in her first three years at Robert Lee High School. She is particularly active in sports and won the title of Most Athletic Girl in 1978. She has made all-district, all-region and all-state as a member of the girls basketball team. She also was a member of the regional track team.

In addition to her athletic accomplishments, Lisa is a twirler with the Steer Band. She has been a member of the stage band for four years and was one of the Bandsmen of the Year for 1978. She is a second year cheerleader and was 1978 Homecoming Queen. She is a member of the Beta Club.

She is a member of the Coke County Rodeo Association and was 1978 Rodeo Queen. She is active in 4-H Club work and has exhibited steers at the annual Coke County Livestock Show.

Steers Look Okay in Tilt With Mason

The Robert Lee Steers traveled to Mason last Friday night for a pre-season scrimmage. The team got a good workout with their Puncher hosts.

A second scrimmage will be held tonight (Friday) when Garden City comes here. It will be the first opportunity of the season for fans to see the Steers compete on their home field. The action will begin at 6:30 p.m.

Coach Jerry English said he was well pleased with the match at Mason. The coach said the defense looked especially good. He is looking forward to the scrimmage tonight to polish up any weak spots that may appear.

CONCESSION TO BE OPEN
The Quarterback Club will operate the concession stand at Friday night's scrimmage and will have plenty of cold drinks and other refreshments. They also will be selling memberships in the club. Everyone is urged to join the Quarterback Club, since it does a great deal for Steer teams, giving financial and other support.

The first game of the regular season is scheduled for Friday, Sept. 7, when Sterling City comes here.

Buy and Sell with Want Ads

Coke Fair to Be Held Sept. 21, 22, 23

It's FAIR TIME AGAIN! The fair catalogues will be out soon and it's time to finish up exhibit items for the canned goods, baked goods, arts, crafts and needlework divisions! These are only a few of the divisions that exhibits may be entered in this year.

Fair rules and explanations of each division's requirements will be in the 1979 Fair Catalogue. Anyone who does not receive a catalogue should contact Kathy Jobe or Sterling Lindsey, Coke County Extension Agents at the courthouse. The office phone number is 453-2461. Entry blanks

Local Enrollment Down By Seven

Enrollment in Robert Lee Schools at the beginning of the 1979-80 school term was down slightly from last year. The decrease of seven students was noted in the 13 grades, kindergarten through the senior class. Last year's total enrollment was 277, compared to 270 for this year.

Biggest drop was in junior high with a decrease of six. There are four less students in the elementary school than last year, but the

TWO GET DEGREES

Two Robert Lee students at Angelo State University were among 189 students to receive degrees during summer commencement at the university.

James Ellis Reid received a bachelor of business administration, majoring in business and Jesus Costilla received a degree in business administration, majoring in accounting.

Graduates heard U.S. Representative Tom Loeffler during ceremonies.

Band Boosters Meet, Elect Officers; Busy Year Expected for Steer Band

The Robert Lee Band Boosters Club began the 1979-80 school year Monday night with their first meeting 16 persons were present. Off-

icers for the year are: Mickey Flowers, president; Lynda Ray, vice-president; Emmalee Bickley, secretary; Dovie Cummins, treasurer; Jeffie Roberts, reporter. The new band director is Miss Mary Grace Ray. She is very enthusiastic and has a good program lined up for the band, a spokesman said.

Miss Ray told the club of a few of the coming events: Sept. 15 the band will play for the grand opening of the Heart O' Texas Savings Association in Robert Lee; Oct. 20 the band will participate in the San Angelo University Homecoming; Sept. 8 the West Texas Fair Parade in Abilene; Nov. 7, Marching Contest in Abilene; Feb. 23, Solo and Ensemble Contest in Abilene; April 22, Concert and Sight Reading.

and information is available from the County Extension Office. The fair will begin on Friday, September 21 with the judging of the divisions. The doors will open to the public on Friday evening from 4 to 7 p.m.; on Saturday, Sept. 22 from 9 a.m. to 8 p.m.; and again on Sunday from 1 to 4 p.m.

The Beau and Belle Coronation will be held again this year in the Mountain Creek Amphitheatre. The ceremonies will begin at 8:30 p.m. Everyone in the county is invited to enter the fair or just come and see the exhibits and booths.

high school enrollment went up three students.

The enrollment by grades for this year follows:

ELEMENTARY SCHOOL	
Kindergarten-----	15
First Grade-----	19
Second Grade-----	21
Third Grade-----	11
Fourth Grade-----	18
Fifth Grade-----	19
Sixth Grade-----	24
	127
JUNIOR HIGH	
Seventh Grade-----	21
Eighth Grade-----	21
	42
HIGH SCHOOL	
Ninth Grade-----	29
Sophomores-----	29
Juniors-----	20
Seniors-----	23
	101
GRAND TOTAL-----	270

Kindergarten students who are entering school for the first time this year are: Eli Arellano, Jennifer Boudreau, Steven Kleiber, J.W. Leard, Lupe Monjaras, Wayne Mundy, Mary Jo Naico, Stacy Olersuik, Blake Pitcock, Eujeana Putman, Esther Rodriguez, Joseph Scott Service, Eva Luz Torres, Vianna Valdez and Lindy Wickliffe.

ROBERT LEE OBSERVER
PUBLISHED EVERY FRIDAY

(USPS 467-480)

Phone 453-2433

P. O. Box 127



Entered at the Post Office at Robert Lee, Texas 76945 as second class matter.

Editor and Publisher Ben Oglesby

Phone 453-2433

Subscription Rates

Per Year in Coke County	\$6.00
Per Year Elsewhere in Texas	\$7.00
Per Year Outside of Texas	\$9.00

Any reflection on the character or standing of any person, firm or corporation is not intended and will be corrected upon notification

Try Fans to Conserve Electricity

BY KATHY JOBE

CIRCULATING FANS

Circulating fans create air movement and increase cooling sensation.

Both the oscillating fan and the old-time ceiling-mounted fan are designed to create air movement within a given space by the use of rotating blades or paddles.

OSCILLATING FANS

Oscillating fans are portable and can be moved easily from one room to another. Efficiency in circulating air depends on design. The more air a fan moves in a given time, the better its cooling potential.

The less electricity it requires to move the cheaper and more efficient it will be to operate.

Generally, a 12-inch blade will move less air than a 20-inch blade, and the fan with the more power will thrust air further into the room.

An oscillating fan distributes its cooling effect best when set to turn from side to side. Some models permit adjustments in the arc or stationary operation by adjusting a control knob.

A clutch that slips

or disengages when the swinging fan meets an obstruction is a desirable feature on an oscillating fan. This feature prevents a serious pinch if fingers are caught between the fan head and the pedestal.

It also keeps the fan from tipping over if it meets an obstruction as it swings.

Since fan speed is often related to how noisy a unit is during operation, units that give a choice of low, medium and high speeds offer some flexibility. Expect a higher level of operation noise at higher fan speed than low or medium speed.

If the unit will be used at night or in a child's room make sure the unit operates quietly on a low setting.

CEILING-MOUNTED FANS

Popular in the early 1900's, ceiling-mounted fans are making a strong comeback because of their energy-saving potential as well as the nostalgic touch they add to an area.

Today's ceiling fans come in a wider assortment of colors and styles, but their operation is essentially the same as the original models. Paddle blades, propelled with

about the same power required for a light bulb, stir up stagnant air to keep room temperatures within the comfort zone.

Because of size and location, the ceiling fan is capable of redistributing sizable amounts of air over a wide area.

Since they use less than 200 watts, they're an economical substitute for air conditioning on those not-so-hot days, as well as an economical and effective supplement for those higher air-conditioning settings.

Units which permit a change of pitch on the paddles or blades will make for more effective use during both heating and cooling seasons.

Heavier, cool air that accumulates near the floor will be drawn upward and recirculated by the revolving paddles during the summer season.

During winter when heated air accumulates at the ceiling, the fan works to move warm air gently downward for a more consistent temperature from floor to ceiling.

Some units accomplish this dual-season feat by a motor that permits direction of the paddles to be reversed, or tilt of the blades to be changed.

While most models are equipped with variable speed motors, this feature is especially important when the unit is used in conjunction with winter heating.

Unless a low speed can be achieved, uncomfortable drafts will result throughout the heated area.

Most manufacturers package ceiling fans for easy do-it-yourself installation. Short-stem mounts are included that provide seven-foot clearance when installed on eight-foot ceilings.

Electrical connections may be made in any ceiling receptacle designed to accommodate an ordinary light bulb.



A brown bat may eat half its weight in insects in a single night.

HORSE RACES

SCHEDULED FOR

LABOR DAY AT

DEAD COW RACEWAY

3 MILES EAST OF BRONTE --- HWY. 158

CANCELLED

Due to Lack of Interest

Frigidaire 17 Cu. Ft.

REFRIGERATOR FREEZER

Offers a convenient
Electri-Saver switch
and is 100% Frost-Proof



• A conveniently located 3-position Electri-Saver switch can help you save energy.

• Three fully-adjustable cantilever shelves provide flexible food storage.

• 100% Frost-Proof convenience lets you forget the messy, time-consuming chore of defrosting.

WEST TEXAS UTILITIES COMPANY



Qualified Factory-Trained Servicemen Offer You The Finest In Appliance Service.

CAR RACES

8 P.M. — SATURDAY NIGHT

Dead Cow Raceway

2 1/2 Miles East of Bronte
On Ballinger Highway

Mrs. Clevenger Dies at Coleman

Mrs. Perry (Lena) Clevenger, 77, of Coleman, died at 6:45 p.m. Tuesday, Aug. 21, in Over-all-Morris Memorial Hospital.

Services were held at 2 p.m. Thursday in Walker Funeral Home Chapel at Coleman with Robert Bowden, minister of First Church of God, officiating. Burial was in Coleman City Cemetery.

She was born Nov. 14, 1901 in Coleman, daughter of Mr. and Mrs. Jesse Elkins. She had lived in Coleman County all her life. She was married Aug. 31, 1919 to Perry Clevenger in Coleman. She was a member of First Church of God.

Survivors include, her husband; a son Joel Clevenger of Montgomery; a brother, Buford Elkins of Robert Lee; a sister, Duffie Clevenger of California; four grandchildren and eight great-grandchildren.

Nephews served as pallbearers.

Lunchroom Menu

Monday, Sept. 3: Labor Day Holiday.

Tuesday, Sept. 4: Fish portions with tarter sauce, butter potatoes, carrot and peas, hot rolls and butter, oatmeal cookies, milk.

Wednesday, Sept. 5: Pinto beans with meat, french fries with catsup, chopped spinach, corn bread and butter, fruit cobbler, milk.

Thursday, Sept. 6: Hot dogs with chili, whole kernel corn, carrot - cabbage slaw, lime jello with pears, milk.

Friday, Sept. 7: Salisbury steak, cream potatoes, green beans, hot rolls and butter, peanut butter brownies, milk.

The unaided human eye, under the best possible viewing conditions, can distinguish ten million different color surfaces.



LIONS CLUB MEETING

1 - 3rd Tuesday of each month - 7 P.M. Lions Club Community Center



LOOK WHO'S NEW

Rebecca Raquel is the new daughter of Mr. and Mrs. Rodney Bailey of Snyder, formerly of Robert Lee. She was born Friday, Aug. 24, at 3:32 p.m. at Cogdell Memorial Hospital in Snyder and weighed 7 pounds 5 ounces.

Grandparents are Mr. and Mrs. Al Chambers of Abilene and Mr. and Mrs. Ed Bailey of San Angelo. Mrs. Mae Bailey of San Angelo is the baby's great-grandmother.

Kristin Gayle Matlock was born at 4 a.m. Saturday, Aug. 25, at Women's and Children's Hospital in Odessa, weighing 7 pounds 6 ounces and measuring 19 inches in length. She is the new daughter of Mr. and Mrs. Mark Matlock of Odessa and has a sister, Stephanie Suzette, age 3 years.

Grandparents are Mr. and Mrs. E.W. Frost of Lohn and Mr. and Mrs. W.T. Matlock Jr. of Robert Lee.

Paternal great-grandmothers are Mrs. W.T. Matlock Sr. of San Angelo and Mrs. Ruth Jenkins of Bryan.

CASEYS HONORED ON ANNIVERSARY

Mr. and Mrs. Turney Casey were honored with a dinner Sunday, Aug. 26, on their 42nd wedding anniversary. The affair was held in the home of their daughter and family, Mr. and Mrs. Rocky Heffernan, Stacey and Pat of Bronte. Joining them were Mr. and Mrs. Bill Casey of Robert Lee, Mr. and Mrs. G.L. Coulter, Tim and Layne of Bronte, and Mr. and Mrs. M.C. Casey of Abilene.

Mr. and Mrs. O.G. Kennedy and David have returned home after a three weeks vacation. They visited their son and family, Mr. and Mrs. Garner Kennedy and children at Craig, Colo., and with their daughter and family, Mr. and Mrs. Norman (Gayle) Hallmark and children at Farmington, N.M.

WORSHIP WITH US AT THE Southside Church of Christ

BIBLE STUDY 10:00 A.M. EVENING WORSHIP ... 6:00, P.M.
WORSHIP 11:00 A.M. WED. BIBLE STUDY 7:00 P.M.

— THE FRIENDLY CHURCH —
WHERE THE BIBLE IS TAUGHT

Shop West Way

FOR OUR LAST SUMMER HOLIDAY

We Will Be Closed Monday, Sept. 3rd—Labor Day

Sugar

Imperial
5 Lb. Bag
(Limit One)

99c



SARA LEE FROZEN POUND CAKE each \$1.29

MAGIC GARDEN

SLICED STRAWBERRIES

10 oz. crt. 35c

BIRD'S EYE COOL WHIP

8 oz. crt. 69c

Crackers

Nabisco
Premium
1 Lb. Box

49c

A & W ROOT BEER, Reg. or Diet

64 oz. 79c

RUSSET POTATOES

10 lb. bag 85c

YELLOW ONIONS

pound 15c



Bacon

Armour Star
1 Lb. Pkg.

\$1.29

BEEF OR REGULAR

ARMOUR STAR FRANKS

12 oz. pkg. 98c

HORMEL CURE 81

COOKED BUFFET HAM

lb. \$2.39

BONELESS BEEF BRISKET

lb. \$1.39

Sausage

Gooch German
Style — Ring

\$1.35



VIP SWEET PEAS

303 size can 39c

VIP CUT GREEN BEANS, 303 size

3 for \$1.00

VIP GOLDEN CORN, 303 size can

3 for \$1.00

VIP PEELED TOMATOES, 303 size

3 for \$1.00

VIP TOMATO SAUCE, 8 oz. can

5 for \$1.00

NICE & SOFT FACIAL TISSUES

150 ct. box 49c

BOUNTY TOWELS

large roll 69c

NICE & SOFT TOILET TISSUE

4 roll pkg. 89c

PUREX BLEACH

1/2 gal. jug 49c

PRICES EFFECTIVE AUG. 31st & SEPT. 1st



West Way Grocery



News from West Coke Hospital

The following admissions and dismissals were reported by the West Coke County Hospital:

Aug. 21: Mary Thomas, Edna Butner, Pearlie Lacy admitted. Lela Huff, Charles Farris dismissed.

Aug. 22: Jessie Parrish, Velma Denman admitted. Edna Butner dismissed.

Aug. 23: Nora Bridges, S.D. Jones, Ronnie Pas-

smore, Betty Keele admitted. Mary Thomas, Jessie Parrish dismissed.

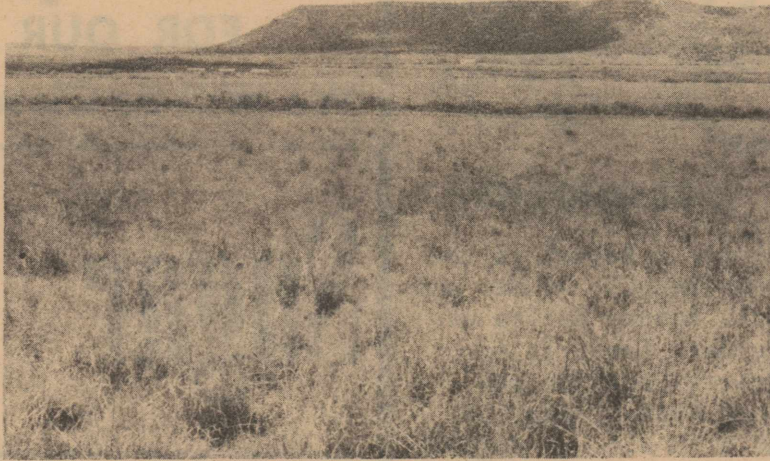
Aug. 24: Earl Ivey, Ellis Sims admitted. Isabel Bowden, Nora Bridges, Betty Keele dismissed.

Aug. 25: O.D. Adkins admitted. No dismissals.

Aug. 26: George Russell admitted. No dismissals.

Aug. 27: Harve McPeters Iva Duncan admitted.

Earl Ivey, Hiram Brock dismissed.



Range Seeding—how it should look three to four years later. This land was seeded to a mixture of Sideoats Grama, K.R. Bluestem, Kleingrass, Blue Panic and Green Sprangletop. Proper management resulted in maintaining an excellent stand.

Range Seeding Results May Vary

The success of seeding your range to selected grasses or grasses and forbs can be affected by several factors during the seeding procedure or by the management used on the established stand.

Some of the factors causing the seeding to be unsuccessful during the germination stage would be poor quality seed, unfavorable temperatures and moisture, high soil salinity, birds and rodents, and poor placement of the seed. Emergence of the

seedling may fail because of soil crusting, insect damage, wind and water erosion, and planting the seed too deep. In the establishment of the seedling, the major factors for failure are drought, weed competition, winterkill, and lack of sufficient deferment from grazing. If proper planning was done at the beginning of the seeding and care was taken during the seeding, then it is still up to the mood of mother nature.

The success of the range seeding usually cannot be determined until the second growing season. If the pasture that is seeded is not allowed to become well established during the first two years, the vigor of the new stand can be reduced quite a bit and would be similar to running a new tractor with no oil.

Once a good stand of grass is established and the results you desired have been accomplished, then it is necessary to graze it properly in order to maintain its vigor and the amount of return you get from the grass. Maybe it is put better in saying that you are in the business of growing grass, not livestock. Taking livestock to the market is just the results of proper grass management. By working towards a high quality stand of forage on the land, profits will be higher, excessive soil and water erosion will be reduced, habitat for wildlife will be improved, and the value of the land will be greater. There have been many acres in this county that have been successfully seeded to grass and are now being properly managed for continued use. Managing the land in a

way that will benefit you and the land you get your living from is the secret to success in conserving and utilizing your natural resources on a sustained basis.

To Head Rehab Center Roundup

Jim Alexander of Abilene, general chairman of the Cattlemen's Round-Up for Crippled Children, has named the following area chairmen: Ed Cumbie and Noel Percifull, both of Bronte.

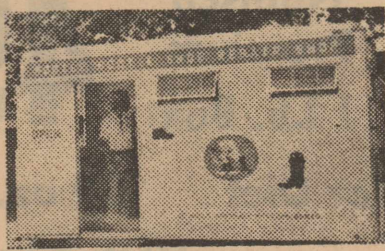
Cattlemen wishing to donate livestock or equipment to benefit the West Texas Rehabilitation Center should contact an area chairman or the Central Office of WTRC, 4601 Hartford, Abilene, Texas 79605.

The 20th annual Round-Up will raise money to help the handicapped being treated at WTRC's three campuses in Abilene, San Angelo and Snyder.

"We appeal to every rancher, farmer and stockman to join in the Round-Up to help crippled youngsters", Alexander said. "We anticipate a record number of calves, horses, and other livestock donated for sale—with all money going directly to the Rehab Center to provide treatment programs for the handicapped."

Dates for the sales are cattle sale, September 24, Abilene Auction; horse sale, October 6, Abilene Auction; sheep and goat sale, October 15, Junction, and special sale, October 17, Coleman.

OPEN IN ROBERT LEE Boot and Shoe Repairing



THE ONLY "MOBILE SHOP" OF ITS KIND

Located at Ross Conoco Station

Intersection of Highways 208 & 158

OPEN 8 A.M. TO 1 P.M. & 3 TO 6 P.M.

MONDAY THROUGH FRIDAY

NOW OPEN

Otis' Butcher Block

(Formerly Hudson Meat Co.)

Phone 655-6404

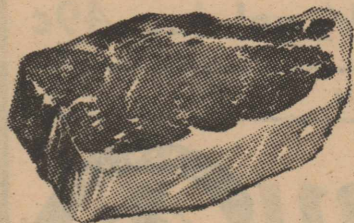
1311 So. Chadbourne

SAN ANGELO, TEXAS

Open Monday-Saturday, 8-6

- Freezer & Custom Beef Orders—Double Wrapped
- Complete Over-the-Counter Meat Service
- Home Freezer Economy and Deluxe Packs
- Custom Smoking Service

BEEF, HAM, TURKEY, CHICKEN, DEER, LUNCHMEAT



SATISFACTION GUARANTEED

CALL FOR INFORMATION

YOUR SPECIFICATIONS ARE OUR OWN!!

FINANCING AVAILABLE ON FREEZER BEEF

We are proud of our new business and invite all our friends to drop in for a visit and a look at the service and top quality meats we have to offer you. Come by any time.

Otis & Paula Rolls



Items
TOTAL RECEIPTS
BEGINNING BALANCES
TOTAL RESOURCES
Add Transfers In
Deduct Transfers Out
AVAILABLE RESOURCES
APPROVED BUDGETED EXPENDITURES
ENDING BALANCES
EXPENDITURES AND BALANCES

MOURNING DOVE • WHITE-WINGED DOVE Hunting Regulations 1979-80

DAILY BAG LIMITS

MOURNING DOVES

Daily Bag Limit - 10.
Possession Limit - 20.

WHITE-WINGED DOVES

Daily Bag Limit - 10.
Possession Limit - 20.

NOTE: Bag limits of both white-winged and mourning doves may be taken during the open white-winged dove season.

SHOOTING HOURS:

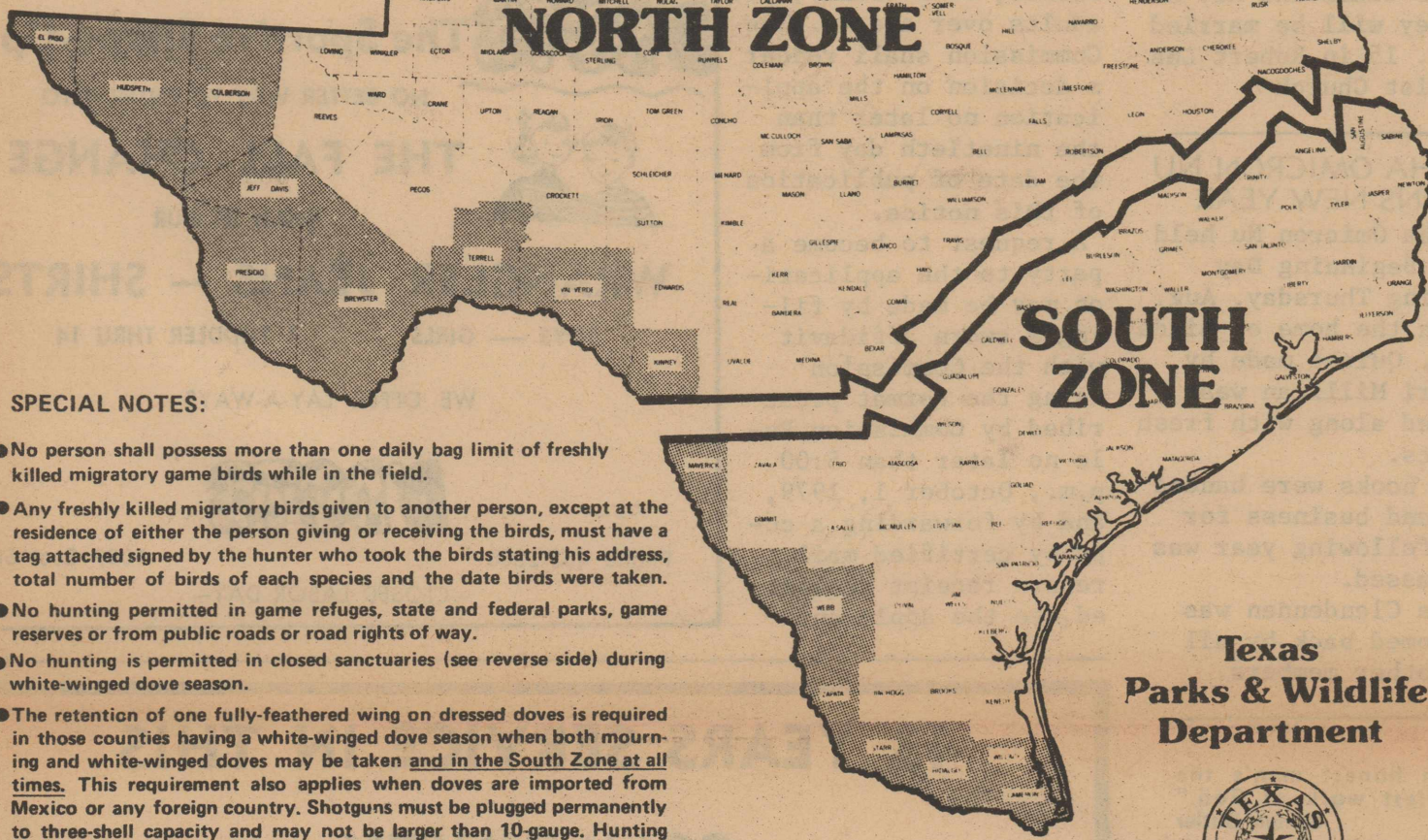
Mourning doves: 30 minutes before sunrise to sunset.

White-winged doves and mourning doves during the Sept. 1, 2, 8 and 9 season: noon to sunset.

OPEN SEASONS

MOURNING DOVES: North Zone - Sept. 1-Oct. 21, 1979, and Jan. 5-13, 1980. South Zone-Sept. 22-Nov. 4, 1979, and Jan. 5-20, 1980. In the shaded counties of the South Zone, mourning doves may be taken on Sept. 1, 2, 8 and 9, during the white-winged dove season. In these South Zone counties, the fall open season for mourning doves will close Oct. 31.

WHITE-WINGED DOVES: Shaded areas-North and South Zones-Sept. 1, 2, 8 and 9, 1979.



SPECIAL NOTES:

- No person shall possess more than one daily bag limit of freshly killed migratory game birds while in the field.
- Any freshly killed migratory birds given to another person, except at the residence of either the person giving or receiving the birds, must have a tag attached signed by the hunter who took the birds stating his address, total number of birds of each species and the date birds were taken.
- No hunting permitted in game refuges, state and federal parks, game reserves or from public roads or road rights of way.
- No hunting is permitted in closed sanctuaries (see reverse side) during white-winged dove season.
- The retention of one fully-feathered wing on dressed doves is required in those counties having a white-winged dove season when both mourning and white-winged doves may be taken and in the South Zone at all times. This requirement also applies when doves are imported from Mexico or any foreign country. Shotguns must be plugged permanently to three-shell capacity and may not be larger than 10-gauge. Hunting doves with rifles prohibited.
- A White-winged Dove Stamp for a \$3.00 fee is required of all persons who hunt white-winged doves. This stamp is required in addition to the valid hunting license.
- Hunters who bring in wild game birds or animals from the Republic of Mexico must obtain a federal statement from a U.S. Customs official at a port of entry which shows the wildlife was brought from the Republic of Mexico. (The state statute requiring an Importation Permit of anyone bringing game birds or animals into Texas from the Republic of Mexico has been repealed by the Texas Legislature and will no longer be required after Aug. 31, 1979.)

See other side for areas included in
WHITE-WINGED DOVE SANCTUARY.

Labor Day to Bring Accidents

Labor Day weekend is just around the corner. Aside from being a great mini-vaction for a countless number of Texans, this long weekend can mean increased traffic risks for Texas drivers. It is estimated that 37 persons will be killed in motor-vehicle accidents in our state, during the 78-hour holiday period. To reduce the Labor Day traffic death-toll, Texas Safety Association is encouraging drivers training and also to follow the 55 MPH speed limit: 55 ALIVE is the slogan that saves.

The National Safety Council's Defensive Driving Course, sponsored in Texas by Texas Safety Association teaches collision-avoidance skills proven to reduce accident rates up to 30 percent among graduates. More than one million Texans are graduates of the course. These skills along with driving defensively at 55 can save lives over the Labor Day weekend. The eight-hour Defensive Driving Course is offered at locations in cities throughout Texas. For information on area Defensive Driving Course agencies, contact Texas Safety Association, P.O. Box 9345, Austin, Texas 78766, 512/451-7421.

"The sound body is a product of the sound mind."
George Bernard Shaw

RECAPITULATION OF BUDGET BY FUNDS FOR YEAR 1980

	Jury Fund	Road and Bridge Funds	General Fund	Permanent Improvement Fund	1979 Road Bond I & S	1972 Interest and Sinking Funds	Revenue Sharing Fund	Total all Funds
		242,184.39	399,623.40		53,000.00	6,660.00	68,000.00	769,467.79
ANCES		131,219.35	208,060.59		42,000.00	95,126.76	23,098.15	499,504.85
		373,403.74	607,683.99		95,000.00	101,786.76	91,098.15	1,268,972.64
Out								
CES		373,403.74	607,683.99		95,000.00	101,786.76	91,098.15	1,268,972.64
ED		258,390.00	425,167.06		52,456.03	28,118.75	90,724.80	854,856.64
ES		115,013.74	182,516.93		42,543.97	73,668.01	373.35	414,116.00
BALANCES		373,403.74	607,683.99		95,000.00	101,786.76	91,098.15	1,268,972.64

Copies may be observed in the County Clerk, Judge, and Auditor Offices for inquiries.

ADD DAVIS GIVING FOOTBALL SCHEDULES

Add Davis again this year has ordered a supply of pocket size schedules which show when games will be played by the Robert Lee Steers and Dogies. The Steer schedule is on one side of the card and the Dogie schedule on the back.

Davis, who is a salesman for Vaughan Chevrolet Co., provides the schedules as a public service and as a promotion for his car sales business. He invites everyone to come by for a schedule and to talk with him about their automobile or pickup needs.

Mr. and Mrs. Nelson Coulter recently moved to Robert Lee from San Angelo. Mrs. Coulter is teaching in Robert Lee School and her husband will do his student teaching here this fall. Coulter is the grandson of Mr. and Mrs. Turney Casey.

WE INVITE YOU TO BE WITH US for WORSHIP and STUDY At All These Services
SUNDAYS: 10 A.M. and 6 P.M.
WEDNESDAYS: 7:30 P.M.
NORTHSIDE CHURCH OF CHRIST
Chadbourne and W. 9th
ROBERT LEE

MISS CLARK HONOREE AT SATURDAY COFFEE

Miss Becky Clark, bride-elect of Mike Me-haffey, was honored with a gift coffee Saturday, Aug. 25, from 9:30 to 11 a.m. The event was held at the fellowship hall of the Robert Lee Baptist Church.

Hostesses were Dolores Roe, Frankie Hood, Mary Bessent, Margaret Roane, Evelyn Flanagan, Pansy Bloodworth, Margaret Epperson, Linda Boone, Joydell Deen, Donna Waldrop, Janice Burnett, Virginia Milliff, Thelma Jo Hinnard and Jessie Faye Russell.

Miss Clark and Mr. Me-haffey will be married Sept. 15 in Robert Lee Baptist Church

ALPHA OMICRON NU BEGINS NEW YEAR

Alpha Omicron Nu held its Beginning Day meeting Thursday, Aug. 23 in the home of Linda Link. Quiche made by Sherri Millican was served along with fresh fruits.

New books were handed out and business for the following year was discussed.

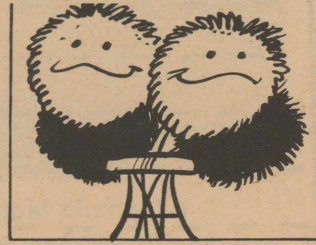
Lana Clendennen was welcomed back by all the other members.

"An honest man's the noblest work of God."
Samuel Butler

"NOTICE OF HEARING"
"Institute of Cognitive Development, Inc. for Bronte Training Residence, 505 S. State Street, Bronte, Coke County, Texas, represented by Lauralee Bachman, P.O. Box 5018, San Angelo, Texas 76902 (THFC File #AS79-0622-019) is scheduled to appear at a hearing at 8:30 a.m. on October 31, 1979, in the offices of the Texas Health Facilities Commission, 1600 West 38th Street, Suite 305, Jefferson Building, Austin, Texas, to present evidence in support of the application for a Certificate of Need to establish a 15 bed ICF-MR-I facility in Bronte, Coke County, for adults over age 44. The Commission shall render a decision on the application no later than the ninetieth day from the date of publication of this notice.

A request to become a party to the application may be made by filing a sworn affidavit with the Commission using the format prescribed by Commission Rule no later than 5:00 p.m., October 1, 1979, and by forwarding a copy by certified mail, return receipt requested, to the applicant

and all other parties." Note: If no request to become a party or petition for hearing is timely filed with the Commission, the Commission may proceed without a hearing on the application for a Certificate of Need at any time after October 1, 1979, upon written request by the applicant.



Carnations will last longer if you add a bit of boric acid to the water in the vase.

Guests of Mr. and Mrs. Turney Casey the weekend of Aug. 10 and 11 were Mrs. Iva Brewington of Manchaca and her sister, Mrs. Myrtle Pessarra of Freeport. Other visiting during the weekend were Mrs. Thelma Lewis, her daughter, Mrs. Joyce Billings and daughter of Clute; Mr. and Mrs. Dan Cappell and daughter of Baytown; Bob Davis of San Antonio; Mrs. Jerry Ellis, Mrs. Dickman and Windy of Alpine; Mr. and Mrs. James Akins of Brownwood; and Mrs. and Mrs. Bascom Chesney of San Angelo.

Buy and Sell with Want Ads

D-DOTS The Sportive Shape-Up
NO BETTER WAY TO ENTER INTO
THE FALL CHANGE
THAN IN OUR
WRANGLER JEANS — SHIRTS
BOYS — GIRLS 1 TODDLER THRU 14
WE OFFER LAY-A-WAYS
D-DOTS
Phone 453-2306 1009 Euel St.
—CLOSED LABOR DAY—

NOTICE
WE HAVE SOLD
Triangle Groc. & Bait

To Mr. & Mrs. Henry Autrey
Effective Sept. 1, 1979

We sincerely hope you will come by and meet Henry and Wyvonne and give them the opportunity to serve you. We know they will appreciate your business.

No fancy words could ever express our gratitude to each of you for the success we have enjoyed. So we just say a good old country "THANKS AND GOD BLESS YOU" to all our customers and friends.

Marie thinks she deserves a vacation after five years of working seven days a week, so we plan on doing just that. We may go up on Yellow Wolf and have a picnic.

After that — we plan to live right here because we have never found a better place to be.

Again — To All of You
THANKS A MILLION

Mike & Marie Ross

43 YEARS SERVICE IN THIS
COMMUNITY

HELPING IN ITS GROWTH

Locally Owned — Personal Service

MONEY MARKET CERTIFICATES
TODAY'S INTEREST RATE:*

9.645%

Aug. 30-Sept. 5

*\$10,000 MINIMUM 26 WEEKS MATURITY.
(PENALTY FOR EARLY WITHDRAWAL)

FEDERAL REGULATIONS PROHIBIT
THE COMPOUNDING OF INTEREST
DURING TERM OF THIS DEPOSIT.



Robert Lee State Bank

Fund Drive to Aid Tommy Bryants

Twenty-three persons met Tuesday afternoon in the Robert Lee-Silver Lions Club Building to organize a drive to raise money for the Tommy Bryant family of Robert Lee.

Two members of the family have been suffering with cancer for months and they have been undergoing treatment most of the time at M.D. Anderson Hospital in Houston.

Tommy Bryant Sr. has undergone surgery several times but is still plagued with the disease. Tommy Bryant Jr. has been in the Houston hospital for weeks, but was scheduled to come home Tuesday night.

The interested friends who met Tuesday afternoon decided to conduct a house canvass of Robert Lee from 7-9 p.m. next Thursday, Sept. 6. Collection cans are being placed in businesses in Robert Lee and Bronte asking for help for the stricken family.

Residents who live in rural areas as well as anybody else who wishes to, may mail contributions to Margaret Epperon, Box 151, Robert Lee, or to the Robert Lee State Bank. Checks should be made out to the Tommy Bryant Fund.

Anyone in the Bronte area who wishes to help

the Bryants may mail or bring contributions to The Bronte Enterprise office.

Cathy DiMaria, daughter of Mr. and Mrs. Ben Oglesby of Bronte, who is a social worker at M.D. Anderson Hospital, called Tuesday afternoon and said that Bryant Jr.'s condition was critical. He had expressed a wish to come home, so the family was making preparations to leave for Coke County as soon as possible.

A spokeswoman for the fund drive urged everyone to give generously. "Most of us give to dozens of drives of all kinds during the year," she said, "and now we are being asked to help somebody right at home who really needs help." She reported that \$385 had been collected Monday and Tuesday.

SS REP COMING

Garland Gregg, representative of the San Angelo Social Security Office, has scheduled his September visit to Robert Lee. He will be at the County Courthouse on Thursday, September 6 between 1 and 2 p.m.

Anyone who wants to file a claim for benefits, get information, or transact other business with the Social Security Administration may contact him at this time. Persons who are unable to meet with him are encouraged to call the office in San Angelo at 949-4608.



Water regulates body temperature by evaporation through the skin and lungs.

GIVE-AWAY FREE PATTERNS

1 PATTERN FOR EVERY
\$1.00 IN FABRIC

1/4 IN. ELASTIC	10 yds.	\$1.00
1/2 IN. ELASTIC	5 yds.	\$1.00
1 IN. ELASTIC	2 yds.	\$1.00
FANCY BELTING	2 yds.	\$1.00
FRINGE TRIM	2 yds.	\$1.00
Cotton Rug Yarn	2 yds.	\$1.00
SNAPS by the Yard	2 yds.	\$1.00
PILLOW CASES	pair	\$3.00
Embroidery Floss	each	8c
BOBBINS	6 for	\$1.00
Handmade Quilts		\$10 & \$20

Lots of Little Folks' Things

Neice-Jo's Fabric Shoppe

BAND BOOSTERS

Continued from Page 1

ing Contest in Abilene.

The Robert Lee High School Band which includes the seventh grade this year will practice every Tuesday at 7:30 p.m. The band will be performing at each of the high school football games starting Sept. 7.

The Boosters will be selling memberships at the scrimmage this Friday. Lynda Ray is the membership chairman and will have a table set up, ready to enroll every interested person in the club. You do not have to have a child in the band, you do not have to be married, just any young or old adult, men and women, are encouraged to join. Everyone is urged to back the band and their director.

Membership dues are \$1.00 per person. This money is used to buy things for the band that is not in the budget. "The band has had a streak of bad luck and are trying to get back on their feet. The ball games would be rather quiet without the band, so let's show them we all care," the officers said.

The Boosters will sponsor the community band calendar again this year. The business people will be asked to buy ads on the calendars. The band members will be selling calendars and listings from door to door. Louise Gartman will serve as the calendar chairman this year.

The telephone committee which consists of Shirley White, Nancy Rasco and Jen Anthony will be calling members each month to remind them of the meetings. The Boosters meet the fourth Monday of each month at 7:30 p.m. in the Band Hall. Persons who cannot attend the meetings, are invited to become a member anyway as support is needed.

There were 45 members in the band Monday.

46th Edith Homecoming Brings Back Memories of Small Communities

The 46th annual Edith Homecoming was held Aug. 19. There was no program except visiting among friends, and short devotional by Ulmer Bird recalled the beginnings of this, the first rural homecoming to be established. Others are Sanco and Silver. His theme was "God's Voice on the Cowtrail".

Some of Bird's recollections and thoughts about the Edith Community are given below:

They met at the old Edith Tabernacle, then at the Green Mountain community center until vandals began to wreck it. Then there was ready for them the beautiful, commodious community meeting place at Robert Lee, and for the last few years the Edith Homecoming has been held there was talk at the 46th Annual Edith Homecoming of meeting again within the boundaries of the old community which included, first, Edith, along with Pecan, Paint Creek, Wildcat, Green Mountain, Divide, and whatever other early day communities of southwestern Coke County there were.

The first Edith, whose northern boundary lay across the river, centered at a store, near which in the twenties was built a big tabernacle. Later the store at that location was closed and another established on the road that is now Highway 158, where it was standing, when the lake was completed and where the new settlement began to grow since. The schools were consolidated at Green Mountain, in a nice, new building, and a lively community center flourished there.

But, as I recall, it was following the depression in the thirties and all through the forties that more and more of the land owners died, sold out and moved away or moved to town, and so the school was consolidated with Robert Lee. The communities with all they meant, now passed into memories, but their spirit lived on in the annual homecomings. These began, as I recall, in 1932. I was preaching at the tabernacle, and there was a big Sunday school there.

I had just come back to Coke County from Van Zandt, where for two years I had pastored a

big country circuit, where the rural farming communities were big and hearty and... well, COUNTRY, all capital letters. Many of these communities had homecomings ever year, and one had just as well forget any idea of anybody around going to church anywhere else on Homecoming day.

What about one at Edith? Mr. Pentecost was Sunday school superintendent, and one day at the tabernacle I asked him and Mrs. Sam Powell, who was teaching at Green Mountain then, what they thought about it, and before a cat could blink his eye, the plans were under way, and for 46 years the Edith Homecoming has not missed a year--the first in the county.

Sanco and Silver followed some years later. These annual meetings have kept a warm hand-clasp with those who established Coke County, and their kin, and descendants. Young and old have attended, and they have become meeting places for friends, neighbors from over the county and from all over everywhere.

"But," one could ask, "What does that have to do with the future?" The answer: "Much in every respect." For Americans are still villagers at heart, and their hearts have turned back to the country places. Any one of the country communities could grow into a town overnight, if they had the land and the water available. But why? Build a big town and you have right there soon the very things that people are leaving the big towns to get away from.

But was the progress that did away with the small communities real progress or a DISEASE!! You answer that one.

But every time we read our newspaper or turn on TV we see new evidence that we need more of what they had and less of a lot we have today, and the heart of the world is hungry for a quiet place in the country again.



When sandpapering, place dampened newspaper under and around the object. This will catch and settle most of the dust.

SCHOOL'S OPEN



DRIVE CAREFULLY

WANT ADS

CLASSIFIED ADVERTISING RATES

1st Insertion . . . Per Word 10c (\$1.50 Minimum)
 2nd and Subsequent Insertions . . . Per Word 7c (\$1.00 Minimum)
 Additional 50c for Blind Ads
 Cards of Thanks Same Rates
 Legal Notices . . . Same Rates

COPY DEADLINE

Class. Ads . . . 4 P.M. Tuesday
 Display Ads . . . 4 P.M. Tuesday

Classified ads and cards of thanks are payable in advance unless customer carries a regular account.

FOR SALE: 3 bedroom, 2 full baths, living room, combination den and kitchen, built-ins, brick, all panel. Very well kept. Redone 11 years old. Call 453-2473 or 453-2862 or 235-8944 for appointment. 5-tnc

HARPER METHOD SCALP & HAIR CLINIC is now a full service beauty salon, including pedicures, manicures, shampoos and sets, Shaklee vitamins and makeup. Phone 453-2258; 1516 Washington, Robert Lee, Texas.

PERMANENT LOCAL RESIDENT looking for yearly or day deer lease. Could provide 1 to 10 hunters depending on acreage. 453-2812 or 453-2452. 6tnc-BP

NOW ENROLLING NEW STUDENTS for Piano and Voice lessons. Call Carolyn Long at 453-2383. 7-3tc-BP

CUSTOM BALING. New John Deere baler. James Miller. Phone 473-2811. 46-tnc-BP

Monuments
 LETTERING
 LOT COVERING
SAM L. WILLIAMS
 Robert Lee, Texas

TO OUR OLD FRIENDS AND NEW FRIENDS:

Thank you not only for our "Pounding Party" but for making our "home away from home" feel so livable.

SPEEDY & MEANO BRASUELL

SAVE GAS — FOOD — LODGING

1975 CHINOOK MOTOR HOME
 Cruise Control, Air, Tinted Glass, C.B., Tapeplayer, will sleep four. Refrigerator, gas or electric, Gas Stove, Nice Carpet and Fixtures. Will Make Over 20 Miles Per Gallon on Gas. 33,000 Miles.
PHONE 453-2301

Ivey Motor Co. SPECIAL

WASH, GREASE AND OIL CHANGE

Includes checking all fluid levels and complete under the hood inspection.

\$19.95

PHONE 453-2715

FOR SALE

Two bedroom mobile home, furnished. Priced to sell.

Stucco house, located on large corner lot. Completely re-finished, carpeted throughout. Must see to appreciate.

KONNER'S KORNER FOR SALE. Small business in new building, located on 3 lots on highway. Good business prospects for someone interested in Arts, Crafts and Gifts. Turnkey deal offered.

3 bedroom rock house, 1 bath, central heating. Has garage. On large corner lot.

Two bedroom house, 1 bath, central heating and cooling. Attached garage. Located on large corner lot. Must see to appreciate.

Two bedroom house, 1 bath, large kitchen, den area. Large screened in porch with workshop and utility space. Carport. Located on large corner lot, well established yard, fenced backyard.

ADAMS LAND & REALTY CO.
 Phone 453-2723 or 453-2757 or 655-9429

LOCAL YOKEL wants to buy Old Fiddles, any condition. Don't have to be intune. Call Observer office or write Box 114, Robert Lee. 7-4tp

FURNISHED APARTMENT For Rent. All bills paid. Call Ben Bessent, 453-2492 or 453-2632. 50-tfc

NEED — Small used refrigerator. Call 453-2511 or 453-2512. 8-tnc

FURNISHED APARTMENT For Rent. Bills paid. Call Mrs. J. H. Ruth, 453-2933, 1621 Austin. 1tp

FOR SALE: MOPED. Good condition, approximately 100 miles per gal. \$150.00. Ivey Motor Co. 9tnc-BP

FOR YOUR TUPPERWARE NEEDS, call Sally Gloria at 453-2225. Your business appreciated. 9tfc-BP

SINGER SEWING MACHINE in cabinet, Sale \$150. Call 453-2440. 1tc

I AM YOUR INDEPENDENT STANLEY dealer. Please contact Helen Fowler, 453-2882. 9-2tc

HAY FOR SALE, \$1.50 in the field. Zula Rodde, 378-4445. 1tp

JEWELRY & GIFT ITEM SHOW, 10 a.m. to 2:30 p.m. Wednesday, Sept. 5. Old Rec Hall. Everyone invited. Refreshments served. 1tc

LOST: Sandy colored poodle. Answers to "Dusty." Small reward for return. Larry Anderson, 453-2343. 9-2tc

DAY CARE CENTER NOW OPEN. All children welcome. 453-2643 or 453-2504. 9-5tc

FREE MOBILE HOME Parking Space for permanent resident, would consider weekend resident. Near Lake Spence. Evelyn Flanagan. 453-2441. 1tp

GOLD

FACTS & FANCIES

High school and college students buy some two million karat gold school rings annually.



Many students see their karat gold school ring as more than just a fine piece of jewelry, they see it as a symbol of their passage into adulthood.

Gold school rings can be customized with the student's birthstone or sign, engraved initials or signature, favorite school activity, and a variety of stone cuts and colors.

Many parents, recognizing the intrinsic and symbolic value of a karat gold school ring and the meaning that such a ring can have for their youngsters, are giving school rings as gifts to their offspring.

Shortening

Jewel 42 Oz. Can **\$1.39**

CRISCO OIL

48 oz. bottle \$2.19

DEL MONTE PEAR HALVES

303 can 57c

DEL MONTE FRUIT COCKTAIL

303 can 53c

Bar-B-Que Sauce

KRAFT 18 Oz. Bot.

65c



PETER PAN PEANUT BUTTER 18 oz. jar \$1.19

HUNT'S TOMATO SAUCE, 8 oz. can 2 for 43c

DEL MONTE CATSUP 14 oz. bot. 45c

Shasta Cola Diet or Reg. 12 Oz. Cans 6 for **\$1.09**

SWEETIE PIE SNACK CAKES 12 ct. box 59c

FIRESIDE CRACKERS 1 lb. box 49c

Bathroom Tissue Nice & Soft 4 Roll Pkg. **89c**

PALMOLIVE LIQUID 32 oz. bottle \$1.29

Parkay Stick Oleo 1 Lb. Qtrs. **59c**
 Lb.

MIRACLE WHIP OLEO 1 lb. tub 79c



10 Lb. Bag

Potatoes **89c**

Yellow Onions lb. **15c**

Pecos Cantaloupes lb. **25c**

Beef Brisket Boneless Vac. Pack Lb. **\$1.39**

PORK RIBS, Small Sides lb. \$1.29

DANKWORTH GERMAN SAUSAGE ring \$1.39

GOOCH'S BLUE RIBBON

BACON lb. **\$1.19**



We Will Be Closed Monday, Sept. 3rd—Labor Day

BAKER'S Groc. & Mkt.