

PAGE ONE

A QUICK READ OF THE NEWS

Muleshoe chamber releases July Fourth event schedule

SATURDAY, JULY 1

9:00 a.m. — Garden tour sponsored by the 2000 Muleshoe High School junior class. Tickets are \$5 and can be purchased from any junior class member or by contacting Lanelle Skaggs at 272-3993. Tickets may also be purchased at the featured homes. Refreshments are included.

10:00 a.m. — Muleshoe Chamber of Commerce and Hugh Earl Young Visitor's Center grand opening and building dedication at 115 E. American Blvd. Refreshments will be served.

All day — Chamber gift shop and visitor's center open along with homemade ice cream and popcorn sales at the chamber office. Joe's Boot Shop Tent Sale is offering free entertainment, featuring Red Steagall.

MONDAY, JULY 3

All day — Chamber gift shop and visitor's center open along with homemade ice cream and popcorn sales at the chamber office. Joe's Boot Shop will continue to provide free entertainment, featuring Freddy Fender and local favorite Jack Stone.

All day — Ex-students reunion at the Bailey County Coliseum.

9:00 a.m.-11:30 a.m. — Registration and coffee.

5:00 p.m.-6:00 p.m. — Late registration.

7:00 p.m. — Banquet.

8:30 p.m.-11:30 p.m. — Awards presentation and entertainment.

TUESDAY, JULY 4

3-on-3 basketball tournament sponsored by high school Speech department takes place at the First Assembly of God Church. Contact 272-3017 or Jason Riggs at 272-5563 for more details.

8:00 a.m. — Slow pitch softball tournament begins at City Park. Lions Club will provide

see **FOURTH** on page 4



Drawing date: Wednesday, June 21
Winning numbers: 17-27-32-35-41-47
Estimated jackpot: \$12 million
Winners: 0
Next drawing: Saturday, June 24
Estimated jackpot: \$16 million

On this date in history

June 27 — The Battle of Adobe Walls marks the last hurrah for Texas Panhandle Comanches, who then begin losing to the U.S. Cavalry (1874).

June 28 — Ratifications are exchanged in London for three treaties between the Republic of Texas and England (1842) and the 19th Amendment to the U.S. Constitution, allowing women the right to vote, is ratified by the Texas Legislature (1919).

LOCAL WEATHER

Partly cloudy conditions should persist over the area at least through midweek, with a high of around 93 on Sunday, mid-80s Monday through Wednesday, and a return to low 90s on Thursday. Expect morning lows in the low 60s through Wednesday, with a slightly warmer Thursday morning at about 63.

Editor Ronn Smith can be reached at 272-4536 or ctyankee@fivearea.com

Missed your paper? Call carrier Melissa Flores at 272-6719 or the Journal during business hours, 8:30 a.m.-5 p.m.

Hospital district to issue nursing-home bonds

By **RONN SMITH**
Editor

It's been a long time coming, but the Muleshoe Area Hospital Board passed a resolution Thursday endorsing the sale of bonds to build a new nursing home adjacent to the city park.

The board also voted — for the second time — to accept the low bid of Greenstreet Construction of

Lubbock. (The project was rebid because so much time had passed that District Attorney Johnny Actkinson had reservations about proceeding under the original bid.)

But Greenstreet's bid of almost \$2.75 million was \$137,000 more than its bid during the first go-round.

Jim Bone, the district's administrator, recommended that the new

bid be accepted contingent upon the district being able to negotiate the price back down near the original bid amount.

Laren Craig, who represented Greenstreet at Thursday's meeting, said he believes the only way to lower the price is to change some of the specifications, but that Greenstreet would be willing to work with the district in any way

possible.

Negotiations begin Tuesday.

Bone told Craig he was just relieved to see that Greenstreet was still interested.

"I was holding my breath to see whether you were going to bid," Bone said. "I thought maybe you'd been so far down the stream on this that you'd decided it just wasn't worth it."

Boll-weevil assessments mailing set

SPECIAL TO THE JOURNAL

Assessment notices for the Northwest Plains boll-weevil eradication zone for the 2000 growing season will be mailed out by Aug. 21, the Texas Boll Weevil Eradication Foundation announced Tuesday.

The foundation bases assessments on information provided from growers to the Farm Services Agency by the final cotton certification date for their area, in this case July 15.

The assessment for 2000 in the Northwest Plains zone is \$5 per acre for dryland cotton and \$12 per acre for irrigated cotton.

Growers who believe the information on their statements is incorrect will need to contact Farm Services and make sure the agency has correct information.

If the agency's records prove incorrect, farmers should have the agency update its records and notify the foundation. Growers must ask the agency to send the correction.

The assessed payment will be due Sept. 21 in the Northwest Plains zone. Failure to pay on time will result in late fees in the amount of 1.5 percent of the balance being added to the grower's account.

A 2 percent discount is available if the assessment is paid in full by Sept. 6.

As an example, if the assessment is \$2,000, the grower may deduct \$40 if paying by Sept. 6. Growers who forget to deduct the discount or don't wish to figure it, but who pay early, will receive a refund if the amount is more than \$10.

Growers who will not be able to produce a crop and who destroy all parts of the crop by July 15 will not be assessed.

More information is available by calling 272-6026, 272-6030 or 272-6032.

Jimmie Dean talent show scheduled

LEVELLAND — Ten talented people from around the region will compete June 29 in the first leg of a national competition that will net the winner \$50,000.

Local competition in the True Value Jimmie Dean Country Showdown is scheduled for 7:30 p.m. in the Tom T. Hall Performance Complex at South Plains College.

The winner will advance to the regional competition at the Panhandle South Plains Fair in Lubbock.

Competing Thursday will be vocalists David Turner, Donna Michelle, Teila Trotter and Karla Todd, all from

Lubbock; Randa Henderson of Levelland; and Katie Thornhill, Janalei Potrament, Caleb Green, Amanda Brown and Crystal Stanley, all students at South Plains.

The South Plains Opry Band will be the backup band for the contestants.

More information is available by calling Merle Fulmer at KLVTV Radio, (806) 894-3134, or Cary Banks at the college, (806) 894-9611, etc. 2474.

The local competition is sponsored by KLVTV; the SPC creative arts department; Levelland's Main Street Program, Downtown Association and Chamber of Commerce; and the Lubbock fair.



Journal photo: Ebony Russ

Still the way to cool off

Abraham "Bob-O" Mendoza and Leroy Flores double team for some fun at the city pool last week as 13-year-old Erwin Williams swims alongside. High temperatures combined with unusual humidity have made recent days uncomfortable for Bailey County residents.

Area sales-tax picture brightens in late 1999

JOURNAL STAFF REPORT

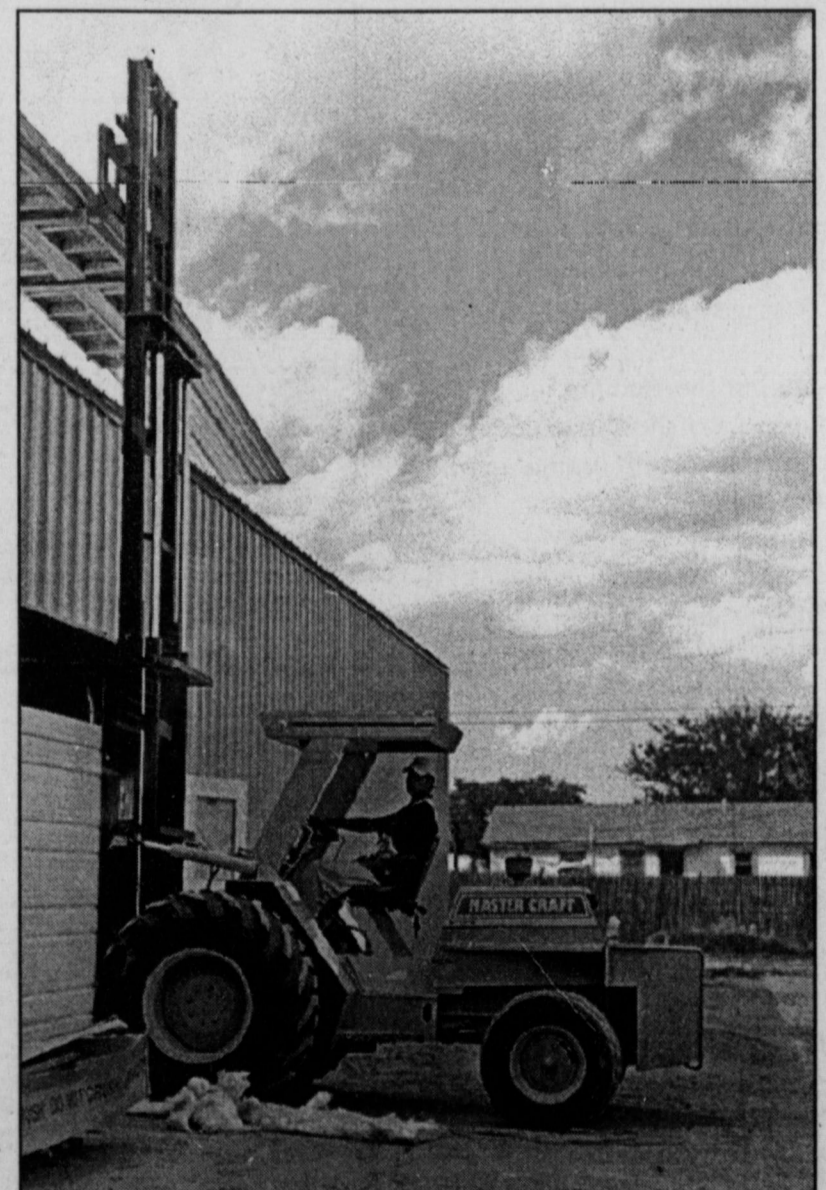
The South Plains' farm economy may still be a long way from recovery, but retail sales reports from the final quarter of 1999 indicates that there is plenty of economic life in the region.

Bailey County's sales-tax revenue for the final quarter of last year did fall 1.6 percent short of the same quarter in 1998, but there were only 142 businesses reporting in 1999 as compared to 160 in 1998. That could indicate fewer businesses with better sales in '99, but could also indicate that some outlets were late in reporting to the state comptroller's office, in which case sales could actually have increased.

Among surrounding counties, Cochran County would appear to have begun a recovery from the oil-industry doldrums of recent years.

With an identical 66 businesses reporting in the last quarter of both years, Cochran County's gross sales jumped 30.7 percent — from about \$5.347 million to about \$6.991 million.

Parmer and Lamb counties reported healthy increases for the quarter (11.8 and 6.3 percent, respectively) while Castro County declined 20.9 percent. Comparisons of individual quarters do not provide accurate measures of trends, since some businesses may not have paid or may have paid for more than one quarter.



Journal photos: Ebony Russ

Expansion continues

Shane Jackson (top) works on the interior of the expansion at Leal's Tortilla Factory, 107 E. Ash, while Dominique Reyes (above) continues to put the exterior together. Both men are working for Roper Construction Co. of Clovis.

AROUND MULESHOE

'55 Alive' driving class scheduled

A "55 Alive" course for mature drivers is scheduled for 8 a.m. to noon June 28-29 in the Five Area Telephone Cooperative meeting room in Muleshoe.

The course is sponsored by the American Association of Retired Persons and is aimed at improving the skills of older motorists.

The eight-hour course, which can earn drivers insurance benefits, costs \$10 — payable to AARP.

Charlotte Treider is the volunteer instructor. Class size is limited to 30.

Registration and/or more information is available by calling 272-5738.

Softball tournaments scheduled

Softball tournaments are scheduled in Muleshoe on July 2 and July 4.

The July 2 event, called the Firecracker Shootout, will be a 3-2 pitch Class D and E tournament with an \$80-per-team entry fee. More information is available by calling Joe at 272-7464 or Mike at 272-3513.

The July 4 event, known as the Leal's 3-2 Slow Pitch Softball Tournament, will have a similar format for the same classes, plus co-ed. Entry fee is \$110 per team. More information is available by calling Mike López at 272-3586.

Miniature golf course open

The Jennyslippers have opened the Mule-Putt Miniature Golf Course again this summer, with hours from 7 p.m. to 11 p.m. Fridays, Saturdays and Sundays.

No games will be allowed to start after 10 p.m.

The cost is \$1 per game per person.

More information is available by calling Nelda Merriott at 272-4071 or Peggie Bruton at 272-4122.

Businesses eligible for special loans

Some Bailey County businesses have until July 3 to apply special low-interest Economic Injury Disaster Loans from the U.S. Small Business Administration.

Such loans are available for businesses dependent on farmers and ranchers sustaining crop losses due to flood, hail and wind damage occurring from April 14 to June 30 of 1999.

The farmers and ranchers themselves are not eligible for this type of loan.

Businesses in Parmer, Lamb, Castro and Cochran counties also may be eligible.

More information is available by calling (800) 366-6303 (or TDD 817-267-4688).

Meeting set to plan health fair

The public is invited to attend a June 27 meeting to plan a health fair for Muleshoe.

The planning session is scheduled for 10 a.m. in the conference room at the Muleshoe Public Library. One goal of the proposed health fair would be as an outreach to migrant families in the area.

Soila Reyes of Catholic Family Services is expected to attend the meeting to explain the proposal. "I envision an outdoor mercado of health and service information/health checks in a cooperative outreach effort," she said.

More information is available by calling Reyes at (806) 296-7044.

3-on-3 basketball scheduled

Entries close at 4 p.m. June 27 for the "Fireworks" 3-on-3 Basketball Tournament scheduled for June 30 and July 1 in the First Assembly of God Family Life Center.

The entry fee for the double-elimination tournament is \$40 per team, and shirts will be awarded to the first-, second- and third-place teams.

Entry forms are available at 1628 W. Avenue C.

More information is available by calling Joey Stone at 272-3984 after 7 p.m.

Registration under way in officer course

SPECIAL TO THE JOURNAL

Registration is under way for a basic peace officer night academy that begins Sept. 5 at South Plains College in Levelland.

The registration deadline is Aug. 4.

The course is designed to meet requirements of the Texas Commission on Law Enforcement Officer Standards and Education for those who wish to take the state peace-officer licensing exam.

Classes will meet from 5:30 p.m. to 11 p.m. Mondays, Tuesdays and Wednesdays through Aug. 8, 2001.

Registration packets are available at the college's law enforcement office.

More information is available by calling (806) 894-9611, ext. 2291.

4-H leaders can learn of sportfishing

SPECIAL TO THE JOURNAL

Aquatic ecology, angling, people/fish interactions and tackle crafting are among the topics that a group of adults will learn this winter in order to mentor youths in a unique 4-H program.

The sessions will be held Sept. 8-10 in Trinidad, Texas, and Oct. 20-22 in the Lake Texoma area, according to Larry Hysmith, Texas Agricultural Extension Service wildlife and fisheries associate.

Registration deadline is Aug. 21.

During the training, adults choose one of the four topics to explore in-depth during the three-day training.

Aquatic ecology stresses water quality, insect and plant sampling and population dynamics.

Angling skills is an introduction to fishing methods from not tying to fly casting.

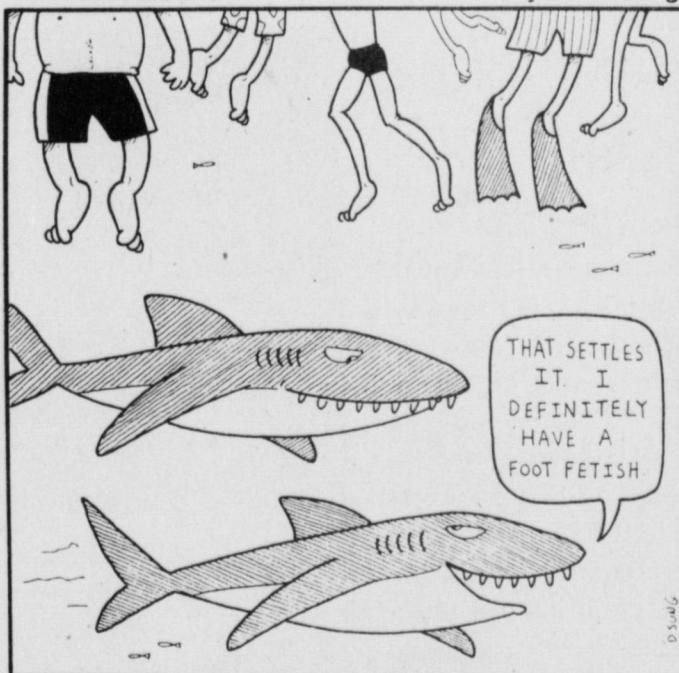
People/fish interaction explores ethics, resource and human management, folklore and heritage, and media and interviewing skills.

Tackle crafting involves lure-making, rod-building and maintenance, and specialty equipment making.

Registration materials are available from local Extension offices or from Hysmith at 102 Jagle Hall, College Station, Texas 778482258, or from hysmith@tamu.edu.

Aminals

By David Sung



Firecracker Shootout SOFTBALL TOURNAMENT

JULY 2, 2000

3-2 Pitch • Class D & E • \$80 Entry Fee

Contact Joe at 272-7464 or Mike at 272-3513

Bailey County Journal USPS 040-200

Established March 31, 1963. Published by Triple S Publishing, Inc. Every Sunday at 304 W. Second, Box 449, Muleshoe, TX 79347.

Second Class Postage paid at Muleshoe, TX.

POSTMASTER: Send address changes to the Bailey County Journal, P.O. Box 449, Muleshoe, TX 79347.

We are qualified members of: Panhandle Press Association, National Newspaper Association, West Texas Press Association and Texas Press Association

WEST TEXAS PRESS ASSOCIATION

PPA

Panhandle Press Association

TA

MEMBER 2000

TEXAS PRESS ASSOCIATION

Scot Stinnett, Publisher
Lisa Stinnett, Vice-President/Comptroller
Ron Smith, Editor
Beatrice Morin, Classifieds
Leah Bell, Advertising

© 1990

SUBSCRIPTIONS: Muleshoe Journal and Bailey County Journal
By Carrier Yearly - \$22.00
Bailey County — by mail - \$24.00
Elsewhere - \$26.00
Advertising Rate Cards on Application

*Advertisers should check their ad the first day of insertion. The Journals will not be liable for failure to publish an ad or for a typographical error or errors in publications except to the extent of the cost of the ad for the first day of insertion. Adjustment for errors will be limited to the cost of that portion of the ad where the error occurred.

T.J.'s Donuts

of Muleshoe

328 S. Main St. 272-3542

All specials come with bread, dessert and med. drink.

Monday — Steak fingers, gravy, choice of mashed potatoes or french fries, salad and toast or Grilled chicken sandwich with french fries

Tuesday — Meatloaf, mashed potatoes, vegetable, salad and bread or BBQ sandwich with chips

Wednesday — Grilled pork chops, mashed potatoes, vegetable, salad and bread or Ham and cheese sandwich with french fries

Thursday — Sirloin strip steak, baked potato, salad and toast or Cheeseburger with french fries

Friday — Fish platter, hush puppies, french fries, salad and toast or Chicken strips, french fries, cream gravy, salad and toast

Fantastic New Desserts! New Smoothie Flavor PEACH - It's delicious!

Open Monday thru Friday, 5 am to 2 pm • Saturday, 5 am to 1 pm

Super Summer Sale!

Big Summer Discounts! Super Low Financing!

All the Lowest Payments in Eastern New Mexico or West Texas!

 <p>2000 GMC Sonoma Regular Cab \$149/mo. OR \$13,500 Walkaway for \$250</p> <p>Stk. #001002</p>	 <p>2000 Pontiac Grand Am SE 4-Dr. \$229/mo. OR \$17,625 Walkaway for \$250</p>
 <p>2000 GMC TX-OK 2x2 \$229/mo. OR \$18,600 Walkaway for \$250</p> <p>Stk. #002087</p>	 <p>2000 Buick Century Custom \$195/mo. OR \$18,900 Walkaway for \$250</p> <p>Stk. #008250</p>
 <p>2000 Pontiac Grand Prix SE 4-Dr. \$277/mo. OR \$21,900 Walkaway for \$250</p> <p>Stk. #007016</p>	 <p>2000 GMC Sierra SLE X-Cab 2x2 \$279/mo. OR \$23,725 Walkaway for \$250</p> <p>Stk. #002114</p>



RICHARD BARTON
"A familiar name known for service, honesty, and easy dealing"

3300 Mabry Drive Clovis, NM 88101 505-762-2986 / 1-888-569-1900

0.09% on select vehicles for 36 months. All vehicles subject to prior sale and lenders approval. All low mileage SmartBuys 35 months 10% - 20% down plus tax, title and license. 4.5% - 9.0% A.P.R. .20 cents per mile excessive mileage charge over 12,000 miles per year. Walkaway after 35 months for \$250.

Pepper breeding hot topic for biotech research in Texas

SPECIAL TO THE JOURNAL
EL PASO—Cracking pepper is hard — that is if you're a scientist trying to breed better varieties.

But a molecular biologist for the Texas Agricultural Experiment Station here has cracked through an efficient way to insert genes for the desired traits in peppers.

The method should lead to better disease and insect resistance and perhaps even better colors, spicy heat control and processing features in many species of peppers, according to developer Dr. Marla Binzel.

In some cases, the change may be as minor as taking out a gene that causes the undes-

ired trait and re-inserting it backwards to result in a desired trait, she noted.

But the method necessary to do that hasn't been easy to come by in peppers.

"It has become pretty routine now to insert genes into plants, it's just that it has remained difficult for certain plants such as pepper," Binzel said.

She added that after early work years ago with longtime chile breeder Dr. Ben Villalón, the two quickly abandoned existing, inefficient methods to develop transgenic peppers, figuring that a different way had to be found to make it worthwhile for the pepper industry, which is relatively

small compared to typical crop giants (such as cotton and grains) where most transgenic research centers.

David Lucero, a marketing specialist with the New Mexico Department of Agriculture, said his state's \$60 million industry constantly looks for new ways to produce better peppers and "molecular methods such as Dr. Binzel's certainly is something we look at" for continued improvements.

The United States is sixth in the world in pepper production, yielding more than 837,000 tons a year, according to the Chile Pepper Institute at New Mexico State University in Las Cruces.

New Mexico leads the nation in the production of long green and red peppers, Lucero said.

Texas growers produce a sizable crop of jalapeños, but no records are kept by the Texas Agricultural Statistics Service. No one keeps records on pepper consumption, either, but the Chile Pepper Institute indicates that the use of peppers as spices has increased more than 21 percent since 1994.

With her new technique, several pepper problems may be corrected in a shorter time frame, Binzel said. "I call it 'accelerating the delivery of value-added traits to chile.'"

Chile pepper improvement

stands to benefit producers, processors and consumers, she said.

For farmers, pepper plants that resist diseases such as chile rot for which there are no effective chemical controls are a possibility.

Processors would like peppers that are seedless and peppers that leave their stems with the plant to decrease labor needed to remove them in processing, and consumers want a pepper with dependable heat levels, flavor and color, Binzel explained.

"This will be a lot more involved than just changing the heat of a particular pepper," she said. "The problem with using traditional breed-

ing to alter pepper traits — say a sweet jalapeño — is that any change also can impact the flavors, which are complex.

"A jalapeño has a much different flavor than a bell pepper," Binzel said. "Sometimes factors can be altered in breeding to the point that it is more like eating grass than a pepper. We don't want to disrupt the aroma and flavor which makes the pepper appealing."

Juan Consuegra, Texas A&M Technology and Licensing Office associate, said the method developed by Binzel is being managed for "protection and commercialization purposes."

July Fourth fireworks call for diligence

Picnics, parades, family gatherings and fireworks mark many traditional Independence Day celebrations.

Unfortunately, there is another all too common occurrence — injuries from fireworks.

The Consumer Product Safety Commission reports about 8,500 people were injured from fireworks in the United States in 1998, two-thirds of those in July.

Males are three times as likely as females to suffer injury from fireworks, and more than 40 percent of those injured are 14 years old or younger.

The pattern is similar in Texas. During the period 1996-98, more than half the reported fireworks injuries occurred around the Fourth of July, according to data from the Texas Trauma Registry of the Texas Department of Health's Injury Epidemiology and Surveillance Program.

All but two of the patients reported to the registry were male, and 60 percent were under 18.

Public fireworks displays run by professionals are generally safer than individual efforts. However, in areas where fireworks are legal, there are safety guidelines that can help avoid disastrous accidents. Always:

- Follow all state and local laws;
 - Buy from reputable dealers, and ask to see their permit;
 - Read all labels, warnings and instructions with each firework before using it;
 - Supervise children ages 15 and older closely when they use fireworks;
 - Use fireworks outdoors on a flat, smooth surface away from houses, flammable materials, trees and dry grass;
 - Have a bucket of water or hose close by for emergencies;
 - Light only one firework at a time and keep unused fireworks away from flames;
 - Move to a safe distance after lighting a firework;
 - Store fireworks in a cool, dry place away from anything that could light them; and
 - Make sure bystanders stay at a safe distance.
- By the same token, never:
- Light fireworks in a container;
 - Relight a "dud." Instead, douse in with water;
 - Aim or shoot fireworks at people, animals, buildings or cars;
 - Carry fireworks in clothing pockets;
 - Use alcohol or drugs while lighting fireworks;
 - Modify fireworks or make homemade ones;
 - Put any part of the body over a firework while lighting it; or
 - Allow children under the age of 15 to play with fireworks.
- Injuries from fireworks can be painful, sometimes disfiguring and occasionally deadly.

Muleshoe Chamber of Commerce & Agriculture Presents

FREEDOM 2000 "MAKING HISTORY"

BOOTHS

To All Merchants or Vendors Interested in having a Booth on Main Street:

The booth fee for this year is \$25.00 per booth. Please read the following information, fill out the form below and mail or deliver to the Chamber along with your \$25.00 fee (please make checks payable to Muleshoe Chamber of Commerce & Agriculture). **The Chamber must receive Booth registration forms, along with the \$25.00 booth fee, no later than Monday, July 3, 2000.** Booth space will be on first come, first serve basis. Please fill out your preference of spaces on the form below and we will try to accommodate that preference. However, before filling out a preference, Vendors must first contact the owner of the business they wish to set up in front of and get that business's approval. If the space or business is vacant, Booth Vendors must have the permission of the Chamber to set up in that location. Vendors are responsible for securing their own electricity and other needs.

Vendors may begin setting up booths at 8:00 a.m. on Tuesday, July 4th. Booths should be ready to open at 9:00 a.m.

If further information is needed, please contact the Chamber office at 272-4248: Chamber mailing address: 115 E. American Blvd., Muleshoe, TX 79347.

BOOTH REGISTRATION FORM

NAME OF PERSON/ORGANIZATION: _____

MAILING ADDRESS: _____

DAYTIME PHONE NUMBER(S): _____

DESCRIPTION OF BOOTH: _____

SPACE PREFERENCE: _____

YES, I HAVE RECEIVED PERMISSION TO PUT MY BOOTH IN THE SPACE I HAVE INDICATED IN MY "SPACE PREFERENCE" ABOVE.

PARADE

THEME: FREEDOM 2000 "MAKING HISTORY"

Name/Organization: _____

Contact Person: _____

Phone Number: _____

Address: _____

Title of Float _____

or Riding Team Name _____

OR Make and Model of Antique Vehicle _____

Please give us details about your entry for our judges: _____

There is no entry fee for the parade; information will be used to assist judges. Please complete this form and give it to the Parade Coordinator at Lineup. Lineup begins at 9:15 a.m. at the Boy Scout Grounds on the south end of Main Street. Parade will begin promptly at 10:00 a.m. After completing the parade route PLEASE return to the Boy Scout Grounds and wait there for the announcement of the winners. Ribbons, Certificates & Mule Bucks will be awarded to 1st, 2nd & 3rd place winners. If you have any questions, please call the Chamber Office at 272-4248.

TALENT SHOW

O
N
T
H
E
D
E
C
K

Talent Show Entry Form

Name: _____

Phone Number: _____

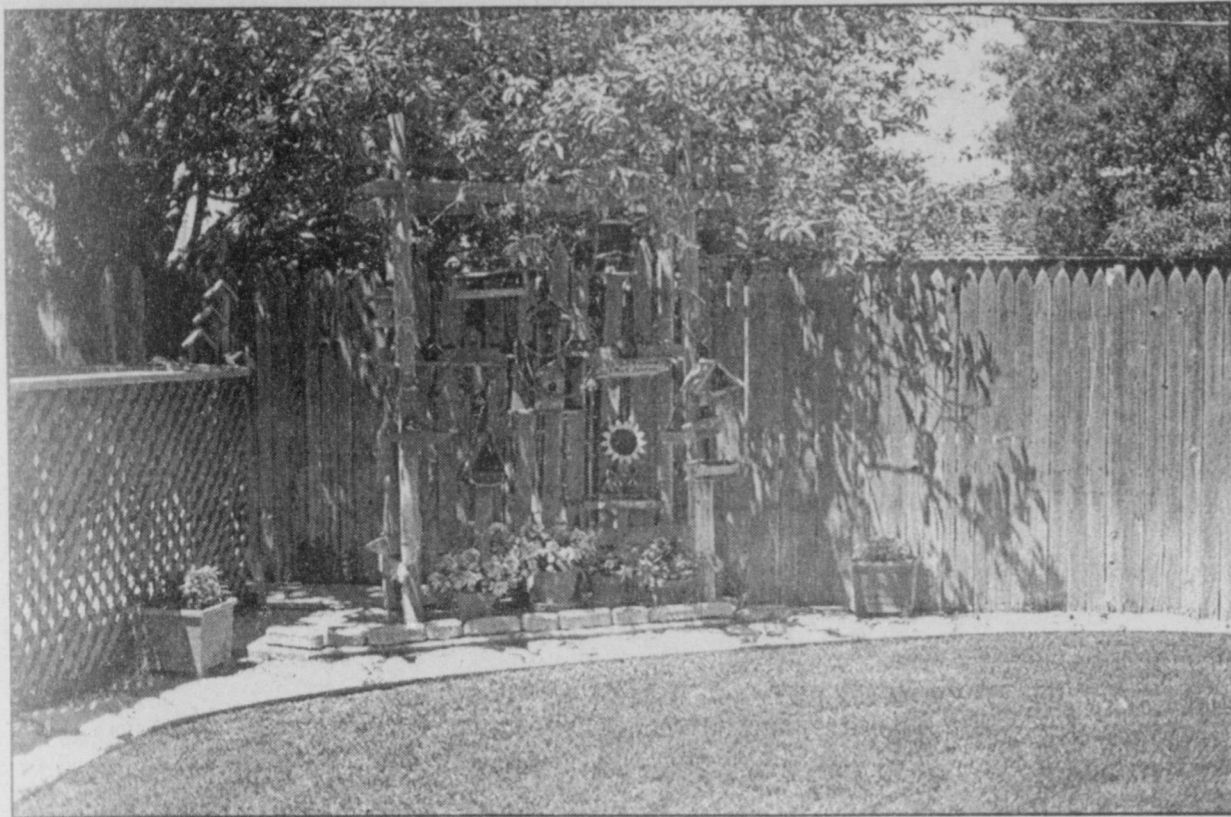
Address: _____

Circle appropriate category: 12 and under
 Ages 13 to 17
 18 and over

Talent Description: _____

There is no entry fee for the talent show; information will be used to assist judges. Please limit performance time to no longer than 5 minutes. Please complete this form and return it to the Chamber office at 115 E. American Blvd., Muleshoe, TX 79347. Talent Show entry deadline is TUESDAY, JULY 4TH AT 10:30 a.m. The talent show will begin promptly at 11:30 a.m. and will be held on the new deck of the Chamber office. 1st, 2nd and 3rd places will be awarded for each category along with ribbons and Mule Bucks. Winners will be announced shortly after the Talent Show is completed. If you have any questions, please call the Chamber Office at 272-4248.





Garden tour set for July 1

The garden of the Ronnie Dents (above) at 704 W. 20th St. will be among those featured in a July 1 yard and garden tour sponsored by the Muleshoe junior class of 2001. The self-guided tour will take place from 9 a.m. to 11 a.m. Other gardens on the tour include those of the Bruce Purdys, the Eugene Hawkinses, the John Youngs, Kay Mardis and the Mark Mortons. Tickets are \$5 (which includes refreshments) and can be purchased from any class member or by contacting Lanelle Skaggs at 272-3993. Tickets also can be purchased at any of the homes on the day of the tour, which will be self-guided so people can take the gardens in any order.

Funds available for local energy needs

South Plains Community Action Association of Muleshoe has received funding from the Texas Department of Housing and Community Affairs to operate the Comprehensive Energy Assistance Program through December.

The primary intent of the program is to make funds available for energy needs affecting low-income households.

Priority will be given to eli-

gible households containing one or more people age 60 or older, a handicapped individual, or children under the age of 6.

A philosophy of energy self-sufficiency will be the central theme in the agency's administering of the assistance program.

The program is designed to offer flexibility to allow for creative implementation and innovation.

Service delivery not only en-

tails utility payments on behalf of the client, but also a system that addresses the underlying causes of energy-induced hardship.

More information is available by contacting Janie Posadas or Leonor Daniel at the agency office, 804 W. American Blvd., or calling them at 272-7537 or 272-7538. The office is open from 8 a.m. to 5 p.m. Monday through Friday.

HONORS

WELCH

Cory B. Welch graduated May 13 from the University of North Texas at Denton with degrees in literature and social science.

A 1993 graduate of Muleshoe High School, he is the son of Jonny and Gary Welch of Muleshoe.

SLAYDEN

Julie Michelle Slayden of Muleshoe was inducted this spring into Alpha Chi, the national collegiate honor society, at Tarleton State University in Stephenville.

Membership in the organization is limited to college juniors and seniors who excel academically.

Slayden, a pre-veterinary major, is the daughter of Mike and Teresa Slayden.

TECH DEAN'S LIST

Five Muleshoe students were named to the dean's list for the spring semester at Texas Tech University in Lubbock.

They are Samantha Anne Caswell, a senior marketing major and the daughter of the Pete Caswells; Chelsey Kay Conklin, a junior exercise and sports sciences major and the daughter of the Garland Conklins; Brienne Nicole Locker, a sophomore pre-med major and the daughter of the Don Lockers; Don Julian Lenau, a freshman substance-abuse studies major and the son of Linda Vines; and Lindy Elizabeth Underwood, a freshman and the daughter of Danette Underwood.

In order to qualify for the dean's list, a student had to earn a grade-point average between 3.5 and 3.9 while enrolled in at least 12 semester hours of work.

TECH PRESIDENT'S LIST

Two Muleshoestudents were named to the president's list for the spring semester at Texas Tech Uni-

versity in Lubbock.

They are Cassidy Anne Cleavinger, a sophomore pre-med major and the daughter of the Mike Cleavingers, and Alyssa Blair Saylor, a freshman family studies major and the daughter of the John Saylor.

In order to qualify for the president's list, a student must earn a 4.0 grade-point average while enrolled in at least 12 hours of work.

ELLIS

Frank Ellis of Muleshoe was among those presented 50-year service awards during the June 12-15 Texas State Funeral Directors convention in Lubbock.

Ellis trained at the Landig College of Mortuary Science in Houston and served a two-year apprenticeship at Boxwell Brothers Funeral Home in Amarillo.

He has served the Muleshoe area for 41 years. He and his son, Todd Ellis, are co-owners of funeral homes

in Muleshoe, Morton, Sudan and Earth.

FOSTER

Brice Foster of Lazbuddie was recently voted student body vice president at Angelo State University in San Angelo.

As such, he will be the presiding officer of the ASU Student Senate for the 2000-2001 terms.

He is also vice president of Pi Kappa Alpha fraternity and was selected as one of seven members of the Angelo State Presidential Ambassadors.

He also serves as a member of the President's Core Curriculum Committee.

Foster attended the June 15-17 Texas State Republican Convention in Houston as a delegate for the Tom Green County Republican Party.

He is the son of Steve and Paulette Foster of Lazbuddie and the grandson of Demp and Anita Foster of Lazbuddie and Paul and Mary Frisbie of Plainview.

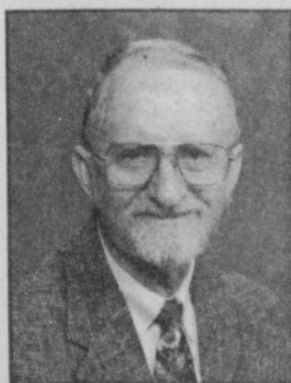


Ellis



Foster

YOUR LAND MAN



BENNY SPLAWN

Benny is a native of the South Plains area and has been involved in the farming and ranching industry for over 40 years. He has been involved in the real estate business for 5 years.

Benny has an appreciation for land, an eye of equality, and knows the value of farm and ranch property. His knowledge and expertise enable him to effectively work in the best interest of his clients.



2920 Duniven #3 417 S. Amherst
Amarillo, TX 79109 Perryton, TX 79070
(806) 355-9856 (806) 434-1407

www.texpanland.com

CASKETS AND MONUMENTS
"SAVE HUNDREDS OF DOLLARS!"
FREE DELIVERY to your funeral home of choice within 100 miles of Hereford.
337 N. MILES
HEREFORD, TX
363-2700

FOURTH

from page 1

concessions at the park all day.

9:00 a.m. — Vender booths on Main Street. Street will be closed off.

9:15 a.m. — Parade line-up begins at the Boy Scout Grounds on the south end of Main.

10:00 a.m. — Parade begins at scout grounds; moving north on Main to U.S. 84, returning south on First Street.

10:30 a.m. — Sign-up deadline for talent show that begins at 11:30 a.m. on chamber deck.

11:00 a.m. — Registration deadline for Muleshoe Country Club Mixed Scramble Golf Tournament; kids activities and games on Main Street.

11:30 a.m. — Talent show on the chamber deck.

1:00 p.m. — Country club mixed scramble golf tourney begins with a shotgun start.

2:00 p.m.-4:00 p.m. — Muleshoe Area Pioneers Reunion at the coliseum.

All day — Chamber gift shop and visitor's center open, homemade ice cream and popcorn sales, booths on Main, Alco sidewalk sale, Antiques and Fine Things sale and drawing (a.m.), Joe's Boot Shop Tent Sale with free entertainment featuring David Frizzell and Peggy Rains, Sheree's Attic Tent Sale, Williams Athletics/Office Supplies Tent Sale and grand opening of the new location, softball tournament at

the City park, Lions Club concession at the park and 3-on-3 basketball.

7:30 p.m. — Senior Citizen's dance at American Legion with entertainment by Bobby & Darrell "The Fun Dancers."

9:00 p.m. — Free concert in

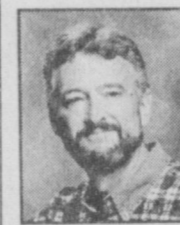
the City Park with entertainment by David Frizzell and Peggy Rains.

10:00 p.m. — Fireworks display from the park.

Glow necklaces will be sold by the chamber in the City Park during the evening.

In the Midst of Frustration, We Still Should Be Thankful

I wish right now that I knew as I'm writing this what you know as you are reading it. I'm writing this very early. You'll know, if you care, a lot more about how this little teapot tempest turns out than I, who care deeply, can possibly know just yet. If you see my wife or me navigating around town in a smoke-colored Dodge Grand Caravan, then I assume the story has turned out perhaps at least fairly well. Probably. And probably I should explain.



Focus On Faith
Curtis Shelburne

I doubt much good theology has ever been formulated by thinkers who are frustrated to the point of irrationality. I don't claim to be a theologian, and—I don't know about this—I may be the only preacher in the area who's ever really seriously wondered how hell could be completely hellish if there are no cars there. And I'm sure of this—precious little good theology has ever been formulated by folks sitting in automotive service centers cursing the day the internal combustion engine was ever conceived.

But still . . . I really should explain.

My family and I are heading to Dallas soon for a fine week-long Christian youth leadership camp. I'm a teacher. Juana's office staff. Son #1 is a "team leader." And the rest are students. I'm flying down. They may be hitchhiking.

My wife and two of my sons drove to Lubbock one recent

Sunday afternoon to buy clothes for the Dallas trip. (The annual shopping trip has become a worse financial "hit" than the start of school.) Lubbock, you know, is a fine place, but the city is much better equipped to handle wind and dust than it is to handle anything that could optimistically be called rain.

Evidently, some minivans—ours, for example—are just like Lubbock in that respect.

It rained. Lubbock flooded. Like it always does when three drops of water land together anywhere inside the city limits. I sometimes think if three cowboys spit tobacco juice at the same time and on the same patch of parched earth in Lubbock, Texas, they'd cause mud-slides and drownings.

As it was, all that drowned, as my wife and the boys drove through a puddle, was the van. They pushed it over to the roadside, hoping that it would soon catch its automotive breath. Alas, no. The air intake slung low on that thing must've been designed by someone who lives where it rarely rains—the Texas South Plains, for instance. While the old van behind our newer one coughed, spluttered, passed out, then revived, and went on its way, ours just inhaled once, gasped, thrashed its engine, and died.

Am I frustrated? Oh, you bet your raincoat, I am! But in the whole scheme of things, file this under "drips" (as in faucets) and "crickets" (as in chirping). They'll drive you nuts—if you let them.

In the whole scheme (and please remind me when the insurance company and the repair shop call), this truly is not that big a deal, and I've got a lot more to be thankful for than I've got to be grinchy about.

What about you?

Curtis Shelburne is minister of the 16th & D Church of Christ in Muleshoe

Make plans to be in Muleshoe July 1, 3 & 4 for the History Making events planned by the Muleshoe Chamber of Commerce & Agriculture.

At Bender Chevrolet-Oldsmobile-Cadillac We're Having A

TRUCK BONANZA

It's The Largest Selection of Chevy Trucks in the Area... We Have 1/2 Ton - 3/4 Ton & 1 Ton To Choose From... V6 & V8... Regular Cab, Extended Cab and Crew Cab... 2 Door, 3 Door and 4 Door... You Need a truck - We've Got Your Truck!!!



2000 S-10 Pickup Extended Cab Automatic \$229 Down* \$11,020.80 final payment	2000 S-10 Pickup Extended Cab 5-Speed \$219 Down* \$10,429.44 final payment	2000 S-10 Pickup Regular Cab Automatic \$209 Down* \$8,349.84 final payment	2000 S-10 Pickup Regular Cab 5-Speed \$199 Down* \$7,898.38 final payment
--	--	--	--

ALSO - WE HAVE GREAT CARS AND GREAT PRICES!!!

<p>2000 CHEVY PRIZM \$159/mo. 36 Month SmartBuy \$815.40 final payment</p> <p>• Automatic • Air • Power Steering • Power Brakes • Power Locks • Cruise Control • AM/FM Cassette</p>	<p>2000 CAVALIER COUPE \$199/mo. 36 Month SmartBuy \$7,384.80 final payment</p> <p>• Automatic Air • Power Steering • Power Brakes • AM/FM Cassette • Sport Package • Electric Sun Roof</p>
--	--

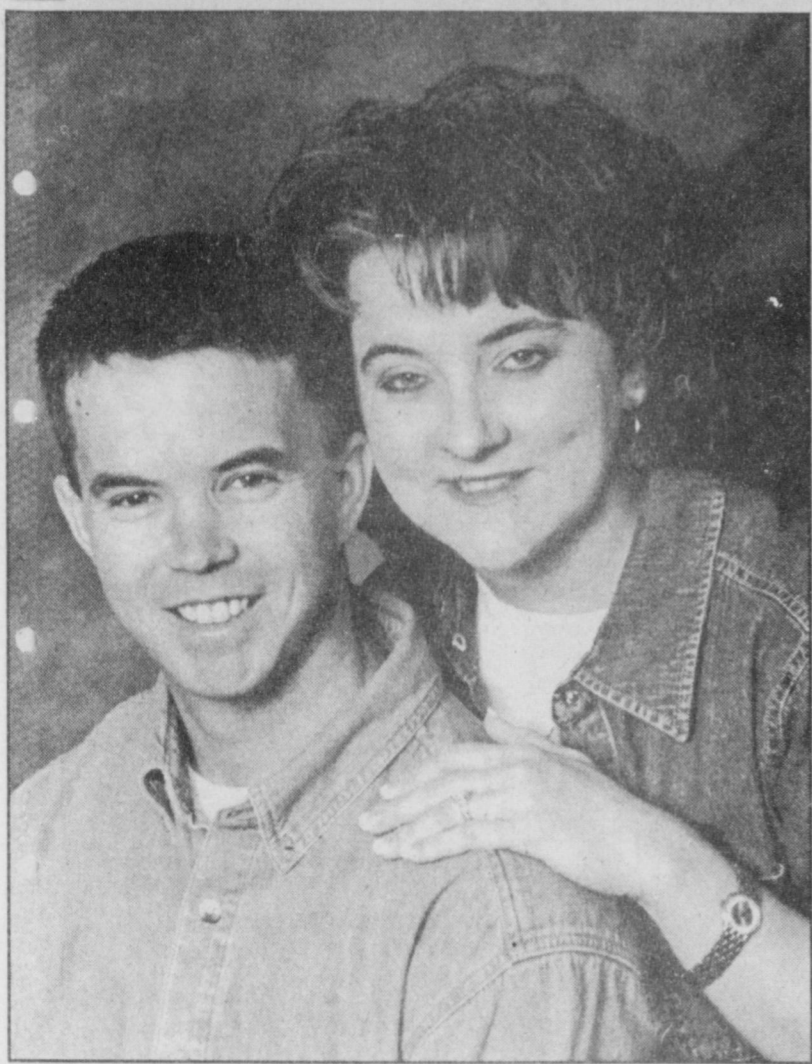
Over 150 Used Cars and Trucks With Payments Under.... **\$250/mo.**
Look At These Examples:

- '99 Chevy Geo - #5879
- '99 Chevy Lumina - #5968
- '99 Chevy Malibu - #5870
- '99 Chevy C1500 PU - #Y6244A
- '99 Chevy Century - #5905
- '98 Olds 88 - #5874
- '98 Chevy C1500 PU - #Y6244A
- '98 Chevy Astro Van - #6009
- '98 Dodge Caravan - #Y2016A
- '98 Olds Intrigue - #5859
- '98 Pontiac Firebird - #5939A
- '98 Olds Alero - #5872
- '97 Chrysler Sebring - #Y6056A
- '97 Chevy S-10 PU - #96124A
- '97 Plymouth Voyager - #5953
- '97 Mercury Grand Marquis - #5900
- '97 GMC Safari Van - #5800A
- '96 Chrysler LHS - #5828C

*4.95% APR on approved credit plus tax, title & license. Rebate to dealer. **15% down plus rebate to dealer - 4.6% on Prizm, 6.25% on Cavalier. All on approved credit plus tax, title and license. \$1000 down - 72 months @ 9.25% on approved credit plus tax, title and license

BENDER CHEVROLET WE'LL BE THERE
Oldsmobile Cadillac
2500 MABRY DR. • 1-800-530-8842 • 763-4465

ENGAGEMENT



Wilbanks-Hope

Paul and Judy Wilbanks of Muleshoe announce the approaching marriage of their daughter, Brittany Shea Wilbanks of Lubbock, to Steven Ray Hope, also of Lubbock.

The prospective groom is the son of Vernon Hope of Lubbock, formerly of Hereford, and the late Linda Hope.

The wedding is scheduled for Aug. 12 in the historic Baker Building in Lubbock.

The bride-elect is a graduate of Texas Tech University Health Sciences Center and is employed at IHS Hospital in Lubbock.

Hope graduated from Hereford High School in 1988 and attended South Plains College. He is employed by the Texas Department of Criminal Justice Jim Rudd Unit at Brownfield.

Water district's board approves rule changes

SPECIAL TO THE JOURNAL

Significant changes to the High Plains Underground Water Conservation District No. 1 rules regarding water-well permits and proper capping of open, abandoned wells were made during a June 13 public hearing at the district office in Lubbock.

The revisions were approved unanimously by the district's board of directors and went into effect immediately.

Rule 5 was changed to increase the water-well permit deposit from \$50 to \$250.

Such a permit provides landowners or their agents four months to complete a well, equip it with a permanent pump, and return the Registration and Log of Well to the water district.

The deposit will be refunded if the paperwork is returned to the district with the four months. Otherwise, the deposit is forfeited.

However, a four-month extension can be sought before the end of the first four-month period if the driller has been unable to complete the well within

the initial period.

The permit is void after eight months if no well is obtained. District personnel conduct field checks of well sites when the permit expires. If the field check reveals that a well was drilled but the documentation was not filed, then the well has to be validated.

Rule 16 was changed to clarify requirements pertaining to the proper capping of abandoned water wells.

Open, abandoned wells must be covered with something capable of preventing anything (including pollutants from the surface) from falling into the well, be capable of sustaining at least 400 pounds and be constructed in such a way that the covering cannot be easily removed.

When a new well is being drilled or an existing well being worked on, it is the responsibility of the driller or pump installer to keep the boring or casing safely covered. District personnel will photograph violations and present this information to a district court.

Leal's Annual 3-2 Slow Pitch
SOFTBALL TOURNAMENT
One Day Only!
Tuesday, July 4th
Entry fee is \$110 per team. Men's Class D & E and Co-Ed.
Call Mike Lopez at 272-3586 for more details.

CREDIT BUILDER
Vehicles Available
Only \$1000 Down.*
Payments Beginning As Low As \$85/Month.
MULESHOE MOTOR CO. FORD MERCURY
1225 West American Blvd.
272-4251 • 1-800-432-7617
Visit us on-line at muleshoemotor.com
Look for the White Tags!
*Plus TT&L

HAVE A GREAT DAY!

OBITUARIES

OLETA MOORE

Graveside services were held Friday at Morton Memorial Cemetery for former Morton resident Oleta Webb Moore, 87, of Mount Ida, Ark. The Rev. Dan Carter officiated.

Ellis Funeral Home of Morton handled local arrangements.

Mrs. Moore was born June 10, 1913. She died June 19 in the Montgomery County Nursing Home in Mount Ida.

Her first husband, Harold Webb, died in March 1954. She also was preceded in death by a second husband.

She is survived by a son, Billy Webb of Oden, Ark.; a daughter, Allene Luther of Clovis; a sister, Amy Merritt of Morton; six grandchildren; six great-grandchildren; five great-great-grandchildren.

She also was preceded in death by a son, William Veryl Webb, two grandchildren, a sister and three brothers.

JEFF PEELER

A memorial service was held Saturday at the First Baptist Church for James Virgil "Jeff" Peeler, 88, of Muleshoe.

Mr. Peeler was born April 26, 1912, at Lamesa. He died June 21 at Muleshoe Area Medical Center.

He married Jewel Anita Glover on May 5, 1934, at Littlefield.

He was an employee of Southwestern Public Service Co. for 43 years, beginning with the company's predecessor Texas

Utility Co. in the ice department at Littlefield.

He later worked on the line crew at Littlefield and then served as local manager for the company at Silverton, Denver City and Dimmitt before moving to Muleshoe as manager from 1949 until his retirement in 1977.

His civic activities included serving as a member of the Muleshoe School Board, president of the Muleshoe Chamber of Commerce and president of the Muleshoe Lions Club, as well as volunteering for the March of Dimes, Boy Scouts, United Fund, Salvation Army and the American Red Cross.

He was a 50-year member of the Muleshoe Masonic Lodge and held several leadership positions in the First Baptist Church of Muleshoe.

He chose to donate his body to the Texas Tech Health Sciences Center at Lubbock.

Mr. Peeler is survived by his wife; a daughter, Rheata White of Muleshoe; a son, Buddy Peeler of Hereford; two grandchildren, Bryan Peeler of Dallas and Melanie Ratliff of Hereford; two great-grandchildren, Kyle Ratliff and Niki Ratliff, both of Hereford; a brother, Paul "Mutt" Peeler of Overland Park, Kan.; and three sisters, Dorothy Hilton of Lubbock, Mary Lou Fellows of Hammond, La., and Audrey Corn of Baird, Texas.

The family suggests memorials to the local chapter of the American Heart Association.

HOW TO TALK TO YOUR KIDS ABOUT DRUGS.

The best thing about this subject is that you don't have to do it well. You simply have to try.

If you try, your kids will get the message.

That you care about them.

That you understand something about the conflicts they face.

That you're there when they need you.

The alternative is to ignore the subject. Which means your kids are going to be listening to others who have strong opinions about the subject. Including those who use drugs. And those who sell them.

ACCEPT REBELLION.

At the heart of it, drugs, alcohol, wild hairstyles, trendy clothes, ear-splitting music, outrageous language are different ways of expressing teenage rebellion.

That's not all bad. Part of growing up is to create a separate identity, apart from parents — a process which ultimately leads to feelings of self worth. A step along that path is rebellion of one kind or another — which is to say rejecting parental values, and staking out new ones.

You did it. They're doing it. And that's the way it is.

The problem comes when kids choose a path of rebellion that hurts them, destroys their self worth, and can ultimately kill them.

That's the reality of drugs.

DON'T GET DISCOURAGED.

When you talk to your kids about drugs, it may seem as though nothing is getting through.

Don't you believe it.

The very fact you say it gives special weight to whatever you say.

But whether or not your kids let on they've heard you, whether or not they play back your words weeks or months later, keep trying.

START ANYWHERE.

"Have you heard about any kids using drugs?"

"What kind of drugs?"



It's never too early to start.

"How do you feel about that?"

"Why do you think kids get involved with drugs?"

"How do other kids deal with peer pressure to use drugs: Which approaches make sense to you?"

"Have you talked about any of this in school?"

However you get into the subject, it's important to state exactly how strongly you feel about it.

Not in threatening tones. But in matter-of-fact, unmistakably clear language:

"Drugs are a way of hurting yourself."

"Drugs take all the promise of being young and destroy it."

"I love you too much to see you throw your life down the drain."

SOME DO'S AND DON'TS.

The do's are as simple as speaking from the heart.

The biggest don't is don't do all the talking. If you listen to your kids - really listen and read between the lines - you'll learn a lot about what they think. About drugs. About themselves. About the world. And about you. They'll also feel heard and that, too, is a step along the path toward self esteem.

There are other do's and don'ts: Don't threaten. Don't badger them. Don't put your kid on the spot by asking directly if he or she has ever tried drugs. They'll probably lie, which undermines your whole conversation.

If you suspect your child is on drugs - there are all sorts of symptoms - that's a different matter. Then you've got to confront the subject directly.

In the meantime, just talk to them.

It's okay if you don't know much about drugs.

Your kids do.

But they need to know how you feel about the subject.

And whether you care.

For more information on how to talk with your kids about drugs, ask for a free copy of "Keeping Youth Drug-Free." Call 1-800-729-6686.

NEW 1/2 PRICE HAPPY HOUR
HALF PRICE FOUNTAIN DRINKS
2 - 5 PM EVERYDAY!
SONIC
America's Drive-In.
1633 American Blvd. • 272-3998 • MULESHOE

This message is brought to you as a public service by
Aldridge, Aycock, Actkinson & Rutter, Attorneys-at-law

BAILEY COUNTY DEVOTIONAL PAGE

MULESHOE MOTOR CO.

 1225 W. American Blvd. 272-4251

WES-TEX FEED YARDS, INC.
 Custom Cattle Feeding
 272-7555 Muleshoe, TX

IRRIGATION PUMPS & POWER
ZIMMATIC CENTER-PIVOTS
 W. Hwy. 84 272-4483

MULESHOE VALLEY INC.

 West Hwy 84 272-4266 Muleshoe

AGRO DISTRIBUTION
 Hwy. 84 • 272-4203
 Muleshoe, Texas Bruce Bruns - Mgr.

But have renounced the hidden things of dishonesty, not walking in craftiness, nor handling the word of God deceitfully; but by manifestation of the truth commending ourselves to every man's conscience in the sight of God. -2 Corinthians 4:2

WEST CAMP GIN, INC.
 Better Ginning & Courteous Service
 James & Phyllis Shepard Rt. 2 Box 1000 • 925-6681 Muleshoe, TX

Leal's 107 E. Ash Muleshoe, TX 272-5772
 Tortilla Factory, Inc.

BRUCE, INC. TAOL-B003350C, LP08638
 HEATING & AIR CONDITIONING
 Hwy. 214 North Muleshoe 272-5114


Henry Insurance Agency
 "Serving You Since 1964"
 111 West Avenue B 272-4581 Muleshoe, TX

minsa corporation
 P.O. Box 484 272-5545 Muleshoe, TX
 FAX (806) 272-5135 (800) 852-8291

SAIN IRRIGATION & MACHINES
 Complete Pump Service
 W. American Blvd. 272-4397
 Walt Sain Muleshoe, TX 272-4148

AG AVIATION
 2 1/2 miles North on HWY 214
 272-3066 FAX 272-3534
 P.O. Box 68 • Muleshoe, TX

BAILEY COUNTY ELECTRIC COOPERATIVE ASSN.
 Muleshoe — 272-4504 Morton — 266-8600

MULESHOE PEA & BEAN, INC.

 RR 2 Box 297 272-5589 Muleshoe, TX

PARMER Co. COTTON GROWERS Co-OP GIN
 825-3701
 RON RILEY-GENERAL MGR. FARWELL, TX

Antiques & Fine Things of Muleshoe
 2104 W. American Blvd. • 272-4217

AZTECA MILLING L.P. 1/4 Mile East On Hwy. 84
 272-6701 Muleshoe, TX FAX 272-6703


"Do All" Family Enterprises
 302 W. 7th (N. Entrance) • 272-4725 • Muleshoe
 Gift Wrapping Party Planning Shipping Via UPS Now doing Auto Repair! Minor Home Repair Caring & Floral Design Watch for New Location! & Remodeling

And as ye would that men should do to you, do ye also to them likewise.
 -Luke 6:31

Facts About The BIBLE BY JOHN LEHTI

LOT, ABRAHAM'S NEPHEW

LOT WAS THE SON OF HARAN, ABRAHAM'S BROTHER. WHEN ABRAHAM MOVED FROM MESOPOTAMIA TO CANAAN, LOT ACCOMPANIED HIM (GEN. 11:31;12) AND TO EGYPT (GEN. 13:1). IT SEEMS OBVIOUS THAT LOT WAS A FAVORITE NEPHEW OF ABRAHAM'S AND, WHEN ABRAHAM ACQUIRED MANY CATTLE, SO DID LOT! GENESIS TELLS US THAT "...ABRAM WAS VERY RICH IN CATTLE..." AND "LOT ALSO...HAD FLOCKS, AND HERDS..." THAT PRESENTED A SERIOUS PROBLEM TO THE TWO MEN, FINALLY, BECAUSE THEIR HERDS HAD BECOME TOO GREAT FOR THE LAND TO SUPPORT! AS IT WAS, THE HERDSMEN OF LOT AND ABRAHAM HAD ALREADY BEGUN TO QUARREL ABOUT WHICH CATTLE COULD GRAZE ON THE BEST PORTIONS OF THE LAND! SEEING THIS, ABRAHAM SUGGESTED THAT HE AND LOT SEPARATE —AND VERY GENEROUSLY TOLD LOT TO CHOOSE FIRST! (GEN. 13:9) LOT, SEEING THAT THE JORDAN VALLEY WAS MUCH MORE FERTILE THAN THE HILL COUNTRY, CHOSE THE FORMER AND BECAME A RESIDENT IN SODOM, NOT REALIZING THAT HE WAS SETTLING IN A LAND WITH LAWLESS PEOPLE WHO WOULD, IN THE FUTURE, GREATLY AFFLICT HIM AND HIS FAMILY--- AND ABRAHAM DEPARTED TO THE LAND OF CANAAN WHICH THE LORD GAVE TO HIM!



AND ABRAHAM SHOWS LOT ALL THE LAND THAT LIES BEFORE THEM, TELLING HIM THAT IF LOT CHOOSES TO DEPART TO THE LEFT HE WILL GO TO THE RIGHT BUT LOT MAY HAVE THE FIRST CHOICE OF ALL THIS ABUNDANT LAND...

JOHN LEHTI

218 SAVE THIS FOR YOUR SUNDAY SCHOOL SCRAPBOOK

This devotional & directory is made possible by these businesses who encourage all of us to attend worship services.

ASSEMBLY OF GOD
 FIRST ASSEMBLY OF GOD
 521 South First Street • 272-3017
 Jack Stone, Min. • 272-3984
 S.S. 9:45 am, W.S. 11 am & 6:30 pm, Wed. 7:30 pm
EL BUEN PASTOR
 415 E. Ave. F • Pastor Felix Cadena
 S.S. 9:45 am, W.S. 11 am & 6 pm, Wed. 7 pm

BAPTIST CALVARY BAPTIST
 1733 W. Ave. C. Rev. Jeff Coffman
CIRCLE BACK BAPTIST
 Intersection FM 3397 & FM 298
 Jessie Shaver, Min • 946-3676
FIRST BAPTIST
 220 West Ave. E., Dr. Stacy Conner
FIRST BAPTIST
 Lazbuddie • 965-2126

PRIMERA IGLESIA BAUTISTA
 223 E. Ave. E, Rev. Greg Guzman
PRIMITIVE BAPTIST
 621 South First, Elder Cleveland Bass, Min.
PROGRESS BAPTIST
 Progress, TX
 Bro. O.J. Bewley
PROGRESS SECOND BAPTIST
 Arthur Hays, Min.
 1st & 3rd Sundays

RICHLAND HILLS BAPTIST
 17th & West Ave. D, Randy Tucker, Pastor
ST. MATTHEWS BAPTIST
 Corner of W. Boston & W. Birch
 Floyd R. Monroe, Min.
THREE WAY BAPTIST
 927-5467

TRINITY BAPTIST
 314 E. Ave. B, Robert Brown, Min.

CATHOLIC IMMACULATE CONCEPTION CATHOLIC CHURCH
 805 E. Hickory, Joseph Agustine, Min.

CHARISMATIC EPISCOPAL ST. CLEMENTS
 1536 W. American Blvd. • 272-5954
 Father Sergio Leal
 Sun. W.S. 10:30 am

CHRISTIAN TRINITY CHRISTIAN CENTER
 1723 W. American Blvd. • 272-3877
 Reydon Stanford, Min.

CHURCH OF CHRIST LARIAT CHURCH OF CHRIST
 Sam Billingsley, Min.
 S.S. 10 a.m.; W.S. 11 a.m. & 6 p.m., Wed. 7 p.m.

LAZBUDDIE CHURCH OF CHRIST
 Nathan Crawford, Min.
 S.S. 9:30 am; W.S. 10:20 am & 5 pm; Wed. 7 pm

MULESHOE CHURCH OF CHRIST
 22nd & W. American Blvd.
 Harry Riggs, Min.
 Albert Garcia, Min. (Spanish service)
 S.S. 9:30 am; W.S. 10:20 a.m & 6 pm; Wed. 7:30 pm

16th & AVE. D CHURCH OF CHRIST
 Curtis Shelburne, Min. • 272-4619
 S.S. 10:30 am & 1:30 pm; Wed. 7:00 pm

LUTHERAN ST. JOHN LUTHERAN
 Lariat, TX-David Simm, Min.
 S.S. 10:30 am; W.S. 9:30 am

METHODIST FIRST UNITED METHODIST HISPANIC MINISTRIES
 E. 5th and E. Ave. D
 Pastor Benito Cavazos
FIRST UNITED METHODIST
 507 W. 2nd St.
 Pastor Brad Reeves
LAZBUDDIE METHODIST
 965-2121

EL DEVINO SALVADOR
 814 W. Ave. C, Muleshoe, TX
 Guadalupe Ballinas, Min.


NAZARENE NEW VISION CHURCH OF THE NAZARENE
 814 W. Ave. C • 272-3622
 Hugh Hayes, Interim-S.S. 10 & 11 am; W.S. 7 pm

PENTECOSTAL UNITED PENTECOSTAL LIGHTHOUSE
 207 East Ave. G • 1-800-454-6051
 Pastor McKibben, S.S. 10 am
 Thursday, Bible Study 7 pm

INTER DENOMINATIONAL NEW COVENANT
 Plainview Hwy.
 Steve Claybrook, Pastor
 W.S. 10 am; Wed. 7 pm

The just man walketh in his integrity: his children are blessed after him.
 -Proverbs 20:7

Shipman's Body Shop
 Auto Painting • Wrecker Service • Free Estimates
 Tractor Glass & Windshields
 410 N. 1st Muleshoe, TX
 272-4408 FAX 272-3366

JAMES CRANE TIRE CO., INC.

 107 Main 272-4594 Muleshoe, TX
 Mike Hahn

United Supermarkets

Muleshoe Feed Barn
 311 W. American Blvd. HI-PRO Muleshoe, TX 272-5626

Better is the poor that walketh in his integrity, than he that is perverse in his lips, and is a fool. He that keepeth the commandment keepeth his own soul; but he that despiseth his ways shall die.
 -Proverbs 19:1,16

MOHAWK AUTO PARTS

 1701 W. American Blvd. 272-4425 Muleshoe, TX

TEXAS FARM BUREAU INSURANCE CO. Life-Auto-Home-Crop


 1612 W. American Blvd. • 272-4567 • Muleshoe

Decorators Floral & Gifts

 616 South First 272-4340 Muleshoe, TX

WINKLES TRUCKS, INC.


 Box 757 (806) 247-2724 Friona, TX

Two locations to serve you
 1900 W. American Blvd. 272-5337 Muleshoe, TX
 107 E. American Blvd. 272-3978


1ST BANK MEMBER FDIC
 202 South First 272-4515

If ye be willing and obedient, ye shall eat the good of the land.
 -Isaiah 1:19

A false balance is abomination to the Lord: but a just weight is his delight. The integrity of the upright shall guide them: but the perverseness of transgressors shall destroy them.
 -Proverbs 11:1,3

1315 W. American Blvd. 272-3333 Muleshoe, TX


"THE FIVE AREA TELEPHONE COOPERATIVE, INC."
 West Plains Telecommunications, Inc.
 Five Area Systems, Inc., Plateau Wireless
 Five Area Long Distance - Five Area Internet
 302 Uvalde Muleshoe, USA (806) 272-5533

WESTERN DRUG


 1411 W. American Blvd. 272-3106 Muleshoe

FIRST AG CREDIT MULESHOE

 "Serving Parmer & Bailey Counties"
 272-3010 • Fax 272-5388
 316 Main • P.O. Box 424 • Muleshoe, TX

MAPLE COOP GIN
 927-5501
 Maple, Texas

MULESHOE LIVESTOCK AUCTION
 Muleshoe, TX • Sale Every Saturday
 Clayton, C.L. & Thurman Myers • 272-4201

FARMERS CO-OP ASS'N of ENOCHS

 "Your Farmers Owned Gin"
 Chemicals • Seed • Fuel • Oil • Fertilizer
 806-927-5511 Wade Baker, Mgr.

FACO FEED YARD, INC.

 Commercial Cattle Feeders
 P.O. Box 956 265-3281 Friona, TX
 Feller Hughs-Mgr

Lowe's MARKETPLACE
 401 W. American Blvd. • Muleshoe • 272-4585

THE TRINITY COMPANY
 MULESHOE, TEXAS

CENTRAL COMPRESS & WAREHOUSE
 SUDAN, TEXAS

Boehning Dairy
DRINK MORE MILK.

 Brian Boehning Earth, Texas

ENGAGEMENT



Jaso-Torres

Andrés Durán and Carmen Gonzales announce the approaching marriage of their daughter, Betty Jaso of Lubbock, to Lalo Torres, son of Ricardo and Daria Torres of Muleshoe.

The bride-elect is employed by the Levelland School District as a custodian. She attended Hart High School in Michigan.

The prospective groom attended Muleshoe High School and is employed as a machine operator at a Lubbock cotton mill.

The wedding is scheduled for 3 p.m. June 24 at 3119 37th St., Lubbock, with a reception following.

Cottonseed futures seminar scheduled

SPECIAL TO THE JOURNAL

Cotton ginners, oil millers, farmers and dairy operators interested in learning about cottonseed futures and options can attend a half-day educational seminar later this summer in Lubbock.

Sponsored by the Minneapolis Grain Exchange, Cotton Incorporated and the National Cotton Council, the seminar is scheduled for 8 a.m. to 12:30 p.m. Aug. 1 at the Holiday Inn Park Plaza, 3201 Loop 289 South.

The seminar will be open to the public and there is no admission charge, but pre-registration is required.

Seminar topics will include an introduction to cottonseed futures, hedging examples, the futures delivery system and introduction to options.

A question-and-answer time also will be available.

Teri Huffaker, vice president of marketing for the grain exchange, said the May 11 debut of cottonseed futures and options at the exchange was the first cottonseed contract on any exchange.

"Interest from the cottonseed

industry prompted the launch of this product," she said. "It's our hope that the seminar will familiarize users with contract specifications and hedging strategies."

Tom Wedegaertner, director of cottonseed research and marketing for Cotton Incorporated, said futures and options can play an important role in a marketing plan and become an effective method of price discovery.

Anyone interested in learning about this new management tool may register for the seminar by calling Jesse Bartz at (612) 321-7124.

The Minneapolis exchange, established in 1881, also is the only market for futures and options on hard red spring wheat, white wheat, durum wheat, black tiger shrimp, white shrimp, on- and off-peak Twin Cities electricity and cottonseed.

More information about the exchange or the seminar is available on the Internet at www.mgex.com.

More information on cottonseed is available by calling Wedegaertner at (800) 334-5868.

Look for in-Store Markdowns on Dr. Martens Sandals! Williams Athletics Sporty! A New Look! Don't Miss The Best Event! YOU WON'T FIND IT CHEAPER ANYWHERE ELSE!

Join Us for Our 3rd Annual
4th OF JULY TENT EVENT

***** Monday, Tuesday & Wednesday *****
July 3rd, 4th & 5th

Under the Tent Savings **50-75% Off!**

We also would like to take this opportunity to welcome everyone to the... **Grand Opening** of our
New Store Location at 1405 W. American Blvd.

***** Great Selection of Comfort Shoes *****

Dr. Martens • Born • Clark's • Catapillar • Nike Athletic
Williams Athletics Tiddies

The Original... Sueded Made Since 1973

Annie Ridolfo, bride-elect of Tadd Young, honored with shower



Annie Ridolfo pauses during her June 3 bridal shower.

Annie Ridolfo of New Orleans was honored June 3 with a bridal shower at the home of Lynne Box of Muleshoe.

Ridolfo, the daughter of Jay and Andrea Ridolfo, is the bride-elect of Tadd Young of Muleshoe, son of Pat Young and the late Hugh Young.

The wedding is scheduled for June 24.

The hostess gift was a vacuum cleaner. Hostesses, other than Box, were Vickie Black, Jan Crawford, Myrt Feagley, LeAnn Gallman, Colleene Hailey, Diana Harrison, Rhonda Hodges, Carolyn Johnson, Patti Kent, Melody Lewis, Judy Logsdon, Frankie Lunsford, Sally Mes-

senger, Gayle Morris, Iva Noble, Dana Pérez, Cindy Purdy, Dana Rempe, Lindy Schuster, Wilma Smith, Pam Thomason, Noel Turner, Sylvia Vourazeri, Ricki Warren and Wanda Wiley.

Special guests from the bride's family were her mother and her sisters, Lauralyn Ridolfo Serera Ridolfo, all of New Orleans.

Special guests from the groom's family were his mother; his sister, Tisha Hughes of Muleshoe; his aunt, Carolyn Young of Lubbock; and his grandmother, Bertie Percell; his great-aunt, Chubby Douglas; and his cousin, Kay Field, all three of Muleshoe.

NURSING HOME NEWS

by Joy Stancell

Friday afternoon the men were honored on Father's Day with an ice cream social. Olan Gatlin (born Dec. 13, 1924) was recognized as being the youngest father present and Webb Watts (Jan. 10, 1904) as the oldest.

Jeff Peeler was voted by residents and staff as the father of the year for 2000. Each of the gentlemen received a planter shaped like an old pickup planter and filled with silk plants.

Darlene Henry and Glenda Dale made ice cream and Joy Whitt furnished cookies for everyone. The center's activity department and Volunteers Plus hosted the party, with Brady Mason providing the entertainment.

Sunday afternoon, members of the Primitive Baptist Church came for a singing service.

Friday morning, the ladies decorated men's ties to be worn at the Father's Day tribute Friday afternoon. The women's gift to the men was that the ladies had to wear neckties and the men didn't. Vivian White from the Heritage Thrift Shop donated the ties.

Tuesday morning, the center's day room was the setting for an "odd couple" wedding. Shannon Radford and D'nea Barker volunteered as the couple. Aline Locke and Grace Scarbrough attended them as flower ladies. A reception followed the service. Each guest at the wedding was given a bottle of bubbles to be blown as the couple marched out.

Wednesday morning, Buster and Wanda Kittrell, Harold and Mary Jo Burge served coffee, juice and doughnuts to residents. David DeMinck, assistant pastor of New Covenant

Church, delivered the devotional. Loyce Killingsworth, Buster and Jim Claunch directed the music and song service. Ruby Garner also attended. Glenda Jennings and Jackie Scoggins directed the sing-along Wednesday afternoon.

Prayers are asked for Bill Millen, who is in a Lubbock hospital, and Ruby Reed, who is in the local hospital.

The center staff and residents extend sympathy to the families and friends of Sim Clark and Jeff Peeler.

Saturday afternoon, Harold and Mary Jo Burge, Melvin and Wanda Griffin directed the Bingo Bash. Clark Price and Doris Jackson are also faithful volunteers. "attendees."

Joe Embry, Harold Burge, Elsie

Damron and Norma Eves were among Tuesday visitors.

Ann Williams, Claudine Embry, Mary Jo Burge and Dorothy Turner worked hard Tuesday afternoon getting the ladies' hair rolled and combed. Francis Ramos and Joy Stancell gave shampoos.

Marilyn Wilson visited Riehl Williams on Friday afternoon.

Roma Davis was visited by her daughter, Jane Reeder, Wednesday morning.

Congratulations to Fannie Maye Black on the birth of a new great-grandson.

Erald Gross, Mary Holt, Mary Johnson, Nan Gatlin and Fannie M. Black, all having birthdays in June, were honored with a party Thursday

afternoon. Decorators Floral gave each birthday resident a corsage. Lasting Impression gave each resident a T Y beanie baby.

The event was hosted by Volunteers Plus and the Activity Department. Wanda Kemp, Jean Kemp and the Rev. and Mrs. Bobby Burris provided entertainment.

SHEREE'S ATTIC
4TH ANNUAL

4th of July
TENT SALE

Big Bargains under the Tent -
More SAVINGS inside where it's COOL!!!
Fri. June 30th - Tues. July 4th
Open 10-6 (Closed Sunday)

Close-out Racks **25%-75% Off**

1519 W. American Blvd. - Muleshoe, Texas

500 acres. 75 head. 3 generations.

One bank.

The spread was your grandfather's dream, your daddy's pride, and now it's yours. When you need a financial partner who fully understands your connection to the land, you can rely on your friends at the Land Bank.

For more than 80 years, we've helped people just like you acquire and refinance land, make improvements, and purchase capital equipment. And we've maintained local ownership and operation every step of the way.

Whether cattle are your livelihood or a weekend passion, it's good to know the Land Bank is on your side. Call our toll-free number for a location near you.

Part of the fabric of rural life.

FIRST AG CREDIT - MULESHOE
316 S. MAIN • MULESHOE, TEXAS 79347
806-272-3010

Advertising Pays! 272-4536

Golden Wedding Anniversary

In honor of the
Fiftieth Wedding Anniversary of
Mr. and Mrs. Frank H. Ellis
their children and grandchildren
request the pleasure of your company
at a Reception

on Sunday, the second of July, 2000
from two o'clock until four o'clock
Bailey County Coliseum
2206 West American Boulevard
Muleshoe, Texas.
No local invitations are being sent.
No gifts please.



Journal photo: Beatrice Morin

Solo and ensemble competitors

Mighty M Band members representing Muleshoe at the 1999-2000 district solo and ensemble contest are (back row, from left) Ruben Ovalle, bass clarinet solo; Christi Adrian, Ebony Russ, Elizabeth Castorena, Stephanie Kirk

and Carmen Estrada, clarinet quintet; and (left to right, front row) Megan Beard, Erica Whalin and Jami Wedel, flute trio; Leisha Wallace, Kyla Hamilton and Angela Tucker, flute trio that advanced to state competition.



Journal photo: Beatrice Morin

Girls' JV golf

Members of the Muleshoe High School girls' junior varsity golf team for the 2000 season are (from left) coach Kodi Crane, Angela Allen, Jennifer Rempe, Nikki Bonds and Ashley Hartline.

'CREATIVE LIVING'

Information on kitchen adventures for kids and making the perfect wedding gown will be featured on "Creative Living" on June 27 at 1 p.m. and July 1 at 3 p.m. (All times are Central.)

"Creative Living" airs on public broadcast station KENW-TV from Eastern New Mexico University in Portales.

Rowena Fullinwider, cookbook author and founder of Rowena's Foods in Norfolk, Va., will present "kitchen adventures" for kids by sharing some of the recipes from her children's cookbook.

Karen Howland, a custom bridal designer from Loveland, Ohio, will talk about what it takes to create a perfect wedding gown and how to make a simple bridal purse.

Exotic and unusual flowers, history, recipes featuring mustard, and creative aging will be the featured topics on June 27 at 10:30 p.m. and June 29 at 1 p.m.

Rene Van Rems, representing the California Cut Flower Commission, will show some of the more exotic and unusual flowers that are available through florists.

Nancy Berkoff of Long Beach, Calif., in celebration of Morehouse Mustard's 100th birthday, will share some history, health facts and recipes featuring mustard.

Edith McCall of Hollister, Mo., author of "Sometimes We Dance Alone," will talk about creative aging.

"Creative Living" is produced

and hosted by Sheryl Borden of Portales.

The show is carried on more than 100 PBS stations in the United States, Canada, Guam and Puerto Rico and is distributed by West Link of Albuquerque.

Viewers can request copies of materials offered on the show by sending a first-class stamp for each handout requested.

Send the stamps, along with name, address and booklets requested, to "Creative Living" Requests, c/o KENW-TV, 52 Broadcast Center, Portales 88130.

Registration under way in SPC manicurist class

SPECIAL TO THE JOURNAL Registration for the next round of classes in South Plains College's certified manicurist program is July 3.

Registration for the 12-month program begins at 5:30 p.m. in the Cosmetology Building adjacent to the Student Center on the Levelland campus.

Classes begin that evening and will meet from 5:30 p.m. to 9:30 p.m. Mondays, Tuesdays, and Wednesdays through the end of June 2001.

The program provides stu-

dents with the training necessary for employment as manicurists or nail technicians.

Instructor is Scarlett Claunch.

The cost for the program (600 clock hours) is \$900. Tuition can be paid in full or in three installments.

Students also need to purchase a kit, lab coat and textbook.

The program is offered through the college's division of continuing and distance education.

New classes will begin on a monthly basis.

More information is available by calling South Plains College at (806) 894-9611, ext. 2341.

HONORS

HUTTON

Holly Ann Hutton of Muleshoe was named to the dean's honor roll at Abilene Christian University for the spring semester.

The daughter of Mr. and Mrs. William Hutton, she is working toward a bachelor's degree in business administration and accounting.

ACU is affiliated with the Churches of Christ and has an enrollment of about 4,600 students.

The campus is located about 230 miles southeast of Muleshoe, or about 150 miles west of the Dallas-Fort Worth area.

Newspaper Policies

EDITORIALS are the opinion of the newspaper. They are written by staff members of the *Muleshoe Journal*. They are not signed because they express the position of the publisher, owners and newspaper staff.

LETTERS TO THE EDITOR are written by readers of the newspaper. They are brief expressions of opinion, most concerning issues of local interest. Letters must be legible. They may be edited for content, length and space. All letters must be signed by the writer and must include a daytime telephone number (used solely for verification). Open letters, letters to third parties and/or unsigned letters will not be published.

COLUMNS are the personal opinion of the writer whose by-line appears. Columns from readers should address an issue of local concern and general interest. Columns may be edited for content, length and space.

Letters to the Editor and Columns can be sent to:

Editor

Muleshoe Journal

P.O. Box 449, Muleshoe, Texas 79347

FAX 806.272.3567 or e-mail ctyankee@fivearea.com

Pride
Mobility Products Corp.

AMERICAN
EQUIPMENT & TRAILER, Inc.

3707 M.L.K. Jr. Blvd.
Lubbock, Texas 79408
1.800.530.4775

MULESHOE LITTLE LEAGUE
WOULD LIKE TO THANK WELLS HALL
AT BOB STOVALL PRINTING FOR
OUR LINE-UP CARDS AND
SUSAN KERBY AT OECIA SUSAN'S
PHOTOGRAPHY FOR OUR TEAM
PHOTOS AND A JOB WELL DONE.

Class of High School Reunion
1990 ★★★★★ **Saturday July 1, 2000**

Noon Activities
The New City Park
11:00 am to 1:30 pm
Bring your own sack lunch,
drinks and lawn chairs.
All family members welcome.

Evening Activities
Barbeque Dinner
Catered by Danny's Fins and Hens
Adults Only!

RSVP by Friday, June 23, 2000
Noel Vourazeris Turner 806-272-5314 or
noelturner@hotmail.com
Please include the number of people that will
be attending the BBQ dinner.
Please make checks payable to Tisha Young Hughes
and send checks to: Tisha Young Hughes,
HC 5 Box 160, Muleshoe, Texas 79347.

Beginning at 6 pm
at the home of
Michelle Finney

Cost is \$20 per person
or \$38 a couple

Bring your favorite pics,
annuals and photo albums

SE HABLA ESPAÑOL

¡PRESTAMOS!

LOANS! LOANS!

\$100 to \$467

Loans while you wait.
Credit Starter Loans
Call and apply today.

CONTINENTAL CREDIT

206 S. Main Street 272-3673
Mon.-Thurs. 8:30 am-5:30 pm Fri. 8:30 am-6 pm

DIESEL INJECTION SERVICE

Diesel and Gas Performance Products

ONLINE PRODUCT CATALOG AT:
www.dieselpage.com

NEED MORE POWER

Mention this ad for a 5% discount off total purchases

- K&N Washable Air & Performance Oil Filters
- Banks Turbo & Exhaust Kits
- Isspro Gauges & Pillar Mounts
- Super Chips & Hypertech Programmers
- Racor Fuel Filters
- Stanadyne Fuel Conditioners & Additives
- BD, U.S. Gear & Western Exhaust Brakes
- TST Performance Upgrades for Dodge

3212 E. Slaton Hwy., Lubbock 806-745-4122 or 800-658-9355

NOTICE! EARLY DEADLINES

In order to give the employees of the Muleshoe Journal an opportunity to spend July 4th with their families and friends, early deadlines are being set for both Display and Classified advertising in the Thursday, July 6 edition of the paper.

CLASSIFIED ADS
For your ad to appear in the Thursday, July 6 paper, please have all ad information in our office by **Friday, June 30 at noon**

DISPLAY ADS
For your ad to appear in the Thursday, July 6 paper, please have all ad information in our office by **Monday, July 3 at noon**

Your ad representative will be calling on customers the morning of Monday, July 3. Thanks for your cooperation and have a spectacular 4th of July!

304 W. 2nd • P.O. Box 449 • Muleshoe • 272-4536 • FAX 272-3567 • email: ctyankee@fivearea.com

LEGLS

NOTICE OF REQUEST FOR PROPOSALS

The Bailey County Commissioners Court is currently accepting sealed proposals for professional services by a certified public accountant for preparation for the annual Independent Audit for Bailey County. Proposals must be delivered to the County Judge's office, 3000 South 1st, Muleshoe, TX 79347, no later than Monday, July 10, 2000 at 11:00 a.m. at which time proposals will be opened. The County reserves the right to accept or reject any or all proposals. Published in the Bailey County Journal June 25 and July 9, 2000.

Ordinance No. O-06-2000B

An ordinance of the city of Muleshoe Texas, providing for the repeal of section 1B only of ordinance no. 372A, which section 1B provides for speed regulation of the maximum authorized speed for vehicles of twenty (20) miles per hour upon East Birch Avenue from U.S. Highway 70 to East El Paso, and declaring same to be null and void and of no effect; and further establishing speed for vehicles upon East Birch Avenue from U.S. Highway 70 to East El Paso of thirty (30) miles per hour, providing a penalty for violating this ordinance and providing for an effective date and other matters. Passed and Approved this 20th day of June, 2000. Signed: Victor E. Leal, Mayor, City of Muleshoe, Texas. Attest: Signed: LeAnn Gallman, City Secretary. Published in the Bailey County Journal, June 25, 2000.

Muleshoe I.S.D. will be accepting applications for a maintenance position. Applications may be picked up at the Administration office located at 514 W. Ave. G. Information about the position may be obtained by calling Sam Whalin at (806) 272-7330. Application deadline is Friday, July 7, 2000. Muleshoe I.S.D. is an equal opportunity employer. Published in the Muleshoe Journal June 25, 2000.

DRIVERS WANTED

IF YOU ARE the spouse of an OTR truck driver, we'll teach you to drive a "Big Rig" w/ automatic transmission in just 2 weeks! 1-800-234-3748.

NEW PAY PACKAGE. OTR teams (.36) needed for dedicated and drop/hook runs. Solo drivers, excellent equipment and benefits. Experience required. Gulf Coast Transport, 1-888-988-8666.

OWNER OPERATOR - EARN up to 85 cpm loaded & empty! No start up costs. No forced NE or Canada. Paid base plates & permits. 1 year OTR, 23 years, CDL with HazMat. Fleets welcome. Paschall Truck Lines. 1-800-848-0405.

DRIVERS WANTED

COMPANY PAID CDL training & first year income \$35K - Stevens Transport - OTR drivers wanted! Non-experienced or experienced, 1-800-333-8595. EOE.

DRIVERS: COVENANT TRANSPORT* Coast to coast runs * Teams start at 42-45 cpm * \$1,000 sign-on bonus for experienced company drivers, experienced drivers, and owner operators. 1-800-441-4394. For graduate students 1-800-338-6428.

DRIVERS - CRIHIRING OTR company/student/owner operators. Company with one year experience start at 32 cpm. Students earn \$50 per day. Owner/operator start at \$.80 all miles. For more information call 1-800-CFI-DRIVE.

DRIVERS - DEDICATED, REGIONAL, an OTR available. CDL training for as low as \$1,250. Tuition reimbursement available. Call now. 1-800-284-8785.

DRIVERS - LONG HAUL drivers needed. Class-A CDL required. Student graduates welcome. Continental Express, 1-800-727-4374.

DRIVERS - MARTEN TRANSPORT, Ltd. Marten Transport can pay you - *1 year - 29 cpm *2-30 cpm *3 years - 31 cpm *4 years - 32 cpm *5 years - 33 cpm. Call 1-800-395-331. www.marten.com.

DRIVERS WANTED! WILDCAT Enterprises, Inc. has immediate openings for experienced flatbed drivers - solo, teams and owner-operators. Solo drivers start at .36 cpm; teams split. 40cpm. We also offer an excellent benefits package. Call 1-877-285-8756 today.

DRIVERS: SWIFT TRANSPORTATION drivers and owner operators wanted for various types of runs! CDL training available! Ask about our \$100 sign-on bonus 1-800-669-7943 www.SwiftTrans.com. (eoe/m/f).

DRIVER TRAINING

A \$35,000 PER YEAR career! C.R. England needs driver trainees. 15 day CDL training. Housing/meals included. No upfront \$\$\$! Call free confidential consultation, David P. Willis, Board Certified Personal Injury Trial Lawyer. Houston, TX principal office, 1-800-883-9858.

TRI-STATE SEMI DRIVER Training, Inc. *Job placement assistance before training. *Tuition loans available, no credit check. *17 day training. *3001 NI-45 Palmer, TX. *Call 1-888-854-7364.

The DEADLINE for our July 6th Classifieds will be NOON Friday June 30th

HELP WANTED



Position Available For Manager Trainee

Experience preferred. Must be able to work flexible hours and be enthusiastic and hard working. Great opportunity in a growing company. \$26,000 base and bonus potential. Possible \$30,000 potential yearly income.

Mail Resume To:
Attn: Stacey Davis
Drawer 519
Plainview, TX 79072

FINANCIAL SERVICES

BE DEBT FREE - years sooner! Low payments. Reduce interest. Stop late fees. Stop collectors. Family credit counseling. Non-profit Christian agency. Se habla Espanol. Recorded message: 1-800-729-7964. Free quote www.familycredit.org.

MEDICAL/HEALTH

MEDICARE NEBULIZER PATIENTS! Stop paying cash for Albuterol, Atrovent, etc. Medicare pays for them. We bill Medicare and deliver to you. Med-A-Save 1-800-538-9849, ext. 12J.

TRAVEL/VACATION

\$129.00 BRANSON VACATION. 70 music shows, Silver Dollar City, golf, fishing, 2 premium theater tickets. 3 days/2 nights deluxe lodging. Breakfast/dinner for two discount booklet. Call toll-free, for reservations 1-877-521-2080. Offer limited. French Quarter Resort, Branson, Missouri.

SOUTH PADRE ISLAND get away, \$\$ summer time fun, winter time prices \$\$ 3 days 2 nights, South Padre Island includes room and continental breakfast. Limited time offer \$29.99. Call 1-877-488-1872.

HOST FAMILIES

FOREIGN EXCHANGE STUDENTS like Robert, 16, from Slovakia arriving in August. Robert likes hockey, basketball and football. Be a host family. Call 1-800-sibling or visit our web site at www.aisetxok.com to view Robert's and other student profiles online.

LEGAL SERVICES

NURSING HOME NEGLECT - Abuse, bedsores, burns, assaults, weight-loss, falls, deaths. Call free confidential consultation, David P. Willis, Board Certified Personal Injury Trial Lawyer. Houston, TX principal office, 1-800-883-9858.

FOR SALE

POOL CITY'S KAYAK Pool, demo homesites wanted to display new maintenance free pool. Save thousands with this unique opportunity! Call today to qualify, 1-800-338-9919 www.poolcitykayak.com.

Advertising pays!

HELP WANTED

Covenant Home Health Care is currently seeking a full-time admission nurse and a full-time care manager to work in our Littlefield office. Please contact Nanette Minton at 385-3255 or come by 311 West 4th Street in Littlefield for an application

CNA's - Any shift small nursing home. LVN's - Apply at Morton Manor: Care Center Shirlee Boyd Una Greer 806-266-8866 or come by 211 W. Garfield

Antiques and Fine Things is now taking applications for Saturday employment. Must be mature and good with figures. Apply in person at 2104 W. American Blvd. between 1-3 PM, Mon. - Fri.

Homeworkers Needed \$635 weekly processing mail. Easy! No experience needed. Call 1-800-440-1570 Ext. 5085 24 Hrs

FEED MILL MAINTENANCE HAND needed for feed mill located in Olton, TX. Wages based on experience. Some benefits are available. Contact Kevin at (806) 285-2616

Make up to \$2,000.00 in 11 days. Looking for Enthusiastic adult to manage a business outside Muleshoe. Call 10 AM thru 5 PM 1-210-622-3788 or 1-830-429-1408

Maintenance/ Electrician Needed in Corn Milling Production Plant Full-time with full benefits Send Resume or Apply in person Human Resources Minsa Corp. 1/4 mile East Hwy 84 Muleshoe

94 Model 35 ft. RV Champaign Hitch Hiker, 5th Wheel, 2 Slider \$26,000 or Call 272-3698

FULLY LOADED PIII computers - free internet. 3 yr. warranty. \$0 down. Poor credit specialist. Toll Free 1-877-724-4284, ext. 1062.

HELP WANTED

CLAIMS PROCESSOR! \$20-\$40/ hour potential. Processing claims is easy! Training provided, must own PC. Call now! 1-888-568-7649, ext. 698.

FOR LOCAL DOCTORS! Data entry. Easy claims processing. Training provided. Computer, lit required. No previous experience necessary. Flexible hours. Software \$449.00. Titan Business Solutions. 1-888-968-7793, ext. 7088.

PARALEGAL/LEGAL FORM typist needed. No exp. necessary. Must own computer. 1-800-990-9835. 1-941-351-5514. Ref. # 02. www.TheLawClub.com.

SERVICE

HENDERSON SERVICE CO.

Major Appliance and Minor Home Repairs 272-4450

WILL BUY

Mon. Fri. Sat. \$ Alurn. CANS \$ Copper, Brass, Misc. Alum. across 385 from GEBOS in Littlefield, Tx Bailey County Residence 35¢ per lb. on cans only

WANTED

NEEDED 63 PEOPLE to lose up to 30 pounds in 30 days. BRAND NEW! Just Patented, Doctor Approved! 1-888-373-8344

HELP WANTED

NOW HIRING! Lead vet position in commercial feedlot. Computer skills and cattle doctoring experience preferred. Excellent opportunity for the right individual to learn and advance in the cattle feeding industry. For more info. Call Darren Newton at Caprock Bovina (806) 225-4400 Ext. 23

Leal's

now taking applications for waitstaff and prep cooks. Apply in person between 1:30 and 4:00 p.m.

HONEST PERSON

Nat'l multi-million dollar corp. now seeking key personnel to fill position in public relations-sales depart., calling on co. accts. We want an honest, down-to-earth person for this stable position. People oriented background would be to your advantage but not necessary. Call Craig 806-785-8718

REAL ESTATE

COLORADO BEAUTIFUL RIVERFRONT property, \$7,500. 8000' elevation, scenic Rocky mountain foothills. Trout fishing on property. Secluded, accessible. utilities nearby. \$250 down, \$125 monthly. Owner 1-806-376-8690.

CARIBBEAN ISLAND PROPERTY for sale/trade. Beautiful beach, or mountaintop properties with stunning views on the tropical island of Roatan. Free video, 1-877-576-2826, www.baysandproperties.com

For Sale By Owner 908 W. 8th 32/2 Brick Home 1200 sq. ft., recent remodel, D/W, range hood, ceiling fans, storm windows & drapes, storage building, large patio w/new cover. \$45,000 By appt. only after 6 PM Call 272-7588

FOR SALE BY OWNER

2380 square feet 3-2 with large game room or extra bedroom with large closet, 3 car garage and workshop, covered patio, underground sprinkler system, fireplace, new central air, motorhome hooks. \$85,000 Call 272-5473

SMILE!



• 960 Acres-Excellent Irrigated Farm, East of Hub. North of Lazbuddie. Two half mile center pivot sprinklers. Five irrigation wells average 550 q.p.m. 40' x 100' steel barn, domestic well, livable house. This is a rare opportunity.

• 320 Acres. Northwest of Muleshoe, 2 center pivot sprinklers. Huzzled for 600 G.P.M. each. Good soil. Lays good.

• 280 Acres in Hub Area. Excellent soil, lays good. Excellent water. 2 Wells. Reasonably Priced.

• 160 Acres. North of Muleshoe. Nice clean farm with center pivot. Good soil. Good Yields. 2 submersible wells. Reasonably priced.

• 505 Acres. South of Muleshoe. 411 Acres in C.R.P., 8 years left. Balance is Native grass with domestic well.

310 Main Street, Suite 103

Muleshoe, Texas Office (806) 272-3100 Home (806) 965-2468

Smile a little Laugh a lot!

Nieman Realty

116 E. Ave. C • George Nieman, Broker • 272-5285 or 272-5286

RICHLAND HILLS - PARK RIDGE

• NICE 3-2-1 Brick, Elect. Heat Pump, built-ins, nice carpet & drapes, patio, fenced yd., MORE!! \$50's!!! RH-2
• LOT 83, PKRDG. - \$2000 OR MAKE OFFER, SEVERAL OTHER NICE LOTS ARE AVAILABLE - CALL FOR MORE INFO!!!

HIGHLAND AREA

• VERY NICE 2-1-1 Carport home, nicely remodeled, Cent. Heat, DW, fans, fenced yd., stor. bldg. \$29.5K!!! HL-1
• VERY NICE 3-2-1 Brick, Elec. Heat Pump, built-ins, ash cabinets, nice carpet & vinyl, cov. patio, fenced yd. MORE!! \$42K 11 HL-2

LENAU - COUNTRY CLUB AREA

• 2-1-1 Home, Cent. A&H, DW, MORE!! \$29.5K!!! L-3
• NICE 3-2-2 Brick, Cent. Heat & Cent. Evap. air, built-ins, FP, fenced yd., stor. bldg.!!! \$40's!!! CC-1
• 2-1-1 Home, Cent. A&H, new carpet, 4 fans, manual spktr., stor. bldg., fenced yd. \$28K!!! L-1
• 3-1-1 Brick, Cent. heat!!! \$25!!! L-5
• 2-1-1 Home, wall furn. heat, \$18K!!! L-4

COMMERCIAL

• Duplex (2-2 bdrm. 1 bath units) plus 1 (2 or 3 bdrm) for residence or rental. \$30K!!!
• R.V./Mobile Home Park on 2.95 acres, home, office, 3 M.H. units. LET'S LOOK TODAY!!
• APPROX. 4,800' shop plus 600' office area on a 60' x 130' lot!!! PRICE REDUCE!! 40K!!!
• 246' x 145' tract, Hwy. 84, \$29.5K!!!
• VERY NICE 51 UNIT MOTEL, Priced to sell!!! Call for details!!!
• NICE 26 UNIT MOTEL, Priced to Sell!!! Call for details!!!
• 56' x 140' tract, approx. 4700' bldg., \$35K!!!
• GOOD INCOME PROPERTY - approx. 3490' bldg., paved parking, good net lease!! PRICED TO SELL!!
• Established Business: Land, Bldg. & Equip., \$75K!!!
• Nice Building with approximately 15,450 sq. ft. of shop area plus approx. 1,044 sq. ft. office (Dual Fuel Heat Pump for Office), 6 station phone system, restrooms (1 w/shower), loading dock, approx. 195 foot frontage. MORE!!!
• 200 Main & E. Ave. B-4 rental units plus upstairs & basement or renovate for your own special use!! \$65!!!

RURAL

• PLEASANT VALLEY, Approx. 320 acres, 2 bdrm home, 1 bath, 2 car detached garage, on pavement!!!
• W. of SUDAN-NICE 3-2 Brick Home, 5 acre tract on Hwy. 298, Cent. Air & Heat, built-ins, large Quonset Barn, MORE!!! \$95K!!!
• 5 Acre tract on pavement close to town!
• Approx. 108 acres on Hwy. 70, approx. 2100' office area, 16,900' of commercial bldg. w/loading dock, 3,400' warehouse!! 2,800' runway!!
• FIX UP-3-2-2 Carport Home & 2-1-1 Home on 20 acre tract, 50' x 150' shed, 54' x 80' sheet metal barn, MORE!! \$55K!!!
• EARTH - (Hite Park Add.), 3 bdrm. 2 bath!! Call for Details!!
• 2-2-2 Carport Mobile Home on 1.997 acres on pavement close to town, attached storage bldg. plus 45' x 74' barn, pens, & fenced pasture!! \$30K!!!
• 3-2-1 Home, Cent. A&H, built-ins, fenced yd., man, spktr., 300' stor. on .84 acre on pavement, edge of town!! \$40's!!
• PROGRESS - VERY NICE 3-2-2 Home on 21.8 acres on Hwy. 84, Elec. Heat Pump, built-ins, FP, 3 fans, 10 hp., sub. irrig. well, undrgrd. tile, valves, & gated pipe!!! MORE!! \$55K!!!

SHUR SAVING Summer Sale

PRICES EFFECTIVE JUNE 21-27, 2000

MEAT

PACKER TRIM BONELESS	
BEEF BRISKET LB	99¢
PREFERRED TRIM BONELESS BEEF	
CHUCK ROAST LB	\$1³⁹
PREFERRED TRIM BONELESS BEEF	
CHUCK STEAK LB	\$1⁵⁹
PREFERRED TRIM BONELESS BEEF	
CHUCK EYE STEAK LB	\$2⁹⁹
PREFERRED TRIM BONELESS BEEF	
SHORT RIBS LB	\$1⁸⁹
COOK'S BUTT PORTION	
HAM LB	\$1¹⁹
COOK'S SHANK PORTION	
BONE-IN HAMS LB	99¢
H&G SMALL PKG.	
WHITING FISH LB	99¢
H&G	
WHITING FISH 5 LB. BOX	\$3⁹⁹
SHUR SAVING	
MILD OR HOT BREAKFAST	
SAUSAGE 1 LB. ROLL	99¢
SHURFINE JUMBO	
MEAT WIENERS 1 LB. PKG	69¢
SHURFINE	
CORN DOGS 1 LB. PKG	\$1²⁹
SHURFINE	
MEAT BOLOGNA 1 LB. PKG	99¢
SHURFINE QUALITY	
SLICED BACON 1 LB. PKG	\$2³⁹
SHURFINE • MEAT BOLOGNA	
• COOKED SALAMI • P&P LOAF	
LUNCHEON MEATS 6 OZ. PKG	59¢
SHURFINE PORK	
SAUSAGE LINKS 11 OZ. PKG	99¢
SHURFINE	
COOKED HAM 12 OZ. PKG	\$1⁹⁹
SHURFINE	
CHOPPED HAM 12 OZ. PKG	\$1⁷⁹
SHURFINE SLICED	
TURKEY BREAST 12 OZ. PKG	\$1⁹⁹
SHURFINE OVAL	
HAM STEAKS 8 OZ. PKG	\$1⁶⁹
SHURFINE PIMIENTO	
CHEESE SPREAD 7.5 OZ. PKG	\$1⁰⁹
SHURFINE PIMIENTO	
CHEESE SPREAD 12 OZ. PKG	\$1⁵⁹
SHUR SAVING	
LONG GRAIN RICE 4 LB	2/^{\$3}
SHUR SAVING	
TOMATO SAUCE 8 OZ.	6/^{\$1}
SHUR SAVING ELBOW MAC OR LONG	
SPAGHETTI 32 OZ.	99¢
SHUR SAVING	
SALTINE CRACKERS 16 OZ.	79¢
SHUR SAVING	
APPLE JUICE COCKTAIL 64 OZ.	99¢
SHUR SAVING	
SWEET RELISH 22 OZ.	\$1⁶⁹
SHUR SAVING ASSTD.	
SANDWICH COOKIES 32 OZ.	99¢
SHUR SAVING CREAMY/CRUNCHY	
PEANUT SPREAD 18 OZ.	99¢
SHUR SAVING	
MAC & CHEESE DINNERS .. 7.25 OZ.	5/^{\$1}
SHUR SAVING IRREGULAR SLICED	
PEARS OR PEACHES 29 OZ.	89¢
SHUR SAVING	
STRAWBERRY PRESERVES .. 32 OZ.	\$1⁶⁹
SHUR SAVING	
PORK & BEANS 15 OZ.	3/^{\$1}
SHURSAVING CRANAPPLE OR CRANBERRY	
JUICE COCKTAIL 64 OZ.	2/^{\$3}
RAISIN BRAN OR SUGAR FROSTED FLAKES	
SHURSAVING CEREAL 20 OZ.	2/^{\$3}
SHUR SAVING CEREAL	
CORN FLAKES 18 OZ.	99¢
SHUR SAVING WHOLE PEELED	
TOMATOES 28 OZ.	2/^{\$1}
SHUR SAVING PLAIN OR RIPPLED	
POTATO CHIPS 16 OZ.	2/^{\$3}
ASSTD.	
DORITOS® PRE-PRICE \$3.29	2/^{\$5}
ASSTD. FRITOS®	
BEAN DIP 9 OZ. CAN	2/^{\$4}
ALL TYPES	
COCA-COLA, SPRITE OR DR. PEPPER 6 PK. CANS	3/^{\$5}
ALL TYPES	
COCA-COLA, SPRITE OR DR. PEPPER 3 LITER BTL.	2/^{\$3}
ALL TYPES	
COCA-COLA, SPRITE OR DR. PEPPER 6 PK. .5 LITER	2/^{\$4}

PRODUCE

SUMMERTIME VALUES ON LARGE SIZES OF CALIFORNIA PLUMS, CALIFORNIA PEACHES, VALENCIA ORANGES, CALIFORNIA NECTARINES, 1 LB. CELLO CARROTS, RED RIPE TOMATOES, BUNCH GREEN ONIONS, U.S. NO. 1 BAKING POTATOES AND JUMBO WHITE OR YELLOW ONIONS

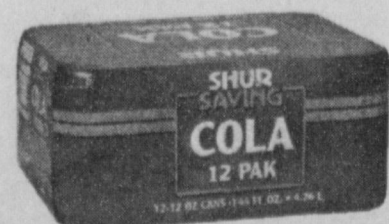
FRESH PRODUCE

MIX OR MATCH-LARGE SIZES

5/^{\$1}

FROZEN & DAIRY

SHUR SAVING ASSTD.	
MELLORINE 4 QT.	\$2⁹⁹
SHURFINE BUTTERMILK OR LOWFAT CHOCOLATE	
MILK 1/2 GALLON	\$1³⁹
SHURFINE REGULAR	
COTTAGE CHEESE 24 OZ.	\$1⁶⁹
SHURFINE	
SOUR CREAM 16 OZ.	\$1¹⁹
SHUR SAVING SOLID OR	
MARGARINE QUARTERS 16 OZ.	2/^{\$1}
SHURFINE ASSTD. TEXAS STYLE	
BISCUITS 12 OZ.	2/^{\$1}
SHURFINE JUMBOS	
CINNAMON ROLLS 16.9 OZ.	2/^{\$3}
EXCLUDES FAT FREE SHURFINE SELECT	
GROUP CHUNK OR 1/2 MOON LONGHORN	
CHEESE 16 OZ.	2/^{\$5}
SHUR SAVING SANDWICH	
CHEESE SINGLES 10.6 OZ.	89¢
SHURFINE SELECT GROUP	
SHREDDED CHEESE 32 OZ.	\$4⁹⁹
SHURFINE CHILLED	
ORANGE JUICE 64 OZ.	\$1⁶⁹
SHURFINE FRUIT PUNCH, REGULAR OR PINK	
LEMONADE 12 OZ.	2/^{\$1}
SHURFINE POTATOES	
HASH BROWNS 32 OZ.	99¢
SHUR SAVING ASSTD.	
TWIN POPS 18 PACK	\$1⁹⁹
SHURFINE SLICED	
STRAWBERRIES 16 OZ.	\$1⁶⁹
SHURFINE SELECT GROUP • PEAS AND CARROTS	
• CUT GREEN BEANS • WHOLE KERNEL CORN	
• GREEN PEAS • MIXED VEGETABLES	
VEGETABLES 16 OZ.	89¢
SHURFINE MINI	
CORN ON THE COB 8 EAR	2/^{\$3}
SHUR SAVING ALL PURPOSE	
FLOUR 25 LB	\$2⁹⁹
SHUR SAVING ALL PURPOSE	
FLOUR 5 LB	79¢
SHUR SAVING CORN OR	
VEGETABLE OIL 48 OZ.	99¢
SHUR SAVING	
SHORTENING 42 OZ. CAN	99¢
SHUR SAVING GRANULATED	
SUGAR 4 LB	\$1²⁹
SHUR SAVING	
GARLIC SALT 20 OZ.	\$1³⁹
SHUR SAVING	
BLACK PEPPER 8 OZ.	\$1⁹⁹
SHUR SAVING PLAIN OR IODIZED	
SALT 26 OZ.	3/^{99¢}
SHUR SAVING	
SALAD DRESSING 32 OZ.	99¢
SHUR SAVING	
SALAD MUSTARD 24 OZ.	69¢
SHUR SAVING DRIP OR REGULAR ELECTRIC PERK	
BRICK COFFEE 11.5 OZ. BRICK	\$1²⁹
SHUR SAVING FILLED	
EVAPORATED MILK 12 OZ.	2/^{\$1}
SHUR SAVING	
TEA BAGS 100 CT.	99¢
7 VARIETIES-YOUR CHOICE SHUR SAVING	
• WK/CS GOLDEN CORN • REGULAR CUT GREEN	
BEANS • SHORT CUT GREEN BEANS • GOLDEN	
OR WHITE HOMINY • MIXED VEGETABLES	
VEGETABLES 14.5-15.2 OZ.	4/^{\$1}



SHUR SAVING ASSTD. VARIETIES
SODA POP
12 PACK-12 OZ. CAN
3/^{\$5}

HEALTH & BEAUTY

WESTERN FAMILY 50 CT.	
FRESH'N UP OR 80 CT. SCENTED	
BABY WIPES YOUR CHOICE	\$1⁹⁹
WESTERN FAMILY	
ADHESIVE TAPE 5 YD. 1/2 INCH	99¢
WESTERN FAMILY • 60 CT. ASSTD. SHEER STRIPS	
• 30 CT. WILD STRIP BANDAGES • 40 CT. SHEER STRIPS	
• 20 CT. ASSTD. FLEX STRIPS • 30 CT. 3/4 IN. FABRIC	
BANDAGES • 60 CT. 3/4 IN. PLASTIC BANDAGES	
BANDAGES MIX OR MATCH	2/^{\$3}
WESTERN FAMILY SCENTED	
BABY WIPES REFILL 80 CT.	2/^{\$3}
WESTERN FAMILY	
COTTON SWABS 300 CT.	\$1⁴⁹
WESTERN FAMILY	
PETROLEUM JELLY 3.75 OZ.	\$1²⁹
WESTERN FAMILY	
EPSOM SALT 4 LB.	\$1⁹⁹
WESTERN FAMILY ASSTD.	
ANTISEPTIC	
MOUTH RINSE 33.8 OZ.	2/^{\$3}
WESTERN FAMILY	
COATED ASPIRIN 100 CT.	\$1²⁹
WESTERN FAMILY ASPIRIN FREE	
INFANT DROPS5 OZ.	\$2⁷⁹
WESTERN FAMILY EX-STRENGTH	
ASPIRIN FREE CAPLETS 50 CT.	\$1⁶⁹
WESTERN FAMILY CAPLETS/TABLETS	
IBUPROFEN 24 CT.	\$1⁶⁹
WESTERN FAMILY	
LAXATIVE PILLS 30 CT.	\$2⁴⁹
WESTERN FAMILY MINT OR WAXED	
DENTAL FLOSS 100 YARDS	\$1²⁹
WESTERN FAMILY FULL SIZE ANGLE MED./SOFT	
TOOTHBRUSHES EACH	2/^{\$1}
WESTERN FAMILY CLEANSER	
DENTURE TABLETS 40 CT.	\$2³⁹
WESTERN FAMILY • 150 CT. REG. OR	
PEPPERMINT TABS • 72 CT. ULTRA TABS	
ANTACID YOUR CHOICE	\$2²⁹
WESTERN FAMILY	
REGULAR BIS-MATE 8 OZ.	\$2²⁹
WESTERN FAMILY MAX. STRENGTH	
BIS-MATE 8 OZ.	\$2⁴⁹
WESTERN FAMILY	
SALINE SOLUTION 12 OZ.	\$1³⁹
WESTERN FAMILY REGULAR, EXTRA	
MOISTURE OR ARTIFICIAL TEARS	
EYE DROPS5 OZ.	\$1⁶⁹
WESTERN FAMILY	
MULTI PURPOSE SOLUTION .. 12 OZ.	\$3⁹⁹
WESTERN FAMILY RECTANGULAR	
SPONGE 4 CT.-BUY ONE, GET ONE	FREE
SHUR SAVING	
FOAM PLATES 40 CT.	99¢
SHUR SAVING WHITE	
NAPKINS 250 CT.	99¢
SHUR SAVING WHITE	
BATH TISSUE 4 ROLL	69¢
SHUR SAVING WHITE 2 PLY	
PAPER TOWELS REG. ROLLS	2/^{89¢}
SHUR SAVING 30 GAL.	
TRASH BAGS 20 CT.	2/^{\$3}
SHUR SAVING STANDARD	
AMUMINUM FOIL 25 SQ. FT.	59¢
SHURFINE MEDIUM OR LARGE	
BASIC DIAPERS 18-24 CT.	\$2⁹⁹
SHUR SAVING REGULAR	
BLEACH GALLON	69¢
SHUR SAVING FABRIC	
SOFTENER SHEETS 40 CT.	99¢
SHUR SAVING CHUNK	
DOG FOOD 20 LB	\$2⁹⁹
SHUR SAVING ASSTD.	
RATION DOG FOOD 13.2 OZ.	4/^{\$1}
SHUR SAVING DRY	
CAT FOOD 3.5 LB	\$1²⁹
WESTERN FAMILY W/FLASH	
CAMERA 27 EXP.	\$6⁹⁹
WESTERN FAMILY OUTDOOR	
Save \$1.00 with Circular Coupon	
CAMERA 27 EXP.	\$3⁹⁹

Lowe's

MARKETPLACE

401 W. American Blvd. Muleshoe 272-4585

WESTERN MONEY UNION TRANSFERSM
"The fastest way to send money"

AT AFFILIATED FOODS INC. MEMBER STORE AT PARTICIPATING STORES

WE RESERVE THE RIGHT TO LIMIT QUANTITIES IN TEXAS