

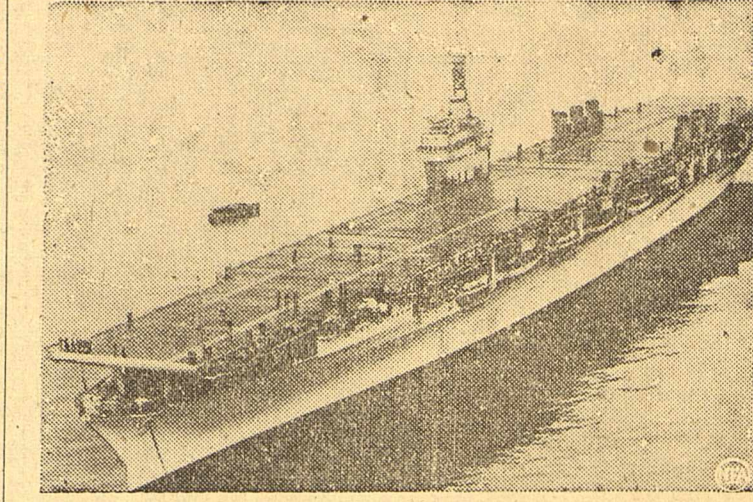
This Leaves Argument Still Unresolved

NORTON CANES, ENGLAND — (P)—Mrs. Elizabeth Adams of this Staffordshire village was publicly proud that she never tasted intoxicants, and credited her old age to abstinence.
 John Edwards, another villager, was just as proud that he was never ill and said "plenty of beer" kept him healthy.

Many Children Die In Warsaw

WARSAW — (P)—This war ruined capital has one of the highest infant mortality rates in the world. Health records disclosed that in the last six months of 1945, 60.9 per cent of all children up to five years of age died. Average mortality of all children is 18 per cent, compared with 3 per cent in Sweden and 4 per cent in London.

Navy Retires USS Ranger, First Ship Built From Keel As Carrier



First Navy ship built from the keel up as a carrier, the USS Ranger will range no more. Navy will retire her in favor of a more modern "laptop".

NORFOLK, VA. — (NEA)—The commission pennant is coming down from the truck of the USS Ranger, the first U. S. Navy ship built from the keel up as an aircraft carrier.
 She came through World War II without the glory her sister flat-tops won, without taking a single hit, and without seeing much in the way of action. No one thought of her in terms of "fighting lady" or "Big E." but her 700-foot flight deck launched more Naval aviators on their way to war careers than any other ship.
 For a fleeting moment of fame, she made headlines as a "ghost ship." That was in 1943, when Hitler decorated one of his U-boat commanders for sinking the Ranger. But the Ranger paid no attention to Hitler's announcement and six months later got a little decoration of her own: the U. S. Navy gave her credit for sinking or damaging 40,000 tons of enemy shipping off Bodo, Norway.
 She was in the African show, too, helping round up and guard the tremendous convoy that was assembled virtually in mid-ocean for the invasion that surprised the Axis.
 But the Ranger never got a chance to show her mettle in the Pacific. You'd never get anybody who served aboard her to admit it, but she had aged fast for a ship that was the newest thing in carrier back in 1934, when she was commissioned at Newport News, Va. Then the 14,500-ton warship showed her heels at 30 knots and flew the flag of many a top-ranking admiral.
 In the uneasy days before the U. S. went into the war, the Ranger was the flagship for the Commander of Aircraft, Atlantic Fleet, and cruised apprehensively in the Caribbean with a wary eye on the French island of Martinique that was owned by a nation the Nazis had conquered.
 After Atlantic convoy duty, the foray off Norway and the African invasion, the Ranger moved around to the west coast. There she stayed as a training ship, because she wasn't quite fast enough for the new combatant carrier task forces.
 Now a newer ship has taken over her training duties, too. The Ranger has been replaced by the spanking new Saipan, a 27,000-ton version of the Essex class, operating in the Gulf of Mexico and based at Pensacola, the Navy's Annapolis of the air.
 Five other Navy vessels have carried the name Ranger. When this one is decommissioned, only one other pre-war carrier, the Enterprise, will remain afloat.

Monahans News

MONAHANS—Arthur Elkins of Monahans built a cattle sprayer and used it last week for the first time. Arthur reports the horn flies were very bad but the use of 2 per cent DDT really got the job done. The cost of the DDT was 1 1/2 cents per head treated.
 Cotton pickers are needed now in the Grandfalls area, John Mogford, Ward County agent, reported.
 If you'd like to see your lawn stay green all through the winter, try planting Italian rye grass, Mogford suggests.
 This is the same rye grass which is grown for winter stock pasture, and it may be planted with Bermuda or any grass that keeps your lawn green in the summer. Just cut the lawn very closely and sow the rye grass, using one pound of seed for each 1,000 square feet of lawn. Water immediately after planting. The grass stays green all winter and begins to die out just about the time the Bermuda comes up in the spring.
 It will be necessary to plant new rye grass each fall, since it won't produce seed until it reaches a height of about 18 inches, and you'll want to keep it mowed.

Mailman's Hobby Doctoring Fish; 10,000 In Yard

EL PASO — (P)—James D. King has been an El Paso mail carrier since 1915, but he's probably better known as the "goldfish doctor."
 His reputation has been 15 years in the making. It started when he ran out of fishing bait one day and decided to raise his own. Today he has 10,000 goldfish in his backyard, plus 10,000 snails and an estimated "mile of fishing worms."
 The hobby keeps his telephone ringing with requests for advice from owners of ailing goldfish. King keeps his fish in tanks full of giant spear plants, star lilies and umbrella plants. Before using a tank he waits until the water is green-stained with vegetation.
 "The goldfish would starve to death in clear water," he explains.
 To supplement their diet he feeds green flies, supplied from specially built traps, and ground shrimp and oatmeal. The worms get bread crumbs.

PHOTOGRAPHERS
decol Phone 1505
 DECOL is operated by veterans with extensive photographic experience who are commended for their high standards of quality.
 AS YET we are not in our permanent downtown location, nevertheless we are now prepared to serve you with complete home portrait service, weddings, parties, and in all phases of industrial, commercial and advertising photography.
 THE OPPORTUNITY to serve and acquaint you with our services will be deeply appreciated and of great assistance in re-establishing these veterans in their business in MIDLAND.
 Charles C. Collier William E. de Alva
 P. O. Box 975

Milk... A BASIC FOOD

BE SURE IT'S PASTEURIZED
 Milk provides materials to build little muscles and strengthen bones and teeth. Most children should have at least a quart a day. Authorities say that "only proper pasteurization insures safe milk."
 Every drop of Borden's Milk is pasteurized for your protection.
 *From the book "The Most Nearly Perfect Food" by Drs. Crumrine and Tolby.
Borden's MILK
 PASTEURIZED FOR YOUR PROTECTION

BOATS FOR RENT

 14 Miles South of Stanton
 2 1/2 Miles SE of Midland on Garden City Road—follow the signs.
Motor Boat Riding FISHING Blalock's Lake
 Phone Your Drug Store for Deliveries
Postal Delivery Service
 Provides Motorcycle Service For All Drug Stores
 For Other Delivery Call Us Direct - Phone 211
TED RAHM

Complete Insurance Service
 Life • Health • Accident
 Automobile • Fire • Casualty

MIDLAND INSURANCE AGENCY
 Laura Jesse, Agent—104-A Wilkinson Bldg.—Ph. 114

Pick Your Favorite!

Take your pick from 6 delicious cereals in Kellogg's VARIETY. Kellogg's CORN FLAKES, PEP, RICE KRISPIES, KRUMBLE, 40% BRAN FLAKES, SHREDDED WHEAT—10 generous packages in one handy carton. Try it!
Kellogg's VARIETY

COUPON
 Stiff-bristled, 10¢ Vegetable BRUSH WITH COUPON 8¢ (limit 2)
MIDLAND Walgreen Agency DRUG CO.
 Specials for Thursday P. M. - Friday - Saturday
 Right Reserved To Limit Quantities.
 FAST FREE DELIVERY ON PRESCRIPTIONS

Save 95¢!
LADY ESTHER BEAUTY BARGAIN
 \$1.38 Four-Purpose Face Cream & 55¢ Face Powder BOTH **98¢**

 WE CARRY THE COMPLETE LINE OF FAMOUS WALGREEN PRODUCTS DRUGS WITH A REPUTATION
 75¢ Size DOAN'S PILLS **49¢** (Limit 1)
 16 oz. MINERAL OIL **39¢** W. A. Brand
 \$1.00 Size DRENE SHAMPOO **79¢**
 Pound EPSOM SALT **15¢** (Limit 2)
 50¢ Size Pepsodent Tooth Powder **39¢**

SEPTEMBER DRUG SALE
DR. LYONS TOOTH POWDER 50¢ SIZE 29¢ (Limit 1)
1.50 ANUSOL SUPPOSITORIES - BOX OF 12 1.09 (Limit 1)
25¢ CUTICURA OINTMENT MEDICATED 19¢ (Limit 1)
MERCUROCHROME 1/2 OUNCE BOTTLE 9¢ (Limit 1)
 Right Reserved To Limit Quantities.

MOST for YOUR MONEY
 Plenty of Good Beef, Fancy Veal, Fresh Pork, Poultry, Fish and Oysters at Cash and Carry Market and Everybody Knows the Prices Are the Lowest!

 Fancy Prime Rib Roast, lb. **37¢**
FRESH PIG FEET Pound **10¢**
 Ground Veal, it's fresh, lb. **26¢**
GOOD LOIN STEAK Pound **44¢**
 Fresh Pig Liver, lb. **23¢**

 Veal Hearts and Tongues, lb. **19¢**

STRAWBERRIES Frozen In Syrup Pound **47¢**
 Enjoy A Luscious Cherry Pie
BULK RED SOUR PITTED CHERRIES Pound **34¢**
GOOD FRESH WIENERS, Lb. 29¢
PORK ROAST, lb. 33¢
 Our Own Fine Chili, lb. **37¢**
FINE PORK SAUSAGE, lb. 42¢
 DRESSED HENS, Lb. **49¢**
 FINE LOUISIANA CATFISH, Lb. **59¢**
LONGHORN CHEESE, lb. 53¢
 SALMON — HALIBUT — OYSTERS — BUTTER
 COLD MEATS — BARBECUE
CASH & CARRY MARKET
 122 S. Main ELMER SELLERS Phone 41

Poor Fish Cuts In On A Party Line
 LIVINGSTON, MONT. — (P)—Telephone troubleshooters checking a dead line west of Livingston found a sizeable fish lying across two wires and shorting them out. Flying fish don't live in Montana so it was figured that an osprey or some other fish-catching bird was to blame.
Gem-Seekers Will Move River
 JOHANNESBURG — (P)—While South African villagers near Kimberley dig holes in their gardens searching for diamonds, a syndicate is planning to move a river in the same quest for precious stones.
 The syndicate, one of many recently formed, has obtained rights to deflect a 2,500-foot stretch of the Vaal River through a canal. Engineers believe the river bed may contain rich diamond deposits.

Safe, Permanent, Low-Cost Buildings
 Built of steel—proof against sagging, warping, rotting and termite. Stran-Steel "Quonsets" are easy to erect and low in cost. Wall and collateral materials nail directly to steel framing because of patented nailing groove. Built to any lengths desired, with or without windows, doors, etc. Now used for dozens of purposes. Call or write for full details.
 * FIRE-SAFE * WEATHERPROOF * DURABLE

STRAN-STEEL "QUONSETS"
Abell-McHargue Lumber Co., Ltd.
 Stran-Steel Division P. O. Box 1310 Phone 1886 Midland, Texas

Guard Your Health!
 Olafsen BAYTOL VITAMIN B COMPLEX CAPSULES Bottle 100 . . . **2.39**
 Olafsen AYTNAL (B-in-All) CAPSULES Bottle 100 . . . **2.39** 8 Vitamins in one Capsule
 Olafsen LOFOTEN Pure Norwegian COD LIVER OIL Full PINT . . . **98¢** Imported direct from the Lofoten Islands.
 Olafsen THIAMIN CHLORIDE TABLETS Bottle 100 1mg. Tablets **39¢**
Announcement
 Our soda fountain and cafe department is now under the management of Mr. Jack Petosky . . . Serving complete meals morning, noon and night.
WAXED PAPER 125 Foot Roll 19¢
POCKET COMB Hard Rubber 6¢
 20% Federal Excise Tax on Toiletries, Luggage and Billboards
COUPON
 White—Standard Size **2 PACKETS OF ENVELOPES** WITH COUPON . . . **9¢** (limit 2 packs)
Box of 12 MODESS NAPKINS 25¢
8-oz. Size MILES NERVINE 89¢

BABY NEEDS
 Hair Looks Thicker, Curlier
Nestle Baby Hair Treatment 98¢
 Gives adorable curls, waves.
 Made of Latex RUBBER PANTS 49¢ Comfortable!
MEAD'S PABLUM Large package for . . . **39¢**
S.M.A. POWDER \$1.20 value! Lb. . . **89¢**
MEYER'S TALC Borated 4-ounces . . . **19¢**
ANTISEPTIC OIL Meyers, 5-oz. . . **39¢**
DEXIN FOOD 12 ounce package . . . **73¢**
BABY SOAP Meyers, Castile . . . **10¢**
50¢ Size JER JOHNSON'S Baby CREAM 39¢ So soothing!

- White Swan Fruit Cocktail, in heavy syrup, gal. \$1.85
- Hominy Van Camps, No. 2 1/2 19c
- Campbell's Cream of Mushroom Soup 19c
- Pictsweet Corn, No. 2 22c
- Aunt Jemima White Corn Meal, 2-lb. pkg. 19c
- Light Crust Flour, new bleach, 5-lbs. 42c
- Tall Can Pet Milk 14c
- Paper Plates, doz. 10c

COMMUNITY CASH GROCERY

Wills and Agnes Whitson
405 S. Marienfield Phone 1311

ARMY TO SPEED RELEASE OF TEMPORARY OFFICERS
WASHINGTON—(AP)—The Army today announced a series of economy measures with an order Wednesday to speed the release of thousands of temporary officers still on active duty.
Advancing dates six months or more, the new separation policy announced by the War Department permits the return to civil life, mostly by year's end, of officers who otherwise would not have been eligible until next June 30.

19 KILLED IN PLANE CRASH NEAR HONG KONG
HONG KONG—(AP)—Fourteen passengers and five crewmen were killed Wednesday when a big RAF plane crashed shortly after leaving the Kai Tak airport for Singapore. Most of the passengers were military personnel.

Boy Sues 'Other Woman'



Ten-year-old Jimmy Edler, of Chicago, is the plaintiff in a \$50,000-100 alienation of affections suit filed in Washington, charging that an English woman, known only as Nora Doe, stole his father's love and induced him to desert his mother. In the picture of Jimmy and his mother, above, the boy holds a photo of his father, Lt.-Col. James Edler, former chief of the Army Criminal Investigation Division in Europe.

GOP Blames Truman For Emergency Status

WASHINGTON—(AP)—Republicans, seizing upon President Truman's assertion that this country is in as great an emergency now as when Pearl Harbor was hit, came back Wednesday with "whose fault is it?"
Declaring that the emergency will continue "until we can get peace and production," Truman added in his first major thrust into the congressional campaign, "that's the program of the Democratic Party."
In an informal address to a group of 39 Democratic nominees from 17 states, who called at the White House Tuesday, the President charged the Republicans with "obstructionist tactics" and called for the election of a Congress in sympathy with the 1944 Democratic platform.
Carroll Reece, chairman of the Republican National Committee, responded in a statement to reporters that "if we are in as great an emergency as Truman indicates, whose fault is it?"
"He and his Administration have been in power with overwhelming majority in both branches of Congress," Reece added. "No leadership has been in evidence. Truman is simply in water over his head."
Truman had pointed to Reece and

Henre-e-e-e!



Champion husband caller is Mrs. Eleanor Ehrlich, of Chicago, who won a recent contest there with a voice that summoned her spouse from a block away. Above, she demonstrates the lung power that won her the title and free meal for the couple.
Two other Republicans in voicing his contention of GOP "obstruction" and describing the Democratic Party as "the party of progress."

JONES BOOT & SHOE SHOP

- One Day Service On Shoe Repair
 - Hand-Made Belts Made-To-Order
 - Specialize In All Kinds Of Boot Repairing
- 118 SOUTH MAIN



3-MINUTE OATS
QUICK OR OLD FASHIONED
THERE IS A DIFFERENCE IN OATS—BUY THE BEST!

TRIANGLE FOOD MARKET

South "A" and Missouri Phone 280

OPEN NIGHTS—SUNDAYS

★ ★ ★

FRESH FRUITS & VEGETABLES

- LETTUCE head 11¢
- CARROTS, 2 bunches 15¢
- Pascal Celery lb. 10¢
- Seedless Grapes lb. 19¢

Johnathan and Winesap Apples

Bartlett Pears

- Monarch Coffee 1 lb. 39¢
- Green Beans Cut Stringless No. 2 can 15¢
- Salad Dressing Pt. Jar 25¢
- PAPER NAPKINS 15¢
- Black Eye Peas Kimbells No. 2 can 23¢
- CLOROX 1 Gal. 63¢

MEAT

- FRESH GROUND VEAL, lb. 29¢
- BRISKET, Baby Beef, lb. 23¢
- CHUCK ROAST, AA Beef, lb. 38¢

Fresh Fish - Oysters - Fryers - Hens

West Texas Kennel Club Now Has Members In Nine Counties Of Area

By ALETHA M. CONNER
Secretary West Texas Kennel Club
MONAHANS—An old saying is, "Every Dog Has His Day," but since 1925, every dog has an entire week that is dedicated to his honor—September 22-28.

This is a national observance in the United States, a noncommercial and non-profit institution.
In the last few years, dogs have more than proved their worth in military service. They were used to supply keener eyes and ears, and a sharp nose for sentries and patrols on night duty, whether in the field or guarding military installations and munition plants. They were also used by the Coast Guard to sharpen the night watch along our beaches, guarding against saboteurs who might slip ashore from submarines or otherwise contrive illegal entry.
Dogs Take Prisoners.

These dogs were taught to make threatening noises and motions to keep the skulkers at bay until the patrol came up, and, at the word, to take prisoners, grabbing the intruder by the right, or weapon arm. Army dogs were also trained to find wounded men on the battlefield and bring stretcher-bearers; to carry messages and water across shell and bomb-swept ground where dogs have better chances to get through than their fellow two-legged soldiers. They were also used to restore

vital communications, stringing fine wire from spools attached to their backs as they ran.

All in all, man's best friend is his dog.
One of the most eloquent tributes ever paid the dog was voiced by Senator Vest of Missouri. He said: "The best friend a man has in the world may turn against him and become his enemy. His son or daughter that he has reared with loving care may prove ungrateful. Those who are nearest and dearest to us, those whom we trust with our happiness and our good name, may become traitors to their faith. The money that a man has, he may lose. It flies from him, perhaps, when he needs it most. A man's reputation may be sacrificed in a moment of ill-considered action. The people who are prone to fall on their knees to do us honor when success is with us, may be the first to throw the stone of malice when failure settles its clouds upon our heads."
"Unselfish Friend
"The one absolutely unselfish friend that a man can have in this selfish world, the one that never deserts him, the one that never proves ungrateful or treacherous, is his dog. A man's dog stands by him in prosperity and poverty, in health and sickness. He will sleep on the cold ground, when the wintry winds blow and the snow drives fiercely, if only he may be near his master's side. He will kiss the hand that has no food to offer; he will lick the wounds and sores that come in encounter with the roughness of the world. He guards the sleep of his pauper master, as if he were a prince. When all other friends desert, he remains. When riches take wings and reputation falls to pieces, he is as constant in his love as the sun in its journey through the heavens."
"If fortune drives the master forth an outcast in the world, friendless and homeless, the faithful dog asks no higher privilege than that of accompanying him, to guard against danger, to fight against his enemies. And when the last scene of all comes, and death takes the master in its embrace, and his body is laid in the cold ground, no matter if all other friends pursue their way, there by the graveside will the noble dog be found, his head between his paws, his eyes sad, but open in watchfulness, faithful and true even in death."

BUTANE GAS and TANKS TERMS

FELIX COX

West Hwy. 80 Phone 2162-J

... and SweetHeart Soap gives mounds of rich, creamy lather—even in hard water. Here is real BEAUTY lather—velvet-soft, delicately fragrant. It cleanses gently, yet thoroughly—leaves your skin radiantly clean... feeling soft, smooth, lovely!

Change to pure, mild SweetHeart Soap—for lathery baths, fragrant shampoos and gentle complexion care.

The Soap that agrees with your skin



IT'S LATHER THAT COUNTS IN A SOAP!

SWEETHEART TOILET SOAP

Congratulations To

Mr. and Mrs. A. Mottett Gilbow on the birth Tuesday of a son, Jimmy Don, weighing six pounds.

Mr. and Mrs. Webb Burns, Jr., on the birth Tuesday of a daughter, Glenda Sue, weighing eight pounds and 10 1/2 ounces.

Mr. and Mrs. J. R. Cotton on the birth Wednesday of a daughter, Binda Grace, weighing seven pounds and 10 ounces.
OZARKA WATER CO. welcomes these new arrivals. Phone 111 and a bottle of OZARKA will be delivered to you free—Adv.

COME AND GET IT!



VISIT THE FAIR
See All The Exhibits
MIDLAND RODEO GROUNDS
Friday and Saturday



PRICES IN THIS AD EFFECTIVE FRIDAY, SATURDAY

- TOMATOES No. 2 Can 15¢
- HOMINY Quart Jar 39¢
- LIMA BEANS DEL HAVEN No. 2 Can 19¢
- SOAP SILVER FOAM Box 29¢
- MODESS Box 22¢
- COFFEE MAXWELL HOUSE OR FOLGER'S Pound 41¢
- Sugar 10 Lbs. 70¢
- Flour 10 Lbs. 76¢
- FROZEN FOODS
- Raspberries 75¢
- Strawberries 75¢
- Peaches 37¢
- Peas 29¢
- Spinach 29¢
- Broccoli 30¢
- Crushed Pineapple 39¢

- WINESAP APPLES 2 LBS 19¢
- SUNKIST LEMONS L B 12¢
- POTATOES 10 LBS 55¢
- SEEDLESS GRAPES L B 17¢
- CABBAGE L B 5¢
- Borden's Chateau CHEESE 2-Lb. Box 98¢
- SWISS STEAK Pound 38¢
- PORK SAUSAGE Pound 39¢
- Spencer Boneless ROLL ROAST Lb. 49¢

FRYERS HENS
BEEF FISH

STEAKS CUT TO ORDER

QUALITY HAS MADE US FAMOUS

PIANOS
AND PIPE ORGANS
TUNED AND REPAIRED
L. J. CLARK
201 E. Dakota St. Phone 1461-4

MIRACOTE
DEEPER WAX
YOUR
MORE DURABLE
CAR
PROTECTS FINISH
\$9.50 ALL CARS
WASH JOB INCLUDED
Firestone STORE
105 S. Main Phone 586

Include Soup In School Lunch Box



Ideal for the school-day lunch—hot soup.

By **GAYNOR MADDOX**
NEA Staff Writer

Whether your child eats in the school cafeteria, carries his lunch, or comes home at lunch-time, he should enjoy a nourishing bowl of hot soup. A thermos bottle will enable him to take hot soup to school with him, in his lunch box.

Scotch Broth With Noodles
(Serves 6)

One shoulder lamb bone, 2 quarts cold water, 1/2 medium-sized onion, 1/2 teaspoon salt, 1/4 teaspoon pepper, 1/2 cup finely diced carrots, 1/3 package noodles (8-ounce package), 1/2 cup finely minced lamb meat, cheese crackers.

Four cold water over lamb bone. Add sliced onion, salt and pepper. Bring to a boil. Skin and simmer, covered, for 2 1/2 hours. Strain.

Add carrots and noodles. Simmer 20 minutes longer.

Add meat and sprinkle with finely chopped parsley. Any other vegetables may be added to this soup.

Serve with crisp cheese crackers.

Carrot Potato Chowder
(Serves 6)

One white onion, minced, 1/4 cup butter or fortified margarine, 2 cups diced raw potatoes, 2 cups boiling water, 6 crackers, 1 teaspoon salt, 1/4 teaspoon paprika, 2 carrots, diced and cooked, 2 cups milk, scalded, 1 tablespoon flour, saltine crackers.

Saute onions in 2 tablespoons butter or margarine in large saucepan until lightly browned. Add potatoes, boiling water, salt and paprika. Boil about 15 minutes, or until potatoes are soft.

Add carrots, milk and flour mixed with remaining 2 tablespoons butter or margarine, and cook 5 minutes, stirring until smooth and thickened.

Pour over crackers which have been placed in each bowl, or crumble crackers into soup before serving.

Poles War On Waste

WARSAW, POLAND — (AP) — The ministry of food and trade has appointed a "Savings Commissar." His job is to initiate a conservation campaign in everyday commodities. He also will investigate deficiencies in the workings of the economic and distributing machinery and wastage in rationed foods.

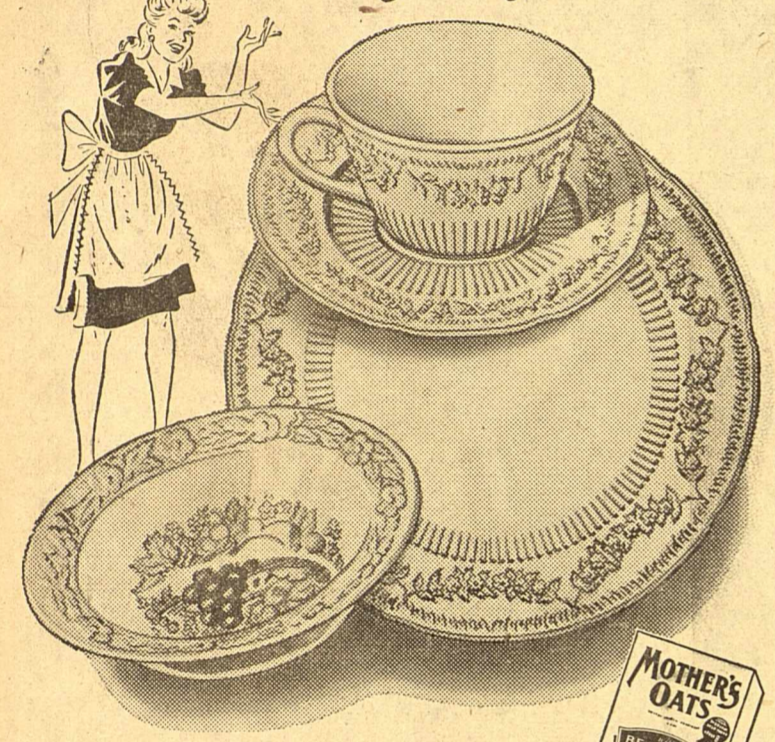
Tea leaves are plucked from a plant every seven or eight days.

- WATER - WATER -

Johnston & Peerless Jet Type Pressure Systems Complete Well Service

O. L. WILLIAMS
Box 862 Big Spring Tel. 758
or H. O. ALLEN
1336 No. "A" — Ph. 2448-J

Here's How to Get Your Set



Pretty Dinnerware
WITH EACH PREMIUM PACKAGE
of Mother's Oats

Imagine a set of these smart, attractive dishes on your table! Each Mother's Oats premium package adds a piece to your set! You'll be proud of the sparkling designs! All are standard size! Start your set TODAY! Give your family the vitality-and-stamina benefits of delicious whole-grain Mother's Oats!

Remember, Mother's Oats was named America's best-tasting cereal in a coast-to-coast vote!

Mother's Oats
(PREMIUM PACKAGE)

Funeral Directors To Meet In Midland

The quarterly meeting of the Central-West Texas Funeral Directors' Association will be held in Midland Tuesday, October 8, New-nie Ellis, Jr., announced Wednesday.

Ellis and Riley Parr, both of Ellis Funeral Home here, are in charge of arrangements for the meeting which is expected to attract more than 100 delegates.

Clyde Brandon of Lamesa is president of the association, and Mrs. Anna Belle Eberley of Big Spring is secretary.

The area covered by the association extends from Mineral Wells to El Paso and from Amarillo to Del Rio.

A business session will be held in the afternoon, with a dinner and dance scheduled in the evening.

JayCee Safety Group Meets Thursday Night

A meeting of the Midland Junior Chamber of Commerce's safety committee has been called at 7:30 p. m. Thursday in the office of Alton Brown.

Brown's office is in the Thomas Building at the Employers Casualty Company.

Stars and Bars Takes to the Air



Newest thing in air forces is the Confederate Air Force recently formed at New Bern, N. C., by two ex-Army flyers. The group will sponsor safe flying and better airports throughout the South. Above, wearing variations of the Confederacy's Stars and Bars flag on their shirts, "Colonels" Albert T. McSorley, left, and J. W. Holton pose in front of their headquarters at New Bern airport.

WTCC To Make Plans For Fall Referendum

ABILENE — The West Texas Chamber of Commerce is on the move toward the beginning of its annual fall referendum convention season. H. Y. Overstreet, president, has called a meeting of the regional chamber's executive board Friday to plan and organize the 1946 referendum, which will start with eight district meetings to be held during October.

Friday's session will be held at Colorado City, starting at 10 a. m. Frank H. Kelley will be official host. The executive board's major job will be receiving and disposing of reports with recommendations as made by the organizations various committees, constituting the proposed essentials of the program of work to be carried on in 1947. These matters, when the board has passed on them, will be as usual referred to affiliates in 165 West Texas towns for action at meetings, to follow the district gatherings.

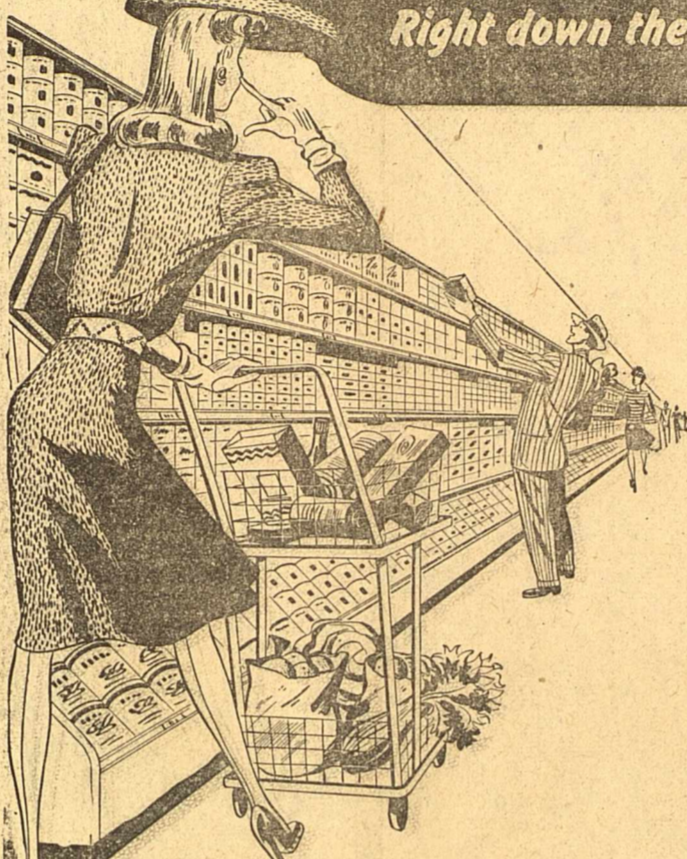
When it rains it pours

PLAIN OR IODIZED



SAFEWAY PRICES ARE RIGHT

Right down the line, you get more for your money at **SAFEWAY**



Compare. Make your own test of the savings we promise you at Safeway. Compare prices on items you need less frequently, such as spices, as well as the items you buy every day or so. Compare brand for brand and quality for quality. Right down the line, you'll find Safeway prices right. You'll see why folks everywhere are saying, "you get more for your money at Safeway".

- Bread** Mrs. Wright's Extra Tender 24-Oz. Loaf **14¢**
- Macaroni** Goch's Products 7-Oz. Pkg. **7¢**
- Luncheon** Rait's Black Hawk Can **35¢**
- Cherub Milk** 2 Tall Cans **23¢**
- Pickles** Heinz Dill Cross Cut 24-Oz. Jar **27¢**
- Sutho Suds** 16-Oz. Pkg. **25¢**

Right Down the Line

EDWARDS' RICH, ROBUST COFFEE
1-Lb. Can **39¢**

- Airway Coffee 2 1-Lb. Pkg. **61¢**
- Nob Hill Coffee 1-Lb. Pkg. **34¢**
- Admiration Coffee 1-Lb. Jar **44¢**
- Kraft Dinner Macaroni and Cheese 6-Oz. Pkg. **14¢**
- Van Camp Chili 17-Oz. Jar **30¢**
- Peas Gardnerside Early June No. 2 Can **14¢**
- Peas Arnhem, Fancy Small, 2-Sieve No. 2 Can **20¢**
- Peanut Butter Real Roast 16-Oz. Jar **29¢**
- Crackers Nabisco Premium 1-Lb. Pkg. **23¢**
- Crackers Sunshine Grahams 1-Lb. Pkg. **23¢**
- Pi-Do Makes Crisp Pie Crust 6-Oz. Pkg. **13¢**
- Quaker Oats 28-Oz. Pkg. **13¢**
- Ralston Wheat Cereal 24-Oz. Pkg. **21¢**

Quality Meats

- HENS FRYERS**
- Dressed and Drawn Lb. **49¢** Lb. **73¢**
- American Cheese Lb. **59¢**
- Skinless Frankfurters Lb. **37¢**
- Assorted Lunch Loaves Type 2 Lb. **43¢**
- Spiced Luncheon Lb. **53¢**
- Heinz Sour Pickles 2 for **5¢**
- Fleischman's Yeast Cakes 2 for **5¢**
- Fresh Water CATFISH Small Whole Lb. **59¢**
- Perch or Cod FILLETS Boneless Lb. **53¢**

Cello Pack Dept.

PRUNES

90-100 Size Evaporated Cello Pack Lb. **12¢**

- Prunes Cello Pack 2-Lb. Pkg. **23¢**
- Apricots Evaporated Cello Pack 1-Lb. Pkg. **47¢**
- Raisins Seedless Cello Pack 1-Lb. Pkg. **17¢**
- Beans Great Northern Cello Pack 1-Lb. Pkg. **13¢**
- Beans Ruby Limas Cello Pack 1-Lb. Pkg. **15¢**



Lady Royal

TOMATO JUICE

46-Oz. Can **23¢**

Apricots

VALLEY GOLD Whole Unpeeled No. 2 1/2 Can **25¢**

HIGHWAY Halves Unpeeled No. 2 1/2 Can **28¢**



Safeway Farm Fresh Fruits & Vegetables

- White Rose Potatoes California Lb. **5¢**
- Red Tokay Grapes Large Clusters Lb. **19¢**
- Oranges California Rich Juicy 8-Lb. Bag **69¢**
- Yellow Onions Lb. **3¢**
- Apples Illinois Jonathan Lb. **13¢** Cauliflower Snow White Lb. **15¢**
- Apples Illinois Red Delicious Lb. **15¢** Head Lettuce Calif. Lb. **12¢**
- Texas Yams Lb. **10¢** Collard Greens Texas Bun. **7¢**
- Green Cabbage Lb. **5¢** Carrots New Mexico Bun. **9¢**

Let Us Help You Mold that line!...

BE LOVELY TO LOOK AT...

Acquire a well proportioned, more beautiful body—sparkling energy of good circulation—ease and grace of relaxed nerves and toned muscles—the social poise of an erect, slender figure.

Free Trial

Because it is not possible to describe the wonderful sense of relaxation and renewed vitality you experience we invite you to come in for a courtesy trial treatment.

12 Treatments \$15

Stauffer System

No lovelier gift for birthdays and anniversaries than a course of Stauffer treatments. Call for information.

409 1/2 W. Illinois St. Phone 2204

SAFEWAY



Half Pint Pianist



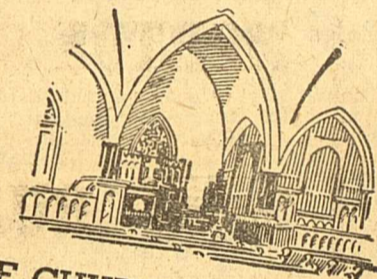
It's all part of a carefully thought out plan!

His parents want him to love music . . . to find in it the beauty and strength that others have discovered . . . to make it an enrichment of his life.

And this banging on the keys is the first step. Already, he loves the sounds his tiny fingers can command.

Thoughtful parents! But there are richer blessings in life than music. There are spiritual chords that touch the depths of the human soul, and call forth the noblest that is in man. And these, too, must be discovered in childhood!

The simple religious truths that a youngster learns in Sunday School are the keys that turn life's discord into harmony. Wise parents begin with the Church in planning their children's lives—and their own lives also.



THE CHURCH FOR ALL . . . ALL FOR THE CHURCH

The Church is the greatest factor on earth for the building of character and good citizenship. It is a storehouse of spiritual values. Without a strong Church, neither democracy nor civilization can survive. There are four sound reasons why every person should attend and support the church of his choice. They are: (1) For his own sake. (2) For his children's sake. (3) For the sake of his community and nation. (4) For the sake of the Church itself, which needs his moral and material support. Plan to go to church on Sunday.

Copyright 1946 by
E. E. Keister, Strasburg, Virginia.

This advertisement contributed to the cause of the Church by the following citizens and business establishments:

Barrow Furniture

Shepard Roofing Co.
"Real Roofs" Phone 887
208 So. Main

Cash & Carry Grocery & Mkt.
122 So. Main Phone 41

Scharbauer Beauty Salon
Phone 664

Westland Grocery & Market
Johnny Carter — Lige Midkiff
Andrews Hwy. & Wall Phone 2129

Neill's Sheet Metal Co.
General Sheet Metal Contractors
207 So. Pecos Phone 1718

Midland Studio & Camera Shop
317 N. Colorado Phone 1003

Willis-White Motor Co.
Service—Repairs Phone 2435
207 W. Wall

Toney Bauer's Texaco Service
Washing—Lubrication—
Complete Service Phone 2402
800 W. Wall

Everybody's Store
104 So. Main Phone 21

Kruger Jewelry Co.
104 N. Main Phone 324

Higginbotham-Bartlett Co.
211 W. Missouri Phone 445

Gaines Radiator Shop
Repairing & Cleaning
307 N. Weatherford Phone 2327

Midland Brake Service
A. E. Murr H. C. (Hank) Hannaford
108 W. Missouri Phone 478

Ray Gwyn Office Supply
215 W. Wall Phone 173

Buckner Hotel
"The Friendly Homelike Hotel"
115 N. Fort Worth Phone 9526

Wes-Tex Equipment Co.
International Trucks
Farmall Tractors
105 N. Fort Worth Phone 2468

The Borden Company
"If Its Borden's, It's Got
To Be Good" Phone 388

Texas Electric Service Co.

Banner Creameries
300 E. Texas Phone 1137

Llano Barber & Beauty Shop
114 W. Wall Phone 273

Ever-Ready Auto Service
300 W. Wall Phone 72

Checker Cab Co.
"Don't Take A Chance,
Take A Checker" Phone 70 or 211

Buster Charlton Garage
110 So. Baird Phone 99

Whigham Electric Co.
Prompt Service Phone 117
219 So. Lorraine

Heath Paint & Body Works
Body & Fender Repairs—Painting
205 So. Baird Phone 1409

The First National Bank

Cameron Pharmacy & Hotel Drug
108 W. Wall Phone 1882

Mims & Crane
205 W. Wall Phone 204

Service Glass Co.
Dan Edgmon Phone 2432
109 W. Kentucky

Ponder Roofing Co.
"Let Ponder Keep You In The Dry"
210 So. Weatherford Phone 2437

Midland Hardware & Furniture Co.
106 N. Main Phone 1500

West Texas Reproduction Co.
209 N. Colorado Phone 360

Petroleum Service
Humble Products
S. E. Corner Colorado & Illinois

Mickey Tire Co.
Star Tires & Batteries
119 N. Weatherford Phone 689

Midland Veterinary Hospital
Stephen B. Shannon, D.V.M.
317 E. Texas Phone 1359

Excel-Sure Cleaners
110 N. Big Spring Phone 23

Barney Graf

J. C. Velvin Lumber Co.
211 East Texas Phone 1534

The Reporter-Telegram
"First With The News"

Hogrove Automotive
Automotive Parts & Accessories
208 So. Main Phone 2032

Phillips Electric Co.
Electric Repairs—Fixtures
222 N. Main Phone 878

Burton-Lingo Co.
119 E. Texas Phone 58

Furr's Super Markets
411 W. Texas Phone 28

Rocky Ford Moving Vans
1111 W. Wall Phone 400

Soft Water Service
1313 W. Tennessee Phone 1893

North Side Garage
Frank Bryan
600 N. Ft. Worth Phone 2385

Hoover Body Shop
Fine Quality Work
West Hwy. Phone 930

Midland City Bus Lines
Safe—Economical—Dependable
Phone 717

Legal Notices 74

NOTICE OF HEARING TO APPROPRIATE PUBLIC WATERS OF THE STATE OF TEXAS

No. 1492
Notice is hereby given, to whom concerned, that the Colorado City, Texas, through its Mayor, Charles Brazal, (Filed in behalf of Colorado City, Odessa, Midland, Big Spring, Snyder, which cities will organize a Water Control and Improvement District to which the permit, granted under this application, will be assigned) did on the 5th day of August, A. D. 1946, file their application in the office of the Board of Water Engineers for the State of Texas, in which they apply for a permit to appropriate of the unappropriated waters of the State of Texas, from the Colorado River, in Mitchell County, Texas, not to exceed Thirty Thousand (30,000) acre-feet of water per annum for municipal and industrial water supply purposes, said water to be impounded in a reservoir created by the construction of a dam, said dam to be located at a point which bears North 39 degrees West 2,900 feet from the S. E. corner of Section 15, Block 27, T. & P. R. R. Survey, on the right bank of the Colorado River, in Mitchell County, Texas, distant in a Northwesterly direction from Colorado City, Texas, approximately six miles, the storage capacity of the reservoir to be 111,000 acre-feet, and to divert the water by means of gravity and pumping.

A hearing on the application of the said Colorado City, Texas, above mentioned, will be held by the Board of Water Engineers for the State of Texas, in the office of the Board at Austin, Texas, on Monday, October 14th, A. D. 1946, beginning at ten o'clock A. M. at which time and place all parties interested may appear and be heard. Such hearing will be continued from time to time, and from place to place, if necessary, until such determination has been made relative to said application as the said Board of Water Engineers may deem right, equitable and proper.

Given under and by virtue of an order of the Board of Water Engineers for the State of Texas, at the office of the said Board at Austin, Texas, this the 31st day of August, A. D. 1946.

C. S. Clark
John W. Pritchett
E. V. Spence
BOARD OF WATER ENGINEERS,
Attest:
A. W. McDonald
Secretary.

9/26/10/3-10-14

Regional Christmas Seal Sale Conference To Be Held In City

Representatives from 22 West Texas counties are expected to attend a regional Christmas Seal Sale conference in Midland Friday and Saturday, officials of the Midland County Tuberculosis Association said Thursday.

Plans for the staging of the 40th annual sale of seals to finance the 1947 tuberculosis control programs in this area will be discussed and coordinated at the meeting here. The seal sale is the sole means of support of the Midland County Tuberculosis Association.

The two-day program will include discussions of the methods of distributing seals by mail, handling of returns and reminders, publicity and public relations.

The meeting will be under the supervision of Mrs. Frances C. Rains of Austin, state seal director, assisted by Sula Fleeman of Fort Worth. Linnie H. Davidson is the executive secretary of the Midland County Tuberculosis Association.

Restaurant Operators Fight OPA Roll Back

Midland restaurant operators along with the Texas Restaurant Association are vigorously protesting the recent OPA regulation forcing them to roll back their meat menu prices to the level of April, 1946.

Operators say "this would be catastrophic in its effect on the industry."

Midland protests along with thousands over the state have poured into the office of the association and that organization is going to fight the OPA ruling "by law and with money".

In spice cakes, leftover coffee may be used instead of sour milk.

Legal Notices 74

CITATION BY PUBLICATION

THE STATE OF TEXAS
TO: N. C. Keeran and wife, Mrs. N. C. Keeran; K. E. Keeran and husband, N. C. Keeran; E. L. Keeran and wife, Mrs. E. L. Keeran; Elliott Laird Keeran and wife, Harriett Furlong Keeran; Walter N. Keeran and wife, Mrs. Walter N. Keeran, their unknown heirs, their heirs and legal representatives:

GREETING:
You are commanded to appear and answer the plaintiff's petition at or before 10 o'clock A. M. of the first Monday after the expiration of 42 days from the date of issuance of this Citation, the same being Monday the 21st day of October, A. D. 1946, at or before 10 o'clock A. M., before the Honorable District Court of Midland County, at the Court House in Midland, Texas.

Said Plaintiff's petition was filed on the 30 day of August, 1946. The file number of said suit being No. 4380.

The names of the parties in said suit are: C. W. Weathered as Plaintiff, and the parties above named, and to whom this Citation is issued and directed as Defendants.

The nature of said suit being substantially as follows: to-wit: This action is a suit in trespass to try title by plaintiff for title and possession of

All of Lots Nos. 1, 2, 3, 4, 5 and 6, Block 76, Southern Addition to the Town of Midland, Midland County, Texas,

claiming same in fee simple, and for damages in the sum of \$500.00.

Plaintiff alleges both record title and title through peaceable, continuous and adverse possession under the 10 year Statutes of Limitation, and prays for title and possession of said lands described above, also for damages and cost of suit.

Issued this 3rd day of September, 1946.

Given under my hand and seal of said Court, at office in Midland, Texas, this the 3rd day of September, A. D. 1946.

(seal) NETTIE C. ROMER, Clerk, District Court, Midland County, Texas.

Shop *FURR'S* before the game

For a tasty *SNACK* after the game

TOMATO JUICE LIBBY'S No. 2 Can 13¢

PRESERVES TAK-A-TASTE BLACKBERRY 2 Lb. Jar 69¢

WINDEX 22 Oz. Bottle 31¢

SUNBRITE Can 6¢

HILEX Quart 19¢

CHEERRIES Sour Pitted 43¢

CARNATION MILK Tall Can 13¢

MILFORD FANCY WHITE CREAM No. 2 Can 18¢

HEINZ SOUP Cream of Tomato Can 13¢

ASPARAGUS Milford All Green No. 2 Can 43¢

SALAD DRESSING SAVORY 8 Oz. Jar 15¢

PICKLES American Dill Fancy 22 oz. jar 23¢

BUTTER Furr's Solids, Lb. Qtrs. lb. 75¢

Borden's Hemo 59¢ 1LB. JAR

MARVENE 2 Lb. Pkg. 43¢

GRAPEFRUIT JUICE Texas, 46 oz. can 13¢

SALAD DRESSING Mrs. Ragsdale, 16 oz. jar 37¢

SOIL-OFF Quart 49¢

OLD DUTCH CLEANSER Can 7 1/2¢

ADMIRATION COFFEE 1 LB. CAN 39¢

3-MINUTE OATS Large Box 27¢

CORN TOASTIES POST'S Package 11¢

MORTON'S SALT Box 9¢

QUAKER OATS Large Box 27¢



KELLOGG'S VARIETY PAK Box 25¢

SWEETHEART SOAP BAR 6¢

FRESH, SWEET CORN

ROASTING EARS 6 FOR 25¢

NECTARINES OR PLUMS, Fresh California, Lb. 19¢

BARTLETT PEARS CALIFORNIA FANCY FRESH, Pound 19¢

TOKAY GRAPES EXTRA FANCY Pound 19¢

BELL PEPPER Fresh Crisp Pound 15¢

ORANGES California Sunkist, Lb. 12¢

DELICIOUS APPLES REDS Pound 14¢

GOLDEN Pound 10¢

GRAPEFRUIT Pound 12¢

CABBAGE Pound 4¢

POTATOES IDAHO WASHED RUSSETS STRICTLY NO. 1s Pound 5¢

Quality MEATS U.S. GOVERNMENT GRADED AND INSPECTED

STEAKS T-BONE or CLUB Pound 60¢

LUNCH MEAT ASSORTED Pound 33¢

WIENERS SKINLESS Pound 37¢

CHEESE LONGHORN, lb. 57¢

SLICED AMERICAN, lb. 59¢

BOLOGNA Pound 32¢

PORK SAUSAGE SACK, lb. 37¢

BULK, lb. 33¢

BEEF ROAST

Brisket Pound 24¢

Chuck Pound 35¢

This Week Is National Dog Week

KEEP YOUR DOG AT HIS BEST!

Miller's KIBBLES

From puppyhood to ripe old age your dog will thrive on this distinctively flavored basic diet. Try it today!

MILLER'S KIBBLES 28-oz. size 33¢

5-lb. size 75¢

MILLER'S PUPPY MEAL 28-oz. size 33¢

MILLER'S RATION (Meal) 5-lb. size 59¢

DOG FOLKS: Join West Texas Kennel Club now. See George Woodford at—

Midland Drug Company Walgreen Agency Drug Store

Hits The Spot

There isn't a dish on our menu you won't enjoy. Our food is of the finest quality — flavorfully prepared by chefs long in the business. Breakfasts, luncheons and a la carte orders are served daily. Prompt, courteous service.

FOR GOOD FOOD AND FAST FOUNTAIN SERVICE Come To—

MIDLAND DRUG FOUNTAIN JACK PETOSKY, Operator

Low prices every day

FURR'S SUPER MARKETS

Shade of Sycamore

By PERCY MARKS Author of "The Plastic Age" "A Tree Grown Straight" Etc.

THE STORY: When Gayle tells friend, Rose Beecher, about her engagement to handsome Bruce... from Hattie Carnegie or the rue de la Paix, and she had made herself herself. She and her mother had thought it perfect, and Rose had pronounced it a dream—but what did Rose know about dresses?

from Hattie Carnegie or the rue de la Paix, and she had made herself herself. She and her mother had thought it perfect, and Rose had pronounced it a dream—but what did Rose know about dresses?

"Oh no," she cried to herself, panic-stricken; "I can't. I never can. I don't want to." ALMOST, it seemed, before Bart stopped the car, two men appeared. Both of them said, "Good evening, Mr. Bruce." One went to the baggage compartment and opened it. The other opened the door beside Gayle and held it while she descended.

McKENNEY ON BRIDGE

By WILLIAM E. MCKENNEY America's Card Authority It is nice to know that Mrs. Madeline Anderson is well on the road to recovery from injuries sustained in the Hotel La Salle fire, and that she and Mrs. Lesley Pope Cook have larger quarters for their Bridge Players Club in the Hamilton Hotel in Chicago.

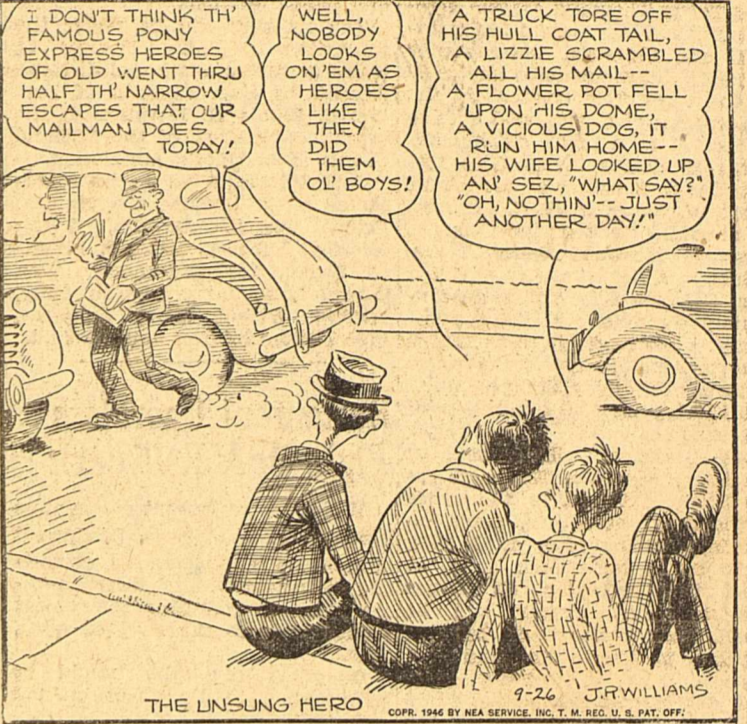
Bridge scores table with columns for South, West, North, East and various deal numbers.

Advertisement for The Midland Studio & Camera Shop, featuring Kodak films and modern equipment.

OUR BOARDING HOUSE with MAJOR HOOPLE OUT OUR WAY



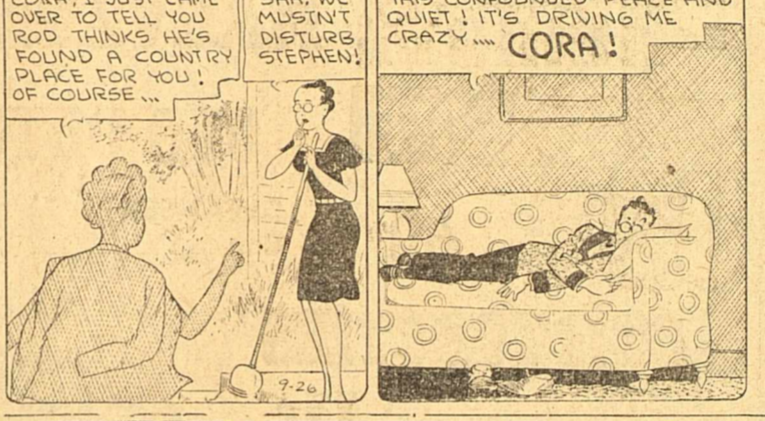
THE LINSING HERO



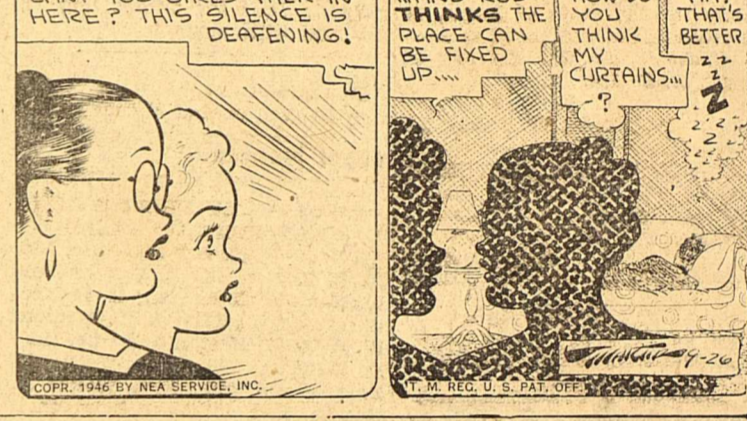
VERY-STANFORD CO. Wellington, New Zealand. Thirty-one thousand bales of wool, valued at approximately \$2,240,000, and a quantity of New Zealand Air Force equipment were destroyed Wednesday by fire which damaged the Wellington exhibition building.

High Officials Attend Weaver Baker's Funeral. JUNCTION—(AP)—High state officials and hundreds of friends from the Capitol and over the state gathered here Wednesday to attend funeral services for Weaver H. Baker, chairman of the Board of Control who was killed in an automobile accident Sunday.

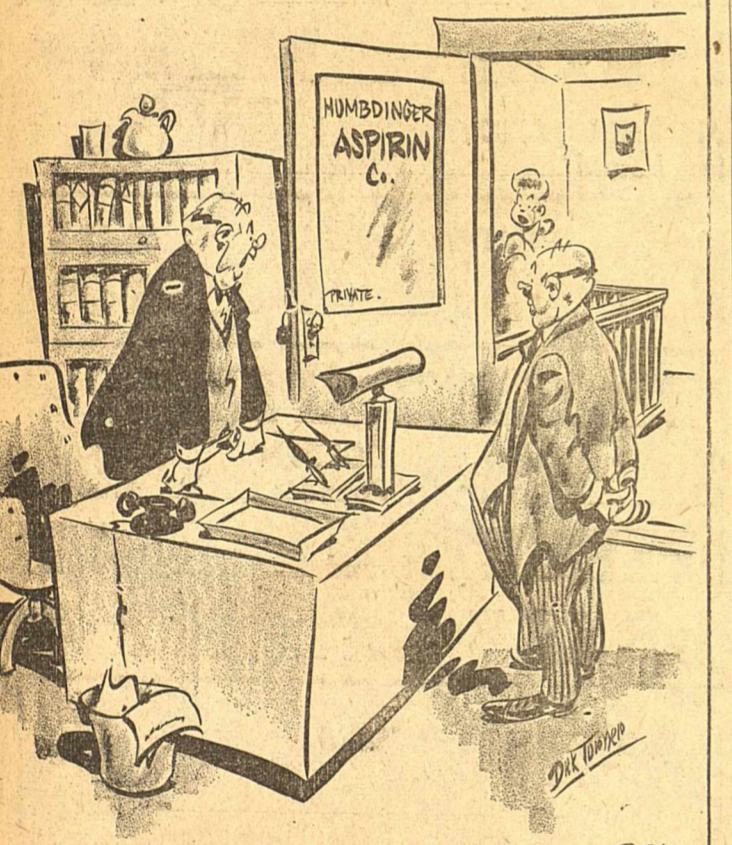
BOOT AND HER BUDDIES



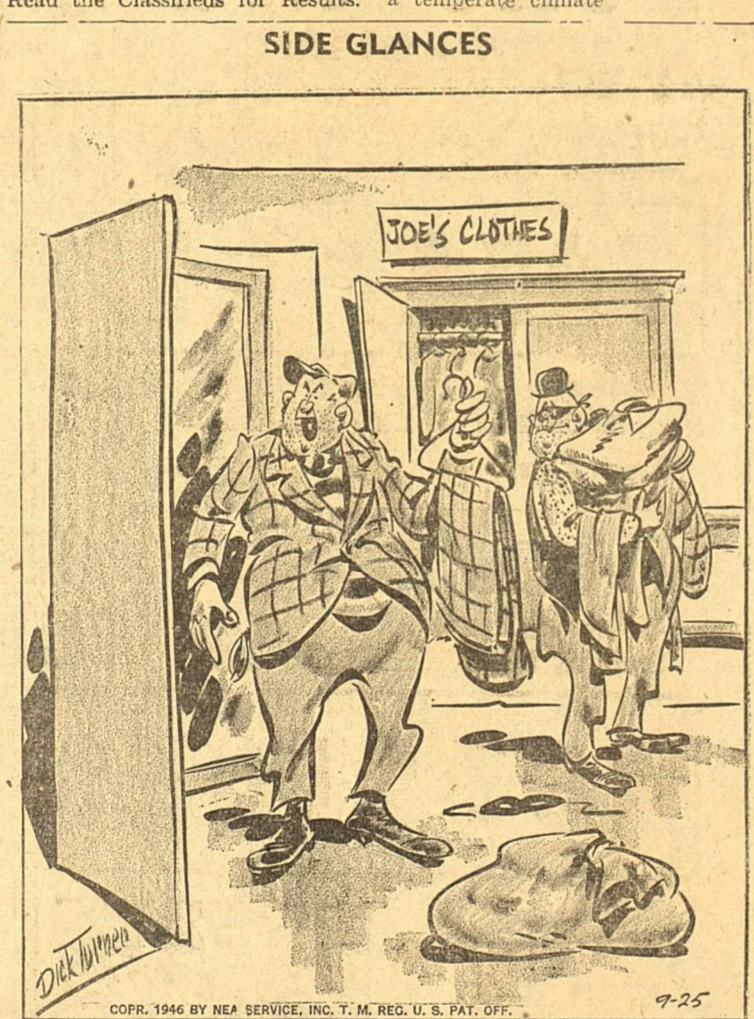
AND ROD THINKS THE PLACE CAN BE FIRED UP



CARNIVAL By DICK TURNER



SIDE GLANCES



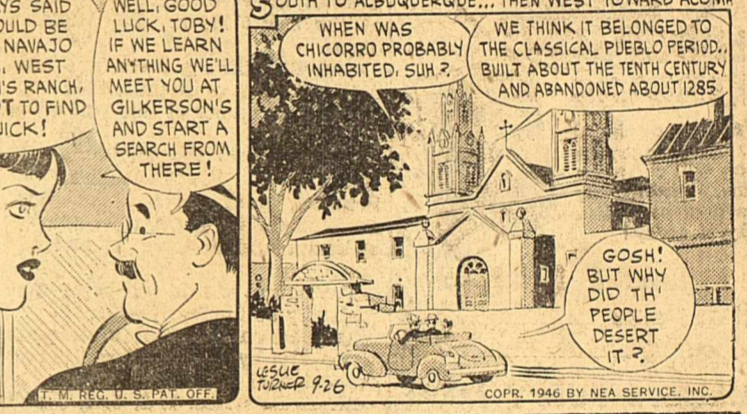
Buy SALLY ANN BREAD

MADE IN MIDLAND BY BLACKWELL'S BAKERY

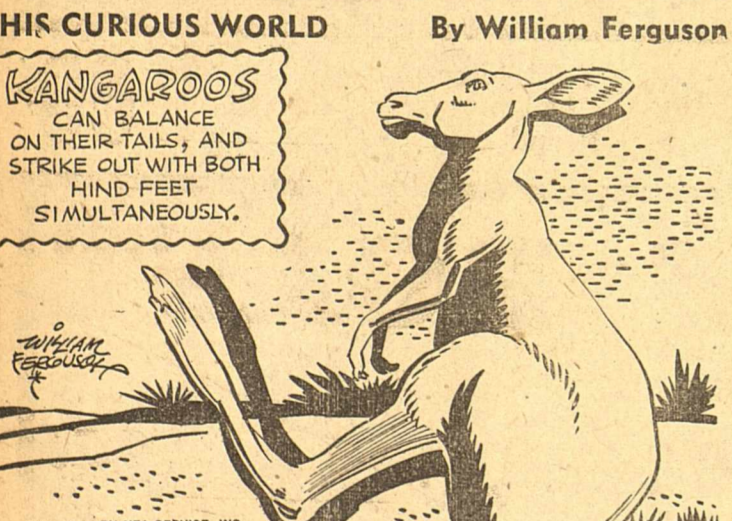
WASH TUBS



ALLEY OOP



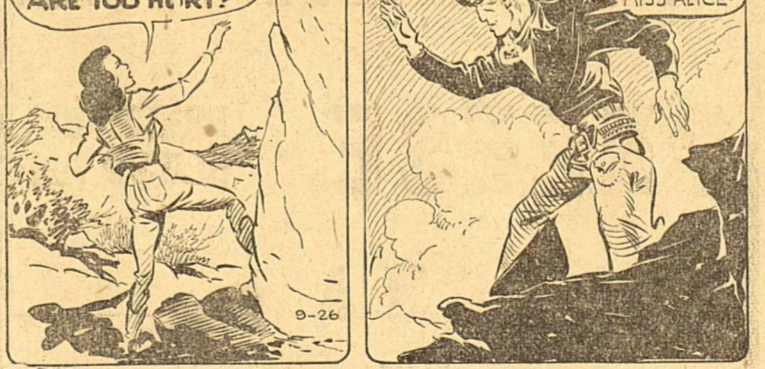
"Now then, Gadsden, what's all this vicious, subversive talk I hear about you having to go home yesterday with a headache?"



FRECKLES AND HIS FRIENDS



RED RYDER



VIC FLINT



Answers to 'This Curious World': KWIZ KORNER: THE EARTH'S TOTAL AREA IS ABOUT 200 THOUSAND BILLION MILLION SQUARE MILES. FITTENAMES: MRS. LIZZIE TUCKER IS A SEAMSTRESS, IN BERING, MISSOURI.

REGULAR!

That's the kind of money-saving you make at Brooks Grocery, where

EVERY PRICE IS A FAIR PRICE EVERY DAY!

GRAPES Seedless or Tokay, Lb. 21¢

LETTUCE Nice and Fresh, Head 10¢

SPUDS California White, Lb. 5½¢

ONIONS White or Yellow, Lb. 5¢

CARROTS 2 Bunches For 15¢

PEARS Delightful For Eating, Each 7¢

CELERY Large Bunch 25¢

Blackeye Peas No. 2 Can 24¢

PEAS Mission No. 2 Can 19¢

MINCEMEAT 9-Ounce Package 19¢

Lunch Meat Rath's 12-Oz. Can 41¢

WAX PAPER Cut Rite Roll 23¢

BLEACH WP 29¢ WP 15¢ ½-gal. Qt.

SUNBRITE Cleanser Package 6¢

APPLES Extra Fancy Jonathans, Lb. 14¢ Good Eating Winesap, Lb. 10¢

YOU, TOO, WILL LIKE THE SQUARE DEALING IN OUR MARKET

BROOKS GROCERY & MARKET PAUL BROOKS 123 South Main Street PHONE 807 For Free Delivery

River Steamboats, Power In Dams Is Missouri Plan

By ED HOFFMAN
BISMARCK, N. D.—(NEA)— Although it has been considered a cardinal sin in the west to use water for any purpose other than irrigating farm land or feeding cattle, the Pick-Sloan Plan gospel preachers along the banks of the Missouri River are converting westerners to the idea that it will be profitable for them to make multiple use of every drop of water available.

In the preachings of these Big Muddy prophets, you can almost hear the whistle of the steamboat coming round the bend again, and the hum of four billion kilowatt hours of cheap power in the generators of the giant dams that will rise along the Missouri Basin.

St. Louis To Bismarck
Those things will come, it is promised in the Pick-Sloan teachings, when the Army Engineers complete the nearly two-billion-dollar Missouri Valley water resources development program they started this summer with the help of the Bureau of Reclamation and other Federal agencies.

Steamboat backers view the proposed navigation channel from Bismarck, North Dakota's capital city, to where the Missouri meets the Mississippi above St. Louis, as the promise of cheaper freight rates. The scene looks rosy to industrialists in the near-northwest too, who hope to capitalize on the power the dams in the basin will generate.

By utilizing the more than one hundred dams and reservoirs to be built from Ft. Peck, Mont., to the Mississippi, excessive rainfall and flood waters will be eased along the journey to the sea to extract the maximum good from every sackful.

Power Controversy
Wherever power is generated, there's controversy. But the Federal Power Commission, as a member of the Basin's Inter-Agency Committee, is used to arguments and has planned a giant system of generators at main Missouri River dams to speed the Valley on its way to modernization and industrialization.

Of the main stream dams, Garrison in North Dakota, and Oahe and Ft. Randall dams in South Dakota will ultimately be the greatest power producers. Garrison, heralded as the world's largest earth-fill dam, will produce 320,000 kilowatts; Oahe, from its powerhouse a few miles above Pierre, South Dakota's capital, will contribute 400,000 kilowatts; and Randall generators, near the South Dakota-Nebraska state line, will pour an additional 240,000 kilowatts of electrical energy into a gigantic inter-connecting maze of grids, or power distribution lines, over the states of Montana, North and South Dakota, Nebraska, and even as far south as Sioux City, Iowa, Colorado, Wyoming and Kansas will have power at their beck and call, too.

Missouri Compromise
In the tug-of-war which marked earlier days of rival Basin development plans, Army Engineers, under super-salesman Brig. Gen. Lewis A. Pick who sold the nation its biggest peacetime project, were primarily interested in harnessing the river to provide flood control and navigation. The Bureau of Reclamation, intent on saving the good land in the north from drought and recurrence of the "dust bowl" disaster which sent North and South Dakotans from their farm homes in jalopy caravans seeking more firmly anchored soil, held out for use of the water for irrigation.

But when proponents of a Missouri Valley Authority drove the two agencies together in a loveless "shot-gun" wedding, the Army bowed and put navigation in second place behind irrigation. The compromise, however, still calls for a good channel from Bismarck to St. Louis, and improvement of harbor facilities along the route.

The big job is underway today, hell-bent for high water—in the right place. In 15 years the waters of the Missouri will be performing usefully in man's closest approximation of natural and balanced perpetual motion.

Crippled Dog Walks on Crutches



Dolly, 3-months-old brindle bulldog, gets around, despite 20-foot fall that broke her front legs. Her owner, Mabel Coats, of Washington, D. C., had her legs set in crutch-like casts upon which she hobbles. Above, Dolly gets sympathetic pat from Tommy Stevenson, a 4-year-old friend and neighbor.

Smart Girl Outwits Herself

CHICAGO —(AP)— When a gunman popped out of the shadows of night and approached a parked car, Miss Lucille McGuire surreptitiously removed her \$1,100 diamond engagement ring and tossed it into the rear seat. The robber took \$115 from the young woman and her fiancé—then ordered them out of the automobile and drove it away.

In England, peanuts are called "earthnuts."

What The Best Dressed Scarecrow Is Wearing

BREWSTER, NEB.—(AP)— Like many other farmers, Henry Taylor has been having difficulty getting work clothes. One day, dressed in a tattered pair of overalls, Taylor was passing his field when his attention was attracted to his scarecrow. He looked, and looked again. Then he changed overalls with the scarecrow.

First automobile racer to drive a car a mile a minute was Barney Cldfield.

FOR GIRLS ONLY...

Looking for a job? Good pay? Pleasant working conditions? A chance to get ahead? Here it is!

The telephone company needs more operators. Starting rates in Midland are now \$26 for a 40-hour week, and, by the end of the first year, you can be making as much as \$32 a week at this interesting job for girls.

Supervisors' jobs are filled by experienced operators, so there are real opportunities for girls in Midland.

If you would like to find out more about it, drop in with your questions at the office of the Chief Operator, Telephone Building.

SOUTHWESTERN BELL TELEPHONE COMPANY

WE SELL TIRES

... When we have them. But our supply of stock becomes less each month. For this reason we believe it is to your advantage to practice tire conservation. Don't wait too long for new tires, and wear your present tires beyond that point where recapping would be useless. That would be false economy. Have your tires recapped before they are too worn. Watch your speed; keep your tires properly inflated; keep your wheels correctly aligned and balanced. Make those tires last until we can furnish you a brand new Goodyear. We sincerely wish to keep you rolling. Drive in to see us today.

Bacon Retreading and Vulcanizing
120 N. Main St. Phone 108

Your Home Owned and Operated Tire Store

New Drug For Stock Not Available Yet

CHICAGO —(AP)— The nation's livestock probably will not benefit from the new drug streptomycin for some time, the Journal of the American Veterinary Medical Association reported.

The Civilian Production Administration has announced plans for limited commercial distribution of the new product, with streptomycin issued to selected hospitals which will act as depots for their areas.

The AVMA Journal said the announced plan, however, leaves out availability of streptomycin for livestock use and that such use of the drug would be limited, at any rate, by its scarcity and high cost. Streptomycin has been used experimentally in research on diseases of livestock.

LARGEST CREATURE

The world's largest creature is the giant Cyanea jellyfish. Spread out, with its tentacles reaching in all directions, its diameter would be more than 200 feet, yet the whole animal could be placed in a small pail.

HELPED WAR EFFORT

Purified trees in southern Utah, buried in the cliffs for centuries, helped to win the war. The ancient hearts of these stone trees yielded up to 50 per cent uranium, used on luminous instrument dials.

EARTH'S TWIN

The planet Venus is called the earth's twin, because it not only comes closer to us than any other planet, but is almost identical in size with the earth.

Scientists have figured that, as the seasons change, there is a movement of 10,000,000,000 tons of air from one hemisphere of the earth to the other each six months.

Read the Classifieds.

Our Specialists Can Do That Special Job For You!

See that your car has a first class Lubrication — Washing — Polishing ... by bringing it by today.

CONOCO SERVICE

410 W. Wall—Phone 156

E. M. (Mack) Richards

QUALITY PLUS LOW PRICE EQUALS ECONOMY AT THE PALACE!

COTY'S DUSTING POWDER \$1.00

Cashmere Bouquet Dusting Powder 69¢

Barbara Gould Large Size Cleansing Cream \$1.19

PERUNA TONIC Regular \$1.25 98¢

Red Arrow ARROCAPS \$1.98

MULTIPLE VITAMINS Regular \$2.25

PALMOLIVE SHAVE CREAM Giant Size 39¢

ZL ANTISEPTIC Pint 49¢

ANACIN TABLETS Bottle of 100 98¢

BAYER ASPIRIN Box of 12 12¢

FORHAN'S TOOTH PASTE Tube 39¢

HINDS Honey and Almond Cream Large Jar 89¢

CHAMBERLAIN'S LOTION Large Bottle 89¢

75c

NEW Zuni NAIL ENAMEL 8 EXCITING SHADES

Marabou The Luscious CREAM SHAMPOO

... your assurance to desirable loveliness

FOR THE ENTIRE FAMILY \$1.00

5% DDT SPRAY Kills Flies, Mosquitoes, Moths, Roaches, Bed Bugs, and Many Other Household Pests. Pint ----- 49¢

WAKE UP LAZY GUMS WITH IPANA TOOTH PASTE AND MASSAGE 39¢

WANT HELP? Get quick relief from COLD SYMPTOMS • SORE MUSCLES TIRED FEET with **MINI-RUB** GREASELESS! STAINLESS! 39¢

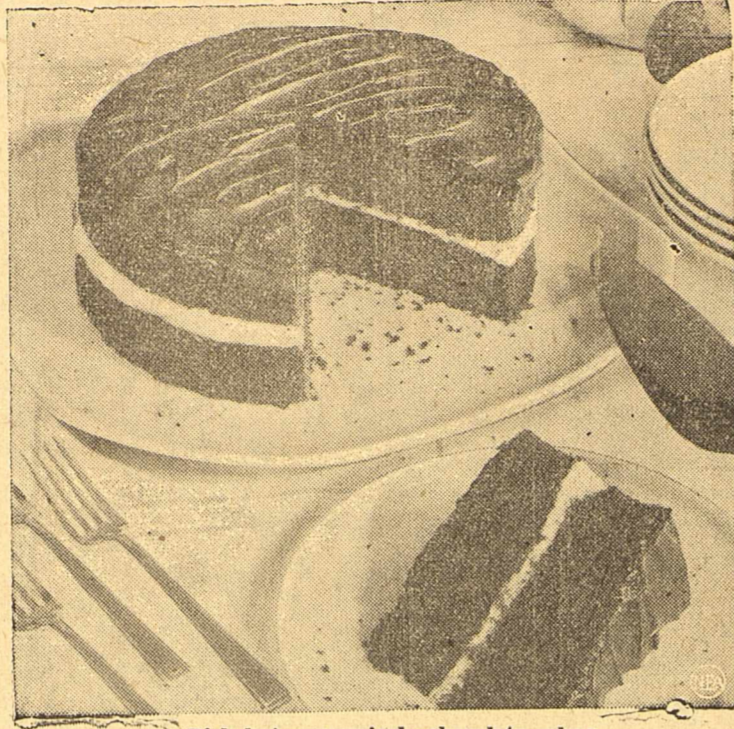
PALACE DRUG AND JEWELRY STORE

108 South Main J. B. McCOY, Owner Phone 38

QUICK DISSOLVING
IMPERIAL SUGAR
 HELPS INSURE
 SMOOTHER, MORE
 DELICIOUS JAMS
 AND JELLIES
 Texas' Own
 100% PURE CANE

STRIKING BUS EMPLOYEES SEEK U. S. MEDIATORS
 PORT ARTHUR—(P)—The National City Lines and its employees, operators of the strikebound city bus services of Beaumont and Port Arthur, wired the United States Conciliation Service Wednesday to nominate five arbiters for mediation of their wage dispute.
 The announcement was made after a night-long conference of operators' and company representatives. One mediator will be chosen from the government agency's nominees.

This Cake Saves Fat And Sugar



Rich but economical—chocolate cake
 By GAYNO
 NEA Staff Writer

Food costs are high, so the question of how to have your cake and not be broke is an important one. Here's a chocolate cake that is rich enough for a party, but which is economical, too.

It calls for only 1/4 cup of shortening and only one egg! Added to that are such sugar-saving features as the use of a packaged pudding for a tasty filling, and a rich frosting made of unsweetened chocolate which covers only the top.

Economical Chocolate Cake
 One and one-half cups sifted cake flour (now back on the market), 1 teaspoon soda, 3/4 teaspoon salt, 1/4 cup shortening, 1 cup sugar, 1 egg, unbeaten, 2 squares unsweetened chocolate, melted, sour milk (with butter, margarine, or hard use 7/8 cup sour milk; with vegetable or any other shortening, use 1 cup sour milk), 1/2 teaspoon vanilla.
 (To sour fresh milk add 1 tablespoon vinegar to each cup milk and let stand in warm place a few minutes.)

Sift flour once, measure, add soda and salt, and sift together 3 times. Cream shortening, add sugar gradually, and cream together until light and fluffy.
 Add egg and beat well; then add chocolate and blend. Add flour,

Turn into two 8-inch layer pans which have been lined on bottoms with paper, then greased. Bake in moderate oven (375 degrees F.) 25 minutes, or until done.
 Frost with Hungarian Chocolate
 Frosting on top of cake, using a prepared vanilla pudding for filling between layers.

Hungarian Chocolate Frosting
 Two squares unsweetened chocolate, 1/2 cup confectioners' sugar, 1 tablespoon hot water, 1 egg, 3 tablespoons butter or other shortening.
 Melt chocolate in double boiler. Remove from boiling water, add sugar and water, and blend. Add egg, beating well after each addition. Add butter, 1/3 at a time, beating thoroughly after each addition.
 Makes enough frosting to cover top of two 9-inch layers.

Note: Since only enough frosting is needed to cover one layer of this cake, the remaining frosting may be kept in refrigerator, tightly closed, until needed.
 Spread on cake while slightly warm. This will soften the frosting so that it will spread easily.

Arnold Of Georgia, Clayton, General Clark Among British Post Candidates

By ALEX H. SINGLETON
 WASHINGTON—(P)—President Truman's freshly stressed emphasis on surprise appointments served to widen the field in the "guess who" contest over a new ambassador to Great Britain.
 The Chief Executive's completely unheralded selection of W. Averil

Harriman to step into Henry A. Wallace's post as secretary of commerce recalled at least two other instances in which Truman caught even some of his closest friends by surprise.
 These factors are the possible candidate's pocketbook, political stature, personal health and past record.

Alphabetically, here is how they stack up:

1. Gov. Ellis Arnall of Georgia, soon to be out of a job due to the state law which prevents an incumbent from succeeding himself. Because of his political philosophy, Arnall's choice might help woo some members of that Democratic faction left disgruntled by Wallace's dismissal.

2. Undersecretary of State Will Clayton, a successful business man with personal assets equal to the financial and social obligations involved. Clayton, however, now holds down a post of such far reaching economic responsibility that it is unlikely he would be sidetracked to Britain.

3. General Mark W. Clark. Speculation here has centered chiefly around the fact that a number of Truman's recent diplomatic appointments have been from military ranks. But Clark's tasks in Austria remain of such magnitude that there is doubt he would be transferred to even as important a post as ambassador to Britain.

4. James Dunn, now ambassador to Italy. Wealthy enough to maintain the post, he has been mentioned chiefly because of his stand in favor of close Anglo-American cooperation.

5. Supreme Court Justice Robert Jackson. His choice, could serve the double purpose of filling the post with a Democrat who has gone along with New Deal policies, and at the same time ease a strained situation on the nation's high tribunal.

6. Joseph P. Kennedy. Here the speculation stems chiefly from the fact that Kennedy's choice might prove welcome in the political sea-saw territory of the northeast. However, Kennedy, a former ambassador to London, incurred the wrath of many Britons by his early pessimism over their wartime chance of victory.

7. Senator Robert M. LaFollette (Prog-Wis), who at best would be a 100 to 1 shot. As a close friend and former Senate colleague, Truman has been reported eager to find a job for LaFollette in the administration. But (a) LaFollette often was critical of administration foreign policy and (b) Wisconsin Democrats might object on the ground that he ran unsuccessfully for the Republican nomination in this year's primaries.

8. Freeman Matthews. If Truman elects to pick a career man "Doc" Matthews would be a likely choice. Now head of the State Department's Office of European Affairs, he has been in on several of the international conferences upon which American foreign policy has been built.

9. Mrs. Franklin D. Roosevelt. Diplomatic observers with a penchant for long shot odds eyed this possibility on the double grounds that she is familiar with and sympathetic to the problems of England and possesses a politically potent name.

Ranchers Keep Cattle From Market Due To Uncertainty Of Future Prices

WASHINGTON—(P)—This meat-hungry nation is witnessing the paradox of near-record numbers of cattle roaming the ranges while dinner table platters are empty of beef.

Agriculture Department officials said Thursday the number of cattle on the nation's ranches is not far below the 1944 peak and that the number on Western ranges may be the largest on record.
 But grass-fed cattle are not moving off ranges to slaughter pens in numbers the government had expected. Department experts said uncertainty over future prices tends to delay marketings.

This picture of the beef situation was depicted as Secretary of Agriculture Clinton P. Anderson made a radio speech Tuesday night on government price policies on farm products. He said it was a good thing for ranchers to keep the stock on the ranges and fatten them for future markets.

This is the season when cattle normally start moving off ranges in large numbers. But the movement has been slow since livestock price controls were re-established September 1.

Cattle fed on Southern and Western ranches usually start marketing as soon as pastures begin drying up, which sometimes is as early as July. The movement usually reaches its peak in October.

Range cattle have two markets—(a) slaughterers and (b) Midwestern corn belt feeders. Slaughterers bid for the fatter grass-fed stock, while feeders buy lean and moderately-fattened animals. These are put on grain feed for several months to fatten them to heavier weights and better quality.

In discussing the small number of range cattle reaching slaughterers this month officials cited several reasons, among them:

1. Some Western cattlemen are holding back in the hope of higher prices, either through a hike in OPA ceilings or possible removal of price controls.

2. Corn-belt feeders have been bidding heavily against slaughterers for cattle which might go either to the slaughter pens or to feed lots. With a record corn crop in prospect and with feed prices expected to decline, feeders see a chance of making money by producing heavier weight cattle.

Bottles broken in fighting scenes in motion pictures are made of candy.
 The U. S. traffic death record in 1941 was 40,000, highest in the nation's history.

FRESH!

Post's CORN TOASTIES
 Delicious Toasted Corn Flakes
 THE NEW IMPROVED Post Toasties

TENDER-CRISP AND FRESH PROTECTED

You CAN ALWAYS DEPEND ON ADMIRATION... IT'S "CUP-TESTED"

Here's the coffee that's the favorite in our part of the nation—dependable "Cup-Tested" ADMIRATION. Only the finest coffees grown can—and do—make this delicious blend. That personalized touch is always there because ADMIRATION is "Cup-Tested". You can always be sure of ADMIRATION goodness because ALL ADMIRATION is "CUP-TESTED". The personally "Cup-Tested" ADMIRATION way is the ONLY way to assure the same perfect blend—package after package.

Admiration Coffee

Copyright 1946, Duncan Coffee Company

DUNCAN COFFEE CO. . . ROASTERS ALSO OF MARYLAND CLUB AND BRIGHT AND EARLY COFFEES

Our Army of LOW PRICES fights INFLATION

Fresh Fruits & Vegetables

GOOD TOMATOES
 Pound 15¢

BELL PEPPERS
 Pound 15¢

Green ONIONS
 Bunch 6¢

CUCUMBERS
 Pound 11¢

CALIFORNIA RED MALAGA GRAPES
 Pound 15¢

Gravenstein APPLES
 Lb. 9¢

CANTALOUPE
 Pound 8¢

CALIFORNIA ORANGES
 Pound 10¢

Fresh Roasted PEANUTS
 Pound 29¢

MORRIS FOOD STORE

IMPERIAL SUGAR, 5-Lb. Bag 40¢
 Stamps No. 9, 10, 49 Spare Expire Sept. 30

PURITY OATS, Box 10¢

Better Breakfast Trays, 10 Boxes 23¢

KRAFT DINNER WITH CHEESE 13¢

VAN CAMP'S CHILI, Glass Jar 35¢

HEINZ TOMATO SOUP, Can 13¢

IVANHOE MACARONI SALAD 25¢

GOBLIN HOMINY, 2 No. 2 Cans 25¢

HEINZ BEEFSTEAK SAUCE, Bottle 22¢

PARD DOG FOOD, 2 Boxes 25¢

ADMIRATION COFFEE, 1-Lb. Can 33¢

BROWN BEAUTY BEANS, Can 10¢

FLIT FLY SPRAY, 5% DDT, Quart 43¢

Strawberry Preserves, 1-Lb. Jar 75¢

McILHANEY'S BUTTER, Lb. 79¢

PINTO BEANS, 2-Lb. Cello Bag 39¢

Light Crust Flour, White, 25-Lbs. \$1.95

BORDEN'S LIQUID HEMO 59¢

HERSHEY COCOA 13¢

HOT SAUSAGE, Lamb's, 10 Oz. Jar 33¢

MAXWELL HOUSE TEA, 1-Lb. 24¢

Prime Quality Meats

BRING IN USED FATS—4c POUND

COTTAGE CHEESE Fresh Lb. 25¢
 Skinless Lb. 45¢

WIENERS Pt. 89¢

SELECT OYSTERS Pt. 89¢

GROUND VEAL Fresh Lb. 31¢

ROAST Chuck or Seven Lb. 38¢

SHORT RIBS Beef Lb. 21¢

ROUND STEAK Beef Lb. 53¢

Frozen Fruits and Vegetables

FRYERS, HENS and TURKEYS

SYSTEM STORE

SPORTS

6—THE REPORTER-TELEGRAM, MIDLAND, TEXAS, SEPT. 26, 1946

Midland-Austin High Game Rated As Important Intersectional Grid Clash

By MAX B. SKELTON
Associated Press Staff
Intersectional clashes, including eleven games matching early season perfect record teams, are on the Texas high school Class AA football schedule for this weekend. Of the fifty-seven games in the sixteen districts, two will be conference encounters, both in District 10, Waxahachie at Ennis and Bryan at Cleburne.

Play Ball On Donks

The fun event of the sport season, any season, in Midland starts at 8 p. m. Thursday on the South Main softball park when the Jay-Cees and Lions Club become embroiled in donkey baseball.

A second game (if enough players live through the first) will be played at 8 p. m. Friday.

Special-trained donkeys will be on hand for the event. Well-known Midlanders will be seen playing.

John Scrogins is the Lion captain and Bill Neely is the Jay-Cees leader. Both have appealed for the entire memberships of both service clubs to be on hand. Replacements will be necessary and often.

The contests are booked as hilarious fun feasts for Midland fans to see. An admission charge will be collected by Jay-Cees.

BARBECUE

Now starting the season of

- Tasty Home-Made CHILI
- Delicious Genuine TAMALES
- Ranch Style Beans

—CUSTOM BARBECUING
We custom barbecue anything

—SPECIAL PICNIC ORDERS
Let us plan and supply your picnic parties.

DOC'S BARBECUE

124 S. Colorado Phone 1001

Matinee Starts Daily 1:45 p.m. NOW THRU

YUCCA SATURDAY

Overwhelmingly Wonderful!

"CENTENNIAL SUMMER"

Jeanne Crain, Cornel Wilde
Addict: LET'S GO GUNNING

Matinee Starts Daily 1:45 p.m. Last Day!

RITZ

Mystery's Most Amazing Story!

"DRESSED TO KILL"

with BASIL RATHBONE
NIGEL BRUCE
Plus Comedy "HOT WATER"

Matinee Starts Daily 1:45 p.m. Ends Today!

"REX"

Robert Walker - Keenan Wynn
"WHAT NEXT, Corporal HARGROVE"

Just Arrived!

COMPLETE LINE OF EVERGREENS

NOW IS THE TIME TO START YOUR FALL PLANTING
Call us for free landscaping estimates.
TERMS IF DESIRED

WALKER'S NURSERY

Now in new location
Andrews Highway Phone 2010

BOB SMITH
Presents the
"Four Shades of Blue"
ORCHESTRA
direct from Kansas City's famous Stork Club.

Dine and Dance

In the gay, rustic Log Cabin—here you can have the time of your life! Remember the Log Cabin is open at 5:30 p.m. and is closed on Tuesdays—cover charge and amusement tax is not in effect until after 9:00 p.m.

LOG CABIN

1 Mile West Highway 80 Phone 9539

Bulldogs Leave For Austin Game, Pups To Meet Big Spring Here Thursday, 'B' Plays Odessa

Ready?



Henry Agusiewicz, Jr., is ready to start game. His pop, who was staff sergeant in Air Forces, plays guard for George Washington.



WEDNESDAY'S RESULTS

National League	W.	L.	Pct.
Cincinnati	6	St. Louis 0	
Philadelphia 11	Brooklyn 9		
Boston 6	New York 5		
Pittsburgh 6	Chicago 5		
American League	W.	L.	Pct.
Chicago 4	Cleveland 1		
St. Louis 8	Detroit 7		
Boston 4	New York 2		
Washington 6-7	Philadelphia 3-4		
Southern Association Playoff	W.	L.	Pct.
Atlanta 6	Memphis 2		
LEAGUE STANDINGS	W.	L.	Pct.
National League	W.	L.	Pct.
St. Louis	95	56	.629
Brooklyn	94	57	.623
Chicago	79	70	.530
Boston	79	70	.530
Philadelphia	69	82	.457
Cincinnati	64	86	.427
Pittsburgh	62	87	.416
New York	58	92	.387
American League	W.	L.	Pct.
Boston	103	48	.682
Detroit	90	60	.600
New York	85	67	.559
Washington	73	77	.487
Chicago	72	79	.477
Cleveland	66	85	.437
St. Louis	65	85	.433
Philadelphia	49	102	.325
Southern Association Playoff	W.	L.	Pct.
Atlanta	2	1	.667
Memphis	1	2	.333

Snead And Hogan Are Favorites At Dallas

DALLAS — (AP) — The nation's leading professional and amateur golfers were to tee-off here Thursday in the opening round of the \$10,000 Dallas Open.

Sam Snead, British open champion and defender of the Dallas title, and Ben Hogan, national PGA champion, are the pre-tournament favorites.

Other strong competitors are Dallas-reared Lloyd Mangrum, National Open champion; George Fazio, winner of the Canadian Open; Herman Keiser, who copped the Masters Title at Augusta, Ga.; Jimmy Demaret of Houston, fourth leading money winner of the year; Harold McSpaden and Vic Ghezzi, Frank Stranahan of Toledo, Ohio, Earl Stewart, Jr., and Don Schumacher of Dallas, and Jimmy McGonagill of Shreveport, La., are among the outstanding amateurs.

CLARK FLIES TO TEXAS

WASHINGTON — (AP) — Attorney General Tom Clark was scheduled to leave here Thursday by plane for Dallas, where he will stop while en route to California for several speaking engagements.

MIDLAND PLUMBING COMPANY

Plumbing - Heating - Fixtures

C. E. SMITH and AL TRAUBER, Owners

203 South Main Phone 1182

It's Your Fair — So Be There!

MIDLAND COUNTY ANNUAL FAIR

At The Rodeo Grounds

FRIDAY AND SATURDAY

See The Exhibits!

MIDLAND CITY LINES

Alfred Petty, Manager

Midland schools have a full slate of football for this weekend with the Bulldogs playing Friday night and "B" Bulldogs and Pups taking on opponents Thursday night.

Bulldogs Travel

Friday at 8 p. m. in Austin High's stadium in El Paso the Bulldogs collide with the undefeated Panthers. This is one of the state's feature classics.

Midland 46, Odessa 0

Midland 46, Odessa 0! Hope it is an omen!

The Carver Hornets of Midland savagely defeated Odessa's Steers in a negro high school football game at the Midland High School stadium Wednesday night.

After a scoreless first quarter Midland tallied 14 points in the second, 12 in the third and 20 in the fourth quarters.

The ice was broken early in the second. Erwardel Noble, Hornet back, passed to Johnny Henderson, right end, in the right flat zone for 42 yards and a touchdown. Rudolph Whitley, fullback, ran over the extra point.

Midland scored again immediately. Odessa had to punt after the kickoff and Noble ripped off 43 yards running to the Odessa two-yard line. He ran wide to the right and cut back for the touchdown. James Marshall, left halfback, ran over the point.

Pups Play Here

The John M. Cowden Junior High Bullpups will tangle with invading Big Spring's Dogies on the high school field at 8 p. m. Thursday.

Admission prices will be 60 cents for adults and 30 cents for students.

This is billed as a rousing contest between the junior high elevens of these two cities.

The starting lineup for the Colts, coached by Ken Kearns and Cameron Neal, runs like this: Dwane Bush and Bobby Lee Daniels, ends; Leon Cline and Bobby Wood, tackles; Jerry Culp and Ken (Tuffy) Kimbell, guards; Jimmy O'Neal, center; Bobby Holt, Roy Mann, Arnold Drake and Bill Blanscett, backs.

Leading the Junior High pep squad will be Misses Ann Stevens, Billy Morningstar, Soya Chapple, and Swan Hoyer.

"B" Goes to Odessa

Still a third contest involving Midland will be the "B" Bulldogs invasion of Odessa. There at 8 p. m. Thursday on Fly Field Coach Aubra Nooncaster's boys play the strong Odessa second Bronchos.

Probable starters for the "B" Bulldogs are: Miller, left end; Deel, left tackle; Henderson, left guard; center (undecided); Clark, right guard; Richardson, right tackle; Bennett, right end; Hyatt, tailback; Ed Richardson, fullback; Buckingham, blocking back; and Messerschmidt, wingback.

Rainey Calls Minority Influence Helpful

AUSTIN — (AP) — Dr. Homer P. Rainey in his first political comment since his defeat for governor, Thursday called on "those interested in the people's welfare" to keep watch over the officials in power.

This is the most important function of a strong, intelligent, organized minority," Dr. Rainey declared. He noted that recent political events show such a minority exists in Texas.

"This minority is a wholesome influence in Texas politics, x x x. This minority cannot be laughed off nor can it be disregarded, even by wise-cracking, do-nothing governors. It is essential to the maintenance of political balance in this 'one-party' state," the former University of Texas president declared.

"As this minority grows in strength, and in its realization of the important place it holds in our political system, a better and more responsible state government will result."

Ultimately, Dr. Rainey believes, a two-party system will result in Texas. He said that the harmony sought by Gov.-Nominate Beauford H. Jester in the recent Democratic convention was not achieved.

"In spite of the plea for harmony the political events of the last two years clearly indicate that there is no harmony," he said.

"It is no longer possible to hold old-line Republicans, traditional Jeffersonian Democrats, Roosevelt and anti-Roosevelt Democrats, Texas Regulars and Left Wing Liberals in one political party—at least not with harmony."

"This one-party system, whatever its merits in the past, is rapidly passing," Dr. Rainey declared.

O'DANIEL HOPES FOR NEWS ON CAMP BOWIE

WASHINGTON — (AP) — Senator W. Lee O'Daniel (D-Texas) says he plans to leave for Texas this week but before he does he hopes to receive some word from the War Department on a request of Brown-wood citizens for continuation of Camp Bowie as a military center.

The Texas senator said that he and Mrs. O'Daniel would leave for Texas by automobile probably Friday or Saturday.

"Time Is Important"

and that time is between 2:00 and 5:00 p.m.—that's the time we serve beer across the bar! Drop in any afternoon.

WE'RE OPEN 11 A.M. TO 12 MIDNIGHT!

Between 2:00 and 5:00 p.m. our air-conditioned dining room is available for private parties.

Jumbo Hamburgers

Good Coffee and All Kinds of Sandwiches

BROWN DERBY COFFEE SHOP

201 N. Colo.—Next to Checker Cab

JUST A REMINDER!

E.O.M.

END OF MONTH VALUES

Continue All This Week!

Reds Beat Cards 6-0 For Arch-Enemy Dodgers Who Drop Game To Phils 11-9

By JOE REICHLER
Associated Press Sports Writer

It is doubtful Thursday if any major league baseball manager ever bowed out with more satisfaction than William B. (Wilkinsburg Bill) McKechnie, erstwhile boss of the Cincinnati Reds.

McKechnie managed his last game for the Reds Wednesday night. He was "fired" three days ago. His final act as the Redleg boss was to mastermind his hirings to a 6-0 victory over the St. Louis Cardinals—an act which might cause the Brooklyn Dodgers—a team Bill admits he dislikes—to nose out the club he formerly managed for the National League flag.

McKechnie knew full well that the Dodgers, who earlier in the season he had accused of "dirty playing" against his Reds, had lost, 11-9, to the Philadelphia Phillies. A St. Louis victory would just about seal Ebrookly's pennant hopes as it would give the Cards a two-game advantage with only 3 games left.

He nominated Bucky Walters, always a tough cookie for the Cards, to pitch. Walters pitched one of the finest games of the season to blank the Birds with seven hits. Twice McKechnie signalled for sacrifices and each time it payed off.

Cards Still Ahead

The defeat left the Cards still one game ahead of the Dodgers.

Brooklyn, showing signs of cracking under the terrific strain of chasing the Cardinals, blew a three-run lead in the ninth when the Phils came up with five runs to win their 11-9 thriller. Altogether the Dodgers used eight pitchers to set a new league record.

Scoring five runs in the first innings, the Boston Braves deadlock

Serving Midland 50 Years

RELIABLE, COURTEOUS AND EFFICIENT

NEWNIE W. ELLIS

24 Hour Ambulance Service
Phone 105 104 W. Ohio

Insure Your Family With
Ellis Burial Association

GROWING....

AND WE'RE GROWING, TOO.

More and more people are turning to using Butane installed by experienced workmen with quality tanks and supplies. You'll notice the difference when you start using Butane from...

JONES BUTANE SERVICE

Rankin Highway Phone 1495-J-2
A. W. Jones—T. D. Jones Jr.