

THE REPORTER-TELEGRAM

Evenings (except Saturday) and Sunday morning
112 West Missouri :: Midland, Texas

JAMES N. ALLISON, Editor and Publisher

Entered as second-class matter at the post office at Midland, Texas,
under the Act of March 30, 1879.

Subscription Price		Advertising Rates	
One Year	\$7.00	Display advertising rates on application. Classified rate 3c per word; minimum charge, 35c. Local readers, 10c per line.	
Six Months	3.90		
One Month	.65		

Any erroneous reflection upon the character, standing or reputation of any person, firm or corporation which may occur in the columns of The Reporter-Telegram will be gladly corrected upon being brought to the attention of the editor.

The publisher is not responsible for copy omissions or typographical errors which may occur other than to correct them in the next issue after it is brought to his attention, and in no case does the publisher hold himself liable for damages further than the amount received by him for actual space covering the error. The right is reserved to reject or edit all advertising copy. Advertising orders are accepted on this basis only.

MEMBER ASSOCIATED PRESS
The Associated Press is exclusively entitled to use for publication all news dispatches credited to it or not otherwise credited in this paper and local news of spontaneous origin published herein.

(For the Lord thy God is a merciful God;) He will not forsake thee, neither destroy thee, nor forget the covenant of thy fathers which He swore unto them.—Deuteronomy 4:31.

Not Tuneful, But Significant

One account of the Army's radar contact with the moon said that a loud speaker connected with the system picked up the echo as a sound—"not a very tuneful sound, but an echo from the moon."

Well, the cry of a newborn child is not a very tuneful sound, either, but it is significant. Likewise the audible echo from the moon was an unbeautiful notice of arrival and of future promise. It was the latest startling reminder that man is pushing back the forces of friction and gravitation which bind him to earth. It proclaimed a tangible link, through the cold, airless void of cosmic space, with another body of matter in our own small corner of the universe.

This is surely a beginning, not an isolated phenomenon. Some day men will receive an untuneful echo from Mars and the more distant planets. Pulsating waves of electronic energy, indifferent to all obstacles, will speed ever farther to open unimagined horizons to human view. They will present fields for pioneering of a sort which now is thought of as impossible fantastic, if it can be thought of at all.

It is all wonderful and frightening. But just what do we do about it—we, the overwhelming majority of non-scientific, uncomprehending people? Do we continue to follow the scientists blindly as, with at least partial vision, they open endless doors upon endless mysteries? Do we continue to convert their discoveries haphazardly to our material and spiritual benefit or to our destruction? Do we entrust to them a major part in our world governments?

Perhaps there is a hint of the solution in the recent establishment of the United Nations' atomic energy commission. If the world's governments have found it necessary to pool their strength and wisdom thus out of fear, it may come about in time that they will also feel a compulsion to ensure a fair and equal use of future discoveries which can contribute to the common good.

The employment of atomic energy plumped the scientist into the midst of politics and of the everyday world. He will find it hard to get out. And that promises to be a good thing for the scientists, the politicians and the public. There may come a day—and we hope it comes soon—when what goes on in the nation's research laboratories may claim some of the popular attention now reserved for what goes on in the nation's big league baseball parks and in Hollywood's studios.

Like Home

"Strike Fever Spreads to Nippon"—Headline. The Japs always did pay us the sincere flattery of imitation.

Sewing Machine
SUPPLIES and CLEANING
Machines of Rent
Buttonhole Attachments, Lights
and Motors for Singers
EX-SINGER MAN—Ph. 2453-J
P. O. Box 484 505 E. Florida

IN STOCK
Remington
Line-A-Time
Copy Holders
\$21.25
Paul C. Jordan
Remington Rand Agent
Telephone 935

ELECTRIC and ACETYLENE WELDING
by dependable, experienced welders.
PLOW POINTS and SHARES
For John Deere and McCormick-Deering Equipment
WES-TEX EQUIPMENT CO.
105 N. Ft. Worth Call 2468

PHONE 930
For
24-HOUR WRECKER SERVICE
Body Work and Painting
Our Specialty
In Our New Home West Highway 80
HOOVER BODY SHOP

UNDER NEW MANAGEMENT
YELLOW CAB CO.
CALL **555**
C. M. Kenley Hal Arthur
Manager, Blake Wingo

BRIGHTEN YOUR HOME
with
Sherwin-Williams PAINTS & VARNISHES
• Newest Wallpaper Patterns
• Complete line of Building Materials
ROCKWELL BROS. & CO.
112 W. Texas Phone 48



Thieves Break Into Car, Take Articles
Capt. W. R. Haughuy, 510 West Louisiana Street, reported to city police the theft of a camera, films and sun glasses from his automobile entrance to the car was forced, he said.

BICYCLE STOLEN WHILE PARKED IN CITY
Norman Cornelius, 706 West Ohio Street, reported to city police the theft of a bicycle parked at a Midland drug store over the weekend.

PY-MAK
The Easy Way
PIE FILLING
NOW IN BANANA, COCOANUT, VANILLA, CHOCOLATE, AND BUTTERSCOTCH
A box of banana PY-MAK and vanilla wafers and you have a delicious pudding.
ASK YOUR GROCER FOR PY-MAK TODAY!
Distributed by
BONDS WHOLESALE A TEXAS TRADER HOUSE
Candies, Tobaccos, Cigarettes, Cigars
211 E. Wall Phone 1076

Plan Scotch Foursomes For Country Club Group
Members of the Midland Country Club are invited to play in the Scotch foursomes Sunday at the club. Tee-off time has been set for 9:30 a. m. Coffee and doughnuts or breakfast will be served at 8:30 a. m.

And Then!
..She went to
T. J. Inman, O. D.
FOR GLASSES
307 S. Pecos Phone 2025-J

TAXI
CALL 80 or 600—24 Hours Daily
Prompt, Courteous Service
CITY CAB CO.
113 No. Colorado
—Owners—
H. G. Newton C. A. Brown

MIDLAND PLUMBING COMPANY
Plumbing - Heating - Fixtures
C. E. SMITH and AL TRAUBER, Owners
203 South Main Phone 1182

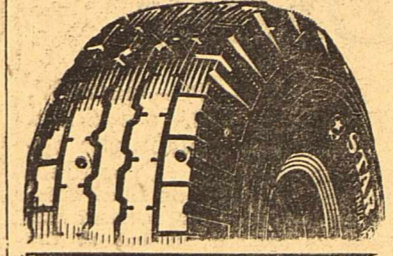
WHIGHAM ELECTRIC CO.
ELECTRICIANS
Supplies and Wiring Devices
All Kinds of Fixtures
Residence or Commercial Wiring
All Sizes Lamp Globes or Tubes, Bed Lamps, Table Lamps, Pin Up Lamps and Mail Boxes
Vent-A-Hoods For Sale
219 So. Loraine Phone 117

Let Us Help You . . .
with the plans for your new home. A well designed structure costs less to build.
Make Your Present Home Liveable
by remodeling. Built-ins are the trick that make a house roomy, bring it up to date in looks and convenience.
LONE STAR CONSTRUCTION COMPANY
— PHONE 1564-W —
ARCHITECTURAL DESIGNERS — GENERAL CONTRACTORS

News Story Sold Midland To Firm

By TANNER LAINE
We sold Midland. Not exactly like it sounds. We didn't actually sell "The Biggest Little City In The World." We sold that idea. Fred Wemple, a Midland merchant, has been trying to convince a large company which handles a special radio and phonograph type that Midland was a good potential distribution point for its products. He was having a little trouble convincing the big company, with the 1940 census reading just 9,000 people here. Other merchants had reported the same trouble. Wemple spent a lot of money telephoning. No success. So he sent a page story from The Reporter-Telegram on the progress of Midland. Result: Sold Midland. The company will stock its products here as well as in Dallas and the cities.

MARRIAGE LICENSE IS ISSUED COUPLE HERE
Receiving a marriage license Saturday were William Harold Phinney and Mareta Gray.



We Have A
Good Stock Of
STAR TRUCK TIRES
For Safer, Longer, More Satisfactory Service.
MICKEY GARAGE
122 East Wall
Phone 689

AUTHORIZED FORD SERVICE
Proper Equipment
Genuine Ford Parts
Factory Trained Mechanics
"BRING YOUR FORD BACK HOME"
MURRAY-YOUNG MOTORS, Ltd.
223 E. Wall Phone 64

H. G. LAWSON CLAUD KEETON J. M. MULLINS
Lubbock Auction & Commission Company
Lubbock, Texas
"No consignment too small. Whether by truck or train, we want your business."
Sale days every Monday, Tuesday, Wednesday, Thursday and Friday beginning at 10:00 a. m.

SANITARY PLUMBING AND HEATING CO.
Repair Work Our Specialty
CONTRACTING
Call us for plumbing fixtures, sprinkler systems. See us for Illinois Water Softners — proper installation guaranteed
Tel. 1666 or 679 — H. F. Kelly

STOP NEEDLESS TIRE WEAR WITH RECAPPING TODAY
\$7.00 6.00 x 16
Come in today to Tire Service Headquarters for recapping as you like it . . . Goodyear Dependable Extra-Mileage Recapping. We'll give you old tires "new life", for longer, safer, low-cost mileage.

Midland Tire Co.
FRED GIRDELY D.B. TOT WATLINGTON
Bacon Retreading and Vulcanizing
120 N. Main st. Phone 108
R. H. (Rusty) Gifford, Mgr. J. C. (Jake) Pogue, Asst. Mgr.

H. L. GAINES
We Fix Radiators
Ph. 2327, 108 W. Missouri

WHEN YOU WISH TO FLY
ANYWHERE DAY OR NIGHT
CALL THE
WEST TEXAS FLYING SERVICE!
TWIN-ENGINED PLANES
Are Used Exclusively!
Facilities for 1 or 4 passengers
Every passenger fully insured.
Approximate Flying Time To Key Cities:
Fort Worth—1:55
El Paso—1:45
San Antonio—2:00
Los Angeles—7:00
Washington, D.C.—10:00
Call Capt. W. Dave Kellogg At The Scharbauer Hotel
Capt. W. Dave Kellogg
Wallace Anderson
WASHING and GREASING
OUR SPECIALTY
Polishing and Simonizing
Open 24 Hours Each Day!
WEST END MAGNOLIA
L. L. COMER, Owner
Phone 9519 703 W. Wall

CALL
MAYES ELECTRIC CO.
FOR BETTER ELECTRICAL SERVICE
Contracting—Wiring—Repairing—Fixtures for home and office
Phone 328 106 S. Colorado

Complete Insurance Service
Life • Health • Accident
Automobile • Fire • Casualty
MIDLAND INSURANCE AGENCY
Laura Jesse, Agent—104-A Wilkinson Bldg.—Ph. 114

Lei Ponder Keep You In The Dry!
Complete Roofing Service, New Or Repair, Commercial or Residential
As Near As Your Phone • Call For Free Estimate
Also Asbestos Siding, Venetian Blinds and Rock Wool Insulation
PONDER ROOFING CO.
G. C. PONDER, JR.
Phone 2437 or 519-J 210 So. Weatherford

AUTHORIZED
Hudson Sales and Service
Modern Shop Equipment—Competent Mechanics—Repair Any Make Car
Washing and Lubrication
Call For and Deliver
MIDLAND MOTOR CAR CO.
Phone 2431 Corner Andrews Highway and West Wall

Announcing Removal of Our Office TO 114-A SOUTH MAIN ST.
(First Door North of Rex Theater)
Complete Insurance Service — Bonds — Real Estate
Farm & Ranch Loans
McKEE INSURANCE AGENCY
ROY McKEE
Ernestine (Mrs. R. H. Jr.) Frizzell, Edna (Mrs. C. C.) Keith
Phones: Office 495 Home 2409

"It tastes better."
Banner MILK
Banner BUTTER
PHONE 1137

The whole of Finland was annexed by Russia in 1809.

Egyptian ladies in 900 B. C. carried vanity cases made of iron.

Before the war, an estimated 50,000 U. S. homes rented rooms to tourists.

Clifford C. Keith
Attorney At Law
ANNOUNCES THE REMOVAL OF HIS OFFICE TO 114-A SOUTH MAIN STREET.
An occupying a portion of same building used by Roy McKee, well known insurance agent — first door north of Rex Theater, Phone 495

JUST OPENED!
SERVICE GLASS CO.
109 W. Kentucky Phone 2432
Dan Edgmon and Charles Wallis wish to invite all their friends to their new glass shop and will handle all types of glass work, specializing in AUTO GLASS.

Estimates Free
Business Appreciated
IRA PROCTOR
General Painting Contractor
Insurance Furnished
1407 W. Ohio—Phone 1830-J
Midland, Texas
INTERIOR DECORATING
FLOOR SANDING
SPRAY PAINTING
Tanks & Oil Field Equipment

First Baptist WMU Program Is Directed By Mrs. Raymond Hall

"Signs of Spiritual Awakening" was the theme of the program presented under the direction of Mrs. Raymond Hall at the First Baptist WMU Monday afternoon at the church.
After a song, "We're A Story to Tell," a devotional was given by Mrs. May Ward and a prayer offered by Mrs. O. L. Bevell. Others assisting on the program were Mmes. S. M. Erskine, Raymond Letgett, Ben Black and Troy Eiland.
Following a prayer by Mrs. J. S. Griffith, a business period was conducted by Mrs. J. M. White, Sr., president. Standing committee chairmen gave reports.
Closing the meeting was a song, "There Shall Be Showers of Blessings" and the welcome of guests and new members. Mrs. Vernon Yearby led in prayer.
Refreshments were served to Mmes. John Godwin, W. H. Hall, Cecil H. Craft, A. B. Clements, J. H. Williamson, R. O. Walker, J. G. White, R. K. White, A. W. Wyatt, Arnold Scharbauer, D. E. Jimerson, A. M. Moore, E. H. Cheves, T. D. Phillips, Leif Olson, W. B. Preston, B. C. Girdley, Bob Campbell, R. F. Goins, S. C. Daugherty, T. O. Midkiff.
Also J. W. Schroeder, Benny Estes, Barbara Hall, M. D. Cox, Richard Hinkle, H. S. Collings, L. R. Standler, J. P. McEldowney, J. O. Nobles, J. D. Hatch, Jr., Thurman Pylant, George W. Morgan, R. Chanslor, E. R. Powell, O. J. Hubbard, T. E. McCain, S. L. Alexander, Floyd Pace, Younger, Wyatt, Black, Ward, Hall, Erskine, Eiland, Leggett, Griffith, Bevell and Yearby.

Coming Events

WEDNESDAY
The Woman's Wednesday Club will meet at 3 p. m. with Mrs. R. L. Miller, 911 West Michigan.
Members of the Modern Study Club will meet at the home of Mrs. C. H. Shepard, 601 North Big Spring, at 3 p. m.
Mrs. R. D. Scruggs, 605 North Pecos, will be hostess to members of the Play Readers Club at 3 p. m.
The Star Club will meet at 1 p. m. at the Masonic Hall. *

THURSDAY
The East Side Home Demonstration Club will meet with Mrs. E. P. Birkhead, 308 North Baird, at 2:30 p. m.
A meeting of the Garden Club will be held at 10 a. m. at the home of Mrs. W. B. Neely, 2104 West Brunson.
The Midland County Library radio program will be heard at 4 p. m. over KORS.
A luncheon meeting of the Palette Club will be held at 1 p. m. at the studio. A program and business session will be held during the afternoon. *

FRIDAY
Mrs. D. R. Dickson and Mrs. S. M. Erskine will be hostesses for the Ladies Association of the Midland Country Club luncheon at 1 p. m. at the club. Golf will begin at 9:30 a. m. and foursome bridge will be played in the afternoon.
A social for the Alathean Class of the First Baptist Church will be held at 2:30 p. m. at the home of Mrs. J. Duval McClure, 1707 West Holloway. Mrs. Tom C. Bobo and Mrs. J. A. Tuttle are co-hostesses.
The Belmont Bible Class will meet at 3 p. m. in the Scharbauer Educational Building of the First Methodist Church. *

SATURDAY
The Moment Musical Club will meet at 11 a. m. at the Watson School of Music Studio.
The children's story hour will be held at 2:30 p. m. in the Children's Library in the courthouse.
SUNDAY
Members of the Country Club are invited to play in the Scotch foursomes at 9:30 a. m. at the club. Coffee and doughnuts or breakfast will be served at 8:30 a. m.

Advertise or Be Forgotten
AUREX HEARING AID
Why not have your hearing tested by an experienced analyst?
For appointment call 722-J
MRS. EUGENE E. CECIL
510 W. Storey
Batteries for Hearing Aids.
BUY and FLY
the **LUSCOMBE "SILVAIRE"**
America's first and finest all metal personal plane!
Prompt Delivery—Free Flight Instruction
Demonstrations at "Skyhaven" Airport, East Highway 80 or write
SHELTON AIRCRAFT SALES
Box 424—Midland, Texas

Juveniles Roll Tires At Cars

Juveniles in Midland were stopped by city police from rolling automobile tires against moving vehicles Monday.
Passing motorists complained to the police.

Price Control Filing Deadline Is Wednesday

Wednesday is the deadline for filing prices with the Midland County Price Control Board by city businesses or sellers of service. Individuals and businesses must file, the board office announced.

Twenty-Five Members Attend Meeting Of Rebekah Lodge

Twenty-five members attended a meeting of the Midland Rebekah Lodge No. 91 Monday evening at the IOOF Hall. One visitor, Mrs. Sprangler, of California, was present.

ANNOUNCEMENT
BY
Claude O. Crane and Tad Crane
1.
This will announce the sale of our interest in the insurance and real estate firm of Mims & Crane, which was effective on February 1. This transfer of our interest in the firm was to your friends and ours, members of the Mims family, the wife, son and daughter of the late P. J. Mims.
2.
It seems very proper that we should express our most genuine thanks to you for the business and personal friendships we have been given by you. It has always been our purpose to deal fairly and in the best of good faith with everyone. To you who have placed confidence in our business integrity and effort we are of course most profoundly grateful, and can only hope that in dealing with you we have been able to serve you in keeping with our good intentions.
3.
It also seems fitting that we should now thank and commend to you all those who have been associated with Mims & Crane, especially the members of the Mims family. It is our genuine hope that they will prosper in service to you. We earnestly hope that you will continue to use the services of the firm.
—CLAUDE O. CRANE and TAD CRANE.

Methodist Circles Hold Study Programs

Circles of the First Methodist WSCS met Monday afternoon for study programs.
Mrs. E. P. Birkhead was hostess to members of the Belle Bennett Circle at the Scharbauer Educational Building. The program was opened with a prayer by Mrs. J. P. Ferguson.
An outline of the study "These Passing Times" was given by Mrs. J. L. Tidwell, and Mrs. O. L. Crooks presented a devotional on a prayer topic in connection with the study for the afternoon.
Announcement was made that Mrs. Crooks will be hostess for the meeting February 11 in the Scharbauer Educational Building.
The hostess served refreshments to Mmes. Melie McCormick, Ferguson, L. M. Fielding, C. P. Wilson, Mary Lou Snodgrass, W. D. Hargrove, Mary Lou Wyatt, Dave Hoover, Crooks, Clyde Gwyn, H. M. Reynolds, J. L. Barber and Tidwell.
Mrs. J. A. Sewell gave a talk on "A People in Motion" at the program for the Winnie Prothro Circle. Hostess for the occasion was Mrs. J. A. Andrews. The business was directed by Mrs. Earl Klebold, chairman.
The new study, "These Moving Times" by Herman N. Morse, was led by Mrs. Earl Chapman.
Refreshments were served by Mmes. A. J. Norwood, A. C. Moore, Barney Barnard, George L. Kirk, John Luccous, C. H. Shepard, Earl Ray, Phil Scharbauer, Chapman, Sewell and one visitor, Mrs. F. E. Rankin.

ANNOUNCING
The purchase of the interest
OF CLAUDE O. CRANE AND TAD CRANE
Our Associates In The Real Estate And Insurance Firm of
MIMS & CRANE
WE PLEDGE YOU THE SAME SERVICE RENDERED THROUGH YEARS GONE BY
And extend to Claude O. Crane and Tad Crane our very hearty confidence that their future business enterprises will be both useful and successful.
JAMES MIMS **MRS. P. J. MIMS** **MARGARET MIMS**

MID-LAND FINANCE CO.
AUTO LOANS
Phone 509 201 E. Wall St.

SAND & GRAVEL
Processed to meet state and federal specifications.
Delivered In Midland. Reasonable Prices.
WEST TEXAS SAND & GRAVEL CO.
Phone 9000 Big Spring, Tex. Box 501

FORD MERCURY LINCOLN
AUTHORIZED SERVICE **MURRAY-YOUNG MOTORS, Ltd.**
223 E. Wall Phone 64

FOR YOUR **HOUSE MOVING**
Write, Wire or Phone **J. P. HINSLEY J. S. KIRKPATRICK**
P. O. Box 1257 Phone 2258 MIDLAND, TEXAS
Insurance to meet all requirements

We have **PICK UP and DELIVERY**
on our flat tire service—**O'NEAL'S 66 SERVICE STATION**
500 W. Wall Phone 577

PLUMBING HEATING
Contracting—Repairing Heating Installations
All Work Guaranteed CALL 1242
CITY PLUMBING & HEATING CO.
400 South Fort Worth

FLIGHT INSTRUCTION
Planes For Hire Or Rent
Midland **Commercial Airport**
R. A. PLUNK, Operator
1 Mile Southeast of Midland, Near Garden City Highway

NATUROPATHIC CLINIC
1006 South Dallas
One block and half south of Garden City Highway.
Phone 472-J for an appointment.
John F. Lilly, N.D.

Be Careful About **CYSTITIS**
This is inflammation of the bladder. Drink delicious Ozarka health water, free from chlorine and alum. Shipped everywhere.
Ozarka WATER CO.
Midland, Texas
Phone 111-402 S. Big Spring

George and Bill Announce That T. J. MILES, JR. Is Successor to the Firm of PHILLIPS & COLE
and wish him the best of success in the business. We thank you for the splendid cooperation given during our time in this business and hope that you will continue this cooperation with the new owner.
PHILLIPS & COLE
George Phillips — 115 East Wall — W. N. (Bill) Cole

OPEN for BUSINESS AT 115 EAST WALL STREET
MILES HARDWARE AND APPLIANCE COMPANY
AS **SUCCESSOR TO PHILLIPS & COLE**
Prepared To Go The Limit In Serving You!
Fully Familiar With Your Numerous Needs!
OFFERING QUICK, RELIABLE SERVICE LIMITED ONLY BY MARKET CONDITIONS
— Shelf Hardware — Housewares
— Farm and Ranch Supplies
— Automotive Equipment and Parts
— Lawn and Garden Equipment
— Gas and Electric Appliances
OUR BASIS OF DOING BUSINESS:
Each Transaction, Large Or Small, To Be Made With Courtesy, Grounded In Service — On A Large Background Of Experience.
YOUR TRADE IS CORDIALLY INVITED, YOUR FRIENDSHIP IS SINCERELY WANTED
Whether To Look Or To Buy, Your Visit Will Always Be Appreciated.
MILES HARDWARE AND APPLIANCE COMPANY
115 East Wall Street Phone 875
T. J. MILES, JR., OWNER
Successor To Phillips & Cole.

THESE MIDLAND STORES HAVE SET ASIDE SPECIAL VALUES FOR WEDNESDAY ONLY — CHECK EACH AD CAREFULLY —

SPECIAL VALUES FOR WEDNESDAY ONLY

WEDNESDAY ONLY!
Only 21 To Sell!




PURSES
Reg. 5.95 to 9.95
WED. ONLY 2.95
Envelopes -- Pouches

Leather, Imitation Reptile, Fabrics
Black, Brown, Navy, Turf, and White

Everybody's
A JO ANN SHOP

WEDNESDAY VALUES!

Children's Cotton
PANTIES 19¢
MEN'S WORK SHIRTS
Forest Green Tight Twist Twill
Workproof - Windproof - Wearproof
The best work shirt we have ever offered at any price **1.98**



Virtue
DRY GOODS CO
"YOUR STORE"

3 ODD LOTS
LADIES SHOES
\$2.69 - \$5.95 VALUES
REDUCED TO —
\$1.98 - \$1.49 - \$1.00

Attractive styles and colors
Sport and dressy

McMULLAN'S
"Family Outfitters Since 1934"

See These Wednesday!
A Brand
NEW SHIPMENT
of attractive
BEDROOM SUITES
including bed, vanity with round or square mirrors, bench, and chest of drawers. BLOND WALNUT AND MAPLE FINISH.

GALBRAITH'S
615 W. Wall Phone 746

NOW IN STOCK!
See These Tomorrow!

ELY CULBERTSON'S
NEW GOLD BOOK
CONTRACT BRIDGE COMPLETE
Also Attractive
NAME PLATES
FOR YOUR BOOKS AND PHONOGRAPH RECORDS
25¢ to \$1.50 per fifty

BOOK STALL
First National Bank Building

Wednesday Specials

Limited Quantity
Seat Covers Semi-Tailored Installed **26.95**
Beautiful Art Leather Binding Trim

Lime-Out Quart **1.00**
For cleaning radiators, corroded pipes, grease, etc. It really works.

Ru-Glyde RUBBER LUBRICANT Gallon Can **3.25**

MIDLAND TIRE CO.
Bacon Retreading and Vulcanizing
R. H. (Rusty) Gifford, Mgr.
120 N. MAIN ST. PHONE 108

SPRAY PINS
with
MATCHING EAR RINGS



Gold set with varied colored stones!
\$3.95

HUGHES JEWELRY CO.
203 W. Wall (Next to Cactus Cafe) Ph. 134

See These Wednesday!
SWEATERS
Long and short sleeves—fine and coarse knit—100% wool—sizes 32 to 40.
\$2.49 to \$5.95

All attractive colors for every season

UNITED
121 N. Main INC. Phone 2218

NOW ON DISPLAY!
Speed Queen
WASHING MACHINE

Come in and see this new and improved post-war washing machine. New improvements include:

- BOWL SHAPED TUB
- DOUBLE TUB WALLS
- STEEL CHASSIS CONSTRUCTION
- SPEED DRAIN
- SAFETY ROLL WRINGER

COX APPLIANCE
613 W. Wall Phone 454

WEDNESDAY ONLY!
Special Wednesday Values

Toasts 4 Pieces Bread At A Time
TOASTERS FOR GAS STOVE **25¢**

Canvas Cots Sturdily Built Wednesday **4.85**

Gasoline Lanterns **8.45**

Assorted Colors — 2 Styles
Lamp Shades Reg. 2.95 Wednesday **1.95**

Butcher Knife Deluxe Diamond Tested **1.10**

WESTERN AUTO ASSOCIATE STORE
T. E. Allen, Owner

Valentine Lovelies

Imported
Maderia Hankies
For Valentine gifts to be really treasured choose from our collection of dainty imported Maderia handkerchiefs.



Echo Scarfs
She'll love to receive an Echo Scarf for Valentine . . . and choose one or more for yourself. They're the newest and niftiest . . . and most highly prized. Squares and oblongs.



MARY ANN SHOPPE
106 N. Loraine — 2nd Door South of Post Office.
• Owned and Operated by Mrs. Ruth E. Finch.

Wednesday Specials!

Ipana Tooth Paste 50c Size (Limit 1) **29¢**

Electric Heating Pads **\$5.98**

Creomulsion 60c Size (Limit 1) **29¢**

Cardui \$1 Size (Limit 1) **59¢**

Gillette SHAVING CREAM Lather Type, 25c Size **11¢**

Vicks Vaporub 35c Size (Limit 1) **19¢**

Rhinall NOSE DROPS 75c Size (Limit 1) **39¢**

Ex Lax 25c Size (Limit 1) **14¢**

MIDLAND DRUG
Walgreen Agency Drug Store

SHOP CAMERON'S WEDNESDAY AND SAVE!

NOW IN STOCK. Writes 2,100 miles without refilling
Reynolds International PEN **12.50**

Congress Cards Reg. 1.75 Double Deck **1.29**

Stationery Assortment Wednesday **1/2 Price**

Electric Hot Plate And Toaster Combination **4.95**

Tea Strainer **15¢**

Harmonicas By Magnus Just Received **1.25**

HALLMARK VALENTINE CARDS

CAMERON'S PHARMACY
Crawford Hotel Bldg. Phone 1882

Wednesday Values!

Seat Covers **6.95 to 14.95**

Wedge Cushions Leatherette Wednesday **1.49**

Airplane Luggage **11.95 up**

Tarpaulins **5.95 up**

Federal Tax not included on luggage

Firestone
• 105 So. Main • Phone 586 •

Wednesday Feature
30" x 42", Single Pedestal
OAK DESK

Top of genuine quartered straight grain oak veneer **\$57.00**

Ray Gwyn Office Supply
215 West Wall Phone 173

SPECIAL — WEDNESDAY ONLY
A moderate-sized shipment of
ONE - GALLON
Sea Breeze Jugs
For Keeping Foods And Liquids Hot Or Cold



As the supply is not too great, we suggest early shopping WEDNESDAY — and we think it only fair that these be limited, one to the customer.

\$2.95

HARRIS-LUCKETT STORES

"Murder!" They Cried By DOROTHY STALEY

Copyright, 1946, NEA Service, Inc.

THE STORY: Betsy admits to Nana that she has spent the day with Pen Downes. Pen needs her, she says. She shrugs off Nana's query about Travers, who has loved Betsy since childhood. Nana reminds Betsy that Downes has a wife, even if he doesn't live with her.

VIII Betsy's face flushed. "I know Pen isn't any plaster saint, Nana, but if he had a wife who was interested in what he was doing, he would be different, I know."

I said, "Do you think you are everything he wants, Betsy?" Her head went up proudly, "I know I am."

I said, "And this wife in Connecticut, Betsy. Do you think she was once everything he wanted?" She said, "He's changed. His ideas have matured. He wants something real from a woman; something more than just the wish to be Mrs. Penfield Downes."

I said, "Do you think he'll change again?" She bit her lip and didn't answer me.

"Why doesn't he get a divorce?" I asked.

Betsy looked at me surprised, "I've just told you. She likes being Mrs. Penfield Downes. She wouldn't hear of it."

I started to say, "Do you believe that, Betsy?" but I stopped before I said it and made a fool out of myself. For wasn't that the very thing we were saying about Phillipa? The old saying about the view depending upon where you stand went through my head. Where Fletch was involved the situation looked one way; where Penfield Downes was involved it looked another.

I said, "Betsy, do you love Pen Downes?" She flung up her head, "Yes," she said, and she was terribly proud to say it aloud.

"And he you?" I asked. She said softly, "Yes, I know he does." She flung her arms high

and threw back her head. "He has told me a hundred times, in a hundred different ways."

I SAID, and I hated myself for it and for the edge that crept into my voice, "Did he ever tell you in a simple sentence that couldn't be misunderstood?"

She looked at me, "I've just told you," she said shortly, "that Pen loves me, I know."

I said, "As your brother Fletch loves Mrs. Ellis?" She swung around, startled. She said, "What do you mean?"

"Just that," I said. "Fletch loves Mrs. so much that until the day Phillipa releases him, he will never speak of it. Never so much as touch her hand." Under my breath, I added, "Again."

It wasn't quite the truth I was telling, but something had to be done. "When a man loves a woman dearly, Betsy, he wants to come to her with clean hands and an open heart. When he merely covets her youth and beauty, when she is merely a conquest to satisfy his ego, he comes to her with flattery and easy caresses. Fletch loves Mrs. with all his heart."

Betsy still shaken, "Fletch and Mrs.?" she said. "I never guessed."

I thought to myself, "There's something to think about, young lady." I hoped I had started a train of thought which might counteract the one that Mr. Penfield Downes had started.

But I wasn't sure. When Fletch had said, "We can't go on this way," it had been Mrs. who said, "There is no other way for us." I wondered if Betsy, who was so fiercely loyal and so much too tender, had the strength to answer that way. Certainly Pen Downes would not respond as had Fletch to that same answer.

Betsy's reaction, which came very swiftly, was totally different, however, from what I might have hoped.

She left my room abruptly, saying, "I must dress. We're going to Ann Quillman's for dinner." I knew who was meant by "we." At the door she turned and asked, "Will it disturb you if I leave the doors open? It is so hot."

I SHOOK my head and settled back in my chair. I must have dozed off, for I was startled to hear Betsy call out from her room.

"Is that you, Phil? Will you come in a moment, please. I want to talk to you."

I heard Betsy's door open and close and then Phil's voice sounding as usual as though it needed defrosting. "Well?"

Betsy's voice was warm with her intenseness. "Phil, why don't you divorce Fletcher?"

The ice was gone from Phil's voice, too, when she answered, "I like your nerve, Betsy. What right do you have to ask me that?"

Betsy's voice rushed on, "You don't want him, Phil. You don't care anything about him. If you ever had a spark of affection for him at all, let him be happy."

"Let him be happy!" Phil repeated. "What about me?" Her voice rose shrilly. "Oh, I get it. It doesn't matter about me. I'm not a Willson."

Betsy replied slowly, "But you are a Willson, and it does matter about you, Phil. You aren't happy either. You can't be. You would be much happier living some other way, and Daddy would see that you had enough to live on."

Phillipa laughed, "You know, Betsy, you have a hell of a nerve talking like this, but I think for the first time I like you. You're honest enough to admit that what I do now matters because I'm in the Willson clan, and you offer to buy me off! The rest of the God Almighty Willsons wouldn't stoop to such low bargaining."

(To Be Continued)

McKENNEY ON BRIDGE

By WILLIAM E. MCKENNEY America's Card Authority

Many readers write to ask what principle is involved in a squeeze play. The answer is: First, count your tricks; second, pay close attention to the bidding. Dr. Max Shindell of Forest Hills, N. Y., found it paid to count his tricks in today's hand.

When the dummy went down Dr. Shindell (South) could count five spade tricks, five club tricks if the clubs broke, the ace of hearts and a diamond. If the diamond finesse worked he could make a grand slam, but Dr. Shindell realized from the

Bridge hand diagram showing a deal with South as Dealer, South-West-North-East layout, and a duplicate table with scores for both vul.

bidding that West undoubtedly held the diamond king. Therefore, he won the first trick with the ace of hearts, cashed five club tricks, discarded two hearts from his own hand, and then ran five spade tricks, discarding the five and ten of diamonds from his own hand. This left him with nothing but the ace-queen of diamonds.

West was in a bad position on the last spade trick. He had to hold the queen of hearts or dummy's Jack would be good. He had to blank down to the king of diamonds. Declarer then led dummy's six of diamonds and went up with the ace, catching the blank king. The queen was good for the thirteenth trick.

FREDDIE HAAS TO BECOME PROFESSIONAL GOLF PLAYER

NEW ORLEANS —(AP)— Freddie Haas Jr., one of the leading amateur golfers of the country for the past decade, has announced that he was turning professional and would compete for purses in the New Orleans Open and subsequent winter tournaments.

CAMERA SUPPLIES. Albums — Photo Books — Movie Supplies and Film — G. E. Exposure Meters — Slide Projectors — Screens — Reflectors and Stands — Filters and Lens Shades — Titrals — Time-O-Lite — Chemicals — Photoflash and Flood Bulbs — Safelights — Trays — Tanks — Photo Paper — Print Dryer Film Editors — Splicers — Cement — Marshall's Photo Oil Colors — Polaroid Filters. PORTRAITS — COMMERCIAL PHOTOGRAPHY — KODAK FINISHING — CAMERA SUPPLIES. The Midland Studio. Phone 1003 For Portrait Appointment. 210 West Texas

OUR BOARDING HOUSE with MAJOR HOOPLE OUT OUR WAY. —By J. K. WILLIAMS. A comic strip showing a man named Hoople and a woman named Martha. Hoople says: "EGAD, ABELARD! MARTHA WAS JUST HERE, THREATENING ME WITH PHYSICAL HARM UNLESS I FIND A JOB IN 24 HOURS! THERE'S NO TIME TO BE LOST, MAN! YOU MUST HYPNOTIZE HER AT ONCE TO THINK I'M EMPLOYED FULL TIME." Martha replies: "I WAS HOPING AGAINST HOPE YOU'D KEEP THAT IDEA IN MOTH BALLS, MAJOR, BUT I GUESS THIS IS IT! WELL, I'LL WIND UP AND MAKE THE PITCH, BUT I'M AFRAID THAT AFTER THIS ONE I'M GOING TO BE OUT LIKE A BOBBY-SOXER'S SHIRT!"

BOOTS AND HER BUDDIES. —By EDGAR MARTIN. A comic strip about a woman named Boots and her friends. One friend says: "GOSH, HARVEY— YOU POOR THING! THINK NOTHING OF IT! I KNEW THE ONLY WAY TO KEEP MY WIFE FROM ABUSING THE GIRLS WAS TO LET HER TAKE IT OUT ON ME!" Boots replies: "BRAVO! WELL, COULD I HELP IT IF TH' ROPE BROKE?"

buy MEAD'S fine BREAD. —By LESLIE TURNER. Advertisement for Mead's fine bread, featuring a large illustration of a loaf of bread.

WASH TUBBS. —By LESLIE TURNER. A comic strip about Wash Tubbs. Wash says: "I HAD NIGHT MARY AIKEN'S THOUGHTS ARE OF THE BLEEKE FAMILY... OF YEARS AGO." Another character says: "THEY WERE ALWAYS SO VERY PROUD, ESPECIALLY OF JEROME..."

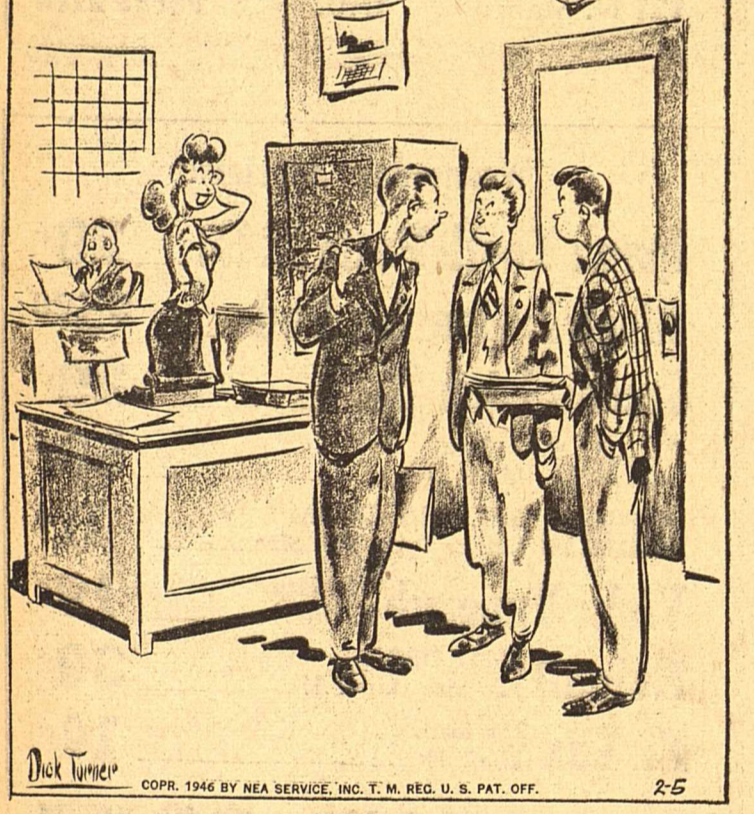
ALLEY OOP. —By V. T. HAMLIN. A comic strip about Alley Oop. Alley says: "COP DOESN'T SEEM TO BE IMPRESSED WITH BOOM'S ABILITY TO RESTORE HIS WHISKERS!" Another character says: "YOU FELL DOWN ON THE JOB, DIDN'T THAT?"

RED RYDER. —By FRED HARMAN. A comic strip about Red Ryder. Red says: "I SEE NOW WHY RED RYDER WEARS A GUN, DUCHESS!" Another character says: "TYP-O-ACCOUNT OF SKUNKS LIKE THIS?"

VIC FLINT. —By MICHAEL O'MALLEY and RALPH LANE. A comic strip about Vic Flint. Flint says: "HE WAS DEAD, ALL RIGHT. I CALLED THE POLICE RIGHT AWAY." Another character says: "WELL, WHAT THE HECK ARE YOU DOING THERE, FLINT? STAY RIGHT WHERE YOU ARE TILL WE GET THERE!"

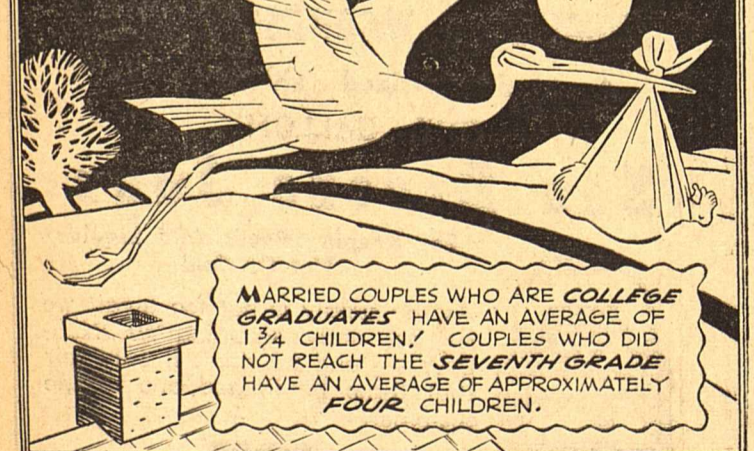
PHILCO Radios - Refrigerators Freezers - Conditioners WILCOX HARDWARE Next to Safeway Grocery

CARNIVAL By DICK TURNER



"Best to treat her as though she was perfectly normal and there hadn't been a shortage of men for the last three years!"

THIS CURIOUS WORLD By William Ferguson



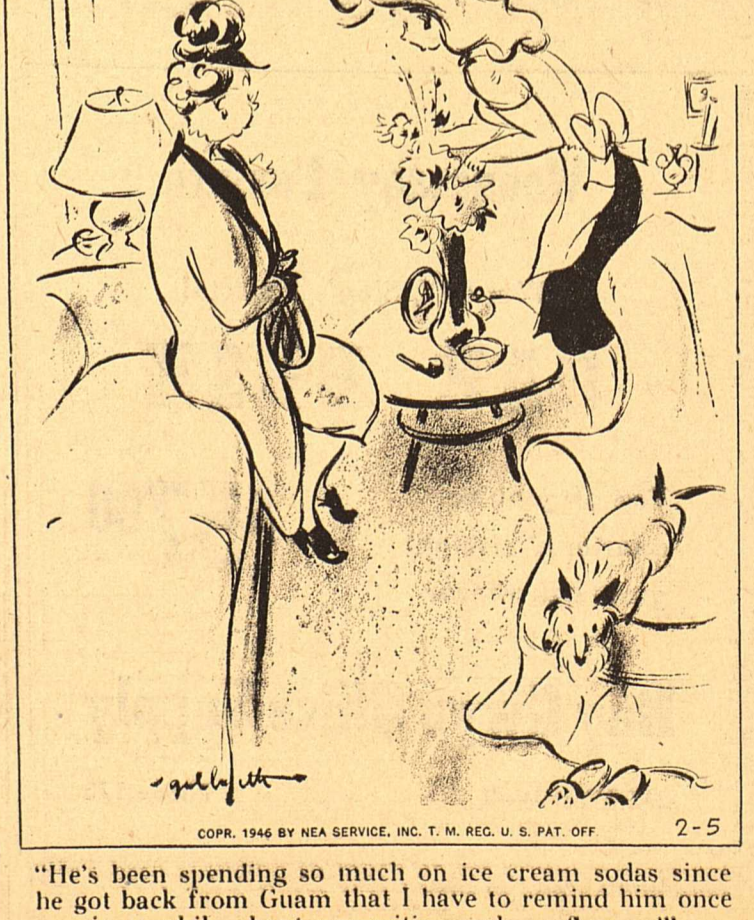
MARRIED COUPLES WHO ARE COLLEGE GRADUATES HAVE AN AVERAGE OF 1 3/4 CHILDREN. COUPLES WHO DID NOT REACH THE SEVENTH GRADE HAVE AN AVERAGE OF APPROXIMATELY FOUR CHILDREN.

KWIZ KORNER. In standing on the western end of the bridge over Boulder Dam. Elmer. THERE ARE MANY KINDS OF GLASS... SOME HEAVIER THAN IRON... AND SOME LIGHTER THAN ALUMINUM. WHERE'S ELMER? ANSWER: In Nevada. The east end is in Arizona.

FRECKLES AND HIS FRIENDS —By Merrill Blosser



SIDE GLANCES



"He's been spending so much on ice cream sodas since he got back from Guam that I have to remind him once in a while about necessities such as flowers!"

