

# Canyon City News.

VOL. X.

CANYON CITY, RANDALL CO., TEXAS, FRIDAY, JUNE 29, 1906.

NO. 16

## THE LONE STAR STATE

### The Panhandle and Central Plains Portion, Climate, Soil, Water, Rainfall, Enterprises, Production and Citizenship.

Texas is a big state and fully in keeping with its size is its marvelous resources. While yet young in development in so far as nature's stores are concerned Texas already heads the list of states as a producer of some of the world's staples.

Of the entire cotton crop of the Nation Texas furnishes one-third.

Texas has more cattle than any other state and just as good in quality as can be found anywhere. Texas is also the natural home of the horse. With the hardy Texas horse as foundation stock, this state is now producing animals of as good quality as can be had from the famed blue grass region of "Old" Kentucky. As a producer of wool Texas also ranks high and her muttons fattened on her native grasses are largely sought by epicures of all the civilized nations of the earth. Nor is Texas behind on the "mortgage lifter"—the porker—as witness the millions invested in the great packeries established at Fort Worth, to say nothing of the train loads that go to the Kansas City, St. Joe, Chicago and other markets and the ship loads that leave the wharves of Galveston and other Texas gulf ports.

It was in Texas, after many other states were "ransacked" for proper material in form and quality that Old England bought her horses and mules for service in the Boer war, and in Texas after that war was closed cattle were purchased with which to restock the Transvaal.

Over three hundred varieties of grasses grow in Texas and most of them native to the soil. Is it any wonder then that Texas is deserv-

edly world famous as a stock country?

Texas is also great in other matters aside from stockraising. As a state she is well in the lead of all other portions of the United States, of equal area, in the variety and yield of agricultural products and garden truck. Strange you say? Yes, but true. Look up the statistics compiled by the government. You can obtain them from your Congressman for the asking.

Again, Texas has the largest available school fund of any state in the Union, and her taxes are the lowest.

Texas has timber too, one hundred and fifty varieties of it were exhibited at the World's Fair. In her forests grow the pine, cypress, cedar, oak, walnut, hickory and many other valuable trees. Here is the home of the nut-bearing pecan and when it comes to fruit-bearing trees, Texas, for quality, quantity and variety stands well among the foremost of all the states of the Nation.

Texas is not behind either in mineral wealth for not only has she vast stores of the precious metals, but also of iron, lead, copper, coal, etc., and as an oil producing state she is almost without a rival.

Great indeed is Texas today, and greater still will be her future, for with the Isthmian canal already assured the Nations of the Far East will enter her markets and her gulf towns will grow into cities that will rival in importance and size the mighty trade marts of Europe. The great railroad systems saw the importance of entering Texas some-

time back and today there are more miles of rails here than in any other state and still they lengthen.

Few portions of this great Nation can truthfully claim such a genial climate as Texas is blessed with. Too far south to be extremely cold; too far north to be oppressively warm. No wonder then, that the Lone Star State has one of the very best climates to be found within the Union.

Another fact about Texas, now becoming widely known, she is blessed with millions upon millions of acres of fertile lands; lands which quality, productions, climate, environments and price considered, offer inducements over those of any other civilized country.

People of the North, Eastern and middle States are seeing this and they are coming. Already the mighty movement is beginning—every day people from all points of the compass are arriving by train loads. The rich and fairly well-to-do alike are included in this movement, and they, almost without exception, are seeing, believing and putting their money into homes in Texas.

All of Texas is good and very good; good for investment, good for business in almost any line, but in the minds of those who know the State pretty thoroughly in all of its great parts that portion of it called the Panhandle, offers today the best opportunities, and especially is this so in an agricultural sense.

#### THE PANHANDLE

This is a name applied by early frontiersmen to the northwest end or corner of Texas. It is a name merely and if it has any other significance it is beyond the knowledge of the editor of The News.

The eastern boundry of the Panhandle is Oklahoma, the western New Mexico and its northern limits border on West Kansas and Southern Colorado. As to its southern limits there is a variety of opinions. Some contend that it reaches as far south as Lubbock, thus including what is known as the Central Plains Country, while others, equally positive, assert that its southern extremity should run parallel with the lower line of Swisher county. As it is only a name, as previously stated, which by common usage has been adopted by map makers to designate a certain portion of the state we will, for the purpose of this edition, include the territory as far south as Lubbock which, as already referred to, takes in the Central Plains Country. This would make its eastern boundry in Texas the counties of Knox, Foard and Hardeman. In the Panhandle thus shaped we have thirty-two counties or a section of country 170 miles wide, east to west and 220 miles north and south. And nearly all of this territory is susceptible of cultivation.

Taking Amarillo as a point to begin with an altitude of 3,630 feet, the elevation increases as you travel north and northwest, while going northeast or east it gradually decreases. Outside of the canyons and along the streams there is practically no native timber in the Panhandle. North and northeasterly from Amarillo and along the watersheds of the Canadian river and other streams, the country is inclined to brakes and some places to scrub oak (about knee high) and sand. The great bulk of it is, however, one vast rolling, fertile prairie.

This portion of the Panhandle



laying north of Amarillo has been dubbed the "North Plains Country." It is a good country and settling up fast, but in the opinion of those who ought to know, by far the choice of the whole Panhandle is that portion of it designated in this article and known far and wide as, The Central Plains.

This rich belt of country known as the "Central Plains" extends from the watershed of the Canadian on the north to that of the Brazos river on the south, or we might say, that from Amarillo on the north to Lubbock as its southern boundary. The northern portion of this belt includes from east to west the counties of Armstrong, Randall and Deaf Smith, and going southward includes some three or four counties within its embrace to about the south line of Lubbock and Hockley counties.

The altitude of these Central Plains varies from about its highest point, Amarillo, which is 3,630 feet above sea level, to its lowest, 2,800 feet at Emma and Lubbock. The same climate hangs over all of it.

Bring to your mind a gentle rolling prairie some 150 miles either way and almost without a break, rocks, gravel or chalk spots—all rich loamy land, and you have before you the Central Plains Country. It is probably the largest body of land in these United States of which it can be said that it is nearly all alike.

The soil is a rich loam, varying in depth from 15 inches to four or five feet and with a subsoil of clay. In some places, for several miles in extent it is black and sticky (called tight land here) and in other places free, owing to the amount of sand in its composition. Almost all of it will scour a plow.

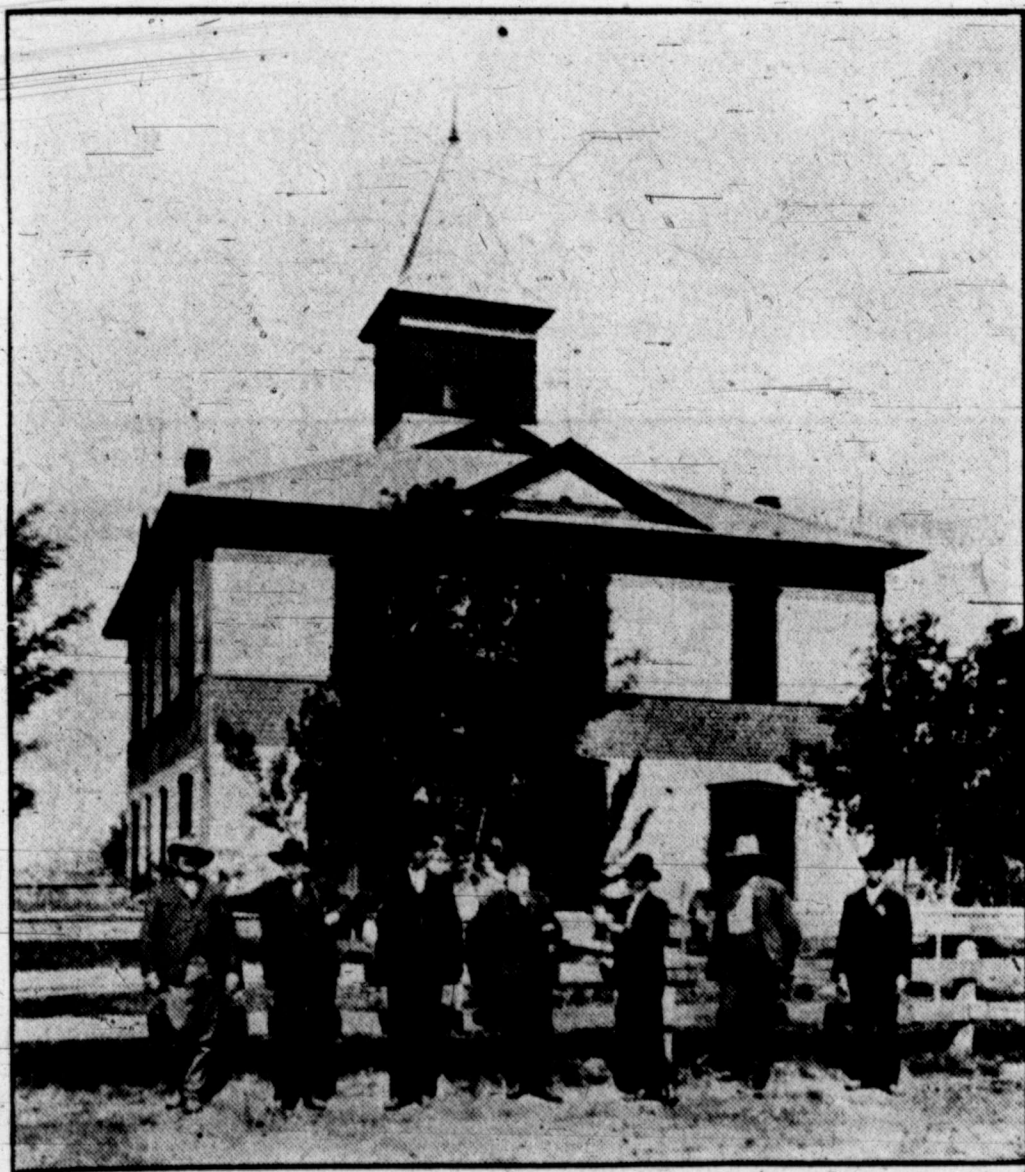
In a state of nature as most of it now is, this prairie is covered with a close turf of mesquite grass, making the finest pasturage in the world, summer and winter and not excelled in any country, anywhere within the knowledge of man.

Prior to 1875, this Central Plains country was known only to the Indian and the buffalo. Here the Comanche, the Kiowa and the Apache were in their glory; it was their prized hunting ground above all others and woe to the paleface who intruded upon them. About the beginning of the "eighties" (1880), when the Government took these Indians in charge, moving them out of the country, the "cattle barons" possessed the land and they, knowing a good thing as well as the Indians, kept the Plains country to themselves holding the

secret of its natural richness with as much tenacity as did their immediate predecessors, the Indians. Then until, we may say 1886, this Plains country, with all its vast possibilities was practically unknown even to old Texans, the writer among the number, who prided themselves upon a thorough knowledge of at least the central and western portions of their State. There were some, however, in those times who knew a good thing in lands. Those few hid themselves to New York and across the great waters to London and to Edinburgh, and as a result great syndicates were formed, domestic and foreign, and vast bodies of these fertile lands were picked up for a song. An instance of this is the "Capital Syndicate Lands," two millions of acres, including the main portion of Deaf Smith and other Plains counties, purchased from the State about 1885, at fifty cents per acre—in trade. The "Block Lands," including at present one-fourth of this, Randall County, is another case and there are still more instances of like character. These great corporations "bided their time." Some of them, including the "Block" people in this county are still waiting, being unwilling, even at present prices, to let the actual settler have this land.

But little farming of any character was done on the Central Plains until the coming of the railroads. With the advent of "the cars," some 15 years ago, came the man of small means and then the turning of the soil began. "Just enough for table vegetables," as an old timer would express it. And, why more at this time, it may be asked, for with the vast prairie covered with the luxuriant grasses and much of it free, all a man wanted was a few head of cows and one or two ponies and plenty grazed his table while independence was written in large letters all over his habitation. But now this man's day is also gone; gone like that of the "nester." He must buy land now for his cows and as the price is advancing he must make out on less acreage and so farming per force, as it were, has been introduced. The results of this tilling of the soil on the Plains, of which we have a record, runs back some fourteen years. They are astonishingly alike to both the first settlers and the visitors. They prove beyond question that the Central Plains Country as a stockfarming and as an agricultural section, is second to no portion of our great

[ continued on page 2 ]



CANYON CITY COURTHOUSE.

This cut also shows the county officers. Reading from left to right we have: M. F. Slover, Sheriff and Tax Collector; R. B. Redfearn, Treasurer; J. A. Tate, County and District Clerk; Hon. J. M. Vansant, County Judge; A. S. Rollins, Esq., County Attorney; R. E. Foster, Cattle and Hide Inspector, and S. V. Wirt, Chief Justice and Deputy Sheriff.



# Homeseekers=Land Buyers

BUY YOUR TICKETS TO CANYON CITY, TEXAS AND CALL AT THE HEADQUARTERS OF THE HALL-ABBOTT LAND COMPANY

There you will be furnished all the information, to the slightest details, that you may want, regarding Panhandle or Plains Lands either in small or large quantities, for homes or investments. Our long experience in this country (we were here among the first) and our thorough knowledge of its conditions, as well as its people, enables us to secure the very best bargains to be had here. We sell these lands ourselves, employing no "roppers in," and at a very small margin of profit—our customers get the benefit. If you can't come write us and we will gladly give all the information it is possible to secure. If in doubt as to our responsibility, we can refer you to any bank or business man in this town or any bank at Hereford, Texas. To make friends of our customers is our constant desire and to this end we always work.

## HALL-ABBOTT LAND CO.

CANYON CITY, TEXAS

### THE LONE STAR STATE.

(Continued from page 1)

State.—And when the health giving qualities of our Plains climate, our pure water and the price of lands is taken into consideration there is no portion of the Lone Star State that begins to offer such opportunities for homes as does the Central Plains.

#### RANDALL COUNTY

By reference to the Panhandle map, to be found elsewhere in this paper, it will be seen that Randall County is about centrally located in the Panhandle and is also within that portion of it designated as The Central Plains.

This county, Randall, was organized in 1889. Among those now remaining with us who were citizens at the time of organization are the following:

W. F. Heller; W. C. Baird, John Hutson; J. W. Turner, J. W. Cartwright, Frank Demery, H. B. Molyneux, Heberd Smith, H. E. Wesley, David Thomas, L. G. Conner, F. Hoffman, H. T. McGee, S. H. Heyser and N. Thompson. A remarkable statement can be made here: Not one of the 150 or more citizens here at the time of said organization have died in the county and those whose names are not given are, most of them, still living at various points on the plains.

The first county officials elected by the people were: County Judge, M. M. McGee; County Clerk, W. F. Heller; Sheriff and Tax Collector, Sam Wise; Assessor, Jas. Atkinson; County Treasurer, A. George.

While the soil in Randall is about of a whatness with other counties of the Central Plains, it, as a county, still possesses advantages not enjoyed by its neighbors. Chief, perhaps, among these advantages are its living waters and its canyons. These waters are furnished by the Palo Duro and the Tierra Blanco



RAILWAY CROSSING ON PALO DURA CANYON AT CANYON CITY.

In this picture we have a view of the natural crossing on the Palo Duro Canyon taken when the passenger train on the Pecos Valley Railway was coming into Canyon City. In the near background may be seen the entrance to the canyon proper—the gorge—just below the town. The house shown is the old headquarters of the T Anchor Ranch, at one time a big syndicate holding and one of the largest cattle ranches in Northwest Texas even in those days of big ranches. John Hutson, still with us and one of our most enterprising citizens—always into everything his whole length that tends to benefit town or county—a large land holder in the county as well as our foremost breeder of Registered Herefords, was for several years, beginning in the early "eighties," manager of this ranch. This old ranch has the distinction of being the first settled habitation of man on the Central Plains. It was staked out in the "seventies" when Indians, buffalo and other wild game were as plentiful as seed ticks in Florida. Connected with this old ranch and the characters that at times figured in its history many fine tales could be told in which some of the scions of old English and Scotch Homes cut no inconsiderable figure, but we will leave this feature for a future edition of The News to deal with.

Rivers which, heading in New Mexico, flow diagonally across the county. Making a junction just below the town of Canyon City these two streams, now one, enter the gorges of the famous Palo Duro Canyon and thence to the Red River of which they are the head waters. Here in these canyons, just below the town and extending on through the county and for miles below are, we may say, the only natural timber growths of the Plains. It is hard to express on paper, limited as this article must be, the wonderful scenic grandeur of this canyon. Government engineers, however, have stated and we have no reason to doubt it, that its wonderful attractions vie with those of the world famous Yellowstone Park. Its form on the top is like unto that of the famed gorges of Colorado, a chasm, a fissure, a crack in the earth, most certainly of volcanic origin and ranging in width from two to eight miles and in places 2000 feet deep. In these canyons may be had and enjoyed some of the highest conceptions of an all wise God's wonderful

works, and fancy run riot in the drama of past ages. Here the black bear still has his home; here the black-tail and the red deer are still unrestrained of their liberty and the nightly music of the coyote recalls the memories of more primitive days. Before passing these streams of Randall county mention might be made that they together with many lakes in the county are well stocked with black bass and several other toothsome members of the finny tribe.

Aside from the brakes which form the watersheds of the two streams mentioned Randall county is all arable land. The northern part of the county is of the black variety and the southern portion, or most of it, contains enough sand to scour a plow at all seasons of the year. Either kind produces well—no difference in this respect perceptible to the editor of the News—and each has its friends.

We who reside here and have also a knowledge of the other Central Plains counties think, and perhaps

much and so do our neighbors of Swisher, Deaf Smith and Hale, of their counties. There is quite a friendly rivalry on this question now since the Plains country is attracting so much attention abroad, but all admit that in so far as the productions of the soil is concerned, all are good.

#### THE RAINFALL

With the quality of the soil fixed as of the very best and the climatic conditions satisfactory about the next question that is asked by the practical farmer is, what about the seasons, have you sufficient rain in this country with which to make crops?

For answer to this important question consult the government tabulated report of our rainfall elsewhere in this paper. From this you will find that our rainfall, for ten years back, gives a general average of 22 inches. Davenport, Iowa for the same period (Continued on page 5)



FIELD OF ALFALFA.

This picture was taken on C. T. Word's farm on the Tierra Blanco Creek, one mile east of Canyon City. Mr. Word has in about 200 acres of alfalfa on this farm and had four cuttings last year, of an average of about one ton per acre to the cutting. This farm is creek land, sub-irrigated, of which there are perhaps 10,000 acres in the county, about one-tenth of which is already "set" in alfalfa. It makes on these lands every year and the term, "Is better than a gold mine," is not at all misapplied in this case.



# Canyon City Business Concerns.

**Leading Business Institutions, Their Proprietors and Managers--Not all of Them, But Some of the Most Prominent, and a Little History of the Country Thrown In.**

In all the lines of writing no subject is so difficult to handle satisfactorily to all concerned as that which deals with personal effects and individual merits. To take a town of 1,500 inhabitants and deal with every unit separately and apart from the others, giving unto each its just dues, as measured in the public eye would be a task indeed and even if attempted, could have no other effect than to weary the general reader who, interested in editions of this character, looks more to matters than to men. Then, again, we have citizens in this town, they are everywhere, who have a special aversion to seeing their names in the public prints. They don't like it, they say, they don't want it "done at all" and so, as in this instance, many of our leading citizens, prominent in our affairs of business, are, of their own volition and on their own motion, not mentioned under this heading. Several, however, whose business interests and untiring efforts have helped to make the town what it is today, have consented that their names and business can be used in this connection, and we head the list by presenting to our readers the "Father of Canyon City."

**L. G. CONNER,**  
dealer in  
FARMS, RANCH LANDS AND CITY  
PROPERTY.

Mr. Conner came to this county and located the section where Canyon City now stands, Christmas 1887, and on Jan. 3, 1888, the first building material was placed by him upon the site.

But five settlers were in the entire county at this time and many, indeed, were the hardships endured in the way of transporting supplies etc.

July 27, 1889, as previously mentioned, the county was organized and its history from that date to now, it may safely be said, has been one of permanent growth and general progress. From the very beginning, Mr. Conner has been of the first to take a hand in this up-building. He was the first Postmaster of the town, the only one in the whole county at that time, and had, what do you think of it Old State Readers? his office in a dugout. He erected the first hotel in Canyon City, naming it after his wife Victoria, and it still goes by that name, and also the first general store building; in fact, there is no enterprise, small or great, which has had for its object the benefit of town or county, but what has received this gentleman's hearty support.

Mr. Conner opened the first real estate office in Randall county—and by close attention to matters pertaining to this business and by his sterling integrity in every detail connected therewith—honest alike to seller and buyer—he has built up a reputation that might well be the envy of any man in Texas.

Mr. Conner has always done a good business and always will. Owners of property trust him implicitly and buyers coming to know him, give him their custom.

Mr. Conner has made lots of sales this year and right now has, all told, 100,000 acres of fine land for sale. He offers this land in tracts to suit purchasers, large or small, and will take pleasure in answering all inquiries touching the same. As Mr. Conner says:

"Randall county is offering some

rare inducements just now. Land that now may be had at from \$10 to \$15 per acre will be \$20 to \$25 in two years if the ratio of increase of the past two years be kept up."

In this view Mr. Conner is correct and as "opportunity knocks but once at each man's door," it would indeed be a good plan to act now if you want land on the Central Texas Plains, and you can't do better than deal with L. G. Conner.

**KEISER BROS. & PHILLIPS**  
REAL ESTATE  
Keota, Iowa.  
Red Key, Indiana.  
Canyon City, Texas.

The wonderful success of some men, may be attributed to being at the right place at the right time. And in no instance is this more true than of Keiser Bros. & Phillips the large real estate firm recently organized in our city.

They have erected a fine office, two stories, with brick foundation and porches on two sides, near the Victoria Hotel where they will conduct one of the leading real estate businesses to be found in the Great Panhandle of Texas.

If starting right means anything then this firm will do well for they propose to do a real estate business upon strictly business principles. After deciding to locate in



L. G. CONNER.

the state of Texas they made thorough investigation of the resources of the different parts of the state and spent many months looking into this, in all its aspects, considering high price land and land of lower value all over the state and at no place could better inducements be found than in Randall County, near Canyon City.

After deciding to locate here they bought outright 37 sections or 23,680 acres, part of which they have now surveyed into quarter sections.

They purchased this land at a close figure and intend to colonize it with people who are tired of farming the high priced land of the North and East.

Already they have let the contract for the building of a new school building, now being erected, and propose to have every modern accommodation for the people who buy a home from the firm.

**THE LAND**

No where in the county can a more beautiful tract be seen. Here for miles and miles the rolling prairie of rich chocolate loam covered with green grass with now and then a fine wheat, oat or alfalfa field

make one feel like stopping when on a drive and exclaiming "here is paradise."

For indeed it seems to be so to the farmer.

**MOISTURE**

The rainfall is abundant and falling as it does during the growing season enables crops of small grain, alfalfa, kaffir corn, maize, etc. to grow in abundance and produce the same crops raised on \$100 per acre land. The land is just rolling enough to cause perfect drainage.

**THE OBJECT**

This Company handles no land on commission, but own every foot they offer for sale and, like the Maywood Colony of California and many other colonies, they propose to colonize this land with actual settlers of the better class.

Already many inquiries have commenced to pour into their office asking about prices, terms, etc., and the prospects are so bright for the firm that they have already commenced to buy more land.

**LOCATION**

This large tract of land lies in the southern part of Randall county beginning 4 1/2 miles from Canyon City and all of it close to the new railroad from Canyon City to Plainview and a more ideal location could not be found.

This Company is composed of solid business men and men who have held the highest esteem of the people where they were formerly in business, and they come to Canyon City well recommended.

The firm consists of W. S. Keiser, Groton, South Dakota, S. I. and C. O. Keiser known as Keiser Bros., Keota, Iowa and George Phillips of



FIRST NATIONAL BANK BUILDING.

Campbell, F. P. Wilson and I. L. Hunt.

Every one of the above named gentlemen are men of ability and closely identified with the best interests of Randall county.

They have for their correspondents such well known banking houses as The Hanover National Bank, N. Y., National Bank of Commerce, K. C., and American National Bank, Ft. Worth.

This bank is a credit to our city and one that asks for your patronage by giving every courtesy and accommodation to be secured from any institution.

**BURTON-LINGO LUMBER CO.**  
J. S. MURPHY Manager.

No firm in the southwest has done more to advance every business enterprise than the Burton-Lingo Lumber Company.

They entered this field fourteen years ago by establishing a wholesale and retail lumber business at Ft. Worth, Texas and from that date to the present time their business has grown by leaps and bounds.

They operate yards all over the state of Texas and have as good facilities to furnish lumber and building material as any other firm in the state.

Among one of the prominent yards and the one that interests our people was established here by this company five years ago and has ever since been closely identified with Canyon City.

Mr. J. S. Murphy the manager here is one who has a thorough knowledge of every detail of the business and always carries a complete stock consisting of Lumber, Laths, Shingles, Doors, Sash, mouldings, Lime, Cement, Plaster, Ready Roofing, Lining Papers, in fact, all kinds of building material.

The facilities here are unsurpassed for filling orders promptly and Mr. Murphy is making every effort to please the trade in this section of the state.

All customers will find him courteous and always ready to estimate their bill and extend any accommodation consistent with good business principles.

It is such firms as the Burton-Lingo Lumber Company that are building Canyon City.

**NORTH-WEST TEXAS TELEPHONE CO.**

J. L. HOWELL JR., Manager.

The fact that the North-West Texas Telephone Co., has placed in operation the most approved type of apparatus known to telephone art, is to be regarded as an earnest intention to continue its efforts to furnish the people of this very rapidly growing town the very best to be had.

The ingenuity and skill of the thoroughly organized engineering

department of this company is being constantly taxed to devise the equipment and appliances so necessary to improve and make more efficient the service rendered.

Enterprise and Progress is the watch word of this company and its efforts should be convincing proof that it has an abiding faith in the continued prosperity of Canyon City.

The number of subscribers in Canyon City at the present time approximates 185 and since this number is being added to at a very rapid rate, and as the list of subscribers in other towns is being increased proportionately it should be plainly apparent that the value of service is being enhanced to a remarkable degree. The company's territory covers Canyon City and the following towns: Amarillo, Happy, Tullia, Silvertown, Wright, Plainview, Lockney, Floydada, Petersburg, Hale Center, Running Water and Lubbock, besides many miles of line to their rural subscribers.

The manager of this company, Mr. J. L. Howell Jr., takes pleasure in seeing that all of his patrons receive courteous treatment and can always be found working for the interests of his patrons and for the advancement and welfare of the entire community.

**NOBLES BROTHERS GROCERY COMPANY.**  
WHOLESALE GROCERIES.  
This concern is one of the largest of its kind in the Great Panhandle. They are wholesale grocers and importers of note, the name of the firm standing for superiority in every-



MISS MAMIE E. CONNER.

Miss Mamie is the daughter of L. G. Conner, founder of Canyon City, and the first white child born in Randall County, January 19, 1889, was the date of her birth. The News was unable to obtain her consent to have a new photograph taken from which to get a good plate for this edition and so was obliged to use an enlarged copy from a small picture taken several years ago. Were it not that Miss Conner was the very first native of the county in the sense stated, the News would not have dared over her positive objection to use her picture at all. We trust, however, that Miss Conner will pardon us for so doing.



# HOMES IN THE PANHANDLE OF TEXAS

## KEISER BROS. & PHILLIPS

The land in the corn belt is too high for a poor man and is no longer the best investment for the rich man to make.

Get a valuable home in the Panhandle for little money by buying directly from us. We have all the lands you want. We own them, and save you the excessive commissions. The buyers get these benefits.

We have personally selected all our lands, and every section we offer for sale contains 640 acres that can be plowed and cultivated.

Come and see us, or learn more about our business by addressing or calling on

# KEISER BROS. & PHILLIPS

CANYON CITY, TEXAS

KEOTA, IOWA

RED KEY, INDIANA

### Canyon City Business Concerns.

thing that they handle from the smallest to the largest.

The business was established seven years ago and from its inception to the present time it has ever been on the increase until today they enjoy a trade covering thousands of square miles.

Their two houses in Canyon and Amarillo are large and well equipped and every attention is given the retail trade in all towns all over this part of Texas and New Mexico.

#### R. A. SOWDER LAWYER AND ABSTRACTOR

The legal talent of Randall is represented by men of marked industry.

Prominent among them is R. A. Sowder the subject of this sketch. He graduated at the University of Texas class '01 and located and commenced practicing law in Canyon City, August 1902.

He practices before all the courts of the state and has by energy and close application established a fine business.

In addition to his legal duties he also conducts a first class abstract office and guarantees satisfaction in all work intrusted to his care. All abstracts made by him are copies of the conveyances themselves beginning with the granting clause down. Mr. Sowder is prompt and reliable and has every interest for the welfare of Canyon City at heart.

He has an office well equipped and always makes you welcome when calling on him whether on a business mission or for entertainment.

#### BUIE & SCOTT, ATTORNEYS-AT-LAW

Judge B. Frank Buie, the senior member of this firm, has resided in Texas for twenty-five years, during

which time he has given the land laws of Texas a close study and he is familiar with all points that arise in examining titles to Texas lands. He has resided in Canyon City eight years.

W. D. Scott, the junior member of this firm, is an attorney of ability, being a graduate of the Lebanon Law School, Tennessee, of the class of 1900. This firm will do a general law practice in all the courts of the state, and give special attention to examining titles of Texas lands for all who may desire their services—and can give the best of references. See their card in this issue.

#### A. S. ROLLINS, ATTORNEY AT LAW AND NOTARY PUBLIC

For the past three years this prominent attorney has taken an active part in the practice of law in Randall and joining counties.

He is a graduate of the University of Texas, a lawyer of ability, also a Notary Public and Abstractor.

Mr. Rollins makes a specialty of furnishing abstracts and has every facility to properly handle this business in a prompt and satisfactory manner.

He holds the highest respect of the bar and has ever been a man to advance the best interests of our city and county. As our present County Attorney he has proven a success and fully deserves his extensive popularity.

#### DR. D. M. STEWART, PHYSICIAN AND SURGEON

In giving this business review of Canyon City and leading citizens, it becomes necessary to mention our professional men. Prominently among them we wish to mention the

subject of this sketch, Dr. D. M. Stewart.

Dr. Stewart is a graduate of the Tulane University, Medical Department, New Orleans, La., and has served many months in hospital practice.

He has been practicing his profession for the past twelve years with great success and for the past five and one-half years has been one of the leading physicians of Canyon City.

His ability and skill in a professional line are appreciated by all our people and he holds the utmost confidence of the public in general.

Dr. Stewart is also a member of the board of health of our town and can always be found advancing the best interests of Canyon City.

#### DR. G. J. PARSONS, PHYSICIAN AND SURGEON

While it is not our intention to advertise anyone in a professional way, yet it becomes necessary to mention in an edition of this kind our physicians.

No town in Texas can boast of having better qualified men or men who have given closer study and application to this profession.

Dr. G. J. Parsons the subject of this sketch is a graduate of Barnes Medical College of St. Louis, Mo., and has practiced medicine for the past nine years, seven of which were in Canyon City.

He has a complete set of surgical instruments and every modern appliance needed in his profession.

Dr. Parsons is the medical examiner here for some of the leading life insurance companies and holds the highest esteem and confidence of all our people both in a professional and social way.

#### D. N. REDBURN,

DRY GOODS GROCERIES, PRODUCE, ETC  
One of the new business industries

to chronicle in this special edition is that of Mr. D. N. Redburn.

Mr. Redburn has been located in the General Merchandise business here since Nov. 1, 1905, and carries a good line of staple and fancy groceries, gents furnishings, notions, hats, including the well known and popular Graham & Roelofs brand.

He pays the highest market price for country produce and this store is headquarters for good bargains and high quality merchandise.

He makes special sales at different times, for instance he is now selling 10 bars Clariette soap for 25 cents, 4 cans best corn for 25 cents and flour from \$2.40 to \$3.00 per hundred, and being a good buyer from the best markets he naturally gives his customers the benefit of this experience.

We are glad to note his increasing success and extend a cordial invitation to our readers to call and inspect his stock and ask prices when in Canyon City.

#### KING & PARKS, GROCERIES, CONFECTIONERIES, FRUITS, ETC.

Those who desire to buy pure can goods of the highest quality or the sweetest of confectionery will find the popular establishment run by Messrs King and Parks the proper place to visit.

While their stock is not so large, yet they are rapidly coming to the front and making many new customers by always keeping nice fresh goods in stock.

They make a specialty of the noted Supreme Texas Beauty Flour and many housewives are made glad to be able to secure this article.

No firm is more courteous or pays closer attention to business than King and Parks and they invite the trade of all our people.

#### WILBERT PETERSON, JEWELER AND WATCHMAKER

No one that is not a practical

jeweler is able to pass upon the value of his wares for many men

who sell jewelry such as proprietors of general merchandise and department stores, do not know the difference between a 20 year gold filled case and a cheap plated case, or between a 23 jewel and 7 jewel watch. Such is not the case with the subject of this sketch, Mr. Wilbert Peterson, who has had 12 years experience in the jewelry trade four of which were spent in St. Louis.

He came to Canyon City in December, 1905, and carries a complete line of watches, jewelry etc.

The watches he carries will stand railroad inspection and the public can secure from Mr. Peterson any of the high grade movements from a seven jewel Elgin or Waltham movement to a 23 jewel work.

In addition to handling a first-class line of jewelry, Mr. Peterson also does repair work in a first-class and scientific manner.

His skill and ability in this line of work is meeting with the approval of the people of Canyon City and surrounding country.

#### BEAVER & BURCH

This new business enterprise might well be termed the Palace of Sweets. They constantly carry a complete line of confectionery, fruits and pastries of all kinds, made fresh every day.

Messrs. Beaver and Burch the proprietors of this popular place are young men of thorough experience, and the great success they are receiving is due to their courteous treatment, and always being ready to please every customer.

All the stock is made of pure ingredients and with practical knowledge and they guarantee the readers of this paper that all purchases made at this popular bakery will give satisfaction.

They have ample facilities to furnish the trade of our town and surrounding country and no firm in our town is more deserving of success.



**THE LONE STAR STATE.**

(Continued from page 2)

of time shows 21.6 inches and Chicago, Illinois, only 19.7 inches. According to government authority 16 inches is amply sufficient for staple crops and this is abundantly proven by South Dakota, which on a general average of less than 16 inches is well in the front as an agricultural success. And then, again, by observation of our rainfall table it will readily be seen that rain on the Plains falls chiefly during the warm months—the growing season—thus giving this section an enormous advantage over many agricultural countries where the rainfall, though heavier than ours for the whole year, comes down chiefly in late fall and early spring when rather a disadvantage than otherwise. If you reside out of this state compare the facts here given with your own rainfall and note the difference. The experience of The News editor is, that the rainfall in Randall county is ample for all staple crops suited to the climate, if given proper cultivation.

**RANDALL COUNTY PRODUCTIONS.**

In speaking of crops it must be understood that very little if any farming was done in Randall county, or anywhere else on the Central Plains for that matter, prior to 1893-4. The purpose here, however, is to go back as far as possible—to the beginning, when we came, that the reader may judge of the possibilities of the future by the history of the past—a safe rule always. As a general rule all field crops of the Middle States succeed here. There are exceptions, however, both for and against us in comparison and of some of these, if not all, we will now speak.

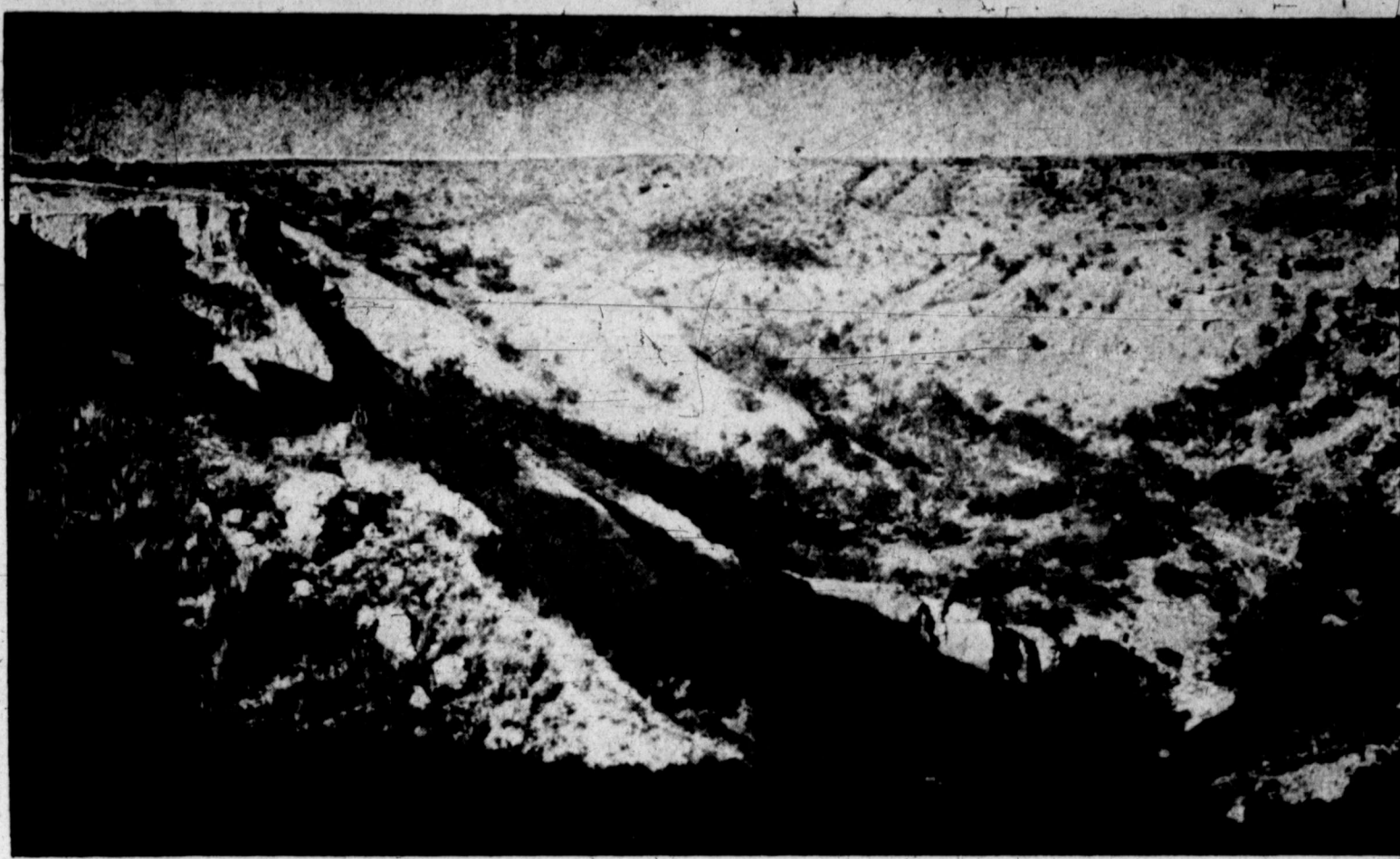
**INDIAN CORN**—On this staple we concede that the Central Plains is not what an Indiana or Illinois man would call a "corn country." Corn will grow though and one year with another produce as well as any other part of Texas, the river bottoms alone excepted. Rev. B. T. Johnson, a Baptist preacher originally from Kentucky—now of this county, says, that during his thirteen years residence in Randall and the adjoining county of Armstrong he has made that many corn crops, that his average yield per acre for the term would not fall short of twenty bushels, and that several years out of the thirteen, he has made as high as forty and even fifty bushels per acre. Not bad is it? The News editor has an idea that it takes hot nights to mature great yields of corn and these we don't have on the Plains nor do we desire them.

**MAIZE AND KAFFIR CORN**—These are sure crops in Randall county; nowhere do they grow and yield to better advantage. It is not at all uncommon for maize and Kaffir to

yield 2,500 pounds of heads or grain per acre, and as this is equal pound for pound in feed value with Indian corn and the fodder much superior to that of Indian corn, it will be seen that it is far more profitable to raise. As a horse feed, either in the head or ground, we regard it as much better than Indian corn and hogs running in pasture and finished on it, shipped from Randall county in car lots, have always commanded top prices in the great markets.

**WHEAT AND OATS**—Last year the average yield per acre in this county was about twenty bushels. Deaf Smith county, joining us on the west, claims an average of thirty bushels for last year's crop, and a general average of twenty bushels per acre for the next preceding eleven years, one failure alone excepted, that of 1903. Oats have also done well but as they have been mostly fed in the bundle or baled, the editor of The News has been unable to come at, with any degree of accuracy, the yield per acre. Several old settlers, however, say that the general average would run about "forty or fifty bushels." One old settler and strictly reliable citizen, George Caler, Post-office Happy, this county, originally from Grayson County, North Texas, who has been here some thirteen years, says, that these crops, in fact all small grains, will do fully as well in Randall as in his old county of Grayson. Rye and barley, to the extent tried, have also made a fine showing.

**FORAGE CROPS**—Perhaps the leader of this line is alfalfa. Some of it is grown on the uplands or Plains proper, but by far the greater portion of it is from the valleys of the creeks mentioned, the Palo Duro and Tierra Blanco. These valleys of which there are estimated to be some ten thousand acres in Randall county are termed "sub-irrigated," it being only from eight to ten feet down to the water. As yet only about one thousand acres of this has been "set" in alfalfa. In this there is practically nothing to do but cut, bale and haul to market—Canyon City, where \$10 per ton has been the prevailing price for all so far offered. It usually makes about five cuttings to the season of about one ton to the acre at each cutting. Much of the alfalfa produced here has been shipped to Fort Worth and other eastern points in Texas, and has been pronounced there as far superior in quality as hay to either the Kansas product or that from the irrigated lands of the Pecos Valley. An alfalfa field is a great and most desirable thing to possess; our people are realizing this fact and many acres have been sown this year. Full information about these alfalfa lands and the prices at which they may be obtained can be had of any agent named in this issue. They are cheap now and may be had at



A fine view in the famous Palo Duro Canyon, Randall County, Texas.

bargain prices, but it won't last long this way.

All the millet family thrive in Plains soil; in fact when once sown it hangs on year after year and you can hardly get "shut" of it. And as to sorghum, no country can beat the Plains for this class of forage. Of other forage crops it may truthfully be stated that all tried so far have proven a success.

**HOGS, CHICKENS ETC.**—The Plains hog is fully as good as those produced in the corn states or anywhere else. Hog cholera is unknown here and Plains hogs finished on native crops have always brought top prices in the Kansas City or Ft. Worth markets. Turkeys, chickens and all fowls are also money makers here—nowhere do they do better.

**FRUITS**—The apple, plum, cherry and grape leading, have all so far done well—see cuts taken from life in this paper. The small fruits are just being introduced and right now some of our citizens are eating fine strawberries from plants set out this spring. They promise big results and so do the bush fruits such as gooseberries.

**VEGETABLES**—In this department we can safely say that nowhere do vegetables grow to better advantage than in Randall county. The writer has visited the truck gardens of the coast; he has seen and for years partaken of the luscious melon and other growths of the famous lower Colorado River truck farms, but never there, or anywhere else, has he seen Randall county surpassed in the melon or vegetable line. Cabbage, good sound ones, weighing 20 pounds and over are not rare during their season in Randall county. And melons and cantaloupes, the writer loves them dearly, seem to taste better here than any we have ever eaten—they are good enough to eat "under the shade of the trees," by the side of that River that "never runs dry."

**WATER FACILITIES**

Nothing, perhaps, save the air we breathe, among all of Nature's gifts is so essential to man's welfare, comfort and happiness, as pure, clear, cold water and plenty of it. In this respect Randall county and the whole Plains country for that matter, is particularly blessed. Independent of the creeks named, peculiar to this county alone, and the numerous fresh water lakes in which the county abounds, there is an inexhaustible sheet of pure, cold water underlying the entire country. It may be tapped anywhere at a depth of from 60 to 150 feet and at a nominal cost, say 30 cents per foot. These wells are through soil and clay all the way down, the water usually being "struck" in a kind of a pack sand. No curbing is needed further than a joint or so at the bottom, and nothing so far has been



Cow Camp on Sunday Creek near the famous Palo Duro Canyon in Randall County, Texas.

found capable of pumping them dry. Lots of our people in addition to watering stock at these wells, use the water to irrigate gardens and yards with, and some of them have also large ponds, fed by windmill pumps and well stocked with fish. This is easily done as the surface earth, especially in the black or tight lands hold water like a jug. Indeed, of no other county can it be so truly said, that water is so good and so plentiful.

**TAXATION**

The State, County and special school tax—all the tax there is—does not exceed fifty cents on the hundred dollars of the actual value of the property assessed.

**THE CLIMATE**

The climate has been alluded to in a general way before, but we will say further, that during summer and fall it is almost ideal. No hot sultry nights here as in lower altitudes; cover is always necessary for comfort at all seasons. There is rarely any very cold weather until January and the worst is generally over by March; zero weather is an exception—to go below is very unusual. We have winds during the spring months, but destructive tornadoes and cyclones are unknown here.

**CANYON CITY**

While Canyon City lays no claim to being the best place in the world it does not fear inspection upon the part of those who desire to live and raise their families in a good town, with a refined highly moral citizenship and exceptionally fine business opportunities; it rather invites this inspection.

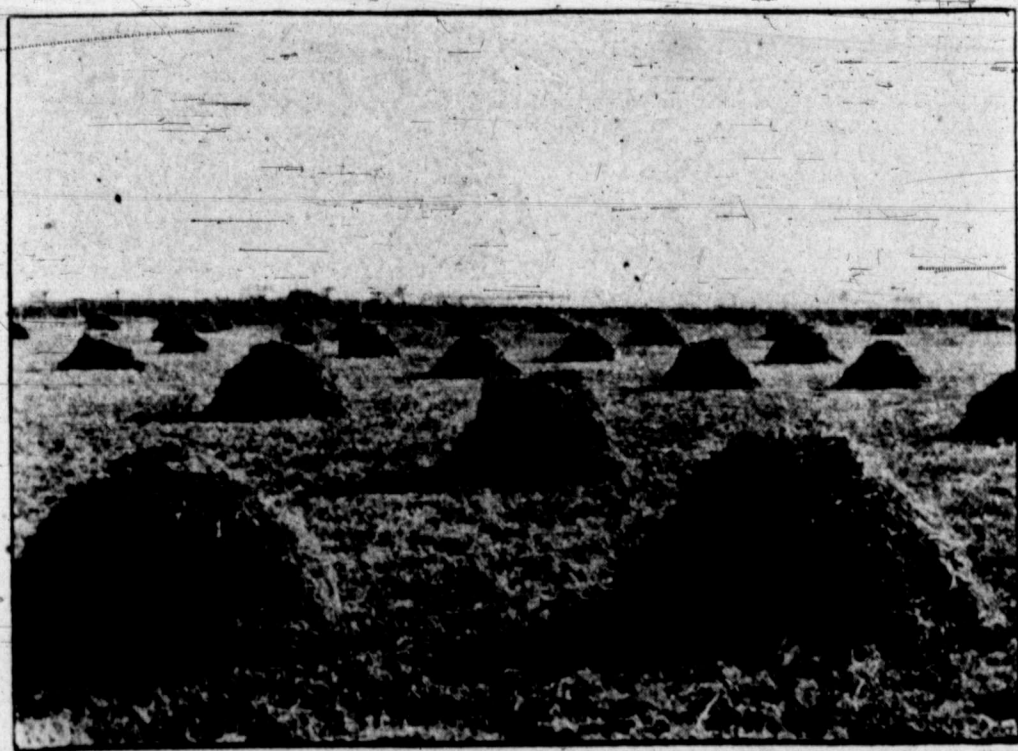
The town is situated on an eminence which forms the divide between the Palo Duro and Tierra Blanco Creeks at this point about two miles apart. This gives it a natural drainage impossible to secure at almost any other town on the Plains. One result of this is that Canyon City today can show a cleaner bill of health than any other

town, according to population on the Plains. We confidently challenge anybody to refute this statement.

The present population of the town is close to 1,500. The scholastic census, just completed shows 268, which when added to those between the ages of seventeen and twenty will make the number approximately 330 children enrolled as eligible under the law for entry in the fall term of school.

The town is on the Pecos Valley and Southern Kansas Railway, a branch of the Santa Fe system which, as soon as the Texas-Belen-cut-off is completed, now almost done, is to become the main line of the Atchison, Topeka & Santa Fe from the great commercial centers of the East to the gateways of the Pacific in California. It is also the terminus of another Santa Fe branch, the

(Continued on page 6)



**UPLAND ALFALFA.**

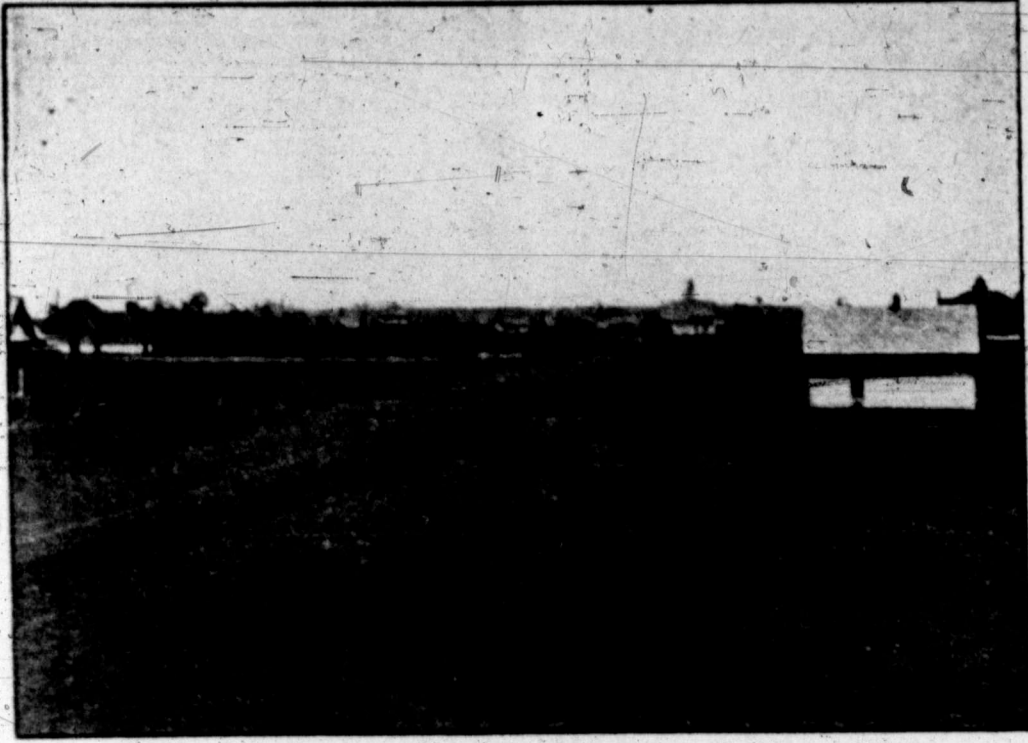
This was taken from a field of four acres, the property of R. W. O'Keefe, about one mile north-west of the Court House, in Canyon City. It made four cuttings last season of a fine quality of hay.



**N. THOMPSON BUILDING.**

This cut fails to do justice to the building. It has a plate-glass front and is 30x100 feet. It is now occupied by the Canyon Mercantile Company.





CANYON CITY.

This view was taken in the west edge of town looking toward the Court House

**CANYON CITY NEWS**

Published Every Friday

By **GEO. A. BRANDON**

Entered at Postoffice at Canyon City, as Second-Class Matter. Office of publication, West Evelyn Street.

**SUBSCRIPTION**

One Year \$1.00  
Six Months .50

**ABOUT THIS PAPER.**

The common every week edition of The News runs from four to six pages, usually four, and the number sent out to actual subscribers is a fraction under 400 copies.

This edition, as will be seen, consists of 12 pages and the number run off the press was six thousand copies.

Some of the cuts used in the illustration of this paper were kindly lent us for the occasion by the Canyon City Real Estate Company, the others were gotten up by this office and the foot notes to all of them were supplied by The News staff.

The reading matter, description of the country, state, county and town, in fact everything except a part of the personal business write-ups, is the work of The News editor. In the writing of these articles the editor of The News has studiously avoided making any statements that he does not believe are born out by the facts. If a residence in the State for nearly forty years tends to the acquisition of knowledge touching its actual conditions then the editor of The News, having had this experience, is surely in a position to tell something of its history; and with the truth ever as his guide, this he has tried to do in this edition.

The News will add further that its editor has neither land for sale of his own nor is he an agent for any—he simply wants to see the country fulfill its destiny—become a prosperous section of farm homes.

Copies of this paper will reach thousands of homes outside of Texas, in some of which there are no doubt people who desire a change; want a more healthful country perhaps, or maybe cheaper lands and to all such we say, come and we will do you good. If in doubt at all as to the statements herein made about this country, or any part of it, write to any of the citizens mentioned in this edition and they will, we think, endorse all we have said regarding it.

Concerning Randall county and the Central Plains country the truth is good enough.

The lands of the "Central Plains Country" are peculiar in being altogether different in quality, and situated with reference to seasons than is New Mexico, which forms their Western boundary. This may sound strange to some, but "seeing is believing," and this fact is self evident to all upon visiting the Plains.

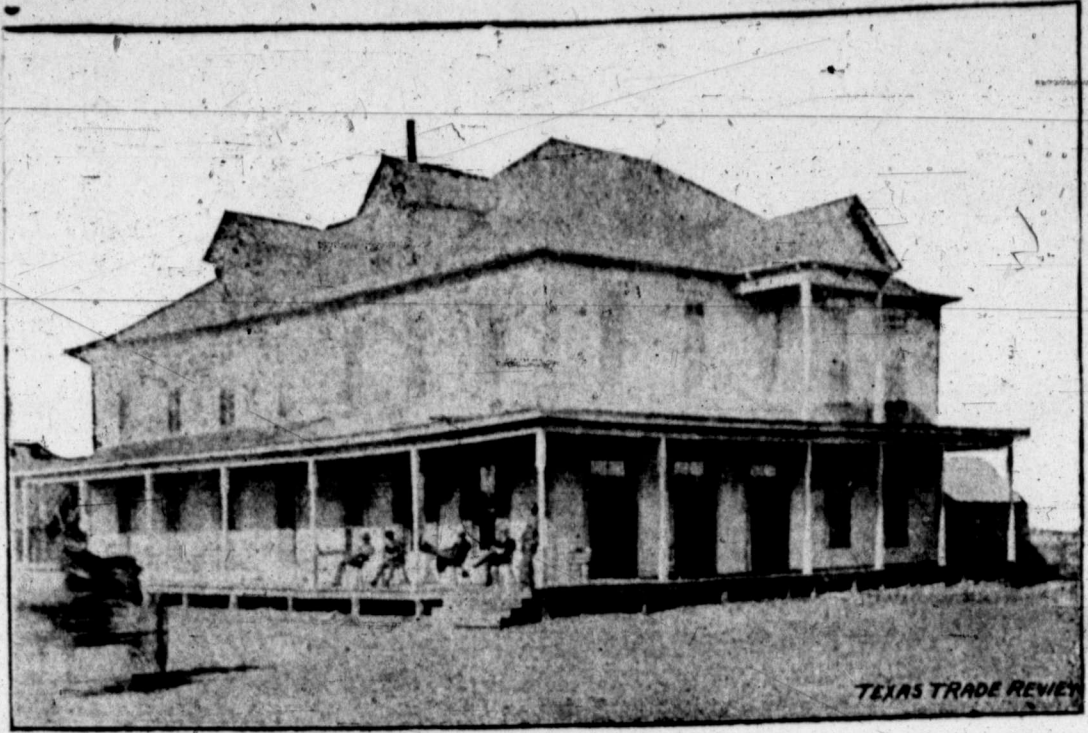
**THE LONE STAR STATE.**

(Continued from page 5)

Canyon City Southern or Pecos and Northern Texas, a line which has for its object a connection with the Gulf, Colorado and Santa Fe at some point near Brownwood. This line is now building from here to Plainview, and is to be finished to that point by fall. Canyon City is also the objective point of the Santa Fe cut-off from Washburn. At present the Santa Fe runs its trains from Washburn over the Denver tracks into Amarillo. The contract on the part of this railway, the Santa Fe, with Amarillo has now expired and it now proposes to come from Washburn straight through to Canyon City. (See map). This will unquestionably give to Canyon City a division and the machine shops and make of the place what it really already is, a Santa Fe town, and one in which the owners of this great railway system can, and will, take an interest in making the leading

southern trade, in the sense heretofore held, any longer than up to the time of this departure of the cars south from here and we don't for a moment indulge in such a thought. Contrary to the expressed belief of some people the knowledge that this southern wagon freight traffic would be lost has rather stimulated than otherwise the business interests of the town. All lines are not only doing well, but are making preparations for an expansion of growth that speaks more eloquently than words of the confidence our moneyed men have in the town's future. In evidence of this, business lots on the public square have advanced at least 100 per cent since grading began on the railroad from here to Plainview. Desirable residences lots have gone up as much or more and new homes, good modern frame residences, have been, ever since winter broke and are now going up like magic. Right now the Methodist brethren have a parsonage on the eve of completion costing \$1,600; T. N. Hicks is building a residence at \$2,200; J. F. Smith one at \$2,200; R. A. Sowder one at \$1,200, and John A. Wallace another at \$1,400.

Of business houses now in process of construction in Canyon City, Keiser, Bros. & Phillips are building a two story frame office that will cost some \$2,500, R. W. O'Keefe and W. T. Moreland all putting up a two story brick on the East side of the square at \$8,400, the Masonic fraternity is erecting a brick hall over the Canyon National Bank at \$3,084, and J. F. Smith is having the foundation laid for a two-story brick 60x130 feet on the South corner of the West side of the public square to cost \$18,000. And this is not all for Contractor Begrin is now making figures on two substantial cement stone edifices for business purposes. Thus it will be observed that Canyon City is marching onward confident in the vast possibilities of Randall County's generous soil and with an abiding faith in Canyon City, the county seat, that will admit of no denial. We know the country is all right, and knowing this, we feel sure that the commercial prosperity of the town is guar-



VICTORIA HOTEL

L. T. LESTER, President D. A. PARK, Cashier  
JOHN HUTSON, V. Pres. TRAVIS SHAW, Asst. Cashier

**The First National Bank**  
3rd Bank Established in the Panhandle  
CANYON CITY, TEXAS

Capital and Surplus	\$120,000
Shareholders Liability	100,000
<b>Total</b>	<b>\$220,000</b>

**DIRECTORS:** L. T. Lester, John Hutson, J. L. Howell, F. M. Lester, R. G. Oldham

This Bank is well equipped to handle all business entrusted to its care and respectfully solicits your patronage.

**The Canyon National Bank**

R. W. O'KEEFE, President J. I. CAMPBELL, Vice-President  
I. L. HUNT, Cashier

**CAPITAL \$30,000.00**

We beg to tender you the services of this Bank for the transaction of any business you may have in this town or vicinity. We have all the advantages necessary for the proper handling of your account.

**DIRECTORS:**

R. W. O'Keefe J. I. Campbell I. L. Hunt  
F. P. Wilson W. C. Baird

CANYON, TEXAS



CANYON CITY PUBLIC SCHOOL

This is a modern substantial structure of brick. In it are taught the common and high school courses with a term of nine months. It is free to all residents between the ages of 7 and 20 years. At present there are some 265 students. Education and the desire to obtain it is the rule here. Ignorance is a rare thing in the Plains Country.

town of the Texas Panhandle. There are many reasons for this belief chiefly among them, perhaps, is the fact that Canyon City has an inexhaustible supply of water, easily accessible that would, if necessary, supply not only all the needs of the Santa Fe, but all the wants of all the railroads in Northwest Texas. This water too has been pronounced by experts as being perfect for the purposes wanted—just the thing for engine boilers—and not to be found anywhere else along said railroad lines in quantity and accessibility required. As a prominent Santa Fe man said a few days ago: "It is hardly a matter of choice, we are going to be obliged to put our shops at Canyon City."

Canyon City has been for some time and is now the leading stock shipping point for the central plains country. It is also the largest wholesale center, being the distributing point for the whole South Plains. This of course, will all be changed on the completion of the line from here to Plainview. It would be folly to suppose that we could hold this

anted.

**CHURCHES.**

Canyon City people are church going. There are five organizations here, Methodist, Baptist Christian, Presbyterian and Christian Science. All five own their houses of worship and the first named four have stationed ministers who reside in substantial parsonages owned by their several churches.

**SCHOOLS.**

We can't say too much in behalf of our schools. The present principal, A. Ernsberger, A. M., is one of the best in the State and the fact that he and his present corps of assistants have been retained year by year and are again engaged for the next term is ample proof of the efficiency of our Canyon City school faculty. The school building, (see cut) is a substantial brick and will afford ample accommodations for twice the present number of students. The number now enrolled is approximately 330. Eleven grades are taught, the term is nine months and all students between the ages of 7 and 20, residing in the district are admitted free.

This free school system extends throughout the county and the facilities for education, while not so good outside of the county seat, Canyon

City, on account of present sparse population, are nevertheless, excellent in almost every part of our county.

**SOCIETIES.**

Among the fraternal orders represented here are the Masons, Odd Fellows, Knights of Pythias, Redmen and Woodmen. All have lodges and are in a thrifty condition.

**GENERAL CITIZENSHIP.**

Our citizens, town and county, God fearing, intellectually and morally, are among the best to be found anywhere. Crime is almost unknown, our jail is empty and has been practically so for years—never did have any use for it save to hold a prisoner for some neighboring county that had no jail at all. Our courts, except a little civil business, have practically nothing to do.

**FINIS**

The purpose of this whole article, from State to town inclusive, has been to state briefly what The News editor has gathered from ex-

perience and observation touching the subject at bar. He has tried to give the facts without either gloss of words or polish of rhetoric. Allowance, of course, must be made for pride of country. This, if a crime, he now confesses to and in the language of the immortal Scott will say:

Breathes there a man with soul, so dead,  
Who never to himself has said,  
This is my own, my native land!  
Whose heart hath ne'er within him burned,  
As homeward his footsteps he has turned,  
From wandering on a foreign strand?  
If such there breathes, go mark him well;  
For him no Minstrel raptures swell;  
High though his titles, proud his name,  
Boundless his wealth as wish can claim,  
For despite those titles power and pelf,  
The wretch, concentrated all in self,  
Living, shall forfeit fair renown,  
And doubly dying shall go down,  
To the vile dust, from whence he sprung,  
Unwept, unhonored and unsung.

**NO SAKOONS**

With the exception of Amarillo, all the Central Plains has prohibition.



Millet field on J. L. Prichard's farm, 3 miles South of town



**The Season's  
Most Approved  
Styles In Shoes**

**Friedman's**

**Low Shoes**  
are built on Oxford lasts  
making them fit natural-  
ly and comfort-  
ably. We  
have a full  
line of  
Latest  
Styles



A nice line of La-  
dies, Misses and  
Childrens Oxfords

Ladies Oxfords, Vici  
Lace, Vici  
Blucher **\$1.50**  
to **\$3.00**

Misses Vici Lace, Vici  
Blucher, Patent Blucher  
& White Can-  
vas Blucher **\$1.00**  
to **\$2.00**

Children's Vici Lace,  
Vici Blucher, Patent  
Blucher and Can-  
vas Blucher from **90c**  
to **\$1.50**

Call and see our line  
before you buy Shoes

**Canyon Mercantile Company**

**JOHN BEGRIN  
CONTRACTOR AND BUILDER**

ESTIMATES CHEERFULLY FURNISH-  
ED ON BRICK AND CEMENT WORK

25 YEARS EXPERIENCE IN THE BUSINESS

**Help Us To  
ADVERTISE  
Our Country**

**PREMIUM LIST**

\$2.50	Best Bundle Millet
\$2.50	" " Wheat
\$2.50	" " Oats
\$2.50	" " Barley
\$2.50	" " Rye
\$2.50	" Bale Alfalfa

**GOLDEN BELT LAND CO.**

**WILBERT PETERSON  
JEWELER**

WATCH & CLOCK REPAIRS & CLEANING  
Estimates made, reasonable prices.  
**ALL WORK GUARANTEED.**  
CANYON CITY, - - TEXAS.

All kinds of Racket Goods,  
School Supplies and Confection-  
ery at Wilson's. Try us.

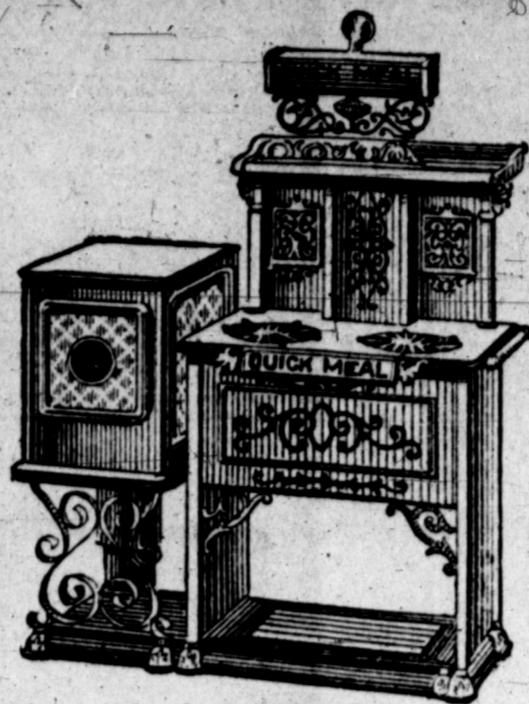
Amarillo Business College.  
No vacation. No entrance ex-  
amination. Enter any time.

**REUNION PRIVILEGES**

All persons desiring to  
secure ground privileges  
at the Canyon City Re-  
union will make applica-  
tion to L. G. Conner who  
has supervision of the sale  
of privileges.

Reunion dates August  
28, 29 and 30.

LOST—Shepherd dog, long  
black curly hair, white spot on  
breast, Reward offered; address  
"Morris" this office.



A stove that is always ready!  
A stove that makes no smoke, smell or  
ashes!  
A safe stove! An economical stove! A  
clean stove!  
A stove that requires no skill to op-  
erate it!  
A stove which has revolutionized  
"cooking," and has transformed  
the drudgery of the kitchen work  
into a pleasant pastime.  
A "Quick Meal" Stove will do any and  
all work that can be done on a wood  
or coal stove, only with the differ-  
ence that the "Quick Meal" does it  
quicker, cheaper and in a more agree-  
able and reliable way.

**..Warm Weather Comforts..**

**OIL STOVES**

**AND**

**SCREEN  
DOORS**

Call and see them  
and get our prices



**SEE US!**

For Lumber, Brick, Posts,  
and all sorts of Building  
Material-It will pay you.

**BURTON-LINGO CO. LBR.**  
CANYON CITY, - - TEXAS.

**L. G. CONNER,**

FARMS, RANCH LAND, CITY PROPERTY,  
STEERS & STOCK CATTLE.

Loans on Real Estate—Abstractor and Notary in Office.

Canyon City—the place for a great city. Abundance of  
running water; natural drainage; located on the Santa Fe, now  
being made the trans-continental line from Chicago to Califor-  
nia. The Santa Fe (Gulf line), is now building South from  
Canyon City. Randall, is the best county in the Panhandle.  
The general price of land is from \$7 to \$10 per acre.  
Property in town a specialty. Don't fail to see me.

**"COOL COLORADO"  
IS NOT EXPENSIVE**

and its  
Climatic and Scenic  
Delights, Pleasurable Opportunities and  
CONTAGIOUS AGGRESSIVENESS  
are an inspiration fraught with health  
and future good for every visitor:

**"THE DENVER ROAD"**

is the "Line of Least Resistance" and af-  
fords frequent and incomparable through-train service.  
Vacation tickets are too cheap to leave you  
an excuse. A postal suggestion of your  
interest will bring surprisingly valuable  
results. Address:-



A. A. Glisson, Genl. Passgr. Agt.  
Fort Worth, Texas.

**PROFESSIONAL CARDS.**

**D. M. STEWART,**  
Physician and Surgeon,  
Office—Thompson Drug Store.  
Calls promptly answered night or day.

**GEO. J. PARSONS, M. D.**  
PHYSICIAN AND SURGEON  
OFFICE—THOMPSON DRUG STORE.

**A. S. ROLLINS**  
LAWYER.  
CIVIL PRACTICE SOLICITED.  
Furnishing Abstracts of Title  
a Speciality and business in this  
line will be appreciated.

**R. A. SOWDER,**  
LAWYER.  
PRACTICE IN ALL COURTS.  
Abstracts of Canyon City and Ran-  
dall County.  
CANYON, - - TEXAS.

**JASPER N. HANEY**  
- - LAWYER - -

Have had years of experience in  
Texas Courts and will practice in  
all the higher courts of the Panhandle.  
Land titles examined.  
Office in Golden Belt L'd Building.

**HALL & FREDERICKS**  
ATTORNEYS AND COUNSELORS  
AT LAW.

General Practice in all Courts  
OFFICE—ROOMS 4 & 5—BANK BUILDING,  
AMARILLO TEXAS

Cards with Plains rainfall by  
months for 14 years at The News  
office.



**TOWN & COUNTY**

PERSONAL AND OTHER MATTERS THAT CONCERN OUR CITIZENS.

Large stock of Ball Mason Fruit Jars at the Canyon Hardware Co.

Fine Candies—Best in town at Wilson's.

Mrs. Ernsberger is visiting relatives at Los Angeles, Cal.

Mrs. J. Harrison left last week on a visit to home-folks in Corsicana.

W. O. Marsh, section foreman, has bought an interest in the D. N. Redburn business.

FOR SALE—Set new double buggy harness and new buggy pole at \$25. This office.

After reading this copy of The News put a one-cent stamp on it and send it to a friend.

Miss Lola Ward entertained her Sunday School class with a party Wednesday evening.

Geo. C. Long left for Bovina Tuesday, where he will remain for some time and represent the National Live Stock Com. Co.

J. J. Guest, wife and daughter, of Lingleville, are here visiting old friends, Mr. and Mrs. Geo. L. Abbott.

A considerable railroad construction outfit landed here this week and is engaged in building "Amarillo Junction" on the north side of the canyon. A civil engineer corps is also at work east of the present canyon railroad crossing. The evident purpose is either to almost parallel the present road bed with another line or raise considerably the grade of the old one. The outfit for the work is a large one and expects to be engaged for several months.

**A Card From Veale**

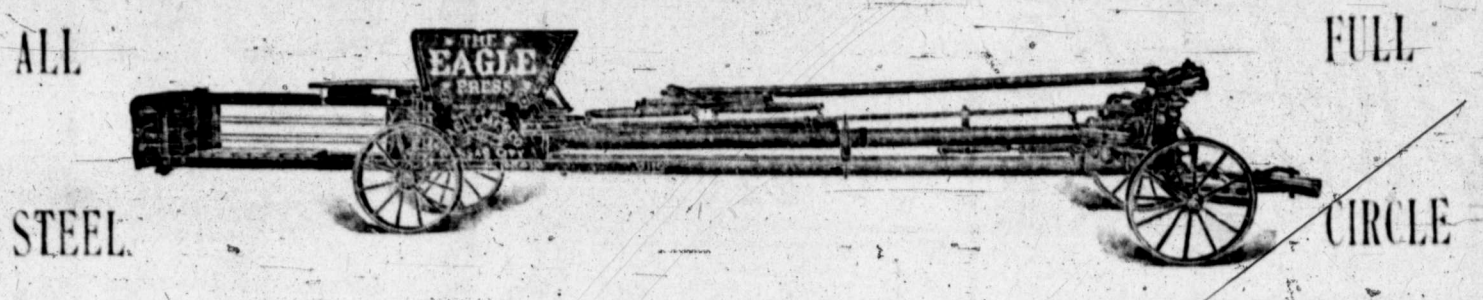
Amarillo, Texas, June 22, '06. To the Voters of Randall County: Mr. Decker, by circular letters mailed all over the District, claims the right to the office of State Senator—CHIEFLY on the ground that it is his SECOND TERM; it also appears on his buttons recently issued.

Mr. Decker has been in the Legislature CONTINUOUSLY EIGHT years—two terms in the lower House and one term in the upper House, THREE TERMS in all. He now seeks the FOURTH TERM and not the Second Term.

Be not deceived. Jno. W. Veale.

Miss Hannah Robeson spent a few days this week in the country visiting with her brother Raymond's family.

**THE EAGLE HAY PRESS**



ALL STEEL FULL CIRCLE THE EAGLE, ALL STEEL, FULL CIRCLE HAY PRESS, is the longest life, lightest draft, simplest and easiest to operate of all presses made. There is no wood to rot or warp out of line. It has all the latest improvements and adjustments. If you are thinking of buying a PRESS come and let us show you ours and make you our best prices and terms

WE HAVE a very large stock of Buggies, Hacks, Surries and Phaetons—all styles—Prices Right.

OUR STOCK of Wood Star and Standard Wind Mills, Pipe and all kinds of water supplies, Wire, Nails, Farm Implements and Wagons is complete. We have everything that is kept in a first class Hardware Store. Call on us when you are in town whether you want to buy anything or not and let us show you our large display of useful goods

**Canyon Hardware Co.**

**DRAGGING**

down pains are a symptom of the most serious trouble which can attack a woman, viz: falling of the womb. With this, generally, come irregular, painful, scanty or profuse periods, wasteful, weakening drains, dreadful backache, headache, nervousness, dizziness, irritability, tired feeling, inability to walk, loss of appetite, color and beauty. The cure is

**WINE OF CARDUI Woman's Relief**

that marvelous, curative extract, or natural essence, of herbs, which exerts such a wonderful strengthening influence on all female organs. Cardui relieves pain, regulates the menses, stops drains and stimulates the muscles to pull the womb up into place. It is a safe and permanent cure for all female complaints.

**WRITE US A LETTER** In strictest confidence, telling us all your troubles. We will send free advice (in plain sealed envelope). Address: Ladies' Advisory Dept., The Chattanooga Medicine Co., Chattanooga, Tenn.

**"I SUFFERED AWFUL PAIN** in my womb and ovaries," writes Mrs. Naomi Bate, of Webster-Groves, Mo., "and my menses were very painful and irregular. Since taking Cardui I feel like a new woman, and do not suffer as I did."

The protracted meeting begins at the Christian Church, Sunday, July 1st. You are cordially invited to attend.

**CATTLE FOR SALE**—Twenty steers, 20 cows and 15 year-old heifers. Fred Waters, Canyon City.

The Smith Bros., through L. G. Conner, this week sold the Victoria Hotel property and some outside lots to L. T. Lester at \$7,500.

The J. M. Cooper ranch, five sections, has been sold to Keiser Bros. & Phillips. The price was near \$7 per acre.

Try one of the fine Washing Machines they have at the Canyon Hardware Co. And if it does what they claim for it, buy it.

Andrew Fordenwalt, of Farmington, Iowa, was a visitor in town from Saturday to Tuesday, the guest of his uncle, A. A. Hauter.

Take a business course at AMARILLO BUSINESS COLLEGE and be prepared to keep books under any system.

Mrs. G. C. Long and daughter, Miss Ona, returned home Tuesday from their visit to relatives and friends in Tennessee.

**Biliousness and Constipation.**

"For years I was troubled with biliousness and constipation, which made life miserable for me. My appetite failed me, I lost my usual force and vitality. Pepsin preparations and cathartics only made matters worse. I do not know where I should have been today had I not tried Chamberlain's Stomach and Liver Tablets. The effects were simply marvelous. The tablets relieve the ill feeling at once, strengthen the digestive functions, purify the stomach, liver and blood, helping the system to do its work naturally. They bring back new life and energy, a bright eye, a clear brow and a happy heart."—Mrs. Rosa Potts, Birmingham, Ala. These tablets are for sale by S. V. Wirt, Druggist.

Misses Eakman and Brandon went with the Junior Endeavorers to the creek for an afternoon picnic yesterday. The children, some 25 or more, had a great time wading, posing for pictures, and playing games. A delicious lunch was spread before returning, by the chaperones, Mes James Eakman and Baird, displaying to perfection the accomplishment of some of the little girls. The boys did ample justice to the goodies, declaring it to be their opinion that the mammy's had superintended the preparation of every dainty—it was so good!

Wilson carries a nice line of Tablets, Pencils, Pens, Ink, etc.

Chas. K. Needham a newspaper man of Sigourney, Iowa; and C. L. Smith, a live stock auctioneer of Wilton Junction, Iowa, were visitors at The News office Friday. They came down with Keiser Bros. Thursday. Mr. Needham will write up our country upon his return and The News trusts to have the pleasure of reproducing it.

W. B. Arnold, for a while associated with the Abbott-Hall Co. here, has purchased the J. Ray residence in Hereford and will make that his home. He paid \$2,100.

This week W. C. Baird sold to McReynolds of Ceta, 5 acres out of the southwest corner of his home 320, at \$75 per acre. Mr. McReynolds intends building on it at once, so he says, a duplicate of the S. B. Lofton residence and will move here on its completion.

Mr. Cannon is now so badly afflicted with dropsy that he is confined to his room and he would no doubt be glad if some of his friends would call on him.

The Misses Eakman were hostesses at a delightful social given at their home Tuesday evening to the Senior Endeavorers. This marks one of the most pleasant gatherings of the kind, in the history of the Canyon Y. P. S. C. E.



**S. V. WIRT'S ANNOUNCEMENT.**

We take great pleasure in announcing to our patrons and the general public that we will have with us for the following days only **JULY 4, 5 AND 6TH.** AN EXPERT OPTICIAN, representing the celebrated firm of **A. K. HAWKES & CO.,** Atlanta, Ga., the largest and most favorably known optical establishment in the South.

**HE WILL TEST EYESIGHT AND FIT GLASSES.**

The Doctor is a graduate of one of the leading Ophthalmic Colleges in the United States, is thoroughly conversant with all modern methods in refractive science, including Retinoscopy, Ophthalmology, etc., and has had long experience in his specialty.

**REMEMBER**

That we have arranged this engagement and secured the services of a man of ability and reputation, and that we, personally, guarantee his work.

All examinations are free, and only regular prices will be charged for glasses.

**YOU CAN SAVE MONEY**

and obtain the highest class of professional service in this line by taking advantage of this opportunity.

**BEAR IN MIND THE DATES, JULY 4, 5, 6.**

The News office is preparing to print on extra heavy Linen or Rag Ledger paper Warranty Deeds of the different kinds and to fit the County Records. These Deeds will be printed from new type and in form, quality and price just as good as can be obtained anywhere.

Where lots of 100 or more are ordered by the same firm or person we will print the business card of the firm or person on the deeds without further charge.

**ESTRAY NOTICE**

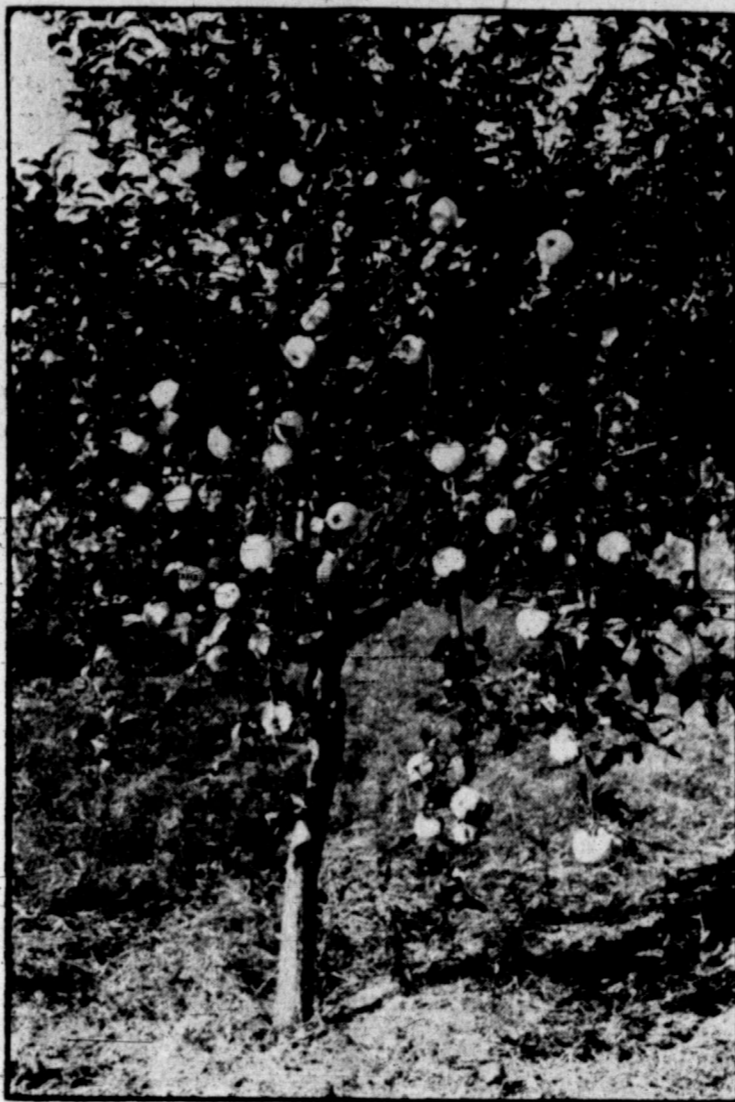
The State of Texas, County of Randall, TAKEN UP by R. M. Peeler and Estrayed before G. B. Stratton, Justice of the Peace Precinct No. 1, Randall County: One Red Roan Horse about 6 years old, unbranded. Appraised at Sixty Dollars. The owner of said stock is requested to come forward, prove property pay charges, and take the same away, or it will be dealt with as the law directs. Given under my hand and seal of office, this the 18th day of June, 1906. J. A. TATE, Clerk County Court Randall Co.





**FOOL'S PRIDE PLUM**

This picture shows a limb taken from a plum tree grown on W. F. Heller's place one mile from town and should give a very good idea of how plums grow in Randall county.



**APPLES**

This tree is about five years old and is one of several all loaded as this one and growing about a half mile west from the Court House in Canyon City.



**CHERRIES**

The cut here shows cherries grown on R. W. O'Keefe's place one-half mile west of the Court House, Canyon City. It was Plains grown fruit that took the prizes over all Texas at College Station last year.

## Canyon City Business Concerns.

(Continued From Page Four.)

CYRUS EAKMAN J. I. CAMPBELL  
GEO. C. LONG WM. WILLIARD  
CANYON CITY REAL ESTATE  
COMPANY

A more reliable and more substantial firm cannot be found in the great southwest than the Canyon City Real Estate Co.

Each of the following gentlemen composing this firm is a permanent citizen of Randall County; own their homes here and are also heavily interested in other business about the town and county. Three of them, Cyrus Eakman, Geo. C. Long and J. I. Campbell, were among the first settlers of this Plains Country and not only do they know the country thoroughly, but their conduct in social and business affairs has been such as to win for them the esteem and confidence of all our people. These gentlemen, Mr. Willard included, are among the very best citizens we have and financially and in every other respect are considered individually and as a firm "as good as gold."

It is just this high character for business integrity that has given this firm one of the largest and best selected lists of lands in the Panhandle. This list includes hundreds of acres of choice lands, improved and unimproved, and they are prepared to sell it in either large or small quantities and at as low, or lower prices, as any in the market.

In dealing with this firm you are not mixing with men whose names are here today and there tomorrow, but with men whose every interest is here; whose homes are here and who are expecting to remain here. They want to sell people land and hold them afterward as friends and neighbors. The responsibility of this firm is vouched for by each of the banks mentioned in this issue.

Their office is opposite the Victoria hotel and is one of the very best in town.

### HALL-ABBOTT LAND CO.

Occupying a high and strong position among those who handle real estate, is the Hall-Abbott Land Co. The gentlemen composing this firm, J. H. Hall and Geo. L. Abbott, made Canyon City their headquarters in October 1905, and since then by good business judgment born of long experience, and fair

dealing they have established a land business second to none in our plains country.

Each of the men of this firm has been in the West for years; they know this country, its soil, its climate, its water supply and its productions as well as it is known of man. Mr. Hall has been engaged in the real estate line in Northwest Texas for years, and Mr. Abbott is not only familiar with this business in its office details but also knows from actual experience what the land in which they deal will do—he having been one of the most successful farmers in Randall county. They know the country well and know the people and from this knowledge they have been able to gather into their fold some of the very best bargains to be obtained in this country. They have small tracts and large ones and can fit up almost any man with what he wants and save him money on it. They now have on their list some 150,000 acres of the finest land in the Texas Panhandle.

And again, these gentlemen are of the dependable kind, they mean what they say and will stand by it. They are good substantial citizens of this county; public spirited men and among the foremost of our people in every enterprise which has for its object the best interests not only of their home town and county, but of Plains country.

If you, Mr. Reader, want land in any quantity, a farm improved or unimproved or merely a house and lot in town you will make no mistake in calling upon the Hall-Abbott Land Co. They will treat you nicely whether you trade or not. These gentlemen have a half page ad in this edition to which The News would direct your attention.

### FIRST NATIONAL BANK CANYON, TEXAS

None of the many banks in the Plains Country are the superior of the First National Bank, which occupies spacious and splendidly equipped quarters in their own building.

There are to be found no better facilities, no better management, no better results in any bank in the country than are to be had at the First National of this city.

The bank officials and directors hold the universal esteem and confidence of the great mass of invest-

ors merchants, farmers, and laboring men that go to make up our fast increasing population.

Representatives of each of these classes are received with equal welcome at the First National Bank and no more or better attention is paid to the interest of one than another.

The strength of the institution is shown in the following statement issued at the close of business May 4th 1906.

RESOURCES	
Loans and Discounts	\$349,770.56
U. S. Bonds and Penitents	104,746.65
Banking House and Fixtures	9,781.50
Due from U. S. Treasurer	5,000.00
Cash and Exchange	169,696.62
Total	\$638,995.33
LIABILITIES	
Capital Stock	\$100,000.00
Surplus and Profits	17,445.03
Circulation	100,000.00
Deposits	421,550.20
Total	\$638,995.33

By this statement it can be seen that there is no safer place in the state to deposit your money in large or small sums than at this bank.

A perusal of the list of officers and directors will disclose the names of men known, respected, trusted in every walk of life. The officers are: L. T. Lester, president; John Hutson, vice president; D. A. Park, cashier and Travis Shaw, assistant cashier. The board of Directors is composed as follows: Messrs John Hutson, L. T. Lester, F. M. Lester, John L. Howell and R. G. Oldham.

The First National Bank was opened for business Jan. 2, 1900 and from its inception to the present day has grown more prosperous year by year until it now ranks as the leading banking institution in Northwest Texas. It has always enjoyed the loyalty, confidence and support of the larger portion of the people of Canyon City and Randall County.

The principal correspondents of this bank are as follows: National Park Bank of New York, First National Bank of Kansas City, Mo., American Exchange National Bank of Dallas, Texas.

L. T. Lester the president of this bank is a pioneer of the plains country being the third settler in Hale County and has resided on the Plains ever since. He is also interested in the banking business in the following towns: Tulia, Floydada, Lockney, Emma, Lubbock, Texico, N. M., Elida, N. M., and Brownhorn, New Mexico.

His large interests in this section of the Plains Country are a credit to any man's ability and show the great possibilities the country offers in all lines of business.

J. L. HOWELL

J. H. DUNBAR

## HOWELL & DUNBAR

MANUFACTURERS OF  
**CEMENT OR CONCRETE STONE**

CANYON CITY, TEXAS

We have the very best of material and Modern Machinery engaged in this work

We want to figure with all parties desiring to build and will cheerfully quote prices

We have the completed stone on exhibition—It has been thoroughly tested

By experts and proven first-class and, we back this judgment with our guarantee.

REFERENCE: **FIRST NATIONAL BANK  
CANYON CITY, TEXAS**

### STRINGFELLOW-HUME HARDWARE COMPANY.

AMARILLO, HEREFORD,  
Wholesale and Retail  
F. P. WILSON, Local Manager,  
Canyon City, Texas.

This concern is one of the largest in their line in Texas, and for twenty years have ever been ready to furnish our people with anything in the Hardware, Implement or Harness line.

They do a wholesale and retail business and the name of Stringfellow-Hume Hardware Company, stands for superiority in everything they handle from the smallest to the largest article.

The hardware department is packed from floor to ceiling with shelf

and heavy hardware, cutlery, builders supplies, etc.

They buy direct from the manufacturers in large quantities and for cash, and are thus enabled to sell for less money than those not so well situated.

The stove and range, handled by this firm is known the world over as the best made and when the housewife has a Majestic Range installed in her home, you may rest assured she is perfectly satisfied.

They also carry a complete line of Buck Stoves, Quick Meal Gasoline Ranges and Eclipse Windmills.

This mill is one of the best manufactured and has for years been giving entire satisfaction.

The implement department is (Continued on page 8)



**SORGHUM CUTTING LAST YEAR**

In a field one mile south of the Court House in Canyon City

S  
L  
CLE  
gest  
ade.  
im-  
ESS  
erms  
ks,  
ght.  
d all  
agons  
lard-  
o buy  
goods  
O.  
T.  
rons and the  
ing days only  
6TH.  
e celebrated  
the largest  
the South.  
GLASSES.  
g Ophthalmic  
sant with all  
Retinoscopy,  
n his specialty  
ed the services  
e, personally.  
prices will be  
ONEY  
ce in this line  
LY 4, 5, 6.  
NOTICE  
as,  
landall.  
R. M. Peeler and  
E. B. Stratton, Jus  
'reinet No. 1, R  
Red Roan M  
unbranded,  
xty Dollars.  
id stock is reques  
rd, prove property  
id take the same  
e dealt with as the  
hand and seal of  
h day of June, 1906.  
PATE,  
y Court Randall Co.





MILLET FIELD - JOHN HUTSON'S

This field joins the town section on the south and was sodd in this year and the picture gives only a very faint idea of the enormous yield. The heads were very large, the grain standing four feet high with a fine stand all over the field which contained close to one hundred acres.

## Canyon City Business Concerns.

Continued From Page 7

another special feature of this mammoth establishment. Here can be seen everything for the farmer to use in planting, cultivating and harvesting his crops.

They handle the well known P. & O. line of plows of which the Success Sulky is one.

These goods will be found satisfactory in every respect and at right prices.

And last but by no means least, we desire to mention the Carriage repository.

They have built up a large trade in this section of the State and owe their success to the kind of goods they handle and the way they treat their patrons.

Their large stock of beautiful, attractive vehicles, including the finest buggies, carriages, etc. wins completely and at once the admiration of all who view it. There also can be seen the well known Bain and Mitchell wagons, the wagons most adapted for this section of the state. No firm has a higher reputation or is capable of doing more toward the advancement and upgrowth of our city, and under the direct management of F. P. Wilson, it is rapidly increasing its trade radius.

### L. C. LAIR

#### REAL ESTATE AND LIVESTOCK

Land is the basis of all wealth and the man today who owns a farm whether large or small has laid the foundation for future prosperity.

Many men are working for wages today or renting high price land that should own their own farm and thus lay the foundation for their future independence.

Other men so much different in financial affairs have large financial interest and are loaning money at 4 and 5 per cent who do not seem to care for a good investment, believing the good old way is the best.

To those two classes we desire to call their attention to the Panhandle country, especially Randall county. Here we have every inducement to the homeseeker and investor and a place where from 12 to 50 per cent can be realized each year.

As will be seen by the testimonials and descriptive matter in this large edition no other place in the United States today is offering better inducements than Randall county.

In this connection we desire to call your attention to a man who for the past fifteen years has been closely identified with the best interests of the county: L. C. Lair or Judge Lair as he is familiarly called came to this county when land was from \$1 to \$2 per acre, when all said that grazing was all

the land was suitable for, and that grain crops would not grow. Today things have changed and Judge Lair has lived on and farmed the land he now offers for sale and knows personally that as good crops are raised in Randall county as any other county in the State.

He now conducts a first-class real estate office and has 100 sections of fine land for sale in tracts to suit purchasers and in addition buys and sells cattle on commission, renders and pays taxes for non-residents and has established a business which is a credit to Canyon City.

He will gladly furnish information and prices of land and invites correspondence. Should you desire to know now about the great prospects of the Plains country, call on or write, L. C. Lair, Real Estate Dealer, Canyon, Texas.

### CANYON HARDWARE CO.

Wholesale and Retail Hardware and Farm Implements, R. G. OLDHAM, Manager.

Hardware is as necessary as lumber for building purposes and almost as necessary as fuel for culinary purposes.

A good hardware store in any town is a wonderful incentive to its growth and development.

In this respect Canyon City meets every requirement in the Canyon Hardware Co. They are one of the largest firms in the Panhandle and carry an immense stock of the best grades in Shelf and Heavy Hardware, Wagons, Buggies, Farm Implements, Windmills, etc.

Their farm implements are World Beaters and when you buy anything made by John Deere & Co., you may rest assured it will give satisfaction.

In wagons you have a choice of either a Studebaker or New Moline, while the buggy line consists of the Studebaker & Anchor.

These goods are too well known to be mentioned by us and go to show the ability of Mr. R. G. Oldham in pleasing the public.

While this is a comparatively new firm yet the business done would lead the stranger to believe that they had been in business for years.

This firm buys direct from the manufacturers and in large quantities and are in a position to sell the best goods in their line at reasonable prices.

The business is conducted on good business principles and all customers receive the most courteous treatment at the hands of Mr. Oldham and his corps of assistants.

They appreciate your trade and in return are always ready to advance the best interests of this com-

munity, especially Canyon City, in every way possible.

### CANYON CITY PHOTOGRAPH GALLERY.

M. S. LUSBY, PROPRIETOR.

There is no art that comes so near the human heart as that of photography. By its aid the poor as well as the rich are enabled to retain the resemblance of loved ones long since past beyond.

In Canyon City we have a man whose whole heart is in the work.

Mr. M. S. Lusby, the subject of this sketch, came from the coast country of Texas in the spring of 1891, with a view of finding a healthier climate and decided that Canyon City was the ideal place to locate. He immediately commenced the erection of a gallery, a building with modern single slant corrugated glass light, with an operating room 16x35 feet, which he equipped with first-class machinery and accessories, and has ever since been prepared to take proper care of the photo work of a rapidly growing city and one even many times the size of Canyon City.

Mr. Lusby is practical in his business methods, his motto is satisfaction or your money refunded.

By using the best materials and chemicals that money can buy, and being a proficient workman in his line of business it is perfectly easy for him to live up to his motto.

His customers have the pleasure of knowing that they can get the latest styles and up-to-date line of cards to select from, and at the same time get prices that are the lowest for quality of material used.

Mr. Lusby is prepared to take views of buildings, scenery, live stock, etc., and our real estate men will find this of advantage in advertising this section of the State.

After living here now for five years our photographer stands solid for Canyon City, first and last, and for the Plains Country all the time.

We may add that with the exception of three cuts used in this edition, Mr. Lusby took all the pictures from which the cuts were made.

### R. M. PEELER, REAL ESTATE

"Westward and ever westward the course of Empire wends its way."

This is true today and has been for the past 400 years. First the Atlantic coast was the attraction for the people of the Eastern Hemisphere and from the first settlement in Jamestown in 1607 until today the center of population has been gradually coming west.

Whenever people of the crowded east who farm high-price land can be educated to the fact that the Panhandle of Texas offers the same inducements in the productiveness of soil and a climate a thousand times healthier, then it will be but a short time before they will avail themselves of the opportunity to secure a home where every ideal condition exists.

1. HERE we have a soil that produces in abundance small grain, alfalfa, fruit, Kaffir corn, maize, etc. and failures are practically unknown.

2. HERE we have pure water in abundance and easy to secure.

3. HERE we have a climate that for healthfulness is beyond comparison.

4. HERE we have every social advantage, good schools, churches and fraternal organizations.

Do not these reasons appeal to you who are situated where taxes are high, where rent is high, and where you suffer from cold winters and hot summers?

Then why do you not take advantage of the golden moment and buy a farm in "the golden spot" of the UNITED STATES, Randall County, Texas.

Should you desire information



CUTTING MILLET.

This picture was taken about two miles south of Canyon City.

## CANYON MERCANTILE CO. DRY GOODS--GROCERIES

We carry a full stock of everything needful to eat and to wear and are Price-Makers. We are in our new quarters—the Thompson Brick, and cordially invite you to visit us when in Canyon.

J. C. PIPKIN, Manager CANYON CITY, TEXAS

## CANYON CITY SUPPLY CO. General Merchandise CANYON CITY, TEXAS

"The Best is Cheapest." Therefore we handle only the best in both Dry Goods and Groceries. We have a good trade but desire to increase it. When visiting Canyon City call, you are welcome at the

## Canyon City Supply Co.'s Store

more fully regarding the values in this county then you should call on or write to Mr. R. M. Peeler, the subject of this sketch, who for the past FIFTEEN YEARS has made his home with us and has always been closely identified with the progress and advancement of the county.

He has been our county clerk for six years and knows every foot of land he has for sale. Not only does he handle farms and ranches from 160 acres to 5,000, but handles city property as well.

Mr. Peeler is thoroughly informed regarding the value of our lands and his word is as good as a bond.

Every reader of this edition would do well to call on or write R. M. Peeler.

### CANYON CITY SUPPLY CO., Wholesale and Retail,

DRY GOODS, GROCERIES, BOOTS AND SHOES, CLOTHING AND GENTS FURNISHINGS.

J. D. GAMBLE, Manager.

It is seldom in a town the size of Canyon City that the repertorial eye rests upon a larger line of general merchandise than can be seen in the store occupied by the Canyon City Supply Co.

One large building is completely filled from bottom to top with bargains in dry goods, notions, millinery, clothing, hats, caps, gents furnishings, boots and shoes, in fact everything usually carried in a general merchandise establishment.

Another feature of this popular firm is the nice display of goods and

the neatness with which they are handled.

Mr. Gamble, the manager, is a man with a thorough knowledge of every detail of the business and is ably assisted by a corps of trained clerks. He is a good buyer and knows exactly the wants of the trade and is therefore always able to please the most exacting.

A visit to this popular store will convince you that this firm has the goods, makes the right prices, guarantees quality and in all will give entire satisfaction in every transaction whether your purchase be 5 cents or \$100.

The watchword of the Canyon City Supply Co. has always been "Progress" both for the business and for Canyon City.

### THE CANYON COAL COMPANY Coal, Grain and Field Seeds, Wholesale and Retail.

W. H. HICKS, Manager.

In giving this business review of leading business institutions of Canyon City we desire to mention the Canyon Coal Co.

They are leaders in their line not only in Randall County, but for the entire Plains Country as well.

They always carry a complete line of Coal, Grain and Field Seeds and furnish many customers over a territory covering 100 miles each way.

They handle coal direct from the mine at Canyon, Colorado, and are always in shape to supply the trade

(Continued on page 11)



**CANYON CITY BUSINESS CONCERNS.**

**W. J. REDFEARN,**  
GENERAL STORE, NOTIONS, CIGARS  
AND FRUITS.

One of the busy places in Canyon is the new store opened in our town some six months ago by Mr. W. J. Redfearn. The inducements he offers and the high class goods handled by this gentleman are fast gaining him friends and customers.

He handles one of the finest lines of high grade cigars to be found in town and his tobacco stock is fresh and of the finest grade.

Mr. Redfearn started at the first to please the trade by courteous treatment and standard goods and can always be found advancing on every line.

He guarantees satisfaction in every purchase and will gladly refund your money should you not be entirely satisfied.

Call and inspect his stock and once a customer always a customer will be the result.

**VICTORIA HOTEL.**

G. C. SMITH, Manager.

Is there a good hotel? is one of the first questions a stranger will ask on entering a town. Answering this on behalf of Canyon City we say yes.

The Victoria Hotel run by G. C. Smith, is first-class in every particular. The thirty-five rooms are nice and clean with comfortable beds. The office is spacious and fitted with desk etc., with plenty of reading and writing material, while last the dining room is furnished with the best the market affords and prepared with skilled hands. No hotel along the Pecos Valley & Northeastern Railroad offers better accommodations than can be secured at Hotel Victoria.

Mr. Smith personally looks after every detail of the business and his every effort is to please the guest and make your stay in Canyon City pleasant.

**HOTEL ROGERSON.**

EUGENE YATES & SON, Proprietors.

One of the popular hotels in Canyon is the one run by Eugene Yates & Son. Here every guest is made to feel at home and no pains are spared to make everything comfortable. The dining service at this hotel is hard to excel.

The writer has traveled in almost every state in the union and can heartily say that at no hotel has he received more courteous treatment.

All the rooms are nice and clean and the full register each day shows that the traveling public fully appreciate the excellent service the management is extending to all. When in Canyon do not fail to register at the Rogerson.

**JAMES HOTEL.**

W. S. CLAYTON, Prop.

This hotel has recently passed under the management of Mr. Clayton, who is now renovating and cleaning up the same, and is now ready to furnish good service at the rate of \$1 per day or \$4.50 per week.

The dining room will be under the direct management of Mrs. Clayton.

**BUIE & SCOTT**

Lawyers

Will practice in all the courts. Special attention given to examining titles. Non-Resident Land Owners Represented.

Canyon City, Texas

and those who desire good cooking and nice meals will do well to stop at the James Hotel when in Canyon. Mrs. Clayton has long been known for her good cooking and all guests may rest assured of stopping where everything will be neat and nice and where courteous treatment will be the rule.

**J. L. PRICHARD,**

THE PRICHARD DAIRY.

The business industry of Canyon City is represented by men who are interested in the future development of our community and all lines are represented by men of ability.

Prominent among these we desire to mention the "Prichard Dairy" owned and run by a man who thoroughly understands the business and has every equipment to properly supply the demands of all our people. This is a home institution and was organized and installed at the direct request of prominent business firms of Canyon City.

Now, Mr. J. L. Prichard, the proprietor, has a dairy not surpassed by any in this part of Texas and delivers milk and butter twice a day of the best quality. The best people of our town are supporting this dairy and are receiving milk and butter as pure and sanitary as furnished by any firm. If you are buying and receiving poor goods in any old manner, it will pay to change and patronize a man who for sixteen years has ever been ready to advance our community and one who guarantees satisfaction and good service from the first of the year to the last.

He invites everyone to visit his model dairy 3 miles from town where he will be glad to show you the cleanliness used in handling the milk and butter.

**CUMMINGS & BROWN,**

CHOICE MEATS, LARD, ETC.

Lots of butchers know all about meats except how to cut them, but Cummings & Brown, the proprietors of this popular market are past masters in this art.

They personally inspect all meat going over their blocks and know that it is all of high grade. When you desire a good roast or nice steak give this market your order and you may always rest assured of getting it. One feature worthy of noting about this market is the fact that your child will receive the same treatment and have the order filled in the same satisfactory manner that you would receive should you place the order in person.

These gentlemen are enterprising and are ever ready to advance the best interests of our growing city.

**CANYON MERCANTILE CO.,**

J. C. PIPKIN, Manager.

Wholesale. Retail.

This is one of the largest general stores in Canyon City. The business was established eight years ago and is one of the best stores in the city. Mr. J. C. Pipkin has personal charge of the store and sees that everything is properly done. He has a thorough knowledge of the business and is recognized as a progressive and public spirited man in every way. A more courteous gentleman cannot be found and the knowledge of the business in every detail enables him to offer the buying public everything in millinery, dry goods, clothing, in fact everything to eat or wear.

This firm does a wholesale and retail business and has always had the advancement of our commercial interests at heart. This firm is now in the large brick next door to the First National Bank where they will have greater accommodation for their many customers.

**J. A. EDWARDS,**

FARMER AND STOCKRAISER.

The progress and advancement of Randall County is a source of gratification to all who have a pride in the welfare of this section of the great state of Texas, and no one can feel more interest in our rapid growth than the subject of this sketch, Mr. J. A. Edwards.

For the past eight years the success or failure of every undertaking in the vicinity of Canyon City has been watched with interest by Mr. Edwards and in speaking of the past and present he is one that from vast experience is capable of giving facts which prove beyond a doubt that nowhere can a man secure a good home better than in Randall County. As he states, here we have an ideal climate, good soil and an abundance of moisture. This with our educational facilities and religious institutions go to make this section one of the best places to make a home.

Mr. Edwards lives about twelve miles south of Canyon City, and owns many sections of land upon which he has both farm and ranch. He favors the settlement of good farmers who will help advance this section, not only in a financial, but moral way as well. We take pleasure in asking those who live on high price land and pay heavy taxes to call on or write Mr. Edwards about the country. He will gladly furnish you information and will do all in his power to aid you in finding a favorable location.

**H. J. CAVET & CO.**

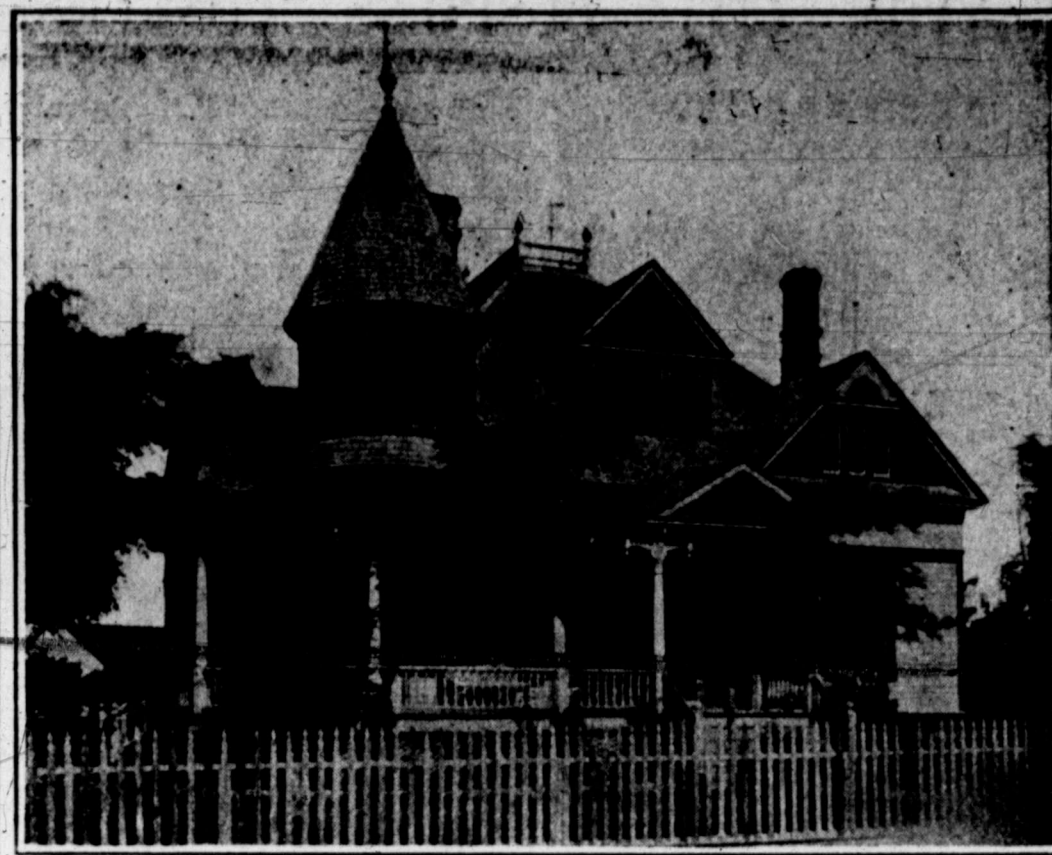
You needn't worry if you carry insurance and have a properly written contract. The policy then protects you from loss and it is a nice thing to have something to prevent worry. The insurance business is an important one and is represented by a class of men that are responsible and reliable. Such is the case in Canyon City where we have the firm of H. J. Cavet & Co., which has been established 5 years and does a large business throughout the city and surrounding country. They are located in the post office building and are properly equipped to handle this business. They write fire and tornado insurance, and represent such firms as the Hartford Insurance Co., Liverpool, London & Globe, Phoenix of Hartford, The German of Freeport, Ill., St. Paul Fire, Girard Fire Ins. Co., and many others. Policies written by this firm are correct in every way and absolutely insure the one underwritten from loss. Mr. Cavet the manager is a young man of pleasing personality and one who can always be found courteous and obliging. He also represents the St. Paul Fire & Marine Insurance Co., of St. Paul Minn., and writes policies covering hail insurance protecting grain crops from damage by hail.

**SEYDLER MERCANTILE CO.,**

J. B. LATHAM, Manager.

This is one of the most popular general stores in this part of the State, and under the management of our fellow townsman, Mr. J. B. Latham is rapidly moving to the front as a place where the best people of the country like to do their trading. It is headquarters for merchandise needed by man to eat or wear and it may well be a familiar saying that when the sun shines there is a crowd at the Seydler Mercantile Co. Mr. Latham has personal management of the stock and buys from the best markets in the country, in large quantities, and is thus enabled to give the buying public the best to be secured in both quality and style. Call and inspect this up-to-date stock, and you will at once recognize the progressive methods used by every one connected with the business.

The pleasing courtesy of the em-



RESIDENCE OF L. T. LESTER.

ployes of this store is a comment, and it is generally understood that if you cannot find what you want at the Seydler Mercantile Co., it cannot be procured in Canyon. Watch for special sales in dry goods, dress goods, shoes or hat departments.

**GOBER, HUME & KENYON,**

COAL, GRAIN AND HIDES.

This well known and reliable firm located in our city eight years ago, and has been intimately connected with our growth and prosperity ever since. They carry an enormous stock of coal and feed of all kinds and have every arrangement to give customers all over this section of the Panhandle the best of service and are also in the market for hides for which they pay the highest market price. The large feed yards in connection offer every accommodation to the public and the fact that they buy direct from the producers in large quantities enable them to furnish commodities cheaper than dealers who are not so situated.

The business history of this firm has ever been marked with success and they are deserving of their liberal patronage. No firm should have a greater interest in the future welfare of Canyon City than Gober, Hume & Kenyon.

**H. W. KEY.**

THE POPULAR LUNCH ROOM.

For a well cooked meal or short order the people of Canyon and vicinity will find the lunch room run by Mr. H. W. Key the proper place to visit. Here you can secure a first-class meal or have a hurry order cooked to perfection and consisting of everything the market affords. He also makes a specialty of those delicious pies, cakes, etc. like mother used to bake.

Every customer visiting this popular restaurant may rest assured of receiving the best of treatment and

we take pleasure in recommending it to our readers.

**REID BROS.,**

PAINTERS, DECORATORS, ETC.

One of the new business enterprises of our town is that of Reid Bros., who are opening up first class shops in Canyon and Amarillo. W. S. Reid the junior partner is now in town and has finished some of our best contracts in a first class manner and other jobs are coming as a result of his ability in doing good work. No class of work however difficult is too hard for them to finish in good shape. They will figure on any and all contracts. They furnish the best of references and guarantee satisfaction and reasonable prices.

**J. T. SERVICE.**

CONTRACTOR AND BUILDER.

In mentioning the contractors of Canyon City and surrounding country no one deserves a more prominent position than Mr. J. T. Service, who for the past 15 years has been identified with this line of work in the plains country. It is not necessary for us to mention his ability, for the court houses of Canyon City, Plainview and Lubbock and the building occupied by the Stringfellow-Hume Hdw. Co., stand as examples of his skill. Not only is he interested in the contracting and building interests of this country but he can also be found advancing every interest in the farming and stock raising industry. He owns a fine stock farm 12 miles South-West of Canyon City upon which he has a herd of 120 head of good cattle. Mr. Service has just now completed the new Thompson building of which a half tone cut appears in this edition.

Anyone wishing to build in this vicinity would do well to consult Mr. Service.

**Combine Business With Pleasure**

Spend your summer vacation in the Panhandle and at the same time see the wonderful resources of the country. Reduced rates first and third Tuesdays of each month with final return limit of twenty-one days. Ask any Santa Fe agent for information regarding the Panhandle, or write to me for literature.

**D. L. MEYERS, Traffic Manager**  
Southern Kansas and Pecos Valley Lines  
AMARILLO, TEXAS

**200,000 ACRES**

If you want to visit the birth-place of easy payments and the home of low prices come to the RANDALL COUNTY LAND CO. LOOK at this—Eight bodies of Land, from two to sixteen sections each, on South Plains, at \$4.00 per acre. Then we have 100,000 acres of smooth, rich, productive lands for sale. Some of this land is in cultivation, with fine water, fenced, dwellings and out buildings, we can sell very cheap. Our raw land is selling very fast. Our lands, much of it, is on the new railroad. For further information address

**RANDALL COUNTY LAND CO.**  
CANYON CITY, TEXAS  
MEMBERS OF COMPANY:  
J. C. Hunt, Atty. O. J. Smith J. H. Pinson J. L. Cagle  
Offices at Canyon City, Tulia and Plainview



**CANYON CITY BUSINESS CONCERNS**

**RENSHAW & COCHRAN.**  
PAINTING, PAPER HANGING AND DECORATING.  
Those who desire to beautify their homes in an artistic manner, either outside or in, would do well to consult these popular men. They have had thirty-five years experience and many fine homes and business blocks in Canyon City show the high skill of their work. When you desire anything in the above line call on the above gentlemen and they will be glad to make estimates on same, and you will find them as low as any contractors can furnish good work.

**SCOTT & ROLLAND.**  
BUILDING CONTRACTORS.  
It is with truth that we state that the contractors and builders of any town deserve great praise, and especially is this true where they are workmen of skill and ability. Canyon City may well feel that within her border are to be found workmen and architects with the same ability as could be secured in Ft. Worth or Dallas and prominent among them is the well known firm of Scott & Rolland. They are workmen of ability and have proved by such contracts as our Public School and Willard's home in Canyon City and the Cain block and H. E. Hume's home in Amarillo. They have twenty-five years experience and are prepared to take contracts of any magnitude.

**JAMES R. HARTER.**  
BLACKSMITHING AND HORSESHOEING.  
In giving this business review of our leading industries and a history of those who have been the most instrumental in our advancement the name of James R. Harter should be mentioned. For the past eight years he has done his part on every occasion to upbuild our town and today runs one of the best general blacksmith and machine shops in the county. He is ready at all times to do repair work in a prompt and satisfactory manner and makes a specialty of horseshoeing.

This shop is supplied with good tools and material and every customer can rest assured of receiving the best of satisfaction.

**JOHN BEGRIN.**  
CONTRACTOR AND BUILDER.  
For the past quarter century the subject of this sketch, Mr. John Begrin, has been connected with the building line. Many jobs in Chicago, Ill., and Detroit, Mich., show the ability and high quality of his work. Prior to locating with us he was a prominent contractor in Fort Worth, where he resided for eight years, and the new telephone company's building there was erected by him. Mr. Begrin came here nine months ago and already has proven to be a workman of ability and one who knows every detail of the building line when it comes to brick, stone or cement. He has made a study of the new building material known as cement blocks, or artificial stone and looks forward to see an industry of that kind started in our town. He is always ready to make estimates on your work and when John Begrin takes the contract you may rest assured it will be done in a proper manner.

**J. W. TURNER.**  
CONTRACTOR AND CARPENTER.  
Among the oldest and best known citizens of our community, we wish to mention Mr. J. W. Turner, who has been identified for the past 20 years with every movement that has had for its purpose the upbuilding of Randall County. Mr. Turner has for the past fifteen years been one of

our prominent contractors and builders and many of our modern residences and business blocks stand today as a monument of his handiwork. He is a contractor and workmen of proven ability and anyone wishing to build in our vicinity would do well to consult him before starting.

**R. E. HILEMAN.**  
BICYCLES AND BICYCLE REPAIR.  
For the past twenty months this has been a popular place to secure first class repair work on bicycles. Not only does Mr. Hileman do repair work in a prompt and satisfactory way but has the well known bicycles for sale and can give you good bargains. He does a general bicycle business, buying and selling, repairing etc. and invites the public to call and inspect his line.

**W. B. JONES.**  
TRANSFER, ETC.  
This enterprise is one that goes to complete the perfect business system of any town and fills a place in the business industry that is essential to its growth and advancement. For years Mr. Jones has conducted a reliable transfer line and can always be found ready to do your hauling in a prompt and satisfactory manner. He owns property in Canyon City and can always be counted on when the interests of the town are at stake.

**CITY BARBER SHOP.**  
For a first class hair cut or an easy shave the people of Canyon City and vicinity will find the City Barber Shop, owned and run by Messrs. Brown & Huffines a proper place to visit. They have a shop equipped with every modern convenience and are workmen of ability and do all classes of work to be secured in any shop in a city many times the size of Canyon.

The proprietors of this shop are residents and property owners of our town and can always be found ready to do or say a good word for its benefit. They deserve the patronage of our people and ladies or gentlemen desiring good work and courteous treatment should call at the City Barber Shop.

**WARD & MAY.**  
BLACKSMITHS AND WOODWORKMEN.  
This is one of the best shops in Randall County. The proprietors, Messrs. Ward and May, employ the best mechanics to be secured and make a specialty of horseshoeing. They have installed in their shop here the only cold-tire-setter in the county and are the patentees of a machine which will permanently take the dish out of wheels and will soon have one installed. The need of this machine has long been felt and it is the only devise of its kind that has ever given entire satisfaction.

**J. M. VANSANT,**  
JUDGE OF RANDALL COUNTY.  
This county should feel proud of its early settlers, for they have been the men who have guided and directed our affairs until today we have one of the banner counties in the state. For years every eye has been directed toward our progress and all our citizens today feel a pride in the men who have been instrumental in shaping the business and official affairs of Randall county. Judge J. M. Vansant has been a resident of this county for the past fifteen years and has held many prominent offices. He has been a prominent business man among us and has been identified with all movements that have attributed to the upbuilding of Randall County.

**A. N. HENSON,**  
DEPUTY COUNTY AND DISTRICT CLERK.  
For the past eight years no man has been more closely identified with the official life of Randall County than Mr. A. N. Henson the subject of this sketch. He has served the county in a creditable manner, one term as county commissioner and justice of the peace and for two years he held the position of county judge and filled the position in such a manner that it raised him high in the esteem of the bar and his fellow-citizens. For the past five years he has been our deputy county and district clerk and all those having business with this office have always received the most courteous attention. He is a man who has our best interests at heart and can always be found doing his duty as a citizen.

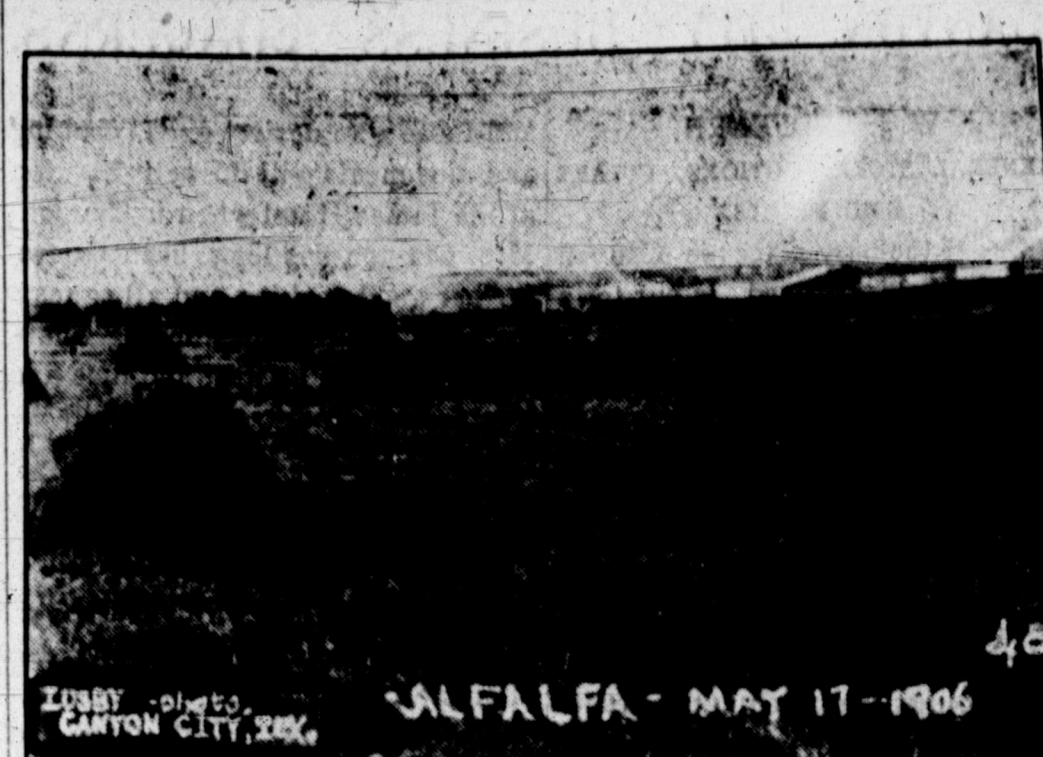
**J. A. TATE,**  
COUNTY AND DISTRICT CLERK.  
Our county officials are all men of business ability and have the welfare of Randall County and Canyon City at heart, especially is this true of Mr. J. A. Tate our popular county and District Clerk. Every man visiting this office will always receive prompt and kind treatment and may rest assured of having his business attended to with correct results. As a man and citizen he holds the respect of all our people, and all join in saying that no mistake was made at the last election when Mr. Tate was elected to this important office.

**R. E. FOSTER,**  
COUNTY CATTLE INSPECTOR.  
For the past sixteen years Mr. Foster has been identified with the best interests of Randall County. He has a fine ranch of about 1200 acres near Canyon City where he has a herd of Hereford and Durham cattle. He also gives a great deal of his attention to the mule business and raises some of as good mules as can be found in "Old Missouri." For the past four years Mr. Foster has been our county Brand inspector and has filled the position to the satisfaction of his fellow citizens. He has always been interested in anything that pertained to the upbuilding of Randall County and has done much to introduce fine stock among the people.

**P. H. YOUNG,**  
COUNTY ASSESSOR.  
In giving this business and official review of Randall County we desire to mention Mr. P. H. Young our county assessor, who for the past five years has been one of our prominent residents, and who has filled during the present term the office of County Assessor in a creditable manner. He has ever been interested in Randall County and owns a nice farm 18 miles southeast of our town consisting of 640 acres. He has always given entire satisfaction to all of our people both in public and private life and can always be found advancing every interest that has a tendency to benefit his county.

**CANYON CITY BUSINESS LINES**  
At present there are in Canyon City professional men and business lines represented as follows:

Physicians (practicing)	3
Lawyers	6
Jewelers	1
Photographers	1
Dentist	none
Land Offices	10
Banks	2
Wholesale Grocery Houses	2
Coal and Grain Houses	2
Hardware Houses	2
Furniture Stores	2
General Merchandise Stores	5
Grocery Stores	2
Racket Stores	2



**ALFALFA FIELD.**  
This cut shows a field of alfalfa belonging to Henry Shinebarger, about one mile northeast of town. In yield and quality Mr. Shinebarger's alfalfa easily stands with the very best there is on the market.

Drug Stores	2	Residence lots in Canyon City are priced according to their location.
Saddle Shops	1	East, South, North and West. The College building is situated in the west part and lots in its vicinity bring the highest prices, from \$250 to \$500. Next in price come those in the northern portion of town and the cheapest are in the east side.
Bicycle Shops	1	The Northern and Western residence portions are the highest.
Barber Shops	2	We have good citizens of all political faiths in Randall County, the majority, however are Democrats. We never ask a proposed settler what his politics are, it is sufficient for us if he be a good man.
Boot and Shoe Shops	1	If in doubt as to the truth of any statement made in this paper write some of those whose names appear in it, not necessarily the land agents, and ask what they think about it.
Blacksmith Shops	2	The lots on the Public or Court House square in Canyon City are 30 foot front and 140 foot back. Unimproved ones are ranging at about \$1000.
Hotels	3	The expression "bornout," used on page 6, is a newly coined word the credit for which belongs exclusively to the compositor, Tom Kidd.
Restaurants	2	
Bakery	1	
Butcher Shops	1	
Livery Stables	1	
Lumber Yards	2	
Phone Systems	1	
Cement Stone Manufacture	1	
Dray Lines	2	
Deliveries	2	
Newspapers	1	

Speaking of the alfalfa crop about Canyon City, the first cutting on a field of 43 acres belonging to L. C. Lair baled out 52 tons. John Knight on six acres had nine tons and two wagon loads over. We may safely put the general average for the entire first crops at 1 ton per acre with three and perhaps four other cuttings yet to come for this year.

Good, pure, cold drinking water may be obtained anywhere in Canyon City at a depth of from 50 to 75 feet. That on the southern slope or Tierra Blanco, watershed is known as "lime water" and that in the northern portion of the Palo Duro side is soft water. It is that on the Palo Duro side from which the railroad draws its supplies.

The prices on Randall county lands are governed to a large extent by amount of improvements on them and their nearness to town and the railroads. The common range is from about \$10 to \$20 per acre. Creek or subirrigated alfalfa lands are higher.

**Canyon City Real Estate Co.**  
CANYON CITY, TEXAS  
Many satisfied customers attest our manner of doing business. We have lands improved and unimproved, in large as well as small bodies, near town or far away. At present we have some unusual bargains.  
**Come and See or Write Us**

**Randall County Abstract Co.**  
We have a complete type-written copy of the Deed Records of this County and are in a position to give the very best Abstracts to be had of Randall County. We attach special significance to our Certificates and ask the public for a portion of their patronage.  
We also write Fire, Tornado, Life, Accident, Health, and Live Stock Insurance, representing some of the best Companies operating in this State.  
We will be glad to write your Deeds, Mortgages, and other Conveyances and assure you the most courteous treatment. Our prices shall be reasonable in all cases and our work as good as the best.  
**OFFICE - East Side of Square. Notary in Office**

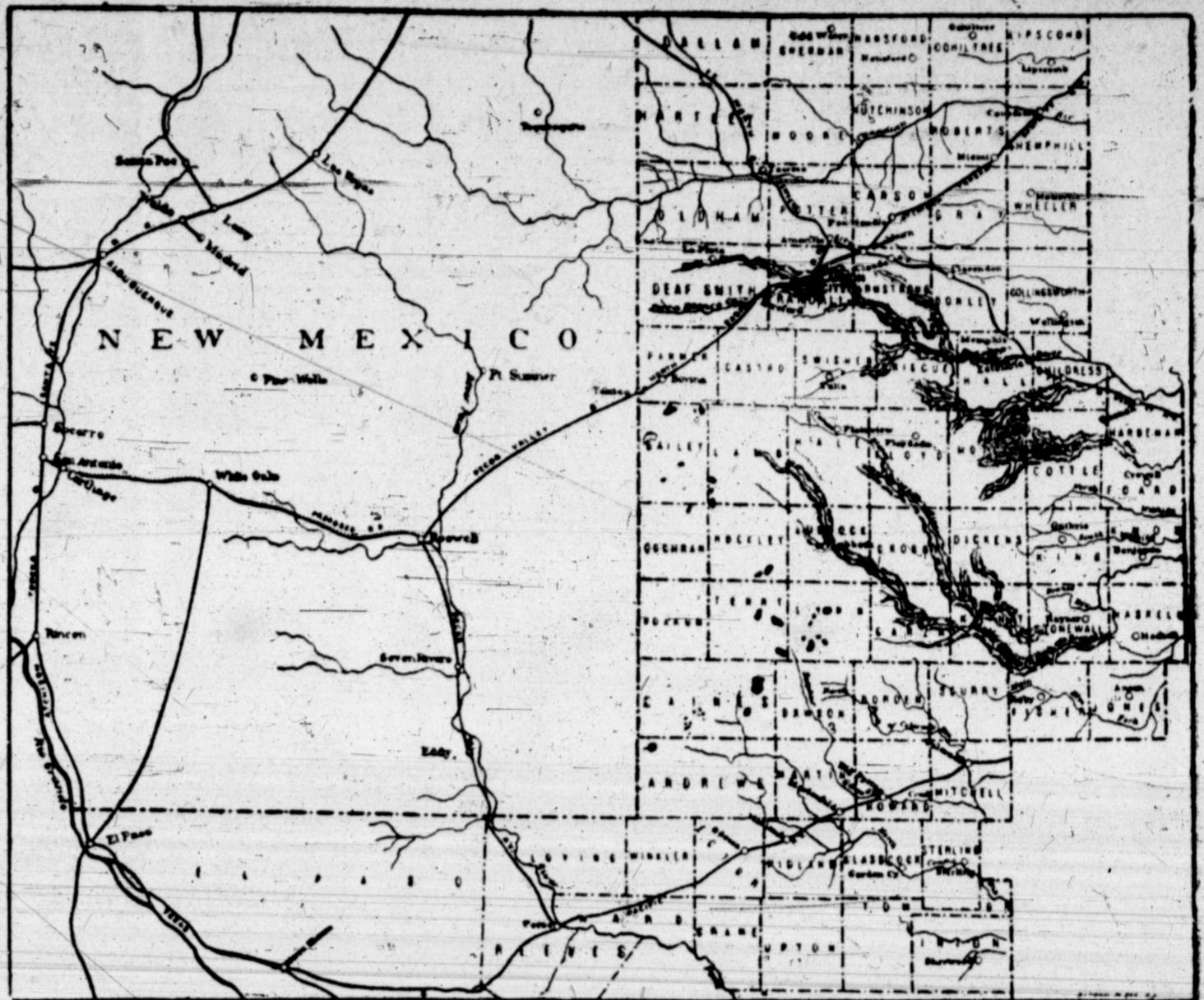
**THE "OUTDOOR"**  
Registered Hereford Herd  
**BULLS IN SERVICE**  
Ten Strike 80169      Majestic Chief 156063  
Armour Dale 156843  
Stock located in Pasture 1 mile north Canyon City Dept - Texas  
**STOCK FOR SALE**  
Apply to JOHN HUTSON, Canyon, Texas.



**PLANT A HOME ON THE PLAINS OF TEXAS.**

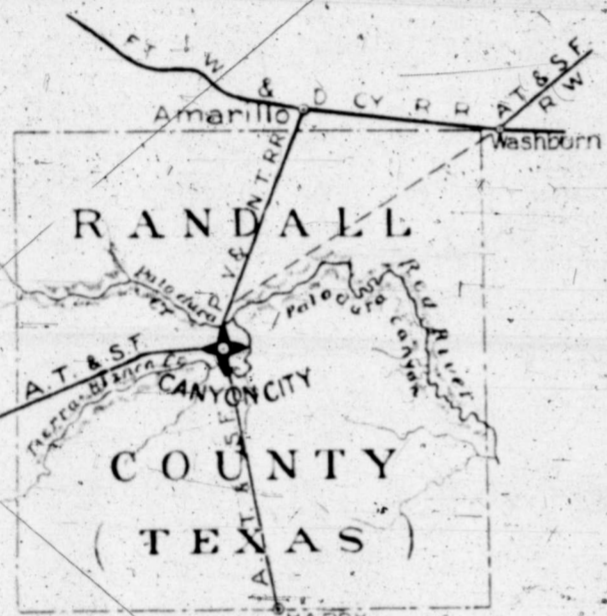
[Paraphrased from Daniels Bros. lines on "Plant a Home in old Missouri."]

Young beginners, in life's morning,  
 Don't forget the rainy day;  
 Sunshine cannot last forever,  
 Or the heart be always gay.  
 Save the dime and then the dollar,  
 Lay up something as you roam;  
 Choose some blooming spot of beauty;  
 Some fair lot and plant a home.  
 You too, who have babes around you,  
 Coming up to take your place,  
 Give them something to remember—  
 Homestead memories let them trace.  
 Would you feel the pride of manhood,  
 Let the sun your dwelling greet;  
 Breathe the blessed air of freedom—  
 Own the soil beneath your feet.  
 You too, who perhaps have squandered  
 Life's fair morn, 'tis not too late—  
 Start at once to woo bright fortune,  
 Rail no more at so-called fate.  
 Sow the golden seed of Saving  
 In the rich and quickening loam;  
 Spend your last days in Texas,  
 Enter heavens' gate from home.



**THE TEXAS PANHANDLE.**

By looking closely at this map, the contemplated cut-off from Washburn to Canyon City on the Santa Fe will be seen, also the course of the canyons and streams through Randall County. It will be observed that this Washburn cut-off to Canyon City will make the Santa Fe line about straight from Panhandle to Texico, whereas at present, a triangle is made by the trains of this system traveling over the "Denver Road" from Washburn to Amarillo and thence to Canyon City. This straightening of the road will place Canyon City on the main trunk line, leaving Amarillo on the spur which runs up from the South.



**WASHBURN CUT-OFF.**

This small cut will, perhaps, give our readers a better idea of the proposed Santa Fe-Washburn-Cut-Off than the larger map does. It also shows the route of the Plainview branch through Randall county. Happy is a station on the South-line of the county. The grade over this road, Canyon City to Plainview, will be completed and ready for the laying of the rails by September 1st.

**Canyon City Business Concerns.**

*Continued from page 8*

at prices to meet any and all competition.

One special feature of the business of The Canyon Coal Co., is Field Seeds. They handle only seeds of proven quality and guarantee every order or shipment to be the best.

Mr. W. H. Hicks the business manager personally looks after every detail of this business and all receive courteous treatment when dealing with the firm.

They are always in line for the advancement of Canyon City and can be depended upon in any laudable enterprise.

**THOMPSON DRUG STORE,**

J. B. LATHAM, Prop.

The public have a right to demand that their prescriptions be filled in the same careful manner that is used by the physician who prescribes the same, and no one but a registered pharmacist should be allowed to prescribe for the dear loved one who may be suffering.

In Canyon we have a drug store where careful compounding of prescriptions from pure drugs can always be secured.

The proprietor of this establishment, Dr. J. B. Latham, is one of our prominent business men and his ever aim is to please the public in the dispensing of Pure Drugs, Drug Sundries, Paints, Oils, School Supplies, Toilet Articles, etc.

In the paint department can be found the celebrated Sherwin-Williams Paint which holds the highest reputation for quality of any paint manufactured in the United States.

This popular drug store is a credit to our town and commands patronage of the best people in Randall county.

**CANYON LUMBER COMPANY**  
 C. R. BURROW, Manager.

One of the leading firms in the up-building of Canyon City.

Lumber has its history and its various chapters open in the primeval forest with the ringing of the woodmen's ax and ends in the haunts and homes of civilized man. For years this has been the leading industry of man and prominent among those who today are successfully carrying on this business is the Canyon Lumber Company.

The manager of this company, Mr. C. R. Burrow, is a man who thoroughly understands every detail of the business and carries one of the most complete stocks of lumber, building material, paints, oils, etc., to be found in any yard in North-west Texas. All their lumber is enclosed in sheds, bright and clear for the carpenter's plane and, at prices as reasonable as can be secured from any city or firm.

All prospective customers will find Mr. Burrow ready to figure on their bills and his estimate will be as low as good material can possibly be furnished.

This yard makes a specialty of Long Leaf Yellow Pine, Celebrated Redwood Shingles, Doors, Sash, Mouldings, Lime, Cement, Paint, etc.

Mr. Burrow, the popular young manager, can always be found pleasing his customers and is ever ready to advance all the enterprises that go to make Canyon City a center of trade.

S. V. WIRT.  
 DRUGS, DRUG SUNDRIES, ETC.

For three years in the present location.

One of the prominent business and

official men of Randall County.

A concern which stands well established among our business enterprises and one that all would do well to take as a model is that of S. V. Wirt, druggist, and dealer in drugs, paints, oils, window glass, etc.

This business today is one of the best known in Canyon City and when Mr. Wirt started the drug business fifteen years ago he made its foundation honesty and reliability. This firm basis, his thorough knowledge as a druggist, his care and tact in selecting his stock, his reasonable prices and constant determination to please every fair-minded customer, has brought him a patronage of which many larger firms might justly feel proud.

The physicians find this an excellent place for the filling of prescriptions, knowing that a long practical experience and complete knowledge are important features in the fulfillment of their wants.

The man, woman or child in quest of any kind of toilet article, perfumery, stationery, fishing tackle, eye glasses, etc., can do no better than to visit Mr. Wirt's store. This business deserves its great prosperity, and will always be found up-to-date and popular.

Mr. Wirt is one of our prominent men and has held many important official positions in our county, having been County Treasurer for four years and Deputy Sheriff.

He buys and sells town property and has many good bargains to offer those who desire to have a home or erect a business block.

We call the attention of our readers to the fact that when you have business dealings with Mr. Wirt you are dealing with a man whose word is as good as a bond.

**THOMAS BROTHERS,**

Wholesale and Retail

FURNITURE, UNDERTAKING, WALL PAPER.

This well known and reliable firm located in Canyon City four years ago. Their large store building and warehouse where they do a large wholesale and retail business is replete with furniture, carpets, matings, house furnishings of all kinds.

The enormous stock would do justice to any city. The arrangement as to every detail is good and the attention bestowed upon customers with the most courteous treat-

ment is one of the things commendable of this firm.

The stock carried embraces an exceedingly broad range and is very large indeed, affording people of every taste just what they desire.

Every available portion of the large floor space is used in the excellent display of the goods carried.

Throughout the entire establishment the most reasonable prices prevail on all articles, whether they be of the very highest and most elaborate design or the plain, substantial goods.

Honorable, straightforward methods at all times have been the means of this store's splendid growth and prosperity.

All gentlemen connected with this firm either as proprietor or salesmen are of the highest type and compose that class of citizenship which is so essential for the making and up-building of this section of the country.

They are also wholesale and retail dealers in coal, and own and operate their own mines at Wayne, Col., and now offer good lump coal at \$7.50 per ton.

**COLEMAN-LYSAGHT-BLAIR CO.**

WHOLESALE GROCERS,

Wichita Falls, Texas.

Branch Houses

Quanah, Semour, Bowie, Amarillo, Texas.

J. M. REDFEARN, Manager,

Canyon City, Branch.

This firm is one of national fame with headquarters at Wichita Falls and branches at five other cities including Canyon City.

The house here ranks as the leading business enterprise and covers floor space 6000 square feet. They do a large wholesale business and have every facility to handle the interior trade between the Santa Fe railroad on the north and the Texas & Pacific on the south. One cannot realize the amount of business done unless you should see some of the shipping receipts for a day which show as high as 60,000 pounds.

While this firm has only been located here since Aug. 1, 1905 as a wholesale establishment yet under the management of Mr. J. M. Redfearn, a young man with vim, push and determination, the business has grown until the capacity of the present building is becoming too small

to carry all the goods so necessary to fill all orders.

The buying is done at the house at Wichita Falls and in large quantities and shipped direct from the manufacturers in car load lots to the different branch houses thus giving them the advantage of quoting the trade the lowest price for high class merchandise.

While they have a traveling representative, yet they solicit mail orders and guarantee to give prompt attention in filling them.

Mr. Redfearn is enthusiastic concerning the future of Canyon City and is one of the earnest workers for the betterment of the town. He is well liked through the city and stands well in business circles.

T. H. ROWAN,

OUR POPULAR LIVERYMAN.

When one hires a livery rig, of course the best is what is wanted and the place where the best appearing rigs and the finest stock are kept is the place that will be preferred.

Such are to be found at the stable run by T. H. Rowan.

He has the best managed and the best equipped livery, sale and boarding stable in Randall county, and gives prompt attention to all orders given him.

Mr. Rowan has the latest in rubber tired rigs of all kinds and his supply of buggies, phaetons and carriages are all of the best makes, which can be hired with the best of driving horses at the lowest rates.

He runs busses to meet all trains and for the past two and one-half years has done much to advance our town by running the most up-to-date business.

He makes a specialty of the traveling public and land seekers and does business in a straightforward business manner.

He has purchased at a cost of \$3,000 one of the finest German Coach Stallions ever brought to the Panhandle of Texas and always takes a great interest in blooded stock of the best breeds.

This three year old horse can be seen at his stable at any time and all who desire are invited to call and inspect him.

Mr. Rowan deserves great credit for his industry and enterprise and no man stands in better favor with all our people.

48  
 one mile  
 with the  
 City are  
 location,  
 st. The  
 d in the  
 vicinity  
 rom \$250  
 me those  
 town and  
 ast side.  
 residence  
 s of all  
 County,  
 e Demo-  
 proposed  
 are, it is  
 ood man.  
 b of any  
 per write  
 s appear  
 id agents,  
 out it.  
 or Court  
 y are 30  
 ck. Un-  
 at about  
 used  
 ed word  
 longs ex-  
 of, Tom  
 late Co.  
 XAS  
 est our  
 We  
 unim-  
 s small  
 ay. At  
 unusual  
 title Us  
 Co.  
 Office  
 R''  
 6063  
 Texas.



# THE SEVENTH ANNUAL REUNION UNITED CONFEDERATE VETERANS AND COWBOYS

WILL BE HELD IN CANYON CITY AUGUST 28, 29 AND 30, 1906

The increased development of our country, its reputation for healthfulness, its new railroad projections, its better known fertility and productiveness, the increasing demand for homes and lower priced lands, all tend to increase from year to year this notable gathering and will naturally make this the most largely attended of all these Reunions. This will call for newer and greater attractions. **WE WILL FURNISH THEM.**

All the latest entertainments and amusements will be on hand; not the least of which will be an exceptionally fine exhibition of the agricultural products of Randall County.

Come and help us enjoy it. Are you tired and run down? Then come and breathe our pure air at an altitude of 3,000 feet, angle in our streams, see the magnificent scenery of the Palo Duro Canyon rivaling that of Yellow Stone Park and return home fresh and invigorated.

Do you want more land for your sons and sons-in-law, or do you want to quit renting and get a home of your own? Then take advantage of the reduced railroad rates to see the largest body of cheap, but fertile lands in the United States.

## LET EVERYBODY COME

## REDUCED RATES ON ALL THE RAILROADS

### THE PLAINS FUTURE

The Texas Plains, especially that portion known as the Central Plains, is just now engaging the minds of people throughout the United States. The attention of the News was most forcibly called to this fact recently by the request of a Chicago paper for an article about the country and almost at the same time came a similar request for a like favor from a publishing firm at Los Angeles, California. A new Eldorado, as it were, a land said to be flowing with milk and honey, has seemingly all at once been spread before the public gaze and they want the particulars.

As were the ancient Romans in their best republican days the American people are progressive; action is born in their bones, they want new fields to explore and to conquer. Such has been the case from the very beginning of things on this continent. It was this motive that lay back of Daniel Boone's entry into the "Kentucky wilderness," as some historians have it. It was this spirit that prompted our grandfathers to cross the great "Father of Waters, the lordly Mississippi, and trench upon the then bleak, treeless, desolate and uninviting prairies of Iowa. The same incentive took men who are now living to face the rigors of a Nebraska winter and to wrestle with hot winds, grasshoppers and starvation on the lonesome plains of Kansas.

Forty years ago the broad prairies of Iowa were practically an unknown quantity as to their value for man's habitation, the lands could almost be had for a song—thirty years ago the same could have been said of Western Kansas, yes, less than ten years ago Western Kansas lands went begging at any old price—nobody wanted them. Only a few years ago our near neighbor, Okla-

homa, with climate, soil and other natural conditions not near so good as ours, was valued only as a grazing ground for transient herds and considered unfit almost altogether for farming purposes. So much is history, but how is it now? No use to dwell on the answer for all the world knows that the States and Territories named are surpassing in the value of their agricultural productions the oldest states of the American Union.

With the wonderful progress thus shown in the countries that partake of our latitude and seasons, and the further fact that the Texas Panhandle and the Texas Plains is the ONE new great country full of promise left in our United States it is no wonder at all to the News that we are engaging the attention of progressive people all over the continent.

To the homeseeker not a country named above has so many good things to offer for so little cash and with so few inconveniences attached as the Central Plains: The people everywhere are finding this out—they are coming; they will stay with us, be of us and for us, and in a few years we can and will make of the Central Plains a land of prosperity, covered all over with happy homes—farm homes and teeming with a people who will earnestly render thanks unto God for bringing them here.

### PRESENT CROP CONDITIONS

Crop conditions throughout the county are about as good as could be wished for.

The first cutting of alfalfa has been secured and almost all of it sold as baled. The bulk of it has been shipped to Fort Worth, the producer receiving \$9.50 per ton F. O. B. the cars here.

The small grain crop is, we may say, made and from all reports the

turnout is going to be an excellent one. There is beyond doubt wheat in this country that will thresh out thirty bushels per acre, and The News considers it safe to say that the average yield for the entire crop of the county is not going to fall any below 20 bushels per acre. As the land sown is practically the same in quality—the great difference that is here indicated in the turnout can only be attributed to the right and the wrong way of preparation of the seed bed and the quality and quantity of the seed put in the ground. The time of sowing also, of course, cuts a figure in the results. Where all these things were given the proper attention the yield per acre for wheat in Randall County for this season may safely be estimated at 25 bushels of good sound grain per acre. The oat and other grain crops, barley etc. is also made in so far as moisture is concerned and much of it is now ready for the sickle. Some of our people are claiming enormous yields for oats, estimated of course. Several parties have gone as high in guessing as 80 and 100 bushels per acre, but this The News is of the opinion is altogether too high. What has been said about the proper preparation of the ground in connection with wheat will, with equal force, apply as well here as there—it all depends on the farmer. The News' estimate of the oat crop would be between forty and fifty bushels per acre. The grains not especially named are also good. It is too early to make estimates on other field crops.

The grass all over the county is fine and the stages in its growth have just been reached when stock do their best on it.

If the Central Plains were known up North where land is high-priced as we who live here know them our country would be full-up within the short space of one month.

### RAINFALL ON THE TEXAS PLAINS

From U. S. Records at a Point Eighteen Miles From Canyon City—Monthly and Annual Precipitation.

Year	Jan.	Feb.	Mar.	Apr.	May	June	July	Aug.	Sept.	Oct.	Nov.	Dec.	Ann'l
1894	0.02	1.15	0.05	0.85	1.30	3.59	1.82	3.41	2.41	0.39	0	0.82	15.81
1895	1.60	1.92	0.16	1.31	1.78	6.84	2.88	3.87	0.57	2.26	0.81	0.79	24.79
1896	0.76	0.41	0.21	1.95	2.20	2.31	7.04	0.63	2.45	3.09	0.35	2.88	24.28
1897	2.26	0.65	0.47	1.08	4.44	2.32	2.16	2.71	0.73	1.63	0.08	0.63	19.16
1898	0.86	0.82	0.35	0.98	3.52	4.81	3.88	4.03	0.48	0.41	0.34	2.06	22.54
1899	0.29	0.07	0.17	0.23	3.12	4.45	6.96	0.51	6.09	1.15	3.24	1.11	27.39
1900	0.59	0.47	0.48	5.47	4.53	1.84	3.21	0.83	5.25	1.58	0.08	0.07	24.40
1901	0.03	0.48	0.02	4.90	5.99	0.92	1.56	3.03	2.19	3.26	2.00	0.04	24.42
1902	0.04	T	0.54	1.83	9.14	2.01	1.45	2.42	0.95	1.74	2.24	0.55	23.11
1903	0.12	2.93	0.26	0.90	1.79	2.62	3.38	4.67	0.82	2.58	0	T	20.07
1904	0.16	0.08	T	0.63	2.88	5.53	2.48	4.69	3.55	0.44	0.20	0.69	21.33
1905	1.00	1.52	2.62	4.52	6.16	2.19	3.76	0.63	3.08	0.30	5.00	1.15	31.93

T—Too light to measure

If we accept the Records at Plainview and other inland towns for the past ten or twelve years, it would give the Central Plains country an average rainfall of twenty-four inches. Letting these go, however, because not official and accepting Amarillo, because a government station and official, we still have for the country mentioned—the Central Plains—an average rainfall of twenty-two inches. This record taken for fourteen years back and compared with the official record of that portion of the State known as the "Central West," only loses two inches annually in favor of that portion of Texas which as a farming country, all things considered, will rank with any part of these United States west of the Mississippi River and east of the Rocky Mountains.

In making this comparison of rainfall—the Central Plains against Central Texas—it must be borne in mind that we of the Plains get almost all of our rains during the crop or growing season while our Central Texas farmers get most of theirs in the fall and early spring when not needed. Take the crop season and there is no disputing the fact but that the Central Plains, one year with another, gets more rain than does Central Texas.

Yes, the Plains rainfall is alright for farming—good farming, and it has been so as far back as official records go and will remain so for all time unless miraculously changed as was Palestine—cursed of God on account of the wicked perversity of its people so that it rained not any more as formally, and from a land of plenty became a barren wilderness.

### Canyon City News

Established 1897 Only Paper in County

A WEEKLY NEWSPAPER

ALWAYS ON TIME NEVER MISSES FIRE

The Central Plains. Would you know more about them? If so subscribe for The Canyon City News and get in touch with Plains people and their comings in and goings out—Randall County and its productions. Subscription \$1 per year and if sent out of the county stopped promptly at expiration of time paid for.

### THE NEWS JOB OFFICE

If has modern type faces and carries a good stock of the best grades of Stationery. Good work or no charge. Prices are reasonable. Always on time. It wants your patronage.

CANYON CITY NEWS