

LISD board hears enrollment report

LISD board members met for a regular scheduled board meeting, Sept. 20, at 7:30 p.m.

Principals from each school gave enrollment reports to the trustees. Total enrollment as of Sept. 19, was 805 students. This is an increase of 48 students over last year. See the principals breakdown of enrollment by school and race in an accompanying story.

Trustees approved the hiring of Shelley Brock as an additional 3rd grade teacher.

A discussion was held on the possibility of future classroom expansion for the elementary school. "We had to hire an additional 3rd grade teacher and we are still considering applications for an additional 5th grade teacher," said Superintendent Dub Hallmark. "Because of the increased enrollment we may have to look at additional classroom space for the elementary school. It is just at a discussion phase now."

Mr. Ellison had a report on the English as a second language program. Ellison reported that a total of 30 students were qualified for the limited English speaking program.

Trustees also approved the Gifted and Talented policy for the school year 1990-91.

The definition given by the state for the gifted and talented program states, "Gifted and talented student" means a student who, by virtue of outstanding mental abilities, is capable of high performance. The student may demonstrate, singly or in combination, above-average achievement or potential in such areas as general intellectual ability,

specific subject matter aptitude, ability in creative and productive thinking, and leadership ability. The phrase does not include students who demonstrate above-average achievement or potential in areas relating to physical abilities.

School board members approved calling for bids on C.H. George Survey, Abstract #1050, 2 acres (old Galloway Concrete Plant). Bids will be opened at the next board meeting.

Trustees accepted the resignation of Trustee Lisa Mosley. Mosley is currently going to college and working a degree. Because of the demand on her time, she felt she could not fulfill her obligation as a school board member.

According to Hallmark, her position will be filled by appointing someone to serve until the next school board elections are held in May.

The school board members and Hallmark left on a state school board and superintendent convention that was held in Houston, September 22-24.

Members present were Dr. Gary Mangold, Dr. Paul Glasson, Lisa Mosley, Mike Mathis, Dickie Lambert,

Eddie Teeter, and Jim Bob Martin.

Also present were W.H. Hallmark, LISD superintendent; James Poole, high school principal; Terry Ellison, junior high principal; and Joyce Evans, elementary school principal.

LOCKNEY ENROLLMENT

Enrollment at Lockney Independent School District, as of September 19, 1990, stands at 805 students. This is an increase of 48 students over last year.

A total of 477 Hispanic students are enrolled in the three schools. This represents 59% of the student body. Enrollment of Hispanic students have increased by 35 over last year's number of 442.

Anglo students represent 36% of the student body this year, with a total of 297 students. This is an increase of 20 students over last year's total of 277 Anglos.

Black students represent .03% of the student body, with a total of 30 Blacks

enrolled. This is a decrease of 10 students over last year's total of 40 Blacks.

Peak enrollment for LISD occurred in the 1972-73 school year, with a total enrollment of 1,112 students. That year there were 505 elementary students, 313 junior high students and 294 high school students.

Peak enrollment for the high school was in the year 1975 when there were 312 students enrolled.

Beginning with 852 students in 1980, there was a decline every year in student enrollment, dropping to a low of 700 total students in 1985.

In 1986, enrollment started to steadily climb again, from 715 in 1986, 720 in 1987, 732 in 1988, and 757 in 1989.

The charts below show a breakdown of enrollment by race and campus and a chart comparing 1989 campus totals to 1990 totals.

EDITOR'S NOTE: Charts detailing the 1990 enrollment figures for LISD appear on page 5 of this issue.



FIRST LOCKNEY BALE--Don Sutterfield (l) brought in the first bale of cotton in the Lockney area. The bale was ginned by Sterley Gin on Wednesday, September 19. According to Jim Roberts, (r) Sterley Gin Manager, the bale weighed 510 lbs and turned out 25 percent lint. The cotton was Paymaster 145 and was grown on dryland east of Sterley.
 Staff Photo

Pictures will be taken Tuesday

Pictures will be taken at all three Lockney schools on Tuesday, October 2. Only those students who pay for pictures the day they are taken will receive pictures. Please refer to the list your child brought home.

Moerbe, Marr and Mosley win weekly money

In the third edition of the Lockney Beacon Football Contest Jamie Moerbe missed only two games. He correctly chose fourteen games and will receive the first place check for \$10.00.

Thirteen correct picks were made by Brady Marr, with a tie breaker score of 21; Ricky Mosley with a score of 35; Nicole Mosley with a score of 39; and Johnnie Mosley with a score of 42.

Brady Marr will take home the second place check of \$6.00 and Ricky Mosley the third place check of \$4.00.

Correctly choosing twelve games were Coby Marr, Jerod Glasson, Glenda Wilson, Johnny Dorman and Pam Fulton.

Dwayne Wilson, Brandon Widener, Carl Lee, Boyd Lee, Omar Burleson, Joseph Henderson, Arturo Gonzales Jr., Lisa Mosley, Jared Mosley, Noe Blanco Jr. and Carrie Davis correctly picked eleven games.

Ten games were correctly chosen by Kimberlee Widener, Kip Holt, Ryan Ford, Roy Saucedo, Allen Martin, Tyson McDonald, Ron Cates, Dickie McCarty, Willie Luna, W.L. Carthel and Julie Hancock.

Olga Enriquez, Brent Sanders, Sarah Sanders, Lucio Vasquez, Terry Turner, Chad Turner, Mike Anderson, Dede McCarty, Mandi Yeary, Elisha Morris, Chad Stapp, Randy Hancock, and Jana Davis missed seven games and correctly picked nine.

Eight games were correctly chosen by Kenny Hooten, Lee Truitt, Nelda

Enriquez, Jessie Garza and E.M. Pyle Jr. Lyndall Stapp, Randall Stapp and Lequita Davis each correctly chose 7 games.

Nicole Mosley is still in the lead for the prize money with 35 points. She is followed by Jared Mosley and Jamie Moerbe with 32 points. Lisa Mosley and Johnnie Mosley have 31 points apiece. Joseph Henderson, Ricky Mosley,

Glenda Wilson and Brandon Widener each have 30 points.

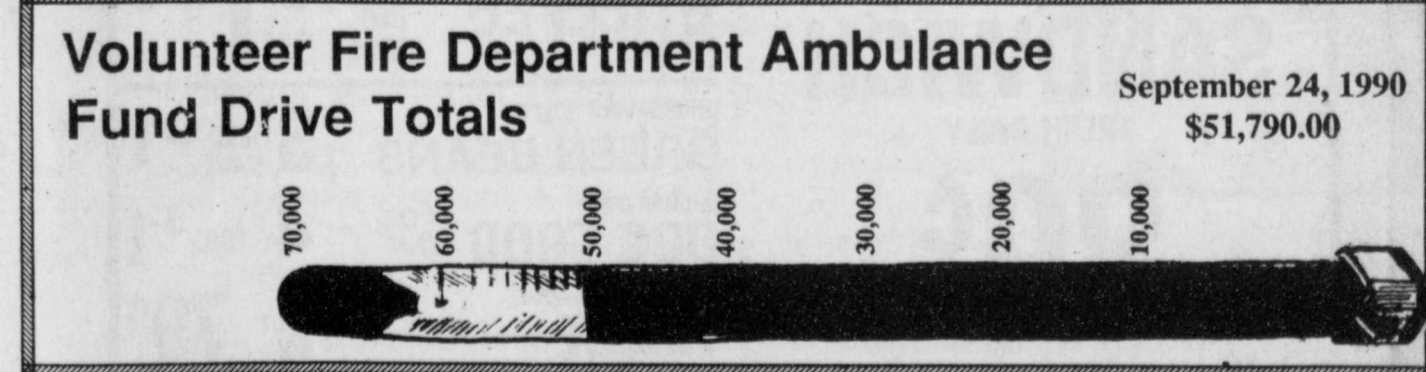
Entrants need to check their entries before they are turned in. One entry was turned in at the Beacon with games circled and the tie breaker score written in but it had no name or address on it and could not be graded.

These football contests are being sponsored by the following merchants:

Clark Pharmacy, Cargill Hybrid Seed, Caprock Industries, The Tye Company, Lambert Spraying, Schacht Flowers and Gifts, Attebury Grain, Lockney Meat Company, Don Hardy Car Wash, Websters Service and Supply, Pay-n-Save of Lockney, Muncy Elevator, Wilson Photography, D&J Gin, Johnson and Johnson, Davis Lumber and The Lockney Beacon.



LOCKNEY ROTARY CLUB DONATES MONEY TO AMBULANCE FUND--Owen Thornton presents Jimmy Kemp with a check for \$500.00 from the Lockney Rotary Club. The money will be used to purchase a new ambulance for the community.
 Staff Photo



First Methodist Centennial year celebration continues October 7

Continuing the centennial celebration for the First United Methodist Church of Lockney, October 7, 1990, will be a big day. The church was organized in 1890 and is celebrating 100 years of Methodism. All former pastors, widows of pastors, district superintendents, members and all friends are invited to any or all of the days activities.

The day is scheduled to begin with the morning worship service at 10:55 a.m. with Frank Oglesby, a former pastor and now retired in Lubbock bringing the message. Other former clergy will have

a part of the service. A covered dish will be served in the fellowship hall at 12:00 noon, with our visitors as guest. Following we will have an old fashioned singing, fellowship, time to visit the centennial display and other entertainment. At 2:00 p.m. our resident bishop, Louis Showengerdt of the Northwest Texas-New Mexico Annual Conference and our district superintendent of the Plainview district Earl Blair will be with us to lead in a dedication service. We will be dedicating our historical marker and our new United Methodist hymnals.

We will have special recognition of guests, the oldest member, the oldest Methodist and all who are 90 years of age and older.

The centennial committee is composed of Merle Mooney, chairperson; Sidney Jackson, Hazel Johnson, Ronnie Thornton, Molly Huffman, members; and the pastor.

Tommie Beck, pastor, extends an invitation to all our friends, both local and out of town to attend.

Postmaster Doug Meriwether retires

(Editor's Note: The following article was written by Texas Tech journalism student, Lori Mertins, who has been provided to this newspaper by Tech's School of Mass Communications. The program is made possible through a grant from the Readers Digest Foundation.)

By Lori Mertins

Doug Meriwether retired this month from his position as Postmaster in the Lockney division of the U.S. Postal Service after 37 years of service.

Meriwether was appointed to Postmaster in 1967, following his position as a postal clerk. While serving Lockney as Postmaster he trained 43 area postmasters and officers-in-charge and served as a team captain in numerous staffing studies and area office studies.

Meriwether surveyed rural routes and highway contract routes to judge customer satisfaction. He monitored overnight delivery services at numerous post offices to maintain that service standards were met. As a member of the Cadre Team, he also audited and reviewed area newspapers' circulation.

Meriwether received awards and recognition during his career for his outstanding job performance. He received two certificates of Merit from the National Association of Postmasters, the MSC Award for outstanding performance and customer service, and recognition for his accomplishments in The Environment Improvement Program.

Meriwether said that what he liked most about his job was the friendly people and atmosphere in Lockney. He also said that he liked knowing at the end of the day that he did a good job protecting and delivering the customer's mail.

Meriwether retired September 3, 1990. Upon retirement, he returned unused sick leave earned throughout his career which was valued at more than \$31,000.

Previous to his postal career, Meriwether served in the Korean Conflict as a sergeant in Military Intelligence stationed at Ft. Sill, Oklahoma.

He graduated from Lockney High School and Watson's Business College in Plainview. He attended various army training schools and postal training institutes.

Having spent almost all of his life in Lockney, Meriwether has been involved in many civic organizations. He was a member of the Lockney Volunteer Fire Department for 21 years, secretary of the Lockney Chamber of Commerce for three years, and president and charter member of the Lockney Lions Club. He served as Little League Baseball Commissioner for four years and service officer of the Lockney American Legion Post for eight years. He has been chairman of the Lockney Beautification Committee.

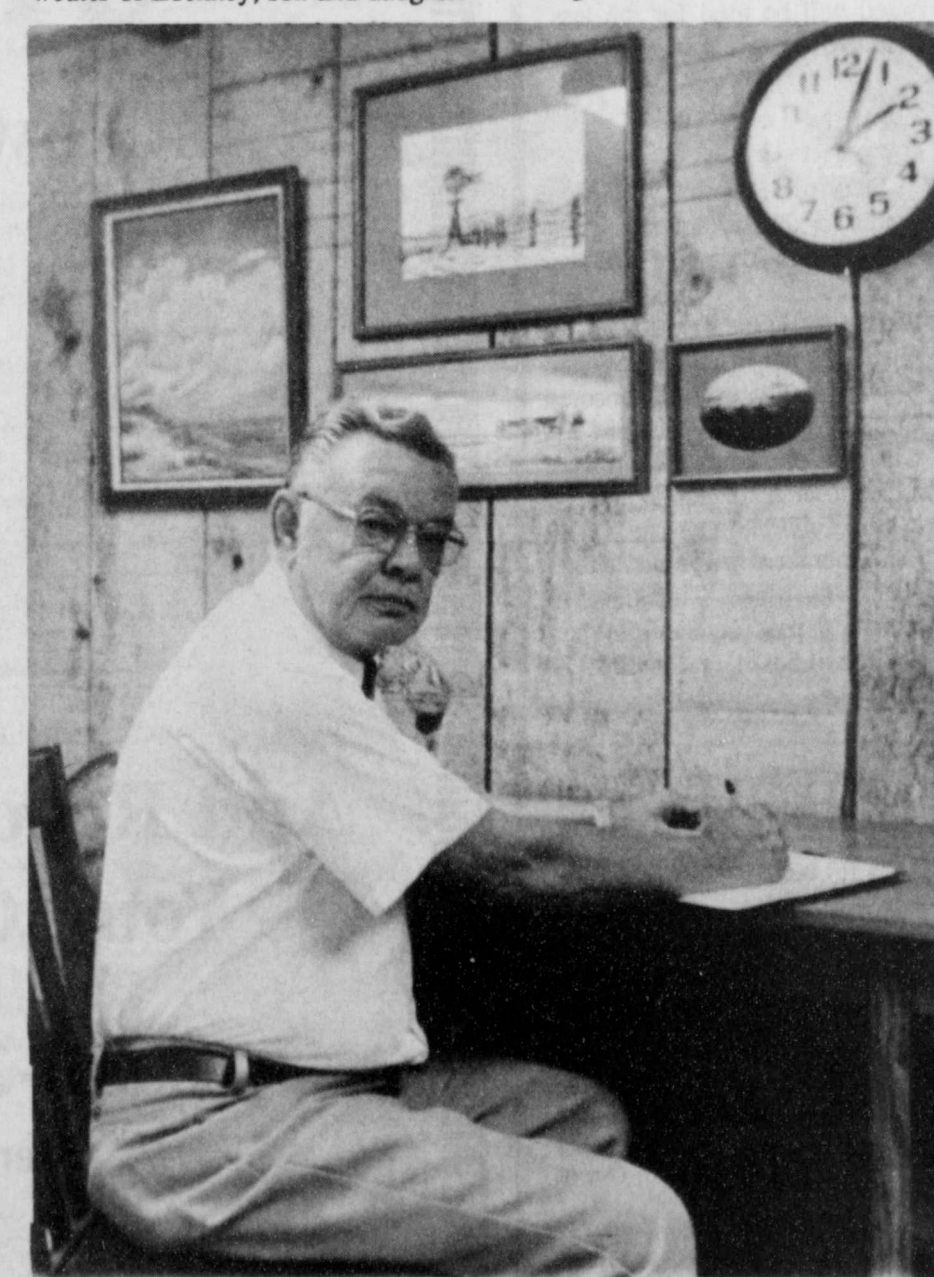
Now that he has retired, Meriwether said he will enjoy spending more time with his friends and family; his wife Donnie, mother Mrs. Raymond Meriwether of Lockney, son and daughter-

in-law Monty and Christy Meriwether of Lubbock, and grandson Matthew. He also said that he will spend more time pursuing hobbies such as farming, painting, and especially fishing.

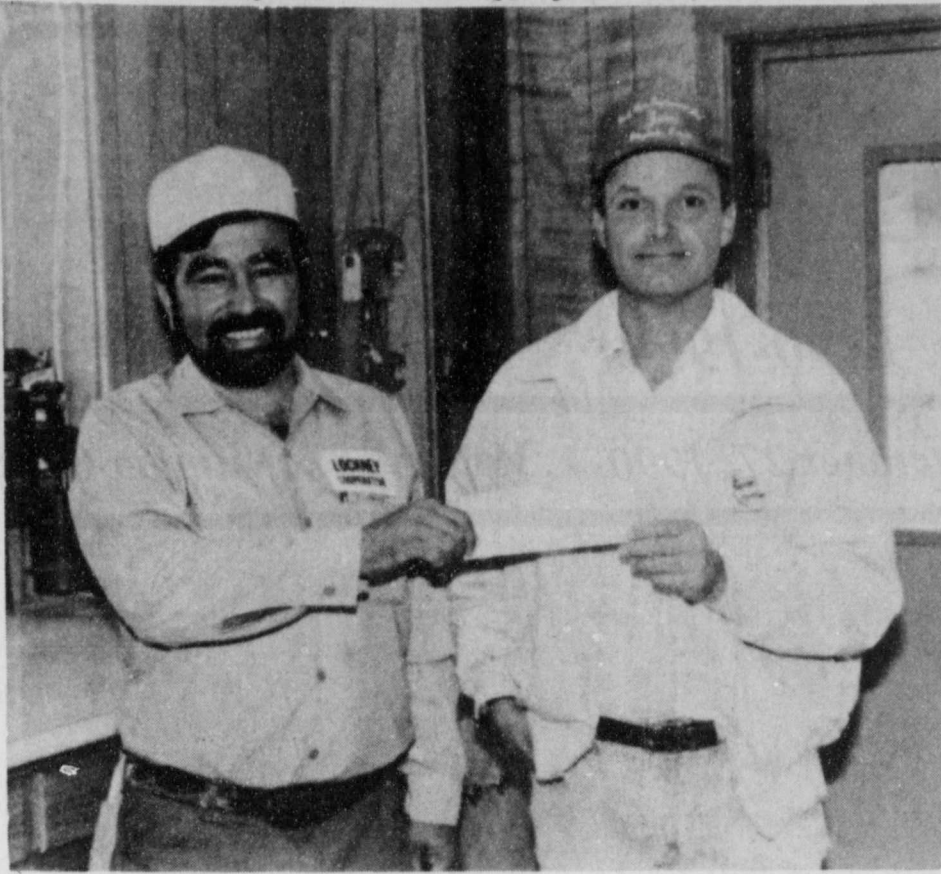
Meriwether said that he was very grateful to the Lubbock MSC staff for their continued support throughout the years.

He said that he would also like to give a pat on the back to the dedicated employees that he worked with throughout the years to make the Lockney Post Office one of the better offices on the high plains.

"I would like to personally thank the people of Lockney for the opportunity of serving as their postmaster and providing them with their service needs."



DOUG MERIWETHER



ASTON RECEIVES CHECK FOR FIRST LOAD OF CORN--Robert Delgado, president of the Lockney Chamber of Commerce presents Ronnie Aston with a check from the chamber after he weighed in and delivered the first load of corn in the Lockney area. Their corn was sold to Caprock Industries Feedyard, north of Lockney. Staff Photo

Mother's Day Out program begins at Methodist Church

The First United Methodist Church of Lockney, announces this year's Mother's Day Out program will begin Wednesday, October 10, 1990 and it will run through May 22, 1991.

This program is for pre-school children only from 9 a.m. - 5:00 p.m. each Wednesday. The program is for the convenience of mothers who want a day out away from their children.

"Leeta Prather has been employed by the church as the director for this year's program. She is very capable and the church is confident she will do a good job", said Tommie Beck, pastor.

If anyone is interested in being a teacher or working in this program, they should contact the pastor on the direction. For all information concerning this program you may call the church at 652-2193, pastor, 652-3459 or the directors at 652-3837. Tuition cost for members of First United Methodist Church is: one child, \$8.00; two children, \$14.00. If you are a non-member of the church the cost is: one child, \$9.00; two children, \$15.00.

This Mother's Day Out program will be open to all children who are pre-school age, no matter race, color or church affiliation.



LOCKNEY CHAMBER PAYS DIVIDEND--The Lockney Chamber of Commerce paid a dividend to Hansel Sanders for the cotton ginned on Friday at the Lockney Cooperative Gin South Plains Division. The cotton was Payment 145 and grown on dryland. The bale weighed 460 pounds and turned out 23 1/2 percent lint. Pictured are (l-r) Lon Colvin, gin manager; Robert Delgado, president of the Lockney Chamber of Commerce and Hansel Sanders. Staff Photo

Kellison leadership honored

Rick Kellison, of Kellison Fertilizer and Spraying Service, Lockney, was honored for his leadership in the agricultural industry during a three-day meeting held here recently. Sponsored by American Cyanamid Company, a major manufacturer of crop protection products, the American Cyanamid 1990 Leadership Council meeting brought together 60 agricultural chemical leaders from throughout the country.

Kellison was nominated to the council due to his "energy, vision, and commitment" to the agricultural business. The 60 attending dealers were chosen from more than 1,500 Cyanamid AgriCenter dealers who offer professional services to growers across the

United States. Called the "Meeting of the Minds," the event provided an opportunity for the agribusiness leaders to share information about the environmental, technical and agronomic aspects of their business. They also discussed their contributions to community service and their innovations in marketing, sales and service.



RICK KELLISON

DPS prepares new licenses

The Department of Public Safety is making preparations to license approximately one million commercial drivers in Texas. On September 17, 1990, DPS began uniform testing for all currently licensed commercial and bus drivers.

All commercial motorists who drive vehicles in excess of 26,000 pounds or transport hazardous materials that require the vehicle to be placarded are required to have a commercial drivers license (CDL) by April 1, 1992. Bus drivers, including school bus and church bus drivers, who drive buses designed to

carry 16 or more passengers, including the driver, will also be required to obtain a CDL by the same date.

Exempt from the CDL requirements are farmers, when they are driving within 150 miles of their farm, military personnel, recreational vehicle operators, and fire fighters when operating fire fighting vehicles or equipment.

Commercial drivers who must carry the new CDL's cannot renew their current licenses due to expire between September 17, 1990 and April 1, 1992. They should plan to visit the DPS Driver License offices for CDL testing at least one month before the expiration date.

To ensure that all commercial drivers in Texas who must have the CDLs obtain them in time to avoid penalties, the DPS troopers are urging them to visit the Driver License offices as soon as they have studied the CDL handbook. CDL License fee is \$40.00, less \$4.00 for each year of validity remaining on current Texas driver license. Free CDL handbooks are available at all of the offices.

Class of 1950 to hold 40th reunion

The Lockney High School class of 1950 will hold their 40th reunion this weekend. Class members will begin gathering at 6:00 p.m. at 302 Southwest 5th Street in Lockney for snacks and drinks.

On Saturday the group will meet at the Lockney Community Center at 9:00 and visit until whenever.

Friends, teachers and parents are invited to attend.



Go
Horns!
Beat
Hart!

POLITICAL CALENDAR

DISTRICT 84
HOUSE OF REPRESENTATIVE

Warren Chisum

Political Adv. Pd. For by
Jack Peoples, Treasurer Chisum Campaign
2323 Evergreen, Fampa, Tx. 79042

FLOYD COUNTY
PRECINCTS 2 & 3

C.L. (Mike) Mooney

Political Adv Pd For by C.L. Mooney

STERLEY GIN

Is Now Open



And Ready To Gin
Your Cotton

652-3102

Sterley

Jim Roberts

Terry Roberts

Lockney This Week

L.W.S.A. MEETING

The L.W.S.A. softball meeting will be held Thursday, Sept. 27, at 7:00 p.m. in the Jr. High Cafeteria. Annual officers will be elected.

ARTS AND CRAFT SHOW

An Arts and Crafts Show will be held on October 27 in conjunction with Punkin Day in Floydada. If you would be interested in renting a booth call Dawnell Smith at 983-5522 or Brenda Heflin at 983-5060.

CAPROCK JAMBOREE

The Caprock Jamboree will be held Saturday, Oct. 6, at 7:00 p.m., in the County Show Barn at Silvertown. Bring your lawn chairs. Drawing for \$25.00 gift certificate.

DOLL SHOW

The Plainview Doll Club is sponsoring a Doll Show and Sale Saturday, Sept. 29, from 10:00 to 5:00 p.m. at the Ollie Liner Center in Plainview. They will be doing doll appraisals and holding drawings for gifts. Admission is adults, \$1.00; children, 50 cents. Money raised will be used for the less fortunate at Christmas.

TULIA ARTS AND CRAFTS FAIR

Fifty-one booths will have wares for display and sale at the annual Tulia Arts and Crafts Fair to be Saturday and Sunday, Sept. 29 and 30, in the Texas National Guard Armory, 619 SE Second St., Tulia. The event, sponsored by the Women's Division of Tulia Chamber of Commerce will cost \$1 admission for adults and .50 cents for children each day. TOPS Club members will have a food concession stand. Times are 10 a.m. to 7 p.m. on Saturday and noon until 5 p.m. on Sunday.

The Lockney Beacon (USPS 317-220)

Published weekly each Thursday by Floyd County Newspapers, 211 North Main Street, Lockney, Texas 79241. Second class postage paid at Lockney, Texas.

Postmaster: Send address changes to The Lockney Beacon, P.O. Box 187, Lockney, Texas 79241.

Subscription Rates: Floyd, Swisher, Briscoe, Hale, Crosby, Motley Counties - \$15.00; Other Texas Counties - \$17.00; Out of State - \$18.00.

Alice Gilroy Editor/Publisher
Neta Marble Associate Editor/
Office Manager

NOTICE

Lockney I.S.D. is accepting bids on the sale of property known as Galloway Construction plant.

Legal description: C.H. George Survey, Abstract #1050, 2 acre tract.

Bids will be accepted until 4:00 p.m. October 11. Lockney I.S.D. Board has the right to accept or reject any and all bids.

Contact person: W.H. Hallmark, Box 428, Lockney, Texas. Phone 806-652-2115

Bids will be opened on October 11 at 8:00 p.m.

10-11c

ALLSUP'S

PRICES EFFECTIVE
SEPTEMBER 23 - 29

**SAVE EVERY DAY
OF THE WEEK!**

**ALL COKE FAMILY
COKES**
6 PACK/12 OZ. CANS

\$1.99

**ALLSUP'S SANDWICH
BREAD**
1 1/2 LB. LOAF

3 \$1
FOR

**ALL SUP'S BARBECUE BEEF
SANDWICH**
FRESH DAILY

89¢
EACH

**MELLO CRISP
BACON**
1 LB. PKG.

99¢

**ALL FLAVORS LAY'S®
RUFFLES** REG. \$1.19

**SHURSAVING CUT
GREEN BEANS** 3 16 OZ. CANS \$1

**SHURSAVING
DOG FOOD** 14 OZ. CAN 4 FOR \$1

**SHURSAVING FACIAL
TISSUE** 150 CT. BOX 79¢

**RITZ BITS
PEANUT BUTTER
CRACKERS** \$1.99
10 1/2 OZ BOX

**TALLSUPS
FOUNTAIN DRINK** 59¢
32 OZ.

**CHILI
DOGS** 3 FOR \$1

**201 S. Main
Lockney**

COOKED FRESH 24 HRS. A DAY		HOT FOODS MENU		AVAILABLE AT ALL ALLSUP'S LOCATIONS	
BARBECUE BEEF SANDWICH	89¢	9 PIECE BOX CHICKEN	\$4.99	BEEF & CHEESE CHIMICHANGA	\$1.19
BARBECUE PORK RIBS (LB.)	\$3.99	(MEAT) CORN DOG	69¢	DELICIOUS HAMBURGER	59¢
BARBECUE WHOLE CHICKEN	\$3.99	WILSON HOT LINKS	99¢	SAUSAGE ON A STICK	\$1.59
ALL SUP'S BURRITO	79¢	SAUSAGE & BISCUIT	79¢	SAUSAGE, EGG & BISCUIT	\$1.09
BREAKFAST BURRITO	99¢	SAUSAGE & SAUTEEDA	\$1.09	SAUTEEDA SAUSAGE	\$1.09
BURRITO BEEF & SALSA	\$1.19	4 COUNT STEAK FINGERS	\$1.00		
DELICIOUS CHEESEBURGER	79¢				
CHICKEN FRIED STEAK	\$1.59				
3 COUNT CHICKEN STRIPS	\$1.49				
W/POTATO WEDGES/CHICKEN (2 PCS) BISCUIT	\$1.99				

CALL-IN ORDERS WELCOME CHECK OUR WEEKLY SPECIALS

Class of '40 celebrates 50 years

Thirty-two members of the Lockney High School Class of 1940 and their spouses met Friday and Saturday, September 14 and 15 and celebrated their fiftieth class reunion.

Registration began on Friday at 2:30 in the high school library and after registration the group attended the Pep Rally held in the Lockney High School Gym.

From 4:00 to 6:00 those present enjoyed visiting and catching up on old times. Pictures were passed around and

all were brought up to date on where everyone is now and what they are doing.

Supper was held in the Home Economics building at high school and barbeque sandwiches with all the trimmings were served.

After eating, the 1940 class attended the Lockney-Petersburg football game and immediately afterwards returned to the home economics building for an aftergame coffee, and more visiting.

On Saturday, September 15, 52 class-

mates and spouses gathered at the Holiday Inn in Plainview.

Lawrence Hohlaus, senior class president, called the class meeting to order and asked Sibyl Mudgett Parrack to read the minutes of the last meeting. She replied that she didn't remember ever having any class meetings 50 years ago.

W.L. Carthel read a list of those in the class who were deceased. They include Tommy Ray Weathers, Bob Miller, Wayne Bybee, Johnnie Lee Carter Stewart, Clarence Davis, Jack Harris, Georgia Williams Church, Lois Mangum Fox, Marthella Cunyus Summers, Mattie Jo Lewis, Genelle Allen and Elmer Martin.

Hohlaus told the group that that traveling the furthest were Weldon and Viola Wilson. They came from Aberdeen, Washington. Having been married the longest were Hubert and Josephine Griffith. They have been married for 49 years.

The person present with the most children was Jimmy Allen. He has seven children. The couple with the most grandchildren were Sterling and Gleyenn Earle Cummings. They have 13 grandchildren. Having the most great-grandchildren were W.L. and Clementine Carthel. They have four great-grandchildren. Wanda Rogers was voted the least changed girl.

Present for the reunion were Jimmie Allen, Mary John Lanham Harris, Reuben and Carole McGilvary, B. and Sibyl Mudgett Parrack, Lawrence Hohlaus, Virgil and Mary Nell Kelley, Joye Martin Graves, Paul Hayes, Wallace and Aileen Taack Allen, R.C. and Wanda Lou Stevenson Rogers, Joe Willman, Revis and Billie Harris, Merle Scroggins, Kenton and Rosalie Davis, Weldon and Viola Wilson, Jay and Kathleen Myers McPherson, Lavern and Clementine Carthel, J.B. Roberson, Warren and Marie Graham, Easton and Dewanda Blendon, Austin and Claire Beedy, Pauline Hayes Barrett, Christine Seaman Shelton, Betty Coleman, Howard and Dorothy Mosley, Carl and Nettie Mae Busby McPherson, Chester and Erna Dean Griffith, Hubert and Josephine Wells Griffith, Holman Owens, Sterling and Gleyenn Earle Cummings, John Earl and Vonceil Simpson, Gilbert and Shirley Roberson.

Unable to be present were Gladys Wilbanks, Weldon Flavin, Irene Jones, E.C. Cope, Leroy Hall, Patricia Caylor, Edward Davis, Virginia Norris Lyons, Margaret Bean Calahan, Billy Gene Simpson, Wayne and W.J. Richards, Beatrice Street Collis, Carl R. Nelson, Florene Miller, Lovelle Bilyeu, Irene Hall, Melba G. Harper Smith and Berthel Hillburn.

After the meeting class pictures were taken and visiting began anew. Those who came in the afternoon to visit with the class members were Claude and Wilma Brown, Jimmie Sams, Doris Meriwether, Mary Lou Bollman, G.B. and Naomi Johnston, Jack Billington, Beth Kropp, Shirley Harper Jackson, Laura Belle Maggard Carter and Betty Hayes.

Zach and Sandra Cummings and Paula Cummings Pyle helped with the name tags, took pictures and videos. Neta Marble came from the Lockney Beacon and took class pictures.



CLASS OF 1940 CELEBRATES FIFTIETH REUNION—Fifty-two members and spouses of the Lockney High School Class of 1940 attended a class reunion celebrating the 50th year they have been out of school. Class members present for the festivities were, (on floor, l-r) Sibyl Parrack, Joye Graves; (seated, l-r) B. Parrack, Mary John Harris, Nettie Mae McPherson, Wanda Lou Rogers, Pauline Barrett, Christene Shelton, Josephine Griffith, Aileen Allen; (standing, l-r) Merle Scroggins, Austin

Beedy, Holman Owens, Reuben McGilvary, Jimmie Allen, Hubert Griffith, Weldon Wilson, John Earl Simpson, Warren Graham, Easton Blendon; (back row, l-r) Kenton Davis, Paul Hayes, Revis Harris, Virgil Kelley, W.L. Carthel, Howard Mosley, Sterling Cummings, J.B. Roberson, Lawrence Hohlaus and Jim Bert Bobbitt. Not pictured, but attending, were Gilbert Roberson, Joe Willmon and Kathleen McPherson.

—Staff Photo



ATHENA STUDY CLUB OFFICERS—Officers for the 1990-91 club year are (l-r) Shirley Hardin, President; Tanya Covington, Vice-President; Vera Jo Bybee, Secretary; Dani Johnson, Treasurer; and Gayle Reay, Parliamentarian and Historian.

Study Club starts year with "year book" party

A dinner in the home of Dorothy Hooten with the year book committee, Shirley Hardin, Tanya Covington, Jane Archer, Barbara Mathis, Barbara Cawley, Gayle Jackson serving as co-hostesses was enjoyed by seventeen members. Party favors were ceramic roses depicting the "Athena Rose".

President Shirley Hardin distributed the new year books which have the theme, "Knowledge comes, but Wisdom fingers," which is also the club's motto.

President Hardin called the meeting to order. Minutes of August 14, were read and approved. The treasurer's report was given. The ice cream booth brought in \$783.90. Our parade float won first receiving \$35.00. The Educational booth won first receiving \$25.00.

Under new business, Leslie Patterson made the motion that we sponsor the

St. Mary's "Self Contained Mobile Mammography Service." Barbara Mathis seconded the motion and the motion carried. All women are urged to watch for the publicity on when we will do this and be sure and take advantage of the opportunity of having a mammogram taken locally.

After the meeting was closed with the benediction, members enjoyed playing games led by Tanya Covington.

For the next meeting, October 9, the members and their husbands will take a journey into the past by traveling to Turkey, Texas and enjoy touring the Historical Hotel. The group will also take their evening meal there.

Officers for this year are: Shirley Hardin, president; Tanya Covington, vice president; Vera Jo Bybee, secretary; Dani Johnson, treasurer; and Gayle Reay, parliamentarian, historian.

Holcomb family welcome two new granddaughters

Mel and Marjorie Holcomb of Lockney have recently welcomed two new granddaughters into their family. The new grandbabies were born only five days apart.

Milton and Linda Holcomb of Tulsa, Okla., announce the arrival of their baby daughter on Tuesday, Sept. 11, 1990, at 10:30 a.m. in Hillcrest Hospital in Tulsa, Okla.

She weighed 7 lbs. 14 oz. and was 22 inches long, her name is Brittany Lynn. Brittany has a four year old sister, Stephanie.

Other grandparents are Mary Lou Gray of Tulsa, Okla., and Helen Tillman, of Tulsa, Okla.

Great-grandmothers are Ruby Holcomb of Floydada Nursing Home

and Vera Cox of Lockney.

Arriving five days later to Eddie Dale and Charlotte Rhoderick of Silvertown was also a new baby daughter. She was born on Sunday, September 16, 1990, at 4:40 p.m. in Hi Plains Baptist Hospital in Amarillo. She weighed 8 lb. 5 oz. and was 10 inches long, her name is Charla Dale. Charla has two sisters, Kimberly, 11, and Kendra, 7, two brothers, Kody, 5, and Chance, 4.

Grandparents are Loretha Rhoderick of Silvertown and Mel and Marjorie Holcomb of Lockney.

Great-grandmothers are Bertha Rhoderick of Grants, N.M., Irene Harrison of Plainview, Vera Cox of Lockney and Ruby Holcomb of Floydada Nursing Home.

The Board of Directors of Plains Cotton Cooperative Association (PCCA) has declared a cash payout of dividends and stock retirements totalling \$9.3 MILLION plus book credit allocations. Included in the approved allocations was the 1989 crop TEXTILE MILL OPTION dividend as follows:

CASH	\$ 4.00
BOOK CREDITS	8.71
TOTAL PER BALE	\$12.71

For more information on these patronage dividends or about PCCA'S TEXTILE MILL OPTION Program, contact your local coop gin or PCCA.



Serving cotton producers since 1953

Senior Citizen Rockins

Mabel Perkins, Terry and Jean Perkins visited Terry Perkins Jr. and family in Midland. Carol Leonard and family of Del Rio were there for the weekend, Mabel, Terry and Jean Perkins traveled to Albuquerque, NM. to visit Bertie Terry.

Visiting Clara Jeffcoat last week was her sister Ada Alexander, Dorothy and Les Thompson all of Quinlan. Hugh and Betty Alexander of Slaton, Ruby Wofford of Plainview, Judy Leatherman of Tulsa and Clara's daughter, Ilene Pyle of Tucson, Arizona.

Our sympathy to Jimmy and Theresa Stennett on the death of cousin Andy Jolly. Andy had lived around Lockney for years. Services were Saturday, September 22.

NEWS

Please, please, call the center before or by 9:30 a.m. to eat lunch that day. You can't cook anything in a matter of seconds.

Thursday night, September 20 was potluck supper, there were 85 participants and guest attending.

Lena Hawkins is hostess for October, so ask if you can be of help in the kitchen.

BIRTHDAYS

September 27 - Fred Huggins
September 29 - Gladys Golden
October 1 - L.A. McCain
October 3 - Lavern Cooper, Ross Cooper

ANNIVERSARY

September 29 - Walter (Bo) and Ruby Kiser

AILING

Edna Cox (home), Eva Whitfill, Colleen Beck, Mabel Perkins, Jimmy Stennett (knee surgery)

Karla Leslie quilts with Quilting Club

The Keeping You in Stitches Quilting Club met Monday, September 10, at the First Methodist Church in Lockney. Karla Leslie from KCBT-TV, Channel 11, met with the group and filmed a feature to be shown over the Lubbock station. Leslie quilted along with the members as the segment was being filmed.

The group met at 8:00 a.m. and took time out for lunch.

Members present were Terrisu Mann, DarLee Foster, Sydney Jackson, Brenda Heflin, Gay Terrell, Dawn Bullock and Anne Jones. Brenda Mangold and Carol Vines were visitors.

Dawn Bullock won the Windblown pieced squares that were turned in at the first of the meeting. Bullock passed out the squares to be pieced before the next meeting and brought back.

Plans were discussed for taking a Hidden Wells class that will be taught by Brenda Heflin. The group turned in and exchanged spools of thread and held a scrap exchange. The next scrap exchange will be a Bow Tie in Amish colors. If you are interested in participating in a scrap exchange you are asked to contact Sydney Jackson.

MENU

October 1 - 5

Monday:

Beef patties, buttered mushrooms, mashed potatoes, spinach, green salad, cake or bread pudding

Tuesday:

Catfish, potato salad, b.b.q. beans, cole-slaw, purple plums

Wednesday:

Baked ham, candied yams, green peas, onions, pickles, pudding

Thursday:

Hamburger steak, brown gravy, mashed potatoes, corn, tossed salad, cobbler, hot rolls

Friday:

Chicken, dressing, giblet gravy, mashed potatoes, green beans, cranberry sauce, pumpkin pie

Support the Longhorns
Wear a MUM
to the
First District Game

These can be purchased until October 4 from any member of the Junior Class or from...

SCHACHT
Flowers, Jewelry & Gifts

112 W. Poplar 652-2385
8:30 - 5:30 Mon. - Sat.
"OUR PLEASURE IS TO SERVE YOU"

DOWN-SIDE UP!

8605

Put the downy-softness of urethane wedge between your feet and the floor. Feel fit all day.

Compare our prices.

Brown's
DEPARTMENT STORE

104-06 North Main Lockney, Texas

RED WING SHOES
MADE IN U.S.A.

OLD-FASHIONED SERVICE IS ALIVE AND WELL

*Convenience
*Everyday Low Prices
*Deliver or by Mail
*Baby Needs
*Vitamins, Health Aids
*Sick Room, Surgical Supplies
*Cards, Gifts
*Cosmetics, Perfumes
*P.C.S., Blue Cross, PAID, National Guard, Welfare

CLARK PHARMACY
Danny Clark

Residence - 652-3712 (24 Hour Call)
320 N. Main Pharmacy - 652-3353

WEEKLY TELEVISION SCHEDULE

THU, SEP 27 - Weekdays - WED, OCT 3

TIME	TBS (4) Atlanta	KTXL (5)	WGN (7) Chicago	KCBD (11) Lubbock	KLBK (13) Lubbock	KAMC (28) Lubbock	KJTV (39) Lubbock	HBO	SHOW	ESPN
6 AM	T & J		Paid Program	NBC News	CBS This Morning	Agri. Rep.	Webster G.I. Joe	Varied	Varied	(Cont) Nation's
7 AM	(95) GII	(45) B'w	Varied	Today	Good Morning	Tale Spin	Chip 'n' Da	Varied	Varied	Business SportsCent
8 AM	(95) Little	Sesame Street			Joan Rivers	America	DuckTales Merry	Varied	Varied	Varied
9 AM	(95) Mr. Rogers Square One		Varied	Geraldo	Family Feud	Sally	700 Club		Movie	Varied
10 AM	(95) Perry Mason	321 Contact	Varied	Joan Rivers	Generation M	Price is Right	Home	Success N Life		Getting FI Workout
11 AM	(95) Mason	321 Contact	Varied	Geraldo	Make a Deal	Young & Restless	Match Loving	Ragis & Kathie Lee	Varied	Body Molo BodyShapin
12 PM	(95) Movie	Days of Our Lives	Varied	Another World	Guiding Light	General Hospital	Trump Card Quiz Kid		(95) Varied	Varied
1 PM	(95) 321 Contact	Mr. Rogers	Varied	Barbara In Edition	Highway to Heaven	Donahue	Peter Pan Tlay Toons	Varied	(25) Varied	Varied
2 PM	(95) 321 Contact	Mr. Rogers	Varied	Barbara In Edition	Highway to Heaven	Donahue	Peter Pan Tlay Toons	Varied	(25) Varied	Varied
3 PM	(95) 321 Contact	Mr. Rogers	Varied	Barbara In Edition	Highway to Heaven	Donahue	Peter Pan Tlay Toons	Varied	(25) Varied	Varied
4 PM	(95) 321 Contact	Mr. Rogers	Varied	Barbara In Edition	Highway to Heaven	Donahue	Peter Pan Tlay Toons	Varied	(25) Varied	Varied
5 PM	(95) 321 Contact	Mr. Rogers	Varied	Barbara In Edition	Highway to Heaven	Donahue	Peter Pan Tlay Toons	Varied	(25) Varied	Varied

THURSDAY SEPTEMBER 27

TIME	TBS (4) Atlanta	KTXL (5)	WGN (7) Chicago	KCBD (11) Lubbock	KLBK (13) Lubbock	KAMC (28) Lubbock	KJTV (39) Lubbock	HBO	SHOW	ESPN
6 PM	(95) Happ	MacNeil Lehr	A Griffith	News	News Wheel	News Golden Girl	Star Trek: Next G.	Mov: Miss Firecracker	(5:00) Cry of Innocent	SportsCente
7 PM	(95) League Baseball	Civil War	League Baseball	Cosby	Top Cops	Father Dowling	Simpsons		Mov: Relentless	Baseball
8 PM	(95) League Baseball	Civil War	League Baseball	Cosby	Top Cops	Father Dowling	Simpsons		Mov: Relentless	Baseball
9 PM	(95) League Baseball	Civil War	League Baseball	Cosby	Top Cops	Father Dowling	Simpsons		Mov: Relentless	Baseball
10 PM	(95) League Baseball	Civil War	League Baseball	Cosby	Top Cops	Father Dowling	Simpsons		Mov: Relentless	Baseball
11 PM	(95) League Baseball	Civil War	League Baseball	Cosby	Top Cops	Father Dowling	Simpsons		Mov: Relentless	Baseball

MORNING
9:05 (4) *** Splendor in the Grass (1961, Drama) Cary Grant, Cyndi O'Reilly. Two teenagers wrestle with strict sexual morals.

AFTERNOON
12:05 (4) *** Denver and the Rio Grande (1952, Western) Edmond O'Brien, Sterling Hayden. Workers battle the elements and their rivals to build a new railroad.

MORNING
9:15 (4) *** Operation Petticoat (1959, Comedy) Cary Grant, Tony Curtis. A zany submarine crew uses offset methods to get back into action.

AFTERNOON
11:30 (7) *** Buckaroo Sheriff of Texas (1950, Western) Michael Chapin, Eileen Janssen. The rough-riding kids capture a gang of notorious outlaws.

MORNING
9:15 (4) *** The Stratton Story (1949, Biographical Drama (Colorized)) James Stewart, June Allyson. True story of one of baseball's heroes, Monty Stratton.

AFTERNOON
11:30 (7) *** Buckaroo Sheriff of Texas (1950, Western) Michael Chapin, Eileen Janssen. The rough-riding kids capture a gang of notorious outlaws.

MORNING
9:15 (4) *** The Stratton Story (1949, Biographical Drama (Colorized)) James Stewart, June Allyson. True story of one of baseball's heroes, Monty Stratton.

SUNDAY SEPTEMBER 30

TIME	TBS (4) Atlanta	KTXL (5)	WGN (7) Chicago	KCBD (11) Lubbock	KLBK (13) Lubbock	KAMC (28) Lubbock	KJTV (39) Lubbock	HBO	SHOW	ESPN
6 AM	T & J		Paid Program	NBC News	CBS This Morning	Agri. Rep.	Webster G.I. Joe	Varied	Varied	(Cont) Nation's
7 AM	(95) GII	(45) B'w	Varied	Today	Good Morning	Tale Spin	Chip 'n' Da	Varied	Varied	Business SportsCent
8 AM	(95) Little	Sesame Street			Joan Rivers	America	DuckTales Merry	Varied	Varied	Varied
9 AM	(95) Mr. Rogers Square One		Varied	Geraldo	Family Feud	Sally	700 Club		Movie	Varied
10 AM	(95) Perry Mason	321 Contact	Varied	Joan Rivers	Generation M	Price is Right	Home	Success N Life		Getting FI Workout
11 AM	(95) Mason	321 Contact	Varied	Geraldo	Make a Deal	Young & Restless	Match Loving	Ragis & Kathie Lee	Varied	Body Molo BodyShapin
12 PM	(95) Movie	Days of Our Lives	Varied	Another World	Guiding Light	General Hospital	Trump Card Quiz Kid		(95) Varied	Varied
1 PM	(95) 321 Contact	Mr. Rogers	Varied	Barbara In Edition	Highway to Heaven	Donahue	Peter Pan Tlay Toons	Varied	(25) Varied	Varied
2 PM	(95) 321 Contact	Mr. Rogers	Varied	Barbara In Edition	Highway to Heaven	Donahue	Peter Pan Tlay Toons	Varied	(25) Varied	Varied
3 PM	(95) 321 Contact	Mr. Rogers	Varied	Barbara In Edition	Highway to Heaven	Donahue	Peter Pan Tlay Toons	Varied	(25) Varied	Varied
4 PM	(95) 321 Contact	Mr. Rogers	Varied	Barbara In Edition	Highway to Heaven	Donahue	Peter Pan Tlay Toons	Varied	(25) Varied	Varied
5 PM	(95) 321 Contact	Mr. Rogers	Varied	Barbara In Edition	Highway to Heaven	Donahue	Peter Pan Tlay Toons	Varied	(25) Varied	Varied

AFTERNOON
12:00 (4) *** The Ladies' Man (1961, Comedy) Jerry Lewis, Helen Traubel. A man who has given up when women get a job in a ladies' boarding house.

EVENING
6:00 (4) *** The Burning Hills (1957, Western) Tab Hunter, Natalie Wood. A man on the run finds help and romance with a Mexican girl.
7:00 (4) *** Boy From Indiana (1950, Adventure Drama) Lois Butler, Lon McCallister. A boy's belief in his horse leads to an exciting quarter-horse race.
7:00 (4) *** Green Buddha (1955, Adventure Drama) Wayne Morris, May Germaine. The theft of a priceless statue yields exciting adventure.
8:00 (4) *** Alias the Champ (1949, Adventure Drama) Robert Rockwell, Barbara Fuller. Racketeers try to frame a wrestler for murder in the ring.

FRIDAY SEPTEMBER 28

TIME	TBS (4) Atlanta	KTXL (5)	WGN (7) Chicago	KCBD (11) Lubbock	KLBK (13) Lubbock	KAMC (28) Lubbock	KJTV (39) Lubbock	HBO	SHOW	ESPN
6 PM	(95) Happ	MacNeil Lehr	A Griffith	News	News Wheel	News Golden Girl	Star Trek: Next G.	(5:00) Fire With Fire	(5:30) Paper Dolls	SportsCente
7 PM	(95) Jeff Major	D.C. Week Wall St	League Baseball	Quantum Leap	Eve's 'n' Shad	Full House	Most Wanted	Crypt Tales	Mov: Disorganized	League Baseball
8 PM	(95) Jeff Major	D.C. Week Wall St	League Baseball	Quantum Leap	Eve's 'n' Shad	Full House	Most Wanted	Crypt Tales	Mov: Disorganized	League Baseball
9 PM	(95) Jeff Major	D.C. Week Wall St	League Baseball	Quantum Leap	Eve's 'n' Shad	Full House	Most Wanted	Crypt Tales	Mov: Disorganized	League Baseball
10 PM	(95) Jeff Major	D.C. Week Wall St	League Baseball	Quantum Leap	Eve's 'n' Shad	Full House	Most Wanted	Crypt Tales	Mov: Disorganized	League Baseball
11 PM	(95) Jeff Major	D.C. Week Wall St	League Baseball	Quantum Leap	Eve's 'n' Shad	Full House	Most Wanted	Crypt Tales	Mov: Disorganized	League Baseball

MORNING
9:05 (4) A Wedding on Walton's Mountain (1982, Drama) Ralph Waite, Jon Wolmsley. Erin Walton marries Paul Northridge when he returns from WWII.

AFTERNOON
12:05 (4) *** Wagon Master (1950, Western (Colorized)) Ben Johnson, Joanne Dru. The Mormons are guided across the frontier as they head for Utah.

MORNING
8:00 (3) *** "Coins in the Fountain" Special World Premiere Romantic Drama) Lori Anderson, Stephanie Kramer. Three women on vacation make major decisions about their lives.

AFTERNOON
11:30 (4) *** Fugitive From Sonora (1943, Western) Don Barry, Lynn Merrick. A reformed outlaw halts a war between cattlemen and homesteaders.

MONDAY OCTOBER 1

TIME	TBS (4) Atlanta	KTXL (5)	WGN (7) Chicago	KCBD (11) Lubbock	KLBK (13) Lubbock	KAMC (28) Lubbock	KJTV (39) Lubbock	HBO	SHOW	ESPN
6 PM	(95) Jeff Major	D.C. Week Wall St	League Baseball	Quantum Leap	Eve's 'n' Shad	Full House	Most Wanted	Crypt Tales	Mov: Disorganized	League Baseball
7 PM	(95) Jeff Major	D.C. Week Wall St	League Baseball	Quantum Leap	Eve's 'n' Shad	Full House	Most Wanted	Crypt Tales	Mov: Disorganized	League Baseball
8 PM	(95) Jeff Major	D.C. Week Wall St	League Baseball	Quantum Leap	Eve's 'n' Shad	Full House	Most Wanted	Crypt Tales	Mov: Disorganized	League Baseball
9 PM	(95) Jeff Major	D.C. Week Wall St	League Baseball	Quantum Leap	Eve's 'n' Shad	Full House	Most Wanted	Crypt Tales	Mov: Disorganized	League Baseball
10 PM	(95) Jeff Major	D.C. Week Wall St	League Baseball	Quantum Leap	Eve's 'n' Shad	Full House	Most Wanted	Crypt Tales	Mov: Disorganized	League Baseball
11 PM	(95) Jeff Major	D.C. Week Wall St	League Baseball	Quantum Leap	Eve's 'n' Shad	Full House	Most Wanted	Crypt Tales	Mov: Disorganized	League Baseball

MORNING
9:05 (4) *** Before and After (1979, Drama) Patty Duke Astin, Bradford Dillman. A wife's weight problem cripples her marriage.

AFTERNOON
12:05 (4) *** Dallas Cowboys Cheerleaders (1979, Drama) Jane Seymour, Laraine Stephens. A reporter tries to expose the truth about the Cowboys cheerleaders.

EVENING
7:00 (4) *** The Sting (1973, Comedy) Paul Newman, Robert Redford. Two con artists set out to fleece a big time racketeer.
7:05 (4) *** The Jerk (1979, Comedy) Steve Martin, Madeline Peters. A poor man's invention takes him from rags to riches and back to rags.
8:00 (4) *** A Promise to Keep (NBC Monday Night at the Movies) Dana Delany, William Russ. A family's quiet life is shattered by the addition of four orphans.

SATURDAY SEPTEMBER 29

TIME	TBS (4) Atlanta	KTXL (5)	WGN (7) Chicago	KCBD (11) Lubbock	KLBK (13) Lubbock	KAMC (28) Lubbock	KJTV (39) Lubbock	HBO	SHOW	ESPN
6 AM	(95) Wrestling	Larry Jones World		(Cont) Peppermint			Fall Guy	(5:00) Pippi	(5:25) UHF	SportsCente
7 AM	(95) Explorer	Farm Repor People	Camp Candy	Captain N	Muppet Babies	Wingie Po	Wizard of Jazzo U	M. Zazzo U	Mov: Let It Be	Ultimate Outdoor
8 AM	(95) Explorer	Farm Repor People	Camp Candy	Captain N	Muppet Babies	Wingie Po	Wizard of Jazzo U	M. Zazzo U	Mov: Let It Be	Ultimate Outdoor
9 AM	(95) Explorer	Farm Repor People	Camp Candy	Captain N	Muppet Babies	Wingie Po	Wizard of Jazzo U	M. Zazzo U	Mov: Let It Be	Ultimate Outdoor
10 AM	(95) Explorer	Farm Repor People	Camp Candy	Captain N	Muppet Babies	Wingie Po	Wizard of Jazzo U	M. Zazzo U	Mov: Let It Be	Ultimate Outdoor
11 AM	(95) Explorer	Farm Repor People	Camp Candy	Captain N	Muppet Babies	Wingie Po	Wizard of Jazzo U	M. Zazzo U	Mov: Let It Be	Ultimate Outdoor
12 PM	(95) Explorer	Farm Repor People	Camp Candy	Captain N	Muppet Babies	Wingie Po	Wizard of Jazzo U	M. Zazzo U	Mov: Let It Be	Ultimate Outdoor
1 PM	(95) Explorer	Farm Repor People	Camp Candy	Captain N	Muppet Babies	Wingie Po	Wizard of Jazzo U	M. Zazzo U	Mov: Let It Be	Ultimate Outdoor
2 PM	(95) Explorer	Farm Repor People	Camp Candy	Captain N	Muppet Babies	Wingie Po	Wizard of Jazzo U	M. Zazzo U	Mov: Let It Be	Ultimate Outdoor
3 PM	(95) Explorer	Farm Repor People	Camp Candy	Captain N	Muppet Babies	Wingie Po	Wizard of Jazzo U	M. Zazzo U	Mov: Let It Be	Ultimate Outdoor
4 PM	(95) Explorer	Farm Repor People	Camp Candy	Captain N	Muppet Babies	Wingie Po	Wizard of Jazzo U	M. Zazzo U	Mov: Let It Be	Ultimate Outdoor
5 PM	(95) Explorer	Farm Repor People	Camp Candy	Captain N	Muppet Babies	Wingie Po	Wizard of Jazzo U	M. Zazzo U	Mov: Let It Be	Ultimate Outdoor
6 PM	(95) Explorer	Farm Repor People	Camp Candy	Captain N	Muppet Babies	Wingie Po	Wizard of Jazzo U	M. Zazzo U	Mov: Let It Be	Ultimate Outdoor
7 PM	(95) Explorer	Farm Repor People	Camp Candy	Captain N	Muppet Babies	Wingie Po	Wizard of Jazzo U	M. Zazzo U	Mov: Let It Be	Ultimate Outdoor
8 PM	(95) Explorer	Farm Repor People	Camp Candy	Captain N	Muppet Babies	Wingie Po	Wizard of Jazzo U	M. Zazzo U	Mov: Let It Be	Ultimate Outdoor
9 PM	(95) Explorer	Farm Repor People	Camp Candy	Captain N	Muppet Babies	Wingie Po	Wizard of Jazzo U	M. Zazzo U	Mov: Let It Be	Ultimate Outdoor
10 PM	(95) Explorer	Farm Repor People	Camp Candy	Captain N	Muppet Babies	Wingie Po	Wizard of Jazzo U	M. Zazzo U	Mov: Let It Be	Ultimate Outdoor
11 PM	(95) Explorer	Farm Repor People	Camp Candy	Captain N	Muppet Babies	Wingie Po	Wizard of Jazzo U	M. Zazzo U	Mov: Let It Be	Ultimate Outdoor

AFTERNOON
4:00 (4) *** The Bachelor's Daughters (1946, Comedy) Adolphe Menjou, Ann Dvorak. A bachelor acts like a father to help several women marry rich men.

EVENING
7:05 (4) *** Valdez Is Coming (1971, Western) Burt Lancaster, Susan Clark. A deputy accidentally kills a man mistaken for a murderer.

MORNING
9:00 (4) *** North to Alaska (1960, Adventure) John Wayne, Stewart Granger. Gold mining partners strike it rich in 1890s Alaska.

AFTERNOON
11:00 (4) *** Undercover Woman (1946, Mystery Western) Stephanie Bachelor. A woman private eye tries to unravel a murder.

MORNING
11:05 (4) *** The Year of the Dragon (1965, Adventure Drama) Mickey Rourke, John Lone. A detective goes after a drug dealer in New York's Chinatown.

MORNING
12:00 (4) *** Vigilante Hideout (1950, Western) Allan Lane, Eddie Waller. Ranchers enlist a range detective to stop a gang of cattle rustlers.

MORNING
1:00 (4) *** To Have and Have Not (1944, Adventure Drama) Humphrey Bogart, Lauren Bacall. A charter boat captain tangles with a singer and Nazis during WWII.

MORNING
3:00 (4) *** Last Frontier Uprising (1945, Western) Monte Hale, Adrian Booth. A horse buyer for the U.S. government encounters crafty horse thieves.

MORNING
3:00 (4) *** Suspicion (1941, Mystery) Cary Grant, Joan Fontaine. A young wife suspects her charming husband is trying to kill her.

MORNING
3:00 (4) *** Partners (1982, Comedy Mystery) Ryan O'Neal, John Hurt. Two undercover cops pose as homosexuals.

TUESDAY OCTOBER 2

TIME	TBS (4) Atlanta	KTXL (5)	WGN (7) Chicago	KCBD (11) Lubbock	KLBK (13) Lubbock	KAMC (28) Lubbock	KJTV (39) Lubbock	HBO	SHOW	ESPN
6 PM	(95) Jeff Major	D.C. Week Wall St	League Baseball	Quantum Leap	Eve's 'n' Shad	Full House	Most Wanted	Crypt Tales	Mov: Disorganized	League Baseball
7 PM	(95) Jeff Major	D.C. Week Wall St	League Baseball	Quantum Leap	Eve's 'n' Shad	Full House	Most Wanted	Crypt Tales	Mov: Disorganized	League Baseball
8 PM	(95) Jeff Major	D.C. Week Wall St	League Baseball	Quantum Leap	Eve's 'n' Shad	Full House	Most Wanted	Crypt Tales	Mov: Disorganized	League Baseball
9 PM	(95) Jeff Major	D.C. Week Wall St	League Baseball	Quantum Leap	Eve's 'n' Shad	Full House	Most Wanted	Crypt Tales	Mov: Disorganized	League Baseball
10 PM	(95) Jeff Major	D.C. Week Wall St	League Baseball	Quantum Leap	Eve's 'n' Shad	Full House	Most Wanted	Crypt Tales	Mov: Disorganized	League Baseball
11 PM	(95) Jeff Major	D.C. Week Wall St	League Baseball	Quantum Leap	Eve's 'n' Shad	Full House	Most Wanted	Crypt Tales	Mov: Disorganized	League Baseball

MORNING
9:05 (4) *** American Gals (1986, Drama) Pam Dawber, Richard Martin. An American woman lives in the mysterious world of the geisha.

AFTERNOON
12:05 (4) *** The Blue Knight (1975, Drama) George Kennedy, Alex Rocco. A veteran street cop searches for the killer of an aged colleague.

EVENING
7:00 (4) *** Masquerade (1968, Suspense Drama) Meg Tilly, Rob Lowe. A lonely young heiress is the victim of a plot to steal her money.
7:05 (4) *** Rollercoaster (1977, Suspense Drama) George Segal, Richard Widmark. A mad bomber derails some of the nation's roller coasters.
8:00 (4) *** Angel of Death (CBS Tuesday Movie Drama) Gregory Harrison, Jane Seymour. A killer works his way into the lives of a woman and her son.

Mrs. May died at 11 p.m. Tuesday, September 18, 1990, in Hi-Plains Hospital in Hale Center.

She was born Maude Irene Hollingsworth on Oct. 27, 1902 in Waxahachie. She moved to the Sand Hills Community at an early age and grew up there. She married Ralph May Sr. on Feb. 13, 1921 in Lockney. He died Jan. 21, 1971 in Plainview.

She moved to Plainview in 1925 and had worked at AVC's variety store. She was a homemaker and the last original member of the Second and Beech Street Church of Christ.

Survivors include two daughters, Mrs. Ernest (Dot) Patty of Plainview and Mrs. Albert (Geri) Eury of San Antonio; one son, Ralph May Jr. of Plainview; 13 grandchildren; and 15 great-grandchildren.

"100 Years of Pioneer Spirit"

1 Child - Non-member FUMC - \$9.00
2 Children - Member FUMC - \$14.00
2 Children - non-member FUMC - \$15.00

OPEN for pre-school children only.

Contact for futher information:
Church - 652-2193 - Pastor - 652-3459
Director - 652-3837

Interested workers are asked to contact the director.



JUNIOR VARSITY CHEERLEADERS--Junior Varsity Cheerleaders for the 1990-91 Lockney Longhorns are (L-R, Top Row) Cindy Perez, Melinda Smith, Melissa Salas, Jo Ann Amador; (Front Row, L-R) Jennifer Anderson, Rhanda Hickerson, and Carissa Clark. Courtesy Photo

\$15.2 million net margins highlights PCCA meeting

Total net margins of \$15.2 million for fiscal-year-end June 30, 1990 were reported at the 37th Annual Stockholders Meeting of Plains Cotton Cooperative Association (PCCA) headquartered in Lubbock.

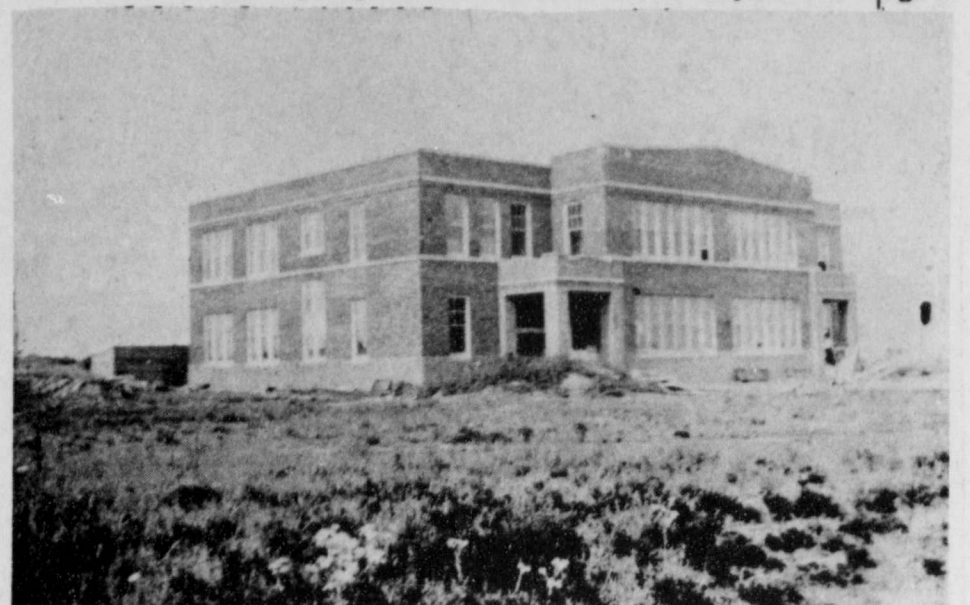
PCCA's Board of Directors approved cash distribution of net margins and stock retirements totaling \$9.3 million. Book credits comprise the remaining portion of the net margin distribution. Participants in PCCA's denim mill option will receive \$4 per bale in cash and \$8.71 per bale in book credits on the 1989 crop.

Projects designed to enable PCCA to effectively serve its members, the cooperative gins and cotton buyers also were reviewed during the annual meeting. A major project is the "Electronic Title System" (ETS) to replace paper ware-

house receipts.

"A lot of people were skeptical about ETS," said PCCA President C.L. Boggs, "but thanks to a lot of hours of hard work by staff and gin personnel, the pilot project at Sweetwater for the 1989 crop was successful and gained a lot of attention throughout the industry." Boggs noted the project has been expanded to include Farmers Cooperative Compress in Lubbock, Plainview Cooperative Compress in Plainview and Oklahoma Cotton Cooperative Association in Altus for the 1990 crop.

Elections were held for board positions from four of PCCA's districts. Directors elected for three-year terms were: Raymond Althof, Roscoe; Wendell Jones, Glasscock County; Curtis Jensen, Danevang; and Harold Scaief, San Benito.



LOCKNEY GRADE SCHOOL--In 1910 a bond issue of \$13,500.00 was voted on and when it passed the bonds were sold to build the first school building. In 1914 the school burned and a new bond issue was necessary. This building, as pictured, was located on the east side of Lockney. In 1924 an addition was made to the building and in the late 1920's the school attendance had grown so much that another building was needed. The present high school building was built in 1929 at a cost of \$85,000.00. In 1946 the grade school burned and army barracks were moved in and used until the present elementary school was built in 1964. Photo courtesy of J.W. Dimes

Lake Mackenzie Fishing Report

Lake Mackenzie reported a water temperature of 74 degrees on Tuesday morning. The depth at the lake was 103.9 feet.

Sept. 17, Red Jennings of Amarillo brought in two channel cats, four bass, and seven crappie. He made his catches

using minnows in Tule Creek.

Sept. 21, a 2-1/2 lb. black bass, a 5 lb. channel cat and a 5 lb. walleye were caught on minnows, along the bluff, by Lonnie Venable of Olton.

Sept. 22, Danny and Janet Love of Canyon caught 16 crappie between

midnight and 1 a.m. They were using minnows in Tule Creek and fishing 4 to 6 feet deep.

Roy Ray of Lockney caught two 3 lb. sand bass in the main lake on Sept. 23. He was using deep running shad type lure.

Also on Sept. 23, Lonnie Venable of Olton brought in two small mouth bass. He made his catches along the bluff, using minnows.

"100 Years of Pioneer Spirit"

Floyd County Centennial
1890-1990'

Lockney ISD Enrollment Statistics

Ethnic Breakdown Enrollment Totals

SCHOOL	1989	1990
ELEMENTARY		
Early Childhood	18	12
Kindergarten	56	68
First	81	66
Second	68	76
Third	71	76
Fourth	63	70
Fifth	52	66
JUNIOR HIGH		
Sixth	64	54
Seventh	54	62
Eighth	68	54
HIGH SCHOOL		
Ninth	45	72
Tenth	49	46
Eleventh	43	49
Twelfth	30	35

CAMPUS	AM. INDIAN	ASIAN-OTHER	BLACK	HISPANIC	WHITE	TOTAL
Elementary						
EARLY CHLD.	0 0	0 0	1 1	3 5	2 0	12
KINDER	0 0	0 0	1 1	24 18	14 10	68
FIRST	0 0	0 0	1 2	21 20	9 13	66
SECOND	0 0	0 0	1 2	26 24	11 12	76
THIRD	0 0	0 0	1 0	23 19	18 15	76
FOURTH	0 0	0 0	1 1	24 22	13 9	70
FIFTH	0 0	0 0	0 2	14 22	12 16	66
TOTALS	0 0	0 0	6 9	135 130	79 75	434
Junior High						
SIXTH	0 0	0 0	2 1	12 7	13 9	54
SEVENTH	0 0	0 1	1 1	16 19	15 9	62
EIGHTH	0 0	0 1	0 1	11 25	8 8	54
TOTALS	0 0	0 2	3 3	39 51	36 26	170
High School						
NINTH	0 0	0 0	2 2	20 28	8 12	72
TENTH	0 0	0 0	1 2	12 15	10 6	46
ELEVENTH	0 0	0 0	1 0	12 13	8 15	49
TWELVTH	0 0	0 0	1 0	5 17	5 7	35
TOTALS	0 0	0 0	5 4	49 73	31 40	202

LAS COMADRES

116 North Main
Lockney, Texas



Specializing in...
MEXICAN FOOD

Hours: - Sunday & Monday - 6 a.m. - 2 p.m.
Tuesday - CLOSED
Wednesday thru Saturday - 6 a.m. - 2 p.m.
5 p.m. - 9 p.m.

We are open AFTER the GAMES when they are at home

Lockney Hospital Report

September 17 - 24

Marissa Garza, Plainview, adm. 9-15, dis. 9-19

Versie Perry, Lockney, adm. 9-14, dis. 9-19

James Baker, Plainview, adm. 9-14, dis. 9-21

Edna Cox, Lockney, adm. 9-11, dis. 9-19

Anthony Hernandez, Dougherty, adm. 9-17, dis. 9-21

Beth Roberson, Plainview, adm. 9-18, dis. 9-22

Vari Harris, Lockney, adm. 9-20, baby girl born 9-20, dis. 9-24

Elizabeth Malone, Plainview, adm. 9-20, baby girl born 9-20, dis. 9-22

Maria Casillas, Plainview, adm. 9-20, baby girl born 9-20, dis. 9-22

Mable Perkins, Lockney, adm. 9-20,

continues care

Garland Sams, Lockney, adm. 9-20, continues care

Lillian White, Quitaque, adm. 9-23, continues care

Christopher Ascencio, Lockney, adm. 9-24, continues care

Armandina Gonzales, Plainview, adm. 9-24, continues care

W.J. Lee, Lockney, adm. 9-24, continues care

OBITUARY

IRENE MAY 9-27-90 *Beacon*

Funeral services for Irene May, 87, were at 2 p.m. Thursday, September 20, 1990, at the Second and Beech Street Church of Christ with Earl McDonough, elder, officiating. Burial was in Plainview Memorial Park by Lemons Funeral Home.

Mrs. May died at 11 p.m. Tuesday, September 18, 1990, in Hi-Plains Hospital in Hale Center.

She was born Maude Irene Hollingsworth on Oct. 27, 1902 in Waxahachie. She moved to the Sand Hills Community at an early age and grew up there. She married Ralph May Sr. on Feb. 13, 1921 in Lockney. He died Jan. 21, 1977 in Plainview.

She moved to Plainview in 1925 and had worked at AVC's variety store. She was a homemaker and the last original member of the Second and Beech Street Church of Christ.

Survivors include two daughters, Mrs. Ernest (Dot) Patty of Plainview and Mrs. Albert (Geri) Eurey of San Antonio; one son, Ralph May Jr. of Plainview; 13 grandchildren; and 15 great-grandchildren.

"100 Years of
Pioneer Spirit"

Mother's Day Out

FIRST UNITED METHODIST CHURCH, Lockney, Texas

Letta Prather, Director

Every Wednesday - 9-5

Beginning Wednesday, October 10

TUITION:

1 Child - Member of FUMC - \$8.00

1 Child - Non-member FUMC - \$9.00

2 Children - Member FUMC - \$14.00

2 Children - non-member FUMC - \$15.00

OPEN for pre-school children only.

Contact for further information:
Church - 652-2193 - Pastor - 652-3459
Director - 652-3837

Interested workers are asked to contact the director.

NOTICE

The Board of Directors of
Plains Cotton Cooperative Association (PCCA)
has declared a cash payout of dividends and stock retirements
totalling **\$9.3 MILLION**
plus book credit allocations. Included in the approved
allocations was the 1989 crop **TEXTILE MILL OPTION**
dividend as follows:

CASH	\$ 4.00
BOOK CREDITS	8.71
TOTAL PER BALE	\$12.71

For more information on these patronage dividends or about PCCA'S
TEXTILE MILL OPTION Program, contact your local coop gin or PCCA.



Serving cotton producers since 1953



LOCKNEY JV FOOTBALL TEAM -- Members of the 1990 Lockney Junior Varsity Football Team include (top row, left to right) Joey Adams, Oscar Palomin, Brandon Widener, Jarod Harrison, Chad Cook, Kelly Pena, Abdel Tapia, and Shane Hooten; (middle row, left to right)

Coach Bert Vandiver, Ricky Ascencio, Randy Rendon, Allen Martin, Patrick Monroe, Jenara Zapata, Juan Comacho, Carlos Raissez (moved to varsity), Max Green and Coach Phil Cotham.

Staff Photo

Lockney JV falls to Floydada

By Susy Smith

Thursday night proved to be a long night for the Lockney Longhorn J.V. The Floydada Whirlwinds cruised to an easy 26-6 victory after scoring 20 unanswered points in the first quarter.

Phineas Riddley scored for Lockney in the 4th quarter on a 20 yard jaunt. He led all Horn rushers with 47 yards on 8 carries. Leo Vargas had 28 yards on 4 carries, and Patrick Monroe had 39 yards on 14 carries.

The next game for the Lockney J.V. will be against Hart on September 27, at 7:30 p.m. They will host Hart at Mitchell-Zimmerman Field.

EIGHTH GRADE

The Jr. High 8th graders showed more experience but were unable to do much more against the tough Breezers than their younger teammates.

With 2:09 left in the first quarter, Alfred Martinez was able to score the only Lockney touchdown against the

Breezer defense to make the score 6-0. The extra point failed. By halftime the Breezers had jumped ahead 22-6. The final score was 28-6.

Coach David Norwood said, "I thought the 8th grade played well, other than a few big plays by the Winds."

The Shorthorns will be at home tonight as they go up against Hart starting at 5:00 p.m.

SEVENTH GRADE

It was easy to see why Floydada is in the 3A district as the Jr. High Shorthorns were defeated by the Breezers last Thursday night.

The seventh grade boys were defeated as the Breezers blew past them for a

score of 34-6.

The LJH offense was able to come up with one touchdown as Frank Gutierrez ran in with 2:50 left in the game. The extra point was stopped short of the goal line.

Lockney School Menu

Oct. 1 - 5

Monday:
Breakfast - Cereal, cheese, orange, milk
Lunch - Roast and gravy, creamed potatoes, cantaloupe, rolls, ice cream, milk
Tuesday:
Breakfast - Creamed beef, toast, cherry, milk
Lunch - B.B.Q. ribs, coleslaw, blackeye peas, orange, rolls, milk
Wednesday:
Breakfast - Oatmeal, sausage, banana, milk
Lunch - German sausage on a stick,

buttered corn, spinach, cornbread, cherry cobbler, milk
Thursday:
Breakfast - Pancakes, peanut butter, apricots, milk
Lunch - Creamed chicken, green beans, apricot orange salad, rolls, spice cake, milk
Friday:
Breakfast - Scrambled eggs, french fried potatoes, toast, milk
Lunch - Corn dogs, mustard, pinto beans, tomatoes, cornbread, ice cream, milk

Longhorns lose to miracle play

By Susy Smith

With 4:42 left in the first quarter the Longhorns proved they meant business as Sr. QB Kip Holt scored on a 1 yard dive in Friday night's battle against the Floydada Whirlwinds. The field goal attempt was good and the score read 7-0, Lockney. With 8 minutes left in the first half, the Whirlwinds could not get through the super-tough Longhorn defense as they were held inside their own 5 yard line for 4 complete downs. The first half ended with the Horns still ahead 7-0.

The Lockney Longhorn Band did a magnificent job during their halftime

An Open Letter

DEAR EDITOR,

The cheerleaders of Lockney High School would like to thank everyone for their participation at last Friday nights game. The support and encouragement that you displayed helped the boys accomplish more than most people expected.

We, the cheerleaders, have designated Thursday and Friday as RED and BLACK DAY. We encourage everyone to show your support.

Thanks again, and we hope to see you root the boys to district win number one.

LOCKNEY VARSITY
CHEERLEADERS

Aimee Green, Anna Cortez, Tina Martinez, Jennifer Fortenberry, Jessica Lemons, Daisey Blanco and Kori Kellison

show. For their grand finale the LLB formed the traditional double L formation as they played the Lockney High School fight song. The band should be commended for their excellent performance as well as the pride they show on and off the field.

With halftime over, the Longhorns rushed onto the field ready for action. Both defensive teams played exceptionally well. The third quarter ended with no additional touchdowns by either team.

The fourth quarter began with the Horns refusing to allow any good offensive plays by the Winds. With 3:13 left in the 4th quarter, the Winds came up with their first touchdown by QB Brian Teeple. The field goal attempt was ruled no good as the ball hit the right goal post and fell short leaving the score 7-6 in favor of the Horns.

The miracle came with only 55 seconds remaining in the game as Whirlwind QB Brian Teeple threw a long bomb to Kenneth Collins who ran 60 yards for their game saving touchdown. Teeple then ran in for the 2 point PAT to make the score 14-7.

SCORE BY QUARTER

Floydada 0 0 14 - 14
Lockney 7 0 0 - 7

TEAM STATS

Floydada	Lockney
11	9
175	125
3-10-0	2-7-1
38	25
213	150
2-28	8-26
8-75	6-50
3	0

SCORING SUMMARY

First Quarter
LHS - Holt 1 run (Carlos Rendon kick) 7:38, 0-7

Fourth Quarter
FHS - Teeple 35 run (kick failed) 3:13, 0-7
FHS - Collins 60 pass from Aleman (Teeple run) 0:55, 14-7

INDIVIDUAL STATS

Rushing - FHS: Johnson 9-48, Teeple 10-47; LHS: Vargas 13-67
Passing - FHS: Teeple 2-9-0 (7); LHS: Holt 2-7-1 25
Receiving - FHS: Collins 2-45, LHS: Vasquez 1-12, Ruiz 1-13
Interceptions - FHS: Jamie Suarez

The Lockney Longhorns should be extremely proud of themselves and each other as they played a super game against a team that was chosen to win. The Longhorns will travel to Hart on Friday night with their first district game to begin at 8:00 p.m.

Also to be commended are the Lockney and Floydada fans for their conduct and respect shown towards the American flag as the National Anthem was being played. Even those still coming from their cars stopped and saluted "Old Glory". Not 1 person moved.

COACHES COMMENTS

Coach Jim Clark stated, "It was one of the most physical and hard fought games I have ever seen. Our guys let it all out, they didn't hold anything back. The loss hurts but it will make us a better ball club in the long run. The maintaining we need to do now is gear up and get ready for district play."

SHOW SCHOOL SPIRIT

The World Famous POWER-MATE PENCIL BAG coming to you soon. Guaranteed to last one full school year, or your money back. Printed in your school colors and mascot. Machine washable. Totally reliable. Never lose school supplies again.



Flexor Industries 2545 Perryton Parkway Pampa, Texas 79065 (800)654-5583

**GO HORNS!
BEAT HEART!**

Lockney Beacon

Football Contest

CONTEST RULES

Any subscriber or individual above the age of 7 who purchases a Beacon from a news rack is eligible to enter this newspaper's weekly football contest, except employees of the newspaper.

To play, circle on the official entry form, the numbers of the teams you believe will win this week's games. To indicate a tie, circle the numbers of both teams playing a particular game. In addition, indicate in the tie breaker football your guess on the total number of points to be scored by the two teams listed. Also circle the team you believe will win.

The only entries considered for prizes will be those appearing on official entry forms and brought to the Beacon Office by 5 p.m. on Friday. NO MAIL ENTRIES WILL BE ACCEPTED.

Three cash prizes are offered each week. In the event of ties - the same number of correct games and equal scores on the tie breaker, prize money will be shared by those involved in the tie. The tie breaker score will be utilized only in the event of a tie on the number of games correct.

In the contest to determine a season winner and the recipient of the \$56 prize, each contestant will receive one point for each correct game selected on the official entry form throughout the season. Running totals will be kept by the Hesperian and weekly scores published regularly.

Print name and address plainly on the official entry form and double check your choices before clipping out the form and depositing it at the Beacon Office before 5 p.m. on Friday.

Entries are limited to one per person per week. Weekly winners are limited to one per household.



\$20.00

In Cash Prizes Each Week

1st prize \$10.00

2nd prize \$6.00

3rd prize \$4.00

Season Winner Receives

A \$56.00 Money Prize

OFFICIAL ENTRY FORM

Name _____
Address _____
City _____

1	2	3	4	5	6	7	8	9	10
11	12	13	14	15	16	17	18	19	20
21	22	23	24	25	26	27	28	29	30

TIE-BREAKER Circle winner and guess total score

Lockney
vs.
Hart

[Write
score
in
football]



Clark Pharmacy
1. Floydada vs. 2. Canyon

The Lockney Beacon
3. Springlake-Earth vs. 4. Morton

Attebury Grain
5. Shallowater vs. 6. Hale Center

Cargill Hybrid Seed
7. Abernathy vs. 8. Olton

D & J Gin
9. West Texas vs. 10. Tulia

The Tye Company
11. Plainview vs. 12. Coronado

Lambert Spraying
13. S.M.U. vs. 14. T.C.U.

Schacht Flowers
15. Air Force vs. 16. San Diego State

Sponsor Needed
17. Tennessee vs. 18. Auburn

Johnson & Johnson
19. U.S.C. vs. 20. Ohio State

Wilson Photography
29. Tampa Bay vs. 30. Minnesota

Davis Lumber Company
27. L.A. Raiders vs. 28. Chicago

Pay-N-Save Lockney
25. Philadelphia vs. 26. Indianapolis

Webster's Service & Supply
23. Green Bay vs. 24. Detroit

Don Hardy Car Wash
21. Duke vs. 22. Clemson