



MARY LINDSEY POOLE

## Mary Lindsey Poole earns national title

Mary Lindsey Poole has been competing in various pageants and talent contests for six years. This summer the experience and hard work paid off for Mary Lindsey when she won the National Our Diamond Miss Competition, held in San Antonio in August.

Twelve year old Mary Lindsey, daughter of James and Sheila Poole, is the youngest to have ever won this title. She is also the only tapper to have ever won. "She has worked for this title for three years," said proud mother Sheila. "The first year she did not make the top 10. She returned the next year and made the top 10, but not the top 5. She came home disappointed but determined and told me, 'Next year I'll go back and win it all.' And she did."

Competing against 115 other girls, ages 3-18, she won several categories including: National, Overall, Our Diamond Miss and Diamond Girl. She also

brought home \$2,000 in cash, savings bonds, a diamond watch and a diamond and pearl necklace. Judged by 12 judges, four of which are Miss America judges, Poole received a score of 328.5 out of a possible score of 330.

Poole's summer was spent in talent and beauty competition. Starting in June, she won the Texas State Overall Our Diamond Miss and Diamond Girl pageant held in Abilene.

In mid July, she entered the National United Miss held in Dallas. There she won Miss Congeniality, Most Beautiful, Pro-Am, Overall Best Fashion, Teen Talent, Teen Beauty and Overall Grand Talent. A \$1,640 savings bond was included in the many prizes.

From this pageant, Poole continued on to San Antonio where she earned her much sought after title of National Our Diamond Miss. With this title will come

many responsibilities for Mary Lindsey. She will be asked to perform at various functions, such as theme parks and malls, all over a six state area. She will be performing at the Pink Cadillac Salon in Silver Dollar City in Branscomb, Missouri and also at Magic City in Hot Springs, Arkansas.

Monthly newsletters will be sent to Mary Lindsey requesting her to perform at various functions. Next summer she will also be required to attend all state pageants and perform "Royal Duties", which means helping in all areas of the pageant.

"She really enjoys pageant competition," said Mrs. Poole. "She enjoys meeting different people and making new friends. We are very serious about these competitions. She is striving to someday be Miss Texas."

The hard work will continue for Mary Lindsey through the school year with her cheerleading responsibilities, her modeling work, pageant work and dancing practice. Gaining experience in each pageant, Mary Lindsey's next accomplishment could be the Little Miss Lubbock title she will be competing for in December.

## Lockney grid season kicks off against Ralls

Football season opens Friday night with a game away from home. The Longhorns will play at Ralls on Friday night beginning at 8:00 p.m.

Coach Jim Clark is excited about the team. He stated, "The Longhorns will be just as competitive as any team in district 3-2A."

Twenty seven players, six of them seniors, came out for practice and made it through two-a-days. Coach Clark believes they will make a good team and commented, "we expect to be up there at the top at the end of the season."

There are 13 returning letterman, ten of whom were starters on last years team. Clark stated that "the team has to stay healthy, the backups will be good players with time and practice but right now they just don't have enough depth."

"With the number of lettermen we have starting, experience is one of the teams strengths" Clark commented.

The roster for this years team includes:

Quarterbacks: Luis Perales, 150 lb., senior; Kip Holt, 140 lb., junior.  
Centers: Wesley Teeter, 205 lb., senior; Jason Bybee, 175 lb., junior; Lance Patridge, 180 lb. freshman.

Backs: Phillip Glasson, 165 lb. senior; Michael Monroe, 170 lb. senior; Daniel Martinez lb., junior; Ignacio Luna, 180 lb. sophomore; Tony Ascencio, 145 lb. sophomore; Juan Vargas,

149 lb. sophomore; Joey Adams, 150 lb. freshman.

Guards: Michael Martinez, 180 lb. senior; Joe Luna, 130 lb. junior; Jose Martinez, 135 lb., junior; Lee Truett, 145 lb., sophomore.

Ends: Joe Guerrero, 200 lb. senior; Johnny Perales, 160 lb., junior; Gilbert Ruiz, 160 lb., junior; Orlando Garza, 140 lb., freshman; Andy Stapp, 140 lb. freshman.

Tackles: Arturo Gonzales, 255 lb., junior; Carlos Rendon, 185 lb., junior; Jimmy Bradley, 190 lb. sophomore; Cosme Gonzales, 185 lb., freshman; Shawn Hill, 280 lb., freshman.

Assistant coaches are Phil Cotham, Malcom Moerbe, David Norwood, Burt Vandiver, Dick Van Hoose, Eddie Fortenberry and Floyd Evans.

The teams plays a wishbone offense and a 4-3 defense.

The Longhorns have two scrimmages under their belts and the coaches were pleased with the teams showing. "We are looking forward to bigger and better things," noted Clark.

The first game of the season will be played at Ralls, followed by Petersburg (here), Floydada (here), Sudan (there), and Springlake-Earth (here).

District play starts with two games at home, Hale Center and Hart. The next game will be Farwell (there), Abernathy (here) and the final game of the season, Olton, will be played on Longhorn turf.

## Annual Beacon football contest begins this week

The Lockney Beacon kicks off the annual football contest this week. With the help of the sponsoring merchants, at the end of the season, the Beacon will award two tickets to the November 23, Cowboys vs. Philadelphia Eagles game. The game will take place in Texas Stadium.

If your not lucky enough to win the bonus ticket, you may still get some cash prizes from playing the game each week. \$20.00 in cash will be given away every week to winners of the football contest. First place winners will take home \$10.00, second place receives \$6.00 and third place will win \$4.00. Prizes will be split in case of ties.

Contestants earn one point for each correct game they pick throughout the season. To remain in contention for the

tickets, it is important for contestants to enter each week. The contest will run for 10 weeks.

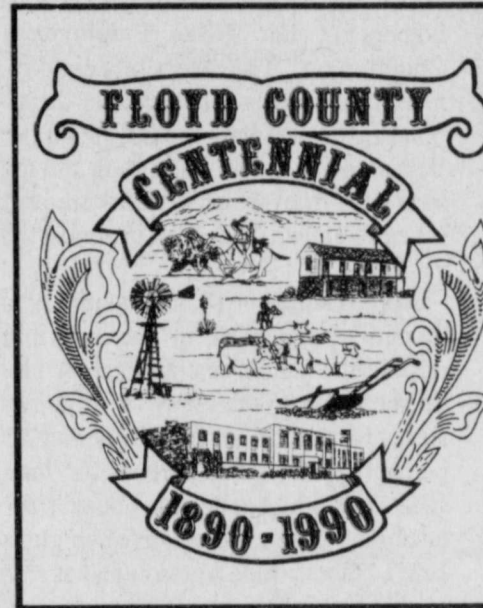
Every Beacon subscriber or individual buying a copy from a newsstand is eligible to compete. He/She should complete the official entry form and bring it to the Beacon office in Lockney before 5 p.m. Friday. No mail entries will be accepted. If there is no one in the office, please drop your entry in the drop box on the side of the building (in the driveway).

All regular players please note the change in rules on the contest page. In order to make scoring easier, please fill out the official entry form provided. Circle the number of the team you feel will win the game (the team numbers are listed in the football with the sponsoring agency). Be sure to also circle the winner of the tie breaker on the entry form, and include your guess at the tie breaker score.

Articles concerning the Longhorns' previous game and photos will be placed on the contest page.

The sponsors that are making this contest and prize money available for you are: Clark Pharmacy, The Lockney Beacon, Atebury Grain, Floyd County Farm Bureau, D & J Gin, Providence Farm Supply, Davis Lumber, Pay-N-Save, Lockney Insurance, Don Hardy Car Wash, First National Bank, The Tye Company, Schacht Flowers and Sunue Fertilizer. Sponsors are still needed to help in the contest.

Remember to thank your sponsors by patronizing their stores first before shopping out of town.



### Lockney Centennial Committee to meet

The Lockney branch of the Centennial Committee will meet at 6:00 p.m., Tuesday, September 12, at the First National Bank meeting room.

Representatives of study clubs, churches, auxiliaries and any interested persons are encouraged to attend.

## Junior high faculty to reward good behavior

The faculty of Lockney Junior High school has found a unique way to reward good behavior in their students. It involves not only the teachers and students, but also the community as a whole.

Starting on September 14 and continuing through the football season, one student will be chosen (from a group of approximately 12 students) to be Shorthorn Of The Week.

Every week, each teacher will nominate one student in their class who has exemplified good behavior in the classroom. These students will be recognized as Students Of The Week. Each of these students will receive a certificate during each week's pep rally.

From the group of Students Of The Week a drawing will be held for the Shorthorn Of The Week. The Shorthorn will then win a prize donated by individ-

ual merchants in Lockney.

When football season is over, the Junior High Faculty will continue the tradition with the Shorthorn Of The Month.

"We feel this is positive reinforcement for good behavior," said faculty member Janis Polson.

Businesses donating to the effort are: Donuts & More, Pay-N-Save, Clark Pharmacy, Stapp's Auto & Glass, Brown's, Schachts, Ann Sherrill - manager of Allsup's, Longhorn Video, Ken Holt with Farm Bureau Insurance, Longhorn Inn, First National Bank, Lambert Spraying Service, Davis Lumber, J & K Insurance, Lee's Home & Auto, Lockney Gin, Barbara's and Mission Cable. A list of other businesses donating was not available at this time.



1989-90 LOCKNEY LONGHORN FOOTBALL TEAM--Representing Lockney on the football field for the 1989-90 season will be (L-R, Top Row) Gilbert Ruiz, Carlos Rendon, Jose Martinez, Kip Holt, Phillip Glasson, Juan Vargas, Johnny Perales, Tony Ascencio, Lee Truett; (L-R, Center Row) Andy Stapp, Lance Patridge, Cosme Gonzalez, Joe Louis Guerrero, Wesley Teeter, Shawn

Hill, Jimmy Bradley, Arturo Gonzales, Orlando Garza, Richard Guerrero; (L-R, Bottom Row) Daniel Perez, Joey Adams, Ignacio Luna, Joe Luna, Jason Bybee, Michael Monroe, Luis Peralez, Michael Martinez.

Photo by Thompson Photography



1989-90 LOCKNEY LONGHORN VARSITY CHERLEADERS--Leading cheers at the Longhorn games for the 1989-90 season will be (L-R) Jessica Lemons, Daisey Blanco, Jennifer Fortenberry, Shedia Hill, Aimee Green, Anna Cortez and (Kneeling) Cindy Cook. Photo by Thompson Photography



## Recipe Corner

### ZUCCHINI NUT BREAD

- 2 cups sifted all-purpose flour
- 1 cup sugar
- 1 tablespoon cinnamon
- 2 tsp. baking powder
- 1 tsp. salt
- 3 eggs
- 2 cups, unpeeled grated zucchini
- 3/4 cup vegetable oil
- 1 Tbsp. vanilla
- 1 cup chopped pecans or walnuts

Preheat oven to 325 degrees. Grease and flour a 9x5x3 inch loaf pan. Stir together flour, sugar, cinnamon, baking powder and salt in large mixing bowl; stir in zucchini, oil and vanilla. Add zucchini mixture to dry ingredients, stirring just until blended. Fold in nuts. Pour batter into prepared pan. Bake for 1 hour and 5 minutes or until toothpick inserted in center comes out clean. Cool in pan for ten minutes. Remove from pan and cool on wire rack. For easier slicing wrap loaf and store overnight in cool place. Freezes well.

### WATERMELON POPS

- 4 cups diced, seeded watermelon
- 1/4 cup sugar (optional)
- 2 Tbsp. lemon juice
- 6 5 oz. cold drink cups
- 6 wooden sticks

In a blender combine all ingredients; puree until smooth. Divide mixture among cups; freeze for 1 hour. Insert wooden sticks in cups and continue freezing 1 to 2 hours until firm. At serving time peel away the paper from the pops and serve.

### THE RIGHT LOOK



INCLUDES CHOOSING THE RIGHT BELT TO KEEP IT PERFECT!

ALWAYS BUCKLE UP

Texas Coalition for Safety Belts

### This Week

#### SUPPORT THE LONGHORNS

Football season is finally here and the Lockney Longhorns need everyone's support. Red and Black day is Friday. We would appreciate everyone coming to support the Horns at 7:30 p.m. by wearing Red and Black and to rally the horns on to victory.

Varsity Cheerleaders

#### PTA CHILI SUPPER

The PTA will hold a chili supper, September 11, at 7:00 p.m. at the elementary cafeteria.

The supper will be free to members after they pay dues of \$3.00 for adults and 50 cents for children. Their will be door prizes.

Deadline for sign-up is Friday, September 8. Call Kathy Allen at 652-2793.

#### GIRL SCOUT SIGNUP

The Girl Scout signup will be held on Thursday, September 7, at 6:30 p.m. at the Lockney Elementary School cafeteria. Each registering girl must bring a parent. If you have any questions please call Reeda Cay Smith, at 652-2338.

#### QUARTERBACK CLUB

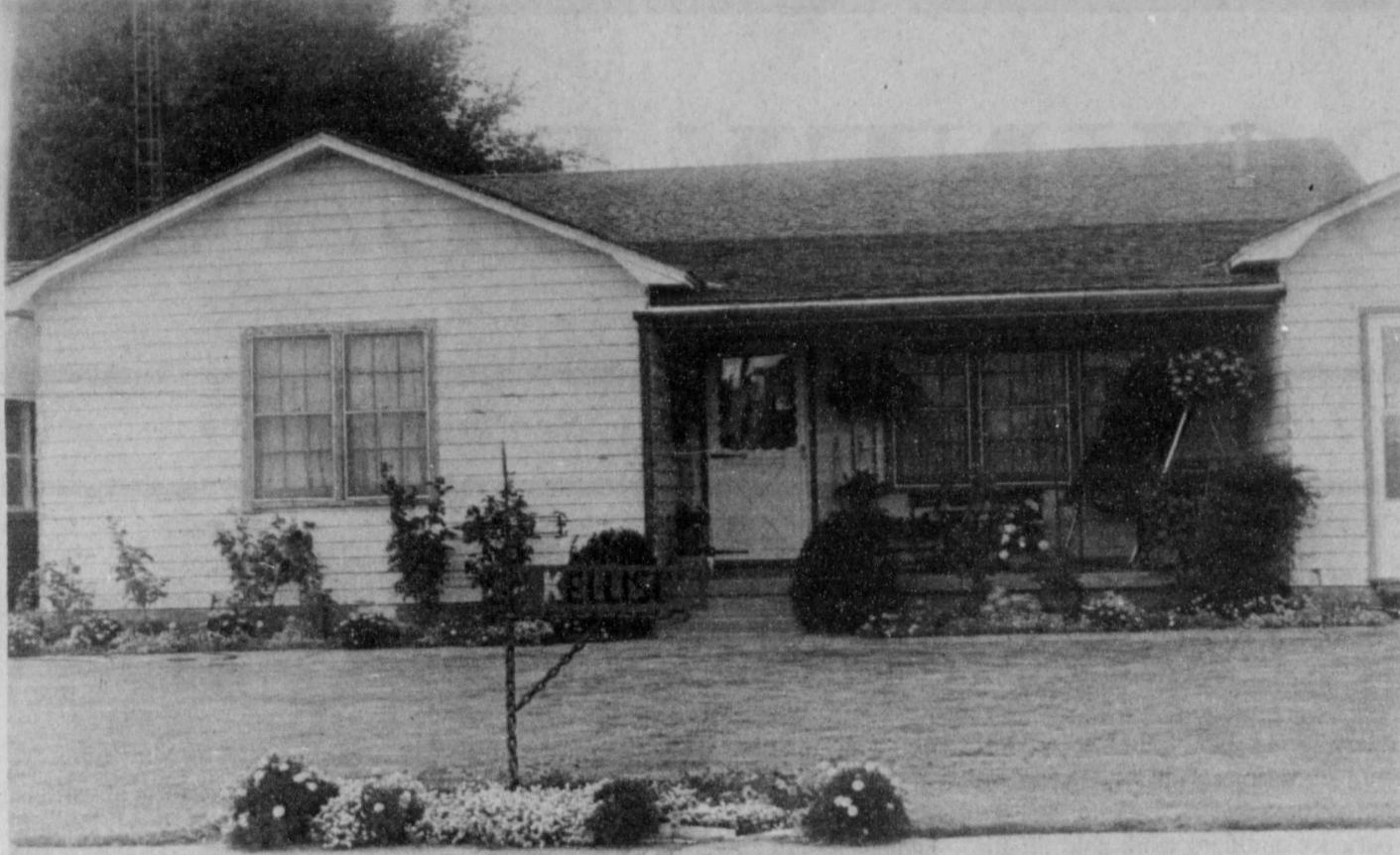
The Quarterback Club will meet September 11, at 7:30 p.m. in Rm. 104 at the High School. All parents (including Junior High parents), with any boys participating in any sports, are urged to come and support the club. If you have any questions call 652-2123. The Quarterback Club meets every Monday at 7:30 p.m.

#### GIRLS ATHLETIC BOOSTERS

Sandy Adrian, with the Girls Athletic Boosters, will hold a meeting on Monday, September 11, in the old Junior High cafe, to discuss the upcoming year.

#### ATHENA STUDY CLUB

The Athena Study Club will meet September 12 in the home of Gayle Jackson at 7:30 p.m.



**YARD OF THE WEEK**--The yard and front porch of Mrs. G.E. Kellison is a bright spot on Main Street. The neatly manicured yard and bright flowers speak a cheer-

ful hello and brighten the day to those who pass by. The front porch also is a pleasant sitting place for watching the coming and goings of Lockneyites. Staff Photo

## Floyd County unemployment rate stands at 3.3

"It's good news and bad news again," according to Commissioner Mary Scott Nabers at the Texas Employment Commission. "The state's July employment rate was posted at another disappointing level," Nabers said, "but more Texans worked than last month and the trust fund from which benefits are paid is healthier than it has been in almost ten years".

Approximately 614,500 unemployed Texans sought work in July and that pushed the state's unemployment rate up according to the office of Commissioner Nabers. "The rate in July was 7.3 percent, up from 7.1 percent for June 1989 and while it is not unusual for unemployment to be relatively high in July", Nabers said, "the somewhat surprising fact is that this rate is up considerably from the 6.6 percent rate recorded in July of last year".

The statewide rate began creeping up again for the first time in June and the July rate posts yet another increase while the national rate is decreasing. An estimated 11,000 nonfarm salaried jobs were deleted between June and July in Texas and 27,000 additional workers joined the ranks of those seeking work.

"What appears to be happening", Nabers said, "is that in spite of the fact that we are gaining jobs in the state, we are not gaining fast enough to keep up with the demand. People are entering the labor force faster than jobs are being created".

Of interest is the recent national report showing Texas as a state where a large number of the unemployed do not seek unemployment benefits. Payouts from the insurance program are currently averaging approximately \$2,700,000 a day Nabers says. "However, the trust fund from which benefit payments are drawn is very healthy - better than it has been in the past ten years", she added.

Total employment in July for Texas was estimated to be 7,813,200. That number is up from the 7,745,200 individuals that were in employment last month but is down slightly from last year's total employment of 7,888,900.

### CLASSIFIED ADVERTISING

### CARD OF THANKS

I appreciate the encouragement and support that everyone gave me. Thanks for coming to the fair.

Lori Gonzales  
Miss Floyd County 1989

### THE LOCKNEY BEACON (USPS 317-220)

Published weekly each Thursday by Caprock Sentinel Corporation, 111 East Missouri Street, Floydada, Texas 79235 and located at 211 North Main Street, Lockney, Texas 79241. Second class postage paid at Lockney, Texas.

Yearly subscription rates: Floyd, Swisher, Hale, Motley, Briscoe, and Crosby Counties; \$15.00. Other in-state counties; \$17.00. Out of state; \$18.00.

POSTMASTER: Send change of address to The Lockney Beacon, P.O. Box 187, Lockney, Texas 79241.

Ken Towery...Owner  
Alice Gilroy...Publisher & Editor  
Neta Marble...Office & Advertising Manager

Floyd County shows a civilian Labor Force of 4,600. Of that number 4,448 are employed, while 152 are not. The rate of unemployment stands at 3.3 percent.

Surrounding counties include: Crosby, 3,052, C.L.F.; 2,859 employed,

193 unemployed for a rate of 6.3; Briscoe, 1,390 C.L.F., 1,308 employed, 82 unemployed, a rate of 5.9; Motley, 947 C.L.F., 914 employed, 33 unemployed, a rate of 3.5; Swisher, 4,079 C.L.F., 3,884 employed, 195 unemployed, a rate of 4.8.

## Aerobic exercise can be the secret to maximum fitness

By now you have heard all of the benefits of being in shape. You probably also know that there are many different types of exercise. What you may not have learned is how to exercise for maximum fitness without distress. The secret is aerobic exercise.

Aerobic ("with air") exercise is a process of raising, maintaining and lowering your pulse through an activity like walking, running, cycling or swimming. The key is finding your target heart rate (THR).

Your THR is a safe, effective pulse that shows you're working at the right pace. You're not working so hard that it hurts and you get discouraged, or so easily that you don't see the results.

According to Cyndi Gaule, interim director of The Centre for Cardiac Rehabilitation at Methodist Hospital, aerobic exercise offers many benefits.

**A stronger heart.** The heart pumps more oxygen-rich blood through your body when it is fit. A person with a strong heart also is at less risk of developing heart disease or high blood pressure.

**A leaner body.** No amount of dieting can burn fat. The extra oxygen and fat-

burning enzymes that are obtained through aerobic exercise are necessary to burn fat.

**A clearer mind.** Aerobics helps relieve stress and gives you more energy. You will be more productive and confident after exercising.

So how do you find your THR? It's simple. Just follow this formula:

1. Start with 220.
2. Subtract your age. This will give you the fastest rate your heart can beat safely for your age.
3. Multiply by your target zone: 60 percent for beginners, up to 85 percent for competitive athletes. This will give you your target heart rate for one minute. You may want to divide this number by six so you can take your pulse for 10 seconds while exercising.

While this formula will give you an area to target for safe, effective exercise, you should use it as a general guide and listen to your body for signs of overdoing. Feeling dizzy or excessive sweating are signs to stop and see your doctor.

## Cooking school for diabetics scheduled

Caprock Hospital District of Floydada Diabetes Class and Southwestern Public Service Co. are co-sponsoring a diabetic cooking school. It will be held at the Floydada Lighthouse Electric Co-op, Inc. on the Matador Highway, Floydada, on Thursday, September 28th at 7:00 p.m. Free cooking demonstrations, recipes, and food sampling will be available. The class will be presented by Melinda Holloway, SPS Home Economist.

If you, or a family member, is a diabetic, please plan to attend this valuable demonstration. People from the surrounding area are also encouraged to attend.

Helen Teeple, RN, is the instructor of the diabetic classes.

## What A Smile Can Do

A smile lends beauty to the face, A sparkle to the eye, That age and time cannot erase As the years slip by. Smiles of friendliness and love Are always a delight, And have the capability Of making spirits light. A smile can chase the blues away, And also dry a tear When soothing words are hard to say To someone we hold dear. God wants us to be happy, And when we wear a smile, It makes life far more pleasant, And also more worthwhile.

Elsie Natalie Brady

## Go Longhorns! We're Behind You All The Way!!

### Your One-Stop Pharmacy

#### YOUR HEALTH IS OUR FIRST CONCERN

- Convenience
- Everyday Low Prices
- Deliver or by Mail
- Baby Needs
- Vitamins, Health Aids
- Sick Room, Surgical Supplies
- Cards, Gifts
- Cosmetics, Perfumes
- P.C.S., Blue Cross, PAID, National Guard, Welfare

## CLARK PHARMACY

Danny Clark

320 North Main Pharmacy - 652-3353 Residence - 652-3712

## Bollman has quilt selected for publication in new book

Mary Lou Bollman has had one of her quilts accepted for pictures and description in an upcoming book that has been entitled Lone Stars II: The Quilt Legacy Continues, 1936-1986. The book will be published by the University of Texas Press.

According to the letter received by Mrs. Bollman, her quilt was one of fewer than 100 chosen from entries all over the state. It also stated that "the quilts selected were all extraordinary examples and each of them reflects particular beauty, originality, complexity, or visual impact that makes them unique."

The quilts chosen for inclusion in the book will also be on exhibit at several quilt shows and exhibits around the state during the year. To coincide with the publication of the book there will be a special exhibit of these quilts at Houston's annual International Quilt Festival to be held in 1990.

Mrs. Bollman pieced her quilt in 1937. The quilt pattern is similar to a Cockscomb and Currant pattern. It is done in red, orange and green on unbleached muslin. It has a cotton backing and cotton batting.

She copied the pattern and colors from a quilt that was quilted by Sally Jeffe Lokey in the early 1900's. The quilt found its way to Floyd County after it was inherited by Laura Lokey Walker. Mrs. Bollman said that she treasures this quilt and has carefully preserved it. To this day she has not seen another quilt of the same pattern.

Mrs. Bollman quilts for self satisfaction. A neighbor started her on a four patch quilt when she was seven years old and she made her first quilt in the 1930's. It was an eight pointed star set together with blue.

She has won recognition at several local exhibits and quilt shows. Mrs. Bollman is a member of quilt guilds in Lockney, Plainview and Lubbock.

## Law eases vehicle refueling for disabled drivers

Beginning September 1, service stations that offer full-service refueling must pump gasoline and diesel for disabled drivers, upon request, at the self-service price. Stations that have only self-service pumps are not affected by the new law, passed during this year's regular legislative session.

To receive refueling service at the self-service price, a driver must display a disabled persons insignia, validation sticker, identification card, or license plates issued by the highway department.

The new law allows Class C misdemeanor charges to be filed against a station manager who does not establish a policy providing refueling service for the disabled driver. Similar charges can be filed against an individual employee who is acting against station policy and refuses to provide this service when requested.

The law will be enforced by the attorney general or a local prosecuting attorney.

## DPS investigate accidents during month of July

Captain L. A. Reinhart, District Supervisor of the Lubbock Highway Patrol District comprising of 21 counties said, "For the month of July, our troopers investigated 8 fatal accidents, 55 personal injury accidents, and 58 property damage accidents. There were 9 persons killed and 55 persons injured in these accidents."

Sergeant Glenn Fant of Crosbyton stated, "In Floyd county, our troopers investigated 0 fatal accidents, 2 personal injury accidents, and 0 property damage accidents in the month of July. 0 persons were killed and 2 persons were injured in these accidents."

## New help is available for Parkinson's Disease victims

New understanding about exercise and diet can now help some of the most distressing symptoms of parkinsonism, enabling the patient to function better than previously thought possible, according to recent studies. Stiffness and slowness of movement are characteristic of Parkinson's Disease.

New physical therapy, coupled with dietary considerations, has resulted in dramatic easing of symptoms. Physical therapy is advantageous because it can be practiced at home by most patients. Information is available upon request by writing Parkinson Research, Dept. 409, Winona, Texas, 75792.

### OLINE MONUMENT CO.

400 Joliet Street, Plainview, Texas 79072 - Phone 296-2953

To Talk To Our Counselors Call Collect

INCLUDES Lettering, Setting, Emblems, No Tax

MASTERSON

JOSEPH H. 1903 - 1974

LENORA E. 1903 -

\$699 FULL SIZE

## PUBLIC NOTICE

### NOTICE OF APPLICATION FOR BANK HOLDING COMPANY

First Lockney Bancshares, Inc., Lockney, Texas, intends to apply to the Federal Reserve Board for permission to form a bank holding company at 201 N. Main, Lockney, Texas 79241. We intend to acquire control of Lockney Bancshares, Inc., 201 N. Main, Lockney, Texas 79241 and First National Bank in Lockney, 201 N. Main, Lockney, Texas 79241. The Federal Reserve considers a number of factors in deciding whether to approve the application including the record of performance of banks we own in helping to meet local credit needs.

You are invited to submit comments in writing on this application to the Federal Reserve Bank of Dallas, Supervision & Regulation Department, Station K, Dallas, Texas 75222. The comment period will not end before October 2, 1989 and may be somewhat longer. The Board's procedures for processing applications may be found at 12 C.F.R. Part 262 [as revised, 49 Federal Register 5603 (February 14, 1984)]. Procedures for processing protested applications may be found at 12 C.F.R. § 262.25 (1984). To obtain a copy of the Board's procedures or if you need more information about how to submit your comments on the application, contact the Community Affairs Officer at the Federal Reserve Bank of Dallas, Mr. Andrew W. Hogwood, Jr., Assistant Vice President, at (214) 651-6341. The Federal Reserve will consider your comments and any request for a public meeting or formal hearing on the application if they are received by the Reserve Bank on or before the last date of the comment period.

8-31, 9-7c



# Brandes and Brotherton wed

Robin Brandes became the bride of Ricky Brotherton during a 7 p.m. wedding ceremony Friday, September 1, in the First Baptist Church Chapel, Plainview. Vows were said before Dennis Williams, pastor of the First Baptist Church in Halfway.

The bride is the daughter of Judy Brandes of Plainview and Lloyd Brandes of Dumas. Brotherton is the son of Mr. and Mrs. E.L. Brotherton Jr. of Lockney.

Given in marriage by her father, the bride chose a formal gown of chantilly lace with a fitted bodice embroidered in

seed pearls. A row of scalloped chantilly lace bordered the sabrina neckline and was also embroidered in pearls. Six lace tiers formed the bouffant skirt and joined with four additional flounces,

extended into a full cathedral train. Her fingertip veil was gathered onto a tiara covered in chantilly lace embroidered in seed pearls. Each of the three tiers of illusion was edged in chantilly lace. She carried a bouquet of white daisies and

white pixie roses accented with blue gypsophila. A silk handkerchief of her great-grandmother's was intertwined

within the bouquet.

Serving as maid of honor was Cathy Brandes of Plainview, sister of the bride. She wore a royal blue tea length dress of chantilly lace. The gathered skirt and fitted bodice were accented at the waist with a satin ribbon. Her bouquet was of white daisies accented with white satin ribbon.

Zach Zachary of Lockney acted as best man. Ushers were Jason Lindeman of Kress and Cody Jones, both cousins of the bride.

Presenting musical selections during the ceremony were Marjorie Ferguson of Lockney, who played the piano, and Linda and Danny Murphree of Plainview, who provided vocals.

Rhonda Barrett, sister of the groom, registered guests.

A wedding reception followed in the parlor of the First Baptist Church. Reception assistants were Mmes. Larry Jones, Karl Lindeman, Robert Armstrong, Roberta Carter and J.C. Arm-

strong.

Following a wedding trip to San Antonio, the couple will reside in Plainview.

The bride is a 1988 graduate of Plainview High School and attended South Plains College in Levelland. She is employed with Hale County Chiropractic Center.

The groom attended Lockney schools and is a farmer.

Pre-nuptial courtesies for the couple included a rehearsal dinner, hosted by the groom's parents at the Golden Corral Steak House; a miscellaneous shower, hosted by Mmes. Don Eversole, Gerald Autry, Lynn Davis, Joe Ferguson, Joe Sherman, Wayne Fore, Ricky Flippin, C.E. Flippin, Jerry L. Wofford, Ray Tomsu, Verne Taylor, Eugene Owens, Rocky Mangum, Omar Burleson, Buddy Buske and A.W. DeBerry; and a lingerie shower, hosted by Rhonda Barrett, Renee Armstrong, Brenda Poole and Devora Arjona.



MRS. RICKY BROTHERTON

## Senior Citizens Rockins'

Our sympathy goes to Clyde Stapp on the death of his nephew, Larry Stapp, on Friday. He died in an accident in Arkansas. Services were Wednesday, August 30, in Lubbock.

Guests of Virginia and Leonard Strickland this weekend were their granddaughter, Tonya Strickland of Sitka, Alaska. Upon returning home, Tonya will go to Russia for a month, as a guest of Moscow.

### MENU

September 11-15

Monday: Chicken fried steak, gravy, mashed potatoes, green beans, green sliced peaches, vanilla wafers, rolls, tea or coffee.

Tuesday: Bar-B-Q on 1/2 bun, kidney beans, onions, pickles, cole slaw, cobbler, cornbread muffins, tea or coffee.

Wednesday: Hamburger steak and brown gravy, mashed potatoes, green peas, apple rings, green salad, pudding, rolls, tea or coffee.

Thursday: Chicken, new potatoes and green beans, green salads, pineapple slices, pan cookies, rolls, tea or coffee.

Friday: Swiss steak, potatoe chunks, buttered spinach, cole slaw, chocolate cake, rolls, tea or coffee.

On Thursday night, August 31, a birthday and anniversary party was held at the Senior Citizen's Center. Ninety-three participants and guests attended.

September hostesses will be Gladys Ragle, Clementine Carthel, Dorothy Shipp, Ruby Kiser and Margie Turner.

A Beltone Hearing Aid representative will be at the Center on September 6, from 10:00 a.m. to 12 noon.

Thursday night, September 7, will be a potluck supper, so everyone cook a big dish of food and come to the center.

Tuesday, September 12, there will be basket weaving. All interested persons are urged to come.

### BIRTHDAYS

September 8th: Johnnie Kellison and Russell Smoot

September 9th: Mary Lou Bollman  
September 10th: Vera King, Wanda Prescott, Lewzetta Gloyna and Walter Gloyna.

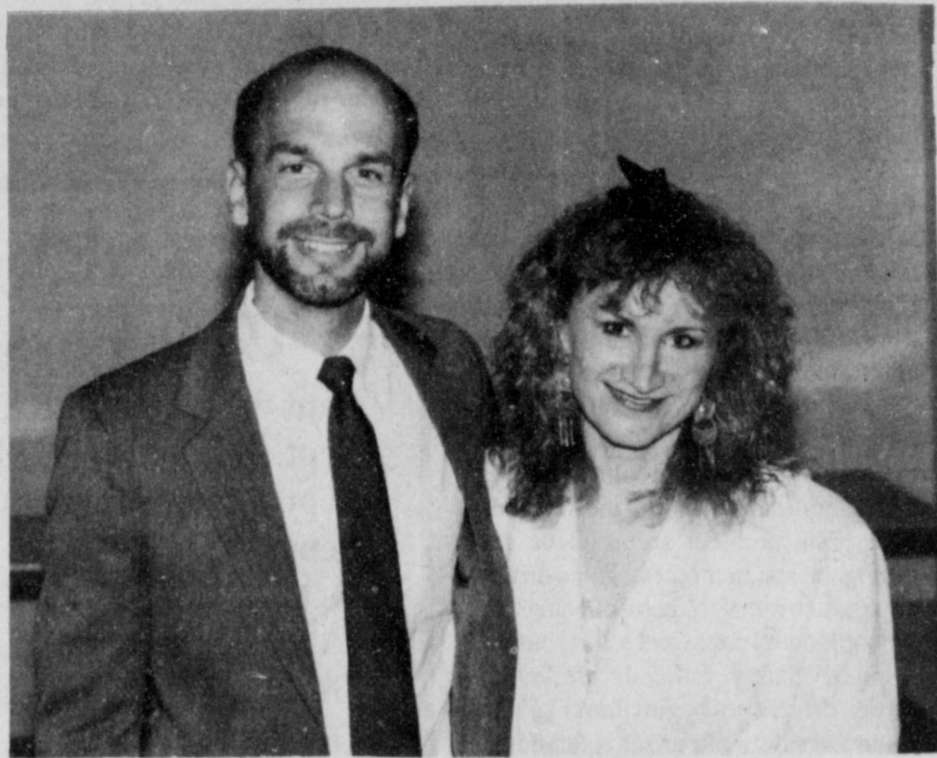
September 12th: Helen Huffman  
September 13th: Billie Cook

### ANNIVERSARIES

September 10th: Rev. and Mrs. M.B. Baldwin

### AILING

Inez Mosley (surgery), Lloyd Wofford (home), Eva Whitfill, Earl Minter, Jewel Fortenberry, Jack Dollar and Bernice Kent.



**COUPLE TO WED**—Mr. and Mrs. Bryan E. Smith of Lockney wish to announce the engagement of their daughter, Marilyn Jan to Dr. Charles S. White of Boston, Massachusetts, son of Mrs. Joseph P. White and the late Joseph P. White of Antrim, New Hampshire. The couple plan to be married October 21, 1989 in Boston. The bride-elect is currently teaching piano at the New School of Music in Cambridge. She received a Bachelor of Music Degree from Texas Tech University in 1981 graduating Magna Cum Laude. She also received a Master of Music Degree from the University of Massachusetts in 1983. The prospective groom obtained a B.S. degree in Mechanical Engineering in 1980, an M.S. degree in 1982, and a Ph.D. in 1988 all from Massachusetts Institute of Technology. He is presently a materials technologist with the U.S. Army Laboratories in Watertown, Massachusetts. They will reside in Boston.

## Family Relief Program helps Alzheimer's patients

Financial assistance is available to Alzheimer's patients and their caregivers through the Alzheimer's Family Relief Program, a national program of the American Health Assistance Foundation.

The Alzheimer's Family Relief Program awards grants of up to \$1,000 to provide financial relief for expenses related to the patients care and treatment. Monies can be used for such costs as short-term nursing care, respite and daycare, medication and other expenses related to the Alzheimer's condition.

Application for the Alzheimer's Family relief Program are funded based on financial need. Candidates for grants may reapply. In addition, they are encouraged to seek alternative sources for additional income.

Alzheimer's disease is a degenerative brain disorder of which there is no cure. It is the fourth leading cause of death among adults affecting 4 million people and costing this country approximately \$88 billion. Although most victims are over the age of 65, there are reported cases of victims in their forties and fifties.

Half of all nursing home beds are

occupied by Alzheimer's patients, although insurance policies typically do not cover Alzheimer's disease and Medicare and Medicaid hardly begin to cover the costs associated with this disease.

The Alzheimer's Family Relief Program is one of four programs sponsored by the American Health Assistance Foundation. Based in Rockville, Maryland, AHAF, established in 1973, is a non-profit organization which funds scientific research of age related and degenerative diseases. The other three programs include, Alzheimer's Disease Research, Coronary Heart Disease Research and National Glaucoma Research. Over \$18.5 million in scientific grants has been awarded since AHAF was established.

AHAF also disseminates information and educational material to the general public on these diseases.

A free copy of the Alzheimer's Family Relief Program brochure or an application form may be obtained by calling 1-800-227-7998 or by writing to the American Health Assistance Foundation, 15825 Shady Grove Road, Suite 140, Rockville, MD 20850.

## Fall planted bulbs bring spring flowers

Fall-planted bulbs are an easy way to colorful spring flowers.

These easy-to-grow flowers are inexpensive and require very little care, said Brent Crossland, county agent with the Texas Agricultural Extension Service.

Begin by ordering good quality, healthy bulbs. Order in September for the best selection of quality plants. These generally will produce flowers the first season and are free from disease.

A second point to remember is the bigger the bulb the bigger the bloom, said Crossland.

If you purchase bulbs early, before the September or October planting time, store them in a cool, dry, well-ventilated area until planting.

Before ordering your bulbs, make sure the variety you choose will produce well in the South. Daffodils, narcissus, tulips, Dutch hyacinths, French-Roman

hyacinths, grape hyacinths, triteicia and Dutch iris are among the choices open to Texas growers.

Some spring bulbs, such as tulips and Dutch hyacinths, require cold treatment prior to planting because of mild Texas winters.

## 7th annual arts and crafts festival set

The Young Homemakers of Littlefield are sponsoring their 7th Annual Littlefield Arts and Crafts Festival. It will be held in the Lamb County Ag and Community Center on Saturday, November 11, 1989.

The 49 booths will be filled with an exciting array of items which will include country decorating items, wooden toys, oil painting, ceramics, dolls, jewelry, decorated sweatshirts and many other areas of craftsmanship.

All craftsmen and artists are invited to write or call now for information and reservations. Please contact Donna West, HC 2 Box 22, Littlefield, Texas 79339, (806) 262-5261.



## Make Your Grandparents Proud

Just call or visit us today



and remember your Grandparents with a Bouquet, Green or Blooming Plant "Grandparents Love Gifts Too."

**SCHACHT**  
Flowers, Jewelry & Gifts

112 W. Poplar 652-2385  
8:30 - 5:30 Mon. - Sat.

"OUR PLEASURE IS TO SERVE YOU"



## Lockney Hospital Report

Aug. 28-Sept. 1

J.B. Brown, Plainview, adm. 8-24, dis. 8-28

Becky Valdez, Lockney, adm. 8-24, dis. 8-27

Patsy Martinez, Plainview, adm. 8-27, baby girl Bridget, born 8-27, dis. 8-29

Yolanda Alvarado, South Plains, adm. 8-27, baby boy Magdiel, born 8-27, dis. 8-29

Kathy Fuston, Plainview, adm. 8-28, baby boy Jeffrey, born 8-28, dis. 8-30

Erma Luna, Lockney, adm. 8-29, baby boy Adrian, born 8-29, dis. 9-1

Adaline Hunter, Quitaque, adm. 8-30, continues care

Elena Enriquez, Plainview, adm. 8-30, continues care

Maria Foster, Plainview, adm. 8-30, continues care

Ray Aston, Lockney, adm. 9-1, continues care

## A FREE PRESS SERVES A FREE PEOPLE

### RE-OPENING

## The Little Shop

510 Joliet, Plainview 296-2688

We have the largest selection of **YARNS** in this area  
Also the most unusual, unexpected and affordable items in needlework.

You will also find - Antiques - Imported Linens - Selected China - Southwest Clothing

Stock up on work for the winter months from our SALE TABLE.

## WEIGHT WATCHERS...

PSSST... THIS IS YOUR LAST CHANCE EVER TO JOIN FOR \$8!

Joyce Nimetz, Area Director

## JOIN NOW FOR ONLY...

**\$8**

Registration Fee \$17.00  
First Meeting Fee \$ 8.00  
Regular Price Total \$25.00  
YOU SAVE \$17.00  
Offer ends Sept. 30, 1989

## CALL TODAY!!!

TOLL FREE  
1-800  
359-3131

With Weight Watchers, you'll lose weight FAST and learn how to keep it off. This could be the SMARTEST eight dollars you ever spent! Better join today!

## Come to the Weight Watchers meeting nearest you.

**LOCKNEY**  
Lockney General Hospital Annex  
217 North Main  
Tue: 5:00 pm

**PLAINVIEW**  
Conestoga Inn  
Meeting Room  
600 N. 1-27  
Mon: 5:00 pm  
Mon: 6:30 pm

**PLAINVIEW**  
Golden Corral  
Private Dining Room  
2606 Olton Rd.  
Wed: 12 Noon  
(Lunch purchase required)



## WEIGHT WATCHERS!

Offer valid September 3 through September 30, 1989. Offer valid at locations listed (Areas 37, 96, 107) only. Offer valid for new and renewing members only. Offer not valid with any other offer or special rate. Weight Watchers and Quick Success are trademarks of WEIGHT WATCHERS INTERNATIONAL, INC. ©WEIGHT WATCHERS INTERNATIONAL, INC., 1989



# St. Mary's Flight for Life enters into agreement with Cargill Seeds

St. Mary of the Plains Hospital's Flight For Life program has entered into agreement with Cargill Hybrid Seeds, naming the company's Aiken facility as an official industrial referral site.

As a referral site, Cargill officials "can call for the helicopter directly" in the event of a medical emergency, according to Flight For Life director Richard Pope.

"We establish industrial referral sites for facilities which are located a considerable distance from a medical center," Pope explained. "We are extremely pleased to add Cargill Seeds to our list of sites."

The agreement was established in early August, and the Flight For Life helicopter made a special visit to the Cargill plant north of Aiken on Aug. 18 to explain operational procedures to plant employees.

In the event of an industrial accident or other medical emergency at the site, the victim is less than 20 minutes away from St. Mary Hospital thanks to the

Flight For Life service, Pope said.

Flight For Life service is provided by AeroCare, a locally owned and operated company based at Lubbock International Airport.

The heart of the Flight For Life operation is a new Twinstar helicopter, which went into service for the hospital on July 1.

AeroCare also supplies the hospital with two fixed-wing King Air aircraft, which are fully equipped as mobile intensive care units.

Established in 1987, Flight For Life was the region's first emergency aeromedical service, providing West Texas and Eastern New Mexico with a 24-hour rescue team.

## DPS stresses caution around school buses

What's yellow and black and has 144 feet? A loaded school bus. Summer Vacation is almost over and children across the state will be returning to school, many aboard big yellow and black school buses. One of the most common sights on our roadways during the school year, these buses can carry from 71 to 83 seated students on any given trip each day.

"Yet as common as they are, every year there seems to be an unfortunate rash of accidents caused by drivers who fail to follow safe driving practices for a stopped school bus," stated Major Vernon Cawthon, Regional Commander for the Texas Department of Public Safety.

State law requires drivers on the same roadway, as a school bus that is stopped to load or unload children, to also stop until the bus driver has turned off the flashing red lights. This rule applies unless the vehicle is separated from the bus by a divided highway with a median strip.

The first few weeks of school are the most dangerous, according to Major Cawthon. "This time of year presents safety problems for both the school children and the driver," he explained. "Many youngsters are attending school for the first time and others might be going to a different school, where they are unfamiliar with local traffic conditions. One problem seems to be that during the summer recess, some drivers have gotten out of the habit of being alert for both school zones and school buses."

Public Safety Officials are asking Texas drivers to begin thinking now about the safety of our school children, as the beginning of a new school year starts up. By observing the speed limits in school zones, being alert for increased pedestrian traffic, and watching for school bus activity, we can make this a safe school year for all.



VISIT TO CARGILL—Flight For Life pilot Greg Gust (center) explains emergency procedures to employees of the Cargill Hybrid Seeds plant north of Aiken. Also making the recent trip for St. Mary of the Plains Hospital were flight nurse Bill Holland (behind Gust), president of AeroCare, and Ronnie Ammons (right), paramedic.

## Go Longhorns! Good Luck in 1989!

### Lockney Coach's Interviews

Hear Lockney Longhorn Coach

**Jim Clark**

4:00-5:00 p.m. each Friday

on

**Coach's Corner**

KKAP 900 AM

95.3 FM

Brought to you by these sponsors: Lockney Meat Co., Lambert Spraying, Stapp Body Shop, Lockney Co-op, Lockney Insurance Co., Kellison Spraying Service, Mission Cable, Farm Bureau Insurance, Schacht Flowers, Jewelry and Gifts, Tastee Burger, Morton Irrigation in Plainview and First National Bank.

## LOCKNEY LONGHORN 1989 Varsity Schedule

Sept 8... RALLS.....There  
 Sept. 15... PETERSBURG..... Here  
 Sept. 22... FLOYDADA..... Here  
 Sept. 29... SUDAN.....There  
 Oct. 6... SPRINGLAKE-EARTH...There  
 (Above games 8:00 p.m.)  
 Oct. 13... HALE CENTER.....Here  
 Oct. 20... HART..... Here  
 Oct. 27... FARWELL..... There  
 Nov. 3... ABERNATHY.....There  
 Nov. 10... OLTON.....Here  
 (District Games - 7:30 p.m.)



## Lockney Beacon

# Football Contest

### CONTEST RULES

Any subscriber or individual above the age of 7 who purchases a Beacon from a news rack is eligible to enter this newspaper's weekly football contest, except employees of the newspaper.

To play, circle on the official entry form, the numbers of the teams you believe will win this week's games. To indicate a tie, circle the numbers of both teams playing a particular game. In addition, indicate in the tie breaker football your guess on the total number of points to be scored by the two teams listed. Also circle the team you believe will win.

The only entries considered for prizes will be those appearing on official entry forms and brought to the Beacon Office by 5 p.m. on Friday. NO MAIL ENTRIES WILL BE ACCEPTED.

Entries are limited to one per person per week. Weekly winners are limited to one per household.

Three cash prizes are offered each week. In the event of ties - the same number of correct games and equal scores on the tie breaker, prize money will be shared by those involved in the tie. The tie breaker score will be utilized only in the event of a tie on the number of games correct.

In the contest to determine the season winner and recipient of two tickets to the November 23 Dallas Cowboy game in Dallas, Each contestant will receive one point for each correct game selected on the official entry form throughout the season.

Print name and address plainly on the official entry form and double check your choices before clipping out the form and depositing it at the Beacon Office before 5 p.m. on Friday.

**Clark Pharmacy**  
1. Floydada vs 2. Idalou

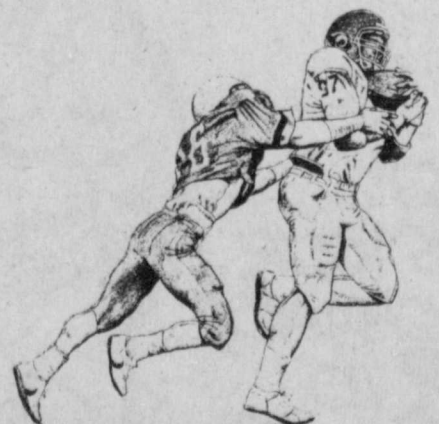
**The Lockney Beacon**  
3. Petersburg vs 4. Nazareth

**Attebury Grain**  
5. Hale Center vs 6. New Deal

**Floyd County Farm Bureau**  
7. Olton vs 8. Crosbyton

**D & J Gin**  
9. Lubbock High vs 10. Dunbar

**The Tye Company**  
11. Dalhart vs 12. Boys Ranch



**\$20.00**

**In Cash Prizes Each Week**  
 1st prize \$10.00  
 2nd prize \$6.00  
 3rd prize \$4.00

Season winner receives two tickets to November 23 Dallas Cowboys game.

**Sponsor Needed**  
13. Texas Tech vs 14. Arizona

**Schacht Flowers**  
15. Rich vs 15. Tulane

**Sun-Vue Fertilizer**  
17. Tennessee vs 18. U.C.L.A.

**First National Bank**  
Member FDIC  
19. Utah vs 20. Utah State

**Providence Farm Supply**  
29. Jets vs 30. Patriots

**Davis Lumber Company**  
27. Eagles vs 28. Seahawks

**Pay-N-Save Lockney**  
25. Oilers vs 26. Vikings

**Lockney Insurance**  
23. Cowboys vs 24. Saints

**Don Hardy Car Wash**  
21. Long Beach State vs 22. Hawaii

**OFFICIAL ENTRY FORM**

Name \_\_\_\_\_  
 Address \_\_\_\_\_  
 City \_\_\_\_\_

1	2	3	4	5	6	7	8	9	10
11	12	13	14	15	16	17	18	19	20
21	22	23	24	25	26	27	28	29	30

**TIE-BREAKER** Circle winner and guess total score

LOCKNEY vs. Ralls [Write score in football]