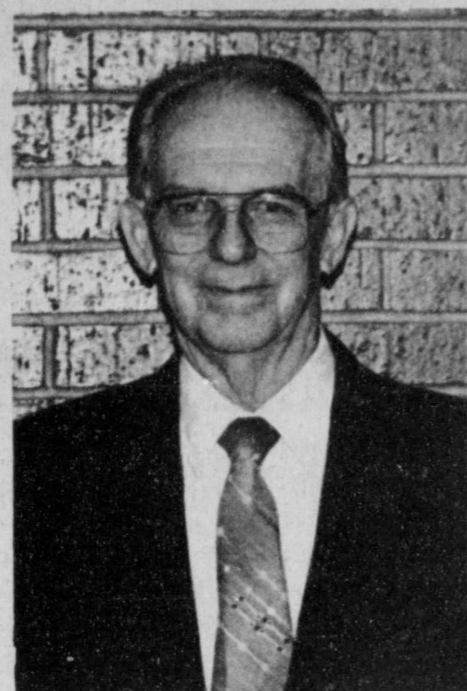




J.R. BELT



CLAUDE BROWN

New directors named to Lockney FNB board

J. R. Belt and Claude Brown, both of Lockney, have been elected to the board of directors of the First National Bank in Lockney according to Ronnie Hardin, president and C.E.O.

Belt is a Lockney native and has been active in several leadership positions. He is a longtime farmer, rancher and businessman in Floyd County. He is a member of the West Side Church of Christ.

Brown is also a Lockney native. He previously served as the mayor of Lockney for sixteen years, director and past president of the Lockney Rotary Club, and chairman of the Lockney Hospital Board. In 1957 he was named Lockney's Outstanding Citizen. He is a member of the First Baptist Church of Lockney and is also a farmer and businessman in Floyd County.

According to Hardin, "We have elected two outstanding men to the board of directors of the bank." He also

stated, "One of the banks goals is to have more local involvement on the board."

The two newly elected board members will be joining the following current board members, Tom C. Nichols, Joe Kim Kling, David Kirk, June McDonald, Robert Wilson, Dub Dipprey and Ronnie Hardin.

Longhorns scrimmage Crosbyton

The Lockney Longhorn football team will hold a scrimmage with the Crosbyton Chiefs, Thursday, August 24 at the Longhorn football field beginning at 5:30 p.m.

Next week the Longhorns will scrimmage New Deal. Time and place to be announced.

Lockney ISD to vote on tax rate

The Lockney school board met for a public hearing on the proposed tax rate Monday, August 21 at the school office for the purpose of discussing the tax rate and answering any questions taxpayers

might have. Two citizens came to the hearing.

The board members will meet August 28 at 7:30 p.m. at the school office

board to set the tax rate. The meeting is open to the public; however no opinions will be considered at this meeting. Those opposing the increase were invited to address the board at the sched-

uled meeting last Monday night.

The tax rate tentatively proposed is 6.67 percent, or 75 cents per \$100 valuation.

In other business members of the school board set the date to amend the 1989-90 budget. This meeting will also be held on Monday, August 28 immediately following the meeting to set the tax rate.

Attending the meeting were Eddie Teeter, Lisa Mosley, Jim Bob Martin, Paul Glasson, D. K. Jackson, Dub Hallmark and two citizens.

Hospital financial dilemma detailed

By Terry Keltz, Administrator

Our financial problems began as suddenly as the development of a West Texas thunderstorm. In January of this year we were celebrating the successful results of a long term plan of narrowing the enormous gap between the Hospital's revenue and expenses. We often patted ourselves on the back for not having raised taxes substantially for a number of years even in the midst of troubled times for rural hospitals. The picnic ended however when, following a Medicare inspection in February, we found ourselves running for shelter from a regulatory storm by paying agency nurses from Lubbock \$30 per hour to fill staffing positions necessary to meet Medicare regulations. There being no registered nurses living in Lockney and having an immediate need to staff extra RNs, a very serious situation arose that could only be addressed with dollars. We launched an advertising campaign to attract registered nurses to Lockney offering competitive wages and other incentives. The wages of our staff RNs were increased and a full-time quality assurance coordinator was hired. When the storm passed, it's impact upon the annual hospital payroll was estimated to be approximately

141,000 additional dollars. This new expense, along with other additional increases in costs, including a 20% increase in worker's compensation insurance, (even though we have not filed a claim in years) left us searching for extra revenue to fund the projected deficit of \$181,455 for the ensuing year.

I wish we were back in the "good old days" of cost reimbursement. This problem could easily be addressed with a slight increase in prices which is almost impossible today due to Medicare, Medicaid and other third party sources paying us on a set rate basis. These days, only about 30 percent of our revenue can be affected by price increases. We estimated that to get the additional revenue we need next year from room charges alone, room rates would have to go from \$160 per day to \$442 thus shifting the burden further to private pay and private insurance.

Whether we meet this projected deficit or not does not constitute an opened or closed issue for the hospital this year. We currently have approximately \$446,400 in our building replacement fund and by Board action could terminate this effort and service the deficit with those funds. This would begin a process of self liquidation, something

the Board has been trying to avoid in the past due to the age of our hospital. Most

Continued On Page 6

Centennial to kick off with Lockney breakfast

January 6 was set as the date of the first event of the Floyd County Centennial at a recent meeting of the Centennial committee. The committee met on Monday, August 14 at the First National Bank of Lockney.

A breakfast is scheduled to be held in Lockney and John Ballard, associate pastor of the First Baptist Church in Lubbock will be the motivational speaker. The event will be sponsored by Pay-n-Save of Lockney, Pay-n-Save of Floydada and Shop Rite of Floydada.

Tickets for the event were set at five dollars each and there will be a cash prize of twenty five dollars for the person selling the most tickets.

A letter from Bill Clements was read. He stated that he was honored to recog-

nize May 28, 1890 as the official charter date of Floyd County and Dolphin Floyd as the county's namesake.

Discussion was held on purchasing or renting bunting to drape the courthouse and painting signs proclaiming the county's 100th birthday for each of the major highways coming into Lockney and Floydada.

Jesse Morales will be at the September meeting with plans for the Cinco de Mayo day celebration. Lavada Garrett is chairman for the Juneteenth activities and has contacted T.J. Patterson to be the speaker on that day. The location has not yet been set.

Mary Sue Potts and Jimmy Ross will coordinate the wagon train schedule. It

Continued On Page 2

Lockney Cooperatives name new manager

Charles McQuhae has been named manager of the Lockney Cooperatives by the board of directors.

McQuhae has moved to Lockney along with his wife, Marie, and their three children Brett, 8, Traci, 6 and Cullen, 2. They came here from Liberty, Texas. Mrs. McQuhae is a registered nurse. She received her degree in nursing from the Baylor School of Nursing.

Brett and Traci will begin school here when it opens the last of August.

McQuhae is a self-proclaimed Aggie, having graduated from Texas A&M in 1974. He operated a farm and ranch at Katy until 1976 and worked for the Production Credit Association until 1980.

He went from there to the American Rice Growers Association where he was

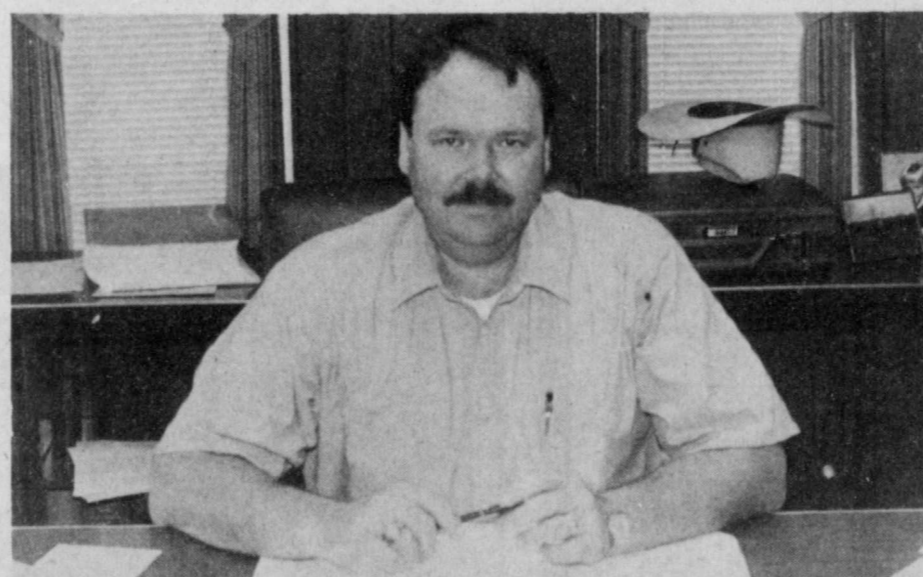
general manager. He was in charge of their drying and storage facilities in two plants along with the fertilizer, chemical and seed warehouse and the farm supply store.

The association also operated an irrigation company and owned an 18,000 acre farm. The land was farmed by tenants and they farmed rice, grain sorghum and soy beans. McQuhae stated

that more soy beans were grown in Liberty County than anywhere else in the state.

After spending a year as an agent for New York Life McQuhae said that he is glad to be back in agriculture. "I am very strongly oriented in cooperatives. I believe in them." Stated McQuhae

He also is an avid hunter and fisherman and occasionally plays a little golf.



CHARLES McQUHAE

Floyd County Fair has something for everyone

LOCKNEY SCOUTS

The Lockney Scouts will meet in the parking lot of the hospital at 9:30 a.m., in full uniform, to serve as Color Guard for the Parade.

LOCKNEY SCOUTS PINEWOOD DERBY

The Scouts will hold a Pinewood Derby Exhibition Race Saturday at 2:30 p.m. at the east end of the Fair building.

EASTERN STAR ENCHILADA SUPPER

Lockney Chapter #347, Order of the Eastern Star will again be serving an Enchilada Supper. Serving will start at 5:30 p.m. on Thursday, Friday and Saturday nights. No noon meals will be served but drinks will be available.

ICE CREAM BOOTH

The Athena Study Club will be selling home made ice cream in the Fair Building all three days of the Fair.

LEMONADE AND COOKIES

Il Penseroso Study Club will be selling lemonade, iced tea and cookies in their booth at the Fair Building.

BAND BOOSTERS FOOD BOOTH

The Lockney Longhorn Band Boosters will have a food booth on the east end of the Fair Building. They will be serving from Thursday to Saturday.

PET PARADE AND SHOW

The children's pet show will be held in the agriculture building on the fairgrounds Saturday morning after the parade. Children 12 or under are encouraged to bring their pets - big or small. Pets must be in a cage, on a leash, or similarly confined, and the child must be able to handle the pet.

Ribbons will be given for the following categories: Smallest Pet, Largest Pet, Prettiest Eyes, Longest Tail, Shortest Tail, Curliest Tail, Happiest Face, Saddest Face, Longest Ears, Furiest Pet, Roly-Poly Pet, Most Spots, Most Unusual Pet, Best Trick, Best Showmanship, Best Pet Costume, and Pet and Master Look-a-Like Contest.

5K AND FUN RUN

The 5K and Fun Run will be held Saturday, August 26. The Fun Run will begin at 8:30 and the 5K Run at 9:00. Packets must be picked in the Breeze-way of the Lockney General Hospital from 4:00 p.m. to 7:00 p.m. Friday, August 25. Entry Fee will be \$10.00. Late registration and late packet pickup will be held at 8:00 a.m. at the Starting Line on race day. The races are sponsored by Floyd County Farm Bureau, City Auto and Floyd County Fair Board. Trophies are furnished by Schacht Gifts in Lockney.

CHILDREN'S BARNYARD

There will be a variety of farm animals to be petted and possibly fed at the children's barnyard in the fair building.

Floyd County Fair Schedule

Thursday, August 24, 1989

- 1:00 p.m. Judging of Community Exhibits
- 1:00 p.m. Judging in Women's Division
- 2:00 p.m. Interviews for Little Miss & Junior Miss Pageant
- 3:00 p.m. Judging in Agriculture Department
- 6:00 p.m. Little Miss & Junior Miss Pageant
- 8:30 p.m. Square Dance

Friday, August 25, 1989

- 9:00 a.m. Quilt Block Show
- 9:30 a.m. Ladies Day
- 5:00 p.m. Tractor Driving Contest
- 7:00 p.m. "Zelda Ellison & Friends" - Singing
- 9:00 p.m. Youth Dance

Saturday, August 26, 1989

- 8:30 a.m. Fun Run
- 9:00 a.m. 5-K Run
- 10:30 a.m. Parade in Lockney Business District
- 11:00 a.m. Chili Cook-off Begins
- 11:00 a.m. Pet Show in Agriculture Building
- 1:00 p.m. Lockney FFA Children's Tractor Pull
- 1:00 p.m. Washer Pitching Contest
- 2:00 p.m. Floyd County 4-H Children's Rodeo
- 2:00 p.m. Interviews for Miss Floyd County Contest
- 2:30 p.m. Scout Pinewood Derby in South end of Fair Building
- 5:00 p.m. Chili Cook-Off Contest
- 7:00 p.m. Miss Floyd County Contest
- 9:00 p.m. "Country Nite Band" - Dance

ADMISSION to the Floyd County Fair is FREE!
ADMISSION of \$1.00 for adults and \$.50 for students and pre-school free will be charged for the Musical Show, Miss Floyd County Pageant and Little Miss and Junior Miss Pageant.

Ladies Day Schedule

Friday, August 25, 1989

- 8:30 a.m. Enter Quilt Blocks
 1. Blocks of today - less than 20 years old
 2. Blocks of Yesterday - 20-50 years in age
 3. Blocks of Yester-Year - over 50 years old
 Put name and history on 3x5 card & attach to block.
 - 9:00 Quilt Block Show in Entertainment Building
 - 9:30-10:30 "New Methods in Cooking" - Jane Archer
 - 10:45-11:45 "Home Security - How safe is your home?" Officers Price and DeLeon, Lubbock Police Department
 - 11:45-12:45 Lunch
 - 1:00-2:00 "Creating With Paper" - Mary True - Try your hand at creating items with the decorative twisted paper.
 - 2:15-3:15 "Christmas Ideas" - Cynthia Bybee
- Numerous door prizes will be given away during the day.



PAST MEETS THE FUTURE—Reigning princesses and the 1989 Miss Floyd County, were on hand Saturday serving refreshments to hopeful contestants who came to the fairgrounds to sign up for next Saturday's Miss Floyd

County Beauty Pageant. Turning over their crowns next week will be: (left-right) Gretchen Quebe (7-9 division), Miss Floyd County Jessica Lemons, Lacy Golightly (10-12 division) and Randi Duke (3-6 division). Staff Photo



MISS FLOYD COUNTY—Competing Saturday night for the Miss Floyd County title will be: (back row, left-right) Joann Amador, Kori Kellison, Jennifer Collins, Tracy Tomlin, Jori Lambert; (front row, left-right) Lori

Gonzales, Brandy Lackey, Kema Blanco and Janet Himes. Not pictured were Amanda Watson and DeAnna Watson. Staff Photo

Looking forward to school?



Lockney This Week

ENCHILADA DINNER
Enchilada dinner at the San Jose Catholic Church Hall, Sunday, August 27, from 11:00 a.m. to 3:00 p.m. Two beef enchiladas, rice, beans, toss salad, tostados and tea. Carry out orders available. The cost is \$2.50 a plate.

LOCKNEY THIS WEEK MOTHER'S DAY OUT
Mother's Day Out will start on Wednesday, August 30, at First United Methodist Church 9 a.m. to 5 p.m. All community preschoolers are welcome. Bring a sack lunch, the drinks and snacks are provided. Cost is \$8.00 per child and \$12.00 for two children in the same family.

CHARACTER CONTEST
Country Magazine is seeking America's No. 1 Country Character. If you would like to nominate someone for this contest send some details on why you think this person is America's No. 1 Character and if possible enclose a picture to the Lockney Beacon, Box 187, Lockney, Texas, 79241. All entries will be forwarded to the magazine.

Early Deadline for Labor Day

The Lockney Beacon will be closed Monday, September 4 for Labor Day. Deadline for the advertising, stories, classified and pictures will be Friday, September 1 at 3:00 p.m.

Centennial to kick off with Lockney breakfast

Continued from Page 1

is set for October 5, 6, and 7.

The committee voted to let Johnny Summers use the Centennial logo on cups and napkins to be used at the fourth of July shindig in the Pay-n-Save, Floydada, parking lot.

The committee voted to order two hundred commemorative plates with the Floyd County Centennial logo on them. The plates will be numbered. Numbers will be drawn for the first fifty plates ordered to determine who will get the plate numbered one through fifty. After that they will be listed in the sequence the orders come in. The price of the plate was set at twenty dollars. The minimum order is two hundred and according to Ways and Means chairman, Nettie Ruth Whittle, an order can-

not be placed unless there are orders for that many plates.

Calendars were also discussed. Happenings in the county down through the years will be listed, as they occurred, along with pictures on noteworthy events.

The Lockney Beacon and the Floyd County Hesperian will be putting out a special edition, and information, stories and pictures will be needed. Everyone is encouraged to send this information as soon as possible. Care will be taken to protect pictures and items of value.

The Merrell Ranch in northeastern Floyd County recently celebrated its centennial. The ranch has been in the same family for 100 years. Are there others? The newspapers would like to know so that a follow-up can be done.



10-12 YEAR CONTESTANTS—Young ladies competing for the Little Miss, 10-12 year old division will be: (left-right, back row) Trudi Lambert, Tiffany Ellison, Kacie Lackey, Pepper Hinkle, Kristi Bennett; (front row, left-

right) Shirley Torres, Casy Fawver, Krissy Patterson, Marcy Vasquez, Alicia Morris and Crystal Dumas. Staff Photo

CHICKEN FILLET BASKET™!

\$2.99* SALE PRICE AUGUST 14-27, 1989

Four chicken fillet strips. Plenty of fries. Texas toast. And DAIRY QUEEN's creamy country gravy on the side.

ON SALE IN

*Reg. TM Tex. D.Q. Op. Coun. **Reg. TM Am. D.Q. Corp. ©1989 Tex. D.Q. Op. Coun. *At participating Dairy Queen stores

COMING

SPARKY THE SAFETY MOUSE

SATURDAY - AUG. 26
SPARKY AUTOGRAPH PARTY
9 A.M. - SPS OFFICE
10 A.M. - FLOYD CO. PARADE

SPS SOUTHWESTERN PUBLIC SERVICE COMPANY

Class of 1959 reunites for 30th

Twenty-three members of the Lockney High school graduating class of 1959 gathered for the 30 year reunion August 12-13. Class members gathered at the Lockney Community Center at 3:00 p.m. on Saturday afternoon.

The evening meal was catered by Nielson's Restaurant in Floydada. Class members were welcomed by Bill Race, class president and invocation was given by Debra Ferguson Parrish. The center piece was a lovely bouquet of red and white carnations placed by Eleanor

Schacht (Schacht's Floral & Gifts) in memory of deceased class members: Don Schacht, Ronnie Harris, Stephen Handley, Elaine Cooper Hardy, Donald Christy, Nancy Nix Hayes, Joel McCray, and David Robertson.

Class members shared memories of school days and their experiences of the past 30 years. Plans for future reunions were also discussed.

Award buttons (designed and made by Mary Martin Smith) were presented as follows: Traveled longest distance -

Debra Ferguson Parrish from Redlands, California; Changed the most (woman) - Edna Johnson Watkins; Changed the most (man) - Shannon Eiland; Changed the least (woman) - Linda Baxter Kidd; Changed the least (man) - Duane Griffith; Most children (three-way tie) Pat Anderson Adams, Debra Ferguson Parrish, and Mary Jones Turner; Oldest child - Pat Anderson Adams; Youngest child - Debra Ferguson Parrish; Most grandchildren - Kenneth Callaway.

Class members gathered at the community center at 9:45 Sunday morning for doughnuts and coffee prior to attending morning worship services at First Baptist Church. The group returned to the community center for lunch and an afternoon of visiting.

A door prize (a hand made tote bag, by Mary Lou Bollman) was awarded on Sunday afternoon to Debra Parrish.

Class members enjoyed visiting, browsing through annuals, scrapbooks, photo albums and other memorabilia. Current photographs of classmates and families were also displayed.

Present for the reunion were: Mr. and Mrs. Robert Williams, Weatherford; Aileene Musser Williams, Danbury; Mr. and Mrs. Ronnie Thornton (Pat McLaughlin), Plainview; Mr. and Mrs. Duane Griffith (Pat Ashton), Plainview; Mr. and Mrs. Kenneth Callaway, Pecos; Joe Holmes, Midland; Peggy Ford Bickel, Houston; Debra Ferguson Parrish, Redlands, California; L. T. Cooper, Lubbock; Mary Martin Smith, Childress; Shannon O. Eiland, Hernando, Mississippi; Nancy Bollman Graham, Floydada; Sue Adams Casey, Lubbock; Rita Johnson Bursell, San Antonio; Edna Johnson Watkins, Fort Worth; Mr. and Mrs. James Ferguson, Mr. and Mrs. Byron Brock, Mr. and Mrs. Roy Kidd (Linda Baxter), Mr. and Mrs. Bill Race, Mr. and Mrs. John David Turner, and Pat Adams all of Lockney.

Special guests were Mrs. Cleo Musser of Groom; Mary Lou Bollman, Ethelyn Vemon and Tami from Lockney. The class expresses appreciation to everyone who attended and had a part in making the reunion an enjoyable occasion.

Oklahoma; Mauretta Meek, Graham; Elmer and Linda Kunkel, Keller; Hank Brotherton, Penrose, Colorado; E. L. Jr.

and Theta Brotherton, Rhonda Brotherton Barrett and son, Robert and Renee Armstrong and Nolan, Lockney; Al and Clara Brotherton Jones, Bowie; Claude and Nell Zevely, Kent Zevely and Tara

all of Amarillo; Ann and Chuck Cole, Aurora, Colorado; Martha Davis, Lockney; Robert B. and Wynema Brotherton, Canyon; Robert B. Jr. and Charla Scott Brotherton, Charlie Rhea and Madison Noel, Seminole; Lynda and Richard Bean of Lubbock.

55 gather for Brotherton reunion at Lockney Center

The Brotherton family reunion was held at the Lockney Community Center on August 5, 1989. A pot luck lunch was enjoyed by the following: Lawrence and Esther Brotherton, Janie and Chester Mann all of Canyon; Richie and Linda Sue Brotherton and Jeb, Matt, Cody of Stratford; Larry and Mary Ann Brotherton, Sudan; Cindy Martin and Malcom, Lubbock; Jan and Tom Stone, Cinnamon, and Colby, Lubbock; Claudie B. and Ina Mae Brotherton, Wheeler; Jack and Doris Finsterwald, Mobeetie; Alva and Jo Boren, Petersburg; Honey Boren Fuller, Kade Powers, Shelbi Chance, Lubbock; Marvin Brotherton, Tulsa,

will be due the last meeting in September. It will be a Christmas quilt again this year.

Two visitors were welcomed, Julie Dorman and Terri Fortenberry. Members present were: Cindy Belt, Kay Brock, Cindy Cotham, Sandra Cummings, JoBeth Dietrich, Rise' Ford, DarLee Foster, Shawnda Foster, Kim Lambert, Sherry McDonald, Jamie Moerbe, Tracy Prater, Lisa Roberts, Lezlee Sherman, Robin Stoerner, Traci Tannahill, Gay Terrell, and Tami Welford.

Penseroso Study Club meets

The Penseroso Study Club met in the home of Jamie Moerbe August, 17 1989. Co-hostesses were Sherry McDonald and Rise' Ford.

The new yearbooks were handed out by the yearbook committee. Meetings and programs were discussed. Plans for the fair were finalized. This year lemonade, iced tea, and cookies will be sold at the club booth. Everyone signed up to work. The float and the educational booth were also discussed.

Quilt squares were handed out. They

Lockney Hospital Report

August 14 - 21

Earl Minter, Lockney, adm. 8-8, dis. 8-15
Alexandra Higgs, Lockney, adm. 8-11, dis. 8-15
Alton Riddell, Silverton, adm. 8-11, dis. 8-16
Mary Rodriguez, Plainview, adm. 8-12, baby girl, "Krystal", born 8-12, dis. 8-14

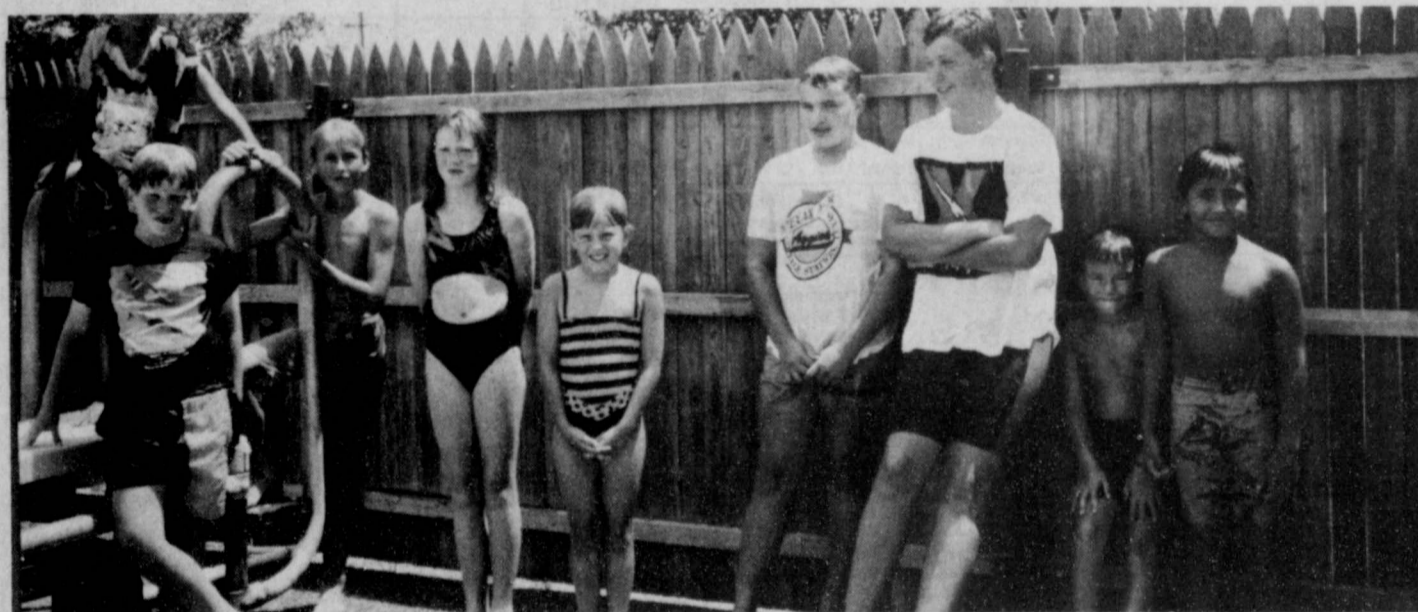
Daniel Soliz, Plainview, adm. 8-15, dis. 8-18
Nellie Torres, Plainview, 8-15, dis. 8-17
Daisey Burson, Lockney, adm. 8-14, dis. 8-17
Elda Hernandez, Dougherty, adm. 8-16, baby boy, "Anthony", born 8-16, dis. 8-20

Albert Hayes, Lockney, adm. 8-16, continues care
Maria Moreno, Lockney, adm. 8-15, dis. 8-21
Manuel Fierros, Lockney, adm. 8-15, dis. 8-19
Rodolfo Blanco, Plainview, 8-18, dis. 8-21
Arlinda Peñalez, Lockney, adm. 8-18, baby boy, "Randall", born 8-18, dis. 8-20
Alice Garcia, Floydada, adm. 8-19, continues care
Amelia Castro, Ralls, adm. 8-19, continues care
Lloyd Wofford, Lockney, adm. 8-20, continues care
Lloyd Wofford, Lockney, adm. 8-20, continues care

Celia Canepos receives award

Celia Canepos of Ruidosa, New Mexico, grand daughter of Martha Margaret Davis, of Lockney, received a recognition award for Outstanding Academic Achievement, and she met the standards for the residential aca-

demetic fitness awards program. The certificate was signed by Lauro F. Cavozos, U. S. Secretary of Education and by George Bush, president of the United States. The award was for the 1989 school year.



END OF SUMMER--The Lockney Swimming Pool closed August 20 and these swimmers are waiting their turn at the diving board as they enjoy the last few days before school starts. Courtesy Photo

Attend The Fair!

THE LOCKNEY BEACON (USPS 317-220)

Published weekly each Thursday by Caprock Sentinel Corporation, 111 East Missouri Street, Floydada, Texas 79235 and located at 211 North Main Street, Lockney, Texas 79241. Second class postage paid at Lockney, Texas.

Yearly subscription rates: Floyd, Swisher, Hale, Motley, Briscoe, and Crosby Counties; \$15.00: Other in-state counties; \$17.00: Out of state; \$18.00.

POSTMASTER: Send change of address to The Lockney Beacon, P.O. Box 187, Lockney, Texas 79241.

Ken Towery...Owner
Alice Gilroy...Publisher & Editor
Neta Marble...Office & Advertising Manager

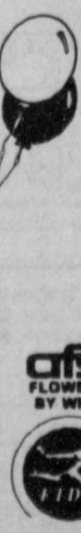
Come by and browse...
New Gift and Christmas Merchandise
-Layaway Available-

See You at the Fair!

SCHACHT
Flowers, Jewelry & Gifts

112 W. Poplar 652-2385
8:30 - 5:30 Mon. - Sat.

"OUR PLEASURE IS TO SERVE YOU"



FAMILY REUNION HELD AT LOHN--Forty one members of the Martinez family gathered for a family reunion that included visiting, games, eating and swimming. Courtesy Photo

Martinez family gathers at Lohn

Attending the Martinez reunion at Lohn July 21 and July 23 were 41 family members. After a weekend of fun, games, visiting and laughter, they ended the reunion with a swimming party at the pool in Brady.

Those attending from Lockney were Arcenio and Nora Martinez, Eric and Dana; Armando and Dianne Vasquez and Marcy, Natalie, Crystal and John.

Also attending were Estella Cooper, Davida and Bobby; Ricky and Rose

Mary Garcia and Matthew from Dumas; Frank and Gloria Arnold, Saginaw; Pete Gonzales, Granbury; Juan and Debbie Medrano, Jason, Curt, Rachael and Bill Francis, David Martinez and Ron of San Antonio;

Manuela Gomez of Seguin; Sue Garza, Christopher, Leticia, Cynthia, Benjamin, and Delores Huerta, Ramiro, Roger, Fidel, and Beatrice Huerta, Fidel Jr., and Roland of Brady; Arcenio and Juanita Martinez, Jessie and Kathie of Lohn.

Senior Citizens Rockins'

Guest Thursday night of Georgia Galloway was her granddaughter Alana Galloway. Thursday night guest of Arvie and Gene Newton was their granddaughter Tori Minick.

Visiting Harley and Edna Workman is Harley's brother Claude Workman of Arizona.

Our sympathy to Clyde Stapp on the death of his sister-in-law, Nina Stapp of Olney, Texas.

Visiting Georgia Galloway over the week-end was her daughter and her family, Margaret, Cleon, and Kimberly Namken of Pecos, Texas.

NEWS
Thursday night was pot luck supper, 90 participates and guest attended. Thursday night, August 24, will be pot luck supper. Thursday night, August 31, will be sandwiches with ice cream and coke.

Due to these people Les and Faye Ferguson, Georgia Ford, Clara Jeffcoat, Harmon and Ann Handley, Ray and Virginia Sissney, Eeton and Marie Wylie, James and Myrt Hill, we have alot of blackeyed peas in the freezer at the center. Ray, Virginia and Harmon picked them and all the rest shelled them.

Thanks to Don, Randy and C.L. Henderson for growing them and giving them to the center. Thanks for all the

fresh vegetables too.

BIRTHDAYS
August 17 - Vernon Gross
August 26 - Aubrey Holt
August 27 - C. H. Huffman

ANNIVERSARIES
August 24 - Archie and Nora Bybee

AILING
Bernice Kent, Earl Minter, Jewel Fortenberry, Eva Whitfill, Jack Dollar, Ruth Reeves, Heritage Home, Plainview; Mildred Hilton at home Amarillo; Hazel Johnson, eye surgery; Lloyd Wofford.

MENU
August 28 - September 1
Monday - Chicken fried steak, gravy, mashed potatoes, mixed greens, green salad, cookies, rolls, tea, coffee
Tuesday - Meatloaf, pork and beans, green peas, beet pickles, green salad, cobbler, cornbread, tea, coffee
Wednesday - Smothered steak, mashed potatoes, carrots, green salad, apple rings, pudding, rolls, tea, coffee
Thursday - Chicken, rice, spinach, green salad, jello with fruit, rolls, tea, coffee

Friday - Baked ham, candied yams, green beans, coleslaw, pineapple cake, rolls, tea, coffee

SHOP IN FLOYD COUNTY AND BUY COTTON

See you at the Fair!

While in town Saturday for the Parade

stop by the
OUTLET STORE
Sidewalk Sale

Further Reductions
Some added Merchandise



SALE begins at 10:00 a.m. Saturday and continues through the afternoon with further reductions.

THE OUTLET STORE

103 S. Main

Lockney

WEEKLY TELEVISION SCHEDULE

| THU, AUG 24 - Weekdays - WED, AUG 30 | | | | | | | | | | |
|--------------------------------------|---------------------------|-----------------------------|---------------------------|-------------------------|------------------------------|------------------------------|-----------------------------|--------------|--------------------------|------------------------|
| | TBS (4) Atlanta | KTX (5) PBS | WGN (9) Chicago | KCB (11) Lubbock | KLB (13) Lubbock | KAMC (28) Lubbock | KJTV (33) Lubbock | HBO | SHOW | ESPN |
| 6 AM | (5:30) T & J | | Alice Jem | NBC News | CBS This Morning | Morn. Ag Rpt ABC News | Gidget Thundercats | (5:35) Movie | Dear Lovy Heart | (Cont) Nation's |
| 7 AM | (9:5) Hbll (35) B'wrc | (45) Wbr | Bezo | Today | Good Morning America | | Ghostbusters Dennis | Movie | Business SportsCenter | |
| 8 AM | (9:5) Little House | Sesame Street | Smurfs Varied | (25) News | Silver Spoon 3's A Crowd | | C.O.P.S. Webster | Movie | Varied | Varied |
| 9 AM | (9:5) Movie | Mr. Rogers Read Rainbow | Dukes Of Hazzard | Judge Concentr'n | Family Feud Wheel | Donahue | 700 Club | Movie | Varied | Varied |
| 10 AM | (9:5) News | Mr. Rogers Read Rainbow | Mr. Rogers Homestretch | Charlie's Win, Lose | Price Is Right | Home | Success N Life | Varied | Varied | Getting Fit Workout |
| 11 AM | (9:5) CHiPs | Varied | Geraldo | Generations Scrabble | Young & Restless | Strangers Loving | Gong Show Hollywood Sq | | | Body Motion |
| 12 PM | (9:5) Varied | Varied | News | News Days Of Our | News Beautiful | All My Children | Newlywed Dating Game | | | Varied |
| 1 PM | (9:5) Varied | Varied | (20) Varied | Lives Another | As The World Turns | One Life To Live | Divorce Cl. Carr. Affair | | | Varied |
| 2 PM | (9:5) Varied | Varied | World Santa Barbara | Guiding Light | General Hospital | Monkees Picture | Yogi Bear DuckTales | | | Varied |
| 3 PM | (9:5) Varied | Varied | ET | Oprah Winfrey | Body By Jake Love Connect | People's Cl. Superior Cl. | Webster | | | Varied |
| 4 PM | (9:5) Addam (35) Beave | Read Rainbow 321 Contact | Fun House | Geraldo | Silver Spoon 3's Company | People's Cl. Superior Cl. | Webster | | | Varied |
| 5 PM | (9:5) Alice (35) Burns | Sit & Be Fit Bus Rpt | Jeffersons | News NBC News | CBS News | ABC News | Varied | | | Varied |

| THURSDAY AUGUST 24 | | | | | | | | | | |
|--------------------|-------------------------|-----------------------|-----------------------|------------------------|---------------------------|-------------------------|-----------------------------|-----------------------|------------------------|-------------------------------|
| | TBS (4) Atlanta | KTX (5) PBS | WGN (9) Chicago | KCB (11) Lubbock | KLB (13) Lubbock | KAMC (28) Lubbock | KJTV (33) Lubbock | HBO | SHOW | ESPN |
| 6 PM | (9:5) Andy (35) Andy | MacNeil Lehrer | A. Griffith Benson | News Win, Lose | News Wheel | News Cosby | Family Ties Curr. Affair | Nov: A Soldier's | Nov: Masters Of The | SportsCenter Little League |
| 7 PM | (9:5) Cleopatra | House Victory Gdn. | Nov: Death Hunt | Cosby | 48 Hours | A Man Called Hawk | Nov: Billy Two Hats | Story | Universe | World Series |
| 8 PM | (9:5) Mystery! | | Cheers Dear John | Equalizer | Mission Impossible | Vietnam War Story | Nov: Monkey Shines | Nov: Monkey Shines | Thursday Thunder | |
| 9 PM | (9:5) News | | L.A. Law | Knots Landing | Primetime Live | Fall Guy | Nov: Ghoulies | Nov: Ghoulies | Auto Racing | |
| 10 PM | (9:5) Body Elect. | Darkside Magnum | News Carson | News 3's Company | News M*A*S*H | Cheers Star Trek | Nov: Bad | Nov: Bad | SportsCenter | |
| 11 PM | (9:5) Sign Off | P.I. | Letterman | Pat Sajak Show | Love Connect Nightline | Arsonio Hall | (9:5) Midnight Run | Dreams | Supercross | Auto Racing |

| FRIDAY AUGUST 25 | | | | | | | | | | |
|------------------|-----------------------------|-----------------------|-----------------------------|---------------------------|---------------------------|---------------------------|-----------------------------|---------------------------|---------------------------|-----------------------------|
| | TBS (4) Atlanta | KTX (5) PBS | WGN (9) Chicago | KCB (11) Lubbock | KLB (13) Lubbock | KAMC (28) Lubbock | KJTV (33) Lubbock | HBO | SHOW | ESPN |
| 6 PM | (9:5) Andy (35) Andy | MacNeil Lehrer | A. Griffith Benson | News Win, Lose | News Wheel | News Cosby | Family Ties Curr. Affair | (Cont) Attractions | (5:00) Gung Ho | SportsCenter Speedweek |
| 7 PM | (9:5) To Hell & Back | D.C. Week Wall St | Nov: California Football | NFL PreSeason Football | Beauty & The Beast | Nov: Alone In The Neon | Nov: Let's Get Harry | Nov: Die Hard Order | Nov: Maled To Order | NHRA Drag Racing |
| 8 PM | (9:5) Great Performances | Suite | Nov: Alone In The Neon | Nov: Alone In The Neon | Nov: Alone In The Neon | Nov: Alone In The Neon | Nov: Alone In The Neon | Nov: Alone In The Neon | Nov: Alone In The Neon | NASCAR Grand National |
| 9 PM | (9:5) Wrestling | Wonderworks | Nov: Alone In The Neon | Nov: Alone In The Neon | Nov: Alone In The Neon | Nov: Alone In The Neon | Nov: Alone In The Neon | Nov: Alone In The Neon | Nov: Alone In The Neon | Nov: Alone In The Neon |
| 10 PM | (9:5) Tracks | Bus Rpt | Darkside Magnum | News Carson | News 3's Company | News M*A*S*H | Cheers Star Trek | Nov: Die Hard | Nov: Die Hard | Mirweek II. SportsCenter |
| 11 PM | (9:5) Tracks | Austin City Limits | P.I. | Letterman | Pat Sajak Show | Love Connect Nightline | Arsonio Hall | Kids In Hall Body Heat | Nov: Yearbook | Lighter Side |

| SATURDAY AUGUST 26 | | | | | | | | | | |
|--------------------|-------------------------|------------------------------|------------------------------|------------------------|------------------------|-------------------------|-------------------------|-------------------|-------------------|-------------------|
| | TBS (4) Atlanta | KTX (5) PBS | WGN (9) Chicago | KCB (11) Lubbock | KLB (13) Lubbock | KAMC (28) Lubbock | KJTV (33) Lubbock | HBO | SHOW | ESPN |
| 6 AM | (9:5) Wrestling | World Tom W | Farm Report | Klasyur Gummi Bears | Spiderman | Fantastic World | Nov: Lolly-Madonn | Nov: Lolly-Madonn | Nov: Lolly-Madonn | Nov: Lolly-Madonn |
| 7 AM | (9:5) National | Against Odds Against Odds | Charlando Chicago Hrt. | Smurfs | Muppet Babies | Nov: Lolly-Madonn | Nov: Lolly-Madonn | Nov: Lolly-Madonn | Nov: Lolly-Madonn | Nov: Lolly-Madonn |
| 8 AM | (9:5) King Solomon's | Tradition Tradition | Minority Bus Make Happen | Chipmunks | Nov: Lolly-Madonn | Nov: Lolly-Madonn | Nov: Lolly-Madonn | Nov: Lolly-Madonn | Nov: Lolly-Madonn | Nov: Lolly-Madonn |
| 9 AM | (9:5) Mines | Business Law | Better Grade Trpl. Threat | Fat Albert | Nov: Lolly-Madonn | Nov: Lolly-Madonn | Nov: Lolly-Madonn | Nov: Lolly-Madonn | Nov: Lolly-Madonn | Nov: Lolly-Madonn |
| 10 AM | (9:5) Underwater! | Bus. File | Soul Train | Home Show | Mighty Storybreak | Nov: Lolly-Madonn | Nov: Lolly-Madonn | Nov: Lolly-Madonn | Nov: Lolly-Madonn | Nov: Lolly-Madonn |
| 11 AM | (9:5) Underwater! | Bus. File | Soul Train | Home Show | Mighty Storybreak | Nov: Lolly-Madonn | Nov: Lolly-Madonn | Nov: Lolly-Madonn | Nov: Lolly-Madonn | Nov: Lolly-Madonn |
| 12 PM | (9:5) Underwater! | Bus. File | Soul Train | Home Show | Mighty Storybreak | Nov: Lolly-Madonn | Nov: Lolly-Madonn | Nov: Lolly-Madonn | Nov: Lolly-Madonn | Nov: Lolly-Madonn |
| 1 PM | (9:5) Underwater! | Bus. File | Soul Train | Home Show | Mighty Storybreak | Nov: Lolly-Madonn | Nov: Lolly-Madonn | Nov: Lolly-Madonn | Nov: Lolly-Madonn | Nov: Lolly-Madonn |
| 2 PM | (9:5) Underwater! | Bus. File | Soul Train | Home Show | Mighty Storybreak | Nov: Lolly-Madonn | Nov: Lolly-Madonn | Nov: Lolly-Madonn | Nov: Lolly-Madonn | Nov: Lolly-Madonn |
| 3 PM | (9:5) Underwater! | Bus. File | Soul Train | Home Show | Mighty Storybreak | Nov: Lolly-Madonn | Nov: Lolly-Madonn | Nov: Lolly-Madonn | Nov: Lolly-Madonn | Nov: Lolly-Madonn |
| 4 PM | (9:5) Underwater! | Bus. File | Soul Train | Home Show | Mighty Storybreak | Nov: Lolly-Madonn | Nov: Lolly-Madonn | Nov: Lolly-Madonn | Nov: Lolly-Madonn | Nov: Lolly-Madonn |
| 5 PM | (9:5) Underwater! | Bus. File | Soul Train | Home Show | Mighty Storybreak | Nov: Lolly-Madonn | Nov: Lolly-Madonn | Nov: Lolly-Madonn | Nov: Lolly-Madonn | Nov: Lolly-Madonn |
| 6 PM | (9:5) Underwater! | Bus. File | Soul Train | Home Show | Mighty Storybreak | Nov: Lolly-Madonn | Nov: Lolly-Madonn | Nov: Lolly-Madonn | Nov: Lolly-Madonn | Nov: Lolly-Madonn |
| 7 PM | (9:5) Underwater! | Bus. File | Soul Train | Home Show | Mighty Storybreak | Nov: Lolly-Madonn | Nov: Lolly-Madonn | Nov: Lolly-Madonn | Nov: Lolly-Madonn | Nov: Lolly-Madonn |
| 8 PM | (9:5) Underwater! | Bus. File | Soul Train | Home Show | Mighty Storybreak | Nov: Lolly-Madonn | Nov: Lolly-Madonn | Nov: Lolly-Madonn | Nov: Lolly-Madonn | Nov: Lolly-Madonn |
| 9 PM | (9:5) Underwater! | Bus. File | Soul Train | Home Show | Mighty Storybreak | Nov: Lolly-Madonn | Nov: Lolly-Madonn | Nov: Lolly-Madonn | Nov: Lolly-Madonn | Nov: Lolly-Madonn |
| 10 PM | (9:5) Underwater! | Bus. File | Soul Train | Home Show | Mighty Storybreak | Nov: Lolly-Madonn | Nov: Lolly-Madonn | Nov: Lolly-Madonn | Nov: Lolly-Madonn | Nov: Lolly-Madonn |
| 11 PM | (9:5) Underwater! | Bus. File | Soul Train | Home Show | Mighty Storybreak | Nov: Lolly-Madonn | Nov: Lolly-Madonn | Nov: Lolly-Madonn | Nov: Lolly-Madonn | Nov: Lolly-Madonn |

MORNING

5:00 (3) Serial (1980, Comedy) Martin Mull, Tuesday Weld. The father of a Marin County family refuses to get with the system.

9:05 (4) King Solomon's Mines (1950, Adventure) Stewart Granger, Deborah Kerr. Safari searches African wilds for missing explorer and diamond mines.

11:05 (4) Underwater! (1955, Adventure) Jane Russell, Richard Egan. Skindivers face dangers to find hidden treasure.

AFTERNOON

12:00 (3) G.I. Joe: The Movie (Animated) The G.I. Joe strike force battles the sinister Cobra organization.

3:00 (3) How To Murder Your Wife (1965, Comedy) Jack Lemmon, Virginia Lili. Bachelor comic strip artist finds he is married to a beauty.

1:00 (3) Follow The Fleet (1936, Musical Comedy) Fred Astaire, Ginger Rogers. A song and dance man joins the Navy and encounters girl trouble.

EVENING

7:00 (3) Student Exchange, Part 2 Of 2 ABC Special Presentation Adventure Comedy) Viveka Davis, Todd Field. American high school seniors masquerade as European exchange students.

7:05 (3) Inside The Third Reich (1982, Documentary) Drama) Rutger Hauer, Derek Jacobi. A dramatization of Albert Speer's true story.

| SUNDAY AUGUST 27 | | | | | | | | | | |
|------------------|---------------------------|----------------------------|-----------------------------|-----------------------------|------------------------|---------------------------|-------------------------|-----------------------------|----------------------------|--------------------------|
| | TBS (4) Atlanta | KTX (5) PBS | WGN (9) Chicago | KCB (11) Lubbock | KLB (13) Lubbock | KAMC (28) Lubbock | KJTV (33) Lubbock | HBO | SHOW | ESPN |
| 6 AM | T & J | | Dr. Kennedy | Bible Answer Sportsman | (5:00) Fighting | Attractions Paddington | (Cont) Mov: Too | SportsCenter BodyShaping | | |
| 7 AM | (9:5) Flint (35) T & J | | (15) What Heritage | Inf'l Sunday J. Robinson | Classic Country | Jerry Falwell | Encyclopedia | Much | Run & Race Golf Swing | |
| 8 AM | (9:5) Flint (35) Andy | Sesame Street | Shut-In Mass Spiral Zone | Oral Roberts 1st United | CBS Sunday Morning | Larry Jones Prophecy | Big Valley | Mov: Dirty Dancing | Out Time | PGA Tour Lighter Side |
| 9 AM | (9:5) News | Mr. Rogers Read Rainbow | BraveStarr Bugs Bunny | Church Sunday Today | World Tom W | Kenneth Copeland | Crazy Like A Fox | Mov: Big Blue | Sportraits Wk In Sports | |
| 10 AM | (9:5) News | Mr. Rogers Read Rainbow | BraveStarr Bugs Bunny | Church Sunday Today | World Tom W | Kenneth Copeland | Crazy Like A Fox | Mov: Big Blue | Sportraits Wk In Sports | |
| 11 AM | (9:5) News | Mr. Rogers Read Rainbow | BraveStarr Bugs Bunny | Church Sunday Today | World Tom W | Kenneth Copeland | Crazy Like A Fox | Mov: Big Blue | Sportraits Wk In Sports | |
| 12 PM | (9:5) News | Mr. Rogers Read Rainbow | BraveStarr Bugs Bunny | Church Sunday Today | World Tom W | Kenneth Copeland | Crazy Like A Fox | Mov: Big Blue | Sportraits Wk In Sports | |
| 1 PM | (9:5) News | Mr. Rogers Read Rainbow | BraveStarr Bugs Bunny | Church Sunday Today | World Tom W | Kenneth Copeland | Crazy Like A Fox | Mov: Big Blue | Sportraits Wk In Sports | |
| 2 PM | (9:5) News | Mr. Rogers Read Rainbow | BraveStarr Bugs Bunny | Church Sunday Today | World Tom W | Kenneth Copeland | Crazy Like A Fox | Mov: Big Blue | Sportraits Wk In Sports | |
| 3 PM | (9:5) News | Mr. Rogers Read Rainbow | BraveStarr Bugs Bunny | Church Sunday Today | World Tom W | Kenneth Copeland | Crazy Like A Fox | Mov: Big Blue | Sportraits Wk In Sports | |
| 4 PM | (9:5) News | Mr. Rogers Read Rainbow | BraveStarr Bugs Bunny | Church Sunday Today | World Tom W | Kenneth Copeland | Crazy Like A Fox | Mov: Big Blue | Sportraits Wk In Sports | |
| 5 PM | (9:5) News | Mr. Rogers Read Rainbow | BraveStarr Bugs Bunny | Church Sunday Today | World Tom W | Kenneth Copeland | Crazy Like A Fox | Mov: Big Blue | Sportraits Wk In Sports | |
| 6 PM | (9:5) News | Mr. Rogers Read Rainbow | BraveStarr Bugs Bunny | Church Sunday Today | World Tom W | Kenneth Copeland | Crazy Like A Fox | Mov: Big Blue | Sportraits Wk In Sports | |
| 7 PM | (9:5) News | Mr. Rogers Read Rainbow | BraveStarr Bugs Bunny | Church Sunday Today | World Tom W | Kenneth Copeland | Crazy Like A Fox | Mov: Big Blue | Sportraits Wk In Sports | |
| 8 PM | (9:5) News | Mr. Rogers Read Rainbow | BraveStarr Bugs Bunny | Church Sunday Today | World Tom W | Kenneth Copeland | Crazy Like A Fox | Mov: Big Blue | Sportraits Wk In Sports | |
| 9 PM | (9:5) News | Mr. Rogers Read Rainbow | BraveStarr Bugs Bunny | Church Sunday Today | World Tom W | Kenneth Copeland | Crazy Like A Fox | Mov: Big Blue | Sportraits Wk In Sports | |
| 10 PM | (9:5) News | Mr. Rogers Read Rainbow | BraveStarr Bugs Bunny | Church Sunday Today | World Tom W | Kenneth Copeland | Crazy Like A Fox | Mov: Big Blue | Sportraits Wk In Sports | |
| 11 PM | (9:5) News | Mr. Rogers Read Rainbow | BraveStarr Bugs Bunny | Church Sunday Today | World Tom W | Kenneth Copeland | Crazy Like A Fox | Mov: Big Blue | Sportraits Wk In Sports | |

MORNING

5:00 (5) The Fighting Seabees (1944, Adventure) John Wayne, Susan Hayward. The story of the tough seabees and their operations in World War II.

9:35 (4) Ike: The War Years (1978, Drama) Robert Duval, Lee Remick. World War II and America's hero Dwight D. Eisenhower are recreated.

10:00 (3) El Condor (1970, Western) Jim Brown, Lee Van Cleef. Two American outlaws blast their way through Mexico in search of gold.

AFTERNOON

12:00 (3) Goodbye Mr. Chips (1939, Drama) Robert Donat, Greer Garson. An English schoolteacher rises to headmaster.

3:00 (3) American Hot Wax (1978, Documentary Musical) Tim McIntire, Fran Drescher. Traces the advent and effects of rock music in the 1950s.

1:00 (3) Strangers When We Meet (1960, Drama) Kirk Douglas, Kim Novak. A married architect and a bored housewife embark on an affair.

EVENING

6:00 (4) Fireball Forward (1972, Drama) Ben Gazzara, Eddie Albert. An unorthodox general leads his tough division during World War II.

8:00 (1) "L.A. Takedown" NBC Sunday Night The Movies (1989) (3) "The Gladiator" ABC Sunday Night Movie (1985, Drama) Ken Wahl, Nancy Allen. The Gladiator is determined to rid highways of drunk drivers.

| MONDAY AUGUST 28 | | | | | | | | | | |
|------------------|----------------------------|-------------------|-----------------------------|------------------------|------------------------|---------------------------|-----------------------------|------------------------|---------------------------|------------------------------|
| | TBS (4) Atlanta | KTX (5) PBS | WGN (9) Chicago | KCB (11) Lubbock | KLB (13) Lubbock | KAMC (28) Lubbock | KJTV (33) Lubbock | HBO | SHOW | ESPN |
| 6 PM | (9:5) Andy Major League | MacNeil Lehrer | A. Griffith Benson | News Win, Lose | News Wheel | News Cosby | Family Ties Curr. Affair | (5:30) Meatballs II | Mov: Back To The Beach | SportsCenter Baseball Mag |
| 7 PM | (9:5) Baseball | Geographic | Nov: Missing By The Bell | ALF By The Bell | K & Allie Designing | NFL PreSeason Football | Nov: Mannequin | Nov: Nature Watch | Nov: SuperBots | Nov: SuperBots |
| 8 PM | (9:5) Dirty Dozan | Lonesome Finn | Nov: Missing By The Bell | ALF By The Bell | K & Allie Designing | NFL PreSeason Football | Nov: Mannequin | Nov: Nature Watch | Nov: SuperBots | Nov: SuperBots |
| 9 PM | (9:5) Dirty Dozan | Lonesome Finn | Nov: Missing By The Bell | ALF By The Bell | K & Allie Designing | NFL PreSeason Football | Nov: Mannequin | Nov: Nature Watch | Nov: SuperBots | Nov: SuperBots |
| 10 PM | (9:5) Dirty Dozan | Lonesome Finn | Nov: Missing By The Bell | ALF By The Bell | K & Allie Designing | NFL PreSeason Football | Nov: Mannequin | Nov: Nature Watch | Nov: SuperBots | Nov: SuperBots |
| 11 PM | (9:5) Dirty Dozan | Lonesome Finn | Nov: Missing By The Bell | ALF By The Bell | K & Allie Designing | NFL PreSeason Football | Nov: Mannequin | Nov: Nature Watch | Nov: SuperBots | Nov: SuperBots |

MORNING

9:05 (4) Promise Of Love (1980, Drama) Valerie Bertinelli, James Van Der Beek. A young girl rebuilds her life when her husband is killed in Vietnam.

AFTERNOON

12:05 (4) Bend Of The River (1952, Western Adventure) James Stewart, Arthur Kennedy. An outlaw turned scout finds his camp raided by a former comrade.

EVENING

7:00 (3) Missing (1982, Thriller) Jack Lemmon, Sissy Spacek. A true story of a military coup in a South American country.

8:00 (3) "Final Jeopardy" NBC Monday Night At The Movies (1989) (3) "The Gladiator" ABC Sunday Night Movie (1985, Drama) Ken Wahl, Nancy Allen. The Gladiator is determined to rid highways of drunk drivers.

9:15 (4) The Dirty Dozen (1967, Drama) Lee Marvin, Ernest Borgnine. A tough Army major leads 12 convicts on a suicidal WWII mission.

11:30 (3) Salem's Lot, Part 1 Of 2 (1979, Horror) David Soul, James Mason. Novelist determines to end haunting memories of his boyhood home.

12:30 (3) Let's Get Harry (1986, Action) Mark Harmon, Gary Busey. A man is kidnapped by drug dealers in Columbia.

| TUESDAY AUGUST 29 | | | | | | | | | | |
|-------------------|----------------------------|-------------------|-----------------------------|------------------------|------------------------|---------------------------|-----------------------------|---------------------------|--------------------|------------------------------|
| | TBS (4) Atlanta | KTX (5) PBS | WGN (9) Chicago | KCB (11) Lubbock | KLB (13) Lubbock | KAMC (28) Lubbock | KJTV (33) Lubbock | HBO | SHOW | ESPN |
| 6 PM | (9:5) Andy Major League | MacNeil Lehrer | A. Griffith Benson | News Win, Lose | News Wheel | News Cosby | Family Ties Curr. Affair | (5:00) Heaven Can Wait | Mov: Wild Champ | SportsCenter Red Man/ TNT |
| 7 PM | (9:5) Baseball | Geographic | Nov: Missing By The Bell | ALF By The Bell | K & Allie Designing | NFL PreSeason Football | Nov: Mannequin | Nov: Nature Watch | Nov: SuperBots | Nov: SuperBots |
| 8 PM | (9:5) Dirty Dozan | Lonesome Finn | Nov: Missing By The Bell | ALF By The Bell | K & Allie Designing | NFL PreSeason Football | Nov: Mannequin | Nov: Nature Watch | Nov: SuperBots | Nov: SuperBots |
| 9 PM | (9:5) Dirty Dozan | Lonesome Finn | Nov: Missing By The Bell | ALF By The Bell | K & Allie Designing | NFL PreSeason Football | Nov: Mannequin | Nov: Nature Watch | Nov: SuperBots | Nov: SuperBots |
| 10 PM | (9:5) Dirty Dozan | Lonesome Finn | Nov: Missing By The Bell | ALF By The Bell | K & Allie Designing | NFL PreSeason Football | Nov: Mannequin | Nov: Nature Watch | Nov: SuperBots | Nov: SuperBots |
| 11 PM | (9:5) Dirty Dozan | Lonesome Finn | Nov: Missing By The Bell | ALF By The Bell | K & Allie Designing | NFL PreSeason Football | Nov: Mannequin | Nov: Nature Watch | Nov: SuperBots | Nov: SuperBots |

MORNING

9:05 (4) The Comeback Kid (1980, Romantic Comedy) John Ritter, Susan Day. A gang of underprivileged kids gives a bitter ballplayer new life.



3-6 YEAR CONTESTANTS—Competing next Saturday in the 3-6 year old division of the Little Miss contest will be: (back row, left-right) Ashley Stevens, Leslie Cuellar, Ashley Cuellar, Kayla Stovall, Kendall Simpson, Katy

Allen, Amber Fortenberry; (front row, left-right) Valerie Molina, Candy Hill, Jessica Garcia, Kimberly Reyes, Kindi Menchaca, Britta McDonald.

Staff Photo



7-9 YEAR CONTESTANTS—Competing for the Little Miss title in the 7-9 year old division, next Saturday, will be: (back row, left-right) Tessa Stapp, Kristen Kellison, Heather Graham, Meredith Schacht, Brandi Patterson, Becky Lambert, Leslieanne Hickerson, Zan Daniels, Jalie

Robnett; (front row, left-right) Melissa Menchaca, Mandi Yeary, Corey Simpson, Esmeralda Gonzales, Krystal Allen, Courtney Cummings, Nicole Mosley, Kassidy Hill.

Staff Photo

School budgets increase 50% since HB72

School budgets have been increased by 50% since the school reform HB 72 was enacted five years ago. A total of \$13.5 billion was approved by school trustees in 1,055 Texas school districts last year. To pay for it, officials levied local property taxes totaling \$5.6 billion. The state provided \$4.9 billion. The remainder came from school lunch and other fees, federal aid, bond sales, interest, and other revenue.

The figures come from the latest issue

of Bench Marks 1988-89 School District Budgets in Texas, an annual publication of the Texas Research League, an Austin-based, educational corporation engaged in governmental research.

An average of \$3,384 per student for current operations was budgeted last year plus \$288 for repayment of debt and \$464 per student for capital outlay.

Lockney Independent School District's budget provided \$3,628.05 per student for current operations, \$3.56

for debt services, and \$234.89 per student for capital outlay based on the 730 students enrolled in the fall semester of 1988.

The average salary for classroom teachers paid by Lockney ISD in 1987-88 was \$21,806, plus supplements for the career ladder.

In Lockney ISD the average salary for administrators was \$40,969, and \$23,042 for other professional support employees (librarians, counselors, nurses, supervisors, etc.)

Four dollars in five were spent for salaries. Statewide payroll expenses averaged \$2,757 per student, as compared to \$2,819.28 in Lockney ISD. Payroll expense is a combination of salary levels and staffing patterns.

Taxpayers provided one teacher for 13.8 students in Lockney ISD, while the statewide pupil-teacher ratio was 17.1 to one. Because of the existence of small classes, especially at the high-school level, and abbreviated teaching schedules, many other classes have more than the average number of students.

To fund higher school budgets with a declining tax base, school trustees in most districts have raised tax rates. The average school district imposed a property tax at the rate of 91.2 cents per \$100 of appraised value, which value averaged 96.5 percent of market value (selling price). The "true tax rate" was 88.1 cents (91.2 times 96.52 percent) statewide. Locally, the Lockney ISD imposed a rate of .720, while property was appraised at 99.9 percent of its market value, making the true rate 72 cents per \$100 of market value (selling price).

The report points out that the calculation of a true tax rate based on market value rather than on appraised value enables a valid comparison of tax levels with other schools. In 1988, the true tax rate exceeded \$1 in 336 school districts in Texas.

The tax on a house that would sell for \$80,000 in Lockney ISD would have been \$459.00. If the homeowner were eligible for homestead exemptions, the tax would have been \$423.00, and if owned by a person 65 years or older, the tax on an \$80,000 house in this district would have averaged \$351.00, or less if subject to a tax freeze. That compares with statewide average tax bills of \$723, \$638, and \$544 respectively for an



SURVEYING NEEDED REPAIRS—W. L. Thomas, Maintenance Director for the Lockney General Hospital, surveys needed repairs to the old temporary military barracks which has served as the patient rooms for the hospital since the 1940's.

Staff Photo

TENDER LOVING CARE GROOMING

Certified Groomer of AKC Standards

Any Size of Dogs

Including

Chows And Cats

SPECIALIZING IN SCHNAUZERS

Guarantee No Clipper Burns With Stripping Matted Dogs

Careful Grooming With A Personal Touch

Call For An Appointment

AUDRA THOMPSON

293-4679



Don Castleberry
895-4613



Kenneth Holt
652-3456

Before the need... You need your
Farm Bureau Insurance Agent.



See you at the
Floyd County Fair
this weekend!!



Clar Schacht
Agency Manager

**FARM BUREAU
INSURANCE**

LOCKNEY - 652-2242 FLOYDADA - 983-3777

101 S. Wall, Floydada, Texas, 79235

Glen's Auto Accessories

Toolboxes
Grill Guards
Bed Rails
Bed Mats & Liners
Sliding Back Glass
Sunfighters
Running Boards
Bumpers
Wheels

BRAND NAMES

John's Int.
Delta
Fey
Mr. Pickup
Westin
Hercules
American Racing

After 5:00 p.m. and ALL Weekend

204 NW Second, Lockney 652-2776



Notice Of Vote On Tax Rate

The Lockney Independent
School District
conducted a public hearing on a
proposal to increase your
property taxes by 6.67 percent
on August 21, 1989 at 7:00 p.m.

A public meeting to vote
on the tax rate will be held
on August 28, 1989
at 7:30 p.m.
at the school office
at 416 West Willow

Truth in Taxation

Hospital financial delimita detailed by Keltz...

Continued from Page 1
 people are aware that the structural core of our hospital is a temporary military barracks brought to Lockney in 1947. We are amazed each year that the State of Texas issues us a license following our Life-Safety Code inspection due to the age and size of our hospital rooms. Building new patient rooms on to the hospital has been a primary focus of the Board during recent months and having a building fund is one way of reducing the burden upon tax payers should construction be mandated. We've had our

fingers crossed in hope of some organization offering to match our funds in project of constructing new patient rooms.

In considering servicing the projected deficit with tax revenue, the board compared 22 other taxing hospital systems within the region and found that on the average, tax revenue represented 34 percent of gross revenue. Lockney Hospital's tax revenue currently makes up only 10 percent. The last substantial increase in taxes occurred in about 1981 when the rate went from 22 to 23 cents

per \$100 valuation. Another consideration the Board made was the decrease in value of the District's tax base by approximately \$20,910,911 since 1980. Another concern the Board had in this proposal was the exorbitant amount the tax rate would have to be increased just to gain a net increase of \$181,455. Noting that Lockney General Hospital District's current tax base of \$85,001,704 is a little more than half as much as Caprock Hospital District's value of \$161,121,082, a rate to affect the net tax revenue would naturally

appear somewhat exaggerated.

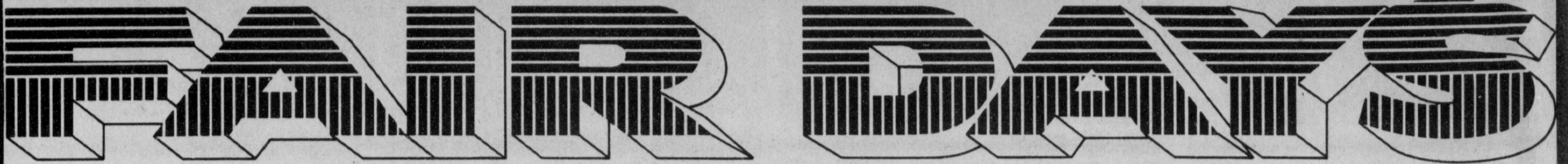
Our current Board is made up of a very conservative group of people. They don't like taxes any more than anyone else. I have seen them suffer over this decision. We all agree that a slow but gradual increase would have been a more desirable process; however, circumstances have created an immediate need in which no other alternatives, other than to begin self liquidation, can be realized.

As a tax payer I don't want to see taxes increase; however, I realize Lockney

Hospital is important to us because it affects our quality of life and if increased taxes support that quality of life then I am for it. Having a hospital in Lockney is not a right, it is a privilege. This privilege comes with a price and without some degree of sacrifice that privilege will go away. Our rural hospitals affect the future of our communities. Not only can the availability of health care services and life saving procedures mean the difference in life and death but also can be the decisive difference in economic development deci-

sions. It is my hope that Lockney and Floydada can enjoy the privilege of having hospitals located in each city for many years to come.

I am aware that there is a tremendous amount of community support for this facility and I have not met one person yet who is opposed to having a hospital and clinic. But I have met people who are against raising taxes and we all understand that feeling. It's like disciplining a child, you want the results of that correction but you sure hate going through the process of getting there.



Lockney Insurance Agency

See you at the Fair!

105 North Main, Lockney 652-3347

Stapp Paint and Body Shop

Invites you to join the fun at the Fair!

120 North Main, Lockney 652-2354

Terra International, Inc.

See you at the Fair!

Highway 70, Muncy 652-3389

Attebury Grain

202 East Shubert 652-3392

LONE STAR COMMUNITY
652-2291

DAN'S AUTO SERVICE

Welcome to the Fair!

112 W. Locust, Lockney 652-2462

Kellison Fertilizer & Spraying

See you at the Fair!

109 East Locust, Lockney 652-2544

Lockney Cooperatives

Welcomes you to the Fair!

Lockney 652-3377
South Plains 983-3501

Texas Energy

Make plans to attend the Fair!

East of Lockney 652-2781

1989 Floyd County Fair Theme...

"A LOOK INTO THE FUTURE"



- Singing and Music
- Parade
- Educational Exhibits
- Commerical Exhibits
- Queen's Contest
- Little Miss & Junior Miss Pageant
- Dances
- Tractor Driving Contest
- Children's Tractor Pull
- Children's Barnyard
- Children's Rodeo
- Ladies Day
- Fun Run
- Washer Pitching Contest
- Pet Show
- Carnival
- Top of the Crop
- Agriculture Exhibits
- Flowers
- Art Show
- Crafts
- Community Exhibits

Cabievision of Texas

Welcomes you to the Fair!

120 South Main, Lockney 652-3328

Dick's Automotive

It's Fair Time - join in the fun!

202 East College, Lockney 652-2294

Tye Company

Join in the fun at the Fair!

816 E. US Hwy 70, Lockney 652-3367

Clark Pharmacy

Welcomes everyone to the Fair!

320 North Main Pharmacy - 652-3353 Home - 652-3712

Johnson & Johnson Auto Parts

Welcome to the Fair!

105 East Locust, Lockney 652-2335

Sam Fortenberry Auctioneers

Join in the fun at the Fair!

Plainview Highway, Lockney 652-3305

Floyd County Newspapers

Lockney Beacon

211 North Main 652-3318

Floyd County Hesperian

111 E. Missouri 983-3737

Lockney Meat Company

Make plans to attend the Fair!

Plainview Highway, Lockney 652-3305

Heavy fed hindquarters, cut and wrapped, \$1.49 lb.

Lockney Gin

Welcomes you to the Fair!

721 South Main, Lockney 652-3388