

# THE LOCKNEY BEACON

35¢

Lockney, Texas 79241

USPS 317-220

©The Lockney Beacon

Thursday, March 3, 1988

Volume 85 Number 9

## Outstanding citizens due banquet honors

Individuals attending the annual Lockney Chamber of Commerce Banquet on Saturday night will be the first to learn the identities of Lockney's Outstanding Woman, Outstanding Man and Outstanding Family for the year.

Identities of the honorees are being kept secret until the 7 p.m. banquet.

Lisa Mosley will recognize her successor as Outstanding Woman; Kenneth Holt, the Outstanding Man last year, is to recognize this year's recipient; and the Outstanding Family will be named by Dr. W.J. and Martha Mangold, who were last year's honorees.

Award winners have been chosen by a committee representing community churches and organizations.

### CHAMBER BANQUET TICKETS AVAILABLE

Tickets for the annual Lockney Chamber of Commerce Banquet are on sale for \$7.50 each. Tickets are available from any chamber member and will be on sale at the door.

Musical entertainment by Mark and Jennie Lynn Hodges is scheduled instead of a speaker at the '88 banquet.

Terry Keltz, outgoing CofC president, is to emcee the banquet. He will introduce the entertainment.

David Foster, incoming president of Lockney Chamber of Commerce, will receive the gavel from Keltz. David Taylor has been named vice president, Merle Mooney has been re-elected as secretary, and J.D. Copeland again is serving as treasurer.

Larry Mullins and Taylor recently were elected to three-year terms on the board. They join holdover directors Robert Delgado, Johnny Dorman, Foster, Nelda Howard, Gayle Reay, Buddie Robnett, Margaret Schacht and George Schuster and appointed directors Copeland, Jack Covington, Floyd Evans, Keltz, Merle and Mike Mooney on the board for the ensuing year.

Retiring directors are Kathy Kellison, Gary Marr, Jim Martin, Cindy Smith and Joe Zorger.

### BANQUET MEAL

Following the invocation by the Rev. Garry Higgs, pastor of First Baptist Church, dinner will be served by the Lockney High School home ec members. The school lunchroom staff is to

prepare the meal.

Mayor Dan Smith will extend the welcome and recognize guests.

Foster is to introduce CofC officers and directors.

Introduction of the award recipients will follow the entertainment.

Schuster, minister of the Main Street Church of Christ, will voice the benediction.

## Plainview musicians will present entertainment at CofC Banquet

Contemporary country music entertainment awaits persons attending Saturday night's Chamber of Commerce Banquet.

Mark and Jennie Lynn Hodges of Plainview are noted for their entertaining at chamber banquets, conferences, annual meetings and benefits throughout the area.

Performing with the Hodges is Oltonite Lonnie Venable. He has been adding his own unique style of rhythm and lead guitar to the couple's music for the past six years.

The threesome compliment each other by combining their varied musical backgrounds and interests with the latest musical technology to reproduce the "unique and sophisticated sounds of today's contemporary country music."

In addition to many of the banquets they have performed for, some of their past performances include Texas Cattle Feeders Association annual meeting, Texas Tech Ag-Credit Conference, Boys Ranch Telethon, Hale County Pioneer Roundup, Amarillo's Centennial Celebration and regular appearances on the West Texas Opry.

Both Mark and Jennie Lynn Hodges were born and reared in the Olton community. They began at an early age

singing and playing at church and for various area civic organizations.

Graduating from Olton High School in the mid-1970s, both attended West Texas State University. Jennie Lynn continued her musical studies while Mark pursued an agricultural degree.

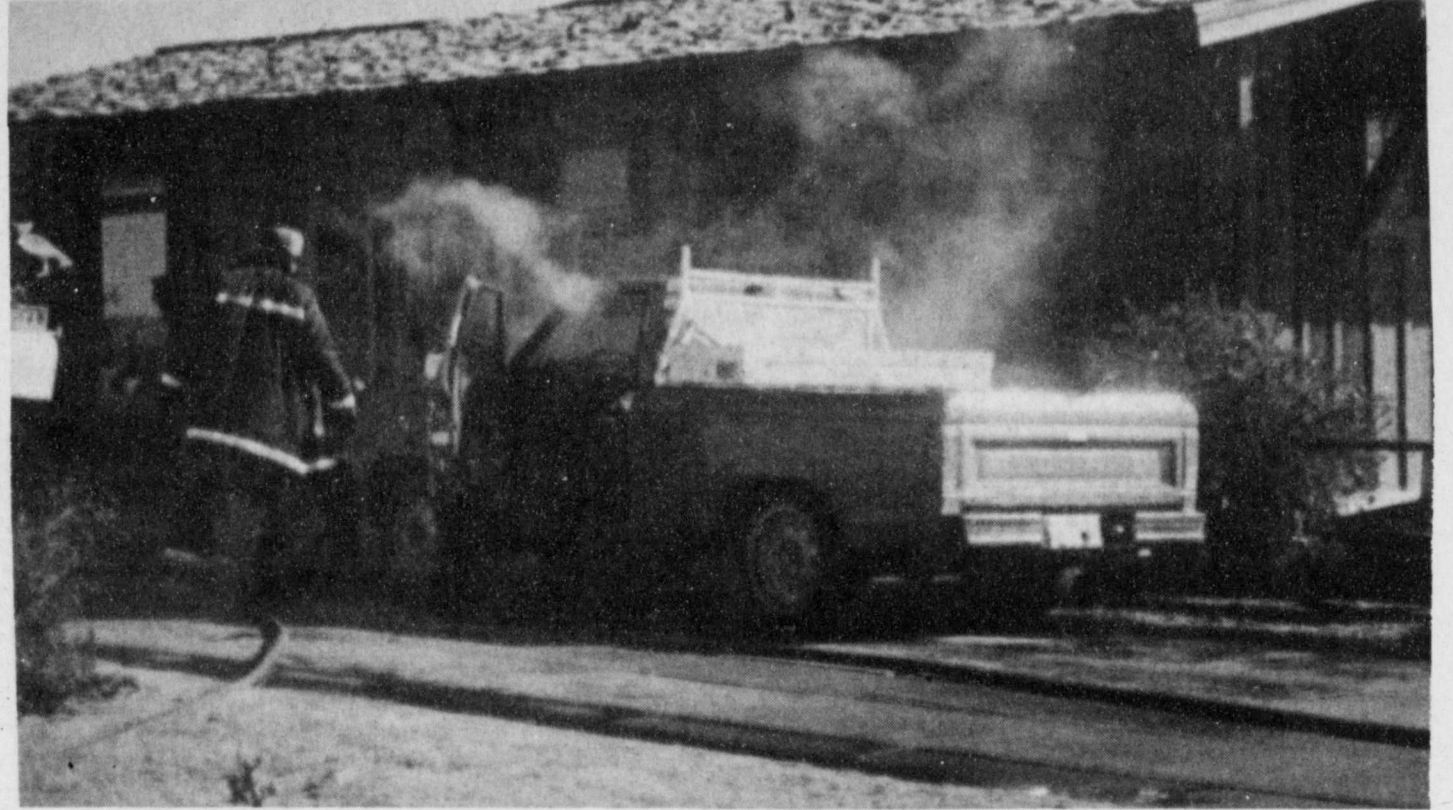
Having grown up as close friends, and with their musical interests, it was inevitable that they would marry each other, which they did in 1977.

Mrs. Hodges graduated in 1979 with a B.A. in Music Education with her main concentration being in voice and organ. In 1982, she earned a masters degree in the same field. That same year she joined the staff of Wayland Baptist University, which she currently serves as assistant professor of music.

Her husband was graduated with a B.S. degree in Ag-Business and Economics in 1979. He has been associated with Kress National Bank since that time, currently serving as vice president.

Through the years the Hodges have been deeply involved in the music program at First Baptist Church in Olton. He serves as minister of music for the Olton church and his wife is organist.

They are parents of two offspring: Heather, four, and Harlan, one.



PICKUP FIRE — The Lockney Volunteer Fire Department was called to the W.T. Cooper home on West Locust Monday morning after Cooper discovered his Ford ranger pickup ablaze in the driveway of his home. Cooper had just returned

home after running some errands and was inside his home when he heard a loud pop and went outside to discover the blaze. Firemen quickly had the blaze under control. — Staff photo

## County fair in jeopardy unless interest shown at Thursday meet

If too few persons attend an 8 p.m. Thursday (today) meeting of the Floyd County and Surrounding Counties Fair board, the fair could be cancelled.

Officers to plan and execute the '88 fair will be elected tonight in the Lockney High School home economics lab.

However, not enough individuals attended a Feb. 20 meeting to organize the board and start draft-

ing plans. Should that situation again be true tonight, the August fair would be in jeopardy.

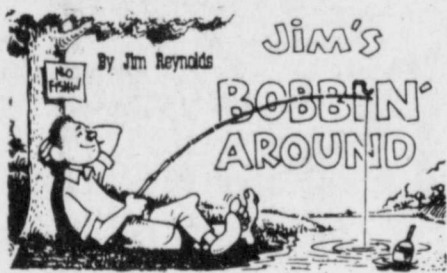
Committee chairpersons from last year and those who were active in staging the fair are particularly encouraged to be present, along with all persons interested in the event.

A spokesperson points out that the fair is designed for all of this county and for residents of sur-

rounding counties. "We would like to have people, young and old, from all over the county to help with the event," the person says. "If there is enough volunteer help, the 1988 fair could outdo any to date."

Tentative dates for the Floyd County and Surrounding Counties Fair are Aug. 18, 19 and 20.

"Bring your ideas to the meeting and share them with others," the board says.



END OF DROUGHT  
The fabled South Plains drought of 1934 ended with rains beginning on March 1.

### 'SUPER TUESDAY' STATES

For months we have heard about "Super Tuesday," the March 8 caucus or primary voting date for 14 Southern and border states and six other states.

Who are these states?  
Holding primaries or caucuses on "Super Tuesday" will be Alabama, Arkansas, Florida, Georgia, Hawaii (Dem.), Idaho (Dem.), Kentucky, Louisiana, Maryland, Massachusetts, Mississippi, Missouri, Nevada (Dem.), North Carolina, Oklahoma, Rhode Island, Tennessee, Texas, Virginia and Washington.

### FORGETFUL

Realizing that her husband's memory was failing, a woman insisted he write down any important chore or date.

One night the couple was watching TV when the wife suddenly announced that she would like a bowl of ice cream. "I'll get it for you," hubby volunteered.

"Write it down," his wife insisted. No need, he responded, because he could certainly remember a simple dish of ice cream.

"While you're at it," the wife replied, "put some chocolate syrup on my ice cream. But you'd better write it down."

A bit miffed about his wife's concern for his lack of memory, he responded that he could remember a bowl of ice cream, covered with chocolate syrup.

"I'd like a cherry on top, too," the wife decided. "But you'd better write it down."

"I can remember that," the fellow replied. "A bowl of ice cream, chocolate syrup topping and a cherry on top."

He remained in the kitchen some time before returning with a bowl of scrambled eggs.

"I told you to write it down," his wife snapped. "You forgot the bacon!" Is it possible that women, also, can be forgetful?

Continued on Page Two



BANQUET ENTERTAINMENT — Mark and Jennie Lynn Hodges of Plainview are to present musical entertainment for the annual Lockney Chamber of Commerce Banquet on Saturday night.

## May 7 elections to fill school and city positions

Two school board seats and three places on the city council are to be filled in May 7 elections.

Councilman Ronnie Aston has filed for re-election.

J.D. Copeland and Gary Marr are the other two members of the city governing body whose terms expire.

All three city positions are for full, two-year terms.

Candidates may file until March 23 at the city hall to have their names placed on the municipal election ballot.

According to City Secretary Erma Lee Duckworth, absentee balloting will be conducted from April 18-May 3. The election will be in the council room at city hall.

### Lockney this week ...

Spring break for Lockney schools will be the week of March 14-18.

#### MARCH 4 BLOOD DRIVE

Lockneyites are encouraged to mark Friday, March 4, on their calendars as the next date to donate blood. Technicians are scheduled to receive donors from 3 until 6 p.m. at the Masonic Lodge.

#### FINAL FILM

The sixth and final film in the "Turn Your Heart Toward Home" series will be shown at 7:30 p.m. next Monday, March 7, in the Main Street Church of Christ. "The Heritage" is the title of this film. A nursery will be provided.

#### COMMODITY DISTRIBUTION

Caprock Community Action will distribute commodities at the Lockney Community Center on March 14 from 2:30 to 5:00 p.m. Please do not arrive before 2:30. Bring white cards. Lost commodity cards will not be reissued. New applications will not be accepted after 4:30 p.m.

#### OLD PHOTOS NEEDED

The Lockney Chamber of Commerce is looking for old photographs of Lockney for use at the annual Chamber of Commerce banquet. Photos will be returned to owners. If you have any photos that you can loan to the chamber, please call Cindy Smith or Terry Keltz.

## Becky Rodriguez injured in pedestrian-vehicle accident

Becky Rodriguez, a 14-year-old Lockney Junior High student and a daughter of Javier and Guadalupe Rodriguez of Lockney, was transported to Lockney General Hospital by ambulance on Thursday, February 25, after she walked into the path of an oncoming car near the corner of Southwest Fourth Street and Willow.

Though she suffered no major injuries, only a bruised hip, this accident could have been much worse. The driver of the car was a Lockney High

### TWO TRUSTEES

Terms of Jim Bob Martin and Eddie Teeter expire on the school board.

Persons have until midnight April 6 to file. They may sign in the superintendent's office.

Two individuals are to be elected May 7 to three-year terms. Balloting will be conducted at high school.

Continued on Page Two

## Pair of directors for hospital due election April 2

Residents of the Lockney General Hospital District will choose two board members on Saturday, April 2. The election is to be held at Lockney High School.

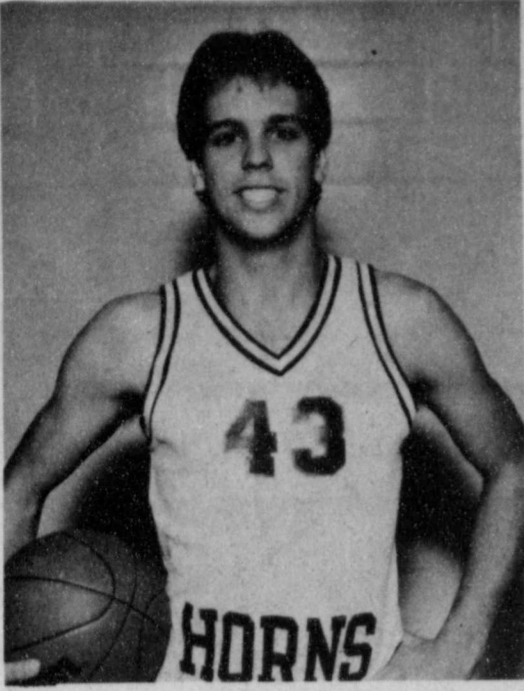
Terms of Chester Carthel and H.E. (Hubert) Frizzell expire. According to by-laws, Frizzell is not eligible to seek re-election.

Les Ferguson is a candidate for one of the places. Hospital directors are named to two-year terms.

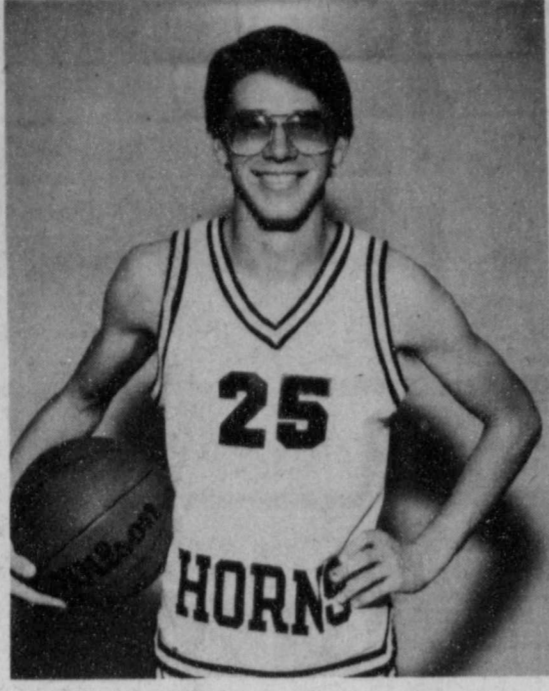
In order to become a candidate, an individual must return a petition signed by 10 qualified voters who resided within the hospital district to Jack Covington by March 8. Covington serves as secretary of the board.

Absentee balloting is to be conducted March 21-25 in J.D. Copeland's office.

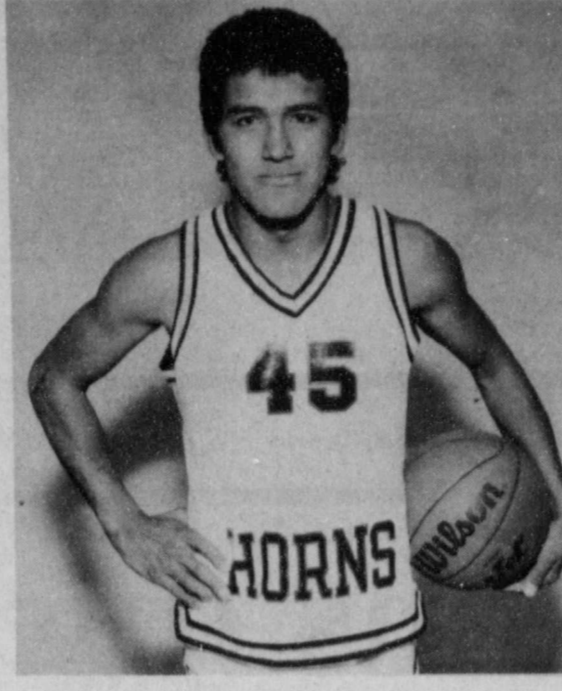
Continued on Page Two



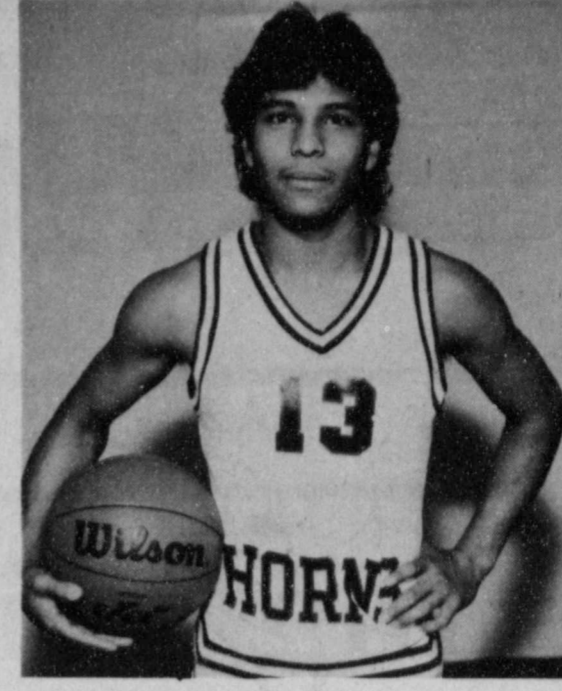
**RON CATES**  
1st team all-district



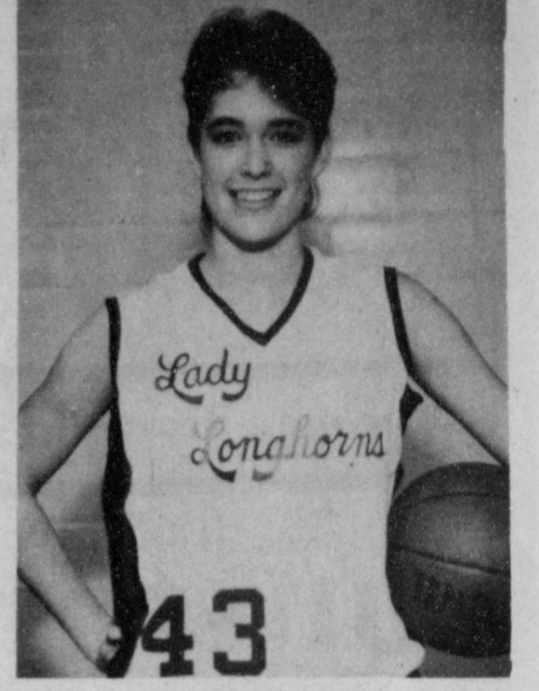
**TODD HALLMARK**  
1st team all-district



**JIMMY BALLEJO**  
Honorable mention all-district



**JAVIER BERNAL**  
Honorable mention all-district



**TANDI GANT**  
Honorable mention all-district

## Ron Cates, Todd Hallmark all-district basketball picks

A pair of Longhorns have earned basketball all-district laurels for their senior campaigns, and two teammates have garnered honorable mention all-district.

Ron Cates and Todd Hallmark, who paced the Red and White of Coach Phil Cotham to two tournament championships and a winning season, have been

honored by opposing coaches with all-district recognition.

Receiving honorable mention all-district were Jimmy Ballejo and Javier

Bernal, also seniors.

For Coach Eddie Fortenberry's Lady Horns, Tandi Gant received honorable mention all-district. She is a freshman.

## Buffet meal and door prizes for annual Consumers meet

Members and guests attending the 62nd annual meeting of Consumers Fuel Association will be treated to a buffet style meal and a drawing for door prizes. The Thursday, March 10, event is scheduled for 7 p.m. in the elementary school cafeteria.

Following dinner, prepared by the school lunchroom staff, and the invocation, Manager Billy Joe Turner is to welcome and introduce guests and employees. Turner also will give the manager's report and minutes of the '87 meeting.

Randolph Swindle of the Sandefur and Swindle accounting firm is to give the audit report.

Two directors are to be elected.

Terms of Kenneth Broseh and Jerry Cawley expire. The nominating committee will present the names of Louie Bybee, Ronnie Thornton, Broseh and Cawley as nominees for directors.

Drawings for door prizes will be conducted by Cawley, Jerry Ford, Danny Lambert and Keith Phillips before Kenneth Holt reports on results of the election.

Broseh will call for new business before the adjournment.

### Social Security News

By Terry J. Clements

A person who returns to work after beginning to get Social Security retirement benefits may qualify for higher benefits because of the additional earnings.

It is not necessary for the worker to take any action if his or her earnings would result in higher benefits. Social Security automatically refigures the benefit rate after the earnings are credited to the worker's record.

People should, however, notify Social Security if they expect to earn more than the annual exempt amount. Earnings over the exempt amount result in the withholding of a person's benefits. In general, \$1 in benefits is withheld for each \$2 of earnings above the exempt amount.

The exempt amounts are \$6,120 for people under 65 for all of 1988 and \$8,400 for people 65 through 69. There is no limit on earnings for people 70 and over.

In addition, a worker's benefit can be increased by 3 percent a year (1/4 of 1 percent a month) that the worker does not get benefits after 65. Starting for people who reach 65 in 1990 and later, the credit will be gradually increased until it reaches 8 percent in 2009. The credit also applies to widows and widowers.

More information about the effect of work and earnings on Social Security benefits can be obtained at the Social Security office at 1401-B West 5th street, or you may call us at 293-9623. Appointments can be arranged if desired.

## Primary voting Tuesday

vote on the proposition that: "English should be established as the official language of the State of Texas and the United States of America."

Democratic voters will have the following referendum on their ballot: "Texans shall maintain their right to select judges by a direct vote of the people rather than change to an

appointment process created by the Legislature."

### DEMOCRATIC BOXES

Voting boxes for the Democratic primary and election judges in this area include:

Sandhill #4, Barwise Elevator, Mrs. Bill Horton

East Lockney #5, Lockney City Hall, J.D. Copeland

Providence #7, Trinity Lutheran Church, Mrs. Mary Turner

Lone Star #8, Lone Star Community Center, G.B. Johnston Jr.

South Plains #9, South Plains School, Mrs. Ruby Lee Higginbotham

Cedar Hill #11, Cedar Hill Baptist Church, Mrs. Lindsey Lackey

West Lockney #18, First United Methodist Church, J.T. (Buster) Terrell.

### REPUBLICAN BOXES

Republican boxes in this area and election officials include:

Old cafeteria at Lockney Junior High School — East Lockney #5, Providence #7, Lone Star #8 and West Lockney #18

— D.K. Jackson, judge; Ray Gant, alternate judge; Dickie Lambert, clerk

Meeting room, county Extension agent office, Floydada #9, Southwest Floydada #1, Allmon #3, Sandhill #4, Harmony #16, McCoy #22, Southeast Floydada #23 and Northeast Floydada #24

— Kerry Pratt, judge

School auditorium, South Plains School — South Plains #9, Cedar Hill #11 and Goodnight #17 — Sterling Cummings, judge; Larry Bramlet, alternate judge.

School auditorium, South Plains School — South Plains #9, Cedar Hill #11 and Goodnight #17 — Sterling Cummings, judge; Larry Bramlet, alternate judge.

School auditorium, South Plains School — South Plains #9, Cedar Hill #11 and Goodnight #17 — Sterling Cummings, judge; Larry Bramlet, alternate judge.

School auditorium, South Plains School — South Plains #9, Cedar Hill #11 and Goodnight #17 — Sterling Cummings, judge; Larry Bramlet, alternate judge.

School auditorium, South Plains School — South Plains #9, Cedar Hill #11 and Goodnight #17 — Sterling Cummings, judge; Larry Bramlet, alternate judge.

School auditorium, South Plains School — South Plains #9, Cedar Hill #11 and Goodnight #17 — Sterling Cummings, judge; Larry Bramlet, alternate judge.

School auditorium, South Plains School — South Plains #9, Cedar Hill #11 and Goodnight #17 — Sterling Cummings, judge; Larry Bramlet, alternate judge.

School auditorium, South Plains School — South Plains #9, Cedar Hill #11 and Goodnight #17 — Sterling Cummings, judge; Larry Bramlet, alternate judge.

School auditorium, South Plains School — South Plains #9, Cedar Hill #11 and Goodnight #17 — Sterling Cummings, judge; Larry Bramlet, alternate judge.

School auditorium, South Plains School — South Plains #9, Cedar Hill #11 and Goodnight #17 — Sterling Cummings, judge; Larry Bramlet, alternate judge.

School auditorium, South Plains School — South Plains #9, Cedar Hill #11 and Goodnight #17 — Sterling Cummings, judge; Larry Bramlet, alternate judge.

School auditorium, South Plains School — South Plains #9, Cedar Hill #11 and Goodnight #17 — Sterling Cummings, judge; Larry Bramlet, alternate judge.

School auditorium, South Plains School — South Plains #9, Cedar Hill #11 and Goodnight #17 — Sterling Cummings, judge; Larry Bramlet, alternate judge.

School auditorium, South Plains School — South Plains #9, Cedar Hill #11 and Goodnight #17 — Sterling Cummings, judge; Larry Bramlet, alternate judge.

School auditorium, South Plains School — South Plains #9, Cedar Hill #11 and Goodnight #17 — Sterling Cummings, judge; Larry Bramlet, alternate judge.

School auditorium, South Plains School — South Plains #9, Cedar Hill #11 and Goodnight #17 — Sterling Cummings, judge; Larry Bramlet, alternate judge.

School auditorium, South Plains School — South Plains #9, Cedar Hill #11 and Goodnight #17 — Sterling Cummings, judge; Larry Bramlet, alternate judge.

School auditorium, South Plains School — South Plains #9, Cedar Hill #11 and Goodnight #17 — Sterling Cummings, judge; Larry Bramlet, alternate judge.

School auditorium, South Plains School — South Plains #9, Cedar Hill #11 and Goodnight #17 — Sterling Cummings, judge; Larry Bramlet, alternate judge.

School auditorium, South Plains School — South Plains #9, Cedar Hill #11 and Goodnight #17 — Sterling Cummings, judge; Larry Bramlet, alternate judge.

School auditorium, South Plains School — South Plains #9, Cedar Hill #11 and Goodnight #17 — Sterling Cummings, judge; Larry Bramlet, alternate judge.

School auditorium, South Plains School — South Plains #9, Cedar Hill #11 and Goodnight #17 — Sterling Cummings, judge; Larry Bramlet, alternate judge.

School auditorium, South Plains School — South Plains #9, Cedar Hill #11 and Goodnight #17 — Sterling Cummings, judge; Larry Bramlet, alternate judge.

School auditorium, South Plains School — South Plains #9, Cedar Hill #11 and Goodnight #17 — Sterling Cummings, judge; Larry Bramlet, alternate judge.

School auditorium, South Plains School — South Plains #9, Cedar Hill #11 and Goodnight #17 — Sterling Cummings, judge; Larry Bramlet, alternate judge.

School auditorium, South Plains School — South Plains #9, Cedar Hill #11 and Goodnight #17 — Sterling Cummings, judge; Larry Bramlet, alternate judge.

School auditorium, South Plains School — South Plains #9, Cedar Hill #11 and Goodnight #17 — Sterling Cummings, judge; Larry Bramlet, alternate judge.

School auditorium, South Plains School — South Plains #9, Cedar Hill #11 and Goodnight #17 — Sterling Cummings, judge; Larry Bramlet, alternate judge.

School auditorium, South Plains School — South Plains #9, Cedar Hill #11 and Goodnight #17 — Sterling Cummings, judge; Larry Bramlet, alternate judge.

School auditorium, South Plains School — South Plains #9, Cedar Hill #11 and Goodnight #17 — Sterling Cummings, judge; Larry Bramlet, alternate judge.

School auditorium, South Plains School — South Plains #9, Cedar Hill #11 and Goodnight #17 — Sterling Cummings, judge; Larry Bramlet, alternate judge.

School auditorium, South Plains School — South Plains #9, Cedar Hill #11 and Goodnight #17 — Sterling Cummings, judge; Larry Bramlet, alternate judge.

School auditorium, South Plains School — South Plains #9, Cedar Hill #11 and Goodnight #17 — Sterling Cummings, judge; Larry Bramlet, alternate judge.

School auditorium, South Plains School — South Plains #9, Cedar Hill #11 and Goodnight #17 — Sterling Cummings, judge; Larry Bramlet, alternate judge.

School auditorium, South Plains School — South Plains #9, Cedar Hill #11 and Goodnight #17 — Sterling Cummings, judge; Larry Bramlet, alternate judge.

School auditorium, South Plains School — South Plains #9, Cedar Hill #11 and Goodnight #17 — Sterling Cummings, judge; Larry Bramlet, alternate judge.

School auditorium, South Plains School — South Plains #9, Cedar Hill #11 and Goodnight #17 — Sterling Cummings, judge; Larry Bramlet, alternate judge.

School auditorium, South Plains School — South Plains #9, Cedar Hill #11 and Goodnight #17 — Sterling Cummings, judge; Larry Bramlet, alternate judge.

School auditorium, South Plains School — South Plains #9, Cedar Hill #11 and Goodnight #17 — Sterling Cummings, judge; Larry Bramlet, alternate judge.

School auditorium, South Plains School — South Plains #9, Cedar Hill #11 and Goodnight #17 — Sterling Cummings, judge; Larry Bramlet, alternate judge.

School auditorium, South Plains School — South Plains #9, Cedar Hill #11 and Goodnight #17 — Sterling Cummings, judge; Larry Bramlet, alternate judge.

School auditorium, South Plains School — South Plains #9, Cedar Hill #11 and Goodnight #17 — Sterling Cummings, judge; Larry Bramlet, alternate judge.

School auditorium, South Plains School — South Plains #9, Cedar Hill #11 and Goodnight #17 — Sterling Cummings, judge; Larry Bramlet, alternate judge.

School auditorium, South Plains School — South Plains #9, Cedar Hill #11 and Goodnight #17 — Sterling Cummings, judge; Larry Bramlet, alternate judge.

## City grass fire calls increase

In the last few weeks members of the Lockney Volunteer Fire Department have been called out on the average of twice per day, due to an increased number of grass fires inside the Lockney city limits.

Most of the fires are in alleys where residents have been burning trash. The increase in grass fires can at least partially be blamed on the dry conditions which exist due to no rain in some time.

Residents are encouraged to keep an

eye on trash which they are burning. Wind is playing a major part in the fires. Just one little spark from a trash barrel can set an alley on fire which then spreads to the grass and wooden fences that line the alleys. This in turn can spread to homes if the fires are not watched.

Rain was expected to fall Tuesday afternoon, according to weather reports on Monday. This will be greatly appreciated by not only fire departments but the farmers as well.

### Dates to remember...

March 1-7: Teacher Appreciation Week

March 7-11: Texas Public Schools Week

March 12: Boys Day, as declared by the governor

March 14-18: Spring Break

April 23: Girls Day, as declared by the governor

April 25: UIL competition in Lockney.



Continued from Page One

### WHEN DID THE ALAMO FAIL?

Okay, history buffs, what day did the Alamo fail?

Anyone guessing a date other than March 6, 1836 is dead wrong.

\*\*\*\*\*

### COMPETITIVE

There once was a small town that only had two grocery stores. The two stores sat directly across the street from each other.

On one occasion a price war on bread erupted between these two rivals. One store advertised "Bread 25 cents a loaf."

The other would counter with one stating "Bread 20 cents a loaf."

And so it went until one finally advertised, "Bread one cent a loaf!"

His competitor was determined not to be outdone, but he was not about to simply give bread away.

All night he tried to come up with a solution. At sun-up he made a huge sign to hang in his window. It read, "Buy your groceries here and we will give you a penny to buy your bread across the street." —Rick Craig, Hamlin Herald

**THE LOCKNEY BEACON**  
(USPS 317-220)

Published weekly each Thursday by Floyd County Newspapers, 211 North Main St., Lockney, Texas 79241. Second class postage paid at Lockney, Texas. Subscription rates: Floyd, Swisher, Hale, Motley, Briscoe, and Crosby counties \$15.00, other counties \$17.00, out-of-state \$18.00.

POSTMASTER: Send address changes to The Lockney Beacon, P.O. Box 187, Lockney, Texas 79241.

Ken Towery  
Alice Gilroy  
Jim Reynolds  
Pam Armstrong

Owner  
Publisher  
Editor  
Office Manager/  
Advertising

## Know early warning signs of heart disease

By Clifford M. Klitten, M.D.,  
F.A.C.C., F.A.C.S.

The human heart, a hollow, pear-shaped muscle about the size of a man's clenched fist, is a truly amazing "machine." It pumps continuously — 60 to 100 times per minute — circulating the body's five quarts of blood through about 60,000 miles of blood vessels.

Americans, unfortunately, abuse this essential piece of body equipment by eating too many of the wrong kinds of food, smoking and not getting enough exercise.

The statistics are alarming: more than 45 percent of all deaths in Texas are caused by cardiovascular disease — that is more than deaths caused by cancer and accidents combined; more than a million Americans suffer heart attacks each year; and over 43 million people in this country live with one or more forms of heart or blood vessel disease.

In most cases, heart attacks are caused by a gradual buildup of deposits, mainly composed of cholesterol, in the inner walls of the arteries that supply blood to the heart. It is a slow process that can go on for years until the obstruction is complete enough to cut off the flow of blood and an attack results. These are, however, some early warning body signals that indicate that the blood supply to the heart is seriously reduced.

These signals should not be ignored; advances in cardiac medicine today enable successful treatment in many cases BEFORE the heart is damaged by an attack.

Listen to what your body is trying to tell you. Brief episodes of chest pain, shortness of breath for no apparent reason, a racing, irregular heart beat and dizzy spells could indicate that you may have some level of coronary artery disease, and the supply of oxygen-rich blood to the vital organs is not enough to meet the demand.

**VOTE FOR**

**D. R. (Richard) Sanders**

County Commissioner - Precinct 3 - Floyd County

Honest - Dependable - Will work FULL TIME - Will give consideration to each and every TAX PAYER - 52 years old - Lived 51 years in Floyd County, 39 years in PRECINCT 3 - Conservative - Will work to hold down taxes - Will oversee ALL road maintenance

Subject to action of the Democratic Primary, Tuesday, March 8.  
Pol. ad paid for by D.R. Sanders.

**R**eady & willing to serve

**E**xperienced by more than 25 years

**D**evoted & sincere, dutiful

**D**edicated to serving our county residents

**I**nterested in Floyd County

**N**eeded for the welfare of our county

**G**iving & accommodating

**ELECT Carolyn Redding**  
Tax Assessor/Collector  
Subject to the Democratic Primary.  
Political ad paid for by candidate.

## Linnie Abbott new founder in 'Bricks for Tech' project

The Texas Tech University College of Arts and Sciences recently completed the first phase of "Bricks at Tech," a long-term fundraising project, with hopes of attracting some of America's top scholars and faculty to the university while beautifying the campus.

A Lockney resident, Linnie Abbott has become the latest founder in the "Bricks at Tech" project. Mrs. Abbott has bought one brick for herself. The bricks will be used in the construction of a recognition garden surrounding Holden Hall, currently the site of the College of Arts and Sciences and the past site of the Texas Tech Museum.

The initial donors have been recognized as founders in the project. Bricks purchased by the founders will be placed in a special segment of the garden. New bricks are engraved with the donor's name. And if the donor is a Texas Tech graduate, the year is added to the brick.

As a founder, Mrs. Abbott will receive a miniature commemorative brick, a certificate and an invitation to all College of Arts and Sciences events.

The red paving bricks will be used in the garden which will include benches, trees, flagpoles and plaques in the

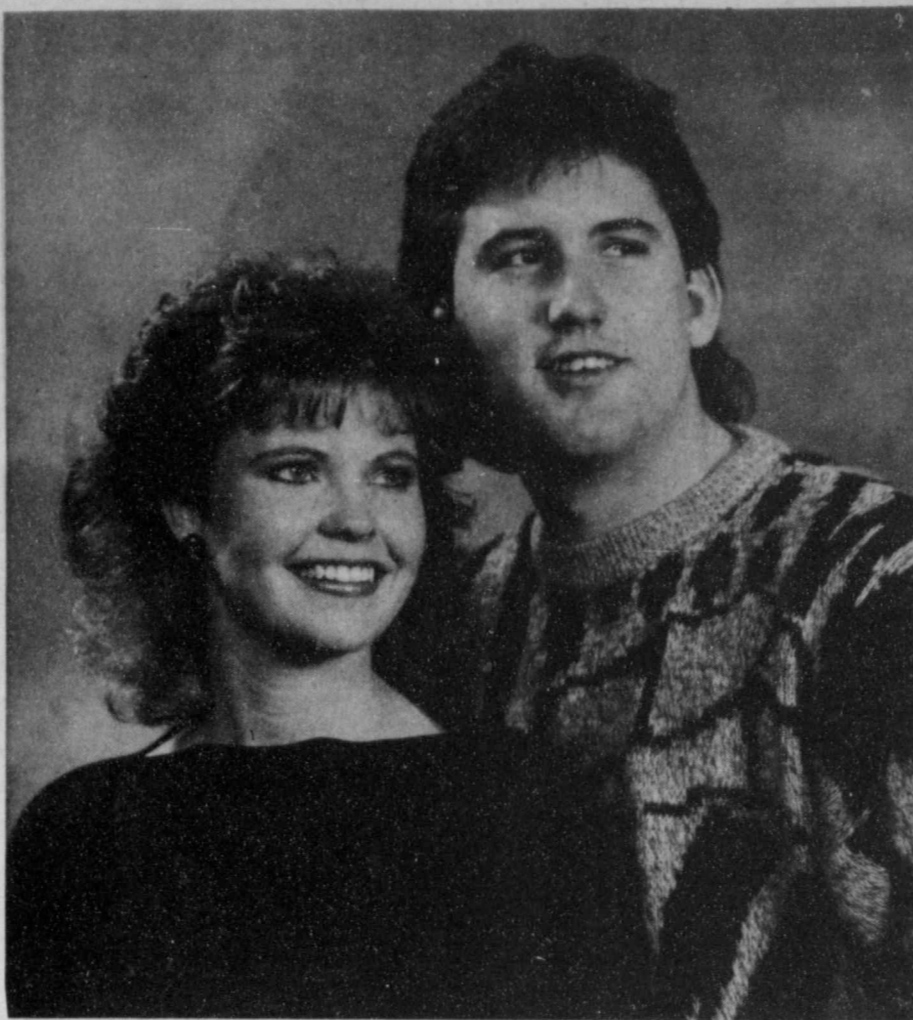
name of donors. In addition, the garden area will include flags of the 50 states, and eventually an international plaza area will include names of people from around the world.

In approving the project, Texas Tech President Lauro Cavazos said, "Ever since I returned to Texas Tech I have wished for settings where students could meet, visit, study or be alone. The is a long overdue addition to an already beautiful campus."

The program will gradually change the campus from having a walk-through concept to having seating where students may pause and take advantage of the setting. Funds raised through the project will help to establish scholarships and perpetuate Texas Tech tradition, according to Arts and Sciences Dean J.R. Goodin.

Cost of a brick is \$100. A down payment of \$25 with a schedule of subsequent payments will ready the brick for the engraver.

Further information may be obtained from Bricks at Texas Tech, College of Arts and Sciences, P.O. Box 4379, Lubbock, Texas 79409, or by calling (806) 742-3834.



**APRIL WEDDING PLANNED** — Karen Flo Churchwell of 1303 Dallas in Plainview and David Scott Snipes of 432 W. Stevenson in Hale Center are announcing plans for an April 16 marriage at First Baptist Church of Hale Center. The bride-elect is the daughter of W.R. and Joyce Churchwell of Route Three, Plainview, and a granddaughter of Florence Dillahanty of Lockney. The prospective bridegroom is the son of Weyland and Patti Snipes of Hale Center. A graduate of Plainview High School, Miss Churchwell studied at Wayland Baptist University and is employed as a teller for Interest Savings. Snipes, who is a salesman/driver for Coca-Cola, was graduated from Hale Center High School and attended Texas Tech University.

## Miscellaneous bridal shower honors Carrie Lee Bobo

Carrie Lee Bobo of Lubbock, bride-elect of Russell Hobson Ford of Lockney, was feted with a bridal courtesy from 7 to 9 p.m. February 27 in the Garden Room of First Baptist Church.

Miss Bobo and Ford plan to be married March 5 in the Community Chapel in Seminole.

Receiving guests were the honoree and her fiance, Mr. and Mrs. Ira Bobo Jr. of Seminole and Mr. and Mrs. Ray Ford of Lockney.

Special guests attending the event included great aunt and uncle of the prospective groom, Raz and Georgia Ford.

Dee Ann Churchwell, sister of the bride-elect, registered guests.

Roxanne Hennagan and Rachelle Ford, sisters of the prospective groom, served punch, cookies and finger sandwiches. They presided at a round table draped with a white lace cloth. Highlighting the setting was a basket holding burgundy, rose and white silk flowers.

A set of Visions cookware was presented to the couple by hostesses, Pat Frizzell, Pat Adams, Violet Cooper,

Neta Marble, Marjorie Ferguson, Peggy Wiley, Peggy Hallmark, Julie Dorman, Annabel Bramlet, Linda Gant, Molly Huffman, Jackie Holt, Sheryl Bybee, Cindy Means, Carol Bramlet, Janette Workman, Jinna Sue Turner, Edith Cooper and Sandra Noland.

*Look Who's New!*

### HUDSON

Mr. and Mrs. John E. Hudson of McGregor are pleased to announce the birth of their son, Alan Keith. He was born Feb. 5 at King's Daughters Hospital in Temple, weighing 9 pounds and 4 ounces and was 21 1/4 inches long.

Welcoming him to the family is his big sister, Karen, age 2, and maternal grandparents Mrs. B.G. Chapman of Dallas and Jerry Paul Cooper of Lockney.

Maternal great-grandfather is Paul M. Cooper of Lockney.

## 60 people participate in annual bridge tourney

Sixty persons from Lockney, Floydada, South Plains, Plainview, Petersburg, Kress and Clovis, New Mexico attended the bridge tournament and luncheon sponsored by Il Penseroso Jr. Study Club. Funds from the tournament are being used in remodeling the lobby of the Lockney hospital.

High prizes, a hand made basket arrangement, made by Jami Kemp, was won by Pat Ellison from Plainview and June Stanton from Petersburg. Consolation prizes, a rag framed heart, made by Brenda Mangold, was won by Virginia Pyle and Jennie Gaunt, both from Floydada.

Door prizes, made by the some of the club members, were given away throughout the day. Winners of hand made sweatshirts were Teresa Willis and Martha Mangold. Darlene Robertson

won a basket of home made muffins and hot chocolate.

Jessie Tye was the winner of a lace heart. A stenciled washboard was won by Norma Bayley. Virginia Byrd was the winner of a set of books. Virginia Pyle won a necklace and Mary Ruth Feyell was the winner of a basket of candles.

Owen Thornton and Joyce Kimple were the winners each of a cup and tea baskets. A painted wooden heart was won by Elaine Gibson.

Jo Goen was the winner of a red and white heart print apron. Ruth Hammonds won a hand pieced belt and Bernice Oden was the winner of a potted plant.

Il Penseroso would like to thank each person who attended the tournament and luncheon for all their support.

## Senior Citizens Rockin's

Our sympathy goes to Nina Sanders and family on the death of her mother, Mary Grisham of Plainview. Services were Saturday.

Congratulations to W.T. and Lavern Cooper on celebrating their fiftieth wedding anniversary. One hundred and 30 people attended the reception in their honor.

Irene Lee has returned home after spending three months in Shreveport, Louisiana, with her daughter, Mary Ann Rivers.

Visiting with Bertha Rolling were her sisters, Gladys Burke of Pampa and Glyde Smith of Anna.

Visiting W.L. and Clementine Carthel this weekend were Sue Swaffer, Bradley and Regina, John and Pricilla Yarbrough, all of Lubbock, Dickie and Debbie McCarty and girls of Lockney.

Jewel Thompson spent Sunday in Amarillo visiting her daughter and family, Jill, Ronnie and Brandy Rogers.

Edith and Melvin Cooper have returned from Amarillo where they stayed with Edith's sister, Flora Payne, who had surgery.

Helen and Squealer Hodel will be leaving for San Angelo at the end of this week. Their new address is available at the Senior Citizens Center.

Birthdays are C.L. Henderson and John T. Carthel on March 2, Helen Dollar and Jewel Fortenberry on March

3 and Mr. and Mrs. Elmo Savage will celebrate their anniversary March 11. Ailing are C.L. Record, R.C. Mitchell, Nita Holland in Amarillo, Georgia Ford, Edna Cox and Bernice Kent.

### Senior Citizens News

Last week's monthly birthday party and potluck supper was a great success with 88 members and seven guests attending. There nine tables of guests.

The senior citizens would like to thank J.B. Mercer for donating the Dutch Girl quilt top that was made by his late wife Annie Mae Mercer. The ladies at the center are just about ready to put the quilt into the frames and to begin quilting it.

A money tree was set up at the potluck supper for Squealer and Helen Hodel to send them to San Angelo.

Hostesses for March are Ruth Mitchell, Jewel Fortenberry, Dorothy Shipp and Neva Smith.

March activities include a potluck supper on March 3, another on March 10, a St. Patrick's Day potluck supper, and another supper on March 31. The monthly birthday party will be March 31 with sandwiches, chips, ice cream and birthday cake.

Donating to the memorial fund were R.C. and Ruth Mitchell in the name of Mary Grisham.

## OBITUARIES

### ALICE BURNS

Alice H. Burns, 87, of Valparaiso, Indiana, was claimed by death on Feb. 8 in Porter Memorial Hospital in Valparaiso, according to information received by Mary Hutton, a Lockney friend.

Memorial services were at 1 p.m. Thursday, Feb. 11, in Bartholomew Funeral Home in her home town. Burial was in Graceland Cemetery.

Born, Sept. 25, 1900 in Valparaiso, Mrs. Burns was employed in the county auditor's office and was a credit accountant at Lowenstines' for many years. She was a member of First Christian Church (Disciples of Christ) and the American Legion Auxiliary.

She was married on Jan. 21, 1928 in Los Angeles, Calif., to Goldie Burns.

Mr. Burns was born Jan. 18, 1896 in the Lockney community to John Ellison and Nancy L. Burns, who moved to Floyd County about 1889, settling six miles southeast of Lockney. Living for a while in a dugout and later in a house, the only fuel available to them was cow chips which they used for heating and cooking.

They were primarily engaged in stock raising and lost many horses and cows through thievery. One year, loco was bad and they moved their livestock to New Mexico and Oklahoma, returning them later to Texas.

The family moved into Lockney in 1900, establishing the town's first blacksmith shop. It was located on land where the present city hall is located. The shop was later enlarged and moved

across the street east. The Burns owned and operated this shop for 30 years.

Mr. and Mrs. Burns built a house just east of the present Lockney City Hall, where they resided until their deaths. Both are buried in Lockney Cemetery.

One of their sons, Goldie L. Burns, practiced law in Valparaiso. He was prosecuting attorney for six years and judge for 12 years for all of the 67th Judicial Circuit of Indiana prior to his retirement.

Judge Burns was a large contributor of artifacts to Floyd County Historical Museum.

He is his wife's lone survivor.

### PAUL MENDOZA

Services for the Rev. Paul Mendoza of Lubbock, a longtime Lockney pastor, were at 3 p.m. Monday in Parkway Baptist Church. Burial was in City of Lubbock Cemetery.

He was claimed by death at 11:15 p.m. Thursday in Plainview's Heritage Nursing Home following a lengthy illness. He was 77.

The Rev. Mendoza pastored First Mexican Baptist Church in Lockney for 20 years. He also pastored a mission in Plainview.

A Wayland Baptist University graduate, he and Eulogia Ayala were married on Dec. 25, 1940, in Waco. Mrs. Mendoza preceded her husband in death on March 17, 1984.

Survivors include four brothers and a sister.

## Mobile home shoppers beware!

Shopping for a mobile home? Be careful. A large number of manufactured housing retailers are going out of business these days. If you buy a home from a dealer who later closes his doors, you will have a hard time getting your warranties honored.

Texas manufactured housing dealers are required by the Texas Department of Labor and Standards to post \$50,000 bonds to protect consumers in case they go out of business. Manufacturers must

put up bonds of a \$100,000. Make sure who you deal with is bonded. And be aware that some dealers headquartered in neighboring states but who sell in Texas, or to Texans, are not bonded.

Before you buy a home, check with the Better Business Bureau or the AG's Consumer Protection Division to see whether there have been complaints against the dealer you are planning to patronize.



*All fall and winter merchandise 50 to 75% off*

**Coupon**  
additional 10% off with this coupon valid thru Saturday, March 5

MasterCard Visa Welcomed **Kristi's** 296-7254 618 Broadway

You are invited to a display of color photography by Wilson Photography now through April 1 at First National Bank, Lockney.

By Appointment 652-3731

Chuck Wilson, M. Photog., Cr.

Mrs. Tyke Dipprey, Lubbock nee Connie Coffman, daughter of Mr. and Mrs. Tom Coffman, Lockney

**Wilson Photography**  
LOCKNEY

### ELECT

## Penny Golightly

FLOYD COUNTY TAX ASSESSOR/COLLECTOR

### Because...

- Honest - Fair
- Experienced in Tax Assessor/Collector's office since 1982
- Educated in Floyd County schools
- Graduated from Famous Artist School
- Serving on Floyd County Art Association board
- Active in church, school, and community activities
- Married to Dayne Golightly, a native of Floyd County
- 15 years experience in all phases of cotton ginning - a total of 20 years working experience



Pd. Pol. Adv. by Floyd Co. residents for Penny Golightly as Tax Assessor Collector.

Subject to the Democratic Primary.

Just arrived from

APPLAUSE & PRECIOUS MOMENTS

Mickey and Minnie

Dolls of the Month Dolls of the World

and Limited Edition

Precious Moments Easter Dolls

Gifts for every occasion

Your Full Service Florist

**SCHACHT**

Flowers, Jewelry & Gifts

652-2385  
112 W. Poplar

Open 8:30 through 5:30  
Monday through Saturday



**LITTLEFIELD MEET PARTICIPANTS** — Members of the Lockney power lifting team who competed in the Littlefield meet this past weekend are (left to right) Michael DeLeon, Josue Blanco, Michael Martinez, Ruben Ascencio, Henry Ruiz, Joe Luna, Carlos Rendon, Lupe Coronado, Jason Bybee, Luis Peralez, Luciano Banda, Joe Castro, and Steven Vasquez. — Staff photo

## Power lifters place in Littlefield tourney

Lockney power lifting team journeyed to Littlefield on February 27 and came home with a fifth place overall win. They competed with 11 other teams. Although they were in fifth place, the Longhorns lacked only one point to tie with Pampa and Sundown for the third place spot.

Coach Randy Josey commented, "Lockney competed extremely well and I am proud of the effort they gave."

Bringing home trophies were Joe Castro and Joe Luna who competed in the 123 pound class and placed second and third, respectively. Henry Ruiz

placed fifth in the 114 pound class, Michael DeLeon was fifth in the 132 pound class, Lupe Coronado placed second in the 181 pound class, and Josue Blanco placed fourth in the super heavy weight class.

Others competing from Lockney included Luis Peralez, Luciano Banda, and Daniel Martinez in the 132 pound class. They placed sixth, eighth and ninth in that class.

Steven Vasquez placed eighth and Jason Bybee placed tenth in the 165 pound class, Carlos Rendon placed eighth in the 181 pound class, and

Ruben Ascencio placed seventh in the 198 pound class.

Teams in their order of finish in Littlefield were Littlefield, Roosevelt, Pampa, Sundown, Lockney, Hart, Lorenzo, Paducah, Friona, New Deal and Smyer.

The team's next meet will be this Saturday in Ralls. This will be the last meets before the regional tryouts which are March 26 in Ralls.

The top 10 lifters in each class are allowed to compete at the regional meet.



**LADY HORN TRACK TEAM** — Members of the 1988 Lady Horn track team include (back, left to right) Amy Turner, Lori Gonzales, Adella Sustalta, Tandi Gant, Shedia Hill, Sundal Workman, Veronica Blanco, Kima Blanco (middle, left to right) Anna Garza, Soyla Luna, Veronica Blanco, Anna Cortez, Almee Green, Angie Moya, (front, left to right) Rosellen Arjona, Linda Cruz, Joann Castro, and Esther Silva. — Staff photo

## Unicare makes \$10,000 gift to Alzheimer center

The Unicare Foundation, a national not-for-profit charitable organization, has awarded a check for \$10,000 to the Texas Tech University Health Sciences Center in Lubbock, as an initial grant to develop a regional Alzheimer's Disease Information and Referral Center. Establishment of information and referral services will add a significant dimension to the clinical, research, and educational transfer operations of the Texas Tech Alzheimer's Center.

The \$10,000 grant will support a variety of information and referral services for Alzheimer patients and family caregivers, including 24-hour telephone access. The Alzheimer's Disease Information and Referral Center will also coordinate public awareness activities, support group formation and continuing education programs for health professionals throughout the state of Texas.

When presenting the check, Spencer expressed his enthusiasm... "On behalf of The Unicare Foundation, I am very pleased that we can substantially assist the Texas Tech University Health Sciences Center in their exemplary work

with Alzheimer's disease. We are confident that the Alzheimer's Disease Information and Referral Center will be a valuable addition to the entire West Texas region."

The Unicare Foundation is supported by fund-raising activities conducted by

employees and residents of Unicare facilities nationwide. Unicare owns or operates 140 healthcare facilities in 17 states, including seven Texas facilities in Lubbock, Brownfield, Tulia, Floydada, Crosbyton, Lockney and Amarillo.

I support Penny Golightly in her campaign for Tax Assessor/Collector on March 8.

She is qualified for this office as I found her very willing to work, wait on the people, flexible to new changes and laws, productive on the job and having reports in on time.

**Jonelle Fawver**

Pol. ad paid for by Jonelle Fawver.



**AWARD WINNERS** — Lockney's Dairy Queen recently scored high marks on its semi-annual Q.V.S.C. (quality, value, service, and cleanliness) inspection. The American Dairy Queen Corporation gave Manager Debbie Griffith, and her crew, a score of 91.5 out of a possible 100. C.M.C. Food, Inc., of Fort Worth, (owners of Dairy Queen), will induct Griffith into the CMC Foods Hall of Fame. A plaque with a

picture of Debbie and her crew of: Linda Cubmie, Inez Gibson, Corina Gonzales, Soyla Luna, Virginia Rodriguez, and Loretta Turner, will hang in CMC's home office. Pictured here are: (front row, left-right) Loretta Turner, Corina Gonzales, Soyla Luna, and Inez Gibson; (back row, left-right) District Manager Hal Leedy, Linda Cubmie, and Manager Debbie Griffith.

## Barbara Moore degree recipient

Barbara Moore, daughter of Tom and Mary Jean Moore of Lockney, was one of more than 1,200 students at Texas Tech University who received degrees in the fall 1987 commencement exercises.

Moore was awarded a bachelor of arts degree in advertising.



I've tried my best to see all the voters in Precinct 3, but to those I've missed, I'm taking this opportunity to seek your vote on March 8th.

I would appreciate your consideration.

**Thomas Warren**  
Candidate for  
Precinct 3 Commissioner

Pol. ad paid for by Candidate [Warren].

## SNOW AND ICE CAUSES MAJOR PROBLEMS!

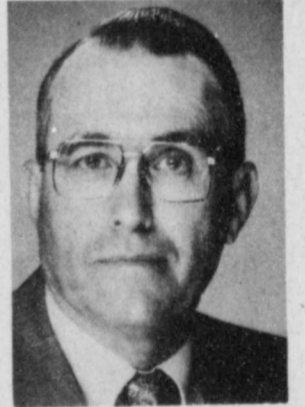
You may have discovered after the snow and ice melted off of your driveway, porch or patio that the freeze caused your concrete to chip and flake. Once this process starts, everytime moisture collects on the surface and refreezes, more and more concrete will flake. Soon you will have large areas popping loose making it unsafe as well as being very unattractive. The professionals at GLASSCOCK RIVER ROCK can save you the time and expense of replacing your old concrete by installing a beautiful new epoxy and stone surface over your old concrete surface. This process is less expensive and is also backed by a 10 year factory warranty.

Call **GLASSCOCK RIVER ROCK**, now for a **FREE** estimate at 1987 prices and **SAVE**, before our 1988 stock arrives

828-3991 - Slaton (anytime) 652-3641 - Lockney (nights)

Let's elect...

**Gary Ivey**



### Education

It is now obvious that local control of our schools will be a continuing issue before the Texas Legislature. I will be a leader in the fight to see that control remains at home.

### Industrial Growth and Water Control

We need to do all we can to attract businesses and industry to the small towns of this District. One key is water control. If the state ends up controlling our water they may end up controlling our growth. I will fight to keep control of our water, and for measures to aid in our industrial growth.

### Burdensome Regulations

The rapid growth of government regulations affecting so much of our lives must be stopped. Witness Education and Agriculture. Common sense must be returned to the area rules and regulations.

### Independent Voice

We need strong, independent, conservative voice in Austin to speak for the people of this District. I will not hesitate to be that voice for fiscal and social responsibility. My vote will be with the people here, not special interests.

*Gary Ivey*

## State Representative for District 84

Pol. Ad. paid for by the Elect GARY IVEY for State Representative District 84 Committee; Edwin Moore, treasurer/Box 479, Ralls, TX 79357

# Sample Ballot

REPUBLICAN PARTY PRIMARY ELECTION  
(ELECCION PRIMARIA DEL PARTIDO REPUBLICANO)

(CONDADO DE) FLOYD COUNTY, TEXAS

March 8, 1988 (8 de marzo de 1988)

## OFFICIAL BALLOT (BOLATA DE MUESTRA)

**INSTRUCTION NOTE: (NOTA DE INSTRUCCION):**  
Vote for the candidate of your choice in each race by placing an "X" in the square beside the candidate's name. (Vote por el candidato de su preferencia en cada carrera marcando con una "X" el cuadro al lado del nombre del candidato.)

"I am a Republican and understand that I am ineligible to vote or participate in another political party's primary election or convention during this voting year." (Yo so Republicano y comprendo que no estoy elegible para votar o participar en el eleccion primaria o la convencion de algun otro partido politico durante este ano electoral.)

### Preference for Presidential Nominee

(Preferencia para un candidato nombrado para presidente)  
You may vote for one presidential candidate whose name appears on the ballot by placing an "X" in the square beside the candidate's name or you may vote as uncommitted by placing an "X" in the square beside "Uncommitted". Make only one choice. (Usted puede votar por un candidato para presidente cuyo nombre aparece en la boleta por marcar con una "X" el cuadro al lado del nombre del candidato o usted puede votar como votante no comprometido por marcar con una "X" el cuadro al lado de las palabras no comprometido. Haga solamente una seleccion.)

- BOB DOLE
- ALEXANDER M. HAIG, JR.
- PETE DUPONT
- GEORGE BUSH
- JACK KEMP
- PAT ROBERTSON
- UNCOMMITTED (NO COMPROMETIDO)

### United States Senator

- WES GILBREATH
- MILTON E. FOX
- NED SNEAD
- BEAU BOULTER

### United States Representative, District 13

- ALAN PICKERING
- LARRY S. MILNER
- BOB PRICE
- RON BUFFUM
- JIM BRANDON
- CHIP STANISWALIS

### Railroad Commissioner

- ED EMMETT
- P. S. (SAM) ERVIN
- DALE W. STEFFES
- RALPH E. HOELSCHER

### Railroad Commissioner, Unexpired Term

- KENT R. HANCE

### Chief Justice, Supreme Court, Unexpired Term

- TOM PHILLIPS

### Justice, Supreme Court, Place 1

- GEORGE BARBARY
- PAUL MURPHY

### Justice, Supreme Court, Place 2

- D. CAMILLE DUNN
- NATHAN HECHT
- RONALD S. BLOCK

### Justice, Supreme Court, Place 3

- CHARLES BEN HOWELL

### Justice, Supreme Court, Place 4, Unexpired Term

- BARBARA G. CULVER

### Presiding Judge, Court of Criminal Appeals

- DAVID A. BERCHELMANN, JR.

### Judge, Court of Criminal Appeals, Place 2

- TOM RICKHOFF

### Member, State Board of Education, District 15

- MONTE HASIE

### State Representative, District 84

- TOM CHRISTIAN
- GARY IVEY

### Sheriff

- RAY MACHA

### County Chairman

- ALBERT SCHEELE

### INSTRUCTION NOTE: (NOTA DE INSTRUCCION):

Place an "X" in the square beside the statement indicating the way you wish to vote. (Marque con una "X" el cuadro al lado de la frase que indica la manera en que quiere usted votar.)

- FOR (A FAVOR DE) "English should be established as the Official Language of the State of Texas and the United States of America."
- AGAINST (EN CONTRA DE) "El ingles debe ser establecido como el idioma oficial del estado de Texas y de los Estados Unidos de America."

## Texas Tech honors list released

Four former Lockney High School students have been named to the honor lists from Texas Tech University in Lubbock.

Gary Bigham, son of Bill and Anita Bigham of Lockney, was named to the President's List. Bigham is a senior Agriculture education major and earned a perfect 4.0 grade point average. Students named to the President's List must be enrolled in 12 or more semester hours of classwork and maintain the 4.0 grade point average. Three former Lockneyites were also

named to the Dean's List at Tech. These students must complete 12 or more semester hours of classwork and have a 3.5 to 3.9 grade point average.

Named to the Dean's List were: Ronnie Ford, son of Jerry and Andy Ford of Lockney. Ford is a sophomore biology major.

Lisa Terrell, daughter of Buster and Linda Terrell, is a freshman elementary education major.

Ritchie Thornton, son of Ronnie and Pat Thornton, is a junior public relations major at Tech.

## Lockney School Menu

March 7-11

**Monday:**  
Breakfast — Monday, cereal, apple-sauce, milk  
Lunch — Corn dog with mustard, pinto beans, onion rings, spaghetti and tomatoes, cornbread, cookie and milk  
**Tuesday:**  
Breakfast — Sausage, oatmeal, pears, milk  
Lunch — Fried chicken strips, creamed potatoes, green beans, apple cobbler, hot rolls, milk  
**Wednesday:**  
Breakfast — Cereal, apples, milk

Lunch — Pork chops with mushroom gravy, fried okra, ranch style beans, apricot cobbler, hot rolls, milk

**Thursday:**  
Breakfast — Waffles, strawberries, milk  
Lunch — Roast and gravy, mixed vegetables, buttered yams, hot rolls, milk

**Friday:**  
Breakfast — Cheese toast, fruit cocktail, milk  
Lunch — BBQ on bun, French fried potatoes, salad, peach cobbler, milk

## ★ Little Dribblers ★

THURSDAY, MARCH 3  
5:30 P.M. B ORANGE CAVALIERS VS RED ROCKETTS  
6:30 P.M. G ORANGE SUNKISTS VS ANGRY RED  
7:30 P.M. B BLACKS KNIGHTS VS BLUE DEMONS  
8:30 P.M. G BLUEBIRDS VS MAROON WILDCATS

FRIDAY, MARCH 4  
5:30 P.M. G BLACK TIES VS MAROON WILDCATS  
6:30 P.M. B MAROON LAKERS VS BLUE DEMONS  
7:30 P.M. B BLACK KNIGHTS VS RED ROCKETTS  
8:30 P.M. G BLUEBIRDS VS ANGRY RED

Tournament play will be on March 7; Tuesday, March 8; and Thursday, March 10.

The schedule has been set up this way to avoid as much interference as possible with Six Weeks Test and to complete the Little Dribblers' season before Spring Break begins.

I will appreciate your VOTE

March 8  
in the Democratic Primary

for  
**George Taylor**

as  
**Commissioner, Place Three**



Pol. ad paid for by George Taylor.

## 1988 Longhorn and Lady Horn track schedule

March 5 - Floydada  
March 12 - Olton  
March 26 - Hart  
April 2 - Idalou  
April 9 - Post  
April 14 - District Meet at Hart

## Go Horns !

## 1988 Shorthorn track schedule

March 5 — Hart  
March 12 — Post  
March 25-26 — Lockney  
April 7-8 — District meet at Hart.

## CRP SEED

- order now to guarantee supply
- quality native grass seeds
- custom blending
- technical assistance
- immediate availability



Call or come by

# FRONTIER

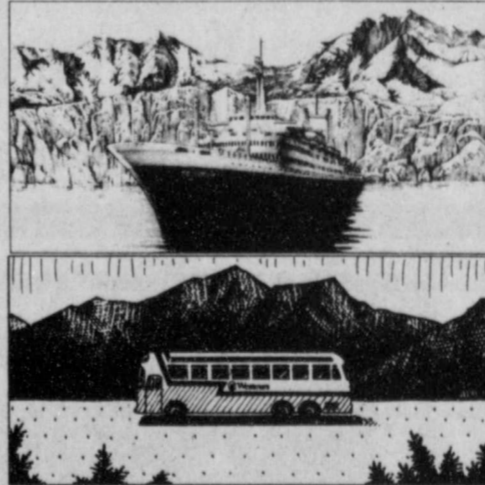
GRASS SEED

1-800-872-0522

413 S. Ave. D Abernathy, Texas

## ALASKA TOUR FOR WEST TEXANS

If you want to see some of the world's most fascinating wildlife, make this your year for Alaska.



Westours is Alaska's most experienced travel company, taking visitors to the Great Land since before it was a state. Starting at approximately \$2199.00 per person from Seattle for our 13 day tour from Seattle.

Your CruiseTour includes an Inside Passage cruise. Since Westours is partners in Alaska with Holland America Line, you'll enjoy the best on land and sea. Call now. Scheduled departure August 31st.

\* Price per person, double occupancy, minimum stateroom. Excludes taxes and port charges. Ships' Registry: Netherlands Antilles.

**Westours is Alaska**  
A Holland America Line Company.



FOR DETAILS MAIL THIS COUPON TO  
**Travel World**  
3010-A Olton Road OR CALL  
Plainview, Texas 79072 (806) 293-4488

NAME \_\_\_\_\_  
ADDRESS \_\_\_\_\_  
CITY \_\_\_\_\_ ZIP \_\_\_\_\_ PHONE \_\_\_\_\_

## PRICE

### PRICE IS RIGHT FOR CONGRESS

Rancher - Farmer - Businessman - Oil and Gas Producer  
Republican 30 Years - 8 Years U.S. Congress  
3 Years Texas Senate - Combat Pilot U.S. Airforce  
College Degree - 90% Conservative Voting Record

### COMPARE THE CANDIDATES . . .

EXPERIENCE	Price	A.P.	L.M.	R.B.	J.B.	R.H.	E.L.	C.S.	B.S.
Married Family Man	YES	YES	YES	YES	YES	YES	YES	YES	YES
Rancher - Farmer	YES	YES	YES	YES	YES	YES	YES	YES	YES
Independent Businessman	YES	YES	YES	YES	YES	YES	YES	YES	YES
Oil & Gas Experience	YES	YES	YES	YES	YES	YES	YES	YES	YES
Congressional Experience	YES	YES	YES	YES	YES	YES	YES	YES	YES
State Legislature	YES	YES	YES	YES	YES	YES	YES	YES	YES
U.S. World Affairs Experience	YES	YES	YES	YES	YES	YES	YES	YES	YES
Armed Services Committee	YES	YES	YES	YES	YES	YES	YES	YES	YES
Space and Science Committee	YES	YES	YES	YES	YES	YES	YES	YES	YES
World Trade Experience	YES	YES	YES	YES	YES	YES	YES	YES	YES
A.A.R.P. Member	YES	YES	YES	YES	YES	YES	YES	YES	YES
College Graduate	YES	YES	YES	YES	YES	YES	YES	YES	YES
Agriculture Committee	YES	YES	YES	YES	YES	YES	YES	YES	YES
Yrs. Republican	30	—	—	—	25	—	—	—	8

Bob Price worked side by side with the leading Republican presidential candidates . . . and is the only candidate with experience in CONGRESS!

## Farm News

### Culling open and late calving cows boosts herd performance

Culling non-bred and late calving cows can improve future pregnancy rates by eliminating sterile and subfertile cows, according to a beef cattle specialist with the Texas Agricultural Extension Service, The Texas A&M University System.

Dr. L.R. Sprott said several studies relating to cow culling to increase reproductive performance were conducted. The studies were used to demonstrate the increase in pregnancy rates after culling non-bred and late calving cows.

In two herds all non-bred cows and a portion of the late calving cows were culled and replaced with early bred

heifers, Sprott explained. In a third herd, no culling was done and no replacements were added.

In the two herds where culling and replacing were implemented, pregnancy rates increased by an average of 14 percent in the first year and were maintained at that level during the second year.

In the herd without culling and replacing, pregnancy rates showed no improvement over time and even showed a slight decrease.

Based on these data, it appears that rather rapid improvements in rebreeding rates can be made through culling of non-bred and late calving cows while simultaneously replacing them with early bred replacement heifers, Sprott pointed out.

#### COTTON TRADE TEAM TO GO OVERSEAS

Cotton Council International, the overseas arm of the National Cotton Council, will dispatch its first cotton trade team of the year to France, Algeria, and Morocco in March. Team leader will be Larry LaTouf, executive vice president of Calcot, Ltd., Bakersfield, California.

The group will have a briefing session at CCI offices in Washington on March 12 before departing for Paris. During their two-week trip, team members will discuss the advantages of U.S. cotton

#### NCC PROTESTS RECLASSIFYING ANHYDROUS AMMONIA

The National Cotton Council has lodged a protest with the U.S. Transportation Department about its proposal to reclassify anhydrous ammonia from a non-flammable gas to a poisonous gas. The restriction would mean that the widely used fertilizer would have to be transported in railroad tank cars.

In a statement filed with federal transportation officials, NCC said the action would have extremely adverse economic consequences for cotton producers while making little or no contribution to the department's effort to ensure safe transportation of hazardous materials.

NCC noted that anhydrous ammonia is the most suitable and cost-effective source of nitrogen for cotton farming operations, costing only about half as much as other products.



Almost 300 letters from farm groups, political entities, businesses and individuals have gone to Washington in pursuit of help for High Plains farmers whose 1987 crops were destroyed by weather.

The letters, along with a letter of request signed by High Plains congressmen and Texas senators, were hand delivered to U.S. Department of Agriculture Secretary Richard Lyng on February 25. They were generated and forwarded to Washington by Plains Cotton Growers, Inc., as part of an emergency disaster aid effort that began after widespread hailstorms last July.

Every county on the Plains suffered losses to some degree, according to PCG Executive Vice President Donald Johnson, but the most concentrated damage fell on Briscoe, Floyd, Crosby, Dawson, Lamb, Lynn and Bailey Counties.

Those seven counties, according to a study of damage that occurred through August 14 by Dr. Jackie Smith, area Extension agronomist, tallied total losses of over 150,000 acres of cotton and severe losses on another 92,000 acres.

Net dollar losses, he estimates, were a minimum of \$35 million at the farm level. Not included in Dr. Smith's

calculations are losses of corn, wheat and other crops, losses in other counties or the effects of hailstorms occurring in late August and September.

The Food Security Act of 1985 gives the Secretary authority to make special disaster payments to producers who sustain losses that create an economic emergency of such magnitude as to preclude its alleviation by other existing forms of Federal assistance.

With 300 first-hand testimonials, documentation of the facts and follow-up actions by PCG, the National Cotton Council and others, Johnson says, "We hope to remove any doubt that may remain in the Secretary's mind that hundreds of our producers qualify for disaster payments as authorized by law."

The only concession made by USDA so far has been to declare Floyd County a disaster area in which producers are eligible for low interest emergency disaster loans. And that declaration also qualifies producers in contiguous counties, including, Motley, Dickens, Crosby, Lubbock, Hale, Swisher and Briscoe.

Such loans will be helpful to some, Johnson admits. But piling another loan on top of already intolerable debt loads will not solve the problem, he adds.

# Chianina cattle catching on

Chianina was a cattle breed known to few West Texans 15 years ago.

The Italian breed is catching on fast! It has gained acceptance from beef packers and some breeders.

"The real advantage to the breed is the phenomenal growth rate, natural leanness and the calving ease," says Charles Burk of Conway, about 30 miles east of Amarillo, who was named outstanding Chianina breeder for 1987.

Burk says the Chianina is the first breed of cattle approved by the U.S. Department of Agriculture to produce "lite" beef, which contains 25 percent less fat than regular beef.

Quoting USDA figures, Burk explains that a three-ounce portion of lite beef contains less fat and cholesterol than a three-ounce portion of roast chicken with the skin removed. He adds that a Texas Tech University study comparing Chianina to typical Hereford and Angus crosses showed Chianina have 36 percent less fat and calories.

A frontrunner in introducing the Italian breed of cattle to the southern United States, Burk and his wife, Kay, bought their first Chianina female in 1972, the first year they were allowed in the country.

"Chi's," as they are commonly called, could not be imported from Italy because of hoof and mouth disease there, so frozen sperm was first brought in. The initial full-blooded animals were taken to Canada for a quarantine period before they were allowed in the United States.

Burk says he raised Angus cattle for some years but

decided they needed to be longer and taller.

"We needed something to put more size in them," Burk told the Amarillo Globe-News. "If I was going to invest, I decided I might as well go with the best, and Chianinas were the oldest, largest and tallest breed."

He runs about 100 cows on his Panhandle place. Most of his cattle sell either as replacement females, show steers, or herd bulls, he says.

Chi's date back to the Roman Empire where they were bred as draft animals because of their size.

Burk explains that he uses the Chi's to add performance to the Angus cattle. The cross between the two is called Chiangus and includes every mixture from a quarter cross to three-quarters.

Average cattle coming out of feedlots are 24 months old and weigh between 1,050 and 1,100 pounds, Burk says. The Chiangus he raises generally reach 1,050 to 1,100 pounds when they are only 12 or 13 months old.

A 3,000-pound six-foot tall pet, named Velvet, goes through 50 pounds of feed per meal. She is a forerunner of the newest product in the beef industry, Burk says.

He says that Velvet is really too large for more than a pet, but the Chianina cow was a national champion in its show years during the early 1980s.

Velvet is gentle as a puppy and can be ridden by anyone from small children to adults. The cow's size indicates what the Chianina breed has to offer, Burk says.

### Biotechnological research improving cotton plants

Cotton plants that are genetically resistant to worm damage, herbicides and drought may soon be a reality as biotechnological research on cotton plants continues to achieve significant results.

"Research conducted by Cotton Incorporated and Texas A&M University is laying the foundation for cotton to be the crop for genetic manipulation," says Dr. Gay Jividen, director of agricultural research for Cotton Incorporated. "Regeneration — bringing cotton plants back from culture — is something we can use to improve varieties within a reasonable length of time."

"A number of new genes are available that confer traits such as worm and herbicide resistance," says Jividen.

"This genetic material is placed in certain individual cells of a cotton plant, where it transforms the genetic material already present into new material. In this way, the new cotton plant material has capabilities that have never before existed in cotton."

According to Jividen, cotton plants can be grown from small pieces of tissue

to whole plants with great reliability. "The new genetic material is used to grow whole cotton plants that, in turn, will be used to breed additional cotton plants containing seeds which carry specific traits such as worm and herbicide resistance."

Researchers at both Cotton Incorporated and Texas A&M continue their

efforts to make cotton easily modifiable genetically for several reasons. Stronger, healthier cotton plants produce better quality fiber and the reduction of insect and weed stress on the cotton plant will increase yield quality and reduce production costs.

"Our long-term goal is to be able to genetically control the quality of the

fiber so that we can produce a fiber that meets the demands of the marketplace," says Jividen.

Cotton is moving rapidly forward in this new technology and Cotton Incorporated is continuing its study in cooperation with Texas A&M University to develop new tissue sources with even higher reliability.

### Rogge FLB/FICB chief financial officer

Donald R. Rogge of Austin has been named as chief executive officer of the Federal Land Bank (FLB) and Federal Intermediate Credit Bank (FICB) of Texas on February 18. The two banks have \$3 billion in loans outstanding to Texas farmers and ranchers.

Robert Vanwinkle of Sulphur Springs, district board chairman, said the appointment of Rogge as CEO for the two banks was made in preparation for the banks' merger which will take place July 6. Their merger is required by the Agricultural Credit Act which became law Jan. 6.

A 26-year veteran of the Federal Land Bank of Texas, Rogge continues as president of the Land Bank. Paul Day of Austin, president of the Federal Intermediate Credit Bank of Texas, will remain in that capacity.

Jack Hughes of Austin is president of the Texas Bank for Cooperatives, the third bank in the Texas Farm Credit District. Hughes' position is not affected by the board decision.

According to Vanwinkle, the naming of a CEO and the pending merger are expected to be implemented with the "least disturbance" to member/borrowers.

"We are making this decision before the merger takes place to ensure coordination and orderly transition," Vanwinkle said. "We do not intend for this change to affect the operation of our local associations or to affect our stockholders."

The FLB makes long-term loans for rural land purchases through 44 Federal Land Bank Associations in Texas. The FICB provides money to finance crop

and livestock production for 23 Production Credit Associations.

"We now have an opportunity," Vanwinkle said, "to implement a new Act to help Texas agriculture. Our job is to see that the Act is implemented as Congress intended and to make ours the best Farm Credit District in the United States."

Rogge has held several positions with the Federal Land Bank of Texas since 1961. He was named FLB president in March of 1986. Under his leadership, the Land Bank introduced a fixed interest rate program for new land purchases. The purpose of the program was to stimulate Texas land sales and stabilize declining land values. A total of \$102 million in loans were committed through this program during 1987.



#### NCC SEEKING FUEL TAX CHANGE

The National Cotton Council is among 16 agricultural groups working to overturn provision in budget reconciliation measure that requires farmers to pay federal excise tax of 15 cents per gallon when they purchase diesel fuel at the wholesale level, and then apply for refunds on quarterly or annual basis.

Council delegates at their annual meeting adopted a resolution urging the provision's repeal, and advocating that any revenues lost through repeal not be recaptured through imposing new taxes on the agricultural sector but through enforcing tax regulations more strictly.

Farm organizations contend it makes no sense to require farmers to pay the tax and then turn around and file for a refund or tax credit. They also argue that paying the tax up front would result in higher interest costs and cash flow problems for farmers.

The new tax provision is due to take effect April 1. Meanwhile, however, six bills with a total of 78 co-sponsors have been introduced in the House to repeal the tax provision, and one with 20 co-sponsors has been introduced in the Senate. All would continue the current arrangement that allows farmers to purchase diesel fuel tax-free for off-road use. The House Ways and Means Committee is expected to begin work on one of the bills just before Easter.

#### JANUARY COTTON CONSUMPTION UP

U.S. textile mills' January cotton consumption was at an annualized rate of 7.611 million bales, up from 7.434 million a year ago. December cotton consumption was revised from an earlier estimate of 7.835 million bales at 7.757 million.

#### FLOYDADA IMPLEMENT CO.



Floydada 983-3584

#### FIRST NATIONAL BANK OF FLOYDADA



Floydada 983-3717

#### RUSSELL'S EQUIPMENT & SUPPLY



Floydada 983-3751

#### FLOYD COUNTY IMPLEMENT



Floydada 983-3732

#### FLOYDADA COOPERATIVE GINS INC



Floydada 983-2884

You and your family are cordially invited to attend our...

## 62nd ANNUAL STOCKHOLDERS MEETING

Consumers Fuel Association, Lockney

Thursday, March 10, 1988

Grade School Cafetorium

Dinner will be served at 7:00 p.m. followed by a business session

Two Directors will be elected

DOOR PRIZES



Ed Lehman and Family

- Ed Lehman is the conservative who upholds traditional family values.
- Ed Lehman wants to bring jobs back to Texas with tougher foreign trade policies.
- Ed Lehman wants to restore trust in Congress.

EXPERIENCED, MATURE LEADERSHIP FOR THE 13TH CONGRESSIONAL DISTRICT

Political Advertisement Paid for by Lehman Campaign, Don Ramsey, Treasurer, P.O. Box 1777, Vernon, TX 76384

### Corn Farmers

CAPROCK INDUSTRIES FEED YARD is presently contracting high moisture corn for delivery this fall.

Several options are available. For details CALL 806-652-3308 or come by the feedyard located 3 miles north of Lockney.

Taking bids on P.I.K. Certificates daily.

We also have a MANURE PROGRAM available.



# El Progreso Study Club hears 'collectibles' program

The El Progreso Study Club met in the home of Dimon Schacht on Wednesday, February 24. Following refreshments served by the hostess, the meeting was called to order by vice-president Merle Mooney. Roll call was answered with "I Love to Collect ...". Many interesting collections and memories were discussed. President-elect, Merle Mooney, appointed yearbook, sunshine and telephone committees for the coming year.

and the Floyd County Museum, she has traced her family history back many generations.

After June finished her presentation, Hazel Johnson gave a short summary of some collectibles of our day. These included antiques, picture frames, Olympic memorabilia, buttons, coconut doll houses, iron items including door stops and last but not least, the Dancing Raisins of TV fame.

Members present were Linnie Abbott, Katherine Ball, Mary Blanchard, Edythe Clark, Arla Copeland, Faye Ferguson, Cornelia Johnson, Hazel Johnson, Bobbie Kellison, Alice Mitchell, Merle Mooney, Pauline Sams, Dorothy Smith, hostess Dimon Schacht and guest, June Sherman.

## ★ Tax relief tips

It's almost income tax time again. Many people are going to turn to experts to help them, particularly this year, which is the first year that the new Tax Reform Bill has been in effect.

Tax experts recommend that you go to people who work on taxes year 'round. That way, if you are audited, the person who prepared your return will be available to explain the return to you and the auditor.

There are many kinds of tax experts, including: Certified Public Accountants (CPAs) have passed a difficult account-

ing exam in order to be certified. Enrolled Agents are relatively new, have been tested by the IRS and approved to do tax work. Enrolled agents can prepare returns, go through audits and represent clients in administrative appeals. They cannot represent you in court unless they are also attorneys.

Tax Attorneys, usually associated with an accountant who does the actual calculations.

Remember, as a general rule, the more training, the greater the expertise. The higher the fee.

## Lockney Care Center

By Lanita Cantwell

There's been a sound of hammering and sawing around our home again and there was a bit of sawdust in the air. The workmen put a new stainless steel vent hood in the kitchen and the laundry has been given a complete face-lift and repair. Of course eating and washing go on daily — no matter what! So there have been some inconveniences for the kitchen and laundry workers, but the finished product will be worth it.

These lovely days make us even more anxious for spring. Bonnie Julian had a nice trip to South Plains where she joined many of her family members to celebrate her birthday. Mrs. Lewis had some long-time friends, the Shivers, to come visit her all the way from Lawton, Oklahoma. Mary Miller and Betty Olive were over from Silvertown to visit Bessie Hunt, Harry Booth and other residents. Theta Holt came and brought some gifts for Mrs. Hunt and visited the other residents too. Pilar Hernandez has had her son and daughter from San Angelo visiting her here at the home. The residents really enjoyed having Lozell Keeter bring her "babies" for a visit. Her "babies" are two precious little miniature poodles — just a few weeks old.

We had special visitors from Uni-care's Corporate Offices in Milwaukee last week. Linda Bishop, R.N. and Jane Fritz, Dietician, are the Quality Assurance Validators. They will be making inspections at Lockney Care Center

about every two months. They complimented us on our facility.

One of the persons who helps us to have an excellent facility was chosen in Resident Council as Employee of the Month. She is Peggy McDonald who works as nurse's aide on the 7 to 3 shift. Peggy has been employed at Lockney Care Center for four years. She is the daughter of Independence and Rosie McDonald and has lived in Lockney most of her life. She has eight brothers and five sisters, so we know that she is a sharing person. Peggy is a pleasant person and always has a kind and cheerful word for the residents. She lives in Lockney with her son, Brandon, who is almost two years old. She likes to read and to play baseball. We congratulate Peggy and appreciate her unselfish service to our residents. Peggy received certificates for two dinners at Bigham's Steak House in Plainview.

We welcome a new resident, Betha Cunyus. Betha is a Lockney native and has many family members living in the area. We hope she will enjoy living with us.

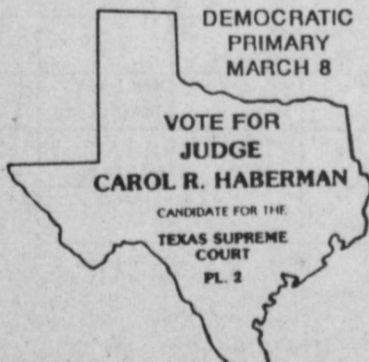
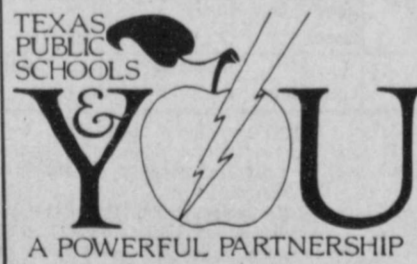
Come to see us! Have a happy day!

### TEXAS PUBLIC SCHOOLS WEEK

is March 7 - 11

Parents, citizens and friends are encouraged to visit and join in a partnership with TEXAS PUBLIC SCHOOLS.

Together we make a difference.



Pol. Adv. Paid for by Bob Hollingsworth, Texas P.O. Box 17264, San Antonio, TX 78217

# CHURCH DIRECTORY

<b>CEDAR HILL ASSEMBLY OF GOD</b> Rev. H.D. Morton Jr., Pastor Sunday School 10:00 a.m. Morning Worship 11:00 a.m. Evangelistic Service 6:00 p.m. Wednesday Evening Bible Study 8:00 p.m.	<b>CITY PARK CHURCH OF CHRIST</b> Floydada J.C. Bailey, Minister Sunday Bible Study 9:30 a.m. Morning Worship 10:30 a.m. Evening Worship 6:00 p.m. Wednesday Bible Study 7:30 p.m. Spanish Assembly, Sunday 3:00 p.m.	<b>FIRST UNITED METHODIST CHURCH</b> Floydada Earl Blair, Pastor Sunday School 9:45 a.m. Morning Worship 11:00 a.m. Youth Fellowship 5:00 p.m. Sunday Evening Worship 6:00 p.m.	<b>CALVARY BAPTIST CHURCH</b> Floydada Dr. Ricky Johnson Sunday School 9:45 a.m. Morning Worship 11:00 a.m. Bible Study 6:00 p.m. Evening Worship 6:00 p.m. Wednesday Evening 7:00 p.m.
<b>LOCKNEY LATIN ASSEMBLY OF GOD</b> Rev. Juan Herrera Sunday School 9:45 a.m. Morning Worship 11:00 a.m. Evening Worship 5:00 p.m. Prayer Service - Friday 7:30 p.m.	<b>MAIN STREET CHURCH OF CHRIST</b> Lockney George Schuster, Minister Bible Study 9:30 a.m. Morning Worship 10:30 a.m. Evening Worship 6:00 p.m. Wednesday Ladies Bible Class 9:30 a.m. Bible Study 7:30 p.m.	<b>EVANS CHAPEL BAPTIST CHURCH</b> Rev. Sammy Hollaway Sunday School 10:00 a.m. Morning Worship 11:00 a.m. Training Union 6:00 p.m. Evening Worship 7:00 p.m. Wednesday Prayer Meeting 7:00 p.m. Sunday Afternoon Worship 2:00 p.m.	<b>MT. ZION BAPTIST CHURCH</b> Floydada Rev. Ralph Jackson, Pastor Sunday School 10:00 a.m. Morning Worship 11:00 a.m. BTU 6:00 p.m. Evening Worship 7:00 p.m. Mid-Week Prayer Wednesday 7:00 p.m. Bible Study Thursday 7:00 p.m.
<b>SPANISH ASSEMBLY OF GOD TEMPLO GETSEMANI</b> 308 Mississippi Rev. Daniel Herrera Sunday School 10:00 a.m. Morning Worship 11:00 a.m. Evening Evangelistic Service 6:00 p.m. Wednesday, Family Night 7:30 p.m.	<b>WEST COLLEGE CHURCH OF CHRIST</b> West College & Third, Lockney Frank Duckworth, Evangelist Morning Worship 10:30 a.m. Evening Worship 6:00 p.m. Wednesday Service 8:00 p.m.	<b>PRIMER IGLESIA BAUTISTA</b> Rev. Pedro Reyes Sunday School 9:45 a.m. Morning Service 11:00 a.m. Training Union 6:00 p.m. Evening Worship 6:00 p.m. Wednesday Service 7:30 p.m.	<b>AIKEN BAPTIST CHURCH</b> Rev. Ray Starnes, Pastor Sunday School 10:00 a.m. Morning Worship 11:00 a.m. Training Union 6:00 p.m. Evening Worship 6:00 p.m. Prayer Service Wed. 7:30 p.m. Brotherhood, W.M.U. and Auxiliary Wednesday 7:30 p.m.
<b>CARR'S CHAPEL</b> Service Every Sunday Morning Worship 9:30 a.m. Sunday School 10:30 a.m. No Evening Services	<b>TRINITY LUTHERAN CHURCH</b> Providence Community Rev. Bruce Adamson Sunday School & Adult Bible Class 9:45 a.m. Worship Service 11:00 a.m.	<b>TEMPLO BAUTISTA SALEM</b> Lockney Tivursio Villarreal Sunday School 9:45 a.m. Worship Service 11:00 a.m. Christian Training Time 5:00 p.m. Evening Worship 6:00 p.m. Wednesday Prayer Meeting 7:30 p.m.	<b>FIRST BAPTIST CHURCH FLOYDADA</b> Rev. Howell E. Farnsworth, Jr., Pastor Sunday School 9:45 a.m. Morning Worship 10:55 a.m. Church Training 6:00 p.m. Evening Worship 7:00 p.m. Wednesday Evening 6:45 p.m.
<b>FIRST CHRISTIAN CHURCH</b> Rev. Dale M. Harter, Minister Sunday School 9:45 a.m. Sunday Worship 11:00 a.m.	<b>"ABUNDANT LIFE FELLOWSHIP"</b> <b>FIRST ASSEMBLY OF GOD CHURCH</b> Floydada Ron Dysart, Pastor Sunday School 9:45 a.m. Morning Worship 10:50 a.m. Sunday Evening Evangelistic 6:00 p.m. Wednesday Night Service 7:30 p.m.	<b>BIBLE BAPTIST CHURCH</b> Floydada Bob Chapman Sunday School 10:00 a.m. Morning Worship 10:45 a.m. Sunday Evening Prayer Meeting 6:00 p.m. Sunday Evening Services 6:30 p.m. Wednesday Evening Services 7:30 p.m.	<b>LONE STAR BAPTIST CHURCH</b> M.B. Baldwin, Pastor Sunday School 10:00 a.m. Morning Worship 11:00 a.m. Training Union 5:00 p.m. Evening Worship 6:00 p.m. Prayer Service, Wednesday Evening 6:30 p.m. Brotherhood, First Saturday Morning of Every Month.
<b>SAN JOSE CATHOLIC CHURCH</b> Lockney Pastors Fr. Jack Gist Mon.-Fri. Liturgy 8:00 p.m. Saturday Vigil Mass of Sunday 7:30 p.m. Sunday Mass 12:30 p.m.	<b>GRANT CHAPEL CHURCH OF GOD IN CHRIST</b> John Williams, Pastor Sunday School 10:00 a.m. Monday Worship 11:00 a.m. Evening Service 7:30 p.m. Prayer Service-Tuesday 8:00 p.m. Service-Wednesday 7:30 p.m.	<b>FIRST BAPTIST CHURCH</b> Lockney Rev. Garry Don Higgs, Pastor Sunday School 9:45 a.m. Morning Worship 10:45 a.m. R.A.'s 5:00 p.m. Acteens 4:30 p.m. Church Training 6:00 p.m. Evening Worship 7:00 p.m. Wed. Choir Practice 8:00 p.m. Wednesday: Prayer Meeting 7:00 p.m. Our Time (Jr. High and High School) 7:00 p.m. GA's 6:00 p.m. Mission Friends (preschool) 7:00 p.m. Thursday: Baptist Women 1st & 3rd Mondays 3:00 p.m. Baptist Young Women 2nd Monday 7:00 p.m.	<b>NEW SALEM PRIMITIVE BAPTIST CHURCH</b> Floydada Jim Jackson, Pastor Sunday Congregational Singing 10:30 a.m. Morning Worship 11:00 a.m. Evening Worship 6:00 p.m.
<b>ST. MARY MAGDALEN CATHOLIC CHURCH</b> Floydada Father Terry Burke Sunday School 10-11:15 a.m. Sunday Mass 11:30 a.m. Wednesday Mass 7:00 p.m. Ultreya 8:00 p.m. Office Phone 983-5878	<b>SOUTH PLAINS BAPTIST CHURCH</b> Tom Fisher, Pastor Sunday School 10:00 a.m. Morning Worship 11:00 a.m. Evening Service 6:30 p.m. Wednesday Service 7:00 p.m.	<b>TEMPLO NUEVA VIDA</b> Rev. Herman Martinez 308 W. Tennessee Sunday School 10:00 a.m. Evening Worship 6:00 p.m. Tuesday Ladies Prayer 2:00 p.m. Thursday Service 7:30 p.m.	<b>SPANISH BAPTIST MISSION</b> Floydada Rev. Lupe Rando Sunday School 9:45 a.m. Morning Worship 11:00 a.m. Church Training 5:00 p.m. Evening Worship 6:00 p.m. Wednesday Evening 7:00 p.m.
<b>WEST SIDE CHURCH OF CHRIST</b> Floydada Sunday Morning Worship 10:30 a.m. Sunday Evening 6:00 p.m. Wednesday 7:00 p.m.	<b>LATIN AMERICAN CHURCH OF CHRIST</b> Lockney Bible School 9:45 a.m. Morning Worship 10:45 a.m. Evening Worship 6:00 p.m. Wednesday Service 8:00 p.m.		<b>TRINITY CHURCH</b> Meets at the Y G.A. Van Hoose, Pastor Sunday School 9:45 a.m. Morning Worship 11:00 a.m. Sunday Evening 6:00 p.m. Wednesday Night Prayer 7:30 p.m.

This page is being brought to you through the courtesy of:

Brown's Department Store 106 N. Main 652-3831	Moore-Rose Funeral Home 402 S. Main, Lockney 652-2211 329 W. California, Floydada 983-2525
Byrd Pharmacy 320 N Main 652-3353	Nielson's Restaurant 304 E. Houston 983-3464
City Auto 201 E. Missouri 983-3767	Oden Chevrolet-Olds 221 S. Main 983-3787
Sponsor Needed	Pay-N-Save 210 N. Main 652-2293
Davis Lumber 102 E. Shubert 652-3385	Plains Electric Co. 106 S. Main 652-2133
E.X.C.L. Co. Rt. 2, Box 135 Lockney, TX 806-983-3022	Producers Dougherty 983-3020 Bothe Spur 983-276 301 E. Missouri Floydada 983-2821 Cedar Hill 983-2970
Gilbreath Tex-Pack Freight 111-B E. Missouri 983-5487	Schacht Flowers & Jewelry 112 W. Poplar 652-2385
Lighthouse Electric Cooperative Matador Highway 983-2814	Thompson Pharmacy 200 S. Main 983-5111
Lockney Coop Gin. W. of City 652-3377	Wilson Aerial Spraying Lockney 652-2719

Attend The Church Of Your Choice.

We now have **GENERIC DRUGS**

**We're Here To Help**

- Prescriptions filled
- Over-the-counter drugs
- Health and beauty aids
- Cosmetics and perfumes
- Sickroom; surgical needs
- Vitamins and diet aids.

**Byrd Pharmacy**  
Phone 652-3353  
LOCKNEY

For fast and reliable service with your prescriptions, come see us!

See us for all your pharmaceutical needs.

# WEEKLY TELEVISION SCHEDULE

DAYTIME										
THU, MAR 3 - Weekdays - WED, MAR 9										
	TBS (4) Atlanta	KTXB (5) PBS	WGN (7) Chicago	KCBQ (11) Lubbock	KLBK (13) Lubbock	KAMC (28) Lubbock	KJTV (33) Lubbock	HBO	SHOW	ESPN
6 AM	(5:30) T & J		Muppets Spiral Zone	(15) News	CBS This Morning	Varied Progr ABC News	USA Tonight G.I. Joe	Seabert Fraggle	Varied Programs	Prog. Cont. Nation's
7 AM	(05) Hbll	(45) Wthr	Bozo	Today		Good Morning America	Thundercats Dennis	Movie		Business SportsCtr
8 AM	(05) Little House	Sesame Street	Smurfs Ruzpin		Gerardo		Woody	Varied		Varied Programs
9 AM	(05) Movie	Mr. Rogers Animated	Beaver A. Griffith	Sale Concentra'n	Blackout	Donahue	700 Club	Programs	Movie	Varied Programs
10 AM		Programs Shape Up	Waltons	Wheel Win, Lose	Price is Right	Boos? Home	Success-N-Li 9			Getting Fit Workout
11 AM	(05) Perry Mason	Varied Progr Varied	Gerardo	Password Scrabble	Young and Restless	Ryan Loving	Jerry Fallwell		(05) Varied Programs	Motion Body Shaping
12 PM	(05) Movie	Programs Varied	News	News Days of Our Lives	News Bold	All My Children	Hillbillies Big Valley	Varied Programs		Coach's Court
1 PM		Programs Varied Progr	D. Van Dyke A. Griffith	Lives Another	As the World Turns	One Life to Live	Varied Progr			Varied Programs
2 PM	(05) T & J	(35) Fstae	Beaver Ghostbusters	Santa Barbara	Guiding Light	General Hospital	Bewitched Varied Progr	Varied		Varied Programs
3 PM	(05) Fstae	Brady	Street Mr. Rogers	BraveStarr Transformers	Varied	Oprah Winfrey	A. Griffith Divorce Ct.	Programs		Wrestling
4 PM	(05) M'ste	(35) L & S	Square One 321 Contact	G.I. Joe Gem	Programs Fact of Life	Silver Spoon Dih. Strokes	World of Disney	Varied Programs		Pulling Varied Progr
5 PM	(05) Alice	(35) Varie	Exercise Bus Rpt	Fact of Life WKRP	News NBC News	3's Company CBS News	Jeopardy! ABC News	Family Ties Gimme	Programs	Varied Progr

THURSDAY										
EVENING										
March 3										
	TBS (4) Atlanta	KTXB (5) PBS	WGN (7) Chicago	KCBQ (11) Lubbock	KLBK (13) Lubbock	KAMC (28) Lubbock	KJTV (33) Lubbock	HBO	SHOW	ESPN
6 PM	(05) Andy	MacNeil Lehrer	Cheers B. Miller	News Win, Lose	News Benson	News Wheel	Family Ties WKRP	Mov: Jaws 2	Faerie Tale Thur.	Col. B'all
7 PM	(05) Branded	West Imagination	Mov: Legacy	Cosby By Day	Tour of Duty	LaRouche	Mov: Falling in Love		Mov: Lady Jane	
8 PM		Mystery	Cheers	Night Court	Simon and Simon	Mov: Blue Thunder		Mov: Baja Oklahoma		Col. B'all
9 PM	(05) Shooting	Upstairs	News	L.A. Law	Knots Landing		Rockford Files		Super Dave	
10 PM		Body Elect.	Soap Magnum	News Tonight Show	News 3's Company	News M*A*S*H	Cheers Star Trek	Tanner '88 (Pl. 1)	Mov: Project X	NCAA Final 4 SportsCtr
11 PM	(05) Fastest Gun Alive		P.I. Concrete Cow		Night Heat	Mov: Connect Nightline	Superfly TNT	Mov: Fly		SpeedWorld

**MORNING**  
9:05 (3) \*\*\* Mistress of Paradise (1981, Drama) Genevieve Bujold, Chad Everett. Hellish marries plantation owner and discovers a threatening secret.

**AFTERNOON**  
12:05 (3) \*\*\* Futureworld (1975, Drama) Peter Fonda, Blythe Danner. Two reporters go to the newly opened Futureworld.

**EVENING**  
7:00 (3) \*\*\* The Legacy (1979, Suspense Horror) Katharine Ross, Roger Daltrey. Two architects are summoned to England on a mysterious assignment.

9:05 (3) \*\*\* Falling in Love (1984, Drama) Meryl Streep, Robert De Niro. Two married commuters, against their better judgment, fall in love.

7:05 (3) \*\*\* Branded (1950, Adventure Western) Alan Ladd, Mona Freeman. Bandits use a man to trick a rancher into thinking he's his lost son.

8:00 (3) \*\*\* Blue Thunder (1983, Action Thriller) Roy Scheider, Malcolm McDowell. In a surveillance helicopter, Roy Scheider takes on the villains.

9:05 (3) \*\*\* The Shooting (1967, Western) Millie Perkins, Jack Nicholson. A woman persuades a bounty hunter to guide her across the desert.

11:05 (3) \*\*\* The Fastest Gun Alive (1956, Western Drama) Glenn Ford, Jeanne Crain. A storekeeper tries to escape his reputation as a fast gun.

11:30 (3) \*\*\* The Concrete Cowboys (1979, Mystery Adventure) Jerry Reed, Tom Selleck. Two men arrive in Nashville and find themselves involved in blackmail.

9:05 (3) \*\*\* The Shooting (1967, Western) Millie Perkins, Jack Nicholson. A woman persuades a bounty hunter to guide her across the desert.

FRIDAY										
EVENING										
March 4										
	TBS (4) Atlanta	KTXB (5) PBS	WGN (7) Chicago	KCBQ (11) Lubbock	KLBK (13) Lubbock	KAMC (28) Lubbock	KJTV (33) Lubbock	HBO	SHOW	ESPN
6 PM	(05) Andy	MacNeil Lehrer	Cheers B. Miller	News Win, Lose	News Benson	News Wheel	Family Ties WKRP	(5:00) Lion of Africa	(5:00) Evil Under the S	SportsCtr Speedweek
7 PM	(05) NBA Basketball	D.C. Week Wall St	Mov: Next Step	Highwayman	Beauty & the Beast	Strangers Full House	Mov: Mass Appeal	Mov: Exorcist	Mov: Raising Arizona	World Cup Skiing
8 PM		Great Performances	Greenwich Village	Miami Vice	Dallas	Belvedere The Thorns		(45) Cndy		Top Rank Boxing
9 PM	(20) Stoges	In Search of	News	Sonny Spoon	Falcon Crest	20/20	Rockford Files	Mov: Exorcist II: The Brothers		
10 PM	Power Dancin	Love Bus Rpt	Soap Magnum	News Tonight Show	3's Company	M*A*S*H	Star Trek	Heretic (45) On Mev:		SportsCtr Stam O'Leir
11 PM	Tracks: I Limits	Austin City Limits	P.I. Concrete Cow	David Letter	Wrestling	Love Connect Nightline	Death Wish	Location (45) After	ASSASSINATION	Speedway Ser

**MORNING**  
9:05 (3) \*\*\* Papa's Delicate Condition (1983, Comedy) Jackie Gleason, Glynn Johns. An amiable family man gets into impossible scrapes whenever he drinks.

**AFTERNOON**  
12:05 (3) \*\*\* Doomsday Flight (1966, Suspense Drama) Jack Lord, Van Johnson. A man blackmails an airline by planting a bomb on a jet.

**EVENING**  
7:00 (3) \*\*\* Next Stop, Greenwich Village (1975, Comedy) Lenny Baker, Shelley Long. A Brooklyn youth moves to Greenwich Village and finds love.

9:05 (3) \*\*\* Mass Appeal (1984, Drama) Jack Lemmon, Zeljko Ivanek. An outspoken young seminarian is taught church politics by a priest.

11:30 (3) \*\*\* Concrete Cowboys (1961, Adventure) Jerry Reed, Geoffrey Scott. Two cowboys stage a con game to avenge a friend's murder.

9:05 (3) \*\*\* All the President's Men (1976, Historical Drama) Robert Redford, Dustin Hoffman. Work by two reporters exposes the Watergate scandal.

1:15 (3) \*\*\* Love with the Proper Stranger (1963, Drama) Natalie Wood, Steve McQueen. Girl discovers she is pregnant and searches for the baby's father.

SATURDAY										
EVENING										
March 5										
	TBS (4) Atlanta	KTXB (5) PBS	WGN (7) Chicago	KCBQ (11) Lubbock	KLBK (13) Lubbock	KAMC (28) Lubbock	KJTV (33) Lubbock	HBO	SHOW	ESPN
6 AM	Gunsmoke		Superman Issues Untd	(5-15) Love Child	(5:00) Country Girl	(5:00) The Pilot Superman's	(5:00) Playing for Horses			SportsCtr Horses
7 AM	Bonanza	Farm Report Wild Tom 'w	Gummy Bears	Kitty Muppet	Clowns Pound Pup	Big Valley	D. Mov:	Mov: I Accusel	Mann Bill Dance	Col. B'all
8 AM	National Geographic	French French	Charlando	Babies	Monster Wizards	Bust Loose Pollard Ford	Solarbabies		Fishin' Hole Outdr Life	
9 AM	Explorer	Your Health Your Health	Minority Superman	ALF Alvin	Pea Wee My Mouse	Real Ghostbusters	Solid Gold	Mov: One Crazy	Mov: Anything Goes	Pulling Trivia
10 AM	Wrestling	All Purposes All Purposes	Jeff Times New Archies	Fraggle Dennis	Popeye Dennis	Bugs Fstones	Johnny Canales	Mov: Blake		Sports SportsCtr
11 AM	Mov: Garoyles	Computerwor Economics	Soul Train	Lubbock Home Guinness Rec	Galaxy High	Crack-ups Health Show	Wrestling	Edwards' A Pie Mess	Mov: Jewel of the Nile	SpeedWorld
12 PM	Major League	Chargel Hometime	Twilite Zone Twilite Zone	Farm Report Wild Kingdom	AQHA Pollard Ford	Invitational Golf	Mov: Won Ton Ton	Billy Joel in USSR		
1 PM	Baseball	Bodywytch Did House	College Basketball	College Basketball	Doral Ryder			Mov: Little Shop of	Mov: I Know Why the College Baseball	
2 PM		Mirwk Victory Gdn.			Pro Bowlers Tour			Mov: Cold Turkey	Caged Bird Sings	
3 PM	(15) Stog Hillbillies	Newton Apple Degradat	Kung Fu	Mov: Cowboy	NCAA Basketball	Wide World		Mov: Three Amigos	Mov: Playing for Keeps	
4 PM	O. Wilson R. Martin	Spencer Tracy T and T	Pul on Hits		Championship s		TBA			SpeedWorld
5 PM	Wrestling	Best Loose Chas Chg	Pollard Ford NBC News	Sports Club CBS News	Sybervision ABC News		Chas. Charge She Sheriff	Mov: Peggy Sue, Married	Mov: Jaws 2	World Cup Skiing
6 PM	(5:00) Wrestling	Wonderworks Mom Fam	TX Cntry Rpt Medical Jnl	Hee Haw	Wheel	Star Trek: Next G.	(5:00) Peggy Sue, Married	(5:00) Jaws 2		Col. B'all
7 PM	(05) Tycoon	Mov: Fast Break	Fact of Life 227	High Mtn. Rangers	Dolly	Be Boys In Prison	Mov: Number One With a			Col. B'all
8 PM		Shaks, Rattle		Gold Girls Amen	Willie Nelson Spc.	O'hara	Mov: Warriors			
9 PM		and Roll	News	Tribute: Bob Hopa	West 57th	Spenser: For Hire		Tina Live From Rio	Elayne Boosler	
10 PM	(05) Charbusters	1988 Easter Seal Telethon	News 1988 Easter	News Wrestling	News Friday the	Wrestling	Mov: Jumpin' Jack Flash	Mov: Killing Machine	SportCntr AWA	
11 PM	(05) Tracks: Limits	Austin City Limits	Seal Telethon	Oliver!	13th Mr Hobbs' Va	Darkside		(45) Jewel	Championship Wrestling	

**MORNING**  
5:00 (3) \*\*\* The Country Girl (1954, Drama) Bing Crosby, Grace Kelly. A Broadway and recording star nearly misses a chance at a comeback.

5:15 (3) \*\*\* Love Child (1982, Drama) Amy Madigan, Beau Bridges. A young girl in a penitentiary becomes pregnant by a prison guard.

11:00 (3) \*\*\* Garoyles (1972, Horror Drama) Cornell Wilde, Jennifer Salt. An anthropologist and his daughter are menaced by horrific creatures.

**AFTERNOON**  
12:00 (3) \*\*\* Won Ton Ton, the Dog Who Saved Hollywood (1976, Comedy Drama) Madeline Kahn, Bruce Dern. An unusual dog enters the lives of stars in a Hollywood studio.

2:00 (3) \*\*\* Cold Turkey (1971, Comedy) Dick Van Dyke, Pippa Scott. A towny orphan befriends himself among a band of young thieves.

3:00 (3) \*\*\* Cowboy (1956, Adventure Drama) Glenn Ford, Jack Lemmon. Two men learn valuable lessons about life on a cattle drive to Mexico.

**EVENING**  
7:00 (3) \*\*\* Fast Break (1979, Comedy) Gabriel Kaplan, Harold Sylvester. A cashier is offered a chance to be a college basketball coach.

7:05 (3) \*\*\* Tycoon (1947, Drama) John Wayne, Laraine Day. An American railroad builder finds adventure in Latin America.

8:00 (3) \*\*\* The Warriors (1979, Adventure Drama) Michael Beck, James Remar. Small gang must defy the odds and reach its own turf by dawn.

11:30 (3) \*\*\* Oliver! (1968, Musical) Ron Moody, Oliver Reed. A young orphan boy finds himself among a band of young thieves.

9:05 (3) \*\*\* Mr. Hobbs Takes a Vacation (1962, Comedy) James Stewart, Maureen O'Hara. Misadventures of a banker and his family trying to enjoy a vacation.

12:00 (3) \*\*\* The Bee (1978, Drama) John Saxon, John Carradine. Killer bees terrorize So. America and threaten the rest of the world.

2:00 (3) \*\*\* See No Evil (1971, Suspense Drama) Mia Farrow, Robin Bailey. A blind girl is victimized by a killer in cowboy boots.

9:05 (3) \*\*\* The Matchmaker (1958, Comedy) Shirley Booth, Anthony Perkins. A widowed bodysets out to snare a wealthy husband.

SUNDAY										
March 6										
	TBS (4) Atlanta	KTXB (5) PBS	WGN (7) Chicago	KCBQ (11) Lubbock	KLBK (13) Lubbock	KAMC (28) Lubbock	KJTV (33) Lubbock	HBO	SHOW	ESPN
6 AM	Tom and Jerry		Teletion continues	Easter Seal Telethon	Insight Ozark Sports		Big Valley	(5:05) Labyrinth	(5:30) Adv. Mark Twain	SportsCtr World Sport
7 AM	Fstones T & J			Bible Study TBA	Jerry Fallwell		Fraggle Seabert	Mov: Treasure Island	NBA Today PGA Tour	
8 AM	Fstones A. Griffith	Sesame Street		CBS Sunday Morning	Larry Jones Prophesy	Jimmy Swaggart	Survival Special		Mirwk Run, Race	
9 AM	Good News Mov: Little	Mr. Rogers Square One	Teletion continues	Teletion continues	World Tom 'w	Kenneth Copeland	Hardcastle	Mov: Man Who Broke	Mov: Once Bitten	Magic Yr Wk Sports
10 AM	Big Man	Wonderworks		Robert Schuller	J. Savelle Another Page		Lifestyles of Rich	1,000 Chains		SportsCtr
11 AM				College Basketball	TBA		Mov: Topper Takes a Trip	Mov: Hannah and Her	Mov: To Be or Not To Be	SpeedWorld
12 PM		All Purposes All Purposes	1988 Easter Seal Telethon		D. Brinkley		Sisters			
1 PM	Valley P.T.A.	D.C. Week Wall St		College Basketball	NBA Basketball	Invitational Golf	Mov: Artists and Models	Mov: Brighton Beach	Mov: Glass Bottom Boat	
2 PM		Mech. Univ. Mech. Univ.								
3 PM	Kind	Finance, Mgt Finance, Mgt	Teletion continues	Easter Seal Telethon	Doral Ryder	College Basketball	TBA	Food Warn Mov: Color	Mov: Lady Jane	SpeedWorld Cycling
4 PM	Wrestling	Finance, Mgt			Open		Small Out of World			Ski World
5 PM	Beaver	Firing Line		CBS News Fight Back!	Pollard Ford ABC News	Its a Living Mama's		(25) Once Bitten		World Cup Skiing
6 PM	Mov: War Wagon	Lawrence Welk	Twilite Zone Movies	Our house	ou minutes	Mov: 14 Go on 30, Pl. 1	21 Jump Street	(15) Over the Top	(5:25) Once Bitten	SportsCtr Col. B'all
7 PM		Nature	Billy Graham By Day	Family Ties	Murder, She Wrote	Supercarrier	Werewolf Married		Mov: Blood Ties	
8 PM	National Geographic	Masterpiece Thur.	Star Search	Mov: In the Heat of the	Mov: Side by Side	Mov: Longarm	T. Ulman	Mov: Lethal Weapon		Col. B'all
9 PM	Explorer	Remembering Bing	News	Night			She Sheriff Throb		Mov: Ruthless People	
10 PM	SpJerry	Another Page	Darkside	News Lou Grant	News Gerald Myers	(20) Sport (45) Dom	Sea Hunt S. & Ebert	On Location		(40) SportsCtr
11 PM	Fallwell	Sign Off	Mr. Deeds Go	Geo. Michael	Gunsmove	(15) 9 to (45) News	Pollard Ford Mr. Music	(10) Morn' After	Nightmare on Elm 3	Women's Volleyball

**MORNING**  
9:30 (3) \*\*\* Little Big Man (1970, Western Adventure) Dustin Hoffman, Faye Dunaway. The only survivor of Custer's Last Stand reminisces about his life.

11:00 (3) \*\*\* Topper Takes a Trip (1939, Comedy (Colorized)) Constance Bennett, Roland Young. Topper takes a trip to the Riviera with Marian Kirby following him.

**AFTERNOON**  
12:30 (3) \*\*\* Harper Valley P.T.A. (1978, Comedy) Barbara Eden, Ronny Cox. A free spirited mother provokes a confrontation with the PTA.

1:00 (3) \*\*\* Artists and Models (1955, Musical Comedy) Dean Martin, Jerry Lewis. Dean and Jerry team up with a comic book artist.

2:30 (3) \*\*\* Two of a Kind (1982, Drama) George Burns, Robby Benson. An old man waiting to die is given a new lease on life by grandson.

**EVENING**  
6:00 (3) \*\*\* The War Wagon (1967, Western) John Wayne, Kirk Douglas. A rancher is obsessed with regaining his land and his name.

8:30 (3) \*\*\* Longarm (ABC Sunday Night Movie) (1988, John T. Terlesky, Whitney Kershaw. Follow a handsome U.S. marshal's adventures in the Old West.

8:00 (3) \*\*\* "In the Heat of the Night" NBC Sunday Night at the Movies (1988, Drama) Carroll O'Connor, Howard Rollins. Police Chief must deal with a girl's murder and his former nemesis.

9:30 (3) \*\*\* "Side by Side" CBS Sunday Movie (1988, Comedy) Milton Berle, Sid Caesar. Three men forced to retire refuse to be categorized as too old.

MONDAY										
EVENING										
March 7										
	TBS (4) Atlanta	KTXB (5) PBS	WGN (7) Chicago	KCBQ (11) Lubbock	KLBK (13) Lubbock	KAMC (28) Lubbock	KJTV (33) Lubbock	HBO	SHOW	ESPN
6 PM	(05) Andy	MacNeil Lehrer	Cheers Basketball	News Win, Lose	News Benson	News Wheel	Family Ties WKRP	Prog. Cont. Fraggle	(5:30) Nightside	Col. B'all
7 PM	(05) Sbyll. Part 1	Television		ALF	Billy Graham	MacGyver	National Geographic	Mov: Jewel of the Nile	Mov: Runaway Train	
8 PM		Television		Mov: Laura Lansing Slept	Newhart Frank's Pl.	Probe				Col. B'all
9 PM	(05) Sbyll. Part 2	Legends of Laughter	News	Here	Barry Manilow		Rockford Files	On Location	Super Dave	
10 PM		Bus Rpt	Soap Magnum	News Tonight Show	3's Company	News M*A*S*H	Cheers Star Trek	Mov: Stewardess	One Duel for	SportsCtr Col. B'all
11 PM	(05) Explorer	Bus. File	P.I. Concrete Cow	David Letter	Hunter	Love Connect Nightline	Next G. Mass Appeal	School Night in Hea	(25) Dave	Thames

**MORNING**  
9:05 (3) \*\*\* One Cook, the Other Doesn't (1983, Comedy) Suzanne Pleshette, Joseph Bologna. Man's ex wife and son move in with him and his new bride.

12:05 (3) \*\*\* Five Card Stud (1968, Western) Dean Martin, Robert Mitchum. A professional gambler gets involved in a crooked poker game.

**EVENING**  
7:05 (3) Sbyll. Part 1 (1976, Drama) Joanne Woodward, Sally Field. Psychiatrist tries to treat Sybil, a woman with 16 personalities.

9:05 (3) Sbyll. Part 2 (1976, Drama) Joanne Woodward, Sally Field. Psychiatrist tries to treat Sybil, a woman with 16 personalities.

11:30 (3) \*\*\* Compulsion (1959, Drama) Orson Welles, Diane Varsi. Two students stand trial for killing a boy.

9:05 (3) \*\*\* Mass Appeal (1984, Drama) Jack Lemmon, Zeljko Ivanek. An outspoken young seminarian is taught church politics by a priest.

1:05 (3) \*\*\* Skateboard Madness (1980, Comedy) Stacey Peralta, Kent Senatore. Photo-grapher meets four stranded skateboarders in San Francisco.

1:30 (3) \*\*\* Career (1959, Drama) Dean Martin, Shirley MacLaine. A man learns some valuable lessons about his career and success.

3:00 (3) \*\*\* The Creators (1972, Science Fiction) Maria Dilarova, Marvin Howard. Beings from outer space incinerate all forms of organic life.

3:30 (3) \*\*\* Red Alert (1977, Suspense Drama) William Devane, Ralph Waite. An accident at a nuclear power plant could mean atomic annihilation.

TUESDAY										
EVENING										
March 8										
	TBS (4) Atlanta	KTXB (5) PBS	WGN (7) Chicago	KCBQ (11) Lubbock	KLBK (13) Lubbock	KAMC (28) Lubbock	KJTV (33) Lubbock	HBO	SHOW	ESPN
6 PM	(05) Andy	MacNeil Lehrer	Cheers Barney	News Win, Lose	News Benson	News Wheel	Family Ties WKRP	(5:30) Dirty Tricks	(5:00) J.O.E	