

STREET IMPROVEMENTS AHEAD—Culverts temporarily stored near the city warehouse attest to the fact that materials are in place for a street improvement project in south Lockney. —Staff photo

City concludes year with deficit

City of Lockney's 1986-87 fiscal year concluded on March 31 with a \$70,088.58 deficit.

"For the first time in many years, the city had a deficit. Luckily, however, we had the reserve to make up the deficit," members of the municipal governing body point out.

Declines in water sales, franchise taxes and interest from reserves were credited with the shortfall. Since water sales is a significant budget item, the fact that 1986 was a "wet year" and thus necessitated less water had a definite bearing on the deficit.

During the fiscal year, "the sales tax held its own" and the ad valorem tax remained "virtually the same."

The budget shortfall is "something most small towns in West Texas are experiencing," city officials note.

City of Lockney had an \$11,000 surplus during the 1985-86 fiscal year.

DEFICIT BUDGET

The council has adopted a "deficit budget" for the current fiscal year which began April 1 and continues through March 31, 1988. With projected income of \$659,940 and anticipated

expenditures of \$690,134, the deficit totals \$30,194.

However, officials explain that "the city council will amend the budget during the year as we make further cuts. It is the goal of this council to have a surplus or do no worse than break even, and we feel we can do it with more intense management."

One official adds that "despite this deficit, the city council has not lost sight of long-range plans for Lockney."

PROJECT TO BEGIN

The road and drainage work on several blocks in south Lockney "will begin any day," officials told The Beacon late last week.

Culverts have been stacked near the city warehouse, awaiting the project's start.

Continued on Page Two

Athletes due honors at Saturday night banquet

Longhorn and Lady Longhorn athletes will be saluted Saturday evening during the annual Lockney All-Sports Banquet.

The event is scheduled for 7 p.m. in the elementary school cafeteria. "Come out and help support the Lockney sports," banquet organizers

urge. Tickets, priced at \$5 each, can be purchased from any Girls Athletic Booster or Quarterback Club member or at First National Bank.

Anyone with questions may contact Bob Lane, Eddie Teeter or Warren Mitchell.

J. D. Copeland appointed to City Council

Former Mayor J.D. Copeland has been appointed to fill the unexpired city council term of Dan Smith. The action was taken during a called Thursday morning meeting, and Copeland is scheduled to be installed "during the next meeting."

The appointment is effective until April 1988.

Mayor Smith says, "We're glad to have Mr. Copeland on the council, realizing that his many years of service to the city will be most helpful."

Copeland was a city council member from 1941 until 1981 and served as mayor from 1981 until last week.

City council members to serve as department heads were chosen at Thursday's session. They include:

- Jerry Johnson — street, water and sewer
- Gary Marr — police department
- Ronnie Aston — city farm
- Kenneth Wofford — fire department
- J.D. Copeland — dump grounds.

CITY JUDGE RESIGNS

Resignation of City Judge Earl Minter has been accepted, effective May 1. Minter hopes to have more time to travel.

Applications for city judge will be accepted until April 24 at the city office.



THANKS, PEGGY

A belated "thank you" to Peggy Hallmark for photos of the Lockney High one-act play cast, printed in last week's Beacon. Peggy has been super helpful in providing pictures with which to spotlight the community's youngsters.

PEOPLE SAY THE CRAZIEST THINGS

A fellow was talking recently about the crazy statements made by people, and oftentimes the equally far-out answers they receive. Have you ever thought about it? He termed it "stupid questions and stupid answers."

Here are a few we've heard:

A fellow walks down the street with his arm in a cast. A well-meaning friend inquires, "Did you hurt your arm?"

A fitting answer to that one might be, "Naw, the cast just blends in well with my suit."

A college or pro football team returns after halftime trailing 0-21 and the TV commentator remarks, "They sure need to put some points on the board." The coach and team are well aware of that fact, as well as every six-year-old watching the telecast. Those guys actually get paid for such brilliant deductions.

Another intelligent comment comes when a team is driving toward an apparent touchdown and fumbles the ball away at the opposition three yard line. "Bet they wish they hadn't done

Continued on Page Two

City 'Clean-up Week' April 19-25

Lockney is about to undergo its annual spring cleaning project. City officials, who have designated April 19-25 as "Clean-up Week" here, are asking all local residents to participate.

"We encourage all citizens to clean their own premises," officials note.

Citizens may call the city office to have debris from clearing around their premises hauled away.

Grace period before abandoned vehicle ordinance enforced

The city's "junk car ordinance" will be "strictly enforced, starting May 17."

But before enforcement becomes rigid, residents are being allowed a one-month "grace period" — April 16 through May 16 — to "voluntarily dispose of junked and abandoned vehicles or contact the city for free disposal during this time span."

Guidelines of the ordinance stipulate

that the owner of such a vehicle could be fined and required to pay for removal of junk or abandoned vehicles.

Junk or abandoned vehicles are defined as those which have no current license plate installed and no registration sticker.

An abandoned or junk auto may be kept in town if it is shielded from public view by means of a fence, shrubbery, etc.

34 pre-schoolers examined

Thirty-four children were registered by the Lockney Athena Study Club at their annual pre-school health clinic held Tuesday, April 7.

Members of the study club weighed and measured each child. Dr. W.J. Mangold and Dr. Gary Mangold gave each child a short physical. Dr. Ricky Cross, dentist from Plainview, checked each child's teeth and vision was checked by optometrist, Dr. Stewart Webb.

Karen Quebe, Lockney schools speech therapist, screened the children for speech impediments. Bryan Springer, South Plains Health Provider was on hand to give any child their booster shots if they were needed. These were given at no cost. Evelyn Ulmer, school nurse updated all immunization records.

Children who came to the clinic will be five years old by September 1, 1987 or they are six year olds who will be attending school for the first time. The number of children present dropped

from forty-seven in 1986 to thirty-four this year. According to Mrs. Ulmer this is not an indication as to how many children will be enrolled next year.

This is the thirty-seventh year that the Athena Study Club has held this preschool registration and health clinic. They do all the leg work in setting it up.

Trustees seated, officers elected

Lockney Independent School Board met in regular session Thursday, April 9 for the purpose of swearing in new board members and electing new officers for the coming year. Lisa Mosley and Dr. Gary Mangold were sworn in replacing Kelton Shaw and Eddie Foster, retiring board members.

Officers elected for the coming year were D.K. Jackson, president; Jim Bob Martin, vice-president; Eddie Teeter, secretary-treasurer; and Dr. Paul Glasson, assistant secretary-treasurer. President Keith Jackson appointed Lisa Mosley and Dr. Gary Mangold as delegate and alternate to the state school board convention to be held in San Antonio. Jackson also appointed members to the various committees.

The board approved the hiring of new personnel and accepted the resignations of John M. Lewis, band director; Charles L. Record, transportation; and Douglas Degge, high school science teacher. It was voted that all school personnel will receive a three per cent pay increase.

Votes were canvassed and minutes of

the last meeting were read and approved. It was reported that American flags have been ordered for each of the classrooms and will be here soon. Bills were approved and paid. Discussion was held on repairs to the school and it was reported that repairs to the boiler had been finished.

A bid of \$300 was accepted from William Paul Cooper for a 1971 pickup. Taxes budgeted for the schools amount to \$2,384,292, of which \$1,794,537 have been collected and \$589,855 have yet to be collected. Money budgeted for the schools amount to \$2,300,475. Up to this date \$1,859,035 have been spent, which amounts to 80.8 per cent of the budget.

Reports were heard from James Poole, Terry Ellison, Joyce Evans and Bob Purser. Discussion was held on the Junior High and Elementary level District U.L.L. contest that will be held here on May 1. School will be turned out early that day.

It was reported that after a test of the first grade students statewide Lockney was notified that they had placed in the top five percent in the state.

Senior Citizens set bake sale on Friday

Memberships moving well

Fifty-nine memberships to Lockney Senior Citizens were sold Thursday during the chicken fried steak lunch served by the organizations. The number has risen since that time.

Dues are \$10 annually, and those securing memberships receive a card. Clementine Carthel is the membership chairperson.

Community response again was strong for the meal. Over 175 persons were served Thursday.

BAKE SALE FRIDAY

The Lockney Senior Citizens Center at 118 West College will be utilized for the first time this Friday for an "all day" bake sale. The event is to begin "about 9 o'clock and continue until it's all sold out."

Cakes, pies, cookies and other items will be available. A box has been placed at the center to receive contributions of Circle C Blue Stamps or Green

Stamps. Stamp books may be dropped into a slot in the box.

The stamps will be used to secure card tables and other equipment for the center.

Publicity Chairperson Myrt Hill says no meeting was held Thursday due to the time required to serve and clean after the meal.

No meeting is scheduled this Thursday (today).

DONATIONS STILL NEEDED

"We still need and are still taking large donations," members say. Contributions can be mailed to P.O. Box 82 in Lockney.

Treasurer Hazel Johnson says approximately \$22,705 in donations have been received. This figure does not include profits from projects, memorial gifts nor memberships.

The donations represent "around half of what is needed."

Memorials also continue to be

received. Hazel Johnson is the chairperson.

For memberships, persons should contact Clementine Carthel at 652-2674 or contact Hazel Johnson at 652-2190 for memorial donations.

APRIL 23 LUNCH

Senior Citizens are to serve a barbecue brisket meal for the public at lunch Thursday, April 23. The menu also is to include vegetables, salads and a cobbler.

Serving begins at 11 a.m. at the Community Center. Cost is \$4 per plate.

While there is no meeting planned for this week, the group will hold a question-and-answer session following the April 23 barbecue.

During an April 7 board meeting, three new directors were appointed to the board. The trio includes Harmon Handley, Ray Sissney and

Velma Harrison.

A representative from South Plains Association of Governments (SPAG) has been in Lockney to assist with planning the center kitchen. Floor covering is to be installed right away in both the kitchen and rest rooms.

Plans call for making a block grant request for the center through SPAG and also to contact South Plains Food Bank about securing food.

Permission has been received from the county to purchase from the Texas Surplus Property Agency.

The board is to meet "the first Tuesday following the first Tuesday of each month."

Advertisements have been placed for a building donated by the Lloyd Woffords.

Liability insurance bids were "inconclusive" and further study will be done.



STATE QUALIFIER—Johnny Silva of the Longhorn power team has qualified for state by totaling 1,100 pounds — bench press, squats and dead lift — to take second place in his class at the regional. State competition is scheduled April 25 in College Station. He holds a trophy won for having the top bench press compared to an athlete's body weight. Randy Josey is his coach. —Staff photo

City concludes year with deficit

Continued from Page One

Robert McDonald has been reappointed to a two-year term as a Lockney director on the Mackenzie Municipal Water Authority board. Owen Thornton is the other local director.

Engineering bids to pave Lavada Drive — an east-west street south of the residence of Dr. Gary Mangold's family — have been called by the council.

Property owners adjacent to this

street will pay for paving, curbing and guttering and the city is to provide the engineering fee. This has been a longstanding city policy.

SEAL-COATING

In another move, the council has called for bids for seal-coating 16 street blocks.

A request from local citizens was accepted by the city governing body to rent the "big room" of the Community

Center for karate classes.

Action on the above matters was taken during both a Tuesday and a called Thursday session. The full council was present for both sessions.

Former Mayor J.D. Copeland opened the initial meeting. Following the canvass of votes and installation of officials elected April 4, Mayor Dan Smith concluded the session. Smith was in charge of the Thursday meeting.



NEW ARTIST—Jesse Savage is the April Artist of the Month November 1986. He began his art career in

Staff Photo

Jesse Savage exhibits art at FNB

Jesse Savage, longtime Lockney resident is artist of the month at the First National Bank.

"I like to paint on canvas what God created," stated Savage who paints primarily in oils. Landscapes are his favorite subject, especially mountains. Savage has been painting since November, 1986. He is taking lessons in Plainview from Audelle Thomas. Savage commented that the canvas is a good place to relax and take out the frustrations after a hard days work.

He credits his wife Margie, who also paints, with encouraging him to try

painting. He immediately fell in love with oils.

Savage moved to Lockney in 1948 and did upholstery work for many years. He has been employed with the Floydada Hospital for the last three years. By

some coincidence most of the members of his class in Plainview are also employed by hospitals in the area.

The First National Bank invites you to view Savage's work during their regular banking hours.



In times like these... By Mary Jo Fielding

The Contras have always had to fight a war on two fronts: at home, against the Soviet-supplied guns of the Sandinistas, and in Washington, against the doubts and fears of U.S. legislators. To some extent they have been caught in a Catch-22. Their failure to win military victories and popular support in Nicaragua has resulted in fitful and inconsistent support from Congress. That has

made it difficult for the Contras to do more than irritate the Sandinistas.

In the past few months, as many as 7,000 men have been trained and sent in small groups — about 20 rebels each — from Honduras into Nicaragua. This is a new stage in the conflict, instead of camping out in big vulnerable bases on the border, they are using small bands to harass the Sandinistas with hit-and-run attacks.

The Contras have attacked targets ranging from government cooperative farms to rural stores and power pylons. But as in the past they have hurt their cause by failing to distinguish between civilian and military targets. There were recent reports of Contras burning down a small community's church-sponsored health clinic. Notes a State Department official, "As the degree of fighting increases, the number of human-rights-violations increases too." The Contras inside Nicaragua are being supplied by clandestine airdrops, a dangerous technique. But if the resupply holds up and the money continues to flow, the Contras are expected to step up their attacks by the summer and move into the strategically important pacific coastal plain.



April Birthdays - Alma McDonald, Fiedela Nuncio, Benny Thompson, Andres Pena.

★ Notes by Janie ★

April showers bring May flowers, they say. What do you suppose April snows bring? Here at Lockney Care Center there have been some sunny activities, even when the cold snow blows outside. Residents who celebrate birthdays in April were honored with a party on the first. They are Bennie Thompson, Alma McDonald and Andres Pena.

A new activity that the residents enjoyed was Mexican Bingo. This was

so popular that we will probably be doing it again soon. We want to thank Laura Wilson, Lockney Co-op, Byrd Pharmacy and Mize Pharmacy for donating gifts for Bingo prizes. All those winning prizes were especially pleased.

We always welcome visitors and some of them who were here last week were Wanda Lane and Mr. and Mrs. Wilbur Martin who visited Lennie Gilbert. Mrs. Allen Kellum of Silverton and Sherry Smith, Ryon and Desha of South Plains came in to see Bonnie Julian. Mary Comacho of Floydada was over to visit her father, Andres Pena.

This is the week for our party to honor the Employee of the Month and the Resident of the Month. Janie Manzanales was chosen by the residents as Employee of the Month. She has been serving as interim Activity Director. Mrs. Grace Foster was chosen as Resident of the Month. She is a long-time Floyd County resident. She has three daughters, five grandchildren, and nine great-grandchildren.

Who's New!



CHAPMAN

Mr. and Mrs. Dane Chapman of Pampa proudly announce the arrival of their son, Jerry Dane, on April 7 at 8:44 p.m. He weighed 8 pounds, 10 ounces and was 21 1/4 inches long at birth in HCA Coronado Hospital in Pampa.

The infant has "a proud older sister," Shay, 21 months.

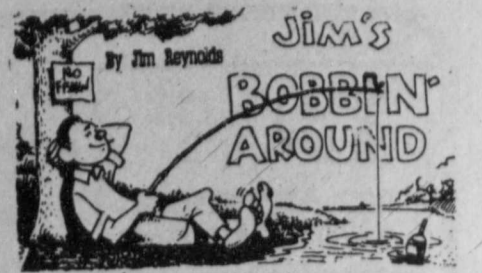
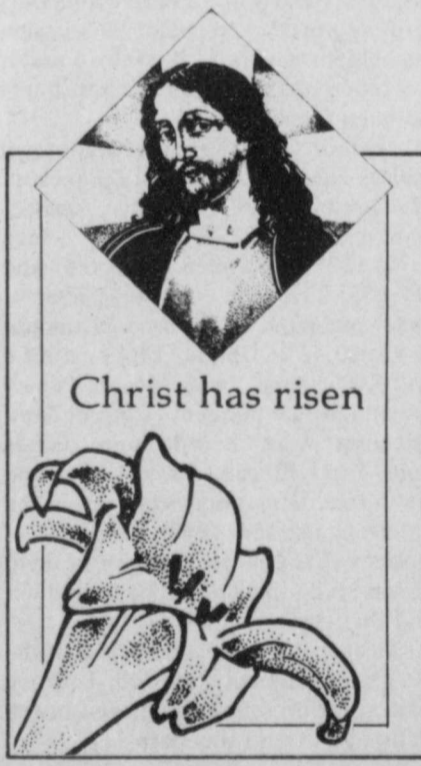
Maternal grandparents are Bryan and Charlotte McCulloch of Lockney. Jerry and Janet Chapman of Amarillo are paternal grandparents.

Maternal great-grandmothers are Nettie McCulloch and Gladys Ragle of Lockney. Paternal great-grandparents are Margrette Holmes of Floydada and Mr. and Mrs. Roy Chapman of Grants, N.M.

Lockney Care Center

We are getting ready for the Easter bunny at Lockney Care Center. We want to thank Shirley Torres and Charlene Telley for bringing painted eggs. We will be coloring some more eggs this week for our Easter egg hunt on Friday afternoon.

We wish to also thank Dana Johnson for volunteering to help our residents. This week she will be riding the bus with residents to Plainview. We always welcome new volunteers.



Continued from Page One

that," comes the commentator's response. No, Mr. Announcer, they are really just being kind to the enemy!

"Haven't seen you around in a few days," one friend calls to another.

"I've been out of town. I went to Joe Jones' funeral," comes the response.

"Oh," says the first fellow, "Did ole Joe die?"

An unlikely but appropriate answer might be, "No, Joe didn't die. We just had his funeral early."

Countless times, we've received news stories which include the wording, "A good time was had by all."

That is probably so, but unless everyone attending was polled individually who's to know for sure? Some lady might have had a headache and didn't enjoy the function at all.

A fellow wearing a black eye is inevitably asked, "Did your wife hit you?"

That's a distinct possibility, but he usually answers, "Naw, I ran into a door." That's also possible, but unlikely.

While emptying coins from news-stands (for the papers which weren't stolen), a friend claims to frequently having been asked, "Are you stealing money?"

Collecting from a coin holder, with a key to the lock, in broad daylight hardly seems a likely scenario for a theft.

We confess, and most other people probably would also, to saying the darndest things. In the act of making conversation, we frequently let our mouth run several steps ahead of our brain.

Incidentally, we need about two feet of sunshine!

Seven-month-old child dies choking on orange seed

Funeral rites for Bobby Joe Luna, a seven-month-old Lockney lad, were conducted at 4 p.m. Thursday in San Jose Catholic Church. He was a son of Jose N. and Esperanza Luna.

Burial was made in Lockney Cemetery under direction of Moore-Rose Funeral Home.

The infant presumably choked on an orange seed Wednesday afternoon, April 8.

According to information secured by The Beacon, the accident occurred at

his grandparents' home in the 100 block of East Guest. The time was "around 3 o'clock."

He was taken to nearby Lockney General Hospital, where death occurred, this newspaper was informed.

Bobby Joe Luna was born Aug. 19, 1986, in Lockney.

In addition to the parents, survivors include: two brothers, Billy Jose Luna and Joe Daniel Luna; and grandparents, Mr. and Mrs. Natividad Luna and Mr. and Mrs. Jose Torrez.

Lana Brotherton, sons escape from smoke-filled apartment

Lana Brotherton and her two young sons escaped from their Plainview apartment early last Wednesday morning with a serious fright but no injuries.

Ms. Brotherton, a Lockney native, was awakened by the smell of smoke while dreaming about a fire, her parents noted. She quickly exited with her sons who were sleeping with her.

Time of the fire was "about 1 o'clock." A wiring short reportedly was the cause of the fire at Plainview

Apartments, 1706 Yonkers.

The Brotherton family suffered "lots of smoke damage" to possessions. Two other families who reside in the same complex also sustained damage.

Ms. Brotherton, the former Lana Smith, is a daughter of Max and Marty Smith of Lockney. The boys are grandchildren of the Smiths.

Brandon, 6, and Chase, 4, also are grandsons of Merle and C.L. (Mike) Mooney of Lockney.

Lockney man injured in motorcycle-car accident

Jessie Garza Jr., a 30-year-old Lockney man, and a companion were treated for minor injuries and released from Central Plains Regional Hospital in Plainview on Sunday evening following a car-motorcycle accident on Ennis Street in Plainview.

Garza and Tammy Peterson, 24, of Amarillo reportedly were riding on a motorcycle that collided with a vehicle driven by Denette Parker, 23, of Plainview. The site was the intersection of Olton Road and Ennis Street.

Time of the mishap was placed at 7:25

p.m.

According to Plainview Fire Department paramedics, Miss Peterson suffered a broken collarbone and lacerations. She and Garza, who sustained minor injuries, were transported to the hospital by fire department ambulance.

The motorcycle was reportedly traveling west on Olton Road and the car was moving east on Olton Road and both were turning north onto Ennis Street.

Garza and Miss Peterson were thrown from the motorcycle.

ATTENTION Farmers

Cattle Manure Available

Analysis at 10 ton/acre

Nitrogin - 350 lbs.
P-205 - 290 lbs.
K-20 - 300 lbs.

COST \$1⁵⁰/ton, plus
10¢ per ton per mile
COST \$20 per acre delivered
and spread, 5 miles

GOOD HUMUS VALUE
FRESH SUPPLIES DAILY

We are still contracting high moisture corn for Fall Delivery. Space is limited, reserve space today. Several pricing options available.

PIC Certificates bought daily.

Contact:

Caprock Industries Feedyard

806-652-3308 or come by

We now have GENERIC DRUGS

Free Delivery



For fast and reliable service with your prescriptions, come see us!

We're Here To Help

- Prescriptions filled
- Over-the-counter drugs
- Health and beauty aids
- Cosmetics and perfumes
- Sickroom; surgical needs
- Vitamins and diet aids.



Massachusetts Mutual life

Don W. Henderson ★ 652-2396

BYRON JACKSON PUMPS

We're still in business
Still Pulling - Still Repairing
We Have Been For 115 Years
We've been friends for a long time
Give us a call!

1305 N. Columbia 296-5504 Plainview, Texas

Ninette Zorger presents program on health care

Lockney Rotary Club met Friday at noon, at Strickland's Restaurant for their regular meeting. Dee Copeland led in the singing of "God Bless America", Paul Schacht led the Pledge of Allegiance, and Boyce Mosley gave the invocation.

President Joe Zorger opened the meeting with an explanation of the donation to the Polio Foundation that is one of the club's projects for the year.

Earl Minter introduced Ninette Zorger director of nursing for the Lockney General Hospital. She spoke on her work, the Lockney General Hospital, and rural hospitals in general. She extolled the good administration, good board members, and the excellent doctors at the hospital.

"The economic situation is a threat to

the survival of rural hospitals," Zorger said. "The change in medicare and medicade rules, prices for liability insurance, which have increased more than three hundred percent in one year, and the sanctioning of doctors by the state of Texas are making it increasingly difficult for small hospitals to keep their doors open. If the local hospital was to close fifty jobs would be lost and health care in Lockney and the surrounding area would be greatly affected."

She finished with the statement, "We must do all in our power to keep our hospital open."

Visitors were Lila Cooper, Rotary Ann of Jerry Cooper, Kevin Flatt, Glen Bickle, Dub Sheets, and Medlin Carpenter from the Plainview Rotary Club.



NINETTE ZORGER, director of nursing at the Lockney General Hospital, speaks to the Lockney Rotary Club on the problems facing rural hospitals. —Staff Photo

Hardy Memorial Scholarship fund recipient to be named

Winner of a scholarship to be awarded by the Elaine Hardy Memorial Scholarship Fund will be announced during the Lockney High School awards assembly in May.

LHS seniors who are interested in making application for the scholarship should write a letter and give it to principal James Poole by May 5.

The letter should list the student's activities and possible major. Special consideration might be given to applicants who are planning to major in either music or medicine.

The applicant might want to write more in the letter as he/she considers that the selection committee wants to choose a student who seriously desires to attend college or a training school,

and who will be diligent in pursuing his/her studies. The selection committee also will consider the student's need of a scholarship.

Amount of the scholarship will be determined by the time the winner is announced. An alternate will be selected. The money will be sent directly to the college or training school chosen by the scholarship winner.

The scholarship fund was begun by donations from parents of Elaine Cooper Hardy's piano students as a tribute to the courageous way Elaine lived in spite of her illness. The fund was increased through donations given as memorials to the fund treasurer, Glenda Ford of Lockney.

THIS WEEK . . .

AIKEN SUNRISE SERVICE

Aiken Baptist Church will be having a sunrise service at 7:00 a.m. April 19. Brother Carl Coffee will bring the message. Sweet rolls and coffee will be provided afterwards.

BRIDGE FOR CANCER

"Play Bridge for Cancer," Wednesday, April 29, 1:30 p.m. at Plainview Country Club. Bring your own partner. Lots of door prizes and prizes for winners. Tickets are \$7.00. All proceeds go to American Cancer Society. Call Mary Jeanne Moore or June McDonald for tickets.

We Salute...

HAPPY BIRTHDAY

April 16 — Chris Rodriguez, Jim Bob Martin, Lozell Keeeter
April 17 — Dan Teuton, Larry Mullins, Ginger Mathis, Jaime Martinez, Wanda Smith

April 18 — Jesse Rodriguez, Myrtle McCreedy
April 20 — Jessie R. Arjano, Matt Zachary
April 21 — David Workman, Gene Belt, Kay Williams, Marie Wylie
April 22 — Todd Hallmark

Easter Extravaganza

Hop on in for the Easter Egg Hunt

Find brightly colored eggs with special savings.

10% 20% 25% 30% 50%

Kristi's
DOWNTOWN PLAINVIEW
296-7254

Julian brings program

The South Plains Hobby Club met Thursday, April 9, in the home of Glynn Earle Cummings. Roll call was answered with "My Favorite Quilt" and Carolyn Marble gave the thought for the day, along with presiding over the business meeting.

Glynn Earle introduced Kristi Julian, interior designer for Ethan Allen Furniture in Lubbock. She brought the program on "What is your decorating

style?" Members and guests present were: Connie Sanders, Helen Teeple, Connie Johnson, Dee Earle Sanders, Diane Johnson, Paula Pyle, Sandra Cummings, Ruby Lee Higginbotham, Edythe Clark, Kelly Fisher, Dot Cummings, Carolyn Marble, Mammie Wood, Mildred Hamm, Lillie Mae Milton, Navolia Kinslow, Kristi Julian and Glynn Earle Cummings.

Kids and poison

Children are naturally curious and will put anything into their mouths. The Texas Department of Health recommends that if your child swallows something poisonous, you should call your Poison Control Center immediately. Methodist Hospital is Lubbock's Poison Control Center and can be reached by calling (806) 793-4366.

A medicine for emergency use in poisoning cases is Syrup of Ipecac. It can be purchased in any pharmacy without a prescription and causes vomiting.

The Poison Control Center recommends, however, that Syrup of Ipecac not be used before calling your physician or the Poison Control Center.

Normally the syrup should not be given at home if:

1. The person is less than 1 year old.
 2. Corrosives (lye, drain cleaners, oven cleaners, automatic dishwasher detergent, or other strong acids or bases) have been taken or burns are seen around or in the mouth.
 3. A petroleum distillate-containing product (kerosene, gasoline, paint thinner, furniture polish, etc.) has been taken.
 4. The patient is lethargic (sluggish), asleep or unconscious.
 5. The patient is convulsing.
- For children older than 1 year and adults, give one tablespoon of Syrup of Ipecac if none of the above conditions exist. Immediately give 8-16 ounces of

any fluid except milk (Kool-Aid, soda pop, fruit juice, etc.). Vomiting should occur in about 15-20 minutes. If vomiting has not occurred in 20 minutes, administer an additional tablespoonful of the syrup. Never give more than two tablespoons.

Also be sure to keep all household products up and away from children and completely out of their sight. Never store lye drain cleaners in your home, and use safety latches on drawers and cupboards.

You should never leave small objects in children's reach, even for a moment, and don't feed youngsters hard pieces of food because they may choke. You may want to get instructions from your doctor or nurse on how to save the life of a choking child.

Letter to the Editor

Ms. Pam Armstrong
Lockney Beacon
211 N. Main
Lockney, TX 79241

Dear Pam:

Our thanks to Lockney General and Lockney Beacon for your continuous support of the community blood program. At the March 27 blood drive, a total of 16 people volunteered to donate. Of these, 14 were able to give.

I appreciate the efforts that you have made toward building successful drives in Lockney. Your commitment helps to insure that blood is available around the clock to the hospitals we service.

I look forward to working with you again on the hospital's next blood drive, which is scheduled for August 14. Thanks again for all you do!

Sincerely,
/s/ Cheryl Keefer
Cheryl Keefer
Donor Resource Specialist

THE LOCKNEY BEACON (USPS 317-220)

Published weekly each Thursday by Floyd County Newspapers, 211 North Main St., Lockney, Texas 79241. Second class postage paid at Lockney, Texas. Subscription rates: Floyd, Swisher, Hale, Motley, Briscoe, and Crosby counties \$15.00, other counties \$17.00, out-of-state \$18.00.

POSTMASTER: Send address changes to The Lockney Beacon, P.O. Box 187, Lockney, Texas 79241.

Ken Towery Owner
Alice Gilroy Publisher
Jim Reynolds Editor
Pam Armstrong Office Manager/
Advertising

South Plains News

By Bonnie Julian

Sunday turned into a cold, bitter day as rain and snow were intermingled when they came down. This made roads slick and muddy and the driving was hazardous and caused a slowing down of all vehicles.

All time schedules are set ahead an hour since Sunday morning as Daylight Savings Time went into effect. It will continue into affect until the last Sunday in October.

Janita Cantwell is the new Activity Director here at the Lockney Home and we all welcome her and wish her well.

Remember Easter Sunday is April 19 and the South Plains Baptist Church is hoping for a high attendance record on that Sunday. Put on your new Easter togs and come to worship.

Carla Miller, who resides at 208 E. Crockett here in Lockney, is the new hair designer and barber here. We are glad to welcome her as she is needed and wanted so much.

Friday afternoon visitors at the Lockney Home were Mrs. Allen Kellum from Silverton, Mrs. Janis Julian of South Plains and Mrs. Shari Smith, Ryan and Desha.

We have been having wonderful weather only one day has been slightly warm. This Monday the wind is blowing hard and it is cool and cloudy.

Visitors last Saturday afternoon here at the home were Mrs. Allen Kellum, Silverton, Mrs. Shari Smith, Ryan and Desha of South Plains.

Connie Johnson will be the head of the Vacation Bible School at South Plains Baptist Church this summer.

WMU hears book review

WMU ladies of the First Baptist Church recently met for their monthly meeting. Theme of the evening was "Telling the story of Jesus Christ to every person in the world by the year 2000."

The program was lead by Emma Thomas who asked questions to which each member responded.

Elvira Stewart reviewed the book "God's Warhorse" by Naomi Hunke.

Members present were: Melba Atkins, Elvira Stewart, Jewel Fortenberry, Eva Whitfill, Ann Handley, Dorothy Shipp, Faye Ferguson, Emma Thomas, Bobbie Kellison, Neva Smith, Helen McLeod and Helen Karr.



WHERE IN THE WORLD ARE YOU GOING?



If you're planning a trip, we can provide travel accident insurance. We offer 24 hour a day, year-round travel accident insurance. Whether you travel by air, bus, train, boat or car, protect yourself with a travel policy from your Independent Insurance Agent.

JERRY COOPER
Lockney
Insurance Agency
105 North Main
Lockney, TX 79241
Phone 806-652-3347

Celebrate Easter in Full Glory

Send a
Glory of Spring Bouquet,
a beautiful Silk Arrangement,
Green Foliage or
Blooming Plant.



For that special added touch on your Easter or Banquet dress let us design you a very special body flower.

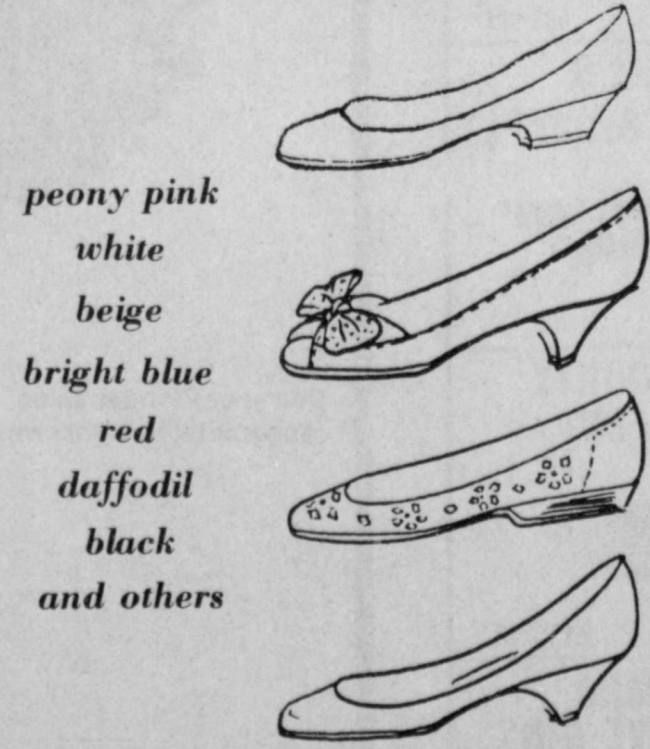
Celebrate Easter in full glory.

SCHACHTS

Lockney Flowers, Jewelry & Gifts 652-2385

"Our pleasure is to serve you."
Mon. - Sat. 8:30 - 5:30

CONNIE DRESS



peony pink
white
beige
bright blue
red
daffodil
black
and others

SHOES for SUMMER

Brown's
DEPARTMENT STORE

104-06 North Main Lockney, Texas

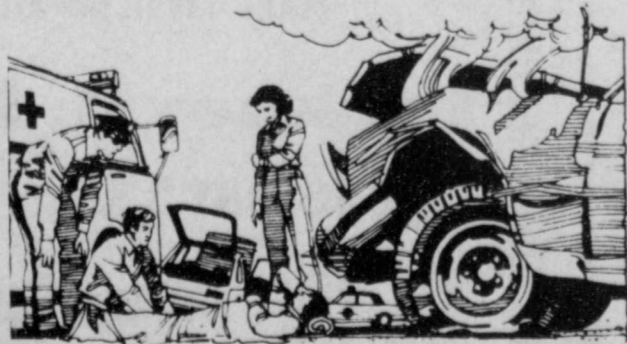


Don Castleberry
895-4613



Max Harrison
983-3044

Before the need... You need your Farm Bureau Insurance Agent.



Auto Insurance

No matter how careful face financial problems that you are, you can't predict you can't handle due to an what other drivers will do. auto accident
Make sure that you won't

TEXAS FARM BUREAU INSURANCE

101 S. Wall Floydada - 983-3777
Floydada, Texas, 79235 Lockney - 652-2242



Clar Schacht
Agency Mgr.
983-2906



Kenneth Holt
652-3456

Time to check wheat for Russian wheat aphids

By C. Mark Brown
Extension Agent-Entomology [PM]
Crosby/Floyd Counties

Most area wheat fields are now in the jointing stage (Feekes 6 and 7), and should be monitored closely during the next few weeks for the presence of Russian wheat aphids. To determine whether your wheat is in this growth stage, strip the leaf collars away from the stems of several of the older tillers in the field. The first two nodes of the plant will appear as swollen knots on the lower-third of the stem of each tiller.

When the wheat begins jointing, check random plants for the presence of the Russian wheat aphid. Damage symptoms include tightly rolled leaves; white, longitudinal streaking of leaves; and a purple coloration of the tillers. The wheat aphids will probably not be seen unless you take the time to unroll the leaves in the whorl of the plant.

Treatment should be considered when the aphids are present on 10 to 20% of the randomly selected plants. Plants are considered in-

festated even if only one tiller has aphids present. If heavy reinfestation occurs following treatment, a second application is recommended when the flag leaf is first visible and 10% of the tillers are infested.

The most damage is done between the time when the flag leaf first appears and the head is first visible. Control strategy is aimed at protecting the flag leaf because of the major contribution it makes to grain yield.

These aphids have the potential to increase rapidly. Aphid populations at the Texas A&M University Agricultural Research and Extension Center at Lubbock increased five-fold between early February and early March.

The next few weeks will be critical for monitoring the wheat aphid; and the flag leaf of the wheat plant must be protected to prevent significant yield loss.

Systemic insecticides such as dimethoate and disulfoton will provide good control of the aphid; however, adequate coverage is required.

Cost-effective weed control

With low market prices and increasing production costs for cotton, herbicides still represent a high-return investment.

Dr. James Supak, cotton agronomist with the Texas Agricultural Extension Service at Lubbock, says herbicide use on cotton acres has made a big difference in production.

"The introduction of dinitroaniline (DNA) and other families of herbicides into the cotton industry in Texas had a tremendous impact," Dr. Supak says. "Previously cotton growers would have to plow under their cotton crop and reseed it if too many weeds emerged. With an ever-expanding array of herbicides, growers now have an economical alternative for weed control."

"A grower simply can't grow and harvest a cotton crop efficiently without using an effective weed control program that typically involves one or more herbicides," Dr. Supak states.

With continued DNA herbicide use, some growers may be concerned about crop safety. However, Dr. Supak notes that when these herbicides are properly

handled there is no need for concern.

Herbicides may affect the root development of a cotton plant to some degree. However, Dr. John Abernathy, professor of Weed Science with Texas Agricultural Experiment Station at Lubbock was never able to show that this reduces yields in studies conducted over a 10-year period.

Frequently, herbicides receive all the blame for slow plant development in the spring. However, Dr. Supak says there are many factors that can stunt early growth.

"Growers are aware that weather, soil compaction, wind, blowing sand and poor seed quality as well as misapplied herbicide are among the problems that can slow early development. These should all be considered in assessing problems influencing normal crop development."

Dr. Supak says proper herbicide application typically has no adverse effects on the crop and normally reduces input costs associated with tillage and hand labor.

"With increasing labor and energy costs, growers need the cost-effective protection of herbicides to control their weed problems."

Texas has 2.3 million acres in CRP

Texas farmers have tentatively contracted another 1,183,176 acres into the government's Conservation Reserve Program during the latest sign-up period, bringing the state's total in the national program to about 2.3 million acres.

Almost 19.5 million acres have been put into the program across the nation, points out Dr. B.L. Harris, soils

specialist with the Texas Agricultural Extension Service.

Bids accepted for the latest sign-up period averaged \$51.17 per acre nationally and \$39.70 in Texas. Accepted bid prices are paid on an annual basis and cannot exceed \$50,000 per farmer per year, notes Harris.

Texas had the largest number of acres accepted into the program among

all the states, including 47,251 acres of corn, for which land owners received a \$2 per bushel bonus.

The CRP was created by the 1985 farm bill to take highly erodible cropland out of production to reduce soil erosion while at the same time reducing the production of surplus farm commodities, Harris points out.

Farmers with qualifying cropland, as determined by the Soil Conservation Service, can submit bids on their cropland during specified sign-up periods at their Agricultural Stabilization and Conservation Service office. If the bids are accepted, the land must be kept out of production for at least 10 years

and must be planted to a permanent cover crop, such as grass or trees. Half the cost of establishing the cover crop is paid by the government.

Some 45 million acres have been targeted for the program over a five-year period which began with the first sign-up in the spring of 1986. Some 11.5 million of these acres have been targeted in Texas, according to Harris.

The next sign-up period will be July 20-31, 1987. Farmers interested in learning more details about the CRP and about the type of land that is eligible should contact local offices of the Agricultural Stabilization and Conservation Service or the Soil Conservation Service.

Japanese tariff could harm U.S. agriculture

Texas and U.S. agriculture could be the big loser if the Japanese retaliate against proposed trade sanctions announced last Friday by the Reagan Administration.

The sanctions, to be effective April 17, impose a 100 percent tariff on some \$300 million worth of imports which either contain or were manufactured by Japanese firms that produce semi-conductors, primarily television sets, radios, tape players and other electronic products.

"If Japan retaliates, U.S. agricultural products would be a likely target," points out Dr. Mickey Paggi, marketing economist with the Texas Agricultural Extension Service. "In 1986 Japan imported some \$5.1 billion in U.S. agricultural products, by far our number one customer. Exports to Japan are projected at about the same level for 1987 barring any retaliatory action."

The trade conflict comes at a particularly bad time for U.S. agriculture, notes the economist. Struggling to escape the downturn in exports of the past few years, many analysts were hoping for a modest recovery in volume and a bottoming out in export value. More importantly, some sources were reporting moves by the Japanese to increase access to markets for agricultural products.

"Indications are that the Japanese will make some move to address the concerns of the U.S. before the April 17 deadline," says Paggi. "Hopefully, a major confrontation will be avoided. If not, agricultural interests should brace for a possible shock from our largest customer."

"As trade legislation continues to be formulated in Congress, agricultural interests will have to speak loud and often to keep other industry groups from dominating the discussions," emphasizes the economist. "Otherwise, the potential for conflict over non-agricultural trade issues will likely result in increased damage to agricultural

Quality forage production program set

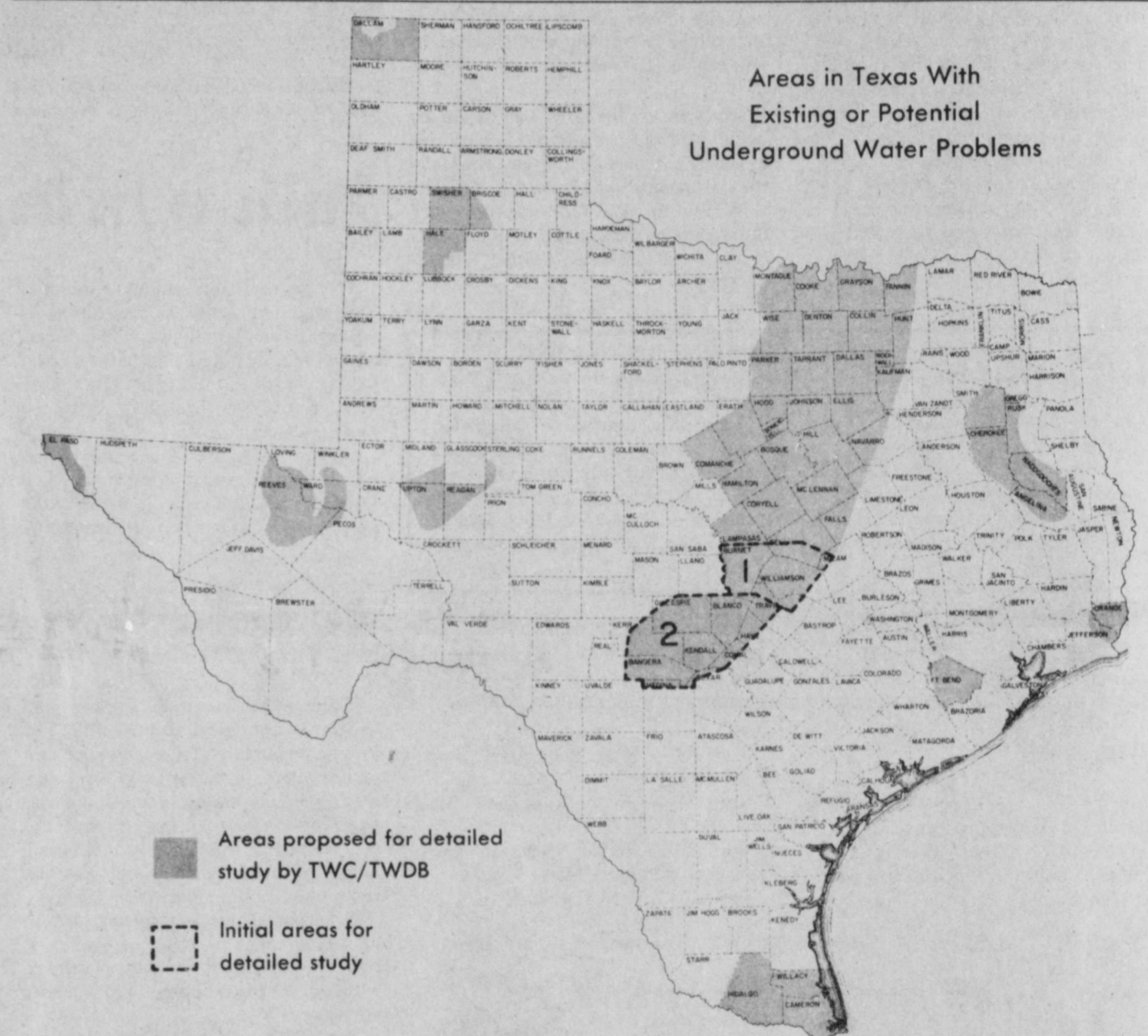
Production of high quality hay and grazing in conjunction with adjacent seed maize fields is sometimes a difficult task to perform. The Texas Agricultural Extension Service, Soil Conservation Service and area hybrid sorghum seed production companies will hold an educational program to assist producers in forages and seed production.

This program will be held at Triumph Seed Company, Ralls, beginning at 9:30 a.m., Thursday, April 23.

T. Andy Vestal, Crosby County Extension agent-ag., will discuss alter-

nate forages for haying and grazing. Dr. John McNeill, Extension beef cattle specialist of Amarillo will inform producers on nutritional aspects and proper methods of haying. Silas Flournoy, soil conservationist from Crosbyton, will discuss the Conservation Reserve Program and cover crops for grass establishment.

These area seed companies will be present to share their knowledge and experiences in seed production adjacent to forage crops: Asgrow, Pioneer, Crosbyton Seed, Dekalb, R.C. Young, Gro-Agri and Triumph.



Water shortage areas due study

The Texas Water Commission and the Texas Water Development Board have agreed on the first two areas for detailed study as possible critical ground water areas. A list of 10 areas to be studied was released January 13.

One area includes portions of Travis, Williamson, Milam, Bell and Burnet counties. The other area covers all of Blanco, Kendall, and Bandera counties and parts of Travis, Hays, Comal, Medina, Kerr, Gillespie, and Burnet counties. The areas proposed for study do not include areas lying within existing underground water conservation districts.

Major topics to be addressed by each detailed study include the occurrence and availability of ground and surface water and conservation and protection of ground water. In addition, these studies will project area water supply and quality for the next 20 years, plus what the population and water demands will be on those resources. On the basis of these findings, the feasibility of creating districts will also be discussed.

These detailed studies will be performed by a joint team representing the Texas Water Commission and the Texas Water Development Board.

Farm News

SPRING PRE-OWNED HOME SALE

1982 SUNVILLA
14 X 80
3 BR 2 BATH
\$219.29 Mo.

1982 CAROLINE
14 X 80
3 BR 2 BATH
\$195.11 Mo.

1978 TOWN & COUNTRY
4 BD. 2 BATH
14 X 80
\$218.27 Mo.

ALL HOMES COMPLETELY REFURBISHED
OTHERS TO CHOOSE FROM!

ON THE SPOT FINANCING!!
10% DOWN - - 180 Mo.
13.25% APR

Graham Home Center

1200 South I-27
Plainview, Texas
(806) 293-8355

For dryland or limited irrigation.

8493

Exceptional drought tolerance makes 8493 ideal for dryland or limited irrigation in the High Plains. Excellent resistance to Biotype C and E greenbugs and MDMV. Medium-maturity, excellent yielding hybrid with strong stalks and roots for standability.

8333

Outstanding yields in the High Plains under limited irrigation. Excellent head exertion and good standability. Resistant to head smut. Good resistance to MDMV and Biotype C greenbugs. Open heads of bronze, hard textured grain make an excellent field appearance.



See your Pioneer sales representative right away.



Ronnie Thornton
652-2650



* Registered trademark of Pioneer Hi-Bred International, Inc. Pioneer is a brand name; numbers identify varieties and products. Pioneer® brand products are sold subject to the terms and conditions of sale which are part of the labeling and sale documents.



CAPROCK-PLAINS FEDERAL LAND BANK ASSOCIATION

Floydada 983-2480

FLOYD COUNTY FARM BUREAU

Lockney 652-2242
Floydada 983-3777

FLOYDADA IMPLEMENT CO.

Floydada 983-3584

FIRST NATIONAL BANK OF FLOYDADA

Floydada 983-3717

RUSSELL'S EQUIPMENT & SUPPLY

Floydada 983-3751

FLOYD COUNTY IMPLEMENT

Floydada 983-3732

FLOYDADA COOPERATIVE GINS INC

Floydada 983-2884

ATTEBURY GRAIN, INC.

Established in 1954

Lockney & Lone Star

652-3393 & 652-3511

Buying Generic Certificates

We would like to handle your wheat this season

Licensed & Bonded Formerly Patterson Grain