

Stampede the Mustangs

7:30 p.m. Friday in Lockney

CONCERT

Members of the First United Methodist Church of Lockney will present the Celebration Singers of St. Luke's United Methodist Church of Lubbock in concert Sunday night, November 2, at 6:00 p.m.

There is no charge for the concert and there will be a potluck supper in the fellowship hall after the concert.

MEMBER
1986
TEXAS PRESS
ASSOCIATION

THE LOCKNEY BEACON

25¢

Lockney, Texas 79241

USPS 317-220

©The Lockney Beacon

Thursday, October 30, 1986

Volume 84 Number 44

PTA organizes for 1986-87

The Lockney P.T.A. organization has organized for the 1986-87 school year and held its first meeting October 6.

Officers elected for the year will include: President Kay Martin, Vice President Kathy Allen, Secretary/Treasurer Reeda Cay Smith, Projects Chairman Brenda Mangold, Programs Chairman Kathy Allen, and vice presidents in elementary and junior high schools are Charlanne Burson and Kathy Kellison, respectively.

The meeting was held at the elementary cafeteria. Mrs. Susan Crider, first grade teacher at Lockney Elementary School and Mrs. Shirley Igo, State Community Services chairman, presented a program on "What PTA is and how it can benefit our school children."

The November meeting of the P.T.A. will feature high school principal James Poole in a program on the new

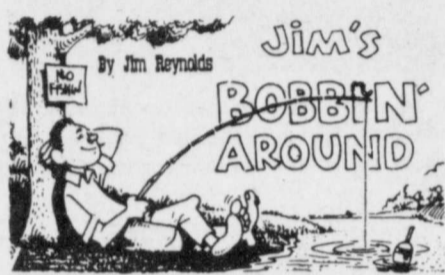
Discipline Management Program, which has been introduced to the Lockney schools.

PROJECTS PLANNED

The Lockney organization has planned several projects for the year and the ones in the near future include a Santa's Secret Workshop from December 8 through 12.

At this workshop, school children will be able to purchase Christmas presents for members of their families at very reasonable prices. According to P.T.A. President Kay Martin, "This is being sponsored by the P.T.A. The children will be able to purchase Christmas gifts for their family members on their own, under supervision, at reasonable prices. We have been told by the company that is coming for the workshop that all the gifts are \$4.00 and under. More

information will be sent home with the students as it gets closer to time for the



SURVIVING AG CRUNCH

Borrowed the following from "On the Edge of Common Sense," a column of the "Livestock Weekly" magazine by Baxter Black, DVM. I think it is pretty amusing and that you will enjoy it.

"Will you be able to survive the 1986 agricultural crisis? Here is a test designed to help you evaluate your chances. Your answers will determine whether you are financially and psychologically fit to continue. Please circle either 'A' or 'B'."

1. My present financial portfolio includes:

A. Over one million in land and livestock.

B. A '72 Ford three-quarter ton, 6 horses worth 32 cents a pound and a wife with a job.

2. Most of my ready cash is:

A. In interest-bearing checking accounts.

B. In a Copenhagen lid on the bedroom dresser.

3. My banker calls me:

A. "Mister"

B. Every two hours.

4. My chances of getting a loan are:

A. Sure as the sun rises.

B. As good as Slim Whitman becoming Pope.

6. The best cattle deal I ever made was:

A. Sold 3,000 head of 28 cent corrientes for 56 cents three months later

B. Stole a truckload of feeder calves and lost \$30 a head

7. I started ranching because:

A. I love the land and inherited \$5 million

B. My daddy chained me to a tractor when I was 6 years old.

8. The reason I ranch and farm today is:

A. I find it a fascinating and lucrative profession

Continued on Page Three

workshop."

Another project that P.T.A. is sponsoring is a poster contest. November is National P.T.A. Child Safety and Protection Month and the local organization will be sponsoring a poster contest in the elementary school. There will be a winner for each of the classrooms.

After a winner from each classroom is selected, judges will then select a winner from each grade. The winners of each grade will then be displayed in the lobby of the First National Bank from November 17 through 21. The overall winner will be selected by the public, who will be allowed to vote for 5 cents per vote. The P.T.A. will then add to the money for the first, second, and third place winners and the money will go to the classrooms of the top three place winners.

Parents are encouraged to get their children to participate in the poster contest and there are a wide range of subjects that students can choose for their posters. These ideas include safety as in watching out for strangers, drinking and driving, fire safety in the home, seat belts, child abuse and latchkey children.

HALLOWEEN CARNIVAL BOOTH

A fund raising project scheduled for November 1 is a cake walk booth at the Lockney Elementary School P.E. departments Halloween Carnival.

SCHEDULE OF EVENTS

The P.T.A. would like to remind parents of these upcoming events.

October 28-29: Exit level exams for 11th grade students.

October 31: Elementary school children may wear Halloween costumes to school, if they are conducive to classroom activities. Halloween parties are from 3:15 to 4:00 p.m. in elementary.

November: National P.T.A. Child Safety and Protection Month.

November 1: Halloween Carnival, elementary school.

November 10: P.T.A. meeting, Mr. Poole to speak.

November 26: Classes dismissed for Thanksgiving.

December 1: Kids back to school.

December 8-12: Santa's Secret Workshop.

December 22: Classes out for Christmas.

January 5: Classes back in session.

January 12: P.T.A. meeting.



THRILLING MOMENT—Carl Coffey, former pastor of Alken Baptist Church, is kissed by the new pastor, Ray Starnes. Rev. Starnes lived up the festivities at the church's Halloween carnival Monday by dressing up as a woman. The Halloween celebration was packed with children and adult anxious for treats, contests, and scares!

Eight qualify for regional

By Patti Purser

Lockney's cross country teams finished up their regular season with an impressive showing. The junior high teams, both boys and girls, were untested by the other district schools.

The junior high girls were represented by Michelle Delgado who placed 1st overall followed by Calixta Guerrero, Martha Harris and Sheda Hill.

The boys team was paced by Kip Holt for the 3rd straight week followed by Steven Vasquez, Roland Raynes, Robby Reyes, Joe Sustaita, Tony Ascencio, Ignacio Luna, Raul Molina and Cody Jackson.

These athletes are to be congratulated on their dedication to keep the Lockney Jr. High program a strong

Continued on Page Three



WHO WON?—This 1984 Ford Ranger was badly damaged Saturday night when it collided with 11 cattle, north of Lockney on Farm Road 378. Jerry Calahan, driver of the pickup, was transported to Lockney General Hospital. He was not seriously injured. See story for further details. —Staff photo

Cattle killed in Saturday accident near Lone Star

A Canyon man was injured, not seriously, about 8:30 p.m. Saturday when his 1984 Ford Ranger struck 11 cattle. The accident occurred 9.2 miles north of Lockney on Farm Road 378.

According to information received by The Beacon, the cattle were pastured near Lone Star for Caprock Industries Feed Yard.

Jerry Calahan, who was driving the pickup that struck the cattle, stated he was knocked out for a short moment after the impact. He received minor head injuries, broken ribs and minor lacerations to both hands and was transported to Lockney General Hospital by a private vehicle before DPS or county deputies arrived.

"We counted approximately 35 small cows that probably had been walking down the highway," said Rowell. "Of the eleven cattle killed, all but three were dead from the impact and three had to be destroyed. There may have been more hit that wandered off."

The vehicle traveled 189.5 feet from the point of impact before stopping, according to the DPS report. "Mr. Calahan did not have his seat belt on. In my opinion this is one of those cases if he had had his seat belt on he would not have been hurt," said Rowell.

Trooper Rowell emphasized how dangerous loose livestock is to motorists. "People should always watch for livestock on the road especially after bad

weather. Many farmers lose the electricity in their fences after bad weather. Approximately 20% of the car accidents I've investigated in Floyd County involve motorists hitting livestock."

Methodist Church Harvest Festival termed 'success'

Another successful year has passed for members of the First United Methodist Church of Lockney. They completed their eighth annual Harvest Festival this past weekend.

This year's festival grossed over \$6000 for the church and the money raised goes towards various church improvements throughout the year.

Those attending this year were again treated to a delicious turkey and dressing dinner with all the trimmings. All of the meal is cooked by members of the church and not only do they feature the meal served in the church but they provide delivery for homebound and shut-ins and a take out service for those who prefer to eat at home.

General chairman for this year's festival was Andy Ford. She was assisted by Connie Sanders and Kathy Kellison who were in charge of the kitchen and the meal. Brett and Judy Gill were in charge of ticket sales, Charlotte Brock and Carolyn Jackson were in charge of the country store and Owen Kathleen Thornton were in

Halloween carnival set Saturday

Plans for the Halloween Carnival, planned for November 1 in the Lockney elementary gym, are being finalized by

chairman Joyce Marks. All proceeds from admission charges and booth rental will go toward the purchase of new physical education equipment for the elementary P.E. program.

At press time there were seven booths rented and it is not too late to rent booth space if Mrs. Marks is notified by Friday. Booth rental is \$5.00 and anyone wishing to rent a booth may contact Mrs. Marks at home at 652-3157 or at the elementary school at 652-3321.

Booths rented at this time include: a cake walk, sponsored by the Lockney P.T.A.; a booth which will feature scars, bruises and face painting by the Lockney Chamber of Commerce; a pie throw by the junior high student council; a skee ball booth by the girl scouts; and the brownie troops have rented two booths which will feature

Beacon offers old papers to public

Any school or church group or a civic organization involved in or planning a paper drive is asked to contact The Beacon.

This newspaper has an abundance of back issues which need to be removed. Opportunity to secure these newspapers is being offered to the public before they are discarded.

various games. A spook house is also planned for the night.

There will be a booth in which cokes will be sold but no food booth is planned

at this time. Admission to the event will be 50 cents for school age children and up and 25 cents for preschool age children.

This Week . . .

ATTENTION PARENTS!

The Beacon has been asked to notify all parents and Halloween trick or treaters to please not knock on the doors of homes which do not have the porch lights on or the front doors open. Many of the citizens in Lockney are elderly and are not able to come to their doors at every knock. If the porch lights are on or

the doors are open youngsters can be sure of a welcome to come to the homes. We ask that parents help their children select the homes which they trick or treat.

Parents should also accompany children on Halloween to avoid accidents. Youngsters can get excited and could possibly not watch for cars.

Make this a safe Halloween for your children.

SPAGHETTI SUPPER

The junior class of Lockney High School will sponsor a fundraising spaghetti supper this Friday night, October 31, from 5 to 7 p.m. in the Lockney Elementary School cafeteria. Cost for the meal is \$3.00 for adults and \$2.00 for children 10 years old and under. The meal, which includes spaghetti, salad, cobbler, bread sticks and tea or coffee is available for take out and tickets may be purchased from any member of the junior class.

CORRECTION

In last week's story on the first six week failures, we reported that Lockney High School had 28 failures in the first six weeks of 1985-86. We were incorrect and we apologize for this error. In the first six weeks of the 1985-86 year the high school had 47 failures, compared to this year's first six weeks failures of 25. This is a considerable drop in the failure rate.

Stampede the Mustangs

7:30 p.m. Friday in Lockney

CONCERT

Members of the First United Methodist Church of Lockney will present the Celebration Singers of St. Luke's United Methodist Church of Lubbock in concert Sunday night, November 2, at 6:00 p.m. There is no charge for the concert and there will be a potluck supper in the fellowship hall after the concert.

MEMBER 1985
TEXAS PRESS ASSOCIATION

THE LOCKNEY BEACON

25¢

Lockney, Texas 79241

USPS 317-220

©The Lockney Beacon

Thursday, October 30, 1986

Volume 84 Number 44

PTA organizes for 1986-87

The Lockney P.T.A. organization has organized for the 1986-87 school year and held its first meeting October 6.

Officers elected for the year will include: President Kay Martin, Vice President Kathy Allen, Secretary/Treasurer Reeda Cay Smith, Projects Chairman Brenda Mangold, Programs Chairman Kathy Allen, and vice presidents in elementary and junior high schools are Charlanne Burson and Kathy Kellison, respectively.

The meeting was held at the elementary cafeteria. Mrs. Susan Crider, first grade teacher at Lockney Elementary School and Mrs. Shirley Igo, State Community Services chairman, presented a program on "What PTA is and how it can benefit our school children."

The November meeting of the P.T.A. will feature high school principal James Poole in a program on the new

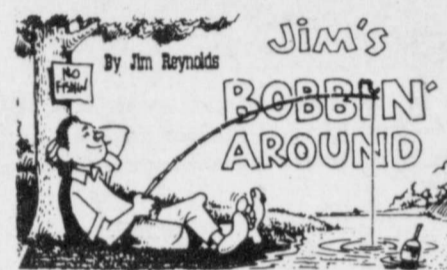
Discipline Management Program, which has been introduced to the Lockney schools.

PROJECTS PLANNED

The Lockney organization has planned several projects for the year and the ones in the near future include a Santa's Secret Workshop from December 8 through 12.

At this workshop, school children will be able to purchase Christmas presents for members of their families at very reasonable prices. According to P.T.A. President Kay Martin, "This is being sponsored by the P.T.A. The children will be able to purchase Christmas gifts for their family members on their own, under supervision, at reasonable prices. We have been told by the company that is coming for the workshop that all the gifts are \$4.00 and under. More

information will be sent home with the students as it gets closer to time for the



SURVIVING AG CRUNCH

Borrowed the following from "On the Edge of Common Sense," a column of the "Livestock Weekly" magazine by Baxter Black, DVM. I think it is pretty amusing and that you will enjoy it.

"Will you be able to survive the 1986 agricultural crisis? Here is a test designed to help you evaluate your chances. Your answers will determine whether you are financially and psychologically fit to continue. Please circle either "A" or "B".

1. My present financial portfolio includes:

A. Over one million in land and livestock.

B. A '72 Ford three-quarter ton, 6 horses worth 32 cents a pound and a wife with a job.

2. Most of my ready cash is:

A. In interest-bearing checking accounts.

B. In a Copenhagen lid on the bedroom dresser.

3. My banker calls me:

A. "Mister"

B. Every two hours.

4. My chances of getting a loan are:

A. Sure as the sun rises.

B. As good as Slim Whitman becoming Pope.

6. The best cattle deal I ever made was:

A. Sold 3,000 head of 28 cent corrientes for 56 cents three months later.

B. Stole a truckload of feeder calves and lost \$30 a head.

7. I started ranching because:

A. I love the land and inherited \$5 million.

B. My daddy chained me to a tractor when I was 6 years old.

8. The reason I ranch and farm today is:

A. I find it a fascinating and lucrative profession.

Continued on Page Three

workshop."

Another project that P.T.A. is sponsoring is a poster contest. November is National P.T.A. Child Safety and Protection Month and the local organization will be sponsoring a poster contest in the elementary school. There will be a winner for each of the classrooms.

After a winner from each classroom is selected, judges will then select a winner from each grade. The winners of each grade will then be displayed in the lobby of the First National Bank from November 17 through 21. The overall winner will be selected by the public, who will be allowed to vote for 5 cents per vote. The P.T.A. will then add to the money for the first, second, and third place winners and the money will go to the classrooms of the top three place winners.

Parents are encouraged to get their children to participate in the poster contest and there are a wide range of subjects that students can choose for their posters. These ideas include safety as in watching out for strangers, drinking and driving, fire safety in the home, seat belts, child abuse and latchkey children.

HALLOWEEN CARNIVAL BOOTH

A fund raising project scheduled for November 1 is a cake walk booth at the Lockney Elementary School P.E. departments Halloween Carnival.

SCHEDULE OF EVENTS

The P.T.A. would like to remind parents of these upcoming events.

October 28-29: Exit level exams for 11th grade students.

October 31: Elementary school children may wear Halloween costumes to school, if they are conducive to classroom activities. Halloween parties are from 3:15 to 4:00 p.m. in elementary.

November: National P.T.A. Child Safety and Protection Month.

November 1: Halloween Carnival, elementary school.

November 10: P.T.A. meeting, Mr. Poole to speak.

November 26: Classes dismissed for Thanksgiving.

December 1: Kids back to school.

December 8-12: Santa's Secret Workshop.

December 22: Classes out for Christmas.

January 5: Classes back in session.

January 12: P.T.A. meeting.



THRILLING MOMENT—Carl Coffey, former pastor of Aiken Baptist Church, is kissed by the new pastor, Ray Starnes. Rev. Starnes lived up to the festivities at the church's Halloween carnival Monday by dressing up as a woman. The Halloween celebration was packed with children and adult anxious for treats, contests, and scares!

Eight qualify for regional

By Patti Purser

Lockney's cross country teams finished up their regular season with an impressive showing. The junior high teams, both boys and girls, were untested by the other district schools. The junior high girls were represented by Michelle Delgado who placed 1st overall followed by Calixta Guerrero, Martha Harris and Sheda Hill.

The boys team was paced by Kip Holt for the 3rd straight week followed by Steven Vasquez, Roland Raynes, Robby Reyes, Joe Sustaita, Tony Ascencio, Ignacio Luna, Raul Molina and Cody Jackson.

These athletes are to be congratulated on their dedication to keep the Lockney Jr. High program a strong

Continued on Page Three



WHO WON?—This 1984 Ford Ranger was badly damaged Saturday night when it collided with 11 cattle, north of Lockney on Farm Road 378. Jerry Calahan, driver of the pickup, was transported to Lockney General Hospital. He was not seriously injured. See story for further details. —Staff photo

Cattle killed in Saturday accident near Lone Star

A Canyon man was injured, not seriously, about 8:30 p.m. Saturday when his 1984 Ford Ranger struck 11 cattle. The accident occurred 9.2 miles north of Lockney on Farm Road 378.

According to information received by The Beacon, the cattle were pastured near Lone Star for Caprock Industries Feed Yard.

Jerry Calahan, who was driving the pickup that struck the cattle, stated he was knocked out for a short moment after the impact. He received minor head injuries, broken ribs and minor lacerations to both hands and was transported to Lockney General Hospital by a private vehicle before DPS or county deputies arrived.

"We counted approximately 35 small cows that probably had been walking down the highway," said Rowell. "Of the eleven cattle killed, all but three were dead from the impact and three had to be destroyed. There may have been more hit that wandered off."

The vehicle traveled 189.5 feet from the point of impact before stopping, according to the DPS report. "Mr. Calahan did not have his seat belt on. In my opinion this is one of those cases if he had had his seat belt on he would not have been hurt," said Rowell.

Trooper Rowell emphasized how dangerous loose livestock is to motorists. "People should always watch for livestock on the road especially after bad

weather. Many farmers lose the electricity in their fences after bad weather. Approximately 20% of the car accidents I've investigated in Floyd County involve motorists hitting livestock."

Methodist Church Harvest Festival termed 'success'

Another successful year has passed for members of the First United Methodist Church of Lockney. They completed their eighth annual Harvest Festival this past weekend.

This year's festival grossed over \$6000 for the church and the money raised goes towards various church improvements throughout the year.

Those attending this year were again treated to a delicious turkey and dressing dinner with all the trimmings. All of the meal is cooked by members of the church and not only do they feature the meal served in the church but they provide delivery for homebound and shut-ins and a take out service for those who prefer to eat at home.

General chairman for this year's festival was Andy Ford. She was assisted by Connie Sanders and Kathy Kellison who were in charge of the kitchen and the meal. Brett and Judy Gill were in charge of ticket sales, Charlotte Brock and Carolyn Jackson were in charge of the country store and Owen Kathleen Thornton were in

charge of the auction.

This year's country store featured homebaked goods, homecanned foods, and small handcrafted items which all sold for under \$20. This year's country store netted \$1086.00.

The biggest event of the day was the auction which raised about \$3022 for the church. There were many items in the auction which included Christmas decorations, afghans, paintings, a hand crocheted vest, and the largest item, a quilt made by church members.

The blocks for the quilt were made by members of the church. Inez and Loren Rhodes donated the Wedgewood blue fabric that was used to strip and border the quilt. Kathleen Thornton worked on the arrangement of the blocks, and Linda Smith of Eastmound bound and quilted the quilt.

Owen Thornton, who came with the specific purpose of winning the bid on the quilt, went home with the quilt this year.

Plans for the Halloween Carnival, planned for November 1 in the Lockney elementary gym, are being finalized by

chairman Joyce Marks. All proceeds from admission charges and booth rental will go toward the purchase of new physical education equipment for the elementary P.E. program.

At press time there were seven booths rented and it is not too late to rent booth space if Mrs. Marks is notified by Friday. Booth rental is \$5.00 and anyone wishing to rent a booth may contact Mrs. Marks at home at 652-3157 or at the elementary school at 652-3321.

Booths rented at this time include: a cake walk, sponsored by the Lockney P.T.A.; a booth which will feature scars, bruises and face painting by the Lockney Chamber of Commerce; a pie throw by the junior high student council; a skee ball booth by the girl scouts; and the brownie troops have rented two booths which will feature

Beacon offers old papers to public

Any school or church group or a civic organization involved in or planning a paper drive is asked to contact The Beacon.

This newspaper has an abundance of back issues which need to be removed. Opportunity to secure these newspapers is being offered to the public before they are discarded.

various games. A spook house is also planned for the night.

There will be a booth in which cokes will be sold but no food booth is planned

at this time. Admission to the event will be 50 cents for school age children and up and 25 cents for preschool age children.

This Week . . .

ATTENTION PARENTS!

The Beacon has been asked to notify all parents and Halloween trick or treaters to please not knock on the doors of homes which do not have the porch lights on or the front doors open. Many of the citizens in Lockney are elderly and are not able to come to their doors at every knock. If the porch lights are on or

the doors are open youngsters can be sure of a welcome to come to the homes. We ask that parents help their children select the homes which they trick or treat.

Parents should also accompany children on Halloween to avoid accidents. Youngsters can get excited and could possibly not watch for cars.

Make this a safe Halloween for your children.

SPAGHETTI SUPPER

The junior class of Lockney High School will sponsor a fundraising spaghetti supper this Friday night, October 31, from 5 to 7 p.m. in the Lockney Elementary School cafeteria. Cost for the meal is \$3.00 for adults and \$2.00 for children 10 years old and under. The meal, which includes spaghetti; salad, cobbler, bread sticks and tea or coffee is available for take out and tickets may be purchased from any member of the junior class.

CORRECTION

In last week's story on the first six week failures, we reported that Lockney High School had 28 failures in the first six weeks of 1985-86. We were incorrect and we apologize for this error. In the first six weeks of the 1985-86 year the high school had 47 failures, compared to this year's first six weeks failures of 25. This is a considerable drop in the failure rate.



In times like these... By Mary Jo Fielding

During the Carter administration a new agency was created, the Department of Energy, better known as the DOE. Sixty percent of the department's budget today is allocated to military programs, up from 38 percent in 1981 when President Reagan took office. Meanwhile civilian energy programs have shrunk from 57 percent of the budget to 35 percent.

Until recently this turnabout was little noticed, which was the way the DOE wanted it to be. A 1985 memo urged the agency's public relations staff to be "sensitive to the risk of calling too much attention to the DOE's (military) nuclear program. The risk of an adverse reaction is always present."

Ever since the Reagan administration took office vowing to strengthen America's nuclear arsenal, the Energy Department has worked overtime to fill

Pentagon orders. The DOE's military budget rose from \$3.6 billion in 1981 to \$7.2 billion this year. These programs have made Energy Secretary John Herrington perhaps second only to Defense Secretary Casper Weinberger as a point man on the buildup of America's nuclear arsenal. The nation's three government-owned weapons, laboratories, working under DOE supervision are busy designing new nuclear warheads for futuristic cannons, depth charges and anti-aircraft and ballistic missiles. The agency detonates these nuclear weapons in huge underground cavities at its sprawling Nevada test site, a practice that Moscow and many lawmakers want halted.

For good or ill, the DOE's growing military role has gained for it a new lease on life from a President who once vowed to abolish the agency.



MISS WAYLAND ENTRIES—Among the 16 contestants in next weekend's Miss Wayland University Pageant are (clockwise from top left) Sherre Kinard, Angel Edwards, Angela Presley and Diana Jarred. Miss Kinard is the daughter of Sharon Kinard and Roy Kinard of Lockney.

Kinard vies in Pageant

The list of 16 contestants entered in this weekend's Miss Wayland University Pageant in Plainview includes Sherre Kinard of Lockney.

Miss Kinard, a 1986 graduate of Lockney High School, is being sponsored in the two-day event by the Student Government Association.

The 16th annual pageant is slated for Friday and Saturday evenings, Oct. 31 and Nov. 1, at 7:30 each evening in Harrah Memorial Auditorium. Preliminary competition will be held Friday, and the eight finalists from that round will compete in Saturday's finals.

Contestants will be judged in talent, swimsuit, interview and evening gown competitions.

The winner, to be crowned by the reigning Miss Wayland, Lenna Lowrance, will be Plainview's entry in the 1987 Miss Texas Pageant in Fort Worth next July.

Admission is free to Friday night's competition, while tickets are \$5 per person for the finals on Saturday.

Miss Kinard, a freshman pre-med major at Wayland, will do a twirling routine to the musical number "Le Jazz Hot" for her talent presentation. She is the daughter of Sharon Kinard and Roy Kinard of Lockney.

Dianne's Diary

October 20:
This month is going by so quickly. We are working busily on our arts and crafts projects in preparation for our Christmas bazaar that we will be having at the elementary school. As we have done in past Christmases, we will be taking our craft projects to the school and selling them at an affordable price to the children to allow them an opportunity to personally choose a gift for their parents and loved ones.

As busy as we have been we still make the time to go on our bus trip to Plainview on Monday's and for our Bingo game on Friday's.

We would like to welcome a new member to our family, Mrs. Olive

Myers of Lockney. We are so glad to have you. We would also like to welcome Mr. Bagwell back. He had been in the hospital and now he is back home with us.

Celebrating birthdays this week will be Mary Jo Fielding, Bessie Jackson, Henry Merrell and Jim Brooks. Happy Birthday to all. We love all of you.

On Halloween day we will be having a party at 2:00. If anyone would care to join us we would love to have you. Wear a costume and come prepared to have a lot of fun. Until next week, Happy Halloween.

Dianne Galvan
Activity Director

Square Dance News

Whirlers have been doing a lot of visiting lately to advertise a special dance, which was held Friday night. Six couples visited in Childress, five couples in Lorenzo, and several in Lubbock and Plainview.

The big Halloween dance was a great success, with more than eleven squares and visitors from as far away as Childress and Dallas. Visitors also came from Lubbock, Plainview, Olton, Tulia, Silverton, Lorenzo, and Snyder. Everyone really enjoyed dancing to caller Troy Ray, who is from Mabank, Texas (close to Dallas.) He calls all around the country and is probably best known in this area for being the resident caller for several years during the summers at Red River, New Mexico.

The M.A.C. was decorated with pumpkins, streamers and other Halloween items. Everyone was treated to a supper of sandwiches, chips, dips and desserts before the dance.

Some of the local club members have traveled out of state to attend special square dance festivals. Paul and Zora Reecer danced at the Aspencade at

Cloudcroft, New Mexico, and Jim and Carol Huggins danced in Red River, New Mexico at Octoberfest.

Whirlers next dance will be November 7 with Ellen Spoon calling.



BRENT BARKER is shown as he flew Governor Mark White for one day last week on his southern Texas, Houston area campaign tour. Brent is Flight Manager of Chaparral Trade Winds Airport in Amarillo, and is the son of Mr. and Mrs. Barry Barker, Lockney.

G. Mangold completes requirements

Dr. Gary B. Mangold of Lockney has completed continuing education requirements to retain active membership in the American Academy of Family Physicians, the national association of family doctors. The Academy formerly was called the American Academy of General Practice.

The requirements call for the members to complete a minimum of 150 hours of accredited continuing medical study every three years. Members become eligible for re-election at the end of the third year following their election to membership. The Academy, the country's second largest national medical association, was the first national medical group to require members to keep up with medical progress through continuing education.

The Academy, founded in 1947 and headquartered in Kansas City, Mo., was instrumental in the establishment of a new primary specialty in family practice in 1969.

THE LOCKNEY BEACON [USPS 317-220]

Published weekly each Thursday by Floyd County Newspapers, 211 North Main St., Lockney, Texas 79241. Second class postage paid at Lockney, Texas. Subscription rates: local \$12.50 per year, out-of-trade area \$13.50 per year.

POSTMASTER: Send address changes to The Lockney Beacon, P.O. Box 187, Lockney, Texas 79241.

Ken Towery Publisher
Pam Armstrong Office Manager/
Advertising Editor
Alice Gilroy Editor

Convenience Banking?

What's So Convenient About:

PAYING
higher interest on your loans?

EARNING LESS
interest on your savings?

PAYING HIGHER
service costs at banks?

LOSING
local control over banking?

SACRIFICING
service to the big banks' benefit?

YOU WILL HEAR A LOT FROM THE SO-CALLED CONVENIENCE BANKERS ABOUT PROPOSITION FOUR BUT YOU PROBABLY WILL NOT HEAR THIS:

The big banks of Texas hope to create a bank monopoly at your expense. Proposition Four has disguised branch banking as "full service banking". Whatever they call it - Branch Banking is a bad idea for Texas, and Texans will end up footing the bill for the big Texas bank holding companies to get bigger.

You especially don't want this to happen now since the Texas Legislature just passed a law permitting the large banks of New York City to purchase some or all of the large Texas bank holding companies. Not only can this legally happen now, but is almost certain to take place in the immediate future.

For all these years, Texans have never wanted or allowed the big banks of New York City to own and control the Texas Banking Industry. We are sure that this position by the people of Texas still has never changed.

Protect Your Interests And Your Pocketbook On Nov. 4.

VOTE NO

ON PROPOSITION FOUR.

Paid for by Independent Bankers for Texas.
P.O. Drawer B, Fredericksburg, Texas 78624
Randy Leifeste, Treasurer

Lockney Hospital Report

Oct. 20-27

Kenneth Griggs, Floydada, adm. 10-15, dis. 10-20
Lisa Holt, Muleshoe, adm. 10-19, baby girl Cassie, born 10-19, dis. 10-22
Charles Huffman, Lockney, adm. 10-19, continues care
O.J. Lee, Flomot, adm. 10-20, dis. 10-23
Mary Jo Cruz, Floydada, adm. 10-20, baby boy Anthony, born 10-20, dis. 10-23
Catherine Nuncio, Lockney, adm.

10-21, baby girl Anita, born 10-21, dis. 10-23, baby dis. 10-25
Olga Rodriguez, Quitaque, adm. 10-23, baby boy Matthew, born 10-23, dis. 10-25

Jerry Guadalacozer, Petersburg, adm. 10-26, continues care
Breck Wofford, Lockney, adm. 10-23, continues care
Eleanor Schacht, Lockney, adm. 10-25, continues care

True addresses El Progreso

The El Progreso Study Club met in the home of Katherine Ball, Oct. 22 for a program on favorite holidays. Merle Mooney presided in the absence of president Mary Blanchard. Christmas was mentioned most often with a few birthdays. It was agreed that anytime families got together was a special time.

Mary True, Floyd County Extension Agent, brought a very interesting and helpful program on gifts from the kitchen. Various breads were mentioned and several hot and cold drink recipes were given. These gifts become more special when they are wrapped and packaged in different and unusual ways. Beautiful Christmas plates and baskets were shown to add to the gifts.

Refreshments of pumpkin pie cake were served to Merle Mooney, Pauline Sams, Arla Copeland, Hazel Johnson, Cornelia Johnson, Bobby Kellison, Dimon Schacht, Alice Mitchell and guests, Ruth Mitchell, Elaine Gibson,

Mary True and Misty Younger by hostess Katherine Ball.

WMU Ladies meet

The WMU ladies of the First Baptist Church in Lockney, met in the church parlor Monday at 3:00 p.m., on October 20, 1986.

Agnes Frizzell was the hostess. The study was Sharing the Good News in the Language of the Heart.

The president, Melba Atkins, presided. Pauline Sams led the program. Those present were: Cornelia Johnson, Elvira Stewart, Emma Thomas, Helen McLeod, Ruth Mitchell, Neva Smith, Pauline Sams, Agnes Frizzell, Faye Ferguson, Eva Whitfill, Ann Handley, Melba Atkins, Jewel Fortenberry, Bobby Kellison, and Dorothy Shipp.

COMPARE WITH THE BEST...

Be you young or older drivers, bring in your Auto Insurance Policy and compare with the BEST. You are probably paying enough, but are YOU getting ALL you pay for? Chances are good we can probably save you money too!



JERRY COOPER
Lockney
Insurance Agency
105 North Main
Lockney, TX 79241
Phone 806-652-3347

YOUR Independent AGENT

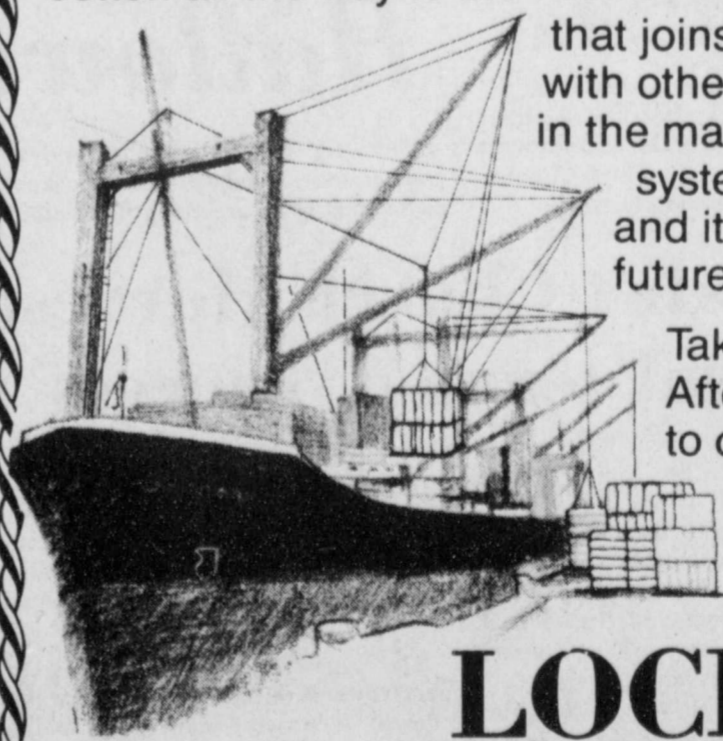
It makes sense to stay involved with your cotton after it leaves the farm. That's why taking your cotton to your co-op gin is a good idea—for a couple of reasons:

First, when you take your cotton to a co-op gin, that gin becomes a part of your business. You have a voice in how it's run and you share in the profits. The more cotton you bring, the more it pays.

But, even more importantly, when you bring your cotton to your co-op gin you become part of a system that takes your cotton all the way to the market. A system

that joins your local co-op gin with other co-op gins to give you a voice in the market. Being a part of that system is important to you now and it's even more important to the future of cotton farming.

Take your cotton to your co-op gin. After all, it's just good business to do business with yourself.



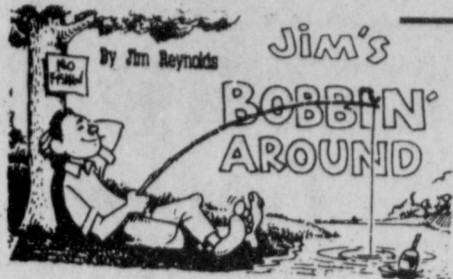
LOCKNEY COOPERATIVES

South Plains 983-3501

Lockney Elevator 652-3394

Main Office 652-3377

Sterley Elevator 652-3103



work! — Jimmie Taylor, Paducah Post

MEANINGFUL WORDS

Old Unk and Auntie had their marital spats throughout the years and I don't think Unk would have parted with her for anything, but like most spouses somewhere in a lifetime he gave it some thought.

For instance, he visited the city one time and went into a bar, although he was more accustomed to tipping a jug than using a glass. A man took a seat next to him and ordered a double.

"Why are you so upset?" Old Unk asked, noticing the agitation on his face.

"Because I just had words with my wife and she moved out."

Old Unk perked up considerably and asked excitedly, "Can you remember exactly what the words were?" — Burnis Lawrence, Crosby County News

NOT FOR EVERYBODY

Two caterpillars were crawling across the field when a butterfly flew over them. They looked up, and one nudged the other and said, "You couldn't get me up in one of those things for a million dollars!"

CARELESS APPEARANCE

A woman seeking a divorce complained to the judge that her husband was careless about his appearance. "He hasn't shown up in two years," she replied.

Eight Horns qualify for regional

Continued from Page One

building block for future Longhorns and Lady Horn honors.

The girls varsity team finished the district meet a little short of greatness. Team totals saw us in a disappointing 3rd place finish behind Hart 1st and Abernathy 2nd. The girls showed great courage and desire in trying to topple the top teams; however, the efforts were not quite good enough.

The team was paced by Melinda Molina with a 5th place finish and a time good enough to advance her to Regionals in two weeks.

Other runners were Linda Cruz, 11th; Joann Castro, 15th; Veronica Blanco, 16th; Rosellen Arjona, 17; Theresa Vasques, 18th; and Soyla Luna, 20th. I was extremely proud of the effort by these girls Saturday as they performed up to their best time for the season in every case but one. They are all young except for one senior and the future looks most encouraging for them.

The boys junior varsity squad was represented by Michael DeLeon, Henry Ruiz, Michael Monroe and Joe Luis Guerrero. These young men ran very competitively against themselves, as there were no other district schools represented in their division.

Our boys varsity team saw only three other boys running for honors against them. We had seven runners, Hart 2 and Abernathy 1 runner.

The team qualified for regional honors by capturing a 1st place finish. Eddie Garza led the Longhorns followed

closely by Corny Luna, Albert Martinez, Jorge Bernal, Mark Gatica, Daniel Rodriguez and Javier Bernal. I was very excited to see them improve on their last Lubbock times; this will definitely be needed to keep us in top form in preparing for Regionals in Lubbock

again on Nov. 8.

We have a long awaited vacation this Saturday and will work extremely hard for the next nine days in preparing for regionals. Congratulations to each of you who ran and represented Lockney during this '86 season.



LOCKNEY JUNIOR VARSITY FOOTBALL PLAYERS—Junior Varsity team members include (back) Albert Martinez, Jamie McDonald, Wesley Teeter, Josue Blanco, Jamie Salas, Ray Jimenez; (center) Joe Luis Guerrero, Heath Rexrode, Feliciano Mondragon, David Brittain, Michael Martinez,

Justin Means, Rex Mathis, Jorge Bernal, Andy Rodriguez, J.J. Perez; (front) Steven Salas, Phillip Glasson, Robbie Williams, Chad Golden, Scott Armstrong, Henry Ruiz, Mark Gatica, Bobby Alcozar, Luciano Banda, Jimmy Gomez and not pictured is Ruben Ascencio.

Continued from Page One

B. I'm in too deep to quit.
9. My long term economic plans include:

A. Expansion and increased productivity

B. Winning the jackpot team roping next Friday.

10. I intend to ranch and farm as long as I can:

A. Make money

B. Borrow money.

Results: If you circled all A's you are an optimistic management type with oil on your property. It is highly likely you will survive through the 80's and invest in satellite technology.

If you circled all B's, you are presently engaged in modern marginal agricultural practices. You will be here tomorrow and the next day, and the next, and the next. Because somebody will always have to be there to do the

DOCK JONES ANNIVERSARY

Friends and family of Mr. and Mrs. Dock Jones are invited to a Saturday, Nov. 1, reception honoring the couple on their 60th wedding anniversary. The fete will be at 5301 48th Street in Lubbock.



WEIRD CHARACTERS APPEAR—At Halloween in 1968 these weird characters appeared at several Lockney sites and at the Ewald Quebe rural home. The gremlins, pictured from left to right are: Algene Barker, Lou Aston, Sally Shaw, Amy Shaw (the small goblin), Emma Collins, Retha Wofford and Lucille Frizzell.

Have a good week!

NOTICE TO RECEIVE BIDS
PLAINVIEW INDEPENDENT SCHOOL DISTRICT
November 13, 1986

The Plainview Independent School District will receive bids for the following:

- (1) Food Products for Cafeterias
- (2) Removal & Disposal of Asbestos from the Main Hall at Estacado Jr. High School
- (3) Teaching Supplies
- (4) Supplies for Panasonic Copiers

Sealed bids should be returned to Mr. John O. Peck, Assistant Superintendent, Plainview, I.S.D., P.O. Box 1540, Plainview, Texas 79073-1540 or delivered to Mr. Peck at the Administration Building, 912 Portland, Plainview, Texas. The bids will be received until 10:00 A.M. on Thursday, November 13, 1986, when they will be opened and tabulated. Bids will be deemed as delivered only when they are received by Mr. Peck. The bids will be presented to the Board at their Regular meeting to be held in the Administration Building at 7:30 P.M. on Thursday, November 13, 1986. At this time the contract will be let. The Board reserves the right to accept or reject any and all bids. This is a solicitation for bids and is not an offer. All bids and information received in response to this solicitation will become the property of the Plainview I.S.D.

Information concerning bid forms and specifications may be obtained by contacting Mr. Peck at the Administration Building, or by calling (806) 296-6392.

John O. Peck, Assistant Superintendent
Plainview Independent School District
10-30, 11-6

On Sale Now Thru Nov. 15th Reg. \$32⁰⁰ for \$28⁸⁰

ELECTRIC Luminarias

A TOUCH OF OLD MEXICO FOR ANY OCCASION.

Whether you want to add a glow to a Christmastime gathering or light up a midsummer night's backyard party, Electric Luminarias bring just the right touch of warmth and tradition to the occasion.

SCHACHT
Flowers, Jewelry & Gifts
112 W. Poplar 652-2385

ALLSUP'S 30 YEARS OF SERVING YOU CONVENIENCE STORES

DELICIOUS DECKER **DECKER**
Franks **Bologna**
12 OZ. PKG. **69¢** 12 OZ. PKG. **89¢**

Support Special Olympics By Purchasing Decker Products at Allsup's

Shurfine Fall Sale

SHURFINE Pumkin 16 OZ. CANS 2 89¢	SHURFINE PURE VEGETABLE Shortening 3 LB. CAN \$1 29	SHURFINE STRAINED CRANBERRY Sauce 16 OZ. CAN 59¢	SHURFINE WHOLE SWEET Potatoes 16 OZ. CAN 59¢
SHURFINE SQUEEZE WAFFLE Syrup 24 OZ. BTL. 99¢	SHURFINE LIGHT CORN Syrup 32 OZ. BTL. 99¢	SUNNY FRESH LARGE Eggs 18 CT. CTN. 99¢	SHURFRESH Biscuits 8 OZ. CANS 6 \$1

LARGE selection Halloween CANDY

YOU'LL BE... THRILLED!

FAST & EASY-ALLSUP'S **Corn Dogs**
2 FOR 89¢

ALLSUP'S CONVENIENCE STORES

DATES EFFECTIVE OCT. 30, 31, NOV. 1, 1986 WHILE SUPPLIES LAST

CONVENIENT & SAFE **Money Orders** EACH **19¢**

BORDEN'S

Homo Milk **Ice Cream** **Hi-Pro Milk**

\$1 99 **\$1 59** **99¢**

FRITO LAY'S® SANTITAS

Tortilla Chips **\$1 19**

REG. \$1.79 NOW ONLY

ALLSUPS BREAD 1 lb. **2/99¢**

Large Beef & Salsa BURRITOS reg. \$1 99 Now **\$1 39**

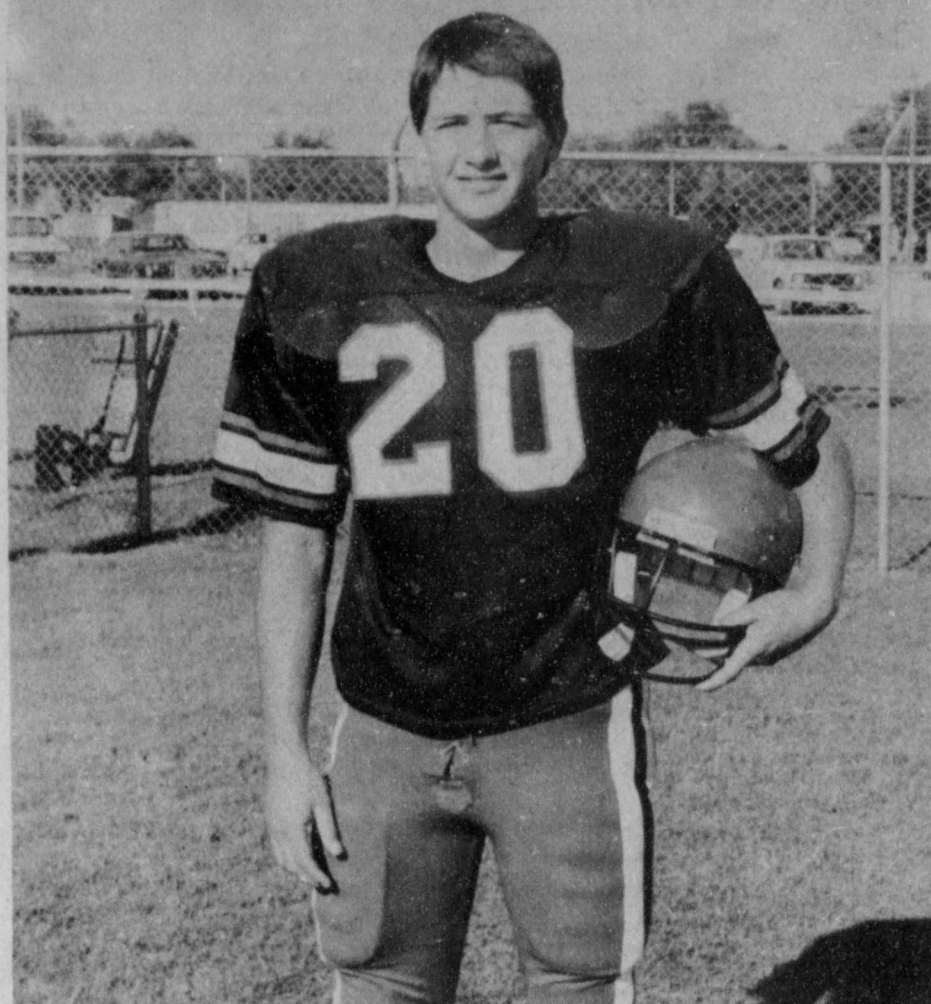
30 YEAR ANNIVERSARY SPECIAL

Allsup's Tallsup **39¢**

Filled with your Favorite Flavor

PEPSI COLA DIET PEPSI PEPSI FREE **99¢** 2 liter

Horns of the Week



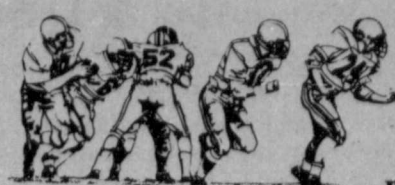
MATT MITCHELL, #20, is that hard-running back you see each Friday night. Matt plays fullback on offense and linebacker on defense. He weighs in at 185 lbs. and is 6 ft. tall. Matt has played football all four years, and he has been actively involved in 4-H since a young boy. Matt is the son of Warren and Charlotte Mitchell. Gallop through those Olton Mustangs, Matt!

Lockney JV posts

30 to 0 win over Owls

The Lockney J.V. returned to the win column by downing Hale Center's J.V. 30-0. Lockney scored first early in the first quarter with Jorge Bernal going in from five yards out, Ray Jimenez kicked the extra point. The touchdown was set up with a 50 yard pass completion from Aurelio Jimenez to Albert Martinez. Jorge Bernal once again scored, this time from 20 yards out, the extra point was no good. Ray Jimenez was responsible for the only scoring in the 2nd quarter when he kicked a 25 yard field goal. Lockney went in at halftime

leading 16-0. Neither team was able to cross in the third quarter. But, Jamie McDonald broke the ice early in the fourth quarter with a slashing 20 yard run around the right corner, Ray again kicked the extra point through. Lockney again put points on the board with Aurelio Jimenez scoring from 5 yards out, Ray once again kicked the point after through. Lockney upped it's record to 3-3 and 2-1 district. The J.V. will play the Olton Mustangs Thursday in Olton.



By Bob Purser

Coach's Corner

Well I guess revenge is always sweet in the game of football, and the way our recent history with Hale Center has gone maybe Friday was even sweeter than normal. It was the kind of game that you could really enjoy at times and at other times you just wanted to get it over with. There were 247 yards in penalties and four players ejected from the game and that never leaves anybody with a very good taste in their mouth. I was really proud of our kids though because I think they played with class and acted properly in almost every case.

It was a big night for our offense and a lot of fun to see so many young players take an active role in the game. Our defense put pressure on quickly and we were able to cash in on their mistakes and by the time they tried to recover, it was 22-0 and they had to throw the ball which again gave us an advantage.

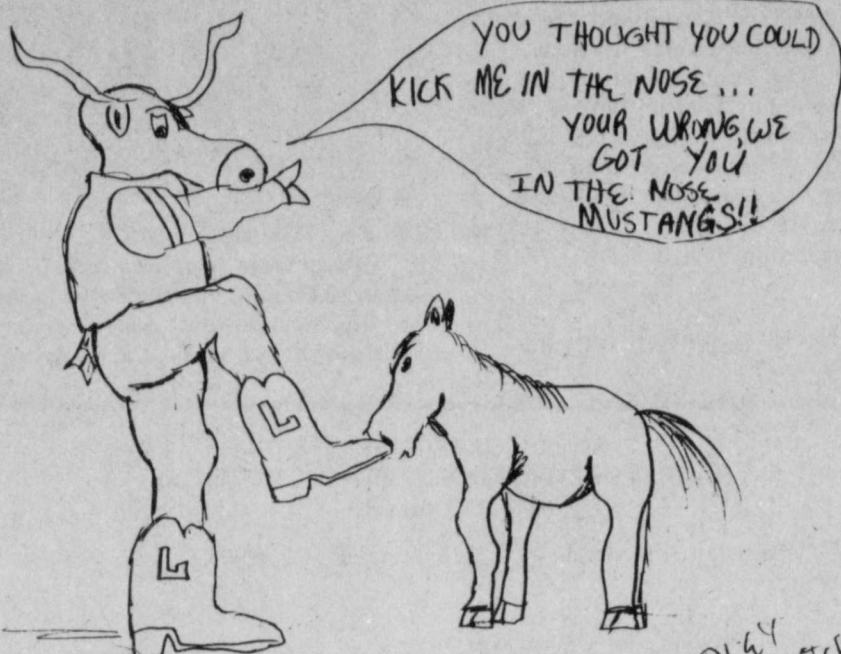
Javier Bernal, Wymon Rexrode, Johnny Silva, Jimmy Ballejo, Steven Cates and Lupe Basaldua all had an excellent game and I thought all the

seniors played a big part from a leadership standpoint. I'm sure a big part of that went back to last year's playoff game.

This week's game with Olton will be a stiff challenge from one of the better defensive teams around. They have really had some bad breaks this year having lost 7 games and given up more than 2 touchdowns only once this year. I'm sure there is nothing they would like better than to knock us out of playoff contention.

Please come out Friday and support the Horns as you have done so well this year. Everytime we play and I look in the stands it seems we always have twice the support as anyone we play. That's what makes you special. Let's give our 14 seniors all the support we can as they play their last ball game in Mitchell-Zimmerman field. See you Friday.

Together We Go
The Horns of 86



Go Horns! Rope a Mustang!

School Lunch Menu

November 3-7

Monday:

Breakfast — French toast, milk, fruit cocktail

Lunch — Beef stew, jellied citrus salad, cornmeal rolls, milk, peanut butter cookies

Tuesday:

Breakfast — Cereal, milk, prunes

Lunch — Beef tacos, lettuce salad, mexi corn, sopapillas, honey, milk, apricots

Wednesday:

Breakfast — Toast w/cheese, milk, French fried potatoes

Lunch — Barbeque beef, cole slaw, pork in beans, hot rolls, milk, fruit cocktail cobbler

Thursday:

Breakfast — Cinnamon biscuit, milk, cherries

Lunch — Corn dog with mustard, potato salad, sliced tomatoes, cinnamon biscuits, milk, oranges in gelatin

Friday:

Breakfast — Cereal, milk, pears

Lunch — Hamburger and hamburger salad, French fried potatoes, cherry cake, milk

Football contest winners

Last week

1. Tiffany Gentry
2. Steve Brooks
3. Randall Stapp

This week

1. Dickie McCarty
2. Boyd Lee
3. Michael Means



Have a good week!

Shorthorns fall short to Hale Center Owls

The Lockney Shorthorns, seventh and eighth grades combined into one team against Hale Center Junior High. Lockney received the opening kickoff and moved the ball down the field with Steven Vasquez scoring from 5 yards to make the score 6-0. It didn't last long as the Hale Center back returned the kickoff 97 yards for the touchdown and the extra point was good, to make the score 8-6. Before half HC scored from 50 yards to make the score 14-6 at half. Hale Center scored once in the 3rd quarter on a 70 yard pass play to make

the final 20-6. Lockney moved the ball well but couldn't get it in the end zone. Good game on offense from Steven Vasquez, Jeffrey Sutterfield, Gilbert Ruiz, Jason Bybee, Domingo Luna, and Ignacio Luna. Defensively were: Ruiz, Vasquez, Kip Holt, Orlando Mondragon, and Jose Martinez. There will be two games at Olton Thursday. 7th grade starts at 5:00.

Roundup at LHS

Journalism will sell annuals on Tuesday, November 4, for \$12. Be sure to bring your money!

Basketball is just around the corner. The girls scrimmage on November 4 at Motley County.

Rope a Mustang!

The Exit Level Test was given Tuesday and Wednesday to all Juniors. With this class begins the ruling whereby a student must pass this test in order to graduate from high school.

Be sure to attend the Junior's "moneymaking" Spaghetti Supper on Friday before the Olton ballgame. They will be serving from 5 to 7 in the elementary cafeteria.

Student Council is sponsoring a Halloween Dance at the Elementary Cafeterium after the ballgame. Come in costume and you pay only \$1; if not dressed up, fork over \$2. Everyone get in the swing of things - come in your most frightening costume or dress up as your favorite personality.

Falling slips go out tomorrow for the 3-weeks period.

Saturday, the FFA travel to Tech for a Leadership Conference.

November 3, the FHA is having a Mother-Daughter Banquet.

- ★ Massachusetts Mutual Life - Permanent or Term
 - ★ Time Medical Insurance - Individual or Group
 - ★ Pre-Paid Legal Insurance - A new idea
- Don W. Henderson ★ 652-2396 ★ Early or Late

WAYLAND BASKETBALL presents its

--- First Annual ---

WINTER BASKETBALL CAMP FOR YOUTH

GENERAL INFORMATION

- * Open to all youngsters in grades 3-8
- * Limited enrollment
- * A great way for parents to do their Christmas shopping while the kids enjoy basketball!

SKILLS DEVELOPMENT

- Dribbling
- Rebounding
- Passing
- Defense
- Shooting
- Knowledge

TEAM DEVELOPMENT

- Offensive tactics
- Defensive tactics
- Communication
- Team play

EACH YOUNGSTER WILL RECEIVE:

- * Blue-Gold Basketball Net
- * League T-Shirt
- * Awards
- * Free admission to all Pioneer and Flying Queen home games (excluding Classics)
- * Quality care and instruction by a professional staff and WBU basketball players.

FIFTH PERIOD HUDDLE

A time together to talk about attitudes and how we should approach basketball.

REGISTRATION

9 a.m. Saturday, Nov. 8, 1986 in the foyer of Hutcherson Center

SIX EXCITING SATURDAYS!!

Nov. 8, 15 & 22 and Dec. 6, 13, and 20
9:30 - 11:30 a.m.

TOTAL COST \$45 PER YOUNGSTER

Registration Forms Available At Area Schools

Contact the Athletic Office, Wayland Baptist University
1900 W. 7th, Plainview, Texas, 79072 (806) 296-5521

REPORT OF CONDITION

Consolidating domestic and foreign subsidiaries of the

FIRST NATIONAL BANK IN LOCKNEY of LOCKNEY
Name of Bank City

in the state of TX, at the close of business on September 30, 1986
published in response to call made by Comptroller of the Currency, under title 12, United States Code, Section 161.
Charter Number 14684 Comptroller of the Currency Southwestern District

Statement of Resources and Liabilities

ASSETS

Thousands of dollars

Cash and balances due from depository institutions:	
Noninterest-bearing balances and currency and coin	1,768
Interest-bearing balances	3,117
Securities	6,189
Federal funds sold and securities purchased under agreements to resell in domestic offices of the bank and of its Edge and Agreement subsidiaries, and in IBFs	1,458
Loans and lease financing receivables:	
Loans and leases, net of unearned income	12,849
LESS: Allowance for loan and lease losses	489
LESS: Allocated transfer risk reserve	0
Loans and leases, net of unearned income, allowance, and reserve	11,560
Assets held in trading accounts	0
Premises and fixed assets (including capitalized leases)	69
Other real estate owned	267
Investments in unconsolidated subsidiaries and associated companies	0
Customers' liability to this bank on acceptances outstanding	0
Intangible assets	0
Other assets	811
Total assets	25,223

LIABILITIES

Deposits:	
In domestic offices:	
Noninterest-bearing	2,654
Interest-bearing	28,452
In foreign offices, Edge and Agreement subsidiaries, and IBFs:	
Noninterest-bearing	0
Interest-bearing	0
Federal funds purchased and securities sold under agreements to repurchase in domestic offices of the bank and of its Edge and Agreement subsidiaries, and in IBFs	0
Demand notes issued to the U.S. Treasury	0
Other borrowed money	0
Mortgage indebtedness and obligations under capitalized leases	0
Bank's liability on acceptances executed and outstanding	0
Notes and debentures subordinated to deposits	0
Other liabilities	348
Total liabilities	23,446
Limited-life preferred stock	0

EQUITY CAPITAL

Perpetual preferred stock	0
Common stock	100
Surplus	958
Undivided profits and capital reserves	727
Cumulative foreign currency translation adjustments	0
Total equity capital	1,777
Total liabilities, limited-life preferred stock, and equity capital	25,223

We, the undersigned directors, attest to the correctness of this statement of resources and liabilities. We declare that it has been examined by us, and to the best of our knowledge and belief has been prepared in conformance with the instructions and is true and correct.

[Signatures of Directors]
Directors

I, June McDonald
Name
Vice President & Cashier
Title

of the above-named bank do hereby declare that this Report of Condition is true and correct to the best of my knowledge and belief.

[Signature of June McDonald]
Signature
October 16, 1986
Date

Longhorns pluck Owls by score of 43 to 20

Last Friday night the Lockney Longhorns traveled to Hale Center with winning on their minds and win they did as they posted their second win in district play. The Horns rolled past the Owls by a score of 43 to 20.

The Horns maintained control of the ball game from their first quarter on. They scored on their first four possessions of the game on one field goal and three touchdowns and at the half went into the locker room with a 22 to 0 lead. After the half they came back out and scored three more touchdowns and posted a final score of 43 to 20.

FIRST QUARTER

The Horns took possession of the ball with about two minutes gone from the first quarter. Beginning on their own 44 yard line the Horns drove to the 17 yard line before they were stymied by the Owls.

The drive lead off with two Matt Mitchell runs which were over almost before they began. Then on the third down play Jimmy Ballejo completed a pass to Rusty Teeter on the Owls 34 yard line. A penalty on the Owls moved the Horns 10 yards closer to the goal line. Two incomplete passes followed and a one yard run on the third down play left the Horns in a fourth and nine situation.

Ben Schuster was called on to boot a field goal from 34 yards out and it was good and the Horns were on the board.

The Owls set up to take the kickoff and began on their own 20 yard line. On their first down play Joe Torrez inter-

cepted a pass and the Horns began their second scoring drive on the Owls 40 yard line.

Two incomplete passes were noted in the first plays but on the third down play Jimmy Ballejo took a keeper and moved the ball to the opponents 21 yard line. Dickie Hernandez took the handoff and earned the Horns a first down on the nine yard line.

Ballejo took the first run with the ball for four yards and Hernandez and Allen Stallings were called on for the second and third down carries. On the fourth and one play Ballejo took another keeper and swung around the end for the touchdown. Ben Schuster booted the extra point and the Horns were up by 10 points.

Hale Center took the kickoff at their own 25 yard line and two incomplete passes lead off their drive. On the third down play Ben Schuster scored an excellent quarterback sack which set the Owls back 10 more yards and on the fourth and 20 from their own 15 yard line they were forced to punt.

Ballejo returned the short, high punt back to the Owls 27 yard line and on the first down play Bernal took the handoff around the end and in for a 27 yard touchdown run. The extra point was wide but the Horns lead by a score of 16 to 0 at the end of the first quarter.

SECOND QUARTER

Lockney's fourth scoring drive began with just seconds left in the first quarter when Hale Center fumbled the ball and Lockney's Schuster recovered on the Horns 20 yard line.

On the first down play Lockney lost five yards on a fumble. Bernal carried on the second down play and gained two yards. On the third down play Steven Cates completed a pass to Todd Hallmark who ended up on the Horns 43 yard line with a first down.

Matt Mitchell carried six yards on the first down and Javier Bernal carried on the second down play and gained the Horns another first down on the Owls 39 yard line. Hernandez took the next handoff for another first down for the Horns on the Owl 22 yard line. Phillip Glasson carried five yards on the next play and the second and third down plays did not move the ball.

On the fourth down Matt Mitchell was called on to take the handoff and the Horns were on the opponents' eight yard line. Two plays later Cates took a keeper five yards in for the score. The two point conversion failed but the Horns lead by 22 points which is how the half ended.

THIRD QUARTER

The Horns received the kickoff after the half and held onto the ball for three minutes before scoring.

The drive began on the Lockney 33 yard line. Matt Mitchell carried on the first two plays and moved the ball two yards closer to the first down. Ballejo took a keeper on the third down play and moved the Horns to the opponents' 25 yard line. Bernal carried on the first down and gained four yards. The second down play was an incomplete pass and the third down play was a quarterback sack which lost the Horns

five yards. A penalty on Hale Center on the fourth down play moved the Horns to another first down on the Owl 14 yard line.

Bernal took the first down handoff from Ballejo in 14 yards for the score. Schuster added the extra point and the Horns lead by a score of 29 to 0.

Lockney's next scoring drive, though short, came in the third quarter with 4:45 on the clock.

Hale Center had the ball on their own 10 yard line when Ballejo intercepted a pass and ran the ball in 24 yards for the touchdown. Schuster booted the extra point and Lockney was in the lead by 36 points.

Hale Center scored with 1:29 left in the third period of play and the extra point was no good. They also scored in the fourth quarter with just 10:19 showing on the clock. The two point conversion was good and the Owls had 14 while Lockney maintained the lead with 36.

FOURTH QUARTER

Lockney came back after the Owl touchdown and drove the kickoff all the way back for another touchdown.

Beginning on their own 45 yard line after Michael DeLeon returned the ball, Cates kept the first handoff and moved two yards, Hernandez added three yards on the second down play and on the third down Lockney was assessed a penalty which left them 10 yards from a first down.

Cates drew back on the third and ten and completed a pass to Rusty Teeter who moved the Horns into Owl country

on the 28 yard line. Glasson took the first handoff and gained four yards and Bernal was called on for the second down play. Running up the middle Bernal added another touchdown to the Horn tally and Schuster capped the drive with the extra point. The Horns lead by a score of 43 to 14.

Hale Center came back one more time and scored with 5:38 left in the game but was unable to pull ahead of the sizeable lead amassed by the Horns.

Statistics		Hale Center	Lockney	
14	First Downs	22		
54	Yards Rushing	282		
193	Yards Passing	70		
247	Total Yards	352		
10-34	Passes Comp-Att	4-9		
6-33	Punts-Ave.	4-30		
12-140	Penalties-Yards	13-135		
3	Fumbles Lost	2		
0	Intercepted By	4		
Score by Quarters				
Lockney	16	6	14	7-43
Hale Center	0	0	6	14-20
Scoring Summary				
First Quarter: L—Ben Schuster 4FG.				

L—Jimmy Ballejo 10 run. Schuster kick. L—Javier Bernal 27 run. Kick no good. Second Quarter: L—Cates 5 run. Pass failed.

Third Quarter: L—Bernal 14 run. Schuster kick. L—Ballejo 24 interception return. Schuster kick. HC—Julio Espinoza 1 run. Run failed.

Fourth Quarter: HC—Julio Espinoza 1 run. Shane Steen to Tim Silva good. L—Javier Bernal 25 run. Schuster kick. HC—Espinoza 1 run. Run failed.

Individual Stats	
RUSHING: L—Javier Bernal 10-105-3 TD, Jimmy Ballejo 12-61-1 TD, Matt Mitchell 11-49, Dickie Hernandez 6-37, Phillip Glasson 6-19, Michael Monroe 5-18, Steven Cates 8-13. HC—Julio Espinoza 9-24, Jamie Garibay 7-16, Tim Silva 6-6.	
PASSING: L—Steven Cates 3-4-59, Jimmy Ballejo 1-5-11. HC—Jamie Garibay 6-24-130-2 interceptions, Shane Steen 4-9-62-1 interception, Tim Silva 0-1-1 interception.	
RECEIVING: L—Rusty Teeter 2-36, Todd Hallmark 2-33. HC—Tim Silva 4-20, Chris Cannon 4-71.	

Have a safe and happy HALLOWEEN!!



CONTEST RULES

Any local residents above the age of 7 except employees of the Beacon may enter. Three cash prizes are given each week - ties will split prize money. Members of the sports department are sole judges of the contest and their decision is final.

It is not necessary to indicate scores on all the games...But total score (scores of both teams) of the tie breaker must be indicated at right.

Simply circle the team you choose to win in each of the footballs. Deadline for submitting entries is 5 p.m. Friday - winners will be announced the following week. Enter one entry per person per week, print name and address plainly on blank below and mail or bring entire page to the Beacon office.

Tie breaker game will be considered only in case of ties.

Thanks, Lockney!

Football Contest

HAVE FUN...
WIN PRIZES...

DEADLINE FOR ENTRIES - 5 P.M. FRIDAY
IN BEACON OFFICE OR POST OFFICE

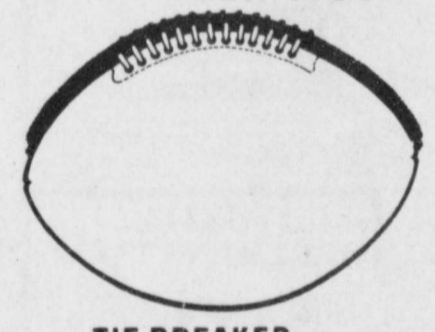
Lockney Beacon \$20⁰⁰

In Cash
Prizes
Each Week

TIE BREAKER-Guess Total Points
AND CIRCLE WINNER

NAME	
ADDRESS	
CITY	

1ST PRIZE \$10⁰⁰
2ND PRIZE \$6.00
3RD PRIZE \$4.00



TIE BREAKER
Lockney vs. Olton

Pay-n-Save

Floydada vs. Littlefield

Schacht
Flowers

Abernathy vs. Hale Center

First
National Bank

Lockney
Member F.D.I.C.
Denver City vs. Roosevelt

Davis
Lumber

Shallowater vs. Seagraves

Don Hardy
Car Wash

Plainview vs. Lubbock Coronado

Wilson
Photography

Texas Tech vs. Texas

City Connection

Texas A&M vs. SMU

Webster Service
& Supply

Houston vs. TCU

Barbara's
Beauty Shop

Auburn vs. Florida

Byrd Pharmacy

Cowboys vs. Giants

Consumers Fuel

Oilers vs. Dolphins

Muncy Elevator

Broncos vs. Raiders

Lockney
Beacon

Chiefs vs. Chargers

U.S. beef checkoff program completing first month

The new, federally-mandated beef checkoff program got underway October 1, and industry spokesmen are calling the first weeks exceptionally successful.

According to Anne Anderson, executive director of the Texas Beef Industry Council, response to the program has been positive. "We had mentally prepared ourselves to expect calls from some very upset cattlemen," she said, "but much to our delight—and relief—most of our callers (and there have been many) have had specific questions, either on the forms or a new situation that we had not previously addressed."

"In the few instances where the callers voiced opposition to or frustration with the new \$1/head assessment," she added, "this reasonable opposition was expressed with typical Texas graciousness. All in all, we have experienced a very smooth beginning

due to the tremendous support by Texas beef organizations."

The checkoff program, known officially as the Beef Promotion and Research Act, was created by the 1985 Farm Bill, and it requires that \$1 a head be collected from cattle producers when cattle are sold. The money is then funneled into existing state and national organizations for beef promotion and research.

Initiated by cattle industry leaders as a measure to revive their sluggish industry, the program is on a 22-month trial run. The federal order requires a

referendum be held by spring 1988 for cattlemen to vote on whether or not to continue it.

The mechanics of the program are simple. When cattle are sold, the buyer must collect \$1 for each head of cattle from the seller, unless the seller verifies he has owned the cattle for less than ten days. In that instance, primarily occurring when order buyers are involved, the buyer collects a non-producer status form from the seller. At the end of the month, the buyer totals the checkoff dollars and non-producer forms and

enter them on a monthly report form. The monthly form, money, and non-producer forms are then forwarded to the beef industry council in the buyer's state of residence.

Anderson noted that a "concerted effort has been made to keep paperwork at a minimum. We do not want the industry flooded with unnecessary forms and bookkeeping. We have also tried to make the forms and information

accessible to everyone," she commented. "County extension agents and Farm Bureau offices can provide the monthly report and non-producer forms, or cattlemen can call our office and request them."

She also pointed out that the law stipulates refunds be made available to producers not wanting to pay the checkoff. "They still must pay the assessment when they sell cattle," she

said, "but they must apply for a refund within 60 days afterwards from their state beef councils."

Penalties for non-compliance with the program are stringent. Fines of up to \$5000 can be levied or restraining orders filed in federal district court.

The program is being administered at the national level by the Cattlemen's Beef Promotion and Research Board, created by the federal order.

SWCD offers trees

Floyd County Soil and Water Conservation District is now selling trees for windbreaks around farmsteads. The trees will be sold at a nominal price through the Texas Forest Service. The seedlings are grown at the West Texas nursery in Lubbock.

Conifer species available this year include Afghanistan Pine, Arizona Cypress, Austrian Pine, Ponderosa Pine, Redcedar, Scotch Pine and Spruce. The seedlings are containerized. They sell for \$45.00/30. The seedlings will be 6 to 8 inches tall.

Hardwoods are available this year. Selections include Bur Oak, Caragana, Desert Willow, Green Ash, Honeylocust, Little Walnut, Osage Orange, Pecan, Russian Olive, and Skunkbush Sumac. The seedlings sell for 32 cents each and are available only in bundles of 50.

Orders are now being taken at the SCS office in Floydada, which will continue to sell trees until they are sold out or until they are to be delivered (March 5). Orders are filled on a first-come first-serve basis.

The trees will be delivered to the Floydada SCS office. Trees sold may not be used for landscaping or ornamental purposes.

For information and applications contact the SCS located at 208 S. Wall, Floydada, or phone 983-2352.

TIPS ON BUYING STOCKER CATTLE

Stocker cattle operators will soon be buying calves to put on winter pasture, and the type of animals they buy will go a long way in determining whether or not they will reap a profit, says a beef cattle specialist with the Texas Agricultural Extension Service, The Texas A&M University System. The stocker operator must buy cattle that will grow fast, be efficient in feed conversion and sell for top dollar. Since these animals will be going into feedlots in the spring, the stocker operator must also consider the value of the animals to the feeder. The cattle feeder is interested in rate of gain in the feedlot, carcass cutability or yield, and carcass quality.

November 15 deadline for wheat and barley insurance in county

November 15 is the final planting date for insured barley and wheat in Floyd County, according to Jackie Harris, a representative for the Federal Crop Insurance Corporation (FCIC).

Insured barley and wheat planted by November 15 must be reported by November 30 in order to receive full crop insurance coverage. The acreage report reflects the actual acreage planted and reported by the farmer.

"During the growing season, if damage occurs, notice should be given promptly," Harris said.

Crop insurance based on actual production history (APH), is available this year to producers of wheat, barley, oats and rye in addition to corn, grain sorghum, soybeans, peanuts, cotton, rice and other crops. "Increasingly, our insured producers are discovering that with a yield guarantee which reflects production capability, crop insurance establishes a farm income floor. Thus, cash flow and the ability to repay a loan may be more accurately projected," explained Harris.



Plains Cotton Growers, Inc., has very few firm answers to the stream of questions pouring in on the agricultural disaster payments amendment to the massive spending bill just enacted by Congress and signed by the President.

The amendment instructs the Secretary of Agriculture to make payments available to eligible producers who sustained major production losses in 1986 due to drought, floods, hail, excessive moisture or heat. Deadline for producer applications is January 31, 1987. Payments will be in the form of generic, negotiable certificates redeemable in government-held commodities.

The total of such payments, including program and non-program crops, is limited to \$400 million, an amount to be transferred to Commodity Credit Corporation from the Agricultural Credit Insurance Fund, a fund previously reserved for emergency insured and guaranteed loans.

According to early interpretations of the law, PCG says cotton and other program crop producers should be eligible for payments if (1) they have production losses over 50 percent of their program payment yields, (2) they are in compliance with 1986 program provisions and (3) they are in a county declared a disaster area by the President. Such disaster declarations come as a result of requests from state governors, toward which the "wheels are already in motion" in Texas, says PCG Executive Vice President Donald Johnson.

The disaster payment rate, as PCG is now reading the amendment, would be the loan rate for the commodity. The

payment total, limited to \$100,000 per producer, is to equal the payment rate times the pounds of production lost above 50 percent of program yield, times base acreage planted or prevented by weather from being planted. However, producers with crop insurance would see total payments reduced by the net indemnity (indemnity less premium paid) received.

"Beyond these skeletal guidelines in the language of the amendment itself," Johnson states, "there's been no indication from Washington as to how the program may be administered."

Questions most on the minds of PCG members, he continues, include "How far will the stipulated \$400 million maximum go in compensating for the heavy damage seen this year to cotton, corn, wheat, soybean, peanut and other crops in the Southeast, Midwest, Southwest and South? And if the available money fails to match the need, how will it be determined who gets what?"

Another section of the amendment calls for the Farmers Home Administration to aid producers with major crop losses by refinancing existing debt at the lowest allowable interest rate, stretching loan payments over a period of years, and providing 1987 production loans.

In another, unrelated section, USDA through 1990 is prohibited from denying "separate person status" in the application of payment limitations "solely on the ground that a family member cosigns for, or makes loans to, such person and leases, loans or gives such person equipment, land and labor, if such family members were organized as separate units prior to December 31, 1985."

Election of FmHA committee members

Election of two Farmers Home Administration county committee members will take place November 12th, 1986, County Supervisor Becky Via announced.

"This is a historic occasion, Ms. Via said. It is the first time that FmHA county committee members have been elected. Until now, they have been designated by the agency. The 1985 Farm Bill calls for two elected and one designated member on the committee."

The FmHA county committee assists the county office in determining the eligibility of applicants for certain types of FmHA loans.

Farmers who live in Floyd County, have their principal farming operation within the county or area for which the election is being held, and derive the principal part of their income from farming are eligible to vote.

Nominees for the Floyd County FmHA County Committee are: L.B. Brandes, Kenneth Broseh, and Jim Simpson.

"This time, we will elect two committee members," Ms. Via said. "One will serve for one year and the other will serve for two years. In the future, all three members will serve three-year terms on a staggered basis, with one position to be filled each year."

Voting ballots are available from the FmHA County Office at 107 W. California, Floydada, Tx. Marked ballots must be received at the FmHA office by November 12, 1986.

The Farmers Home Administration (FmHA) County Committee election this year will be held on Nov. 12, 1986. The ballot below must be filled out, detached and mailed and received or returned in person to 107 W. California, in Floydada not later than Nov. 12, 1986. If you do not vote in person you should mail your ballot inside a blank envelope marked ballot to ensure a secret ballot. This blank envelope should be placed inside the envelope you use to mail your ballot. Your name and address must be legible on the outer envelope. Failure to provide this information will render your ballot invalid. Ballots and envelopes may also be obtained from your local FmHA office.

The slate of nominees for Floyd County - County Committee are listed in the ballot below. The qualifications of persons voting are described in the "Voter Certification Statement." For further information regarding voting and voter eligibility, see the county office listed above. FmHA elections are open to all eligible voters without regard to race, color, religion, national origin, age, political affiliation, marital status, sex and/or handicap.

U.S. DEPARTMENT OF AGRICULTURE FARMERS HOME ADMINISTRATION BALLOT FOR COUNTY COMMITTEE MEMBER(S)

State - Texas County - Floyd
 *Candidate(s):
 L.B. Brandes
 Kenneth Broseh
 Jim Simpson

*ONLY VOTE FOR Two (2) CANDIDATE(S)

Please detach this notice before voting ballot

VOTER CERTIFICATION STATEMENT

Subpart W of Part 2054 of Title 7, Code of Federal Regulations requires that all voters for FmHA county or area committee elections meet the following eligibility requirements: (a) be farmers; (b) derive the principal part of their income from farming (that is more than 50 percent of their gross income must come from agricultural production); (c) have their principal farming operation within the county or area for which the election is being held.

By submitting this ballot, I attest that I meet the criteria to vote.

FARM NEWS

SHORTCOURSE FOR VINEYARD OWNERS

Grape production and wine making are hitting the big time in Texas, and the latest information related to these operations will be featured at a shortcourse at Texas A&M University Nov. 8 in the Horticulture/Forest Science Building. Vineyard managers as well as individuals investigating the feasibility of commercial grape production are invited to attend, says a horticulturist with the Texas Agricultural Extension Service, The Texas A&M University System. Discussions will deal with all phases of grape production, from site selection and preparation to varieties.

Sunflower insurance

November 30 ends the 1986 year insurance period for sunflowers grown in Floyd, Texas and insured by the Federal Crop Insurance Corporation (FCIC) according to Jackie Harris, a representative for the Federal Crop Insurance Corporation.

"Under the terms of the policy, any acreage on which harvest will not be completed must be left intact until an inspection is made. Any claim for indemnity may be rejected if these loss reporting requirements are not met," Harris stated.

"Any notice of loss must be given promptly after the total destruction of the unit, completion of harvest, or November 30, whichever occurs earlier," according to Harris. The producer who anticipates a claim should notify his or her crop insurance representative immediately.

Caprock-Plains Federal Land Bank Association



Floydada 983-2480

FLOYD COUNTY FARM BUREAU



Lockney 652-2242
 Floydada 983-3777

FLOYDADA IMPLEMENT CO.



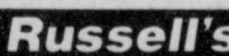
Floydada 983-3584

FIRST NATIONAL BANK OF FLOYDADA



Floydada 983-3717

RUSSELL'S EQUIPMENT & SUPPLY



Floydada 983-3751

FLOYD COUNTY IMPLEMENT



Floydada 983-3732

PATTERSON GRAIN CO.

652-3393

Lockney Lone Star

FLOYDADA COOPERATIVE GINS INC.



Floydada 983-2884

WANTED COTTON GROWERS

Gins offering eleven year old electronic cotton marketing system seek qualified High Plains cotton producers who need assistance in marketing cotton under 1986 Farm Bill.

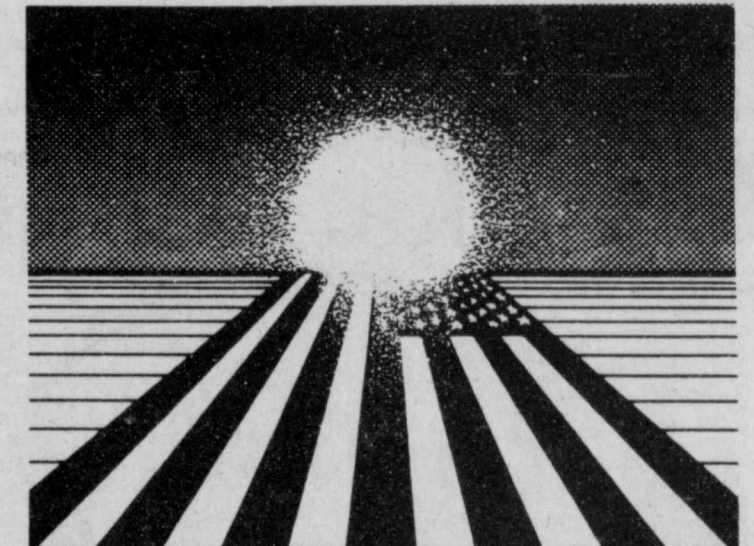
Key Services Offered

- * CCC Loan entry from coop gin office
- * Easy access to Form G Cotton Loan Program, including prompt payment
- * Adjusted World Price Information
- * Equity Trading, including daily calculations of producer's equities
- * Calculation of Loan Deficiency Payment (P.O.P.) for each producer
- * Access to over 40 major U.S. cotton buyers
- * Firm Offer
- * Guaranteed payment to producers along with computer listed invoice

To apply, or for more information, contact any of the following gins.

Briscoe Coop	847-2241	Hart Producers Coop	938-2189
Castro Coop	647-3546	Lockney Coop	652-3377
Cotton Center Coop	879-2150	Mayfield Coop	879-2172
Edmonson Coop	864-3359	Olton Coop	285-2525
Hale Center Coop	839-2436	Swisher Coop	684-2771
Halfway Coop	889-3318	United Farm Industries	293-5108

ASK FOR TELCOT®



From sunrise to sunset all across the nation...

40,000 cooperatives work hard for their member-owners and their communities.

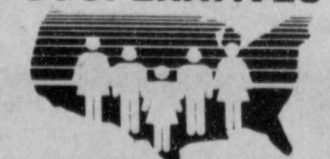
In big cities, small towns and rural areas, cooperatives owned and operated by 60,000,000 people provide a tremendous variety of goods and services—electric and telephone service, farm credit, credit unions, farm marketing and farm supply, food, health and day care, and insurance.

Cooperatives work because they meet people's needs efficiently and economically. That's why co-ops have scored high marks for quality goods and services for more than half a century all across America.

Co-op people point with pride at what their cooperatives have achieved for their friends, neighbors and communities. Co-ops are true American success stories.

When cooperatives work, all America benefits.

COOPERATIVES



WORK!

SPONSORED BY -

FIRST National Bank

in LOCKNEY

A TRADITION WORKING TOWARD YOUR FUTURE Since 1908

Member FDIC

A Full Service Bank

THURSDAY OCTOBER 30, 1986

FRIDAY OCTOBER 31, 1986

Table of TV schedules for Thursday, October 30, 1986. Columns include time slots (7:00-12:00 AM) and channels (WTBS, KXTX, WGN, KCBN, KLBK, KAMC, KJTV, HBO, SHOW, ESPN). Programs listed include 'I Dream of Jeannie Bewitched', 'Down To Earth', 'Movie: With This Ring', 'Perry Mason', 'Movie: The Wyoming Kid', 'Tom & Jerry And Friends', 'Scooby Doo', 'Gilligan's Island', 'Andy Griffith', 'Sanford and Son', 'Movie: A Thunder Of Drums', 'Mystery: Shroud for a Nightingale', 'Movie: The Return Of The Mod Squad', 'Movie: The Brothers O'Toole', and 'Movie: The Action'.

Table of TV schedules for Friday, October 31, 1986. Columns include time slots (7:00-12:00 AM) and channels (WTBS, KXTX, WGN, KCBN, KLBK, KAMC, KJTV, HBO, SHOW, ESPN). Programs listed include 'I Dream of Jeannie Bewitched', 'Down To Earth', 'Movie: How To Save A Marriage', 'Perry Mason', 'Movie: The Family Rico', 'Woman Watch', 'Tom & Jerry And Friends', 'Scooby Doo', 'Gilligan's Island', 'Andy Griffith', 'Sanford and Son', 'NBA Basketball', 'Boston Celtics', 'Movie: The Return Of The Mod Squad', 'Arkansas', 'Night Tracks', and 'Night Tracks'.

HIGHLIGHTS

7:00 (9) ★ 1/2 "NIGHT OF THE LIVING DEAD" (1968, Horror) Judith O'Dea, Duane Jones. Dead bodies become man-eating monsters when they are activated by a radiation leak.

7:05 (4) ★ 1/2 "A THUNDER OF DRUMS" (1961, Western) Richard Boone, George Hamilton. A seasoned captain of the U.S. Cavalry rides hard on a green, young lieutenant just out of West Point.

11:30 (7) ★ 1/2 "A PIECE OF THE ACTION" (1977, Comedy) Sidney Pegg, Tom Cosby. Two likable crooks attempt to master the art of the rip-off while being blackmailed into tackling several community problems.

SATURDAY NOVEMBER 1, 1986

SUNDAY NOVEMBER 2, 1986

Table of TV schedules for Saturday, November 1, 1986. Columns include time slots (7:00-12:00 AM) and channels (WTBS, KXTX, WGN, KCBN, KLBK, KAMC, KJTV, HBO, SHOW, ESPN). Programs listed include 'Wrestling', 'National Geographic Explorer: World Safari', 'Cimarron Strip', 'College Football', 'Teams to be announced', 'Write Course', 'Focus On Society', 'Bonanza', 'Orlando Wilson Motorweek Illustrated', 'Wrestling', 'College Football', 'Movie: "Road Games"', 'Mystery: Shroud for a Nightingale', 'Sanford and Son', 'Chartbusters', 'Night Tracks', and 'Night Tracks'.

Table of TV schedules for Sunday, November 2, 1986. Columns include time slots (7:00-12:00 AM) and channels (WTBS, KXTX, WGN, KCBN, KLBK, KAMC, KJTV, HBO, SHOW, ESPN). Programs listed include 'Tom & Jerry And Friends', 'Sesame Street', 'Good News', 'Dozen', 'Silk Screen', 'Movie: Waterloo', 'Bridge', 'Movie: "Where Were You When The Lights Went Out?", 'Portrait of America', 'Minnesota', 'Wrestling', 'National Geographic Explorer', 'Masterpiece Theatre', 'Sports Page', 'John Ankerberg', 'Jimmy Swaggart', and 'World Tomorrow'.

HIGHLIGHTS

7:00 (9) ★★ "ROAD GAMES" (1981, Mystery) Stacy Keach, Jamie Lee Curtis. An eccentric trucker, a beautiful hitchhiker and a psychopathic killer traveling the same route play games of life and death.

11:30 (3) ★★ "THE TOWERING INFERNO" (1974, Drama) Steve McQueen, Paul Newman. A fire erupts during the opening of the world's tallest skyscraper, trapping many of the partygoers on the top floor.

1:00 (4) ★★ 1/2 "THE GROUNDSTAR CONSPIRACY" (1972, Mystery) George Peppard, Michael Sarrazin. The sabotage of a secret space project sets off a ruthless investigation.

HIGHLIGHTS

12:00 (9) ★★ 1/2 "SHANE" (1953, Western) Alan Ladd, Jean Arthur. A reformed gangster is forced to use his gun again to defend homesteaders from lawlessness.

12:35 (4) ★★ "WATERLOO BRIDGE" (1940, Romance) Vivien Leigh, Robert Taylor. A dancer mourns when she believes that her lover, a soldier, has died.

2:00 (4) ★★ 1/2 "GIRLS! GIRLS! GIRLS!" (1962, Musical) Elvis Presley, Stella Stevens. A boy refuses his girl's gift until he sees another would-be suitor after her.

MONDAY NOVEMBER 3, 1986

	(4) WTBS IND	(5) KTXI PBS	(9) WGN IND	(11) KCBD NBC	(13) KLBK CBS	(28) KAMC ABC	(34) KJTV IND	HBO	SHOW	ESPN
7:00	I Dream Of Jeannie Bewitched	Farm Day A.M. Weather	Bozo	Today	CBS Morning News Cont'd	Good Morning America	Transformers	Movie: "Sinbad and The Eye of The Tiger"	Movie: "A Christmas Story"	Nation's Business SportsCenter
8:00	Down To Earth I Love Lucy	Sesame Street	"	"	Dukes Of Hazzard	"	Flintstones	"	"	Play Your Best Golf PGA Golf Seiko Match
9:00	Movie: "The Whiplash"	Mister Rogers 3-2-1 Contact	Waltons	Family Ties	\$25,000 Pyramid Card Sharks	Donahue	700 Club	Movie: "Protocol"	Movie: "Stop, You're Killing Me"	Play Final Round
10:00	"	Captain Kangaroo Educational Computing	Big Valley	Wheel Of Fortune Scrabble	Price Is Right	Fame Fortune & Romance Celebrity Double Talk	Jim And Tammy	"	"	"
11:00	Perry Mason	The West Of The Imagination	Falcon Crest	Super Password Search For Tomorrow	Young And The Restless	Ryan's Hope	Richard Roberts	Movie: "Eleni"	Movie: "The Minstrel Man"	Aerobics
12:00	Movie: "The Last Gangster"	Innovation	News	News	News	All My Children	One Big Family Big Valley	"	"	College Football
1:00	"	Movie: "The Devil Horns"	Dick Van Dyke	Another World	Capitol	One Life To Live	Bewitched	Movie: "Johnny Dangerously"	Movie: "Great Expectations"	"
2:00	Tom & Jerry And Friends	Adam Smith's Money World	Andy Griffith	Guiding Light	General Hospital	I Dream Of Jeannie Brady Bunch	Tucker And The Horse	"	"	"
3:00	Scoby Doo	Sesame Street	Ghostbusters	"	\$100,000 Pyramid What's Happening!!	Falcon Crest	Smurfs' Adventures She-Ra	Thief	Movie: "Toby And The Koala Bear"	Wrestling
4:00	Gilligan's Island Rocky Road	Mister Rogers 3-2-1 Contact	G.I. Joe	Magnum, P.I.	Silver Spoons	People's Court	ThunderCats	Henry's Cat II	"	America's Cup World Of Sports
5:00	New Leave It To Beaver Down To Earth	Captain Kangaroo Business Report	Facts Of Life	News	Three's Company	Jeopardy	Beverly Hillsbillies Alice	Movie: "Moses"	Movie: "Bim, The Little Donkey"	SportsLook
6:00	Sanford And Son Honeymooners	MacNeil / Lehrer Newshour	Barney Miller	News	News	News	Too Close For Comfort Gimme A Break!	"	Q.E.D.	SportsCenter
7:00	Movie: "The Prisoner Of Zenda"	Day The Universe Changed	Love Boat	ALP	Kate & Allie	MacGyver	Movie: "Between Two Lovers"	Movie: "Protocol"	Movie: "A Christmas Story"	Magic Years In Monday Night Matchup
8:00	"	Making Of A Continent	Fantasy Island	Movie: "Rage Of Angels: The Story"	Newhart	NFL Football Los Angeles Rams at Chicago	"	"	"	Skate America Women's Competition
9:00	World Of Audubon	Story Of English	News	Continues	Cagney & Lacey	Bears	Lifestyles Of The Rich And Famous	Price's Trust All-Star Rock Concert	Movie: "The Wild Life"	To Be Announced
10:00	Bonanza	League Of Women Voters	Honeymooners	News	News	News	Late Show	Movie: "Johnny Dangerously"	Movie: "The Minstrel Man"	Aerobics
11:00	National Geographic Explorer	Business Report	Movie: "Rome"	Late Night With David	Simon & Simon	Tales Of The Unexpected	Movie: "Night Of The Living Dead"	Movie: "The Clairvoyant"	Movie: "The"	Auto Racing World Sports Car Fuji 1000
12:00	"	"	Adventure	Letterman	Movie: "A Summer Without Boys"	Nightlife	"	"	Movie	NFL Yearbook World Of Sports

HIGHLIGHTS

7:00 (3) ★★ 1/2 "TORN BETWEEN TWO LOVERS" (1979, Drama) Lee Remick, George Peppard. A woman devoted to her husband and son becomes romantically involved with a charming, sophisticated architect.

7:05 (4) ★★ "THE PRISONER OF ZENDA" (1952, Adventure) Stewart Granger, Deborah Kerr. An Englishman fights off usurpers while posing as the king of a tiny country whose real king has been kidnapped.

8:00 (1) "RAGE OF ANGELS: THE STORY CONTINUES" (Premiere, Drama) (Part 2 of 2) Jaclyn Smith, Ken Howard. Jennifer discovers details concerning her family history while she and her ex-husband, now vice president of the United States, continue to be victimized by an obsessive blackmailer.

11:30 (3) ★★ "ROME ADVENTURE" (1962, Drama) Troy Donahue, Angie Dickinson. A young girl learns about love the hard way when she goes to Rome.

12:10 (3) ★★ "A SUMMER WITHOUT BOYS" (1973, Drama) Barbara Bain, Michael Moriarty. A young girl discovers that her mother is having an affair with a younger man.

1:00 (3) ★★ "BREAKFAST AT TIFFANY'S" (1961, Comedy) Audrey Hepburn, George Peppard. Based on the story by Truman Capote. A sophisticated New York playgirl encounters several romantic adventures.

3:00 (2) ★★ "WESTWARD HO" (1935, Western) John Wayne, O'Dea, Duane Jones. Dead bodies become man-eating monsters when they are activated by a radiation leak.

TUESDAY NOVEMBER 4, 1986

	(4) WTBS IND	(5) KTXI PBS	(9) WGN IND	(11) KCBD NBC	(13) KLBK CBS	(28) KAMC ABC	(34) KJTV IND	HBO	SHOW	ESPN
7:00	I Dream Of Jeannie Bewitched	Farm Day A.M. Weather	Bozo	Today	CBS Morning News Cont'd	Good Morning America	Transformers	Movie: "The War Boy"	Movie: "Isaac Littlefeathers Cont'd"	Nation's Business SportsCenter
8:00	Down To Earth I Love Lucy	Sesame Street	"	"	Dukes Of Hazzard	"	Flintstones	Not News	Music School	PGA Golf Seiko Match
9:00	Movie: "The Whiplash"	Mister Rogers 3-2-1 Contact	Waltons	Family Ties	\$25,000 Pyramid Card Sharks	Donahue	700 Club	Movie: "Florida Straits"	Movie: "Remains To Be Seen"	Play Semifinal Round
10:00	"	Captain Kangaroo Educational Computing	Big Valley	Wheel Of Fortune Scrabble	Price Is Right	Fame Fortune & Romance Celebrity Double Talk	Jim And Tammy	"	"	"
11:00	Perry Mason	The West Of The Imagination	Falcon Crest	Super Password Search For Tomorrow	Young And The Restless	Ryan's Hope	Richard Roberts	Movie: "The River"	"	Aerobics
12:00	Movie: "Three Comrades"	Day The Universe Changed	News	News	News	All My Children	Mama's Family	"	"	Tennis Paris Open Men's Semifinals
1:00	"	MacNeil / Lehrer Newshour	Dick Van Dyke	Another World	Capitol	One Life To Live	Bewitched	Movie: "Love With A Perfect Stranger"	Movie: "Kidco"	"
2:00	Tom & Jerry And Friends	Adam Smith's Money World	Andy Griffith	Guiding Light	General Hospital	I Dream Of Jeannie Brady Bunch	Tucker And The Horse	"	"	"
3:00	Scoby Doo	Sesame Street	Ghostbusters	"	\$100,000 Pyramid What's Happening!!	Falcon Crest	Smurfs' Adventures She-Ra	Worst Witch	"	Women's Bowling Professional Tour
4:00	Gilligan's Island Rocky Road	Mister Rogers 3-2-1 Contact	G.I. Joe	Magnum, P.I.	Silver Spoons	People's Court	ThunderCats	"	Movie: "Isaac Littlefeathers"	Scholastic
5:00	Andy Griffith	Captain Kangaroo Business Report	Facts Of Life	News	Three's Company	Jeopardy	Beverly Hillsbillies Alice	"	"	SportsLook
6:00	Sanford And Son Honeymooners	MacNeil / Lehrer Newshour	Barney Miller	News	News	News	Too Close For Comfort Gimme A Break!	"	Paper Chase	SportsCenter
7:00	Movie: "Thirty Seconds Over Tokyo"	Nova	Movie: "The Blues Brothers"	Matlock	Election Coverage	Who's The Boss? Moonlighting	Movie: "Thunderbolt And Lightfoot"	Movie: "Movers & Shakers"	Movie: "Jaws"	NHL Hockey Washington Capitals at New York Islanders
8:00	"	The Africans	"	Crime Story	"	"	"	Not News	"	"
9:00	"	Managing Our Miracles	Health Care In America	News	Election Coverage	"	Fall Guy	Surveillance	Movie: "A Nightmare On Elm Street"	"
10:00	NBA Basketball Houston Rockets at	Sneak Previews Business Report	Magnum, P.I.	Election Coverage	News	News	Late Show	Movie: "Florida Straits"	"	Auto Racing IHRA Drag SportsCenter
11:00	Sacramento Kings	"	"	Continues	Hot Shots	Returns	Taxi	Movie: "Death Wish 3"	"	NFL Films Presents Top Rank Boxing
12:00	Movie: "Murphy's War"	"	"	Letterman	"Third Girl From The Left"	Nightlife	"	"	Movie: "Crimes Of Passion"	Harold Brazier vs. Brian Baronet

HIGHLIGHTS

7:00 (3) ★★ "THE BLUES BROTHERS" (1990, Comedy) John Belushi, Dan Aykroyd. Two blues singers must contend with the Chicago police, the CIA, neo-Nazis and the U.S. Army to put together a benefit concert to raise money for their orphanage.

11:30 (3) ★★ 1/2 "OPERATION DAYBREAK" (1975, Adventure) Timothy Bottoms, Martin Shaw. A young man becomes involved in events leading to the assassination of Reinhard Heydrich, Hitler's confidant and right-hand man.

7:05 (4) ★★ "THIRTY SECONDS OVER TOKYO" (1944, Drama) Spencer Tracy, Van Johnson. General Jimmy Doolittle prepares for and commands B-25s in bombing missions over Japan.

11:30 (3) ★★ 1/2 "OPERATION DAYBREAK" (1975, Adventure) Timothy Bottoms, Martin Shaw. A young man becomes involved in events leading to the assassination of Reinhard Heydrich, Hitler's confidant and right-hand man.

12:15 (2) ★★ "MURPHY'S WAR" (1966, Science-Fiction) Mark Richmond, Wendell Corey. A space monster terrorizes the world by transforming human flesh into fungus.

12:10 (3) ★★ "THE THIRD GIRL FROM THE LEFT" (1973, Drama) Kim Novak, Tony Curtis. An older chorus girl worries about age and marriage.

Social Security News

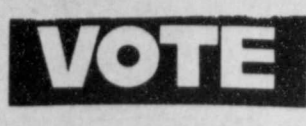
By Terry J. Clements
The Federal Government has enlisted the aid of health-care professionals to oversee the hospital treatment given Medicare patients. In general, Peer Review Organizations (PRO's), which are composed of health professionals, are responsible for seeing that each Medicare patient receives the hospital care that is medically indicated in the particular case. The PRO also makes certain that the care is provided in the appropriate setting, e.g., hospital, outpatient clinic, or other, and that whatever care is provided meets a generally accepted level of quality.

PRO's are also responsible for investigating patient complaints. For example, a person may believe that he or she was improperly refused admission to a hospital or was made to leave the hospital too soon. Complaints about the quality of care a patient receives may also be directed to the PRO; however, the issue should first be brought to the attention of the patient's own physician or to a representative of the hospital.

A patient who has been denied admission to a hospital and who disagrees with the decision may request a reconsideration. The request must be submitted in writing within 60 days of the denial. It may be submitted directly to the PRO or through the local Social Security office.

A hospitalized patient who is informed that he or she must either leave the hospital or begin paying for the care may also request a PRO review. The request should be made as soon as possible by either the patient or a family member after receipt of the notice.

If you have any questions you may contact us at 1401-B West 5th street, or call us at 293-9623.



October Subscriptions...

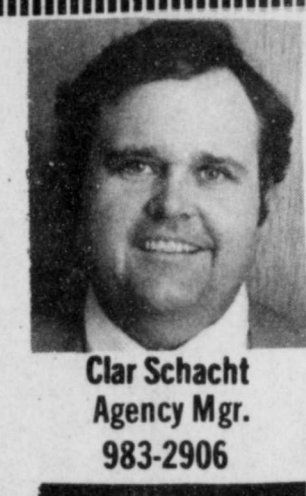
Local \$12.50 Out-of-county \$13.50

- | | | |
|-----------------|-----------------------------|---------------------------|
| Lula Mae Cates | Roy Kinard | Boyd Reay |
| Consumers Fuel | Peggy Laird | Joe Reeves |
| Agnes Cooper | Elmer Laughlin | Ted Roberts |
| Mrs. Guy Davis | Lockney Junior High Library | Clar Schacht |
| John A. Dorman | Lockney High School Library | Dorothy Shipp |
| Ricky Duckworth | Bobby McCormick | Emma Stalbird |
| H.E. Frizzell | Gale McPherson | Elvire Stewart |
| Brett Gill | Earl Minter | Superintendent of Schools |
| Don Henderson | Mrs. Howard Morris | Ronnie Thornton |
| Larry Hammit | Stephanie Parker | Don Vernon |
| Bob Jarrett | Debra Parrish | Lee's Home and Auto |
| Ike Johnson | J. Ed Parsons | Bill Wisdom |

Before the need... You need your local Agent.



Retirement Insurance
Texas Farm Bureau Insurance
101 S. Wall Floydada, Texas
Floydada - 983-3777 Lockney - 652-2242



Clar Schacht Agency Mgr. 983-2906



Kenneth Holt 652-3456

WEDNESDAY NOVEMBER 5, 1986

	(4) WTBS IND	(5) KTXI PBS	(9) WGN IND	(11) KCBD NBC	(13) KLBK CBS	(28) KAMC ABC	(34) KJTV IND	HBO	SHOW	ESPN
7:00	I Dream Of Jeannie Bewitched	Farm Day A.M. Weather	Bozo	Today	CBS Morning News Cont'd	Good Morning America	Transformers	Movie: "Comfort And Joy"	Movie: "Peter No-Tail Cont'd"	Nation's Business SportsCenter
8:00	Down To Earth I Love Lucy	Sesame Street	"	"	Dukes Of Hazzard	"	Flintstones	"	And Hillie	NBA Today
9:00	Movie: "Double Trouble"	Mister Rogers 3-2-1 Contact	Waltons	Family Ties	\$25,000 Pyramid Card Sharks	Donahue	700 Club	Movie: "Grease"	Movie: "The Tartars"	Play Final Round
10:00	"	Captain Kangaroo Managing Our Miracles	Big Valley	Wheel Of Fortune Scrabble	Price Is Right	Fame Fortune & Romance Celebrity Double Talk	Jim And Tammy	"	"	"
11:00	Perry Mason	Health Care In America	Falcon Crest	Super Password Search For Tomorrow	Young And The Restless	Ryan's Hope	Richard Roberts	Movie: "Finian's Rainbow"	Movie: "Victoria"	Aerobics
12:00	Movie: "Alcatraz: The Whole Shocking"	Gary Jenkins	News	News	News	All My Children	It's A Living	"	"	Capitals at New York Islanders
1:00	"	MacNeil / Lehrer Newshour	Dick Van Dyke	Another World	Capitol	One Life To Live	Bewitched	Movie: "Irreconcilable"	Movie: "My Science Project"	"
2:00	Tom & Jerry And Friends	Nature	Andy Griffith	Guiding Light	General Hospital	I Dream Of Jeannie Brady Bunch	Tucker And The Horse	Differences	"	Wrestling
3:00	Scoby Doo	Sesame Street	Ghostbusters	"	\$100,000 Pyramid What's Happening!!	Falcon Crest	Smurfs' Adventures She-Ra	One Too Many	"	"
4:00	Gilligan's Island Rocky Road	Mister Rogers 3-2-1 Contact	G.I. Joe	Magnum, P.I.	Silver Spoons	People's Court	ThunderCats	"	"	"
5:00	Safe At Home	Captain Kangaroo Business Report	Facts Of Life	News	Three's Company	Jeopardy	Beverly Hillsbillies Alice	"	"	SportsLook
6:00	Sanford And Son Honeymooners	MacNeil / Lehrer Newshour	Barney Miller	News	News	News	Too Close For Comfort Gimme A Break!	"	"	SportsCenter
7:00	Movie: "Boom Town"	Discover: The World Of Science	Movie: "Dirty Harry"	Highway To Heaven	Together We Stand Better Days	Perfect Strangers Head Of The Class	Movie: "The Man Who Knew Too Much"	Movie: "Grease"	Movie: "Bizarre"	Cycling Mayor's Cup Women's Final
8:00	"	Entrepreneurs	"	Magnum, P.I.	Dynasty	"	"	"	"	Basketball U.S.S.R. at Arizona University
9:00	"	"	"	St. Elsewhere	Equalizer	Hotel	Fall Guy	Movie: "Irreconcilable Differences"	"	"
10:00	"	"	"	"	"	"	"	"	"	America's Cup SportsCenter
11:00	"	"	"	"	"	"	"	"	"	"
12:00	"	"	"	"	"	"	"	"	"	"

HIGHLIGHTS

7:00 (3) ★★ "DIRTY HARRY" (1971, Drama) Clint Eastwood, Harry Guardino. A determined police detective defies his superiors and gambles with innocent lives to capture a sniper who is terrorizing San Francisco.

11:30 (3) ★★ "THE MAN WHO KNEW TOO MUCH" (1956, Suspense) James Stewart, Doris Day. An American couple in Morocco learn of an assassination plot when they witness the murder of a French secret agent.

7:05 (3) ★★ "BOOM TOWN" (1939, Western) Clark Gable, Spencer Tracy. A pair of wildcatters find the excitement they're seeking when they strike it rich in the oil fields.

9:40 (4) ★★ "TAKE THE HIGH GROUND" (1953, Adventure) Richard Widmark, Karl Malden. A harsh, sadistic sergeant establishes more rapport with his troops through the influence of the woman he loves.

11:30 (3) ★★ 1/2 "DIAL M FOR MURDER" (1954, Suspense) Ray Milland, Grace Kelly. After learning of his wife's infidelity, a man decides to have her eliminated.

11:30 (3) ★★ "A GUNFIGHT" (1971, Western) Kirk Douglas, Johnny Cash. Driven by greed, two former gunfighters stage a shootout for a price.