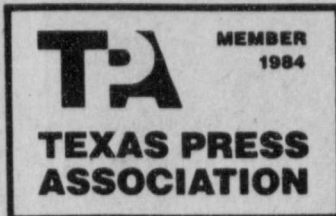


Make plans to attend the Chamber of Commerce
banquet Friday night.



652-2416
(If no answer, call toll-free hotline)
1-800-252-8477



THE LOCKNEY BEACON

25¢

Lockney, Texas 79241

USPS 317-220

Thursday, March 1, 1984

Volume 82, Number 9



EARL BROSEH was the recipient of this Sweepstakes trophy from this year's stock show. He also received a plaque which is his to keep.

Broseh takes sweepstakes

The 40th annual Floyd County Stock Show came to an end last Thursday night at the banquet held in the Lockney Elementary Cafeterium. Farm Bureau, sponsoring the banquet, had estimated at least 175 people for the event; however the lunchroom staff served 250 plates of enchiladas, beans, rice, salad, sopapillas, cherry cobbler, and tea.

Joe Scott Faulkenberry worded the invocation and Larry Schneider served as the master of ceremonies. Guest speaker for the banquet was Mark Nutt, a former Floydada resident, who is presently a student at Abilene Christian University.

Earl Broseh was awarded the sweepstakes award. Three Lockney students earned the showmanship awards: Bill Sherman, the beef; Karyn Foster, the sheep; and Earl Broseh, the swine; Gary Bighan was the winning beef herdsman. The overall high judging

trophy and the steer judging trophy went to Joel Mitchell.

In other awards given out to Lockney students, Erik Anderson received a trophy for the Grand Champion lamb and the breed champion Hampshire lamb. Jason Lusk showed the reserve breed Fine Wool Cross and Monty Teeter the breed champion shropshire. Rusty Teeter exhibited the reserve breed shropshire, Gwen Lane the reserve Southdown, Ronnie Ford the reserve breed Hampshire, Ritchie Thornton the breed champion in other pure breeds classification, and Matt Mitchell the reserve other pure breeds champion.

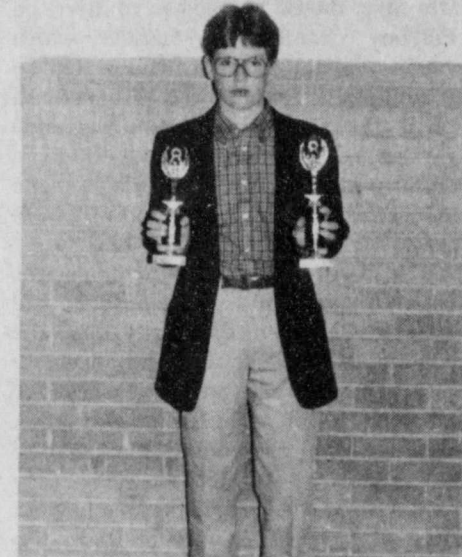
Top awards for the steers went to Chad Golden for the Breed Champion Cross, and the Grand Champion Steer was shown by Libby Williams. She exhibited the Breed Champion Angus and the Reserve Grand Champion Steer. Clay Golden showed the reserve

breed cross steer.

Lockney students received five of the top awards in the barrow division. Earl Broseh had the Breed Champion Chester White, Monty Means the Reserve Breed Hampshire, Rusty Carthel the Breed Champion Yorkshire, Jerald Johnson the Reserve Breed Yorkshire, and Wymon Rexrode the Reserve Champion of Other Pure Breeds.

In addition to the Traveling Sweepstakes trophy Earl Broseh received a permanent plaque for winning sweepstakes.

Albert Scheele, President of the Floyd County Livestock Association, was presented a plaque by the superintendents of the show for all of his hard work on this year's show and the sale which was deemed a "great success." Closing benediction was given by Earl Broseh.



JOEL MITCHELL received the trophies for the steer judging and the overall high score in the junior livestock judging held Wednesday morning after the County Stock Show was completed.

JH one act play to be presented for the public

Lockney Junior High School will present its one act play, "The Near-sighted Knight and The Far-sighted Dragon" for the public on Monday night, March 5, at Lockney Elementary School at 8:00 p.m. Admission is 50 cents.

The play is a comedy written by Eleanor and Ray Harden. Published in 1977, this children's play is a delight for all ages.

The cast includes: knight-Boyd Jackson, princess-Gwen Lane, dragon-Matt Williams, duchess-Joie Diepenhorst, Wilfred-Todd Hallmark, captain of the guards-Joel Mitchell, king-Clay Adrian, and guards-Missy Hayes, Ron Cates, Clay Harrison, and Pat Briggs.

Stage crew includes: Kathy Davis, Donna Vernon, Jimmy Ballejo, and Julia Segovia. The director is Linda Terrell.

The cast will travel to Post on March 8 to present the play for district U.I.L. competition.

Kenneth Wyatt to speak at Chamber banquet Friday

The annual Lockney Chamber of Commerce banquet is scheduled for Friday night. Speaker for the banquet will be the renowned western artist Kenneth Wyatt, an ordained Methodist minister.

Other new officers of the Chamber will be introduced at the gathering. They include Marr, Carroll Anderson, vice president, Donnie Meriwether, secretary, and the incumbent treasurer J.D. Copeland.

The banquet, which will include a complete chicken fried steak dinner, will start at 7:00 p.m. Tickets for the banquet are \$5.00 per person and may be purchased from any member of the Chamber of Commerce or at the door.

New Chamber of Commerce directors, elected by mail by ballot, will also be introduced. They include Jack Covington, Vera Jo Bybee, Merle Mooney, and Joe Zorger. Retiring directors are Jerry Paul Cooper, Dickie Lambert, June McDonald, Jinna Sue Turner, and Clar Schacht.

The announcement of the Man and Woman of the Year will highlight the event and presentations of this year's honorees will be made by last year's winners, Chester Carthel and Ethelyn Vernon. A new award added this year to the list of special recognition will be the Family of the Year. This award will be presented by the Chamber's in-coming president, Gary Marr.

Please make your plans to attend the banquet. It promises to be a very rewarding evening of entertainment with a superb after-dinner speaker appearing at one of the ever decreasing number of such occasions, dictated by his busy schedule. One of more of your friends or neighbors might be recognized too.

a view from

The Lamplighter

By Ken Towery

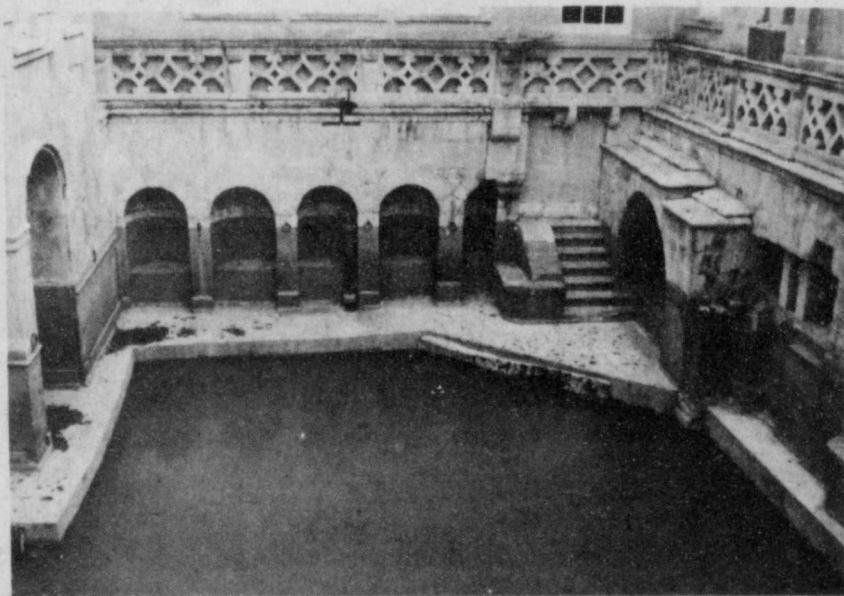
Well, the deed is done. The troops will be ordered out of the airport and onto the ships.

As far as I am concerned, and from this distance, it was a good day's work on the part of the President.

I had no quarrel with the decision to put the troops ashore in the first instance, given the situation existing at the time. But as anyone knows who is familiar with battlefields, situations are bound to change in time. And in the Mid-east, they change much more quickly than anywhere else on earth.

I don't know what will happen next. By the time this is in print, no doubt the situation will have changed again, and perhaps even again. One thing that will not have changed, however, is the propensity of his opposition to criticize his actions, no matter what they are. Many of the exact same people who were loudest in their demands for removing the troops are now in the front ranks of those saying the removal proves the failure of the President's policies in the mid-east. Such is the wild and wonderful world of national politics. About all the President can do, it seems to me, is stick to his guns, make his decisions as best he can, do what he thinks is right, and let us judge the wisdom of his policies in November. As I have said before, I believe the people have enough sense to sort it all out.

Speaking of November. It's still a long time away, and the traveling troupe of candidates for the presidency have already made enough promises to last into the next century. All in all, however, there debates are proving quite interesting. I have a weakness for watching that sort of thing on t.v. Mr. Mondale is in high dudgeon over Mr. Reagan's budget deficit, and he says if he gets to be president, he will reduce it significantly. Mr. Glenn asks him how he is going to do it, in view of the fact that he has already made enough promises to special interest groups to add an additional \$400 Billion to federal spending. Mr. Mondale replies that he would cut defense spending, and cut some 12 to 15 Billion dollars from the farm programs, and raise some taxes. of course.



ONE OF THE BEST EXAMPLES of the old Roman Baths exists in England. The one pictured here is in Bath, England.

Our September song...

Editor's Note: The following is an account given by Faye Barker, in cooperation with Dottie Stansell, of the travels by Art and Faye Barker of Lockney and Dewitt and Roberta Seago of Arlington in the European countries during the month of September 1983. The Seagos are former residents of Lockney and Floydada. This is the seventh account of several that will be printed in the upcoming editions of the paper.

England gradually regained control of Wales and Edward I was primarily responsible. Edward declared war on Wales in 1277 and finally subdued them in 1283. It was accomplished in part by his building massive castles in North Wales, the center of resistance. One of them - Caernarfon Castle - was the scene of English history's most famous ruse. The Welsh chiefs weakened by years of campaigning appeared before Edward at this mightiest of his strongholds. "Give us a prince who neither speaks English or French, who is born in Wales and we will pledge allegiance," they said. Edward gave his word and sent them away, then forthwith sent to England for his wife, who was about to bear a child. A month later a son was born at Caernarfon. Edward summoned the Welsh chieftans, striding into the assembly hall with the infant cradled in his shield. He proclaimed pulling aside

under a rock. Limestone lets water go through and make caves where there is splunking, but it is dangerous as splunkers have drowned when it starts to rain and the water quickly rises. We pass through Cheddar, made famous for its cheese. The Cheddar Gorges or caves makes this a resort town. There is also trout fishing. We approach Bristol by way of the famous Clifton Suspension Bridge, which was at one time Port Bristol and imported mostly tobacco, wine, chocolate and slaves. It is no longer a seaport because the reefs do the veil. "I give you your prince, born in Wales who speaks neither English nor French." The chiefs knelt before the babe, knowing they had been tricked. Thus did the title Prince of Wales, originate, a title worn by the eldest son of the British sovereign ever since. Prince Charles was presented to the Welsh in 1969 by Queen Elizabeth II also at Caernarfon.

We cross back into England through little villages one famous for leather shoes, another for making sheep skin coats. We stop in Wells which is one of the most delightful little towns in England, a place in which time seems to stand still. It is famous for its small, but most impressive Cathedral. "Rock of Ages" was written here as the author sought protection from a storm while

Continued On Page 4

Princess contestants sought for rodeo

The Silver Spurs Rodeo Club is sponsoring a Rodeo Princess contest in conjunction with their upcoming March High School Rodeo.

The contest is open to young girls 12 years old and under. Anyone interested in the contest may call 652-2738 or 652-2737.

Tri-State High School Rodeo Association's annual spring rodeo is scheduled for March 24 and 25 with performances to be held in the afternoons on both days. It is sponsored by the Lockney Rodeo Club.

Over 200 high school age participants are expected to compete in town for the rodeo.

Ed Marks is scheduled to serve as the announce. Bruce Williams and Roy Henderson, both of Lockney, will be the clowns. Stock for the Rodeo is being provided by the Terrell Rodeo Company of Roaring Springs.

13 women complete firearms course

Thirteen area women have completed a firearms class under the instruction of Ray Macha, a city policeman who is an instructor certified by the state and the National Rifle Association.

The class met three nights and concluded Saturday afternoon with a session on a shooting range. Macha emphasized gun safety, gun laws, familiarization with handguns, marksmanship and some aspects of self-defense. High scorers on the range were Wendy Montandon, Linda Kidd and Billie Cook.

Certificates were presented to June Sherman, Elfie Sherman, Wendy Montandon, Linda Kidd, Mary Joe Sherman, Barbara Cawley, Gayle Jackson, Helen Griggs of Floydada, Wanda Dudley, Mary Ruth Fewell, Billie Cook, Barbara Farrow and Colleen Sandlin.

Macha says he will conduct another class if the interest is high enough. He would prefer a four-hour intensive class followed by range practice.

This Week

CHEESE AND BUTTER

Cheese and butter will be distributed on Friday, March 16, from 9 a.m.-1 p.m. at Baccus Ford in Lockney. Please bring some type of I.D.

FAMILY PORTRAITS

The Floyd County Fair Association has announced that a photographer will be in Lockney on March 24 to take only family portraits. The photographer is being brought to Lockney as a fund raising project for the Fair Association. The portraits will be made at the Lockney Beacon office and anyone wishing to have pictures made of their families should purchase a coupon from any members of the Fair Board at a cost of \$7.95. The coupon will be for a 10x13 portrait and additional pictures may be ordered if you wish. The coupon also includes a frame for the portrait.

For more information on the photographer and coupons for the portraits call Tina Graves at 652-2776 or 652-3308.

SPANISH CLASSES

Lockney I.S.D. is now offering adult Spanish classes. The classes will start Feb. 28 and will run through May. The classes will be held Tuesday and Thursday nights from 7-9:00 p.m. at a cost of \$40 per person. Anyone interested in learning conversational Spanish should call the Lockney High School at 652-3325.

VOLLEYBALL

Anyone interested in playing volleyball should call Louzilla Keeter at 652-2371.

CHARM SCHOOL

Saturday, March 3rd from 10:00 a.m.-12:00 noon the Floyd County 4-H will host a charm school where Brenda Becknell will discuss all aspects of skin care. This event is open to everyone between the ages of 9-19! It will be at the Community Room of the Lighthouse Electric in Floydada and should be a fun day.



SHOWMANSHIP AWARDS—All three Showmanship awards from the Floyd County Junior Livestock Show went to Lockney students. Bill Sherman received the steer trophy, Karyn Foster the lamb trophy and Earl Brosch was awarded the barrow trophy.

PERSPECTIVES

By The Rev. Michael O'Connor

There's a shoot out going on in the Panhandle town of Borger. They are using words and the ballot box instead of bullets, but the fight is over the honor of a woman, sort of. At any rate, the whole thing has turned into a much bigger fuss than anyone apparently thought it would.

At stake is whether the local cable franchise should be allowed to carry the Playboy channel, a channel which carries what many consider to be sexually explicit material. From what I read, the channel is apparently a video version of the magazine, with some cultural stuff, some "comedy", game shows, and, of course the now famous centerfold.

The group which seeks the ban states simply that the material is obscene and show be outlawed, especially since the community dislikes it. They want a referendum to end the controversy for all time, a sort of let the people speak solution. On the other hand, their opposition is quoted as saying they simply want the right to be able to what they want in the privacy of their own home.

Both sides, I fear, face a logical inconsistency. Does the group seeking the ban also desire a ban on whatever movie channel the franchise carries? I have yet to see one of those channels that does not carry "R" rated material, often containing sexually explicit language and video. Are they also crusading to eliminate Playboy and its like from the convenience stores and the local bookstore?

Does the opposition, which is so concerned about constitutional liberty really believe that line about "the

privacy of one's own home?" John Wayne Gacy did a lot in the privacy of his own home. Surley they don't mean to condone that sort of thing.

I would hate to see the Playboy channel on any cable system, as I don't think it represents the morality of the broad segment of population in any town. But let us be consistent with our battles. And please, let us recover the concept of the good of the community and ease up on arguments concerning rights. It is interesting that leaders on both side of the issue dislike the Playboy channel and would not have it in their homes. I think that would be the best place to center their discussion.

In times like these....

By Mary Jo Fielding

I was so pleased to read that the U.S. Marines are not leaving Lebanon. President Reagan is determined not to abandon the Gemayel government and to maintain a military role in Lebanon in the form of naval firepower. He has authorized attacks by Americans' warships on any forces firing from Syrian controlled territory. Defense Secretary Weinberger said that the Marines were being withdrawn 2 to 3 miles to the West, moving to warships offshore. This new strategy of Navy retaliation is demonstrated as the 16 inch guns of the battleship New Jersey and smaller weapons of U.S. destroyers fired hundreds of shells at Syrians - occupied territory. White House aides say that

Jargin from Jackie

Well, it sure doesn't seem possible but this is already the last week of February. We have all enjoyed the nice, warm weather this week and I think everyone is glad the dirt hasn't been blowing.

Everyone seems to be doing better. We have had several residents with colds, but nothing serious. This week, we seem to all have our "sniffles" under control.

We are making preparations now for National Nursing Home Week. It will be the week of May 13th through May 19th. Watch for more publicity in the upcoming weeks. There will be various activities and events for everyone to enjoy.

Since the weather has been so pretty this week, many of our residents have taken advantage of the sunshine. As always, Granny Self has been feeding the birds everyday. Here lately, though, she has spent more time scattering their "goodies" and enjoying the sunshine. In the mid-mornings and mid-afternoons, Esker Pyle, John Smith, Richard Lanham, Wilber Miller and Lewis Roberts can be found "sunning" in groups around the grounds outside. Ladies, we've been falsely accused all these years of chattering and gossiping

more than men. If you're ever around this group, they make a ladies sewing circle seem quiet! Ha! Just joking guys! Anyhow, as you can see, we are getting out, soaking up sun, and getting rid of the case of "cabin fever" everyone has had this winter.

Whoops, I spoke too soon! Only in the Texas Panhandle can you experience every type of weather--all at the same time. I awoke Sunday morning to the crashing of thunder, the flashing of lightning, wind howling, hail, sleet, rain and snow. That was all going on at once, too. The weather just got worse and with no phones or electricity, things were sure quiet. We don't realize how dependent we've become or modern convenience until we can't use them. Very little in my home is not electric powered. Everyone seemed to be doing alright at the Care Center today, but they enjoyed a sing-a-long this morning by the fireplace. It helped boost our spirits and gave us a lift.

We enjoyed the gentlemen playing for us on Saturday night so much. It really was a good two hours of entertainment everyone enjoyed. Thanks again to Mr. Martin, Daniel Brewer, Milt Robs, Louis R. Slapp. You made the residents very happy.

Lockney School Menu

Feb. 27-March 2

Monday:
Breakfast—Toast, jelly, pears, milk
Lunch—Ham, corn on the cob, broccoli, rolls, pears, chocolate candy, milk
Tuesday:

Breakfast—Waffles with syrup, peaches, milk
Lunch—Smoked ropes sausage, lima beans, sauerkraut, tomatoes, cornbread, temptation, milk
Wednesday:

Breakfast—Rice, fruit cocktail, milk
Lunch—Salisbury steak, mixed vegetables, green salad, muffins, apple-sauce cake, milk
Thursday:

Breakfast—French fried potatoes, applesauce, milk
Lunch—Barbequed meat balls, lettuce, tomato salad, creamed peas, greens, fruit salad, rolls
Friday:

Breakfast—Toast, apricots, milk
Lunch—Big burger, lettuce, pickle, golden french fried potatoes, apple wedge, cookies, milk

such a strategy deters attacks on the Marines as they are withdrawn, and gives confidence to the Gemayel government. The naval armada includes not only the New Jersey but also two aircraft carriers - the John F. Kennedy and the Independence, which carry a total of 180 F. 14, A-6 and A-7 attack aircraft. The flotillas, with a total of 25 ships also includes a dozen cruises, destroyers, and firegates.

Here it is Sunday morning of February 26th and I heard over the news that the last of the combat Marines have withdrawn from Lebanon to the warships.



GWEN LANE receives her trophy for Reserve Breed Southdown from Stock Show Association president Albert Scheele.



OUTSTANDING SHEEP WINNERS—[Back] Ritchie Thornton, Ronnie Ford, Monty Teeter, Matt Mitchell, Rusty Teeter; [front] Gwen Lane, Erik Anderson, and Jason Lusk with the trophies they received for their outstanding sheep shown at the county stock show. Ritchie had the Breed Champion in the Other Pure Breed division, Ronnie the Reserve Breed Hampshire, Monty the Breed Champion Shropshire, Matt the reserve Breed Champion of Other Pure Breeds, Rusty the Reserve Breed Shropshire, Gwen the Reserve Breed Southdown, Erik the Grand Champion Lamb and the Breed Champion Hampshire, and Jason the Reserve Breed Fine Wool.



CHAD GOLDEN had the Grand Champion Steer at this year's Floyd County Stock Show and the Breed Champion Cross Steer while brother, Clay Golden, had the Reserve Breed Cross. Not pictured is Libby Williams who had the Reserve Grand Champion Steer and the Breed Champion Angus.

ALLSUP'S CONVENIENCE STORES

- WHILE SUPPLIES LAST
- SELF SERV GAS
- OPEN 24 HOURS FOR YOUR CONVENIENCE
- PRICES EFFECTIVE MARCH 1-3, 1984

REG., KING SIZE, NEW LIGHTS

FRITOS CORN CHIPS

REG \$1.79 BAG

\$1.49

Ham & Cheese Sandwich 89¢

Burritos 2/99¢

Hot Link on Bun 79¢

NOW AVAILABLE AT ALLSUP'S

NO NONSENSE HOSIERY

LARGE SELECTION ALL SIZES AND COLORS

ALLSUP'S COOKED FOOD SPECIAL AS FEATURED

CHOPPED B.B.Q. SANDWICH

ON TV. 99¢

ENJOY THE TASTE OF REAL SOUTHWESTERN B.B.Q. EACH

ALLSUP'S NEW

HOT CHOCOLATE

8 OZ. CUP

30¢

ASST. FLAVORS

BORDEN'S ICE CREAM

1 1/2 GAL. CTN.

\$1.79

BORDEN'S

COTTAGE CHEESE

12 OZ. CTN.

79¢

BORDEN'S

HI-PRO MILK

1/2 GAL. CTN.

\$1.19

DR. PEPPER

12oz. Cans 6 pack \$1.69

Singles 45¢ ea.

Nice N Soft 6 Roll Toilet Tissue \$1.59

Zee Paper Towels 2/99¢

8222

Let the new generation of hybrids do for your sorghum acres what Pioneer has done for Plains corn.

8222 Big yield potential under full irrigation. A widely adapted hybrid, 8222 has produced a superior record under many different environmental conditions. But it's especially adapted to full-season production in this area. Provides outstanding stress tolerance, plus excellent resistance to MDMV and head smut. It's an attractive, medium height hybrid with semi-open heads of bright red, hard-textured grain. Leaves that are above average in width help provide first-rate shading. And outstanding root and stalk strength keeps plants standing for maximum harvest.

8493 Especially adapted for dryland or very limited water conditions, this is a fast maturing hybrid with exceptional drought tolerance. It has the ability to take full advantage of normal early season rainfall; then it makes efficient use of available ground moisture to produce all that the season allows. Under tough growing conditions, the standability of many hybrids often suffers. But not 8493. Strong stalks and roots keep medium height plants standing straight for easy harvest of dark red, high test weight grain. It's the standard for resistance to greenbugs.

8333 Pioneer plant breeders developed this great new hybrid to make the most of what the growing season has to offer. This one has outstanding drought tolerance, too—but you should plant it on good dryland or under limited irrigation to take full advantage of its maturity and yield potential. In irrigation tests throughout the Plains, 8333 has produced exceptional yields. The field appearance of the bronze, hard-textured grain is most attractive. Harvesting is made easy, too, by excellent head exertion and very good standability. For late season plant health, 8333 is highly resistant to MDMV, head smut, and Biotype C greenbugs.

Choose the combination best suited to your land and your conditions — and get ready for a great sorghum crop.

See Your Nearest Pioneer Dealer.

Contact Kenneth Holt
at 652-3456
after 6:00 p.m.

8493

Registered trademark of Pioneer Hi-Bred International, Inc. The Limitation of Warranty and remedy appearing on the label is part of the terms of sale. Pioneer is a brand name, numbers identify varieties. PHS 1984

Ramsey recognized for service

Gerald G. Ramsey was recognized for his outstanding service to Texas Tech in his field of home economics last month. He received a crystal vase on an engraved platform from C.O.H.E. and was presented the Texas Tech Univer-

sity Medallion by Dr. Lauro Cavazos, President of TTU.

A 1935 graduate of Lockney High School, he was the son of Mr. and Mrs. Guy Ramsey, formerly of Lockney. He grew up in Lockney. He received his Bachelor of Science degree in Institution Management from Texas Tech in 1941 and was one of the first male graduates from the College of Home Economics. After graduation, Mr. Ramsey served his country in the military during World War II. Employing skills learned during his academic preparation, he then served for a period of time as assistant director of food service at Texas Tech. This experience led to his employment as director of food service at Hockaday School, a prestigious girls' school in Dallas, and later as director of food service at Southern Methodist University. During his thirty-two years of recognized service at SMU, Mr. Ramsey, annually directed the activities of 135 employees to feed 2,800 students daily.

The Lamplighter

By Ken Towery

Continued from page 1

Considering the fact that Reagan's spending for agriculture last year was somewhere in the neighborhood of 21 to 24 Billion dollars, that does not leave much for the farmers, under Mr. Mondale. I guess everyone would agree that Reagan's farm program was terribly expensive. Unless I am wrong, he poured more money into the agriculture sector last year than any administration in history. But I think everyone would also agree that something had to be done. A combination of circumstances, beginning with Mr. Carter's grain embargo, and culminating with drought and a worldwide recession, had placed farmers in a very precarious position. So as expensive as the program was, I believe it was justified.

I know the program had its critics. I've never seen a government farm program that made everyone happy. My memory goes all the way back to the 1930's, when the long process began. We had just finished hoeing a field of knee-high cotton when a "government man" stopped by the house and brought my dad down to the fields where we kids were working. He measured off the appropriate number of acres and told us to plow them under. That was the beginning. To an eleven year old it didn't make much sense. I don't remember being unhappy about the cotton being plowed under. That was not my worry.

But I do remember being put out that they didn't tell us about it before we got the field hoed.

THE LOCKNEY BEACON

Published weekly each Thursday by Floyd County Publishing Co., 211 North Main St., Lockney, Texas 79241. Second class postage paid at Lockney, Texas. Subscription rates: local \$11.50 per year, out-of-trade area \$12.50 per year. POSTMASTER: send address changes to the Lockney Beacon, P.O. Box 187, Lockney, Texas 79241.

Ken Towery Publisher
Carolyn Redding Editor/Gen. Mgr.
Pam Armstrong Office Manager
Carolyn Redding Advertising



RONNIE FORD displays the trophy he received for exhibiting the Reserve Breed Hampshire Lamb at the county stock show.

Missionary conference to be held

Eleventh annual missionary conference of First United Methodist Church will be held Friday, March 2-4, through Sunday with two couples as speakers.

The guest speakers are Don and Marie Curley, Navahos from the Shiprock, NM, United Methodist Church, and Harold and Ruth Greenlee, OMS International missionaries now living in the Dallas area.

The conference begins Friday evening at 6 o'clock with a worship service scheduled to conclude before 7 o'clock when the Chamber of Commerce banquet will begin. The guests will be taken to the banquet to hear the speech of UMC minister Kenneth Wyatt of Tulsa.

Saturday's schedule will include a men's breakfast in fellowship hall at 7 a.m. hosted by the Methodist men. Don Curley will be speaker.

The ladies and children will meet at 11:30 for a salad luncheon in fellowship hall. Afterwards Ruth Greenlee will speak to the women while the children attend a session with Marie Curley.

The congregation will meet together at 6:30 p.m. for a sandwich supper in fellowship hall before the 7:30 worship service with Dr. and Mrs. Greenlee in charge.

Sunday's schedule begins with coffee and donuts at 9:15. During the Sunday School time which begins at 9:45, Mr. and Mrs. Curley will speak to the adults while the youth meet with the Greenlees. Dr. Greenlee will speak at both the 11 a.m. and 6 p.m. worship services.

The congregation will join in a covered-dish luncheon at noon Sunday.

Don and Marie Curley speak as representatives of the 4 Corners Native American Ministry which was established by the United Methodist church as an outreach to the Indian tribes in the four states of Utah, Arizona, Colorado

Virgil Kelly resigns post after 37 years

Virgil Kelly, a former graduate of Lockney High School, and son of Mrs. Dolly Cardinal of Lockney, has resigned his position as the superintendent of the Denver City Independent School District effective at the end of the 1983-84 school year.

Kelly has been employed with the school system for the past 37 years. After his graduation from West Texas State University in 1947, he was hired as a basketball coach for Denver City. He held that position for three years, coordinating his coaching duties with those of teaching 7th grade math. He went on to become the head basketball coach in 1962. He held that position four years. In his first season as the head

coach, he took the Mustangs to the state championship and brought home a second place trophy.

In 1960 Kelley was named the principal of the intermediate school and served in this position until 1970. While there he was instrumental in starting the first remedial reading program and the first special education program, along with establishing a library at the elementary school.

In 1970, he was named to the assistant superintendent's post. During his term as assistant, he is credited with the establishment of the school's auto mechanics and agriculture programs. He also encouraged the development of the system's art department.

Spokesmen for the School Board in Denver City say that Kelley's guidance in the school systems will be missed.

Lockney Hospital Notes

Feb. 21-Feb. 27

Eli Ybanes, Plainview, adm. 2-15, dis. 2-21
Jonathan Schneider, Floydada, adm. 2-18, dis. 2-21
Gloria Ochoa, Plainview, adm. 2-15, baby boy Darrell, born 2-16, dis. 2-20
Emma Thomas, Lockney, adm. 2-17, dis. 2-24
Frances Maldonado, Plainview, adm. 2-19, baby girl Marcia, born 2-19, dis. 2-24
Velma Shankles, Lockney, adm. 2-20, dis. 2-24
Josephine Rivera, Plainview, adm. 2-21, dis. 2-23
J.D. Vincent, Plainview, adm. 2-21, dis. 2-25
Jean Jenkins, Plainview, adm. 2-21, continues care

Jerline Baker, Claytonville, adm. 2-21, baby boy Nathan, born 2-21, dis. 2-23

Bettie Counts, Lockney, adm. 2-23, continues care
Melinda Crowe, Lockney, adm. 2-23, baby boy Kevin, born 2-23, dis. 2-25
Dora Bueno, Olton, adm. 2-23, baby boy Marcelo, born 2-23, dis. 2-25

Faye Crader, Lockney, adm. 2-23, dis. 2-27

Amelia Lopez, Plainview, adm. 2-23, baby girl Cristina, born 2-23, dis. 2-25
Maria Ferrer, Kress, adm. 2-23, baby boy Jonah, born 2-23, dis. 2-25

Grace Colson, Lockney, adm. 2-25, continues care
Margareta Pulido, Plainview, adm. 2-25, continues care

Letters to the Editor

To the Editor:

We would like to Thank the reporter that came to our AAM meeting Friday, the 17th. Too bad the farmers in Lockney didn't think it was important enough to come too. Lockney was very inconsiderate to AAM. AAM has brought the Food Help Program to Lockney once a month. And this is how you all show your appreciation.

We had a "free" chili Lunch and great speakers: Wayne Cryts from

Missouri and David Senter from Washington D.C.

The next time you "broke" farmers come thru the cheese line please save the bull for the coffee shop. You had a chance to help and you refused. You were too busy to take an hour out of your day to come to a farm meeting. (Bet you had time to go to a basketball game!)

Better wake up Lockney!
Billie Hamlin
Aiken, TX 79221

Floyd County 4-H & FFA
Junior Livestock Association
Floyd County Agent
Floydada, Texas

Dear President Albert Scheele,

The County Stock Show was always played an important part in the lives of our family. It gave our children and us an opportunity to work and participate with the adults and youth of Lockney

and Floydada. The friendly and helpful association with these people has had many rewards.

Once more our lives have been touched and rewarded by these people. We wish to express our appreciation to the Floyd County Junior Livestock Association for dedicating the 40th Annual Show to the memory of our son, Dusty.

Thank you,
Stanley and Lou Burleson

STARTING TOMORROW

BUY ONE BURGER-

Get one FREE!

BUY ANY BURGER FRIDAY, MAR. 2 thru THURSDAY, MAR. 8, Only

GET EQUAL SIZE BURGER FREE

at your **FLOYDADA and LOCKNEY**

Dairy Queen

COW POKES

By Ace Reid

Everything "Above board" - Everything "Out In The Open"! Every Banking Detail Is Important In Our Service To You! We Understand Your Problems And Can Provide For All Your Financial Requirements!

First National Bank

Each depositor insured \$100,000.00 in Lockney 652-3355

FDIC FEDERAL DEPOSIT INSURANCE CORPORATION

A FULL SERVICE BANK

Our September Song...

Continued From Page 1

not allow the handling of the larger ships of today. We saw the parish church which looked like a cathedral and Queen Elizabeth I said it was the finest and prettiest in England. We also saw the Old Pub mentioned in Treasure Island.

After a delightful dinner, night and breakfast at the Ladroke Dragonara Hotel we were ready to go to Bath for a guided tour of this old city we had waited so long to see, and we were not disappointed. Its natural hot springs were discovered by the Romans, who built the baths, which in a perfect state of preservation, are the best example of Roman remains in England. We went through the old Roman Baths and to the Kings bath, throne and all. It was larger than a city swimming pool and the steam was rising from the water since it was 120 degrees. We walked past ancient Roman walls, Bath boasts that it is the best planned town in the land; it is certainly a perfect example of the 18th century at its handsomest. It is set high above the River Avon and the native honey-colored native stones create a classic town of spacious buildings and squares with their rare dignity and charm. Jane Austen and her heroines loved Bath. Mr. Pickford played while in the Assembly Rooms, and bronze plaques mark the houses where Lord Nelson, General Wolfe, Beau Nash, Queen Victoria and many other famous people lived. Art and I ate lunch at the Original Sally Lunn's. It is a small, narrow building with just a few tables, but with the same delicious food one would expect - of course with loads of clotted cream and pots of hot tea and hot milk. This is a beautiful place to see. We reluctantly left and soon drove through a very small place really just a wide place in the road named Pennsylvania. Our guide said, "They probably took it to the States, everything else seems to end up there." We traveled on toward Stratford upon Avon going in and out of Wales as our driver plays the tape "Come back to Wales." We passed the famous Black Bear Tavern,

built in 1308 in Tewkesbury. The abbey was turned into a parish church and 18 year old Prince of Wales is buried under the tower. We stop and visit the Parish and some of the antique shops before we go to Broadway, a small shopping village which is very popular with tourist and is often called The Painted Lady of the Cotsworld. After dinner, night and breakfast at the Hilton Hotel, which is the worlds most descreet Hilton as it stands only four stories high on the Avon. Although Hilton wanted a hotel in mock-Tudor, they were told to see it was no higher than the Memorial Theater, which is nearby.

We began our walking tour at the house on Henley Street where Shakespeare was born (1564) and spent his early years. The rooms were furnished in fashion of middle class houses of the period. The front room on the first floor, probably the room in which Shakespeare was born, contains many editions of his works. Many famous visitors have scratched their names on the windows. We then walked through the town to his school, a fine range of buildings, erected in 1552 where W.S. is crudely carved on one of the desks, the building is still used as a school. Nearby is a house called Hall's Croft a fine Tudor town house with spacious gardens which belonged to Shakespeare's son-in-law, Dr. John Hall. The cellar steps are all that remain of the "New Place" the house which Shakespeare bought when he returned to Stratford rich and famous. He went to London at 22, became wealthy and came home. But Stratfordians don't regard Shakespeare as a saint. To them he's the home town boy who made good.

Some 200 years ago, a testy clergyman, who lived next door, bought the house and pulled it down, so annoyed was he by the stream of visitors. Today pilgrims take leisurely walks through the beautiful garden planted over the foundation of the destroyed house. It contains every plant and shrub mentioned in the plays. As we strolled across the flower lined paths to Anne Hathaway's cottage, we realized that we were traveling the very path which the poet took to "woo" his wife. Anne was 26, Shakespeare 18 when they married. Until 1899 it was occupied by

the descendants of the Hathaway family, and still contain some of the original furniture.

At the corner of the High Street and Bridge Street is Quincy House which was occupied from 1616 to 1652 by Thomas Quincy, a wine dealer and his wife Judith, Shakespeare's youngest daughter. For a while there was a Judith Shakespeare Tea Room here at this house, but it is now the town Information Center.

Close by, in the High Street is Harvard House, a half-timbered house built in 1696, which belonged to the mother of John Harvard, founder of Harvard University. There is also a statue of Shakespeare, presented by David Garrick, the famous 18th century actor and manager of Drury Lane

Theater in London. Beside the Town Hall is the Shakespeare Hotel, dating in part from the 15th century. Close by is Nash's house which belonged to Thomas Nash, husband of Shakespeare's granddaughter. It now contains a museum. The parish church of Holy Trinity, in which Shakespeare is buried, is beautifully located on the banks of the Avon. A bronze bust of Shakespeare looks down on us as we stand there viewing the famous inscription on the slab covering his resting place. It says: "Good friend for Jesus sake forbear To dig the dust enclosed here Blest be ye man yt spares these stones And curst be he yt moves my bones."

Yes, this is "Shakespeare Country," but the town and little shops are

charming on their own.

In our group was a couple from Pennsylvania who taught English Literature, so we found them both informative and intelligent-very well versed in Shakespeare. We wished for Felicia Applewhite as we looked backward into the history of this man whose works she taught for so many years.

After a quick lunch at an old English Restaurant, we reluctantly left Stratford-upon-Avon. We soon crossed briefly over into Wales past a monument to the fighting Welsh, past a slate quarry and stopped at the top of Horse Shoe Pass (very aptly names). Our guide gave fresh bread for us to feed the sheep, and when they saw the bus stop, they came running after their bread. I spent my time during the stop, gather-

ing little sprigs of that beautiful heather that covered the rolling hills. Past slate quarries, Race Horse Tracks and the Castle of Chester, we drove to the Plantation Hotel in the city of Chester which presents a feast of "Medieval England." Next to those in York, its city walls is the most perfectly preserved. Chester, the county town of Cheshire, situated on the North bank of the River Dee is a vision of well preserved half-timbered houses and its characteristic "Row," the arcades or galleries which run along the house fronts of first floor level in the form of pedestrian walkways in half timbered construction supported on timber posts with staircases leading up to them. With shops, cafes and houses on two levels the Rows

Continued On Page 7



Let's talk.

Information about your changing telephone service from Jim West, Manager-Community Relations

"What's good about Southwestern Bell?"

While not addressed quite so bluntly, that was the main question we tried to answer in recent group sessions with our customers. These "focus group" meetings were held to give us a better idea of what people perceive to be strengths of our company.

We also asked for, and received, commentary on our weaknesses as seen by these customers.

Good service — particularly its dependability and reliability — was by far the main strength cited in these sessions.

Here are some of the comments made by our customers: "We couldn't survive without the phone service. I have to have my telephone for communications. If you have an emergency or a fire, you need it. I could live without the service, but I wouldn't want to. It is a big part of everybody's life."

It's dependable

"I would stress the dependability. I would point out to consumers being able to rely on your telephone for just about anything: your business, your home life, your social life."

"I'd say they have good service. Their phones work, and you can depend on the calls. If you have any repair work, it gets done."

"I've called to ask questions about rates and bills, and the people I've spoken to have been very polite and willing to answer all my questions."

"The phone company is every day coming up with more efficient ways of doing things, or better ways."

"I think the strength of the telephone company is that they have been more economical as compared to other items in your household budget. They have not gone up proportionately as much. That has been a tremendous asset for the lower income people."

Rate increases in line

"In relationship to every other company's rate increases, they're in line. The regulated companies have more trouble than the unregulated companies because they have to go beg almost to get a nickel and unregulated companies don't."

"Compared to what other

things cost today, I would say telephone service is a good value. It saves me money because I do a lot of comparison shopping through the phone book. I make the telephone work for me."

"You pay for contact with most of the world. You can use the phone to talk to anybody about anything, check on relatives, children, and you don't have to worry about it. It always works. What value would you put on that? A call to poison control when your child just drank a glass of bleach. What do you do? What's the value of that?"

"I like the bills because they come with a return envelope. It's one less address you have to write out and one less envelope you have to work up."

"I think the size of the company and the fact that it has been such a good company for people to work for has been a real asset here."

Divestiture confusion

Some customers did tell us they were still confused and uncertain about our separation from AT&T. Here are some of the comments about life after divestiture:

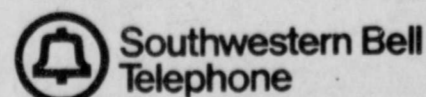
"I feel uneasy about it. I don't really understand what is actually happening and how it is going to affect me. I really can't say anything about it because I really don't know."

"We will be able to tell shortly how well Southwestern Bell Telephone will do on its own — whether in the coming years it is going to fall on its face or lay an egg. Or spread its wings and fly."

Well, the breakup has come and gone and I can assure you Southwestern Bell Telephone isn't laying any eggs. Our service in Texas has never been better. And we're going to work hard to keep it the best there is.

How about you? What do you think is good about Southwestern Bell Telephone? What faults do you find with us? I'd like to hear from you either way — just drop me a line at the address below.

Jim West
SW Bell Telephone
916 Denver
Plainview, TX 79072



84

LUMBER & Home Center

Sale Days

STORE HOURS:
Mon-Fri 7am-8pm
Saturday 8am-5pm
Sunday 9am-5pm

We accept checks

NOW THROUGH
Sunday, March 4, 1984

SALE DATES:
NOW THROUGH Sunday, March 4, 1984

CEILING FAN
MIRCO POLC
With light kit
\$6884 each
SAVE \$30
Other styles in stock.

ELECTRONIC TELEPHONE
One piece Two piece (Pictured)
\$684 \$1484 each

STORM & SCREEN DOORS
32" or 36" wide 80" high Mill finish
\$3984 each

ACADIA TOILET
White (seat extra)
\$3984 each

CAULKING
84¢ tube
We carry a complete line of DAP products

PAINTS
84 Latex Flat Wall **\$599** gal.
Premium Latex Flat Wall **\$899** gal.

HOT WATER HEATER
Gas Energy 30 Gal. 5 Year Warranty
\$11984 each

CASH DERBY
Come one, come all! Enter the \$3,000 Cash Derby! Ask how you can win up to \$1,000 cash! See associates for details. No purchase necessary. Contest ends March 31, 1984

FIBERGLASS INSULATION
Kraft Faced Roll-In
3 1/2" R-11 15 1/2¢ sq. ft. \$1365/88.12 sq. ft.
6" R-19 26¢ sq. ft. \$1273/48.9sq. ft.
Higher R-values mean greater insulating power.

CARPET
Level Loop Tweed **\$369** sq. yd.
Sculptured Cut & Loop **\$699** sq. yd.
SPECIAL! 6 Ft. wide green porch and patio turf **\$159** lin. ft.

CLOSE OUT! KEROSENE HEATERS
GRW-6 **\$2984** each
GRF-9A Deluxe **\$3984** each
Quantities are limited and may vary with location. Hurry and Save!

PANELING
Light or Dark Oak **\$539** piece
Sundance Hickory **\$848** piece

BLOW-IN INSULATION
30 lb. bag R-11 Value **\$5.59**
11¢ sq. ft. R-19 Value **19¢** sq. ft.
FREE! Use of blower with purchase

6' PATIO DOOR
Aluminum Mill Finish Standard Glass **\$13284** each
Screen Extra

REDWOOD DECKING LUMBER

	8'	10'	12'
2" x 4"	\$309	\$384	\$469
2" x 6"	\$464	\$579	\$704
4" x 4"	\$654	\$809	\$969

CHAINLINK FENCING
48" High **\$2184** 50' roll

METAL STORAGE SHEDS
5' x 4' Brentwood **\$7184** each
Other styles and sizes to choose from.

TRUCK TOOL BOX
Fits most popular size pickups. Baked grey enamel finish. **\$8484** each

FIBERGLASS ROOFING SHINGLES
Self-Sealing 20 Year Warranty Class A Fire Rating **\$1999** 100 sq. ft.

BUILDING STUDS
2" x 4" x 92 5/8" **\$152** each

SHEATHING PLYWOOD
1/2" x 4' x 8' CDX **\$739** piece

FENCING PICKETS
1" x 4" quality Cedar Picket **94¢** picket

FRAMING LUMBER

	10'	12'	14'	16'
2" x 4"	\$219	\$259	\$289	\$339
2" x 6"	\$324	\$379	\$449	\$509

DELIVERY AVAILABLE AT REASONABLE RATES

84

LUMBER & Home Center

PLAINVIEW, TEX.

1911

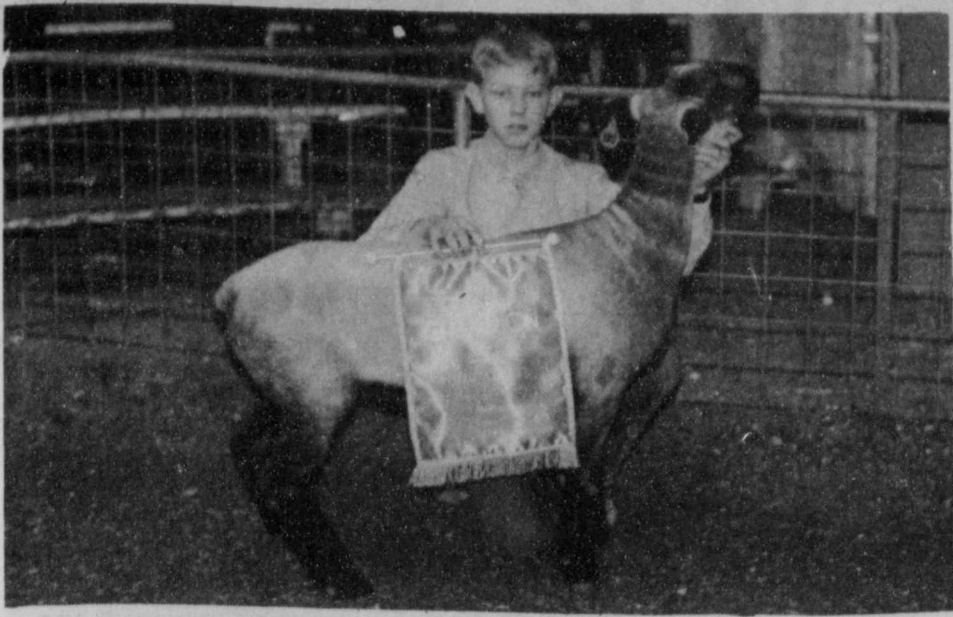
2985 DIMMITT RD. EAST

PHONE: (806) 293-4384

We reserve the right to limit quantities. Some items limited to stock on hand. Not responsible for typographical errors.

Think 84 In '84

CHURCH DIRECTORY



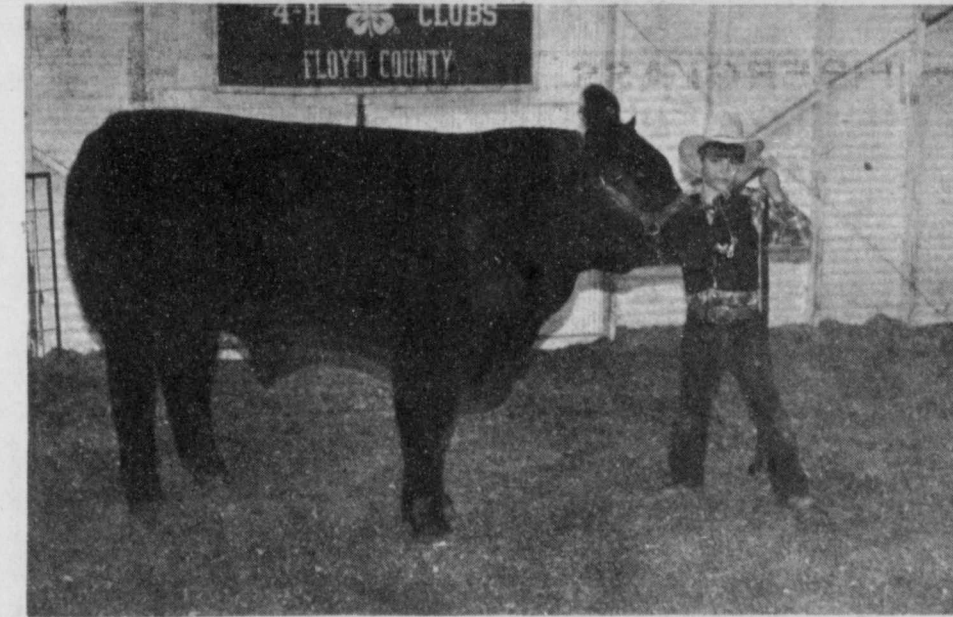
ERIK ANDERSON with the Grand Champion Lamb from the Floyd County Jr. Livestock Show. The lamb was also the Breed Champion Hampshire.



LOCKNEY STUDENTS Wymon Rexrode, Rusty Carthel, Jerald Johnson, and Monty Means took four of the top barrow awards from the county stock show. Wymon had the Reserve Breed Other Pure Breeds, Rusty the Breed Champion Yorkshire, Jerald the Reserve Breed Yorkshire, and Monty the Reserve Breed Hampshire.



RUSTY TEETER with his trophy for showing the Reserve Breed Shropshire lamb at the county stock show.



CLAY GOLDEN—1st place Medium Lightweight Cross and Reserve Breed Cross.

CEDAR HILL ASSEMBLY OF GOD
Mark Proffitt
Sunday School 10:00 a.m.
Morning Worship 11:00 a.m.
Evangelistic Service 6:00 p.m.
Wednesday Bible Study 6:00 p.m.

ASSEMBLY OF GOD CHURCH
Rev. Robert Ryan Lockney
Sunday School 10:00
Morning Worship 11:00
Evening Worship 7:00
Prayer Service Wed. 7:00

LOCKNEY LATIN ASSEMBLY OF GOD
Manuel Rendon, Pastor
Sunday School 9:45
Morning Worship 11:00
Evening Worship 7:30
Men's Fellowship, Tuesday Evening 8:00
W.M.C. Thursday 8:00
Christ's Ambassadors, Saturday Evening 7:30

SPANISH ASSEMBLY OF GOD TEMPLO GETSEMANI
308 E. Mississippi
A.C. Botello, Pastor
Sunday School 10:00
Morning Worship 11:00
Evening Evangelistic Service 6:00
Wednesday, Family Night 7:30

CARR'S-CHAPEL
Rev. Jerry Kunkel
Petersburg Pastor
Services Every Sunday
Morning Worship 9:30 a.m.
Sunday School 10:30 a.m.
No Evening Services

"ABUNDANT LIFE FELLOWSHIP" FIRST ASSEMBLY OF GOD CHURCH
Floydada
Pastor Jim Guess
Sunday School 9:45 a.m.
Morning Worship 10:50 a.m.
Sunday Evening Evangelistic 6:00 p.m.
Wednesday Night Service 7:30 p.m.

SAN JOSE CATHOLIC CHURCH
Lockney
Pastor: Fr. Jack Gist
Mon-Fri. Liturgy 8:00 p.m.
Saturday Vigil Mass of Sunday 7:30 p.m.
Sunday Mass 12:30 p.m.

ST. MARY MAGDALEN CATHOLIC CHURCH
Floydada
Father Terry Burke
Sunday Mass 12:00 noon
Monday Mass and Ultreva 9:00 p.m.
Thursday Mass 9:00 p.m.

CITY PARK CHURCH OF CHRIST
Floydada
Perry Zumwalt, Minister
Sunday Bible Study 9:30 a.m.
Morning Worship 10:30 a.m.
Evening Worship 6:00 p.m.
Wednesday Bible Study 7:30 p.m.
Ladies Bible Study, Wednesday 9:30 a.m.

LATIN AMERICAN CHURCH OF CHRIST
Lockney
Bible School 9:45
Morning Worship 10:45
Evening Worship 6:00
Wednesday Service 8:00

CHURCH OF CHRIST
Lockney
Ray Starnes
Bible Study 9:30
Morning Worship 10:30
Evening Worship 6:00
Wednesday Ladies Bible Class 9:30
Bible Study 8:00

WEST COLLEGE CHURCH OF CHRIST
West College & Third, Lockney
Frank Duckworth, Evangelist
Sunday Morning Worship Services 10:30
Sunday Evening Worship Services 6:00
Wednesday Evening Prayer Services 8:00

WEST SIDE CHURCH OF CHRIST
Floydada
Sunday Morning Worship 10:30 a.m.
Sunday Evening 6:00 p.m.
Wednesday Evening 7:00 p.m.

CHURCH OF THE NAZARENE
Lewis Shapp, Pastor
Sunday School 9:15 a.m.
Morning Worship 10:45 a.m.
Evening Worship 6:00 p.m.
Wednesday Bible Study 5:30 p.m.

FIRST CHRISTIAN CHURCH [Disciples of Christ]
Sunday 9:45 a.m.
Worship 11:00 a.m.

TRINITY LUTHERAN CHURCH
Providence Community
Gary Kleypas, Pastor
Sunday School & Adult Bible Class 10:00
Worship Service 11:00

FIRST UNITED METHODIST CHURCH
Lockney
Rev. Michael O'Connor
SUNDAY
Sunday School 9:45
Worship Service 10:55
UMY 5:00
Evening Worship 6:00
United Methodist Women, First Tuesday of Month Circles, Monday (2nd & 4th Monday nights) Tuesday & Wednesday mornings.

FIRST UNITED METHODIST CHURCH
Floydada
Earl Blair, Pastor
Sunday School 9:45 a.m.
Morning Worship 11:00 a.m.
Youth Fellowship 5:00 p.m.
Sunday Evening Worship 6:00 p.m.

EVANS CHAPEL BAPTIST CHURCH
Rev. Bennie Anderson
Pastor
Sunday School 10:00 a.m.
Morning Worship 11:00 a.m.
Training Union 6:00 p.m.
Evening Worship 7:00 p.m.
Wednesday Prayer Meeting 7:00 p.m.
Sunday Afternoon Worship 2:00 p.m.

PRIMER IGLESIA BAUTISTA
Rev. Agustín Rey
Sunday School 9:45 a.m.
Worship Service 11:00
Training Union 5:00 p.m.
Evening Worship 7:00 p.m.
Prayer and Study Group Monday 7:30 p.m.
Mid-Week Service Wednesday 7:30

TEMPLO BAUTISTA SALEM
Lockney
Pedro Reyes
Sunday School 9:45
Worship Service 11:00
Christian Training Time 5:00
Evening Worship 6:00
Wednesday Prayer Meeting & Choir Practice 7:30

BIBLE BAPTIST CHURCH
Floydada
Bob Chapman
Sunday School 10:00 a.m.
Morning Worship 10:45 a.m.
Sunday Evening Prayer Meeting 6:00 p.m.
Sunday Evening Services 6:30 p.m.
Wednesday Evening Services 7:30 p.m.

FIRST BAPTIST CHURCH
Lockney
Murle Rogers, Pastor
Sunday School 9:45 a.m.
Morning Worship 11:00 a.m.
Church Training 6:00 p.m.
Evening Worship 7:00 p.m.
Prayer Meeting, Wednesday 7:00 p.m.
Adult Choir, Wednesday 8:00 p.m.
High School Youth (B.Y.F.) Wednesday 7:00 p.m.
G.A. and Mission Friends Wednesday 4:00 p.m.
R.A.'s Sunday 5:00

CEDAR HILL BAPTIST CHURCH
Sunday School 10:00 a.m.
Morning Worship 11:00 a.m.
Evening Worship 7:30 p.m.

SOUTH PLAINS BAPTIST CHURCH
Rev. Cecil Osborne
Sunday School 10:00 a.m.
Morning Worship 11:00 a.m.
Training Union 6:00 p.m.
Evening Worship 7:00 p.m.

CALVARY BAPTIST
Floydada
Rev. Hollis Payne
Sunday School 9:45 a.m.
Morning Worship 11:00 a.m.
Bible Study 6:00 p.m.
Evening Worship 7:00 p.m.
Wednesday Evening 7:00 p.m.

MT. ZION BAPTIST CHURCH
Floydada
Otis Cook, Jr., Pastor
Sunday School 10:00 a.m.
Morning Worship 11:00 a.m.
Bible Study 4:00 p.m.
Evening Worship 5:00 p.m.
Wednesday Prayer Meeting 8:00 p.m.

AIKEN BAPTIST CHURCH
Bruce Kirby
Sunday School 10:00
Morning Worship 11:00
Training Union 6:00
Evening Worship 7:00
Prayer Service Wed. 7:30
Brotherhood, W.M.U. and Auxiliary Wednesday 7:30

FIRST BAPTIST CHURCH
Floydada
Sunday School 9:45 a.m.
Morning Worship 10:55 a.m.
Church Training 6:00 p.m.
Evening Worship 7:00 p.m.
Wednesday Evening 6:45 p.m.

LONE STAR BAPTIST CHURCH
Rev. Darwin Barnett
Sunday School 10:00
Morning Worship 11:00
Training Union 5:00
Evening Worship 6:00
Prayer Service, Wednesday Evening 6:30
Brotherhood, First Saturday Morning of Every Month.

VICTORY BAPTIST CHURCH
Floydada
Gary Grant, Pastor
Sunday School 10:00 a.m.
Morning Worship 11:00 a.m.
Evening Worship 7:00 p.m.
Wednesday Services 7:00 p.m.

NEW SALEM PRIMITIVE BAPTIST CHURCH
Floydada
Joe M. Jackson
Sunday Congregational Singing 10:00 a.m.
Morning Worship 10:30 a.m.
Evening Worship 6:30 p.m.

SPANISH BAPTIST MISSION
Floydada
Eloy Felan, Pastor
Sunday School 9:45 a.m.
Morning Worship 11:00 a.m.
Church Training 5:00 p.m.
Evening Worship 6:00 p.m.
Wednesday Evening 7:00 p.m.

TRINITY CHURCH
Pastor: G.A. Van Hoose
Sunday School: 10:00 a.m.
Morning Worship: 11:00 a.m.
Sunday Evening: 6:00 p.m.
Cottage Prayer Meeting Wednesday 7:00 p.m.
Now meeting in the Senior Citizens' Building.

PUBLIC NOTICES

NOTICE TO BIDDERS

Sealed proposals addressed to the Honorable Mayor and City Council of Lockney, Texas, will be received at the office of the City Secretary, City Hall in Lockney, Texas, until 9:00 A.M., C.S.T., March 8, 1984, for furnishing all necessary materials, machinery, equipment, superintendence and labor for placing a seal coat, consisting of one application of asphalt covered with aggregate on approximately 30,000 square yards of street pavement. The estimated quantities are:

- 9,000 gallons of asphalt
- 250 cubic yards of aggregate

Bidders shall submit their bid on the forms attached to the specifications and must submit therewith a Certified Check issued by a bank satisfactory to the Owner, or a Proposal Bond from a reliable Surety Company payable without recourse to the order of the City of Lockney, Texas, in an amount not less than five per cent (5%) of the largest possible bid submitted on the project as a guaranty that the Bidder will enter into a contract and execute bond and guaranty in the forms provided within fifteen (15) days after notice of award of contract to him.

Information for bidders, proposal forms, specifications and plans are on file at the office of the City Secretary, Lockney, Texas, and copies can be secured at the Office of the Consulting Engineer, A.C. Bowden, 1716 Avenue M, Lubbock, Texas, upon deposit of \$10.00 as a guarantee of the safe return of the plans and specifications. The full amount of the deposit will be returned to the Bidder on submission of a bonafide bid on the work, with such plans and specifications or upon returning the plans and specifications immediately after examination of same but before the time of receiving bids and advising the Engineer that a bid will not be submitted, otherwise, the deposit shall be forfeited. Suppliers may secure copies of the plans and specifications as outlined above but will be given five (5) days after bids have been received to return said documents to the Engineer's office before the deposit shall be forfeited. No obligation is assumed to return the deposit under other conditions.

CITY OF LOCKNEY, TEXAS
OWNER

/s/ J.D. Copeland
J.D. Copeland, Mayor

ATTEST:
/s/ Erma Lee Duckworth
Erma Lee Duckworth, City Secretary
2-23, 3-1c

If you appreciate your church directory, please let your sponsors know.

Adams Well Service
720 N. 2nd 983-5003

Brown's Department Store
106 N. Main 652-3831

Byrd Pharmacy
320 N. Main 652-3353

City Auto
201 E. Missouri 983-3767

Consumer's Fuel
210 E. Missouri 983-3394

Davis Lumber Co.
102 E. Shubert 652-3385

Bill Gilbreath Exxon
101 N. 2nd 983-3323

Jackson Tire Co.
101 S. Main 652-3366

Lee's White Auto Store
119 W. College 652-2145

Lockney Coop Gin
W. of City 652-3377

Martin & Co.
216 S. Main 983-3713

Moore-Rose Funeral Home
402 S. Main, Lockney 652-2211
329 W. California, Floydada 983-2525

Oden's Chevrolet-Olds.
221 S. Main 983-3787

Pay-N-Save
210 N. Main 652-2293

Plains Electric Co.
106 S. Main 652-2133

Reed Ford
Ralls Hwy. 983-3761

Schacht's Flowers & Jewellery
112 W. Poplar 652-2385

Thompson Pharmacy
200 S. Main 983-5111

Willson & Son
111 N. Wall 983-3113

1984 Stock Show Buyer's List for Steers and Lambs—Livestock Judging Winners—

Steers
 Chad Golden, Grand Champ Steer, 4-H, 1178 lbs., \$1.80 per lb., Lockney First National Bank.
 Kelli LaBaume, Grand Champ Barrow, FFA, 202* lbs., \$2.60 per lb., Floydada Livestock Sales.
 Erik Anderson, Grand Champ Lamb, FFA, 111 lbs., \$5.00 per lb., Oscar and Larry Golden.
 Libby Williams, Res. Gr. Champ Steer, 4-H, 1155 lbs., \$1.60 per lb., Providence Farm Supply and Fred Garrison.
 Mike Leatherman, Res. Gr. Champ Barrow, FFA, 242 lbs., \$2.25 per lb., R.C. Young Seed Co.

Hunter Smith, Res. Gr. Champ Lamb, FFA, 100* lbs., \$3.25 per lb., Floydada Businessmen and Farmers.
 Kristy Dawdy, Res. Br. Champ Angus, 4-H, 1130 lbs., \$1.10 per lb., Floydada Coop Gin.
 Shannon Edwards, Br. Champ Hereford, 4-H, 1075* lbs., \$1.10 per lb., Floydada Coop Gin.
 Amy Hinsley, Res. Br. Champ Hereford, 4-H, 989 lbs., \$1.10 per lb., Floydada Coop Gin and Ralls Delinting.
 Clay Golden, Res. Br. Champ Cross, 4-H, 1080 lbs., \$1.40 per lb., First National Bank, Plainview, and Southwestern Grain.

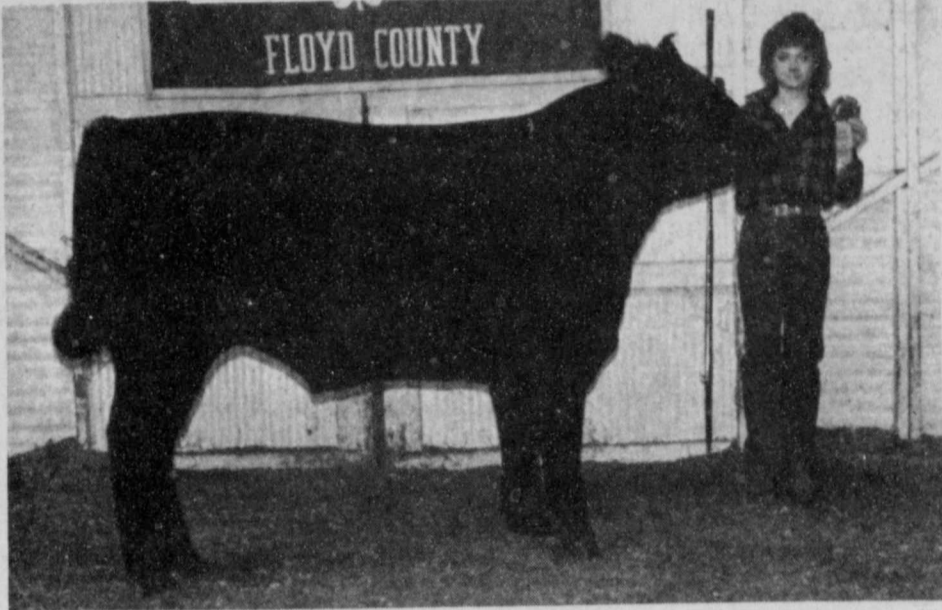
Angie Hinsley, 1st, 4-H, 976 lbs., \$1.10 per lb., Floydada Coop and Plainview Coop Compress.
 Earl Brosech, 1st, 4-H, 982 lbs., \$1.30 per lb., First National Bank, Lockney.
 Zach Nutt, 2nd, 4-H, 956 lbs., \$1.20 per lb., Barwise Elevator and Gin.
 Matt Williams, 2nd, 4-H, 1084 lbs., \$1.40 per lb., Royce Williams and East Mound Gin.
 Gary Bigham, 2nd, FFA, 1174 lbs., \$1.30 per lb., Ricky Kellison Fertilizer, Lockney.
 Lisa Terrell, 2nd, 4-H, 1208 lbs., \$1.30 per lb., Lockney Coop.
 Stacy Dawdy, 3rd, 4-H, 982 lbs., \$1.25 per lb., Tommy Turner Truck Co.
 Troy Bigham, 3rd, FFA, 1013 lbs., \$1.30 per lb., Lockney Businessmen and Farmers.
 Bill Sherman, 3rd, 4-H, 970 lbs., \$1.35 per lb., First National Bank, Lockney.
 Colt Golden, 3rd, 4-H, 1123 lbs., \$1.40 per lb., Farmers and Ranchers and East Mound Gin.
 Zane Colston, 3rd, 4-H, 1183 lbs., \$1.10 per lb., Floydada Businessmen and Farmers.
 Ross Colston, 3rd, 4-H, 1198 lbs., \$1.15 per lb., Producers Elevator.
 Clint Bigham, 4th, FFA, 1006 lbs., \$1.30 per lb., Lockney Coop.
 Jennifer Crow, 4th, 4-H, 1148 lbs., \$1.15 per lb., Rick Fuller Trucking.
 Chad Edwards, 4th, 4-H, 1233* lbs., \$1.10 per lb., Floydada Coop and American State Bank.
 David Pyle, 5th, FFA, 967 lbs., \$1.20 per lb., J&M Livestock.
 Troy Faulkenberry, 5th, FFA, 1105 lbs., \$1.10 per lb., Muncy Elevator and Floydada Businessmen and Farmers.
***Will Take Home**

Jason Brown, 2nd, 4-H, 136 lbs., \$3.00 per lb., Producers Coop Elevator.
 Shannon Shurbet, 2nd, FFA, 107 lbs., \$3.00 per lb., Producers Coop.
 Joe Faulkenberry, 2nd, FFA, 126 lbs., \$3.00 per lb., Floydada Coop Gin.
 Rusty Teeter, 2nd, 4-H, 112 lbs., \$3.00 per lb., Lockney Coop Gin.
 Pam Woody, 2nd, 4-H, 122 lbs., \$2.75 per lb., Floydada Businessmen and Farmers.
 Erik Anderson, 2nd, FFA, 137 lbs., \$3.10 per lb., Consumer's Fuel, Lockney.
 Christi Rowan, 3rd, 4-H, 95 lbs., \$2.75 per lb., Floydada Businessmen and Farmers.
 Karyn Foster, 3rd, 4-H, 112 lbs., \$3.00 per lb., Lockney Coop Gin.
 Roxene Brown, 3rd, 4-H, 100 lbs., \$2.75 per lb., Mike Mowrey, Benny Butler, Richie Crow, Tommy Hancock and Heather Holt, 3rd, FFA, 120 lbs., \$3.10 per lb., Eddie Teeter.
 Gwen Lane, 3rd, 4-H, 123 lbs., \$3.10 per lb., Patterson Grain.
 Wesley Teeter, 3rd, 4-H, 88 lbs., \$3.50 per lb., City National Bank, Plainview.
 Don Chesshir, 3rd, FFA, 107 lbs., \$2.75 per lb., Floydada Businessmen and Farmers.
 Angie Shurbet, 3rd, FFA, 113 lbs., \$3.00 per lb., Tommy Turner Cattle Co.
 Craig Forbes, 3rd, 4-H, 126 lbs., \$2.75 per lb., Floydada Businessmen and Farmers.
 Grant Cage, 3rd, 4-H, 113 lbs., \$3.00 per lb., McAdoo Flying Service.
 Todd Cage, 3rd, 4-H, 123 lbs., \$3.00 per lb., Lighthouse Electric.
 Lisa Terrell, 3rd, 4-H, 141* lbs., \$3.70 per lb., Tommy Turner Cattle Co.
 Matthew Redding, 3rd, FFA, 110 lbs., \$2.75 per lb., Floydada Businessmen and Farmers.
 Keri Dee Lusk, 4th, 4-H, 101 lbs., \$3.50 per lb., Jerry Williams and Warren Mathis.
 Doug Bigham, 4th, FFA, 116 lbs., \$2.75 per lb., Floydada Businessmen and Farmers.
 Haney Robertson, 4th, FFA, 91 lbs., \$3.00 per lb., Bob Ross.
 Maria Saucedo, 4th, 4-H, 120 lbs., \$3.00 per lb., Lockney Businessmen and Farmers.
 David Sutterfield, 4th, FFA, 121 lbs., \$3.30 per lb., Lambert Spraying.
 Kathie Battey, 4th, 4-H, 109 lbs., \$3.20 per lb., Tommy Turner Cattle Co.
 Ronnie Ford, 4th, FFA, 122 lbs., \$3.00 per lb., Lockney Businessmen and Farmers.
 Don Chesshir, 4th, FFA, 135 lbs., \$2.75 per lb., Floydada Businessmen and Farmers.
 Heath Robertson, 4th, 4-H, 94 lbs., \$2.75 per lb., Lewis and Robert Pyle.
 Carlos Baker, 5th, 4-H, 94 lbs., \$3.60 per lb., Cattlemens Livestock Comm., Dalhart, Texas.
 Joe Faulkenberry, 5th, FFA, 103 lbs., \$3.00 per lb., Floydada Coop Gin.
 Billy Sherman, 5th, FFA, 114 lbs., \$3.20 per lb., Sun Vue Fertilizer.
 Matt Mitchell, 5th, 4-H, 121 lbs., \$3.25 per lb., First National Bank, Lockney.

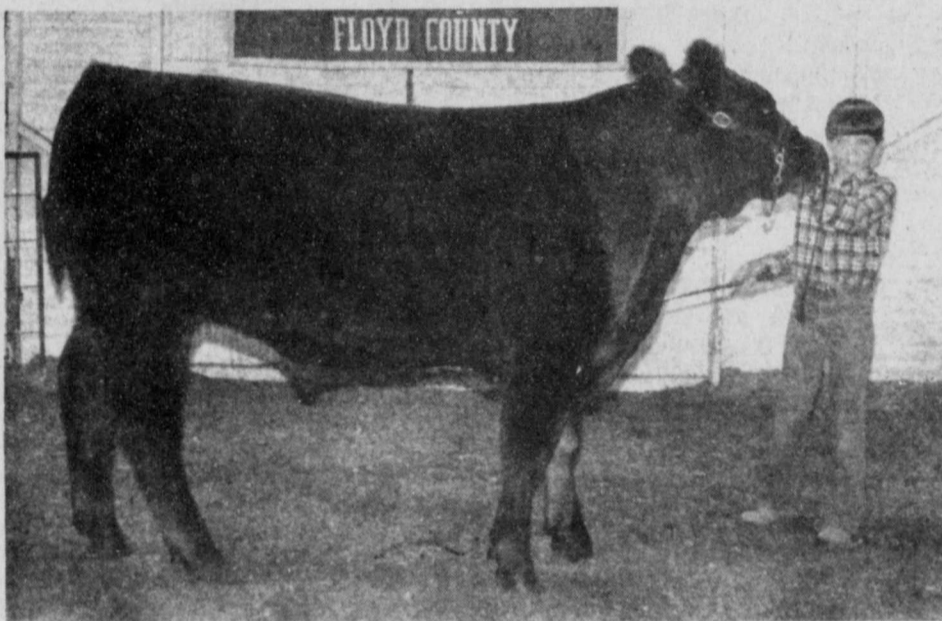
\$3.25 per lb., First National Bank, Lockney.
 Monty Teeter, 5th, 4-H, 87 lbs., \$3.20 per lb., Patterson Grain.
 Keri Dee Lusk, 5th, 4-H, 113 lbs., \$3.40 per lb., Eddie Foster and J.R. Belt.
 Allen Stallings, 5th, FFA, 123 lbs., \$3.40 per lb., Tri Seed Corp., Lockney.
 Haney Robertson, 5th, FFA, 111 lbs., \$3.00 per lb., Floydada Businessmen and Farmers.
 Kathie Battey, 5th, 4-H, 120 lbs., \$3.25 per lb., Allens Dixie Dog.
 Jason Brown, 5th, 4-H, 150 lbs., \$2.75 per lb., Floydada Businessmen and Farmers.
 Scotty Battey, 5th, 4-H, 91 lbs., \$3.00 per lb., Tara Seed Co. and Floydada Seed.
 Wendy Forbes, 6th, 4-H, 107 lbs., \$2.75 per lb., Floydada Businessmen and Farmers.
 Glenn Sutterfield, 6th, FFA, 113 lbs., \$3.10 per lb., Sterley Gin Co.
 Lisa Smith, 6th, 4-H, 103 lbs., \$3.25 per lb., Crume Gin and Providence Farm Supply.
 Scotty Battey, 6th, 4-H, 121 lbs., \$3.00 per lb., Floydada Gin and Sun Belt Delinting.
 Zora Woody, 6th, 4-H, 102* lbs., \$2.75 per lb., Floydada Businessmen and Farmers.
 Glenn Sutterfield, 6th, FFA, 135 lbs., \$3.00 per lb., Patterson Grain.
 Trent Gant, 7th, FFA, 124 lbs., \$3.25 per lb., Lambert Spraying.
 Tian Younger, 7th, 4-H, 115 lbs., \$3.00 per lb., Floydada Coop.
 Hunter Smith, 7th, FFA, 111 lbs., \$3.00 per lb., Eddie Teeter and Ronnie Thornton.
 Todd Cage, 7th, 4-H, 120 lbs., \$3.00 per lb., Producers and Elanco.
 Romeo Araujo, 8th, FFA, 123 lbs., \$3.00 per lb., Lockney Meat Co.
 Lori Smith, 8th, 4-H, 117 lbs., \$3.10 per lb., Lambert Spraying and Ronnie Thornton.
 Heather Holt, 8th, FFA, 119 lbs., \$3.25 per lb., Lambert Spraying.
 Jayson Lusk, 8th, 4-H, 113 lbs., \$3.20 per lb., Ricky Mosley, Red Mathis, Jerry Williams.
 Christi Rowan, 9th, 4-H, 111 lbs., \$2.85 per lb., Floydada Businessmen and Farmers.
 Shannon Shurbet, 9th, FFA, 125 lbs., \$3.00 per lb., Floydada Coop and Muncy Elevator.
 Jason Pyle, 12th, 4-H, 117 lbs., \$3.50 per lb., J&M Livestock.

Trophy Donors

Those who provided trophies for the 1984 Floyd County Stock Show winners include the following:
 Mr. and Mrs. G.L. Fawver, Grand Champion Steer;
 George Sparkman, Grand Champion Lamb;
 Producers Cooperative Elevator, Grand Champion Barrow;
 Jim Simpson, Reserve Grand Champion Steer;
 Roger Dawdy, Reserve Grand Champion Lamb;
 Larry Barbee and James McNeil, Reserve Grand Champion Barrow;
 Charles Beedy, Tub Springs Ranch, Breed Champion Steers;
 Consumers Fuel Association, Breed Champion, Fine Wool;
 Choise Smith, Breed Champ, Hampshire;
 Henry Hinton, Breed Champ, Suffolk;
 Floyd County Soil Conservation District, Breed Champ, Southdown;
 Womack Brothers, Breed Champ, Finewool Cross;
 Caprock Motor Parts and Hardware, Breed Champ, Shropshire;
 Cal Clay Farms, Breed Champ, Other Breeds;
 Morton Irrigation, Swine Breed Champs and Reserves;
 Geneva and Jackie Elliott, Reserve Breed Champ, Angus, Hereford, and Cross;
 Eddie Foster, Reserve Breed Finewool;
 Bill Hendrix, Reserve Breed Hampshire;
 Elmer Dean Williams, Reserve Breed Suffolk;
 Albert Scheele, Reserve Breed Southdown;
 Kenneth Holt, Reserve Breed Fine Wool Cross;
 Eddie Teeter, Reserve Breed Shropshire;
 Buster Terrell, Reserve Breed Champ, Other Breeds;
 Johnny West, Showmanship, Beef;
 Gary Brown, Showmanship, Sheep;
 In memory of K.E. Probasco, Showmanship Swine;
 Eugene Beedy, Herdsmen, Beef;
 Mr. and Mrs. Kenneth Brosech, Herdsman, Sheep;
 Buddy's Foods, Herdsman, Swine;
 Motley County Abstract and Mr. and Mrs. James Russell, Individual High Judging;
 Jerry Williams, Division High Individual Judging;
 Sweepstakes, Friend of the Floyd Co. Jr. Livestock Show; and
 Sweepstakes plaque, Mr. and Mrs. Weldon Pruitt.



LIBBY WILLIAMS—1st place and Breed Champion Angus.



CHAD GOLDEN—1st place medium-heavyweight Cross, Breed Champion Cross and Grand Champion Steer.

Lambs
 Grant Cage, Breed Champ, 4-H, 142 lbs., \$3.00 per lb., Floydada Businessmen and Farmers.
 Monty Teeter, Breed Champ, 4-H, 80 lbs., \$3.25 per lb., Sun Vue Fertilizer.
 Keith Hancock, Breed Champ, FFA, 102* lbs., \$3.00, Floydada Businessmen and Farmers.
 Dean Smith, Breed Champ, 4-H, 109 lbs., \$3.00 per lb., Floydada Businessmen and Farmers.
 Ritchie Thornton, Breed Champ, 4-H, 114 lbs., \$3.25 per lb., Lockney First National.
 Jennifer Crow, Res. Breed Champ, 4-H, 102* lbs., \$3.00 per lb., Buster Terrell and Ronnie Thornton.
 Jayson Lusk, Res. Breed Champ, 4-H, 115 lbs., \$4.00 per lb., Dan and Susan Fudge, Denton, Texas.
 Gwen Lane, Res. Breed Champ, 4-H, 94 lbs., \$3.00 per lb., Kenneth Brosech.
 Ronnie Ford, Res. Breed Champ, FFA, 117 lbs., \$3.00 per lb., Hurst Farm Supply, Lorenzo.
 Terri Bailey, Res. Breed Champ, FFA, 125 lbs., \$2.75 per lb., Floydada Businessmen and Farmers.
 Matt Mitchell, Res. Breed Champ, 4-H, 117* lbs., \$3.00 per lb., Cruce and Long Auctioneers.
 Gracie Saucedo, 1st, 4-H, 109 lbs., \$3.00 per lb., Lockney Businessmen and Farmers.
 Jonny Jones, 1st, FFA, 134 lbs., \$2.60 per lb., Floydada Businessmen and Farmers.
 Ritchie Thornton, 2nd, 4-H, 100 lbs., \$3.10 per lb., Lambert Spraying.
 Karyn Foster, 2nd, 4-H, 135 lbs., \$3.00 per lb., Barwise Gin.
 Tony Saucedo, 2nd, 4-H, 98 lbs., \$3.00 per lb., Dulin & Reagan Auctioneers.
 Wesley Teeter, 2nd, 4-H, 113 lbs., \$3.25 per lb., Lockney First National Bank.

Twister Beads Now Available
 In
Colored Fossil Beads
Pearl Beads
Gold Beads

SCHACHTS
 Lockney Flowers, Jewelry & Gifts 652-2385

You and your family are cordially invited to attend our

58th ANNUAL STOCKHOLDERS MEETING

of
Consumers Fuel Association, Lockney

Thursday, March 8, 1984,

at the Grade School Cafetorium

Dinner will be served at 7:30 p.m. followed by a business session

Two (2) Directors will be elected

DOOR PRIZES

LOCKNEY INDEPENDENT SCHOOL DISTRICT FINANCIAL STATEMENT FISCAL YEAR ENDED AUGUST 31, 1983

	General Operating Fund	Interest & Bonded Debt Fund	Designated Purpose Fund	Totals
REVENUE				
Local Maintenance & Debt Service Tax	\$ 586,632	\$ 60,388	\$	\$ 647,020
Other Local Sources	82,187	3,347		85,534
Intermediate Sources	2,540			2,540
State Sources	822,804			822,804
Federal Sources	92,440		145,742	238,182
Other Receipts	999			999
Total Revenue	\$1,587,602	\$ 63,735	\$145,742	\$1,797,079
EXPENDITURES				
Instruction	\$ 806,100	\$	\$119,820	\$ 925,920
Instructional Administration			6,938	6,938
Media Services	26,831		6,787	33,618
School Administration	117,759			117,759
Guidance & Counseling	32		1,478	1,510
Health Service	16,546		3,395	19,941
Pupil Transportation	73,296			73,296
Co-Curricular Activities	51,597			51,597
Food Services	101,254			101,254
General Administration	121,582		2,834	124,416
Debt Service		78,222		78,222
Plant Maintenance	189,675			189,675
Facilities Construction	26,858			26,858
Community Services			4,490	4,490
Total Expenditures	\$1,531,530	\$ 78,222	\$145,742	\$1,755,494
Net Revenue (Expenditures)	\$ 56,072	\$(14,487)	\$	\$ 41,585
ASSETS & OTHER DEBITS				
Cash & Temporary Investments	\$ 450,623	\$ 14,946	\$ 21,520	\$ 487,089
Receivables	182,621	13,992		196,613
Other Current Assets	40,536			40,536
Land, Buildings, Equipment	2,426,807			2,426,807
Retirement for Funded Indebtedness		17,500		17,500
Allowance for Uncollectible Taxes	(67,029)	(6,900)		(73,929)
Total Assets	\$3,033,558	\$ 39,538	\$ 21,520	\$3,094,616
LIABILITIES, FUND BALANCE, RESERVES				
Accounts Payable	\$ 46,468	\$ 19,150	\$ 2	\$ 65,620
Deferred Revenue	68,001	6,900	21,518	96,419
Bonded Debt Reserve		13,488		13,488
Fund Balance	492,282			492,282
Reserves in Fixed Assets	2,426,807			2,426,807
Total Liabilities	\$3,033,558	\$ 39,538	\$ 21,520	\$3,094,616

	4	5	9	11	13	28	34	HBO	SHOW	ESPN
	WTBS IND	KXTX PBS	WGN IND	KCBF NBC	KLBK CBS	KAMC ABC	KJAA IND			
7:00	Bewitched	Bozo	Today	Morning News	Good Morning America	Bullwinkle	Inspector Gadget	Movie: "Twilight Time"	Pick Up Your Feet	SportsCenter
7:30	I Love Lucy	Weather							Fairie Tale Theatre	Horse Racing
8:00	Movie: "Miracle In The Rain"	Sesame Street	Beverly Hillsbillies	Bewitched	Joker's Wild	The Flintstones Underdog			"Tale Of The Frog Prince"	College Basketball Indiana Vs.
8:30										
9:00		Electric Company	Movie: "Fifty-Five Days To Peking"	The Facts Of Life	\$25,000 Pyramid	Donahue	Mighty Mouse	Movie: "Playing For Time"	Movie: "Green Mansions"	Purdue
9:30		Contact					Jimmy Swaggart			
10:00	The Catlins Texas	Mister Rogers	Part 2	Wheel Of Fortune	The Price Is Right	Benson	Jim Bakker			Sports-Woman Australian Rules
10:30		Sneak Preview					Loving			
11:00	Perry Mason	Paraspectives	Family	Hot Potato Search For Tomorrow	Young And The Restless	Family Feud	INN News		Liberace In Las Vegas	Football
11:30		Teaching Students					I Love Lucy	Movie: "T.A.G."		
12:00	Movie: "Who's Minding The Mint?"	Writer's Workshop	News	News	News	All My Children	My Three Sons	The Assassination Game		Boxing Top Rank
1:00		MacNeil Lehrer	Rhoda	Turns	Capitol	One Life To Live	Movie: "All The Way Home"			
2:00	The Flintstones	Animal Painting	I Dream Of Jeannie	Guiding Light	General Hospital					Horse Racing Weekly
2:30	Battle Of The Planets	Match Game						HBO Coming Attractions		
3:00	The Munsters	Sesame Street	Super-Friends Scooby Doo	Hollywood Squares	Tattletales	Tom & Jerry Scooby Doo	The Flintstones Super-Friends	Movie: "Treasure Island"	Thunderbirds	College Basketball Indiana Vs.
3:30	Leave It To Beaver									
4:00	Little House On The Prairie	Mister Rogers	Charlie's Angels	On The Prairie	Barney Miller	People's Court	He-Man	I Love Lucy	Liberace In Las Vegas	Purdue
4:30		Electric Company								
5:00	Andy Griffith	3-2-1 Contact	One Day At A Time	News	Three's Company	News	ABC News	ABC News	Movie: "Twilight Time"	SportsLook
5:30	Carol Burnett	Report								SportsWeek
6:00	Hogan's Heroes	MacNeil Lehrer	Barney Miller	News	News	News	Hawaii Five-O		Fairie Tale Theatre: "Tale Of The Frog Prince"	Sports-Center NFL's Greatest
6:30	Sanford & Son		The Jeffersons	Entertainment	Family Feud	People's Court				
7:00	College Basketball Auburn Vs.	Sneak Preview	Lou Grant	Gimme A Break	Magnum, P.I.	All-Star Family Feud	College Basketball Texas A&M Vs.	Movie: "48 Hrs."	Movie: "Missing"	Moments
7:30		Inside Story								Boxing Top Rank
8:00	Mississippi State	Mystrary	College Basketball DePaul Vs.	Cheers	Simon & Simon	Lottery	Texas Tech			
8:30		DePaul Vs.								
9:00	News	The Lawmakers	South Carolina	Hill Street Blues	Knots Landing	20-20	Family	On Location "Carlin At Carnegie"	Pat Collins: "The Hip Hypnotist"	
9:30		Tony Brown's Journal								
10:00	All In The Family	Restless Sea	News	News	News	News	Twilight Zone	Movie: "That Championship"	Movie: "Independence Day"	College Basketball UCLA Vs.
10:30	The Catlins	Report		Tonight	WKRP In Cincinnati	M.A.S.H.	Thicke Of The			
11:00	Movie: "The Southern Star"	Focus On Society	Love Boat	David Letterman	Trapper John, M.D.	Bob Newhart	Night	Season		Washington
11:30		Focus On Society				ABC News Nightline				
12:00		The Gold Watch And Dynamite	CBS Movie "If Things Were Different"	Eye On Hollywood Laugh-In	CBS Movie "If Things Were Different"	Eye On Hollywood Laugh-In	INN News	On Location "Billy Crystal"	Movie: "Lunch Wagon"	College Basketball
12:30										

HIGHLIGHTS

MORNING
 8:05 (4) ★★ "MIRACLE IN THE RAIN" (1954, Romanoff) Jane Wyman, Van Johnson. A young soldier and a lonely woman fall in love only to be separated by war.
 9:00 (9) ★★ "55 DAYS AT PEKING" (Part 2) (1963, Adventure) Charlton Heston, Ava Gardner. Tension and political turmoil surrounds the Chinese Boxer Rebellion of 1900.
AFTERNOON
 12:05 (4) ★★ "WHO'S MINDING THE MINT?" (1967, Comedy) Jim Hutton, Dorothy Provine. A U.S. Mint employee joins forces with counterfeiters after he loses \$50,000 in currency.
 1:00 (4) ★★ "ALL THE WAY HOME" (1963, Drama) Jean Simmons, Robert Preston. A young boy's poignant perception of his father's death in an accident is traced from innocent bewilderment to final acceptance.
EVENING
 11:05 (4) ★★ "THE SOUTHERN STAR" (1969, Adventure) George Segal, Ursula Andress. A man searches for a priceless diamond in hopes of winning the heart of the owner's daughter.
 12:10 (3) ★★ "IF THINGS WERE DIFFERENT" (1979, Drama) Suzanne Pleshette, Don Murray.

FRIDAY MARCH 2, 1984

	4	5	9	11	13	28	34	HBO	SHOW	ESPN
	WTBS IND	KXTX PBS	WGN IND	KCBF NBC	KLBK CBS	KAMC ABC	KJAA IND			
7:00	Bewitched	Bozo	Today	Morning News	Good Morning America	Bullwinkle	Inspector Gadget	Movie: "Savannah Smiles"	Movie: "Rainbow Cont'd"	To Be Announced SportsWeek
7:30	I Love Lucy	Weather								
8:00	Movie: "P.J."	Sesame Street	Beverly Hillsbillies	Bewitched	Joker's Wild	The Flintstones Underdog				College Basketball DePaul Vs.
8:30										
9:00		Electric Company	Movie: "Life Begins For Andy"	The Facts Of Life	\$25,000 Pyramid	Donahue	Mighty Mouse	Movie: "Without A Trace"	Journey	South Carolina
9:30		Contact					Jimmy Swaggart			
10:00	The Catlins Texas	Mister Rogers	Hardy	Wheel Of Fortune	The Price Is Right	Benson	Jim Bakker			College Basketball UCLA Vs.
10:30		Reading Rainbow					Loving			
11:00	Perry Mason	Nature	Family	Hot Potato Search For Tomorrow	Young And The Restless	Family Feud	INN News	Movie: "To Catch A King"	Movie: "The Pirates Of Penzance"	Washington
11:30							I Love Lucy			
12:00	Movie: "The D.I."	America: 2nd Century	News	News	News	All My Children	My Three Sons			Boxing Top Rank
12:30		America: 2nd Century		Days Of Our Lives	As The World	One Life To Live	Movie: "A Woman's World"	Bus Stop	Movie: "Deep"	
1:00		MacNeil Lehrer	Rhoda	Turns	Capitol	One Life To Live	Movie: "A Woman's World"			
2:00	The Flintstones	The Lawmakers	I Dream Of Jeannie	Guiding Light	General Hospital					College Basketball
2:30	Battle Of The Planets	Match Game								
3:00	The Munsters	Sesame Street	Super-Friends Scooby Doo	Hollywood Squares	Tattletales	Tom & Jerry Scooby Doo	The Flintstones Super-Friends	Movie: "The Wild Pony"	Movie: "Rainbow"	DePaul Vs. South Carolina
3:30	Leave It To Beaver									
4:00	Little House On The Prairie	Mister Rogers	Charlie's Angels	On The Prairie	Barney Miller	People's Court	He-Man	I Love Lucy	Fraggle Rock	Horse Racing Weekly
4:30		Electric Company								
5:00	Andy Griffith	3-2-1 Contact	One Day At A Time	News	Three's Company	News	ABC News	ABC News	Movie: "Savannah Smiles"	SportsLook
5:30	Carol Burnett	Report								
6:00	Hogan's Heroes	MacNeil Lehrer	Barney Miller	News	News	News	Hawaii Five-O			Sports-Center Basketball Report
6:30	Sanford & Son		The Jeffersons	Entertainment	Family Feud	People's Court				
7:00	Basketball Week Lakers At	Washington	Bulls At Boston	Legmen	The Duke Of Hazard	Benson	Family	Movie: "Without A Trace"	Movie: "48 Hrs."	USFL Football New Jersey Generals At
7:30		Wall Street				Webster				
8:00	Atlanta Hawks	Texas Report	Master	Dallas	Blue Thunder		Movie: "War Path"			At Jacksonville Bulls
8:30		Internat'l Edition								
9:00	News	German Professional Soccer	News	The New Show	Emerald Point, N.A.S.	Matt Houston		Crystal Gayle In Concert	Movie: "The Deep"	
9:30										
10:00		Monty Python	Soap	News	News	News	Twilight Zone	Movie: "To Catch A King"		SportsCenter SportsLook
10:30	The Catlins	Business Report	Love Boat	Tonight	WKRP In Cincinnati	M.A.S.H.	Thicke Of The			USFL
11:00	Night Tracks	Teaching Writing	Movie: "None"	Friday Night Videos	CBS Movie "Pleasure Cove"	Bob Newhart	Night	Rock Of The 50's		Football New Jersey Generals At
11:30		Writer's Workshop				ABC News Nightline				
12:00		But The				Eye On Hollywood Laugh-In	INN News	The Great Stand-ups	Movie: "Hardcore"	Jacksonville F vs. J
12:30										

HIGHLIGHTS

MORNING
 8:05 (4) ★★ "P.J." (1968, Adventure) George Peppard, Raymond Burr. A penniless private eye is tricked into murder by a woman he was hired to guard.
 9:00 (9) ★★ "LIFE BEGINS FOR ANDY HARDY" (1941, Comedy) Lewis Stone, Mickey Rooney. Before entering college, Andy learns the value of friendship and the misfortune of death.
AFTERNOON
 12:05 (4) ★★ "THE D.I." (1957, Drama) Jack Webb, Don Dubbins. A tough drill instructor must prepare boot camp recruits for combat within 12 weeks.
 1:00 (4) ★★ "WOMAN'S WORLD" (1954, Drama) Clifton Webb, June Allyson. Three men and their wives are observed in New York by a prospective employer.
EVENING
 8:00 (4) ★★ "WARPATH" (1951, Western) Edmund O'Brien, Polly Bergen. A cowboy avenges the death of his fiancée.
 11:00 (3) ★★ "PATRICK" (1978, Horror) Susan Penhaligon, Robert Hellmann. Though in a deep coma, a young man is still able to seek revenge for wrongdoings by unleashing his powerful psychokinetic powers. (R)
 11:30 (9) ★★ "NONE BUT THE BRAVE" (1965, Drama) Frank Sinatra, Clint Walker.

In and around Lockney

By Felicia Applewhite

Just eleven days after Douglas Meriwether came home from the army, he was working in the post office in Lockney. That was October 22, 1955. He became Lockney Postmaster June 1967.

During the time since his becoming Postmaster, changes have taken place from time to time, but one very noticeable change has been the moving of the post office to a different location with a new building and modern facilities.

This present facility serves 820 post office box customers and about 490 customers for rural delivery.

"Since we have moved to this building we have adequate boxes available for rent," he says.

Only one family or member residing in a household can rent a single box. This is for the customer's protection. An example is the protection given a customer receiving Social Security checks.

The box lobby is open 24 hours a day. This convenience is for people to pick up mail any time - day or night.

The local law watches the lobby during off hours. This prevents unnecessary loitering.

One concern for rural boxes is the damage done to the boxes by machinery. Eight and ten-row farming equipment sometimes knocks boxes down. However, much of the time boxes are grown over with weeds and it is difficult for a driver of this type equipment to see that he is hitting something hidden in the weeds.

"The average person would never look on the post office as a drawing card for downtown business but the post office stimulates traffic for the businesses. Customers come to town to get mail and shop while here."

Also, people visit in the post office box lobby and exchange shopping ideas.

Mr. Meriwether is officially a post office trainer. In this capacity he trains postmasters of post offices comparable in size, to the Lockney Post Office. The

designated area for his program of training includes Amarillo, Childress and Lubbock.

This training position was named for him because of his efficient operation of the Lockney Post Office. His responsibilities as a trainer began in 1967.

"I have trained approximately thirty-seven postmasters and officers-in-charge since I became trainer," he says.

Presently, he is serving one operation and staff-study team. This team is studying the needs for staffing all the postal stations in Lubbock.

It is said of Mr. Meriwether that he has a definite gift of determining needs which are based on pre-established standards.

As a trainer, he is responsible for training newly-appointed postmasters in all phases of postal operations and window service. An example is that he teaches how to compute postage on parcels of second and third class mail.

At the same time, the Lockney Post Office itself has to establish a set of objectives to be accomplished during any upcoming year.

One objective for the local office is the reducing of energy consumption. Revenue protection where mail is dropped in without sufficient postage is important.

Sick leave is a major consideration. Stamp sales is more important than would normally be thought to be.

Our September Song ...

Continued From Page 4

offer pedestrians shelter from the weather and traffic while doing their shopping or simply strolling about the town.

The many unexpected nooks and crannies add to their charm. There are more half-timbered buildings than any other English town. There are four gates into this city and they are all old and spectacular. The North Gate is by the canal. The East Gate leads into the older part of the city. The New Gate goes

to the Roman Gardens and the Bridge Gate leads over the River. A very large estate here belongs to the Duke of Westminster, who owns a lot of London; and from the imposing gate at the front, it is three more miles to his house. It is 15 miles across this choice piece of property, and he is only 28 years of age!

What becomes of postal revenue? All the revenue that comes over the counter is federal funds. All these funds are mailed to a centrally located bank in Lubbock. The main source of revenue is stamp sales for a year run to about \$110,000.

"I have had no problems in operating this office. There are times that I work here on Sunday because I have been out of the office during the week performing sectional center management in Lubbock. There has been no neglect in running the local office," he explains.

The postal business has its own inner connections. For one, it has its own news circulation. Through that source, the usual news concerning post offices is discussed. Naturally such a news publication is spiced with bits of humor.

"One of our publications had this bit of humor: A woman went into a small-town post office and asked for a dollar's worth of stamps.

"What denomination?" asked the postal clerk.

"Well," came an angry reply. "I didn't know it would come to this, but if you nosy government people have to know, I am a Baptist."

An another one: "Did you write 'Fragile, this side up' on the carton before shipping out?"

New clerk: "Yes sir, and to make sure that everyone saw it, I wrote it on both sides."

We have a special guide for our trip into Wales today. We stop shortly to see the Plains of Chester and see castles and hills in the misty distance. This scenery is used in movie making and I can certainly understand why. September is the best month for grass, milk and cheese because of the heavy dew.

SATURDAY MARCH 3, 1984

	4	5	9	11	13	28	34	HBO	SHOW	ESPN
	WTBS IND	KXTX PBS	WGN IND	KCBF NBC	KLBK CBS	KAMC ABC	KJAA IND			
7:00	Starcade	U.S. Farm Report	The World Tomorrow	Flintstone Funnies	Charlie Brown Saturday Supercade	The Jettsons	Health Field	Movie: "Playing For Time"	Movie: "Sherlock Holmes In Dressing"	SportsCenter in Series Wrestling
7:30	Movie: "Lafayette"						Wall Street Journal			
8:00	Escadrille	The New Literacy	Rex Humbard	Smurfs	Scooby Doo	Johnny Canale			To Kill	NCAA Division II Championships
8:30		The New Literacy	The New Literacy	Unlimited	Dungeons And Dragons	Pac-Man, Rubik Cube,				
9:00		Interaction	Charlando	Tarzan	Menuudo	Pop 'N Rocker			Mansions	
9:30	Movie: "Barabba"	Interaction	The Muppets	Alvin & The Chipmunks	Bugs Bunny Road Runner	America's Top Ten		Movie: "Tough"		Play Your Best Golf
10:00		Ascend Of Man	Wild Kingdom	Mr. T	Puppy, Scooby Doo, Menuudo	Hardy Boys, Nancy Drew		Enough		USFL Football New Jersey Generals
10:30				Amazing Spiderman						
11:00		Focus On Society	Focus On Society	Movie: "Powder"	Incredible Hulk	The Blakitts Benji	Weekend Special	Voyage To The Bottom Of The Sea	HBO Coming Attractions	Outsiders
11:30										At Jacksonville Bulls
12:00		America: 2nd Century	America: 2nd Century	River	College Basketball Louisiana State	Fat Albert	Dance Fever	Movie: "Apache Uprising"	Movie: "The Year Of Living Dangerously"	
12:30	Movie: "The Guns Of Navarone"	Growing Years	College Basketball Dayton	At Kentucky	NCAA Basketball	Si Se Puede				College Basketball Dayton Vs.
1:00		Computer Program	Notre Dame	College Basketball Baylor	PBA Bowling 200,000	"Thunder In The East"	Standing Room Only	Movie: "The Bridge On The River Kwai"		Notre Dame
1:30		Movie: "Shock"	Rice	College Basketball Michigan Vs.	Sports Saturday	Toledo Trust	Movie: "Playing For Time"			College Basketball Michigan Vs.
2:00		Orlando Wilson Motorweek Illustrated	Minnesota	PGA Golf "Honda Classic"	Wide World Of Sports					Minnesota
2:30		Wrestling	Matinee At The Little "Nebonga"	Welcome Back, Kotter	Nashville Music NBC News	Country Music CBS News	Roland Marlin			The Police In Concert
3:00				On The Prairie At The Movies	See Haw	News	Star Search			College Basketball Sun Belt Conference
3:30				A House For All Seasons	Classic Country		HBO Coming Attractions			
4:00				This Old House	American	Different	Ringling Bros. Silver Barnum & Bailey	College Basketball SMU Vs.		Semifinal
4:30										

SUNDAY MARCH 4, 1984

Table of TV programs for Sunday, March 4, 1984, listing channels (4, 5, 9, 11, 13, 23, 28, 34, 44) and various shows like Starcade, Sesame Street, and The World Tomorrow.

HIGHLIGHTS

AFTERNOON

12:00 (7) ★★½ "CHARLIE CHAN'S MURDER CRUISE" (1940, Mystery) Sidney Toler, Robert Lowery, Charlie's scheme to apprehend a murderer aboard a luxury liner almost backfires.

PAULINE" (1967, Comedy) Pat Boone, Pamela Austin. A young woman searching for her childhood sweetheart encounters a variety of harrowing experiences along the way.

EVENING

7:05 (4) ★★½ "THE BIG TREES"

MONDAY MARCH 5, 1984

Table of TV programs for Monday, March 5, 1984, listing channels (4, 5, 9, 11, 13, 23, 28, 34, 44) and various shows like Bewitched, Sesame Street, and The Flintstones.

HIGHLIGHTS

AFTERNOON

12:05 (4) ★★½ "THE PLAINS-MAN" (1966, Western) Don Murray, Guy Stockwell. A trio of famous Western characters try to stop a white man from selling guns to Indians.

his nephew inherits the business and all its headaches.

EVENING

7:05 (4) ★★½ "THE AFRICAN QUEEN" (1951, Adventure) Humphrey Bogart, Katharine Hepburn. A captain operating in the Congo during World War I is persuaded by a lady missionary to destroy a German gunboat.

Stephen Collins. The police find themselves caught in a bizarre situation when twin sisters—one good, the other disturbed—are implicated in a murder investigation.

TUESDAY MARCH 6, 1984

Table of TV programs for Tuesday, March 6, 1984, listing channels (4, 5, 9, 11, 13, 23, 28, 34, 44) and various shows like Bewitched, Sesame Street, and The Flintstones.

HIGHLIGHTS

AFTERNOON

12:05 (4) ★★½ "THE WRONG BOX" (1966, Comedy) John Mills, Ralph Richardson. Six people vie for a trust fund that should rightfully go to only one of them.

nant. The chance meeting of a lonely widow and a widower results in their mutual, deep-seated love.

WEDNESDAY MARCH 7, 1984

Table of TV programs for Wednesday, March 7, 1984, listing channels (4, 5, 9, 11, 13, 23, 28, 34, 44) and various shows like Bewitched, Sesame Street, and The Flintstones.

HIGHLIGHTS

AFTERNOON

12:05 (4) ★★½ "THE TAKE" (1974, Adventure) Billy Dee Williams, Eddie Albert. A New Mexico policeman with a reputation for honesty stoops to accepting bribes from the syndicate.

EVENING

8:00 (3) ★★½ "10" (1979, Comedy) Dudley Moore, Julie Andrews, Bo Derek. A successful songwriter, disturbed about hitting "middle age," decides to chase after a beautiful girl on her way to her wedding. (R)

Anthony Quinn, Jackie Gleason. An employment counselor tries to help a washed-up boxer land a job.

Movie Ratings scale from Outstanding (★★★★) to Poor (★).