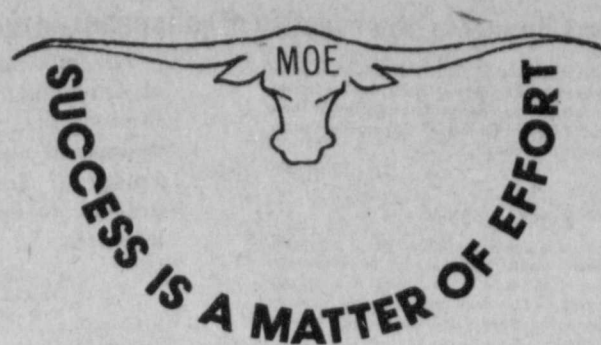


**Go Horns! Beat Childress!**  
**Friday night in Childress**  
**Game starts at 7:30**  
**This is the last game of the 1983 football season**  
**Go out and support the Horns.**



**Brock chosen football queen**  
 The 1983 Lockney High School football queen was crowned before the start of Friday's game against Post.  
 The three candidates for queen were senior Libby Williams, senior Shawnda Brock and junior Evelia Elias.  
 Shawnda Brock, daughter of Mr. and Mrs. Byron Brock, was chosen by the football boys as the 1983 queen.

# The Lockney Beacon <sup>25°</sup>

Rates: In county: \$11.50  
 Out-of-county \$12.50

Volume 82

Number 44

Thursday

© The Lockney Beacon

November 3, 1983

## Lockney drops to 2A district classification

Saturday the University Interscholastic League released the list of district realignments for Texas high schools. Lockney, as expected dropped from district 3-3A to district 4-2A.

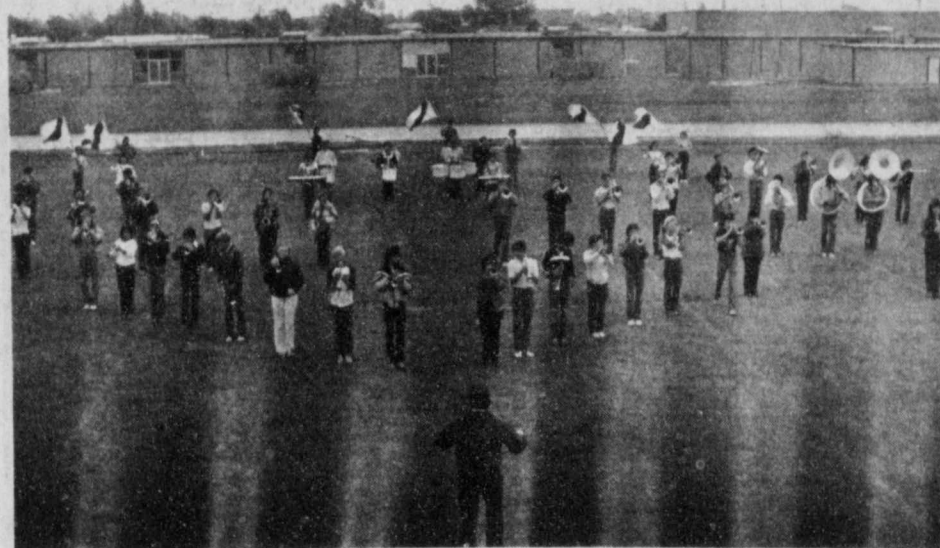
The redistricting was based on average yearly enrollment of the high schools. The enrollment figures came from the last two years from each school. The figures used by the UIL for classes 2A and 3A were, for 3A 275-649 and 2A 135-274 and at the present Lockney has 190 students enrolled in high school. Lockney will remain a 2A school for the next two years and superintendent W.H. Hallmark expects Lockney to remain a 2A school as the enrollment has stabilized in the high school.

Both Hallmark and high school principal James Poole feel that Lockney will have a more competitive chance with the drop to 2A and Hallmark stated that for the last 15 years since he became superintendent, Lockney has been pitted against schools that were larger in attendance than Lockney. Coach Bob Purser stated that he was

happy about the redistricting plan and he like Hallmark felt that Lockney stands a better chance at being a competitive team next year. With 21 starters coming back next year the chances are good for Lockney. Lockney will still face some tough teams the next two years.

This reclassification to 2A will effect not only athletics, but all UIL approved extracurricular activities. Included are band contest, drama, journalism, FFA contests, and track.

The only fear by Lockney school officials had about the redistricting was that Lockney might be put in a class where the football and basketball games might be far from Lockney, but the tentative schedule for the 1984 football season is as follows: Tulia here, Dimmitt there, Floydada there, Hale Center here, Abernathy here, and for the district games Petersburg there, Paducah here, Crosbyton there, Lorenzo, here, and Ralls there. Scrimmages for the 1984 season are Post and New Deal and both games will be in Lockney.



THE LOCKNEY HIGH SCHOOL Marching Band practiced Monday for contest in Lubbock which they went to yesterday.

## Longhorn band prepares for contest

Band director James Whitis was confident that the band would receive at least a 2 rating if not a 1 at contest in Lubbock Wednesday. He felt that this year's band is playing very well together and stood an excellent chance of receiving a superior rating.

The Lockney band is among several schools from the area that have been invited to participate in the annual

"Christmas for the Kids" concert. Whitis stated that as in the past years he would be taking several band students to Lubbock to participate in the concert which will be held at the Memorial Civic Center at 7:00 p.m. on December 10.

Next week we will report on the band's performance and how they did in contest.

## Revival to be held at First Baptist Church

Revival services are scheduled at First Baptist Church, Lockney, November 6-13. Murle Rogers, Pastor, extends an invitation to the community to participate in the meetings. Sunday services begin with Sunday School at 9:45 a.m. and worship at 11:00 a.m. Church Training is at 6:00 p.m. and evening worship at 7:00 p.m. Weekday services are at 12 noon (lunch in fellowship hall) and 7:30 p.m. (choir practice and group prayer meetings at 7:00 p.m.).

The visiting evangelist, Rev. Clarence Branch of Anson, Texas, will be preaching each service Sunday evening (Nov. 6) through Sunday morning (Nov. 13). Bro. Branch is former pastor of Calvary Baptist Church in Brownfield (1970-1978). He has served on the associational level as Moderator, Evangelism Chairman, Clerk, Vice-Moderator, and Director of the Church Related

Division. Branch served as President of the 1982 Big Country Pastor's and Laymen's Conference held at Hardin Simmons University, and has preached revival meetings in Brazil, California, Kansas, Oregon, North Dakota and over most of the state of Texas.

Buddy Wells, Church Services Director of the Caprock-Plains Area, from Plainview will be directing the music program for the services. Wells has served as Minister of Music and Education in churches at Springtown, San Antonio, Fort Worth and Littlefield. He was serving as associate pastor at Brookwood Baptist Church in Shreveport, Louisiana before accepting his present position with the Caprock-Plains Area.

Terry Keltz, Minister of Music, and Randall Stotts, Minister of Youth, will be actively participating in the weeks activities.

**Get out and vote on Tuesday**  
**November 8. Polls will be open**  
**from 8:00 am to 7:00 pm.**

## County Judge explains confusion

TO THE VOTERS OF FLOYD COUNTY:

On Tuesday, November 8th, you will have two ballots in Floyd County, to-wit:

(a) The ballot with the 11 proposed constitutional amendments, and (b) A SPECIAL BALLOT FOR FLOYD COUNTY, which will state "For" or "Against" THE ADDITION OF ASSESSOR-COLLECTOR OF TAXES

This special ballot is confusing, and this explanation is made to assist you. The Texas Constitution states, that when the population of a county is below 10,000 according to last census, that the Tax Assessor-Collector shall be the Sheriff of the county, unless an election is held and the voters elect to "add the office of Tax Assessor-Collector to the list of elective offices". Floyd County dropped below 10,000 population this last census for the first time since 1930. Therefore, the commissioners court is giving the voters the right to decide if the office of Tax Assessor-Collector will be filled by appointment made by the sheriff or will the office be filled by vote of the people.

A vote "for" adding tax assessor-collector, simply gives to the voters the right to decide who will hold this office, as an elected official, as it has been for the last 50 years.

A vote "against" the addition of Assessor-Collector of taxes, means that the Sheriff will be the Assessor-Collector of taxes, and that he will appoint deputies to do the work.

CHOISE SMITH - COUNTY JUDGE



RESIDENTS AND EMPLOYEES of the Lockney Care Center dressed up for Halloween Monday and they had alot of fun.

## Program can provide aide for furthering education

If you or your child is in need of assistance in applying for college or financial aid or if you desire a General Educational Development (G.E.D.) study or adult education, LEARN Educational Talent Search can help you.

Counselor, Eddie Anaya, has been calling on the Lockney and Floydada schools and will return sometime in November. Centrally located at it's offices in Lubbock, the five counselors for LEARN Educational Talent Search call on forty-nine high schools in a 10-county area within a sixty-mile radius of Lubbock.

LEARN Educational Talent Search is a non-profit funded organization whose primary purpose is to assist individuals in furthering and pursuing their education into post secondary programs. The services provided by LEARN are free to anyone interested in them.

Counselors at LEARN Educational Talent Search offer a wide range of services including:

1. academic counseling with students about vocational, academic, and career choices on an individual basis
2. career and vocational guidance and testing to help in making decisions
3. obtaining information on post secondary educational institutions and educational programs chosen by the individual student
4. helping in the application process for admissions and enrollment, testing, housing, and student financial aid

5. do follow-up to make sure student is actually enrolled and has received financial aid, if eligible

6. assisting with enrollment or re-enrollment in high school, GED, or adult education programs

7. referring students to other community agencies and resources.

The Lubbock offices are located at 1203 University Avenue in Suite 200, Lubbock.

Anaya said the purpose of the organization sending counselors to the various schools is to bring their assistance and counseling as close as the schoolhouse. Parents are more than welcome to visit with the counselor during his visits.

Understandably, more time is spent at the schools which do not have counselors.

"The program is for anybody and everybody up to the age of 27," Anaya said. "We try to make the transition from high school to college as easy as possible."

The passage of the Middle Income Student Assistance Act has made many middle income families eligible for financial aid.

The United States Office of Education (USOE) requires that this program verify and document the family income. In order to do this a copy of one of the following is required: copy of most recent 1040 or 1040A, copy of W-2 forms, documentation to verify social security, welfare, or other non-taxable income or LEARN Talent Search income verification form.

Anyone interested in more information can contact Mr. Anaya at the following address. LEARN Educational Talent Search, 1203 University, Suite 200, Lubbock, TX 79401 or call (806) 763-4256.



EDDIE ANAYA

## Fire Department to attend advanced first aid classes

The Lockney Volunteer Fire Dept. will begin E.C.A. (Emergency Care Attendant) classes Thursday, November 3. This training is a very advanced First Aid course consisting of 40 hours of lecturing and training skills. Then a test given by the Texas Department of Health must be passed.

The ECA courses are mandatory after the Texas Legislature passed a law which reads that starting in January 1984 there must be at least one ECA in

the ambulance. In 1985 there must be at least two ECA's in the ambulance. Failure to do so could lead to stiff fines and law suits.

The L.V.F.D. will be involved in the classes to meet the requirements of this law and the T.D.H. Each class will start at 6:30 p.m. each night and will end about 10:30 p.m. If all goes well, the test will be given about the middle of December. The ECA classes cost \$65 for each student and about \$20 for books.

## Harvest Festival serves over 600 for lunch

The annual First United Methodist Church Harvest Festival was deemed a success at its conclusion Saturday afternoon.

A lunch of turkey, dressing, gravy, sweet potatoes, rolls and cobbler was served to about 625 people. This surpassed last year's record of 550. During the lunch the Smith family singers were featured in an outdoor concert.

The Country Store which featured homemade items from baked goods to crafts sold out of all the items that had for sale.

Auctioneers for this year's auction were Sam Fortenberry and Earl Broseh and everyone involved with the Festival would like to thank Sam and Earl for

donating their services to this year's festival. At the end of the auction a draw was held to give away the door prize which was a hand made clock made by C.L. Record. The winner of the clock was Octavia Carthel.

Several people from out of town as well as Lockneyites enjoyed this years festival including the auction.

The festival netted even more proceeds this year than last year.

The church and everyone involved with the festival would like to thank the community for their support and generosity which lead to the success of this year's festival. Were it not for the community support the festival would not be what it is each year.

## Matt Williams wins last weeks football contest

Last week's football contest apparently contained several upsets. Grading these contests I begin to wonder if we would have a winner with fewer than eight wrong. However, as the grading progressed I found two entries with only five wrong the third place winner had only seven wrong.

Matt Williams is the first place winner. Matt had only five wrong answers and the closest to the tie breaker score. Matt will receive \$10.00.

This week's second place winner is Bernice Reynolds. Bernice also missed only five of the games but was 12 points off the tie breaker score. She will receive \$6.00.

The third place winner is Pat Stansell.

Pat missed seven of the games and was only four points off the tie breaker score. Pat will receive \$4.00.

This week there are four honorable mentions this week. All four missed seven games, but were from 7 to 29 points off the tie breaker score. These four people are Roy Saucedo, W.L. Carthel, Richard McCarty, and Debby McCarty.

Missing this week from the top tree are regulars Randall Stapp and Karla Josey. Both missed eight games on their contest entries.

This is the last week of the football contest for 1983. If you want a chance to win a part of the last \$20.00 to be given away get those entries in by 5:00 p.m. Friday.

## This Week

### GATE TICKETS

Students may purchase gate tickets for all district games, in and out of town, in the principals office the week of the games. Advance tickets are \$1.50, at the gate they will be \$2.50.

### EARLY DISMISSAL

School will be let out at 2:45 on Friday because of the football game in Childress. The pep rally will be held at 2:15. The ball game will start at 7:30 and will be in Childress.

### Quarterback Club

The Quarterback Club meets every Tuesday night. Films of the previous Friday night's ball games are shown during the meeting.

### CUB SCOUTS

The scouts are still selling Scout-A-Rama tickets. Funds raised from these ticket sales go toward future scout projects. Planned for the Lockney scouts display at the Scout-A-Rama is a space theme.



### Free Blood

### Pressure Clinic

Held Wednesday  
 at Reecer's Cleaners  
 10 to 12:00 noon.



Constitutional Amendments 5-11

Amendments 1-4 appear in other section of your paper - page 2

AMENDMENT 5

FOR AGAINST THE CONSTITUTIONAL AMENDMENT AUTHORIZING USE OF THE PERMANENT SCHOOL FUND TO GUARANTEE BONDS ISSUED BY SCHOOL DISTRICTS.

EXPLANATION The Permanent School Fund (PSF) is a perpetual trust fund made up of income from public lands that are constitutionally set aside for the support of the state's public schools.

operation costs. There is no state program to assist school districts with construction costs, which are usually financed through the sale of school district bonds.

A bond-guarantee program, by improving most school districts' bond ratings, would lower the interest they must pay on bonds.

The administration of the PSF should be handled by experienced investment managers and the legislature is more apt to pay competitive salaries for these positions if they are funded by PSF money rather than by general revenue.

EXPLANATION If the state is going to use the PSF to guarantee school district bonds, it should also be prepared to spend part of the fund in the event of a default.

The constitutional dedication of the principal of the PSF has enabled it to grow phenomenally providing income for operation of the schools.

AMENDMENT 6

FOR AGAINST THE CONSTITUTIONAL AMENDMENT ALLOWING THE LEGISLATURE TO PROVIDE FOR ADDITIONAL REMEDIES TO ENFORCE COURT-ORDERED CHILD SUPPORT PAYMENTS.

EXPLANATION Since 1876 the Texas Constitution has prohibited the garnishment of wages—that is, seizure of a person's current pay to satisfy the claims of creditors.

their children has risen sharply. Along with the rise of court-ordered child support payments has come a rise in the number of parents who not only those orders and fail to provide adequate support for their children.

This proposed solution is one of the most effective means of on-going enforcement of support obligations according to the National Conference of State Legislatures.

savings of \$9,000,000 on welfare cases alone by 1985 if the amendment passes.

Parents rather than taxpayers need to support their children.

EXPLANATION It would be an administrative burden on employers. Information concerning an employee's private life would be known to an employer and employers might discriminate against employees who are subject to wage assignment.

EXPLANATION There are practical limitations to wage assignment. Employees might quit or change jobs frequently to avoid the assignment.

AMENDMENT 7

FOR AGAINST THE CONSTITUTIONAL AMENDMENT PROVIDING FOR FINANCIAL ASSISTANCE TO VETERANS AND TO AUTHORIZE THE ISSUANCE OF \$800 MILLION IN BONDS OF THE STATE TO FINANCE THE VETERANS' LAND PROGRAM AND THE VETERANS' HOUSING ASSISTANCE PROGRAM.

EXPLANATION This amendment authorizes \$300 million in additional bonds for the Veterans' Land Fund and \$500 million to create a Veterans' Housing Assistance Fund.

The Veterans' Land Program was created by a 1946 constitutional amendment with an initial bond authorization of \$25 million.

Present legislation limits financial assistance from the Land Fund to a maximum of \$20,000 to any veteran, with a 5% down payment required.

The proposed new Veterans' Housing Assistance Fund would make available 40-year \$20,000 mortgage loans at rates similar to those for the Land Program.

EXPLANATION The long term, low interest mortgage loans offered by the new Veterans' Housing Assistance Fund would enable thousands of Texas veterans to finance homes that they could not otherwise afford.

Program, since most veterans live in cities and have a more immediate need for housing than for rural land.

The authorization of additional bonds for the Land Fund would extend the availability of this program.

EXPLANATION A disproportionate amount of the state's credit is now being used for assistance to veterans.

EXPLANATION State assistance for housing should go to those who cannot otherwise afford decent residences. Maximum income limits are set for recipients of mortgage loan assistance from the Texas Housing Agency.

AMENDMENT 8

FOR AGAINST THE CONSTITUTIONAL AMENDMENT TO AUTHORIZE TAXING UNITS TO EXEMPT FROM TAXATION PROPERTY OF CERTAIN VETERANS' AND FRATERNAL ORGANIZATIONS.

EXPLANATION The Texas Constitution permits the legislature to exempt from taxation a number of different kinds of property including buildings used exclusively by public charity institutions.

constitutionally entitled to an exemption. Another section of the Tax Code exempts real and tangible personal property of certain "charitable organizations" that are organized exclusively to perform certain charitable functions listed.

This proposition authorizes, but does not mandate, political subdivisions to exempt veterans' organizations from ad valorem taxation on their property if certain stated requirements are met.

EXPLANATION This amendment is necessary to ensure that veterans' groups may receive property tax exemptions since the current law is in doubt.

Many fraternal organizations do not meet the "purely public charity" standard imposed by the courts and used by tax appraisers to decide if they qualify for an exemption under the Tax Code.

With this amendment, each local governing body will be able to decide what type and amount of exemptions are justified and what can be afforded locally.

EXPLANATION These proposed exemptions would shift the tax burden to already pressed taxpayers.

EXPLANATION The amendment does not clearly define "fraternal organization." Leaving that determination up to each individual taxing unit might invite litigation.

EXPLANATION The amendment should allow the legislature itself to limit the types and amounts of property that may be exempted and to provide eligibility requirements for veterans' organizations as with fraternal organizations.

AMENDMENT 9

FOR AGAINST THE CONSTITUTIONAL AMENDMENT PROVIDING FOR ASSIGNMENT OF JUDGES OF STATUTORY PROBATE COURTS TO OTHER STATUTORY COUNTY COURTS WITH PROBATE JURISDICTION AND TO COUNTY COURTS.

EXPLANATION The Texas Constitution provides that each county shall have a county court. The elected county judge who presides over commissioners court and is the chief executive officer of the county also presides over the county court.

county judge of some or all judicial districts. Many of these courts have some probate jurisdiction. Eleven specialize in probate matters—three in Dallas County, three in Harris County, two in Bexar County, and one in Galveston County.

Under this proposal statutory probate-court judges would be allowed to substitute in any county in the state for another judge of a statutory county court with probate jurisdiction or for the judge of the constitutional county court.

EXPLANATION This proposition authorizes, but does not mandate, political subdivisions to exempt veterans' organizations from ad valorem taxation if they are primarily engaged in charitable or benevolent functions.

Although probate cases can be transferred by the constitutional county judge to the district court or a special judge may be appointed in certain cases, these options are generally unsatisfactory.

EXPLANATION Transferring special probate judges around the state would mean that those judges might be unavailable in their home counties.

EXPLANATION Constitutional authority is not required for the legislature to regulate the administration of statutory courts.

AMENDMENT 10

FOR AGAINST THE CONSTITUTIONAL AMENDMENT TO PERMIT A CITY OR TOWN TO EXEMPT PUBLIC FUNDS AND LEVY ASSESSMENTS FOR THE RELOCATION OR REPLACEMENT OF SANITATION SEWER LATERALS ON PRIVATE PROPERTY.

EXPLANATION When it is necessary for a city to relocate a sewer main, sewer laterals belonging to private property owners must also be relocated.

EXPLANATION This amendment would facilitate needed replacements and relocations of sewer lines. It is permissive for both the city and the property owner.

EXPLANATION The five-year repayment period provided by the amendment is too short. Repaying the cost of a new sewer lateral within this time period would create a hardship for individuals with low incomes.

THE ASSESSOR-COLLECTOR ELECTION

The Texas Constitution, Article 8, Section 16, provides that in any County in Texas having a population of less than 10,000 as determined by the last preceding United States Census, the Sheriff shall be the Assessor and Collector of Taxes, in addition to his other duties.

The population of Floyd County having dropped below 10,000 in the 1980 United States Census, the office of Assessor-Collector of Taxes will cease to exist upon expiration of the term of office of the present incumbent in 1984, and the Sheriff will at that time become ex-officio Assessor-Collector of Taxes in addition to his other duties.

It is obviously inaccurate to say that the issue in the election is whether the Assessor-Collector of Taxes shall be elected by the people or appointed by the Sheriff: if the voters vote not to add the office of Assessor-Collector of Taxes to the list of county officials, the Sheriff, himself a duly elected official, will become the Assessor-Collector of Taxes in addition to his other duties.

It is reasonable to assume that any Sheriff having, in addition to his duties as Sheriff, the duties of the office of Assessor-Collector of Taxes, would appoint a deputy or deputies to assist in the performance of such additional duties, just as the Assessor-Collector of Taxes has always done, but in view of the fact that the responsibilities of the Assessor-Collector of Taxes have been reduced by at least one-half by the transfer in 1982 of all duties of assessment and collection of taxes to the Floyd County Tax Appraisal District, leaving the Assessor-Collector of Taxes with only the functions of registration and transfer of motor vehicles, and voter registration, it is not reasonable to assume that the deputy or deputies appointed by the Sheriff to assist in performance of those functions would necessarily receive the same salaries as the present incumbent of the office and her deputy, whose salaries were fixed at a time when the major function of the office was the assessment and collection of taxes.

The decision is one to be made by the voters, but that decision should be made in the light of the actual facts as they exist.

Political Advertisement paid for by Committee of Concerned Taxpayers Chairman C.J. Payne.

The following proposed Constitutional Amendments are presented to you through the combined efforts of this newspaper and the League of Women Voters of Texas Education Fund to provide as much information as was available.

AMENDMENT 11

FOR AGAINST THE CONSTITUTIONAL AMENDMENT TO CHANGE THE BOARD OF PARDONS AND PAROLES FROM A CONSTITUTIONAL AGENCY AND TO GIVE THE BOARD THE POWER TO REVOKE PAROLES.

EXPLANATION This amendment removes the Boards of Pardons and Paroles from the constitution and requires the legislature to establish it by law and to enact laws governing parole.

EXPLANATION The present limit of three members of the Board of Pardons and Paroles and their method of appointment would also be removed from the constitution.

EXPLANATION The Board of Pardons and Paroles has a trained staff with resources and expertise to determine eligible offenders' readiness to be released from prison.

EXPLANATION The present system of a governor's clemency staff of reviewing paroles granted by the board is a duplication of effort, adds three weeks or more to the parole process, and may jeopardize any job the parolee may have been promised upon release.

EXPLANATION Expansion of the Board of Pardons and Paroles and the removal of the governor's power to revoke parole are two of the recommendations designed to eliminate overcrowding of prisons which were proposed by the 1982 Governor's Blue Ribbon Commission on Comprehensive Review of Criminal Justice Corrections.

EXPLANATION The present gubernatorial veto power over paroles is an important safeguard to ensure that only capable and rehabilitated offenders are released from prison.

EXPLANATION The power to deny parole gives the governor the discretion to be tougher than the board.

EXPLANATION Additional appointment power given to the governor in the enabling legislation does not compensate for the loss of direct power to prevent selected releases from Texas prisons.

October 31, 1983 (Public Letter of Appreciation) Sheila Faulkenberry, Chief Appraiser Floyd County Central Appraisal District Floyd County Courthouse, Room 107 Floydada, Texas 79235 Dear Ms. Faulkenberry: Last fall, 1982 taxable property values and amounts of tax levy were finalized. The Lockney Hospital District was only one of several taxing entities in Floyd County to contract with Floyd County Central Appraisal District for the assessment and collection services.

October 31, 1983 Dear Editor: There seems to be confusion concerning the upcoming election FOR or AGAINST THE ADDITION OF ASSESSOR & COLLECTOR OF TAXES. According to the County Judge's article "the only issue here is shall the office be elective by the voters as in the past, or shall the sheriff appoint a person to fill this job."

REPORT OF CONDITION

Consolidating domestic subsidiaries of the First National Bank in Lockney of Lockney City, Texas at the close of business on September 30, 1983 published in response to call made by Comptroller of the Currency, under title 12, United States Code, Section 161.

Statement of Resources and Liabilities. Thousands of dollars. Assets: Cash and due from depository institutions 2,130; U.S. Treasury securities 1,200; Obligations of other U.S. Government agencies and corporations 6,558; Federal funds sold and securities purchased under agreements to resell 16,920; Loans, Total (excluding unearned income) 339; TOTAL ASSETS 28,663. Liabilities: Demand deposits of individuals, partnerships, and corporations 3,176; Time and savings deposits of individuals, partnerships, and corporations 19,976; Deposits of United States Government 6; Deposits of States and political subdivisions in the United States 1,779; All other deposits 20; Certified and officers' checks 75; TOTAL DEPOSITS 25,032; Federal funds purchased and securities sold under agreements to repurchase 400; Interest-bearing demand notes (note balances) issued to the U.S. Treasury and other liabilities for borrowed money None; Mortgage indebtedness and liability for capitalized leases None; All other liabilities 858; TOTAL LIABILITIES (excluding subordinated notes and debentures) 26,290; Subordinated notes and debentures None.

MEMORANDA EQUITY CAPITAL. Preferred stock No. shares outstanding None (par value) None; Common stock No. shares authorized 10,000; No. shares outstanding 10,000 (par value) 100; Surplus 200; Undivided profits and reserve for contingencies and other capital reserves 2,073; TOTAL EQUITY CAPITAL 2,373; TOTAL LIABILITIES AND EQUITY CAPITAL 28,663.

We, the undersigned directors, attest to the correctness of this statement of resources and liabilities. We declare that it has been examined by us, and to the best of our knowledge and belief has been prepared in conformance with the instructions and is true and correct. Joe Kirk Fulton, Tom Battin, Carroll Anderson, June Mc Donald, Cashier. of the above-named bank do hereby declare that this Report of Condition is true and correct to the best of my knowledge and belief. October 27, 1983

THE LOCKNEY BEACON [USPS 317-220] Published weekly each Thursday by Floyd County Publishing Co., 211 North Main St., Lockney, Texas 79241. Second class postage paid at Lockney, Texas. Subscription rates: local \$11.50 per year, out-of-trade area \$12.50 per year. POSTMASTER: send address changes to the Lockney Beacon, P.O. Box 187, Lockney, Texas 79241. Carolyn Redding Publisher Pam Armstrong Office Manager





SERVING as this year's freshman cheerleaders are (back) Lisa Terrell, Nicki Race, (front) Amy Nance and Christy Coffman.



THIS YEAR'S Junior High cheerleaders are (top) Lupe Cortez, Gwen Lane, (middle row) Connie Vasquez, Sundal Workman and Diana Peralez, and (front) Jessica Marks.



SERVING as this year's Junior high twirlers for 1983-84 are: (standing) Gloria Martinez, (seated) Amy Ansley and Jolie Diepenhorst.

## School Menu

November 7-11

**Monday:**  
Breakfast — Cold cereal, milk, fruit cocktail  
Lunch — Salisbury steak, creamed potatoes, green beans, hot rolls, honey, milk

**Tuesday:**  
Breakfast — Rice, milk, pineapple  
Lunch — Corn chip pie, pinto beans, tomatoes and spaghetti, milk, cornbread

**Wednesday:**  
Breakfast — Toast, bacon, milk, juice  
Lunch — Pig in a blanket, mustard, French fried potatoes, cole slaw, milk, prunes

**Thursday:**  
Breakfast — Peanut butter and honey, toast, milk, prunes  
Lunch — Tuna patties, catsup, greens, buttered corn, hot rolls, milk, honey

**Friday:**  
Breakfast — Cinnamon roll, milk, banana  
Lunch — Hamburger, mustard, fruit cup, lettuce, milk, fried okra

## Ambulance calls

9-3, Lockney residence to Caprock Hospital, Floydada  
9-4, Lockney General Hospital to Lubbock General  
9-5, Lockney residence to Lockney General  
9-6, Lockney residence to Lockney General  
9-8, Lockney General Hospital to Lubbock Methodist  
9-13, Lockney residence to Central Plains Hospital, Plainview  
9-14, Lockney General to Central Plains Hospital, Plainview  
9-19, Lockney residence to Lockney General  
9-20, Lockney Care Center to Lockney General  
9-24, Lockney Care Center, to Lockney General  
9-25, Lockney rural to Central Plains Hospital, Plainview  
9-28, Lockney rural, to Lubbock Methodist  
9-30, Lockney Care Center to Central Plains Hospital, Plainview  
10-15, Lockney rural to Lubbock General  
10-6, Lockney residence to Lubbock Methodist  
10-7, Lockney residence to Lockney General  
10-18, Lockney General to Lubbock Methodist  
Ambulance and two men on call at all Lockney home football games.

## PERSPECTIVES

By the Rev. Michael O'Connor

Gabriel Rivera will not play any more football. For that matter, he may not walk again. His is another in a long list of those whose lives have been permanently changed due to alcohol. When talking about the incident a few days ago, a friend said, "Tell me one thing that alcohol is good for, just one thing."

The advertisers of the liquor industry are busy trying to convince us that alcohol is a necessary part of our enjoyment of life. Beef commercials tell us that weekend were made for drinking; that we are to bring out our best, implying that their product is part of that somehow; that the most important thing to consider when choosing a beer is not its alcohol content as much as its taste and caloric value.

benefits of drinking, and then when they are older and begin reading magazines a bit more often, the ads they see are for hard liquor, perhaps suggesting that when you grow up you should move on to the harder stuff. I wish someone would check on that.

In truth, is there any benefit to drinking alcoholic beverages? Some scientists contend that the occasional beer or glass of wine may help reduce the possibility of heart attack. Old folk remedies have employed various alcoholic beverages. A bit of whiskey in the cough medicine, a glass of wine for a troubled stomach, a glass of beer to help the insomniac and the terribly thin; all a remedies which have adherents.

Wine advertisers present the drinking of their product as part of a cultured group, which you need not spend tremendous sums of money to enter. Or they present wine as a romantic addition to our lives, and even as a kind of adult soft drink.

Purveyors of harder liquor do their advertising in less visible arenas than television, but get the same messages across. In fact, I am convinced that the purpose of the industry is to convince younger folks, through television of the

The question is whether the benefits outweigh the disadvantages, hours lost in work, accidents on the highways, lives lost or ruined, etc. The question is usually avoided by those who advocate liquor use. It is, they say a question of education and moderation. One cannot bring back prohibition, they cry. Individuals must make the decision for themselves, not society.

Next week, we shall examine that line of argument, and examine the scriptures to see what we may draw upon there.

## Cedar Hill News

Farmers were able to get back in the fields after our 12 inch rain last week. Little spooks will be knocking on our doors with all trust and faith that we will treat them. Let this be a halloween season that we will be extra careful to protect the little ones in the excitement of the tradition.

John D. and Pauline VanHoose returned home last Sunday after attending the funeral of Daniel Brewer, brother-in-law of John D. the funeral was held in Ft. Worth Thursday.

Pauline VanHoose visited her sister, Eula Mae Wilson in Ralls Sunday afternoon. Eula Mae's husband Chick is in the Crosbyton Hospital with apparently a light stroke. We trust that he will soon be able to go home with no bad effects.

Ron Vick of Ft. Worth spent two nights this week with Mr. and Mrs. Tom Fortenberry. His son, Patrick, stayed the week with them. Gladys Fortenberry and Patsy Boone of Lubbock and Patrick flew to Garland and spent the

week-end with Paula and Ron Vick.

Betty Brown of Brownwood visited Mr. and Mrs. Albert Mized Sunday. Betty went on to Amarillo to attend the Southern Baptist Convention at the Civic Center this week.

Mr. and Mrs. Albert Mize had lunch Sunday in the home of Veda and Walton Wilson.

Rev. and Mrs. Vance Mitchell had lunch Saturday in the home of his sister, Laverne and Ben Peek and visiting them in the afternoon.

Rev. and Mrs. Vance Mitchell attended the Assembly of God Convention in Paducah held in the Assembly of God Church Thursday.

Mrs. Peat Kelley accompanied Norma Welch to Crosbyton to visit Carrie Mae Craze who is a patient in the Crosbyton Hospital. Mr. and Mrs. Bobby Holland of Graham, a daughter and granddaughter, Vickie and two boys were there.

Pleasant days are just ordinary days made better by good people.

## Subscriptions due in November

In County - \$11.50

Out of County - \$12.50

D.E. Adams  
Quentin Adams  
Wilbur L. Adams  
C.D. Atkins  
Paul Barker  
Jerry Bartram  
H.H. Bennett  
Mrs. H.E. Blendon  
Earl Cooper  
Weldon Cumbie  
Danny Cunyas  
Martha Davis  
Bernie Ford  
Byron Ford  
Sam Fortenberry  
David Frizzell  
Jim Hill  
Mrs. C.O. Jeffcoat  
Melissa Johnson  
J. Chris Johnston  
Mrs. A.S. Jones  
G.E. Kellison  
Roy Kinard  
C.L. King  
John Lane  
Carl F. Lemons  
Jessie K. McGhee  
Margaret's Jewelry  
J.V. Martin  
W.W. Miller  
R.C. Mitchell  
Mrs. Olive Myers  
Roach Perry  
Plains Cotton Growers, Inc.  
Providence Gin  
L.L. Rhodes  
Jimmy Scott  
Herbert Smith  
W.R. Smith Jr.  
Southwestern Bell Tele. (Plv.)  
George Sparkman  
Claude A. Stallings  
Waverly Washington  
West Texas Industries  
Lois Williams  
J.C. Willis  
W.H. Workman  
George Worsham

## Letter to the Editor

Dear Ms. Redding:

About twelve years ago major banks in this state started to combine with each other to form bank holding companies. Then the bank holding companies began absorbing smaller banks. These big banks bragged on their ability to loan hundreds of millions of dollars at a time. I had difficulty relating to this because a few thousand for a car, or several thousands for a home will do me just fine.

Sometime thereafter, I discovered that what was being deposited in Texas, was being loaned to third world countries because banks could charge them a higher rate of interest than what was legally allowable in this state. To me, this practice was both immoral and unfair because there was less money to loan the citizens of this state for their agricultural, commercial, and personal needs. To most folks though, I guess it was just free enterprise.

As we all know, the oil boom collapsed. Many third world countries are unable to pay off their huge loans. I secretly smiled and told myself that justice had finally caught up with the greedy bankers. However, even though no payments were made, the bankers did not declare a default. Something

was wrong. The banks were keeping the loans alive when the third world countries had absolutely no ability to repay them.

Recently, I learned that Congress will give the International Monetary Fund 8.5 billion dollars to loan to third world countries so that they can repay their debts to the major banks. (This will cost every man, woman, and child in this country approximately \$34.00 a piece). I surmise that we will continue to give the IMF money to loan to third world countries until the loans to the big banks are completely repaid, then the loans to the third world countries will be forgiven, and everybody will be happy.

I imagine that next year most of the candidates who get banking industry money will win their elections. I would venture that huge sums will again be spent by banks on lobbying the state and national legislatures. I guess the joke is really on me. Who knows, some day I may be officially working for a bank. Maybe they will even make me think I like it.

Sincerely,  
/s/ Paul O. Primrose  
Route 2  
Hale Center, Texas 79041

## Energias becomes new corp

Pioneer Corporation (NYSE) has announced that its Energias Company division has been separated from Pioneer and established as an independent corporation, chartered by the State of Texas.

Pioneer Corporation is an energy resources corporation, with operations or interests in 18 states and in offshore areas. Energias Company is a natural gas distribution company, serving about 280,000 customers in a 30,000-square-mile area of West Texas. Both companies have their headquarters in Amarillo.

To make the separation, Pioneer Corporation transferred all of its gas distribution properties and the assets of the Energias division to the newly-formed corporation, in exchange for shares of Energias Company common stock.

Pioneer then declared a distribution of the Energias common stock to Pioneer shareholders, on the basis of one share of Energias stock for each 20 shares of Pioneer owned as of October 28, 1983.

In a letter to Pioneer stockholders announcing the separation, C.D. Culver, president and chief executive officer of Pioneer, said: "The separation of Energias from Pioneer will give the gas utility business of Energias and the diversified energy operations of Pioneer the financial, operational, managerial and regulatory flexibility necessary for their dissimilar activities to achieve greater efficiency and growth."

Culver also told stockholders that Pioneer's directors believe the distribution of Energias stock is "in the best interest of Pioneer and Energias and their shareholders." The distribution, he said, is expected "to permit both Energias and Pioneer to comply more

appropriately with objectives of the investing public and thereby to provide a better market for their securities."

The new Energias Company will have assets of approximately \$97 million and is expected to have revenues of more than \$275 million for year 1983. Before the separation, Pioneer's assets were more than \$1 billion, and the corporation reported total revenues of \$1.1 billion for 1982.

Charles K. Vaughan, who served for the past two years as president of the Energias division, will be chairman of the board, president and chief executive officer of the new Energias Company. Energias will employ about 900 people, substantially all of whom were previously employed by the division.

The Energias stock received by Pioneer in the separation has been delivered to Morgan Guaranty Trust Company of New York, which will be the agent for distributing shares to Pioneer stockholders. Pioneer stockholders will be furnished an information statement regarding the stock distribution, and stock certificates will be mailed about November 2.

The distribution of Energias stock will not affect the regular quarterly cash dividend paid by Pioneer, Culver said in his letter to stockholders.

Pioneer Corporation's operations include exploration for and production of natural gas and oil onshore and offshore in the Gulf of Mexico; transportation of natural gas in West Texas; extraction and sales of natural gas liquids; contract petroleum drilling; sales of oil field supplies; exploration for uranium and precious metals; and sales and servicing of heavy equipment for construction and surface mining.

## REVIVAL FIRST BAPTIST CHURCH

Lockney  
November 6 - 13



CLARENCE BRANCH  
Evangelist



BUDDY WELLS  
Music

Evening Services: 7:30 p.m. Monday - Friday  
(7:00 p.m. - Choir Practice & Group Prayer Meetings)

Nursery provided all services

Monday-Friday worship services 12:00 noon  
(Lunch at church - bring covered dish)

### SPECIAL ACTIVITIES

Sunday (Nov. 6) - High School Youth Night - Fellowship following evening worship

Monday (Nov. 7) - Men's Prayer Breakfast (fellowship hall) 7:00 a.m.

Wednesday (Nov. 9) - Children's Dogwitch Supper 6:00 p.m.

Friday (Nov. 11) - Junior High Youth Night - Supper 6:00 p.m.

### SUNDAY SERVICES

|                 |            |                 |           |
|-----------------|------------|-----------------|-----------|
| Sunday School   | 9:45 a.m.  | Church Training | 6:00 p.m. |
| Morning Worship | 11:00 a.m. | Evening Worship | 7:00 p.m. |

## Who's that man and what's he doing in our alley?



It could be Cliff Hardy from Energias' Lockney office.

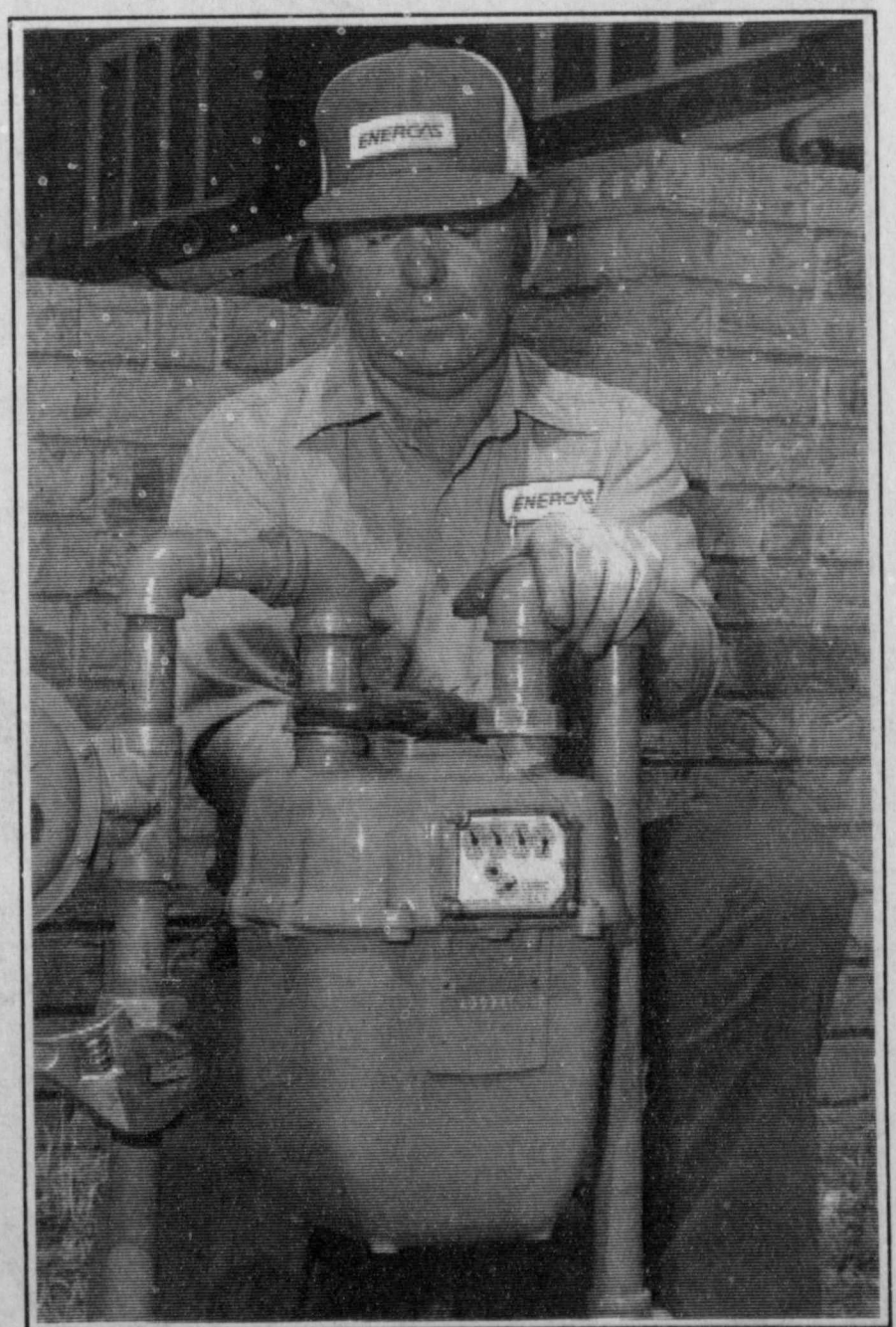
You are apt to find him in a lot of places. His job is to check out gas equipment and lines to assure you of a dependable, safe supply of natural gas. Like in your alley. Besides carefully reading your meter, he checks for leaks and for any needed repairs or replacement.

So, when you see an Energias man in your alley . . . or in the heart of town, you can be sure he is there for a good reason.

Energias people can do and want to.

# ENERGAS

"It's great to have the people of the Lockney office represent Energias. I am proud of the job they are doing and the spirit in which they are doing it."  
Charles Vaughan  
President, Energias Company



Cliff Hardy  
Service Specialist





# Football Contest

HAVE FUN...  
WIN PRIZES...

DEADLINE FOR ENTRIES - 5 P.M. FRIDAY  
IN BEACON OFFICE OR POSTMARKED

Lockney Beacon **\$20<sup>00</sup>**

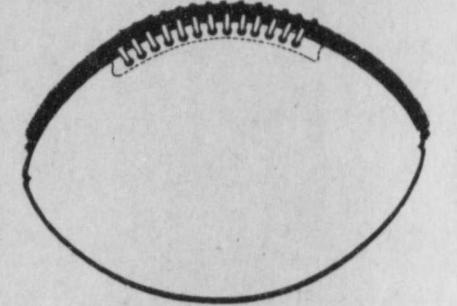
TIE BREAKER-Guess Total Points  
AND CIRCLE WINNER

In Cash  
Prizes  
Each Week

**CONTEST RULES**  
Any local residents above the age of 7 except employees of the Hesperian may enter. Three cash prizes are given each week-ties will split prize money. Members of the sports department are sole judges of the contest and their decision is final. It is not necessary to indicate scores on all the games...But total score (scores of both teams) of the tie breaker must be indicated at right.  
Simply circle the team you choose to win in each of the footballs. Deadline for submitting entries is 5 p.m. Friday - winners will be announced the following week. Enter one entry per person per week, print name and address plainly on blank below and mail or bring entire page to the Lockney Beacon office.  
Tie breaker game will be considered only in case of ties.

|         |
|---------|
| NAME    |
| ADDRESS |
| CITY    |

1ST PRIZE **\$10<sup>00</sup>**  
2ND PRIZE **\$6.00**  
3RD PRIZE **\$4.00**



TIE BREAKER  
LOCKNEY VS CHILDRESS

**Thanks, Lockney!**

|                                                           |                                                               |                                                                               |                                                                |
|-----------------------------------------------------------|---------------------------------------------------------------|-------------------------------------------------------------------------------|----------------------------------------------------------------|
| <p><b>Dan's Auto</b><br/>Floydada vs. Slaton</p>          | <p><b>Consumers Fuel</b><br/>Dallas vs. Philadelphia</p>      | <p><b>Muncy Elevator</b><br/>San Diego vs. Pittsburgh</p>                     | <p><b>Allsup's</b><br/>Los Angeles Raiders vs. Kansas City</p> |
| <p><b>Strickland's Restaurant</b><br/>Idalou vs. Post</p> | <p><b>Don Hardy Car Wash</b><br/>Littlefield vs. Friona</p>   | <p><b>Reecer's Master Cleaners</b><br/>Cincinnati vs. Houston</p>             | <p><b>Farm Bureau</b><br/>Abernathy vs. Dimmitt</p>            |
| <p><b>Byrd Pharmacy</b><br/>Tulla vs. Muleshoe</p>        | <p><b>Paymaster</b><br/>Palo Duro vs. Monterey</p>            | <p><b>Lee's White Auto</b><br/>Coronado vs. Hereford</p>                      | <p><b>Las Maracas</b><br/>Roosevelt vs. Denver City</p>        |
| <p><b>Longhorn Inn</b><br/>Tahoka vs. Frenship</p>        | <p><b>First National Bank</b><br/>Hale Center vs. Lorenzo</p> | <p><b>Moore-Rose Funeral Home</b><br/>O'Donnell vs. Morton</p>                | <p><b>Farmers Ag Service</b><br/>Shallowater vs. New Deal</p>  |
| <p><b>Keeter Grocery</b><br/>Odessa vs. Permian</p>       | <p><b>Jackson Tire Co.</b><br/>Midland Lee vs. Midland</p>    | <p><b>Brown's Dept. Store Outlet Store</b><br/>Springlake-Earth vs. Kress</p> | <p><b>Patterson Grain</b><br/>Bovina vs. Olton</p>             |
| <p><b>Pay-N-Save</b><br/>Crosbyton vs. Petersburg</p>     | <p><b>Sun Vue Fertilizer</b><br/>Ralls vs. Spur</p>           | <p><b>Wilson Photography</b><br/>TCU vs. Texas Tech</p>                       | <p><b>Lockney Beacon</b><br/>Texas vs. Houston</p>             |



## Care Center Capers

By Mavis Barton & Mary Jo Fielding

We have had an exciting week here. Last week we had two new residents come in from Silverton. Mrs. Weta Hill and Mrs. Bessie Hunt. We are glad to have them. On Thursday, we had a Halloween Carnival and prizes were furnished by the Athena Study Club and the Woman's Bible Group from First Baptist Church, Silverton. Thanks for making our day a special event.

Sally Rodriguez is back after taking a vacation. It's good to have you back Sally.

On Saturday, the Methodist Church had a Harvest dinner at noon. Several of the residents participated in the luncheon and had plates delivered to the center. Those taking part were Ida Rose, Roxie Workman, Alma McDonald, Myrtle Howell, Jewell Miller, Edna Hunter, Mavis Barton, Jessie Harris, Nena Loudermilk, Billie Self, Mary Green, Esker Pyle, Melvin Thacker, William Poole, Richard Lanham, and Mr. and Mrs. Clyde Hutsell. The staff reports they really enjoyed their lunch and had a good time visiting while they ate.

Monday, 24th: Well, I had a good time last Sunday, telling you, who we saw and what I did.

This weekend was better, couldn't have been any better.

We were nearing home and Bud asked me if I wanted to go to his sister's house. Louvaine Scaff was holding a family October birthday party which we used to do years ago. And we all looked forward to the get-togethers. Bud had already told her, we might be down but he thought about the narrow door to the bathroom and I said we will go to

Steve's. When I remembered from last week they had already gone to Muleshoe. But now Bud tells me that Ann and Bruce are at Steve and Beverly's again. They had changed weekends with one of the hands who didn't have enough money, so would have to work. We went to Steves but found them just eating breakfast. So went in to the house and hadn't been there 30 minutes when Chris and Joy came from Rotan. I downed everything and held my brand new baby granddaughter, her name is Kristi Lea Reyes. Oh she is so little and sweet. It is a wonderful feeling and hard to believe that my own children had once been that small and helpless.

We had some hard rain in places and where it hailed I guess it ruined the cotton, it just breaks your heart. While it was good weather the strippers really got after it. But when I went home yesterday, there were strippers, cotton trailers and tractors just stuck in the mud. What a big difference in the weather since I first came to Texas in 1954. Now we get storms and thunderstorms at the wrong time and winter was mild and we would get a late snow storm. Now we had snow as early as October 28 and Thanksgiving. The whole world is changing around.

It is difficult for me to distinguish between Iraq and Iran. There has been a bloody Iran-Iraq war going on now for four years. I did learn that there are cozy ties between anti-Israeli Iraq and Egypt. Iraq needs both military and economic aid from Egypt because of the stalemated war with Iran. Egypt is doing all it can to aid President Hussein of Iraq. Some 15,000 Egyptian 'volunteers' serve with Iraqi military units.

**October 24-31**  
Rebecca Truitt, Lockney, adm. 10-21, dis. 10-28  
Dodie S. Webb, Floydada, adm. 10-21, dis. 10-25  
Eva Munos, Quitaque, adm. 10-21,

Cairo has shipped Iraq arms and ammunition. Why all this aid to Iraq? President Mubarak hopes that Egypt can regain its leadership among the Arab states. I think President Amwar Sadat of Egypt was assassinated because of his peace terms with Israel. Sadat was honored and respected even by his enemies.

Iraq President Hussein warns that he intends to use Elendards jets (ordered from France) to bomb oil facilities in Iran. Iran's Khomeini threatens that he would close the Persian Gulf if Iraq attacked. Some analysts believe that Iran is bluffing. So the war between the two continues.

I watched the Cowboys-Giants game today. It was a beautiful game with Danny White throwing five touchdown passes. The sportscasters, Jack Madden and Pat Summerall, commented how methodical, unemotional Landry and his Cowboys were and that they seemed to play football as a job well done. I think Coach Landry relishes his team and when they are playing well, there is a quirk of a smile tugging at the corners of his mouth. He seems to be a very gracious winner. I noticed today that after the game when the Giants coach came over to congratulate him that they not only shook hands but that Landry momentarily grasped his elbow.

## Lockney Hospital Notes

June Taylor, Plainview, adm. 10-29, continues care  
Catrina Rosales, Lockney, adm. 10-29, continues care  
baby boy Jose, born 10-21, dis. 10-23  
Rosa Cruz, Happy, adm. 10-20, baby boy Martin born 10-20, dis. 10-22  
Nancy Browning, Plainview, adm. 10-22, baby boy Erik Daniel, born 10-23, dis. 10-25  
Jeffie Smith, Floydada, adm. 10-22, dis. 10-28  
Anna Tonche, Plainview, adm. 10-23, baby girl Denise, born 10-23, dis. 10-25  
Tom Ward, Lockney, adm. 10-23, dis. 10-27  
Josephine Pearson, Quitaque, adm. 10-21, dis. 10-25  
Ada Gregg, Lockney, adm. 10-22, dis. 10-28  
Larry Christian, Lockney, adm. 10-25, dis. 10-27  
Ignacio Luna, Lockney, adm. 10-25, dis. 10-29  
Eleanor Martinez, Lockney, adm. 10-25, dis. 10-28  
Clay Muncy, Lockney, adm. 10-26, continues care  
Dorothy Jarrett, Lockney, adm. 10-26, dis. 10-31  
Fernanda Caldera, Plainview, adm. 10-28, baby boy Jacob, born 10-28, dis. 10-31  
Brenda Deweber, Aiken, adm. 10-27, baby girl Heather born 10-27, dis. 10-29  
Izabel Ruiz, Plainview, adm. 10-27, baby boy born Adam 10-27, dis. 10-29  
Velma Shankle, Lockney, adm. 10-26, dis. 10-29  
Holly Tierce, Dougherty, adm. 10-28, baby girl Kayla Renea, born 10-28, dis. 10-31

For fast and reliable service with your prescriptions, come see us!

## Professional nursing available

Patients discharged from hospitalization, yet requiring intermittent professional nursing care and treatment now have an alternative to the full time attention of a nurse. Total Home Health Care, Inc. has been established to serve residents of Hale, Floyd, Swisher, and Lamb counties with skilled nursing service in the home. Nursing services will be provided following the medication and treatment schedule prescribed by the attending physician. This allows the patient the benefit of nursing care administered by a qualified professional, and convalescence in comfortable, familiar surroundings.

nurse include: blood pressure, pulse, respiration, and temperature check during each visit, I.M. or I.V. injections as ordered by a physician, dressing changes, catheter and ostomy care, and any other special treatments ordered by the patient's physician.

In addition to these services, the attending nurse may aid in patient care through teaching and assistance in such areas as diabetic care, nutritional counselling, and other special care of homebound or bedridden patients, and general patient care management. Physical therapy may also be provided when ordered by a physician. Personal health and hygiene aides are available

when required. Services provided by Total Home Health Care, Inc. are payable through Medicare, Medicaid, Veteran's Administration, insurance, and personal payment. Attempts will be made to locate alternative assistance for patients not qualified under Medicare, Medicaid, or one of the other payment plans. It is the policy of this agency to accept referrals and qualified patients regardless of race or national origin. Total Home Health Care, Inc. offices are located at 410 Broadway in Plainview, central to the four county service area. For information, phone 806-296-2767.

Services provided by the attending

### Great American FOOD SALE

|                                                                     |                                                                        |
|---------------------------------------------------------------------|------------------------------------------------------------------------|
| GRANULATED SHURFINE SUGAR 5 LB. BAG \$1.49                          | VAC-PAC REG.-DRIP-ELEC SHURFINE COFFEE 1 LB. CAN \$1.89                |
| SHURFINE CUT GREEN BEANS 3 16 OZ. CANS \$1                          | 49 oz. box detergent Tide \$1.99                                       |
| Sunshine Krispy 16 oz. box SALTINE CRACKERS 59¢                     | Allsup's Bread 2/\$1                                                   |
| SHURFINE - IN NATURAL JUICE - CRUSHED PINE-APPLE 15 1/4 OZ. CAN 59¢ | SHURFINE FANCY TOMATO JUICE 46 OZ. CAN 79¢                             |
| SHURFINE EARLY HARVEST SWEET PEAS 2 17 OZ. CANS 89¢                 | Shurfine Chunk style Tuna 2/\$1 cans                                   |
| SHURFINE FROZEN ORANGE JUICE 12 OZ. CAN 69¢                         | SHURFRESH HALFMOON-LONGHORN-COLBY OR CHEDDAR CHEESE 10 OZ. PKG. \$1.29 |
| Coca Cola 6 pack 16 oz. \$1.99                                      | BUTR. MILK-SWT. MILK SHURFRESH BISCUITS 6 8 OZ. CANS \$1               |
| Shurfine Aluminum Foil 69¢                                          | CLOVER CLUB LA FAMOUS REG. #111 TORTILLA CHIPS BAG \$1.29              |
| Rath Pure Pork Sausage 69¢                                          | BORDEN'S BUTTER MILK 1/2 GAL. CTN. 99¢                                 |
| TV COOKED FOOD SPECIAL CORN DOG 2 FOR 89¢                           | Del Monte Fruit Cocktail 2/\$1                                         |
| ALLSUPS ASST. ICE CREAM 1/2 GAL. CTN. \$1.59                        | Del Monte Sliced Peaches 2/\$1                                         |
| SHURFINE FLOUR 5 LB. BAG 69¢                                        | FALL WAREHOUSE SALE OSCAR MAYER-SLICED BOLOGNA 8 OZ. PKG. 69¢          |

Lockney

WHILE SUPPLIES LAST!

# ALLSUP'S

CONVENIENCE STORES

OPEN 24 HOURS FOR YOUR CONVENIENCE

SELF SERVE GAS

PRICES EFFECTIVE OCT. 30-NOV. 5, 1983

## NOTICE

Professional health care in the home is now available to the residents of Hale, Floyd, Swisher, and Lamb Counties through

## Total Home Health Care, Inc.

When health problems require care in the home, TOTAL HOME HEALTH CARE will send a qualified, licensed nurse to administer medication and treatment ordered by a physician. Skilled nursing services provided include:

- ★ Blood pressure, pulse, respiration, and temperature check each visit
- ★ I.M. or I.V. injections as ordered by physician
- ★ Dressing changes
- ★ Catheter and ostomy care
- ★ Diabetic teaching assistance
- ★ Teaching and assistance with care of homebound or bedridden patients
- ★ Any additional special treatment ordered by the physician
- ★ Nursing assessment and evaluation
- ★ Nutritional counselling
- ★ General patient care management
- ★ Services Provided By Physician's Orders Only

TOTAL HOME HEALTH CARE treatments are payable through Medicare, Medicaid, Veteran's Administration, insurance, and private payment. For patients who do not qualify under one of these payment plans, attempts will be made to locate alternative assistance. It is the policy of this agency to provide service to any qualified patients regardless of race or national origin.

For Additional Information Phone (806) 296-2767

## TOTAL HOME HEALTH CARE, INC.

410 BROADWAY  
PLAINVIEW, TEXAS 79072





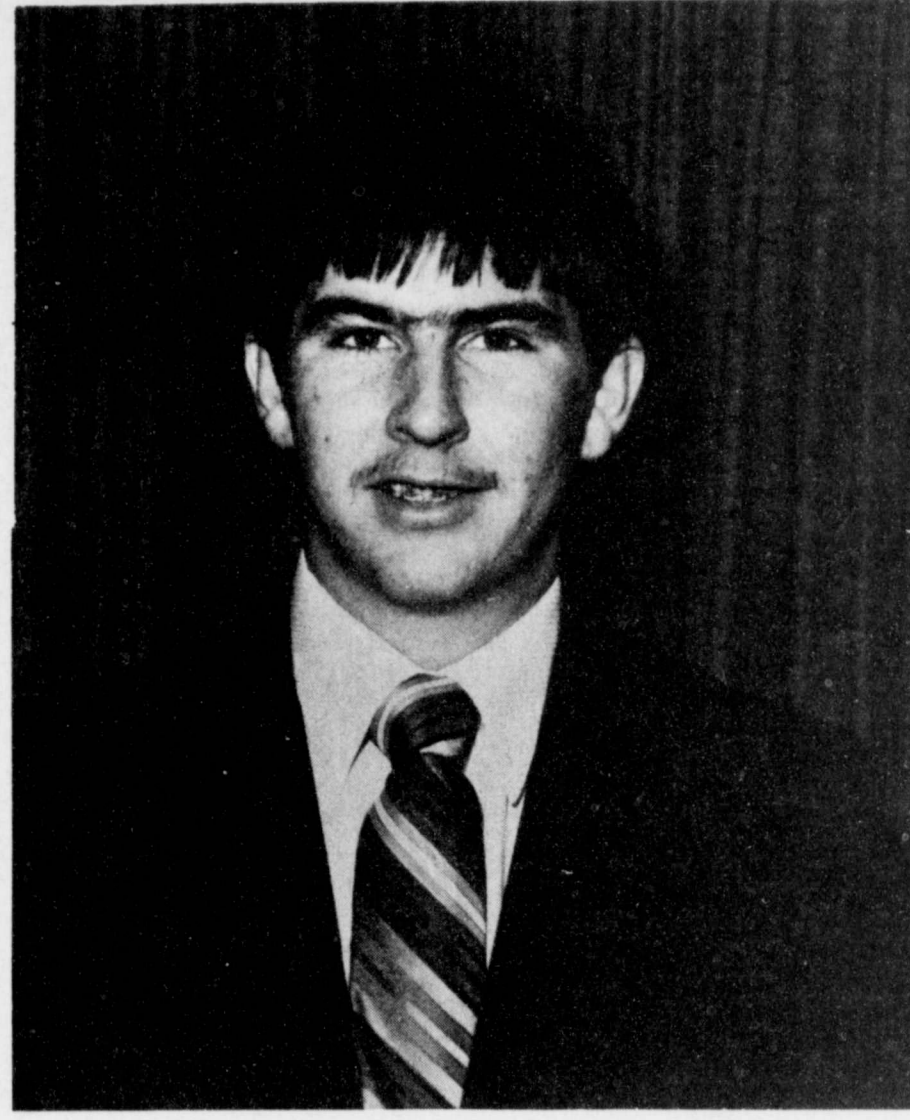
**THURSDAY** NOVEMBER 3, 1983

|       | 4                                 | 5                                  | 9                                    | 11                             | 13                                     | 28                          | 34                                     | HBO                              | SHOW                           | ESPN                                          |
|-------|-----------------------------------|------------------------------------|--------------------------------------|--------------------------------|----------------------------------------|-----------------------------|----------------------------------------|----------------------------------|--------------------------------|-----------------------------------------------|
| 7:00  | Bewitched I Love Lucy             | Jazzercise Weather                 | Bozo                                 | Today                          | Morning News                           | Good Morning America        | Bullwinkle Inspector Gadget            | Inside Boxing The Time Of Our    | Movie: "Waltz Across Texas"    | SportsCenter Horse Racing Weekly SportsCenter |
| 8:00  | Movie: "The Smugglers"            | Sesame Street                      | Beverly Hills                        | "                              | Bewitched                              | "                           | The Flintstones Underdog               | Live                             | "                              | LA '83                                        |
| 9:00  | "                                 | Electric Company                   | Movie: "Charlie Bubbles"             | Diffrent Strokes               | \$25,000 Pyramid Press Your Luck       | Donahue                     | Mighty Mouse Jimmy Swaggart            | Movie: "Gallipoli"               | The Fastest Gun Alive          | Sports-Forum                                  |
| 10:00 | The Catlins Texas                 | Mister Rogers                      | "                                    | Wheel Of Fortune Dream House   | The Price Is Right                     | Benson                      | Jim Bakker                             | "                                | "                              | CFL Football Toronto Argonauts At             |
| 11:00 | Perry Mason                       | Vietnam: A Television History      | Family                               | Go!                            | Young And Restless Search For Tomorrow | Family Ryan's Hope          | INN News Richard Hogue                 | One Man's Fight For Life         | Movie: "The Verdict"           | Edmonton Eskimos                              |
| 12:00 | Movie: "The Sound of Anger"       | Footsteps                          | News                                 | News                           | News                                   | News                        | All My Children                        | Movie: "The Hound Of The         | "                              | Saturday Night                                |
| 1:00  | "                                 | MacNeil Lehrer                     | Dick Van Dyke                        | "                              | Turns                                  | One Life To Live            | Movie: "Who's Been Sleeping In My Bed" | Baskerville's                    | Movie: "Waltz Across Texas"    | At The Fights                                 |
| 2:00  | The Flintstones Starcade          | Over Easy Western Squares          | I Dream Of Jeannie Bugs Bunny        | Match Game                     | Guiding Light                          | General Hospital            | "                                      | The Time Of Our Lives            | "                              | "                                             |
| 3:00  | The Munsters Brady Bunch          | Sesame Street                      | Super-friends Scooby Doo             | Hollywood Squares CHiPs Patrol | Tattletales                            | Tom & Jerry Scooby Doo      | The Flintstones He-Man                 | The Incredible                   | "                              | Auto Racing                                   |
| 4:00  | Leave It To Beaver Beverly Hills  | Mister Rogers Electric Company     | Pink Panther Laraine & Shirley       | The Jeffersons                 | On The Prairie Barney Miller           | Happy Days People's Court   | Super-friends I Love Lucy              | Book Escape Hooper-Bloob Highway | Benji At Marineland            | Sports-Week                                   |
| 5:00  | Little House On The Prairie       | 3-2-1 Contact Oil Painting         | One Day At A Time WKRP In Cincinnati | News                           | Three's Company CBS News               | News                        | ABC News                               | Movie: "Gallipoli"               | A Case Of Label                | Racquetball Sports-Center                     |
| 6:00  | Carol Burnett Good News           | MacNeil Lehrer                     | Barney Miller                        | News                           | News                                   | News                        | Hawaii Five-O                          | "                                | "                              | Golf Kapalua Int'l national                   |
| 7:00  | NCAA Football Georgia Tech        | Wild America                       | Movie: "The Three Musketeers"        | Gimme A Break Mama's Family    | Magnum, P.I.                           | Battle Of The Network Stars | Family                                 | Movie: "First Blood"             | Pat Collins, The Hip Hypnotist | Championship                                  |
| 8:00  | Va. Virginia                      | Inside Story New Tech Times        | "                                    | We Got It Made Cheers          | Simon & Simon                          | "                           | Movie: "The Out Of Towners"            | Inside Boxing                    | "                              | Boxing Top Rank                               |
| 9:00  | "                                 | The Lawmakers Tony Brown's Journal | News                                 | Hill Street Blues              | Knots Landing                          | 20-20                       | "                                      | Inside The NFL                   | "                              | "                                             |
| 10:00 | News                              | Reginald Perrin Business Report    | Love Boat                            | Tonight                        | News                                   | M.A.S.H.                    | Twilight Zone Thick Of The             | Movie: "The Verdict"             | Gallagher: The Maddest         | SportsCenter NFL's                            |
| 11:00 | Catlins Movie: "Fire Over Africa" | The Art Of Being Human             | Movie: "Suddenlly, David Letterman   | Trapper John, M.D.             | Bob Newhart ABC News Nightline         | "                           | "                                      | Movie: "The Verdict"             | Loving Friends                 | Greatest Moments The Sports-                  |
| 12:00 | "                                 | "                                  | "                                    | "                              | "                                      | "                           | "                                      | "                                | "                              | "                                             |

**Cook Of The Week**

Earl Brose is a senior this year. He is the son of Kenneth and Juanita Brose of Lockney. Earl is a very active 4-H member, he has participated in the food show for the past six years, he served as the County Council President and also as the

president of the South Plains District 4-H council. He is presently the Vice President of both local and district FFA organizations and he is serving as the vice president of the Silver Spurs Rodeo Club.



EARL BROSE

- Humming Bird Cake**
- 1 1/2 cups cooking oil
  - 2 cups sugar
  - 2 eggs
  - 1 tsp. vanilla
  - 3 cups flour
  - 1 tsp. soda
  - 1 tsp. cinnamon
  - 1/2 tsp. salt
  - 1-8 oz. can crushed pineapple
  - 2 bananas, diced
  - 1 cup pecans, chopped
  - 1/2 cup coconut
- Mix oil, sugar, eggs, and vanilla well. Then add sifted dry ingredients. Mix well. Then add fruit and mix. Bake in greased and floured tube or bundt pan at 300° for 1 hour. (Do not use mixer.) Cool before removing from pan.

- Whole Wheat Egg Bread**
- 2 cups boiling water
  - 1/2 cup powdered milk
  - 1/2 cup butter or margarine
  - 2 teaspoons salt
  - 1/2 cup honey
  - 2 packages yeast
  - 2 eggs, beaten
  - 4 cups whole wheat flour
  - 4 1/2 cups unbleached white flour
- Pour boiling water over milk, butter, salt and honey. Allow to cool. Add yeast and eggs. Add flour, 1 cup at a time, starting with the whole wheat first. Turn dough onto floured board and knead until smooth and elastic. Place dough in a greased bowl, cover, and let rise until double in bulk (about 1 1/2 hours). Punch down and turn onto a lightly floured board. Shape into five round loaves and place in greased pie pans. Cover and let rise until double again. Slit top (make an X) with a very sharp (serrated) knife. Bake in 350° oven for 25-30 minutes.
- Variations:** Use all white flour and 1 cup of raisins for raisin bread; use all white flour for plain white bread. Or, make rolls.

**Highlights**

**MORNING**  
 8:05 (4) ★★ 1/2 "THE SMUGGLERS" (1968, Suspense) Shirley Booth, David Opatoshu. A smuggling ring uses a naive woman as a front for their operations.  
 9:00 (9) ★★ "CHARLIE BUBBLES" (1968, Drama) Albert Finney, Liza Minnelli. A sense of meaningless ennui; a middle-class writer when he is catapulted into fame and fortune.

**AFTERNOON**  
 12:05 (4) ★★ "THE SOUND OF ANGER" (1968, Drama) Burl Ives, James Farentino. After a wealthy man is murdered, his daughter and her boyfriend are accused of the crime.  
 1:00 (3) ★★ "WHO'S BEEN SLEEPING IN MY BED?" (1963, Comedy) Dean Martin, Elizabeth Montgomery. While visiting his psychiatrist, a soap opera star is pursued by his fans and his fiancée.

**EVENING**  
 7:00 (9) ★★ "THE THREE MUSKETEERS" (1974, Comedy) Oliver Reed, Raquel Welch. In 17th-century France, three dashing adventurers come to the aid of King Louis XIII when they learn that his crafty cleric, Cardinal Richelieu, is hatching a nasty plot against him.  
 8:00 (3) ★★ "THE OUT-OF-TOWNERS" (1970, Comedy) Jack Lemmon, Sandy Dennis. An Ohio couple visiting New York experience every known urban disaster.  
 11:20 (3) ★★ "FIRE OVER AFRICA" (1954, Adventure) Maureen O'Hara, Macdonald Carey. Secret agents converge on Tangier to smash a drug-smuggling operation.  
 11:30 (9) ★★ "SUDDENLY, LAST SUMMER" (1960, Drama)

**FRIDAY** NOVEMBER 4, 1983

|       | 4                                | 5                                  | 9                                    | 11                             | 13                                     | 28                        | 34                              | HBO                                      | SHOW                             | ESPN                                  |
|-------|----------------------------------|------------------------------------|--------------------------------------|--------------------------------|----------------------------------------|---------------------------|---------------------------------|------------------------------------------|----------------------------------|---------------------------------------|
| 7:00  | Bewitched I Love Lucy            | Jazzercise Weather                 | Bozo                                 | Today                          | Morning News                           | Good Morning America      | Bullwinkle Inspector Gadget     | Movie: "Killing If Randy" Cont'd         | Treasures Of The Snow Cont'd     | SportsCenter Sports-Week SportsCenter |
| 8:00  | Movie: "All My Sons"             | Sesame Street                      | Beverly Hills                        | "                              | Bewitched                              | "                         | The Flintstones Underdog        | Flashback: The Wall Street Crash Of 1929 | Aerobicise                       | Australian Rules Football             |
| 9:00  | "                                | Electric Company                   | Movie: "The Sergeant" Was A          | Diffrent Strokes               | \$25,000 Pyramid Press Your Luck       | Donahue                   | Mighty Mouse Jimmy Swaggart     | Movie: "Modern Problems"                 | The Horizontal Lieutenant        | Sports-Week                           |
| 10:00 | The Catlins Texas                | Mister Rogers                      | "                                    | Wheel Of Fortune Dream House   | The Price Is Right                     | Benson                    | Jim Bakker                      | "                                        | College Soccer Southern Illinois | "                                     |
| 11:00 | Perry Mason                      | The Shakespeare Plays "Anthony And | Family                               | Go!                            | Young And Restless Search For Tomorrow | Family Ryan's Hope        | Richard Hogue                   | From Hollywood                           | Movie: "The French Lieutenant's  | Vs. St. Louis                         |
| 12:00 | Movie: "The Ride To Hangman's    | Cleopatra"                         | News                                 | News                           | News                                   | All My Children           | My Three Sons 20 Minute Workout | Movie: "The                              | "                                | Horse Racing Rodeo                    |
| 1:00  | "                                | Dick Van Dyke                      | "                                    | Turns                          | One Life To Live                       | Movie: "Deeiree"          | "                               | "                                        | "                                | "                                     |
| 2:00  | The Flintstones Starcade         | Over Easy Gourmet Cooking          | I Dream Of Jeannie Bugs Bunny        | Match Game                     | Guiding Light                          | General Hospital          | "                               | Video Jukebox                            | "                                | Sports-Week                           |
| 3:00  | The Munsters Brady Bunch         | Sesame Street                      | Super-friends Scooby Doo             | Hollywood Squares CHiPs Patrol | Tattletales                            | Tom & Jerry Scooby Doo    | The Flintstones He-Man          | Movie: "The Glacier Fox"                 | Treasures Of The Snow            | Boxing Top Rank                       |
| 4:00  | Leave It To Beaver Beverly Hills | Mister Rogers Electric Company     | Pink Panther Laraine & Shirley       | The Jeffersons                 | On The Prairie Barney Miller           | Happy Days People's Court | Super-friends I Love Lucy       | Fraggle Rock                             | "                                | "                                     |
| 5:00  | Little House On The Prairie      | 3-2-1 Contact Oil Painting         | One Day At A Time WKRP In Cincinnati | News                           | Three's Company CBS News               | News                      | ABC News                        | Flashback: The Wall Street Crash Of 1929 | Lone Star Bar & Grill; Hurricane | Sports-Center                         |
| 6:00  | Carol Burnett Good News          | MacNeil Lehrer                     | Barney Miller                        | News                           | News                                   | News                      | Hawaii Five-O                   | Inside The NFL                           | Bzaregard                        | Golf Kapalua Int'l national           |
| 7:00  | Basketball Chicago Bulls At      | Washington Wall Street Week        | Bulls Atlanta Hawks                  | Mr. Smith At The Movies        | The Dukes Of Hazzard                   | Benson                    | Webster                         | Movie: "An Officer And A                 | Movie: "Still Of The Night"      | Championship                          |
| 8:00  | Atlanta Hawks                    | Texas Report Internet Edition      | "                                    | Manimal                        | Dallas                                 | Lottery!                  | Movie: "Five Card Stud"         | "                                        | Movie: "The                      | The World Sportsman                   |
| 9:00  | "                                | Soccer                             | News                                 | For Love And Honor             | Falcon Crest                           | Matt Houston              | "                               | Not The News                             | French Lieutenant's Woman"       | NFL Game Of The Week Inside Football  |
| 10:00 | "                                | Reginald Perrin Business Report    | Soap                                 | News                           | News                                   | News                      | Twilight Zone Thick Of The      | Movie: "The Verdict"                     | "                                | SportsCenter Ringside Review          |
| 11:00 | Night Tracks                     | Computer Programme                 | Movie: "The Russians Are Coming"     | Friday Night Videos            | "                                      | "                         | "                               | "                                        | "                                | "                                     |
| 12:00 | "                                | "                                  | "                                    | "                              | "                                      | "                         | "                               | "                                        | "                                | "                                     |

**Highlights**

**MORNING**  
 8:05 (4) ★★ "ALL MY SONS" (1948, Drama) Edward G. Robinson, Burt Lancaster. A son accuses his father of having sold defective planes to the government during the war.  
 9:00 (9) ★★ "THE SERGEANT WAS A LADY" (1961, Comedy) Martin West, Venetia Stevenson. Through a bureaucratic slip-up, a handsome young corporal finds himself assigned to a WAC base in the Pacific.

**AFTERNOON**  
 12:05 (4) ★★ 1/2 "THE RIDE TO HANGMAN'S TREE" (1967, Western) Jack Lord, James Farentino. The infamous "Black Bandit" escapes being hanged and becomes the scourge of the West.  
 1:00 (3) ★★ "DESIRE" (1954, Drama) Marlon Brando, Jean Simmons. Napoleon Bonaparte has an early and bittersweet love affair

**EVENING**  
 8:00 (3) ★★ "5 CARD STUD" (1968, Western) Dean Martin, Robert Mitchum. A cheater in a poker game is lynched and one by one the other members of the game are also killed.  
 11:00 (3) ★★ "NIGHTMARE IN BADHAM COUNTY" (1975, Drama) Deborah Raffin, Lynne Moody,

**SATURDAY** NOVEMBER 5, 1983

|       | 4                          | 5                                      | 9                                   | 11                                 | 13                              | 28                                 | 34                                    | HBO                      | SHOW                        | ESPN                                      |
|-------|----------------------------|----------------------------------------|-------------------------------------|------------------------------------|---------------------------------|------------------------------------|---------------------------------------|--------------------------|-----------------------------|-------------------------------------------|
| 7:00  | Starcade                   | "                                      | U.S. Farm Report The World Tomorrow | Flintstone Funnies The Shirt Tapes | The Baskitts Saturday Supercade | Scobby Doo, Menuido The Jetsons    | Healthfield Wall Street Journal       | Movie: "Gallipoli"       | East Side, West Side Cont'd | Rodeo Cont'd Vic's Vacant Lot             |
| 8:00  | "                          | European Journal Computer              | Rex Humbard Issues Unlimited        | Smurfs                             | "                               | Jonny Quest Rubik Cube,            | Johnny Canales                        | "                        | "                           | Motocross Racing                          |
| 9:00  | "                          | Growing Years Growing Up               | Charlando Incredible Hulk           | "                                  | Alvin & The Chipmunks           | Menuido                            | Pop 'N Roker America's Top Ten        | Inside The NFL           | "                           | NFL Game Of The Week Inside Football      |
| 10:00 | Marcus-Nelson Murders"     | Focus On Society Focus On Society      | Kung Fu                             | Mr. T                              | Benji Amazing Spiderman         | Puppy, Scooby Doo Schoolhouse Rock | Hardy Boys, Nancy Drew                | Pat Benatar In Concert   | "                           | Sports-Week Alpine Ski School             |
| 11:00 | "                          | Footsteps                              | "                                   | Incredible Hulk Thundarr           | Bugs Bunny Road Runner          | NCAA Football                      | Voyage To The Bottom Of The Sea       | Movie: "Enigma"          | "                           | Sports-Center Auto Racing                 |
| 12:00 | "                          | American Story                         | "                                   | U.S. Farm Report Questions         | Fat Albert Festival             | "                                  | Movie: "The Last Safari"              | "                        | "                           | NASCAR Fall 100                           |
| 1:00  | Autumn"                    | Quilting                               | "                                   | Alias Smith And Jones              | Shopemith                       | "                                  | Flashback: Voyage Of The Morro Castle | "                        | "                           | Inside Football Alpine Ski School         |
| 2:00  | "                          | Movie: "Lights Of Old Santa Fe"        | Costello Meet Frankenstein          | Emergency                          | Cowboy Weekly                   | NCAA Today                         | Movie: "Murphy's War"                 | "                        | "                           | World Sports-Week Boxing Top Rank         |
| 3:00  | High Chaparral             | "                                      | "                                   | America's Top Ten Soul Train       | SportsWorld                     | Football                           | Amateur Boxing Ireland Va. U.S.A.     | "                        | "                           | Girl                                      |
| 4:00  | "                          | "                                      | "                                   | "                                  | "                               | "                                  | Wide World Of Sports                  | Movie: "The Last Sunset" | Donna-Castle                | "                                         |
| 5:00  | Motorweek Illustrated      | Cinema Showcase                        | Good Times                          | Wild Kingdom                       | "                               | "                                  | "                                     | "                        | "                           | "                                         |
| 6:00  | Wrestling                  | Matinee At The Bijou "Remedy For       | Back Kotter NBC News                | Nashville Music NBC News           | "                               | "                                  | More Real People                      | "                        | "                           | Rebellious Jukebox                        |
| 7:00  | "                          | Riches" House-warming                  | On The Prairie At The Movies        | Entertainment This Week            | Hee Haw                         | News                               | Star Search                           | "                        | "                           | The Making Of The Raiders Of The Lost Ark |
| 8:00  | NCAA Football Kentucky Vs. | Meet The Candidates                    | Movie: "One Hundred Rifles"         | Diffrent Strokes Spoons            | Cutter To Houston               | T.J. Hooker                        | Switch                                | Pat Benatar In Concert   | Movie: "The Godfather"      | Championship                              |
| 9:00  | Vanderbilt                 | Admendment Overviews To The Manor Born | "                                   | The Rousters                       | CBS Movie: "Sparkling Cyanide"  | Love Boat                          | Movie: "Smokey And The Bandit"        | Movie: "Enigma"          | "                           | Saturday Night At The Fights              |
| 10:00 | "                          | "                                      | "                                   | "                                  | "                               | "                                  | "                                     | "                        | "                           | "                                         |
| 11:00 | "                          | "                                      | "                                   | "                                  | "                               | "                                  | "                                     | "                        | "                           | "                                         |
| 12:00 | "                          | "                                      | "                                   | "                                  | "                               | "                                  | "                                     | "                        | "                           | "                                         |

**Highlights**

**AFTERNOON**  
 12:00 (3) ★★ 1/2 "THE LAST SAFARI" (1967, Adventure) Stewart Granger, Kaz Garas. After a hunter is killed by an elephant, his friend and an American playboy attempt to capture the animal.  
 2:00 (5) ★★ 1/2 "LIGHTS OF OLD SANTA FE" (1947, Western) Roy Rogers, Dale Evans. A lovely rodeo owner on the brink of bankruptcy is rescued by a cowboy.  
 3:00 (3) ★★ "MURPHY'S WAR" (1971, Adventure) Peter O'Toole, Sian Phillips. A man decides to fight a one-man war against the Germans after they shoot his plane down in the middle of a jungle river.

**EVENING**  
 7:00 (9) ★★ 1/2 "100 RIFLES" (1969, Western) Jim Brown, Raquel Welch. An outlaw Indian, a black lawman and a female revolutionary help the Mexican Indians depose a cruel governor.  
 8:00 (3) "SPARKLING CYANIDE" (Premiere, Mystery) Anthony Andrews, Deborah Raffin. Based on a story by Agatha Christie. The poisoning of a philandering wife prompts the woman's younger sister and a British visitor to investigate the tragedy.  
 8:30 (9) ★★ 1/2 "SMOKEY AND THE BANDIT" (1977, Comedy) Burt Reynolds, Sally Field. A trucker hired to hightail it to Texas for an illegal beer run picks up a runaway sheriff and infuriates a stubborn bride along the way.  
 10:30 (9) ★★ 1/2 "A PIECE OF THE ACTION" (1977, Comedy) Sidney Poitier, Bill Cosby. Two likeable crooks attempt to master the art of the rip-off while being blackmailed into tackling several community problems.  
 11:00 (2) ★★ "FRIDAY THE 13TH, PART II" (1981, Horror) Amy

Steel, John Fury. The grisly killings continue at a summer camp that had been closed down after a series of bizarre murders occurred there.  
 11:30 (3) ★★ "SEVEN" (1977, Adventure) William Smith, Barbara Lee. U.S. intelligence calls in a special agent to stop the imminent merger of seven Hawaiian crime syndicates.





SUNDAY NOVEMBER 6, 1983

Table with columns for time slots (7:00-12:30) and channels (WBNS, KTVT, WGN, KCB, KLBK, KAMC, KJAA, HBO, SHOW, ESPN). Rows list various programs like 'Cartoons', 'Leave It To Beaver', 'Best Of Good News', etc.

MONDAY NOVEMBER 7, 1983

Table with columns for time slots (7:00-12:30) and channels (WBNS, KTVT, WGN, KCB, KLBK, KAMC, KJAA, HBO, SHOW, ESPN). Rows list various programs like 'Bewitched', 'I Love Lucy', 'Sesame Street', etc.

Highlights

12:00 (9) ★★ "THANK YOU, MR. MOTO" (1937, Mystery) Peter Lorre, Sidney Blackmer. A group of people are brought together by the possibility of finding Genghis Khan's hidden treasure.

Highlights

12:05 (3) ★★ "HELL IS FOR HEROES" (1962, Drama) Steve McQueen, Bobby Darin. A squad of American GIs is ordered to hold back the Germans at any cost.

Highlights

7:00 (4) ★★½ "SHANE" (1953, Western) Alan Ladd, Jean Arthur. A reformed gunfighter is forced to use his gun again to defend homesteaders from lawlessness.

TUESDAY NOVEMBER 8, 1983

Table with columns for time slots (7:00-12:30) and channels (WBNS, KTVT, WGN, KCB, KLBK, KAMC, KJAA, HBO, SHOW, ESPN). Rows list various programs like 'Bewitched', 'I Love Lucy', 'Sesame Street', etc.

Highlights

12:05 (3) ★★½ "CITY BENEATH THE SEA" (1953, Adventure) Robert Ryan, Anthony Quinn. Two deep-sea divers search for a treasure in gold bullion off the Jamaican coast.

Highlights

8:00 (13) ★★ "TWO KINDS OF LOVE" (Premiere, Drama) Lindsay Wagner, Ricky Schroder. After unexpected tragedy strikes a family, a teen-age boy facing the normal problems of growing up is forced to deal with another set of emotions.

WEDNESDAY NOVEMBER 9, 1983

Table with columns for time slots (7:00-12:30) and channels (WBNS, KTVT, WGN, KCB, KLBK, KAMC, KJAA, HBO, SHOW, ESPN). Rows list various programs like 'Bewitched', 'I Love Lucy', 'Sesame Street', etc.

Highlights

12:05 (3) ★★½ "ARROWHEAD" (1953, Western) Charlton Heston, Jack Palance. Trouble erupts when a cavalry unit sets out to sign a treaty with the Apaches.

Highlights

7:00 (9) ★★½ "THE MAGNIFICENT SEVEN" (1960, Western) Yul Brynner, Eli Wallach. A band of gunfighters is hired to protect a Mexican town from outlaws.





DICKIE HERNANDEZ receives a pass from quarterback Jerry Mathis and carries for a 10 yard gain in Friday's game against Post.

## Horns unable to stop the Post Antelopes

Lockney was unable to stop the Post Antelopes Friday night in the last home game of the season. The Horns were only able to gain 176 total yards to Post's total of 394.

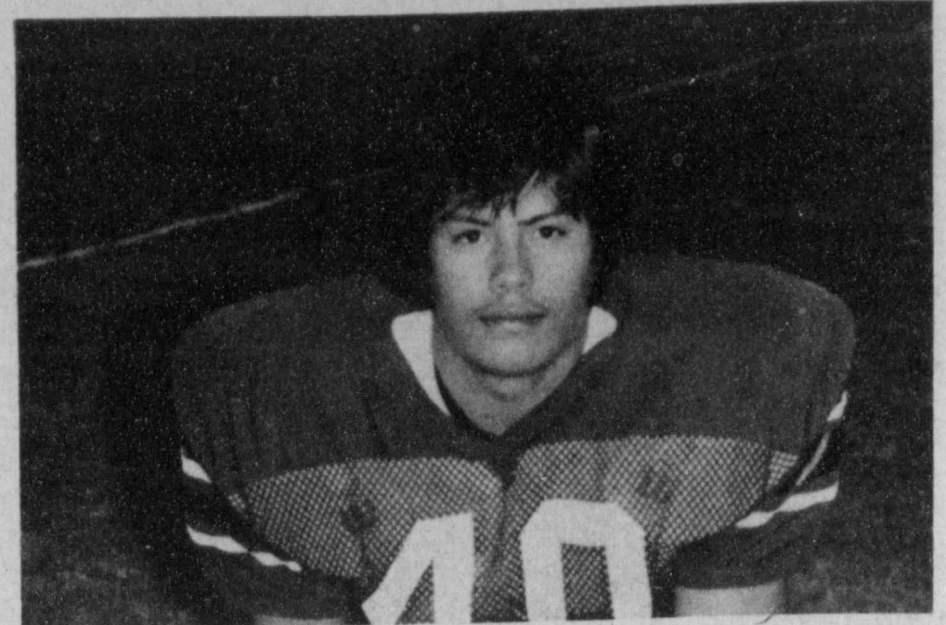
Sophomore Jerry Mathis was the quarterback for Friday's game and coach Bob Purser stated that he was very pleased with Jerry's performance in the game, and he said that for a sophomore and for this to have been his first game to play quarterback Purser said that Mathis did a very good job in leading the offense. Purser also said that Mathis showed the potential for becoming a very good quarterback.

Coach Purser said that the entire team played a very good game Friday night and that even though the score was 49 to 0 the Horns put forth a very good effort. The main problem that the Horns encountered was Post running back Milton Williams who seemed to fly down field.

Williams has speed unequalled to anything Lockney has and the Horns were unable to stop Williams from running in four of Post's seven touchdowns, including a 56 yard punt return.

Players of the week from the Post game are offensive line Moses Blanco and Monty Teeter, offensive back Jerry Mathis, defensive forcing unit Terry Mathis and Scott Poole, and secondary Robert Rendon.

Friday the Horns will face Childress in Childress. Since this is the last game of the season please try and make it out to support the Horns, especially the seniors as this will be their last football game played for Lockney High School.



ABEL SALAS

## Horn of the Week

Abel Salas, son of Mr. and Mrs. Joe Salas Jr., plays defensive end and tight end for the 1983 Longhorns. Abel has been a valuable receiver for the Longhorns. He caught three passes in last week's game with Slaton.

Abel has been in FHA for two years. Good Luck to Abel, all Seniors, and the entire varsity as they play their last game of the 1983 season. Slaughter the Bobcats!

## JV team outscored marginally by Post

The J.V. Longhorns played one of their better games of the year against Post. The first quarter went by with Post holding the ball most of the quarter. The Antelopes scored on a 20-yard run. The first quarter ended with Post leading 6-0. Lockney moved the ball well, but turnovers stopped many drives. The Longhorns scored on a 18-yard pass from Steven Cates to Jessie Castro. The score was deadlocked for just a few seconds Post returned the ensuing kickoff for 70 yards for a touchdown. The half ended 14-6.

The second half was a defensive game with turnovers playing a big part. The score was still 14-6 when Lockney got the ball with 1:30 left in the game. The scoring drive started on a pass from Ted Flores to Rusty Teeter, followed by a run of Tony Banda to the 2. With 56 seconds in the game, Banda scored to make it 14-12. The onside kick failed and Post had the ball on the 45. The first play Trent Gant and David Sutterfield hit the Post ball carrier causing a fumble which Lockney recovered. A long pass from Cates to Castro put the

ball on the 2. Banda scored the winning touchdown with no time on the clock.

The offensive Horns of Week are Tony Banda and Jessie Castro with Rusty Teeter, Matt Mitchell, Trent Gant, Ricky Key, Monty Means and Steven Cates.

The defensive Horns of the Week was the whole defensive team who played an outstanding game.

The last game of the year is here at 5:00 against Childress.

## C/C advances to regionals

The Lockney varsity boys and girls cross-country teams finished second last Wednesday, October 26, in the district meet. There will be seven girls and seven boys advancing to the regional meet on Saturday, November 5, to be held at Mae Simmons Park in Lubbock. The JV girls competed well, but their scores were not able to count for a team score due to the fact that there are not enough girls runners to make a team. The JV boys captured the championship, but they do not advance past district competition.

The varsity girls were extremely impressive in their efforts. Judy Davis won first place with a time of 13:14.81. Betty Kay Cates took second place honors in 13:23. The other team qualifiers were Veronica Vasquez, 14:36; Tamara Elam, 14:43; and Minerva Salas, 15:42. The two other team members to compete with the varsity were Theresa Vasquez and Sulema Salinas.

Slaton took first-place team honors with 36 points. Lockney with 57 points.

Childress with 84 points, Floydada with 84 points and Idalou with 126 points. Both Slaton and Lockney advance to regionals.

The Lockney boys team was led by Eddie Garza who came in third with a time of 17:21; Hector Molina, fourth, 17:56; Paul Castro, fifth, 18:08; Jessie Castro, seventh, 18:24; and Cory Luna, tenth, 19:00. The other varsity team participant was Daniel Rodriguez who finished twelfth with a time of 10:03. The Floydada team won first with a score of 26 points, and Lockney had 20 score of 26 points, and Lockney had 29 points. These two will advance to Regionals.

The JV girls competing were Elizabeth Hernandez with a time of 16:09, and Linda Coronada in a time of 10:04.

The JV boys who competed were Tony Banda, placing third, 20:10; Johnny Silva, fourth, 20:13; Doug Key, fifth, 20:41; Steven Cates, seventh, 21:19; Manuel Rendon, eighth, 21:46; Joe Torres, ninth, 21:47; and Michael Villa, tenth, 24:02.

## Post takes 8th grade Horns

The 8th grade Shorthorns lost to the Post Antelopes 32-8. Lockney's score came on a one yard run by Dewayne McDonald. The two point conversion was made on a pass from Todd Hallmark to Pat Briggs.

## Bowling teams ranking high

Lockney's two bowling teams are still doing well in the area league as they continue to bowl in Plainview. The First National Bank team with members Dot Thomas, Shirley Hayes, June Hayes, and Marty Smith is presently in second place with a record of 21 wins and 11 losses.

The Schacht's Flowers team with members Margaret Schacht, Eddie Douglas, Theresa Stennett, and Carolyn Cunningham is presently in fifth place with a record of 19 wins and 13 losses.



Visit our shop or call for all your floral, jewelry and gift needs.

Check our half price or less table

Pfaltzgraff dinnerware service for 4

\$20

Franciscan Dinnerware sale continues until December 30

Selected patterns of Oneida Stainless flatware

33 1/3 to 40% off regular price

SCHACHTS  
Flowers, Jewelry & Gifts

LOCKNEY.

652-2385

**PRICES ARE DOWN SAVINGS ARE UP**

| DAIRY                                                              | Grocery Items                                                      | Grocery Items                                                        | MEAT                                                             |
|--------------------------------------------------------------------|--------------------------------------------------------------------|----------------------------------------------------------------------|------------------------------------------------------------------|
| Shurfine Frozen 12 oz.<br><b>Orange Juice 69¢</b>                  | Shurfine Fancy 46 oz.<br><b>Tomato Juice 79¢</b>                   | Shurfine 5 lb.<br><b>Flour 69¢</b>                                   | Shurfresh boneless cooked 1/2 or whole<br><b>Hams \$1.99 lb.</b> |
| Shurfresh - sq. carton 1/2 gal.<br><b>Ice Cream \$1.29</b>         | Shurfine 15 oz.<br><b>Pink Salmon \$1.79</b>                       | Shurfine Macaroni and Cheese 7 1/2 oz.<br><b>Dinner 4/\$1</b>        | Shurfresh<br><b>Bacon \$1.39 lb.</b>                             |
| Shurfine 10 oz.<br><b>Mixed Vegetables 2/\$1</b>                   | Shurfine (Glass) 25 oz.<br><b>Applesauce 69¢</b>                   | Shurfine RTS vanilla/fudge 16 oz.<br><b>Frostings 99¢</b>            | Shurfresh 12 oz. pkg.<br><b>Franks 89¢</b>                       |
| Shurfine Hash Brown 2 lb.<br><b>Potatoes 89¢</b>                   | Shurfine 13 oz.<br><b>Evaporated Milk 2/89¢</b>                    | Shurfine Saltine 16 oz.<br><b>Crackers 59¢</b>                       | Shurfresh Sliced<br><b>Bologna 12 oz. 99¢</b>                    |
| Shurfresh Buttermilk/Sweetmilk<br><b>Biscuits 8 oz. 6/\$1</b>      | Shurfine 32 oz.<br><b>Catsup 99¢</b>                               | Shurfine bag - Asstd.<br><b>Candies 2/\$1</b>                        | <b>Hamburger \$1.19 lb.</b>                                      |
| 32 oz.<br><b>Coke \$1.59</b>                                       | Shurfine Hamburger Sliced Dill 32 oz.<br><b>Dill Pickles 99¢</b>   | Shurfine liquid gal.<br><b>Bleach 79¢</b>                            | <b>Health and Beauty Aids</b>                                    |
| Bell 1 gal.<br><b>Orange Drink \$1.09</b>                          | Shurfine Peanut Crunch/Cream 18 oz.<br><b>Peanut Butter \$1.19</b> | Shurfine powdered 49 oz. all-purpose blue<br><b>Detergent \$1.29</b> | Shurfine 5-grain 100 ct.<br><b>Aspirin 59¢</b>                   |
| Shurfine Cut/French Sliced 16 oz.<br><b>Green Beans 3/\$1</b>      | Shurfine Imitation 6 oz.<br><b>Vanilla 49¢</b>                     | Shurfine standard 12x25'<br><b>Aluminum Foil 2/\$1</b>               | Shurfine nail polish 4 oz.<br><b>Remover 49¢</b>                 |
| Shurfine whole kernel/cream style 17 oz.<br><b>Gold Corn 3/\$1</b> | Shurfine Vac Pac 16 oz.<br><b>Coffee \$1.89</b>                    | Shurfine tall 15 ct.<br><b>Kitchen Bags 99¢</b>                      | Shurfine Skin Care 16 oz.<br><b>Lotion 99¢</b>                   |
| Shurfine dark red 15 oz.<br><b>Kidney Beans 3/\$1</b>              | Shurfine Coffee 16 oz.<br><b>Creamer 99¢</b>                       | Shurfine 2-ply 8 rolls<br><b>Bathroom Tissue \$1.39</b>              | <b>PRODUCE</b>                                                   |
| Shurfine Fresh Shelled 15 oz.<br><b>Blackeyes 3/\$1</b>            | Shurfine Granulated 5 lb.<br><b>Sugar \$1.49</b>                   | Shurfine Chunk Dry 25 lb.<br><b>Dog Food \$3.99</b>                  | Russet All Purpose<br><b>Potatoes \$1.19 5 lb. bag</b>           |
| Shurfine Early Harvest 17 oz.<br><b>Sweet Peas 2/89¢</b>           |                                                                    |                                                                      | Red or gold extra fancy<br><b>Apples 49¢ lb.</b>                 |
| Shurfine Whole Peeled<br><b>Tomatoes 2/89¢</b>                     |                                                                    |                                                                      | Ocean Spray<br><b>Sweet Potatoes 29¢ lb.</b>                     |
| Shurfine 8 oz.<br><b>Tomato Sauce 5/\$1</b>                        |                                                                    |                                                                      | <b>Cranberries 89¢ 12 oz.</b>                                    |
|                                                                    |                                                                    |                                                                      | <b>Celery Hearts 79¢ pkg.</b>                                    |
|                                                                    |                                                                    |                                                                      | <b>Yellow Onions 19¢ lb.</b>                                     |

Home owned and home operated.  
Custom Slaughtering & Processing

# KEETER'S

114 NE 8th 652-2191

STORE HOURS 7:30 a.m. - 7:30 p.m. Monday-Saturday 8:00 a.m. - 6:00 p.m. Sunday