

INDEX

Area News .....	11a	Letter to Editor .....	2a
Church Directory .....	13a	Obituaries .....	13a
Classified .....	14, 15a	Society .....	4, 5a
Crime Call .....	2a	Sports .....	16a
Farm News .....	2a	Wes Side Story .....	4b
Farm News .....	1b		

Weather

Courtesy of Energas		
DATE	HIGH	LOW
Feb. 16	62	34
Feb. 17	56	39
Feb. 18	66	32
Feb. 19	67	40
Feb. 20	42	41
Feb. 21	43	37
Feb. 22	58	41

# The Lockney Beacon <sup>25¢</sup>

Rates: In county: \$11.50  
Out-of-county \$12.50

Volume 82      Number 8      Thursday February 24, 1983      © The Lockney Beacon      24 Pages In Two Sections

## Floyd County Show winds down with banquet tonight

A banquet for the 4-H and FFA exhibitors and their parents tonight will wrap up the 29th annual Floyd County Junior Livestock Show. The banquet will begin at 7 p.m. in the Lockney Elementary Cafeteria and is sponsored by the Floyd County Farm Bureau.

Winning exhibitor trophies will be awarded and the Floyd County Junior livestock Show Queen will be announced. Also the Showmanship, Herdsman, and Sweepstakes winners will be announced.

Grand Champion in the swine division of the county show was Karen Mathis with a heavyweight cross breed. Reserve Grand Champion was Brent Williams with a Hampshire. The swine were judged Monday with Paul Gross as judge.

Grand Champion and Reserve Grand Champion lambs were won by Lisa Terrell with a heavyweight Suffolk lamb. Lambs were judged Tuesday by John McNeill.

Colt Golden had the Grand Champion steer which was a medium-heavyweight cross-breed. Matt Williams had the Reserve Grand Champion steer also a heavyweight cross-breed. Judging for

the steers was Tuesday afternoon. Spencer Tanksley was the steer judge.

Auction results are not available at press time, but will be published in next week's issue. They began at 1 p.m. after a buyer's luncheon.

Further results of the County Show and pictures of the winners are throughout this issue. Results of the Floydada and Lockney shows are in section B of this issue.

The Showmanship awards will be announced tonight at the awards banquet. Judges for the showmanship are known only by the division ringmen.

Chosen to compete in the swine showmanship division are Brent Williams, Margie Araujo, Christy Pruitt, Karen Mathis, Kyle Brock, Garland Easter, Hugo Araujo, Shannon Barbee and Coy LaBaume.

Contenders for showman in the steer division are Keith Hight, Libby Williams, Mitch Ross, Jodie Smith, Dusty Burleson and Matt Williams.

Those chosen for the lamb division showman honors were not available at press time.

An unidentified judge sits in the bleachers and picks the exhibitors for the showmanship competition. After the

division show is complete and the Grand Champions are named, the youths chosen for the showmanship competition re-enter the ring. The winner is then selected and will be announced tonight.

The Herdsman award is given to the participant who keeps his or her animals and their pens in the best order during the entire show.

Executive committee for the show was Albert Scheele, president; Roger Dawdy, vice president; Larry Barbee and Stan McClendon, secretary/treasurer.

## Stock Show held Saturday

Shortly after noon Friday the livestock barns on the Floyd County Fairgrounds at Lockney began to fill with kids, animals, trailers, and the works, in preparation for the annual Lockney Jr. Chamber of Commerce Livestock Show.

The weighing of the lambs started at 5:00 p.m., followed by the weighing of the swine at 6:00 p.m. Steers were weighed in Saturday morning before 9:00 a.m.

Paul Smith, agriculture teacher in Friona High School, judged the animals. He praised the animal exhibitors for having good quality animals and showing them with relatively little problem in control.

Ribbons were presented to the winners by Lockney 4-H sweetheart candidate Heather Holt and FFA sweetheart candidate Libby Williams.

The Lockney Chamber of Commerce donated prize money to winners in the swine and sheep categories as follows: \$6, first place; \$5, second; \$4, third; \$3, fourth; and \$2, fifth. Grand champion showman won \$10 and reserve grand champion won \$5.

Winning exhibitors in the steer division won \$10 for first place, \$8 for second; \$6 for third; \$4 for fourth; and \$2 for fifth. Belt buckles were presented to winners of grand championship, reserve championship, and showmanship.

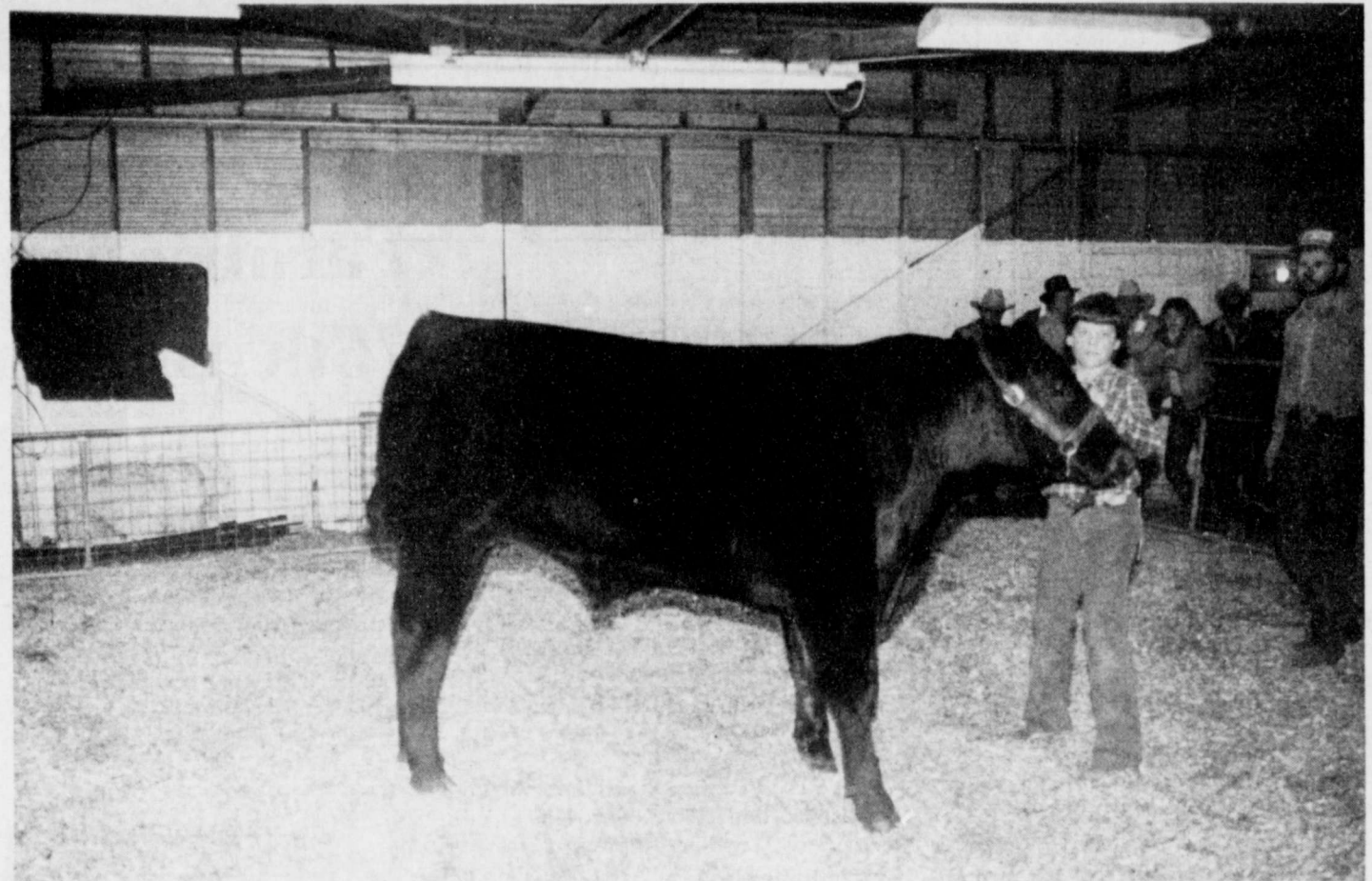
Donors of the belt buckles for the top three awards in the swine category were: Warren Mathis, grand champion; L.N. Johnson, reserve champion; and H & W Durocs, showmanship.

Donors of the three top awards in the sheep class were: Eddie Teeter, Kenneth Broseh, Kenneth Holt, Clar Schacht, and George Sparkman.

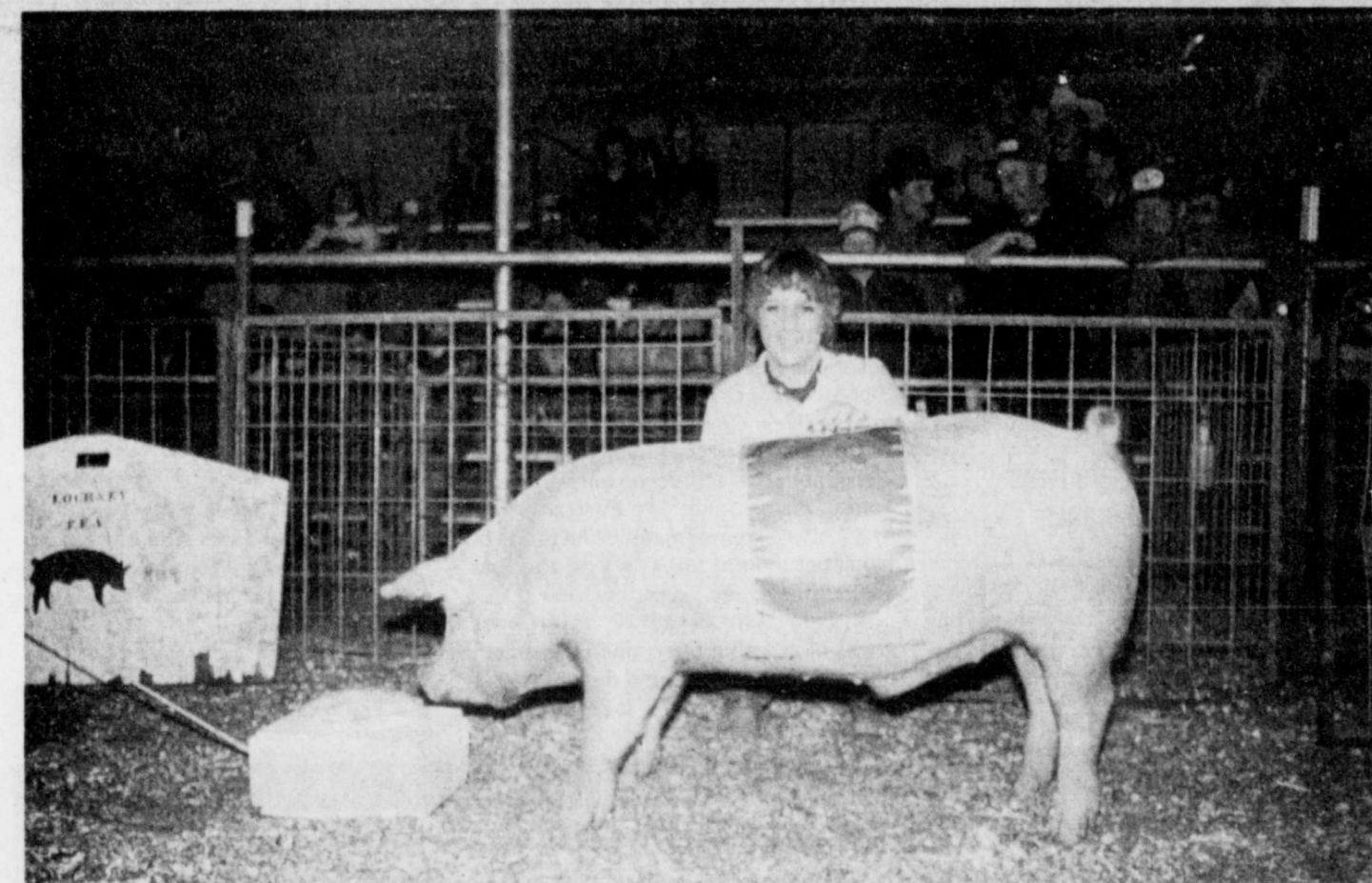
J/K Angus Farms donated the grand champion belt buckle in the steer division. Golden Point Angus Farms contributed the reserve champion belt buckle and David Foster the showmanship buckle in the steer division.

Each exhibitor showing an animal was awarded \$4 from funds donated by Warren Mathis and Kelton Shaw.

Sunday the animals were moved into the show barns at Floydada for competition in the County Livestock Show.



GRAND CHAMPION STEER honor went to Colt Golden of Lockney. His 1108 pound Crossbreed Steer was sold Wednesday to Southwestern Grain and First National Bank of Plainview at \$1.65 a pound.



KAREN MATHIS of Lockney took the Grand Champion Barrow with her 242 pound Crossbreed Barrow. He sold for \$5.00 a pound to The City National Bank of Plainview.



LISA TERRELL swept the lamb show with her heavy weight Suffolks. Her 125 pound Grand Champion Lamb sold to the Lockney Co-op for \$5.50 a pound.

## This Week

### Deadlines

Starting March 1, deadlines for all ads and news articles for that week's Beacon will be 3:00 p.m. or Mondays. We expect this to take some adjusting, but trust it will not create any problems.

### UIL Play

Lockney's Junior High UIL one-act play will be presented to the public Friday night at 7:00 p.m. in the elementary school cafeteria. Admission will be 50 cents. The play, entitled "The Freeway," will be in UIL competition in Floydada next Tuesday.

### Correction

In the Courthouse news last week, under "Probate" the name should have read Ophelia Goen. We apologize for any confusion or inconvenience this may have caused.

### Reception

A reception will be held in honor of Mr. and Mrs. G. Elmo Reeves on Sunday, February 27, from 2:30 to 4:30 p.m. in the Fellowship Hall of the First United Methodist Church in Lockney. The couple's children and grandchildren will be hosting the reception. The public is cordially invited.

### Gospel Concert

The Blackwood Brothers Gospel Concert has been rescheduled for Friday, March 4 at 8 p.m. The concert will be at the Lubbock Municipal Auditorium. It was originally scheduled in January but bad weather forced a postponement.

### Craft show

Il Penseroso's Arts and Crafts Show will be held Saturday, April 9 from 9 to 5 in the Lockney Elementary Cafeteria. A limited number of booths are available but will be made available on a "first come-first serve" basis. Booth rental will be \$25 with an additional \$5 for each additional exhibitor in each booth. For more information please call Ginger Mathis at 296-7096 or Brenda Mangold at 652-3855. Funds from the craft show will go toward the club's purchase of a portable incubator for Lockney General.

### "Give Your Heart"

Deadline for sign-up in the "Give your heart to Hardy" Blood Drive is March 3. Sign-up sheets have been distributed over town. Two of those locations are Energas and First National Bank. Blood will be donated March 7 from 4 to 7 p.m. in the Fellowship Hall in the First Baptist Church.



### Nominations

Deadline for submitted nominations for Outstanding Man and Woman of the Year is March 2. Clar Schacht, president of Lockney Chamber of Commerce, would like to especially urge all groups to make their nominations.

Tickets for the banquet to be held March 10 are available from any member of the chamber or may be picked up at First National Bank, Lockney, or at Schacht's Gifts and Flowers. Tickets are \$5.

Make your plans now to attend the banquet and hear a motivational speaker, enjoy the association with your friends and neighbors, and see which nomination wins Outstanding Man and Woman.

### Attention

ATTENTION: Parents of elementary school children who bring their children to school: Would you please refrain from driving through area marked for "Buses Only" from 8 a.m. to 4 p.m. for the safety of the children.

Director of Transportation  
C.L. Record

### Bridge tourney

Anyone interested in participating in a bridge tournament and luncheon to be held Friday, February 25, from 9:30 a.m. to 3:00 p.m. should preregister by Wednesday, February 23. The tournament, sponsored by Il Penseroso Junior Study Club, will be held in the American Legion Hall in Lockney. Tickets will be \$7.50 per person, with all proceeds going to purchase an incubator for Lockney General Hospital.

Anyone wishing to enter or more information may call Lisa Mosley at 652-2569 or Brenda Mangold at 652-3855.

### THE LOCKNEY BEACON

Published weekly each Thursday by Floyd County Publishing Co., 211 North Main St., Lockney, Texas 79241. Second class postage paid at Lockney, Texas. Subscription rates: local \$11.50 per year, out-of-trade area \$12.50 per year. POSTMASTER: send address changes to the Lockney Beacon, P.O. Box 187, Lockney, Texas 79241.

David Cates      Publisher  
Carolyn Redding      Advertising Manager  
   Editor

# Crime Call

Crime Call is offering a \$100 reward for the arrest and conviction or recovery of property stolen from the Aaron Rendon residence on F.M. 1958 south of Dougherty. Entry was gained to the residence through a front window. Among items stolen were six guns, two 19-inch color televisions, stereos, a tape deck, radios, gun cases, two Timex watches, gun holsters, a ring and a \$2-bill. The incident occurred some time Sunday evening February 13. Total losses and damages amounted to \$1,984.

Anyone having information regarding these crimes is urged to call Crime Call at 983-5200 in Floydada. In Lockney the number to call is 652-2416. Or, informants may call the Texas Crime Busters toll free number: 1-800-252-8477. Informants may remain anonymous, but if they are willing to testify in the trial of the case additional rewards will be paid for this testimony.

Citizens are also advised Crime Call offers rewards for information received on all unsolved felony crimes occurring in Floyd County.

## Rendition and exemption forms mailed January 1

Rendition and exemption forms were mailed January 1, 1983. An individual is entirely exempt from taxation of implements of farming or ranching that he owns and uses in the production of farm or ranch products.

A person who receives a one-time exemption must notify the Appraisal Office by May first after his property no longer qualifies. If he fails to do so, he incurs a ten percent penalty of the difference between the taxes he erroneously paid and the taxes he should have paid.

Many taxpayers paid their Exemptions and Personal Property Renditions when they paid their 1982 taxes. If this was not done, the Appraisal Office encourages the public to return the Exemptions and Renditions, properly signed, by May 1, 1983.

Exemptions include Residence Homestead, Over 65, Disability, Charitable Organizations, Religious Organizations, and Agriculture. After filing exemptions on 1982, they need not be claimed again, according to Shelia Faulkenberry, Floyd County Chief Appraiser.

## "Give Your Heart To Hardy" drive organized

A "Give Your Heart to Hardy" Blood Drive has been organized by friends of Elaine Hardy in Floydada and Lockney. The blood drive will be conducted by United Blood Services of Lubbock on Monday, March 7 from 4 to 7 p.m. A crew from the blood services will be working in both towns at the same time

in order to better serve the people of the community.

The blood drive in Lockney will be conducted at the Fellowship Hall of the Baptist Church. Floydada residents can give at the Community Room of the First National Bank.

Sign-up is necessary with a minimum of 15 in each town in order for the blood services to conduct the blood drive. Sign-up sheets have been distributed around town. Deadline for the sign-up is March 3. If you are unable to sign-up or would like additional information, call Dottie Stansell at 652-3122 mornings or 652-3622 afternoons. Floydada residents may call 983-2542.

Hardy, a dialysis patient, has been in John Sealy Hospital in Galveston since early January. She has taken 20 pints of blood in that 2-month period. In addition, she owes some from previous transfusions.

The blood service has made an assurance that the use of any excess that might be collected for use in the future.

Some recent publicity on artificial blood and blood substitutes has led some blood donors to believe that blood donations are no longer necessary. Blood donations are needed every day to save lives. Current requirements for United Blood Services, which services a 22-county area and 35 hospitals on the South Plains and in Eastern New Mexico, are approximately 2000 units of blood per month, up 30% over the first six months of the preceding year.

Sign-up right away to assure our towns of securing the trained personnel of the blood services, and donate to this worthwhile cause. All it takes is a little time.

**"When you're sick or hurt, I can give you some old-fashioned attention!"**

James R. Bigham  
111 B E. Missouri  
Floydada TX  
(806) 983-5516



See me for State Farm health insurance.

Like a good neighbor, State Farm is there.



4-H CELEBRATES 75th ANNIVERSARY IN TEXAS--Ardra Hannah [center] of Jacksboro, member of the state's original club, attends the tree-planting ceremony on the Capitol grounds February 16. Shown with him are Mrs. Hannah, Rep. Charles Finnell of Holliday [l] and Sen. Ray Farabee of Wichita Falls [r].

## Farabee commemorates 75th Anniversary of 4-H

Senator Ray Farabee (D-Wichita Falls) participated in a special ceremony held February 16 celebrating the 75th Anniversary of the 4-H in Texas.

"This special occasion is a fitting time to note the great contributions to Texas that 4-H organizations across the state have made. The involvement of some 125,000 young Texans in the many project areas not only prepares our young people by teaching them valuable

trades and arts, but also improves the quality of life in our communities," Farabee noted.

Farabee was a co-sponsor of a resolution honoring 4-H, and attended the tree planting ceremony held on the northeast Capitol grounds. He also met with one of the original members of the first 4-H group in Texas, Ardra Hannah of Jacksboro. Farabee is the senator representing the Jacksboro area.

## Cancer program offered free

The American Cancer Society provides free programs for your club, organization or any group wishing to learn more about cancer. Education is often times the key in detecting a cancer in early stages. The American Cancer Society wants to provide you with knowledge that may save your life.

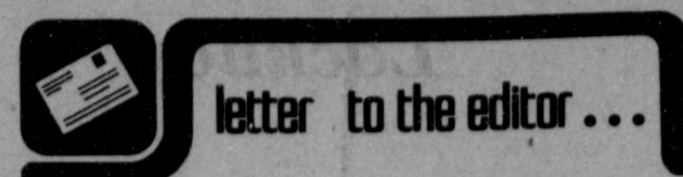
To get more information about the following programs or to schedule one for your group, club or organization contact: American Cancer Society, 5135-69th St. - C, Lubbock, TX 79424, 806-794-5808.

The following programs are available free of charge from the American Cancer Society:

Colorectal Cancer Programs: "The Cancer No One Talks About."  
Breast Cancer Programs: "How to Examine Your Breast" and "Something Very Special."

Uterine Cancer Programs: "It's Up to You" and "Women in Middle Years."

Women & Smoking Programs: "Women and Smoking."



Dear Editor:

There are several bills pending in the State Legislature which are very important to our children of divorced parents, to the parents and to the grandparents. I would like to use this means of bringing them to the attention of your readers, and to urge people to contact their representatives in Austin regarding the need for passage of these bills.

It would be wise to also contact Lt. Gov. William Hobby and Gov. Mark White, asking for their assistance in getting these bills through the legislature and enacted into law.

Two of the bills are: House Bill No. 367 by Alan Schoolcraft - relating to joint managing conservatorship of children; and, Senate Bill No. 79 by Chet Brooks - relating to the rights of grandparents to have access to their grandchildren.

Among others to be considered are: SB No. 45 by Ray Farabee, HB No. 94 by Matt Garcia and HB No. 262 by Rollin Khoury.

If you wish to read the bills before voicing your concern, you may obtain a copy by calling Senate Bill Distribution 475-2520; House Bill Distribution 475-8452 (there will be a small charge for copies) or by contacting the Austin office of the sponsoring legislator.

Address for senators, governor and lieutenant governor: P.O. Box 12068, Capitol Station, Austin, Texas 78711; for representatives: P.O. Box 2910, Austin 78769.

For the name of the senator representing your district, call: 475-4271; for

representative in House, call: 475-2213.

THE TIME IS NOW -- these bills are in committee or probably will be shortly.

Thank you,  
Evelyn E. Lehmann  
Rt. 1, Box 358  
Seguin, Texas 78155  
512-379-2113

## Forever Living Products

### Information Meeting

### About Aloe Vera

Rebekah Hall, Lockney  
2:00 p.m.  
Saturday, February 26th

652-2597

652-3485

## SHOP & SAVE

- Fresh Killed Calf LIVER 59¢ lb.
- Fresh Ground HAMBURGER 99¢ lb.
- Large Head LETTUCE 49¢ each
- 10 lb. Bag Utility POTATOES 99¢
- Shurfresh Saltine 1 lb. Box CRACKERS 59¢
- Large, Grade A EGGS 69¢ Dozen
- Country Pride Grade A FRYERS 59¢ lb.
- Wright's, Ends & Pieces BACON 99¢ lb.
- Shurfine, 3 lb. Can SHORTENING \$1.59
- Golden Ripe BANANAS 29¢ lb.

**BLUE STAMP**

**COUPON EXTRAVAGANZA**



WORTH \$500  
IN EXTRA BLUE STAMPS  
AND MORE

Begins Monday, February 14  
Not Subject to Double Couponing.

- Shurfresh, 1/2 Gallon ICE CREAM \$1.49
- Gold Medal, 5 lb. Bag FLOUR 88¢
- 4 Roll Delsey BATH TISSUE 88¢
- 6-32 oz. COKE \$1.89 Plus Deposit

## KEETERS GROCERY

7:30 a.m. - 7:30 p.m.

652-2191

We Redeem Food Stamps & WIC Cards  
We Reserve The Right To Limit Quantities



We Give Circle Blue Stamps Double on Wednesday

## WE CAN EXPLAIN CROP INSURANCE TO YOU IN 30 MINUTES!!!

Its easy with our new IBM computer. Stroud Crop Insurance has programmed this machine so that we can help you understand more about your crop insurance options in a half-hour than you could in a week using pencil and scratch pad.

In a few minutes you can compare any level of multi-peril insurance with pure hail insurance, using any combination of losses, and then you can see how Stroud's new "35/70" supplemental hail insurance endorsement may be used to eliminate many of the objections of the multi-peril policy. This "35/70" endorsement isn't available from any other agent in the area and is especially attractive where a low guarantee has prevented you from carrying Multi-Peril in the past.

After we answer your questions we will print out the examples for you so that you can refer to them later instead of having to rely on memory.

Come by now while we both have plenty of time!!!

### GOEN & GOEN

W. Dale Goen & LaVerne McCarty  
983-3524

102 E. California

Floydada, TX



MATT WILLIAMS of Lockney took Reserve Grand Champion Steer with heavyweight crossbreed steer.



BRENT WILLIAMS of Floydada took Reserve Grand Champion of the barrow division with his Hampshire barrow.



LISA TERRELL of Lockney Reserve Grand Champion Lamb with her reserve breed champion Suffolk.

## Cowboy Smiley to stage Roundup

Cowboy Smiley, Champion of Children, will stage the happy kids roundup in Floydada, Texas starting Monday night February 28th.

He has given over 9,000 performances in 49 states, and 8 Canadian provinces, appearing in 830 cities. His programs are nonsectarian and officials

and parents across the nation praise the character-building work of the Smiley's. The record attendance for their roundups was in St. Johns, New Brunswick, when 4,200 came in four nights.

Some features of their roundup program include the roping and branding, and Mrs. Smiley leads the happy singtime, and tells great visual stories. They also have puppets, and Smiley makes jumbo size jig saw pictures with brilliant lighting and shows special youth motion pictures.

The boy or girl who brings the most friends each night, ages 5 to 12, will be made Smiley's top rider, and receives the 3 foot candy bar. The Grand Champion will choose a radio or digital watch, for bringing the most pals.

They decorate a bright and colorful stage for their Christian ranch, and all children can wear western clothes, including boots, holster, hats. Big size balloons will be given to the kids on Monday night, and treats other nights. All children under 6 years must be accompanied by an adult.

The programs will be in the auditorium of The Assembly Of God at 701 W. Mo. St. The time is 6:30 p.m. to 8 p.m. Monday to Thursday February 28-March 3rd. Admission is free and parents also are welcome.

The Smiley's will also appear for Sunday events, including the a.m. service. He will give a timely message and in the p.m. service will show the great motion... "The Masters Face". Thousands have seen and enjoyed this family picture, and all ages are invited February 27th at 6 p.m. Anyone needing a ride may call 983-3319, states Pastor Jim Guess.

## Study Club elects 83-84 officers

The El Progresso Study Club met Wednesday, February 9, 1983 in the home of Faye Holmes. President Arla Copeland presided. Roll call was answered with "A Special Valentine."

The nomination committee reported and the following were elected as officers for 1983-84: LaVerna Sams, president; Pauline Sams, vice president; Cornelia Johnson, secretary; Hazel Johnson, treasurer; Kathleen Thornton, reporter; and Linnie Abbott, parliamentarian.

The following committees were appointed: Yearbook, Linnie Abbott, Wanda Rogers and Pauline Sams; Sunshine, Dorothy Smith and Faye Holmes; Telephone, Katherine Ball and Arla Copeland.

Hazel Johnson was appointed to represent the club on the committee that selects the man and woman of the year.

A very interesting program was given by Dimon Schacht about the legend of Valentine.

Lovely refreshments were served to Linnie Abbott, Katherine Ball, Arla Copeland, Faye Ferguson, Cornelia Johnson, Hazel Johnson, Jeanette Marr, Alice Mitchell, Wanda Rogers, Dimon Schacht, Kathleen Thornton and hostess Faye Holmes.

**Got Heating or Plumbing Problems?**

CALL

**Holmes Plumbing**

Austin or Steve  
Call Day or Night  
983-2251

## Awards banquet honors Hodel

By Dottie Stansell

The Lubbock Advertising Federation announced the winners of its annual Addy Awards competition at a banquet Saturday night at the Holiday Inn Civic Center.

Doug Hodel, a partner in the Webster-Harris Advertising Agency was presented the federation's 1982 Silver Medal Award, which recognizes outstanding contributions to advertising and the community.

Bob Nash, general manager of KAMC-TV, served as master of ceremonies for the program which represents a highlight of the year for Lubbock advertisers.

Hodel's award was presented by Phil Harris, last year's Silver Medal Award winner. It is considered the highest honor given to an advertising professional.

Surprise guest were his parents, Helen and Squealer Hodel of Lockney and his sister, Mrs. Dinah McCulloch of San Angelo.

Criteria for selection include: contributions to one's company, contributions to advertising, creative excellence and contributions to the community.

A native of Lockney, he graduated at Lockney High School in 1970 and was a class 2-AA All District football player and tri-captain of the "Hustling Horns"

football team. He attended Angelo State and Texas Tech University, majoring in telecommunications. His wife is the former Liz Lawson, Miss Lubbock 1975. They have a daughter, Heather, and are members of First Baptist Church.

Hodel joined the staff at KLBK-TV, Channel 13, as cameraman in 1972. He worked on commercial production and as director for the 6 p.m. and 10 p.m. newscast. He served as producer and director of several programs while at KLBK-TV, including a Bicentennial documentary in 1975 that earned him an Addy Award from the Lubbock Advertising Federation and an Honorable Mention at the 10th District Addy Awards in New Orleans.

He joined the Webster-Harris Advertising agency in 1977 and became a partner in the firm in 1980.

Hodel has been a member of the Lubbock Advertising Federation since 1977, having served as Addy Awards chairman for four years. He was president of the federation in 1981-82.

His community involvement includes service as board member of the South Plains Council of Boy Scouts, member of the Lubbock Rotary Club and member of the Chamber of Commerce Blue Coats. He was chairman of the Chamber's latest advertising campaign to promote the city, "Lubbock-You're Some Kind of Special."

## R. Photography to attend convention

R. Photography will be closed after 1 p.m. Friday, February 25 and Saturday February 26. Jack and Allison Robertson will be attending the Texas Professional Photographer's Association Convention in Dallas.

The convention is designed to bring together Texas' top professional photographers. Photography from all over the state of Texas will be displayed and judged. The convention is a great learning experience for the photographers who attend.



Donice Casey  
Career Agent  
652-3414

### We Welcome Your Insurance Business



Life - Auto - Fire - Home - Ranch  
Farm Crops & Health Insurance

Do I need liability insurance when I hire an employee for farm and ranch work?

For help with insurance questions and needs call...



Bud Rainey  
Career Agent  
983-5225

**Texas Farm Bureau Insurance**  
101 S. Wall, Floydada TX

Floydada 983-3777 Lockney 652-2242



James Race  
Agency Mgr.  
983-5095 652-2638



Clar Schacht  
Career Agent  
652-3449

## KIDS KRUSADE

Feb. 28 - March 3  
6:30 PM

Need A Ride  
Call 983-3319



Cowboy and Mrs. Smiley



Pastor, Jim Guess

First Assembly of God  
701 W. Missouri

## Summit Savings Money Rates

	MONEY MARKET CERTIFICATE	SMALL SAVERS CERTIFICATE	MONEY FUND	SUPER NOW FUND
RATE	8.733%	9.900% COMPOUNDED DAILY 10.405% YIELD	10.5%	8.5%
EFFECTIVE THRU	2-28-83	3-7-83	2-28-83	2-28-83
MINIMUM TERM	6 MONTHS	30 MONTHS	NONE	NONE
MINIMUM DEPOSIT	\$2500	\$1,000	\$2500	\$2500
INSURANCE OF ACCOUNTS	\$100,000	\$100,000	\$100,000	\$100,000

NOTICE: As required by law, all certificates are subject to substantial penalty for early withdrawal.



We Invite You To "JOIN US AT THE TOP"

### SUMMIT SAVINGS ASSOCIATION

217 W. CALIFORNIA  
FLOYDADA, TEXAS 79235  
983-3725

HOME OFFICE - 716 BROADWAY, PLAINVIEW  
OTHER BRANCHES  
3000 OLTON ROAD IN PLAINVIEW, FLOYDADA, HALE CENTER, MULESHOE,  
LITTLEFIELD, FARWELL, PLANO and ALLEN

MEMBER FSLIC



## Edwards crowned 1983 Sweetheart of Alpha Sigma Upsilon

Texas Alpha Sigma Upsilon Chapter of Beta Sigma Phi held their Valentine social on Saturday, February 12, 1983 at 7:00 p.m. The annual event was catered by King's Restaurant at the Canyon Club. Served by Irene King was barbecue beef with all the trimmings. Rhonda Guthrie and Janice Potet, outgoing sweethearts, crowned Barbara Edwards the Valentine Sweetheart for 1983. Rhonda gave a short introduction and also presented Barbara with a red carnation corsage and a gift. Barbara Edwards has been an active member of Alpha Sigma Upsilon for 4

years. She and husband Bud have two sons, Rusty, age 11, and Tyson, age 7. She is employed as a secretary to Kenneth Bain, Jr., County Attorney. Members and husbands who were present were: June and Jimmy McGaugh, Gail and Larry Noland, Adeana and Gale Campbell, Gail and Craig DuBois, Vicki and David Ware, Sheryl and Dale Derryberry, Barbara and Bud Edwards, Rhonda and Larry Guthrie, Nancy Jarnagin and Jan Nichols also attended. The next social for Alpha Sigma Upsilon will be March 19, 1983.



THE TEXAS Alpha Sigma Upsilon chapter of Beta Sigma Phi had their annual Valentine social February 12. The outgoing sweethearts, Janice Potet [L] and Rhonda Guthrie [R] crowned the new sweetheart, Barbara Edwards [center]. Barbara has been an active member of Alpha Sigma Upsilon for four years.

## Il Penseroso Jr. Study Club met

Il Penseroso Jr. Study Club met Thursday, February 10, at 7:00 p.m. in the home of Karen Quebe. Laticia Murrell from Ramsowers in Plainview gave the program. She talked with the group about how to select a color scheme and ways to accent a room. She was very helpful in answering questions about carpeting and how to select quality furniture. To tell us more about our own personal likes and dislikes in decorating, she gave each member a paper with several drawings on it to complete, the results were supposed to reflect our individual preferences in decorating. Following the program co-hostesses Ginger Mathis and Cynthia Bybee served refreshments to the group. Brenda Mangold called the business meeting to order. More plans for the February 25 bridge tournament and luncheon were discussed. The menu for the luncheon will be turkey crepes, and a large variety of salads, both vegetables and fruit, a salad bar with all the

trimmings and dessert. Anyone interested in participating in the tournament or needing more information may call Lisa Mosley at 652-2569. The tournament will be at the Legion Hall. The date for the arts and crafts fair was set for April 9. Interested persons may contact Brenda Mangold 652-3855 or Ginger Mathis 296-7096 for more information. Nominations were discussed and a vote was taken to decide who the club would nominate for outstanding man of the year. The nomination for woman of the year was made at the last meeting. The group was glad to have Sharon Clepas visiting with them. Members present were Robin Stoerner, Reeda Cay Smith, Karen Quebe, Lisa Mosley, Rhonda McCain, Ginger Mathis, Kay Martin, Linda Marr, Brenda Mangold, Kathy Kellison, Julie Hickerson, Lynda Gant, Kelly Fortenberry, Cindy Ford, Lesca Durham, Sandra Cummings, Cynthia Bybee, Charlanne Burson, Marilyn Biggs and Cathy Barnett.

## Lockney Care Center

By Vickie Hutton

Our week has been a very exciting one. Monday we had our Valentine party and crowned our Valentine King and Queen. Our Queen was Rose Pyle; 1st runner up, Mary Green; 2nd runner up, Mary Jo Fielding. Our King was Esker Pyle; 1st runner up, Richard Lanham; 2nd runner up, Thomas Jones. Our congratulations to our winners and runners up. During the party we played

games but the one that was the most fun was Spin the Bottle! Thursday we saw a special film which touched us all. It was "Who are the DeBolts?" I'm sure everyone had seen this film and know how special this family is. Mary Jo Fielding and Hallie Roberts were our blackout winners this week in Bingo. Our bingo cards really get a working over! Kim Sherman brightened up our Wednesday with her special talent. She really knows how to put a bright spot in our day. Mrs. Hazel Johnson started a craft class last week. She is teaching the residents to make "nerds". We thank her for sharing her time and talent with us. We have three residents in the hospital. Bill Holt is in Methodist Hospital in Lubbock. Myrtle Burke is in Central Plains Regional Hospital in Plainview; and Albert Poole is in Lockney General Hospital. We hope these special people are well enough to return home soon. They are missed. Until next time, enjoy.



**CLEMMONS**  
Bill and Elaine Clemmons of Dougherty are proud to announce, after 21 years of marriage, the arrival of their first child, a baby girl, born Sunday, February 20, 1983 in South Park Hospital in Lubbock.

Natasha Rue Don weighed 6 lbs. 10 ozs. and was 18 1/2 inches long. Tasha has two granddaddys, Elvin S. Rowton of Monroe, Louisiana and Dewey Clemmons of Fairfield, Texas.

**PARKER**  
Mr. and Mrs. Tim Parker of Canyon are the proud parents of a daughter, Callie J'Nae, born January 25 at Northwest Texas Hospital in Amarillo. The young lady weighed 7 lbs. 13 1/2 oz. Maternal grandparents are Mr. and Mrs. Bill Turner of Lockney.

**WARREN**  
Ed and Kyla Warren wish to announce the arrival of a daughter, Leslie Charice, born Friday, February 18 at 4:05 p.m. in Lockney General Hospital. She weighed 7 lbs. and was 19 1/2 inches long. She has a brother, Danny, 19 months old. Maternal grandparents are Mr. and Mrs. D.M. Springer of Kress. Paternal grandparents are Mr. and Mrs. Thomas Warren of Floydada. Great-grandmother is Mrs. Ola Warren of Floydada.

**FREE** Carnation Boutonniere with purchase of Orchid or Sweetheart Rose Corsage for the Chamber of Commerce banquet, March 5. Order now - offer good only on early orders (through Wed. March 2nd). Call or Come By 983-5013 128 W. California

**WILLIAMS FLORIST and CARD SHOP**

## Athena Study Club held informative program

An informative program on "The Last Thing We Talk About," was given by H.C. McElyea, local mortician at Moore-Rose Funeral Home of Lockney, Thursday February 10 to members of Athena Study Club. Mr. McElyea showed members the information sheets that the family of the deceased needs to fill out for information to him and so certain part of the information can be called into the local papers for the Obituary. He mentioned several people had already planned and prepaid for their burial. This is becoming more popular with people to save their family from having to make decisions about the funeral while they are mourning the loss of their loved one. A wide selection of different types and cost range of caskets were shown to Athena members. It is now a State Law that a person can choose to be embalmed or not. Mrs. McElyea passed out an informative book called "My Duty" to all members present. After the meeting everyone left to go to Cindy Smith's house for refreshments with Laura Wilson as co-hostess. A short business meeting was conducted by Donnie Meriwether, vice president, Charlotte Mitchell's place. Nominations for Chamber of Commerce's man and woman of the year were discussed and voted on.

A drop box to be placed in front of the local library was discussed. A book called "Legend of Ladies of Texas" was voted on to be placed in the local library. Athena will conduct a Book Fair at Lockney Elementary from March 28th to April 1st. 5000 Campbell Soup labels were collected by local school children for new school equipment. Shelia Poole's room collected the most. A special party for this class will be given March 11th by Athena. Coy Davis collected the most labels. Joyce Marks, teacher, helped with the collection of the labels. Athena members present were Cindy Smith, Kathy Hunter, Martha Sue Lusk, Donnie Meriwether, Laura Wilson, Jill Golden, Sandra Turley, Barbara Mathis, Judy Schacht and Virginia Owens. The group's next meeting will be with Tanya Covington with the program being on artifacts and archeology. Wayne Parker will be the speaker.

**Dottie's Doodlings**

By Dottie Stansell

Dinah (Hodel) and Keith McCulloch and children Marcy and Shannon, of San Angelo, visited with their parents Mrs. J.S. McCulloch and Helen and Squaler Hodel over the week-end. Saturday Dinah and Helen and Squaler Hodel went to Lubbock to attend the Addy Awards Banquet. Doug was presented the federation's 1982 Silver Medal Award. Scott and Jody (Nance) Stansell visited with their parents, Pat and Dottie Stansell, and Joe, Peggy and Amy Nance. Also visiting with the Nance's were their daughter and son-in-law, Toyna and Ross James of Plainview. Mrs. John Hanst and daughter Kristen and a friend of Houston, visited over the week-end with the R.H. Fords. Diana Garcia, 7 month-old daughter of Nino and Rosa Garcia, remains at Children's Medical Center in Dallas after heart surgery last Monday. She has pneumonia, but her condition is stable.

Those attending were: Wanda Baker, Bernice Barker, Faye Barker, Faye Belt, Polly Gilbert, Dahlia Hight, Mildred Hilton, Bernice Miller, Ann McCormick, Merle Mooney, Edith Patterson, Elva Perry, Mary Reeves, Inez Rhodes, Sally Shaw, Armine Tarpley and Kathleen Thornton.

## Hill Circle United

Hill Circle of Lockney United Methodist women met Tuesday at 9:30 a.m. in the Fellowship Hall. Faye Barker led the Bible study on "Isaac and Rebekah." Kathleen Thornton was hostess for the meeting. Those attending were: Wanda Baker, Bernice Barker, Faye Barker, Faye Belt, Polly Gilbert, Dahlia Hight, Mildred Hilton, Bernice Miller, Ann McCormick, Merle Mooney, Edith Patterson, Elva Perry, Mary Reeves, Inez Rhodes, Sally Shaw, Armine Tarpley and Kathleen Thornton.

**Bridal Selections of Dinnerware, Crystal, Kitchen & Bath Accessories, ect. are now available for -**

**Vicki Fuller bride-elect of Craig Hambright and Kay Faulkenberry bride-elect of Andy Rainwater**

**Sue's Gifts**

126 W. Calif. Floydada 983-5312

## "Laugh Lines"

BY DON AND SARA PROBASCO  
Bits of Humor, Trivia, and an occasional Word of Wisdom

Free advice costs you nothing, unless you act upon it.

Man to psychiatrist: "My wife has suddenly developed an inferiority complex. What can I do to keep her that way?"

Inveterate golfer finally arrived home for dinner. During the course of the meal, his wife remarked: "Willie tells me he caddied for you today." "So that's it," said Willie's father. "I knew that kid looked familiar."

A caddy is a boy who stands behind you and didn't see where it went, either.

Did you hear about the first-grade teacher who sent her morning attendance report to the principal marked, "Help! They're all here."?

I know a man who has a perfectly clear conscience -- he never uses it.

We visited a restaurant recently that had very independent waiters -- they took orders from no one.

A bookkeeper is a person who feels good when things start looking black again.

Haircut: what men get that their wives don't notice unless they don't get them.

Something a wife will certainly notice is a lovely gift of stained glass. Remember her on her next birthday, anniversary, or any other such special occasion with an "heirloom of tomorrow". They come in all sizes, shapes, and prices.

PROBASCO'S  
24-hour mobile Locksmith service  
2 miles north of South Plains on the Silverton Highway (Hwy 207)  
983-3834  
Studio South Stained glass art Gifts, and Supplies  
2 miles north of South Plains on the Silverton Highway (Hwy 207)  
983-3834  
Visa and Mastercard Welcome  
ADV

## Baptist Women II met February 7th

The Baptist Women II of the First Baptist met Monday evening, February 7, at 6:30 p.m. in the fellowship hall for a salad supper and home mission study. After the fellowship hour, Mrs. David Seay called the meeting to order expressing a warm welcome to all present. Mrs. Willie Bunch read the calendar of prayer for the birthday missionaries of that day. Prayer was voiced by Mrs. Nettie Adams. Study of the home mission book, "The Sodbusters" was directed by Mrs. Allen Benson. Mrs. Benson stated the Home mission theme for 1983 is -- The challenge of starting new churches. Others participating in the mission study were Mmes. J.W. Cannon, W.B. Parrack and Jay Hale. Mrs. Cannon gave a most informative talk on how the mission work is carried on among the blacks in Youngstown, Ohio. Mrs. Parrack spoke on the work near Jacksonville, Florida, cultivating "A Golden Ghetto." Mrs. Hale based her talk on "Putting God First" and told of the missionary work being done in Manchester, N.H. Closing the study Mrs. Benson asked that all contribute to the task of loving and reaching others for Christ. Continuing prayers for the new Home mission churches were worded by Mmes. Floyd Bradley, J.R. Turner, Willie Bunch, Anthony Latta, Earl Crawford, and Allen Benson, who closed the meeting.

## Lone Star Extension

Homemakers met, February 15  
Lone Star Extension Homemakers club met on February 15 in the home of Helen Huffman. Roll call was answered with What I Do for Exercise. Club officers were elected and the yearbook was filled out. Refreshments were served to Elvira Stewart, Vera King, Syble Teeple and the hostess, Helen Huffman. FLOYD DATA Mr. and Mrs. C.W. Denison Jr of Georgetown and Mr. and Mrs. Gilmer Denison of Lubbock visited several days last week with their parents, Mr. and Mrs. Carl Denison. They all also spent some time in Lubbock with the Gilmer Denisons' and their children.

**Bridal selections available for:**

**Vicki Fuller, bride-elect of Craig Hambright**

**Mrs. Lance Hoffman (nee Amy Lipham)**

**Kay Faulkenberry, bride-elect of Andy Rainwater**

**THOMPSON PHARMACY**  
200 SO. MAIN FLOYDADA, TEXAS 79235

**Spring Fashion Outlook**  
by **andiamo**  
MADE IN U.S.A.

Step into spring with all the footwear style and quality you need to look your very best. Whether you prefer stylish dress shoes or comfortable casuals, we have just the right style for you. Come in today and choose from our wide selection.

**Brown's**  
DEPARTMENT STORE  
106 NORTH MAIN LOCKNEY

# Waples West buddy's SUPERMARKET



**DOUBLE STAMPS ON WEDNESDAY WITH \$5.00 PURCHASE OR MORE**

220 SOUTH 2nd • 983-3149  
STORE HOURS:  
MON. THRU SAT. 8 A.M. TIL 9 P.M.  
SUNDAY 9 A.M. TIL 8 P.M.

WE RESERVE THE RIGHT TO LIMIT QUANTITIES

These values in this advertisement are effective through Wednesday, 3-3-83

## Farmer's Market PRODUCE

California Pascal Stalk  
**CELERY** 39¢

6 oz. Cello Bag  
**RADISHES** 3/\$1.00

Fresh Green  
**BROCCOLI** 59¢ lb.

Golden Ripe  
**BANANAS** 3 lbs. / \$1.00

US All Purpose, 20 lb. Bag  
**POTATOES** \$1.99

*Farm Fresh*

USDA Choice  
**CHUCK ROAST** \$1.89 lb.

USDA Tenderized  
**STEAK** \$2.99 lb.

14 oz. Morehead  
**PIMENTO CHEESE SPREAD** \$1.39 lb.

Farm Fresh Whole  
**CATFISH** \$1.99 lb.

From Our Deli, Bean & Beef  
**BURRITOS** 4/\$1.00

1 lb. White Swan  
**BACON** \$1.79

Country Style Spare  
**RIBS** \$1.69 lb.

HEALTH & BEAUTY AIDS *Specials*

WET ONES  
**TOWELETTES** 70 Ct. \$1.39

**FROZEN FOOD FESTIVAL**

KRAFT "LE CREME" WHIP  
**TOPPING** 9 Oz. 79¢

**SAVINGS JAMBOREE**

DEL MONTE SEEDLESS  
**RAISINS** 9 Oz. 89¢

SUNSHINE CHIP-A-ROO  
**COOKIES** 17 1/2 Oz. \$1.39

ALKA-SELTZER 25 Ct. \$1.49

EDGE  
**SHAVE CREAM** 7 Oz. \$1.59

ICE CREAM SANDWICHES 6 Pack 99¢

MRS. SMITHS "EGG" HOMESTYLE  
**WAFFLES** 11 Oz. 79¢

FABRIC SOFTNER  
**BOUNCE** 20 Ct. 99¢

LIBBY PINK  
**SALMON** 15 1/2 Oz. \$1.89

GLASS PLUS WINDOW  
**CLEANER** 64 Oz. \$1.79

GLAD "FUN TIME"  
**SANDWICH BAGS** 50 Ct. 79¢

### Barrel Of Bargains

6-32 oz. Regular or Diet  
**7-UP** \$1.99 Plus Deposit

12 oz. Can 6 Pack  
**A&W ROOT BEER, WELCH'S STRAWBERRY OR GRAPE SODA** \$1.49

GEBHARDT - JUMBO  
**TAMALES** 28 Oz. 99¢

WOLF PLAIN OR WITH BEANS  
**CHILI** 15 Oz. 89¢

### CABIN FEVER SALE

BUSH'S SHOWBOAT  
**PORK & BEANS** 15 Oz. 2/69¢

OLD EL PASO  
**NACHIPS** 7 1/2 Oz. 89¢

HELLMANS REAL  
**MAYONNAISE** 32 Oz. \$1.59

HI DRI  
**PAPER TOWELS** 1 Ct. 59¢

DURKEE "O & C" FRENCH FRIED  
**ONION RINGS** 2.8 Oz. 59¢

Sunny Fresh Farm  
Grade A Medium  
**EGGS** Dozen 29¢ With One Filled S&H Special Saver Book 79¢ Without Book

22 oz. Dish Liquid  
**SUNLIGHT** 69¢ With One Filled S&H Special Saver Book \$1.19 Without Book

46 oz. Teksun  
**GRAPEFRUIT JUICE** 39¢ With One Filled S&H Special Saver Book 89¢ Without Book

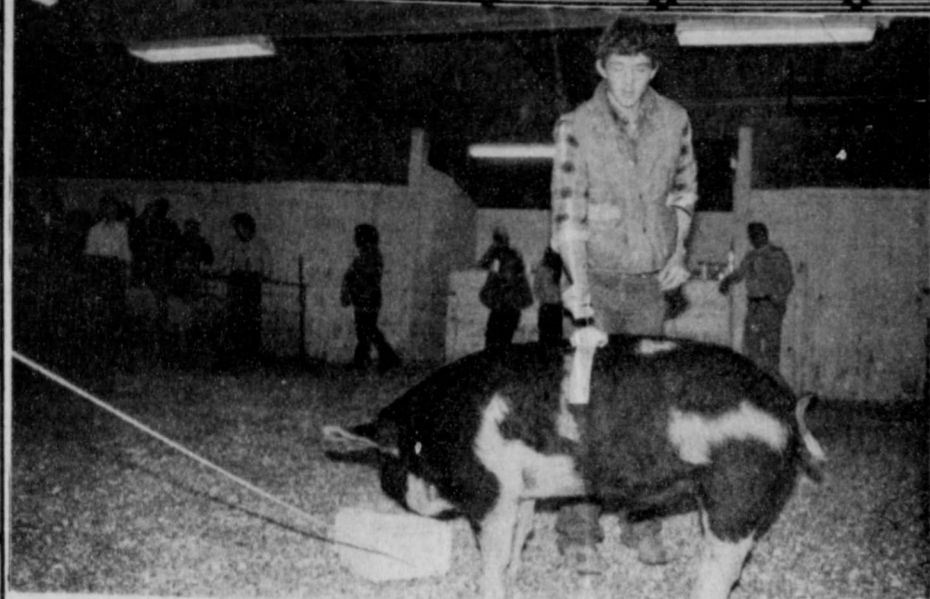
### Barrel Of Bargains

STARKIST CHUNK LITE. OIL OR WATER  
**TUNA** 6 1/2 Oz. 89¢

RANCH STYLE  
**BEANS** 15 Oz. 39¢

SUNSHINE SALTINE OR UNSALTED  
**CRACKERS** 1 Lb. 69¢

*Congratulations...*



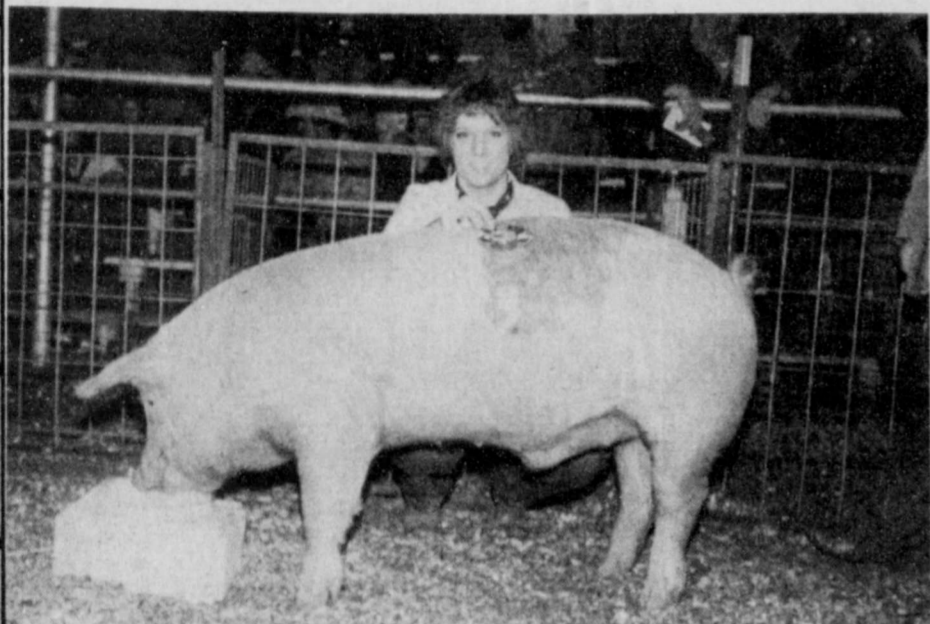
GARY BIGHAM CHAMPION OTHER PURE BREEDS



LISATERRELL CHAMPION SUFFOLK



ROXENE BROWN CHAMPION SHROPSHIRE



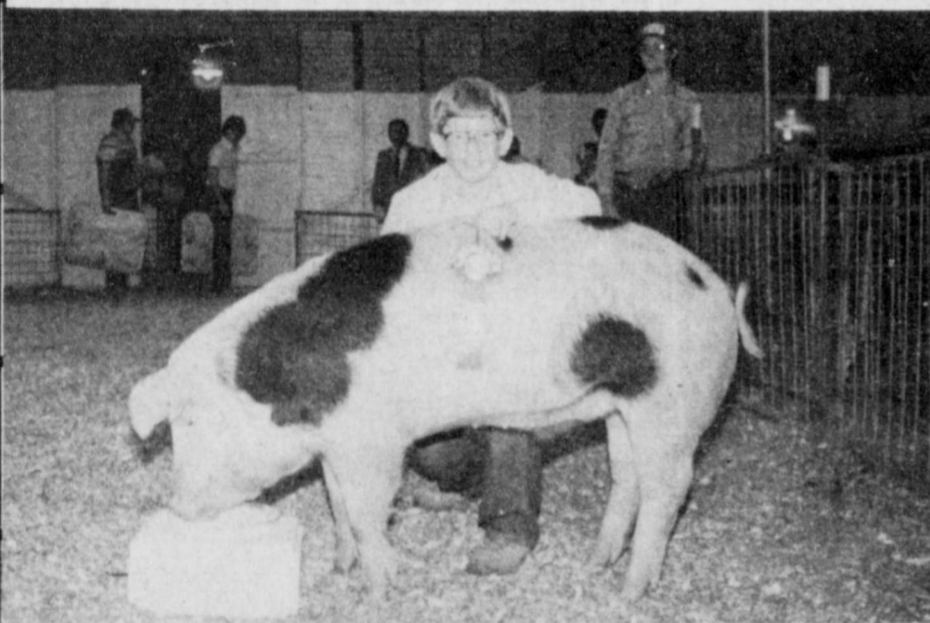
KAREN MATHIS CHAMPION CROSSBREEDS



SHANNO SHURBERT CHAMPION HAMPSHIRE



MATT MITCHELL CHAMPION FINEWOOL CROSS BREED

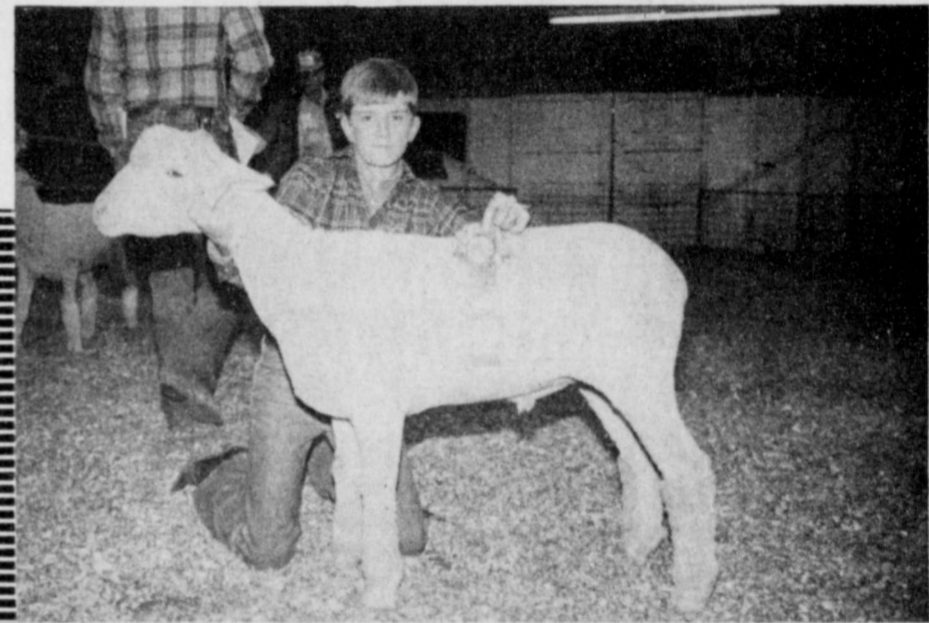


PHILLIP GLASSON CHAMPION SPOTTED & POLAND CHINA

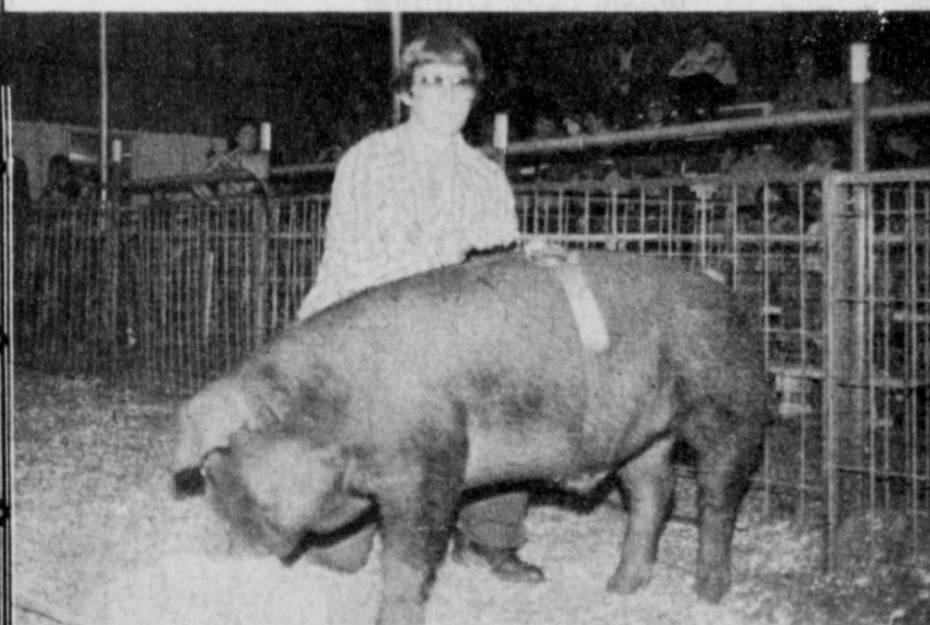
This page sponsored by -

**CONSUMERS FUEL ASSN.**

404 E. Missouri  
Floydada, TX  
983-3394



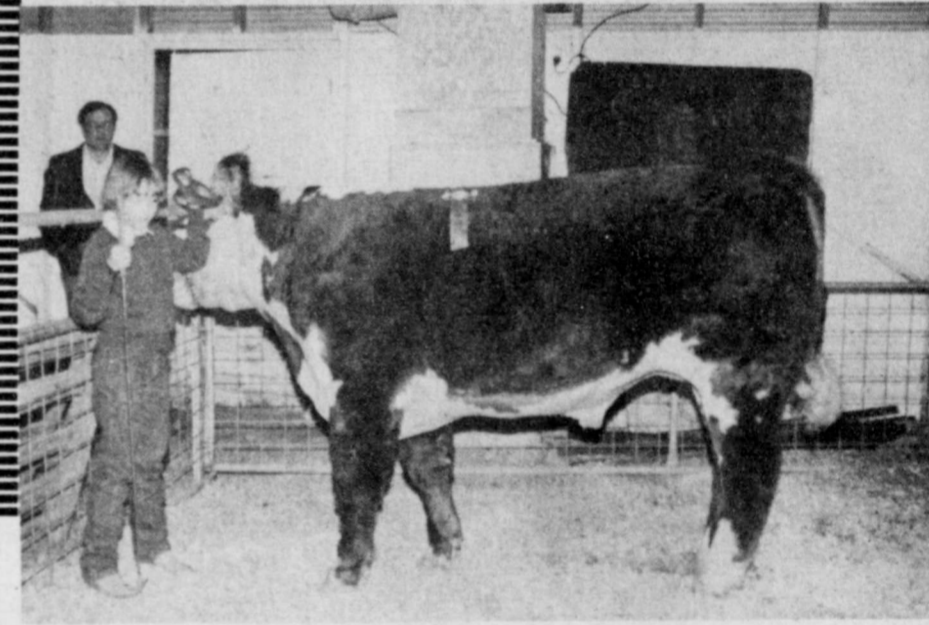
DEAN SMITH FINEWOOL CHAMPION



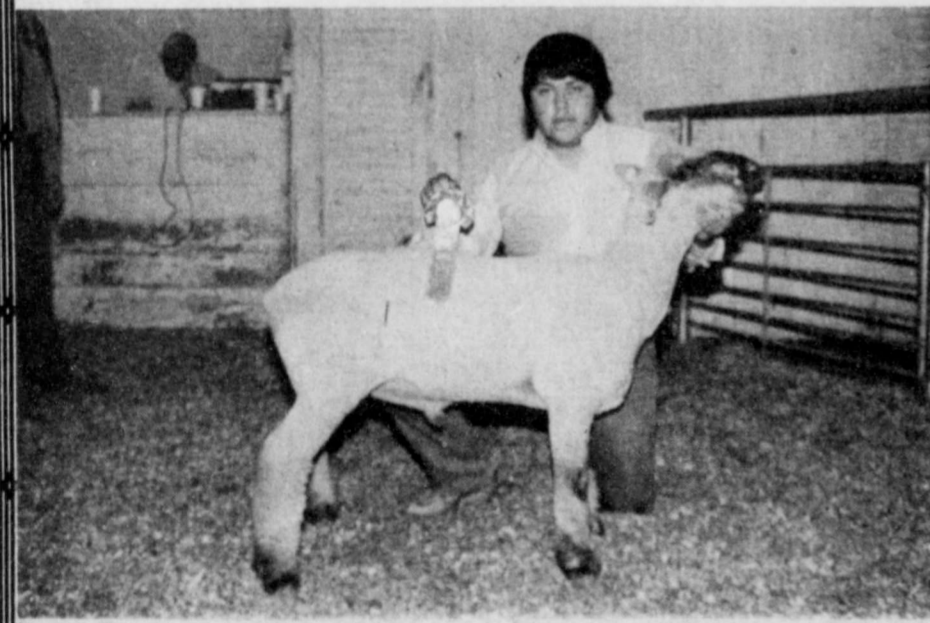
TROY LA BAUME CHAMPION DUROC

**PONDEROSA MEAT CO.**

807 E. Missouri  
Floydada, TX  
983-2261



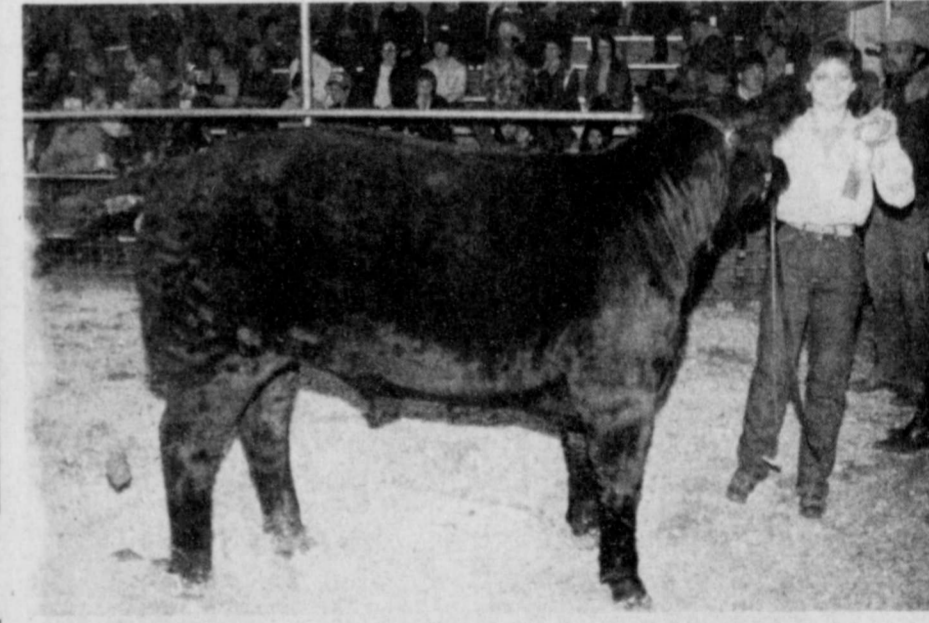
STACY DAWDY CHAMPION HEREFORD



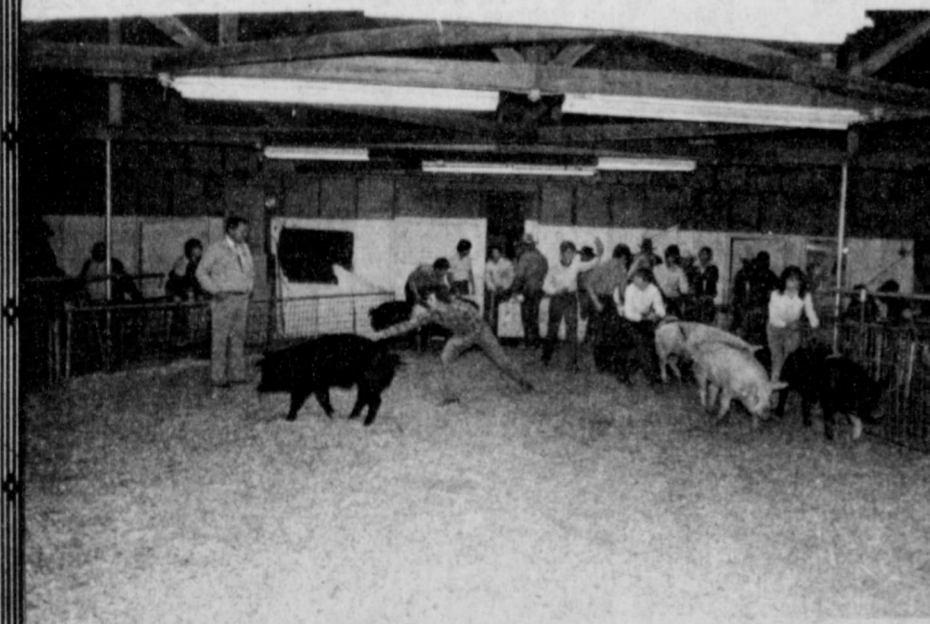
TONY SAUCEDA CHAMPION OTHER BREED



GWEN LANE CHAMPION SOUTHDOWN



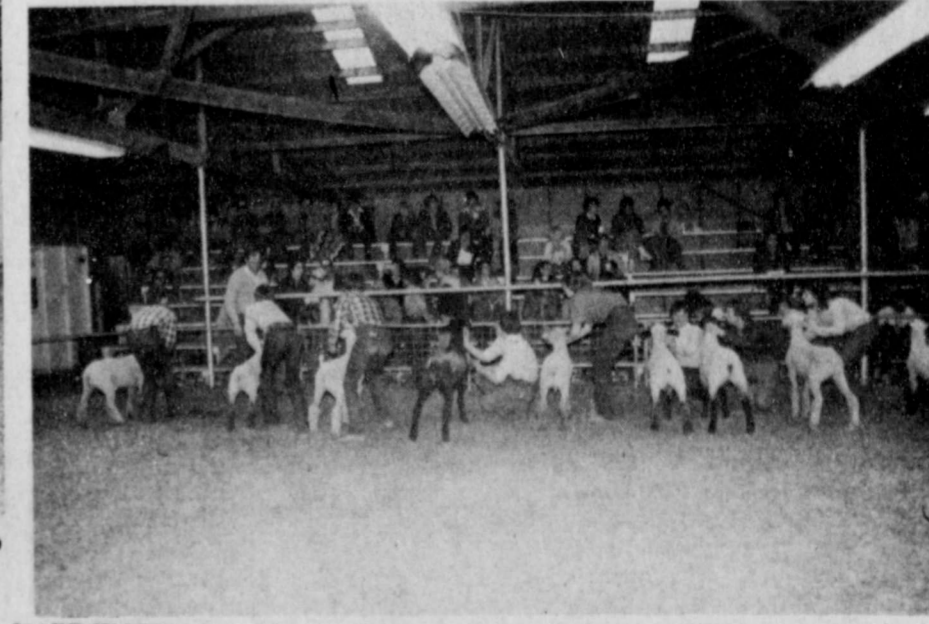
LIBBY WILLIAMS CHAMPION ANGUS



SHOWMANSHIP AWARDS don't grow on trees as these kids demonstrate at the Stock Show Monday with their swine.



SHOWING STEERS IS REWARDING especially if you also win the Showmanship Award for showing steers. All these showmen deserve the award.

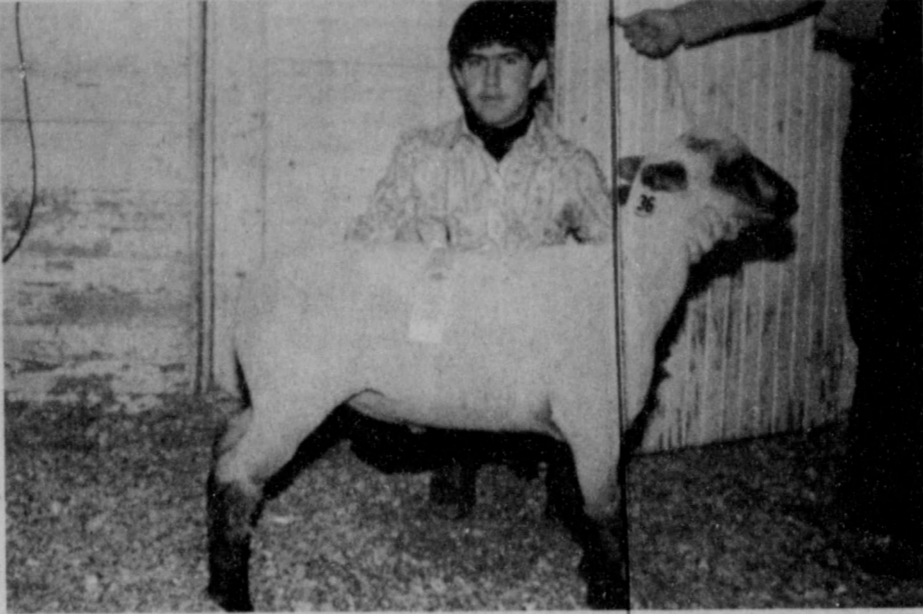


HARD WORK is the only way to win the Showmanship Award for lambs, as we see by these kids.

*for a job well done!*



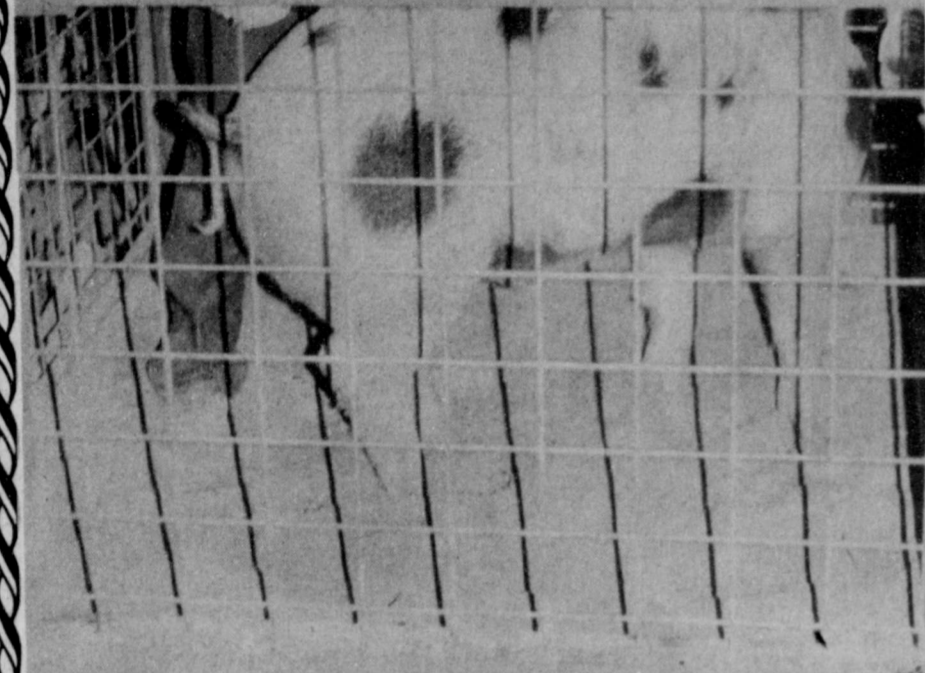
PHILLIP GLASSON 1st place winner in heavyweight Poland China and Berkshire division, Lockney Stock Show.



EARL BROSEH — Reserve Shropshire



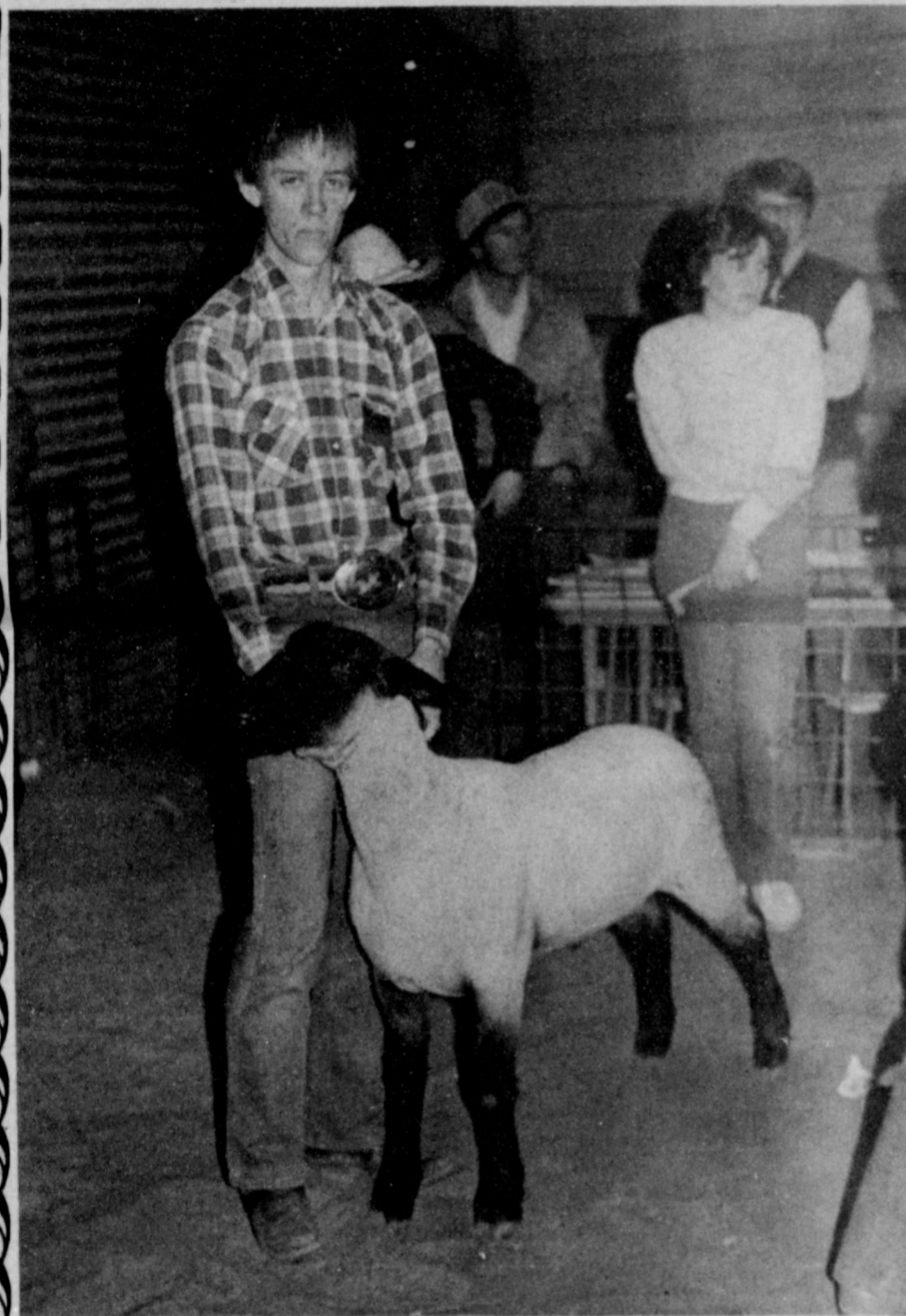
GWEN LANE — Reserve Champion Other Breeds



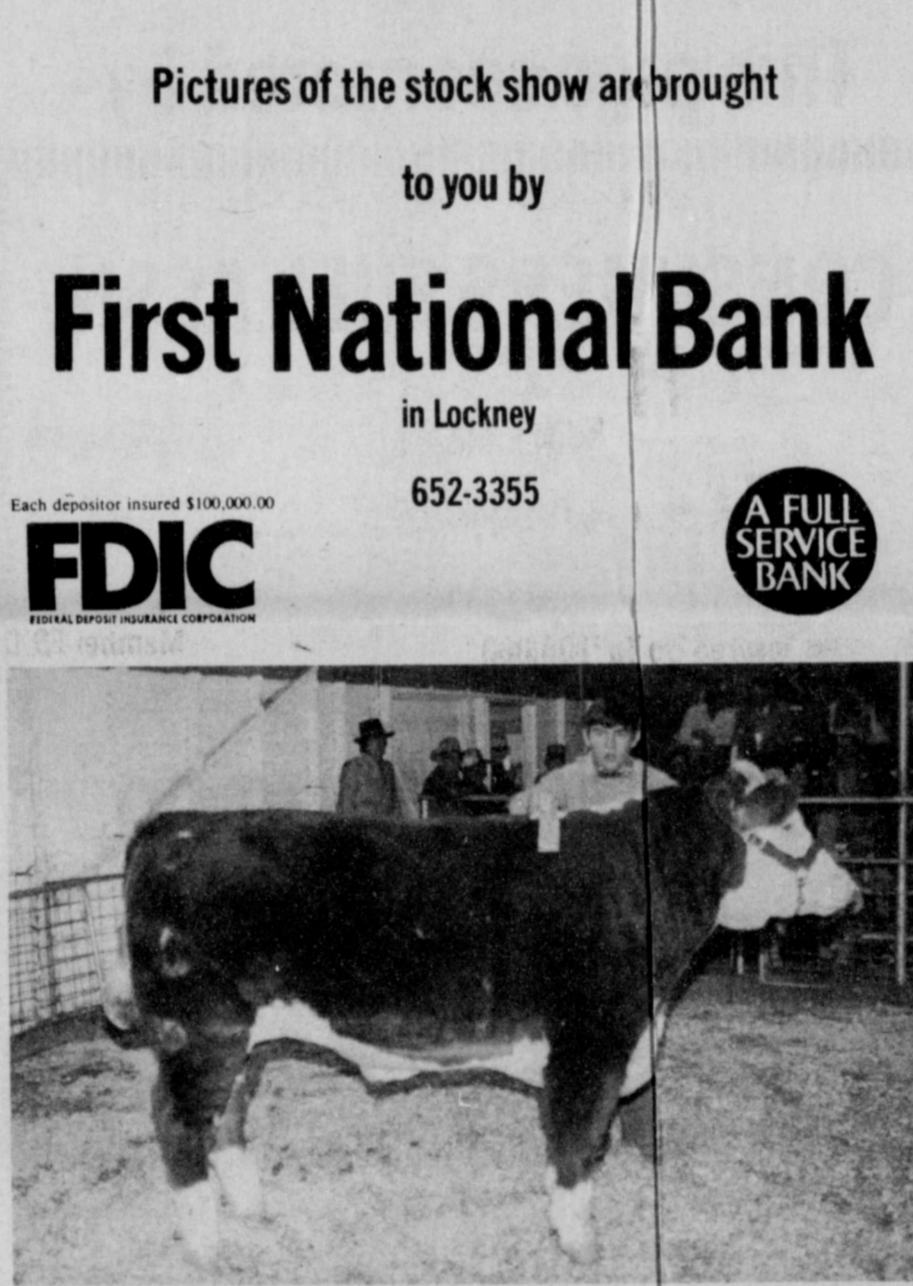
RUSTY CARTEL won reserved Grand Champion with his cross breed barrow.



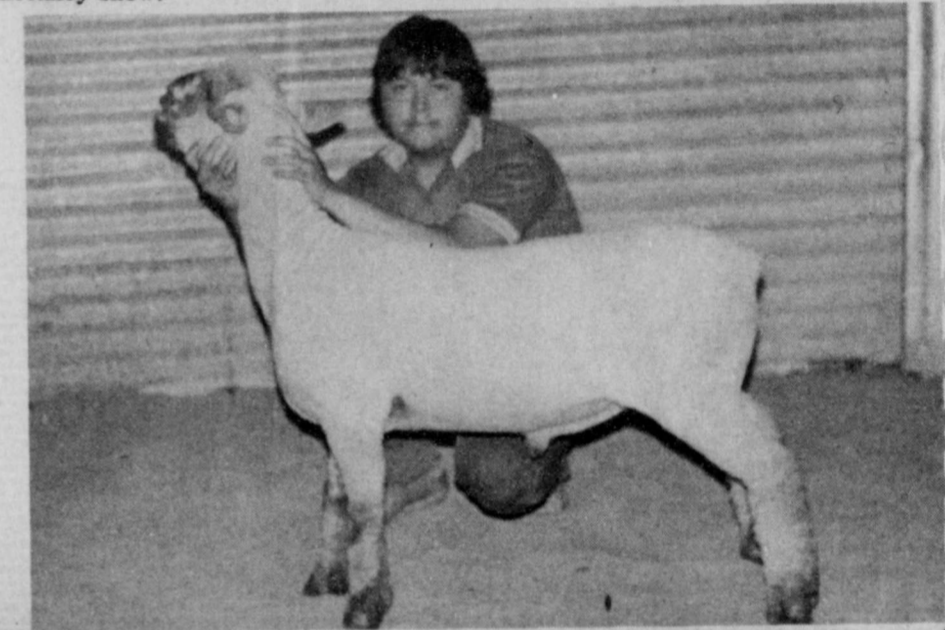
KEITH HIGHT, winner of the Showmanship Award in the sheep category of the Lockney show.



GLEN SUTTERFIELD—1st place winner with his lightweight Suffolk in the Lockney Stock Show.



KEITH HIGHT — Reserve Hereford



TONY SAUCEDO won Reserve Grand Champion with his heavyweight Fine Wool cross lamb.

Pictures of the stock show are brought to you by

# First National Bank

in Lockney

652-3355

Each depositor insured \$100,000.00

**FDIC**  
FEDERAL DEPOSIT INSURANCE CORPORATION

**A FULL SERVICE BANK**



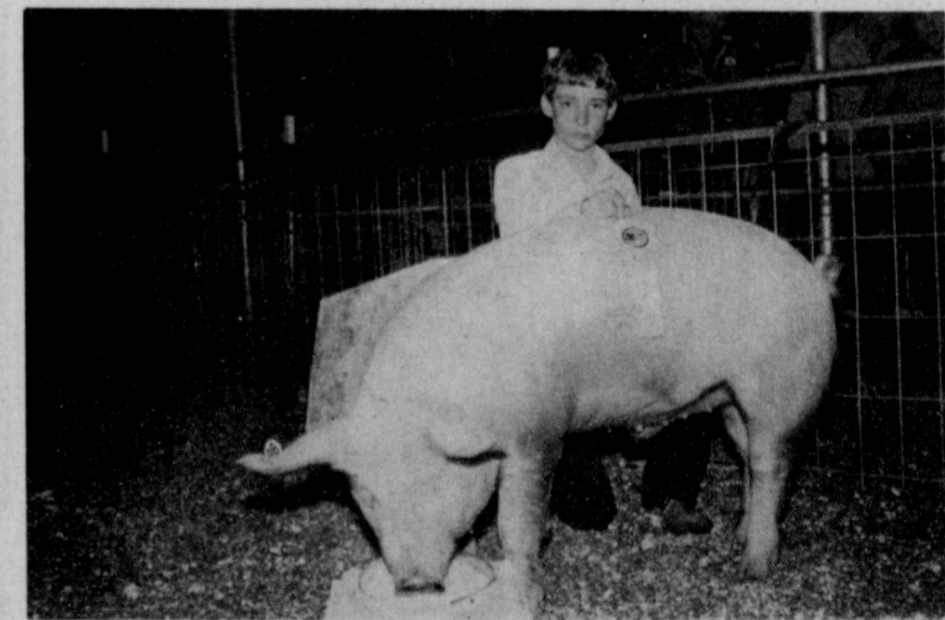
CAMMY HANCOCK — Reserve Hampshire



MARGIE ARAUJO—Winner of the Showmanship Award in the swine division of the Lockney local show. PAUL SMITH, Lockney Stock Show Judge.



DAVID MARTINEZ was first place winner of the heavy hampshires in the Lockney Show.

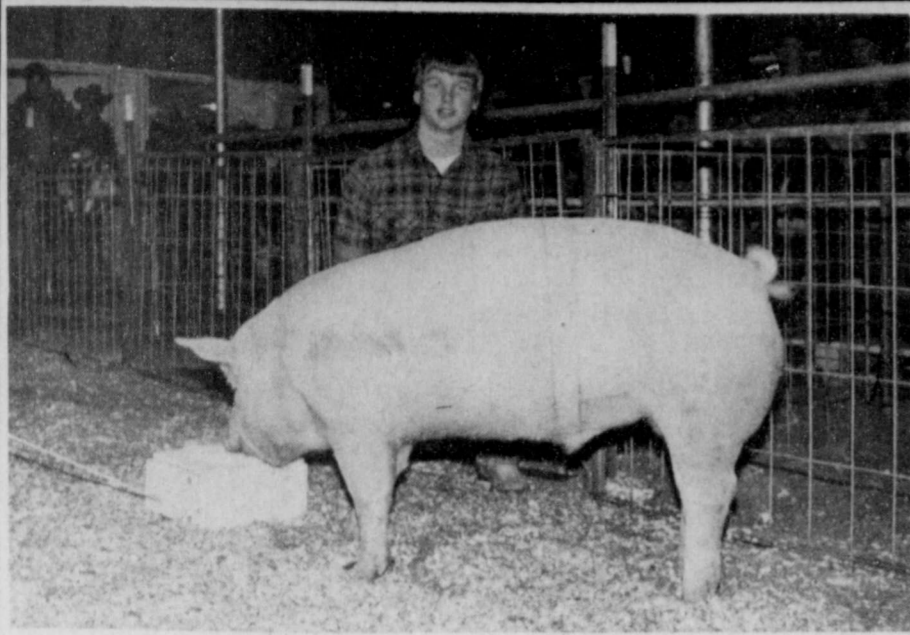


ROBERT REED — Reserve Other Breeds



MARTY COVINGTON — Reserve Hampshire





MIKÉ RUFF RESERVE CHESTER WHITE



RUSTY CARTHEL RESERVE CROSSBREDS



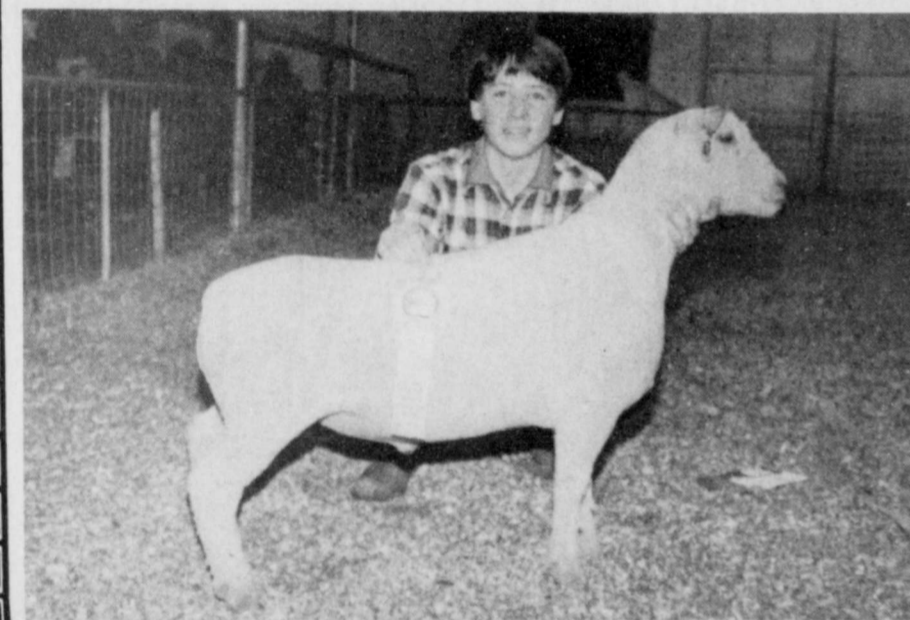
CHRISTY PRUITT 1ST LIGHTWEIGHT HAMPSHIRE



CAMMY HANCOCK FINEWOOL RESERVE



JODIE SMITH RESERVE CHAMPION SUFFOLK

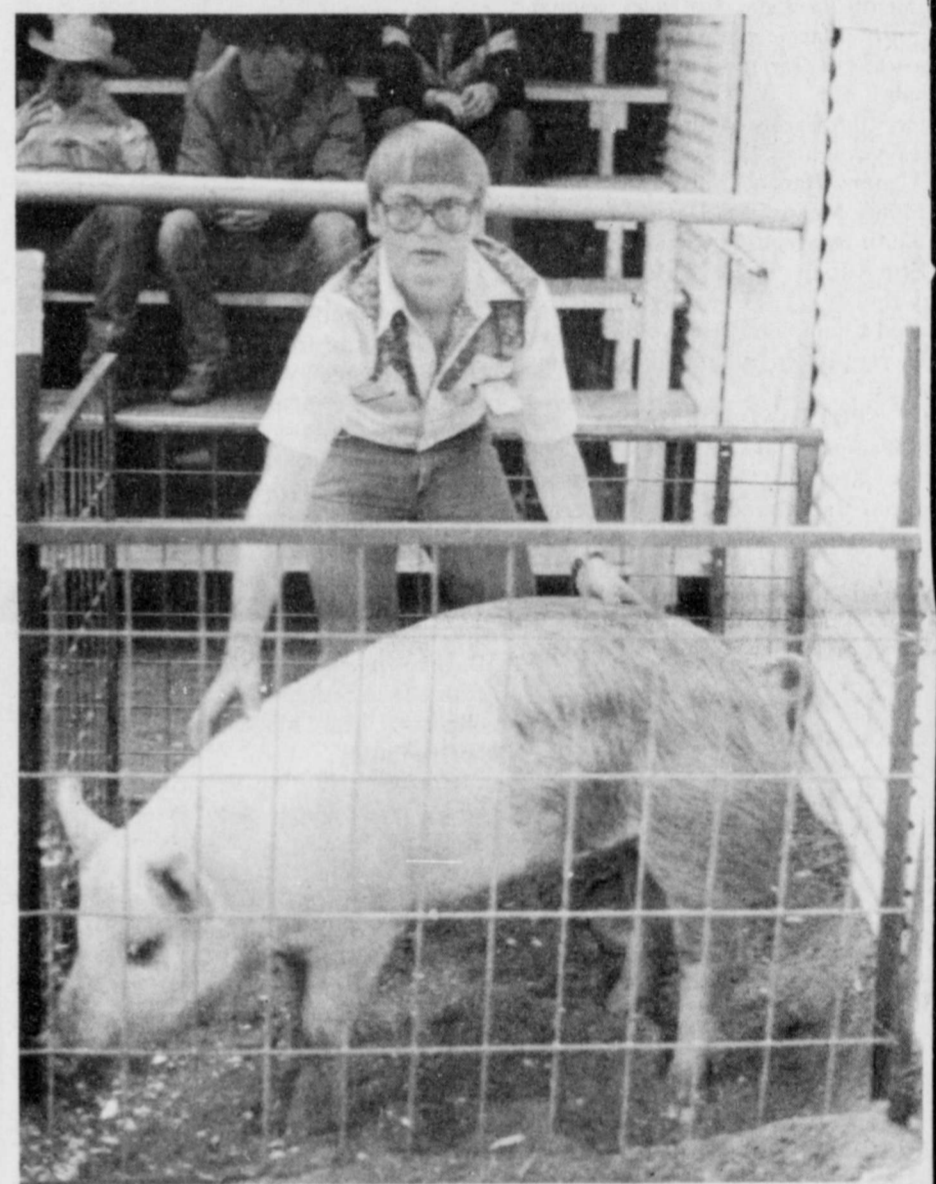


MATT MITCHELL RESERVE SOUTHDOWN

Stock Show pictures  
brought to you by

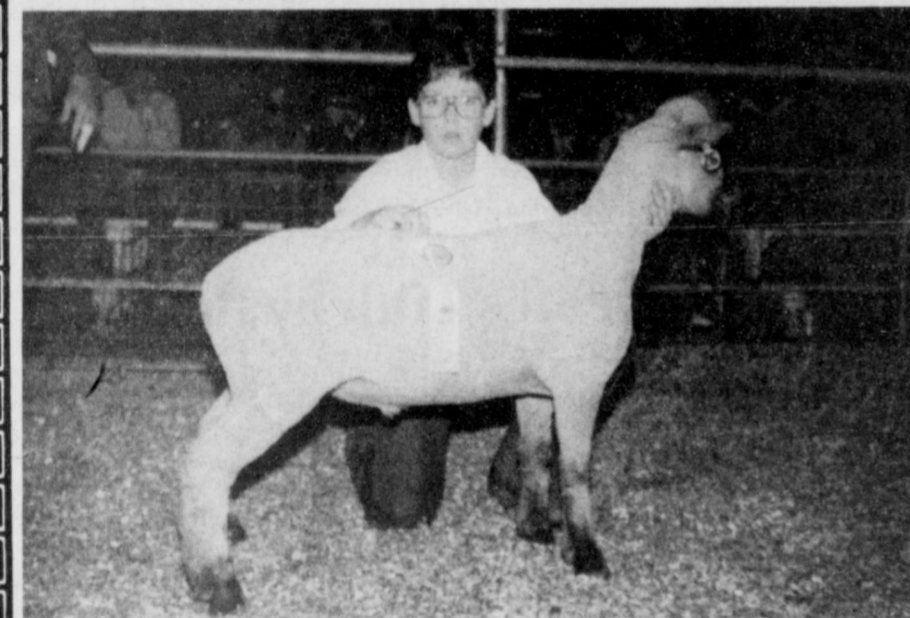
*"Helping you change things for the better"*

**THE FIRST NATIONAL BANK OF FLOYDADA**



J.B. CATES 1ST LIGHTWEIGHT CROSS

Accounts Insured Up To \$100,000 Member FDIC



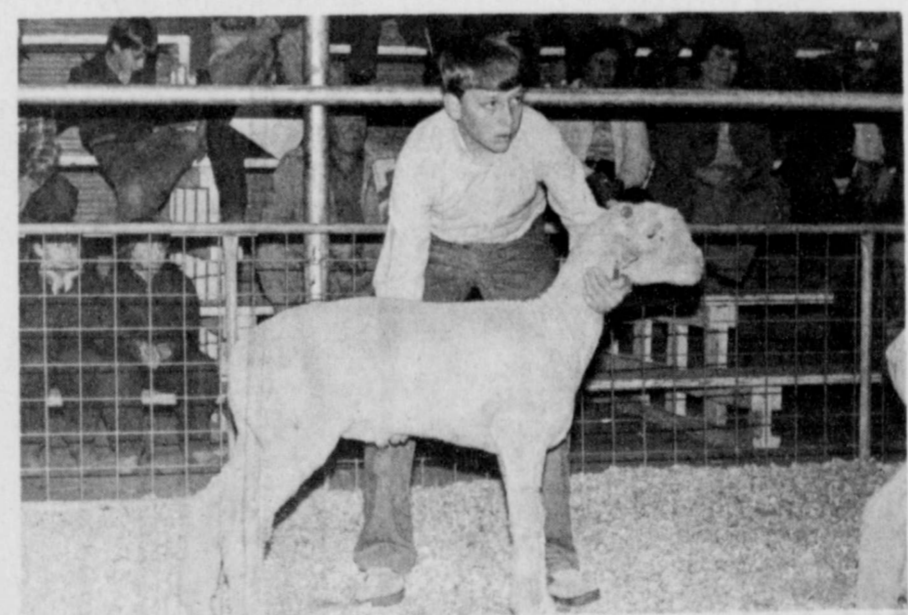
JOEL MITCHELL RESERVE FINEWOOL CROSSBREED



HUNTER SMITH RESERVE BREED CHAMPION FINEWOOL



LISA TERRELL RESERVE SUFFOLK



DEAN SMITH 1ST LIGHTWEIGHT FINEWOOL



SHANNON BARBEE 1ST LIGHTWEIGHT DUROC



TIM BURNS RESERVE DUROC



GARLAND EASTER GRAND CHAMPION SUFFOLK

# County Stock Show Results

## Barrows

**CHESTER WHITE**  
 Lightweight: 1st Brent Williams, 2nd Daron Widener, 3rd Shea Jackson, 4th Wyman Rexrode, 5th Ricky Key, 6th Hugo Araujo  
 Heavyweight: 1st Mike Ruff, 2nd David Payne, 3rd Heath Rexrode, 4th Margie Araujo, 5th Chuck Rowley, 6th Robert Reed, 7th Phillip Glasson  
 Breed Champion: Brent Williams  
 Reserve Breed Champion: Mike Ruff

## DUROCS

Lightweight: 1st Christy Pruitt, 2nd Shannon Barbee, 3rd Jerald Johnson, 4th Joey Davis, 5th Keith Owens, 6th Gary Bigham, 7th Clint Jackson, 8th Joe Widener, 9th Tim Winter  
 Medium Weight: 1st Mark Thompson, 2nd Shawnda Brock, 3rd Kip Holt, 4th Troy Bigham, 5th Scott Poole, 6th Carlos Molinar, 7th Brent Williams, 8th Kip Holt  
 Heavyweight: 1st Coy LaBaume, 2nd Tim Burns, 3rd Karen Mathis, 4th Stephen Turner, 5th Chad Williams, 6th James Fannon, 7th Tate Harris, 8th David Martinez

Breed Champion: Coy LaBaume  
 Reserve Breed Champion: Tim Burns

## HAMPSHIRE

Lightweight: 1st Kyle Brock, 2nd Christy Pruitt, 3rd Joey Davis, 4th Clint Jackson, 5th Kristy Dawdy, 6th Karen Mathis, 7th Don Cheek, 8th Tommy Floyd, 9th Keith Owens, 10th Shannon Barbee, 11th Shayla Barbee  
 Medium weight: 1st Rusty Carthel, 2nd Heath Rexrode, 3rd Mark Thompson, 4th Margie Araujo, 5th Keith Hancock, 6th Garland Easter, 7th Gary Bigham, 8th J.B. Cates, 9th Terry Taylor, 10th Carlos Molinar

Heavyweights: 1st Brent Williams, 2nd Cammy Hancock, 3rd Tate Harris, 4th Monty Means, 5th David Martinez, 6th Keith Hancock, 7th Brian Sanders, 8th Erin Adrian, 9th Coy LaBaume, 10th Stacy Dawdy, 11th Clint Bigham  
 Breed Champion: Brent Williams  
 Reserve Breed Champion: Cammy Hancock

## SPOTS AND POLANDS

Lightweight: 1st Tim Winters, 2nd Wyman Rexrode, 3rd Clay Harrison, 4th Jarod Harrison, 5th Joe Widener  
 Heavyweight: 1st Phillip Glasson, 2nd Wyman Rexrode, 3rd Stephen Turner, 4th Stephen Turner  
 Breed Champion: Phillip Glasson  
 Reserve Breed Champion: Wyman Rexrode

## CROSSES

Lightweight: 1st Kyle Brock, 2nd Hugo Araujo, 3rd Garland Easter, 4th Don Cheek, 5th Shayla Barbee, 6th Carlos Molinar, 7th J.B. Cates, 8th Wyman Rexrode, 9th Chad Williams, 10th Brian Sanders, 11th Jim Ansley, 12th Terry Carlton, 13th Ricky Key, 14th Lane Cheek  
 Medium weight: 1st Shannon Barbee, 2nd Keith Hancock, 3rd Clint Bigham, 4th Monty Means, 5th Mike Salas, 6th Joe Widener, 7th Romeo Araujo, 8th Troy Bigham, 9th David Martinez, 10th Kelly Griggs, 11th Rusty Rainey, 12th Phillip Glasson, 13th Kelly Griggs, 14th Stacy Dawdy  
 Heavyweight: 1st Karen Mathis, 2nd Rusty Carthel, 3rd Margie Araujo, 4th Karen Mathis, 5th Clay Harrison, 6th Christy Pruitt, 7th Jarod Harrison, 8th Kristy Dawdy, 9th Tate Harris, 10th Terry King, 11th Christy Pruitt, 12th Cammy Hancock, 13th James King  
 Breed Champion: Karen Mathis  
 Reserve Breed Champion: Rusty Carthel

## OTHER PURE BREEDS (Berks, Yorks)

Lightweight: 1st Gary Bigham, 2nd Jerald Johnson, 3rd Carlos Baker, 4th Daron Widener  
 Heavyweight: 1st Robert Reed, 2nd Kristy Dawdy, 3rd Mark Hatley  
 Breed Champion: Gary Bigham  
 Reserve Breed Champion: Robert Reed

**Grand Champion:** Karen Mathis  
**Reserve Grand Champion:** Brent Williams

## Lambs

### FINE WOOL

1st Hunter Smith, 2nd Cammy Hancock, 3rd Matt Mitchell, 4th Jodie Smith, 5th Jennifer Crow, 6th Ross Colston, 7th Dean Smith, 8th Ross Colston, 9th Ronnie Bailey  
 Breed Champion: Hunter Smith  
 Reserve Breed Champion: Cammy Hancock

### FINE WOOL CROSS

Lightweight: 1st Matt Mitchell, 2nd Erik Anderson, 3rd Greg Sparkman, 4th Erik Anderson, 5th Terri Sparkman, 6th Joel Mitchell, 7th Randy Race, 8th Ritchie Thornton, 9th David McCulloch, 10th Teddy Salinas, 11th Ronnie Whittington, 12th Aric Hendricks  
 Heavyweight: 1st Joel Mitchell, 2nd Garland Easter, 3rd Matt Mitchell, 4th Jennifer Crow, 5th Maria Saucedo, 6th Maria Saucedo, 7th Tony Saucedo, 8th Trent Gant, 9th Scott McCarty, 10th Ronnie Whittington, 11th Heather Holt, 12th Keith Hancock  
 Breed Champion: Matt Mitchell  
 Reserve Breed Champion: Joel Mitchell

### SHROPSHIRE

1st Roxene Brown, 2nd Earl Broseh, 3rd Monty Teeter, 4th Wesley Teeter, 5th Heather Holt, 6th Rusty Teeter, 7th Kip Holt, 8th Heather Holt  
 Breed Champion: Roxene Brown  
 Reserve Breed Champion: Earl Broseh

### SOUTHDOWN

1st Gwen Lane, 2nd Matt Mitchell, 3rd Pam Woody, 4th Wesley Teeter, 5th Joel Mitchell, 6th Scott McCarty  
 Breed Champion: Gwen Lane  
 Reserve Breed Champion: Matt Mitchell

### HAMPSHIRE

Lightweight: 1st Dean Smith, 2nd Ronnie Ford, 3rd Greg Sparkman, 4th Joe Faulkenberry, 5th Terri Sparkman, 6th Donny Ferguson, 7th Kathie Battey, 8th Heath Robertson, 9th Monty Teeter, 10th Monty Teeter, 11th Troy Don Faulkenberry, 12th Scotty Battey, 13th Kathie Battey  
 Medium Weight: 1st Sam Alvarez, 2nd James Smith, 3rd Aric Hendricks, 4th Scott McCarty, 5th Erik Anderson, 6th Jason Brown, 7th Gwen Lane, 8th David Sutterfield, 9th Marty Covington, 10th Glenn Sutterfield, 11th Joe Faulkenberry, 12th Manuel Suarez, 13th Scotty Battey  
 Heavyweight: 1st Shannon Shurbet, 2nd Marty Covington, 3rd Jason Brown, 4th Jason Brown, 5th Karyn Foster, 6th Romeo Araujo, 7th Randy Race, 8th Keith Hight, 9th David McCulloch, 10th Terri Bailey, 11th Heath Robertson, 12th Manuel Suarez, 13th Donny Ferguson  
 Breed Champion: Shannon Shurbet  
 Reserve Breed Champion: Marty Covington

### SUFFOLK

Lightweight: 1st Marty Covington, 2nd Hunter Smith, 3rd Glenn Sutterfield, 4th Dean Smith, 5th Glenn Sutterfield, 6th Ritchie Thornton, 7th Erik Anderson, 8th Haney Robertson, 9th Sherre Kinard, 10th David Sutterfield, 11th Manuel Suarez, 12th Pam Woody, 13th Heather Holt, 14th Jay King, 15th Haney Robertson, 16th Kip Holt, 17th Scotty Battey  
 Medium Weight: 1st Garland Easter, 2nd Hunter Smith, 3rd Grant Cage, 4th Ritchie Thornton, 5th Terri Sparkman, 6th Joe Faulkenberry, 7th Karyn Foster, 8th Pam Woody, 9th Kevin Helms, 10th Grant Cage, 11th Rusty Teeter, 12th Roxene Brown, 13th Andra Smith, 14th Don Chesshir, 15th Manuel Suarez, 16th Cammy Hancock, 17th Stacey Smith  
 Heavyweight: 1st Lisa Terrell, 2nd Lisa Terrell, 3rd Grant Cage, 4th Ronnie

Ford, 5th Gwen Lane, 6th Earl Broseh, 7th Kevin Helms, 8th Grant Cage, 9th Kevin Helms, 10th Trent Gant, 11th Rusty Teeter, 12th Ricky Prisk, 13th Chad Williams, 14th Earl Broseh  
 Breed Champion: Lisa Terrell  
 Reserve Breed Champion: Lisa Terrell

### OTHER BREED

Lightweight: 1st Gwen Lane, 2nd Scott McCarty, 3rd Margie Araujo, 4th David Sutterfield, 5th Sam Alvarez, 6th Marty Covington, 7th Joel Mitchell, 8th Dawn Atteberry, 9th Don Chesshir, 10th Randy Wideman  
 Heavyweight: 1st Tony Saucedo, 2nd Jennifer Crow, 3rd Karyn Foster, 4th Chad Williams, 5th Joe Faulkenberry, 6th Ronnie Ford, 7th Ritchie Thornton, 8th Teddy Salinas, 9th Donny Ferguson, 10th Kevin Helms  
 Breed Champion: Tony Saucedo  
 Reserve Breed Champion: Gwen Lane  
**Grand Champion:** Lisa Terrell  
**Reserve Grand Champion:** Lisa Terrell

## Steers

### ANGUS

Lightweight: 1st Colt Golden, 2nd Libby Williams  
 Heavyweight: 1st Libby Williams, 2nd Greg Sparkman, 3rd Ross Colston

**Breed Champion:** Libby Williams  
**Reserve Breed Champion:** Libby Williams

### HEREFORD

Lightweight: 1st Keith Hight, 2nd Amy Hinsley, 3rd Earl Broseh, 4th Dusty Burleson  
 Medium Weight: 1st Lisa Terrell, 2nd Bart Bivins, 3rd Shawnda Brock  
 Heavyweight: 1st Stacy Dawdy, 2nd Keith Hight, 3rd Terri Sparkman  
 Breed Champion: Stacy Dawdy  
 Reserve Breed Champion: Keith Hight

### CROSS

Lightweight: 1st Chad Golden, 2nd Angie Hinsley, 3rd Ross Colston, 4th Shannon Edwards  
 Medium Light Weight: 1st Chad Edwards, 2nd Dusty Burleson, 3rd Greg Sparkman, 4th Zach Nutt  
 Medium Heavy Weight: 1st Colt Golden, 2nd Mitch Ross, 3rd Jodie Smith, 4th Mitch Ross, 5th Zach Nutt  
 Heavyweight: 1st Matt Williams, 2nd Jodie Smith, 3rd Kristy Dawdy, 4th Lisa Terrell, 5th Kyle Brock  
 Breed Champion: Colt Golden  
 Reserve Breed Champion: Matt Williams  
**Grand Champion:** Colt Golden  
**Reserve Grand Champion:** Matt Williams

## Floyd County

### Stock Show Queen contestants



JODIE SMITH



HEATHER HOLT



LIBBY WILLIAMS



SHANNON EDWARDS

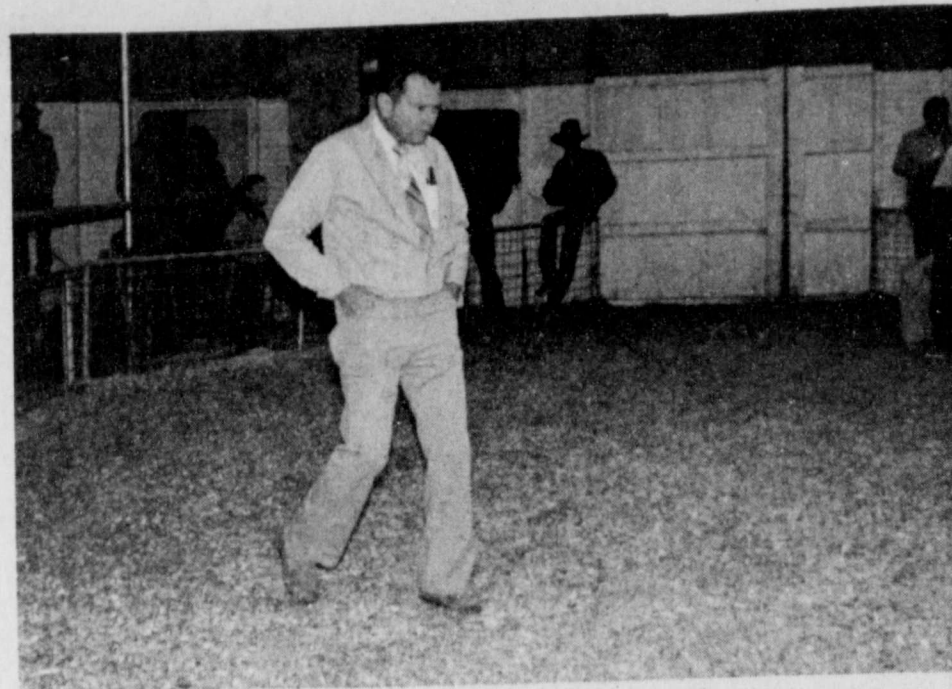
### Fuller makes Honor Roll

Lyndell Fuller from Floydada, has been recognized for making the Dean's Honor Roll at Eastern, a total of 64 students made straight A's putting them on the President's Honor Roll. One hundred seventy-nine have been named to the Dean's Honor Roll for

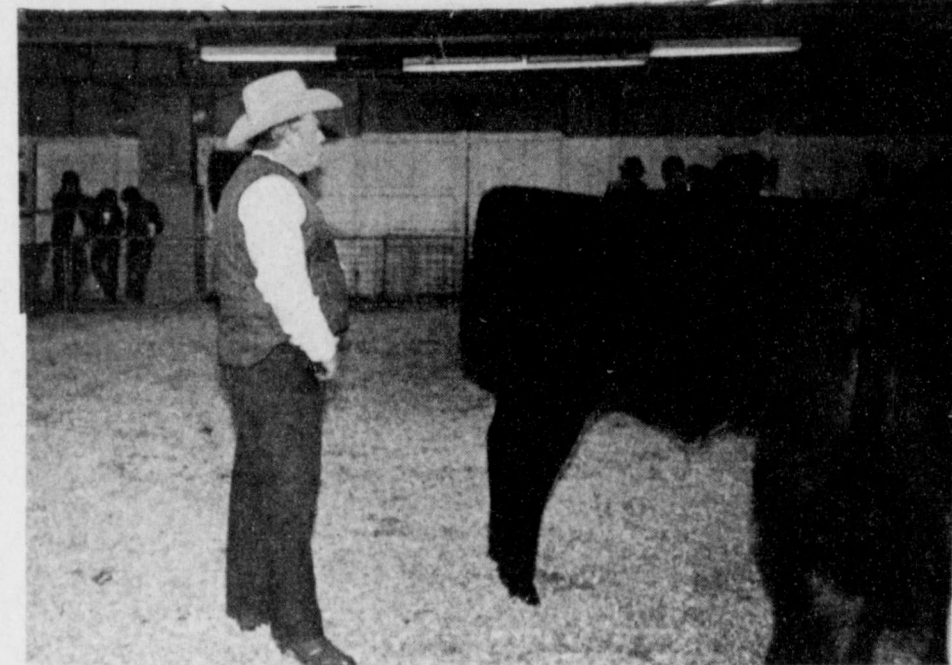
making a B-or-better in 12 or more hours.



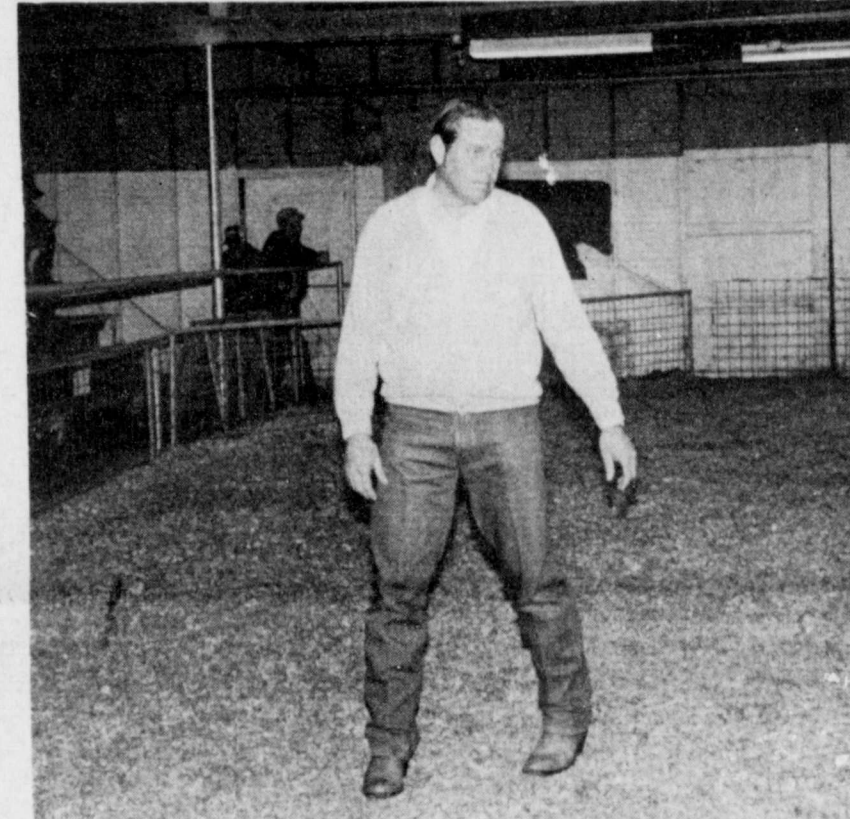
**IN DOUBT? USE ferti-lome Weed & Feed Special Davis Farm Supply 517 E. Houston 983-2233**



JUDGING of the 127 swine at the Floyd County Livestock Show was Paul Gross of Amarillo, District Extension Director.



SPENCER TANKSLEY, Bailey County Extension Agent, was on hand to judge the 35 steers Tuesday afternoon.



155 LAMBS WERE JUDGED by John McNeill, Extension Beef Cattle Specialist of Amarillo.

### Kemp celebrates 10th birthday

Cory Kemp, son of Mr. and Mrs. Sammy Kemp, was honored with a 10th birthday party Saturday, February 19, at his home in Floydada.

Theme of the party was "The Dukes of Hazzard", and Cory enjoyed the "Dukes" tablecloth, cups, plates, and napkins. Cut glass punch bowl, crystal plates and ice cream dishes, and gold-plated silverware were used for refreshments. Colored balloons hanging

from green streamers completed the decorations.

Refreshments of birthday cake, ice cream and cherry punch were served to Mikey and Jessie Gourdon, Trixie and James Vick and the birthday boy.

Party favors consisted of pencils with separate erasers, along with assorted gum, candy, and suckers wrapped in green net. Also, each had a party hat.

Cory's mother, daddy and brother, Joey, also helped him celebrate.

**Congratulations to all the winners of the Lockney & Floyd County Jr. Livestock Shows.**



**Congratulations to all the winners of the Floydada & the Floyd County Jr. Livestock Stock Shows.**

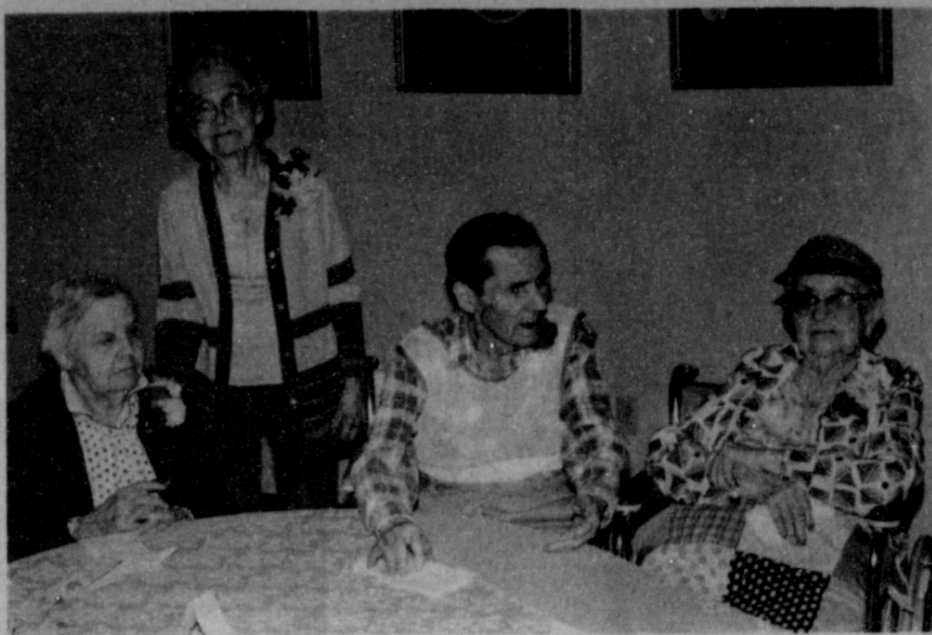
**Floydada Power & Light**

# Center News

By Mrs. J.E. Green

Monday February 21, 1983:  
We are having some more cloudy weather, and were we surprised yesterday when church was dismissed and we found the street covered in water and still raining for awhile.  
Darrel Taft, Gideons International representative, was with us at Calvary yesterday. He, or one of them, comes by once a year and is always interesting.  
Mr. and Mrs. Marion Carpenter arrived home Saturday after visiting with their children in Georgia since before Christmas. Welcome home, neighbors!  
Mrs. Plumlee was out of town Sunday.  
The Clay Muncys of Lockney are home.  
The Pecks are doing ok.  
Mrs. Hartline's son-in-law, Bob Landry of Plainview is in a Lubbock Hospital recovering from recent surgery. Let us remember the sick in prayer.  
The Wiley Rogers' are doing very well at home.  
Miss Alma Ruth Nelson in Floydada

Nursing home is doing very well today.  
Mrs. Elmer Warren is recovering.  
Mr. Duncan of Caprock Hospital is reported some better.  
Mr. and Mrs. Paul Stout and girls of Muleshoe visited over the weekend with her parents, Mr. and Mrs. Thomas Warren.  
Mrs. Anthony Latta and Mrs. David Latta and son, Jason, visited Ma Green Friday afternoon.  
I received a message last week from my sister, Gertrude Massingill of Phillips, from Everglades, Florida where she was visiting a son. She informed me she would join the 16th a tour group from Atlanta bound for Rio de Janeiro, Brazil. I could think of nothing else much yesterday, only think of her going to church in South America. I had rather go to church at home.  
Other friends of ours staying in today are: Mrs. Frizzell, Mrs. Jones, the Denisons, Mrs. Meredith, Mrs. Warren, the Mayfields and, of course, Ma Green.  
P.M.: It is raining again this p.m.



FLOYDADA NURSING home birthday honorees this month were [L-R] Mamie Gray, Vera Troutman, Travis Corley and Iva Simpson.

## Rest Home Birthday Party

By Lorilla Bradley

February is a time  
...Despite the ice and snows...  
For Valentines and birthdays, too.  
To keep us on our toes!

Mr. Travis Corley  
...who counts from 1903...  
Still loves a birthday party...  
Just watch him, and you'll see!!!

We greet our Mrs. Simpson  
...A lady very nice...  
Although her years are 90...  
She still had lots of "spice."

Another lovely lady  
Is Mrs. Mamie Gray...  
She always looks quite pretty  
In a special sort of way!

Our Mrs. Vera Troutman  
...Her years are 88...  
Celebrates with "Cupid"...  
The 14th, is her date.

Mrs. Marr we welcome...  
...Who is only 69...  
She's just a "kid" among us  
The way we're counting time!

To serenade these people  
Let's do the birthday song...  
So get all tuned and ready  
And sing out good and strong!

Thursday, February 17, was birthday

time at the Rest Home and ladies of the City Park Church of Christ hosted the festivities. Residents and guests were ushered into the dining room with the honorees being seated at the "honor" table.  
We are sorry Mrs. Marr was unable to attend but she was out visiting with relatives. We missed her.  
The table was laid with an ecru cloth and centered with a basket of lovely fresh flowers given to the home by the family of Mrs. Jean Miller. Places for the honorees were marked with special birthday cards. Compliments of Williams Florist of Floydada, each lady wore a fresh corsage and Mr. Corley had a boutonniere.  
The Hesperian photographer came for the "picture taking" after which the party was well underway. The poem was read and all joined in singing the song.  
Seated with Mrs. Troutman was her daughter, Mrs. Greer Christian. Other guests included Mrs. Jessie Stewart visiting her sister, Mrs. Bennie Wilson, and Mrs. Malvin Jarboe visiting her mother, Mrs. Laura Brashear.  
A delicious refreshment plate of angel food cake and tangy, red fruit punch was served to the honorees, residents, guests and employees.  
The next party will be Thursday March 17, 2:30 p.m. Please come and be with your loved ones when they celebrate their special day.

## CAPROCK HOSPITAL NEWS

February 14-21

Jeffie Smith, Floydada, adm. 1-3, continues care, Acar  
Ruth Benson, Matador, adm. 1-13, dis. 2-14, Hong  
Charles Beedy, Claude, adm. 1-18, continues care, Acar  
Mary Jordan, Tulia, adm. 1-20, dis. 2-20, Jordan  
Earl Bishop, Floydada, adm. 1-31, continues care, Acar  
David Campbell, Floydada, adm. 2-3, dis. 2-17, Acar  
Gladys Lawson, Floydada, adm. 2-4, dis. 2-17, Hong  
April Thompson, Quitaque, adm. 2-5, dis. 2-20, Hong  
Mollie Burleson, Floydada, adm. 2-6, dis. 2-15, Acar  
Carlos Valdez, Floydada, adm. 2-6, dis. 2-14, Hong  
Maria Vallejo, Floydada, adm. 2-10, dis. 2-18, Hong  
Eulalia DeLeon, Floydada, adm. 2-10, dis. 2-13, Acar  
Stanislada Pesina, Floydada, adm. 2-11, dis. 2-16, Acar  
H.O. Ginn, Floydada, 2-11, continues care, Hong  
Troy Hinton, McLain, adm. 2-12, continues care, Acar  
Elena Hopper, Floydada, adm. 2-12, dis. 2-14, Hong  
Albert Duncan, Floydada, adm. 2-13, continues care, Hong  
Albert Traweek, Matador, adm. 2-14, dis. 2-20, Acar  
Vina Crawford, Floydada, adm. 2-14,

continues care, Hong  
Ethel Slover, Matador, adm. 2-14, dis. 2-15, Hong  
Kay Kenner, Floydada, adm. 2-14, continues care, Hong  
Otis C. Anderson, Floydada, adm. 2-15, continues care, Jordan  
Vernon Nipp, Roaring Springs, adm. 2-15, continues care, Acar  
Elena Hopper, Floydada, adm. 2-15, dis. 2-18, Hong  
Roel Mercado, Jr., Floydada, adm. 2-17, transferred 2-21, Acar  
Bessie Martin, Floydada, adm. 2-17, continues care, Hong  
Lola Allen, Floydada, adm. 2-17, continues care, Acar  
Lorene Hudson, Floydada, adm. 2-18, continues care, Hong  
Jan Ann Chandler, Floydada, adm. 2-18, continues care, Hong  
Rebecca Hernandez, Floydada, adm. 2-18, continues care, Hong  
Leo Granado, Crosbyton, adm. 2-18, continues care, Hong  
George Weeks, Turkey, adm. 2-18, continues care, Hong  
Rosa Granado, Crosbyton, adm. 2-19, continues care, Hong  
Crecincio Rodriguez, Floydada, adm. 2-19, continues care, Hong  
Paul Hart, Floydada, adm. 2-20, Hong  
Mary Slover, Matador, adm. 2-20, continues care, Hong  
C.M. Miller, Floydada, adm. 2-20, continues care, Jordan  
Vickie Pitts, Floydada, adm. 2-21, continues care, Hong

# Cedar Hill News

By Grace Lemons

We had some pretty days this week that enabled the farmers to get back in the fields. We have had drizzly rains and high winds during the week-end.  
The Rev. and Mrs. R.C. Guest attended the funeral services for Mrs. Guest's brother Less Campbell, 80, in Lamesa held at the Methodist Church Thursday afternoon. Mr. Campbell died Tuesday after a lengthy illness. Our condolences and prayers are with them at this time.  
Linda Lemons and children had lunch with her parents, Mr. and Mrs. W.T. Cooper and in Lockney last Sunday and attended a birthday party in Plainview for Melissa Shackelford on her first birthday. Others present were Kevin Shackelford, Anita Bigham and children and Mrs. W.T. Cooper.  
Thursday the cattle were worked on Edna Gilly's farm and she had Mr. and Mrs. Craig Gilly, Amy and Tara, Mr. and Mrs. Mark Gilly and Emory, Bud Taylor and Mark Nolan as guests for dinner.  
Happy birthday to Edna Gilly! Her daughter, Delise Harrison, Christy and Casandra of Lubbock were dinner guests Sunday to help her celebrate her birthday.  
Twyla Lemons and Edna Gilly are still on our sick list. Elvie Lackey is much

improved from a recent illness. We regret to report that Ott Ginn is a patient in Caprock Hospital. We trust that he will readily gain his strength and be able to be home soon.  
Gladys Fortenberry, Pam Hayhurst and Trevor returned from Oklahoma Saturday where Gladys had visited with Pam and Trevor for about two weeks. The Hayhurst family are in the process of moving to Amarillo.  
Linda Lemons and Vance attended a birthday party honoring Stacy Bigham at the home of Mrs. W.T. Cooper in Lockney Friday. Others present were Anita Bigham, Kay Shackelford and Melissa and Kevin of Plainview.  
Visitors in the home of Mr. and Mrs. A.S. Mize this week were C.L. Callaway and Mrs. Roy Fawver.  
The Social and Society Club met in the home of Jonni Delle Cogdell last Thursday with Martha Taylor, Imogene Fortenberry, and Lou Jean Burleson present. It was decided not to meet this week but will meet Tuesday at 3:00 o'clock in the home of Martha Taylor.  
Rhonda and Mike Pritchard and Dustin of Plainview visited Rhonda's grandparents, Mr. and Mrs. Jim Conner last Monday.  
The worst bankrupt in the world is the man who has lost his enthusiasm.

## Floydada Nursing Home Happening

By Dartha Westbrook

Last week was very busy and enjoyable at the Nursing Home. On Monday, we had our Valentine party. Our Residents enjoyed the entertainment provided by our Companions-N-Caring Volunteers, as well as the cookies and punch they served. Our Sweetheart was Ollie Birnie, and our Beau was Charlie Lewis. Both are from Matador.  
Olive was here for ceramics after the party. We had six Residents who participated in this activity. They were Emmitt Lawrence, Vera Duke, Iva Simpson, Una Clark, Travis Corley and Irene Fuller.  
On Tuesday, the Sunshine Sunday School Class of the First Baptist Church was here with bananas and blueberry muffins for all the Residents. Thanks so much ladies.  
On Wednesday Bingo winners were Susie Thompson, with three games, Ona Jameson and Una Clark with two each, and Vera Duke, Emmitt Lawrence, and Slim Goolsby with one each. Slim was our grand prize black-out winner.  
Thursday was our birthday party for February. We had five honorees, Iva Simpson, Travis Corley, Vera Trout-

man, Aita Marr, and Mamie Gray. Of course, the City Park ladies hosted the party with cake and punch for all. Williams Florists provided beautiful red carnation flowers for all the honorees. Thanks so much to these lovely friends.  
On Saturday night, we had a real treat. The Square Dance group from Floydada provided entertainment for about an hour for our Residents. There were nine couples dancing, and they even brought their caller, who did a great job. I've really got a lot of comments from our Residents about the dancing. We sure appreciated all who came out to dance or just watch. Come back often, we really enjoyed it.  
Thanks to the many visitors last week: Mary Poole, M.D. Freeman, Anne Sweptson, Rubie Ratjen, Ruth Duncan, Ana Lee Brown, Mattie West-er, Sherry Colston, Gene Baird, Tonia Morley, Lucille and Tom Daniel, Eula Parrack, Mr. and Mrs. M.H. Hartness, Estelle Hinkle, Pauline Pierce, Lucille Lobban, Hazel Bradley, Karl Bunjes, Dana and Kim Ellis, Doris Casleton, Ethel Lee, Houston: Worth Gwendolyn Howard, Dalores Cannon and Mary Poole.

# Lockney Hospital

February 14-21

C.H. Rose, Lockney, adm. 1-28, continues care  
Fredrick Ayers, Lockney, adm. 2-8, continues care  
Josephine Seymour, Turkey, adm. 2-11, dis. 2-16  
William Poole, Lockney, adm. 2-11, continues care  
Alejandra Muniz, Lockney, adm. 2-13, dis. 2-17  
Mable Perkins, Lockney, adm. 2-13, continues care  
Tomas DeLeon, Lockney, adm. 2-13, dis. 2-18  
Estella Salinas, Floydada, adm. 2-14, baby girl, Evangelina, born 2-14, dis. 2-16  
Maxine Hill, Lockney, adm. 2-14, dis. 2-18  
Gertrude Marr, Lockney, adm. 2-14, continues care  
Dan Brandon, Matador, adm. 2-13, dis. 2-15  
De Ann Criswell, Plainview, adm. 2-14, baby girl, Taryn, born 2-14, dis. 2-17  
Maria Nava, Plainview, adm. 2-14, dis. 2-21  
Maria Gomez, Floydada, adm. 2-15,

baby boy, Erick, born 2-15, dis. 2-17  
Esther Langley, Lockney, adm. 2-15, dis. 2-17  
James Allen Martin, Lockney, adm. 2-15, dis. 2-20  
Omar Santos, Turkey, adm. 2-16, dis. 2-19  
Angela Rangel, Lockney, adm. 2-14, baby boy, Guadalupe, born 2-14, dis. 2-16  
Maria Lucio, Plainview, adm. 2-17, baby boy, Alejandro, born 2-17, dis. 2-19  
Jeremy Davis, Matador, adm. 2-17, continues care  
Kyla Warren, Floydada, adm. 2-18, baby girl, Leslie Charice, born 2-18, dis. 2-20  
Julia Perez, Lockney, adm. 2-18, continues care  
Juanita Luna, Lockney, adm. 2-19, continues care  
Toribio Rodriguez, Lockney, adm. 2-20, continues care  
R.V. Johnson, Turkey, adm. 2-20, continues care  
Jack Covington, Lockney, adm. 2-20, continues care  
Ola Gwinn, Levelland, adm. 2-22, continues care

**H-E-C**  
SPRAYER

THE H. E. C. SPRAYER  
"POSITIVE WEED CONTROL IN ACTION"

THE H. E. C. SPRAYER WAS DESIGNED TO:

1. CONTROL ALL WEEDS
2. SAVE AS MUCH AS 50% ON EXPENSIVE CHEMICALS
3. SAVE TIME
4. SAVE LABOR

For more information call:  
**Bart Bivins**  
(806) 652-2795

## THE BED OF THE 80'S

The Finest In  
*Somma* "Controlled Flotation Beds"

It's called Controlled Flotation Sleep and it's quickly replacing the common Innerspring mattress.

This unique, creative, patented design has made flotation sleep completely desirable and respectable. Where other flotation systems use various forms of the water bladder a Somma Controlled Flotation System uses individual, water filled, cylinders. This design eliminates the unwanted wave motion usually associated with waterbeds. In addition, the individual cylinders can be filled to appropriate levels making one side of the bed firmer than the other. Custom comfort as you like it.

A Somma Controlled Flotation System come in conventional mattress sizes and fits into any room situation. It uses standard bedding, including fitted sheets. It requires no worrisome electric heater. It's lightweight and easy to move. It sits on a standard, heavy duty, bed frame. And the comfort level is unequalled by any other form of mattress available today.

Come in and try a Somma Controlled Flotation System. You'll enjoy a wonderful experience. You'll quickly recognize the advantages over a common innerspring mattress as well as all other flotation systems. You'll agree, "A Somma is just like a bed, only better".

TWIN  
\$369<sup>00</sup>

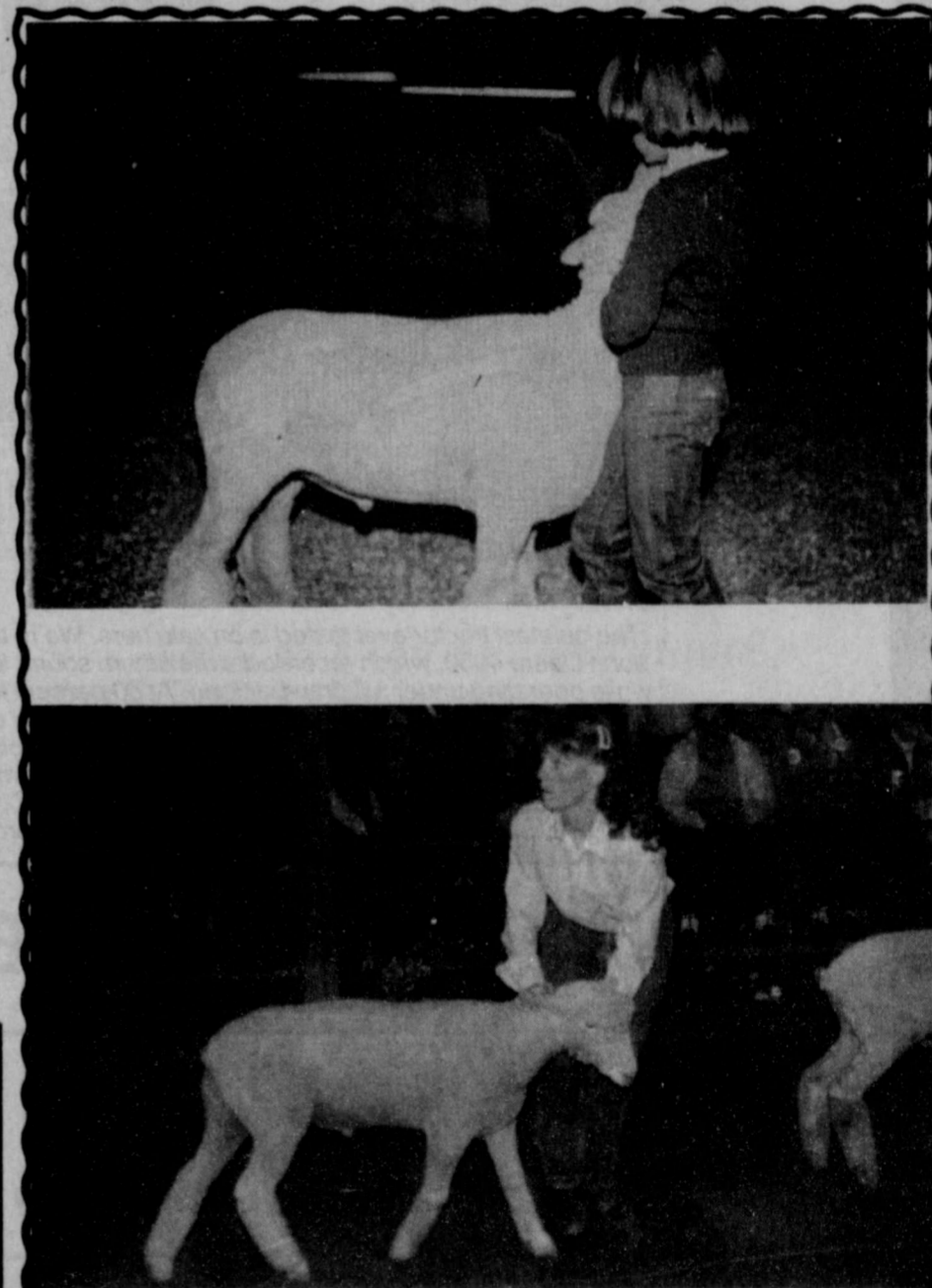
FULL  
\$449<sup>00</sup>

QUEEN  
\$530<sup>00</sup>

KING  
\$610<sup>00</sup>

**PARKER HOME FURNISHINGS**

LOCKNEY, TEXAS



Congratulations  
to all the winners!

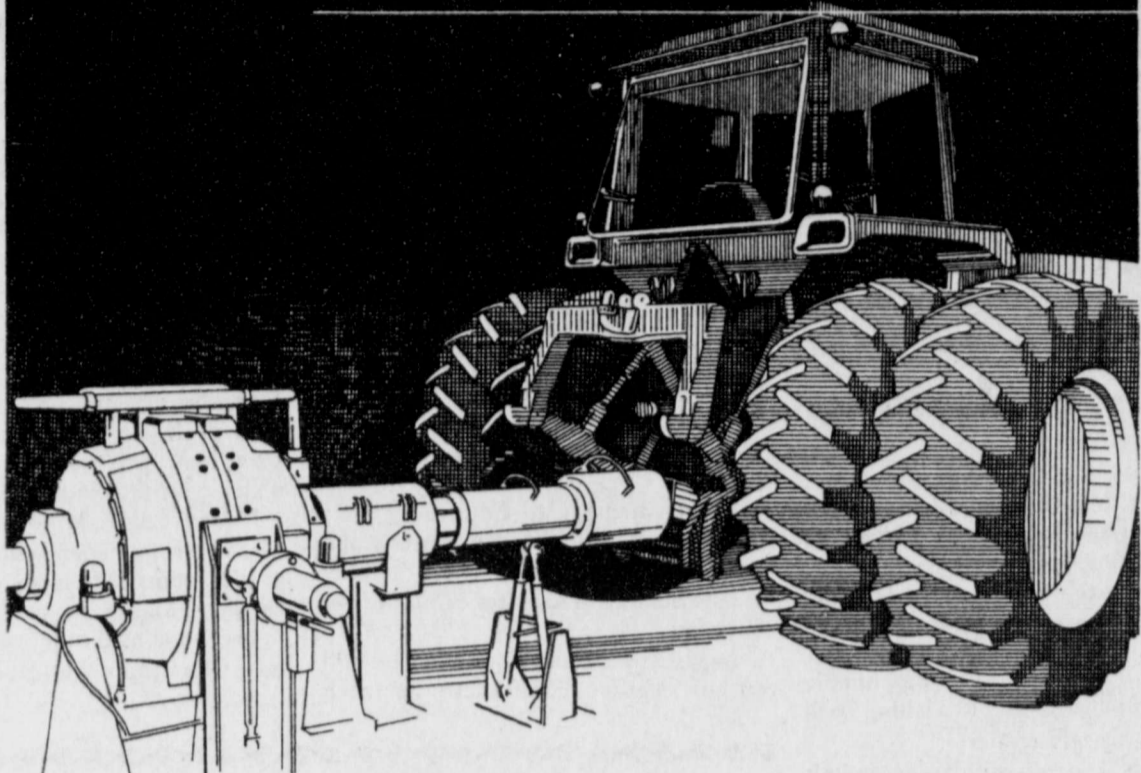
**DAVIS LUMBER CO.**

102 E. Shubert

652-3385

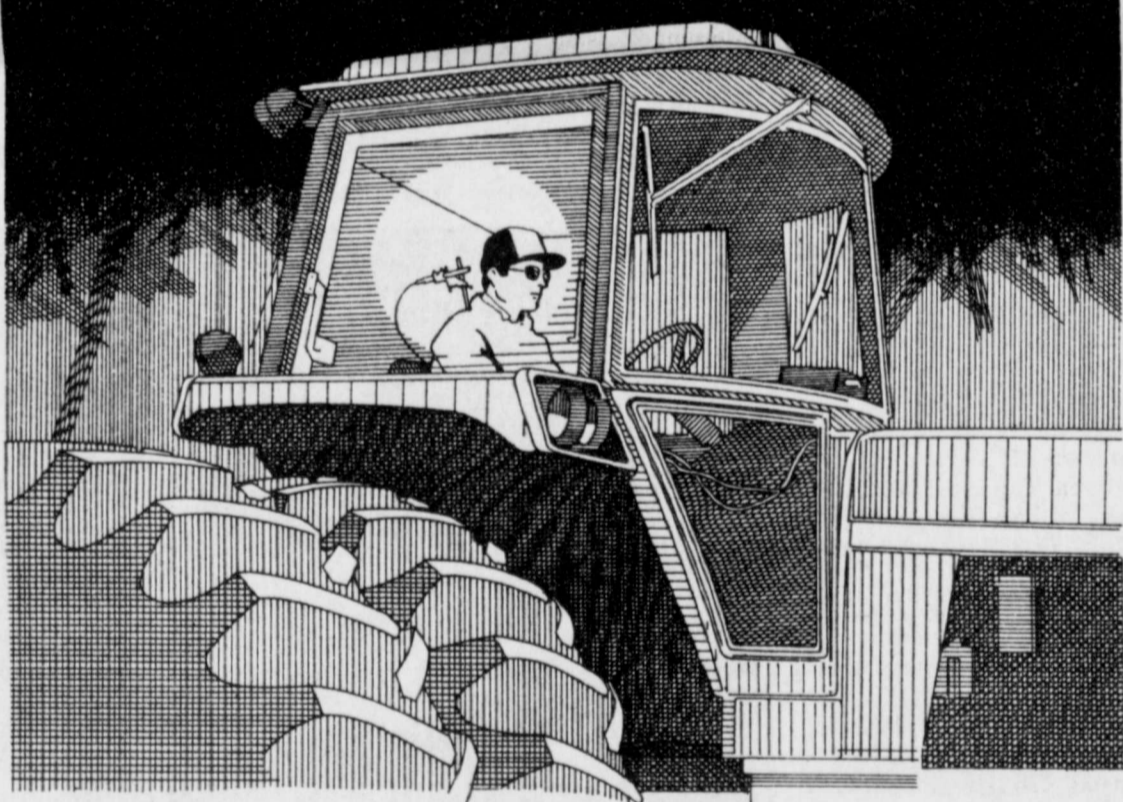
Lockney

NEW 100-190 HP TRACTORS  
**JOHN DEERE SETS NEW  
 PTO FUEL EFFICIENCY  
 RECORD IN OFFICIAL TESTS**



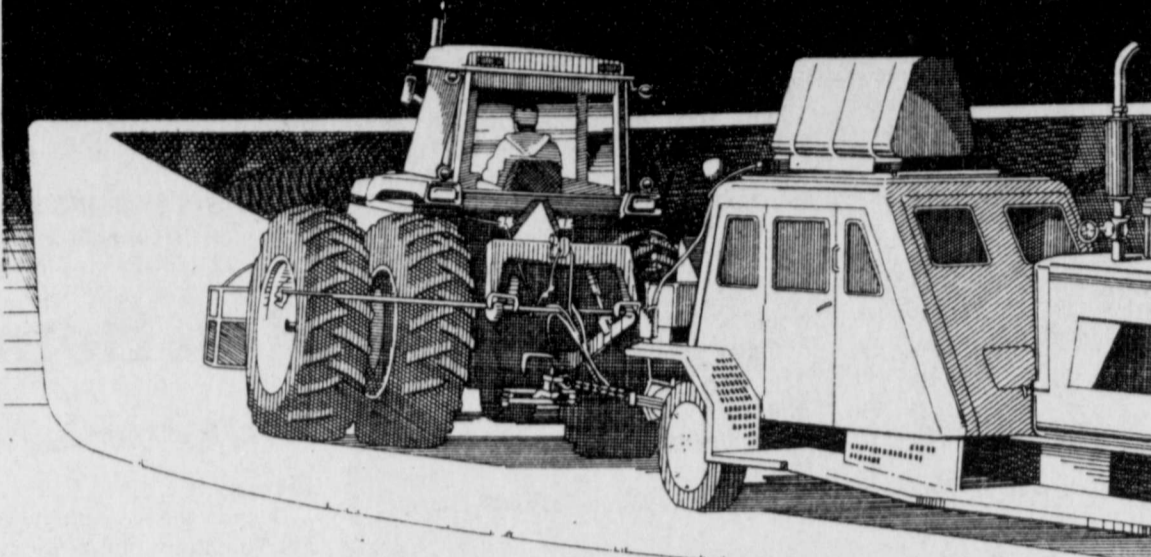
The John Deere 4850 is the most fuel-efficient big tractor you can buy. It now holds the record for PTO-measured fuel efficiency: In official tests at rated engine speed, the new 4850 bested every current production tractor of 100 horsepower or more. (Actually it's the most fuel efficient tractor over 65 hp currently available.) The record? Take your choice: 17.47 horsepower hours per gallon or .399 pounds of fuel per horsepower hour. But the 4850 wasn't alone in turning in an improved PTO fuel efficiency. All five of our 100- to 190-hp tractors are more fuel efficient than their predecessors. Across the line, they average 10 percent better on overall PTO fuel efficiency. Stop in for the full story.

NEW 100-190 HP TRACTORS  
**JOHN DEERE  
 SMOTHERS THE SOUND  
 RECORD IN OFFICIAL TESTS**



The quietest tractor ever tested is on sale here. We're talking about the John Deere 4050, which recorded a maximum sound level of 73.5 dB(A) while operating under full drawbar load. At 50 percent load with reduced engine speed this same tractor recorded a sound level of 70.0 dB(A). Now that's quiet! But the 4050 wasn't alone in smothering noise. All five of these 50 Series tractors are very quiet. Here's how they performed at maximum drawbar load: 4250, 74.5 dB(A); 4450, 74.0 dB(A); 4650, 76.5 dB(A); 4850, 75.5 dB(A). Stop by and hear the full story on these record-setting tractors.

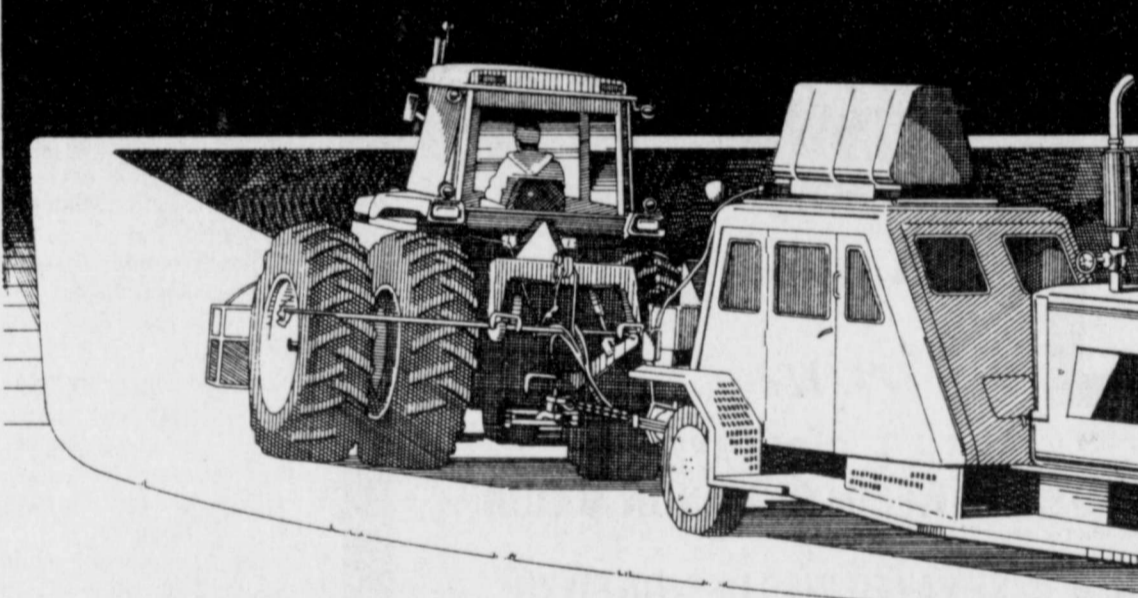
NEW 100-190 HP TRACTORS  
**NEW JOHN DEERES  
 SHATTER OFFICIAL  
 TEST RECORDS**



**NEW PTO FUEL EFFICIENCY RECORD  
 NEW DRAWBAR PULL RECORD  
 QUIETEST TRACTOR EVER TESTED**

Stop and ask about the new 50 Series 100- to 190-hp tractors. We've got all the test results and complete information on new features.

NEW 100-190 HP TRACTORS  
**JOHN DEERE OUTPULLS  
 THEM ALL  
 IN OFFICIAL TESTS**



Two of our new 50 Series Tractors have broken the drawbar pull record for 2-wheel-drive tractors in official tests. Yes, that's right. TWO of them. The new 4650 recorded a maximum pull of 18,794 lb. And the new 4850 recorded a maximum pull of 20,810 lb. Both of these tractors recorded more drawbar pull than any other 2-wheel-drive tractor ever tested. All five of our new tractors generate a considerable increase in pulling power when compared to their predecessors. And torque reserve? It's increased as well. Drawbar fuel efficiency? It's improved on all five. Stop by the store for complete details on these record-setting tractors. We want to tell you about our PTO fuel efficiency record and sensational sound levels, too. If you're looking for better fuel efficiency, more pulling power or a better working environment, look at a new John Deere.

**POWERFUL NEW EFFICIENCY FOR YOUR BREAD-AND-BUTTER MACHINE**



**March the 1st is FARM FRONTIER DAY**

**BEGINS AT 7:00 AM AT THE MASSIE  
 ACTIVITY CENTER**

**ALL ACTIVE FARMERS INVITED TO ATTEND.**

**AT 10:00 AM THERE WILL BE A 50 SERIES  
 TRACTOR DEMONSTRATION  
 AT BILL FULTON'S FARM  
 3 MILES SOUTH OF FLOYDADA**

**4250 THROUGH 4850 SERIES WILL BE DEMONSTRATED.  
 EVERYONE INVITED TO ATTEND.**

**FLOYD COUNTY IMPLEMENT**

983-3732

Floydada, Texas









**BOY SCOUT AWARD WINNERS**—[back l-r] Jeffrey Sutterfield, Justin Adams, John Mark Gatica, Ignacio Luna and Joe Sustalta. [Front l-r] Matt Workman, Daniel Perez, Lance Patridge and Brandon Poole with Cub Master, Charles Smith behind.

## Boy scouts attend banquet

About 100 attended the first annual Blue and Gold Banquet for the Boy Scout troop, consisting of 3 dens. The banquet was held in the Rebekah Hall Building Monday night.

Tables were decorated with blue and gold streamers. Centerpieces of paper circular-fanned boy scouts, attired in their scout hats and scarves, were used. Each person had a blue placemat with a boy scout gold silhouette.

Awards were given to the Pack Pine Derby Race Car winners. The gold medallion went to Justin Adams, a silver medallion to Lance Patridge, and a bronze to Jeffrey Sutterfield.

Scout Awards were presented. Brandon Poole and Ignacio Luna had earned their wolf badges. Daniel Perez and Joe Sustalta earned their bobcat badges. Winners of arrow points were: John Mark Gatica, 1 gold and 3 silver; Jeffrey Sutterfield, 1 gold; and Matt Workman, 1 gold and 2 silver.

Although not present, Jerry Cooper received a certificate as the SME chairman. He has been active in fund raisers for the Haynes District.

Den Leader Appreciation Awards went to Brenda Poole, Linda Reyes, and Susan Patridge. They received scout necklaces.

Assistant Den Leaders recognition came in the way of a pin with a bow and a scout emblem. Recipients were Linda Griffith, Pat Gonzales, Freida Davis, Natalia Cruz, Martha Sue Lusk, and Carol Manley. Cub Master, Charles Smith, was presented with a cub scout tie tack.

Several special scout helpers received the Whiskers Good Citizen awards. Three of these awards were designated as "loyalty to attend." Chelsea Patridge, Davey Reyes, and Anthony

Poole were recognized since their mothers were den mothers, and their attendance record was impressive.

Raymond Lusk lead the prayer before the meal of ham furnished by the scout troop. Each family brought desserts and

vegetables. Following the meal each of the three dens presented a skit and a song for the program.

Gene Lantrip, a Haynes District executive was a special guest. He lead the dismissal prayer.

## Lady Horns bow to Cooper

The Lady Horns came out hitting hard in last Friday night's game against Lubbock Cooper in the New Deal Gym. They were in charge throughout the first quarter with the score indicating the play. Cooper 8, Lockney 19. High pointer of the game, for the Horns, Connie Coffman, scored 9 of her 23 points that quarter.

In the second quarter Cooper outscored the Lady Horns 17 to 7. The Horns made many errors, bringing the score at the half to 25 for Cooper, Lockney 26.

In the third quarter Cooper again scored 21 points to the Lady Horns' 8, to take the lead for the first time during the game. The two high point players, Shawnda Brock and Coffman ran into foul trouble, for a score of Cooper 46, Lockney 34 at the end of the quarter.

With a 12 point deficit at the beginning of the fourth quarter, the Lockney team started a long drive for a comeback. Coffman hit two straight

times with only 1:52 minutes left in the game to bring her team to within two points of their opponent, 51-49.

Coffman again sank another basket after Cooper's Rhonda Chisum made a free throw, bringing the score to 52-51.

A traveling call on Cooper gave the ball to Lockney, but they again lost the ball to Cooper. They scored 2 free throws in the final seconds of the game to give them the game 56 to Lockney's 51.

Lockney ended the year with a 17-12 record, having lost to Slaton twice before Cooper.

### The Boxscore

Lockney [51]	FG	FT	R	PF	TP
Brock	4-11	3-3	6	5	11
Reay	0-2	0-0	0	2	0
McCormick	2-3	0-2	5	3	4
C. Carthel	1-3	2-2	3	2	4
Foster	0-4	0-0	1	3	0
Coffman	12-23	1-2	13	4	25
Mathis	3-9	1-2	7	4	7
<b>Totals</b>	<b>22-43</b>	<b>7-11</b>	<b>36</b>	<b>23</b>	<b>51</b>

## Torres named DAR Good Citizen



MARIBEL TORRES

American History Month was celebrated by the members of the Mary McCoy-Baines Chapter of Daughters of American Revolution at a Washington Tea recently at the Woman's Clubhouse in Plainview.

The tea hostesses were Mrs. Harley Wells, chairman; Mrs. T.E. Vestal; Mrs. Robert Wilson; Mrs. Russell Bowles; and Mrs. Ronald Tullis. The tea table featured a red flower arrangement and crystal and silver appointments.

Following the tea, participants in the Good Citizen Essay contest and those submitting papers for the American History contest were introduced. Good Citizen Essay Contest winner was Maribel Torres of Lockney. She received the \$100 DAR chapter scholarship.

Jamie Byrd of Petersburg, Kim Coen of Olton, and Xylina Gregg of Plainview were also contestants in the contest.

Maribel, a senior, is president of the senior class and of the National Honor Society. She is also the editor of this year's annual. She was vice-president of

her class last year.

Among other activities she has been a member of the student council for the past three years, and of the NHS the last two. She will compete in UIL spelling and journalism, has been in FTA, band, a junior marshal, and a member of the flag corp.

Awards that have been bestowed on her include Most Studious all four years and the REA youth tour to Washington, D.C.

## Lockney School Menu

### Monday:

Breakfast—Rice, applesauce, milk  
Lunch—Turkey salad, sliced bread, milk, French fried potatoes, lettuce, apple cobbler

### Tuesday:

Breakfast—Toast, sausage, milk, peaches

Lunch—Fish sticks, cole slaw, pinto beans, cornbread, milk, ice cream

### Wednesday:

Breakfast—Pancake pups, milk, potato rounds

Lunch—Fried chicken, tossed salad, green peas, milk, hot rolls, fruit glaze

### Thursday:

Breakfast—Toast w/Cheese, milk, fruit cocktail

Lunch—Italian spaghetti, tomatoes, pork in beans, pineapple glaze, milk, garlic bread

### Friday:

Breakfast—Cinnamon biscuits, milk, pineapple

Lunch—Barbeque beef sandwich, sweet potatoes, corn, milk, applesauce

**Does your health insurance plan help protect against large medical expenses from long term illness?**

Check with State Farm for one that does.



Call: James R. Bigham  
111 B East Missouri  
Floydada TX  
Off: (806) 983-5516



Like a good neighbor, State Farm is there. Personal Health Insurance the State Farmway!

**YOU AND YOUR FAMILY ARE CORDIALLY INVITED**

to attend our

**57th ANNUAL STOCKHOLDERS MEETING of**

**Consumers Fuel Association, Lockney**

Tuesday, March 22, 1983

at the Grade School Cafetorium

Dinner will be served at 7:00 followed by a business session

One (1) Director Will Be Elected

**DOOR PRIZES**



**ALLSUP'S**  
CONVENIENCE STORES  
LOCKNEY

PRICES EFFECTIVE  
FEB. 24-26, 1983  
WHILE SUPPLIES  
LAST

"THERE'S ONE NEAR YOU"

FOR YOUR CONVENIENCE

**MONEY ORDERS**

ONLY **19¢** EACH



REG. \$1.39

**FRITO LAY TOSTITOS**

**\$1.09**

BAG

See All of Our In Store  
Specials 1/2 OFF or LESS

15 oz. SHURFINE  
PINEAPPLE **2/\$1.00**



ASSORTED FLAVORS  
ALLSUP'S  
**ICE CREAM**

**\$1.59**

1/2 GAL. RD. CTN.



2 Liter  
Coca Cola

**\$1.05**

BEAUTIFUL  
WOODEN ROSES **\$2.98**

10W30 Qt.  
PENNZOIL **99¢**

FRITO LAY REG. \$1.29

**CHEE-TO'S**

**99¢**

PKG.

BORDEN'S  
**PUDDING BARS**

**\$1.69**

12 PACK

BORDEN'S  
**BUTTERMILK**

**\$1.09**

1/2 GAL.

COOKED FOOD SPECIAL OF THE WEEK

HOT-DELICIOUS-READY TO GO

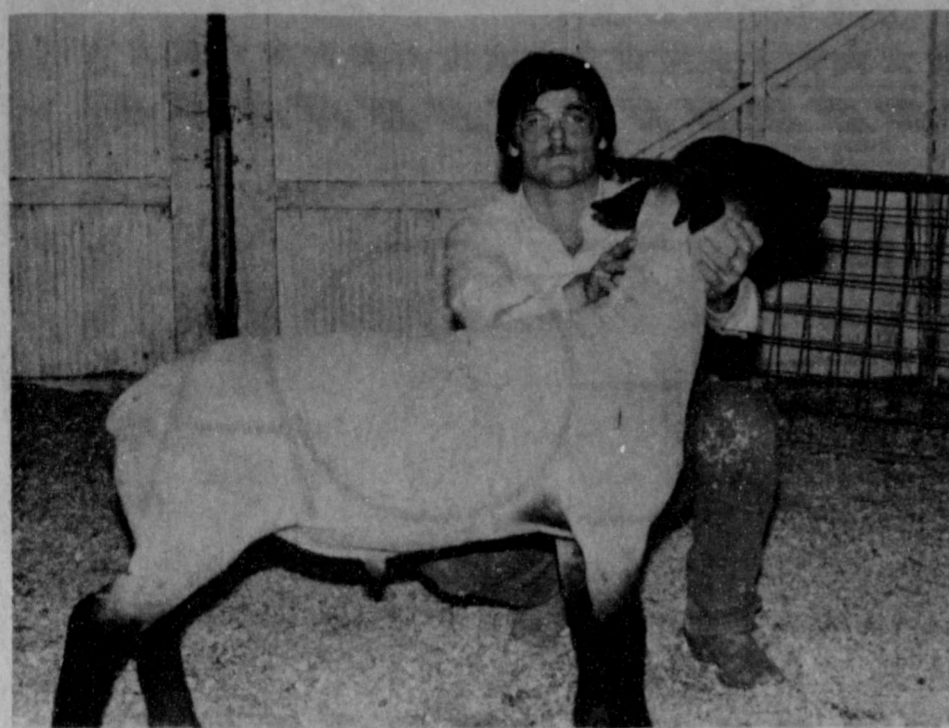
**B.B.Q. SANDWICH**

**99¢**

EACH

FRESH COOKED ALLSUP'S FAST FOOD CENTERS!





MARTY COVINGTON had the first place light weight Suffolk lamb.



ANGIE HINSLEY had the first place lightweight cross breed steer in the Floydada Jr. Livestock Show.

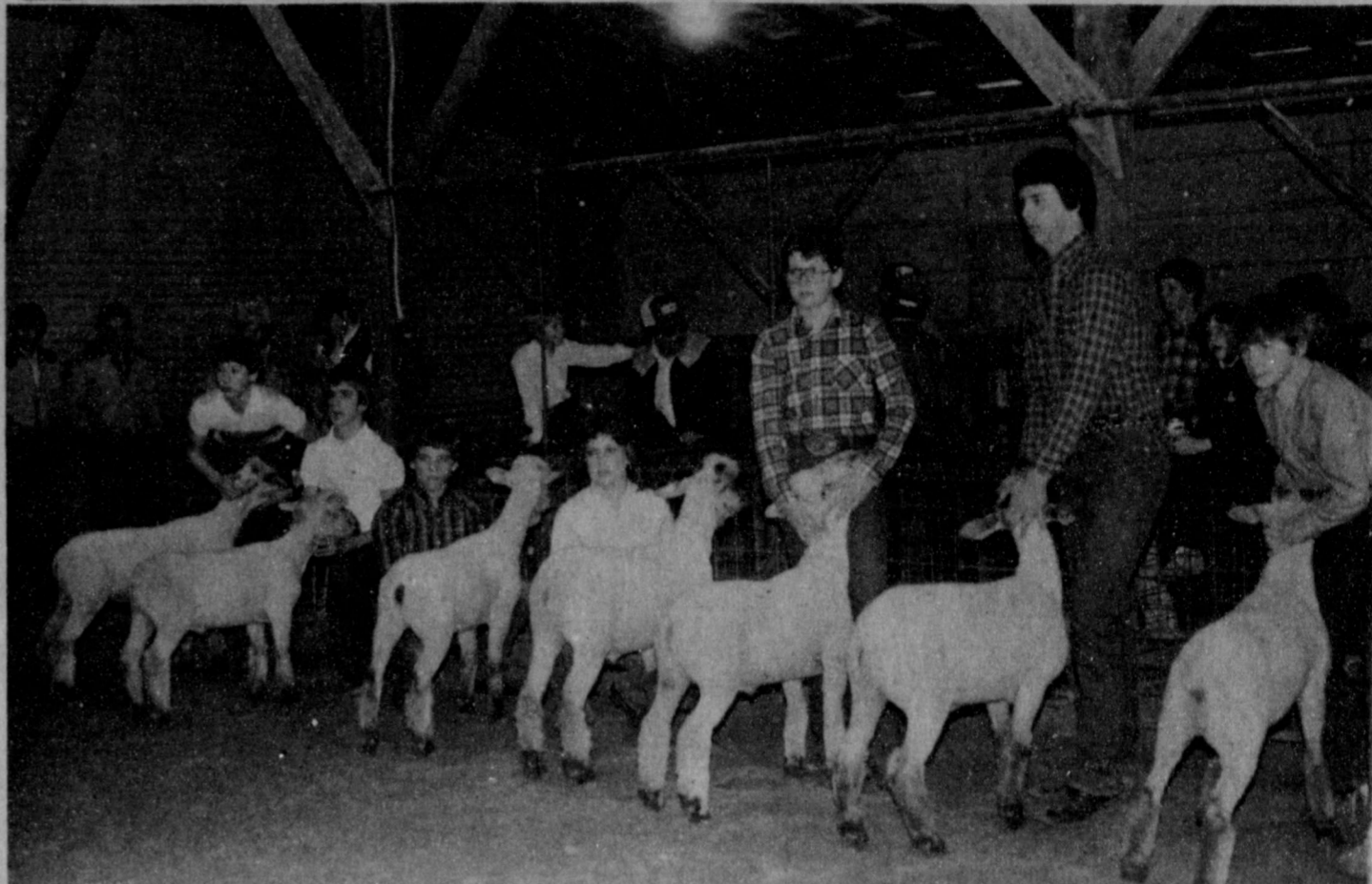


KEITH HIGHT, Breed Champion and Reserve Breed Champion winner with his Herefords. He also won the Showmanship Award in the cattle division.



MATT MITCHELL won first and second places with his lightweight fine wool cross lambs, first place with his fine wool lamb, fifth place with his medium weight fine wool cross lamb, and fourth with his southdown lamb.

# FARM NEWS



MATT MITCHELL, Ronnie Thornton, Monty Teeter, Heather Holt, Joel Teeter, Randy Race and Greg Sparkman lined their lambs up for the judge at the Lockney local show Saturday.

## Landscape & Gardening

by Benny Butler

### PRUNING PEACH, PLUM TREES

One of the most often overlooked and possibly the most important aspect of proper pruning is the fact that it modifies growth condition. Plant production during the growing season largely depends on plant vigor during the preceding year. If a tree or vine is allowed to overproduce due to lack of pruning, a smaller amount of shoot growth and metabolite storage occurs. This means a weakened plant and a decrease in production.

### Open Center Method for Peach, Plum and Nectarine Trees

First year. Prune a 3- to 4-foot tree after planting to a single stem and top at a height of 24 inches. Prune large trees slightly higher because of such vigorous growth in the nursery. This is not always desirable because of subsequent problems in planting and training. This "heading back" is important to balance the top with the root system and to begin the scaffold system correctly. Remove all branches so new branches have no competition.

When new shoots are 4- to 6-inches long, select three vigorous shoots branching from the top 6 inches of the main stem. These three shoots will grow to become scaffold limbs. They should be evenly spaced with each pointing in a different direction. Cut back all shoots to about 4 inches.

During the first growing season, allow three scaffold limbs to grow as much as possible. Cut back other shoots periodically to reduce their competition with developing scaffolds. This trashy-trunk growth helps reduce problems of sandblast and sunscald and results in greater tree growth and earlier fruit production.

Second year. During January and February, cut off all branches growing from the main stem except the three scaffold branches. Cut scaffold branches back at 32 inches to encourage subscaffolds. Remove watersprouts or suckers growing from lower parts of the main trunk.

During the growing season keep the trunk clean and stub back shoots rising straight up or into the center of the tree. Choose only two side branches (on each main scaffold branch) about 30 inches from the trunk to become subscaffolds. Select young shoots growing outward and spreading. Continue to stub back competing shoots and remove watersprouts.

Third year. In February, head back tall shoots and open up the center of the tree. Cut off suckers and watersprouts growing upright. Stub long shoots to 18 inches along subscaffolds.

During the growing season, remove suckers and watersprouts on the trunk and toward the center of the tree. Select for branches with the spreading habit to increase horizontal surface.

Mature trees. Prune mature trees to a height of about 8 feet. Cut off all shoots above this height. This allows easy picking without ladders and good sunlight penetration within the center of the tree. Remove all low hanging limbs and sprouts below 3 feet. Peaches and nectarines produce only on last season's growth. Too many branches during the growing season shade limbs and inhibit new growth for next year's crop. During the dormant season, leave only 18- to 24-inch stubs of last year's growth spaced every 4 inches along older limbs. Each year remove some of the older

branches toward the center of the tree to encourage young productive branches.

Mature plum trees: Plums usually require less pruning than peaches. Remove about one-third of the previous season's growth and thin interior branches and fruiting spurs. Each year remove all overcrowded and low hanging limbs plus suckers and watersprouts.

To maintain tree vigor, use a heavier degree of pruning every third year. Light pruning results in more fruit of small to medium size while severe pruning increases fruit size but reduces yield.

Next week's article on pruning apple and pear trees will wind up the series on pruning.

Educational programs conducted by the Texas Agricultural Extension Service serves people of all ages regardless of socioeconomic level, race, color, sex, religion or national origin.

## Water maps available

**Floyd County Hydrologic Atlas**  
The most detailed and complete ground-water maps ever prepared for Floyd County residents within the District's service area are available in a Hydrologic Atlas published by the High Plains Underground Water Conservation District No. 1.

The Hydrologic Atlas for Floyd County, Texas consists of a packet containing a set of four maps and an explanatory text. The maps are contoured at 20 foot intervals. They illustrate (1) the elevation of the land surface; (2) the elevation of the water table in the Ogallala Formation in 1980; (3) the elevation of the base of the Ogallala Formation; and (4) the saturated thickness of the Ogallala in 1980.

The data for each map describing this information is printed on a county highway base map at a scale of two miles per inch. Legal descriptions are also illustrated on the maps to assist landowners in proper identification of their property. A tremendous amount of data was used in constructing the maps and they should reflect a very accurate picture of the hydrologic conditions as of 1980 for Floyd County.

The text is short, concise, illustrated, and includes an explanation of how to read and interpret contour lines. Points discussed in the text include the Older Geological Formation in relation to the Ogallala, the composition of the Ogallala, its volume of water in storage, chemical quality, recharge, movement and water-level changes.

The Water District has compiled and published hydrologic atlases for each county within its service area. The construction and drafting of these maps was made possible with support from the Texas Department of Water Resources. Production required over six man-years of effort by the Water District staff geologists and draftsmen. The atlases are the most detailed and complete ground-water mapping investigation ever completed in this area.

These atlases were prepared to help local landowners and operators and other county residents to better understand the fresh water resource available under their towns, cities, farms and industries. They should be a valuable planning tool to confirm available water resources and for locating future irrigation well sites. The maps are intended for use primarily in providing general information to the public served by the District and are not warranted for use in real estate transactions or other legal matters.

Individual copies of the atlases for any of the counties served by the Water District may be obtained by contacting the High Plains Underground Water Conservation District No. 1 at 2930 Avenue Q, Lubbock, Texas 79405, 806-762-0181.

**MUNCY ELEVATOR**  
Lockney 652-3100

**SUN-VUE FERTILIZER**  
Lockney 652-3362

**CONSUMERS FUEL ASSOC.**  
Lockney 652-3336

**MARTIN & COMPANY**  
Floydada 983-3713

**MORTON BUILDINGS**  
HAROLD JOHN R. HUNTER  
RT. 1, BOX 1288, 1276 SOUTH PLAINVIEW, TEXAS  
RESIDENCE (806) 798-0419 OFFICE (806) 382-4369

**CASE POWER & EQUIPMENT**  
Floydada 983-2836

**FLOYD COUNTY IMPLEMENT**  
Floydada 983-3732

**FIRST NATIONAL BANK OF FLOYDADA**  
Floydada 983-3717

**FLOYDADA COOPERATIVE GINS INC.**  
Floydada 983-2884

**FLOYDADA IMPLEMENT CO.**  
Floydada 983-3584

## John Deere features new 50 series tractors

"John Deere's new 50 Series 100- to 190-hp tractors really rang the bell in official tests," said Jerry Perry of Floyd Co. Implement.

"One or another of these tractors set records for PTO fuel efficiency, drawbar pull and low sound level," Jerry noted. As a John Deere dealer, Floyd Co. Implement has just received a set of official test results performed at the University of Nebraska Test Station in Lincoln. The five new tractors were announced in August, but test results were only recently made public.

Comparison of test results shows that the 190-hp 4850 is the most fuel-efficient tractor available in the over-100-hp category. "In fact, it's the most fuel-efficient tractor over 65 hp," Jerry said, referring to PTO fuel consumption tests performed at rated engine speed. In official test language, the 4850 produced 17.47 horsepower hours per gallon of fuel.

Both the 4850 and the 165-hp 4650

broke all existing records for drawbar pull measured on a 2-wheel-drive tractor. The 4650 pulled 18,794 pounds and the 4850 pulled 20,810 pounds. "I never expected to see any 2-wheel-drive pull over 20,000 pounds at Nebraska," Jerry said.

The 100-hp 4050 set a completely different kind of record. It's the quietest tractor ever tested at rated speed and maximum power. Sound level measured at the operator's ear was only 73.5 dB(A).

"All of these tractors were really quiet," Jerry said. "At full load the 4250 was only 74.5 dB(A), the 4450 was 74.0 dB(A), the 4650 was 76.5 dB(A) and the 4850 only 75.5 dB(A). Everybody knows that Sound-Gard R body is quiet, but these numbers are really impressive."

Mr. Perry said he has the complete tests on all five tractors. He invites all interested farmers to stop in and see the results.

**RUSSELL'S EQUIPMENT & SUPPLY**  
Russell's  
Floydada 983-3751

**FEDERAL LAND BANK ASSOC. OF FLOYDADA**  
Floydada 983-2480

**ADAM'S WELL SERVICE**  
Floydada 983-5003

**PRODUCTION CREDIT ASSOC.**  
Floydada 983-2454

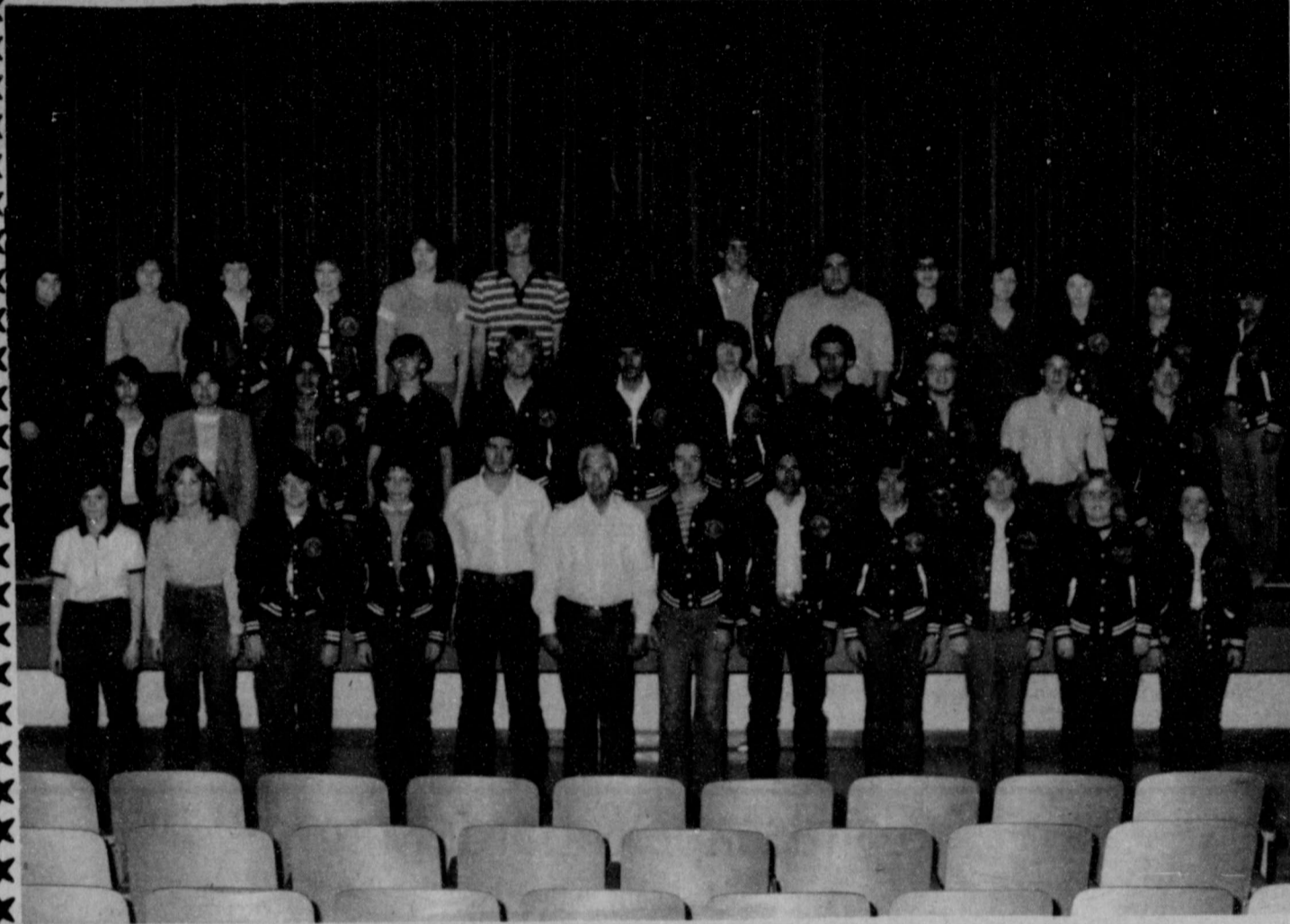
**FLOYD COUNTY FARM BUREAU**  
Lockney 652-2242  
Floydada 983-3777

# NATIONAL DECA WEEK



# DECA

Developing Future Leaders for Marketing and Distribution



We would like to extend a sincere "THANK YOU" to the many businesses and individuals who have supported us over the years. A special thanks goes to the following merchants who are training our members this year.

Anderson's Department Store  
 Arwine Drug  
 Azteca  
 Buddy's Food Store  
 Caprock Motor Parts  
 City Auto, Inc.  
 Dr. Charles Craig  
 Dairy Queen  
 Lane Decker  
 Lovell-Collins Jewelry  
 Don Hardy Race Cars, Inc.  
 Floydada Livestock Sales  
 Floydada Power & Light  
 Floyd County Hesperian

Floydada City Water Dept.  
 Dr. Jack Jordan  
 Kirtley's Market  
 Lighthouse Electric Cooperative  
 Oden Chevrolet Inc.  
 Olde White House  
 Our Place  
 Pizza Gold  
 Ponderosa Meat Company  
 REM Farms  
 Script Printing & Office Supplies  
 Shop Rite  
 Sue's Gift Shop  
 Brooks Oil Company

PRESENTED AS A PUBLIC SERVICE BY THE FLOYDADA DECA SUPPORTERS:

### BUSINESS IS GREAT IN FLOYDADA FREE ENTERPRISE

Hi-Plains Farms  
 Adams Well Service  
 Baker Insurance Agency  
 Gene's Cleaners  
 State Farm Insurance  
 Script Printing & Office Supplies  
 Oden Chevrolet-Oldsmobile  
 Pizza Gold  
 Moore-Rose Funeral Home  
 Sears  
 Allen's Dixie Dog  
 Hale Insurance Agency  
 Kirk & Sons  
 Don Hardy Race Cars  
 Summit Savings & Loan  
 Williams Florist  
 Kirtley's Market  
 Ponderosa Meat Company  
 D&P Grain Company Inc.  
 Floydada Power & Light  
 Leonards Cafe  
 Floyd County Implement  
 Thompson Pharmacy  
 Maya's Beauty Shop  
 Plainview Production Credit Assn.

Parker Furniture  
 Our Place  
 Floydada Insurance & Real Estate  
 John's Swap Shop  
 Floydada Nursing Home  
 Dons Heating & Air Conditioning  
 Howard Flying Service  
 Anderson's Department Store  
 Palace Barber Shop  
 Colonial Beauty Shop  
 Carmack Feed & Seed Co.  
 Rudy's Barber Shop  
 Southwestern Public Service  
 Brown Implement Inc.  
 Producers Cooperative Elevator  
 Lighthouse Electric Cooperative  
 Floydada Lions Club  
 Martin & Company  
 Olde White House  
 Floydada Livestock Sales  
 Floydada Cooperative Gins  
 Tony's Game Room  
 Lovell-Collins Jewelry  
 Russell Equipment & Supply Inc.  
 Arwine Drug

City Trim Shop  
 Farm Bureau Insurance Co.  
 Hale's Department Store  
 First National Bank of Floydada  
 Shop Rite Food  
 Don's Muffler Shop  
 Buddy's Food  
 Dairy Queen  
 Brooks Oil Company  
 Fina No. 15  
 Red X Fuel Stop  
 City Auto Inc.  
 Consumers Fuel Association  
 Quality Body Shop  
 Bishop-Ramsey Pharmacy  
 Davis Farm Supply & The Loft  
 Floydada Auto Parts  
 KFBA Radio  
 Caprock Motor Parts  
 Floyd County Hesperian  
 Sue's Gifts & Accessories  
 Tipton Oil Company  
 Edmiston Plumbing & Heating  
 Cornelius Oil Company

# Floydada show results

**FINE WOOL**  
 Lightweight: 1st Dean Smith, 2nd Dawn Atteberry, 3rd Ronnie Bailey

**FINE WOOL**  
 Medium Weight: 1st Jodie Smith, 2nd Jennifer Crow, 3rd Zane Colston  
 Heavyweight: 1st Jennifer Crow, 2nd Hunter Smith, 3rd Cammy Hancock, 4th Ross Lee Colston  
 Breed Champion: Jennifer Crow  
 Reserve Breed Champion: Hunter Smith

**FINE WOOL CROSS**  
 Lightweight: 1st Jennifer Crow, 2nd Garland Easter, 3rd Marty Covington, 4th Todd Cage, 5th Aric Hendricks, 6th Don Cheshir  
 Heavyweight: 1st Shannon Shurbet, 2nd Kevin Helms, 3rd Chad Williams, 4th Keith Hancock, 5th Joe Faulkenberry  
 Breed Champion: Shannon Shurbet  
 Reserve Breed Champion: Jennifer Crow

**HAMPSHIRE**  
 Lightweight: 1st Jodie Smith, 2nd Marty Covington, 3rd Joe Faulkenberry, 4th Heath Robertson, 5th Troy Don Faulkenberry, 6th Scotty Battey  
 Medium weight: 1st Terri Bailey, 2nd Heath Robertson, 3rd Joe Faulkenberry, 4th Kathie Battey, 5th James Smith  
 Heavyweight: 1st Marty Covington, 2nd Keith Hancock, 3rd Jason Brown, 4th Kevin Helms, 5th Aric Hendricks, 6th Manuel Suarez  
 Breed Champion: Jodie Smith  
 Reserve Breed Champion: Marty Covington

**SUFFOLK**  
 Lightweight: 1st Marty Covington, 2nd Dean Smith, 3rd Hunter Smith, 4th Haney Robertson, 5th Marty Covington, 6th Haney Robertson  
 Light-Medium weight: 1st Joe Faulkenberry, 2nd Cammy Hancock, 3rd Jason Brown, 4th Marty Covington, 5th Manuel Suarez  
 Medium Weight: 1st Garland Easter, 2nd Jodie Smith, 3rd Roxene Brown, 4th Chad Williams, 5th Manuel Suarez  
 Medium-Heavy weight: 1st Grant Cage, 2nd Grant Cage, 3rd Jason Brown, 4th Kevin Helms, 5th Don Cheshir  
 Heavyweight: 1st Todd Cage, 2nd Grant Cage, 3rd Kevin Helms, 4th Manuel Suarez, 5th Andra Smith  
 Breed Champion: Garland Easter  
 Reserve Breed Champion: Jodie Smith

**SOUTHDOWN**  
 1st Zora Woody, 2nd Randy Wideman, 3rd Randy Wideman  
 Breed Champion: Zora Woody  
 Reserve Breed Champion: Randy Wideman

**SHROPSHIRE**  
 1st Roxene Brown, 2nd Pam Woody  
 Breed Champion: Roxene Brown  
 Reserve Breed Champion: Pam Woody

**Grand Champion:** Garland Easter, Suffolk  
**Reserve Grand Champion:** Jodie Smith, Suffolk  
**Showmanship:** Marty Covington

**CHESTER**  
 1st Keith Hancock, 2nd Chuck Rowley, 3rd David Payne, 4th Mike Ruff, 5th Brent Williams  
 Breed Champion: Keith Hancock  
 Reserve Breed Champion: Chuck Rowley

**DUROC**  
 Lightweight: 1st Shannon Barbee, 2nd Christy Pruitt, 3rd Brent Williams, 4th James Fannon  
 Heavyweight: 1st Chad Williams, 2nd Coy LaBaume, 3rd Tim Burns, 4th Tate Harris, 5th Mark Thompson  
 Breed Champion: Chad Williams  
 Reserve Breed Champion: Coy LaBaume

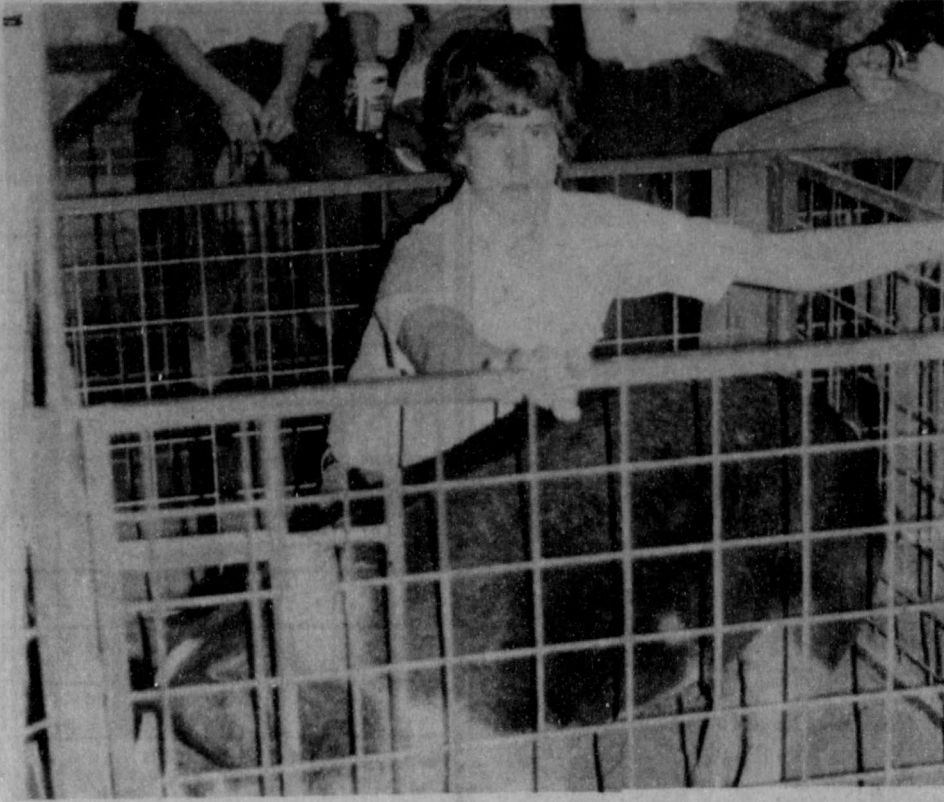
**HAMPSHIRE**  
 Lightweight: 1st Christy Pruitt, 2nd Don Cheek, 3rd Shayla Barbee, 4th Stacy Dawdy, 5th Shannon Barbee  
 Medium Weight: 1st Kristy Dawdy, 2nd Cammy Hancock, 3rd Tate Harris, 4th Mark Thompson, 5th J.B. Cates  
 Heavyweight: 1st Brent Williams, 2nd Coy LaBaume, 3rd Brian Sanders  
 Breed Champion: Kristy Dawdy  
 Reserve Breed Champion: Cammy Hancock

**YORKSHIRE**  
 1st Cammy Hancock, 2nd Kristy Dawdy, 3rd Mark Hatley, 4th Carlos Baker  
 Breed Champion: Cammy Hancock  
 Reserve Breed Champion: Kristy Dawdy

**CROSS**  
 Lightweight: 1st J.B. Cates, 2nd Garland Easter, 3rd Brian Sanders, 4th Lane Cheek, 5th Chad Williams, 6th Don Cheek  
 Medium weight: 1st Garland Easter, 2nd Rusty Rainey, 3rd Kelly Griggs, 4th Kelly Griggs, 5th Kristy Dawdy  
 Medium-Heavy weight: 1st Cammy Hancock, 2nd Shannon Barbee, 3rd Shayla Barbee, 4th Stacy Dawdy, 5th Tate Harris  
 Heavyweight: 1st Christy Pruitt, 2nd Keith Hancock, 3rd Terry King, 4th Christy Pruitt, 5th James King  
 Breed Champion: Cammy Hancock  
 Reserve Breed Champion: Shannon Barbee  
**Grand Champion:** Cammy Hancock, Cross  
**Reserve Grand Champion:** Kristy Dawdy, Hampshire  
**Showmanship:** Garland Easter

**HEREFORD**  
 1st Stacy Dawdy, 2nd Amy Hinsley, 3rd Dusty Burleson  
 Breed Champion: Stacy Dawdy  
 Reserve Breed Champion: Amy Hinsley

**CROSS**  
 Lightweight: 1st Angie Hinsley, 2nd Chad Edwards, 3rd Ross Colston, 4th Ross Colston  
 Medium Weight: 1st Mitch Ross, 2nd Zach Nutt, 3rd Shannon Edwards, 4th Dusty Burleson  
 Heavyweight: 1st Jodie Smith, 2nd Kristy Dawdy, 3rd Mitch Ross, 4th Jodie Smith  
 Breed Champion: Jodie Smith  
 Reserve Breed Champion: Mitch Ross  
**Grand Champion:** Jodie Smith, Cross  
**Reserve Grand Champion:** Mitch Ross, Cross



**GERALD JOHNSON**, winner of second place with his lightweight Poland China pig. He also won second place with his lightweight duroc.



**TIM WINTERS**, winner of 1st place with his lightweight Berkshire pig.

# Lockney show winners

**CHESTER WHITES**  
 Lightweight: 1st Daron Widener, 2nd Robert Reed, 3rd Ricky Key, 4th Hugo Araujo  
 Heavyweight: 1st Margie Araujo, 2nd Heath Rexrode, 3rd Wymon Rexrode, 4th Phillip Glasson

**DUROCS**  
 Lightweight: 1st Keith Owens, 2nd Gerald Johnson, 3rd Clint Jackson, 4th Gary Bigham, 5th Joe Widener, 6th Kip Holt, 7th Tim Winters, 8th Troy Bigham  
 Heavyweight: 1st Clay Adrain, 2nd Steven Turner, 3rd Karen Mathis, 4th Joey Davis, 5th Carlos Molinar, 6th Kip Holt, 7th Scott Poole, 8th Shawnda Brock, 9th David Martinez

**HAMPSHIRE**  
 Lightweight: 1st Karen Mathis, 2nd Heath Rexrode, 3rd Clint Jackson, 4th Tommy Floyd, 5th Joey Davis, 6th Kyle Brock  
 Heavyweight: 1st David Martinez, 2nd Margie Araujo, 3rd Clint Bigham, 4th Terry Taylor, 5th Carlos Molinar, 6th Jim Ansey, 7th Gary Bigham, 8th Rusty Carthel

**POLAND CHINA & BERKSHIRES**  
 Lightweight: 1st Tim Winters, 2nd Gerald Johnson, 3rd Steven Turner, 4th Clay Harrison, 5th Joe Widener  
 Heavyweights: 1st Phillip Glasson, 2nd Gary Bigham, 3rd Jared Harrison, 4th Wymon Rexrode, 5th Steven Turner, 6th Wymon Rexrode

**CROSS BREEDS**  
 Lightweight: 1st Keith Owens, 2nd Shea Jackson, 3rd Jody Ansey, 4th Carlos Molinar, 5th Wymon Rexrode, 6th Kyle Brock, 7th Troy Bigham and Hugo Araujo  
 Heavyweights: 1st Romeo Araujo, 2nd Rusty Carthel, 3rd Karen Mathis, 4th Robert Reed, 5th Margie Araujo, 6th Phillip Glasson, 7th Erin Adrain  
**Grand Champion:** Romeo Araujo  
**Reserve Grand Champion:** Rusty Carthel

**FINE WOOL**  
 Lightweight: 1st Gwen Lane, 2nd Matt Mitchell, 3rd Erik Anderson

**FINE WOOL CROSS**  
 Lightweight: 1st Matt Mitchell, 2nd Matt Mitchell, 3rd Ritchie Thornton, 4th Heather Holt, 5th Sam Alvarez  
 Medium weight: 1st Margie Araujo, 2nd Erik Anderson, 3rd Teddy Salinas, 4th Joel Mitchell, 5th Matt Mitchell  
 Heavyweight: 1st Tony Saucedo, 2nd Joel Mitchell, 3rd Keith Hight, 4th Scott McCarty, 5th Karyn Foster

**HAMPSHIRE**  
 Lightweight: 1st Scott McCarty, 2nd Ronnie Ford, 3rd Terri Sparkman, 4th Gregg Sparkman, 5th Donnie Ferguson  
 Heavyweight: 1st Keith Hight, 2nd Glen Sutterfield, 3rd Randy Race, 4th Sam Alvarez, 5th David Sutterfield

**SUFFOLK**  
 Lightweight: 1st Glen Sutterfield, 2nd Erik Anderson, 3rd Ritchie Thornton, 4th Terri Sparkman, 5th Glen Sutterfield  
 Heavyweight: 1st Lisa Terrell, 2nd Rusty Teeter, 3rd Lisa Terrell, 4th Karyn Foster, 5th Ronnie Ford

**SHROPSHIRE**  
 Lightweight: 1st Wes Teeter, 2nd Earl Broseh, 3rd Monty Teeter, 4th Rusty Teeter, 5th Heather Holt

**SOUTHDOWN**  
 Lightweight: 1st Scott McCarty, 2nd Wes Teeter, 3rd Gwen Lane, 4th Matt Mitchell, 5th Gregg Sparkman

**OTHER BREEDS**  
 Lightweight: 1st Erik Anderson, 2nd Scott McCarty, 3rd Terri Sparkman, 4th Earl Broseh  
**Grand Champion:** Lisa Terrell, heavyweight Suffolk  
**Reserve Grand Champion:** Tony Saucedo, heavyweight Finewool Cross

**ANGUS**  
 1st Libby Williams, 2nd Libby Williams, 3rd Greg Sparkman, 4th Colt Golden  
 Breed Champion: Libby Williams  
 Reserve Breed Champion: Libby Williams

**HEREFORD**  
 Lightweight: 1st Keith Hight, 2nd Earl Broseh, 3rd Bart Bivins, 4th Shawnda Brock  
 Heavyweight: 1st Keith Hight, 2nd Terri Sparkman, 3rd Lisa Terrell  
 Breed Champion: Keith Hight  
 Reserve Breed Champion: Keith Hight

**CROSS**  
 Lightweight: 1st Colt Golden, 2nd Chad Golden, 3rd Greg Sparkman  
 Heavyweight: 1st Matt William, 2nd Kyle Brock, 3rd Lisa Terrell  
 Breed Champion: Colt Golden  
 Reserve Breed Champion: Matt Williams  
**Grand Champion:** Colt Golden  
**Reserve Champion:** Matt Williams



**GARLAND EASTER** had the first place middle weight cross breed barrow in the Floydada Jr. Livestock Show.



**TERRI BAILEY** had the first place medium weight Hampshire lamb in the Floydada Jr. Livestock Show.

## Let's talk.

Information about your changing telephone service from Jim West, Community Relations Manager

### Divestiture, FCC actions to affect cost of local service

Concern is being expressed today in many places that changes taking place in the telecommunications industry are going to create a rapid increase in rates for local flat-rate service. Unfortunately, that's probably true. We've been saying for years that Long Distance revenues were subsidizing local rates. Because others were saying just the opposite, the public's confusion was understandable. Now that the Bell System is being broken up, the handwriting is on the wall. Revenues from Long Distance will no longer be available to Southwestern Bell as they have been in the past to help keep local rates low. Beginning this year, the company lost another important revenue contribution from the FCC's order that a separate subsidiary (American Bell) be set up to exclusively market telephone terminal equipment. Southwestern Bell may continue to sell the Bell System terminal equipment it had on hand at the beginning of the year. When it's gone, however, the company won't be able to sell Bell System-manufactured phones, PBXs, etc.

### Services will need to be repriced

Therefore, virtually every service Southwestern Bell offers will be repriced to make each contribute sufficient revenue to stand on its own, profit-wise. Local flat-rate service probably is the most under-priced service we offer, because of the generally accepted public policy that local rates should be kept as low as possible to encourage the development of "universal" service. Virtually everyone who has wanted telephone service in recent years could afford a basic local service. Public policy has

now shifted to de-regulation, with competition expected to provide the impetus to take advantage of the fruits of the ever faster technological race.

### Long Distance bargains come in minutes, too

Long Distance service may be the first to realize the benefits of true competition in the industry, with rates almost sure to go down once subsidies for local service are withdrawn. But Bell Long Distance rates within Texas are already a bargain. Surprisingly, our research indicates most people overestimate the cost of an in-state call. Do you? Test yourself. What is the rate for the first minute of a Day-rate call dialed direct (1+) from a non-coin phone, without tax, say from Amarillo to Brownsville? A. 42¢ B. 59¢ C. 73¢. Hint: It's the same from El Paso to Texarkana, Texas. You don't have to turn the page for the answer. Or even turn the page upside down. It's A. Just 42¢. You can talk as long as you like at 42¢ for each additional minute. That's one of the nice things about Long Distance. You can virtually tailor-make each call. You can pick the time, type and length of call which suits you and your pocketbook best.

\*\*\*

Remember, if you have something to talk about, don't hesitate to drop me a line.

Jim West  
 Southwestern Bell  
 916 Denver  
 Plainview, TX 79072



FRIDAY FEBRUARY 25, 1983

Showtime

Movie Highlights

Movie Ratings table with categories: Outstanding, Excellent, Very Good, Good, Not Bad, Fair, Poor and corresponding star ratings.

Main TV schedule grid for Friday, February 25, 1983, listing channels (4, 5, 9, 11, 13, 28, 34) and programs like 'My Three Sons', 'Sesame Street', 'The Juggler', etc.

5:30 a.m. Reaching Out
6:30 a.m. Breaker Morant PG
8:30 a.m. Aerobicise
9:00 a.m. Our Very Own
11:00 a.m. Greased Lightning PG
1:00 p.m. Aerobicise
1:30 p.m. Swamp Thing PG
3:00 p.m. Benji At Work
3:30 p.m. Mark Twain Theatre: On The River
5:00 p.m. The Gymnast
6:00 p.m. Gallagher: Two Real
7:00 p.m. Swamp Thing PG
8:30 p.m. My Bloody Valentine R
10:00 p.m. Loving Friends & Perfect Couples/Episode 12
10:30 p.m. A New Day In Eden/Episode 25, Shelley Raped
11:00 p.m. Sharky's Machine R
1:05 a.m. Hussy R
2:40 a.m. Kill and Kill Again PG
4:30 a.m. Benji At Work
5:00 a.m. Mark Twain Theatre: On The River

MORNING
8:05 (4) \*\*\* 'THE JUGGLER' (1953, Drama) Kirk Douglas, Milly Vitale. A talented juggler attempts to piece his life together after a soul-shattering term in a Nazi concentration camp.
9:00 (7) \*\*\* 'SITTING PRETTY' (1948, Comedy) Clifton Webb, Robert Young. A snooty, middle-aged 'genius' proves to be an excellent baby sitter.

Main TV schedule grid for Saturday, February 26, 1983, listing channels (4, 5, 9, 11, 13, 28, 34) and programs like 'Rompers Room', 'European Journal Perspectives', 'The Growing Years', etc.

5:00 a.m. Butch Minds The Baby
5:30 a.m. College
6:30 a.m. Hondo
9:00 a.m. The Shootist PG
11:00 a.m. The Bad News Bears PG
1:00 p.m. Golden Rendezvous
3:00 p.m. HBO Magazine
3:30 p.m. College
5:00 p.m. Fraggie Rock 'I Want To Be You'
5:00 p.m. The Bad News Bears PG
7:00 p.m. Hondo
8:30 p.m. The Shootist PG
10:30 p.m. Sharky's Machine R
2:30 a.m. Groove Tube R
3:45 a.m. The Shootist PG

AFTERNOON
12:05 (4) \*\*\* 1/2 'THE PERILS OF PAULINE' (1947, Comedy) Betty Hutton, John Lund. The life of silent film star Pearl White is traced from her humble beginnings to her triumph in the Follies Bergere.
1:00 (2) \*\*\* 1/2 'THE DEATH OF RICHIE' (1977, Drama) Ben Gazzara, Robby Benson. A distraught father struggles desperately to cope with the problems caused by his 16-year-old son's drug addiction.

HBO

ESPN

AM
1:00 Big 8 College Basketball: Nebraska at Oklahoma
3:00 SportsCenter
4:00 UCLA Basketball: UCLA at USC
6:00 SportsCenter
8:00 SportsCenter
9:00 ESPN's SportsForum
9:30 SportsCenter
10:00 SportsCenter
PM
12:00 ACC College Basketball: Wake Forest at North Carolina
2:00 ESPN's SportsForum
2:30 UCLA Basketball: UCLA at USC
4:30 Big 8 College Basketball: Nebraska at Oklahoma
6:30 To Be Announced
7:00 College Basketball Report
7:30 SportsCenter
8:00 NFL Theatre: Super Seventies
9:00 Budweiser Presents Top Rank Boxing from Las Vegas (L)
11:30 SportsCenter

EVENING
7:00 (3) \*\*\* 1/2 'SHERLOCK HOLMES IN NEW YORK' (1976, Mystery) Roger Moore, Patrick Macnee. Holmes and Watson rush to New York to thwart Professor Moriarty.
7:05 (4) \*\*\* 'GEORGE' (1976, Adventure) Marshall Thompson, Michele Mercier. A man, a woman and a St. Bernard set off for an adventurous romp through the Swiss Alps.
8:00 (2) \*\*\* 1/2 'THE WARRIORS' (1979, Drama) Michael Beck, Dorsey Wright. Blamed for the murder of a charismatic leader at a New York street gang convention, members of a Coney Island gang must fight their way back to their home turf. (Parental discretion is advised)

10:30 (3) \*\*\* 'HOUSE OF DRACULA' (1945, Horror) Lon Chaney Jr., John Carradine. Count Dracula tricks a scientist into giving life to a monster.
10:35 (4) \*\*\* 'NICHOLAS AND ALEXANDRA' (1971, Drama) Michael Jayston, Janet Suzman. The great love of Czar Nicholas for his wife Alexandra is set against the events leading to the Bolshevik Revolution.
11:00 (3) \*\*\* 'NIGHTMARE IN BADHAM COUNTY' (1975, Drama) Deborah Raffin, Lynne Moody. Two pretty co-eds are arrested on phony charges and sent to a women's prison farm.
1:00 (2) \*\*\* 'VANISHING POINT' (1971, Drama) Barry Newman, Cleavon Little. A former cop is aided by a blind disc jockey when he accepts a challenge to drive a high-performance race car from Denver to San Francisco in record time.
2:30 (4) \*\*\* 'THE PURPLE PLAIN' (1955, Drama) Gregory Peck, Win Min Than. An RAF pilot fights against having a nervous breakdown after learning of his wife's death.
(7) \*\*\* 1/2 'NIGHTMARE' (1956, Suspense) Edward G. Robinson, Kevin McCarthy. A young musician gets caught up in a web of murder in New Orleans.
3:40 (3) \*\*\* 1/2 'THE BELLS OF ST. MARY'S' (1945, Drama) Bing Crosby, Ingrid Bergman. A priest and a mother superior save an old parochial school by persuading a skinflint to donate land and a building to their cause.
4:30 (7) \*\*\* 'ANGELS IN DISGUISE' (1949, Comedy) Bowery Boys, Mickey Knox. When their real-estate friend is shot, the Boys decide to investigate.

FRIDAY



Marcelino Sanchez (l. to r.) plays Rembrandt, Terry Michos is Vermin and Michael Beck plays Swan, all characters in the film 'The Warriors,' to air Friday, Feb. 25 on ABC.

SATURDAY FEBRUARY 26, 1983

Showtime

Movie Highlights

Movie Ratings table with categories: Outstanding, Excellent, Very Good, Good, Not Bad, Fair, Poor and corresponding star ratings.

Main TV schedule grid for Saturday, February 26, 1983, listing channels (4, 5, 9, 11, 13, 28, 34) and programs like 'Rompers Room', 'European Journal Perspectives', 'The Growing Years', etc.

6:30 a.m. Showtime Short Picks
7:00 a.m. The Catered Affair
9:00 a.m. King's Solomon's Mines
11:00 a.m. The Adventures of The Wilderness Family Part II G
1:00 p.m. What's Up America!
2:00 p.m. Shaft of Love
4:00 p.m. Heartland PG
6:00 p.m. The Smart Shopper Show
5:00 p.m. Super Fuzz PG
7:00 p.m. Rich Little's Robin Hood
8:00 p.m. Cannery Row PG
10:00 p.m. Fleetwood Mac in Concert
11:05 p.m. A Stranger is Watching R
12:40 a.m. Chanel Solitaire R
2:50 a.m. Super Fuzz PG
4:30 a.m. Fleetwood Mac

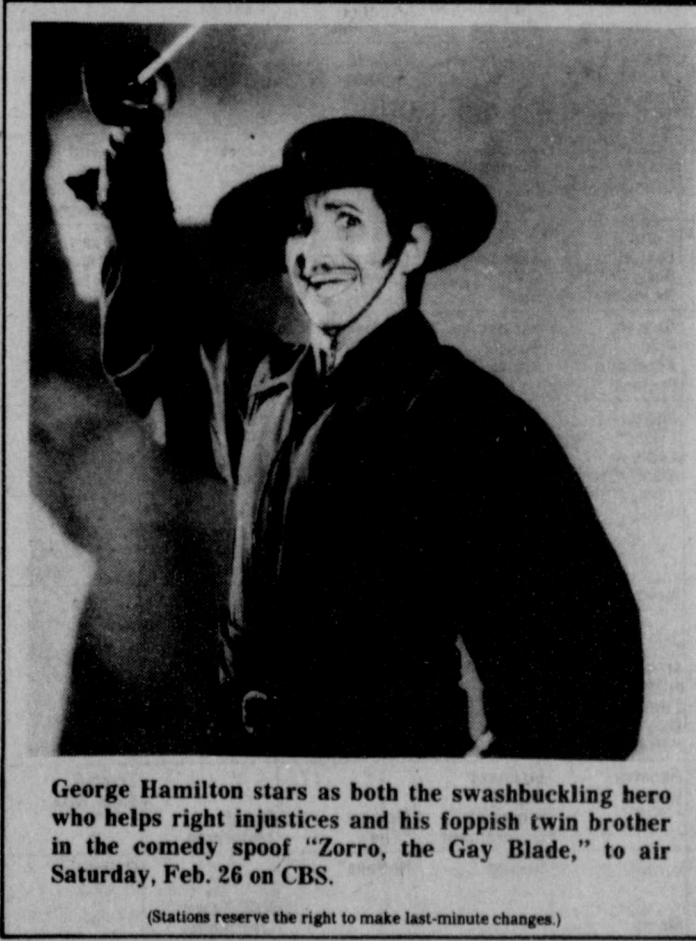
MORNING
7:35 (4) \*\*\* 'RODAN' (1957, Science-Fiction) Kenji Sawara, Yumi Shirakawa. Earth is menaced by a number of awesome and deadly flying creatures from the Stone Age.
9:05 (4) \*\*\* 1/2 'TRIPLE CROSS' (1967, Suspense) Christopher Plummer, Yul Brynner. An international agent receives medals from Germany and Britain before the end of the war, when he turns out to be a hero for the Allies.
11:00 (7) \*\*\* 'THE GUNFIGHT AT

HBO

ESPN

AM
12:30 FIS World Cup Skiing: Men's Giant Slalom from Garmisch, West Germany
2:00 College Basketball Report
2:30 SportsCenter
3:30 Future Sport
4:00 Budweiser Presents Top Rank Boxing from Las Vegas
6:30 F.A. Soccer: 'Road to Wembley'
7:30 Pony's People in Sports
8:00 SportsCenter
9:00 NCAA Instructional Series: Cross Country Skiing with Middlebury Coach Terry Aldrich
9:15 College Basketball Report
9:45 NCAA Instructional Series: Ice Hockey - Passing & Receiving with Coach Bob Johnson
10:00 Vic's Vacant Lot (Children)
10:30 To Be Announced
11:00 Future Sport
11:30 Ski School
PM
12:00 Gymnastics: USGF Single Elimination Championships
1:00 ACC College Basketball: Georgia Tech at Duke (L)
3:00 ACC College Basketball: Wake Forest at Maryland (L)
5:00 Budweiser Presents Top Rank Boxing from Las Vegas
7:30 SportsCenter
8:30 Winterworld Series
9:00 Big 10 College Basketball: Ohio State at Michigan (L)
11:00 SportsCenter

SATURDAY



George Hamilton stars as both the swashbuckling hero who helps right injustices and his foppish twin brother in the comedy spoof 'Zorro, the Gay Blade,' to air Saturday, Feb. 26 on CBS.

Movie Highlights

MORNING
7:35 (4) \*\*\* 'RODAN' (1957, Science-Fiction) Kenji Sawara, Yumi Shirakawa. Earth is menaced by a number of awesome and deadly flying creatures from the Stone Age.
9:05 (4) \*\*\* 1/2 'TRIPLE CROSS' (1967, Suspense) Christopher Plummer, Yul Brynner. An international agent receives medals from Germany and Britain before the end of the war, when he turns out to be a hero for the Allies.
11:00 (7) \*\*\* 'THE GUNFIGHT AT

DODGE CITY' (1959, Western) Joel McCrea, Julie Adams. Bat Masterson gets elected sheriff and tries to rid his town of lawless elements.
11:35 (4) \*\*\*\*\* 'THE TREASURE OF THE SIERRA MADRE' (1948, Drama) Humphrey Bogart, Walter Huston. A trio of greedy men attempt to outwit each other in their quest for gold.
AFTERNOON
12:00 (2) \*\*\* 1/2 'THE INVISIBLE WOMAN' (1940, Horror) John Barrymore, John Howard. A strange professor perfects a way to make a girl 'vanish into thin air.'
1:00 (7) \*\*\* 'ABBOTT AND COSTELLO IN THE FOREIGN LEGION' (1950, Comedy) Patricia Medina, Walter Slezak. The boys travel to Algiers and promptly become

involved in local intrigues.
1:30 (2) \*\*\* 'MYSTERY OF EDWIN DROOD' (1935, Mystery) Claude Rains, Valerie Hobson. Adapted from Charles Dickens' unfinished novel. A mob gathers with justice as a goal when three different men meet violent deaths because of one girl.
2:35 (4) \*\*\* 1/2 'THE WAR LOVER' (1962, Drama) Steve McQueen, Robert Wagner. A captain and his co-pilot become interested in the same girl.
3:00 (2) \*\*\* 1/2 'PARADISE, HAWAIIAN STYLE' (1966, Musical) Elvis Presley, Suzanna Leigh. A pair of pilots start a charter helicopter service in Hawaii.
EVENING
7:00 (5) \*\*\* 1/2 'FIRE OVER ENGLAND' (1937, Drama) Lau-

rence Olivier, Flora Robson. In the 1500s, British royalty is in bitter conflict with the Spanish.
(2) \*\*\* 'THE GREAT SMOKEY ROADBLOCK' (1978, Adventure) Henry Fonda, Eileen Brennan. A veteran long-distance trucker decides to make one final cross-country run, with a diverse group of zany characters in tow.
8:00 (3) \*\*\* 1/2 'ZORRO, THE GAY BLADE' (1981, Comedy) George Hamilton, Lauren Hutton. The heroic son of old California's famous justice fighter is incapacitated by a injury, forcing his foppish brother to don the cape and mask.
11:00 (2) \*\*\* 'BENEATH THE PLANET OF THE APES' (1970, Science-Fiction) James Franciscus, Kim Hunter. While searching for a fellow astronaut, a man discovers a mutant underground society which worships the atomic bomb.

Round Trip to Las Vegas from Lubbock or Amarillo \$120.00 Rooms as low as \$20.00 International Tours of Plainview 112 East 5th Street Plainview, Texas 79072 (806) 293-4488





2 Inch Thick or Over, Full Cut Round

# ROAST

Bone-In **\$1.59** lb.  
Boneless **\$1.79** lb.

**SAVE**

# SHOP RITE

Turkey

# DRUMSTICKS

**47¢** lb.

**MEAT Super Buys**

Prices effective thru 3-2-83  
309 S. Wall  
Floydada, Texas

**MEAT Super Buys**

Full Cut, Regular Thickness, Round

# STEAK

Bone-In **\$1.67** lb.  
Boneless **\$1.87** lb.

<b>CHEESE</b> Muenster, Half or Whole	<b>\$1.69</b> lb.
<b>FLOUNDER FILET</b> Fish Tray Pack	<b>\$1.48</b> lb.
<b>BUTTER FISH</b> Tray Pack	<b>\$1.38</b> lb.
<b>BACON</b> Sliced Shurfresh	<b>\$1.89</b> lb.
<b>HOT DOGS</b> 16 oz. Oscar Mayer, Meat, Beef, or Cheese	<b>\$1.89</b> lb.
<b>LUNCH MEAT</b> 12 oz. Oscar Mayer Variety Pack	<b>\$1.97</b> lb.
<b>BOLOGNA</b> 8 oz. Sliced Oscar Del Norte, All Meat <b>99¢</b>	<b>99¢</b>
<b>BOLOGNA</b> 8 oz. Sliced, Oscar Del Norte, All Beef	<b>99¢</b>

Turkey

# TAILS

**29¢** lb.

**PRODUCE SAVINGS**

4 lb. Bag Navel **ORANGES 99¢**

Texas Red Ruby **GRAPEFRUIT 4/\$1.00**

**PRODUCE SAVINGS**

Fresh Green Bunches **BROCCOLI 49¢** lb.

Fresh Bunches **GREEN ONIONS 5/\$1.00**

**PLAY**

**TIC-TAC TREASURE**

Instant Prizes \$1, \$2, \$5, & \$20  
plus Sweepstakes Every Week

**AVOCADOES 5/\$1.00**

5 lb. Bag US No. 1 **POTATOES 69¢**

Bartlett **PEARS 69¢** lb.

**RADISHES 39¢** lb.

Join our list of big winners!

**TOTAL SERVICE**

12 Oz Cans Shasta <b>SODAS 4/\$1.00</b>	Jumbo Roll Scott <b>PAPER TOWELS 69¢</b>	18.5 oz. Betty Crocker <b>CAKE MIXES 79¢</b>	Assorted Varieties Banquet <b>DINNERS 79¢</b>
12 oz. Treesweet <b>ORANGE JUICE 89¢</b>	303 Can Del Monte <b>GREEN BEANS 2/79¢</b>	1 lb. Mazola Corn <b>OLEO 89¢</b>	125 Count Facial Tissue <b>KLEENEX 2/99¢</b>
		32 oz. Welch Strawberry <b>JAM \$1.99</b>	42 oz. Detergent <b>PUREX \$1.29</b>
		12 lb. Purina <b>CAT CHOW \$5.99</b>	40 oz. <b>BISQUICK \$1.69</b>
		8 oz. Tasters Choice Decaffeinated <b>COFFEE \$5.19</b>	16.5 oz. Cans Hershey's Cake <b>FROSTING \$1.29</b>

**DOUBLE COUPON**

Present this coupon along with any one manufacturer's "cent-off" coupon and get double the savings from Shop Rite. Not to include "retailer", "free", soft drinks, or tobacco coupons, or exceed the value of the item.  
Thursday, Friday, & Saturday

Limit 1 coupon per manufacturer's coupon.  
Limit 4 Double Coupons per customer.  
Coupons Good at Shop Rite.

**DOUBLE COUPON**

Present this coupon along with any one manufacturer's "cent-off" coupon and get double the savings from Shop Rite. Not to include "retailer", "free", soft drinks, or tobacco coupons, or to exceed the value of the item.  
Thursday, Friday, & Saturday

Limit 1 coupon per manufacturer's coupon.  
Limit 4 Double Coupons per customer.  
Coupons Good at Shop Rite.

**DOUBLE COUPON**

Present this coupon along with any one manufacturer's "cents-off" coupon and get double the savings from Shop Rite. Not to include "retailer", "free", soft drinks, or tobacco coupons, or exceed the value of the item.  
Thursday, Friday, & Saturday

Limit 1 coupon per manufacturer's coupon.  
Limit 4 Double Coupons per customer.  
Coupons Good at Shop Rite.

**DOUBLE COUPON**

Present this coupon along with any one manufacturer's "cents-off" coupon and get double the savings from Shop Rite. Not to include "retailer", "free", soft drinks, or tobacco coupons, or exceed the value of the item.  
Thursday, Friday, & Saturday

Limit 1 coupon per manufacturer's coupon.  
Limit 4 Double Coupons per customer.  
Coupons Good at Shop Rite.