

Attend the stock shows —
support the youth of our county!

INDEX

Area News	6a	Farm News	1b
Church Directory	8a	Obituaries	11a
Classified	12a, 13a	Society	4a, 5a
Courthouse News	2a	Sports	14a
Crime Call	2a	Wes Side Story	3b

Weather

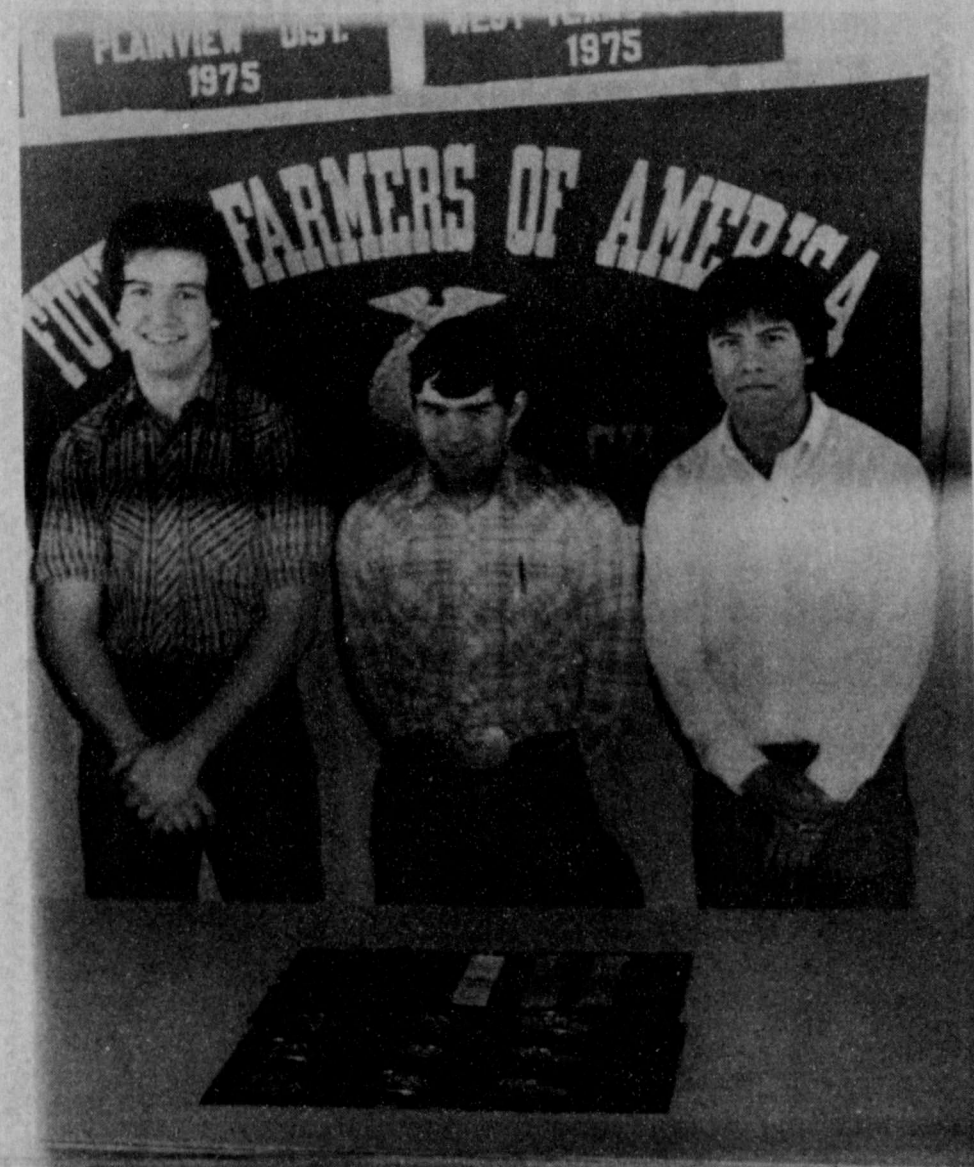
DATE	HIGH	LOW
Feb. 9	50	35
Feb. 10	58	35
Feb. 11	53	36
Feb. 12	56	32
Feb. 13	65	36
Feb. 14	72	38
Feb. 15	53	42

The Lockney Beacon ^{25°}

Rates: In county: \$11.50
Out-of-county \$12.50

Volume 82 Number 7 Thursday ©The Lockney Beacon February 17, 1983 20 Pages In Two Sections

County Junior Livestock Show begins February 20



SCOTT POOLE, Keith Hight, and Hugo Araujo proudly show off the ribbons and belt buckles which will be awarded Saturday in the Lockney local stock show. The buckles represent a diversion from the traditional trophies which have been given to the winners until this year.

The 29th Annual Floyd County Junior Livestock Show will begin Sunday, February 20 with the County Show Barns opening at 12 noon.

The show barns are located on the rodeo grounds in Floydada. Entry fees are \$5 per head for steers and \$3 per head for lambs and barrows.

Judges and classifier for the 1983 show are: Steer Judge, Spencer Tankley, Bailey County Extension Agent; Swine Judge, Paul Gross, Amarillo District Extension Director; Lamb Judge, John McNeill, Extension Beef Cattle Specialist of Amarillo; Classifier, Gary Stanford, Jones County Extension Agent.

The show will conclude with a banquet Thursday night for 4-H and FFA exhibitors and parents to be held at Lockney Elementary School Cafeteria in Lockney. The banquet, sponsored by the Floyd County Farm Bureau, will be at 7 p.m.

Lockney and Floydada 4-H and FFA club and chapter sweethearts have begun membership card sales for the show. Membership dues to the Stock Show Association are \$5 for individuals and \$25 for businesses.

Memberships to the Association gives an individual or business voting rights in the Association and the dues are used to maintain and improve the existing showground facilities.

This year's 4-H and FFA Sweethearts are: Shannon Edwards, Floydada 4-H; Jodie Smith, Floydada FFA; Heather Holt, Lockney 4-H; and Libby Williams, Lockney FFA.

The Sweetheart that collects the most membership dues will become the 1983 Floyd County Junior Livestock Show Queen.

A schedule for the show is given in full on page two of this issue.

The executive committee is headed by Albert Scheele, president. Roger Dawdy is vice president and Larry Barbee and Stan McClendon are secretary-treasurers. Scheele has been associated with the livestock show for 26 years, serving for the first time without having one of his six children as a participant. He thought there were either 5 or 6 shows before he was involved.

He said the local shows are "kinds like practice. And we have some of the finest sales for a county with a

comparable population."

"What keeps the show a good one is the interest of the parents and families," Scheele commented. He said the show generates whole families working together which creates a cooperation among the whole county.

He said he thought raising the animals for show taught responsibility and leadership to the kids, because without that experience they would miss so much since a larger percent of the children of today do not have chores as they did when Scheele was growing up. "They learn a lot about human nature working with the animals. They learn to be gentle and train the animal. They learn to win and lose. And they meet kids from other areas."

In larger shows that Scheele had attended with each of his children, including Ft. Worth, Amarillo, the State Fair in Dallas, Plainview, Lubbock, and El Paso, he said he felt they saw a depth of quality and better, finer animals. In addition to their meeting people from all over, he said a lot of information was exchanged on improving rations, grooming, etc. "Some families use the stock shows as their form of recreation. You

just don't see vandalism at the shows. Some of our finest young people are from rural areas."

He reminisced about how when their oldest son showed a Hereford steer, the entire family cried to see it go. David Scheele now is a veterinarian in Midland and is married to the former Jane Thacker of Lockney.

The Scheeles had their fair share of good fortune. Four years in a row they won the steer show, three of those years with animals they had raised. Scheele has had a registered Angus herd for about 25 years.

As a grandfather of 10 grandchildren, Scheele expects to see many of them participate in the shows.

Scheele said because the economy is down a little that he would be surprised if this year's sale broke the record sale of last year, but he did not expect it to drop drastically either.

Interest in this year's auction is mounting and a concerned effort is being expanded by supporters to make this one of the best sale years in the show's history.

Council receives building site status update

At the regular City Council meeting held at the City Hall Thursday morning, February 10, Mayor J.D. Copeland, City Secretary Erma Lee Duckworth, Councilmen Paul Reece, Dub Dipprey,

and Kenneth Wofford, and City Police Chief Bill McConnell were in attendance.

The minutes were read from last month's regular meeting and approved.

as well as the minutes from the special called meeting held January 27. At that meeting the council approved the placing of a plaque on the City Hall, designating it as a historical site. It sits on the original site of the Burns Blacksmith Shop. Also in the called meeting Ordinance 226 was approved to regulate the drilling of water wells within the city limits.

Barbara Ellis of Parkhill, Smith & Cooper, Inc. of Lubbock met with the Council to give them a status report on sites found available for the building of low-income housing. She reported that sites meeting HUD requirements that would accommodate more than 2 units had been in short supply in Lockney.

A proposal is expected to be submitted to HUD on or before April 8. The three sites to be contained in the proposal, if all are approved by HUD, would be adequate for the building of 3 one-bedroom duplexes, 6 two-bedroom

duplexes, 3 three-bedroom duplexes, and 2 four-bedroom duplexes.

A public hearing will be held at the City Hall Tuesday night, March 22, at 7:00 p.m. Prerequisites such as contacting all of the landowners on the tax roll within a quarter mile of the proposed sites and erecting prescribed signs on the sites will be accomplished before that time.

Allowing for a 60-day processing period by HUD from the proposal date, Ellis said construction could easily be started by September 30. The units would be maintained by the Housing Authority.

In other business, Councilman Dipprey made a motion to call an election for April 2. Councilman Reece seconded the motion. Two councilmen's terms, Wofford and Kring, and the term of the mayor will expire. Mayor Copeland and Councilman Wofford indicated they would seek another term.

Local livestock show begins Friday

The annual Lockney Jr. Chamber of Commerce Livestock Show will be held February 18-19 at the Livestock Barn located on the Floyd County Fairgrounds in Lockney.

No entry fees are required for this show.

Paul Smith, an agriculture teacher in the Friona schools, will be the judge of this year's show.

The weighing in of lambs will start at

5:00 p.m. Friday. Swine will begin weighing in at 6:00 p.m. Animals should be checked in by 6 p.m. Friday.

All steers must be in the barns by 8 a.m. Saturday morning. Weigh in of the steers will be completed before 9 a.m.

Entries will be accepted from any regularly enrolled 4-H member, boy or girl who is nine years of age or older before the show or any FFA or FFA

member under the supervision of the County Agent or Lockney Vocational Agriculture Instructor and attend public schools in Lockney, provided they are in show condition.

The show is preliminary to the Floyd County Jr. Livestock Show which will begin on Sunday.

Mike Mowrey, high school vocational agriculture teacher, said he expected

approximately 85 swine, 70 sheep, and 16 steers in the local show. He indicated Grand Champion, Reserve Grand Champion, and Showmanship winners in each category will be awarded belt buckles this year.

Bernie Ford will be steer superintendent, Hubert Dudley superintendent of the swine division, and Clar Schacht of the sheep category.

This Week

Deadlines

Starting March 1, deadlines for all ads and news articles for that week's Beacon will be 5:00 p.m. on Mondays. We expect this to take some adjusting, but trust it will not create any problems.

A Bite Out of Crime

Rural residents of Floyd County are invited to attend the program "Increase the Security of Your Farm" at 7:30 p.m. on Thursday, February 17. The program which will be held at the A&M Engineering Center on the Matador Highway, will inform rural residents of practical steps to prevent crime against their families and property. The program is free and sponsored by the Floyd County Program Building Committee.

Craft show

Il Penseroso's Arts and Crafts Show will be held Saturday, April 9 from 9 to 5 in the Lockney Elementary Cafeteria. A limited number of booths are available but will be made available on a "first come-first serve" basis. Booth rental will be \$25 with an additional \$5 for each additional exhibitor in each booth. For more information please call Ginger Mathis at 296-7096 or Brenda Mangold at 652-3855. Funds from the craft show will go toward the club's purchase of a portable incubator for Lockney General.

Whirlers

The Whirlers will be at the Massie Activity Center Saturday night at 8:00 p.m. A cordial invitation is extended to the public to come out and enjoy the fun.

Bridge tourney

Anyone interested in participating in a bridge tournament and luncheon to be held Friday, February 25, from 9:30 a.m. to 3:00 p.m. should preregister by Wednesday, February 23. The tournament, sponsored by Il Penseroso Junior Study Club, will be held in the American Legion Hall in Lockney. Tickets will be \$7.50 per person, with all proceeds going to purchase an incubator for Lockney General Hospital.

Anyone wishing to enter or more information may call Lisa Mosley at 652-2569 or Brenda Mangold at 652-3855.

LVN exam

A Licensed Vocational Nurse's Aptitude Exam will be given at 8:30 a.m. Thursday, February 24 in Room 101 of the Wheeler Building located at the International Occupational Center at 8th and Yonkers in Plainview. The \$4 fee is payable at the time of registration. Those taking the test must be present at 8:15 a.m. and have a completed application for admission. Those forms may be picked up at the OIC from 8:30 to 5:00 Monday thru Friday.

For more information call the OIC, (806) 293-3605.

School board to accept bids on two city lots

In a regular monthly meeting held Wednesday, February 9 at 1:00 p.m., the board for the Lockney Independent School District heard from Superintendent W.H. Hallmark in his report on how the weather had taken its toll on ADA and state funding for the district.

In the principals' reports James Poole, high school principal, reported on his trip to the state vocational school in Austin the weekend of February 5. Raymond Lusk, junior high school principal, gave a rundown on the national principals' convention he attended in Dallas the previous week.

Mike Mooney was approved as election judge of the April 2 election. Helpers will be Murle Mooney, Kenneth Wofford, Maria Arellano, and Kenneth Tate. The election will be held in the entrance of the high school. Deadline for sign-up for candidates wishing to run in the election is March 2.

The board approved calling for bids on lots 13 and 14 in Block 4 of the Walling Addition on the corner in front of the elementary school. Persons bidding on the property must submit escrow money equal to 10% of his or her bid. If his bid is accepted, and he turns down his option to buy, the escrow money will be forfeited. The bids will be opened at the next regular board meeting, presently set for March 8.

The board elected to send a red van not currently being used to Huntsville during the spring break for renovation and installation of seats for use by small

school groups. A bus which was budgeted for renovation will also be delivered there at the same time.

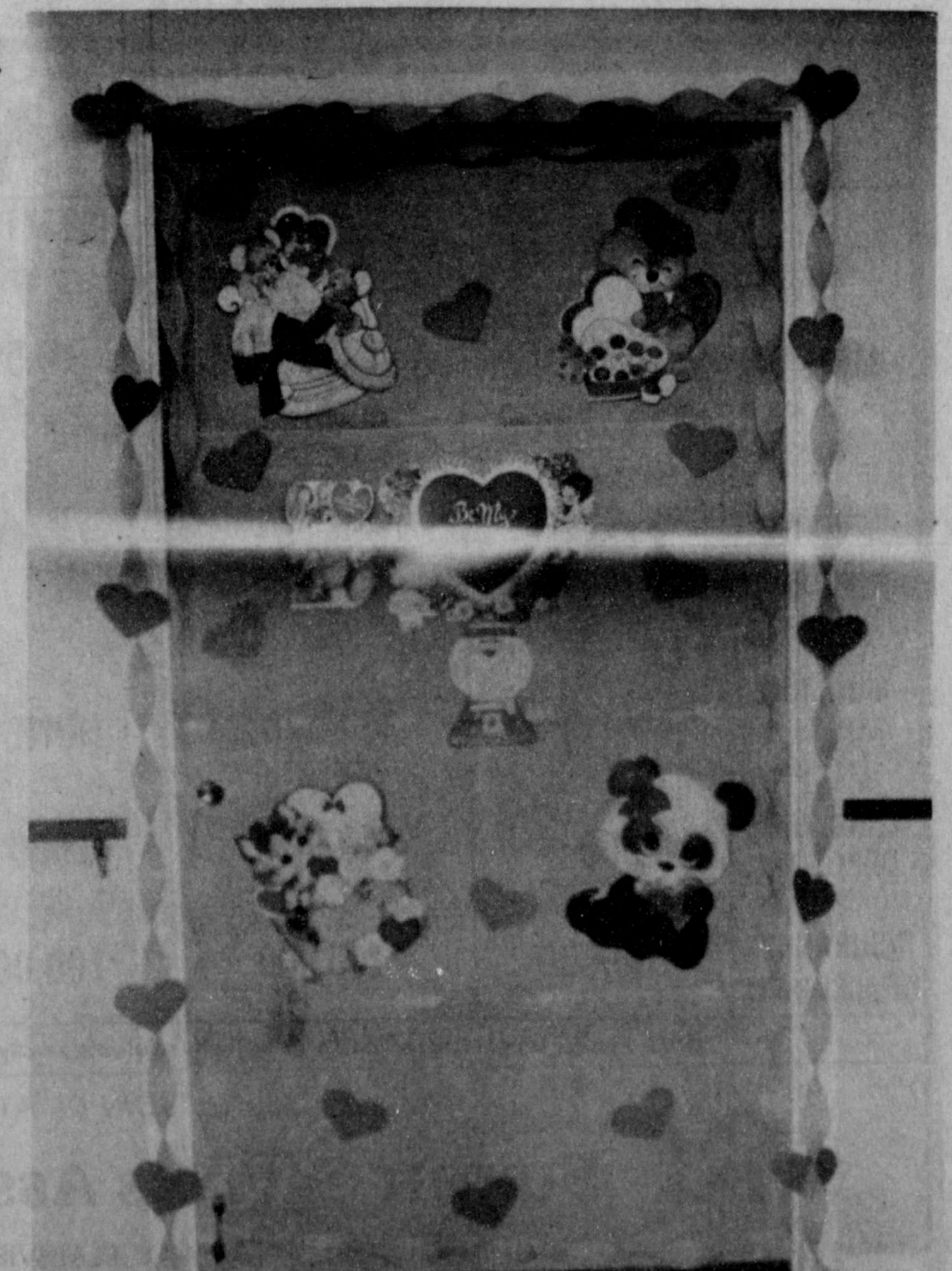
The 1983-84 school calendar was approved. The first semester will consist of 88 days; 87 in the second. 5 in-service days and 3 workdays are included. A short summary of the calendar follows:

August 22, 23rd	In-Service Work
August 24	First day of classes
September 5	Labor Day holiday
Nov. 24, 25th	Thanksgiving holiday
Dec. 19th	In-service comp. time teachers
Dec. 19-30th	Christmas holidays
January 2	Holiday-comp. time teachers
January 12	First semester ends
January 13	Work day - teachers
January 16	Second semester ends
February 17	In-service-comp. time teachers
March 12-16th	Spring break
April 20	In-service-comp. time teachers
May 24	Last day of school
May 25	Workday

Principal R.L. Knox, elementary principal, and principals Lusk and Poole were hired, the term of their contract being through 1985. Athletic Director and Head Coach Bob Purser's contract was renewed through 1984.

Resolution was approved to tax automobiles.

Friday, February 18, was set for a makeup day; originally it was a scheduled teachers' in-service workday.



FIRST PLACE - This door, decorated by Rosalinda Hernandez, won first place out of the 26 doors decorated at Lockney Care Center for Valentine's. The four judges were residents of the Center: Mary Jo Fielding, Eaker Pyle, Mary McCracken, and Richard Lanham.

King Irresistible crowned at LHS

The Student Council sold carnations to the student body for Valentine's and delivered them to the classrooms on Friday. Special messages were attached from sweethearts or friends.

An assembly was then held to deliver special "singing telegrams" that had been purchased for those "one in a million" guys or gals.

The highlight of the assembly was the crowning of King Irresistible. During the week each girl in school had received three paper hearts. The guys were to flirt with the girls to coax a heart from them. The boy with the most hearts at the end of the week was crowned the king.

Moses Blanco had flirted well, for he finished first with 38 hearts. Runners-up were Tim Winter and Teddy Salinas.



KING IRRESISTIBLE, Moses Blanco, is accompanied on the left by Tim Winter and right, Teddy Salinas. They were runners-up.

Broseh wins at El Paso

Nine Lockney students participated in the El Paso Stock Show. They were accompanied to the show by Mike Mowery, high school vocational agriculture teacher, Carroll Anderson, Mr. and Mrs. Joe Neil Rexrode, and Mr. and Mrs. Kenneth Broseh.

The group departed Thursday, February 3, and returned late Wednesday, February 9.

Keith Owens won seventh with his cross. Heath Rexrode place sixth with a Chester white pig. Wyman Rexrode came in 14th with a Poland China pig.

Earl Broseh won grand champion with a Hamp ram reserve grand Champion with a Suffolk ram, reserve grand champion and grand champion with Hamp ewes. He also placed second with a Hereford heifer.

Other locals showing animals in the show were Donnie Ferguson, Keith Hight, Scott McCarty, Daron Widener, and Erick Anderson.

Lockney, Dear Old Lockney

[Editor's Note: This clipping was sent to us by Fred H. Corder, 5423-14th, Lubbock, Texas. He found it in a book belonging to his grandfather, Joe Allen Nall (10-22-1849 to 7-15-1935), which had to be printed somewhere between 1912-15. He indicated in his letter that Walter Reeves lived on the Nall place and was raised on the old Vandergriff farm.]

Where is there such charming grace?

Lockney, dear old Lockney!
How I love your winds so bold,
How I love your winters cold,
How I love your plains of gold,
Lockney, dear old Lockney!

Let me rest beneath your trees:
Let me feel your cooling breeze:
Let me hear your rolling seas—
Lockney, dear old Lockney!

While my blood is surging free,
While there's life and liberty,
All my song shall ever be—
Lockney, dear old Lockney!
Take my life and take my hand,
Let me die at your command,
God, I love my native land,
Lockney, dear old Lockney!

—Mrs. J.R. Vandergriff,
Corpus Christi, Texas.

See you
at the
Stock Show
Saturday.

Lockney, Dear Old Lockney
Spell it out in shining gold,
Shout each letter clear and bold,
'Tis the sweetest name yet told—
Lockney dear old Lockney!
Tell it far and tell it near,
Tell it till a world shall hear,
There is not a place so dear,
Lockney, dear old Lockney!

Where is there a sweeter place?
Where is there a nobler race?



11 HIGH SCHOOL youths including Amy Shaw, Terri Sparkman, Stacy Manley, Cherie Parrish, Rachelle Ford, Russell Ford, Coy Holley, Gary Kent, Keith Owens, Donnie Ferguson, and Scott McCarty boarded a bus at the First Baptist Church Thursday afternoon about 2:30 p.m. for a

3-day trip to Glorietta, New Mexico and did some skiing at Santa Fe. Sponsors accompanying the young people were Jeff and Gay Terrell, Jean Sparkman, and Skip Parrish. They returned Sunday morning about 2:00 a.m. "all in one piece" and reported having a good time.

Winners at Lockney Care Center of decorating contest announced

Second place winner of the Door Contest at Lockney Care Center was Joe Munoz with the door that he decorated and wrote this poem for the ladies who share that room. Lee Atchley and Billie Self:

Sweethearts embracing,
Sneaking stolen kisses,
Falling in love,
For cupid never misses.

A different kind of love I've seen.

"I haven't heard of anybody who wants to stop living on account of the cost."
Kin Hubbard

A love not known by many,
In the eyes of two dear women,
Lee and Granny.

They care and feel for each one here,
They share memories they each hold dear.

Of raising young ones and watching them grow,
Of seeing sunsets all aglow.

So if Valentine's is a day of love,
And you'd like to hear of the truest kind.

Talk with these two ladies,
Look into their eyes and you will find all there is to find.

Estella Castro won third place by decorating the doors at the entrance of the cafeteria of the Care Center. The residents all liked it because everytime they saw it, it meant "they were going to get to eat."

Honorable mention winners were Lavada Giffith, Donna Yearly, Yolanda Lopez, Lee Whitley, and Tina Nuncie.

Lockney School Menu

February 21-25

Monday:

Breakfast-Toast, sausage, milk, peaches
Breakfast-Barbequed chicken, potato salad, spinach, milk, apricot cobbler, hot rolls

Tuesday:

Breakfast-Cinnamon biscuit, fruit cocktail, milk
Lunch-Corn dog, French fried potato rounds, baked apples, hot roll, milk

Wednesday:

Breakfast-Rice, milk, applesauce
Lunch-Turkey pot pie, tossed salad, milk biscuit, peaches, brownies

Thursday:

Breakfast-Cold cereal, milk, pears
Lunch-Ham salad on bread, French fried potatoes, milk, cherry cobbler

Friday:

Breakfast-Toast and peanut butter, milk, apricots
Lunch-Sloppy joe on bun, fried okra, pinto beans, milk, peanut butter cookie

THE LOCKNEY BEACON
(USPS 317-220)

Published weekly each Thursday by Floyd County Publishing Co., 211 North Main St., Lockney, Texas 79241. Second class postage paid at Lockney, Texas. Subscription rates: local \$11.50 per year, out-of-trade area \$12.50 per year. POSTMASTER: send address changes to the Lockney Beacon, P.O. Box 187, Lockney, Texas 79241.

David Cates Publisher
Carolyn Redding Advertising Manager
Editor

Fittin'est Pecos.

The fittin'est for work. The fittin'est for play. The fittin'est for heel-hugging comfort. Choose from a selection of Red Wing Pecos pull-ons with sizes that are right for you.

*Not all sizes in all widths.

SIZES
AAA-EEE
5-16



1155

You've earned your Wings!

Red Wings
Hale's Dept. Store

WE CAN EXPLAIN CROP INSURANCE TO YOU IN 30 MINUTES!!!

Its easy with our new IBM computer. Stroud Crop Insurance has programmed this machine so that we can help you understand more about your crop insurance options in a half-hour than you could in a week using pencil and scratch pad.

In a few minutes you can compare any level of multi-peril insurance with pure hail insurance, using any combination of losses, and then you can see how Stroud's new "35/70" supplemental hail insurance endorsement may be used to eliminate many of the objections of the multi-peril policy. This "35/70" endorsement isn't available from any other agent in the area and is especially attractive where a low guarantee has prevented you from carrying Multi-Peril in the past.

After we answer your questions we will print out the examples for you so that you can refer to them later instead of having to rely on memory.

Come by now while we both have plenty of time!!!

GOEN & GOEN

W. Dale Goen & LaVerne McCarty
983-3524

102 E. California

Floydada, TX

Take the worry out of wondering whether your money is safe!
Federal Deposit Insurance Corporation, plus Our Bank Reserves,
guarantees safety of your money!

Both savings and checking accounts are insured

First National Bank

in Lockney

Each depositor insured \$100,000.00
FDIC
FEDERAL DEPOSIT INSURANCE CORPORATION

652-3355

A FULL SERVICE BANK





TWENTY-FIFTH ANNIVERSARY DINNER—Mr. and Mrs. Natlidad Joe Luna, who were married February 26, 1958, will be honored on their twenty-fifth anniversary with a dinner in the Rebekah Lodge Hall, 210 W. Washington, Lockney on Saturday, February 26, at 5:00 p.m. The couple's children will be hosts for the occasion: Jane Martinez, Crestina Luna, Jose Luna, Diana, Cornelius and Damaian Luna, all of Lockney; Margarita Saucedo of Seminole, Antonia Ibarra of Amarillo, Dolores Ochoa of Lubbock, and Frances Soto of Plainview.

Floydada Nursing Home Happening

By Dartha Westbrook

On Monday, Kim was here for our Music Therapy. I wish you could have been here to see about 15 Residents holding a parachute, and moving it to the music. It was just beautiful, colorful and so graceful. Kim really has a way with our Residents, and seems to bring out the music in all of us. You are more than welcome to come out and enjoy this time every other Monday at 3:30.

On Tuesday, we enjoyed our Bible Study. We are studying in Psalms, and have some very interesting discussions. On Wednesday, our Bingo winners were Emmet Lawrence with three games, Susie Thompson with three games, Vera Duke and Una Clark were winners of two games each. Susie Thompson was our black-out winner.

It was so good to see so many of our Volunteers out last week doing various things for our Residents. I saw one volunteer take a large box of mending home, and she brought it back before the day was over, with all the buttons sewed on, rips sewed up, and ready to wear. Several were doing manicures, and many just visited the individual Residents. I don't know a better place to spend your time, nor a more rewarding

experience--thanks Volunteers!

Thursday was a day to remember, with our "Good Old Days" time. We started out talking about our Valentines and Sweethearts and ended up singing "Precious Memories" after about an hour of happy remembering.

If you have never taken the time to sit and listen to an elderly person, you just don't know what you have missed. They have so much wisdom and knowledge, and they are the most interesting individuals when you get them started.

On Friday we had our two movies and popcorn, this is a real treat for some of our Residents.

We have a new Resident from Matador. Her name is Ruth Benson, and she is in room 8N. We hope her stay here will be a happy one.

Thanks to all our visitors last week: Rita Thompson, Carolina; Deonta Odum, Ruby Davis, Dalores Cannon, Dorothy Neff, LaDonna Rosales, Mendy and Nicholas, Hazel Bradley, Gene Baird, Vicki Roberts, El Paso; Doris Castleon, Merrit Island, Florida; Milton Roberts, LePuente, California; Dana and Jo Lee Ellis, Marvin and Vertie Powell, Crosbyton; and Tenia Cooper, Crosbyton.

Reves to celebrate Golden Wedding Anniversary

Mabel (Youngquist) and G. Elmo Reves will be celebrating their Golden Wedding Anniversary at a reception in their honor on Sunday, February 27, from 2:30 until 4:30 p.m. The reception will be held in the Fellowship Hall of the First United Methodist Church in Lockney.

The grew up in Jones County, and were married at Avoca, Texas, March 1, 1933. They made their home in the Ericksdahl Community for five years before moving in 1938, to the South Plains Community in Floyd County. They lived there until they retired from farming in 1975 and moved to Lockney. They have been active members in the Methodist Church both at Sterley and Lockney.

Hosting the reception will be their daughters and husbands, Shirley and John Eslinger of Childress and Connie and Hansel Sanders of South Plains, their six grandchildren and seven great-grandchildren including: Dwain and Sherry Wright of Beaumont; Dan and Dianna Wright of Wink; Pam and Jerry Buzan of Morgan; Gary and Jeni Sanders of Lubbock; Mark and Dee Earle Sanders of Floydada and Mike Reve of Plainview.

The public is cordially invited to attend the reception to help make this a memorable day for the couple. They treasure your friendship, and your presence will be most cherished. No other gift is necessary.

Mitchell hosts 1929 Study Club February 10th

The 1929 Study Club met in the home of Frances Mitchell, Thursday, February 10, with Miss Ann Sweptston as Co-hostess.

The group was led in the pledge of allegiance to our flag by Anne Sweptston. Roll call was answered by giving an old or favorite doll of long ago.

The treasurer's report was given by Mrs. Cleo Goen.

Mrs. Ben Whitaker read a letter of appreciation from the State Hospital in Vernon concerning Christmas gifts sent in December. She also read an invitation from the Caprock Hospital for the tour of the facilities on Sunday afternoon February 13th. The Club voted to

sent a contribution to the Caprock Auxiliary.

The program was on Hobbies, and "A Show of Dolls" was given by Frances Mitchell, during which time she showed some of her dolls, giving history and explanations on them.

Refreshments were served to Mrs. Nettie Adams, H.O. Cline, C.W. Denison, Roy Fawver, Clarence Goins, C.M. Meredith, E.J. Morehead, W.B. Parrack, S.W. Ross, George Smith, Ben Whitaker, Q.D. Williams, Misses Anne Sweptston, and Frances Mitchell.

The next meeting will be a pot luck luncheon March 3 at the Museum.



MR. & MRS. G. ELMO REVES

Abby Battey crowned sweetheart

The Alpha Mu Delta Chapter of Beta Sigma Phi held its annual Valentine Social Saturday, February 12, 1983 at The Olde White House in Floydada.

Highlight of the evening was the presentation of the chapter's 1983 sweetheart, Abby Battey. President Duffy Hinkle presented the new sweetheart with a short introduction and giving her a red rose. 1982 sweetheart Mitzi Nixon then crowned the new sweetheart.

Abby is a new member in Beta Sigma Phi this year. She is married to Jerry Battey. She is employed as a secretary at Don Hardy Race Cars.

Members were served barbecue, potato salad, beans, cornbread, and cherry cobbler. Those present were: Bill and Duffy Hinkle, Abby and Jerry

Battey, Danny and Mitzi Nixon, Steve and Donna Anderson, Glen and Debbie Bertrand, Larry Ogden and Penny Bertrand, Eric and Julianne Cornelius, Joel and Holly Hendrix, Steve and Judy Lloyd, Stan and Wendy Pierce, and Mitch and Tana Probasco.

LOCKNEY LOCALS

Mary Lou Bollman, Myrle Wofford and Wynona Allison of Lockney joined with other members of the South Plains Quilters Club, Wanda Miller, Mary Crook, Joy Denton, Betty Royal, Agnes Oberhaus, Elfreida Bentke, and Virginia Spain, to view an exhibit of quilts at the Panhandle-Plains Museum in Canyon on Monday of last week. They saw quilts ranging in age from 1806 to the present.

Alpha Sigma Upsilon see "The Verdict" in Lubbock

Texas Alpha Sigma Upsilon had a social January 30, 1983 at Lubbock. Everyone met Sunday afternoon at 12:30 p.m. at the home of Nancy Jarnagin to leave for Lubbock.

They all decided to see **The Verdict** with Paul Newman. Following the movie the group dined at Steak and Ale

for dinner. Everyone enjoyed the afternoon while the husbands watched the Super Bowl.

Those who attended were: Sheryl Derryberry, Barbara Edwards, Rhonda Guthrie, Jan Nichols, Gail Noland, Janice Poteet, Vicki Ware and Vikki Yeary.

"Laugh Lines"

BY DON AND SARA PROBASCO
Bits of Humor, Trivia, and an occasional Word of Wisdom

A good citizen is one who wants better schools, better roads, better public officials, and lower taxes.

Suspenders: the oldest form of social security.

Posing the farmer and his college-age son for a picture, the photographer suggested that the boy stand with his hand on his father's shoulder. "If you want it to look really natural," said the father, "he could put his hand in my pocket."

Did you hear about the college football player that was so dumb that when he won his letter, somebody had to read it to him?

The boy wrote home: "I'm getting along fine in everything but school."

No woman has ever made a fool out of man without his full cooperation.

The trouble with today's economy is when a person is rich it's all on paper, but when he's broke, it's in cash.

The safest way to double your money is to fold it over once and put it in your pocket.

A good way to protect your money and valuables is to have a good safe in your home or place of business. If you have a safe, call Pro-Lock Shop for service or to change the combination. If you do not have a safe, call for information on all sizes and types.

PROBASCO'S

Pro-Lock Shop
24-hour mobile
Locksmith service

Studio South
Stained Glass Art
Gifts and Supplies

2 miles north of South Plains on the Silverton Highway (Hwy 207)

983-3834
Visa and Mastercard Welcome

9 West SHOES

Now At

Brown's
DEPARTMENT STORE
106 NORTH MAIN LOCKNEY

Olde White House
702 South Main
Floydada, Texas
983-5441

Thursday, Feb. 17th
Swiss Steak

Friday, Feb. 18th
Baked Chicken w/
Wild Rice

Monday, Feb. 21st
BAked Ham w/ Orange
Glaze

Tuesday, Feb. 22nd
Steak Roll ups

Wednesday, Feb. 23rd
Pork Chops Mexicali

A Unique Dining Experience

Senior Citizen Menu

February 21-25

Monday: Beef stew with vegetables, squash casserole, tossed salad with dressing, cornbread-butter, apricot cobbler, milk

Tuesday: BBQ chicken, sweet potatoes, pinto beans, onions-pickles, roll-butter, fruit jello-topping, milk

Wednesday: Fried fish, tartar sauce, catsup, new potatoes in cheese sauce, green beans, roll-butter, orange, banana, milk

Thursday: Shepards pie, golden carrots, tossed salad-dressing, roll-butter, chocolate cake, milk

Friday: Chicken fried steak-cream gravy, mashed potatoes, turnips and greens, roll-butter, banana pudding, milk

Bridal Selections for Mrs. Lance Hoffman

formerly
Amy Lipham
are available at
Sue's Gifts

126 W. Calif. 983-5312

COUPON COUPON COUPON COUPON

Clip This Coupon
SAVE \$5.00
On Any Purchase Over \$20.00
Applies to regular price merchandise.
Coupon good through Saturday, February 19th

Layaways - Mastercard-VISA
ANDERSON'S
DEPARTMENT STORE
120 West California Floydada

COUPON COUPON COUPON COUPON

STOCK SHOW SPECIALS at HALE'S

ALL BOYS BOOTS
Sizes Infant 4 to Boy's 6 **\$3.00 OFF**

ALL MEN'S WESTERN BOOTS
\$5.00 OFF

ALL MEN'S WESTERN SHIRTS
1/4 OFF

ALL BOY'S WESTERN SHIRTS
1/3 OFF

ALL MEN'S & STUDENT'S JEANS
Levi-Wrangler-Sedgefield **\$3.00 OFF**

ALL BOY'S & TOTS WRANGLERS
Boot Flare or Straight Leg **\$2.00 OFF**

HALE'S DEPT STORE - Floydada, Tx.
OPEN 8:30 a.m. to 5:30 p.m. Monday thru Saturday



JOHN AND MAYBELLE FRANCES, their daughter Lori and her three children, and J.D. and Lois Nance, all of Silverton, made last Thursday a particularly enjoyable treat for the residents of the Lockney Care Center when they entertained with some old favorite songs and piano playing. The group provides Monday morning devotionals, but the residents enjoyed the special program, including Valentine candy.

Lockney Care Center

By Vickie Hutton

Our week was very enjoyable. We started off with a bus trip. Seeing familiar sights and places makes our trips very enjoyable. Those enjoying the trips are Mary Green, Billie Self, Esker Pyle, Alma McDonald, Mary Jo Fielding, Richard Lanham and Myrtle Payne.

As you know bingo is one of our favorite activities. This is due in part to our wonderful volunteers Almeda Phillips and De Linda Glasson and to the many friends who donate money and fruit for games. We would like to send a special thanks to Clara McCain and Delta Kappa Gamma for their generosity.

Wednesday a committee of residents consisting of Richard Lanham, Mary McCracken, Mary Jo Fielding and Esker Pyle judged the Valentine doors decorated by the employees. Our winners were: 1st place-Rosalinda Hernandez; 2nd Place-Joe Munez; and 3rd Place-Estella Castro. Honorable Mention went to Dona Yeary, Lee Whitley, Tina Nuncia, La Vada Griffith, and Yolanda Lopez.

We had a special treat Thursday when John and Maybelle Francis, their daughter Lori, their grandchildren and Mr. and Mrs. J.D. Nance all came from Silverton to entertain us. Our afternoon

of fellowship and sharing friends was enjoyed. A special thanks to John and Maybelle and all for sharing their time and talent with us.
Until next time: enjoy.

CENTER NEWS

By Mrs. J.E. Green

February 14, 1983: Our Jimmy's birthday, and our first grandson's birthday. And what a nice day it is! Nearly like spring, and so was Sunday.

I can't reach so many today. People getting out after so much cold snowy weather.

The Henry Brewers had part of their children at home Sunday.

Mrs. Hartline reports that her son-in-law, Bob Landry of Plainview, is in a Lubbock hospital where he had surgery Thursday.

Bro. Muncy, I understand, is back home after several days in the hospital. Mrs. Elmer Warren's son and wife, Mr. and Mrs. Bill Warren of Amarillo spent the weekend with his mother.

Alma Ruth Nelson of the Floydada Nursing Home is reported "just fine" today.

Mr. Mayfield is better. Wiley Rogers is home and doing very well. So is Miss Opal Rogers.

Mrs. Clarence Ashton, Lockney Nursing Home, is doing very well.

Some of us are still staying in, for we still have cold wind, and March and April are still to come.

Mrs. David Latta and son called at the Green home this Monday afternoon.

Unpaved streets and roads are a bit better.

Son Clyde Green, of near Albuquerque, reports they have recently had a 5 inch snow.

Let us remember the sick.



KING AND QUEEN of the Valentine party held Monday afternoon at the Lockney Care Center were Mr. and Mrs. [Rose] Esker Pyle. The couple were among 40 residents plus visitors who were served cake and punch prepared by the dietary department of the center. Games were played. Rozella Trowbridge was the winner at guessing how many pieces of candy were in a bag. We understand there were a lot of red faces when they played Spin the Bottle.



Cook cranberries just until they pop. Further cooking makes them taste bitter.

Lakeview News

By Joyce Williams

Mr. and Mrs. Joe Thurston were honored on their 40th wedding anniversary with a family dinner in the home of Sandy and Rob Carr in Lubbock last week. All their children and grandchildren were present except Linda Wise, who lives in Kansas and was unable to attend but sent her love and best wishes.

Mrs. Rex Harrison helped at Duncan Monday afternoon with the Valentine party for her son, Brandon and his classmates in Mrs. Donna Harmon's third grade.

Mr. and Mrs. Grady Dunavant were hosts over the week-end to two grandsons and their families from Ft. Worth, and got to see their new great granddaughter, Mollie Dianne, daughter of Mr. and Mrs. Michael Dunavant. Mr. and Mrs. Steven Dunavant were the other guests. They arrived Friday evening and stayed through Sunday. Sunday dinner guests included Mr. and Mrs. John Redding and family, also Melvin Dunavant and sons, Dahl and Shane, and from Plainview there was Ray Dunavant.

Jason Pyle, son of Mr. and Mrs. Robert Pyle, is enjoying his Cub Scout

work with Mrs. Judy Gibbs, their leader. Paula Pyle helped with his Valentine party in the second grade at Duncan school on Monday.

Don Harrison took his wife, Ruth, to the Olde White House for the special Valentine luncheon on Monday.

The weather was so pretty and sunshiny Sunday that Mrs. W.M. Hambright went out to visit her children, both the Bob Hambrights and Gordon Hambrights. Their daughter, Janell Breed, was over to see them one morning last week. While the ice and snow kept streets dangerous, the Hambrights stayed close to home and genuinely appreciated the pleasant weather.

Roland Adams came out from Lubbock Sunday to help his father, Dee Adams, unload feed for their livestock. Nita Lou's father, Mr. Walter Craft, continues to be about the same at the rest home.

Howard Bishop and son, Greg, took advantage of the bad weather and have removed a partition and started remodeling work in their house. Nancy is fortunate to have carpenters right there in her family, just like the Dunavants. Mrs. Roy Fawver played 84 at Mrs.

Mayo's house Wednesday. On Friday she visited Mrs. Iva Benson. During the 1929 Study Club program on antique dolls given by Frances Mitchell, Flora recalled how as a child her own China headed doll used to disappear just before Christmas. Then there on the Christmas tree would appear a doll that looked just like hers, all cleaned up and with a brand new wardrobe. She soon figured it all out and spent hours dressing her doll in the new finery.

Mrs. Lanny Glasscock helped with the first grader's party at Duncan for her son, Tate, on Valentines Day.

Mrs. O.D. Williams visited her grandson, Austin Williams, at his Valentine party in Mrs. Carolyn Cheek's first grade class, Monday.

Mr. and Mrs. Max Harrison and daughters, Tracy and Debbie, came out for a Valentine dinner Sunday with the Don Harrisons.

On Saturday Mr. and Mrs. Don Harrison visited in Lubbock with their son and family. Mr. and Mrs. Jerry Bob Harrison and daughters, Ruth and Jerre went to Dillard's to pick up her granddaughter, when she got off work. They also visited with Mrs. Flukie Smith while there.

SAVE SAVE SAVE SAVE SAVE

Going out for business sale.

30-70% off on men's, women's, & children's departments.

Sale starts Friday, the 18th.

The Little Shoppe

1516 Main Petersburg

SAVE SAVE SAVE SAVE SAVE

Got Heating or Plumbing Problems?

CALL

Holmes Plumbing

Austin or Steve

Call Day or Night

983-2251

National Brands Sale Week

The Place To Go For The Brands You Know

- 5 lb. Bag Gold Medal **FLOUR 88¢**
- Family Size **TIDE \$5.99**
- 5 lb. Bag Shurfine **SUGAR \$1.39**
- 32 oz. 6 Pack **DR. PEPPER \$1.89** Plus Deposit
- Jumbo Hi Dry **PAPER TOWELS 2/\$1.00**
- Del Monte, Cut or French Style 16 oz. Can **GREEN BEANS 3/\$1.00**



- Gooches German Brand Smoke, 12 oz. pkg. **\$1.49**
- SAUSAGE \$1.49**
- 80% Lean, Extra Lean **GROUND BEEF \$1.59** lb.
- Oscar Meyer Sliced Cooked, 6 oz. pkg. **HAM \$1.69**
- California Sunkist **LEMONS 39¢** lb.
- Wright Slab Sliced **BACON \$1.59** lb.
- Oscar Meyer Beef, 1 lb. pkg. **FRANKS \$1.69**
- Shurfine 1 lb. Quarters **OLEO 3/\$1.00**
- Texas Green **CABBAGE 15¢** lb.
- California 1 lb. Package **CARROTS 3/\$1.00**



- Good Thru Saturday, February 19th
- Round **STEAK \$1.89** lb.
 - Washington D'Anjou **PEARS 49¢** lb.
 - Large Size Green Skinned **AVOCADOES 6/\$1.00**
 - 10 lb. Bag All Purpose, Russet **POTATOES 89¢**
 - 85 oz. Dish Detergent **CASCADE \$3.49**
 - 16 oz. Del Monte **PEAR HALVES 66¢**
 - 16 oz. Del Monte **FRUIT COCKTAIL 66¢**
 - 16 oz. Del Monte Sliced **PEACHES 59¢**
 - 32 oz. Del Monte **CATSUP \$1.19**
 - 8 oz. Byrds Eye **COOL WHIP 69¢**
 - 4 Ear pkg., Green Giant Niblet **CORN \$1.19**
 - 17 oz. Can Del Monte, Whole or Cream Style **CORN 3/\$1.00**
 - 17 oz. Del Monte Sweet **PEAS 3/\$1.00**



BLUE STAMP

COUPON EXTRAVAGANZA

WORTH \$500 IN EXTRA BLUE STAMPS AND MORE

Begins Monday, February 14
Not Subject to Double Couponing.

KEETERS GROCERY

7:30 a.m. - 7:30 p.m. 652-2191

We Redeem Food Stamps & WIC Cards
We Reserve The Right To Limit Quantities

BLUE STAMP

We Give Circle Blue Stamps Double on Wednesday



MAXINE CALDWELL

Cladwell named district director for pageant

Maxine Caldwell has been named district 12 director of the Cinderella Girl Scholarship Pageant it has been announced.

As director of the pageants in 18 West Texas counties, Mrs. Caldwell will supervise official Cinderella Girl Scholarship Pageants and will act as liaison with the Cinderella Girl International headquarters in Baton Rouge, Louisiana.

"Anyone in the area who is interested in entering or sponsoring this type of pageant should contact me," Mrs. Caldwell said.

"Sponsoring a pageant is a wonderful fund-raising event for any club or group organization. The local winners go on to state competition and state winners compete in the international finals."

The Cinderella Girl Scholarship Pageants are open to girls ages 3 to 17. The girls compete in four categories: cinderella tot, ages 3 through 6; miniature miss, ages 7 through 9; cinderella miss, ages 10 through 12; and cinderella teen ages 13 through 17. The pageant also offers special awards for

talent, photogenic and a new category, beauty.

"The new 'beauty' category which has been added will enable girls to enter in that category and forego the talent competition. I think this will benefit the pageant and the participants next year," Mrs. Caldwell said.

Counties included in district 12 are: Lubbock, Parmer, Castro, Swisher, Briscoe, Hall, Childress, Bailey, Lamb, Hale, Floyd, Motley, Cottle, Cochran, Hockley, Crosby, Dickens and King. For further information write Mrs. Caldwell at 3403 62nd St., Lubbock, TX 79413 or call 806-793-5848.

Two area-wide meetings set to discuss economics

In order that farmers might have information to help them maximize income, minimize cost and make the most rational marketing decisions when participating in the newly announced USDA P-I-K program, two area-wide meetings have been set.

Paul Gross and Mrs. Sue Farris, District I Extension Directors, Sam Cook ASCS District Director and Otis Harman, Texas Wheat Producers Association President indicated that the two sessions have been scheduled as follows:

Wednesday, February 23, 1983

10:00 a.m.-12:00 noon, Dumas, Moore County Community building, 16th and Maddox (S.E. near the stadium)

2:00 p.m.-4:00 p.m., Amarillo, Texas A&M Research and Extension Center, 6500 Amarillo Blvd. West

Duplicate Program

Program Moderator and Commentator, Bill Nelson, Exec. V.P., Texas Wheat Producers Assn.

The Current Grain Situation, P-I-K program considerations and farmers

participation worksheet, Dr. Ed Smith, Extension Grain Marketing Economist, College Station.

Managing Wheat P-I-K Grazeout Acres, Dr. John McNeill, Extension Area Beef Cattle Specialist, Amarillo.

Managing P-I-K and RAP Diversion Acres, Dr. Wyatt Harman, Research Economist, Texas Agricultural Experiment Station, Amarillo.

Response to P-I-K program operation questions, ASCS Representative, Farmers and attendees participation.

Otis Harman, TWPA president, said, "We know that ASCS County Directors and County Extension Agents have held or will be holding local meetings dealing with the nuts and bolts of operations of the P-I-K program. We have been pleased, however, with the producer response to the broader overview of the economics of the program which may lead to wider participation and effectiveness." Similar area meetings have been held in Paris, Krum, Belton, Waxahachie and Abilene.

All the sessions are open to the public and interested individuals are urged to attend.

Jones receive awards

The only husband-wife team honored at the recent biennial convention of International Dairy Queens was Hollis and Sue Jones, owners of the Hollis Jones Dairy Queen Restaurants organization, which owns and operates 28 Dairy Queens in North and West Texas, including the one locally in Floydada and Lockney.

Jones was presented with a custom-made gold wrist watch, engraved "IDQ NDMC," and a plaque of appreciation for his year's service as one of 13 members of IDQ's National Dealer Marketing Council, and Mrs. Jones received a Dairy Queen gold pen and pencil set honoring her for having served on the IDQ NDMC's uniform committee.

Recognition of both the Joneses for their service to IDQ during its convention award ceremonies came after the first year IDQ, headquartered in Minneapolis and the international franchisor for virtually all of the Dairy Queens in the world, had acquired the DQ franchise rights for the state of Texas.

Following this acquisition, Jones was named one of the first two Texans to represent Texas Dairy Queens on IDQ's National Dealer Marketing Council, which coordinates marketing programs, techniques on operations and personnel training and the testing and implementation of all such programs used within the system, encompassing approximately 4,000 DQs.

What had previously been an 11-member IDQ National Dealer Marketing Council became a 13-member body with IDQ's take-over of the DQ franchise rights for Texas, the last full state to be encompassed by IDQ and one with virtually 1,000 DQs or nearly one-fourth of all such restaurants in the world. Texas -- Region 11 on the IDQ NDMC -- thus was given two seats on the body. Selected as Texas DQs' first representatives on the council were, of course, Jones, and also L.J. (Jay) Streetman of Dallas.

Subsequently, during the course of the year, when the IDQ NDMC decided to establish a uniform committee, Mrs. Jones was appointed to this group.

Cedar Hill News

By Grace Lemons

Happy Valentine to you on this beautiful day to help make it a day of love and concern for others.

Edna Gilly and Juanita Teeple went to Amarillo Saturday and visited Virgie Flowers.

Janette Lackey accompanied Edna Gilly to Amarillo Friday where Janette had a check up and found that she is doing great.

Marisa Fortenberry of Amarillo was a house guest in the home of her son, John and Cindy Fortenberry. She had dinner with Edna Gilly and spent the afternoon with her Sunday.

The Social Society Club did not meet last week but met this week on Wednesday at 3:00 o'clock in the home of Jonni Delle Cogdell.

Marilyn and Edith VanHoose who are students at South Plains College in Levland spent the weekend with their grandparents, Mr. and Mrs. John D. VanHoose.

Patsy Boone of Lubbock spent the weekend with her father, Tom Fortenberry.

Machelle and Terry Harris of Floydada and Jewell Fortenberry accompanied Cephus and Imogene Fortenberry to Dumas Friday where Cephus and

Imogene stayed with Wesley and Rodney Durham while their parents went to Angel Fire, New Mexico for the weekend. Jewell Fortenberry visited with her son and wife, Elmo and Patsy Fortenberry while she was there.

Robin and Ruth Fortenberry of Hereford visited Cephus and Imogene Fortenberry Monday.

Norma Welch and Peat Kelley spent the weekend with their daughter and granddaughter, Connie Welch in Amarillo.

Martha and Junior Taylor were among those who attended the Open House and Farmer Appreciation Lunch at the Green Machinery Co., Inc. in Plainview Saturday. It is reported that a large crowd was present to enjoy the bar-b-que. Entertainment was by Travis Thornton.

Peat Kelley visited Belle Lemons and also Tom Fortenberry Friday.

Joy Guest of Floydada and little grandson, Matt Cowart of Lubbock and Janie Guest who is a student at West Texas State Teachers University were visitors at the Baptist Church Sunday.

Myrt Guest and Erlene Hutsell visited Myrt's brother, Less Chapman, in the hospital at Lamesa Saturday. Our prayers go out to him and the family during the illness of this loved one.

God grant me the serenity to accept things I cannot change, courage to change things I can, and wisdom to know this difference.

New regulations to combat tampering

Recent nationwide drug product tampering—which claimed seven lives in the Chicago area—has brought about two new regulations, according to Dr. Mary Ann Shirer, health education specialist with the Texas Agricultural Extension Service, Texas A&M University System.

As of early November 1982, the Food and Drug Administration (FDA) is requiring tamper-resistant packaging for certain over-the-counter human drug and cosmetic products, and for contact lens solution and tablets.

In addition, each retail package must bear a prominent statement to alert consumers to the specific tamper-resistant features of the package.

Purpose of these regulations is to

assure package integrity and product security, Shirer explains.

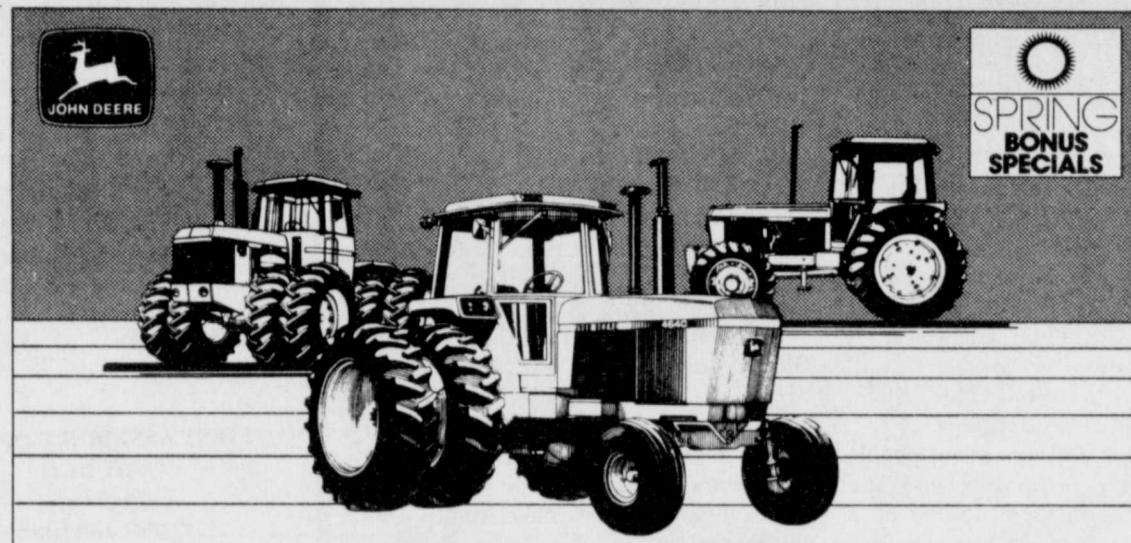
Both regulations require packaging products in a way that makes tampering more difficult, and also makes it easier to detect a product that has been tampered with, she adds.

Shirer advises consumers to always look for signs of product tampering before purchasing or using an item. Tampering signs include broken seals; open or damaged containers; loose, torn or missing wrappers; discolored products, and unusual odors.

"Be familiar with the tampering signs. If a package has been tampered with, or an item looks suspicious, do not hesitate to alert the pharmacist or store manager," she suggests.

Clip This Coupon
SAVE \$5.00
On Any Purchase Over \$20.00
Applies to regular price merchandise.
Coupon good through Saturday, February 19th

Layaways - Mastercard-VISA
ANDERSON'S
DEPARTMENT STORE
120 West California
Floydada



\$500 to \$5,800 END-OF-MODEL REBATES

On remaining 40 Series John Deere tractors, including a bonus for financing without waiver

Believe it. Now is the best time to buy a new 40- to 228-hp 40 Series John Deere tractor. But don't delay when the inventory is gone so are the tractor savings.

Get a cash rebate (first dollar column below) direct from John Deere in addition to our good deal on the 2WD or 4WD tractor of your choice. These tractors carry a 1981 sticker price, so we're offering rebates and discounts from prices already competitively low.

Here's more. During February, 1983, pay cash for your new tractor, finance it where you choose, or finance it with John Deere without waiver* and you'll collect the cash

rebate in lieu of finance charge waiver as shown. Or you can elect to have the John Deere finance charge waived to November 1, 1983, instead of taking the additional cash rebate.

If you prefer 50 Series 4WD tractors there are also special rebates during February. Cash rebates up to \$8,200 on new models that replace the 40 Series 4WDs being cleared out. And, if you finance with John Deere, finance charges will be waived to June 1, 1983.* But John Deere may withdraw these special offers at any time. Come on in soon!

Model	Cash Rebate on Purchase	Feb. '83 Cash Rebate in Lieu of Waiver	Maximum Rebate
228-hp 8640	\$3,200	\$2,600	\$5,800
179-hp 8440	3,000	2,000	5,000
180-hp 4840	2,700	1,800	4,500
155-hp 4640	2,300	1,600	3,900
130-hp 4440	1,700	1,200	2,900
110-hp 4240	1,500	1,100	2,600
90-hp 4040	600	1,000	1,600
80-hp 2940	1,400	700	2,100
70-hp 2640	900	600	1,500
60-hp 2440	400	500	900
50-hp 2240	100	450	550
40-hp 2040	100	400	500
370-hp 8850	\$8,200	NA	NA
290-hp 8650	6,400	NA	NA
225-hp 8450	5,700	NA	NA

(Offer subject to tractor availability)

Floyd County Implement

Ralls Highway - Floydada

We Welcome Your Insurance Business

FB

Donice Casey
Career Agent
652-3414

James Race
Agency Mgr.
983-5095 652-2638

Life - Auto - Fire - Home - Ranch Farm Crops & Health Insurance

Do I need liability insurance when I hire an employee for farm and ranch work?
For help with insurance questions and needs call...

Texas Farm Bureau Insurance
101 S. Wall, Floydada TX
Floydada 983-3777 Lockney 652-2242

Bud Rainey
Career Agent
983-5225

Clay Schacht
Career Agent
652-3449

Long-term credit with no prepayment penalty.

When you make the land your life... financing your long-range plans is a big commitment. You must make every dollar count. At your Federal Land Bank Association we can help make your long-term credit dollars go further. Land Bank loans offer affordable terms with no prepayment penalty.

The Land Bank
Federal Land Bank Association
Close to the land and the people who work it

105 S. Wall
Floydada, TX 79235
983-2480

USE NOW

ferti-lome
WEED and FEED SPECIAL

Kill winter weeds
Prevent spring weeds

ferti-lome

IN DOUBT? USE
ferti-lome
Weed & Feed Special

Davis Farm Supply
517 E. Houston 983-2233

Library News

The following films and filmstrips will be available through March 11 at the Floyd County Library:

It's Tough To Be A Bird. Walt Disney. Color. 15 min. EL-JH

M.C. Bird shows the viewers the hazards of being a bird. He traces the evolution of birds, their place in history and their difficult coexistence with human beings. An Academy Award winner, which skillfully blends contemporary cartooning, photo animation and live action.

Angel and Big Joe. 26 min. Color. 1975. Learning Corp. of America. E1-A

Considers the various aspects of responsibility in a story about a young migrant worker who must decide whether to help his family in Arizona or make a new career for himself with a friend in New Jersey.

Check It Out. 13 min. Color. 1972. McGraw-Hill Films. Pre-EI

Shows how easy it is to misjudge a person you do not know. The library is shown as a place you can "check it out."

Conquista. 20 min. Color. 1974. Xerox Films. JH-A

The culture-changing moment when an Indian of the Plains first confronts a horse left by a Spanish conquistador is recreated in this film photographed in the foothills of a Western mountain range. Narrated by Richard Boone.

Dinosaurs: A First Film. 10 min. Color. 1978. BFA Educational Media. E1-JH

Animated introduction to appearance of plant and animal life on the planet Earth. Entertaining and informative.

Discovering American Indian Music. 24 min. Color. 1971. BFA Educational Media. JH-A

Presents the songs and dances of tribes from various parts of the country performed in authentic costumes. A varied presentation.

Eyewitness. 22 min. Color. 1977. Esmeralda Films, Inc. JH-A

Deals with our illusions about people stemming from preconceptions and assumptions about them. Story of a young Chicano college student in search of a father he's never known. As seen from four different points of view, we follow a day in the life of Manuel Vargas.

Father/Daughter. 19 min. Color. 1975. Telekinetics Films. SH-A

A documentary using the interview technique that explores the past and present relationships of a man and his oldest daughter, now a member of Hari-Krishna religious commune. Any groups discussing present parent/child relationships would find this film a stimulant to discussion.

The Growth Of Intelligence In the Preschool Years. 30 min. Color. 1972. Sterling Educational Films. Adult

Shows how children's level of logical classification develops from the age of three to six. Clarifies Piaget's theories and terminology.

Mole And The Hedgehog. McGraw-Hill. Color. 1973. 10 min. Pre-EI

The lazy hedgehog would rather eat than help the Mole with his work. He becomes trapped and ends up in a

nature study room at school. So it's up to the kind-hearted Mole to rescue him. A charming animated film.

Kitty Hawk To Paris: The Heroic Years. 29 min. Color. 1976. Learning Corp. of America JH-A

The formative years of American aviation are recalled in the flights of its special heroes, Wilbur and Orville Wright and Charles Lindbergh among others. Quite interesting.

Magic Book. 10 min. Color. 1963. Pre-EI

Uses animation to show how to care for books.

Olympics: The Eternal Torch. 27 min. Color. 1974. Paramount-Oxford. JH-A

Uses footage of each Olympiad dating back to 1896 to highlight American participation in the modern games. Also discusses political climate associated with various Olympiads.

The Owl Who Married A Goose. 8 min. Color. 1974. Bosustow Productions. E1-A

Using an animation technique of moving stained sand on white background, filmmaker Caroline Leaf creates a stunning interpretation of an old Eskimo allegory. An owl tries to live as a gander after he marries his love.

Planned Parenthood. 10 min. Color. American Veterinary Medical Association. Pre-EI

An animated film using clay figures that advises the viewer on holding down the birth rate to our pets and dealing with the problems of abandoned cats and dogs. The film concludes "pets are a joy, unwanted animals aren't."

Rosie's Walk. 5 min. Color. 1970. Weston Woods. Pre-EI

The fox is after Rosie, the hen, but she doesn't know it and unwittingly leads him into disaster after disaster, each funnier than the last.

Run Don't Walk: You're Never Too Old. 24 min. Color. 1977. Ramsagate. SH-A

Joggers, swimmers, gymnasts and paddle tennis players ranging from 40 to 87 years old describe the mental and physical benefits they have from physical fitness.

Will Roger's 1920s: A Cowboy's Guide To The Time. 41 min. Color. 1976. Churchill Films. JH-A

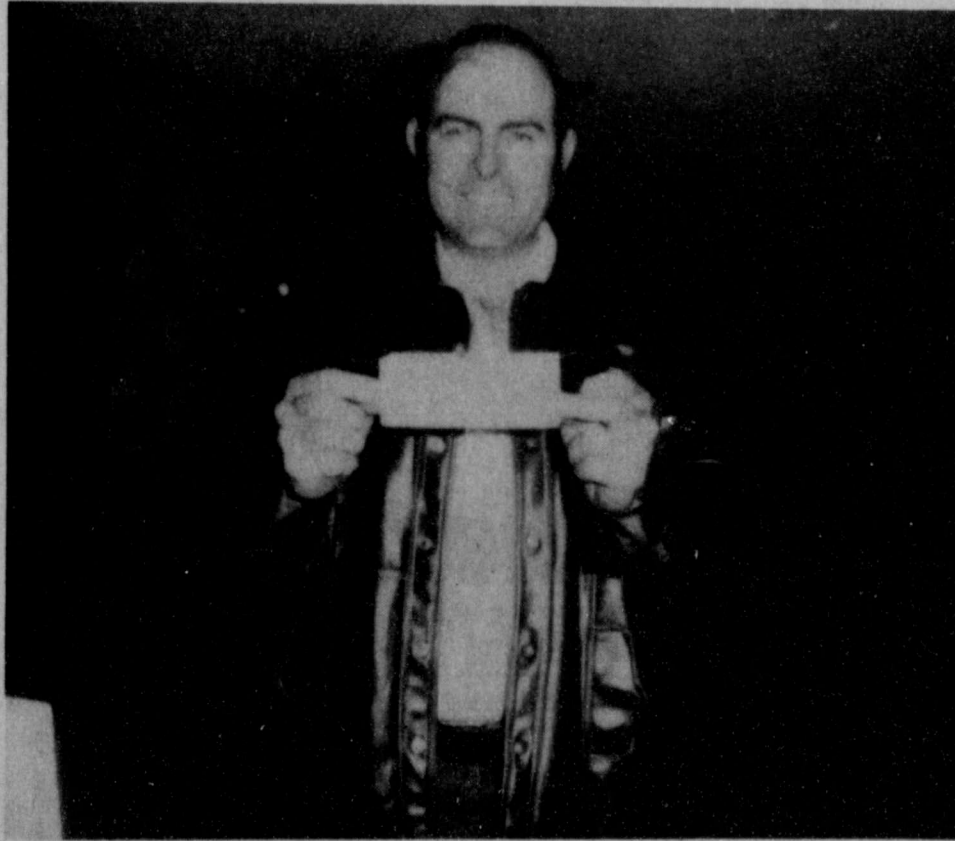
A chronicle of the major events in America from 1919-1931 as seen through the eyes of the country's most loved humorist. Includes interviews with relatives and friends about the man, his working habits and home life.

Soopergoop. 13 min. Color. 1975. Churchill Films. PRE-A

The power of television advertising is explored in this animated film about the marketing of a new sugary breakfast cereal.

Filmstrips:

- The Boy in the Moon
- A Flying Saucer Full of Spaghetti
- The Hare That Ran Away
- The Legend of Befena
- Lentil
- Little Bear's Visit
- Peter and the Wolf
- The Smoking Mountain
- The Three Sillies
- A Woggle of Witches



RECENT WINNERS of the Pizza Gola Cash Back contest are Gary Pate, \$100 winner [top] and Rick and Cindy Fuller \$50 winners [below].



CHURCH DIRECTORY

CEDAR HILL ASSEMBLY OF GOD CHURCH

Rev. Vance Mitchell
 Sunday School 10:00 a.m.
 Morning Worship 11:00 a.m.
 Evangelistic Service 6:00 p.m.
 Wednesday Bible Study 7:00 p.m.

ASSEMBLY OF GOD CHURCH

Lockney
 Sunday School 10:00
 Morning Worship 11:00
 Evening Worship 7:00
 Prayer Service Wed. 7:00
 Eddie Kendall, Pastor

LOCKNEY LATIN ASSEMBLY OF GOD

Manuel Rendon, Pastor
 Sunday School 9:45
 Morning Worship 11:00
 Evening Worship 7:30
 Men's Fellowship, Tuesday Evening 8:00
 W.M.C. Thursday 8:00
 Christ's Ambassadors, Saturday Evening 7:30

SPANISH ASSEMBLY OF GOD

TEMPLO GETSEMANI
 308 E. Mississippi
 A.C. Botello, Pastor
 Sunday School 10:00
 Morning Worship 11:00
 Evening Evangelistic Service 6:00
 Wednesday, Family Night 7:30

CARR'S CHAPEL

Rev. Jerry Kunkle
 Petersburg Pastor
 Services Every Sunday
 Morning Worship 9:30 a.m.
 Sunday School 10:30 a.m.
 No Evening Services

FIRST ASSEMBLY OF GOD CHURCH

Floydada
 Pastor Jim Guesz
 Sunday School 9:45 a.m.
 Morning Worship 10:50 a.m.
 Service 5:00 p.m.
 Sunday Evening Evangelistic 6:00 p.m.
 Wednesday Night Service 7:00 p.m.
 Thursday Womens Missionary 9:00 a.m.

SAN JOSE CATHOLIC CHURCH

Lockney
 Father Terry Burke, Pastor
 Sunday morning Mass 9:00
 Saturday Evening Mass 8:00
 Wednesday Evening 8:00 p.m.
 Friday Evening 8:00 p.m.
 Confessions Saturday 6:30

ST. MARY MAGDALEN CATHOLIC CHURCH

Floydada
 Father Terry Burke
 Sunday Mass 11:30 a.m.
 Monday Mass and Ultreya 9:00 p.m.
 Thursday Mass 9:00 p.m.

CITY PARK CHURCH OF CHRIST

Floydada
 Perry Zamwalt, Minister
 Sunday Bible Study 9:30 a.m.
 Morning Worship 10:30 a.m.
 Evening Worship 6:00 p.m.
 Wednesday Bible Study 7:30 p.m.
 Ladies Bible Study, Wednesday 9:30 a.m.

LATIN AMERICAN CHURCH OF CHRIST

Lockney
 Bible School 9:45
 Morning Worship 10:45
 Evening Worship 6:00
 Wednesday Service 8:00

CHURCH OF CHRIST

Lockney
 Bible Study 9:30
 Morning Worship 10:30
 Evening Worship 6:00
 Wednesday Ladies Bible Class 9:30
 Bible Study 8:00

WEST COLLEGE CHURCH OF CHRIST

West College & Third, Lockney
 Frank Duckworth, Evangelist
 Sunday Morning Worship Services 10:30
 Sunday Evening Worship Services 6:00
 Wednesday Evening Prayer Services 8:00

WEST SIDE CHURCH OF CHRIST

Sunday Morning Worship 10:30 a.m.
 Sunday Evening 6:00 p.m.
 Wednesday Evening 7:00 p.m.

CHURCH OF THE NAZARENE

Lewis Shapp, Pastor
 Sunday School 9:15 a.m.
 Morning Worship 10:45 a.m.
 Evening Worship 6:00 p.m.
 Wednesday Bible Study 5:30 p.m.

FIRST CHRISTIAN CHURCH

[Disciples of Christ]
 Minister, Karl Bunjes
 Sunday
 Sunday School 9:45 a.m.
 Worship 11:00 a.m.

TRINITY LUTHERAN CHURCH

Providence Community
 Gary Kleypas, Pastor
 Sunday School & Adult Bible Class 10:00
 Worship Service 11:00

FIRST UNITED METHODIST CHURCH

Lockney
 Rev. Michael O'Connor
 SUNDAY
 Sunday School 9:45
 Worship Service 10:55
 UMY 6:00
 Evening Worship 7:00
 United Methodist Women, First Tuesday of Month Circles, Monday (2nd & 4th Monday nights)
 Tuesday & Wednesday mornings.

FIRST UNITED METHODIST CHURCH

Floydada
 Jim Smith, Pastor
 Sunday School 9:45 a.m.
 Morning Worship 11:00 a.m.
 Youth Fellowship 5:00 p.m.
 Sunday Evening Worship 6:00 p.m.

EVANS CHAPEL BAPTIST CHURCH

Rev. Bennie Anderson
 Pastor
 Sunday School 10:00 a.m.
 Morning Worship 11:00 a.m.
 Training Union 6:00 p.m.
 Evening Worship 7:00 p.m.
 Wednesday Prayer Meeting 7:00 p.m.
 Sunday Afternoon Worship 2:00 p.m.

PRIMER IGLESIA BAUTISTA

Rev. Agustin Rey
 Sunday School 9:45 a.m.
 Worship Service 11:00
 Training Union 5:00 p.m.
 Evening Worship 7:00 p.m.
 Prayer and Study Group Monday 7:30 p.m.
 Mid-Week Service Wednesday 7:30

TEMPLO BAUTISTA SALEM

Lockney
 Manuel Alaniz, Pastor
 Sunday School 9:45
 Worship Service 11:00
 Christian Training Time 5:00
 Evening Worship 6:00
 Wednesday Prayer Meeting & Choir Practice 7:30

BIBLE BAPTIST CHURCH

Floydada
 Bob Chapman
 Sunday School 10:00 a.m.
 Morning Worship 10:45 a.m.
 Sunday Evening Prayer Meeting 6:00 p.m.
 Sunday Evening Services 6:30 p.m.
 Wednesday Evening Services 7:30 p.m.

DOUGHERY BAPTIST CHURCH

Richard Rhodes
 Sunday Services 10:00 a.m.
 Morning Worship 11:00 a.m.

FIRST BAPTIST CHURCH

Lockney
 Murle Rogers, Pastor
 Sunday School 9:45 a.m.
 Morning Worship 11:00 a.m.
 Church Training 6:00 p.m.
 Evening Worship 7:00 p.m.
 Prayer Meeting, Wednesday 7:00 p.m.
 Adult Choir, Wednesday 8:00 p.m.
 High School Youth (B.Y.F.) Wednesday 7:00 p.m.
 G.A. and Mission Friends Wednesday 4:00 p.m.
 R.A.'s Sunday 5:00

SOUTH PLAINS BAPTIST CHURCH

Rev. Cecil Osborne
 Sunday School 10:00 a.m.
 Morning Worship 11:00 a.m.
 Training Union 6:00 p.m.
 Evening Worship 7:00 p.m.

CALVARY BAPTIST

Floydada
 Rev. Hollis Payne
 Sunday School 9:45 a.m.
 Morning Worship 11:00 a.m.
 Bible Study 6:00 p.m.
 Evening Worship 7:00 p.m.
 Wednesday Evening 7:00 p.m.

MT. ZION BAPTIST CHURCH

Floydada
 Otis Cook, Jr., Pastor
 Sunday School 10:00 a.m.
 Morning Worship 11:00 a.m.
 Bible Study 4:00 p.m.
 Evening Worship 5:00 p.m.
 Wednesday Prayer Meeting 8:00 p.m.

AIKEN BAPTIST CHURCH

Sunday School 10:00
 Morning Worship 11:00
 Training Union 6:00
 Evening Worship 7:00
 Prayer Service Wed. 7:30
 Brotherhood, W.M.U. and Auxiliary Wednesday 7:30

FIRST BAPTIST CHURCH

Floydada
 F.C. Bradley, Pastor
 Sunday School 9:45 a.m.
 Morning Worship 11:00 a.m.
 Church Training 6:00 p.m.
 Evening Worship 7:00 p.m.

LONE STAR BAPTIST CHURCH

Sunday School 10:00
 Morning Worship 11:00
 Training Union 5:00
 Evening Worship 6:00
 Prayer Service, Wednesday Evening 6:30
 Brotherhood, First Saturday Morning of Every Month.

VICTORY BAPTIST CHURCH

Floydada
 Gary Grant, Pastor
 Sunday School 10:00 a.m.
 Morning Worship 11:00 a.m.
 Evening Worship 7:00 p.m.
 Wednesday Services 7:00 p.m.

NEW SALEM PRIMITIVE BAPTIST CHURCH

Floydada
 Joe M. Jackson
 Sunday Congregational Singing 10:00 a.m.
 Morning Worship 10:30 a.m.
 Evening Worship 6:30 p.m.

SPANISH BAPTIST MISSION

Floydada
 Sunday School 9:45 a.m.
 Morning Worship 11:00 a.m.
 Training Union 6:00 p.m.
 Evening Worship 7:00 p.m.

CEDAR HILL BAPTIST CHURCH

Sunday School 10:00 a.m.
 Morning Worship 11:00 a.m.
 Evening Worship 7:30 p.m.

If you appreciate your church directory, please let your sponsors know.

Adams Well Service

720 N. 2nd 983-5003

Brown's Department Store

106 N. Main 652-3831

Byrd Pharmacy

320 N. Main 652-3353

Case Power & Equipment

101 S. 12th 983-2836

Cates & Dawson

231 W. California 983-5322

City Auto

201 E. Missouri 983-3767

Consumer's Fuel

210 E. Missouri 983-3394

Davis Lumber Co.

102 E. Shubert 652-3385

Bill Gilbreath Exxon

101 N. 2nd 983-3323

Jackson Tire Co.

101 S. Main 652-3366

Lee's White Auto Store

119 W. College 652-2145

Lockney Coop Gin

W. of City 652-3377

Martin & Co.

216 S. Main 983-3713

Moore-Rose Funeral Home

402 S. Main, Lockney 652-2211
 329 W. California, Floydada 983-2525

Oden's Chevrolet-Olds.

221 S. Main 983-3787

Pay-N-Save

210 N. Main 652-2293

Plains Electric Co.

106 S. Main 652-2133

Producer's Cooperative Elev.

301 E. Missouri 983-2821

Reecer's Master Cleaners

121 S. Main 652-2262

Reed Ford

Ralls Hwy. 983-3761

Schacht's Flowers & Jewellery

112 W. Poplar 652-2385

Sun-Vue Fertilizers

E. Hwy 70 652-3326

Thompson Pharmacy

200 S. Main 983-5111

Willson & Son

111 N. Wall 983-3113



Owens
Country Style Owens Country
SAUSAGE
\$1.85 16 oz.
\$3.69 2 lb Roll

SAVE



SAVE

SHOP RITE



Country Style
SPARE RIBS
\$1.57 lb

MEAT Super Buys

Prices effective thru 2-12-83

309 S. Wall
Floydada, Texas

MEAT Super Buys



16 oz. Smoked Owens Cry-O-Vac
SMOKED SAUSAGE
\$1.75 lb

Shurfresh Half	BONELESS HAMS	\$2.27 lb.
Monterey Jack	CHEESE	\$1.97 lb.
Quick Frozen	PERCH FILLETS	\$1.97 lb.
Quick Frozen	CATFISH FILLETS	\$2.37 lb.
Unico Brand	CHORIZO	97¢ lb.
12 oz. Peyton Del Norte	SLICED BACON	\$1.57
12 oz. Shurfresh BOLOGNA	\$1.09	Shurfresh 12 oz. All Meat FRANKS 99¢



Quarter Loin
PORK CHOPS-COMB
\$1.37 lb

PRODUCE SAVINGS

PRODUCE SAVINGS

3 lb bag Red Delicious APPLES 99¢	Sunkist ORANGES 29¢ lb	Fresh Head LETTUCE 29¢ lb	Lb Bag CARROTS 3/\$1.00
YAMS 3/\$1 lbs	YELLOW ONIONS lb 13¢	BROCCOLI lb 79¢	GREEN ONIONS Ea. 3/\$1



Join our list of big winners!

TOTAL SERVICE

1 lb Parkay
MARGARINE
2/99¢

8.5 oz. Ranch Style
BEANS
3/\$1.00

8 oz. Contadina
TOMATO SAUCE
3/69¢

9.5 oz. Mr. P's
PIZZAS
79¢

5 lb Gold Medal
FLOUR
99¢

6-32 oz. Pak plus deposit
COCA COLA or TAB
\$1.99

64 oz.
ALL DETERGENT \$2.49

22 oz.
DOVE LIQUID 99¢

2 lb Shedd's Soft Spread
MARGARINE 99¢

24 oz. Ore Ida Country Style
FRIES 99¢

9.6 oz. Top Secret Cat Litter
DEORDARANT \$1.39

EAGLE BRAND MILK \$1.09

8 oz.
COOL WHIP 89¢

½ Gal Borden's Lowfat
MILK 99¢

DOUBLE COUPON

Present this coupon along with any one manufacturer's "cents-off" coupon and get double the savings from Shop Rite. Not to include "retailer", "free", soft drinks, or tobacco coupons, or exceed the value of the item.
Thursday, Friday, & Saturday
Limit 1 coupon per manufacturer's coupon.
Limit 4 Double Coupons per customer.
Coupons Good at Shop Rite.

DOUBLE COUPON

Present this coupon along with any one manufacturer's "cent-off" coupon and get double the savings from Shop Rite. Not to include "retailer", "free", soft drinks, or tobacco coupons, or exceed the value of the item.
Thursday, Friday, & Saturday
Limit 1 coupon per manufacturer's coupon.
Limit 4 Double Coupons per customer.
Coupons Good at Shop Rite.

DOUBLE COUPON

Present this coupon along with any one manufacturer's "cent-off" coupon and get double the savings from Shop Rite. Not to include "retailer", "free", soft drinks, or tobacco coupons, or to exceed the value of the item.
Thursday, Friday, & Saturday
Limit 1 coupon per manufacturer's coupon.
Limit 4 Double Coupons per customer.
Coupons Good at Shop Rite.

DOUBLE COUPON

Present this coupon along with any one manufacturer's "cents-off" coupon and get double the savings from Shop Rite. Not to include "retailer", "free", soft drinks, or tobacco coupons, or exceed the value of the item.
Thursday, Friday, & Saturday
Limit 1 coupon per manufacturer's coupon.
Limit 4 Double Coupons per customer.
Coupons Good at Shop Rite.

CAPROCK HOSPITAL NEWS

Lockney Hospital

January 31 - February 7

Jeffie Smith, Floydada, adm. 1-3, continues care, Acar
 Ruth Benson, Matador, adm. 1-13, continues care, Hong
 Henry Bloodworth, Floydada, adm. 1-17, dis. 2-3, Jordan
 Charles Beedy, Claude, adm. 1-18, continues care, Acar
 Mary Jordan, Tulia, adm. 1-20, continues care, Jordan
 Marianita Ramirez, Afton, adm. 1-28, dis. 2-5, Hong
 Darryn Boothe, Lubbock, adm. 1-29, dis. 2-2, Hong
 Mary Cowand, Floydada, adm. 1-30, dis. 2-1, Jordan
 Noelia DeLello, Ralls, adm. 1-30, dis. 2-1, Hong
 Vernon Nipp, Roaring Springs, adm. 1-30, continues care, Acar
 Charles K. Hatley, Floydada, adm. 1-31, dis. 2-3, Hong
 Lela V. Conway, Roaring Springs, adm. 1-31, dis. 2-2, Jordan
 James E. Smith, Floydada, adm. 1-31, continues care, Hong
 Earl Bishop, Floydada, adm. 1-31, continues care, Acar
 Ginger Warren, Floydada, adm. 1-31, dis. 2-3, Jordan

February 7 - 14

Jeffie Smith, Floydada, adm. 1-3, continues care, Acar
 Ruth Benson, Matador, adm. 1-13, continues care, Hong
 Charles Beedy, Claude, adm. 1-18, continues care, Acar
 Mary Jordan, Tulia, adm. 1-20, continues care, Jordan
 Vernon Nipp, Roaring Springs, adm. 1-30, dis. 2-7, Acar
 James E. Smith, Floydada, adm. 1-31, dis. 2-9, Hong
 Earl Bishop, Floydada, adm. 1-31, continues care, Acar
 Maria Valdez, Floydada, adm. 2-1, dis. 2-12, Acar
 Tommy Pearson, Floydada, adm. 2-2, dis. 2-11, Jordan
 Robert E. Owens, Floydada, adm. 2-2, dis. 2-7, Hong
 May Dell Purnell, Floydada, adm. 2-3, dis. 2-11, Hong
 David Campbell, Floydada, adm. 2-3, continues care, Acar
 Lorene Hudson, Floydada, adm. 2-4, dis. 2-7, Hong
 Gladys Lawson, Floydada, adm. 2-4, continues care, Hong
 April Thompson, Quitaque, adm. 2-5, continues care, Hong

February 7-14

Birda Foster, Lockney, adm. 1-24, dis. 2-14
 Laura Manning, Lockney, adm. 1-24, dis. 1-10
 C.H. Rose, Lockney, adm. 1-28, continues care
 Manuel Rendon, Lockney, adm. 2-2, dis. 2-7
 Martin Garza, Floydada, adm. 2-7, dis. 2-12
 Ramona Rodriguez, Lockney, adm. 2-7, dis. 2-10

Lola Caldwell, Lockney, adm. 2-7, dis. 2-14
 Frederick Ayres, Lockney, adm. 2-8, continues care
 Dana McCarty, Lockney, adm. 2-8, dis. 2-13
 Lois Lee Martin, Lockney, adm. 2-8, dis. 2-12
 Lenece Peters, Plainview, adm. 2-8, baby boy Laith born 2-9, dis. 2-11
 Zora Reece, Lockney, adm. 2-9, dis. 2-14
 Erick Ray Rivas, Quitaque, adm. 2-9, dis. 2-11

Lelicia Fonseca, Plainview, adm. 2-9, baby girl Crystal born 2-9, dis. 2-11
 Josephine Seymour, Turkey, adm. 2-11, continues care
 William Albert Poole, Lockney, adm. 2-11, continues care
 Diana Jimenez, Plainview, adm. 2-12, baby girl Jacqueline born 2-12, dis. 2-14
 Alejandra Muniz, Lockney, adm. 2-13, continues care
 Mable Perkins, Lockney, adm. 2-13, continues care
 Tomas DeLeon, Lockney, adm. 2-13, dis. 2-11

Estella Salinas, Floydada, adm. 2-14, continues care
 Maxine Hill, Lockney, adm. 2-14, continues care
 Gertrude Marr, Lockney, adm. 2-14, continues care
 Dan Brandon, Matador, adm. 2-13, continues care
 DeAun Criswell, Plainview, adm. 2-14, continues care
 Maria Nava, Plainview, adm. 2-14, continues care
 Maria Gomez, Floydada, adm. 2-14, continues care

Whirlwind Sams take weekend outing

The Floydada Whirlwind Sams Chapter of the Good Sam Trailer Club had a weekend outing at Caprock Canyons State Park at Quitaque. There were nine rigs represented. The Caravan left Floydada Friday at three o'clock and returned Sunday afternoon.

The Sams had a potluck dinner Saturday and one of the other highlights of the outing was a bonfire Saturday night. A good fellowship time was had. Vesper Services were held in the W.B. Cates trailer Sunday morning due to the cold wind. Claude Weathersbee, President of the Whirlwind Sams Chapter, was in charge of the services and

J.W. Gilbreath, song director, was in charge of the music.

The Sams closed their meeting with their Chapter Song, "Happy Trails."

Those attending the outing were: Mr. and Mrs. W.B. Cates, Mr. and Mrs. J.W. Gilbreath, Mr. and Mrs. Fred Thaxton, Mr. and Mrs. Wayne Russell, Mr. and Mrs. Paul Westbrook, Mr. and Mrs. George Miller, Mr. and Mrs. Boone Adams, Mr. and Mrs. Vernon Parker and Mr. and Mrs. Claude Weathersbee.

The Whirlwind Sams are planning a trip to the Big Bend for their next outing which will be in March.

Sandhill Hobby Club held monthly meeting

The Sandhill Hobby Club met February 3rd in the Party room of Lighthouse Electric for our regular monthly meeting.

In the absence of President Glenn Miller, Ruth Trapp Vice President presided over the business meeting. Plans were completed for our Birthday party for March 3rd in the home of Reva Smith. Members are to bring a covered dish. Meeting to be at 11:30 a.m.

Program was given by Marlyn Tate. She gave a demonstration on microwave cooking. Receipts leaflets were distributed to members and guests. Miss Tate cooked a number of delicious dishes which she later served to members and guests.

Members present: Ruth Trapp, Neva Smith, Sarah Hunter, Doris Huckaby, Nora Hatley, Mary Lou Bullock.

Guests: Juanita Chappell, Stacey Lloyd, Beth Carr, Lorena McKinney and Ruth Mitchell.

"Highway Pot-Hole Special"
 (Chug - Hole)

Has your front end been knocked out of alignment because of the pot-holes from the snow storm? Don't wear out your front tires!

Align front end **\$19.95** SPECIAL
 (most GM Cars & Pickups) Good the entire month of February.

CITY AUTO INC.
 Tel: 983-3767
 201 E. Missouri
 Floydada, Texas 79235
 Lubbock 765-6143

Mr. Goodwrench

84 LUMBER & HOME CENTER

Store Hours: M-F 7:00AM - 8:00PM, Sat 8:00AM - 5:00PM, Sun 9:00AM - 5:00PM

SUPER SAVINGS
 Sale Dates: Now through February 27

<p>REDWOOD DECKING</p> <table border="1"> <tr> <td>8'</td> <td>10'</td> <td>12'</td> </tr> <tr> <td>2" x 4" \$2.64</td> <td>\$3.29</td> <td>\$3.36</td> </tr> <tr> <td>2" x 6" \$3.36</td> <td>\$4.94</td> <td>\$5.34</td> </tr> <tr> <td>4" x 4" \$5.94</td> <td></td> <td></td> </tr> </table> <p>PRE-CUT BUILDING STUDS 2" x 4" x 92 5/8" \$1.49 each</p>	8'	10'	12'	2" x 4" \$2.64	\$3.29	\$3.36	2" x 6" \$3.36	\$4.94	\$5.34	4" x 4" \$5.94			<p>INTERIOR PRE-HUNG DOOR Bored no lock 24" x 80" \$23.48 each</p> <p>6' MILL PATIO DOOR Screen Included \$133.84 each</p> <p>WENCO WOOD SCREEN DOOR 32" wide 36" wide All 80" high \$1999 \$2184 each</p>	<p>CHINOOK WOOD BURNING STOVE The "Apollo" \$299.99 each</p> <p>LUXE CARVED MAHOGANY DOORS All 80" high</p> <table border="1"> <tr> <td>36" Madrid \$7484 each</td> <td>36" 6-Panel \$6984 each</td> </tr> <tr> <td colspan="2">36" Jallhouse \$7984 each</td> </tr> </table>	36" Madrid \$7484 each	36" 6-Panel \$6984 each	36" Jallhouse \$7984 each	
8'	10'	12'																
2" x 4" \$2.64	\$3.29	\$3.36																
2" x 6" \$3.36	\$4.94	\$5.34																
4" x 4" \$5.94																		
36" Madrid \$7484 each	36" 6-Panel \$6984 each																	
36" Jallhouse \$7984 each																		
<p>KITCHEN CABINETS SAVE UP TO 10% OFF all stock cabinets \$17.25 A CABINET (SB60)</p>	<p>FAUCETS each Kitchen #81701 \$13.84 Bath #81401 \$9.48</p> <p>DOUBLE BOWL SINK Stainless Steel \$29.84 each</p>	<p>VANITIES Space Saver 17" x 21" White & Gold Top Included \$39.84 each</p> <p>TOILET Grade A White \$45.98 each</p> <p>TOILET SEATS Choice of Colors \$5.84 ea.</p> <p>SAVER TUB WALL KIT Artesian \$43.48 each</p>																
<p>INSULATION</p> <p>Roll-in Fiberglass R-11 3 1/2" 14 1/2 sq. ft. R-19 6" 24 sq. ft.</p> <p>Blow-In Cellulose \$5.49 30 lb. bag sq. ft. R-11 Value 12" sq. ft. R-19 Value 21" sq. ft.</p> <p>Great STUFF \$4.48 14 oz. can Foam Insulation</p>	<p>SIDING 5/8" x 4' x 8' piece T1-11 \$12.84 7/16" x 4' x 8' Primed Hardboard \$10.24</p> <p>DRYWALL Tapered Edge 1/2" x 4' x 8' \$2.94 piece</p> <p>PLYWOOD 1/2" x 4' x 8' Sheathing CDX \$7.89 piece</p>	<p>PANELING piece Light & Dark Oak \$5.48 Classic Oak \$8.48 Light Birch \$8.48 California Gold \$8.48 Honey Pecan \$9.48</p>																
<p>CARPETING Choice of colors All 12' wide</p> <p>Level \$3.49 sq. yd. Loop Tweed \$6.74 sq. yd. Sculptured Cut & Loop \$6.74 in. ft.</p>	<p>STANLEY TOOLS AND HARDWARE</p> <p>Fiberglass Hammer #52-416 \$11.99 7 pc. Screwdriver Set #62-407 \$4.48 1 1/2" Laminated Padlock #CD39-9805 \$4.09 Locking Patio Door Bolt #CD4547 \$6.24</p>	<p>ASPHALT ROOFING SHINGLES 100 sq. ft. \$23.39</p>																
<p>STEP LADDERS</p> <p>Wooden 2' \$7.84 each 4' \$14.48 each 5' \$17.99 each 6' \$21.84 each</p>	<p>FENCE PICKETS 1" x 4" x 6" Cedar 84¢ each</p>	<p>LIGHT FIXTURES</p> <p>"Our finest" Antique Brass Chandelier #967 \$59.84 each Beautiful Crystalline Ceiling Light #431 \$49.99 each</p> <p>SKYLIGHTS Double Domed Bronze BAXT 16" x 16" Flush 24" x 24" Curb \$18.84 each \$46.84 each</p>																

We Accept Master Card and Visa

84 LUMBER & HOME CENTER PLAINVIEW, TEX.
 1911 2985 DIMMITT RD. EAST
 PHONE: (806) 293-4384

Some items limited to stock on hand. We reserve the right to limit quantities.

STORE HOURS:
 WEEKDAYS: 7am to 8pm
 SATURDAYS: 8am to 5pm
 SUNDAYS: 9am to 5pm

Delivery Available at Reasonable Rates

OBITUARIES

WAYNE JOHNSON COLEMAN

Funeral services for Wayne Johnson Coleman were held Friday, February 11, 1983, at 2:00 p.m. at the Main Street Church of Christ. Jerry Klein, director of the Bible Chain at Amarillo College and former minister here, conducted the service, assisted by Ray Starnes, present minister of the church.

Mr. Coleman was born July 8, 1914, in Lockney and died February 9, 1983 at Lockney General Hospital after an extended illness.

A graduate of Lockney High School and West Texas State University with B.S. and M. Ed. degrees, Mr. Coleman taught school 39 years. He taught at Lakeview in Floyd County, South Plains, Allred, Plainview, and Lockney. He was a veteran of World War II, serving in the Air Force.

Mr. and Mrs. H.P. Coleman, his parents, and a sister, Hula Blain, preceded him in death.

He is survived by a sister, Eunice Greenhaw of Lockney; a nephew Wayne Greenhaw and his wife, Betty of Cotton Center; two great nephews, Gerald Greenhaw of Plainview and Gregory Greenhaw of Cotton Center; two great nieces, Jane Cummings of Cotton Center and Gail Greenhaw, a student at L.C.C.; also a great-great nephew, Brad Cummings.

PERFECTO DE LEON

Funeral services for Perfecto De Leon Sr., 68, who died on Tuesday, February 8, 1983, were held Friday, February 11 at 11 a.m. in Laredo.

He was transported about 6:10 p.m. from his home in Lockney to Lockney General Hospital, where he was pronounced dead on arrival of an apparent heart attack. Wednesday his body was removed to Laredo.

A rosary was held at the Chapel of Faith at Jackson Funeral Home on Thursday at 7 p.m.

The funeral procession left Jackson Funeral Home at 10:45 a.m. for Holy Mass at Mother Cabrini Church. Burial followed at the Catholic Cemetery.

Survivors include his wife, Tomasa of Lockney; four sons: Perfecto Jr. (Joann) of Pasadena, Texas; Juan (Francisca); Manuel (Melli); Martin (Irma), all of Lockney; two daughters: Maria (Enrique) Segovia, of Lockney; Irma (Jesus) Ibarra of Floydada, Texas; two sisters: Anastacia Navarro and Andrea, both of Laredo; 16 grandchildren.

RUBY J. KENADY

Services for Ruby Jewell Kenady, 83, of Plainview were at 2:30 p.m. Saturday at Moore-Rose Chapel with Wayland Stephens, of Littleton, Colorado, officiating.

Burial was in the Lockney Cemetery under the direction of Moore-Rose Funeral Home.

She died Thursday, February 10, at the Heritage Home in Plainview.

Born November 14, 1899, in Esteline, she moved to Floyd County in 1900. She married Anthon Boyce Kenady on August 23, 1919, in Snyder. She was a private nurse, and a member of the Order of Eastern Star. She was a member of the First Baptist Church of Hart.

Survivors include a daughter, Johna Bilbrey of Plainview; a son, Horton of California; a sister, May Harper Bley of Olton; six grandchildren; and 10 great-grandchildren.

Pallbearers were J.E. Huggins, Greg White, Johnny Wood, Butch Watson, Bill Watson, and Orval Slaughter.

JEAN M. MILLER

Services for Jean Manning Miller, 55, of Floydada were at 2 p.m. Tuesday in First United Methodist Church in Petersburg with the Rev. Jerry Kunkel, pastor, officiating, assisted by the Rev. Waymon Swopes, pastor of the First Baptist Church in Petersburg.

Her body has been donated to the Texas Tech University Medical School. Arrangements were handled by Moore-Rose Funeral Home.

She died at 5 p.m. Sunday at her home. Justice of the Peace Walter Hollums ruled natural causes in the death.

The Floydada native married D.L. Miller June 18, 1945, in Clovis, New Mexico. She was active in the Methodist

Church, the P.T.A., Band Boosters, Rainbow Girls, Cub Scouts, Boy Scouts and other activities. She was a member of a pioneer Floyd County family.

Survivors include her husband; a daughter, Mrs. Mack (Gay) Hall of Wolfforth; two sons, Scott of Beaumont and Rex of Denver, Colorado; a sister, Mrs. Doris Snodgrass of Floydada; and seven grandchildren.

The family suggests memorials to the Methodist Hospital Cancer Center, Visiting Nurses Service or a favorite charity.

AMALIA RAISSSEZ

Mass for Amalia Raisseze, 68, of Plainview was celebrated at 11 a.m. Saturday February 12 at Sacred Heart Catholic Church in Plainview with the Rev. Pat Hoffman officiating.

Burial was in Lockney Cemetery under direction of Lemons Funeral Home, Plainview.

She died at 3:30 p.m. Wednesday February 9, in Lubbock General Hospital after a brief illness.

The San Marcos native married Jose Raisseze June 3, 1932.

Survivors include seven daughters, Mrs. Celia Garcia of Harlingen, Mrs. Delen Deltan of Eloy, Arizona, Mrs. Rosaria Saenz, Mrs. Philipe Raisseze and Mrs. Esther Muniz, all of Plainview, and Mrs. Hortenzia Morales and Mrs. Elena Morales, both of Edinburg; three

sons, Isabel of Powderly, Alfonso of Floydada and Gregory of Lockney; two sisters; a brother; 42 grandchildren; and 17 great-grandchildren.

GENEDA ROBERTS

Services for Geneda Roberts, 74, of Floydada were at 2 p.m. Sunday in the First Baptist Church in Ralls with the Rev. Floyd Bradley and the Rev. Hollis Payne officiating.

Burial was in Ralls Cemetery under direction of Carter-Adams Funeral Home.

She died at 11:30 p.m. Thursday, February 10, in Caprock Hospital in Floydada after a lengthy illness.

The Stephenville native was born March 22, 1905, and moved to the Ralls area in 1936. She married Sullivan Roberts on November 13, 1926, in Tahoka. He died on November 15, 1957.

Survivors include six sons, Milton of La Puente, California, J.T. and Rodney, both of Irving, Dale of Lawton, Oklahoma, Jerry of Mission Viejo, California and Jimmie of Lewisville; three daughters, Betty Draper of Houston, Doris Casleton of Merritt Island, Florida, and Dana Ellis of Floydada; four brothers, J.C. Henexson of Ralls, Bill Henexson of Post, Melvin Henexson of Eastland and Meryle Henexson of Dallas; 18 grandchildren; and nine great-grandchildren.

Alpha Mu Delta holds make-up meeting

The Alpha Mu Delta Chapter of Beta Sigma Phi held a make-up meeting Tuesday, February 8, at the home of Holly Hendrix with 11 members present. President Duffy Hinkle called the meeting to order and the opening ritual was recited.

Members then discussed plans for an Old Settler's Day dance, possible names for a Spring Rush, and the upcoming Valentine social to be held at The Olde White House, Saturday, February 12 at 7:00 p.m. Voting was held for Chapter Sweetheart, who will be presented at

the upcoming Valentine social. Members then recited the closing ritual and the Mizpah.

Members were then served refreshments of chicken casserole, tossed salad, crackers, chips, and iced tea by hostesses Holly Hendrix and Abby Battey.

Members were reminded of the next regular meeting to be held Tuesday, February 15, in the home of Wendy Pierce with hostesses being Wendy Pierce and Trina Savage. Program will be given by Linda Phillips.

New Sweetner to be on the market soon

Since cyclamates were banned for use as artificial sweeteners by the FDA in 1980, saccharin has been the only sugar alternate on dinner tables. Aspartame was approved for marketing in the U.S. in 1981, after an eight-year battle. It could be available soon under brand names of "Nutra-sweet" and "Equal". Claimed to be about 180 times sweeter than sugar, aspartame is a nutritive substance made from two naturally occurring amino acids found in many foods.

Although aspartame does supply calories, the aspartame sweetening equivalent of one 18-Calorie teaspoon of sugar yields only one-tenth Calorie. Aspartame must however "Keep its cool." It loses sweetness at high temperatures, so it cannot be cooked or used in sweet baked goods. It can be used on the table, in instant coffee and tea and some beverage mixes (but not carbonated beverages yet), in gelatins, fillings, toppings, some dairy products, and on cereal.

Floydada Speech team competed in Tournament

The Floydada Speech team competed at Texas Tech University on February 11-12. Those competing were: Informative Speaking - Anna Leta Bradshaw (semi-finalist); Persuasive Speaking

Stacey Smith and David Myrick; Poetry Interpretation - Meredith Kitchens, Tomas Trevino, and Mary Ann Cavazos; Prose Interpretation - Sandy Carr and Matt Griffin; Standard Debate - Robert Pratt/David Carr, Wally Davis/Wendy Ruff, Althea Campbell/Jana Lawson, and Cindy Mulder/Cindee Davis.

Lockney Local

Zora Reecer spent a few days in Lockney General, but was released Monday. She will be recuperating at her home this week before she returns to her job at Energas Monday.

REMEMBER your loved ones with a living memorial to the Caprock Hospital Auxiliary Memorial Fund. Mrs. Ben Whitaker, Treasurer.

Now Allstate can save you 35%* off Texas state rates for homeowners insurance.

Come in and compare.

Your Allstate agent will show you just how much you may save on homeowners dwelling insurance with Allstate's new low rates.

We're helping you keep your insurance costs down—as we protect your home against loss from fire and many other hazards. Come in soon and find out how much you might save. Or just phone us.



Allstate
You're in good hands.

*Applies to policies with \$40,000 or greater coverage on dwelling. Allstate Insurance Company, Northbrook, Ill.

Major Medical Health Insurance

\$1,000,000

Maximum Benefit

Calendar Year Deductible

Your Choice of Deductible
\$100, \$200, \$500, or \$1,000

Comprehensive Protection
In or Out of the Hospital

TIME

TIME INSURANCE COMPANY



THE TRAVELERS

CATES & DAWSON

INSURANCE AGENCY

231 W. California Floydada

983-5322 Office

983-3273 Home

FLOWERS
to soften the sorrow
to comfort the living
to honor loved ones

SPRAYS
\$10.00-\$25.00

STANDING
SPRAYS
\$25.00 up

Compare Our Prices

Floral Designs by Cyndi Williams
& Ozena Norris

WILLIAMS FLOREST CARD SHOP

128 W. California 983-5013

Myadec
High Potency vitamin supplement
with minerals for adults. Including 20

SAVE!

Valuable Coupon offers inside

100 Value Pack
30 TABLETS

\$992

A Super Consumer Value!

- Available with each Myadec® package
- Includes 15 leading national brands

Byrd
Phone 852-3353
LOCKNEY



JIM AND LOUISE OSTRANDER from Swift Current, Saskatchewan, Canada were through Floydada last week. They are researching the cattle brand of "turkey track." They traced the brand through Colorado, Kansas, and Oklahoma. They checked "at every museum we could find." The brand was traced to the Cresswell Cattle Company in Quitaque and to the Floyd County area. They asked if anyone had any information on the brand contact them at Site 10 Box 8, Rural Route 1 Swift Current, Saskatchewan, Canada S9H3X7.

Support Floyd County's Youth and attend the Floyd County Stock Show

Public Notice

LEGAL
I. David B. Cates have purchased all interest in the Cates & Dawson Insurance Agency. The agency will continue to do business under the same name.
David B. Cates
2-17

LEGAL NOTICE
We will not be held responsible for checks signed by C.O. Spence, unless co-signed by Sam A. Spence.
Signed:
Sam A. Spence
C.O. Spence
2-17

NOTICE OF PUBLIC HEARING
CITY OF FLOYDADA
A Public Hearing on the 1983-84 City of Floydada Operating Budget will be held at the regular Council meeting in the Council meeting room at 114 W. Virginia St. on Tuesday, March 8, 1983 at 7:30 P.M.

LEGAL
I am not responsible for Geneva Fancher's debts or words or actions from this date on.
L.E. Fancher
2-24p

Notice is hereby given by the Parks and Wildlife Department that a public hearing will be held at 2 P.M. on March 23, 1983 at the County Courthouse at Floydada for the purpose of gathering information concerning proposed hunting and fishing regulations for Floyd County.
As the result of action by the Texas Legislature, the Texas Parks and Wildlife Commission, under the authority of the Uniform Wildlife Regulatory Act, Chapter 61, Texas Parks and Wildlife Code, is responsible for the setting of seasons, bag limits, means, and methods for taking the wildlife resources in Floyd County. All interested persons are urged to attend and comment upon the proposed regulations.
Additional information concerning the public hearing may be obtained by calling our Toll Free Number 1-800-792-1112 or 512-479-4974.
2-17

NOTICE TO ALL PERSONS HAVING CLAIMS AGAINST THE ESTATE OF MARY MARLER AYLOE COLLINS
Notice is hereby given that Original Letters Testamentary for the Estate of Mary Marler Ayloe Collins, Deceased were issued on February 14, 1983, in cause no. 4657, pending in the County Court of Floyd County, Texas, to Orville Marler. All persons having claim against this Estate which is currently being administered are required to present them within the time and in the manner prescribed by law by forwarding the same to the undersigned attorney for the Estate.
DATED the 14th day of February, 1983.
Mr. Larry McEachern
LaFont, Tunnell, Formby,
LaFont & Hamilton
P.O. Box 1510
Plainview, Texas 79072
ATTORNEY FOR THE ESTATE
2-17

LEGAL NOTICE
Lockney ISD is now accepting bids on Lots 13 & 14, Block 4, Walling Addition. 10% escrow must accompany bid. Bids should be in superintendent's office by 4 p.m. March 8. Lockney ISD reserves the right to reject any and all bids.
L3-3

NOTICE TO CONTRACTORS
Sealed bids addressed to the City of Floydada, Texas will be received at the City Hall until 7:30 PM, March 8, 1983 and then publicly opened and read for furnishing all plant, labor, material and equipment, and performing all work required for seal coating city streets.
Bids shall be submitted in sealed envelopes upon the blank form of the proposal attached hereto and marked in the upper left hand corner.
All proposals shall be accompanied by a cashier's check or certified check upon a national or state bank in the amount of five (5%) percent of the total maximum bid price payable without recourse to the City or a bid bond in the same amount from a reliable surety company, as a guarantee that bidder will enter into a contract and execute performance bond within ten days after notice of award of contract to him. The bid security must be enclosed in the same envelope with the bid. Bids without check or bid bond will not be considered.
The successful bidder must furnish performance and payment bonds upon the forms which are attached hereto in the amount of 100% of the contract price from an approved surety company holding a permit from the State of Texas to act as surety or other surety or sureties acceptable to the Owner. (If contract is less than \$25,000, no performance or payment bond is required.)
The right is reserved to reject any and all bids and to waive any informality in bids received.
Plans, specifications and bidding documents may be secured from the office of Bill R. McMorries & Associates, Inc. 6300 Canyon Dr., Amarillo, Texas 79109, on deposit of Fifty (\$50.00) Dollars per set which sum so deposited will be refunded, provided: (1) All documents are returned in good condition to Bill R. McMorries & Associates, Inc. not later than 48 hours prior to the time for receiving bids; or (2) The Contractor submits a bid and all documents are returned in good condition to Bill R. McMorries & Associates, Inc. at the time that bids are opened.
CITY OF FLOYDADA, TEXAS
By: Parnell Powell, Mayor
2-17

PUBLIC NOTICE
LOCKNEY HOUSING AUTHORITY
PROPOSED HOUSING PROJECT
A public hearing will be held at 7:00 p.m., Tuesday, March 22, 1983, at the Lockney City Hall, 218 East Locust Street, Lockney, Texas, to discuss the proposed sites for construction of 20 low rent public housing units by the Lockney Housing Authority with funds provided by the U.S. Department of Housing and Urban Development.
Proposed project sites are as follows:
A parcel of land generally described as the west one-half of Block F. J. D. Burleson 158-acre Homestead Donation Survey, Abstract No. 1227, in the City of Lockney, Floyd County, Texas.
Lots 11-16, Block 14, Original Town, City of Lockney, Floyd County, Texas.
Lots 7-10, Block 1, Original Town, City of Lockney, Floyd County, Texas.
All persons interested in making comments on the proposed housing project sites should attend this public hearing. For further information, contact Carroll Anderson, Chairman, Lockney Housing Authority, at 652-2355.
L2-17

PUBLIC NOTICE
CITY OF LOCKNEY
HOUSING AND COMMUNITY DEVELOPMENT PROGRAM
The City of Lockney, Texas, invites owners of dilapidated dwellings in the City's Community Development Block Grant (CDBG) Target Area which are occupied by low/moderate income tenants and which have been officially certified as "infeasible for rehabilitation" by the City to submit proposals for the voluntary sale of their structures (not land) to the City for the purpose of eliminating acute threats to public health and safety in the CDBG Target Area.
Tenant-occupants who are displaced as a result of the sale of dilapidated structures and have occupied the dwellings for at least 90 days prior to initiation of negotiations for purchase of the structures will be eligible to receive relocation payments and assistance as set out under the Federal Uniform Relocation Assistance and Real Property Acquisition Policies Act of 1970, as amended.
Owners of dilapidated structures must agree as a condition of the sale of these properties that the City may enter onto their properties for the purpose of demolishing and removing the dilapidated structures and related debris.
A map showing the boundaries of the City's CDBG Target Area is available for public examination in the Lockney City Hall between the hours of 8 A.M. and 5 P.M., Monday through Friday. Information on income eligibility for tenants is also available in the City Hall. Properties offered for sale must be in the CDBG Target Area and must be occupied by low/moderate income persons.
Persons interested in selling their dilapidated structures to the City must submit their proposals in writing, responding to this solicitation no later than 5 o'clock p.m. on February 21, 1983. In order to be considered by the City, a proposal must contain at least the following information:
(1) General description of the structure, including location, size in square feet, number of rooms by type and number of current occupants.
(2) Proof of ownership.
(3) Statements and documentation concerning any outstanding encumbrances on the title (e.g. liens, mortgages).
(4) Proposed selling price.
(5) Certification by the City of infeasibility for rehabilitation.
The City expects to acquire up to one dilapidated structure as a result of this solicitation. Other solicitations may be published at later dates. The City reserves the right to reject any and all proposals received as a result of this solicitation and assures the public that if negotiations for the sale of properties offered under this solicitation are not satisfactorily completed, the City will NOT exercise its powers of eminent domain over these properties.
Proposals for voluntary sale of dilapidated structures should be delivered in person or by mail to the Lockney City Hall, 215 E. Locust Street, by the deadline specified above. Assistance in preparing proposals can be obtained by contacting Erma Lee Duckworth at the Lockney City Hall, phone (806) 652-2355 during normal business hours.
L2-17

CITY OF FLOYDADA
PUBLIC NOTICE
INVITATION TO BID
The City of Floydada, on behalf of applicants to the Community Development Block Grant Program, is soliciting bids for home repair and improvement contracts. Work write-ups, including specifications and the addresses of the homes to be repaired, may be picked up at the Floydada City Office, 114 W. Virginia St., Floydada, Texas, on the 22nd day of February.
Sealed bid procedures will be observed and the deadline for submitting bids on Case Numbers 8115, 8137, 8207, 8211, 8130 is 5:00 P.M. on the 7th day of March, 1983. The bids will be opened at 7:00 P.M. in the City Council meeting room at the Floydada City Office on the 7th day of March 1983.
The right is reserved by the City and the applicant-owner to reject any and/or all bids. All qualified bidders will receive consideration for award without regard to race, color, religion, sex, or national origin.
Dorr Blasingame
Rehabilitation Coordinator

RENDITION, EXEMPTION FORMS MAILED TO PROPERTY OWNER
JAN. 1, 1983
Rendition and exemption forms, as required by Sec. 5.07 of The Property Tax Code, were mailed to the Public, January 1, 1983. The deadline for filing Exemptions and Renditions is May 1, 1983.
After filing the following Exemptions in 1982, they need not be claimed again: Residence Homestead, Over 65, Disability, Charitable Organizations, Religious Organization and Agricultural. The D.A.V. does need to be signed each year along with a copy of the percentage disability.
An individual is entirely exempt from taxation of implements of farming or ranching that he owns and uses in the production of farm or ranch products.
A person who receives a one-time exemption must notify the Appraisal Office by May 1st, after his property no longer qualifies. If he fails to do so, he incurs a Penalty of 10% of the difference between the taxes he erroneously paid and the taxes he should have paid.
Many tax payers signed their Exemptions and Personal Property Renditions when they paid their 1982 taxes. If you did not do this The Appraisal Office encourages the public to return the Exemptions and Renditions, properly signed, as soon as possible.
Thank you for your cooperation.
Shelia Faulkenberry, Chief Appraiser
2-24

Church of the Nazarene

The Whitey Gleason Trio of Ozark, Mo. will be presenting a concert of sacred music on February 19th at the Church of the Nazarene.



The time of the concert is 7:30 p.m.

Rev. Louis Schaap

1st & K Petersburg, TX 983-3716

More Classified



Cattle For PIK Program

Will help you buy your cattle for PIK Program and can sell your cattle off grazed out wheat and hay grazer.

Tommy Turner Cattle

Joe Mack Breed
995-2515 or 995-4006

Tulia

Texas

Multiple Peril All Risk Crop Insurance
Certified by F.C.I.C.
To Serve the farmers of Floyd & Surrounding Counties.
Buster Terrell
Route 33
Lockney, Texas 79241
Night or Day 806-652-3718

Card of Thanks

I am not able to write you individually, but I do want to thank everyone who spoke words of encouragement, brought food, sent flowers or made donations at the time of the loss of my husband. Dear friends and neighbors help so much in times of distress. I love each one of you.
Mrs. O.C. Bailey

We want to thank our families, friends and neighbors for the many telephone calls, visits, cards, flowers and food during Floyd's recent surgery, his hospitalization and since we returned home. Your concern, expressions of friendship and words of encouragement are sincerely appreciated and will always be remembered.
Floyd and Carolyn Jackson

The family of Geneda Roberts expresses deep appreciation for the love and care shown during our time of sorrow. Special appreciation to the Floydada Nursing Home staff, Dr. Floyd C. Bradley, Hollis and Jo Payne, and Caprock Hospital staff.
Geneda Roberts family

Thanks to all our friends for the telephone calls, cards and well wishes during my recent stay in the hospital.
David Lewis and family

During our time of sorrow of the loss of our Mother, and Grandmother, it was very comforting to realize the love of our friends and neighbors. Thank each of you for everything you did: the visits, food furnished at the home and church, flowers, cards, the phone calls and most of all the prayers. Words are very inadequate at this time to express the thanks we would like to extend.
Pat and Joe Jones
Bud and Beverly Hammonds and family
Joe Mack, Debbie, Branda and Jodee Breed
J. Don, Mickey and Jeremy Jones
2-17

We wish to thank all of these who showed their sympathy by their many acts of kindness, food, cards, flowers, and contributions, at the loss of our loved one, Perfecto DeLeon.
Mrs. Tomasa DeLeon and family

SHOP COMPARE WANT ADS ARE YOUR BEST BUY!

Real Estate

FOR SALE TO BE MOVED: 3 bedroom, 1 1/2 story house. Call 983-3736 after 5:00 p.m.

MUST SELL: 3 bedroom, 2 bath. With large shop. Must see to appreciate - 983-2636. tfn

FOR SALE: Several nice two and three bedroom houses. Loans can be arranged. Contact Sam Hale at Hale Ins. & Real Estate 983-3261. tfn

3 BEDROOM BRICK HOME: 1 1/2 bath, refrigerated air. 105 J.B. Avenue. 983-3288. 2-24p

2 BEDROOM HOUSE: Enclosed garage, good location. Large lot. Storage. 983-3562 TFN

Houses For Sale

PRICE-SPACE-OPPORTUNITY! Put it all together in this spacious 2 bedroom-1 bath home offering carpet, panelling, and a sunroom/gameroom combination. Call Larry S. Jones, Broker, 983-2052.

FOR SALE: 3 bedroom house at 316 W. Mississippi. Randell King Real Estate. 983-2707. 2-17c

TWO BEDROOM HOUSE at 129 W. Jeffie. Call 983-2633. TFN

2-two bedroom houses. West of the highway on Tennessee. 983-2633. tfn

HOUSE FOR SALE or rent in Dougherty. 492-2040 after 5. 2-17p

FOR SALE: Two bedroom, 1 bath house; central air and heat, carpet, panelling; fenced backyard, carport, storage room. 983-3362. tfn

BEAUTIFUL 3-2-2 Brick. Central Heat/Ref. Air. 3 Metal Storage Bldgs. Mature landscaping. Kay Steen. 744-2475. Nita Kiesling, Realtors. Lubbock 795-5506. 2-27p then TFN

NICE 3-1/2-1 Brick. Central Heat/Evaporative Air. Kitchen Stove and Refrigerator. Kay Steen 744-2475. Nita Kiesling, Realtors. Lubbock 795-5506. 2-27p then TFN

2 BEDROOM. 1 1/4 bath. Central air, single garage. Has duplex apartments in rear with double garage. Corner lot. 983-2391. 983-5135. tfn

HOUSE FOR SALE: 2 bedroom, fireplace, carpeted, backyard storage in good condition. near schools. 652-2249. L2-17

FOR SALE: 3 bedroom, 1 1/4 bath, living room, den, large yard. Call 652-2561 after 6:00 p.m. L-3-3p

NICE 2 BEDROOM HOUSE: attached garage; good location; large rooms, closets, and storage. Call 374-0540. 376-4811 or 652-3451. tfn

FARMS

FOR SALE: 320 acres - 5 miles east and 1 south of Floydada on pavement. \$330 an acre. Dewie Parson - 983-2646. tfn

Pets

FOR SALE: AKC Shih TZU and mini salt and pepper Schnauzer puppies. (806) 867-2243. 2-24

PUPPIES - Collie/Shepherd? mix to give away. Chuck Wilson. 652-3731 L-2-17c

For Sale

"WE SELL SLEEP" Direct Mattress Co. New or renovated. For appointment call City Trim Shop. 983-2332. Floydada. tfn

5 used Color TV's 19" and 25" \$150 up Mize Television. tfn

LIKE NEW PARK TOOL CHEST with tools included. 983-5169. tfn

6 VHF HIGH BAND Walkie Talkie radios. 983-5169. tfn

ONE OF A KIND: 25 inch Console TV - was \$829.95, now \$579.95; VCR was \$945.95, now \$699.95. Sears - Floydada. 983-2862. tfn

30 INCH ELECTRIC RANGE. Almond. Automatic oven. 1 only. \$349.95. Sears. Floydada. 983-2862. tfn

1981 SHASTA 16 ft. camping trailer. Air, bath, fully self contained. \$4,800. 983-5775 after 6 p.m. tfn

HOMEMADE cakes and pies. Call Muriel. Plainview. 296-7579. L

REDUCE! Eat all you want! Burn off excess fat - take Glucomannan. Thompson Pharmacy. tfn

FIREWOOD. Seasoned Pinon and Juniper \$150 cord; Oak \$130. Delivered and stacked. 983-5320. 652-2492. tfn

ELEVATOR LEG CUPS. \$2.00 each. PRODUCERS. tfn

Fruit Trees & Pecan Trees
Emert's Nursery
652-3116 Lockney

Farm Items

TANDEM DISK BLADE SALE! All prices reduced 15% or more. 24 inch blades are \$25.00. 22 inch blades are \$23.00. 20 inch blades are \$20.00 and 18 inch blades for Disk Bedders only \$13.55. Prices are good until February 28 and we can fit almost all makes of plows, Brown-McMurtry Impl., Silverton, Texas 79257. Phone 806-823-2441. L2-17

Mufflers for John Deere Tractors
3020 late & 4020 Diesel - \$20
Late model 4010 & 4020 - \$18.85
3010, 3020 gas and LP, early 4010 Diesel, 4020 Gas & LP - \$17.50
4230, 4320, 4430, 4520, 4620, 4630 - \$43.50

Spray Paint Matched to Fit \$1.25
Case Red, Ford Blue, Ford Gray, JD Yellow, JD Green and MF Red

Enamel Paint \$15.00 Gal.
J.D. Green & J.D. Yellow

20% off Lubricant Accessories
While Supplies Last

Brown's Implement
Ralls Highway 983-2281

ETOO
The eyes of an owl cannot move in their sockets so the bird must turn its head from side to side to see.

For Rent

FOR RENT: 2 furnished apartments with bills paid. Call 983-3751 - day. 983-3535 - nights. TFN

FOR RENT: 2 bedroom mobile home. Clean, rent reasonable. 983-3504. tfn

UPSTAIRS APARTMENT for rent. Contact Wilbur Mize, 652-2435 TFN

3 BEDROOM modern farm house. 3 miles from Floydada. 1 mile off pavement. 652-2455.

ECONOMICAL STORAGE
TRY BARKER'S
Jewel Box-Mini Storage
and save your time and money. Phone 652-2642. Corner Main & Locust - Lockney, Texas.
Barker Building

STORAGE SPACE
BOATS, FURNITURE, ANYTHING, ETC. BY THE MONTH OR SIX MONTH 10% DISCOUNT.
West Texas Mini Storage
CALL WILSON BOND
983-3573 OR 983-2151

Want To Buy

WANTED TO BUY irrigated or dryland farm in Floyd or surrounding area. Write Box XRO, c/o Hesperian, 111 E. Missouri, Floydada. tfn

WANTED TO BUY: 2 small sized vented space heaters. 983-5241. tfn

Want to Rent

WANTED: Farm land to lease or rent. Call 983-2671. tfn

Employment

SALES REPRESENTATIVE: National Company, leading manufacturer of custom-made lubricants, has immediate opening. Prefer person with knowledge of heavy equipment or sales background. Duties involve calling on commercial, industrial and agricultural buyers. Complete training, high commissions, advancement potential. Call collect 1-214-638-7400. C.S.T. p

Services

LET ME TRIM your fruit, nut and shade trees. Keith Emert. 652-3116. L-TFN

PAINTING, interior, exterior. Residential and commercial. Dale Griffin. 983-3915. 2-24p

PIK PROGRAM
will give you, the farmer-stockman, more needed profit potential from your farming operation. For more information, contact **Byron Brock, Route 1, Lockney, Texas 79241** or call (806) 652-2652.

WANTED: Spring and summer pasture for grazing at competitive prices. See **Byron Brock, Lockney, Texas,** or phone 652-2652 or 652-3807 (office).

FOR SALE: All classes of stocker and feeder cattle available. Coastal round bale hay and square bale cow candy for sale. See at **Brock Feedlot 6 miles north on 378** or call 652-3807 or **Byron Brock 652-2652.**

Hollis R. Bond Real Estate
PHONE 983-2151
107 S. 5th FLOYDADA

Diamond Industrial Supply Co., Inc.
Phone Days 296-7418
Nights 296-1200 or 296-7828
1014 Broadway
Plainview, Texas
SKF BCA Timken Bower
Cotton Stripper Brushes & Bats
"We Appreciate Your Business More"

Farm Services

WE CUSTOM MAKE & FIT hydraulic hose for all types of machines. Brown's Implement 983-2281. TFN

Portable disc rolling
Lawson Farm Supply
Inc.,
Floydada 983-3940

USE NOW



**Kill winter weeds
Prevent spring weeds**

ferti-lome

PRODUCERS COOP FARM STORES
Floydada-Dougherty
983-2821 983-3770

Multiple Peril All-Risk Crop Insurance
Certified by F.C.I.C.
To serve the farmers of Floyd & Surrounding Counties.
Buster Correll
Route 211
Lockney, Texas 79241
Light or Day 806-652-2718

PIK options figured for you....
Dale or LaVerne will figure all your PIK options at no charge and print them out for you--Come on by!!

GOEN CROP INS. AGENCY 2-24

Lost & Found

DISAPPEARED: 1485 International tractor with duals. Call 983-2377. TFN

FOUND: Bunch of keys on ring. Call 983-3737. tfn

Big Ben is the 13 1/2 ton bell in the clock tower of the Houses of Parliament in London--the name is often incorrectly applied to the clock itself.

Business Services

ADAMS WELL SERVICE Complete Irrigation Service. All sizes submergible pumps in stock. One day service. 983-5003. tfn

Script Printing & Office Supply
*Commercial Printing
*Office supplies & Furniture
*Business Machines
108 S. Main
Floydada
983-5131

MITCHELL TAX SERVICE
Income Tax professionally prepared. Reasonable Rates. 983-3692

Its easy to find an insurance salesman, but when you have a loss can you find the guy that was so glad to sell you your policy?
Don't plan on a part-time agent being available when you need him. DALE & LA VERNE are at Goen Crop Insurance year-round to give you the service you paid for when bought your policy. TFN

Mary Kay COSMETICS
Lisa Rose
CALL: 983-5460

Mary Kay COSMETICS
Sue Williams
Independent Beauty Consultant
983-5166
Floydada

Business Opportunities

OWN YOUR OWN Jean-Sportswear, Infant-Preteen or Ladies Apparel Store. Offering all nationally known brands such as Jordache, Chic, Lee, Levi, Vanderbilt, Calvin Klein, Wrangler over 200 other brands. \$7,900 to \$16,900 includes beginning inventory, airfare for one to Fashion Center, training, fixtures, grand opening promotions. Call Mr. Loughlin at (612) 888-6555.

The number of weekly newspapers in the United States is 7,666. Total circulation is 45 million.

ESTATE SALE
To liquidate the Estate of Audrey A. Barnard, deceased, the undersigned executrices offer for sale and invite written bids on or before Tuesday, March 1, 1983.
BRICK HOME - 3 bedrooms, 2 baths, living, dining, den, kitchen & service area. Double garage. Central heat and ref. air. Storm windows & doors. 2 Fireplaces E 1/2 lot 13, all lot 14, W 1/2 lot 15, Bl. 1 Western Addition, 812 W. California, Floydada, Tex.
Terms of sale - owner will carry part for responsible party. Taxes & insurance prorated. Shown by appointment.
RIGHT IS RESERVED TO REJECT ANY AND ALL BIDS
Barbara Barnard, Executrix
Jean B. Vineyard, Executrix
812 W. Calif. Floydada, Tex. 79235
Tele- 806-983-2051 - Day
Tele-806-983-2530 - Night

INDUSTRIAL, OILFIELD AND FARM EQUIPMENT
PERKINS AUCTIONEERS
Rep. - Kirk Young
983-2295
Floydada, TX 79235
(806) 935-6210
Box 782
Dumas, Texas 79029

Automotive

1977 GRAND PRIX SJ. Good condition. 983-2052. 2-17c

1979 FORD PINTO. AM-FM-cassette. 21,600 miles. Good condition. Clean inside and out. \$3000. 983-5375. tfn

1980 GMC CABALLERO (El Camino) with 2 tops. Camper top and vinyl cover. Economical V-6 engine. AM/FM/cass.. tilt wheel and cruise control. Only 39,000 miles. New tires and air shocks. Will sell wholesale. Only \$5,250. 983-2676 after 5. Saturday. 19th. 2-17p

1978 REDBIRD Limited Edition. 45,000 miles. Honeycomb wheels, radial tires. 347-2889 or 983-2646. 2-17p

Wholesale & Retail
79 Impala. 4 dr. New tires.
76 Subaru
78 Plymouth. 4 dr. New tires.
77 Malibu. New tires
74 Malibu
76 Chrysler
76 LTD
76 Mt. Carlo
6 little cars
79 Ford PU-LWB
79 Olds-98-New tires
Small Down Payment
W.B. EAKIN CAR LOT
Ralls Hwy 983-3616
Night 983-2941

Auto Parts & Accessories
E-Z RIDER SHOCKS by Monroe, Buy 3 and the 4th is FREE. Free Installation, Don's Muffler Shop, 210 W. California, Floydada, Texas. tfn

ALTERNATOR & STARTER REPAIRS
Norrell Tractor Parts
215 S. Main
983-3417

CUSTOM EXHAUST WORK
Bruce Williams
Specializing in Glass Packs and Turbo Mufflers
At **DANS AUTO SERVICE**
652-2462

DAN'S AUTO SERVICE
DAN TEUTON, Owner
Specializing in Automatic Transmission, Motor Tune-Ups, Auto Air Conditioning.
General Repair
We Have A BRAKE LATHE to handle all passenger car brake service.
Phone 652-2462

Classified Rates

Classified advertising rates: 20 cents per word
First insertion: 15 cents per word each subsequent insertion.
Minimum charge \$2.50 first insertion; minimum charge \$1.50 second insertion.

Classified display rate: \$2.66 per column inch.
Card of Thanks: - \$3.00.

Deadline for classified ads is Tuesday at 3:00 P.M.

983-3737

652-3318

Lady Horns hold Number 2 position in District play

Last week's games were the final district games with a record of 8-2 for the Lady Horns. Second only to Slaton, who led the district with a 10-0 record.

The Lady Horns played three games for the week beginning with Post last Monday afternoon. The make-up game they defeated the Post Antelopes by a score of 60 to 47. Scoring was led by Connie Coffman with 18 and Shawnda Brock with 15. Following close behind was another double figure scorer, Jeri Ann McCormick, who had 10 points, to help in the win and make it an outstanding offensive game.

Tuesday night's game with Idalou was another well earned victory for the Lady Horns with an outstanding score of 74-46. While Connie Coffman led the scoring with 19 points, there were 4 more teammates that helped by raking up double figure scoring: Karen Mathis

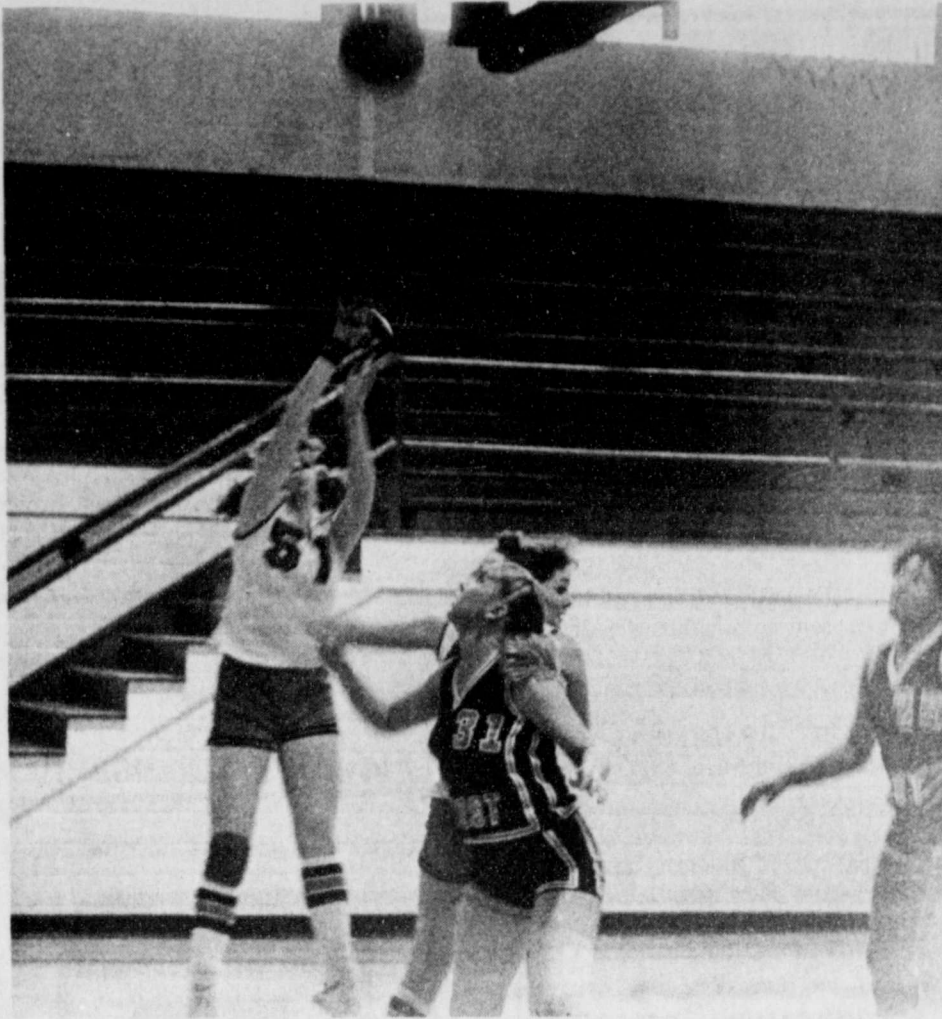
with 18 points, Shawnda Brock with 11 points, and Karyn Foster and Jeri Ann McCormick each had 10 points to help.

The last game of the week was played against the Slaton Tigerettes. This game hopefully was to be a return win for the Lady Horns. But, in spite of all the enthusiasm, they could not overcome the speed and aggressiveness of the might Tigerettes. Their final district ended with a 32 to 54 finish.

High point for Lockney was Connie Coffman with 14 points.

This week's players of the week were Jeri Ann McCormick for offense. Miss McCormick seemed to come up this last week with the talent she really has and yet so often hasn't used.

Karen Mathis was defensive player of the week holding Elkins, from Slaton, a good post player to only 8 points for the game.



KAREN MATHIS and Connie Coffman hustle against the Post Antelopes to put them down by a score 60 to 47.

Former Lockney coach up for Coach of the Year

First year Tech Coach Marsha Sharp has wasted no time developing a strong women's basketball program at Texas Tech. Recognized for those accomplishments by a nationwide committee of major college coaches, Sharp has been named one of twenty final nominees for the 1983 STAYFREE Coach of the Year on the Large College Level.

Sharp, 30, is from Tulia, Texas, and attended Wayland Baptist University on a basketball scholarship. She coached the Flying Queens' freshman team from 1972-75 under the direction of Dean Weese prior to accepting the head basketball post at Lockney High School. During her six years at Lockney, her teams earned three district titles and never finished lower than second. Sharp ended her high school coaching career with an impressive 126-60 record before coming to Tech as the assistant basketball coach for the 1981-82 season.

Following the resignation of Donna Wick, Sharp was promoted to head coach and has led the Raider squad to a 14-5 season record and a 6-1 mark against Southwest Conference opponents.

Coach Sharp graduated with a bachelor's degree in physical education from Wayland in 1974 and a master's degree in education from West Texas State in 1976.

Final balloting for the 1983 STAYFREE Coach of the Year will take place in March. The winner will be announced April 7, 1983.

Boys basketball ends

Lockney vs. Idalou
The Longhorns played the best game of the year falling to Idalou 59-54. The Longhorns took a lead of 53-50 with 2 minutes to go in the game. The Wildcats stayed tough and took the win hitting 6 of 8 free throws down the stretch.

Scoring	
Tony Rodriguez	21
Robert Rendon	10
Michael Carthel	10
Buffo Rodriguez	8
Steven Johnson	5

	1	2	3	4	T
Lockney	9	18	12	15	54
Idalou	18	16	13	12	59

Lockney vs. Slaton
Lockney played hard at Slaton but was never in the game with the Tigers in the lead 37-16 at half. Tony Rodriguez led the way in scoring with 22 for the game and 16 in the fourth quarter. The season ended on a disappointing note, losing 87-49.

Scoring	
Tony Rodriguez	22
Robert Rendon	8
Michael Carthel	7
Buffo Rodriguez	6
Steven Johnson	6

	1	2	3	4	T
Lockney	6	10	8	25	49
Slaton	18	19	22	28	87

Back those Lady Horns!
6:00 p.m. Friday
at New Deal

Lockney vs. Idalou
The Longhorns played one of their better games of the year with the final score 50-43 in favor of Idalou. The whole team played well with the Longhorns having a hard time getting the ball to fall in the 4th quarter. Terr Mathis had an outstanding game scoring and rebounding.

Scoring	
Terry Mathis	11
Ritchie Thornton	9
Brent Hallmark	8
Adam Rodriguez	5
Paul Moats	4
Jason Hill	2
Scott Poole	2
Terry Carlton	2

	1	2	3	4	T
Lockney	13	13	11	6	43
Idalou	14	12	11	13	50

Lockney vs. Slaton
Lockney had a hard time in Slaton. The Longhorns could do little right as they lost 56-25. Terry Carlton was the lead in scoring with 7. The JV ended the season 5-10.

Scoring	
Terry Carlton	7
Paul Moats	5
Adam Rodriguez	3
Ritchie Thornton	2
Scott Poole	2
Terry Mathis	2
Monty Teeter	2
Brent Hallmark	1
Kelly Hayes	1

	1	2	3	4	T
Lockney	3	10	7	5	25
Slaton	12	12	20	56	



ROBERT RENDON, awaits an opening to go in for the drive against the Post Antelopes.

BRETT R. GILL

TAX SERVICE
Tax Returns and Bookkeeping Service
CALL 847-2222



Support the youth of our county!

Everyone attend the
Floyd County Stock Show.

"Helping You Change Things For The Better"

1ST NATIONAL BANK OF FLOYDADA

Accounts Insured up to \$100,000

Member FDIC



PRICES GOOD
FEB. 17-19, 1983

WHILE SUPPLY LASTS

LOCKNEY

COOKED FOOD SPECIALS OF THE WEEK

HAM-EGGS-CHEESE ^{\$1.79} ^{VALUE} **\$1.29**
ON A MUFFIN WITH SMALL ALLSUP'S COFFEE

CANADIAN BACON-CHEESE **\$1.29**
ON A ROLL WITH SMALL ALLSUP'S COFFEE EACH

FRESH COOKED
ALLSUP'S BURRITOS **2 FOR 99¢**

BORDEN'S HOMO MILK \$2.59 GAL.	BORDEN'S ASSTD. FLAVORS ICE CREAM \$1.59 1/2 GAL. RD. CTN.
---	--

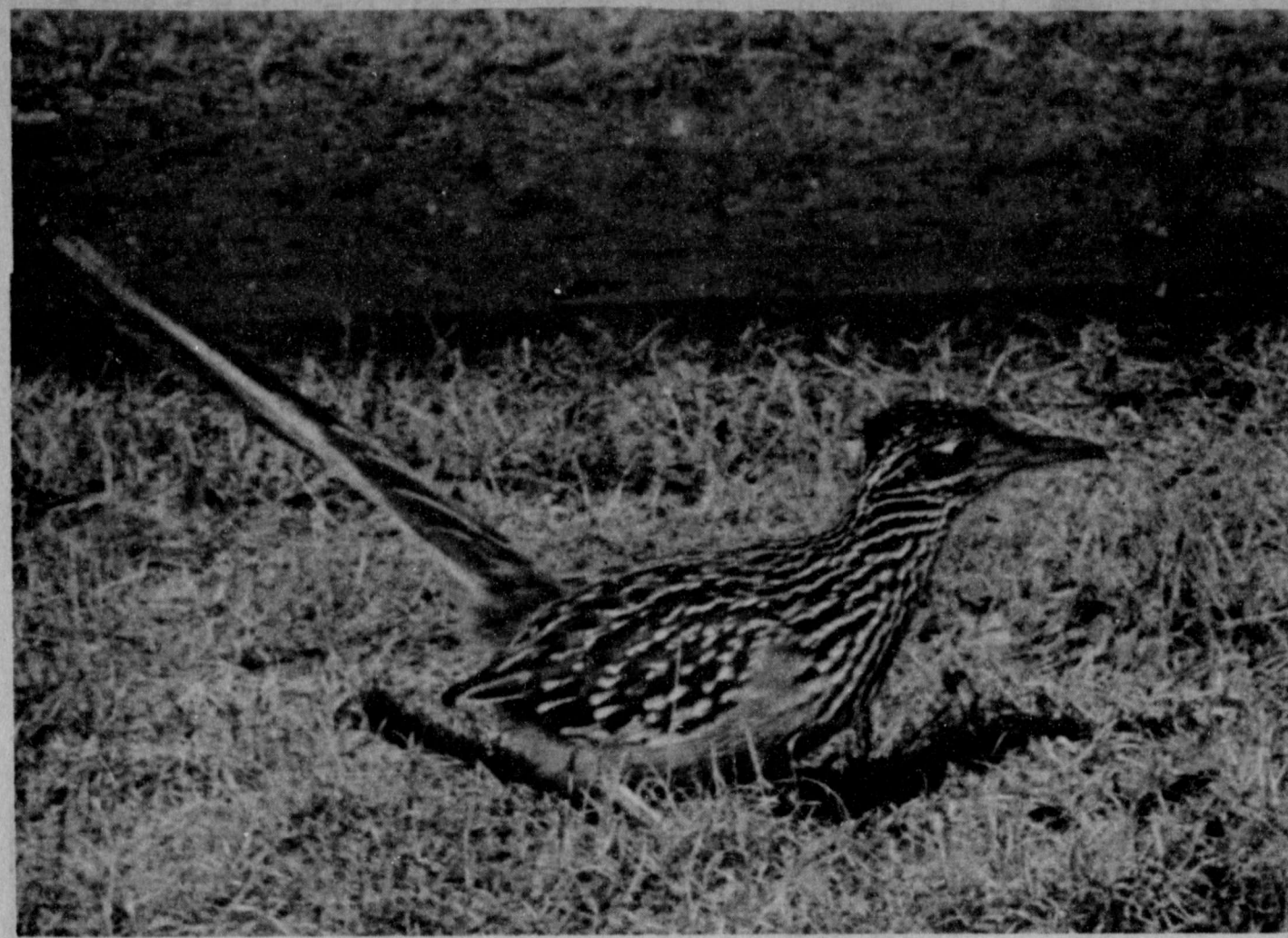
Folgers ALL GRINDS **FOLGER'S COFFEE** **\$2.59**
1 LB. CAN

16 oz. Shurfine Cranberry SAUCE 2/\$1.00	Shurfine Sliced PINEAPPLE 2/86¢
16 oz. Shurfine Sweet POTATOES 2/97¢	18 oz. Shurfine Grape JELLY 2/\$1.23
15 oz. Shurfine Blackeye PEAS 2/49¢	18 oz. Shurfine Peanut BUTTER 87¢
18 oz. Shurfine Tomato JUICE 2/56¢	16 oz. Shurfine PORK & BEANS 2/57¢

12 oz. Cans - 6 Pk. Hot Only
COKE-TAB-DIET COKE
Coke **\$1.59**

FOR YOUR CONVENIENCE
MONEY ORDERS
ONLY **19¢**
EACH

FARM NEWS



THERE'S NO COYOTE AFTER THIS ROADRUNNER since he lives in the seclusion of a farm house. Roadrunners have made an appearance in Floyd County within the past year.

With the increase of snakes around Floydada, this may account for the Roadrunners since snakes and lizards top their menu list.

Landscape & Gardening

by Benny Butler

TIPS FOR PRUNING LANDSCAPE PLANTS

February and March are good months to prune most landscape plants. Proper pruning procedures are important to keep plants healthy and attractive.

Be selective when pruning and only prune those plants that need it. Always use sharp tools for a clean cut.

It's a good idea to treat all cuts or wounds over to inches in diameter with a good tree dressing to prevent cracking and checking. These cracks provide excellent places for borer eggs and disease organisms.

Since pruning cuts made in mid-branch induce lateral growth, prevent branching by cutting back to a major limb, twig or bud. For more compact growth, cut back terminal shoots, removing about one-half the current growth to induce lateral growth.

Do not destroy a plant's natural form and beauty when pruning. Trim -- but never butcher.

For multi-stemmed shrubs such as quince, nandina and pomegranate, think in terms of thinning out rather than shearing the total plant. Remove some canes or stems at ground level, and cut stems in mid-branch to make the plant more dense.

If shrubs like quince, nandina and

spirea have been neglected for several years, it's best to remove about one-third of the oldest canes at ground level. This completely renews the plant every three years, the flowering wood is kept nearer the ground, and the plant seldom becomes tall and leggy.

Don't prune hydrangeas during the winter because their flower buds are already established for next season's bloom. The best time to prune is immediately after their prime bloom in early summer.

Prune bush-type roses in late February or early March, just prior to spring growth. Prune spring flowering shrubs and climbing roses after flowering.

Hollies and other berrying plants, such as pyracantha, may be pruned now. However, these plants produce berries on two-year-old wood, so removing new growth eliminates future berries.

For more pruning information, obtain a copy of "Pruning and Training Landscape Plants" from the county Extension office. Be sure to read next week's article on pruning peach and plum trees.

Educational programs conducted by the Texas Agricultural Extension Service serves people of all ages regardless of socioeconomic level, race, color, sex, religion, or national origin.

Take a bite out of crime - Increase farm security

The program on Farm Security, which was cancelled on February 3rd due to poor road conditions, has been rescheduled for 7:30 p.m., February 17. The program will be presented at the Texas A&M Engineering Center on the Matarador Highway (across from Lighthouse Electric). Dr. Greg Taylor, Extension community Development Specialist

from Amarillo, will address the need to make rural property less susceptible as a target for criminals. According to Dr. Taylor, rural crime is increasing faster than city crime, and farmers are being forced to confront this problem. All interested persons are urged to attend this free program.

Silverton Young Farmers discuss annual banquet

On Thursday, February 10, the Silverton Young Farmers held their regular business meeting with Clinton Dickerson presiding.

Final plans were made for the rescheduled Silverton Young Farmers Annual awards banquet. It will be held on Saturday, February 26, in the school cafeteria. The Fin and Hen of Lubbock will cater the meal and a casino fun night will follow the awards program.

Members discussed the Silverton FFA banquet which will be held on Tuesday, February 22, in the school cafeteria at 7:30 p.m.

Two Young Farmer members will cook for the Sweetheart Banquet to be held on Saturday, February 12.

Next meeting will be February 24 in the high school vocational agriculture department.

Certified agents available at 800 toll free number

"Names of certified agents who have completed the Agent Certification Training and testing program will be available at a toll free 800 telephone number in 1983," according to F.W. "Ted" Crouch, Jr., Director for the College Station, Texas Field Operations Office of the Federal Crop Insurance Corporation (FCIC).

"The individual farm yield guarantee and other program changes make immediate access to a trained agent necessary," Crouch added. "Absentee landowners needing to locate a qualified agent in the same county where the land is located will find this service especially helpful," Crouch declared.

"Use of the 800 number is simple.

Just dial 1-800-447-4700 and ask for agent referral. The operator will ask for name, address, and the zip code where the land is physically located. With this information the names of three certified agents in that area will be randomly and automatically selected and given to the caller. Farmers can be assured that all agents listed will be either certified by FCIC or authorized by a reinsured company," Crouch said.

"Agents who qualify at a later date will be added to the listing as they are trained and certified. In addition to the toll free number listing, the county ASCS offices will post a list of all certified and authorized agents," Crouch stated.

Conference to update growers

Progress in transportation and labor relations in the Texas vegetable industry, increasing the market demand for High Plains red potatoes, use of computers, and new production practices for onion and potatoes will highlight the 1983 West Texas Vegetable Conference here Tuesday, February 15.

The educational conference begins at 8:30 a.m. at the Hereford Community Center, 100 Avenue C at Park Avenue, and runs until 4 p.m. The \$5 registration covers the cost of a barbecue lunch and conference materials.

Co-sponsors with the High Plains Vegetable Growers and Shippers Council are the Texas Agricultural Extension Service, and the Deaf Smith County Vegetable Crops Committee, the Texas Agricultural Experiment Station and Texas Tech University.

"The program deals with major concerns of High and Rolling Plains vegetable growers, from the newest potato and onion varieties to short run partial budgeting techniques and the application of computers to accounting and problem solving for the vegetable grower and shipper," said Dr. Roland Roberts, Extension vegetable specialist.

"Transportation and Labor, Challenges for the Texas Vegetable Industry" is the title of the keynote address. It will be given by Bill Weeks, Executive vice president of the Texas Citrus and Vegetable Growers Association in Harlingen. Dr. John Downes and Dr. Carl Alspaugh, vegetable scientists

with Texas Tech University will report on research involving weed control in onions and the nitrogen nutrition and irrigation of potatoes. Vegetables researchers Dr. William Lipe and Doug Smallwood of the Texas Agricultural Experiment Station, will discuss their research with drip irrigation of wide bed onions and new high performance potato varieties.

Onion growers will see the latest in mechanical harvesting equipment on display and can visit with the seed, chemical and machinery dealers serving the growing onion industry.

High yield and quality of the newest onion hybrids grown on the High Plains will be shown by Roberts. Dr. Gary Condra, Extension management eco-

nomist, will demonstrate the technique of partial budgeting in short run vegetable production planning.

Joe Rabb, a leading onion harvester engineer and President of AG-ONE of Emmett, Idaho, will report on the newest advancement mechanical harvester design and performance.

Marvin Sartin of Ag. Computer Services in Amarillo will demonstrate the adaptability of some of the newest computer techniques equipment adapted to the requirements of the vegetable industry.

Texas Department of Agriculture marketing specialist Mark Schnabel will report on the work that his department has done to increase consumer demand for High Plains potatoes and onions.

Dr. A.F. Wiese named Outstanding Scientist

At the recent Staff Conference of the Texas Agricultural Experiment Station on the Texas A&M University Campus, Dr. A.F. Wiese was named Outstanding Research Scientist in the Soil and Crop Sciences Department for 1982. The scientist was cited for his many contributions to weed science, production agronomy, reduced tillage, and water management practices. Dr. Ed Runge, Department Head of the Soil and Crop Sciences Department, said, "Dr. Wiese is a broad spectrum researcher who had focused many problems into definitive experiments and came up with answers."

Wiese has been working at the USDA Center at Bushland for 29 years. During this time, his research has helped revolutionize weed control in Panhandle crops. When he started working, 2,4-D was the only herbicide available to growers. Cultivation along with hoeing was the most commonly used method of weeding crops. At that time, losses in

yield caused by weeds was about 25 percent of the potential yield. This loss amounted to 100 million dollars annually on the 15 million acres of crops in the Panhandle of Texas. Now a variety of herbicides are available for every crop. Recent estimates indicate that weeds only decrease yields 5 to 10 percent with new methods of weed control.

Wiese has won several other awards for his outstanding research program. He received the 1970 Agricultural Chemicals Award from the West Texas Agricultural Chemical Institute. In 1978, he was named No-Tillage Educator of the Year from No-Till Farmer Magazine, and was featured as the cover story in the January 1980 edition of Agrichemical Age. He was elected a Fellow in the Weed Science society of America in 1979, and received the Research Award from that society in 1980. In 1981, he received the Texas A&M Deputy Chancellor of Agriculture Award for Distinguished Performance in Research.

Farmers Union Update

More than 500 Texas Union members and friends attending Texas Farmers Union's annual convention in Austin January 20-22 heard the state's newly-elected top officials pledge their support for farmers and rural programs, including the TFU Green Thumb employment program for older workers.

TFU Green Thumb employs more than 1,000 rural, low-income elderly persons in schools, senior centers, libraries, and museums in 111 counties across the state.

New Agriculture Commissioner Jim Hightower said Texas farmers are "innovative, productive--and they are broke. Thousands are staring bankruptcy in the face. We can't have an economic recovery in this country until the farmers recover."

Hightower promised to work with farmers and farm communities to bring about some changes. "We worked with you to save the Green Thumb program," he said, referring to successful efforts to maintain Green Thumb funding in the face of proposed budget cuts. "That's one battle we won."

Hightower recognized that the large problems facing farmers would require immediate and concerted action. "It's time to raise less corn and more hell," he said.

Governor Mark White, in his first major address on farm policy since taking office, expressed his solid support for family farmers, the "biggest and most efficient producers in the United States."

"One thing we do better in Texas than anywhere else on earth is produce food and fiber," White told the farm group. "We just can't let you go out of business." The governor said he was planning to work closely with Hightower and other officials to advance the farmer's cause.

Also addressing the convention were Congressman J.J. (Jake) Pickle of Austin; Texas House Speaker Gib Lewis; Attorney General Jim Mattox; State Treasurer Ann Richards; and Texas Farmers Union President Mike Moeller.

Moeller, elected to a second two-year term by convention delegates, said Green Thumb had been a vital part of the Older Americans Act for years.

"People came together as never before to fight the fight to save Green Thumbs," Moeller said. "and the main reason we won is the Green Thumb workers themselves."

Pickle told the farmers that "Green Thumb is a great program and you (Farmers Union) ought to be proud to sponsor it."

ASA soy-diesel fuel exemption proposed

Disoyl, a blend of 10 percent soybean oil and 90 percent diesel fuel, would reduce U.S. dependence on foreign oil and help increase U.S. soybean prices according to the American Soybean Association (ASA).

In an effort to promote expanded use of the soy-diesel blend, ASA has launched a legislative campaign aimed at gaining congressional action to exempt disoyl from the four cent a gallon federal fuel tax.

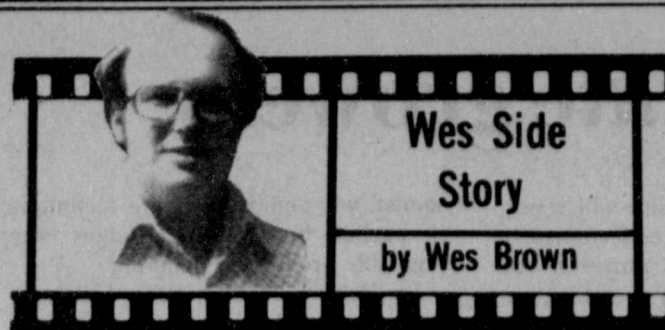
"The soy-diesel blend represents an excellent way to benefit farmers and other consumers," says ASA President B.B. Spratling, Jr., a Roba, Alabama, farmer. "Research studies at several universities demonstrate the blend performs well. Congress is currently considering the fuel users tax -- which includes a fuel tax exemption for gasohol -- and soybean farmers would like a similar exemption for the soybean oil - diesel fuel blend."

ASA's analysis shows that the disoyl blend is price competitive with regular diesel fuel if the federal tax is waived. Congressional approval could increase soybean oil consumption as much as 800 million pounds. According to ASA Senior Economist Bob Action, this would increase soybean oil prices 10 cents a pound and would increase soybean prices 50 cents a bushel. This, he estimates, would increase U.S. farm income \$1.2 billion.

"This legislative action is part of an overall ASA campaign to increase soybean oil consumption and return profits to soybean farmers," Spratling says. "The campaign also includes efforts to increase soybean exports and to expand non-food uses of soybean oil. Farmers are tired of selling soybeans at

garage sale prices. We're taking action to help re-build soybean income through a program to increase sales. The fuel tax exemption would reduce federal revenues \$90 million, but would cut government loan and storage program costs \$200 million, thus saving the government a total of \$110 million."

RUSSELL'S EQUIPMENT & SUPPLY  Floydada 983-3751					
FEDERAL LAND BANK ASSOC. OF FLOYDADA  Floydada 983-2480					
ADAM'S WELL SERVICE  Floydada 983-5003					
PRODUCTION CREDIT ASSOC.  Floydada 983-2454					
FLOYD COUNTY FARM BUREAU  Lockney 652-2242 Floydada 983-3777					
MORTON BUILDINGS HAROLD JOHN R. HUNTER RT 1, BOX 1288, 127 SOUTH PLAINVIEW, TEXAS RESIDENCE (940) 296-6830 OFFICE (940) 293-4288 Floydada 983-2836	CASE POWER & EQUIPMENT  Floydada 983-2836	FLOYD COUNTY IMPLEMENT  Floydada 983-3732	FIRST NATIONAL BANK OF FLOYDADA  Floydada 983-3717	FLOYDADA COOPERATIVE GINS INC.  Floydada 983-2884	FLOYDADA IMPLEMENT CO.  Floydada 983-3584



Wes Side Story
by Wes Brown

Eliminating clichés: a horse of a different color

As I was writing this column I became as nervous as a cat. If I didn't get it turned in by the deadline I would be in a lot of hot water.

In one of my writing classes, I learned the perils of using clichés. According to Webster a cliché is "a trite phrase or a hackneyed theme or plot". I learned they should be avoided like the plague.

Writers must know the ropes of the writing business and be able to use words and phrases carefully and correctly or else their writing would be as clear as mud. I decided to let the cat out of the bag and pass along some insight on clichés.

Clichés are old as the hills, but that is neither here nor there. The sea of controversy around the clichés is they are so overused that their meaning has become null and void. Although most of us are as steady as a rock, the cliché craze is spreading like wildfire.

For example we speak of it being raining cats and dogs or someone being as happy as a lark. But let's get the ball rolling and find some more problems clichés cause.

If we are not clear in our writing, the reader would not be able to see the forest for the trees and would be barking up the wrong tree.

"Does this have anything to do with the price of tea in China?" one may ask. No, but the wear and tear of clichés could put one's writing out of whack.

Before we make a mountain out of a

molehill, I really should be fair and square, because someone who uses clichés is not as nutty as a fruitcake. Using clichés is as easy as falling off a log. Some people would argue that writing and clichés go hand in hand like peaches and cream.

I am not going to put the cart before the horse and say that everyone is devoted to the use of clichés body and soul, but some people are up to their ears in clichés, although they fight them tooth and nail.

When I first heard clichés were as thick as thieves in my writing, I was less than thrilled. I tried to correct some of the things I had written but that was like closing the corral gate after the horses had left.

Since an idle mind is the devil's workshop and a rolling stone gathers no moss, it is time to seek out the cause of the clichés. It seems that those who are deaf, dumb and blind are immune to the use of clichés. Some people are not aware that they are using them and are in a state similar to the bliss of nirvana.

Clichés are used because of the lack of originality. We must stick to our guns and try to come up with substitutes or else we'll be leading a dog's life. Although changing to such a practice, would be as though the writer had suddenly grown two left feet, when clichés are eliminated the writer would come out smelling like a rose.

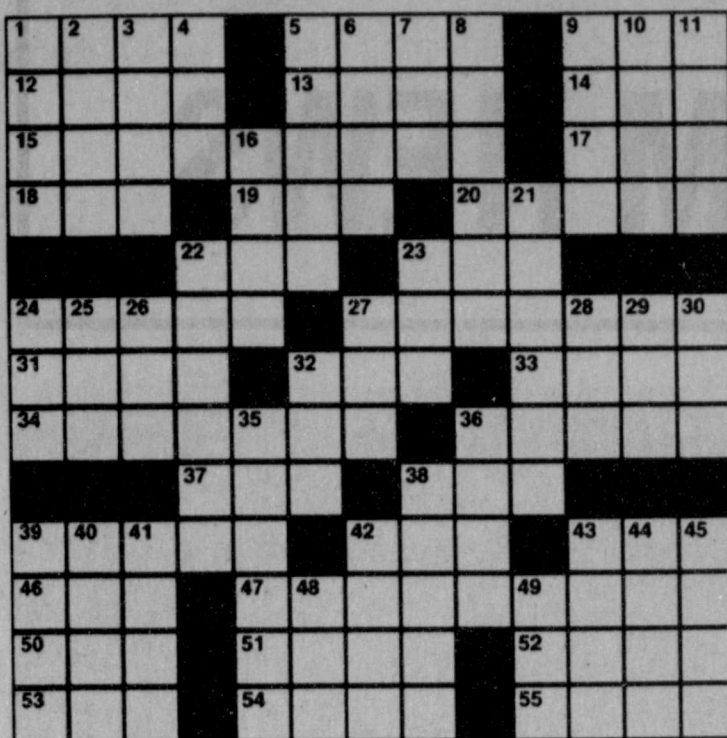
Once the writer gets the hang of spotting clichés, they become as obvious as the nose on his face. The writer doesn't have to be in a howling wilderness to be overcome with abject terror, but he could get the feeling there was water, water everywhere and not a drop to drink when he starts noticing clichés.

Writing is near and dear to me. Although some people are in blissful ignorance about clichés, when they find out about clichés, they are left with blank amazement.

At first one may feel high and dry without clichés and so weak they could be knocked over with a feather. If the writer would look at them long and hard he would see the light and not use clichés. He should remember he can't have his cake and eat it too.

Now that I have given the long and short of clichés, we should share and share alike our knowledge and make clichés become as dead as a doornail. We know using clichés would be like flogging a dead horse. It was a long uphill battle, but now our writing is as clear as a bell.

After doing my research on clichés, I made a beeline to my typewriter. I tried to write everything I knew about clichés, but was all thumbs. I thanked my lucky stars that great things come to those who wait and my writing is as right as rain.



By DANIEL M. MARVIN

- ACROSS**
- 1 Square
 - 5 Humorist
 - 9 Actor Hunter
 - 12 Pennsylvania city
 - 13 Athletic group
 - 14 Bullfight cheer
 - 15 Medic series: St. —
 - 17 Negative word
 - 18 Allow
 - 19 Comedian
 - 20 Erik Estrada series
 - 22 Nothing
 - 23 Haggard novel
 - 24 Actress Leigh
 - 27 Priscilla or Elvis
 - 31 Once more
 - 32 Sportscaster
 - 33 Place for a chapeau
 - 34 The Powers of — Star
- DOWN**
- 36 Newsman
 - 37 Not at home
 - 38 Newsman
 - 39 Trade name
 - 42 Late actress
 - 43 Commotion
 - 46 Poetic word
 - 47 McLean or Parker
 - 50 No. Scot.
 - 51 A king of Israel
 - 52 To be: Fr.
 - 53 Palm leaf
 - 54 Ointment
 - 55 Happy — DOWN
 - 1 Pare
 - 2 Author Gardner
 - 3 Pith
 - 4 Espy
 - 5 Miss Merman
 - 6 Donna or Robert
 - 7 Deface
 - 8 Actor Don
 - 9 Singer
 - 10 Slanted
- Rock**
- 36 Actress Martha
 - 38 Niven or Soul
 - 39 Singer Sonny
 - 40 — People
 - 41 Locality
 - 42 Actress Deborah
 - 43 Movie dog
 - 44 Life-saving boat
 - 45 The Bold —
 - 48 Toy
 - Manufacturers of Amer.
 - 49 A Beatty

TV Circles

By Gayle Disco

Words in the list below appear across, up, down, backwards and diagonally in the diagram. Find each word and circle it. Some circled letters appear in more than one word. Letters that form answer are left over. Arrange them in order to arrive at answer.

Clue: JUST PRACTICAL WORKING GIRLS

S P U N K Y F Y N N E L T S C
A S T A R R Y E Y E D E R I L
B R N O A E N G E A M E N L S
L I S N N I G K V P P D A H M
U I K E M U I E P Y H O L A
C E E R U A D R A W S T H R D
C F A Q W L A C I R Z S O I C
O C S L A M E L A B I O D D A
L V I N E L L M R B M E E P
L M D N T I Y E A M A F I D S
A E T T A N W B A L A K S R Y
R S O M N E S T I Z O O I L T
Y B S E R R E S I O A O F R R
H E P Y M S T O K T H N U A A
M I C H A E L M C K E A N E P

(SOLUTION: 17 letters, 3 words)

Blue-Collar, Bottle-Cappers, Carmine, Chaos, Cindy Williams, David Lander, De Fazio, Feeney, Frank, Fun, Idealist, Kookie, Lenny, Madcap, Michael McKean, Milwaukee, Mrs. Babish, Party, Penny Marshall, Riot, Roommates, Rosie, Shatz Brewery, Spunky, Squiggly, Starry-Eyed, Temperaments

© United Feature Syndicate, Inc.

ANSWER: Loveless Shirley

TV TANGLE

UNTANGLE THE LETTERS AND USE THE CLUE SHOWN TO SPELL THE NAME OF A TALENT CONTEST SHOW.



E N A D C E F R E V

ANSWER: DANCE FEVER

© 1983 United Feature Syndicate, Inc.

THURSDAY FEBRUARY 17, 1983

	4 WTBS IND	5 KTXB PBS	9 WGN IND	11 KCBD NBC	13 KLBK CBS	28 KAMC ABC	34 KJAA IND
7:00	My Three Sons That Girl	Weather	Bozo	Today	Morning News	Good Morning America	Tennessee Tuxedo Bullwinkle
8:00	Movie: "Mr. Soft Touch"	Sesame Street	Bewitched	"	The Flintstones Richard Simmons	"	Underdog
9:00	"	Electric Company 3-2-1 Contact	Movie: "All That Heaven Allows"	The Facts Of Life Sale Of The Century	\$25,000 Pyramid Child's Play	Eight Is Enough	Mighty Mouse Jimmy Swaggart
10:00	Perry Mason	Mister Rogers Sneak Previews	"	Wheel Of Fortune Hit Man	The Price Is Right	Love Boat	Jim Bakker
11:00	People Now	The Shakespeare Plays "A	Big Valley	Just Men Search For Tomorrow	Young And The Restless	Family Feud Ryan's Hope	Rockford Files
12:00	Movie: "Just An Old Sweet Song"	Midsummer Night's Dream	You Asked For It INN News	News Days Of Our Lives	News As The World	All My Children	INN Midday Healthfield
1:00	Woman Watch	MacNeil Lehrer	Dick Van Dyke Andy Griffith	Another World	Turns	One Life To Live	Movie: "Bedtime Story"
2:00	Funtime	Dick Cavett This Old House	I Dream Of Jeannie Pink Panther	Fantasy	Guiding Light	General Hospital	"
3:00	The Munsters Leave It To Beaver	Sesame Street	Super-friends Scooby Doo	Brady Bunch	Tattletales	Tom & Jerry Yng. People's Special	Little Rascals Mighty Mouse
4:00	Brady Bunch Bewitched	Mister Rogers Electric Company	Incredible Hulk	CHiPs Patrol	On The Prairie Barney Miller	Happy Days Again People's Court	I Love Lucy My Three Sons
5:00	Carol Burnett Bob Newhart	3-2-1 Contact Over Easy	The Muppets Laverne & Shirley	News NBC News	Three's Company CBS News	News ABC News	Andy Griffith Beverly Hillsbillies
6:00	Gomer Pyle Andy Griffith	Jazzercise To Life MacNeil Lehrer	Barney Miller The Jeffersons	News Entertainment	News Lie Detector	News M.A.S.H.	Tic Tac Dough Joker's Wild
7:00	Movie: "Pueblo"	Sneak Previews Enterprise	Tennis Chicago Virginia Slims	Fame	Magnum, P.I.	Condo Amanda's	Movie: "The Tall Men"
8:00	"	Mystery "Agatha Christie Stories"	Women's Tournament	Gimme A Break Cheers	Simon & Simon	Too Close For Comfort It Takes Two	"
9:00	News	Freedom To Speak Tony Brown's Journal	News	Hill Street Blues	Knobs Landing	20-20	Jerry Falwell
10:00	All In The Family Movie: "Piranha"	Dick Cavett Business Report	Soap Charlie's Angels	News Tonight	News Soap	News M.A.S.H.	INN News
11:00	Piranha	Health Issues Health Issues	Movie: "Operation Mad Ball"	David Letterman	Quincy	Bob Newhart ABC News Nightline	Sentinel
12:00	Movie: "Hercules"	"	"	McCloud	The Last Word	"	"

Showtime

- 6:00 a.m. The Gumball Rally G
- 8:00 a.m. Raintree County
- 11:00 a.m. Diner R
- 1:00 p.m. Star Wars PG
- 3:00 p.m. Animals Are Beautiful People R
- 4:30 p.m. Breaker Morant PG
- 6:30 p.m. Aerobicise
- 7:00 p.m. The Lost Satellite
- 8:00 p.m. Star Wars PG
- 10:00 p.m. Loving Friends & Perfect Couples/Episode 12
- 10:30 p.m. A New Day In Eden/Episode 25 Shelly Raped
- 11:00 p.m. Diner R
- 12:50 a.m. Monty Python's Life of Brian R
- 2:25 a.m. Island Of A Thousand Delights R
- 3:40 a.m. The Lost Satellite
- 4:45 a.m. Animals Are Beautiful People G

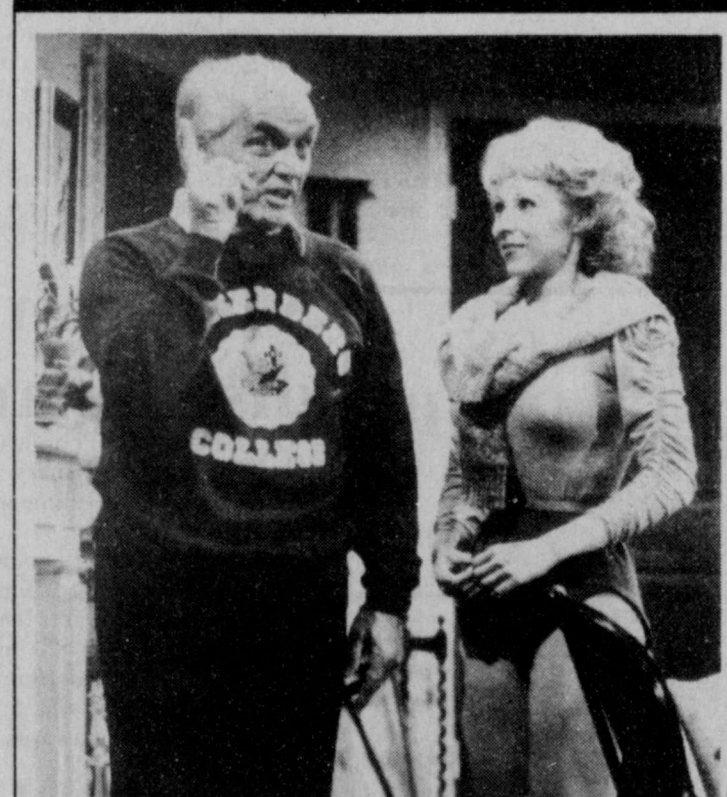
HBO

- 5:00 a.m. Misty
- 6:30 a.m. Golden Rendezvous
- 8:30 a.m. Consumer Reports Presents: The Smart Shopper Show
- 9:00 a.m. Dirty Tricks PG
- 10:30 a.m. Cannery Row PG
- 12:30 p.m. Those Fabulous Clowns
- 1:30 p.m. Golden Rendezvous
- 3:30 p.m. Misty
- 5:00 p.m. Dirty Tricks PG
- 6:30 p.m. Consumer Reports Presents: The Smart Shopper Show
- 7:00 p.m. Cannery Row PG
- 9:00 p.m. The Seduction R
- 10:50 p.m. Sharky's Machine R
- 12:55 a.m. Chanel Solitaire R
- 3:00 a.m. Dirty Tricks PG
- 4:30 a.m. Those Fabulous Clowns

ESPN

- AM**
- 12:00 SportsCenter
 - 12:30 Notre Dame Basketball: Notre Dame at Pittsburgh
 - 2:30 SportsCenter
 - 3:30 ACC College Basketball: Notre Dame at Maryland
 - 5:30 ESPN's SportsForum
 - 6:00 SportsCenter
 - 8:00 SportsCenter
 - 9:00 Gymnastics: USGF Single Elimination Championships
 - 10:00 SportsCenter
- PM**
- 12:00 ACC College Basketball: North Carolina at Maryland
 - 2:00 Big 10 College Basketball: Iowa at Indiana
 - 4:00 Notre Dame Basketball: Notre Dame at Pittsburgh
 - 6:00 F.A. Soccer: "Road to Wembley"
 - 7:00 ESPN's SportsForum — Thurs. Ed.
 - 7:30 SportsCenter
 - 8:00 NFL Theatre: Best-Ever Runners
 - 9:00 Big 8 College Basketball: Kansas at Missouri (L)
 - 11:00 SportsCenter

THURSDAY



Henry (Ted Knight) will have to explain the presence of a beautiful, scantily clad woman (Cisse Cameron) to his wife on "Too Close for Comfort," to air Thursday, Feb. 17 on ABC.

(Stations reserve the right to make last-minute changes.)

Movie Highlights

Movie Ratings

Outstanding	★★★★
Excellent	★★★½
Very Good	★★★
Good	★★½
Not Bad	★★
Fair	★½
Poor	★

- MORNING**
- 8:05 (4) ★★½ "MR. SOFT TOUCH" (1949, Comedy) Glenn Ford, Evelyn Keyes. A returning war veteran finds that a nightclub has been taken over by a gangster.
 - 9:00 (3) ★★ "ALL THAT HEAVEN ALLOWS" (1956, Romance) Jane Wyman, Rock Hudson. Criticism from others almost forces a woman to give up the gardener she truly loves.
- AFTERNOON**
- 12:05 (4) ★★½ "JUST AN OLD SWEET SONG" (1976, Drama) Robert Hooks, Cicely Tyson. A black family from Detroit travel to the South on a vacation that leaves a lasting mark upon all of their lives.
 - 1:00 (3) ★★ "BEDTIME STORY"

- (1964, Comedy) Marlon Brando, David Niven. Two gigolos vie to see who is the best in their profession.
- EVENING**
- 7:00 (3) ★★ "THE TALL MEN" (1955, Adventure) Clark Gable, Robert Ryan. Two brothers decide to go into the cattle business with a tycoon rather than rob him.
 - 7:05 (4) ★★ "PUEBLO" (1973, Drama) Hal Holbrook, Andrew Duggan. North Koreans capture the U.S. Pueblo and its crew.
 - 10:30 (3) ★★½ "THE SENTINEL" (1977, Horror) Chris Sarandon, Cristina Raines. A young woman's life is irrevocably changed when she moves into a sinister brownstone whose only other tenant is a blind priest.
 - 10:35 (4) ★★ "PIRANHA, PIRAN-

- HA" (1972, Adventure) Peter Brown, William Smith. A ruthless hunter schemes to stalk a trio of jungle wildlife photographers.
- 11:30 (3) ★★½ "OPERATION MAD BALL" (1957, Comedy) Jack Lemmon, Ernie Kovacs. A private involves his fellow recruits, enlisted men, officers, nurses and prisoners in carrying off the "Mad Ball," a wild party.
- 12:35 (4) ★ "HERCULES AND THE BLACK PIRATE" (1960, Adventure) Alan Steel, Rosalina Neri. Hercules attacks a band of pirates who are plotting to abduct the lovely daughter of the governor.
- 2:30 (4) ★★½ "TRIPLE DECEPTION" (1957, Mystery) Michael Craig, Brenda De Banzie. A daring impostor is caught in his own web when he is linked to a multi-million dollar murder ring.
- 3:00 (3) ★★ "THE RIVER'S EDGE"

At H&R Block we guarantee our work.

This year with over 100 changes in the tax laws and forms, you have more chances of making a mistake. And that could mean an IRS audit. If H&R Block prepares your taxes and you're audited, we go with you at no added cost. Not as your legal representative, but to explain how your taxes were prepared. If we make a mistake and you owe additional tax, you pay only the tax. We pay the penalty and interest.

106 W. Missouri
Floydada, Texas

H&R BLOCK 983-5233

The new tax laws.
This year's number one reason to go to H&R Block.

FRIDAY FEBRUARY 18, 1983

	4	5	9	11	13	28	34
	WTBS IND	KTXT PBS	WGN IND	KCDB NBC	KLBK CBS	KAMC ABC	KJAA IND
7:00	My Three Sons That Girl	Weather	Bozo	Today	Morning News	Good Morning America	Tennessee Tuzedo Bullwinkle
8:00	Movie: "The Movie Maker"	Sesame Street	Bewitched	"	The Flintstones Richard Simmons	"	Underdog Rocky
9:00	"	Electric Company 3-2-1 Contact	Movie: "Francis Goes To The Races"	The Facts Of Life Sale Of The Century	\$25,000 Pyramid Child's Play	Eight Is Enough	Mighty Mouse Jimmy Swaggart
10:00	Perry Mason	Mister Rogers Perspectives	"	Wheel Of Fortune Hit Man	The Price Is Right	Love Boat	Jim Bakker
11:00	People Now	Mystery "Agatha Christie Stories"	Big Valley	Just Men Search For Tomorrow	Young And The Restless	Family Feud Ryan's Hope	Rockford Files
12:00	Movie: "The Eagle And The Hawk"	American Playhouse "The File On Jill Hawk"	You Asked For It INN News	News Days Of Our Lives	News As The World	All My Children	INN Midday Healthfield
1:00	"	Over Easy MacNeil Lehrer	Dick Van Dyke Andy Griffith	"	Turns Capitol	One Life To Live	Movie: "Men Who Love Women"
2:00	Funtime The Flintstones	Dick Cavett Victory Garden	I Dream Of Jeannie Pink Panther	Fantasy	"	General Hospital	"
3:00	The Munsters Leave It To Beaver	Sesame Street	Super-friends Scooby Doo	Brady Bunch	Tattletales Little House	Tom & Jerry Scooby Doo	Little Rascals Mighty Mouse
4:00	Brady Bunch Bewitched	Mister Rogers Electric Company	Incredible Hulk	CHiPs Patrol	On The Prairie Barney Miller	Happy Days Again People's Court	I Love Lucy My Three Sons
5:00	Carol Burnett Over Newhart	3-2-1 Contact Easy	The Muppets Laverne & Shirley	News NBC News	Three's Company CBS News	News ABC News	Andy Griffith Beverly Hillsbillies
6:00	Winners	Jazzercise To Life MacNeil Lehrer	Barney Miller The Jeffersons	News Entertainment	News Lie Detector	News M.A.S.H.	Tic Tac Dough Jimmy's Wild
7:00	Movie: "Amazing Spider-Man: Deadly"	Washington Week Wall Street Week	Movie: "Silver Streak"	The Powers Of Matthew Star	The Dukes Of Hazzard	Benson New Odd Couple	Movie: "Murder In Peyton Place"
8:00	Dust	Austin City Limits	"	Knight Rider	Dallas	ABC Movie: "Firs Family"	"
9:00	News	Texas Report Firing Line	News	Remington Steele	Falcon Crest	"	Hawaii Five-O
10:00	All In The Family Movie: "Shoot"	Business Report	Charlie's Angels	News Tonight	News Soap	News M.A.S.H.	INN News Movie: "The"
11:00	The Sun Down	Focus On Society Focus On Society	Saturday Night	SCTV Network	CBS Movie "Nightmare In Badham County"	Bob Newhart ABC News Nightline	Invisible Man Returns
12:00	Movie: "Moby Dick"	"	Twilight Zone	"	"	The Last Word	"

Showtime

6:30 a.m. Showtime Short Picks
 7:00 a.m. Jack And The Beanstalk G
 8:30 a.m. Aerobicise
 9:00 a.m. The Catered Affair
 11:00 a.m. Dragonslayer PG
 1:00 p.m. Aerobicise
 1:30 p.m. The Doobie Brothers Farewell Concert
 3:00 p.m. The Valentine's Day That Almost Wasn't

Movie Highlights

MORNING

8:05 (4) ★★½ "THE MOVIE MAKER" (1967, Drama) Rod Steiger, Robert Culp. An aging producer tries to maintain control of a film company.
 9:00 (4) ★★ "FRANCIS GOES TO THE RACES" (1951, Comedy) Donald O'Connor, Piper Laurie. A stable hand gets involved with mobsters, but Francis helps him out of trouble.

AFTERNOON

12:05 (4) ★★½ "THE EAGLE AND THE HAWK" (1950, Western) John Payne, Rhonda Fleming. Two American lawmen discover a plot to overthrow the Mexican leader Juarez.
 1:00 (4) ★★ "MEN WHO LOVE WOMEN" (No Date) Tony Roberts, Squire Fridell. A woman is brought to trial for the murder of her husband.

EVENING

7:00 (9) ★★ "SILVER STREAK" (1976, Comedy) Gene Wilder, Jill Clayburgh. A mid-mannered book editor accidentally becomes entangled in romance and the bizarre plot of a cunning art thief during a cross-country train ride.
 (4) ★★ "MURDER IN PEYTON PLACE" (1977, Mystery) Ed Nelson, Dorothy Malone. The murders of two Peyton Place residents trigger a wave of intrigue and suspicion which sweeps the town.
 7:05 (4) ★★ "AMAZING SPIDER-MAN: DEADLY DUST" (1978, Adventure) Nicholas Hammond, Robert Simon. Three students build a bomb with stolen plutonium and threaten to kill thousands of people.
 8:00 (28) ★★ "FIRST FAMILY" (1980, Comedy) Gilda Radner, Bob Newhart. The sexually repressed daughter of the country's weirdest presidential family complicates her father's attempts to conduct the affairs of state. □

HBO

5:30 a.m. Challenge To Be Free G
 7:00 a.m. Super Fuzz PG
 9:00 a.m. Dragonslayer PG
 11:00 a.m. Simon and Garfunkel
 12:30 p.m. Fleetwood Mac in Concert
 1:30 p.m. Super Fuzz PG
 3:30 p.m. The Violent Earth
 4:30 p.m. Fraggie Rock "The Preachification of Convincing John"
 5:00 p.m. Butch Minds The Baby
 5:30 p.m. Challenge To Be Free G
 7:00 p.m. Dragonslayer PG
 9:00 p.m. Fleetwood Mac in Concert
 10:00 p.m. Thief R
 12:05 a.m. Even More Unexpurgated
 Benny Hill
 1:05 a.m. Bustin' Loose R
 2:40 a.m. Dragonslayer PG
 4:30 a.m. Fleetwood Mac in Concert

ESPN

AM
 12:00 Exhibition Baseball: Los Angeles Dodgers vs. USC
 2:00 ESPN's SportsForum
 2:30 SportsCenter
 3:30 Big 8 College Basketball: Kansas at Missouri
 5:30 ESPN's SportsForum
 6:00 SportsCenter
 7:30 SportsCenter
 9:00 ESPN's SportsWoman
 9:30 ESPN's SportsForum
 10:00 SportsCenter

PM
 12:00 Big 8 College Basketball: Kansas at Missouri
 2:00 Exhibition Baseball: Los Angeles Dodgers vs. USC
 4:00 Vitalis/U.S. Olympic Invitational Track Meet
 6:30 To Be Announced
 7:00 College Basketball Report
 7:30 SportsCenter
 8:00 Winterworld Series: "Born on Skis" Boxing (L)
 8:30 Budweiser Presents Top Rank
 11:00 SportsCenter

SATURDAY FEBRUARY 19, 1983

	4	5	9	11	13	28	34
	WTBS IND	KTXT PBS	WGN IND	KCDB NBC	KLBK CBS	KAMC ABC	KJAA IND
7:00	Romper Room Movie: "Siren Of Bagdad"	U.S. Farm Report The World Tomorrow	Flintstone Funnies The Shirt Tales	Smurfs	Popeye & Olive Pandemonium	Super-friends Pac-Man, Little Rascals, Richie Rich Pac-Man	Tennessee Tuzedo Bullwinkle
8:00	Bagdad	European Journal Perspectives	Rex Humbard Issues Unlimited	"	"	"	Underdog Rocky
9:00	Movie: "Genghis Khan"	The Growing Years The Growing Years	Charlando Job Line	Gary Coleman	Road Runner The Dukes	The Jelsons Jonny Quest	Dr. Snuggles Teen Show
10:00	"	Being Human Being Human	Voyage To The Bottom Of The Sea	Incredible Hulk Amazing Spider-Man	Bugs Bunny Road Runner	Mork & Mindy Laverne & Shirley	Johnny Canales
11:00	Movie: "The"	Government Survey Government Survey	Movie: "Shepard Of The Hills"	The Jelsons Flash Gordon	Gilligan's Planet Fat Albert	Weekend Special Si Se Puede	Sha Na Na Texas Basketball
12:00	Horse Soldiers	America: 2nd Century America: 2nd Century	"	U.S. Farm Report Questions	Blackstar Film Festival	Wrestling	Movie: "The Black Cat"
1:00	"	Focus On Society Focus On Society	Movie: "The Wistful Widow Of"	Val De La O Wild Kingdom	NCAA Basketball Louisville At	Road To Los Angeles	Movie: "The"
2:00	Movie: "Casa-blanca"	The Shakespeare Plays "A"	Wagon Gap America's Top Ten	NCAA Basketball Southwest Conference	Memphis State	PBA Bowling	Spider Woman Strikes Back
3:00	"	Midsummer Night's Dream	Soul Train	Wild Card Game	Auto Racing Sports Saturday	"	Movie: "King Creole"
4:00	Motorweek Illustrated	From These Roots	Know Your Heritage The Muppets	PGA Golf San Diego Open	"	Wide World Of Sports	"
5:00	Wrestling	Malinee At The Bijou "West Of"	Good Times Little House	Nashville Music NBC News	To Be Announced CBS News	Medically Speaking	Voyage To The Bottom Of The Sea
6:00	"	The Divide	On The Prairie At The Movies	Memories With Lawrence Welk	Hee Haw	News All In The Family	Glen Campbell Austin City Limits Encore
7:00	Basketball Atlanta	Movie: "My Favorite Brunette"	Best Of Midnight Special	Diff'rent Strokes Silver Spoons	Bring Em Back Alive	T.J. Hooker	Movie: "Paradise Alley"
8:00	Hawks Vs. Dallas Mavericks	Cinema Showcase	College Basketball Minnesota Vs.	Mama's Family Teachers Only	CBS Movie: "The Fighter"	Love Boat	"
9:00	"	To The Manor Born Comedy Tonight	Wisconsin	The Family Tree	"	Fantasy Island	Saturday Night
10:00	News	Six Great Ideas	News	News	News	News	INN News Wrestling
11:00	Tush!	Footsteps	Movie: "Bullitt"	Live	"	Movie: "Planet Of The Apes"	Laugh Trax
12:00	Movie: "The Prince And The Showgirl"	"	"	Madame's Place	"	"	"

Showtime

6:00 a.m. The Gymnast
 7:00 a.m. Our Very Own
 9:00 a.m. The Barretts of Wimpole Street
 11:00 a.m. Swamp Thing PG
 12:30 p.m. On The Right Track PG
 2:30 p.m. Fractured Flickers
 3:00 p.m. Liberace In Las Vegas
 4:30 p.m. Greased Lightning PG

FRIDAY

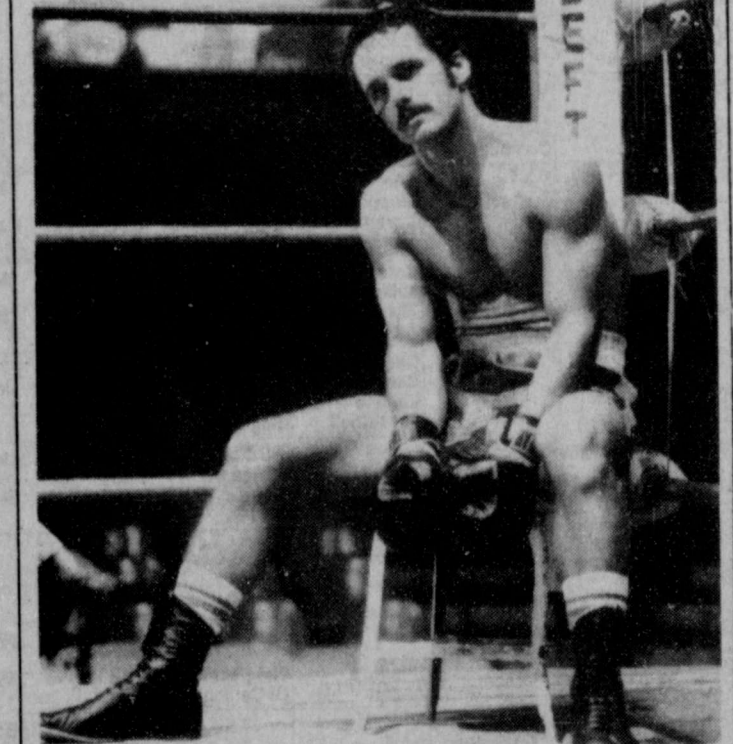


Clayton (Rene Auberjonois, l.) is in for a surprising discovery when a genealogy expert (Jason Bernard) reports on Benson's ancestry in "Benson," to air Friday, Feb. 18 on ABC.

HBO

5:30 a.m. Swamp Thing PG
 7:00 a.m. Star Wars PG
 9:00 a.m. Boy Meets Girl
 10:00 a.m. The Bad News Bears PG
 12:00 p.m. Swamp Think PG
 1:30 p.m. Dirty Tricks PG
 3:00 p.m. The Shootist PG

SATURDAY



Gregory Harrison stars as an out-of-work mill worker who enters amateur boxing against his wife's wishes in "The Fighter," to air Saturday, Feb. 19 on CBS.

ESPN

AM
 12:00 Gymnastics: USGF Single Elimination Championships
 1:00 F.A. Soccer: "Road to Wembley"
 2:00 College Basketball Report
 2:30 SportsCenter
 3:30 Future Sport
 4:00 Budweiser Presents Top Rank Boxing
 6:30 F.A. Soccer: "Road to Wembley"
 7:30 Pony's People in Sports
 8:00 SportsCenter
 9:00 NCAA Instructional Series: Ice Hockey — Shooting with Coach Bob Johnson
 9:15 College Basketball Report
 9:45 NCAA Instructional Series: Ice Hockey — Stickhandling with Yale Coach Tim Taylor
 10:00 Vic's Vacant Lot (Children)

PM
 10:30 To Be Announced
 11:00 Future Sport
 11:30 Ski School
 12:00 Winterworld Series: "Ride the Wind"
 12:30 ACC College Basketball: Duke at Wake Forest (L)
 2:30 ACC College Basketball: North Carolina at North Carolina State (L)
 4:30 ACC College Basketball: Clemson at Maryland (L)
 6:30 Winterworld Series: "Moment of Reward"
 7:00 SportsCenter
 8:00 Gymnastics: USGF Single Elimination Championships
 9:00 Big 10 College Basketball: Wisconsin at Minnesota (L)
 11:00 SportsCenter

Movie Highlights

MORNING

7:35 (4) ★★½ "SIREN OF BAGDAD" (1963, Adventure) Paul Henreid, Patricia Medina. Upon discovering that some lovely Bagdad dancing girls are going to be auctioned off as slaves, a magician and his friend try to rescue them.
 9:05 (4) ★★ "GENGHIS KHAN" (1965, Adventure) Omar Sharif, Stephen Boyd. The terrifying Khan leads the Mongol hordes across Asia.
 11:00 (7) ★★½ "THE SHEPHERD OF THE HILLS" (1941, Drama) John Wayne, Betty Field. Ozark Mountain people attempt to save

their land from outside invaders.
 11:35 (4) ★★ "THE HORSE SOLDIERS" (1959, Adventure) John Wayne, William Holden. The Union cavalry drives toward Louisiana amidst personal conflicts between the officers on the subject of war.

AFTERNOON

12:00 (34) ★★ "THE BLACK CAT" (1941, Mystery) Basil Rathbone, Nigel Bruce. After a will is made public, a series of bizarre murders begins.
 1:00 (9) ★★½ "THE WISTFUL WIDOW OF WAGON GAP" (1947, Comedy) Abbott and Costello, Marjorie Main. Lou accidentally kills a man and is forced to take care of the deceased's "helpless" widow.
 1:30 (2) ★★½ "THE SPIDER WOMAN STRIKES BACK" (1946, Mystery) Brenda Joyce, Gale Sonder-

gaard. A private-duty nurse taps a blind woman's blood supply in order to provide nourishment for a mysterious type of plant.

2:05 (4) ★★ "CASABLANCA" (1943, Drama) Ingrid Bergman, Humphrey Bogart. A gambling casino owner holds the key to the escape of a French Resistance leader and his wife, who are fleeing from the Nazis.

3:00 (24) ★★½ "KING CREOLE" (1958, Musical) Elvis Presley, Carolyn Jones. A youth becomes a smashing hit when he agrees to sing in a gangster-owned New Orleans nightspot.

EVENING

7:00 (5) ★★ "MY FAVORITE BRUNETTE" (1947, Comedy) Bob Hope, Dorothy Lamour. A mysterious woman persuades a phy-

siologist to become a super-leuth.

(4) ★★ "PARADISE ALLEY" (1978, Drama) Sylvester Stallone, Armand Assante. Three scheming brothers from the Hell's Kitchen section of New York City combine their brains and brawn in an effort to create better lives for themselves.

8:00 (13) "THE FIGHTER" (Premiere, Drama) Gregory Harrison, Glynnis O'Connor. An unemployed mill worker jeopardizes his marriage and his life when he enters the risky world of amateur boxing.

11:00 (3) ★★½ "BULLITT" (1968, Drama) Steve McQueen, Robert Vaughn. A San Francisco detective tries to prevent the murder of a prospective witness for a political hearing.

(28) ★★ "PLANET OF THE

jam.

2:30 (9) ★★ "CHINA GIRL" (1943, Adventure) Gene Tierney, George Montgomery. World War II China is the backdrop for adventure and romance between an American photographer and a lovely Eurasian girl.

2:55 (13) ★½ "THE DEERSLAYER" (1975, Adventure) Lex Barker, Rita Moreno. Based on the story by James Fenimore Cooper. A white man is raised by Indians in the frontier days of early America.

4:25 (13) ★½ "PALS OF THE SADDLE" (1938, Western) John Wayne, Ray Corrigan. A cowboy encounters a pretty female agent on an undercover mission to investigate the illegal transport of a dangerous chemical being camouflaged as salt.

SUNDAY FEBRUARY 20, 1983

	4	WTBS IND	5	KTXB PBS	9	WGN IND	11	KCBD NBC	13	KLBK CBS	28	KAMC ABC	34	KJAA IND
7:00	Cartoons				Three Score What's Nu? Robert Schuller		Sacred Heart	Capital Eye James Robinson		Jerry Falwell			Bullwinkle House Of Ireal	
8:00	Lost In Space		Footsteps		Sunday Mass Church Hour		Oral Roberts Methodist Church	Sunday Morning		Larry Jones Prophecy In The News			Jerry Falwell	
9:00	Side Of The News Movie: "Von"		Sesame Street		Tarzan		The World Tomorrow	Sunday School		Kenneth Copeland			Jimmy Swaggart	
10:00	Ryan's Express		Mister Rogers Electric Company		Rawhide		Rex Humbard Jimmy Swaggart	Robert Schuller		Jerry Savelle Herald Of Truth			Jim Bakker	
11:00			3-2-1 Contact Matinee At The		Cisco Kid Lone Ranger		Meet The Press	Auto Racing Daytona 500		Baptist Church			Editor's Desk Wall Street Journal	
12:00	Portrait Of America		Bijou "West Of The Divide"		Movie: "Charlie Chan At The Opera"		NCAA Basketball DePaul			This Week With David Brinkley			Movie: "Bridger"	
1:00	Movie: "To Sir With Love"		Movie: "Springtime In The Rockies"		Movie: "The"		St. John's			The Superstars				
2:00			Movie: "My Favorite Brunette"		Harvey Girls		SportsWorld			Amateur Boxing			Movie: "Hawmps"	
3:00					Movie: "The War Of The Worlds"			Basketball Missouri Vs. Virginia		Wide World Of				
4:00			Washington Week Wall Street Week				Isuzu-Andy Williams San Diego			Sports			Voyage To The Bottom Of The Sea	
5:00			Nice People		All Creatures Great & Small		Little House	Open NBC News		Dance Fever ABC News			Those Amazing Animals	
6:00			Wrestling		To The Manor Born Comedy Tonight		On The Prairie Tennis Chicago	Voyagers!		60 Minutes			Ripley's Believe It Or Not!	
7:00	Nashville Alive!		Life On Earth		Virginia Slims Tournament		CHiPs	Archie Bunker Gloria		Matt Houston			Movie: "Midway"	
8:00	Week In Review		Masterpiece Theatre "Winston Churchill"		NBC Movie: "Rage Of Angels" Part 1		The Jeffersons One Day At A Time			ABC Movie: "Star Trek - The Motion Picture"				
9:00	News		Super Soccer		News		Trapper John, M.D.			Picture"				
10:00	Jerry Falwell		Health Issues The Blowing Years		Twilight Zone Saturday Night		News Gerald Myers			Solid Gold			INN News Saturday Night	
11:00	Open Up				Movie: "Uncertain Glory"		Emergency			Countdown '82			News Pop! Goes The Country Nashville On The Road	
12:00	Movie: "Desire Under The Elms"									Jack Van Impe Jim Bakker				

Showtime

6:30 a.m. Showtime's Hollywood
 7:00 a.m. Benji At Work
 7:30 a.m. Mark Twain Theatre: The Thing About Feudin'
 9:00 a.m. Star Wars PG
 11:00 a.m. Shaft of Love
 1:00 p.m. Barbary Coast
 2:30 p.m. Showtime's Hollywood
 3:00 p.m. The Gumball Rally G
 5:00 p.m. Mark Twain Theatre: The Thing About Feudin'
 6:30 p.m. Barbary Coast

HBO

5:30 a.m. Challenge To Be Free G
 7:00 a.m. Consumer Reports
 7:30 a.m. Cannery Row PG
 9:30 a.m. Fleetwood Mac
 10:30 a.m. Fraggie Rock "The Preachification of Convincing John"
 11:00 a.m. Take This Job and Shove It PG
 1:00 p.m. Cannery Row PG
 3:00 p.m. Simon and Garfunkel
 4:30 p.m. Cannery Row PG

ESPN PM

12:00 ACC College Basketball: North Carolina at North Carolina State
 2:00 Winterworld Series: Record of Time
 2:30 SportsCenter
 3:30 ACC College Basketball: Clemson at Maryland
 5:30 ACC College Basketball: Duke at Wake Forest
 7:30 Vic's Vacant Lot (Children)
 8:00 SportsCenter
 9:00 Future Sport
 9:30 Big 10 College Basketball: Wisconsin at Minnesota
 11:30 Fishin' Hole

Movie Highlights

Movie Ratings

Outstanding	★★★★
Excellent	★★★½
Very Good	★★★
Good	★★½
Not Bad	★★
Fair	★½
Poor	★

MORNING

9:35 (4) ★★★ "VON RYAN'S EXPRESS" (1965, Drama) Frank Sinatra, Trevor Howard. An American leads a prisoners' revolt against the Nazis taking them to Austria.

AFTERNOON

12:00 (9) ★★ "CHARLIE CHAN AT THE OPERA" (1936, Mystery) Warner Oland, Helen Wood. Chan is called in to solve a mysterious murder involving the opera.
 (3) ★★½ "BRIDGER" (1976, Adventure) James Wainwright, Ben Murphy. In 1830, an American mountaineer is given 40 days to uphold the United States' claim to the Pacific Northwest by blazing a trail to the California coast.

WORLDS" (1953, Science-Fiction) Gene Barry, Ann Robinson. Earth is threatened by a Martian invasion.

EVENING

7:00 (3) ★★★ "MIDWAY" (1976, Adventure) Charlton Heston, Henry Fonda. Japanese and American military forces square off for a naval and aerial battle centered around a Pacific island during World War II.

8:00 (1) "RAGE OF ANGELS" (Part 1) (Premiere, Drama) Jaclyn Smith, Ken Howard. Based on the novel by Sidney Sheldon. After nearly being disbarred on her first day in court, a fledgling lawyer sets up her own practice and becomes romantically involved with a politically ambitious, married attorney.

(2) ★★½ "STAR TREK - THE MOTION PICTURE" (1979, Science-Fiction) William Shatner, Leonard Nimoy. Admiral Kirk clashes with the new commander of the starship Enterprise on a mission to find a huge, unidentified vessel that is carving a destructive path through the galaxy.

11:30 (7) ★★½ "UNCERTAIN GLO-RY" (1944, Adventure) Errol Flynn, Paul Lukas. In order to save the lives of 100 French hostages, a criminal saboteur offers himself to be handed over to the Nazis.

(2) ★★½ "THE HARVEY GIRLS" (1946, Musical) Judy Garland, John Hodiak. The standards and men of an 1870s Western town are altered by a group of young girls. Songs include "The Atchison, Topeka And The Sante Fe."

2:00 (5) ★★★ "MY FAVORITE BRUNETTE" (1947, Comedy) Bob Hope, Dorothy Lamour. A mysterious woman persuades a baby photographer to become a super-sleuth.

(3) ★★ "HAWMPISI" (1976, Comedy) James Hampton, Christopher Connelly. A group of U.S. Cavalrymen try to adjust to riding camels instead of horses in the untamed, lawless Texas of the 1800s.

3:00 (9) ★★★ "THE WAR OF THE MARINES" (1952, Comedy) Bowery Boys, Leo Gorcey. The Boys run into murder when they are assigned to the same regiment in the Marines.

MONDAY FEBRUARY 21, 1983

	4	WTBS IND	5	KTXB PBS	9	WGN IND	11	KCBD NBC	13	KLBK CBS	28	KAMC ABC	34	KJAA IND
7:00	My Three Sons The Girl		Bozo		Today		Morning News			Good Morning America			Tennessee Tuxedo Bullwinkle	
8:00	Movie: "The Strange One"		Sesame Street		Bewitched		The Flintstones			Richard Simmons			Underdog	
9:00			Electric Company Tuned In		Movie: "The Romance Of Rosy Ridge"		The Facts Of Life			\$25,000 Pyramid Child's Play			Eight Is Enough	
10:00	Perry Mason		Mister Rogers Decorative Painting		Ridge		Wheel Of Fortune Hit Man			The Price Is Right			Love Boat	
11:00	People Now		All Creatures Great & Small		Big Valley		Just Men Search For Tomorrow			Young And The Restless			Family Feud Ryan's Hope	
12:00	Movie: "Walk Like A Dragon"		Footsteps		Footsteps		News INN News			Days Of Our Lives			All My Children	
1:00			Over Easy MacNeil Lehrer		Dick Van Dyke Andy Griffith		Another World			Turns			One Life To Live	
2:00	Funtime The Flintstones		Dick Cavett Smithsonian Profiles		I Dream Of Jeannie Pink Panther		Fantasy			Guiding Light			General Hospital	
3:00	The Munsters Leave It To Beaver		Sesame Street		Super-friends Scooby Doo		Brady Bunch			Tattletales			Tom & Jerry Scooby Doo	
4:00	Brady Bunch Starcade		Mister Rogers Electric Company		Incredible Hulk		CHiPs			On The Prairie Barney Miller			Happy Days Again People's Court	
5:00	Carol Burnett Bob Newhart		3-2-1 Contact Over Easy		The Muppets Laverne & Shirley		News NBC News			Three's Company CBS News			News ABC News	
6:00	Gomer Pyle American Profess.		Jazzercise To Life MacNeil Lehrer		Barney Miller The Jeffersons		News Entertainment			News Lie Detector			News M.A.S.H	
7:00	Movie: "The April Fools"		Frontline		Odd Couple College Basketball		Little House A New Beginning			Charlie Brown Square Pegs			That's Incredible	
8:00			Great Performances "Wagner's Ring"		Loyola Vs. Xavier		NBC Movie: "Rage Of Angels" Part 2			M.A.S.H Newhart			ABC Movie: "Grace Kelly"	
9:00	News		Die Walkure Act I Life And Death		News		News			Cagney & Lacey			Hawaii Five-O	
10:00	All In The Family Movie: "The"		Dick Cavett Business Report		Charlie's Angels		The Best Of Carson			Soap			News M.A.S.H	
11:00	Lusty Men		American Government Survey		Movie: "Scorpio"		David Letterman			Trapper John, M.D.			Bob Newhart ABC News Nightline	
12:00							Columbo			The Last Word				

Showtime

6:00 a.m. The Adventures of The Wilderness Family Part II G
 8:00 a.m. Best Horse
 8:30 a.m. Aerobicise
 9:00 a.m. For The First Time
 11:00 a.m. Die Laughing PG
 1:00 p.m. Aerobicise
 1:30 p.m. Dragonslayer PG
 3:30 p.m. Best Horse
 4:00 p.m. The Adventures Of The Wilderness Family Part II G

HBO

5:30 a.m. Butch Minds The Baby
 6:00 a.m. Those Fabulous Clowns
 7:00 a.m. Dragonslayer PG
 9:00 a.m. Super Fuzz PG
 11:00 a.m. Dirty Tricks PG
 12:30 p.m. Those Fabulous Clowns
 1:30 p.m. Dragonslayer PG
 3:30 p.m. College

ESPN

1:00 FIS World Cup Skiing: Men's Giant Slalom from Garmisch, West Germany
 2:30 SportsCenter
 3:30 NBA Basketball: Dallas at Chicago
 6:00 SportsCenter
 8:00 SportsCenter
 9:00 ESPN's SportsWoman
 9:30 Ski School
 10:00 SportsCenter



Jaclyn Smith plays a top attorney, Kevin Conway (seated) her partner and Ron Hunter the district attorney in "Rage of Angels," airing Sunday, Feb. 20 and Monday, Feb. 21 on NBC.

Today's Lifestyles

by Marilyn Tate

USE TEST SEAM ON KNIT FABRICS

Before sewing on a knit fabric, a test seam should be made to determine the pressure, tension and proper pressing techniques needed.

Use similar stitches and layers of fabric to test for the right pressure and tension.

Pressure is usually adjusted for light to normal settings, depending on the weight of the fabric, and the right amount of pressure is important.

Too much pressure can stretch or ripple the fabric and too little can cause skipped stitches. When checking pressure, two lengths of fabric cut the same length should come out identical when stitched without thread.

Loose tension should be used on knits. To check tension, the top and bottom will look the same with stitches interlocked between two fabric layers. However, for top stitching the top

thread may be looser than the bottom one. Fabric curling can be prevented by placing pins close together and perpendicular to the fabric edges. Starching edges also helps.

When cutting fabrics that tend to curl, consider using a wider-than-called-for seam allowance and trimming the seam allowance after stitching.

You can also use double stick tape along the seam line and seam allowance of fabrics that curl considerably.

Pressing helps obtain the desired look on most knitted fabrics, though some are resistant to pressing. The resistant fabrics can be flattened with the manner determined through seaming.

These hints will help when pressing knitted fabrics:

--check for correct iron temperature (determined by fabric content and thickness)

--use a press cloth to avoid shine

--press with lowering-lifting motion rather than sliding one

--place brown paper strips under seams, hem allowances and darts to prevent impressions

--press in the same direction as the lengthwise rib to avoid stretching

Some knitted fabrics made of acrylic, cotton or acetate fibers, sweater-type or poor quality knits can stretch when warm and moist, so let them cool and dry before picking them up.

Educational programs conducted by the Texas Agricultural Extension Service serves people of all ages regardless of socioeconomic level, race, color, sex, religion or national origin.

Movie Highlights

MORNING

8:05 (4) ★★½ "THE STRANGE ONE" (1957, Drama) Ben Gazzara, George Peppard. An emotionally disturbed senior at a Southern military academy sadistically bullies his fellow cadets.

9:00 (3) ★★★ "THE ROMANCE OF ROSY RIDGE" (1947, Comedy) Van Johnson, Janet Leigh. Following the Civil War, a Missouri farmer and his wife cast a wary and vigilant eye upon the handsome stranger who's wooing their daughter.

AFTERNOON

12:05 (4) ★★½ "WALK LIKE A DRAGON" (1960, Drama) Mel Torme, Jack Lord. A man fights neighbors and a young Chinaman when he invites the young man's girlfriend to stay in his home.

1:00 (3) ★★★ "BLINDFOLD" (1966, Suspense) Rock Hudson, Claudia Cardinale. A psychiatrist becomes involved with international conflict when he treats a scientist sought by two opposing governments.

EVENING

7:05 (4) ★★½ "THE APRIL FOOLS" (1967, Comedy) Jack Lemmon, Catherine Deneuve. A Madison Avenue executive is bewitched by his boss's beautiful wife with whom he decides to run

away to Paris.

8:00 (1) "RAGE OF ANGELS" (Part 2) (Premiere, Drama) Jaclyn Smith, Ken Howard. Based on the novel by Sidney Sheldon. Jennifer Parker's romance with now-U.S. Senator Adam Warner, whose child she is carrying, ends, and she becomes entangled with Michael Moretti, a ruthless underworld lawyer.

(2) "GRACE KELLY" (Premiere, Biography) Cheryl Ladd, Lloyd Bridges. The life of legendary screen star Grace Kelly, who gave up a successful acting career to marry Prince Rainier of Monaco, is dramatized.

10:30 (3) ★★½ "SHADOW OVER ELVERON" (1968, Drama) James Franciscus, Leslie Nielsen. After the sheriff murders a young boy, an incorruptible man sets out to bring dignity back to the hearts of the

townspeople.

10:35 (4) ★★½ "THE LUSTY MEN" (1952, Drama) Susan Hayward, Robert Mitchum. A cowboy does everything to become a rodeo star.

11:30 (7) ★★½ "SCORPIO" (1973, Drama) Burt Lancaster, Alain Delon. An agent is marked for execution by Scorpio, a fellow agent.

1:00 (4) ★★ "THE CLONE MASTER" (1978, Science-Fiction) Art Hindle, Robyn Douglas. A biochemist produces 13 replicas of himself and uses them to thwart the planned destruction of a top-secret cloning project.

3:05 (4) ★★½ "WAR DRUMS" (1957, Western) Lex Barker, Joan Taylor. A cavalry officer acts as peacemaker between goldminers and Apaches.



TUESDAY FEBRUARY 22, 1983

	4 WTBS IND	5 KTXI PBS	9 WGN IND	11 KCBD NBC	13 KLBK CBS	28 KAMC ABC	34 KJAA IND
7:00	My Three Sons That Girl	Weather	Bozo	Today	Morning News	Good Morning America	Tennessee Tuxedo Bullwinkle
8:00	Movie: "Nobody's Perfect"	Sesame Street	Bewitched	"	The Flintstones Richard Simmons	"	Underdog Rocky
9:00	"	Electric Company Tuned In	Movie: "Female On The Beach"	The Facts Of Life Sale Of The Century	\$25,000 Pyramid Child's Play	Eight Is Enough	Mighty Mouse Jimmy Swaggart
10:00	Perry Mason	Mister Rogers Watercolors	"	Wheel Of Fortune Hit Man	The Price Is Right	Love Boat	Jim Bakker
11:00	People Now	Masterpiece Theatre "Winston Churchill"	Big Valley	Just Men Search For Tomorrow	Young And The Restless	Family Feud Ryan's Hope	Rockford Files
12:00	Movie: "Hell's Half Acre"	Being Human Being Human	You Asked For It INN News	News Days Of Our Lives	News As The World	All My Children	INN Midday Healthfield
1:00	"	Over Easy MacNeil Lehrer	Dick Van Dyke Andy Griffith	"	Turns	One Life To Live	Movie: "Adam At 6 A.M."
2:00	Funtime The Flintstones	Dick Cavett Lap Quilting	I Dream Of Jeannie Pink Panther	Fantasy	"	Guiding Light	General Hospital
3:00	The Munsters Leave It To Beaver	Sesame Street	Super-Friends Scooby Doo	"	Brady Bunch	Tattletales Little House	Tom & Jerry Scooby Doo
4:00	Brady Bunch Bewitched	Mister Rogers Electric Company	Incredible Hulk	CHiPs Patrol	On The Prairie Barney Miller	Happy Days Again People's Court	I Love Lucy My Three Sons
5:00	Carol Burnett Bob Newhart	3-2-1 Contact Over Easy	The Muppets Laverne & Shirley	News NBC News	Three's Company CBS News	News ABC News	Andy Griffith Beverly Hills
6:00	Gomer Pyle Andy Griffith	Jazzercise To Life MacNeil Lehrer	Barney Miller The Jeffersons	News Entertainment	News Lie Detector	News M.A.S.H.	Tic Tac Dough Joker's Wild
7:00	Movie: "Ensign Pulver"	Nova "Asteroid And The Dinosaur"	Solid Gold Countdown '82	The A-Team	CBS Movie: "Will There Really Be A Morning?"	Happy Days Laverne & Shirley	Movie: "River Of No Return"
8:00	"	American Playhouse "The File On Jill Hatch"	"	Bare Essence	Be A Morning?"	Three's Company 9 To 5	"
9:00	News	Fundi: The Ella Baker Story	News	St. Elsewhere	"	Hart To Hart	Hawaii Five-O
10:00	All In The Family Movie: "Stromboli"	Dick Cavett Business Report	Soap Charlie's Angels	News Tonight	News Soap	News M.A.S.H.	INN News Movie: "Cannonball"
11:00	"	America: 2nd Century America: 2nd Century	Movie: "The Unforgiven"	"	David Letterman	"	"
12:00	Movie: "Caxambu"	"	"	NBC News Overnight	"	McMillan & Wife	The Last Word

Showtime

5:30 a.m. The Gymnast
6:30 a.m. Fractured Flickers
7:00 a.m. King Solomon's Mines
11:00 a.m. Ordinary People R
1:00 p.m. Heartland PG
3:00 p.m. Jack and The Beanstalk G
4:30 p.m. Swamp Thing PG
6:00 p.m. Greased Lightning PG
8:00 p.m. The Postman Always Rings Twice R
10:00 p.m. Loving Friends and Perfect Couples/Episode 9
10:30 p.m. A New Day In Eden/Episode 22. Biff Gets The Cash
11:00 p.m. Ordinary People R
1:00 a.m. Sharky's Machine R
3:05 a.m. Heartland PG
4:45 a.m. Jack and The Beanstalk G

HBO

5:25 a.m. Misty
7:00 a.m. Golden Rendezvous
9:00 a.m. The Bad News Bears PG
11:00 a.m. Boy Meets Girl
12:00 p.m. The Comeback Kid
2:00 p.m. Fleetwood Mac in Concert
3:00 p.m. Video Jukebox
3:30 p.m. Misty
5:00 p.m. Golden Rendezvous
7:00 p.m. The Bad News Bears PG
9:00 p.m. Fleetwood Mac in Concert
10:00 p.m. Bustin' Loose R
11:40 p.m. Animal House R
1:30 a.m. A Stranger Is Watching R
3:00 a.m. The Groove Tube R
4:15 a.m. Boy Meets Girl

ESPN

AM
12:00 Big East College Basketball: Connecticut at Boston College
2:00 ESPN's Inside Baseball — Feb. Ed.
2:30 SportsCenter
3:30 Sun Belt College Basketball: North Carolina-Charlotte at Jacksonville
5:30 ESPN's Inside Baseball — Feb. Ed.
6:00 SportsCenter
8:00 SportsCenter
9:00 ESPN's Inside Baseball — Feb. Ed.
9:30 Vic's Vacant Lot (Children)
10:00 SportsCenter
PM
12:00 Pony's People in Sports
12:30 Ski School
1:00 Big East College Basketball: Connecticut at Boston College
3:00 ESPN's Inside Baseball — Feb. Ed.
3:30 Winterworld Series: "Born on Skis"
4:00 Budweiser Presents Top Rank Boxing
6:30 ESPN's SportsForum — Tues. Ed.
7:00 This Week in the NBA
7:30 SportsCenter
8:00 Gymnastics: USGF Single Elimination Championships
9:00 SEC College Basketball: Auburn at Tennessee (L)
11:00 SportsCenter

Movie Highlights

Movie Ratings

Outstanding	★★★★
Excellent	★★★½
Very Good	★★★
Good	★★½
Not Bad	★★
Fair	★
Poor	★

MORNING

8:05 (4) ★★½ "NOBODY'S PERFECT" (1968, Comedy) Doug McClure, Nancy Kwan. A man attempts to return a Buddha to a small village after he learns that its absence has brought bad luck.
9:00 (7) ★★★ "FEMALE ON THE BEACH" (1955, Suspense) Joan Crawford, Jeff Chandler. A woman begins to believe that her husband is planning to kill her for her money.

AFTERNOON

12:05 (4) ★★½ "HELL'S HALF ACRE" (1953, Adventure) Wendell Corey, Evelyn Keyes. After hearing a haunting Hawaiian melody, a woman heads for the islands certain that her husband, presumed dead, wrote the song.
1:00 (3) ★★½ "ADAM AT 6 A.M." (1970, Drama) Michael Douglas, Lee Purcell. A young college professor spends a summer in the Midwest as a common laborer.

EVENING

7:00 (13) "WILL THERE REALLY BE A MORNING?" (Premiere, Biography) Susan Blakely, Lee Grant. The glamorous and troubled life of actress Frances Farmer, from her chaotic childhood through her rise to stardom and eventual emotional breakdown, is dramatized.
8:30 ★★★ "RIVER OF NO RETURN" (1954, Adventure) Robert Mitchum, Marilyn Monroe. A widower, his son and a barroom entertainer escape on a raft from Indian attacks and a sinister gam-

bler who is intent upon finding them.
7:05 (4) ★★½ "ENSIGN PULVER" (1964, Comedy) Robert Walker, Burl Ives. A mischievous ensign joins his Navy crew in plotting against their eccentric captain.
10:30 (3) ★★★ "CANNONBALL" (1976, Adventure) David Carradine, Robert Carradine. A quarter-of-a-million dollars' worth of vehicles meet their end in a motorized mayhem of stunt driving, chilling chases and spectacular wrecks.
10:35 (4) ★★ "STROMBOLI" (1950, Drama) Ingrid Bergman, Mario Vitale. Unsuccessful in improving her lot through marriage, a poor fisherman's wife yearns for something better.
11:30 (7) ★★½ "THE UNFORGIVEN" (1960, Western) Audrey Hepburn, Burt Lancaster. A pioneer family struggles against the hostile Kiowa Indians, who claim that the pioneers' adopted daughter is a member of their tribe.
12:15 (4) ★★ "TIMBUKTU" (1959, Adventure) Victor Mature, Yvonne De Carlo. A World War II mercenary lends his support to both the French and Arabs during an African battle in the Sudan.
2:10 (4) ★★★ "THE QUIET AMERICAN" (1958, Drama) Audie Murphy, Michael Redgrave. A young American is determined to end the war in Southeast Asia using his own means.
3:00 (9) ★★★ "THE LAST OUTPOST" (1935, Adventure) Cary Grant, Claude Rains. A pair of military officers fall in love with the same woman amidst battles between African natives and the British.

WEDNESDAY FEBRUARY 23, 1983

	4 WTBS IND	5 KTXI PBS	9 WGN IND	11 KCBD NBC	13 KLBK CBS	28 KAMC ABC	34 KJAA IND
7:00	My Three Sons That Girl	Weather	Bozo	Today	Morning News	Good Morning America	Tennessee Tuxedo Bullwinkle
8:00	Movie: "In-Discreet"	Sesame Street	Bewitched	"	The Flintstones Richard Simmons	"	Underdog Rocky
9:00	"	Electric Company Tuned In	Movie: "Battle Hymn"	The Facts Of Life Sale Of The Century	\$25,000 Pyramid Child's Play	Eight Is Enough	Mighty Mouse Jimmy Swaggart
10:00	Perry Mason	Nova "Asteroid And The Dinosaur"	"	Wheel Of Fortune Hit Man	The Price Is Right	Love Boat	Jim Bakker
11:00	People Now	Life On Earth	Big Valley	Just Men Search For Tomorrow	Young And The Restless	Family Feud Ryan's Hope	Rockford Files
12:00	Movie: "The Nutty Professor"	Health Issues Health Issues	You Asked For It INN News	News Days Of Our Lives	News As The World	All My Children	INN Midday Healthfield
1:00	"	Over Easy MacNeil Lehrer	Dick Van Dyke Andy Griffith	"	Turns	One Life To Live	Movie: "Sex And The Married Woman"
2:00	Funtime The Flintstones	Dick Cavett Here's To Your Health	I Dream Of Jeannie Pink Panther	Fantasy	"	Guiding Light	General Hospital
3:00	The Munsters Leave It To Beaver	Sesame Street	Super-Friends Scooby Doo	"	Brady Bunch	Tattletales Little House	Tom & Jerry Scooby Doo
4:00	Brady Bunch Bewitched	Mister Rogers Electric Company	Incredible Hulk	CHiPs Patrol	On The Prairie Barney Miller	Happy Days Again People's Court	I Love Lucy My Three Sons
5:00	Carol Burnett Bob Newhart	3-2-1 Contact Focus: Law & Shirley	The Muppets Laverne & Shirley	News NBC News	Three's Company CBS News	News ABC News	Andy Griffith Beverly Hills
6:00	Gomer Pyle Andy Griffith	Jazzercise To Life MacNeil Lehrer	Barney Miller The Jeffersons	News Entertainment	News Lie Detector	News M.A.S.H.	Tic Tac Dough Joker's Wild
7:00	Basketball Arkansas Vs. Texas	The Horror Of It All	College Basketball Illinois Vs. Purdue	Real People	Grammy Awards	All-Star Family Feud Special	Movie: "The War Wagon"
8:00	"	Soundstage	"	The Facts Of Life Family Ties	"	The Fall Guy	"
9:00	News	The Making Of M.A.S.H.	News	Quincy	"	Dynasty	Hawaii Five-O
10:00	Woman Watch Movie: "The Green Pastures"	Business Report	Charlie's Angels	News Tonight	News Soap	News M.A.S.H.	INN News Movie: "The Dion Brothers"
11:00	"	Perspectives	"	"	Hart To Hart	Bob Newhart ABC News Nightline	"
12:00	Movie: "Caxambu"	"	"	NBC News Overnight	"	CBS Movie "Topper"	The Last Word

Showtime

6:30 a.m. On The Right Track PG
8:30 a.m. Aerobicise
9:00 a.m. The Catered Affair
11:00 a.m. The Stunt Man R
1:15 p.m. Aerobicise
1:30 p.m. The Gumball Rally G
3:30 p.m. The Valentine's Day That Almost Wasn't
4:00 p.m. Mark Twain Theatre: The Thing About Feudin'
5:30 p.m. The Doobie Brothers Farewell Concert
7:00 p.m. The Stunt Man R
9:30 p.m. Best of Bizarre 6
10:00 p.m. Loving Friends & Perfect Couples/Episode 10
10:30 p.m. A New Day In Eden/Episode 23. Pam's New Lover
11:00 p.m. Island Of A Thousand Delights R
12:15 a.m. Diner R
2:05 a.m. The Doobie Brothers Farewell Concert
3:35 a.m. Best of Bizarre 6
4:15 a.m. Mark Twain Theatre: The Thing About Feudin'

HBO

5:00 a.m. Simon and Garfunkel
6:30 a.m. Fraggie Rock "I Want To Be You"
7:00 a.m. Star Wars PG
9:00 a.m. Hondo
10:30 a.m. Those Fabulous Clowns
11:30 a.m. Cannery Row PG
1:30 p.m. Consumer Reports Presents
2:00 p.m. Simon and Garfunkel: The Concert In Central Park
3:30 p.m. Fraggie Rock "I Want To Be You"
4:00 p.m. Butch Minds The Baby
4:30 p.m. Star Wars PG
6:30 p.m. HBO Magazine
7:00 p.m. Chanel Solitaire R
9:10 a.m. Cannery Row PG
11:15 p.m. Hondo
12:45 a.m. The Seduction R
2:35 a.m. Chanel Solitaire R

ESPN

AM
12:00 Budweiser Presents Top Rank Boxing
2:30 SportsCenter
3:30 This Week in the NBA
4:00 SEC College Basketball: Auburn at Tennessee
6:00 SportsCenter
8:00 SportsCenter
9:00 ESPN's SportsForum
9:30 This Week in the NBA
10:00 SportsCenter
PM
12:00 ESPN's SportsWoman
12:30 F.A. Soccer: "Road to Wembley"
1:30 (3) ★★½ "THE DION BROTHERS" (1974, Western) Stacy Keach, Frederic Forrest. Two brothers head West in search of more exciting lives as outlaws.
10:35 (4) ★★★★★ "THE GREEN PASTURES" (1936, Fantasy) Rex Ingram, Eddie Anderson. Biblical characters and Heaven are seen from the black point of view.
11:30 (9) ★★½ "HANG 'EM HIGH" (1968, Western) Clint Eastwood, Inger Stevens. A man brings those who tried to lynch him to justice.
12:10 (13) ★★½ "TOPPER" (1979, Comedy) Kate Jackson, Andrew Stevens. The ghosts of two sophisticated people return to Earth to complicate the life of a wealthy

Movie Highlights

MORNING

8:05 (4) ★★★ "INDISCREET" (1958, Comedy) Cary Grant, Ingrid Bergman. A rich American and a European actress fall in love although he claims to be married.
9:00 (7) ★★★ "BATTLE HYMN" (1957, Drama) Rock Hudson, Martha Hyer. A gentle chaplain is able to dispel his guilty feelings and become a military hero during World War II.

AFTERNOON

12:05 (4) ★★½ "THE NUTTY PROFESSOR" (1963, Comedy) Jerry Lewis, Stella Stevens. A meek professor is transformed into an irresistible charmer who can have any girl except the one he wants.
1:00 (3) ★★½ "SEX AND THE MARRIED WOMAN" (1977, Romance) Joanna Pettet, Barry Newman. A contemporary couple's marriage founders when the wife publishes a bestseller.

EVENING

7:00 (3) ★★★ "WAR WAGON" (1967, Western) John Wayne, Kirk Douglas. A cowboy defrauded of his gold-rich land plans a special type of vengeance with the help of a gunslinger, an Indian, a drunk and a thief.

TUESDAY



Susan Blakely plays actress Frances Farmer, who is appalled at the way she looks after a Hollywood make-up man (George Touliatos) transforms her in "Will There Really Be a Morning?", Tuesday, Feb. 22 on CBS.

ASK ME ABOUT TV

By Val Carew

PIERCE-D HEART — I think answering the readers who write to you is very considerate. So I would like to ask you about gorgeous Pierce Brosnan, from "Remington Steele." Where can I write to him and where can I get a poster of this strikingly handsome man? — M.R., San Francisco, Calif.
Lots of mail arriving about Pierce, who in real life is not only handsome but charming, witty and intelligent — also married and the father of two children, an 8-year-old daughter, Charlotte, and a 7-year-old son, Christopher. He was born in Ireland and lives in England, when he is not working in the United States.

Write to him in care of the show at MTM Productions, 4024 Radford Ave., Studio City, CA 91604. He has not posed for a poster.

BURT'S OTHER NAME — In the "Gunsmoke" series, Burt Reynolds played the role of an Indian blacksmith. What was he called? — O.H., New Boston, Texas
Burt, who played the half-breed blacksmith, was known as Quint Asper.

(Do you have a question about TV? Write Val Carew at 200 Park Avenue, Room 602, New York, NY 10166.)

Saying "I love you" is sweet to the ears, but a Raynor door opener says "I love you" for years.



Give your Valentine a Raynor garage door opener on Valentine's Day. It shows you're concerned about their safety and comfort, and everytime they use it will remind them how much they mean to you.
● Ends garage door lifting
● Chain drive runs steady and quiet
● Remote transmitter offers in-car opening
● 5-minute light offers safety and convenience
● Adjustable safety switches stop, reverse door

Have it installed by us! Our guaranteed installation lets your loved one enjoy it immediately.

Round Trip to Las Vegas
from Lubbock or Amarillo
Rooms as low as \$20.00
International Tours of Plainview
112 East 5th Street
Plainview, Texas 79072
(806) 293-4488

Only \$185.00 INSTALLED
Complete with Remote
Walter N. Davis Const.
983-5337
There's no better way.



Buddy's SUPERMARKET



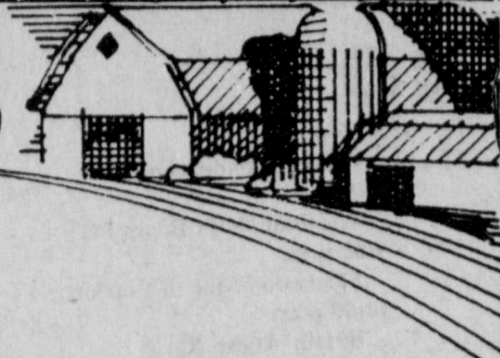
DOUBLE STAMPS ON WEDNESDAY WITH \$5.00 PURCHASE OR MORE

220 SOUTH 2nd • 983-3149
 STORE HOURS:
 MON. THRU SAT. 8 A.M. 'TIL 9 P.M.
 SUNDAY 9 A.M. 'TIL 8 P.M.

WE RESERVE THE RIGHT TO LIMIT QUANTITIES

These values in this advertisement are effective through Wednesday, 2-23-83

PRODUCE FARM-FRESH QUALITY



Wide Selection at Great Savings

Washington Red Delicious
APPLES
 3 lbs. / \$1.00

Golden Ripe
BANANAS
 3 lbs. / \$1.00
 4 Count Cello
TOMATOES 69¢
 Yellow
ONIONS 7 lbs. / \$1.00

PORK CHOPS



Loin End Cut

\$1.59 lb.



2 lb. Jimmy Dean
SAUSAGE \$3.49

16 oz. Kraft Plain or Jalapeno
CHEESE WHIZ \$2.39

YOU'LL LOVE OUR MEATS

12 oz. Tysons, With Cheddar
CHICKEN PATTIES \$2.39
 USDA Boneless Round
STEAK \$2.89 lb.
 USDA English or Arm
ROAST \$1.99 lb.
 From Our Deli Smoke
SAUSAGE \$2.69 lb.

JOLLY-TIME YELLOW
POP CORN 32 Oz. 79¢

LY SOL PINE ACTION 28 Oz.
CLEANER \$1.89

DAWN 22 Oz.
DISH LIQUID \$1.39

MEADOWLAKE SOFT
OLEO 1 Lb. 69¢

MILNOT CANNED
MILK 13 Oz. 49¢

MILKY WAY - SNICKERS - 3 MUSKETEERS BAG
SNACK BARS 16 Oz. \$1.98

GOLDEN GRIDDLE
SYRUP 24 Oz. \$1.59

featuring **Del Monte** foods

WASHINGTON'S BIRTHDAY

CHEERIOS
CEREAL 15 Oz. \$1.69

DEL MONTE CREAM OR FAMILY STYLE
CORN 2/99¢ 17 Oz.
 DEL MONTE FRENCH STYLE OR CUT
GREEN BEANS 2/79¢ 16 Oz.
 DEL MONTE CHUNK SLICED OR CRUSHED IN JUICE OR SYRUP
PINEAPPLE 59¢ 15 1/4 Oz.

Sale

VAN CAMP - WHITE OR GOLDEN
HOMINY 14 1/2 Oz. 2/69¢
 SKIPPY
PEANUT BUTTER \$1.49 18 Oz.
 BETTY CROCKER AUGRATIN, SCALLOPS, HASH BR'NS BROWNS
POTATOES 5 1/2 Oz. 89¢
 SCHILLING BLACK
PEPPER 4 Oz. 79¢
 LONE STAR CHUNK
DOG FOOD 20 Lb. \$2.99
 6-32 oz. Diet or Regular Plus Deposit 12 oz. Can 6 Pack
DR. PEPPER \$1.99 **PEPPER FREE** \$1.69

DEL MONTE
TOMATO SAUCE 2/49¢ 8 Oz.
 DEL MONTE EARLY GARDEN
PEAS 2/89¢ 17 Oz.
 CLOROX
BLEACH 69¢ 1/2 GAL.

FROZEN FOOD FESTIVAL
 STILWELL FRUIT
COBBLERS 32 Oz. \$1.59
 EL CHARRITO ENCHILADA OR MEXICAN
DINNERS 12 Oz. 89¢
 SNO-CROP FRUIT JUICES
5-ALIVE 12 Oz. 89¢

Folgers 8 oz. Jar, Instant
COFFEE \$2.99 With One Filled S&H Special Saver Book \$3.49 Without Book
 Sunny Fresh Farms
 Grade A Medium
EGGS 29¢ With One Filled S&H Special Saver Book 79¢ Without Book
 Round Tortilla Chips
TOSTITOS 49¢ With One Filled S&H Special Saver Book 99¢ Without Book
 42 oz. Bake Rite
SHORTENING 69¢ With One Filled S&H Special Saver Book \$1.19 Without Book
 Laundry Detergent
FAB 20 oz. Box 3/\$1.99 79¢ Each
 32 oz. Bonus Pack
SPRAY & WASH \$1.59

HEALTH & BEAUTY AIDS *Specials*
 JOHNSONS BABY
BABY OIL 10 Oz. \$2.19
 JOHNSONS BABY
CORN STARCH 6.8 Oz. \$1.19
 COLAGTE
TOOTHPASTE 5 Oz. \$1.19