

## "Payment in Kind" program Monday

Monday, January 24, the Floyd County Extension Service and the Lockney Coop will co-sponsor an educational meeting on the new "Payment in Kind" program. The meeting will kick off at 10:00 a.m. at the Lockney Coop. Free coffee and donuts will be served.

Dr. Gary Condra, Extension Economist out of Lubbock will be there to give the program. He will be discussing the

things to consider when evaluating the PIK program, and how to go about making the decision whether or not to participate in it. A question and answer session with Dr. Condra will follow his presentation.

Educational programs conducted by the Texas Agricultural Extension Service serves people of all ages regardless of socioeconomic level, race, color, sex, religion or national origin.

## INDEX

Area News	.....7
Church Directory	.....TV6,7
Classified	.....12,13
Courthouse News	.....2
Crime Call	.....2
Farm News	.....10

Obituaries	.....11
Recipe Exchange	.....TV8
Society	.....4,5
Sports	.....14
Subscription Renewals	.....3
Wes Side Story	.....TV1

Courtesy of Energas		
DATE	HIGH	LOW
Jan. 12	62	36
Jan. 13	67	34
Jan. 14	54	38
Jan. 15	50	28
Jan. 16	55	31
Jan. 17	48	27
Jan. 18	34	32
Average temperature for the past 31 days was 38.7°		

# The Lockney Beacon <sup>25c</sup>

Rates: In county: \$11.50  
Out-of-county: \$12.50

Volume 82

Number 3

Thursday

©The Lockney Beacon

January 20, 1983

26 Pages In Two Sections



RICHE C. CROW

## New agent named

An experienced county extension agent, agribusinessman and ginner has been appointed extension agricultural agent for Floyd County, effective January 21. He is Richard C. (Richie) Crow of Floydada.

Crow's appointment was announced by Floyd County Judge, Choise Smith, and Dr. Catherine Crawford, district director for the Texas Agricultural Extension Service. Crow succeeds Jett Major, who recently transferred to Lamb County.

He will serve as agricultural program leader and trainer agent in Floyd County, Crawford said. He will join Extension agents Marilyn Tate and Bennie Butler in providing leadership for the 4-H and youth program in the county.

Crow will work closely with the county program building committee, agricultural committees, community development organizations and farm organizations in conducting Extension educational programs.

A native of Abilene, Crow was graduated from Baird High School. His

parents, Mr. and Mrs. Frank Crow still reside in Baird. Crow was graduated from Texas Tech University in 1969 with a B.S. degree in agronomy. He has completed additional graduate work at Tech.

From 1970-74, he served Floyd County as Extension agent for agriculture. He was assistant manager of a farm supply store in Dougherty for a year. He joined Growers Seed Assn. as senior production agronomist in 1976, serving there four years. Since 1979, Crow has managed Blanco Gin, Inc., in Floydada.

He is a member of the Texas Cotton Ginners Assn. and the Texas Independent Ginners Assn. He has coached 13-14-year-olds in Little League baseball; has officiated 7th, 8th and 9th football grade football in Floydada, and has assisted with the Floyd County Stock Show.

He is married to the former Sue Howard, daughter of Mr. and Mrs. L.B. Howard of Ballinger. She has taught first grade in the Floydada school system. The Crows have two daughters, Jennifer, 9, and Jamie, 5.

## MWA board votes to allow water taps

The Mackenzie Municipal Water Authority Board of Directors voted Tuesday January 11, 1983 to allow land owners to have water taps on the water transmission lines going from Lake Mackenzie to the cities of Floydada, Lockney, Silverton and Tulia. At this time the water taps will be available only to land owners who have land joining the right-of-way on the side of the road in which the transmission line will be installed.

The transmission lines will be installed from the Rock Creek Store east on the north side of Highway 86 to Silverton and south along the west side of Farm to Market Road 278 to Lockney. From Lockney to Floydada the line will be on the northeast side of Highway 170. From the Rock Creek Store west to Tulia the lines will be on the south side of highway 86.

This water will be for domestic use only and land owners qualifying for a tap at this time must pay a tapping fee of \$250.00. The \$250.00 fee must be paid now and will include a pretensioned

concrete cylinder 3/4" tap installed at the factory. Then when the transmission line is being installed the contractors will run a 3/4" line from the tap to a meter vault on private property. The meter will be installed in the meter vault, at the land owners expense, when the water is available. The cost of the water will be set by the Board of Directors at a later date.

The deadline for paying the service water tap fee and notifying the Water Authority where the tap is to be installed is January 28, 1983. You may take your fee to Boyd Vaughn at the Littlejohn-Vaughn Agency in Tulia, George Sparkman at the First National Bank at Lockney, or D.N. Taylor at the Water Authority office at Lake Mackenzie. At this time you will show exactly where the water tap is needed and the location will be marked on a set of plans. The January 28th deadline must be met in order for the taps to be made in the pipe which is now being manufactured.

## School board election set for April 2nd

The average daily attendance (ADA) came under scrutiny again in the January 13, school board meeting. The ADA was 59.67 less than a year ago at the end of the first semester. Cutting back of personnel was discussed, but the difficulty of coming up with a workable elimination was explained by Superintendent W.H. Hallmark to the board members due to the widespread decrease of students in contrast to a particular grade or section. The problem is particularly difficult in the junior and senior high due to departmentalization. In order to fulfill state and federal requirements, some classes must be offered by necessity, with no regard to the numbers being taught.

The election for the school board members was set for April 2. Sign-up dates for those interested in running in the board race will be from February 1 through March 2. Absentee voting will be conducted at the superintendent's office from March 16 through March 31. Jackie Lou Holt was appointed clerk.

No election judge was selected, but that appointment will be made at the regular February meeting when the

judge and clerks will all be appointed. The location of the election was also not approved, with consideration being given to consolidating polls for all the elections that might be held at the same time to lend more convenience for the residents.

The superintendent's contract was approved to be extended to June, 1986.

The board entertained a request for inquiry into delinquent taxes in connection with a piece of property to be sold at a sheriff's sale, but the matter was tabled until Paul Lyle, school attorney, could advise the board on the logistics. Another matter discussed at the Thursday night meeting was the taxation of automobiles. It was agreed among the members that they should be taxed, but action will not be taken until the February meeting.

The '83-'84 school calendar was tentatively reviewed, but adoption is expected at the next meeting also.

The board members were photographed at the meeting for this year's annual by Mrs. Peggy Hallmark, annual advisor.

## Non-denominational services to be presented

Guest speaker Ed Mooney will present an inspirational message to young people and parents on today's family responsibilities and relationships.

The outstanding and non-denominational program will be held in the auditorium of the First Baptist Church at 10:55 a.m. Sunday, January 23, in observance of "Baptist Laymen's Day" along with other churches throughout the Southern Baptist Convention.

Mooney, athletic recruiter for the Texas Tech football program and former line-backer for the Detroit Lions pro

football team, will deliver his message after an all men's choir opens the worship service to be shared by all who wish.

Mooney, his family and several members of the Texas Tech football team will be special guests for the occasion. His message, which was two years in the making, is for every child and every parent.

Families who attend and hear this sincere "from the heart" message may carry this message with them for the rest of their life.

## Social service president to be guest speaker

Robert C. Greene will deliver the sermon Sunday, January 23 at the Trinity Lutheran Church in the Providence community at its 11:00 a.m. worship service.

The guest preacher is president of Lutheran Social Service of Texas, with his office in Austin. The closest regional office in our area is Lubbock.

LSST is an agency supported by Lutheran churches providing a wide array of services from adoption to care for the elderly. LSST has become the second largest child placement agency

in the state, annually placing 220 to 230 children for adoption.

In July, 1980, the agency celebrated its 2,000 adoptive placement, and has since placed almost 500 more children, bringing joy to adoptive parents and grandparents, and ministering to young people with the crisis of an unplanned pregnancy.

Counseling services, refugee resettlement, care and housing for the elderly are just a few of the other services provided by LSST. Visitors are welcome to take part in this special worship service.

## Brock makes All-State



KYLE BROCK

Kyle Brock, who has played high school football for the Longhorns under the most trying of circumstances was named by sports writers from all over the state to the second All-State Class AA football team.

The 5'8" 195-pound line backer has been 3-time All-District and twice All South Plains. He made the Amarillo Globe News Super Team as a sophomore. In addition, he made the first All-State team last year as a junior.

He is the son of Mr. and Mrs.

Byron Brock. Head coach Bob Purser said that when the senior gave enough to endure the pain that he has had to live with on the football field from chronic asthma, taking oxygen constantly during play, he had given 100%. "That, combined with his ability and a big heart definitely makes him the best linebacker in the district in my estimation," the coach went on.

The active young man has plans to attend Texas Tech. His major will be animal business.

He has had at least three offers from colleges and universities to play college football, including New Mexico State, but he told the Beacon he did not intend to play.

Purser said he was losing 17 seniors this year and "there is no way you can just replace people like Kyle Brock, Steven Johnson, and Tony Rodriguez."

Next year is a long way from being all bleak and inexperience, though, since there will be six returning seniors, including Jackie Cunyus who quarterbacked the last four games of the past season for the Horns. Purser estimated the average on the line next year to be 180 pounds, with the line almost completely replaced.

## Turner appointed HA commissioner

In the regular meeting of the City Council for January held January 6, the following council members were present: Mayor J.D. Copeland, Alderman Pat Frizzell, Gail Kring, Kenneth Wofford, Dub Dipprey, Attorney Paul Lyle, and the City Secretary.

The Mayor opened the meeting and asked Paul Lyle to read the minutes. They were approved as read.

The council looked at the bills. Alderman Kring made motion to pay the bills. Alderman Wofford seconded

and all were for. Alderman Frizzell made motion to re-appoint Jinna Sue Turner as Housing Authority Commissioner for a two year term. Alderman Dipprey seconded and all were for.

Floyd County Historical Society requested that a plaque be placed on City Hall as the original site of the J.E. Burn's Blacksmith Shop. Alderman Wofford made motion that the council approve this request with a second from Alderman Frizzell. All were for.

The meeting was adjourned.

## Chamber encourages nominations for outstanding man and woman

The Lockney Chamber of Commerce Banquet will be held Thursday, March 10, at 7:00 in Lockney Elementary Cafeteria. The highlight of the banquet is the recognition of Outstanding Man and Woman of the Year.

The Chamber is now accepting nominations from any individual church, club, or organization.

These nominations must be in to the committee chairman by Wednesday, March 3. The chairman is Clar Schacht, Route 1, Lockney.

The nomination of recipients for these awards is something everyone can have a part in. We encourage each organization in our community to become involved.

## Fire damages pickup

A 1963 Chevrolet pickup belonging to Johnny W. Adams caught fire Thursday afternoon almost directly in front of Pay-N-Save Grocery. The flames ignited under the hood, causing extensive damage to the motor and wiring.

Adams was driving his grandfather, J.W. Leach, to the doctor's office when the accident occurred.

Two units of the fire department were dispatched to the scene and the fire was quickly extinguished. An estimated \$300-\$400 damages were incurred. The heat of the fire melted paint off the hood

of a new paint job Adams had recently had on the pickup. Papers in the glove compartment were also heavily blacked.

Adams is employed at Don Hardy's Car Wash. He has also been attending classes at IOC in Plainview three nights a week.

Friends and neighbors immediately got together a fund and donated them to Adams for the purchase of another pickup. He was the proud owner of a 1977 Ford pickup by late Saturday. His thank you for Lockney's generosity can be found on page 12.



THIS CLOUD had a silver lining. A truck belonging to Johnny W. Adams caught on fire under the hood Thursday on Main Street. Friends and neighbors donated the funds for another vehicle, and he was driving it by late Saturday.

## This Week

### DAR

DAR meeting will be January 25 at 7:30 p.m. in the home of Mrs. B.P. Neff, 811 W. Jackson. The program will be on DAR schools. The speaker will be Mrs. Ralph Johnston.

### Neighborhood Watch

The Neighborhood Watch meeting scheduled for January 17th has been changed to January 24 at Lighthouse Electric at 7 p.m. all concerned citizens are urged to attend.

### Aerobics

Aerobics are being held at South Plains every Tuesday night from 6:30 to 8 p.m. Late comers welcome. No enrollment necessary for any of our classes. Call 652-2456 for further information.

### Locals

We are so pleased to have Dottie Stansell writing Lockney Locals again. Her column will be entitled "Dottie's Doodlings." She will be happy to take your local news. You may call her by phoning 652-3122 mornings and 652-3622 afternoons.

Deadline for reporting local news will be 3:00 p.m. each Monday.

### 4-H

4-H parents will have a meeting tonight. All are reminded to attend.

### Tator Bake

The 1956 Junior Study Club will be sponsoring a "Tator Bake" Feb. 1 at the junior high cafeteria. They will start serving about 5 p.m. There will be a choice of three different meat toppings. Sour cream, butter, and the works will be included. Also cobbler, tea and coffee will be served. Prices are \$3 for adults and \$1 for children. The proceeds will go to a scholarship fund for one of the Floydada students.

### Volleyball

A short planning meeting will be held at Southwestern Public Service Friday, February 28 at 5:30 p.m. for anyone interested in signing up for men's or women's volleyball.

For more information call 652-2191 (or 652-2561 after 5:00).

### G.A.B.

The Lockney G.A.B. will have a meeting Friday night between the JV boys and girls game.

### Adult Education

Adult education classes will be taught at R.C. Andrews School at 215 N. White on Monday and Tuesday evenings from 6:30 to 9 p.m. The classes are free and are planned to meet the needs of the individual student. Enroll at any time. For further information call 983-3134 during the day or 983-3337 after 4 p.m.



# CRIME STOPPERS

Burglary occurs every two minutes in Texas, leaving behind losses that cannot be replaced. In Texas, burglary rings account for 245 million dollars worth of stolen goods annually, an average loss of 966 dollars per home.

Crime prevention is one answer to this growing problem. The simple act of locking one's home before leaving, reduces the chances of burglary by 20 percent. Asking your neighbor to pick up your newspaper when you are away from home and turning household lights on at intervals, can deter a prospective burglar. The Texas Crime Stoppers Advisory Council is doing its part to see that those criminals who make their living by stealing from others are put where they belong — behind bars.

For the month of January, 1983, Texas Crime Stoppers is focusing its statewide "Crime of the Month" program on burglary. Any citizen having information about burglary is asked to call the anti-crime hotline at 1-800-252-TIPS. Cash reward are available for information leading to the arrest and indictment of these criminals.

Our efforts to combat crime cannot succeed without active citizen involvement. Your support and participation in this program will be a formidable obstacle to any criminal.

Call 1-800-252-TIPS today to help shut down burglary rings in Texas.

## W-2 forms should be received by February 1

For the next four issues the *Hesperian* and *Beacon* will feature a service of tips from the Internal Revenue Service. For additional information call the IRS office toll free 1-800-492-4830.

Employees who have not received a W-2, Wage and Tax Statement, by February 1 should contact their employer to be sure they have the correct address. The Internal Revenue Service says.

Even if an employee is unable to get a W-2 before the tax filing deadline, the

return must be filed by April 15. The IRS reminds taxpayers that they must have a W-2 form from every employer they worked for during the year. If it is impossible to obtain a W-2 from an employer, the employee should either request a Form 4852, Substitute Wage and Withholding Statement, from the IRS or attach a signed and dated statement explaining the tax computations for the missing wage and tax information to replace the W-2 and file it with the tax return, according to the IRS.

## Courthouse News

### Deeds

Clay Henry, et al. Executors, to Vida Marie Delton, Lots 2&3, Blk. 90, Floydada

Ken Vance Campbell, et ux, to Bob Wes Campbell, 168.5 acres out of North part of Sur. 106, Blk. 1.

Bob Wes Campbell, et ux, to Ken Vance Campbell, 2 tracts.

J.B. Howard to Jose Tambunga, tract out of A.B. Bell 160-acre Homestead Survey, Lockney.

Hazel Pinkston, et al, to David Gonzales, Lots 10-13, Blk. 5, T.M. Moore Addn. #1, Lockney.

Clay Henry, et al. Executors, to Ray Douglas, et ux, 640 acres of Sur. 65, Blk. D-3

Robert W. Smith, et ux, to Beach Exploration, Inc., N/2 of Sec. 6, Blk. K, Beach Exploration, Inc. to G.C. Broughton, Jr., N/2 of Sec. 6, Blk. K

Minnie Faye Easter, Executrix, to Keith E. Thomas, et ux, 24.40 acre tract out of east part of Sur. 16, Blk. G.

Clay Henry, et al. Executors, to Vida Marie Delton, Lots 2&3, Blk. 90, Floydada

La Donna E. Montevon to Arcadio Araujo, et ux, Lots 4, 5, 6, and N. 10' of Lot 7, Blk. 4, Moore Addn., Lockney.

Delbur C. Rose to Carroll R. Anderson, et ux, N. 40 ft. of S. 60' of Lots 15, 16, 17 & 18, Blk. 5, Walling Addn., Lockney.

Floyd County, Texas, a municipal corporation, to Templo Getsemani Assembly of God Church, Lot 3, Blk. 96, Floydada.

James David Wilkins, Delores Elaine Galey

Gilbert Glen Lane, Kellye Kay Ford

Eulabell Scott, will & appl. to probate, 1-6-83.

Ford Johnson, will & appl. to probate, 1-6-83.

D.F. Byerly, will & appl. to probate, 1-6-83.

### STANDARDS FOR DETERMINING FREE AND REDUCED PRICE ELIGIBILITY JULY 1, 1982

FAMILY SIZE	FREE MEALS FOR FAMILY INCOME OF:	REDUCED PRICE MEALS FOR FAMILY INCOME OF:
1	0 - \$6,080	\$6,081 - \$8,660
2	0 - 8,090	8,091 - 11,510
3	0 - 10,090	10,091 - 14,360
4	0 - 12,090	12,091 - 17,210
5	0 - 14,090	14,091 - 20,050
6	0 - 16,090	16,091 - 22,900
7	0 - 18,100	18,101 - 25,750
8	0 - 20,100	20,101 - 28,600
Each additional family member:	\$2,000	\$2,850

The Texas Migrant Council, Inc. announces the sponsorship of the Child Care Food program. All children in attendance will be offered the same free meals with no physical segregation of, or other discrimination against any child because of race, color, handicap, sex, national origin, or ability to pay.

"Income" means current income before deductions for income taxes, employee's social security taxes, insurance premiums, bonds, etc. It includes the following: (1) monetary compensation for services, including wages, salary, commissions, or fees; (2) net income from nonfarm self-employment; (3) net income from farm self-employment; (4) social security; (5) dividends or interest on savings or bonds, income from estates or trusts or net rental income; (6) public assistance or welfare payments; (7) unemployment compensation; (8) Government civilian employee, or military retirement, or pensions or veterans' payments; (9) private pensions or annuities; (10) alimony or child support payments; (11) regular contributions from persons not living in the household; (12) net royalties; and (13) other cash contributions from persons not living in the household.

## Four burglaries solved

In a combined effort between the Floydada Police Department and the Floyd County Sheriff's Department, three arrests cleared four burglaries that occurred in Floydada last month.

The three individuals were arrested Friday in connection with the burglary of the Della Plains School, Mrs. Bairds Storage Shed, some Idalou school buses that were in Floydada, some Floydada school buses and vandalism of some merchandise at Shop Rite Foods. They were charged with two counts of criminal mischief each.

Monday evening two men tried to pass some forged and stolen checks at Buddy's Supermarket. A high speed chase resulted when one of the two suspects tried to flee from the police and sheriff's department. The suspects vehicle wrecked while attempting to escape.

The other suspect tried to flee on foot and was apprehended about one block west of Buddy's. The two men were charged with three felony charges: possession of stolen property, forgery, and felony fleeing from an officer.

## Short form filers 1040A one-stop service from H&R Block.

Now you can have H&R Block prepare your 1040A short form while you wait. An accurate and complete return — ready to sign and mail when you walk out our door. With over 100 changes in the tax laws and forms, including two new short forms and new deductions, H&R Block's 1040A one-stop service can save you time and money.

106 W. Missouri  
Floydada, Texas  
The new tax laws.  
This year's number one reason to go to H&R Block.

**H&R BLOCK**

983-5233

## Texas cities receive sales tax percentage

State Comptroller Bob Bullock Thursday sent \$32 million to nearly 1,000 Texas cities as their share of the one percent city sales tax for January.

"These payments are down 7.7 percent from last January's checks," Bullock pointed out. "Collections are down in every major city in the state except Austin. It is this trend that led me to reduce my estimate of available state revenue and it's affecting the finances of Texas cities even more drastically than the finances of the state," Bullock said.

Citing depression in the Texas oil industry and the repeated devaluation of the Mexican peso, Bullock dropped his estimate of available state revenues by \$1.5 billion dollars this week.

Floydada received \$3,217.74 compared to \$3,643.22 in January 1982 which is a decrease of 11.68 percent. Lockney received \$1,730.53 as compared to \$1,357.39 in January of 1982 representing an increase of 27.49 percent.

Changes in other cities in the area are: Crosbyton - an increase of 40.90 percent; Ralls - an increase of 4.93 percent; Plainview a decrease of 22.57 percent; and Lubbock - a decrease of 4.43 percent.

The City sales taxes are collected along with the state sales tax by merchants and rebated monthly to the cities in which they are collected by the Comptroller.

Organic 40 lb PEAT MOSS \$2.97

Hyponex 20 lb bag POTTING SOIL \$3.49

Red Ribbon ROSE BUSHES \$2.67

Trophy 3 in pack ROSE BUSHES \$3.97

Garden Geni SHURBS \$2.97

BLUE DENIM FABRIC Reg. \$2.22 NOW \$1.66 yd

**PERRYS**

106 East California St. - Floydada

## Wallace commends energas on aid program

Texas Railroad Commission Chairman Mack Wallace has commended Energas Company for expanding its efforts to aid low-income people in paying their energy bills this winter.

Energas joins Entex, Lone Star and several other natural gas utilities in setting up similar aid programs. Last month, Wallace sent letters to chief executives of 60 privately-owned utilities in the state describing energy assistance programs established by gas utilities in other states and asking the Texas companies to set up similar programs.

In a letter to Energas officials, Wallace said, "Your voluntary program of financial assistance is a significant one and is clear evidence that Texans can and do help each other during difficult times."

Energas officials indicated they are

working with seven charitable organizations in their service territory to set up the program. Once agreements have been made, Energas will give a donation to each non-profit organization for them to distribute to needy customers for heating assistance.

Wallace said, "It is my fervent hope other gas utilities in our state will follow your fine example of willingness to help those in a 'crisis situation' regarding heat for the winter."

"You have indeed embarked on a pioneer effort," Wallace continued, "to at least try to help insulate our elderly and poor from a winter of freezing cold."

Wallace calculated that over the last eight years, the average residential price per thousand cubic feet of gas has risen from \$1.16 to \$4.06, a 350 percent increase.

ask for our  
**"Full Meal Deal"**

\$2.59

Only at participating Texas Dairy Queen stores.

If you're looking for a great meal and a great deal, look at all you get for just \$2.59.

- Quarter-pound 100% pure beef Hung-buster® made to order.
- French Fries.
- Medium soft drink.
- 5-oz. D.Q. Sundae, your choice of topping.

At \$2.59 it's not just a deal, it's a steal!

**Dairy Queen**

Prices Good Thru Wednesday, 1-26-83

6½ oz. Chunk Light, Oil or Water  
Chicken of the Sea

**TUNA**

**49¢** With One Filled S&H Bonus Book

**99¢** Without Book

**Buddy's Food**

220 S. 2nd

Floydada





SILVER SPURS RODEO CLUB OFFICERS - Daron Widener, president; Billy Bob Sherman, vice-president; Gary Bigham, secretary; and Earl Broseh, treasurer.

# High School rodeo club organized

Tuesday night, February 11, a meeting was held to organize a high school rodeo club. Fifteen boys have joined as members, and the prospects are "promising" for adding more in the near future, according to Tommy and Belinda Billington and Judy Jackson, sponsors.

Officers of the new club to be known as the Silver Spurs Rodeo Club included: Daron Widener, president; Billy Bob Sherman, vice president; Gary Bigham, secretary; and Earl Broseh, treasurer.

Ed Marks and Bruce Williams will be

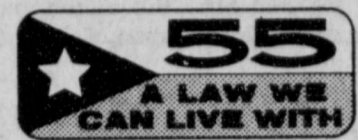
coaching the riding of stock.

Although a rodeo is not planned in Lockney this year due to a late start, the spring rodeos will begin in March, and the members are scheduled to participate in those held in Happy, Hereford, Plainview, Dalhart, and others. They will rodeo through the Tri State Rodeo Association.

Meetings will be held on the second

Tuesday night of each month. Parents are welcome to attend.

Members are not eligible for jackets until they have earned 15 working points. Those points are earned by working fundraisers or keeping the arena and rodeo grounds in shape and backlogs.



## Area students named to President's lists

Three students from Lockney have been named to the President's and Dean's Honor Lists at South Plains College for the 1982 fall semester.

To qualify for placement on the President's List, SPC students must maintain a 4.0 or "straight A" grade point average for the semester. Students on the Dean's Honor List must

maintain a minimum grade point average of 3.25. All honor students must enroll for a minimum of 12 semester hours.

Victoria Ortegon of Lockney has been named to the President's List at SPC. Jovita Castro and Randy Davis, both of Lockney, have been named to the Dean's List at SPC.

"We wish to extend our congratulations to these fine students who have demonstrated the academic excellence which is found at South Plains College," said Dr. Bud Joyner, vice president for academic affairs. "We are always proud of the students who are named to the President's and Dean's Honor Lists at SPC."

A total of 162 students were named to the President's List for the fall, and 297 students were named to the Dean's Honor List.

## Lockney Police Department Report

By Ray Macha  
Lockney Police Department

We are now entering into the new year of 1983. Much has happened in the last 12 months concerning the area of law enforcement in Texas. Probably the most significant event being the enactment of new laws supported by Governor Clements. His crime bill will certainly have a beneficial effect in the years to come, and even now appears to be bearing some fruit.

There have been several large drug busts that have been attributed to the recently passed wire tap law. These drug busts have netted large amounts of illegal drugs and their dealers. As a byproduct many thefts and burglaries have been cleared also.

The initiation of a state wide crime-line with cash rewards for individuals who pass on important information to police agencies will begin to put a squeeze on many organized crime rings. The enactment of a new law requiring motorists to carry proof of liability insurance has reduced the risk of being

involved in a traffic accident with an uninsured driver.

Raising the legal drinking age from 18 to 19 years of age seems to be having a favorable effect on the ever increasing war against drunk drivers in our state. It will also have a beneficial effect in many other crimes committed by young people where alcohol is a contributing factor.

Another event of great significance was the first execution of a death row inmate since 1964 in the state of Texas. Hopefully this trend will continue with a faster pace. It should send out a loud and clear message to anyone contemplating committing a serious crime.

As the year of 1982 was coming to a close many lawmakers were studying more legislation to combat the slaughter that is occurring on our state highways. Hopefully stronger jail terms and fines with the absence of legal loopholes will be appearing on the law books this year as citizens demand an end to the DWI problem.

Yes, there were many needed reforms and goals reached in 1982 that will assist in the war on our spiraling crime rate. Of great significance was the citizens and lawmakers turn to a more conventional, conservative and practical approach in making Texas a safe place to live again. If this trend will continue then Texas has a chance to once again get a handle on the problem and end the crime rate as it is.

It will be difficult for many cities and counties to continue the increasing pace due to the economy. As purse strings tighten for many local governments the temptation to cut back on law enforcement expenses may end the gains we have seen in the past year. However if the momentum can continue we can begin to see some light in the end of the tunnel.

With a new Governor and many new state officials taking office in 1983 it will be interesting to watch if they will continue to press the attack, or will Texas government simply revert back to politics as usual.

## El Progreso Study Club met

The El Progreso Study Club met January 12th in the lovely home of Arla Copeland, President. She presided at the meeting. Roll call was answered with "What I would like to do." The secretary read the minutes from the November and December meetings.

Mrs. LaVerne Christian and Mrs. Vickie Hutton presented a very interesting and informative program about Lockney Care Center and other care centers. Mrs. Christian told about some of the rules and regulations, activities, and care at the local care center. The Mrs. Hutton showed an interesting film about care centers in general, provided

by the Texas Department of Health. This program made us all more aware and appreciative of the people who need the care and of the people who provide the care.

The president appointed the following to serve on the nominating committee for next year officers: chairman - Bobbie Kellison, Dorothy Smith and Katherine Ball.

Members present were: Linnie Abbott, Faye Ferguson, Faye Holmes, Cornelia Johnson, Hazel Johnson, Bobbie Kellison, Jeanette Marr, LaVerne Sams, Pauline Sams, Dimon Schacht, Kathleen Thornton, and Mrs. Copeland.

## Subscriptions due in January

In order to continue to receive your Beacon uninterrupted, if your name appears below, please remit by mail to Box 187, Lockney, Texas 79241 or bring payment by Beacon office.

- E.O. Barrett
- Faye Beebe
- Austin Beedy
- Sterling Cummings
- Mrs. J.C. Danford
- Effie F. Dent
- Aileen Dunn
- L.B. Elam
- W.W. Farish
- Walter Gloyna
- Harold Griffith
- Harmon Handley
- Kenneth Holt
- Mrs. James Jeffress
- A.J. Kent
- Lockney Junior High Library
- George Long
- R.C. Matthews
- Austin Meriwether
- Chester Mitchell
- Marie Nigh
- J.D. Pate
- Elva Perry
- Tina Presley
- Duard Reves
- Jim Saul
- Mrs. H.W. Schacht
- Dr. J.E. Steelman
- Percy Tate
- J.T. Terrell, Jr.
- Sallie True
- Dr. B.W. Webster
- Myrtle Williams
- W.E. Wylie

Prices Good Thru Wednesday, 1-26-83

20 lb. Bag, All Purpose  
**POTATOES**

**\$1.49** With One Filled S&H Bonus Book

**\$1.99** Without Book

**Buddy's Food**  
220 S. 2nd Floydada

## Lockney School Menu

**Monday:**  
Breakfast-Cold Cereal, Milk, Peaches  
Lunch-Pizza, green peas, buttered corn, milk, cinnamon biscuits

**Tuesday:**  
Breakfast-Waffles w/syrup, pears, milk

Lunch-Fried Chicken, gravy, French fried potatoes, milk, cole slaw, apple-sauce, hot rolls

**Wednesday:**  
Breakfast-Toast, Scrambled eggs, milk, pineapple

Lunch-Tacos, Spanish rice, sopapillas honey, milk Ranch style beans, lettuce salad

**Thursday:**  
Breakfast-Rice, milk, fruit cocktail  
Lunch-Barbequed vienna sausage, boiled cabbage, milk, pork in beans, peaches, devils food cake, cornbread

**Friday:**  
Cinnamon biscuits, milk, pineapple  
Lunch-Fish stick on bun, milk, sweet potatoes, lettuce salad, mixed fruit temptation

A GIANT, AREA-WIDE PRAISE GATHERING  
**IN CONCERT**

**The BLACKWOOD BROS.**

Saturday, January 22  
8:00 PM  
Municipal Auditorium  
Lubbock, Texas

**ADMISSION - FREE**

Once you begin the savings habit things go a little easier! A few dollars saved each pay day will lead to your future financial security! Start savings now!

You'll be glad you did!

**First National Bank**

in Lockney  
652-3355  
member F.D.I.C.

Each depositor insured \$100,000.00  
**FDIC**  
FEDERAL DEPOSIT INSURANCE CORPORATION

**A FULL SERVICE BANK**

**We Welcome Your Insurance Business**

**Donice Casey**  
Career Agent  
652-3414

**James Race**  
Agency Mgr.  
983-5095 652-2638

**Life - Auto - Fire - Home - Ranch Farm Crops & Health Insurance**

Do I need liability insurance when I hire an employee for farm and ranch work?  
For help with insurance questions and needs call...

**Texas Farm Bureau Insurance**  
101 S. Wall, Floydada TX  
Floydada 983-3777 Lockney 652-2242

**Bud Rainey**  
Career Agent  
983-5225

**Clar Schacht**  
Career Agent  
652-3449



## Fultons to celebrate 50th Anniversary in Floydada

Mr. and Mrs. Cleo W. Fulton will celebrate their 50th wedding anniversary, Saturday from 3 until 5 p.m. with a reception in the home of a son at 835 West Mississippi.

Hosting will be Mr. and Mrs. Laron Fulton, Mr. and Mrs. Bill Fulton and Mr. and Mrs. Carroll Fulton of Gallup, New Mexico.

New Mexico.

Fulton and the former Jennelda Helms were married January 14, 1933 in Arkadelphia, Arkansas. They moved to Floyd County in 1945. They have seven grandchildren and three great grandchildren.

## Lipham, Hoffman nuptials exchanged December 23rd

The Willson Chapel First Methodist Church was the scene of the nuptials exchanged between Amy Michelle Lipham and Jay Lance Hoffman, on December 23, 1982 at 7:30 p.m. with the Reverend Jim Smith officiating.

Amy is the daughter of Donna Lipham of Floydada and Wayne Lipham of Aspermont. Lance is the son of Jack Hoffman and JoAnne Hoffman, both of Oklahoma City.

The bride, given in marriage by her father, wore a gown of long white knit adorned with bridal lace and seed pearls, accenting lace mantilla adorned her head. She carried a wedding ring from her mother tied upon her bridal bouquet of tiny pink and white carnations as something old and a white Bible as something new. The veil was borrowed from Mrs. A.E. Guthrie, bought in Brussels, and the traditional garter was blue. A penny with her birthdate was worn in her shoe.

Jill Willson and Deanne Collins attended the bride as maid of honor and bridesmaid. Each girl wore a pink Coupe DeVille accented in white lace. Pink carnations and white daisies in a nosegay completed their attire.

Rob Hale served as best man with

Mikel Lipham, brother of the bride, serving as groomsmen.

Pat Rendon and David Duvak, uncles of the bride, served as ushers. Casey and Michelle, brother and step-sister of the bride were candlelighters.

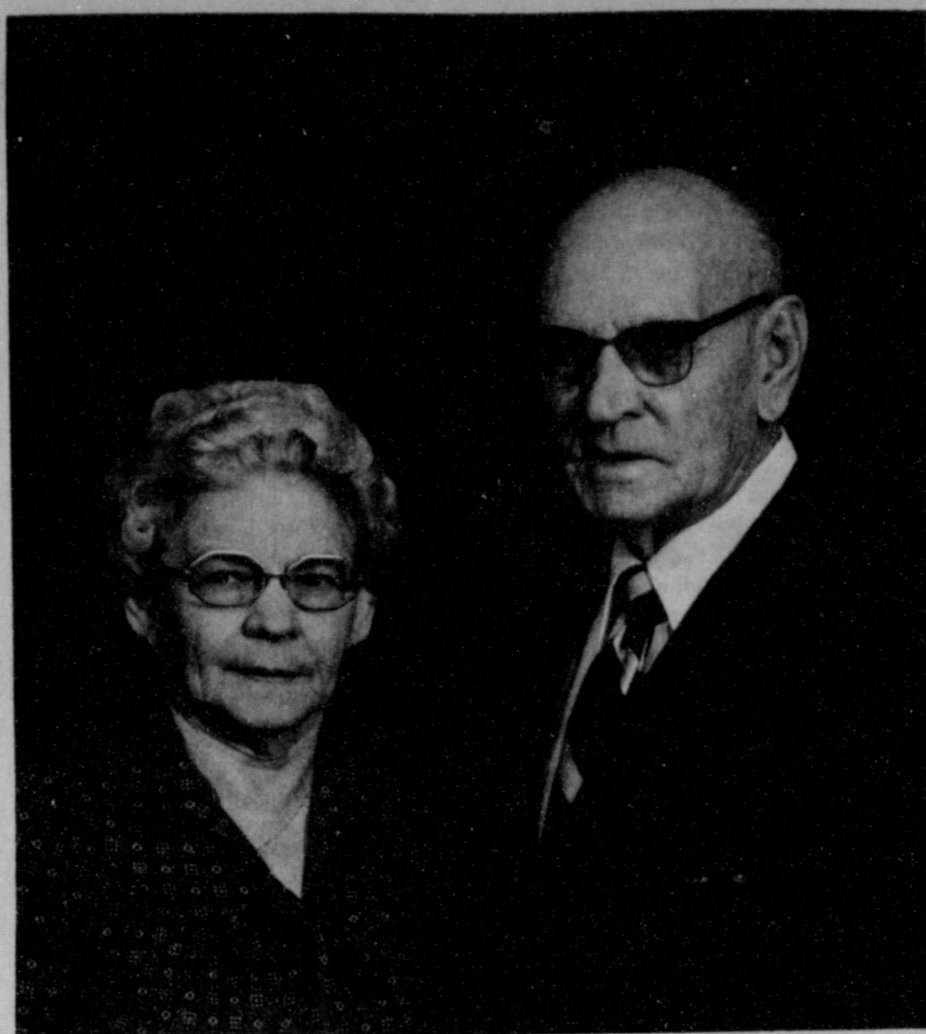
Dell Gray played the traditional wedding march with special music, "Endless Love" and the Wedding Prayer being played by Tammy Bothe on the flute.

Bride's mother wore a hot pink dress with hot pink accessories. Groom's mother wore a green long dress with leather accessories.

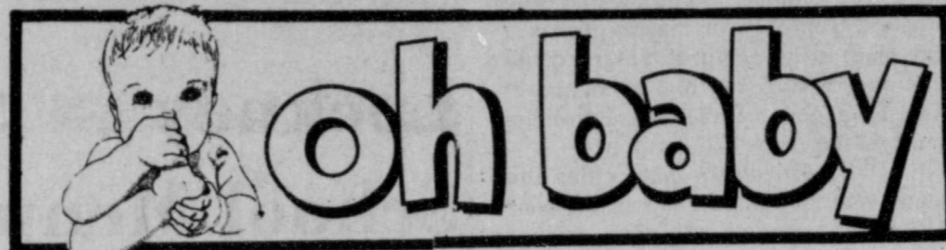
A reception was held in the bride's mother's home. A three-tiered cake was served with punch and nuts completing the table. Pink gladiolas and white carnations adorned the table as a centerpiece. Mysti Orman and Anna Leta Bradshaw served and were assisted by Mrs. Wayne Russell and Mrs. Dell Gray.

Tammy Cochran presided at the register table.

The couple left for their home in Oklahoma City immediately following the reception. The groom will be employed at Baker Packers in Oklahoma.



MR. AND MRS. CLEO W. FULTON



### KELLY

Mr. and Mrs. Jimmy Kelly Jr. wish to announce the arrival of a new baby girl, born Friday January 14 at 9:30 p.m. in Methodist Hospital, Lubbock. She has been named Shayna Merle Kelly. She weighed 6 lb. 15 oz. and is 19 1/2 inches long.

She has a sister, Mindy, age 20 months.

Grandparents are Mr. and Mrs. Jimmy Kelly of Abernathy and Mr. and Mrs. Fred Mulkey of Plainview. Mrs. Wade Kelly of Hale Center is the baby's great-grandmother.

### LUCAS

Mr. and Mrs. David Lucas of Round Rock are the proud parents of twin boys, Matthew Allen and Michael David. The boys arrived January 13 at Seton Hospital in Austin. They weighed 4 lbs. 11 oz. and 4 lbs. 9 1/4 oz.

Mrs. Lucas is the former Connie

Kendall. She was raised in Olton and graduated from Plainview High School. She has been employed in the Capitol building in Austin. Lucas is employed by the City of Austin.

Grandparents of the twins are Mr. and Mrs. Wilfred Stoerner of the Providence community. They left Monday for Austin. The boys and mother were scheduled to be dismissed that day.

### WHITTLE

Mr. and Mrs. Clyde Dennis Whittle, 5228 Royce, Amarillo, announce the birth of a son, Jason Clyde Whittle, born January 5, 1983 at High Plains Baptist Hospital in Amarillo. He weighed 7 lbs. and 11 1/2 oz.

His grandparents are Mr. and Mrs. Cleo Whittle, Floydada, and Mrs. D.G. Powell, Lorenzo. Great grandmother is Faye Whittle of Plainview.

## Homemakers hold regular meeting January 13th

The Floyd County Homemakers Extension Council met January 13 in regular meeting in the Council room. Gladys Widener called the meeting to order and read the poem, "Something to Think About."

Murl Mayfield, T.E.H.A. Chairman, gave her report to the members. She mentioned that there were still a few "Texas Cookbooks" for sale. Also she asked if Floyd County club members would like to sponsor a workshop at the District meeting in Brownfield this spring.

Marilyn Tate, Extension Agent, reported that the Junior Fat Stock Show would be February 21-24. The Council voted to furnish one pie per club member for the 4-H clubs.

The leader training for the program "Arthritis Management" will be January 21 at 2 p.m. and the leader training for "Shaping Up Sensibly" will be February 24 at 10 a.m.

Dr. Gregg Taylor of Amarillo held a

workshop on Organization Leader training. He stated that a group looks to its leaders to find a common interest to set up priorities, initiate projects, to evaluate the results, and to plan effective meetings.

During the T.E.H.A. meeting, Imelda Murry and Ruth Trapp were elected as delegates to the District meeting in Brownfield. Bess Carr and Lillian Smith were elected as alternates. There will also be a delegate and alternate from the Lone Star Cub to be elected at their next meeting.

Members attending were Murl Mayfield, Imelda Murry, Bess Carr, Lillian Smith, Gladys Widener, and Extension Agent Marilyn Tate.

## Deputy visits Floydada Chapter

Floydada Chapter No. 31, O.E.S. held a called meeting January 11, 1983, for an initiation service. New members initiated at that time were Mr. and Mrs. Tom Powell and James M. Willson III.

The regular monthly meeting was held Thursday, January 13, 1983, at which time a pot-luck dinner was served at 6:30 p.m. with the Chapter opening for business at 7:30 p.m.

Special recognition was given to Grand officers present; namely, the Deputy Grand Matron of District 2, Section 3, Mrs. Beverly S. Brooks of Hereford; also to Mrs. Flora McNeill, District 2 chairman of the Music Committee; Mrs. Eula Parrack, member of the Music Committee; M.H. McNeill, Masonic Counselor; and Mrs. Reva McNeill of Amarillo, Grand Visitor of the Order of the Rainbow for Girls.

Mrs. Brooks, making her official visit to Floydada Chapter as Deputy Grand Matron, conveyed greetings from the Worthy Grand Matron of the Grand Chapter of Texas and gave instructions to the chapter officers and members. She announced that the O.E.S. School Instruction will be held at Hereford, March 24, 1983, and that the Grand Chapter Session for 1983 will be held in

San Antonio, November 3, 4, 5, 1983.

In memory of two recently departed members—Mrs. Rachel Ivey, December 15, 1982, and Mrs. Marcella Brown, January 9, 1983—the charter was draped while Mrs. Noma Lou Rainer, W.M., paid tribute to them. The memorial service closed with a prayer by Mrs. Eula Parrack.

Members of Floydada Chapter and visitors present were Mr. and Mrs. Courtney Brooks of Hereford; Mr. and Mrs. Frank McNeill, Amarillo; from Silverton, Mr. and Mrs. Glen Lindsey, Mr. and Mrs. James Griffin, and Mmes. Frances Crass and Daisey Montgomery.

Floydada members included Noma Lou and Bobby Rainer, Dell and Bill Gray, Regi and Keith Gross, Sherry and Billy Don Colston, Kay and Tom Powell, Melba and Bob Vickers, Flora and M.J. McNeill, Roberta and Wayne Russell, Mabel and Keller Holmes, Charley Berry, Gertrude Hollums, Trina Savage, Fern Hartsell, Ruth Daniel, and Anne Sweptston.

### It's Almost Valentine!

Visit our large gift department & look over our selection of Valentine Toys - stuffed animals, Valentine Dolls & Valentine China figurines!  
**Valentine Special**  
A soft & plush & loveable Valentine Bear holding a fresh Valentine carnation in his arms.  
Valentine wrapped - \$7.95

**Park Florist**  
Cupids Headquarters  
in Floydada

## Il Penseroso view needlework

Il Penseroso Jr. Study Club met January 13 at 7:30 p.m. in the home of Reeda Cay Smith. Co-hostesses for the evening were Brenda Mangold and Treena Aston.

Linda Cunyus introduced Karen Rogers and Mary Murray of Needlework Alley in Plainview.

They brought with them a beautiful display of the different types of needlework they carry in the shop. The types of needlework they have available range from the most popular, counted cross stitch to latch hook.

They also showed the different types of material for cross stitch, thread, cross stitch pattern books, different types of mats and frames for framing, and accessories to help organize your needlework materials.

Following the program, refreshments were served and members took the opportunity to get a closer look at the needlework display and ask questions.

The business meeting was called to order by Brenda Mangold. Reeda Cay Smith gave the treasurers report. The club has been working to raise money for a needed piece of equipment for the hospital. After discussing several possibilities it was decided to purchase a transport incubator. The incubator will be used to transport babies from the delivery room to the nursery.

Il Penseroso will sponsor a bridge tournament and luncheon to be held in February. The exact date, fee, and location for the tournament will be announced at a later date. Lisa Mosley is in charge of arrangements and interested persons may contact her.

Members also discussed the possi-

bility of having an Arts and Crafts Show. It was decided that they would contact area artists and see what type of response they would get. The show would be held sometime in April. Ginger Mathis is in charge of arrangements. The meeting was adjourned.

Members present were: Treena Aston, Marilyn Biggs, Anita Bigham, Charlanne Burson, Cynthia Bybee, Sandra Cummings, Linda Cunyus, Lesca Durham, Lynda Gant, Julie Hickerson, Judy Jackson, Jesse Johnson, Kathy Kellison, Kim Lambert, Brenda Mangold, Ginger Mathis, Rhonda McCain, Lisa Mosley, Reeda Cay Smith, Robin Stoerner, Karen Quebe, Janette Workman and Sherry McDonald.

## Danny Huggins celebrates 1st birthday

Danny Huggins, son of Jim and Carol Huggins of Lockney, celebrated his first birthday last Friday, January 14, at a party at his home.

Dan and his family had red punch, birthday cake, and Granny's homemade peach ice cream.

The high-chair area was decorated with red and white streamers and balloons imprinted "Happy Birthday Danny."

Attending were Dan, Jim and Carol; his grandparents Wayne and Annabel Bramlet and Harold and Evelyn Huggins; great-grandmother Eula Bramlet; Aunt Sharron Huggins and Uncle Larry Bramlet.

# JANUARY SALE



4- 1982 RCA Color TV SETS COST

All Coty COLOGNES 30% off

All Other COLOGNES 20% off

All GIFT ITEMS 25% off

All JEWELRY 2 for the price of one plus a 1<sup>st</sup>

Low Low Prices on Litton MICRO/OVENS

## Mize Pharmacy & T.V.

102 S. Main, Lockney

652-2435

Starting Thursday, January 20th  
**MOST SALE ITEMS Marked Down To 50% OFF**

**Brown's**  
DEPARTMENT STORE  
LOCKNEY  
106 NORTH MAIN



From 1933 until 1983 is quite a lot of years.

We've had good times, bad times joys and some tears.

We've watched the kids grow up and leave the family nest.

We've seen men walk on the moon and we've laid good friends to rest.

We've had the pleasure of grandkids and we've suffered lack of rain.

If you had it to do over, Would you ask me to marry you, again?

**HAPPY 50th ANNIVERSARY**



## Rest Home Birthday Party

Our Mrs. Norma Webster  
...80 years she claims...  
Is still a friendly lady  
Despite her aches and pains!

Mr. Efford Parrish  
Counts from '91...  
He's done a lot of living  
And had a lot of fun!

Let's serenade these people  
And make their birthday happy...  
So join us in the "birthday song"...  
And make it good and snappy!

Ladies of the City Park Church of Christ hosted the monthly birthday party at the Rest Home on Thursday the 13th. Residents and guests were seated in the dining room after which the Hesperian photographer did the "picture taking".

The honorees were seated at the "honor" table which was laid with an ecru cloth and centered with a floral arrangement in blue. Matching cards marked their places. The men were presented boutonnières and the ladies had corsages of lovely fresh flowers, compliments of Williams Florist Shop of Floydada. The poem was read and all joined in singing the birthday song.

Mrs. Webster had as her guest her husband Bill and Mr. Parrish had his daughters Mrs. Raymond McJimsy and Mrs. H.S. Waller. Visiting with Mr.

Lewis were Mr. and Mrs. Grady Walker and Mrs. Garnet Goen. Seated with Mrs. Childs were Nealy and Zelma Richardson. With Mrs. Jessie Freeman was her husband Meril and Mr. Marvin Goolsby was a guest of Mrs. Zella Palmer.

A delicious refreshment plate of

coconut and angel food cakes and tangy fruit punch was served to the honorees, guests, residents and employees.

The next party is to be Thursday, February 17, 2:30 p.m. Please come and be with your loved ones and friends. It means so much to have guests when it is their "special" day.



FLOYDADA NURSING HOME birthday honorees for this month are [L-R]: Francis Childs [lower left], Norma Webster, Charlie Lewis [seated], Efford Parrish and Irene Fuller.

### FLOYDADA NURSING HOME HAPPENING

By Dartha Westbrook

What a lovely week we have had at the Nursing Home. On Monday, Kim Sherman was here for Music Therapy. Each time she comes we seem to have more who participate. She had the Residents singing solo's and every one played a rhythm instrument. They really look forward to this activity.

The week was filled with the usual activities including Bible Study, Bingo, and movies. Our bingo winners were Emmet Lawrence with eight games, Susie Thompson with six, Vera Duke with two, Una Clark with four, and Ann Brown with one.

On Thursday we honored five residents at the birthday party hosted by

City Park ladies. The honorees were: Charlie Lewis, Efford Parrish, Frances Childs, Irene Fuller and Norma Webster. We sure appreciate these dear ladies supplying everything needed for this party. There were several visitors present, their names will be listed in the birthday article. Of course Williams Florist furnished the flowers and David was here to take the picture from the Hesperian - thanks so much to all of you.

We have a new Resident, Irene Fuller from Matador. If you would like to visit her, she is in room 5-West. Welcome to our home Irene, we hope you will be very happy.

Thanks to the 1950 Study Club for their check for \$30.00, which was

received today. This will be used to purchase something our Residents can enjoy.

Thanks to Bill Daniel for the turnips - boy, the Residents sure enjoyed them.

Doris Castleton is here visiting her mother, Geneda Roberts from Florida. We sure appreciated all our visitors last week. They are: Dana, Otis, Kim and Jo Lee Ellis, Hazel Bradley and Kim, Christine Robertson, Estelle Hinkle, Lucille Lobban, Karl Bunges, Burmah Probasco, Cora Smallwood, Thanic Smallwood, Charley L. Berry Sr., Doris Castleton, Merritt Island, Florida; Mattie Wester, Mr. and Mrs. Augustine Lara, and Amanda, Lubbock; Ira Sullivan, Analee Brown, Tonia Marley, Jimmy Marley.

### Rebekahs install new officers January 11th

Floydada Rebekah Lodge met on Tuesday night, January 11, for the purpose of installing officers for the

term. Ethelyn Vernon, District Deputy President of District #9, and her installing

staff of Lockney Rebekah Lodge No. 259 were the installing officers.

Due to illness and bad weather, several members were not present to be installed, but their installation will be held at a later date.

Valree Turner was installed again as Noble Grand for another term. Ruby Davis is the new Vice Grand; Barbara Gilliland, Recording Secretary; Artie Webb, Treasurer; Eula Parrack, Conductor; Willie Hill, Warden; Gracy Grundy, Inside Guardian; Amanda Hart, Musician; and Jewell Price, Chaplain.

The new Noble Grand chose as her theme, "Reach Out"; her motto "Reach Out for Friendship"; her aim "Reach Out For Love"; her watchword "Reach Out for Truth"; her emblem "Clasp Hands"; her scripture: Gen. Chapter 3-V.22 "And the Lord God said, behold, the man is become one of us, to know good and evil; and now lest he put forth his hand and take also of the tree of life, and eat, and live forever." Her colors will be red, white and blue; her flower, a red rose; and her song "Hold To Gods Unchanging Hand."

After reading her acceptance speech, Artie Webb, read her poem "Clasp Hands". After lodge closed a snack supper of soup, crackers, dips, chips, pickles and olives, cheese, cake, cookies and coffee was served to the group.

Lockney girls were thanked for coming through the snow to attend the installation.

### Fuller, Hambright plan March 12th wedding

Mrs. Doris Fuller of Lubbock, announces the engagement and forthcoming marriage of her daughter, Vicki June Fuller to James Craig Hambright, son of Mr. and Mrs. Gordon Hambright of Floydada.

Vicki is a graduate of Coronado High School in Lubbock and is employed at Republic Bank Lubbock in the Book-keeping Dept.

Craig is a graduate of Floydada High School and Texas Tech University. He has a Bachelor of Music Education. Craig is currently the Assistant Director of Bands at Idalou High School.

The couple plan to marry on Saturday March 12, 1983. The ceremony will be held at the First Baptist Church in Floydada, 401 South Main Street.

### Flower artistry presented to 1929 Study Club

The 1929 Study Club met Thursday, January 13, in the home of Mrs. H.O. Cline. The meeting was called to order by the club president, Mrs. Q.D. Williams, and the group read the club collect in unison.

Roll call was given with each member naming their favorite flower.

A business meeting was conducted including the reading of the minutes by Mrs. Ben Whitaker, and a treasurers report by Mrs. Clarence Goins. A letter was read from the State Hospital in Vernon acknowledging contributions which the club had made during the

holiday season.

A most interesting program was given on Silk Flower Artistry by Mrs. Cindy Williams from the Williams Floral Shop. Several arrangements were made and knowledgeable facts were given about flower arranging.

Members present included Mmes. C.W. Denison, Roy Fawver, Clarence Goins, C.M. Meredith, E.J. Morehead, W.B. Parrack, Ben Whitaker, Q.D. Williams, Misses Anne Swepton, Frances Mitchell, and the hostesses Mrs. H.O. Cline and S.W. Ross. The next meeting will be February 3.

**January Sale Continues**

Selected Ladies Items

Savings up to **50%**

Men's Flannel Shirts

**1/2 Price**

**Many other items REDUCED!**



**THE LOFT**

517 E. Houston  
Floydada

983-2235

SAVE SAVE SAVE SAVE SAVE SAVE SAVE

It's Time For Hale's

## 1/2 Price Sale

on all  
Women's and Girls

### FALL READY - TO - WEAR

Starts Thursday, 12:00 Noon, January 20th

SAVE SAVE SAVE SAVE SAVE SAVE SAVE

## Shop Anderson's Dept. Store

### Color Bright - Home Goods - SALE

Also Greater REDUCTIONS on January Clearance  
Color Sale Begins - Thursday, January 20th

<p><b>SHEETS</b></p> <p>Full Flat or Fitted</p> <p>Regular \$10<sup>99</sup> each NOW <b>\$6<sup>99</sup></b> each</p> <p>Cases - Regular \$8<sup>99</sup> NOW <b>\$5<sup>99</sup></b> pair</p> <p>Matching - Bed Spread - Full Regular \$50<sup>00</sup> NOW <b>\$38<sup>88</sup></b></p>	<p><b>BATH TOWELS</b></p> <p>Bath Size Regular \$10<sup>99</sup> NOW <b>\$8<sup>99</sup></b></p> <p>Bath Size Regular \$8<sup>99</sup> NOW <b>\$6<sup>99</sup></b></p> <p>Bath Size Regular \$6<sup>99</sup> NOW <b>\$4<sup>99</sup></b></p> <p>Bath Size Regular \$4<sup>49</sup> NOW <b>\$2<sup>99</sup></b></p>
<p><b>PILLOWS</b></p> <p>Dacron Polyester Fiberfill II</p> <p>Standard Size Regular \$9<sup>99</sup> NOW <b>\$7<sup>99</sup></b></p> <p>Queen &amp; King Size <b>REDUCED</b></p> <p>ALSO</p> <p>NEW Quallofill - DuPont - Dacron Polyester - With Down Like Qualities Regular \$15<sup>99</sup> NOW <b>\$12<sup>99</sup></b></p>	<p><b>MATTRESS PADS</b></p> <p>North - Star<sup>R</sup> Lifetime Fitted</p> <p>Full Size Regular \$19<sup>99</sup> NOW <b>\$16<sup>99</sup></b></p> <p>Queen Size Regular \$26<sup>99</sup> NOW <b>\$22<sup>99</sup></b></p> <p>King Size Regular \$31<sup>99</sup> NOW <b>\$27<sup>99</sup></b></p>
<p><b>BLANKETS</b></p> <p>Royal Classic Thermal by Cannon</p> <p>Full Size Regular \$32<sup>99</sup> NOW <b>\$26<sup>99</sup></b></p> <p>North - Star - A - Plush Blanket - With Scotchguard<sup>R</sup> Release</p> <p>Full Size Regular \$29<sup>99</sup> NOW <b>\$24<sup>99</sup></b></p>	<p><b>PACKAGED SHEET SETS</b></p> <p>Full Sizes - Top &amp; Bottom Sheet With Standard Size Cases</p> <p>Regular \$34<sup>99</sup></p> <p>NOW <b>\$25<sup>95</sup></b> set</p>
<p><b>CLEARANCE</b></p> <p>One Group of Ladies Mix &amp; Match Sportswear</p> <p>NOW <b>1/2 PRICE</b></p>	<p><b>CLEARANCE</b></p> <p>One Group of Ladies Dresses</p> <p>NOW <b>1/2 PRICE</b></p>

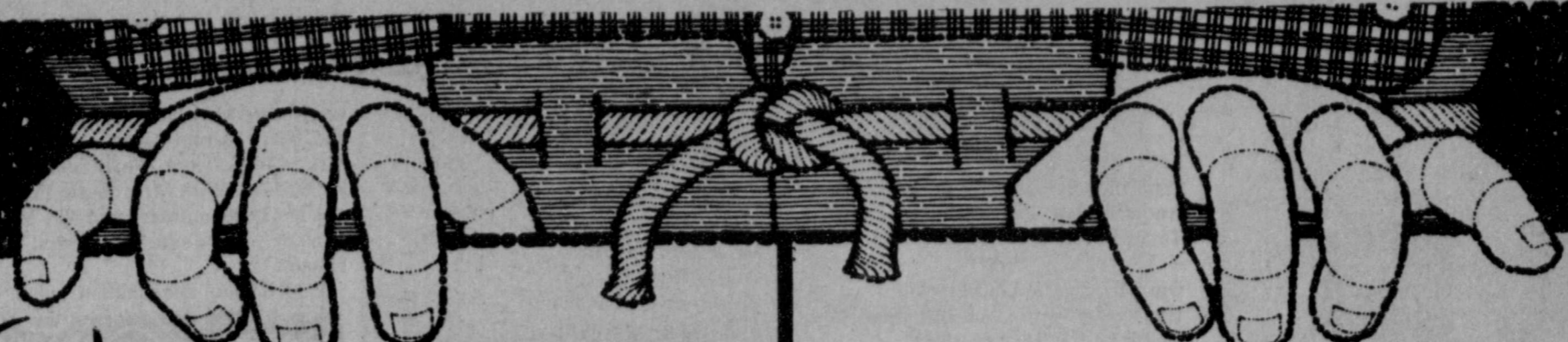
Layaways - Mastercard-VISA

# ANDERSON'S

DEPARTMENT STORE

120 West California  
Floydada & Matador, TX





# Buddy's SUPERMARKET



220 SOUTH 2nd • 983-3149  
 STORE HOURS:  
 MON. THRU SAT. 8 A.M. TIL 9 P.M.  
 SUNDAY 9 A.M. TIL 8 P.M.  
**DOUBLE STAMPS ON WEDNESDAY WITH \$5.00 PURCHASE OR MORE**  
 WE RESERVE THE RIGHT TO LIMIT QUANTITIES

These values in this advertisement are effective through Wednesday, 1-26-83

## PRODUCE

8 OZ. CELLO BAG  
**RADISHES.. 4/\$1.00**  
 EAST TEXAS FINEST  
**YAMS.....Lb. 29¢**  
 ARIZONA SWEET 4 Lb. BAG  
**ORANGES.....EA 99¢**  
 NEW CROP MEDIUM WHITE  
**ONIONS...Lb. 4/\$1.00**

20 Lb. BAG  
**POTATOES**  
**\$1.99**

8 oz. White Swan  
**BISCUITS 4/\$1.00**

# QUALITY meats

Loin End Cut  
**PORK CHOPS \$1.39** lb.

1 lb. Package White Swan  
**BACON \$1.59**

Jimmy Dean Pure Pork, 2 lb.  
**SAUSAGE \$3.19**

USDA Tenderized  
**STEAK \$2.99** lb.

USDA Chuck  
**ROAST \$1.69** lb.

From Our Deli  
**CORN DOGS 3/\$1.00**

14 oz. Morehead  
**PIMIENTO SPREAD \$1.29**

10 oz. Stilwell Whole  
**OKRA 2/\$1.00**  
 32 oz. White Swan  
 Crinkle Cut  
**POTATOES 79¢**

**FROZEN FOOD**  
 26 oz. Mrs. Smith's  
**APPLE PIES \$1.39**

16 oz. Suave All Fragrances  
**SHAMPOO \$1.19**

5 Count Atra  
**RAZOR BLADES \$1.69**  
 6.4 Colgate Gel  
**TOOTHPASTE \$1.49**

17 oz. Green Giant Sweet  
**PEAS 39¢**  
 16 oz. Green Giant Cut Green  
**BEANS 3/\$1.00**  
 12 oz. Green Giant Niblets  
**CORN 39¢**

15 oz. Chef-Ar-Dee  
**CHILI MAC 79¢**

5 oz. Hormel  
**VIENNA SAUSAGE 2/\$1.00**  
 32 oz. Sunlight  
**DISH LIQUID \$1.69**

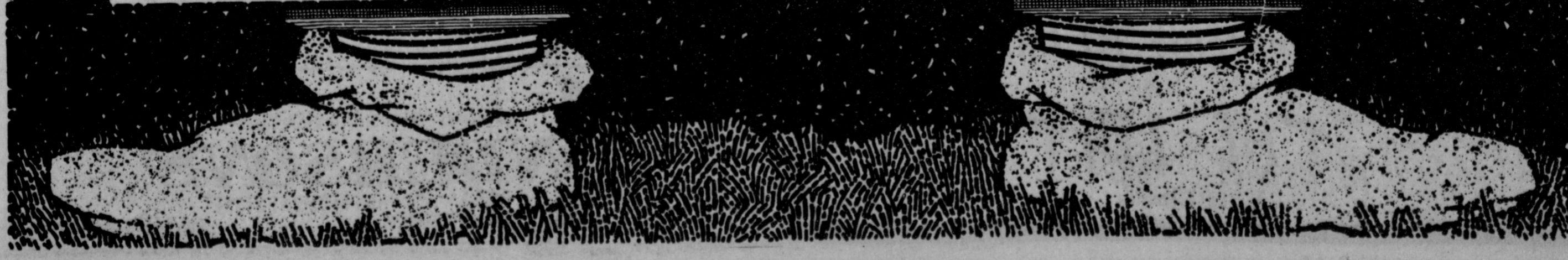
4 1/2 oz. Green Giant Sliced or Whole  
**MUSHROOMS \$1.19**  
 7 oz. Old El Paso  
**GREEN CHILIES 79¢**  
 1 lb. Meadowlake  
**MARGARINE 59¢**  
 32 oz. Pioneer  
**BISCUIT MIX \$1.29**  
 12 lb. Purina  
**CAT CHOW \$6.39**  
 64 oz.  
**DOWNY \$2.09**  
 30 Count  
**KOTEX \$2.99**

12 oz. Brachs  
**CHOCOLATE COVERED CHERRIES \$1.79**

32 oz. Del Monte  
**CATSUP \$1.19**  
 4 Roll Nice-N-Soft  
**TISSUE 99¢**  
 14 1/2 oz. White Swan  
**HOMINY 4/\$1.00**  
 50 oz. Dish-All  
**DETERGENT \$2.19**

15 oz. Hunts  
**TOMATO SAUCE 2/\$1.00**  
 12 oz. Hunts  
**TOMATO PASTE 79¢**

# Gigantic Sale





# "Laugh Lines"

BY DON AND SARA PROBASCO

Bits of Humor, Trivia, and an occasional Word of Wisdom

A tourist remarked to an old-timer. "You've lived in Texas for 79 years, so I suppose you have worked out a pretty good system for foretelling the weather." Uncle Zeke replied, "I ust to be purty good at it, but since the Guv'ment took it over, I can't tell a durn thing about it any more."

There's a close connection between getting up in the world and getting up in the morning.

A woman answered the front doorbell to find a little kid who asked: "Do you have any old whiskey bottles I could sell?" "Does my face look like I'm the kind of person who would?" He looked at her face for some time and asked, "Well, do you have any old vinegar bottles?"

A man took his Great Dane to the vet. "My dog is always chasing sport cars," he explained. "Well, that's not uncommon," said the vet. "Yes, but he's been burying them in the back yard."

Mechanic to motorist: "Let me put it this way. If your car were a horse, it would have to be shot."

What the average man wants out of his car is his teen-age son.

Woman to big-city merchant "You don't sell used cars? What kind of a drug store IS this, anyway?"

When you want to buy a used car, go to a used-car dealer. When you have a plumbing problem, contact a plumber. When you need help with locks or keys, call Pro-Lock Shop.

### PROBASCO'S

Pro-Lock Shop  
24-hour mobile  
Locksmith Service

Studio South  
Stained Glass Art  
Gifts and Supplies

2 miles north of South Plains on the Silverton Highway (Hwy 207)

983-3834

Visa and Mastercard Welcome

## Library News

The Following films and filmstrips are available now through February 11 at the Floyd County Library:

**The Arab Identity: Who Are The Arabs.** 26 min. Color. 1975. Learning Corp. of America. SH-A

Contrasts the diversity of 125 million Arabs and the unifying power of their centuries-old heritage. Also shows impact of modernizing and Westernizing influences and violent political confrontation.

**The Amazing Cosmic Awareness Of Duffy Moon.** 32 min. Color. 1977. Time-Life. EI-JH

Duffy Moon's often funny adventures will hit home with any young person who has been teased for his "Shortcomings." Based on Jean Robinson's *The Strange, But Wonderful Cosmic Awareness of Duffy Moon*.

**Clay or The Origin of Species.** 8 min. B&W. 1964. McGraw-Hill. Films. All ages.

A lump of clay stars in this creative, lighthearted version of evolution from molecular ocean life, to animals that continually eat each other and change, to man.

**The Desert.** 28 min. Color. 1970. Films, Inc. JH-A

Explores the animals, plants and land that make the desert unique. Good photography and narration. We hear the sounds of the desert, as well as, see its beauties.

**A Doll's House.** 39 min. Color. 1977. Elkins Productions, Ltd. SH-A

Edited film version of Henrik Ibsen's classic portrayal of a woman trapped in her husband's fantasy "doll house" and her self-awakening. Claire Bloom and Anthony Hopkins give spellbinding dramatic performances.

**Everyone Needs Some Help.** 6 min. Color. 1972. Encyclopedia Britannica. Pre-EI

Animated film about a child with speech and hearing impairment. A discussion starter. From the Like You, Like Me Series.

**Eye Of An Artist.** 20 min. Color. 1956. International Film Bureau. SH-A

Artist Dewey Albinson relates how he discovers nature on a New England farm. The film reveals his approach in studying and selecting subject matter.

**Health And Your Body.** 6 films. 4 min. each. Color. 1975. Encyclopedia Britannica. (Most Important Person Series) Pre-EI

Contents: 1. Take care of your teeth. 2. The voice box. 3. Where does food

go? 4. Tell us how you feel! 5. When you get hurt. 6. Visiting the doctor.

**An Alphabet Of Animals.** Coronet. Black & White. 1974. 12 min. Pre-EI

Animated letters introduce live animals ranging from a frog to the X-ray fish. Children's voices accent the key words which pop on the screen. Original piano music underscores whimsical rhymes about the animals from A to Z.

**Sand Castle.** 13 min. Color. 1978. National Film Board of Canada. Pre-A

A sandman sculpts creatures out of sand with shapes to fit their functions as sand castle builders. They build a fairytale sand castle and celebrate its completion. Soon the wind blows it away. Nonverbal. Sand Castle is the winner of the following awards: Academy Award, 1977; Blue Ribbon, A.F.F., 1977; Gold Hugo, 1977; Anecny, 1977.

**The Lion And The Mouse.** 5 min. Color. 1977. Benchmark Films, Inc. EI

In this endearing Aesop's fable, the compassionate lion catches and then releases a grateful mouse. The lion is later rewarded when the mouse rescues him from a rope net. Moral: One good turn deserves another. Clever cut-out animation.

**The Litter Bug.** 8 min. Color. 1962. Walt Disney Educational Media. EI

Donald Duck hosts a graphic demonstration of that scourge of city, country, beach and highway. A humorous attempt to change our attitude toward discarding the wastes of our popular culture.

**Morris, The Midget Moose.** 8 min. Color. no date. Walt Disney Educational Media. Pre-EI

A lesson in cooperation and turning weakness into an advantage. Morris overcomes the ridicule directed at him because of his huge antlers and diminutive body.

**No Tears For Kelsey.** 28 min. Color. 1969. Paulist Productions. SH-A

A dramatization about a successful, but hardened man and his confrontations with his daughter who runs away from home and rejects his materialistic values.

**North From Mexico: Exploration and Heritage.** 20 min. Color. 1971. Greenwood Press. SH-A

Traces the history of the Mexican-American people from the time of Coronado to the present, explores their culture and points out the contributions made by the Spanish. Examines the Chicano of today and his struggle to win

By Joyce Williams

At last the sunshine has melted most of the New Years Day snow, although there were still patches of snow in the shade on the north side of buildings as late as Saturday, a full two weeks after the storm.

Mr. and Mrs. Joe Thurston enjoyed two of their little granddaughters this week as Ashley and Alissa Core, daughters of Sandy and Rob Core of Lubbock, visited here on Thursday through Sunday. Joe and Alta took them to Lorenzo where Sandy met then Sunday.

Mr. and Mrs. Jimmy Nichols and sons, Cody and Brynn, were Sunday dinner guests of his parents, the James Lee Nichols, also Tammy and Ricky.

Mr. and Mrs. Flukie Smith of Lubbock came over Saturday for supper with Judge and Mrs. Choise Smith and children.

Roy Dunavant of Plainview spent Wednesday and Thursday night with his grandparents, Mr. and Mrs. Grady Dunavant. His cousin, Miss Rebecca Redding, was also at her grandparents, as this high school freshman was exempt from her mid-term exams. Melvin Dunavant, Ronnie Smith, Shane and Dahl, ate Thursday lunch with the Dunavants at their farm.

Mrs. Roy Fawver was hostess to the Grace Sunday School class in her home Tuesday. She had made preparations for afternoon tea and to her surprise, the guests arrived for a luncheon! But Flora rose to the occasion. She had dozens of sandwiches already made and

## Lakeview News

took brownies from the freezer, added chips and glasses of iced tea and the ladies are still laughing and talking about what a good time they all had at her "surprise" luncheon party. It began as a misunderstanding but ended as a triumphant success.

Derek Lambeth, son of Carolyn Hartsell Lambeth of Carlsbad, went hunting in Blanco Canyon Saturday with his grandfather, Blanton Hartsell. Carolyn, Derek and a family friend came out Friday after Derek had registered at

Texas Tech University, where he is an architect major.

Ford Miller of San Antonio came over Saturday and Sunday to visit his relatives, the Q.D. Williams, after enrolling at Tech Friday. He went bird hunting in Blanco Canyon Sunday afternoon.

Greg Bishop and Gary Nixon returned home from a week's fishing trip to Corpus Christi.

Mr. and Mrs. Duane McClintock returned home Sunday afternoon after a trip to Hurst where they visited Duane's sister, Mrs. Opal Brown, and their mother, Mrs. C.W. McClintock, who is in a rest home in Hurst.

Earl Bishop came back to Floydada Jan. 4, to stay awhile with the Riley Teagues after a visit in Lubbock with his daughter, Mrs. Betty Howard. On Saturday, Marion, Chris, and Gail Howard visited the Riley Teagues and Mr. Bishop. The Marion Howards are from Ruidoso.

Mr. and Mrs. Louis Pyle were in Lubbock and Idalou this past week to attend basketball games in which their son, David, was a player. Our boys won the tournament.

Mr. and Mrs. W.H. Bunch are back home after a holiday visit in Carrollton with their sons and families. They visited with Darrell and Arlene, Tanya and Brenda Bunch, also with Rodney, Vicki, Kalissa, Brandon and Jeremy Bunch.

Mr. and Mrs. Billy Joe Hambricht met their children and all went out for lunch Saturday in Lubbock. Kathy and Jerry Green and Heather, also Todd Hambricht were present.

Mr. and Mrs. David Hart. Salinda, Sara Jane and Sanday of Seymour, were here from Friday evening through Sunday with his parents, the P.L. Harts and shopped and ate lunch in Plainview Saturday. After church Sunday they went to King's for lunch before returning to Seymour.

Little Miss Cassy Fawver, daughter of Becky and Larry Fawver of Lubbock, stayed from Tuesday to the following Tuesday with her grandparents, Mr. and Mrs. Neil Bertrand.

Jody and Marvin Crabtree and son, Kyle, of Clarendon, were Saturday and Sunday guests of the Joe Thurstons.

Sunday dinner guests of Mr. and Mrs. Grady Dunavant included Brother and Mrs. Donald Bryant of Tennessee, Mrs. Luther Grigg of Littlefield and Mrs. Doyle Sandefur of Floydada.

Mrs. Jenny Gaunt visited the Louis Pyle family Sunday.

Mrs. Howard Bishop, Mrs. Norman Muncy and Mrs. Mike Bishop visited Mrs. Shirley Peggram in her new home in Nazareth Saturday. Shirley and Jimmy had bought Mrs. Alvin Nichols house in Cedar Hill, moved it to Nazareth and remodeled it.

Mr. and Mrs. Bill Norris were in Seagraves Sunday to meet Mr. and Mrs. C.M. Norris and brought their mother, Mrs. Nora Norris, back to her home in Floydada after her holiday visit in Carlsbad, New Mexico.

Pete Calloway and Speck Brian of Lubbock went bird hunting in Blanco Canyon Saturday.

Edgar Jones of Truscott came up Sunday afternoon and stayed with his daughter, Mrs. Q.D. Williams. They attended a fellowship supper at the City Park Church of Christ Sunday evening. On Monday they went to Dumas where Mr. Jones saw about his business there. Ashleigh and Austin Williams spent Sunday afternoon at their grandparents' ranch and Austin went hunting with his BB gun.

The Carl Moosebergs celebrated a late Christmas on January 7 to 10. All their daughters and their families were home. These included Tommy and June Sherman and son, Rolf Lockney; Ken and Alice Steele of Perryton; also Donny and Carla Winslow and Zade of Duncan, Oklahoma.

## South Plains News

By Mrs. Murray Julian

South Plains, January 17:

There was no school here at South Plains and in Floydada Friday and several people were out of town over the week-end. However it was a work day for the teachers, an In-Service Day.

Next week the C.P.R. meetings will be held at the Fellowship Hall of the South Plains Baptist Church on the nights of January 17, 20th, and 21st, beginning at 6:30 p.m. and finishing at 9:00 p.m. Those who can, should take advantage of the meetings.

At this time, Mrs. Fannie Bell McClure is scheduled to go into the Methodist Hospital in Lubbock Wednesday and will have eye surgery Thursday at 12:00 o'clock noon. We will be thinking about her and wishing her well.

Over the past week-end of January 7th, 8th, and 9th, some of our people went to Ruidoso, New Mexico to spend the week-end skiing, and those included Mr. and Mrs. Nathan and Connie Johnson, and Mr. and Mrs. Jerry and Darla Chappell.

Hobby Club Meeting

Mrs. Harold Hamm was hostess in her home on the highway southeast of South Plains to members of the South Plains Hobby Club. They met on Wednesday January 12 at 2:00 p.m. with members drawing up plans for the Hobby Club time of meetings, subject of their demonstrations, and officers for the coming months were elected as follows: President, Mrs. E.J. Kinslow; vice-president, Mrs. Keith Marble; secretary and treasurer will be Mrs. Sterling Cummings, with telephone committee for 1983 being Mrs. Kendall Cummings for the Lockney area, and Mrs. Letha Mulder and Mrs. Leighton Teeple in the South Plains area.

The February meeting will be in the home of Mrs. Teeple on February 9th, at 2:00 p.m. on Crafts. Bring scraps of material to use in covering a basket, use ric rac, and other forms of adornment that you would like for beauty. Roll call will be: A Craft I Would Like To Do and Thought for the Day will be by Mrs. Cecil Osborne, Hostess Mrs. Hamm served a delicious refreshment plate of sandwiches, snacks, with cookies, and drinks of coffee and cold drinks. Those who attended were Mrs. Kendall Cummings, Mrs. Leighton Teeple, Mrs. M. Julian, Mrs. E.J. Kinslow, Mrs. Fred Marble, Mrs. Letha Mulder and Mrs. Don Probasco.

Mrs. Nina Upton is back home after a short stay in the Methodist Hospital in Lubbock last week. She will be going back for further tests, but she is getting along fine at this time.

Mrs. Jewel Kennedy is in the Central Plains Hospital in Plainview and has been there before January 11, when she had major surgery for gall bladder. She is sitting up at the present time, and getting along fine, and is able to eat and walk a little. We are glad to know she is doing well.

We have had a week of beautiful weather, with a few cold nights, but this Monday it is cloudy, and rain, snow and perhaps ice is said to be on the way.

long-denied human rights.

**Le Plat Du Jour.** 13 min. Color. 1976. Carousel Films. SH-A

Musorous view of the clientele of a Paris restaurant during a typical (?) noon hour.

**Silver Blaze.** 31 min. Color. 1976. Learning Corp. of America. JH-A

A prize racehorse has disappeared and his trainer killed. Sherlock Holmes and Watson come into the case, and the classic detective deduces the unusual truth of what had happened. Christopher Plummer stars as Holmes.

**Zoo Families (revised).** 9 min. Color. 1977. BFA Educational Media. Pre-EI

A group of children visit the zoo where they see many different animal mothers taking care of their babies.

**Toller.** 26 min. Color. 1977. Wombat. JH-A

Canadian free-skating world champion, Toller Cranston's artistic flair and skill in both skating and painting are highlighted in this beautifully photographed and choreographed film.

**Yoshiko The Papermaker.** Coronet. Color. 1980. 25 min. JH-A

Yoshiko Fujimoto, 13, lives in the tiny mountain village of Obara-Mura which retains its 700-year-old tradition of handmade paper. Under the guidance of a local master, Mr. Ando, she helps make paper from the Kozo tree and designs her own panel. But the process is demanding and she defers her decision on apprenticeship until she finishes her schooling.

Filmstrips

The Boy Who Went to the North Wind

Danny and the Dinosaur  
The First Woodpecker  
The Hole In the Dike  
How Hippo  
The Legend of the Palm Tree  
Mr. Vinegar  
Petunia  
The Tiger, the Brahman, and the Jackal  
Toad and Diamonds

## Special Stocker Cow Sale

along with regular sale  
**Wednesday, January 26th at 10 A.M.**

expecting 2,000 head of cattle

350 Springer Cows

100 Stocker Pairs

70 First Calf Crossbred Pairs

1400 Feeder Cattle

## FLOYDADA LIVESTOCK SALES

983-2153

Don 983-3780

Darrell 983-2444

**SPECIAL SPECIAL SPECIAL SPECIAL**

Did you know that most vehicles should have the transmission fluid and filter changed every 25,000 miles?

350 & 400 Transmissions	Regular \$38 <sup>85</sup>	Special \$29 <sup>75</sup> Plus Tax
----------------------------	-------------------------------	---


(Includes filter, gasket, fluid, labor)  
For Most GM Cars & Pickups  
Good thru February 28th

**CITY-AUTO, INC.**

**Mr. Goodwrench**

FLOYDADA, TEXAS  
983-3767 or 765-6143

**SPECIAL SPECIAL SPECIAL SPECIAL**



**Let's talk.**

Information about your changing telephone service from Jim West, Community Relations Manager.

**Changes in Telecommunications — Today**

The new year brings with it the first signs of changes in the way we do business with you. These changes are the result of a ruling by the Federal Communications Commission to introduce more competition into our industry. The ruling went into effect January 1.

For most customers, the changes will have little impact. In fact, you probably won't be affected immediately unless you move, disconnect or change your service in some way. If you plan to alter your phone service, here are some areas of change you should know about.

**Bell PhoneCenters**

Bell PhoneCenters are no longer a part of Southwestern Bell. Now the Southwestern Bell business office is the place to call for starting, stopping, moving or changing your service. The number is listed in the front of your phone directory.

**Telephones**

Southwestern Bell will continue to lease phones to our customers. However, during this year, we will not be permitted to add new phones to our inventory. When you order phones from us, we will direct you to the nearest

Southwestern Bell Service Center to pick up your telephones. If you cannot go to the Center, we will deliver the phones. There will be a charge for this service. Business customers with a single line or two lines with non-key equipment can pick up telephones from these Centers, too.

**Repair Service**

We will continue to repair Southwestern Bell phones as always. If you have trouble with your phone, you still should call the repair service number listed in the front of your phone book. If the problem is in your Southwestern Bell set, we'll direct you to a Service Center where you can pick up a replacement. For more information about the changes, write me for a copy of our booklet, "Telecommunications in Transition." Address requests to: Transition Booklet, Southwestern Bell, P.O. Box 225265, Dallas, Texas 75265. If you have any questions or comments to pass along, don't hesitate to contact me at the address below:

Jim West  
Southwestern Bell  
916 Denver  
Plainview, Texas 79072

 Southwestern Bell

Prices Good Thru Wednesday, 1-26-83

Sunny Fresh Farm Grade A Medium

**EGGS**

29¢ Dozen With One Filled S&H Bonus Book

79¢ Without Book

**Buddy's Food**

220 S. 2nd Floydada



USDA Grade A  
**FRYERS**  
Whole **47¢** lb.  
Cut Up **57¢** lb.

**SAVE**



**SAVE**

Center Cut Rib or Loin  
**PORK CHOPS**  
**\$2.09** lb.

**SHOP RITE**

**MEAT Super Buys**

Prices effective thru 1/26/83

309 S. Wall  
Floydada, Texas

**MEAT Super Buys**

Beef Blade Cut Chuck  
**STEAK**  
**\$1.39** lb.  
Center Cut Beef Blade 7-Bone  
**STEAK**  
**\$1.57** lb.

<b>ROAST</b> Beef Arm, Round Bone Cut	<b>\$1.57</b> lb.
<b>STEAK</b> Beef Arm, Round Bone Cut	<b>\$1.67</b> lb.
<b>CHEESE</b> Muenster	<b>\$1.77</b> lb.
<b>SAUSAGE</b> 16 oz. Morrell Roll Pork	<b>87¢</b>
<b>BACON</b> 12 oz. Peyton Del Norte Sliced	<b>\$1.25</b>
<b>BRAUHSWEIGER</b> 8 oz. Oscar Mayer	<b>99¢</b>
16 oz. Oscar Mayer Meat or Beef	<b>\$1.79</b>
8 oz. Oscar Mayer, Pickle & Pimento	<b>\$1.17</b>
<b>FRANKS</b>	<b>LIVER LOAF</b>

Beef Center Cut Beef Chuck 7-Bone  
**ROAST**  
**\$1.47** lb.

**PRODUCE SAVINGS**

**PRODUCE SAVINGS**

Texas  
**ORANGES**  
**29¢** lb.

Red Delicious  
**APPLES**  
**39¢** lb.

6 oz. Bags Red  
**RADISHES**  
**4/88¢**

20 lb. Bag  
**POTATOES**  
**\$1.99**

White  
**ONIONS**  
**25¢** lb.

**YAMS**  
**29¢** lb.

Texas  
**GRAPEFRUIT** 6/**\$1.00**

Green  
**ONIONS** 3/**\$1.00**



Join our list of big winners!

**TOTAL SERVICE**

49 oz. Detergent  
**TIDE**  
**\$1.89**

1 Gallon Morning Fresh Homo.  
**MILK**  
**\$2.19**

8 oz. Contadina  
**TOMATO SAUCE**  
**4/88¢**

15 oz. Ranch Style  
**BEANS**  
**2/79¢**

42 oz. Jewel Pre-Creamed  
**SHORTENING**  
**\$1.39**

1 lb. Can Folgers  
**COFFEE**  
**\$2.49**

7 oz. Shaving Cream	<b>EDGE</b>	<b>\$1.69</b>
10 oz. Hand Lotion	<b>SOFT SENSE</b>	<b>\$1.69</b>
32 oz. Hershey Instant	<b>COCOA</b>	<b>\$2.33</b>
4 oz. Durkee Black	<b>PEPPER</b>	<b>77¢</b>

49 oz. Detergent	<b>CHEER</b>	<b>\$1.99</b>
48 oz. Dishwashing Liquid	<b>JOY</b>	<b>\$2.49</b>
2 lb. Popsrite Yellow	<b>POPCORN</b>	<b>79¢</b>
36 Count Tablets	<b>EXCEDRIN</b>	<b>\$1.99</b>

**COUPON**  
1 Loaf Tendercrust  
**BREAD**  
**FREE**  
With the Purchase of \$10.00  
One Per Coupon

**COUPON**  
1 Dozen Shurfresh  
**EGGS**  
**FREE**  
With the Purchase of \$20.00  
You May Also Redeem  
Coupon No. 1  
One Per Coupon

**COUPON**  
1 Roll Spillmate  
**PAPER TOWELS**  
**FREE**  
With the Purchase of \$30.00  
You May Also Redeem  
Coupon No. 1&2  
One Per Coupon

**COUPON**  
6½ oz. Chicken of the Sea  
**TUNA**  
**FREE**  
With the Purchase of \$40.00  
You May Also Redeem Coupon  
No. 1, 2, & 3  
One Per Coupon

**COUPON**  
12 oz. Shurfresh  
**BACON**  
**FREE**  
With the Purchase of \$50.00  
You May Also Redeem Coupon  
No. 1, 2, 3, & 4  
One Per Coupon

**COUPON**  
1 lb. Can, All Grinds, Folgers  
**COFFEE**  
**FREE**  
With the Purchase of \$60.00 or More  
You May Also Redeem Coupon  
No. 1, 2, 3, 4, & 5  
One Per Coupon



## Windom serves tour with the Multinational Force

The Sinai peninsula, an area steeped in Biblical lore and frequent warfare, ancient and modern, is one-third of the way around the world from Floydada, Texas, but it's where Army Staff Sgt. Lawrence R. Windom, son of Willie T. Windom, 620 E. Virginia, has served since last August.

Windom, 26, a food service specialist with the 163rd Aviation Company, 1st Battalion, 502nd Infantry of the 101st Airborne Division, is serving a six month tour with the Multinational Force and Observers (MFO), an eleven nation peacekeeping organization which is an outgrowth of the Camp David accords between Egypt and Israel.

The Sinai, occupied by Israel follow-

ing the 1967 Six-Day War, was returned to Egypt in early 1982 in accordance with the Camp David agreements between Anwar Sadat of Egypt and Menachem Begin of Israel. The MFO was brought into being as part of the accord and serves as a "buffer" between the Israelis and Egyptians. Referred to as a peacekeeping force, the MFO serves primarily as an observer, reporting violations of the treaty and serving as an international "cushion" between two nations which have been historical enemies for centuries.

Duty in the Sinai, particularly the southern tip of the peninsula, is not easy. Condition of terrain, weather and—perhaps worst of all—monotony, are frequently harsh. Soldiers of the

502nd, scattered among the various Observations Posts (OP's) which range from Sharm El Sheikh and the Straits of Tiran in the South, northward along the Gulf of Aqaba to the Israeli border at Eilat, spend 20 of every 30 days keeping watch from craggy mountaintops and deep in the "wadis" (dry riverbeds) of the region. Except for the infrequent passage of a Bedouin tribe or some other traveler, there is—depending on the location of the particular OP—precious little to see, except an incredibly rugged landscape, similar to the surface of the moon.

"This assignment has offered me the opportunity to meet and work with people from another country," Windom said, "and it's given me the chance to

live in an area deep in Christian history."

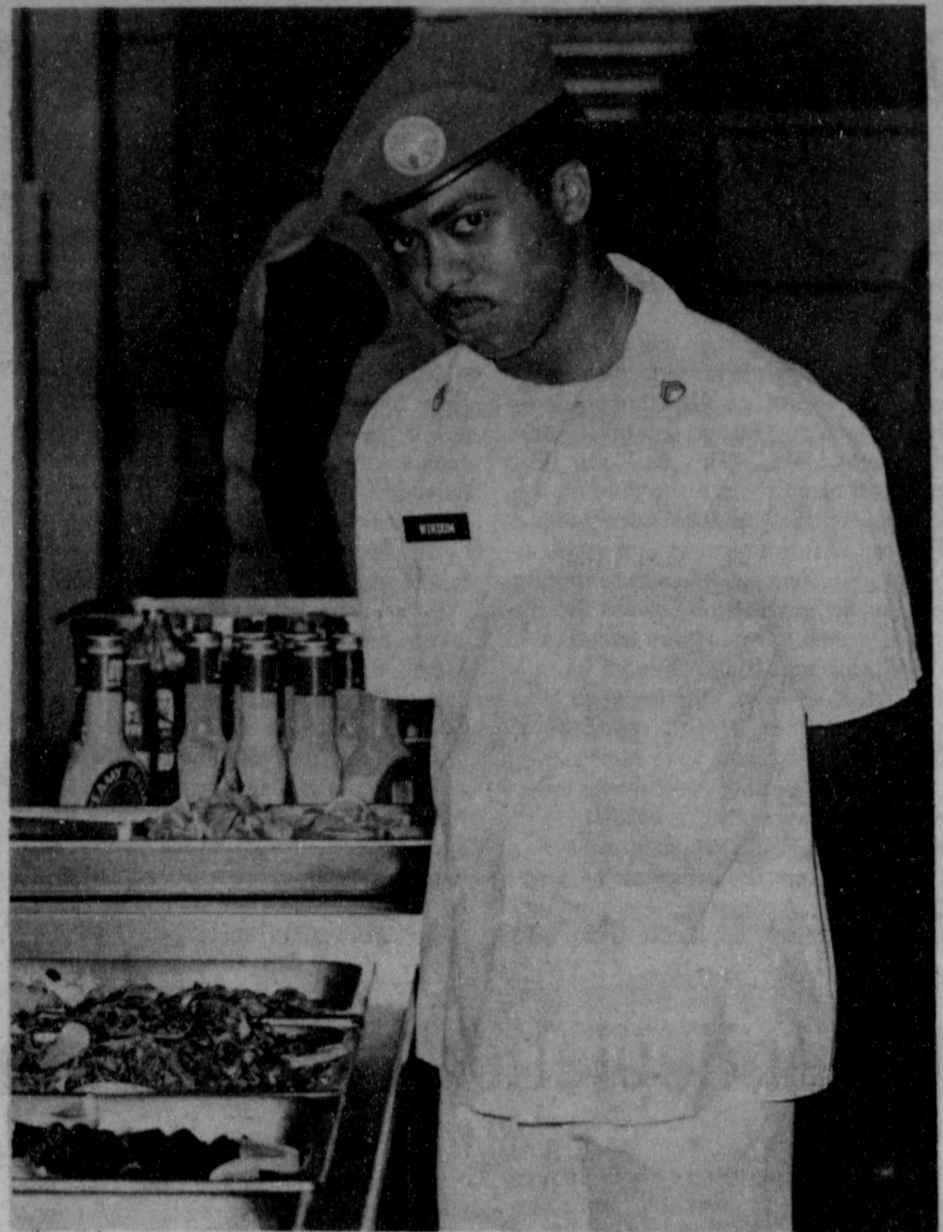
Of the eleven nations which comprise the MFO, only three—the United States, Colombia and Fiji—have soldiers actually manning the outposts in the buffer area, better known as Zone C. The remainder of the MFO countries provide support in various specialties to the force as a whole.

"This mission has helped me professionally because it's put me in contact with a situation where I've been able to meet a problem head-on and deal with it," Windom said. "Being away from my family has been difficult, though. All in all, it's been a good experience for me."

The 502nd, only the second American unit to be stationed with the MFO, is scheduled to be relieved in February 1983 by a battalion of the 82nd Airborne Division—which provided the first U.S. contingent in early 1982. Each incoming unit will find things a little better organized, a few more amenities of life available to them as the rotation schedule and plenty of hard work bring continual improvements to the American camp near Sharm El Sheikh and the various OP's along the Gulf of Aqaba.

Windom attended Floydada High School before enlisting in January 1974. "I originally enlisted because I needed a job," he said, "but have found that it's a good place to gain experience and to make something of myself. Now, I've decided to make a career out of it. I enjoy my work and get to meet new people all the time."

There is an awe-inspiring magnificence in the sheer desolation of the southern Sinai, a strange sort of beauty which almost manages to mask the harshness and sterility of its tortured surface. It is the sort of place one can get accustomed to, but probably never comfortable with, a legend and Bedouin wanderers, of lonely herds of camels and mile-wide wadis, coming from nowhere, going nowhere. It is also a place where—here and there across it's desolation—small patches of cloth—red, white and blue—stand out against the grimness of an inexorable nature, small American flags on the shoulders of American soldiers, assuming new duties in this most ancient of lands.



ARMY STAFF SGT. LAWRENCE R. WINDOM of Floydada is a food service specialist serving with the 502nd Infantry and the Multinational Force and Observers in the Sinai. [U.S. Army Photo by Sgt. 1st Class Dennis Page]

## Assiter certified to offered Federal Crop Insurance

Tommy Assiter of the Assiter Insurance Agency in Floydada has achieved Certification from the Federal Crop Insurance Corporation to sell and service insurance coverage on cotton, soybeans, sunflowers, grain sorghum, wheat, corn, peanuts, oats, barley and sugar beets.

According to F.W. Crouch, Jr., Director of the FCIC, Tommy Assiter earned the Certification by participating in an intensive training program recent-

ly conducted in Lubbock and successfully passing examinations that required a knowledge of all aspects of the Federally-backed insurance program as well as of the coverage available for individual crops produced in Floyd and surrounding counties. The training and testing program was initiated in the fall of 1982 to assure a high level of professional competency among private insurance agents who offer Federal Crop Insurance to farmers in their communities.

Federal Crop Insurance policies,

which provide coverage against all unavoidable causes of loss, are designed to offer farmers an affordable way to protect the substantial sums of money which must be invested and risked to produce a crop. The insurance can also assure a source of income to repay outstanding production loans and to meet fixed expenses such as taxes and mortgage payments. To make the coverage as economical as possible, the Federal Government currently pays up to 30 percent of the premium cost.

## Area students named to Dean's List

Three students from Floydada have been named to the President's and Dean's Honor Lists at South Plains College for the 1982 fall semester.

To qualify for placement on the President's List, SPC students must maintain a 4.0 or "straight A" grade point average for the semester. Stu-

dents on the Dean's Honor List must maintain a minimum grade point average 3.25. All honor students must enroll for a minimum of 12 semester hours.

Candy Thrasher of Floydada has been named to the President's List; and Jeffrey Moss and Teresa Weaver, both of Floydada, have been named to the

Dean's List at SPC.

"We wish to extend our congratulations to these fine students who have demonstrated the academic excellence which is found at South Plains College," said Dr. Bud Joyner, vice president for academic affairs. "We are always proud of the students who are named to the President's and Dean's Honor Lists at SPC."

A total of 162 students were named to the President's List for the fall, and 297 students were named to the Dean's Honor List.

## Speech/Drama Team takes fourth

The Speech and Drama team competed in the Tahoka tournament on Saturday, January 15. The team placed fourth with 102 sweepstakes points.

David Myrick won third place in persuasive speaking. David Carr, Stacy Smith, and Cindee Davis reached semi-finals in persuasive speaking.

Those competing in poetry interpretation were Thomas Trevino, Marlyse

McGaugh, and Ange Shurbet. Meredith Kitchens made semi-finals in this event.

In prose interpretation Matt Griffin reached finals and Sandy Carr reached semi-finals. Paige Cannon also competed in this event.

In debate were Wendy Ruff-Wally Davis and Jana Lawson-Althea Campbell.

## Lockney students on ASU Honor Roll

Two Lockney area students attending Angelo State University in San Angelo, are listed on the Dean's Honor Roll for the Fall Semester at the University.

Those listed on the 3.00 to 3.49 Honor Roll include Julie Michelle Ferguson, a Health & Physical Ed Major.

Those listed on the 3.50 to 4.00 honor roll include Jeffrey Gayland McCormick, an undecided major.

## ASU announces fall honor roll

Area students attending Angelo State University in San Angelo, are listed on the Dean's Honor Roll for the Fall semester at the University.

Those listed on the 3.00 to 3.49 honor roll include Jeffrey Lewis Rainey, an undecided major, Bart Joseph Patzer, an undecided major, Sylvia Devette Coleman, an Elementary Education major, Penny Marie Kirtley, an Ac-

counting major, Roger Zane Jones, a Business major, and Larry Wayne Jones, a Business major.

## Senior Citizen Menu

January 24-28

Monday: Swiss steak, corn pudding, buttered green peas, roll-butter, canned plums, milk

Tuesday: Beef-macaroni casserole, buttered green beans, tossed salad-dressing, roll-butter, apricot cobbler, milk

Wednesday: Roast turkey, dressing, giblet gravy, cranberry sauce, cauliflower and broccoli with cheese sauce, roll-butter, apple crisp, milk

Thursday: Roast beef with brown gravy, hash brown potatoes, squash casserole, cornbread-butter, pineapple upside down cake, milk

Friday: Fried fish, tartar sauce, catsup, new potatoes in cream sauce, carrots and peas, roll-butter, fruit cup, milk

Prices Good Thru Wednesday, 1-26-83

20 oz. Laundry Detergent With Softner

**FAB**  
**49¢**

With Purchase of \$20<sup>00</sup> Or More

**Buddy's Food**

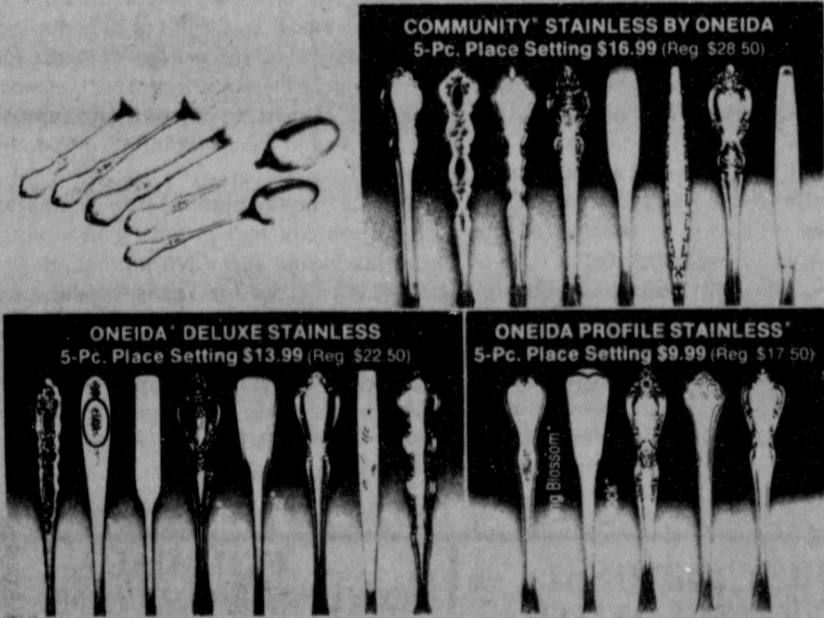
220 S. 2nd

Floydada

## ONEIDA'S GREAT STAINLESS PLACE SETTING SALE

5-Piece Place Setting  
Contains: Salad Fork, Place Fork, Place Knife, Place/Soup Spoon, Teaspoon.

**ONEIDA**  
The American Made Tableware Trademarks of Oneida Ltd.



**SCHACHTS**  
Flowers, Jewelry & Gifts

LOCKNEY

652-2385

## Floydada Students receive degrees

Two Floydada students at Angelo State University were among 183 students who completed degree requirements at the conclusion of the Fall semester.

Larry Wayne Jones received a degree with a major in Business, and Roger Zane Jones received a degree with a major in Business.

Diplomas will be mailed to graduates. December graduates may, upon request, participate in Spring Commencement Exercises slated for May 13.

## BRETT R. GILL

TAX SERVICE

Tax Returns and Bookkeeping Service

CALL 847-2222

## Fittin'est Pecos.

The fittin'est for work. The fittin'est for play. The fittin'est for heel-hugging comfort. Choose from a selection of Red Wing Pecos pull-ons with sizes that are right for you.



**Red Wings**  
Hale's Dept. Store

# THREE THINGS YOUR SAVINGS SHOULD DO FOR YOU

1. EARN A MARKET RATE OF INTEREST
2. BE COMPLETELY SAFE
3. BE ACCESSIBLE

**SUMMIT SAVINGS** all new **MONEY FUND 1 Account** or **SUMMIT SUPER CHECKING ACCOUNT** does all three. Visit or call one of **SUMMIT's** offices today for all the facts, including rates subject to change every Tuesday.

296-6393  
716 Broadway Downtown

293-4208  
3000 Olton Road



## SUMMIT SAVINGS ASSOCIATION

HOME OFFICE - 716 BROADWAY, PLAINVIEW

BRANCH OFFICES  
3000 OLTON ROAD IN PLAINVIEW, FLOYDADA, MATADOR, HALE CENTER, MULESHOE, FRIONA, LITTLEFIELD, FARWELL, PLANO and ALLEN

MEMBER FSIC

983-3725

217 W. CALIFORNIA  
FLOYDADA, TEXAS 79235



## SPD program offers farmers help on decisions

Information to help crop and livestock producers in Floyd County reduce costs and plan for profit in 1983 will be presented during the annual meeting of the South Plains Development Program, January 25 in Lubbock.

"It's more vital than ever that our farmers have the latest information on economic conditions affecting agriculture," Benny J. Butler, county Extension agent, said. "This day-long program will bring them up to date on the economic outlook, national farm policies and programs, and export prospects, as well as give them specific information to help make production decisions for cotton, grains, oilseeds and livestock."

The program will begin at 9:15 a.m. at the KoKo Palace, Avenue Q at 50th Street in Lubbock. A registration fee of \$7.50 will include lunch.

Butler said leading agricultural economists and commodity specialists with the Texas Agricultural Extension Service will present the program.

Dr. Carl G. Anderson, economist and cotton marketing specialist from Col-

lege Station, will analyze the current economic situation and its implications for South Plains producers. National policies and farm program decisions will be examined by Dr. Ronald D. Knutson, economist and specialist in marketing and policy, from College Station.

Suggestions to help local producers plan for profits this season will be offered by Dr. Gary Condra, Extension economist and farm management specialist at Lubbock. Texas' prospects for agricultural exports will be presented by Dr. Mechel S. Paggi, economist and marketing specialist, College Station.

In two concurrent sessions during the afternoon, commodity specialists will focus on specific questions facing county producers, the county agent said.

Anderson and Johnny R. Feagan, economist and organization specialist from College Station, will discuss cotton and oilseed crops. Grain crops and livestock production will be discussed by Dr. Edward G. Smith, economist and grain marketing specialist, and Dr.

Ernest E. Davis, economist and livestock marketing specialist, both from College Station.

"This program will provide timely information needed not only by farmers, but by agribusiness firms and anyone involved in agriculture," the county agent said. He urged anyone interested in attending to advise his office this week so meal arrangement can be made.

The SPD program is a coordinated regional effort of individuals, associations, businesses and agencies to promote economic development in agriculture and improved family life in 21 counties. It is sponsored by the Extension Service, working through county Extension program building committees and special SPD task forces which identify educational needs and coordinate educational activities.

Educational programs conducted by the Texas Agricultural Extension Service serves people of all ages regardless of socioeconomic level, race, color, sex, religion or national origin.



# FARM NEWS



THESE "LITTLE DOGGIES" are waiting to go through the auctioneers' ring at the SPECIAL SALE that is to be held at the Floydada Livestock Sales, January 26th. [Photo by Nancy Barker]

## Special Stocker Cow Sale scheduled for January 26

By Nancy Barker

A Special Stocker Cow Sale is to be held Wednesday, January 26th at the Floydada Livestock Sales starting at 10:00 a.m. This sale is expected to last until 10:00 p.m. that night, due to the large quantity of cows that are to be sold.

The Floydada Livestock Sale auctions

between 165 and 200 head through the ring each hour. Bulls are to be sold first and then the cattle will be sold by tag numbers.

The sale will have many different breeds, but black baldies are at the top of the list. About 70 young, first calf, crossbred pairs are to be sold. These

cattle are arriving from within a 150 mile radius.

Everyone is invited to bring their cattle to this special sale and add theirs to the 2000 head already expected.

With cattle prices on the rise anyway, it's hoped that this Special Sale will help increase the prices even more.

## Water depletion info now available

Water depletion information for tax year 1982 is now available from the High Plains Underground Water Conservation District for landowners to use in claiming a cost-in-water income tax depletion allowance for the area served by the Water District.

Area landowners whose ground water is depleted in the business of irrigation farming can claim a cost-in-water depletion allowance each year for the water exhausted in that year's farm operation.

To determine the owner's cost-in-water requires determining the quantity of ground water in storage beneath his tract of land for the year of purchase. The value of the water is determined by comparing the difference in land sale prices for irrigated land as compared to dryland for the year of acquisition. The value attributed to the ground water in storage beneath the irrigated tract is the amount the landowner had to pay above what he would have had to pay for a comparable dryland tract. The dollar difference is divided into the feet of saturated formation at the date of purchase to obtain the cost per foot of water. These values are obtained from actual sale records each year in the Water District's service area by the District's appraisers.

Finally a water decline value must be assigned for each year the tax deduction is claimed for each tract of land eligible for a depletion allowance.

Each year a qualified consulting appraiser collects and interprets the per acre value difference in irrigated and dryland sales in order to calculate the true cost of the water for any land acquired that year. The cost of ground-water reserves for irrigated land acquired in 1982 ranged from \$140 to \$755 per acre within the Water District's 15 county service area.

To assign annual water level declines in the aquifer, Water District staff members measure the water levels in a network of 950 water level observation wells within the District each January. The one year, the past five and the past ten year changes are calculated and a graph is of these generally declining changes.

To put it all together, the landowner's cost per acre in water is divided by the saturated thickness of the aquifer beneath his land to arrive at a cost per acre per foot. As an example, if the landowner has 100 feet of saturated thickness at the date of purchase and he paid \$500 per acre more for the irrigated land than he would have had to pay for similar land without irrigation water

(dryland), he would then have a cost of \$5.00 per foot of saturated material. Each year as he receives a "feet of decline" assignment from the Water District, the landowner can calculate the cost of depleting his ground water by multiplying feet of decline times cost per foot times total acres and arrive at a dollar value for his tax deduction. Using the example above, if he had three feet of decline he would multiply this by the \$5.00 per foot value with a resulting tax deduction of \$15 per surface acre.

The Water District has been providing cost-in-water decline values for 20 years now, and anticipates between six and seven thousand landowners will make requests for the values this year either as individuals or through their tax accounts. The District estimates at least three to five million dollars of tax expense allowances are saved by farmers each year by this program in the Water District's service area.

If you purchased land or had your land values reassessed as a result of an estate settlement since about 1950, you may qualify for tax expense allowance. Please contact the High Plains Underground Water Conservation District at 2930 Avenue O, Lubbock, Texas 79405, or telephone 806-762-0181 for assistance.

## Natural Fibers Fashion review planned

The 12th annual Natural Fibers Fashion Review is being planned for the 1983 Southwest Farm & Ranch Exposition. The fashion contest and show will be held on March 5 in Fort Worth.

The contest is open to any homemakers from the Southwest Farm and Ranch states of Texas, Oklahoma, and New Mexico, who is involved in agricultural production, an agriculture-related business, or is a member of an agriculture-related organization.

The Fashion Review is designed to promote the use of Southwest natural

fibers and to emphasize excellence in garment construction and fashion in home sewing.

Garments entered in the show must be made of a minimum blend of 50% cotton or 50% wool and/or mohair.

The competition will have four divisions: day wear, evening wear, mother and child, and former grand award winners. The contest provides a showcase for exhibiting designs made from natural fibers.

Prizes will be awarded to first, second, and third place winners in each division. Special awards will be presented to the best cotton, mohair, and wool garments. The Grand Award winner will be selected from the winners of the mother and child, day wear, and

evening wear division.

Sponsors of the event include the Texas Agricultural Extension Service, Southwest Hardware & Implement Association and Progressive Farmer.

Entries must be submitted by February 18, 1983. Contest rules and entry blanks may be obtained from Marilyn Tate at the Floyd County Extension Office.

The Natural Fibers Fashion Review will be presented at 4 p.m. on Saturday, March 5, at the Southwest Farm and Ranch Exposition in Fort Worth.

Educational programs conducted by the Texas Agricultural Extension Service serves people of all ages regardless of socioeconomic level, race, color, sex, religion or national origin.

## Plan an Arbor Day Planting

existing landscape? Is it used for shade, screening, wind protection or just to balance the landscape?

Choose a tree that is well adapted to area soils and weather extremes. Consider possible insect problems such as elm leaf beetles, common to various elm species and disease susceptibilities such as anthracnose, common to sycamore trees and the Arizona ash.

The potential tree buyer will have to choose between deciduous and ever-

green trees. Deciduous trees provide shade in summer and shed their leaves to let sunlight through in winter. Evergreen plants provide shading and screening the year-round but do not change color or texture in the fall.

After selecting the tree, make certain it's planted correctly. Whether planting bare-root or balled-and-burlapped trees or shrubs, the first step is to dig a hole of sufficient size. If the plant is bare-root, the hole should be large enough to allow the root system to spread out naturally.

As far as depth is concerned, plant the tree or shrub about the same depth it was growing in the nursery. On a bare-root plant the trunk or main stem is often discolored at the original soil line. This may be several inches above the upper-most roots. Plant a balled-and-burlapped plant so the top of the soil ball is at the soil surface.

When setting out balled-and-burlapped plants, the pit should be about 1-1/2 times the diameter of the ball. The depth should be the same as the depth of the ball. For container grown plants the hole size should be sufficiently large to allow plenty of good soil to be filled in

around the soil ball.

After setting the tree or shrub in the hole always use a good soil mixture for the backfill. One-third peat moss and two-thirds good topsoil is usually satisfactory. Water the plant thoroughly after planting. In drier areas of the state, a soil ridge around the edge of the hole will aid in holding rain water as well as facilitate watering with a garden hose.

Fertilizer should not be used on new plants. It should be used only after the plant has become well established in the new location. For additional information on the use of fertilizer, two fact sheets are available from the County Extension Office: "Fertilizing Woody Ornamentals," and "Transplanting Woody Plants."

As your newly planted tree begins to grow, you can feel proud of improving your landscape and environment. Refer to B-1237 - Trees for Texas Landscapes for a list of trees suited to our area.

Educational programs conducted by the Texas Agricultural Extension Service serves people of all ages regardless of socioeconomic level, race, color, sex, religion, or national origin.

**MUNCY ELEVATOR**  
Lockney 652-3100

**SUN-VUE FERTILIZER**  
Lockney 652-3362

**CONSUMERS FUEL ASSOC.**  
Lockney 652-3336

**MARTIN & COMPANY**  
Floydada 983-3713

**MORTON BUILDINGS**  
HAROLD JOHN R. HUNTER  
RESIDENCE (806) 295-0430 OFFICE (806) 295-0282

**COTTON COUNCIL**  
mailing questionnaires

**CASE POWER & EQUIPMENT**  
Floydada 983-2836

**FLOYD COUNTY IMPLEMENT**  
Floydada 983-3732

**FIRST NATIONAL BANK OF FLOYDADA**  
Floydada 983-3717

**FLOYDADA COOPERATIVE GINS INC.**  
Floydada 983-2884

**FLOYDADA IMPLEMENT CO.**  
Floydada 983-3584

**RUSSELL'S EQUIPMENT & SUPPLY**  
Floydada 983-3751

**FEDERAL LAND BANK ASSOC. OF FLOYDADA**  
Floydada 983-2480

**ADAM'S WELL SERVICE**  
Floydada 983-5003

**PRODUCTION CREDIT ASSOC.**  
Floydada 983-2454

**FLOYD COUNTY FARM BUREAU**  
Lockney 652-2242  
Floydada 983-3777



# Lockney Hospital

**January 10-17**  
 Josie Taylor, Lockney, adm. 12-25, dis. 1-15  
 Gertrude Marr, Lockney, adm. 12-27, dis. 1-12  
 Harold Griffith, Lockney, adm. 12-30, dis. 1-12  
 Annie Mae Mercer, Lockney, adm. 1-2, continues care  
 Elmer Smith, Lovington, New Mexico, adm. 1-4, continues care  
 Faye Dudley, Quitaque, adm. 1-4, dis. 1-11  
 Donie Hester, Lockney, adm. 1-6, continues care  
 Alzia Virden, Lockney, adm. 1-8, dis.

1-14  
 Hilda Sanchez, Kress adm. 1-11, baby girl, Amanda, born 1-11, dis. 1-14  
 Jewell Miller, Lockney, adm. 1-10, continues care  
 Barbara Gilliland, Floydada, adm. 1-12, dis. 1-15  
 Robert Hutsell, Silverton, adm. 1-12, continues care  
 Independence McDonald, Lockney, adm. 1-13, dis. 1-15  
 Julia Trevino, Plainview, adm. 1-13, continues care  
 Opal Morrison, Floydada, adm. 1-14, continues care  
 Eula Ellis, Lockney, adm. 1-15,

continues care  
 John Jones, Flomot, adm. 1-16, continues care  
 Verdie Smith, Lockney, adm. 1-16, continues care  
 Laveda Cunningham, Lockney, adm. 1-16, continues care  
 J.T. Juarez, Lockney, adm. 1-17, continues care  
 William A. Holt, Lockney, adm. 1-17, continues care  
 Lois Durham, Floydada, adm. 1-17, continues care  
 Ruby Hartman, Lockney, adm. 1-17, continues care

## CAPROCK HOSPITAL NEWS

**January 10-17**  
 Irene Fuller, Matador, adm. 11-29, dis. 1-12, Hong  
 Hester Moore, Floydada, adm. 12-8, dis. 1-13, Hong  
 Eldie Bryant, Floydada, adm. 12-22, dis. 1-15, Hong  
 Ethel Warren, Floydada, adm. 12-23, dis. 1-16, Hong  
 Lillian Donathon, Floydada, adm. 1-1, continues care, Jordan  
 Jeffie Smith, Floydada, adm. 1-3, continues care, Acar  
 Wiley Rogers, Floydada, adm. 1-3, continues care, Jordan

Joy Williams, Floydada, adm. 1-3, dis. 1-12, Hong  
 Roy Simpson, Matador, adm. 1-4, dis. 1-12, Hong  
 Weldon Pruitt, Floydada, adm. 1-5, dis. 1-14, Jordan  
 Crencio Rodriguez, Floydada, adm. 1-6, dis. 1-13, Hong  
 Rebecca Oviedo, South Plains, adm. 1-6, baby girl Virginia born 1-7, dis. 1-12, Hong  
 Mary Katherine Hale, Floydada, adm. 1-8, dis. 1-10, Jordan  
 M.G. Brotherton, Matador, adm. 1-11, continues care, Jordan

Jose Lewis Rodriguez, Floydada, adm. 1-11, continues care, Jordan  
 Lonnie Doran, Matador, adm. 1-11, dis. 1-14, Hong  
 Felix Riojas, Floydada, adm. 1-13, continues care, Hong  
 Sam Crabtree, Floydada, adm. 1-13, dis. 1-14, Jordan  
 Billie Joe Nichols, Crosbyton, adm. 1-13, continues care, Jordan  
 Ruth Benson, Matador, adm. 1-13, continues care, Hong  
 Lea Cuellar, Floydada, adm. 1-14, dis. 1-16, Hong

## Center News

**By Mrs. J.E. Green**  
 January 17, 1983  
 Today and Sunday are and were nice sunny days except for the wind. It is cold.  
 Mr. and Mrs. Earl Huckabee of Dumas, formerly of Center, visited his sisters, Mrs. Ola Warren and Mrs. Fred Battey Thursday night.  
 Mrs. Roe Jones had three of her daughters visit her over the weekend. These were Helen Melton of Plainview,

Christine Terry of Petersburg and Clara Mae of Amarillo.  
 The Mayfields are still not so well. He has been ill and she is still handicapped by her right fore arm broken three weeks ago.  
 Hal Thomas spent Thursday and Thursday night with the children, Sue and Milton Mensch and boys of Lubbock.  
 Ma Green had a pleasant day

Tuesday in Plainview. Daughter in law Sue came for me. We dined at Furr's, visited the hearing aid office and my granddaughter in law at the huge variety store where she works - Mrs. Jim Green.  
 The Henry Brewers who had been visiting their children reached home not feeling well. He was better but she had been having headaches and sore throat and ended up Saturday with a severe cold.  
 Most of us women these cold days have spent the time quietly at home. Some seem to be out of town.  
 The Muncys - still at home.  
 Mrs. Clarence Ashton, Lockney Rest Home is not so well. She has a virus.  
 Mrs. Ethel Warren was taken home Sunday from the Caprock Hospital, accompanied by a daughter in law.  
 Wiley Rogers is still in Caprock Hospital.  
 We were saddened this week by the passing of Mrs. J.M. Ryman Sr. at the home of her son Dr. J.M. Ryman Jr. in Hubbard. This staunch Christian and devoted mother and grandmother is being sadly missed. My Margaret's mother in law. A stroke took her away. Your prayers, please for these and all these others.

## Cedar Hill News

**By Grace Lemons**  
 We have had some nice warm days this week and farming is going on. Wheat is showing up after the snow and sunny days.  
 We were glad to see Bro. Guest back in the pulpit at the Baptist Church after being in the hospital and at home recuperating.  
 Norma Welch and Grace Lemons visited with Clay and Myrt Guest in Silverton last Tuesday.  
 Funeral services were held last Tuesday at 3:30 in the Methodist Church at Silverton for Marcella Brown who died after a lengthy illness. Norma Welch, Grace Lemons, George and Elwauna Taylor, Donie Hanson, Geraldine Callaway and Goldie Cypert were among those who attended the funeral.  
 Traca Lemons accompanied Grace Lemons to Lockney Sunday afternoon and attended the musical recital of pupils of Lucy Dean Record given in the First United Methodist Church. Jessica Lemons, daughter of Mr. and Mrs. Marvii Lemons, participated in the program.  
 Lowell Gilbert of Santo, Texas had lunch with Mr. and Mrs. J.A. Welch Thursday.  
 Mrs. Peat Kelley and Norma Welch visited Mrs. Aldine Welch in Flomot Wednesday.  
 Edna Gilly entertained her children, Delise and girls of Lubbock, Mr. and Mrs. Craig Gilly and family and Mr. and Mrs. Mark Gilly and son with a dinner in her home Saturday.  
 Janette Lackey of Floydada had supper with Edna Gilly Saturday evening.  
 Janette Lackey and Edna Gilly went to Lubbock Thursday on business.

Ruthie Clark of Plainview spent the day with Edna Gilly last Monday.  
 Peat Kelley visited Belle Lemons Sunday afternoon.  
 The social Society Club met in the home of Lou Burleson last Tuesday with Edna Gilly, Martha Taylor, Jonni Delle Cogdell and Imogene Fortenberry present. They will meet in the home of Edna Gilly next Tuesday.  
 Many times the troubles that are hardest to bear are those which never come at all.

# OBITUARIES

**GENEVA RUTH ELLIOTT**  
 Services for Geneva Ruth Elliott, 55, of Floydada were at 2 p.m. Wednesday, January 12, in New Salem Primitive Baptist Church with Elder Joe Jackson, pastor, officiating.  
 Burial was in Floyd County Memorial Park under direction of Moore-Rose Funeral Home of Floydada.  
 Mrs. Elliott died Monday afternoon, January 10, in Lockney General Hospital after a brief illness.  
 She was born January 25, 1927 in Floyd County and married James Odis Elliott in December 1947 in Floydada. He died August 6, 1979. A housewife, Mrs. Elliott was a member of New Salem Primitive Baptist Church.  
 Surviving are two sons, Jackie Elliott of Lubbock; her mother Cora Knight of Farmington, New Mexico; and a sister, Opel Owens of Farmington, New Mexico.

**RAMBO OF RIVERSIDE, CALIFORNIA**  
 Services for Rambo of Riverside, California; one brother Cecil Moore of Fort Worth; 15 grandchildren and 14 great-grandchildren.  
 Grandsons served as pallbearers.  
**JOHN SOTO**  
 Services for John Soto, 54, of Brownfield were at 3 p.m. Monday in the Spanish Church of God in Brownfield with the Rev. Benjamin O'Jeda officiating.  
 Burial was in Brownfield Cemetery under direction of Brownfield Funeral Home.  
 He died at 1 p.m. Saturday in the Brownfield Regional Medical Center after a lengthy illness.  
 He moved to the Meadow area in 1955 from Franklin and moved to Brownfield in 1972.  
 Survivors include his wife, Maria; four daughters, Carolyn of Meadow, Stella Zenica of Wolforth, Janie Martinez of Lubbock, and Virginia of Fort Worth; a son, John Thomas of Fort Worth; a sister, Maria Flores of Dimmitt; four brothers, Jo and Jesse of Marlin, Cruz of Highland, and Martin of Floydada; and 14 grandchildren.

**ERMA OLA WALKER**  
 Services for Erma Ola Walker, 79, of Lockney were at 2 p.m. Saturday at the Moore-Rose Chapel with the Rev. Mike Conner, pastor of Lockney United Methodist Church, officiating.  
 Burial was in Lockney Cemetery under direction of Moore-Rose Funeral Home.  
 The former Ima Moore, member of a pioneer family, was born August 1, 1897 in Gustine in Comanche County, Texas. She married T. Berch Rambo August 12, 1915 in Gustine and they moved from Comanche County to Floyd County, to the McCoy Community, in 1925.  
 From Floyd County, Mr. and Mrs. Rambo went to Hale County to the Prairieview Community northeast of Plainview in 1928, and from there to Petersburg in 1933. Mr. Rambo died January 4, 1972 and Mrs. Rambo moved to Hale Center from Petersburg in 1977.  
 A Baptist since she was a little girl, Mrs. Rambo was a member of First Baptist Church in Petersburg.  
 Surviving are one daughter, Mrs. W.C. (Kalene) Foote Jr. of Hale Center; three sons, Tom Rambo of Hale Center, Carl W. Rambo of Hart and Lt. Col. Don

**Got Heating or Plumbing Problems?**  
 CALL  
**Holmes Plumbing**  
 Austin or Steve  
 Call Day or Night  
 983-2251



**Prescriptions**



**Trust Us With Prescriptions**

Our reputation is based on years of dependable service to the community. We fill all orders quickly and reliably... Deliveries.

**Byrd Pharmacy**  
 Phone 652-3353  
 LOCKNEY



**IMA RAMBO**  
 Ima Rambo, 85, of Hale Center, died at 2 a.m. Monday in Hi-Plains Hospital, Hale Center, after an illness of several months.  
 Services were at 2 p.m. Tuesday in First Baptist Church of Petersburg. Officiating was the Rev. Jesse J. Nave, a Baptist minister of Petersburg, and the Rev. Ron Mooney, pastor of First Baptist Church in Hale Center. Burial followed in Petersburg Cemetery directed by Wood-Dunning Funeral Home of Plainview.  
 REMEMBER your loved ones with a living memorial to the Caprock Hospital Auxiliary Memorial Fund. Mrs. Ben Whitaker, Treasurer.

**NEW from Chief Industries**

2 Car Carport  
 18 x 20  
 January Special \$1195<sup>00</sup>  
 Installation Available

We also sell Raynor overhead doors and electric operators.

Service for all overhead doors available.

**WALTER DAVIS CONSTRUCTION**  
 983-5337

Shurfine 303 Can  
**PEACHES, PEARS & FRUIT COCKTAIL** 59¢  
 Shurfine 1 gal  
**MILK** \$2.19  
 Sylvania 60-75-100 2 per pak  
**LIGHT BULBS** 99¢  
 6-32 oz. Bottles plus deposit  
**COCA COLA** \$1.89  
 Velvetta 2 lb Box  
**CHEESE** \$2.79  
 Thrift King 25 lb  
**FLOUR** \$3.39  
 Wilson Pure Hog 25 lb  
**LARD** \$9.99  
 Shurfine 18 oz.  
**APPLE BUTTER** 89¢  
 Parkay 1 lb Pkg  
**OLEO** Pkg 49¢  
 Atkins Hamburger Sliced Dill  
**PICKLES** Pt. Jar 2/\$1.80

**THIS SALE'S FOR**

Choice Boneless  
**ROUND STEAK** \$1.98 lb  
 Fresh Ground  
**HAMBURGER** \$1.29 lb  
 Wrights Thick Sliced 1 lb  
**BACON** Bulk Pack \$1.59  
 Large  
**AVOCADOES** ea 19¢  
 Utility 10 lb  
**POTATOES** 89¢  
 California Sunkist  
**ORANGES** 3 lbs 99¢

**KEETERS GROCERY**  
 7:30 a.m. - 7:30 p.m. 652-2191

We Redeem Food Stamps & WIC Cards  
 We Reserve The Right To Limit Quantities

**ONE BLUE STAMP**  
 We Give Circle Blue Stamps Double on Wednesday

**FLOWERS**  
 to soften the sorrow  
 to comfort the living  
 to honor loved ones

SPRAYS \$10.00-\$25.00  
 STANDING SPRAYS \$25.00 up

Compare Our Prices

Floral Designs by Cyndi Williams & Ozena Norris

**WILLIAMS FLORIST and CARD SHOP**  
 128 W. California 983-5013

**COUPON**

With This Coupon and Purchase of \$30<sup>00</sup> Or More

**500 EXTRA S&H GREEN STAMPS**

**Buddy's Food**  
 220 S. 2nd Good Thru 1-26-83 Floydada

**COUPON**



# Year for south plains agriculture to be previewed

Crop and livestock producers throughout the area will get an up-to-date picture of the season ahead in agriculture during the annual meeting of the South Plains Development Program in Lubbock January 25.

The day-long program at the KoKo Palace, Avenue Q at 50th Street, will give producers information to help them plan for profits in 1983. Billy C. Gunter, District Director with the Texas Agricultural Extension Service, said.

The South Plains Development Program is a coordinated regional effort of individuals, associations, businesses and agencies to promote economic

development in agriculture and improved family life in 21 counties. It is sponsored by the Extension Service, working through county Extension program building committees and task forces which identify educational need and coordinate educational activities.

Details about the annual meeting January 25 are available at county Extension offices across the South Plains.

Educational programs conducted by the Texas Agricultural Extension Service serves people of all ages regardless of socioeconomic level, race, color, sex, religion or national origin.

# did you know?

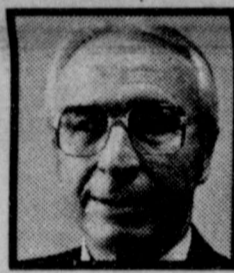


Keeping the customer's fuel adjustment cost down is my primary responsibility. I, along with Karen Roberts, Grafton Clarke, Barry Smith, and others, purchase fuels—coal, natural gas, oil—at the lowest possible prices. We negotiate with fuels suppliers to modify on-going contracts so the total cost to SPS customers for fuel is again minimized. And we plan ways to shift the production load among Southwestern's 27 generating units so that the fuel cost to our customers is made as low as possible.

Morris Rantz, fuel administration manager, Amarillo.

Computerized equipment helps SPS battle the costs of fuel. Every 10 seconds, we run a computer scan of all of our power generating units. The scan checks each unit's efficiency of operation, and calculates each unit's per-kilowatt-hour cost at that given moment. Then—for the sake of economy—we may immediately increase the generation at one unit, and decrease generation at one or more of the others. Our objective: At any instant in time to be producing electricity at the lowest possible fuel cost.

John H. Evans, manager electrical operations, Amarillo.



A new SPS ally is helping you manage electricity costs. Coal-fired Tolk Station, an efficient 561,000-kilowatt power plant near Muleshoe, Texas, began commercial production in August. We predict that the fuel cost adjustment our customers pay will be significantly lower over the life of Tolk Station than it would be if Tolk had never been built. In fact, Tolk Station for the next 35 years should save SPS customers about \$50 million per year.

Roy Thomas, vice-president operations, Amarillo.

For answers to your questions, call or write your SPS manager.

**You and SPS, partners managing electricity, make the difference.**



SOUTHWESTERN PUBLIC SERVICE COMPANY

## Public Notice

### FLOYD COUNTY CENTRAL APPRAISAL DISTRICT PUBLIC NOTICE INVITATION TO BID

The Floyd County Appraisal District is soliciting bids for an auditor. Work includes office records and collections for all entities.

Sealed bid procedures will be observed and the deadline for submitting bids will be on February 1, 1983. The bids will be opened at 9:00 A.M. in the Floyd County Appraisal District meeting room at the Floyd County Courthouse, Room 107, on the 2nd day of February, 1983.

The right is reserved by the Floyd County Appraisal District to reject any and/or all bids. All qualified bidders will receive consideration for award without regard to race, color, religion, sex or national origin.

1-27

### NOTICE TO CREDITORS OF THE ESTATE OF BESSIE LEE GRIFFIN, DECEASED

Notice is hereby given that original Letters of Administration upon the Estate of Bessie Lee Griffin, deceased, were granted to the undersigned on the 10th day of January, 1983, and were issued to me on January 10, 1983. All persons having claims against this estate are required to present same to me within the time prescribed by law. My residence and post office address is Route 1, Lockney, Texas 79241. Claims may be presented through my attorneys, Morehead, Sharp & Tisdell, P.O. Box 1600, Plainview, Texas 79072.

John B. Griffin, Independent Administrator of the Estate of Bessie Lee Griffin, Deceased

### NOTICE TO CREDITORS OF THE ESTATE OF J.T. GRIFFIN, DECEASED

Notice is hereby given that original Letters Testamentary upon the Estate of J.T. Griffin, deceased, were granted to the undersigned on the 10th day of January, 1983 and were issued to me on January 10, 1983. All persons having claims against this estate are required to present same to me within the time prescribed by law. My residence and post office address is Route 1, Lockney, Texas 79241. Claims may be presented through my attorneys, Morehead, Sharp & Tisdell, P.O. Box 1600, Plainview, Texas 79072.

John B. Griffin, Independent Executor of the Estate of J.T. Griffin, Deceased

### CITY OF FLOYDADA NOTICE OF PUBLIC HEARING

In accordance with provisions of the State and Local Fiscal Assistance Amendments of 1976 (Public Law 94-488), the City of Floydada will hold a public hearing on the 8th day of February, 1983 at 7:30 P.M. in the City Council meeting room at the City Office in Floydada, Texas, to present to the public the proposed uses of the general revenue sharing funds for the budget year April 1, 1983 to March 31, 1984. At said time and place all such interested persons shall have the right to appear and be heard. The City of Floydada will have unused Revenue Sharing Funds on hand April 1, 1983 in the amount of \$20,070.00. The amount of entitlement funds expected to be received during the fiscal year is \$36,202.00 and interest income expected to be received during the fiscal year is \$1,200.00. Total Budgeted Revenue Sharing Funds for the fiscal year will be \$57,472.00. Of all said matters and things, all persons interested in the above mentioned will take notice. By order of the City Council of the City of Floydada, Texas this the 11th day of January, 1983.

### NOTICE TO BIDDERS

State of Texas  
County of Floyd

The Commissioner's Court of Floyd County, Texas will accept sealed bids until 10:00 a.m., January 24, 1983, for the purchase of the following equipment:

Two (2) 1983 long wheel base 1/2 ton pickups. Approximately 300 cu. in. V-8 engine, dual gas tanks, 4-speed transmission or automatic transmission, P-225 tires, Power brakes and steering, Heavy duty radiator, gauges, cigarette lighter, AM radio, heavy duty bumper guard, hitch, heavy duty springs, light color.

Trade in on the above: one (1) 1970 Ford pickup, one (1) 1976 Ford pickup.

Said pickups can be inspected at County Barns, Floydada and Lockney, Texas.

County Commissioners Court will also take sealed bids for sale of the following:

1974 1/2 ton International Pickup. May be seen at City Auto.

All bids shall be sealed when presented and will be opened at the above time and date. The Court reserves the right to reject any and all bids, and waive all formalities.

This the 10th day of January, 1983.

Choise Smith  
Floyd County Judge

### NOTICE TO BIDDERS

The City Council of the City of Lockney, Texas will accept sealed bids until 9:00 a.m., February 10, 1983 for the purchase of a 1948 Chevrolet Fire Truck with 500 gallon pumper. Has one red line. No other hose included. Fire truck will be sold as is. Truck is parked behind City Hall and may be seen there by interested parties.

The Council reserves the right to reject any and all bids, and waive all formalities.

ATTEST:  
Erma Lee Duckworth  
City Secretary

S/  
J.D. Copeland  
Mayor

## Vets encouraged to update

Veterans holding National Service Life Insurance policies are encouraged

to update their beneficiary designations, said the Director, Waco Veterans Administration Regional Office.

If policyholders aren't sure who they have designated as beneficiaries, it is usually a good idea to make another designation, he added. That will help insure proper and timely payment of proceeds to beneficiaries.

For a "Designation of Beneficiary" form, visit, write or telephone the Waco VA Regional Office toll-free number listed in your telephone directory under "U.S. Government" or "Veterans Administration."

### IN THE MATTER OF THE ESTATE OF MINA BREED, DECEASED NOTICE TO ALL PERSONS HAVING CLAIMS AGAINST THE ESTATE OF MINA BREED, DECEASED

Notice is hereby given that Original Letters Testamentary upon the estate of MINA BREED, Deceased, were issued to the undersigned on the 10th day of January, A.D., 1983, in the proceedings indicated below our signatures hereto, which is still pending, and that we now hold such letters. All persons having claims against said estate which is being administered, in the county below named, are hereby required to present the same to us at the addresses below given, before such estate is closed, and within the time prescribed by law.

FRANK BREED, 300 E. KENTUCKY, FLOYDADA, FLOYD COUNTY, TEXAS, EXECUTOR OF THE ESTATE OF MINA BREED, DECEASED, CAUSE NO. 4650, IN THE COUNTY COURT, FLOYD COUNTY, TEXAS

ODELL BREED, ROUTE 2, FLOYDADA, FLOYD COUNTY, TEXAS, EXECUTOR OF THE ESTATE OF MINA BREED, DECEASED, CAUSE NO. 4650, IN THE COUNTY COURT, FLOYD COUNTY, TEXAS

## More Classified

### Business Opportunities

**DEALERSHIP OPEN**  
Pre-Assembled Logs  
Log walls assembled at our plant; erected at your job site by our experienced crew. New process solves the four biggest problems log dealers experience: 1) Poor log construction; 2) Inexperienced crews; 3) Unsuitable building costs; 4) Indecisive financing.

Mfr. of the famous Lincoln Log Home is seeking district dealers to establish retail sales within a protected territory.

**Unlimited Income Potential**  
—FEATURING—  
\*Quality log kits that retail for \$8.50 per sq. ft. (pre-assembly optional)  
\*USSI "Maxi-Mini" solar and fire-place total home heating system cuts utilities up to 60%.  
\*Exclusive "Weather Lok" corners  
\*Solid 8" uniform treated logs  
\*L.L.H. trains to insure success  
\*Pre-assembled or you erect

**INVESTMENT 100% SECURED BY MODEL HOME**  
Individual selected must have ability to purchase or mortgage a \$17,000 model home. Call Mr. Sloan COLLECT (704) 932-6151. Lincoln Log Homes, 6000 Lumber Lane, Kannapolis, N.C. 28081.

### Card of Thanks

#### THANK YOU

Words are inadequate to express my feelings of gratitude to the people of Lockney. I am thankful to the members of the fire department and others who came to help when my pickup caught fire. I am deeply grateful to everyone in the community who contributed to buy me another pickup.

A special word of appreciation to Ronnie Aston and Ricky Kellison for all the arrangements they made and for installing my hand controls.

Sincerely,  
Johnny W. Adams

We would like to express our appreciation for the outpouring of loving concern of our relatives and friends during and after Hester's recent hospital stay following her fall on the ice.

For the skillful medical and nursing care, the prayers offered, the visits made, cards received and the food and other gifts, we are grateful.

May God continue to bless each of us.  
Hester and Ian

1-20

I want to express my appreciation to the Floydada Fire Department and all the friends and relatives that helped, especially Leroy Burns, for suggesting the Fire Department in my time of need January 1 when I was snow bound and needed to get to the hospital. Also my thanks to Dr. Jordan and the hospital staff for the good care I received.

My special thanks to my friends for their calls and visits.

May God Bless each and every one.  
Lillian Donathon

## Summit Savings Money Rates

RATE	MONEY MARKET CERTIFICATE	SMALL SAVERS CERTIFICATE	MONEY FUND	SUPER NOW FUND	READY MONEY CERTIFICATE
	8.374%	9.50% COMPOUNDED DAILY	11.00%	9%	(NOT A SAVINGS) 7.874%
		10.129% YIELD		UNLIMITED CHECKS	8.124% RATE DEPENDS ON DEPOSIT
EFFECTIVE THRU	1-25-83	1-25-83	1-25-83	1-25-83	1-25-83
MINIMUM TERM	6 MONTHS	30 MONTHS	NONE	NONE	14 DAYS
MINIMUM DEPOSIT	\$2500	\$1,000	\$2500	\$2500	\$1,000/\$5,000
INSURANCE OF ACCOUNTS	\$100,000	\$100,000	\$100,000	\$100,000	THIS ACCOUNT IS BACKED BY U.S. GOVERNMENT SECURITIES; NOT INSURED BY FSIC

NOTICE: As required by law, all certificates are subject to substantial penalty for early withdrawal.



We Invite You To "JOIN US AT THE TOP"

## SUMMIT SAVINGS ASSOCIATION

HOME OFFICE - 716 BROADWAY, PLAINVIEW  
OTHER BRANCHES  
3000 OLTON ROAD IN PLAINVIEW, FLOYDADA, HALE CENTER, MULESHOE, LITTLEFIELD, FARWELL, PLANO and ALLEN

MEMBER FSIC

Prices Good Thru Wednesday, 1-26-83

Dr. Pepper, Sugar Free, Caffeine Free

# PEPPER FREE

12 oz. Can

6 Pack  
**\$1.29**

Case  
**\$4.99**

## Buddy's Food

220 S. 2nd

Floydada

A brand for the future



105 S. Wall  
Tommy Ogden mgr.  
983-2480

MEMBER LAND BANK



# SHOP COMPARE WANT ADS ARE YOUR BEST BUY!

## Real Estate

**HOUSE FOR SALE:** 1700 sq. ft. plus full basement. Tall cathedral ceiling in spacious living, dining and kitchen area with beautiful black brick fireplace. Two stairways leading in and out of basement. A lovely stone fireplace in play room of basement. Two and 1/2 baths. Designed for 3 and 1/2 baths and two car garage. Office space is created from enclosed patio. Call 983-3772. Across the street from High School. Wonderful for growing children.

**3 BEDROOM, 2 bath brick home.** Central heat and cooling, covered patio. Built-in microwave. Lots of built-ins. Good location. 809 W. Virginia. 983-2394.

**MUST SELL:** 3 bedroom. 2 bath. With large shop. Must see to appreciate - 983-2636.

**3 BEDROOM, 1 1/2 baths, carpet and fan fenced yard.** 983-2394.

**FOR SALE:** Several nice two and three bedroom houses. Loans can be arranged. Contact Sam Hale at Hale Ins. & Real Estate 983-3261.

**3 BEDROOM BRICK HOME.** 1 1/2 bath, refrigerated air. 105 J.B. Avenue. 983-3288.

**TWO BEDROOM HOUSE** at 129 W. Jeffie. Call 983-2633.

**2-two bedroom houses.** West of the highway on Tennessee. 983-2633.

**FOR SALE OR RENT.** 3 bedroom house. 130 W. Jeffie. Call 983-3088.

**FOR SALE:** 3 bedroom, 2 bath, brick house in Floydada. Day 667-3505 ask for Mike; night 667-3967.

**NICE 2 BEDROOM HOUSE;** attached garage; good location; large rooms, closets, and storage. Call 374-0540, 376-4811 or 652-3451.

**HOUSE FOR SALE:** 2 bedroom, fireplace, carpeted, backyard storage in good condition, near schools. 652-2249.

**FOR SALE:** 15 lots in South Lubbock. 75x146. Sell one or all. WOULD TRADE all for local property. 983-3834.

## FARMS

**FOR SALE:** 320 acres - 5 miles east and 1 south of Floydada on pavement. \$330 an acre. Dewie Parson - 983-2646.

**100 ACRES.** All in cultivation. Some irrigation. West of Floydada. \$685 an acre. Randell King. 983-2707.

## For Lease

**DRY LAND FARM FOR LEASE** in Floyd County. 185 acres. \$25.00 an acre. Write to Guy Day. 1610 San Carlos, Sweetwater, Texas 79556. (915) 235-8502.

## Garage Sale

Let US have your garage sale for you. 613 South Main, Lockney. Open weekly.  
Elaine Hardy, 652-2570  
Edith Cooper, 652-2201

## AUCTION

**WEST TEXAS AUCTION CO.**  
Generous Finders Fee.  
Farm and Industrial auctions.  
Day--Les 747-6629.  
Night --Leo 797-5518

**CLASSIFIED ADS**  
CALL 983-3737  
or 652-3318  
Before 3:00 p.m. on Tuesdays

A good dinner in thirteenth century China could consist of some 150 separate dishes.

## For Sale

**"WE SELL SLEEP"**  
Direct Mattress Co. New or renovated. for appointment call City Trim Shop. 983-2332. Floydada.

**1 PAIR OF PIONEER T.S.** 289 triaxials speakers and a Pioneer AD 50 equalizer. Call 983-5003 or 983-5455.

**5 used Color TV's** 19" and 25" \$150 up Mize Television.

**1974 PROWLER travel trailer** self contained. 24', air, sleeps 6. Completely reconditioned inside. 652-2206. 620 S.W. 2nd, Lockney.

**SEE WHAT MARY KAY cosmetics** can do for you. Call collect 296-7898.

**EXCELLENT G.E. harvest gold built-in** dishwasher. \$125. 983-5168 after 5.

**ONE OF A KIND:** 25 inch console TV, was \$829.95, now \$599.95; Mini stereo system, was \$505.95, now \$305.95; Compactor, was \$355.95, now \$199.95. Sears 983-2862.

**1981 SHASTA 16 ft. camping trailer.** Air, bath, fully self contained. \$5,275. 983-5775 after 6 p.m.

**DINING ROOM TABLE** and 8 chairs. Can be seen at 300 E. Kentucky.

**FOR SALE:** Kenmore sewing machine and cabinet with extra accessories. Nine different stitches. Excellent condition. \$100.00. 983-3355.

**Tots Delight**  
Barbie & Kens clothing 3 items  
send \$1.00 to Box 57  
Plainview, Texas 79072

**FIREWOOD.** Seasoned Pinon and Juniper \$150 cord; Oak \$130. Delivered and stacked. 983-5320, 652-2492.

**FIREWOOD.** Hauled and stacked. \$100 per cord. Call night 983-2291 or days 983-2737.

**FOR SALE:** Mesquite wood. \$100 a cord. Delivered and stacked. 652-2151.

**ELEVATOR LEG CUPS.** \$2.00 each. PRODUCERS.

## Fruit Trees & Pecan Trees

**Emert's Nursery**  
652-3116 Lockney

## Pets

**REGISTERED AUSTRALIAN puppies.** Cowdog and good watchdog. Donice Casey. 652-3414.

## Farm Items

**FOR SALE:** Excellent leafy alfalfa. Also good oat hay. Call 983-3362.

**BALED MAIZE STALKS** in field. Round bales \$25.00, square bales \$1.25. Tom Pierce 983-2578.

**Mufflers for John Deere Tractors**  
3020 late & 4020 Diesel - \$20  
Late model 4010 & 4020 - \$18.85  
3010, 3020 gas and LP, early 4010 Diesel, 4020 Gas & LP - \$17.50  
4230, 4320, 4430, 4520, 4620, 4630 - \$43.50

**Spray Paint Matched to Fit** \$1.25  
Case Red, Ford Blue, Ford Gray, JD Yellow, JD Green and MF Red

**Enamel Paint \$15.00 Gal.**  
J.D. Green & J.D. Yellow

**20% off Lubricant Accessories**  
While Supplies Last

**Brown's Implement**  
Ralls Highway 983-2281

## For Rent

**FOR RENT:** 2 furnished apartments with bills paid. Call 983-3751 - day. 983-3535 - nights.

**FOR RENT:** 2 bedroom mobile home. Clean, rent reasonable. 983-3504.

**ECONOMICAL STORAGE**  
**TRY BARKER'S**  
Jewel Box-Mini Storage  
and save your time and money.  
Phone 652-2642.  
Corner Main & Locust - Lockney,  
Texas.  
**Barker Building**

**STORAGE SPACE**  
BOATS, FURNITURE, ANY-  
THING, ETC. BY THE MONTH OR  
SIX MONTH 10% DISCOUNT.  
**West Texas Mini Storage**  
CALL WILSON BOND  
983-3573 OR 983-2151

## Want To Buy

**WANTED TO BUY** irrigated or dryland farm in Floyd or surrounding area. Write Box XRO. c/o Hesperian. 111 E. Missouri. Floydada.

## Employment

**\$20,000 FIRST YEAR GUARANTEE** in education sales Floyd County area. Teaching or sales experience helpful. Salary, commission, bonuses and insurance benefits. One year management development program with leader in school related educational material. For appointment call (806) 799-2007 on Monday January 24 or Tuesday January 25, 9 to 4:30.

**TEXAS OIL COMPANY** urgently needs mature person for Floydada area business sales rep. Sales experience not necessary. We train. Write O.B. Dickerson, Southwestern Petroleum, Box 789, Ft. Worth, Tx. 76101.

**EARN EXTRA MONEY** to pay for your Christmas demonstrating education material to interested families in Floydada area. Flexible hours and guaranteed income. Call (806) 799-2007 on Monday January 24 or Tuesday, January 25, 9 to 4:30.

## EARN \$4.87 HR.

We need assistance in evaluating and responding to daily work reports submitted by our agents throughout the state. No experience necessary; Paid to complete training. Work at home. For information send self-addressed, stamped envelope 9 1/2 inches long to AWGA, Dept. E, Box 49204, Atlanta, GA 30359.

## Farm Services

**WE CUSTOM MAKE & FIT hydraulic** hose for all types of machines. Brown's Implement 983-2281.

Portable disc rolling  
**Lawson Farm Supply**  
Inc.,  
Floydada 983-3940

## Services

**LET ME TRIM** your fruit, nut and shade trees. Keith Emert. 652-3116.

**MITCHELL TAX SERVICE**  
Income Tax professionally prepared.  
Reasonable Rates  
983-3692

Mary Kay COSMETICS  
**Lisa Rose**  
CALL: 983-5460

Mary Kay COSMETICS  
**Sue Williams**  
Independent Beauty Consultant  
**983-5166**  
Floydada

## Business Opportunities

**OWN YOUR OWN** Jean-Sportswear, Infant-Preteen or Ladies Apparel Store. Offering all nationally known brands such as Jordache, Chic, Lee, Levi, Vanderbilt, Calvin Klein, Wrangler over 200 other brands. \$7,900 to \$16,900 includes beginning inventory, airfare for one to Fashion Center, training, fixtures, grand opening promotions. Call Mr. Loughlin at (612) 888-6555.

**DISTRIBUTORSHIPS Available** - National manufacturing company based in Denton, Texas, looking for distributors to handle complete line of low cost steel homes, single and multi-family, one and two story and tri-level. Tremendous benefits and earnings potential. Show homes available. \$3,000 investment required - 100% refundable. Total line of commercial and agricultural buildings also available. Call Mr. Brown at 817-566-1386.

## Motorcycles

**1971 BMW R75/S.** Good condition. 983-3646.

"When business is good it pays to advertise; when business is bad you've got to advertise."  
Anon.

## Business Services


**ADAMS WELL SERVICE** Complete Irrigation Service. All sizes submergible pumps in stock. One day service. 983-5003.

**LOCKSMITH:** Locks opened. Locks repaired. Keys made for locks that have no keys. Duplicate keys made. Deadbolts installed. 24-hr. Mobile Service throughout area. Don Probasco. Pro-Lock shop. 983-3834.

**POOLE WELL SERVICE**  
**AND RADIATOR SHOP**  
Irrigation and domestic.  
Trailer Sales  
**407 E. Houston**  
**983-5610 or 983-2285**

Script Printing & Office Supply  
\*Commercial Printing  
\*Office supplies & Furniture  
\*Business Machines  
108 S. Main  
Floydada  
983-5131

**USE NOW**



**Kill winter weeds  
Prevent spring weeds**

**ferti-lome**

**PRODUCERS COOP FARM STORES**  
Floydada-Dougherty  
983-2821 983-3770

## Automotive

**1975 2-DOOR FORD GRANADA.** Call 983-2912.

**FOR SALE:** 1979 Malibu Classic. 28,500 miles. V-8. Excellent condition. 983-5555.

**Wholesale & Retail**

79 Impala, 4 dr. New tires.  
76 Subaru  
78 Plymouth, 4 dr. New tires.  
77 Malibu, New tires  
74 Malibu  
76 Chrysler  
76 LTD  
76 Mt. Carlo  
6 little cars

**Small Down Payment**  
**W.B. EAKIN CAR LOT**  
Ralls Hwy 983-3616  
Night 983-2941

**Auto Parts & Accessories**

**E-Z RIDER SHOCKS** by Monroe. Buy 3 and the 4th is FREE. Free Installation. Don's Muffler Shop, 210 W. California Floydada, Texas.

**ALTERNATOR & STARTER REPAIRS**  
Norrell Tractor Parts  
215 S. Main  
983-3417

**CUSTOM EXHAUST WORK**  
**Bruce Williams**  
Specializing in Glass Packs and Turbo Mufflers  
At **DANS AUTO SERVICE**  
652-2462

**DAN'S AUTO SERVICE**  
DAN TEUTON, Owner  
Specializing in Automatic Transmission, Motor Tune-Ups, Auto Air Conditioning.  
General Repair  
We Have A BRAKE LATHE to handle all passenger car brake drums. See us for complete brake service.  
**Phone 652-2462**  
"The best mirror is a friend's eye."  
Gaelic Proverb

**Hollis R. Bond Real Estate**  
PHONE 983-2151  
107 S. 5th FLOYDADA

**Diamond Industrial Supply Co., Inc.**  
Phone Days 296-7418  
Nights 296-1200 or 296-7828  
1014 Broadway  
Plainview, Texas  
SKF BCA Timken Bower  
Cotton Stripper Brushes & Bats  
"We Appreciate Your Business More"

U joints  
Oil Seals  
O rings  
Wisconsin

**For Sale:**  
Young thin breed cows  
(good for stalk fields)  
Light heifers  
Light steers  
Will contract heifers & steers back.  
Can process if needed.  
**Tommy Turner Cattle**  
Joe Mack Breed  
995-2515 or 995-4006  
Texas

**Classified Rates**  
Classified advertising rates: 20 cents per word  
First insertion: 15 cents per word each subsequent insertion.  
Minimum charge \$2.50 first insertion; minimum charge \$1.50 second insertion.  
Classified display rate: \$2.66 per column inch.  
Card of Thanks: - \$3.00.  
Deadline for classified ads is Tuesday at 3:00 P.M.  
**983-3737 652-3318**

Prices Good Thru Wednesday, 1-26-83

14 oz. Morehead  
**PIMIENTO SPREAD**  
**79¢** With One Filled S&H Bonus Book  
\$1.29 Without Book  
**Buddy's Food**  
220 S. 2nd Floydada



## Longhorns disappointed

Friday night the Lockney Longhorns lost a disappointing game to the Floydada Whirlwinds by a final tally of 50 to 57.

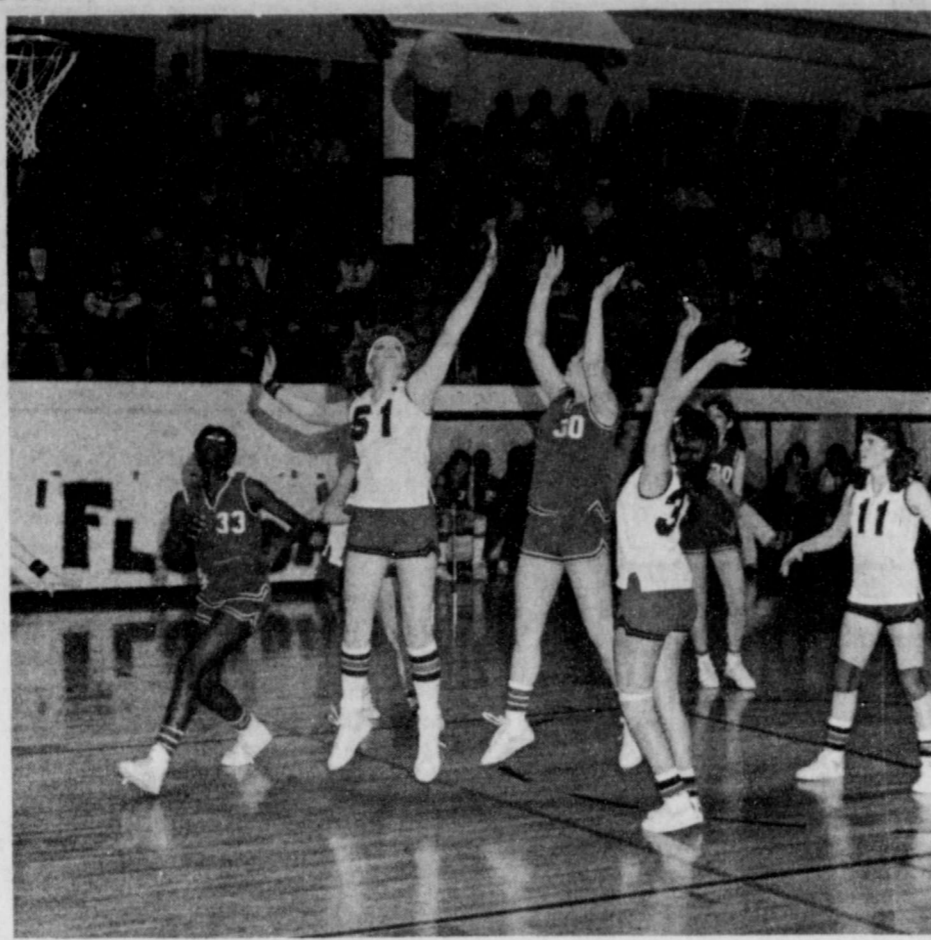
The Whirlwinds came out strong in the first quarter, scoring 14 points to Lockney's 6. The Winds were strong on the fast break, but the Horns slowed them down in the second quarter and also scored well to come within four points going into the half.

The Horns slowed in the scoring column in the third quarter, scoring twelve points to Floydada's 16 making the score 41 to 33 at the end of the third quarter.

The fourth quarter was filled with scoring as the Horns racked up 17 points to Floydada's 16 to end the game with a 50 to 57 score.

Standouts in the game included Steven Johnson who had 19 rebounds followed by Michael Carthel with 10 Rebounds.

Leading scoring and offensive stand-out was Tony Rodriguez who had 20, followed by Johnson with 9, Carthel with 8, Robert Rendon with 6, Buffo Rodriguez with 4 and Cookie Vasquez with 3.



**THIS BLOCKED SHOT** by Karen Mathis number 51, helped the Lady Horns defeat the Floydada Whirlwinds in Friday's game 62-41. Karyn Foster and Shawnda Brock were on hand to assist.

## Longhorns blow lead

The Lockney Longhorns after having a ten point lead in the fourth quarter, ended their district opener with a 45 to 48 loss to Childress. The Bobcats used a two-squad system, substituting five players at a time. This seemed to make the difference in the outcome of the game as the Bobcats were well-rested.

The Horns lacked good team play. The scoring leader in this game was Robert Rendon with 11 points, followed by Tony Rodriguez with 10, Buffo Rodriguez and Michael Carthel, both with 6, Steven Johnson, Cookie Vasquez and Hector Molina all with 4 points a piece.

## 8th vs Frenship

The 8th grade Shorthorns dropped their record to 3-5 as they lost to Frenship by a score of 38-32.

Player	Points
Dickie Hernandez	12
Chad Frizzell	6
Joe Torrez	4
Rusty Teeter	4
Steven Cates	2
Johnny Silva	2
Hulio Cortez	2

## 7th loses in overtime

The Lockney 7th grade basketball team lost in overtime to the Frenship Tigers 19-18. The loss lowered the Shorthorn's record to 5-3.

Player	Points
Jimmy Ballejo	5
Todd Hallmark	5
Javier Bernal	4
Michael Gatica	2
Clay Adrian	2

## Shorthorns defeat Happy

The Lockney 8th grade Shorthorn basketball team participated in a tournament in Tullia last week. Lockney opened the tournament with a 30-23 victory over Happy.

The Shorthorns lost a close game to Tullia 21-17 in the second round. Lockney also lost its last game of the tourney to Olton 40-30.

### Scoring

Player	Happy Game	Tullia Game	Olton Game
Dickie Hernandez	7	5	—
Joe Torrez	6	4	2
Rusty Teeter	5	4	16
Chad Frizzell	6	4	6
Steven Cates	2	—	6
Hulio Cortez	4	—	—

## Lady Horns win big

Once again Connie Coffman led the Lady Horns in scoring with 20 points. She came up with 15 rebounds against the Whirlwinds which made her defense an outstanding job too! Shawnda Brock followed with a total of 15 points and alot of hustle, and once again all the

Lady Horns chined in. Karen Mathis scored 8 points and 5 rebounds to help with the defeat. Also scoring 8 points was the ever exceeding Freshman Crissy Carthel who tends to be a great value to the team. As stated by Coach Haynes, "Crissy is a great player and as a Freshman she is up against a lot of pressure and handles it well. With experience Crissy will be a great asset for us!" Karyn Foster scored 7 points and has played some exceptional ball in spite of playing with a bad knee for sometime now. Hopefully her condition will improve and she will be going full

force soon.

The Lady Horns face another exciting week of games as they faced Post Tuesday there and Idalou here on Friday.

Last week's players of the week were very hard to determine as Coach Haynes looked at the overall playing and records. "So many did so good and yet, defensively Connie Coffman held Childress's Von Tucker to only 8 points and had a total of 23 rebounds for the week.

Offensively Shawnda Brock was going strong with 28 points for the week.

## JV vs Floydada

The Lockney JV had a poor showing Friday night against the Floydada Whirlwinds with a 49-17 loss.

The Horns were not ready to play as they had trouble shooting and playing defense against the Winds. High point in the losing effort was Scott Poole with 6, followed by Ritchie Thornton with 4, Monty Teeter, Jerald Johnson and Terry Carlton with 2 and Adam Rodriguez with 1.

## 8th vs Floydada

The 8th grade Shorthorns lost a tough game to Floydada by a score of 22-9. The game dropped Lockney's record to 3-6.

Player	Points
Chad Frizzell	4
Ricky Brotherton	2
Steven Cates	2
Dickie Hernandez	1

## 7th vs Floydada

The Lockney Shorthorn 7th grade basketball team dropped its record to 5-4 as Floydada outscored them 36-15.

Player	Points
Javier Bernal	9
Michael Gatica	4
Todd Hallmark	2

Prices Good Thru Wednesday, 1-26-83

12 oz. Keebler  
**VANILLA WAFERS**  
**69¢**

With Purchase of \$20.00 Or More

**Buddy's Food**  
Floydada

220 S. 2nd

**ALLSUP'S**  
CONVENIENCE STORES

PRICES EFFECTIVE  
JAN 20-22, 1983

WHILE SUPPLIES LAST

**WE'RE PROUD TO GIVE YOU MORE!**

LOCKNEY

HOT, DELICIOUS AND READY TO GO! FRESH COOKED  
**ALLSUP'S BURRITOS** 2 FOR **2.99¢**

DELICIOUS 1/2 GAL. **BORDEN'S BUTTERMILK** \$1.09

CLOVER CLUB PUFFED CHEESE KRISPS 8 OZ. PKG. REG. \$1.19 **89¢**

CLOVER CLUB REG. \$2.29 **POTATO CHIPS** 1 LB. PKG. **\$1.59**

REFRESHING DELICIOUS **ALLSUP'S MILK** GAL. **\$1.99**

BORDEN'S ASSORTED FLAVORS **ICE CREAM** 1/2 GAL. RD. CTN. **\$1.69**

Shurline Cream **CORN** 3/\$1.00

6-16 oz. Pk. Hot Only **RC & RC 100** \$1.59

**Tide** LAUNDRY DETERGENT **GIANT TIDE** 49 OZ. BOX **\$1.69**

**THERE'S ONE NEAR YOU**

Share Your Special One!

Valentines will be here soon!

Why not "show-off" your special little one with others.

Pictures will be featured inside a Valentine Heart.

**\$12.50** per picture

Contact:  
Floyd County Hesperian or Lockney Beacon  
111 E. Missouri Floydada 983-3737      211 N. Main Lockney 652-3318