



Have a Happy New Year!

Our hope for you is peace, prosperity, and happiness.

| index | | Weather | | |
|-----------------------|------------|---------------------|------|-----|
| Area News |5 | Courtesy of Energas | | |
| Church Directory |TV6.7 | DATE | HIGH | LOW |
| Classified |11 | December 22 | 69 | 42 |
| Crime Call |2 | December 23 | 68 | 42 |
| Farm News |9 | December 24 | 52 | 44 |
| Obituaries |12 | December 25 | 40 | 30 |
| Recipe Exchange |TV8 | December 26 | 32 | 30 |
| Society |4 | December 27 | 44 | 29 |
| Sports |8 | December 28 | 29 | 25 |
| Subscription Renewals |3 | | | |

Beacon Rates
In County \$11.⁵⁰
Out-of-County \$12.⁵⁰

The Lockney Beacon

25°

Volume 81 Number 52 Thursday ©The Lockney Beacon December 30, 1982 24 Pages In Two Sections

1982 It's Been A Good Year!

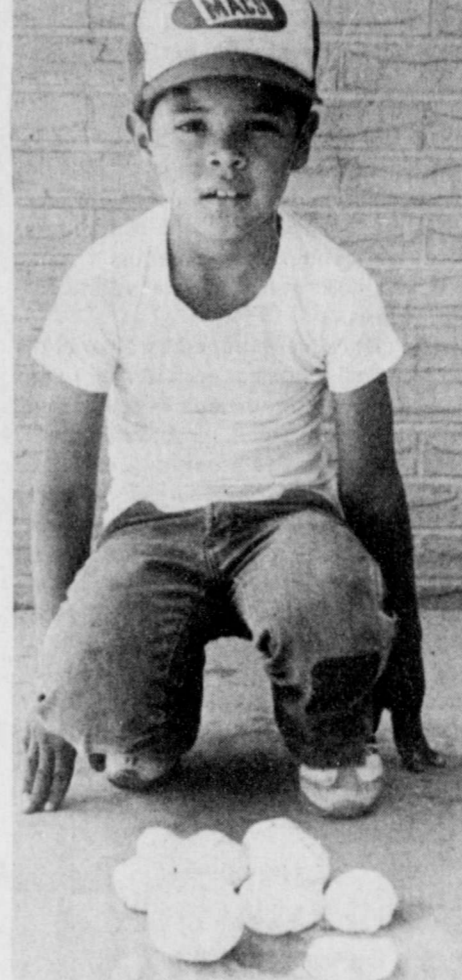
some hellos...



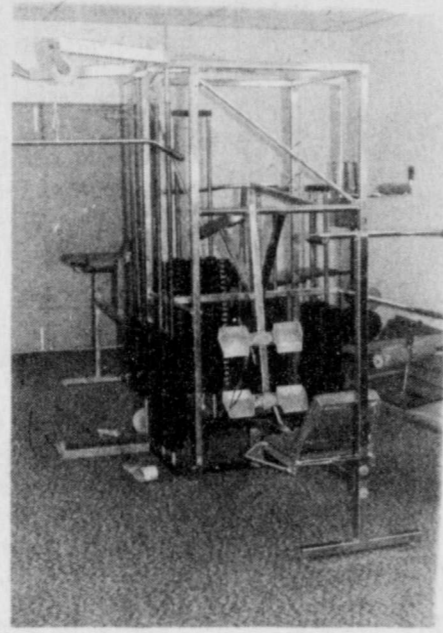
some giving...



some hail...



some weddings...



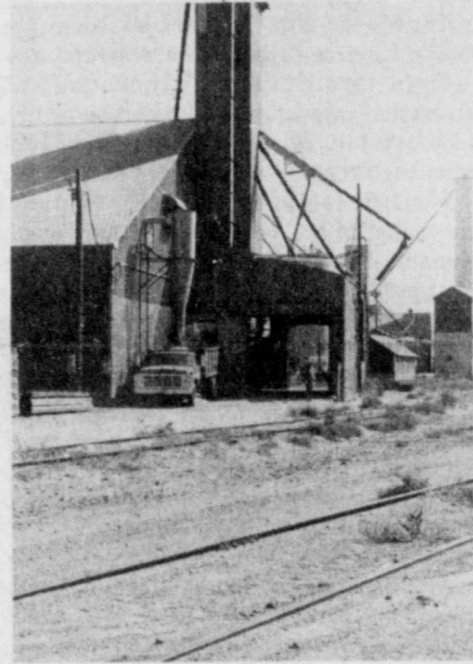
some taking...



some goodbyes...



some harvest...



some anniversaries...



some upgrading...



some playing...



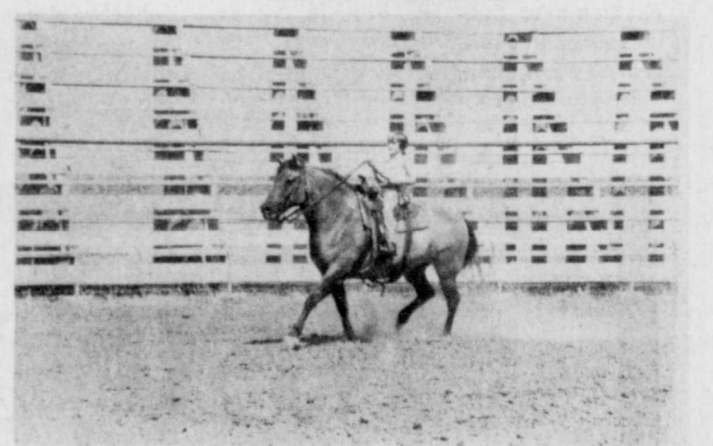
some improving...



some Fair Days...



some awards.



some reunions... an annual breakfast...



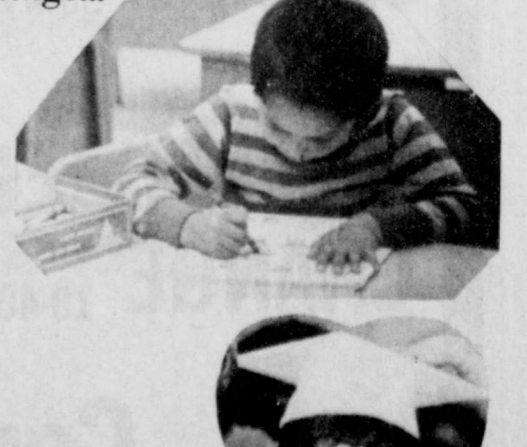
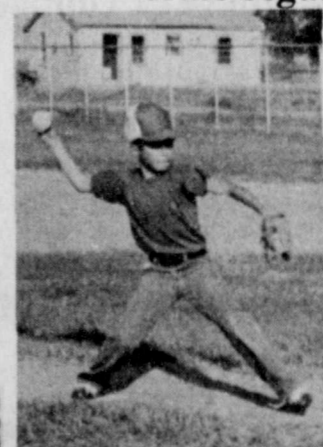
some new faces...



some outstanding citizens...



some beginnings...



some traveling...



some pep rallies and football games ...



some endings...



some little league...

District 4-H Food

Show winners named

Originality spiced up some familiar favorite recipes as 135 boys and girls from 20 counties displayed their nutritional knowledge and cooking skills during the South Plains District 4-H Food Show in Lubbock Saturday, December 11. Three girls and a boy advanced to the state competition next year.

Winners in the senior division of the contest in the Home Economics Building at Texas Tech University were Jim Bob Carver of Hale County, main dish; Kayla Gentry of Dawson County, fruits and vegetables; Donna Stout of Hale County breads and cereals; and Donna Smith of Lamb County, nutritious snacks and desserts. Each received a plaque and ribbon in addition to advancing to the state contest.

Senior runners-up, who will participate in the state contest if the winners can't take part, were: Cindy Greaves, Lubbock County, main dish; Shelley Sain, Bailey County, fruits and vegetables; Jene' Nance, Dawson, breads and cereals, and Marie Hooper, Hale, snacks and desserts.

Junior division winners and runners-up in the four food categories also received ribbons, but don't compete beyond the district level. They were: Main dish—Roxie Johnson, Swisher, and Traci Wilson, Hockley, Fruits and vegetables—Misty Riney, Lamb; Misti McClurg, Swisher, Breads and cereals—Lisa Terrell, Floyd, and Rosemary Shepard, Hale. Snacks and desserts—John Hamilton, Hale, and Londi Jill Smith, Lamb.

Each contestant had earned championships in their county to advance to the district meet.

Four-H'ers from Floyd County and their awards were: Seniors: Earl Broseh, main dish; and Heather Holt, bread and cereals. Juniors: Kelli LaBaume, main dish; Joel Mitchell, fruits and vegetables; Lisa Terrell, bread and

cereals; and Sharon Smith, snacks and desserts.

Jim Bob Carver took top honors in the main dish category with his "Autumn Festival Beef Pie," a double-crust dish combining beef and green beans seasoned with onion, tomato soup and spices. Cindy Greaves second-place entry was "Shrimp-Stuffed Tomato Blossoms," blending shrimp, pineapple, and walnuts into a stuffing for fresh tomatoes.

In fruits and vegetables, Kayla Gentry won with a simple salad combining cauliflower with frozen sweet peas and chopped celery. Shelley Sain served up fresh vegetable sticks with a tangy dip with a cream cheese base.

Winning entry in the breads and cereals was Donna Stout's "Whole Grain Honey Bread." It combined whole wheat flour, rolled oats, pecans and honey in a yeast bread. Runner-up was Jene' Nance with her homemade crisp crackers.

Taste-tempting apricot nut bars captured the prize for Donna Smith in the snacks and desserts category. Second place went to Marie Hopper and her "Festive Spinach Treats," a baked hors d'oeuvre blending frozen chopped spinach and herb stuffing with additional seasonings.

The dishes were judged by a panel of professional home economists and homemakers. Contestants were quizzed on nutritional values, preparation methods and costs of preparation.

The show is one aspect of the year-round foods and nutrition project in 4-H, explained Dr. Catherine Crawford, district director with the Texas Agricultural Extension Service. 4-H is the youth program of Extension.

Educational programs conducted by the Texas Agricultural Extension Service serves people of all ages regardless of socioeconomic level, race, color, sex, religion, or national origin.



ROSEMARY SHEPARD, left, and LISA TERRELL

CRIME CALL

Lubbock and Hale County Crime Line have joined Floyd County Crime Call and the city of Petersburg in the reward fund in the Glenna Biggers slaying. The total is now about \$3,000. She was found stabbed to death in her Petersburg residence December 20.

If anyone would like to contribute to the fund, donations may be made to the First State Bank of Petersburg, Post Office Box 269, Petersburg, Texas 79250, attention: Glenna Biggers Reward Fund.

The Floyd County Crime Call would like to thank the Lubbock and Hale County Crime Line for their help in contributions to this fund.

Floyd County Crime Call is offering a \$200 reward for information leading to the arrest and conviction of the person or persons responsible for the burglary of the Floydada Inn. Rooms 20 and 21 were broken into and the television was removed from each room. The incident occurred around three or four a.m. on December 24.

Floydada is also offering a \$200 reward for information leading to the arrest and conviction of the person or persons involved in the burglary of the barn on the Kenneth Bean property located 1 1/2 miles north and 1.3 miles east of Floydada.

Approximately \$900 worth of equipment was taken including a battery charger, a portable grinder, 7/8 circular saw, five impact sockets, a victor cutting torch, a bottle of acetylene and an air compressor. The incident occurred sometime during the night of December 15.

Anyone having information regarding these crimes is urged to call Crime Call at 983-5200 in Floydada. In Lockney the number to call is 652-2416. Or, informants may call the Texas Crime Busters toll free number: 1-800-252-8477. Informants may remain anonymous, but if they are willing to testify in the trial of the case additional rewards will be paid for this testimony.

Crime Call is supported entirely by private donations. Tax deductible contributions may be mailed to Crime Call of Floyd County Inc., 122 E. California, Floydada, Texas 79235.

Citizens are also advised Crime Call offers rewards for information received on all unsolved felony crimes occurring in Floyd County.

OBITUARIES

MELBA TURNER MAHONEY

Melba Turner Mahoney died December 12, 1982 in Carlsbad, California, as the result of a brain tumor.

She was born October 10, 1923, in Lockney.

Survivors included her husband, Edward P. Mahoney and four children, Patty Gomez, Jenny Mahoney, Chris Mahoney and Susan Grubaugh; two grandchildren, Willie and Emily Grubaugh; her mother, Bessie Turner of

Amarillo; and a brother, Leland Turner of Fresno, California.

Services were held in the St. Andrew's Episcopal Church in Encinitas, California on Thursday, December 16 at 6:00 p.m. Officiating were Rev. Paul Camm and Father Hans Kothuis. Interment was made in Eternal Hills Memorial Park at Oceanside, California.

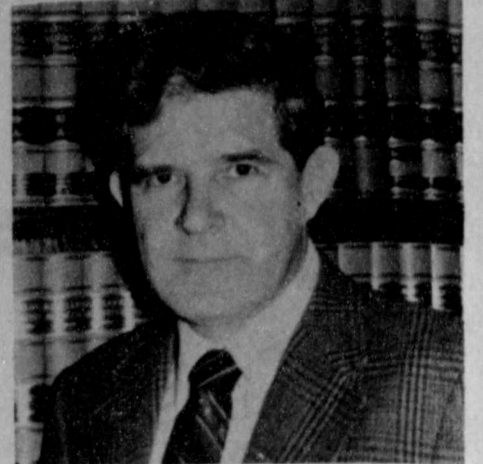
Mrs. Mahoney will be remembered by high school classmates and friends still living in the Lockney community.

Whitfill appointed judge

Cypert O. Whitfill, formerly of Floydada, has been appointed to fill to a vacancy as Judge of the Circuit Court for Harford County, Maryland. Cy is the son of the late Fess Whitfill of Floydada and Grace Feagans Whitfill who now resides in Snyder.

Cy was born in Floyd County and attended the elementary and secondary schools in Floydada. He later attended Texas Tech in Lubbock and St. Mary's College in Kentucky. While serving in the United States Army, he enrolled in the University of Maryland School of Law and received a Bachelor of Laws degree with honors in 1965. During his last two years of law school, Cy served as law clerk to the Honorable Stewart Day who was then Chief Judge of Maryland's Third Judicial Circuit. Cy went on to practice law with the firm of Brown & Brown located in Bel Air, Maryland. He became a partner with that firm which was then known as Brown, Brown, Lanahan & Whitfill in 1969. In 1974, Cy organized its own law firm and, at the time of his appointment, was practicing in a general practice of law in Bel Air, Maryland, with the firm of Whitfill, Leaf & Hertsch, P.A.

Cy resides in Forest Hill, Maryland, with his wife, the former Betty Lorine Castle. They have six children ranging in age from 22 to twin boys who are age 13.



CY WHITFILL

Cy will be assuming his duties on the bench in mid-January of 1983. The Circuit Court for Harford County is a part of Maryland's Third Judicial Circuit. The Circuit Court is a court of general jurisdiction trying serious misdemeanor cases, felony cases and civil cases where the amount in dispute exceeds \$7,500.00 Cy was appointed to this position by Governor Harry Hughes on November 12, 1982. He will be required to run for election in 1984 and, if elected, will serve a 15 year term.

For further information, contact Betty Lorine Whitfill, 2236 Rock Spring Road, Forest Hill, Maryland, telephone (301) 838-8387 or (301) 838-8664.

W-2 Deadline Feb. 1

Employers must provide each employee with a completed Wage and Tax Statement, Form W-2, for 1982 by February 1, 1983, the Internal Revenue Service says.

For additional information on the proper distribution and handling of Wage and Tax Statements, employers

may get a free copy of IRS Publication 15, "Circular E, Employer's Tax Guide," from the IRS.

Got Heating or Plumbing Problems?

CALL
Holmes Plumbing
Austin or Steve
Call Day or Night
983-2251

beer bust floyd county

Three raids by the Floyd County Sheriffs department and Floydada Police department netted a sizeable amount of illegal alcoholic beverages.

Confiscated were: 1162 cans of beer, 31 half pints of whiskey, 17 pints of whiskey, and four quarts of whiskey. Also a 1/2 gallon of vodka, a quart of tequila sunrise, and a partial quart of gin were confiscated.

The raids occurred in the northeast part of town Floydada.

Save On

GASOLINE or DIESEL

Use our key pump. Main Street Lockney

For Information or Prices- Call COLLECT

DOUGLASS OIL CO.

Phone 293-1579 Plainview, Texas

Dist. Gulf Oil Products

Rebates up in county

State Comptroller Bob Bullock Tuesday sent \$42.1 million to 973 Texas cities as their share of the one-percent city sales tax for December.

The 1982 statewide total is up 8.8 percent over the 1981 year-end total. This payment reflects taxable sales made in October and reported to the state by the end of November.

Floydada received \$4,962.05 as compared to \$5,554.79 this time a year ago. The 1982 payments to date are \$94,211.78 as compared to \$91,980.75 last year; representing a change of 2.43 percent.

Lockney received \$2,153.59 compared to \$2,227.58 this time a year ago. The 1982 payments to date are \$46,054.14 as compared to \$41,948.43 last year; representing a change of 9.79 percent.

Totals for Floyd County are \$7,115.64 for this period as compared to \$7,782.37 at this time a year ago. The 1982 payments to date are \$140,265.92 as compared to \$133,929.18 last year. This represents a change of 4.73 percent.

Houston received \$8.4 million. Hous-

ton's payments for 1982 are up 9.5 percent over 1981.

Dallas got \$4.9 million, up 9.2 percent for the year.

San Antonio got \$2.3 million, up 8.8 percent for 1982.

Fort Worth received \$1.6 million, bringing the total for 1982 to \$25 million, up 4.2 percent for the year.

Austin received \$1.5 million, up 14.4 percent for the year.

El Paso received \$1 million up 3.6 percent for 1982.

Bullock also sent December rebates to the state's two Metropolitan Transit Authorities. The Houston MTA received \$9.6 million, bringing the total received this year to \$166.7 million, up 8.5 percent over last year. The San Antonio MTA got a check for \$1.5 million, bringing the 1982 total to \$20.8 million, up 4.9 percent for the year.

The city and MTA sales taxes are collected along with the state sales tax by merchants and rebated monthly to the cities in which they are collected by the Comptroller.

SAVE SAVE SAVE SAVE SAVE SAVE SAVE

NEW YEAR'S SPECIAL

THURSDAY & FRIDAY ONLY

OIL & FILTER CHANGE

30 w Oil with FREE Lubrication

\$13²⁵

OIL & FILTER CHANGE

10-40 w Oil with FREE Lubrication

\$13⁷⁵

Consumers Fuel

Floydada, Texas
983-3394

SAVE SAVE SAVE SAVE SAVE SAVE SAVE

Summit Savings Money Rates

| | MONEY MARKET CERTIFICATE | SMALL SAVERS CERTIFICATE | MONEY FUND I | READY MONEY CERTIFICATE |
|-----------------------|--------------------------|--|--------------|---|
| RATE | 8.653% | 9.700% COMPOUNDED DAILY 10.184% YIELD | 11.00% | (NOT A SAVINGS ACCOUNT) 8.403%/ 8.153% RATE DEPENDS ON DEPOSIT |
| EFFECTIVE THRU | 1-3-83 | 1-3-83 | 1-3-83 | 1-3-83 |
| MINIMUM TERM | 6 MONTHS | 30 MONTHS | NONE | 14 DAYS |
| MINIMUM DEPOSIT | \$10,000 | \$1,000 | \$2500 | \$1,000/\$5,000 |
| INSURANCE OF ACCOUNTS | \$100,000 | \$100,000 | \$100,000 | THIS ACCOUNT IS BACKED BY U.S. GOVERNMENT SECURITIES; NOT INSURED BY FDIC |

NOTICE: As required by law, all certificates are subject to substantial penalty for early withdrawal.

We Invite You To "JOIN US AT THE TOP"

SUMMIT SAVINGS ASSOCIATION

HOME OFFICE - 716 BROADWAY, PLAINVIEW
OTHER BRANCHES
3000 OLTON ROAD IN PLAINVIEW, FLOYDADA, HALE CENTER, MULESHOE,
LITTLEFIELD, FARWELL, PLANO and ALLEN

MEMBER FSLIC

This Week Holiday

For your convenience the following list is given with the days to be observed for the New Year holiday:

| | |
|-----------------------------|----------------|
| Business | Closing |
| Post Office | Saturday |
| (No rural delivery) | |
| Floyd County Insurance | Friday |
| Lockney Cable TV | Friday |
| Brown's Dept. Store | Saturday |
| The Outlet Store | Saturday |
| City Offices | Friday |
| Southwestern Public Service | Friday |
| Energas | Friday |
| First National Bank | none |
| Lockney General Clinic | Friday noon |
| Beacon | Friday |

Meeting

The High Plains Geneological Society will have a meeting Tuesday night, January 4 in the Unger Memorial Library.

They will also hold their annual covered dish supper in the the library at 825 Austin in Plainview on Tuesday night, January 7 at 7:00 p.m. Owen Eggar will be the guest speaker. Items for show and tell can be shown at the meeting.

Anyone interested in attending either of these meetings is invited to attend.

Singles

The Lockney Singles will not have a meeting this week, but they will meet in the Rebekah Building on Saturday, January 8.

4-H Auction

Floyd County 4H will be having a farm chemical and seed auction Tuesday January 11 at 11:30 at the Lockney Legion Hall. A free barbecue lunch will be served.

THE LOCKNEY BEACON (USPS 317-220)

Published weekly each Thursday by Floyd County Publishing Co., 211 North Main St., Lockney, Texas 79241. Second class postage paid at Lockney, Texas. Subscription rates: local \$11.50 per year, out-of-trade area \$12.50 per year. POSTMASTER: send address changes to the Lockney Beacon, P.O. Box 187, Lockney, Texas 79241.

David Cates Publisher
Carolyn Redding Advertising Manager
Carolyn Redding Editor

Cowpokes cartoons to be featured



DONNIE MERIWETHER is shown sorting IRS forms which went out in the mail this week. According to Doug Meriwether Lockney postmaster, the holiday season was "comparable to last year." With holidays falling on the weekends this year, employees hardly got a breather before going into a heavy schedule of timed mailings.

"Cowpokes" cartoons by Ace Reid will begin publication in The Lockney Beacon on January 6! Considered by many to be the number one rural cartoon in the U.S., "Cowpokes" is published in over 500 newspapers, magazines and farm/ranch journals throughout North America.

"Cowpokes" has a twenty five year heritage. From a humble beginning of drawing cartoons depicting life in the depression and dust bowl days of the west, Ace Reid's cartoon business has grown into a large industry.

"Cowpokes" books and calendars sell in the millions annually and Reid is in constant demand as an after dinner speaker to such groups as the National Editors Association, Bankers conventions and the Little Britches Rodeo Association. Reid created the first "Pre-Sweat Stained" cowboy hats for urban cowboys and at his ranch in the hill country in Kerrville, Texas, Ace has entertained princes, presidents, world famous actors, and international bankers. People come from all over the world to hear a bit of real western humor, where farmers and ranchers fight for existence against adversity such as drought, floods, high interest rates, government intervention and scraggly cattle.

"Cowpokes" main characters are Jake, his wife (Maw), Honest Wilbur the horse trader and Zeb...and not to forget the stingy banker Tuffernal.

"Cowpokes" will appear weekly in The Lockney Beacon.



THE HOSPITAL'S new stainless steel stove has six burners with oven, grill and broiler. The replacement is being well received by the Dietary Department of Lockney General.

Stove received by dietary department

Lockney General Hospital received a 56 inch stainless cooking range December 22. It is equipped with six large burners, a 36 inch oven, a 22 inch grill and broiler and a storage area.

"The dietary staff is really appreciative of the new stove," Viola Mangum, Director of Food Service said. Other staff members of the department include Jackie Hamilton, Melinda Grimaldo, Irene Higgs and Juanita Amador.

In addition to the fulltime cooks, Josie Peralez, Dana Poole, and Ella Armstrong work part time. Mrs. Armstrong partially retired in July, having worked 4 1/2 years in the dietary department.

Beacon Resolution

The Lockney Beacon resolves to do a better job of covering the happenings in this, our hometown, in the coming year.

We all have so much for which to be thankful, and all of those things can come together to give an interesting and informative paper each week. Some of those things will be important enough for us to snip them out and tuck them away for reminders.

And that is what we want. A weekly paper worth saving parts of. We have been accepted very well, but we have only just only begun. We have not even scratched the surface as far as the potential of the paper in this progressive, closely-knit community is concerned.

If we can be of service to you in anyway, please do not hesitate to call on us. If you have suggestions, we always have a receptive ear.

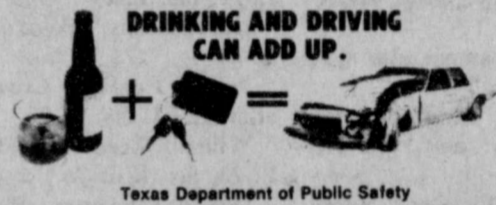
We know that not being able to have someone in the office at all times is an inconvenience to you, and we hope you can be understanding of the circumstances. If and when the paper receives enough support, we intend to remedy that situation. In the meantime, let us be your friend throughout this year. We will all benefit from that.

Carolyn Redding, Editor
David Cates, Publisher

Subscriptions due in December

In order to continue to receive your Beacon uninterrupted, if your name appears below, please remit by mail to Box 187, Lockney, Texas 79241 or bring payment by Beacon office.

- | | |
|--------------------|-------------------|
| Mrs. Lee Atchley | Royce Latimer |
| Carl Bart | L. R. McCormick |
| Fred Carthel | Irene Hall Morgan |
| W. O. Clark | E. N. Muse |
| Agnes Cooper | J. C. Roach |
| Mrs. Edith Dillard | J. B. Seale |
| Tom Duvall | Don W. Smith |
| Zelda Epperson | Clyde Stapp |
| Jim Gomez | Joe Taylor |
| Mrs. E. H. Ford | Martin Tickle |



Brett R. Gill
Announces the opening of his
Tax & Bookkeeping Service
to be operated out of his home.
Bookkeeping services & tax returns done.
For more information 847-2222 Silvertown


ALLSUP'S
CONVENIENCE STORES
LOCKNEY

OPEN NEW YEARS

PRICES EFFECTIVE DEC. 30 - JAN. 1, 1983
WHILE SUPPLIES LAST
OPEN 24 HOURS 365 DAYS A YEAR

NOTICE: AT ALLSUP'S WE'RE CONSTANTLY STRIVING TO DO A BETTER JOB OF PROVIDING THE BEST SERVICE AND QUALITY PRODUCTS. WE VALUE AND APPRECIATE YOUR BUSINESS, AND WE'RE WORKING HARD TO EARN YOUR TRUST. THANK YOU, FROM ALL OF YOUR FRIENDS AT ALLSUP'S. HAVE A PROSPEROUS AND HAPPY NEW YEAR!

| | |
|---|--|
| WE HAVE YOUR HOLIDAY NEEDS ★ ICE ★ SNACKS ★ SOFT DRINKS ★ PARTY DIPS ★ CHIPS ★ MIXERS ★ FRESH COOKED FOODS ★ MONEY ORDERS ★ BREAD ★ FRESH PRODUCE ★ MILK AND A COMPLETE LINE OF BATTERIES, FILM AND FLASH CUBES! | ALLSUP'S COOKED FOOD SPECIAL BBQ SANDWICH 99¢ |
| ALLSUPS BREAD 2/99¢ | DIET PEPSI/MOUNTAIN DEW OR PEPSI-COLA 2 LITER BTL. \$1.29  |
|  BORDEN'S ASSORTED PARTY DIPS 8 OZ. CTNS. 2 99¢ | ALLSUPS MILK \$2¹¹ |
| SHURFINE CATSUP 32 oz. 99¢ | BORDEN'S ASSORTED ICE CREAM \$1⁵⁹ 1/2 GAL. HD. CTN.  |
|  BORDEN'S EGG NOG qt. 99¢ | SHURFINE BLACK EYE PEAS 3/\$1⁰⁰ |




Dealing with the folks who know farming makes it easier...

You'll find the answers to your financial farming questions right here... with us! Our people know about the problems that may crop up in your farming community and are glad to help. Stop in today and see!

First National Bank

Accounts insured up to \$100,000

in Lockney
652-3355
member F.D.I.C.



Brown honoree of postnuptial shower

Mrs. Lynn Brown of Plainview was the honoree at a postnuptial gift shower recently. The shower was given in the home of Mrs. Bill McCarter of Lockney. Mrs. Brown is the former Gaylyn Hooten, daughter of Mr. and Mrs. John L. Hooten. She and Brown were married in Clovis, New Mexico, October 22. The groom is the son of Mrs. Joe Mauldin of Plainview.

The honoree's mother and grandmother, Mrs. Cecil Cox of Aiken, were special guests at the shower.

A Christmas arrangement with evergreens and holly around a white wrought iron candle holder with a votive candle was used as the centerpiece. The serving table bore a red cloth and milkglass appointments. Refreshments were served by Mrs. Claude McMurtry and Mrs. Kenny Hooten, sister-in-law of Mrs. Brown.

McElyeas celebrate Christmas, Dec. 19th

Mr. and Mrs. H.C. McElyea celebrated Christmas Sunday, December 19, with their children and grandchildren. A traditional Christmas dinner was enjoyed by all. In the afternoon gifts were presented from a green tree decorated in silver and pink.

Those attending were Dr. and Mrs. Randell Jones and Justin of Plano; Mr. and Mrs. Jerry Phillips of Ruidoso, New Mexico; Mr. and Mrs. Wayne Potet

and Mr. and Mrs. Billy Hinkle of Floydada; Julie Mitschke and children, Jason and Mackenzie, and Dane Mount of Vernon; Max and Vikki Yeary, Charla and Mandi; Billy Jean and Duffy Hinkle, Pepper and Chad; Joe and Dena Hinkle; Mike and Michelle Potet of Floydada; Bill and Sharon Fulton, Shanna and Jenna of Lorenzo; and Stephen and Jenne Roach and Daniel of Canyon.

CAPROCK HOSPITAL NEWS

Wayne Coleman, Lockney, adm. 12-20, continues care

Opal Hanna, Turkey, adm. 12-21, continues care

Josie Taylor, Lockney, adm. 12-25, continues care

Jennifer Graves, Lockney, adm. 12-25, dis. 12-28

Mrs. (Raul) Bertha Martinez and baby girl, Plainview, adm. 12-27, continues care

Geneva Ruth Elliot, Floydada, adm. 12-27, continues care

Gertrude Marr, Lockney, adm. 12-27, continues care

Pete R. Lopez, Jr., Plainview, adm. 12-27, continues care

Mamie Hayes, Lockney, adm. 12-27, continues care

Leslie Gilbert, Fritch, adm. 12-26, dis. 12-28

Alma Marie Warren, Floydada, adm. 12-26, dis. 12-28

Jessie L. Morris, Quitaque, adm. 12-21, dis. 12-24

Alla Faye Holladay, Floydada, adm. 12-22, dis. 12-24

Keith Owens, Aiken, adm. 12-22, dis. 12-26

Janice Ragland Crowe, Plainview, adm. 12-23, dis. 12-26

William Bertrand, Floydada, adm. 12-23, dis. 12-27

Dolores Navaroo, Plainview, adm. 12-25, dis. 12-27

Antonia Tamayo, and baby girl, Quitaque, adm. 12-24, dis. 12-26

Mrs. David Curry and baby boy, Plainview, adm. 12-24, dis. 12-26

Mrs. Joe M. Gonzales and baby girl, Plainview, adm. 12-28, continues care

Mrs. Jody Baccus, Lockney, adm. 12-28, continues care

Il Penseroso hold Christmas party

Il Penseroso Jr. Study Club held their Christmas party December 16 at the Olde White House dining room in Floydada.

The evening started with a delicious meal served by elves. Following the meal, numbers were drawn and everyone divided into groups of four to play the game bunto.

Couples gifts were exchanged with the men selecting a gift from under the tree or from someone who had already opened a gift. A good time and lots of laughs were had by all.

Members then exchanged gifts with secret pals as is custom. The party was ended with best wishes for a Merry Christmas and a Happy New Year.

Couples present were Mr. and Mrs. Gary Marr, Tim McCain, Mike Mathis, Ronnie Aston, Bernie Ford, Garry Burson, Larry Cunyus, Gary Mangold, Ricky Kellison, David Workman, John Quebe, Danny Durham, Lanny Barnett, Louie Bybee, Danny Lambert, Ray Gant, Bill Bigham, Zach Cummings, Sam Fortenberry, Jerry Johnson, Jim Bob Martin, Ricky Mosley, Dan Smith, Marlon McDonald, Ricky Biggs, Judy Jackson, Julie Hickerson and Barton Cooper.

FLOYD DATA

Mr. and Mrs. Pat Shelby of Lubbock invited his foster parents, Mr. and Mrs. Laure Dade, to have Christmas dinner with them in Ralls with his in-laws, Mr. and Mrs. Jessie Johnson. His father Cecil and his two brothers, Robert and Isaiah Shelby were also there.

FLOWERS

to soften the sorrow
to comfort the living
to honor loved ones



SPRAYS \$10.00-\$25.00

STANDING SPRAYS \$25.00 up

Compare Our Prices

Floral Designs by Cyndi Williams & Ozena Norris



128 W. California 983-5013

Floydada Nursing Home Happening

By Linda Emert

Well, it looks like old man winter has finally come. It has been real cold, ice, and some snow.

On Monday, the residents did some ceramic painting. Then Monday night we had the resident's Xmas party. We had a house full of families and friends with the residents. We had Xmas songs then the residents opened their gifts and had punch and cookies. We want to thank each and every one of you that took time to come out or send gifts and cards.

Tuesday we just had decision in Bible Study.

Wednesday we played bingo and we played until they got tired. We had four that played. Emmet Lawrence won twenty-four games, Vera Duke won thirteen games and Una Clark and Sue Thompson both won twelve games each.

We want to thank the Lazbuddie FFA for the donated five cases of grapefruit and the Sunshine Sunday School Class from First Baptist Church for the cookies, bananas and candy canes.

Here is a list of visitors for a while. We want to thank you for coming: Calvary Church (Christmas caroling), Dorothy Neff, Howard and Wanda Davenport, Mattie Wester, Marvin and

Ella Goodwin, Deecota Odum, Jackie Duke, Dustin Duke, Ricky and Lana Copp, Allene Henry, Molly Burleson, Sue Guthrie, C.L. Berry Sr., Rev. and Mrs. Floyd Bradley, Ruby Gooch, Ethel Warren, Hazel Bradley and Kim, Frances Badgett, Jess and Bessie Glover, Gene Baird, Harold Meason, Otis, Dana, Kim and Jo Lee Ellis; Lucille and Tom Daniel, Cynthia Covington, Kim Covington, Sabrina Varner, Mr. and Mrs. Varner, Greg Thompson, Sally Day, JoLee Covington, Ann Campbell, Rebekah, Richard Campbell, Sherry Campbell, Jimmy Marley, Tonia Marley, Trisha Pernell; Frank Breed, Dolores Cannon, Jettie Moss, Deecota Odum, Dena Myrick, Greer and Ruth Christian, Shannon Olene Christian, Nealey Richardson, Ethel Barker, City Park Church of Christ (Christmas caroling), Estelle Hinkle, Burmah Probasco, Karl Bunjes, Beverly Knight, Lorie Knight, Cora Smallwood, Thanie Smallwood, Jennifer Palmer, Mattie Wester, Francis Gunter, Mamie Duran, Mr. and Mrs. Bruce Williams, Voncel Colston, Otis, Dana, Kim and Jo Lee Ellis, Elvis and Lovelle Childs, David and Jan Campbell, Jimmy and Freddie Duke, Ira M. Sullivan, Ruby Gooch, Cody and Lee Stewart.

Lockney Care Center Capers

By Vickie Hutton

Wonderful is the only way to describe our Christmas. We were blessed in so many ways. Santa Claus visited us Tuesday night. Before his arrival John and Maybelle Francis entertained us by singing Christmas carols. After enjoy-

LOCKNEY LOCAL

Rev. and Mrs. E.O. McElyea of Spur were guests of their children, Mr. and Mrs. H.C. McElyea for Christmas. They arrived Christmas eve and spent Christmas Day.

In the afternoon Mrs. McElyea spent a few hours with her family, Mr. and Mrs. C.B. Lyles of Floydada.

Others attending were John and Christine Lyles of Hale Center, Gary and Karen Lyles of Amarillo, Paul and Lori Lloyd and Olin and Jo Lyles, both of Floydada, Nada and Danny Doyan and Daniel of Merckle, Don and Glen Lyles of Plainview, Linda and Crystal James of Plainview, Rena and Cecil Baxter, and Tommy and Sallye Lyles and Jeffrey of Floydada.

DAR meeting held

The Buffalo Grass Chapter of the National Society of the Daughters of the American Revolution met Tuesday, December 21, in the home of Mrs. Kendis Julian at South Plains.

The program, Christmas in the Colonies, was under the direction of Mrs. Julian, Deryl Evans and Phil Dunavant. A group of Floydada High School students under the direction of Mrs. Kay Kinner sang several Christmas carols. Mrs. Phil Dunavant gave a reading "Christmas in the Colonies."

Mrs. Euell Norris, regent, presided over the short business meeting.

Refreshments were served to visitors: Misses Mary Lloyd, Lois Beckham, Virginia Mitchell, Mary Ann Rainer, Kristy and Mitzi Julian, Mrs. Kay Kinner, Janet Lloyd, Ann Carr, Carolyn Marble and Mrs. Don Chessir.

Members present were Mmes: Ve Noy Sanders, Silas Wheeler, Clinton Denning, Euell Norris, Buell Neff, Mary Lou Bollman, Emma Lou Whitaker, Emily Johnston, Deryl Evans, Miss Anne Swebston, Mrs. Phil Dunavant and Mrs. Kendis Julian.

The next meeting will be at 7:30 p.m. on Tuesday, January 25, in the home of Mrs. Buell (Ona Ruth) Neff. Mrs. Emily Johnston will give the program on the DAR schools.

Marbles receive degree

Larry and Julie Marble, grandchildren of Mr. and Mrs. Johns Cox, received their college degrees from Texas Tech University on December 17 during Commencement exercises held in the Tech Coliseum.

Marble, a 1978 graduate of Hart High School, earned a Bachelor of Science degree with a major in animal production.

Mrs. Marble is a 1978 graduate of Lomerset High School and earned a Bachelor of Science degree with a major in elementary education. She is the daughter of Mr. and Mrs. Billy Mitchell of near San Antonio, who have seen all three of their children graduate from Texas Tech.

Marble is the son of Mrs. Keith Brock and Max Marble, both of Hart, and also is the grandson of Eathyl Marble of Plainview.

The young couple left December 29 for their new home in Smithville, Tennessee where Marble has been employed as general manager of Midwest Inc., a farming and ranching operation, 40 miles from Nashville.

January Clearance

Our Annual January Clearance begins

Thursday, December 30th at 9 AM.



A brand for the future



105 S. Wall
Tommy Ogden mgr.
983-2480





Savings of

25% to 50%

All Sales Final.

Kristi's

614 Broadway
Downtown Plainview



Carolyn's Stout Fashions

Tops 36 To 54
Pants - Skirts 30-48
Dresses 12-32
Evens And 1/2's

3200 Olton Road
Village Shopping Center

HALE'S DEPARTMENT STORE

Semi-Annual SHOE SALE

Starts Thursday, December 30th 8:30 a.m.

CHARGE—CASH—LAY—AWAY

It's Business as Usual at Hale's Sales

ALL WOMEN'S DRESS SHOES
Pumps, Sandals and Slings from
Naturalizer, Red Cross & Connie
30%to40% off



YO-YO'S by CONNIE
Sandals in brown or black
Reg. \$34* NOW **\$22⁹⁹**

CASUAL SHOES by CONNIE
Ballet-looks, Topsider-looks in black,
navy, tan, cordovan & brown in
different heel heights
1/4 to 1/3 Off

NATURALIZER CASUAL TIES
in leather with comfortable
Kraton Soles
Reg. \$44* NOW **\$29⁹⁹**

DR SCHOLL SHOES
in tan or white NOW **\$19⁹⁹**

OLD MAINE TROTTERS
Drastically Reduced

COBBIE LOW HEEL SHOES
30% to 40% Off

LARGE GROUP OF WOMENS SHOES
Different styles & colors all stacked in the middle
1/2 Price or Less

**ALL CHILDRENS HUSH PUPPIES
and CASUAL STYLES
Marked Down**

CHILDRENS HUSH PUPPY BOOTS
NOW **\$17⁹⁹**

GROUP OF NIKE (tm) JOGGERS
\$5⁰⁰ Off

**ALL MEN, WOMEN'S and CHILDRENS
JOGGING and TENNIS SHOES**
\$3⁰⁰ Off

This Thursday & Friday ONLY
Nike, Converse, Pro-Keds, AAU Kid Power &
Mercury Large Group at Even Deeper Reductons

ALL WOMENS PURSES
1/4 to 1/2 Off

FIRST TIME EVER
WOMEN'S DANIEL GREEN HOUSE SHOES
\$5⁰⁰ Off



ALL MEN'S BOOTS
REDUCED
Reg. \$60⁰⁰ or less **\$5⁰⁰ Off**
Reg. \$90⁰⁰ to \$60⁰¹ **\$10⁰⁰ Off**
Reg. \$135⁰⁰ to \$90⁰¹ **\$15⁰⁰ Off**
Red Wing, Dan Post, Stock Show,
Acme & Texas Brands

**NUNN BUSH ITALIAN HAND
SEWN LOAFERS**
Supersoft calf leather in tan or black
\$8⁰⁰ Off
This Thursday & Friday ONLY

ALL OTHER MEN'S SHOES
by Red Wing, Nunn Bush, Stacy
Adams, Stacy Baldwin, Hush Puppy
& Daniel Green **\$5⁰⁰ Off**
This Thursday & Friday ONLY

**LARGE GROUP OF MEN'S
HUSH PUPPIES
AND ARMADILLOS**
Drastically Reduced

**SUPER SALE
MOON BOOTS**
\$19⁹⁹

HALE'S SEMI-ANNUAL SHOE SALE

LAKEVIEW NEWS

By Joyce Williams

A freezing rain and snowstorm Sunday caught many travelers on the road as the holiday ended.

For Christmas, Patricia and Bill Smith of Littlefield visited her mother, Mrs. Buell Neff, Sunday. When they stopped for coffee at Sweetwater the highway patrolmen advised them to stay where they were, so they spent the night at a motel and came on to Floydada Monday. A thaw had set in by Monday and travel was about normal on pavements.

Country roads are wet and sticky. Most of the cotton harvest was completed in the pretty weather last week, but some is still to be stripped.

All of the Milton Harrison children were home for their tree and dinner. This included Kim Harrison of Wellman; Sue and Ted Givens and children, Jennifer and Chad; Gail and Bill

CENTER NEWS

By Mrs. J.E. Green

Dec. 27, 1982:

I awoke this morning to find the ground covered with snow, but at 10 o'clock the sun is out and the sky bright and clear - and the wind still blows. There were family get togethers, some happy some sad.

The Ashtons were all together Christmas day at the family home - Mrs. Ashton of the Lockney Rest Home, Francis, Mr. Clarence Ashton, and son, Bobby and family of League City.

The Henry Brewers dined with their daughter and families, the Millard Watsons of Mt. Blanco, the Ken Robersons of Lubbock and the Dean Watsons of Rt. 2, Floydada.

The Neal Wrights of Sweetwater spent Christmas with her mother, Mrs. Ava Jackson. A son was coming later.

At Louis Andersons: All the children and grandchildren including the daughter and family of Levelland came Christmas.

Hal Thomases: his daughter and family, Sue and Milton Mensch and boys of Lubbock spent the week with him.

Mrs. Roe Jones had her daughters and families home for Christmas: Wanda Lee of Stephenville, Christine of Petersburg, Helen of Plainview, Clara Mae of Amarillo.

Present for Christmas at the Thomas Warrens were their children and families (except Ed and family), Elaine and Paul Stout and girls of Muleshoe, Jim and Joyce Owens and boys, City, the bride and groom, Hope and Don

CEDAR HILL NEWS

by Grace Lemons

We are having more ice and snow and the weather is very cold. Some of the wheat is beginning to come up from the previous moisture.

The Rev. and Mrs. Vance Mitchell and girls went to Crosbyton Tuesday to attend the Christmas celebration with his mother, Minnie Mitchell, Gary and Janie Mitchell and David Stewart of Oklahoma were also present.

Edna Gilly, Mark and Lori Gilly, Craig and Trudi and girls, Delise Harrison, and Casandra had dinner Thursday with Edna's mother and husband, Mr. and Mrs. W.M. Clark in Plainview.

Edna Gilly was hostess to the Lutrell family Christmas dinner in her home Friday night with 35 present. The group also exchanged gifts. Those present were, Craig and Trudi Gilly and girls, Mark and Lori Gilly, Johnnie and Delise Harrison and girls of Lubbock, Weldon, Gaylia, Julia and Jennifer of Plainview, Gayland and Zelda Anderson, Connie and Renee of Lubbock, Juanita and Leighton Teepie, Dwight and Helen Teepie, Brian and Keith of South Plains and Sherlene and David Reddott, Tonya and Ricky of Springfield, Missouri.

Jacqueline Owens and Trevor of Plainview visited Edna Gilly Friday. Christy Harrison is spending the week with her grandmother, Edna Gilly.

Mr. and Mrs. A.S. Mize had Christmas Eve dinner in the home of Edna Beth and Bill Tye and Christmas dinner in the home of Judy and Harvey Allen.

Shelia and Charlie and Nick arrived at the home of her parents, Martha and Junior Taylor and spent Christmas with them and Bud Taylor. They returned to their home in Dallas Monday.

Margaret and Millard Fourt arrived

Nellie and Jack Johnson were on their way up here, to visit her mother, Mrs. Buell Neff, Sunday. When they stopped for coffee at Sweetwater the highway patrolmen advised them to stay where they were, so they spent the night at a motel and came on to Floydada Monday. A thaw had set in by Monday and travel was about normal on pavements.

Country roads are wet and sticky. Most of the cotton harvest was completed in the pretty weather last week, but some is still to be stripped.

All of the Milton Harrison children were home for their tree and dinner. This included Kim Harrison of Wellman; Sue and Ted Givens and children, Jennifer and Chad; Gail and Bill

Warren. Also guests were Mrs. Ola Warren and Mrs. Eula Battey. Mrs. Plumlee spent Christmas in Plainview with her daughter, Mary Alice Hinds and family.

Mr. and Mrs. Wiley Rogers had all their children and grandchildren with them on Christmas day.

Mr. and Mrs. Anthony Latta had their Christmas with their children and grandchildren on Christmas eve. They took me by Calvary for church Sunday and I found our pastor and family were in Tennessee. Our Warren student at Wayland was a good substitute. Small crowd and it was raining when we came out. No church Sunday nite.

I enjoyed Christmas day in Plainview with loved ones. In the home of my grandson and wife, Jim Green and wife. Present also were Vic and Sue (his parents), Jim's brother, Steve, a senior at Brown University, Providence, Rhode Island. He returned there Sunday. Also Sue's sister, Mrs. Banko of Lubbock, My! What a good dinner! I hope to have my get together some time soon.

We are sorry to report that Mrs. Ethel Warren is a patient in Caprock Hospital the result of a car and truck collision a few days ago. The hospital reports her better today.

Her many friends grieve with the children of Mrs. J.D. Welborn a long ago Center mother. The fine family of children and grandchildren have our deep sympathy.

Bro. and Mrs. Clay Muncy are doing very well at home.

Howard, Heather and Alicia; also Rex and Beverly Harrison, Brandon and Jason.

The Bob Alldredges kept their grandchildren, Jeremy and Jonathon Klein the week before Christmas when their parents, Karen and Tommy Klein of Sweetwater went to Ruidoso, New Mexico for a winter vacation. Steve Alldredge of Plains, went skiing in Taos before Christmas. Along with Mark Alldredge of Lubbock, all met at their parent's home for Christmas. Steve has gone on to Virginia for another visit.

Mr. and Mrs. Wayne McHam and children went to her parents, Mr. and Mrs. Neil Pierce for Christmas Day.

Mrs. Nancy Goodwin and daughter, Hilary, of Idabel, Oklahoma arrived at Truscott Friday for Christmas at her grandfather's ranch. She stayed Thursday night at Ft. Sill, Oklahoma with her brother, Monte Williams, who also came to Truscott after putting his wife, Kellie and daughter, Amanda on the plane at Oklahoma City the previous week-end. She spent the week with her grandmother Brian at San Antonio.

Monte went on to Reese Air Force Base Saturday where he and Kellie joined her parents, Col. and Mrs. Elton Brian, for

Christmas dinner at the Officers Club. Nancy and Hilary arrived in Floydada Sunday for a week's visit with her parents, Mr. and Mrs. O.D. Williams.

Cheryl and Donnie Guess and children, Amy and Bryan of Levelland spent Wednesday night with her parents, Mr. and Mrs. Duane McClintock. They had their Christmas next day and went on to Ruidoso where they met at the Guess family cabin for Christmas and skiing.

Mr. and Mrs. Dayne Golightly, Rance and Lacy joined the McClintocks and Guess families Wednesday and Thursday. Dayne's mother, Mrs. Benny Golightly of Lubbock came over Christmas Day and all took their food out to Mr. and Mrs. W.E. Lackey's for dinner and visiting.

Mr. and Mrs. Joe Womack went to her parents' home Friday for the Rance's Christmas. Others there were Mrs. Gertie Rance and Leroy Rance of Crosbyton; also Vicky and Brian Webster, Chris, Jon and Enoch of Crosbyton. On Saturday morning the family went to Spur to be with Mr. and Mrs. Jay Austin. On their way home all stopped in Crosbyton to visit Mrs. Lena Moore at her home.

Mr. and Mrs. Earl Edwards, Jr. of

Llano were here the week before Christmas to visit his parents, Mr. and Mrs. W. Earl Edwards and brought a Christmas tree which they had cut on their ranch at Llano. Sunday guests included Mr. and Mrs. Frank Fite and Jana of Abilene; Mr. and Mrs. Maxey McKnight of Kress; also Dr. and Mrs. Dell McKnight of Amarillo, and Rob McKnight of Haskell.

Mrs. Orville Custer and son, Ken, visited her sister, Mrs. Adele Whisenant and Carla, in Lamesa Friday for Christmas. They were in Slaton Thursday and Sunday.

Greg Bishop and Monte Williams played dominoes Monday night and caught up with the news. Monte went to Lubbock for a load of barbed wire and posts to build fence at Roaring Springs during his two weeks holiday.

The Appling family met at the Pioneer Memorial building in Crosbyton December 19th, for their family Christmas dinner and tree. Those present included Mr. and Mrs. Wayne Appling, their daughters and families; Beverly and Lon Conner, Michah and Joshiah; Phyllis and Chuck Farley; Kevin and Kelly; Mr. and Mrs. Joe Appling.

David, Mark, and Robbie of Mt. Blanco; Mr. and Mrs. James Temple, and Jav, Lubbock; Mr. and Mrs. Leeman Norman, Lubbock; Mr. and Mrs. Olin Watson, Floydada; Mr. and Mrs. Roy Miller of Tula; Sarah Miller, Crosbyton and Rober Miller of San Angelo. The mother of the clan, Mrs. S.G. Appling was back in the Crosbyton hospital and unable to join the family. Brother Crabtree of Spur, formerly of the Mt. Blanco Baptist Church, visited the family party.

Charlie and Mary Wright had a houseful for Christmas. Sandra and Don Martin, Terry, Charles, Erica and two new foster children, Angie, age 4, and Nathan, age 6, all of Muleshoe; Coleta and Gene Mitchell, Laqueeta and Chipper of Crosbyton; Mary Elizabeth and Carroll Sims, Therese and Randall of Floydada, all shared Christmas with the ladies' parents.

Mr. and Mrs. Joe Womack visited Sunday with his parents, Mr. and Mrs. Bill Womack. Other guests were Mr. and Mrs. Tracy Womack of Burkburnett; Mr. and Mrs. Ricky Copp and Jody of Lazbuddie; also Mr. and Mrs. A.D. Jester.

"Laugh Lines"

BY DON AND SARA PROBASCO

Bits of Humor, Trivia, and an occasional Word of Wisdom

If you don't want your children to hear what you're saying, pretend you're talking to them.

Nothing makes a child worse-behaved than belonging to a neighbor.

Those who speak of it as being easy to take candy from a baby should try it sometime.

Wife to husband: "I'm so glad we got Junior a Bicycle for Christmas." "Why, do you think it will improve his behavior?" "No, but at least it will spread it over a wider area."

It's bad when you son is too young to be left alone with the baby, but too old to be left alone with the teenage sitter.

Child psychology would be OK if you could just get the kids to understand it.

Sign on a psychiatrist's door: "A well-adjusted New Year to all."

Best wishes for a healthy, happy, and prosperous New Year.

PROBASCO'S

Pro-Lock Shop

24-hour mobile

Locksmith service

2 miles north of South Plains on the Silverton Highway (Hwy 207)

983-3834

983-3834
Visa and Mastercard Welcome

Studio South

Stained glass art

Gifts and Supplies

CAPROCK

HOSPITAL NEWS

December 20-27

Steven Tackett, Floydada, adm. 9-15,

expires 12-24, Hong

Irene Fuller, Matador, adm. 11-29,

continues care, Hong

Hester Moore, Floydada, adm. 12-8,

continues care, Hong

Crescencio Rodriguez, Floydada, adm.

12-12, continues care, Hong

James Simpson, Matador, adm. 12-

17, dis. 12-20, Jordan

Ona Jameson, Matador, adm. 12-18,

continues care, Acar

Rita Hernandez, Floydada, adm.

12-21, dis. 12-24, Hong

Sostenes Bursiaga, Floydada, adm.

12-21, dis. 12-24, Hong

Armond Cardinal, Lockney, adm.

12-21, dis. 12-24, Hong

Eldie Bryant, adm. 12-22, continues

care, Hong

Enrique Guerra, Flomot, adm. 12-23,

dis. 12-25, Hong

Ethel Warren, Floydada, adm. 12-23,

continues care, Hong

Sam Mills, Crowell, adm. 12-26,

continues care, Hong

Albert Whitener, Quitaque, adm.

12-26, continues care, Jordan

Myrtie Mills, Crowell, 12-26, contin-

ues care, Hong

Village Shop - Young Duds

JANUARY SALE

CLEARANCE

Sale starts at 3:00 p.m. - till ...

Thursday

All Fall & Winter Merchandise

35% to 50% OFF

Opens Friday at 9:00 a.m.

Village Shopping Center
Plainview, Texas



ONEIDA'S GREAT PLACE SETTING SALE

Oneida Designs; Community Stainless, Deluxe Stainless, & Profile Stainless

ORDER TODAY! OFFER ENDS JANUARY 31, 1983!

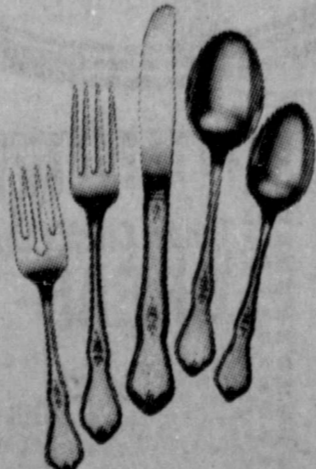
The Prestige® Quality Tableware
Made in America

SCHACHTS
Flowers, Jewelry & Gifts

LOCKNEY

652-2385

5-Piece Place Setting Contains:
Salad Fork, Place Fork, Place Knife,
Place/Soup Spoon, Teaspoon.





SHOP RITE

Prices Effective December 30, 1982 thru January 5, 1983

FOOD STAMPS Welcome Here!

| | |
|---|--|
| CHEESE Longhorn Morrell Colby | \$1.99 lb. |
| FRANKS 12 oz. D & R All Meat | 89¢ pkg. |
| BOLOGNA 12 oz. D & R All Meat | 89¢ pkg. |
| LIVER Sliced Beef | 79¢ lb. |
| BACON Wright's Bulk Sliced | \$1.57 lb. |
| SAUSAGE (Farmland) 12 oz. Pork Link, Regular or Pork & Bacon Links | 99¢ pkg. |
| LUNCHEON MEATS Carl Buddig 2½ oz. Beef, Ham, Turkey Ham, Chicken, Turkey, Corned Beef, or Pastrami | 2/89¢ pkgs. |
| CHORIZO 8 oz. Peyton Del Norte | BUY ONE AT REGULAR PRICE & GET ONE FREE |

MEAT Specials

USDA Grade A
FRYER HINDQUARTERS

37¢ lb.

MEAT Specials

With Back Portions
FRYER DRUMSTICKS or THIGHS

59¢ lb.

MEAT Specials

Boneless Beef Chuck ROAST **\$1.39** lb.

Boneless Center Cut Beef Chuck STEAK **\$1.59** lb.

MEAT Specials

Boneless Arm Cut Beef ROAST **\$1.69** lb.

Boneless Center Cut Arm Beef STEAK **\$1.73** lb.



32 oz. 6 Pack
COCA-COLA **\$1.99** Plus Deposit

9 oz. Frito-Lay
POTATO CHIPS **99¢**



RAVIOLI 48 oz. Chef Byrd **\$1.79**

QUIK 32 oz. Nestle's **\$2.59**

LOTION 15 oz. Jergen's Hand **\$2.29**

COLD POWER Giant Size Detergent **\$1.99**

FAB Family Size Detergent **\$5.99**

18 oz. Betty Crocker
CAKE MIXES
79¢



8 oz. Hunt's
TOMATO SAUCE
4/99¢



1 Roll Spillmate
PAPER TOWELS
77¢

COUPON VALUES GOOD FOR SUPER SAVINGS!!

You have up to 6 ways to save with our Bonus Coupons.

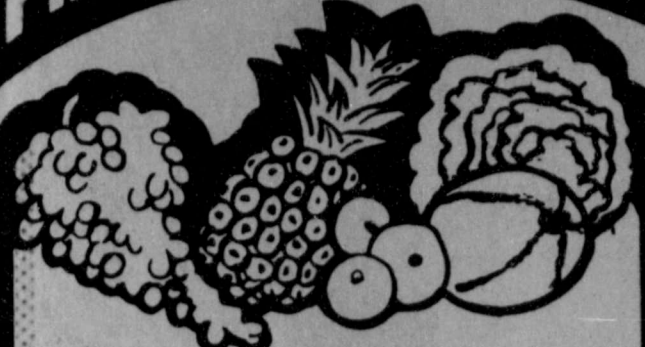
Your total purchase will determine which coupons you have qualified to redeem.

COUPON
Tender Crust 1 Loaf
BREAD FREE
With the Purchase of \$10.00 One Per Coupon

COUPON
Shurfresh Large 1 Dozen
EGGS FREE
With the Purchase of \$20.00 You May Also Redeem Coupon No. 1 One Per Coupon

We will close at 6:00 Sunday for inventory.

PRODUCE Specials



Red Delicious
APPLES
49¢
lb.

PRODUCE Specials



Sunkist
TANGERINES
49¢
lb.

PRODUCE Specials



BELL PEPPERS
5/\$1.00

PRODUCE Specials



1 lb. Bag
CARROTS
3/\$1.00

POTATOES US no. 1 10 lb. Bag

\$1.39



ONIONS Yellow

19¢
lb.

CABBAGE Green

15¢
lb.

AVOCADOS

6/\$1.00

6 oz. Chloroseptic
MOUTH WASH

\$2.09

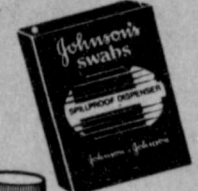


10 oz. Skin Care Lotion
WONDRA

\$1.89

54's
Q-TIPS

69¢



11 oz. Shampoo
PRELL

\$1.99



Join our list of big winners!

good eatin' costs less

WITH THESE FOOD VALUES

10.5 oz. Campbell's Chicken Noodle
SOUP
4/99¢



1 lb. Box Murry
SALTINES
59¢

5 lb. Gold Medal
FLOUR
99¢



11 oz. Sunshine Vanilla
WAFERS
88¢



DAIRY Super Buys...

AJAX Giant Size Cleanser

59¢



ALKA-SELTZER 25's

\$1.59



PINEAPPLE JUICE 46 oz. Del Monte

99¢

9.5 oz. Mr. P.'s
PIZZAS
79¢



Shurfresh
BISCUITS 4/\$1.00

16 oz. Kraft Velveeta
SLICES \$1.49

1/2 Gallon Borden
BUTTERMILK 99¢

24 oz. Borden's
COTTAGE CHEESE \$1.39



COUPON

1 Fresh Head
LETTUCE 19¢

With The Purchase
Of \$30.00
You May Also Redeem Coupon No. 1&2
One Per Coupon

COUPON

1 lb. Jimmy Dean
SAUSAGE 69¢

With The Purchase Of \$40.00
You May Also Redeem Coupon
No. 1, 2, & 3
One Per Coupon

COUPON

5 lb. Gold Medal
FLOUR 39¢

With The Purchase
Of \$50.00
You May Also Redeem Coupon
No. 1, 2, 3, & 4
One Per Coupon

COUPON

2 lb. Box Kraft
VELVEETA \$1.99

With The Purchase
Of \$60.00 or More
You May Also Redeem Coupon
No. 1, 2, 3, 4, & 5
One Per Coupon

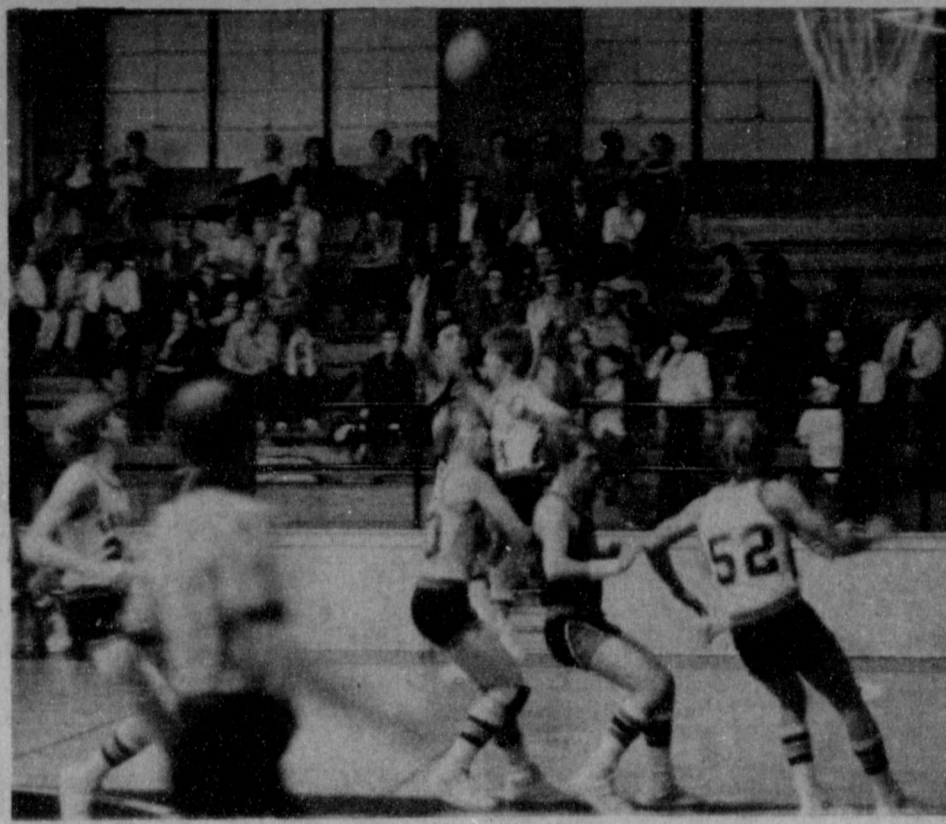
Lockney Longhorns out jump Lorenzo

The Longhorns came out hot jumping out to a 14-4 lead before came back. Steven Johnson was outstanding with 26 points and 21 rebounds. Tony Rodriguez and Robert Rendon were next in scoring. Everyone on the team hustled as much as they could. The

Municipal Coliseum.

| Scoring | |
|-----------------|-----------------------|
| Steven Johnson | 26 |
| Tony Rodriguez | 16 |
| Robert Rendon | 10 |
| Michael Carthel | 6 |
| Buffo Rodriguez | 4 |
| Terry Mathis | 2 |
| Jackie Cunyus | 2 |
| Marcus Schacht | 2 |
| Cookie Vasquez | 1 |
| Lorenzo | 10 17 16 18 61 |
| Lockney | 14 16 17 22 69 |

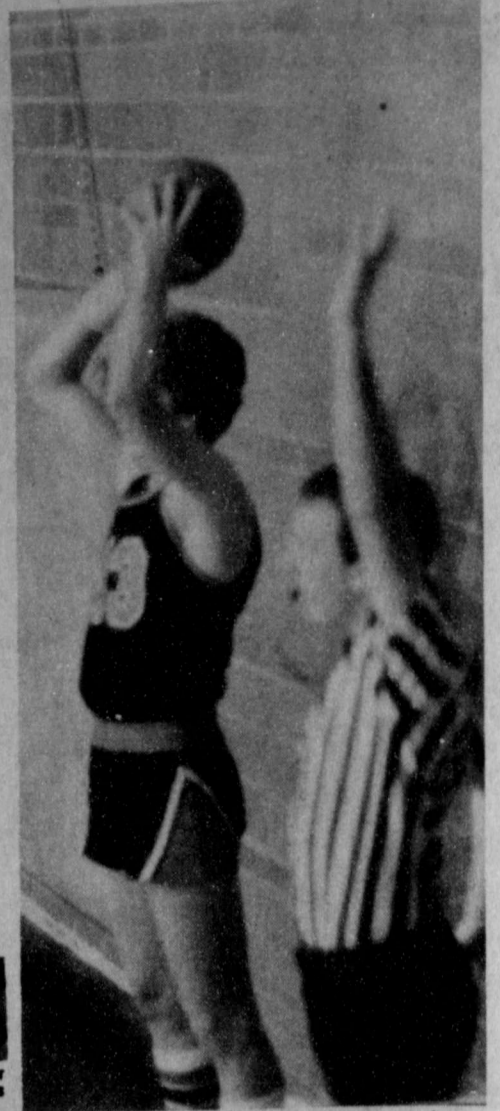
Longhorns are in the Caprock Tourney, their first game is December 29, (Wednesday) at 12:45 against Lubbock Coronado at the Coronado gym. The following day they either play at 8:00 a.m. or 11:00 a.m. Lockney will play either Dimmitt or Wichita Falls at



JV rally to a victory

A low scoring affair the first quarter with Lockney trailing by 2. The Longhorns had a balance attack all night with Kelly Hayes leading the way. Free throws at the end of the game helped come back after trailing by 5 with less than 3 minutes to play. The JV's next game is January 4 at Abernathy.

| Scoring | |
|------------------|----------------------|
| Kelly Hayes | 10 |
| Scott Poole | 8 |
| Paul Moats | 6 |
| Melvin Shivers | 4 |
| Ritchie Thornton | 3 |
| Monty Teeter | 2 |
| Jerald Johnson | 2 |
| Terry Carlton | 2 |
| Richard Schacht | 2 |
| Vince Balderas | 1 |
| Lockney | 6 12 13 10 41 |
| Lorenzo | 8 8 8 16 40 |



We are proud of our roundballers!



DRINKING DRIVING DEATH A Combination we CAN'T LIVE WITH!
A message from this newspaper and the Troopers of the Texas Department of Public Safety.

RED X FUEL STOP

- 16 oz. Coke 6 pack \$1.49
- 12 oz Coke 6 pack cans \$1.39
- 2 liter Coke \$1.29

Prices good while supply last
East on Highway 70

Poems shared with friends...

The following was sent to Johns and Vera Cox from Aulton and Mattie Ruth Patrick of Gentry, Arkansas.

THE MISSING LETTER

Just want to say I'm living
That I'm not among the dead.
I'm getting more forgetful.
And more messed up in the head.

Sometimes I can't remember
As I stand at foot of stari
If I must go up for something
Or I've just come down from there.

Before the Frig, so often
My poor mind filled with doubt
Have I just put food away
Or come to take some out.

And times when it is dark out
With my nightcap on my head
I don't know if I'm retiring
Or just getting out of bed.

So if it's my turn to write you
There's no need in getting sore
I may think that I have written
And don't want to be a bore.

So remember I do love you
And wish that you were here.
But not it's nearly mail time
I must say good-bye, my dear.

Here I stand beside the mail box
With a face so very red.
Instead of mailing you my letter
I have opened it instead.

MERRY CHRISTMAS NEIGHBORS
Neighbors are God's Angels
In many different ways.
They help when there is sickness
And ask no word of praise.

Whenever there is trouble
You always can depend
That someone will come running
Their sympathy to lend.

When life is not going smoothly
How often will appear
A plate of fresh baked goodies
Along with words of cheer.

They are always standing ready
To do their share and more.
Neighbors are God's Angels.

We know... You live next door!

Our prayer--God keep you in his care.
(Copied)

HAPPY HOLIDAY
Mel and Marjorie Holcomb
Johns and Vera Cox
LOCKNEY LOCAL

Johns and Vera Cox had their daughter and husband, Wanda and Keith Brock of Hart for Christmas Day dinner and supper. Marjorie and Mel Holcomb also were there for supper.

Prescriptions Rx

Trust Us With Prescriptions

Our reputation is based on years of dependable service to the community. We fill all orders quickly and reliably... Deliveries.

Byrd PHARMACY
Phone 652-3353
LOCKNEY

We Welcome Your Insurance Business

Donice Casey
Career Agent
652-3414

James Race
Agency Mgr.
983-5095
652-2638

Life- Auto - Fire Home - Ranch Farm Crops & Health Insurance

Do I need liability insurance when I hire an employee for farm and ranch work? For help with insurance questions and needs call...

Bud Rainey
Career Agent
983-5225

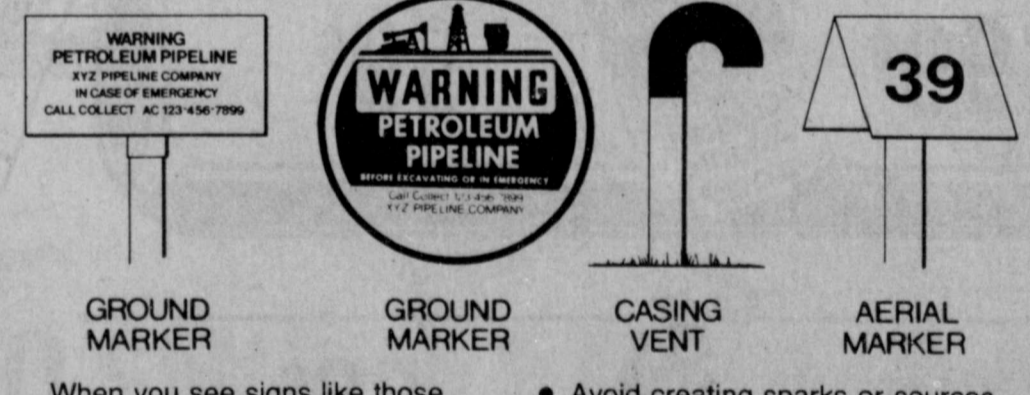
Texas Farm Bureau Insurance
101 So. Wall Floydada
983-3777 Lockney 652-2242

Clar Schacht
Career Agent
652-3449

Pipelines... make good neighbors

America has over 220,000 miles of petroleum pipelines carrying crude oil and products to refineries and storage terminals across the United States. Each day, more than 1.5 billion ton/miles of crude oil and products move through this network. These pipelines have a safety record second to none in the transportation industry... and we want you to help us keep it that way.

- liquids on or a mist above the ground in the area of a pipeline.
- Flames originating from an opening in the ground. If you become aware of a pipeline leak...
 - LEAVE THE LEAK AREA IMMEDIATELY.
 - Avoid driving into vapor clouds.
 - Avoid direct contact with the escaping liquids.



When you see signs like those shown above, they tell you that there's a pipeline nearby. If it's underground, you can't see it, of course. But it's there, working quietly to provide energy for you and other consumers throughout this nation.

- Some of these signs list the commodity transported in the pipeline, the name of the operator, and a telephone number where the operator's representative can be reached at all times.
- Although pipelines have an exceptionally good safety record, once in a while a leak can occur. Indications of a leak might include:
- A strange or unusual odor in the vicinity of a pipeline.
 - A hissing or roaring sound (caused by petroleum or product escaping from a pipeline).
 - A dense white cloud or fog.
 - A spot of dead or discolored vegetation.
 - An accumulation of petroleum

- Avoid creating sparks or sources of heat which could cause the liquids or vapor to ignite and burn. If you find yourself in a suspected vapor area, do not light a match, start an engine or even switch on an electric light.
- Notify the pipeline operator as soon as you reach a safe area. Call collect. Give your name, a description of the leak and its location. If you do not know who the pipeline operator is, call your local fire, police or sheriff's department, or the state police. Advise them of the nature and location of the emergency. If you see someone digging near a pipeline or doing other construction work... or if you plan to do such work near a pipeline yourself... please call the telephone number shown on the sign and let the pipeline company know so damage can be avoided. It's in your interest... and the nation's.

America's Petroleum Pipelines

Pipelines are the safest way to move petroleum and products and you can help keep it that way!

1982-A year Farmers & Ranchers would like to forget

By Ill Graden
Communications specialist

No opinion poll is needed to find out how Texas farmers and ranchers feel about the past year. 1982 was a disaster in almost every sense of the word—a year that most farmers and ranchers would just as soon forget.

The year started out with many producers in bad financial shape due to poor prices the past two years. And from there things got worse. Farm prices continued to suffer as commodity supplies mushroomed, and producers found little encouraging news as 1982 drew to a close.

A FEW BRIGHT SPOTS

A few things did happen during the year for which farmers and ranchers can be thankful. Interest rates eased down a bit and that old nemesis, inflation, finally cooled off to slow the rise in production costs. 1982 also turned out to be a fairly good crop year for some producers.

At the outset of the crop year, many farmers were in a dilemma about what to plant. For most it was a matter of choosing the least of several evils. Many opted to plant less cotton—more than a million acres less—due to poor price prospects. Rice plantings were also down for the same reason. The slack was taken up by corn, grain sorghum and soybeans, but the outlook for those crops was lukewarm at best.

HEAVY WEATHER LOSSES

Extensive wet weather in the spring delayed planting operations in some western areas and in the state's mid-section. That caused many crops to be late, making them prime targets for the long, hot summer that followed. So some areas went abruptly from extreme wet conditions to a season-long drought that cut crop yields severely.

Of course, the usual spring storms with heavy rains and cool weather reduced young crop stands in some sections, particularly in central and eastern areas and in Southwest Texas, where hundreds of acres of corn, cotton and vegetables were lost to flooding, hail and high winds. Earlier, dry conditions had delayed plantings in parts of Southwest Texas and other areas.

The real blow as far as spring crop losses are concerned came in the Texas plains. Farmers saw most of their cotton crop wiped out by some of the most severe hailstorms in the area's history. Almost half of the South Plains' five million acres of cotton were reduced to stubble by the savage storms. Since the storms hit so late in the season that cotton could not be replanted, most farmers went to alternative crops such as soybeans and sunflowers. A considerable amount of grain sorghum also replaced hailed-out cotton.

Texas wheat yields in late spring was "so-so" as the crop endured extremely dry conditions in late winter and early spring followed by heavy rains. Rust disease also was severe in many areas. This year's wheat acreage was the

largest ever in Texas, spurred by good price prospects. But when harvest time rolled around, prices had cooled off considerably.

INSECTS AND OTHER PROBLEMS

Insects once again made the scene as the 1982 crop season progressed. Yellow sugarcane aphids, greenbugs and cutworms dealt a lethal blow to thousands of acres of grain sorghum in coastal and central areas.

By mid-year the weather has settled down into its usual pattern—hot and dry. Most crops progressed well for a while, but soon spring moisture was gone and drought stress set in. In irrigated areas, farmers had irrigation pumps going full blast to keep their crops watered. Needless to say, running those pumps pushed production costs up sharply.

The hot, dry summer weather continued into the fall, providing ideal harvest conditions in most areas. Most farmers reaped good cotton, corn and grain sorghum harvests despite slow crop starts in the spring. However the summer-long drought cut into crop yields in some areas, particularly cotton and dryland peanuts in central areas and soybeans and peanuts in coastal and eastern sections.

The summer drought also dealt a blow to this year's pecan crop, which already had its share of disease and insect problems. In addition, this was an alternate-bearing year for most pecan trees.

RANCHERS ALSO HAD PROBLEMS

While farmers were enduring all these problems ranchers weren't faring any better. 1982 started out extremely dry so cattle had little grazing on small grains such as wheat and oats. A siege of extremely cold weather followed which brought snow to much of Texas and caused a surge in livestock feeding. Spring brought warmer weather and some rain, but much of the state continued dry until May—and even later in some areas—extending the feeding period due to lack of grazing. Of course, this pushed costs up.

May rains gave a big boost to pastures and ranges and brightened the outlook for most livestock producers. However, market prices remained weak for the most part and tended to waver downward as the year progressed.

Stockmen again had to be on guard for screwworms—perennial livestock pests. The first case of screwworms in Texas in more than a year was confirmed May 18 near the Starr-Hidalgo County line. But only a few more cases followed to bring the 1982 total to six, compared to five in 1981.

As the hot, dry summer weather wore on, ranchers had to contend with short grazing conditions, so they started to feed hay. Some had plenty of hay from an abundant harvest or past seasons but others faced short supplies, particularly in coastal, central and southern areas. As the dry siege continued, ranchers started culling their herds heavily. They shipped calves and lambs to market earlier than usual. And these heavy runs at local auctions sent prices plummeting.

The dry weather continued into the fall, causing delays in small grain planting for fall and winter grazing. Some fields were dry-planted but didn't come up due to lack of moisture. Limited small grain growth hampered the movement of stocker cattle into the plains area where small grain grazing traditionally is big business. However, the demand for lightweight stocker cattle picked up in early December following widespread rains, with some going for up to \$1 a pound.

These December rains gave a big boost to small grains although much of the western half of Texas remained short on soil moisture. Stock water also continued short in some sections due to lack of sunoff.

WHAT'S AHEAD

Undoubtedly, Texas farmers and ranchers are putting improved prices for their products at the top of their list of New Year wishes. There are two chances of that happening—slim and none. So what's there to look forward to?

Most farmers will need to take a hard look at their operations to try to cut costs wherever possible. They will also need to consider participating in the 1983 government farm program which offers some price protection on their investments and can supplement their income.

Ranchers also need to adopt efficient management practices—those that can bring in extra dollars—and they need to cut out anything that might be draining their pocketbooks.

Farmers and ranchers must strive to become better businessmen if they expect to financially survive the year ahead. If U.S. and world economic

conditions improve some, the demand for agricultural products could increase and prices could strengthen. But that may not happen for some time. So farmers and ranchers must continue to hang on for survival—a situation they have become accustomed to over the past several years.



COLORADO WIN—The South Plains College livestock judging team won team honors in four events at the recent competition hosted by Colorado State University at Fort Collins. They took second high point team honors in horse judging, third in swine, fourth in sheep and sixth in cattle judging. From left are Tim Addison of Plains, David Lust of Lazbuddie, fifth high point individual overall and second high point man in horse judging; Benton Easter of Floydada; Mark Thomas of Wolfforth, first high point individual in sheep judging; and Lance Dunn of Post. Coach is Jim Jenkins.

County Cattlemen find preconditioning profitable

Paying close attention to the feeding and health of calves pays handsome dividends, according to David McGowen, a local feed specialist.

A 21-day preconditioning program instituted the day after weaning keeps calves healthy and developing without any of the traditional setbacks, claims McGowen of Producers Coop in Floydada.

"More and more cattlemen are recognizing that stress faced by calves at weaning can be reduced," said McGowen. "They're also finding that the growth setbacks and weight losses

usually associated with weaning don't have to occur."

McGowen has helped area cattlemen establish preconditioning programs designed to ease the stresses faced by calves in weaning and shipping.

To prove his point, he recently referred to records kept by 341 cattlemen over a four year span which indicate that 23,137 newly weaned calves made average daily gains of 2.46 pounds during the 21 days they were on the preconditioning program designed by the Ralston Purina Company.

Grazing fees lowered on national forests & grasslands

Livestock grazing fees on national forests and national grasslands in 17 western states will be reduced next year. R. Max Peterson, chief of the U.S. Department of Agriculture's Forest Service, said.

Peterson said the 1983 grazing fees will be \$1.45 per animal unit month, 41 cents less than in 1982, on national forests and grasslands in Idaho and Oregon and on national forests in Arizona, California, Colorado, Kansas, Montana, Nevada, Nebraska, New Mexico, North Dakota, Oklahoma, South Dakota, Texas and Wyoming.

The grazing value for national grasslands in Colorado, Kansas, Nebraska, New Mexico, North Dakota, Oklahoma, South Dakota, Texas and Wyoming will be \$2.86 per month, 48 cents less than in 1982.

An animal unit month is the grazing of one cow, one horse or five sheep for one month.

Cost Share Funds to be available

The 1983 ACP program has been announced by the ASCS office. Sign up has been scheduled for January 3 through January 7.

A number of conservation practices can be cost-shared such as diversion terraces, parallel terraces, waterways, tailwater pits, irrigation pipeline and other practices.

Anyone who would like further information on the Cost-Share program should contact the ASCS office or the Soil Conservation Service (SCS) in Floydada.

Peterson said grazing fees are determined by a formula established in the Rangelands Improvement Act of 1978. The formula, which is being used on a seven-year trial basis, considers rates for leasing private grazing lands, the difference between total costs of grazing on public and private lands, beef cattle prices and the costs of producing livestock.

"Grazing fees are lower again this year because the prices farmers and ranchers received for beef declined while the costs of livestock production increased," Peterson said. "These factors play a prominent role in determining grazing fees under the formula prescribed by law."

Farmers and ranchers will pay about \$9.7 million to graze their livestock on western national forests and grasslands in 1983, Peterson said. Fifty percent of this amount may be appropriated by Congress to maintain and improve national forest rangelands. Twenty-five percent will go to counties where the lands are located and the remainder will go to the U.S. Treasury.

FARM NEWS

Landscape & Gardening

by Benny Butler

USE CARE WHEN MOVING NATIVE PLANTS

If you like living in Texas, chances are you also appreciate the native plants—trees and shrubs—that make Texas so uniquely beautiful: majestic live oaks, stately Spanish oaks, cedar elm, pecan or persimmon, or the hundreds of other native or "wild" plants that add scenic beauty to our landscape.

There is a growing trend among horticulturists, nurserymen and landscape architects all across the country to advocate the use of native plants in landscape developments, with good reason.

Native plants have distinct advantages over other types of introduced plants. Most natives are easy to grow. They tend to be tolerant to local weather conditions and local soils, and for the most part they are not troubled with insect and disease problems.

The main problem with the natives lies in trying to transplant and establish the plant from its native habitat to your landscape. Most native plants like to be left alone; they don't like to be disturbed.

However, if you would like to "go wild" and add some native plants to your landscape, the wet, cold days of winter are ideal for transplanting. Now, while the plants are dormant, they will suffer less from the shock of moving and

the interruption of growth.

Special precautions must be taken when selecting and transplanting native plants. Even though these plants are hardy, it is often difficult for the homeowner to substitute the natural or native woodland environment which nature has provided. The gardener must first ask himself whether he can provide growing conditions similar to those in which the plant now grows. If not, leave the plant to nature.

In choosing the native to transplant, do not attempt to move overly large specimens. Small plants are usually more vigorous, grow much faster and are easier to handle.

It is often advisable, particularly in the case of large specimens, to prune the root system of the selected native prior to digging. Prune the plant's lateral roots one growing season prior to complete transplanting by making spade cuts around the plant in winter, allowing the soil to remain in place. This allows the plant to adjust to shock prior to transplanting, as well as develop a more intensive root system.

When transplanting, lift the plant with a ball of earth if possible. Wrap the ball with a moist burlap sack or similar material for easy transfer and to prevent disturbance of the root system. Plant the native plant at its normal growing depth immediately after digging. Water well after planting and mulch over the root area with leaves, pine bark or compost.

Pruning the transplanted tree or shrub is often difficult for the gardener but usually essential for livability. The upper branches and end shoots of limbs should be cut back so as to compensate for loss of root area and to encourage new branching and foliage come spring.

There are many beautiful native plants in Texas, yet the fellow with the shovel should be aware of state and county laws concerning native plants and be certain to obtain permission from property owners before digging.

Regardless of your choice, be sure you transplant with caution and care to insure liveability—otherwise, better just leave it to nature and do not disturb.

Educational programs conducted by the Texas Agricultural Extension Service serves people of all ages regardless of socioeconomic level, race, color, sex, religion or national origin.

ADAM'S WELL SERVICE

Floydada 983-5003

FEDERAL LAND BANK ASSOC. OF FLOYDADA

Floydada 983-2480

RUSSELL'S EQUIPMENT & SUPPLY

Floydada 983-3751

MUNCY ELEVATOR

Lockney 652-3100

CONSUMERS FUEL ASSOC.

Lockney 652-3336

PRODUCTION CREDIT ASSOC.

Floydada 983-2454

BROWN'S IMPLEMENT INC.

Floydada 983-2281

FLOYD COUNTY IMPLEMENT

Floydada 983-3732

CASE POWER & EQUIPMENT

Floydada 983-2836

FIRST NATIONAL BANK OF FLOYDADA

Floydada 983-3717

FLOYDADA COOPERATIVE GINS INC.

Floydada 983-2884

FLOYD COUNTY FARM BUREAU

Lockney Floydada 652-2242
983-3777

FLOYDADA IMPLEMENT CO.

Floydada 983-3584

MARTIN & COMPANY

Floydada 983-3713

SUN-VUE FERTILIZER

Lockney 652-3362

MORTON BUILDINGS

RESIDENCE (983) 298-6518 OFFICE (983) 295-4388

Telephone Outlook and Market Information (TOMI)
(713) 845-8664

Telephone Outlook and Market Information (TOMI) is available seven days a week, 24 hours a day.

| January | Subject, Specialist |
|---------|--|
| 4-6 | Hog and Pig Situation, Ernie Davis |
| 7-10 | Decision Dates in 1983, Ron Knutson |
| 11-13 | Production Input Price Outlook, Forrest Stegelin |
| 14-17 | Grain Crop Production Update, Ed Smith |
| 18-20 | Cattle on Feed Analysis, Ed Uvacek |
| 21-24 | Dairy Situation, Bud Schwart |
| 25-27 | Cotton Update, Carl Anderson |
| 28-31 | 1983 Cattle Inventory, Ed Uvacek |

Number is... (713) 845-TOMI

Telephone Outlook and Market Information (TOMI)
(713) 845-8664

Telephone Outlook and Market Information (TOMI) is available seven days a week, 24 hours a day.

| January | Subject, Specialist |
|---------|--|
| 4-6 | Hog and Pig Situation, Ernie Davis |
| 7-10 | Decision Dates in 1983, Ron Knutson |
| 11-13 | Production Input Price Outlook, Forrest Stegelin |
| 14-17 | Grain Crop Production Update, Ed Smith |
| 18-20 | Cattle on Feed Analysis, Ed Uvacek |
| 21-24 | Dairy Situation, Bud Schwart |
| 25-27 | Cotton Update, Carl Anderson |
| 28-31 | 1983 Cattle Inventory, Ed Uvacek |

Number is... (713) 845-TOMI

Telephone Outlook and Market Information (TOMI)
(713) 845-8664

Telephone Outlook and Market Information (TOMI) is available seven days a week, 24 hours a day.

| January | Subject, Specialist |
|---------|--|
| 4-6 | Hog and Pig Situation, Ernie Davis |
| 7-10 | Decision Dates in 1983, Ron Knutson |
| 11-13 | Production Input Price Outlook, Forrest Stegelin |
| 14-17 | Grain Crop Production Update, Ed Smith |
| 18-20 | Cattle on Feed Analysis, Ed Uvacek |
| 21-24 | Dairy Situation, Bud Schwart |
| 25-27 | Cotton Update, Carl Anderson |
| 28-31 | 1983 Cattle Inventory, Ed Uvacek |

Number is... (713) 845-TOMI



Six years after Marconi discovered radio, the first transatlantic radio telegraphic transmission occurred - in 1901.

Model Closeout Rebates up to \$6,200
On the last 40 Series John Deere tractors we'll get - including a bonus for financing without waiver



Get a cash rebate direct from John Deere, in addition to our good deal on the 40 Series tractor of your choice - 2WD or 4WD. These tractors also carry a 1981 sticker price, so we're offering rebates from prices already competitively low.

Boost your savings even more. During December, 1982, pay cash for your new tractor, finance it where you choose, or finance it with John Deere without waiver* and you'll collect the

cash rebate in lieu of finance waiver as shown. Or you can elect to have the John Deere finance charge waived to June 1, 1983, instead of taking the additional cash rebate.*

During December, special rebates, too, on 50 Series 4WD tractors that are replacing 40 Series 4WDs being closed out. Cash rebates up to \$10,500. Waiver of finance charge option: See us soon!

| Model | Cash Rebate on Purchase | Dec. '82 Cash Rebate In Lieu of Waiver | Maximum Rebate |
|-------------|-------------------------|--|----------------|
| 228-hp 8640 | \$4,500 | \$1,700 | \$ 6,200 |
| 179-hp 8440 | 4,000 | 1,350 | 5,350 |
| 180-hp 4840 | 3,600 | 1,200 | 4,800 |
| 155-hp 4640 | 3,400 | 1,050 | 4,450 |
| 130-hp 4440 | 2,800 | 850 | 3,650 |
| 110-hp 4240 | 2,300 | 750 | 3,050 |
| 90-hp 4040 | 2,200 | 700 | 2,900 |
| 80-hp 2940 | 1,800 | 500 | 2,300 |
| 70-hp 2640 | 1,300 | 400 | 1,700 |
| 60-hp 2440 | 1,200 | 350 | 1,550 |
| 50-hp 2240 | 1,100 | 300 | 1,400 |
| 40-hp 2040 | 900 | 250 | 1,150 |
| 370-hp 8850 | \$8,200 | \$2,300 | \$10,500 |
| 290-hp 8650 | 6,400 | 1,900 | 8,300 |
| 225-hp 8450 | 5,700 | 1,500 | 7,200 |

(Offer subject to tractor availability.)

*Availability of John Deere financing plans subject to approval of credit. These offers may be reduced in value or withdrawn at any time.

Floyd County Implement
 Ralls Highway - Floydada

More Classified

Business Services

ADAMS WELL SERVICE Complete Irrigation Service. All sizes submergible pumps in stock. One day service. 983-5003. tfn

LOCKSMITH: Locks opened. Locks repaired. Keys made for locks that have no keys. Duplicate keys made. Deadbolts installed. 24-hr. Mobile Service throughout area. Don Probasco. Pro-Lock shop. 983-3834.

POOLE WELL SERVICE AND RADIATOR SHOP

Irrigation and domestic. Trailer Sales

407 E. Houston
 983-5610 or 983-2285

Script Printing & Office Supply
 *Commercial Printing
 *Office supplies & Furniture
 *Business Machines

108 S. Main
 Floydada
 983-5131

"When you care enough to look your very best."

Gene's Cleaners

103 North Main
 Floydada

Mary Kay COSMETICS

Lisa Rose
 CALL: 983-5460

Pets

REGISTERED AUSTRALIAN puppies. Cowdog and good watchdog. Donice Casey. 652-3414. L-1-20c

Motorcycles

FOR SALE: 1975 XL-350 Honda Dirt Bike. Excellent condition. \$650.00 or best offer. Call 983-3736 after 6:00 p.m.

FOR SALE: 1980 Yamaha. Model 80 GT. Tommy Hancock. 983-2459. 12-31c

Automotive

1966 PLYMOUTH. 51,000 miles. Fair condition. Call 983-2370. 12-31p

1975 HONDA CIVIC. AC. 8-track. White with tan interior. 983-3430. 520 W. Missouri. 12-30c

78 Plymouth \$1650
 75 LTD \$750
 76 Pontiac \$650
 73 Mt. Carlo \$600

6 little school cars
 Priced to sell
 We can finance any car we sell
 W.B. Eakin
 Ralls Hwy 983-3616

CUSTOM EXHAUST WORK

Bruce Williams
 Specializing in Glass Packs and Turbo Mufflers
 At
DANS AUTO SERVICE
 652-2462

Auto Parts & Accessories

EZ RIDER SHOCKS by Monroe. Buy 3 and the 4th is FREE. Free Installation. Don's Muffler Shop, 210 W. California, Floydada, Texas. 11m

ALTERNATOR & STARTER REPAIRS
 Norrell Tractor Parts
 215 S. Main
 983-3417

TURNER REAL ESTATE

983-2635 Farms Ranches Floydada, Texas

Hollis R. Bond Real Estate

107 S. 5th FLOYDADA PHONE 983-2151

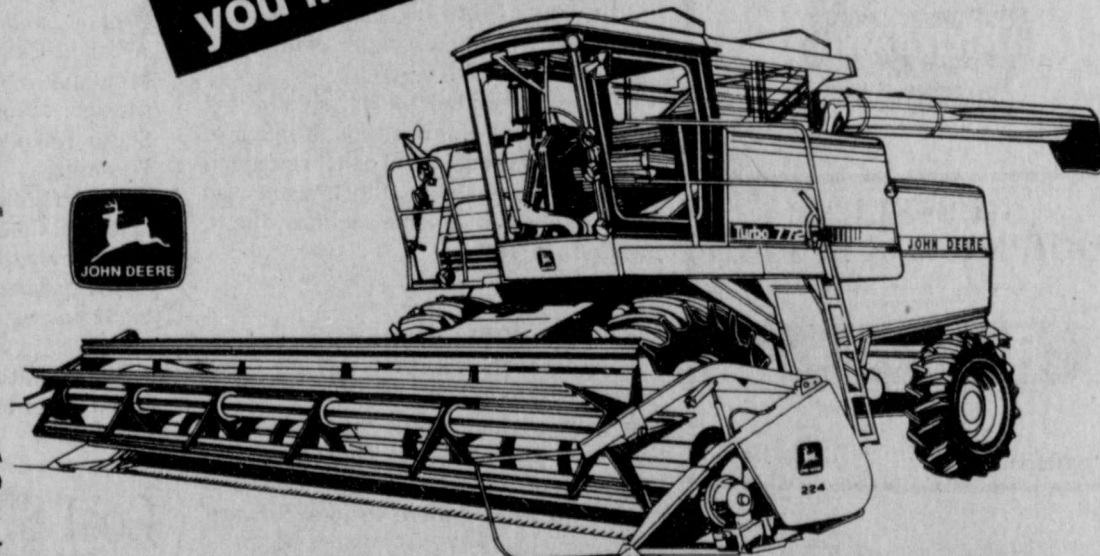
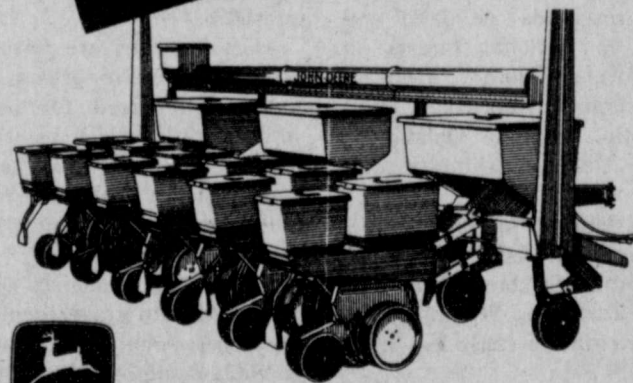
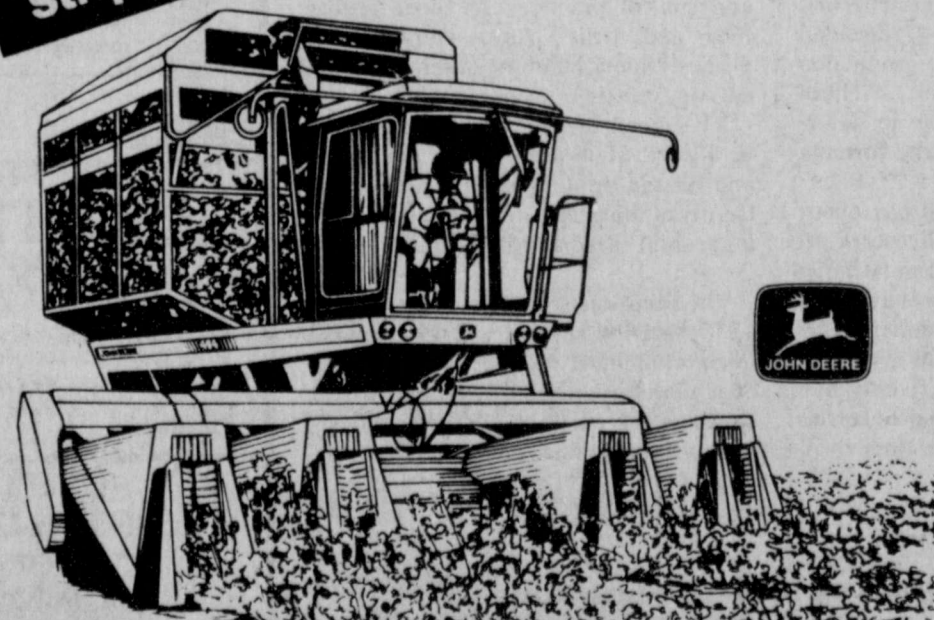
Diamond Industrial Supply Co., Inc.

Phone Days 296-7418
 Nights 296-1200 or 296-7828
 1014 Broadway Plainview, Texas
 SKF BCA Timken Bower Cotton Stripper Brushes & Bats
 U joints Oil Seals O rings Wisconsin
 "We Appreciate Your Business More"

Cash Rebates up to \$5,000 plus a WAIVER OFFER
 On a new John Deere cotton stripper bought preseason

UP TO \$6,100 DEERE BONUS
 On these new John Deere Max-Emerge[®] Planters plus April 1, '83 waiver offer

Up to \$5,200 Cash Rebate Plus WAIVER OFFER
 On the new John Deere combine you'll need next season



The cotton harvesting pros at John Deere offer the most cost-efficient cotton strippers in the field today... and now make a limited-time rebate offer to lower your costs even more. Order any new mounted or self-propelled stripper listed here; when it's delivered you'll get a cash rebate check from John Deere.

There's more. If you qualify for credit, you can finance with John Deere, make the normal downpayment, then make no installment payments and incur no finance charges until the 1983 harvesting season.* So it'll pay

you to order now while this offer's in effect.

| Model | Cash Rebate On Purchase |
|----------------------|-------------------------|
| 283 Mounted Stripper | \$2,500 |
| 484 SP Stripper | \$5,000 |
| 7440 SP Stripper | \$3,000 |

*Availability of John Deere finance plans subject to approval of credit. These offers may be reduced in value or withdrawn at any time.

Order the model and size you need now. A substantial John Deere money bonus will be mailed to you after your planter is delivered.

In addition to this bonus, if you finance the planter with Deere, finance charges will be waived to April 1, 1983.*

| Model | John Deere Money Bonus | Model | John Deere Money Bonus |
|---------------------|------------------------|--------------------|------------------------|
| 7000 Front-Folding: | | 7000 Conservation: | |
| 24-row N | \$6100 | 8-row N | \$1300 |
| 18-row N | \$4400 | 6-row W | \$1100 |
| 16-row N | \$3900 | 6-row N | \$1000 |
| 12-row W | \$3500 | 4-row | \$ 700 |
| 12-row N | \$2600 | 7100 Integrat: | |
| 8-row W | \$2200 | 12-row N | \$1200 |
| 7000: | | 10-row N | \$1000 |
| 12-row N | \$1900 | 8-row N | \$ 900 |
| 8-row W | \$1200 | 8-row W | \$ 900 |
| 8-row N | \$1100 | 6-row N | \$ 700 |
| 6-row W | \$1000 | 6-row W | \$ 600 |
| 6-row N | \$ 800 | 4-row W | \$ 500 |
| 4-row W | \$ 500 | 4-row N | \$ 500 |
| 4-row N | \$ 500 | | |

N = Narrow W = Wide
 *John Deere finance plans subject to approved credit. These offers may be reduced in value or withdrawn at any time.

You can't buy more productivity than you'll get from a Titan combine. And now, take delivery on a Titan ordered during this special offer and you'll get a hefty cash rebate check from John Deere. A cash rebate plus our best offer on a John Deere combine already carrying a list price that's below many competitors.

Then, after the downpayment if you qualify for credit, you can finance your new combine with Deere and finance charges will be waived until the 1983 harvest season in this area.*

| Model | Rebate on Purchase |
|------------------------|--------------------|
| 4420 | \$3,300 |
| 6601 Pull-Type | \$2,300 |
| 6620 and SideHill 6620 | \$4,200 |
| Hillside 6622 | \$4,900 |
| 7721 Pull-Type | \$2,800 |
| 7720 | \$4,600 |
| 8820 | \$5,200 |

*Availability of John Deere financing plans subject to approval of credit. These offers may be reduced in value or withdrawn at any time.

FLOYD COUNTY IMPLEMENT

Floydada, Texas

983-3732

SHOP COMPARE WANTS ADS ARE YOUR BEST BUY!

Real Estate

FOR SALE: 2 bedroom house, nice location, assumable loan, owner would carry part of equity. Call 983-3736 after 5:00 p.m.

3 BEDROOM, 2 bath brick home. Central heat and cooling, covered patio. Built-in microwave. Lots of built-ins. Good location. 809 W. Virginia. 983-2394.

MUST SELL: 3 bedroom, 2 bath. With large shop. Must see to appreciate - 983-2636.

3 BEDROOM, 1 1/2 baths, carpet and fan fenced yard. 983-2394.

FOR SALE: Several nice two and three bedroom houses. Loans can be arranged. Contact Sam Hale at Hale Ins. & Real Estate 983-3261.

BEAUTIFUL BRICK, 3 bedroom, 2 bath, spacious walk down den with fireplace, 2-car garage, and storm cellar. For appointment, call 983-3487 after 6:00 p.m.

TWO BEDROOM HOUSE at 129 W. Jeffie. Call 983-2633.

2-two bedroom houses. West of the highway on Tennessee. 983-2633.

HOUSE FOR SALE OR RENT: See at 125 J.B. Avenue. 3 bedroom, 1 1/2 baths, 1 car garage. Fenced yard. Day 667-3505, ask for Mike Perry. Night, 667-3967.

NICE 2 bedroom house: attached garage, good location, large rooms, closets and storage. Call 374-0540, 376-4811 or 652-3451.

HOUSE FOR SALE: 1700 sq. ft. plus full basement. Tall cathedral ceiling in spacious living, dining and kitchen area with beautiful black brick fireplace. Two stairways leading in and out of basement. A lovely stone fireplace in play room of basement. Two and 1/2 baths. Designed for 3 and 1/2 baths and two car garage. Office space is created from enclosed patio. Call 983-3772. Across the street from High School. Wonderful for growing children.

518 W. MISSISSIPPI, Floydada. Nice for retirement. Price \$12,000. 2 bedrooms, 1 bath. Call Lubbock 1-797-1084.

HOUSE FOR SALE: 2 bedroom, fireplace, carpeted, backyard storage in good condition, near schools. 652-2249, L1-20p

FARMS

FOR SALE 320 Acres, 5 miles East of Floydada. Call 806-983-2646.

FOR SALE: 74 acres in cultivation, 2 miles north of Floydada on Lockney Highway. \$500.00 an acre, will G.I. call 983-3979.

Farm Items

FOR SALE: Excellent leafy alfalfa. Also good oat hay. Call 983-3362.

Lost & Found

STRAYED FROM STERLEY community. 6 Brangus steers. Notched on end of left ear and branded on left hip. If seen, call 652-3680.

LOST: Female Shetland sheep dog or miniature collie. Disappeared early Christmas morning, Northeast of South Plains. Call 983-3660 or 983-3043.

LOST: Black Labrador retriever. White star on front chest, 80 lbs. Had red collar with "Flash" name tag. (806) 592-3593 or 592-8119 or 652-3581. Reward offered.

LOST: A key ring with 5 keys. Has flat oval clear plastic ornament. Reward. Call 983-3737.

For Sale

"WE SELL SLEEP"
Direct Mattress Co. New or renovated. For appointment call City Trim Shop, 983-2332. Floydada.

1 PAIR OF PIONEER T.S. 289 triaxials speakers and a Pioneer AD 50 equalizer. Call 983-5003 or 983-5455.

5 used Color TV's 19" and 25" \$150 up Mize Television.

FOR SALE: Storage building, 12x32. Wood floor, 9 ft. garage door and a walk in door; 40 gallon electric water heater; 79 Datsun king cab pickup with camper top. 983-3695, Joe Jones.

PORTABLE DISHWASHER. White, 3 level, 6 cycles. Was \$429.95. Now \$299.95. One only. Hurry. Sears, Floydada, 983-2862.

FOR SALE: Grandfather clocks. Call 983-2417, 804 W. Grover.

FIREWOOD. Hauled and stacked. \$100 per cord. Call night 983-2291 or days 983-2737.

FOR SALE: Mesquite wood. \$100 a cord. Delivered and stacked. 652-2151, L-1-27-p

PIANO IN STORAGE

Beautiful spinet-console stored locally. Reported like new. Responsible party can take at big saving on low payment balance. Write Joplin Piano, Inc., Joplin, Missouri 64801. Include home phone number.

WANTED: Responsible party to assume small monthly payments on spinet/console piano. Can be seen locally. Write: (include phone number) Credit Manager, P.O. Box 478 Lockhart, TX 78644-0478.

Fruit Trees & Pecan Trees

Emert's Nursery
652-3116 Lockney

PORTABLE CORRAL PANELS. 5 ft. x 20 ft. 6 bar panels. \$45.00. Call (405) 662-2046 or Texas residents (800) 654-4584.

Mufflers for John Deere Tractors
3020 late & 4020 Diesel - \$20
Late model 4010 & 4020 - \$18.85
3010, 3020 gas and LP, early 4010 Diesel, 4020 Gas & LP - \$17.50
4230, 4320, 4430, 4520, 4620, 4630 - \$43.50

Spray Paint Matched to Fit \$1.25
Case Red, Ford Blue, Ford Gray, JD Yellow, JD Green and MF Red

Enamel Paint \$15.00 Gal.
J.D. Green & J.D. Yellow

20% off Lubricant Accessories
While Supplies Last

Brown's Implement

Rails Highway 983-2281

Card of Thanks

We would like to express our sincere thanks to the many friends who have helped us through the recent loss of our mother. Your expressions of kindness have given us strength thru a difficult time.

Bill & Kay Orman, Misti & Shane Kent & Beth Biggers Keith Biggers

Dear Friends
The family of Ermon Welborn would like to express their deep appreciation for your prayers, cards, food, flowers and visits during our dear Mothers illness and passing. God bless you.
Bobby Welborn & family
James Welborn & family
Eunice Lewis & family
Donna Booth & family
Jo Ann Gooch & family

For Rent

DAY LAND FARM for rent in Floyd County. Less than 200 acres. Write to Guy Day, 1610 San Carlos, Sweetwater, Texas 79556.

FOR RENT: 3 bedroom brick house. 1/4 mile from city limits. Call 983-3780 or 983-2153.

ECONOMICAL STORAGE
TRY BARKER'S
Jewel Box-Mini Storage
and save your time and money.
Phone 652-2642.
Corner Main & Locust - Lockney, Texas.
Barker Building

STORAGE SPACE

BOATS, FURNITURE, ANYTHING, ETC. BY THE MONTH OR SIX MONTH 10% DISCOUNT.
West Texas Mini Storage
CALL WILSON BOND
983-3573 OR 983-2151

Want To Buy

WANTED TO BUY irrigated or driland farm in Floyd or surrounding area. Write Box XRO, c/o Hesperian, 111 F. Missouri, Floydada.

CLASSIFIED ADS
CALL 983-3737
or 652-3318
Before 3:00 p.m. on Tuesdays

Public Notice

The Floydada Independent School District is now accepting bids for the renewal of its insurance policy covering the building and contents. Bid forms may be obtained from the Administrative Office, 226 West California or call 983-5167. The Board of Trustees will award contract during its regular scheduled meeting on January 6, 1983. The Board of Trustees reserves the right to waive any or all formalities and to reject any or all bids. Bids must be received by 5:00 p.m. on January 5, 1983.

CITY OF FLOYDADA PUBLIC NOTICE INVITATION TO BID

The City of Floydada, Texas will receive sealed bids at the office of the City Secretary at 114 W. Virginia Street until 5:00 P.M., January 11, 1983 and then opened and publicly read at the City Council meeting at 7:30 P.M. in the meeting room at the City Hall for the following:
DEMOLITION OF THE FOLLOWING PROPERTY:
1. Vida Mae Culpepper - Lot 8, Block 126, Original Addition, 613 S. Wall Street, Floydada, Texas.

INSTRUCTIONS:
1. Specifications may be obtained at the City Hall, 114 W. Virginia, Floydada, Texas.
2. The City Council of the City of Floydada, Texas reserves the right to accept or reject any or all bids submitted.

Jimmie Lou Stewart
City Secretary

Farm Services

WE CUSTOM MAKE & FIT hydraulic hose for all types of machines. Brown's Implement 983-2281.

Portable disc rolling
Lawson Farm Supply
Inc.,
Floydada 983-3940

Services

LET ME TRIM your fruit, nut and shade trees. Keith Emert. 652-3116. L-TFN

PHEASANTS & QUAIL mounted. Call Mike Anderson 983-2037. TFN

CARPET INSTALLATION

WORK GUARANTEED
REPAIRS AND RE-STRETCHING
NEW AND USED
PHIL AND JO GINN
PHONE (806) 793-3620
(806) 983-2593

Employment

TEXAS REFINERY CORP. offers PLENTY OF MONEY plus cash bonuses, fringe benefits to mature individual in Floydada area. Regardless of experience, write A.D. Sears, Pres., Texas Refinery Corp., Box 711, Fort Worth, Texas 76101.

PUBLIC NOTICE

Note: This ordinance has been in effect since July 5, 1979 but since it has not been previously published, enforcement has been delayed.

ORDINANCE NO. 205

AN ORDINANCE BY THE CITY OF LOCKNEY, TEXAS, PROHIBITING THE KEEPING OF LIVESTOCK WITHIN THE CITY AND DECLARING THE SAME TO BE A NUISANCE AND FIXING A PENALTY FOR THE VIOLATION THEREOF, AND PROVIDING FOR ABATEMENT AND INJUNCTION

WHEREAS, the City of Lockney, Texas is a municipal entity, incorporated under the general laws of the State of Texas; and

WHEREAS, the City of Lockney, Texas is charged with protection of the health of its citizens and

WHEREAS, it is deemed by the Council necessary to enact measures insuring sanitation in the City of Lockney:

NOW, THEREFORE, BE IT ORDAINED:

SECTION I: In addition to those things which are elsewhere by ordinances of the City declared to be and constitute nuisances, it is hereby declared to be a nuisance for any person within the limits of the City to maintain or keep any livestock or poultry or any animal or fowl whatsoever, whether for agrarian, home use, or commercial purposes or, to cause or suffer the carcass of any animal or any animal or vegetable matters, slop, swill, suds, garbage, filth, stable droppings or offal or noisome substances of any kind to be collected, deposited or to remain at any place within the City of Lockney.

SECTION II: When judgement shall be rendered against any person for creating, keeping or maintaining any nuisance the subject of this ordinance, it shall be the duty of the Court before whom such conviction is had to order the Defendant in such suit to forwith abate the nuisance; and also, that if the same is not done by such Defendant within 24 hours, the same may be abated and removed by the Chief of Police of the City of Lockney. The order shall be entered upon the docket of the Court and be made a part of the judgement in the cause.

SECTION III: The right of injunction for purposes of enforcing this ordinance shall remain inviolate as a remedy, but shall be cumulative of all other remedies and not exclusive.

SECTION IV: Every person keeping, creating or maintaining any nuisance the subject of this ordinance, shall be liable for all costs and necessary expenses of abating the same when done by the City; and, in all cases where the Chief of Police or other officer shall abate any such nuisance, he shall keep an account of all such expenses attending such abatement, and shall forthwith report the same to the Mayor, who shall thereupon bring suit for the same in the name of the City against the person creating, keeping or maintaining the nuisance so abated.

SECTION V: Any person convicted of maintaining any nuisance the subject of this ordinance, or who violates any provision of this ordinance or who omits or refuses to comply with this ordinance, shall be deemed guilty of a misdemeanor and upon conviction shall be fined in any sum not less than \$1.00 nor more than \$200.00. Any person having been found guilty of creating, keeping or maintaining a nuisance, who shall neglect to abate and remove the same within 24 hours thereafter, during which such nuisance is continued, be subject to a like penalty as that originally incurred for keeping, creating or maintaining a nuisance, and each day that the nuisance is allowed to continue shall constitute a separate offense.

SECTION VI: Notwithstanding anything herein contained to the contrary, household pets, such as dogs, cats, canaries and other such domesticated home-environment-kept pets, shall be exempted from such ordinance unless the maintenance of such pets or the number thereof shall, in itself, constitutes a nuisance, in which case they shall be considered within the prohibition created under this ordinance.

SECTION VII: Nothing contained in this ordinance shall be construed to diminish the prohibition of the maintenance of animals dealt with in other ordinances of the City.

SECTION VIII: In the event any provision of this ordinance, for any reason, shall be invalid or unenforceable, all ordinances heretofore passed by the City and otherwise repealed by this ordinance, shall remain in full force and effect.

SECTION IX: The City Council passing this ordinance deems subject matters hereof to create an immediate public necessity and emergency, and this ordinance shall be in full force and effect immediately upon its passage.

PASSED AND APPROVED THIS 5th day of July, 1979.

ATTEST:
Erma Lee Duckworth
CITY SECRETARY

SIGNED:
Claude Brown
MAYOR

APPROVED AS TO FORM: PAUL LYLE, City Attorney

12-30

CONTRACTOR NOTICE OF TEXAS HIGHWAY CONSTRUCTION MOWING OF STATE DEPARTMENT OF HIGHWAYS and PUBLIC TRANSPORTATION RIGHT-OF-WAY

All sealed proposals will be received, publicly opened and read at the District Maintenance Office, 601 Slaton Road, Lubbock.

Parmer, Gaines, Crosby, Hale and Lamb Counties will be received until 9:00 a.m. on January 24, 1983.

Castro, Hockley, Dawson, Lubbock South and Garza Counties will be received until 9:00 a.m. on January 26, 1983.

Bailey, Floyd, Lubbock North, Yoakum and Terry Counties will be received until 9:00 a.m. on January 28, 1983.

The State Department of Highways and Public Transportation, in accordance with the provisions of Title VI of the Civil Rights Act of 1964 (78 C.F.R., Part 8), issued pursuant to such Act, hereby notifies all bidders that it will affirmatively insure that the contract entered into pursuant to this advertisement will be awarded to the lowest responsible bidder without discrimination on the grounds of race, color, or national origin, and further that it will affirmatively insure that in any contract entered into pursuant to this advertisement, minority business enterprises will be afforded full opportunity to submit bids in response to this invitation and will not be discriminated against on the grounds of race, color, or national origin in consideration for an award. Plans and specifications are available at the Maintenance Office for the above mentioned counties and at the office of William M. Pope, District Maintenance Engineer, 601 Slaton Road, Lubbock, Texas.

Usual rights reserved.

A regular meeting of the board of directors for Floyd County Central Appraisal District will be held on January 5, 9:00 A.M. in the appraisal office board room, Room 107, County Courthouse.

12-30c

CITY OF FLOYDADA, TEXAS
By: Parnell Powell, Mayor

12-30c

OBITUARIES

LEONA BRANDES

Leona Brandes, 72, died at 5:10 p.m. Monday, December 20, at Central Plains Regional Hospital, Plainview. She was a resident of Heritage Home. Services were at 2 p.m. Wednesday, December 22, at the Kress United Methodist Church with the Rev. James Willborn, pastor of the First United Methodist Church of Shallowater, officiating. He was assisted by the Rev. John Dorn, pastor.

Burial was in Plainview Cemetery under direction of Lemons Funeral Home.

Born Leona Lloyd on July 13, 1910, in Mary Lee, she had grown up in Aiken and attended Aiken schools. Following her marriage to Clarence Brandes November 19, 1927, in Aiken, she moved to the Providence community where Mr. Brandes farmed.

Mrs. Brandes moved to Plainview in 1946 and to Vega in 1955, where Mr. Brandes died in September 1964. She moved to Kress in 1975 and returned to Plainview in 1979.

Survivors include three daughters, Mrs. Jake (Maxine) Jones of Claytonville, Mrs. Nadine Jones of Moore, Oklahoma, and Mrs. Felix (Sue) Ramirez of Hereford; one son, Lloyd Brandes of Danville, Arkansas; one sister, Mrs. Curley (Margaret) Service of Plainview; eight grandchildren; and 12 great-grandchildren.

MARTHA CAMPBELL

Services for Mrs. O.C. (Martha Faye) Campbell, 73, of Kress were at 10 a.m. Wednesday at First United Methodist Church of Kress with the Rev. John Dorn, pastor, officiating.

Burial was in Plainview Memorial Park under direction of Wood-Duning Funeral Home.

Mrs. Campbell died at 4:25 p.m. Saturday in Central Plains Regional Hospital in Plainview after a brief illness.

The Lamar County native grew up in Childress County. She married O.C. Campbell on March 22, 1940, in Waurika, Oklahoma and they moved from Roaring Springs to the Kress area in 1950. She was a Methodist.

Survivors include her husband; three sons, Gene Weldon of Holcomb, Kansas, Jerry Dean of Dallas, Mollie Faye Box of Mount Pleasant; a sister, Edna Hunter of Floydada; a brother, George Turner of Bovina; seven grandchildren; and a great-grandchild.

MINNIE CANON

Minnie Lenora Canon, 85, of Lockney died at 9:30 a.m. Sunday, December 26, at West Texas Hospital in Lubbock.

Funeral services were at 3 p.m. Tuesday at West College and Third Street Church of Christ with Frank Duckworth, minister, officiating, assisted by Boyce Mosley, a church elder. Burial was in Lockney Cemetery by Moore-Rose Funeral Home of Lockney.

Mrs. Canon was born September 11, 1897 in Lockney. She married Ray Robert Canon on September 7, 1919 at Rencona, New Mexico. They moved to Floyd County from Rencona in 1942.

She was a housewife and member of the Church of Christ.

Survivors include one son, Bill Canon of Santa Fe, New Mexico; one daughter, Mrs. John Lee Carthel of Lockney; two brothers, Paul Ragle of Santa Fe and Raymond Ragle of Plainview; two sisters, Charlotte Hester of Santa Fe and Birtha Smith of Mountainair, New Mexico; 15 grandchildren and 15 great-grandchildren.

She was preceded in death by daughters, Minnie Ray Canon and Sarah Keitley; and one son, Robert.

Pallbearers were grandsons Garry Lee Carthel, Ronald Carthel, Curtis Canon, Ray Hardin, Robert Canon and Mark Canon.

ETHEL CARROLL

Mary Ethel Carroll, 88, of Lockney died at 11:10 p.m. Saturday, December 25, at Lockney Care Center.

Funeral services were at 10 a.m. Tuesday in the First Baptist Church in Lockney with the Rev. Murle Rogers, pastor, officiating. Burial was in Lockney Cemetery by Moore-Rose Funeral Home of Lockney.

Mrs. Carroll was born January 15, 1894 in Carrell County. She married Joseph Hugh Carroll on November 5, 1911 in Center City. They moved from Goldthwaite to Floyd County in 1919. Mr. Carroll died in 1954.

Mrs. Carroll was a housewife and a member of the First Baptist Church of Lockney.

Survivors include one daughter, Mary Dean Crane of Muleshoe; two sons, Glyn Carroll of Houston and James Carroll of Garland; two sisters, Mrs. Jewel McBeth of Killeen and Mrs. Johnnie Head of Goldthwaite; one brother, Raymond Reid of Balch Springs; nine grandchildren and 12 great-grandchildren.

Pallbearers were Hubert Frizzell, Les Ferguson, Claude Brown, Kelton Shaw, R.C. Mitchell and R.V. Webster.

BESSIE GRIFFIN

Services for Bessie Lee Griffin, 76, of the Lone Star community near Lockney were at 2 p.m. Sunday at First Baptist Church in Lockney. Officiating was the Rev. H.H. Sego of Haskell and the Rev. Gorce Applewhite.

Burial was in Lockney Cemetery under direction of Moore-Rose Funeral Home of Lockney.

Mrs. Griffin died at 8:30 a.m. Thursday in Lockney General Hospital December 23, after a sudden illness.

Mrs. Griffin was born in Olney. She married John Tom Griffin in 1927 at Mineral Wells. He died in 1982. She was a member of First Baptist Church in Lone Star, and a housewife. She had lived in Floyd County since 1927.

Survivors include a son, John B. of Lone Star; and two grandchildren.

Pallbearers were Joe Neil Rexrode, Delton Jack, G.B. Johnston, Pat Frizzell, Joe Keeter and Jerry Cawley.

JAMES LEMONS

James E. Lemons, 45, of Seagraves, died about 5 a.m. Wednesday, December 22, when the tractor trailer he was driving overturned about 18 miles south of Big Spring in Glasscock County.

He was the son of Mr. and Mrs. Carl F. Lemons of Lockney, grandson of Mrs. Bell Lemons of Lockney, and brother of Marvin Lemons of Plainview. Mr. Lemons was northbound on U.S.

87 when his truck ran off the east side of the road and overturned 2 1/2 times. He was pronounced dead at the scene.

Services were at 10 a.m. Friday, December 24, in First Baptist Church of Seagraves with the Rev. Floyd Haddock officiating.

Graveside services were at 3 p.m. Friday in Lockney Cemetery with burial under direction of Connally Funeral Home of Seagraves.

Mr. Lemons was a native of Lockney. Born July 25, 1937 in Floydada, he graduated from Lockney High in 1955.

He married Janie Warren August 1963 in Floydada.

Other survivors include his wife, Janie; a daughter Jenese of the home; two sisters, Mrs. Frances Whatley of Dallas and Mrs. Carla Galey of San Antonio; and another brother, Phil Lemons of Cedar Hill.

S.H. TACKETT

Services for S.H. Tackett, 87, of Floydada were at 2:30 p.m. Sunday at City Park Church of Christ in Floydada with Perry Zumwalt, minister officiat-

ing. Burial was in Crosbyton Cemetery under the direction of Moore-Rose Funeral Home.

The Dublin native married Eva Tackett on October 25, 1922, in Lubbock. He was a retired farmer, a World War I veteran and a member of City Park Church of Christ.

Survivors include his wife; a daughter, Cleta Ellison of Lubbock; two sisters, Mrs. Lawrence Topete and Opal Evans, both of Tulsa; four grandchildren; and five great-grandchildren.

BUDDY'S FOOD

Buddy Widener, Owner-Forrest Shannon Mgr.
in Floydada, 220 South Second



NEW STORE HOURS

Monday - Saturday 8 AM - 9 PM
Sunday 9 AM - 8 PM



We reserve The Right To Limit Quantities

Values in this ad effective thru Wednesday, January 5, 1983

6-32 oz. Regular or Diet
COCA-COLA \$1.99



22 oz. Giant Size Dish Liquid
PALMOLIVE 99¢



15 oz. Wheat Chex
CEREAL 99¢



12 oz. Can Regular or Diet 6 Pack
COCA-COLA \$1.39



Nabisco Bag or Box
SNACKS 99¢
17 oz. Del Monte Sweet
PEAS 2/89¢

25 Square Feet
REYNOLDS WRAP 2/99¢

14 oz. Tony's
PIZZA \$1.59
Dry Salt
JOWLS 69¢ lb.

Lean Pork
ROAST \$1.49 lb.

Frito Lay Picante Sauce, Enchilada or Bean
DIP 99¢

Sparklers
AIR FRESHNERS 99¢

20 oz. Van D Kamps
FISH STICKS \$2.79
2 lb. Owens
SAUSAGE \$3.89

Boneless Round
STEAK \$2.39 lb.

Lipton Onion
SOUP MIX 79¢
70 oz. Wondra
Long Grain
RICE \$1.99

16 oz. Stokley Can
PUMPKIN 4/\$1.00

USDA
GROUND BEEF \$1.29 lb.

USDA Boneless Bottom Round
ROAST \$1.89 lb.

2 oz. Schilling
VANILLA \$1.69

11 oz. Del Monte
MANDARIN ORANGES 79¢



15 oz. Cinch
CORNBREAD MIX 69¢

16 oz. Princella
YAMS 2/99¢

12 oz. Nabisco
VANILLA WAFERS 99¢



32 oz. White Swan
DISH LIQUID 59¢

Sunkist Orlando
TANGERINES 39¢ lb.

10 lb. Bag no. 1
POTATOES 99¢

1 lb. Cello Bag
CARROTS 3/\$1.00

Yellow Medium Size
ONIONS 7 lbs. / \$1.00

20 Count Hefty Medium
GARBAGE BAGS \$1.39

Lady Of San Juan Religious
CANDLES 69¢

15 oz. Box Del Monte
RAISINS \$1.29

7 Day Religious
CANDLES \$1.59

1 Gallon Buddy's
MILK 99¢

With This Coupon and Purchase of \$20.00 or More
Good at Buddy's Food no. 2
Expires 1-5-83

1 lb. Parkay
MARGARINE 29¢

With This Coupon And Purchase of \$20.00 or More
Good At Buddy's Food no. 2
Expires 1-5-83

REMEMBER your loved ones with a living memorial to the Caprock Hospital Auxiliary Memorial Fund. Mrs. Ben Whitaker, Treasurer.