

THE KENNETH HOLT home reminds us of the busy activities involved with the approaching holidays.

Lockney Branch Library  
P O Box 681  
Lockney, Texas 79241

Index	
Area News .....	1b
Church Directory .....	TV6.7
Classified .....	13a
Crime Call .....	2a
Farm News .....	4b
Obituaries .....	12a
Recipe Exchange .....	TV8
Society .....	4a
Sports .....	9a
Wes Side Story .....	TV1

Weather		
Courtesy of Energas		
DATE	HIGH	LOW
Dec. 8	29	28
Dec. 9	33	26
Dec. 10	42	32
Dec. 11	34	31
Dec. 12	41	28
Dec. 13	51	30
Dec. 14	57	37

Beacon Rates  
In County \$11.<sup>50</sup>  
Out-of-County \$12.<sup>50</sup>

# The Lockney Beacon

# 25<sup>c</sup>

Volume 81

Number 50

Thursday

©The Lockney Beacon

December 16, 1982

30 Pages In Three Sections

## Changes coming to Southwestern Bell

Changes are coming January 1, 1983, for Southwestern Bell customers. However, those changes do not alter Southwestern Bell's commitment to provide quality basic telephone service.

pledged Jim West of Southwestern Bell. Starting January 1, Southwestern Bell will be restricted to providing new residential and business telephone instruments and equipment only from

existing inventories, said West. However, customers still will receive local phone service, access to long distance lines and a monthly bill from Southwestern Bell just as they do today.

Bell's equipment offerings has no direct link with the recent settlement of the government's antitrust suit against the Bell System, West said. But, he said the equipment ruling is "the first visible step" in a series of changes leading up to Southwestern Bell's divestiture from AT&T in 1984.

"The FCC action effective January 1 will not directly affect rates for local or long distance service," West said.

"However, factors such as past inflationary periods, high interest rates and competition will continue to push rates upward."

West pointed out that Southwestern Bell will continue to provide repair or maintenance service on instruments leased from the company. Customers who purchase instruments from other vendors will handle any maintenance through a warranty or similar agreement.

Southwestern Bell also will continue to be responsible for repairs if a service problem is in Southwestern Bell's central office, in the cable leading to a customer's home or business, or in inside wiring provided by the telephone company, he said.

"For new connects, or changes in premise telephone arrangements, customers still will be able to have Southwestern Bell wire their homes for phone service," West said. "Or, customers may prefer to hire someone else to do the wiring, or even do it themselves."

West emphasized that amid all the changes, Southwestern Bell is doing everything possible to ensure a smooth transition for the company and its customers.

"Our record is based on long years of good service. We don't intend to change," he said. "Customers can be assured we'll do all we can in the months ahead to minimize any inconvenience stemming from the FCC ruling and other changes."

West suggested that customers with questions about these or any other changes in the telephone business should call the company's "Let's Talk" toll-free information number, (800) 555-5000. However, questions concerning individual customer accounts should be directed to Southwestern Bell business offices.



THE OFFICIAL ground breaking ceremony for the Mackenzie Water project took place Tuesday at Lake Mackenzie. Lon Davis, [R] president of the Mackenzie Water Authority Board, starts the project with the turning of the first shovel

of earth. Looking on is [R-L] T.A. Hayhurst representing Tulla, Wayne Russell representing Floydada and Charles Satchel representing Silverton.



IF YOU WOULD like to see a shining smiling face sitting in the chair take a moment to consider the suggestions mentioned in the article, "Lockney Care Center residents to Enjoy Christmas" on page 5 of this section.

## Hospital receives new equipment

If you visit Lockney General Hospital as an out-patient, you could make a visit without realizing that they have added a very important piece of equipment recently. But if you required surgery, you would be thankful for the newly purchased equipment, enabling the doctors to adequately perform their tasks with greater ease. Also, you as a patient, would be made more comfortable.

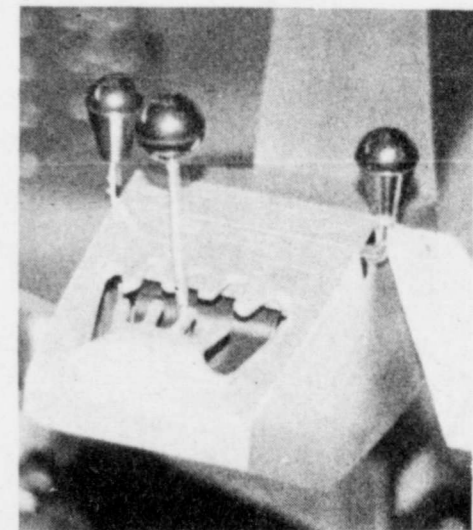
The purchase of the stainless steel operating table was made possible by an April, 1981, donation of \$50,000 from the Cogdell Foundation for the purpose of purchasing radiology and surgery equipment. A purchase order was issued September 30, but it was not delivered and installed until December 8.

The Shampaign, Radi-op, #1400 operating table was purchased from Affiliated Hospital Products in St. Louis, Missouri, at a cost of \$16,525. It is the same table that is being installed in most new hospitals in America today.

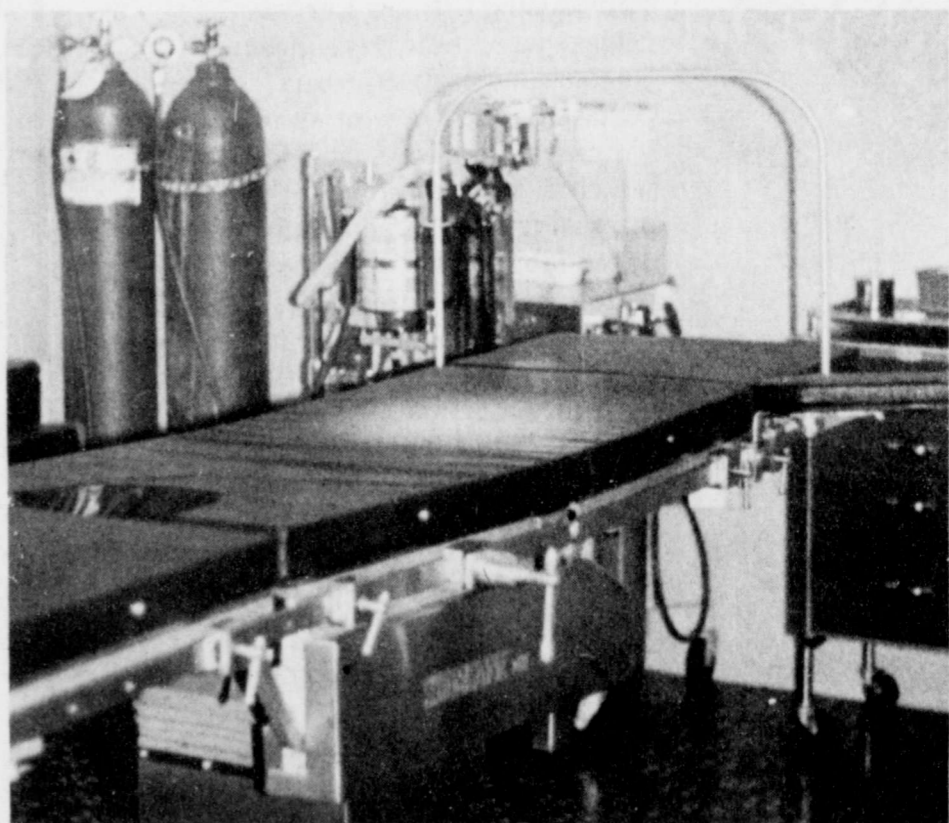
The most important piece of equipment in a major surgery suite, the 900-lb. adjustable table is hydraulically powered. An accessory pack was ordered along with the table, giving a wider variety in range for use of the table in many different types of surgery. Dr. W.J. Mangold commented on the new installed piece, "It is a very

adequate piece of equipment for our facility."

The table has the capacity for holding the x-ray slides underneath the patient's body for the taking of x-rays if the hospital purchased a portable x-ray unit at some later point in time. At that time, x-rays could be taken of a patient on the operating table during an operation to assist the surgeon in making some special types of operative repairs on the patient.



A CONTROL PANEL allows the surgeon to select what section of the O.R. table to be adjusted and what type adjustment. A touch of a foot pedal completes the adjustment.



THE 4-SECTION surgery table recently installed at Lockney General provides the facility with some of the most up-to-date equipment. It has several optional capacities that may be used with additional equipment later.

## This Week

### Christmas Party

The Annual Senior Adult Christmas party will be held at the First Baptist Church Fellowship Hall, December 20th at 4:30 p.m. Senior Adults of all faiths are welcome to come and fellowship with the group.

### Christmas Program

The children's Christmas program at the First Baptist Church will be Sunday, December 19, at 6:45 p.m. Everyone is welcome to attend at no charge.

### Singles

The Floydada and Lockney Singles Club will have a joint meeting at 6:30 p.m. Thursday (tonight) at Lighthouse Electric. A meal will be furnished by the Singles Club. Everyone is asked to bring a \$3.00 gift.

The hostesses will be Marie Nigh, Nita Holland, Georgia Finley and Edith Marrs.

### Blood Pressure

The American Heart Association will not be taking blood pressure Tuesday, Dec. 21.

### Tax Office

State Comptroller Bob Bullock has announced that Kay Doggett from his Lubbock Field Office will be at the Floyd County Courthouse in Room 104 on December 21, 1982 from 9-11:00 a.m. A Comptroller's representative is available to assist local residents at the Courthouse the third Tuesday of each month.

Bullock urges anyone with problems or questions concerning state taxes to contact Ms. Doggett at the courthouse in person or call the Lubbock Field Office at (806) 795-0691. A toll-free number (1-800-252-5555) is also available to Texas taxpayers.

### Whirlers

The Whirlers will be at the Massie Activity Center Saturday night at 8:00 p.m.

Everyone is invited to come out and join in the fun.

### Free cheese

Surplus cheese for Lockney will be given away at the Community Action Center Thursday and Friday.

### Nativity Scene

Nine UMYF Jr. High age members will be presented in a Nativity Scene at the First United Methodist Church from 7:45-8:15 p.m. Sunday.

### Christmas Service

You are invited to a Christmas service December 22 at 7:30 at Primer Iglesia Bautista. Worship services, Christmas play and Christmas bags for all the children.

### Neighborhood Watch

The regular monthly meeting of Neighborhood Watch, scheduled for Dec. 20, has been cancelled. Meetings will resume after the holidays.

When the regular meetings resume, the Operation Identification segment of the program will be explained and implemented.

Neighborhood Watch urges everyone to be especially aware of strangers in the neighborhoods. The Christmas season is historically a high crime season. Any suspicious activity should be reported to the authorities.

### Social Security

The Social Security Representative will be in Floydada on December 22 at the Floydada County Courthouse Annex from 9:30 to 11:30 a.m. The icy road conditions prevented the representative from coming on December 8th.

### Appraisal Office

The Floyd County Central Tax Appraisal District office will be closed December 23rd and 24th for Christmas Holidays.

The office will resume regular office hours the week of the 27th of December. The 1% discount will remain in effect through December 31, 1982.

He explained that the equipment supply restrictions stem from a Federal Communications Commission ruling designed to foster competition in the telecommunications industry.

Customers who may notice changes the most after January 1 are those establishing service for the first time, or revising current service, West said.

"Despite the restriction to existing inventory, we'll continue to sell or lease new phone equipment for as long as our supply lasts," West said. "We'll also continue to offer refurbished sets for some time. It may take several months before we run out. How long will depend on the demand we have for telephones. If Southwestern Bell does not have equipment requested by a customer, the customer will have to get it from another vendor."

The ruling restricting Southwestern



JACKIE TJERINA was the proud winner of \$5 at Lockney Junior High Tuesday as the individual winner of the Christmas Tree Ornament. She made the clown on the tree to her immediate left. Homerooms competed in three categories for the handmade items to decorate their Christmas tree in the library. Linda Terrell's room won \$10 for the Most Christmas ornaments. Carolyn Whittington's room won \$5 for the Prettiest Christmas ornaments with popcorn balls decorated with gumdrops. D'Lynn Morgan won the Most Original category for \$15. They had a variety of very unique ornaments.

The Rev. Michael O'Connor's

# Perspectives

A couple of British scientist have concluded that the Darwinian explanation of evolution by natural selection is wrong. They have, by their account, been met not with stout opposition but with silence from the other member of the scientific community.

I am amazed by the amount of discussion and publicity such an issue creates. To be sure, we are all curious as to the how and why of creation and how we got here. For the religious person, the question is relatively settled. I say relatively because even religious folks are divided on the specifics.

But it seems to be that whether we are religious or not there is really little purpose in trying to figure out how we got here. What purpose does it serve? Religious thinkers say that if we can prove there is a God, or gods, then that settles the question of our purpose and gives meaning to life. If we are the process of chance and evolution, however, then the universe has no meaning and neither do our lives, so therefore there is really little sense in carrying on.

Scientist and philosophers insist that knowing the exact process of our creation adds greater meaning to our existence because we will then learn how to control and improve our miserable little lives, eliminating all those things which threaten the good life. This, of course, has shown itself to be unmitigated hogwash up to this point in time.

The problem with both views is the thought that greater knowledge will somehow settle things. In terms of the existence of God, the ancients held to the view espoused in the Bible that everything necessary to settle the question was already in evidence. While modern scientists would have us believe that the ancient world was populated by a race of mental midgets in comparison to our age, nearly everything important about the formation of the universe and its operation had been thought of before

the birth of Jesus.

Amassing knowledge has brought us closer only to an understanding of how little we really know about anything. It is time we begin using the little we do know for more constructive means. Calculators in watches, clocks in fountain pens, and the like really add little to the quality of our existence. Being able to gobble little electronic ghosts with championship ability may be fun, but doesn't feed people. Nor do a host of other pieces of knowledge we have gained.

The religious folks do have one thing right, and that is that purpose is established by the presence of an outside Creator. We don't prove his existence by Science, we only strongly suggest it. We don't know him through test tubes and theories. We only know him the way we know each other, through our experiences together, the relationship we develop.

## Packaging regulations changed

Two Texas associations expressed support for the Federal Drug Administration's (FDA) nationwide rules requiring tamper-resistant packaging of over-the-counter drugs.

Both the Texas Pharmaceutical Association and the Texas Safety Association agree the FDA rules will be a positive step toward helping assure public safety and providing a uniform system for making over-the-counter drugs tamper-resistant.

"We are pleased with the speed with which the FDA has promulgated and put into effect these regulations," said Luther Parker, Executive Director of the Texas Pharmaceutical Association. "Because the rules apply uniformly on a nationwide basis, Texas drug manufacturers and pharmacists will not have to deal with overlapping or contradictory safety packaging rules," he continued. "This will save consumers money," he concluded.

George R. Gustafson, Executive Director of the Texas Safety Association, said the rules should help ease consumers' concerns about drug safety. He said, "Consumers need to know if tampering has occurred to over-the-counter drugs they purchase. By packaging drugs in blister packs and by sealing the drug containers in shrink-wrap plastic among other methods, consumers will have some assurance of the safety of the drug products they purchase."

Both associations are non-profit, non-governmental bodies serving the public interest.

# Commissioners Court

The Commissioners' Court of Floyd County met in regular session December 13 when the following proceedings were had, to-wit:

Motion was made and seconded that all bills properly presented be approved and paid. Vote: All in favor.

Motions were made and seconded to approve the following requests and contracts for the use of county equipment and machinery: Marble Brothers by Keith Marble (2), Wes Campbell, Keith E. Thomas, Raymond Rucker Estate by Edwin E. Teeter, Robert Smith, Joe D. Smith, John A. Dorman, and G.C. Applewhite.

Motion made by Thomas Warren and seconded by Bob Jarrett that the Delinquent tax statement penalty and interest for a county taxpayer not be deleted from the tax roll.

Vote: For - Bob Jarrett, Thomas Warren, and Choise Smith. Against - Sam Spence and Jack Lackey.

Motion made by Bob Jarrett and seconded by Sam Spence that the court accept the bid of Thomas Hurt Used Cars in Matador, Texas reading as follows: \$200.00 for 1978 Dodge tag no. 384.975 and \$500.00 for 1978 Dodge tag no. 394.973. Vote: All in favor.

Motion by Bob Jarrett and seconded by Thomas Warren that the line items submitted by the County Auditor be approved. Vote: All in favor.

Motion made by Thomas Warren and seconded by Bob Jarrett that the court accept the bid made by Yellowhouse Machinery Co. for JD 310 B Wheel Loader Backhoe and Belshe T-2 3 Axle Machine Trailer for a total of \$34,100.00 to be paid 1/3 down and two equal payments on or before June 1983 and December 1983.

Vote: All in favor.

Motion by Thomas Warren and seconded by Bob Jarrett that the court accept the bid from Plains Machinery for a 1978 Galion T 500 Motor Grader for \$15,000.00. Vote: All in favor.

Motion made by Sam Spence and seconded by Thomas Warren that the court accept the bid from Baker Insurance Agency for General Liability Insurance for Floyd County, \$11,669.00 to be paid January 1983. Vote: All in favor.

Motion made by Thomas Warren and seconded by Bob Jarrett that the following names be approved for the Child Welfare Board.

- (1) Karl Bunjes
- (2) Sue Crow
- (3) Ray Starnes
- (4) Roger Garms
- (5) Ricky Gonzales
- (6) Lee King

Vote: All in favor

Motion made by Thomas Warren and seconded by Sam Spence that \$140,000 be transferred from the Road and Bridge Fund to the Precincts. Each precinct will receive \$35,000. Vote: All in favor.

# TCA solicits program proposals

The Texas Commission on Alcoholism (TCA), under the authority of Texas Civil Statutes, Article 5561c (Section 18) is soliciting proposals for the development of children of alcoholics programs in Texas. A total of \$183,492 in state funds is available for the development of either school-based or agency-based children of alcoholics programs. Public or private nonprofit organizations, institutions, or agencies in state planning regions 1, 2, 3, 4, 6, 7, 8, 9, and 10 and

22 may apply. The minimum amount for which any applicant may apply is \$40,000; the maximum amount is \$50,000. Grantee cash match will be required at a minimum of five percent of the TCA amount requested.

Approved projects will be funded for a 12-month project period beginning March 1, 1983; however, the initial award will be for 6-month period ending August 31, 1983. The award for the

remainder of the project year will be contingent on the appropriation of funds to TCA for the state fiscal year beginning September 1, 1983.

The closing date for proposal submission is January 7, 1983. To obtain a proposal packet or more information, contact Karen A. King, Regional Alcoholism Services Director, at 806-762-8721, at SPAG, serving your region.

**SANTA'S HEADQUARTERS**  
For Gift Ideas

- \*Brass
- \*Crystal
- \*Colored glass
- \*Wood items
- \*Musical novelties
- \*Mugs
- \*Jewelry boxes
- \*Candles
- \*Figurines
- \*Canister sts
- \*Canister sets
- \*Lead Crystal
- \*Pictures

**FREE XMAS WRAPPING**  
**Park Florist**  
"Visitors Welcome"  
Drive by our shop each night until Christmas and let your children see Santa at work in our display windows.

VISA 983-2867

**ATTENTION MEN ...**  
Would you like to do something well appreciated and everlasting to help your wife look and feel her very best? Stop by **Pat Walker's Figure Perfection Salon** and ask about our **Holiday Gift Certificate**.

Ladies: There is a Holiday Gift Certificate available for men, too!

**Pat Walker's**  
Figure Perfection Salons International  
205 W. Missouri - Floydada, Texas - 983-2112

*For years, the Swiss have kept the peace. Now they've started a revolution.*

Introducing the new Certina Swiss Quartz time piece. From Switzerland comes Certina Swiss Quartz, a revolution in watchmaking. True to ageless Swiss watchmaking tradition of uncompromising quality, accuracy and dependability. The all Swiss quartz watch. Elegant. Affordable. Available in a wide variety of styles, water resistant to 100 ft. and backed by a two year warranty. Certina Swiss Quartz. From \$125 to \$295. High Swiss standards at a low price. Revolutionary.

**CERTINA**  
Swiss Quartz

**SCHACHTS**  
Flowers, Jewelry & Gifts

LOCKNEY 652-2385

## Producing more energy from less ... makes the difference.

Their discovery would shake the worlds of communication, medicine and defense, but Charles Townes and Arthur Schawlow knew only that they had discovered an entirely new source of light. They called it an "optical maser." Today we know it as the "laser."

Their discovery was a light beam so concentrated it could produce power densities millions of times as intense as those on the surface of the sun - a light source so dense, the energy produced was greater than the energy required to produce it.

**Arthur Schawlow and Charles Townes**

This principle of more energy from less applies to the **High-Efficiency Add-On Heat Pump** - more units of heat than units of electricity needed to produce that heat. And while the **Add-On Heat Pump** works with your existing furnace to heat your home during the winter, the **Add-On Heat Pump** functions with the same efficiency to cool your home during warm weather.

As partners, Townes and Schawlow made a significant difference in our world with their work on the laser. As partners you, Southwestern Public Service Company and the **Add-On Heat Pump** can make the difference managing electricity in your home. Call SPS to see what your savings could be.

The ruby laser

**You and SPS, partners managing electricity, make the difference.**

**SPS**  
SOUTHWESTERN PUBLIC SERVICE COMPANY

## All South Plains



**KYLE BROCK**, was named to the Lubbock Avalanche Journal's All-South Plains team as a defensive linebacker. He was one of two repeaters from last year's All-South Plains team in the same position.

Brock, a 5-9, 195-pound senior of Lockney, is a three-time All District performer. He assisted in 162 tackles, and 51 unassisted, this fall. In addition he recovered six fumbles and intercepted three passes.



THIS PLAQUE has been erected this week on the west wall of the lobby of the Lockney General Hospital. It was donated to the hospital in appreciation of the many dedicated years of service provided by Mrs. Elfie Sherman and her daughter, Gayle Fortenberry, as administrators of the hospital.



**JAMES WHITTIS**, Lockney Band Director, will be appearing with the Plainview Symphony Orchestra in their Christmas Concert Friday. He plays a trombone. Amy Thornton, a member of a well-known musical group and elementary music teacher in the Lockney schools will be one of the featured soloists in The Messiah.

## Local teachers in perform Christmas concert

The Plainview Symphony Orchestra will be performing in a Christmas Concert Friday, December 17, at 8:15 in the sanctuary of the First United Methodist Church, 1001 W. 7th, in Plainview.

The 48-member orchestra, under the direction of Dale Daniels, will be appearing in its fourth annual presentation.

The Plainview Symphony Chorus, 60 voices strong, is in its first season. It is directed by Duane Harris, a music professor at Wayland Baptist University.

John Rudder's Messiah, The Nutcracker, as well as a large variety of

Christmas carols will be performed in the program.

Performers include members of the two musical groups from Plainview, Hale Center, Amarillo, Floydada, and Lockney.

The public is invited to attend.

Tickets may be purchased at Gabriel's or at the door. Adult tickets are \$5 and children's tickets are \$2.50 for the performance.

A meal will be served in the Fellowship Hall of the church, with proceeds being to the Guild. Reservations may be made by calling Mrs. James Davenport at 296-5714. Meal tickets are \$5.50 for adults and \$3.00 for students under 12.

## Wileys to tour tire plant

More than 320 independent dealers in Texas Farm Bureau's Safemark program will tour General Tire's plant and the TFB headquarters, 7420 Fish Pond Road, in Waco, on Friday, December 17, according to Travis McMorrough, TFB Safemark manager.

Safemark service agents attending from Floyd County will be Mr. and Mrs. Richard Wiley of Lockney.

TFB President S.M. True Jr. will preside at a dinner meeting Thursday, December 16 at the Waco Convention Center. George McKinney, manager of community development for Texas Power & Light Company of Dallas; Eldon Schnoor of Chicago, general manager of American Farm Bureau Service Company; and McMorrough will also be on the program.

TFB Executive Director Warren Newberry will speak at a Friday luncheon in the Texas Room of the convention center.

Farm Bureaus in 41 states are involved in the Safemark program which includes the sale of tires, batteries and tillage tools. TFB this year had total sales of \$34.9 million, including \$30.5 million in tires. TFB sales represented 30 percent of the national sales.

General Tire's Waco plant manufactures 85 percent of the Safemark tires

sold in the 41 states. Tires are also supplied by General Tire's plants in Mt. Vernon, Illinois and Mayfield, Kentucky.

McMorrough said the Safemark program in Texas this year saved TFB members more than \$10 million.

**Olde White House**  
702 South Main  
Floydada, Texas  
983-5441

**Our NEW Gift Certificates will make a great Christmas present.**

We will be closed  
December 23 through  
January 2nd

We will open January 3  
for your dining pleasure.

"A Unique Dining Experience"

**Sears 4-DAY APPLIANCE SALE**  
Lowest Prices of the Year on These Selected Home Appliances  
December 15-18, 1982 Only

**Almost Unbelievable!**  
25-in. Console Color TV  
WAS \$577  
**\$500**

**Unbelievable Low Price**  
Portable 12-in. Color TV  
WAS \$289.95  
**\$227**

**Cut \$139**  
19-in. Color TV  
WAS \$499.95  
**\$350**

**Cut \$112**  
Kenmore Gas Grill  
WAS \$289.95  
**\$177**

**Cut \$240**  
Kenmore Microwave  
WAS \$589.95  
**\$349**

**Save \$203 on this Kenmore Large-Capacity Laundry Pair**  
Cut \$124  
2-speed, 6 cycle washer  
WAS \$439.95  
**\$315**

**Cut \$79**  
Automatic fabric-master dryer  
WAS \$299.95  
**\$220**

**Cut \$84**  
2-speed, 3-cycle washer  
WAS \$379.95  
**\$295**

**Your Choice \$350**  
Cut \$129  
Kenmore 30-in. Gas Range  
WAS \$479.95  
**\$350**

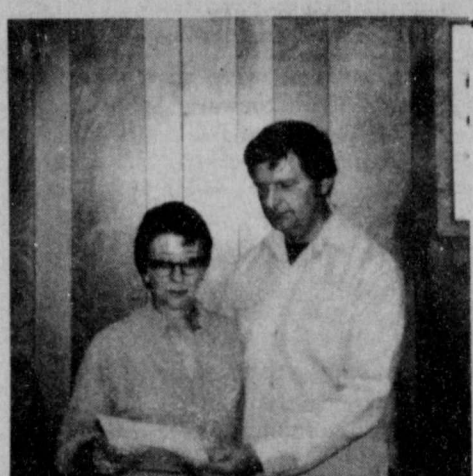
**Cut \$129**  
Kenmore 30-in. Electric Range  
WAS \$479.95  
**\$350**

**Cut \$101**  
Kenmore Self-Propelled Vac  
WAS \$234.95  
**\$133**

**Cut \$109**  
Kenmore Undercounter Dishwasher  
WAS \$439.95  
**\$330**

Still Time to Order... You Can Order Through Dec. xx and Still Get Most Items Before Christmas.  
EACH OF THESE ITEMS IS READILY AVAILABLE FOR SALE AS ADVERTISED. PRICES ARE CATALOG, SHIPPING, DELIVERY AND INSTALLATION. ARE EXTRA. KENMORE DRYERS AND RANGES REQUIRE CONNECTORS. EXTRA. ICEMAKERS REQUIRE HOOD-UP EXTRA. COLOR IS EXTRA. PRICES RELIEVED FROM THE "TV" MEDIA. SEARS HAS A CREDIT PLAN TO SUIT MOST EVERY NEED.  
Satisfaction Guaranteed or Your Money Back

Sears  
100 S. Main - Floydada  
Sue Williams  
983-2862



**SHERRIL COMPLETES COURSE**—Ann Sherril, (left) assistant manager of the Allsup's store at 209 South Main in Lockney, receives her diploma from Gary Whittington, instructor, for fulfilling the requirements of the Allsup's Assistant Store Manager Training Course. The class, held at the company's home offices in Clovis, New Mexico, is a requirement for all Allsup's Assistant Managers. According to Whittington, "The training covers proper food handling, cooked food procedures, store cleanliness and maintenance as well as public relations. Ultimately, we provide customers with a professional who can better serve them, while at the same time preparing the employee for future advancement."



**LOCKNEY LOCAL**  
Marcus Otto Schacht has been chosen as one of the semi-finalists in the Air Force ROTC 4-year scholarship program. Marcus, a senior at LHS, is the son of Mr. and Mrs. Calvin Brittain and the grandson of Eleanor Schacht, and Mr. and Mrs. Tom Word.

**THE LOCKNEY BEACON**  
[USPS 317-220]

Published weekly each Thursday by Floyd County Publishing Co., 211 North Main St., Lockney, Texas 79241. Second class postage paid at Lockney, Texas. Subscription rates: local \$11.50 per year, out-of-trade area \$12.50 per year. POSTMASTER: send address changes to the Lockney Beacon, P.O. Box 187, Lockney, Texas 79241.

David Cates Publisher  
Carolyn Redding Advertising Manager  
Sue Williams Editor



**LON DAVIS** President of the Mackenzie board breaks ground with [l-r] T.A. Hayhurst, Wayne Russell, and Charles Satchel.

**We Welcome Your Insurance Business**

**Donice Casey**  
Career Agent  
652-3414

**James Race**  
Agency Mgr.  
983-5095  
652-2638

**Life - Auto - Fire Home - Ranch Farm Crops & Health Insurance**

**Bud Rainey**  
Career Agent  
983-5225

**Clar Schacht**  
Career Agent  
652-3449

**Texas Farm Bureau Insurance**  
101 So. Wall Floydada 983-3777 Lockney 652-2242

If my registered cattle are hit on the roadway will liability insurance help?  
For help with insurance questions and needs call...

**The First National Bank congratulates The Mackenzie Muncipal Water Authority on the ground breaking for the four city water project.**

We are glad to be a part in providing for our cities future.

**First National Bank**

Accounts insured up to \$100,000  
in Lockney 652-3355  
member F.D.I.C.



MR. AND MRS. NOMAN HAMILTON

## Reception to honor Hamiltons' 50th Anniversary

Mr. and Mrs. Noman Hamilton of Lubbock will be honored with a reception in honor of their 50th wedding anniversary Sunday, December 19, 1982, from 2 to 4 p.m. in the First Baptist Church, Wall Street Parlor in Floydada.

Hosting the event will be their daughter and family, Bobby and Noma

Lou Rainer and Kay Lyn and Mary Ann. Noman Hamilton and Louise Wright were married December 23, 1932 in Quitaque, Texas. They are former Floydada residents.

Friends and relatives are invited to attend.

Your friendship is a cherished gift and they respectfully request no other.

## Moses feted with baby shower in Harrison's home December 11th

Mrs. Dee Jay Moses was honored with a baby shower Saturday afternoon, December 11, from 2 to 3 p.m. in the home of Mrs. Rex Harrison. Co-hostesses were Mmes. Scott Simpson, Dean Watson and Rick Fuller. The guest of honor, attired in a maroon suit, was presented a corsage of carnations.

Guests were served fruit punch, mints and a cake decorated in yellow to look like a miniature baby carriage. Yellow trimmed napkins carried out the color scheme.

The honoree's mother-in-law, Mrs. D.J. Moses was a special guest. She presented a handmade baby quilt from the prospective great-grandmother, Mrs. Bonnie Lee Flemin of Crosbyton. Hostess gift was a changing table. Many beautiful and useful gifts were presented by Mrs. Moses' friends.



### COVINGTON

Rick and Angie Covington of Wichita Falls would like to announce the arrival of their first child, a son named Kary Layne.

Kary Layne was born December 10 at Wichita General Hospital and weighed in at 9 lbs. and was 21 3/4 inches long.

Proud grandparents are Kent and Barbara Covington of Dougherty and Nolan and Rena Turner of Floydada.

Great grandparents are Mattie Covington of Dougherty, Mr. and Mrs. Henry Willis and Mrs. Annie Turner of Floydada.

### SWEARINGEN

Ricky and Melody Swearingen of Plainview are proud to announce the birth of their son, Weston Zon Allen Swearingen, born December 8, 1982 at Lockney General Hospital.

He weighed in at 7 lbs., 11 oz. Grandparents are Mr. and Mrs. Parnell Powell of Floydada and Mr. and Mrs. Cled Swearingen of Plainview.



LOVELL-COLLINS JEWELRY

Oneida's Michelangelo or Satinique

**SERVING & HOSTESS SETS**

**25% Off**

**SALE**

## 1934 Study Club hold Christmas meeting December 7th

It was a jolly, jolly Christmas time as the festively dressed, corsaged, and laughing, eager members of the 1934 Study Club gathered in the beautifully decorated home of Mrs. M.J. McNeill for their Christmas meeting on Tuesday evening, December 7, 1982. Mrs. Milton Ashton and Mrs. Wade Warren were co-hostesses for the event.

As members arrived they were served delicious refreshments of wassail, thumbprint cookies, ice-box fruitcake, colorful finger sandwiches, red spiced cucumber pickles. Red napkins were held in a Santa Claus face napkin ring, which was a hostess gift to each member.

During the business meeting the Club voted to send a Christmas gift of \$100 to Girlstown, Inc. and \$100 to be given to the Caprock Hospital Auxiliary to be used in some needed project.

Mrs. Kyle Glover was the program coordinator and she introduced the program theme as "Christmas, A Beautiful Season." She presented Mrs. Alan Benson who told a new version of the Christmas story. The story was told from the viewpoint of a little lame girl named Ruth, the daughter of the innkeeper. As the child observed the Wise Men bringing their gifts to the Christ Child she was sad because she had nothing to give the baby Jesus, until she saw her pet lamb at the foot of

her bed with the starlight falling upon his sleeping form.

Arising from her bed, she picked him up and made her way, slowly and painfully, to the manger, and there she laid him at the feet of Mary and the child. Mary, upon seeing the lovely, lame child and her precious gift kneeling at her feet, placed the baby Jesus in the arms of little Ruth.

After a time, Joseph was warned to take his family and flee to the land of Egypt in order to escape death at the hands of the land's wicked king.

Then the star grew dimmer and dimmer and passed away forever from the skies over Bethlehem. But little Ruth grew straight and strong and beautiful, and all the people who saw her were amazed for Ruth had once been a cripple.

"It was the night of the strange star," her mother said. But little Ruth knew it was the touch of the Blessed Christ Child who was once held in her loving arms.

"The Big Pay Off" was a gift exchange with all gifts being displayed for all to enjoy. This was followed with Mrs. Milton Ashton and Mrs. L.D. Simpson leading the group in singing Christmas songs.

The program closed with Mrs. McNeill showing some of her Christmas

decorations from countries she has visited. From Germany she had a wooden windmill with figurines, and candle heat turning the blades; a miniature Santa Claus and train; wooden and brass creche's; and a pair of miniature candleholders. From Taiwan there were three wooden creche's; a creche from Israel; tree ornaments from China; and from Jerusalem a Bible with a mother-of-pearl cover which Mrs. McNeill obtained from the Willet Estate in Motley County.

Members attending the meeting were Mmes. Alan Benson, Allen Bingham, Floyd Bradley, W.H. Bunch, W.L. Davis, Dennis Dempsey, Garland Foster, Kyle Glover, J.S. Hale, Jr., Anthony Latta, Floyd Lawson, J.P. Moss, W.O. Newberry, L.D. Simpson, George Springer, L.B. Stewart, Jr., G.W. Switzer, W.W. Trapp, J.R. Turner, Walton Wilson, and A.L. Wylie, Jr.

The next club meeting will be January 18, 1983 in the home of Mrs. L.B. Stewart, Jr.

### CHRISTMAS MEANS POINSETTIAS

Send the beauty of the Xmas season with long-lasting red, white or pink Poinsettias, Red Azaleas, Norfolk Island Pines.

Our greenhouses are full of colorful Xmas plants! Visit us & make your selection today for your home, office or as a gift in a distant city.

Phone Us — Charge It  
We Deliver  
**Park Florist**  
983-2867

## Lone Star Extension Homemakers hold meeting

The Lone Star Extension Homemakers met for their regular Tuesday night, December 7, in the home of Mrs. Joe Reeves.

An inspirational program was given roundtable discussion.

Roll call was answered with "Christ-

mas Gifts I Treasure Most."

Mrs. Reeves read the scripture lesson from the book of Luke.

Refreshments were served to Ruth Reeves, Elvira Stewart, Syble Teeple and Helen Huffman.

## L.C.C. Associates hold party

The L.C.C. Associates held their Christmas meeting and party in the home of Carol Huggins. Mary Glen Degge served as co-hostess.

Mrs. Degge conducted the short business meeting. Then the party began. The first order was the traditional Christmas gift exchange. There were so many pretty gifts — most of them handmade by the giver. After everyone had admired each gift, they were served refreshments of Fantastic

brownies, date balls, fudge, hot spiced cranberry tea, and coffee.

Those attending were: Mary Lois Montandon, Mavis Reece, Dorothy Smith, Jane Archer, Myrl Wofford, Alma Baxter, Tommie Williams, Annabel Bramlet, Madge Huff, and a guest Kathy Hill. Mrs. Degge and Mrs. Huggins.

## Season's Greelings



We have a good stock of Christmas Gift Items available.

Shop at home.



Phone 652-3353

LOCKNEY

## Jolly Good Gifts FOR A JOYFUL CHRISTMAS!



Boys & Mens Quilted Winter	
<b>JACKETS</b>	<b>20% OFF</b>
Mens	
<b>SUITS &amp; SPORTSCOATS</b>	<b>20% OFF</b>
Ladies & Junior	
<b>JEANS</b>	Compare at \$20 <sup>00</sup> a Pair <b>Now \$9<sup>88</sup></b>
<b>LADIES JEANS</b>	Values to \$26 <sup>00</sup> <b>Now \$12<sup>88</sup></b>
Ladies Winter	
<b>ROBES</b>	<b>20% OFF</b>
Ladies & Junior	
<b>JACKETS &amp; COATS</b>	<b>20% OFF</b>
Group Junior Misses Coordinated	
<b>SPORTSWEAR</b>	<b>25% OFF</b>
Western, Sport & Knit	
<b>BOYS SHIRTS</b>	<b>20% OFF</b>




**CHRISTMAS GIFTS WRAPPED FREE**

**ANDERSON'S**  
DEPARTMENT STORE  
120 West California - Floydada  
4 ways to Buy: Cash-Layaway-Mastercard or VISA

## Christmas Special on Jewelry Cleaners



We proudly present a new safe and effective way to remove dirt, body oil, grime and tarnish from diamonds, fine gems, jewelry and pearls. Now you can clean your jewelry at home exactly the same way the professional jeweler does when you take your jewelry to him for cleaning. Through Electro-Sonic action and a special solution, this personal size jewelry cleaner returns your jewelry to its original luster in seconds. The perfect gift for both men and women.

Christmas Special  
Regular \$29<sup>95</sup> **\$25<sup>95</sup>**

Check My Selection of  
Chains, Earrings, Earring Jackets or Beads.

**SUE HARDY JEWELRY**

202 W. Missouri

Floydada, Tx 79235

983-3774

# "Laugh Lines"

By Don & Sara Probasco  
Bits of Humor, Trivia, and an occasional Word of Wisdom

Our friend went to a ski resort that had three slopes: Beginner, intermediate, and call-an-ambulance.

Peacock: A chicken in bloom.

One advantage of a bad memory is that you can keep enjoying the same jokes without getting bored.

The best way to come back from Las Vegas with a small fortune is to go there with a large one.

Have you noticed that the very kids who don't believe in Santa Claus are the ones who grow up and play the horses?

The main problem with money is that you can't use it but once.

Of course money is the Christmas gift everyone in the family appreciates most. The trouble is, you can't charge it.

You can charge your gifts on your Visa and MasterCard at Pro-Lock Shop and Studio South. And if you're undecided about exactly the right gift for someone, we have gift certificates, too.

**PROBASCO'S**  
24-hour mobile  
Locksmith service  
2 miles north of South Plains on the Silverton Highway (Hwy 207)  
983-3834  
Visa and Mastercard Welcome  
ADV

Studio South  
Stained glass art  
Gifts and Supplies



## HOLIDAY BAKING

Has the holiday baking bug hit your kitchen yet? If not, you should plan ahead and stock up on supplies so that you will have everything you need when the mood to bake strikes you.

Rather, than shopping for a few ingredients as you need them, save money and time by making a master shopping list. Look over the ingredients listed in your favorite recipes, then check your shelves for spices, flavoring and staples. Jot down how much you will need of each ingredient. Perhaps

the question of how many pounds of flour, sugar, nuts, etc. you will need comes in mind. Add up the number of cups needed, then use this chart to make an accurate shopping list.

### BAKING EQUIVALENTS

Brown sugar - one pound equals 2 1/4 cups, packed  
10X confectioners sugar - 1 pound equals four cups  
Walnuts - one pound, whole equals four cups; 10 ounce pack, broken equals 2 1/2 cups  
Almonds - one pound, whole equals 3 1/2 cups; 6 oz. pack, sliced equals two cups  
Pecans - one pound, whole equals four cups  
Candied fruit, mixed - four ounces, chopped, equal 1/2 cup  
Citron - four ounces, chopped equals 1/2 cup  
Cherries, candied - eight ounces, whole equal one cup  
Raisins - 15 ounces equal 1/2 cup  
Regular flour - one pound equals four cups, sifted; two pounds equal eight

# Today's Lifestyles

by Marilyn Tate

cups, sifted; five pounds equal 20 cups, sifted; 10 pounds equal 40 cups, sifted.  
Cake flour - one pound equals 4 1/4 cups, plus two tablespoons, sifted  
Graham crackers - 11 squares equals one cup crumbs.  
Oatmeal - 18 oz. quick equals seven cups; half ounce packet, plain equals one-half cup.

Granulated sugar - one pound equals two cups; two pounds equals four cups; five pounds equals 10 cups.  
If you need pecans for your holiday baking, remember that Floyd County 4-H has 3 lbs. packages of pecans available at the County Extension Office for \$12 and \$13.

Homemakers often share their recipes with me. I hope you will enjoy this economical substitute for sweetened condensed milk which was shared by Neva Smith of Lockney and sugarless cake (great for diabetics!) which was shared by Rilla Sue Woody of Floydada.

**Sweetened Condensed Milk**  
1 cup instant non-fat dry milk

2/3 cup sugar  
1/2 cup boiling water  
3 tablespoon melted butter or margarine.

Combine until smooth in blender. Store in refrigerator.

### Sugarless Cake

1/2 cup butter or oleo  
2 eggs  
2 tablespoon artificial sweetener  
2 cups self-rising flour  
1 teaspoon soda  
1/4 teaspoon cloves  
1/4 teaspoon cinnamon  
1/4 teaspoon vanilla  
1 1/2 cup applesauce (unsweetened)  
1 cup nuts chopped  
1 package dates, chopped

Cream butter, eggs, sweetener, and vanilla. Mix well, then fold in dates, applesauce, and nuts. Bake in lightly greased tube pan at 300° for 30 to 40 minutes.

## Lockney Care Center residents to enjoy Christmas

Since we, as Lockney residents, have some lovely friends in the Lockney Care Center, this would be an excellent time to remember some or all of them. They will be having their tree at 6:30 p.m. Tuesday night, December 21.

Some items which have been suggested by personnel of the home are:

Letter writing material (tablets, envelopes, stamps)  
After shave and cologne in plastic bottles (Nothing in glass bottles or aerosol cans; there are fire hazards.)  
Socks or booties  
Powder, hair brushes, combs, curlers and bobby pins  
Ribbons and hair clips  
Monthly donations for fruit for bingo  
Coloring books and crayolas  
Volunteers for crafts class, letter writing or Bible study

The following is a list of our citizens who have been vital part of our community in the past who reside at the Care Center now:  
William Holt, Lewis Roberts, Melvin

Thacker, William Poole, Joseph Gilmore, Dennis Grabbe, Edwin Sheek, Thomas Jones, Richard Lanham, Donnie Hester, Hallie Roberts, Ethel Carroll, Amelia Ashton, Ada Bertha Gregg, Mary Jo Fielding, Mamie Wofford, Euna Bradshaw, Ida Hopper, Dawn Jasper, Stella Wilson.

Chaford Texford, Esher Pyle, Rose Pyle, Robert Peel, Mary McCracken, Mary Green, Algia Virden, Mavis Barton, Rosella Trowbridge, Ruby Vaughan, Marie Leach, Mable Griffin, Myrtle Howell, Myrtle Payne, Birdie Foster, Bertie Bradley, Edna Thomas, Kay Mitchell, Jessie Harris, Alma McDonald, Ada Lois Rucker, Mary Shoemaker, Myrtle Burke, Jeffie Griffith, Billie Self, Lee Atchley, Jewel Miller.

If you would like more information about the residents, if they have family or names of those who are needy, or if you need help with sizes, please feel free to contact Vickie Hutton or Laverne Christian at 652-2513.

Let's not let any of these deserving people go without being remembered. Sometimes it takes so little to set a heart aglow.

## THIS CHRISTMAS GIVE HIM HIS FAVORITE VAN HEUSEN®



**FREE GIFT WRAPPING**

**Brown's DEPARTMENT STORE**

104-06 North Main Lockney, Texas

## Floydada Nursing Home Happening

### BY DARTHA WESTBROOK

It has been awhile since we have had our "happenings" in the paper, due to the absence of our Acitivity Director, Linda Emert. Linda is recovering from surgery, and we wish her well.

We would like to say a special "thank you" to so many in our community who are so good to us during the year. To all the church groups who take time out of their busy schedules to bring our devotions and visit personally with our Residents, THANKS! To everyone who visits, remembers birthdays, brings goodies for our Residents to eat, THANKS!

To our special Companion-N-Caring volunteers, who have given thousands of hours of their time this year to brighten the days of our Residents, THANKS!

We could never remember every lovely gesture that is done so lovingly for our dear elderly people, so we just say a great big "THANK YOU FLOYDADA," and include all of our friends.

During the Christmas season, so many are so gracious and kind to remember us, here are only a few:  
This & That Hobby Club - fruit;  
Homemaking Class - FHS - cookies;  
Jackie Duke and Helen Teeple - carpet scraps;

Alpha Mu Delta, - \$100.00.  
We acknowledge and appreciate these favors.

We have two new Residents - Orland and Bonnie Howard. They are in room 5 West. We hope they will be very happy here, and their stay will be more

enjoyable if their friends will visit.

Our Residents Christmas Party will be Monday, December 20 at 6:00 p.m. Our Companions-N-Caring will be serving refreshments after presents are passed out. Be sure you have gifts for your loved one here before 6:00 - we want to make sure there are gifts for all our Residents.

Thanks to all our visitors over the past few weeks. They are:

Mattie Wester, Sherry Colston, Ross and Zane, Mr. and Mrs. Luther Lancaster, Frances Linch, Lillian Parks, Grady Freeman, Cora Smallwood, Thanie Smallwood, Gene Baird, Lucille Daniel, Tom Daniel, Alva Smith, Jennelda Fulton, Ruby Ledbetter, Otis, Dana, Kim and Jo Lee Ellis, John, Juanema and Johnny, Dolores Cannon, Hazel Bradley and Kim, Bill and Cora Smallwood, Charley L. Berry Sr., Eldie Bryant, Ruby Gooch

Marilyn Buchanan, J.H. and Dolores Cannon, Joan Littlejohn, Dixie Harris, Tate Harris, Melanie Ross, Daniel and Jackson McIntosh, Eunice Hardy, Franklin Harris, Zacha Harris, Molly Burleson, Deota Odam, Merlene Breeding, Helen Breed, Frank Breed, Mr. and Mrs. Williams, Ruth Noland, Ricky and Lana Copp, Randy Duke, Helen Breed, Pam and Kallie Rogers, Frank Breed, Belinda, Noel and Jodi, Tyson Coe Covington, Tanya Covington, Beulah Denison, Nettie Adams, Charley L. Berry Sr., Babe Dillard, Mollie Burleson, Myrtice Rainer, Frances Badgett, Estelle Hinkle, Mattie Wester, Hazel Bradley and Kim, Chely Duncan, Ed and Rhea Lawrence.

Dee and Matthew Durning, Otis and Dana Ellis, Ethel Cross, Guy Garrison, Kim and Jo Lee Ellis, Jimmie, Susan, Alisha and Alan Roberts, Travis and Marilyn Weems, Tuffy Howell, Misty Howell, Jewel Lawrence, Deota Odam.



**PEACE**

Let this be the year it all comes together with brotherly love.

## Quitaque couple to be honored

The children and grandchildren of Mr. and Mrs. Dick Taylor will honor their parents with a reception on their fiftieth wedding anniversary Sunday, December 19 from 2:00 until 4:00 p.m. at the Community Center in Quitaque.

Mrs. Taylor is the third one of her sisters, in addition to her parents, who were fortunate enough to celebrate 50 years of marriage.  
Mr. and Mrs. J.T. Bradley, celebrated their golden wedding anniversary in October, 1957. Their eldest daughter and husband, Mr. and Mrs. C.C. Moss of Anson, celebrated their anniversary in January, 1977. Their youngest daughter and her husband, Mr. and Mrs. J.T. Witcher of Shafter, California celebrated their anniversary December 5, 1982, and the Taylors will celebrate their golden wedding anniversary December 19.

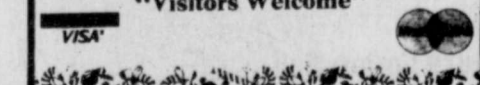
The children of Mr. and Mrs. Taylor are Mr. and Mrs. James Taylor and children of Littleton, Colorado, and Mr. and Mrs. Dan Duncan and children of Panhandle.

Friends of the couple are invited to attend. Your presence, love and friendship are the only gifts they desire.

**Trim the Tree—Decorate the Mantle—Pretty Up The Door—**  
Our shop has turned to Christmas!

You are invited to visit our spacious gift and floral department and browse around among the Xmas beauty that you will not find in any other shop in this vicinity!  
Need a Xmas tree?  
Permanent Trees — \$10 up  
Flocked Plastic Trees \$25

**PARK FLORIST**  
"Visitors Welcome"



## A Great Christmas Idea

What could be a more treasured gift than a *Delhart Windberg* painting.

We now have a new shipment of *Windbergs* along with paintings by *Larry Dyke, Robert Summers* and others.

Priced from \$19<sup>50</sup> up.

**Sue's Gifts**

126 W. Calif. 983-5312 Floydada



## Brass Christmas Tree Ornaments

Personalized FREE!

**Poinsettias Fresh Holly Christmas Greenery**

✓ Gift Certificates

✓ Free Gift Wrapping

✓ Good selection of Gifts for all ages

**SCHACHTS**  
Flowers, Jewelry & Gifts

LOCKNEY

652-2385

## CHRISTMAS

# GIFT SPECIALS

Most Merchandise

# 20% Off

Starting Friday, Dec 17th until Christmas Eve

We will close at 4:00 p.m. on December 24th

**Mizacks**

Phone 983-5483

111 W. California



10½ oz. Kraft Miniature  
**MARSHMALLOWS**

43¢

17 oz. Del Monte  
**FRUIT COCKTAIL**

63¢

11 oz. Del Monte  
**MANDARIN ORANGES**

67¢

16 oz. White Swan Halves  
**PEARS**

2/99¢

16 oz. Del Monte Cut  
**GREEN BEANS**

36¢

16 oz. Vlasic  
**SWEET PICKLES**

99¢

8 oz. Geisha Whole  
**OYSTERS**

89¢



**DOUBLE ON WEDNESDAY**

**Buddy's SUPERMARKET**

*Merry Christmas from Buddy's Food*

**Win a ATARI VIDEO COMPUTER or a 12 Inch Portable Black & White TELEVISION at Buddy's Food**

**Drawings will be held Thursday (12/23/82) at 5 PM**

You do not have to be present to win.  
No purchase required.  
Prizes in cooperation with Coca-Cola  
Dr. Pepper Bottling Plant, Plainview, Tx.

We appreciate your business.

*Merry Christmas from Buddy's Food*

**Double S&H GREEN STAMPS Everyday thru Friday (12/24/82)**

With a \$5.00 Purchase or more.

**PLUS Double Coupons on Coupons manufacturers**

Not to exceed full retail price.

Excluding Cigarette or Tobacco coupons

Effective thru Friday (12/24/82)

We appreciate your business.

Quart Kraft  
**MIRACLE WHIP**

\$1.49

1 lb. Quarters Kraft Margarine  
**PARKAY**

53¢

½ Gallon Bell  
**BUTTERMILK**

89¢

1 Gallon Buddy's Grade A  
**MILK**

\$2.19

5 lb. Gold Medal  
**FLOUR**

99¢

4 lb. "For Tortillas"  
**MASA TRIGO**

\$1.29

15 oz. Cinch  
**CORN BREAD MIX**

69¢

12 Count Farm Fresh  
Brown & Serve  
**ROLLS**

3/\$1.00

15 oz. Del Monte  
**RAISINS**

\$1.19

New Crop Red Delicious

**APPLES**

39¢ lb.

Assorted Chex  
**CEREAL**

\$1.09

½ Gallon Deluxe Carton Bell  
**ICE CREAM**

\$1.49

Sunkist Navel  
**ORANGES**

3 lbs./\$1.00

Fresh Green  
**BROCCOLI**

49¢ lb.

Medium Size Yellow  
**ONIONS**

6 lbs./\$1.00

Dixie Holiday  
**NAPKINS, PLATES, or CUPS**

79¢

1<sup>st</sup> Size Ruffles Potato

**CHIPS**

79¢

US no. 1 10 lb. Bag  
**POTATOES**

99¢




17 oz. Del Monte Whole Kernel  
**CORN**  
2/89¢




4 oz. Green Giant Pieces & Stems  
**MUSHROOMS**  
59¢



17 oz. Del Monte Luncheon  
**PEAS**  
2/89¢



17 oz. Princella Cut  
**YAMS**  
2/99¢



8 oz. La Choy  
**WATER CHESTNUTS**  
69¢

**y's**  
**MARKET**

220 South 2nd  
983-3149  
**STORE HOURS**  
Mon. Thru Sat. 8 am - 9 pm Sunday 9 am - 8 pm  
Values In This Ad  
Effective Thru Friday  
12/24/82  
We Reserve The Right To Limit Quantities



We Give  
**S&H GREEN STAMPS**  
We Take U.S.D.A. Food Coupons  
We Take W.I.C. Cards



Diet Or Regular  
**COCA-COLA**

6-32 oz.  
**\$1.99**  
Plus Deposit

6-12 oz. Can  
**\$1.29**

**Merry Christmas from Buddy's Food**  
Monday, Tuesday, Wednesday, & Thursday  
December 20, 21, 22, & 23 at 5 PM

each day we will give away one  
**\$50.00 GIFT CERTIFICATE**  
for your Christmas groceries.

No Purchase required.  
You do not have to be present to win.

We appreciate your business



Jennie-O

**TURKEYS**

**69¢**  
lb.

Farmland Boneless Halves  
**HAM** \$1.99 lb.

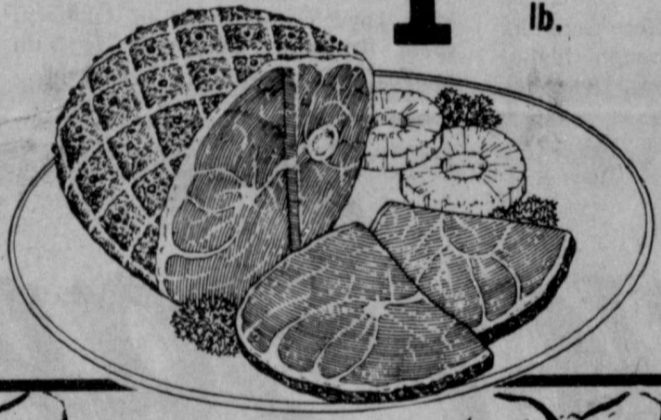
Country Pride Baking  
**HENS** 69¢ lb.

Bone In Half or Whole  
**HAMS**  
\$1.69 lb.

Farmland Boneless Whole

**HAM**

**\$1.95**  
lb.



8 oz. Philadelphia  
**CREAM CHEESE**

**69¢**

2 lb. Jimmy Dean  
**SAUSAGE** \$2.99

Swift Dark & White, All Dark or All White Meat  
**TURKEY ROAST** \$2.99  
2 lb. Box

70 oz. Bag  
Wonder Long Grain  
**RICE**  
\$1.89


Lipton  
**ONION SOUP MIX**  
79¢



42 oz. Mrs. Tuckers  
**SHORTENING**  
\$1.19

Jumbo Roll Delta  
**TOWELS**  
59¢

4 Roll Bathroom Tissue  
**DELSEY**  
93¢



8 oz. Borden  
**WHIPPING CREAM** 2/89¢

Pet Ritz Regular

**PIE SHELLS**

**1¢**

With One Filled S&H Special Saver Book

Without Book  
**61¢**

We will be closed Christmas Day, 12/25/82.  
Merry Christmas from Buddy's Food.

Sunny Fresh Farm Grade A Medium  
**EGGS**  
9¢  
With One Filled S&H Special Saver Book  
Without Book  
**69¢**

8 oz. White Swan  
**WHIPPED TOPPING**  
**1¢**  
With One Filled S&H Special Saver Book  
Without Book  
**61¢**

10 oz. Ellis Halves or Pieces  
**PECANS**  
**\$1.49**  
With One Filled S&H Special Saver Book  
Without Book  
**\$2.09**

# Library News

**Christmas Films and Filmstrips**  
The new Christmas films and filmstrips listed below are now available for reservation at the Floyd County Library.

**Puppy's Amazing Rescue.** 23 min. Color. 1979. Coronet. Pre-EI  
Petey the puppy and his friend Dolly have another exciting adventure as they are chased by a bear, stalked by a pair of evil trappers, and then must rescue Tommy and his dad from an avalanche. An animated sequel to **The Puppy Who Wanted a Boy** and **Puppy's Great Adventure.**

**What Is Christmas?** 10 min. Color. 1973. Paramount-Oxford. Pre-EI  
A little boy tells his puppy and the audience an easily-understood children's version of the first Christmas. Animated.

Filmstrips: **Winter [The Seasons] and Broken Toys**

Films and filmstrips available through January 7 at the Floyd County Library:

**American Tall Tale Heroes.** 15 min. Color. 1974. Coronet El-JH  
A timeless film recalling America's history before spaceships, skyscrapers, and ice cream cones. Old Timer spins tales of legendary deeds of Stormalong, the sailor; Paul Bunyan, the lumberjack; John Henry, the steel driver, and Pecos Bill, the cowboy. Animated.

**Apollo: Journey to the Moon.** 26 min. B&W. 1965. McGraw-Hill. SH-A  
Covers all phases of Project Apollo, America's manned moon mission. Includes sequences showing rocket engine tests, detailed photographs of the capsule's interior and visits to Cape Kennedy. Nostalgia buffs will enjoy.

**Camping Out.** 15 min. Color. 1977. West Wind Productions. JH-A  
A basic film showing the requirement and necessities of simple tent camping close to home or far away.

**Had You Lived Then: Life in a Midwestern Small Town 1920's.** 18 min. Color. 1976. Paramount Communications. Upper El-A  
Portrays everyday life experienced in a typical turn-of-the-century midwestern town and the inventions that shaped gradual change in lifestyles.

**The Legend of John Henry.** 11 min. Color. 1974. Stephen Bosustow. El-JH  
John Henry, fictionalized for his prowess and stamina as a steel driver, died beating a steam drill in a race through a mountain. Portrays strength, courage, and perseverance in the face of overwhelming odds. Features Roberta Flack singing the scored narrative in this animated film.

**Lifeclimb.** 23 min. Color. 1977. Pyramid Films. JH-A  
Faced with retirement at 57, coupled with crippling and terminal illnesses, Stan Zundell recreates his eight-year search for a better way of life: physically, emotionally and mentally. Inspiring.

**The Mole and the Umbrella.** 9 min. Color. 1973. McGraw-Hill. Pre-EI  
With universal humor and quickly moving situations, Czech animator Zdenek Milner has created an entertaining, stimulating story of a mole who finds a new use for his umbrella with every predicament he encounters.

**Noises in the Night.** 9 min. Color. 1969. BFA Educational Media. Pre-EI  
Sherri fears noises that she hears in the dark. Her parents help her to understand that night noises are made by familiar things.

**Portrait of Grandpa Doc.** 28 min. Color. 1977. Phoenix Films. JH-A  
Touching, fond memories of a gentle man as seen through the eyes of his artist grandson. Moving.

**Pride and Workmanship.** 9 min. Color. 1975. Paramount-Oxford. JH-A  
A short portrait of master American carver of wooden carousel figures, Salvatore Cerigliaro, sensitively reveals his pride in his artistry and his achievement as an immigrant.

**Ranch Girl.** 16 min. Color. 1972. Paramount Communications. El  
Follows a rancher's daughter on a horseback ride near Sunlight Valley, Wyoming. A pleasant, quiet film.

**Rodeo.** 20 min. Color. 1969. Phoenix Films. JH-A  
The film moves from jovial scenes at the beginning of a National Finals Rodeo to the intense slow-motion battle between a rider and a mean Brahma bull.

**Sharks.** 22 min. Color. 1974. Macmillan. El-A  
Explores the behavior of various types of sharks in an objective search for truth about one of the few species that will attack man. Lorne Greene narrates.

**The Silent Partner.** 25 min. B&W. 1955 Eastin-Phelan. All ages  
Features a touching plot accented with hilarious comedy sequences. Selma (ZaSu Pitts) reunites Arthur Bail (Joe E. Brown), a film director, and his old friend from the silent days. Kelsy Dutton (Buster Keaton).

**Snake River.** 25 min. Color. 1969. Northern Films. JH-A  
Traces the Snake River from its source in Wyoming through Idaho, Oregon, and Washington. Describes

how it serves mankind by watering farmland, supplying fish, providing electric power, and affording recreation. Looks at the effect man has had on the river.

**The Steadfast Tin Soldier.** 14 min. Color. 1955. Macmillan. Pre-EI  
Adaptation of Hans Christian Andersen's story of a one-legged tin soldier who falls in love with a paper dancer. The adventures of the soldier provide a captivating plot, and movement of toys and puppets is done in genius.

**A Story, A Story.** 10 min. Color. 1970. Weston Woods. El  
Based on the Caldecott Medal winner of the same title by Gail E. Haley, and animated African folk tale that tells how Ananse, the spider man, buys the stories of Nyame, the sky god, so they can be retold on earth.

**When your Clothing Burns.** 19 min. Color. 1976. National Fire Protection Association. El-A  
All clothing will burn, but cautious behavior and use of flame-retardant clothing will reduce the chances of starting a fire. Film shows what to do when clothing is on fire and high-probability fire situations around the home.

**Bubble Gum and Honey.** Films, Inc. Color. 1970. 6 min. Pre-EI  
A comedy which shows the gathering,

processing, and packaging of the bubble gum and honey which leaves viewers without a doubt as to which is more wholesome and appetizing.

**Really Rosie.** 26 min. Color. 1976. Weston Woods. El  
Rosie challenges everyone to believe that she's a movie star from afar, terrific at everything with an absolutely fantastic personality. She's determined to prove that make-believe is not just a passtime, but a life style. Based on characters from Maurice Sendak's **Nutshell Library** and **The Sign on Rosie's Door.** Music composed and performed by Carole King. Winner of four awards including ALA Notable Children's Film and Blue Ribbon, American Film Festival.

**Filmstrips**  
The Boy Who Went to the North  
Wind  
Danny and the Dinosaur  
The First Woodpecker  
The Hole in the Dike  
How, Hippo  
The Legend of the Palm Tree  
Mr. Vinegar  
Petunia  
The Tiger, the Brahman, and the Jackal  
Toad and Diamonds

**MONOGRAMMED & PERSONALIZED XMAS GIFTS!**

We offer two-day imprinting service in gold or silver on:

- \*Christmas cards
- \*Christmas napkins
- \*Christmas stationary
- \*Thank You notes

Names printed in gold on Bibles, books, Testaments, Diaries. So personal yet so inexpensive.

**Park Florist**  
"Visitors Welcome"  
983-2867

## Senior Citizen Menu

December 20-24

Monday: Fried chicken with cream gravy, buttered rice, peas and carrots, roll and butter, banana, orange cup, milk

Tuesday: Pepper steak, buttered noodles, pea, celery, cheese and pimenton salad and mayo, rolls and butter, bread pudding and pineapple sauce, milk

Wednesday: Ham hock and lima beans, buttered carrots, sliced tomatoes and onions, cornbread and butter, peach cobbler, milk

Thursday: Lasagna, buttered broccoli, fruit salad, roll and butter, chocolate cake, milk

Friday: Closed.

FLOYD DATA  
Mr. and Mrs. Ira Bobo and Mr. and Mrs. Loyd Ownbey, all of Lubbock, spent Tuesday, December 7, with cousins Mr. and Mrs. Clyde Bagwell.



# Family Gift Center

- Sunbeam Mixers • Osterizer Blenders
- Norelco Coffee Makers
- Timex & Westclox Clocks
- Pioneer & Sanyo Radios and Clock Radios
- Colognes & Perfumes Sophia, Cachet, Nuance, Wind Song, Heaven Scent, Charlie, All the Coty Frangrances-Wild Musk, L'Origan • New Shipment Jewelry Items
- Complete line of RCA TV & Litton Microwave Ovens

## Mize Pharmacy & T.V.

102 S. Main, Lockney

652-2435

# Holiday Savings for All

Shurfresh Grade A Large <b>EGGS</b> 2 lb. Kraft <b>VELVEETA CHEESE</b> 1 lb. pkg. Shurfresh Quarters <b>OLEO</b> Shurfresh Baking <b>HENS</b> Shurfresh, Toms or Hens <b>TURKEYS</b> 6-32 oz. <b>COKE</b> 1 lb. Folgers <b>COFFEE</b> Wright's Thick Slice <b>BACON</b>	<b>69¢</b> <b>\$2.89</b> <b>3/\$1.00</b> <b>69¢ lb.</b> <b>59¢ lb.</b> <b>\$1.89</b> <b>\$2.09</b> <b>\$1.49 lb.</b>	Shurfresh Boneless, 4-6 lb. Average <b>HAMS</b> Wright's Dry Cure Whole <b>HAMS</b> Rich's <b>TURKEY HAMS</b> Shurfine 303 Can <b>CRANBERRY SAUCE</b> Shurfresh 1/2 Pint Carton <b>WHIPPING CREAM</b> Pet Ritz Deep <b>PIE SHELLS</b>	<b>\$2.19 lb.</b> <b>\$1.69 lb.</b> <b>\$1.59 lb.</b> <b>39¢</b> <b>39¢</b> <b>89¢</b>	US no. 1 10 lb. Bag <b>POTATOES</b> 5 lb. Bag Texas <b>ORANGES</b> Red or Golden Delicious <b>APPLES</b> 8 oz. pkg. Brachs Hard Christmas <b>CANDY</b> In Shell <b>PECANS</b> California <b>WALNUTS</b>	<b>\$1.09</b> <b>99¢ lb.</b> <b>49¢ lb.</b> <b>3/\$1</b> <b>\$1.29 lb.</b> <b>98¢ lb.</b>	
--	---	--	---	--	--	---

**Bastantes Cabezas de Marano**

**KEETERS GROCERY**  
7:30 a.m. - 7:30 p.m. 652-2191  
We Redeem Food Stamps & WIC Cards  
We Reserve The Right To Limit Quantities

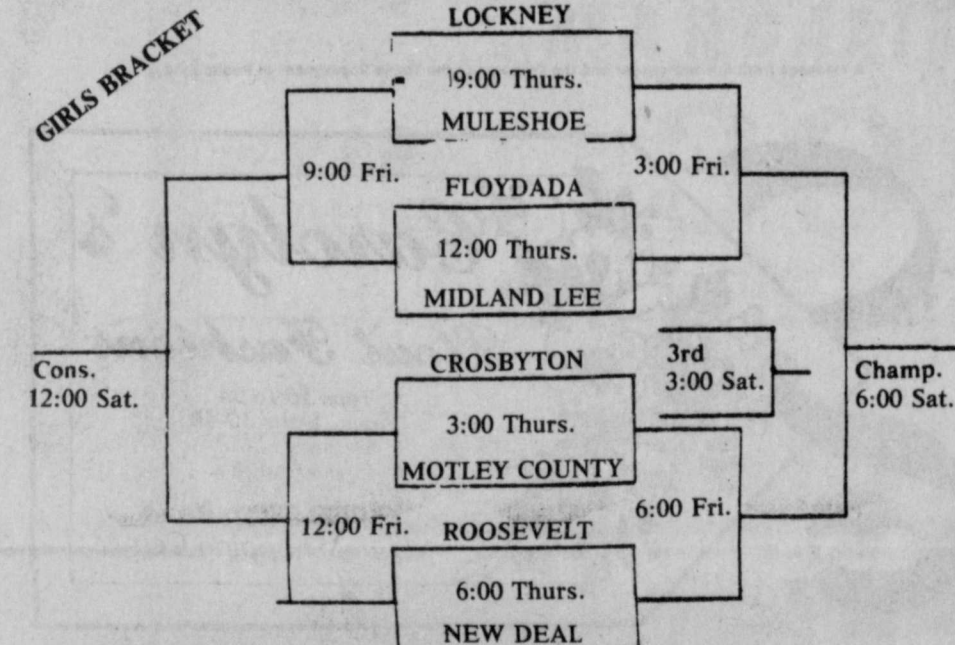
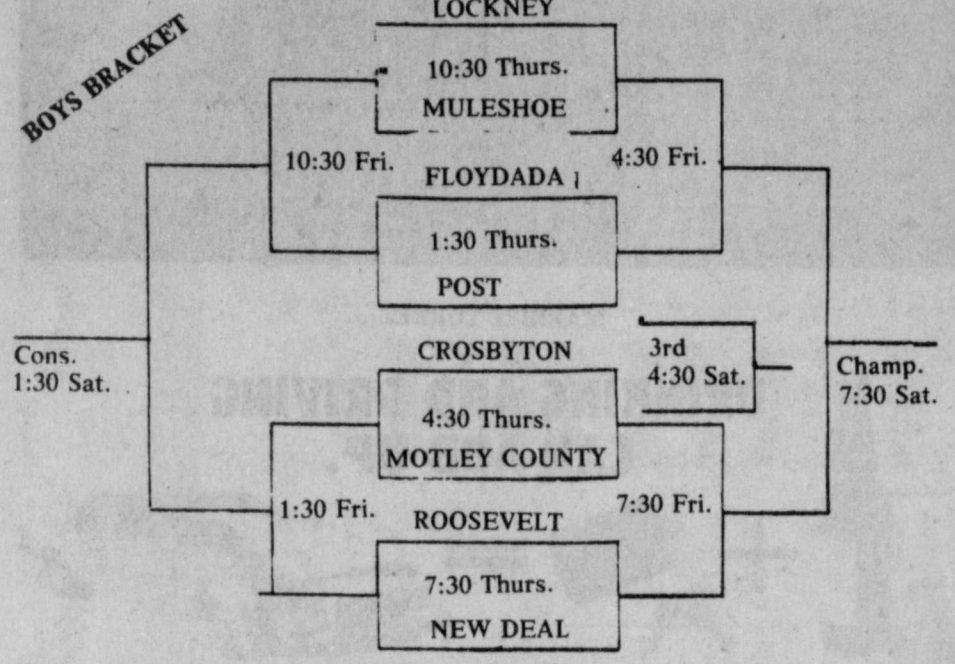
**BLUE STAMPS**  
We Give Circle Blue Stamps Double on Wednesday



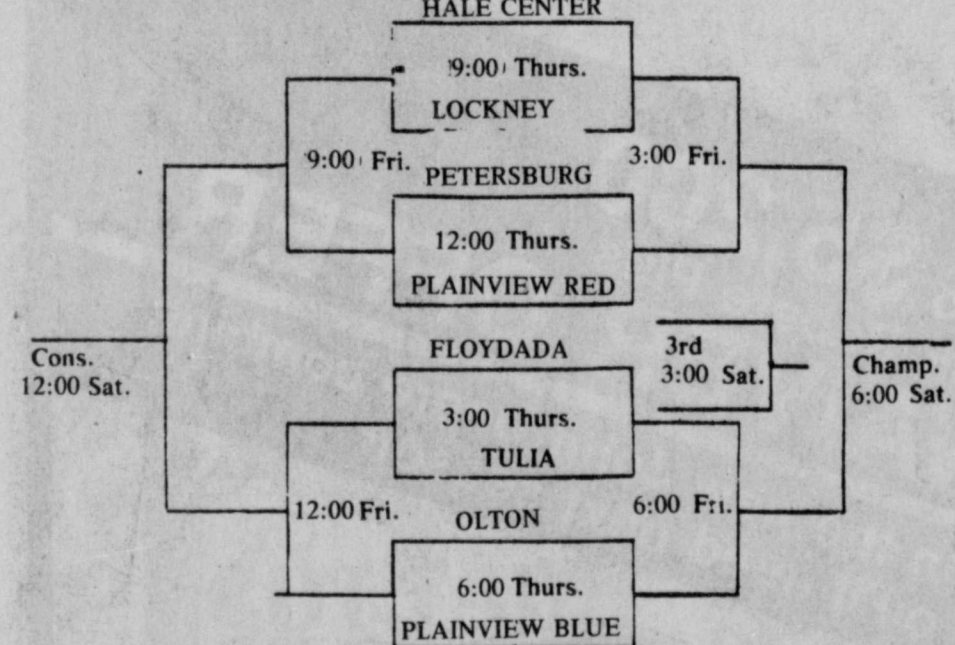
### Girl's Basketball Results

7th Grade			
11/29/82 Floydada 31	vs.	Lockney 9	*Julie Davis 4 *Christy Coffman 4
12/6/82 Post 12	vs.	Lockney 21	12/12/82 Lockney vs. Idalou 8 24 *Christy Coffman 4
*Amy Ansley 4			
*Gwen Lane 6			
*Amy Ansley 6			
Freshmen			
12/12/82 Idalou 23	vs.	Lockney 14	11/29/82 Floydada vs. Lockney 47 22 *Tammy Ballejo 8
*Amy Ansley 6			12/6/82 Post vs. Lockney 25 23 *Heather Holt 10
11/29/82 Lockney 13	vs.	Floydada 36	12/12/82 Idalou vs. Lockney 29 31 *Shandra Bybee 13
*Christy Coffman 6			
12/6/82 Lockney 17	vs.	Post 28	*High pointer for the games.

### New Deal Varsity Tourney



### Plainview 7th Grade Tourney



### Lockney vs Cooper

The Longhorns played three good quarters of basketball, but in the 4th they didn't play so well. Tony Rodriguez played well but Steven Johnson played outstandingly, pulling down 24 rebounds and scoring 12 points.

**Scoring**

Tony Rodriguez	16
Steven Johnson	12
Buffo Rodriguez	10
Michael Carthel	7
Cookie Vasquez	4
Robert Rendon	4
Terry Mathis	1
Jason Hill	1

Lockney	1	2	3	4	T
Cooper	9	16	18	12	55



THE VARSITY GIRLS' TEAM whaloped Hale Center with an outstanding 53-32 defeat last week. Connie Coffman was high pointer for the night with 16 points, Crissy Carthel was close behind with 14. The Junior Varsity did not fare as well when they came up with a 36-20 final score. Irene Cantu was the JV high pointer with 6 points for her efforts. Terri Sparkman shows some of the concentration and determination required under the pressure of the Tulla girls in the Lockney tournament.

### Lockney vs Frenship

The Longhorns played one of the best games of the year for them. This was the first victory of the year for Lockney. The Longhorns were lead by the Rodriguez brothers, Tony and Buffo.

**SCORING**

Tony Rodriguez	18	Lockney	1	2	3	4	T
Buffo Rodriguez	16	Frenship	13	16	11	21	61

### Lockney vs. Ralls

Lockney played its worst game of the year against Ralls Saturday afternoon. The Longhorns were ice cold from the floor and turned the ball over way too much. The bright spot again was the play of Steven Johnson who had 12 points and 15 rebounds.

**Scoring**

Steven Johnson	12	Lockney	1	2	3	4	T
Tony Rodriguez	8	Ralls	8	8	8	20	44
Buffo Rodriguez	6		12	9	25	18	64

Next tourney is New Deal, December 16-18, Thursday, Friday and Saturday. We play Muleshoe at 10:30 a.m. Thursday morning.

## OPEN 24 HOURS

**ALLSUP'S**  
CONVENIENCE STORES  
Lockney

PRICES EFFECTIVE DECEMBER 16-18, 1982  
WHILE SUPPLIES LAST  
OPEN 24 HOURS  
365 DAYS A YEAR

**SAVE ON FRESH CHRISTMAS TREES!**

- SPRUCE
- FIR
- BALSAM
- SCOTCH PINE

AS LOW AS **\$899**

ALL SIZES  
GREAT SELECTION  
HURRY WHILE SUPPLIES LAST

Van Camp  
**PORK & BEANS**  
3/\$1.00

Shurfine Cream Style  
**CORN**  
3/\$1.00

IN A HURRY?  
BREAKFAST AT ALLSUP'S  
HERBY'S  
**SAUSAGE 'N BISCUITS**  
99¢  
WITH AN 8 OZ. CUP OF FREE COFFEE

DELICIOUS  
**BORDEN'S EGG NOG**  
99¢  
QT.

COOKED FOOD SPECIAL OF THE WEEK  
**SAUSAGE ON A STICK**  
99¢  
**CORN DOGS**  
3/\$1.00

SAVE ON BORDEN PRODUCTS AT ALLSUP'S

BORDEN'S WHIPPING CREAM 2 1/2 PINT CTN. 99¢	LADY BORDEN ICE CREAM 1/2 GAL. RD. CTN. \$1.99
---	--

KRAFT  
**MARSHMALLOW CREME**  
7 OZ. JAR  
39¢

NON-RETURNABLE MOUNTAIN DEW/DIET PEPSI OR  
**PEPSI-COLA**  
\$2.29  
16 16 OZ. BTLs. 8 PACK

KRAFT PHILADELPHIA  
**CREAM CHEESE**  
59¢  
8 OZ. PKG.

BORDEN'S  
**PARTY DIPS**  
59¢  
8 OZ. CTN.

Shurfine 32 oz. Size  
**TOMATO JUICE**  
89¢  
Shurfine Tomato  
**CATSUP**  
99¢

**THERE'S ONE NEAR YOU!**

Got Heating or Plumbing Problems?  
CALL  
**Holmes Plumbing**  
Austin or Steve  
Call Day or Night  
983-2251

**KNOW YOUR LIMITS.**

There's Another Limit You Should Know: Your Own

Everyone knows it's best not to drink before driving. But everybody also knows that most people drink, and some occasionally drive afterwards. So, many safety officials now say: "If you drink before driving, know your own limit."

**CHART FOR RESPONSIBLE PEOPLE WHO MAY SOMETIMES DRIVE AFTER DRINKING!**

Drinks	100	150	200	250	300	350	400	450	500
1	0.08	0.12	0.16	0.20	0.24	0.28	0.32	0.36	0.40
2	0.16	0.24	0.32	0.40	0.48	0.56	0.64	0.72	0.80
3	0.24	0.36	0.48	0.60	0.72	0.84	0.96	1.12	1.28
4	0.32	0.48	0.64	0.80	0.96	1.12	1.28	1.44	1.60
5	0.40	0.60	0.80	1.00	1.20	1.40	1.60	1.80	2.00
6	0.48	0.72	0.96	1.20	1.44	1.68	1.92	2.16	2.40
7	0.56	0.84	1.12	1.44	1.76	2.08	2.40	2.72	3.04
8	0.64	0.96	1.28	1.60	1.92	2.24	2.56	2.88	3.20
9	0.72	1.08	1.44	1.80	2.16	2.48	2.80	3.12	3.44
10	0.80	1.20	1.60	2.00	2.40	2.72	3.04	3.36	3.68

Source: National Highway Traffic Safety Administration, 1977. Blood Alcohol Content (BAC) is measured in percent. 0.08% is the legal limit for drivers. 0.15% is the level at which most people begin to feel the effects of alcohol. 0.25% is the level at which most people become intoxicated. 0.40% is the level at which most people lose consciousness. 0.50% is the level at which most people die. 0.80% is the level at which most people die within 10 minutes. 1.00% is the level at which most people die within 30 minutes. 1.50% is the level at which most people die within 1 hour. 2.00% is the level at which most people die within 2 hours. 3.00% is the level at which most people die within 4 hours. 4.00% is the level at which most people die within 6 hours. 5.00% is the level at which most people die within 8 hours. 6.00% is the level at which most people die within 10 hours. 7.00% is the level at which most people die within 12 hours. 8.00% is the level at which most people die within 14 hours. 9.00% is the level at which most people die within 16 hours. 10.00% is the level at which most people die within 18 hours.

STURGEST POLICY IS - DON'T DRIVE AFTER DRINKING!

Shop For The Golfer  
At The  
**Floydada Country Club**

Gifts for all members of the family:  
Sweater, Shirts, Slacks,  
Windbreakers by Izod  
Top Line Golf Equipment  
FREE Gift Wrapping

Merry Christmas to all  
**Ronnie Rosson Pro Shop**

**Gulf** Save On  
**GASOLINE or DIESEL**

Use our key pump. Main Street Lockney

For Information or Prices- Call COLLECT  
**DOUGLASS OIL CO.**  
Phone 293-1579 Plainview, Texas  
Dist. Gulf Oil Products



JODI SMITH

## FHS DAR Good Citizen candidate elected

Jodi Smith, daughter of Mr. and Mrs. Choise Smith, was selected by the faculty of Floydada High School to be a candidate for the Mary McCoy Baines Chapter of DAR for the Good Citizen Award. Members of the Senior class nominated three candidates and the faculty selected one of those three to be the candidate on the basis of the NSDAR rules.

The recipient of the honor is judged on qualities of outstanding leadership, responsibility, cooperation, citizenship, high values and high grades.

Among Jodi's accomplishments and honors have been 8 years of active participation in 4-H Club, holding many offices in that organization. She was the 1981 4-H Gold Star recipient, 1982 "I Dare You" 4-H award, President of the Senior class, Student Council member for 4 years, FFA Sweetheart, member of Annual staff, Junior class favorite and secretary, and a DECA member.

She is an active member of First Baptist Church. She plans to attend West Texas State University and later Texas Tech University where she plans

to major in Home Economics.

All area school candidates, their parents, school principal, counselors and friends will be honored at a Tea February 12, 1983, to be given by the Mary McCoy Baines Chapter, where each candidate will be presented a Certificate of Award and a Good Citizen Pin. The Good Citizen winner will be announced at that time and will receive a \$100 scholarship.

The local DAR Good Citizen winner, mother and father, are invited to attend the TSDAR State Conference in Galveston in March. The State DAR Good Citizen receives a State DAR Good Citizen Pin, a \$200 Educational Award, an engraved Paul Revere bowl from the State Society, and a \$100 Educational Award from the National Society. The Divisional winner will receive a \$250 Educational Award.

The National winner receives a \$1,000 scholarship to the college of the student's choice and a sterling silver Paul Revere bowl that has been engraved.

## LHS DAR Good Citizen candidate elected

Maribel Torres, daughter of Mr. and Mrs. Mario Torres, was selected by the faculty of Lockney High School to be a candidate for the Mary McCoy Baines Chapter of DAR for the Good Citizen Award. Members of the Senior class nominated three candidates and the faculty selected one of those three to be the candidate on the basis of the NSDAR rules.

The recipient of the honor is judged on qualities of outstanding leadership, responsibility, cooperation, citizenship, high values and high grades.

Maribel won the most studious award for three years, was REA tour winner, is Senior class president, National Honor Society president, Yearbook editor and a member of the Student Council. She plays in the band and is an active member of San Jose Catholic Church. She plans to attend Amarillo College, majoring in Radiologic Technology, specializing in radiation therapy.

All area school candidates, their

parents, school principals, counselors and friends will be honored at a Tea February 12, 1983, to be given by the Mary McCoy Baines Chapter, where each candidate will be presented a Certificate of Award and a Good Citizen Pin. The Good Citizen winner will be announced at that time and will receive a \$100 scholarship.

The local DAR Good Citizen winner, mother and father, are invited to attend the TSDAR State Conference in Galveston in March. The State DAR Good Citizen receives a State DAR Good Citizen Pin, a \$200 Educational Award, an engraved Paul Revere bowl from the State Society, and a \$100 Educational Award from the National Society. The Divisional winner will receive a \$250 Educational Award.

The National winner receives a \$1,000 scholarship to the college of the student's choice and a sterling silver Paul Revere bowl that has been engraved.



MARIBEL TORREZ

## Area physician to be honored by group

The American College of Physicians (ACP) announced that Melvin Wayne Cooper, MD of Lubbock, Texas, son of Mr. and Mrs. Melvin Cooper of Lockney, has been selected to Fellowship in the 54,000-member national medical specialty society. Dr. Cooper, a specialist in Cardiology, will be honored during the Convocation ceremony at the College's Annual Session in San Francisco, California, April 11-14, 1983.

Dr. Cooper is one of 16,000 physicians honored with Fellowship in the College — 718 have been elected this year. A 1969 graduate of University of Texas Medical Branch in Galveston, Dr. Cooper has been a resident of Lubbock for four years and is on the staff of the Texas Tech University Health Sciences Center, School of Medicine, Department of Internal Medicine.

Election to Fellowship in the College signifies that a physician has been recognized by his colleagues as having attained a level of medical scholarship and achievement in internal medicine. Usually, Fellowship means that the honoree has authored articles in medical journals, presented papers at medical meetings, is involved in the teaching of young doctors and medical students

and has made other notable contributions to the advancement of medical science and practice.

The ACP, founded in 1915, represents doctors of internal medicine (internists) and related specialists. Through rigorous membership requirements, contact with health care officials in government and the private sector, and programs of continuing medical education, the College works to upgrade the quality of medical practice, education and research in the U.S.

Fellows in the American College of Physicians are recognized by the initials "FACP" after their names.

## Outstanding TVO students named

Jeff Moss of Floydada has been named Outstanding Technical-Vocational-Occupational Student of the Month of November in Commercial Art.

Students are selected for the honor monthly by faculty members in their respective study areas. Selection is based upon the student's grades, attitude, improvement and motivation.

## DRINKING AND DRIVING CAN ADD UP.



A message from this newspaper and the Troopers of the Texas Department of Public Safety.

*Carolyn's*  
**Stout Fashions**

Tops 36 To 54  
Pants - Skirts 30-48  
Dresses 12-32  
Evens And 1/2 s

3200 Olton Road  
Village Shopping Center

Cash Rebates up to  
**\$5,000** plus a  
**WAIVER OFFER**  
On a new John Deere cotton  
stripper bought pre-season

**UP TO \$6,100**  
**DEERE BONUS**  
On these new John Deere  
Max-Emerge<sup>®</sup> Planters plus  
April 1, '83 waiver offer

Up to **\$5,200**  
Cash Rebate Plus  
**WAIVER OFFER**  
On the new John Deere combine  
you'll need next season

The cotton harvesting pros at John Deere offer the most cost-efficient cotton strippers in the field today... and now make a limited-time rebate offer to lower your costs even more. Order any new mounted or self-propelled stripper listed here; when it's delivered you'll get a cash rebate check from John Deere.

There's more. If you qualify for credit, you can finance with John Deere, make the normal downpayment, then make no installment payments and incur no finance charges until the 1983 harvesting season.\* So it'll pay

you to order now while this offer's in effect.

Model	Cash Rebate On Purchase
283 Mounted Stripper	\$2,500
484 SP Stripper	\$5,000
7440 SP Stripper	\$3,000

\*Availability of John Deere finance plans subject to approval of credit. These offers may be reduced in value or withdrawn at any time.

Order the model and size you need now. A substantial John Deere money bonus will be mailed to you after your planter is delivered.

In addition to this bonus, if you finance the planter with Deere, finance charges will be waived to April 1, 1983.\*

Model	John Deere Money Bonus	Model	John Deere Money Bonus
7000 Front-Folding:		7000 Conservation:	
24-row N	\$6100	8-row N	\$1300
18-row N	\$4400	6-row W	\$1100
15-row N	\$3900	6-row N	\$1000
12-row W	\$3500	4-row W	\$ 700
12-row N	\$2800	7100 Integral:	
8-row W	\$2200	12-row N	\$1200
7000:		10-row N	\$1000
12-row N	\$1900	8-row N	\$ 900
8-row W	\$1200	8-row W	\$ 800
8-row N	\$1100	6-row N	\$ 700
6-row W	\$1000	6-row W	\$ 600
6-row N	\$ 800	4-row W	\$ 500
4-row W	\$ 500		
4-row N	\$ 500		

N = Narrow W = Wide

\*John Deere finance plans subject to approved credit. These offers may be reduced in value or withdrawn at any time.

# FLOYD COUNTY IMPLEMENT

Floydada, Texas
983-3732

# FREEBIES!

**FREE!** WHILE 360 LAST

TOWN & COUNTRY  
**BASEBALL CAP**  
WITH PURCHASE OF 10 GAL. OR MORE OF GAS

**FREE!**

TOWN AND COUNTRY BUTANE  
**CIGARETTE LIGHTER**

PRESENT THIS COUPON AT (WHILE SUPPLY LASTS)  
102 SO. 2ND, FLOYDADA  
STORE COUPON

**\*FREE! 9oz. FOUNTAIN DRINK WITH THE PURCHASE OF HERBY'S SANDWICH \***

PARADE BRAND **MARGARINE**  
**1 LB** **39¢**  
QUARTERS  
LIMIT 3 LBS.

**FRITO - LAY POTATO CHIPS DORITOS RUFFLES**  
\$1.29 BAG

**ARMOUR'S BOLOGNA**  
1 LB. PKG **\$1.69**

**NORTHERN FACIAL TISSUE**  
175 CT. BOX **49¢**  
LIMIT 3

**99¢**  
LIMIT 3 PER CUSTOMER

**MRS BAIRD'S Sta-Fresh BREAD** LARGE LOAF  
REG. 79¢ EA  
LIMIT 4 **2 FOR \$1.00**

**ANTI - FREEZE**  
ARTIC 1 Gal. **\$2.99**  
LIMIT 4

**ARMOUR BACON** 1 Lb.  
**\$1.69** Pkg.

**WELCHADE GRAPE DRINK** 46oz CAN  
LIMIT 2 only **59¢**

**GENERIC MACARONI & CHEESE** 7 1/2 oz BOX  
**29¢**  
LIMIT 4

**SUPERMAN PEANUT BUTTER** 18 OZ.  
**\$1.29**

**FIRESIDE SNACK CRACKERS** 11 oz BOX  
**49¢**

**BORDEN COTTAGE CHEESE** 12 OZ  
**89¢**

**6 PACK CANS COKE DR PEPPER, PEPSI**  
REG. 2.69

**LIBBY'S Whole Kernal CORN** 17oz  
**39¢** ea.

**LIBBY'S GREEN BEANS** 16 OZ CAN CUT  
**39¢**

**\$1.99**

**BORDEN POINSETTIA MILK** 1 GAL HOMOGENIZED  
**\$2.19**

**GENERIC BATHROOM TISSUE** 4 ROLL PACKAGE  
**69¢**

**DOLLY MADISON DANISH ROLLS**  
REG 1.29 **89¢**

**TONY'S PIZZA** Pepperoni REG 1.99 Supreme REG 2.59  
**YOUR CHOICE \$1.59**

**SPECIAL PRICES GOOD THRU 12/23 LIMITED SUPPLY ON SOME ITEMS**

**GRADE A LARGE EGGS** 65¢ DOZ  
LIMIT 3 DOZEN



**102 S 2ND FLOYDADA**



*PEARSON GREETINGS*



# Lockney Hospital

**December 6-13**  
 Wayne Coleman, Lockney, adm. 11-18, continues care  
 Blas Rodriguez, Plainview, adm. 11-25, dis. 12-8  
 Ethel Carroll, Lockney, adm. 11-11, continues care  
 Margareta Gonzales, Lockney, adm. 12-4, dis. 12-8  
 Mauricia Osorio, Quitaque, adm. 12-4, dis. 12-13  
 Mae Rowell, Silvertown, adm. 12-5, dis. 12-11  
 Sheila Kay Hickman, Midland, adm. 12-5, baby girl Amber born 12-5, dis. 12-8  
 Dora Cruz, Lockney, adm. 12-5, baby

boy Brad born 12-5, dis. 12-8  
 Christina DeLeon Casias, Ralls, adm. 12-6, dis. 12-8  
 Melody Swearingen, Plainview, adm. 12-7, baby boy Weston born 12-8, dis. 12-10  
 Carman Garcia, Plainview, adm. 12-7, baby girl Nelda born 12-8, dis. 12-10  
 Willie Jones, Lockney, adm. 12-7, continues care  
 Hallie Roberts, Lockney, adm. 12-1, dis. 12-8  
 Earl Freeman, Lockney, adm. 12-9, continues care  
 James Kimbell, Quitaque, adm. 12-9, dis. 12-13

Anjella E. Hunt, Lockney, adm. 12-10, baby girl Anjella Tabitha Kay born 12-10, dis. 12-12  
 Andrea Guerrero, Hart, adm. 12-10, baby girl Maribel born 12-10, dis. 12-12  
 J.W. Leach, Lockney, adm. 12-11, dis. 12-14  
 John Bickley, Lockney, adm. 12-12, continues care  
 Mary Ann Madrigal, Tulia, adm. 12-12, continues care  
 Betty Hinjosa, Floydada, adm. 12-11, continues care  
 Anthony Powell, Floydada, adm. 12-13, continues care  
 Grace Foster, Lockney, adm. 12-13, continues care

## Homebuilders party held in Smith's home

The Homebuilders Christmas party was held in the beautifully decorated home of Mrs. Lillian Smith on December 6th. The lovely tree set a festive atmosphere for the gifts that members brought to exchange and gifts for their secret pals.

Mrs. Blanch Williams was in charge of the program. Barbara Willis read the beloved account of our first Christmas from Luke 2:2-10. Gladys Widener and Lela Mae Burns read stories of families of yesteryear and the anxieties they had in buying a toy for their children. Blanch Williams gave a story of a mother who was afraid for her little three year old getting to close to a manger scene. Then one day finding him covering the baby Jesus, saying "Baby Jesus was cold." "Let us keep Him warm in our hearts."

Each member brought a gift they had from other years and told why they cherish it. They then wrote names of extension members who have been

helpful and hung the ribbons on a small tree.

Muri Mayfield installed the officers for another year. She used the U.S. flag as an inspiration to the duties of their office.

Members enjoying the afternoon and

Christmas goodies were: Eunice Hong, Gladys Widener, Lela Mae Burns, Muri Mayfield, Blanch Williams, Frances McClure, Inye Walker, Ruth Trapp, Barbara Willis and Marilyn Tate.

The group's next meeting will be January 11.

### Public Notice

**NOTICE TO ALL PERSONS HAVING CLAIMS AGAINST THE ESTATE OF RUTH ELAINE BEEDY, DECEASED**  
 Notice is hereby given that original Letters Testamentary for the Estate of RUTH ELAINE BEEDY were issued on November 11, 1982, in Cause No. 4633, pending in the County Court of Floyd County, Texas, to: Latonya Gay McHagon, Independent Executrix.

The residence of said Executrix is Floyd County, Texas. The post office address is: c/o White, Self & Bass, 601 West 7th Street, Plainview, Texas 79072.

All persons having claims against this Estate which is currently being administered are required to present them within the time and in the manner prescribed by law.

DATED this 10th day of December, 1982.

WHITE, SELF & BASS  
 601 West 7th Street  
 Plainview, Texas 79072  
 806/293-8463  
 By: Ed Self, 18008000  
 ATTORNEYS FOR THE ESTATE

### CITY OF LOCKNEY PUBLIC NOTICE INVITATION TO BID

The City of Lockney, on behalf of applicants to the Community Development Block Grant program is soliciting bids for home repair and improvement contracts. Work write-ups, including specifications and the addresses of the homes to be repaired, may be picked up at the Lockney City Hall, 215 E. Locust Street, Lockney, Texas 79241. Copies of this material may be requested by potential bidders by calling the Lockney City Hall at (806) 652-2355.

Sealed bid procedures will be observed and the deadline for submitting bids on Application #'s 10098101, 01278201, 08168201, 12108101, 10198201, 07208203 and 09028201 is 5:00 o'clock P.M. on the 11th day of January, 1983. The bids will be opened at 7:00 o'clock P.M. in the City Council meeting room of the Lockney City Hall on the 11th day of January, 1983. The City and the applicant-owners reserve the right to reject any and all bids at their sole discretion.

Erma Lee Duckworth, City Secretary  
 P.O. Box 387  
 Lockney, Texas 79241

**Brett R. Gill**  
 Announces the opening of his  
**Tax & Bookkeeping Service**  
 to be operated out of his home.  
 Bookkeeping services & tax returns done.  
 For more information 847-2222 Silvertown

**Dorothy's Special Buys**  
  
**1¢ SALE on Ladies Skirts**  
 Very Good Selection of Size & Colors  
**Buy 2 for Price of 1 plus 1¢**  
**30-50% Off Car Coats**  
 Lots of Colors & Sizes Polyester, Cotton & Velvet  
**Long Coats & Sportswear**  
 Mix & Match Lots of Colors & Sizes  
**Lamps, Pictures, & Oil Paintings Large & Small 30% Off**  
**Dorothy's**  
 1511 West 5th Gabriel - Wayland Shopping Center - Plainview, Texas

**Mufflers for John Deere Tractors**  
 3020 late & 4020 Diesel - \$20  
 Late model 4010 & 4020 - \$18.85  
 3010, 3020 gas and LP, early 4010 Diesel, 4020 Gas & LP - \$17.50  
 4230, 4320, 4430, 4520, 4620, 4630 - \$43.50

**Spray Paint Matched to Fit \$1.25**  
 Case Red, Ford Blue, Ford Gray, JD Yellow, JD Green and MF Red

**Enamel Paint \$15.00 Gal.**  
 J.D. Green & J.D. Yellow

**20% off Lubricant Accessories**  
 While Supplies Last

**Brown's Implement**  
 Ralls Highway 983-2281

**FLOWERS**  
 to soften the sorrow  
 to comfort the living  
 to honor loved ones  
 SPRAYS \$10.00-\$25.00  
 STANDING SPRAYS \$25.00 up  
 Compare Our Prices  
  
 WILLIAMS FLORIST and CARD SHOP  
 128 W. California 983-5013

# OBITUARIES

**MAURICE CAMPBELL**  
 Services for Maurice Carrol Campbell, 67, of Floydada were at 2 p.m. Tuesday, in First Baptist Church, Floydada, with Dr. Floyd C. Bradley, pastor, officiating.

Burial was in Floyd County Memorial Park under direction of Moore-Rose Funeral Home.

He died Saturday afternoon at his home after a brief illness. He had been under a doctor's care.

The Floyd County native married Leona Peck December 31, 1942, in Amarillo. He was a farmer, rancher and a veteran of World War II.

He was a Baptist.

Survivors include his wife; three daughters, Jody Staples of New York State, Jean Gant of Liberal, Kansas, and Kim Swanson of Amarillo; a son, Max of Levelland; and seven grandchildren.

### LILLIE M. GRIMES

Services for Lillie Mae Grimes, 80, of Floydada were at 1 p.m. Monday at the First Baptist Church in Stratford with Dr. Floyd C. Bradley, pastor of the Floydada First Baptist Church, officiating. Burial was in Stratford Cemetery by Moore-Rose Funeral Home.

Mrs. Grimes died at 12:40 p.m. Friday, December 10, at Caprock Hospital in Floydada after a lengthy illness.

The Claude native married Lee Lance Grimes March 15, 1923, in Claude. They moved to Floydada in 1966. Grimes died on April 24, 1968. She was a member of First Baptist Church in Floydada.

Survivors include two daughters, Mrs. Arlene Steel of Corpus Christi and Mrs. Marjorie Collins of Floydada; a son, Ray E. of Canyon; eight grandchildren; and four great-grandchildren.

### DOYLE JACKSON

Services for Doyle Franklin Jackson, 49, of Floydada were at 2 p.m. Saturday at First Methodist Church.

Burial was in the Floydada Cemetery under the direction of Moore-Rose Funeral Home.

He died at 8:10 a.m. Thursday, December 9, at Methodist Hospital in Lubbock after an illness.

Born January 15, 1933, Jackson moved to Floyd County in 1954. He married Winona Lee Hatley on December 18, 1955, in Dougherty. He was a member of First United Methodist Church.

Survivors include his wife; two daughters, Brenda Bowley of Amarillo and Jeannie Jackson of Floydada; his

parents, Mr. and Mrs. J.W. Jackson of Miles; and a brother, Dwain of Lubbock.

### FORD JOHNSON

Services for Robert Ford Johnson, 74, of Floydada were at 10 a.m. Wednesday in Calvary Baptist Church with Rev. Hollis Payne, pastor officiating.

Burial was in Floydada Cemetery under direction of Moore-Rose Funeral Home.

He died at about 6 a.m. Monday in Caprock Hospital, Floydada, after a sudden illness.

The Wise County native married Lizzie M. Brown on August 12, 1971, in Paducah. He was a Floyd County employee, driving a maintainer. He was a Baptist.

Survivors include his wife; two sons, Rex of Quitaque and Arnold of Flomot; two step-sons, Wayne and Johnny Gourdon, both of Floydada; three daughters, Iva Mae Merrell of Claude, Mary Alice Scott and Gail Johnson, both of Amarillo; three brothers, Charlie of Tioga, Dean of Forresterburg and R.N. of Alvord; three sisters, Maggie Grinsley and Y'vonne Mouser, both of Alvord and Jackie Johnson of Wichita Falls; 14 grandchildren; and six great-grandchildren.

### THURMAN McCULLAR

Services for Thurman McCullar, 90,

of Lubbock were at 1 p.m. Tuesday in Franklin-Bartley Chapel with the Rev. Jerry Roberts of First Assembly of God Church officiating.

Burial was in Plainview Cemetery under direction of Franklin-Bartley Funeral Home.

He died at 6:50 a.m. Sunday in Methodist Hospital after a lengthy illness.

He was in the Army during World War I. He moved to Lubbock in 1958 and also had lived in Plainview before moving to Amarillo.

He was a member of First Assembly of God Church.

Survivors include four daughters, Betty Avery and Beulah Puckett, both of Goodrich, Beatrice Watts of Canadian, and Barbara Gibbons of Lubbock; seven sons, Henry J. of Henryetta, Oklahoma, J.D. of Floydada, Jessie of Tecumseh, Oklahoma, Clyde of Bedford, Billy Ray of Lockney, Heran of Goodrich and Donnie of Lubbock; two sisters, Loraine Sloan of Shawnee, Oklahoma, and Ester Rhodes of Coolidge, Arizona; a brother, Ben of Shawnee, Oklahoma; 36 grandchildren; and 32 great-grandchildren.

Pallbearers were Terri Nugent, Harold Stapp, Steve Phillip, Billy Burch, Ronnie Adams and Carl Cruise.

The family suggests memorials be made to the American Diabetes Association.

### CAPROCK HOSPITAL NEWS

#### December 6-13

Steven Tackett, Floydada, adm. 9-15, continues care, Hong

Joseph (Boots) Dobbins, Floydada, adm. 11-9, continues care, Hong

Armond Cardinal, Lockney, adm. 11-26, dis. 12-10, Hong

Irene Fuller, Matador, adm. 11-29, continues care, Hong

Vernon Bradshaw, Floydada, adm. 12-2, dis. 12-10, Hong

Opal McHam, Floydada, adm. 12-3, dis. 12-7, Hong

Ona Jameson, Matador, adm. 12-3, continues care, Acar

Faye Head, Matador, adm. 12-6, continues care, Hong

Lillie Grimes, Floydada, adm. 12-7, expired 12-10, Hong

Teresa Sandoval, Floydada, baby girl Stacy Ann born 12-7, dis. 12-11, Hong

Belinda Simpson, Matador, adm. 12-7, dis. 12-10, Hong

Marie Vallesjo, Floydada, adm. 12-7, dis. 12-12, Jordan

Hester Moore, Floydada, adm. 12-8, continues care, Hong

Bob Covington, Dougherty, adm. 12-8, continues care, Hong

James Henry Brewer, Floydada, adm. 12-10, continues care, Hong

Johnnye Terrell, Floydada, adm. 12-10, continues care, Hong

Antonio Polendo, Quitaque, adm. 12-11, continues care, Hong

Dana Ellis, Floydada, adm. 12-11, continues care, Hong

Crecencio Rodriguez, Floydada, adm. 12-12, continues care, Hong

Vaughan Murff, Floydada, adm. 12-13, continues care, Hong

Bryan Thomas, Floydada, adm. 12-13, continues care, Hong

Remember your loved ones with a living memorial to the Caprock Hospital Auxiliary Memorial Fund. Mrs. Ben Whitaker, Treasurer.

# Christmas Gifts

\*WITH SPECIAL PRICE APPEAL

- |  |                            |            |
|--|----------------------------|------------|
| 7" 14K Solid ROPE BRACELET               | Retail \$150.00 SPECIAL    | \$52.00    |
| 30" 14K Solid ROPE NECKLACE              | Retail \$520.00 SPECIAL    | \$175.00   |
| .10 ct. DIAMOND STUDS                    | Retail \$180.00 SPECIAL    | \$59.95    |
| .33 ct. DIAMOND STUDS                    | Retail \$580.00 SPECIAL    | \$189.95   |
| .50 ct. DIAMOND STUDS                    | Retail \$800.00 SPECIAL    | \$229.95   |
| 14K Yellow Gold 27 Diamond .45 ct. RING  | Retail \$1,340.00 SPECIAL  | \$445.00   |
| 18K Yellow Gold 17 Diamond 1.20 ct. RING | Retail \$3,500.00 SPECIAL  | \$1,155.00 |
| 18K Yellow Gold 59 Diamond 4.50 ct. RING | Retail \$10,000.00 SPECIAL | \$3,300.00 |



Come and see us in  
 Roaring Springs  
 and SAVE!  
 1-800-692-4249 or  
 348-3971

**Thacker Jewelry**  
 201 Broadway  
 Roaring Springs, Texas

# SHOP COMPARE

# WANT ADS ARE YOUR BEST BUY!

### Real Estate

**FOR SALE:** 2 bedroom house, nice location, assumable loan, owner would carry part of equity. Call 983-3736 after 5:00 p.m.

**3 BEDROOM.** 2 bath brick home. Central heat and cooling, covered patio. Built-in microwave. Lots of built-ins. Good location. 809 W. Virginia. 983-2394.

**MUST SELL:** 3 bedroom, 2 bath. With large shop. Must see to appreciate - 983-2636.

**3 BEDROOM.** 1 1/2 baths, carpet and fenced yard. 983-2394.

**FOR SALE:** Several nice two and three bedroom houses. Loans can be arranged. Contact Sam Hale at Hale Ins. & Real Estate 983-3261.

**BEAUTIFUL BRICK.** 3 bedroom, 2 bath, spacious walk down den with fireplace, 2-car garage, and storm cellar. For appointment, call 983-3487 after 6:00 p.m.

**TWO BEDROOM HOUSE** at 129 W. Joffie. Call 983-2633.

**2-two bedroom houses.** West of the highway on Tennessee. 983-2633.

**HOUSE FOR SALE OR RENT:** See at 125 J.B. Avenue. 3 bedroom, 1 1/2 baths, 1 car garage. Fenced yard. Day 667-3505, ask for Mike Perry. Night, 667-3967.

**NICE 2 bedroom house:** attached garage, good location; large rooms, closets and storage. Call 374-0540, 376-4811 or 652-3451.

**515 S. Main Floydada - Real Buy - Must See.** \$8,000

**HOUSE FOR SALE:** 1700 sq. ft. plus full basement. Tall cathedral ceiling in spacious living, dining and kitchen area with beautiful black brick fireplace. Two stairways leading in and out of basement. A lovely stone fireplace in play room of basement. Two and 1/2 baths. Designed for 3 and 1/2 baths and two car garage. Office space is created from enclosed patio. Call 983-3772. Across the street from High School. Wonderful for growing children.

**518 W. MISSISSIPPI, Floydada.** Nice for retirement. Price \$12,000. 2 bedrooms, 1 bath. Call Lubbock 1-797-1084.

### FARMS

**FOR SALE** 320 Acres. 5 miles East of Floydada. Call 806-983-2646.

**FOR SALE:** 74 acres in cultivation. 2 miles north of Floydada on Lockney Highway. \$500.00 an acre, will G.I. call 983-3979.

### Pets

**FOR SALE:** Boston Terrier puppies. Call 983-2251 after 6.

**THREE PUPPIES** to give away. 983-3820.

### Personals

In case you have forgotten, today is my 44th birthday. All sympathetic calls appreciated. Phone: 983-2509 after 5 and ask for Frances.

### AUCTION

Sunday December 19, 1:30 p.m.  
Hale County Pawn Shop

117 E. 6th, Plainview  
(North Side of Courthouse)

Auctioneer  
Rex Mogg

TXS-112-0902

12-16c

Some people have thought that seeing a wolf before the wolf saw them would render them speechless.

### For Sale

**"WE SELL SLEEP"**  
Direct Mattress Co. New or renovated. For appointment call City Trim Shop. 983-2332. Floydada. tfn

**1 PAIR OF PIONEER T.S.** 289 triaxials speakers and a Pioneer AD 50 equalizer. Call 983-5003 or 983-5455. tfn

**TWO SETS OF DRAPES.** 1 cornice board, full length, green, 8 1/2 feet wide. A set of blue drapes, 6 1/2 feet wide. Excellent condition and excellent price. AM-FM stereo-radio-record player in large fruitwood console. Call 983-5168 after 4.

**FOR SALE:** 50,000 BTU Dearborn heater. Free standing, forced air with vent. Victor Smith, 983-2048. tfn

**5 used Color TV's** 19" and 25" \$150 up Mize Television.

**GIVE YOUR LOVED ONE A SWINGING CHRISTMAS:** Lawn and patio swings. Don Daniel Distr. 983-2273. tfn

**PRETTY CHRISTMAS DOLLS.** New bath robes. See at 318 W. Virginia. Call 983-5221 or 983-5869. tfn

**FOR SALE:** Sturdy bunk beds and dresser. Call 983-3144 or 983-2861. tfn

**CHRISTMAS GIFTS:** Clocks, Clamps, Desk Sets, Five-Straight Games. Call or come by RWR Company, north of South Plains. 983-3077. tfn

**LADY KENMORE clothes dryer:** excellent condition. D.J. Phillips. 652-2647. L12-23c

**FOR SALE:** Stutz camper shell to fit pickup. 652-3697. L12-16c

**MESQUITE WOOD** for your fireplace. \$105.00 cord. Call 652-2151. L12-16p

**FIREWOOD,** mesquite, cord, \$100. Hauled and stacked. Rick 983-2456; Rodney 983-2783.

**FIREWOOD.** Hauled and stacked. \$100 per cord. Call night 983-2291 or days 983-2737.

**FOR SALE:** A 20 ft. self contained Karosel Travel Trailer. Inquire at Palace Barber Shop or call 983-3387. 719 South Wall. L12-16c

**LAST MINUTE CHRISTMAS IDEAS.** Tractor miniatures, farm toys, jackets, gloves, tools. Brown's Implement, Ralls Highway. 983-2281. L12-23c

### For Rent

**FOR RENT.** Apartment on 428 White. 4 rooms and carport. Call 983-3973. tfn

**FOR RENT:** 3 bedroom brick house. 1/4 mile from city limits. Call 983-3780 or 983-2153. tfn

**ECONOMICAL STORAGE TRY BARKER'S Jewel Box-Mini Storage** and save your time and money. Phone 652-2642. Corner Main & Locust — Lockney, Texas. **Barker Building**

### STORAGE SPACE

BOATS, FURNITURE, ANYTHING, ETC. BY THE MONTH OR SIX MONTH 10% DISCOUNT.

West Texas Mini Storage  
CALL WILSON BOND  
983-3573 OR 983-2151

### Want To Buy

**WANTED TO BUY** irrigated or dryland farm in Floyd or surrounding area. Write Box XRO, c/o Hesperian, 111 E. Missouri, Floydada. tfn

### Lost & Found

**LOST:** 1 section John Deere drill press wheels south of Lockney. Hall Ferguson. 652-3533. L12-16p

**STRAYED FROM STERLEY** community. 6 Brangus steers. Notched on end of left ear and branded on left hip. If seen, call 652-3680. L12-30p

### Farm Services

**WE CUSTOM MAKE & FIT** hydraulic hose for all types of machines. Brown's Implement 983-2281. TFN

Portable disc rolling  
**Lawson Farm Supply Inc.,**  
Floydada 983-3940

### Services

**WANTED:** Housecleaning or babysitting from 8 a.m. to 7 p.m. Call Christina at 652-2762. L12-16c

**LET ME TRIM** your fruit, nut and shade trees. Keith Emert. 652-3116. L-TFN

**PHEASANTS** and other game birds mounted at reasonable prices. Idalou 892-2397 or local pickup and delivery at Ponderosa Meat Co. L12-16p

**PHEASANTS & QUAIL** mounted. Call Mike Anderson 983-2037. TFN

**SERVICE REPAIRMAN** for washers and dryers in surrounding areas. 652-2703. L12-23c

### Employment

**NOW TAKING APPLICATIONS** for nursing assistants. Lockney Care Center. L12-16c

**EARN \$155+ PER WEEK** stuffing envelopes in your spare time. For information send two 20 cent stamps to: Delta Mailing Services, Dept. R1, P.O. Box 107, Greenpoint, N.Y. 11222.

### Card of Thanks

We would like to extend our love and appreciation to each and everyone who did so much for us during the loss of our loved one, Doyle.

The flowers were so beautiful and the cards so reassuring.

Thank you for the food, visits, calls, memorials and especially your prayers. Many thanks to the friends who stripped our cotton. They were: Roy Baxter, Bob Bradford, Lee and Richard Burton, Jerry and Ozell Chappell, L.B. Cozby, Kay Crabtree, Weldon Cumbie, Mac Fowler, Mickey Dot Hammonds, Adrian and Kerry Helms, Bill, Billy Gene and Joe Hinkle, Drew, Louis, Melvin, Paul and Ray Lloyd, Daryl, Mark and Terry Mayo, Leslie and Gary Nixon, Neil Pierce, Louis Riddle, Don Shurbet, Robert Stovall, Manuel Suarez, Brett Turner and Bill Womack. Also thanks to Tom and Stan Pierce, C.M. and Jack Miller for delivering hay. May I in some small way be a blessing to someone along the way as you have been to us.

You are all so very special.  
Willie Merle Sandefur  
Sandefur and Crump families  
12-16p

We wish to express our thanks to our many friends for your prayers, flowers, thoughts, cards and personal visits following our loss of Shanna.

We are thankful to the Lord for loaning the precious ray of sunshine to us for nearly 4 1/2 years.

May God bless each of you.  
The family of Shanna Kay Scarth  
Pat & Janet Scarth  
Jack & Ruth Scarth  
Elvis & Esther Parker  
Mrs. Lois Parker  
12-16p

We wish to thank all that helped in any way during Daddy's illness and death. Your deeds of kindness were appreciated.

May God Bless.  
Mrs. W.O. Sue  
Mr. & Mrs. Coy Smith  
Mr. & Mrs. Huford Sue  
Carisa and Glenna  
Mr. & Mrs. Chris Sue  
& Joshua  
12-16p

We would like to express our sincere thanks for the many kind thoughts, cards, prayers and food that were sent to us at the time of the death of our loved one. For the many floral arrangements, the phone calls and words of sympathy. You will never know how much it meant to all of us. Many thanks again and may God bless you and be with you.

Sincere Thanks  
Karen Patterson, Krissy and Brandi  
Charles & Juanita Patterson  
Harold & Cynthia Bryant  
Bettye Patterson  
Bill & Clorene Holladay  
Adrian & Sarah West  
12-16c

### Business Services

**ADAMS WELL SERVICE** Complete Irrigation Service. All sizes submergible pumps in stock. One day service. 983-5003. tfn

**LOCKSMITH:** Locks opened. Locks repaired. Keys made for locks that have no keys. Duplicate keys made. Deadbolts installed. 24-hr. Mobile Service throughout area. Don Probasco. Pro-Lock shop. 983-3834.

### POOLE WELL SERVICE AND RADIATOR SHOP

Irrigation and domestic. Trailer Sales

407 E. Houston  
983-5610 or 983-2285

"CARPET NEED CLEANIN'" Let me do the work for you. Dry Foam. 12 cents sq foot. Also Home and Auto Upholster. All Jack Moore 983-3033. After 5 p.m. Notice! I am moving to Lubbock January 1st. 795-8473. I will be glad to come back to Floydada to clean your carpet.

Script Printing & Office Supply  
\*Commercial Printing  
\*Office supplies & Furniture  
\*Business Machines  
108 S. Main  
Floydada  
983-5131

When you care enough to look your very best.

Gene's Cleaners  
103 North Main  
Floydada

Mary Kay COSMETICS  
Personalized Gift Services  
Call 983-2862

According to some researchers, celery has negative calories. It takes more calories to eat a piece of celery than the celery has in it to begin with.

983-2635  
**TURNER REAL ESTATE**  
Farms Ranches Floydada, Texas

107 S. 5th  
**Hollis R. Bond Real Estate**  
PHONE 983-2151  
FLOYDADA

GOING OUT OF BUSINESS  
CASH & CARRY SALE  
Increase of Discount on most items now in effect.  
**Whites Auto Store**  
Floydada, Texas

**Diamond Industrial Supply Co., Inc.**  
Phone Days 296-7418  
Nights 296-1200 or 296-7828  
1014 Broadway  
Plainview, Texas  
SKF BGA Timken Bower  
Cotton Stripper Brushes & Bats  
U joints  
Oil Seals  
O rings  
Wisconsin  
"We Appreciate Your Business More"

### Automotive

**1978 T-BIRD,** red and white. Good condition. 65,000 miles. Call 652-3742. L12-23p

**1977 GRAND PRIX S.J.** Excellent condition. 983-2052 L12-16c

**1973 BUICK.** 350 motor, 4 door. \$495. Call 423-1329. L12-16p

**FOR SALE:** 66 Chevrolet pickup. 283, 3 speed. Runs good. 983-2948. L12-16p

**1974 460 Ford pickup.** Good second vehicle. Good condition. 652-2295. L12-16c

78 Plymouth	\$1650
75 LTD	\$750
76 Pontiac	\$650
73 Mt. Carlo	\$600
6 little school cars	
Priced to sell	
We can finance any car we sell	
W.B. Eakin	
Ralls Hwy	983-3616

### Motorcycles

**FOR SALE:** 1975 XL-350 Honda Dirt Bike. Excellent condition. \$650.00 or best offer. Call 983-3736 after 6:00 p.m.

### Auto Parts & Accessories

**E-Z RIDER SHOCKS** by Monroe. Buy 3 and the 4th is FREE. Free Installation. Don's Muffler Shop, 210 W. California Floydada, Texas. tfn

**ALTERNATOR & STARTER REPAIRS**  
Norrell Tractor Parts  
215 S. Main  
983-3417

**CUSTOM EXHAUST WORK**  
Bruce Williams  
Specializing in Glass Packs and Turbo Mufflers  
At  
DANS AUTO SERVICE  
652-2462

**DAN'S AUTO SERVICE**  
DAN TEUTON, Owner  
Specializing in Automatic Transmission, Motor Tune-Ups, Auto Air Conditioning.

General Repair  
We Have A BRAKE LATHE to handle all passenger car brake drums. See us for complete brake service.  
Phone 652-2462

CLASSIFIED ADS  
CALL 983-3737  
or 652-3318

Before 3:00 p.m. on Tuesdays



MATT MITCHELL shows his enthusiasm from taking this mule deer buck on the Saul Ranch near Quitaque. The 13-year-old son of Warren and Charlotte Mitchell of Lockney has kept up a remarkable record, three deer in three years. This buck had 15 points and a 25-inch spread with the main beams 25 inches high. It weighed in excess of 200 pounds.

## Edwards' cows receive awards

Cows from the herd of Craig Edwards of Floydada, have been honored by the American Simmental Association. Craig Edwards earned an excellent Cow Award for outstanding performance.

To qualify for an ASA Cow Award, a cow must produce outstanding calves at regular intervals. "Excellent" awards are based on the first two calves a cow produces and those calves must be born before her fourth birthday. A "Superior" cow must produce four calves before her sixth birthday, while an "Elite" cow must have raised six calves prior to her eighth birthday.

The awards are based on date computed through ASA's extensive performance-testing programs, and using the cow's lifetime "Most Probable Producing Ability" (MPPA). This formula evaluates the animal's within-herd performance as shown by the weaning weights of her progeny, compared to the herd average. All honored cows must possess MPPA scores of 105 or greater.

Owners of award-winning cows receive an attractive metal plaque for display, while both the owner and the breeder of the cow receive a Cow Performance Certificate for their herds. Cow Awards are an indication that the owner and breeder believe strongly in performance-testing and test their entire herd.

The American Simmental Association was the first American Beef Breed Association to recognize performance of genetically-outstanding females with national cow productivity awards.

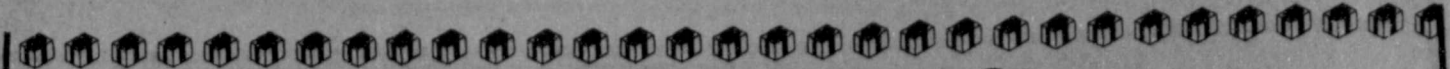
## Kirk to play in Symphony

Kerry Kirk, of Floydada, will be playing in the Plainview Symphony Concert tomorrow Dec. 17. The concert will be at the First Methodist Church Sanctuary, 1001 W. 7th. This is the first concert of the symphony's fourth season. Kirk will be playing tuba.

Sections from the Messiah and selections from the Nutcracker Suite will be featured in the Christmas concert.

This year a 60-member chorus has been organized. The chorus will be led by Duane Harris, a music professor from Wayland Baptist University.

The Symphony guild will sponsor a dinner the same evening in the fellowship hall of the church. Meal prices are \$5.50 for adults and \$2 for students under 12. The proceeds go to the guild for their various activities. Concert tickets are \$5 for adults and \$2 for any age student. Tickets will be available at the door or at Gabriels on Fifth Street.



## Hale's Department Store

A Gift From Hale's Means Quality and Fashion

### For the Ladies -

Gifts of Lingerie have always appealed to women of all ages - Hales has pajamas and gowns in tailored and lacy styles in both nylon and brushed nylon. Our velour robes are both pretty pretty and warm for winter nights. Also shop Hale's for panties, slips & Camisoles by Vassarrette.



### For the Men -

Wool sport coats by Sewell - \$130<sup>00</sup>  
Part wool suits by Sewell - \$180<sup>00</sup> - \$230<sup>00</sup>  
Our clothing is the finest quality materials with up to the minute styling. He will not only feel well dressed - he will be well dressed - in clothes from Hale's!

Light up her w eyes with a new Blouse from Hale's. We have all the newest ruffled styles in jewel colors and sparkling white. Team one with a black taffeta shirt for festive occasions. Blouses by Sunny South & Sir James.



You still get the finest shirts from Arron and Hale's! The fit and fabric are the ingredients of a fine shirt. Hale's has sizes from 14 1/2 - 19 1/2 - sleeve lengths from 32" - 37" in all the latest fashions. A little extra for you until Christmas - 10% off!

Show her she is really special with a dress by Butte Knit from Hale's. These are beautiful dresses and suits that will make her feel well-dressed wherever she goes.

Hale's has the hottest jacket line around - Pacific Trail - see these good looking jackets for men.

AND REMEMBER - Hale's does not just carry ties, socks and underwear - we have quality products in the newest cuts and latest fabrics.

Always FREE Gift Wrapping at Hale's

# HALE'S DEPT. STORE

112 East California

983-2388



## Save

Take the wise step and buy a Ruud® High-Efficiency Central Air Conditioning system. It is specifically designed to be more energy-efficient than previous Ruud models and yet it's still economical to buy.



IS AIR CONDITIONING  
Don's Heating & Air Conditioning

A brand for the future



105 S. Wall  
Tommy Ogden mgr.  
983-2480



**Model Closeout Rebates up to \$6,200**  
On the last 40 Series John Deere tractors we'll get - including a bonus for financing without waiver



Get a cash rebate direct from John Deere, in addition to our good deal on the 40 Series tractor of your choice - 2WD or 4WD. These tractors also carry a 1981 sticker price, so we're offering rebates from prices already competitively low.

Boost your savings even more. During December, 1982, pay cash for your new tractor, finance it where you choose, or finance it with John Deere without waiver\* and you'll collect the

cash rebate in lieu of finance waiver as shown. Or you can elect to have the John Deere finance charge waived to June 1, 1983, instead of taking the additional cash rebate.\*

During December, special rebates, too, on 50 Series 4WD tractors that are replacing 40 Series 4WDs being closed out. Cash rebates up to \$10,500. Waiver of finance charge option: See us soon!

Model	Cash Rebate on Purchase	Dec. '82 Cash Rebate In Lieu of Waiver	Maximum Rebate
228-hp 8640	\$4,500	\$1,700	\$ 6,200
179-hp 8440	4,000	1,350	5,350
180-hp 4840	3,600	1,200	4,800
155-hp 4640	3,400	1,050	4,450
130-hp 4440	2,800	850	3,650
110-hp 4240	2,300	750	3,050
90-hp 4040	2,200	700	2,900
80-hp 2940	1,800	500	2,300
70-hp 2640	1,300	400	1,700
60-hp 2440	1,200	350	1,550
50-hp 2240	1,100	300	1,400
40-hp 2040	900	250	1,150
370-hp 8850	\$8,200	\$2,300	\$10,500
290-hp 8650	6,400	1,900	8,300
225-hp 8450	5,700	1,500	7,200

(Offer subject to tractor availability.)

\*Availability of John Deere financing plans subject to approval of credit. These offers may be reduced in value or withdrawn at any time.

Rails Highway - Floydada

## Floyd County Implement

## INSURED MONEY MARKET FUND IS NOW AVAILABLE AT FIRST NATIONAL BANK OF FLOYDADA

This new account has the following Features:

- FDIC insured up to \$100,000<sup>00</sup>
- Unlimited number and amount of deposits
- All depositors are eligible
- Minimum to \$2,500<sup>00</sup> to open account
- Interest rate will be quoted daily
- Up to 6 withdrawals per month allowed

Come by and let one of our friendly staff discuss this new account with you.

"Helping You Change Things For The Better"

# 1ST NATIONAL BANK OF FLOYDADA

Accounts Insured up to \$100,00

Floydada, Texas

Member FDIC

# Lakeview News

By Joyce Williams

Mrs. Dayne Golightly and children, Rance and Lacy, attended the recent production of "The Nutcracker" at the Lubbock Civic Center. Penny's niece, Miss Amy Guess, daughter of Cheryl and Donnie Guess of Levelland, was a member of the ballet cast. Miss Guess danced four different roles. Her ballet

instructor, Leonid Lubarsky, was also director of the production. Other guests at the Christmas entertainment included Mr. and Mrs. Dwayne McClintock, of Lakeview, Mr. and Mrs. Don Guess and his parents, Mr. and Mrs. Bud Guess of Levelland. Penny and the children had dinner with her mother-in-law, Mrs. Benny Golightly, before going to the theatre.

Mr. and Mrs. Jimmy McLaugh attended the Alpha Sigma Upsilon sorority Christmas party Saturday evening at the community room in the Ag building in Floydada. Santa Claus handed out gifts to the childrens of members. Secret sisters exchanged gifts. Also gag gifts were given to their secret sister's husbands. Crocheted booties filled with Lifesaver candy were

hung on the tree for each child. Mrs. S.G. Appling is back in the Crosbyton rest home after recovering from pneumonia in the Crosbyton hospital last week. Wayne and Bertha Appling are looking forward to having two of their daughters home for Christmas next week. Beverly and Lon Conner and children of Ft. Worth, and Phyllis and Chuck Farly and children of Dallas are planning to come up if the weather is good. Judy and family in Farmington, New Mexico are afraid to start out traveling through the mountains with their children, so her parents hope to be able to go there later.

A lovely holiday sight in our community is the Christmas lighted rose garden at the Odell Breed home.

Judge Chose Smith and sons, Hunter and Dean, were in Spearman from Friday evening to Saturday night, pheasant hunting. They brought home a full bag.

Miss D'Lane Pearson was the Friday night guest of Miss Marlis McLaugh. On Sunday the James McGaugh and Marlis attended the Floydada Band barbecue luncheon at the high school and the Christmas Concert afterwards. Marlis plays in the Junior High band.

Mrs. Q.D. Williams visited in Plainview Saturday evening with her niece, Mrs. Ed Mobley and new baby son, Cody. Her in-laws from Maxwell, New Mexico had been there a week, helping out, and also had their Christmas together as they were afraid of snow and bad roads closer to the holiday. They reported spinning around and off the highway several times on the trip to Texas.

Mrs. Dee Joy Moses was guest of honor at a baby shower in the home of Mrs. Rex Harrison Saturday afternoon. Beverly has beautiful new carpet in her rooms, including dark green in the recreation room to match the felt on the pool table. Her paintings and ceramic work reflected the Christmas theme in

decorations throughout the house. Sherri received many useful and beautiful gifts for the expected baby. One surprise package was opened to reveal her soft ball glove, given back by Connie Lou Bertrand. Sherri had been all set to play Women's Softball last spring, but her plans were changed, and the glove forgotten in Bertrand's car all these months until Connie decided this was the time to give it back. For refreshments there was punch served with a cake decorated by Beverly to resemble a little yellow baby buggy.

Mr. and Mrs. Mike Bishop and friends from Florida, Mr. and Mrs. Greg Rorobough, ate Sunday dinner with his parents, Mr. and Mrs. Howard Bishop. Holt Bishop was also a guest.

Earl Bishop is still in Lubbock with his daughter, Mrs. Betty Howard.

A prairie fire on J.S. Hale's pasture due south of the T-Bar ranch house was noticed by Pedro Barbosa and Q.D. Williams as they came home from cutting brush at Roaring Springs about dusk time recently. The horizon was all lit up. It was supper time and everyone was in their houses and the fire was unnoticed by neighbors. The ground was wet from rain and snow but the top of the tall prairie grass had been dried by the wind and burned slowly. The Floydada Fire Department responded to the call in a few minutes. The men wet down low sacks to give them weight and fought the flames which burned to the canyon rim. About a half section of grass was destroyed before the fire was brought under control. It is not known how the fire started.

Mr. and Mrs. Carl Mooseberg attended Open House at the home of Brother and Mrs. Perry Zumwalt of the Church of Christ Sunday afternoon. The white covered table was centered with a holly printed runner edged in red. Red fruit punch and coffee were served at alternate ends of the table by the Zumwalt daughters. Sugared pecans

and an array of fruit cookies were served to callers between three and five p.m. The Moosebergs daughter, June and husband, Tommy Sherman and son, Rolf, of Lockney visited here Saturday evening. A long time friend, Don Dey of Marion, Arkansas, spent Sunday night with Pearlie and Carl, on his way home from Las Vegas, Nevada where he attended the National Agriculture Pilots Association meeting.

Mr. and Mrs. Q.D. Williams visited Mr. and Mrs. James Williams, Austin and Ashleigh after church Sunday evening and watched the National Finals Rodeo at Oklahoma City on T.V.

Clinton Lang of Llano, who is married to the former Cynthia Edwards, came by Sunday to visit Mr. and Mrs. W. Earl Edwards. He had taken a load of cattle to Hereford and was on his way back home.

Rance Golightly and other second grade students were in a Christmas program at the Dec. 6 P.T.A. meeting at Duncan school. His school party is Friday Dec. 17, when they will turn out for the holiday.

Miss Lacy Golightly and fellow Day Care students are looking forward to their party and Christmas program on Thursday, Dec. 16.

Mr. and Mrs. Flukie Smith of Lubbock visited Judge Chose Smith and family Sunday.

Miss Jody Smith attended the District Future Farmers of America Sweetheart banquet at Tulia Saturday evening. Jody was selected as a finalist in the district sweetheart contest.

County roads have been muddy to being almost impassable since the 3/4 inch of rain and snow that started Wednesday. Cars are parked at the gin and store and families are taxied in to the pavement by four wheel drive pick-ups. Cotton harvest looks like it will stretch out until Christmas or later after all.

## South Plains News

By Mrs. Murray Julian

South Plains, Dec. 13th: Visitors at the South Plains Baptist Church morning services December 12, were Cindy and Penny Mulder, and Mrs. Corda Taylor here from Muleshoe, Texas. She has been visiting with her children, Rev. and Mrs. Cecil Osborne for the past two weeks.

Many for this area went to the Floydada High School Sunday at noon to have dinner at the Floydada High School Cafeteria, and then all attended the Christmas Concert at the High School Auditorium given by the Floydada High School Concert Band, the Floydada High School Stage Band, the Floydada Junior High Band, and the Andrews 6th Grade Band Program. Among the boys and girls in the band and who are relatives of people of this vicinity, are Rusty Edwards, Cindy and Lynn Mulder, Mitzi Julian, Cindy Marble, Shawnda Sanders, Meredith Kitchens, and Brian Sanders. Everyone thoroughly enjoyed the beautiful concert.

Reverend and Mrs. Cecil and Joyce Osborne were hosts this Sunday, December 12, at a lovely Open House at their home in South Plains from 3:00 p.m. to 6:00 p.m. Delicious refreshments of sandwiches, appetizers, dips, snacks, spreads, desserts, coffee and fruit punch, were served to guests who came to visit them during the afternoon.

Mr. and Mrs. Blalock of Clovis, New Mexico left on Tuesday of this week after they had spent the past week-end here with their granddaughter and family, Mr. and Mrs. Nathan Mulder and children. The bad weather kept them from trying to get back home to Clovis.

This past Wednesday was cold, around 30 degrees, with an icy sheet all over the world and everything that was

outdoors. Anywhere you stepped you began to slip and slide. School was out early, and children went home at 2:30 p.m. There was no prayer meeting at the Baptist Church Wednesday night due to icy roads, and walks. Thursday more sheets of ice greeted us, and everything was covered with ice. It was 28 degrees that day.

Among those who were visitors at the Sunday morning Methodist Church in Floydada at services December 12 were the Sterling Cummings, the Kelvin Cummings, and the Hansel Sanders from here. Shea Sanders and Ken Cummings sang with the Children's choir, and also singing in the choir were a niece and nephew, Brittany and Josh Gregory.

We have been sorry to hear that L.N. Johnson has had a rough weekend and has been in the Central Plains Hospital in Plainview, with part of that time he was in Intensive Care. We are very relieved and glad to hear that he is better this Sunday evening.

Mr. and Mrs. Sylvan and Bobbie Kinnibrugh spent the past week-end down in Vera with Sylvan's father, J.A. Kinnibrugh, and they arrived back home Sunday evening. John Kinnibrugh has been in the hospital in Haskell for several days of last week. This is Sylvan's brother, and we hope to hear he is much improved.

Hobby Club members, their husbands and friends met on Friday evening, December 10, at 7:00 p.m. in the home of Mr. and Mrs. Leighton and Juanita Teeple, east of South Plains, for a Christmas party with Christmas decorations, a delicious banquet meal, and an evening of entertainment and happiness. A buffet banquet was enhanced by table decorations in a Christmas motif. A ham menu, with colorful salads, vegetable dishes, hot

rolls, and pecan pies for dessert along with tables of snacks, spreads and other good things were served to twenty-four people. After the buffet supper, they were honored with a story about, "The Fourth Wise Man," given by Mrs. Frances Stanforth, with background music by Mrs. Janis Julian. It was a beautiful story and much enjoyed by those present. After the story the guests drew names and received Christmas gifts from the laden Christmas tree. Those present at the party were Messrs. and Mmes. Don and Sara Probasco, Grigsby and Lillie Mae Milton, Fred and Carolyn Marble, Harold and Mildred Hamm, Kendall and Dot Cummings, Sterling and Gleyenne Earle Cummings, E.J. and Navolia Kinslow, Howard and Annela Staples, Billy and Frances Stanforth, Kendis and Janis Julian, Letha Mulder and Bonnie Julian and hosts Leighton and Juanita Teeple.

South Plains school news for this week is the Christmas program to be held at 1:00 p.m. Friday, December 17, at the school auditorium, and all parents are invited to come. The children will exchange Christmas gifts in their rooms, and school will be closed for the holidays on December 17, at 2:30 p.m. Time to resume studies will be on January 3, 1983.

## Center News

By Mrs. J.E. Green

December 13, 1982: Sunday and today are clear and beautiful, but of course we have "that cold wind". And the ground is soft and muddy from recent snows that melt right off.

The pre-Christmas weddings, banquets, parties and songs have already begun. A favorite time of the year.

Mr. and Mrs. Marion Carpenter are in Atlanta, Georgia where they will spend the Holidays with some of their children.

Rev. and Mrs. Ulman Moss, who have rounded out 37 years as Missionaries to Venezuela and Mexico have arrived in their home in Central Texas. Their son and Ruth's brother J.B. Jordan of Lubbock, are with them now to help them be "at home". We hope

they will have a pleasant holiday season. of Lubbock are with them now to help them be "at home". We hope they will have a pleasant holiday season.

Henry Brewer entered Caprock Hospital last Friday.

Wiley Rogers and wife are home again after weeks in Lubbock where Wiley was hospitalized. He is feeling better.

Alma Ruth Nelson is about the same in Floydada Nursing Home.

And so is Mrs. Amelia Ashton, Lockney Nursing Home. Mrs. Mayfield has news that Margaret Tubbs Fisher's husband of Livermore, California, Burlie Fisher, is undergoing radium treatment at University Hospital for a tumor.

Let us remember them and all the sick in prayer.

## Cedar Hill News

By Grace Lemons

Moisture came this week in the form of drizzle, freezing rain and snow. Trees lost limbs during the ice storm and some antennas and towers fell. Roads have been impassable. We appreciate the Lighthouse Electric during this spell. Our lights were out only a short while.

Virginia and Sandra Mitchell and Twyla Lemons participated in the Christmas Band Concert held at Floydada High School Sunday afternoon. The Rev. and Mrs. Vance Mitchell, Linda Lemons, Trance and Vance and Grace Lemons were among those who attended.

Edna Gilly went to Lubbock Saturday and attended the Christmas Band Concert at the Adkins Jr. High. Her granddaughter, Christy Harrison participated in the program. Edna spent the night with Mr. and Mrs. Johnnie Harrison and family.

Gertrude Hammit of Plainview visited Edna Gilly Sunday afternoon.

Martha Taylor is giving a Christmas party for the missionaries and all the little girls in the community are invited to attend. They are asked to bring a gift for a girl and presents will be exchanged. The party is next Saturday afternoon.

Sharon and Jay Green of Amarillo spent the day with her sister and husband, the Rev. and Mrs. Vance Mitchell.

Bruce Conner and a friend Larry spent the week-end with Bruce's grandparents, Mr. and Mrs. Jim Conner.

Virginia Mitchell participated in a Christmas Carol Recital in the home of Kay Kenner Monday evening. Kay teaches voice.

Edith and Marilyn VanHoose, students of Levelland College spent the week-end with their grandparents, Mr. and Mrs. John D. VanHoose. Their parents are Mr. and Mrs. Cecil Wayne VanHoose of Kingsville.

A layette shower was given for Gail DuBois and her baby daughter, Cindy Renee at the Fellowship Hall of the Assembly of God Church Monday morning at 10:00. Pumpkin bread, donuts and coffee were served to the guests.

Virginia and Sandra Mitchell were among those who taped the Christmas for Kids program that will be on television Christmas Eve on Channel 28.

Cephus and Imogene Fortenberry had Jana Jernigan of Waxahachie, Jean and Troy Smith and boys of Dumas and Phyllis Harris, Michelle and Terry of Floydada as dinner guests in their home for Thanksgiving. The following Sunday morning the Fortenberrys took their granddaughter, Jana to North Rhigland Hills to visit Nelda and Wayne Jernigan. They also visited Doyle and Edna Love in Alford and Raymond and Etta Love in Bridgeport before returning home.

Jenese Lemons of Seagraves was selected on the Varsity Tennis Team of Gaines County and will represent U.I.L. at Brownfield in April.

Some things are not done right because they are not done right away.



# PIONEER

PIONEER ELECTRONICS (USA) INC.

**KP-8500** 199.95



\$170.00

**TS-697** 139.95



\$85.00

**TS-168** 124.95



\$80.00

**KE-6100** 349.95



\$320.00

**Buy a KE5100, KE6100 or RK560 Portable Radio valued at \$99.95**

**AD50-50 Watt Equalizer List \$199.95**

**XMAS PRICE \$120.00**

**IN-DASH CASSETTE WITH AM/FM STEREO AND DOLBY®**

- \* SUPERTUNER®
- \* Dolby® Noise Reduction For Both Tape and FM
- \* 5-Station Pre-Set Pushbutton Tuning
- \* Local/Distance Switch
- \* FM Mono/Stereo Switch
- \* Automatic Muting on FM Stereo
- \* Connector for PNS
- \* Locking Fast Forward and Rewind
- \* Automatic Replay After Rewind
- \* Automatic Eject
- \* Volume, Tone and Balance Controls
- \* Power Antenna Activator
- \* Adjustable Shafts

\$210.00

**6" x 9" 2-WAY SPEAKERS**

- \* 20 Oz. Ferrite Magnet
- \* 60 Watts Power Handling
- \* Coaxial Speaker
- \* Unobstructed Bridgeless Construction
- \* 2 5/8" Tweeter
- \* 4 Ohm Rated
- \* Handsome Mesh Grilles for Better Sound Dispersion

**6 1/2" DOOR-MOUNT SPEAKERS**

- \* 10 Oz. Magnet
- \* 40 Watts Power Handling
- \* Deep Parabolic Cone
- \* Unobstructed Bridgeless Construction
- \* 2 1/4" Midrange, 1 1/8" Horn Tweeter
- \* 6,700 and 10,000 Hz Crossover Frequencies
- \* 4 Ohm Rated
- \* Mesh Grilles with Metal Finish Frames

**IN-DASH CASSETTE WITH DIGITAL QUARTZ ELECTRONIC AM/FM STEREO TUNER**

- \* SUPERTUNER® II
- \* Dolby® Noise Reduction for Tape
- \* LED Address Indicator on Preset Buttons
- \* Digital Time/Frequency Display with 4-Digit Green LED
- \* Local/Scan Switch
- \* 15 Station (10 FM/5 AM) Electronic Pre-Set Feather-Touch Pushbutton Tuning
- \* Auto Scan/Seek Tuning
- \* Built-in PNS Noise Suppressor
- \* Built-in Clock with Clock Button
- \* Accurate Quartz PLL Tuning
- \* Standard 2" High Chassis
- \* Tape Selector (CrO2) for Chromium and Metal Tape
- \* Parallel Fader Control — enables use of two booster amps
- \* Locking Fast Forward and Rewind
- \* Automatic Replay After Rewind
- \* Loudness Switch
- \* Automatic Eject
- \* Power Antenna Activator

\$260.00

**Buy a KE5100, KE2100 and get a RK500 Portable Radio valued at \$89.95**

**AD30-30 Watt Equalizer List \$129.95**

**XMAS PRICE \$85.00**

While supply lasts

# ODEN CHEVROLET OLDS INC.

221 South Main      Floydada      983-3787

Prices good thru 12/24/82  
 We will close Christmas Eve at 5:00  
 We will be closed Christmas Day.



# SHOP RITE

Each of these advertised items is required to be readily available for sale at or below the advertised price in each store, except as specifically noted in this ad. We reserve the right to limit quantities. None sold to dealers.

309 South Wall Floydada  
 Monday - Saturday: 8 am to 8 pm  
 Sunday: 9 am to 7 pm



## Season's Greelings

### \* MEAT-POULTRY \*

18 lbs. & Over  
 USDA Grade A HoneySuckle  
**TURKEYS**  
**69¢** lb.

Shank Portion Or  
 Whole Smoked (Bone In)  
**HAMS**  
**\$1<sup>19</sup>** lb.

Large End Or Whole  
 Standing Rib  
**ROAST**  
**\$1<sup>99</sup>** lb.

Boston Butt Boneless  
**PORK ROAST** **\$1<sup>29</sup>** lb.

Lean Boston Butt Bone In  
**PORK ROAST** **97¢** lb.

Center Cut  
**HAM ROAST** **\$1<sup>89</sup>** lb.

**PIG'S FEET** **39¢** lb.

Butt Half Smoked (Bone In)  
**HAMS** **\$1<sup>27</sup>** lb.

Small End Rib  
**ROAST** **\$2<sup>19</sup>** lb.

Standing Rib Large  
 End or Whole  
**ROAST** **\$1<sup>99</sup>** lb.

Center Cut Regular Thickness  
**HAM SLICES** **\$1<sup>95</sup>** lb.

Boneless Peyton  
 Quick Carve Whole  
**HAMS** **\$1<sup>99</sup>** lb.

Peyton Quick Carve Half  
**HAMS** **\$2<sup>19</sup>** lb.

**BEEF TRIPE** **27¢** lb.

8 oz. Peyton Del Norte  
**CHORIZO** **97¢**

8 oz. Jar  
**OYSTERS** **\$1<sup>85</sup>**

Smoked  
**HAM HOCKS** **\$1<sup>29</sup>** lb.

**\$1<sup>00</sup> OFF ON ALL HONEYSUCKLE TURKEYS**  
 with this coupon thru December 24, 1982



### HOLIDAY COUPON SALE

You have up to 6 ways to save with our Bonus Coupons.

Your total purchase will determine which coupons you have qualified to redeem.

**HOLIDAY COUPON**  
 12 Count Pkg. Tender Crust  
**ROLLS** **FREE**  
 With the Purchase of \$10.00  
 One Per Coupon

**HOLIDAY COUPON**  
 1 Dozen Shurfresh Grade A Large  
**EGGS** **FREE**  
 With the Purchase of \$20.00  
 You May Also Redeem Coupon No. 1  
 One Per Coupon

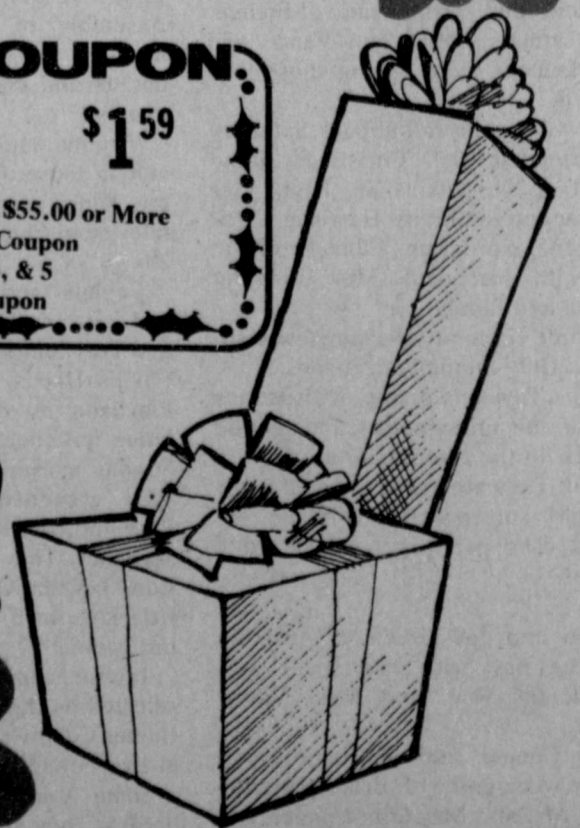
**HOLIDAY COUPON**  
 1 lb. Quarters Kraft Parkay  
**MARGARINE** **FREE**  
 With The Purchase of \$30.00  
 You May Also Redeem Coupon No. 1&2  
 One Per Coupon

**HOLIDAY COUPON**  
 12 oz. Shurfresh  
**BACON** **69¢**  
 With the Purchase of \$40.00  
 You May Also Redeem Coupon  
 No. 1, 2, & 3  
 One Per Coupon

**HOLIDAY COUPON**  
 3 lb. Bag  
**APPLES** **59¢**  
 With The Purchase of \$50.00  
 You May Also Redeem Coupon  
 No. 1, 2, 3, & 4  
 One Per Coupon.

**HOLIDAY COUPON**  
 1 lb. Can Folgers  
**COFFEE** **\$1<sup>59</sup>**  
 With The Purchase of \$55.00 or More  
 You May Also Redeem Coupon  
 No. 1, 2, 3, 4, & 5  
 One Per Coupon

**MERRY CHRISTMAS!**





# Happy Holidays!

❄️ **PRODUCE** ❄️

Red Delicious  
**APPLES**  
**39¢** lb.

Sunkist  
**ORANGES**  
**29¢** lb.

Fresh  
**BROCCOLI**  
**39¢**

**CELERY**  
**29¢** lb.  
**TANGERINES**  
3 lbs. / **\$1<sup>00</sup>**

10 lb Bag US no. 1  
**POTATOES**  
**\$1<sup>09</sup>**



Beautiful Potted  
**POINSETTIAS**  
**\$6<sup>99</sup>**



- 2 lb. Shurfine Brown or Powdered  
**SUGAR** **89¢**
- 15.5 oz. Shurfine Crushed  
**PINEAPPLE** **59¢**
- 16 oz. Sugary Sam  
**YAMS** **59¢**
- 10 oz. Bag Kraft  
**MARSHMELLOWS** **2/99¢**
- 8 oz. Hersheys  
**COCOA** **\$1<sup>99</sup>**
- 1/2 Pint Borden's  
**WHIPPING CREAM** **2/89¢**

- 12 oz. Tom Scott  
**MIXED NUTS** **\$1<sup>69</sup>**
- 8 oz. Pepridge Farm  
**STUFFING MIX** **79¢**
- 14 oz. Baker's Angel Flake  
**COCONUT** **99¢**
- 9 Inch 2 pkg. Pet Ritz  
**PIE SHELLS** **59¢**
- 20 oz. Banquet Pumpkin  
**PIES** **79¢**
- 6 oz. Keebler Ready Crust  
**PIE SHELL** **89¢**

- 18 oz. Comstock Pumpkin  
**PIE FILLING** **2/99¢**
- 5.6 oz. Box  
**DREAM WHIP** **\$1<sup>09</sup>**
- 32 oz. 6 Pack  
**COKE or DR. PEPPER** **\$1<sup>89</sup>**  
Plus Deposit
- 15 oz. Del Monte Seedless  
**RAISINS** **\$1<sup>69</sup>**
- 11 oz. Shurfine  
**MANGRINE ORANGES** **55¢**

Quart Borden's  
**EGG NOG**  
**89¢**

8 oz. Birdseye  
**COOL WHIP**  
**69¢**

2 pkg. Eveready D Size  
**BATTERIES**  
**2/99¢**

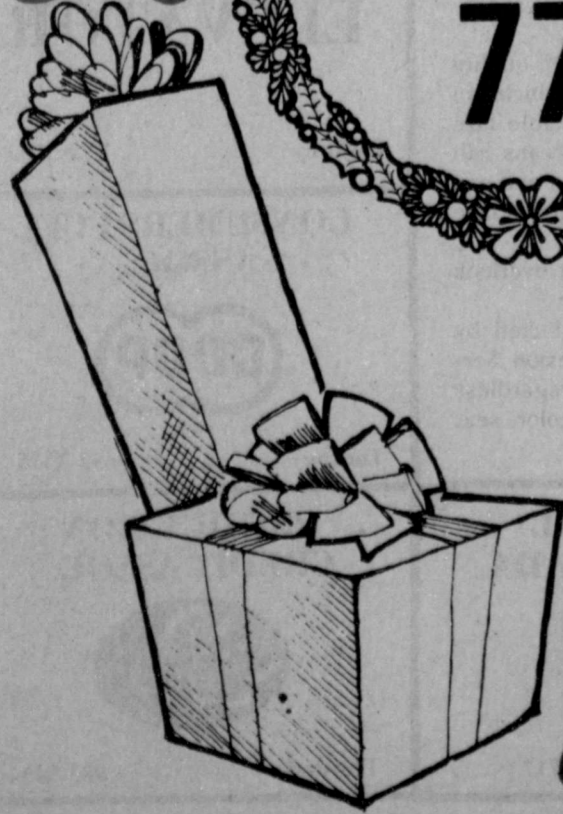
12 oz.  
Bakers Chocolate Flavored  
**CHIPS**  
**89¢**

8 oz. Philadelphia  
**CREAM CHEESE**  
**77¢**

12 Count  
Tender Crust Brown n Serve  
**ROLLS**  
**2/89¢**

16 oz. Ocean Spray  
**CRANBERRY SAUCE**  
**59¢**

16 oz. Libby's Canned  
**PUMPKIN**  
**59¢**



# Farmers Cooperative hits new annual high

Business volume of farmer cooperatives in this country reached a record high of \$71.5 billion in 1981, 8 percent above 1980, a U.S. department of Agriculture official said.

Randall E. Torgerson, administrator of USDA's Agricultural Cooperative Service, attributed the rise in business volume primarily to larger quantities of farm products marketed by cooperatives. Average prices received by farmers for most commodities were down in 1981.

Other highlights on cooperatives for the year:

— Equity of members and patrons reached \$10.9 billion, also a new high.

— Total assets of \$26.3 billion and net margins of \$1.4 billion were down from the previous year.

— The number of cooperatives and cooperative memberships continued a long downward trend.

Total cooperative business volume includes marketing (the value of products sold), farm supplies (sales of fertilizer, chemicals, fuels, feed and other supplies to members and patrons), and receipts from related services such as trucking, storage, ginning and drying.

Torgerson said the drop in number of cooperatives -- from 6,293 to 6,211 -- was the result of cooperatives reorganizing -- mergers, consolidations, acquisitions -- and going out of business.

Memberships totaled 5.3 million, down from 5.4 million for the previous year. "The drop of less than 1 percent partly reflects the continuing reduction in the number of farms and partly a continuing trend in mergers and consolidations," Torgerson said. Some farmers belong to more than one cooperative.

Memberships per association averaged 860 in 1981, compared with 855 for 1980.

Marketing volume, at \$53.3 billion, was up 8.9 percent from the \$48.9 billion in 1980.

Grain, the leading farm product, increased to \$19.8 billion, up 11.2 percent. However, marketing for two other products made bigger gains, with rice up 25.4 percent and tobacco up 23.8 percent.

Farm supply volume of \$17.1 billion, up 5.7 percent from \$16.1 billion in 1980, increased mainly from higher values for petroleum, the leading farm supply, and fertilizer.

Business volume of petroleum products went up 11.4 percent, to \$5.6 billion; and fertilizer rose 6.4 percent, to \$3.7 billion. Farm chemicals was the largest farm supply gainer, up 21.7 percent.

Value of other services related to farm business remained at \$1.2 billion.

More cooperatives were headquartered in Minnesota and North Dakota than in any other state, with 722 and 422 respectively.

States with the largest number of

cooperative memberships were Minnesota, 525,709, and Wisconsin, 249,071. Iowa accounted for the largest business volume handled by cooperatives with nearly \$7.5 billion. California was second with more than \$5.9 billion.

Farmer cooperative assets, eliminating intercooperative investments, totaled \$26.3 billion, a 2.5 percent drop from the \$26.9 billion in 1980.

Total liabilities dropped from \$18.8 billion in 1980 to \$17.9 billion, a decrease of 4.8 percent.

Net worth, or member and patron equity, increased 3.1 percent, from \$10.6 billion to \$10.9 billion.

Member and patron equity financed 37.9 percent of total assets in 1981, up from 36 percent in 1980. The increased share of member and patron equity financing total assets appears to result from reductions in current assets, principally inventories and accounts receivable, reductions in current

liabilities, and an actual increase in member and patron equity.

Cooperatives' net margins were more than \$1.4 billion, a 25.9 percent drop from the 1.9 billion in 1980. The \$1.4 billion included intercooperative dividends and refunds of \$558 million. This was a 3.1 percent increase, compared with 1980 intercooperative dividends and refunds of \$541 million.

"Information was collected on the number of full-time employees of cooperatives for the first time since 1957," Torgerson said.

Farmer cooperatives employed 204,000 full-time employees, compared with 141,000 in 1957. Farm supply cooperatives accounted for 80,000 employees. Full-time employees in marketing cooperatives totaled 122,000. By commodity, dairy cooperatives had 39,000 full-time employees, while grain cooperatives accounted for 33,000.

# With Parity at 55, How Does It Rate

[Editor's Note: The following article was taken from the December 2, 1982 issue of Southwest Farm Press.]

With Parity At 55, How Does It Rate?  
By Calvin Pigg  
Editor

With parity at 55 and the lowest since April 1933, how does it rate with other lows?

It's a question that's come up often in recent months.

So, here's a rundown USDA's Statistical Reporting Service provided of the months parity ran below 63 over the years.

### Early Low

It hit the then all-time low of 62 in June 1931, stayed at 62 in July, then dropped to 61 in August, to 60 in September, then dropped to 59 in October 1931. It moved up to 62 in November but fell back to 59 in December.

It dropped to another all-time low of 57 in January, 1932, but dropped again to 55 in February. It moved up to 58 in March 1932, dropped to 56 in April,

then hit 52 in May. In June 1932 it dropped to the record low of 49. That still stands.

It moved up to 52 in July, to 54 in August and to 55 in September and remained at 55 the rest of the year.

It dropped to 54 in January 1933, then dropped to 50 -- the second lowest on record, in February -- before moving up to 53 in March, to 54 in April and 61 in May of that year.

### March 1980

It was above 63 every month until March 1980, when it fell to 63 again. It fell to 60 in April 1980, moved up to 61 in May 1980, to 62 in June and was above 63 for the rest of the year.

It dropped to 63 again in April 1981, stayed there through July of that year, before falling to 61 in August, to 58 in September and 57 for October through December.

This year, it fell to 56 in January, was at 57 in February and March, to 58 in April, 59 in May and June, was at 58 in July, 57 in August, 58 in September, then dropped to 55 last month.

# Grain Sorghum Producers Assn. studies USDA plan

The National Board of Directors of Grain Sorghum Producers Association (GSPA) met on December 1 to discuss USDA's proposed program which would allow growers to idle part of their base acreage and receive payment with certificates of ownership of government grain stock. The plan, now being called "Payment In Kind" or "PIK", proposes to further reduce 1983 planting and, at the same time, reduce USDA's holding of surplus commodities.

GSPA President Mabry Foreman, of Felt, Oklahoma, said of the program, "Secretary of Agriculture John Block and the U.S. Department of Agriculture are to be commended for their efforts to improve the American farm economy by reducing production and surplus stocks. The Payment In Kind proposal is an innovative approach to solving our problem. We believe it deserves serious consideration."

Grain Sorghum Producers Association will support USDA's Payment In Kind program, provided it includes the following points:

1. The PIK program would be offered in addition to the 1983 Feed Grain Reduced Acreage Program previously announced, not as a replacement or alternative to it.

2. The PIK program shall in no way be used to lower loan rates and target prices of present or future programs.

3. The PIK payments would be set at 50% of the farm yield. If this does not adequately reduce production, USDA would have the option of raising the percentage to obtain the desired diversion.

4. In order to protect agribusiness within each community, total diversion (RAP and PIK) would not exceed 60%

on any farm.

5. PIK stocks would not be released to farmers before 1983 harvest time for that commodity. PIK stocks would be released at the rate of 20% per month for a period of 5 months, to avoid disruption in market prices.

6. Farmers would be able to replace the PIK commodity in the Reserve or Government Loan program to facilitate an orderly marketing plan.

7. The Government would pay storage and interest on PIK commodities until their release to farmers.

8. To secure ownership of sufficient grain to conduct this program, CCC may offer to buy farmers' equity of grain in current reserve programs. CCC may make the offer in increments, increasing the price until the desired amount of grain has been obtained.

9. Farmers' PIK payments will be made from the closest available CCC grain.

GSPA maintains that, since PIK commodity stocks are in lieu of a farmer's eligible production allowed under the 1983 Reduced Acreage Program, they are not subject to the \$50,000 limitation of payments.

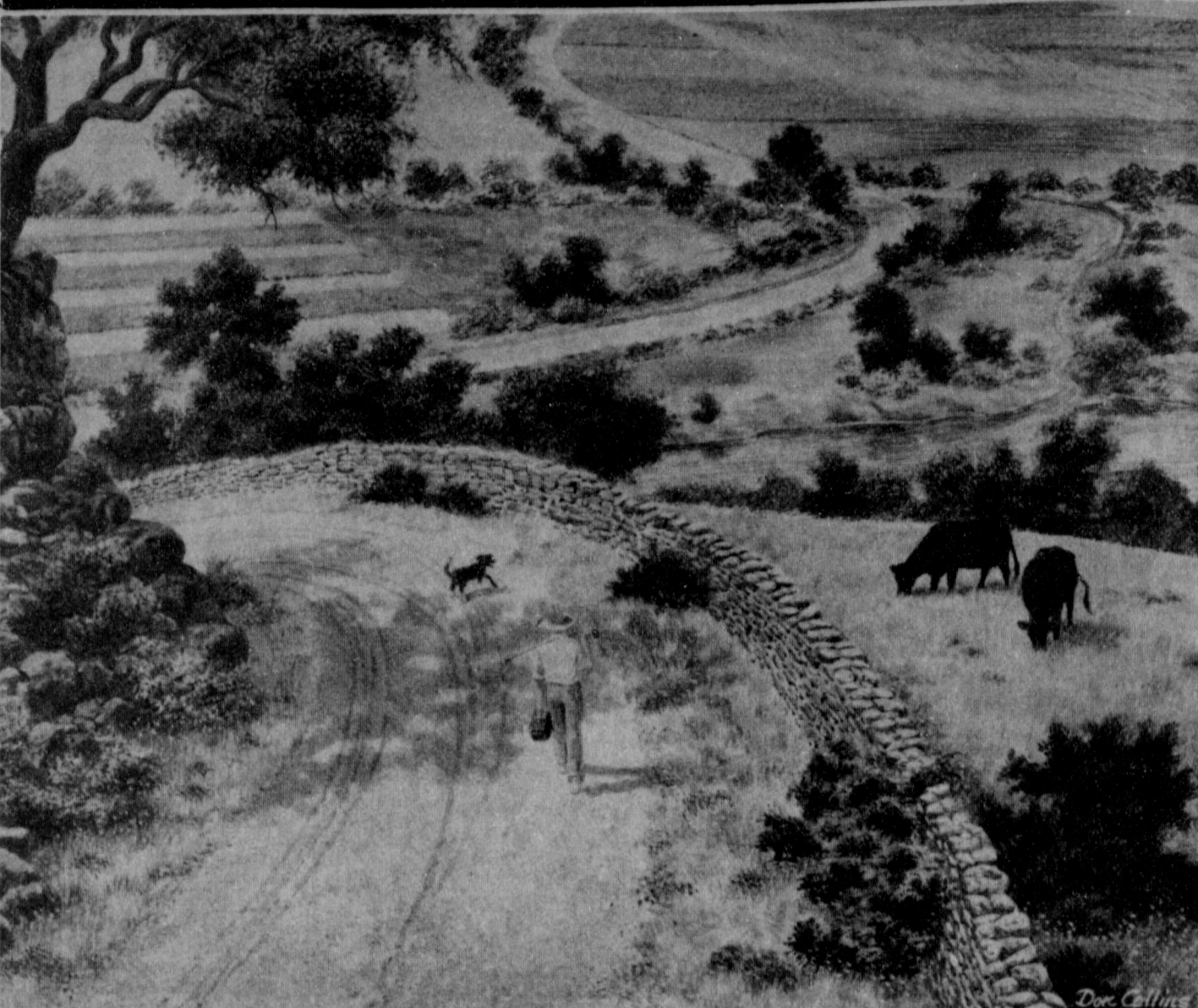
Foreman pointed out that GSPA reserves the right to oppose the PIK plan if it does not include the points listed above. Elbert Harp, Executive Director of GSPA, will meet with Secretary Block and other USDA officials on December 8 to discuss details of the PIK plan.

## DRINKING DRIVING DEATH

A Combination we CAN'T LIVE WITH!

A reminder from this newspaper and the Troopers of the Texas Department of Public Safety

# FARM NEWS



# The Country Life

[Editor's Note: The following article entitled "The Country Life" was taken from the magazine, Texas Agricultural Aviation.]

### THE COUNTRY LIFE

What is Country Life? When thinking of the Country Life, I can picture long winding roads, fields full of plants, cows on a hillside, a boy with a fishing pole thrown over his shoulder and air that is full of country smells. According to the Random House Dictionary or the English Language, country is "rural districts, as opposed to cities or towns." The word life has several definitions such as: "A mode or manner of existence." But the definition which I think best suits the word country is "a corresponding state, existence or principle of existence conceived of as belonging to the soul." I believe Country Life is something in ones soul which is always with him whether he is in the city or on a winding country road.

It is a feeling of the senses:  
"A song of the good green grass!  
A song no more of city streets  
A song of farms—a song of the soil of fields  
A song with the smell of sun-dried hay  
Where the nimble pitchers handle the pitch-fork;  
A song of new wheat and of fresh-husk'd maize."

Walt Whitman Country Life is humor and sadness, success and failure and a way of life that is simple in needs. I know that life away from the city has become modernized and that farming, in order to feed an increasingly expanding world population, is necessarily more complex, but because this is a way of life, developed by generations since man began, it will always be as I have pictured it, if only in ones soul.

Country Life is centered around the

production of food and fiber for ones family and the world. It amazes me that in 1862 the average American farmworker produced enough food and fiber to support fewer than five persons. By 1962, the average ag worker could supply the needs of 26 persons. Today, he supplies the needs of 77 persons. This has been accomplished through many years of experimenting with hybrids, advances in the control of weeds, pests and disease, and most of all, generation after generation of people dedicated to this way of life.

Country Life, food production and the American farmer are being threatened. Many urbanites are seeking a life away from the fast pace of the city. But they too often seek a different country life. One that is void of the responsibilities of growing large amounts of food. One that interferes with the Country Life which is centered around the production of food. As these individuals seeking their "country life" push their way into the farmlands, they push out the farmers. For they do not want the Country Life as it is today, they wish to go back to the times before farmers became modernized and complex. They do not understand the needs of agriculture. And as they seek their country life, they threaten the very existence of the real Country Life. And this loss effects everyone, the farmer, the consumer, and it is happening now.

# Landscape & Gardening

by Benny J. Butler



### GIFT IDEAS FOR GARDENING FRIENDS

Along about this time every year, the thoughts and attentions of most of us have turned away from lawns and gardens to the approaching holiday season. If you're like most of us, you'll still be hunting that "very special gift" right up until Christmas.

Here's a list of gift possibilities for the green thumbs in your family:

Plants are always welcome. Perhaps the lady of the house would like something in bloom for the holidays. Christmas cactus, kalanchoe, azalea, mums, and the traditional poinsettia (no, they're absolutely not poisonous) are available at local nurseries and florists.

Foliage plants are welcomed by almost everyone, and there's a tremendous variety from which to choose. Some good low-light requiring plants are Chinese Evergreens, Janet Craig Dracaena, Cost Iron Plant and Philodendrons. Don't overlook hanging baskets, hanging containers, and macrame hangers. Bonsais, sand paintings, terrariums and dish gardens also make excellent gifts.

Although they are seldom considered, what's wrong with outdoor specimen plants as Christmas gifts -- the choice is practically limitless. Flower and vegetable seeds are also pleasing to gardening enthusiasts.

Other gift suggestions for the zealous gardener would include a subscription to a gardening magazine or a gift

certificate from a bookstore. Or, if you prefer to make the gift selection, books on any gardening topic you can imagine are available in the gardening section of your local bookstore.

How about garden accessories, such as garden sculpture, a wind chime or bird feeder? Or maybe someone would like a fancy container for a favorite houseplant? Patio furniture may be useful, and any gardener who likes the outdoors would appreciate a hammock for moments of relaxation.

For the weather buff, there's a rain gauge, a sun dial or a thermometer. Minimum-maximum thermometers are useful outdoors or in the greenhouse to tell how cold it got or how hot.

Or how about a work certificate, such as, "I promise to cultivate the vegetable garden," or "I'll water the lawn six times," or "This certificate good for season-long lawn mowing and edging". There are many possibilities for gardeners who need encouragement.

Let's not forget our own top-quality pecans, grown here in Texas, which can be enjoyed as a part of the table fare during the holiday season. Pecans can be purchased in small amounts and can be made to fit almost any budget. A nice surprise for any gift recipient.

So, whatever you do, don't overlook these unusual gifts.

Educational programs conducted by the Texas Agricultural Extension Service serves people of all ages regardless of socioeconomic level, race, color, sex, religion or national origin.

# MARTIN & COMPANY

Floydada 983-3713

### SUN-VUE FERTILIZER



Lockney 652-3362

# MUNCY ELEVATOR

Lockney 652-3100

### CONSUMERS FUEL ASSOC.



Lockney 652-3336

### PRODUCTION CREDIT ASSOC.



Floydada 983-2454

### FLOYD COUNTY FARM BUREAU



Lockney 652-2242  
Floydada 983-3777

### FLOYDADA IMPLEMENT CO.



Floydada 983-3584

### ADAM'S WELL SERVICE



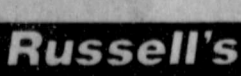
Floydada 983-5003

### FEDERAL LAND BANK ASSOC. OF FLOYDADA



Floydada 983-2480

### RUSSELL'S EQUIPMENT & SUPPLY



Floydada 983-3751

### FLOYDADA COOPERATIVE GINS INC.



Floydada 983-2884

### BROWN'S IMPLEMENT INC.



Floydada 983-2281

### FLOYD COUNTY IMPLEMENT



Floydada 983-3732

### CASE POWER & EQUIPMENT



Floydada 983-2836

### FIRST NATIONAL BANK OF FLOYDADA



Floydada 983-3717