

Lockney Library
Box 681
Lockney, Texas 79241

See you at
Fashioned Saturday!

Area News	10	Courtesy of Energas		
Classified	13a	DATE	HIGH	LOW
Courthouse News	2a	August 11	90	74
Crime Call	2a	August 12	94	73
Farm Update	4b	August 13	98	74
Obituaries	11a	August 14	99	75
Recipe Exchange	TV8	August 15	102	74
Society	4a, 5a, 8a	August 16	94	77
Sports	9a	August 17	89	76
Subscription Renewals	3a			
Wes Side Story	TV1			

The Lockney Beacon 25¢

Volume 81 Number 33 Thursday ©The Lockney Beacon August 19, 1982 32 Pages In Three Sections

This Week

Neighborhood Watch

A workshop meeting for Neighborhood Watch will be held at 7:30 p.m., Monday, August 23 at Lighthouse Electric Co-Op in Floydada. All concerned citizens are urged to attend.

Whirlers

The Whirlers will meet at the Massie Activity Center on Saturday at 8:00 p.m.

Finis Nabors of Lubbock will be the caller for the square dance. Everyone is invited to attend.

Senior Citizens

The Senior Citizens will meet for their regular monthly meeting at the Lighthouse building in Floydada Saturday night at 7:00 p.m.

Old Fashioned Saturday

Any club, organization, or individual is encouraged to clean out their attics and garages in participation with the swap meet to be held in conjunction with the Old Fashioned Saturday, August 21.

Hospital Auxiliary

Lockney General Hospital Auxiliary members will be operating a concession stand at the auction to be held on the slab at the Lockney Meat Co. Saturday, August 21 in conjunction with the city's combined effort for the Old Fashioned Saturday.

The concession stand will be open from 11:00 a.m. to 5:00 p.m. Sandwiches, cake, pie, coffee, and cold drinks will be served.

Athena Study Club

The funds raised by the Athena Study Club with their snowcone stand and garage sale items will be donated to a fund for establishing a foundation for finding the cause and cure of a rare skin disease known as epidermolysis bullosa. The foundation, based in Brooklyn, New York, is called Dystrophic Epidermolysis Bullosa Research of America. Two children of the same family in Lockney have the disease. Check your Beacon for a feature story on these two children next week.

Registration

Seniors and Juniors will register at Lockney High School on Wednesday, August 25th.

Sophomores and Freshmen will pick up their schedules on Thursday, August 26th when they enroll.

Principal R.L. Knox asked that those students who are entering elementary school for the first time in Lockney this year to bring their shot records and their birth certificate by the principal's office at the school between the hours of 8:00 a.m. and 4:00 p.m.

If a student is entering the school after having attended school somewhere else, he will need to bring his previous year's report cards.

The classes should be posted at least by Wednesday, August 25th. Anyone interested in obtaining that information before school resumes on Thursday, August 26, may do so.

Jr. high class arrangement will be posted at the front door Wednesday also for the students' convenience.

County Fair

Have you painted your masterpiece yet? If so, why not share it with others by entering it in the Floyd County Fair this September. It not, get started today.

Attention '82-83 Seniors

Wilson Photography is photographing seniors during the month of August.

Social Security

A representative of the Social Security Administration will be working at the Floyd County courthouse annex from 9:30-11:30 a.m. on August 25.

Parking Spaces

Renewing of parking spaces at the Longhorn stadium is being accepted through September 1. The price is \$7.50.

Two walk away from truck wreck



THIS SHADY ACRES tractor-trailer came to rest on its side stretched across the access road to U.S. Highway 70 about 1/4 of a block west of Strickland's Restaurant.

The heifer shown lying down had the misfortune of breaking a leg, the only one of the cattle suffering extensive injury. [See additional picture on page 11]

Monday afternoon about 4:15 p.m. a tractor-trailer rig traveling east on Highway 70 at the outskirts of Lockney veered out of the lane of traffic, crossed the ditch, and came to rest on its right side at an angle blocking the access road.

The top of the double-decker cattle truck from Shady Acres out of Canton, Florida, laid open to dump its 50 head of cattle out on the corner of Strickland's Used Car Lot. All of the cattle except one got out unharmed with the exception of a few minor cuts and bruises. The one unfortunate heifer had sustained a broken leg. She was loaded into a trailer and transported only a block down the road to be slaughtered at Lockney Meat Company.

After a few excited cattle were rounded up they were all driven to a pasture where they were penned for holdover until they could be picked up by another truck.

The frame of the tractor broke between the tandem dials on the right rear, causing the driver, Robert Bellais, to lose control of the rig. The jolt experienced when crossing the railroad tracks immediately beforehand was believed to have caused the frame to snap.

The driver, whose address was given as Poplarville, Mississippi, and Penny Braden, address unknown, were taken by ambulance to the emergency ward of the Lockney General Hospital. The driver was treated for laceration of the left eyebrow. The passenger sustained a broken left forearm. She was treated and referred to a doctor in Plainview for the compound fracture.

The 18-wheeler was traveling with several other rigs from Shady Acres. Its destination was Shreveport, Louisiana.

James Whitis new Lockney band director

James Whitis, 26, originally of Belton, Texas, received his bachelor degree in music education from Wayland Baptist University. He recently completed his masters at East Texas State University.

He was the head band director in the Friona schools last year. His instrument is the trombone. He has been playing with the brass players at Wayland.

He said he started college as an accounting major in mind, but his love for music caused him to change his major. He assisted some fellow students with their music at Wayland and gave some private lessons at East Texas in the two years he was there. That may have "set him up" for his teaching career.

Eighty-nine students had pre-enrolled for the Lockney High School band with 31 of those Freshmen at the end of last year. Whitis is hoping for 95. Dependent upon the number of band

members he plans 8 to 12 flags. There are three twirlers.

Whitis chose a small school because he finds students from rural communities more responsible.

In addition, there is a certain young lady who lives in Plainview who probably was the deciding factor toward his moving to Lockney. Jessye Streeter, his fiance is a teacher of voice in Wayland. She is working toward her doctorate at Texas Tech University. She also directs the "Spirit of America" singers at Wayland.

Whitis comes from a "civil service family," his mother having worked in Ft. Hood for some 14 years, and his father is a retired civil service employee. He has three sisters also employed by civil service. He has two "wayward" brothers. One is a fireman and the other is a Texas A&M employee.

Whitis and his twin brother Harold are the youngest of the family. Harold

has been an assistant director of financial aid at Wayland but has recently moved to Austin in hopes of finding employment with the United Parcel Service.

Whitis said his goal for the Lockney bands are to make them stronger and stronger with an ultimate goal of taking them to sweepstakes.

"I don't always look for the most musically inclined student when looking for a good bandsman, but a dependable student who has goals for the common good to the entire group," Whitis commented.

There will be two beginner classes of band. Band will be taught to the fifth graders for the first time in several years. That class will be taught the last period of the day. Also a beginner band class of sixth graders will be taught since it was not offered to them last year.

During football season Whitis said he would stress pride. "I want them to keep their pride up and keep them working hard all year. I want to push

them hard enough for them to realize their potential, and then they will make the bandsmen they want themselves to be."

Whitis has been impressed with the musical talent shown here and said he could tell they had been trained well before his joining the Lockney faculty.

Athenas to sponsor school reception

A reception will be sponsored by the Athena Study Club for all the school personnel. It will be held Sunday night at 8:00 p.m. in the Jr. High School library.

The come and go occasion will afford the opportunity for parents and all those interested in meeting any new teachers that have moved into our community for the first time or to meet some of the faculty that they have not been in contact with previously.

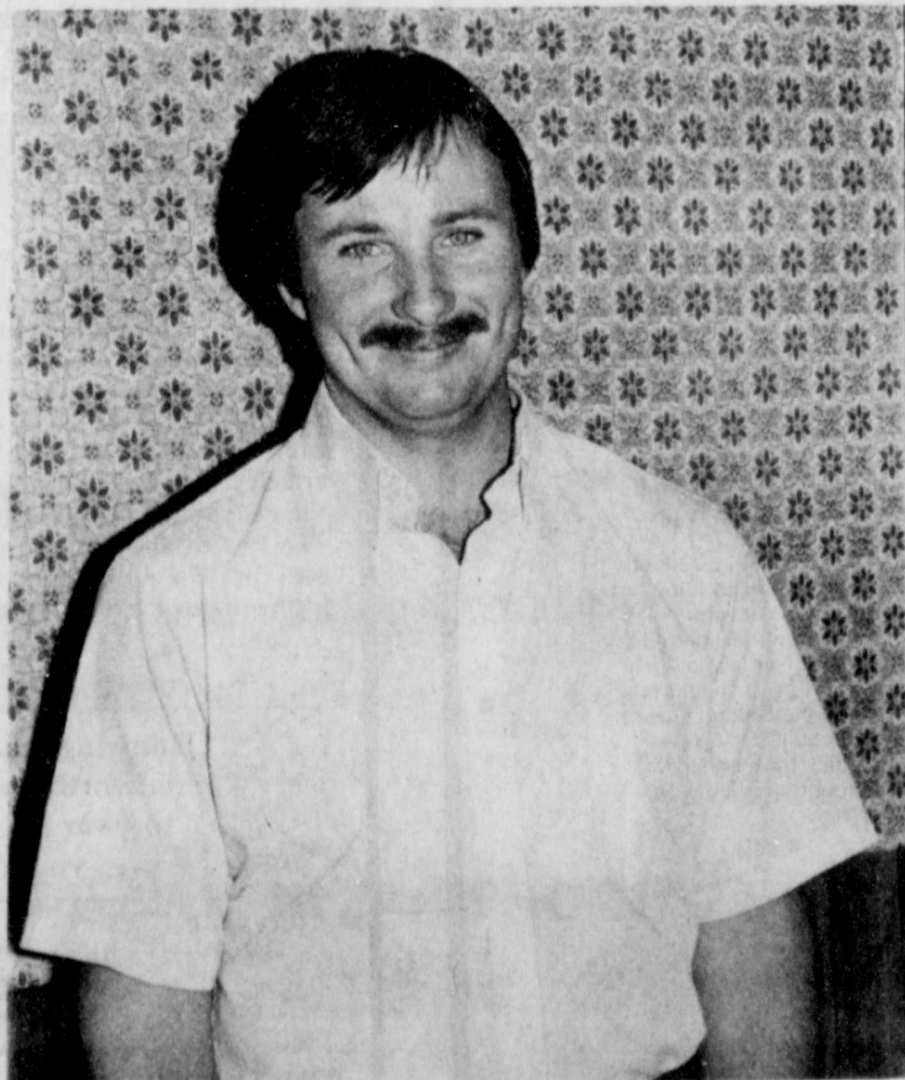
New members of the high school faculty include Bob Purser, head football coach; Patti Purser, health and history; James Whitis, band

director; Scott Knippa, speech/coach; Malcom Moerbe, history/coach; Randy Josey, math/coach; Mike Mowrey, agriculture; and Charlotte Brock, library aide.

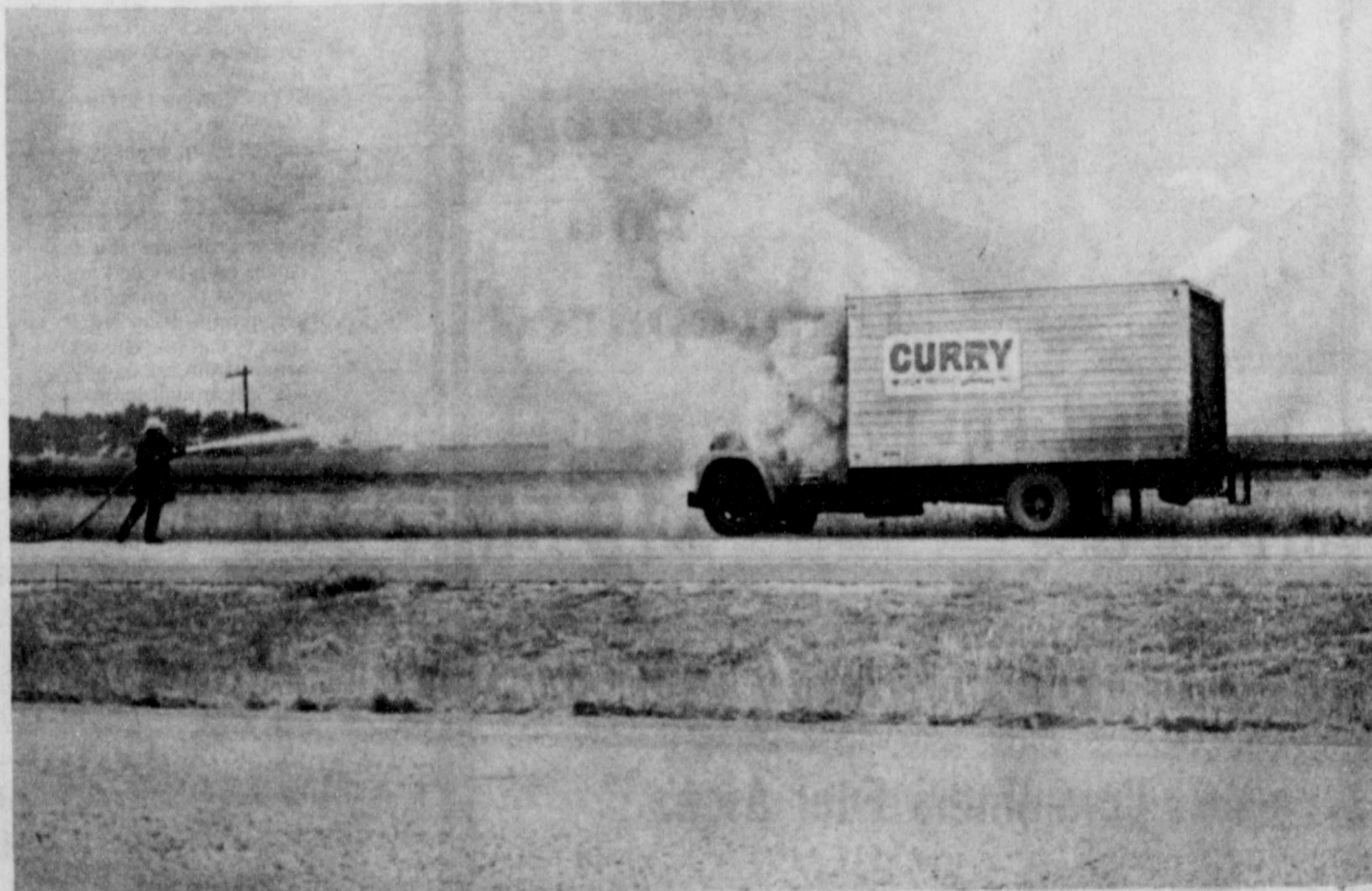
New faculty members in junior high are Wanda Rogers, math; Janet Bek, reading; Phil Cotham, math and coach; Linda Terrell, English and speech; and Yolanda Garcia, aide.

New elementary faculty members are Patti Mowrey, special education; Jamie Moerbe, third grade; Margie Rexrode, first grade; and Liz Butler, aide.

The public is invited to attend.



JAMES WHITIS



A CURRY FREIGHT TRUCK caught fire Monday morning. Two units of the Volunteer Fire Department were sent to 1 mile east of Aiken about 10:00 a.m. Todd Burton, 20, a Curry

driver for 3 years said he heard something under the hood. When he raised the hood, flames had engulfed the motor.

CRIME CALL

On August 13, 1982, Crime Call of Floyd County, Inc. affiliated with Texas Crime Stoppers to expand the services, offering rewards for information in felony crimes. In the Lockney area, the number to call is 652-2416. In Floydada, informants are urged to call 983-5200. If an answer is not received at these numbers, anyone having information regarding felony crimes is urged to call (toll-free) 1-800-252-8477. A simple way to remember this number is "1-800-252-TIPS."

Informants are reminded that they may remain anonymous, but is they are willing and choose to testify in the trial of the case, additional rewards are paid for this testimony.

Crime Call is supported entirely by private funding, and tax-deductible contributions may be mailed to Crime Call of Floyd County, Inc., 122 E.

California, Floydada, TX 79235 or may be taken to First National Bank of Lockney or First National Bank of Floydada.

The Texas Crime Stoppers provides technical assistance to local programs and when information is received on the "800" line, the information is relayed to the appropriate law enforcement agencies. So far, in 1982, Texas Crime Stoppers has aided in the recovery of property and seized narcotics with a value of over \$1,000,000.

The Crime Call board is very happy to announce this addition to the program and is confident the 1-800-252-8477 line will give additional assistance to our law enforcement agencies. The "hotline" became operational on a 24-hour basis on May 25, 1982, and information is currently taken around the clock by trained police officers.

free school meals

Free and reduced-price meals will be offered in the Floydada Independent School District again this year to children whose families meet certain economic criteria.

Children from families whose income is at or below certain levels may be eligible for either free meals or meals at a reduced price of 40-cents for lunch and 30-cents for breakfast. Regular prices are 80-cents for lunch in the elementary schools and 90-cents for lunch in the junior high and high schools and 50-cents for breakfast throughout the school system.

Parents may apply for free or reduced-price meals at anytime during the school year. Applications are available from the school district. Parents will be notified within 10-days of filing the applications if their application has been accepted.

If there are changes in family size or income during the school year, such changes should be reported to school officials so appropriate adjustments may be made.

Superintendent Jerry Cannon said there are a number of factors involved in determining if a child qualifies for free or reduced-price meals.

Among those factors are:

Proof of Current Family Income—If you have applied for free or reduced price benefits in other school years, you will note some changes to the application form. The application now requires the name and social security number of all adult family members. Adults without social security numbers must indicate that they do not have one. Schools may verify the source and amount of income as well as household composition.

Foster Children—In certain cases, foster children are also eligible for these benefits. If you have foster children living with you and you wish to apply for such meals for them, please notify us or indicate it on the application.

Nondiscrimination—All children are treated the same regardless of ability to pay. In the operation of child feeding programs, no child will be discriminated against because of race, sex, creed, color or national origin.

Fair Hearing—If you do not agree with the school's decision on your application, you may wish to discuss it with the school. If you wish to review the decision further, you have a right to a fair hearing. This can be done by calling or writing: Jerry Cannon, 226 W. California, Floydada, Texas 79235, or call (806) 983-3498.

Children from households with incomes not exceeding the family size and income specified below are eligible for free or reduced-price meals.

Family Size	Yearly	Monthly	Weekly
1	\$ 8,660	\$ 722	\$167
2	11,510	959	221
3	14,360	1,197	276
4	17,210	1,434	331
5	20,050	1,671	386
6	22,900	1,908	440
7	25,750	2,146	495
8	28,600	2,383	550
Each Additional Family Member	\$ 2,850	\$ 238	\$ 55



**Don't Let
The
Weather
Catch
You
Unprepared**

ANTI FREEZE SALE

6x1 Gal Case **\$19.50**

Bulk Antifreeze
5 Gals or More gal. **\$2.75**

Consumers Fuel Assn.

Floydada, Texas **983-3394**

ATTACHMENT A

INCOME ELIGIBILITY GUIDELINES

1982-83
Annual

Family Size	Free Meals	Reduced-Price Meals
1	\$0 - 6,080	\$ 6,080 - 8,660
2	0 - 8,090	8,090 - 11,510
3	0 - 10,090	10,090 - 14,360
4	0 - 12,090	12,090 - 17,210
5	0 - 14,090	14,090 - 20,050
6	0 - 16,090	16,090 - 22,900
7	0 - 18,100	18,100 - 25,750
8	0 - 20,100	20,100 - 28,600
Each Additional Family Member	\$ 2,000	\$ 2,850

Monthly

Family Size	Free Meals	Reduced-Price Meals
1	\$0 - 507	\$ 507 - 722
2	0 - 674	674 - 959
3	0 - 841	841 - 1,197
4	0 - 1,008	1,008 - 1,434
5	0 - 1,174	1,174 - 1,671
6	0 - 1,341	1,341 - 1,908
7	0 - 1,508	1,508 - 2,146
8	0 - 1,675	1,675 - 2,383

Each Additional Family

\$ 167 \$ 238

Weekly

Family Size	Free Meals	Reduced-Price Meals
1	\$0 - 117	\$ 117 - 167
2	0 - 156	156 - 221
3	0 - 194	194 - 276
4	0 - 233	233 - 331
5	0 - 271	271 - 386
6	0 - 309	309 - 440
7	0 - 348	348 - 495
8	0 - 387	387 - 550

Each Additional Family Member

\$ 38 \$ 55

Each school district may determine the price charged for reduced-price meals, but in no case may the charge for a reduced-price lunch exceed 40 cents or a reduce-price breakfast exceed 30 cents.

"Laugh Lines"

LAUGHLINES
BY DON AND SARA PROBASCO

Bits of Humor, Trivia, and an occasional Word of Wisdom

Now that your vacation is behind you, don't you feel sort of exhilarated by the challenge of trying to pay for it?

Most of us are willing to accept advice from people smarter than we are, if we could find any.

The person who says it cannot be done should be careful not to distract the one who is doing it.

Today's business machines can do everything but think. In this respect they resemble many employees.

Average is the poorest of the good and the best of the bad.

We refuse to believe computers are smarter than people until we see one refold a road map on the first try.

Even the best family tree has its sap.

Why not branch out a little — take beginner's Stained Glass at Studio South this Fall. Call for information. Classes are forming now for September.

PROBASCO'S

PRO-LOCK SHOP
24-hour Mobile
Locksmith Service

2 Miles north of South Plains on the Silverton Highway (Hwy 207)

983-3834
Visa and Mastercard Welcome
ADV

STUDIO SOUTH
Stained Glass Art
Supplies, Gifts



If one baseball is tossed horizontally while at the same instant a second baseball is dropped vertically from the same height, both of them will reach the ground simultaneously.

When you're sick or hurt, you deserve some old-fashioned personal attention...

Check with State Farm for a health insurance program that's just right for you.



Call:
James R. Bigham
111 B. East Missouri
Floydada, Texas
79235



Like a good neighbor, State Farm is there. Off: (806) 983-5516
State Farm Mutual Automobile Insurance Company, Home Office: Bloomington, Illinois

did you know?



The steam-driven turbine rotor at Tolk Station, our new coal-fired plant near Muleshoe, Texas, whirls at such great speed that if it were placed on the highway, it would travel the 125 miles from Lubbock to Amarillo in about 6 minutes. Other interesting facts about the power plant, which began generating electricity in July: At the speed the main steam — which drives the turbine — travels through the pipes, it could finish the Boston Marathon (26 miles) in about 12 minutes. At maximum output the turbine produces about 728,000 horsepower. It can provide power for 5,430,000 hundred-watt light bulbs.

Jim Matthews, Generation Design & Construction Group Manager, Amarillo.

The primary fuel for Tolk Station is a low-sulphur, high-heat-value coal from the Black Thunder Mine near Gillette, Wyoming. Southwestern Public Service made the decision to buy this coal because the low-sulphur rating means we can comply with certain requirements of the Clean Air Act without installing extremely complex and extremely expensive pollution-control devices.

Leo Austin, Supervising Engineer, Roswell.

We'll turn things upside down to benefit our customers. Here's an example: We use a "rotary dumper" system to unload the railroad cars which carry coal to Tolk. The cars are unloaded one by one. Each is attached to a large wheel that literally turns the car upside down, pouring out the coal. The system allows us to use lighter weight coal cars. So our freight cost is lower, and so is the fuel cost adjustment our customers pay.



Jack Logan, Operations Superintendent, Muleshoe.

Knowing what electricity is worth is worth knowing. For answers to your questions, call or write your SPS manager.



SOUTHWESTERN PUBLIC SERVICE COMPANY



Strake Talk

FREE EDUCATION AND THE UNDOCUMENTED WORKER

On June 15, 1982, The Supreme Court ruled, 5-4, that Texas and other states must provide free public education for the children of undocumented workers—people in this country illegally.

Our current Lt. Governor, Mr. Hobby, was happy with the decision, praising it as the "only rational decision" the court could have made.

On the contrary, I think it was a wrong decision that defied both law and logic.

One of the principal underpinnings of an orderly society is that one should not benefit from breaking the law. All around the world, thousands of people stand patiently in line at our embassies, waiting for legal entry into this country. By its recent ruling, the Supreme Court told these people that, if they are smart, they will ignore our immigration laws, find some other way to enter, and then there's a good likelihood all manner of taxpayer-supported benefits

will be open to them and their families.

We can all feel sympathy for people driven to emigrate by desperate economic conditions. And I believe we should be compassionate toward the children of undocumented workers who are here through no fault of their own. We have been told we must educate these children and we will: it is our duty.

But I am deeply concerned about the effect this will have on our school systems and the quality of education. We have only a certain amount of desks and dollars with which to address the problems of educating Texas' children.

The court was essentially establishing social policy under the guise of ruling on a constitutional question. The result was bad law and bad social policy. It should now be up to the Federal Government to help pay for the mess they have created by not properly policing our borders.

George W. Strake, Jr.

George W. Strake, Jr.

Paid Political Advertisement. Texans for Strake, 1213 W 34th Street, Austin, Texas 78705. Bayard Friedman Treasurer.

Open House held Sunday

Approximately 90 to 100 residents attended the Open House held in the Fieldhouse at the Lockney Longhorn Football stadium.

The Open House was sponsored by the Lockney Quarterback Club from 2:00 to 4:00 p.m.

The Varsity Cheerleaders served refreshments to those coming out to meet the new coaching staff and their wives.

Bob Purser heads the staff of Scott Knippa, Malcom Moerbe, Phil Cotham, and Randy Josey.

The coaches have done some remodeling to the fieldhouse during the summer for a more attractive and serviceable facility.

An open house for the mothers of this year's football players was also held Tuesday night.



LINDA GANT (far left) is shown with the pretty side of the coaches as their wives greeted visitors Sunday afternoon at Open House at the fieldhouse. Right to left is Carla Josey, Jamie Moerbe, Cindy Cotham, Peggy Hallmark and Patti Purser.

Crager named Dean of Music

Dr. Ted J. Crager, a performing musician whose teaching and administrative experience span a 30-year period, has been named Dean of the School of Music (interim) at the University of Miami.

Crager, a former lockney resident, is a former supervisor of music for Lubbock Public Schools.

He succeeds Dr. William F. Lee III, who was promoted to the position of Provost and Executive Vice President of the University last spring.

Dr. Lee said, "I am extremely delighted to be able to announce that Dr. Crager will serve as dean of music for the 1982-83 academic year. Dean Crager's extensive experience in university administration, which includes seven years as director of music at West Texas State University and 15 years as associate dean of the School of Music at UM, will greatly assist the faculty, students, and staff in their continued quest for excellence."

A nine-member committee, under the chairmanship of Dr. J. Robert Flynd, professor and director of keyboard studies, is conducting a search for a permanent dean.

Additional administrative changes in the music school include the promotion of Professor Constance J. Weldon from assistant to associate dean, and the appointment of Dr. Brian Busch as assistant dean for graduate studies.

Dr. Crager, who joined the UM in 1965, earned his doctorate at Columbia University, and for seven years he was chairman of the music department at West Texas State University. He was named associate dean of the UM music school in 1967 and twice was named an Outstanding Educator in America.

A professional trumpet player for symphony orchestra, television, radio, theaters and nightclubs in Texas, New York and Florida, Dr. Crager is also a clinician, adjudicator, visiting conductor and trumpet soloist with high school and university bands. He's also the author of numerous publications, a member of various professional organizations and listed in Who's Who in American Education, Who's Who in the Southwest, and Personalities of the South.

Dean Crager notes that "For a number of years, the School of Music sought qualitative advancement in terms of students, faculty and programs. This is the strength of our school."

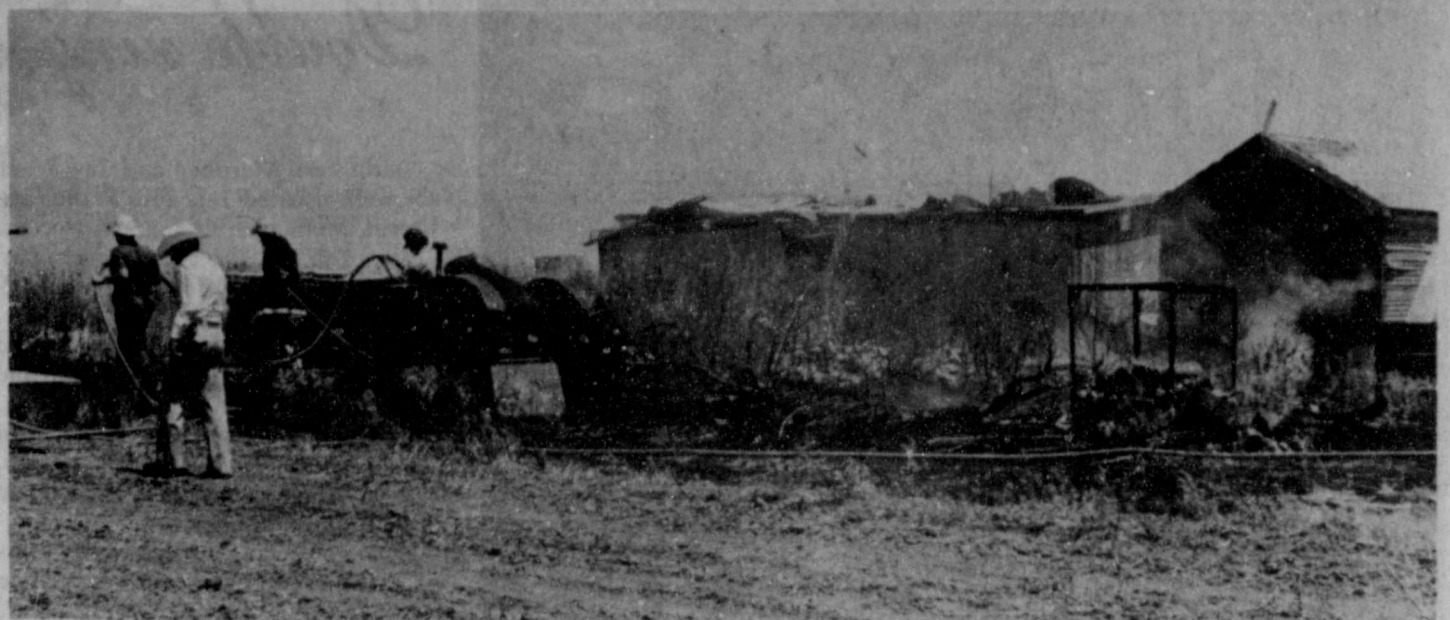
"We will continue to refine our quest for quality which has placed the UM among leaders of music schools in the nation. We are proud to offer the

widest choice of career opportunities of any school of music in the world."

The School of Music has the largest undergraduate enrollment of any school of music affiliated with a private university in the United States. It offers undergraduate and graduate majors in 30 fields to its more than 800 students. SAT scores of entering freshman music majors are consistently among the highest in their class. It was the first school in the nation to offer a major in music merchandising, and the music engineering technology major, also a first, is the only one in the nation currently accredited.

LOCKNEY LOCAL

Mrs. C.L. Record have returned to their home in Lockney after being in Colorado for several weeks this summer.



THE VOLUNTEER FIRE DEPARTMENT has been kept busy with numerous grass fires that have been reported due to the dry conditions that exist. They were summoned to the Bill Strickland residence about 1:45 Friday where the fire was quickly extinguished without any major damage.

"Focus on Family" film to show

The public is invited to attend the showing of the "Focus on Family" film series that will begin Wednesday, September 1, at 7:30 p.m. in fellowship hall of First United Methodist Church of Lockney.

"Focus on the Family" film series features Dr. James C. Dobson, a leading Christian authority on the family. The series is produced by Word Inc. of Waco and has been shown in churches of many denominations. Dr. Dobson's presentation is understandable, interesting and often humorous.

The series has seven films which will be shown on consecutive Wednesday nights. A nursery will be available at the church.

Titles of the films are "The Strong-Willed Child", "Shaping the Will Without Breaking the Spirit", "Christian Fathering", "Preparing for Adol-

escence: The Origins of Self-Doubt", "Preparing for Adolescence: Peer Pressure and Sexuality", "What Wives Wish Their Husbands Knew About Women: Money, Sex and Children".

The shortest film is 42 minutes and the longest is just over an hour.

Church pastor Michael O'Connor stresses that people of all ages will benefit from the films.



Floyd County
Farm Bureau
Annual Convention
Thursday, Aug. 26, 1982
7:30 p.m.

Duncan Elementary
School Cafeteria
Floydada

Meal will be served
Two new directors
to be elected
Everyone come!

THE LOCKNEY BEACON
[USPS 317-220]

Published weekly each Thursday by Floyd County Publishing Co., 211 North Main St., Lockney, Texas 79241. Second class postage paid at Lockney, Texas. Subscription rates: local \$11.50 per year, out-of-trade area \$12.50 per year. POSTMASTER: send address changes to the Lockney Beacon, P.O. Box 187, Lockney, Texas 79241.

David Cates Publisher
Carolyn Redding Advertising Manager
Editor

St. Mary Magdalen Church
will have a cook out meal
from 11 a.m. till 7 p.m.
Saturday August 21st.

The plate will consist of beef strips, potato salad, rice, and beans.

\$3⁵⁰ adult and \$1⁷⁵ children.



SUMMIT SAVINGS ASSOCIATION

No Monthly Service Charge

5 1/4% Interest Bearing Checking Account

No Minimum Balance

First 200 Checks "FREE"



SUMMIT SAVINGS ASSOCIATION

OFFICES IN
PLAINVIEW, FLOYDADA, MATADOR, HALE CENTER MULESHOE,
LITTLEFIELD, FRIONA, FARWELL PLANO and ALLEN

Accounts Insured up to \$100,000

MEMBER FSLIC



See You At The
OLD FASHIONED
SATURDAY
August 21st

Floyd County's Progressive Bank

First National Bank

Member F.D.I.C.
Accounts insured
up to \$100,000

in Lockney

Look for this symbol:
We've got the answers.





MR. & MRS. IKE JOHNSON

Johnsons to celebrate 50th Wedding Anniversary

Mr. and Mrs. Ike Johnson of Lockney will observe their 50th wedding anniversary with a reception Sunday Afternoon, August 22, from 2-4:00.

The event will be held in the fellowship hall of First United Methodist Church of Lockney. Friends and relatives are invited to attend.

Hosts will be the couple's three children, Betty and Orland Gilbert of Lubbock, Rita Burselon of Andrews, Tom and Dixie Johnson of Lockney; and their grandchildren, Greg and Gavin Gilbert of Lubbock, Todd Burselon of Denton, Melissa and Steve Johnson of Lockney. Several nieces will assist with hospitalities.

Special guests will be Mrs. Johnson's sisters, Mrs. Clyde Baxter of Lockney

and Billie Rue Dorsett of Lamesa; and Mr. Johnson's sister-in-law, Mrs. Lavon Johnson of Lockney.

Mr. Johnson was born in Greenville. His wife, the former Lucile Jarboe, was born in Lexington, Oklahoma. Their parents, the late Mr. and Mrs. Tom Jarboe and the late Mr. and Mrs. M.S. Johnson, were neighbors in the Lone Star community north of Lockney.

Ike Johnson and Lucile Jarboe were married August 17, 1932, in Fort Sumner, New Mexico. They have resided in Floyd County except for several years in Plainview and then several years in Fort Worth during World War II. He is a retired farmer and mechanic. They are longtime members of the Methodist Church in Lockney.

O.E.S. holds regular business meeting August 18th

At the monthly meeting of Floydada Chapter No. 31, O.E.S., August 18, 1982, besides the regular business of the meeting, a program honoring Dr. Robert Morris, the illustrious founder of the Order of Eastern Star, was presented.

Mrs. Keith Gross and Mrs. W.B. Parrack gave excerpts from the biographical sketch of Robert Morris, entitled "We Have Seen His Star," as well as the Beatitudes of Rob Morris and a poem featuring the five star points of

Jackson feted with misc. shower

Nesa Jackson, bride-elect of Larry Anders, was honored with a miscellaneous bridal shower, Saturday, August 7, from 2-4:30. The shower was held at the bride and grooms new home.

Hostesses were: Alta Reeds, Patricia Greene, Sheila Bufford, Cecil Gardner, Donna Hurley, Sarah Lofgrin, Billie Soash, Barbara Smith, Betty Dickey, Jean Nelson, Brenda Hutson, and Randa Matthews.

Peach thumbprint cookies, sand tarts, peach punch, peach mints, and assorted nuts were served as refreshments.

Hearth-size brass candlesticks were given to the bride as a gift from the hostesses.

GOSPEL SINGING
Sunday, August 22
10:50 a.m.



Jim Guess, Pastor
First Assembly
of God
701 W. Missouri

the Order.

In memory of Mrs. Blix Belew, the Resolutions of Respect were read by Anne Sweptson, secretary, and the Charter was draped by Keith Gross, marshal. The Worthy Matron, Mrs. Bobby Rainer, read the Twenty-third Psalm, which was followed by a prayer led by Mrs. W.B. Parrack, chaplain.

After the chapter closed, refreshments were served by Mrs. Ruth Daniel and Mr. and Mrs. Bob Vickers to the following in the dining room: Mr. and Mrs. Bobby Rainer, Bill Gray, Bobby Kendrick, Keith Gross, Noman Hamilton, M.J. McNeill, Mmes. Billy Don Colston, W.B. Parrack, Rex Savage, Frances Crass, Ruth Trapp, and Fern Hartsell, Anne Sweptson and Charley Berry.

On August 29, 1982 from 3-5 p.m. at 901 West Tennessee Street, Floydada Chapter No. 31, O.E.S. will honor Mrs. Flora McNeill, Grand Esther; Mrs. Roberta Russell, member of Music Committee; and Wayne Russell, member of Masonic Relations Committee, all of the Grand Chapter of Texas, Order of the Eastern Star. All members are urged to attend.

Double ring ceremony unites Murphey, Womack

Darla Fern Murphey and Jay Womack were married July 24th at the First United Methodist Church in Nocona, Texas. The Rev. Merwin Turner, pastor, officiated the Western style wedding.

Parents of the couple are Mr. and Mrs. John A. Murphey, Nocona, and Mr. and Mrs. Bill Womack, Floydada. Grandparents are Mr. and Mrs. Lloyd W. Jones, Bokchito, Oklahoma; Mrs. W.S. Murphey, Nocona, and Mr. and Mrs. A.D. Jester, Floydada.

Honor attendants were Karla Murphey, sister of the bride of Wichita Falls, Texas, and Tracy Womack, brother of the groom of Stephenville, Texas.

Bridesmaids were Nancy Duggan, Lisa Cadwallader, Teri Johnson and Tammie Arnett, all of Wichita Falls.

Groomsmen were Russell Mustin, Jubel Caldwell, Brent Noles, all of Stephenville, and Zane Jones, San Angelo. Ushers were Larry Jones, San Angelo; Hoyt Lindsey of Springtown, Texas, and Mark Murphey of Nocona.

Ring bearers were Shannon Norris of Burkburnett and Jody Copp of Lazbuddie, Texas.

Jo Allison sang "You Light Up My Life", accompanied by Elaine Young at the organ. Other special music was given by Ron Routledge singing "Just One Girl." Mark Murphey, brother of the bride, sang "Someone Loves You Honey." The western theme was carried out as Fred Jones accompanied with guitar and Elaine Young played the piano. Mrs. Young also presented the traditional Wedding March on the

organ.

The bride designed her floor length gown which was tailored by her mother. The sweetheart neckline was accented with an empire bodice of re-embroidered lace over satin and outlined with pearls and sequins. The lace bell sleeves were scalloped at the edge and trimmed to match the bodice. The satin skirt was Austrian draped at the lower edge. Tiers of scalloped lace over satin underlaid the Austrian drapes tied with white satin ribbon and a pair of off-center sequins tied to the end of each ribbon at each drape.

Her picture hat was covered with lace to match the dress. A scalloped band of illusion net was held in place by sequins at the scallops as those on the dress.

She carried a bouquet of white roses accented with blue roses and peach baby's breath and streamers of white, blue and peach satin ribbon to complement the chosen colors of the parents.

The mother of the bride made the bride's wedding dress and hat and arranged all flowers. She also made the matching western shirts for all males and dresses of the attendants of checked gingham material.

Mr. and Mrs. Murphey wore light blue checks and Mr. and Mrs. Bill Womack were dressed in peach checks.

The brides parents gave the reception in the fellowship hall of the church. Juli Womack, Floydada, and Lana Copp, Lazbuddie, sister-in-laws of the groom, served at the reception table.

Parents of the groom hosted the rehearsal dinner at the home of the

bride's parents, with an outdoor cook-out.

The bride is a graduate of Nocona High School and Midwestern State University, Wichita Falls, where she was a cheerleader and belonged to Gamma Phi Beta.

The groom is a graduate of Floydada High School and Tarleton State University, Stephenville, where he was a member of Alpha Zeta. Both are

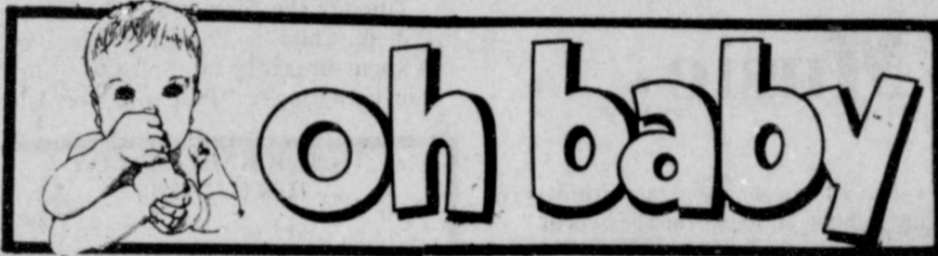
employed by the Burkburnett Independent School District, Burkburnett, as a coach and Vo.-Ag. instructor.

After a trip to Cancun, Mexico, the couple are living in Wichita Falls.

Out of town guests were: Mr. and Mrs. Bill Womack, Floydada; Mr. and Mrs. Joe Womack, Floydada; Mr. and Mrs. A.D. Jester, Floydada; and Mr. and Mrs. Ricky Copp and Jody of Lazbuddie.



MRS. JAY WOMACK



CARTHEL

T. Sgt. and Mrs. Wayland L. Carthel are the proud parents of a son, born August 2, weighing 7 lbs. 8 oz. Christopher Kengi has an 8-year-old brother, Weldon Lyle.

Grandparents are Mrs. Chiyo Oshiro of Naha, Okinawa, maternal grandmother, and Mr. and Mrs. W.L. Carthel of Lockney, paternal grandparents.

T. Sgt. Carthel is a career man in the Air Force, stationed at Nellis AFB, Las Vegas, Nevada.

VASQUEZ

Mr. and Mrs. Ricky M. Vasquez are proud to announce the birth of their first child, Ruth.

Ruth was born August 11, 1982 at 7:25 a.m. She weighed 7 lb. 8 oz. and was 20 inches long.

Grandparents are Mrs. Elena Castillo and Mr. and Mrs. Luis L. Vasquez, all of Floydada.

WASHBURN

Peggy Probasco has a new grandson, Kenneth Wayne Washburn. Parents are Malcom and Judy Washburn, of Yanbu, Saudi Arabia.

Floyd Data

Triss Coleman of Floydada attended an Early Enrollment Conference for incoming freshmen July 29-30 (Thursday-Friday) at East Texas State University, Commerce.

Activities included academic information, small group sessions, faculty receptions, academic advisement, pre-registration and other sessions designed to acquaint students with ETSU.

Lockney Local

Southwestern Oklahoma State University has announced both the President's and Dean's Honor Rolls for the 1982 summer semester.

Kay Tannahill of Lockney was listed among the many students who are on the Dean's List after completing eight semester hours with a grade point average of 3.0 ("B") or higher, with no grade lower than a "C."

Register Your
Bridal Selection



983-3240

Lovell - Collins Jewelry

806/983-3240 102 S. MAIN FLOYDADA, TEXAS 79235

Bridal selections are now available for



**Lori & Paul
Lloyd**

Complete Dinnerware

Old Fashion Saturday Sidewalk Sale

Brand Name Shoes
Summer Ready To Wear
Prices Reduced to

Half of A Half Price Sale

Table of Children Shoes Reduced
Many Items Inside the Store

Brown's Outlet Store

Lockney

**BRIDAL SELECTIONS
ARE NOW AVAILABLE FOR:**

Paul & Lori Lloyd
formerly Lori Lyles

Many items to choose from
for your various school needs
and College Dorm supplies.

Sue's
Gifts and Accessories

126 W. California 983-5312

Candlelight wedding joins Taylor, Ford

Rise Shea Taylor and Evan Michael Ford were united in marriage in a Saturday evening ceremony in the First United Methodist Church of Lockney.

Hugh B. Daniel, pastor of First United Methodist Church of Quanah, officiated. The couple exchanged vows before an



MRS. MICHAEL FORD

altar setting of four spiral candelabras with a flanking fan-shaped candelabra. Each held white tapers and were entwined with silk greenery tied with white satin bows.

Parents of the couple are Mr. and Mrs. C. Joe Taylor of Tullia and Mr. and Mrs. Harold Ford of Lockney.

Mrs. C.L. Record, organist, and Mrs. Ray Ford, soloist, both of Lockney, provided the wedding music.

The bride, given in marriage by her father, wore a white chiffon gown designed with a moulded bodice veiled in Venise lace. It featured a Queen Anne neckline outlined in Venise lace and seed pearls and dropped to a natural waistline. Bishop sleeves exposed an embroidered cameo outlined in matching lace. Embroidered cuffs were buttoned with loops.

The bouffant floor length skirt bore Venise lace appliques in front accented with seed pearls. A row of embroidered cameos outlined with Venise lace were featured around the skirt. The back fullness of the skirt formed an apron back outlined with scalloped embroidery and crystal pleating and an embroidered scalloped edging extending around the chapel length train.

Completing the bride's attire, a white chapel length veil of illusion edged in Venise lace trim was worn, held to a Juliet capulet covered in matching lace.

For the traditional "something old" the bride wore a gold bracelet belonging to her maternal great-grandmother, the late Mrs. W.W. (Johnnie) Merrell, which had been given to her on her wedding day by her groom. Pearl studded earrings were loaned to her by her paternal grandmother, Mrs. Josie Taylor. Mrs. Byron Brock, aunt of the bride, made her blue garter with a pocket that held pennies minted in the birth years of the couple. She also wore a pearl necklace belonging to her late maternal grandmother, Mrs. J.P. Taylor.

The bride's bouquet was carried atop a white Bible covered in white satin applied with lace motifs trimmed in beads and pearls and edged in white lace. The double cascade bouquet of white sweetheart roses and lily of the valley surrounding a cattleya orchid was tied with satin streamers entwined with lily of the valley.

The bride presented a white rose to her mother as she approached the altar, and she presented an identical rose to the groom's mother as they left. The couple lit a unity candle to conclude the ceremony.

Shawnda Brock of Lockney, cousin of the bride, was the maid of honor, Mrs. Phil (Cindy) Cotham, and Mona Henderson, both of Lockney, Karla McCarter of Amarillo, and Mrs. Tim (Stephanie) Parker of Canyon were the bridal attendants.

Feminine attendants wore floor length dresses of dusty rose and chiffon overlays. The bodice of the gowns featured a scoop cowl neck and split chiffon sleeves. A-line skirts were gathered to small peplum at the

waistlines and accented with satin ribbon ties. Each attendant wore a pearl necklace, a gift from the bride, and carried a white firsided basket of dusty rose silk azaleas tied with a dusty rose satin bow and streamers.

Flower girl was Kaci Mathis of Lockney and candlelighters were Karen Ford, sister of the groom, and Jeff and John Taylor of Matador, the bride's cousins. Randy Gregg of Matador was ring bearer.

Cousin of the groom, Randy Ford of Lockney was best man. The groom's brother, Ricky Ford of Corpus Christi, the bride's brother, Gregg Taylor of Laramie, Wyoming, Mike Chandler of Manachaca and Steve Warren of Lamesa served as groomsmen.

Cousins of the groom, Kevin Ford of Garden City, Kansas, and Curtis Ford of Lockney, seated guests and placed the white aisle runner.

A reception was held in the fellowship hall of the church immediately following the ceremony. Assisting with hospitalities were Mrs. Dwayne Adams of Plainview, Mrs. Dwayne Henderson of Quanah, and Shelley Bearden of Floydada, all cousins of the bride; Mrs. Ricky Ford of Corpus Christi, the groom's sister-in-law; and Cindy Bickle of Houston, cousin of the groom.

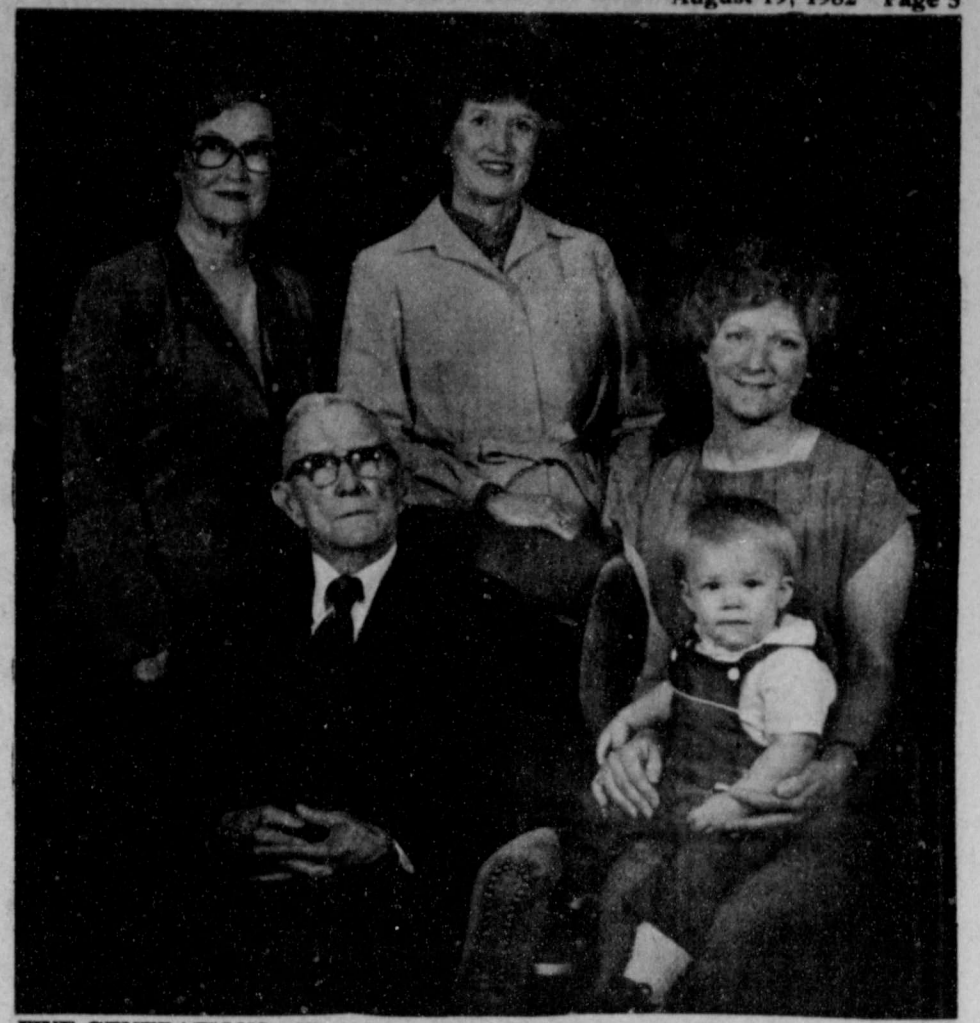
Members of the houseparty were Mmes. Dale Pierce of Lubbock, Byron Brock, Gale Gregg of Matador, Jack Ford of Leoti, Kansas, Jerry Ford, Tom Johnson, Tommy Bickle of Houston, Bill Turner, Deanie Henderson, Roger Owens of Dell City, Pat Frizzell and Gale McPherson.

The reception tables were arranged in an inverted V shape. A small circular table at the point of the V covered with a white lace floor length cloth held the three-tiered wedding cake trimmed in dusty rose and cherubs and topped with wedding bells. Other tables were covered in matching white cloths trimmed with lace and were centered with five-branch silver candelabras entwined with silk greenery and flowers.

Both the bride and groom are graduates of Lockney High School. He attended Angelo State University at San Angelo and she attended West Texas State University. Ford is engaged in farming in the Lockney area and his bride is a secretary at the Lockney Western Limited Feedlot. The couple will make their home in Lockney after a honeymoon trip.

A rehearsal dinner was hosted by the groom's parents in the garden room of the First Baptist Church. Saturday at noon a bridesmaid luncheon was held in the Olde White House in Floydada hosted by aunts of the bride, Mrs. Dale Pierce of Lubbock, Mrs. Gale Gregg of Matador, and Mrs. Byron Brock.

Special guests for the wedding and reception were Kirby Ford of Littlefield, the groom's maternal grandfather, Mr. and Mrs. R.H. Ford of Lockney, the groom's paternal grandparents, Mrs. Josie Taylor of Lockney, the bride's paternal grandmother, and J.P. Taylor of South Plains, the bride's maternal grandfather.



FIVE GENERATIONS—Five generations recently got together and are pictured with Mr. Earl Bishop of Floydada, his daughter, Mrs. Terry McGregor of Marble Falls, Texas [left]; her daughter, Mrs. Gloria Novak Jones of Houston [center]; her daughter, Mrs. Kim Jones Lewis of Ft. Smith, Arkansas [seated] and her son, Derek Alan Lewis, one-year-old, of Ft. Smith, Arkansas. Mr. Bishop was born September 5, 1886 in Robson, Texas. He will be 96 next month.

Tri-family reunion held

Members of the Holt, Clay, and Winn families assembled for a reunion in the school cafeteria in Silvertown recently. The occasion was also W.A. (Bill) Holt's 86th birthday.

Music was provided through the get-together by W.A. and David Holt, Scott Garvin, Betty McPherson, Brian Dell and Joan Vining.

In attendance were W.A. Holt, Lockney; Brian Dell, Joan and Vanessa Vining, Jack and Heil Osborne, Pampa; Curtis, Ramona and Curt Craddock, Hollis, Oklahoma; Edgar and Mamie Holt, Graham; Mike, Leila Jo and Jamie Holdaway, Dara Garvin, Guy and Catherine Cope, Amarillo; Shorty and Christine Donnell, Canyon; Georgie and Angela Gaither, Elwanna and Lori Eaton, Spearman; Edgar and Mamie Holt, Graham; and Edgar and Mamie

Holt, Graham;

Charlie and Fern Holt, Silvertown; Randy, Kelly, Caleb and Joshua Clay, Hale Center; Clayton, Donna, Krisse, Mandy and Ben Pigg, Quitaque; Wayne and Marian Hamilton, Mozelle Northcutt, Agness Allard, Tullia; Fay and Ruth Holt, Earth; Randa McDaniel, Plainview; Lyle and Mary Coppersmith, Tatum, New Mexico; Frank and Louetta Shaffer, Perryton; Dick Bishop, Floydada; Freddie and Jo Hamilton, Dimmitt; and Lester and Shirley Green, Mrs. Lizzie Jack, Delton Jack, and June Bybee, Lockney;

Rhiana and Jerie McNamara, Doris Dudley, Doug Cowan, Scott Garvin, Neal, Chad, and Dee Turner, Vestine Mull, Lubbock; Gayle James, Spring; Edwin, Carrie Dell and Clinton Dickerson, Fred and Jackie Mercer, Zelta Dudley, Doleta Boyce, Winston and Jo Hamilton, Rex, Theta and Kent Holt, Jerry, Jealeata, Kerry and Kori Baird, Robert and Betty McPherson, Pearl Lanham, Virgil and Eudean Crow, Bryant, and Ruby Lee Eddleman, Fred and Jackie Mercer, David and Debbie Holt, Lance, Jonathan and Jeremy, Lee and Ada Clay, Silvertown; and Irene Holt, Mineral Wells.

Museum News

Museum visitors this week have included people from Chicago, Illinois; Stillwater, Oklahoma; Mexico; North Dakota; Pocatello, Idaho; Fort Worth; Houston; El Paso; Odessa; Abernathy; Spur; Estacado; Lubbock and Plano.

Memorials have been received in memory of Rena Mae Smith Baker, Coke and Della Fullingim, Blix Belew, Elmer Williams and Deral Young.

Accessions received have included an 1888 song book and an assortment of baby shoes and clothing purchased in 1902 in Lockney by Mrs. Lige Koger for her son Leo. Mrs. Koger will celebrate her 101st birthday on November 10.

A copy of "Understanding Colonial Handwriting" has been added to the Genealogical collection along with several other historical magazines.

Olde White House
702 South Main
Floydada, Texas
983-5441

Daily Luncheons
11:00 a.m. - 2:00 p.m.

CATERING FOR
Weddings, Luncheons
and Parties

Open evenings
for specials occasions

"A Unique
Dining Experience"

FLOWERS: Fresh Silk or Dried!
Gifts for all occasions!
Greenhouse plants & tropicals!

PARK FLORIST
983-2867 983-2868

Sedgefield

Back to School SALE

Boys
Regular Price \$17⁰⁰ **Now \$12⁸⁸**

Students
Waist 25-30
Regular Price \$22⁰⁰ **Now \$16⁸⁸**

Mens
Regular Price \$24⁰⁰ **Now \$18⁸⁸**

Layaways - Mastercard-VISA

ANDERSON'S
DEPARTMENT STORE
120 West California Floydada

Come by on
Old Fashion Saturday
and shop our
25-75% OFF Sale!

SCHACHTS
Flowers, Jewelry & Gifts
"Our Pleasure Is To Serve You"

Lockney 652-2385

Lovell - Collins Jewelry
806 983-3240 102 S. MAIN FLOYDADA, TEXAS 79235

\$10⁰⁰ OFF!

Class Rings

This ad is worth \$10 OFF the price of any of our beautiful Gold Lance class rings made of 10-karat gold. And we'll deliver it in just 2-4 weeks.

Hurry ... offer expires September 10, 1982

RING PARTY
Saturday, August 21, 1982
9:00 a.m. - 5:00 p.m.

Refreshments
Factory Representative

FREE Jar Jewel Clean with every order

Credit Available
Layaways Welcome

Clip this ad and bring to our store to qualify.



MR. & MRS. KEVIN FORD

Smith, Ford exchange vows in Plainview

Robin Smith, Garden City, and Kevin Ford, were wed in a double-ring ceremony Saturday, July 31, at 2 p.m. in the First Southern Baptist Church. The Rev. Ernest Stewart performed the ceremony.

The bride was given in marriage by her parents, Dwight and Judy Smith, Garden City. Parents of the groom are Charles and Vickie Ford, Leoti.

Cindy Hall, Garden City, served as matron of honor and Becky McGinn, Garden City, was bridesmaid.

Best man was Dean Ford, Leoti. Mike Ford, Lockney, served as groomsmen.

Taper lighters were Timmy Nay, Liberal, and Chuck Ford, Leoti.

Greg Smith, Mark Hill, both of Garden City, Curtis Ford and Randy Ford, both of Lockney, seated the guests.

Organists was Ana Ford, Lockney.

She also sang "Lord's Prayer." Linda Grain, Garden City, sang "Wedding Song," and Roxanne Ford, Lockney, sang "You Light Up My Life."

A reception, at First Southern Baptist Church, was given by the bride's parents, Karla Hickey and Linda Hoezee assisted.

Honored guests were Mr. and Mrs. Raz Ford, Mr. and Mrs. M.C. Cook Jr., and Mr. and Mrs. B.O. Nay.

The bride graduated from Garden City High School and attended Garden City Community College. She is employed by Gillans True Value. The groom graduated from Wichita County High School and Garden City Community College. He works for Acra Plant sales.

After a wedding trip to Colorado Springs, Colorado, the couple is at home at 2820 Terrace.

Neffs hold annual reunion in Floydada August 15th

The Neff Annual reunion was held in the Massie Activity Center August 15, 1982.

Those present were Seth and Catherine Neff, Kenneth Neff, Cecil and Hazel Neff, and Pat M. Neff, Tuscola, Texas; Rena Lambert, Crosbyton; Tommy and Cornelia Brantley, Lamesa; Lee and Linda Lambert, Johnny and Trudie Virden, Midland; James B. and Virginia Cross, Bangs, Texas; Archie and Dovie Neff, New Mexico; Stanley and Lena Stock, Arizona; Stephanie Fordem, Arizona;

Also, Noble and Nonda Neff, Midland; Dale and Doris Neff, McAdoo; Bill and Wilma Nell Mulihell, Arizona; Thurman and Joyce Davis, Hereford; Brent Davis, Oklahoma; Eric and James Davis, Dimmitt; Ed and Dorothy Neff, Floydada; LaDonna Rosales, Amanda, and Nicholas, Joe Guffee, Plainview; Dale and Angie Stephens and Mitchell, Morton; Shorty and Leona Neff, Mary Neff, Jerry Winola, and Tammie Gallo-way, and Ona Ruth Neff, Floydada; Bill and Pat Smith, and Becky, Littlefield; Neida Jean Riels, and daughter, New

Mexico; Alec and Sharon Gordon, Kembra and Kris Gordon, Plainview; Ron and Gayla Hall and Jill of Canyon;

Also, Wayne and Hattie Bennett, Floydada; Sam Woody Jr., and boys, Cross Plains; Phil and Sharon Taylor and Family, Lubbock; Glenn and Deonne Lobstein and son, Lamesa; Janice Woddy, Grapevine, Texas; Mark

Woody, Paul and Hauteen Woody, Lubbock; and Russell Nichols.

Everyone brought lunch and put it on the tables, the lunch hour was cafeteria style and enjoyed by all.

Lots of visiting and picture taking were main objects, of the day.

Next years reunion will be held on the 3rd Sunday in August at the same place.

Matador site for Webbs' Family Reunion

The family of the late Mr. and Mrs. L.D. Webb of Matador held their annual family reunion at the American Legion Hall on August 13-14.

On Saturday the younger generation catered most of the food and served the older group.

On Sunday Walter Jones and wife catered the dinner.

On the two days 58 relatives and friends were present for the occasion.

Those traveling the furthest for the reunion were: Eldon Webb, Redlands, California; Mr. and Mrs. Clifford Webb, Desert Hot Springs, California; Mrs. Newell Crego, Albuquerque, New Mexico; Mr. and Mrs. R.L. Webb and Carla, Albuquerque, New Mexico; Mrs. Gayle Maschewski and children, Debra and Amy, Albuquerque, New Mexico; and Mrs. Melba Cascado and children, Lou Phillip, Kara, Albuquerque, New Mexico.

Also attending were Mr. and Mrs. Harvel Gibson, Nocona, Texas; Mr. and Mrs. George Webb and Denise, Bryan, Texas; Mr. and Mrs. Richard Bumpus, Aletha and Bud, Paducah; Mr. and Mrs. Billy Ray Webb, Mary and Billy, Jr., Lubbock; Mr. and Mrs. Calvin Gilbert, Lubbock; Mr. and Mrs. Terry Gilbert, Lubbock; Mr. and Mrs. Greg Sherrod and Josh, Lubbock; Mrs. Janet Forbus, Sam and Erick, Lorenzo; Mrs. Veda McCauley and Clell, Jayton, Texas; Mr. and Mrs. Larry Burks and

Angie, Matador;

Also, Mrs. Wanda Goss, Littlefield; Mrs. Sheila Edwards, and Joseph, Littlefield; Mr. and Mrs. Floyd Webb, Floydada; Mr. and Mrs. Neil Webb, Floydada; Mr. and Mrs. Ray Webb, Matador; Mrs. Vera Mitchell, Roaring Springs; Mr. and Mrs. Grady Webb, Roaring Springs; Mrs. Hattie Marshall, Roaring Springs; Mr. and Mrs. R.A. Stafford, Matador; and Miss Mildred Plumlee, Matador.

"An economist is a person who guesses wrong with confidence." Anonymous

OLD FASHIONED

SATURDAY

Grab Bag SALE

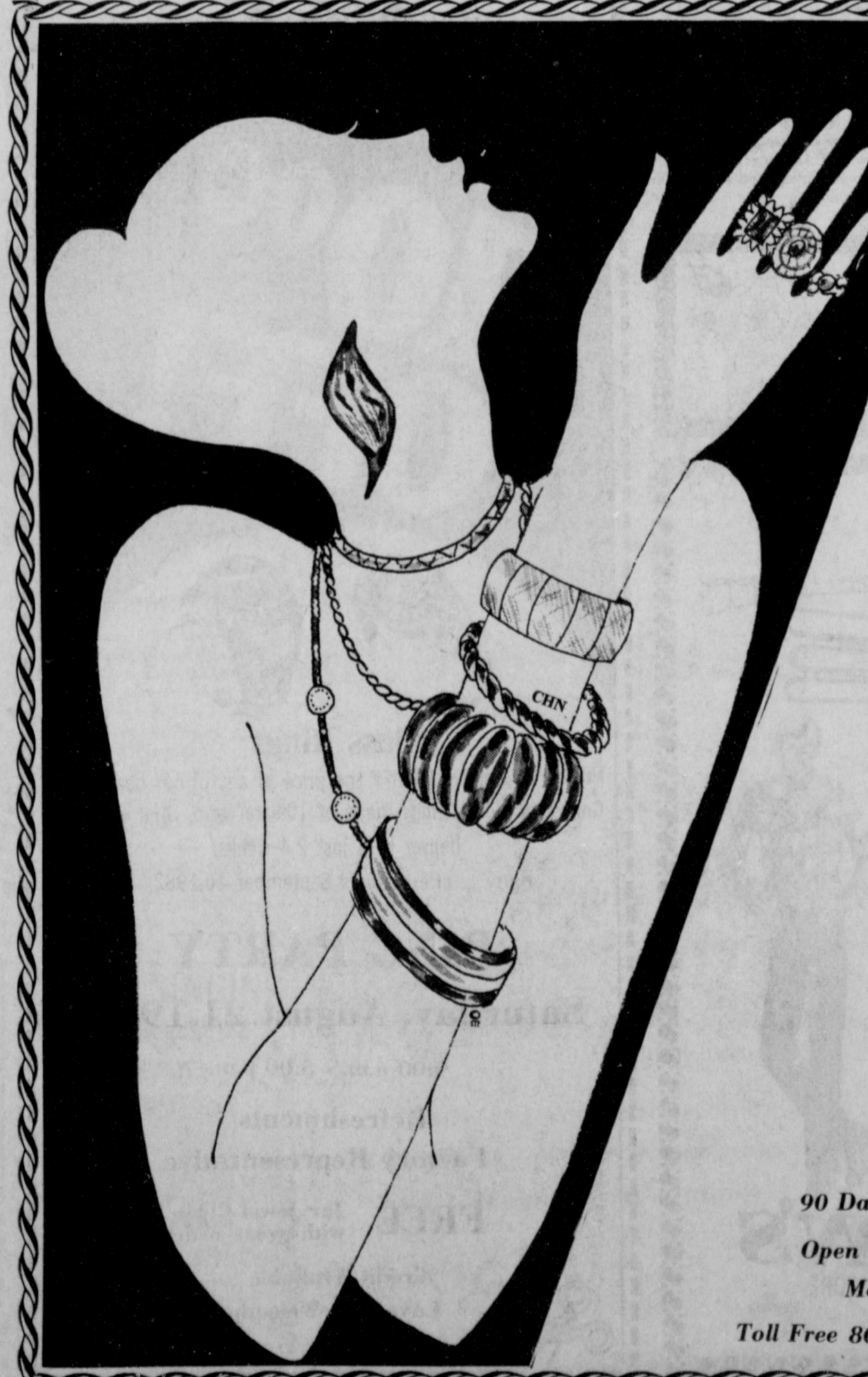
Mize Pharmacy & TV

102 S. Main St.

CROSBYTON SCHEDULE OF CLASSES - FALL 1982

COURSE NO	COMP NO	COURSE TITLE	DAYS	PERIOD	NO HR	INSTRUCTOR	LIMIT
CHM 142	880	Fund of Chem II Lab	MW MW	6:30-9:50 TBA	04	Bennett, W Bennett, W	(30) ¹⁰ (30)
ENG 131	881	Composition I	TH	6:30-9:20	03	Staff	(25)
HIS 131	882	US His to 1865	T	6:30-9:20	03	Staff	(30)
MTH 135	883	College Algebra	T	6:30-9:20	03	Staff	(30)
Soc 231	884	Intro/Sociology	W	6:30-9:20	03	Hamilton, O	(50)

Registration will be held August 24, 1982 from 6:30 to 8:00 p.m.



Thacker Jewelry

Roaring Springs

ANNOUNCES IT'S

BIGGEST SALE EVER

August 19th through September 4th

65% OFF

ON EVERYTHING IN THE STORE

SHOW SPECIALS

7" 14 K Yellow Gold Nugget Bracelet	Retail \$19 ⁰⁰ on Sale	\$5 ⁹⁹
16" 14 K Yellow Gold Nugget Necklace	Retail \$42 ⁰⁰ on Sale	\$12 ⁹⁹
30" 14K Yellow Gold Rope Necklace	Retail \$540 ⁰⁰ on Sale	\$170 ⁰⁰
1/10 Carat Diamond Buttercup Ear Studs	Retail \$240 ⁰⁰ on Sale	\$72 ⁰⁰
1/5 Carat Diamond Drop	Retail \$280 ⁰⁰ on Sale	\$84 ⁰⁰
1/3 Carat Diamond Drop	Retail 460 ⁰⁰ on Sale	\$138 ⁰⁰
Ladies 2mm 14K Wedding Band	Retail \$54 ⁰⁰ on Sale	\$16 ⁰⁰
Mans 4mm 14K Wedding Band	Retail \$126 ⁰⁰ on Sale	\$38 ⁰⁰
4 Diamond .27 Carat FREE Form Ring	Retail \$1040 ⁰⁰ on Sale	\$340 ⁰⁰
19 Diamond 2.55 Carat Waterfall Ring	Retail \$5300 ⁰⁰ on Sale	\$1749 ⁰⁰

90 Day Lay-Away Available

Open 10:00 a.m. - 5:30 p.m.

Monday - Saturday

Toll Free 800-692-4249 or 806-348-3971

Mastercharge & VISA Accepted



CAPROCK HOSPITAL NEWS

August 2-16
 Alma Ruth Nelson, Floydada, adm. 6-9, continues care, Acar
 Olive Hind, Floydada, adm. 7-9, dis. 8-9, Jordan
 Dora Hinton, Floydada, adm. 7-12, dis. 8-4, Acar
 Lois Parker, Floydada, adm. 7-21, dis. 8-9, Hong
 Jerry Galloway, Floydada, adm. 7-28, dis. 8-5, Hong
 Aaron Carthel, Floydada, adm. 7-30, dis. 8-9, Acar
 Bessie Martin, Floydada, adm. 7-30, dis. 8-4, Hong
 Felipe Martinez, Floydada, adm. 8-2, transferred 8-3, Acar
 Julio Flores, Floydada, adm. 8-4, dis. 8-5, Hong
 Albert S. Mize, Floydada, adm. 8-5, dis. 8-9, Jordan
 Louis Warren, Floydada, adm. 8-6, dis. 8-14, Hong
 Levis Gilliland, Floydada, adm. 8-9, continues care, Hong
 Hilda Vasquez, Floydada, adm. 8-11, baby girl Ruth born 8-11, dis. 8-12, Hong
 Jack Timmons, Matador, adm. 8-12, dis. 8-12, Jordan
 Alice Duncan, Floydada, adm. 8-12, continues care, Jordan
 Raul Uballe, Crosbyton, adm. 8-13, dis. 8-15, Hong
 Rudy Torres, Ralls, adm. 8-14, dis. 8-15, Jordan
 Thelma Crawford, Floydada, adm. 8-14, continues care, Jordan
 Ignacio Trejo, Floydada, adm. 8-14, continues care, Hong
 Joe Garza, Floydada, adm. 8-14, continues care, Acar
 Bonnie Howard, Dougherty, adm. 8-15, continues care, Hong

LOCKNEY HOSPITAL NOTES

August 9-16
 Janice Crowe, Lockney, adm. 8-3, dis. 8-11
 Maria Rivas, Plainview, adm. 8-9 baby boy Jose, born 8-9 dis. 8-11
 Gertrude Marr, Lockney adm. 8-9, dis. 8-17
 Laura Pratt, Floydada, adm. 8-9, dis. 8-15
 Wilson Barton, Lockney, adm. 8-9 dis. 8-13
 Evangelina Arriola, Plainview, adm. 8-10 baby boy Reynolds, born 8-10 dis. 8-15
 James Morris, Quitague, adm. 8-10 dis. 8-13
 Lewis Roberts, Lockney, adm. 8-11 Continuous care
 Anjella Hunt, Lockney, adm. 8-11 dis. 8-16
 Paul Miller, Plainview, adm. 8-11 dis. 8-13
 Belinda Vallejo, Floydada, adm. 8-12 dis. 8-16
 Maria Hooten, Plainview, adm. 8-13 dis. 8-17
 Nadine Rice, Quitague, adm. 8-13 dis. 8-16
 Joseph Gilmore, Lockney, Adm. 8-13 Continuous care
 Marice Gonzales, Lockney, adm. 8-14 baby boy Julian, born 8-14 dis. 8-16
 Rosie Pyle, Lockney, adm. 8-14 Continuous care
 Ofelia Mata, Ralls, adm. 8-14 baby boy Rodrigo, born 8-14 dis. 8-16
 Alma Rose Melendez, Plainview, adm. 8-16 Continuous care
 Roy Hunter, Quitague, adm. 8-16 Continuous care
 Walter Kiser, Lockney, adm. 8-16 Continuous care
 Ester Muniz, Plainview, adm. 8-16 Continuous care

Floydada Nursing Home Happenings

BY: LINDA EMERT

The weather has been extra hot this past week. The heat is good on the cotton. The farmers are in full swing watering right now.

Monday the residents did what ever they wanted to. Tuesday we had Bible study. We are having a better group every week. Wednesday we played bingo with everyone winning a game or more. Vera Duke won two games, Sue Thompson won three games, W.C. Cates won two games, Geneda Roberts won two games, Emmitt Lawrence won two games and Una Clark won two games.

Thursday we honored the birthday girls. We had three ladies. They are Sallie Kreis, Susie Mooney, and Sue Thompson. Everyone enjoyed the party

very much. We do appreciate the ladies that make it possible for us to have a birthday every month. Thank you ladies very much. Friday we showed movies and had some popcorn.

We had Mr. Marvin Goolsby back with us. Mr. Bob Rosson has left for a while.

Here is a list of visitors for the week: Otis, Dana, Kim, and Jo Lee Ellis; Lisa Graham, Todd Anderson, Shelly Coleman, Sandra Coleman, Burmah Probasco, Christine Robertson, Estelle Hinkle, D.R. Richardson, Tami Richardson, Hallie Richardson, Jemelda Fulton, Sherry Colston, Ross and Zane, Esmeralda De Leon, Mr. and Mrs. M.H. Hartness, Dorothy Neff, Elvis and Lovelle Childs, N.B. and Jo Ann Mooney, Ruby Gooch, James, Joyce and Jeff Crowley.

Hodges hold reunion in Mackenzie Park

Sunday August 8, 1982, some of the descendants of the late George T. and Lula Jane Hodge met in Terrace Party House of Mackenzie Park Lubbock, Texas, for their nineteenth annual reunion, and a day of fun and fellowship.

Mrs. C.E. Bartlett of Heritage Home, Plainview, is the only surviving child, and was unable to attend.

Mrs. Randel (Lucille) Blankenship of McAllen, Texas traveled the furthest to attend. Michael Jerald Rushing, attended for the first time and was the youngest person present.

A covered dish luncheon was enjoyed at the noon hour. The remainder of the day was spent playing games and visiting. Many were absent because of illness. The reunion will be held on the second Sunday in August 1983 at the same location.

Those attending were: Mrs. Randel

Save

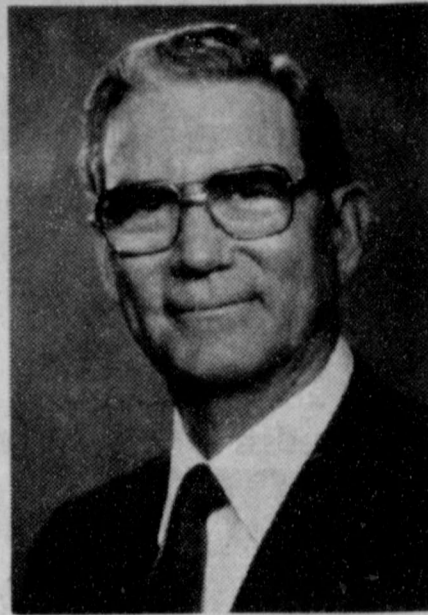
Take the wise step and buy a Ruud® High-Efficiency Central Air Conditioning system. It is specifically designed to be more energy-efficient than previous Ruud models and yet it's still economical to buy.



Heating & Air Conditioning
 983-2440 Floydada

Springer new chief of Food & Energy Council

Berl M. Springer, chairman of the board and chief executive officer of Southwestern Public Service Company, will



Berl M. Springer

be inaugurated in Denver as chairman of the board of directors of the National Food and Energy Council.

The National Food and Energy Council (NFEC) is a non-profit "think tank" and educational organization headquartered at Columbia, Missouri. Its focus is on energy supplies and energy use in food production, food processing, and food distribution systems in the U.S.

Springer characterizes NFEC as an "organization dedicated to helping the agri-business industry and all the people that industry serves."

Springer's inauguration will open a three-day annual conference in Denver.

"The conference was called to address critical issues that affect our nation's ability to produce adequate food and energy supplies on a timely basis," said Ken McFate, NFEC president.

Subjects to be discussed are vitally important to people in Southwestern Public Service Company's service area, Springer pointed out. Topics and speakers include:

"Water Availability, Use and Distribution," addressed by Senator Maurice Kremer, Chairman of the Public Works Committee, Nebraska Legislature, Lincoln, Nebraska.

"A Timely Look at the Future of Farming," by George Stone, president, National Farmers Union, Denver.

"Effective Management of Irrigation Loads," by Rolland Skinner, manager, Northwest Rural Public Power District, Hay Springs, Nebraska.

"Optimizing Prime Land Use for Food Production," J. Evan Goulding, Commissioner, Colorado State Department of Agriculture.

"Timely Energy Supplies: Expectations of the Food Industry," Frank Hackmann, of Ralston Purina Company, St. Louis, and chairman of the energy committee of the Grocery Manufacturers Association.

"The Nation's Economy and World Population: Impact on Food and Energy

Supplies," by Berry Hughes, Associate Professor, Graduate School of International Studies, University of Denver.

"Coal Severance Taxes and Coal Exports," Dr. Kenneth Lindner, Secretary, Department of Administration, Madison, Wisconsin.

Springer said, "One of the great responsibilities we as members of the National Food and Energy Council have taken on is to offer advice—sound, researched, thoughtful council—to both on-the-farm and off-the-farm food system managers."

"Part of what we want them to understand is that our nation's food system cannot be separated from and cannot function without equally strong energy systems."

"Also, we distribute a lot of information about wise management and efficient use of energy in the food system," Springer said.

The NFEC for years has been telling farmers to use minimum tillage, he said. The Council also suggests farmers should grow genetically engineered crops which require less nutrient from the soil and which require less water.

"Because our petroleum fuel resources are finite—there will be an end to them, someday—we're counseling food producers to hold petroleum fuels in reserve for only the largest mobile field requirements," Springer continued. "We're telling farmers and other managers throughout the food system, 'Whenever possible, substitute electricity—manufactured from our truly abundant fuels, such as coal—to power your stationary operations.'"

Another major thrust of the National Food and Energy Council, the new chairman said, is youth education. The NFEC recently published a 15-unit school study guide called "Food, Energy and Your Future," which reviews major food and energy issues. And NFEC has for many years taught 4-H and FFA youth about electrical wiring and wise management of energy, Springer said.

One of the 1982 conference speakers, Springer pointed out, will be Kenneth

Pollard of the Department of Agricultural Engineering, Texas A&M, speaking on "Youth Education Opportunities." Pollard often helps Southwestern Public Service Company employees plan and conduct electrical wiring and energy workshops for service area youth.

Southwestern Public Service primarily provides electric service to population of more than 1 million in a 45,000-square-mile area of the Panhandle and south plains of Texas, eastern and southeastern New Mexico, the Oklahoma Panhandle, and southwestern Kansas.

Consignment Auction

Saturday August 21, 1:00 p.m. on the slab next to Lockney Meat Co. U. S. 79 & Farm Road 378 South, Lockney, Texas.

- | | |
|--|---|
| <p>SWINE EQUIPMENT
 8-Portable Farrowing Crates
 1-16 Hole Broiler Hog Feeder
 1-12 Hole Round Hog Feeder
 8-Portable Farrowing Crates</p> <p>KNIVES
 23-New Sherade hunting and pocket knives</p> <p>TRUCK, CAR, MOTORCYCLE, MOP-ED, TRAILER, CAMPER
 1-1980 Suzuki 125 CC dirt bike
 1-1980 Yamahaopper, less than 400 miles
 1-Coons Dresser insulated camper, 2 double beds, cook stove, refrigerator, sink, extra clean
 2-Camper jacks
 1-1969 Rambler station wagon
 1-1963 2-ton Chevrolet truck 292, 4 speed
 1-New utility trailer 16 ft.x6 ft. 4 inch 7000# Cap. tandem axle
 1-Idle Time camper LWB, insulated, boot</p> <p>TOOLS
 1-Cardina band saw, New
 1-Cardina 3 wheel Cherry Picker, New
 1-Cardina Shop Press 50,000# Cap. New
 1-2 ton Chain Hoist
 Hydraulic Bottle jacks</p> | <p>Cord reel and drop light
 Several new socket sets SAE and metric 3/8, 1/2 and 3/4 drive
 Several screwdriver sets
 Air impact tools
 Coma longs
 Pipe wrench sets
 Pipe cutting and flowing sets
 Ball pier. ammers
 1-Anvil
 1-Roto tiller
 1-Pickup toolbox</p> <p>MISCELLANEOUS
 1-Clean apartment gas cookstove
 1-Ladies bicycle
 1-Full size natural color youth bed, side rails, new mattress
 2-Coyote traps
 1-10 inch brass cuspidor
 7-10 In. Brass Cuspidors
 2-Pool Tables
 1-Set new barbells and weights</p> |
|--|---|

AUCTIONEER'S NOTE:

This is only a partial listing, more merchandise arriving until sale time. Lunch will be served by the Lockney Hospital Auxiliary. For more information call Sam Fortenberry at Lockney Meat Co. 662-3306.

TERMS

All accounts settled day of sale, cash or personal check.

BEEF SALE

U.S.D.A. inspected beef. Cut, wrapped frozen and fully guaranteed.

- | | |
|------------------------|-----------------------|
| 1/2 beef 200-300 lbs. | \$1 ²⁵ lb. |
| Arm Roast | \$1 ⁶⁹ lb. |
| 7 Bone Chuck Roast | \$1 ⁴⁹ lb. |
| Club Steak | \$2 ⁶⁹ lb. |
| T-Bone Steak | \$2 ⁸⁹ lb. |
| 5 lb. bag of Hamburger | \$1 ⁰⁹ lb. |

These prices effective Saturday only.

Sam Fortenberry Auction Service

TXS-023-0937 Licensed and Bonded

JOHN DEERE



SUPER TRACTOR SAVINGS

Purchase, or lease from Deere, any tractor model listed here and qualify for a John Deere money bonus

- | | |
|----------------------|-----------------------|
| 300-hp 8850: \$8,200 | 110-hp 2420: \$2,300 |
| 235-hp 8650: \$6,400 | 90-hp 4040: \$2,200 |
| 185-hp 8450: \$5,700 | 80-hp 2940: \$1,800** |
| 228-hp 8640: \$4,500 | 80-hp 2940: \$1,400** |
| 179-hp 8440: \$4,000 | 70-hp 2640: \$1,300 |
| 180-hp 8440: \$3,600 | 60-hp 2440: \$1,200 |
| 155-hp 4640: \$3,400 | 50-hp 2240: \$1,100 |
| 130-hp 4440: \$2,800 | 40-hp 2040: \$ 900 |

*without Sound-Gard® body
 **with Sound-Gard body

PLUS

1 MAR. '83 WAIVER OFFER

Finance your new tractor with Deere and get a second bonus: finance charge can be waived to March 1, 1983. This waiver plus the money bonus is yours, from John Deere, over and above our new tractor discount. And we're making specially good trades on your older models—3020's, 4020's and other tractors of that age. (Financing and leasing subject to approved credit.)

Get our best deal...get a John Deere money bonus...get a waiver of finance charge from Deere. Get moving...the whole deal can be withdrawn on short notice from Deere.

Floyd County Implement

Floydada, Texas

983-3732

Come By Pasttime Arcade for an Old Fashion Saturday.

We now have

- 10 Pinball Machines
- 11 Video Games
- 2 Pool Tables
- FREE Ping Pong

PASTTIME ARCADE

Lockney

Buddy's SUPERMARKET



220 SOUTH 2nd • 983-3149
 STORE HOURS:
 MON. THRU SAT. 8 A.M. 'TIL 9 P.M.
 SUNDAY 9 A.M. 'TIL 8 P.M.
 WE RESERVE THE RIGHT TO LIMIT QUANTITIES

DOUBLE STAMPS ON WEDNESDAY WITH \$5.00 PURCHASE OR MORE
 These values in this advertisement are effective through Wednesday, 8-25-82

U.S.D.A. Bottom Boneless
ROUND STEAK
 \$2.89 lb.

U.S.D.A.
GROUND BEEF
 \$1.39 lb.

U.S.D.A. Bottom Boneless
ROUND ROAST \$2.69 lb.
 2 lb. Kraft **VELVETTA** \$3.89
 12 oz. Smokey Canyon Chicken **BOLOGNA** 69¢ pkg
 Land O Frost Wafer Thin **MEAT** 49¢ pkg.
 From 'Our Deli Smoked **SAUSAGE** \$2.69 lb.

12 Count Jello Pudding
POPS
 \$1.69

1 Gallon Generic
MILK
 \$1.99

6-32 oz. Diet or Regular
7-UP OR DR PEPPER
 \$1.99 Plus Deposit

VELVEETA
 24 oz. Mildew Stain Remover
TILEX \$1.89
 26 oz. Liquid Cleaner
SOFT SCRUB \$1.39

12 oz. Can
NUGRAPE, DR. PEPPER, OR COKE
 \$1.59 6 Pack

8 oz. Box Nabisco
SNACK CRACKERS
 89¢

5 oz. French's Cattleman's
STEAK SAUCE 89¢
 32 oz Dish Liquid
JOY \$1.79

19 oz. Nabisco Chips Ahoy
COOKIES
 \$1.39

3 1/2 lb. Purina
MEOW MIX
 \$1.99

12 oz. Dish Liquid
PALMOLIVE 79¢

40 oz. Laundry detergent
SUPER SUDS \$1.29

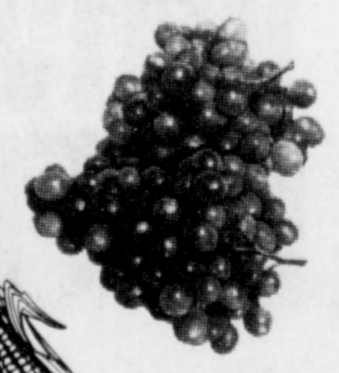
11 oz. Hot Shot House and Garden
SPRAY \$1.79

4 oz. Hot Shot
INDOOR FOGGER \$1.59

2 Count Black Flag
ROACH MOTEL \$1.29

20 Count Fabric Softner
BOUNCE \$1.09
 40 oz. Liquid
PINE SOL \$2.79

1/2 Gallon Bell
BUTTER MILK
 99¢



Fresh Produce
 Thompson Seedless **GRAPES** 79¢ lb.
 Fresh Green **ONIONS** 4 Bunches / \$1.00
 Firm Green **CABBAGE** 8¢ lb.
 Full Ear Golden **CORN** 6 / \$1.00
 Straight Neck Yellow **SQUASH** 39¢ lb.
 Red Delicious **APPLES** 49¢ lb.

Health & Beauty Aids
 100 Count Extra Strength
TYLENOL \$3.99
 12 oz. Flex Creme Rinse
CONDITIONER \$1.99
 3 3/4 oz. Plastic Tube
VASELINE \$1.79

STAMP PRICE SPECIALS

More savings!

Remember what a penny could buy in the "good old days"? Well, take a good look at our good old thrifty Stamp Price Specials! For just a few pennies... and a 1/4 Saver Book of Green Stamps (30 Big 10's)... it's happy days are here again... every day! Stamp Price Specials are just one more way we help you save money through Green Stamps. Every time you shop. Hurry in for your Stamp Price Special Saver Books. The more you shop... the more you save. Promise. Prices on these Stamp Price Specials effective through 8-25-82.

STAMP PRICE SPECIAL

16 oz. Eatwell Jack
MACKAREL
9¢

With One Filled
S&H Special Saver Book
69¢
Without Book

STAMP PRICE SPECIAL

Sunny Fresh Farm Grade A Medium

EGGS
9¢ doz

With One Filled S&H
Special Saver Book

69¢ doz
Without Book

STAMP PRICE SPECIAL

12 oz. Nabisco Ritz
CRACKERS
19¢

With One Filled
S&H Special Saver Book

79¢
Without Book

STAMP PRICE SPECIAL

Jumbo Roll Zee
PAPER TOWELS
9¢

With One Filled
S&H Special Saver Book

69¢
Without Book

5 Quart Bucket Bell
ICE CREAM
\$3.99



12 oz. Keebler Deluxe Chips

COOKIES
\$1.19



18 oz. Garden Club Red Plum

JELLY
59¢

1 lb... Round Top Country Fresh

BREAD
3/\$1.00

1 1/2" Size Round Corn Chips
TOSTITOS
89¢

7 oz. Super Size Coast
SOAP **62¢**

22 oz. Spray Bottle
Shell No Pest
SPRAY **\$1.99**

16 oz. French Squeeze
MUSTARD **79¢**

10 inch 35 Count Chinnet Paper

PLATES
\$2.19



12 oz. Hi C Orange
or Grape
FRUIT DRINK
3/89¢



1 lb. Maxwell House
all Grinds
COFFEE
\$2.49

46 oz. Giant Size Detergent

PUNCH **99¢**

with this coupon

*1.49 Without This Coupon

Good At Buddys No. 2
Expires 8-25-82

Limit One Per Coupon

6-32 oz. Diet or Regular
**7-UP OR
DR. PEPPER**
\$1.99
plus deposit



Maxwell House Instant
10 oz.
COFFEE
\$3.99



7 Day Religious
CANDLES **99¢**

with this coupon

*1.49 Without This Coupon

Good At Buddys Good No. 2
Expires 8-25-82

Limit One Per Coupon

Double On
Wednesday
With A \$5
Purchase
Or More



buddy's

SUPERMARKET

220 South 2nd - Floydada

VALUES IN THIS AD EFFECTIVE THRU WEDNESDAY, 8-25-82



BIRTHDAY HONOREES—Sue Thompson, Sallie Kreis and Susie Mooney celebrated their birthdays at the Floydada Nursing Home August 12.

Birthday party honors three

BY LORILLA BRADLEY
August 12, 1982

"Indian" summer days are here...
...They make us somewhat lazy...
But celebrate we surely will
If skies are fair or hazy!

A very lovely lady is
Our Mrs. Sallie Kreis...
She's always been so "full of life"
And a party, wouldn't miss!

We greet our Mrs. Thompson...
...Her parents named her Sue...
She loves to visit with her friends
Whether old or new!

Now Mrs. Susie Mooney
Still has an eye that twinkles...
And with a smile that lights her face
Despite a few ole wrinkles!

Lets serenade these ladies
With the good old birthday song...
So, everybody join us
And sing out good and strong!

Ladies of the City Park Church of
Christ hosted the monthly birthday
party at the Rest Home on Thursday,
August 12th.

The table was laid with an ecru cloth
and centered with a lovely arrangement
of silk flowers in summer colors. Special
cards marked places for each of the
honorees at the "honor" table.
Seated with Mrs. Kreis was her

daughter, Ruth McIntosh and with Mrs.
Thompson was her niece, Dolores
Cannon.

The Hesperian photographer came
for the "picture taking" after which
the party got underway. The poem was read
and all joined in singing the birthday
song.

A delicious refreshment plate of
angel food and iced orange cake,
complimented by Hawaiian fruit punch
was served to the honorees. Residents
of the home, guests and employees.

Guests, other than those above
named, included Kayla Emert, Sabrina
Varner and Shirley Varner.

The next party will be Thursday,
September 16, 2:30 p.m. Please come
and be with your friends and loved ones
as they celebrate their "special" day.

West Texas State Registration Schedule

Summer vacation will end for thou-
sands of students when they travel to
West Texas State University on Wed-
nesday, August 25, for registration for
the fall semester.

Beginning freshmen and transfer
students may be involved in several
activities before registration. The Amer-
ican College Test, a college entrance
examination, will be administered from
8 a.m. to 12:45 p.m. on Friday, August
20, for students whose test scores are
not on file in the WTSU registrar's
office.

An orientation meeting for students
who did not attend any of the five
summer orientation sessions has been
scheduled for Monday, August 23, at
8:45 a.m. at the Activities Center
Ballroom. They will receive academic
advising on Tuesday, August 24, from 1

Foliage Tour

A few spaces are still available for
the September 28, Southern Foliage
and World's Fair Tour September 28,
through October 11, sponsored by the
Hockley County Senior Citizens As-
sociation, Inc. in Levelland, Texas.
A \$100 deposit will hold your reser-
vation until September 1, when the
balance will be due. Total cost of the
tour, including handling of luggage is
\$795. World's Fair and Opryland tick-
ets are included.

The trip will include Dallas, Memp-
his and Nashville Tennessee, Gatlin-
burg, Tennessee and Knoxville for the
World's Fair, Opryland, on to North
Carolina, South Carolina, Atlanta,
Georgia, Vicksburg and Natchez, Miss-
issippi and Shreveport, Louisiana.

For information call Hockley County
Senior Citizens Center (806) 894-7642
or 894-9939 and ask for Ruth Warren or
Jimmie Lea Payne. Deposits may be
sent to the same place, 1202 Houston
St. Levelland, Texas 79336.

This southern tour will be one of the
best trips of the year. Those wishing to
be included should book reservations
as soon as possible before all spaces are
taken.

p.m. to 4 p.m.
Registration on Wednesday will be-
gin at 8:40 a.m. and continue through
7:20 p.m. at the Activities Center
Ballroom.

Late registration, which includes a \$5
late fee, begins at noon on Thursday,
August 26, and continues each weekday
until 5 p.m., Friday, September 3, at
the registrar's office in the Administra-
tion Building.

The fall semester will conclude with
final examinations taken by the stu-
dents December 10-15.

Students register according to the
following schedule:

Fall Semester, 1982
Wednesday, August 25, 1982
FRESHMEN AND SENIORS ONLY
8:40-9:00 Q-R
9:00-9:20 Mc-N
9:20-9:40 L-Mb
9:40-10:00 O-P
10:00-10:20 W-Z
10:20-10:40 A-BI
10:40-11:00 Bm-Bz
11:00-11:20 I-K

11:20-11:40
11:40-12:00
12:00-12:20
12:20-12:40
12:40-1:00
1:00-1:20
1:20-1:40
1:40-2:00

**SOPHOMORES, JUNIORS,
GRADUATE STUDENTS**

2:00-2:20
2:20-2:40
2:40-3:00
3:00-3:20
3:20-3:40
3:40-4:00
4:00-4:20
4:20-4:40
4:40-5:00
5:00-5:20
5:20-5:40
5:40-6:00
6:00-6:20
6:20-6:40
6:40-7:00
7:00-7:20

Ha-He
E-F
Hf-Hz
G
Sq-V
Sa-Sp
Cp-D
Ca-Co

O-R
Mc-N
L-Mb
O-P
W-Z
A-BI
Bm-Bz
I-K
Ha-He
E-F
Hf-Hz
G
Sq-V
Sa-Sp
Cp-D
Ca-Co

Lockney Local

Mr. and Mrs. Kenneth Bayley of
Eakert, Colorado recently visited her
brother Walter and his wife Lorene
Reves, her sister Marie Nigh, Sam and
Mildred Jones and a niece John David
and Mary Turner and their children,
Amy and Carolyn.

Lockney Local

The annual Reves reunion was held
in Lamesa on August 1, and the follow-
ing relatives of Lockney attended:
Mrs. Sam Jones; Marie Nigh; Walter,
Lorene and Rex Reves; Elmo Reves;
Duard and Mary Reves; and John Dav-
id, Mary, Loretta, Amy, Carolyn and
David Turner. Ninety descendants of the
family registered.

WE HAVED MOVED TO 315 S. 2nd ST.
See or call me for all kinds of seeds. Now
featuring the following varieties of seed
WHEAT
TAM 105- Tascosa, TAM W 101- VONA,
TAM 106 STURDY, CENTURK, TINA, RUSSIAN
BEARDLESS (Great for Grazing), TEX RED AND
NEWTON
Seed Oats and Barley, Grass Seed, Purple Top Turnips
CARMACK FEED & SEED Phone 983-3404

PICKUP OWNERS WE'VE DONE IT 2-SPEED AXLE*

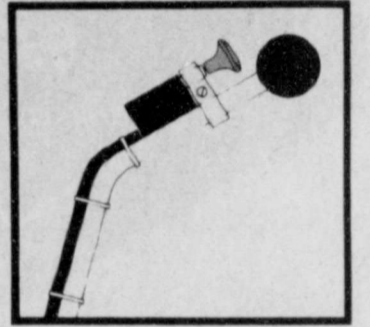
NOW AVAILABLE FOR FORD, CHEVY & GMC
2 & 4 WHEEL DRIVE PICKUPS

*OUR 2XT ELECTRICALLY OPERATED AUXILIARY TRANSMISSION SHIFTS AND
REACTS THE SAME AS A 2-SPEED AXLE ON MUCH LARGER TRUCKS

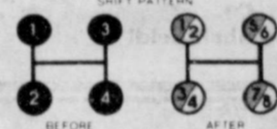
FOR MANY YEARS, ONE OF THE LARGEST MANUFACTURERS OF FARM EQUIPMENT HAS
KNOWN AND DEMONSTRATED THAT THE SIZE OF THE ENGINE IS NOT THE SOLUTION TO
A PULLING PROBLEM. IT IS PROPER GEARING. FOR EXAMPLE: A SMALL TRACTOR HAS MUCH
MORE PULLING POWER THAN ANY ORDINARY VEHICLE — THIS IS THE DIRECT RESULT OF
PROPER GEAR RATIOS.

THE DOUBLE TORQUE 2XT AUXILIARY TRANSMISSION PLACED
BETWEEN THE BELL HOUSING AND YOUR EXISTING 4 SPEED
TRANSMISSION SPLITS EACH GEAR, GIVING YOU 4 ADDITIONAL
GEARS. THE PUSH-PULL SWITCH MOUNTED ON YOUR FLOOR
SHIFT LEVER ELECTRICALLY CHANGES THE 2XT FROM HIGH RANGE
TO LOW RANGE, THUS ENABLING YOU TO CHOOSE THE TORQUE
NEEDED FOR THE JOB AT HAND.

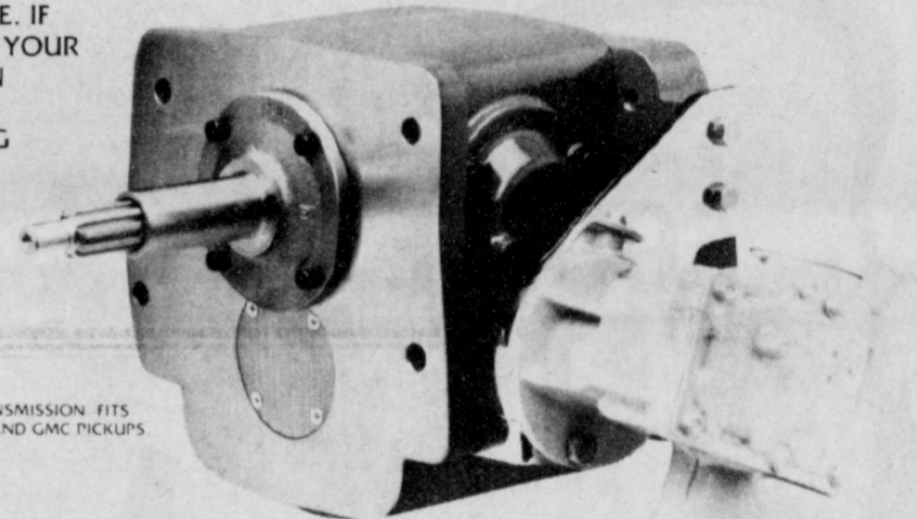
WITH THE ADDITIONAL 4 FORWARD SPEEDS GIVEN YOU WITH THE
NEW 2XT, YOU WILL EXPERIENCE LESS ENGINE MAINTENANCE, LESS
DOWN TIME AND LESS ENGINE WEAR,
WHILE STILL HAVING ALL THE
POWER YOU NEED AND MORE. IF
ALL THIS WEREN'T ENOUGH, YOUR
8TH GEAR NOW ACTS AS AN
OVERDRIVE, THEREBY
DRAMATICALLY INCREASING
YOUR FUEL ECONOMY.



ELECTRONIC PUSH-PULL SWITCH MOUNTED
ON FLOOR SHIFT LEVER



THE DOUBLE TORQUE 2XT AUXILIARY TRANSMISSION FITS
2 AND 4 WHEEL DRIVE FORD, CHEVROLET AND GMC PICKUPS
(FOR MANUAL TRANSMISSIONS ONLY)



DOUBLE 2XT
POWER TORQUE IND. INC. 1001 COMMERCIAL BLVD. N. ARLINGTON, TX 76017-817 467-6386

**CONTACT A PARTICIPATING
FORD, CHEVROLET, OR GMC
DEALER TRUCK DEPARTMENT**

OR CALL POWER TORQUE INDUSTRIES, INC.
817/467-6386

FISH FISH FISH

NOW IS THE TIME TO STOCK PONDS & LAKES

Channel Catfish Largemouth Bass Hybrid Bluegill Fat Head Minnows

Hybrid Bluegill will reach the weight of 2½ to 3 lbs at maturity.

We furnish your hauling containers.

Delivery Tuesday, August 24 at the following locations:

Floydada - PRODUCERS COOP ELEVATOR — 8-9 a.m. - 983-2821

Ralls - CROSBY CO FUEL ASSN. - 10-11 a.m. - 243-2032

Post - J.T. FEED & SUPPLY - 12-1 p.m. - 495-3718

Tahoka - BARTLEY-WEAVER FERTILIZER - 2-3p.m. - Call Dunn Fish Farm Collect

Lamesa - THE COUNTRY STORE - 4-5 p.m. - 872-2422

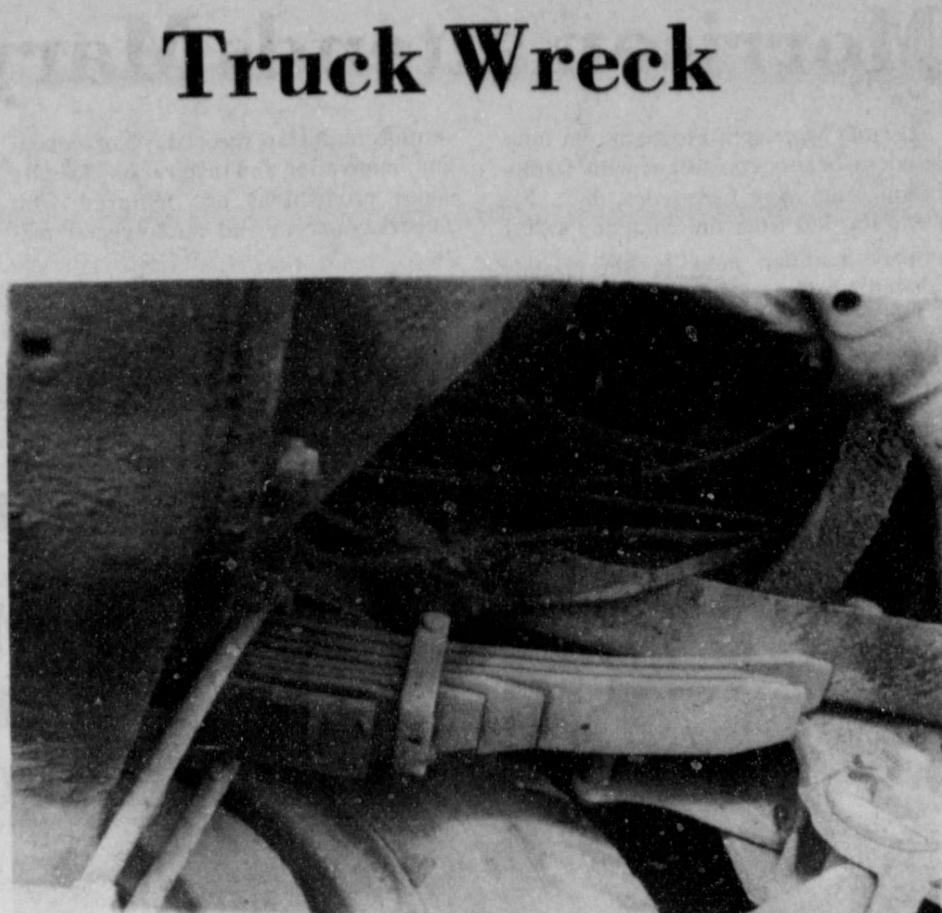
Call Your Local Feed Store To Place Your Order
or Call Dunns Fish Farm Collect

405-777-4480 or 405-777-2855
Box 85 Fittstown, Oklahoma 74842

Got Heating
or Plumbing
Problems?
CALL
**Holmes
Plumbing**
Austin or Steve
Call Day or Night
983-2251



JUNIOR VARSITY CHEERLEADERS (back, left) Elizabeth Guerrero and Heather Holt; (front, left) Crissy Carthel and Shandra Bybee, are ready for another exciting football season which is near at hand. Their new outfits are impressive in the distinctive red and white.



THE FRAME OF THE TRACTOR BROKE between the right rear duals causing the driver to lose control Monday.

Truck Wreck

Band rehearsals
are looking good!



MARCHING CAN BE DRILLED ON THE INSIDE TOO. Practice has been held twice a day this week to prepare for when that Lockney Longhorn band steps out on the football field!



WILD BUNCH: (back) Lupe Martinez (coach), Hilario Moreno, John Black, Chris Torrez, Gilbert Blanco, Mike Arrellano, and Margarito Arrellano (coach). (front) Lupe Anguliano, Otto Hernandez, Jose Banda, Lupe Martinez, Jr., and Tony Banda. Not pictured is Joe Beltran, Domingo Nuncio, and Glen Smith.

Local & Yocal Look for them soon!



INTRODUCING

Rex and Edmund Brown of Floydada Auto Parts. They would like for you to come by and meet them plus pick up your **FREE** filter or cap.

Ted Allen will also be on hand to wait on you.



Introducing our Overall Filter Line

Now you can stop running from dealer to dealer and town to town for filters because we stock an overall filter line to cover all your farm and heavy duty filter needs.

Save more than time with convenient, one-stop filter shopping. Save money, too.

**WIX FILTERS
THE BEST
IN HEAVY DUTY
PROTECTION.**


WIX has you covered !

Buy 1 filter and
get 1 **FREE!**

Buy 2 filters and
get a **FREE** WIX Cap!

Tell us about your filter
needs and take home a
WIX oil filter for your car or pickup absolutely
FREE!



Free  **!**
Bring this sheet when you come in.

Offer expires August 31, 1982

FLOYDADA AUTO PARTS
Floydada, Texas 79235
123 West California
806-983-2382

Attend
Old
Fashioned
Saturday



Fittin'est Pecos.

The fittin'est for work. The fittin'est for play. The fittin'est for heel-hugging comfort. Choose from a selection of Red Wing Pecos pull-ons with sizes that are right for you.



SIZES
AAA-EEE
5-16

1155
You've earned
your Wings!
Red Wings
Hale's Dept. Store

Are you heading off to college ?
Having a checking account will give you
a written record of where you spend your
money.

OFF TO COLLEGE →

Come in and let one of our friendly
people help you open a checking account
today.

Tickets to the Maines Brothers Concert and Floyd County
Fair are for sale at our bank.

"Helping you change things for the better"

**THE FIRST
NATIONAL BANK
OF FLOYDADA**

Accounts Insured up to \$100,000

Member F.D.I.C.

Lakeview News

BY: JOYCE WILLIAMS

Wayne and Naomi Battey from Paris, Texas spent the week-end here visiting relatives, including their son's family, the Jerry Batteys.

Mrs. S.G. Appling spent several days with Wayne and Bertha Appling, and is now at her home in Mt. Blanco. Her daughter Mrs. Cathy Miller, of Tulia Arrived Thursday to look after her mother. Mrs. Appling recently stayed three weeks in Caprock Hospital for back treatment.

Mr. and Mrs. Mike Bishop and Rozanne's parents, Mr. and Mrs. Harold Page of Canelron, Oklahoma, spent Sunday afternoon visiting the Howard Bishops where they picked garden vegetables to take home.

Mrs. Kathy Green of Lubbock spent several day here last week visiting her parents, the Billy Joe Hambrights. They all took their camper to White River and spent the night, cooking their supper out doors. The school in which Kathy teaches in Lubbock began the full term this week.

Mr. and Mrs. Don Harrison visited in Lubbock Saturday with the Jerry Bob Harrisons. Rex and Kay McPherson and Little Danny of San Angelo were also there.

Marlia McGaugh attended a farewell party Friday evening from 8 to 12 p.m. in the home of Daralyn Williams. Penny Bearden was guests of honor. She is moving to Matador, where she will be in the eighth grade. Guests were served iced cokes, chips and dips.

Mrs. Howard Bishop has been pickling and freezing garden vegetables the past two weeks, as are other families all over the community. The Don Harrison's peach trees are yielding fruit for the freezer.

Something that didn't survive the hail storms were the skylight at Casa del Sol. Mrs. Georgia Mae Erickson said the skylight, fully insured, were advertised as being able to withstand baseball sized hailstones. When the hail fell in the spring, the baseball size stones shot right through and landed in the indoor swimming pool. Insurance adjustors have been working there this past week, after putting her off all summer.

Mr. Q.D. Williams met with the yearbook Committee of the 1929 Study Club on Friday to write the 1982-83 club program.

Mrs. Don Harrison and granddaughter, Debbie, were in San Angelo Tuesday and Wednesday. Debbie was making arrangements for the fall enrollment at San Angelo State University.

The hot days and cold nights tell us fall is on the way. The mist hangs over Blanco River each morning until the sun burns it away. Children register for school next week.

Charles Martin, of Mueshoe is here visiting his grandparents, Mr. and Mrs. Charley his cousin, Randell Sims. Sandra and Son Martin Brought him here Sunday. Mary Wright and her daughter, Mary Elizabeth Sims, put up corn on Saturday. They've been getting things done up so they will be ready for the Primitive Baptist Association.

Morrison attends Mary Kay convention

Glenda Morrison, Floydada, an independent beauty consultant with Dallas-based Mary Kay Cosmetics, Inc., has just returned from the company's 20th annual Seminar held in the Dallas Convention Center August 2-4.

The annual Mary Kay Seminar is a professionally-produced \$3 million con-

vention featuring three days of education, motivation and inspiration. Twenty major productions are featured with singers, dancers and audio-visual magic.

Daily workshops on product knowledge, sales techniques and business management were taught by outstanding leaders in the sales force. Seminar was highlighted by Awards Night, an evening of entertainment by singer-TV celebrity, John Davidson, followed by

the crowning of the Mary Kay "Queens" for 1982.

Mary Kay Ash, founder and chairman of the board, gave her special "thank you" to the top consultants and directors by personally awarding them minks, diamonds, exotic vacations and the famous pink Cadillacs and Regals. Each winner had her moment in the spotlight on stage with an opportunity to enjoy a personal congratulations from Mary Kay for her success.

Mrs. Morrison joined Mary Kay Cosmetics as an independent beauty consultant in 1981. She is married to Don Morrison, who is with Farm Bureau Insurance Company, and they have three children.

Mary Kay Cosmetics, Inc. is an international manufacturer and distributor of skin, hair and body care products, cosmetics, fragrances and toiletries with net sales of \$234.3 million in 1981.



GLEND MORRISON

FLOYD DATA

Relatives visiting in the M.W. Carpenter home last week were Mr. and Mrs. F.D. Bryant and their daughter, Betty, and husband, J.E. Box and their daughter, Stacy, all of Ft. Worth. The Bryants are former residents of Floydada.

Cedar Hill News

BY GRACE LEMONS

Still no moisture our way and crops are very dry. Farmers are busy working their crops and irrigating.

There were 104 who registered at the Fortenberry reunion on Friday evening at the Massie Activity Center. Fish and ribs were cooked outside and were served with French fries and salads. 135 were registered Saturday. The ones that came the furthest were Lelia and Dick Dooly of Stutter Creek, California and Altha Henson of Santa Cruce, California.

The Lackey reunion will meet Saturday 21st in the Massie Activity Center in Floydada. Bring a basket lunch and enjoy the fellowship of relatives and old acquaintances. Drinks, bread and the utensils will be furnished.

Murt Guest received injuries of a

broken shoulder in a freak accident when she was coming from the courthouse to watch the parade at the celebration at Silverton this week. She is in room 314 at the Highland Hospital in Lubbock. Her address is 2412, Lubbock.

Norma Welch, Mrs. Peat Kelley and Mrs. Belle Lemons visited Donie Henson and Goldie Cypert in Floydada Thursday evening.

Geraldine Calaway, Goldie Cypert and Donie Henson visited Mr. and Mrs. Albert Mize one day this week.

Houseguests in the home of Mr. and Mrs. Tom Fortenberry this weekend were Patsy and Lafayette Boone of Lubbock, Danita Boone and her friend of Waxahachie, Pam and Jackie Hayhurst and son, Paula Vick and Patrick of Oklahoma and Garland, respectfully.

Connie Welch of Amarillo spent the

weekend with her parents, Mr. and Mrs. J.A. Welch and attended the Fortenberry reunion.

Rev. and Mrs. Vance Mitchell attended the Fortenberry reunion and attended the Mitchell reunion in Crosbyton Saturday.

Othela and Calvin Black of Denton visited her grandparents, Mr. and Mrs. John D. VanHoose this week-end and attended the Fortenberry reunion with them.

Mary and Elvie Henderson visited Mr. and Mrs. Albert Mize recently.

Clark Gayley and children, Andre and Angelia, visited Mr. and Mrs. Carl F. Lemon Tuesday evening and Angelia stayed with them. Mr. Gayley and Andrew were on their way to attend a retreat in New Mexico. Angelia will go home to San Antonio by plane Sunday.

Mr. and Mrs. Edward Lemons and Sarah spent Saturday night with Mr. and Mrs. Carl F. Lemons and returned to their home in Seagraves Sunday afternoon.

You cannot do kindness too soon—for you never know when it will be too late.

Allsup's MD fund Drive

Allsup's Convenience Stores will again participate in the Annual Muscular Dystrophy Fund Raising Drive. Allsup's Stores will be displaying the Muscular Dystrophy Collection canisters in all of the stores in New Mexico, Texas and Oklahoma in order to help meet the goals of this worthwhile association, whose programs are funded almost entirely by private contributions, corporations and the Labor Day Telethon.

The Muscular Dystrophy Association is looking for cures and causes of a group of diseases, marked by progressive weakness and wasting of the skeletal muscles which control body movement. Neuromuscular disease can strike anyone at any age, they afflict an estimated one million Americans.

In addition to the "in-store" canisters, Allsup's will also be conducting the "Allsup's Doorbell Brigade". Area youngsters are encouraged to visit their local Allsup's Store on September 5-6 and pick up a collection packet for the door to door campaign. After collecting donations for "Jerry's Kids" and returning them to the store, Allsup's will give the youngsters a free fountain drink of their choice. It's our way of saying thanks to the kids for caring.

From Jack Crow, Director of Public Relations, "thanks to all of our customers for your generosity in this fight against neuromuscular diseases, and

we at Allsup's are looking forward to working with area youngsters to help the Muscular Dystrophy Associations."

ANNOUNCING THE APPOINTMENT OF GOEN CROP INSURANCE AGENCY

105 E. California
Floydada, TX 79235

DALE GOEN

LaVERN McCARTY

As All-Risk Crop Insurance Agent for the

National Association of Crop Insurance Agents

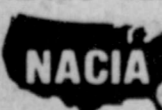
NACIA, a nation-wide network of insurance agents who specialize in offering All-Risk Crop Insurance to their farm customers, is proud to announce the appointment of Dale Goen to represent the Association in this area.

The Association is a direct writer for the Department of Agriculture's All-Risk Crop Insurance Program.

If you are interested in protecting your investment against possible losses from drought, hail, fire, wind, frost, excessive moisture, or any other crop disaster, let your NACIA Crop Insurance Agent help you tailor a plan to meet your needs.

For more information on crop insurance, call or write:

QUESTION AND ANSWER SESSION
All - RISKS WHEAT INSURANCE
MONDAY THROUGH FRIDAY 1:00 to 5:00



National Association of Crop Insurance Agents

The Land Bank

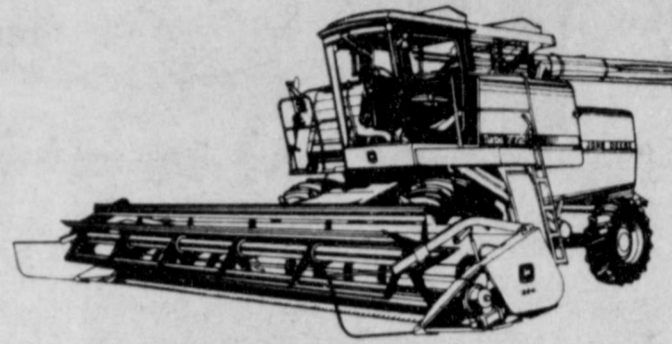
Dependable long-term credit through good times and bad...

See us:



Floydada
105 South Wall

Special limited-time financing offer on new John Deere combines



Make your deal now in time for the harvest

If you buy a new John Deere combine now, no finance charges will accrue until January 1, 1983. It's a great way to put a productive new combine to work in your fields this year.

Come on in and look over our new combines, select the one you want and let's talk a deal.



Floyd County Implement

Ralls Highway

983-3732

SUMMER FOOD SAVINGS START HERE!

Kraft Velveeta 2 lb. Box	\$2.79	Shurfine 1/2 Gallon Ice Cream	\$1.59
gal. Milk	\$2.19	6-32 oz. Carton Coca-Cola	\$1.99
Shurfresh Large Grade A Eggs	69¢ dozen	Giant Size 49 oz. Oxydol	\$1.89
Pecos Cantalope	25¢ lb.	1 lb. Can Hills Brothers Coffee	\$1.99
Thompson Seedless Grapes	79¢ lb.	Fresh Gound Hamburger	\$1.19 lb.
Vine Ripe Tomatoes 3 lb.	3/\$1.00	Tenderized Steak	\$2.49 lb.
Dishwasher Detergent Dawn	99¢	Shurfresh 12 oz. pkg. Franks	98¢
Carnation 6 1/2 oz. can Tuna	79¢	Fresh Country Pride Fryers	59¢ lb.
Swift's Premeium Vienna 5 oz. can Sausage	3/\$1.00		

KEETERS GROCERY

7:30 a.m. - 7:30 p.m.

652-2191

We Redeem Food Stamps & WIC Cards
We Reserve The Right To Limit Quantities



We Give Circle Blue Stamps Double on Wednesday

OBITUARIES

MRS. TOM R. FIELD

Mrs. Tom R. Field, 89, died at 6 a.m. Friday, August 13, in Windcrest Care Center in San Antonio after a lengthy illness.

Services were at 2 p.m. Monday in Lemons Memorial Chapel with Dr. R.L. Kirk, pastor of First United Methodist Church, officiating. Burial was in Plainview Memorial Park directed by Lemons Funeral Home.

The former Pearl Mildred Daugherty was born October 3, 1892 in Collin County until moving to Plainview in 1929.

In 1931 Mrs. Field moved to Floydada and returned to Plainview in 1937. Her husband died February 13, 1966 in Plainview. She moved to San Antonio in 1973. Mrs. Field was a member of First United Methodist Church.

Survivors are one daughter, Charlene Moreland of San Antonio; six grandchildren, four great-grandchildren and three great-great-grandchildren.

EMMA KING

Services for Emma King, 85, of Lubbock, were at Parkway Drive Baptist Church with the Rev. Wilburn Coffman, associate pastor of South Crest Baptist Church, officiating.

Burial was in Resthaven Memorial Park under direction of Resthaven Funeral Home.

She died at 3:40 p.m. Sunday, August 15, at West Texas Hospital after an illness.

She was born in Commerce where she married James A. King in 1920. He died in 1969. They moved to Floyd County in 1923 and to Lubbock in 1959. She was a member of Parkway Baptist Church. Her son, Thomas King, died July 24, 1982.

Survivors include two sons, Kenneth of Lubbock and Glenn of Corpus Christi; two daughters, Joyce King of Lubbock and Isabelle Mapp of Lewisville; a sister, Mattie Sullivan of Kerrville; 10 grandchildren; and seven great-grandchildren.

Pallbearers were F.C. Lowrie, Sidney Fallin, R.E. Bartlett, Aubra Deshazo, Loyd Perry and Terry Gilbreth.

ALICE MARNEY

Services for Alice Cornelia Marney, 86, of Crosbyton were at 2 p.m. Sunday, August 15, at Crosbyton Church of Christ with Glen Gray minister, officiating.

Burial was in Floydada Cemetery under direction of Adams Funeral Home of Crosbyton.

She died at 1:30 a.m. Friday, August 13, at Crosbyton Clinic Hospital after a lengthy illness.

A native of Indian territory, Oklahoma she moved to Floyd County in 1908. She married Benjamin Franklin Marney on May 17, 1927, in Floyd County. Before moving to Crosbyton in 1972, she lived in Ralls and Floydada. She was Methodist.

Survivors include a son, Truman Marney of Houston; three daughters, Tajuhanna Hargrove of Crosbyton, Marquinita (Skeet) Johnston of Houston, and Pauline Lovd of Bakersfield, California; two brothers, Leonard Holmes of Amarillo and Riley Holmes of Littlefield; seven grandchildren; and four great-grandchildren.

JOHNNY LEE MARTIN

Funeral services for Johnny Lee Martin, 28, were held at 3 p.m. Monday, August 16 at the Peoples Funeral Home Chapel in Lone Wolf, Oklahoma. Burial was in Lone Wolf Cemetery.

Martin died Saturday, August 14, at Lockney General Hospital.

He was born September 7, 1953 in Hobart, Oklahoma.

Surviving are his parents, J.V. and Louise Martin of Lockney; one sister, Janice Randolph of Lubbock; and his grandmother, Ethel of Valiant, Oklahoma.

DALE MAULDIN

Services for Dale Lawson Mauldin, 42, of Littlefield were at 4 p.m. Tuesday at August 17, at Lemons Memorial Chapel with the Rev. Bennie Boss, of the Sunset Baptist Church in Littlefield, and the Rev. Merle Stephens, of the Seth-Ward Baptist Church, officiating. Masonic graveside services followed in the Parklawn Memorial Gardens. Burial was under direction of Lemons Funeral Home.

He died at 9:20 p.m. Saturday at Littlefield Medical Center after a sudden illness.

He was born January 3, 1940, in Lockney and moved to Plainview in 1948. He graduated from Plainview High School in 1958. He married Carolyn Rogers on November 14, 1964, in Plainview.

Mauldin was manager for Goodvear

Stores in Plainview and Littlefield. He moved to Littlefield in 1973 and was owner of B & C Auto Sales. He was a Baptist and a member of Plainview Masonic Lodge.

Survivors include his wife; a daughter, Derinda of Houston; two sons, Rocky of Houston, and Cody of Littlefield; two sisters, Dorothy Hudgins of Lubbock and Randell (Dorris) King of Floydada; and his father, Elmer of Plainview.

STEPHANIE RIDDLE

Services for Stephanie Marie Riddle, infant daughter of Donald and Donna Riddle of Lubbock, were held at 2 p.m. Monday, August 16, in Central Baptist Church. Burial was in Resthaven Memorial Park by Rix Funeral Directors.

The infant died at 9:15 a.m. Thursday, August 12, in Methodist Hospital after a brief illness. She was the granddaughter of Edna Riddle of Floydada.

She is survived also by her parents, two brothers, two other set of grandparents and great-grandparents.

BILL WALLS

A former Plainview resident, Bill Walls, 56, of Denver, Colorado died in Denver, Saturday, August 14. Funeral services and burial were in Texas, on Wednesday.

Mr. Walls, the son of Mr. and Mrs. E.R. Walls, the son of Mr. and Mrs. E.R. Walls of Plainview, was born and reared in the Plainview area, and had been a pilot and mechanic for Hutcherson Air Service. He was a pilot for a Denver firm at the time of his death.

He was a cousin of Doyle Walls of Floydada.

Survivors, in addition to his parents, include four daughters, two sons and a sister.

ELMER WILLIAMS

Services for Gilbert Elmer Williams, 67, of Plainview were at 3:30 p.m.

Sunday, August 15, at First United Methodist Church in Floydada with the Rev. Jim Smith pastor, officiating.

Burial was in Floyd County Memorial Park Cemetery under direction of Moore-Rose Funeral Home of Floydada.

Williams died at 6 p.m. Friday, August 13, at Central Plains Hospital in Plainview from a heart attack.

The Floyd County native was a retired farmer and had lived in the country most of his life. He married Blanch Geary on June 3, 1933, in Petersburg. He was a member of Carrs Chapel Methodist Church in Harmony Community.

Survivors include a daughter, Leone Nelson, Bayfield, Colorado; two sons, Elmer Dean and Leon, both of Floydada; two sisters, Phalia Clubb of Austin and Robertha Bagwell of Dimmitt; four brothers, Buck of Clyde, Paul of Wichita Falls, and Leo and Woodrow, both of Tow; 10 grandchildren; and three great-grandchildren.

L.V. WOODY

L.V. (Woody) Woody, 49, who died Monday, August 9, in Dumas, was a brother of Wanda Carthel of Lockney.

Services were Thursday, August 12, in First United Methodist Church in Stratford. Burial was in Lockney Cemetery by Morrison Funeral Directors of Dumas.

Born in Fletcher, Oklahoma, Mr. Woody had lived in Tulsa and Plainview prior to moving near Sunray.

Mr. Woody was a farmer and member of Spurlock Community Chapel. He was a U.S. Navy veteran of the Korean Conflict.

Also surviving are his wife, Margaret; three sons, Victor Woody of San Diego, California, Larry Woody and Micah Woody, both of the home; a daughter, Tammy Huereca of Las Vegas, Nevada; a stepson, Donald Hilderbrand of the home; his mother, Mrs. Willie Woody of Levelland; a brother, John Ivy Woody of Fletcher, Oklahoma; two other sister, Parthenia Cosper of Visalia, California and Willie

Mae Cox of Levelland; and two grandchildren.

DERAL YOUNG

Services for Deral G. Young, 50, of Floydada were at 3 p.m. Sunday, August 15, at City Park Church of Christ in Floydada with Perry Zumwalt, minister, and Cecil Osborne of South Plains officiating.

Burial was in Floyd County Memorial Park under the direction of Moore-Rose Funeral Home of Floydada.

Young died Saturday morning, August 14, in his residence. Justice of the Peace Raz Ford ruled that the death was by natural causes.

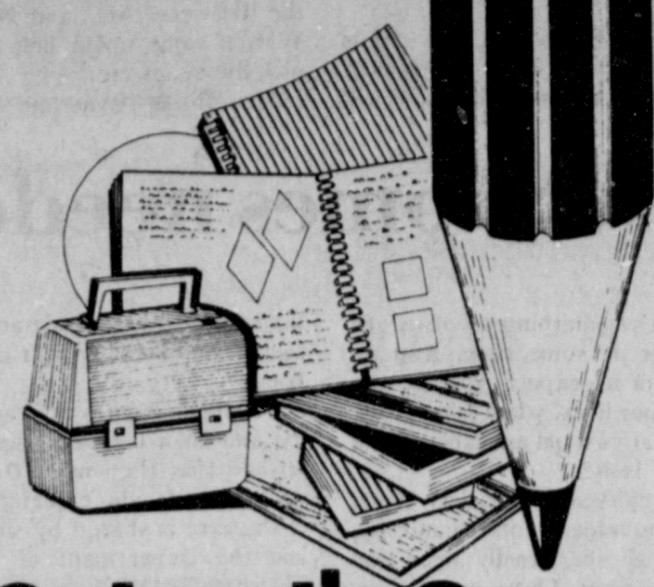
Young was born in Wheeler and lived most of his life in Floydada. He was farmer and veteran of the U.S. Army. He was a member of the Church of Christ. He married LaFaun Hanna April 5, 1953, in Lubbock.

Survivors include his wife; a son, Rance of Floydada; a daughter, Carlen Beedy of Claude; his mother, Mrs. Rufus Young of Floydada; a brother, Travis of Floydada; and six sisters, Ruby Brannon of Silverton, LaVerne Pitts of Lubbock, Velma McKee of Charleston, S.C., Mary Shurbert, and Peggy Young, both of Floydada, and Donnie Meriwether of Lockney.

Floyd Data

Visitors of Charlie Berry last week were Mr. and Mrs. Walter Tindall of Lake Elsinore, California. They all attended the Pharr family reunion in Amarillo.

Safety Notice



School's Open

Just a reminder to drive with extra care. Children don't always see cars on the road. Make sure you keep an eye out for them!

FLOYDADA POWER AND LIGHT

AUCTION

Saturday, August 21, 1982

Sale Time — 10:30 a.m.

Bill Hopper and Others, Owners

LOCATED: In Floydada, Texas, 101 South 12th Street, the same being 1/4 mile north on Highway 207 from intersections US 70, 62 and 207. (Sale site located on south side of the Case Power and Equipment Yard.)

Mr. Hopper has quit farming, moved his equipment into town and will sell the following at Public Auction:

TRACTORS & SPRAY BUGGY

- 1-1976 John Deere 4430 Diesel Tractor Cab - R, H & Air - Quad-Range - Weights - Factory Duals -18.4-38 Rubber - S.N. #53247 - A One Owner Tractor!
- 1-1975 International 966 Diesel Tractor Cab - R, H & Air - T.A. - 3 pt. - P.T.O. - Weights - Dual Hyd & PTO - 18.4-34 Rubber - S.N. #029698
- 1-1974 Case 1175 Diesel Tractor - Cab & Air - Weights - S.N. #8730680
- 1-1973 Case 1070 Diesel Tractor - Cab - Wide Front & Air - S.N. #8705779
- 1-1970 Case 1070 Diesel Tractor Cab - Weights - S.N. #8650027
- 1-1966 John Deere 4020 Diesel Tractor - Fenders - Weights - Dual Hyd. - Wide Front - S.N. #122057
- 1-1958 John Deere 730 Butane Tractor - Wide Front - 3 pt. - PTO - 15.5-38 Rubber - S.N. #7303456
- 1-1979 Wylie S.P. - 3 Seat Spray Buggy - Elec. Start

PICKUP IMPLEMENT TRAILERS

- 1-1979 Chevrolet Diesel Pickup - Automatic - R, H & Air - Full Power - N-New Tires - App. 5000 Miles on New Engine - Nice!
- 1-Donahue 28 ft. Tandem Axle - Low Boy Implement Trailer
- 1-S&S Tandem Axle - Camel Type - Implement Transport Trailer

COTTON STRIPPERS - MODULE BUILDER & TRAILERS

- 1-1980 John Deere 484 Diesel - 4 Row Cotton Stripper - New Style Cab - R, H & Air
- 1-1980 International 1400 - 4 Row - Diesel Cotton Stripper - R, H & Air - Monitors
- 1-1980 Bush Hog Huskey Module Builder - Cab & Blower
- 1-John Deere 282 Cotton Stripper & 70 Series Basket w/ Row Sensors & 4430 Mounting Brackets

- 1-International 30 Brush Stripper & Basket
- 2-8x9x24 ft. Expanded Metal Cotton Trailers
- 1-8x9x20 ft. Expanded Metal Cotton Trailer
- 12-8x8x20 ft. Wood & Wire Cotton Trailers - Some w/ Steel Runners - Cobey - Big 12 - Ranger & John Deere Chassis
- 4-Flatbed 4 Wheel Trailers - Various Chassis
- 1-Shopmade 4 Wheel Grain Trailer w/ Antique Spoke Wheels

EQUIPMENT

- 1-32 ft. Crustbuster Fold Up - Grain Drill - Disc Openers - 10 in. Spacing - Complete w/ Hyd. Cylinders
- 2-International 16-10 Rubber Tired Wheat Drills
- 1-Shopmade Double Drill Hitch
- 1-Bush Hog - 32 ft. Fold Up Field Cultivator
- 1-Roll-A-Cone 21 ft. - Drag Type - 4 Bar - Chisel Rig - 2 Hyd. Cylinders - Dual Gauge Wheels
- 1-Noble Harrow or Soil Mulcher for Above Rig
- 1-Eversman - 30 ft. Camelback Float - Heavy Duty - Good!
- 1-Listlinton 6 Row Rolling Cultivator - Complete w/ Fenders
- 1-Servis 950 3 pt. Blade Complete w/ 3 Hyd. Cyl. - 1 Yr. Old - Nice!
- 1-Tye 6 Row Bedplanter (6 Units) Mounted on Double Bar Tool Carrier - Complete w/ Gauge Wheels
- 1-Tye 6 Row - Double Bar - Stiff Shank - Cultivator w/ Gauge Wheels
- 1-Tye 6 Row Double Bar - Stiff Shank - Middle Runner w/ Gauge Wheels
- 1-Yetter 9 Row Rotary Hoe
- 1-John Deere 8 Row - 400 Rotary Hoe
- 1-John Deere 14 ft. Tandem Disc - Cyl. Cont. - Dual Carrier Wheels & N-New Disc
- 1-Caldwell 4 Row Shredder
- 2-Hamby Triple Bar 9 Shank Deep Rippers w/ Gauge Wheels
- 2-Amco 8 Row Disc Bedders Complete w/ Row Markers & Gauge Wheels - 7x7 in. Tool Carrier, Nice!
- 1-John Deere 5 Bottom Sub Soiler on 5x7 Tool Carrier

- 1-Krause 21 ft. - Cyl. Cont. One-way Plow
- 1-Krause 18 ft. One Way Plow
- 1-Shopmade 6 ft. - 3 pt. One-way
- 1-Porter 6 Row Wick Applicator
- 1-Super Rhino 3 pt. Blade
- 1-Servis 8 ft. 3 pt. Blade
- 1-Wylie Side Mount Sprays Rig Complete w/ Ace Pump & Boom
- 1-Wylie 3 pt. Sprays Tank w/ Boom
- 1-Shop Made 10 ft. 3 pt. Dirt Mover
- 1-12 Row - Fold Up - 3 pt. Soudrighter - S. Bearings
- 1-Shopmade 4 Row Stalk Cutter
- 1-Shopmade 3 pt. 1 ft. Arm

NURSE TANKS & FUEL TANKS

- 1-1000 Gallon Butane Tank Plumbed for Water - Equipped w/ Teel Pump & Motor - Hoses - Mounted on a Big 12 Trailer Chassis w/ Springs
- 1-500 Gallon Butane Tank Plumbed for Water Mounted on 2 Wheel Truck Frame w/ Springs
- 1-300 Gallon Butane Tank - Plumbed for Diesel Mounted on 2 Wheel Trailer
- 1-300 Gallon Overhead Diesel Tank & Stand

TRACTOR & TOOL MAKE-UPS

- 1-Set 18.4-34 IHC Tractor Duals
- 1-Case Fast Hitch
- 1-Hamby 21 ft. Double Bar Tool Carrier
- 1-R&J 21 ft. Double Bar Tool Carrier
- 1-10 Tractor Weights
- 5-John Deere Uster Beams for 5x7 Bar
- 8-Hamby Barrowing Off Discs
- 1-Hamby Set Gauge Wheels for 4x4 Bar
- 1-Hwy. Drive - 7 Row - Rod Weeder
- 1-Fowler Cotton Bump Net
- 2-Set Press Wheels for 16-10 Wheat Drills
- 1-10 ft. Rolling Fenders
- 1-Lot Hamby 1x3 Shanks & Clamps
- 5-S&S Straddle Mulch Shank - for 5x7 Bar
- 1-Lot Sweepers - Chisels - Points - Shanks - Drags - Weights - Beet Knives - Hyd. Cylinders

Prescriptions

Trust Us With Prescriptions

Our reputation is based on years of dependable service to the community. We fill all orders quickly and reliably... Deliveries.

Byrd PHARMACY

Phone 652-3353

LOCKNEY

unbeatable

FREE Chassis Lubrication with paid oil & filter change

Undercoating

Regular \$50⁰⁰

NOW \$35⁰⁰

Offers good through August 31st.

Keep That Great GM Feeling With Genuine GM Parts.

GM QUALITY SERVICE PARTS

GENERAL MOTORS PARTS DIVISION

CITY AUTO, INC

Buick - Pontiac - GMC

6TH ANNUAL CONSIGNMENT AUCTION

FALL HARVEST EQUIPMENT

CONSIGN NOW!

LOCATED: In Lockney, Texas, at the Floyd County Fair Grounds

September 21 & 22, 1982

Will Be Selling: Tractors - Cotton Trailers - Module Builders - Trucks - Pickups - Combines - Farm Equipment & Any Other Harvest Related Equipment

Consignments must be in by Wednesday, September 1, 1982 to be advertised.

For More Information Contact: DULIN, REAGAN & EVANS AUCTIONEERS

JACK DULIN — TXS-012-0119 - (806) 293-8791
 BENNIE REAGAN — TXS-012-0163 - (806) 847-2213
 MERVIN EVANS — TXE-111-0678 - (806) 293-8195
 FRANK HOOPER, Clerk — (806) 627-4448

— OR —
 LOCKNEY ROTARY CLUB MEMBERS

BOYCE MOSLEY — (806) 652-2686
 OWEN THORNTON — (806) 652-3195

Hale Center, Texas
 Silverton, Texas
 Plainview, Texas
 Tulsa, Texas

Lockney, Texas
 Lockney, Texas

DULIN, REAGAN & EVANS AUCTIONEERS

Route 2, Hale Center, Texas 79041

JACK DULIN TXS-012-0119 (806) 293-8791
 BENNIE REAGAN TXS-012-0163 (806) 847-2213
 MERVIN EVANS TXE-112-0678 (806) 293-8195
 FRANK HOOPER, Clerk (806) 627-4448

Hale Center, Texas
 Silverton, Texas
 Plainview, Texas
 Tulsa, Texas

REMEMBER your loved ones with a living memorial to the Caprock Hospital Auxiliary Memorial Fund. Mrs. Ben Whitaker, Treasurer.

Center News

BY: MRS. J.E. GREEN

August 16, 1982:

Sunday was a long hot day. So is today. When the big white clouds float between us and the sun it helps. It will

Foster homes needed

Old age—it's something all of us are going to face at some time. And although few of us expect it to be the highlight of our lives, when you consider the alternatives, old age isn't such a bad thing—or is it?

More and more today, society tends to shuttle its elderly off to nursing homes—whether they really need the medical care or not. There, out of sight and out of mind, the elderly, who could contribute so much to the lives of others, live out the rest of their days in uselessness and futility.

But there are alternatives, according to Norma Whiteley, Social Worker for the Texas Department of Human Resources (TDHR) in Floydada. Mrs. Whiteley explains that TDHR is attempting to expand its services to the elderly by providing alternatives to nursing home care.

"With a little help, many elderly people who would otherwise have to go to nursing homes, can remain in their own homes or their own communities," she said. Help may be in the form of assistance with such personal care as bathing, exercising and taking medication, or household tasks such as cooking, cleaning, laundry, shopping, minor home repair and yard work.

"One alternative that we're trying to make available in the Floydada area," Mrs. Whiteley said, "is foster care. The foster care program provides 24-hour care in a family home approved and supervised by TDHR. It is for older people who are in pretty good health,

but just need some assistance with day-to-day activities, or just don't have a home."

Canning seems the order of the day at the Brewers. Mr. and Mrs. Millard Watson came up to help her parents pick the beans etc.

Mrs. Hollis Payne and mother Mrs.

Wester have just returned from a flying trip to New York to visit the sister and daughter and family which included the 6 months old baby boy. They report a wonderful time.

Mrs. James Hartline of Levelland spent the weekend in Floydada visiting her mother, Mrs. Wanda Teeple and her mother in law, Mrs. Cora Hartline.

Mr. and Mrs. Julian Edmonson of Borger spent Friday night and Saturday with Mrs. Fred Battey. Mrs. Flora Warren visited Mrs. Battey Monday afternoon.

Mrs. Lucille Custer visited Mrs. Green recently.

Mrs. Anthony Latta came Saturday afternoon.

Mrs. Wanda Huckabee of Stephenville visited from Monday to Friday with her mother, Mrs. Roe Jones. Another daughter, Mrs. Clara Hale of Amarillo came for over this weekend.

weekend.

Mr. and Mrs. Hal Thomas were in Lubbock Saturday. They took home grandson David who has spent the week with his grandparents. And visited with

their children Sue and Milton Manseh.

Miss Alma Ruth Nelson was reported resting today when I called the hospital.

Brother Clay Muncy is home again after several days in the Lockney Hospital. Let us remember these and all the sick in prayers.

I received an interesting letter last week from our missionaries, Ulman and Ruth Jordan Moss. They are on their last furlough in the Missionary Residence of Wylam Baptist Church of Birmingham, Alabama and enjoying it very much.

Also the husbands' people are in Alabama and they recently attended the Moss Clan Reunion, which they and all their children attended. About 150 to 200 in all. They had a great time.

They regret that they will not be able to be with us at the Center-Fairview Homecoming September 5, but hope to be at the next one.

After November 15, they plan to be in their home in Cleburn.

Blessings on the Mosses as they wind up much over 30 years as missionaries in Venezuela and Mexico.

Public Notice

NOTICE TO CREDITORS OF THE ESTATE OF J.T. GRIFFIN, DECEASED

Notice is hereby given that original Letters Testamentary upon the Estate of J.T. Griffin, deceased, were granted to the undersigned on the 1st day of July, 1982, and were issued to me on July 1, 1982. All persons having claims against this estate are required to present same to me within the time prescribed by law. My residence and post office address is Route 1, Lockney, Texas 79241. Claims may be presented through my attorneys, Morehead, Sharp & Tisdell, P.O. Box 1600, Plainview, Texas 79072.

Bessie Lee Griffin, Independent Executrix of the Estate of J.T. Griffin, Deceased
8-19

PUBLIC NOTICE

Notice of Meeting

Representatives of minority organizations and of organizations having substantial interest in minority affairs are invited to attend a meeting at the District Courtroom of the Crosby County Courthouse, Crosbyton, Texas on August 24, 1982 at 8:00 p.m., to participate in the election of one individual to the Board of Directors of the South Plains Association of Governments as a representative of minority residents of Crosby, Dickens, Lynn, Garza, Motley, Floyd and King counties.

Jerry D. Casstevens
Executive Director

PUBLIC NOTICE

Notice is hereby given that the adoption of the budget for the fiscal year 1982-83 for Caprock Hospital District is scheduled at the regular meeting of the Board of Directors on Thursday morning, September 2, 1982 at the Caprock Hospital at 7:00 a.m. The public is welcome.

E.A. Williams
President

NOTICE TO BIDDERS

The City of Floydada, Texas will receive sealed bids at the office of the City Secretary at 114 W. Virginia until 5:00 P.M., September 14, 1982 and then opened and publicly read at the City Council meeting at 7:30 P.M. in the meeting room at the City Hall for the following:

INSURANCE:
Comprehensive General Liability Insurance
Comprehensive Automobile Liability Insurance
Automobile Medical Payments Insurance

INSTRUCTIONS:

1. List of vehicles to be covered may be obtained from the City Secretary.
2. New policy to contain terms and provisions of existing policy which may be reviewed at the City Hall from 8:00 A.M. to 5:00 P.M. Monday thru Friday each week.
3. The City Council of the City of Floydada, Texas reserves the right to accept or reject any or all bids submitted.

Parnell Powell
Mayor

Jimmie Lou Stewart
City Secretary

8-26

The Floydada Independent School District is offering for sale by sealed bids a 1981 Chevrolet 4-Dr. Malibu Drivers Education Car. Please return bid in a sealed envelope marked "Drivers Ed. Car Bid" by 5 P.M. August 27, 1982 to Floydada Independent School District, 226 W. California, Floydada, Texas 79235. Bids will be opened by the Floydada Board of Trustees during a called meeting on August 31, 1982. The Board of Trustees reserves the right to reject any or all bids and waive any or all formalities. Minimum bid requirement is \$4,500.00. For additional information please call 983-5167.
Tommy Cathey
Business Mgr.

LEGAL NOTICE

Lighthouse Electric Cooperative, Inc. (the "Utility") in accordance with the rules of the Public Utility Commission of Texas, hereby gives notice of its intent to implement a new schedule of electric rates, effective September 1, 1982, or as soon thereafter as permitted by law. All classes of consumers are affected by the proposed changes. The Utility expects that the proposed schedule of rates will furnish 50.15 percent more in revenues than were furnished by the existing schedule of rates during the test year and will incorporate expected wholesale power increases.

A statement of intent, including the proposed tariff revisions and schedules and a statement specifying in detail the effect the proposed change is expected to have on the revenues of the Utility, and the classes and numbers of Utility consumers affected, is on file with the Public Utility Commission of Texas and is available for Public Inspection at the Cooperative offices, Hwy. 70 East, Floydada, Texas, and 502 S. 2nd Street, Memphis, Texas.

Harry Jung,
Attorney for the Utility

INTRODUCING

Our new cattle representative for your area order buying all cattle classes



Gary Park



phone: 817/232-1867
office: 817/626-3761
Route 1, Box 27AB • Fort Worth, Texas 76179

GARY PARK • PADUCAH, TEXAS
office: 806/492-3613 • home: 806/492-3477

More Classified

TOUGH CASE FOR YOU

WE HAVE A TOUGH CASE FOR YOU...NOW IS THE TIME TO CASH IN ON A GREAT DEAL. SO COME BY ONE OF OUR FOUR LOCATIONS AND LET US STATE OUR CASE.
INTEREST FREE FINANCING TO JAN. 1st., 1982

LUBBOCK	
CASE 2290 8 SP CAB & AIR	\$24,000
CASE 4480 CAB & AIR	38,000
CASE 2470 CAB & AIR	28,000
CASE 2670 CAB & AIR	20,000
CASE 2670 CAB & AIR	18,000
CASE 1570 CAB & AIR	15,500
CASE 1175 CAB & AIR	13,500
CASE 1070 CAB & AIR New Engine	13,500
CASE 1070 CAB & AIR	7,000
CASE 1070 CAB & AIR	9,500
IHC 1486 CAB & AIR	11,500
JD 4010 & HESTON STRIPPER	6,500
JD 4010 DIESEL	4,900
JD 4020 LP	4,900
OLIVER 1800 LP with HESTON STRIPPER	4,900
CASE 990 DAVID BROWN 50 HP	7,200
MF 35 Gas New Tires	2,950

LITTLEFIELD	
CASE 2090 CAB & AIR	\$24,000
CASE 2590 CAB & AIR	32,000
IHC 1486 CAB & AIR	9,000
CASE 1175 CAB & AIR	9,000
MF 510 COMBINE	6,500
CASE 220 Garden Tractor with Mower	2,000
CASE 600 4 BOTTOM REVERSIBLE PLOW	4,100
JD 4 BOTTOM REVERSIBLE PLOW	2,200
JD 7 SHANK CHISEL PLOW	950
4010D	5,500

LAMESA	
CASE 900 TRACTOR (overhauled)	\$2,400
CASE 2590 CAB & AIR	32,000
CASE 2590 CAB & AIR	32,000
CASE 2590 CAB & AIR	33,000
JD 4430 CAB & AIR	15,500
JD 3010 DIESEL	4,900
JD 4630 CAB & AIR New Tires	22,500
IHC 1486 CAB & AIR	17,500
IHC 1086 CAB & AIR	16,500
IHC 1086 CAB & AIR	15,500

FLOYDADA	
1980 CASE 2470 2300 hrs	\$29,000
1970 CASE 1070 CAB AIR	7,500
1972 CASE 1070 CAB AIR	9,500

LUBBOCK	LITTLEFIELD
3202 Slaton Hwy 745-4451	E. Hwy 84 Bypass 385-4427

FLOYDADA	LAMESA
101 South 12th 983-2836	902 S. Dallas 872-5861



TURNER REAL ESTATE

983-2635 Farms Ranches Floydada, Texas

Hollis R. Bond Real Estate

PHONE 983-2151
107 S. 5th FLOYDADA

Diamond Industrial Supply Co., Inc.

Phone Days 296-7418
Nights 296-1200 or 296-7828
1014 Broadway
Plainview, Texas
SKF BCA Timken Bower
Cotton Stripper Brushes & Bats
U joints
Oil Seals
O rings
Wisconsin
"We Appreciate Your Business More"

Classified Rates

Classified advertising rates: 20 cents per word
First insertion: 15 cents per word each subsequent insertion.
Minimum charge \$2.50 first insertion; minimum charge \$1.50 second insertion.

Classified display rate: \$2.52 per column inch.

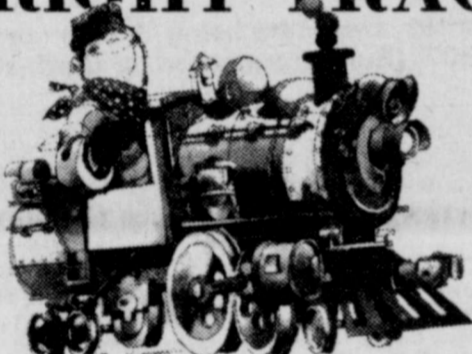
Card of Thanks: - \$3.00.

Deadline for classified ads is Tuesday at 3:00 P.M.

983-3737

652-3318

GET ON THE RIGHT TRACK ...



Watch for your EXPIRATION DATE in The Lockney Beacon OR The Floyd County Hesperian



In 1836 a machine was invented that mowed, threshed, tied straw into sheaves and poured grain into sacks—but it wasn't until the 1930s that such a combine was actually marketed.

So says the VA... THE BORN LOSER by Art Sansom

LISTEN TO THIS! WIDOWS OF VETS MAY BE ENTITLED TO CERTAIN EDUCATIONAL AND HOME LOAN BENEFITS!



Contact nearest VA office (check your phone book) or a local veterans group.

SHOP COMPARE WANT ADS ARE YOUR BEST BUY!

Real Estate

SPACIOUS 2 bedroom house, partially bricked, large fenced yard, storage sheds, excellent location, plus many extras. Call 983-3736 after 5:00 or weekends.

HOUSE FOR SALE: 1 mile west of Floydada. 3 bedroom, 2 bath. Custom drapes, woven woods and blinds. Day, 983-2811 and after 5, 983-2204.

FOR SALE: Several good two and three bedroom houses. Bond Real Estate. Contact Wilson Bond, 983-2151 or 983-3573.

3 BEDROOM HOUSE, west part of town. Carpeted, storm cellar. Has assumable loan. Bond Real Estate, Wilson Bond, 983-2151, 983-3573.

3 BEDROOM house, 2 baths, carpeted. Good location. Financing arrangement possible. Bond Real Estate 983-2151.

3 BEDROOM, 2 bath brick home. Double garage. Nice fenced yard. Covered patio. Storage building. Good location. 809 W. Virginia, 983-2394.

MUST SELL. 3 bedroom, 2 bath, 402 W. Virginia. \$15,000 at 12% interest with \$5,000 down on a five year note. Monthly payments approximately \$222.85 per month. 983-3319.

HOUSE FOR SALE: 2 bath, 3 bedroom. With large shop. 983-2636. 429 W. Mississippi.

FOR SALE: Several nice two and three bedroom houses. Loans can be arranged. Contact Sam Hale at Hale Ins. & Real Estate 983-3261.

TWO BEDROOM HOUSE. paneled. Carpet. 327 West Jeffie, 983-3216.

TWO BEDROOM HOUSE at 129 W. Jeffie. Call 983-2633.

LEASE OR SALE: 3 bedroom, sun room, playroom, 2 baths, den w/fireplace, utility room, kitchen w/built-ins. Carport. 2800 sq. ft. Great location. 522 W. Mississippi. Call after 5:30, 983-5244.

NICE 3 BEDROOM: 2 bath home. Modern kitchen, large utility, recently remodeled. Redwood covered patio, basement. Domestic well. 1 mile east of city limits. For information, call Darrell McCandless, 983-2444 or 983-2153.

HOUSE FOR SALE OR RENT: See at 125 J.B. Avenue, 3 bedroom, 1 1/2 baths, 1 car garage. Fenced yard. Day: 667-3505, ask for Mike Perry. Night, 667-3967.

NICE 2 bedroom house; attached garage; good location; large rooms, closets and storage. Call 374-0540, 376-4811 or 652-3451.

FOR SALE BY OWNER: Nice, brick home at 508 S.W. 6th St., Lockney. 2 bedrooms, den and/or 3rd bedroom, living room, bath and 1-car garage. Priced below appraisal. (817) 565-0414.

CLASSIFIED ADS
CALL 983-3737
or 652-3318
Before 3:00 p.m. on Tuesdays

"A bore is a person who talks when you wish him to listen."
Ambrose Bierce

For Sale

"WE SELL SLEEP"
Direct Mattress Co. New or renovated, for appointment call City Trim Shop, 983-2332, Floydada.

15 FT. NEWMAN BASS BOAT, with tarp, 85 hp Evinrude motor with anglo boat trailer, trolling motor and depth finder. \$4000. Call 806-983-3932.

FOR SALE: 7 1/2 horse boat motor. (Would consider trading for smaller motor or boat) Call 983-3736 after 6 p.m.

REFRIGERATED window unit air conditioner. Call Victor Smith, 983-2048.

KENMORE portable dishwasher, front loading. 652-3752.

CAMPSITE CAMPER storage and fully paneled. 983-5132, 616 W. California.

SEARS 22 inch lawnmower. \$95.00. Twin bed frames, \$20.00 each. 2 box springs, \$20.00 each. 122 E. California, 983-3121.

PIANO IN STORAGE
Beautiful spinet-console stored locally. Reported like new. Responsible party can take at big saving on low payment balance. Write Joplin Piano, Inc., Joplin, Missouri 64801. Include home phone number.

Watkins Quality Products
\$1.00 off an order of \$12.95 or more with this ad.
Floydada 983-5019 Bertie Ann
Lockney 652-2160

Vegetables

FOR SALE: Black eyed peas, creamed peas and beans. Howard Bishop, 983-2992.

Farm Items

INVENTORY CLEARANCE: 2 6-row Bo-Bar rope wicks. Sell at cost. Producers Cooperative Elevator.

FOR SALE: Big 12 grain cart. Button Beedy, 983-3927.

HAY for sale. Call 983-2087.

Lost & Found

LOST: 2 golf clubs in City Park. Reward will be paid. Call 983-3701 or 983-3717.

Pets

TO GIVE AWAY: 4 cute puppies, 7 weeks old. Part dachshund and spaniel. Also mother dog, part dachshund. 895-4612.

KITTENS to give away. Litter trained. Call 983-2634.

For Rent

UPSTAIRS APARTMENT for rent. Call Mize Pharmacy, 652-2435 or 652-2412. LTFN

FOR RENT: New 2 bedroom mobile. Partially furnished. Rent includes water, sewer, garbage and yard care. \$275.00 per month. Also master bedroom and bath to single man. See at 330 W. Kentucky, 983-5619.

FOR RENT: Small 2 bedroom house. Call 983-5043.

ECONOMICAL STORAGE
TRY BARKER'S
Jewel Box-Mini Storage
and save your time and money.
Phone 652-2642.
Corner Main & Locust - Lockney, Texas. **Barker Building**

STORAGE SPACE
BOATS, FURNITURE, ANYTHING, ETC. BY THE MONTH OR SIX MONTH 10% DISCOUNT.
West Texas Mini Storage
CALL WILSON BOND
983-3573 OR 983-2151

Want To Buy

WANTED TO BUY irrigated or dryland farm in Floyd or surrounding area. Write Box XRO, c/o Hesperian, 111 E. Missouri, Floydada.

WANT TO BUY buttons in sacks of one lb. or more. Also a used manual typewriter for childrens use. Call after 5 p.m. 983-3478.

Garage Sale

MOVING SALE: Thursday and Friday, 1 mile west of Floydada on Sandhill highway. Console TV, chest freezer, lawn furniture, etc.

3 FAMILY GARAGE SALE: Friday, 8 a.m. to 9 p.m. Office furniture, heaters, air conditioners, bicycles, kids clothes. Behind Brooks Oil, Floydada.

GARAGE SALE: Saturday, August 21, 8:00 a.m. to 5:00 p.m. 504 S. White. Misc., lamps, bedspreads, clothes, baby and toddler shoes and toys.

GARAGE SALE: 202 E. Hallie. Small and large appliances, clothes, little boy's clothes, big screen TV (lowest price ever), king size waterbed and toys. Come at 9:00 o'clock Saturday and Sunday afternoon.

GARAGE SALE: 812 W. Virginia. Thursday. Furniture, etc.

GARAGE SALE: Friday, 20th, at 123 J.B. Avenue. Come to back door.

3 FAMILY CARPORT SALE. All kinds of goodies. Come see. Thursday and Friday, 8:30 to 5:00, 321 W. Kentucky.

BIG GARAGE SALE! Friday, August 20 from 8:00 a.m.-6:00 p.m. Baby dressing table, baby clothes, play pen, headboard to bed, weight set, stereo, baby bath tub, chairs, other furniture, curtains and cornices, NICE clothes, knick knacks and lots more! 630 W. Mississippi.

GARAGE SALE: Friday, August 20, 8 1/2 miles south Ralls Hwy. Things left over from raising three sons. Shuffle board, radios, speakers, Christmas decorations, etc. Beckers.

Rodeo Sidewalk Sale and Flea Market
Saturday, August 21
Ralls Chamber of Commerce and Agriculture, Ralls, Texas.

Let US have your garage sale for you. 613 South Main, Lockney. Open weekly.
Elaine Hardy, 652-2570
Edith Cooper, 652-2201

Farm Services

Portable disc rolling
Lawson Farm Supply Inc.,
Floydada 983-3940

Nash Irrigation Supply. Plastic pipelines, aluminum pipe, lake pumps and accessories. 983-5231.

Grease Pit Pumping Cess Pool
RUBEN DELEON
318 W. Mississippi
Floydada, Texas 79235
983-2171 OR 983-2449
Day or Night
Mud Holes Septic Tank

FLOYDADA IRON & METAL
We buy Scrap Iron, Junk Cars, Aluminum Cans, Batteries, and sell new and used steel.
Location - East Ross
Call 983-2305

Services

15 YEAR OLD WANTS TO MOW your yard. Call 983-3273.

GIBBS SHARPENING SERVICE. Saw blades, tools, scissors, etc. 983-3964, 106 E. Jeffie.

HAVE ALL OF YOUR tools, saws, mower blades, scissors, etc. sharpened by a professional sharpener. O.C. Allison, 407 W. Bryant, 652-3124.

MARLEY CONSTRUCTION. Roofing, home repair, painting, government jobs. Small fee out of town. Bob Marley, Rt. 2, Floydada, 983-5742.

MOST ALL TYPES OF PAINTING DONE
Farm equipment, houses, etc. Quality work, reasonable price. Call 983-5813.

Employment

WANTED CABLE TV INSTALLER
Duties include climbing utility poles and working with public. Training period. High school diploma required. Apply in person to set up interview. Floydada Cable TV, Equal Opportunity Employer.

Wanted

WANTED: Small carpentry work. Call Terry at 983-3739 or 983-2294.

Business Opportunities

OWN YOUR OWN Jean-Sportswear, Infant-Preteen or Ladies Apparel Store. Offering all nationally known brands such as Jordache, Chic, Lee, Levi, Vanderbilt, Calvin Klein, Wrangler over 200 other brands. \$7,900 to \$16,500 includes beginning inventory, airfare for one to Fashion Center, training, fixtures, grand opening promotions. Call Mr. Loughlin (612) 835-1304.

Business Services

ADAMS WELL SERVICE Complete Irrigation Service. All sizes submergible pumps in stock. One day service. 983-5003.

LOCKSMITH: Locks opened. Locks repaired. Keys made for locks that have no keys. Duplicate keys made. Deadbolts installed. 24-hr. Mobile Service throughout area. Don Probasco. Pro-Lox shop, 983-3834.

POOLE WELL SERVICE AND RADIATOR SHOP
Irrigation and domestic.
Trailer Sales
407 E. Houston
983-5610 or 983-2285

"Carpet Need Cleaning?"
Let me do the work for you. Dry foam, 10 cents sq. foot. Also home and auto upholstery. Call Jack Moore 983-3033, after 5 p.m.

Script Printing & Office Supply
*Commercial Printing
*Office supplies & Furniture
*Business Machines
108 S. Main
Floydada
983-5131

BICYCLE REPAIR SERVICE
Western Auto Store
201 S. Wall Street
Floydada 983-2302

WALKER FENCING
PLAINVIEW, TX
WE DO ALL TYPES FENCING
AND SPECIALIZE IN
CUSTOMER SERVICE.
CALL 806/296-5936
AFTER 6:00 PM

ROOFING
Flat Roofs
Composition Roofs
Trailer Houses
Steel Buildings
FREE ESTIMATES
All Work & Material Guaranteed
Deanie Henderson
652-3434, Night
293-5459, Days

Mary Kay COSMETICS
Sue Williams
Independent Beauty Consultant
983-2862
100 S. Main
Floydada

Automotive

75 LTD	\$ 950
71 LTD	\$ 850
68 PU Chev.	\$ 750
66 Buick	\$ 850
74 Chev. New Mt.	\$1500
75 Malibu	\$1800

TERMS
Looks good, runs good
W.B. EAKIN CAR LOT
Ralls Hwy.

For Your New Ford
Leasing
See Ray Reed
at Reed Ford-Mercury
983-3761

Motorcycles

1981 KAWASAKI CSR650. 983-3273 after five.

Auto Parts & Accessories

E-Z RIDER SHOCKS by Monroe. Buy 3 and the 4th is FREE. Free Installation. Don's Muffler Shop, 210 W. California, Floydada, Texas.

ALTERNATOR & STARTER REPAIRS
Norrell Tractor Parts
114 W. Missouri
983-3417

CUSTOM EXHAUST WORK
Bruce Williams
Specializing in Glass Packs and Turbo Mufflers
At
DANS AUTO SERVICE
652-2462

DAN'S AUTO SERVICE
DAN TEUTON, Owner
Specializing in Automatic Transmission, Motor Tune-Ups, Auto Air Conditioning.
General Repair
We Have A BRAKE LATHE to handle all passenger car brake drums. See us for complete brake service.
Phone 652-2462

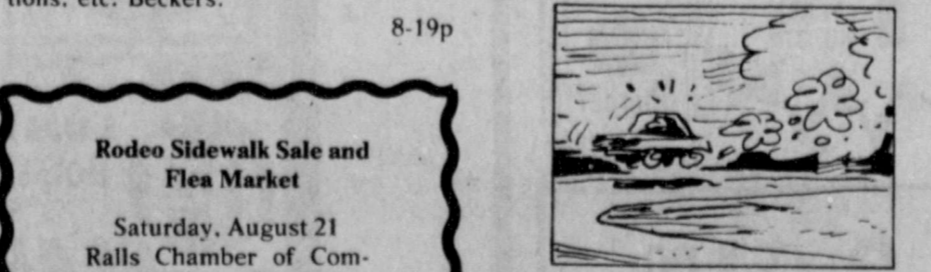
Card of Thanks

I would like to say thanks for all the cards, prayers, visits, phone calls while I was in the hospital. For all the food brought to the house.
Buddy and I appreciate all the concern you all showed us during these days.
Thank You,
Sanuy Lutrick

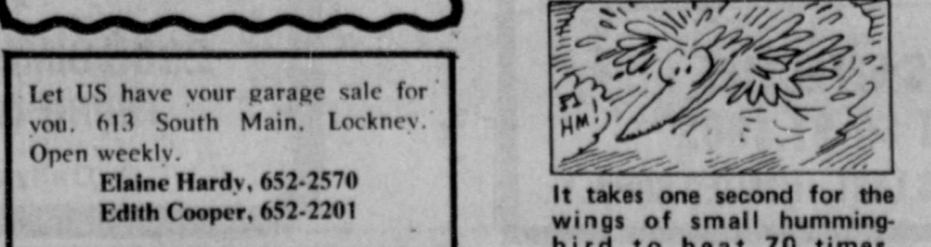
The family of Elmer Williams would like to express our appreciation to all our friends and neighbors for their kindness and concern during the loss of our loved one. We want to thank each and everyone for the visits, cards, food, flowers, and memorial gifts.
God Bless each of you.
Blanche Williams
Loene & H. Nelson & family
Martha & Elmer Dean Williams & family
Sue & Leon Williams & family

SALE!

Eight Rental Units
(Efficiency Apartments plus House in Floydada)
Monthly Income Above \$1600
Small Investment For Trailer Space Could Increase Income Above \$2,500
All Units Partly Furnished
House Includes: Washer/Dryer, Disposal, New Hot Water Heater, Refrig., Stove, A/C
Minimum Down: \$6,900
Call Bob Jacobs
between 5 & 8 p.m. (518) 623-9644



An automobile traveling 30 miles per hour will go 44 feet in the space of a single second.



It takes one second for the wings of small hummingbird to beat 70 times.

J.P. WILLIAMS
Ph. 652-2326
WEED CONTROL
On Lawns
INSECT CONTROL
On Trees & Shrubs
Control Of
BINDWEED, RAGWEED, BLUEWEED & JOHNSON GRASS
On Farms
C.A. Lic. No. 22453 Bus. Lic. No. 3106



DEON ZUMWALT

Zumwalt to compete for West Texas Rodeo Queen

Deon Zumwalt, the daughter of Mr. and Mrs. Perry Zumwalt of Floydada, is currently a contestant in the Miss West Texas Rodeo Queen Pageant which will be held Friday, September 10. The pageant takes place in Abilene, the home of the West Texas Fair.

The categories of competition will be Horsemanship, Western Attire, and Personality. Each category will be judged on an equal basis. The purpose of the pageant is to find a well-qualified contestant who will represent West Texas and help promote the sport of Rodeo. The winner must be able to ride a horse and feel at home in the saddle. She must also wear western clothes with a flair and look comfortable in them.

The competition will begin with the personality interview, followed by the horsemanship segment which will be held at the Taylor County Coliseum. The western attire portion of the competition and the crowning of Miss

West Texas Rodeo will be that same evening.

Several pre-competition activities that the contestants are asked to attend include interviews, television talk show appearances and civic club luncheons. Each non-winner is asked to ride in the Saturday morning parade as the queen's court and make an appearance in the grand entry at the Saturday night performance of the rodeo.

The new Miss West Texas Rodeo Queen will reign over the five days of the rodeo and will be expected to ride in the parade and be presented every night of the rodeo.

The winner of the pageant will go to the state pageant in San Antonio in January to compete for the Miss Rodeo Texas title.

Deon is currently a student at Abilene Christian University where she will begin her second year this fall. She is being sponsored by the Bacacita Farms of Abilene.

Bonds available for mortgage loans in Texas

The Texas Housing Agency has announced that it has available Single Family Mortgage Revenue Bonds available for mortgage loans to finance acquisition of qualified owner-occupied residences in the State of Texas. Location of the residents must be within the geographic limits of the State of Texas.

Qualifying Mortgage Loans will be Conventional Mortgage Loans made to eligible borrowers whose adjusted gross income for the tax year 1981 did not exceed \$38,000 for families and \$30,000 for individuals and who have not had an ownership interest in a principal residence during the preceding three years. In addition, residences financed by the loans in most cases must not exceed \$57,780 for new homes and \$45,450 for existing homes.

Persons interested in participating in the program may contact South Plains Housing Finance Corporation at (806) 762-8721 or one of the participating financial institutions. The following is a list of participating institutions, the contact person, and the telephone number.

- Andrews Savings, Janice Portorfield, (915) 523-2595
- Briercroft Savings, Curtis Beard, (806) 747-5181
- Lubbock National Bank, Kelly Minor, (806) 762-8800
- Mortgage and Trust, Wm. J. Morrow, (806) 797-4235
- Plains National Bank, Manda Stephenson, (806) 795-7131
- Sentry Savings, Jackie Connolly, (806) 794-2411
- West Central Investment Corp., Linda Hutches, (806) 792-2178

FLOYD DATA

Navy Chief Machinist's Mate Joe M. Jarnagin, son of Glenn and Floriene Jarnagin of Floydada, recently participated in exercise "FLEETEX 1-82".

He is a crewmember aboard the guided missile cruiser USS Bainbridge, homeported in San Diego.

The 22 day exercise involved extensive training in anti-aircraft, anti-ship and anti-submarine warfare. Both surface-to air and anti-ship "Harpoon" cruise missiles were fired at targets 400 miles off the southern California coast.

There were 34 ships, 150 aircraft and 19,000 Navy personnel participating in the exercise.

We Welcome Your Insurance Business

Donice Casey
Career Agent
652-3414

Bud Rainey
Career Agent
983-5225

Life - Auto - Fire Home - Ranch
Farm Crops & Health Insurance

If a guest injured his ankle in my yard will my Farm and Ranch Owners policy pay his medical expenses?

For help with insurance questions and needs call . . .

Texas Farm Bureau Insurance

101 So. Wall Floydada
Lockney 652-2242

James Race
Agency Mgr.
983-5095
652-2638

Clar Schacht
Career Agent
652-3449

84 Lumber & Home Center

SALE DATES: NOW THROUGH AUGUST 29

6' Patio Door \$133 ⁸⁴ each with screen Mill Finish	Cedar Fencing Picket 84¢ each																				
Farm Fencing Barbed Wire gaucho 6' T-Posts \$22 ⁹⁵ each \$2 ⁴⁹ each	<table border="1" style="width: 100%; border-collapse: collapse;"> <tr> <th colspan="2">Lumber</th> <th colspan="2">Framing Lumber</th> </tr> <tr> <td>Sheathing Plywood 1/2" x 4' x 8' CDX</td> <td>\$6⁹⁹ each</td> <td>10' 2" x 4"</td> <td>\$1⁸⁴</td> </tr> <tr> <td>Studs 2" x 4" x 92 1/2"</td> <td>\$1²⁵ each</td> <td>12' 2" x 4"</td> <td>\$2¹⁴</td> </tr> <tr> <td></td> <td></td> <td>14' 2" x 4"</td> <td>\$2⁴⁴</td> </tr> <tr> <td></td> <td></td> <td>16' 2" x 4"</td> <td>\$2⁵⁹</td> </tr> </table>	Lumber		Framing Lumber		Sheathing Plywood 1/2" x 4' x 8' CDX	\$6 ⁹⁹ each	10' 2" x 4"	\$1 ⁸⁴	Studs 2" x 4" x 92 1/2"	\$1 ²⁵ each	12' 2" x 4"	\$2 ¹⁴			14' 2" x 4"	\$2 ⁴⁴			16' 2" x 4"	\$2 ⁵⁹
Lumber		Framing Lumber																			
Sheathing Plywood 1/2" x 4' x 8' CDX	\$6 ⁹⁹ each	10' 2" x 4"	\$1 ⁸⁴																		
Studs 2" x 4" x 92 1/2"	\$1 ²⁵ each	12' 2" x 4"	\$2 ¹⁴																		
		14' 2" x 4"	\$2 ⁴⁴																		
		16' 2" x 4"	\$2 ⁵⁹																		

Complete Details At Your Nearest 84 Lumber Store

The Seaside \$6057.00 plus freight

84 Panelized Homes 84 Homes 11919 E. 37th Avenue Denver, CO 80239

For more information fill out the following and mail with \$1 to:

Name _____
Street _____
City _____ St _____ Zip _____
Phone _____

Blueprints \$50.00 5 set pkg.
84 Lumber Nearest You

Siding T1-11 3/8" x 4' x 8' \$13 ⁹⁹ each Hardboard 7/16" x 4' x 8' \$10 ⁸⁴ each	Shingles 3 Tab \$25 ²⁹ 100 Sq. Ft. Self Sealing Choice of Stock Colors	Drywall 1/2 x 4' x 8' \$2 ⁸⁹ each Tapered Edge
--	---	---

Metal Storage Sheds 10' x 6' \$142 ⁸⁴ Newburgh 10' x 9' \$166 ⁹⁹ Newburgh 10' x 9' \$197 ⁸⁴ Brookside	Kitchen Cabinets 10% OFF Regular Price All Stock Items
---	---

STANLEY Tools & Hardware Hammer #52-416 \$11 ⁴⁸ each Mini-Hacksaw #15-210 \$3 ⁴⁸ each Patio Door Lock #CD4547 \$6 ²⁴ each Shelf Bracket 12" x 14" 99¢ each	Commodore Vanities 15% OFF Regular Price SPECIAL CLOSE OUT PRICE
--	---

Paints & Stain Clear Wood Preservative \$9 ⁹⁹ gal. Semi-Transparent Wood Preservative \$10 ⁸⁴ gal. Redwood Stain \$3 ⁶⁴ gal.	Carpeting price per square yard Carefree Shag \$6 ⁸⁴ Paydirt Tweed \$3 ⁴⁸ Artificial Grass \$2 ⁴⁹
---	---

Septic Tanks 750 gallon \$322 ⁹⁹ each	Power Attic Vent #2000 \$47 ⁴⁸ each
--	--

We welcome Mastercard and Visa

84 LUMBER & HOME CENTER

PLAINVIEW, TEX.

1911

2985 DIMMITT RD. EAST

PHONE: (806) 293-4384

Delivery Available at Reasonable Rates

We reserve the right to limit quantities

Top Quality at Low Prices!

<p>BORDEN'S HI-PRO MILK \$1⁹⁹ GAL. CTR.</p>	<p>FOLGER'S ALL GRINDS COFFEE \$2⁴⁹ 1 LB. CAN</p>
---	---

<p>Krispy CRACKERS 69¢</p>	<p>Western Straw HATS \$2⁹⁹</p>
<p>Shurfine SPINACH 3/\$1⁰⁰</p>	<p>Shurfine PORK & BEANS 3/\$1⁰⁰</p>

<p>6 PACK REGULAR/DIET PEPSI-COLA \$1⁶⁹ 12 OZ. CANS</p>	<p>BORDEN'S ASSORTED SHERBET \$1⁴⁹ 1/2 GAL. RD. CTR.</p>
---	--

Lockney

ALLSUP'S
CONVENIENCE STORES

"THERE'S ONE NEAR YOU"

TACO ROLLS 2/\$1⁰⁰

PRICES EFFECTIVE AUGUST 19-21, 1982

WHILE SUPPLIES LAST - LIMITED SUPPLY

Join Us In Worship-Regularly

IN THE CHURCH OF YOUR CHOICE



EVANS CHAPEL BAPTIST CHURCH
 Rev. Bennie Anderson, Pastor
 Sunday School 10 a.m.
 Morning Worship 11 a.m.
 Training Union 6 p.m.
 Evening Worship 7 p.m.
 Wednesday Prayer Meeting 7 p.m.
 Sunday afternoon worship 2:00

FIRST UNITED METHODIST CHURCH LOCKNEY
 Rev. Michael O'Connor
SUNDAY
 Sunday School 9:45
 Worship Service 10:55
 UMY 6:00
 Evening Worship 7:00
 United Methodist Women, First Tuesday of Month Circles, Monday (2nd & 4th Monday nights) Tuesday & Wednesday mornings.

TRINITY LUTHERAN CHURCH
 Providence Community
 Gary Kleypas, Pastor
 Sunday School & Adult Bible Class 10:00
 Worship Service 11:00.

ASSEMBLY OF GOD CHURCH LOCKNEY
 Sunday School 10:00
 Morning Worship 11:00
 Evening Worship 7:00
 Prayer Service Wed. 7:00
 Fddie Kendall, Pastor

TEMPLO BAUTISTA SALEM LOCKNEY
 Manuel Alaniz, Pastor
 Sunday School 9:45
 Worship Service 11:00
 Christian Training Time 5:00
 Evening Worship 6:00
 Wednesday Prayer Meeting & Choir Practice 7:30

CHURCH OF CHRIST LOCKNEY
 Bible Study 9:30
 Morning Worship 10:30
 Evening Worship 6:00
WEDNESDAY
 Ladies Bible Class 9:30
 Bible Study 8:00

AIKEN BAPTIST CHURCH
 Sunday School 10:00
 Morning Worship 11:00
 Training Union 6:00
 Evening Worship 7:00
 Prayer Service Wed. 7:30
 Brotherhood, W.M.U. and Auxiliary Wednesday 7:30

SAN JOSE CATHOLIC CHURCH LOCKNEY
 Father Terry Burke
 Sunday morning Mass 9:00
 Saturday Evening Mass 8:00
 Wednesday Evening 8 p.m.
 Friday Evening 8 p.m.
 Confessions Saturday 6:30

WEST COLLEGE CHURCH OF CHRIST LOCKNEY
 West College & Third
 Frank Duckworth, Evangelist
 Sunday Morning Worship Services 10:30
 Sunday Evening Worship Services 6:00
 Wednesday Evening Prayer Services 8:00

LONE STAR BAPTIST CHURCH
 Sunday School 10:00
 Morning Worship 11:00
 Training Union 5:00
 Evening Worship 6:00
 Prayer Service Wednesday Evening 6:30
 Brotherhood, First Saturday Morning of Every Month.

FIRST BAPTIST CHURCH LOCKNEY
 Murle Rogers, Pastor
 Sunday School 9:45 a.m.
 Morning Worship 11:00 a.m.
 Church Training 6:00 p.m.
 Evening Worship 7:00 p.m.
 Prayer Meeting Wednesday 7:00 p.m.
 Adult Choir Wednesday 8:00 p.m.
 High School Youth (B.Y.F.) Wednesday 7:00 p.m.
 G.A. and Mission Friends Wednesday 4:00 p.m.
 R.A.'s Sunday 5:00

PRIMERA IGLESIA BAUTISTA LOCKNEY
 Rev. Glenn Smith, pastor
 Sunday School 9:45 a.m.
 Morning Worship 11 a.m.
 Training Union 5 p.m.
 Evening Worship 6 p.m.
 WMU, Brotherhood Choir Practice 7:30p.m.
 Monday Prayer Service Wednesday 7:30
 RA's, GA's and Acteens Wednesday 7:30 p.m.

LATIN AMERICAN CHURCH OF CHRIST LOCKNEY
 Bible School 9:45
 Morning Worship 10:45
 Evening Worship 6:00
 Wednesday Service 8:00

LOCKNEY LATIN ASSEMBLY OF GOD
 Manuel Rendon, Pastor
 Sunday School 9:45
 Morning Worship 11:00
 Evening Worship 7:30
 Men's Fellowship Tuesday Evening 8:00
 W.M.C. Thursday 8:00
 Christ's Ambassadors Saturday Evening 7:30

Church directory sponsored by

If you appreciate your church directories, please let your sponsors know

Pay-N-Save
Byrd Pharmacy
Plains Electric Co.
Sun-View Fertilizers
Jackson Tire Co.

Reecer's Master Cleaners
Moore-Rose Funeral Home
Brown's Department Store
Schacht's Flowers & Jewellery

The Tye Co.
Emmert's Nursery
Lockney Coop Gin
Davis Lumber Co.
Lee's White Auto Store

That Blessings May Shine on You...Come to Church



Peace In Prayer

...And joy in faith. Religion offers guidance, enlightenment and inspiration. Each of us can benefit from visiting our place of worship.

If you appreciate your church directories, please let your sponsors know.

**MT. ZION
BAPTIST CHURCH**
FLOYDADA
Otis Cook, Jr., Pastor
Sunday School 10:00 a.m.
Morning Worship 11:00 a.m.
Bible Study 4:00 p.m.
Evening Worship 5:00 p.m.
Wednesday Prayer Meeting 8:00 p.m.

**FIRST ASSEMBLY
OF GOD CHURCH**
FLOYDADA
Pastor Jim Guess
Sunday School 9:45 a.m.
Morning Worship 10:50 a.m.
Service 5:00 p.m.
Sunday Evening Evangelistic 6:00 p.m.
Wednesday Night Service 7:00 p.m.
Thursday Womens Missionary 9:00 a.m.

**SOUTH PLAINS
BAPTIST CHURCH**
Rev. Cecil Osborne
Sunday School 10:00 a.m.
Morning Worship 11:00 a.m.
Training Union 6:00 p.m.
Evening Worship 7:00 p.m.

**CALVARY BAPTIST
CHURCH**
FLOYDADA
Rev. Hollis Payne
Sunday School 9:45 a.m.
Morning Worship 11:00 a.m.
Bible Study 6:00 p.m.
Evening Worship 7:00 p.m.
Wednesday Evening 7:00 p.m.

**ST. MARY MAGDALEN
CATHOLIC CHURCH**
FLOYDADA
Father Terry Burke
Sunday Mass 11:30 a.m.
Monday Mass and Ultreya 9:00 p.m.
Thursday Mass 9:00 p.m.

**WEST SIDE
CHURCH OF CHRIST**
FLOYDADA
Sunday Morning Worship 10:30 a.m.
Sunday Evening 6:00 p.m.
Wednesday Evening 7:00 p.m.

**FIRST UNITED
METHODIST CHURCH**
FLOYDADA
Jim Smith, Pastor
Sunday School 9:45 a.m.
Morning Worship 11:00 a.m.
Youth Fellowship 5:00 p.m.
Sunday Evening Worship 6:00 p.m.

**VICTORY BAPTIST
CHURCH**
FLOYDADA
Gary Grant, Pastor
Sunday School 10:00 a.m.
Morning Worship 11:00 a.m.
Evening Worship 7:00 p.m.
Wednesday Services 7:00 p.m.

**NEW SALEM PRIMITIVE
BAPTIST CHURCH**
FLOYDADA
Joe M. Jackson
Sunday Congregational Singing 10:00 a.m.
Morning Worship 10:30 a.m.
Evening Worship 6:30 p.m.

**THE CHURCH
OF THE NAZARENE**
FLOYDADA
William E. Clark, Pastor
Sunday School 9:45 a.m.
Morning Worship 10:45 a.m.
Evening Worship 6:00 p.m.
Wednesday Bible Study 7:00 p.m.

**SPANISH BAPTIST
MISSION
CHURCH**
FLOYDADA
Sunday School 9:45 a.m.
Morning Worship 11:00 a.m.
Training Union 6:00 p.m.
Evening Worship 7:00 p.m.

**CEDAR HILL ASSEMBLY
OF GOD CHURCH**
Rev. Vance Mitchell
Sunday School 10:00 a.m.
Morning Worship 11:00 a.m.
Evangelistic Service 6:00 p.m.
Wednesday Bible Study 7:00 p.m.

CARR'S CHAPEL
Rev. Jerry Kunkle
Petersburg, Pastor
Services Every Sunday
Morning Worship 9:30 a.m.
Sunday School 10:30 a.m.
No Evening Services

BIBLE BAPTIST CHURCH
FLOYDADA
Bob Chapman
Sunday School 10:00 a.m.
Morning Worship 10:45 a.m.
Sunday Evening Prayer Meeting 6:00 p.m.
Sunday Evening Services 6:30 p.m.
Wednesday Evening Services 7:30 p.m.

**FIRST CHRISTIAN
CHURCH**
FLOYDADA
Sunday School 10:00 a.m.
Morning Worship 11:00 a.m.

FIRST BAPTIST CHURCH
FLOYDADA
F. C. Bradley, Pastor
Sunday School 9:45 a.m.
Morning Worship 11:00 a.m.
Church Training 6:00 p.m.
Evening Worship 7:00 p.m.

**DOUGHERTY BAPTIST
CHURCH**
Jim DeWese, Pastor
Sunday Services 10:00 a.m.
Morning Worship 11:00 a.m.
Evening Worship 7:00 p.m.

**CEDAR HILL
BAPTIST CHURCH**
Sunday School 10:00 a.m.
Morning Worship 11:00 a.m.
Evening Worship 7:30 p.m.

**CITY PARK
CHURCH OF CHRIST**
FLOYDADA
Perry Zumwalt, Minister
Sunday Bible Study 9:30 a.m.
Morning Worship 10:30 a.m.
Evening Worship 6:00 p.m.
Wednesday Bible Study 7:30 p.m.
Ladies Bible Study, Wednesday 9:30 a.m.

Church directory sponsored by

City Auto

Reed Ford

Willson & Son

Consumer's Fuel

Adams Well Service

Sue's Gifts

Cates & Dawson

Bill Gilbreath Exxon

Moore-Rose Funeral Home

Producer's Cooperative Elev.

Oden's Chevrolet-Olds.

Martin & Co.

Thompson Pharmacy

Case Power & Equipment

★ Floyd County Recipe Exchange ★

Do you have a favorite recipe that you would like to share? Send it to the Hesperian at 111 E. Missouri or to the Beacon at 211 N. Main or bring it to either office before 3. p.m. Tuesday. We will print it along with your name.

OATMEAL-APPLESAUCE MUFFINS

Mrs. Orba Miller

- 1/2 c. butter
- 3/4 c. brown sugar
- 1 egg
- 1 c. sifted flour
- 1 tsp. baking powder
- 1/2 tsp. cinnamon
- 1/4 tsp. soda
- 1/4 tsp. salt
- 3/4 c. applesauce
- 1 c. 3-Minute Brand Oats
- 1/2 c. raisins
- 1/2 c. chopped nuts

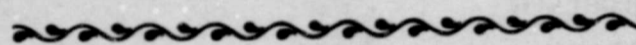
Cream butter and brown sugar. Add egg and continue beating. Sift together the flour, baking powder, cinnamon, soda and salt. Mix the sifted ingredients alternately with the applesauce into the creamed mixture. Stir in the oats, raisins, and nuts. Spoon batter into greased muffin cups. Bake at 350°F. for 25 to 30 minutes or until an inserted toothpick comes out clean. Sift powdered sugar over tops of muffins, if desired.

MOCK PECAN PIE

Mrs. Orba Miller

- 1/4 c. butter
- 1/4 c. sugar
- 2 eggs
- 1/4 c. white corn syrup
- 1 tsp. vanilla
- 1 c. shredded coconut
- 3/4 c. 3-Minute Brand Oats
- 9 inch unbaked pie shell

Cream butter and sugar. Mix in the eggs, corn syrup and vanilla. Stir in coconut and oats. Pour into pie shell. Bake at 350°F. for 40 to 45 minutes or until golden brown.



Another day, another dinner...for an easy, light summertime meal, why not toss together a cool, refreshing main dish salad? Enjoy an array of flavors from the garden, sea and dairy with Seaboard Salad, a delicious combination of fresh vegetables, savory seafood and bottled sour cream and Italian herbs dressing. This summer, don't wilt at the thought of cooking—keep your cool with main dish salads.

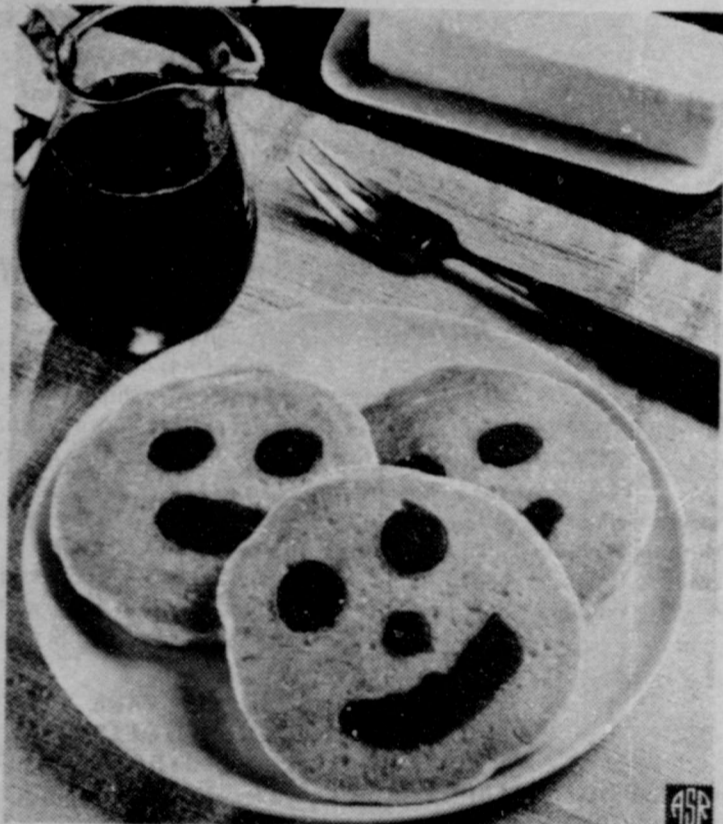
Other exciting recipes and tips can be found in "A Real Fresh Taste for Real Fresh Foods" from Wish-Bone® Dressing. Just send your name, address and zip code to: FRESH TASTE-MR., Allwood Station, P.O. Box 4093, Clifton, NJ 07012.

SEABOARD SALAD

- 1 quart mixed salad greens
- 1 pound fish fillets, cooked and flaked
- 1/2 pound shrimp, cleaned and cooked
- 2 medium tomatoes, cut into wedges
- 1/2 cup pitted ripe olives
- 2/3 cup Wish-Bone Sour Cream & Italian Herbs Dressing

In salad bowl, arrange all ingredients except sour cream and Italian herbs dressing; chill. Just before serving, toss with dressing. Makes about 4 servings.

Smiley Face Pancakes



Have you ever had a pancake look right back at you and grin? Smiley Face Pancakes do! They're a novel way to brighten up a meal or perk up a children's party.

These cheery pancakes are also simplicity plus because they require only four basic ingredients: buttermilk complete pancake mix, cocoa, sugar and water. Since the pancake mix already contains flour, buttermilk, eggs, shortening and leavening, it's convenient to use. And, there's less mess to clean up.

The eyes, nose and mouth on each gleeful face are actually small cocoa-flavored pancakes. Make them first, and simply pour buttermilk pancake batter over these mini pancakes when they're nearly set.

Kids really flip over these flapjacks. Served with maple flavored table syrup, Smiley Face Pancakes are as fun to eat as they are to make.

Smiley Face Pancakes

- | | |
|--|-------------------------------|
| 1 1/3 cups buttermilk complete pancake mix | 2 teaspoons unsweetened cocoa |
| | 1 teaspoon sugar |
| | 1 cup water |

Heat griddle over medium-high heat (375°F. electric griddle). Grease lightly. In small bowl, combine 1/3 cup pancake mix, cocoa and sugar; add 1/4 cup water, mixing until smooth. Using a teaspoon, drizzle batter onto hot prepared griddle to form eyes, nose and mouth. In medium bowl, combine remaining 1 cup pancake mix and remaining 3/4 cup water, mixing until batter is fairly smooth.

When smiley faces are nearly set, pour about 1/4 cup batter over each. Turn when pancakes begin to rise and edges look cooked. Turn only once. Serve with butter and maple flavored table syrup. Makes 7 to 8 pancakes.

Sale Banana Split \$1.19

This Monday, August 16
thru Sunday, August 22.

**Dairy
Queen** *

We treat you like a Texan.



★ Floyd County Lifestyles ★

Mail carrier retires after 34 years

John Speer, rural mail carrier, was roasted at a retirement dinner held in his honor Friday, August 6 at the Lighthouse building by his fellow postal workers.

About 35 people gathered for the occasion. The city carriers, rural carriers, and retired and substitute carriers and their spouses provided a meal of chicken, salads, and homemade ice cream.

Among those attending were Ed and Jo Wester, Ronald, Aleen and Leann Evans, Gary Wilson Wayne and Pansy Finley, John and Geneva Cockrell, Harold Wayne and Geneva Bennett, Doyle and Dorothy Turner, Elvis and Estelle Warren, George and Lee Finley, McAdoo Postmaster, Doris Neff and her husband Dale; her clerk, Madilyn Griffin and her husband Howard; Freddie and Lovita Morren, Weldon and Mazie Becker, Lorin and Bennie Liebfried, Kay Dunn and her children Kathy and Sam, Ed and Kyla Warren, Roy and Sharon Kinard, and John and Carolyn Redding.

Numerous gag gifts were bestowed on the retiree before a letter which had accumulated "various and sundry" postal charges. Speer was instructed to examine the contents. He was then told he could redeem the letter for something over \$2.00, which he gladly agreed to when he found the envelope to contain a purse taken up specifically for the occasion by his co-workers.

Ed Wester took charge of the roasting ceremony. Each fellow worker took his turn at reminding Speer of some past experience that might "enlighten" those in attendance to his qualifications and dedication.

On a more serious note Wester presented Speer with a plaque of certification on his 34 years as a rural mail carrier signed by Emmett Cooper, Regional Postmaster General of the Southern Region. He explained that Speer was far too young for this occasion.

Wester prefaced his remarks by explaining that service was all that the Postal Department had to sell. He said Speer had kept the standards of the department with the highest honor and dedication and exemplified the type employee the department always tried to attain. To illustrate his care and concern, Wester told of how Speer had asked his substi-

tute to keep check on a 93 year old patron on the McAdoo end of the route as a personal favor to him.

Speer retired as rural carrier on Route 2 out of the Floydada post office and Route 1 out of the McAdoo post office. The 134-mile route that Speer has traveled every day for the past two years serviced 58 Floydada patrons and 76 McAdoo patrons.

When Speer came to Floydada in March of 1976 he was the carrier on Route 4. He bid on Route 2 and was awarded that bid over two years ago.

Speer transferred to Floydada from Flomot where he had been a substitute rural carrier for 11 years before beginning his civil service career in 1961. He was a regular mail carrier there for 15 years before transferring to Floydada.

But when Speer started working with the postal department in 1950 that was not his first experience with delivering mail. Speer's father, Joe, was a postman for 31 years. Only at his death did Speer attain a regular appointment.

Speer fondly recalled that he had ridden with his father ever since he was old enough to offer assistance when the roads would be muddy or when the mail was heavy for one reason or another.

Speer and his wife Joyce have a daughter Kay Dunn who lives in Tucumcari, New Mexico, with her husband who is a mortician and their children, Kathy 3½ and Sam 1. They also have a son Bill.

The Speers farmed their 395 acre farm where they raised cotton and wheat at Flomot from 1961 until about a year after they moved to Floydada. Both of them had been raised in farming and/or ranching communities, but after their move, it was impractical for them to continue their farming operation. Mrs. Speer recalled with a twinkle in her eye that they spent that year saying "Hi" and "Bye" in the doorway as they passed each other on the way in and out. She ran the tractor until Speer could run his route. Then he would relieve her. Since that time the farm has been leased.

Speer spent about two years in the U.S. Army at the end of World War II. He counted himself lucky in that the war was ended while they were enroute overseas. He was in Japan and with the troops when they occupied Korea.

After his 22-month hitch he worked with road construction from 1957 to 1960, spending two seasons in Alaska.

Speer recalls his years as mailman with fond memories. One humorous incident he related was when he was delivering mail at Flomot. When he stopped at a mailbox, he noticed the landowner's pasture gate was open. So wanting to be helpful, he proceeded to close it. Without realizing it, he had closed the gate the owner had purposely left open to drive a cow out of the pasture. In spite of all her hollering and waving, she was unable to attract his attention. Speer said they had had many laughs over the incident.

When asked about the muddy roads and weather conditions, Speer said he had been really fortunate in that respect. He said he had never been caught in a blizzard. He said he had had several near misses, but never anything treacherous. He said he had been stuck a number of times and had to walk out, but nothing that is not included in "another day in the life of a rural carrier."

"The people have been exceptionally kind to me. They just go out of their way to be nice. You really enjoy serving people like that. That's the best part of the job," Speer said. He told of how his patrons had always given him vegetables, jellies, and various gifts through the years. He recalled that probably the most unusual thing ever left for him

was the head of a large bass. One of his loyal patrons had left the fish head to let him know their recent fishing trip had been a success.

"The people have been so good to me. My fellow workers at the post office here were so helpful when I transferred to this office. They showed me the ropes and helped to connect some of the gaps I found by moving into a new community with lots of new names and faces." Shaking his head affirmatively, Speer reaffirmed his remarks, "Lots of good people — some of the finest."

Friday, August 6 was the official date of Speer's retirement. His wife said they had gotten adjusted to having so many Saturdays and Sundays all run together yet.

Speer said he intends to spend the biggest part of his spare time with his grandchildren and fly fishing. He has been an avid fisherman for many years, but only now does he feel he can really spend as much time at it as he would like at his favorite pastime.

Postmaster Wester said of Speer, "He is one of those type employees that you don't like to see retire. He is a sincere and dedicated man. The postal service needs more like him. We have really enjoyed the association. He and Randy Gafford (the mail carrier Speer replaced on Route 2) are a complement to the Flomot community, both having transferred from there."



POSTMASTER ED WESTER presents John Speer with a plaque of certification for 34 years as a rural mail carrier.

A Week In The Life Of A Farmer

[Ed. Note: This feature was brought in to the newspaper office by Edwin Nutt, and was originally published in the Daily Register of Brookings, North Dakota. We find it to have rich humor, and hope our rural citizens will enjoy it.]

Monday

Water froze up. Bought nice blackface cow. \$225.
Tried to find five-section drag...lost somewhere.
Dead steer in feedlot, looks like it bloated. Must be something it ate. Called the vet.
Put blackface cow in with other cows. Fixed fence. Vet wants to talk to me.
Vet said steer bloated. It must have been something it ate. Paid vet.
Called banker. Asked about a \$10,000 loan. He laughed. I didn't.
Put blackface cow back in with other cows. Fixed fence.
Wife mad. Dinner cold; late for hair appointment.
Sprayer froze solid. Put sprayer in to thaw.
Weaned pigs from two sows. Wired up gate between them.
Wife mad. Threatened divorce if I thawed out sprayer in her bath tub again.
Put blackface cow back in. Used pickup this time.
Found five-section drag. Fixed front tire and rim on pickup.
Traded off slightly beat-up five-section drag.
Sows in with little pigs. Knocked down gate. Nailed 2x6 across pen.
Put rest of cows out with nice blackface cow. Fixed fence.
Sows ate through 2x6. Locked them out of hoghouse.
Cleaned out hoghouse. Started to spread manure. Rendering truck here to pick up dead steer.
Sows broke into hoghouse. Put baby pigs in chicken house. 6:45 - wife mad. Supper cold and kids want to go to town.

Tuesday

Manure spreader froze solid. Need to spray pigs. Blackface cow looking peaked. Called vet.
Wife mad - car won't start.
Vet here. Said cow looked peaked. Must be something she ate. Watch her. If she gets worse, call him. Paid \$10.00.
Property taxes due, paid half what they're worth, same as I'm getting for any corn.
Called vet. Told him blackface cow still looks peaked. Vet said might be to wheels under her.
Called feed grinder truck. Said he would be here after dinner. Put blackface cow in with other cows. Fixed fence.
Wife mad. Dinner cold. Mother-in-law wanted to go shopping.
Broke hose on tractor loader. Changed clothes.
Took blackface cow to market. Got \$485. My neighbor bought her.
Banker called. Said my note was due. I laughed. He didn't.
Peaked looking blackface cow in north pasture. Called neighbor. Nobody home. Put blackface cow back. Fixed fence.
Baby pigs have scours - feed must be too rich. Called vet.
Wife mad - hogs out in back yard. Herded them back. Fixed hoghouse door. Nailed 2x6 across door.
Wife laughing on hoghouse door. Says car is on fire. Ripped pants on hoghouse door.
New spark plug wires and radiator hose for car - \$14.87.
Vet here. Says pigs have scours. Feed must be too rich. Paid vet \$10.00.
Wife mad. Dinner cold and car won't start. Out of gas.
Called feed grinder man. Said he would be here after supper time.
Wife back. Says we are going to eat supper at Frank's Steakhouse at 6:30 sharp. Blackface cow in north pasture again. Called neighbor.
Wife mad. Dryer blew fuse. Clothes still wet.
Hogs in front yard again. Herded them back. Fixed other hoghouse door. Nailed 2x6 across.
6:30 sharp - wife mad. Grinder man here. Gas man here. Neighbor came to get blackface cow. Canned soup for supper.

Wednesday

Blackface cow in north pasture.
Banker called. Said note was past due. Nobody laughed. Sent check.
Wife mad. Washer overfilled again. Trash barrels full again.
Put water hose in manure spreader to thaw it out.
Sow farrowed - 14 pigs. Hooked up heat lamp with extension cord. Hog prices up \$1.00.
Wife mad. Car won't start. Sewer is plugged up.
Fixed dryer, washing machine, started car, emptied trash barrels and unplugged sewer.
Sat in easy chair with dirty clothes on. Wife mad.

Thursday

Water froze up.
Forgot running water in manure spreader yesterday. Boy-oh-boy.
Banker called. Check bounced. I laughed. He didn't.
Sold 10 head of hogs. Hog prices down \$4.00.

Wife mad. Furnace quit.
Sow loose in hoghouse. Chewed up extension cord - \$7.48. Ripped pants on hoghouse door.
Blackface cow still in north pasture. Bought her back for \$200.00.
Tax man here. Says 14 head of cows in north pasture not shown on tax form. Told him I didn't know how I miscounted like that. Sure glad to see them all home.

Friday

Water overflowing again.
Tire blew out on froze up manure spreader. Got too hot.
Snowed last night. Driveway drifted shut. Wife mad. Can't get to town for her groceries.
Blackface cow had twins in north pasture. Carried them to barn. Twin calves looked peaked.
Called vet.
Wife mad. Hot water heater not working. Water cold.
Banker called me. Said he might give me a loan if the cattle market would go up. I laughed. He didn't.
County Agent here. Says I ought to plant black walnut trees instead of corn. Says in 40 years they will be worth a fortune. Showed him how to get off the place.
Vet here. Said peaked looking cows sometimes have peaked looking calves. Paid \$15.00 (\$5.00 for each).
Put new steel door on hoghouse.
Dealer called. Wanted to know how I bent up drag so bad. Said he sure wished he had come looked at it before the trade.
Guess I won't get truck started today.

Saturday

Steel hoghouse door froze shut.
Put space heater against door casing.
Got tractor started. Found right hand glove.
Neighbor called and asked if I was missing blackface cow with twin calves.
Wife says hoghouse is on fire. Sure is.
Garden hose froze up. Called fire department.
All the neighbors are here. Wife mad. House is a mess. Fire truck stuck in driveway.
Put fire out with snow and wet sacks.
Insurance man here. Says he doesn't have hoghouse listed on policy. Anyway, it was \$100.00 deductible (about what it cost to fix it).
Threw away steel door. Sold space heater.
Neighbor called. Said he'd only charge me a dollar a day keep for cows and calves. Went and got them.
Wife mad. Hogs eating cat food on back porch. Put 2x6 on hoghouse door.
Sunday
Wife mad. Late for church again. Car started and quit. Gasoline froze. Went to church in pickup.
Sermon same as a month ago.
Fell asleep during sermon. Hat rolled down aisle. Wife mad.

Big tractor conference to be held in Lubbock

A one-day educational conference to help farmers and implement dealers achieve the utmost efficiency from farm tractors will be held Wednesday, September 1, at the South Park Inn in Lubbock.

Specialist with the Texas Agricultural Extension Service and representatives of several major farm equipment companies will conduct the training, according to Jett Major, county Extension agent.

The "Big Tractor Conference" will cover tractor performance, high speed farming, tractor weighing, field operations and efficiency, matching implements to big tractors, tires, soil compaction, tractor electronics, and computer management tools, the county agent said.

Registration at the conference begins at 9 a.m. with the program starting at 10 a.m. A \$7.50 registration fee includes lunch and conference proceedings. The South Park Inn is on South Loop 289 at the Indiana Ave. exit in Lubbock.

All major tractor dealers in Floyd County helped to make this conference possible through their donations. All producers and equipment dealers in the county are encouraged to attend the Big Tractor Conference.

Additional information about the conference and registration is available at the county Extension Office.

Educational programs conducted by the Texas Agricultural Extension Service serves people of all ages regardless of socioeconomic level, race, color, sex, religion or national origin.



Landscape & Gardening

BY BENNY J. BUTLER

GETTING READY FOR FALL GARDENING

A fall garden often produces better quality and higher yielding vegetables than a spring-summer garden.

Cooler weather means a longer harvest period for many vegetables. Lettuce and leafy greens are sweeter and more tender. Lettuce, collards, spinach, broccoli, Brussels sprouts and Swiss chard will continue to grow to be a part of your Thanksgiving and maybe even Christmas feast.

A fall garden requires careful planning. Planting must be timed to allow frost-sensitive vegetables to mature and be harvested before frost. Those which will tolerate frost can be planted for harvesting to continue after the first fall frost.

Vegetables adapted to fall gardens can be divided into four groups by their tolerance of freezing temperature.

Some warm-season vegetables adapted to fall gardens—but killed by frost—are snap beans, southern peas, summer squash, winter squash, cucumbers, sweet corn and early maturing pepper and tomato varieties.

The second group includes cool-season crops usually damaged by light frost when mature, such as lettuce, cauliflower, kohlrabi, celery, cabbage and broccoli.

The third group contains those which are moderately tolerant of repeated light frosts: carrots, parsnip, beets, Brussels sprouts, leaf lettuce, endive, radishes, rutabagas and turnips.

Members of the fourth group, which tolerate night after night of freezing and have even survived a mild winter, include bulb onions, green onions, chives, garlic, leeks, multiplier onions, shallots, spinach, parsley, collards, kale and Buttercrunch and Romaine varieties of lettuce.

Seed of snap beans, baby lima beans, broccoli, cabbage, carrots, collards, chard, sweet corn, cucumbers and summer squash planted in mid-summer will produce crops ready for harvest before the first fall frost. Beets, kohlrabi, leaf lettuce and spinach seed-planted in late summer will likewise provide abundant fall harvests. Mustard greens, radishes and turnips planted in early to mid-September will make it to the table in October and November.

Gardeners have several choices for starting their fall gardens. Summer vegetable seedlings require constant attention. Sowing seed in the garden in summer is one choice but will require repeated irrigation and careful attention to pest control. It's often easier to start seedlings of tomatoes, peppers, cabbage, broccoli, cauliflower, Brussels sprouts and parsley in boxes or pots of potting soil, culture them in protected areas, and transplant them to the garden when four to five weeks old.

A third choice to help fall gardeners is to buy transplants of these vegetables at local nurseries to set in the garden at the right time.

Additional information on timing of fall garden plantings and recommended varieties can be obtained from the Extension bulletin, (B 1221) "Growing Fall Vegetables and Annuals in Texas", available at the County Extension Office.

THATCH ACCUMULATION IN HOME LAWNS

The spongy turf which results from accumulated organic residues between the soil and the green leaves is referred to as thatch. A certain amount of thatch is desirable, as it adds resilience to the turf, reduces compaction of the soil surface and prevents soil erosion. However, excess thatch reduces water infiltration, creates shallow-rooted turf, encourages insect and disease infestations and makes mowing difficult.

Management practices such as thorough and infrequent watering, close and frequent mowing, proper fertilization and occasional cultivation (aeration, vertical mowing and topdressing) will prevent excess thatch accumulation. If lawns are mowed frequently, grass clippings will not promote thatch accumulation, and it is beneficial to

leave them on the lawn. However, if a lawn is mowed so infrequently that the turf is covered with clippings, then the clippings should be removed. Excess tree leaves should also be removed rather than shredding them with the mower. Scalping the lawn each spring by lowering the mower and mowing in several directions at the first sign of spring green-up will aid in thatch prevention.

Excess fertilization with nitrogen can cause thatch accumulation. Lawns should be fertilized in early spring and fall when the grass is not growing vigorously. During the summer months fertilization should be kept to a minimum and should not exceed 1 pound of nitrogen per 1,000 square feet every 60 days.

If thatch accumulation becomes a problem, lawns should be dethatched in early spring by vertical mowing in two or more directions. For bermudagrass or zoysia lawns the vertical blades may be spaced only 1/2 to 1 inch apart, but for St. Augustine or centipedegrass lawns the blades should be 1 1/2 to 2 inches apart. The organic debris brought to the surface by dethatching should be removed by raking or sweeping. Aeration should follow the vertical mowing operation. A hollow spoon aerator should be run over the lawn 3 to 5 inches into the soil. After aeration the lawn should be fertilized to encourage rapid recovery of the grass.

Such a renovation may never be necessary, or may be needed every 2 to 3 years, depending on the turfgrass species and maintenance program.

Additional information on thatch control is contained in the Extension bulletin, "Thatch Control in Home Lawns", (L-1713) available at the County Extension Office.

Reference to commercial products or trade names is made with the understanding that no discrimination is intended and no endorsement by the Cooperative Extension Service is implied. Educational programs conducted by the Texas Agricultural Extension Service serves people of all ages regardless of socioeconomic level, race, color, sex, religion or national origin.



SHADE TREE DECLINE FROM ROOT DAMAGE

Many times the health and vigor of shade trees declines in mid-summer, the cause being below the ground in some form of root stress.

Often this hidden stress exists for years and isn't noticed until above-ground symptoms become obvious. I have had several calls to look at trees this summer that were exhibiting symptoms of root stress.

Various conditions exist that cause root stress, and soil compaction is probably the number one cause.

Oxygen must enter soil for the roots and use, and carbon dioxide, when given off, must be able to move up from the root zone.

Where soil compaction exists, this process cannot occur and roots die.

Construction damage also kills trees, occurring as "bulldozer blight" from heavy equipment, misuse of fill dirt or scraping away soil.

Pruning helps when trees are weakened by construction damage. Removing as much as one-third of the canopy takes some of the load off the root system so the tree can recover enough to support remaining limbs and foliage.

When problems arise because of fill dirt, get air into the soil by drilling holes around the drip line and lining these with PVC pipe filled with gravel.

Trenching for service lines damages feeder roots because most roots are in the upper 18 inches of soil.

Girdling roots can kill shade trees by

growing around the base and strangling the tree. If girdling roots are suspected, dig two to four inches below the surface and cutting roots with a sharp chisel.

Weed-and-feed fertilizers, when not used properly or applied too near the root system, can damage the system and kill the tree. The bad thing about this type of damage is that no antidote exists and the chemical's effect may last for as long as a year. However, the chemical damage to the tree can be lessened by heavy irrigation in an effort to leach the chemical on down and diluting the chemical itself.

Insect scouting workshop to be conducted August 19th

Dale Spurgeon, County Extension Entomologist, will be conducting his weekly insect scouting workshop this week on Thursday, August 19, 1982 at 8:30 a.m. at the County Extension Office.

The workshop is very informal and is designed to keep the producer up to date on the current insect problems and answer any questions producers might have regarding insect identification, scouting or control.

All producers interested in attending the workshop should be there by 8:30

Weakened trees are extremely susceptible to insects and diseases - especially boring insects, so try spraying the trunk and larger limbs with lindane to protect against borers. Please don't hesitate to call the County Extension Office if you are having problems with any of your ornamental plants.

Educational programs conducted by the Texas Extension Service serves people of all ages regardless of socioeconomic level, race, color, sex, religion or national origin.

Kings Can Do No More!

When the sun rises,
I go to work.
When the sun goes down,
I take my rest...

I farm the soil
which yields my food.
I share creation:
Kings can do no more!
Chinese Proverb
2500 B.C.

ADAM'S WELL SERVICE
Floydada 983-5003

FEDERAL LAND BANK ASSOC. OF FLOYDADA
Floydada 983-2480

RUSSELL'S EQUIPMENT & SUPPLY
Floydada 983-3751

FLOYDADA COOPERATIVE GINS INC.
Floydada 983-2884

MARTIN & COMPANY
Floydada 983-3713

SUN-VUE FERTILIZER
Lockney 652-3362

THE TYE COMPANY
Lockney 652-3367

FLOYD COUNTY IMPLEMENT
Floydada 983-3732

CASE POWER & EQUIPMENT
Floydada 983-2836

FIRST NATIONAL BANK OF FLOYDADA
Floydada 983-3717

BROWN'S IMPLEMENT INC.
Floydada 983-2281

FLOYD COUNTY FARM BUREAU
Lockney Floydada 652-2242 983-3777

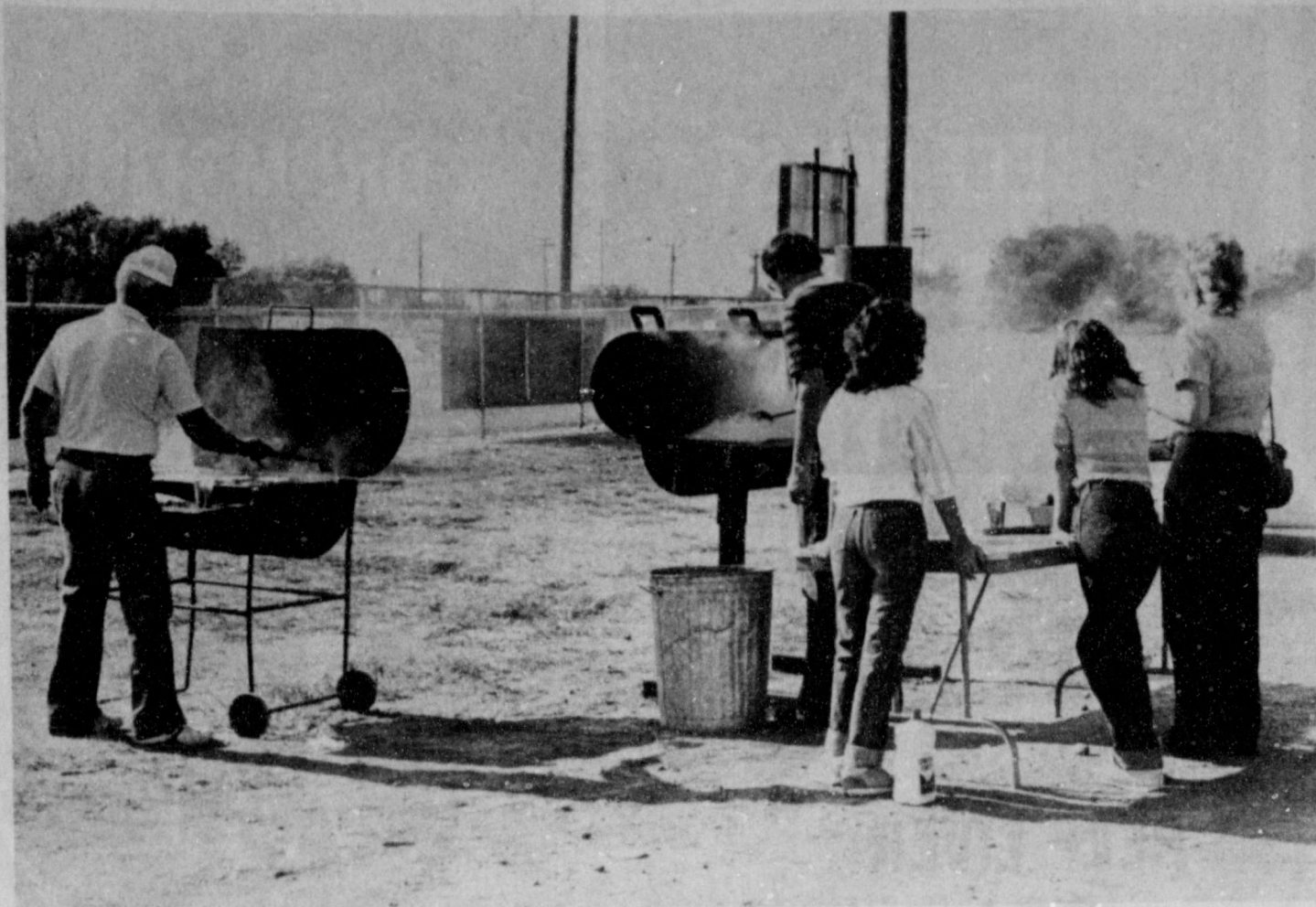
FLOYDADA IMPLEMENT CO.
Floydada 983-3584

MUNCY ELEVATOR
Lockney 652-3100

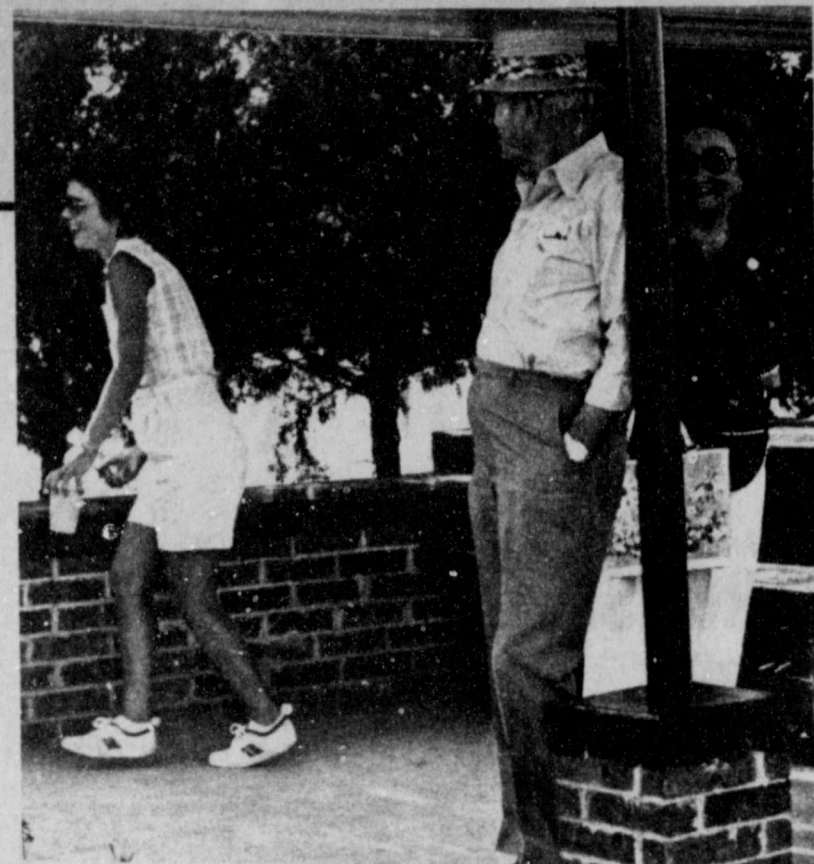
CONSUMERS FUEL ASSOC.
Lockney 652-3336

PRODUCTION CREDIT ASSOC.
Floydada 983-2454

Tye Company picnic



BILL McCARTER, AND JOHN TYE worked feverishly to provide enough hamburgers for those attending. Others helping with the cooking but not pictured were A.O. Smith, and Randy Williams, and Jerry Becton.



WITH THE TEMPERATURES SOARING to over 100 degrees Saturday those who arrived early and not involved in some activity were hunting shade under the shaded picnic areas. Sharla Becton and J.M. and Jessie Tye were some of those staying nearby.

About 135 employees and members of their families attended the Tye Company picnic held Saturday, August 14, at the Community Center in Lockney.

The picnic was kicked off with the playing of volleyball and horseshoes about 5:00 p.m.

Hamburgers with all the trimmings were served about 6:00 p.m. Guests could also begin swimming about that time.

Marie Vasquez won the pinto bean guess when she most accurately guessed the number of pinto beans contained in a suntea jar. She won a gift

certificate.

Mrs. Joe Tambunga, Jr. won the red hot guess. They were also in a suntea jar.

Swimming, the volleyball tournament and the horseshoe tournament continued through the evening.

David Peralez and Joe Tambunga, Jr. were the winners of the horseshoe tournament.

Winners of the volleyball tournament were Department 600. Members of that team were Joe Tambunga, Jr., Freddie Gonzales, David Peralez, Mattie Martinez, Lucio Vasquez, Glenn Quebe, Joe Luna, and Calvin Thompson.



GLENN QUEBE (left) with tournament director is shown with David Peralez and Joe Tambunga, Jr., winners of the horseshoe tournament.



ISIASTERMA, (right front) is shown presenting plaque to the winners of the volleyball tournament: (back row) Joe Luna, Joe Tambunga Jr., David Peralez, Glenn Quebe, and Calvin Thompson, (front row) Lucio Vasquez, and Mattie Martinez.





Combination Package (4 ends- 6 centers)

PORK CHOPS

\$1 59 lb.



Not Less Than 70% Lean

GROUND BEEF

\$1 29 lb.



Boneless Chuck

BEEF ROAST

\$1 37 lb.



Turkey

DRUMSTICKS

49¢ lb.

Country Style

SPARE RIBS

\$1 59 lb.

Boneless Arm

STEAK

\$1 88 lb.

Muenster

CHEESE

\$1 79 lb.

Whitting (tray pack)

FISH FILLETS

\$1 79 lb.

Boneless Arm

BEEF ROAST

\$1 78 lb.

John Morrell Meat

FRANKS

98¢ 12 oz. Pkg.

John Morrell Sliced

BOLOGNA

\$1 09 12 oz. Pkg.

BEEF LIVER


89¢ lb.



4.6 oz. Aim Mint

TOOTH PASTE

\$1 39



DOUBLE COUPON
 Present this coupon along with any one manufacturer's "cents-off" coupon and get double the savings from Shop Rite. Not to include "retailer", "free", soft drinks or tobacco coupons or exceed the value of the item.
 Limit 1 coupon per manufacturer's coupon.
 Limit 4 Double Coupons per customer.
 Coupons Good at Shop Rite.
 Good Thru August 21, 1982



½ Gallon

BLEACH

49¢

14.5 oz Shurfine evaporated

MILK

2/83¢



DOUBLE COUPON
 Present this coupon along with any one manufacturer's "cents-off" coupon and get double the savings from Shop Rite. Not to include "retailer", "free", soft drinks or tobacco coupons or exceed the value of the item.
 Limit 1 coupon per manufacturer's coupon.
 Limit 4 Double Coupons per customer.
 Coupons Good at Shop Rite.
 Good Thru August 21, 1982



40 oz.

PINE SOL

\$2 79

4 oz. Shurfine Pure

BLACK PEPPER

69¢

20 oz. Eggo Homestyle

WAFFLE

88¢

8 oz. Shurfine Sweet Milk or Buttermilk


BISCUITS

4/88¢

22 oz Shurfine Pink or Lemon Liquid

DETERGENT

69¢




Roast & Blend

Maryland Club Coffee

1 lb. Maryland Club Regular, Drip, or Perk-o-electric

COFFEE

\$2 09



16 oz. Shurfine Cut


GREEN BEANS

4/\$1 00


YOU CAN'T GO WRO



Sweet
CORN
7/\$1⁰⁰



Thompson Seedless
GRAPES
79¢ lb.



Green
CABBAGE
8¢ lb.



Red Delicious
APPLES
39¢ lb.

SHOP RITE

Prices Good Thru August 25, 1982

Each of these advertised items is required to be readily available for sale at or below the advertised price in each store, except as specifically noted in this ad. We reserve the right to limit quantities. None sold to dealers.

White
ONIONS 19¢ lb.

BELL PEPPERS 5/\$1⁰⁰

Green
ONIONS 5/\$1⁰⁰ bunch

Local Yellow
SQUASH 39¢ lb.

8 oz. Banquet Chicken, Beef, or Turkey
POT PIE
3/\$1⁰⁰



DOUBLE COUPON
Present this coupon along with any one manufacturer's "cents-off" coupon and get double the savings from Shop Rite. Not to include "retailer", "free", soft drinks or tobacco coupons or exceed the value of the item.
Limit 1 coupon per manufacturer's coupon.
Limit 4 Double Coupons per customer.
Coupons Good at Shop Rite.
Good Thru August 21, 1982



32 oz. Tree Top
APPLE JUICE
99¢

4 Roll Delsey
BATH TISSUE
89¢



DOUBLE COUPON
Present this coupon along with any one manufacturer's "cents-off" coupon and get double the savings from Shop Rite. Not to include "retailer", "free", soft drinks or tobacco coupons the value of the item.
Limit 1 coupon per manufacturer's coupon.
Limit 4 Double Coupons per customer.
Coupons Good at Shop Rite.
Good Thru August 21, 1982



12 oz. Birds-Eye Awake
ORANGE JUICE
49¢

Shurfine Vegetable Quarters
OLEO
39¢ 1 lb.

16 oz. Shurfine
PORK & BEANS
3/\$1⁰⁰

24 oz. American Beauty
MACARONI
99¢

20 oz. Ore Ida
SHOESTRINGS POTATOES
99¢




48 oz. Shurfine Vegetable
SHORTENING
\$1⁴⁹



14 oz. Heinz
BBQ SAUCE
69¢

ONG AT SHOP RITE